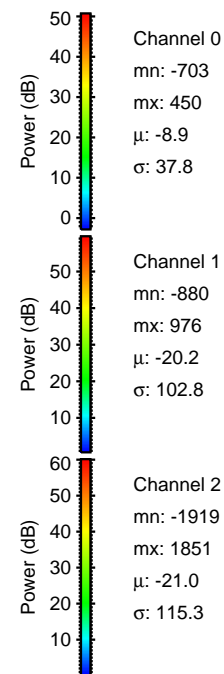
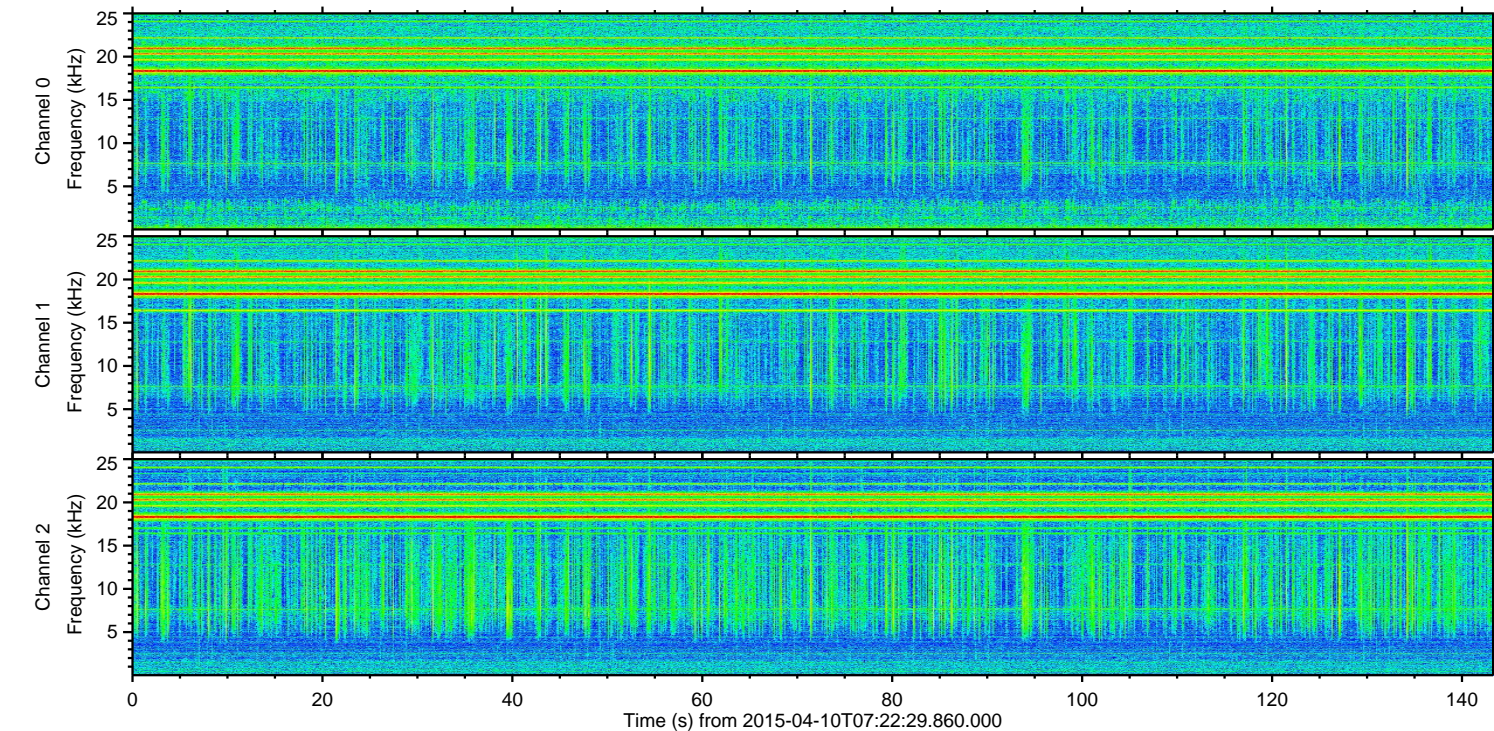
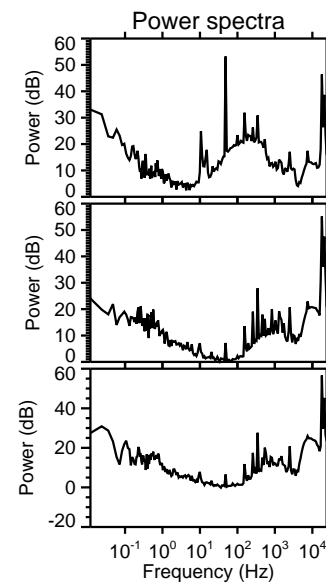
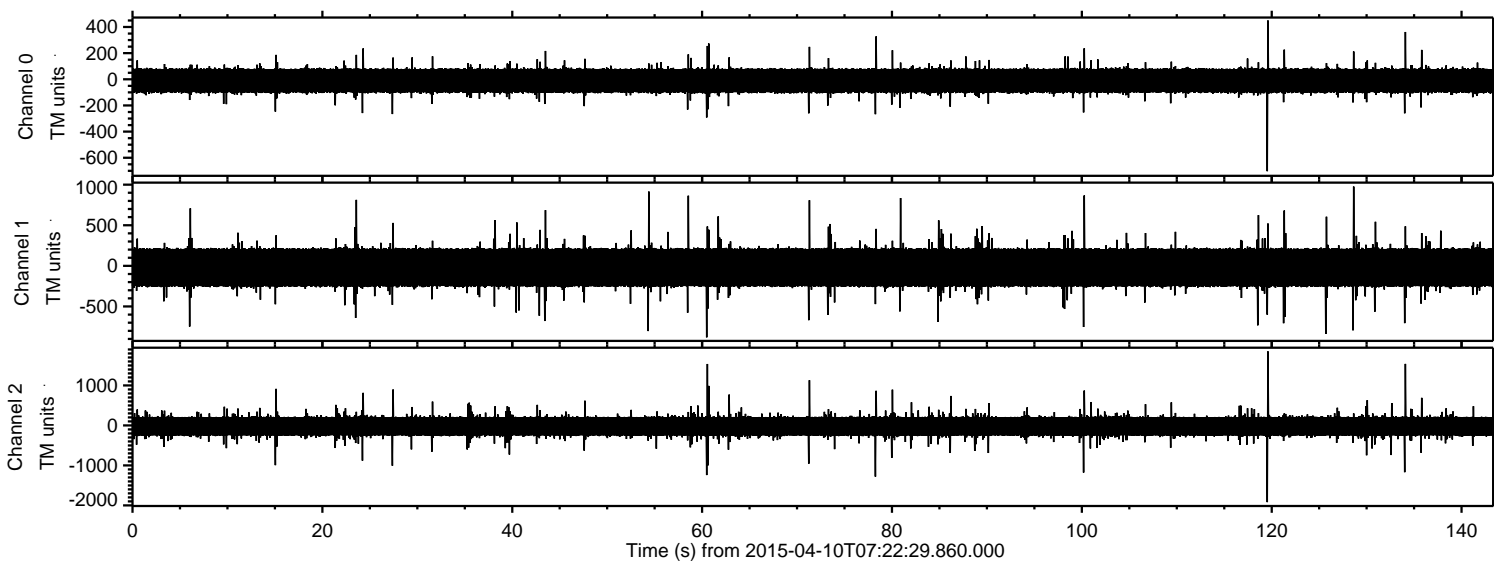


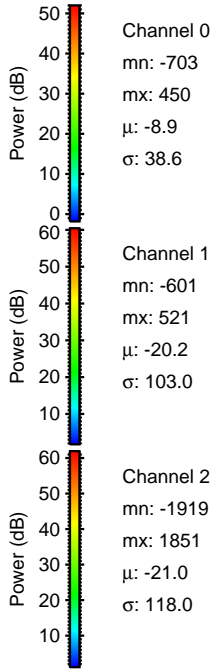
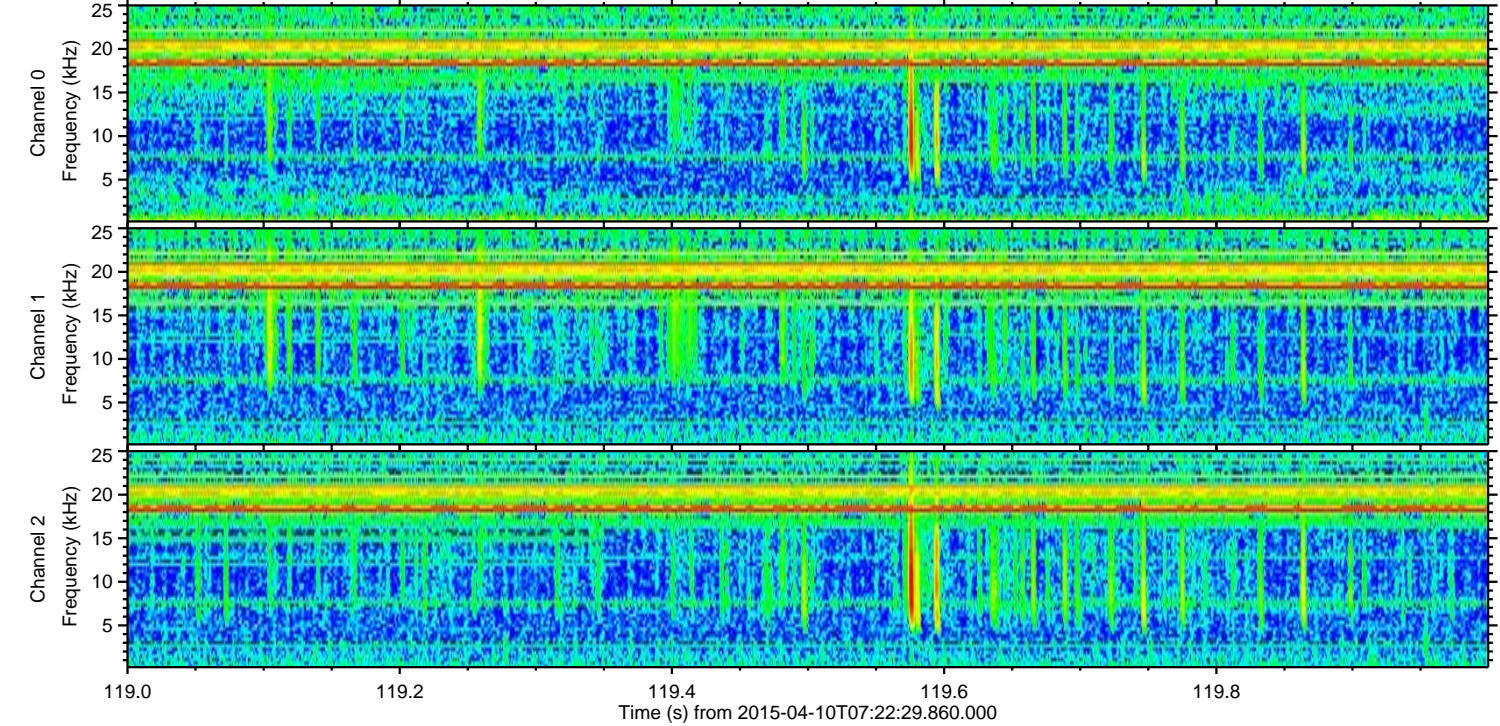
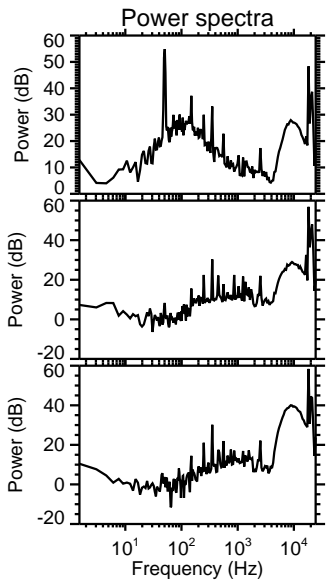
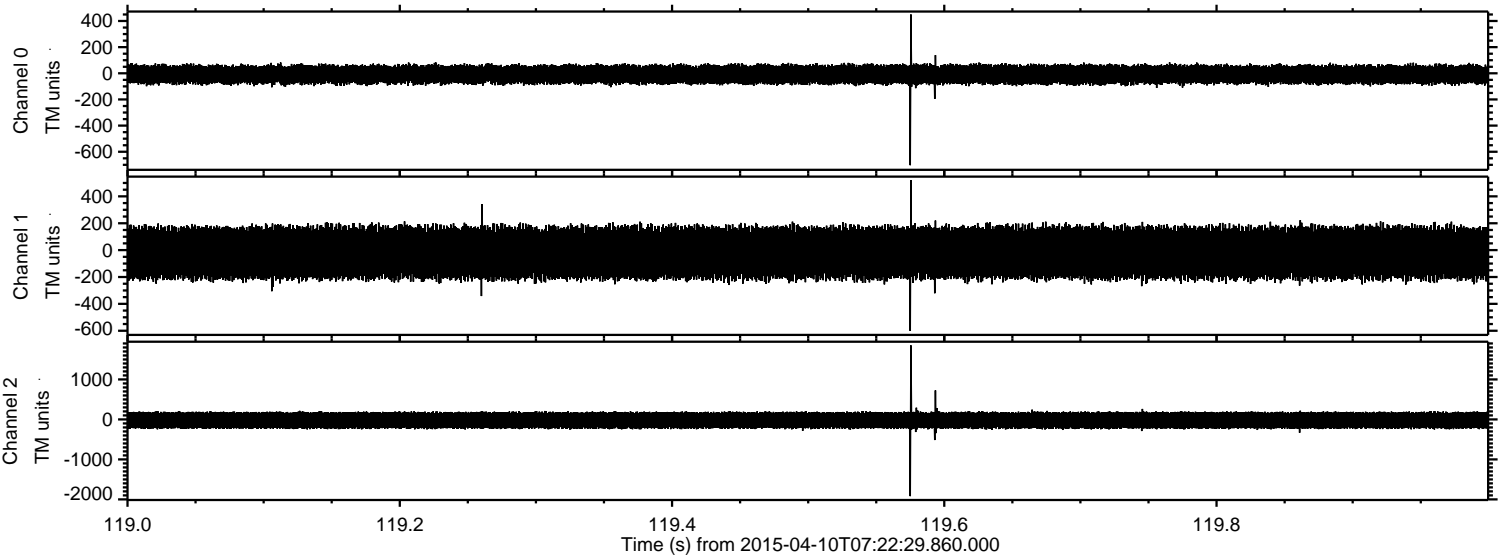
# ELMAVAN 3D WAVEFORMS (Measured data sampled at 50 kHz) 49766 packets of 144 samples from 2015-04-10T07:22:29.860.000.

Processed Fri Apr 10 09:29:47 2015 by ELM ver.2012-10-06 from 001\_\_elm20150410\_072228\_\_dat00.bin





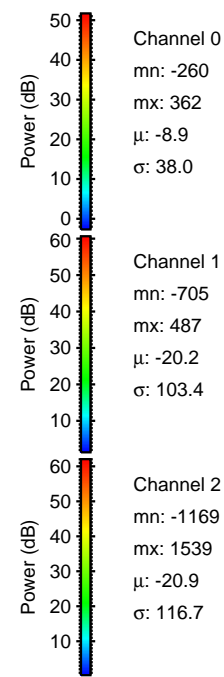
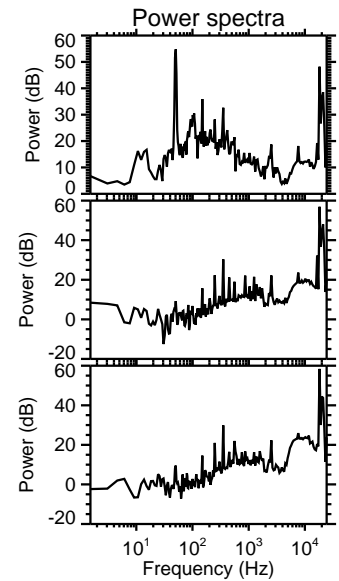
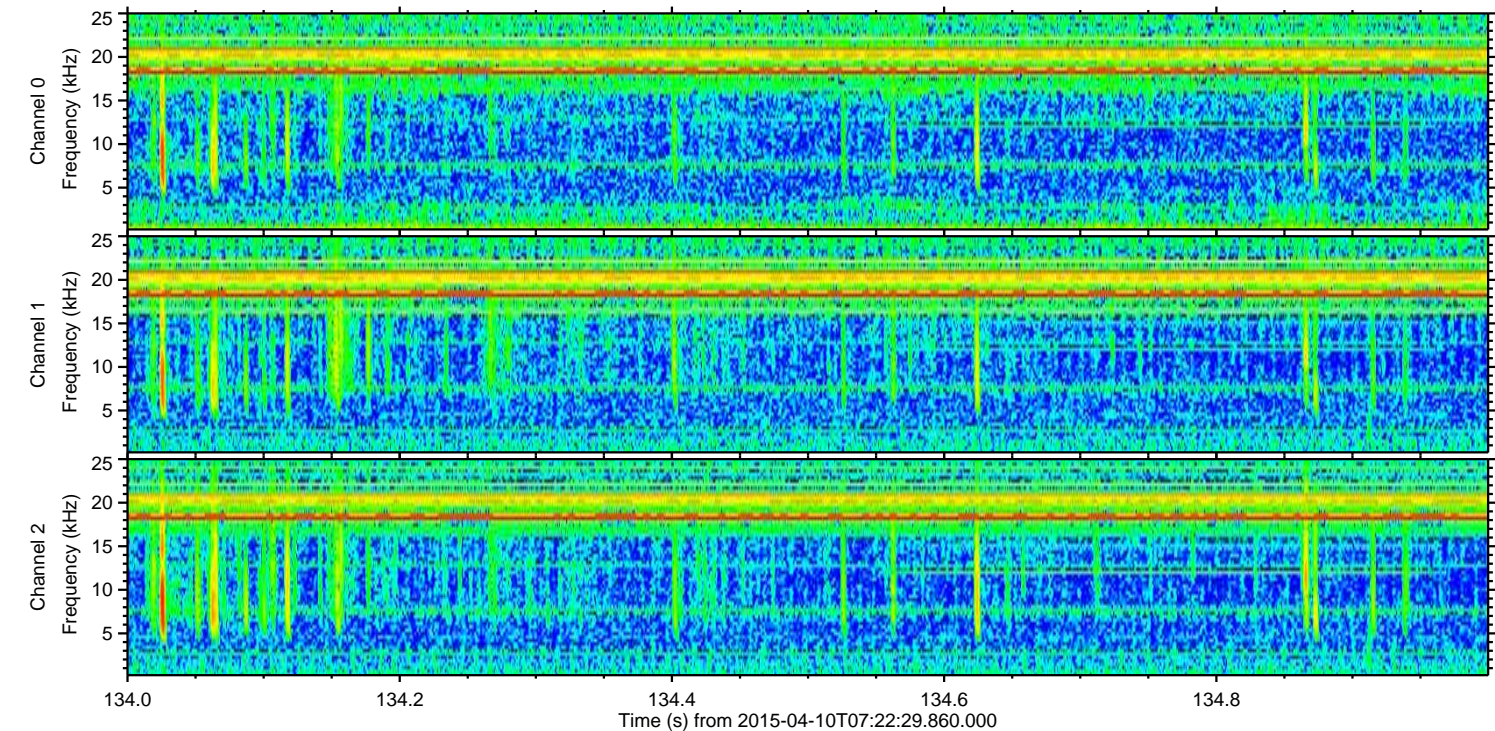
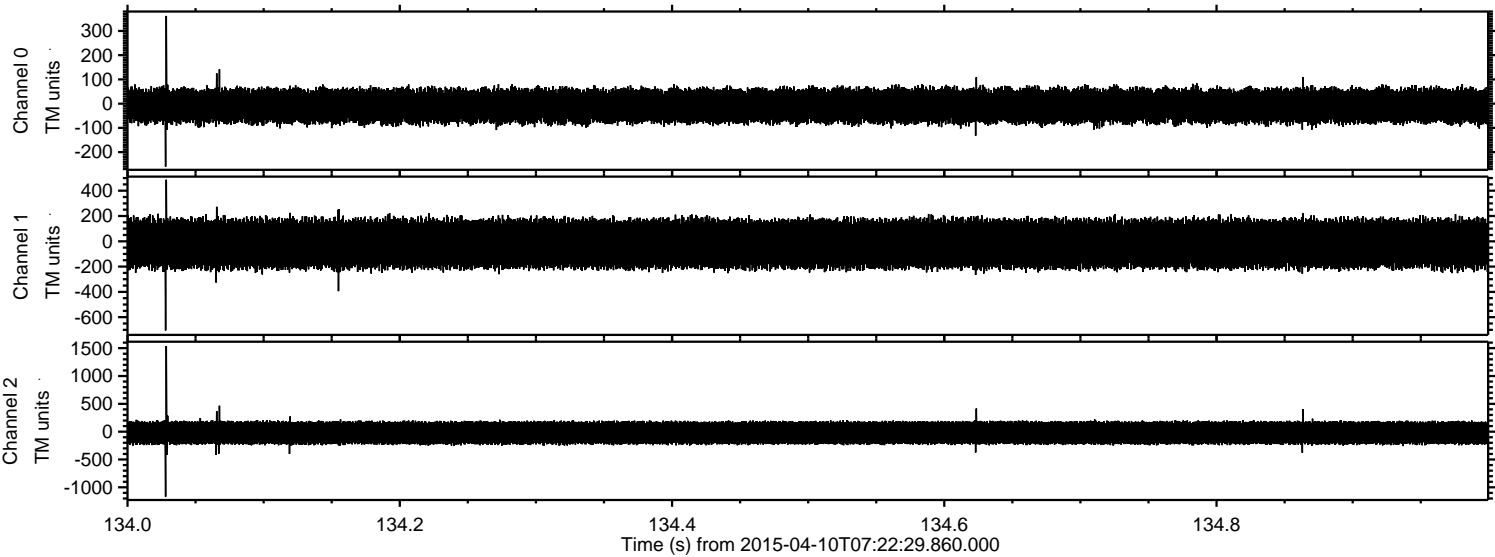
Processed Fri Apr 10 09:29:59 2015 by ELM ver.2012-10-06 from 001\_\_elm20150410\_072228\_\_dat00.bin





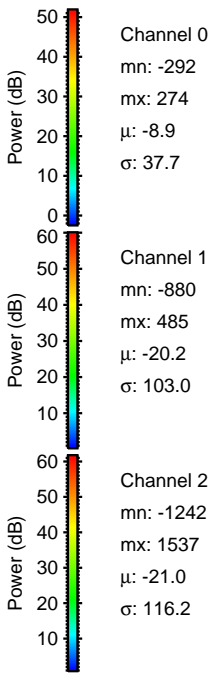
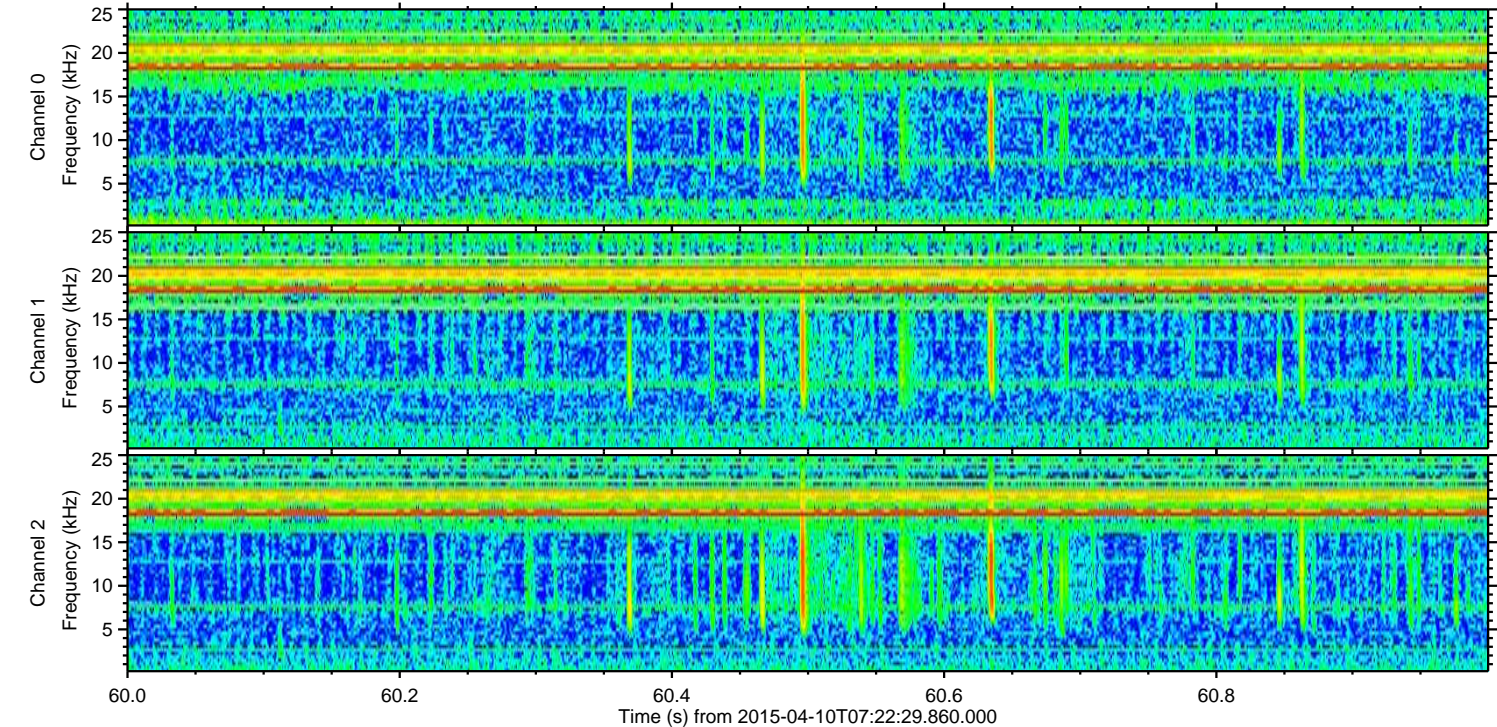
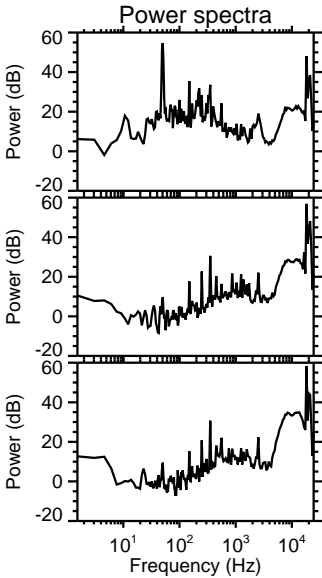
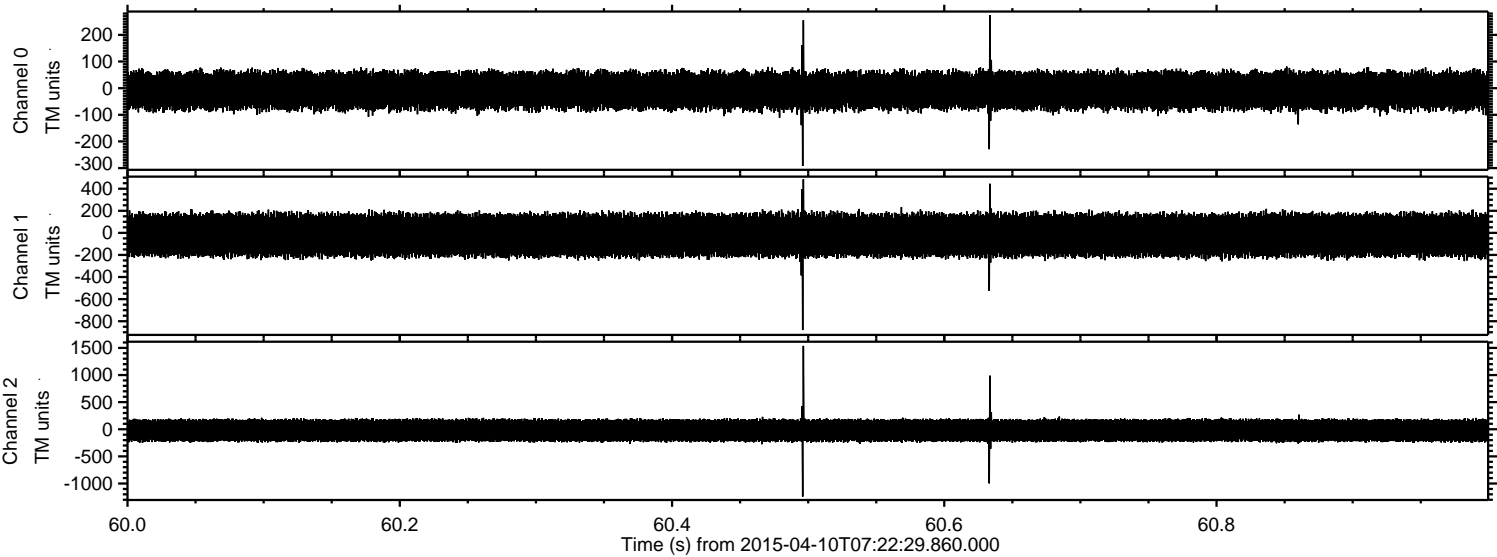
ELMAVAN 3D WAVEFORMS (Measured data sampled at 50 kHz) 49766 packets of 144 samples from 2015-04-10T07:22:29.860.000. Part 135/144

Processed Fri Apr 10 09:30:00 2015 by ELM ver.2012-10-06 from 001\_\_elm20150410\_072228\_\_dat00.bin



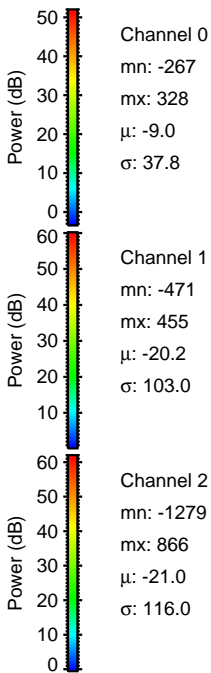
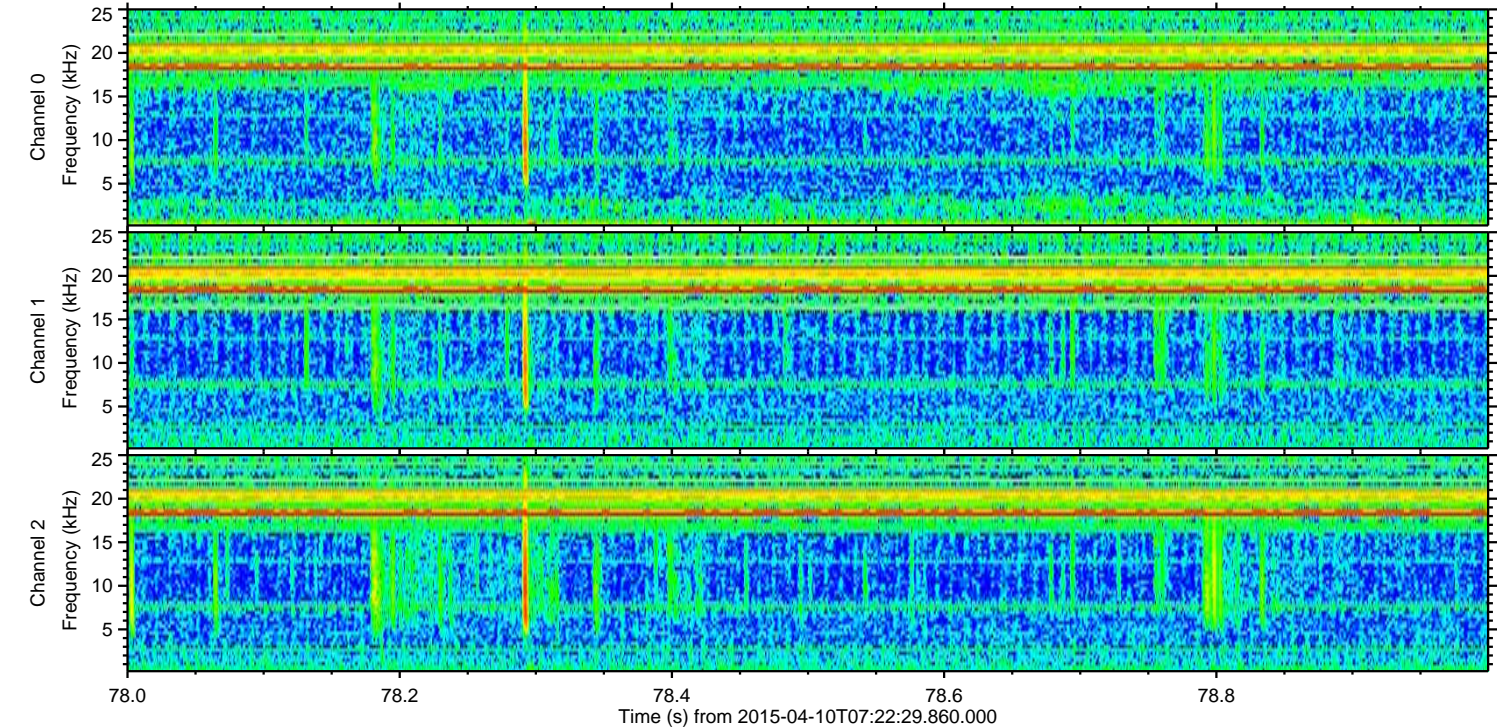
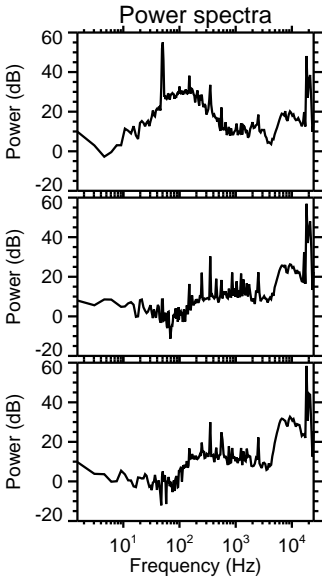
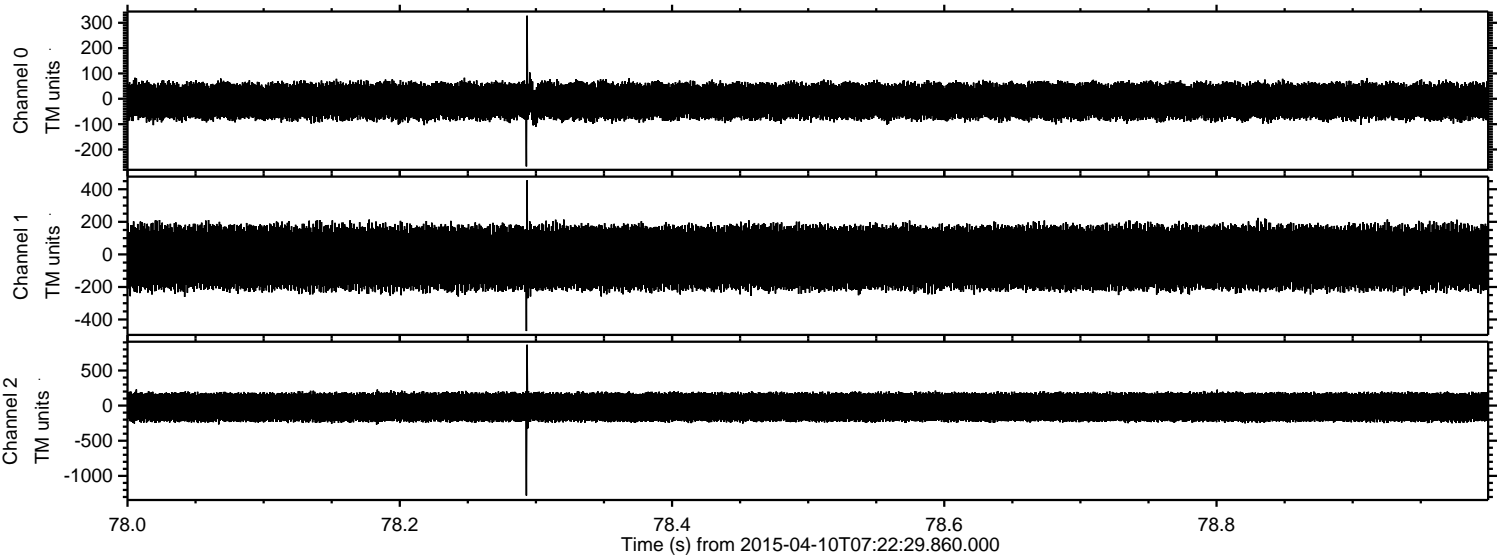


Processed Fri Apr 10 09:30:01 2015 by ELM ver.2012-10-06 from 001\_\_elm20150410\_072228\_\_dat00.bin



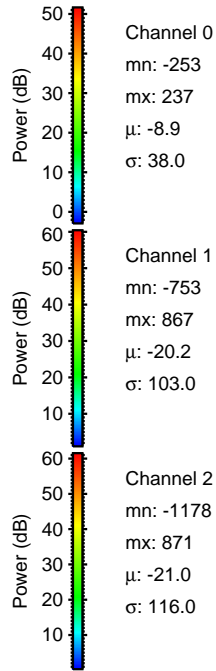
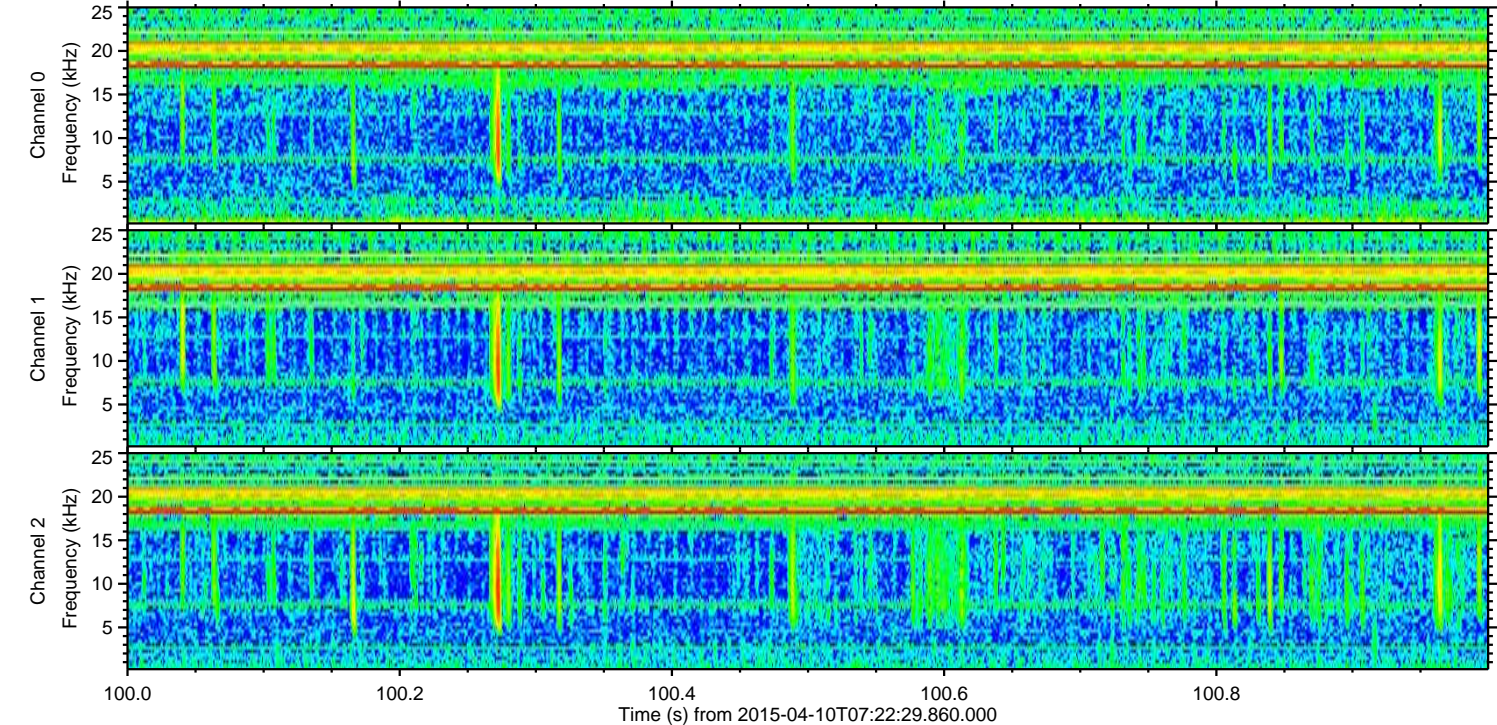
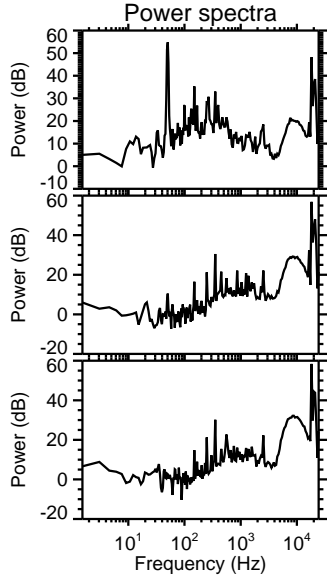
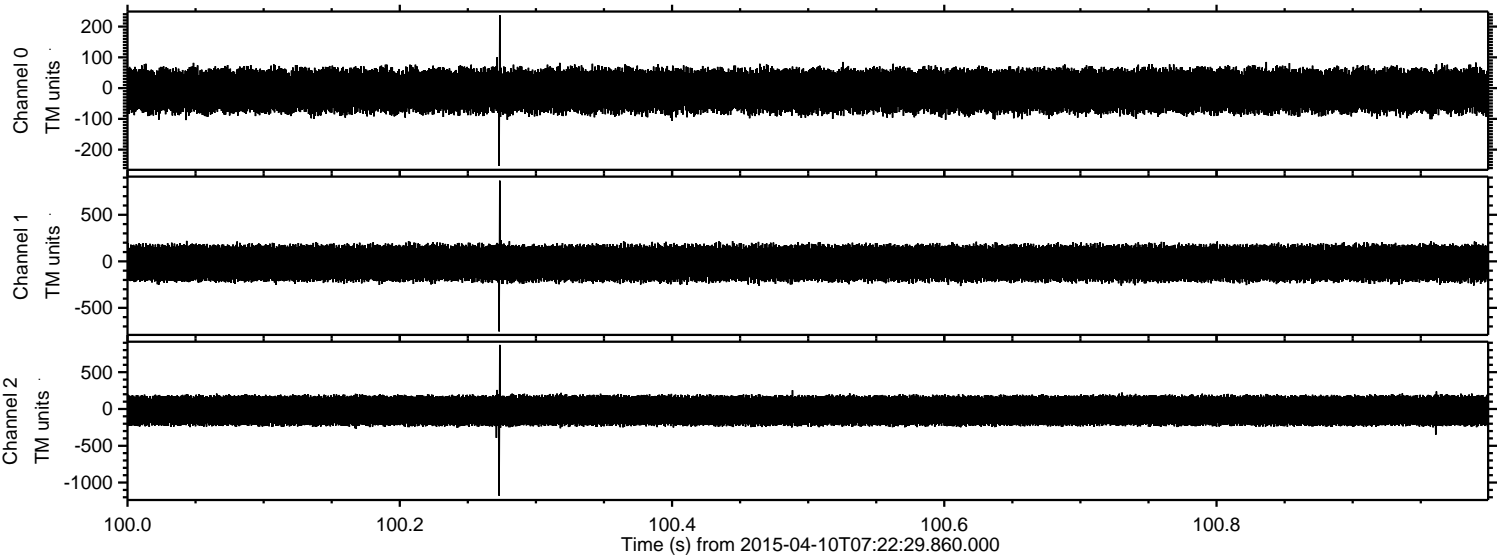


Processed Fri Apr 10 09:30:02 2015 by ELM ver.2012-10-06 from 001\_\_elm20150410\_072228\_\_dat00.bin



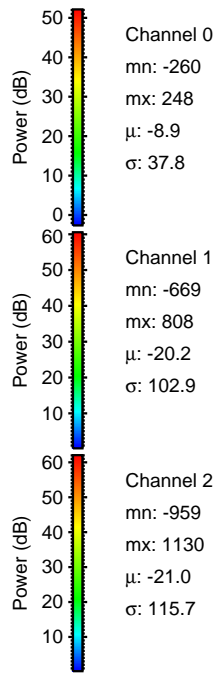
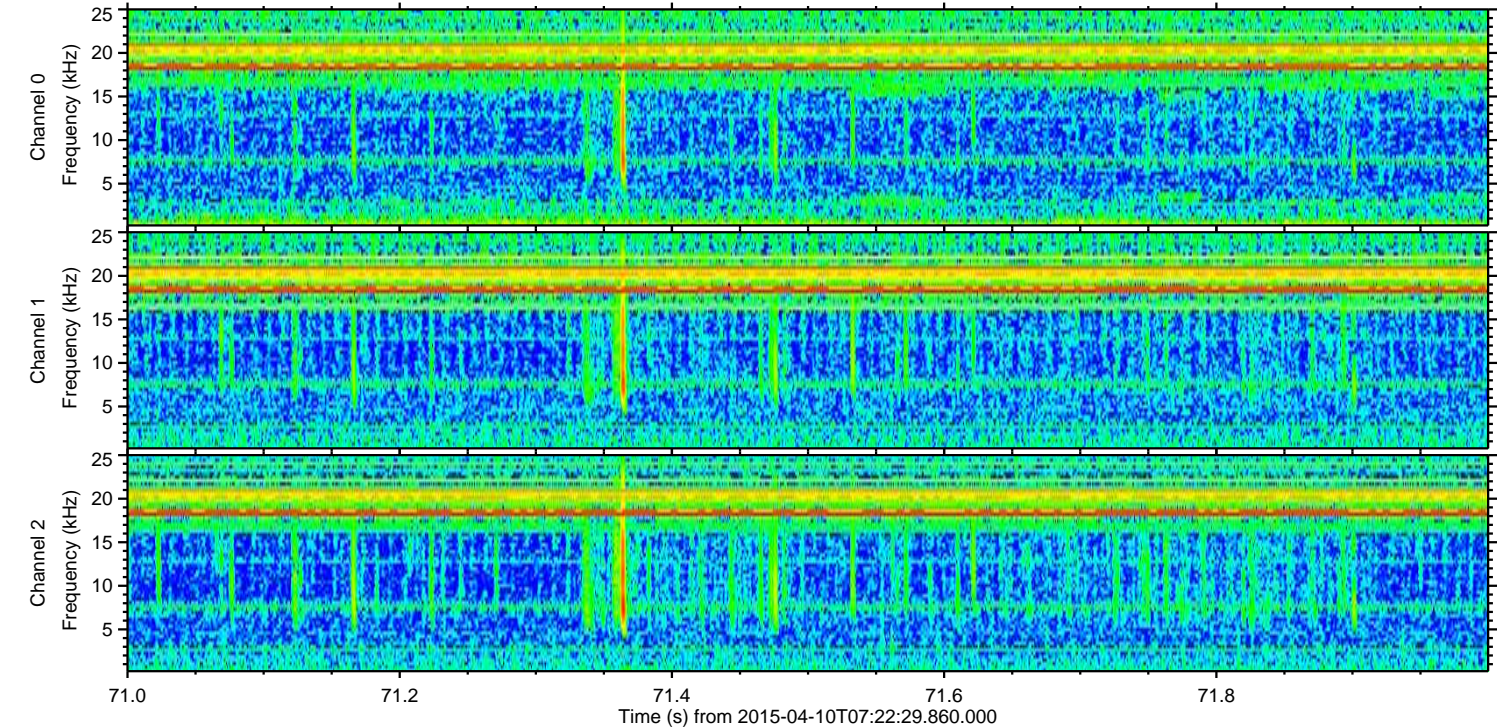
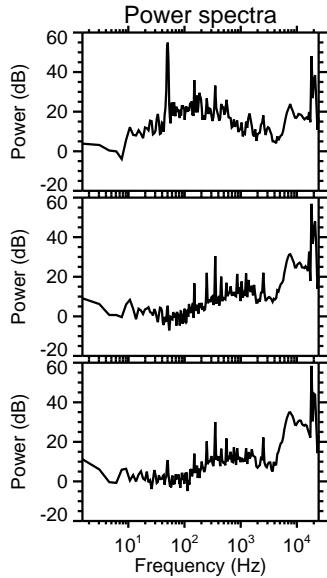
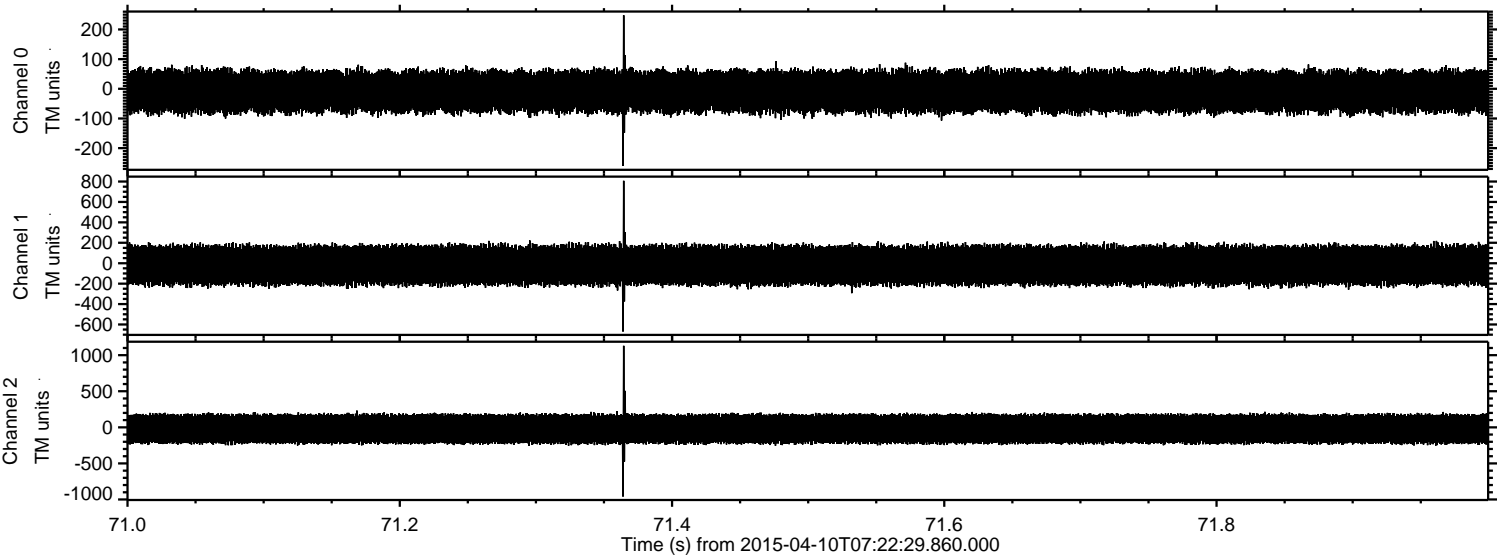


Processed Fri Apr 10 09:30:03 2015 by ELM ver.2012-10-06 from 001\_\_elm20150410\_072228\_\_dat00.bin



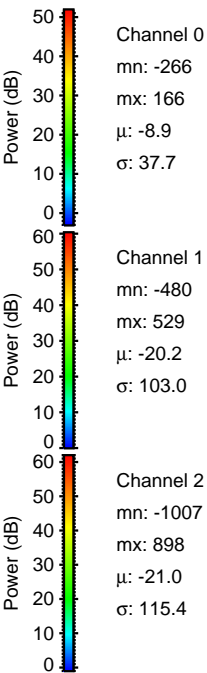
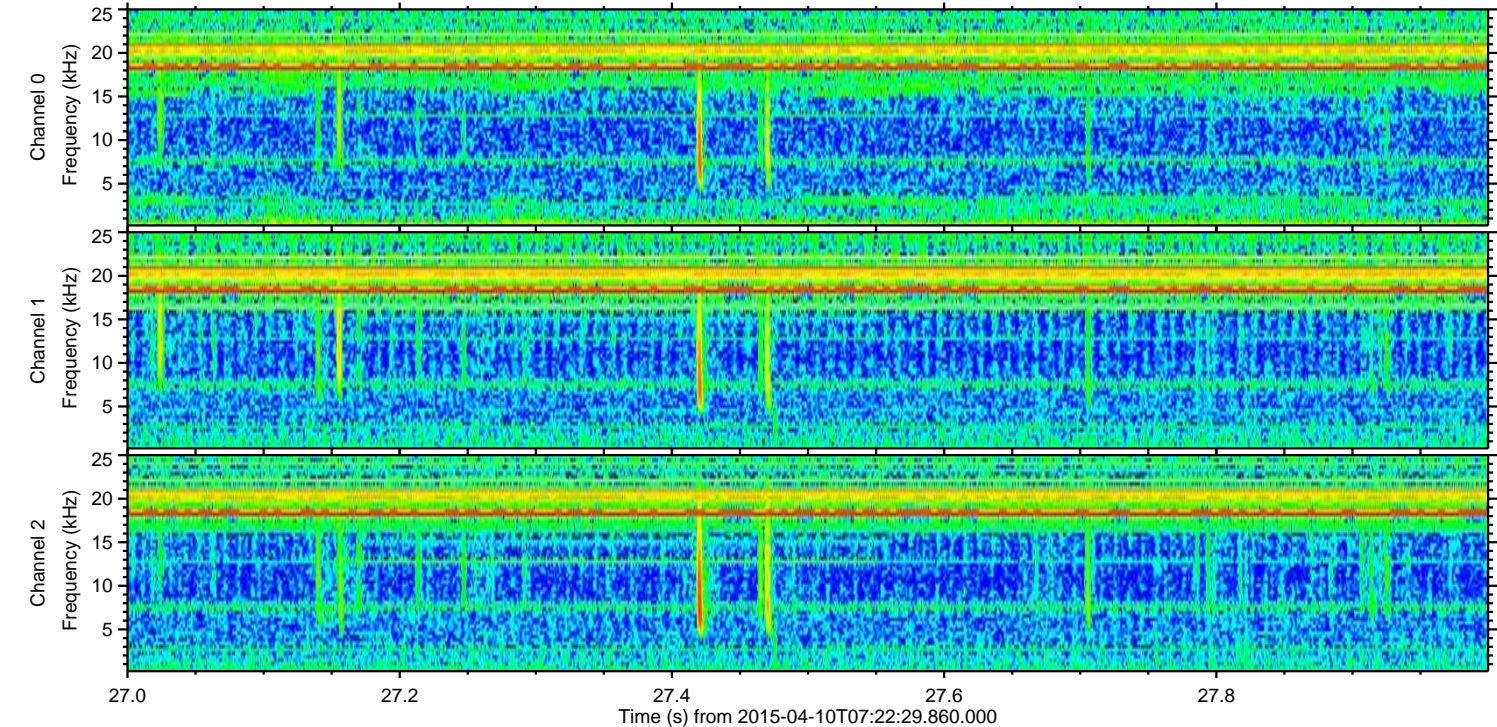
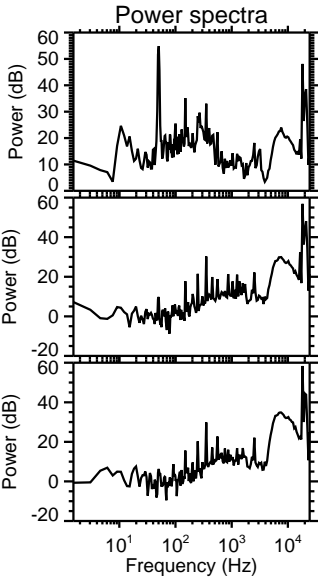
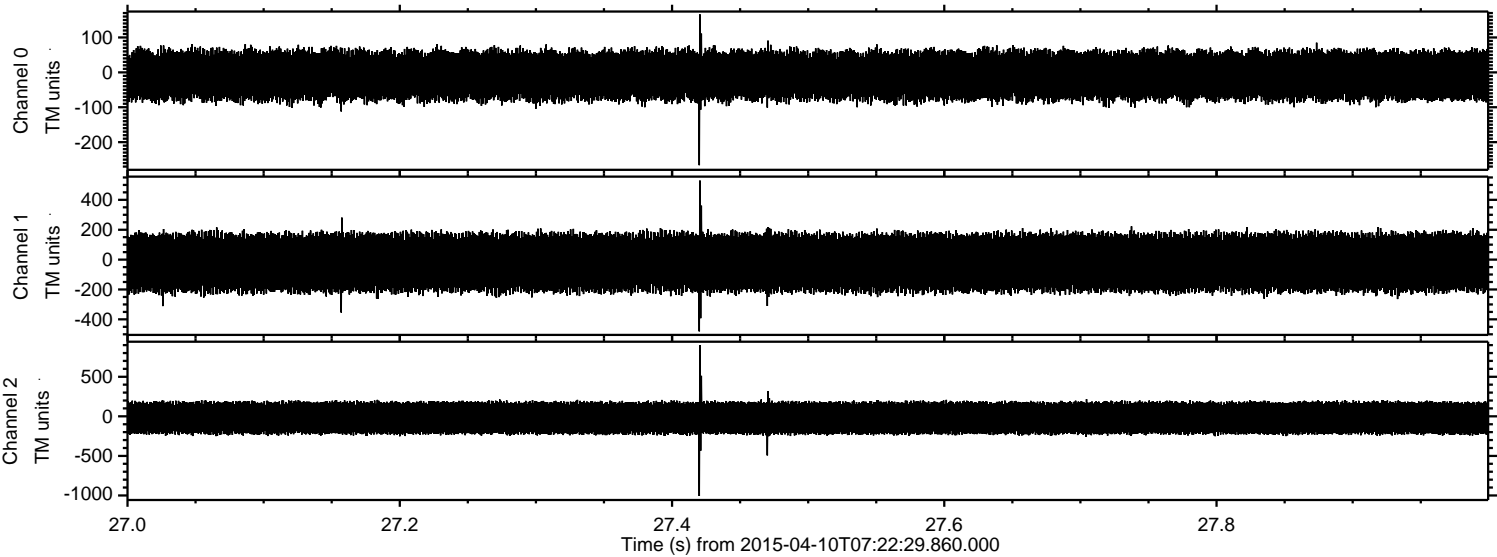


Processed Fri Apr 10 09:30:03 2015 by ELM ver.2012-10-06 from 001\_\_elm20150410\_072228\_\_dat00.bin



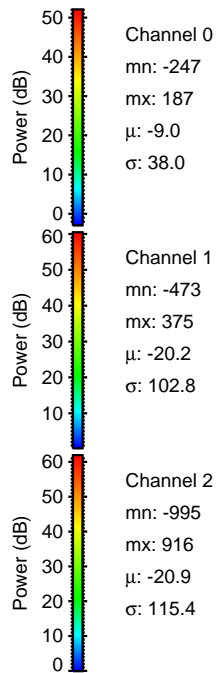
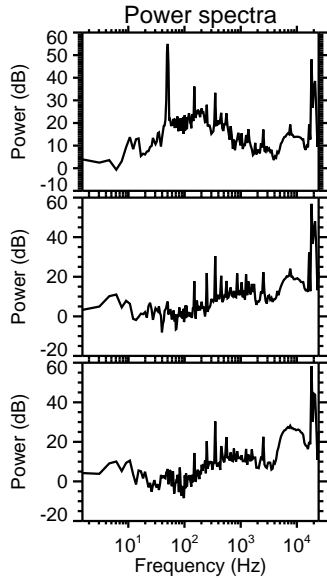
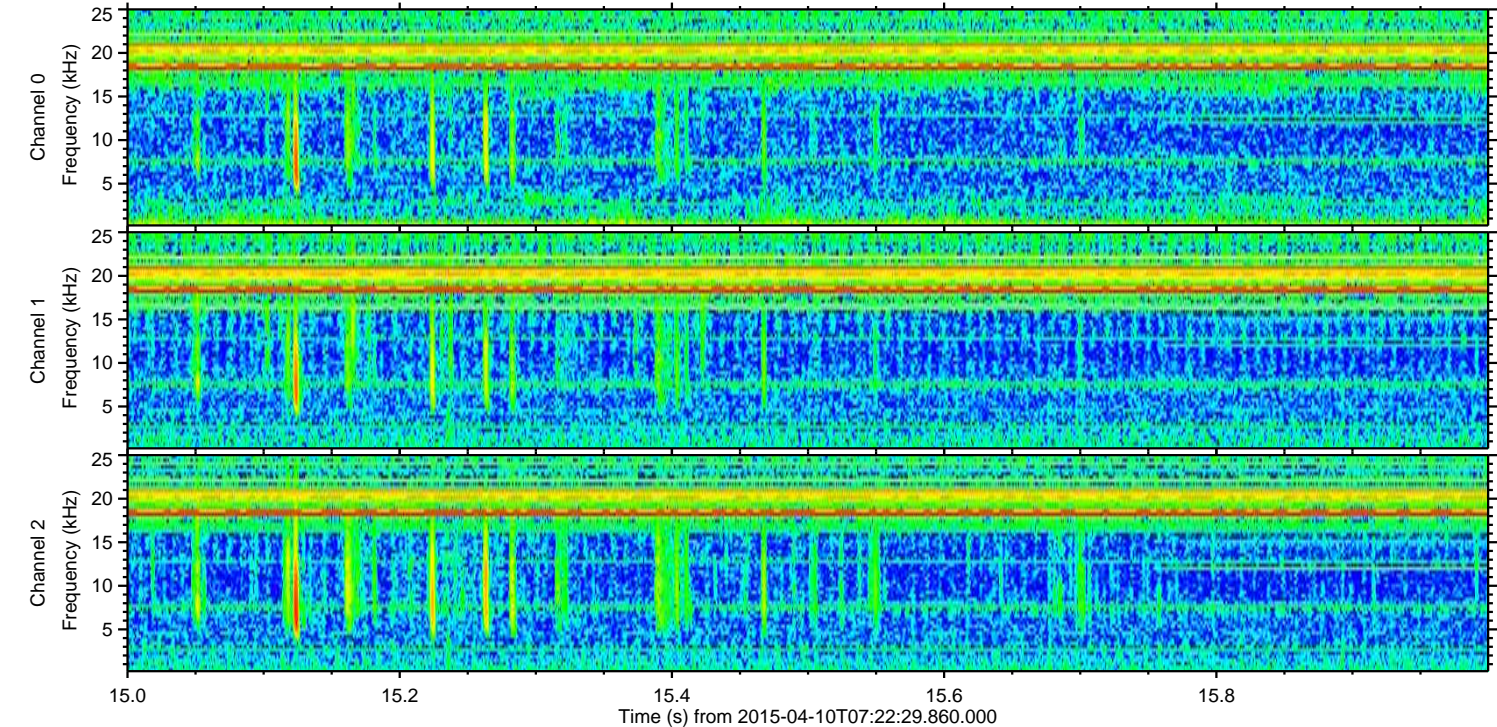
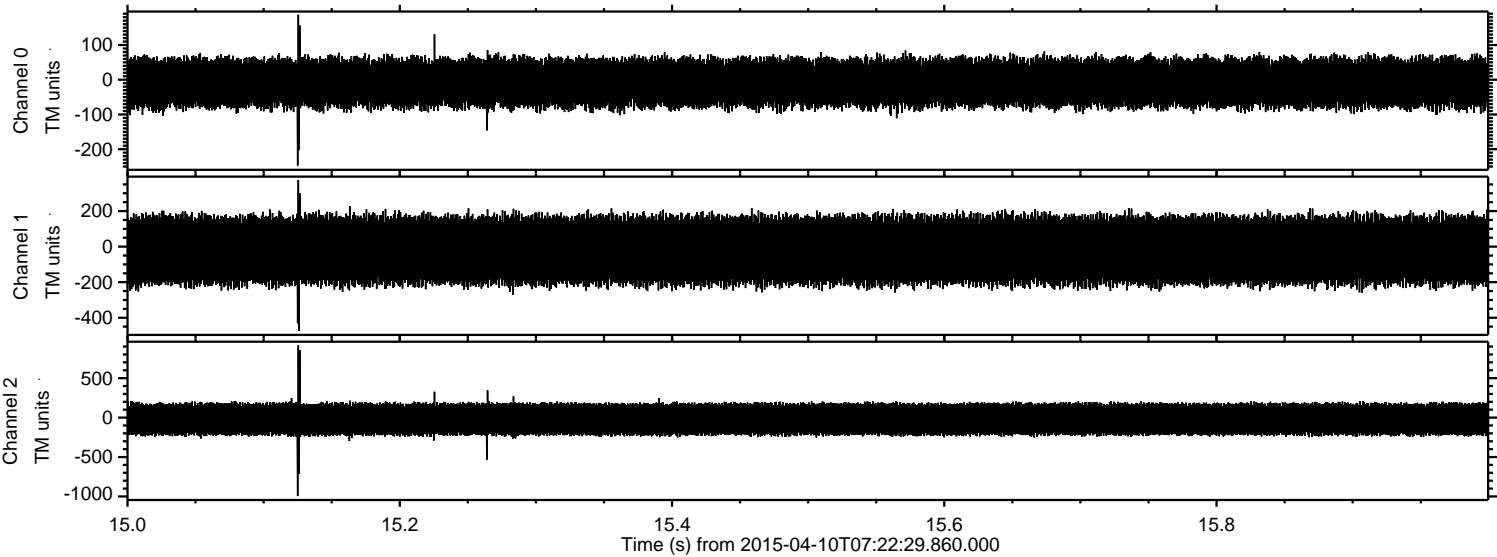


Processed Fri Apr 10 09:30:04 2015 by ELM ver.2012-10-06 from 001\_\_elm20150410\_072228\_\_dat00.bin



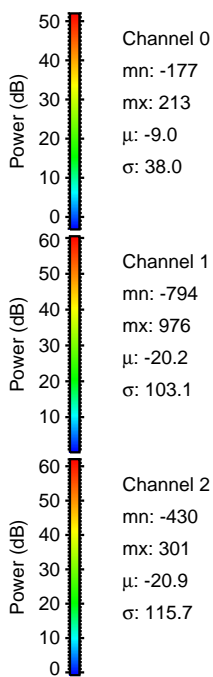
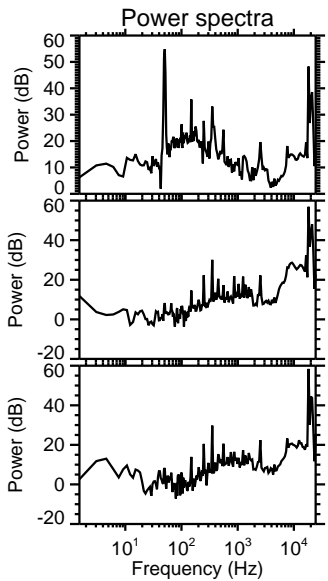
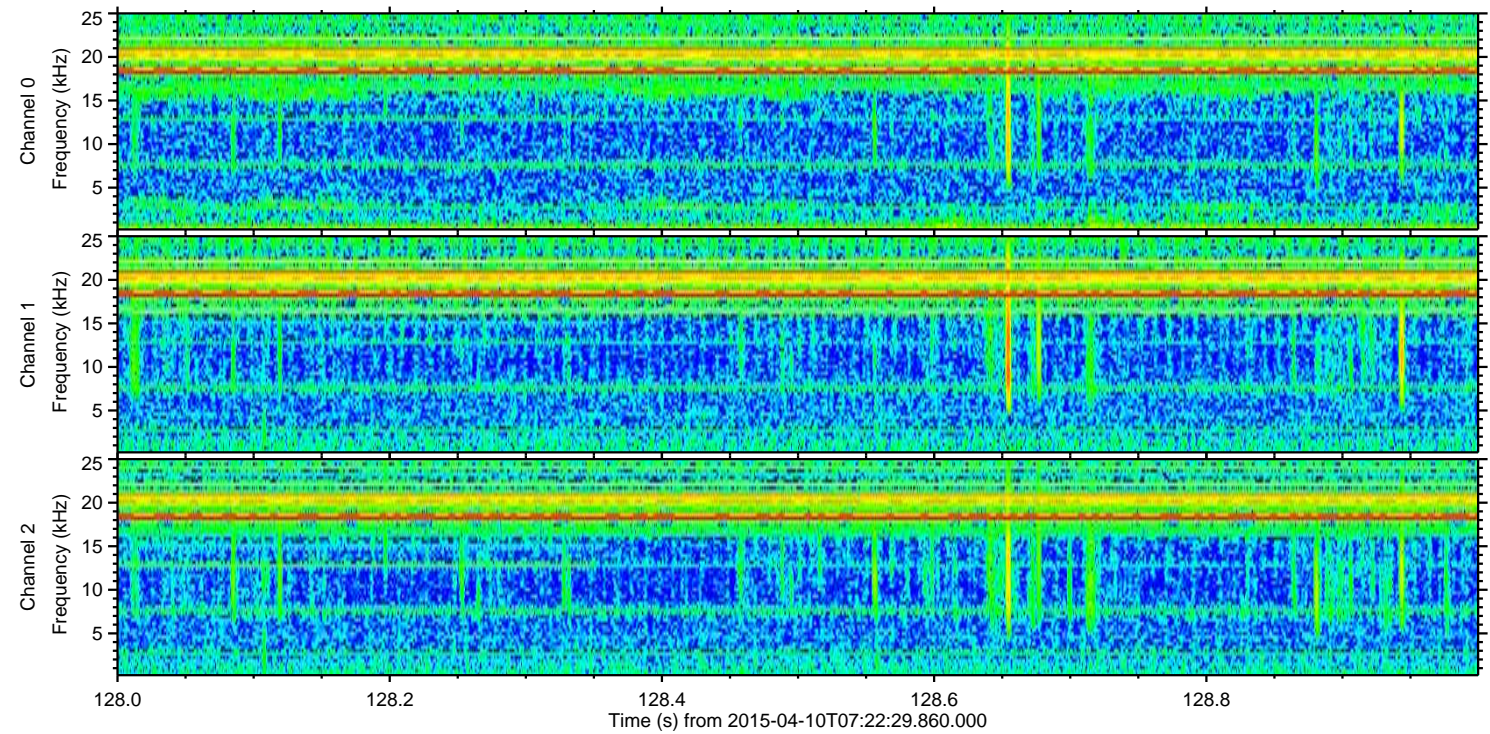
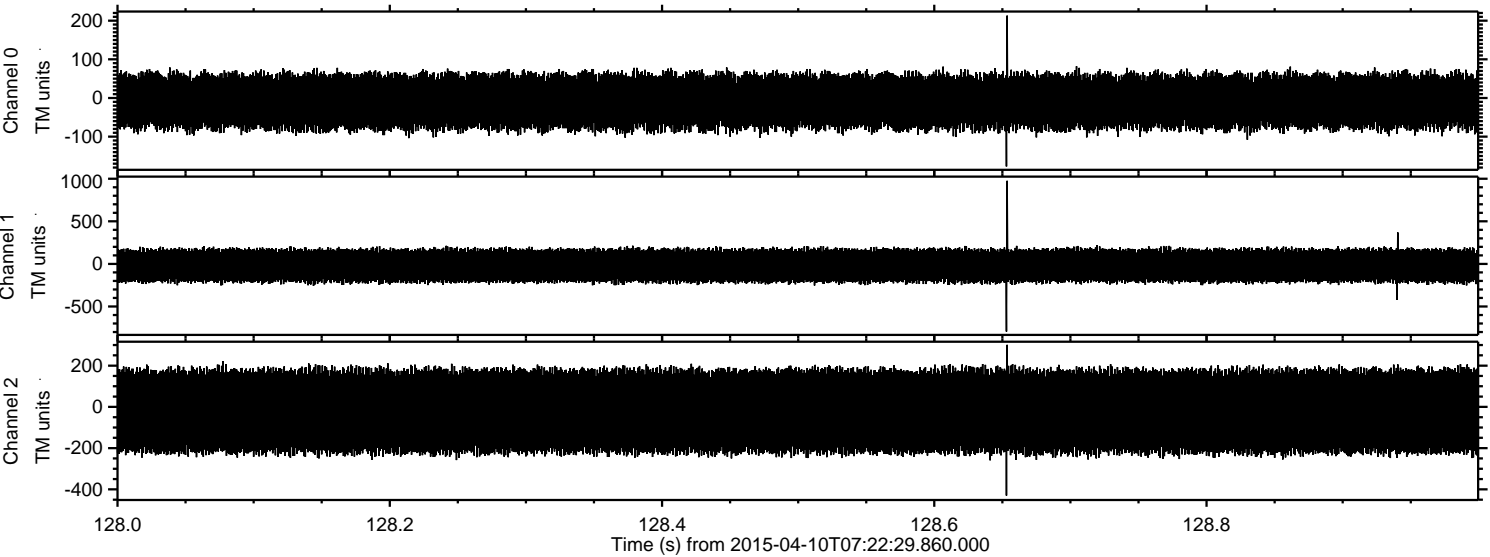


Processed Fri Apr 10 09:30:06 2015 by ELM ver.2012-10-06 from 001\_\_elm20150410\_072228\_\_dat00.bin





Processed Fri Apr 10 09:30:07 2015 by ELM ver.2012-10-06 from 001\_\_elm20150410\_072228\_\_dat00.bin



Channel 0  
mn: -177  
mx: 213  
 $\mu$ : -9.0  
 $\sigma$ : 38.0

Channel 1  
mn: -794  
mx: 976  
 $\mu$ : -20.2  
 $\sigma$ : 103.1

Channel 2  
mn: -430  
mx: 301  
 $\mu$ : -20.9  
 $\sigma$ : 115.7



Processed Fri Apr 10 09:30:07 2015 by ELM ver.2012-10-06 from 001\_\_elm20150410\_072228\_\_dat00.bin

