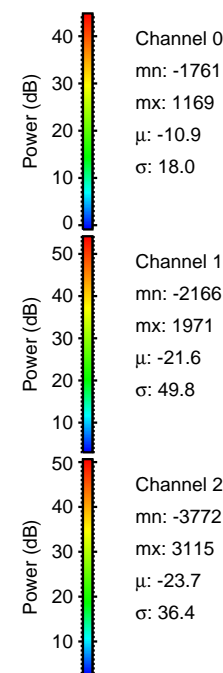
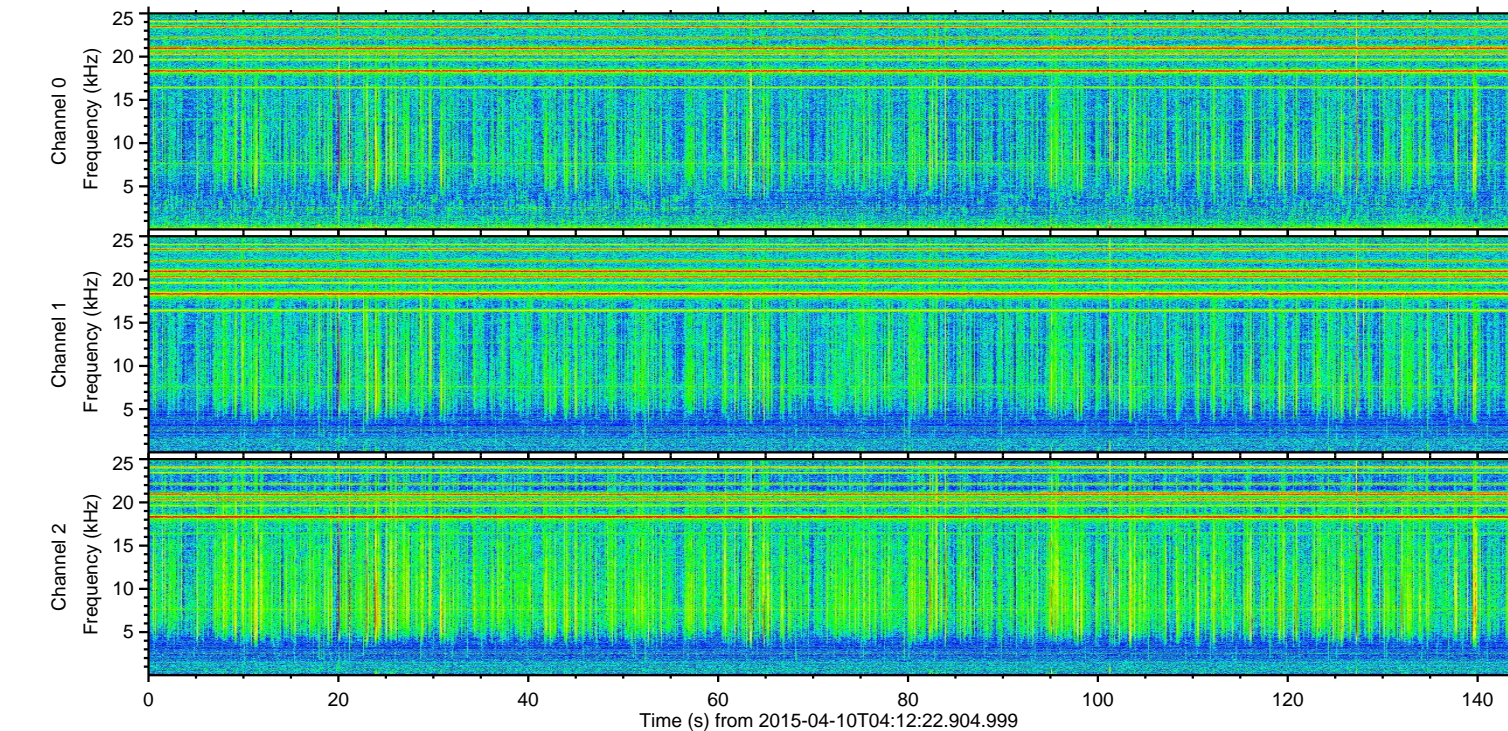
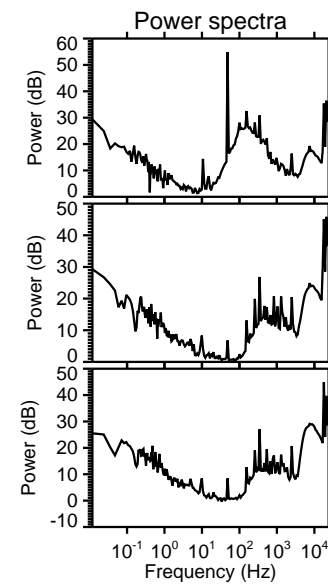
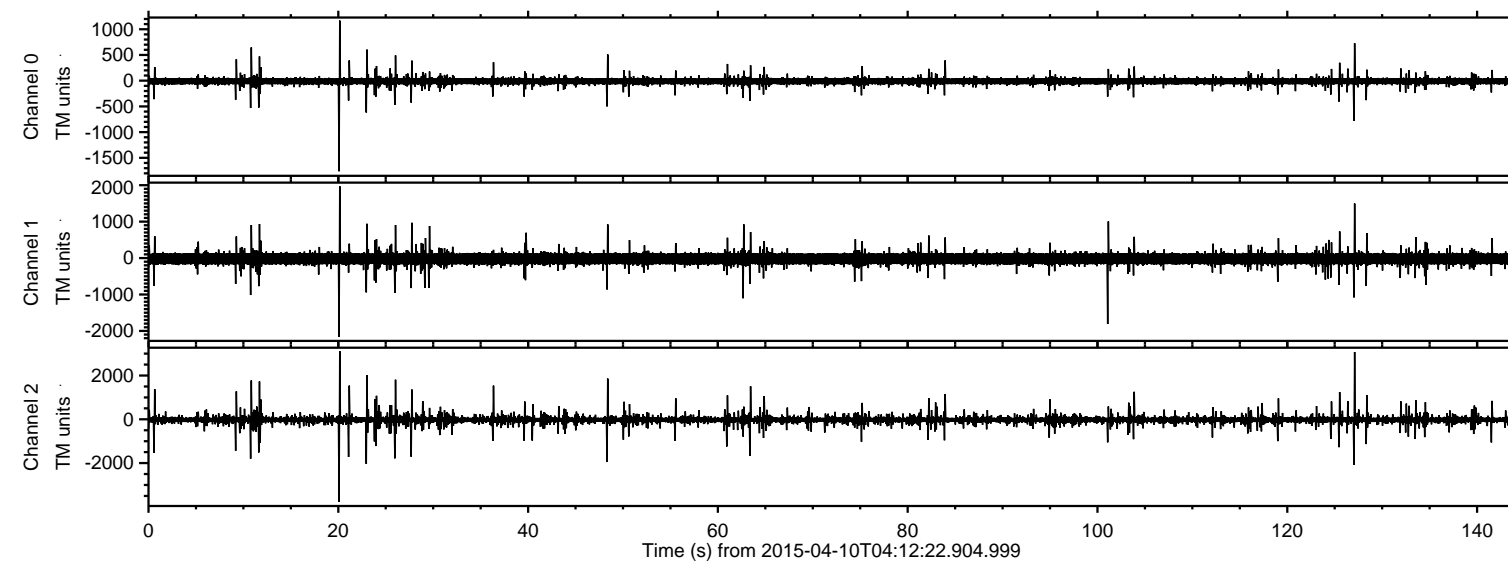


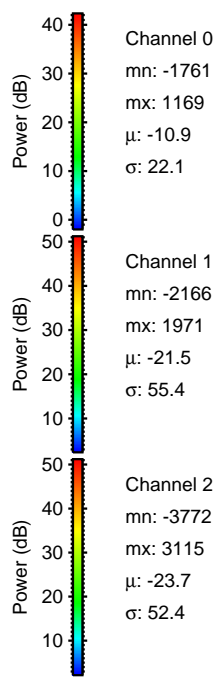
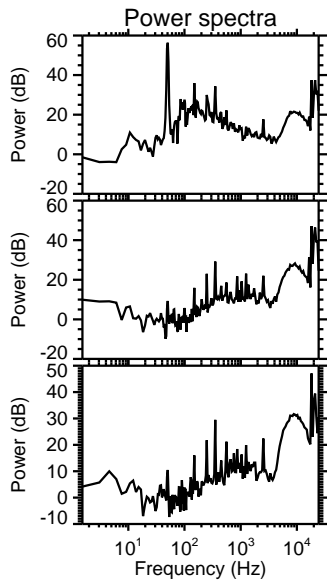
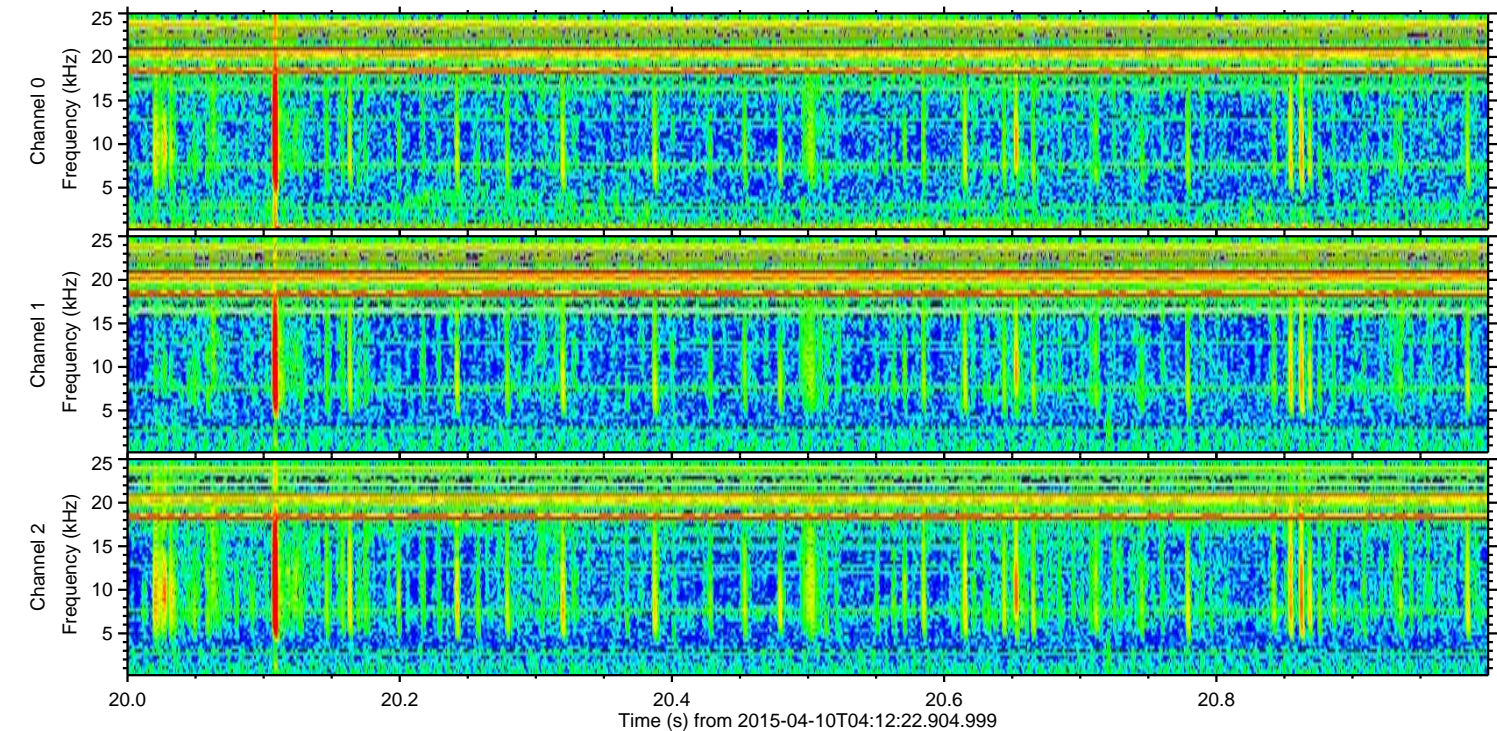
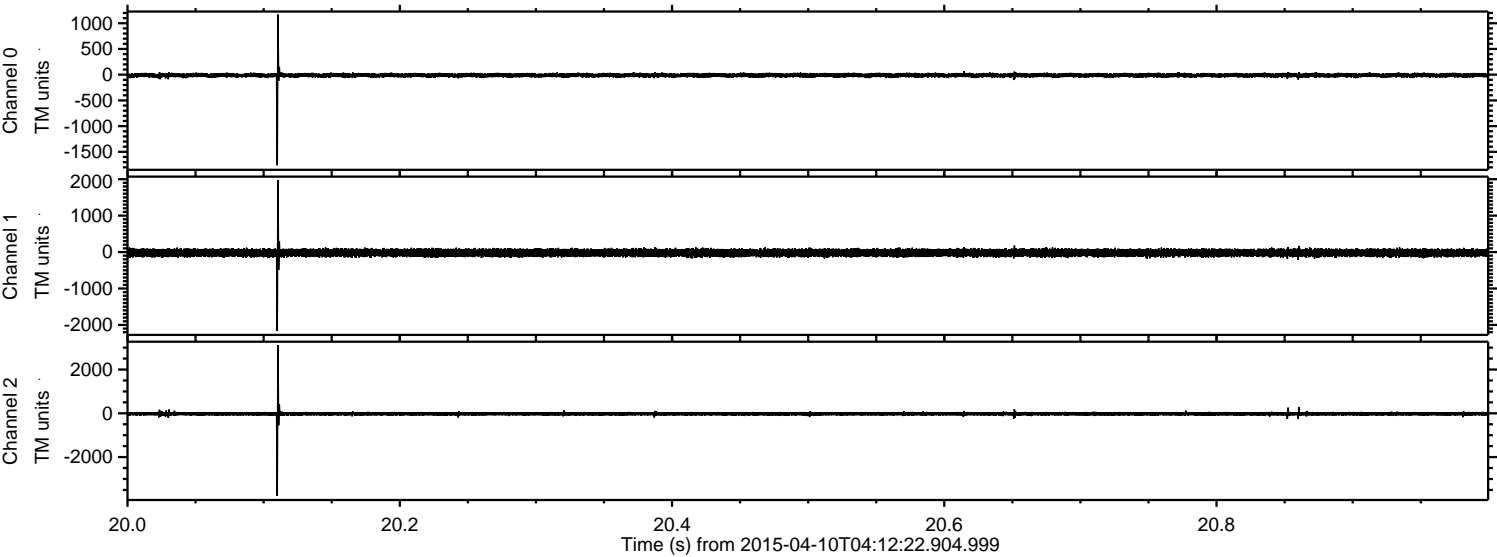
ELMAVAN 3D WAVEFORMS (Measured data sampled at 50 kHz) 49785 packets of 144 samples from 2015-04-10T04:12:22.904.999.

Processed Fri Apr 10 06:19:11 2015 by ELM ver.2012-10-06 from 001__elm20150410_041221__dat00.bin



ELMAVAN 3D WAVEFORMS (Measured data sampled at 50 kHz) 49785 packets of 144 samples from 2015-04-10T04:12:22.904.999. Part 21/144

Processed Fri Apr 10 06:19:22 2015 by ELM ver.2012-10-06 from 001__elm20150410_041221__dat00.bin



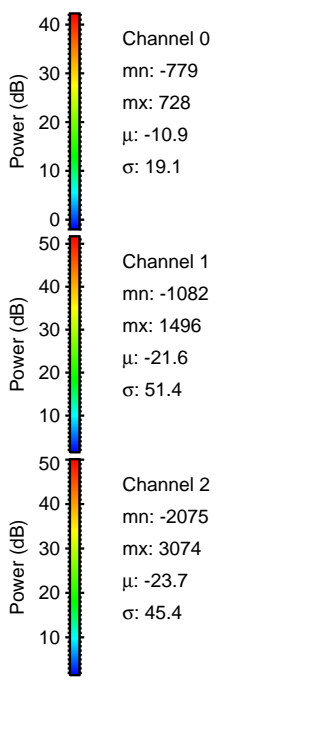
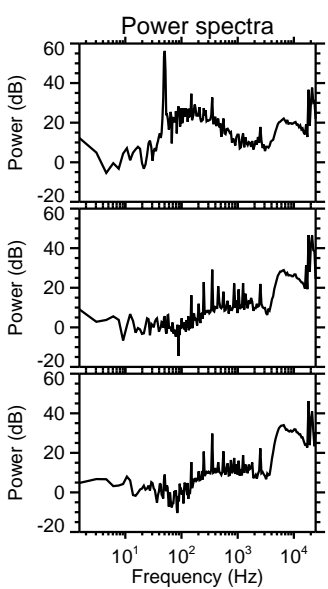
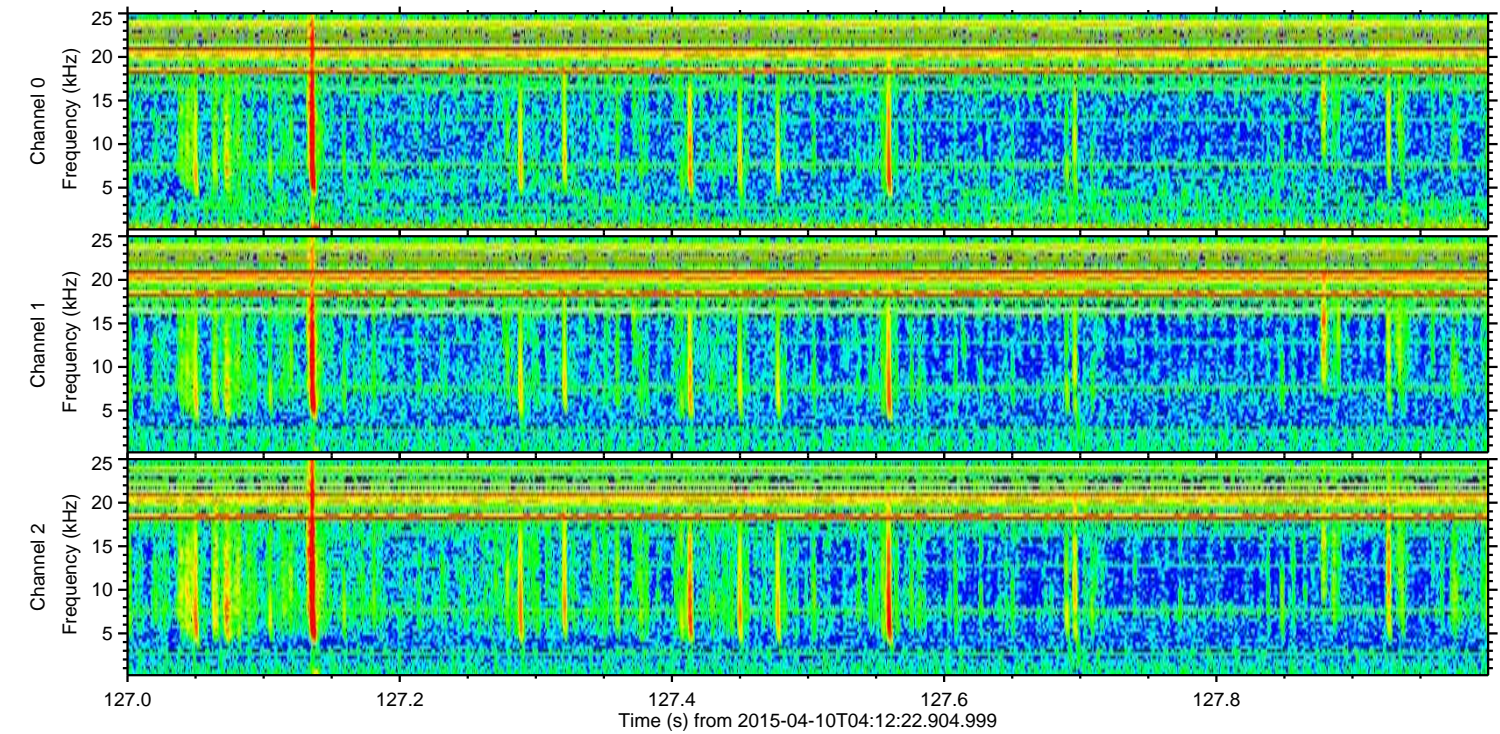
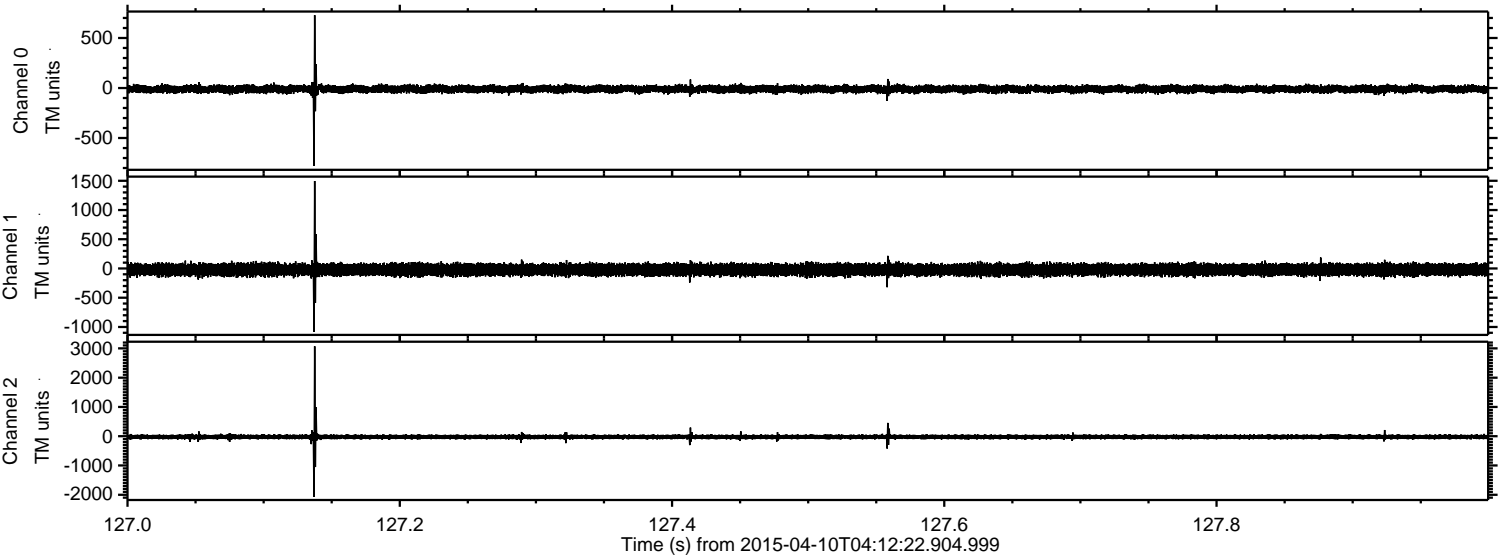
Channel 0
mn: -1761
mx: 1169
 μ : -10.9
 σ : 22.1

Channel 1
mn: -2166
mx: 1971
 μ : -21.5
 σ : 55.4

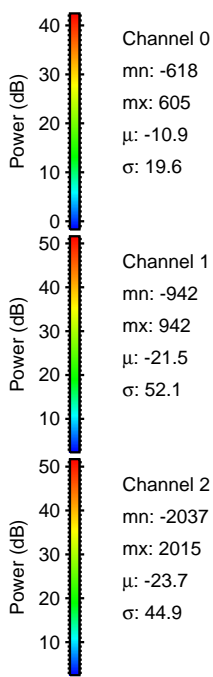
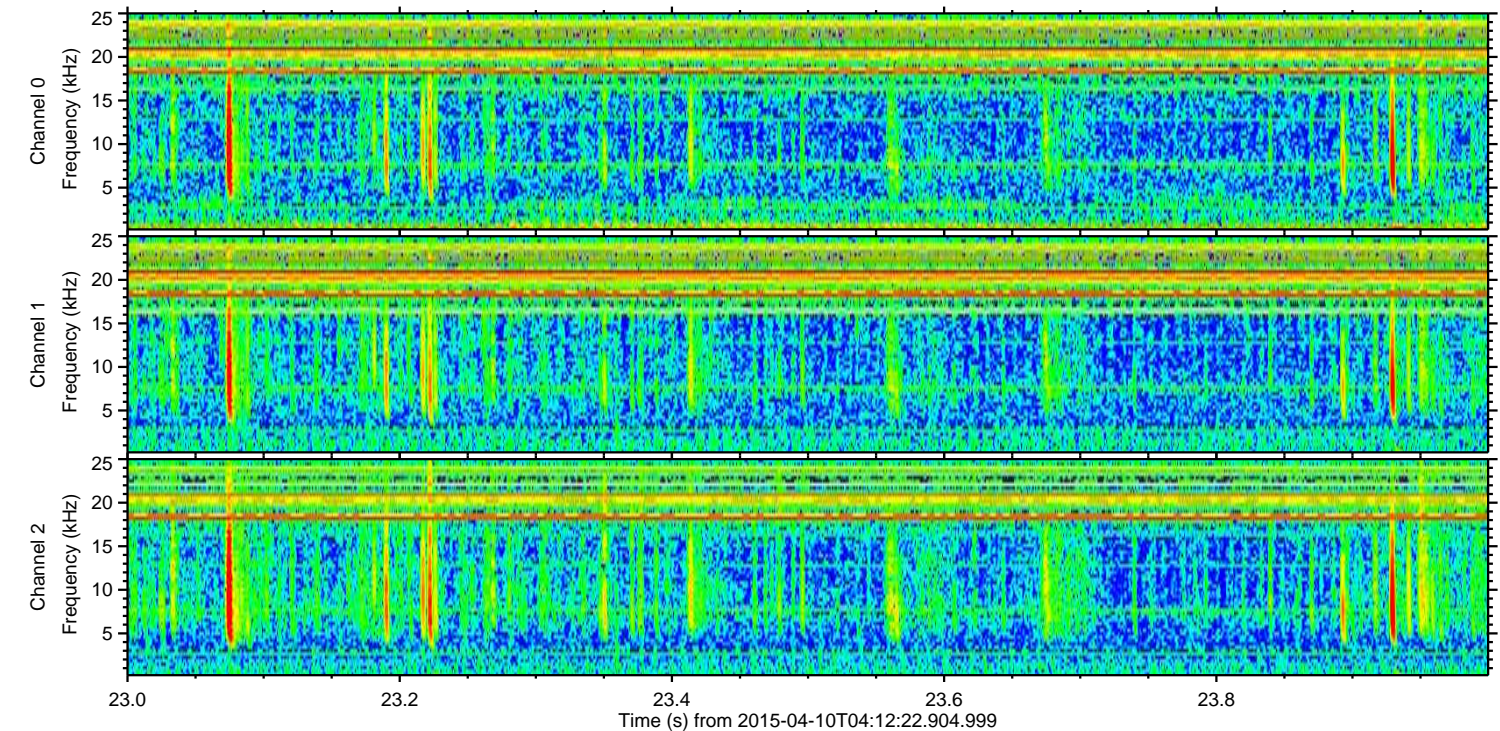
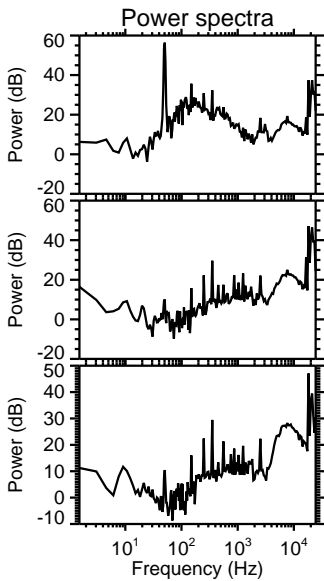
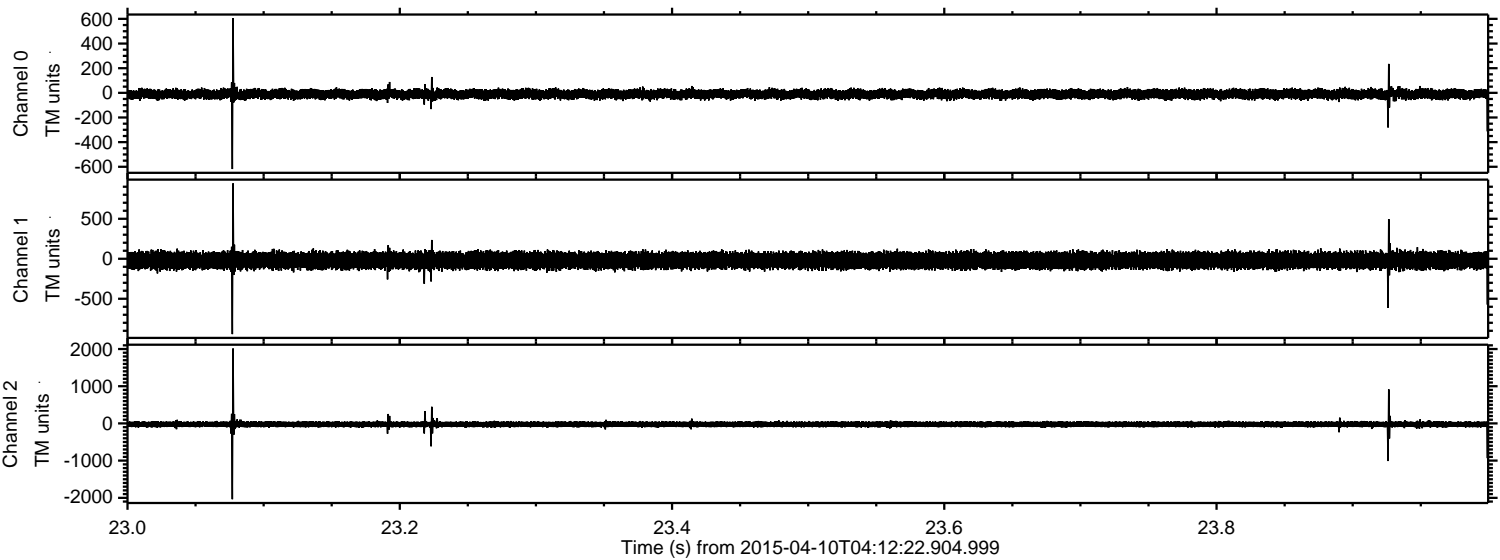
Channel 2
mn: -3772
mx: 3115
 μ : -23.7
 σ : 52.4

ELMAVAN 3D WAVEFORMS (Measured data sampled at 50 kHz) 49785 packets of 144 samples from 2015-04-10T04:12:22.904.999. Part 128/144

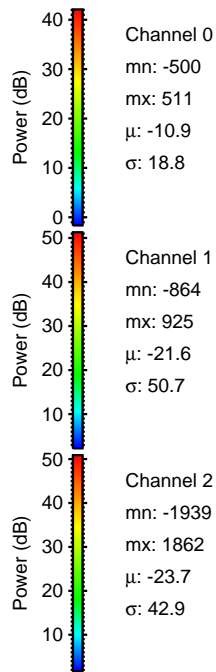
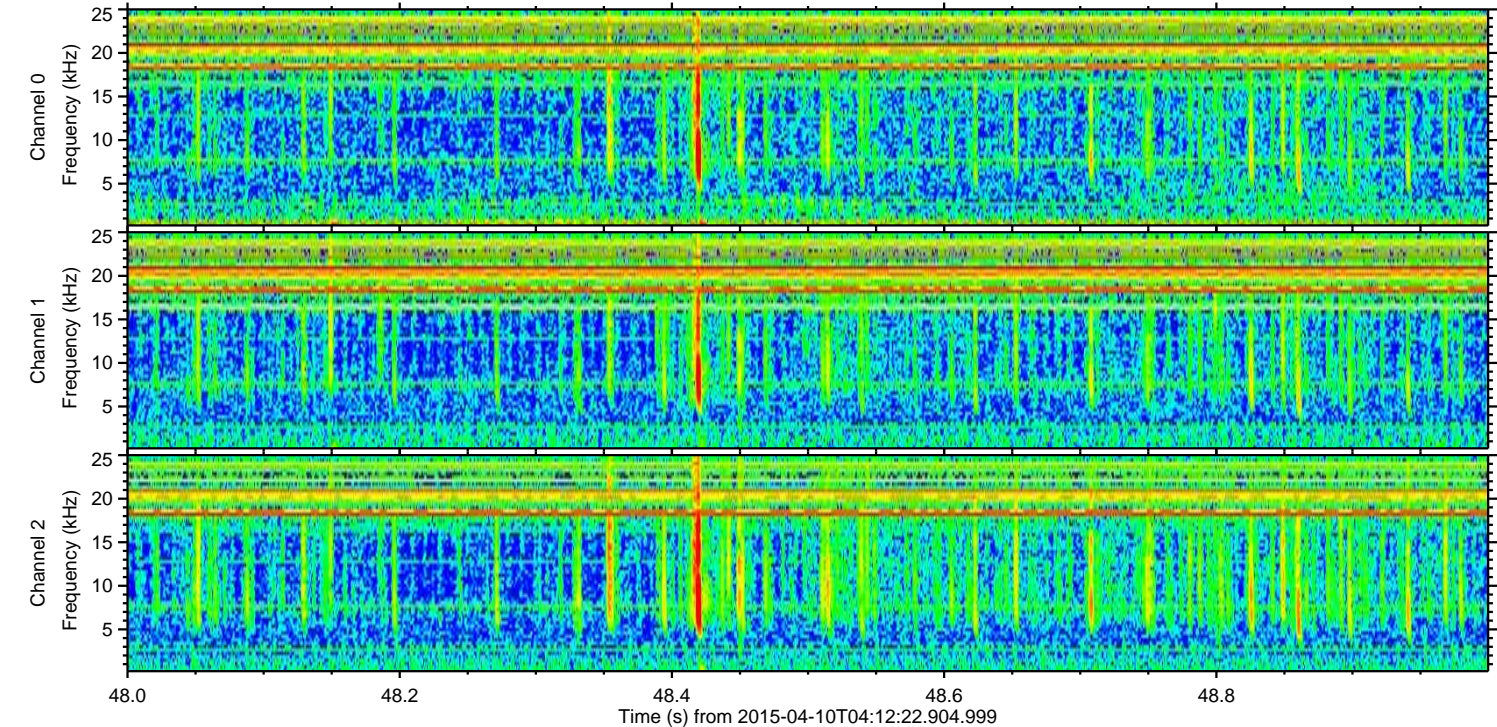
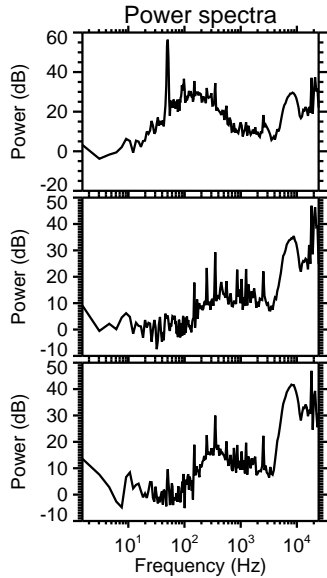
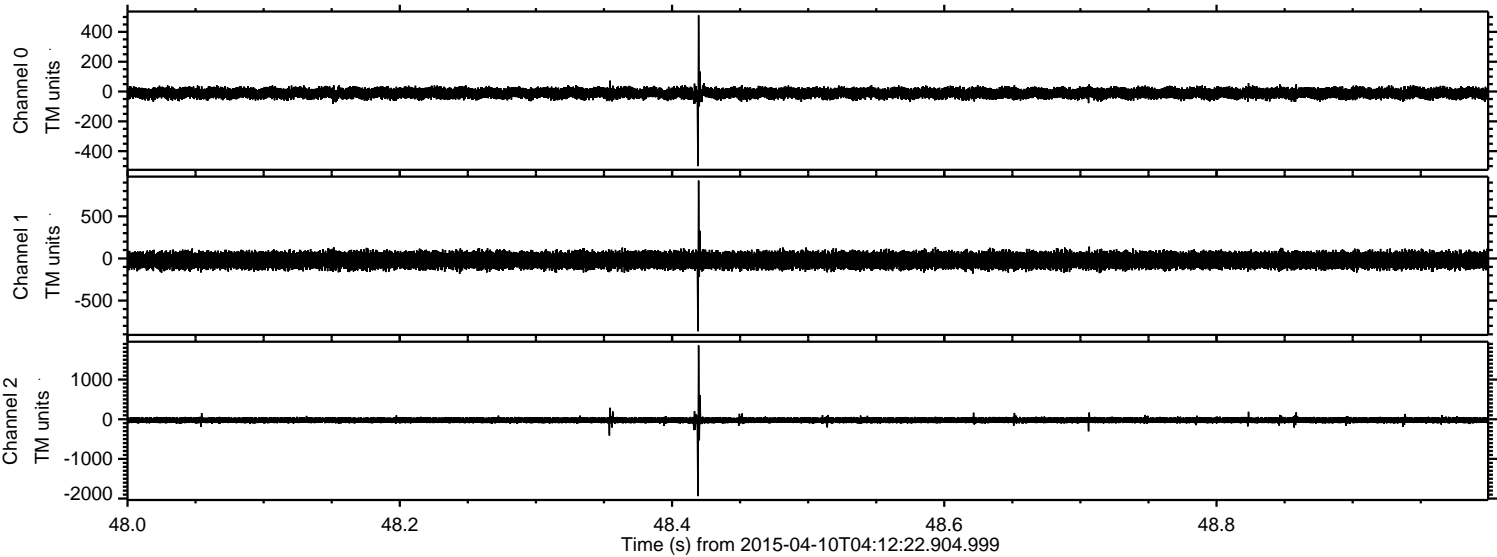
Processed Fri Apr 10 06:19:23 2015 by ELM ver.2012-10-06 from 001__elm20150410_041221__dat00.bin



Processed Fri Apr 10 06:19:24 2015 by ELM ver.2012-10-06 from 001__elm20150410_041221__dat00.bin

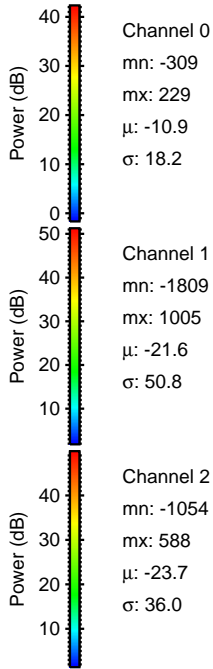
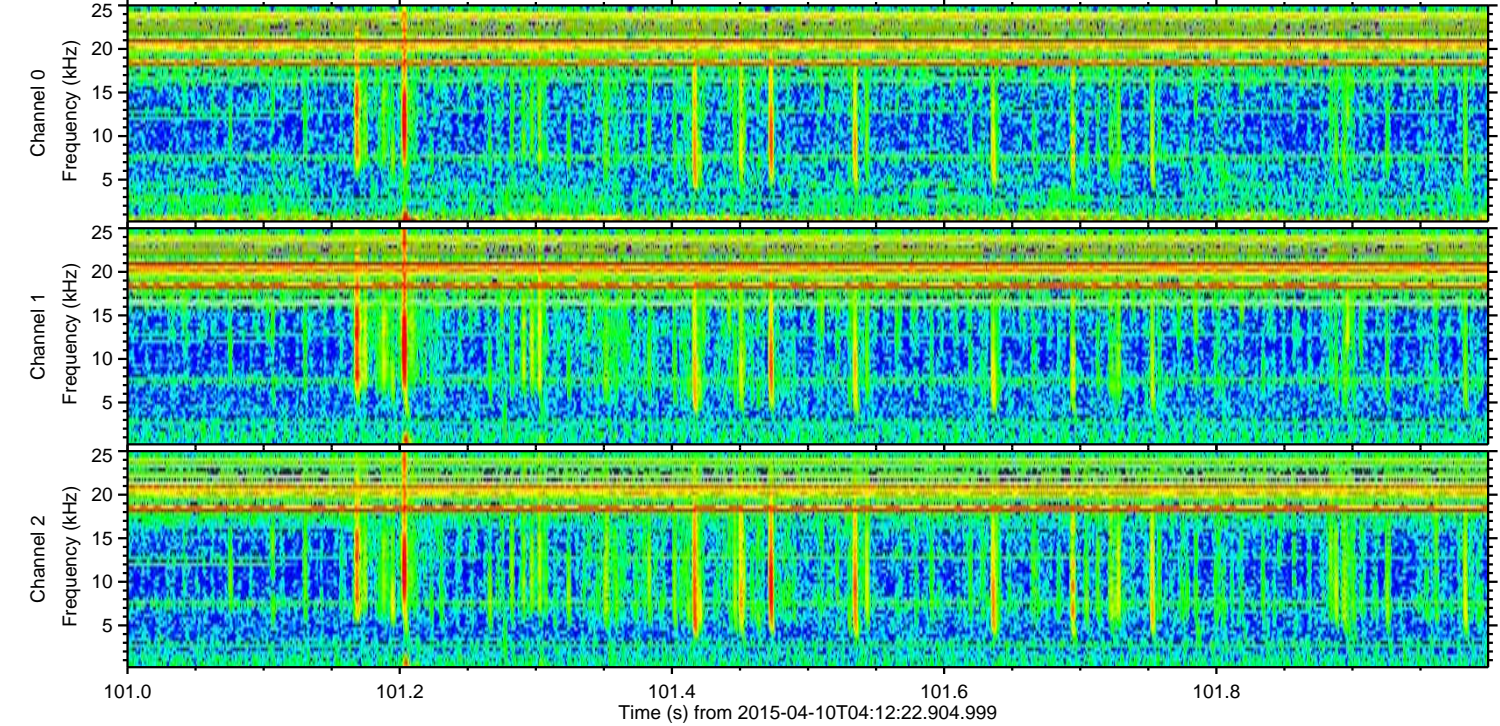
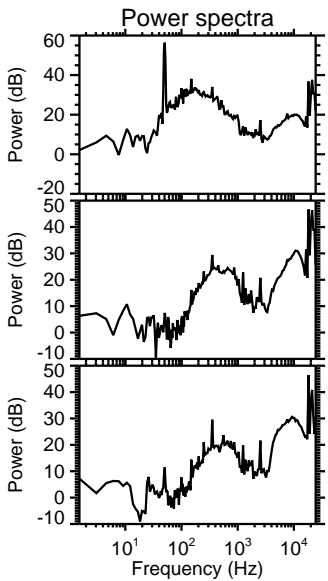
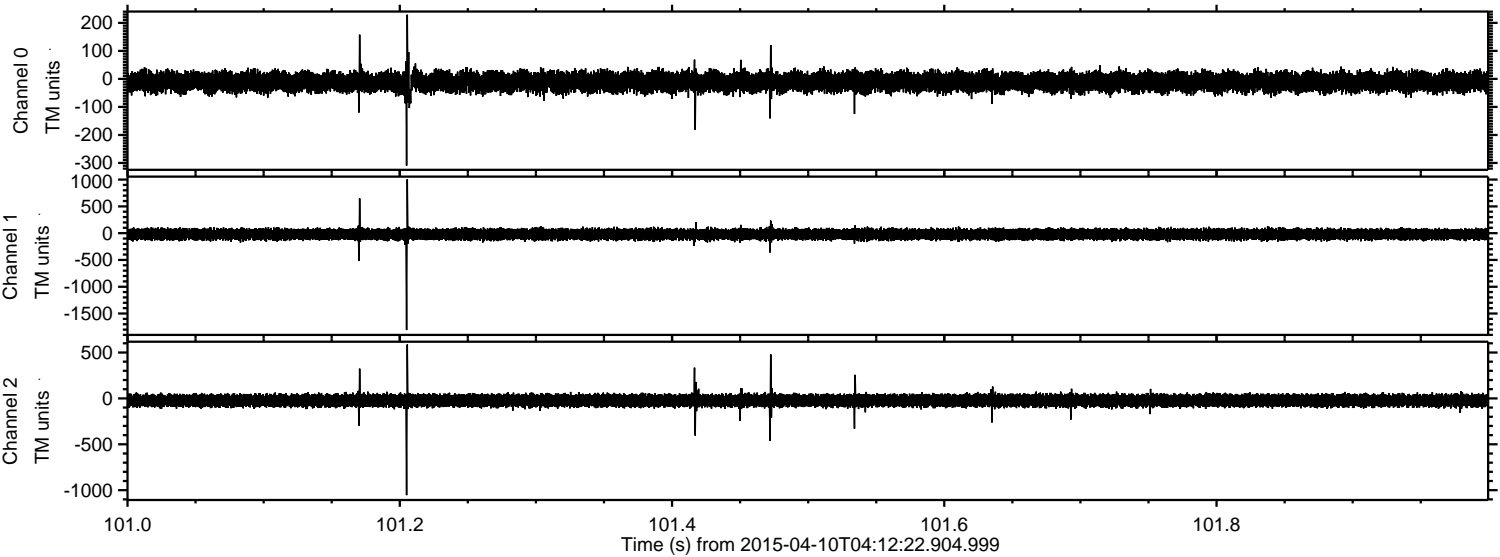


Processed Fri Apr 10 06:19:25 2015 by ELM ver.2012-10-06 from 001__elm20150410_041221__dat00.bin

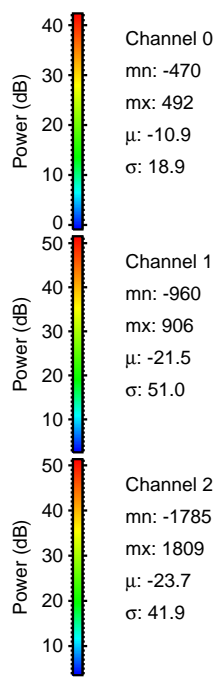
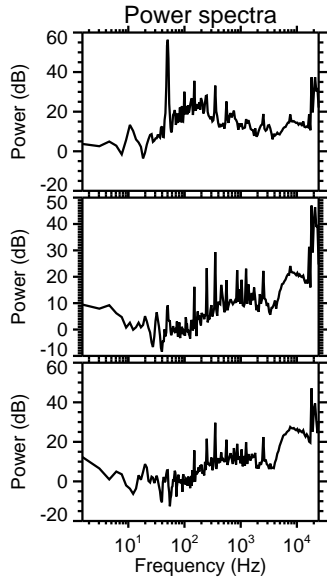
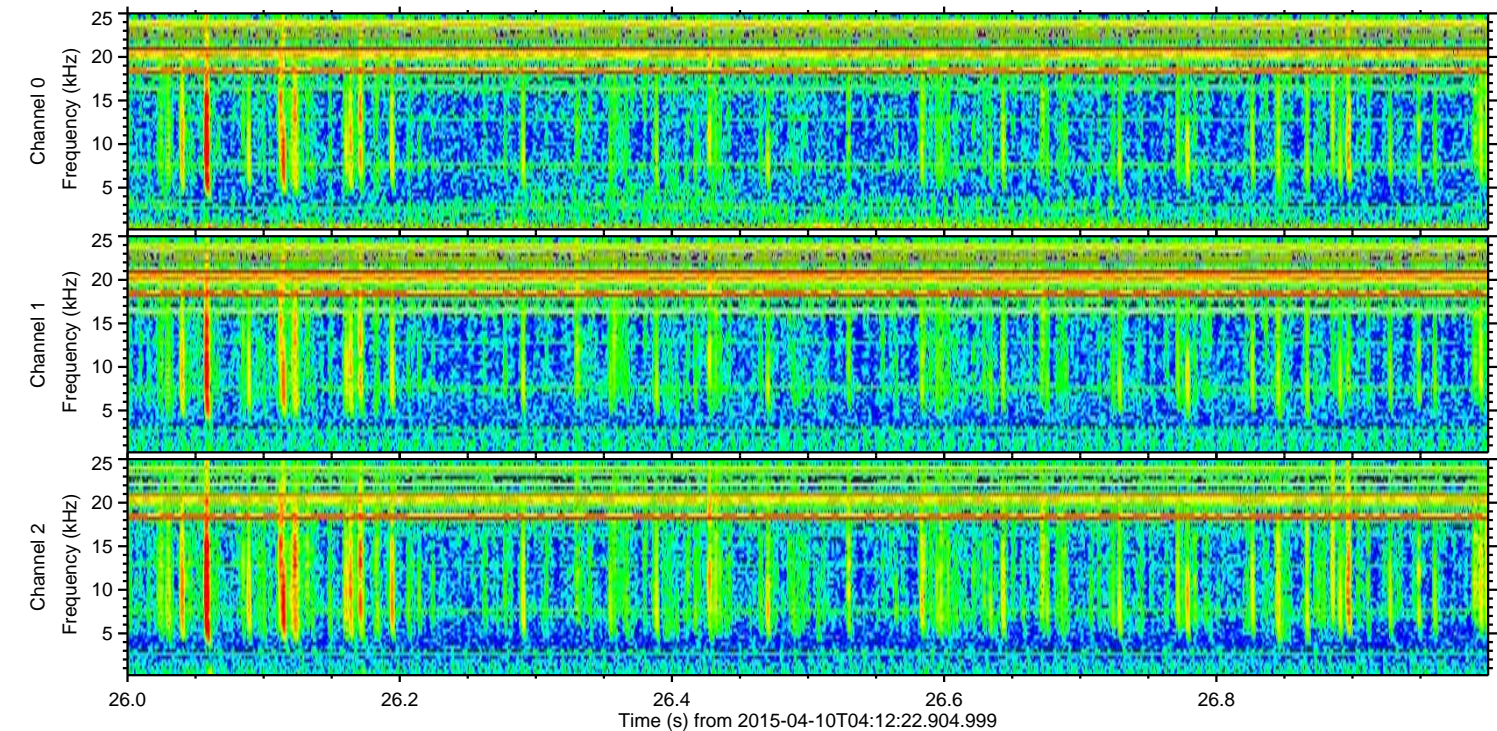
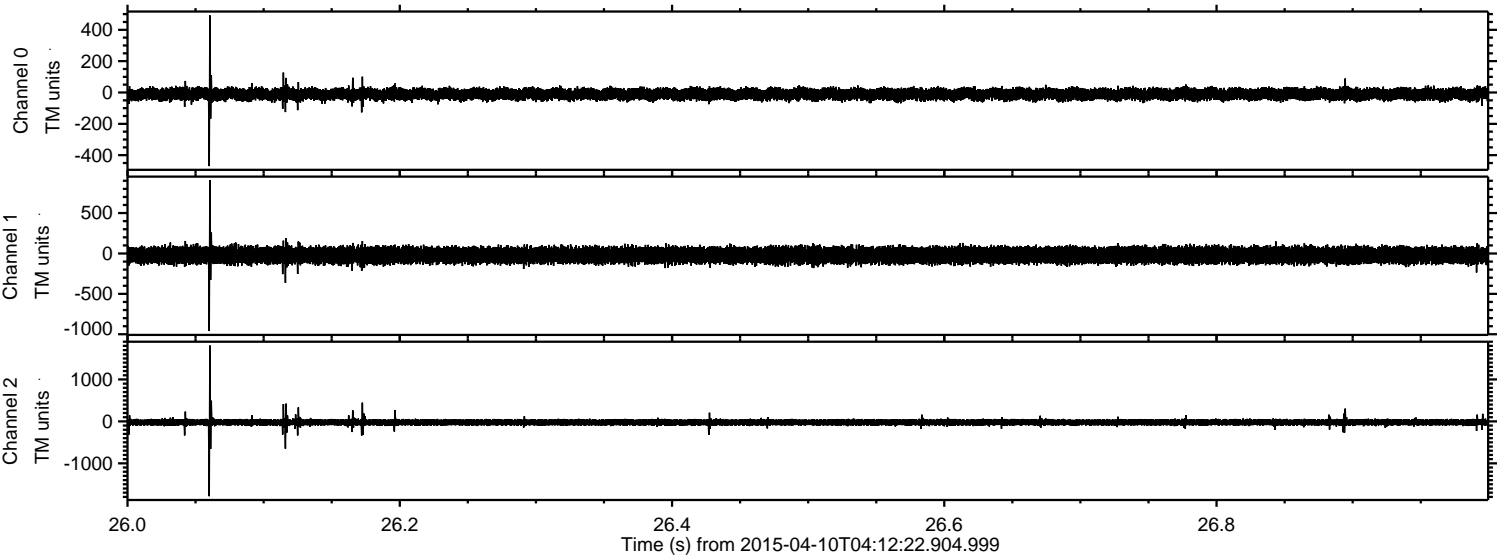


ELMAVAN 3D WAVEFORMS (Measured data sampled at 50 kHz) 49785 packets of 144 samples from 2015-04-10T04:12:22.904.999. Part 102/144

Processed Fri Apr 10 06:19:26 2015 by ELM ver.2012-10-06 from 001__elm20150410_041221__dat00.bin

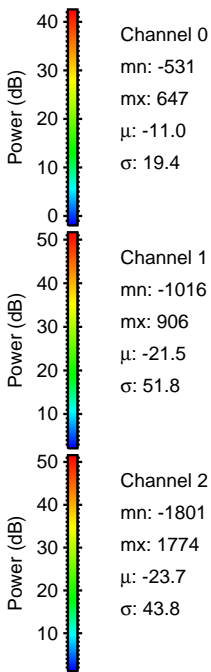
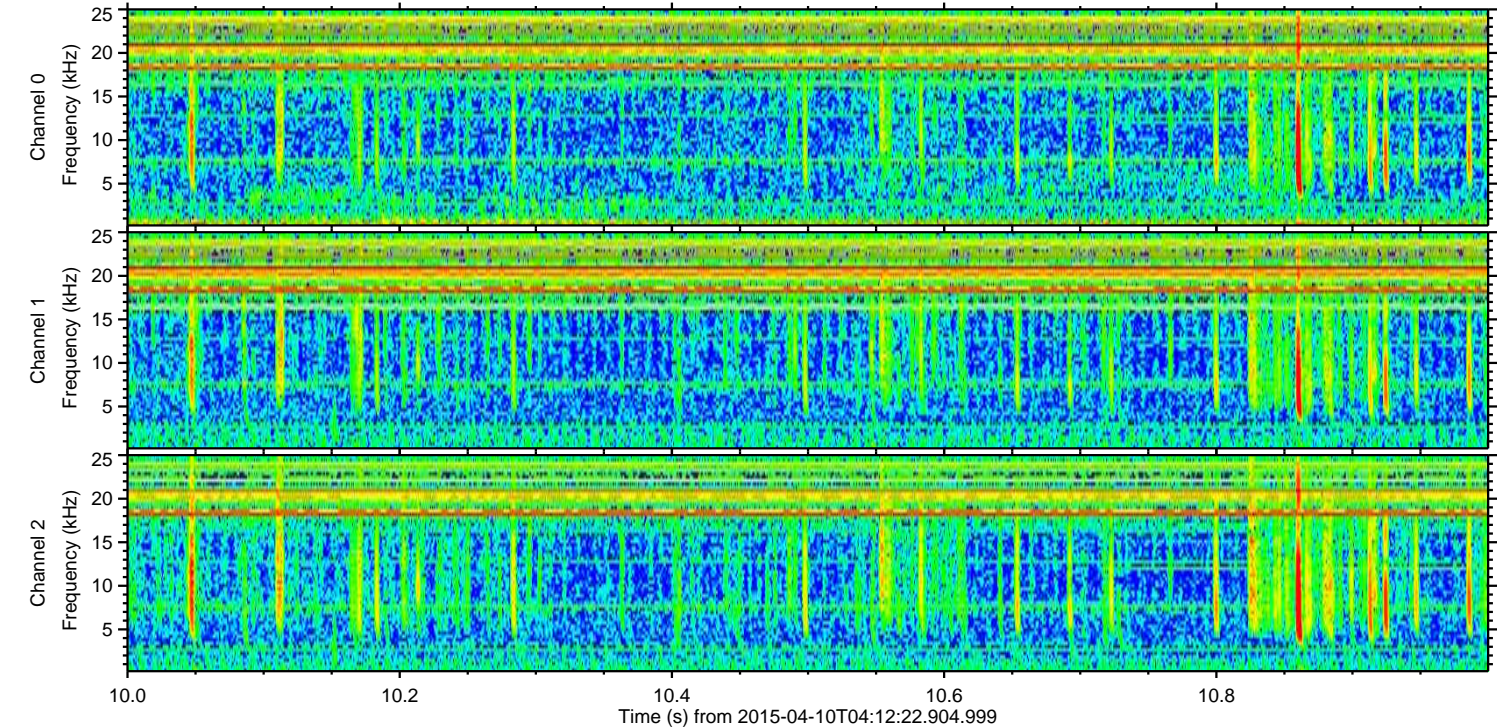
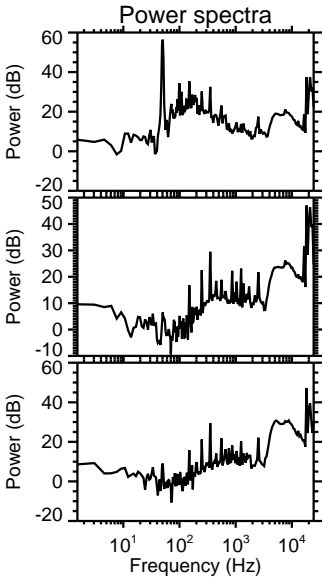
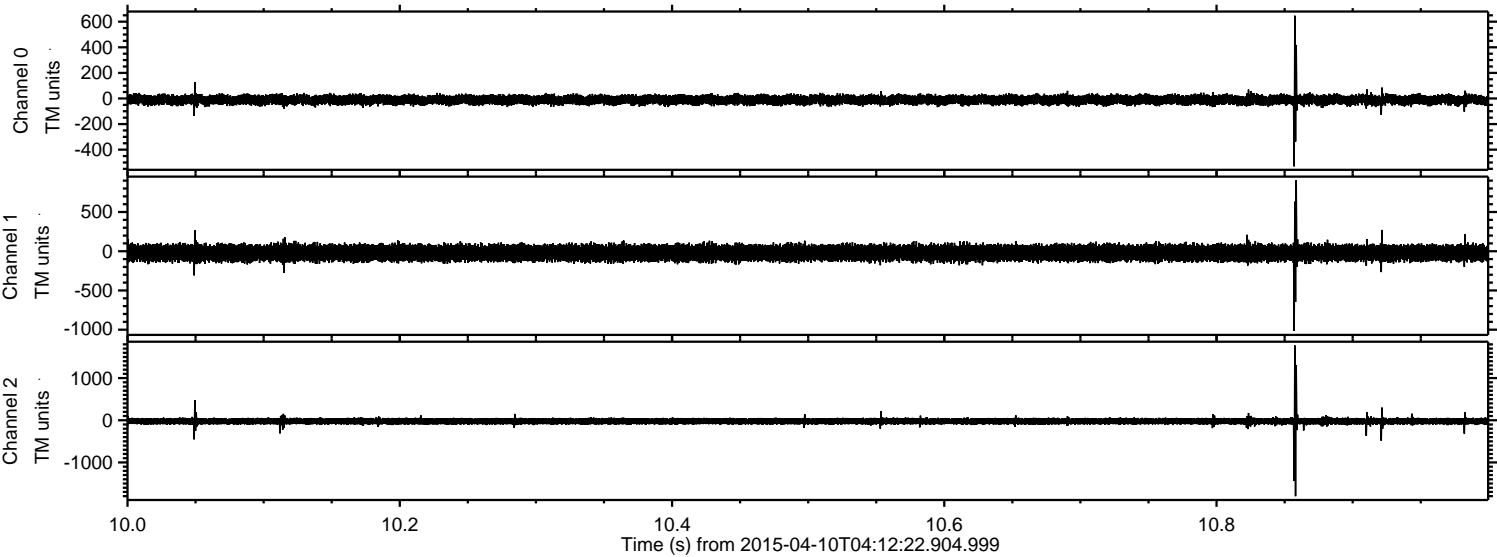


Processed Fri Apr 10 06:19:27 2015 by ELM ver.2012-10-06 from 001__elm20150410_041221__dat00.bin

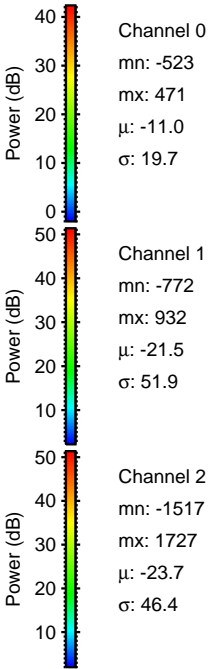
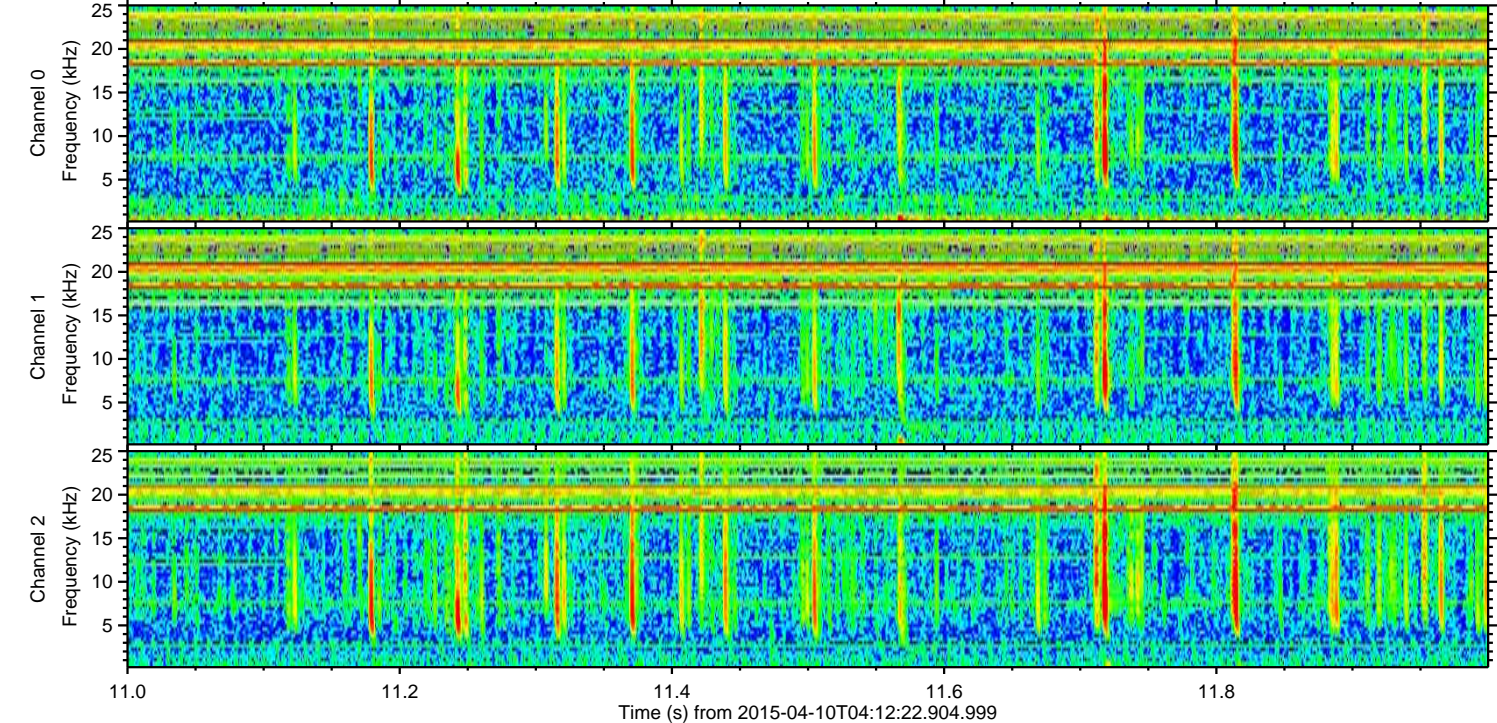
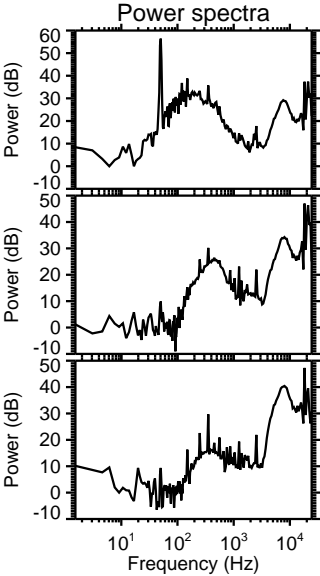
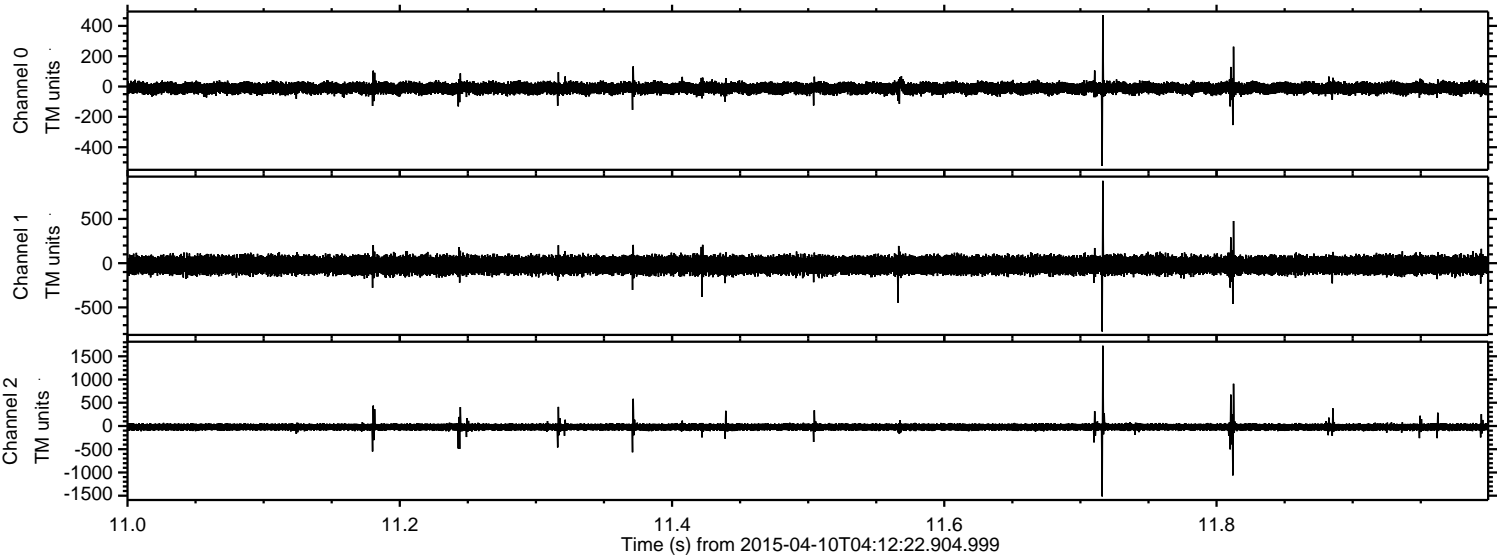


ELMAVAN 3D WAVEFORMS (Measured data sampled at 50 kHz) 49785 packets of 144 samples from 2015-04-10T04:12:22.904.999. Part 11/144

Processed Fri Apr 10 06:19:28 2015 by ELM ver.2012-10-06 from 001__elm20150410_041221__dat00.bin



Processed Fri Apr 10 06:19:28 2015 by ELM ver.2012-10-06 from 001__elm20150410_041221__dat00.bin



Channel 0
mn: -523
mx: 471
 μ : -11.0
 σ : 19.7

Channel 1
mn: -772
mx: 932
 μ : -21.5
 σ : 51.9

Channel 2
mn: -1517
mx: 1727
 μ : -23.7
 σ : 46.4

Processed Fri Apr 10 06:19:29 2015 by ELM ver.2012-10-06 from 001__elm20150410_041221__dat00.bin

