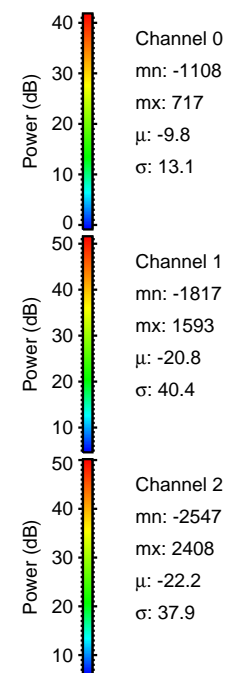
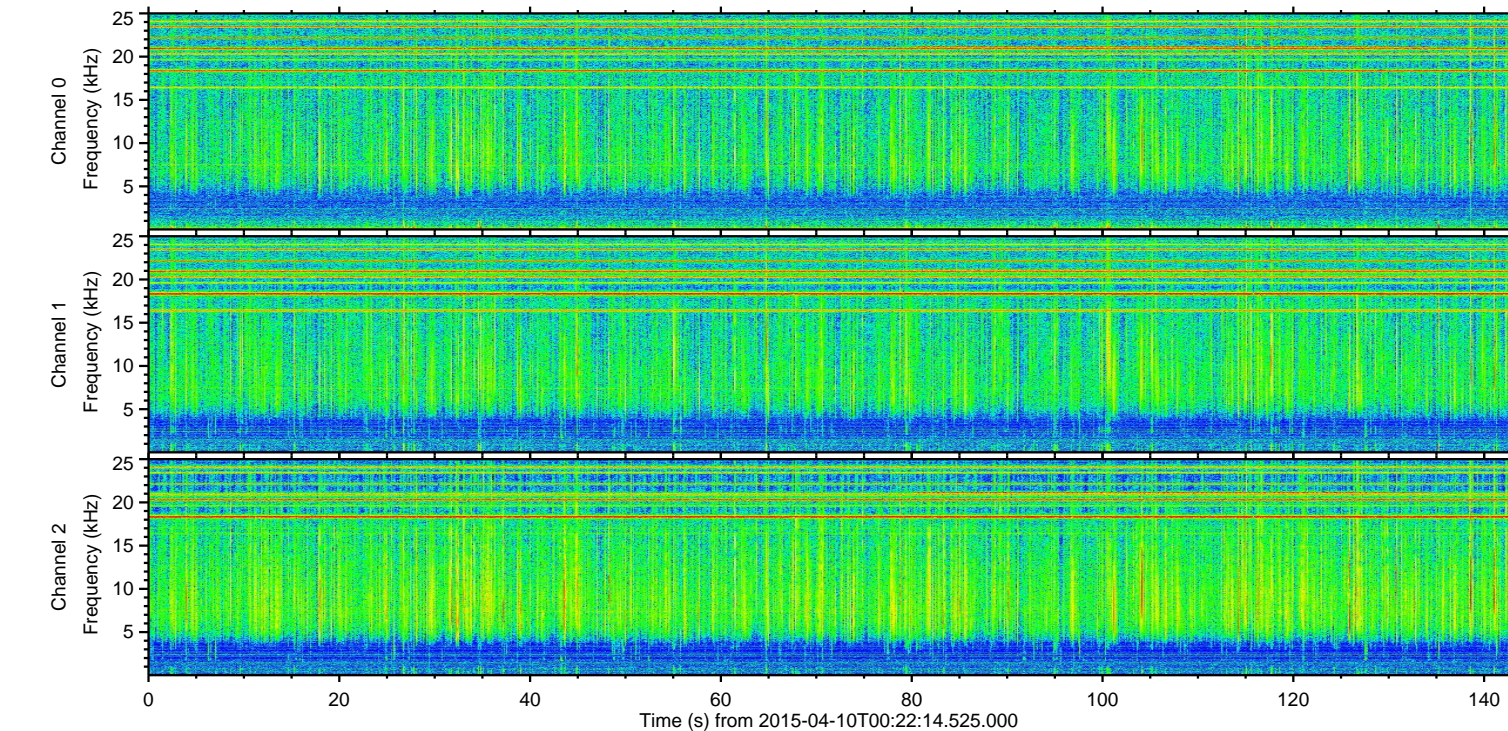
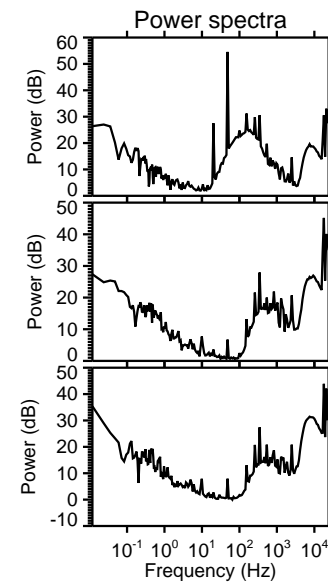
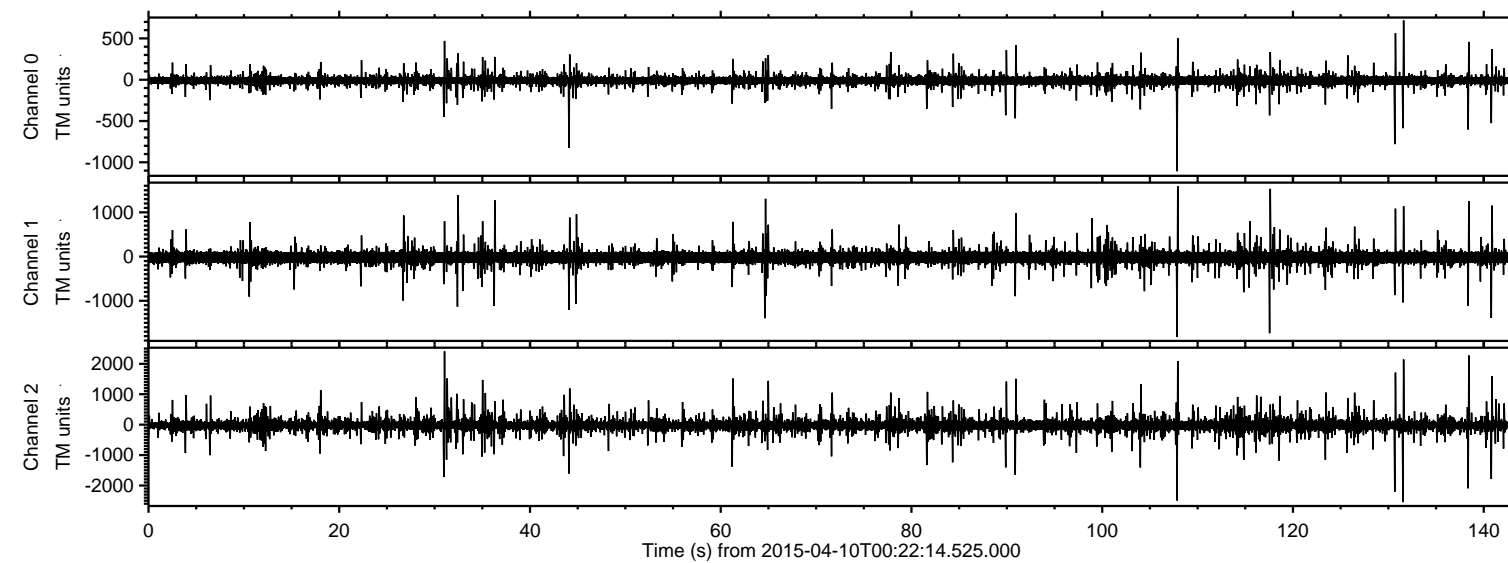


ELMAVAN 3D WAVEFORMS (Measured data sampled at 50 kHz) 49537 packets of 144 samples from 2015-04-10T00:22:14.525.000.

Processed Fri Apr 10 02:28:45 2015 by ELM ver.2012-10-06 from 001__elm20150410_002213__dat00.bin



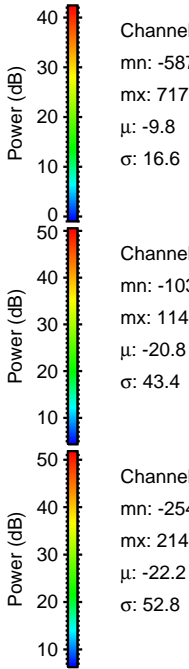
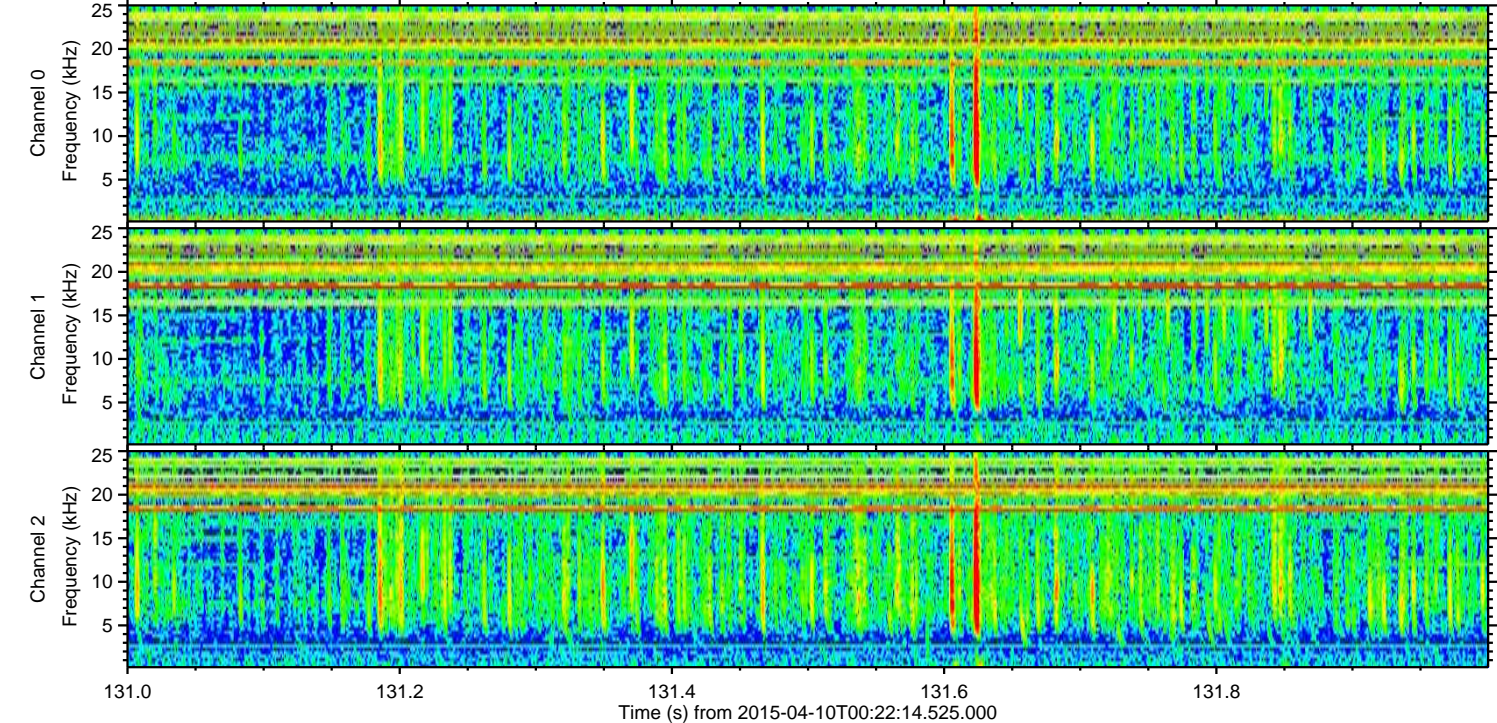
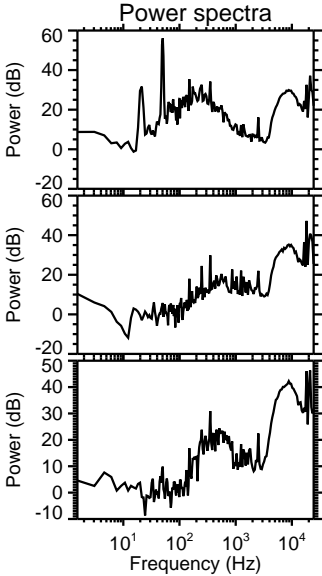
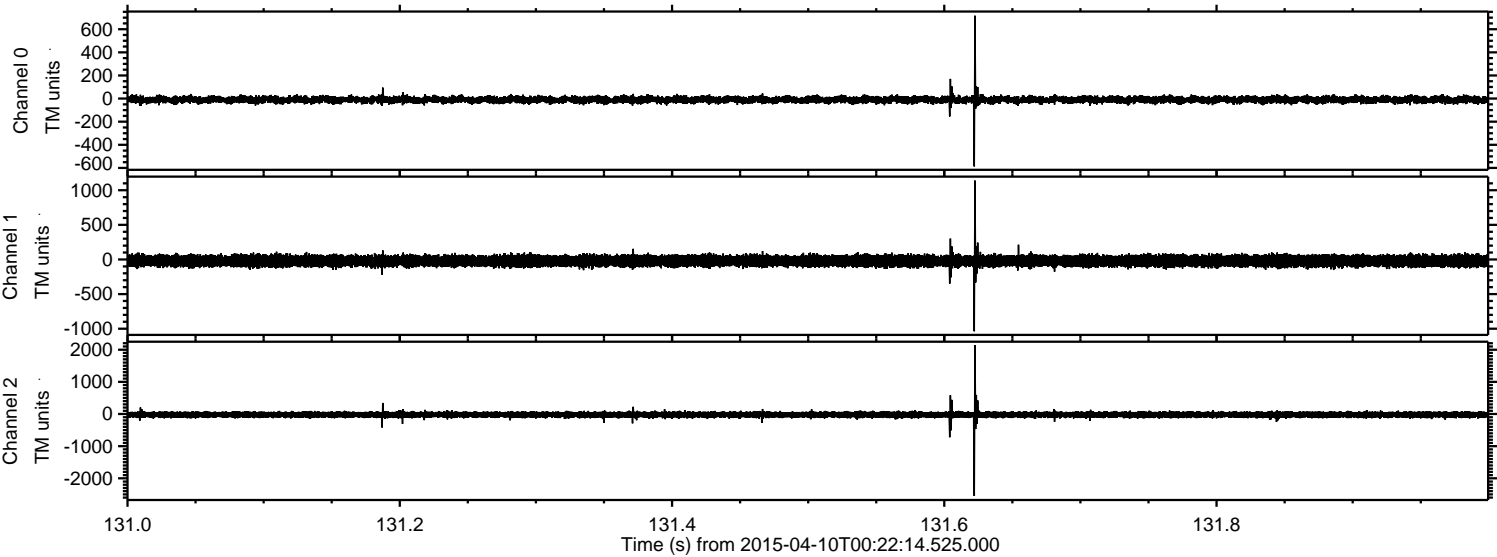
Channel 0
mn: -1108
mx: 717
 μ : -9.8
 σ : 13.1

Channel 1
mn: -1817
mx: 1593
 μ : -20.8
 σ : 40.4

Channel 2
mn: -2547
mx: 2408
 μ : -22.2
 σ : 37.9

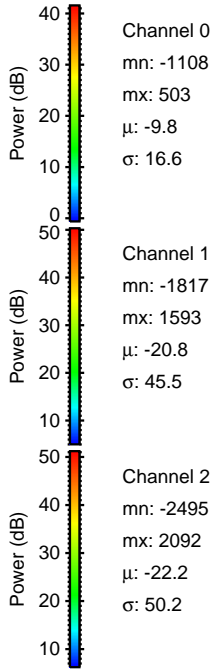
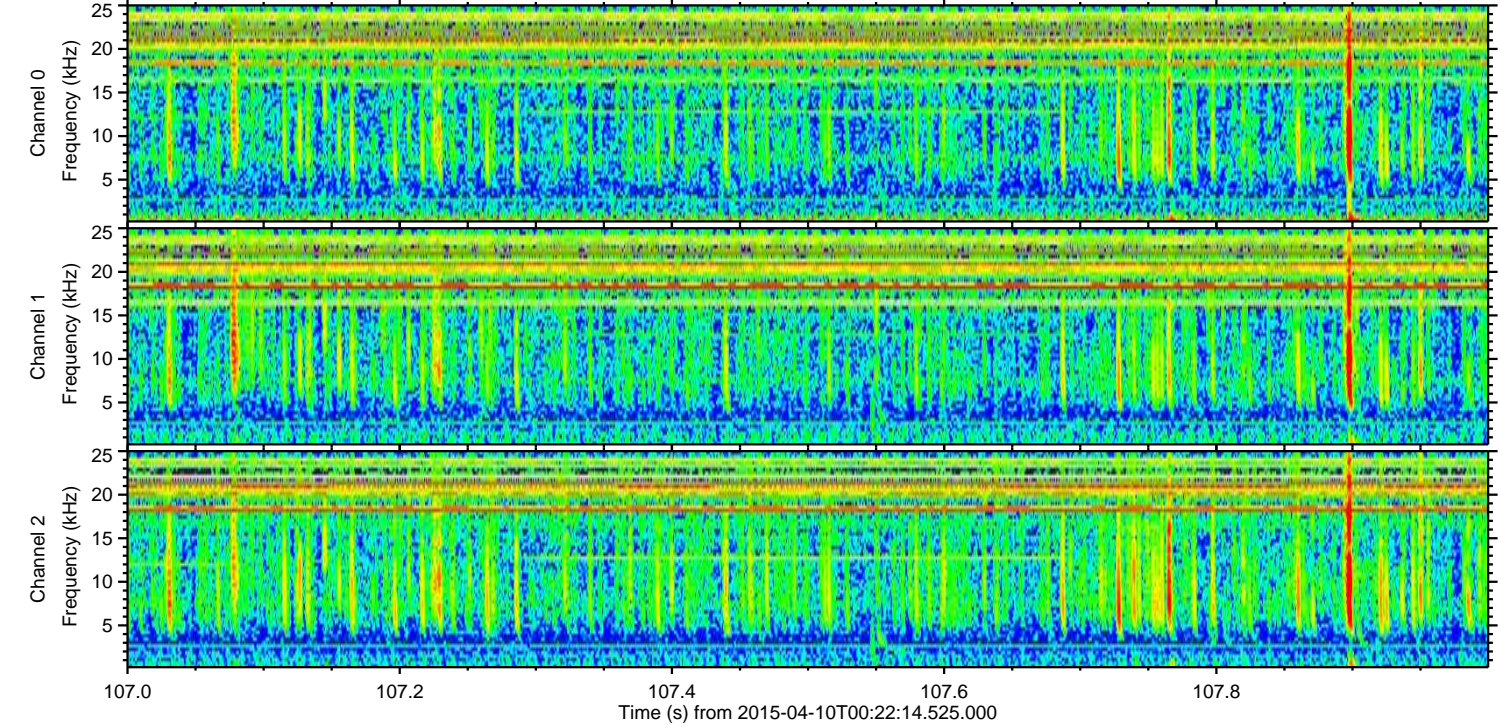
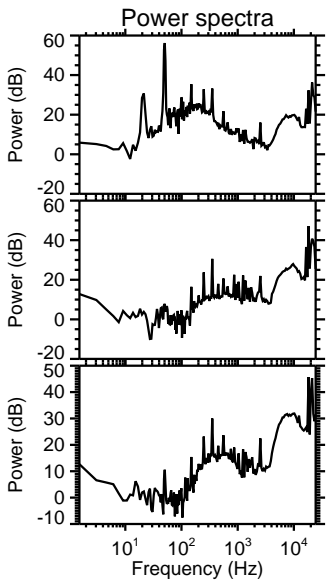
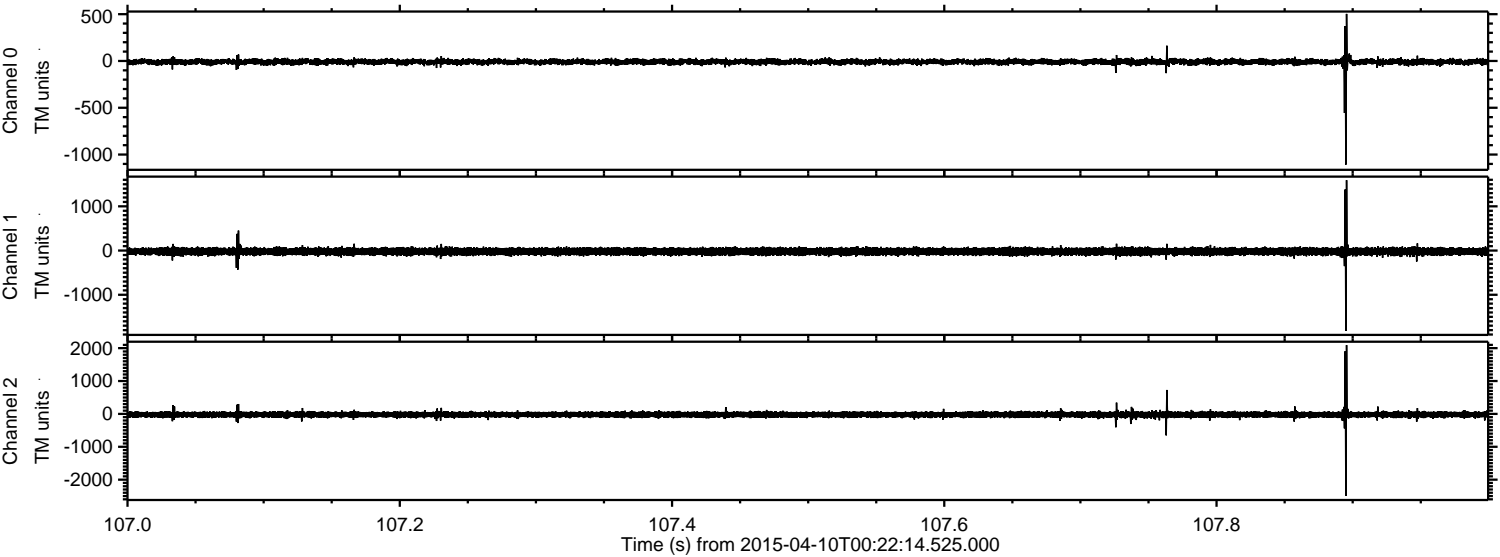
ELMAVAN 3D WAVEFORMS (Measured data sampled at 50 kHz) 49537 packets of 144 samples from 2015-04-10T00:22:14.525.000. Part 132/143

Processed Fri Apr 10 02:28:56 2015 by ELM ver.2012-10-06 from 001__elm20150410_002213__dat00.bin



ELMAVAN 3D WAVEFORMS (Measured data sampled at 50 kHz) 49537 packets of 144 samples from 2015-04-10T00:22:14.525.000. Part 108/143

Processed Fri Apr 10 02:28:57 2015 by ELM ver.2012-10-06 from 001__elm20150410_002213__dat00.bin

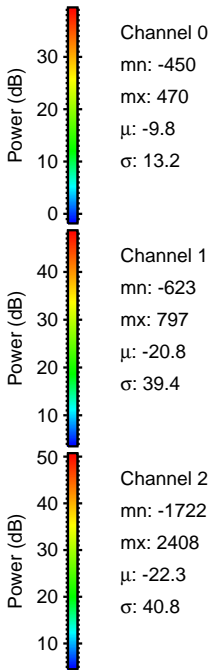
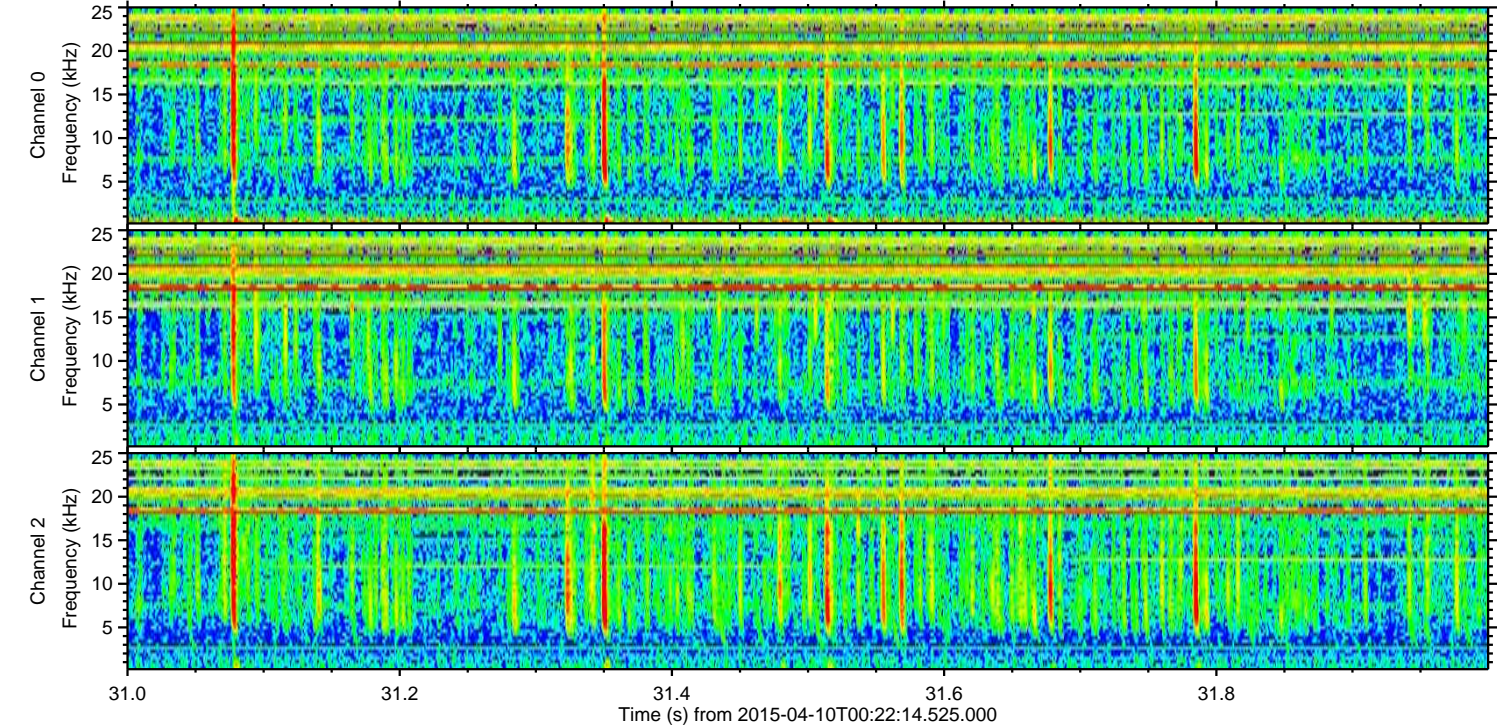
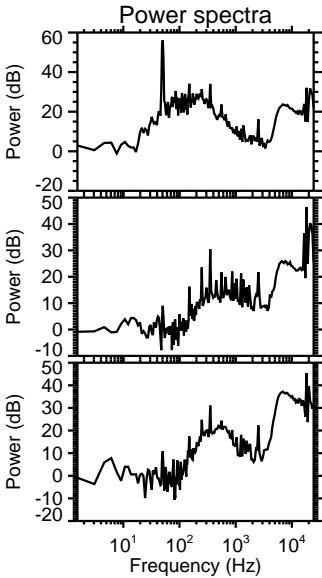
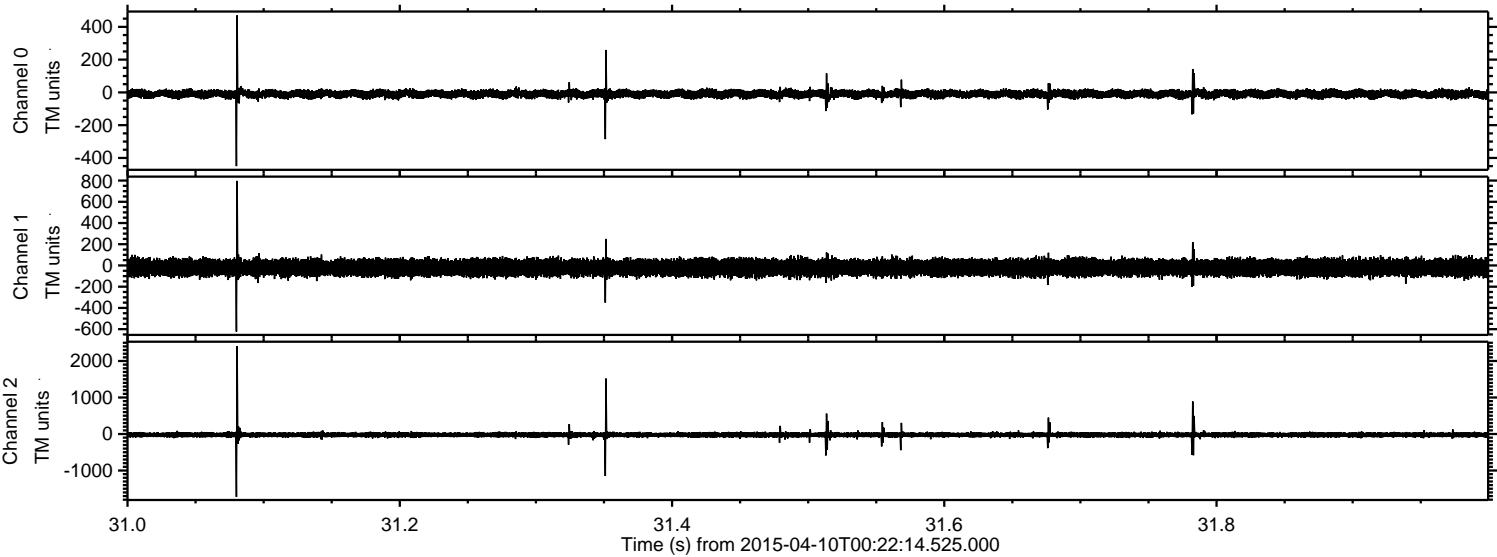


Channel 0
mn: -1108
mx: 503
 μ : -9.8
 σ : 16.6

Channel 1
mn: -1817
mx: 1593
 μ : -20.8
 σ : 45.5

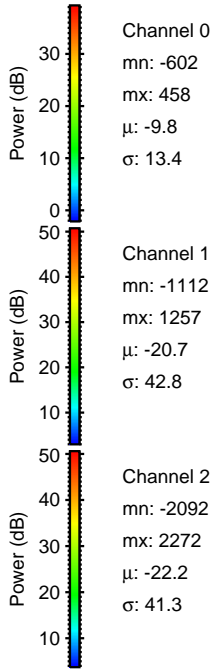
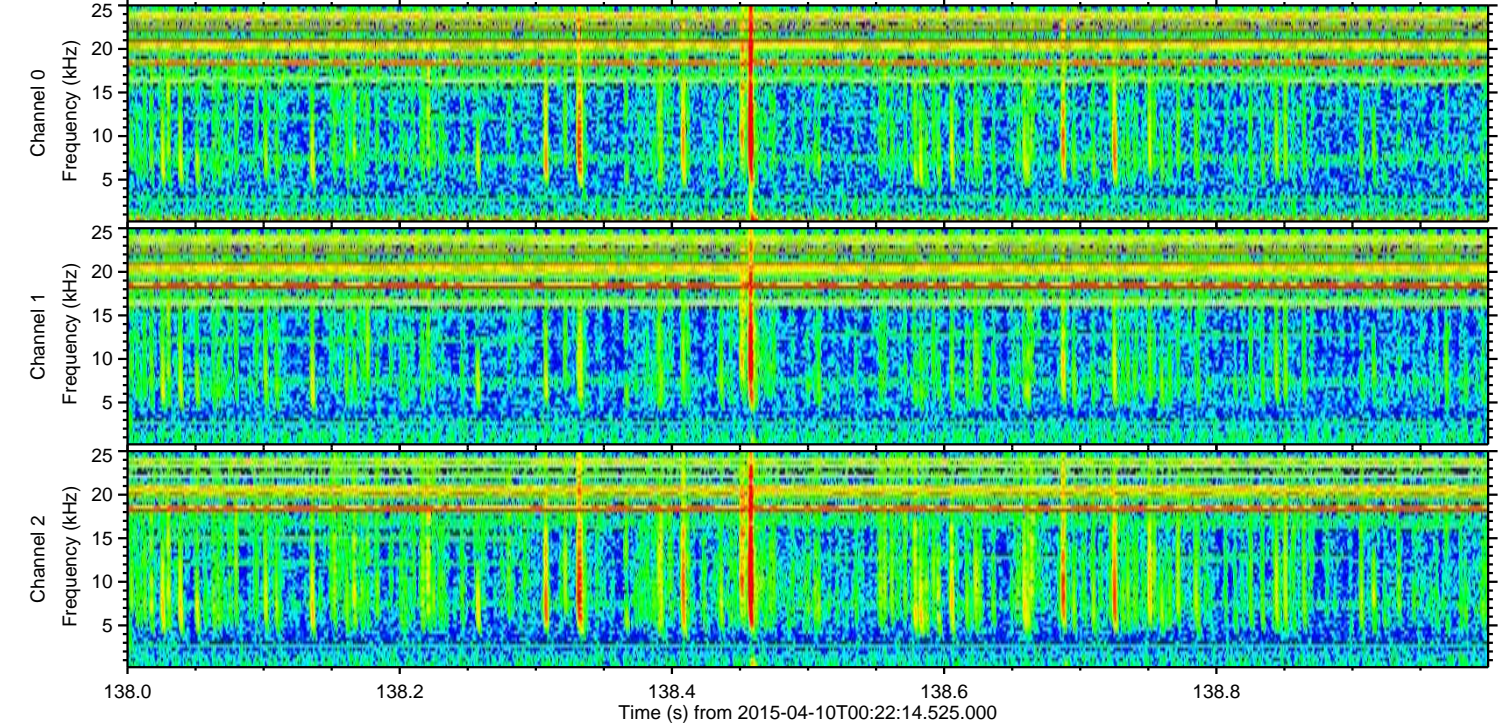
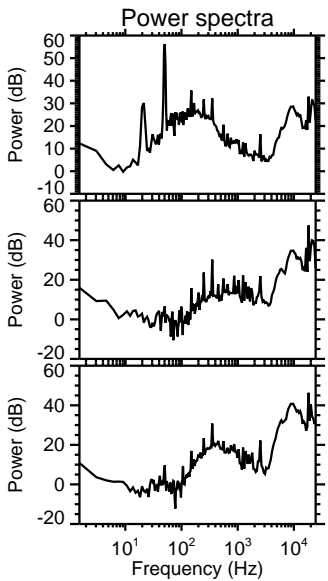
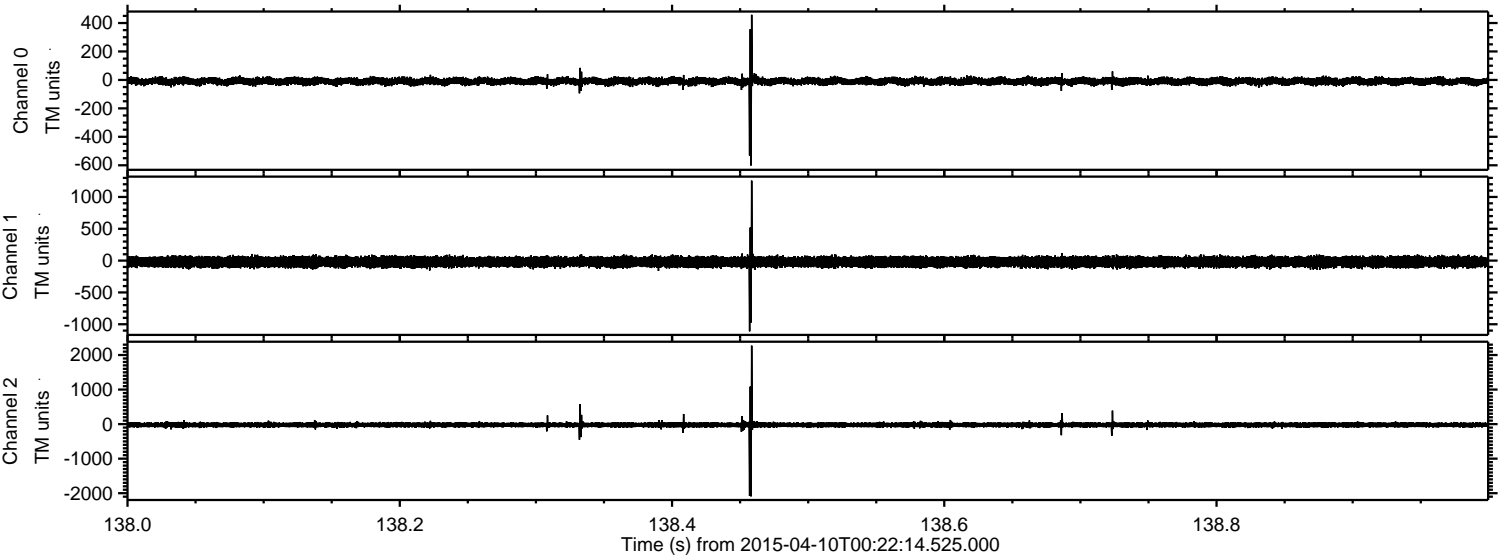
Channel 2
mn: -2495
mx: 2092
 μ : -22.2
 σ : 50.2

Processed Fri Apr 10 02:28:58 2015 by ELM ver.2012-10-06 from 001__elm20150410_002213__dat00.bin



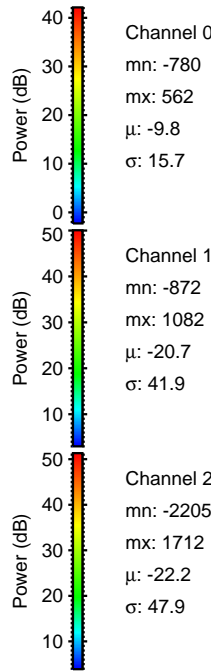
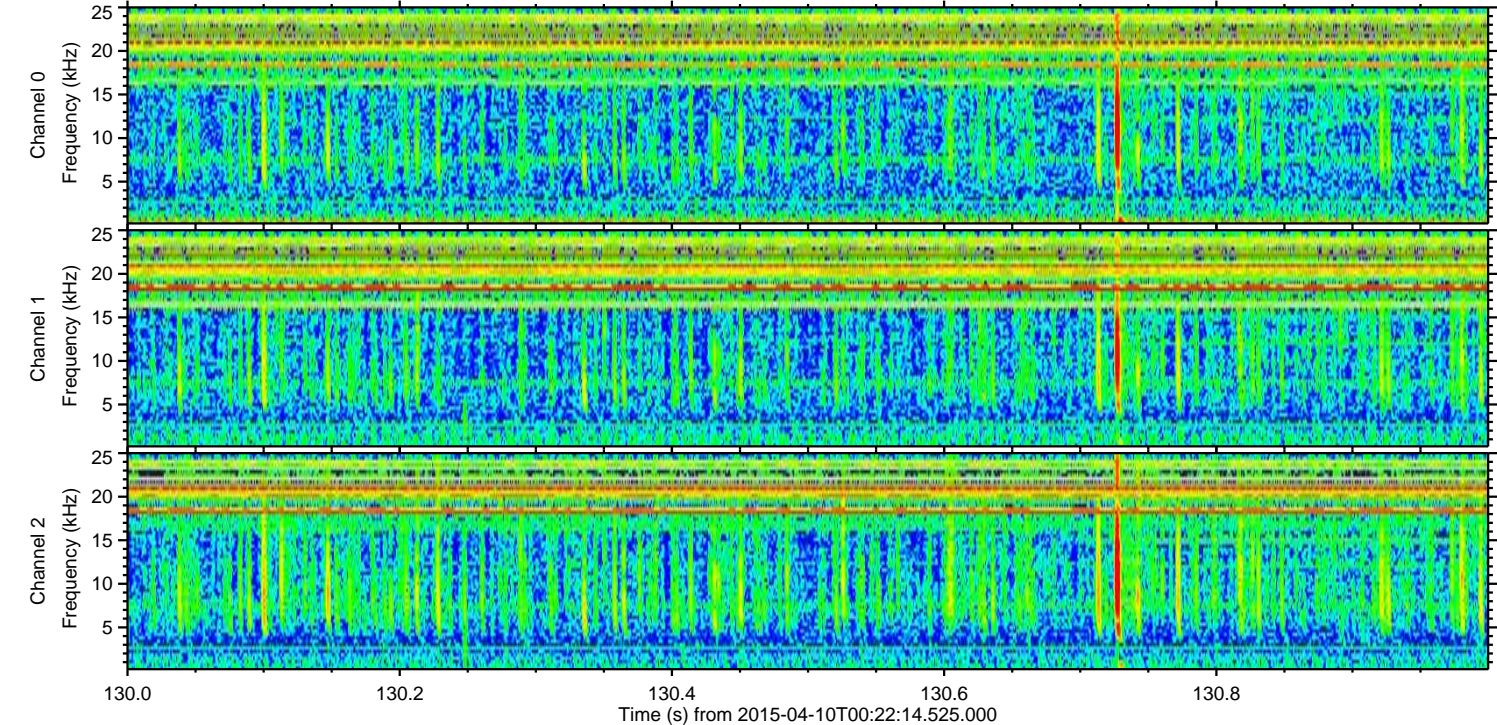
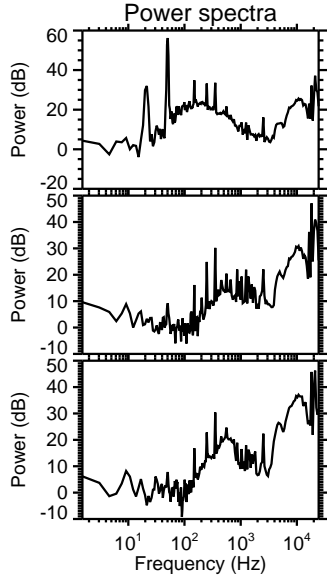
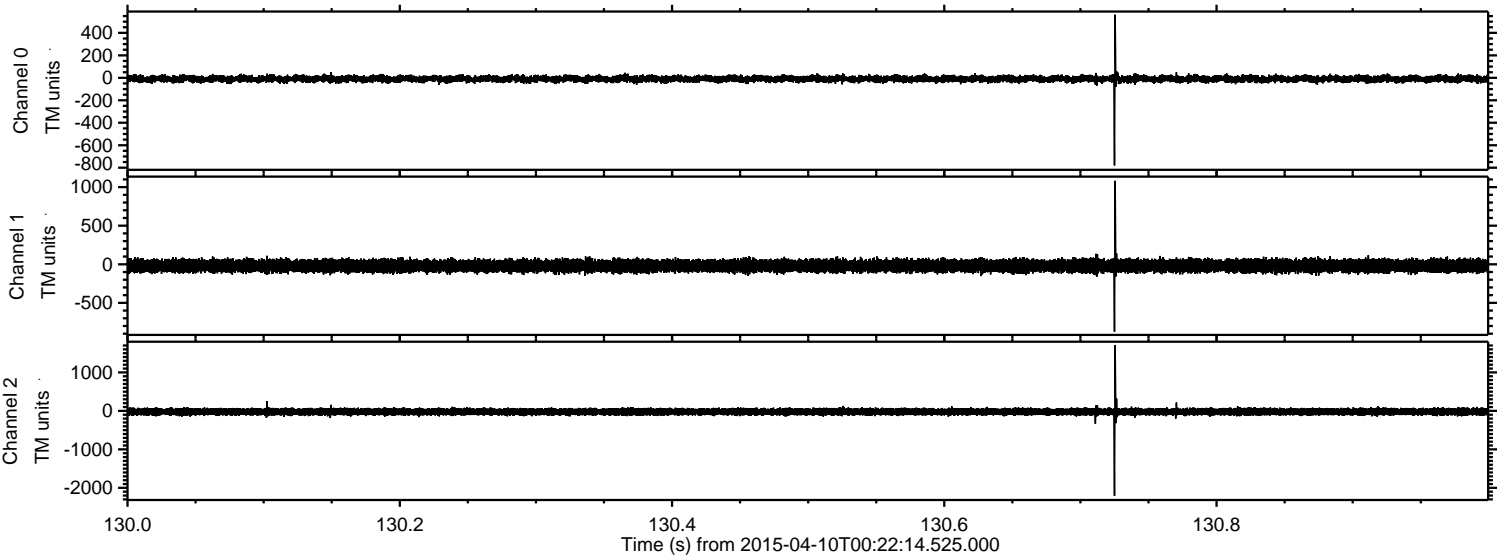
ELMAVAN 3D WAVEFORMS (Measured data sampled at 50 kHz) 49537 packets of 144 samples from 2015-04-10T00:22:14.525.000. Part 139/143

Processed Fri Apr 10 02:28:59 2015 by ELM ver.2012-10-06 from 001__elm20150410_002213__dat00.bin



ELMAVAN 3D WAVEFORMS (Measured data sampled at 50 kHz) 49537 packets of 144 samples from 2015-04-10T00:22:14.525.000. Part 131/143

Processed Fri Apr 10 02:29:00 2015 by ELM ver.2012-10-06 from 001__elm20150410_002213__dat00.bin

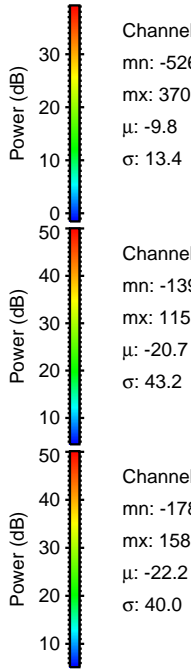
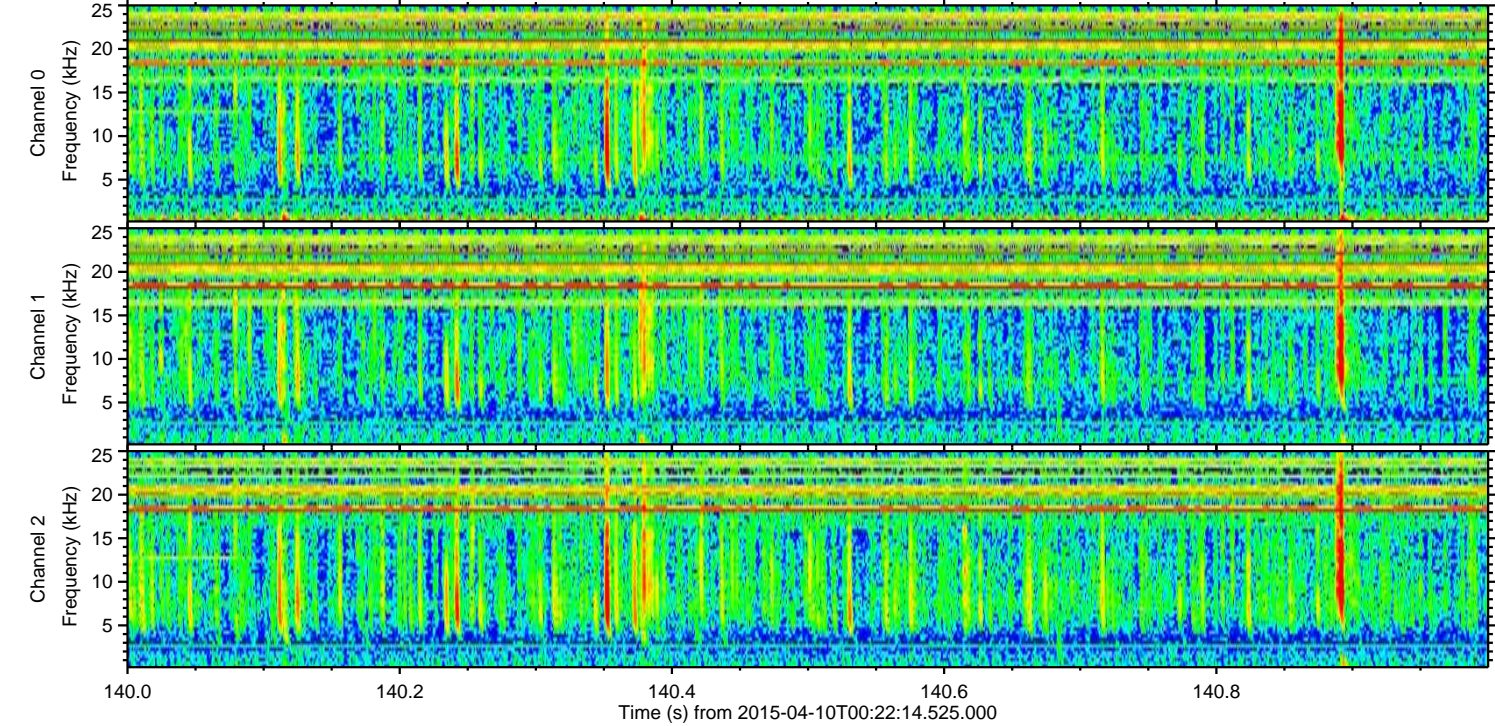
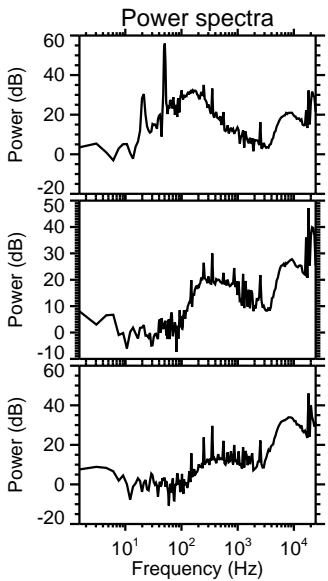
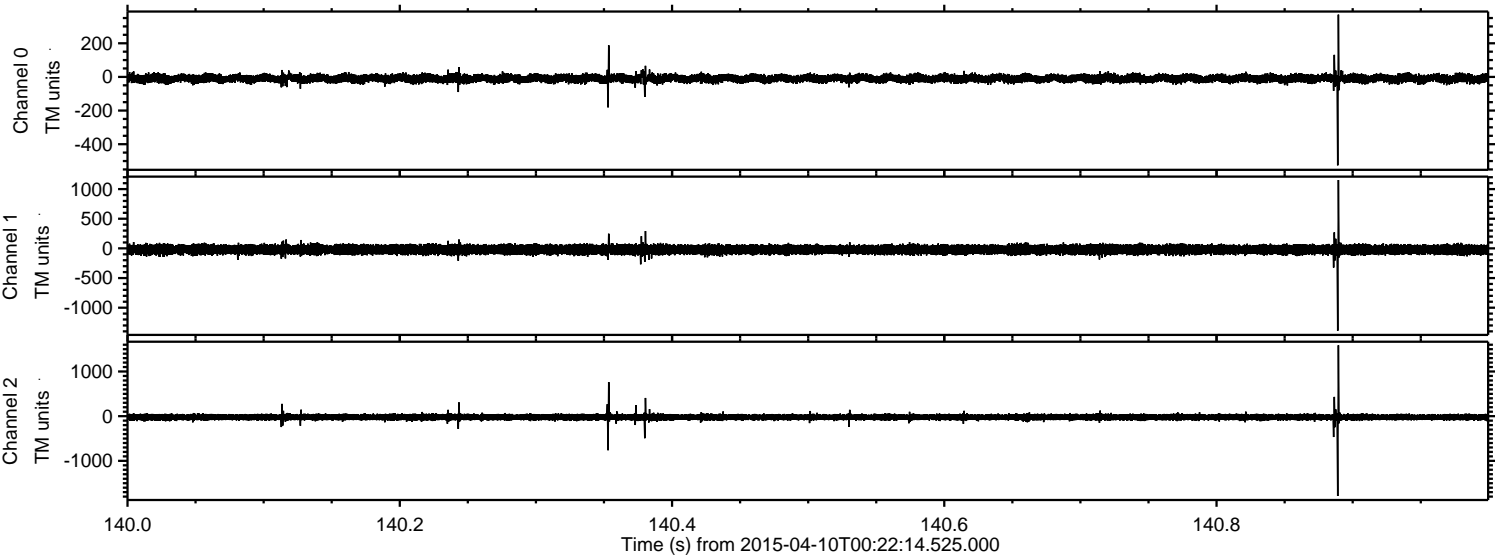


Channel 0
mn: -780
mx: 562
 μ : -9.8
 σ : 15.7

Channel 1
mn: -872
mx: 1082
 μ : -20.7
 σ : 41.9

Channel 2
mn: -2205
mx: 1712
 μ : -22.2
 σ : 47.9

Processed Fri Apr 10 02:29:01 2015 by ELM ver.2012-10-06 from 001__elm20150410_002213__dat00.bin

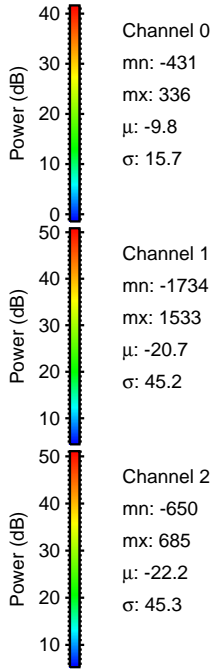
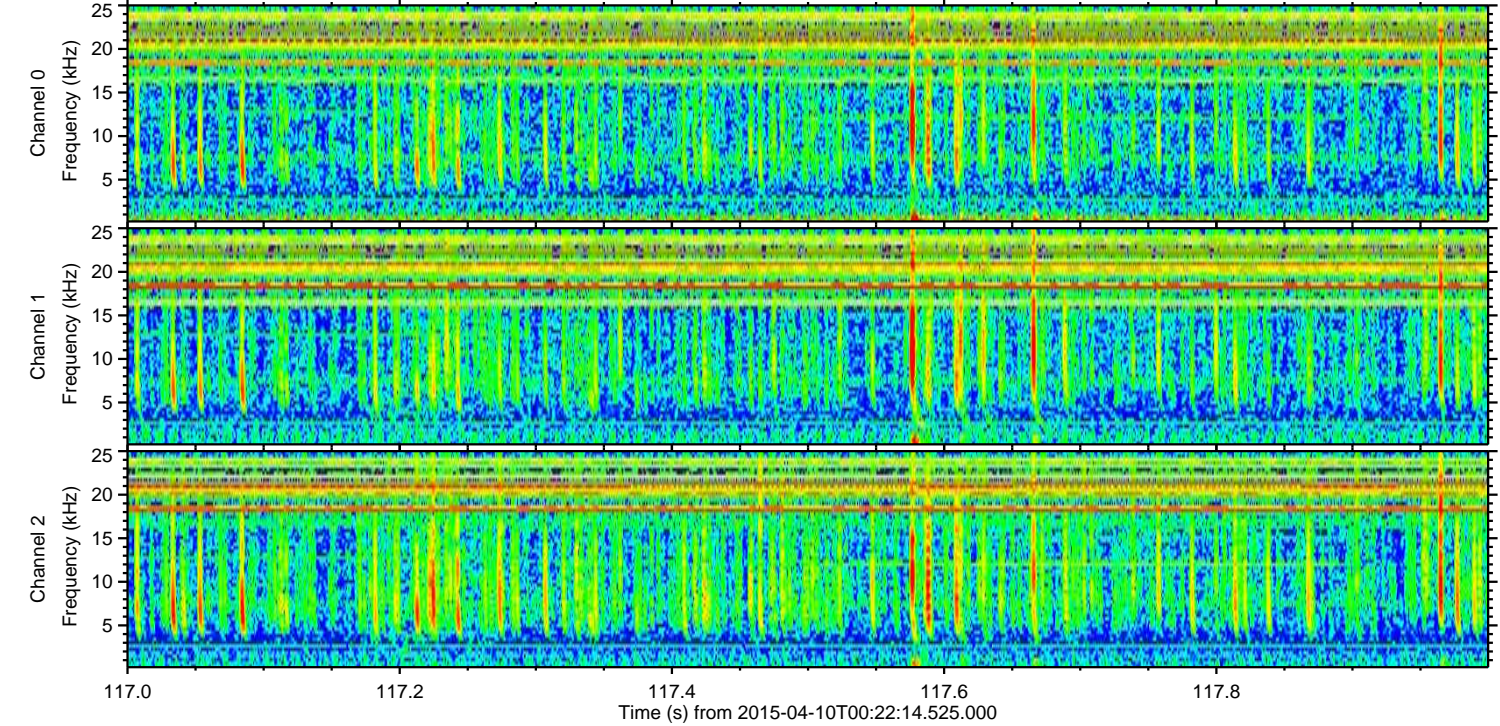
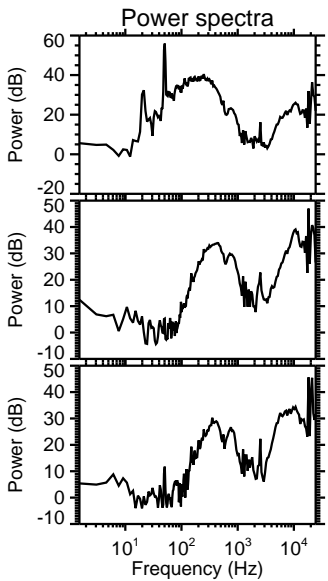
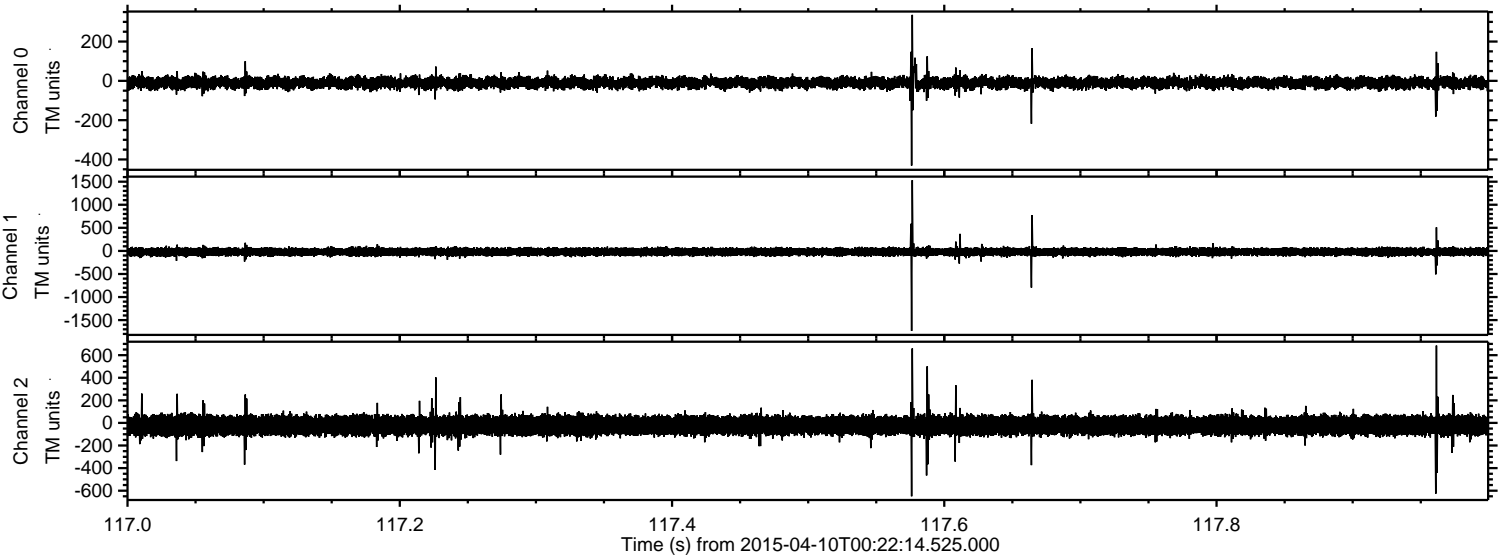


Channel 0
mn: -526
mx: 370
 μ : -9.8
 σ : 13.4

Channel 1
mn: -1390
mx: 1153
 μ : -20.7
 σ : 43.2

Channel 2
mn: -1787
mx: 1588
 μ : -22.2
 σ : 40.0

Processed Fri Apr 10 02:29:02 2015 by ELM ver.2012-10-06 from 001__elm20150410_002213__dat00.bin

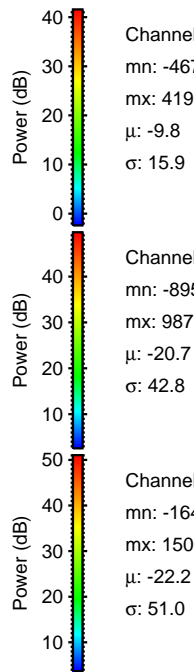
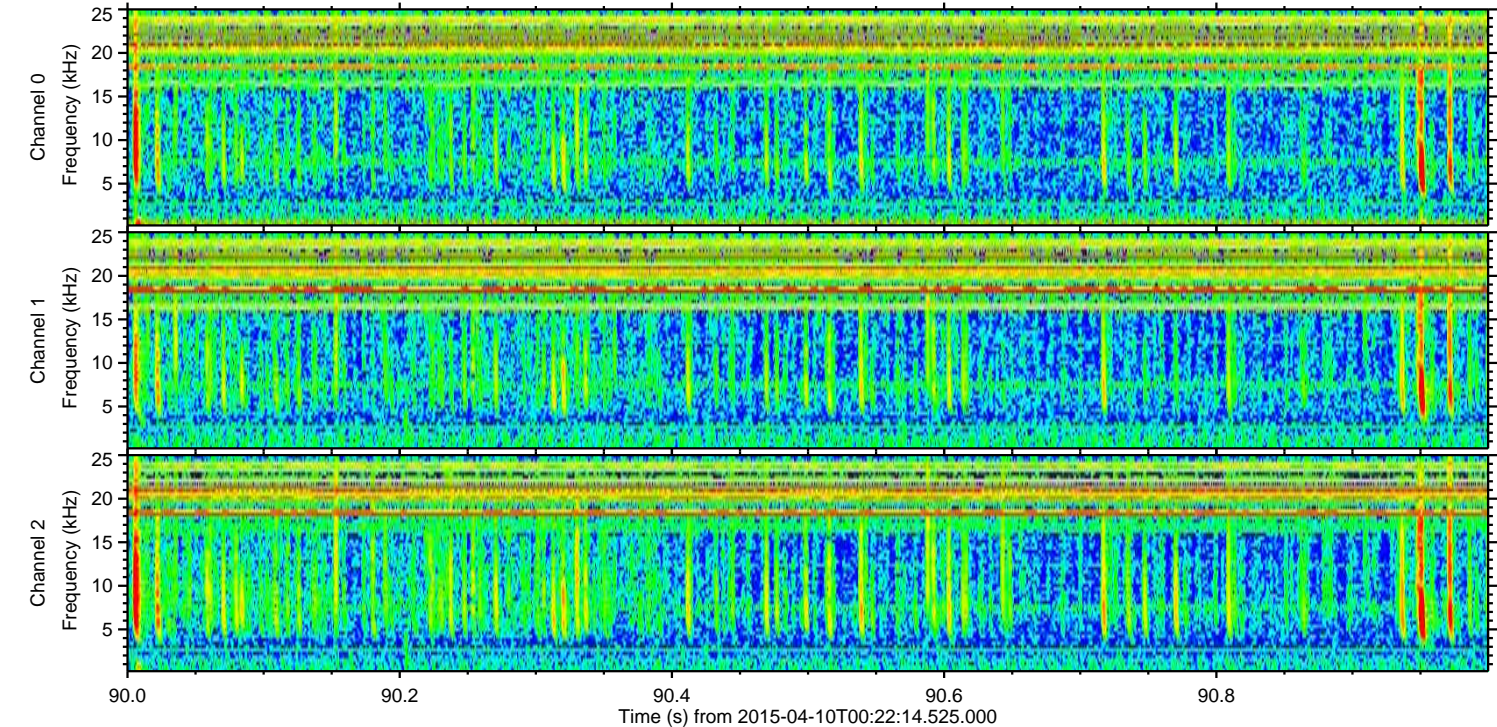
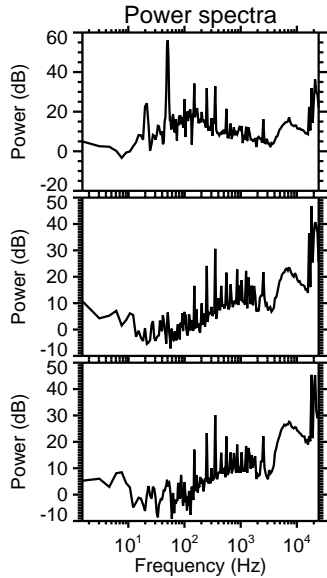
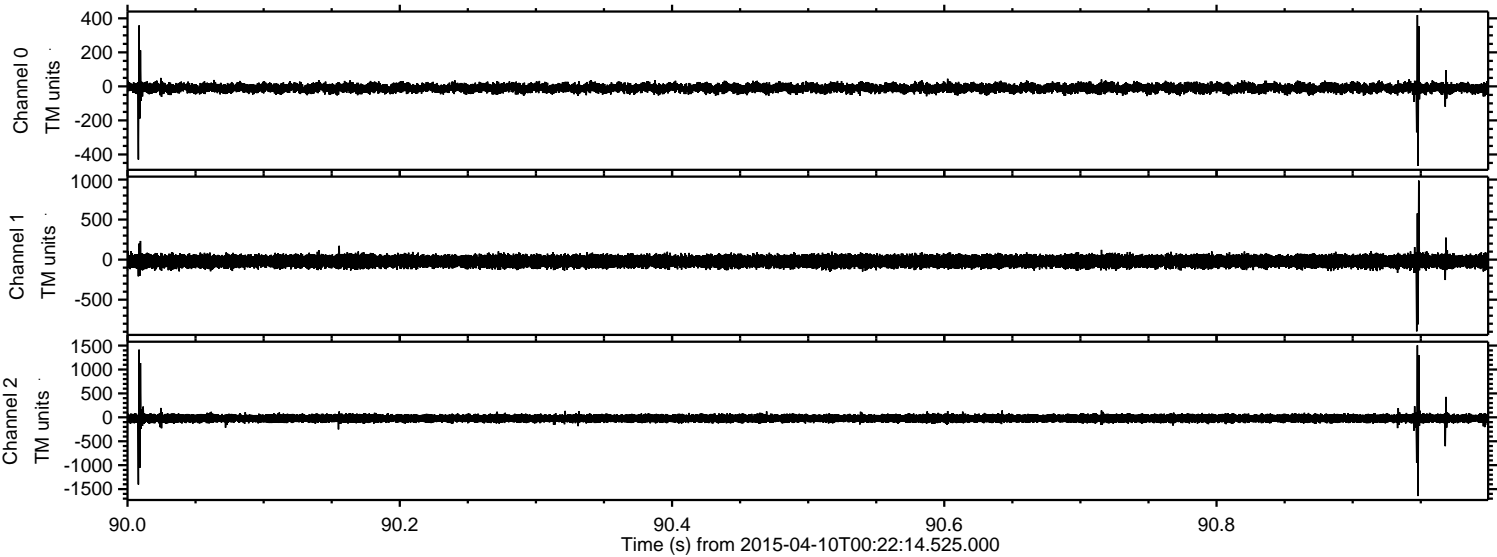


Channel 0
mn: -431
mx: 336
 μ : -9.8
 σ : 15.7

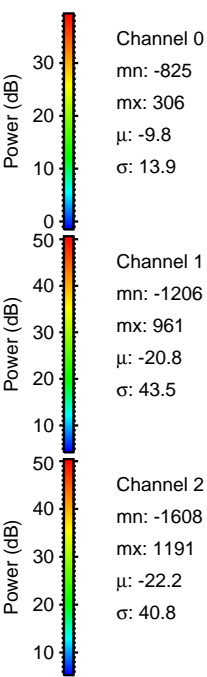
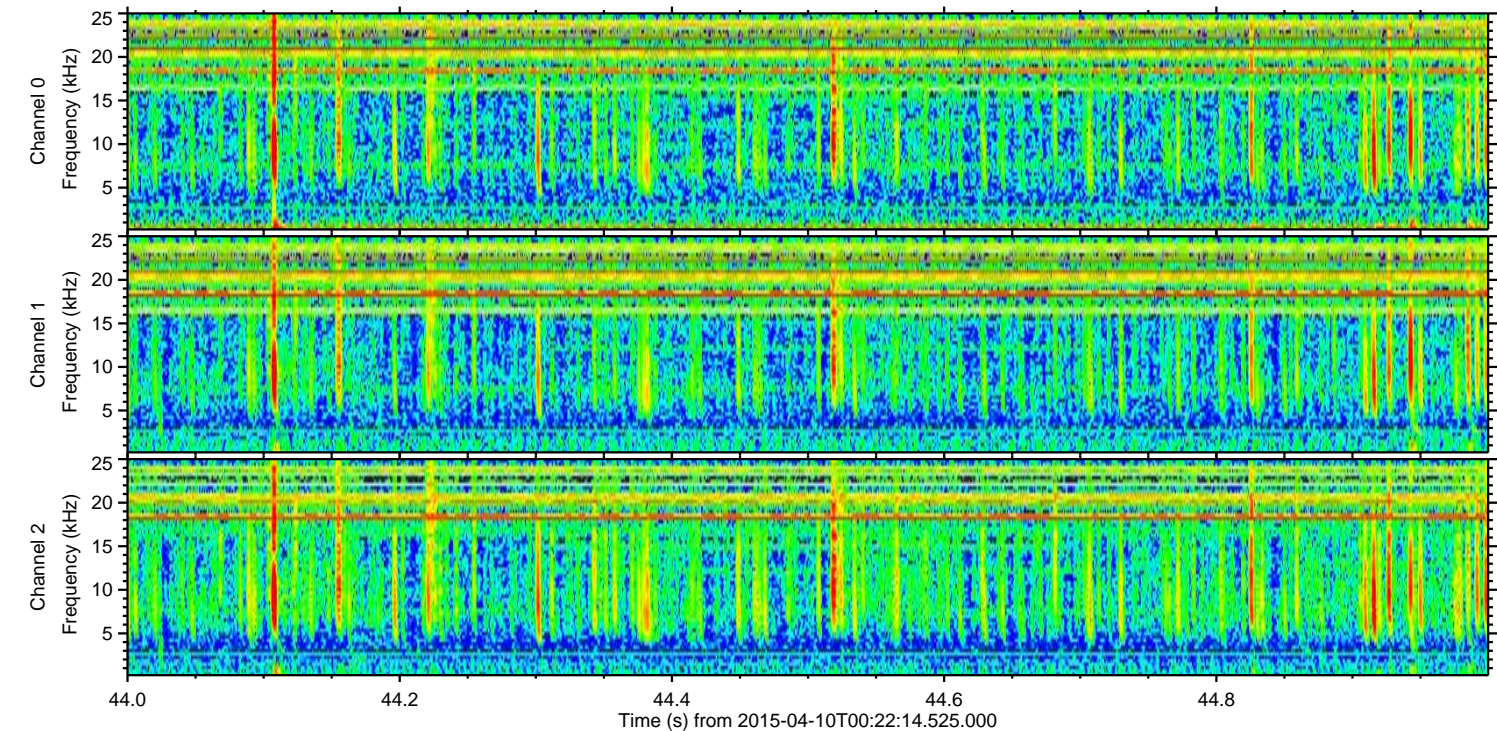
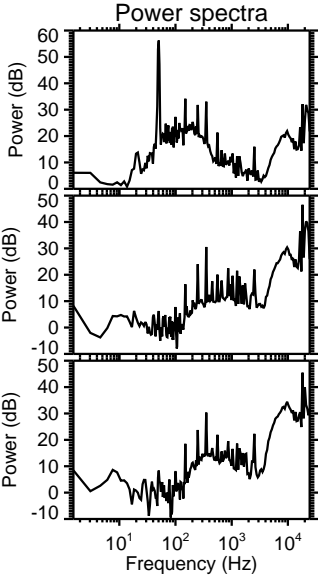
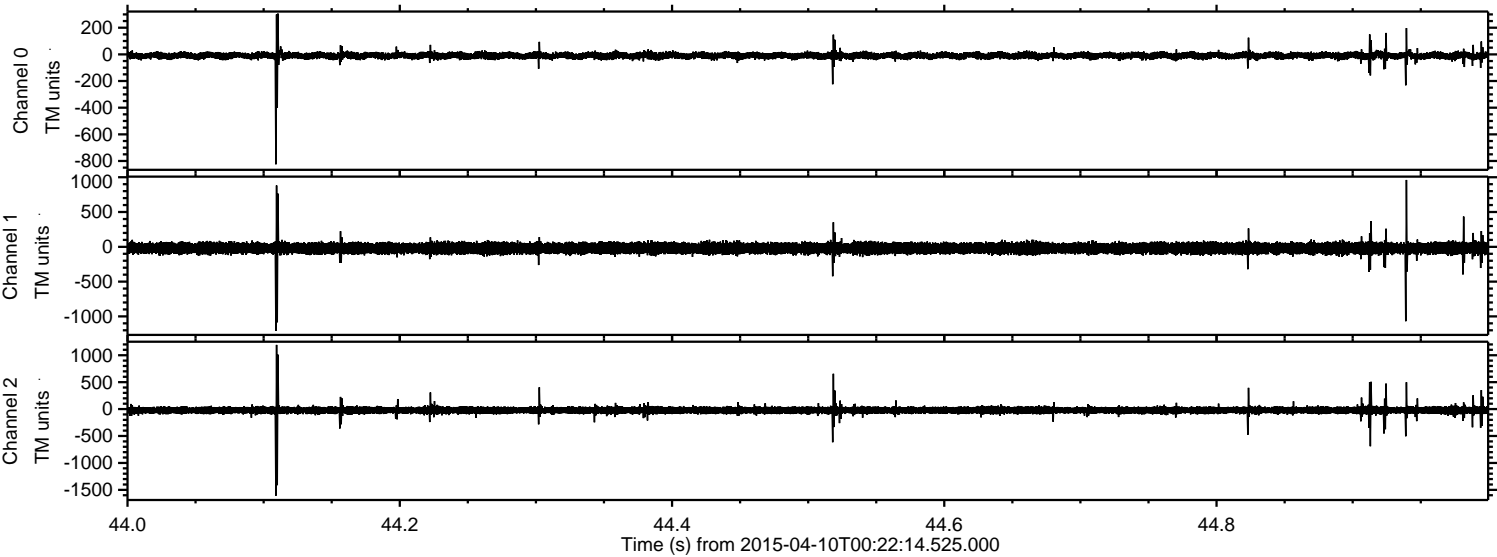
Channel 1
mn: -1734
mx: 1533
 μ : -20.7
 σ : 45.2

Channel 2
mn: -650
mx: 685
 μ : -22.2
 σ : 45.3

Processed Fri Apr 10 02:29:03 2015 by ELM ver.2012-10-06 from 001__elm20150410_002213__dat00.bin



Processed Fri Apr 10 02:29:04 2015 by ELM ver.2012-10-06 from 001__elm20150410_002213__dat00.bin



Processed Fri Apr 10 02:29:05 2015 by ELM ver.2012-10-06 from 001__elm20150410_002213__dat00.bin

