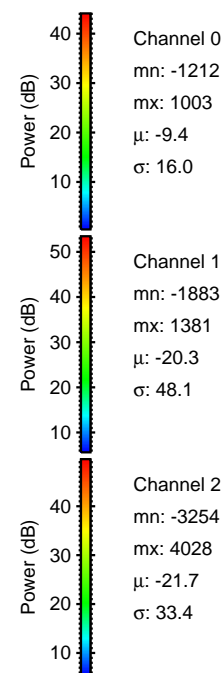
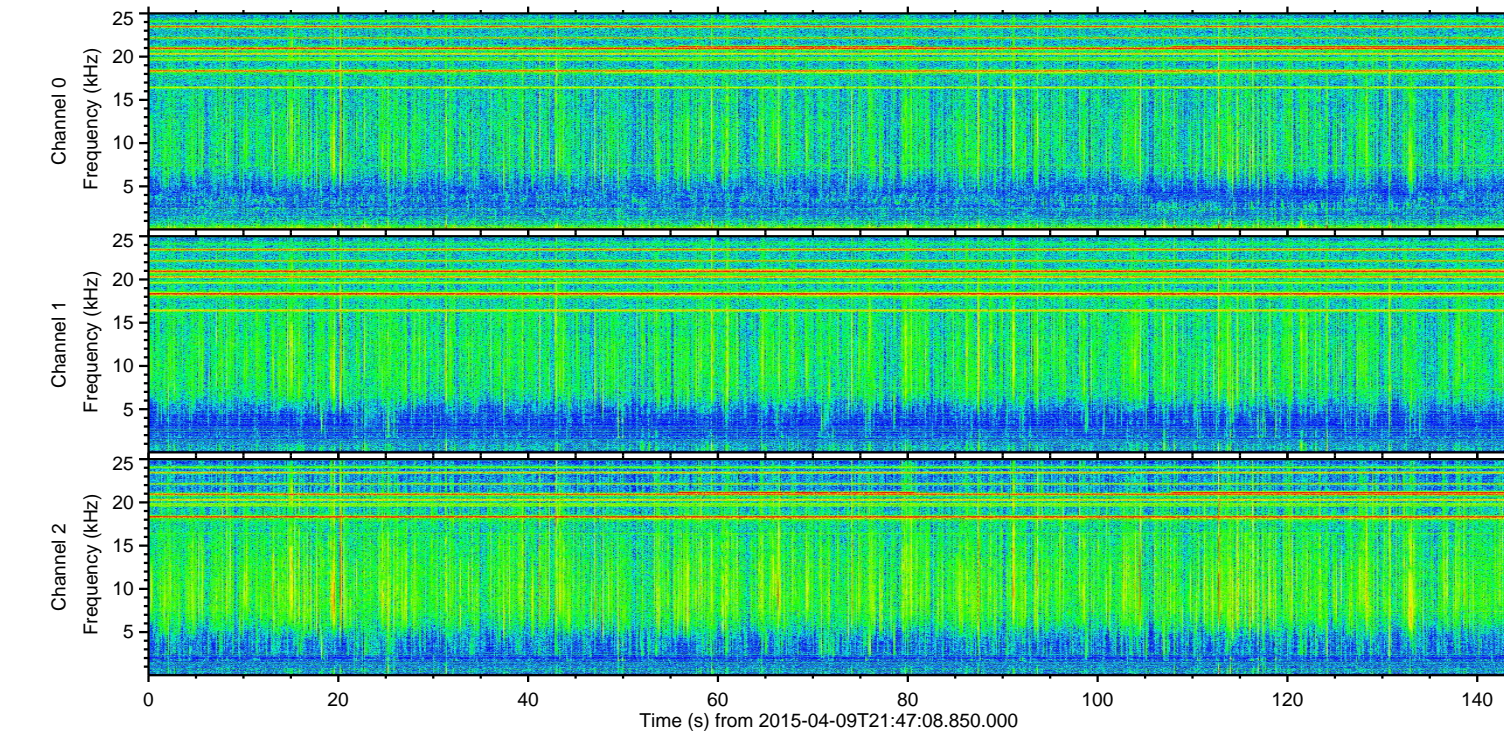
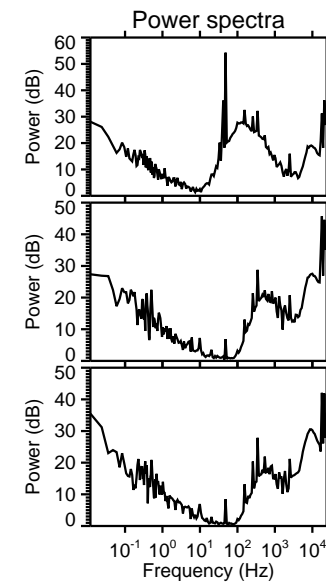
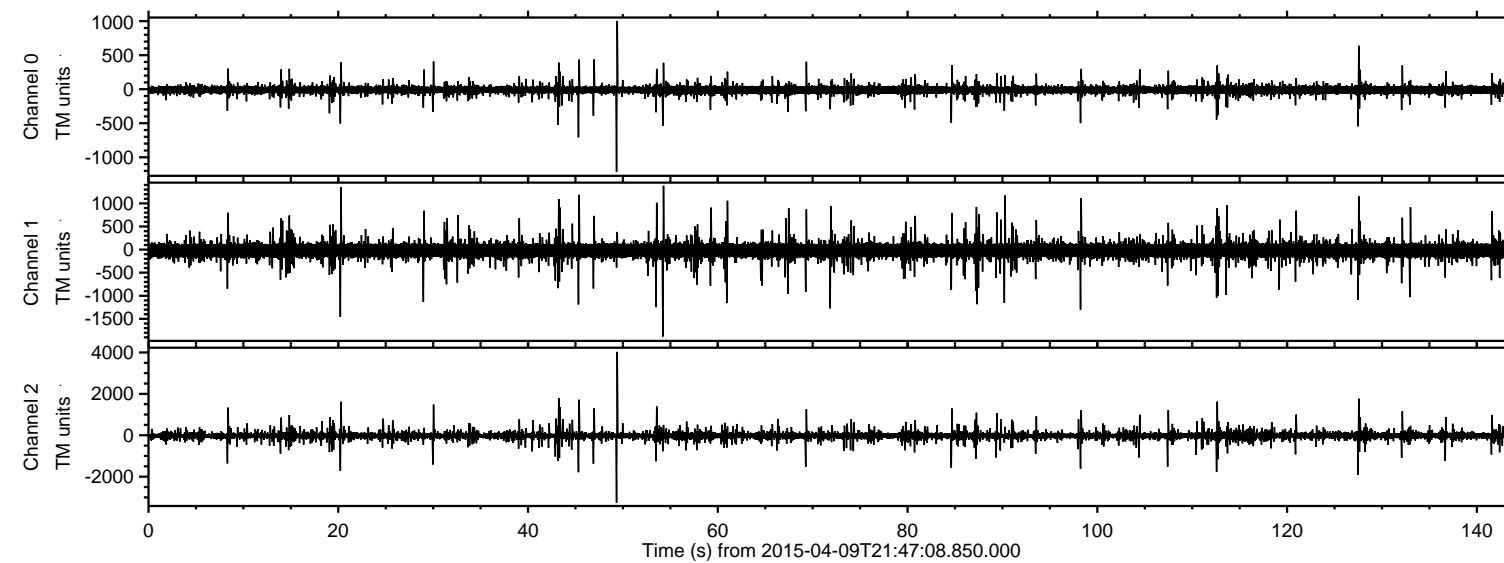
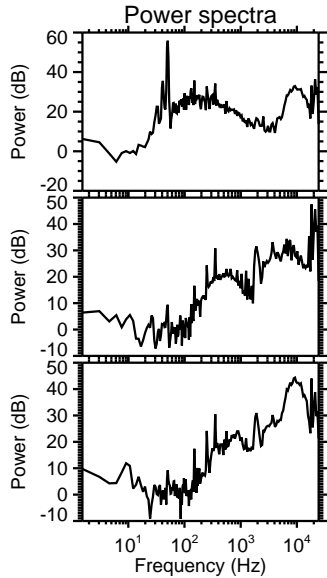
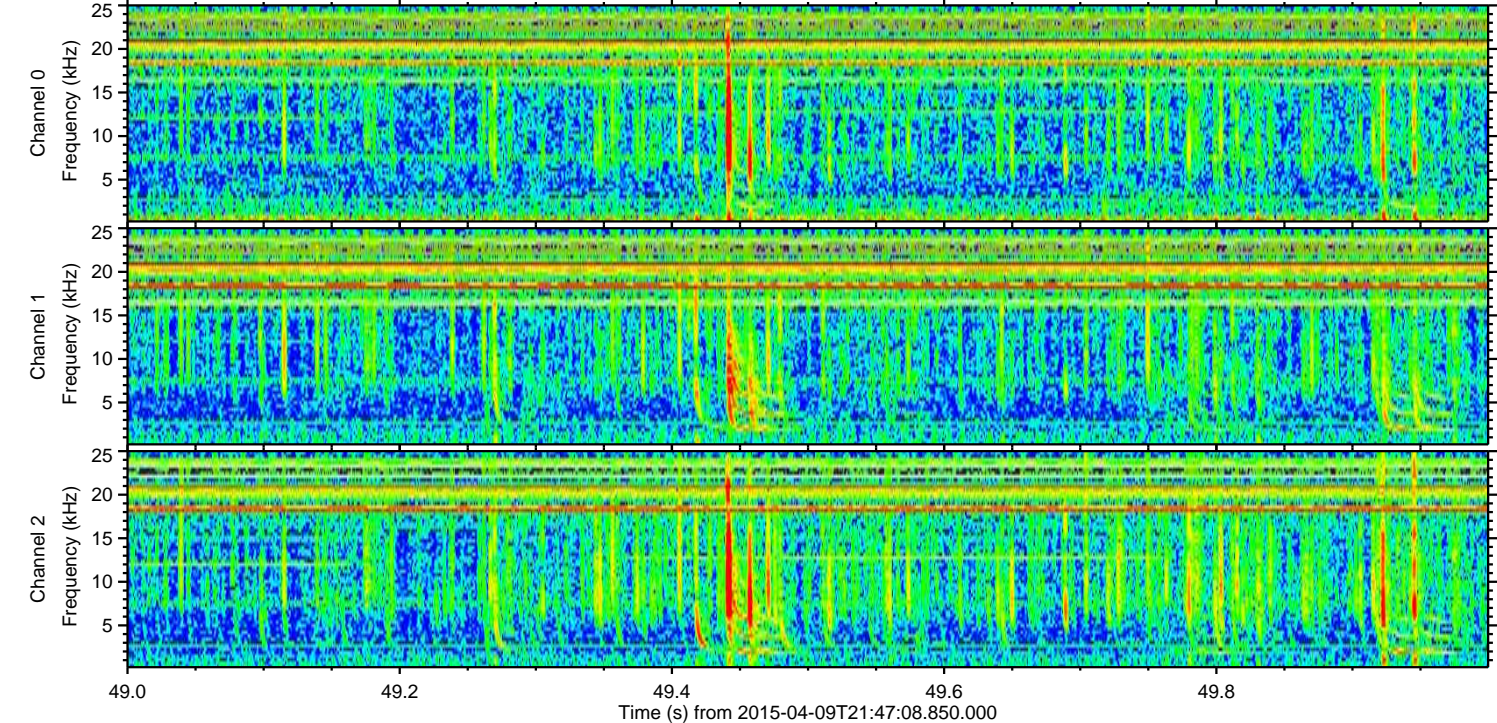
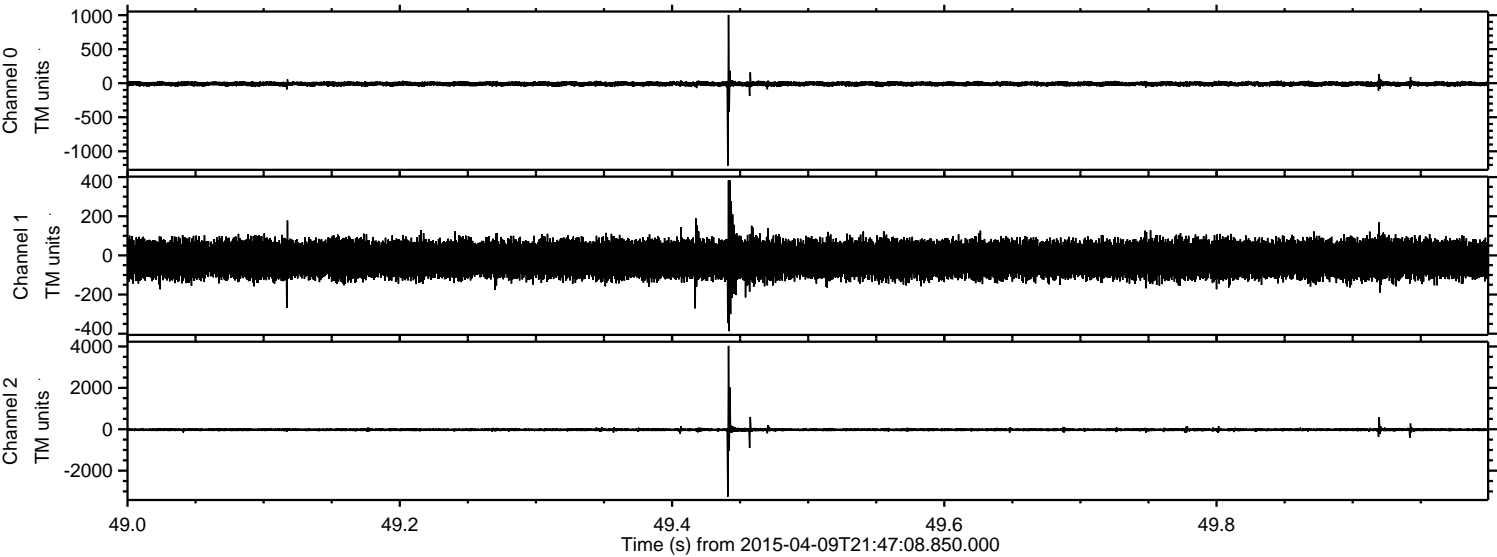


# ELMAVAN 3D WAVEFORMS (Measured data sampled at 50 kHz) 49793 packets of 144 samples from 2015-04-09T21:47:08.850.000.

Processed Thu Apr 9 23:53:39 2015 by ELM ver.2012-10-06 from 001\_\_elm20150409\_214707\_\_dat00.bin



Processed Thu Apr 9 23:53:50 2015 by ELM ver.2012-10-06 from 001\_\_elm20150409\_214707\_\_dat00.bin



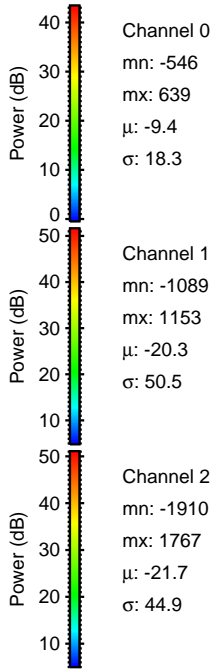
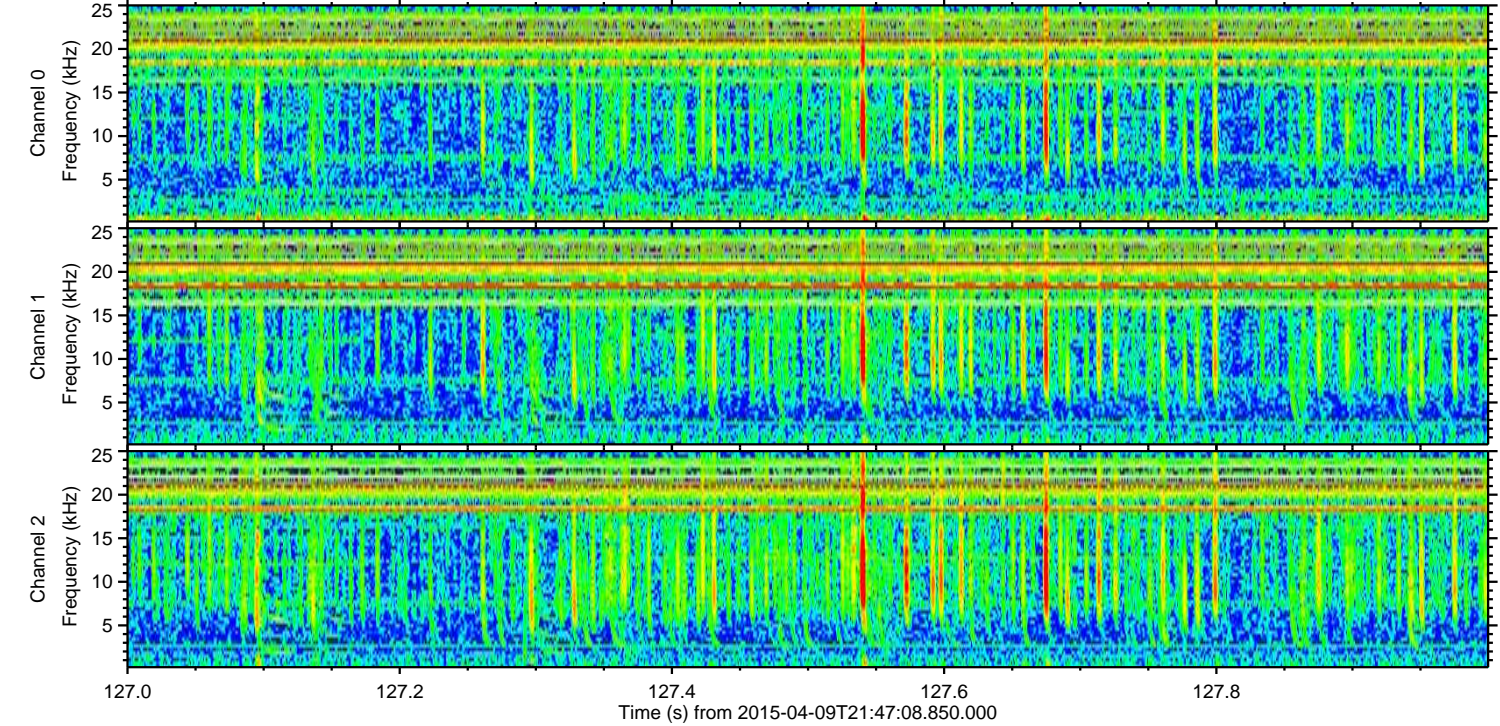
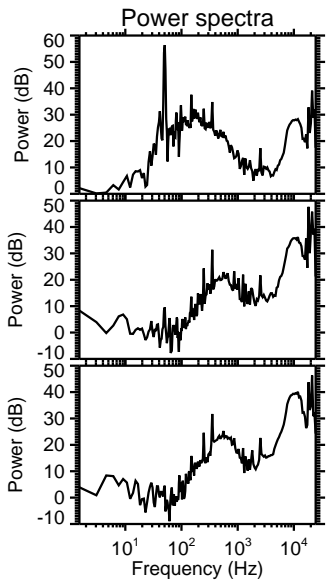
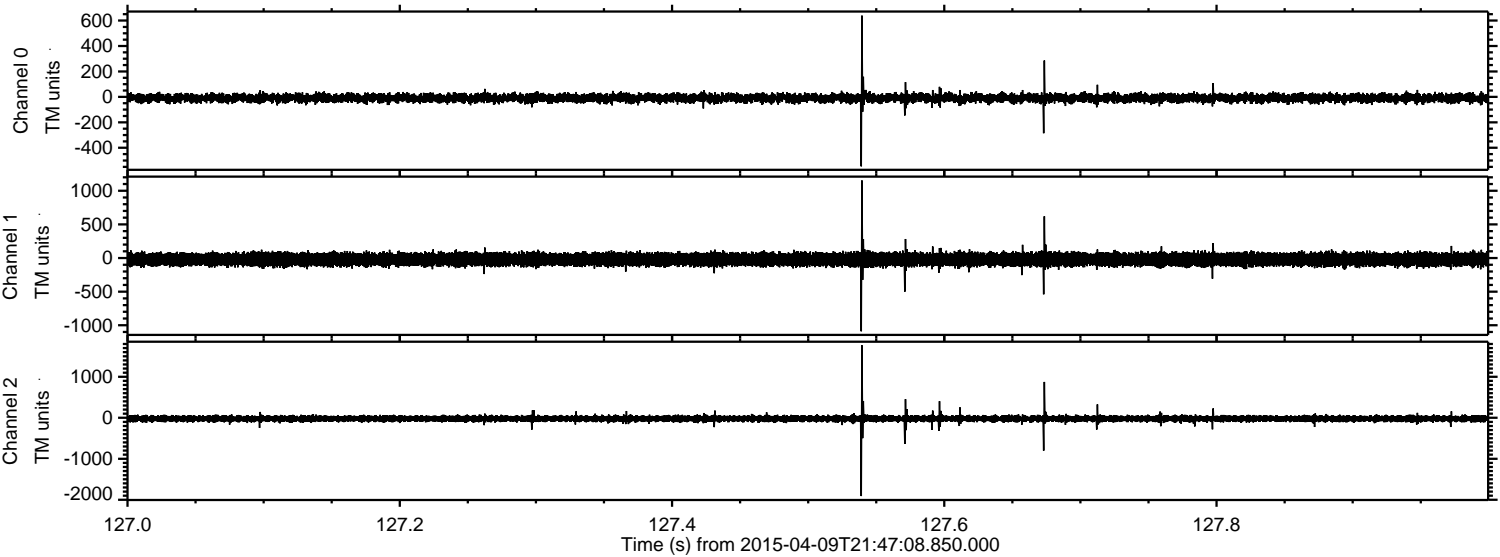
Channel 0  
mn: -1212  
mx: 1003  
 $\mu$ : -9.4  
 $\sigma$ : 18.0

Channel 1  
mn: -387  
mx: 383  
 $\mu$ : -20.3  
 $\sigma$ : 48.8

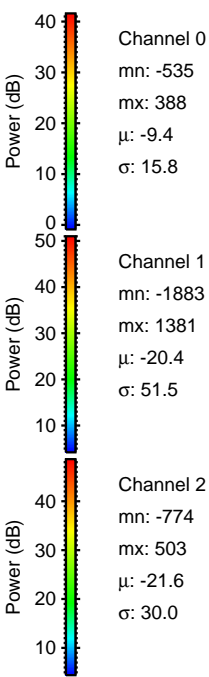
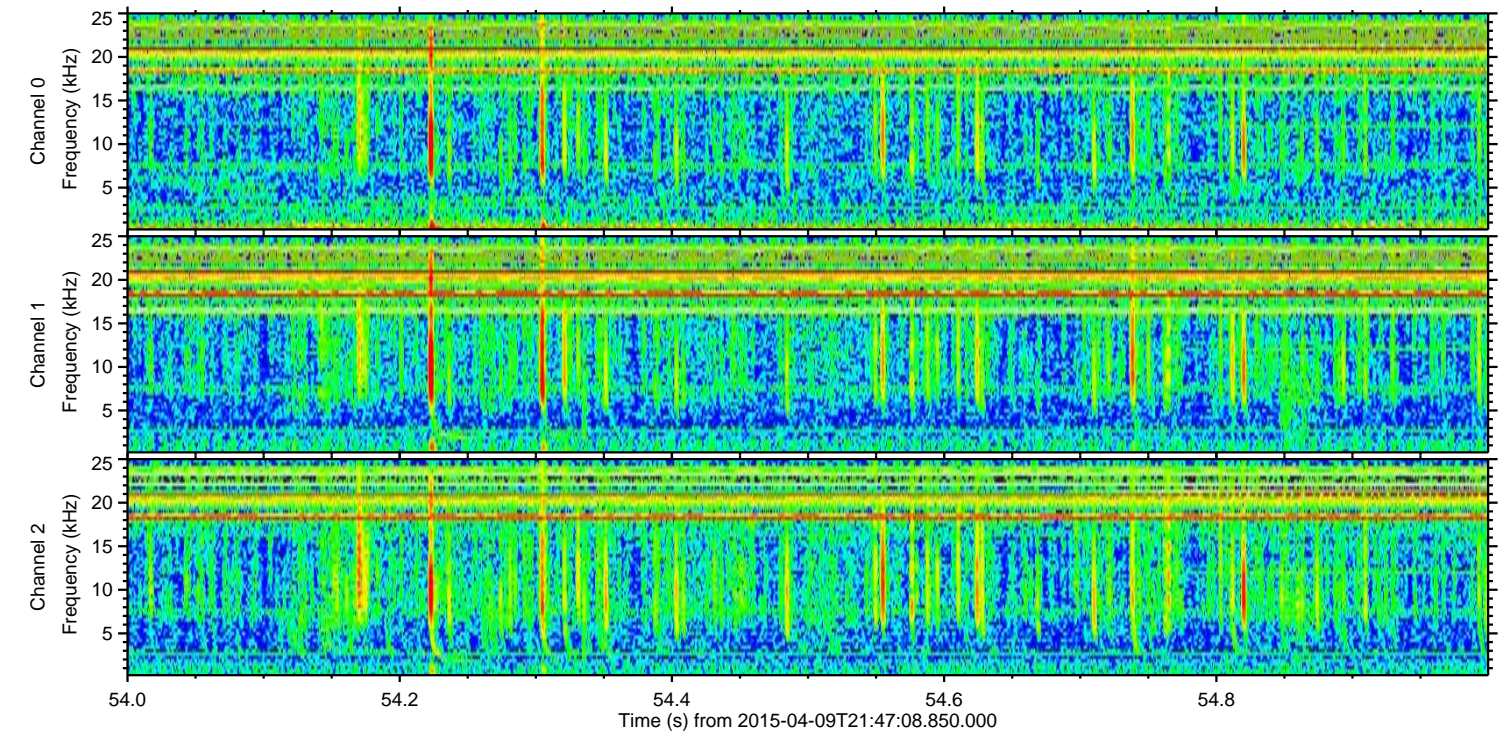
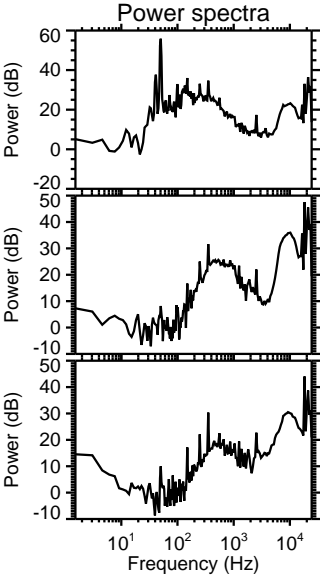
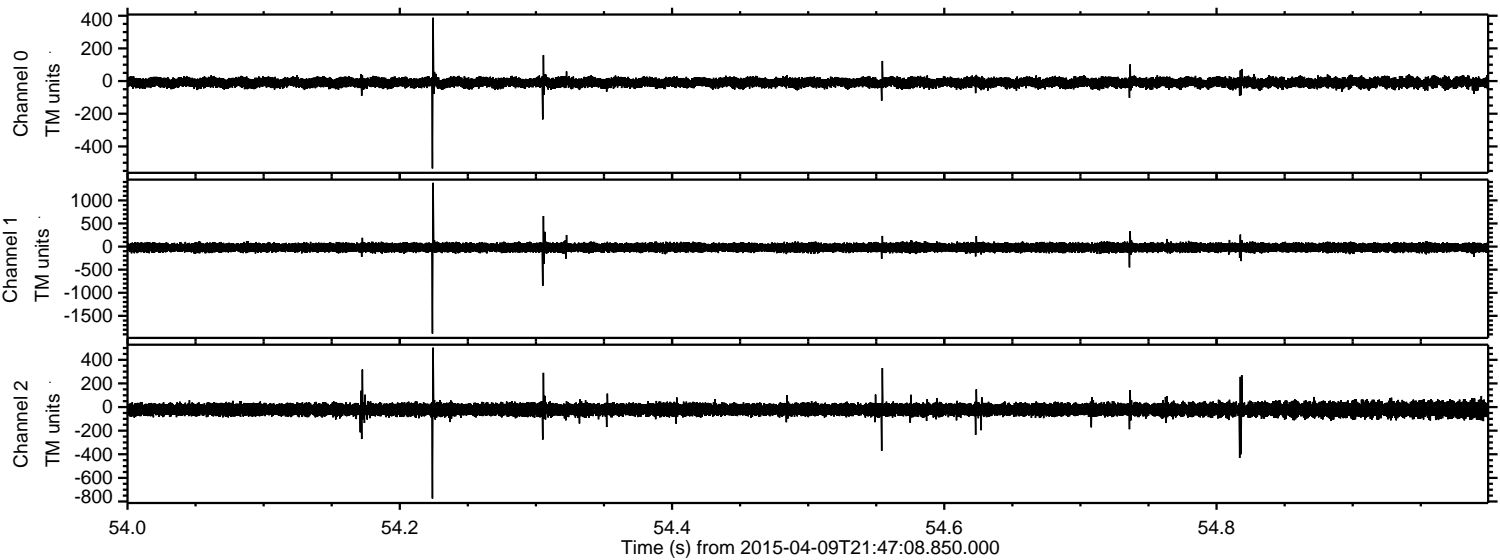
Channel 2  
mn: -3254  
mx: 4028  
 $\mu$ : -21.7  
 $\sigma$ : 45.0

ELMAVAN 3D WAVEFORMS (Measured data sampled at 50 kHz) 49793 packets of 144 samples from 2015-04-09T21:47:08.850.000. Part 128/144

Processed Thu Apr 9 23:53:51 2015 by ELM ver.2012-10-06 from 001\_\_elm20150409\_214707\_\_dat00.bin



Processed Thu Apr 9 23:53:52 2015 by ELM ver.2012-10-06 from 001\_\_elm20150409\_214707\_\_dat00.bin

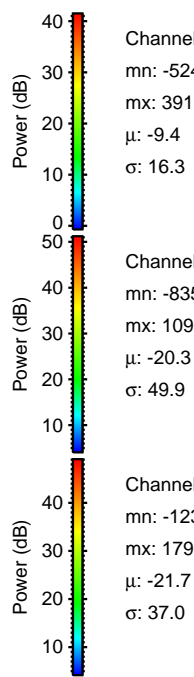
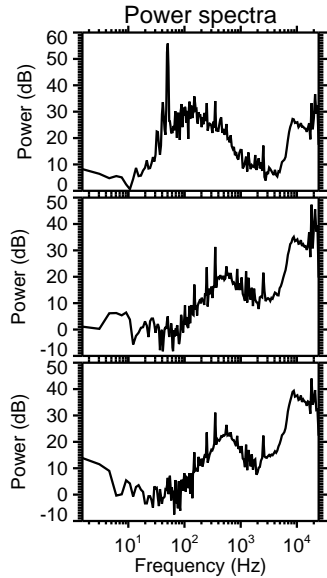
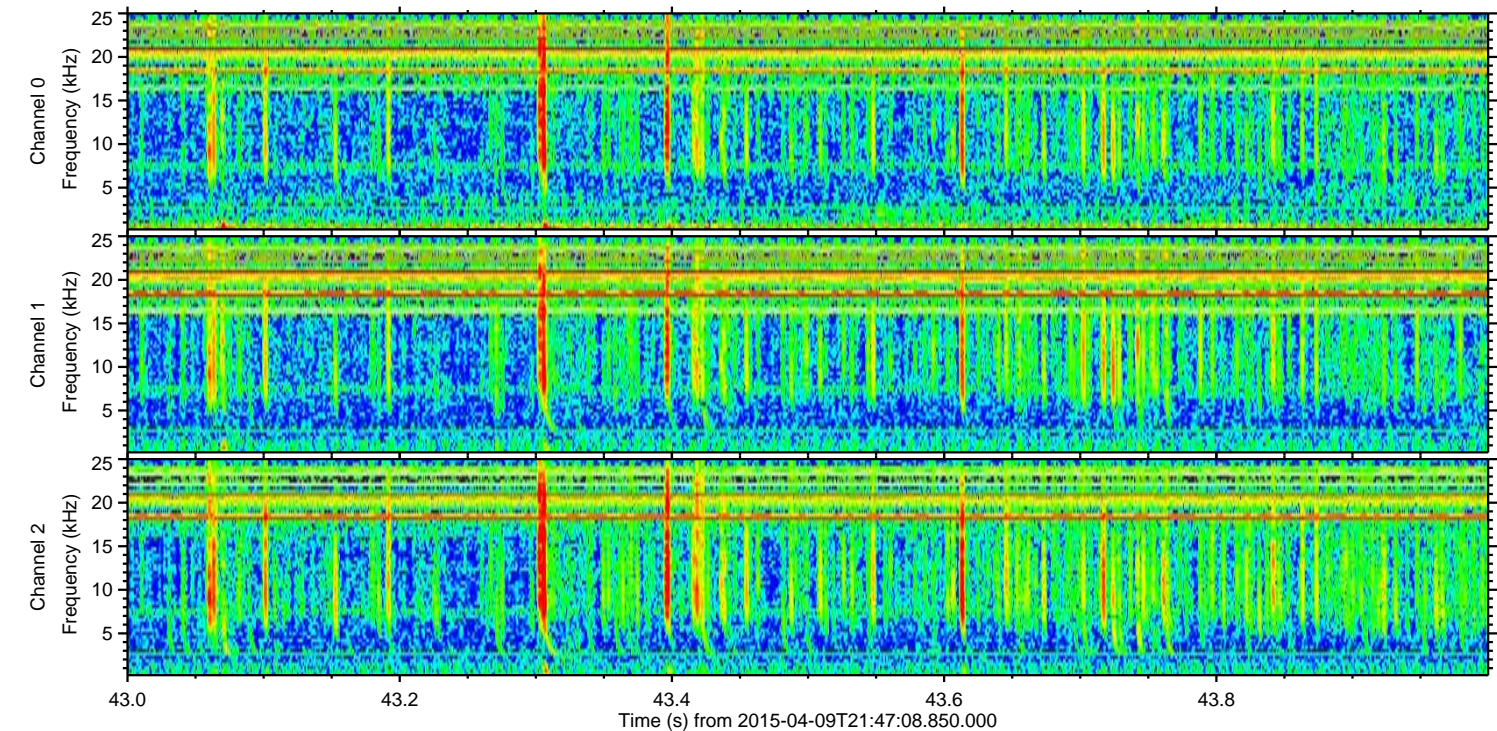
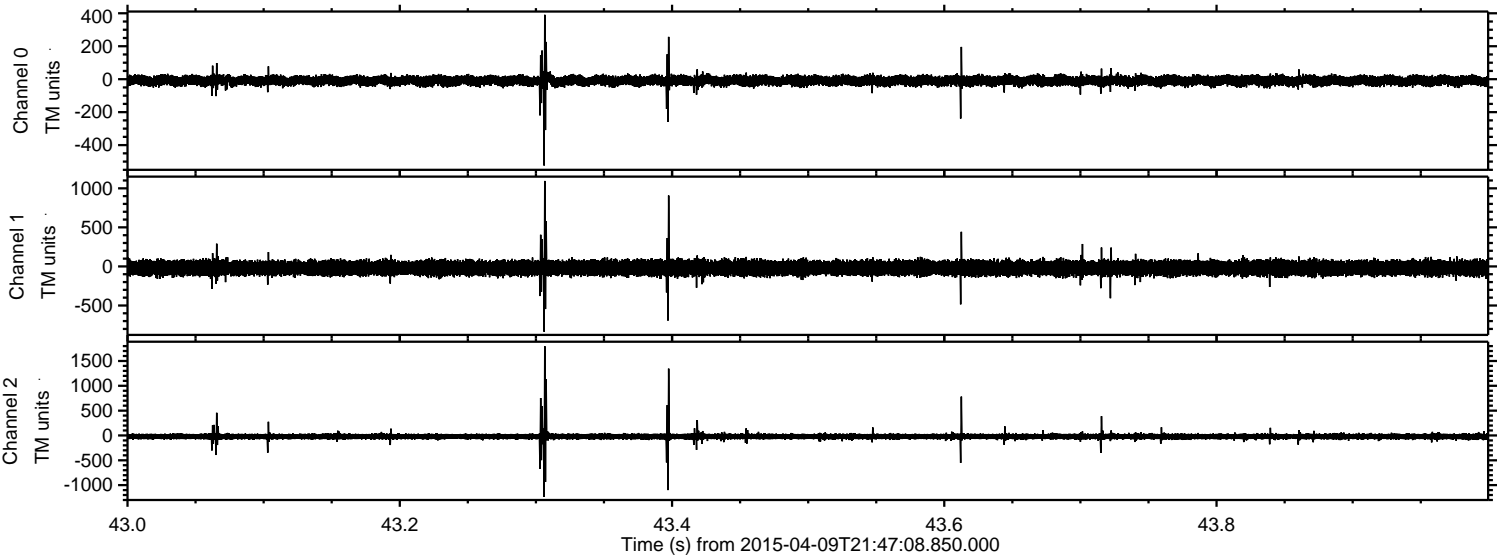


Channel 0  
mn: -535  
mx: 388  
 $\mu$ : -9.4  
 $\sigma$ : 15.8

Channel 1  
mn: -1883  
mx: 1381  
 $\mu$ : -20.4  
 $\sigma$ : 51.5

Channel 2  
mn: -774  
mx: 503  
 $\mu$ : -21.6  
 $\sigma$ : 30.0

Processed Thu Apr 9 23:53:53 2015 by ELM ver.2012-10-06 from 001\_\_elm20150409\_214707\_\_dat00.bin

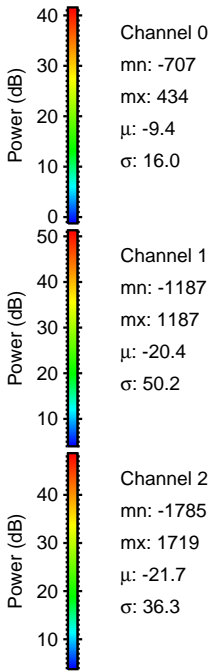
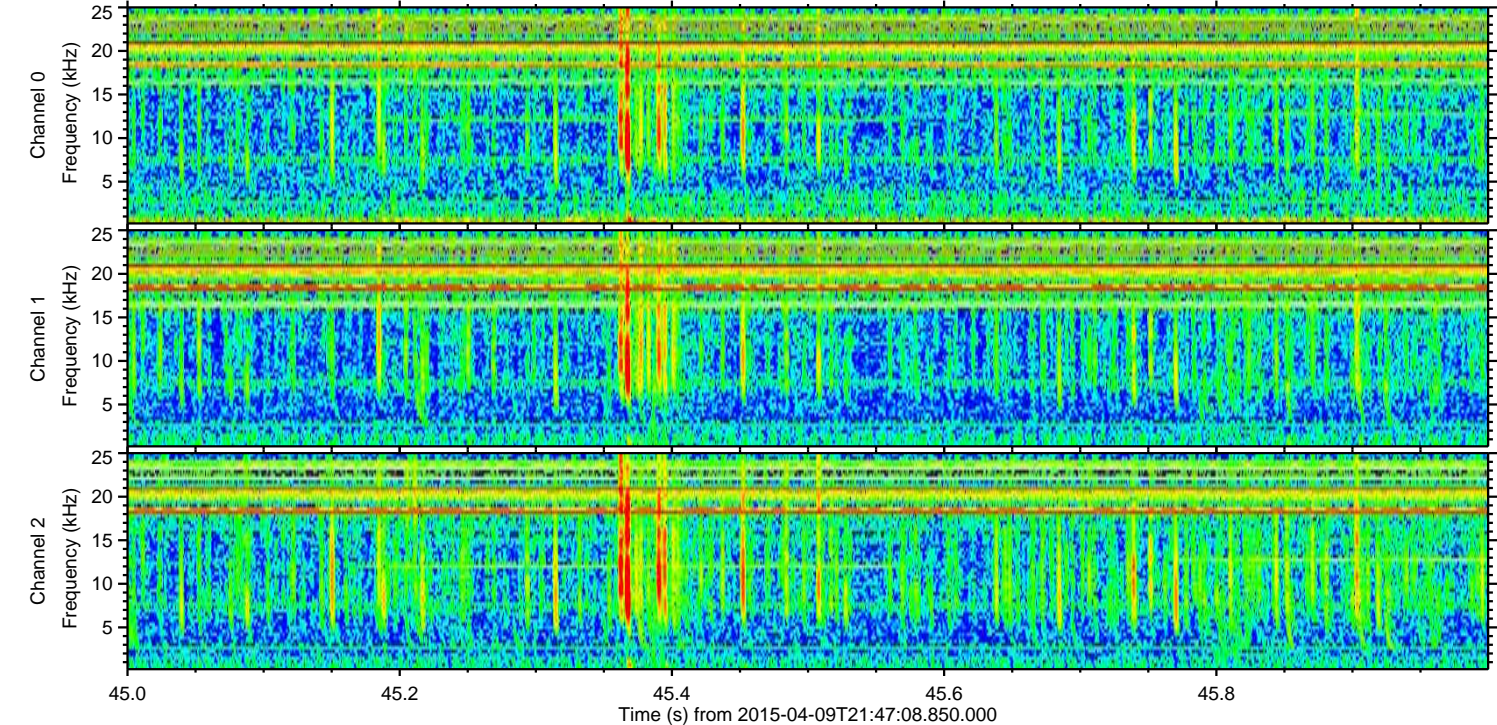
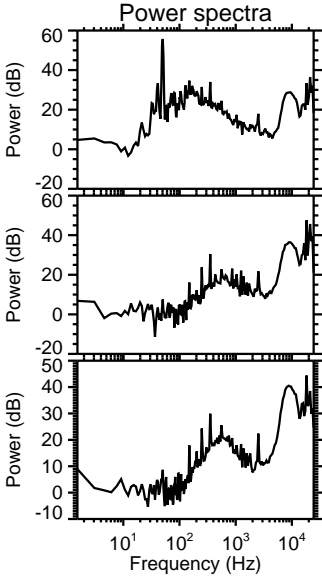
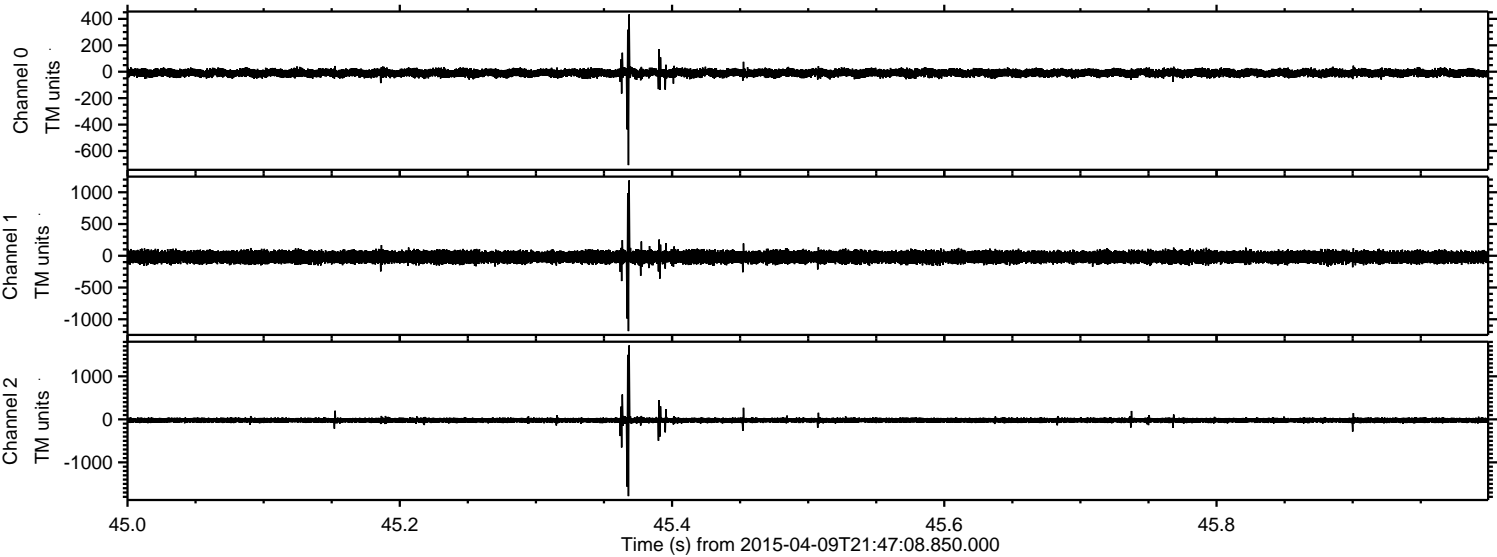


Channel 0  
mn: -524  
mx: 391  
 $\mu$ : -9.4  
 $\sigma$ : 16.3

Channel 1  
mn: -835  
mx: 1095  
 $\mu$ : -20.3  
 $\sigma$ : 49.9

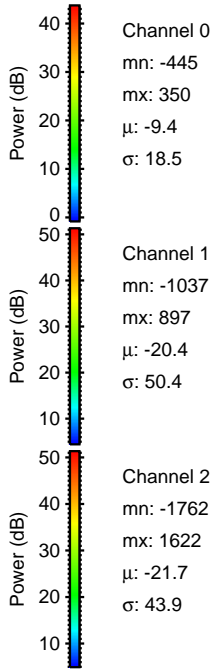
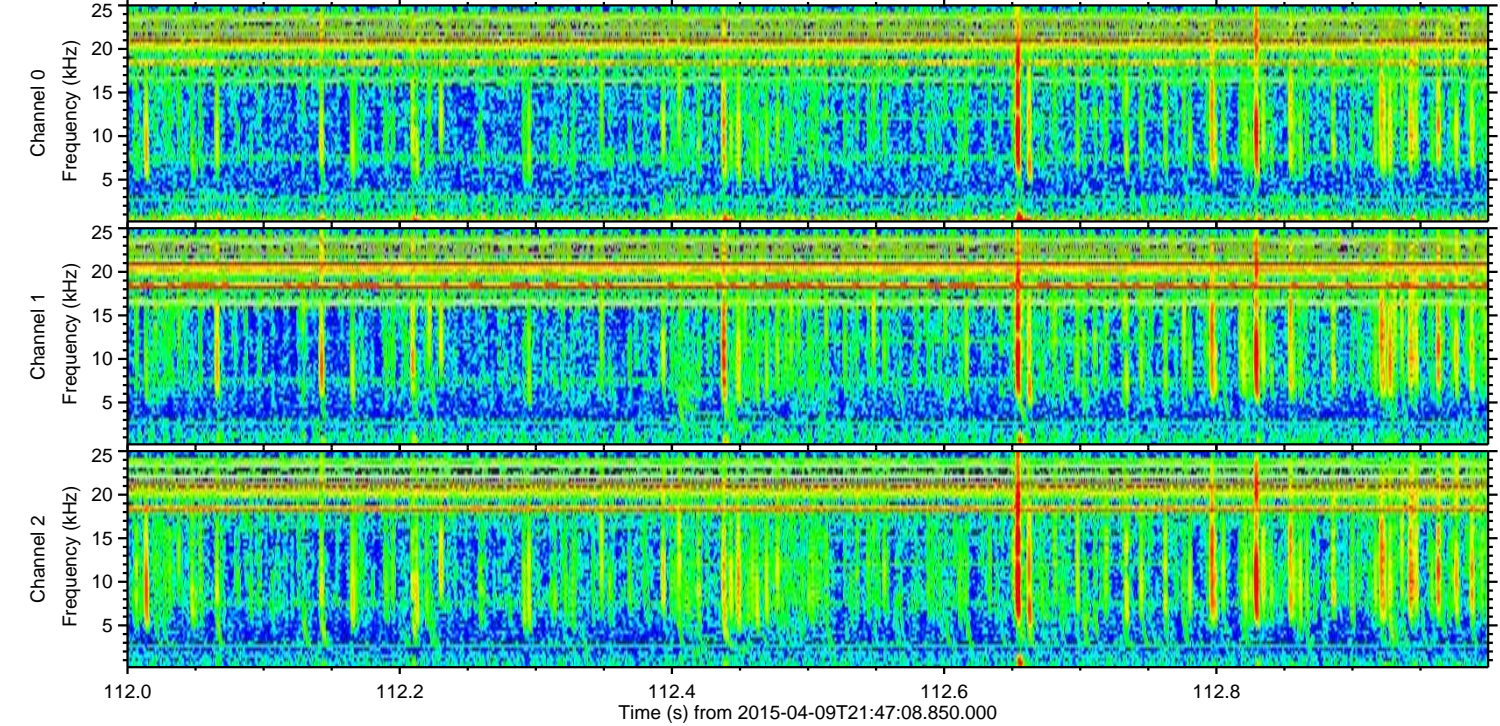
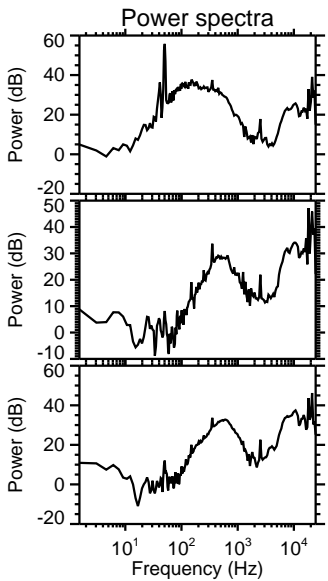
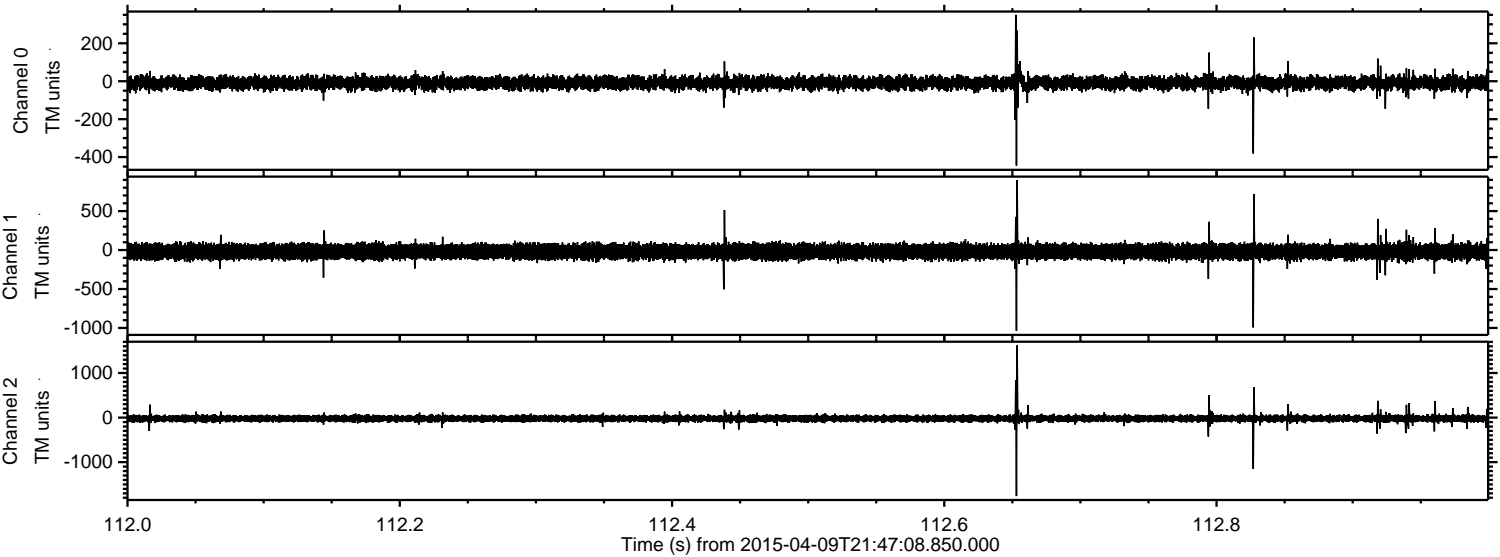
Channel 2  
mn: -1238  
mx: 1798  
 $\mu$ : -21.7  
 $\sigma$ : 37.0

Processed Thu Apr 9 23:53:54 2015 by ELM ver.2012-10-06 from 001\_\_elm20150409\_214707\_\_dat00.bin

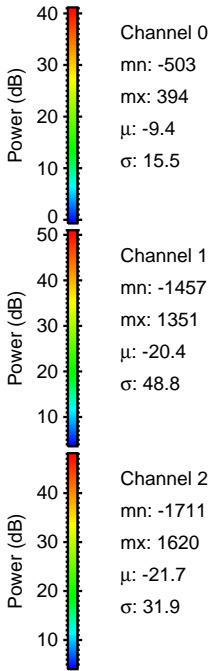
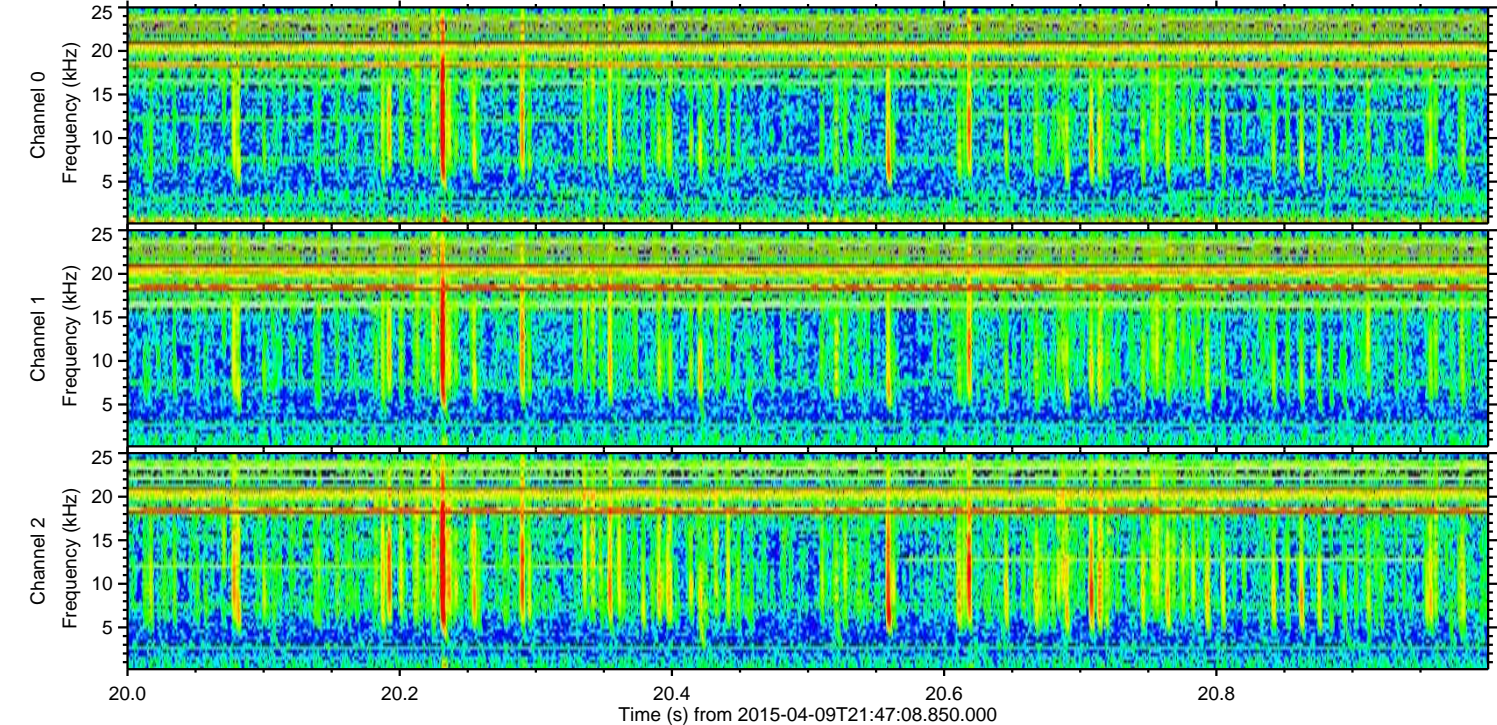
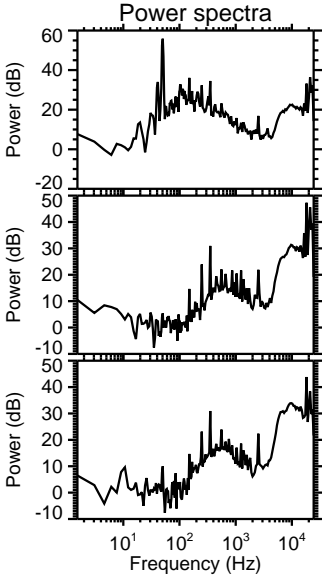
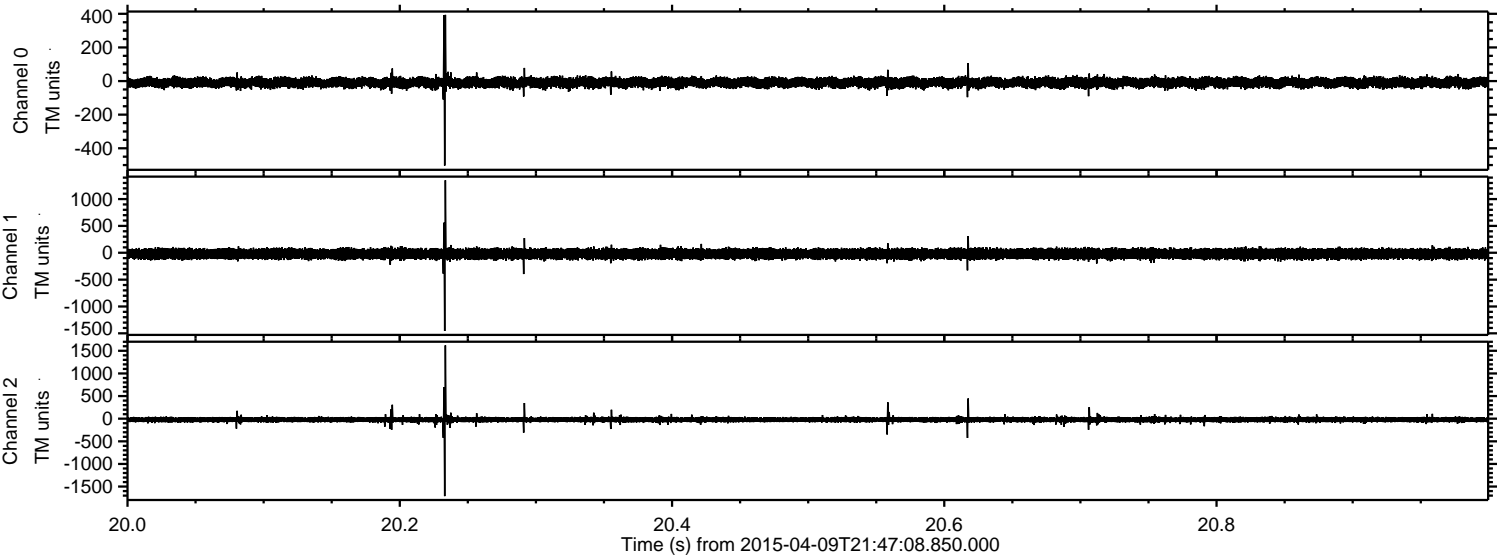


ELMAVAN 3D WAVEFORMS (Measured data sampled at 50 kHz) 49793 packets of 144 samples from 2015-04-09T21:47:08.850.000. Part 113/144

Processed Thu Apr 9 23:53:55 2015 by ELM ver.2012-10-06 from 001\_\_elm20150409\_214707\_\_dat00.bin



Processed Thu Apr 9 23:53:56 2015 by ELM ver.2012-10-06 from 001\_\_elm20150409\_214707\_\_dat00.bin

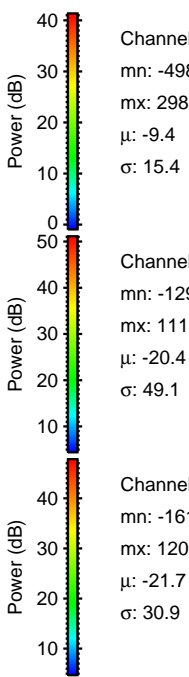
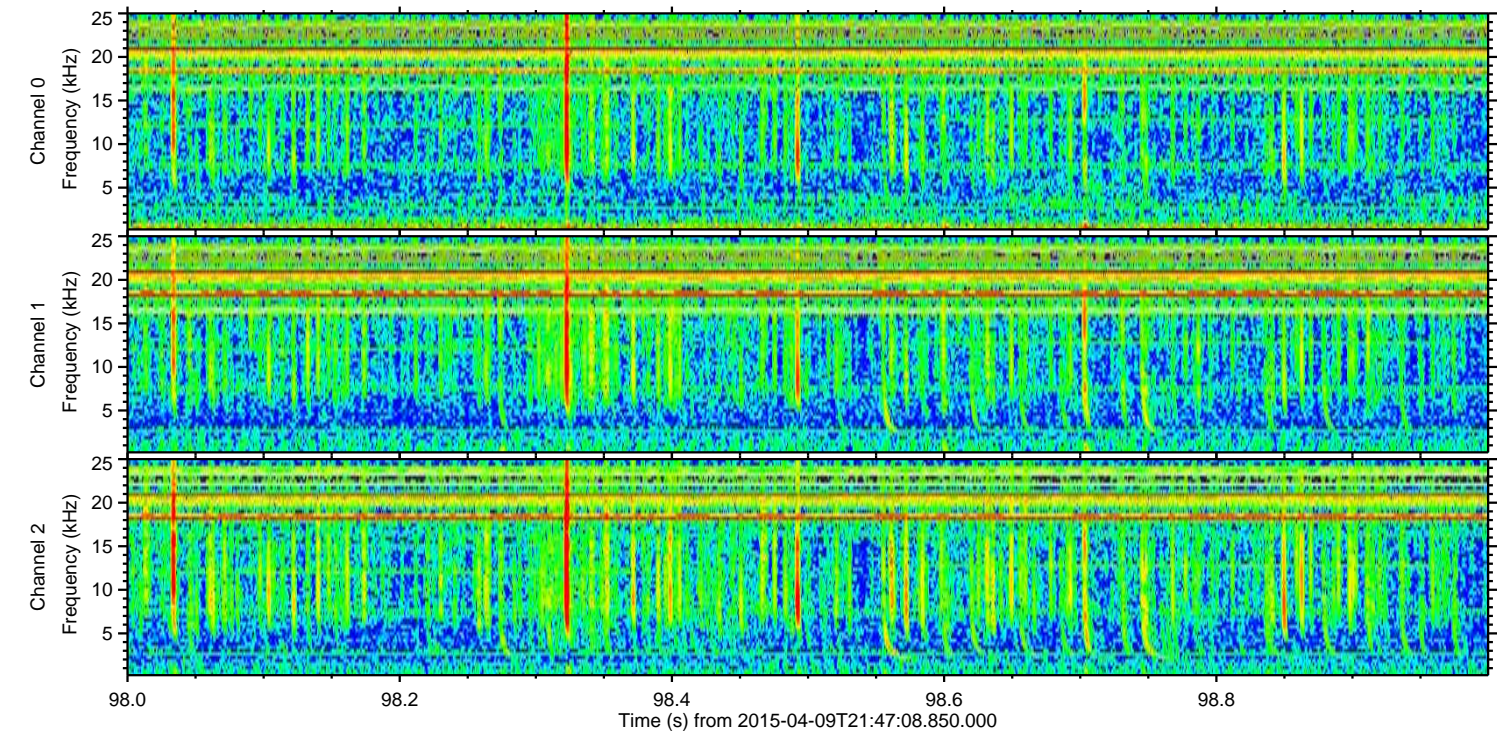
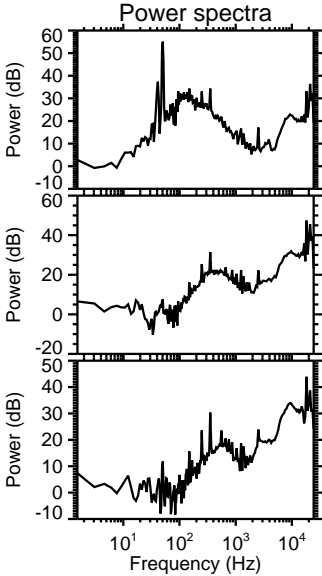
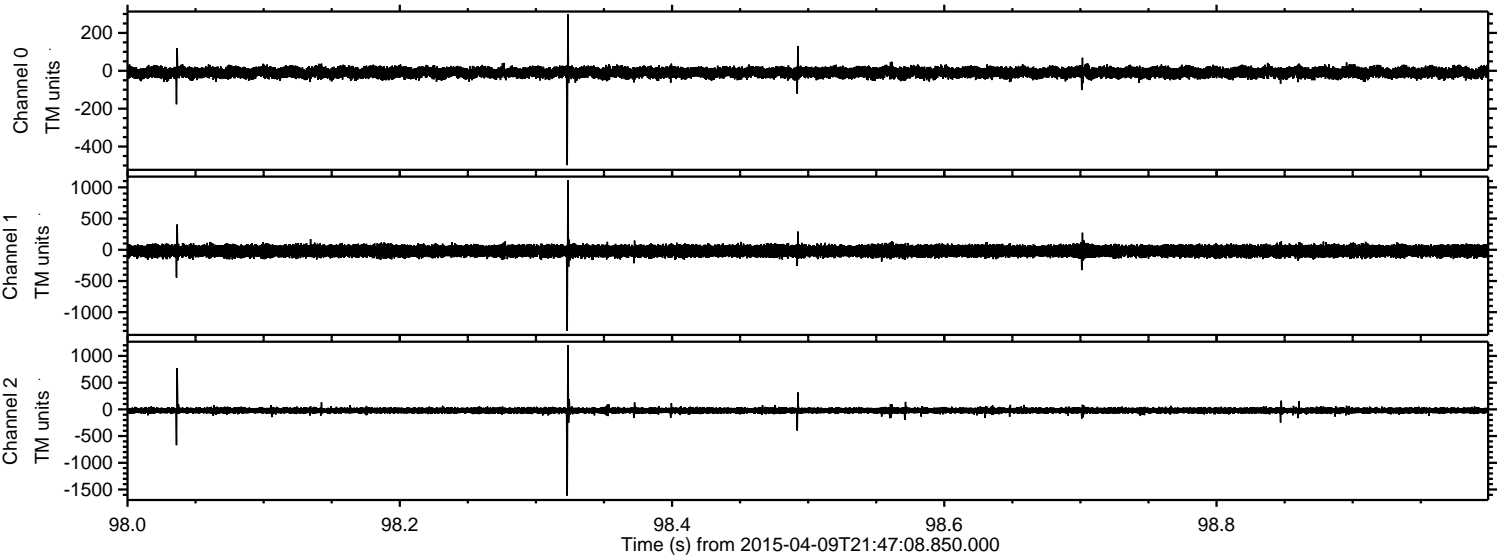


Channel 0  
mn: -503  
mx: 394  
 $\mu$ : -9.4  
 $\sigma$ : 15.5

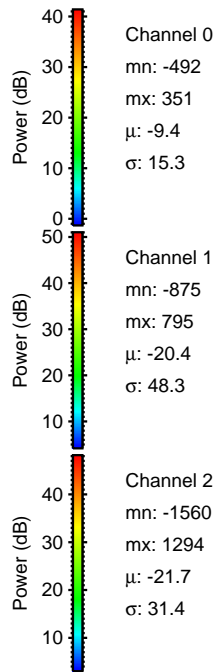
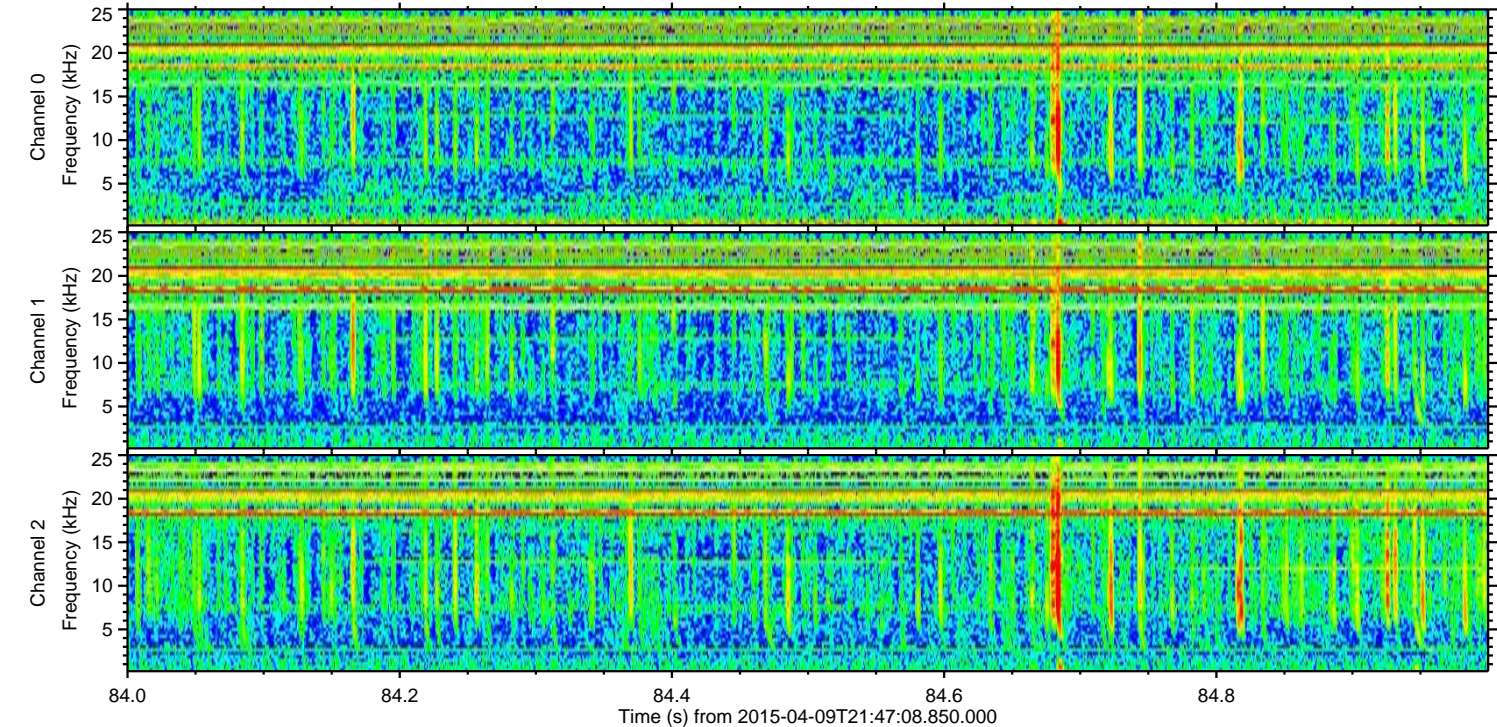
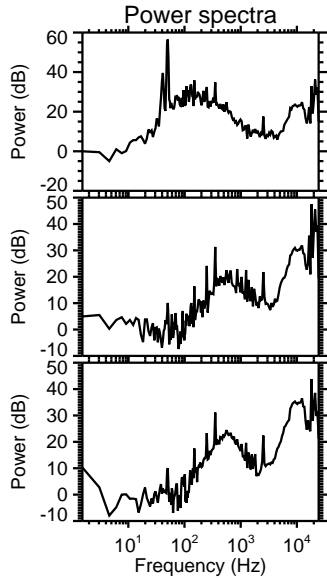
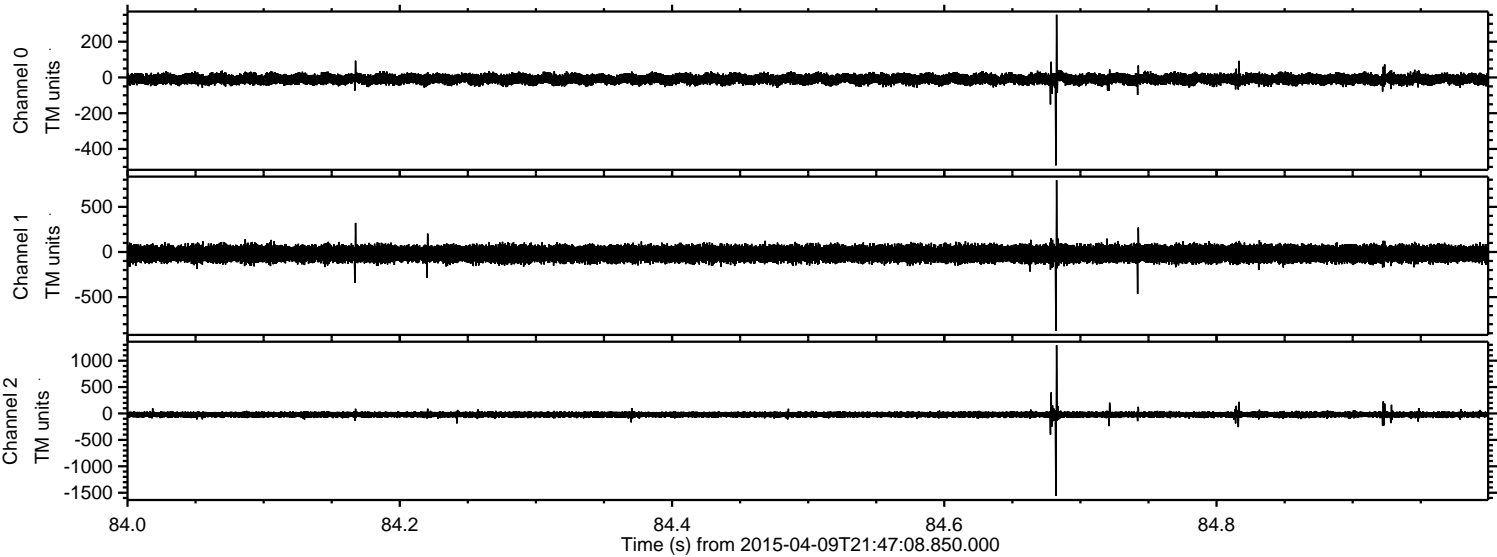
Channel 1  
mn: -1457  
mx: 1351  
 $\mu$ : -20.4  
 $\sigma$ : 48.8

Channel 2  
mn: -1711  
mx: 1620  
 $\mu$ : -21.7  
 $\sigma$ : 31.9

Processed Thu Apr 9 23:53:57 2015 by ELM ver.2012-10-06 from 001\_\_elm20150409\_214707\_\_dat00.bin



Processed Thu Apr 9 23:53:58 2015 by ELM ver.2012-10-06 from 001\_\_elm20150409\_214707\_\_dat00.bin



Processed Thu Apr 9 23:53:59 2015 by ELM ver.2012-10-06 from 001\_\_elm20150409\_214707\_\_dat00.bin

