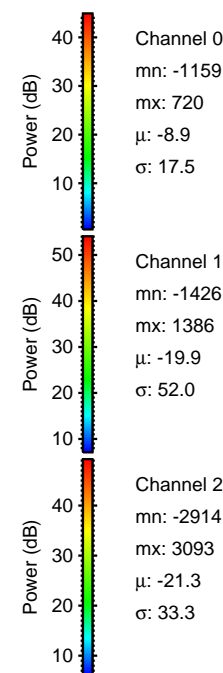
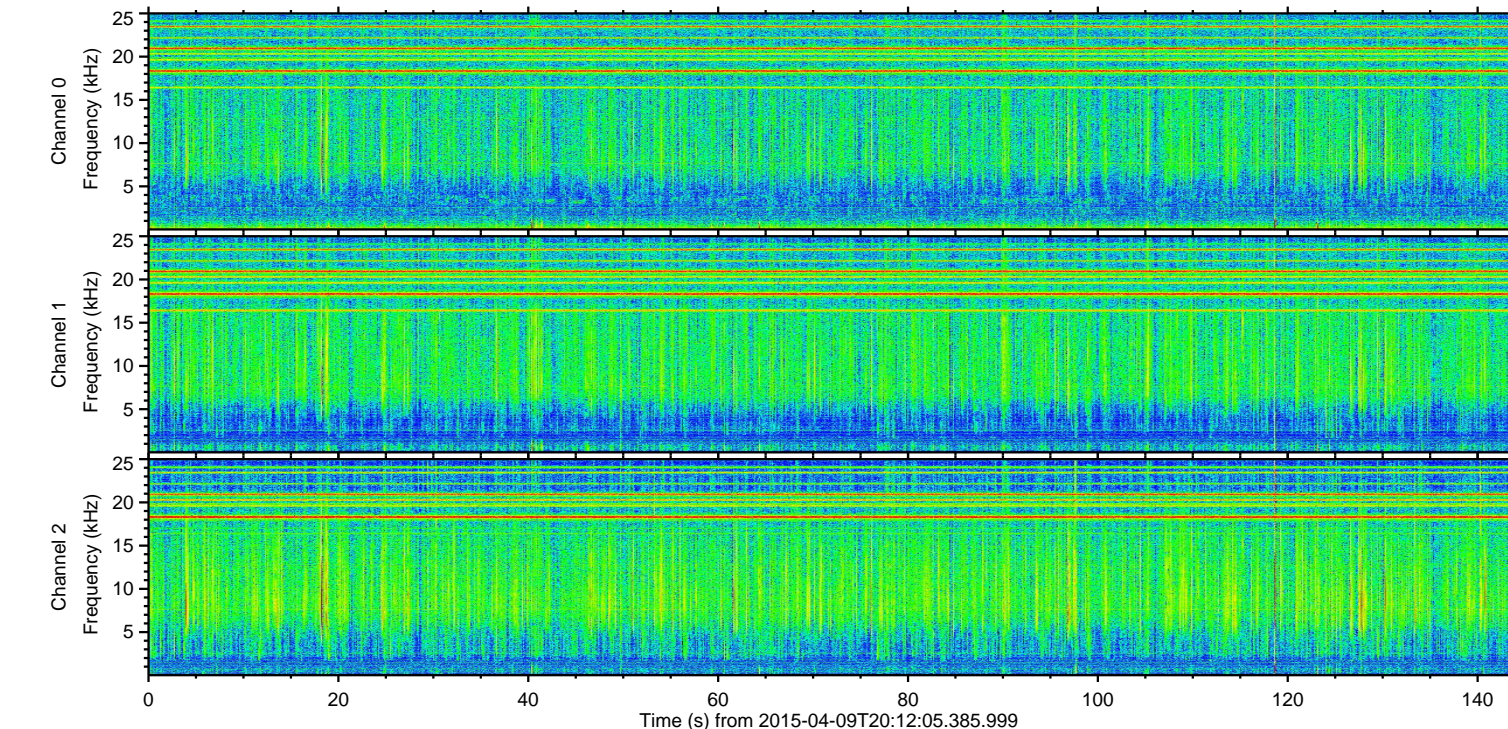
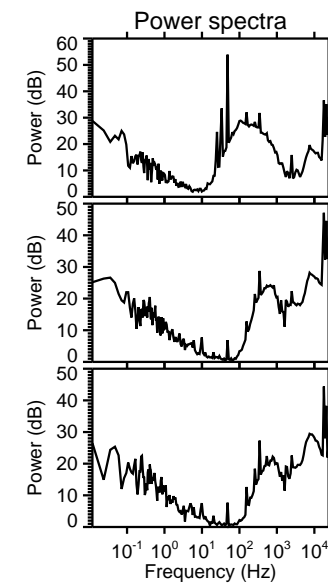
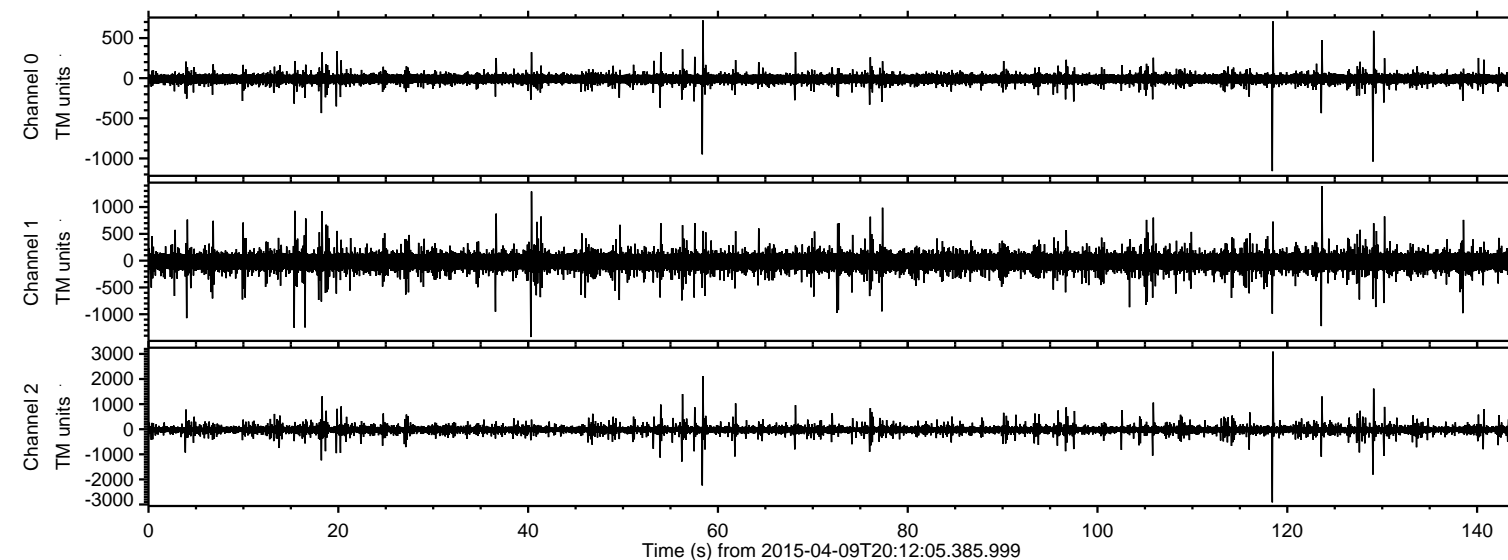


# ELMAVAN 3D WAVEFORMS (Measured data sampled at 50 kHz) 49783 packets of 144 samples from 2015-04-09T20:12:05.385.999.

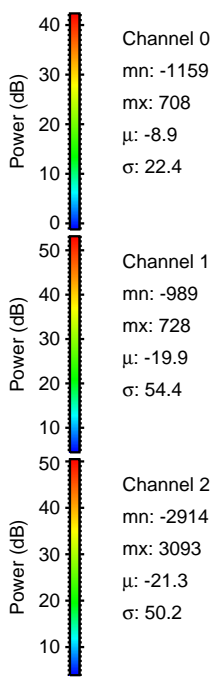
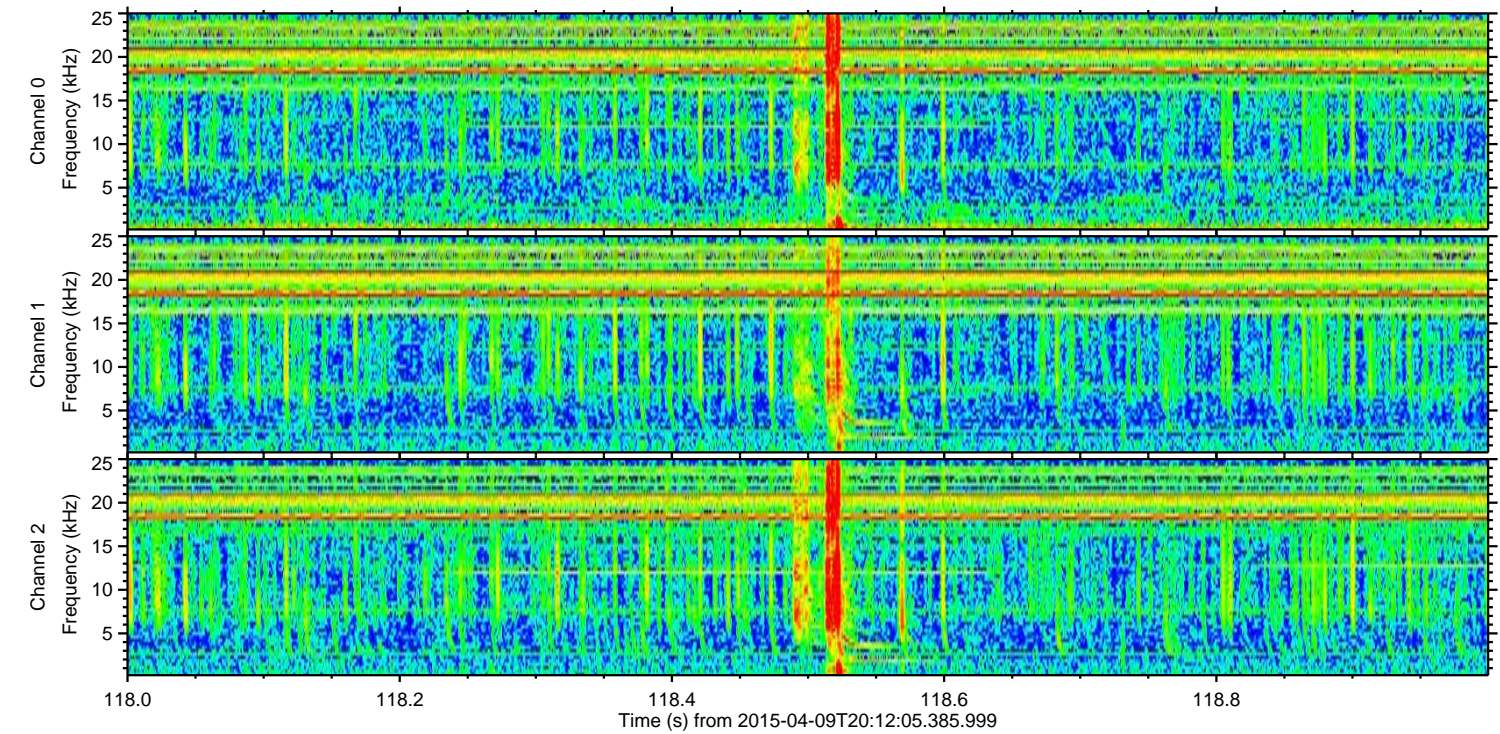
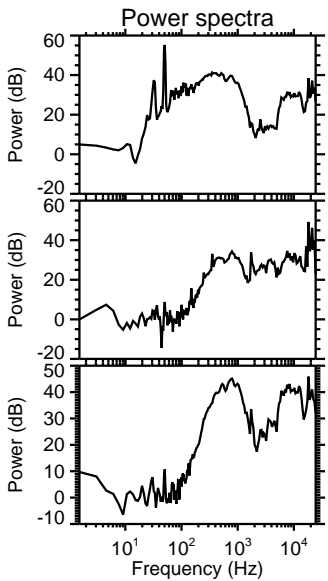
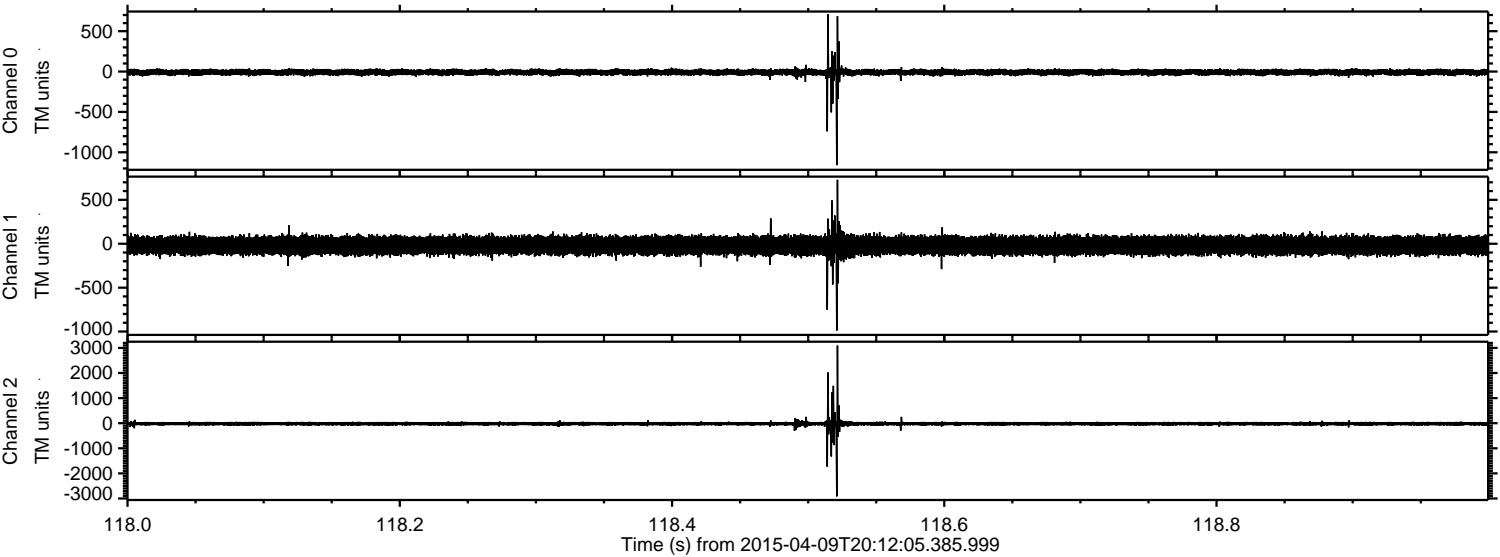
Processed Thu Apr 9 22:18:44 2015 by ELM ver.2012-10-06 from 001\_\_elm20150409\_201204\_\_dat00.bin





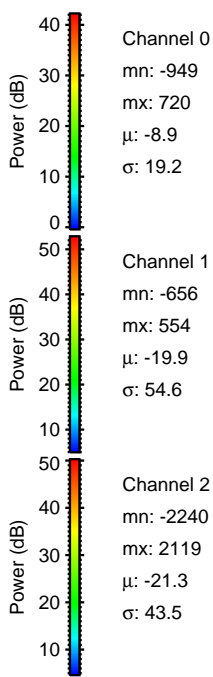
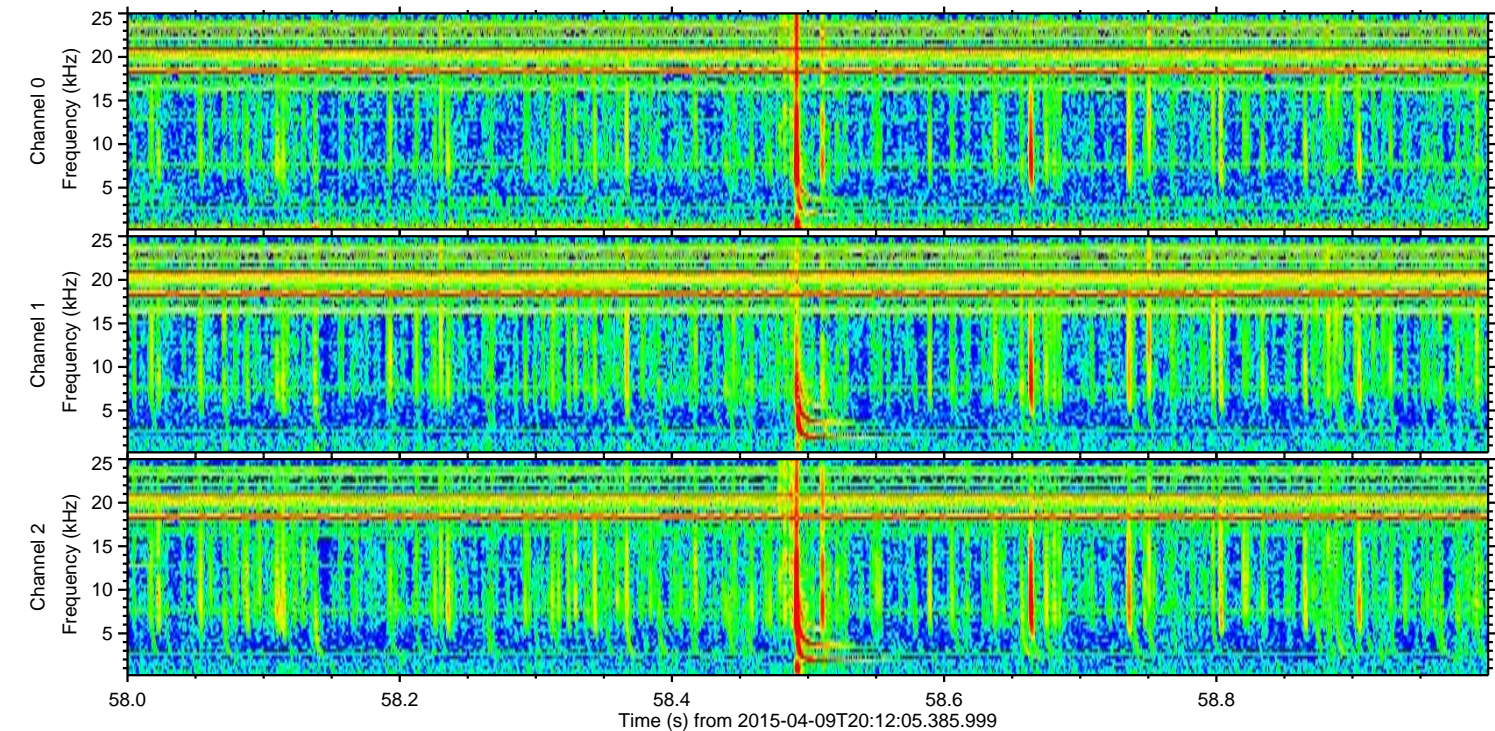
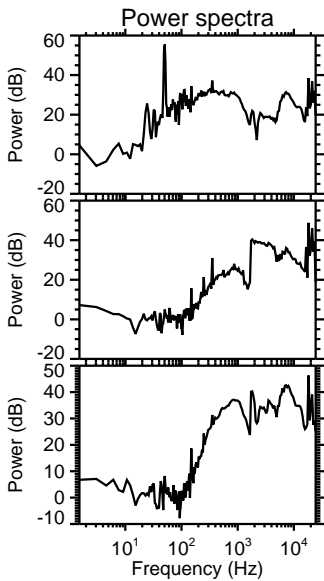
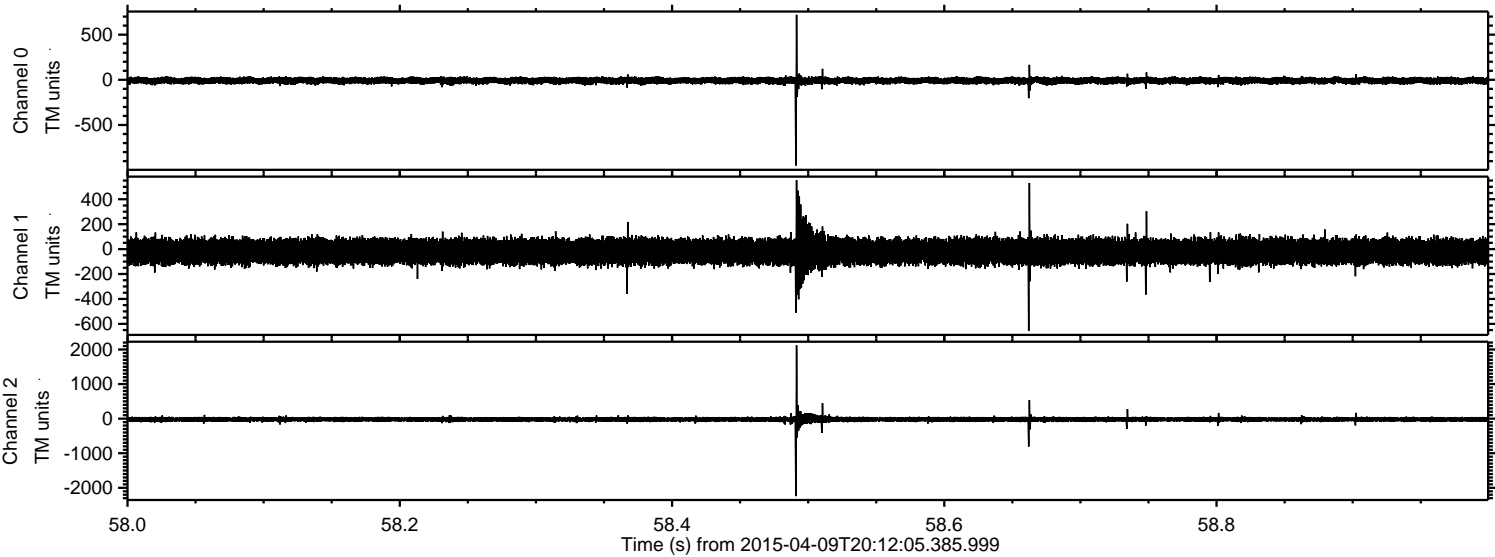
ELMAVAN 3D WAVEFORMS (Measured data sampled at 50 kHz) 49783 packets of 144 samples from 2015-04-09T20:12:05.385.999. Part 119/144

Processed Thu Apr 9 22:18:56 2015 by ELM ver.2012-10-06 from 001\_\_elm20150409\_201204\_\_dat00.bin





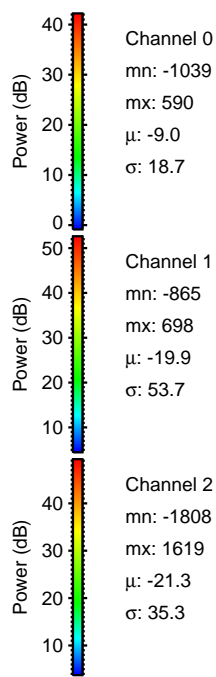
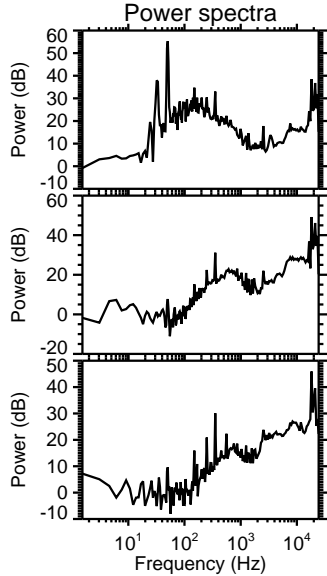
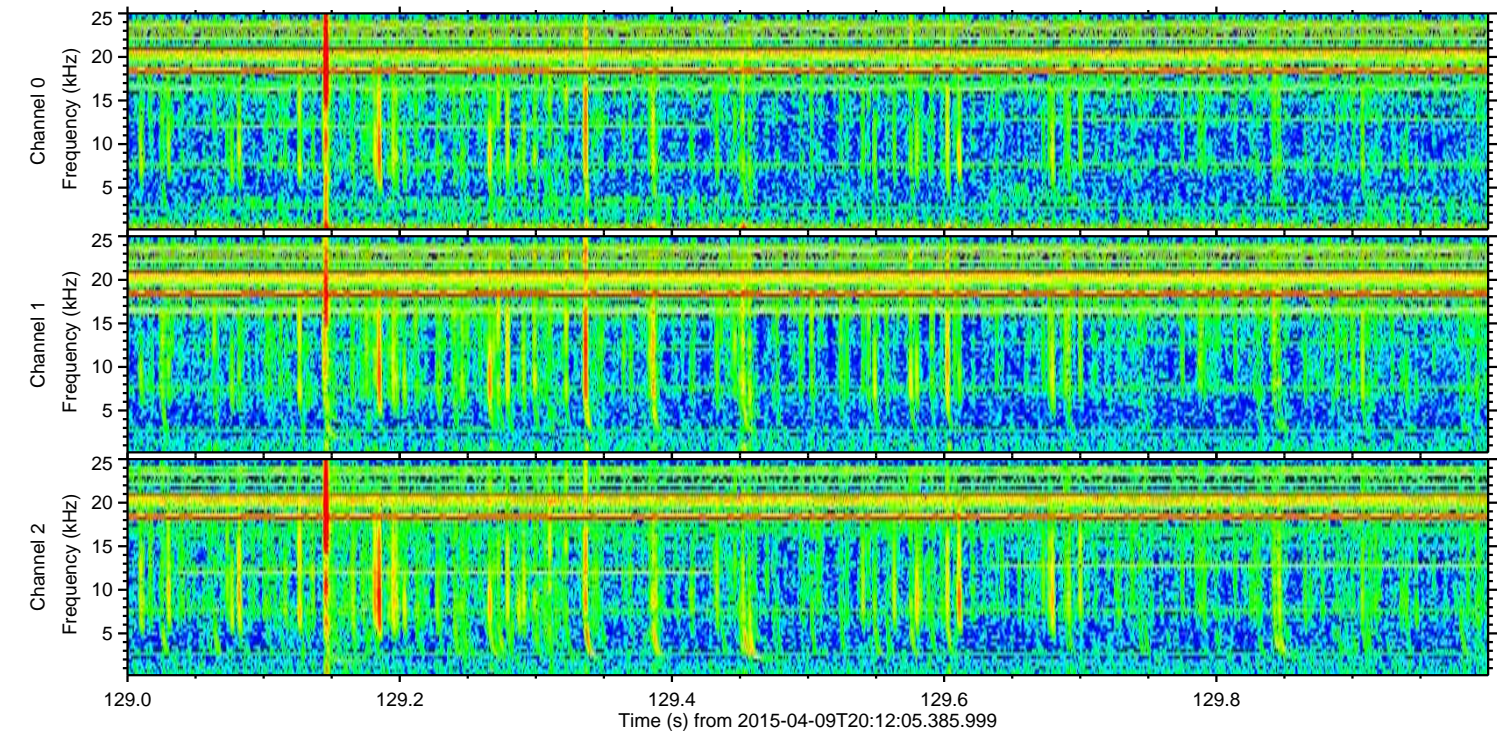
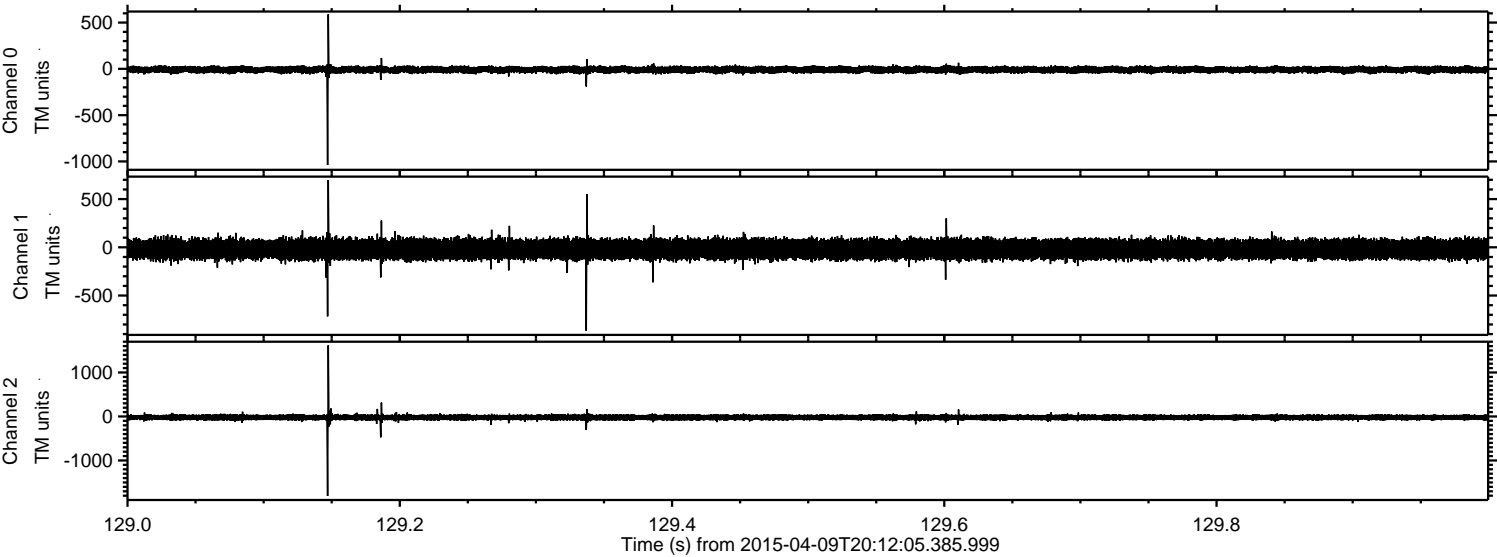
Processed Thu Apr 9 22:18:57 2015 by ELM ver.2012-10-06 from 001\_\_elm20150409\_201204\_\_dat00.bin





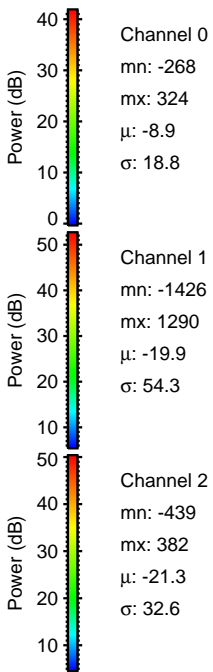
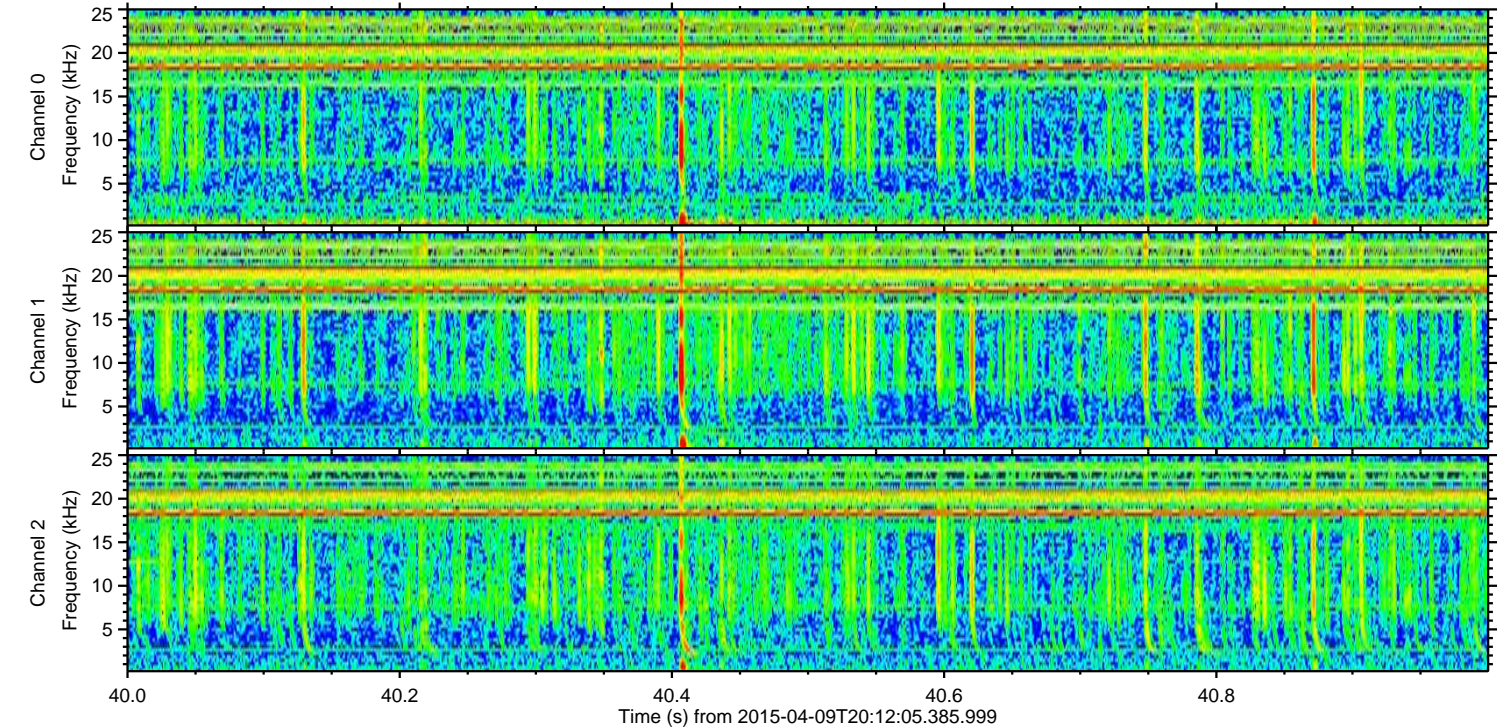
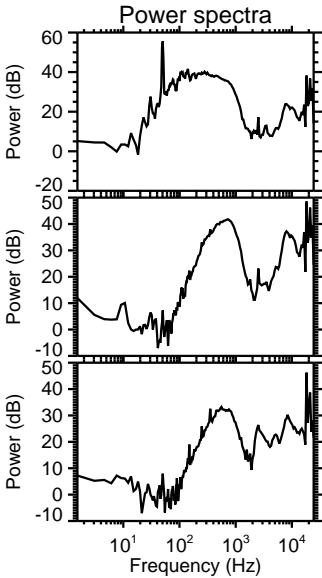
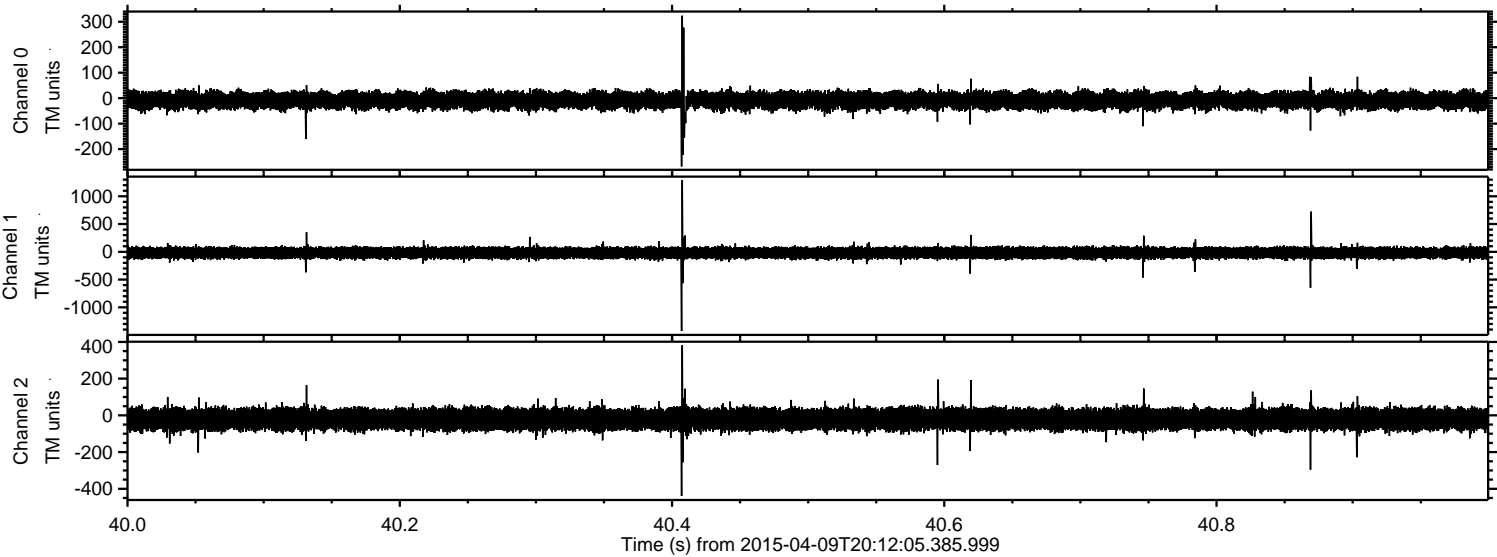
ELMAVAN 3D WAVEFORMS (Measured data sampled at 50 kHz) 49783 packets of 144 samples from 2015-04-09T20:12:05.385.999. Part 130/144

Processed Thu Apr 9 22:18:58 2015 by ELM ver.2012-10-06 from 001\_\_elm20150409\_201204\_\_dat00.bin



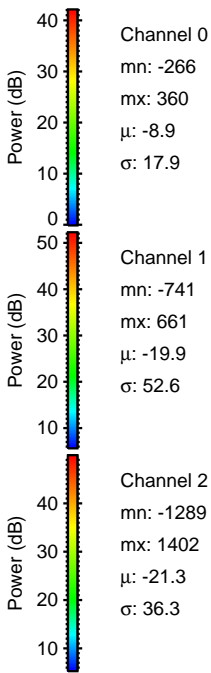
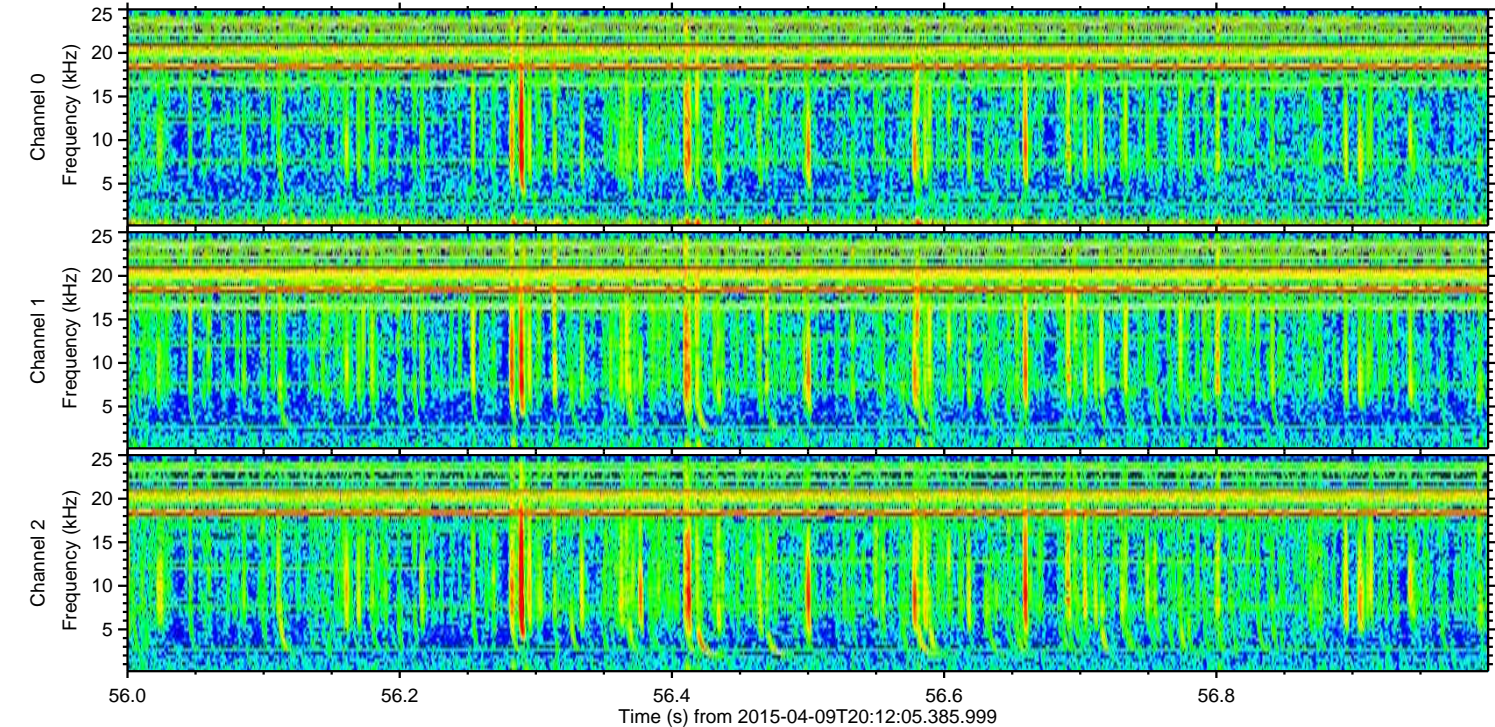
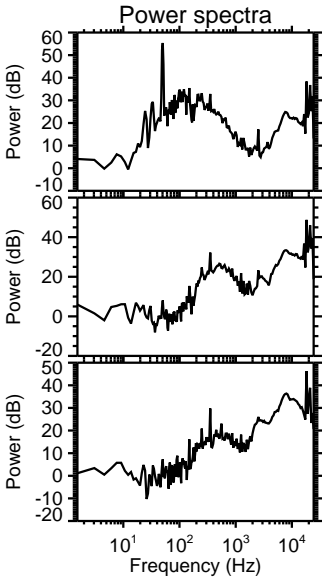
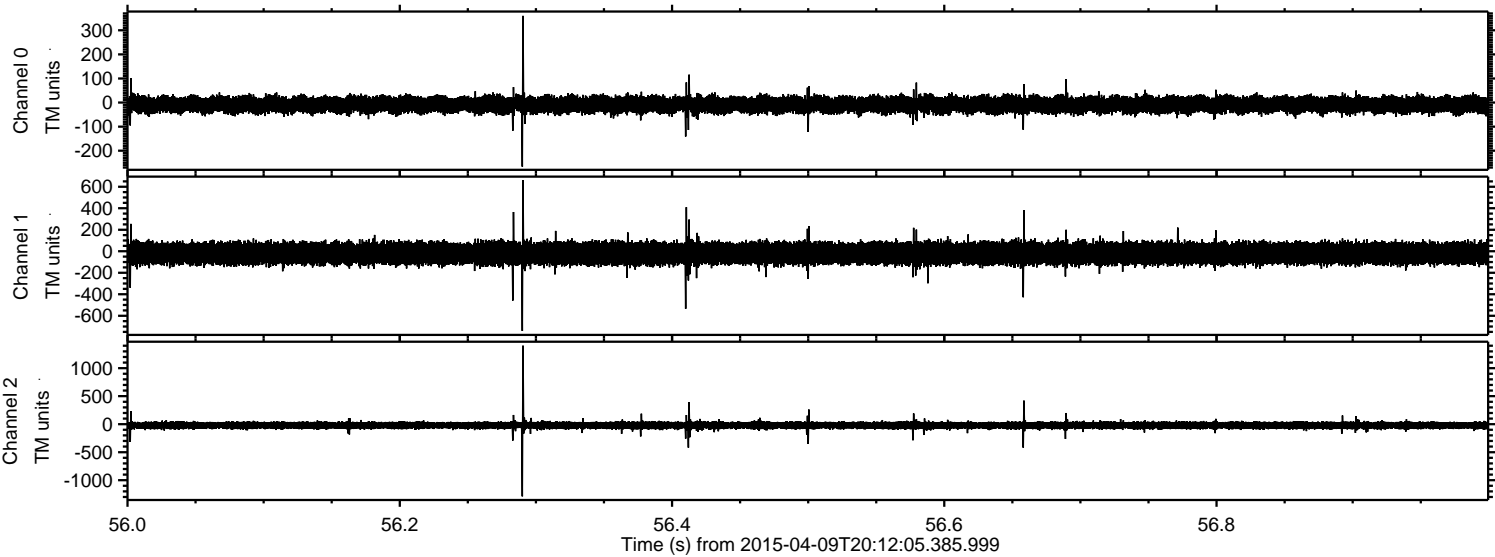


Processed Thu Apr 9 22:18:59 2015 by ELM ver.2012-10-06 from 001\_\_elm20150409\_201204\_\_dat00.bin





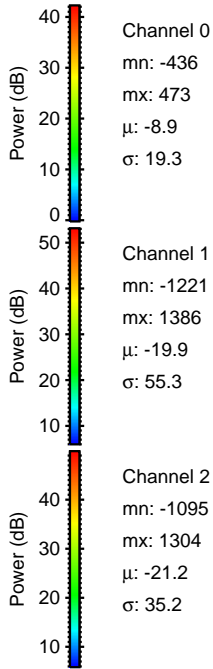
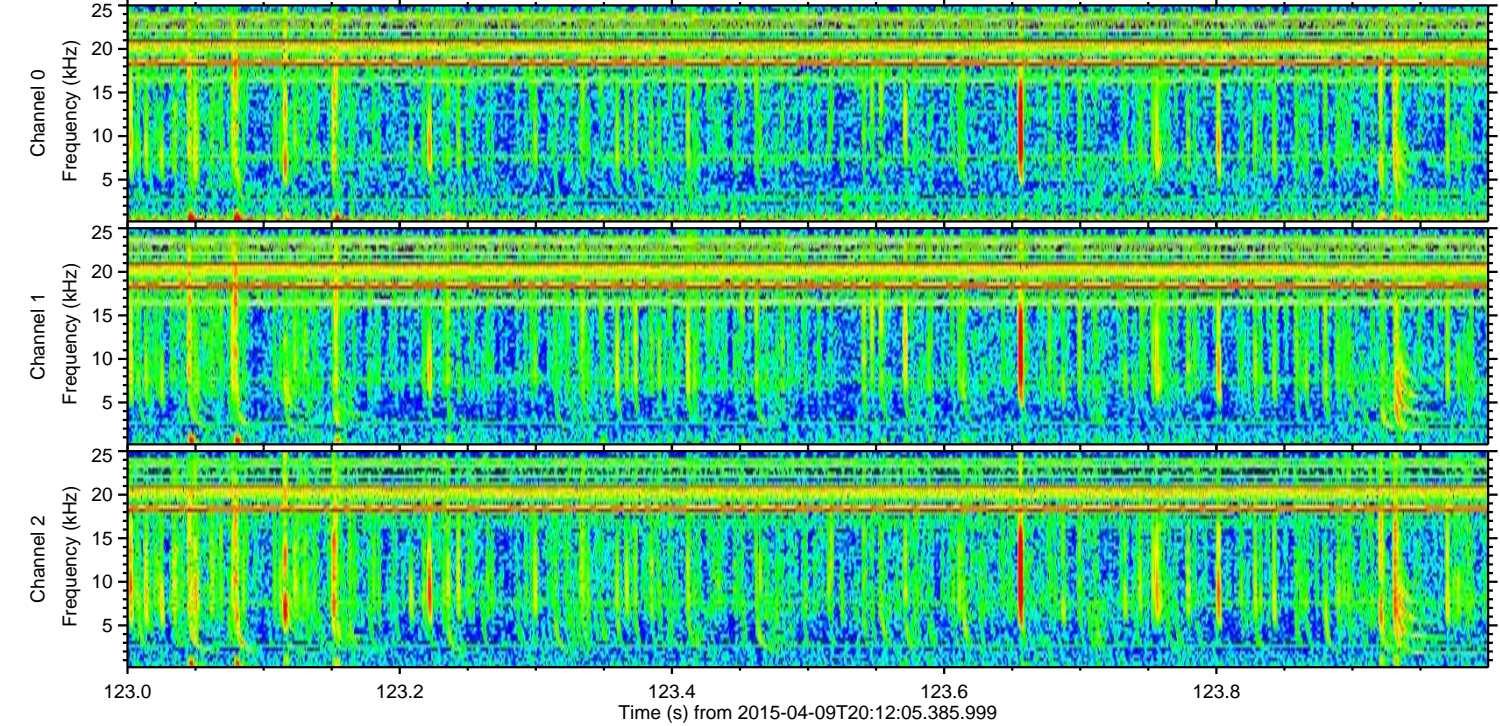
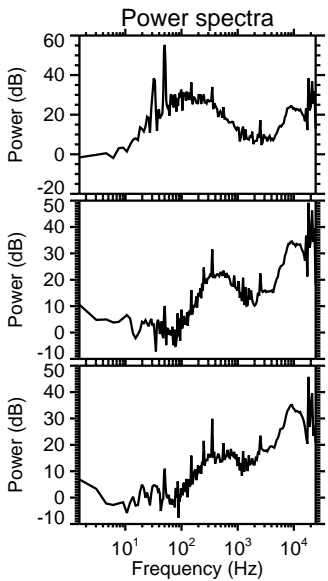
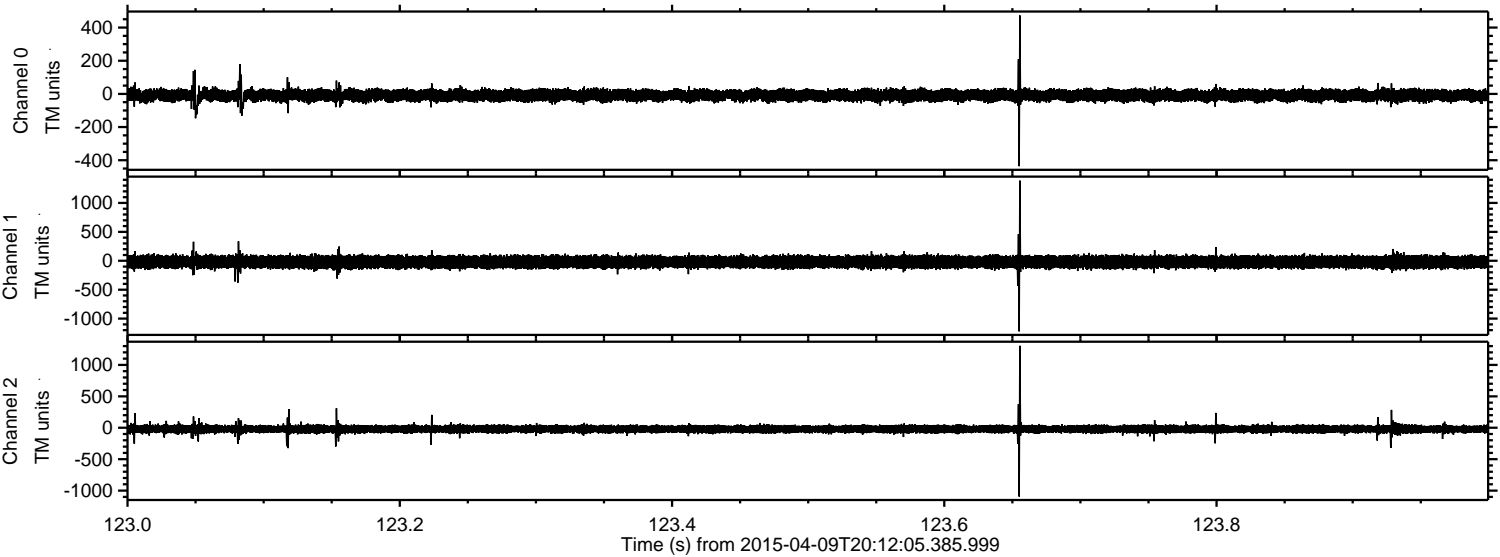
Processed Thu Apr 9 22:18:59 2015 by ELM ver.2012-10-06 from 001\_\_elm20150409\_201204\_\_dat00.bin





ELMAVAN 3D WAVEFORMS (Measured data sampled at 50 kHz) 49783 packets of 144 samples from 2015-04-09T20:12:05.385.999. Part 124/144

Processed Thu Apr 9 22:19:00 2015 by ELM ver.2012-10-06 from 001\_\_elm20150409\_201204\_\_dat00.bin



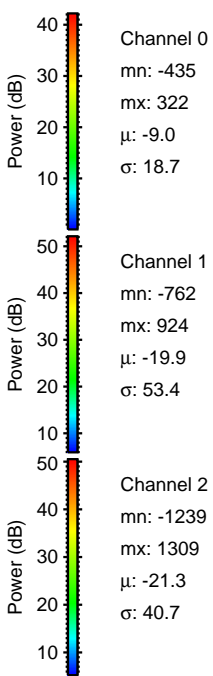
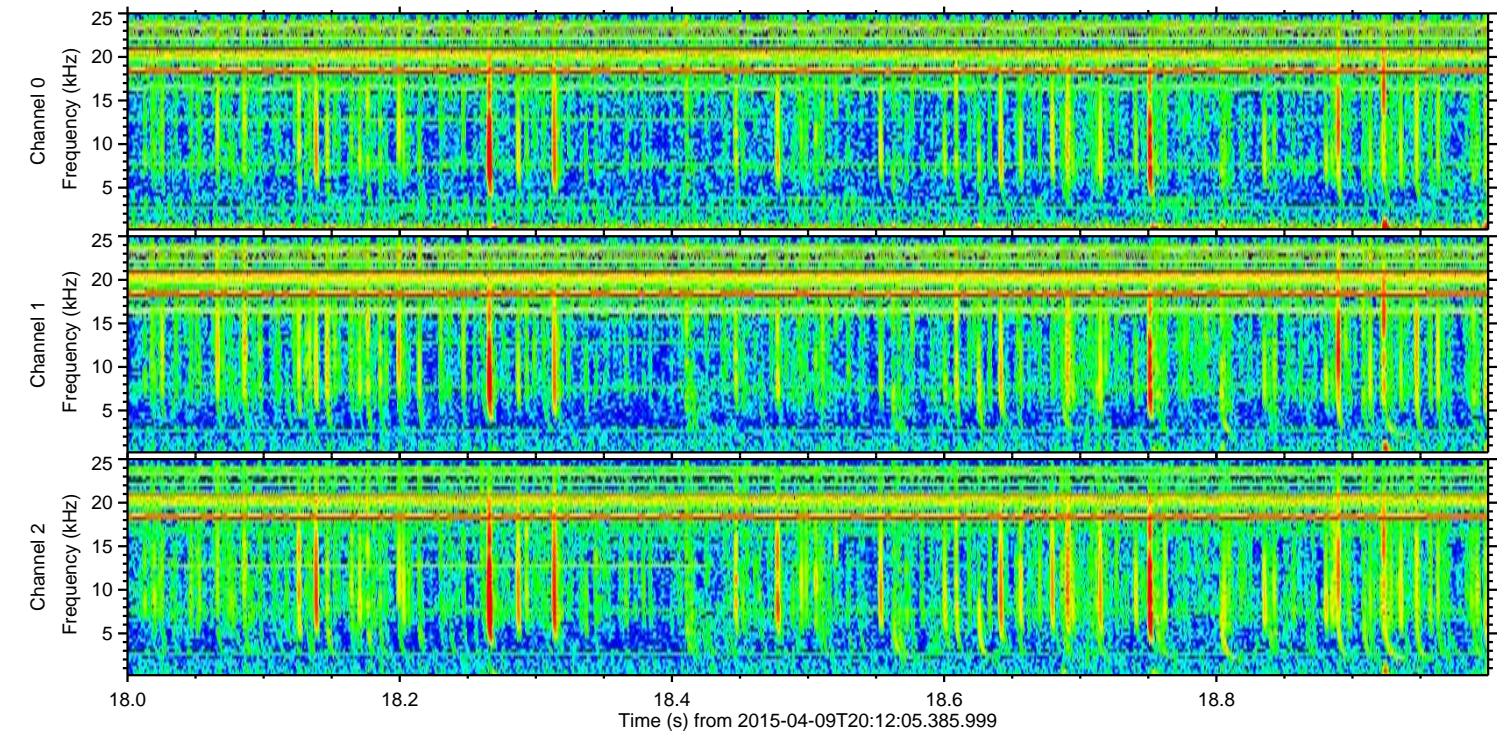
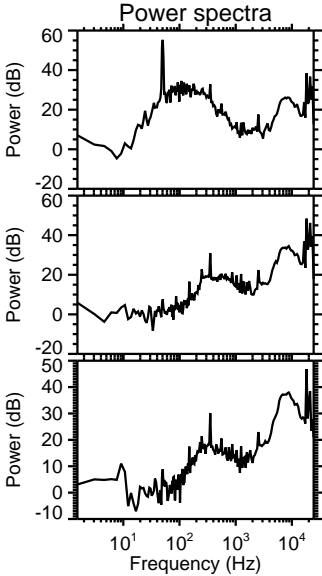
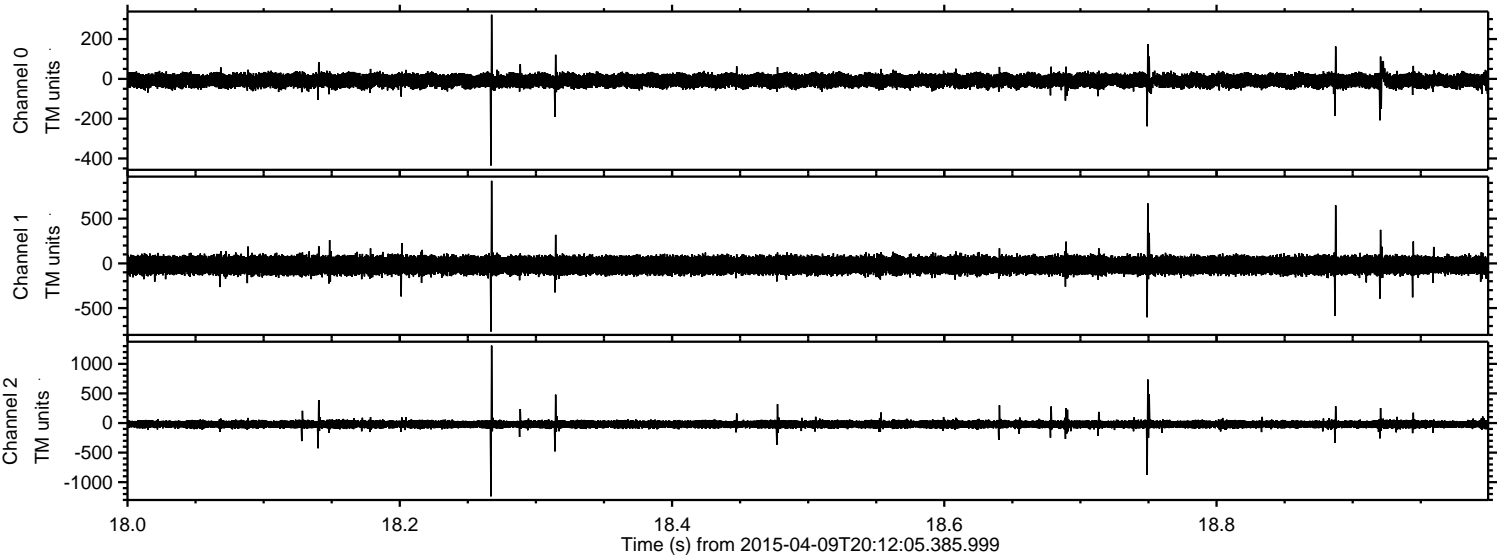
Channel 0  
mn: -436  
mx: 473  
 $\mu$ : -8.9  
 $\sigma$ : 19.3

Channel 1  
mn: -1221  
mx: 1386  
 $\mu$ : -19.9  
 $\sigma$ : 55.3

Channel 2  
mn: -1095  
mx: 1304  
 $\mu$ : -21.2  
 $\sigma$ : 35.2



Processed Thu Apr 9 22:19:01 2015 by ELM ver.2012-10-06 from 001\_\_elm20150409\_201204\_\_dat00.bin



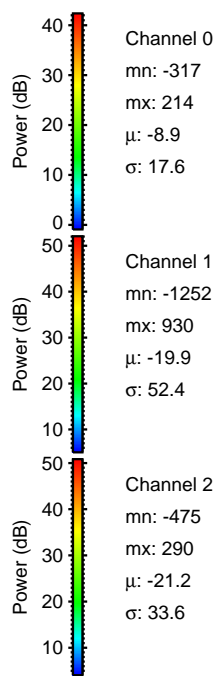
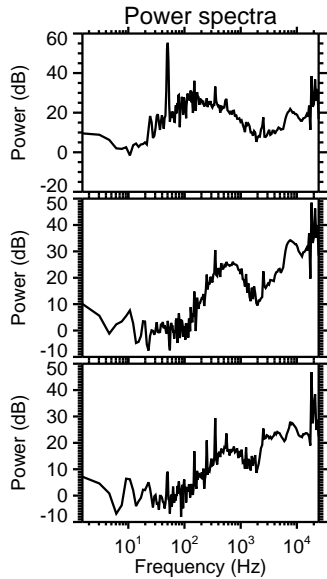
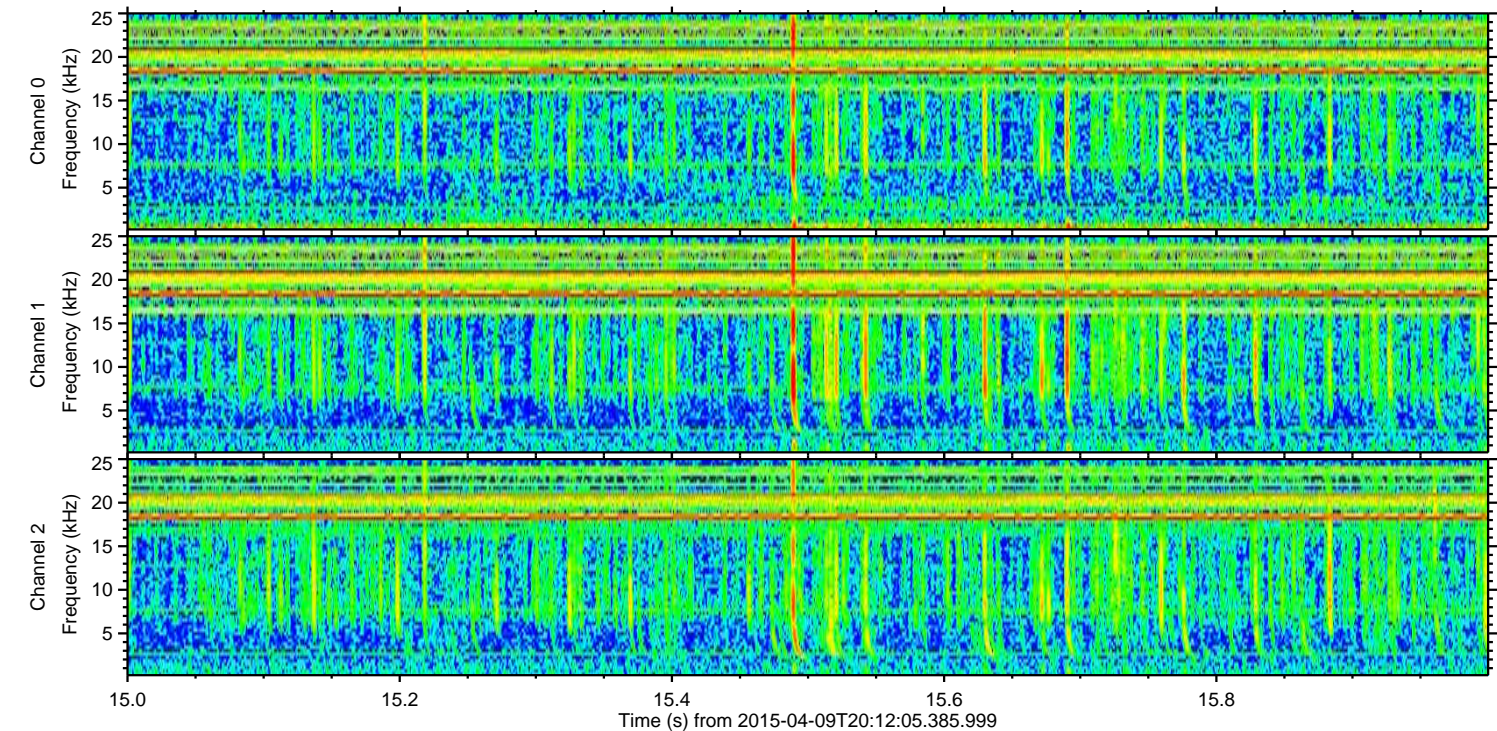
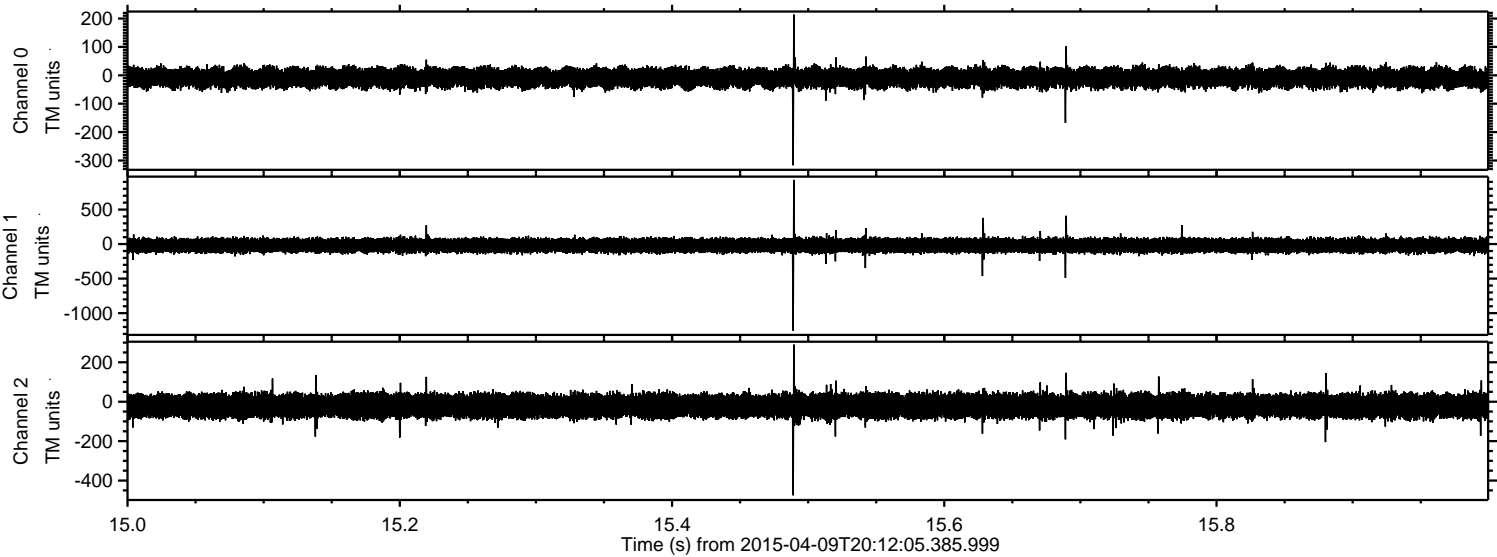
Channel 0  
mn: -435  
mx: 322  
 $\mu$ : -9.0  
 $\sigma$ : 18.7

Channel 1  
mn: -762  
mx: 924  
 $\mu$ : -19.9  
 $\sigma$ : 53.4

Channel 2  
mn: -1239  
mx: 1309  
 $\mu$ : -21.3  
 $\sigma$ : 40.7

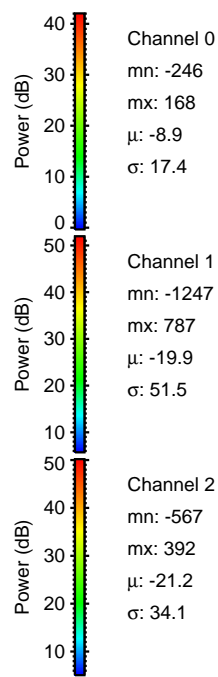
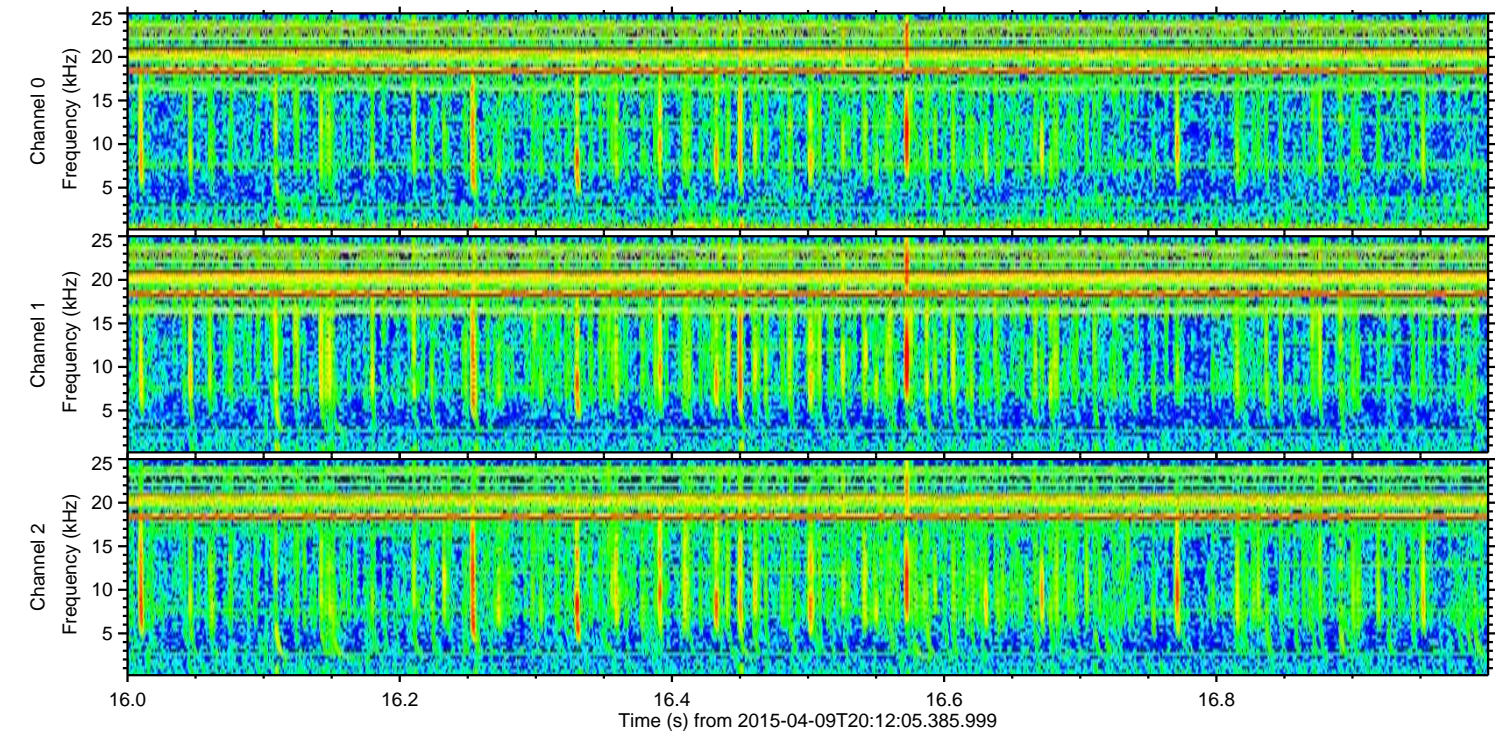
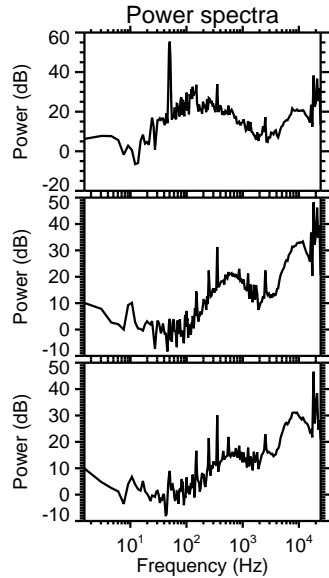
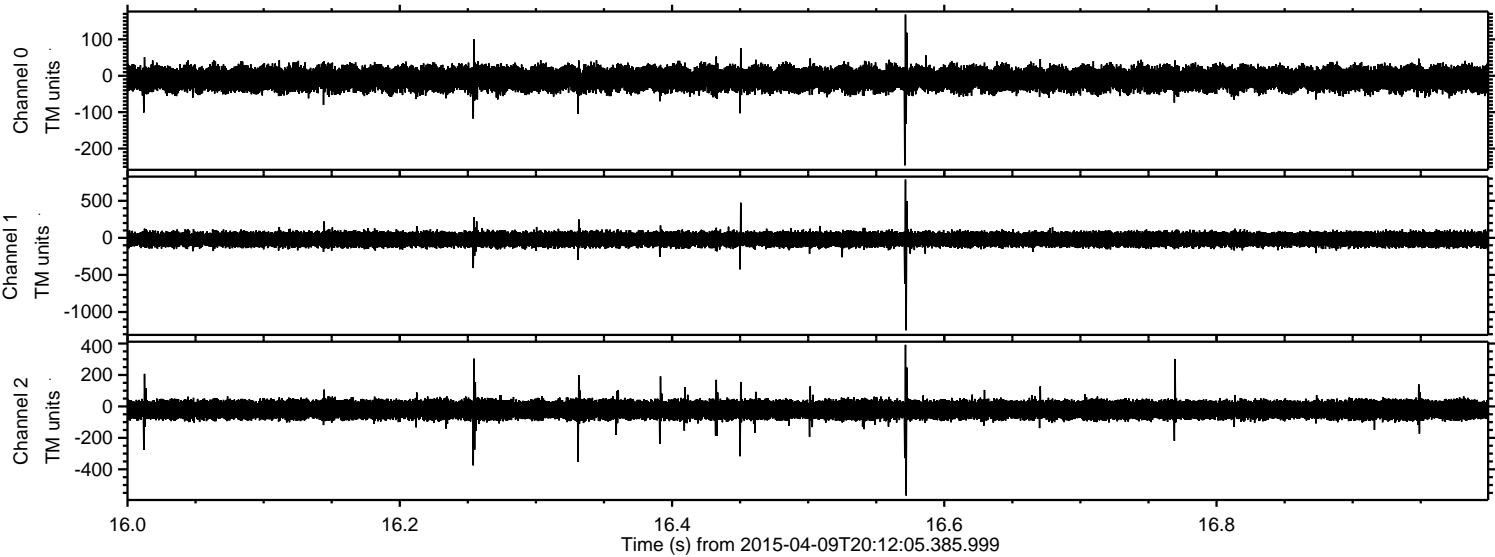


Processed Thu Apr 9 22:19:02 2015 by ELM ver.2012-10-06 from 001\_\_elm20150409\_201204\_\_dat00.bin





Processed Thu Apr 9 22:19:03 2015 by ELM ver.2012-10-06 from 001\_\_elm20150409\_201204\_\_dat00.bin





Processed Thu Apr 9 22:19:04 2015 by ELM ver.2012-10-06 from 001\_\_elm20150409\_201204\_\_dat00.bin

