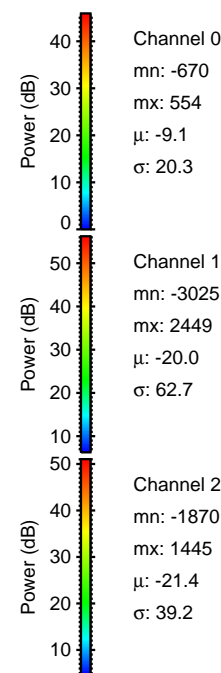
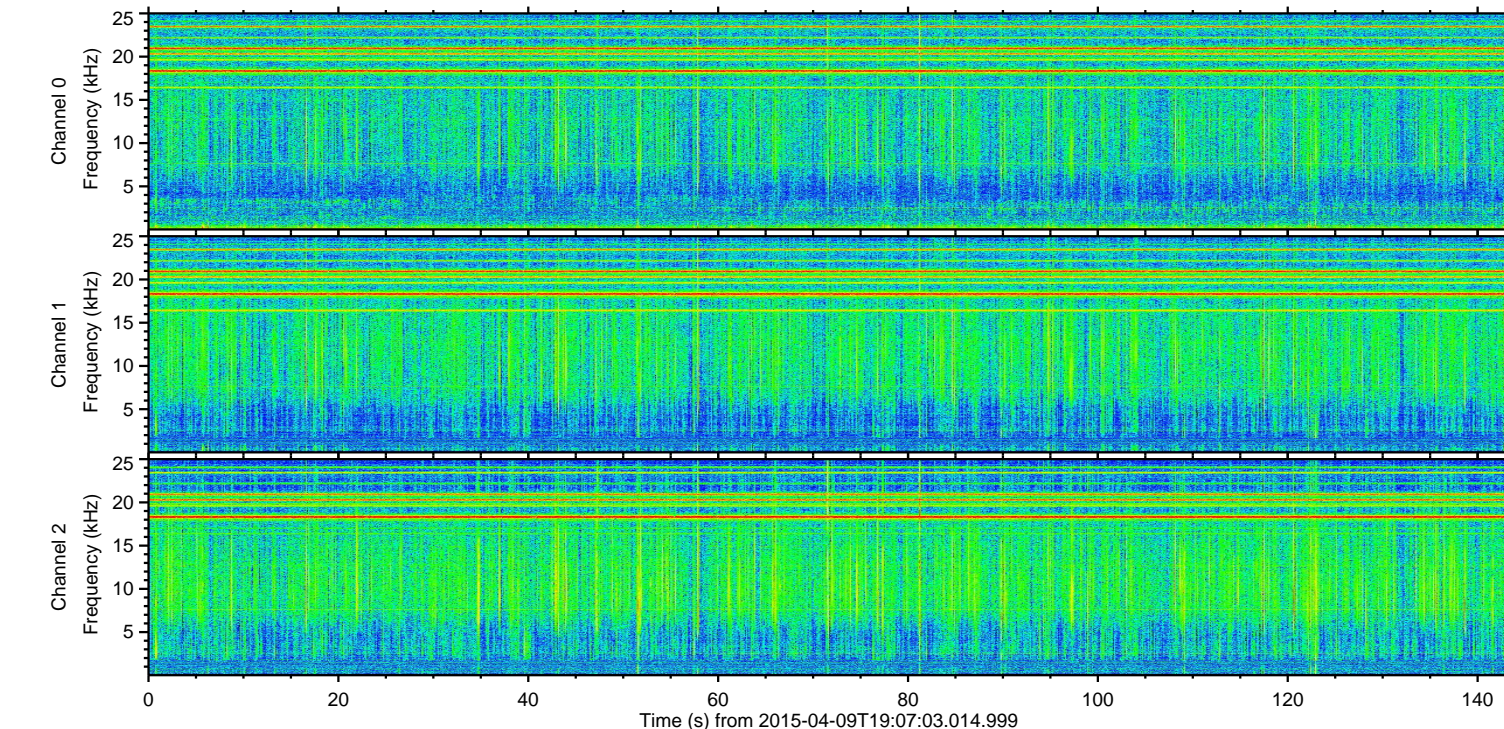
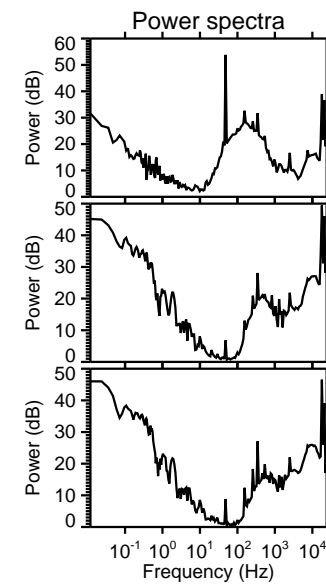
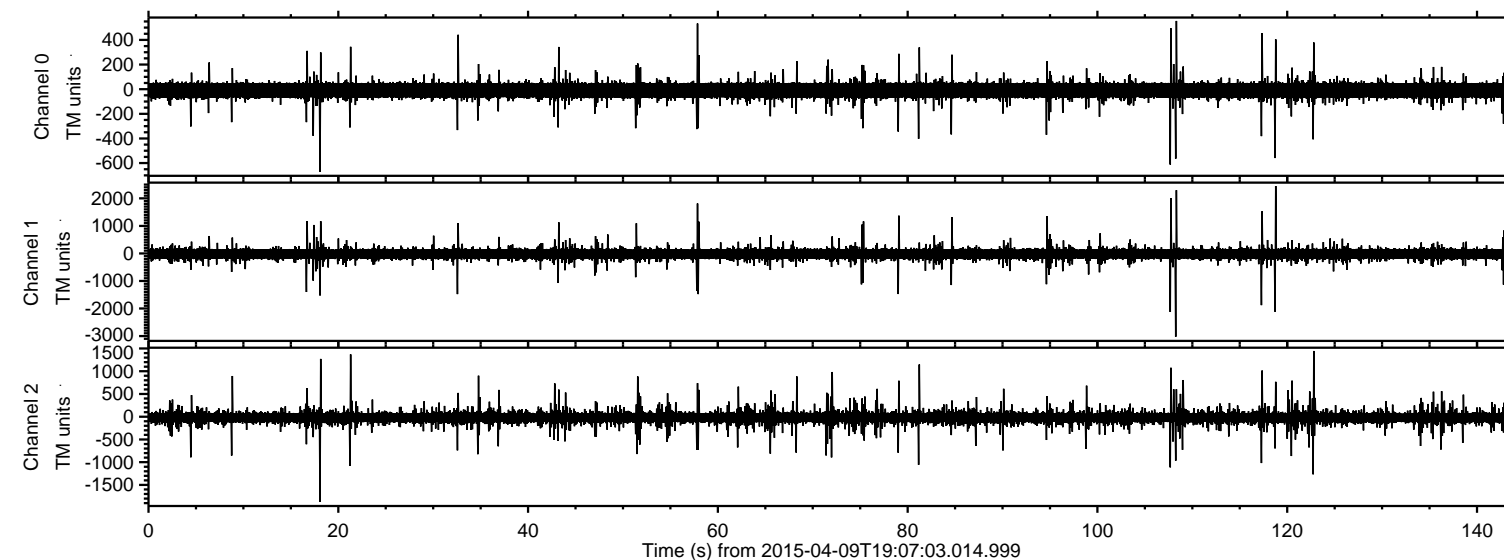
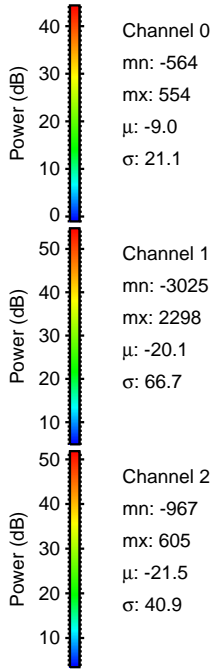
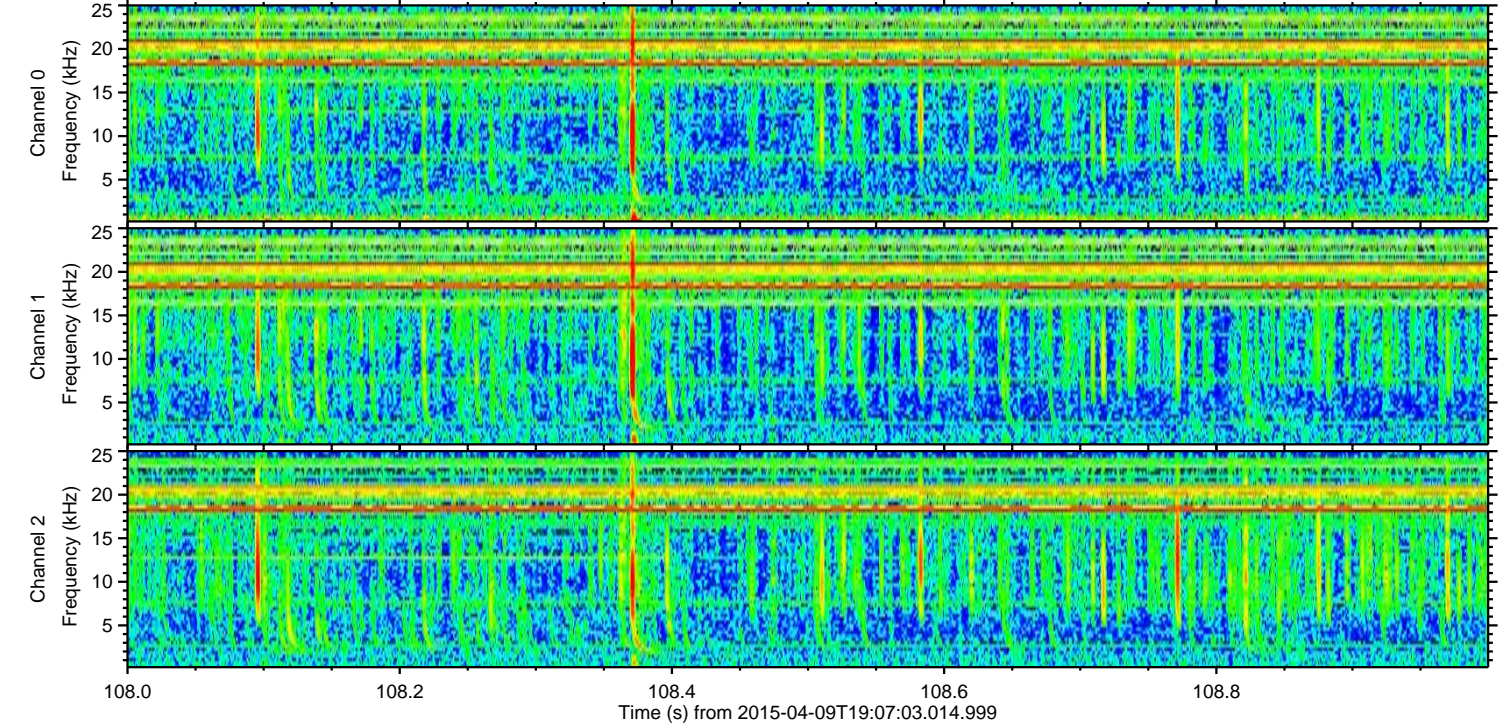
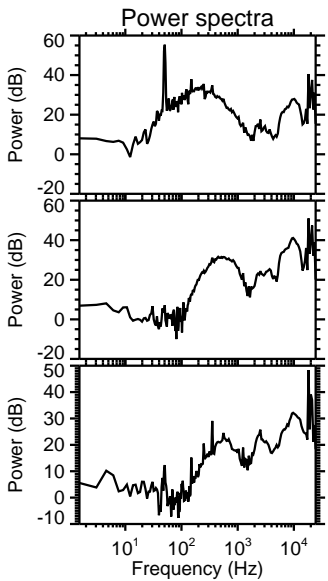
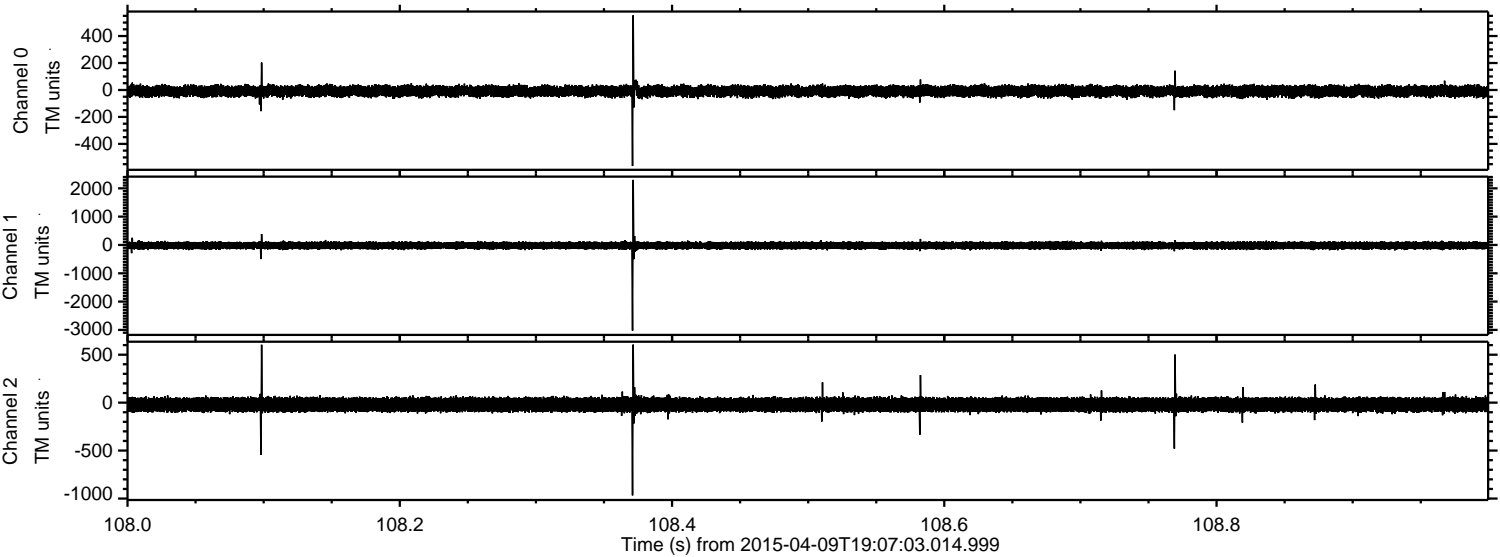


# ELMAVAN 3D WAVEFORMS (Measured data sampled at 50 kHz) 49788 packets of 144 samples from 2015-04-09T19:07:03.014.999.

Processed Thu Apr 9 21:13:37 2015 by ELM ver.2012-10-06 from 001\_\_elm20150409\_190702\_\_dat00.bin

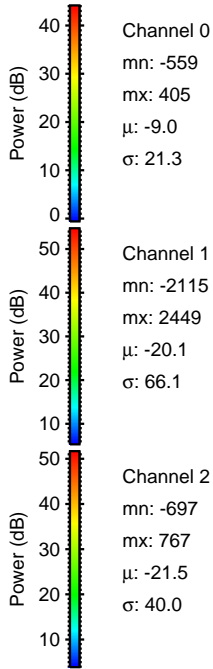
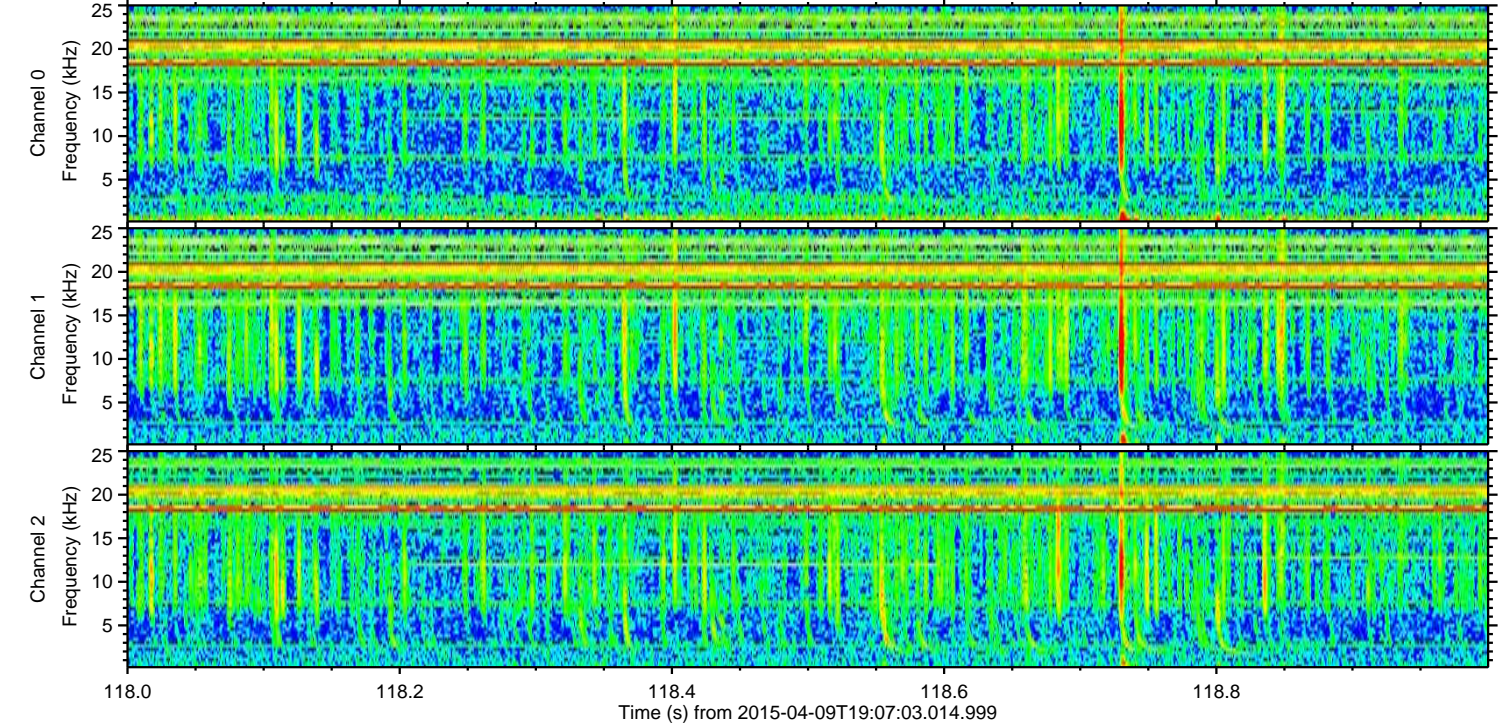
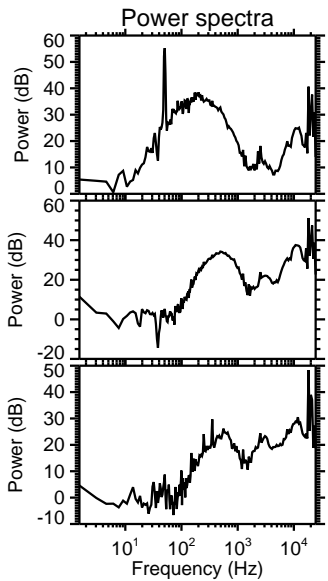
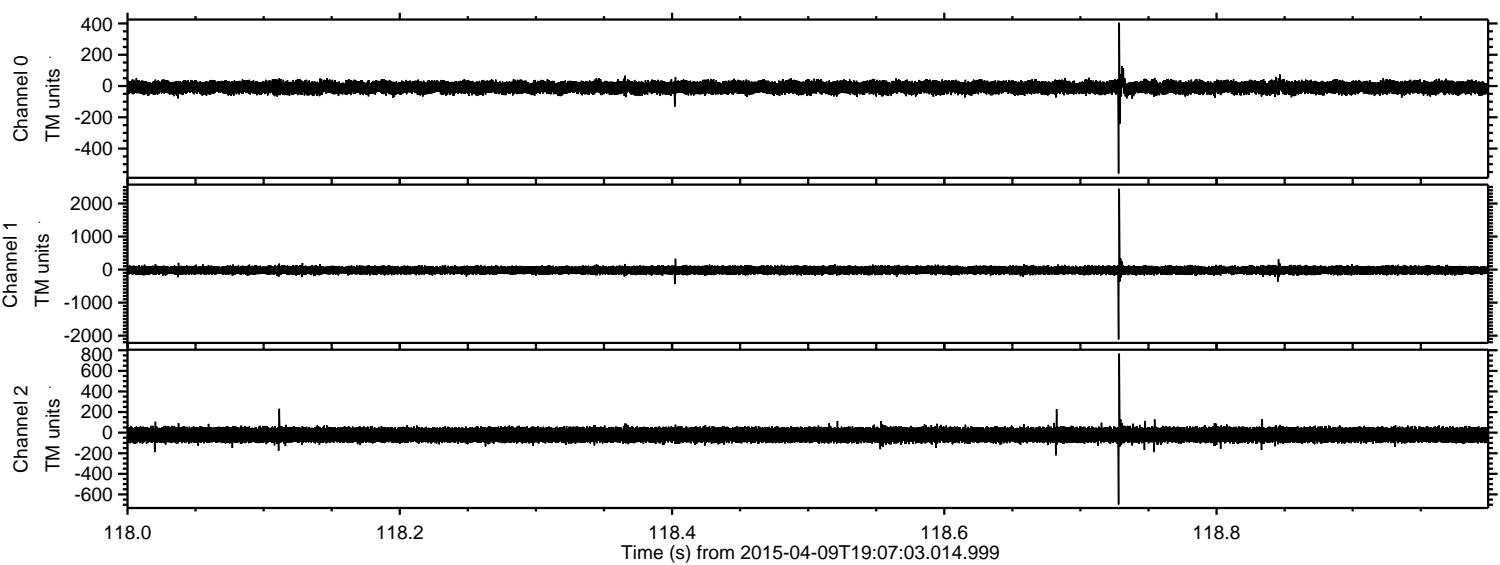


Processed Thu Apr 9 21:13:48 2015 by ELM ver.2012-10-06 from 001\_\_elm20150409\_190702\_\_dat00.bin



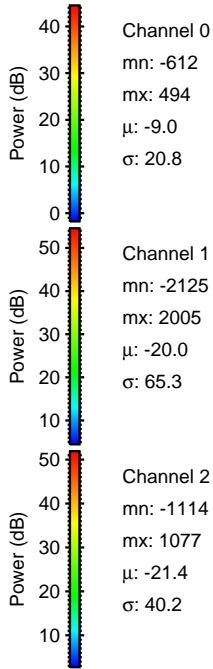
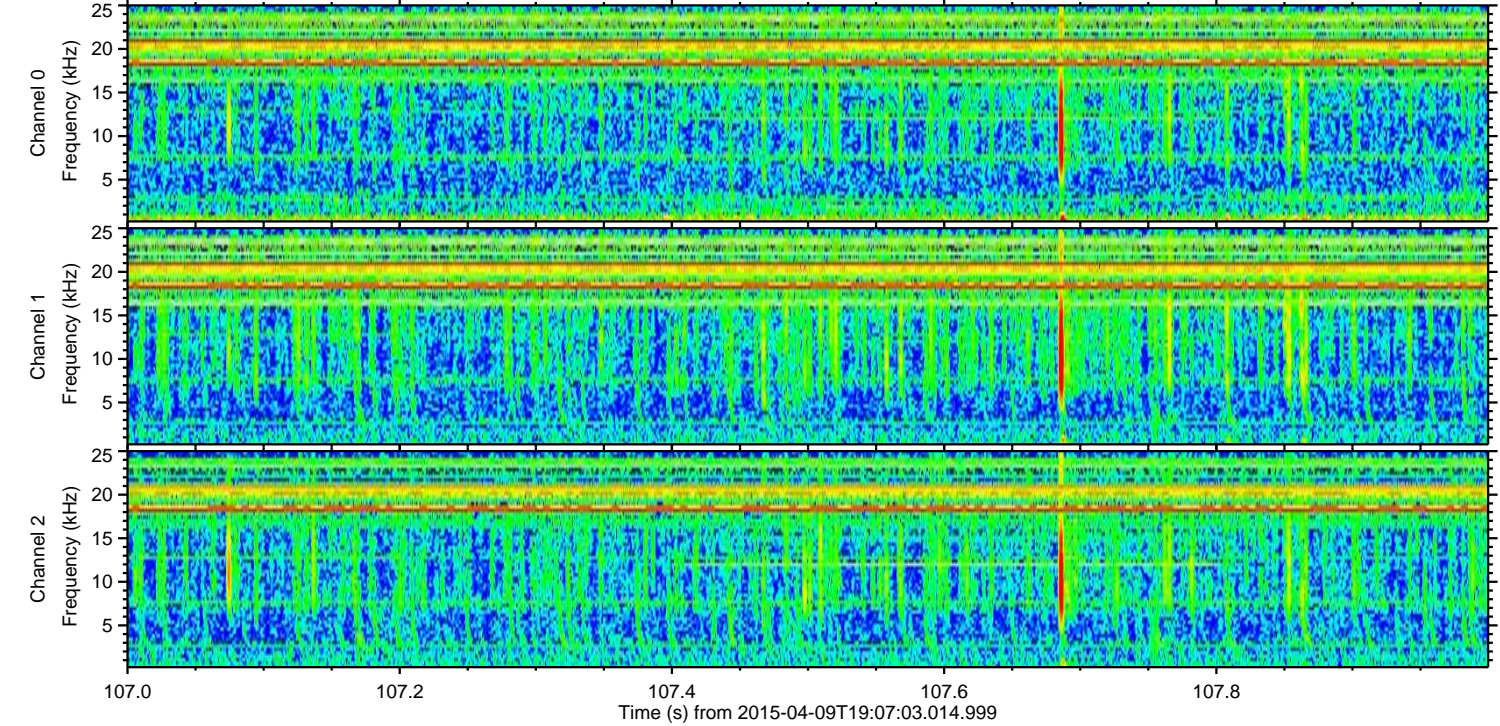
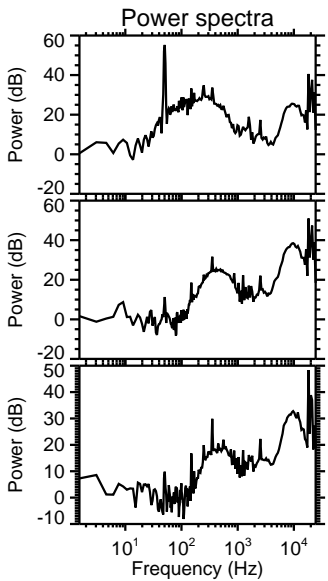
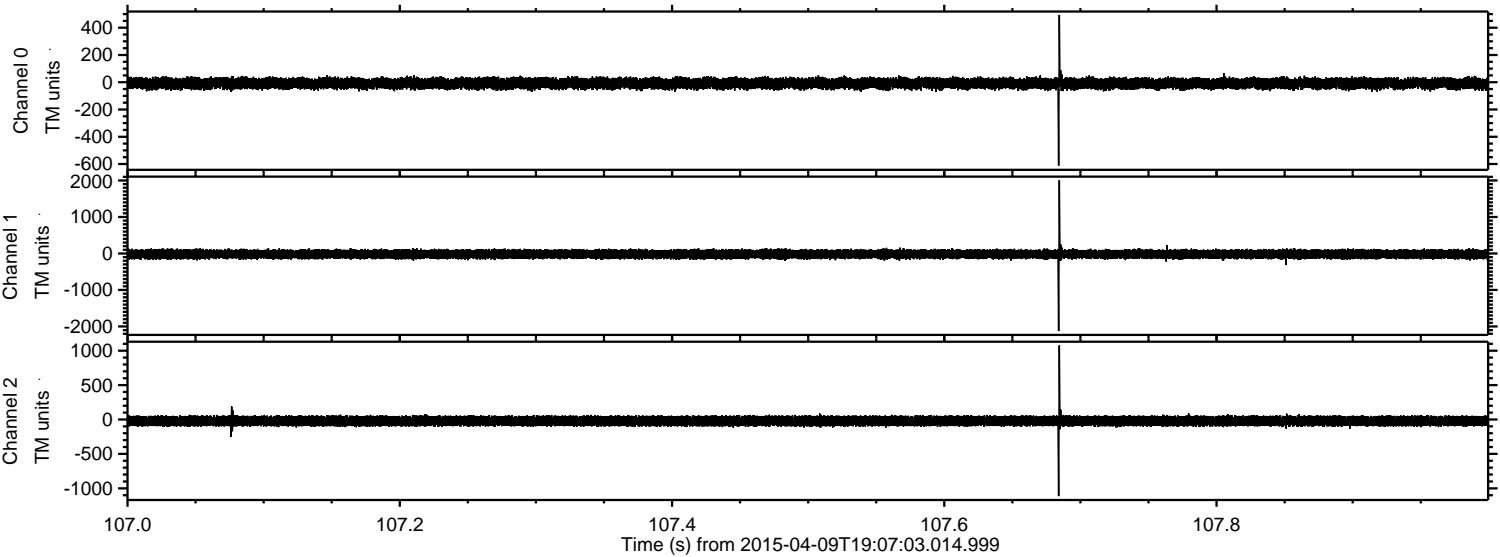
ELMAVAN 3D WAVEFORMS (Measured data sampled at 50 kHz) 49788 packets of 144 samples from 2015-04-09T19:07:03.014.999. Part 119/144

Processed Thu Apr 9 21:13:49 2015 by ELM ver.2012-10-06 from 001\_\_elm20150409\_190702\_\_dat00.bin



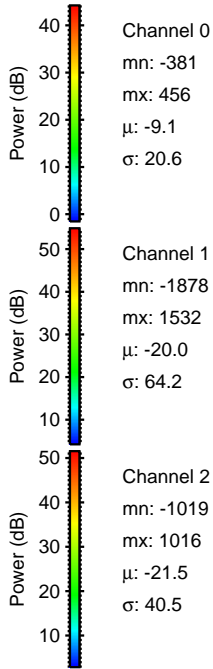
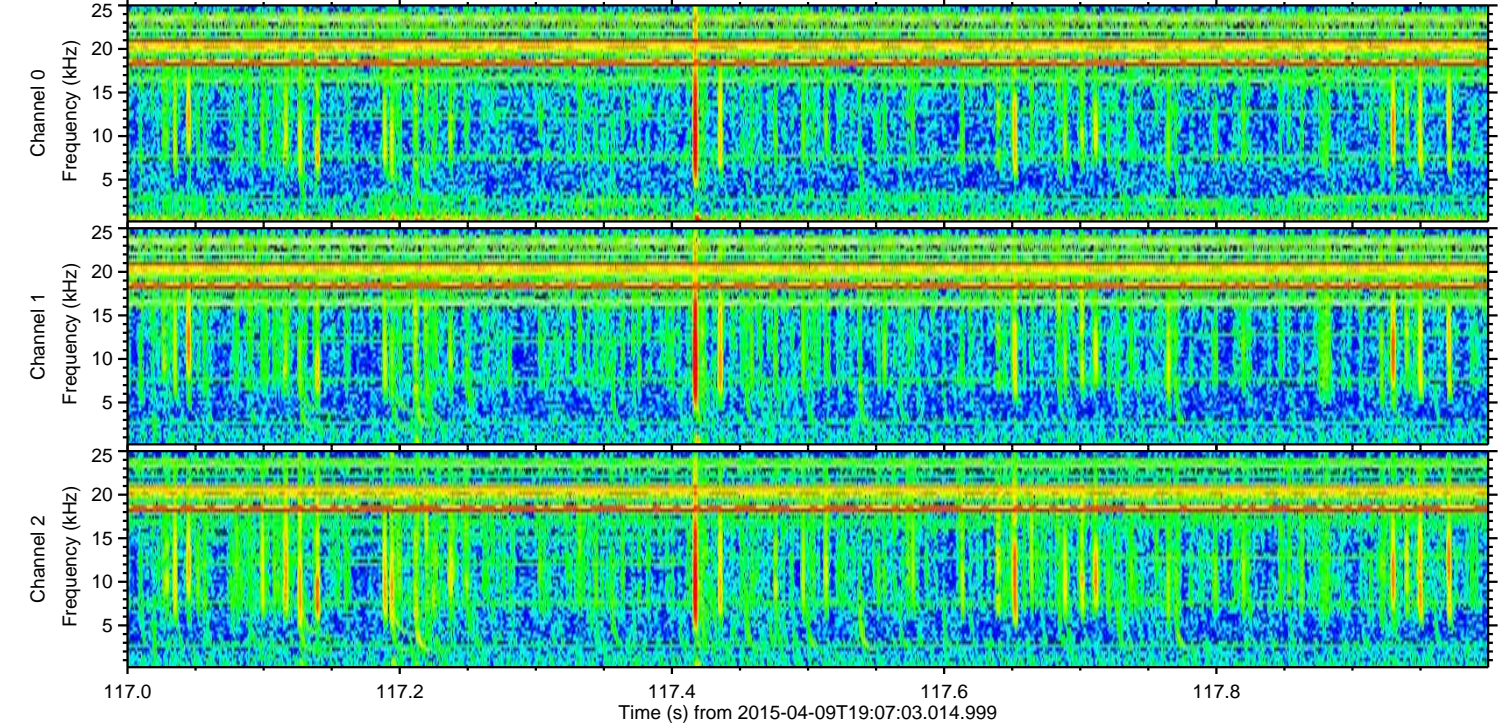
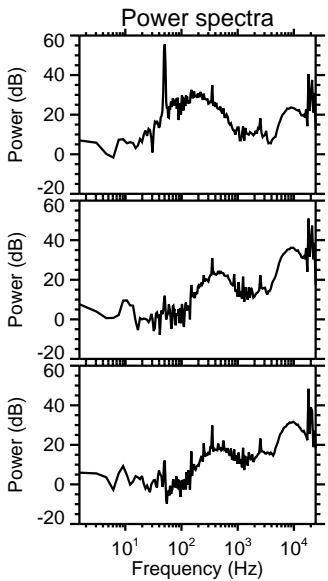
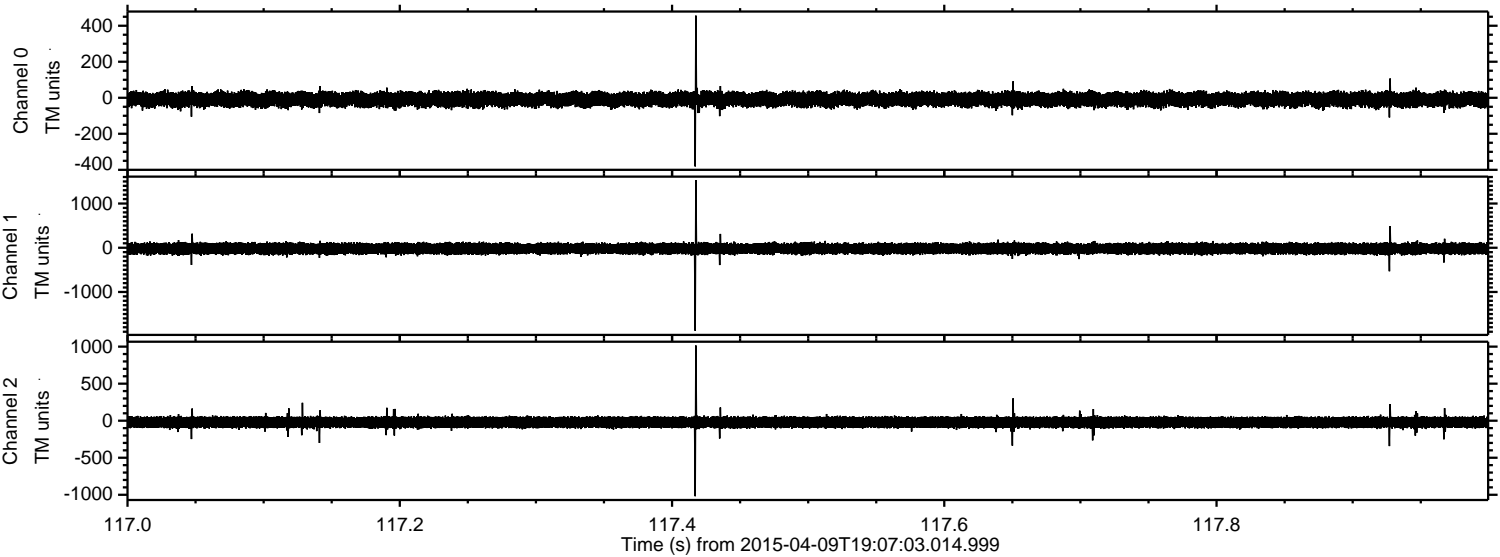
ELMAVAN 3D WAVEFORMS (Measured data sampled at 50 kHz) 49788 packets of 144 samples from 2015-04-09T19:07:03.014.999. Part 108/144

Processed Thu Apr 9 21:13:50 2015 by ELM ver.2012-10-06 from 001\_\_elm20150409\_190702\_\_dat00.bin



ELMAVAN 3D WAVEFORMS (Measured data sampled at 50 kHz) 49788 packets of 144 samples from 2015-04-09T19:07:03.014.999. Part 118/144

Processed Thu Apr 9 21:13:51 2015 by ELM ver.2012-10-06 from 001\_\_elm20150409\_190702\_\_dat00.bin



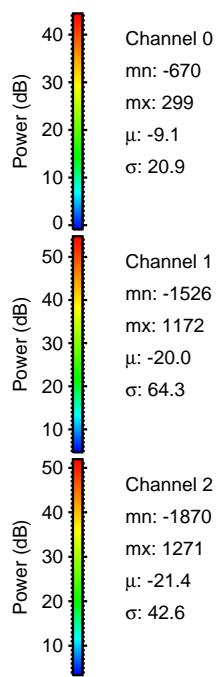
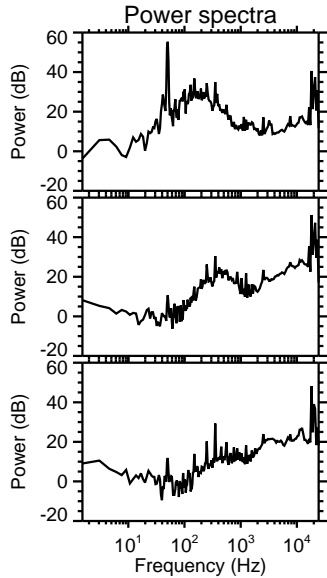
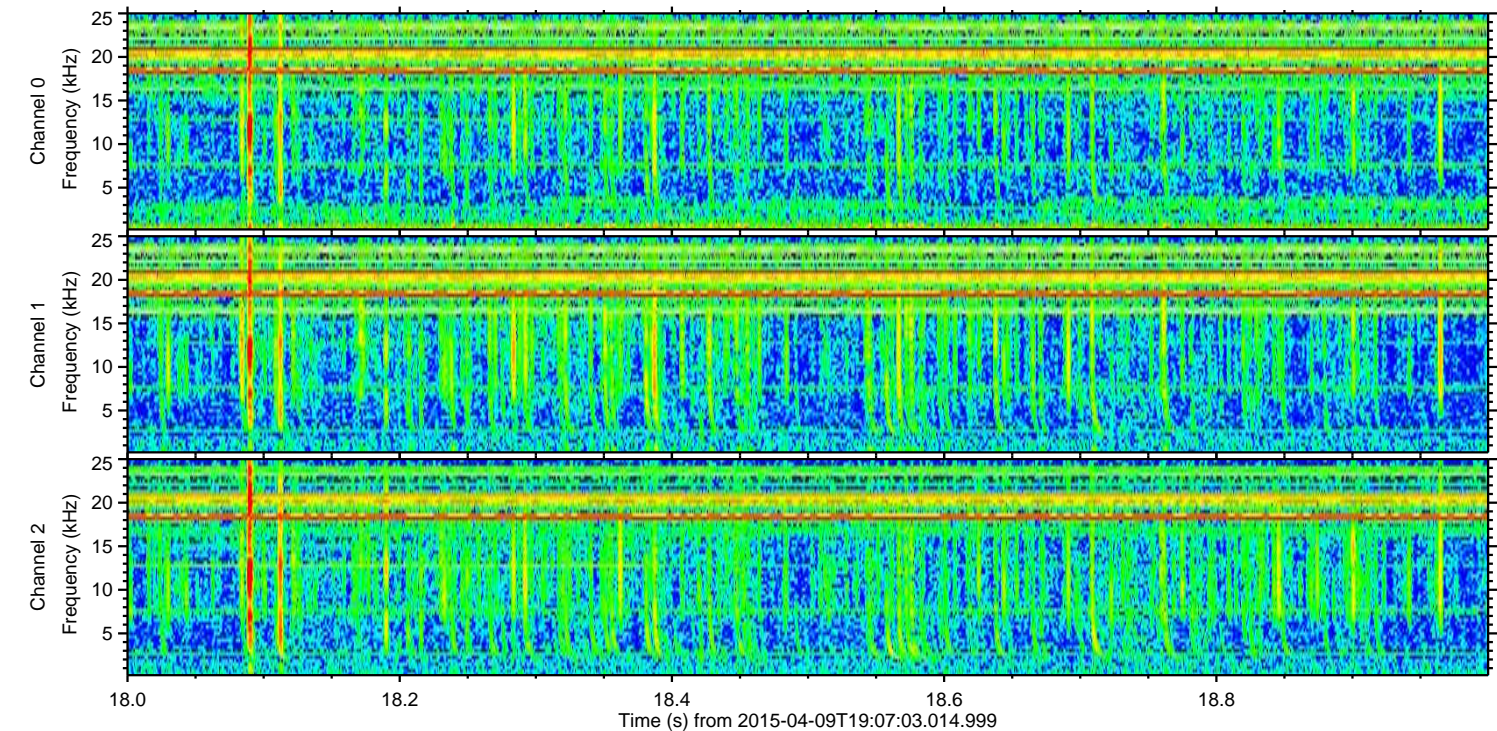
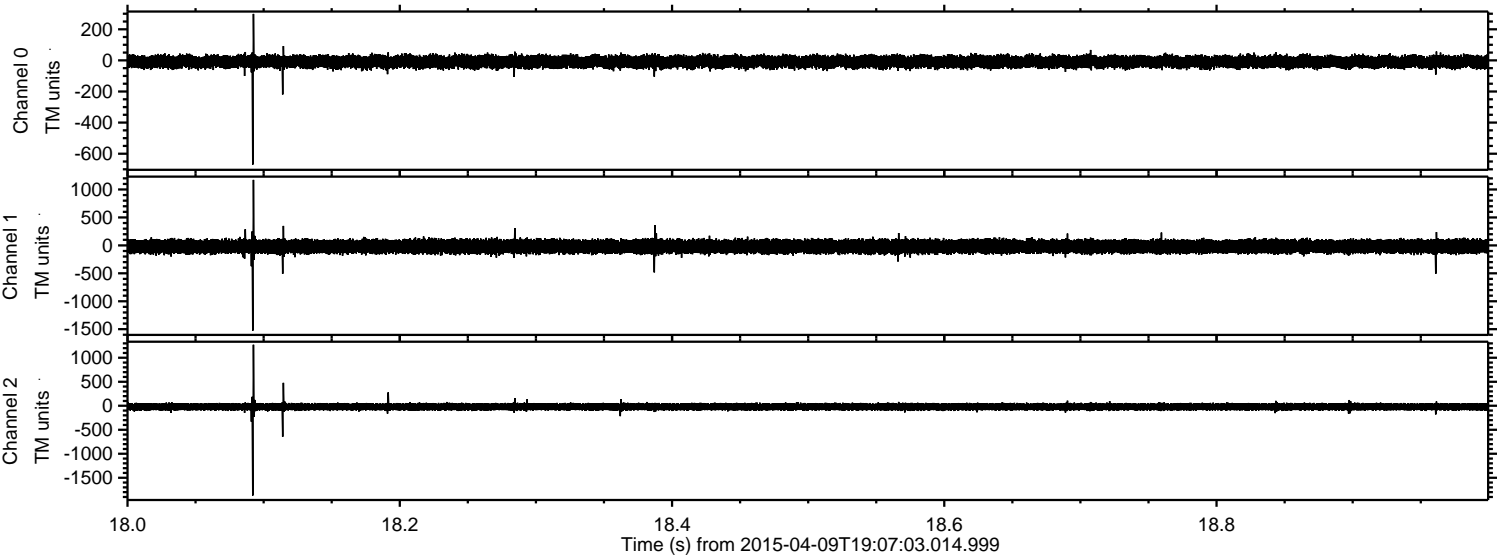
Channel 0  
mn: -381  
mx: 456  
 $\mu$ : -9.1  
 $\sigma$ : 20.6

Channel 1  
mn: -1878  
mx: 1532  
 $\mu$ : -20.0  
 $\sigma$ : 64.2

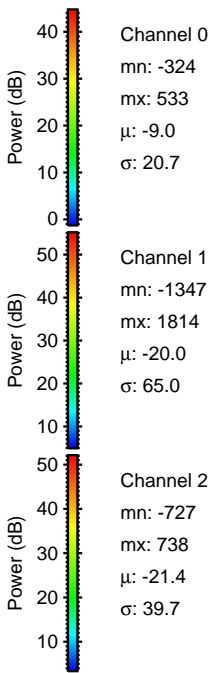
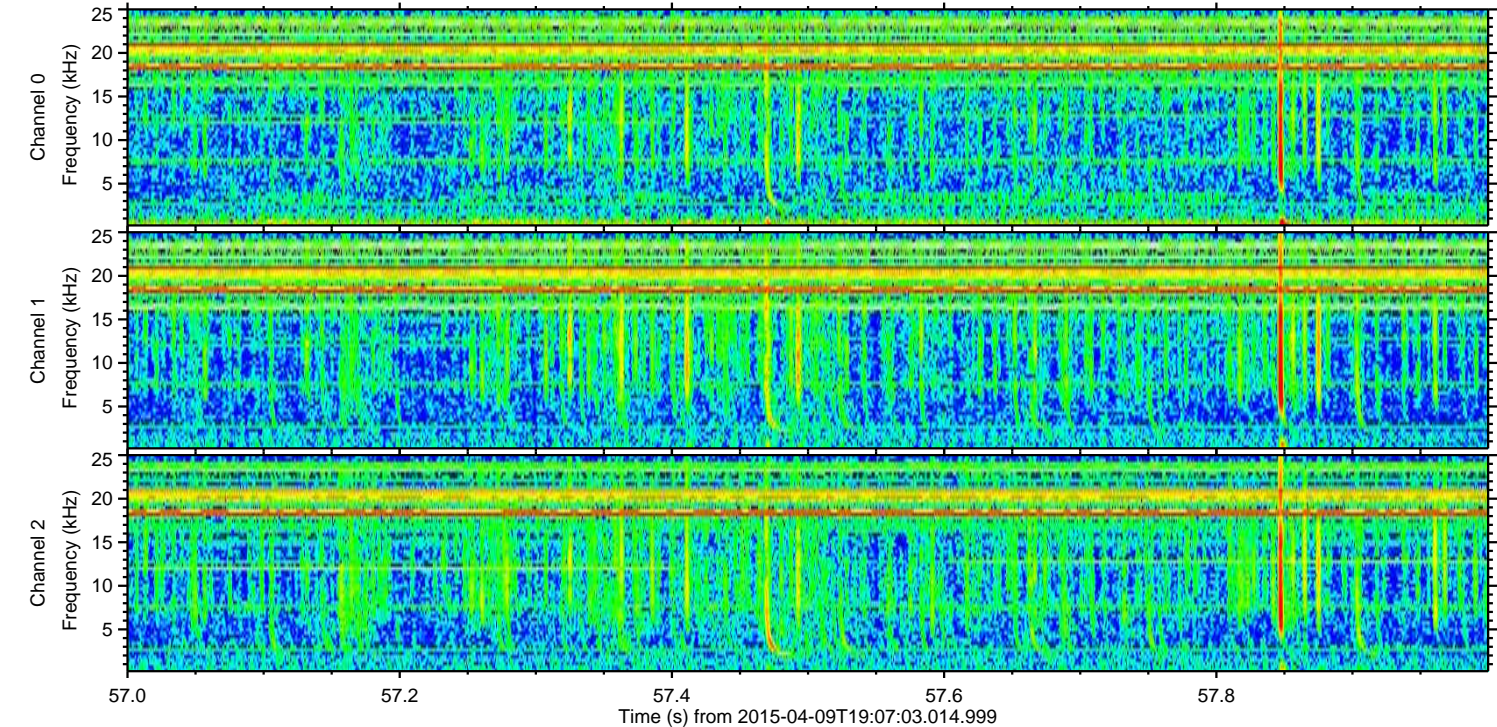
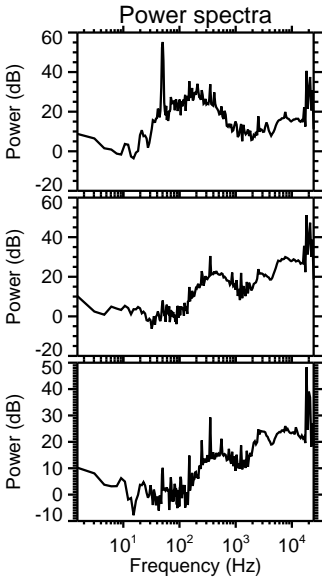
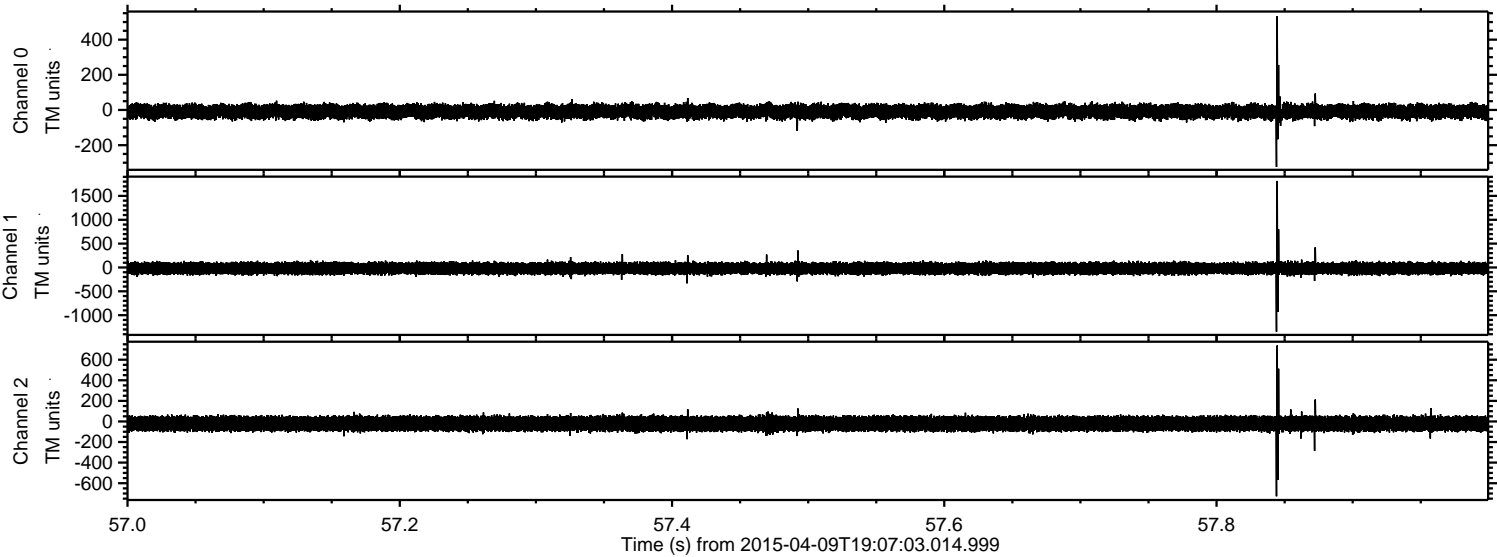
Channel 2  
mn: -1019  
mx: 1016  
 $\mu$ : -21.5  
 $\sigma$ : 40.5

ELMAVAN 3D WAVEFORMS (Measured data sampled at 50 kHz) 49788 packets of 144 samples from 2015-04-09T19:07:03.014.999. Part 19/144

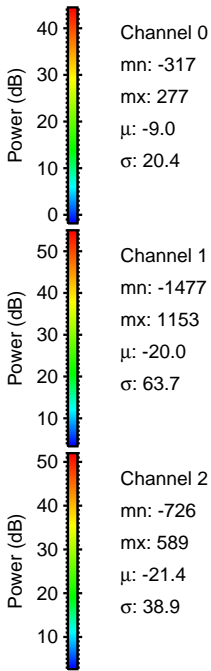
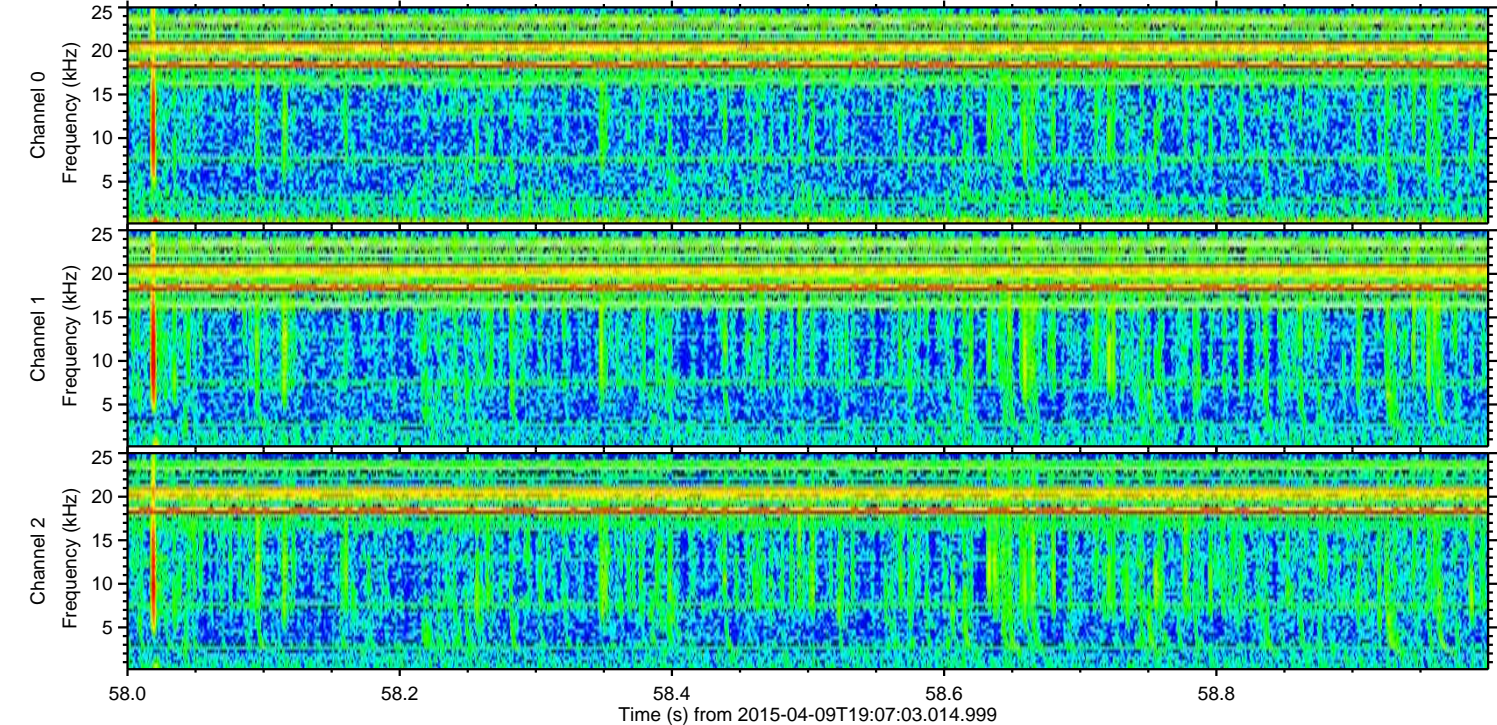
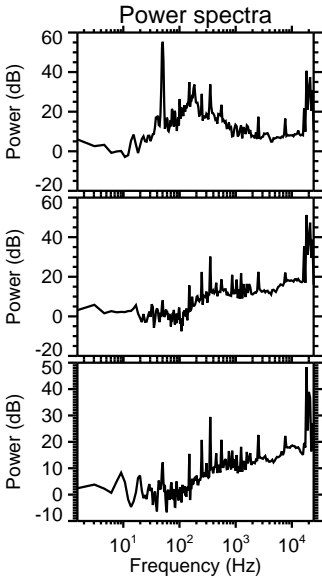
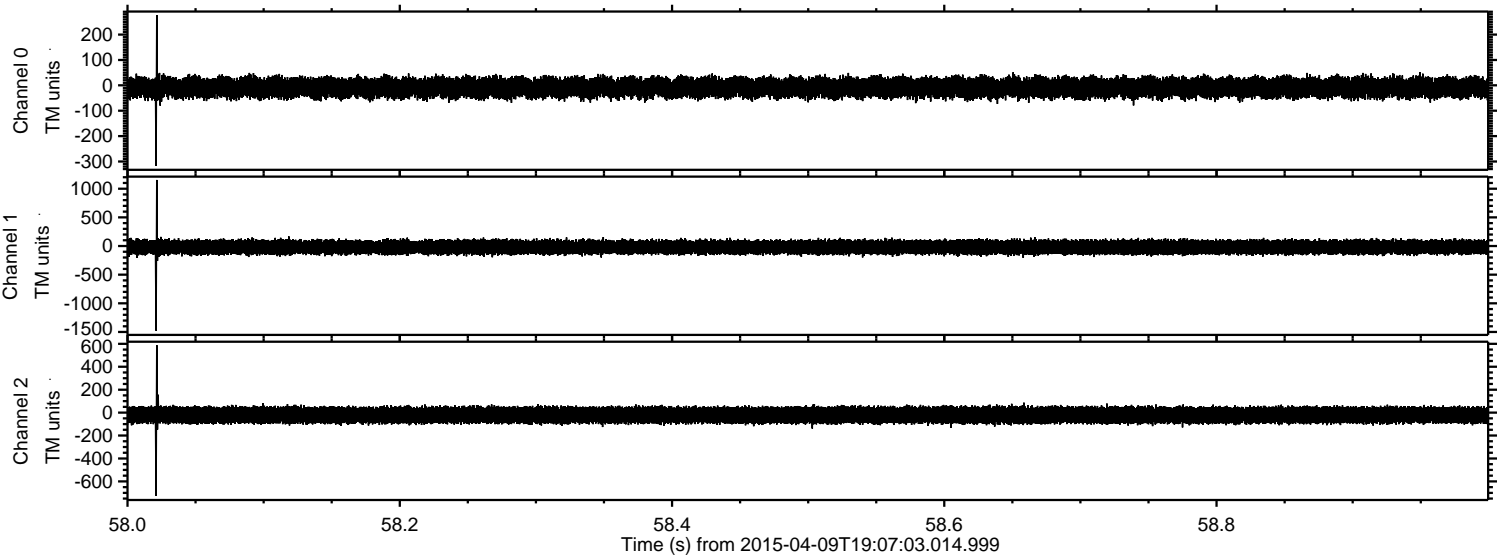
Processed Thu Apr 9 21:13:52 2015 by ELM ver.2012-10-06 from 001\_\_elm20150409\_190702\_\_dat00.bin



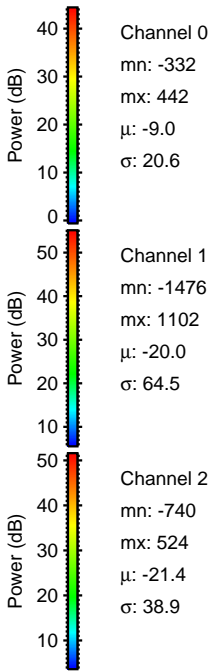
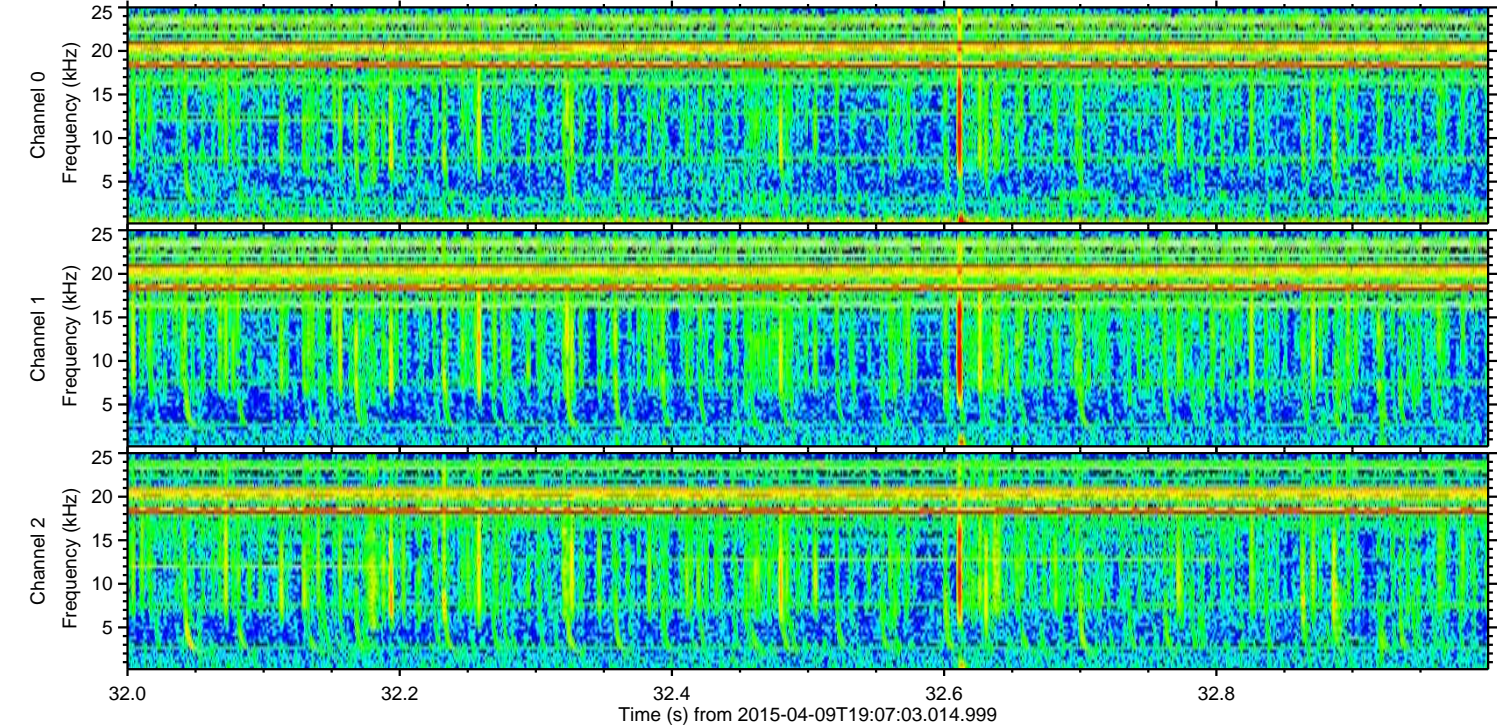
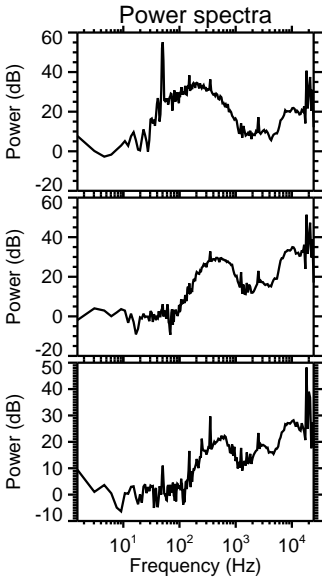
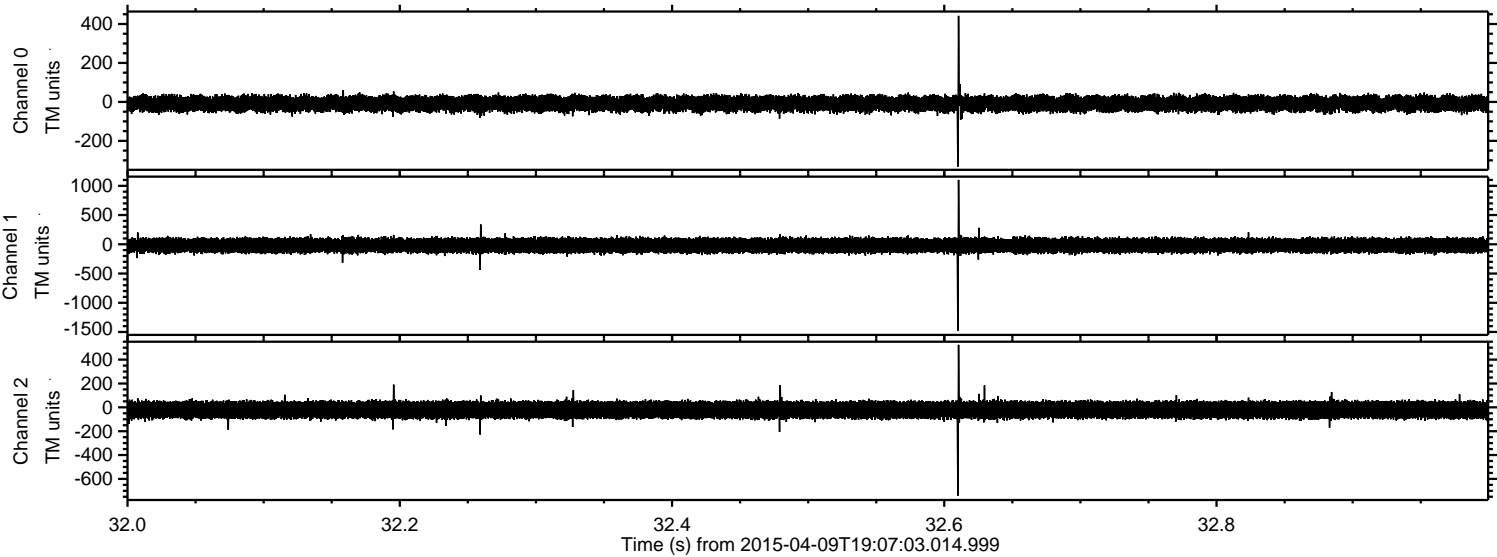
Processed Thu Apr 9 21:13:53 2015 by ELM ver.2012-10-06 from 001\_\_elm20150409\_190702\_\_dat00.bin



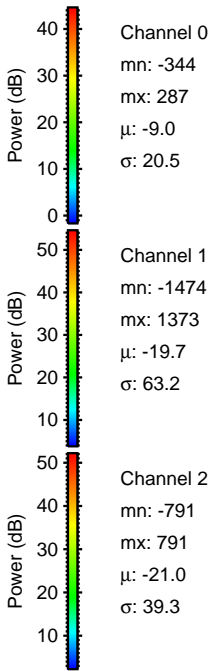
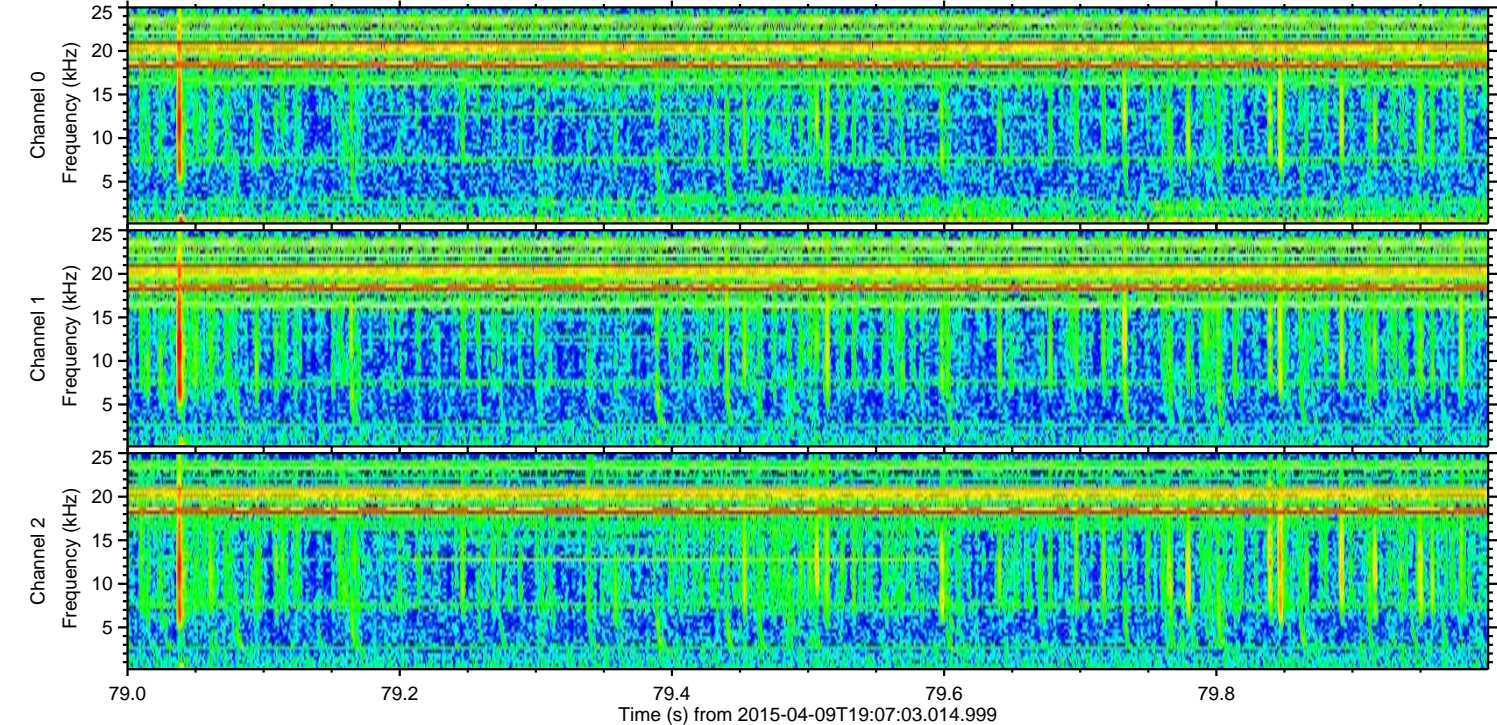
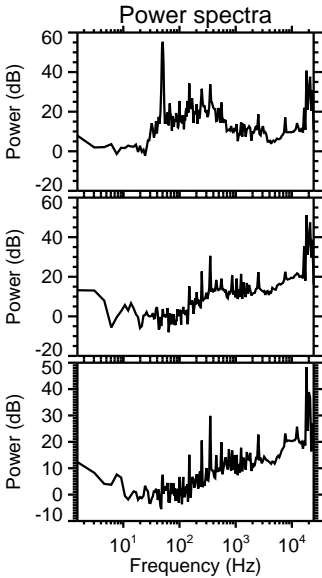
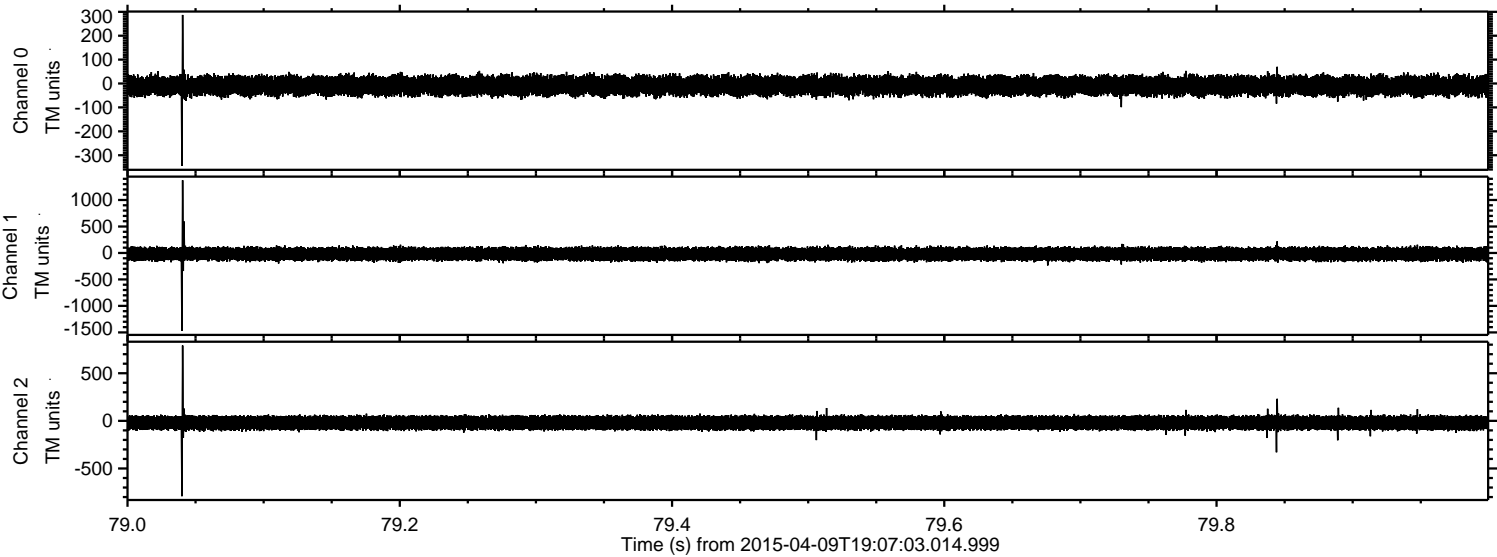
Processed Thu Apr 9 21:13:54 2015 by ELM ver.2012-10-06 from 001\_\_elm20150409\_190702\_\_dat00.bin



Processed Thu Apr 9 21:13:55 2015 by ELM ver.2012-10-06 from 001\_\_elm20150409\_190702\_\_dat00.bin



Processed Thu Apr 9 21:13:56 2015 by ELM ver.2012-10-06 from 001\_\_elm20150409\_190702\_\_dat00.bin



Processed Thu Apr 9 21:13:57 2015 by ELM ver.2012-10-06 from 001\_\_elm20150409\_190702\_\_dat00.bin

