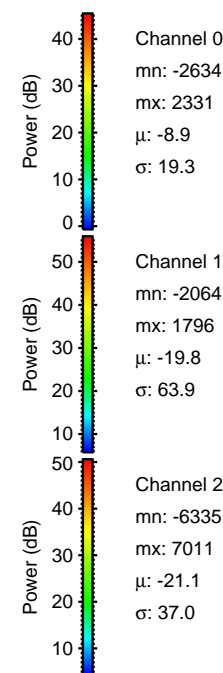
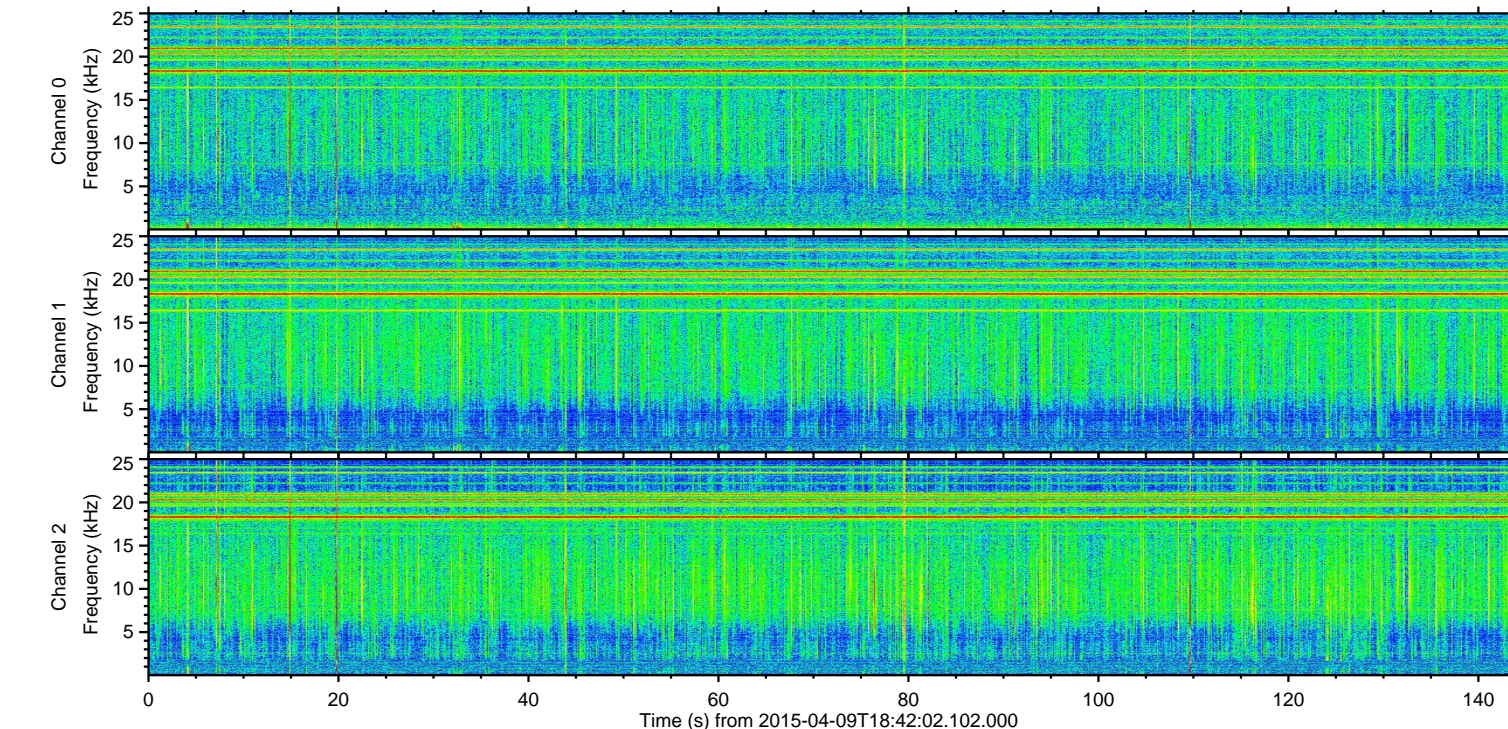
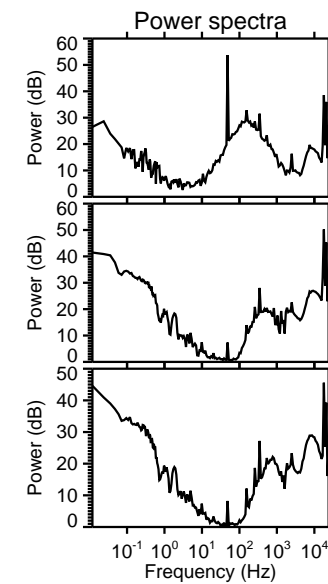
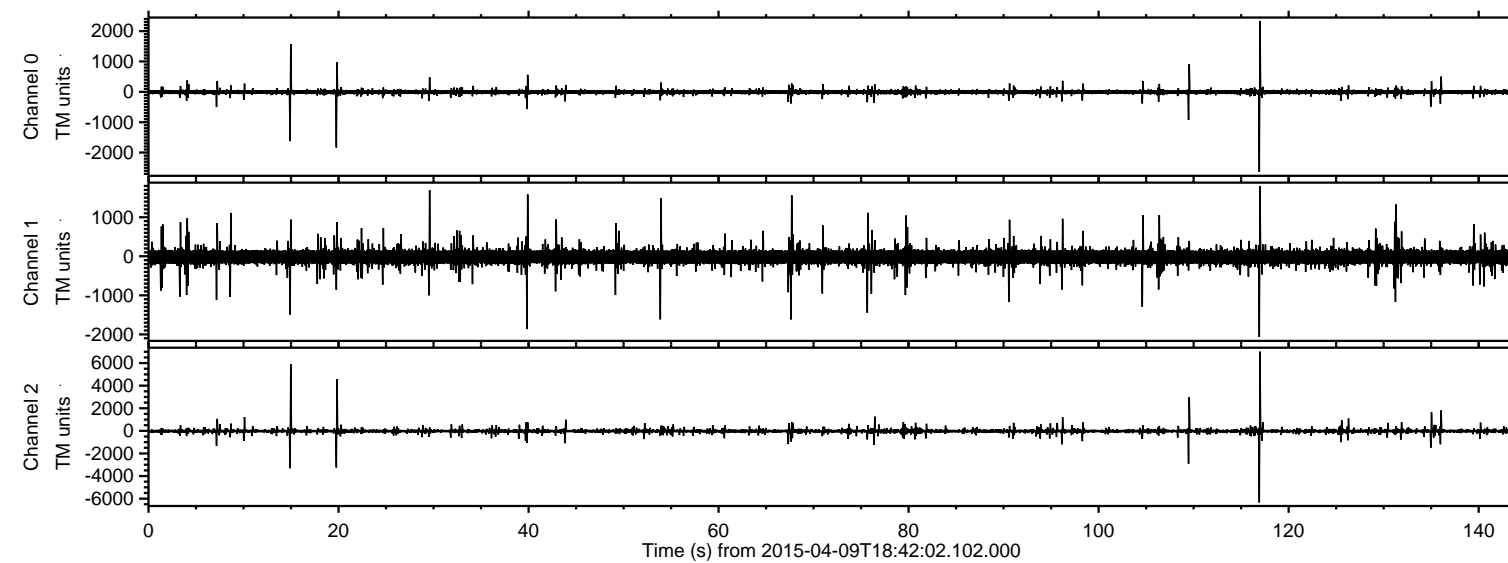


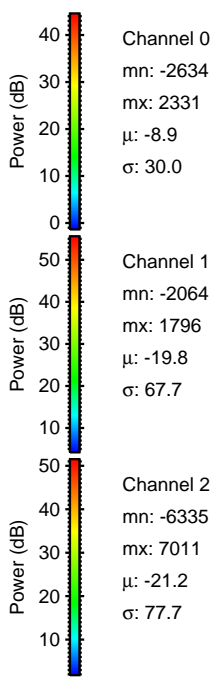
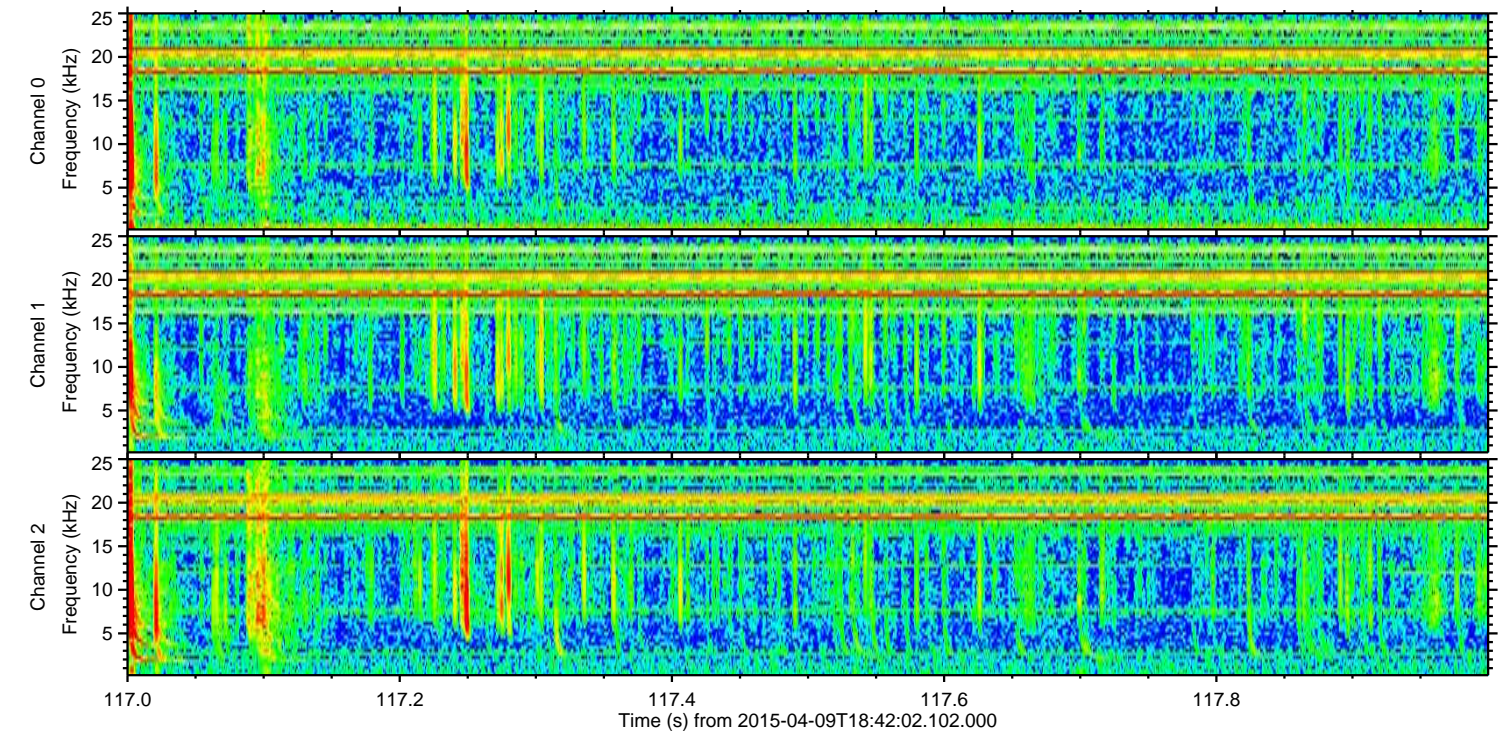
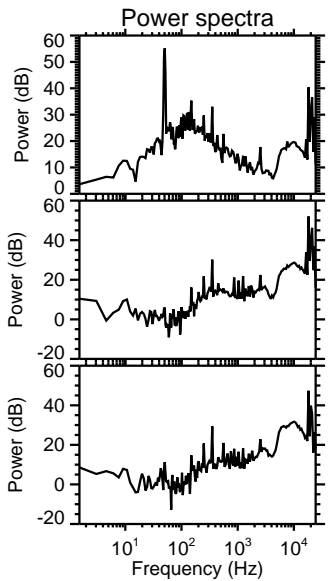
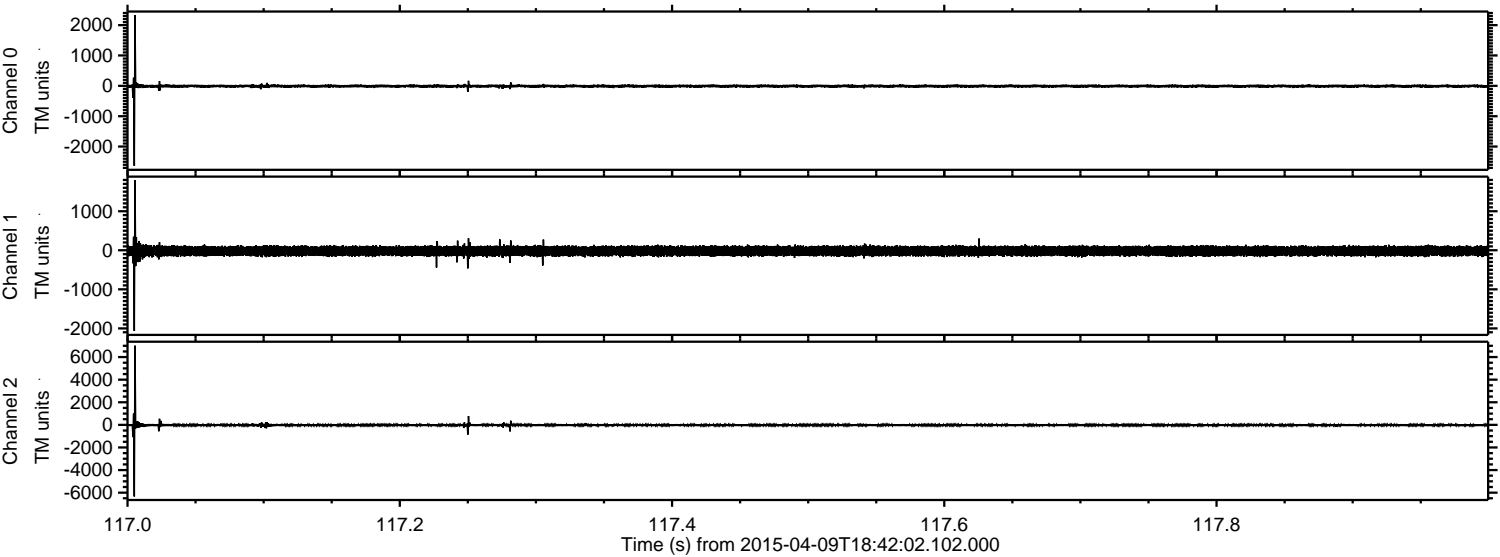
ELMAVAN 3D WAVEFORMS (Measured data sampled at 50 kHz) 49750 packets of 144 samples from 2015-04-09T18:42:02.102.000.

Processed Thu Apr 9 20:49:14 2015 by ELM ver.2012-10-06 from 001__elm20150409_184201__dat00.bin

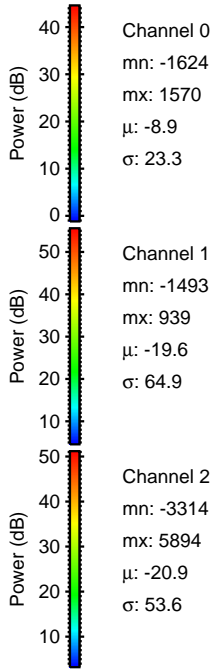
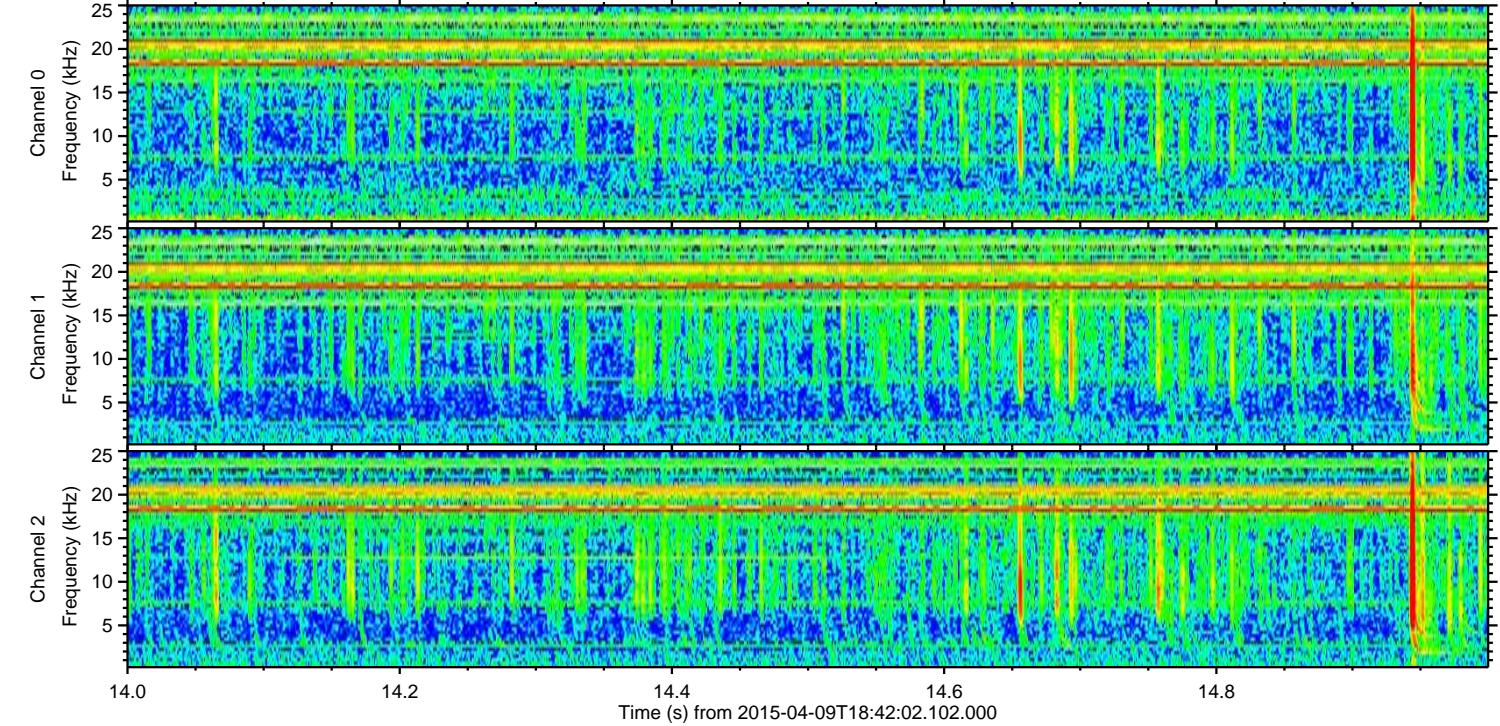
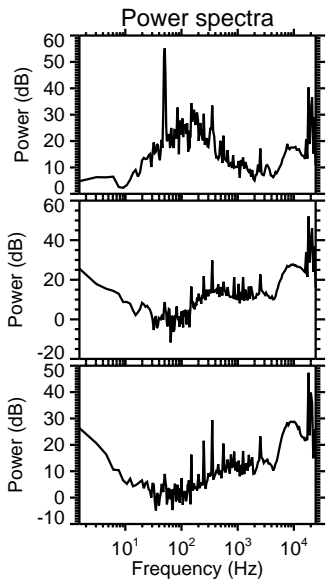
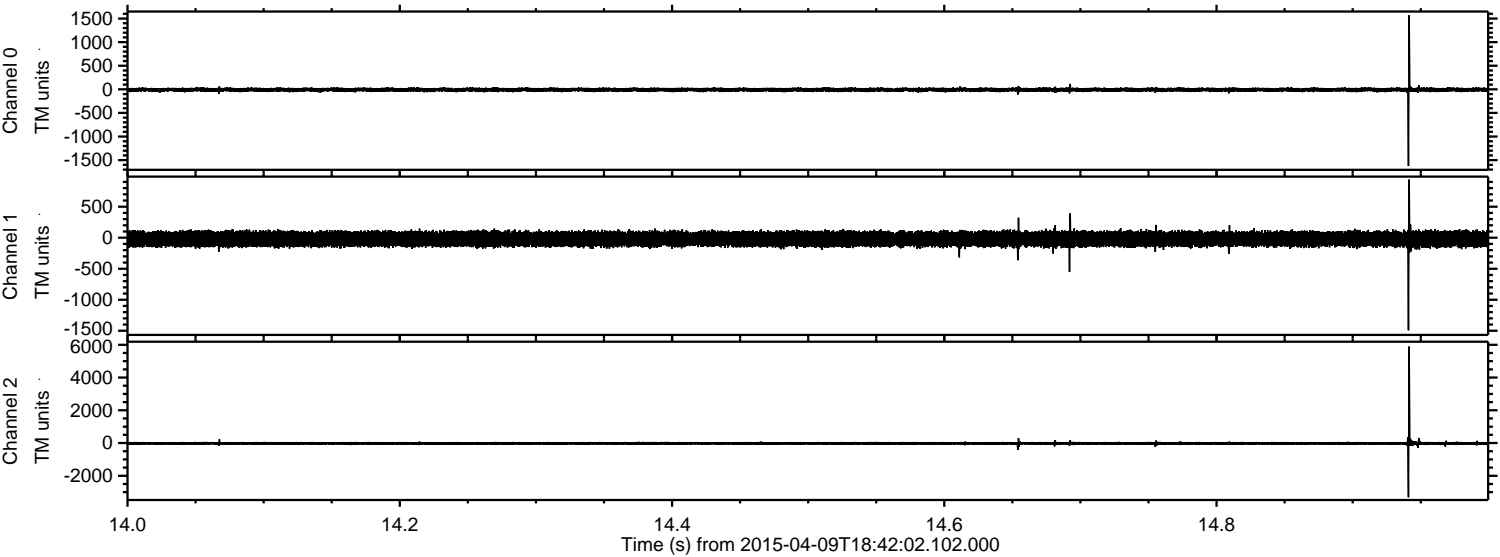


ELMAVAN 3D WAVEFORMS (Measured data sampled at 50 kHz) 49750 packets of 144 samples from 2015-04-09T18:42:02.102.000. Part 118/144

Processed Thu Apr 9 20:49:25 2015 by ELM ver.2012-10-06 from 001__elm20150409_184201__dat00.bin



Processed Thu Apr 9 20:49:26 2015 by ELM ver.2012-10-06 from 001__elm20150409_184201__dat00.bin

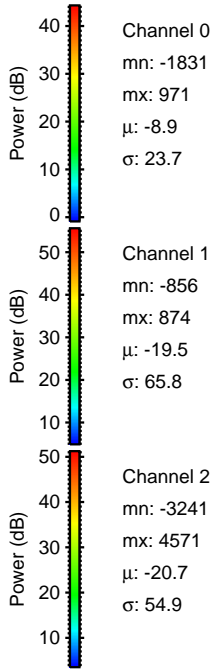
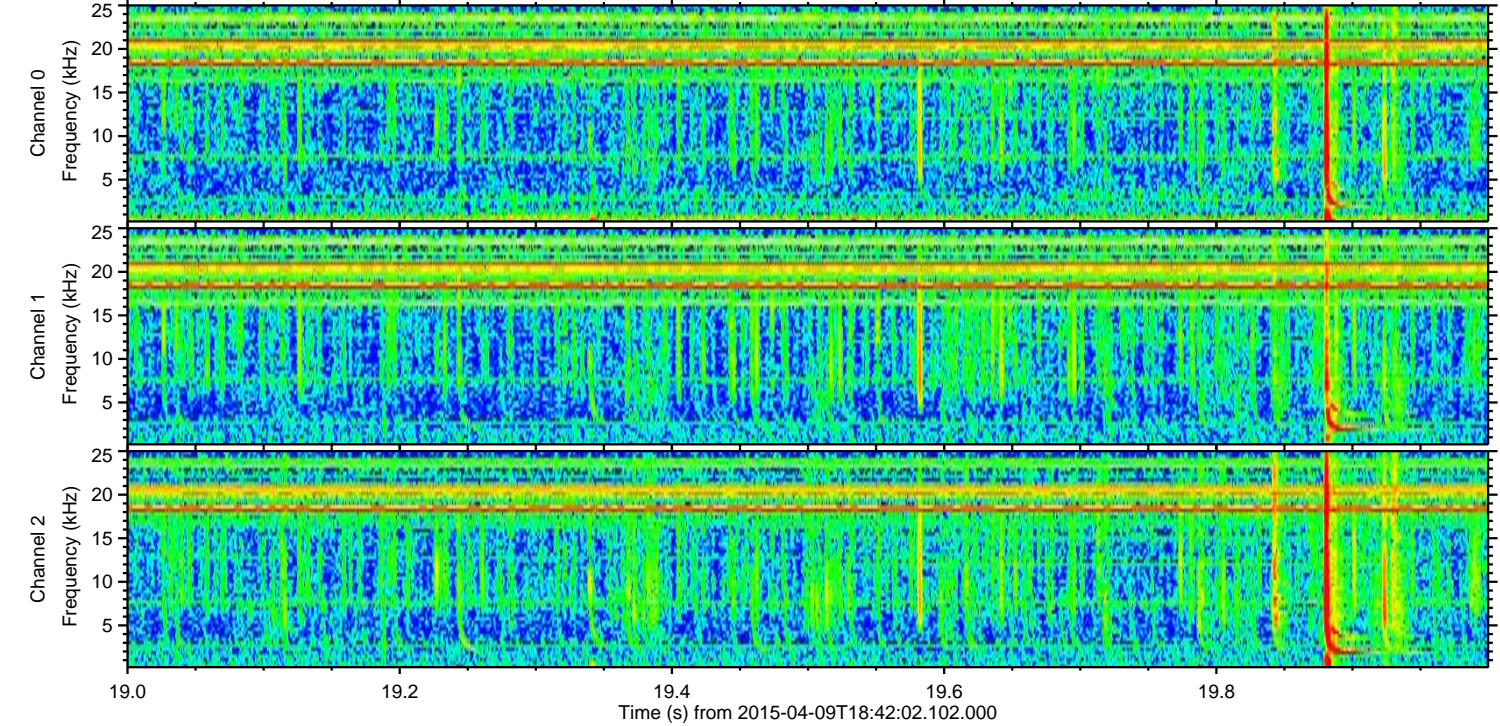
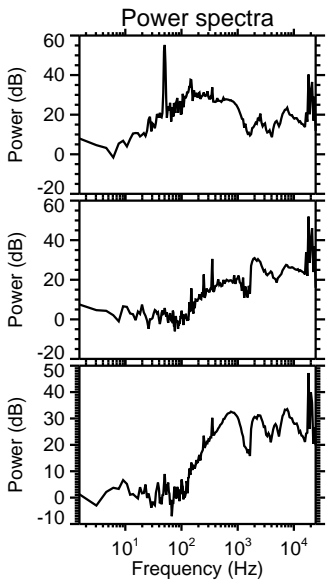
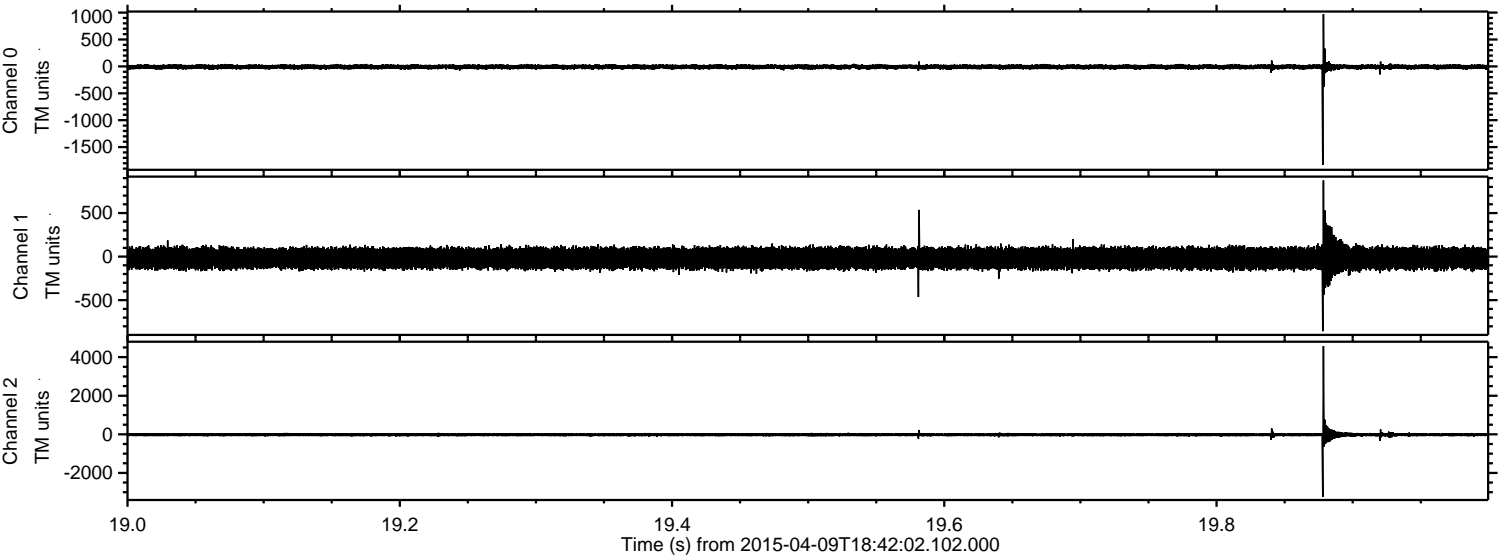


Channel 0
mn: -1624
mx: 1570
 μ : -8.9
 σ : 23.3

Channel 1
mn: -1493
mx: 939
 μ : -19.6
 σ : 64.9

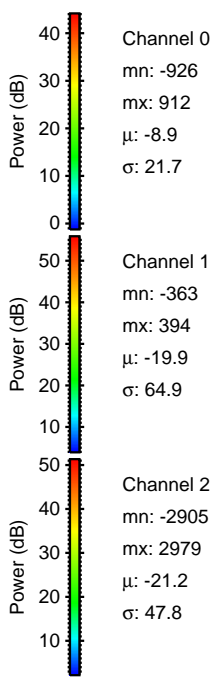
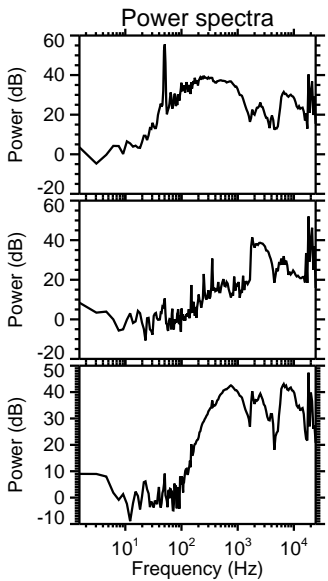
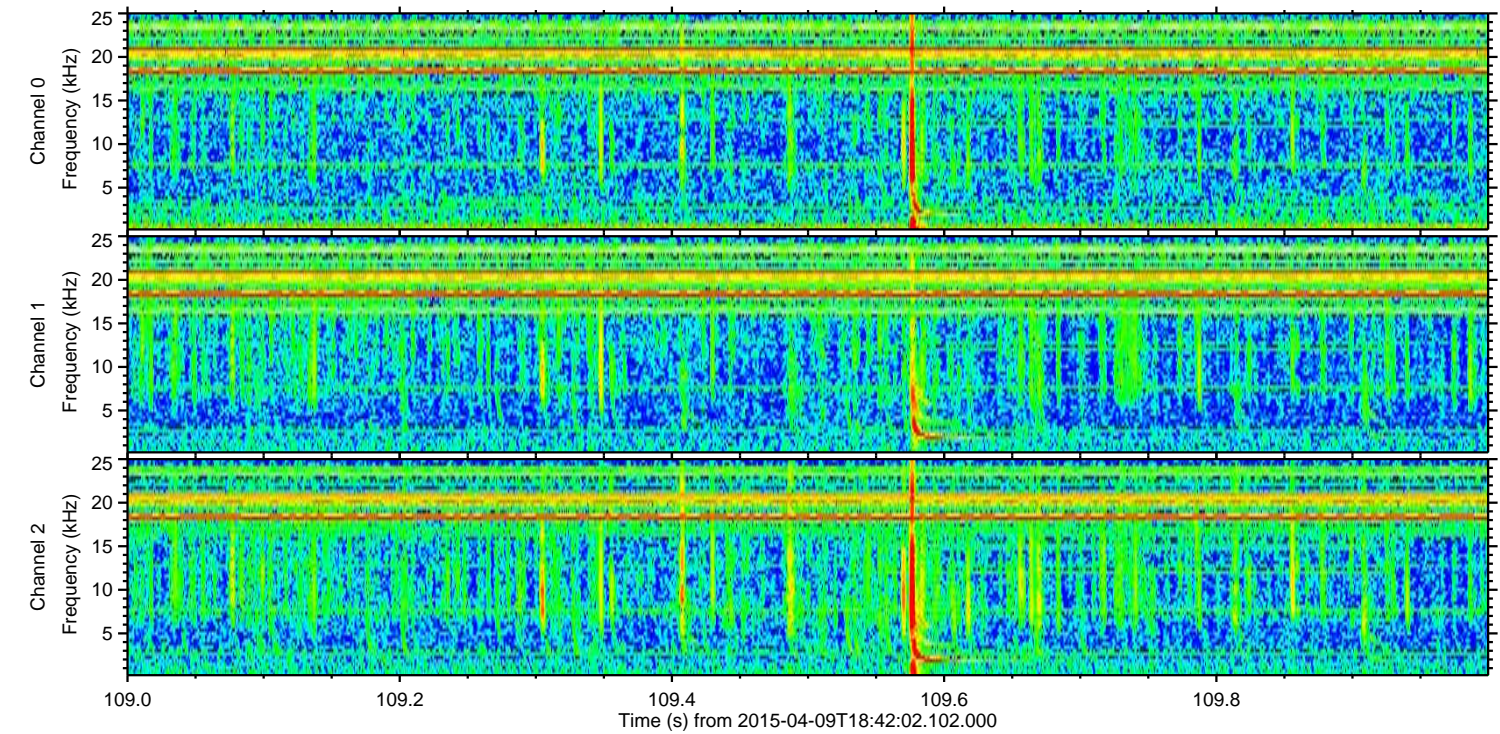
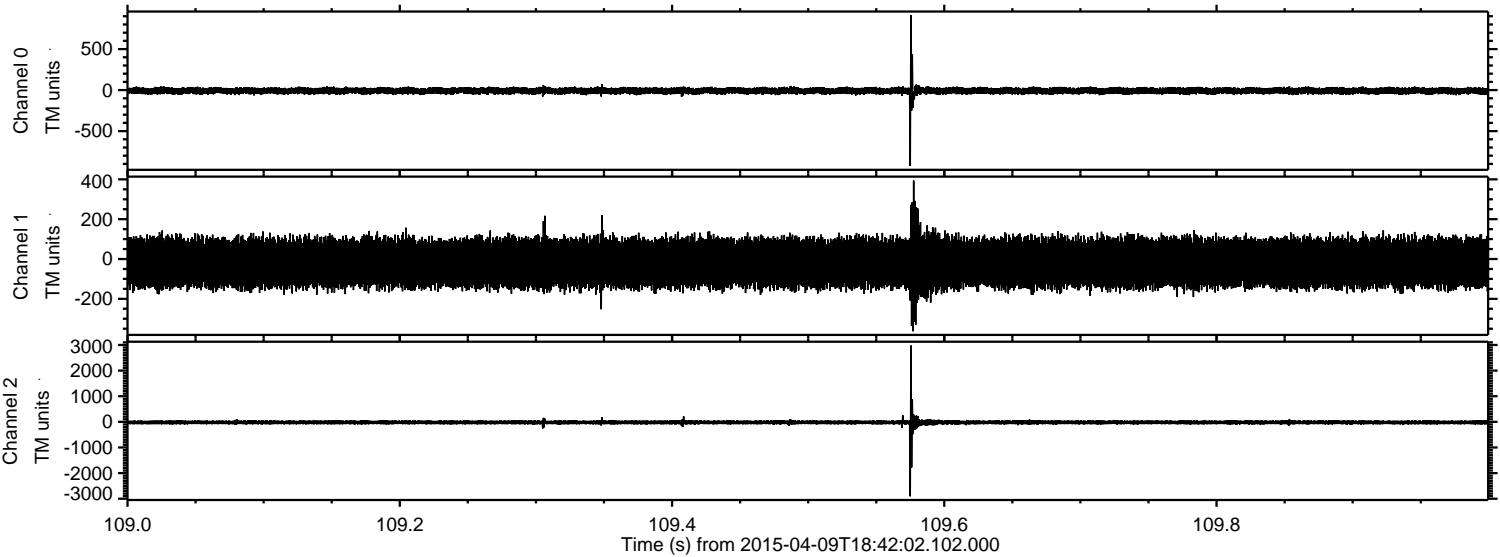
Channel 2
mn: -3314
mx: 5894
 μ : -20.9
 σ : 53.6

Processed Thu Apr 9 20:49:27 2015 by ELM ver.2012-10-06 from 001__elm20150409_184201__dat00.bin



ELMAVAN 3D WAVEFORMS (Measured data sampled at 50 kHz) 49750 packets of 144 samples from 2015-04-09T18:42:02.102.000. Part 110/144

Processed Thu Apr 9 20:49:28 2015 by ELM ver.2012-10-06 from 001__elm20150409_184201__dat00.bin



Channel 0

mn: -926
mx: 912
 μ : -8.9
 σ : 21.7

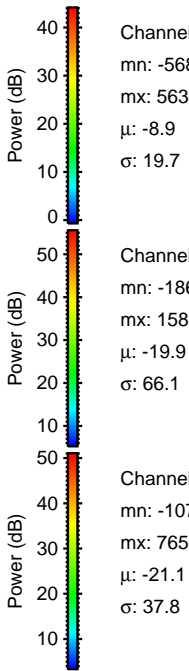
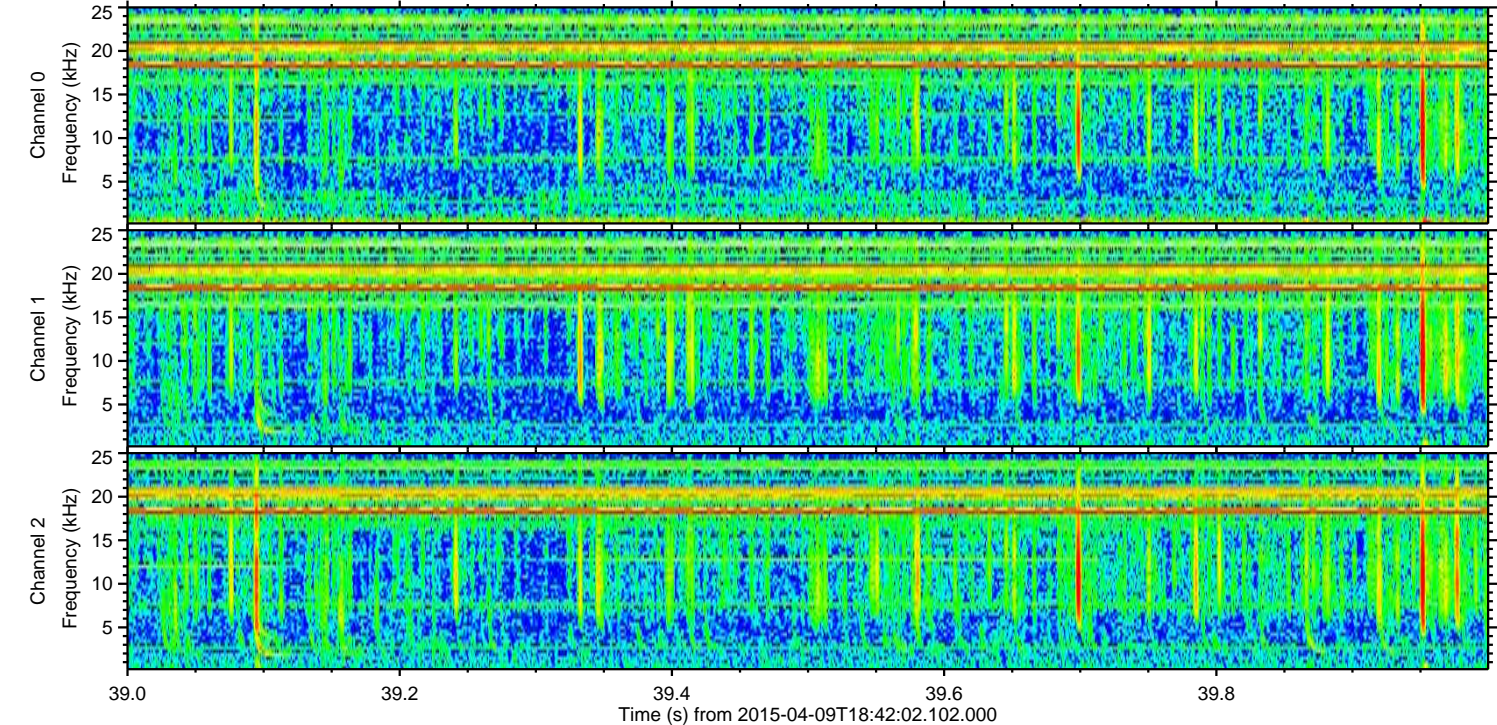
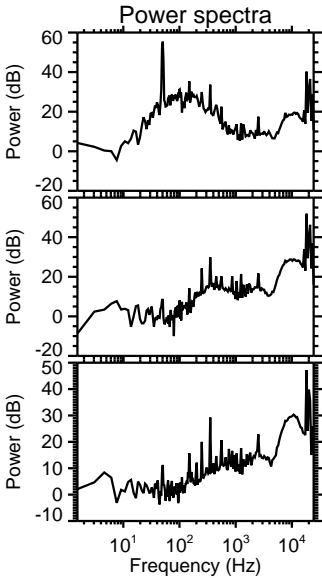
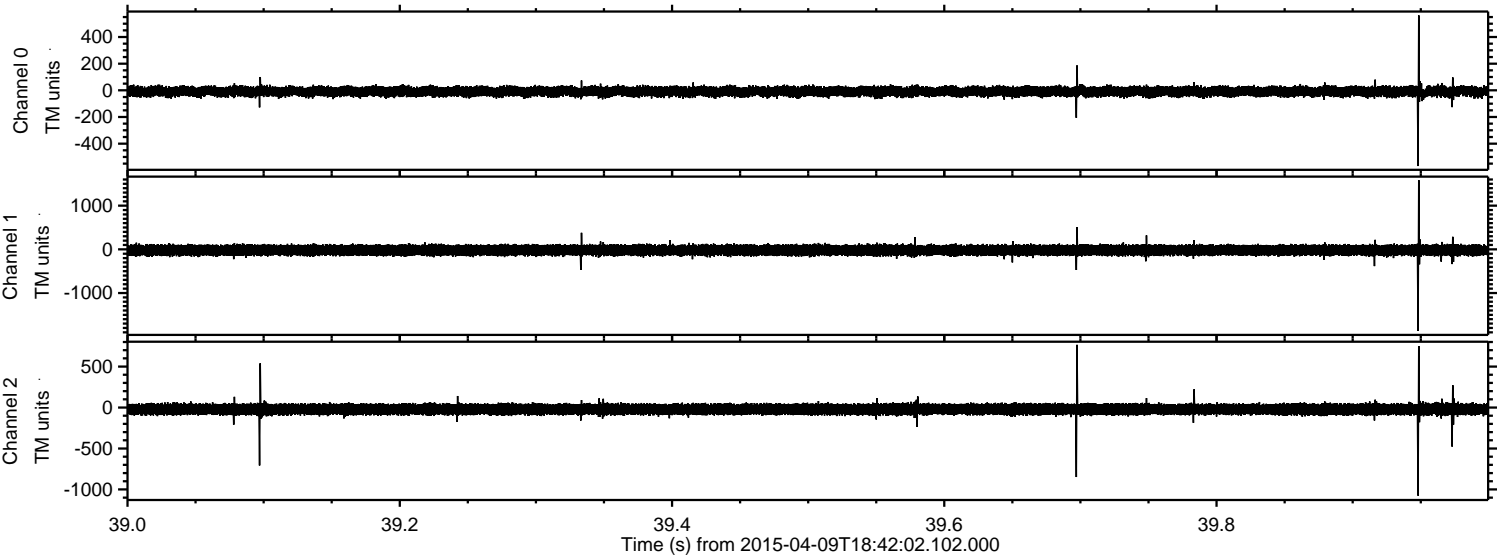
Channel 1

mn: -363
mx: 394
 μ : -19.9
 σ : 64.9

Channel 2

mn: -2905
mx: 2979
 μ : -21.2
 σ : 47.8

Processed Thu Apr 9 20:49:29 2015 by ELM ver.2012-10-06 from 001__elm20150409_184201__dat00.bin



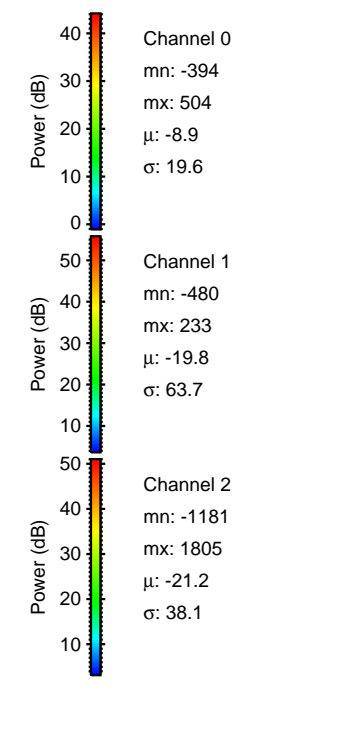
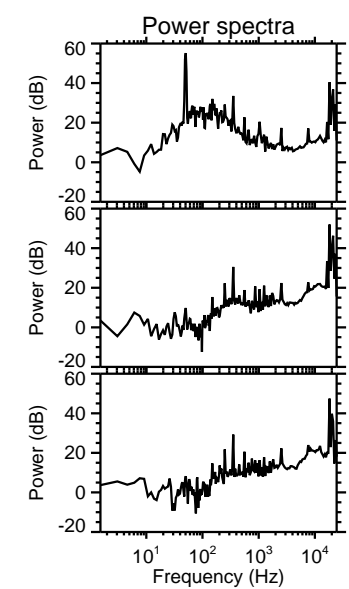
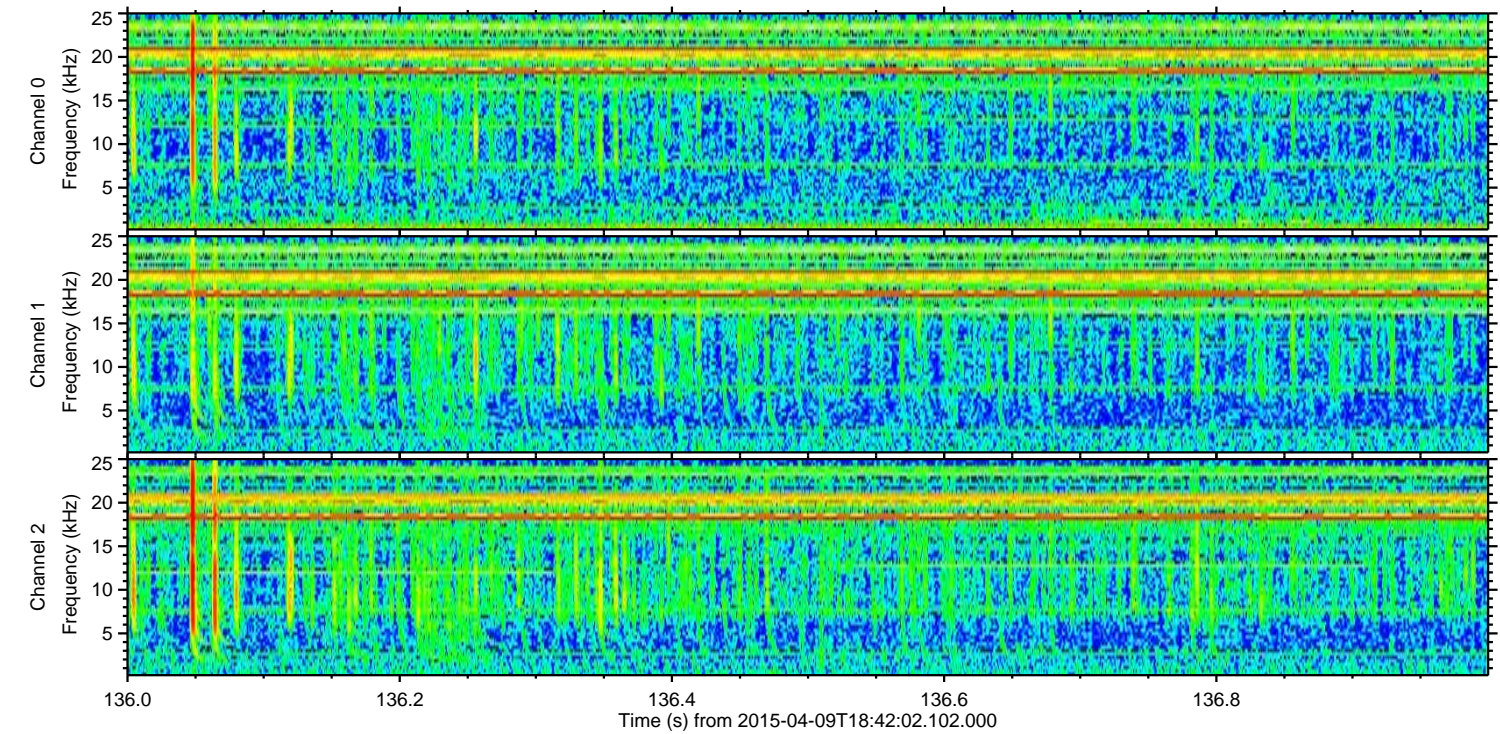
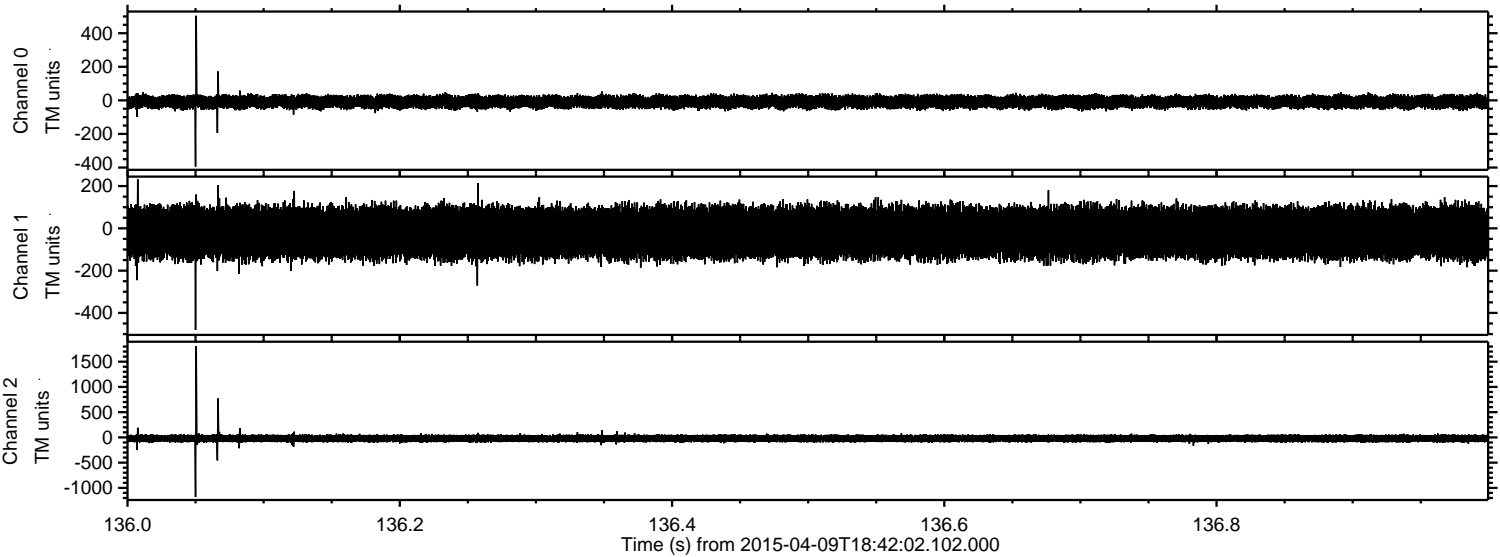
Channel 0
mn: -568
mx: 563
 μ : -8.9
 σ : 19.7

Channel 1
mn: -1866
mx: 1586
 μ : -19.9
 σ : 66.1

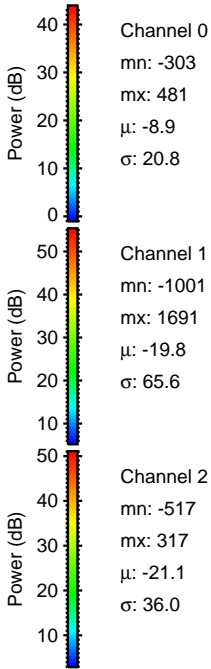
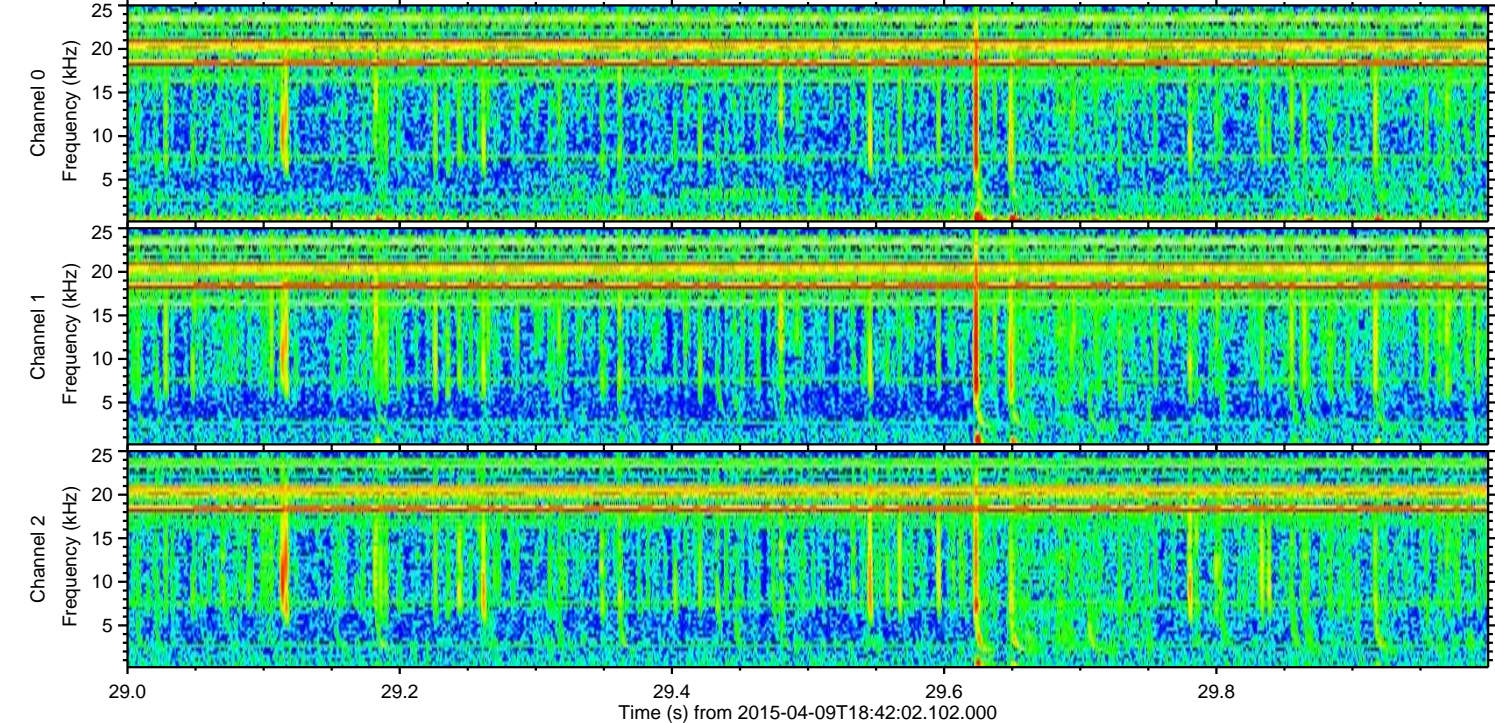
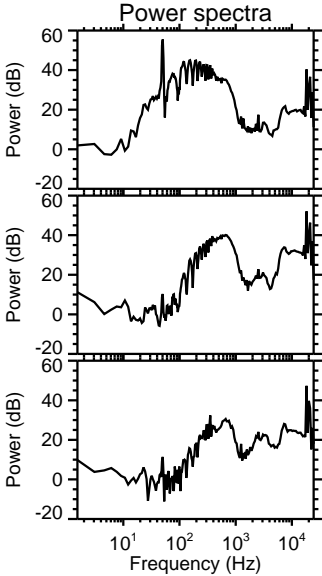
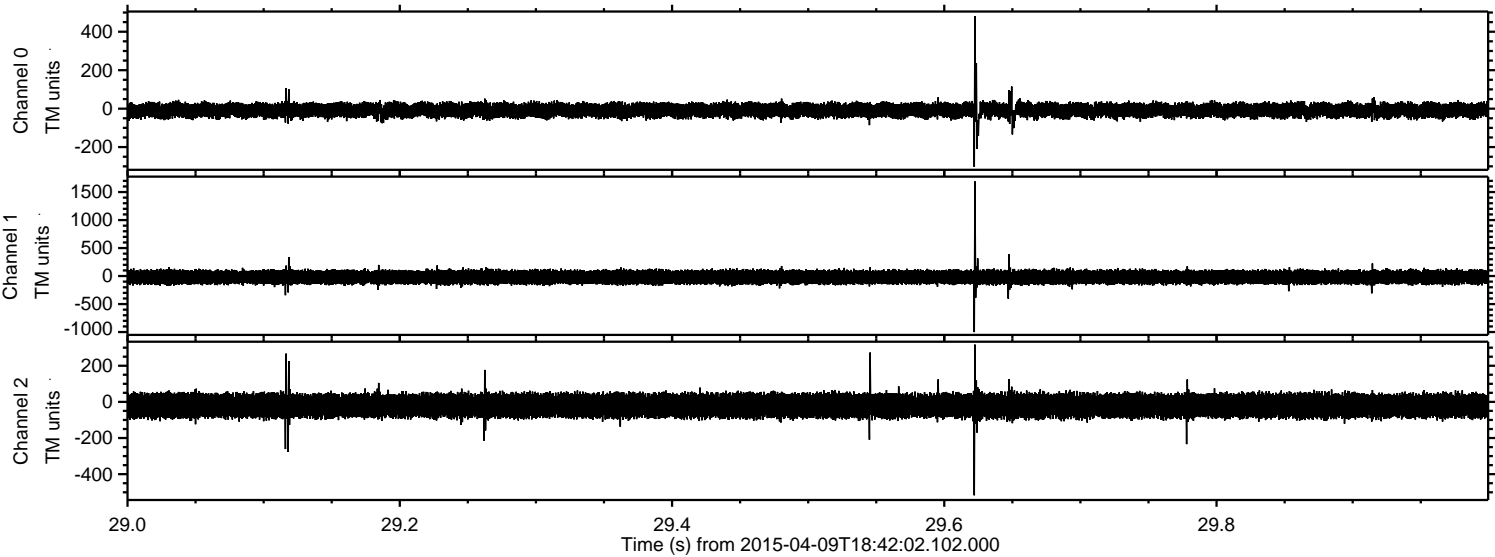
Channel 2
mn: -1075
mx: 765
 μ : -21.1
 σ : 37.8

ELMAVAN 3D WAVEFORMS (Measured data sampled at 50 kHz) 49750 packets of 144 samples from 2015-04-09T18:42:02.102.000. Part 137/144

Processed Thu Apr 9 20:49:30 2015 by ELM ver.2012-10-06 from 001__elm20150409_184201__dat00.bin

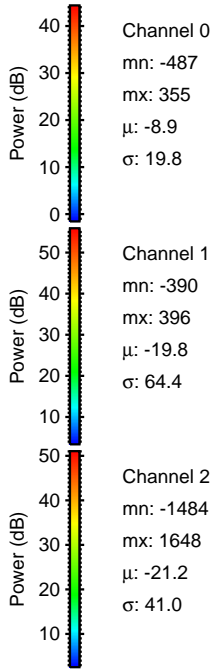
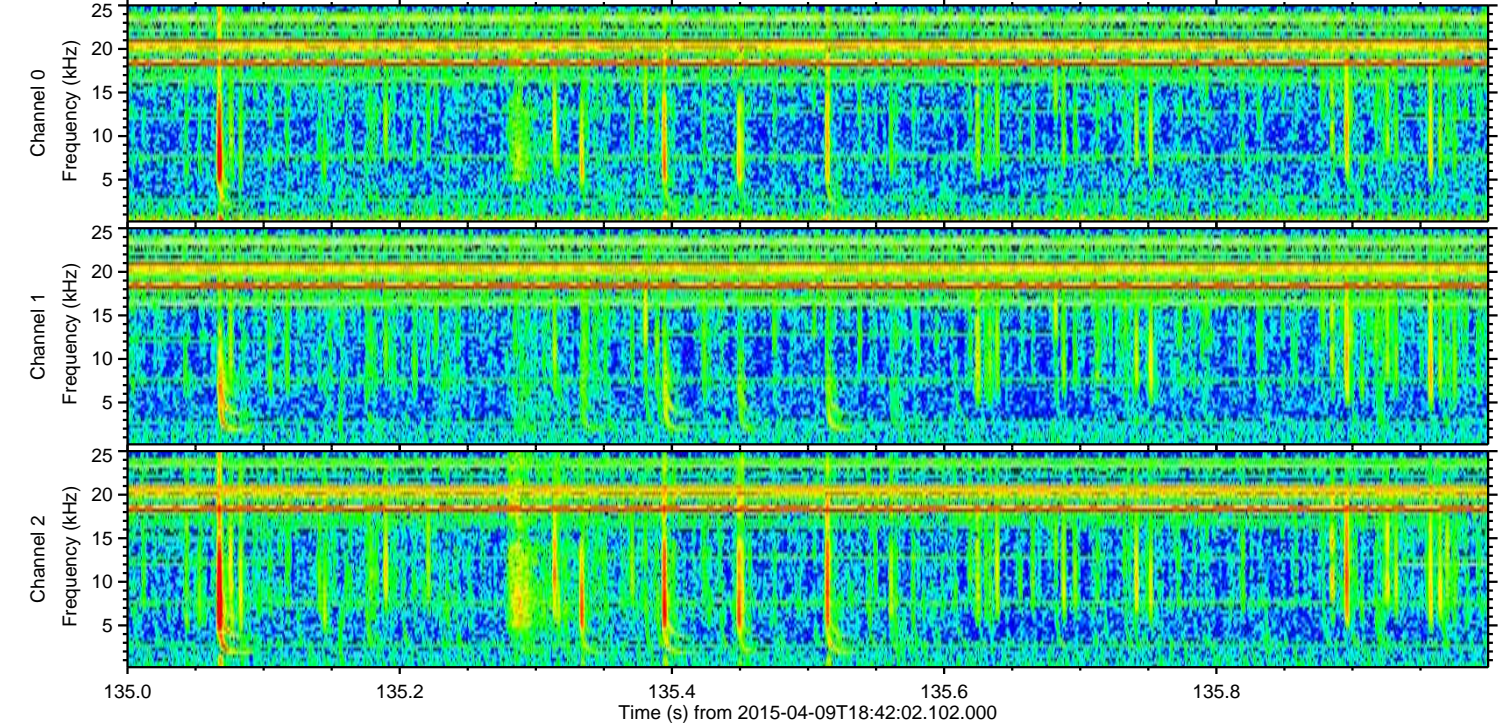
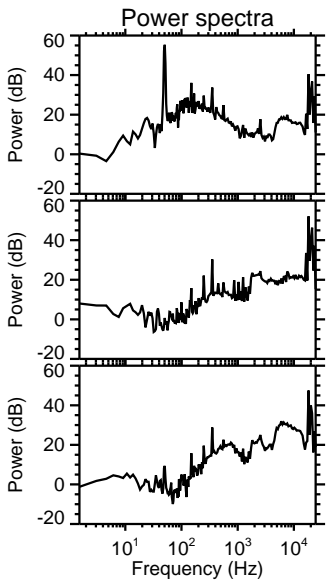
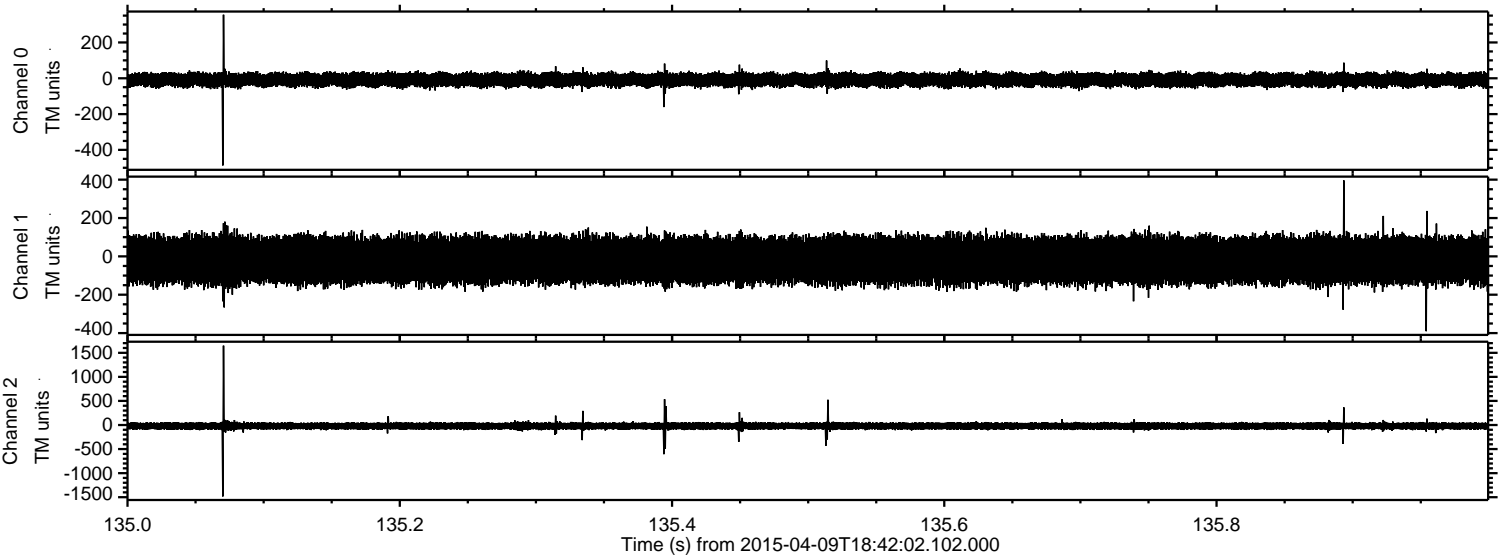


Processed Thu Apr 9 20:49:31 2015 by ELM ver.2012-10-06 from 001__elm20150409_184201__dat00.bin



ELMAVAN 3D WAVEFORMS (Measured data sampled at 50 kHz) 49750 packets of 144 samples from 2015-04-09T18:42:02.102.000. Part 136/144

Processed Thu Apr 9 20:49:32 2015 by ELM ver.2012-10-06 from 001__elm20150409_184201__dat00.bin

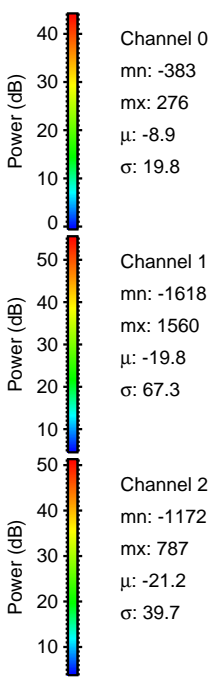
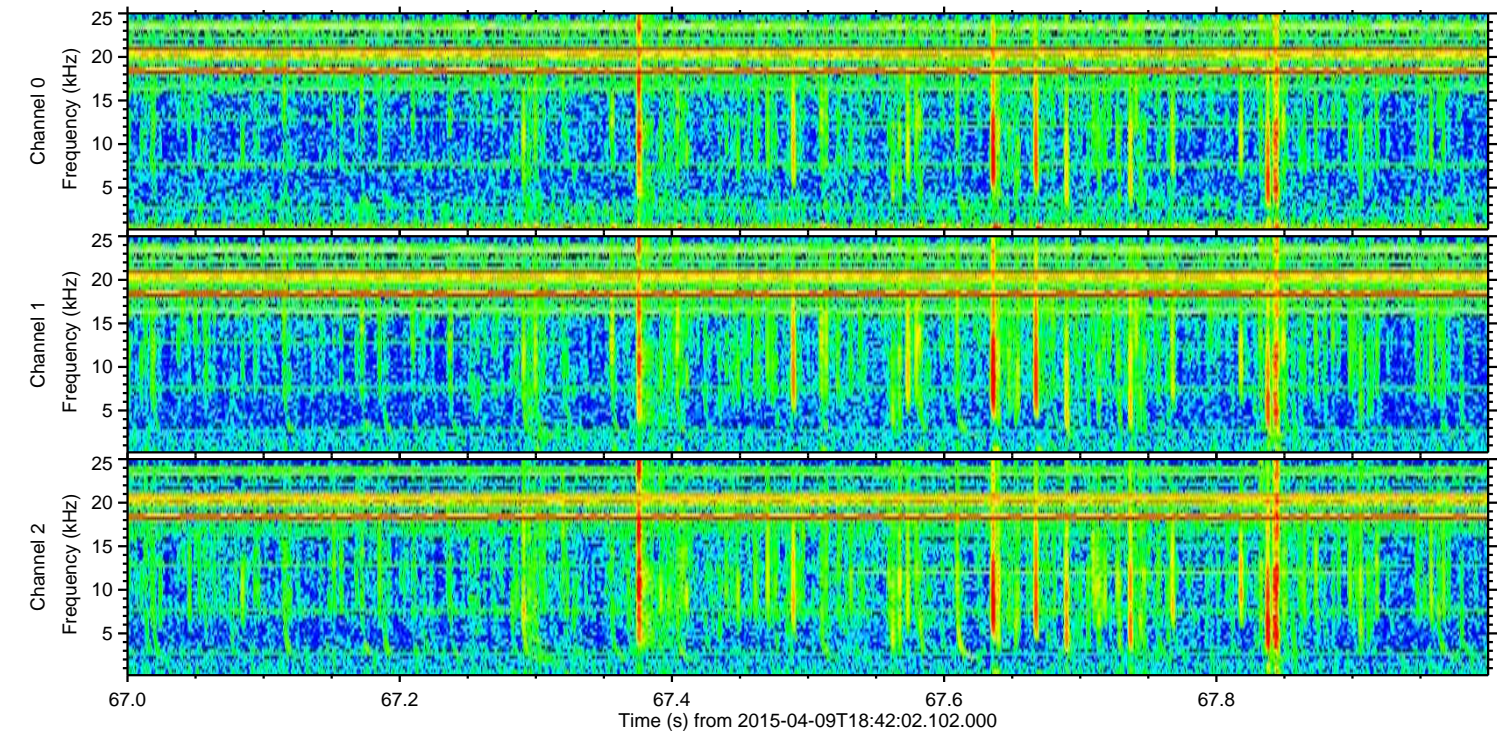
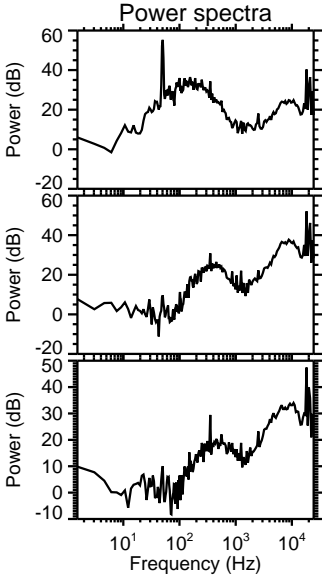
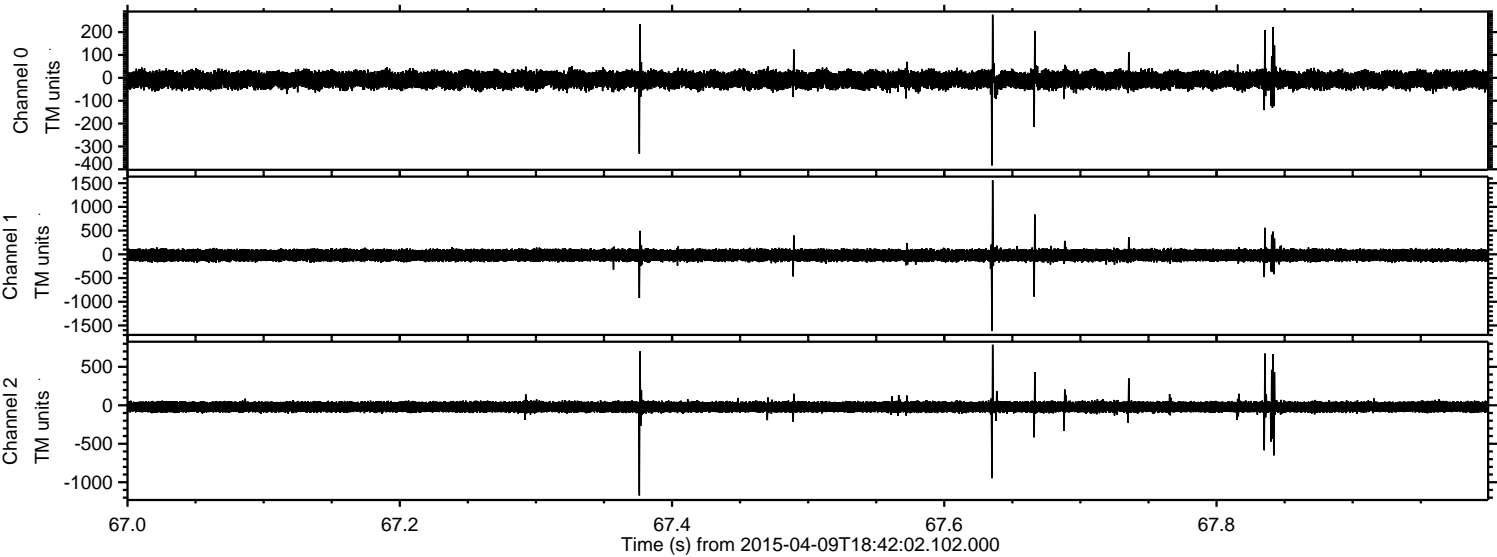


Channel 0
mn: -487
mx: 355
 μ : -8.9
 σ : 19.8

Channel 1
mn: -390
mx: 396
 μ : -19.8
 σ : 64.4

Channel 2
mn: -1484
mx: 1648
 μ : -21.2
 σ : 41.0

Processed Thu Apr 9 20:49:33 2015 by ELM ver.2012-10-06 from 001__elm20150409_184201__dat00.bin



Channel 0
mn: -383
mx: 276
 μ : -8.9
 σ : 19.8

Channel 1
mn: -1618
mx: 1560
 μ : -19.8
 σ : 67.3

Channel 2
mn: -1172
mx: 787
 μ : -21.2
 σ : 39.7

Processed Thu Apr 9 20:49:34 2015 by ELM ver.2012-10-06 from 001__elm20150409_184201__dat00.bin

