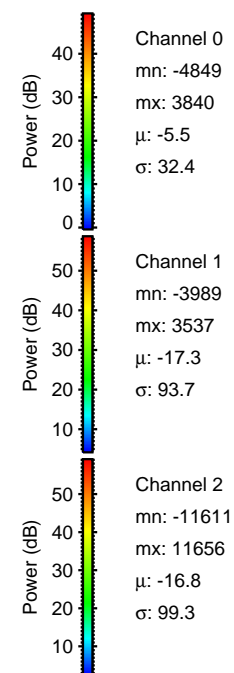
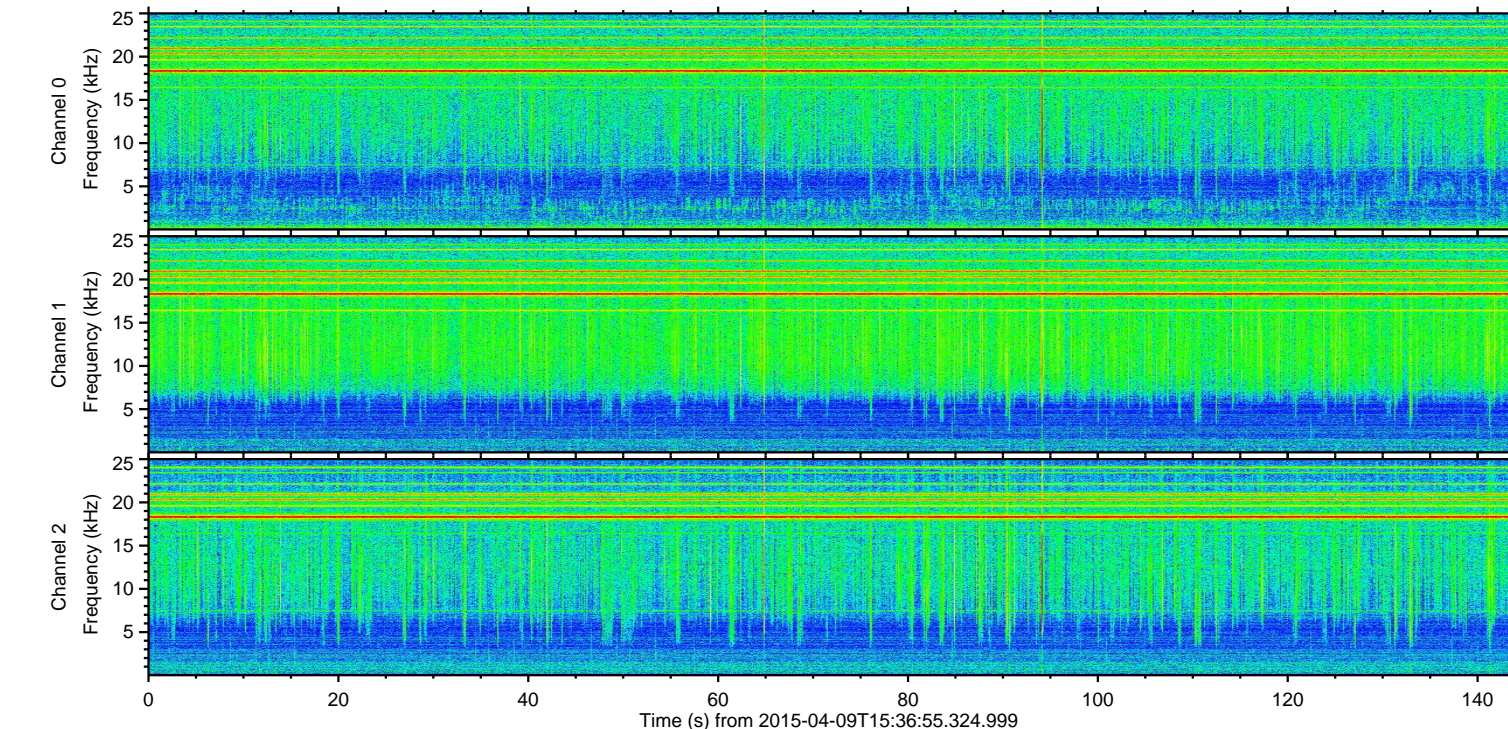
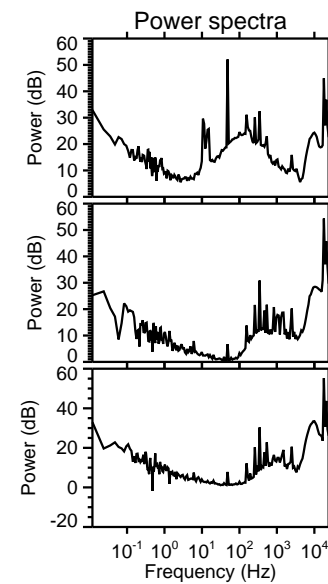
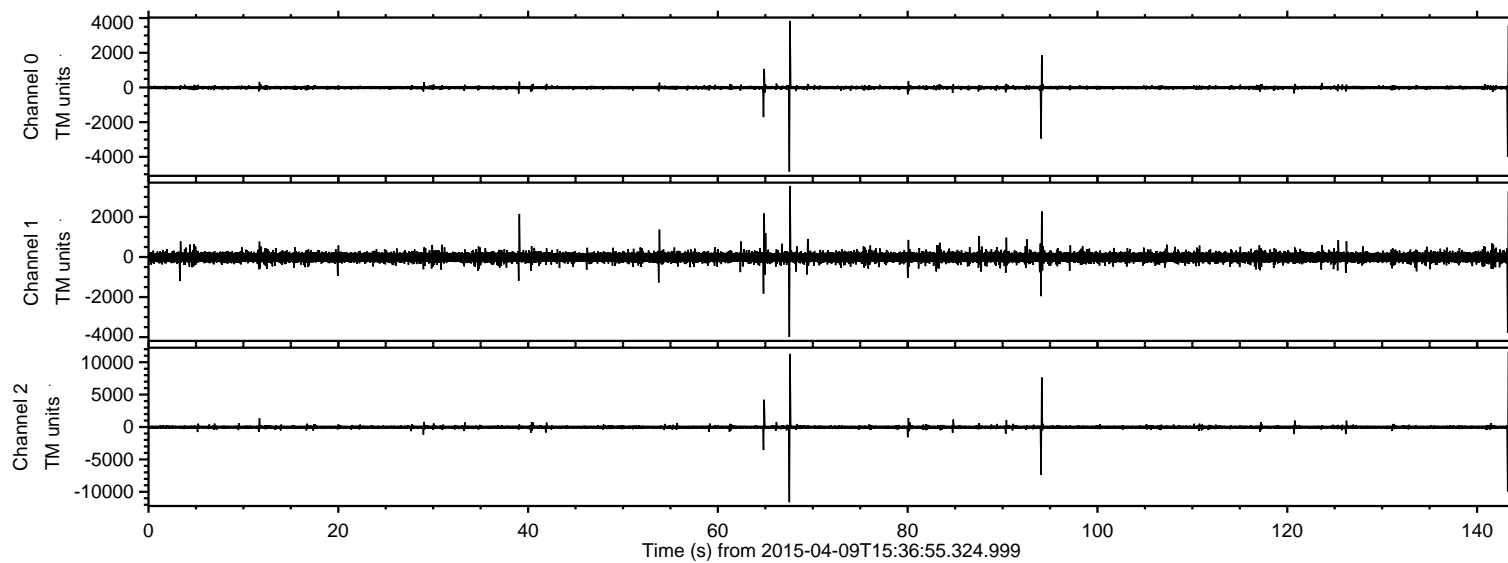
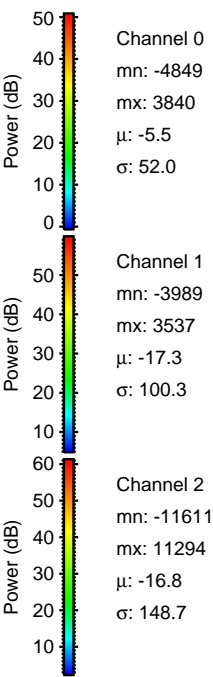
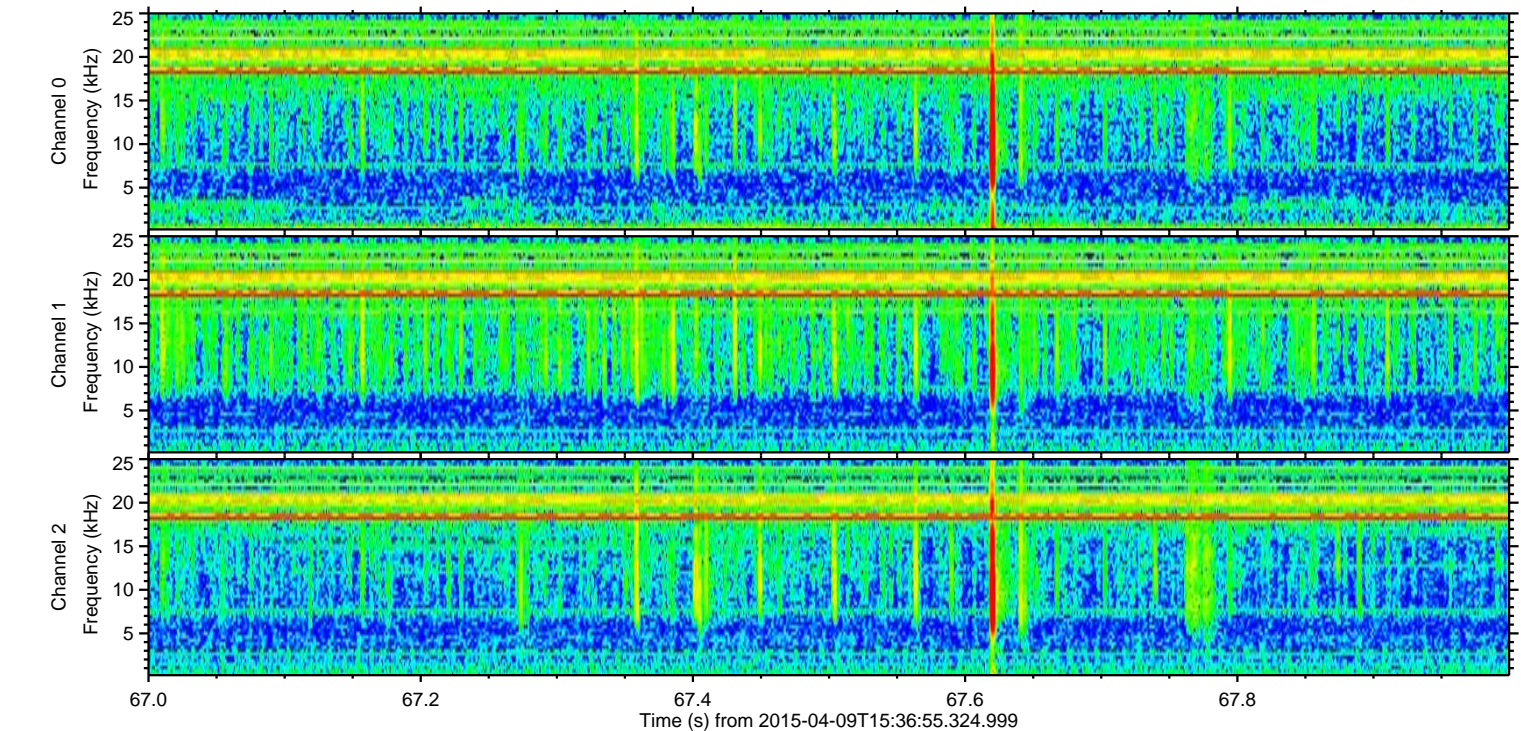
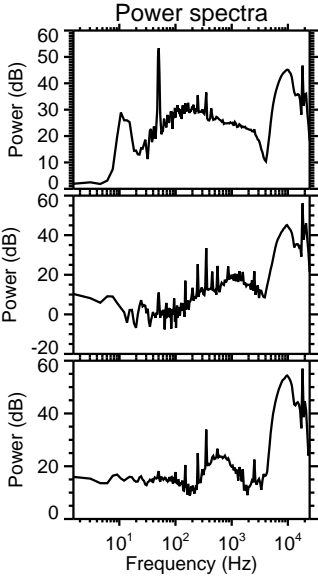
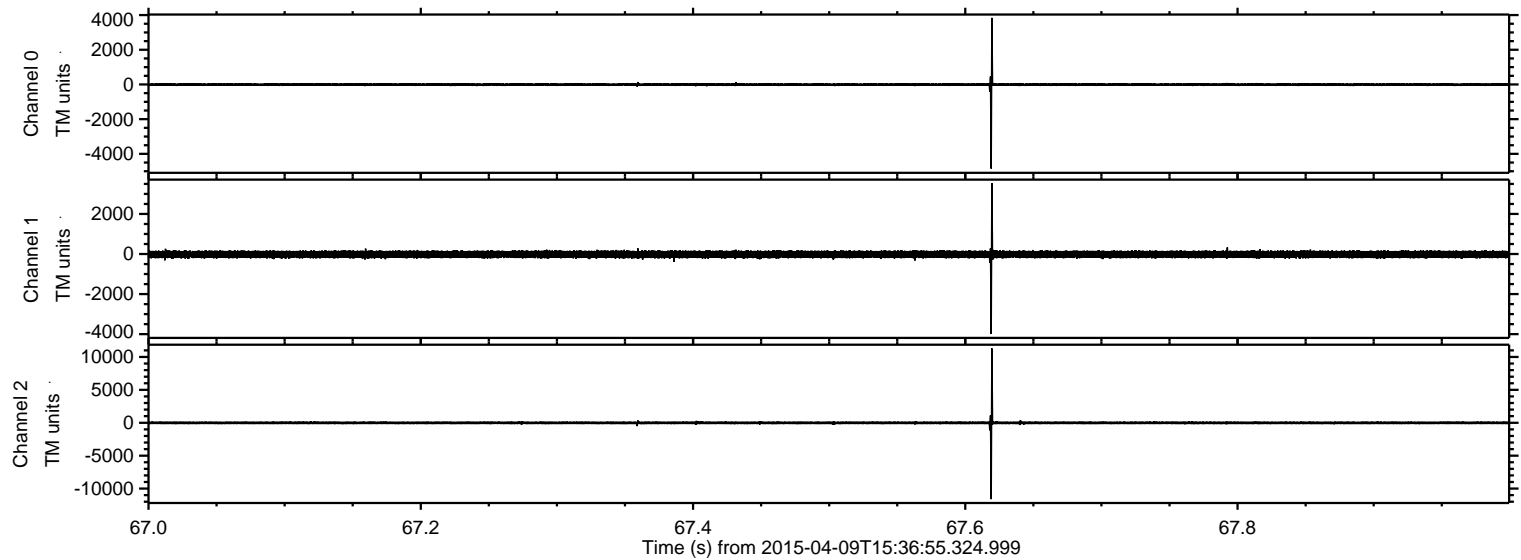


ELMAVAN 3D WAVEFORMS (Measured data sampled at 50 kHz) 49785 packets of 144 samples from 2015-04-09T15:36:55.324.999.

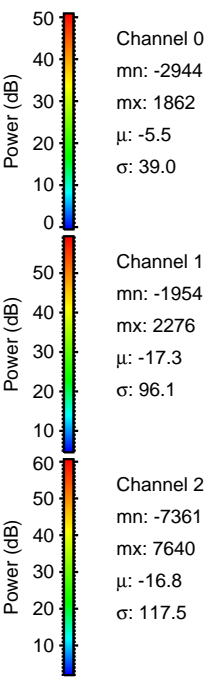
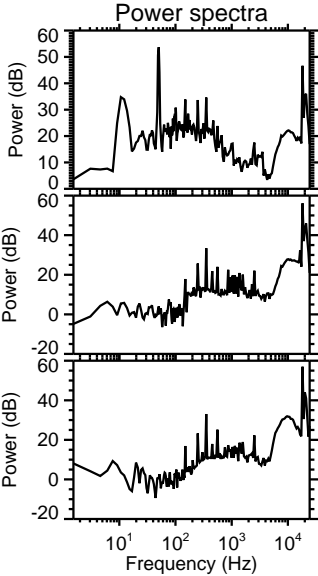
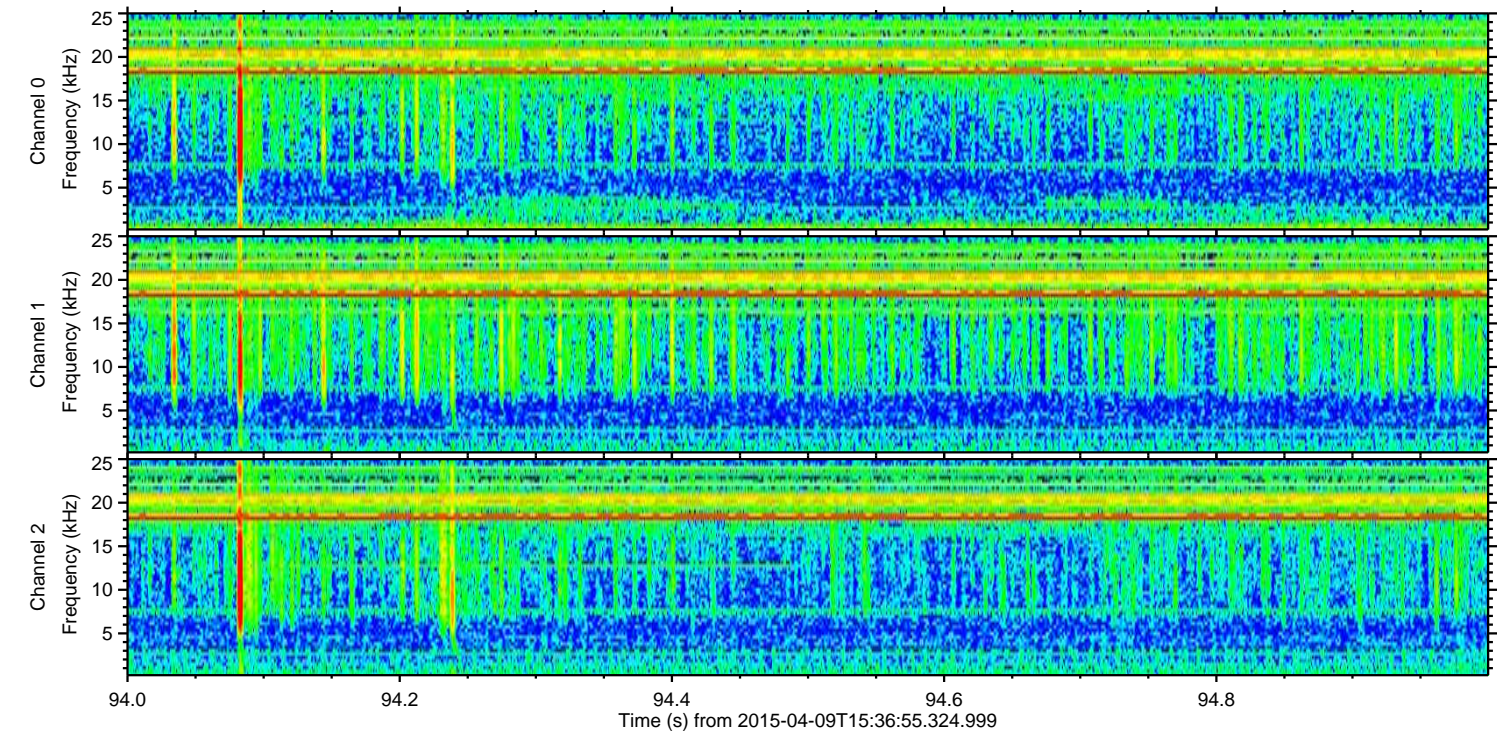
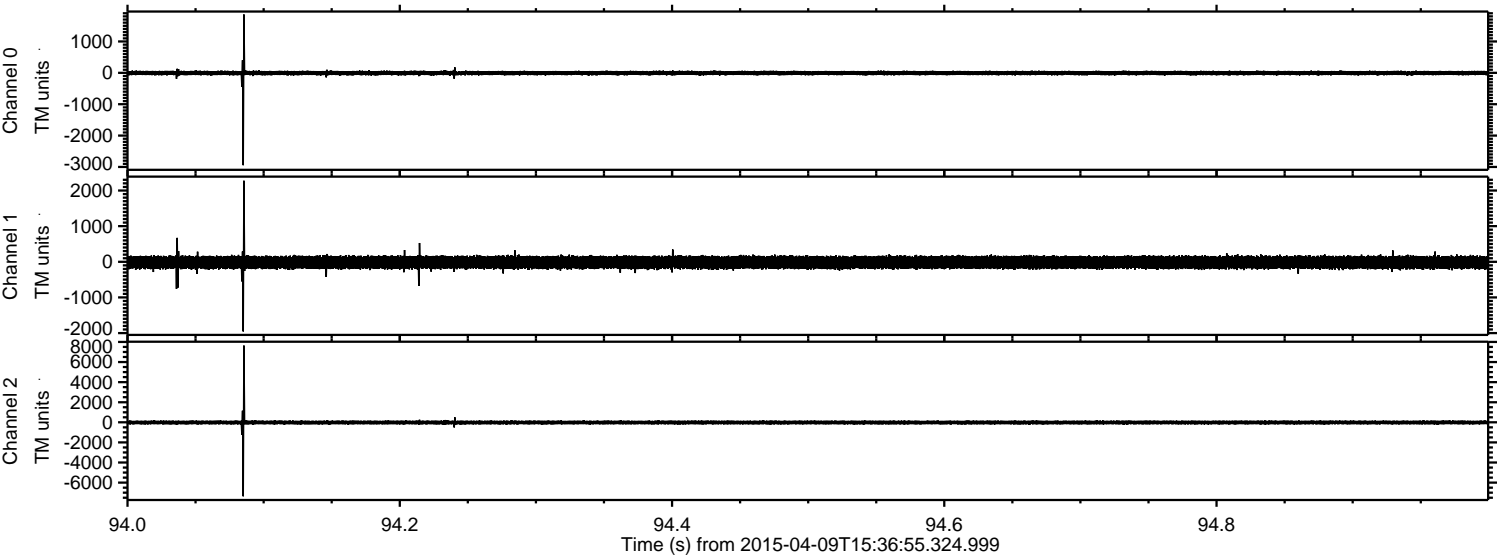
Processed Thu Apr 9 17:43:58 2015 by ELM ver.2012-10-06 from 001__elm20150409_153654__dat00.bin



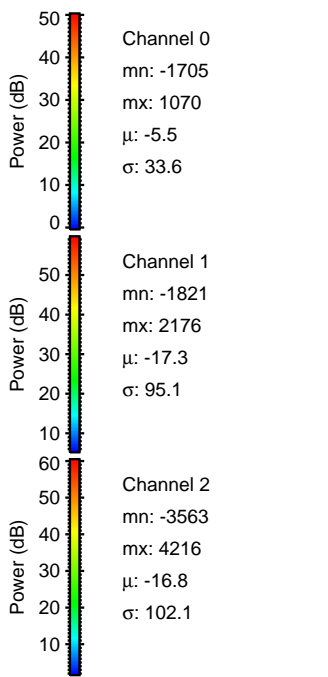
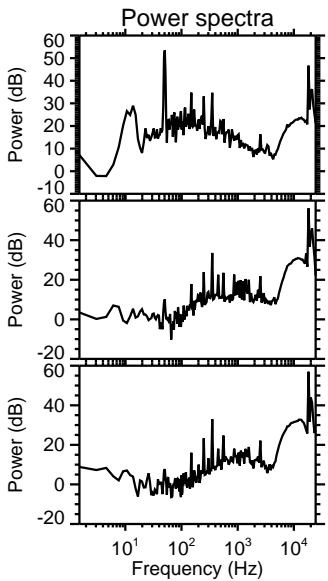
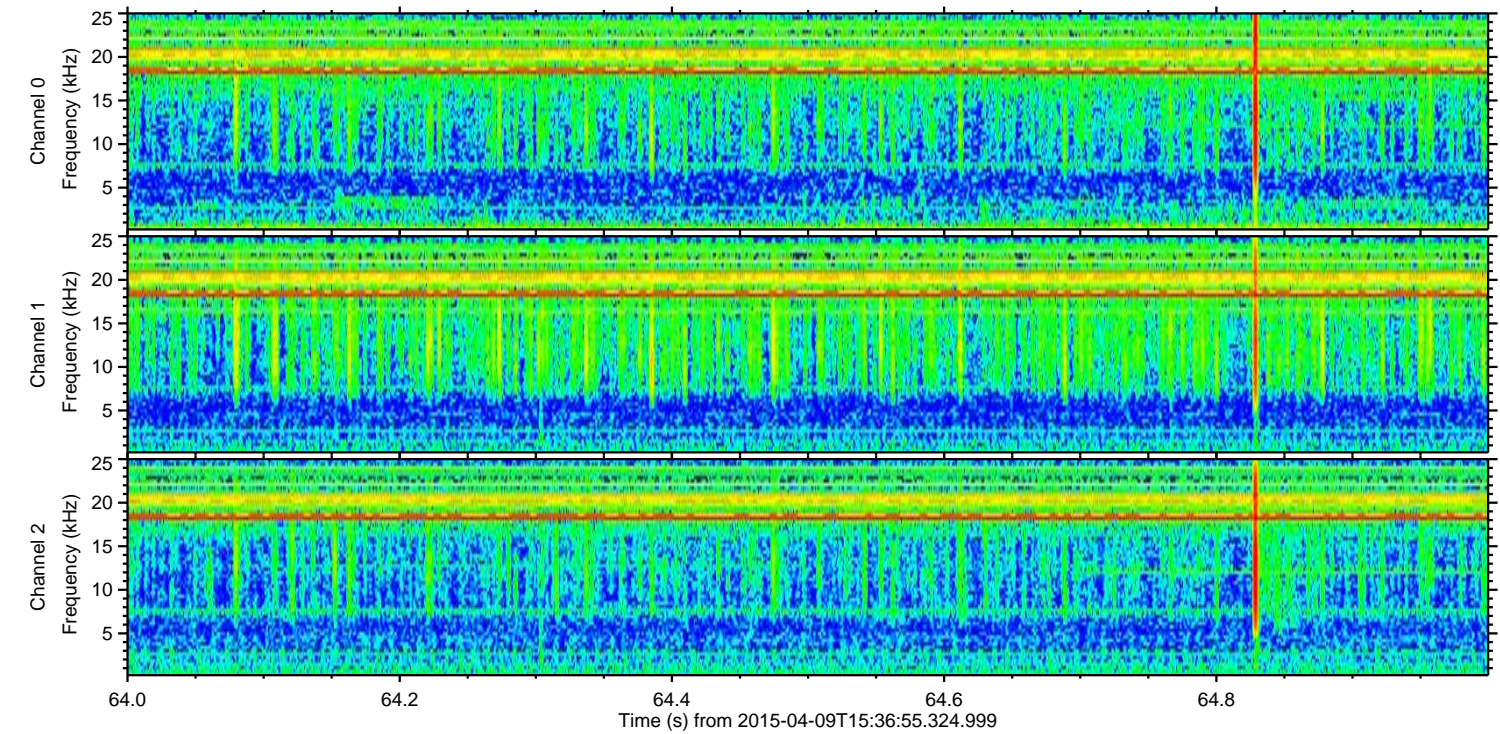
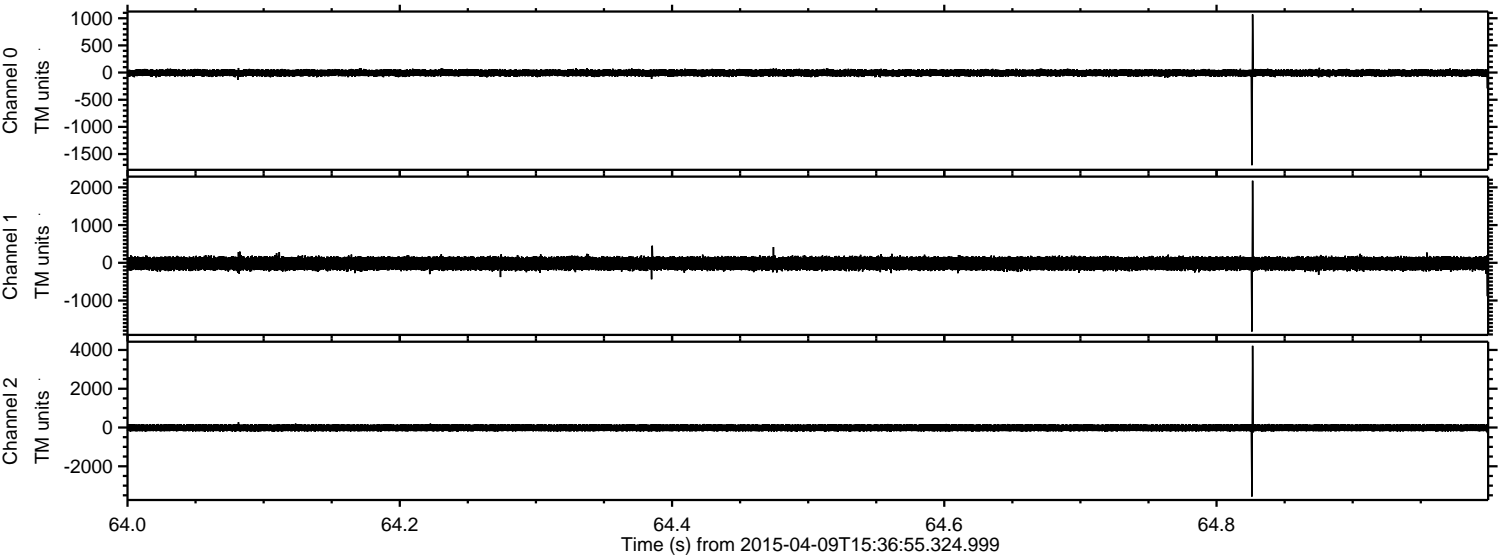
Processed Thu Apr 9 17:44:10 2015 by ELM ver.2012-10-06 from 001__elm20150409_153654__dat00.bin



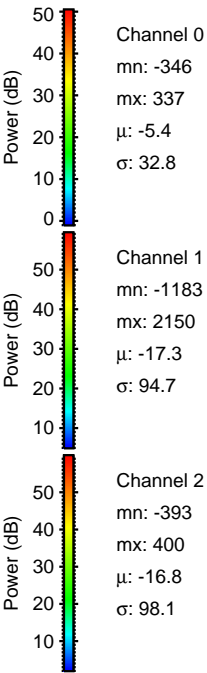
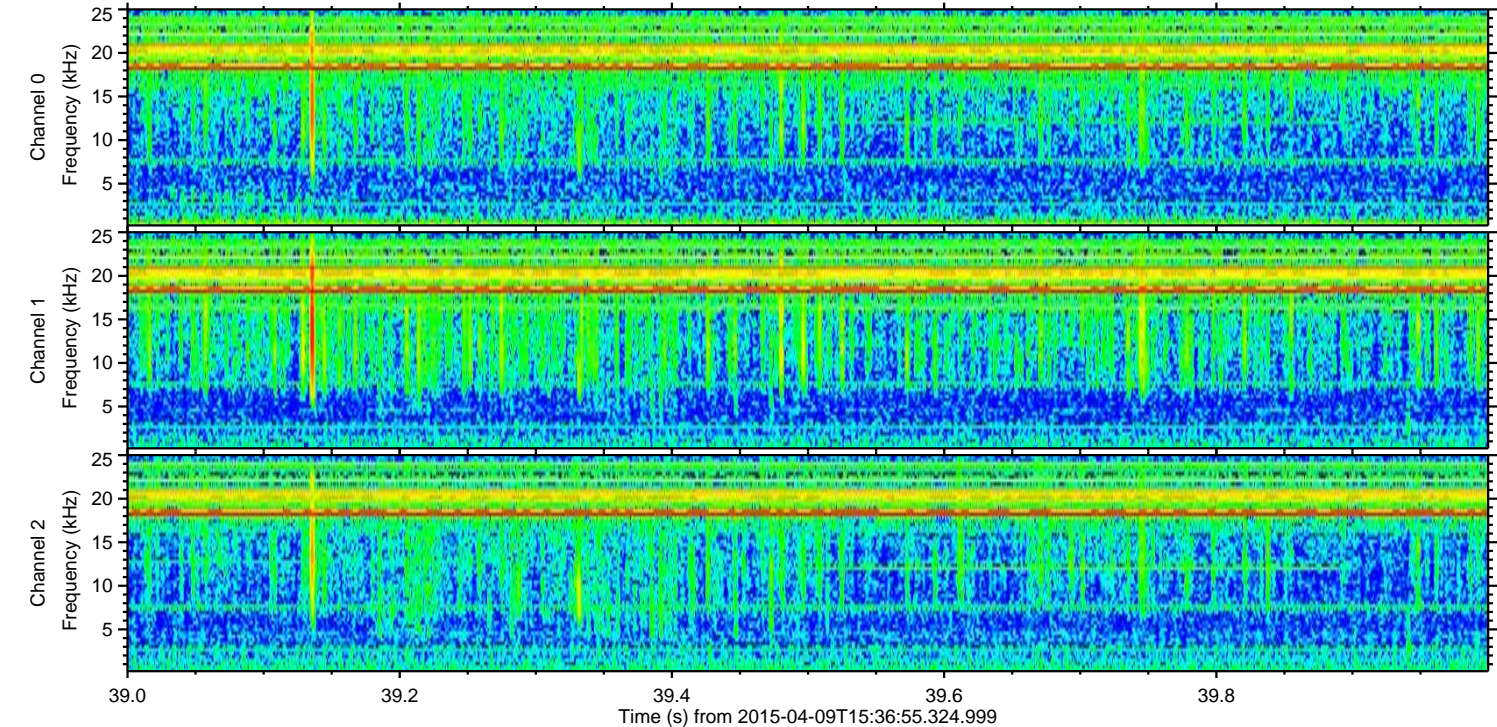
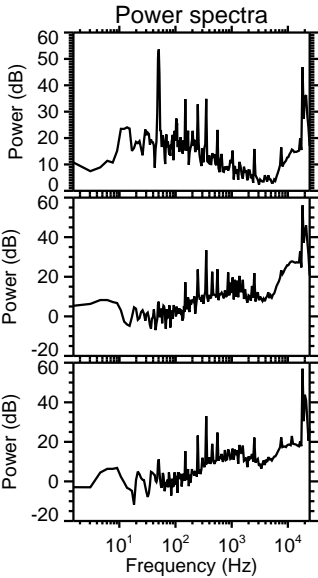
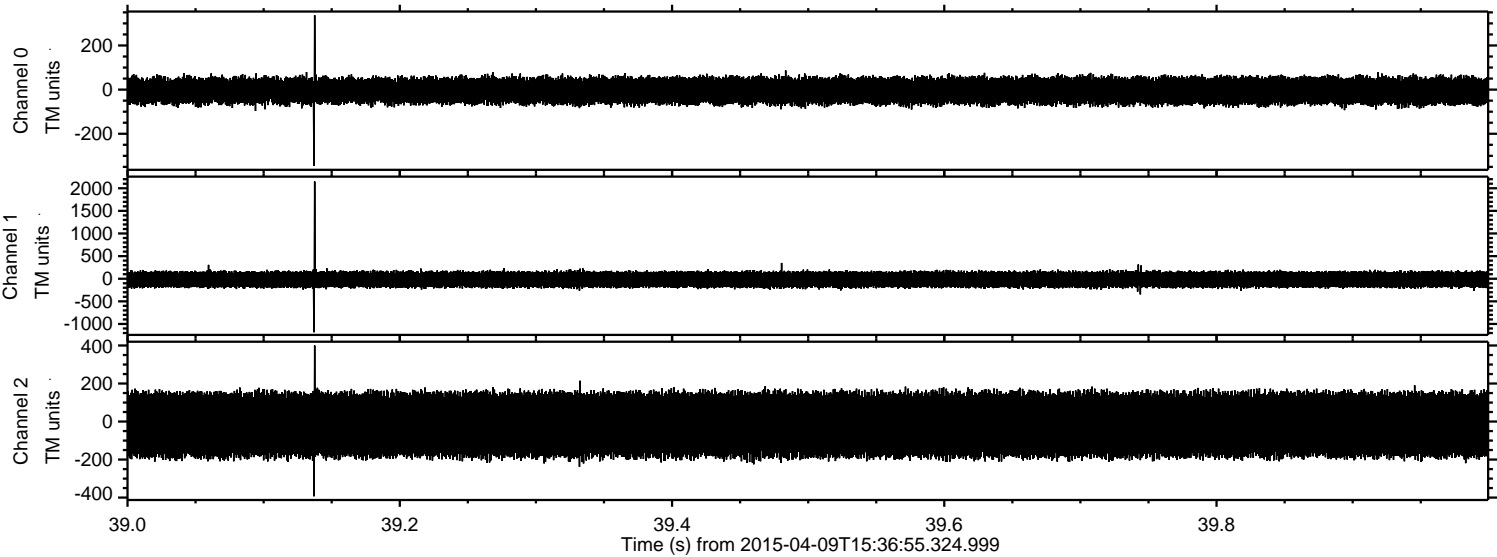
Processed Thu Apr 9 17:44:11 2015 by ELM ver.2012-10-06 from 001__elm20150409_153654__dat00.bin



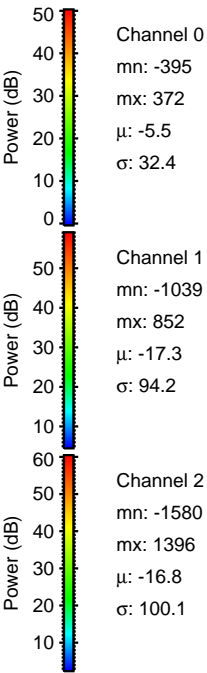
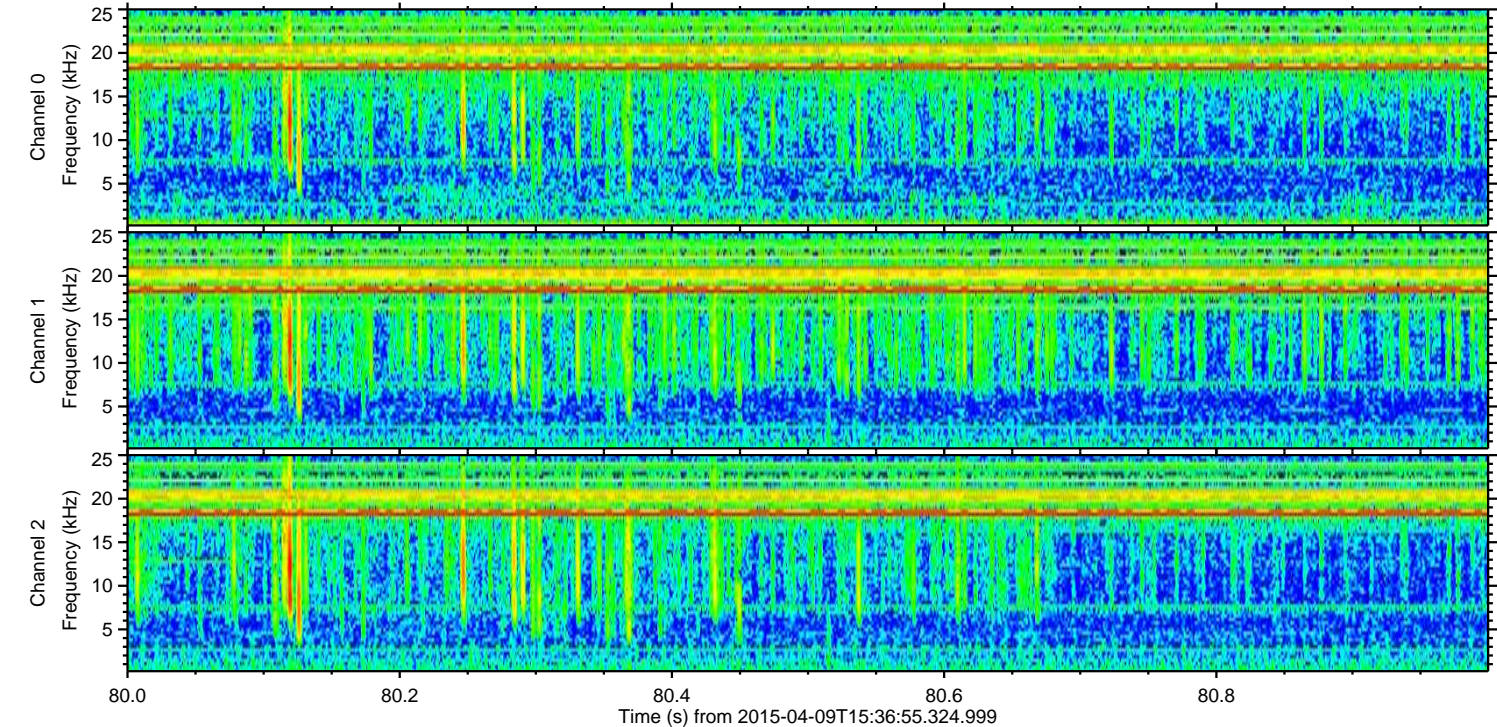
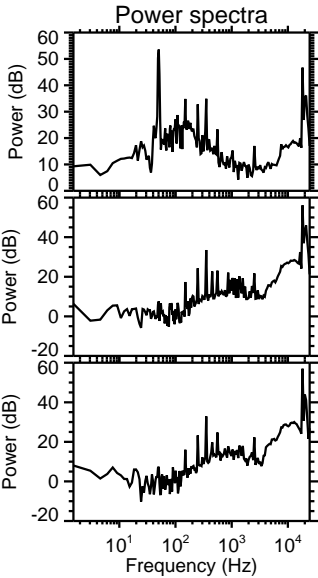
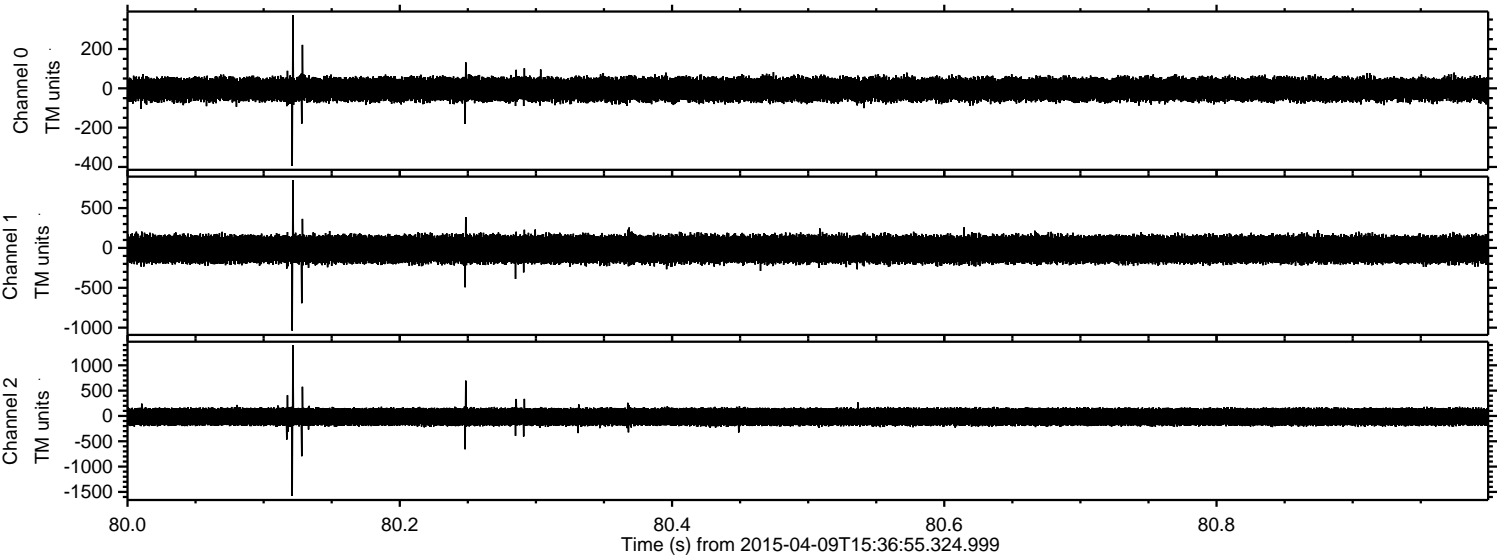
Processed Thu Apr 9 17:44:12 2015 by ELM ver.2012-10-06 from 001__elm20150409_153654__dat00.bin



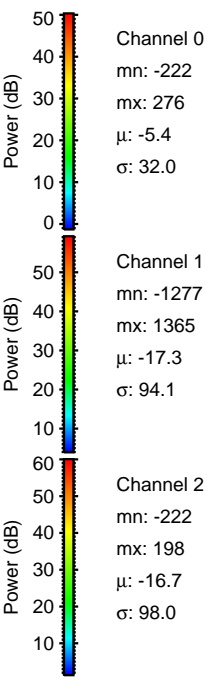
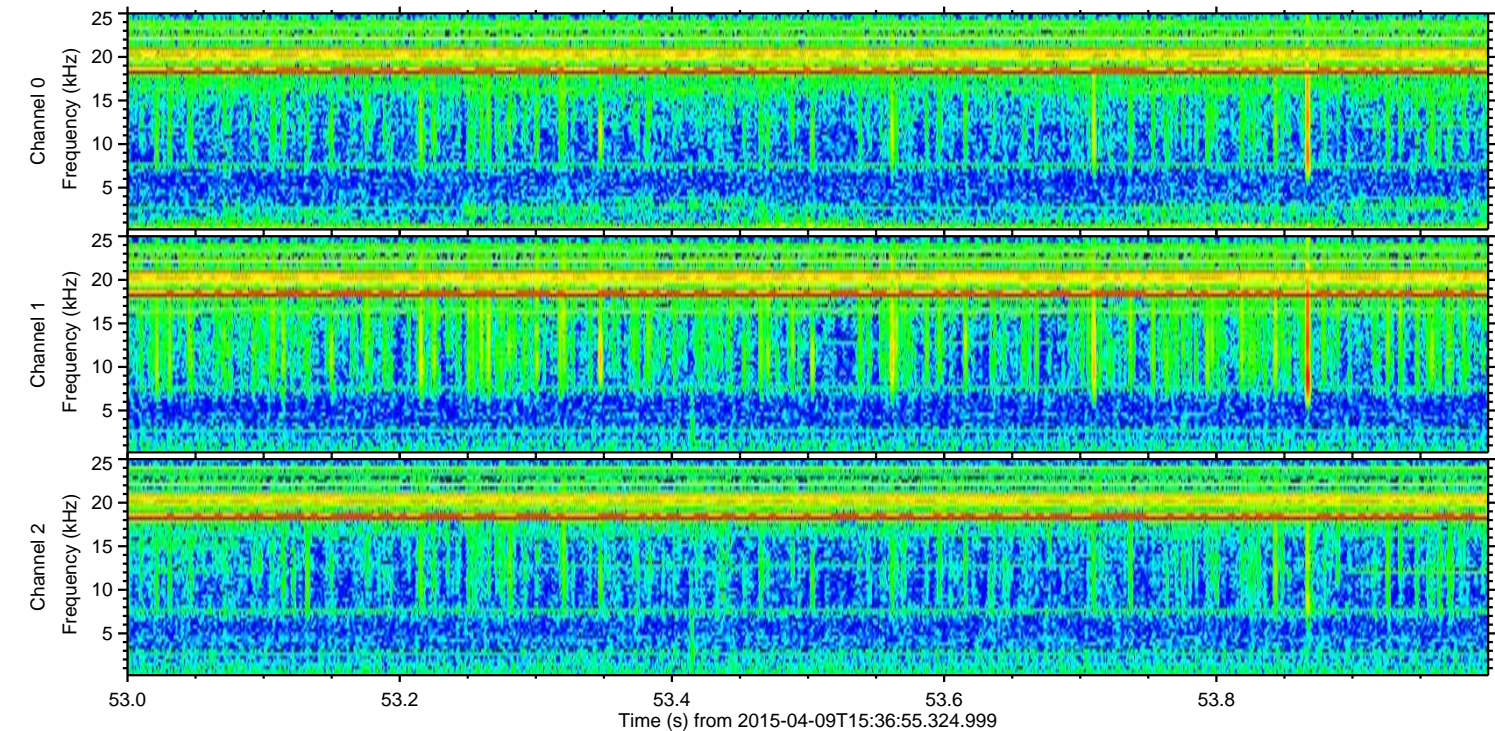
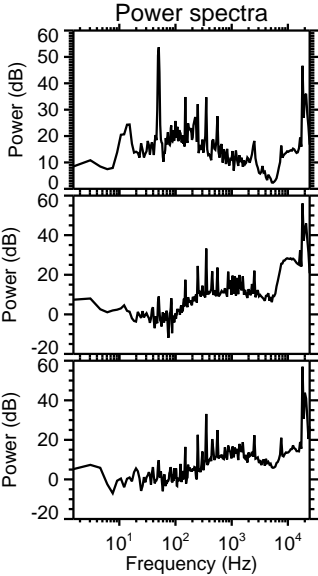
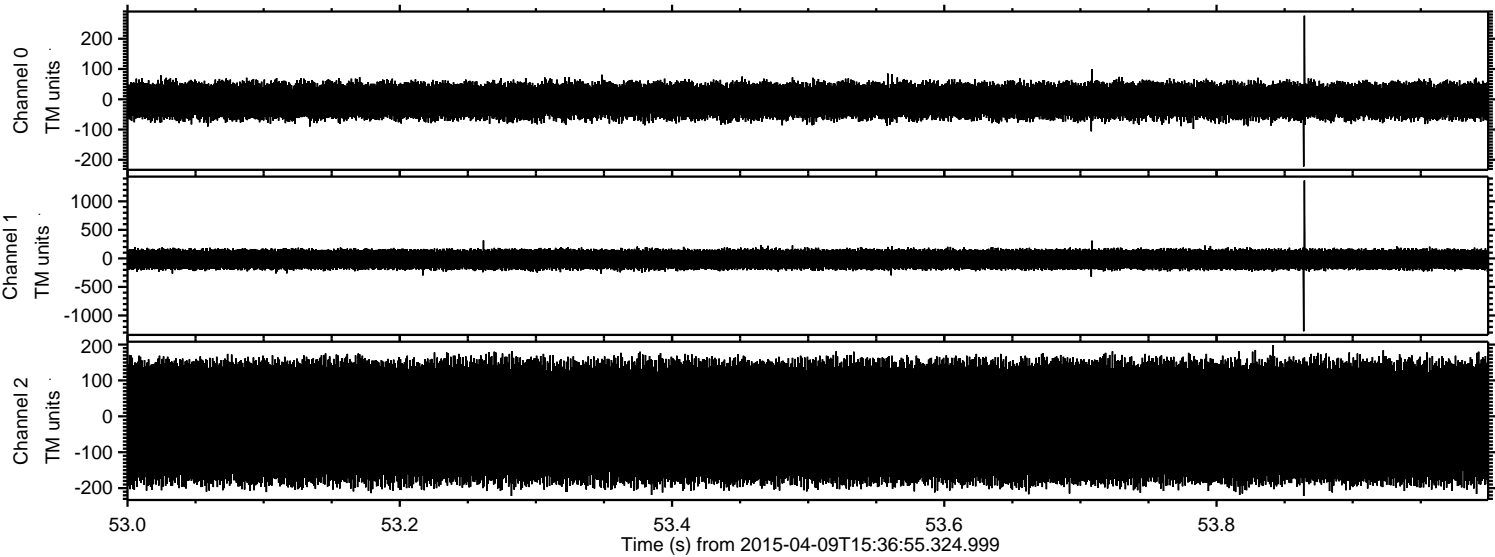
Processed Thu Apr 9 17:44:13 2015 by ELM ver.2012-10-06 from 001__elm20150409_153654__dat00.bin



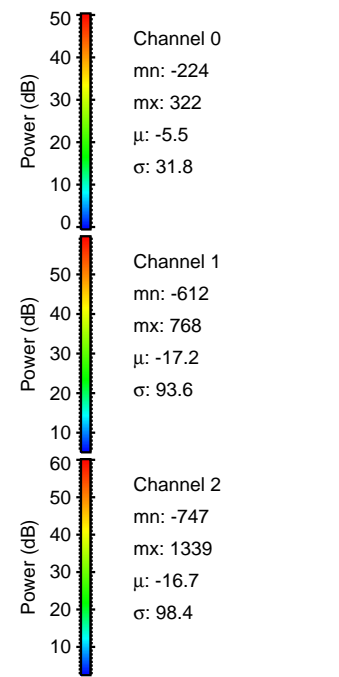
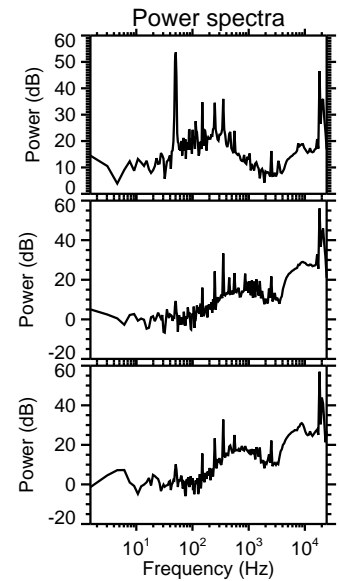
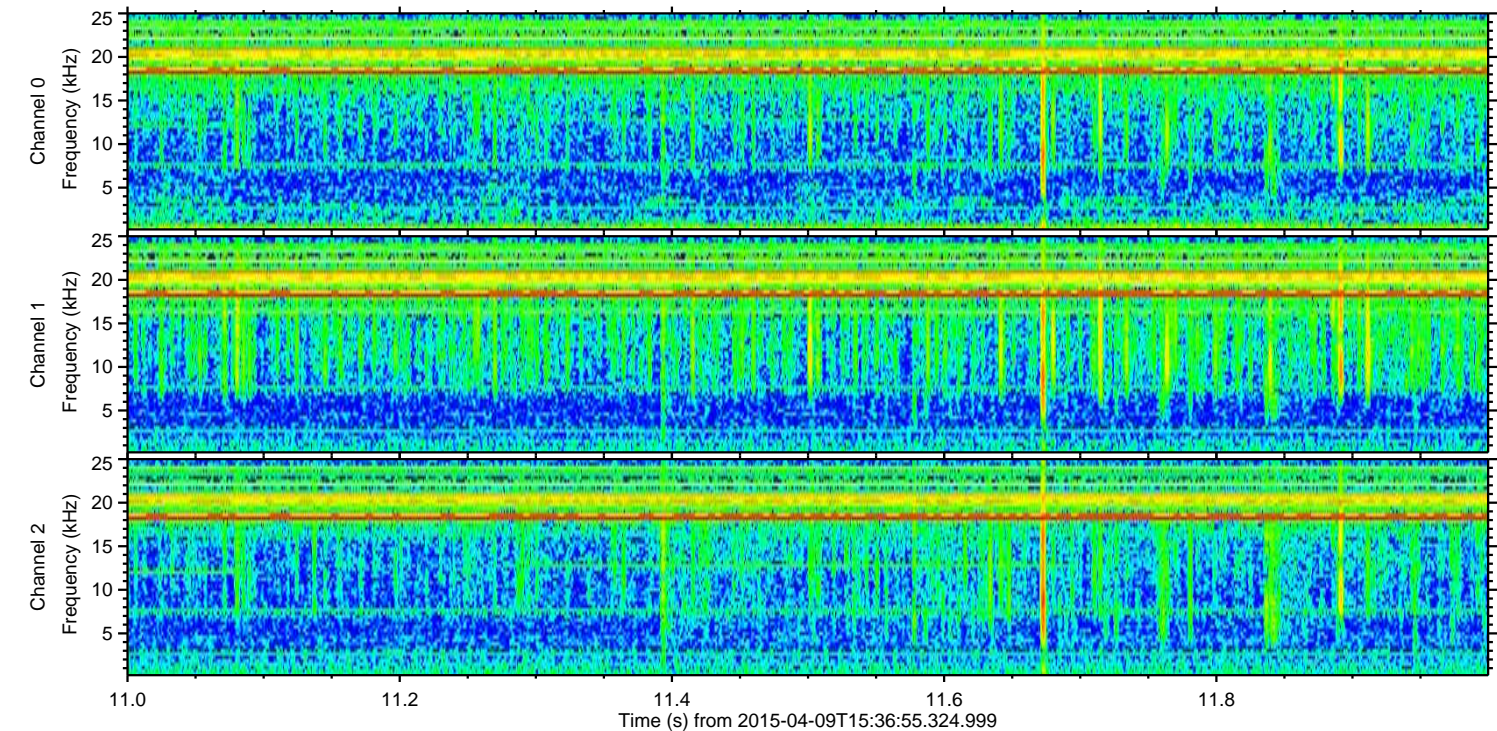
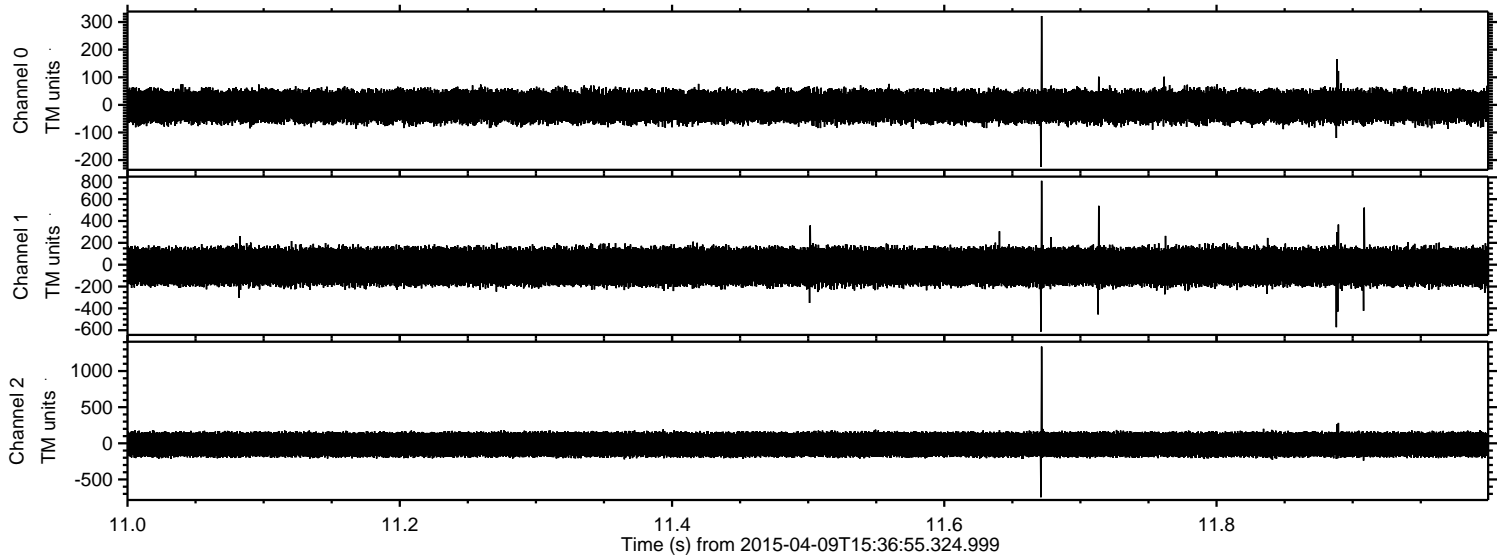
Processed Thu Apr 9 17:44:14 2015 by ELM ver.2012-10-06 from 001__elm20150409_153654__dat00.bin



Processed Thu Apr 9 17:44:15 2015 by ELM ver.2012-10-06 from 001__elm20150409_153654__dat00.bin



Processed Thu Apr 9 17:44:16 2015 by ELM ver.2012-10-06 from 001__elm20150409_153654__dat00.bin

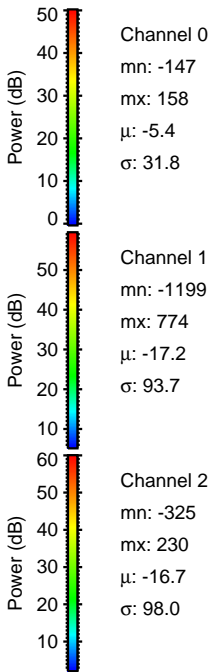
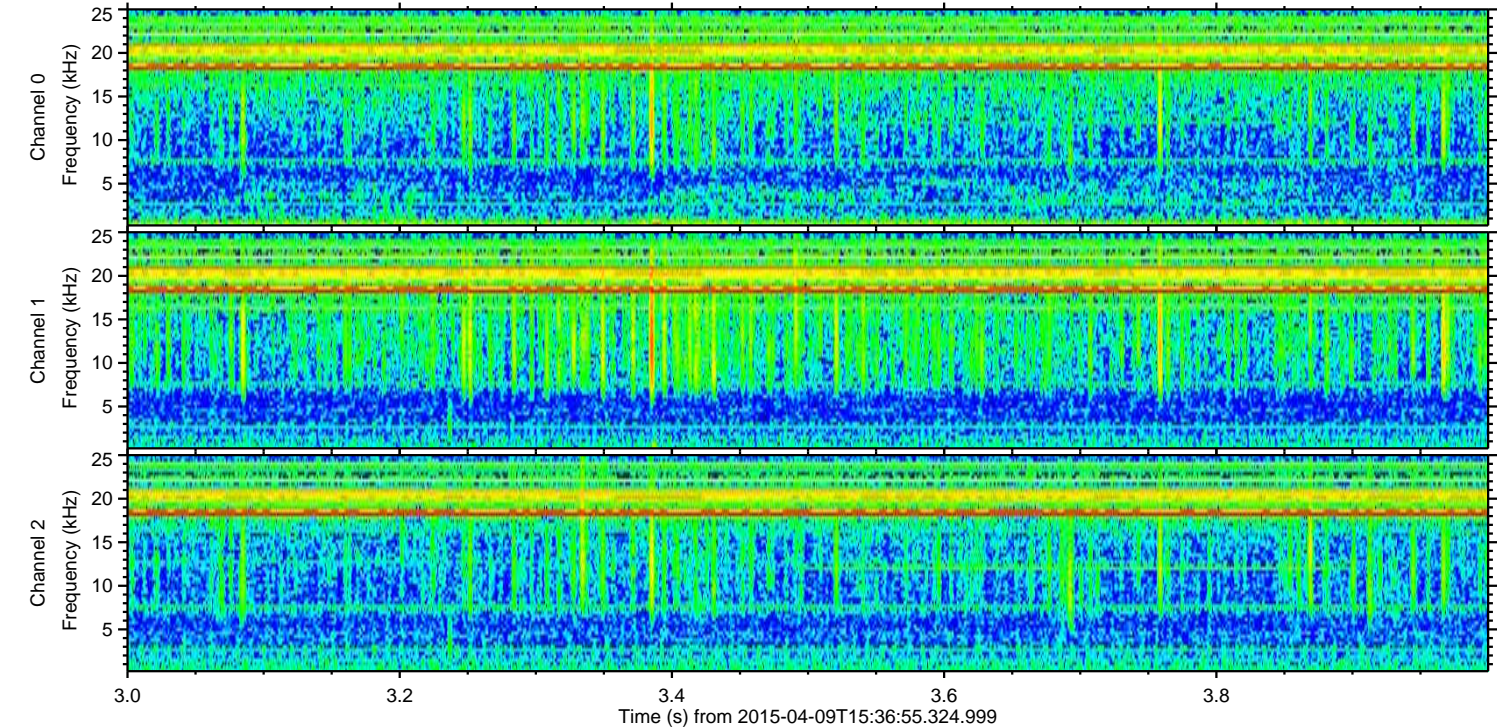
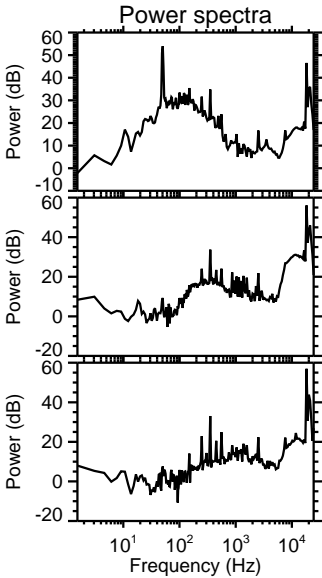
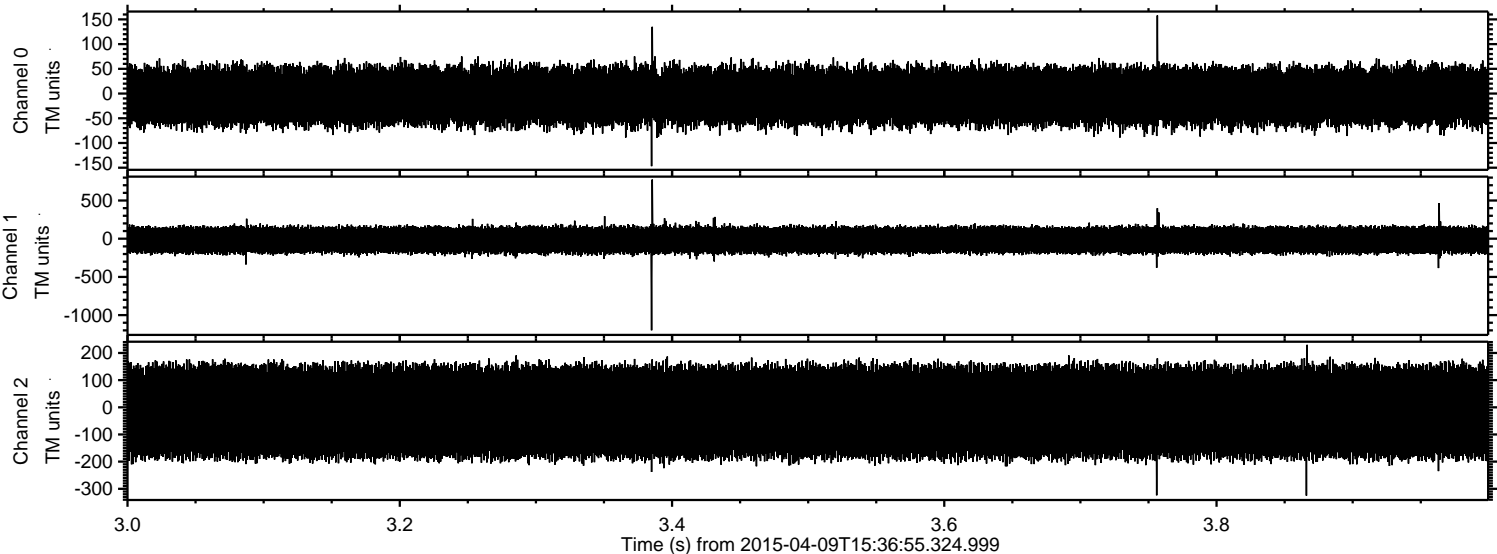


Channel 0
mn: -224
mx: 322
 μ : -5.5
 σ : 31.8

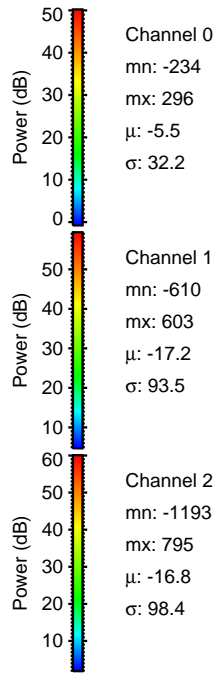
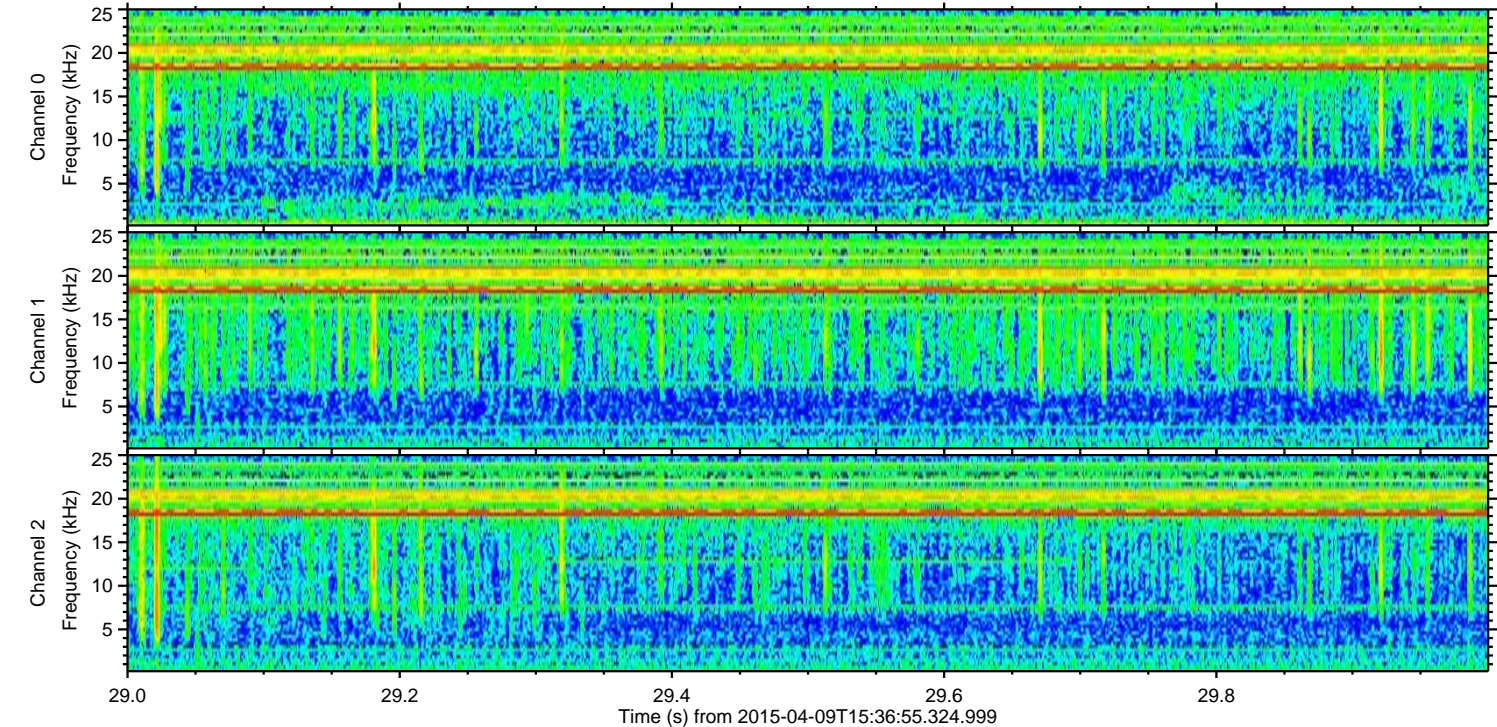
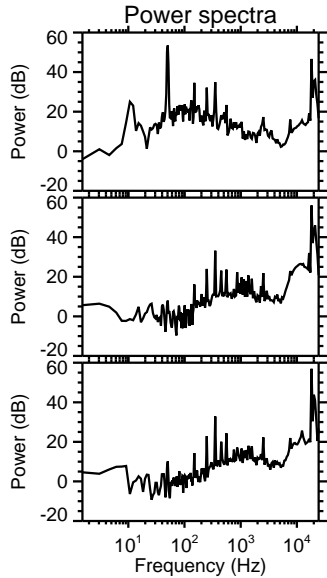
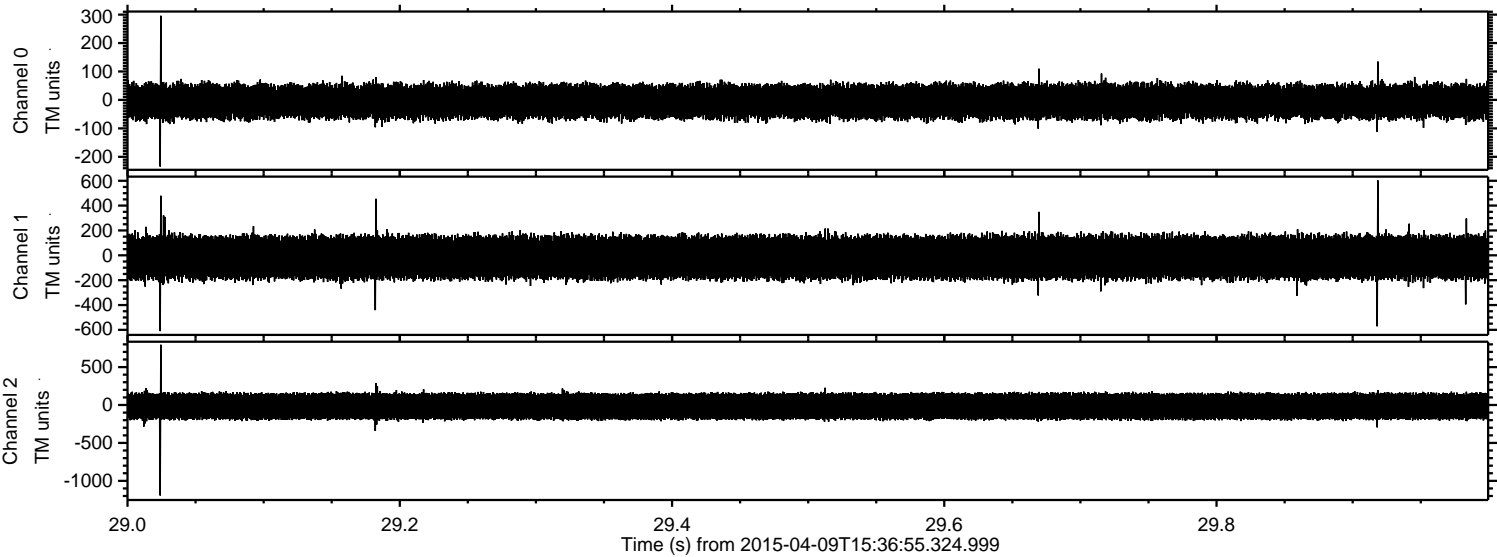
Channel 1
mn: -612
mx: 768
 μ : -17.2
 σ : 93.6

Channel 2
mn: -747
mx: 1339
 μ : -16.7
 σ : 98.4

Processed Thu Apr 9 17:44:16 2015 by ELM ver.2012-10-06 from 001__elm20150409_153654__dat00.bin



Processed Thu Apr 9 17:44:17 2015 by ELM ver.2012-10-06 from 001__elm20150409_153654__dat00.bin



Processed Thu Apr 9 17:44:18 2015 by ELM ver.2012-10-06 from 001__elm20150409_153654__dat00.bin

