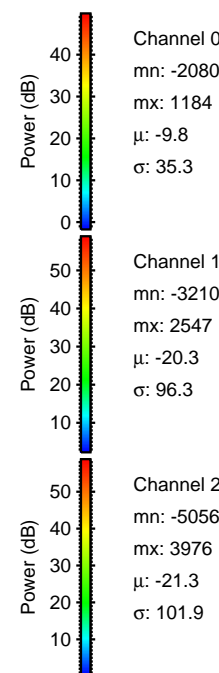
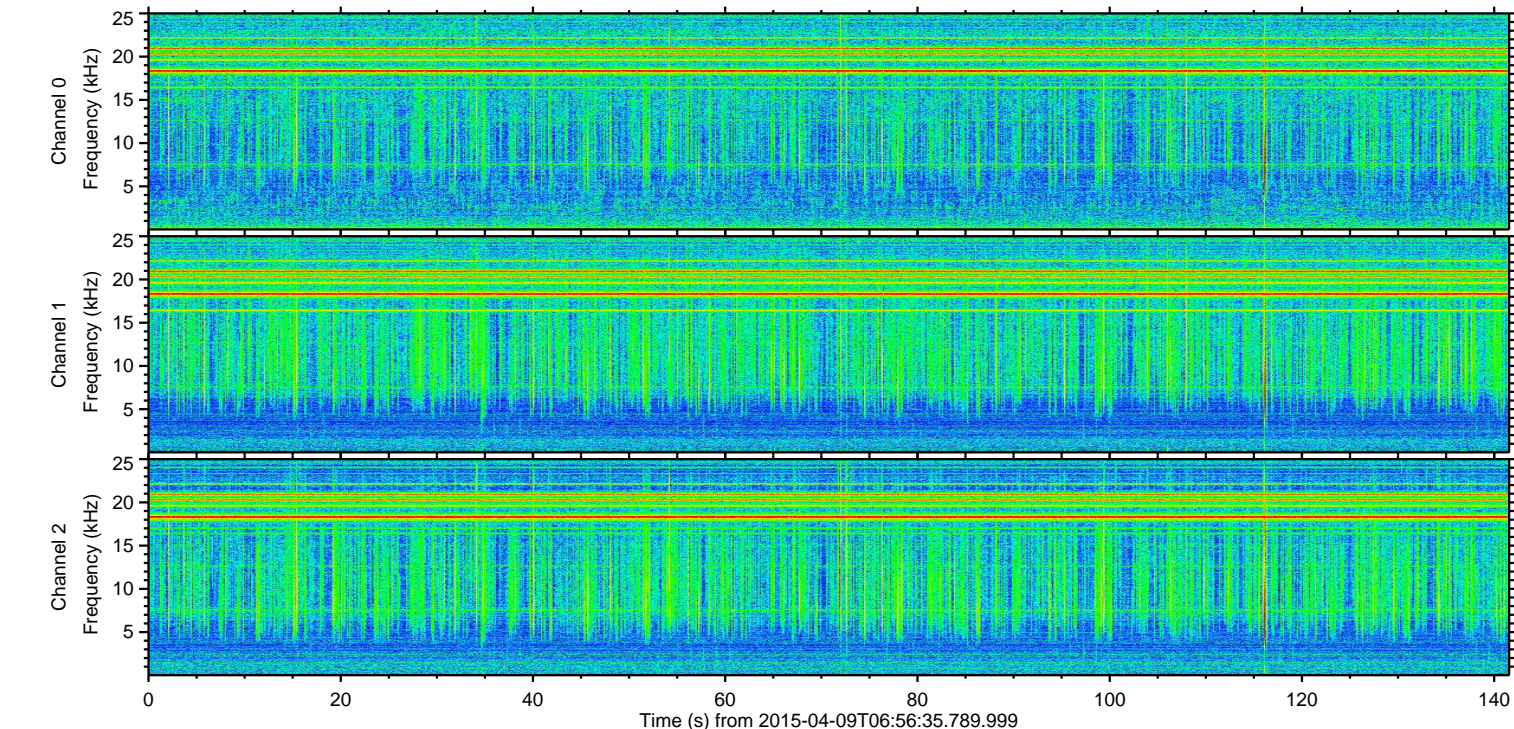
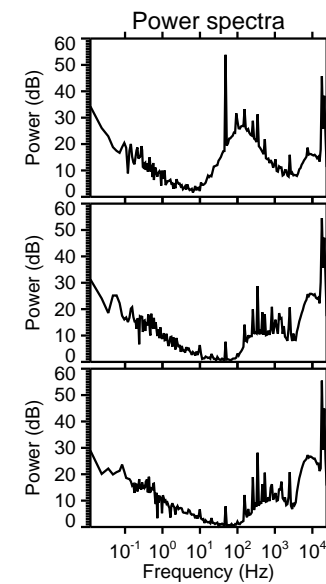
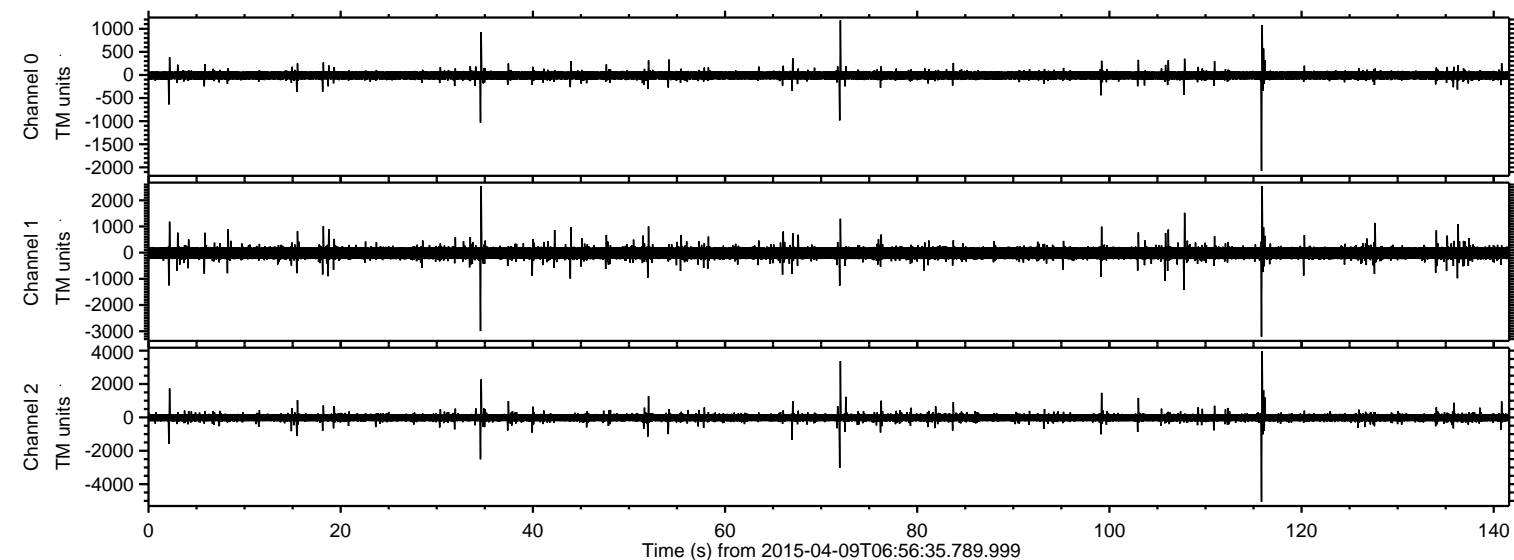


# ELMAVAN 3D WAVEFORMS (Measured data sampled at 50 kHz) 49168 packets of 144 samples from 2015-04-09T06:56:35.789.999.

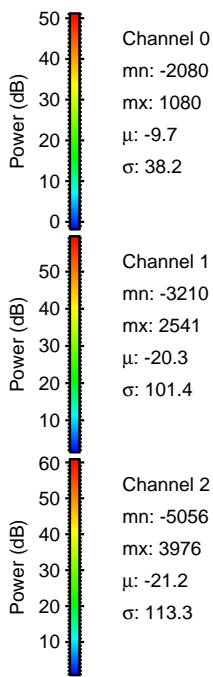
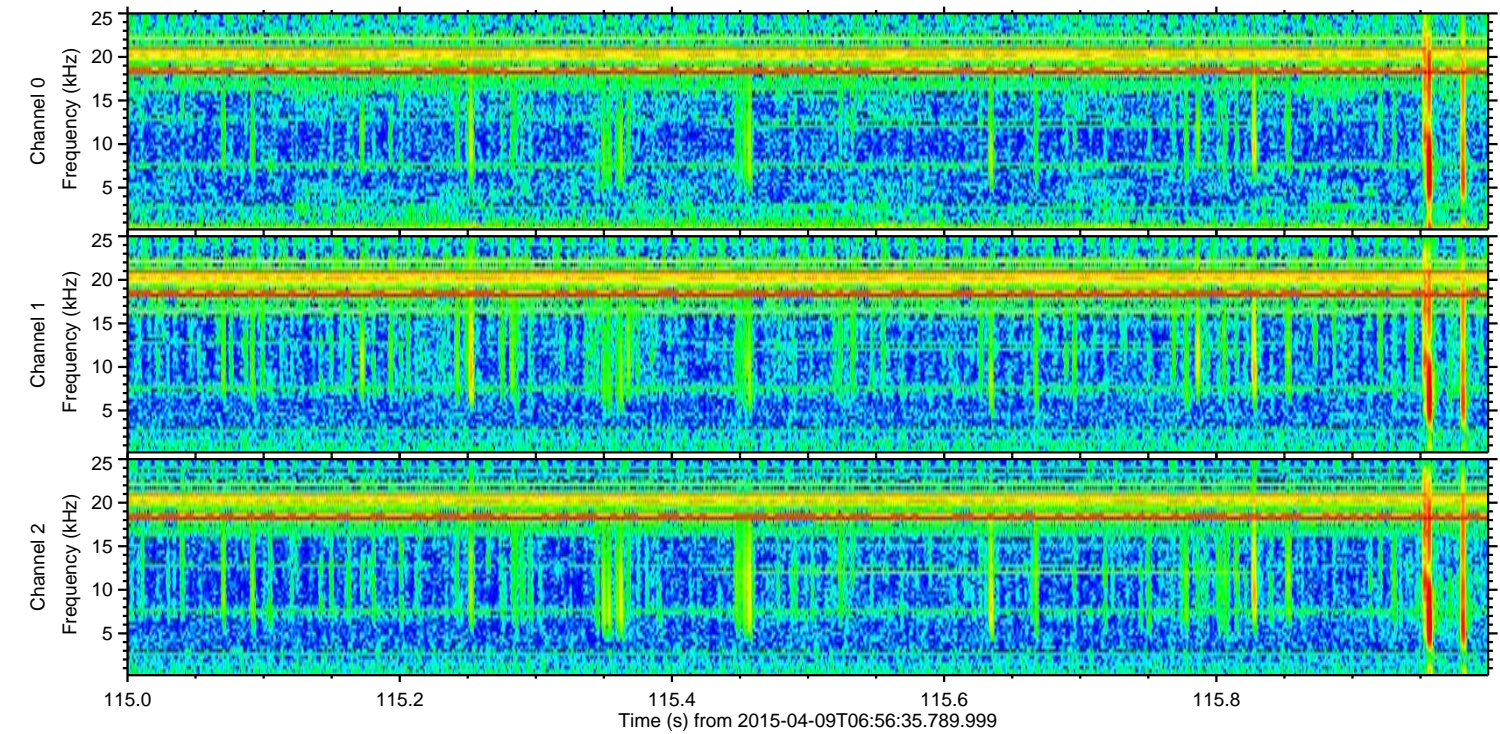
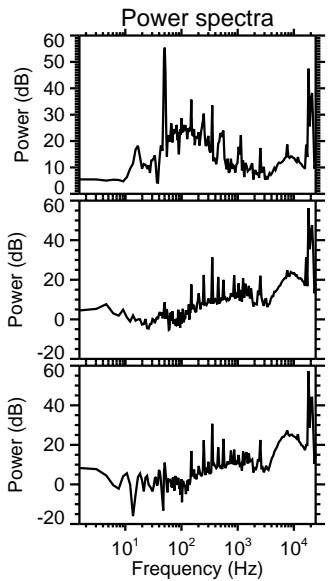
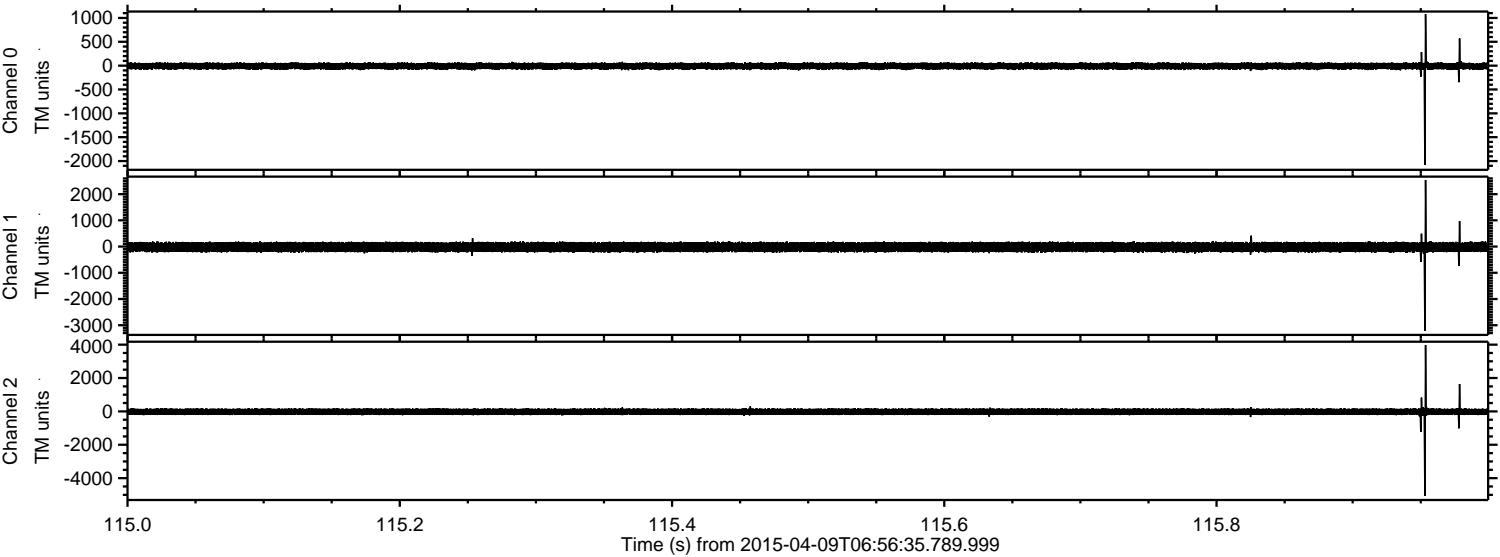
Processed Thu Apr 9 09:05:11 2015 by ELM ver.2012-10-06 from 001\_\_elm20150409\_065634\_\_dat00.bin





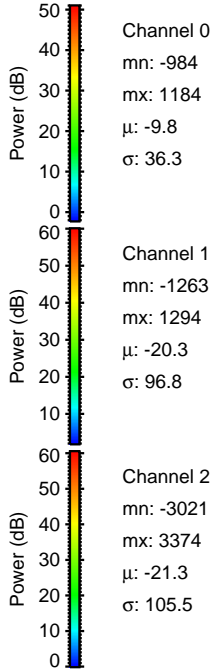
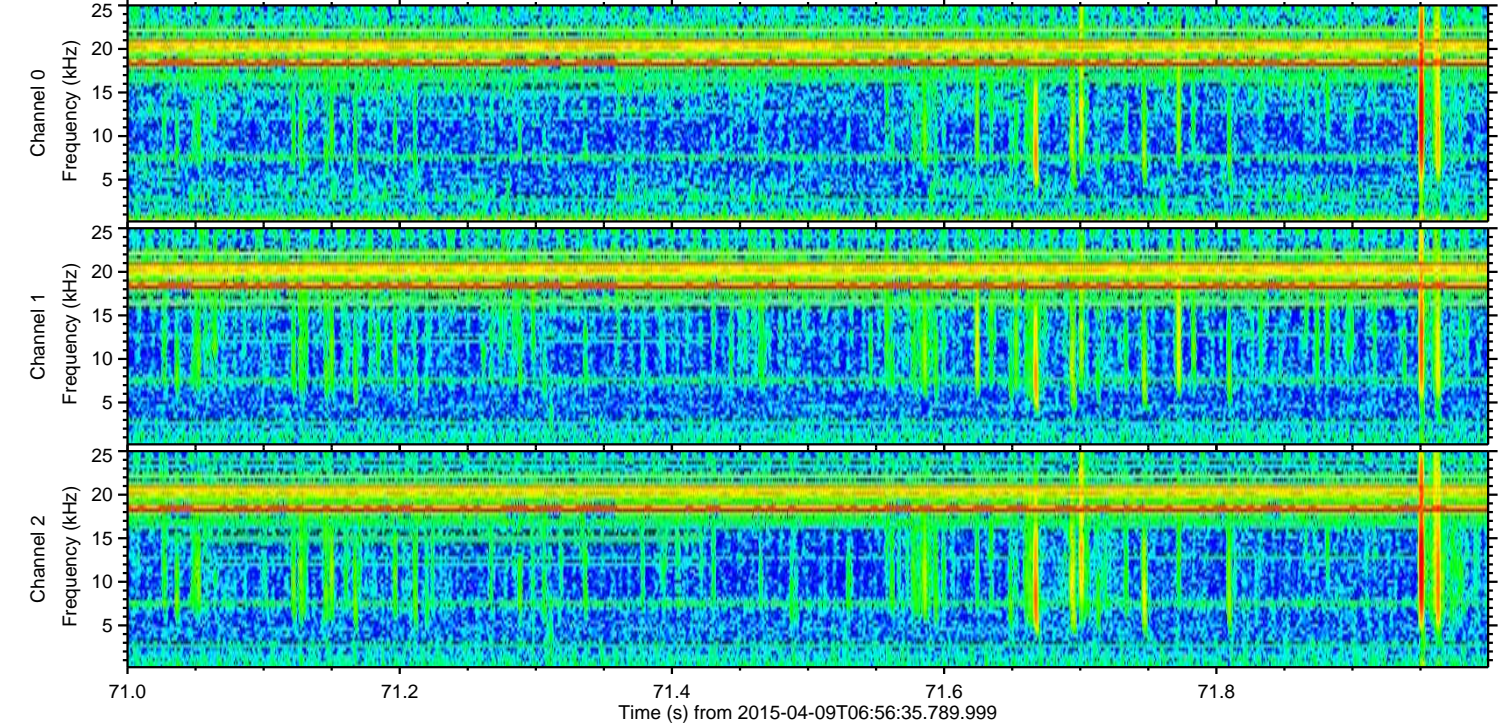
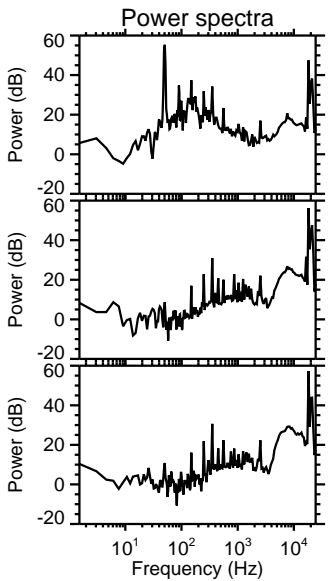
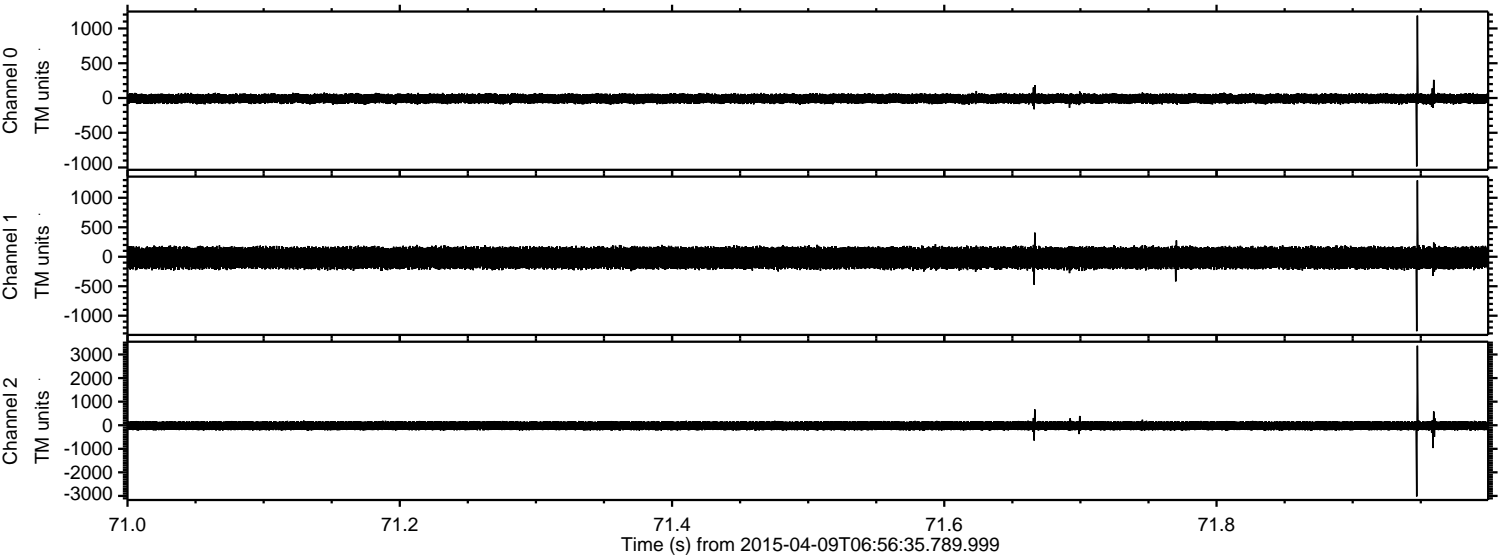
ELMAVAN 3D WAVEFORMS (Measured data sampled at 50 kHz) 49168 packets of 144 samples from 2015-04-09T06:56:35.789.999. Part 116/142

Processed Thu Apr 9 09:05:26 2015 by ELM ver.2012-10-06 from 001\_\_elm20150409\_065634\_\_dat00.bin





Processed Thu Apr 9 09:05:27 2015 by ELM ver.2012-10-06 from 001\_\_elm20150409\_065634\_\_dat00.bin



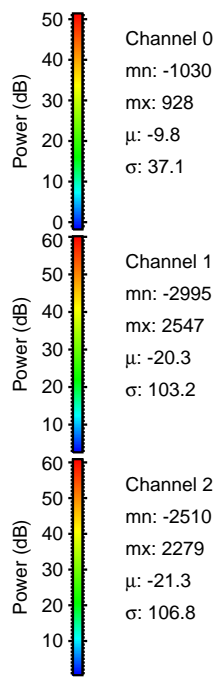
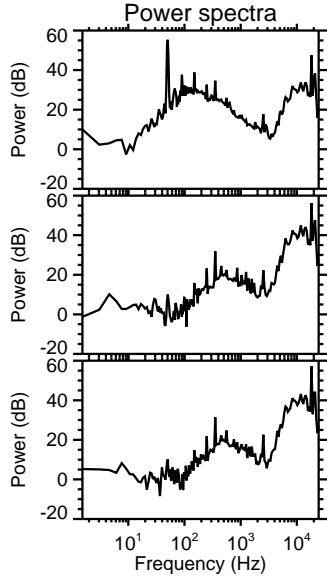
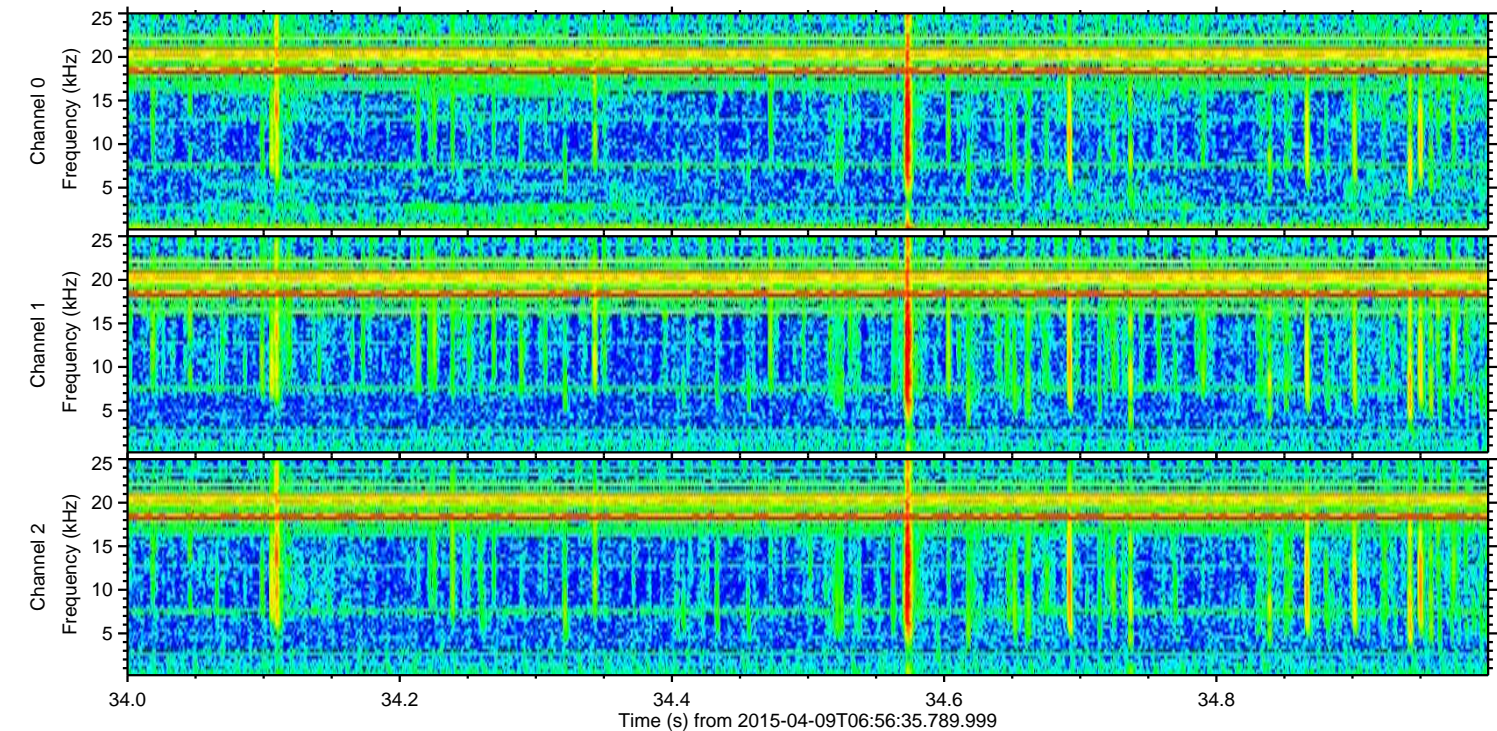
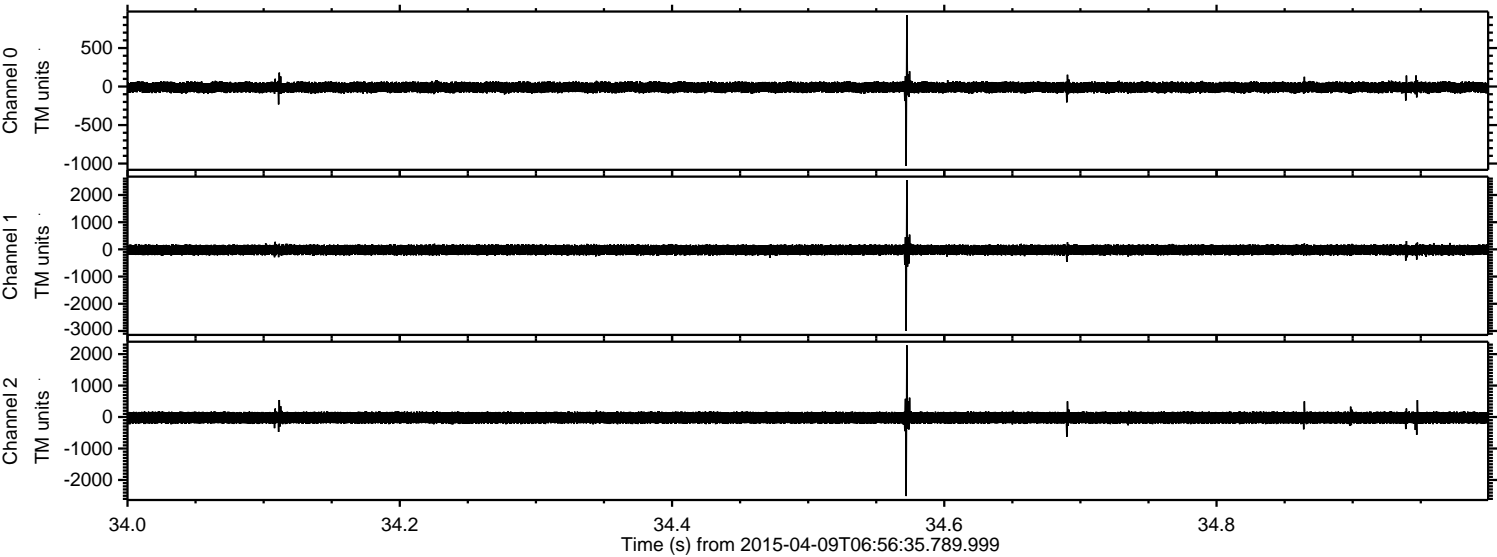
Channel 0  
mn: -984  
mx: 1184  
 $\mu$ : -9.8  
 $\sigma$ : 36.3

Channel 1  
mn: -1263  
mx: 1294  
 $\mu$ : -20.3  
 $\sigma$ : 96.8

Channel 2  
mn: -3021  
mx: 3374  
 $\mu$ : -21.3  
 $\sigma$ : 105.5

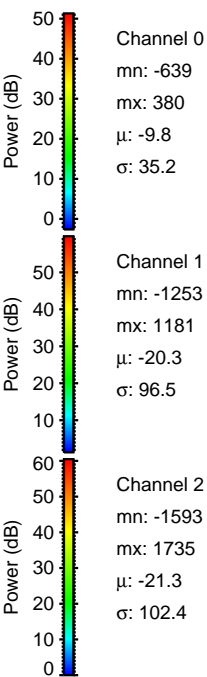
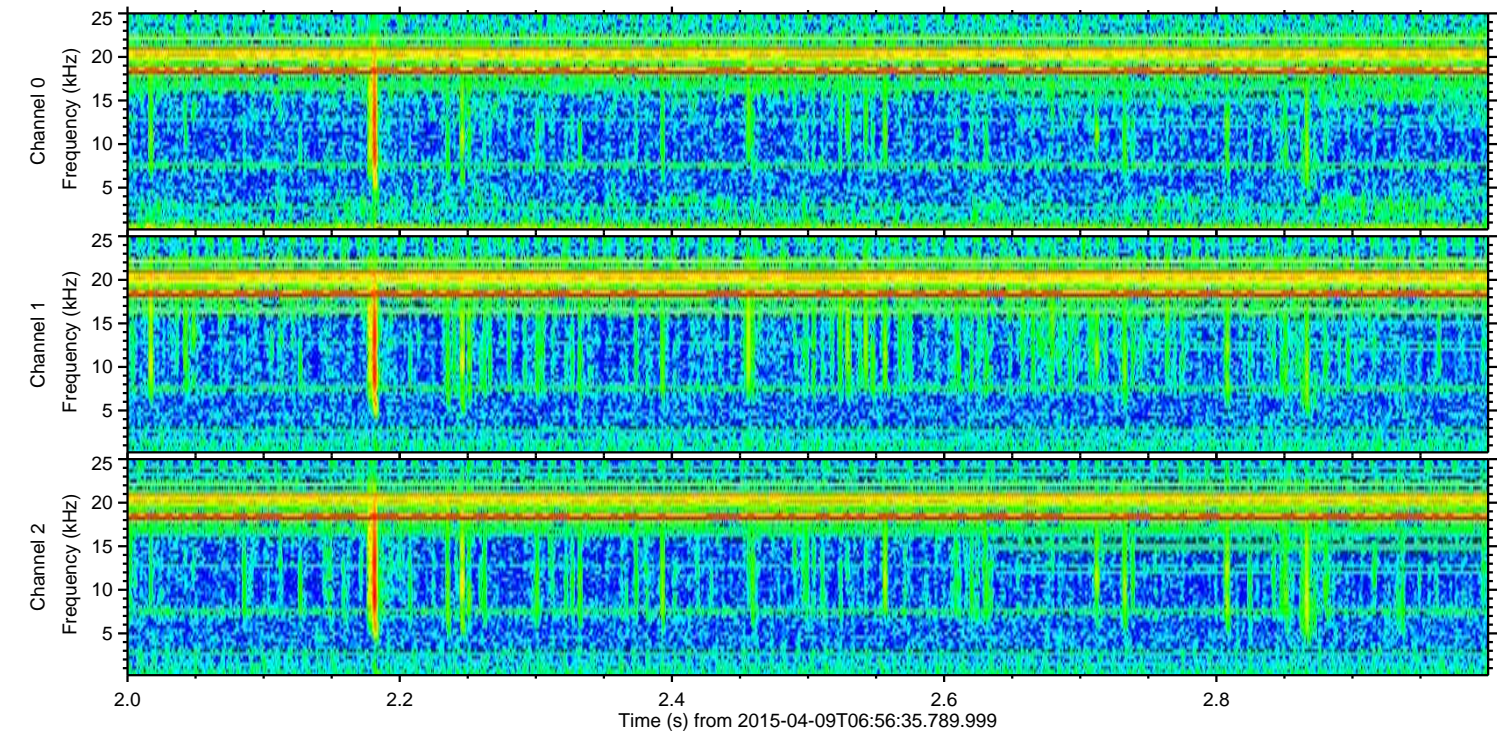
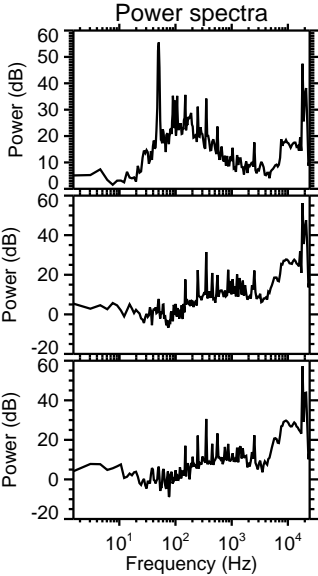
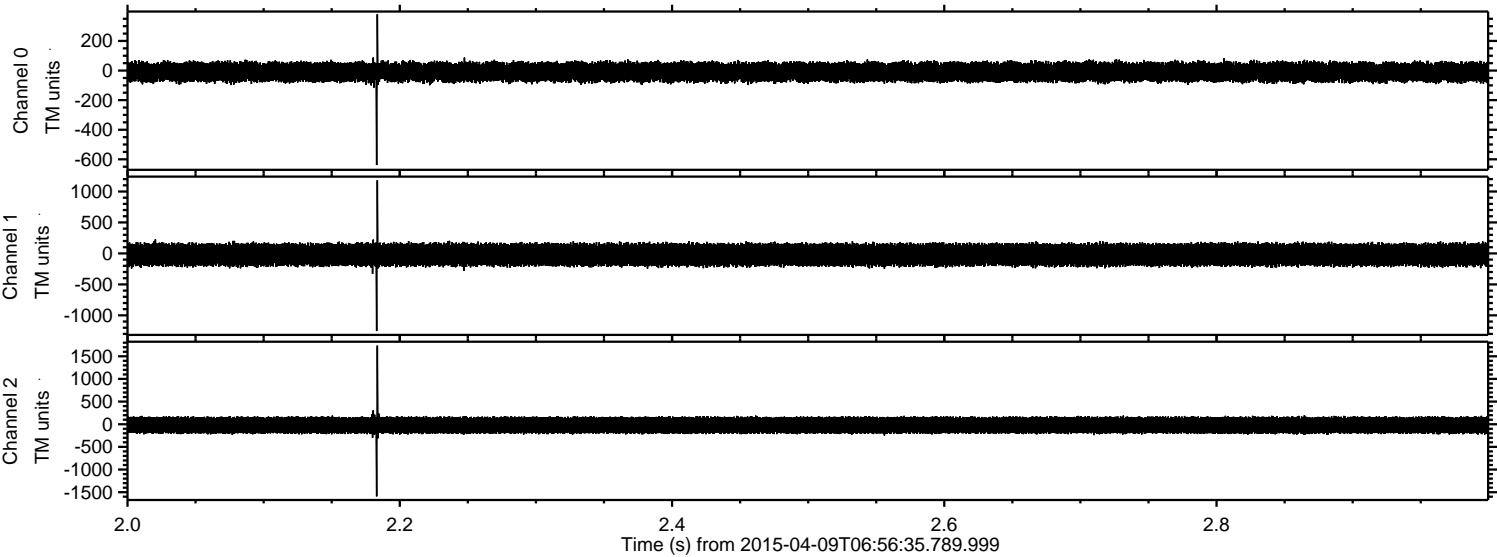


Processed Thu Apr 9 09:05:28 2015 by ELM ver.2012-10-06 from 001\_\_elm20150409\_065634\_\_dat00.bin





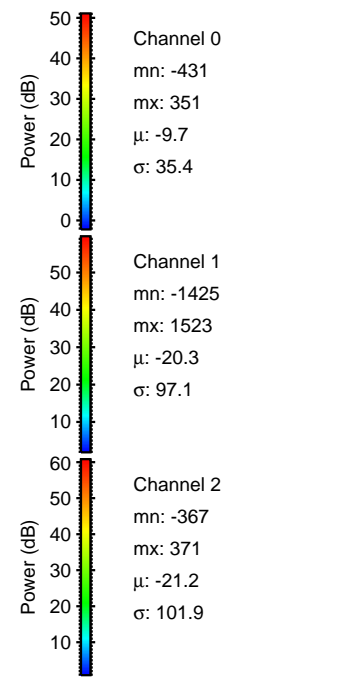
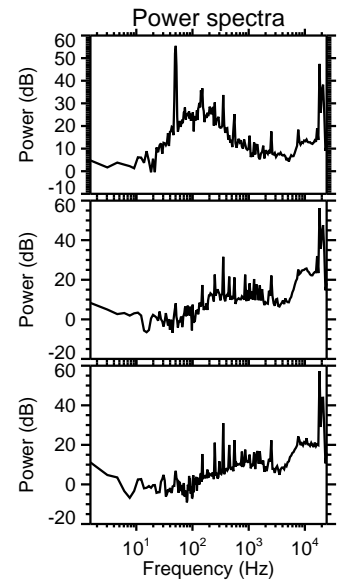
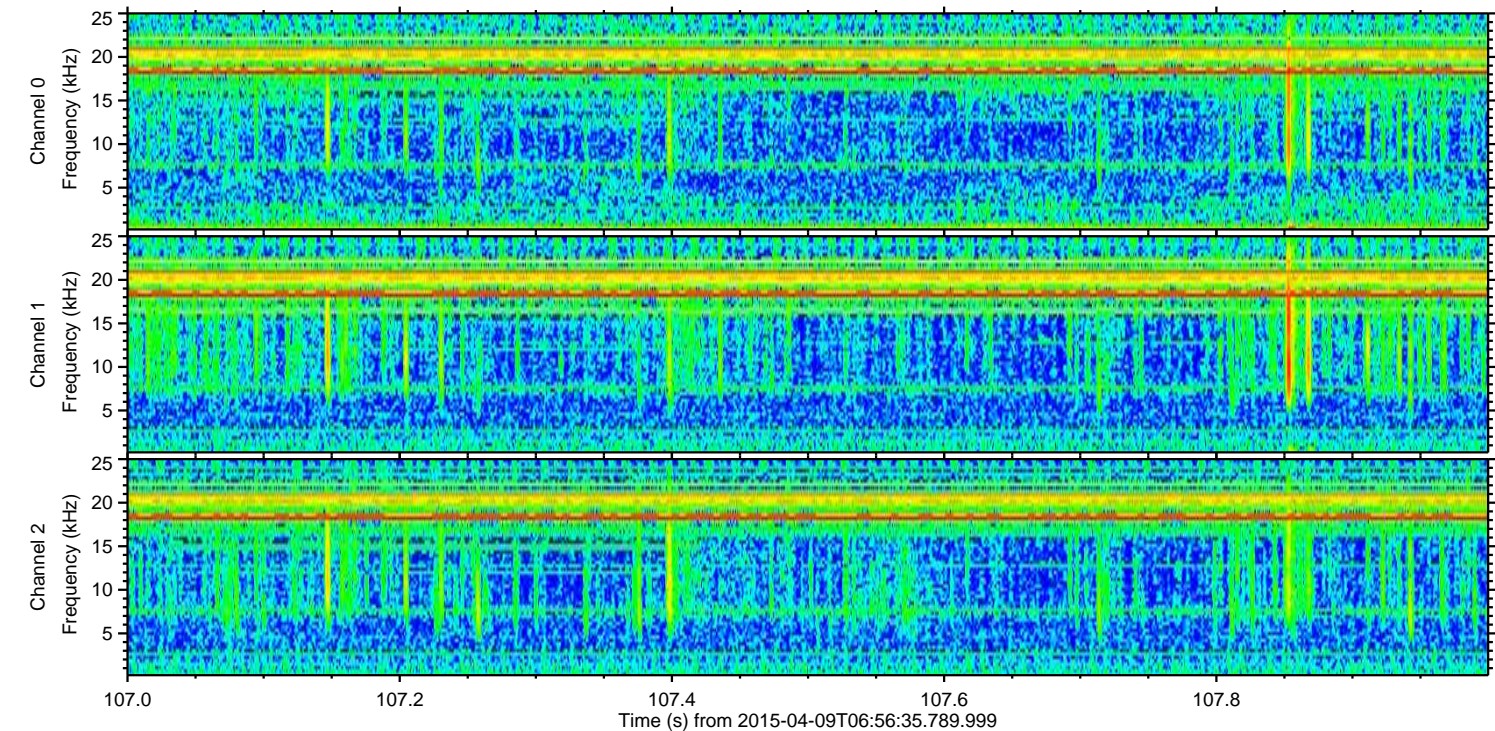
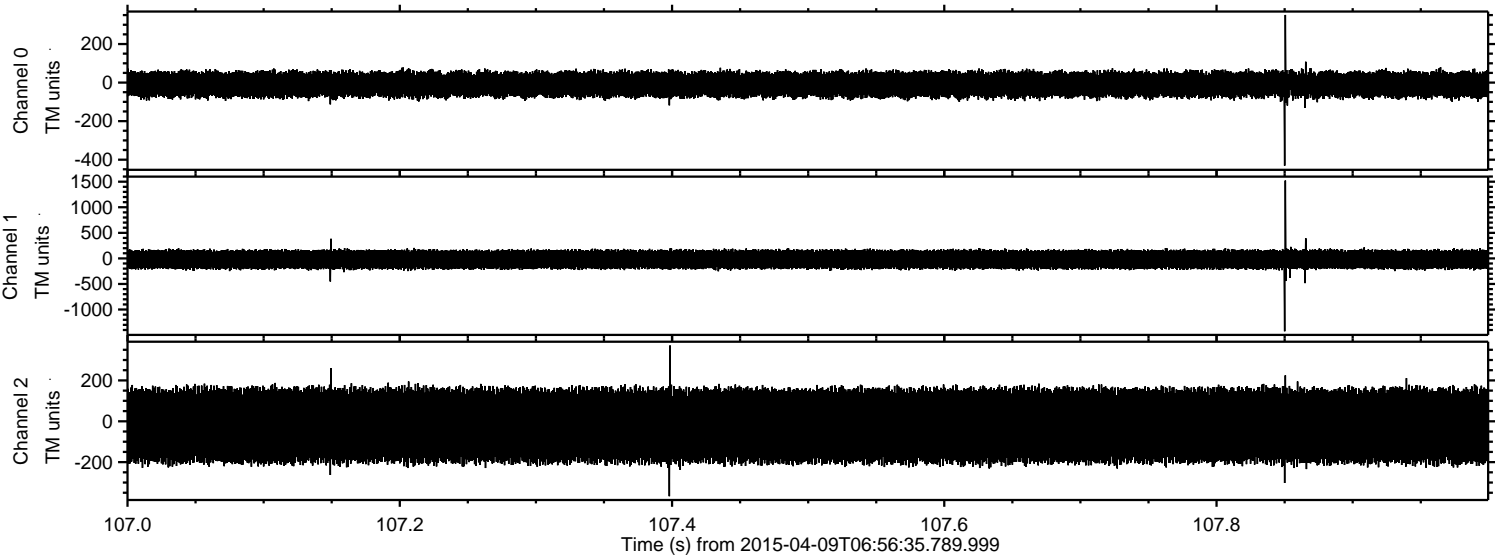
Processed Thu Apr 9 09:05:29 2015 by ELM ver.2012-10-06 from 001\_\_elm20150409\_065634\_\_dat00.bin





ELMAVAN 3D WAVEFORMS (Measured data sampled at 50 kHz) 49168 packets of 144 samples from 2015-04-09T06:56:35.789.999. Part 108/142

Processed Thu Apr 9 09:05:30 2015 by ELM ver.2012-10-06 from 001\_\_elm20150409\_065634\_\_dat00.bin



Power spectra

Channel 0

mn: -431  
mx: 351  
 $\mu$ : -9.7  
 $\sigma$ : 35.4

Channel 1

mn: -1425  
mx: 1523  
 $\mu$ : -20.3  
 $\sigma$ : 97.1

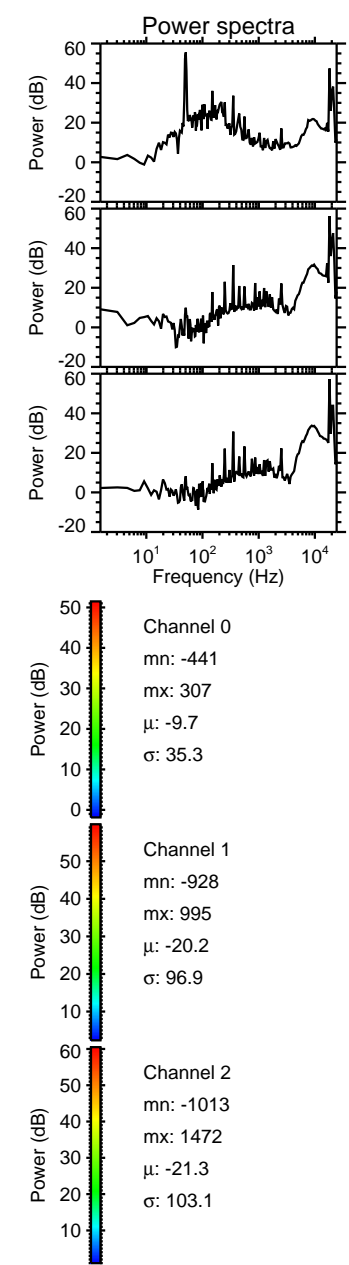
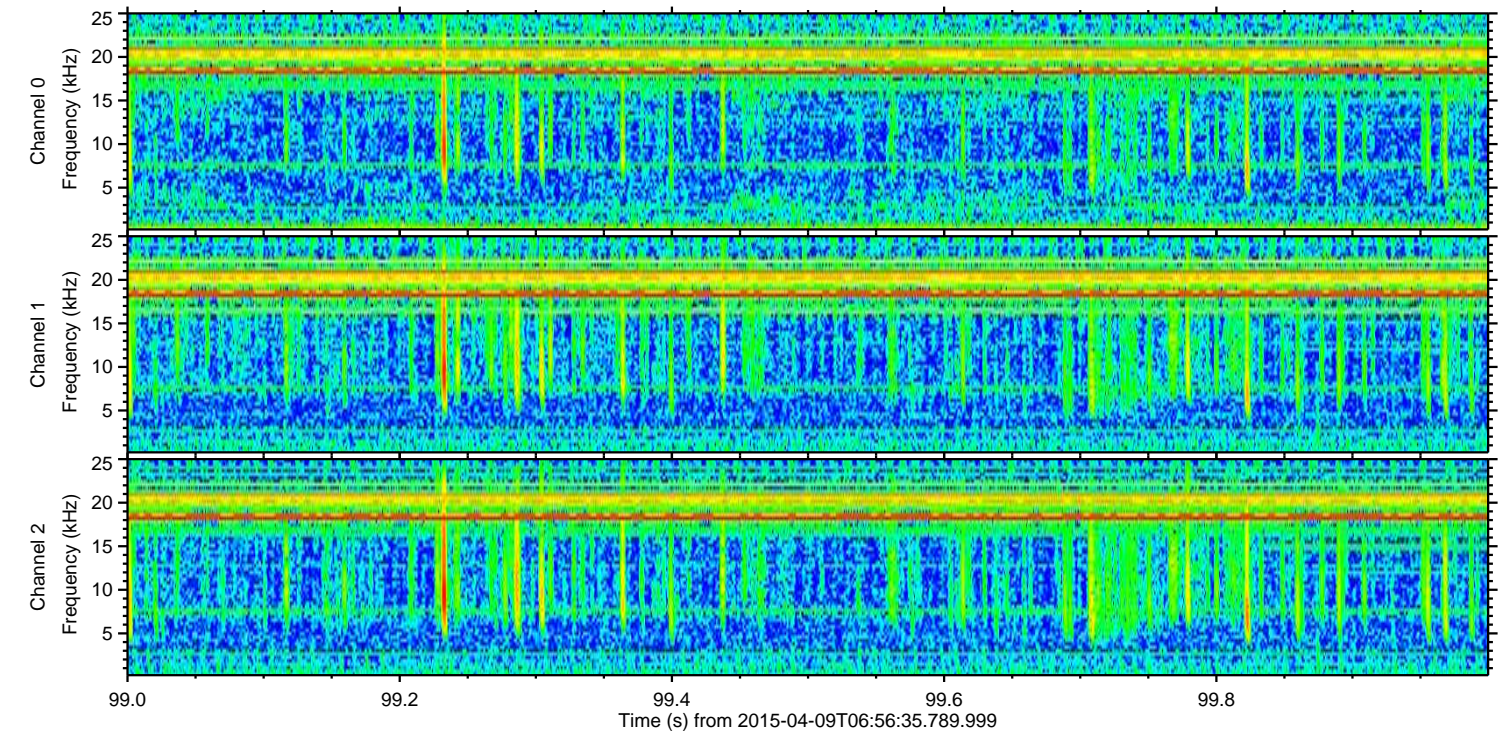
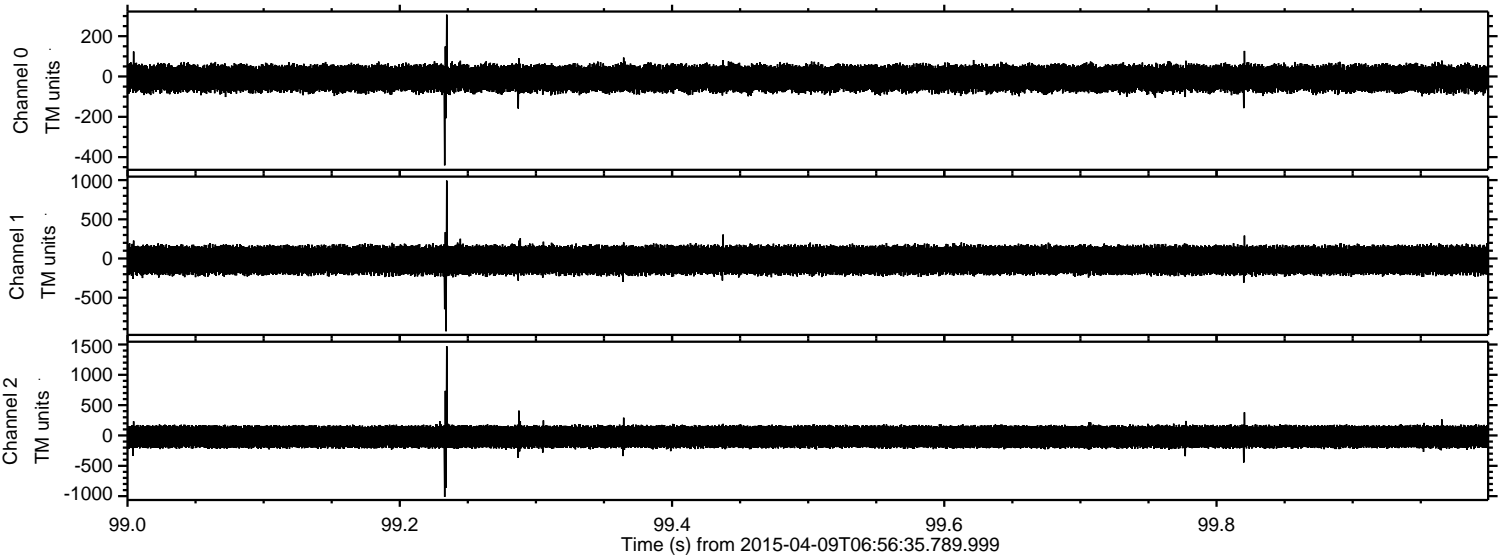
Channel 2

mn: -367  
mx: 371  
 $\mu$ : -21.2  
 $\sigma$ : 101.9



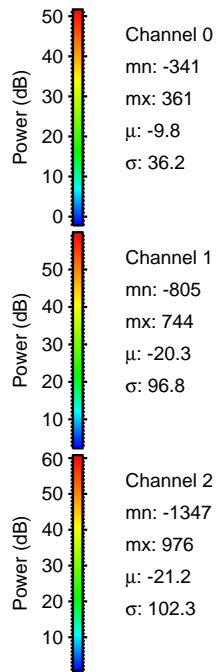
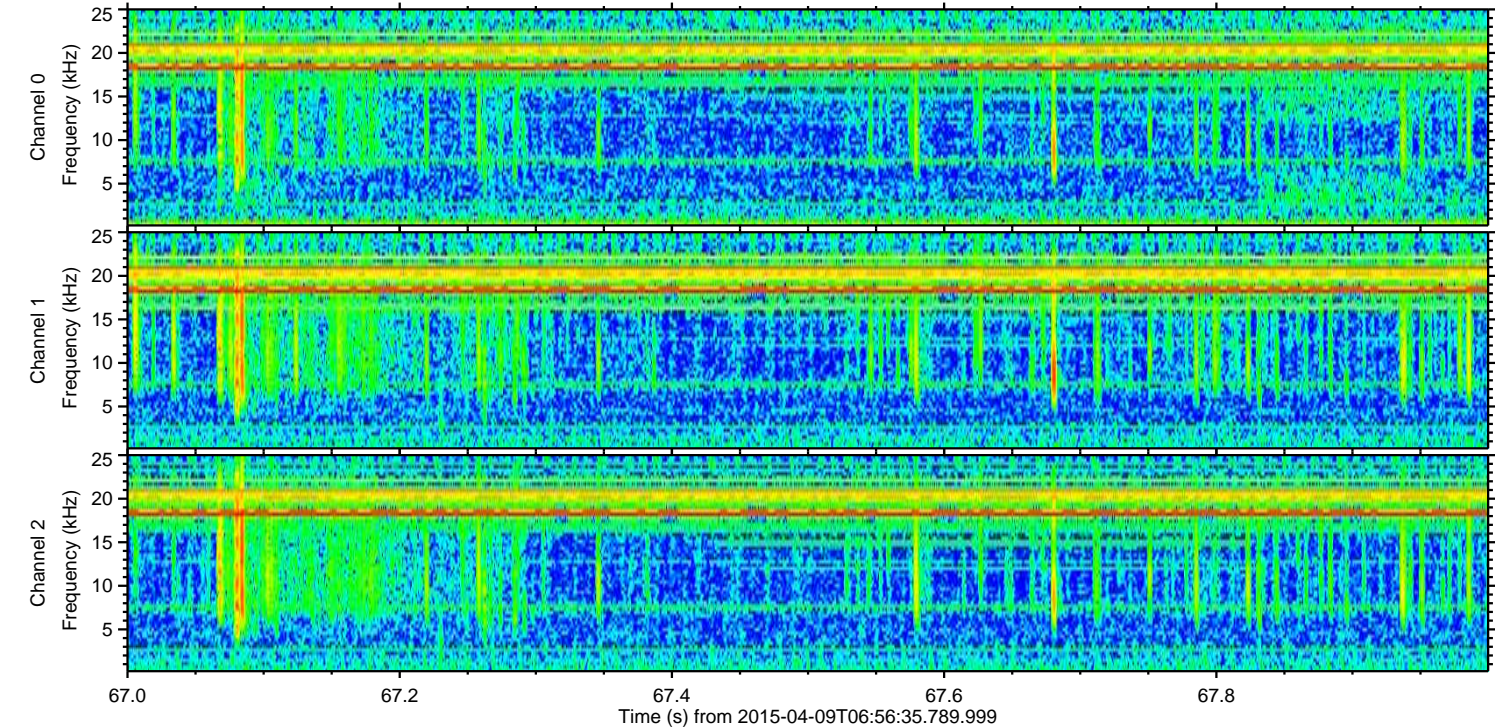
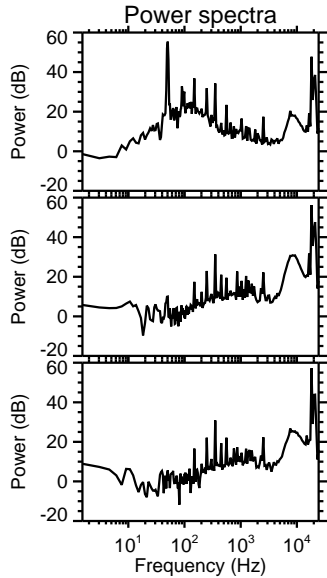
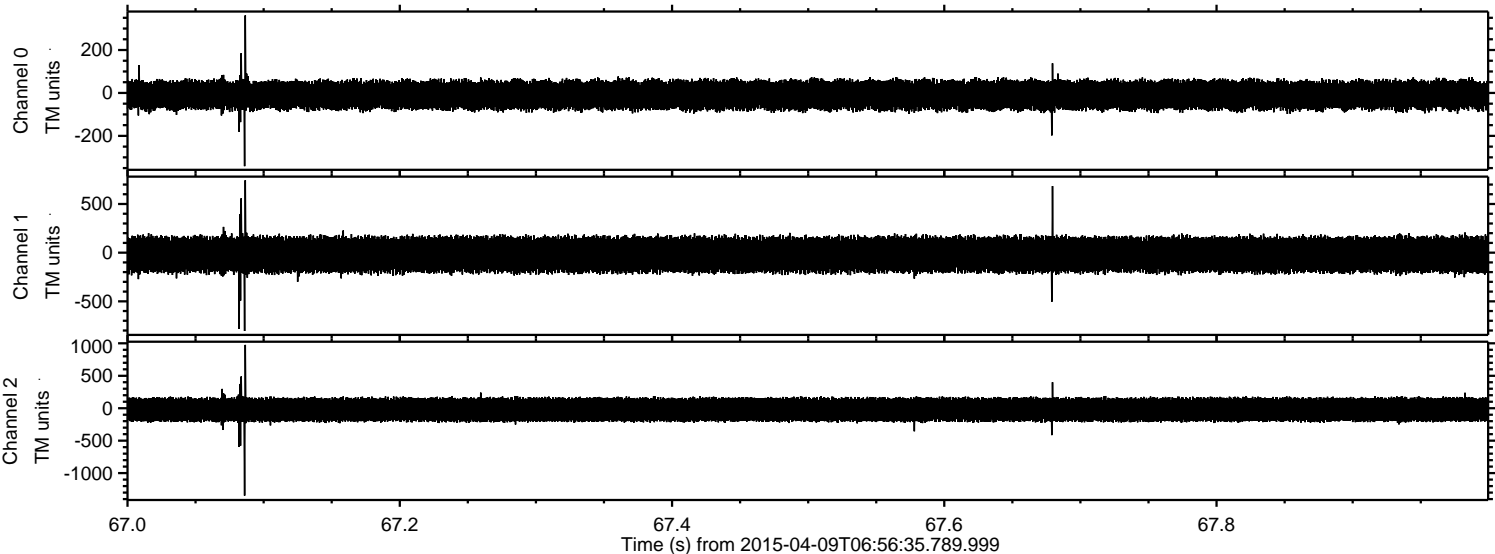
ELMAVAN 3D WAVEFORMS (Measured data sampled at 50 kHz) 49168 packets of 144 samples from 2015-04-09T06:56:35.789.999. Part 100/142

Processed Thu Apr 9 09:05:31 2015 by ELM ver.2012-10-06 from 001\_\_elm20150409\_065634\_\_dat00.bin



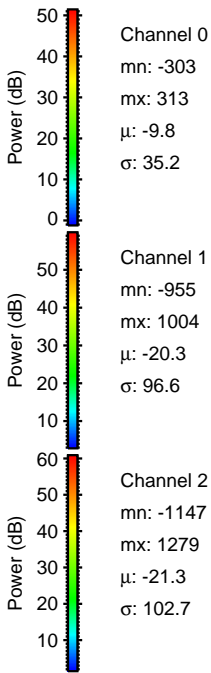
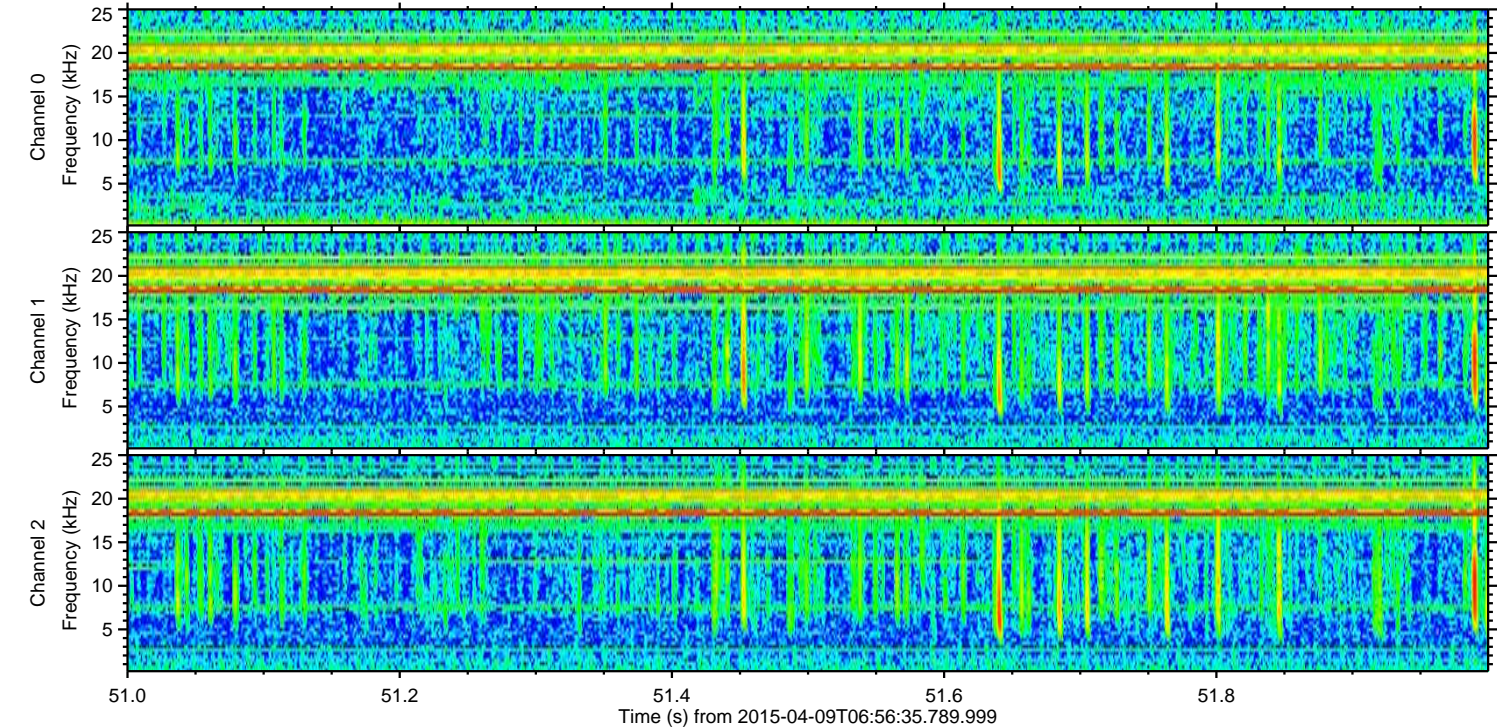
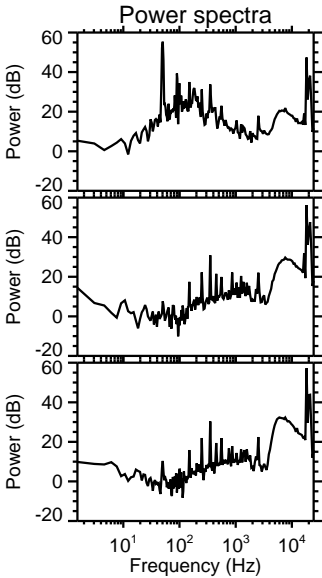
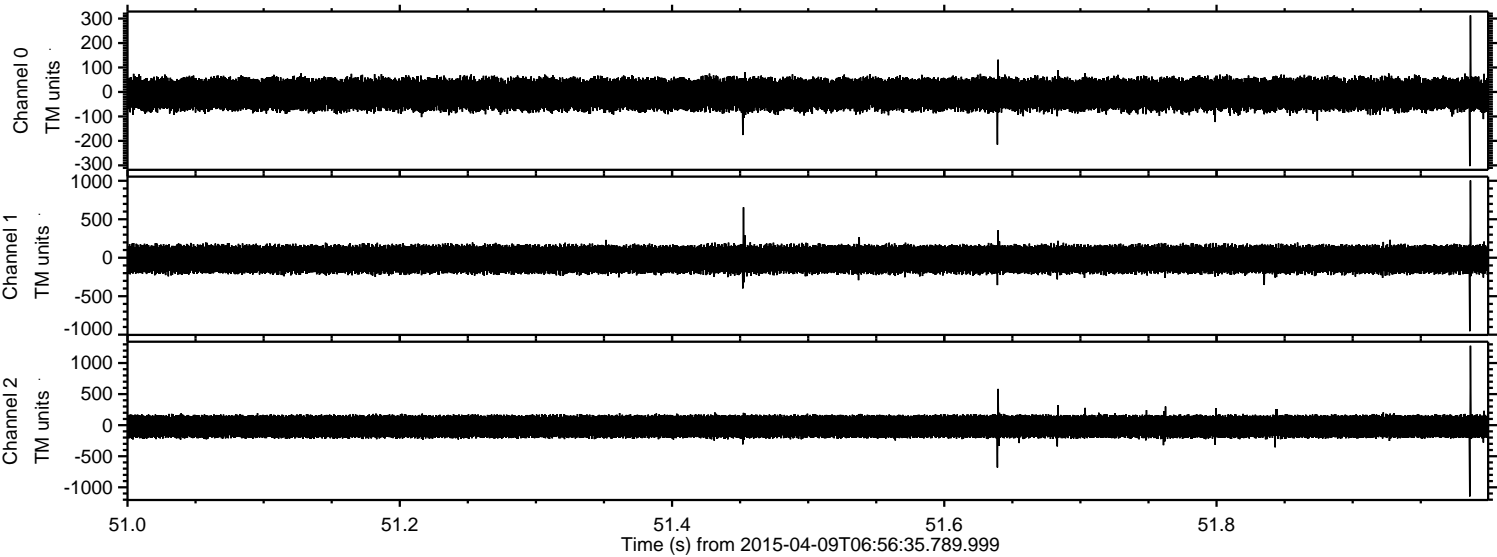


Processed Thu Apr 9 09:05:32 2015 by ELM ver.2012-10-06 from 001\_\_elm20150409\_065634\_\_dat00.bin



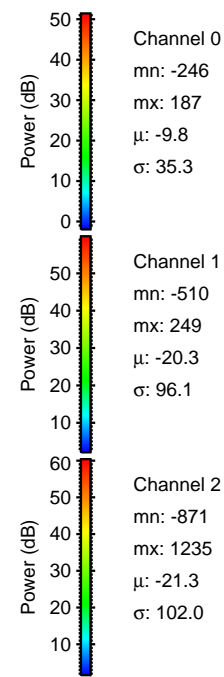
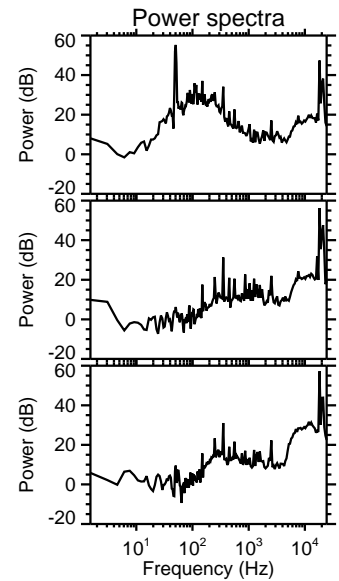
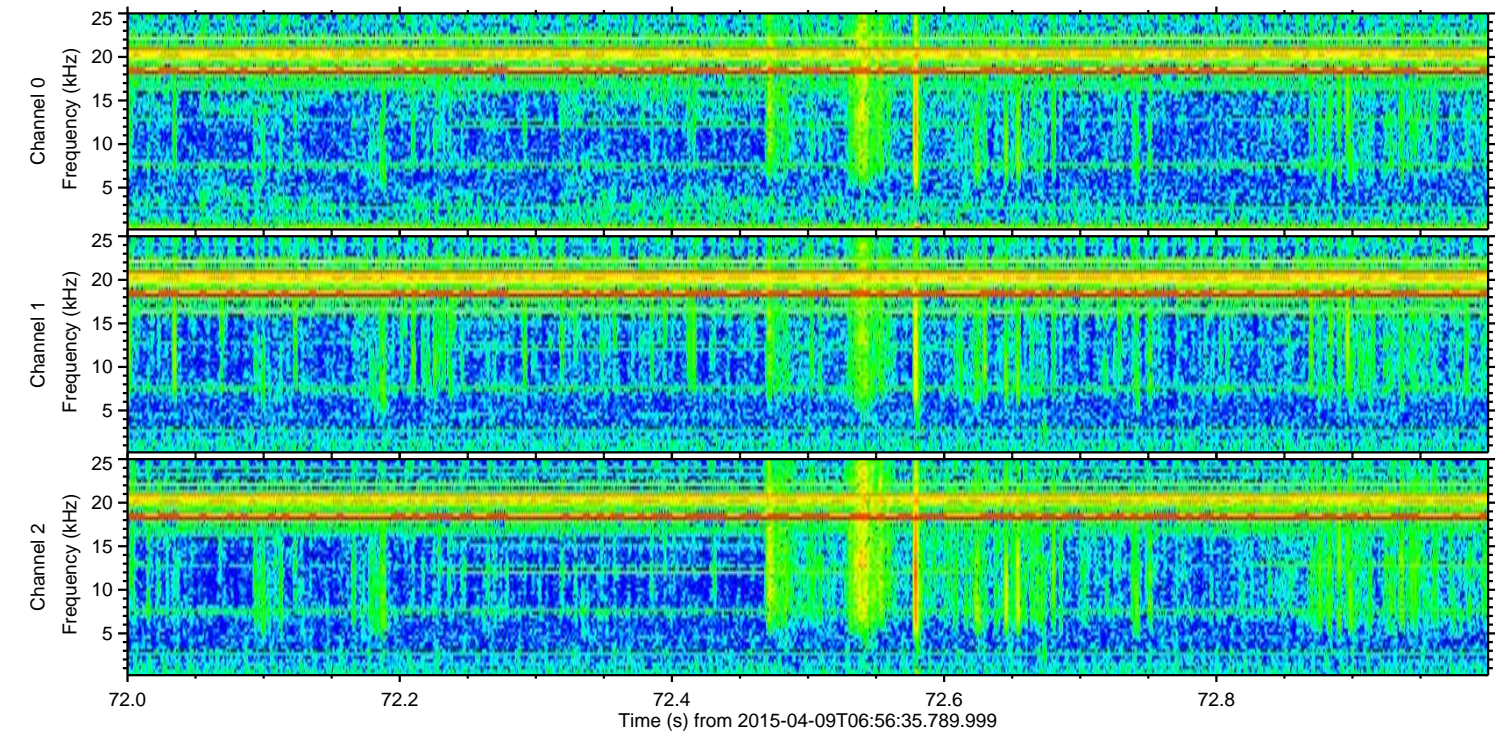
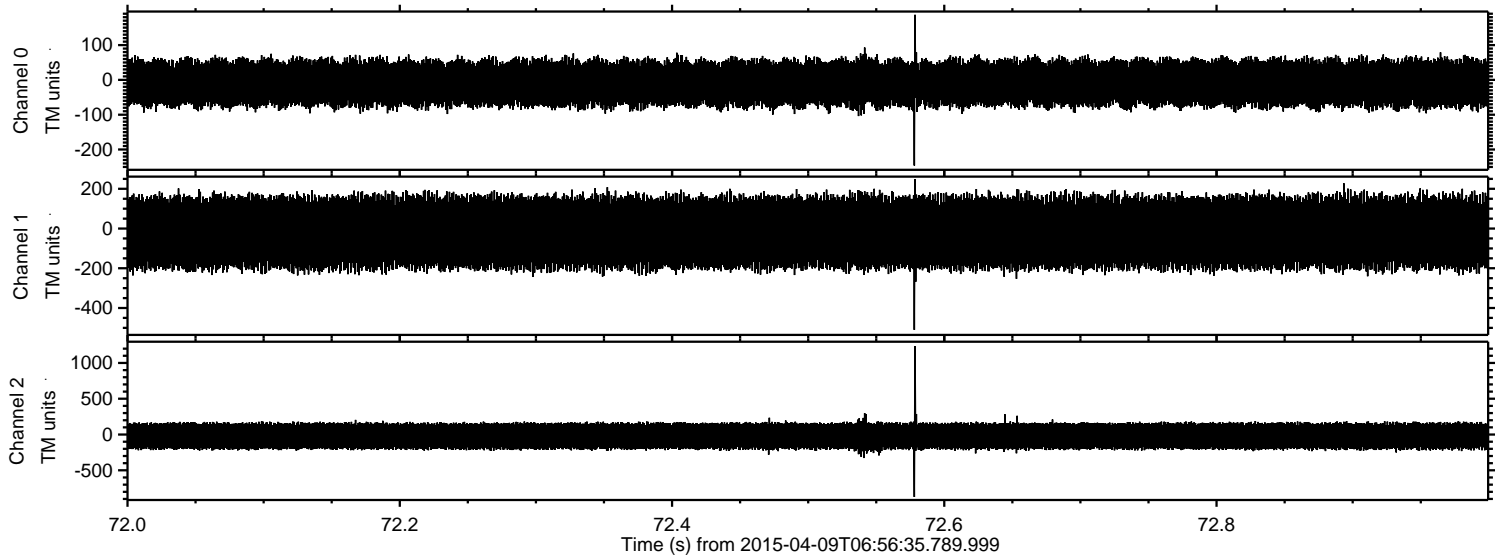


Processed Thu Apr 9 09:05:33 2015 by ELM ver.2012-10-06 from 001\_\_elm20150409\_065634\_\_dat00.bin





Processed Thu Apr 9 09:05:34 2015 by ELM ver.2012-10-06 from 001\_\_elm20150409\_065634\_\_dat00.bin





Processed Thu Apr 9 09:05:35 2015 by ELM ver.2012-10-06 from 001\_\_elm20150409\_065634\_\_dat00.bin

