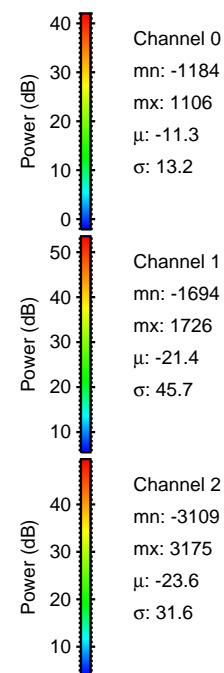
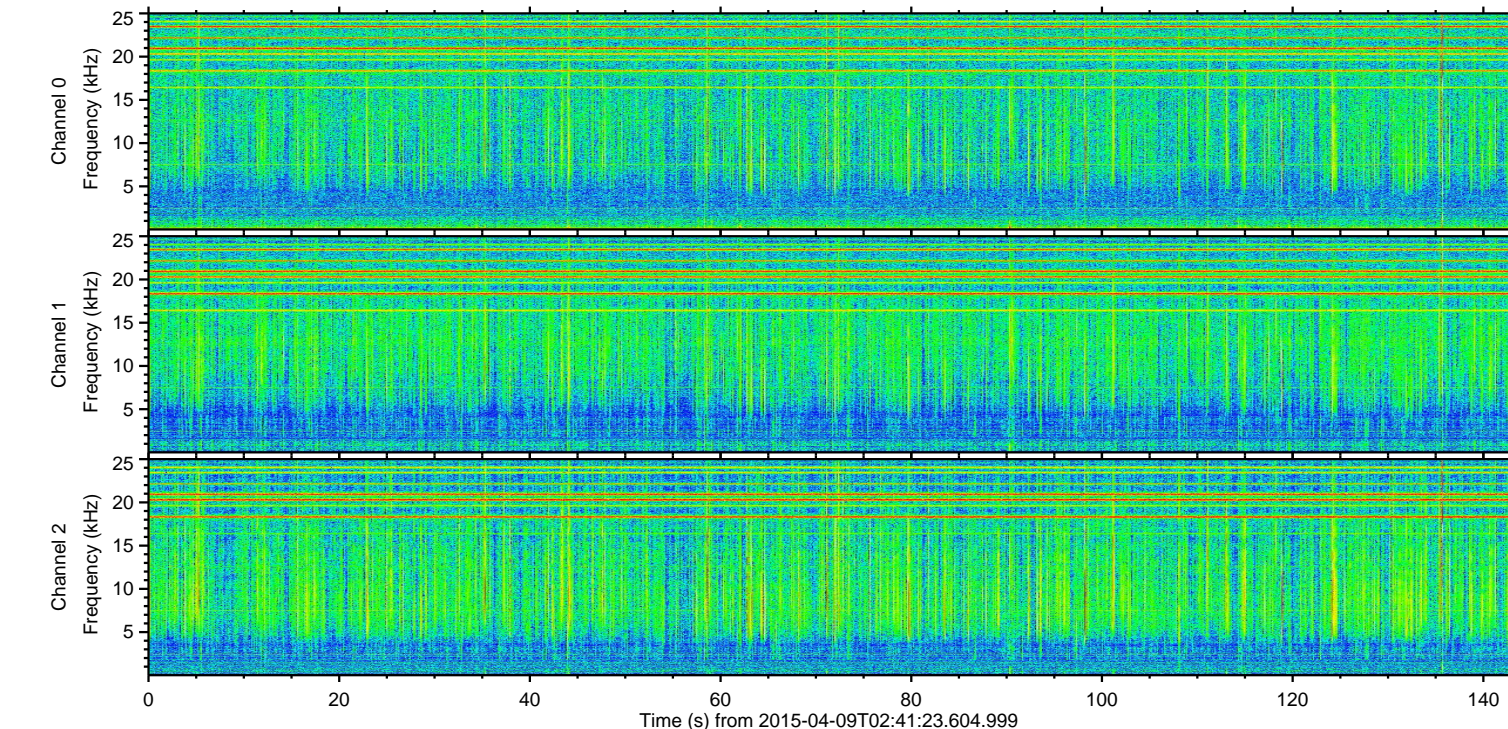
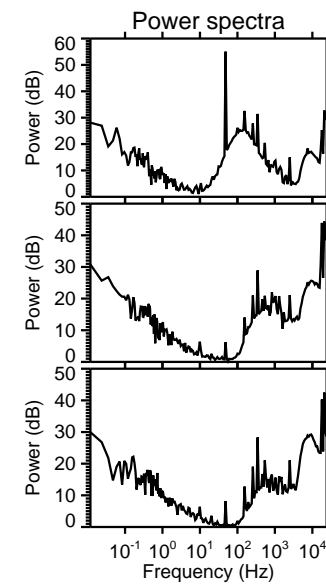
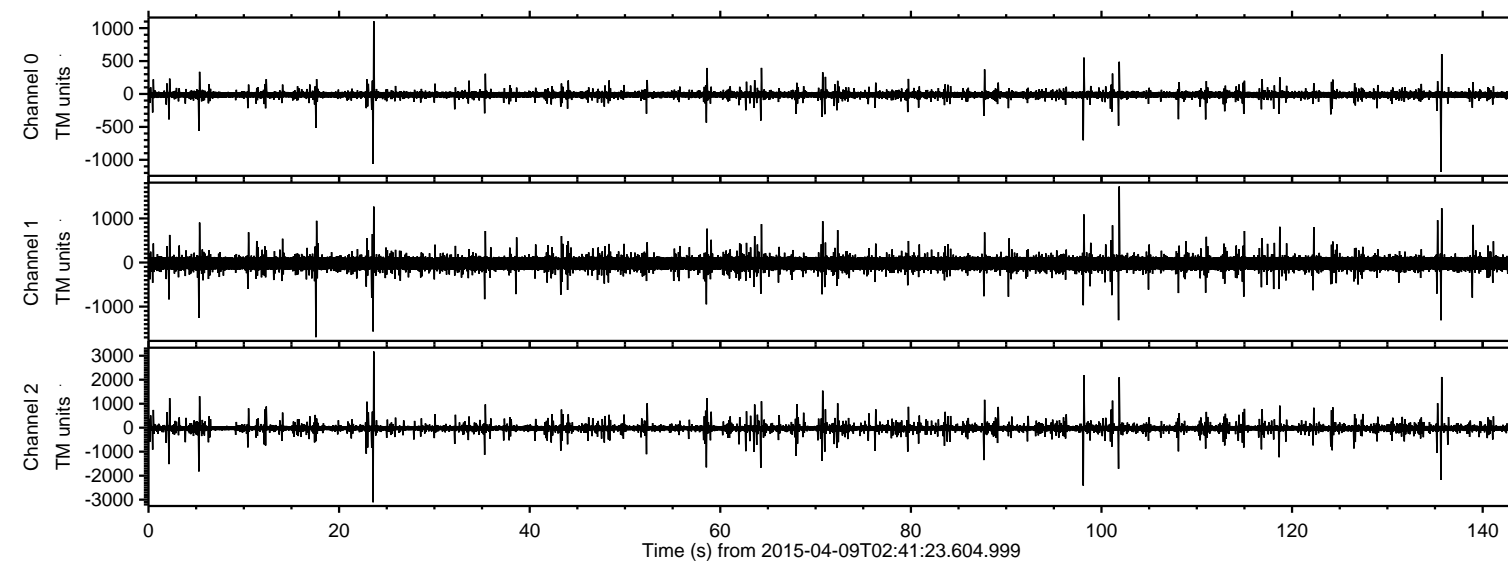


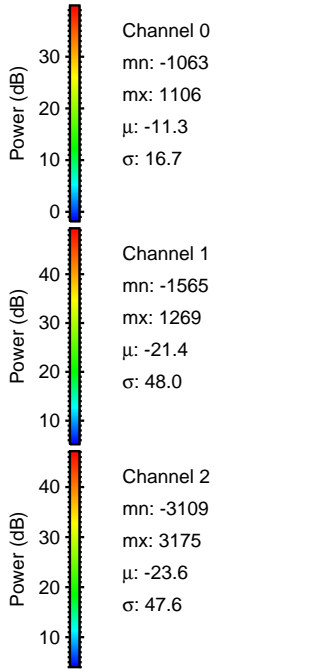
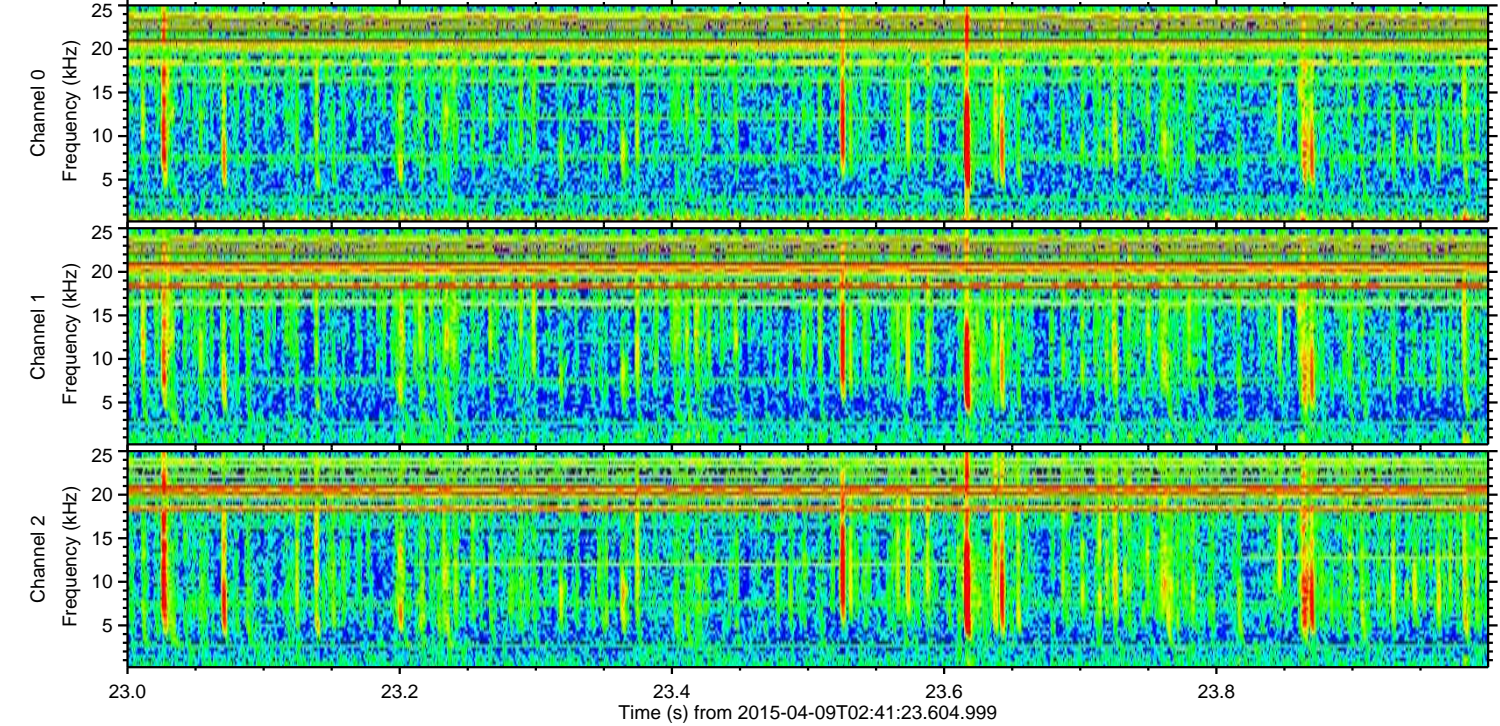
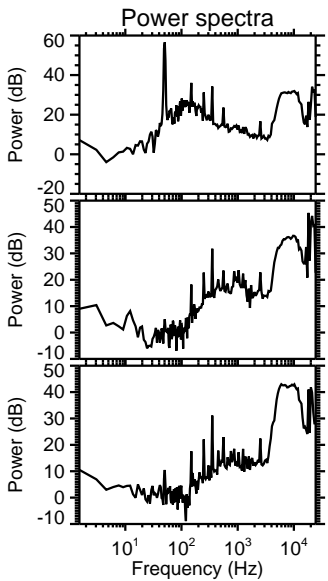
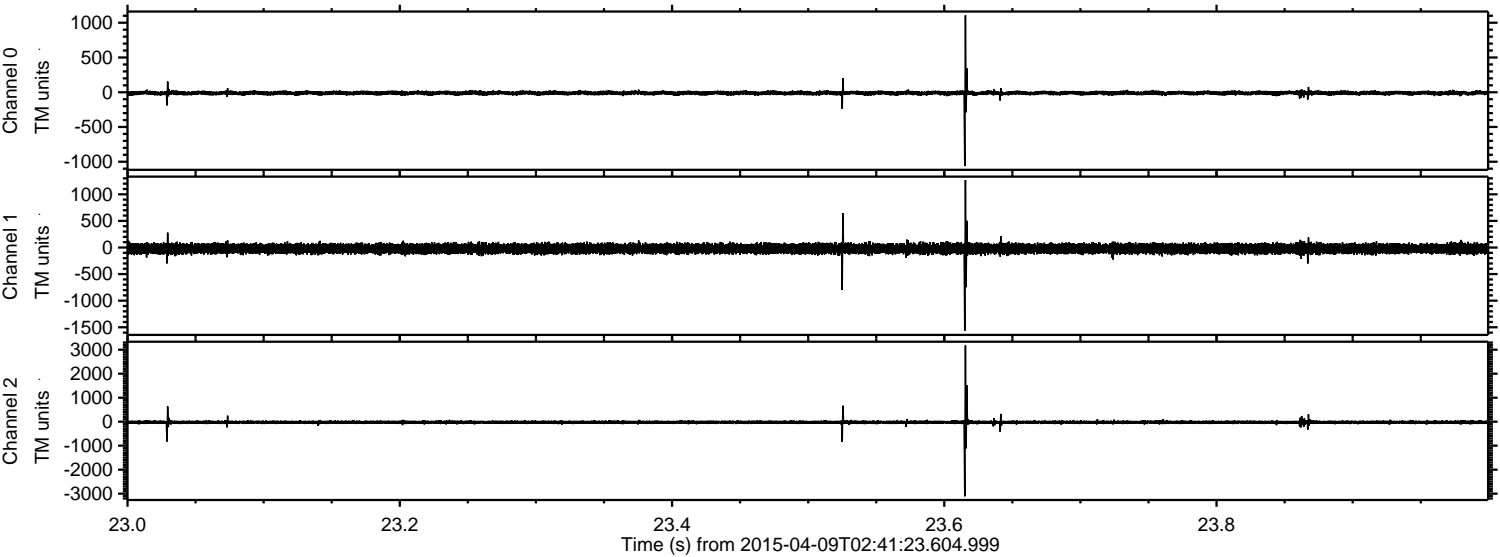
ELMAVAN 3D WAVEFORMS (Measured data sampled at 50 kHz) 49576 packets of 144 samples from 2015-04-09T02:41:23.604.999.

Processed Thu Apr 9 04:48:22 2015 by ELM ver.2012-10-06 from 001__elm20150409_024122__dat00.bin

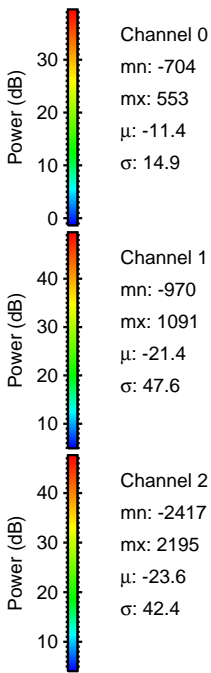
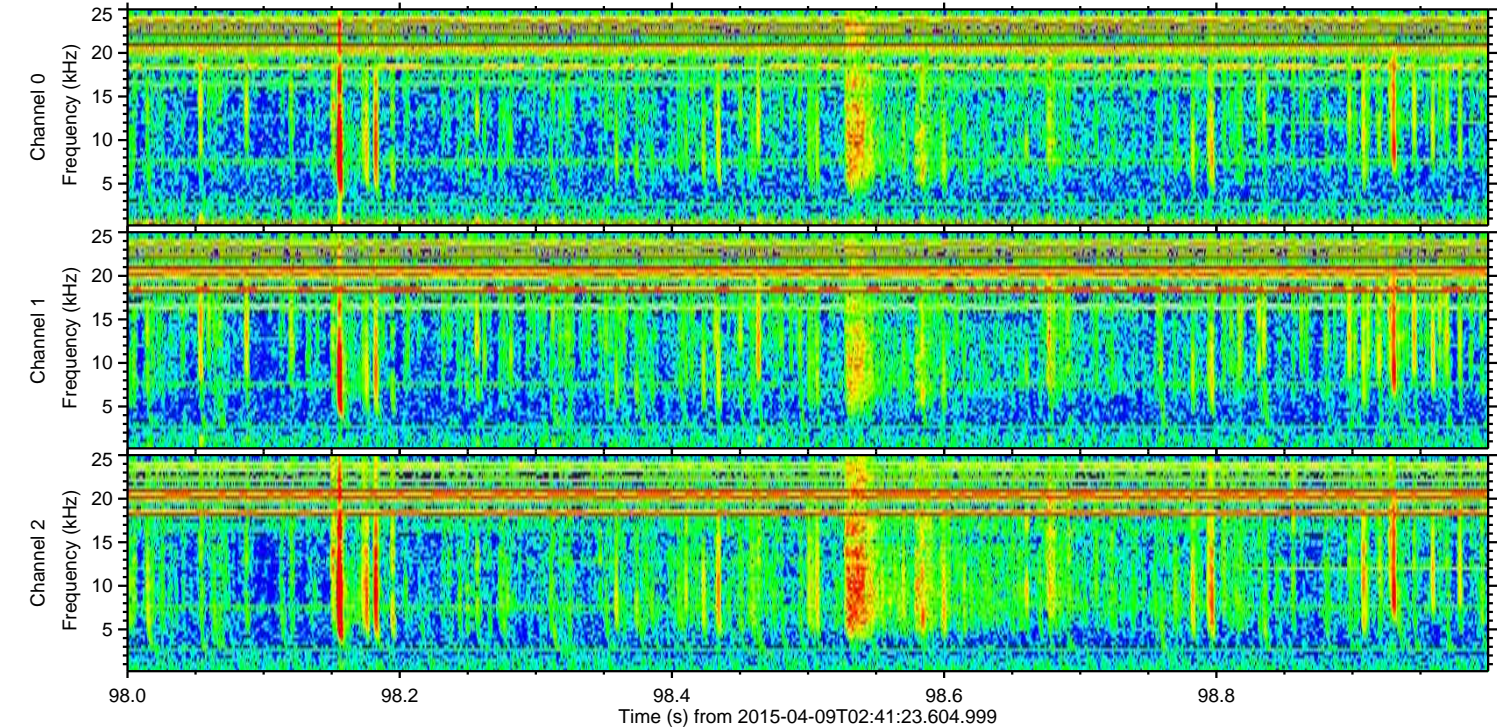
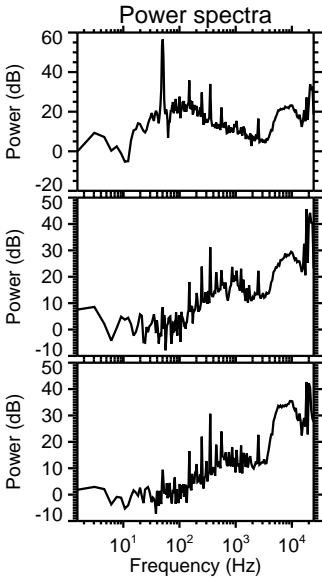
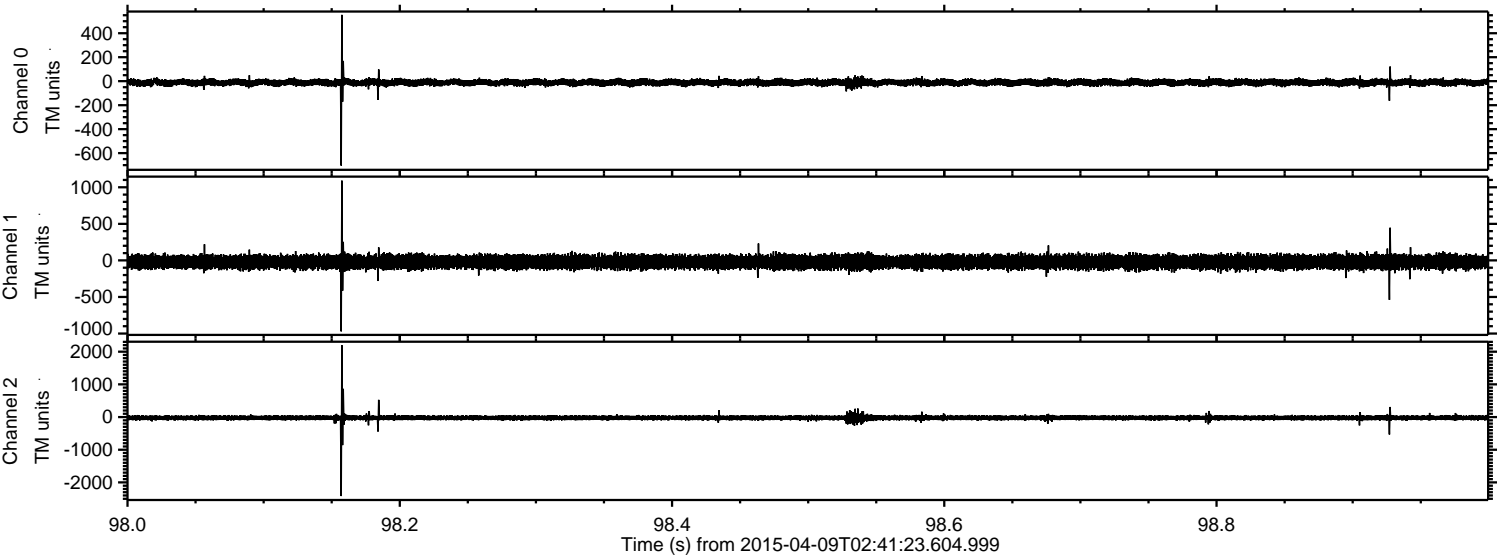


ELMAVAN 3D WAVEFORMS (Measured data sampled at 50 kHz) 49576 packets of 144 samples from 2015-04-09T02:41:23.604.999. Part 24/143

Processed Thu Apr 9 04:48:37 2015 by ELM ver.2012-10-06 from 001__elm20150409_024122__dat00.bin

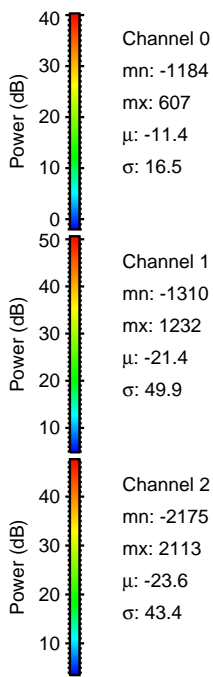
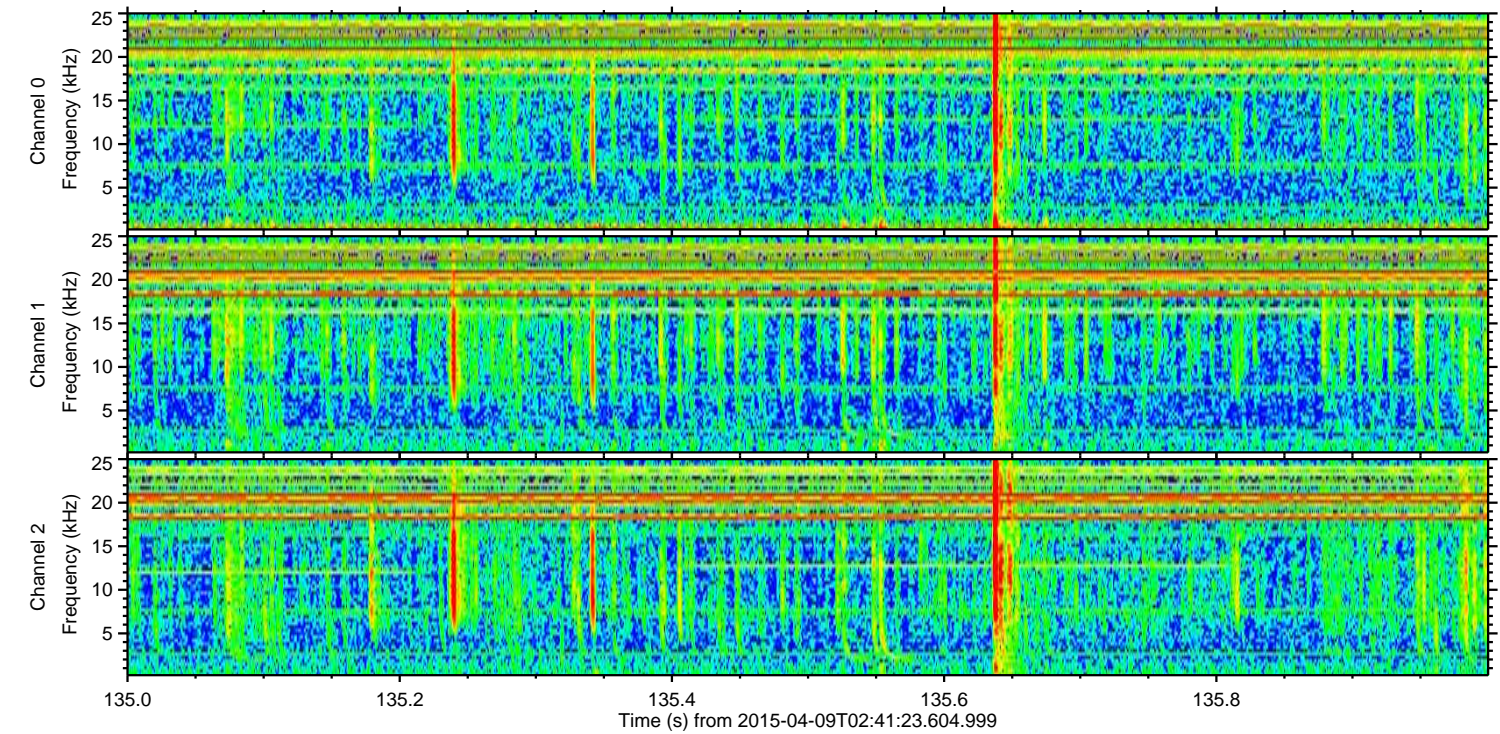
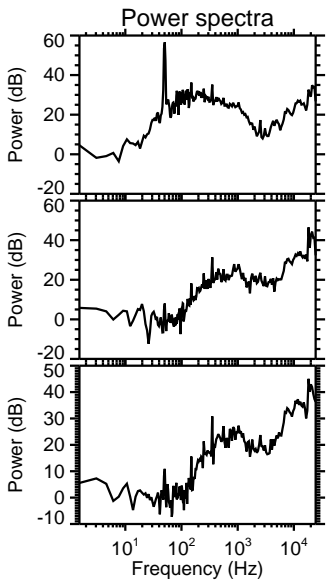
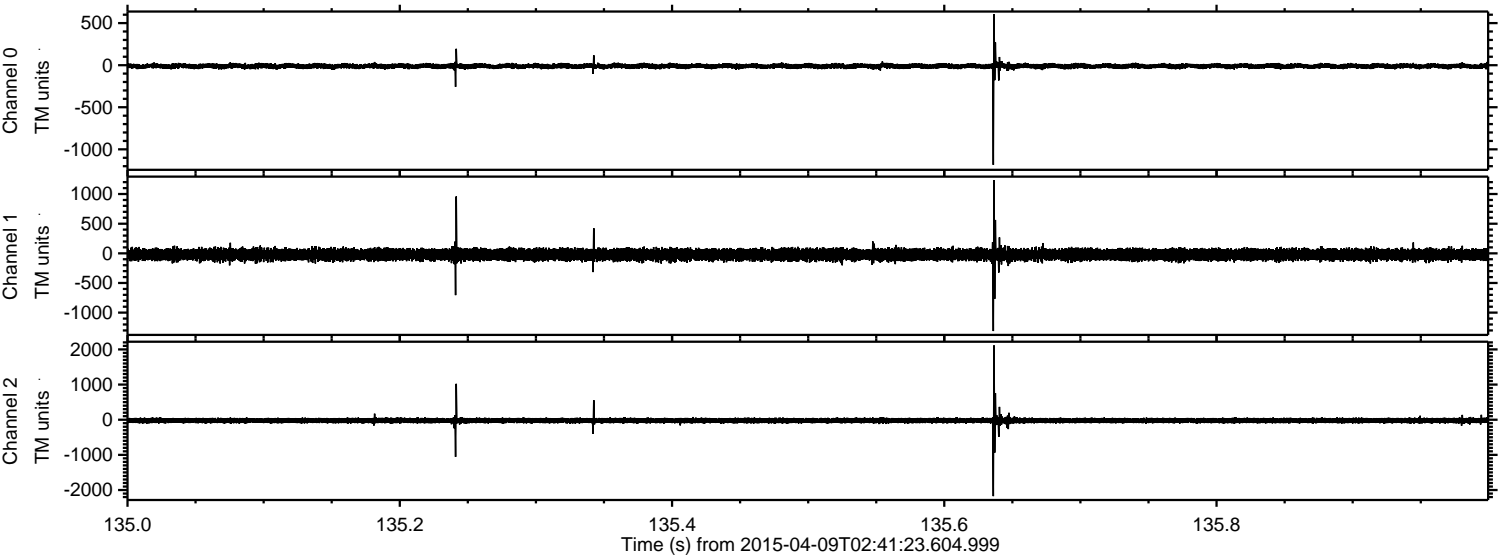


Processed Thu Apr 9 04:48:39 2015 by ELM ver.2012-10-06 from 001__elm20150409_024122__dat00.bin

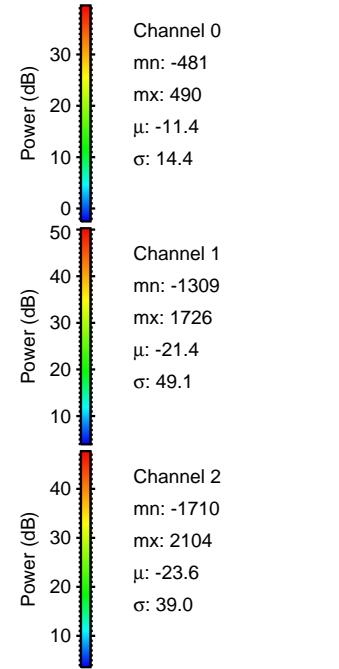
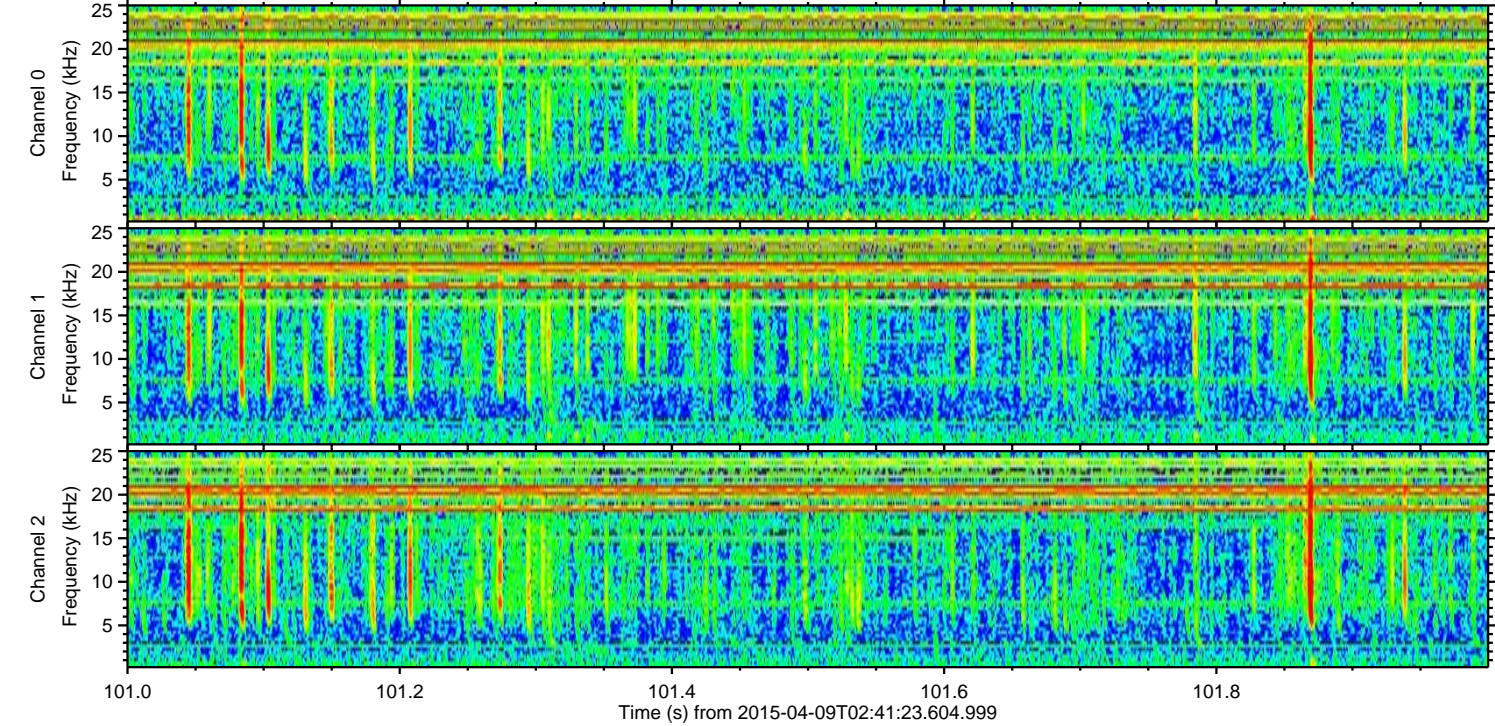
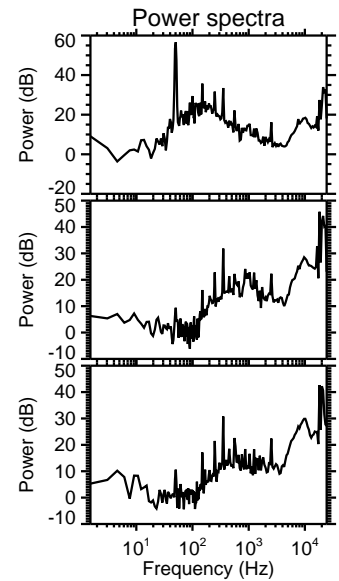
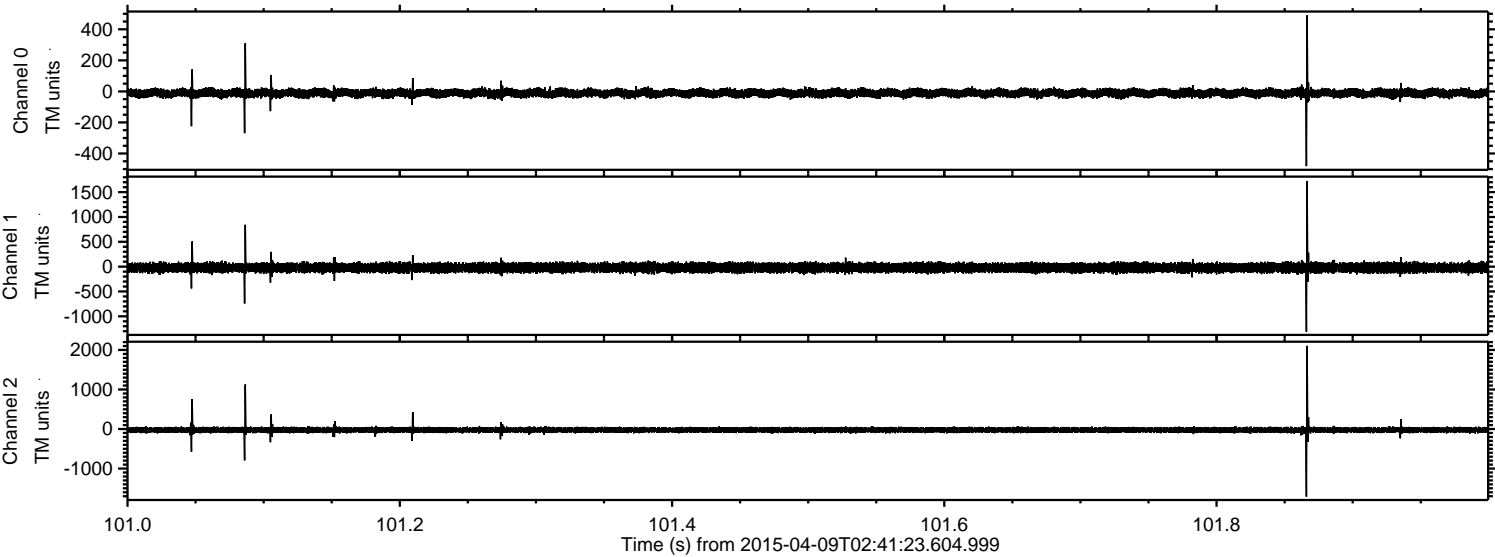


ELMAVAN 3D WAVEFORMS (Measured data sampled at 50 kHz) 49576 packets of 144 samples from 2015-04-09T02:41:23.604.999. Part 136/143

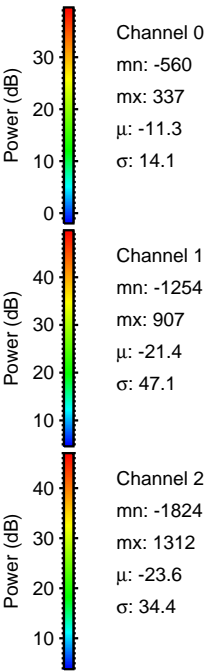
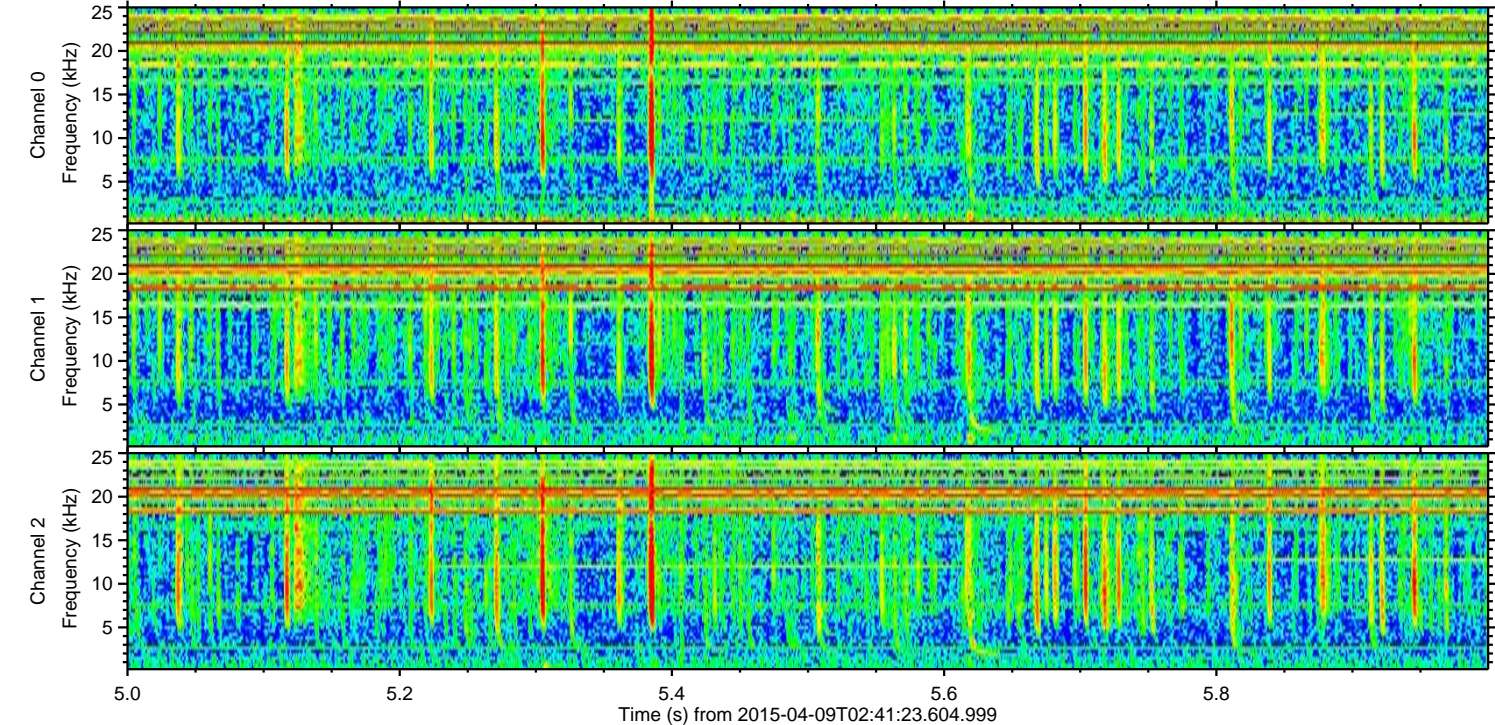
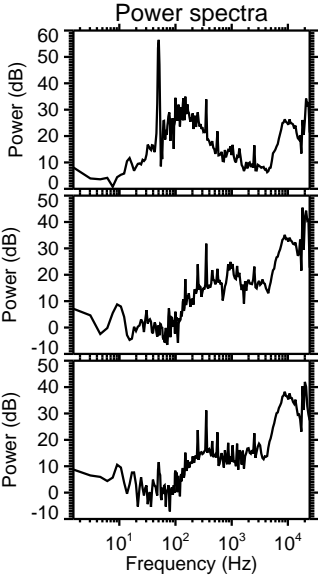
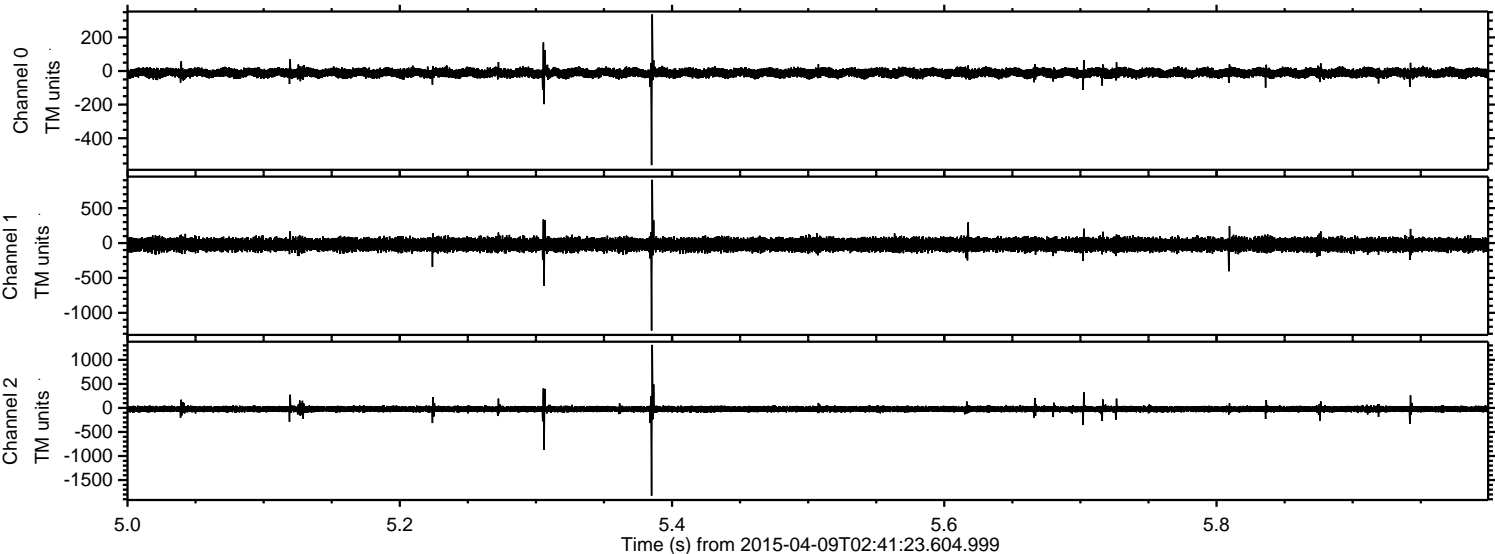
Processed Thu Apr 9 04:48:40 2015 by ELM ver.2012-10-06 from 001__elm20150409_024122__dat00.bin



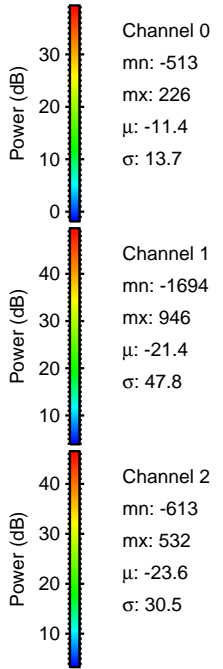
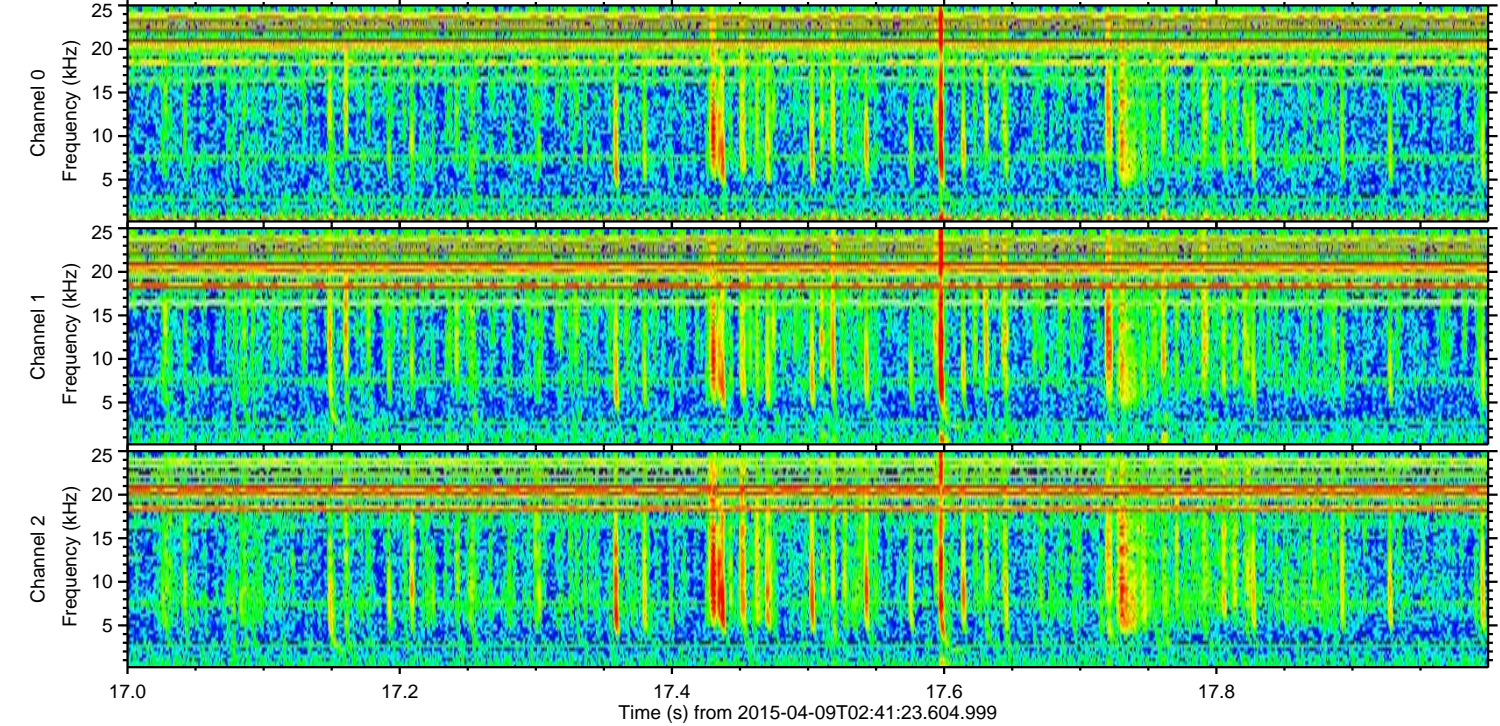
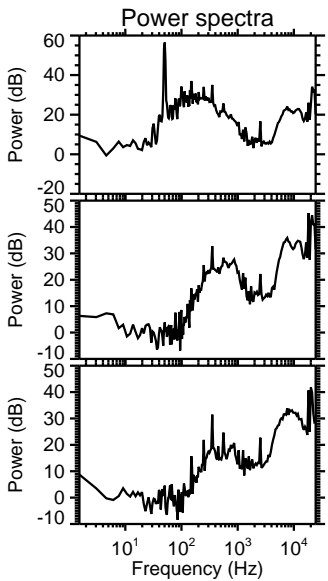
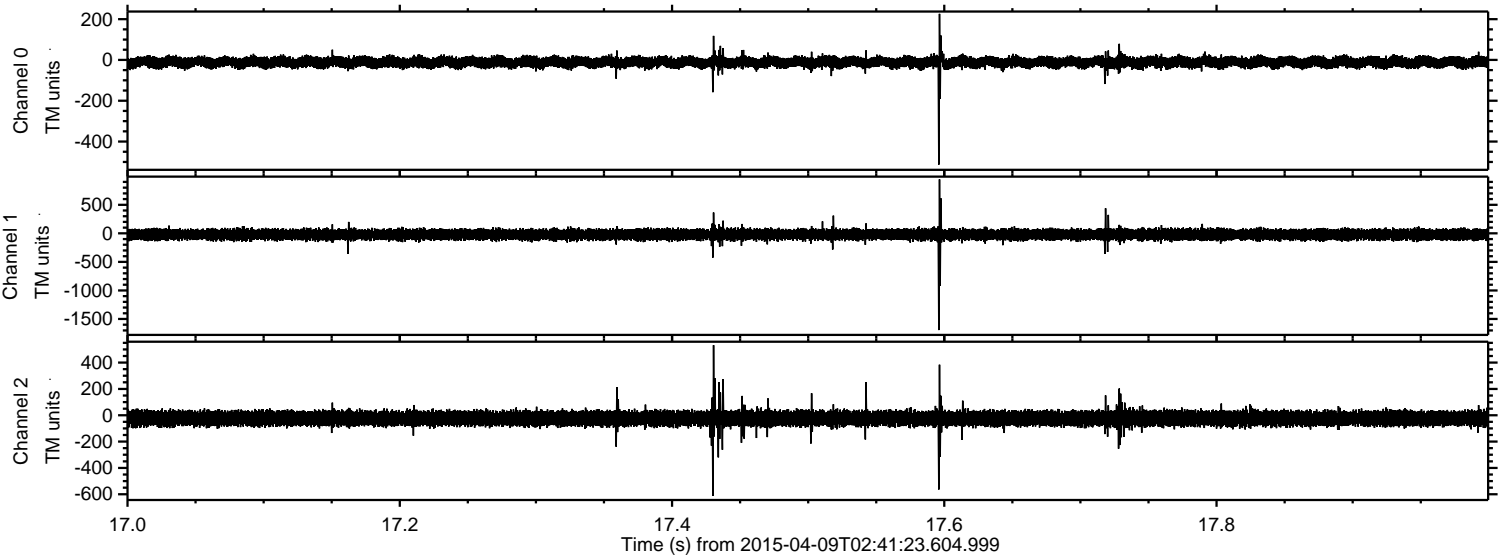
Processed Thu Apr 9 04:48:41 2015 by ELM ver.2012-10-06 from 001__elm20150409_024122__dat00.bin



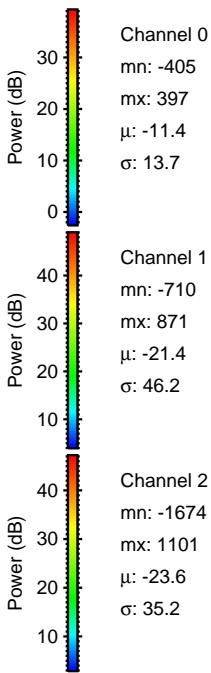
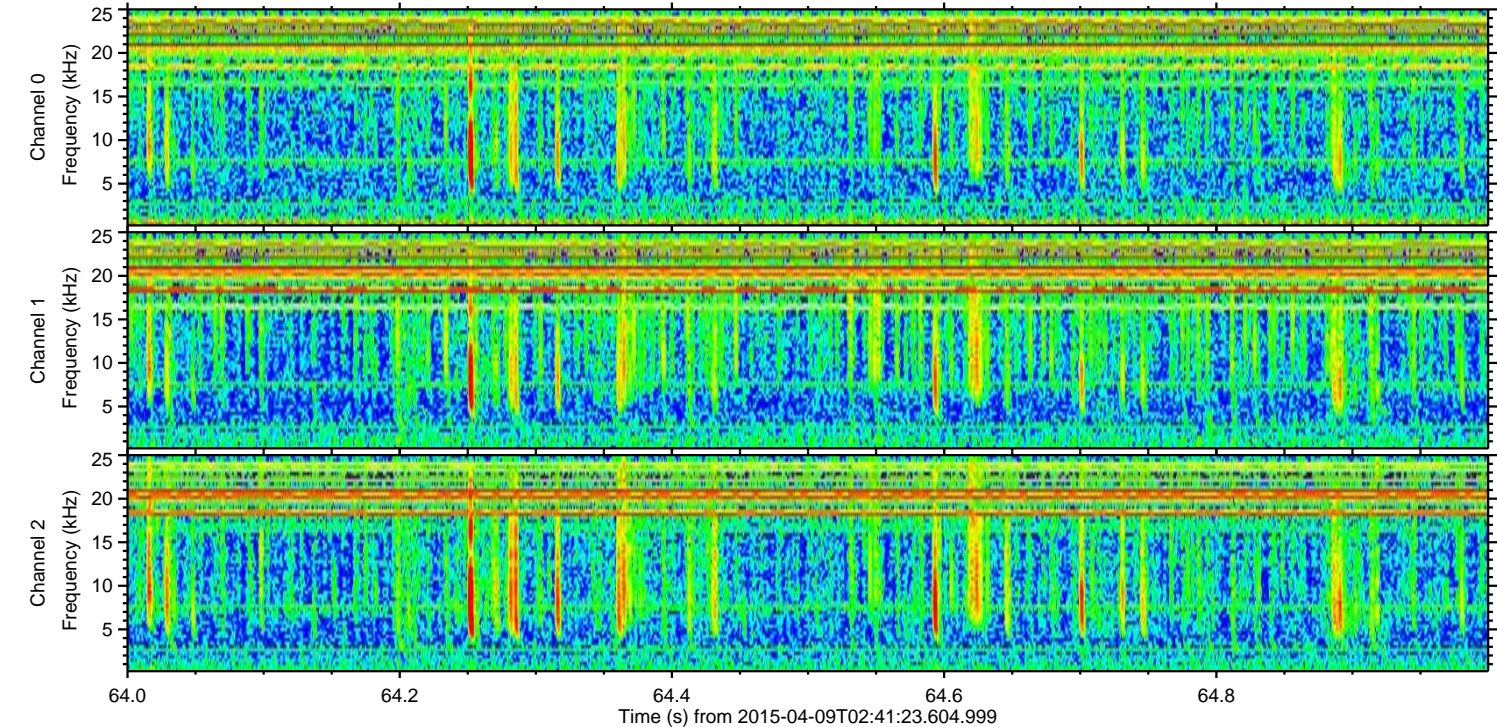
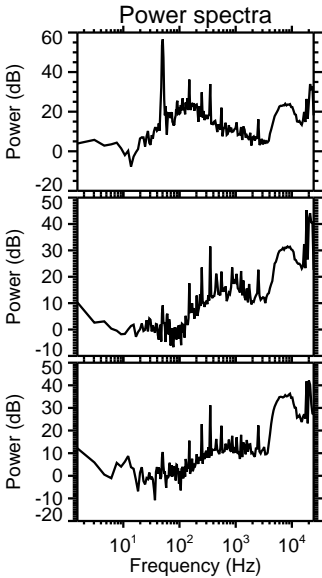
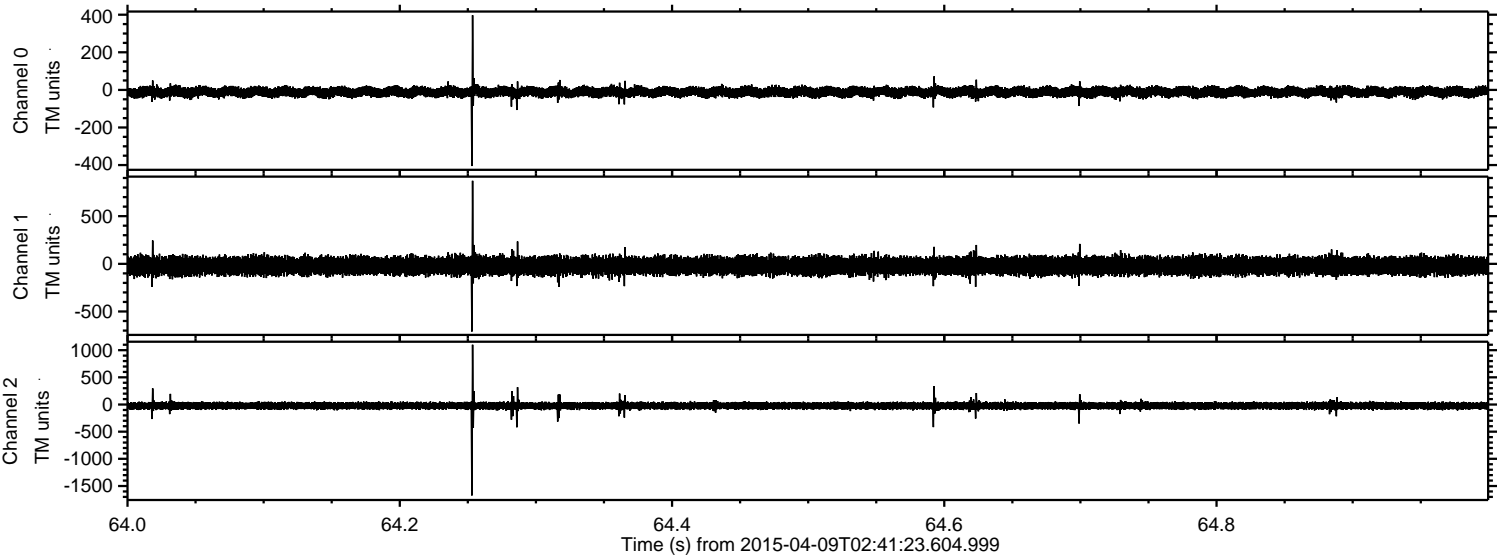
Processed Thu Apr 9 04:48:42 2015 by ELM ver.2012-10-06 from 001__elm20150409_024122__dat00.bin



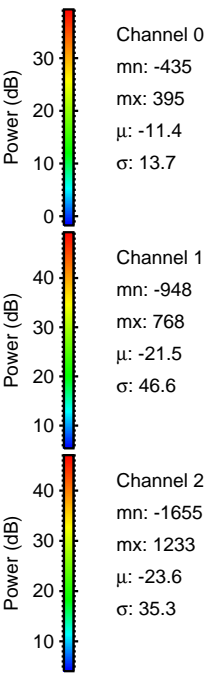
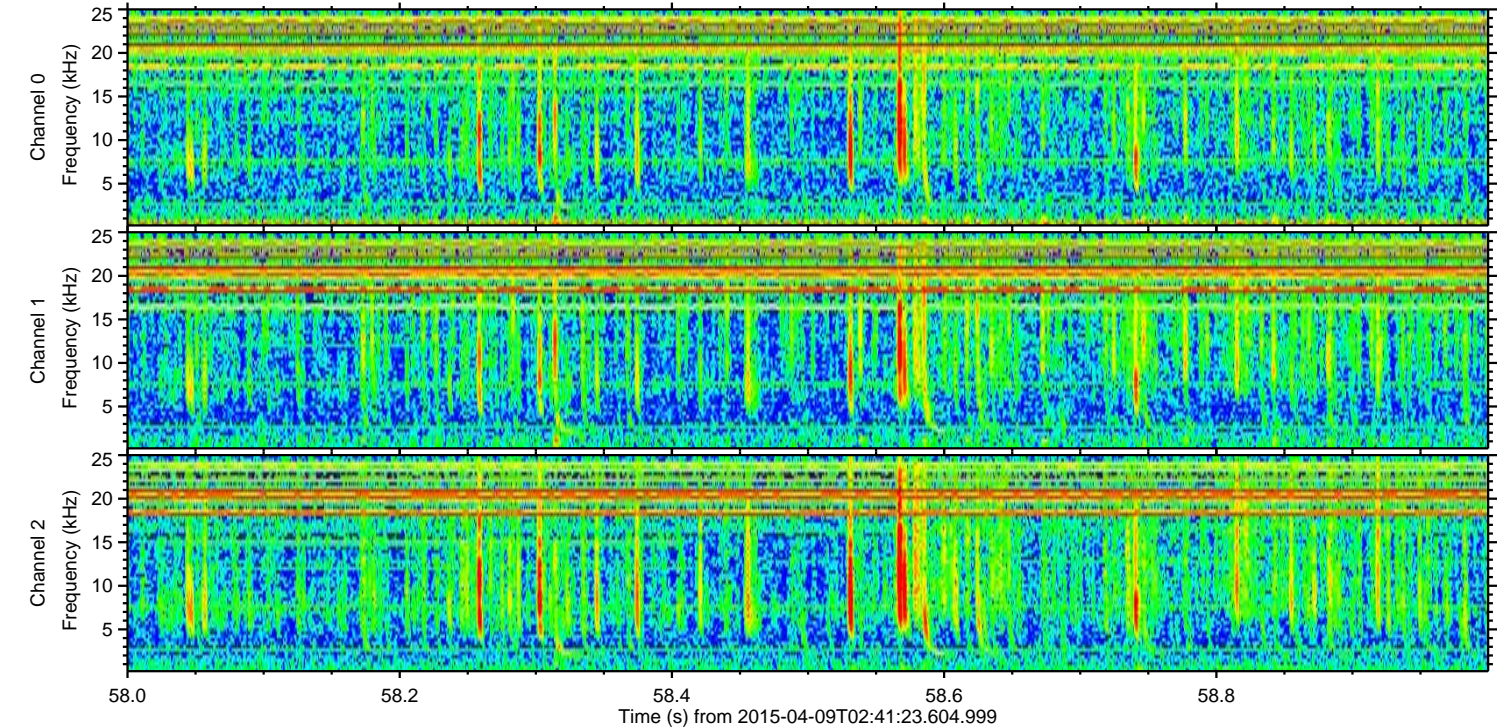
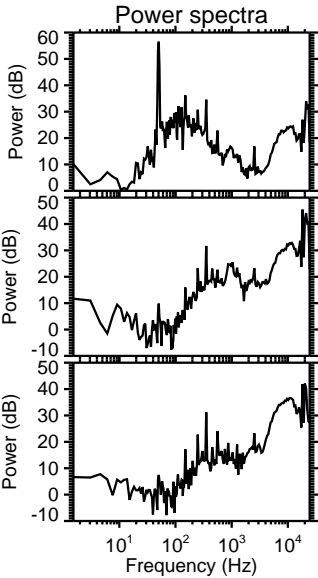
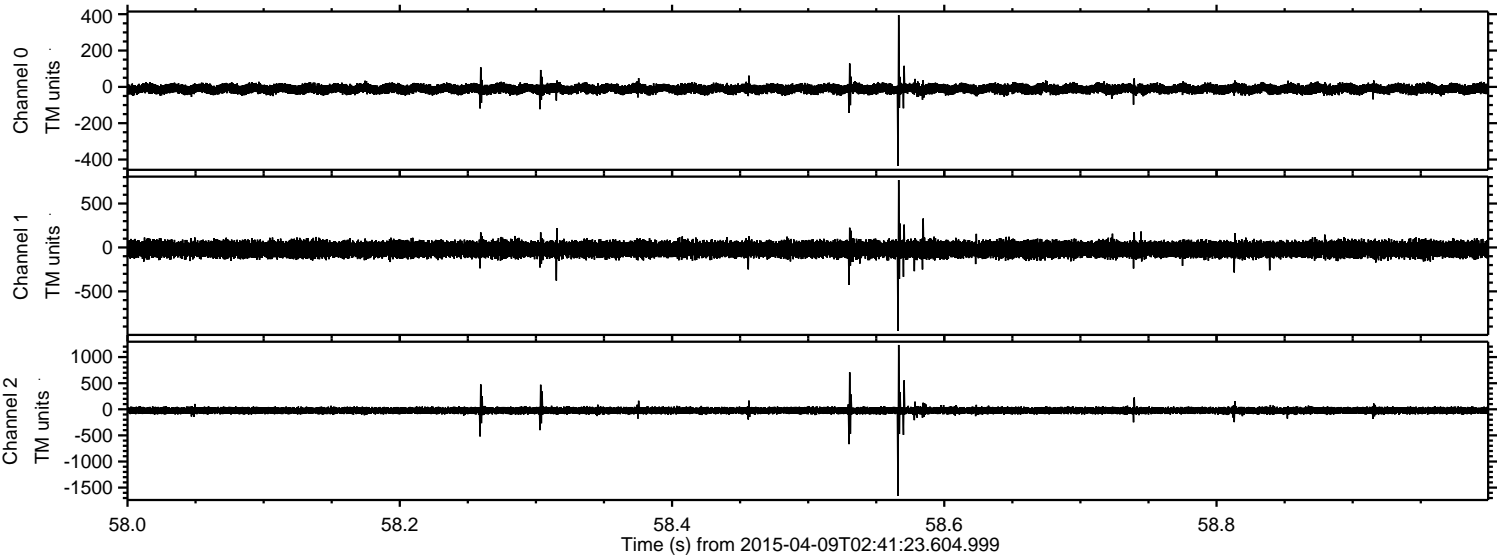
Processed Thu Apr 9 04:48:43 2015 by ELM ver.2012-10-06 from 001__elm20150409_024122__dat00.bin



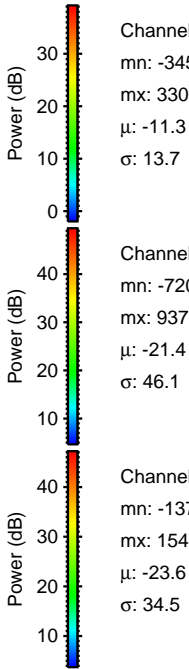
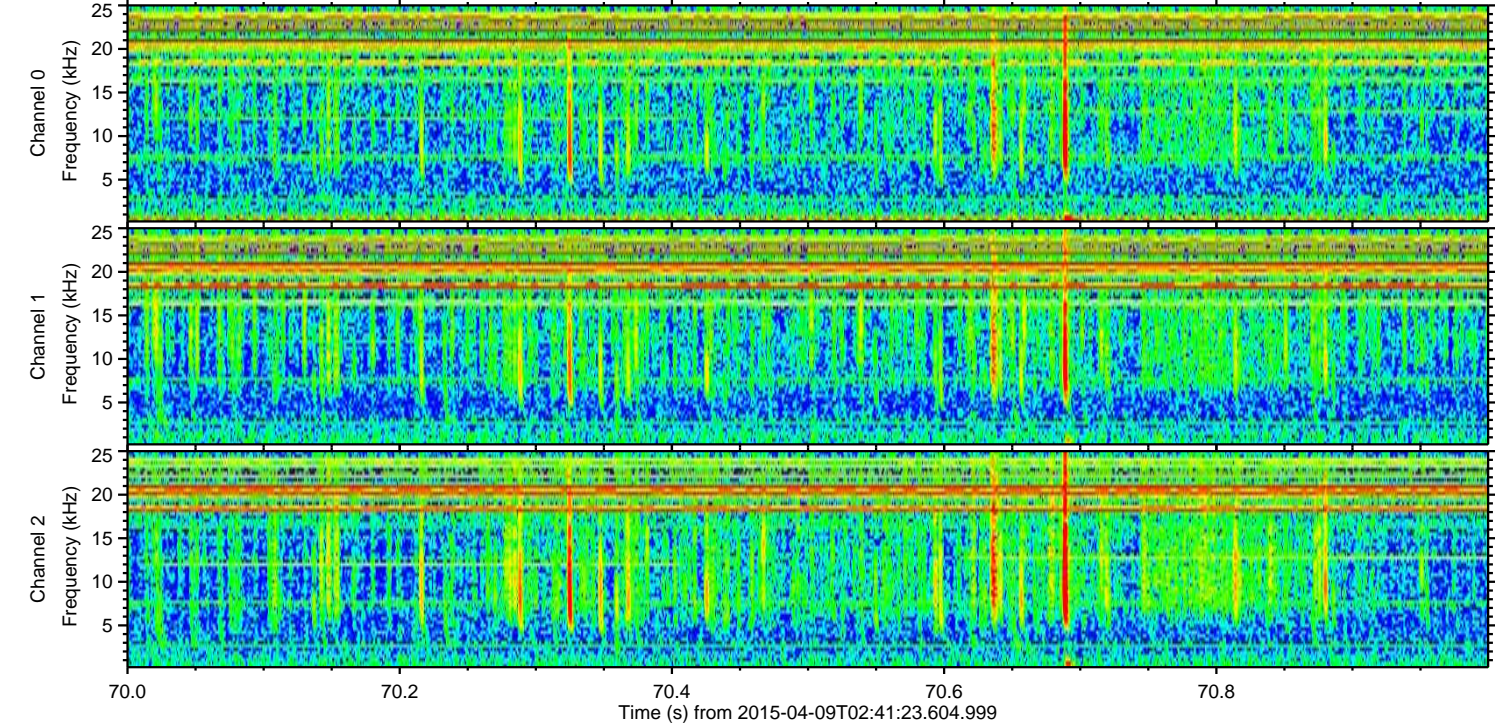
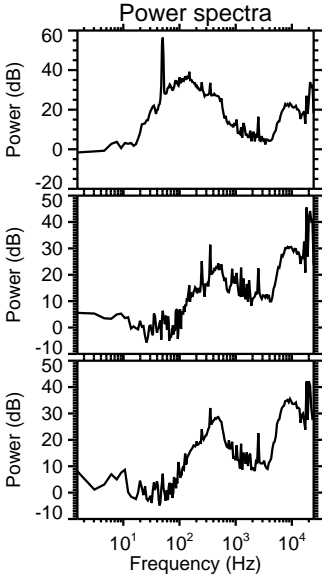
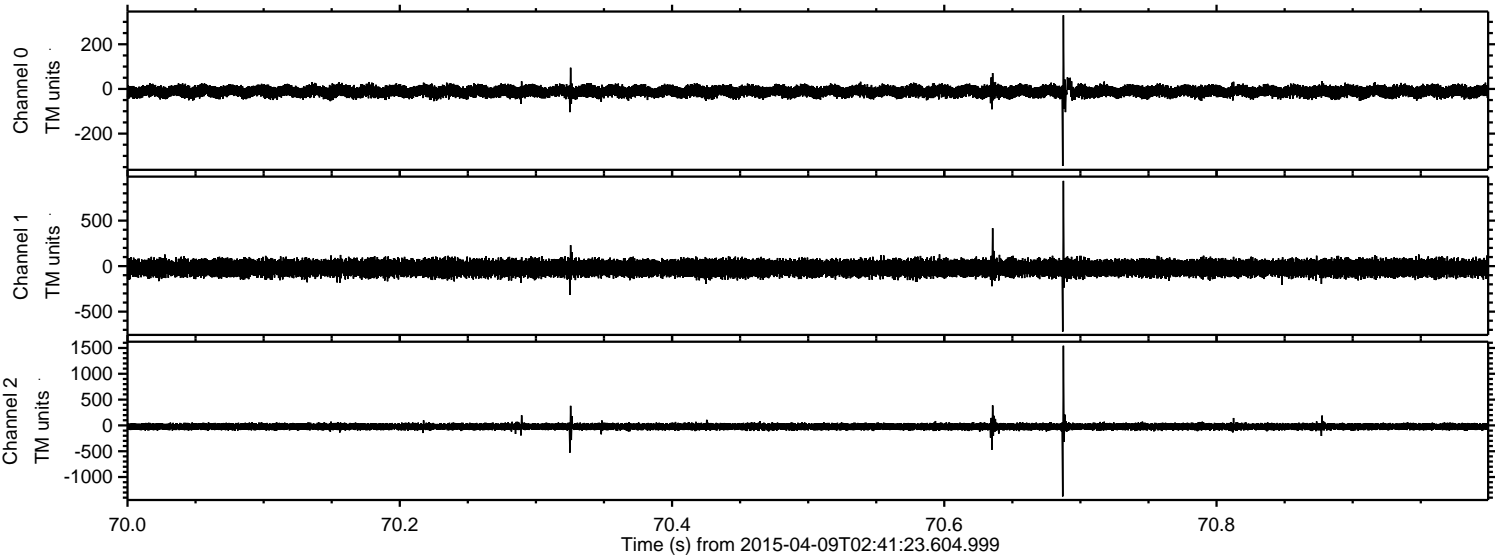
Processed Thu Apr 9 04:48:45 2015 by ELM ver.2012-10-06 from 001__elm20150409_024122__dat00.bin



Processed Thu Apr 9 04:48:46 2015 by ELM ver.2012-10-06 from 001__elm20150409_024122__dat00.bin



Processed Thu Apr 9 04:48:47 2015 by ELM ver.2012-10-06 from 001__elm20150409_024122__dat00.bin



Channel 0
mn: -345
mx: 330
 μ : -11.3
 σ : 13.7

Channel 1
mn: -720
mx: 937
 μ : -21.4
 σ : 46.1

Channel 2
mn: -1376
mx: 1544
 μ : -23.6
 σ : 34.5

Processed Thu Apr 9 04:48:48 2015 by ELM ver.2012-10-06 from 001__elm20150409_024122__dat00.bin

