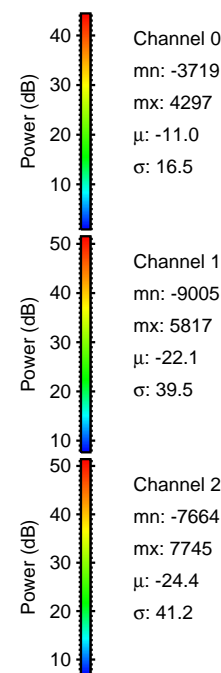
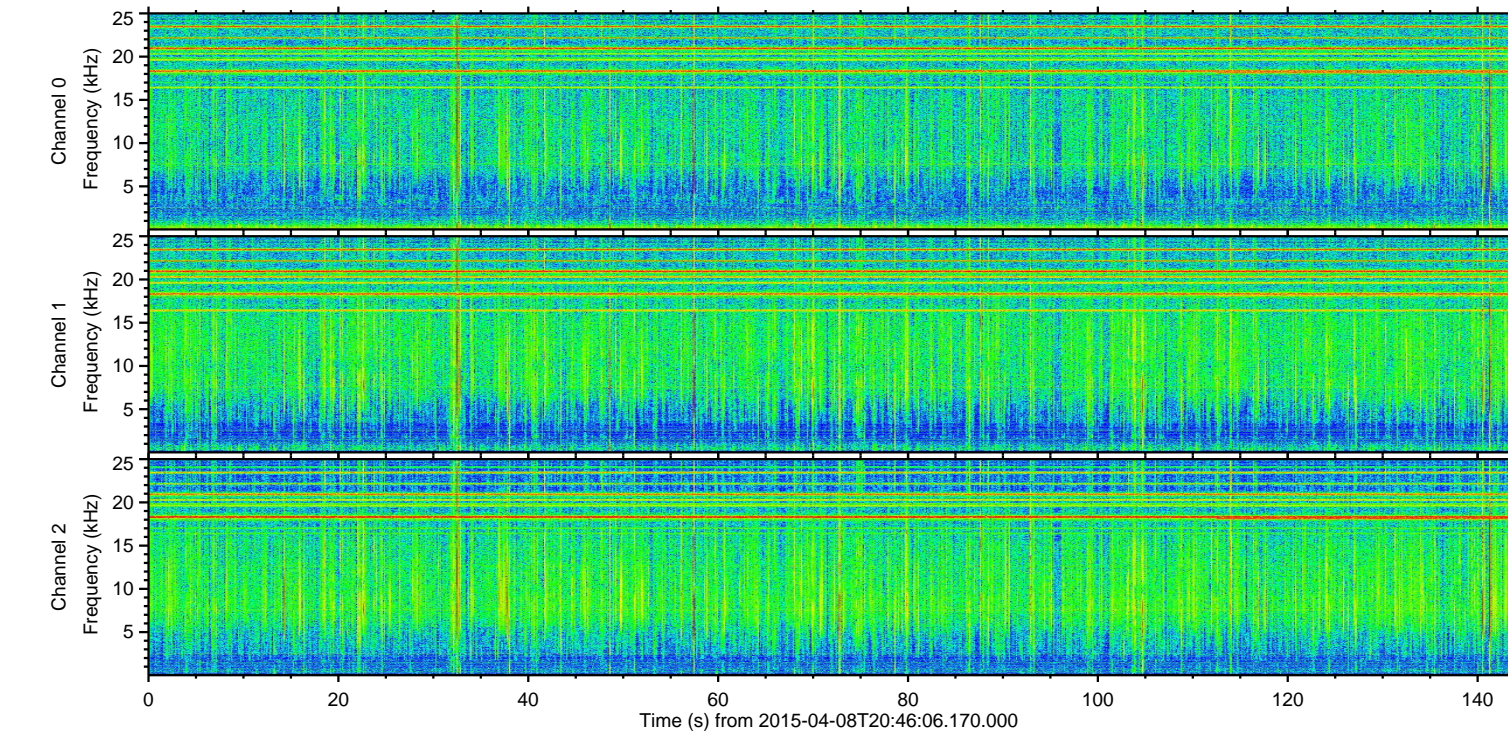
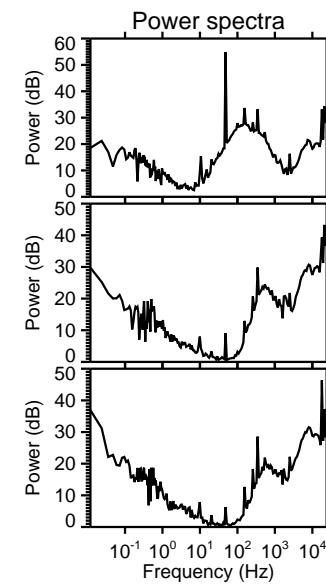
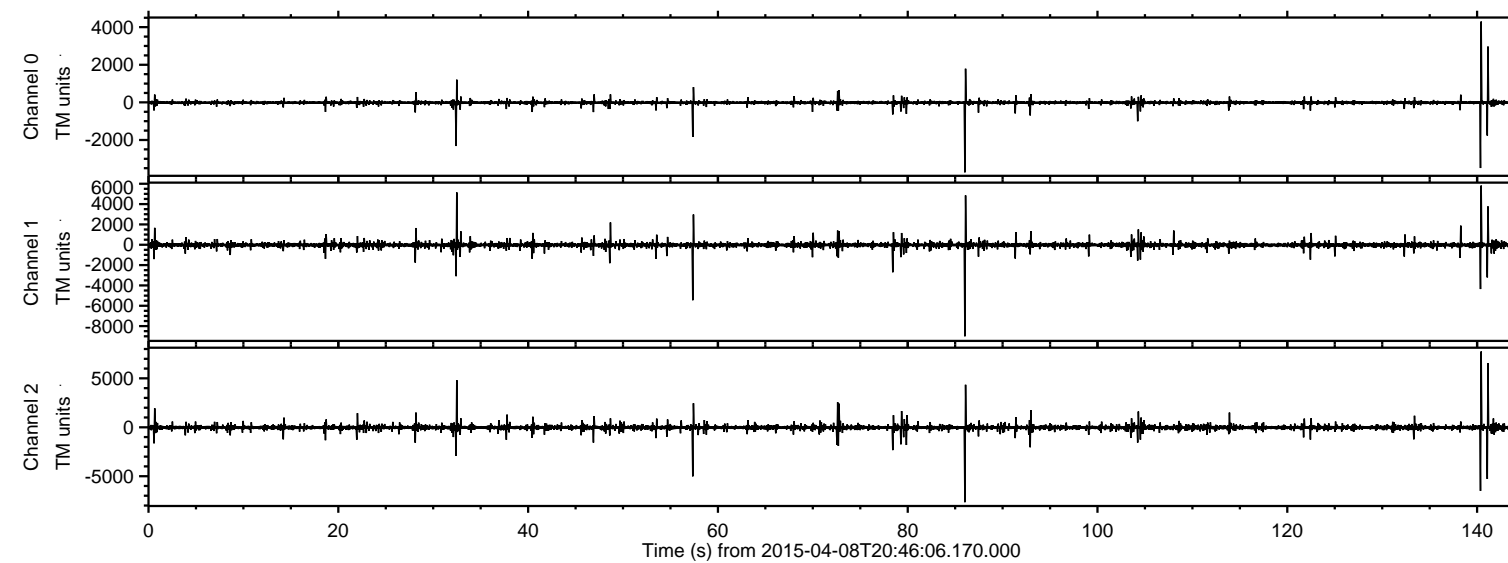


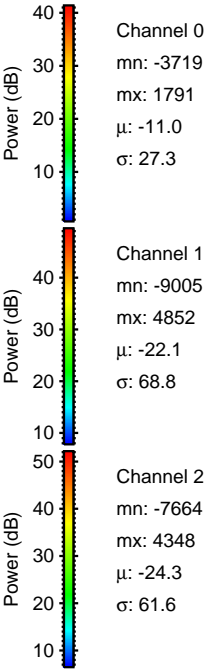
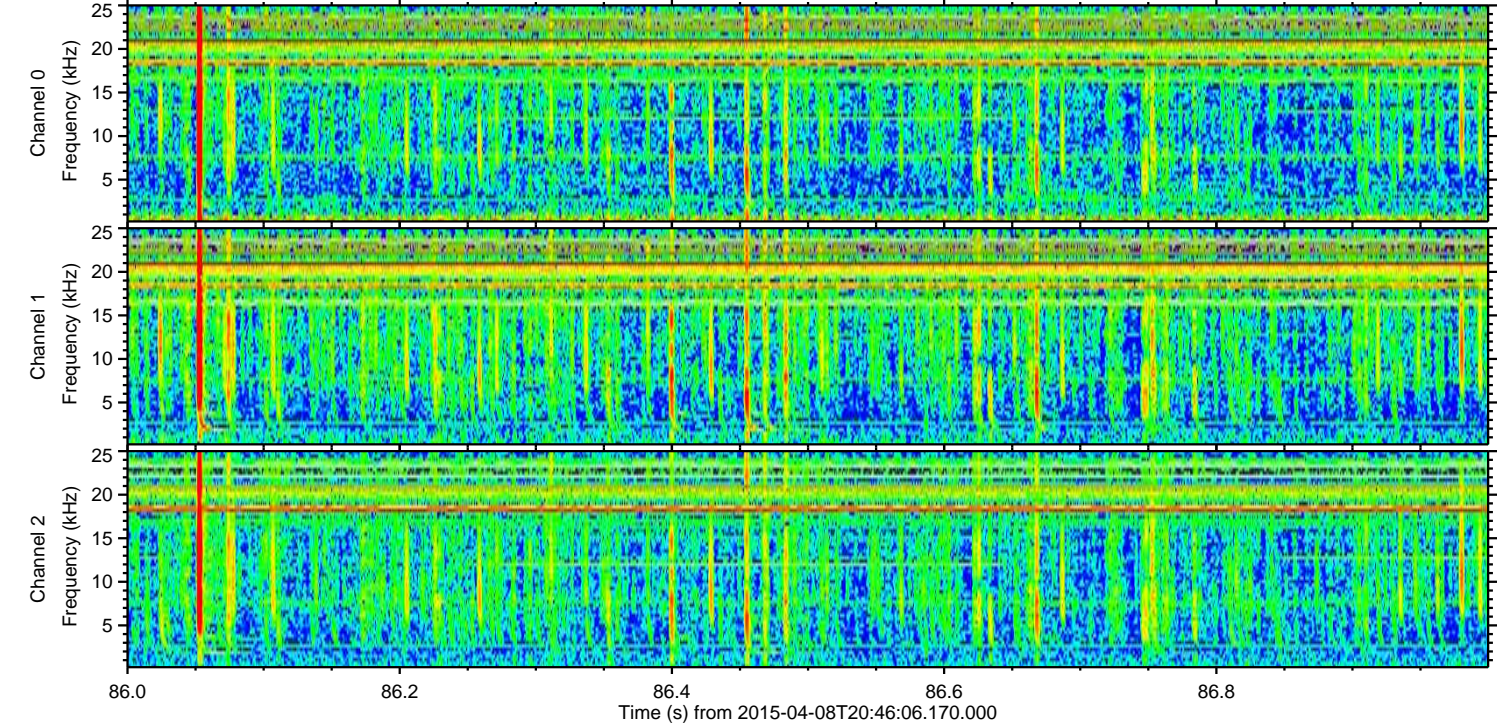
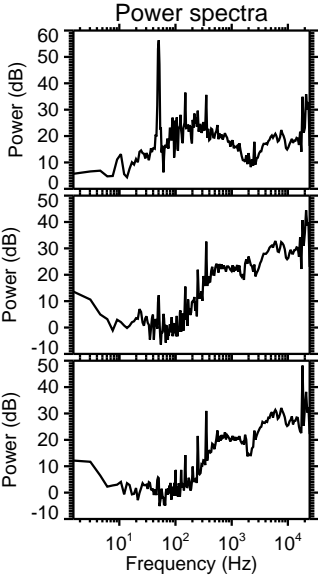
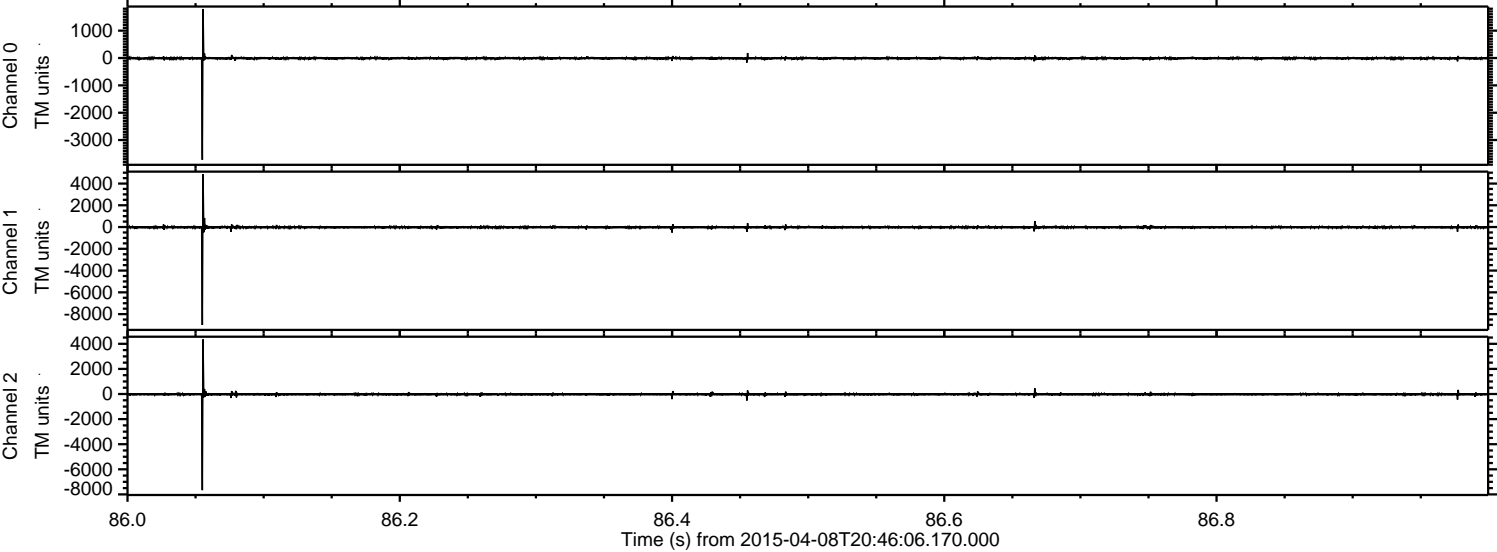
# ELMAVAN 3D WAVEFORMS (Measured data sampled at 50 kHz) 49783 packets of 144 samples from 2015-04-08T20:46:06.170.000.

Processed Wed Apr 8 22:52:22 2015 by ELM ver.2012-10-06 from 001\_\_elm20150408\_204605\_\_dat00.bin





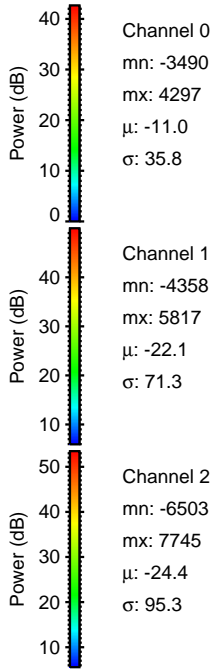
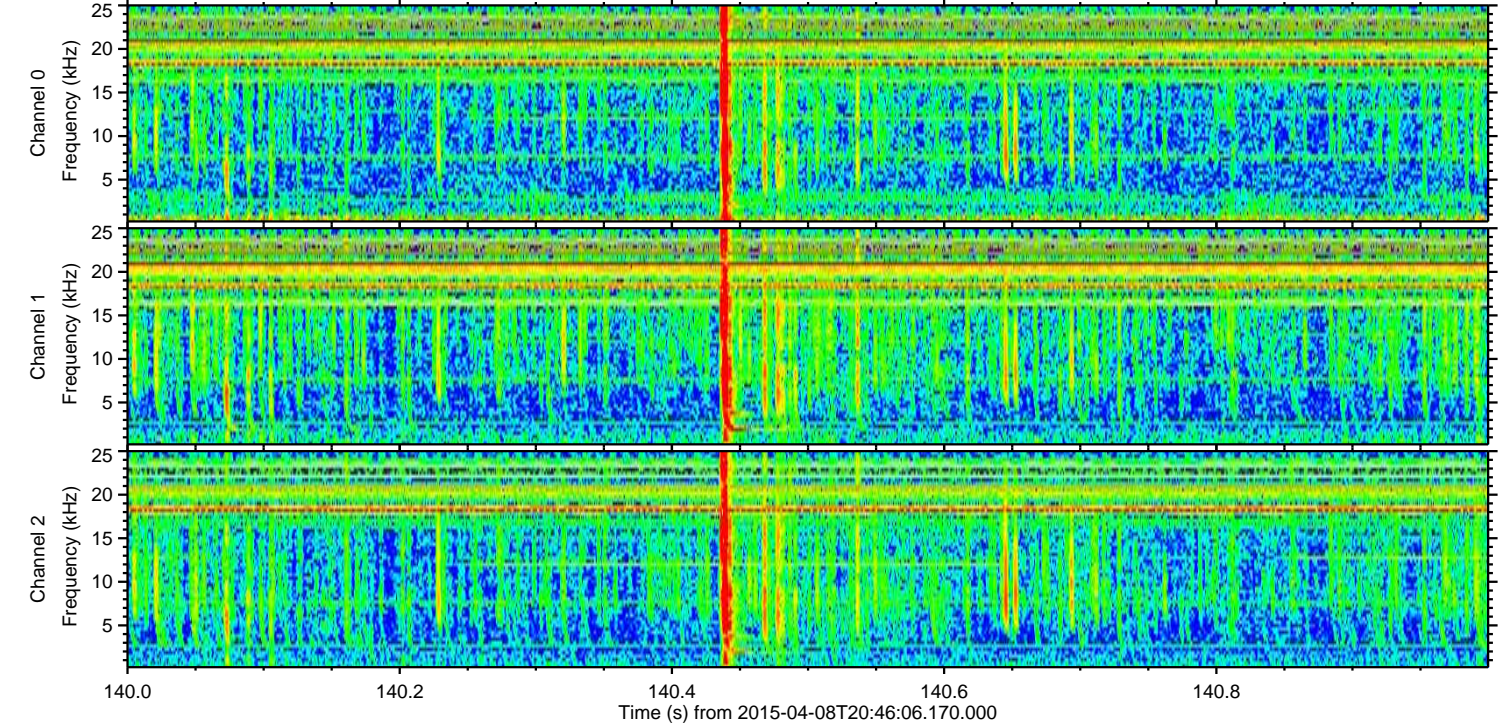
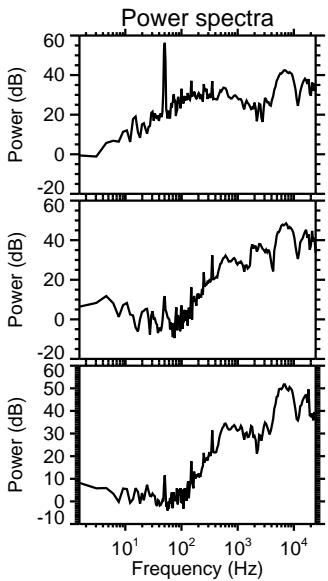
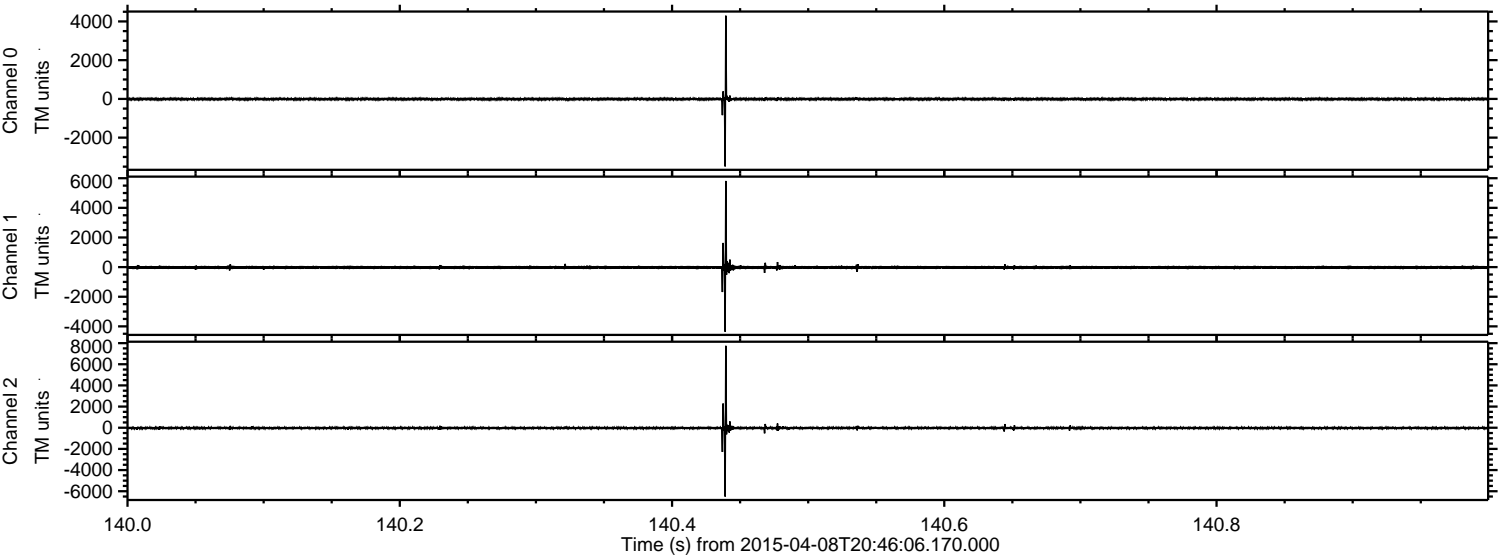
Processed Wed Apr 8 22:52:33 2015 by ELM ver.2012-10-06 from 001\_\_elm20150408\_204605\_\_dat00.bin





ELMAVAN 3D WAVEFORMS (Measured data sampled at 50 kHz) 49783 packets of 144 samples from 2015-04-08T20:46:06.170.000. Part 141/144

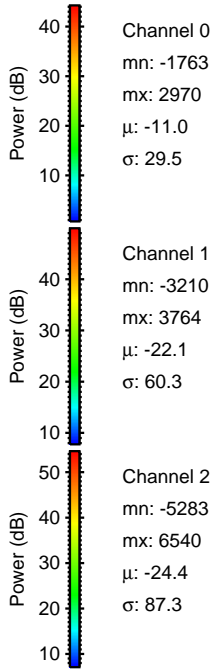
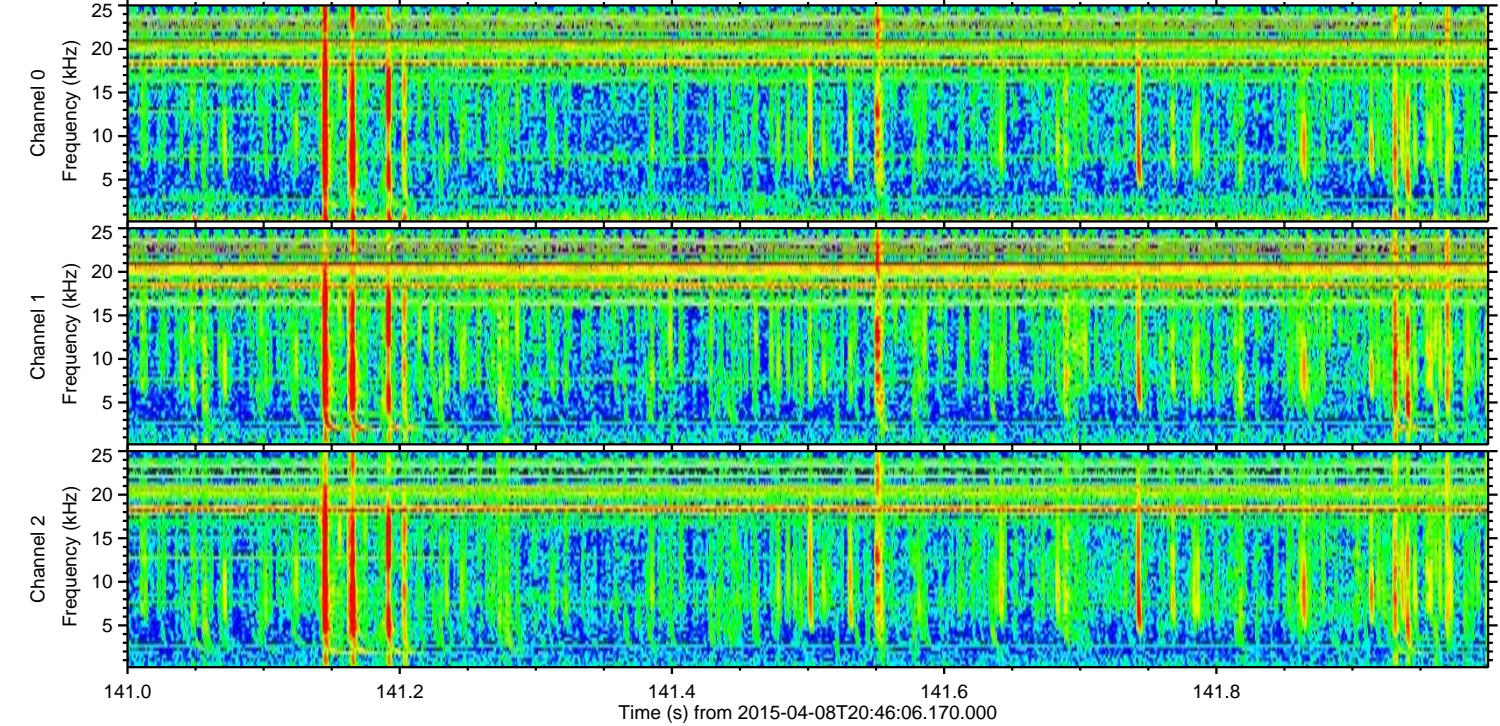
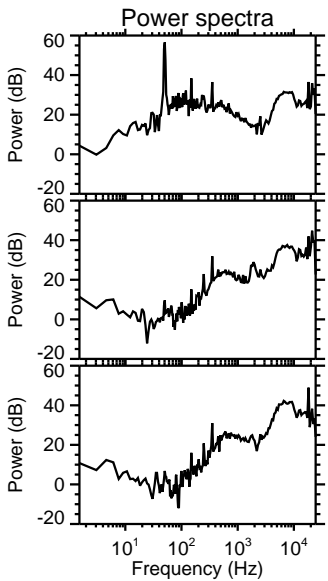
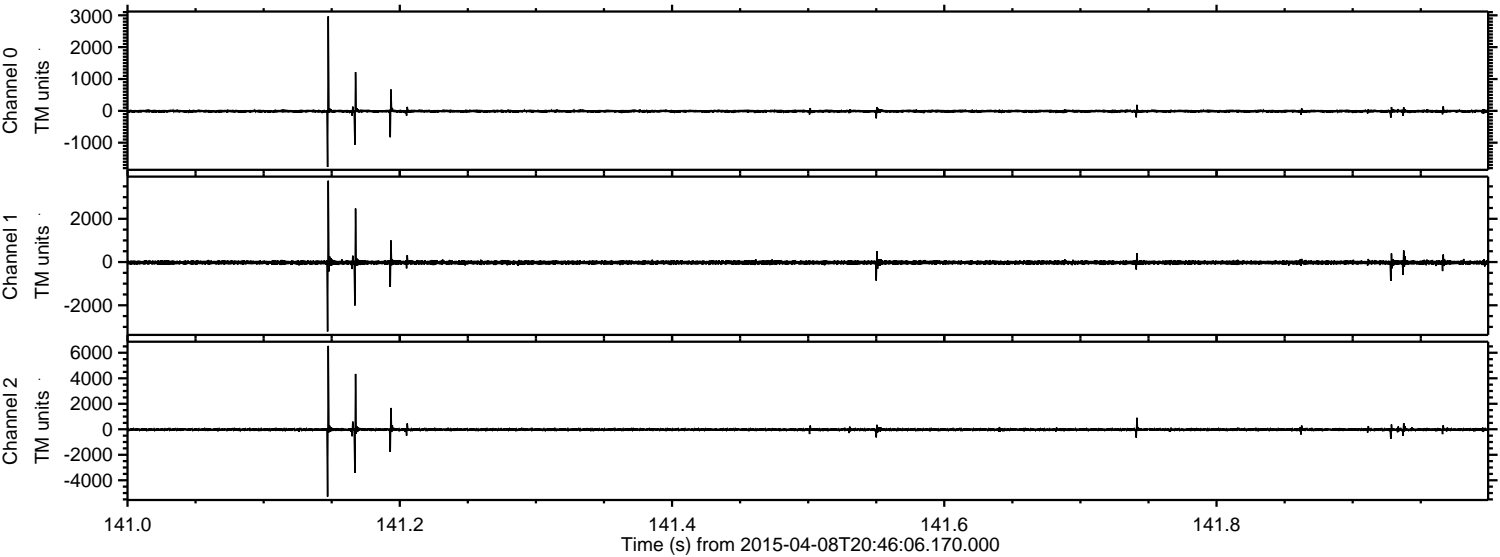
Processed Wed Apr 8 22:52:34 2015 by ELM ver.2012-10-06 from 001\_\_elm20150408\_204605\_\_dat00.bin





ELMAVAN 3D WAVEFORMS (Measured data sampled at 50 kHz) 49783 packets of 144 samples from 2015-04-08T20:46:06.170.000. Part 142/144

Processed Wed Apr 8 22:52:35 2015 by ELM ver.2012-10-06 from 001\_\_elm20150408\_204605\_\_dat00.bin



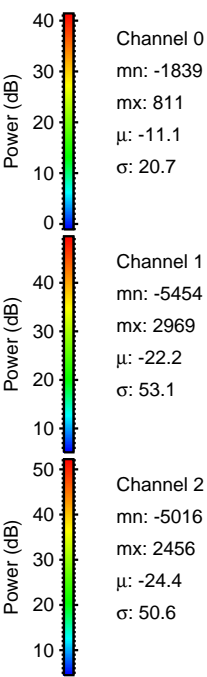
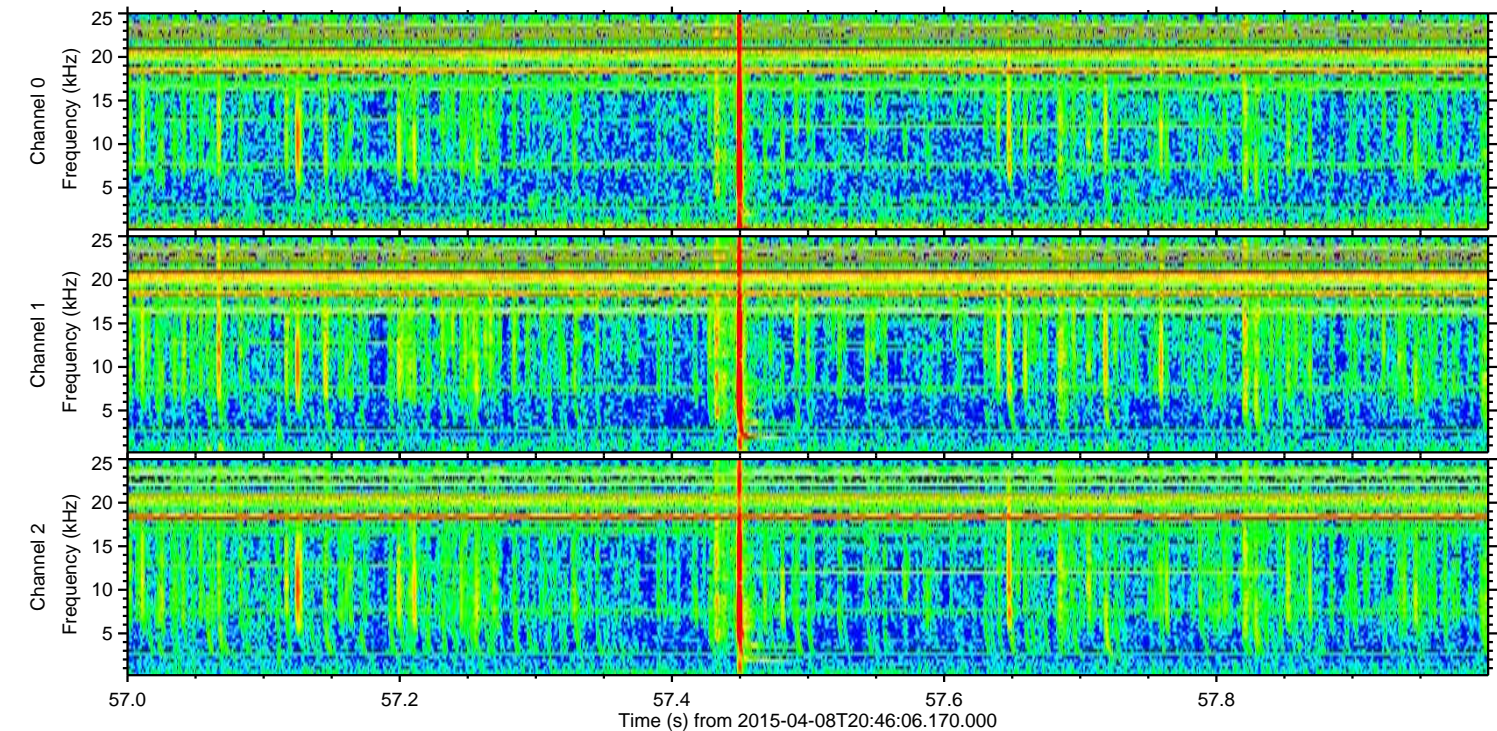
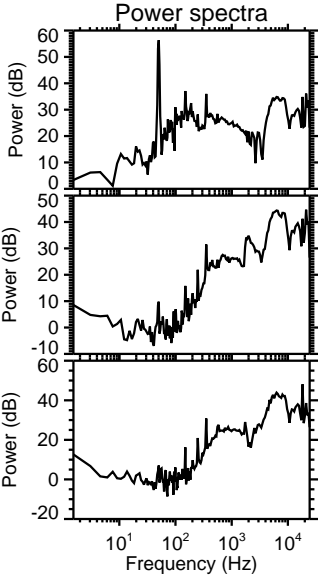
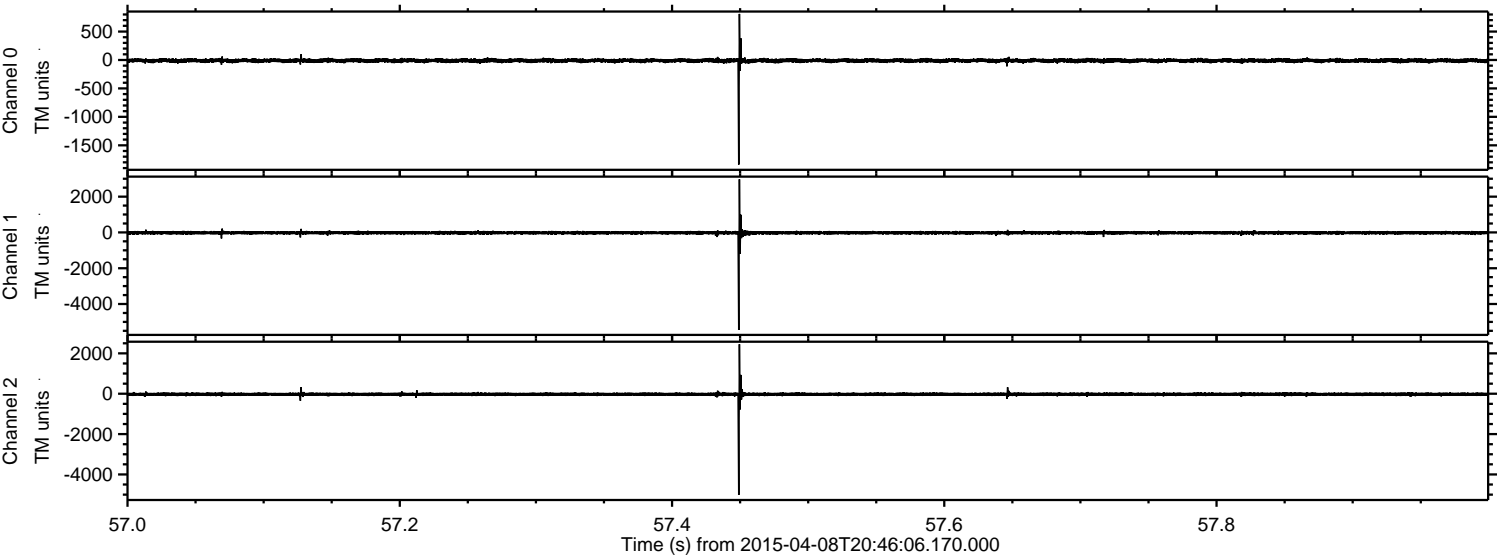
Channel 0  
mn: -1763  
mx: 2970  
 $\mu$ : -11.0  
 $\sigma$ : 29.5

Channel 1  
mn: -3210  
mx: 3764  
 $\mu$ : -22.1  
 $\sigma$ : 60.3

Channel 2  
mn: -5283  
mx: 6540  
 $\mu$ : -24.4  
 $\sigma$ : 87.3



Processed Wed Apr 8 22:52:36 2015 by ELM ver.2012-10-06 from 001\_\_elm20150408\_204605\_\_dat00.bin



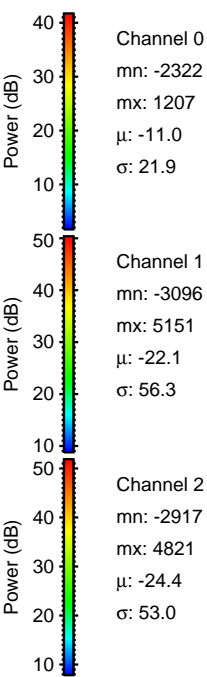
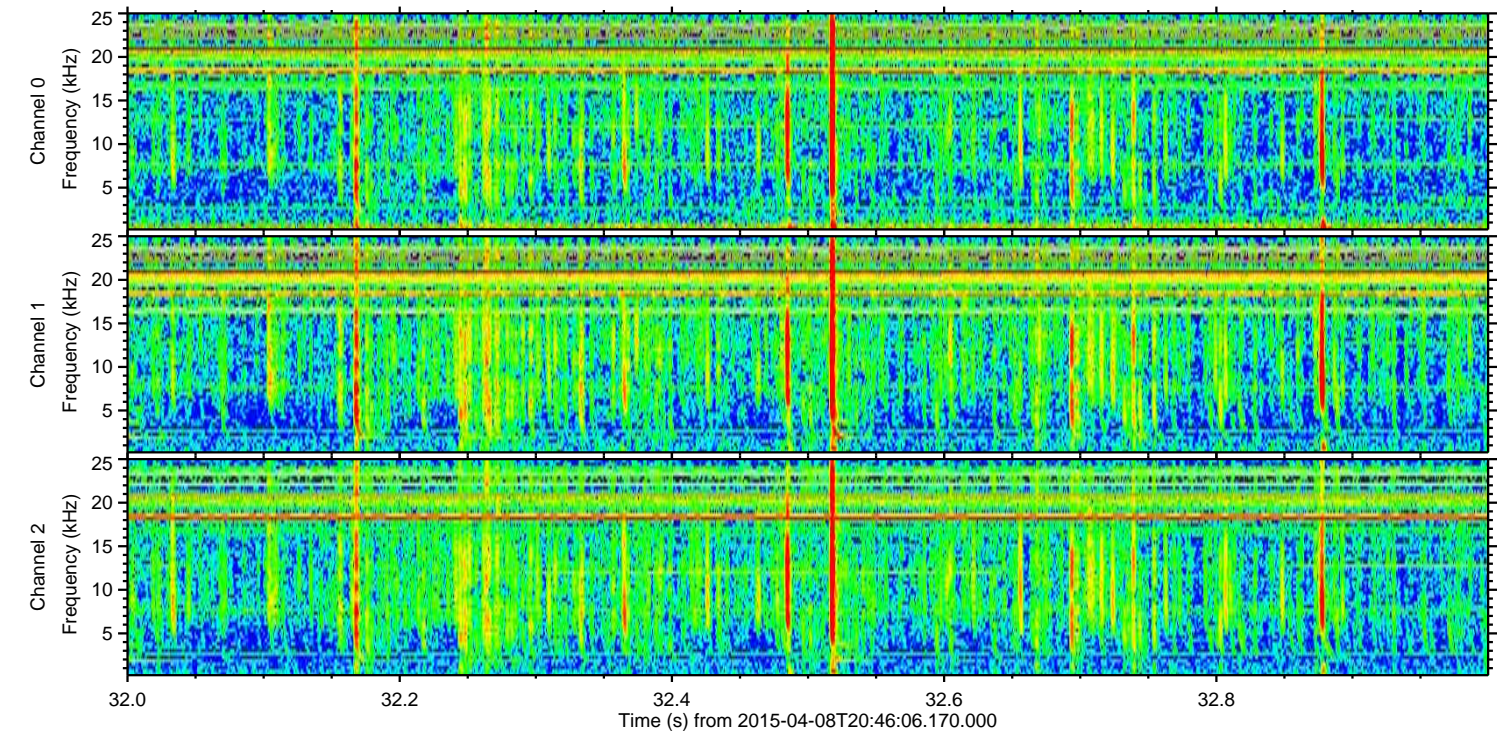
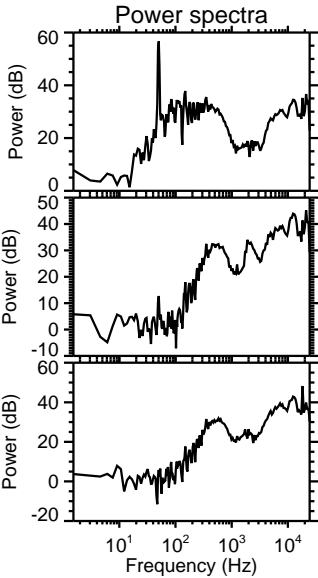
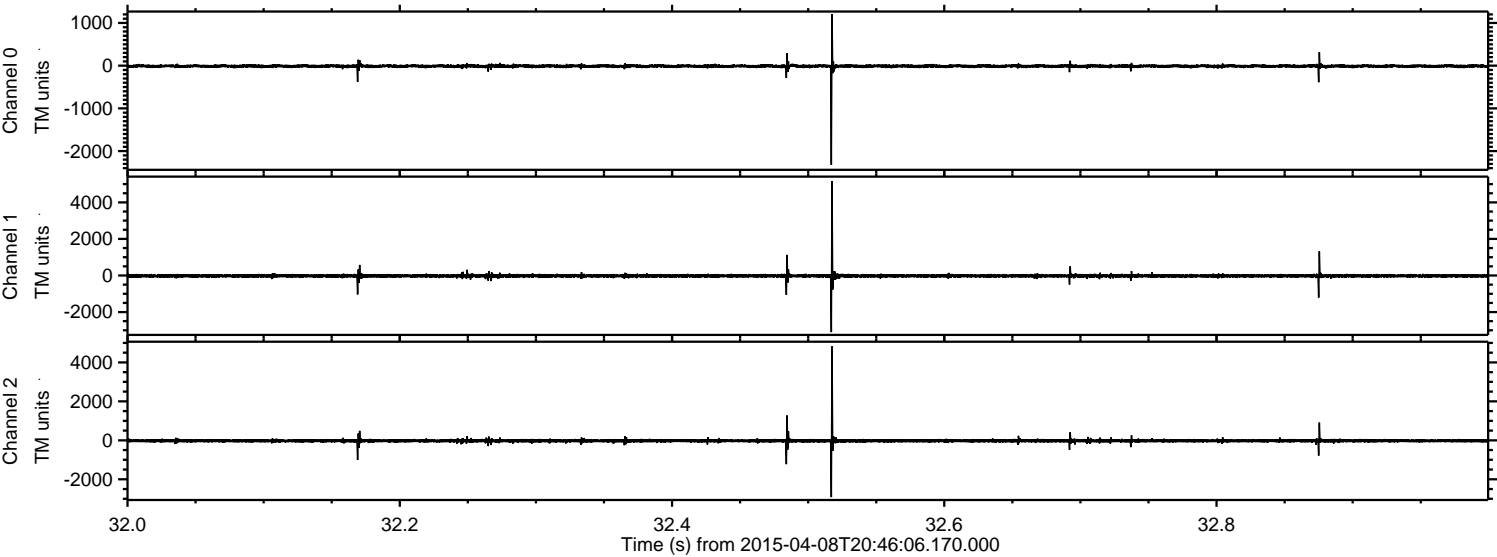
Channel 0  
mn: -1839  
mx: 811  
μ: -11.1  
σ: 20.7

Channel 1  
mn: -5454  
mx: 2969  
μ: -22.2  
σ: 53.1

Channel 2  
mn: -5016  
mx: 2456  
μ: -24.4  
σ: 50.6



Processed Wed Apr 8 22:52:37 2015 by ELM ver.2012-10-06 from 001\_\_elm20150408\_204605\_\_dat00.bin



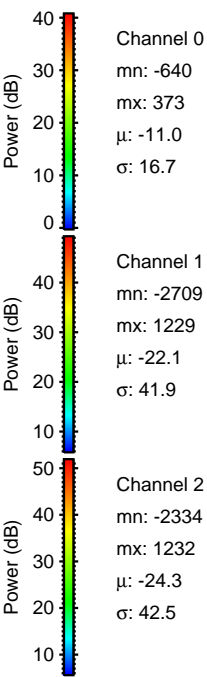
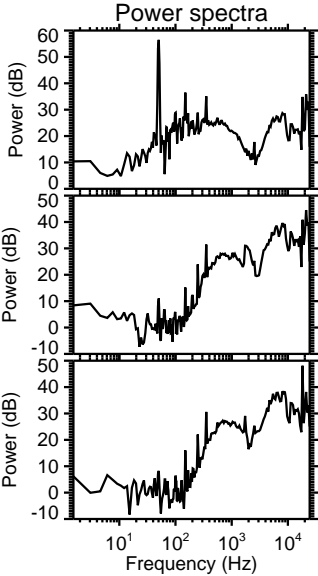
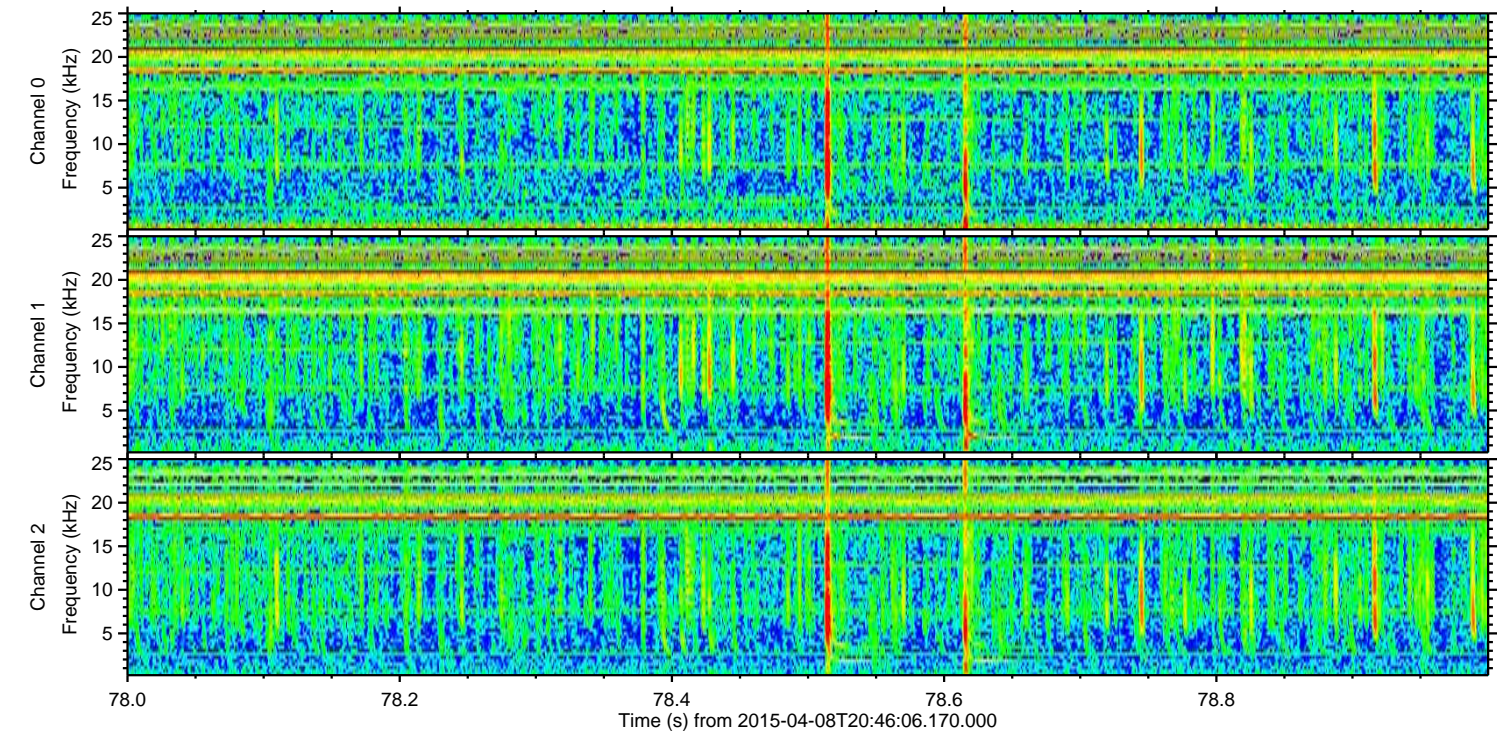
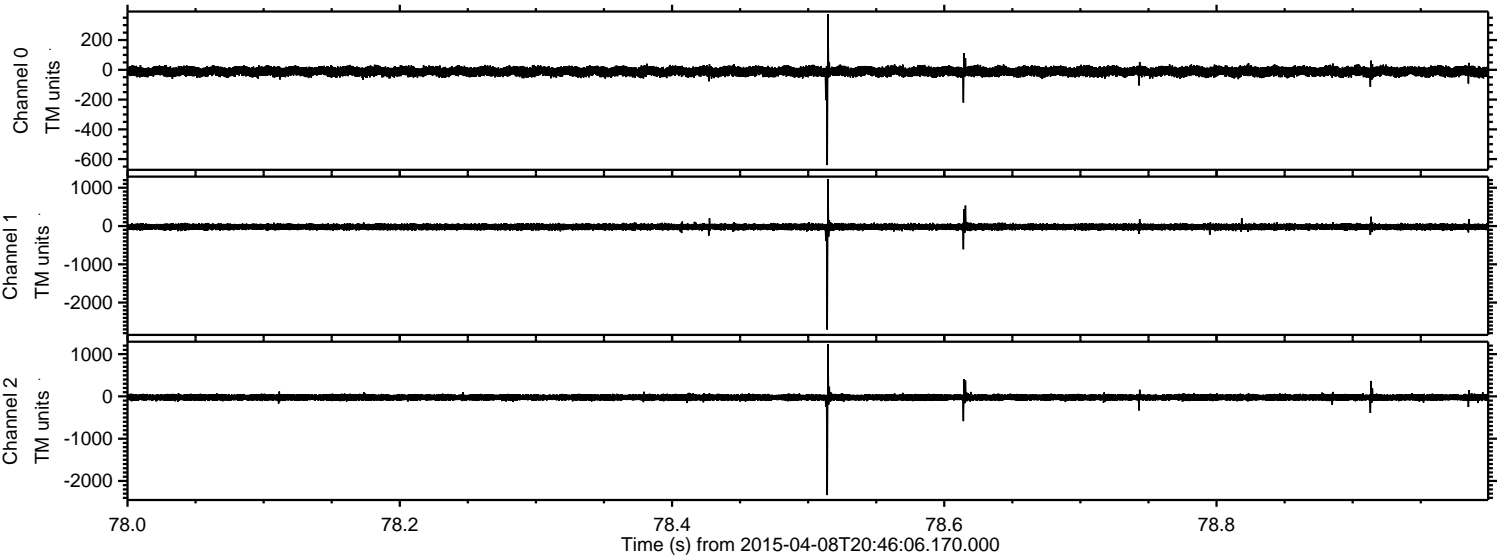
Channel 0  
mn: -2322  
mx: 1207  
 $\mu$ : -11.0  
 $\sigma$ : 21.9

Channel 1  
mn: -3096  
mx: 5151  
 $\mu$ : -22.1  
 $\sigma$ : 56.3

Channel 2  
mn: -2917  
mx: 4821  
 $\mu$ : -24.4  
 $\sigma$ : 53.0

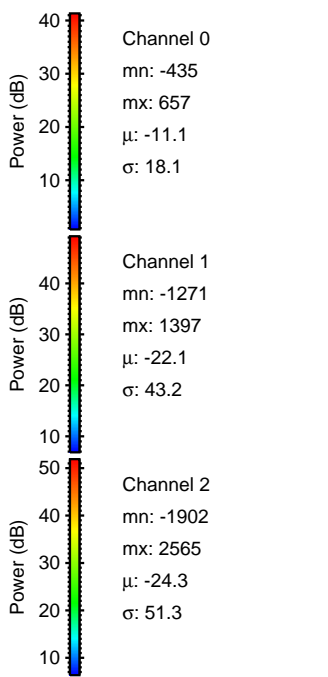
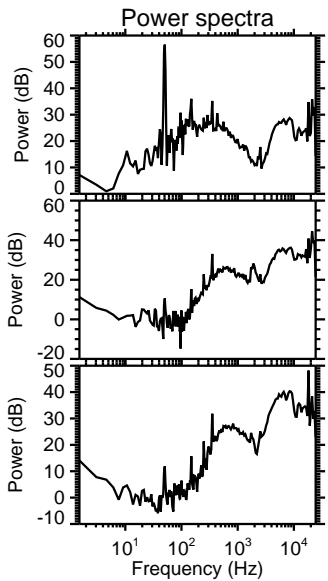
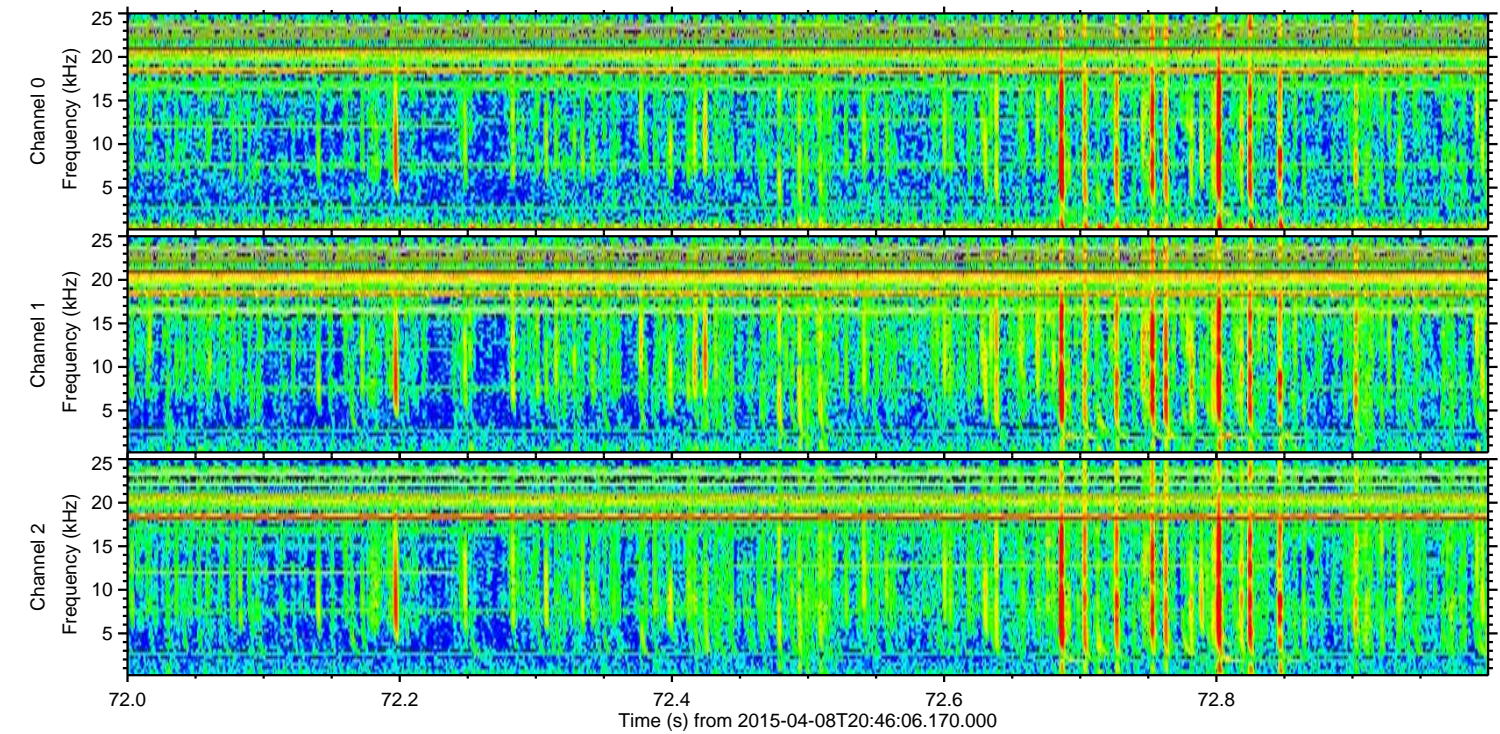
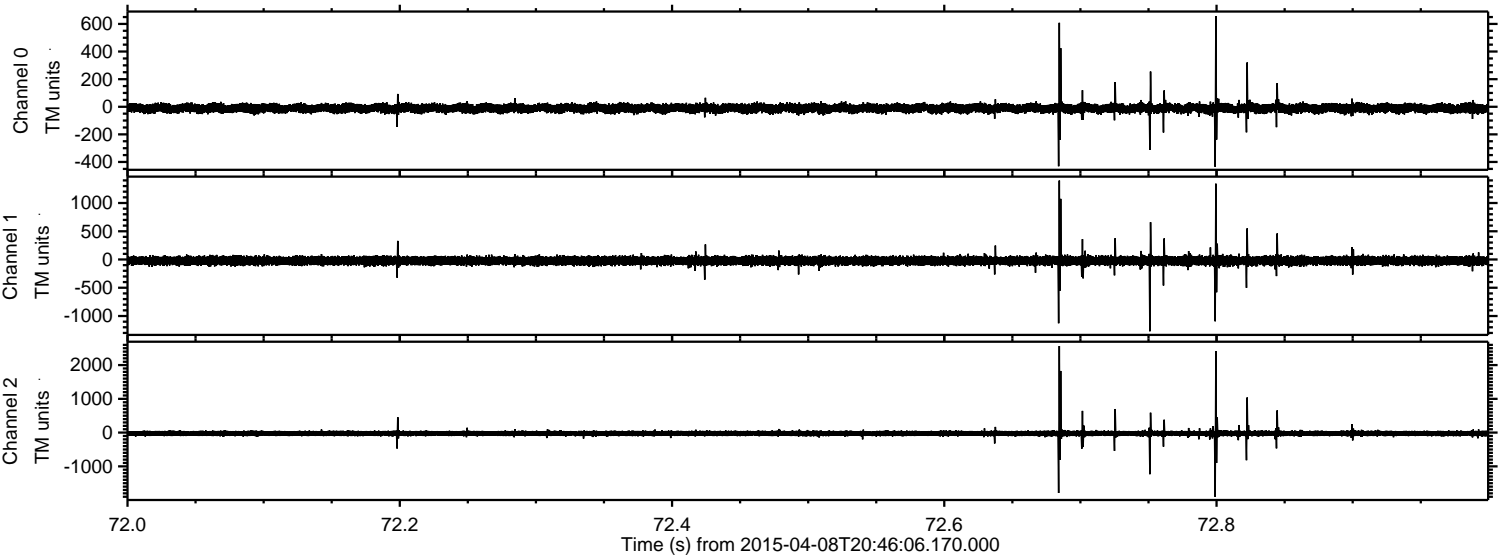


Processed Wed Apr 8 22:52:38 2015 by ELM ver.2012-10-06 from 001\_\_elm20150408\_204605\_\_dat00.bin



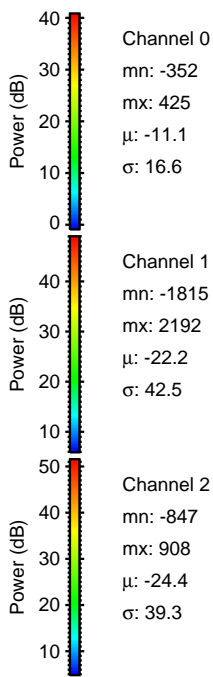
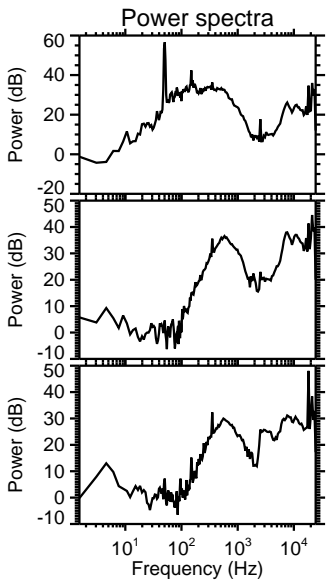
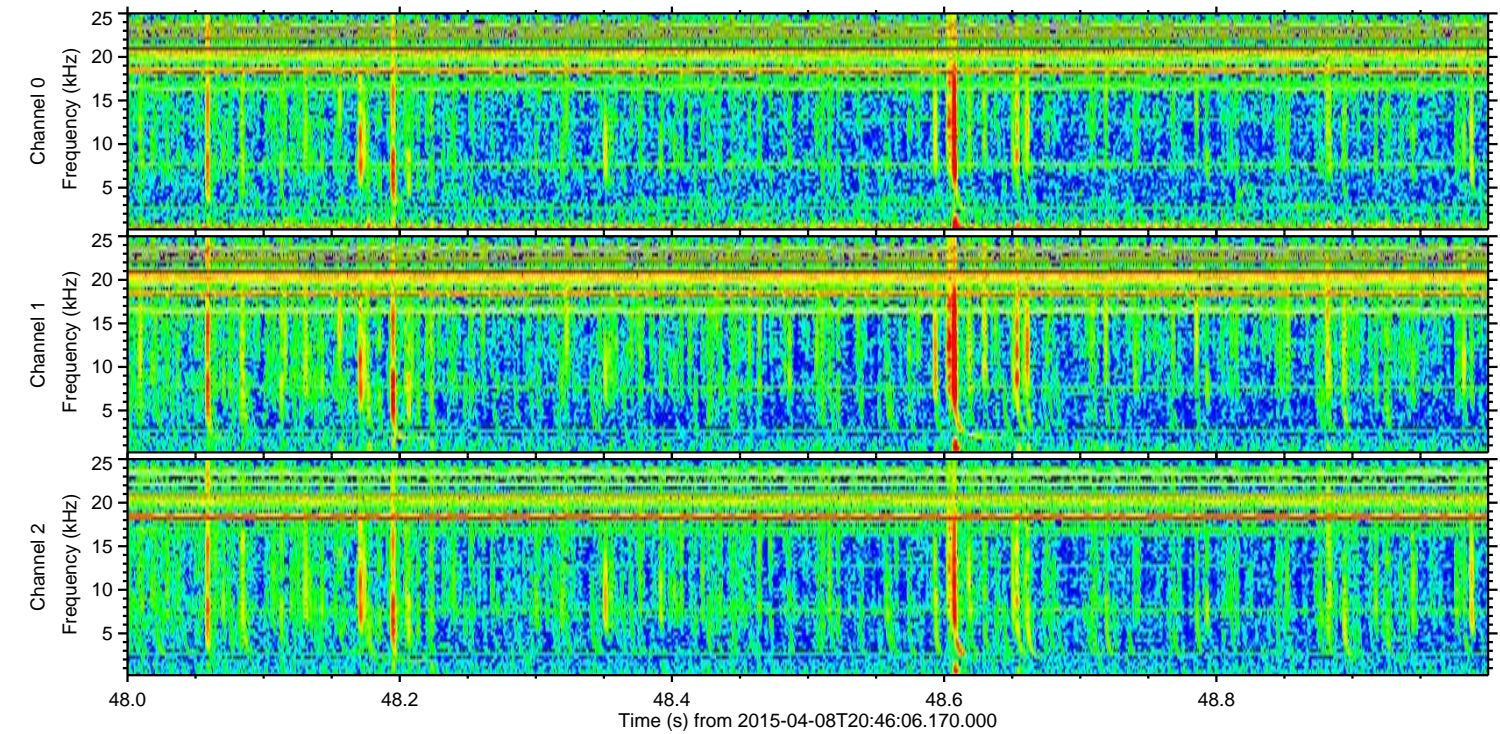
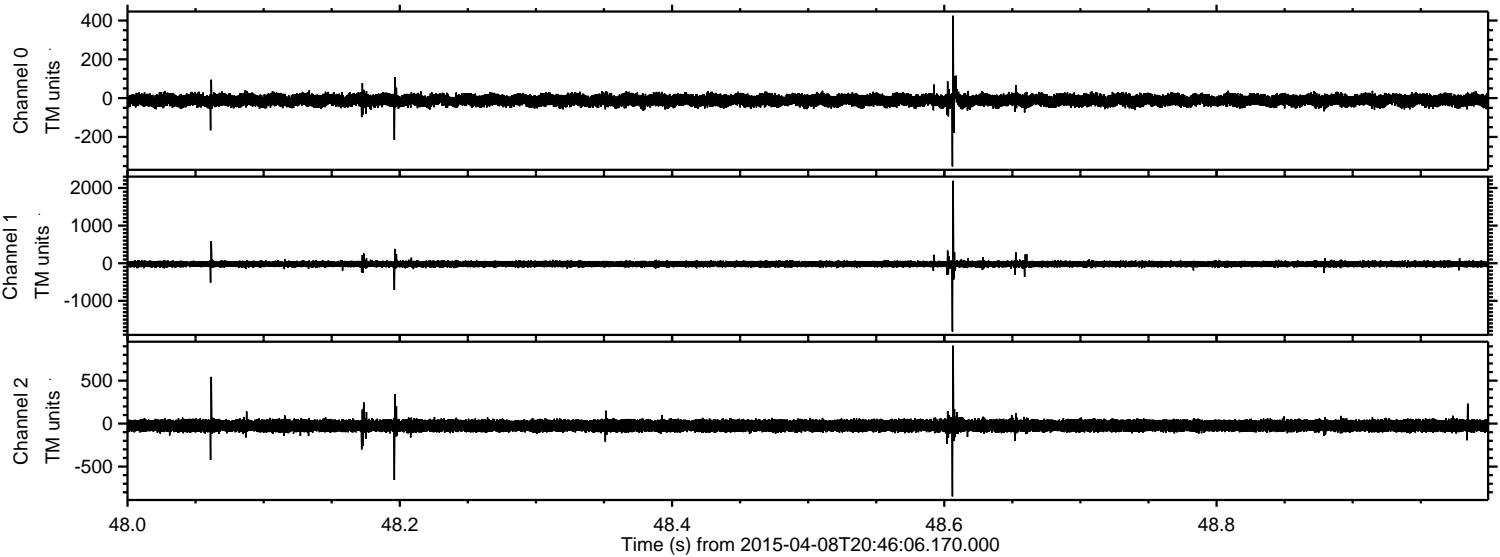


Processed Wed Apr 8 22:52:39 2015 by ELM ver.2012-10-06 from 001\_\_elm20150408\_204605\_\_dat00.bin



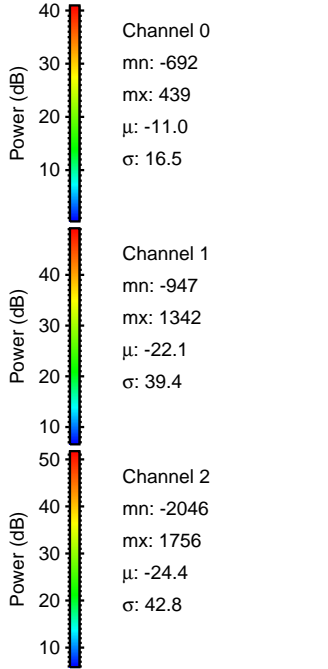
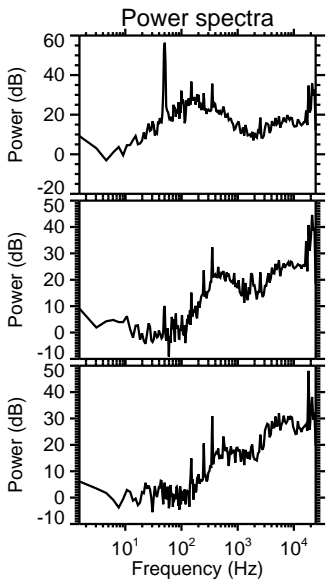
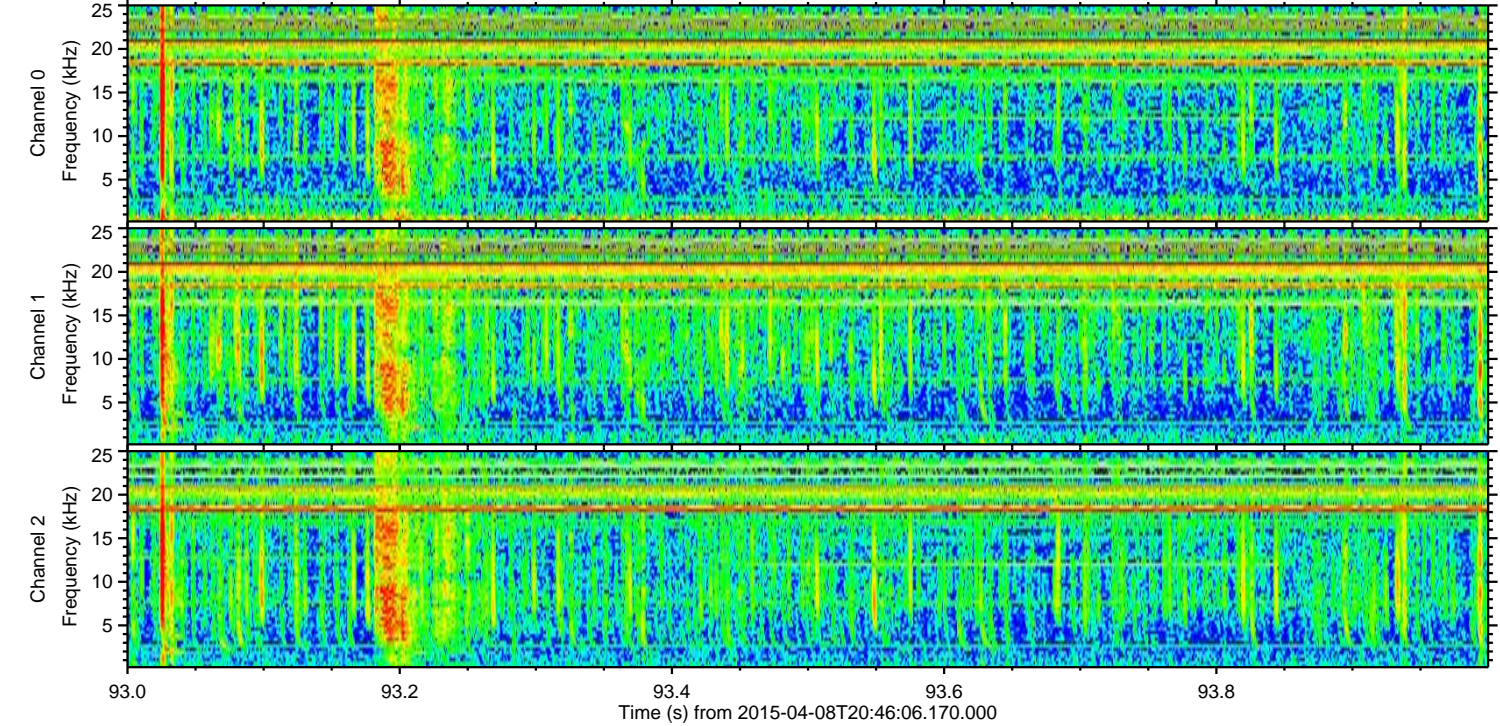
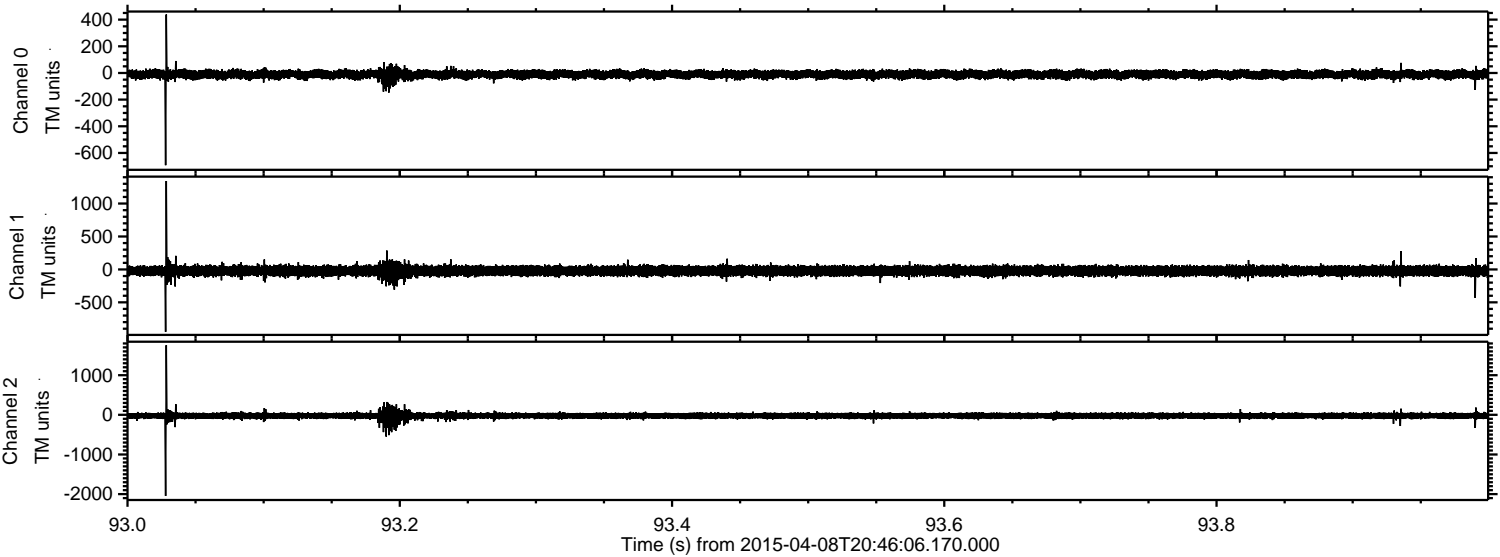


Processed Wed Apr 8 22:52:40 2015 by ELM ver.2012-10-06 from 001\_\_elm20150408\_204605\_\_dat00.bin



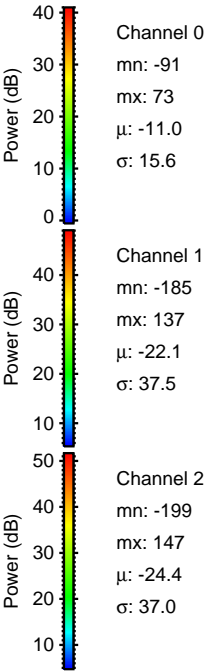
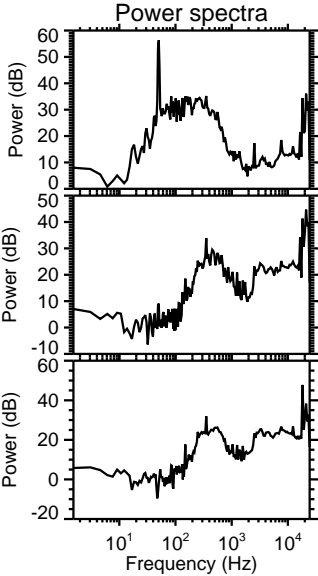
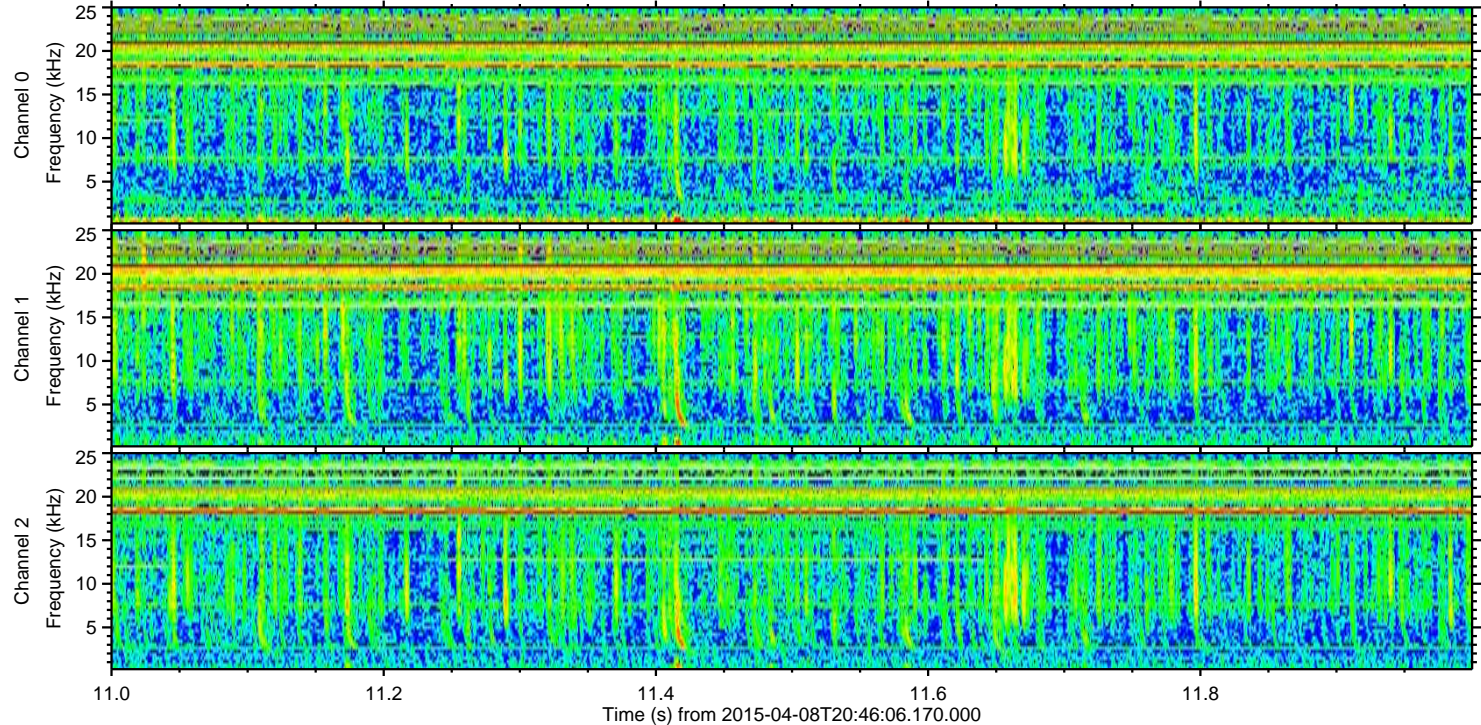
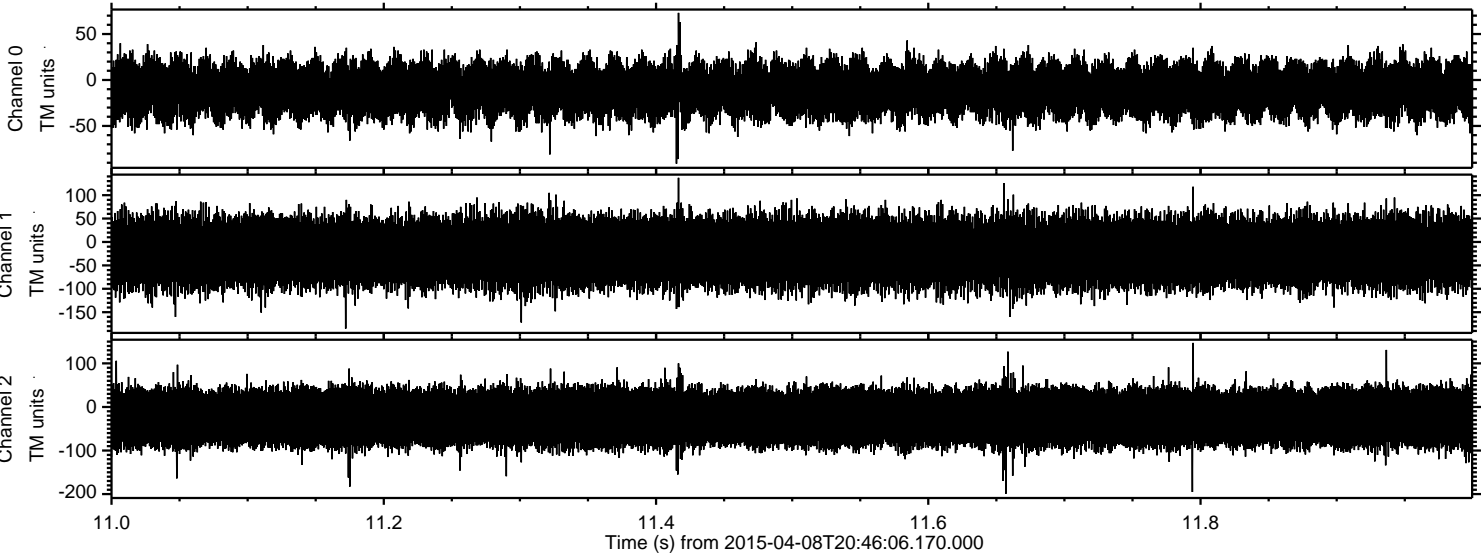


Processed Wed Apr 8 22:52:41 2015 by ELM ver.2012-10-06 from 001\_\_elm20150408\_204605\_\_dat00.bin





Processed Wed Apr 8 22:52:42 2015 by ELM ver.2012-10-06 from 001\_\_elm20150408\_204605\_\_dat00.bin



Channel 0  
mn: -91  
mx: 73  
 $\mu$ : -11.0  
 $\sigma$ : 15.6

Channel 1  
mn: -185  
mx: 137  
 $\mu$ : -22.1  
 $\sigma$ : 37.5

Channel 2  
mn: -199  
mx: 147  
 $\mu$ : -24.4  
 $\sigma$ : 37.0