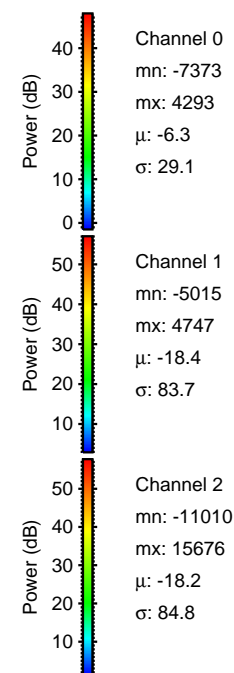
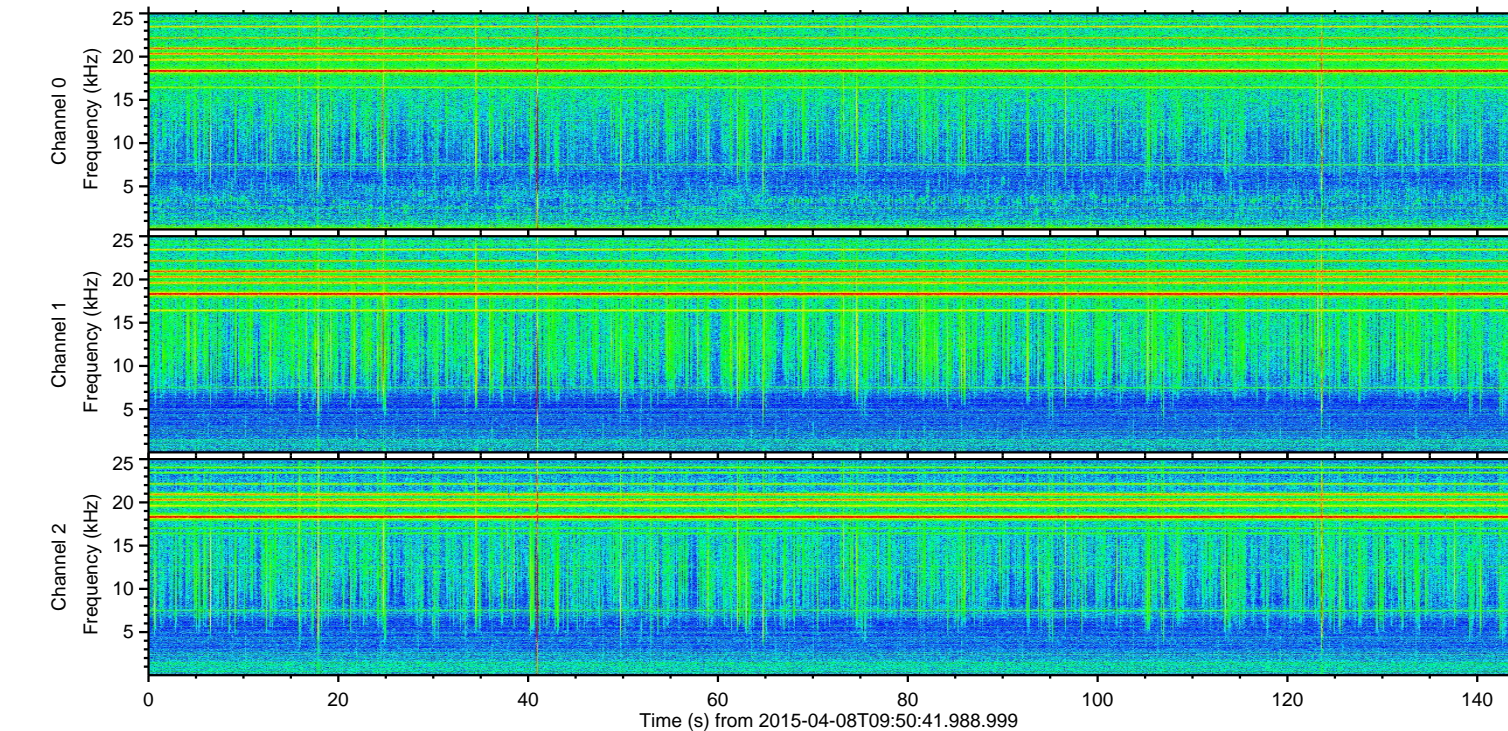
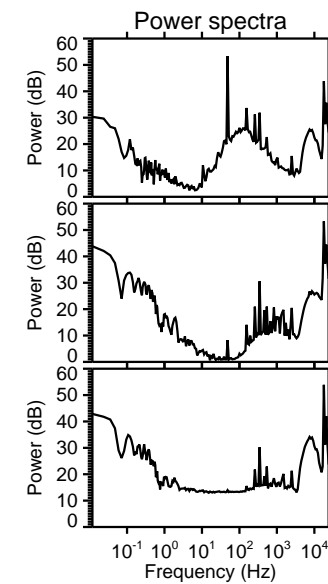
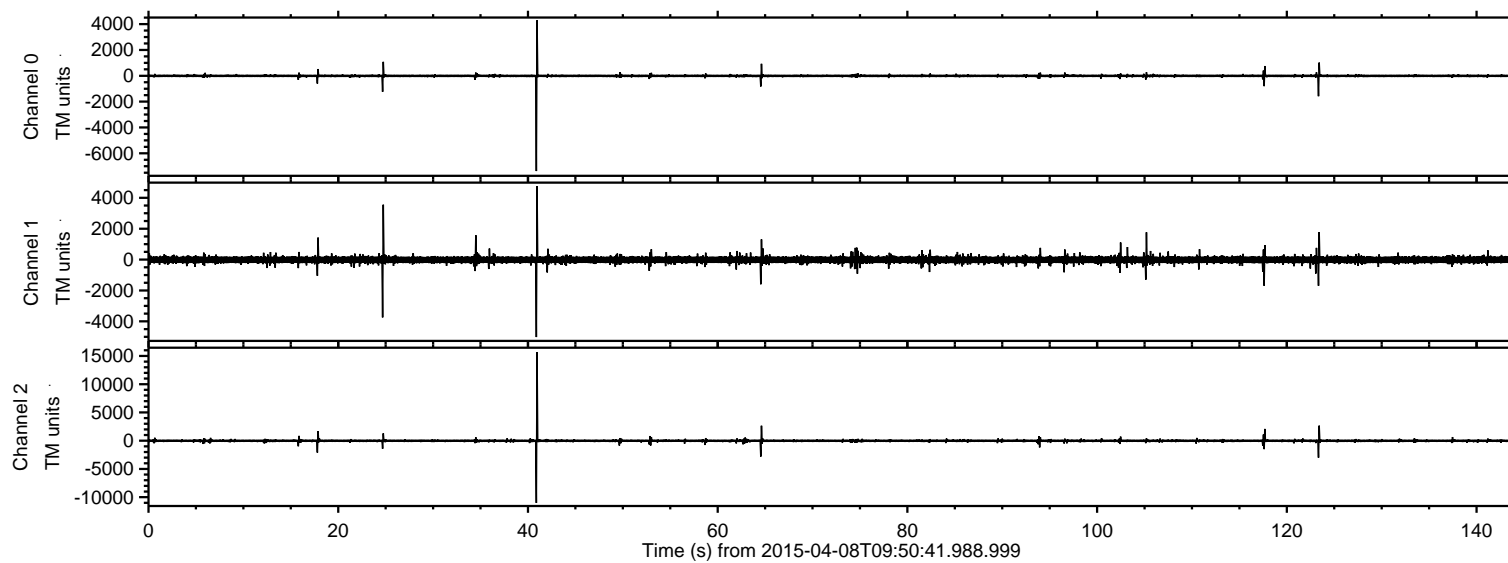


# ELMAVAN 3D WAVEFORMS (Measured data sampled at 50 kHz) 49804 packets of 144 samples from 2015-04-08T09:50:41.988.999.

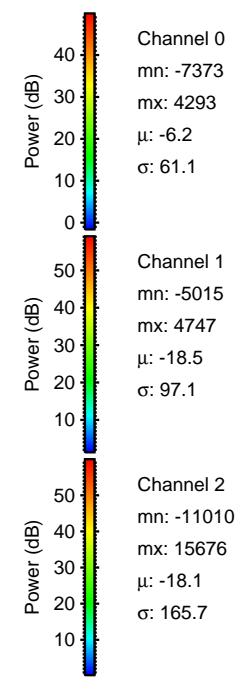
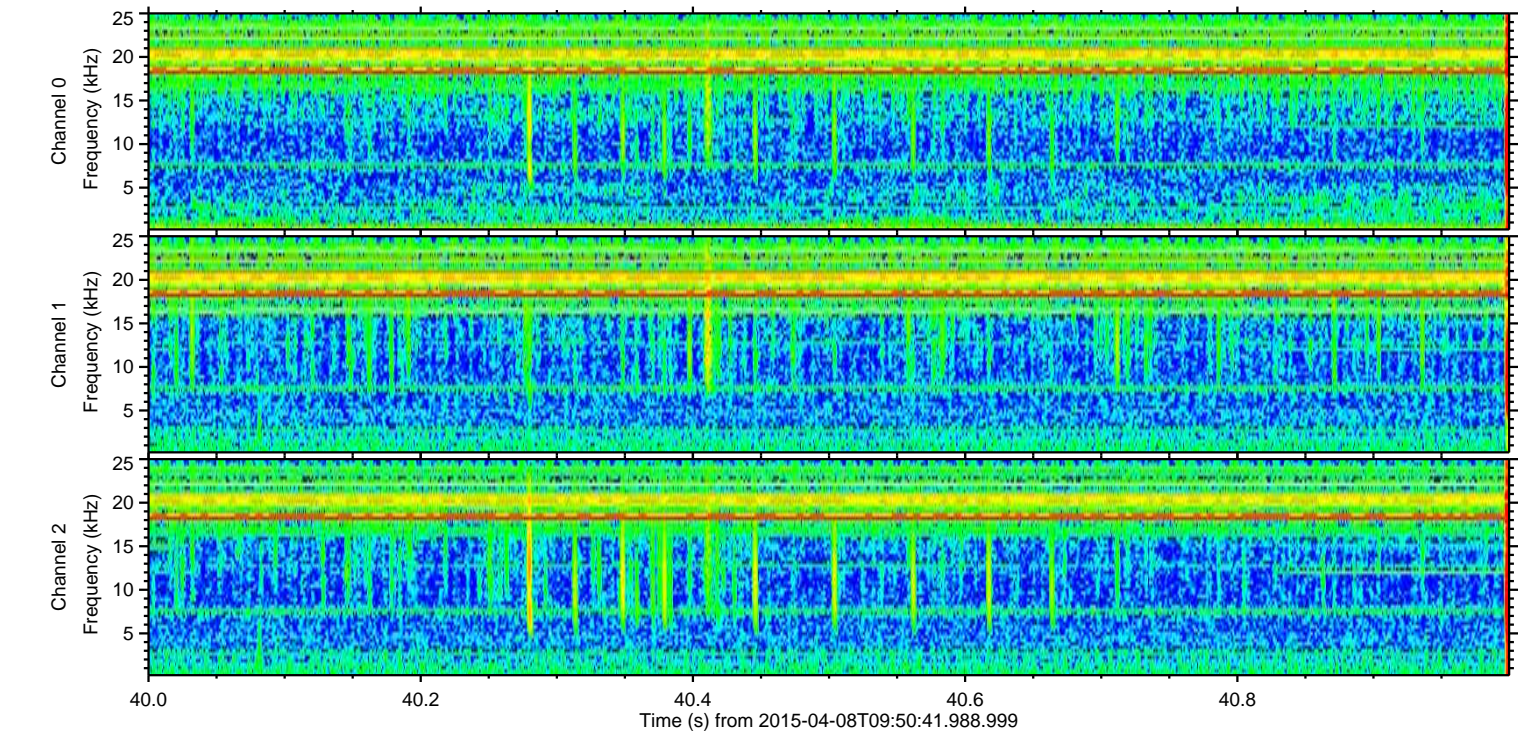
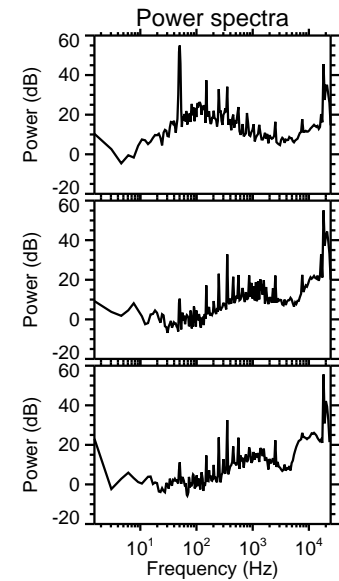
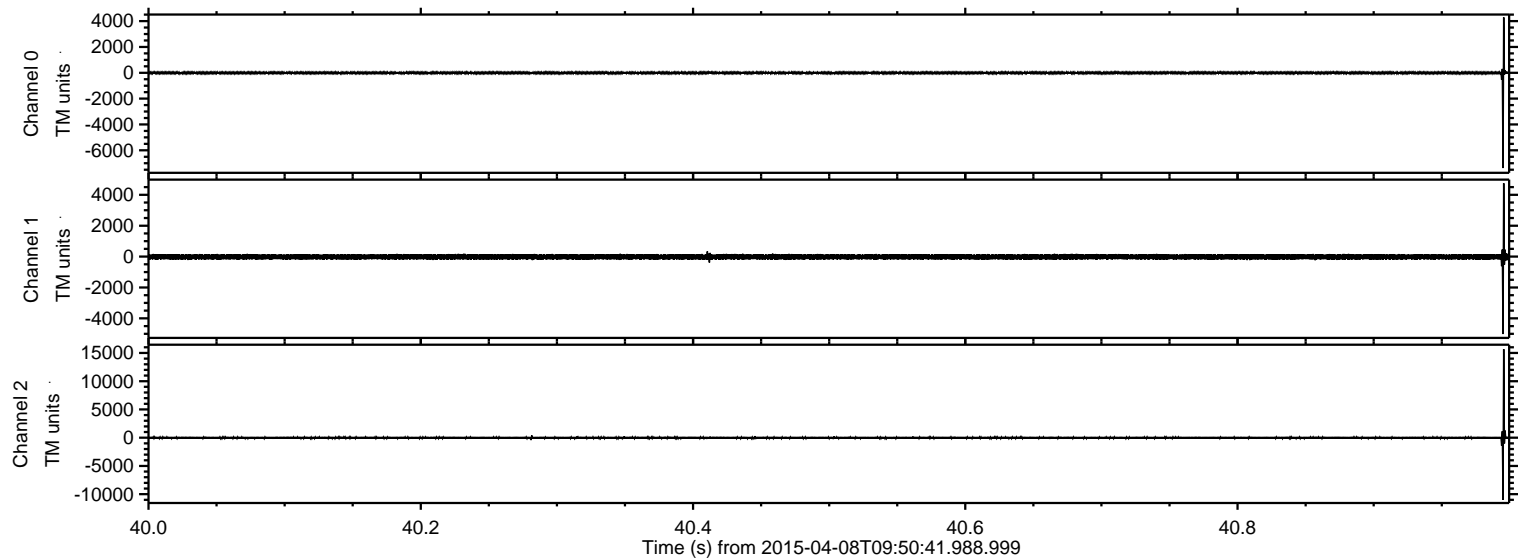
Processed Wed Apr 8 12:44:59 2015 by ELM ver.2012-10-06 from 001\_\_elm20150408\_095040\_\_dat00.bin





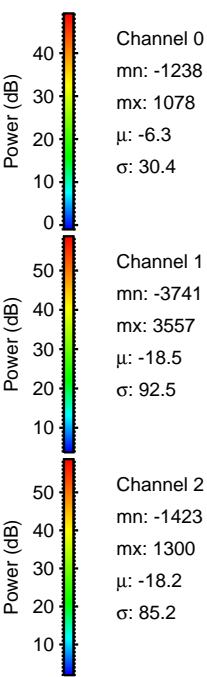
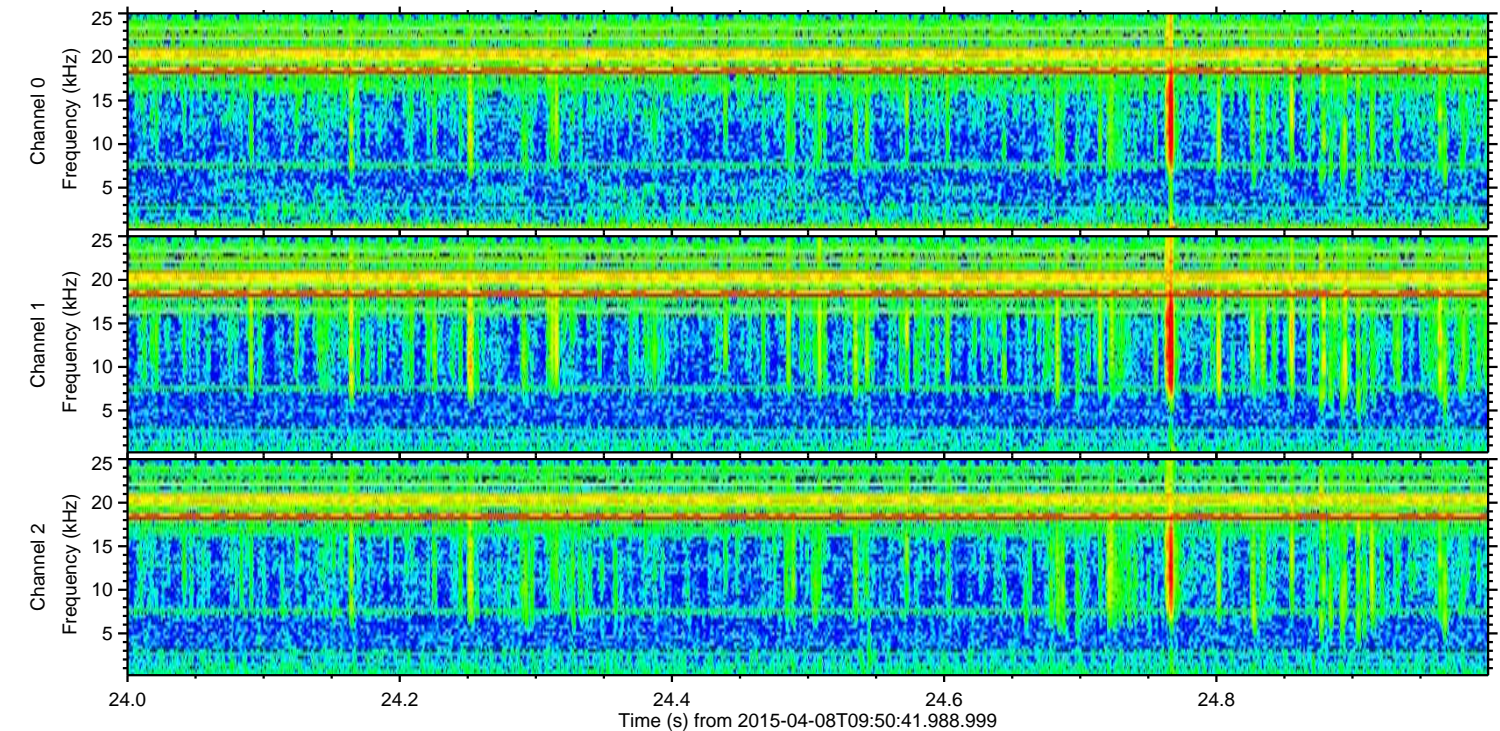
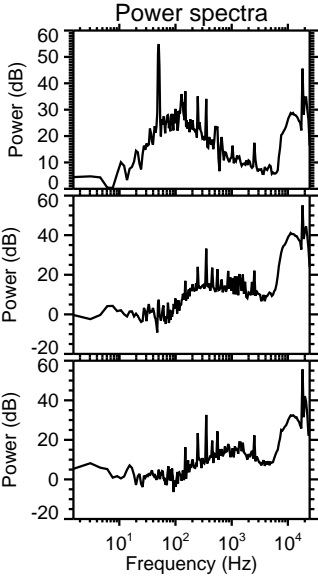
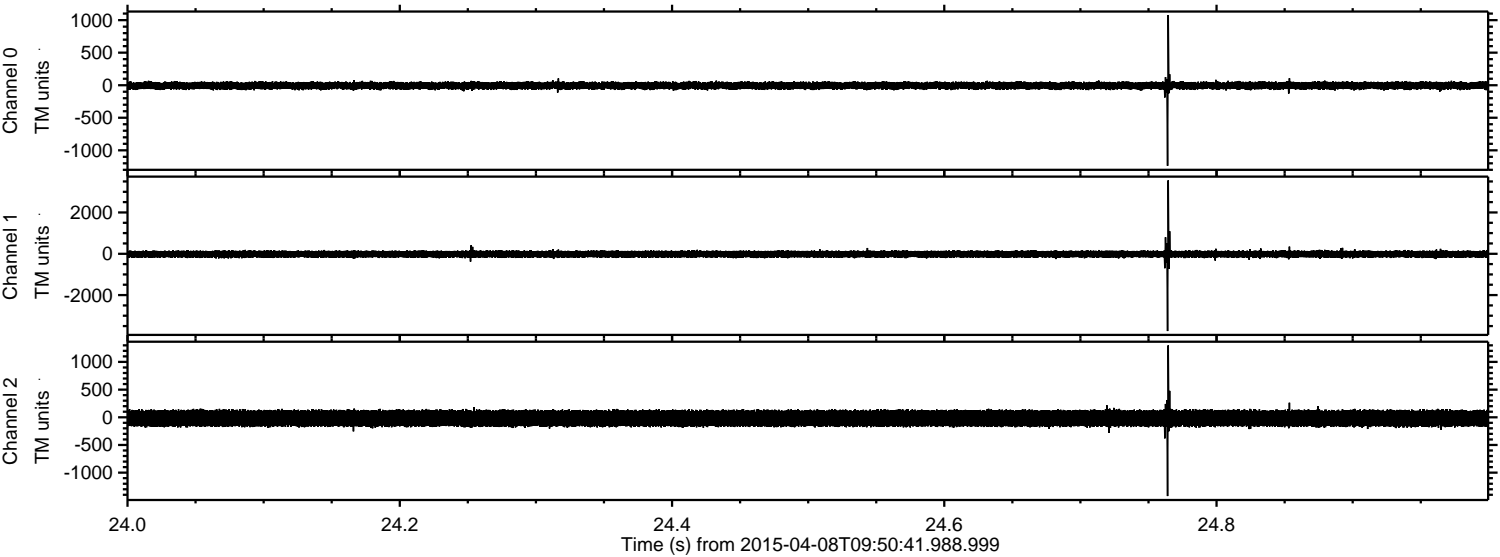
ELMAVAN 3D WAVEFORMS (Measured data sampled at 50 kHz) 49804 packets of 144 samples from 2015-04-08T09:50:41.988.999. Part 41/144

Processed Wed Apr 8 12:45:14 2015 by ELM ver.2012-10-06 from 001\_\_elm20150408\_095040\_\_dat00.bin





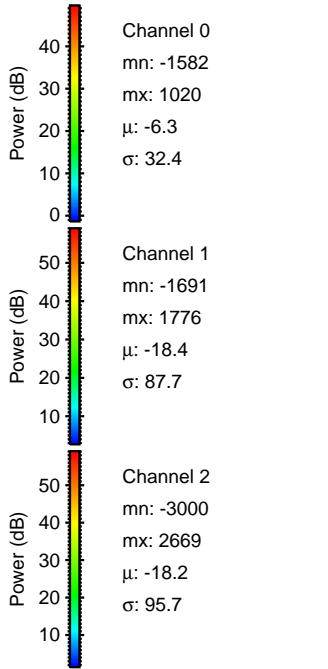
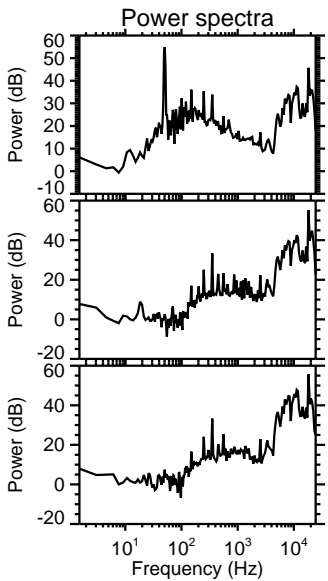
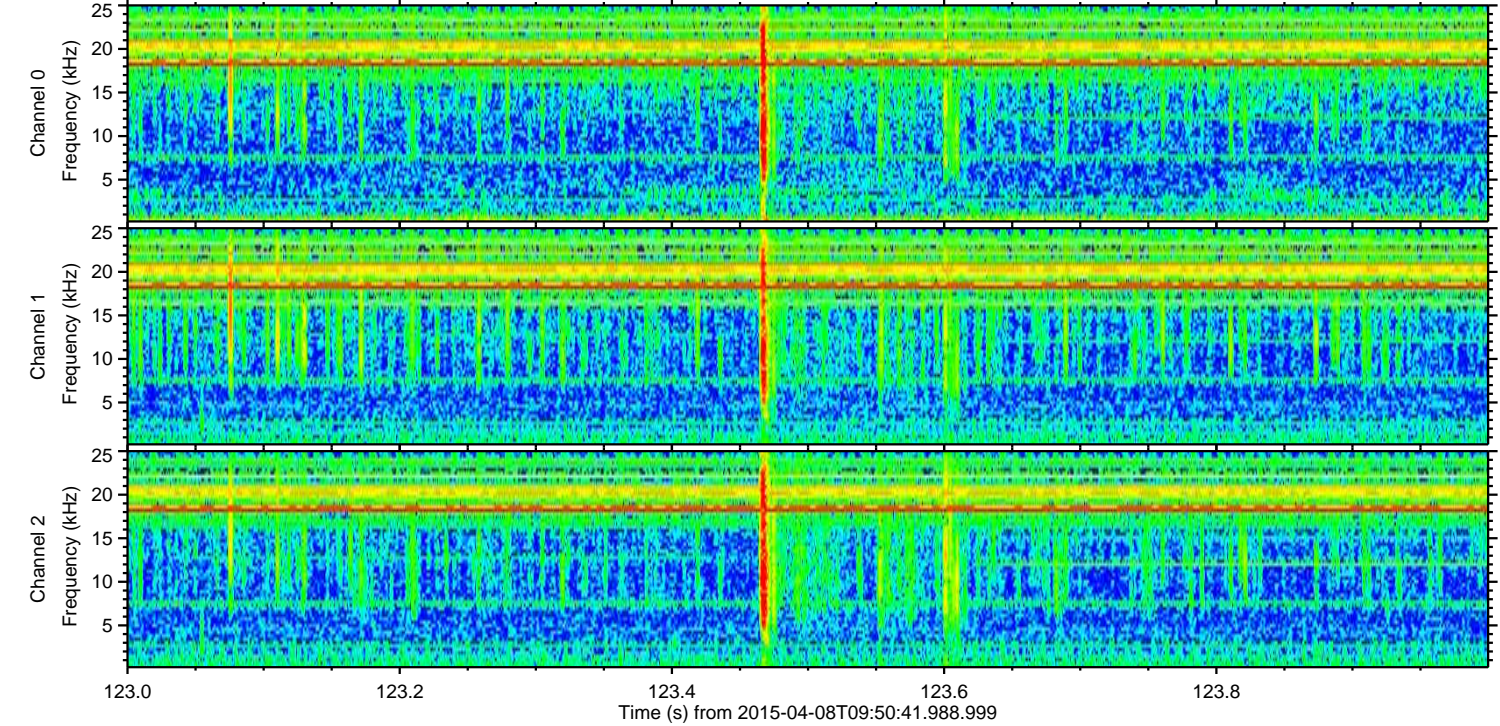
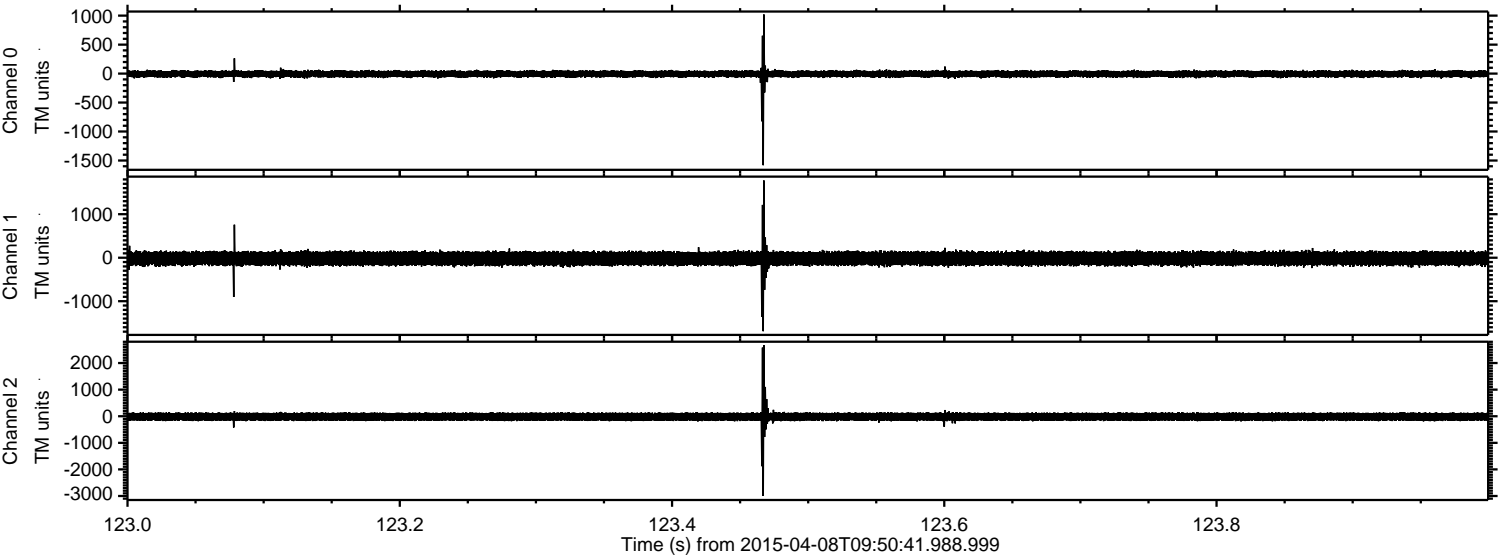
Processed Wed Apr 8 12:45:16 2015 by ELM ver.2012-10-06 from 001\_\_elm20150408\_095040\_\_dat00.bin





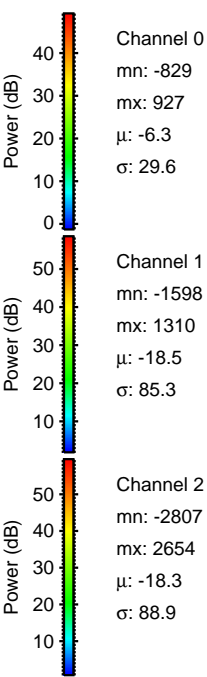
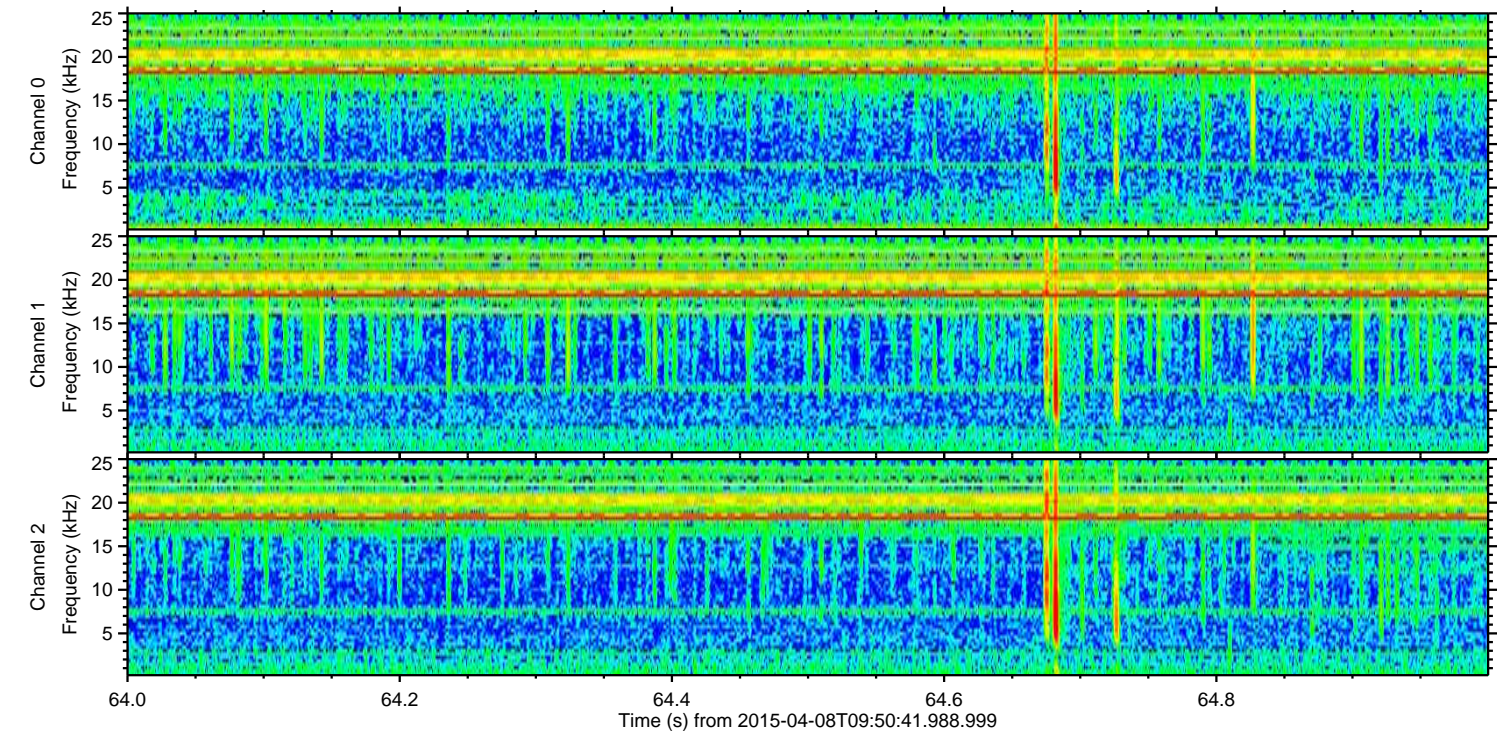
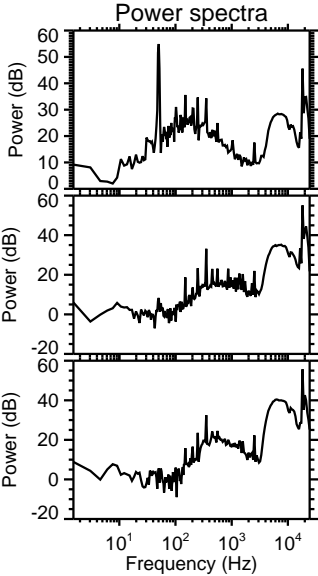
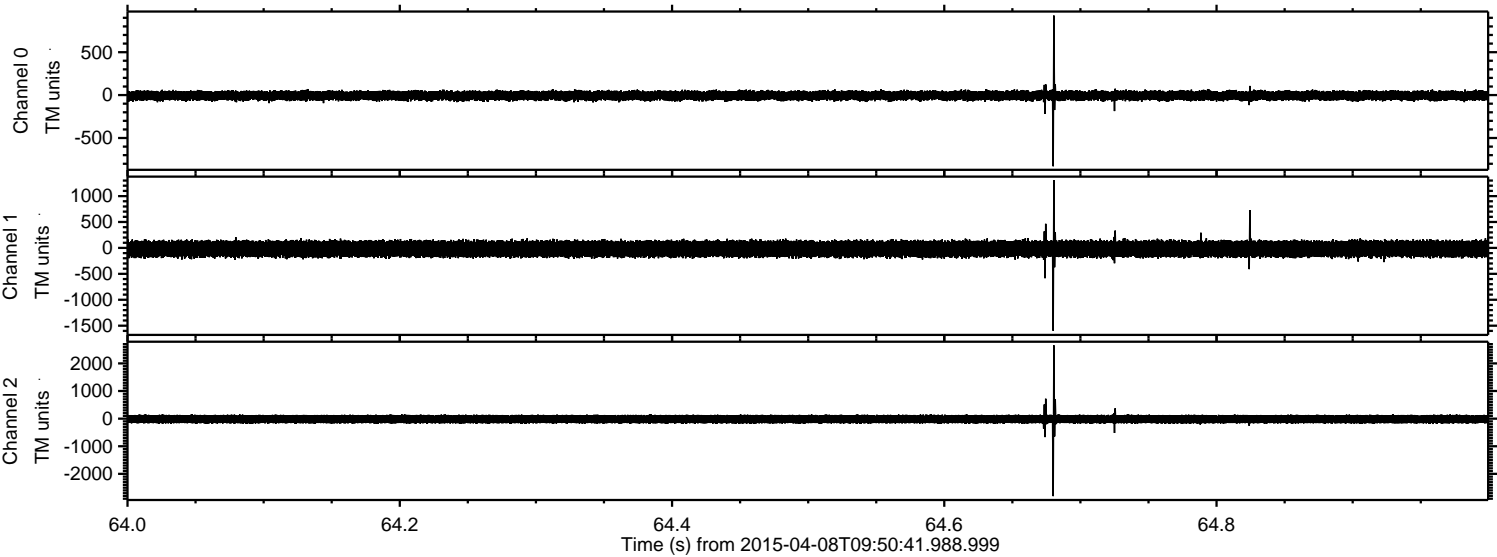
ELMAVAN 3D WAVEFORMS (Measured data sampled at 50 kHz) 49804 packets of 144 samples from 2015-04-08T09:50:41.988.999. Part 124/144

Processed Wed Apr 8 12:45:17 2015 by ELM ver.2012-10-06 from 001\_\_elm20150408\_095040\_\_dat00.bin





Processed Wed Apr 8 12:45:18 2015 by ELM ver.2012-10-06 from 001\_\_elm20150408\_095040\_\_dat00.bin



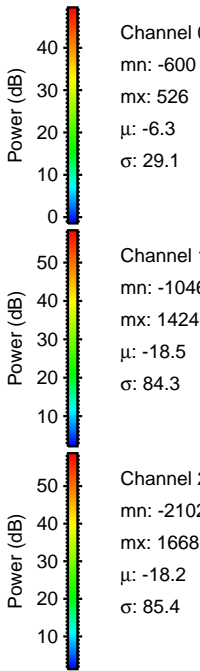
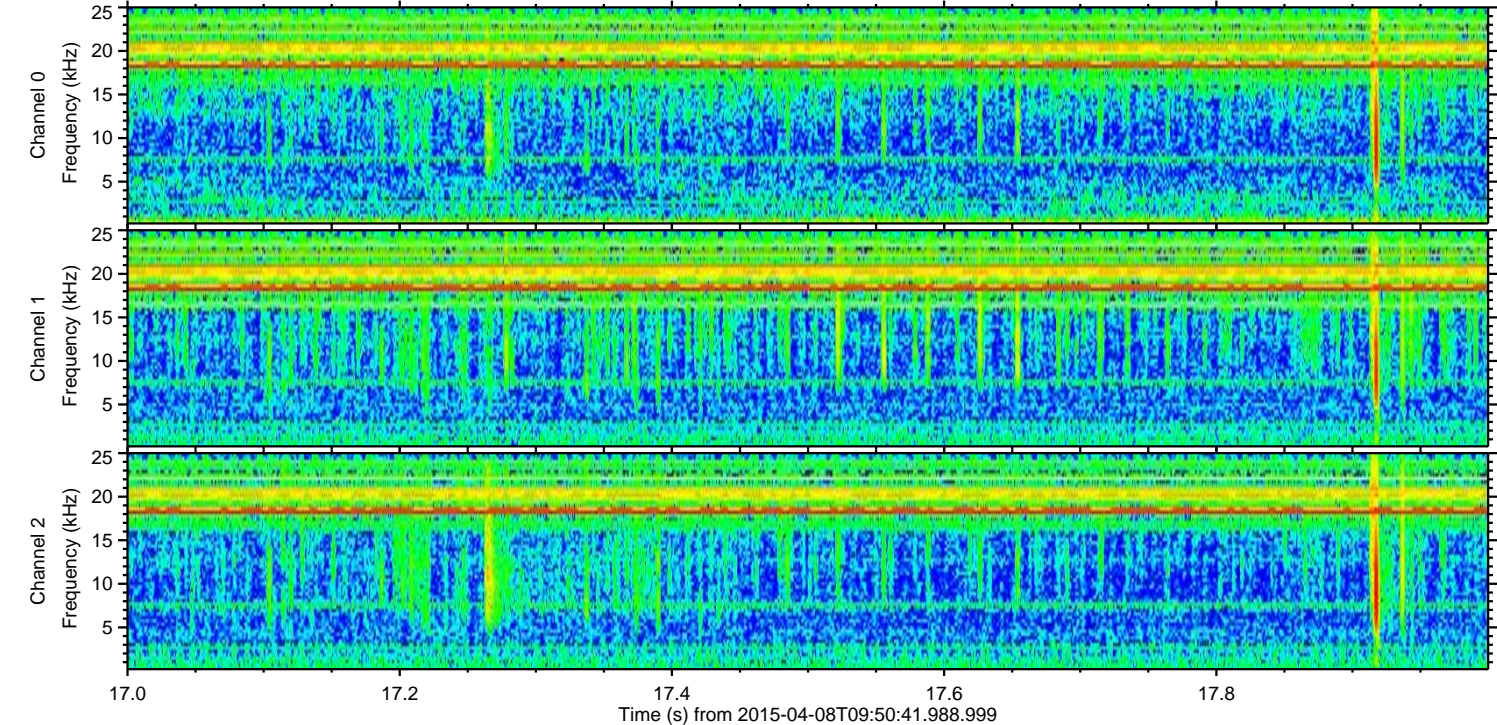
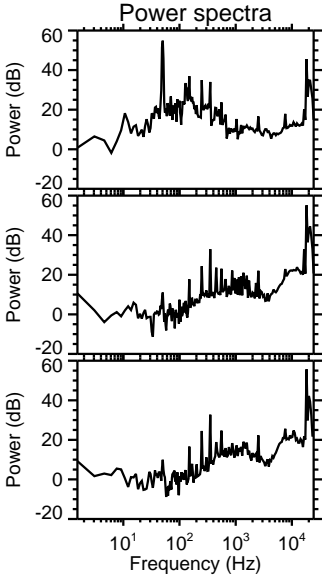
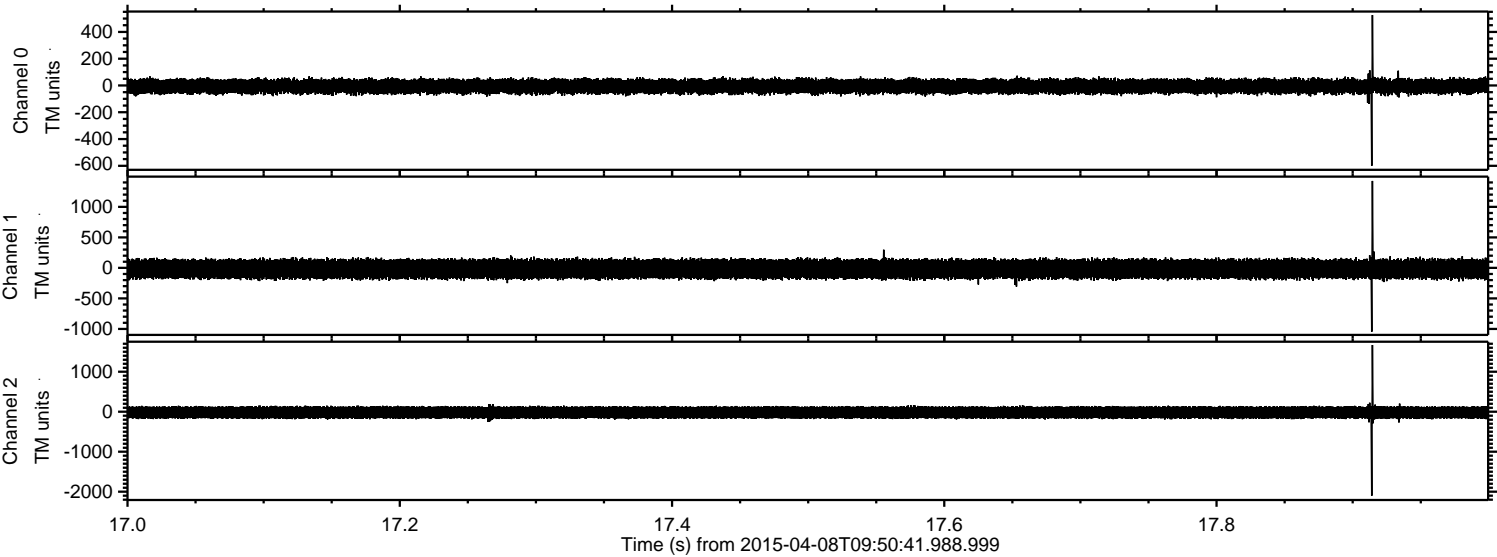
Channel 0  
mn: -829  
mx: 927  
 $\mu$ : -6.3  
 $\sigma$ : 29.6

Channel 1  
mn: -1598  
mx: 1310  
 $\mu$ : -18.5  
 $\sigma$ : 85.3

Channel 2  
mn: -2807  
mx: 2654  
 $\mu$ : -18.3  
 $\sigma$ : 88.9



Processed Wed Apr 8 12:45:19 2015 by ELM ver.2012-10-06 from 001\_\_elm20150408\_095040\_\_dat00.bin



Channel 0  
mn: -600  
mx: 526  
 $\mu$ : -6.3  
 $\sigma$ : 29.1

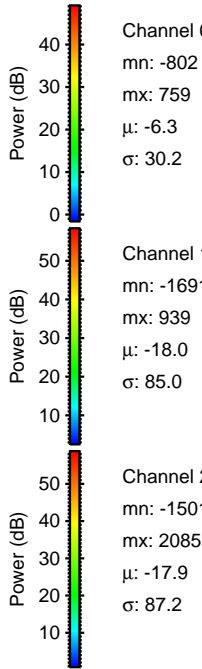
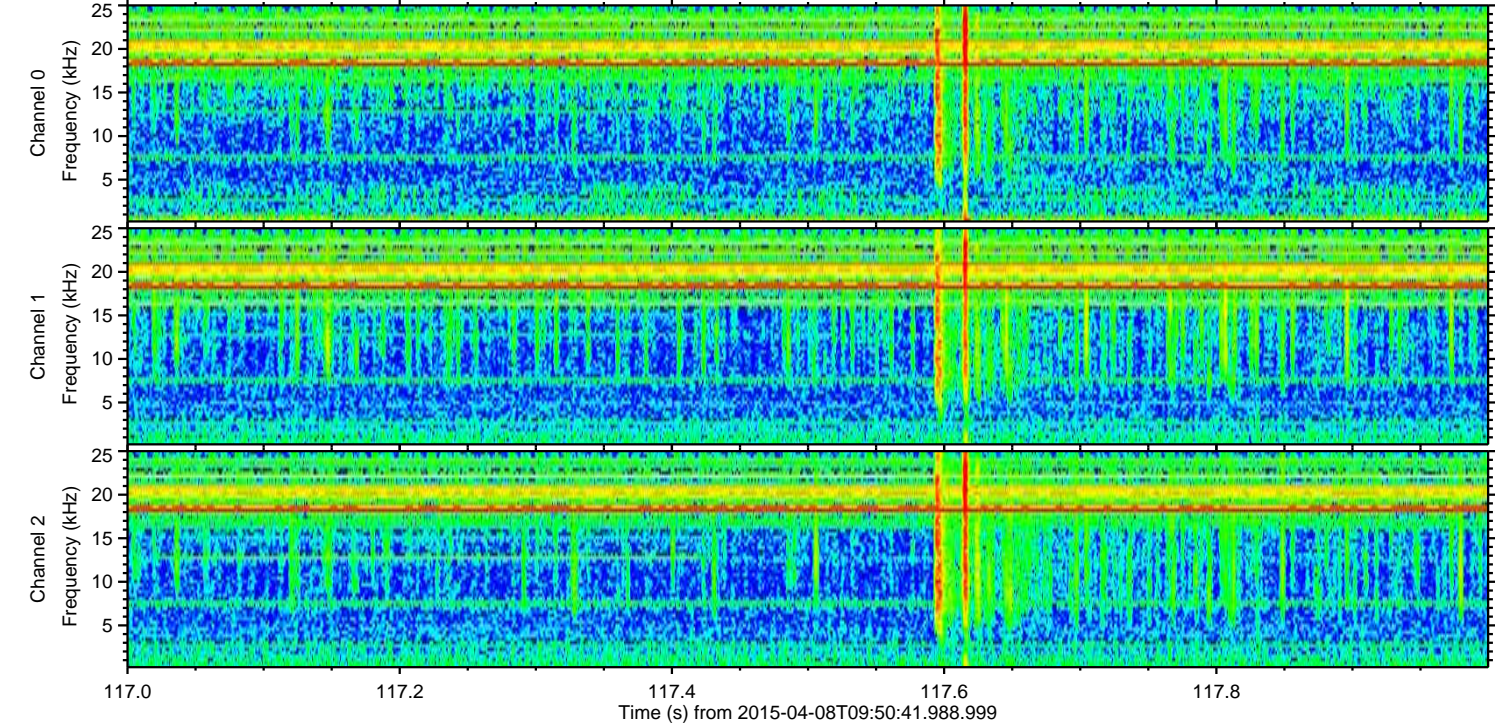
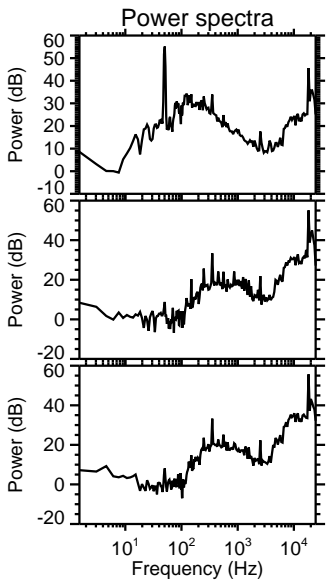
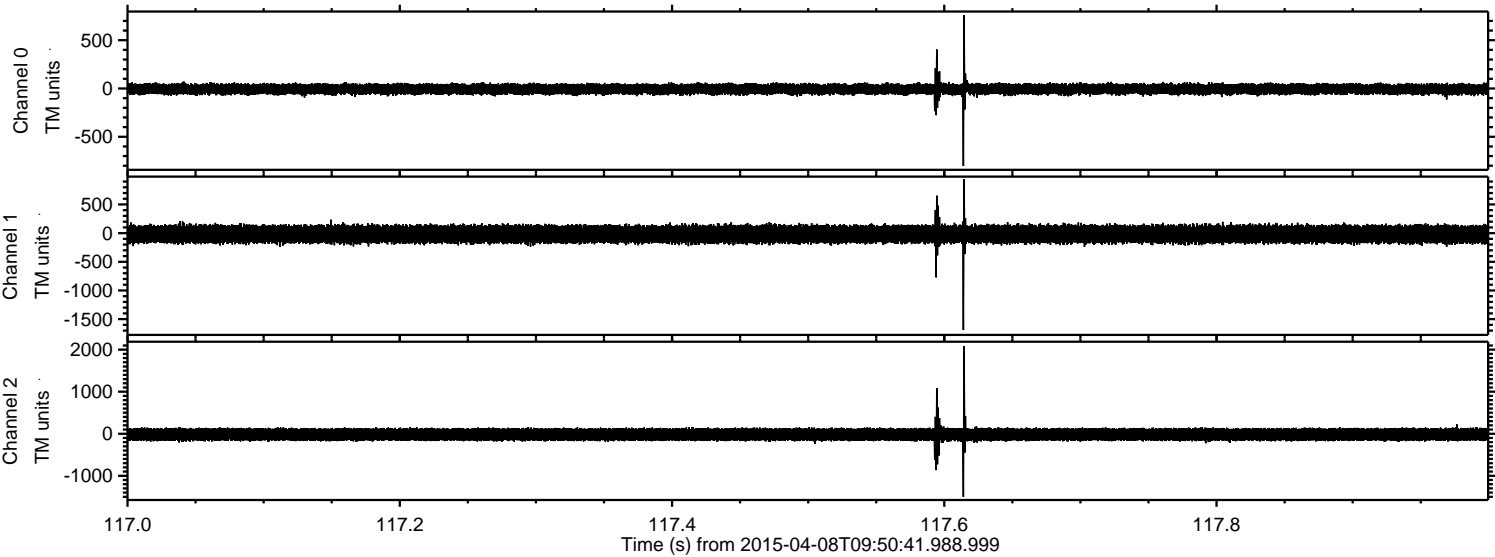
Channel 1  
mn: -1046  
mx: 1424  
 $\mu$ : -18.5  
 $\sigma$ : 84.3

Channel 2  
mn: -2102  
mx: 1668  
 $\mu$ : -18.2  
 $\sigma$ : 85.4



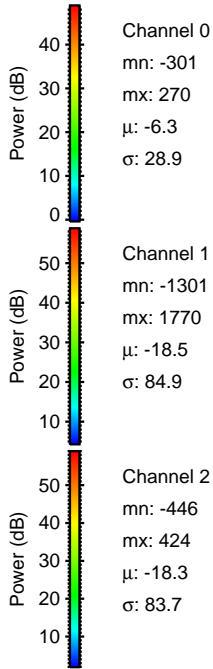
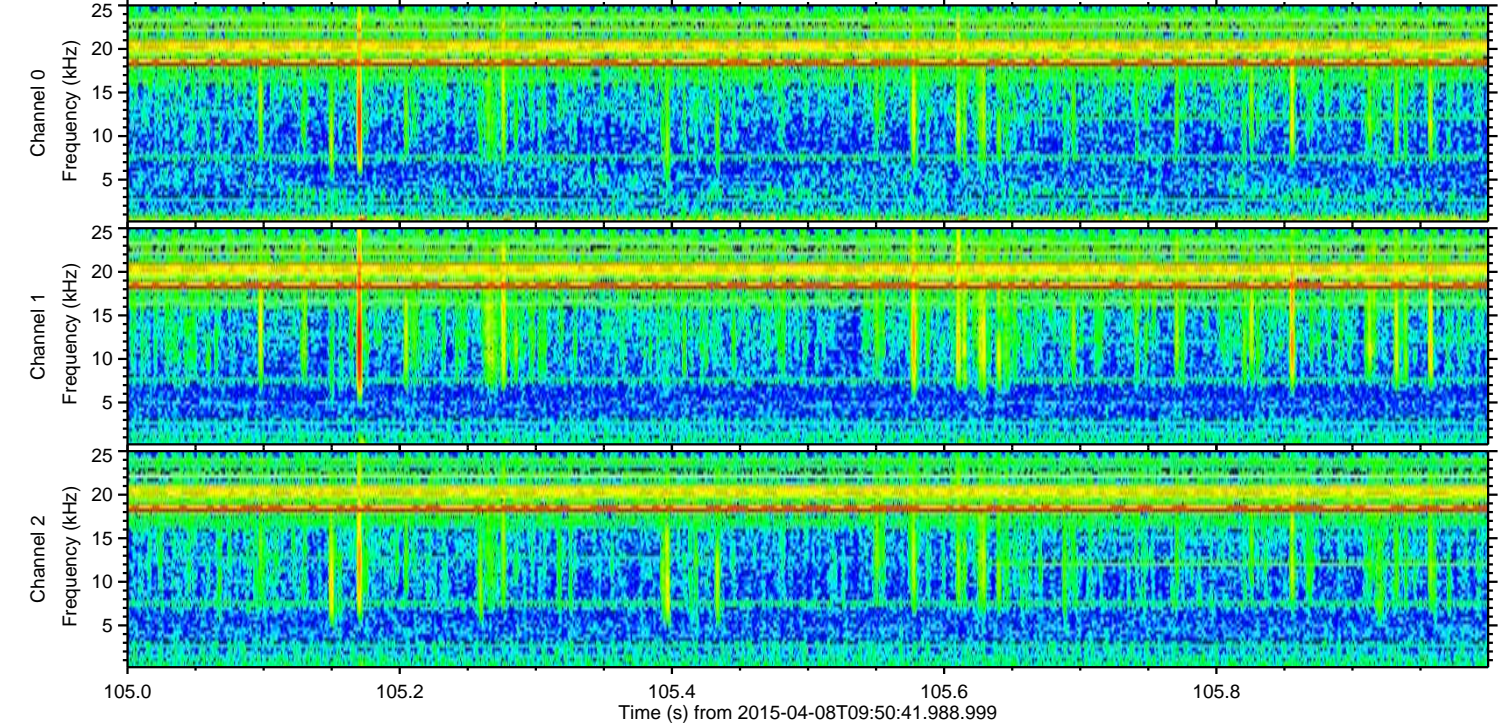
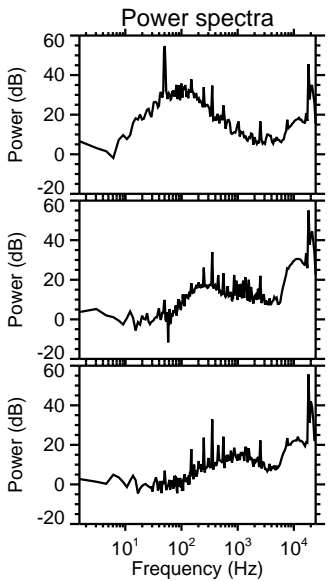
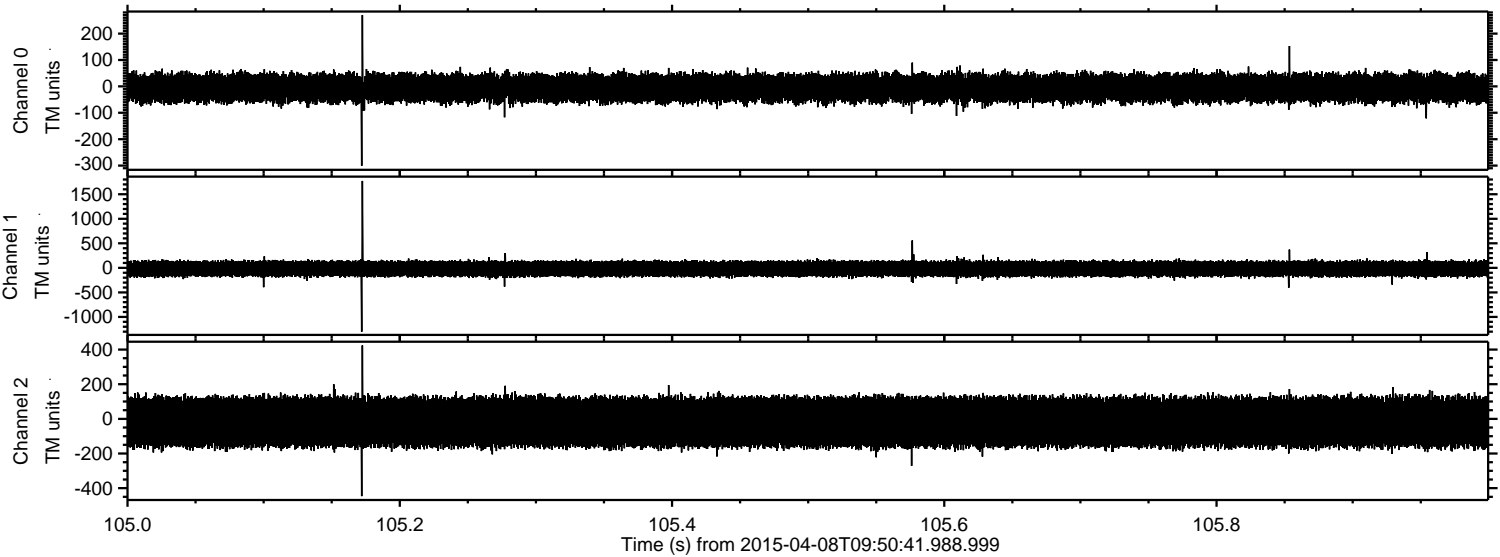
ELMAVAN 3D WAVEFORMS (Measured data sampled at 50 kHz) 49804 packets of 144 samples from 2015-04-08T09:50:41.988.999. Part 118/144

Processed Wed Apr 8 12:45:20 2015 by ELM ver.2012-10-06 from 001\_\_elm20150408\_095040\_\_dat00.bin



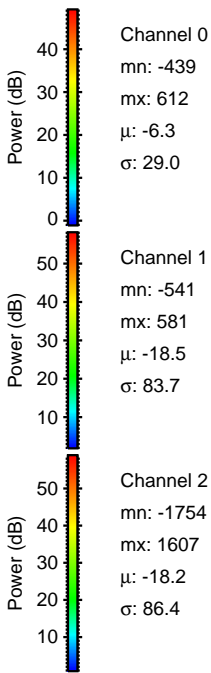
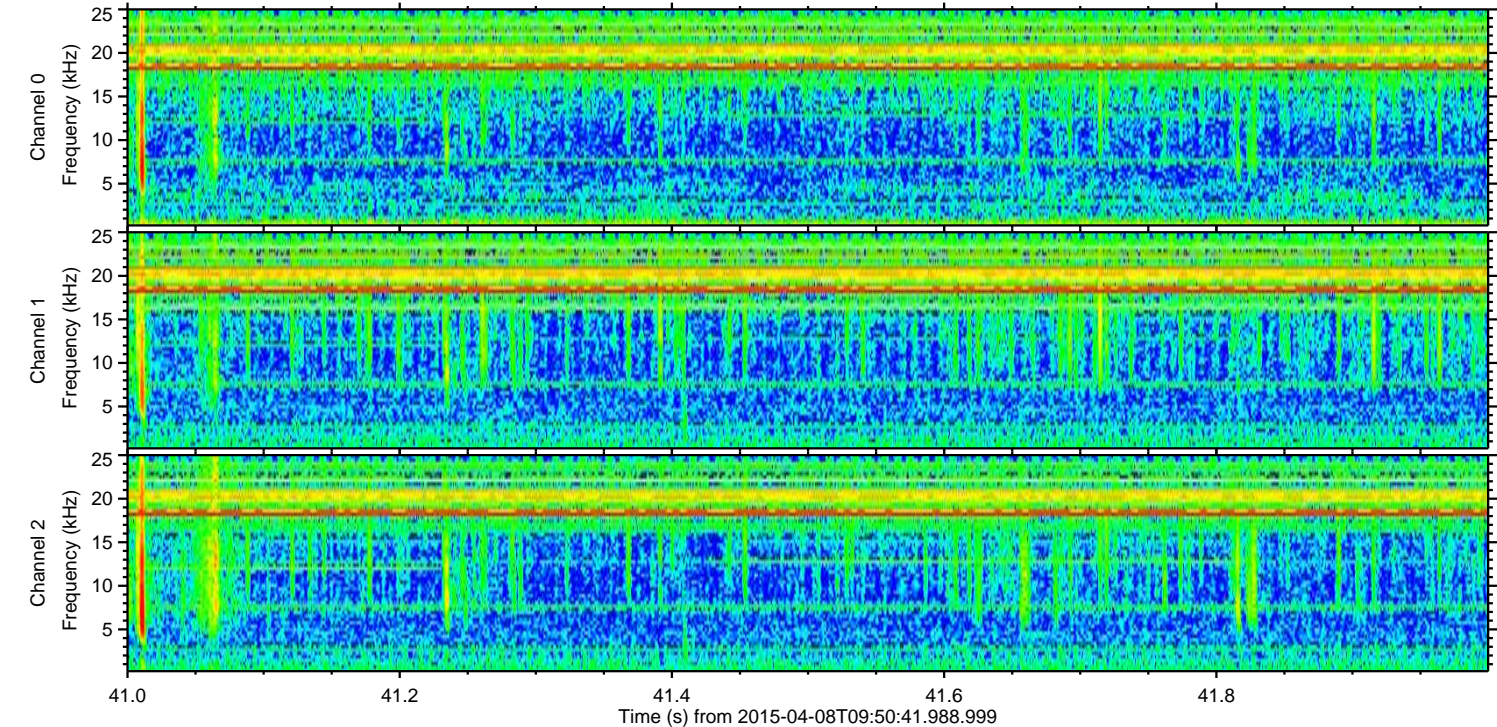
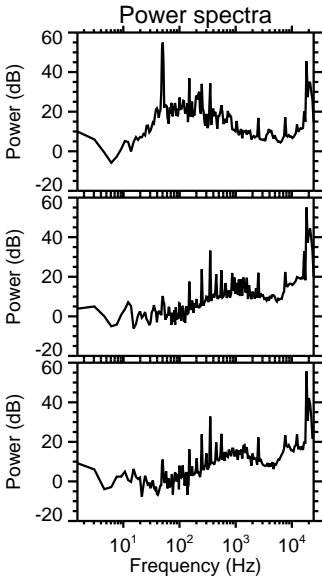
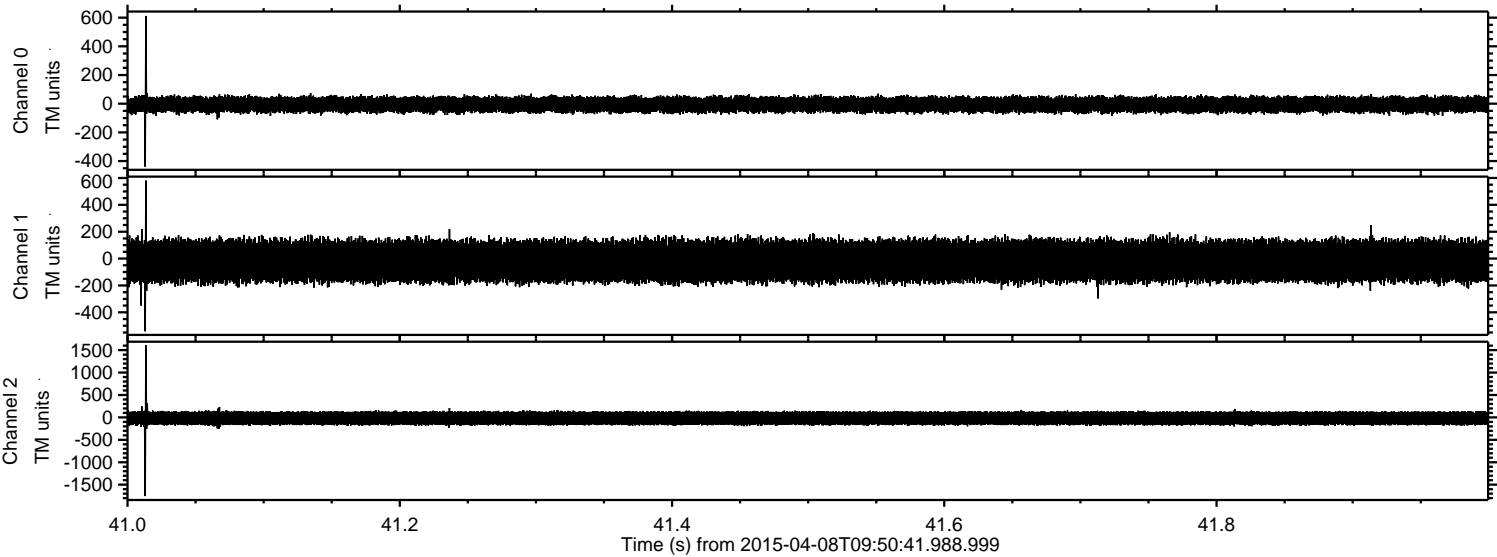


Processed Wed Apr 8 12:45:21 2015 by ELM ver.2012-10-06 from 001\_\_elm20150408\_095040\_\_dat00.bin



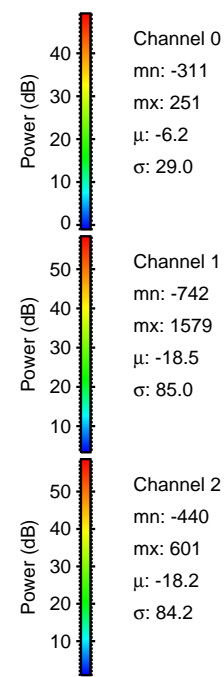
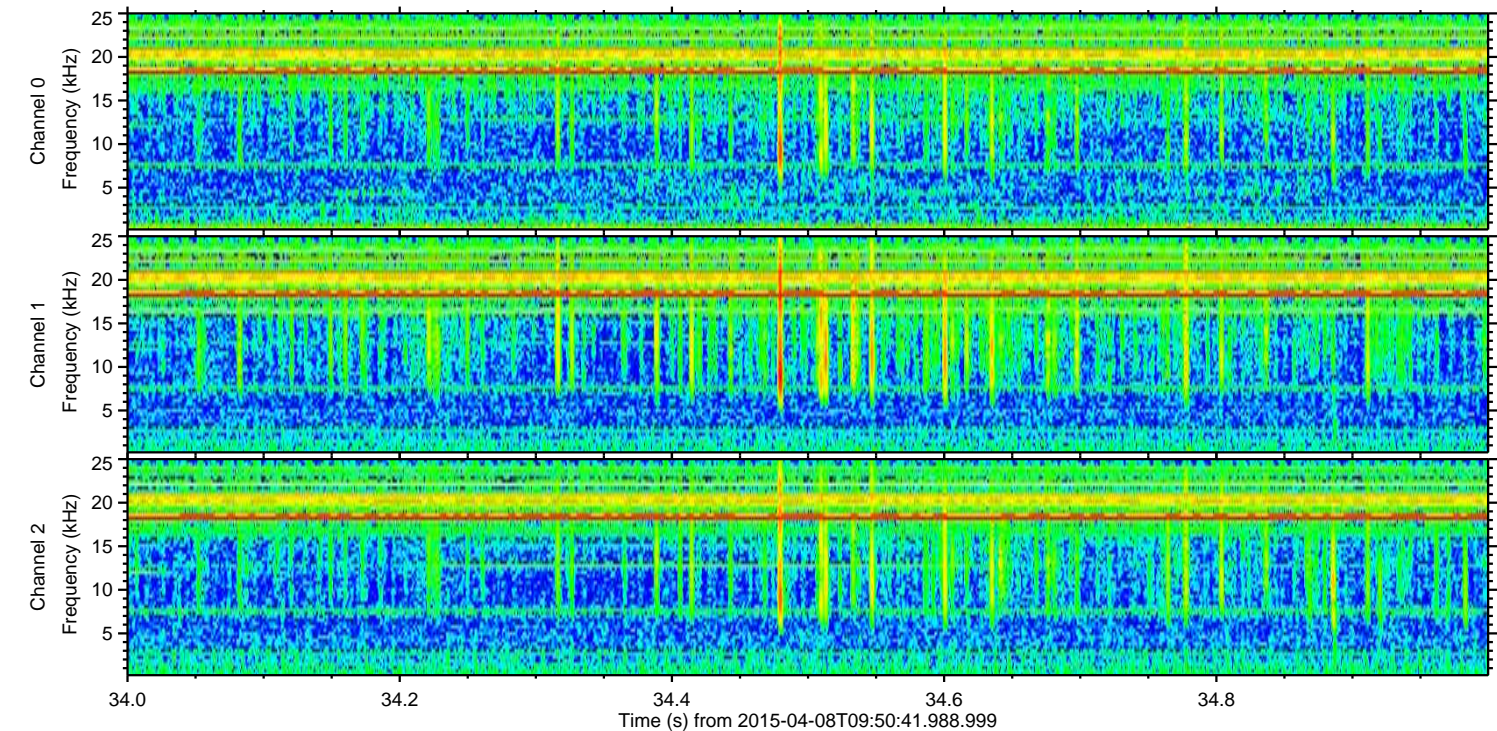
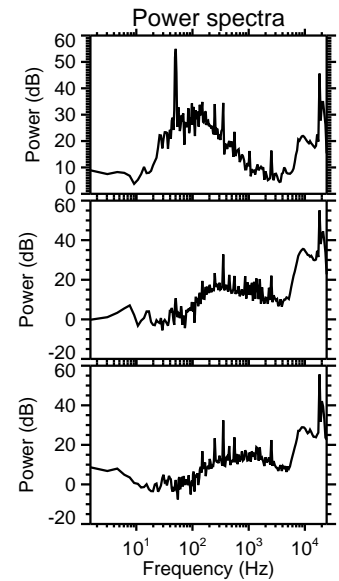
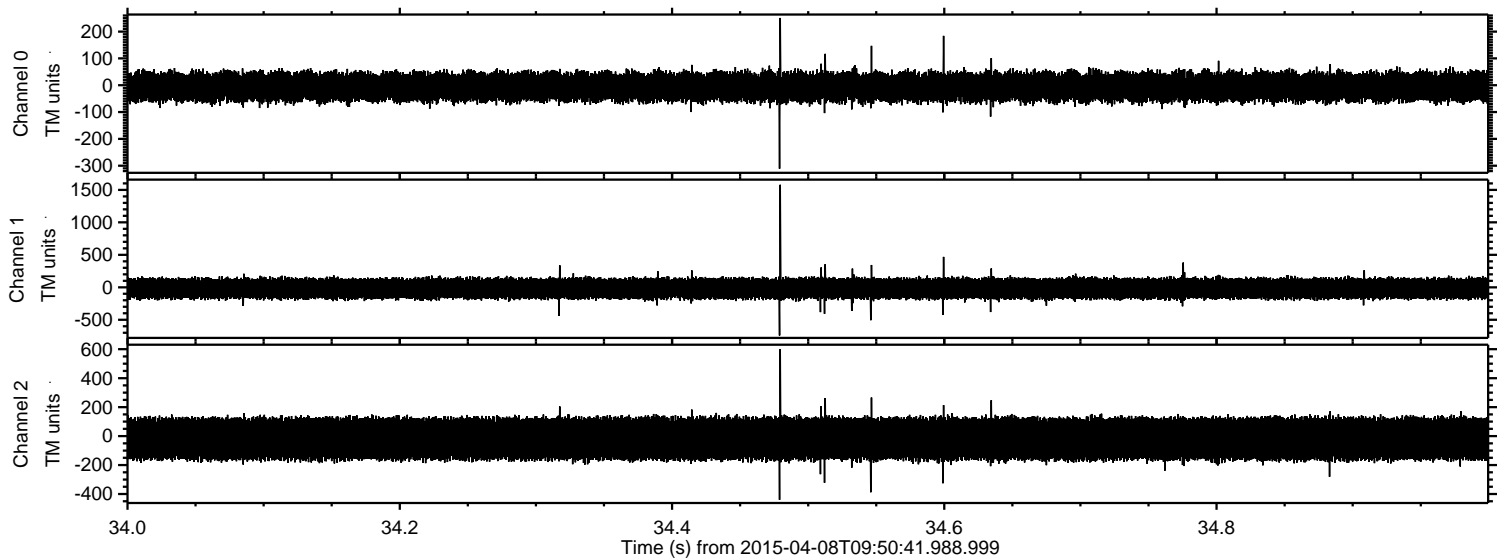


Processed Wed Apr 8 12:45:22 2015 by ELM ver.2012-10-06 from 001\_\_elm20150408\_095040\_\_dat00.bin





Processed Wed Apr 8 12:45:23 2015 by ELM ver.2012-10-06 from 001\_\_elm20150408\_095040\_\_dat00.bin





Processed Wed Apr 8 12:45:24 2015 by ELM ver.2012-10-06 from 001\_\_elm20150408\_095040\_\_dat00.bin

