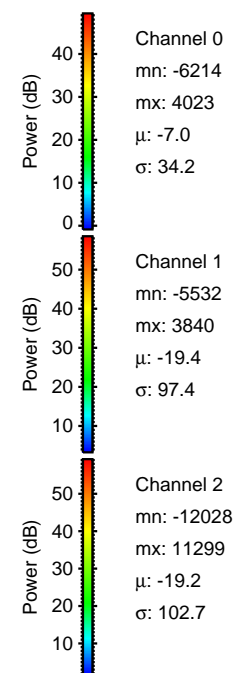
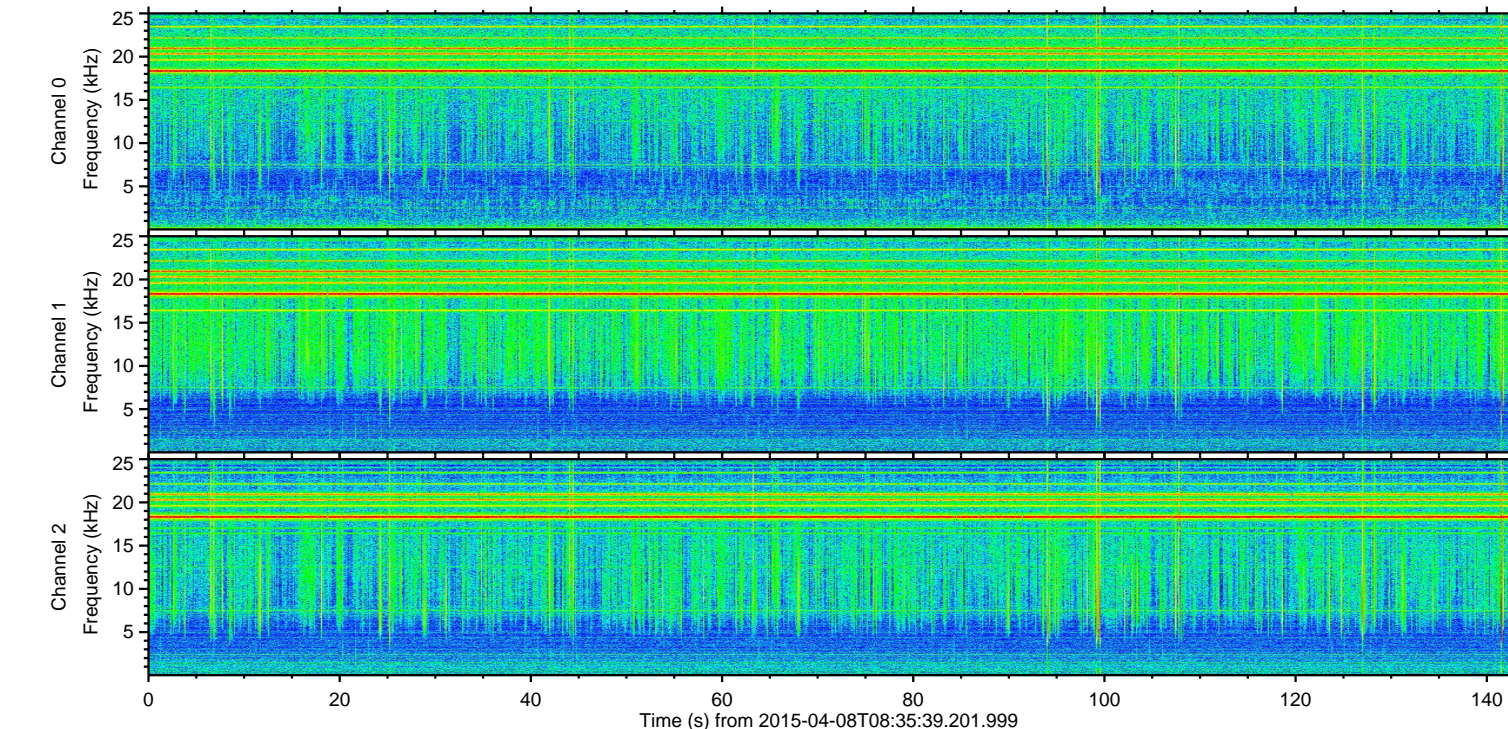
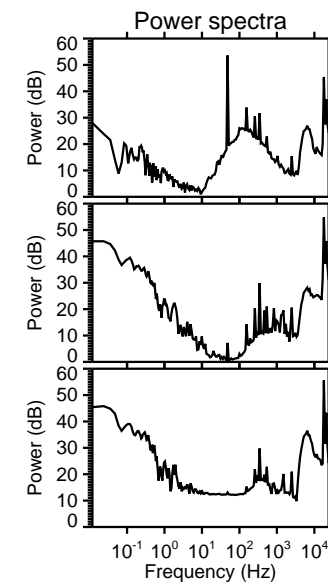
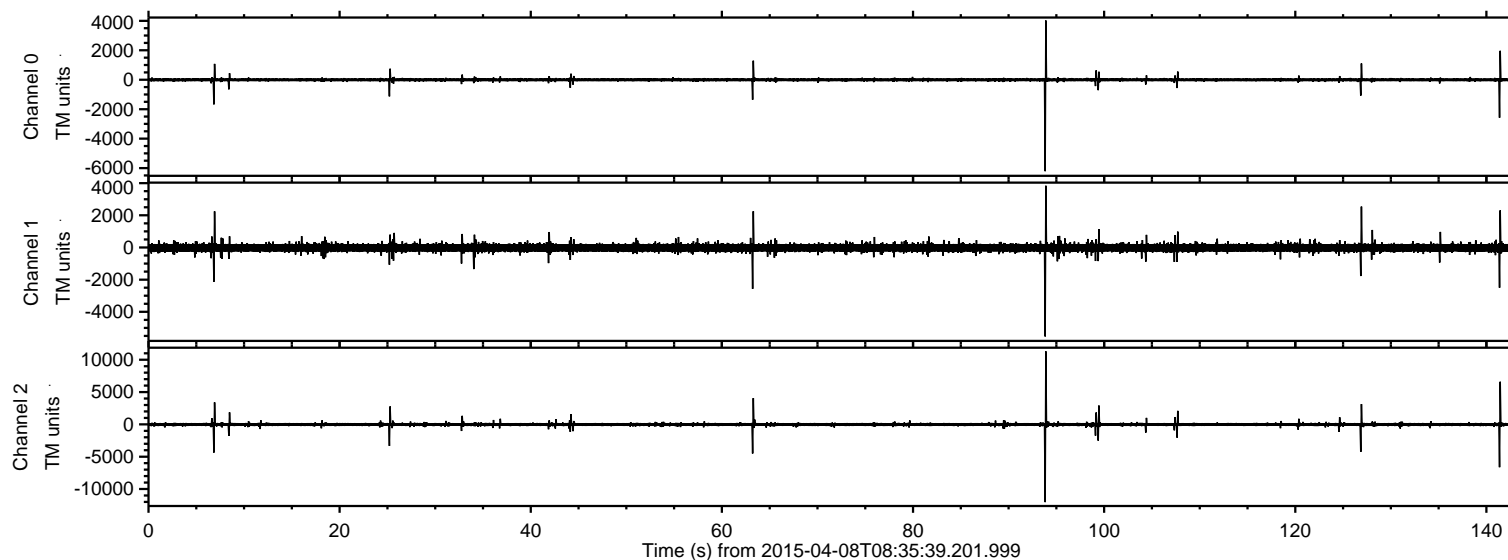
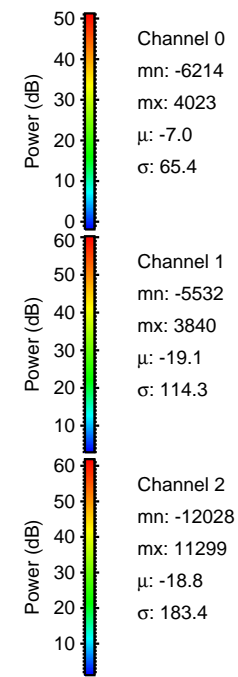
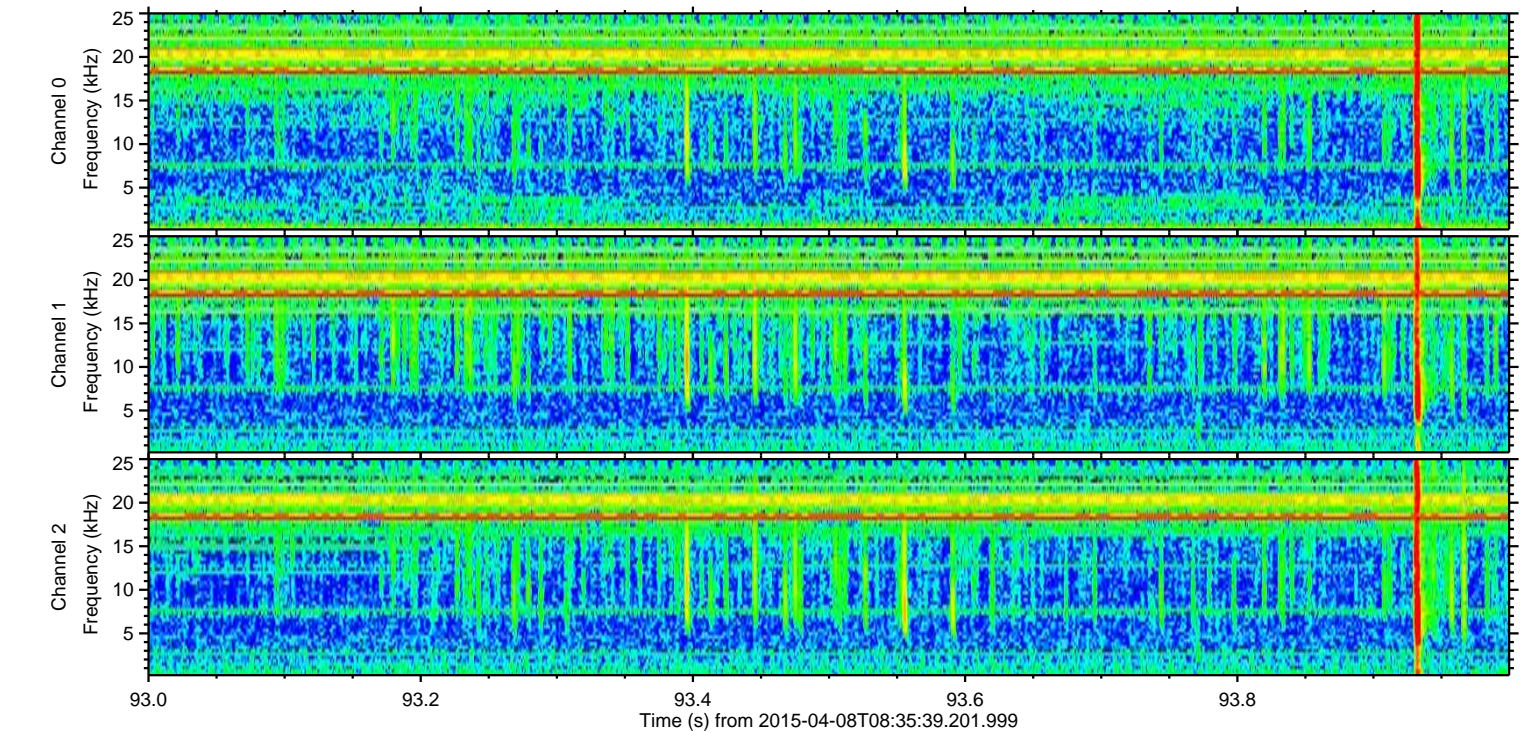
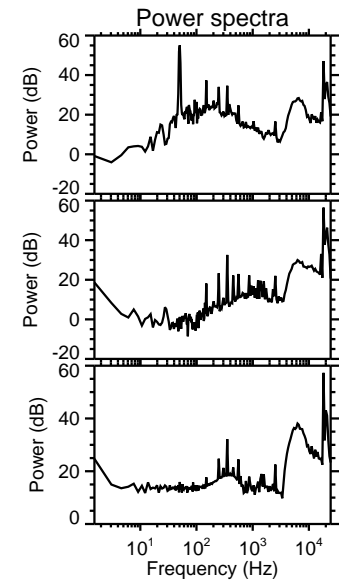
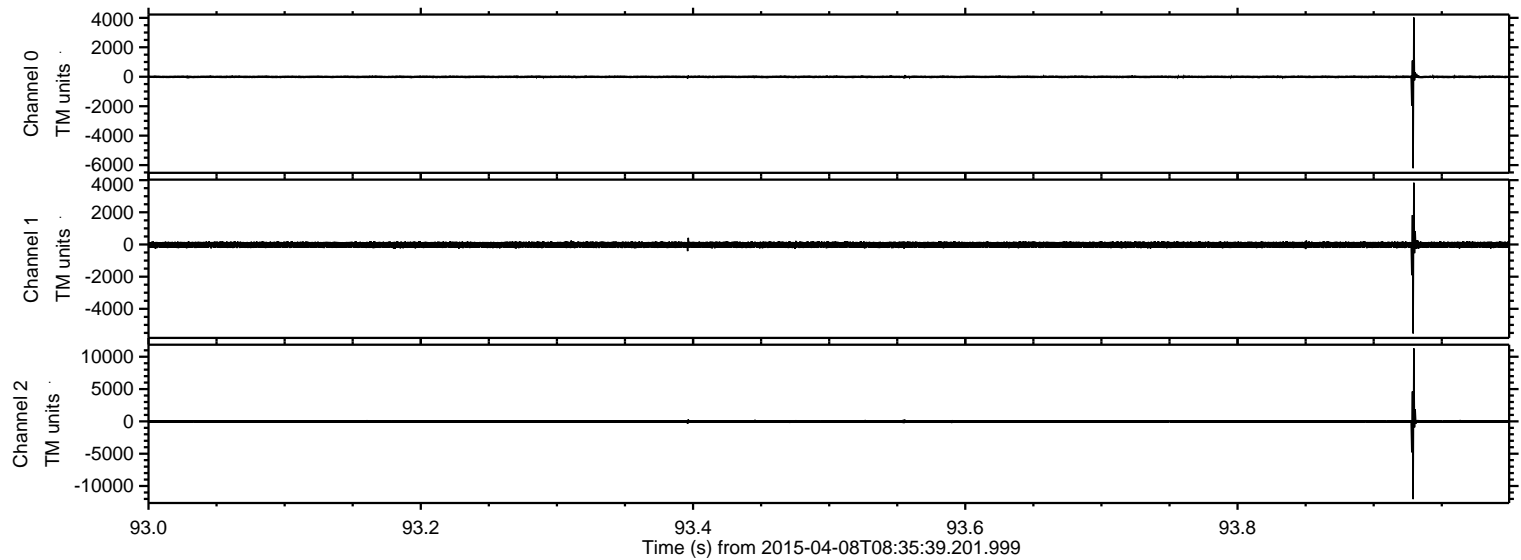


ELMAVAN 3D WAVEFORMS (Measured data sampled at 50 kHz) 49437 packets of 144 samples from 2015-04-08T08:35:39.201.999.

Processed Wed Apr 8 11:42:42 2015 by ELM ver.2012-10-06 from 001__elm20150408_083538__dat00.bin

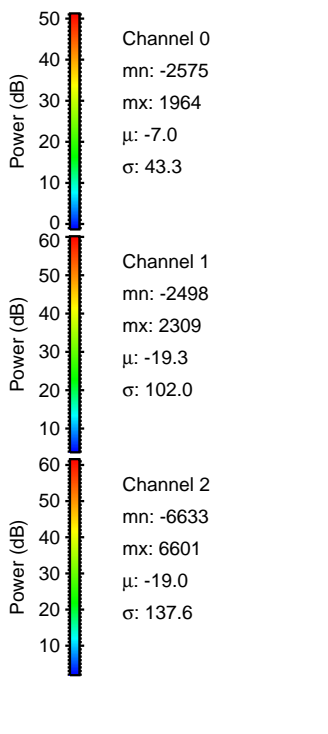
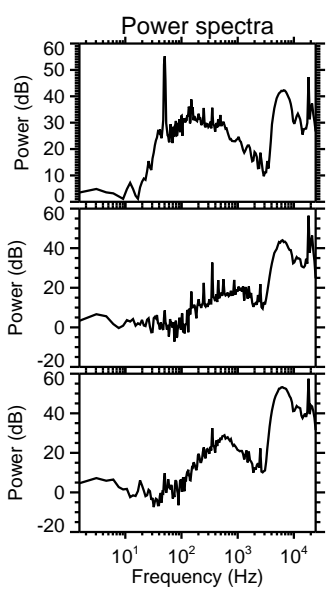
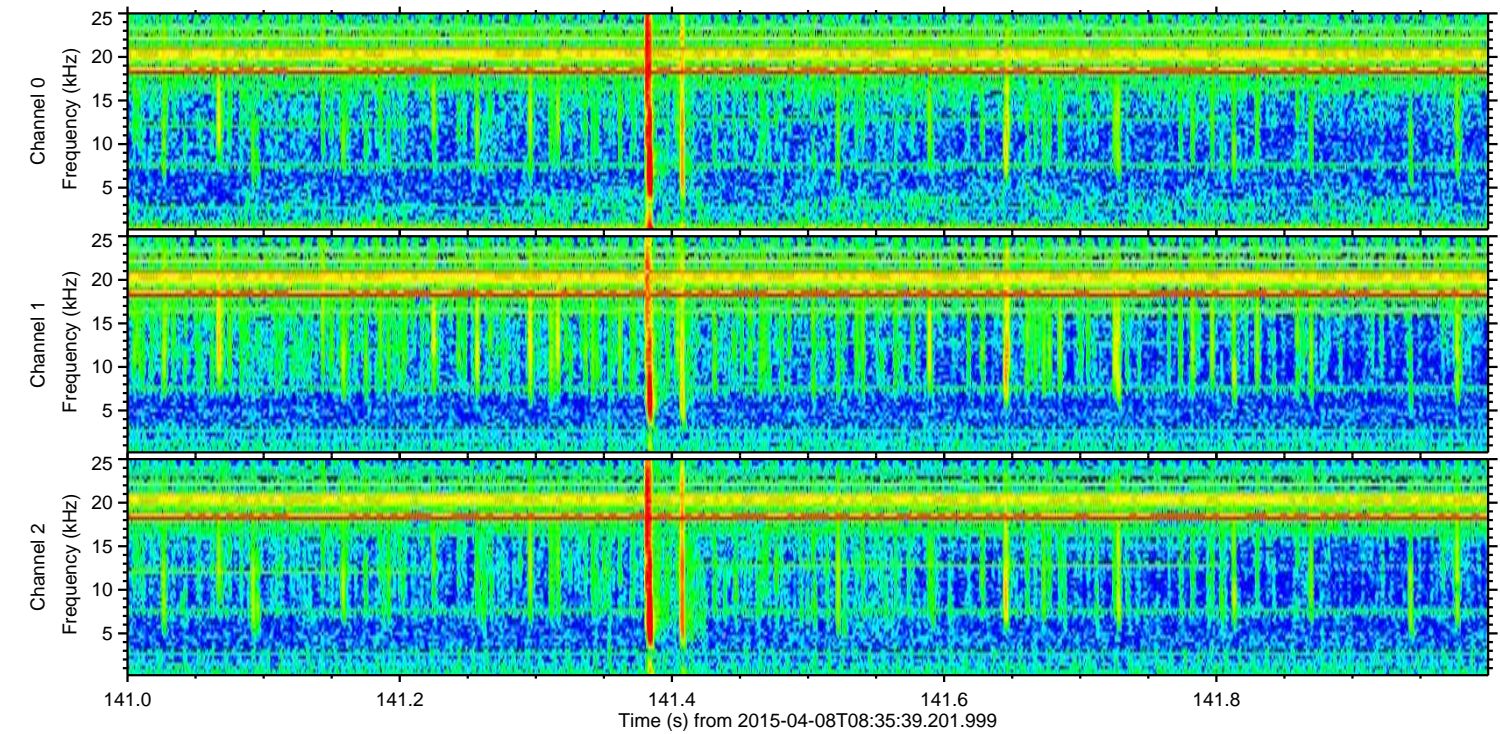
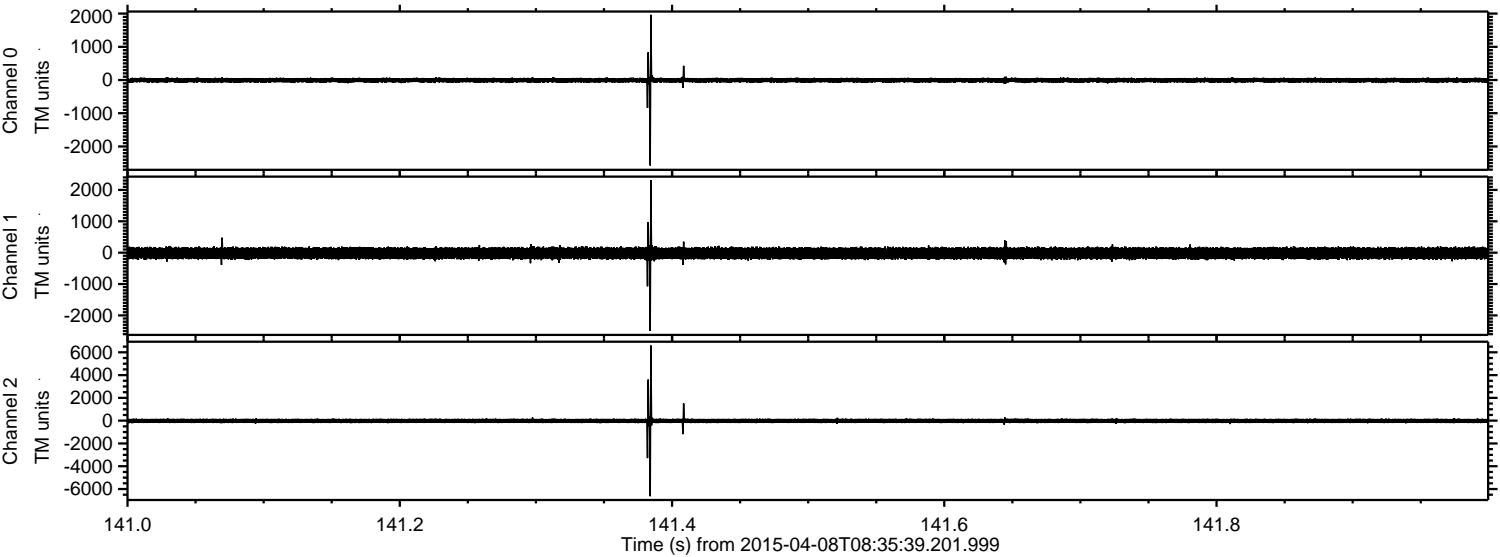


Processed Wed Apr 8 11:42:57 2015 by ELM ver.2012-10-06 from 001__elm20150408_083538__dat00.bin

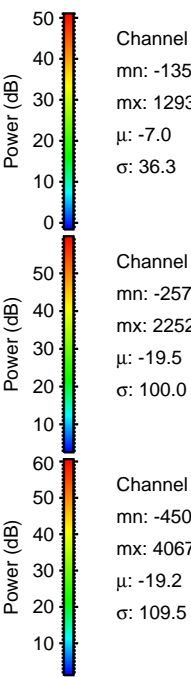
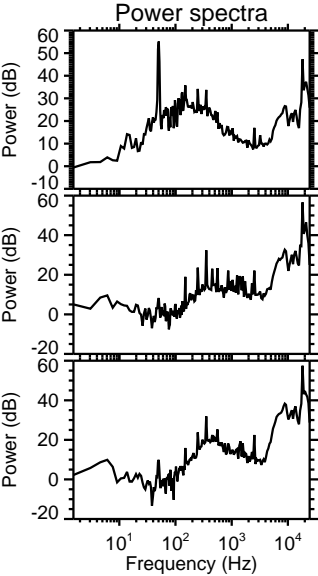
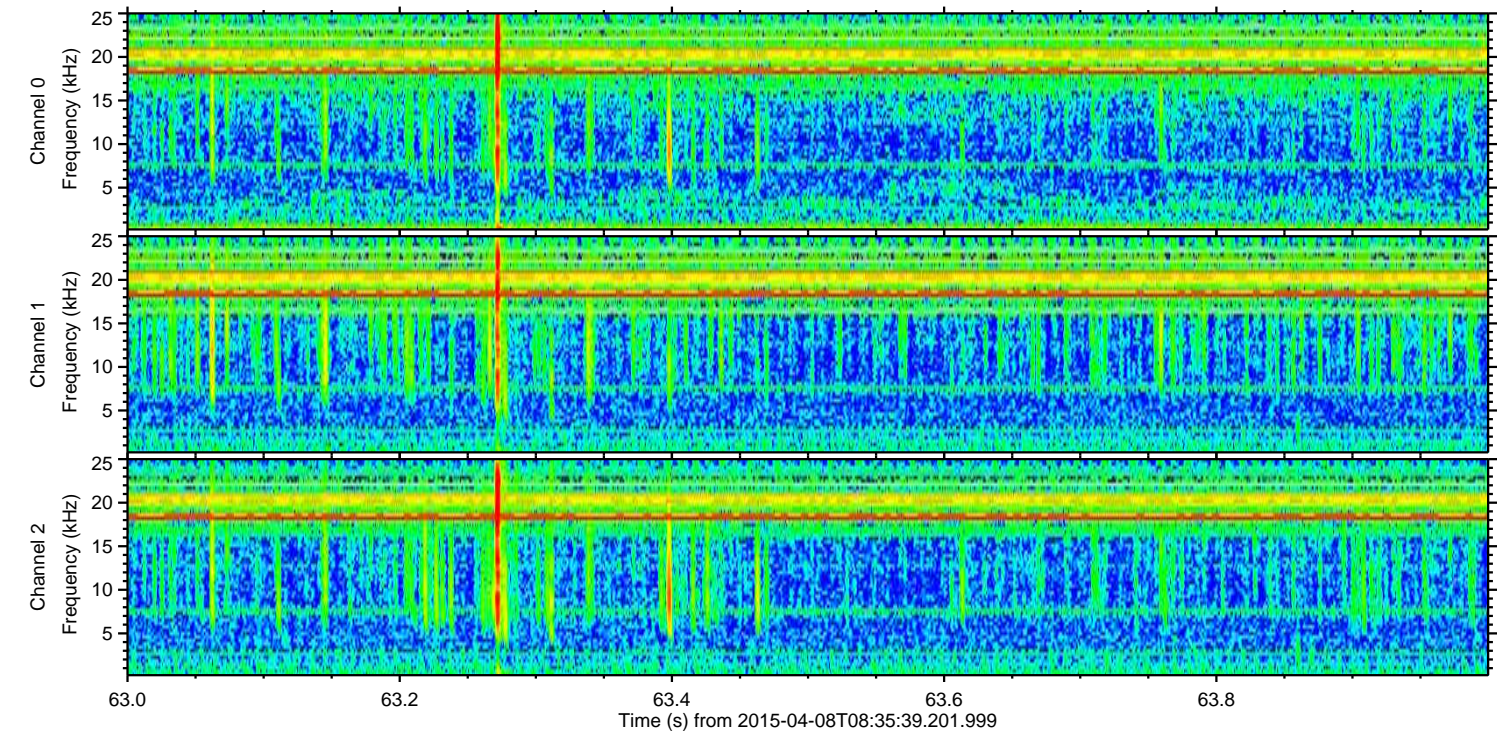
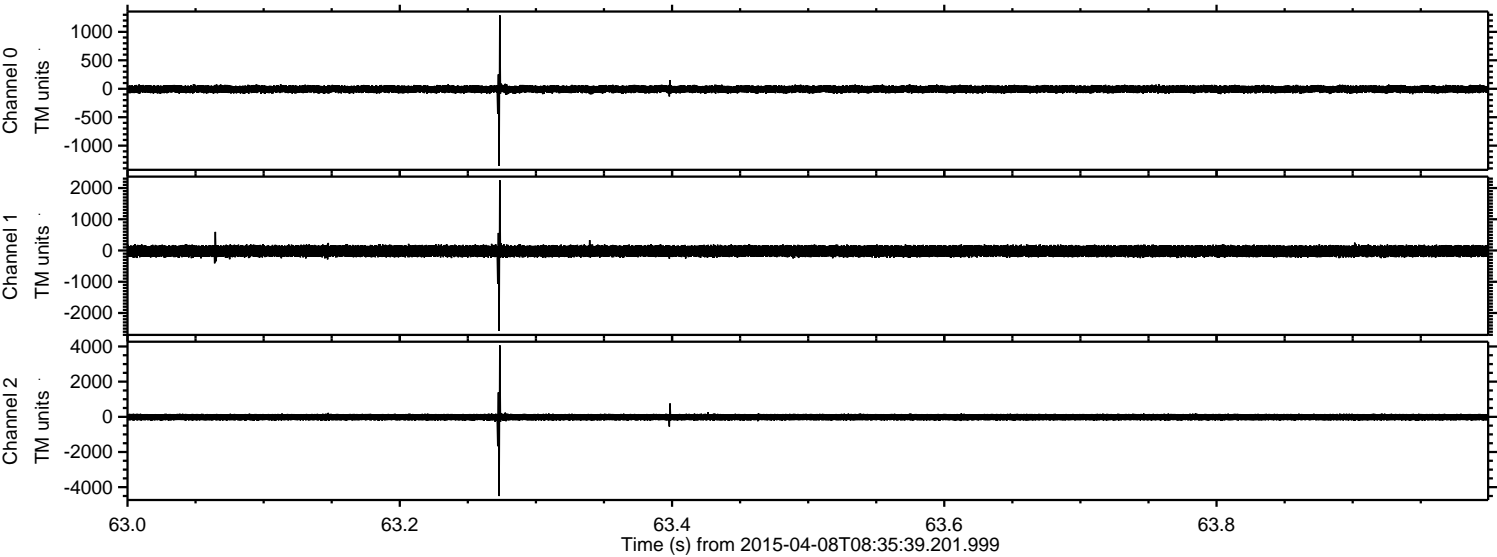


ELMAVAN 3D WAVEFORMS (Measured data sampled at 50 kHz) 49437 packets of 144 samples from 2015-04-08T08:35:39.201.999. Part 142/143

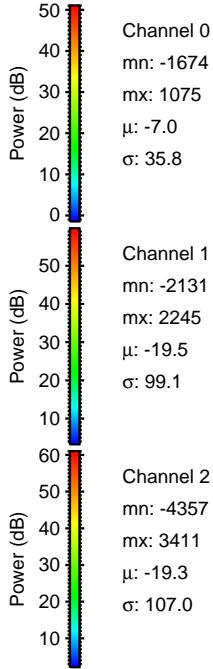
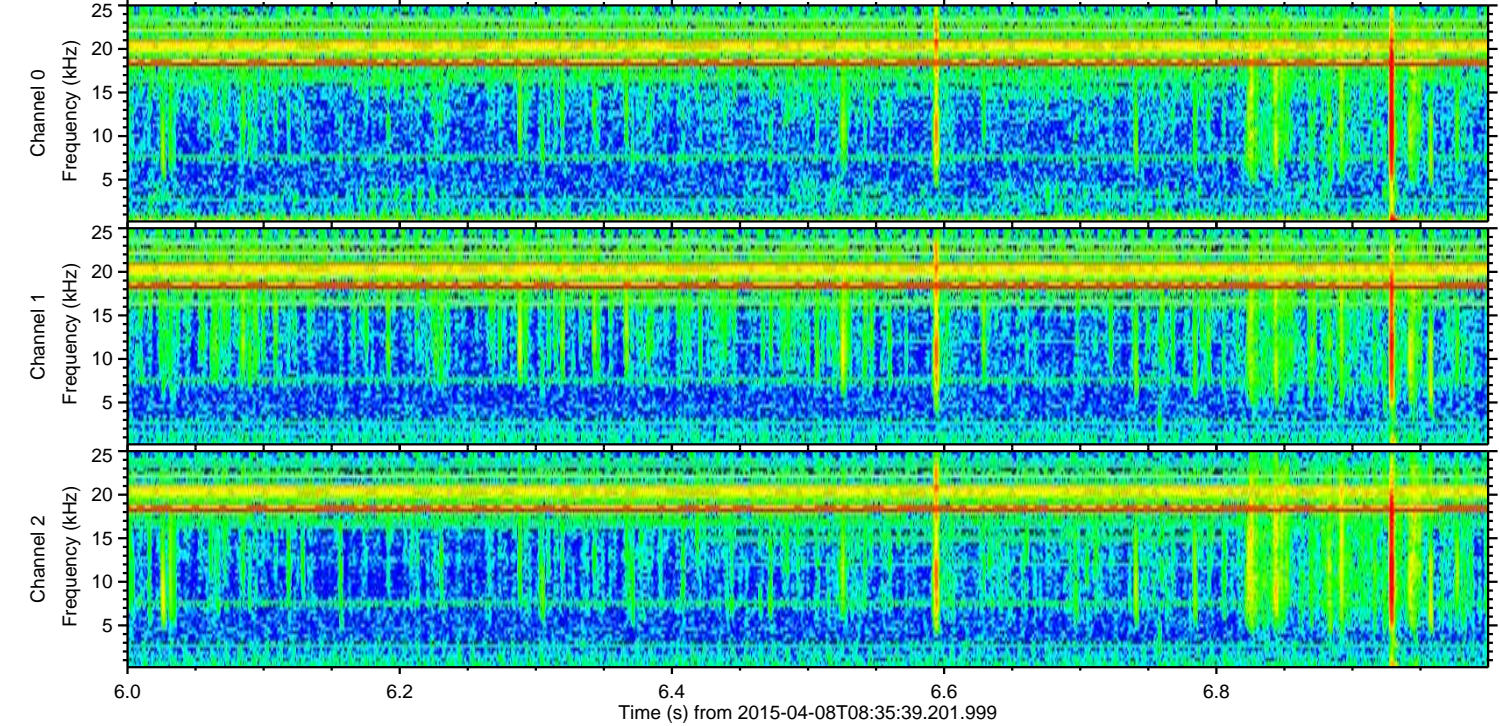
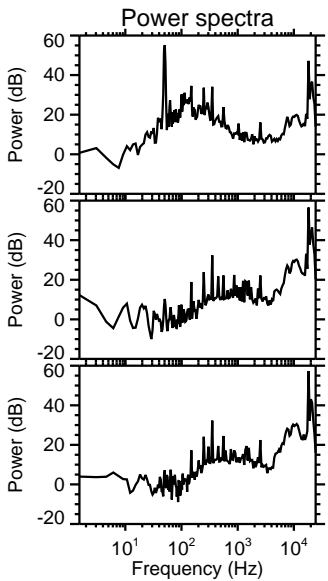
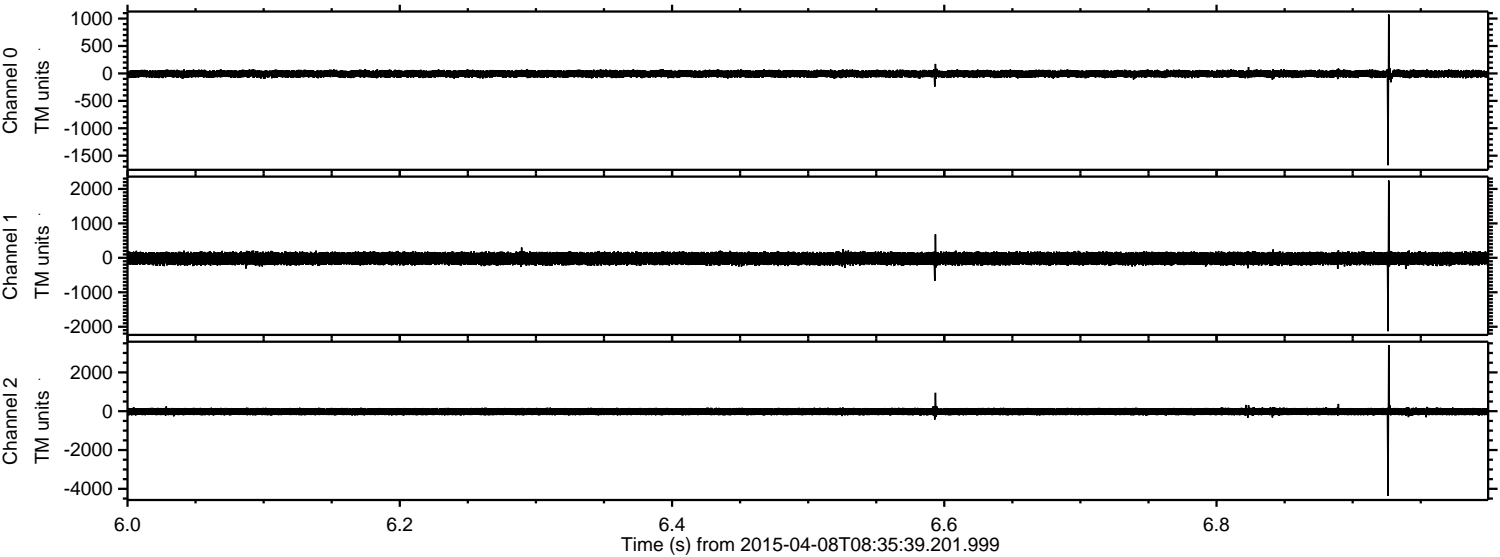
Processed Wed Apr 8 11:42:58 2015 by ELM ver.2012-10-06 from 001__elm20150408_083538__dat00.bin



Processed Wed Apr 8 11:42:59 2015 by ELM ver.2012-10-06 from 001__elm20150408_083538__dat00.bin

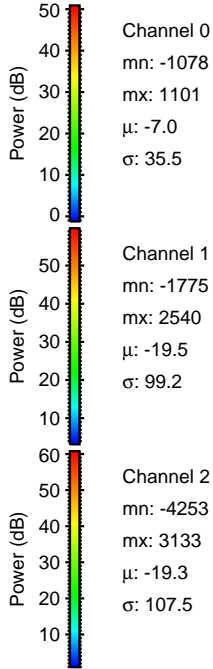
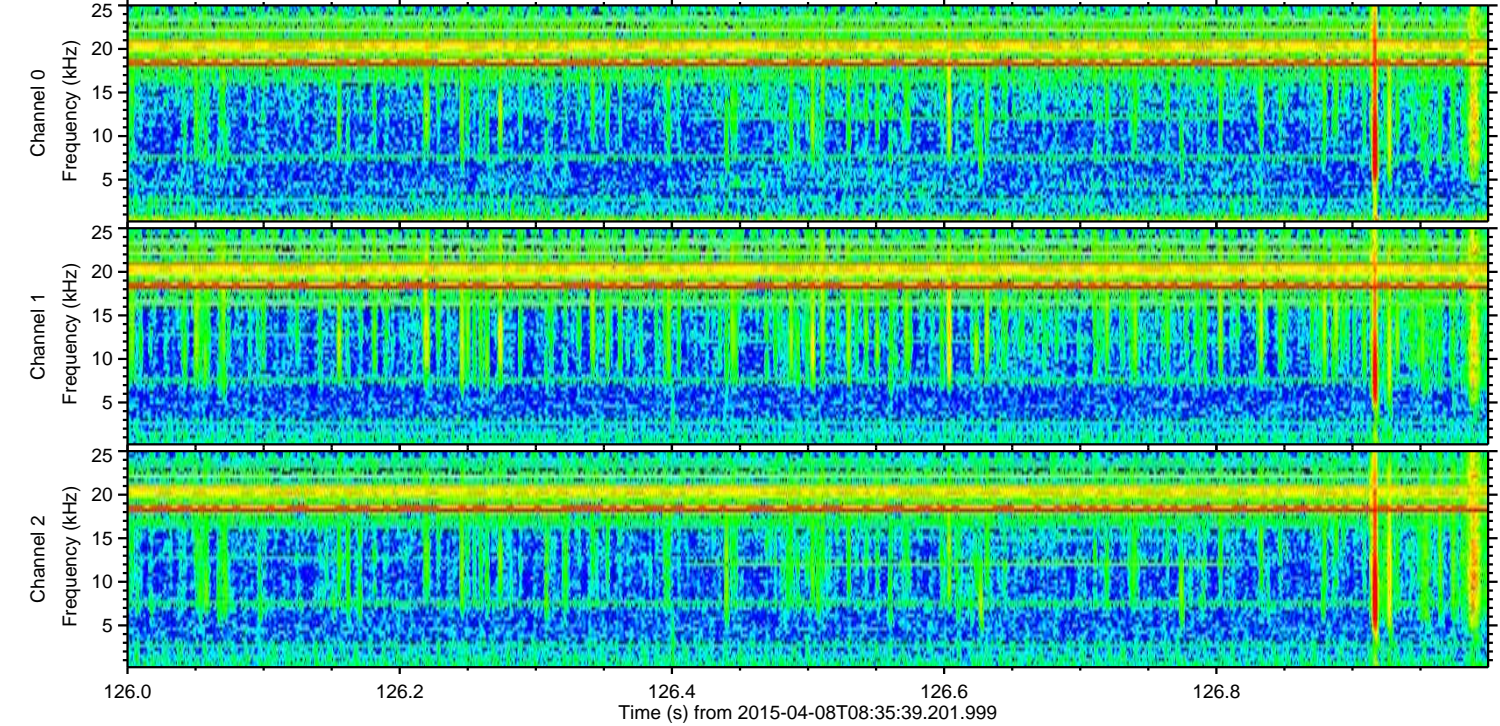
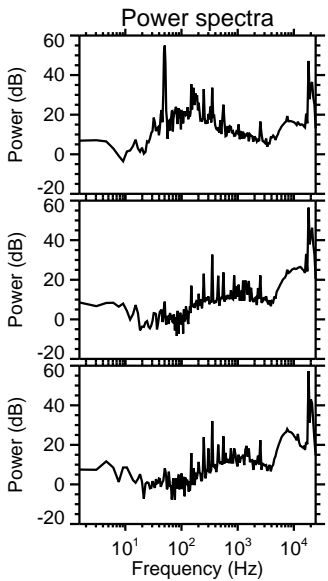
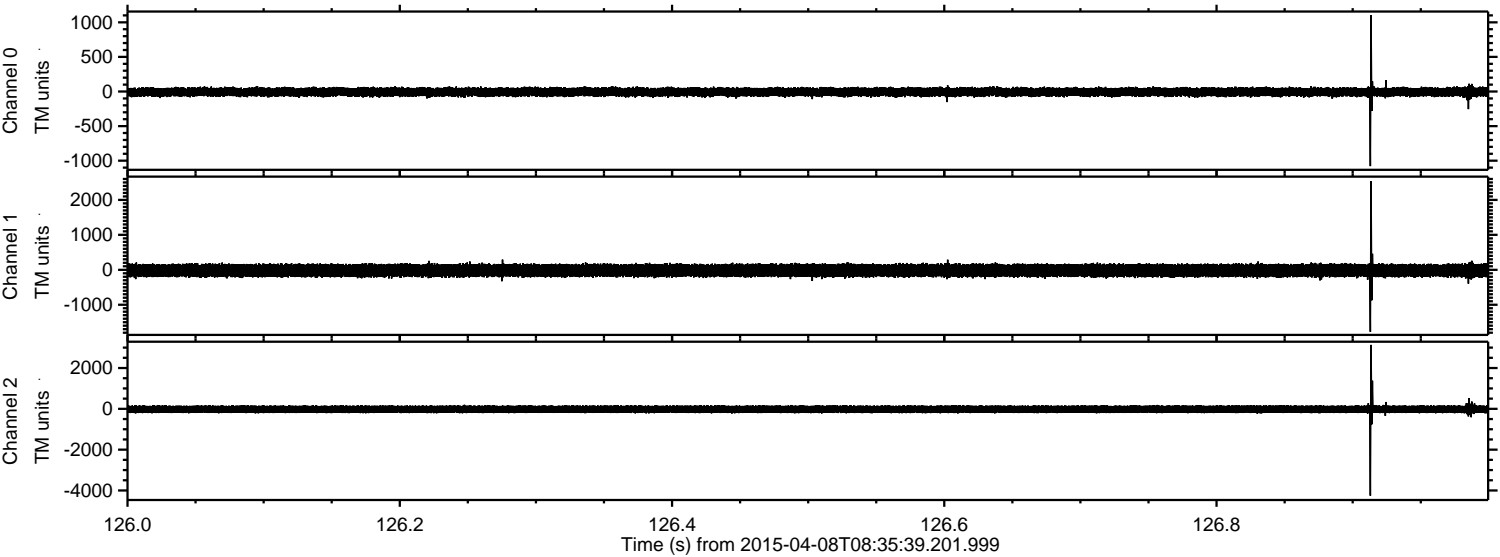


Processed Wed Apr 8 11:43:00 2015 by ELM ver.2012-10-06 from 001__elm20150408_083538__dat00.bin

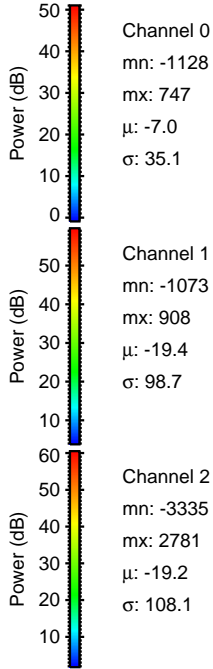
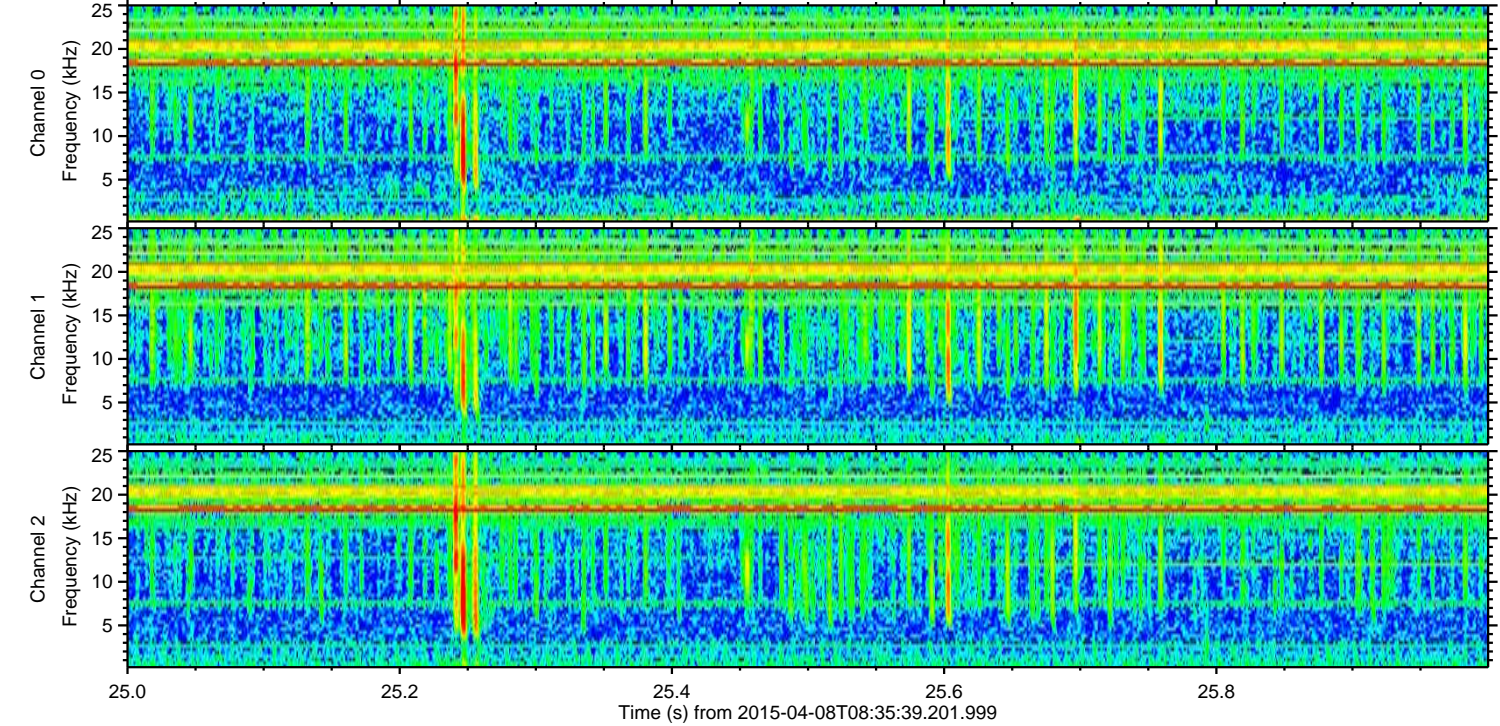
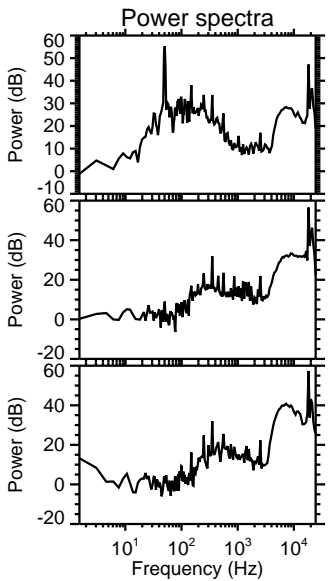
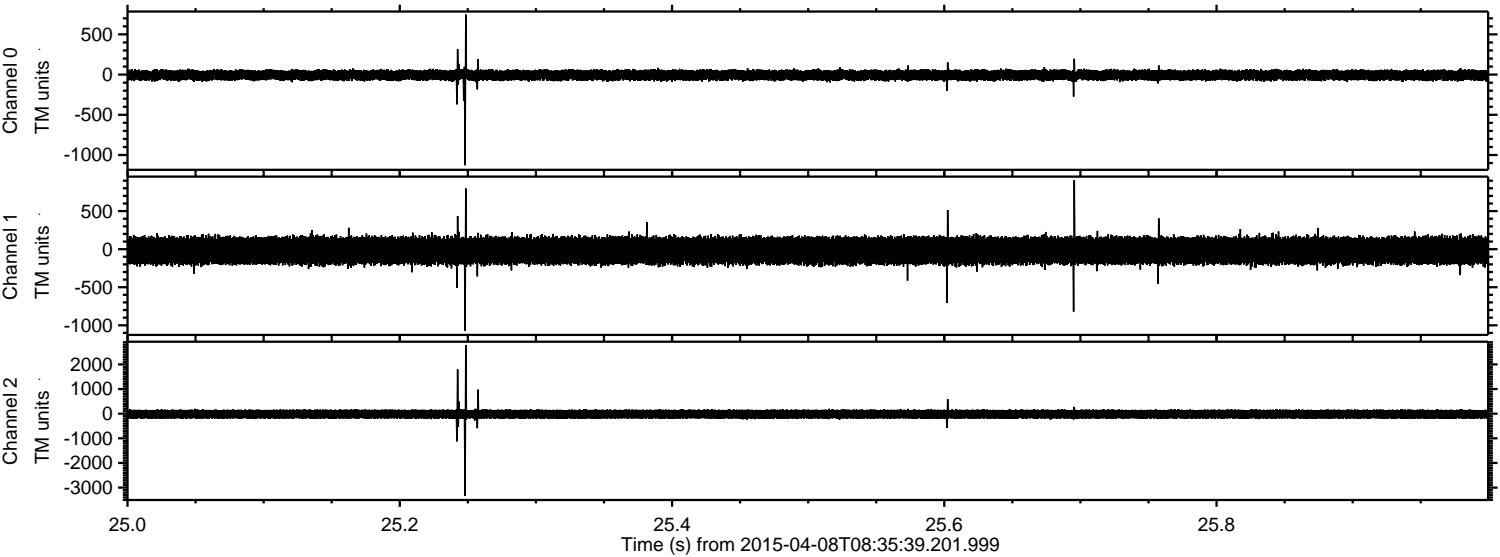


ELMAVAN 3D WAVEFORMS (Measured data sampled at 50 kHz) 49437 packets of 144 samples from 2015-04-08T08:35:39.201.999. Part 127/143

Processed Wed Apr 8 11:43:01 2015 by ELM ver.2012-10-06 from 001__elm20150408_083538__dat00.bin

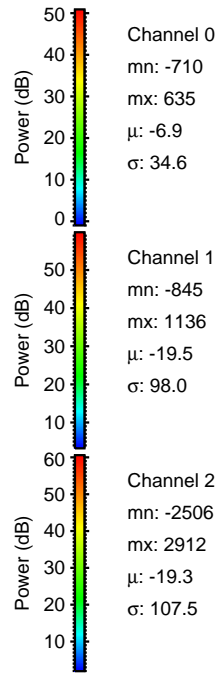
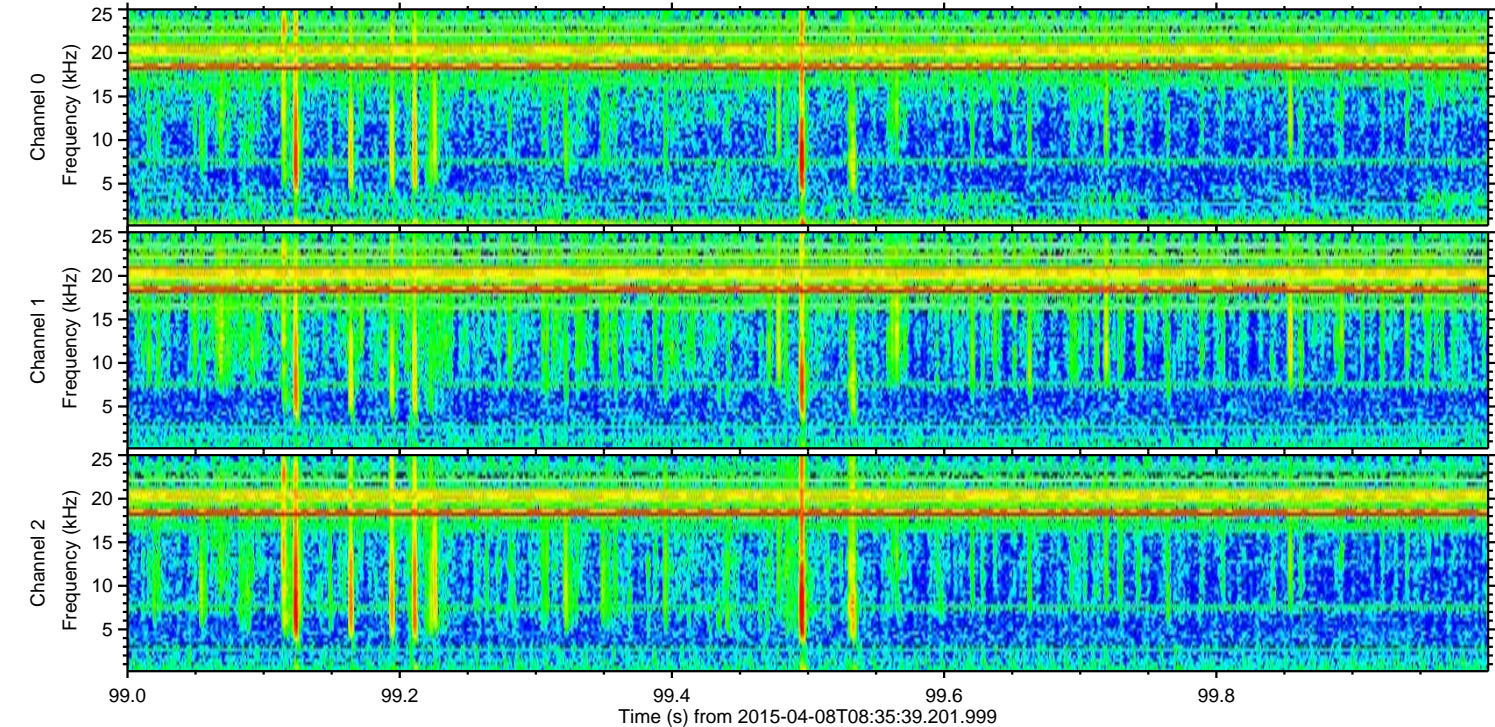
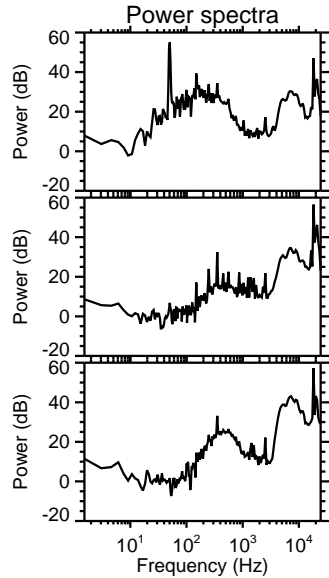
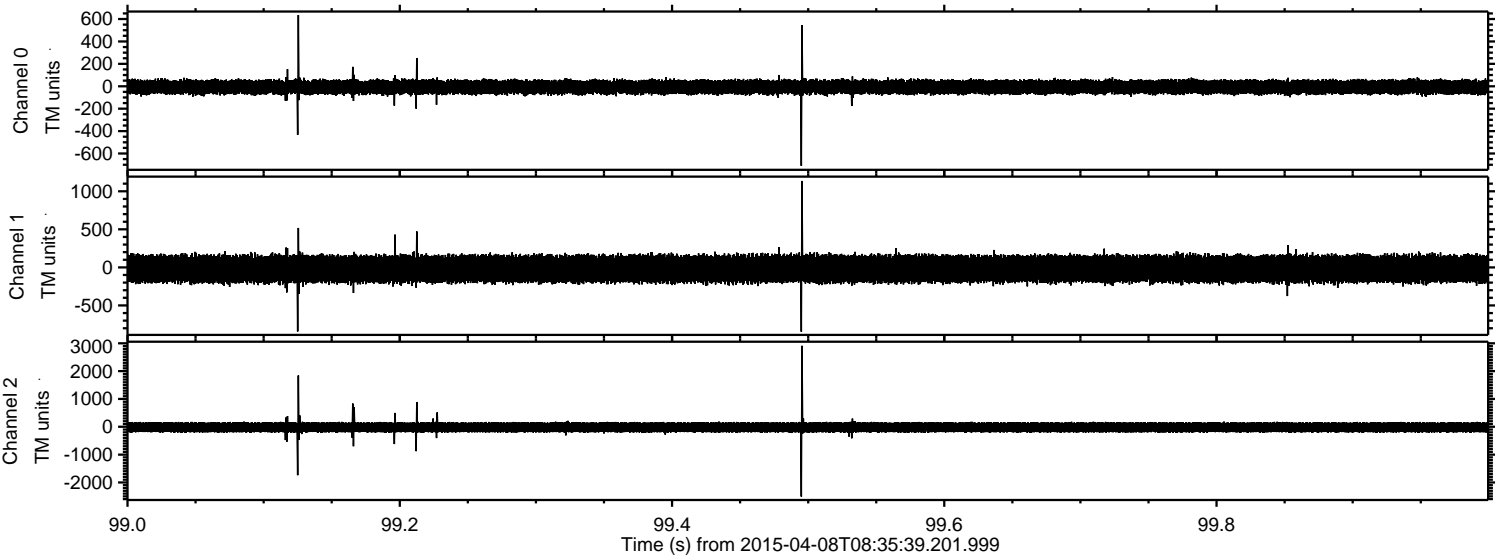


Processed Wed Apr 8 11:43:02 2015 by ELM ver.2012-10-06 from 001__elm20150408_083538__dat00.bin

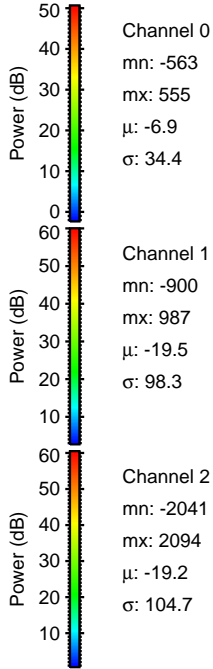
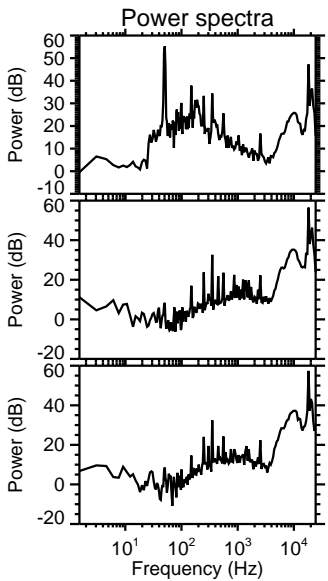
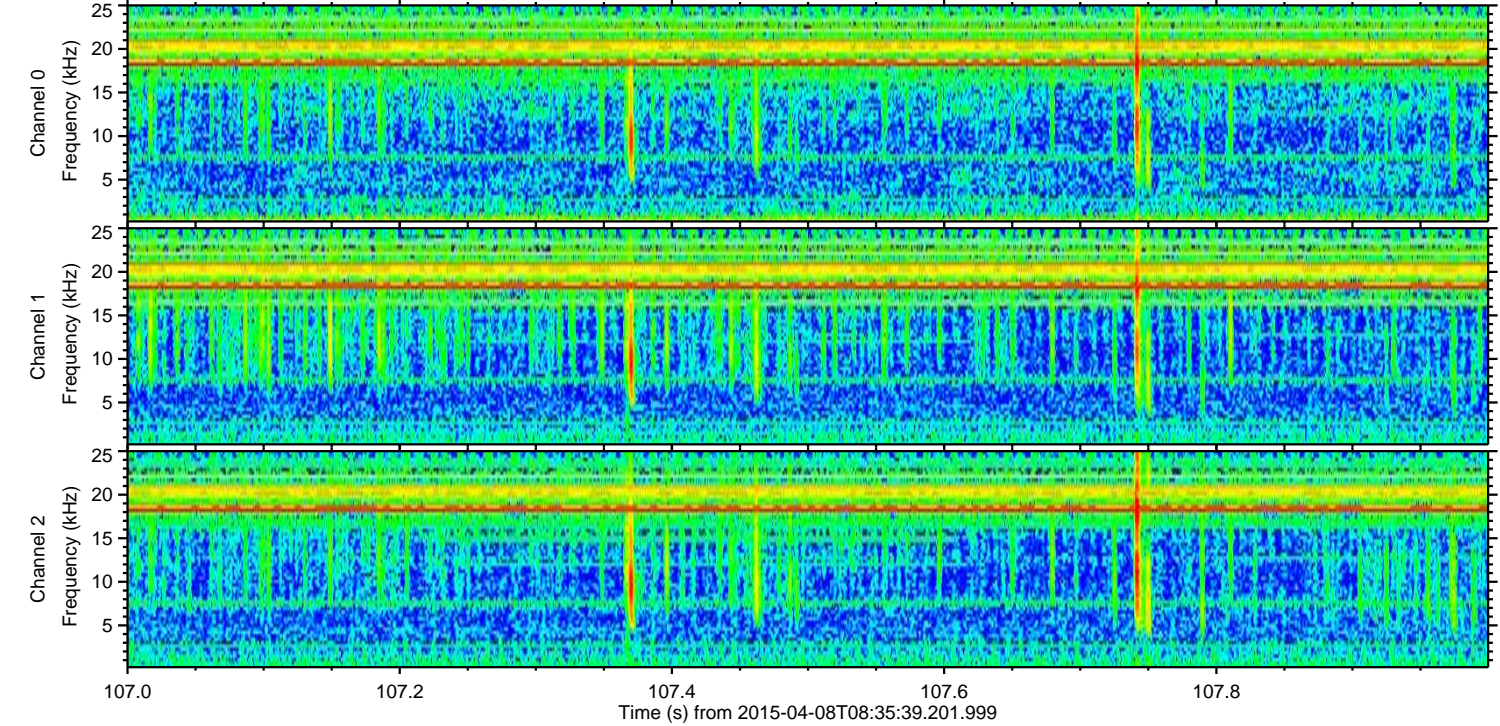
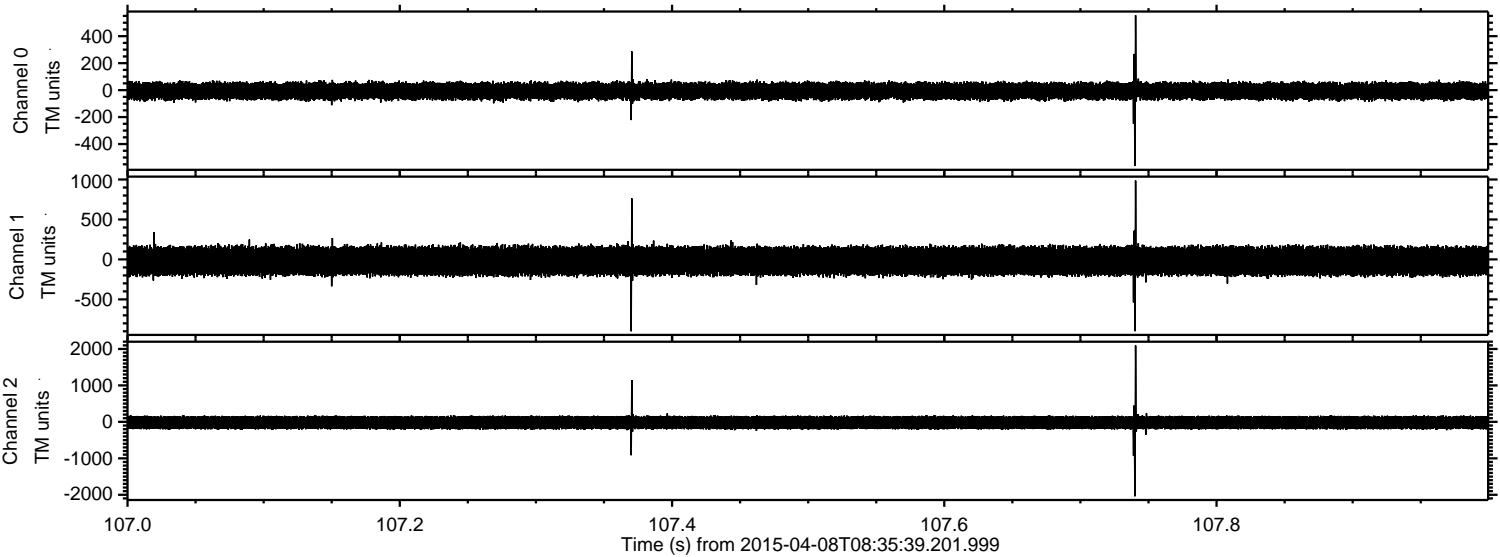


ELMAVAN 3D WAVEFORMS (Measured data sampled at 50 kHz) 49437 packets of 144 samples from 2015-04-08T08:35:39.201.999. Part 100/143

Processed Wed Apr 8 11:43:03 2015 by ELM ver.2012-10-06 from 001__elm20150408_083538__dat00.bin



Processed Wed Apr 8 11:43:04 2015 by ELM ver.2012-10-06 from 001__elm20150408_083538__dat00.bin

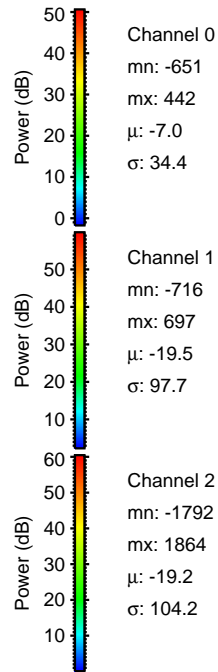
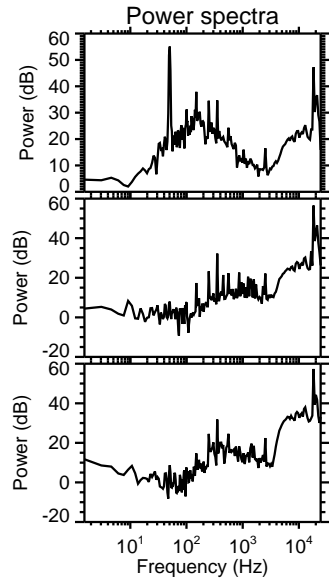
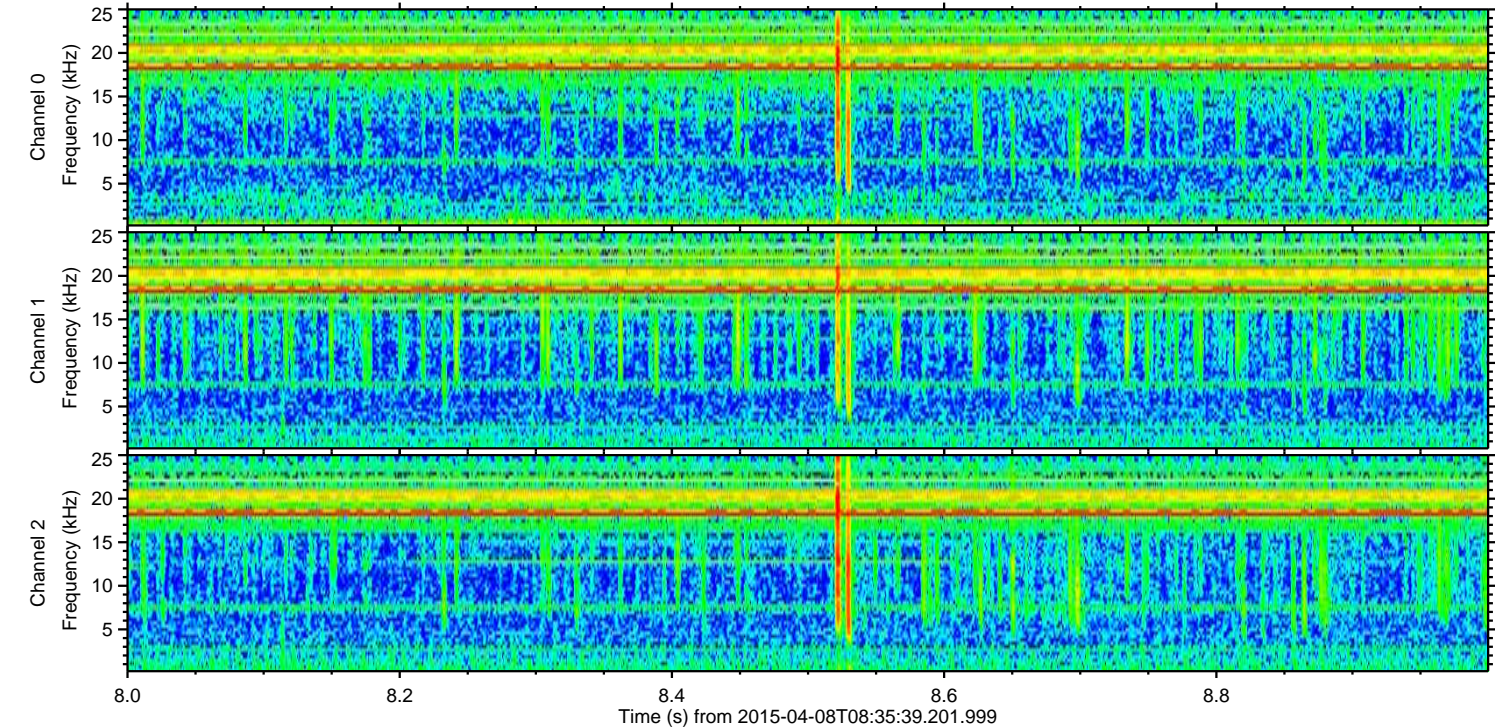
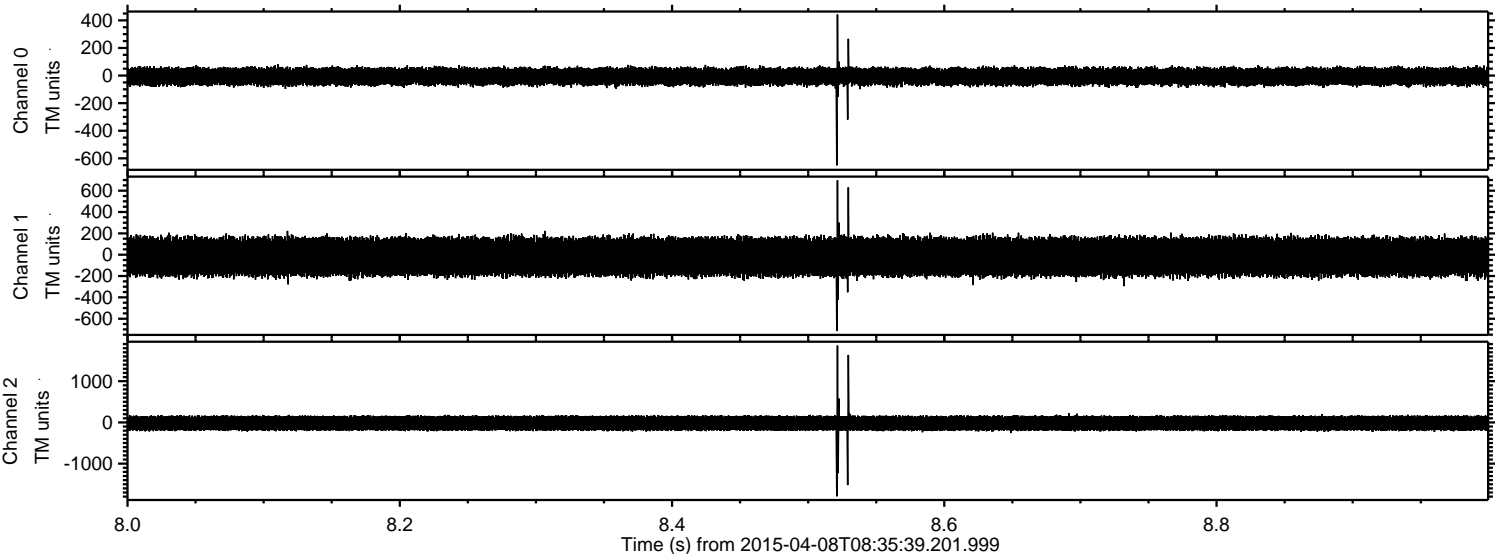


Channel 0
mn: -563
mx: 555
 μ : -6.9
 σ : 34.4

Channel 1
mn: -900
mx: 987
 μ : -19.5
 σ : 98.3

Channel 2
mn: -2041
mx: 2094
 μ : -19.2
 σ : 104.7

Processed Wed Apr 8 11:43:05 2015 by ELM ver.2012-10-06 from 001__elm20150408_083538__dat00.bin



Processed Wed Apr 8 11:43:06 2015 by ELM ver.2012-10-06 from 001__elm20150408_083538__dat00.bin

