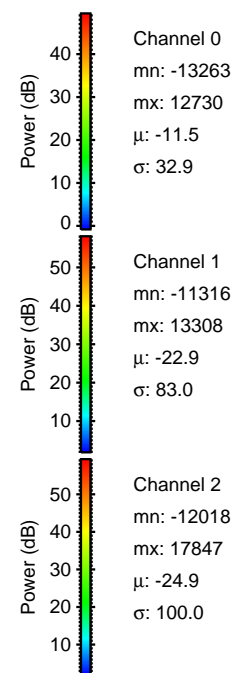
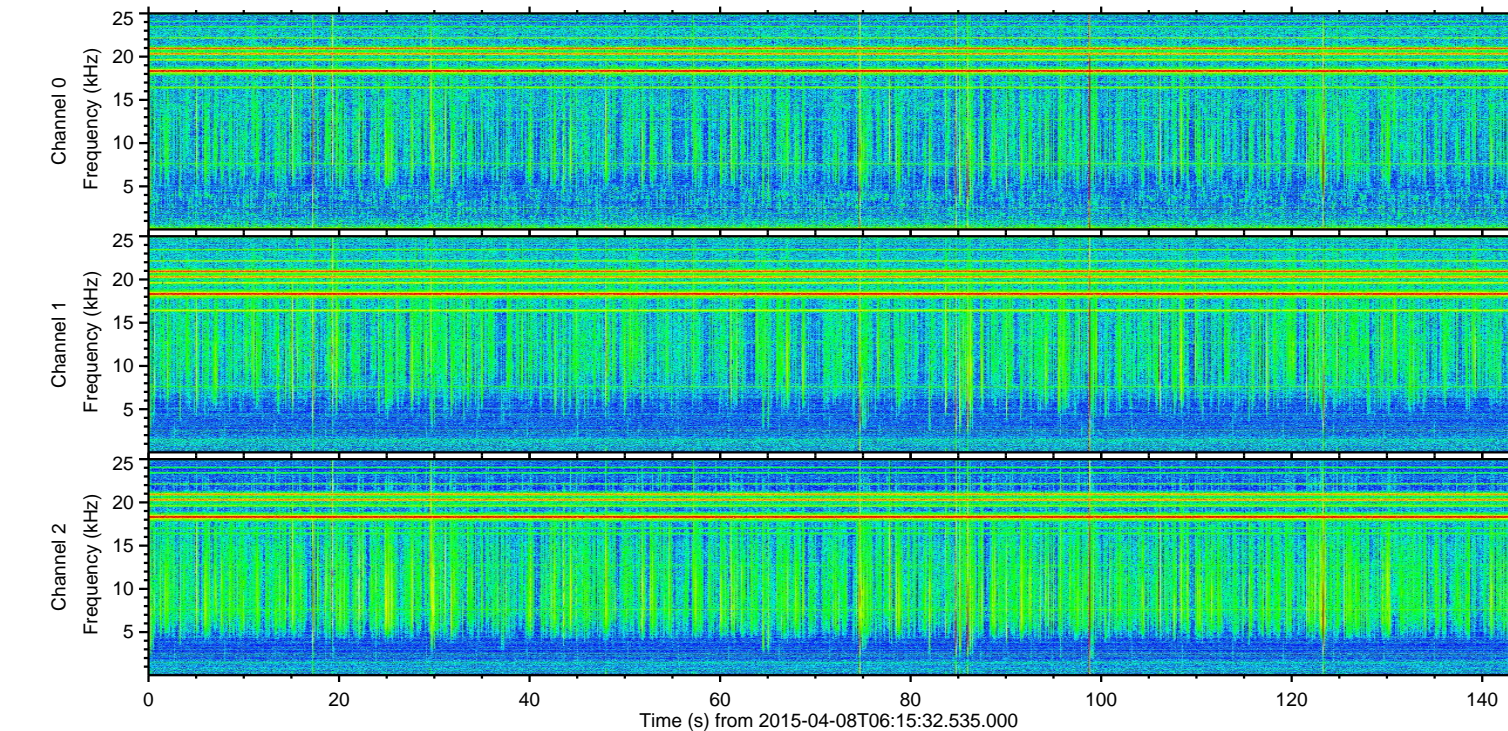
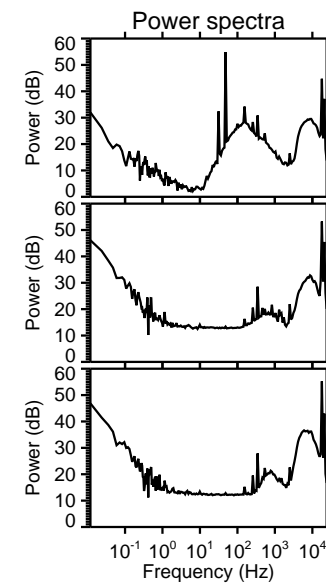
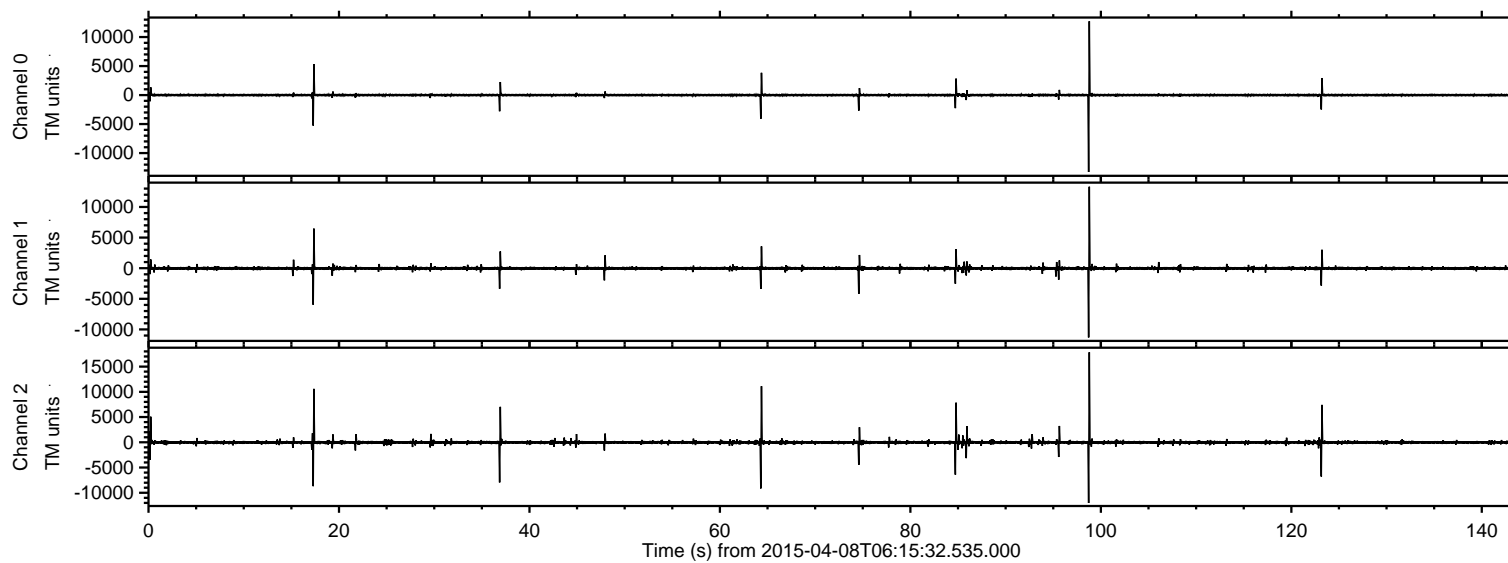
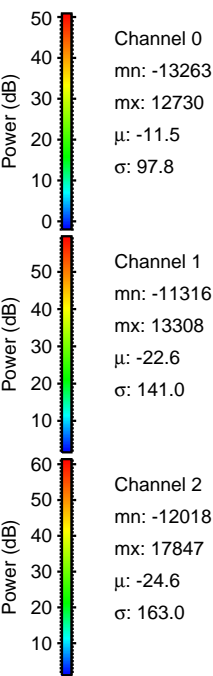
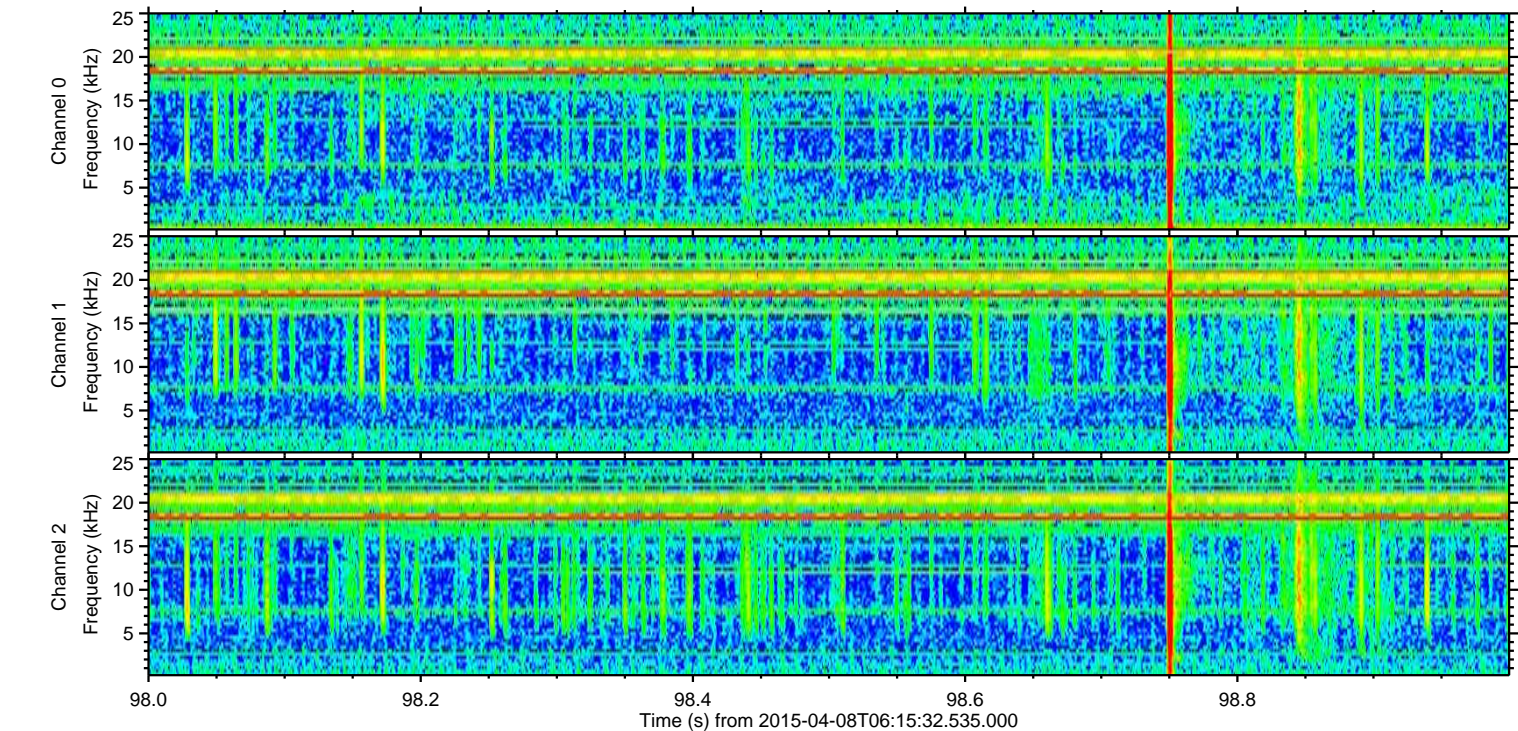
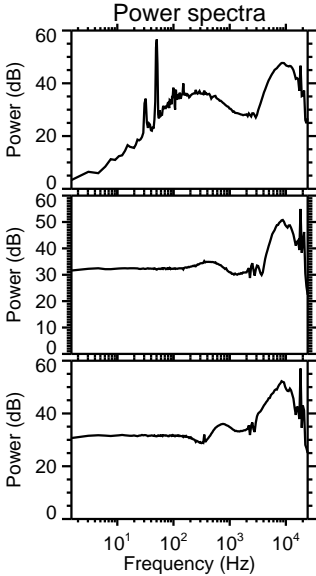
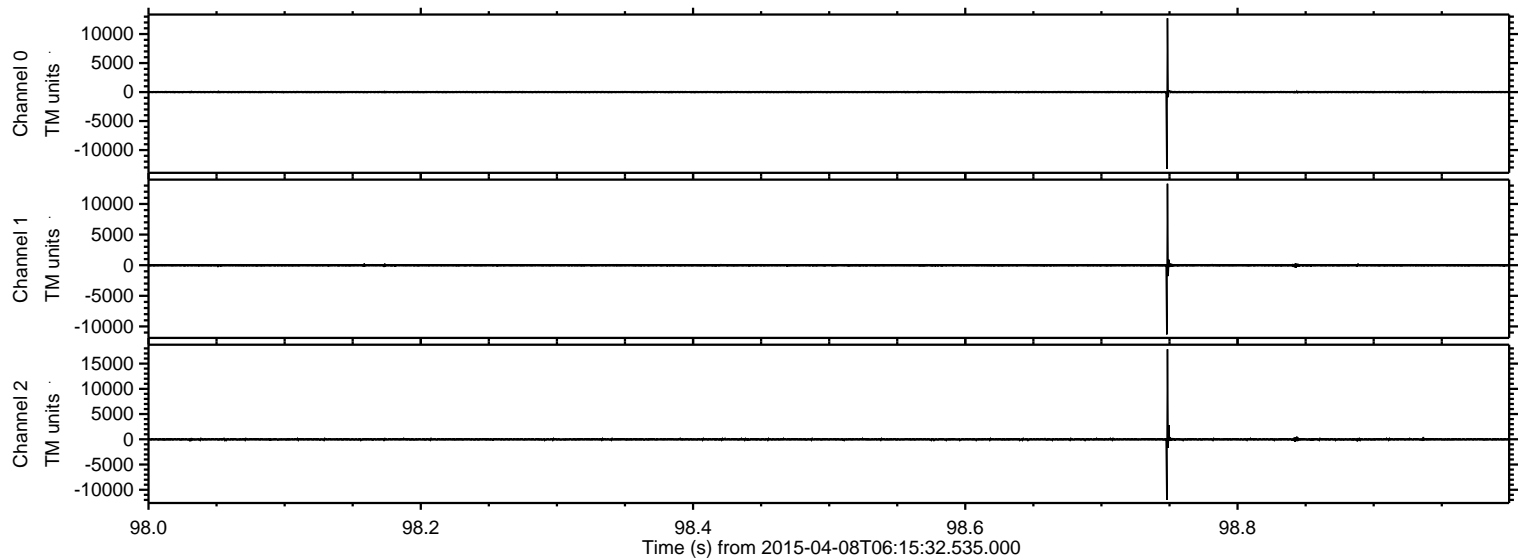


ELMAVAN 3D WAVEFORMS (Measured data sampled at 50 kHz) 49608 packets of 144 samples from 2015-04-08T06:15:32.535.000.

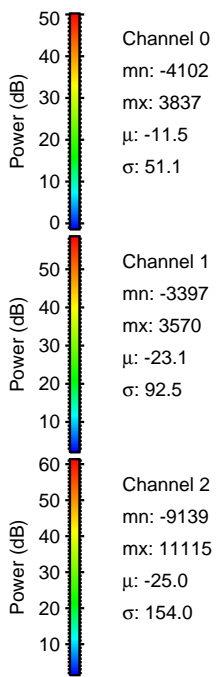
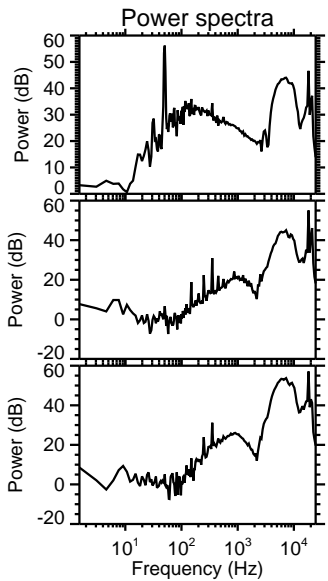
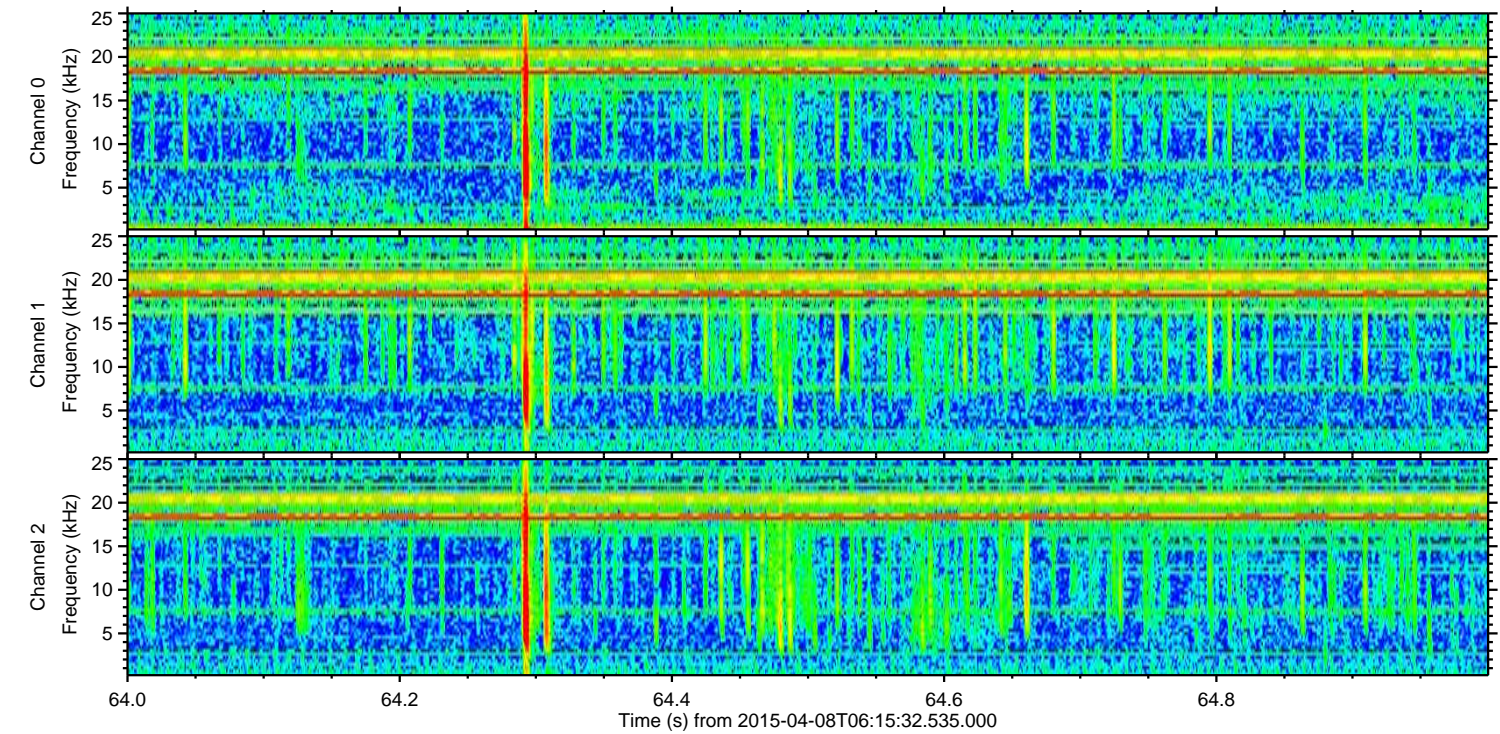
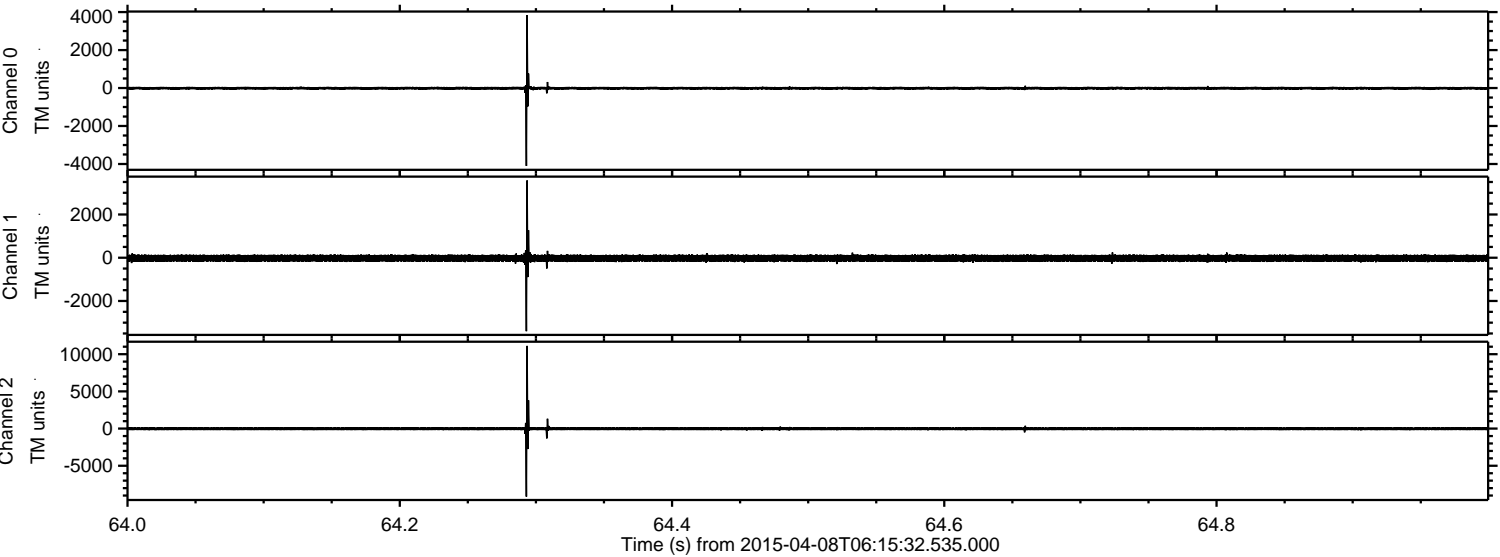
Processed Wed Apr 8 08:24:56 2015 by ELM ver.2012-10-06 from 001__elm20150408_061531__dat00.bin



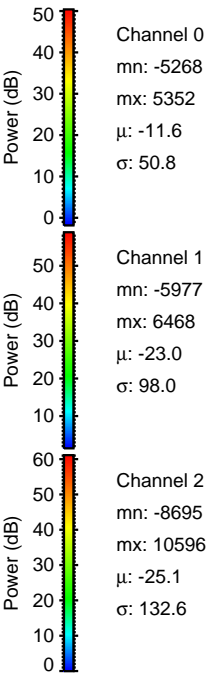
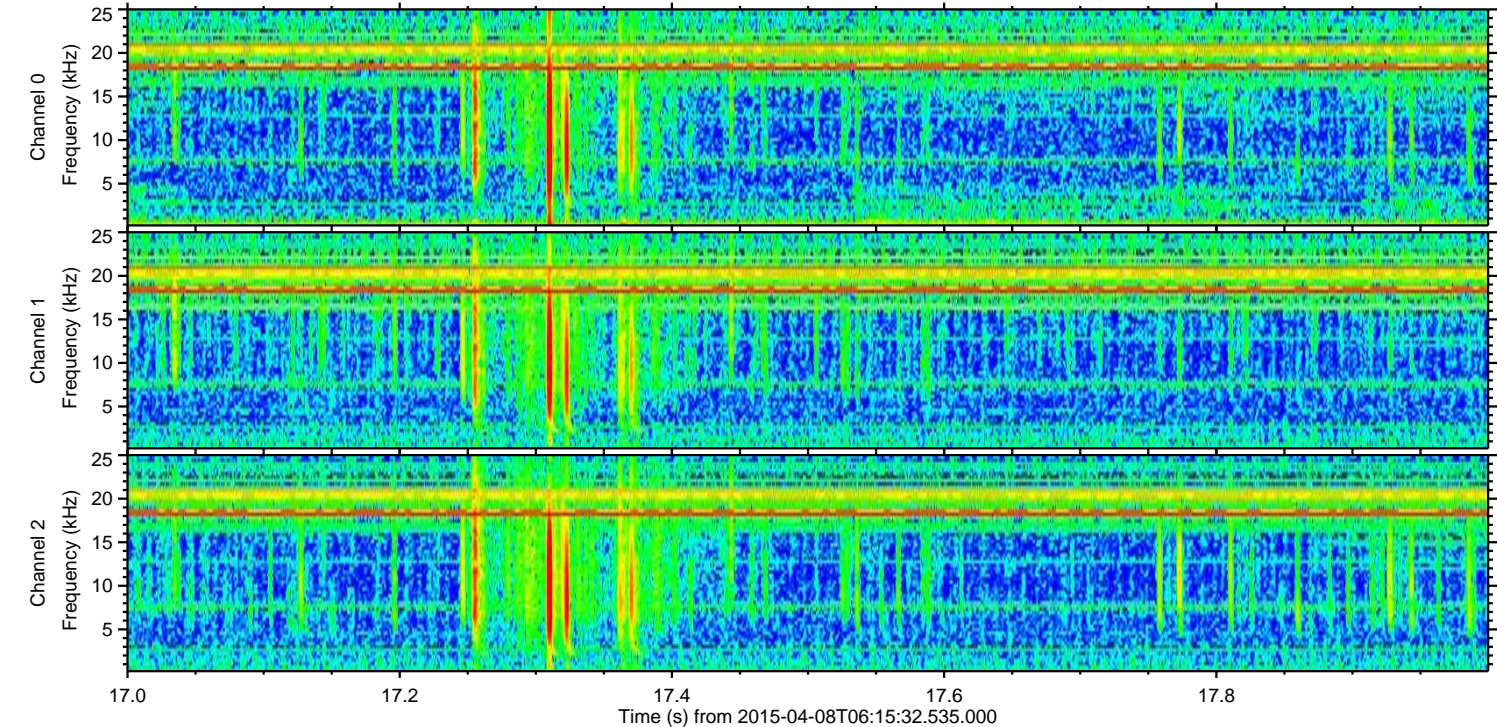
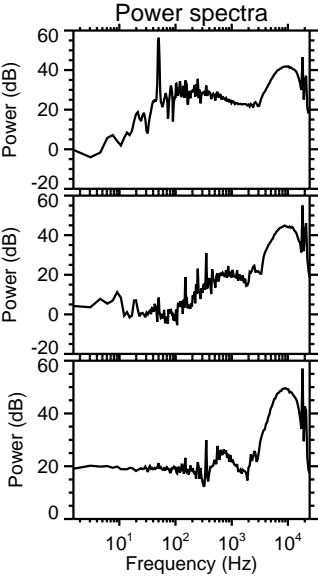
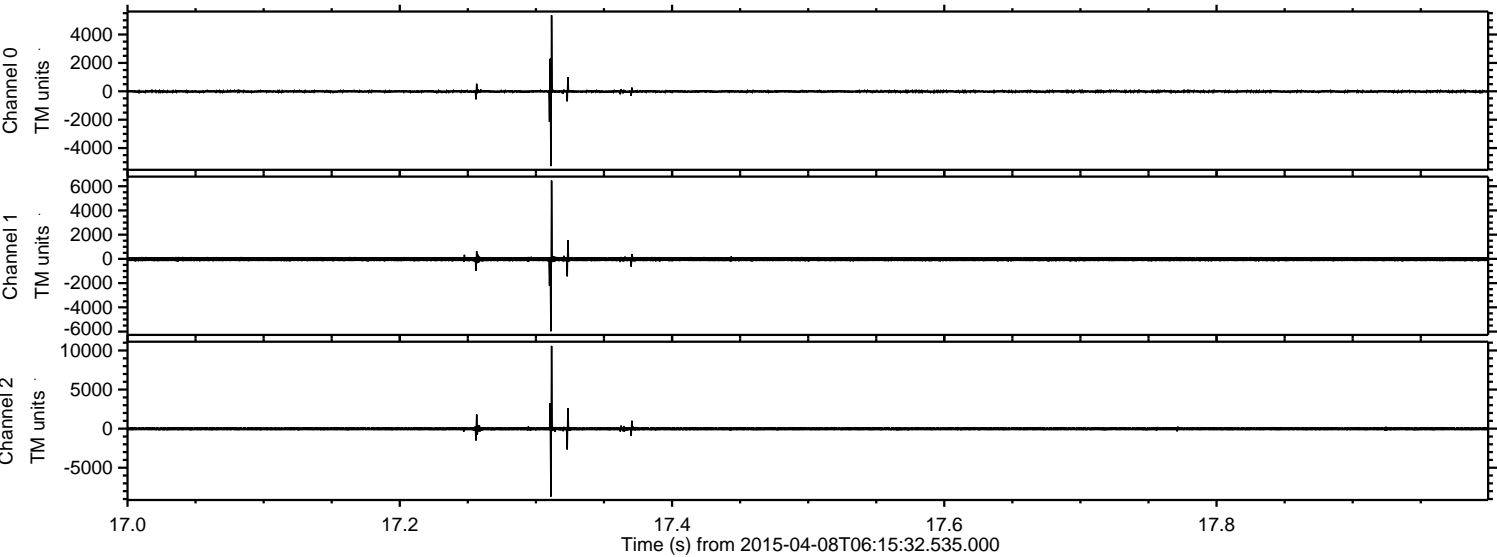
Processed Wed Apr 8 08:25:11 2015 by ELM ver.2012-10-06 from 001__elm20150408_061531__dat00.bin



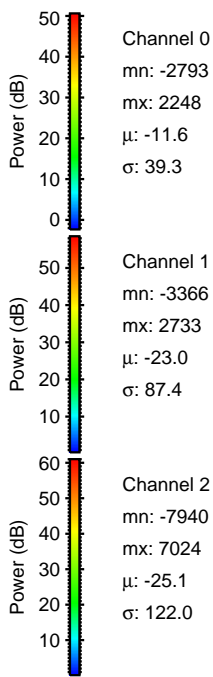
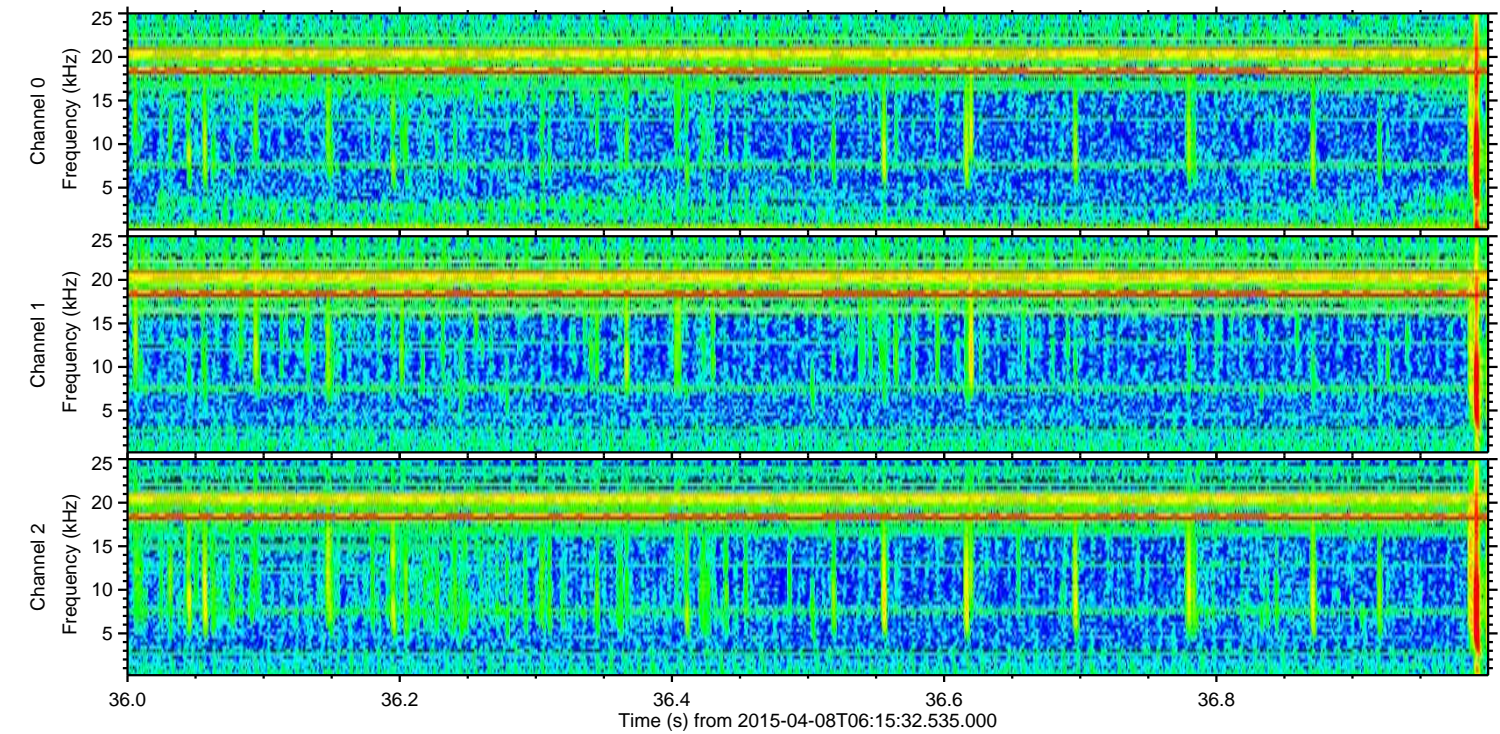
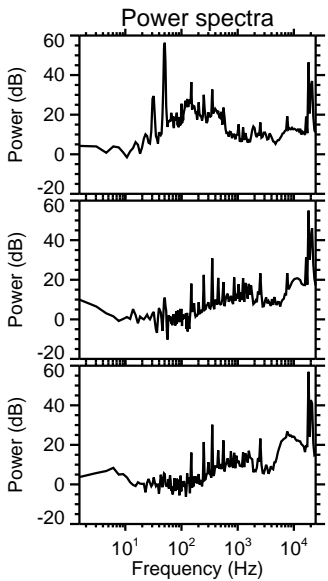
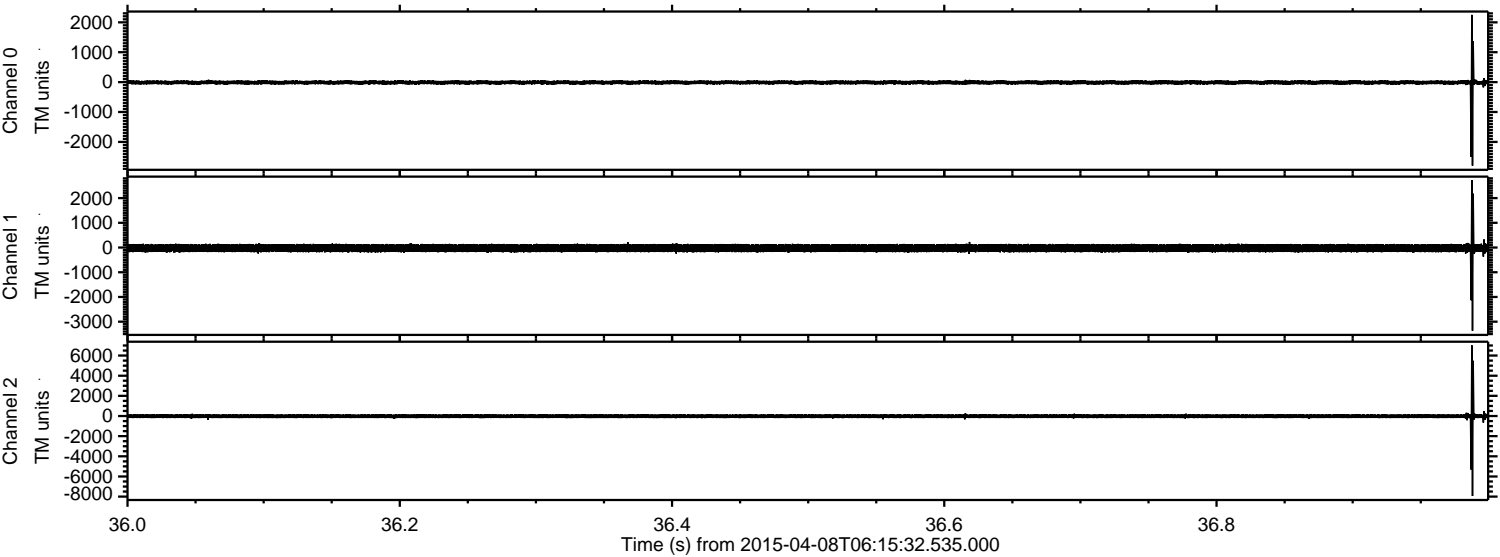
Processed Wed Apr 8 08:25:12 2015 by ELM ver.2012-10-06 from 001__elm20150408_061531__dat00.bin



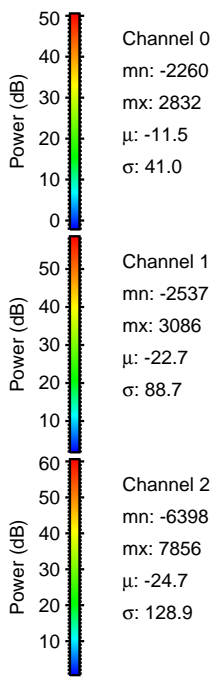
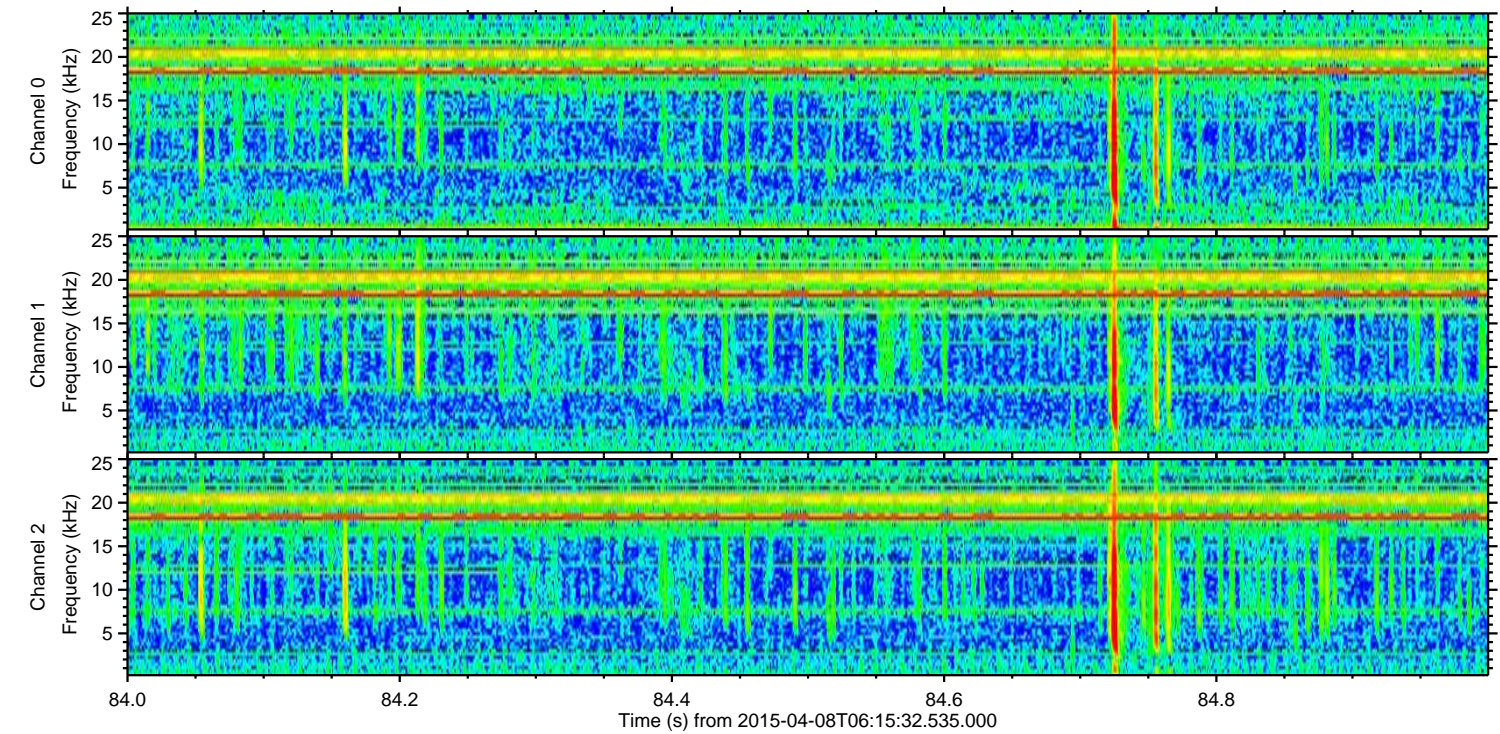
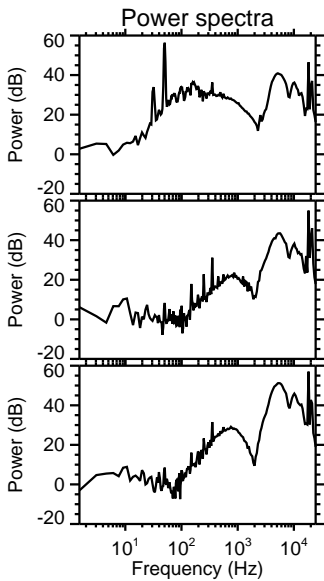
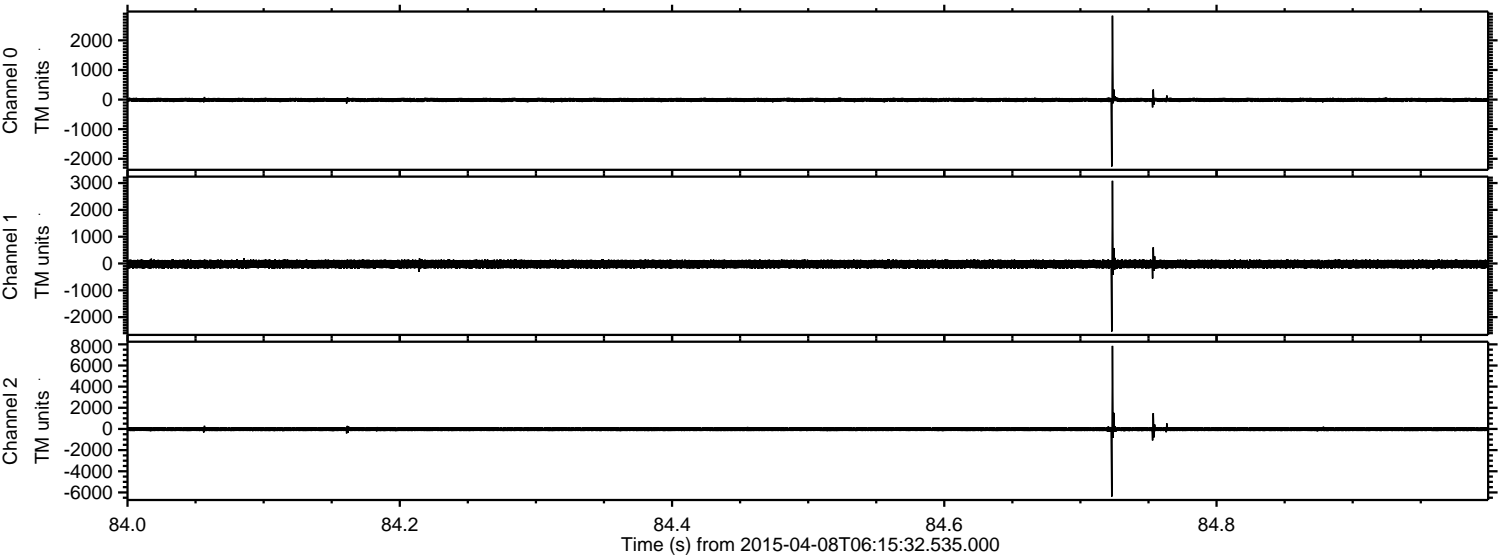
Processed Wed Apr 8 08:25:13 2015 by ELM ver.2012-10-06 from 001__elm20150408_061531__dat00.bin



Processed Wed Apr 8 08:25:14 2015 by ELM ver.2012-10-06 from 001__elm20150408_061531__dat00.bin

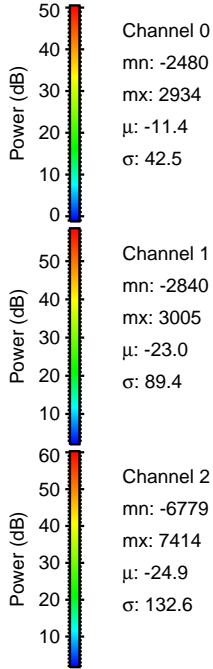
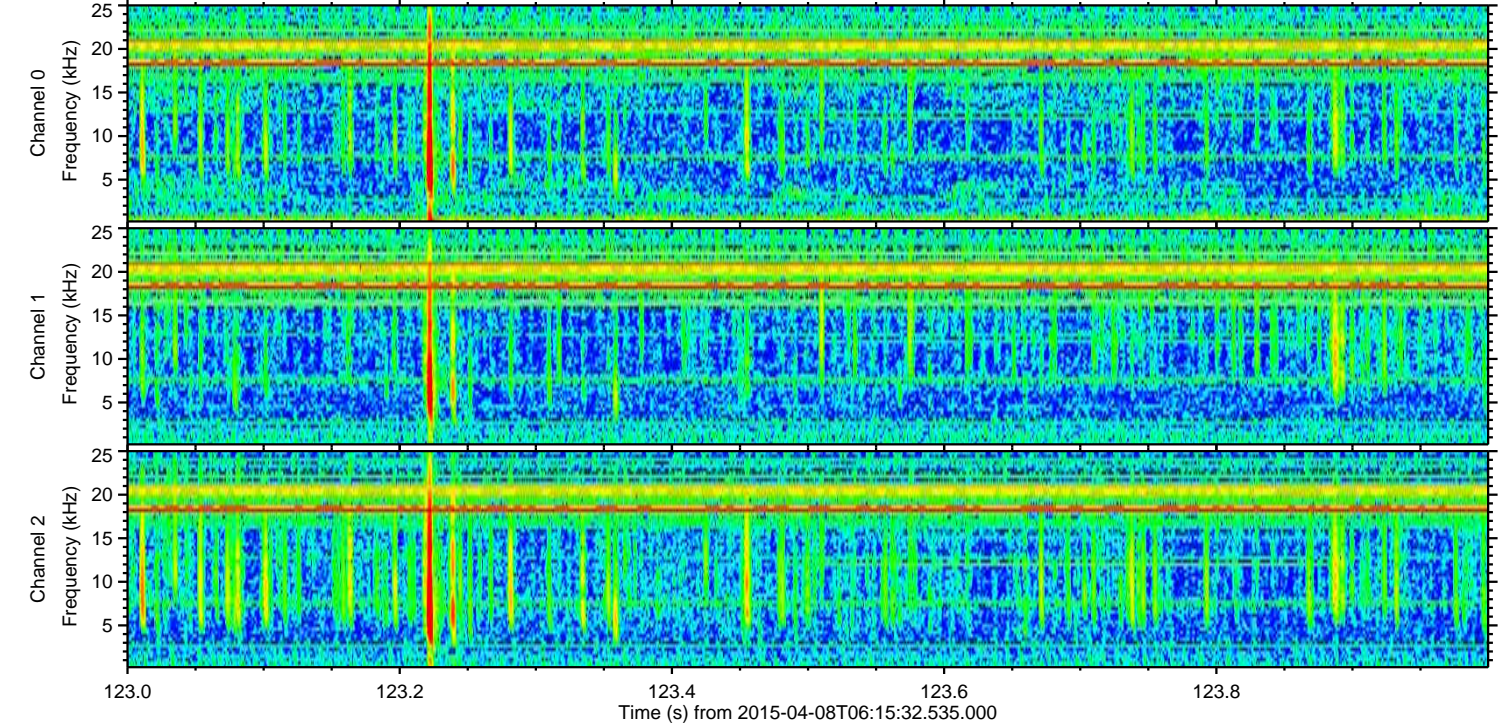
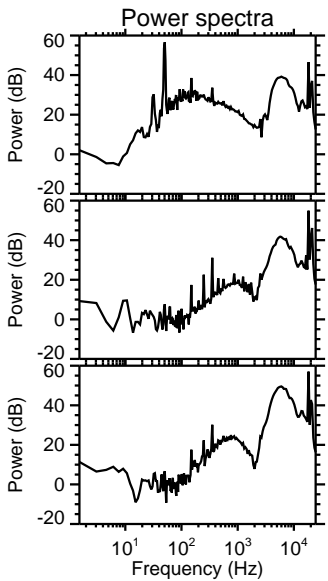
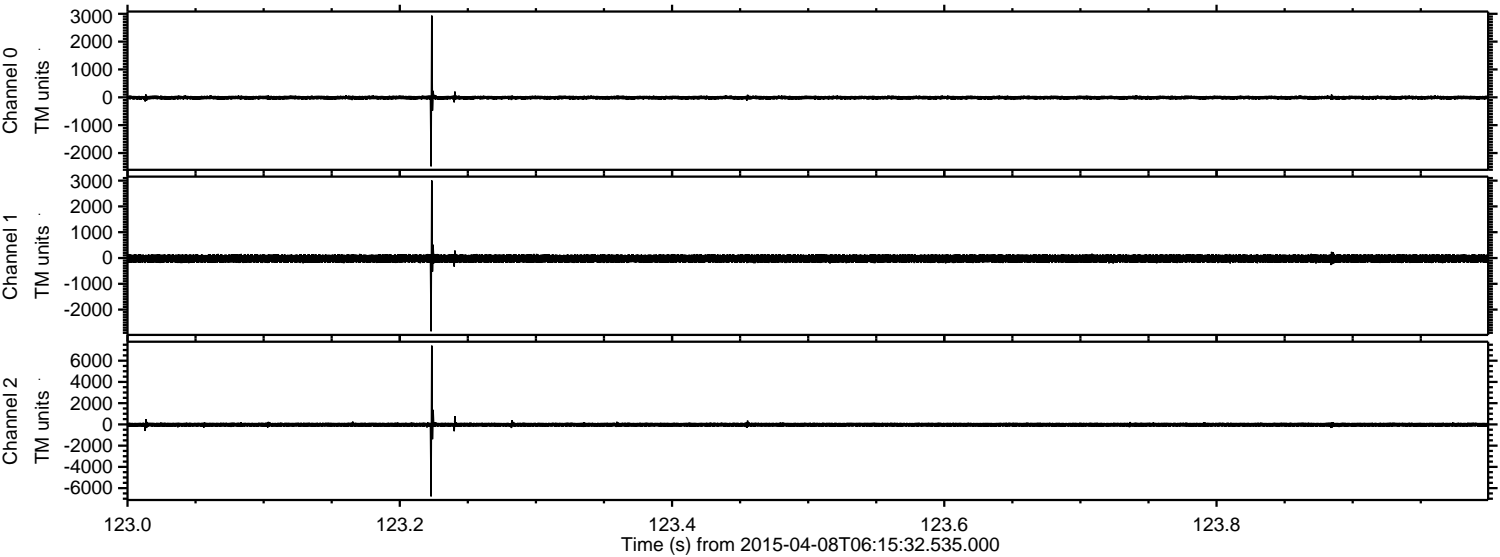


Processed Wed Apr 8 08:25:15 2015 by ELM ver.2012-10-06 from 001__elm20150408_061531__dat00.bin



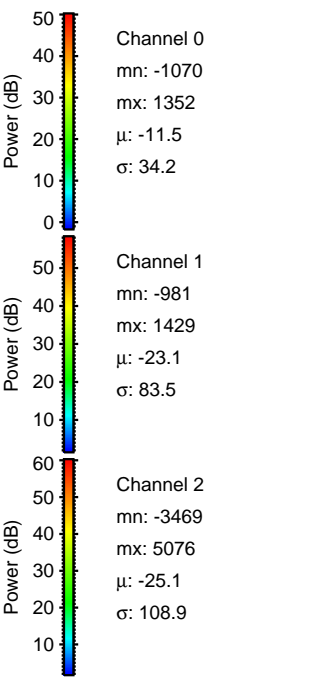
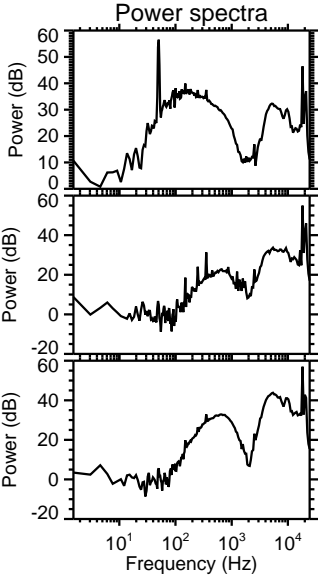
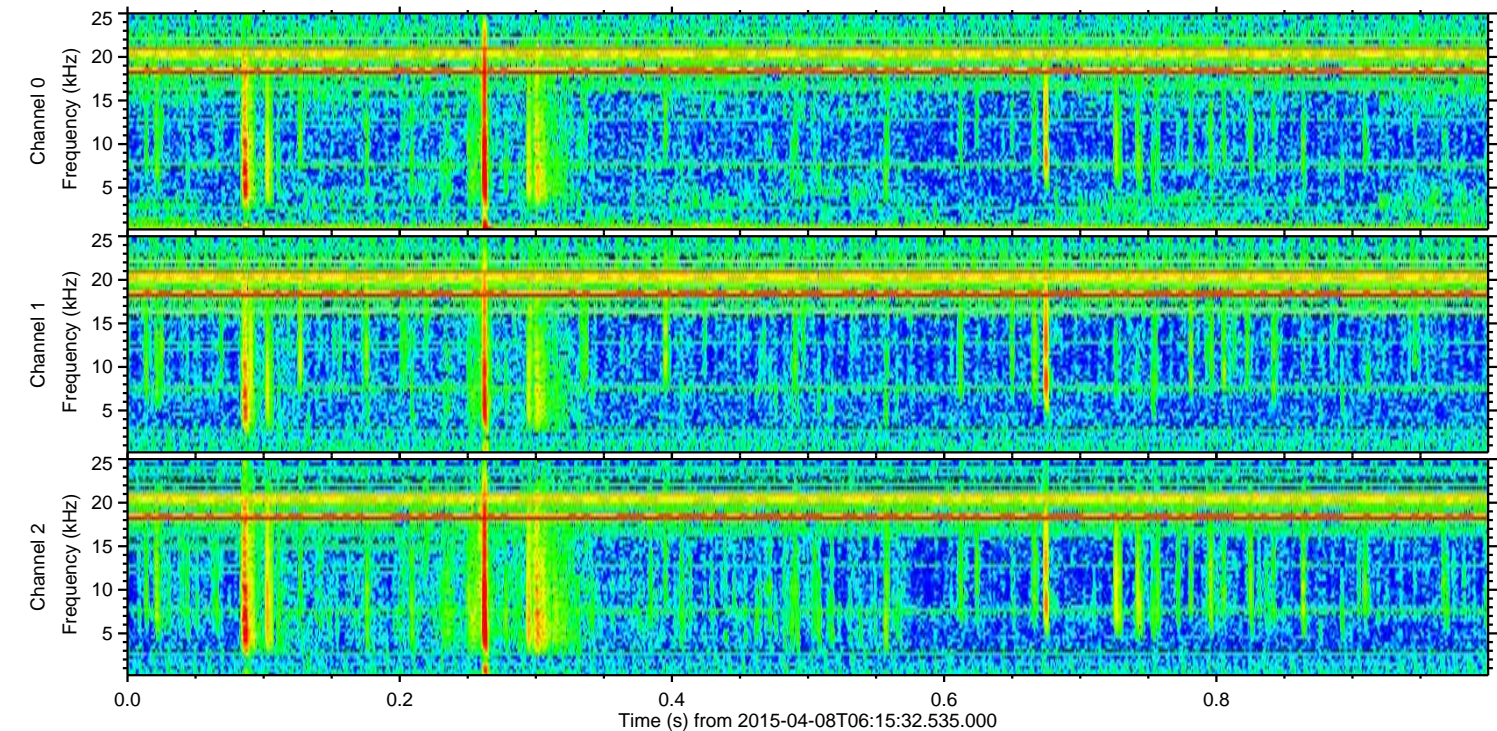
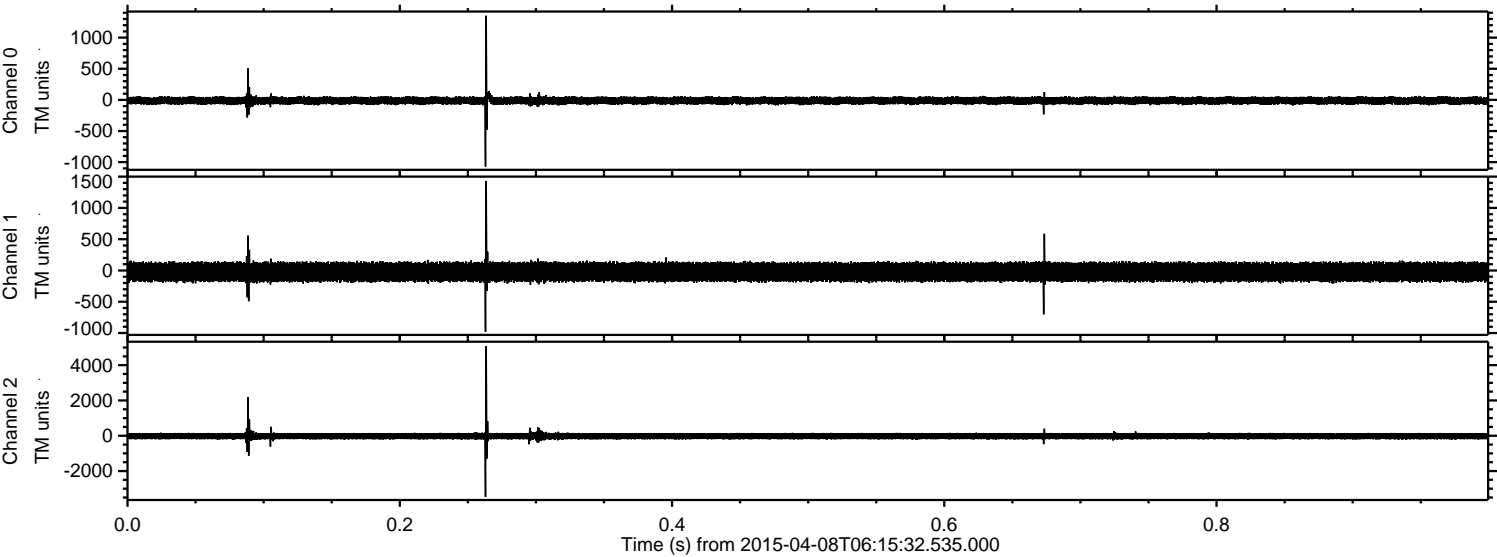
ELMAVAN 3D WAVEFORMS (Measured data sampled at 50 kHz) 49608 packets of 144 samples from 2015-04-08T06:15:32.535.000. Part 124/143

Processed Wed Apr 8 08:25:16 2015 by ELM ver.2012-10-06 from 001__elm20150408_061531__dat00.bin

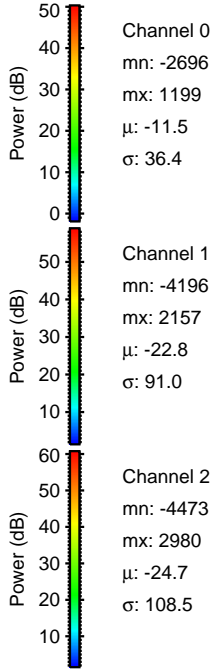
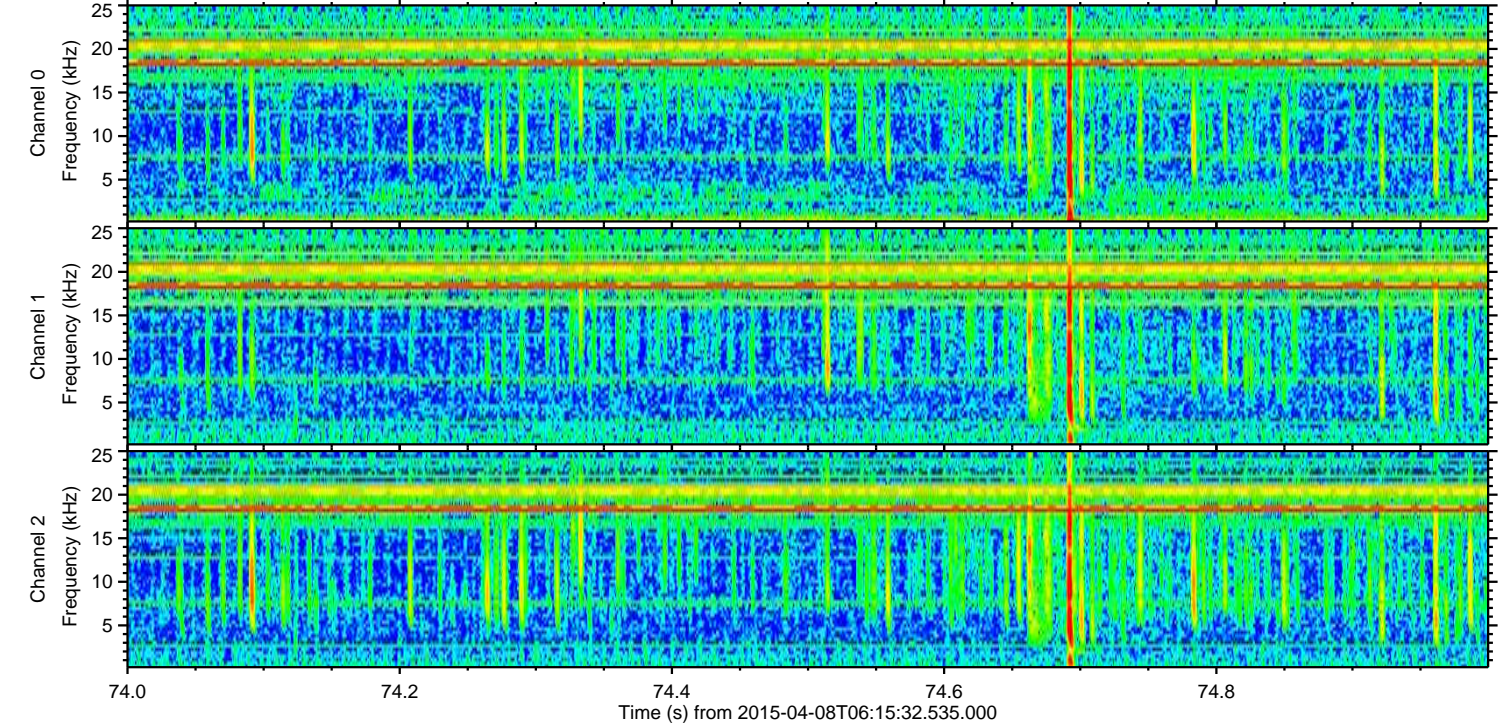
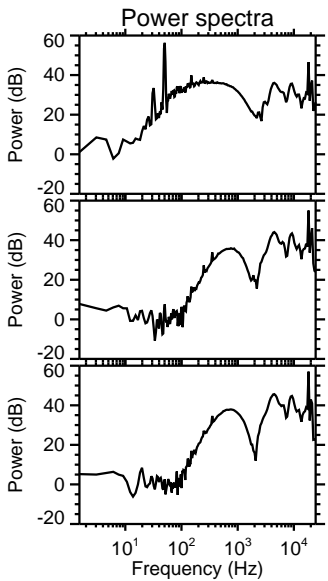
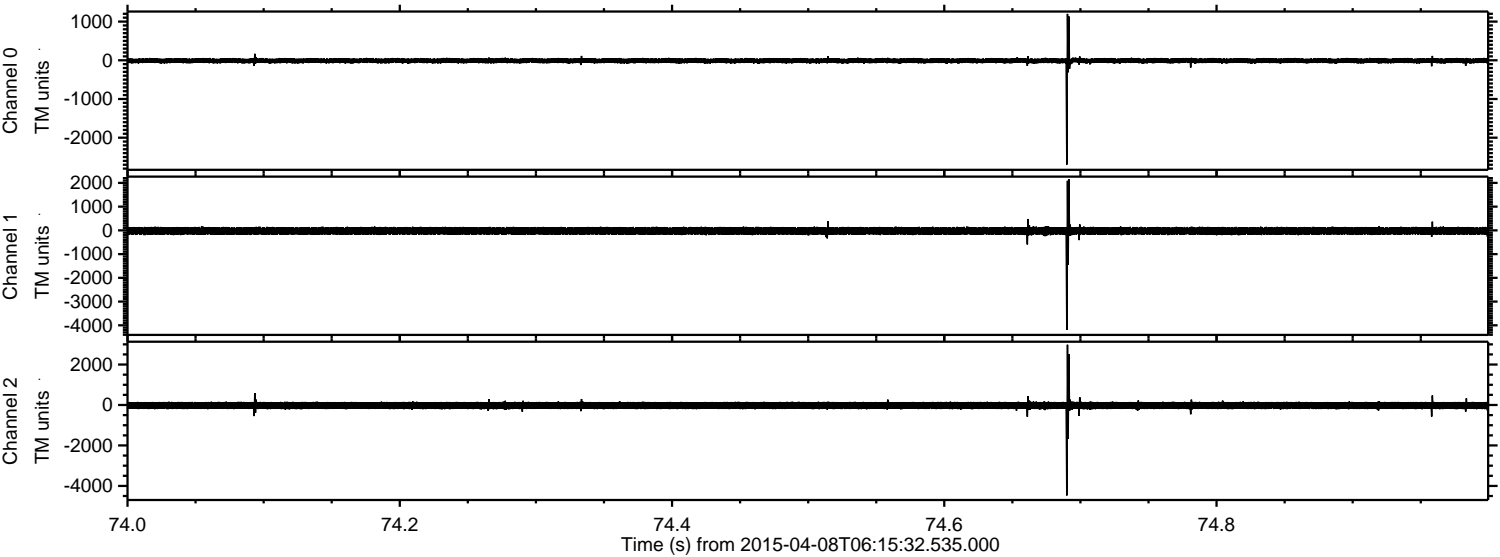


ELMAVAN 3D WAVEFORMS (Measured data sampled at 50 kHz) 49608 packets of 144 samples from 2015-04-08T06:15:32.535.000. Part 1/143

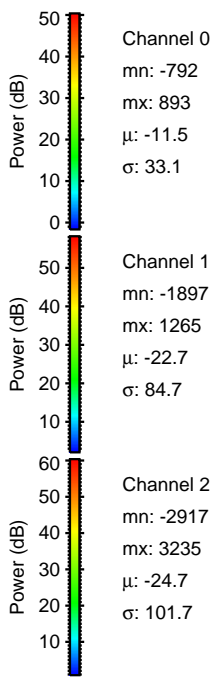
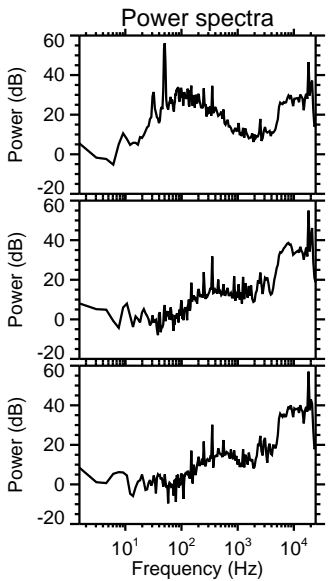
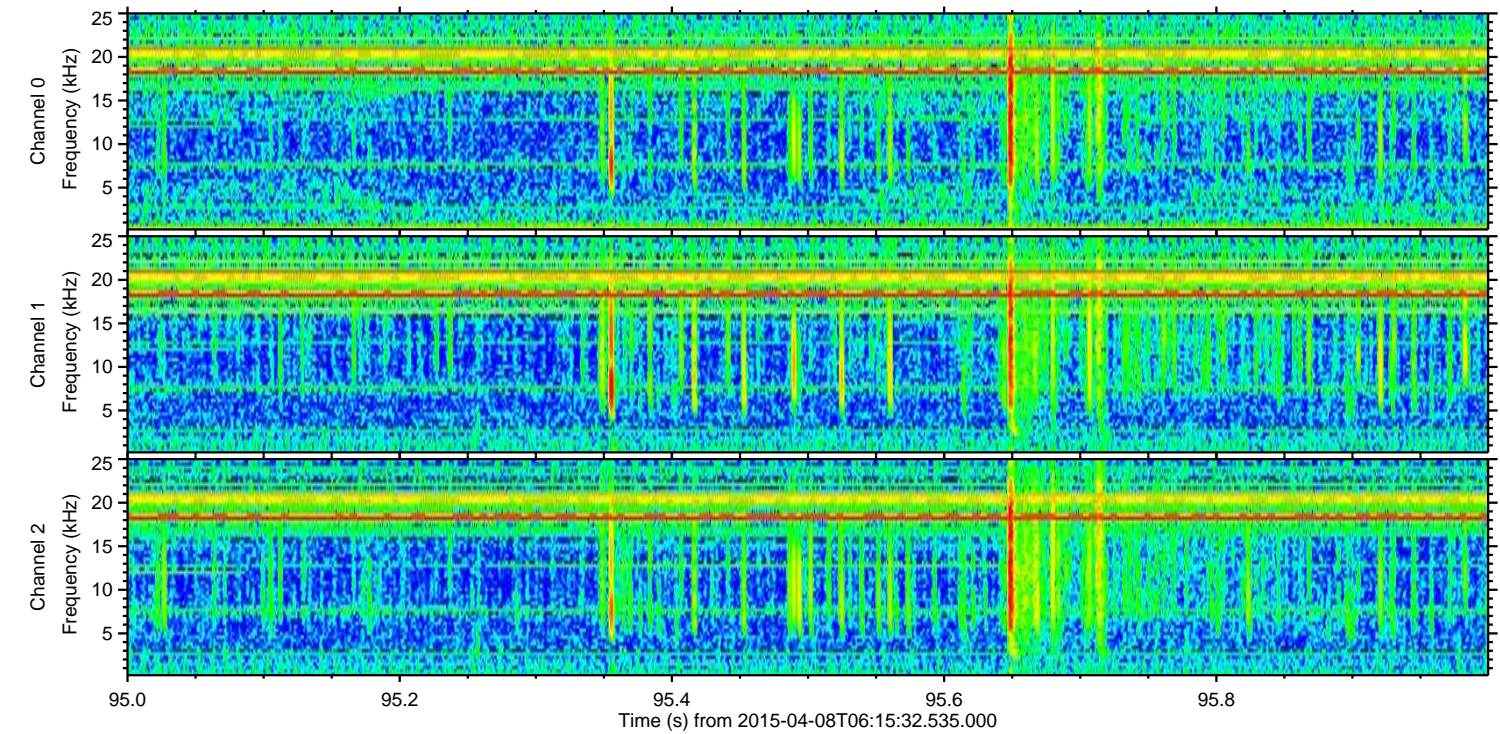
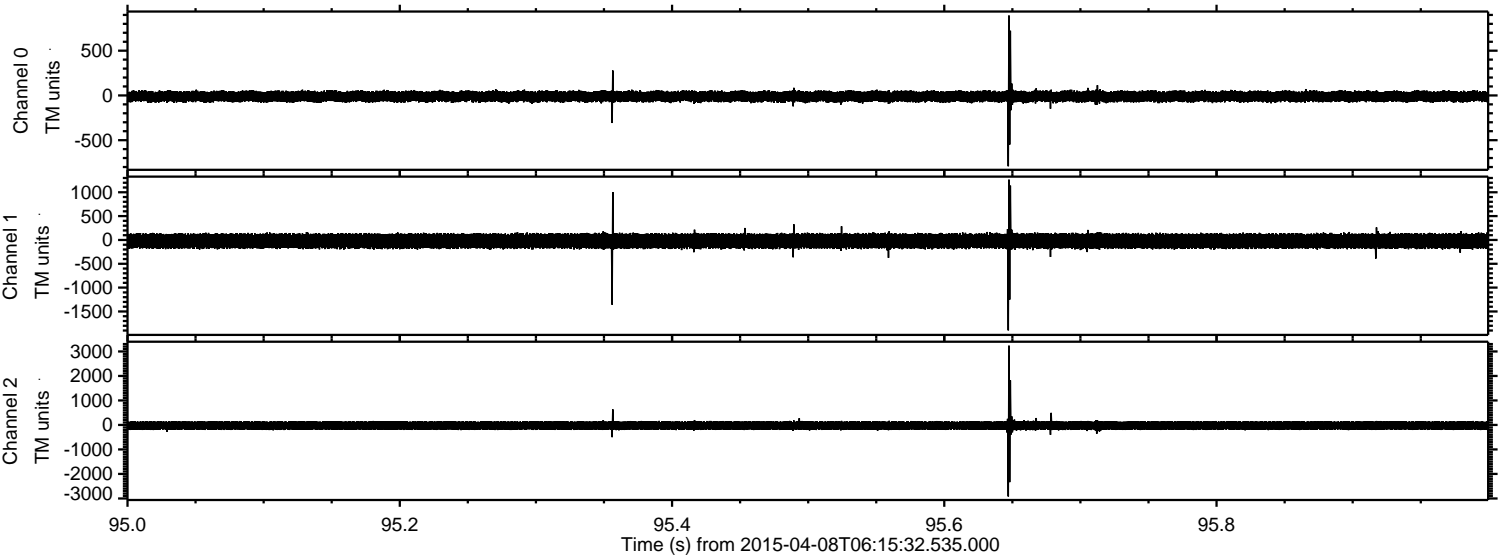
Processed Wed Apr 8 08:25:17 2015 by ELM ver.2012-10-06 from 001__elm20150408_061531__dat00.bin



Processed Wed Apr 8 08:25:18 2015 by ELM ver.2012-10-06 from 001__elm20150408_061531__dat00.bin



Processed Wed Apr 8 08:25:19 2015 by ELM ver.2012-10-06 from 001__elm20150408_061531__dat00.bin



Channel 0
mn: -792
mx: 893
 μ : -11.5
 σ : 33.1

Channel 1
mn: -1897
mx: 1265
 μ : -22.7
 σ : 84.7

Channel 2
mn: -2917
mx: 3235
 μ : -24.7
 σ : 101.7

Processed Wed Apr 8 08:25:20 2015 by ELM ver.2012-10-06 from 001__elm20150408_061531__dat00.bin

