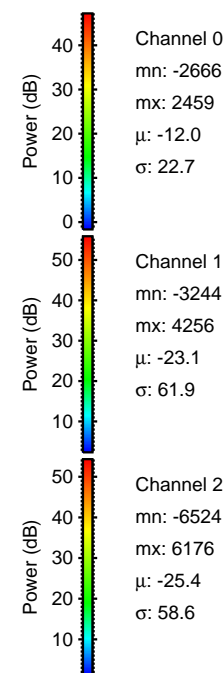
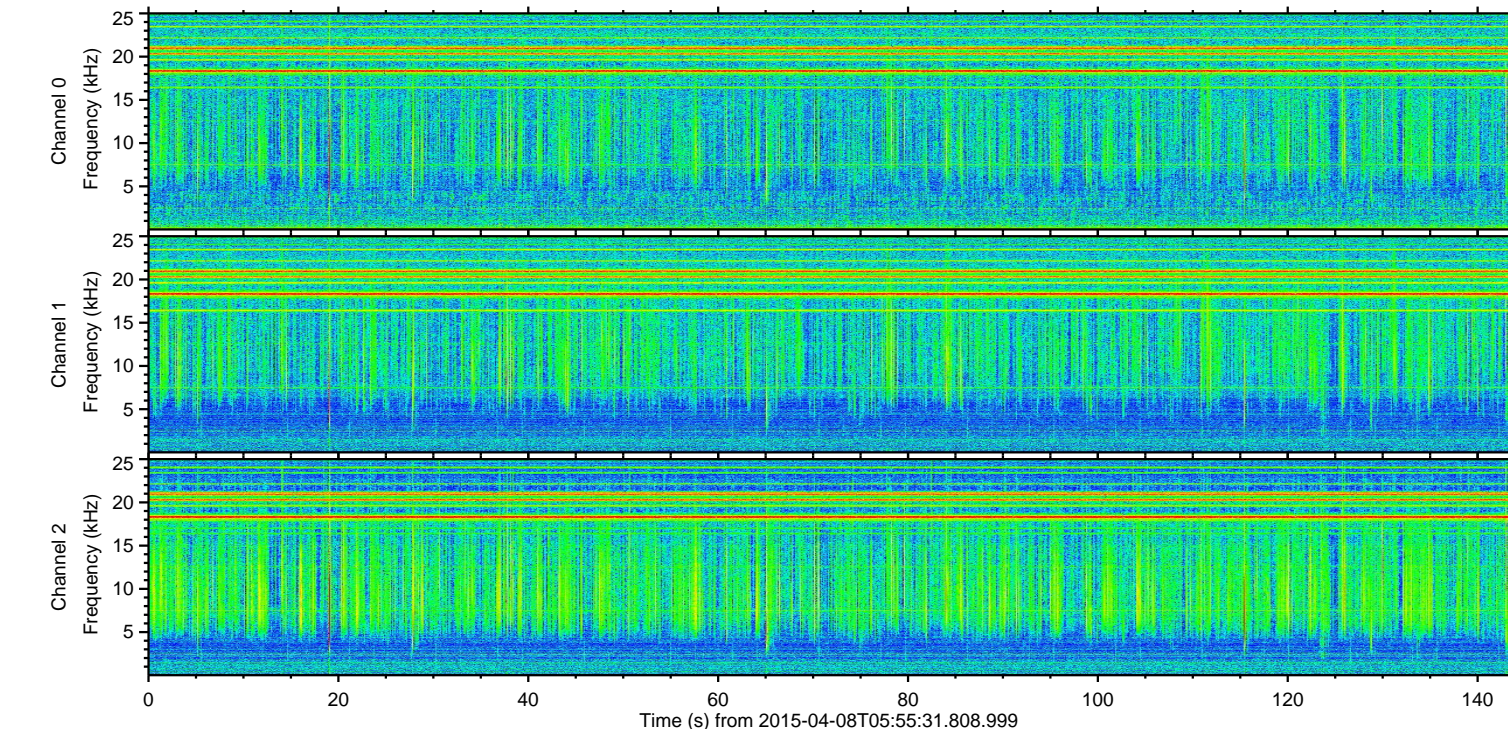
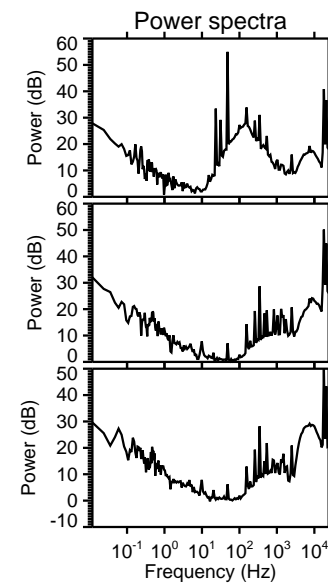
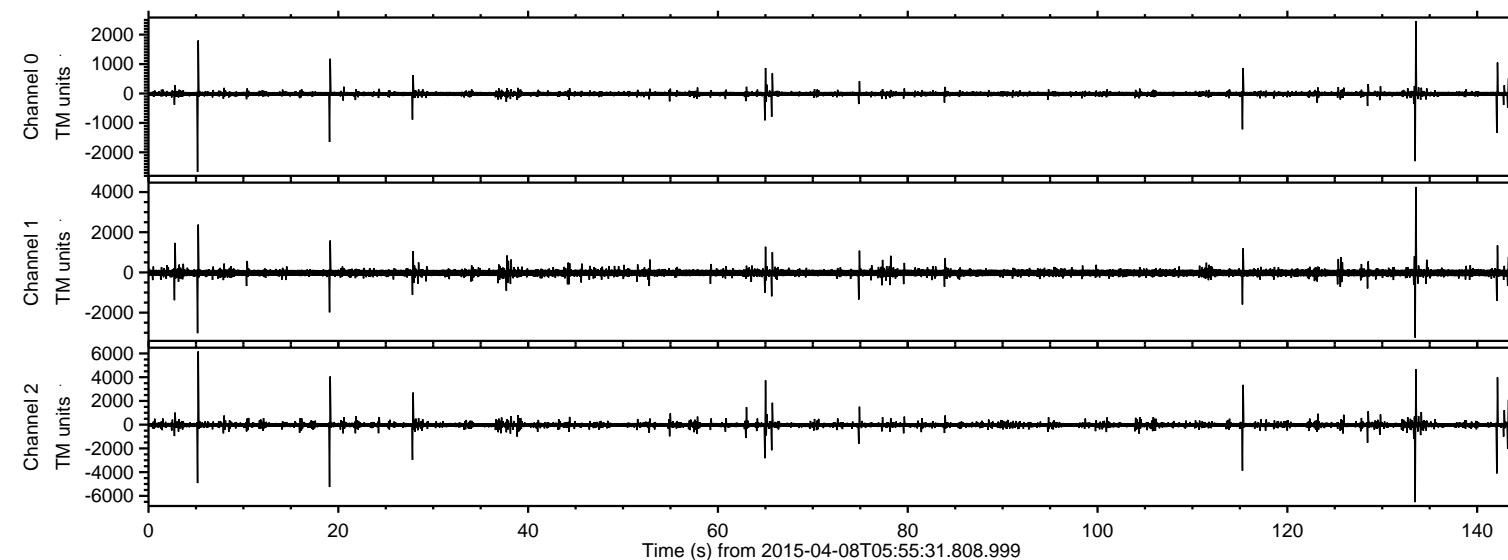


# ELMAVAN 3D WAVEFORMS (Measured data sampled at 50 kHz) 49782 packets of 144 samples from 2015-04-08T05:55:31.808.999.

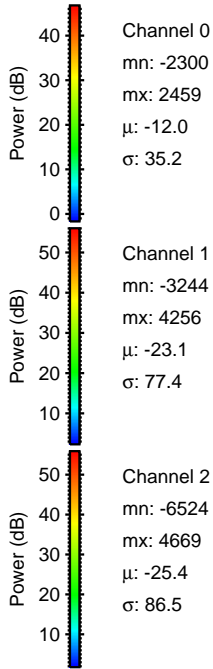
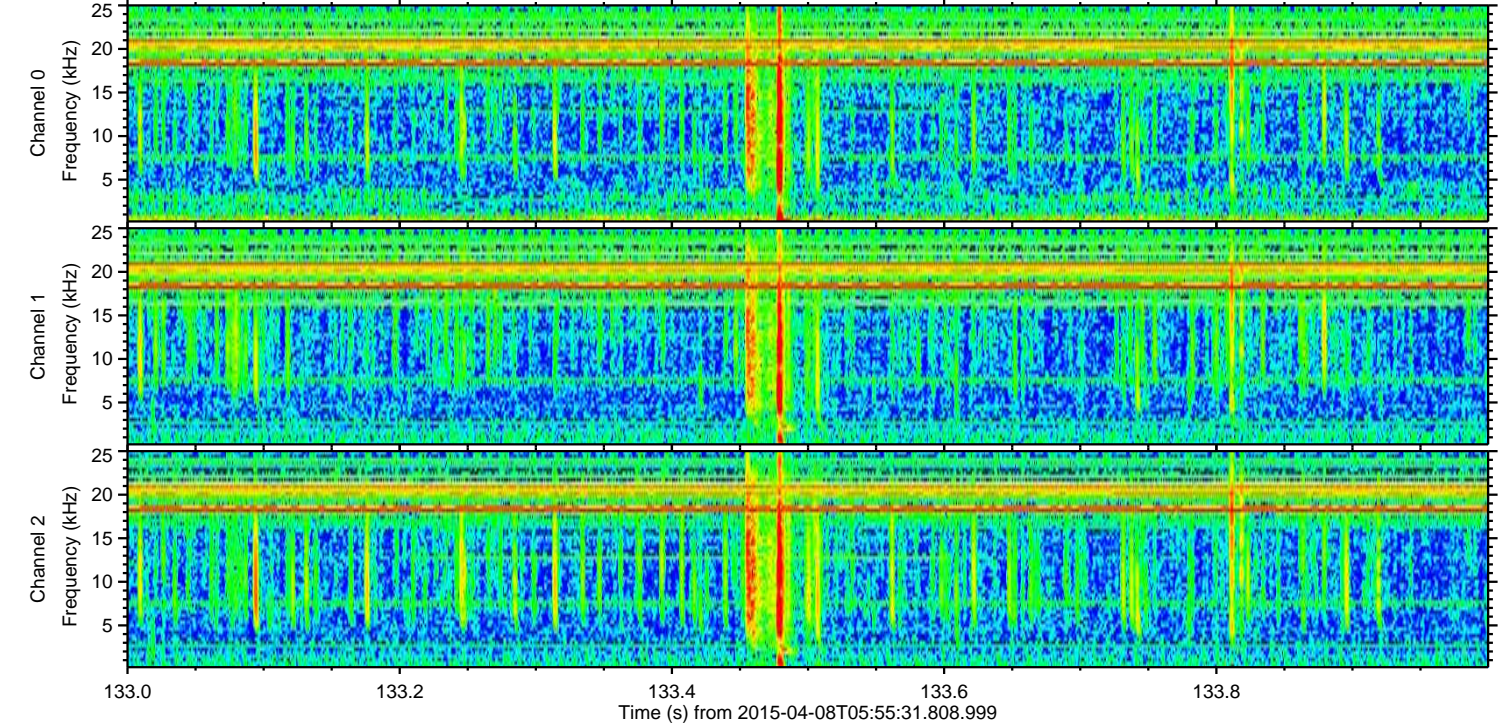
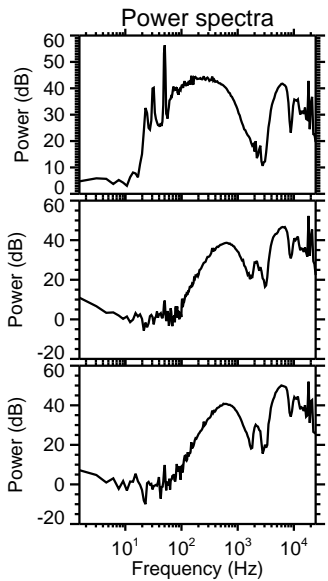
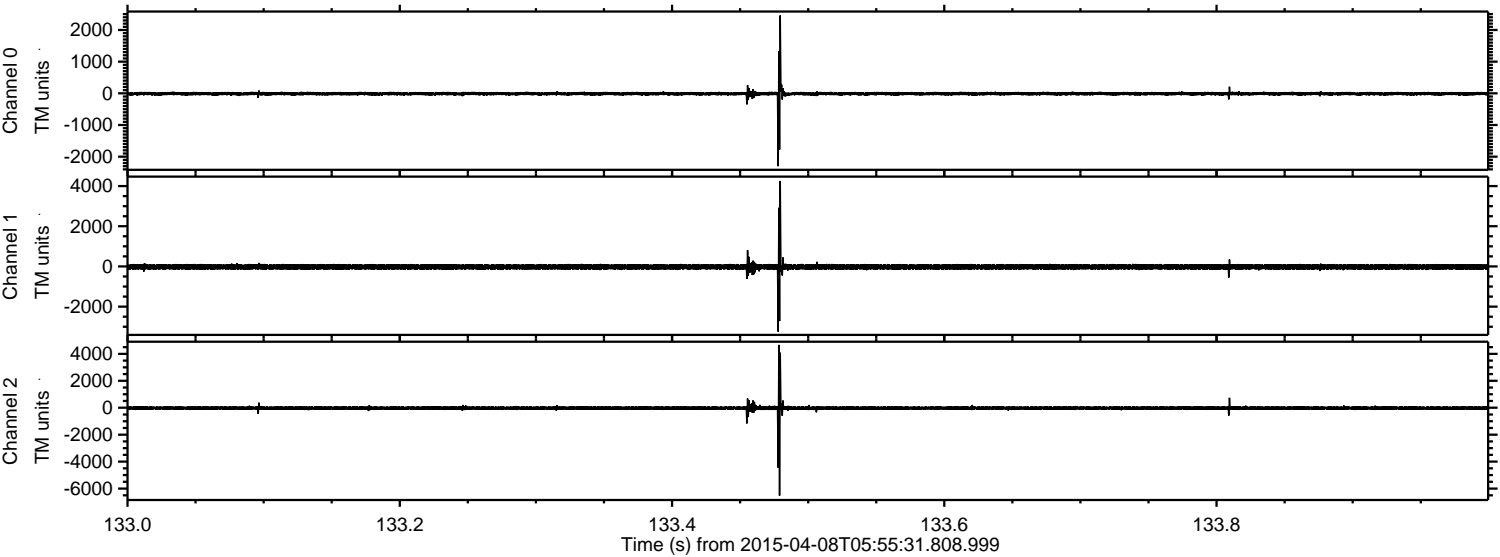
Processed Wed Apr 8 08:03:25 2015 by ELM ver.2012-10-06 from 001\_\_elm20150408\_055530\_\_dat00.bin





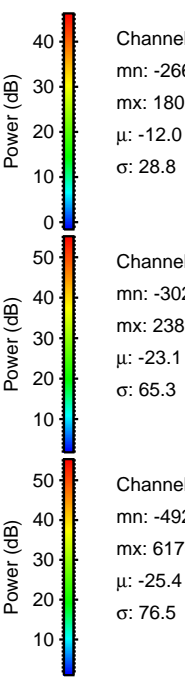
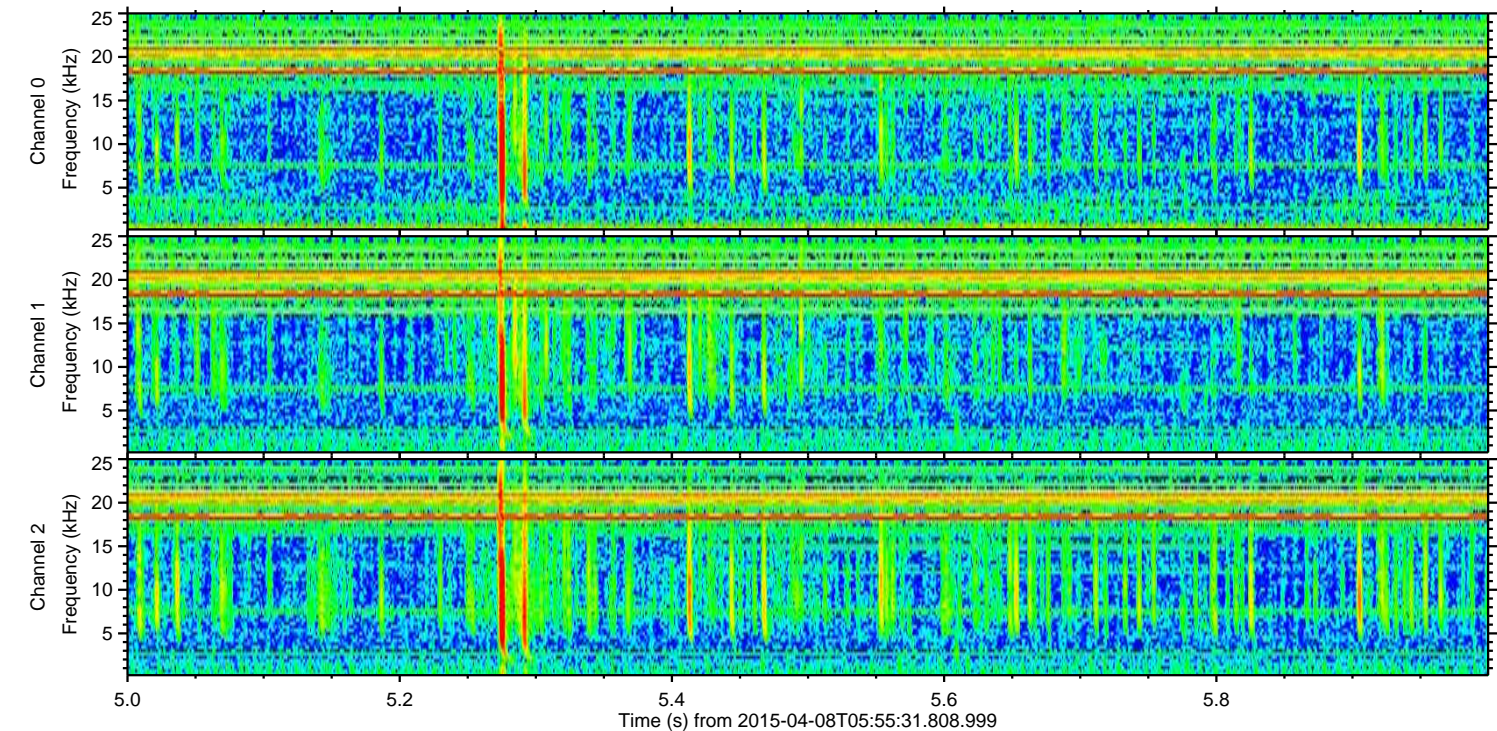
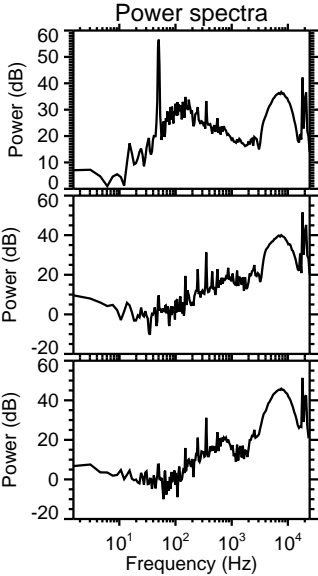
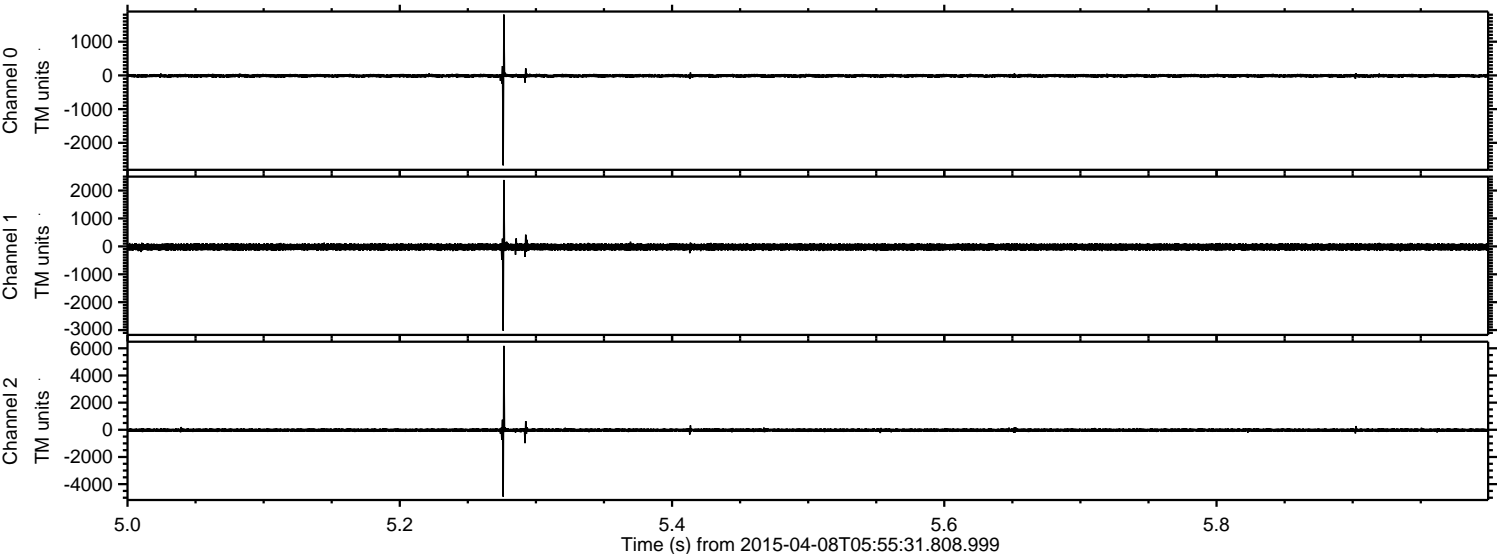
ELMAVAN 3D WAVEFORMS (Measured data sampled at 50 kHz) 49782 packets of 144 samples from 2015-04-08T05:55:31.808.999. Part 134/144

Processed Wed Apr 8 08:03:36 2015 by ELM ver.2012-10-06 from 001\_\_elm20150408\_055530\_\_dat00.bin



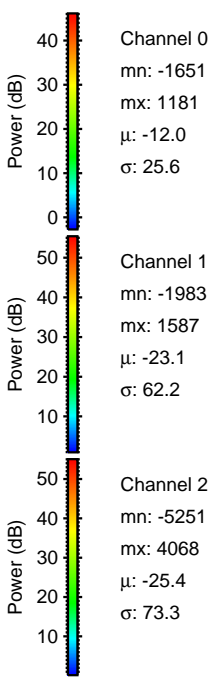
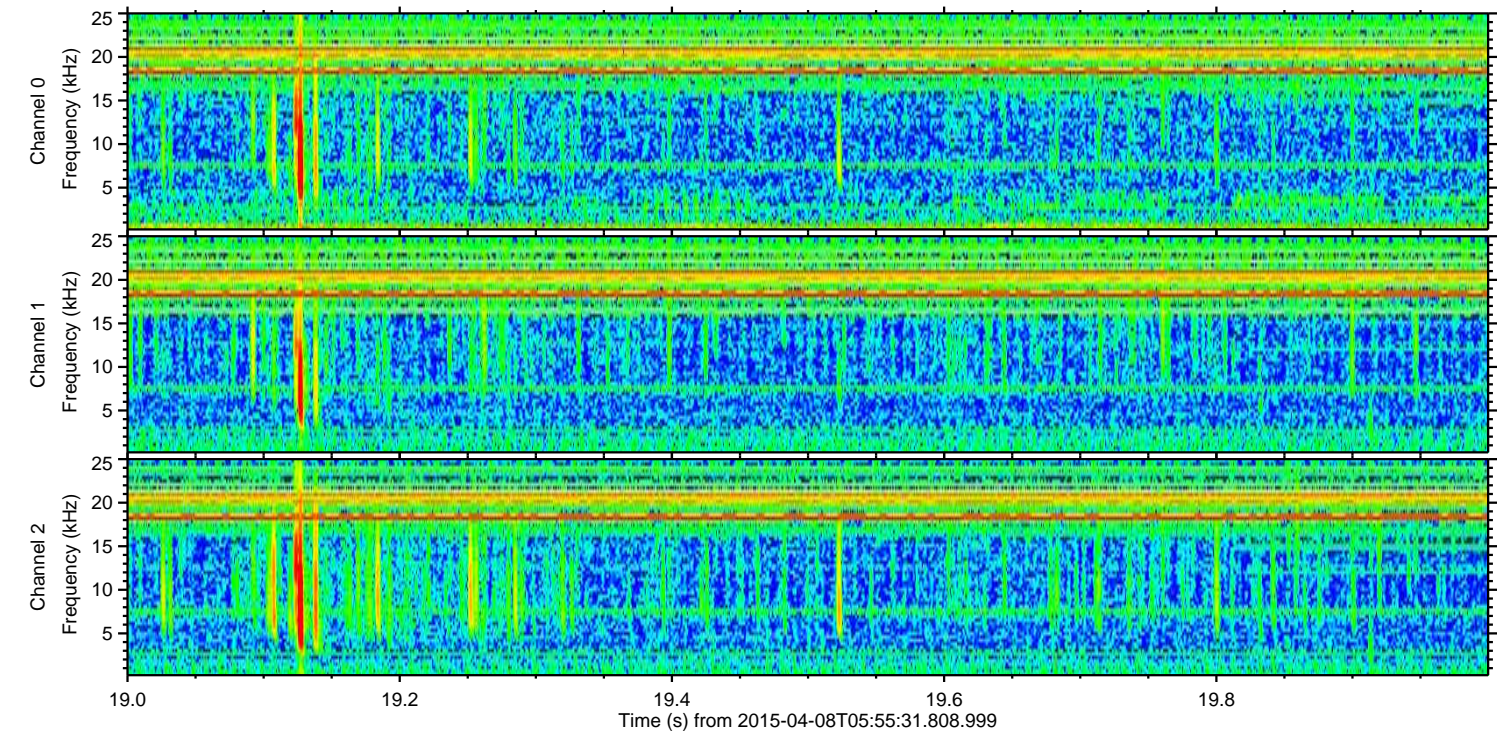
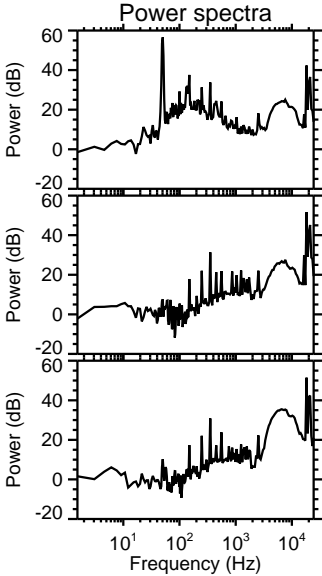
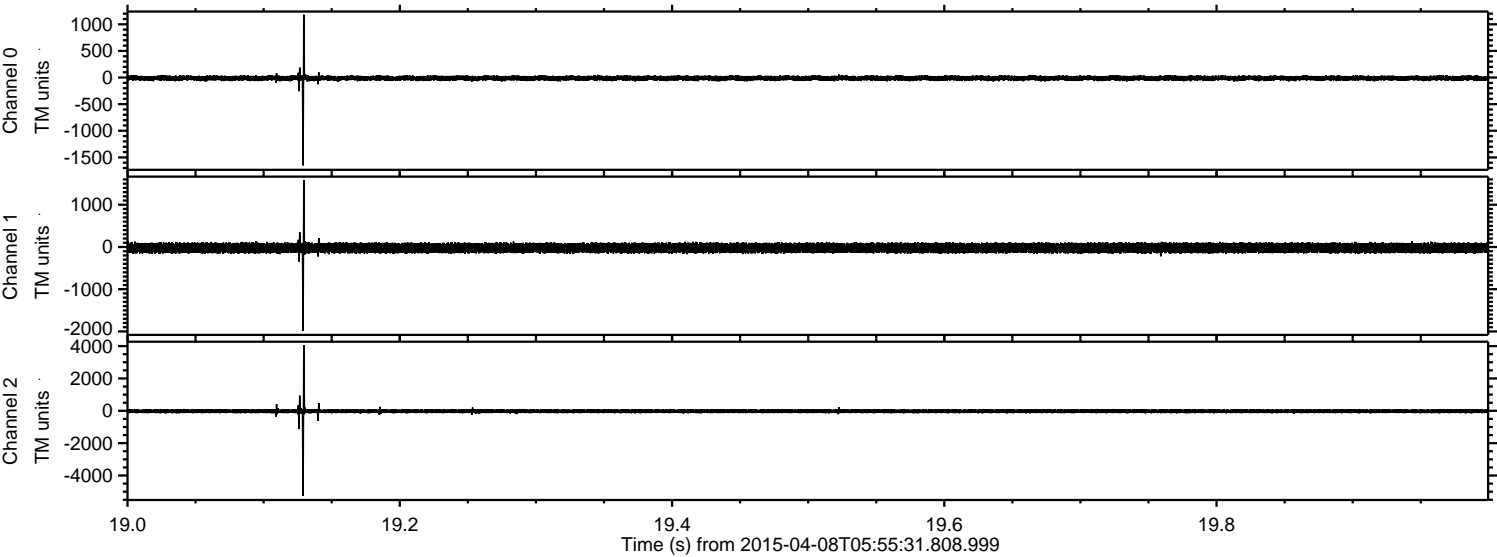


Processed Wed Apr 8 08:03:37 2015 by ELM ver.2012-10-06 from 001\_\_elm20150408\_055530\_\_dat00.bin





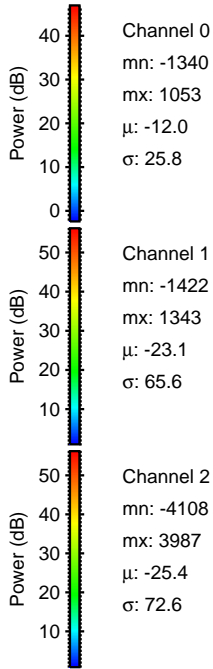
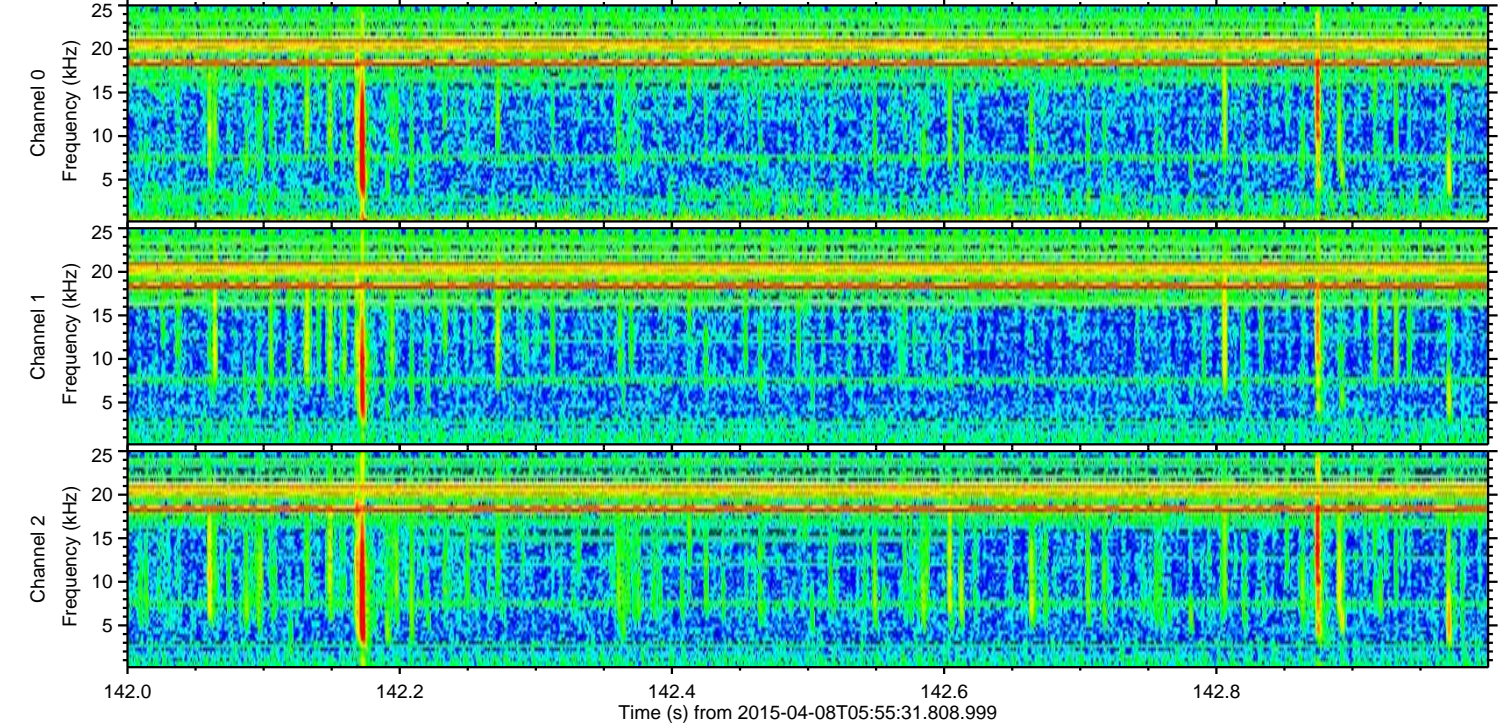
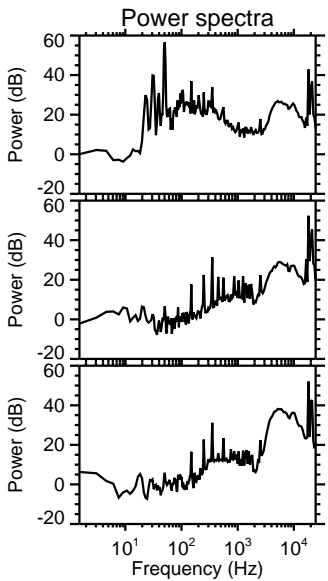
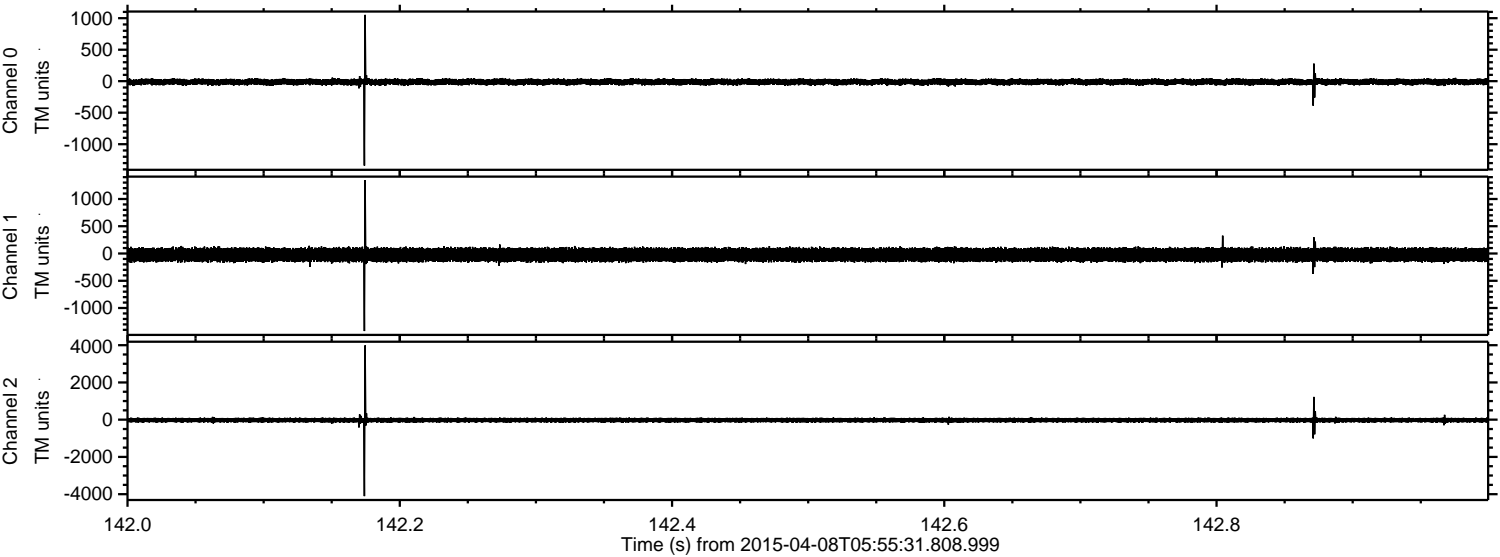
Processed Wed Apr 8 08:03:38 2015 by ELM ver.2012-10-06 from 001\_\_elm20150408\_055530\_\_dat00.bin





ELMAVAN 3D WAVEFORMS (Measured data sampled at 50 kHz) 49782 packets of 144 samples from 2015-04-08T05:55:31.808.999. Part 143/144

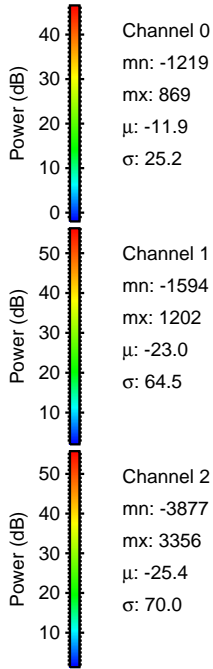
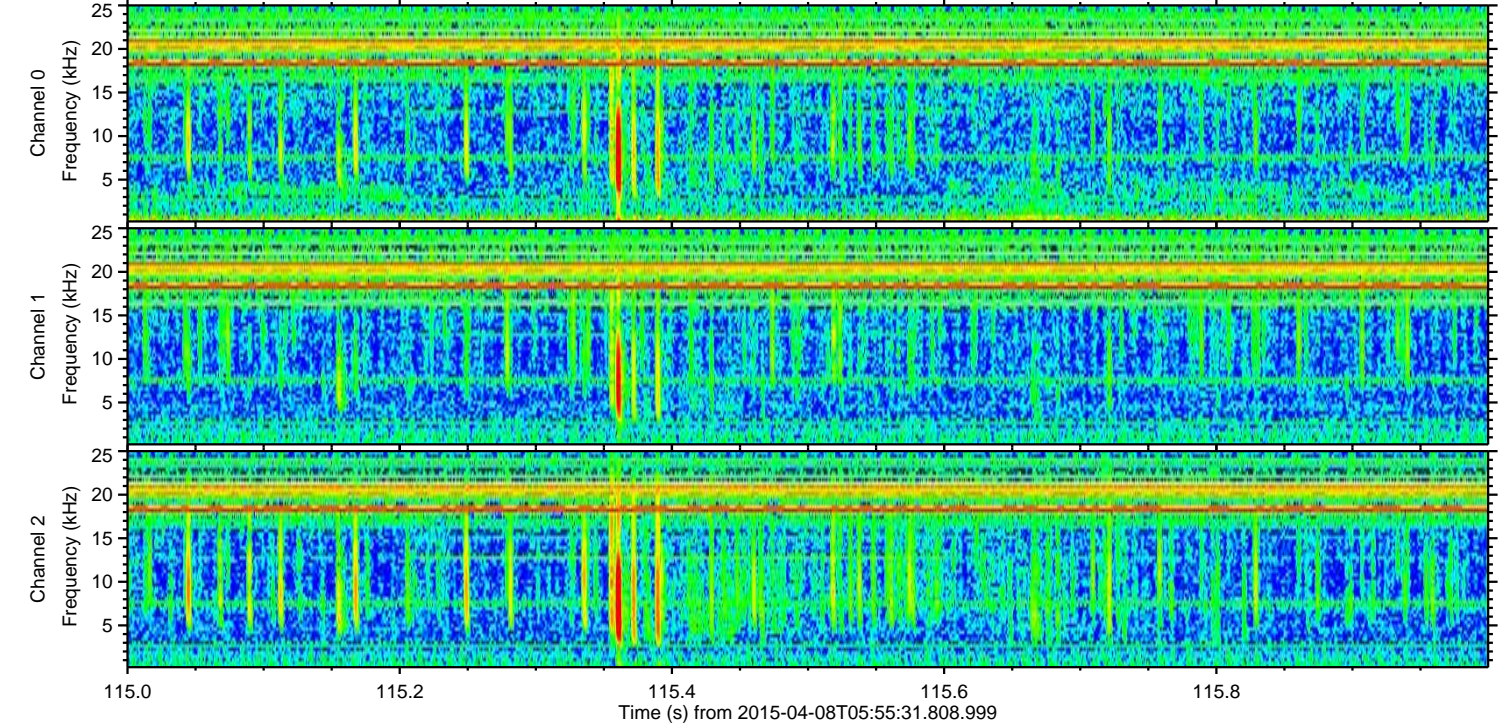
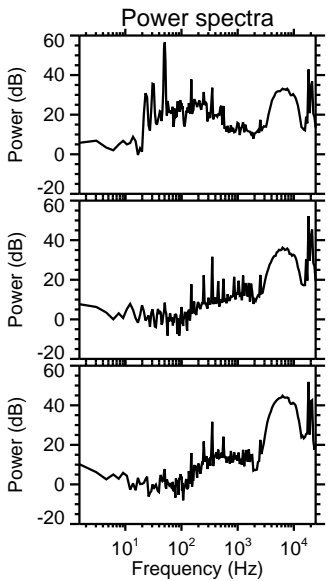
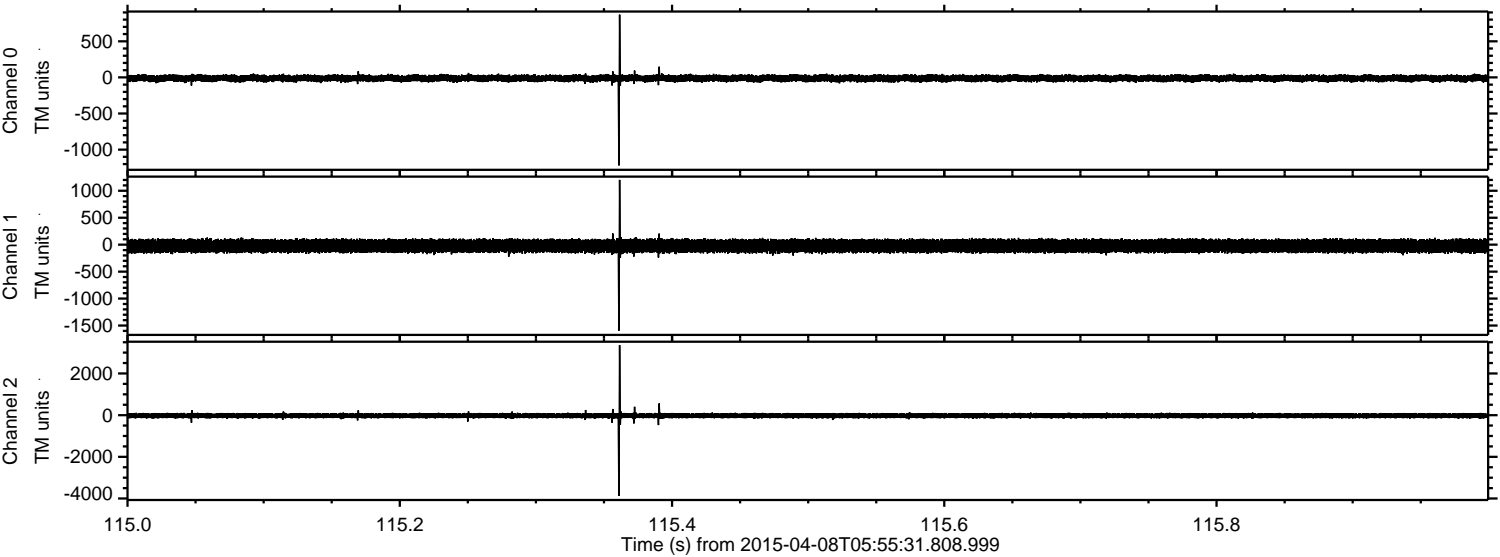
Processed Wed Apr 8 08:03:39 2015 by ELM ver.2012-10-06 from 001\_\_elm20150408\_055530\_\_dat00.bin





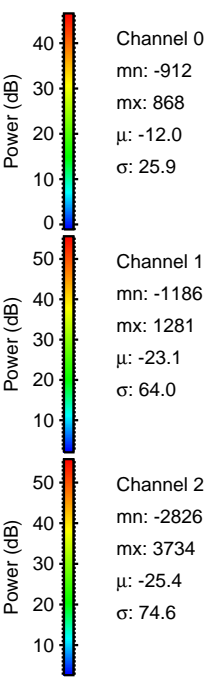
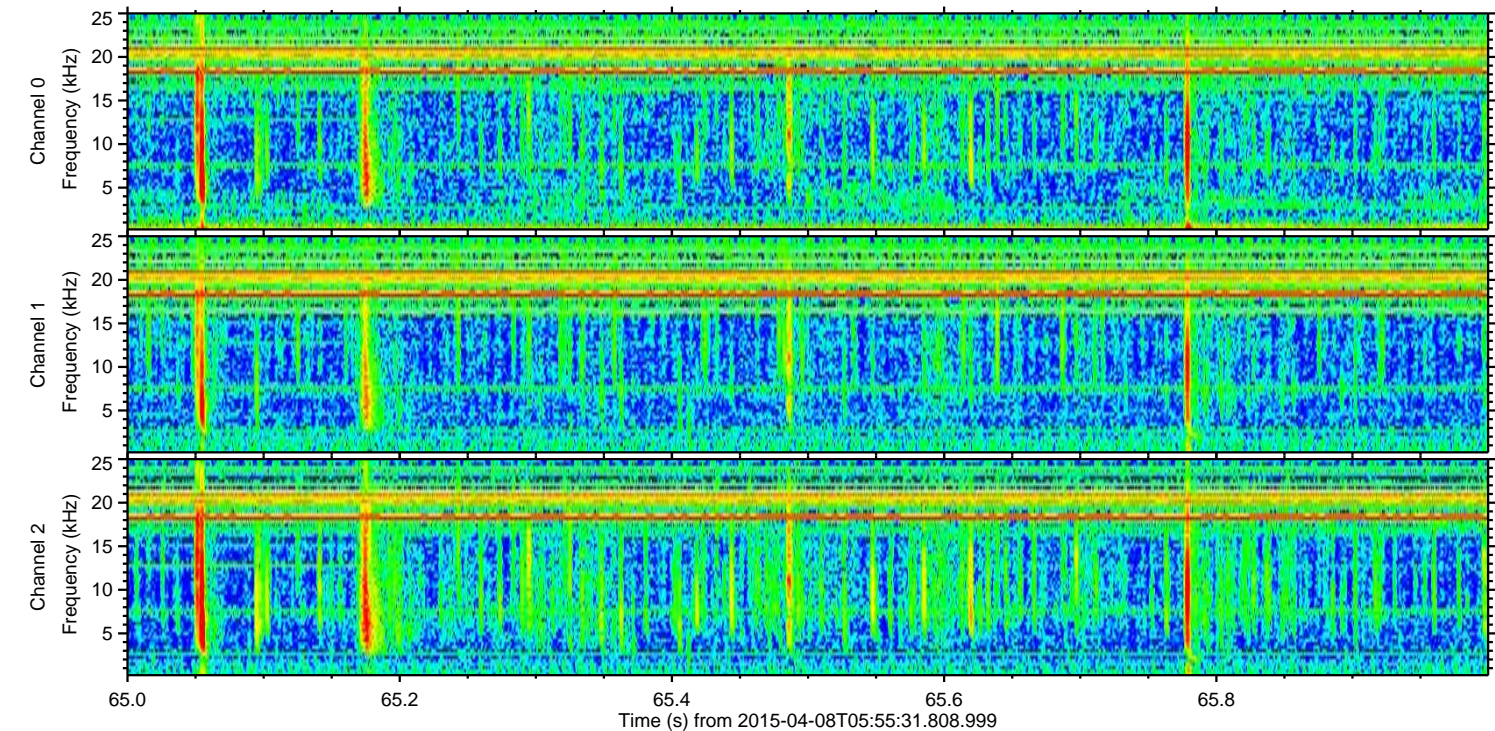
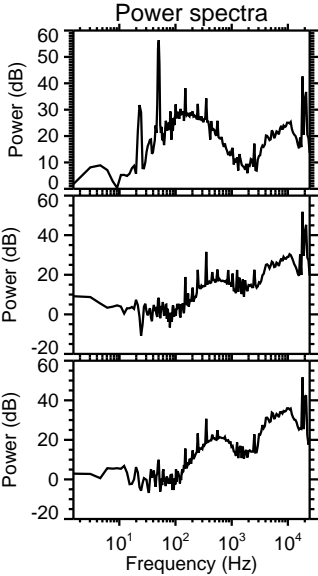
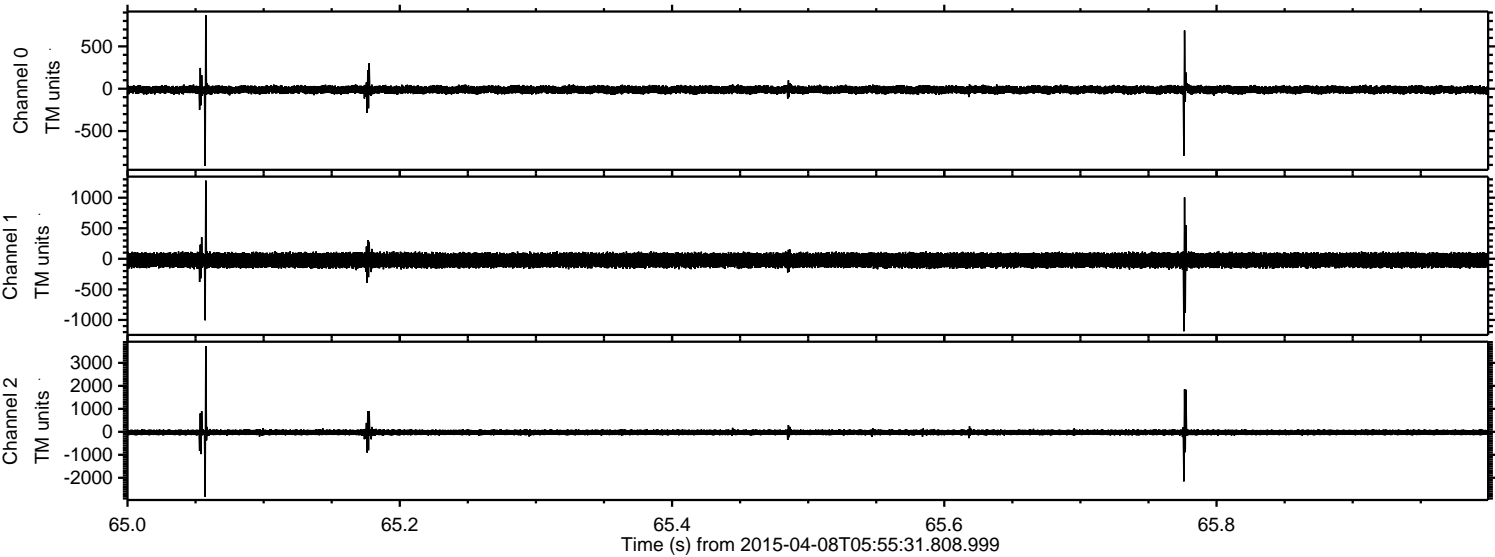
ELMAVAN 3D WAVEFORMS (Measured data sampled at 50 kHz) 49782 packets of 144 samples from 2015-04-08T05:55:31.808.999. Part 116/144

Processed Wed Apr 8 08:03:40 2015 by ELM ver.2012-10-06 from 001\_\_elm20150408\_055530\_\_dat00.bin





Processed Wed Apr 8 08:03:41 2015 by ELM ver.2012-10-06 from 001\_\_elm20150408\_055530\_\_dat00.bin



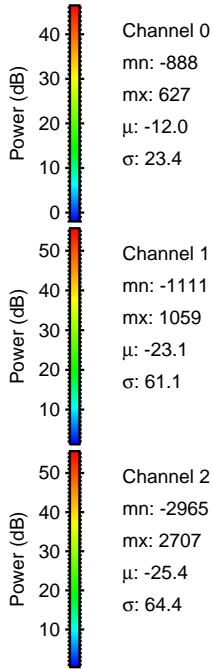
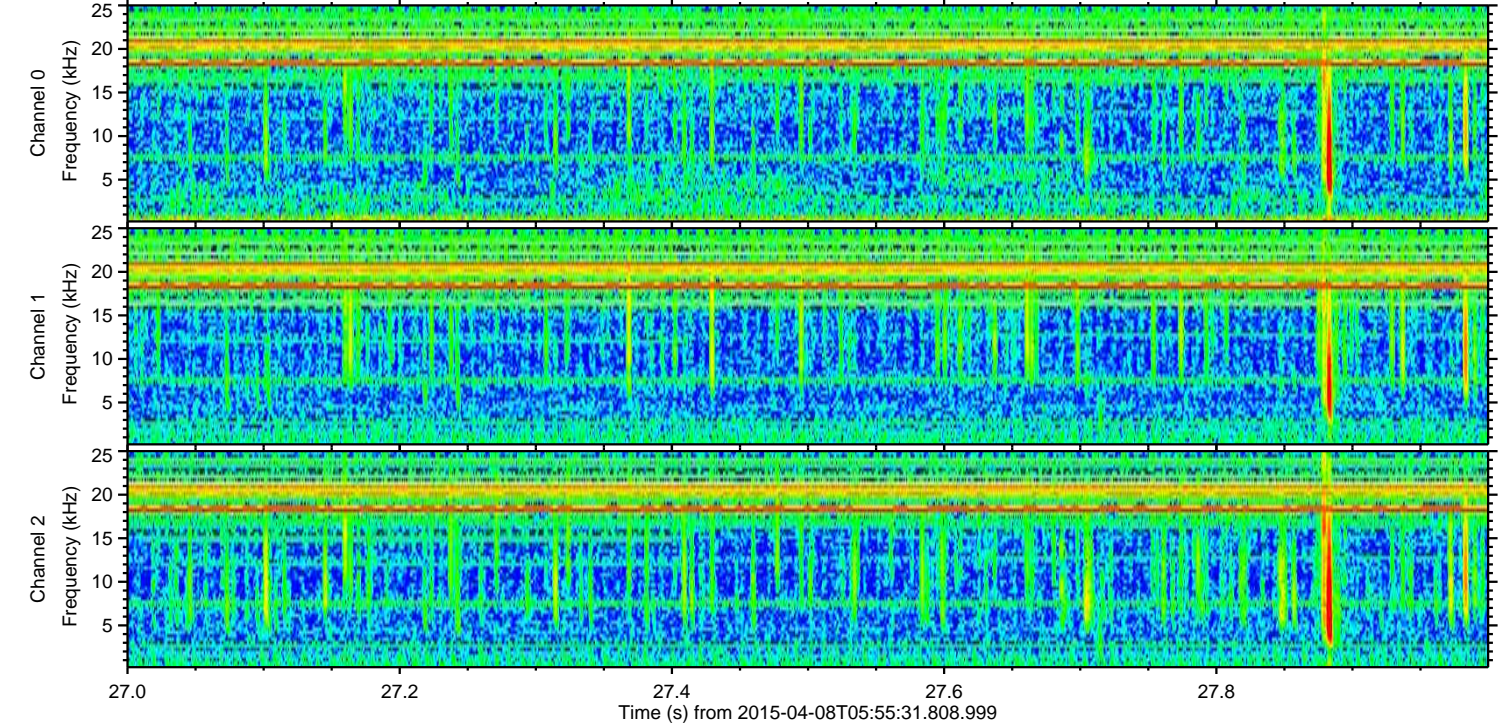
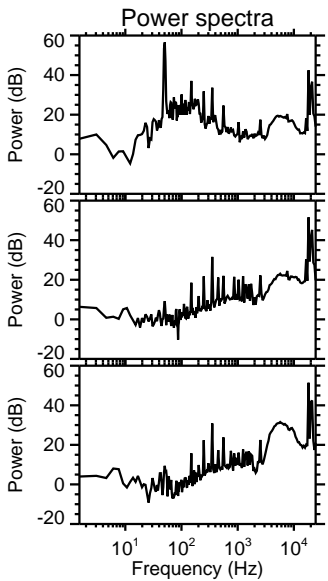
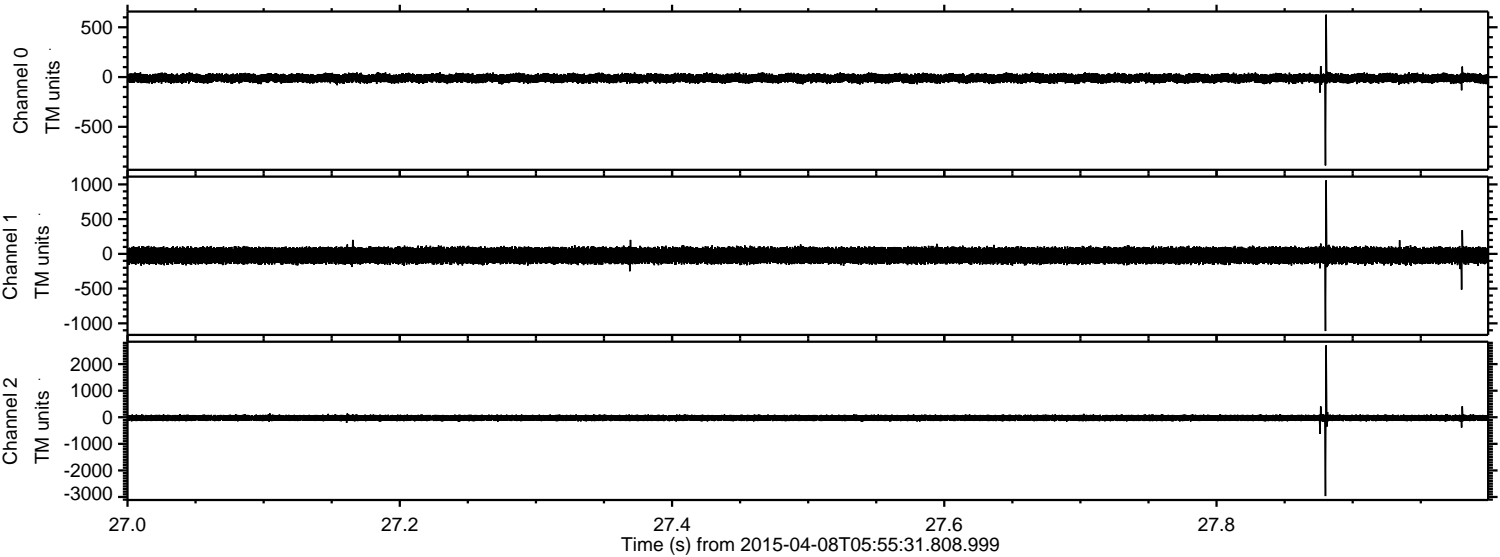
Channel 0  
mn: -912  
mx: 868  
 $\mu$ : -12.0  
 $\sigma$ : 25.9

Channel 1  
mn: -1186  
mx: 1281  
 $\mu$ : -23.1  
 $\sigma$ : 64.0

Channel 2  
mn: -2826  
mx: 3734  
 $\mu$ : -25.4  
 $\sigma$ : 74.6



Processed Wed Apr 8 08:03:42 2015 by ELM ver.2012-10-06 from 001\_\_elm20150408\_055530\_\_dat00.bin



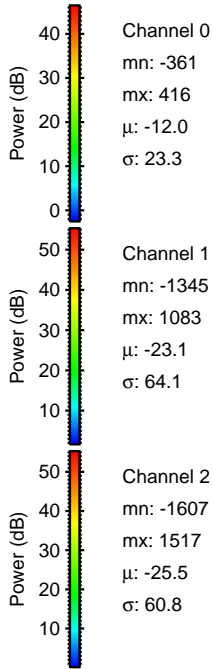
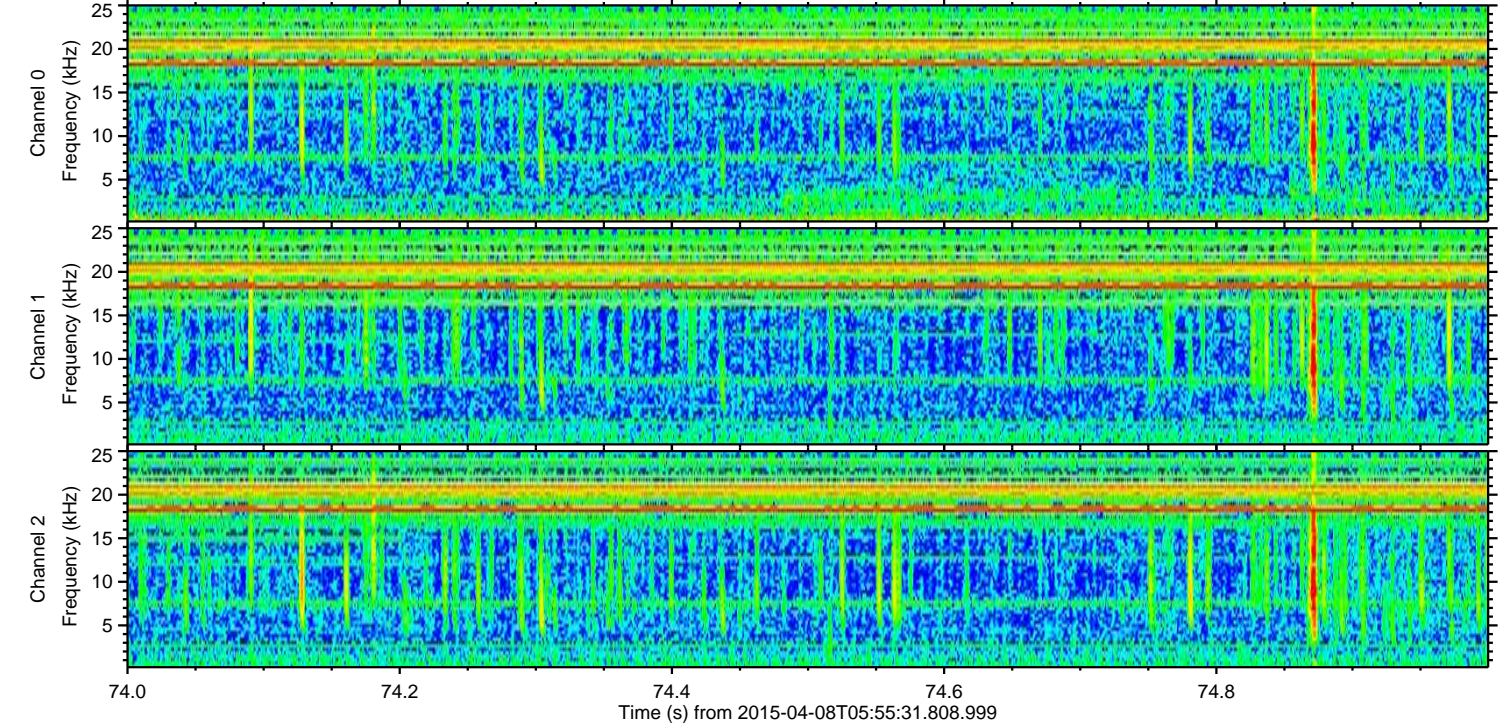
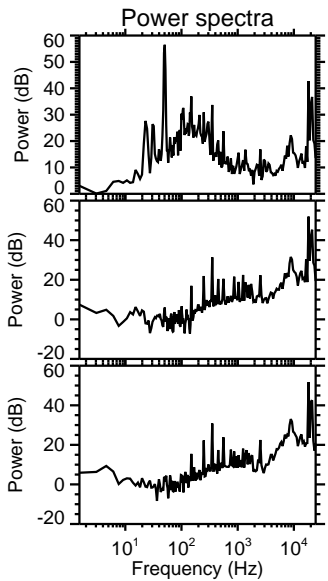
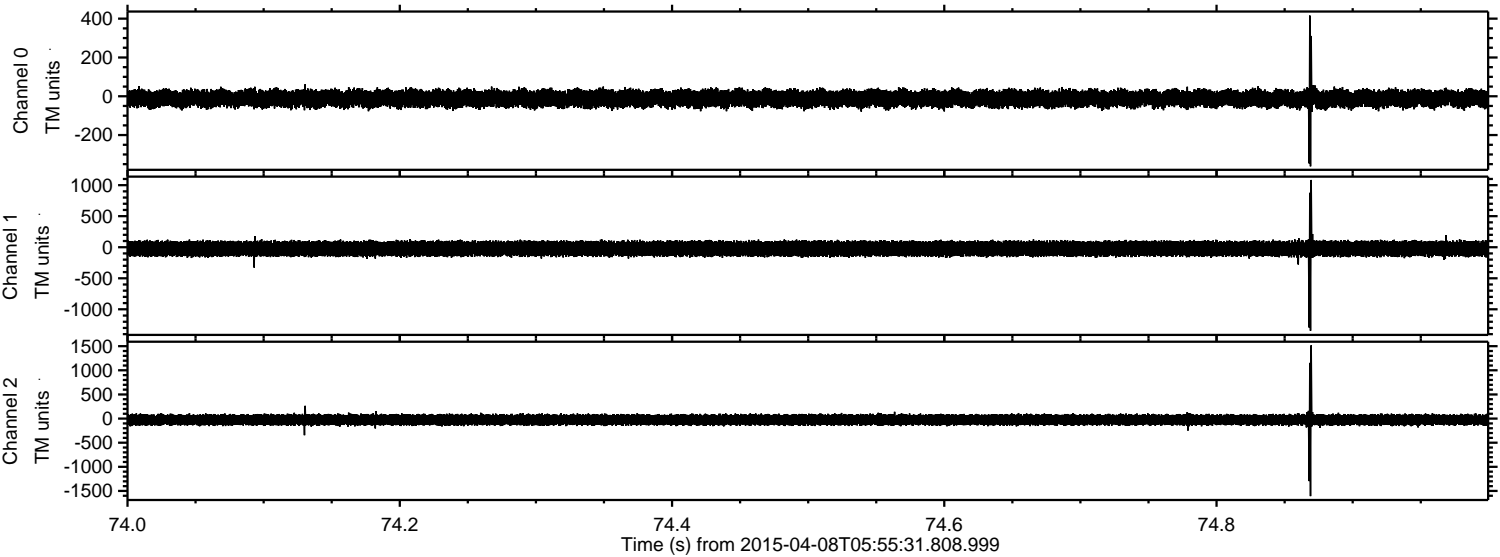
Channel 0  
mn: -888  
mx: 627  
 $\mu$ : -12.0  
 $\sigma$ : 23.4

Channel 1  
mn: -1111  
mx: 1059  
 $\mu$ : -23.1  
 $\sigma$ : 61.1

Channel 2  
mn: -2965  
mx: 2707  
 $\mu$ : -25.4  
 $\sigma$ : 64.4

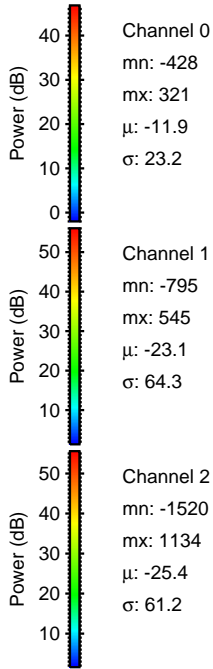
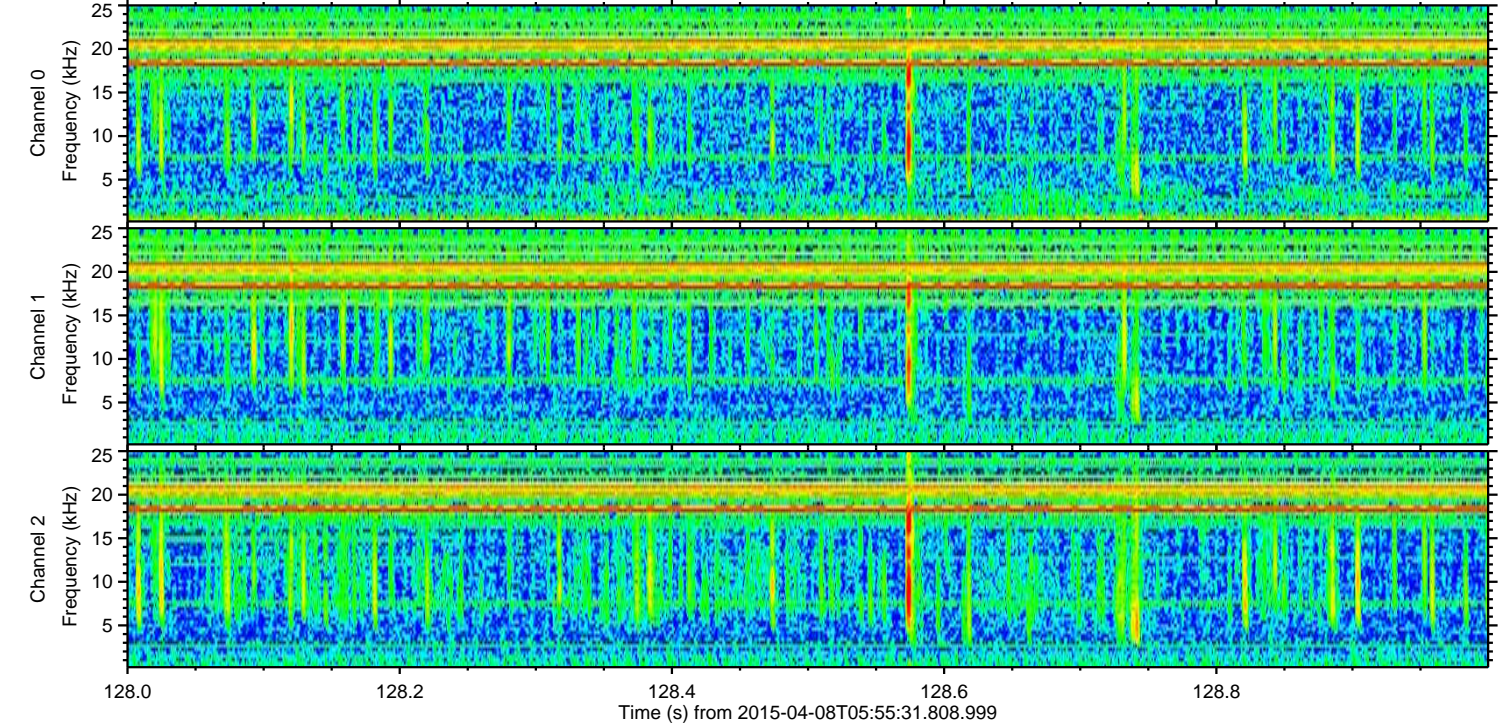
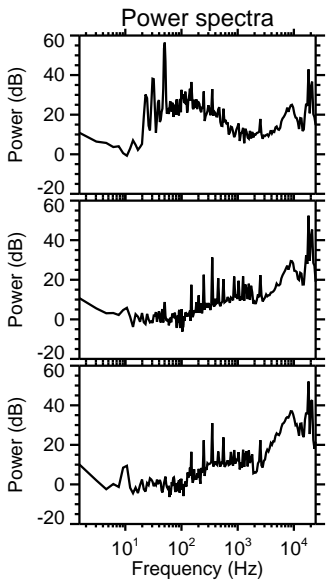
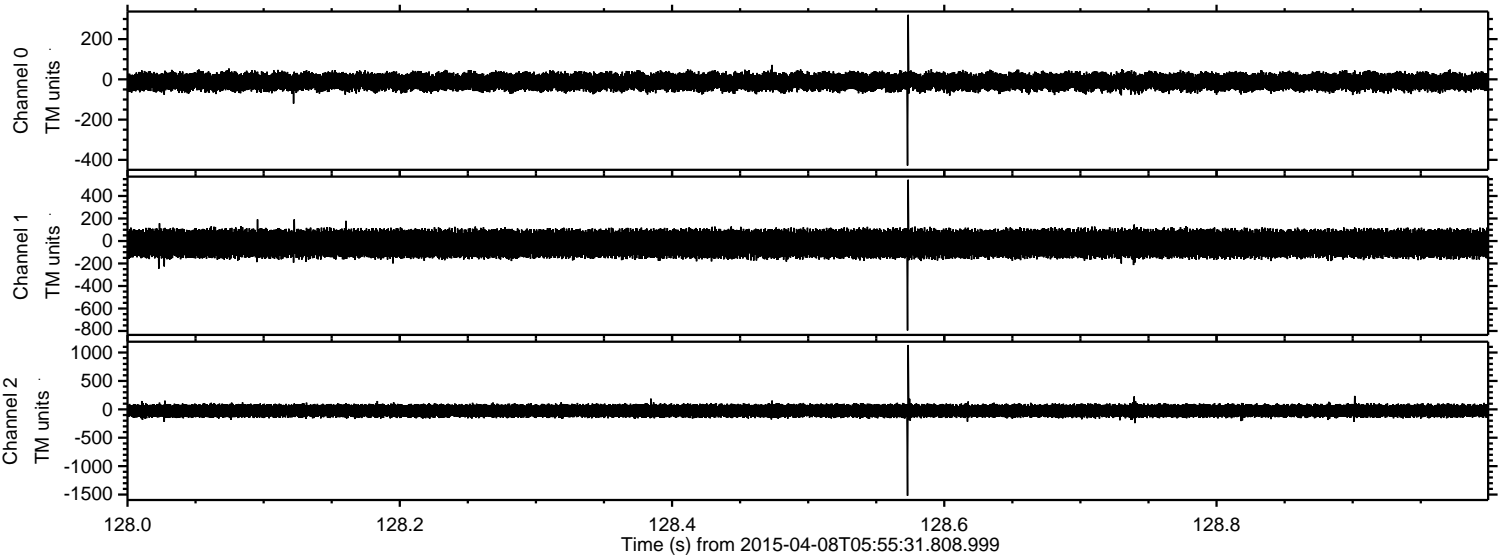


Processed Wed Apr 8 08:03:43 2015 by ELM ver.2012-10-06 from 001\_\_elm20150408\_055530\_\_dat00.bin





Processed Wed Apr 8 08:03:44 2015 by ELM ver.2012-10-06 from 001\_\_elm20150408\_055530\_\_dat00.bin





Processed Wed Apr 8 08:03:45 2015 by ELM ver.2012-10-06 from 001\_\_elm20150408\_055530\_\_dat00.bin

