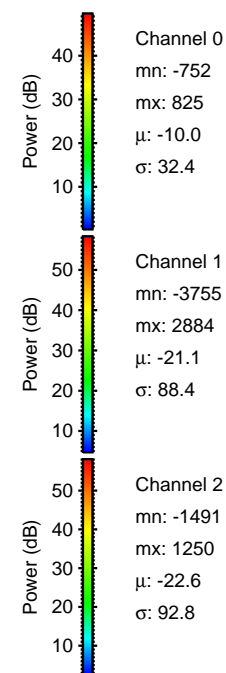
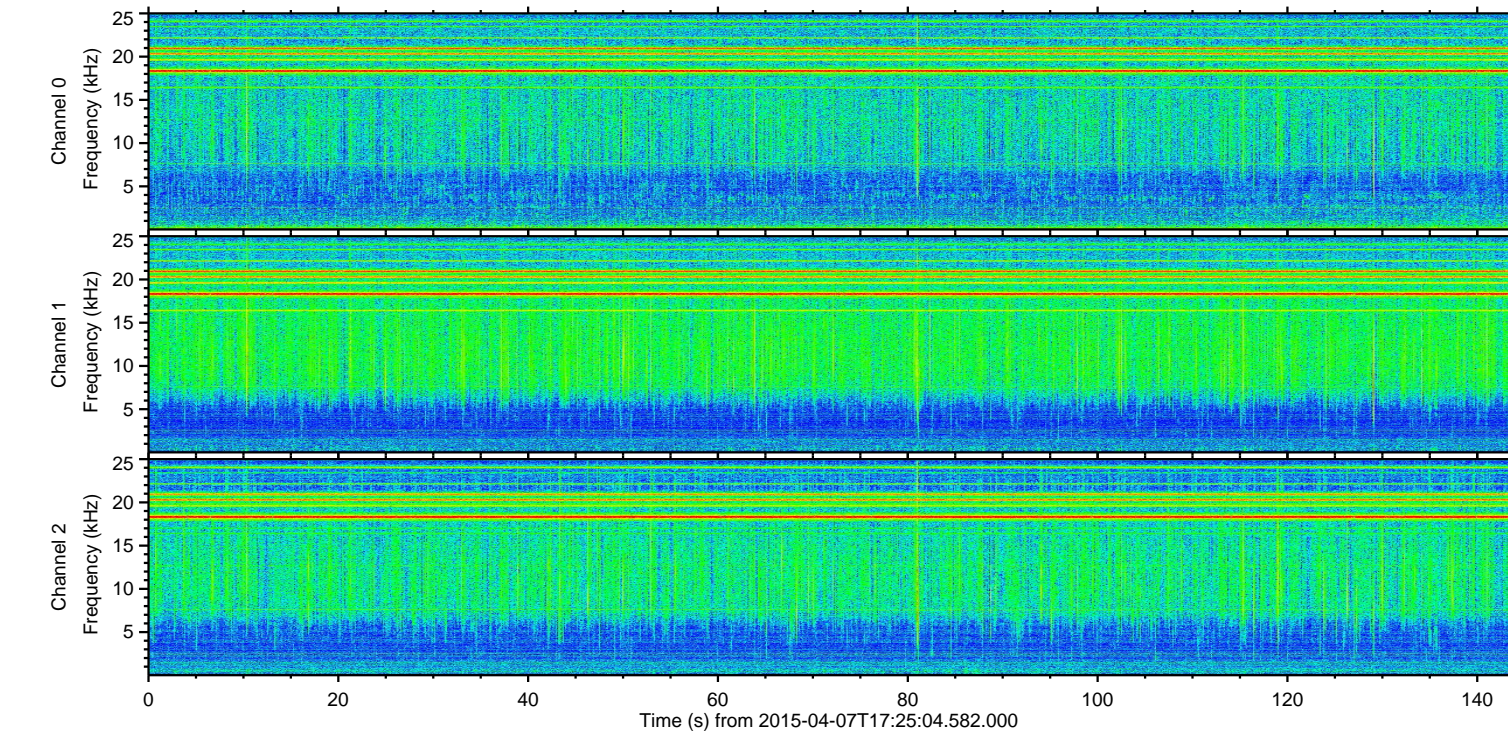
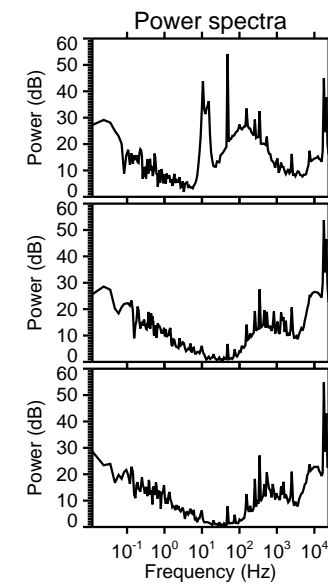
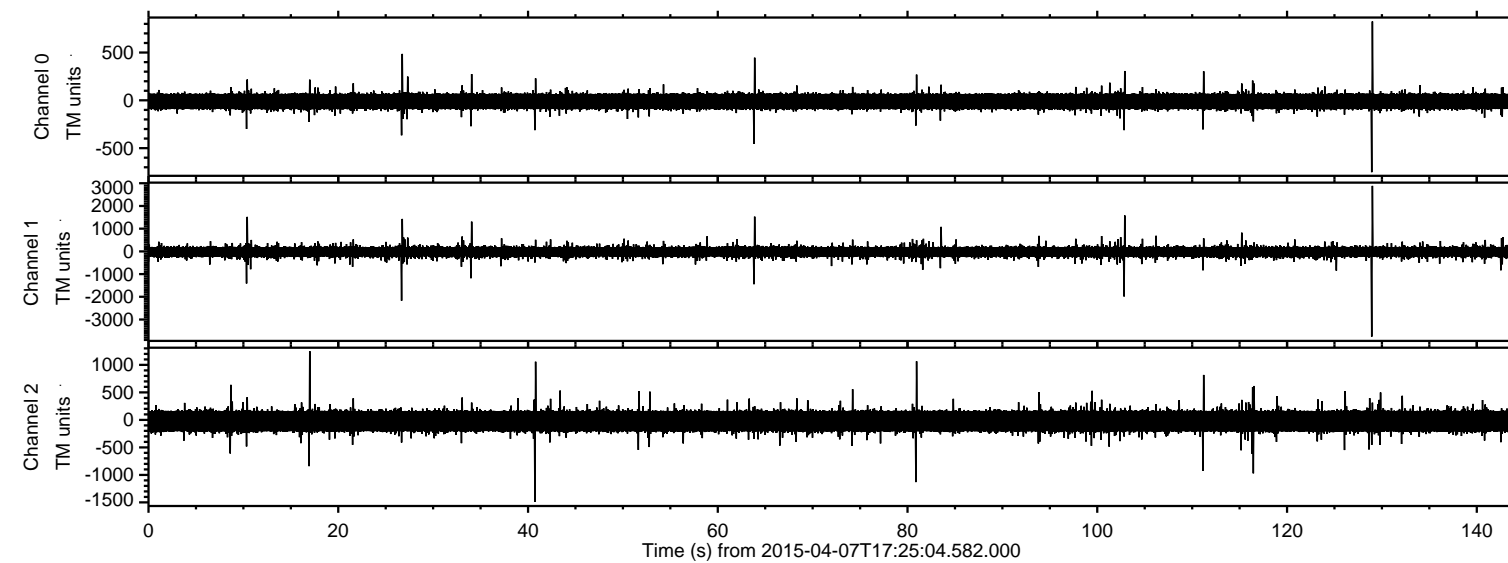


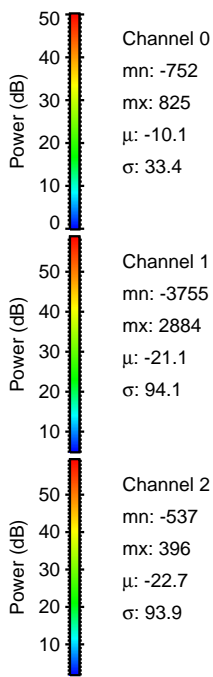
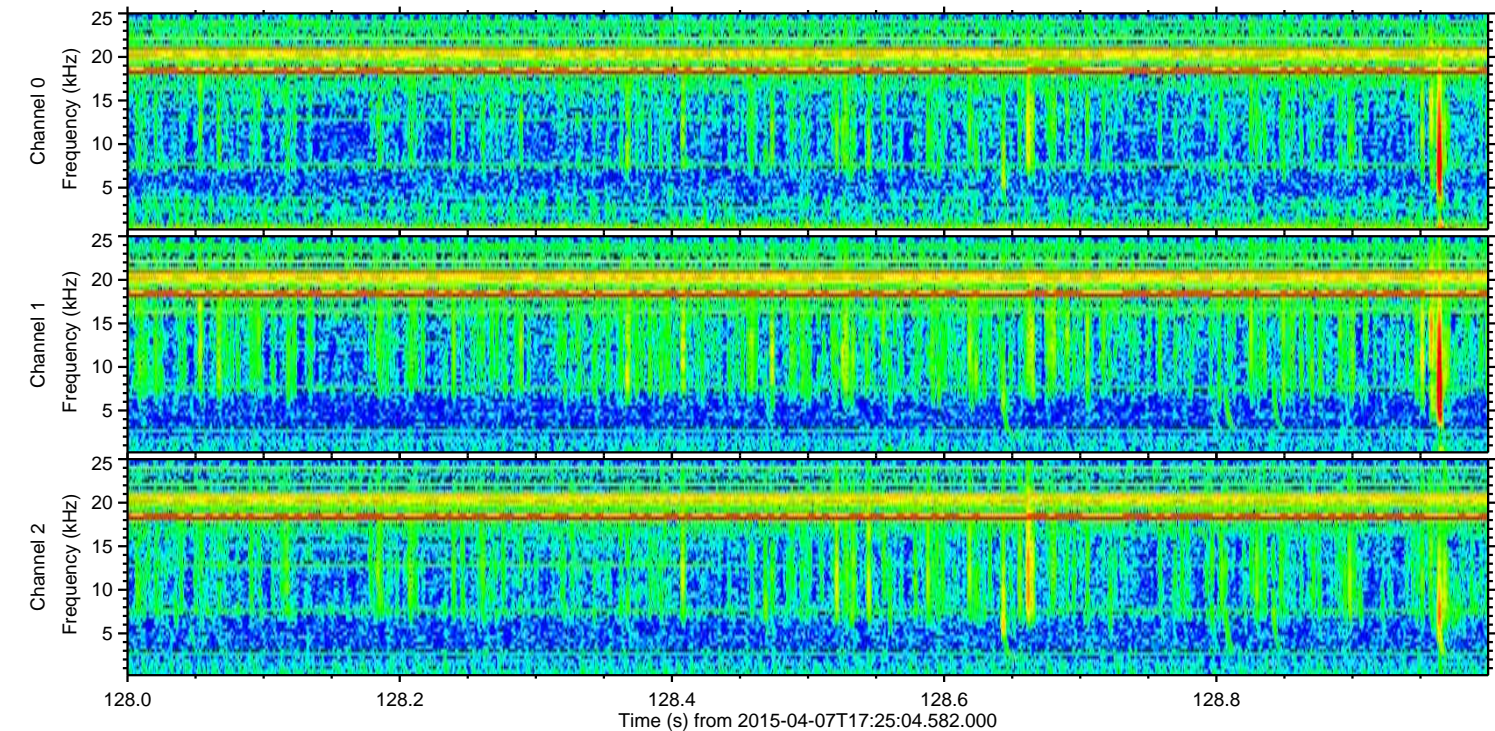
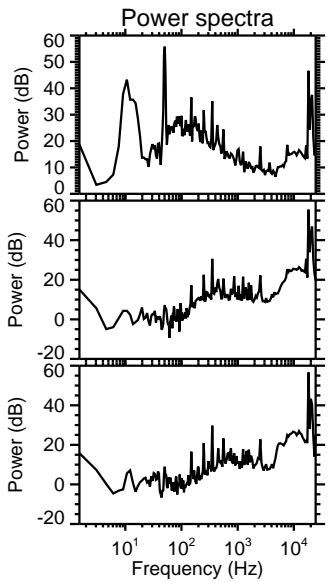
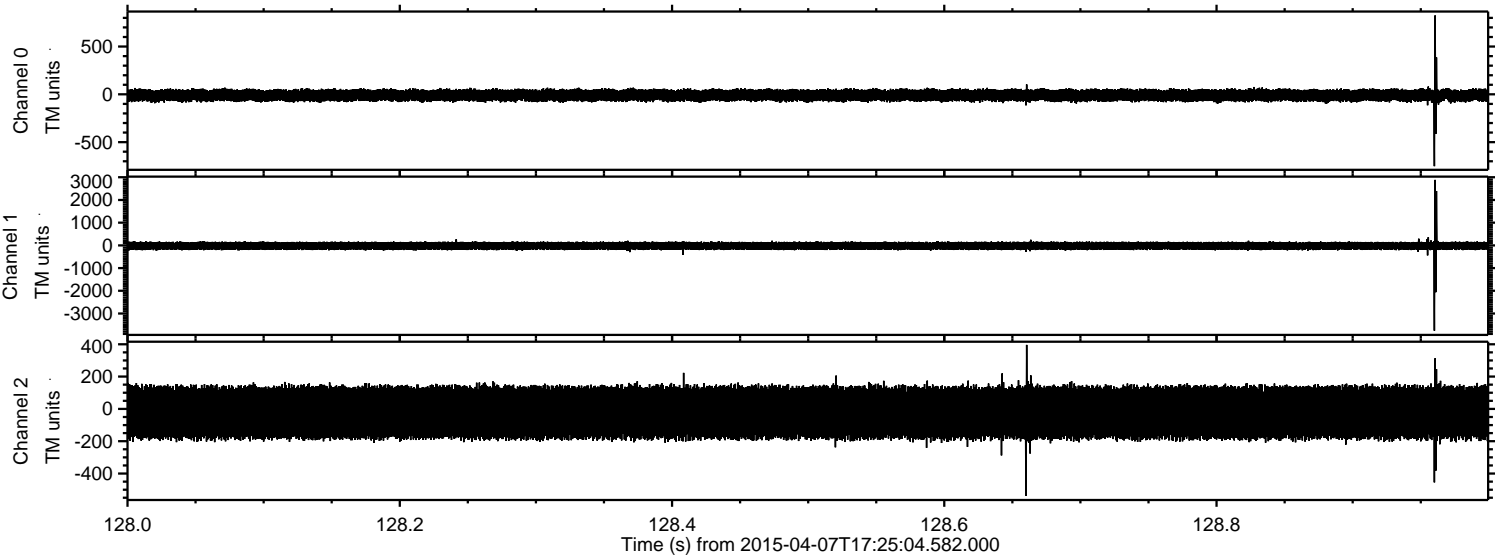
ELMAVAN 3D WAVEFORMS (Measured data sampled at 50 kHz) 49795 packets of 144 samples from 2015-04-07T17:25:04.582.000.

Processed Tue Apr 7 19:31:38 2015 by ELM ver.2012-10-06 from 001__elm20150407_172503__dat00.bin



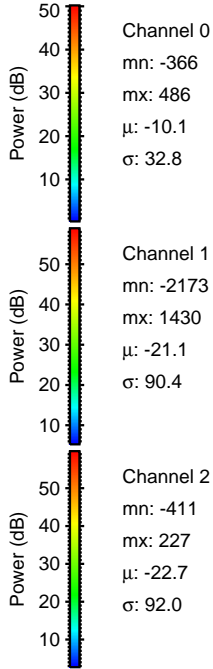
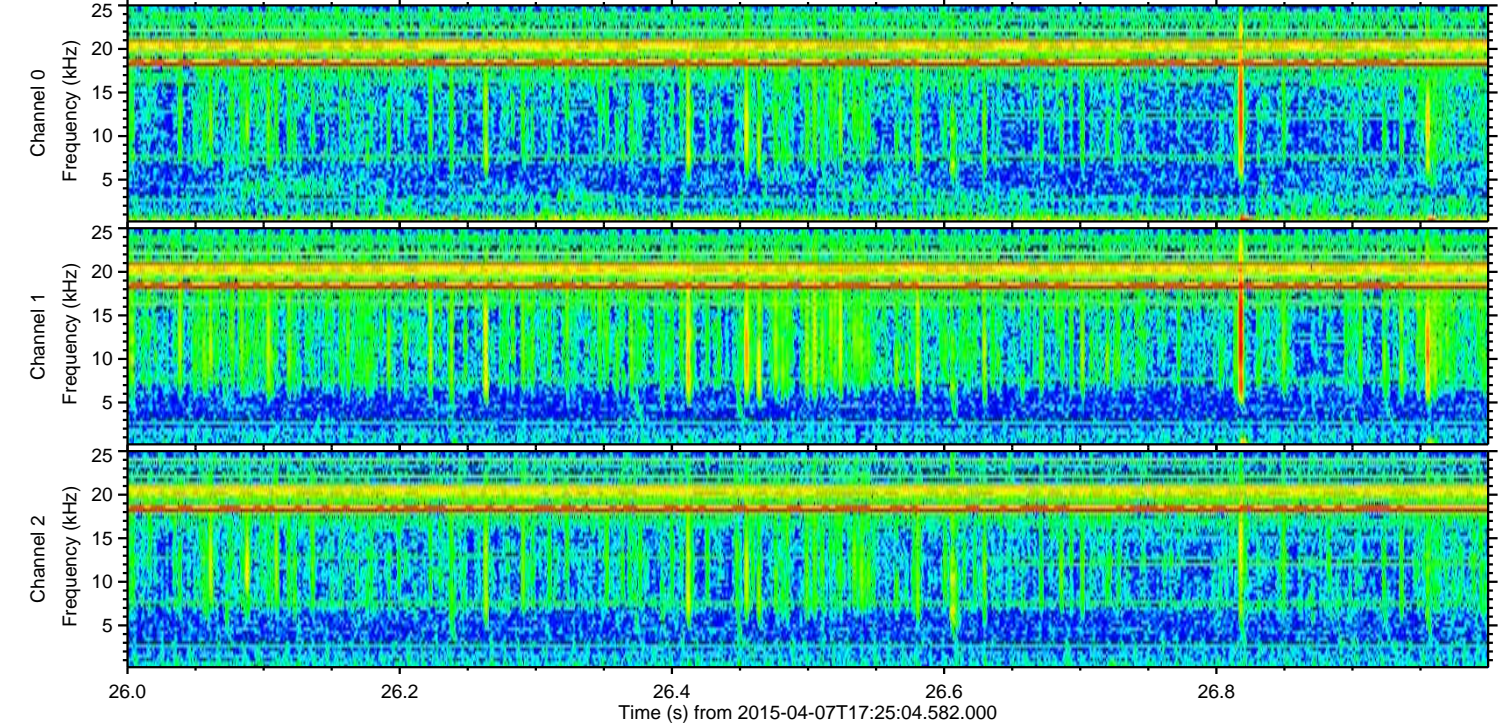
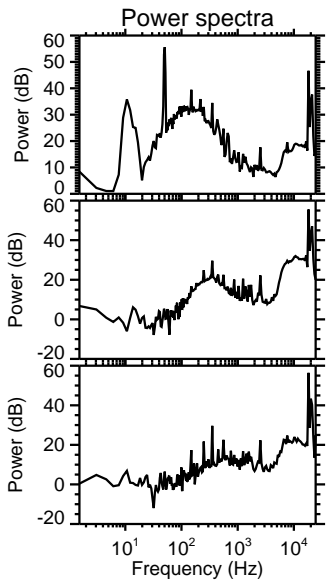
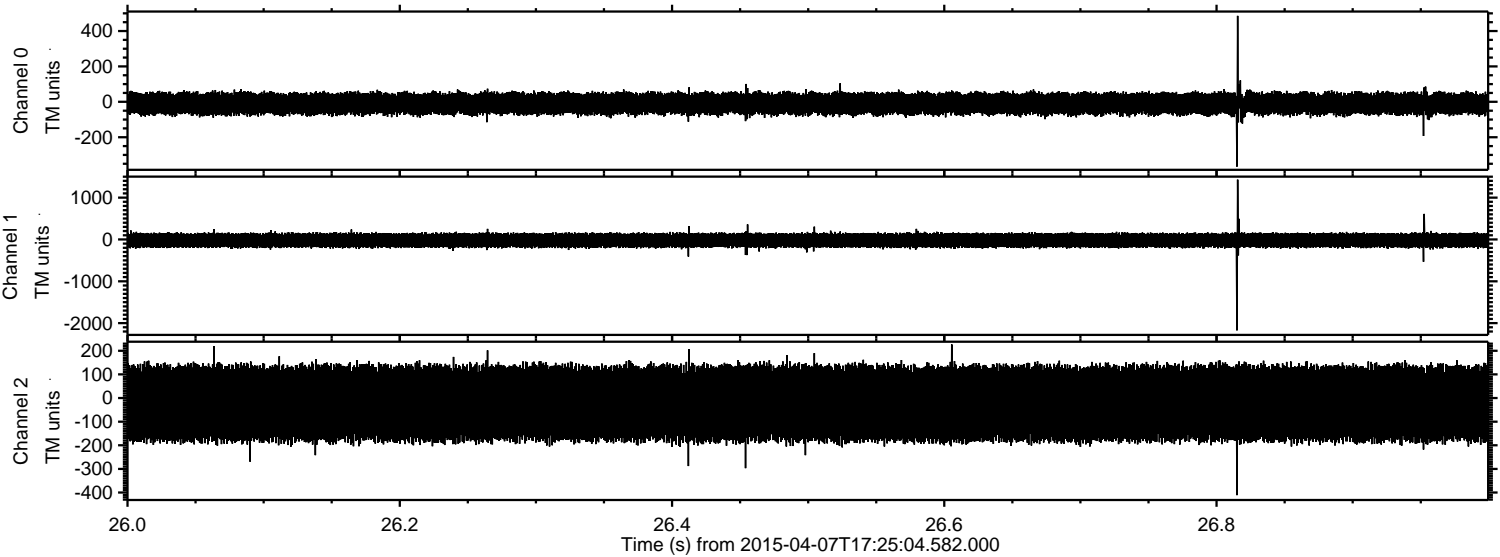
ELMAVAN 3D WAVEFORMS (Measured data sampled at 50 kHz) 49795 packets of 144 samples from 2015-04-07T17:25:04.582.000. Part 129/144

Processed Tue Apr 7 19:31:49 2015 by ELM ver.2012-10-06 from 001__elm20150407_172503__dat00.bin



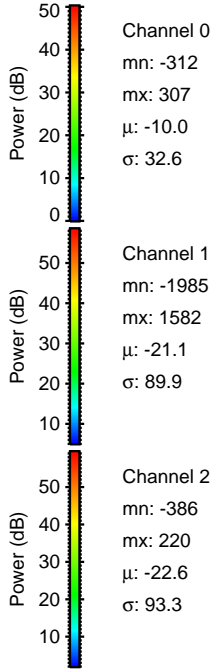
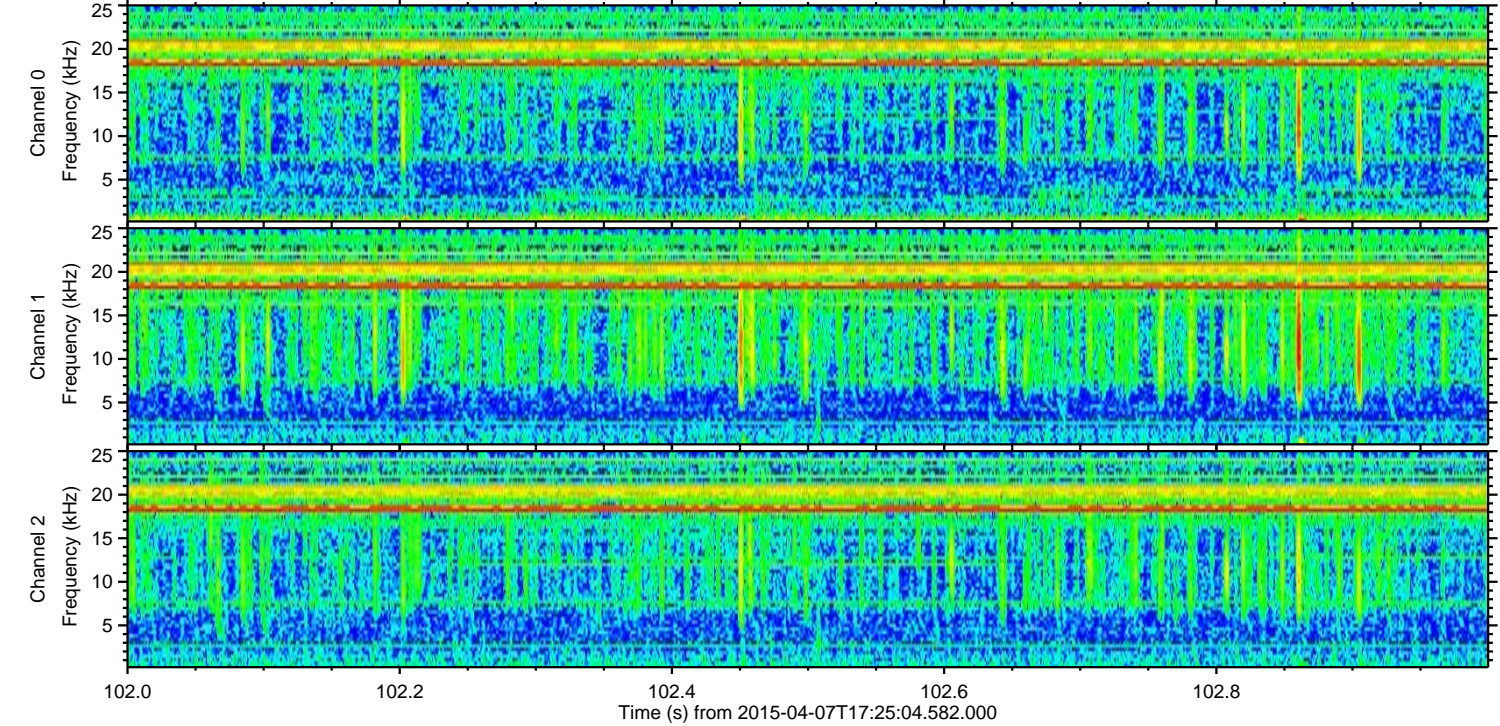
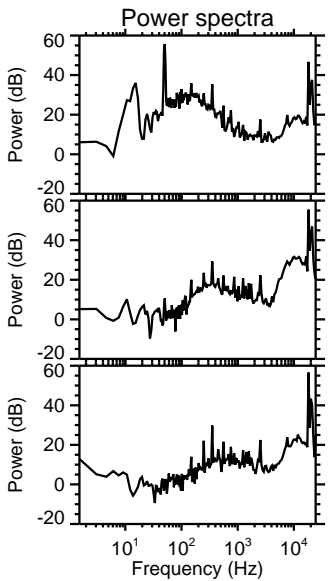
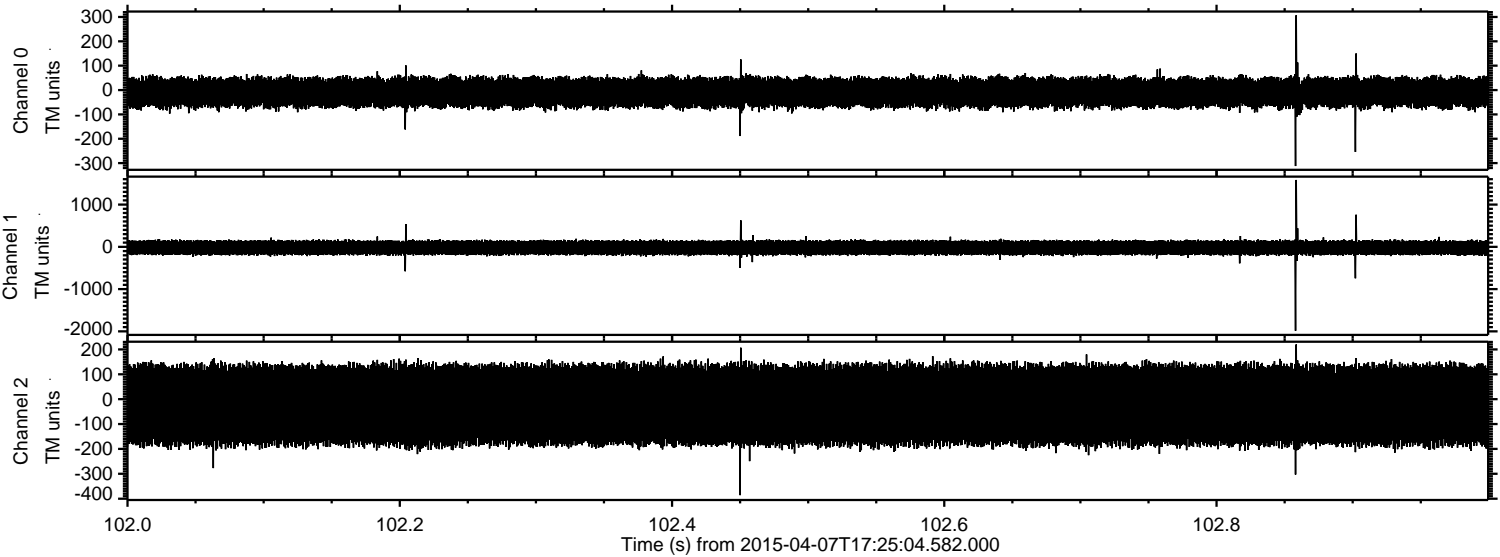
ELMAVAN 3D WAVEFORMS (Measured data sampled at 50 kHz) 49795 packets of 144 samples from 2015-04-07T17:25:04.582.000. Part 27/144

Processed Tue Apr 7 19:31:50 2015 by ELM ver.2012-10-06 from 001__elm20150407_172503__dat00.bin

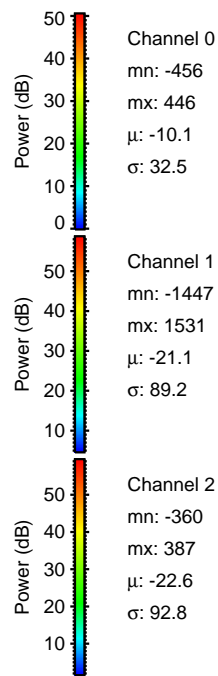
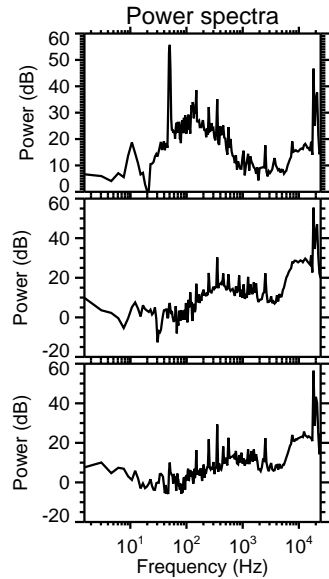
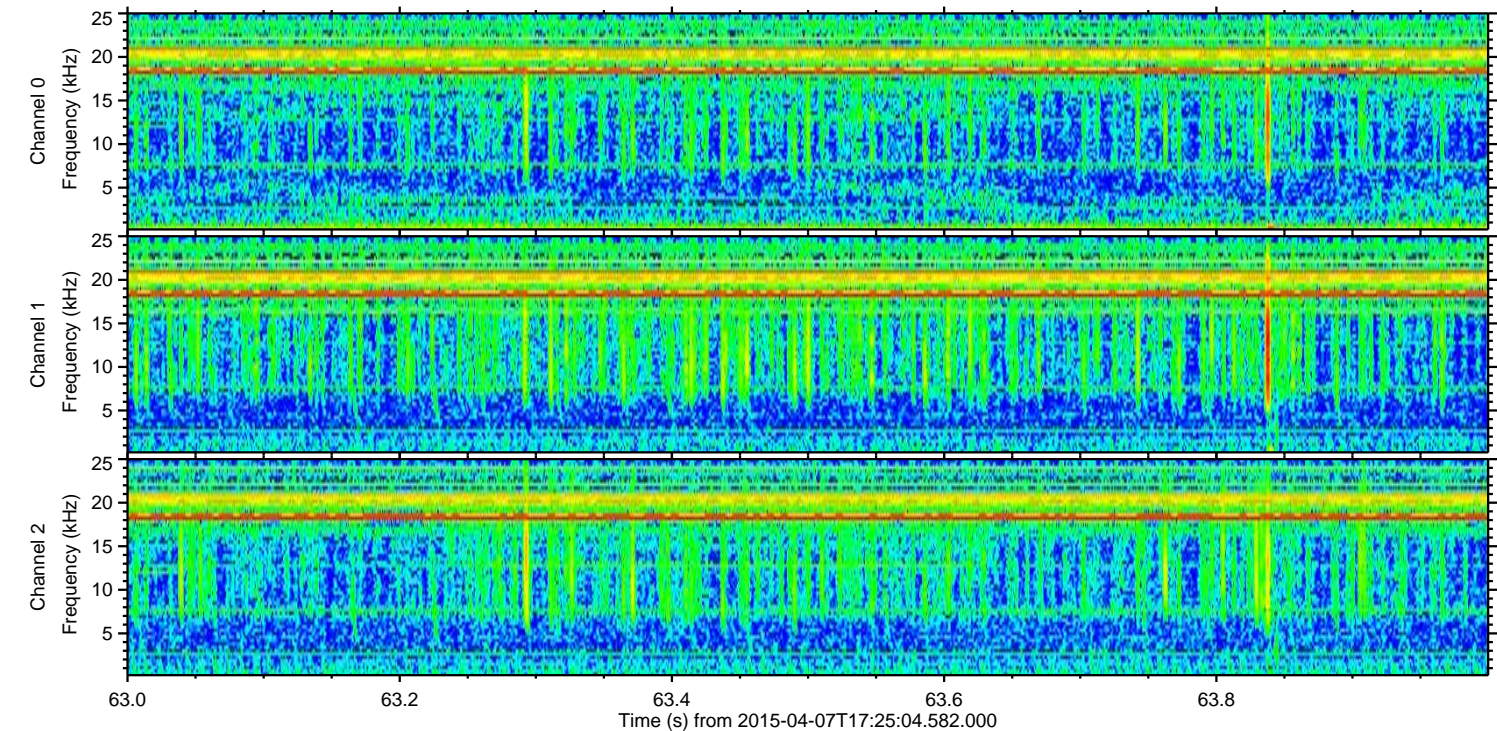
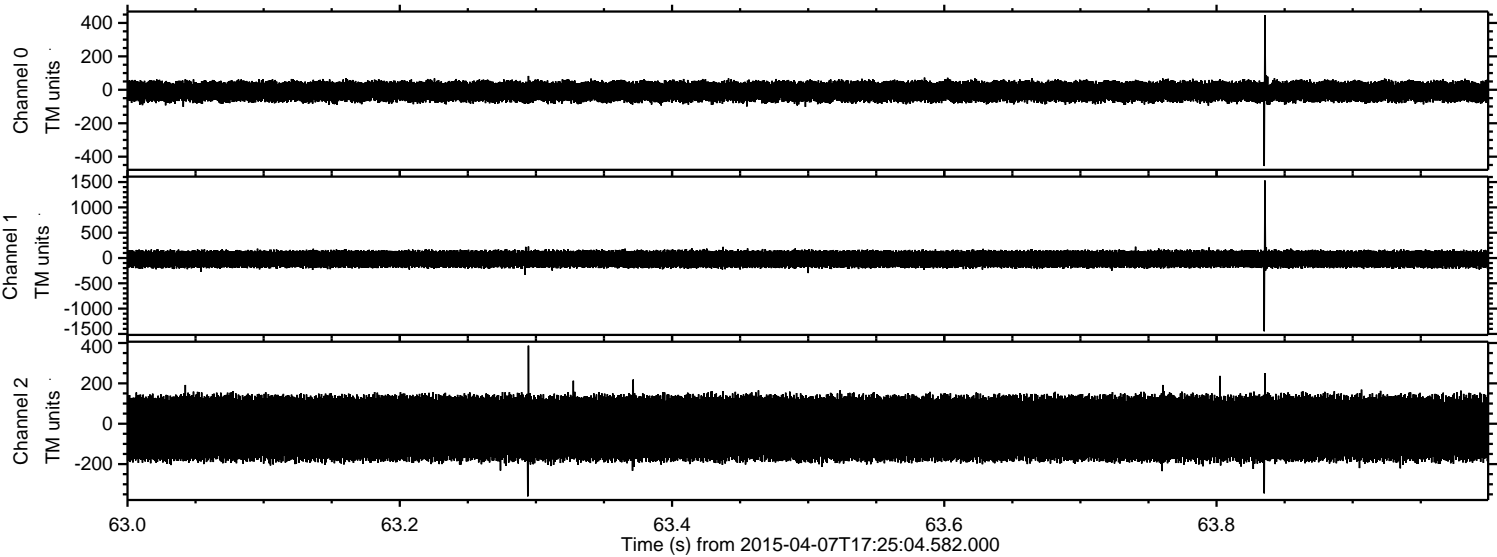


ELMAVAN 3D WAVEFORMS (Measured data sampled at 50 kHz) 49795 packets of 144 samples from 2015-04-07T17:25:04.582.000. Part 103/144

Processed Tue Apr 7 19:31:51 2015 by ELM ver.2012-10-06 from 001__elm20150407_172503__dat00.bin

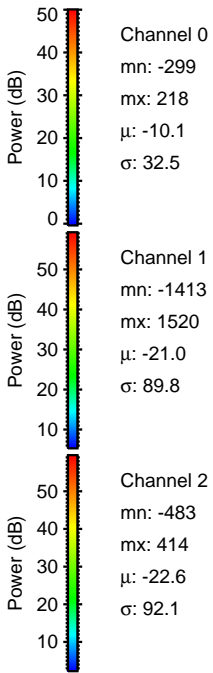
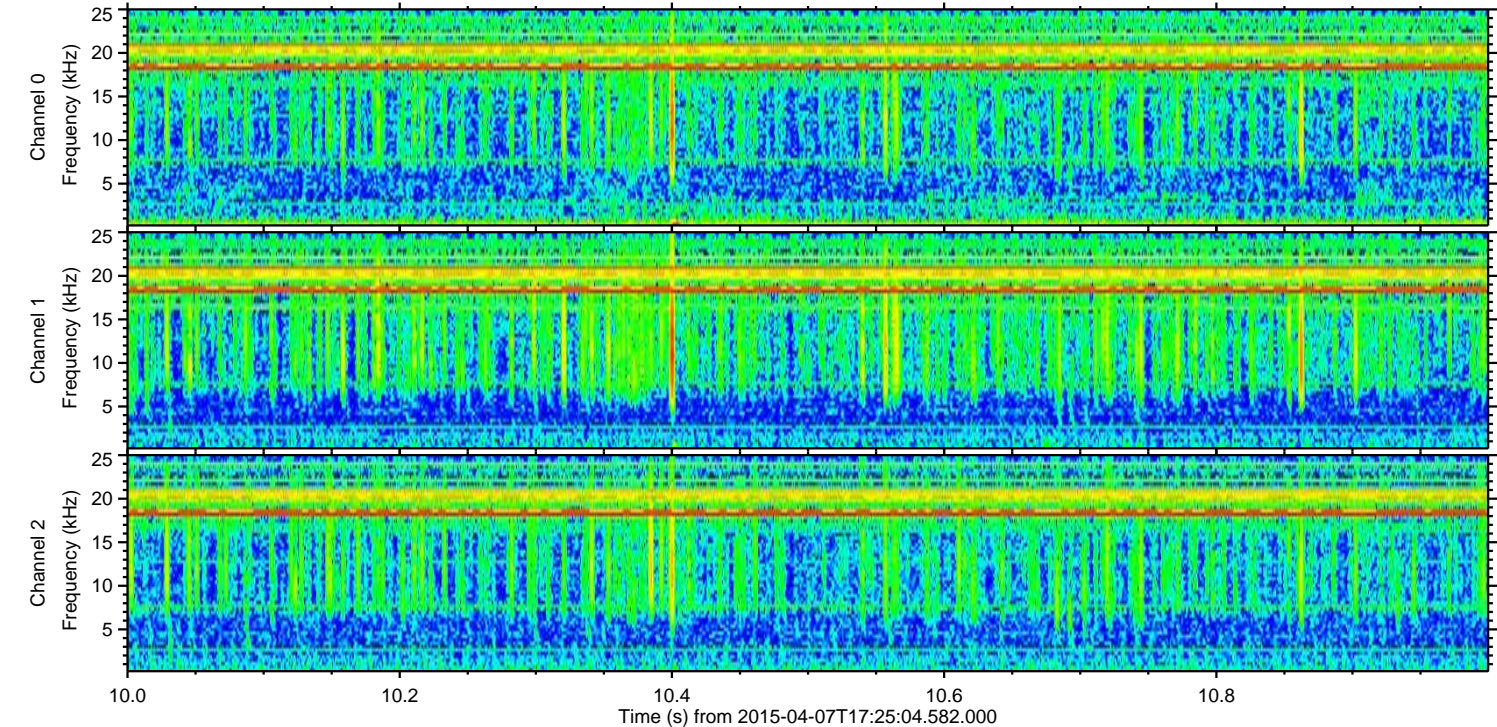
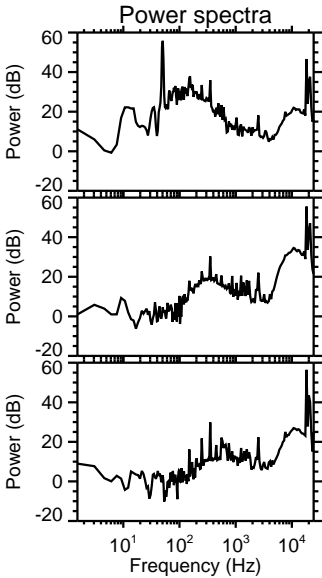
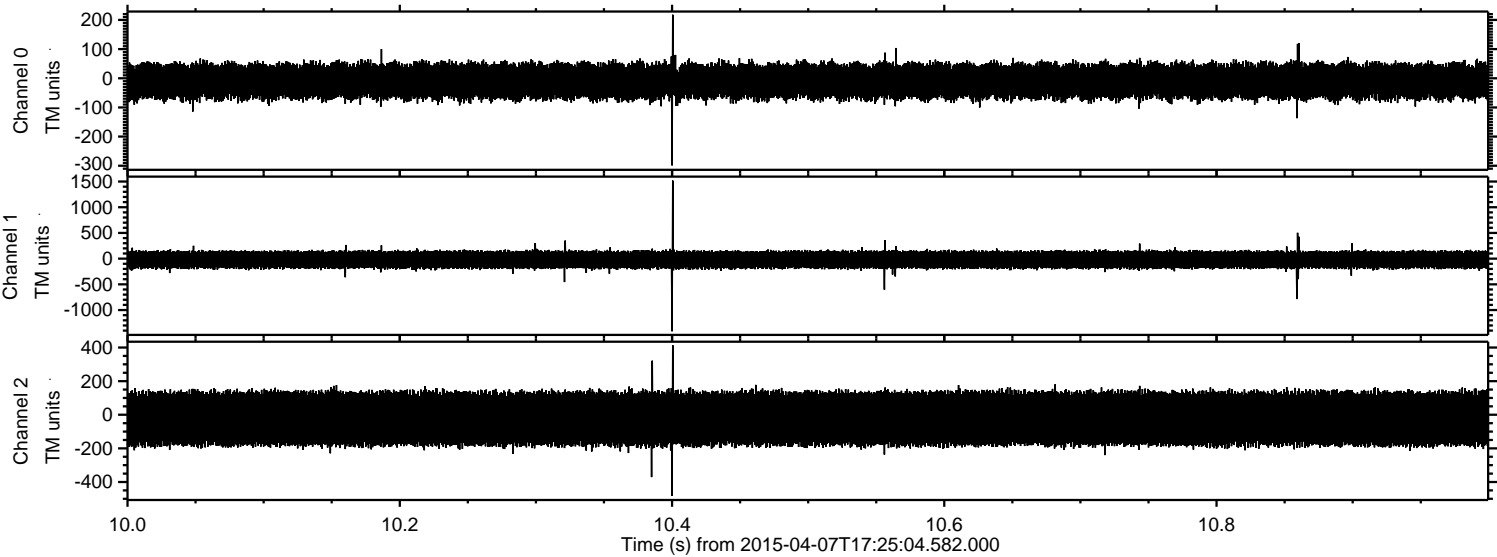


Processed Tue Apr 7 19:31:52 2015 by ELM ver.2012-10-06 from 001__elm20150407_172503__dat00.bin

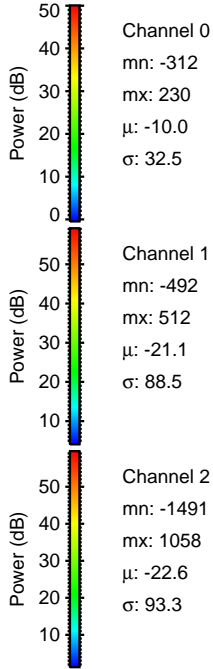
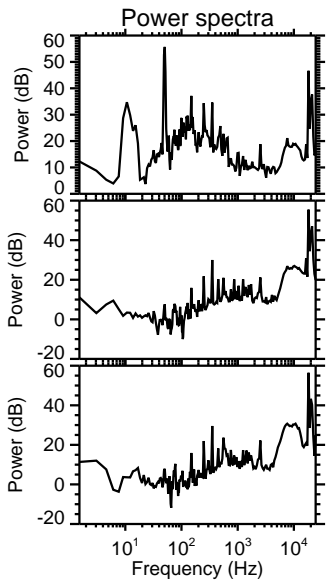
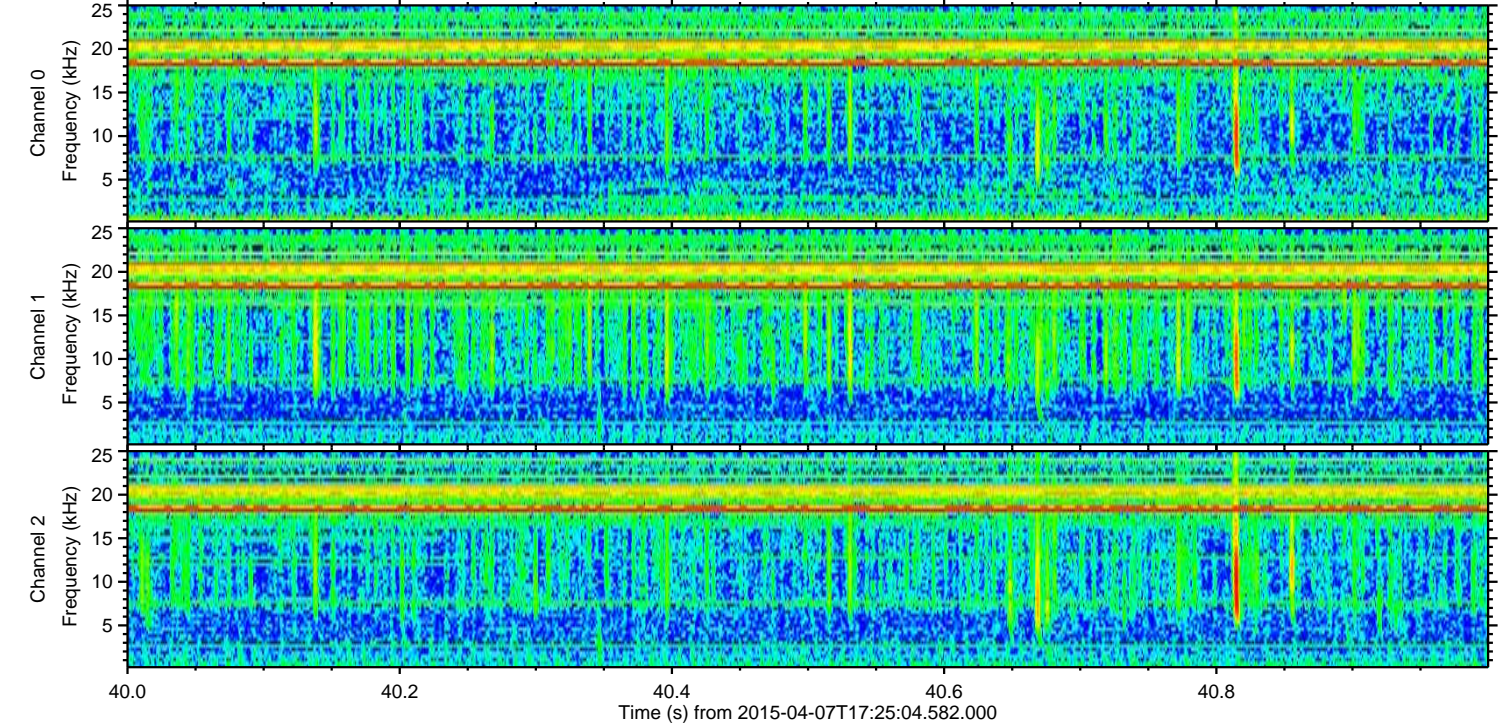
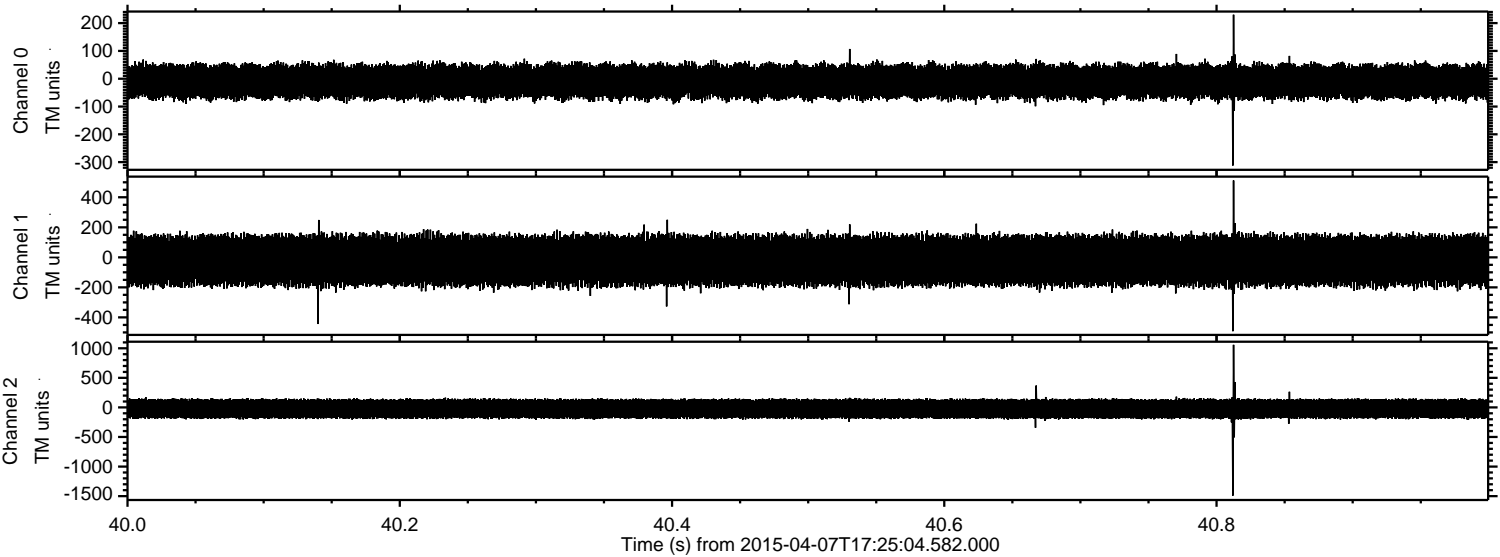


ELMAVAN 3D WAVEFORMS (Measured data sampled at 50 kHz) 49795 packets of 144 samples from 2015-04-07T17:25:04.582.000. Part 11/144

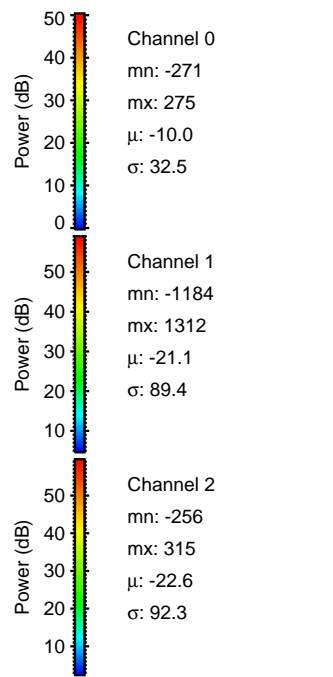
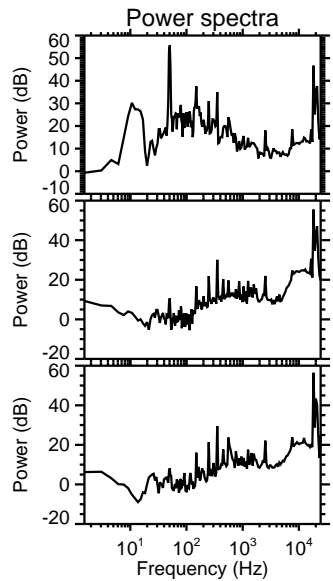
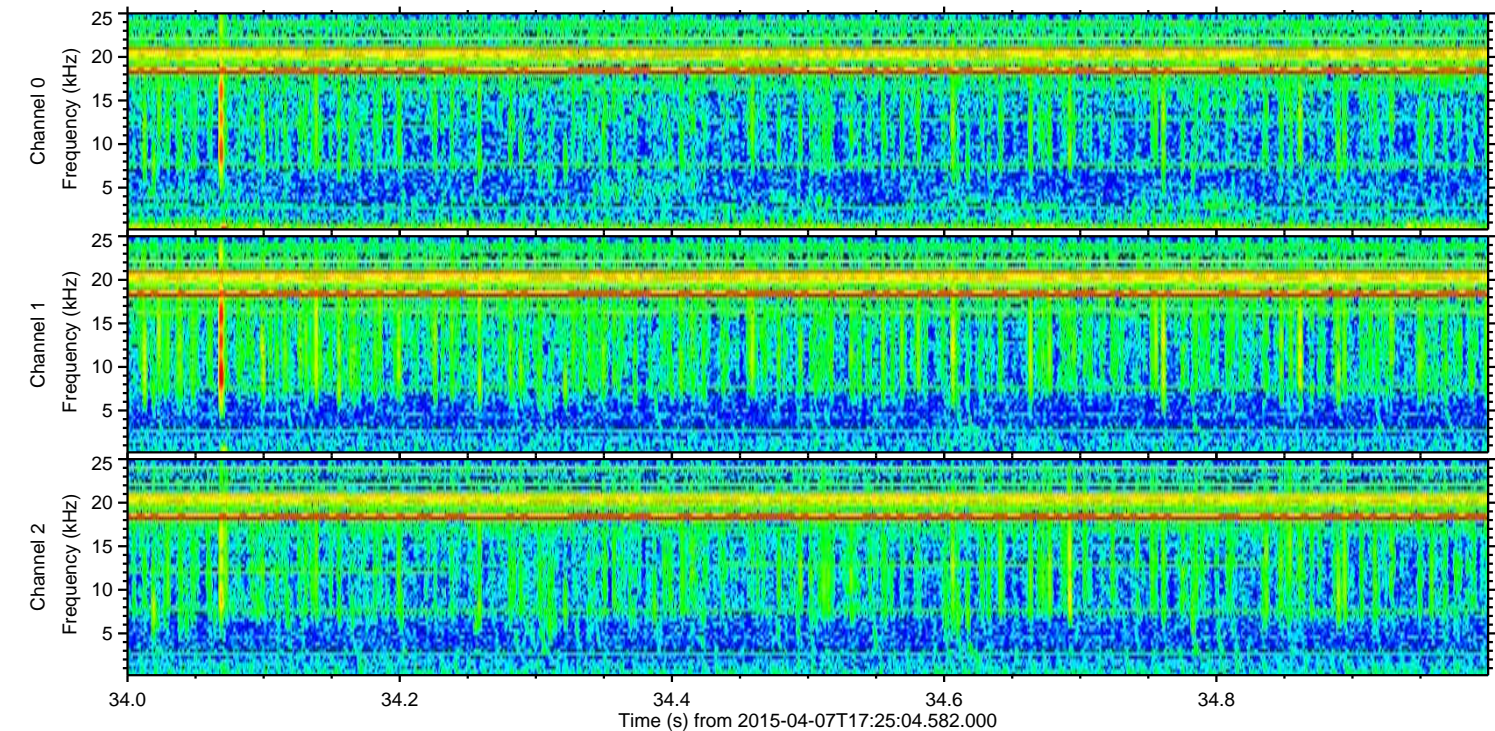
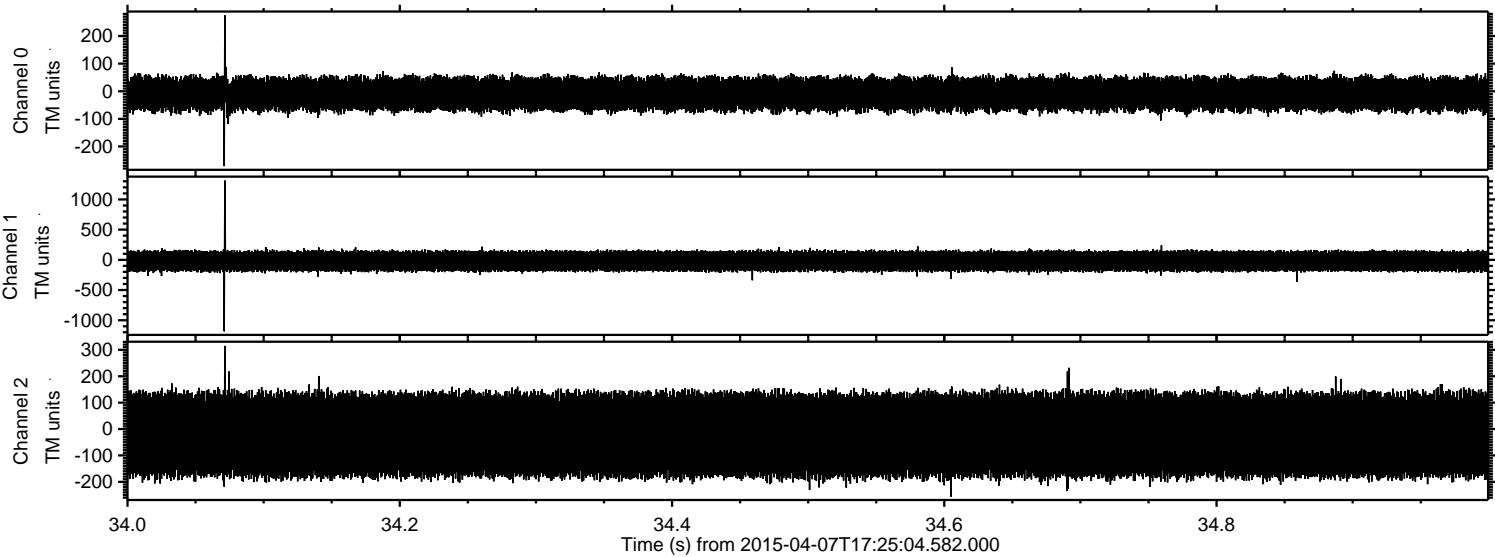
Processed Tue Apr 7 19:31:53 2015 by ELM ver.2012-10-06 from 001__elm20150407_172503__dat00.bin



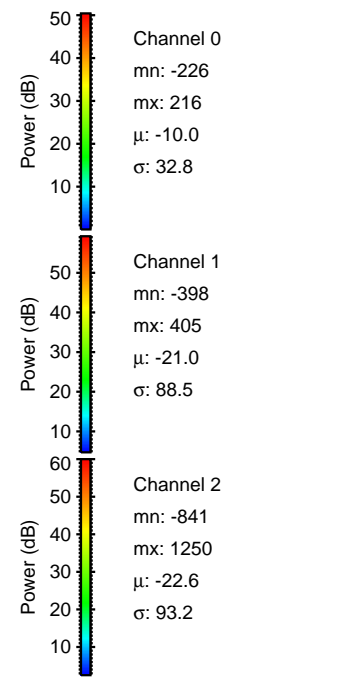
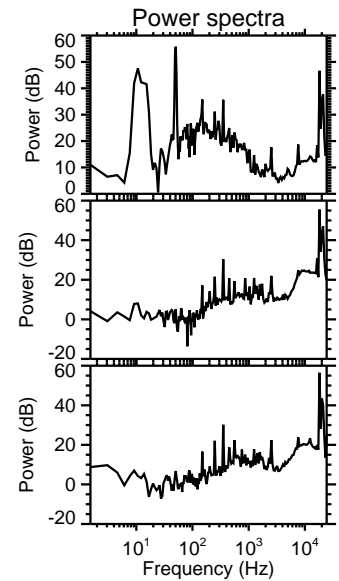
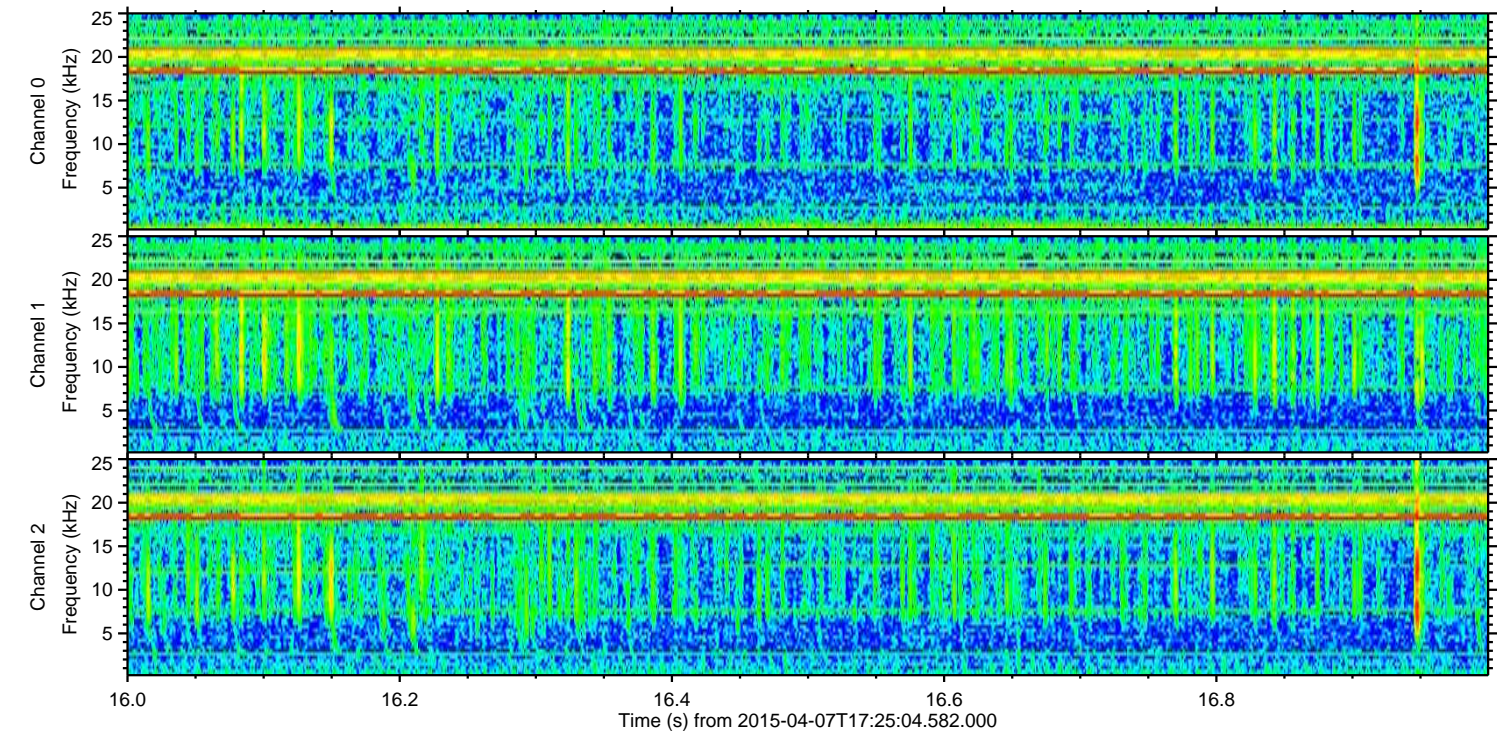
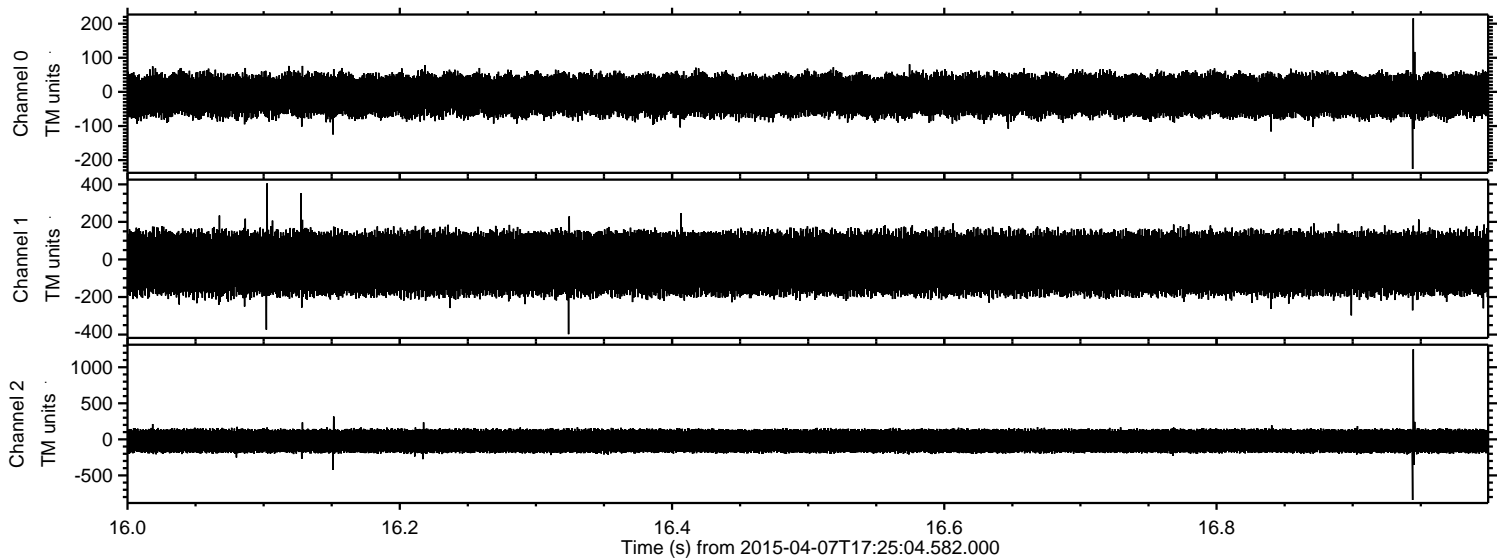
Processed Tue Apr 7 19:31:54 2015 by ELM ver.2012-10-06 from 001__elm20150407_172503__dat00.bin



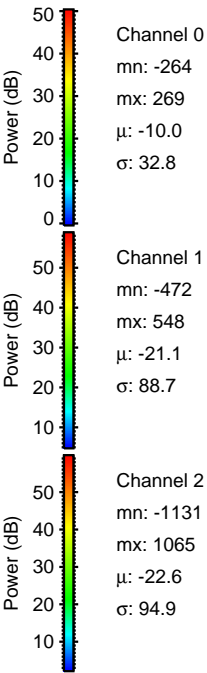
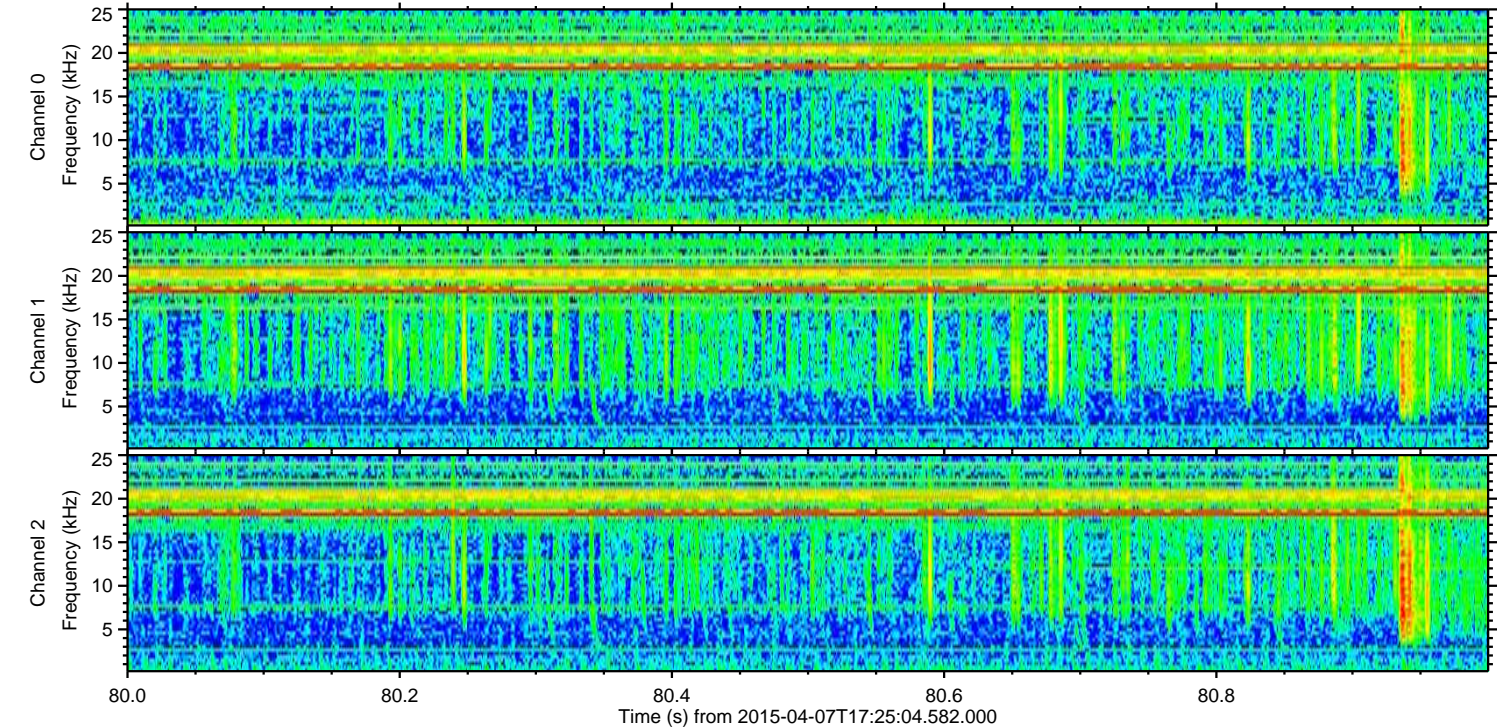
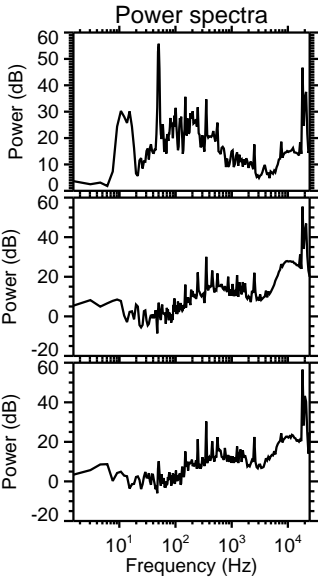
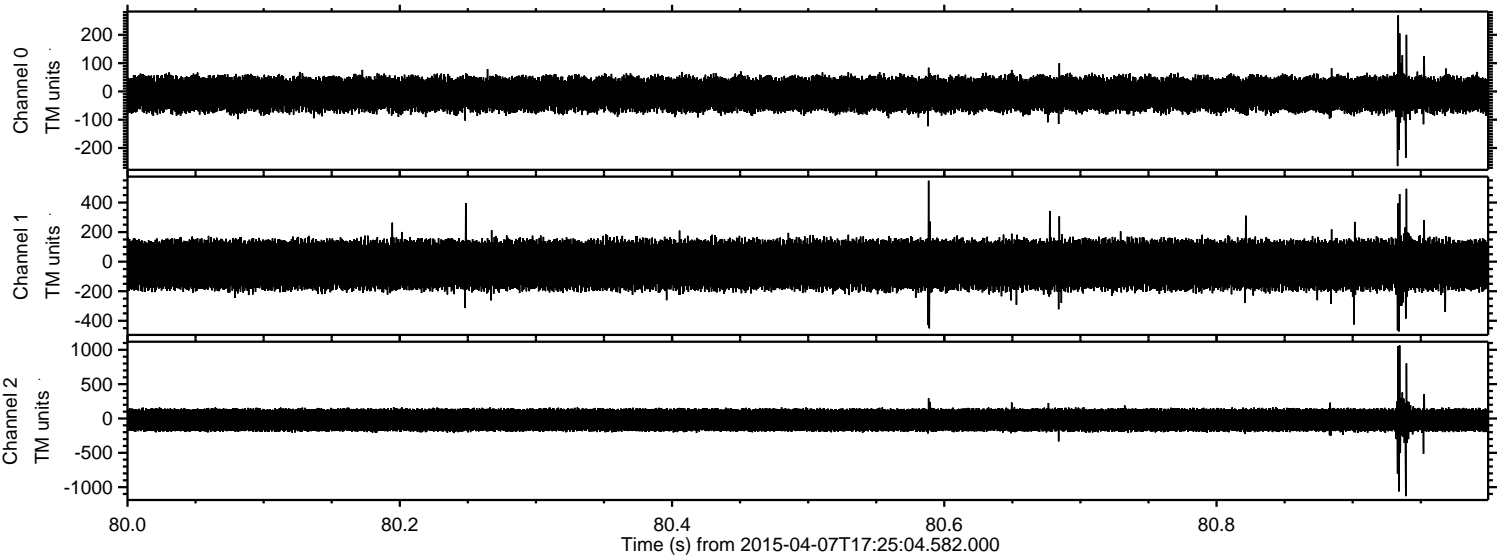
Processed Tue Apr 7 19:31:55 2015 by ELM ver.2012-10-06 from 001__elm20150407_172503__dat00.bin



Processed Tue Apr 7 19:31:56 2015 by ELM ver.2012-10-06 from 001__elm20150407_172503__dat00.bin



Processed Tue Apr 7 19:31:57 2015 by ELM ver.2012-10-06 from 001__elm20150407_172503__dat00.bin



Processed Tue Apr 7 19:31:58 2015 by ELM ver.2012-10-06 from 001__elm20150407_172503__dat00.bin

