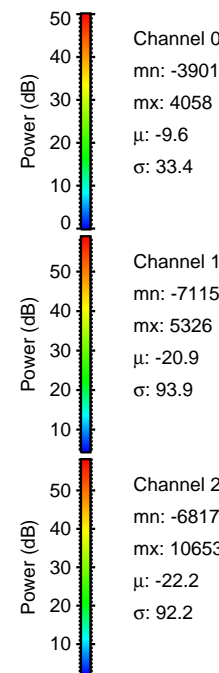
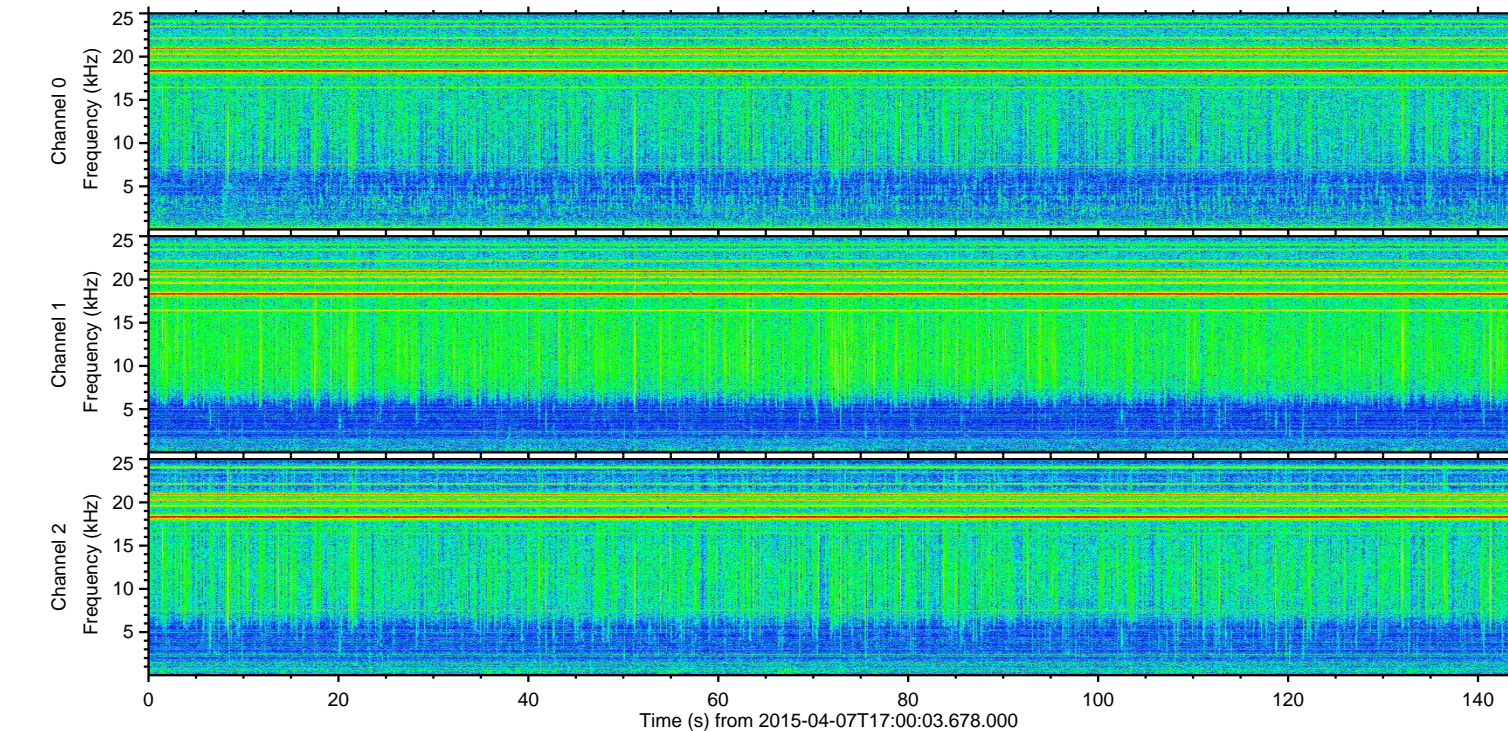
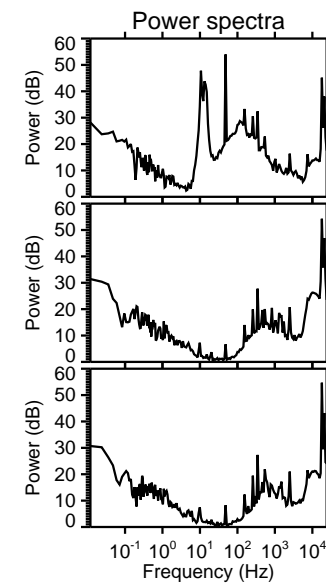
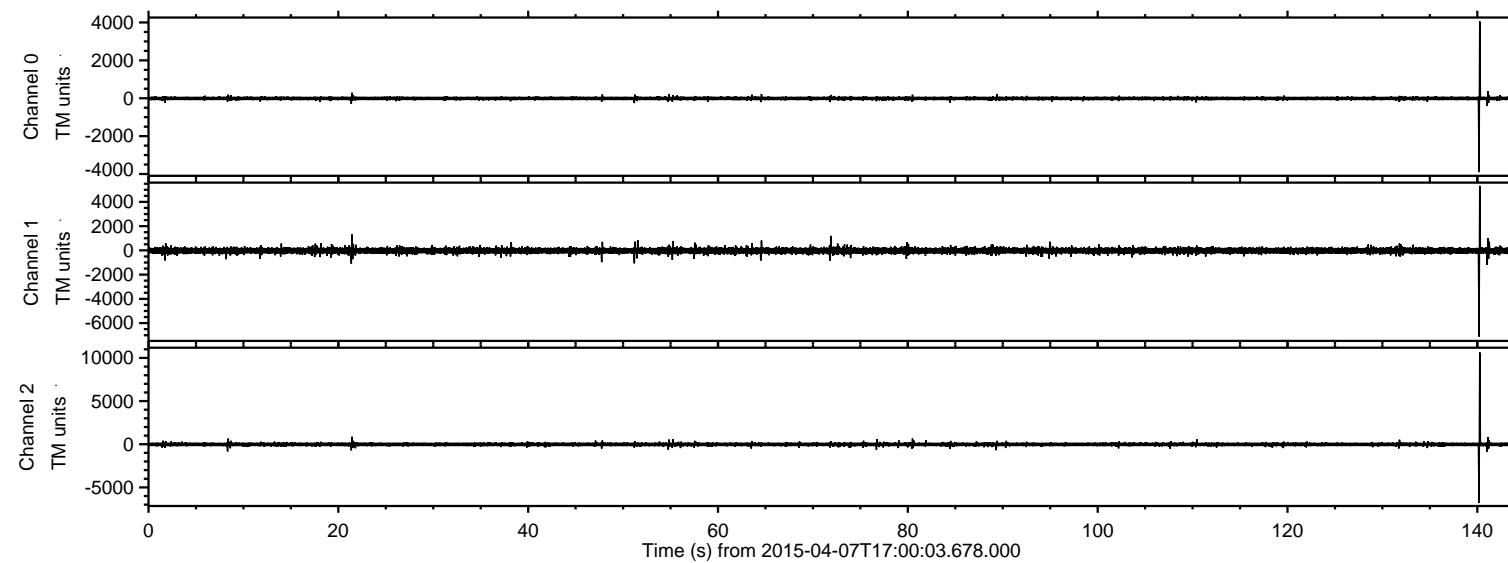


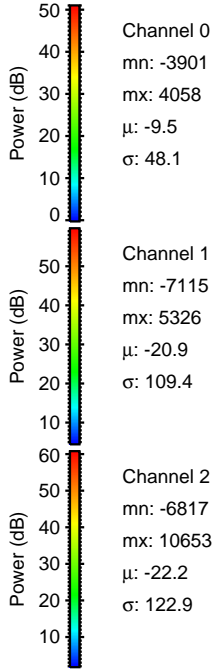
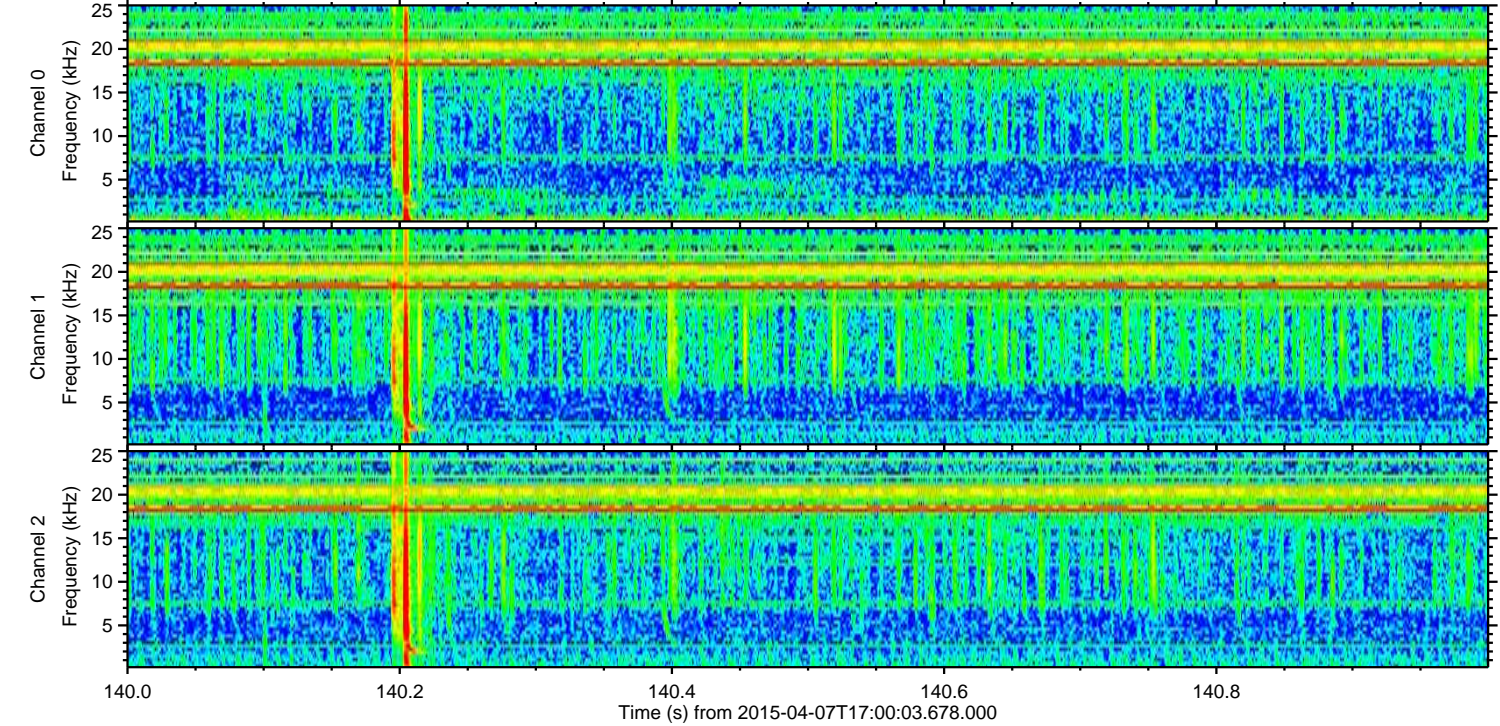
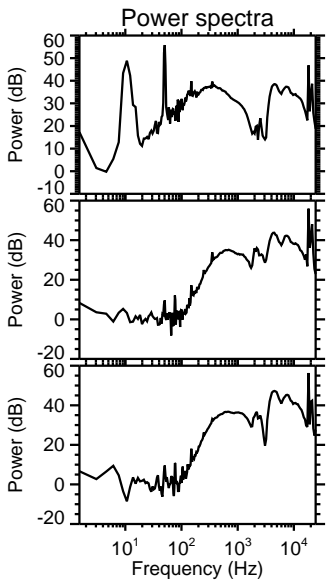
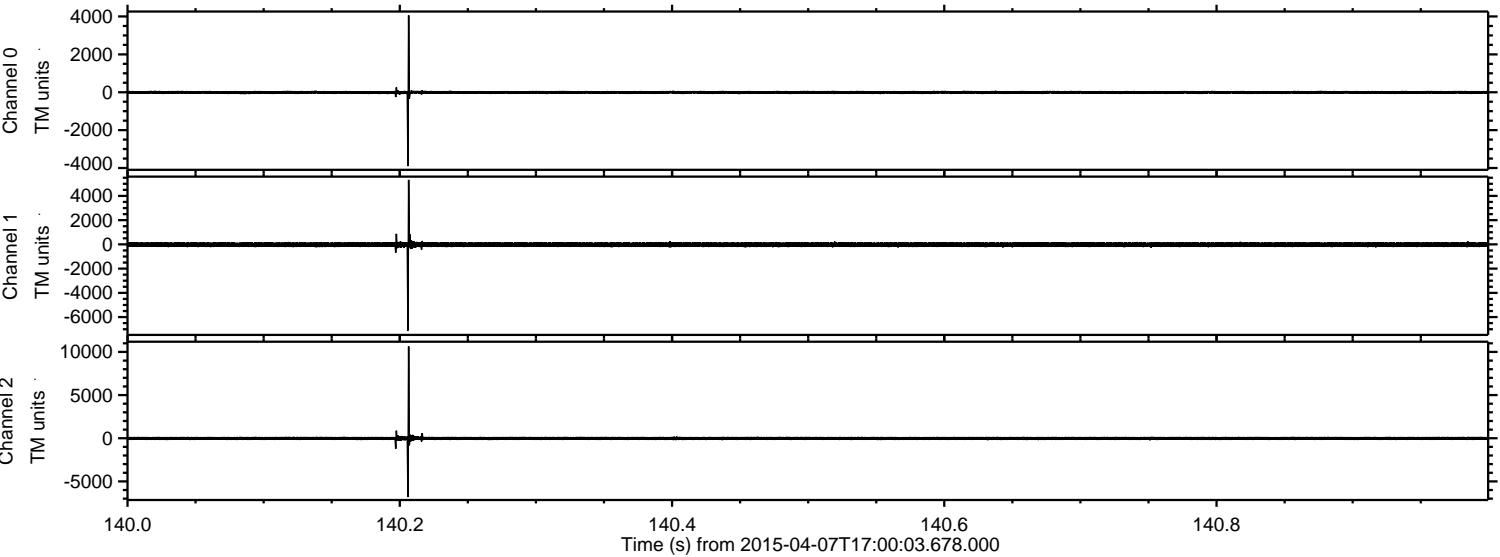
ELMAVAN 3D WAVEFORMS (Measured data sampled at 50 kHz) 49775 packets of 144 samples from 2015-04-07T17:00:03.678.000.

Processed Tue Apr 7 19:06:51 2015 by ELM ver.2012-10-06 from 001__elm20150407_170002__dat00.bin

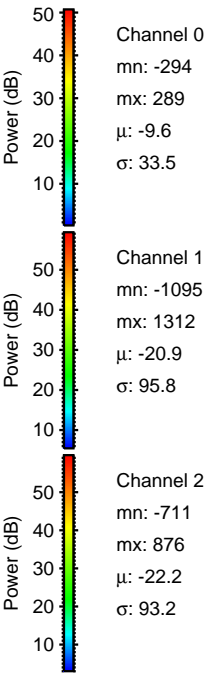
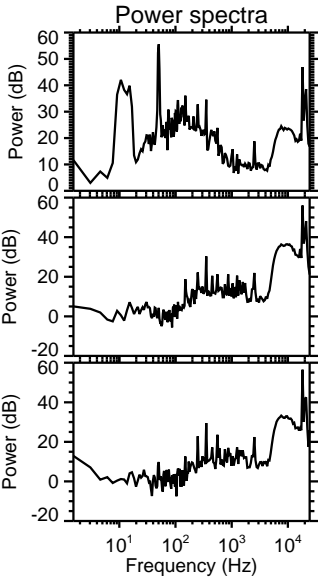
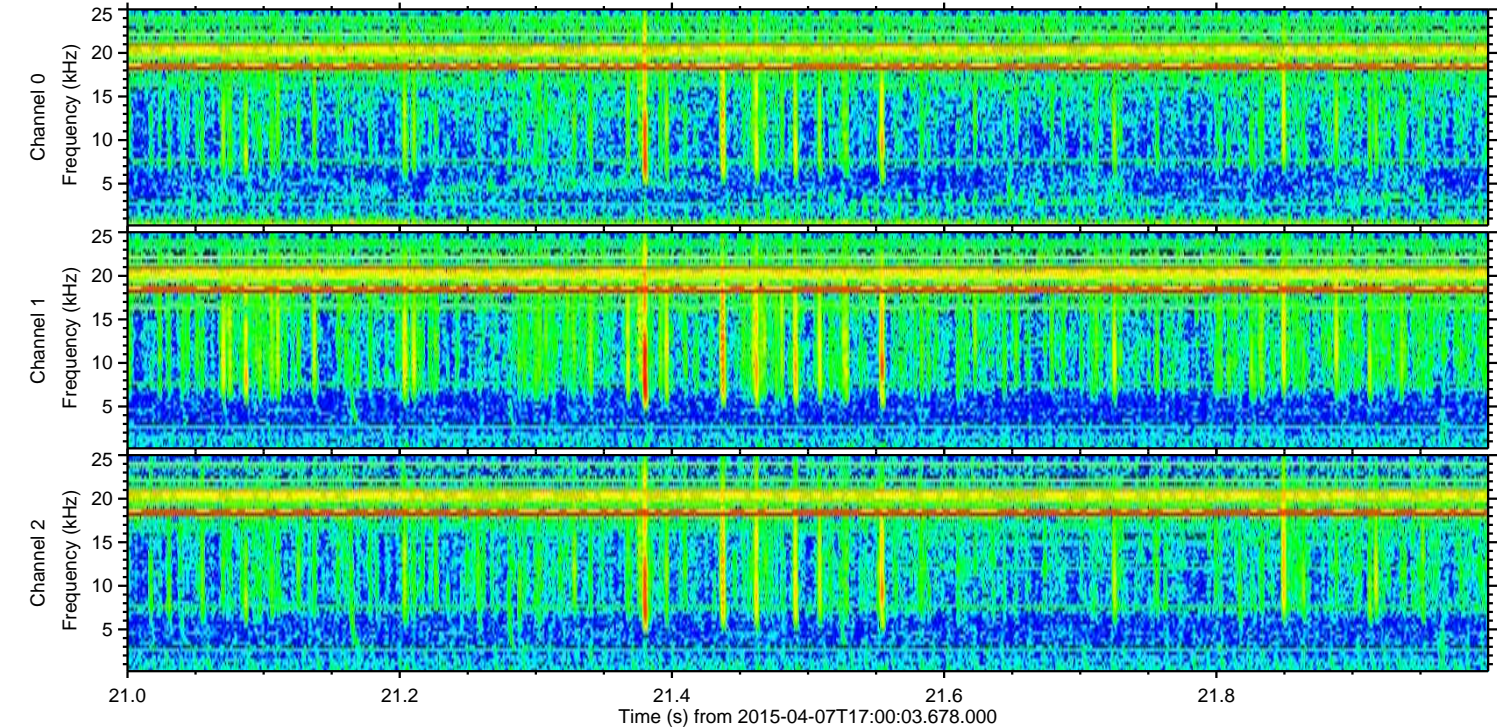
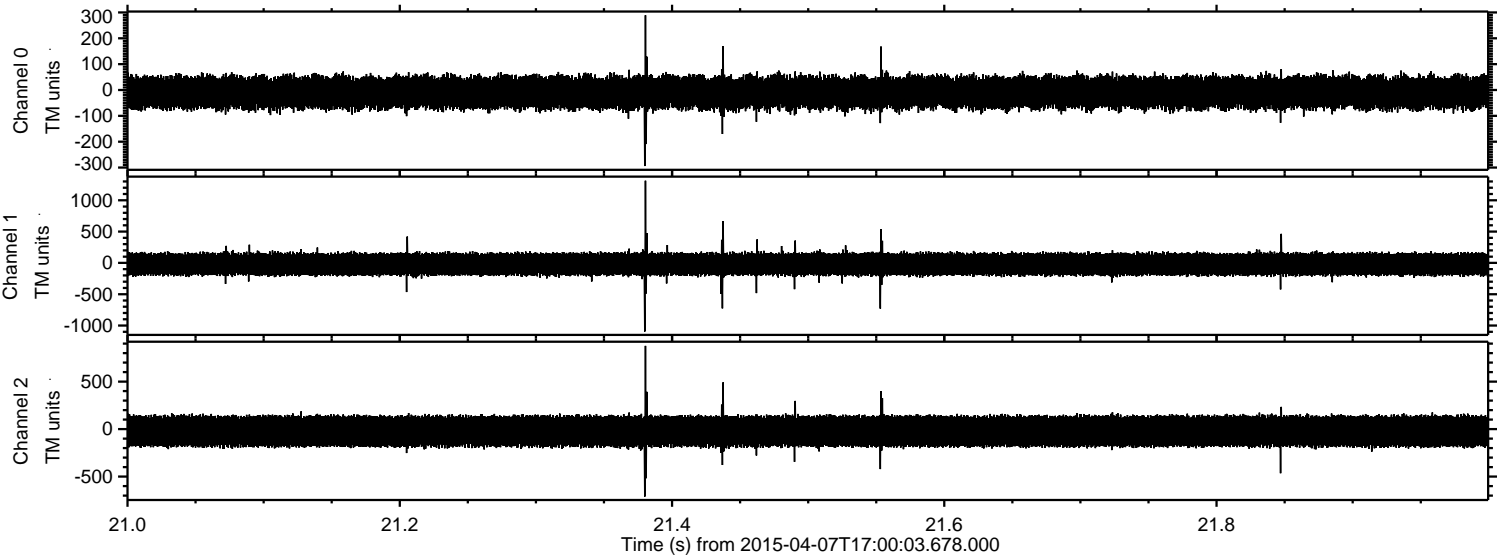


ELMAVAN 3D WAVEFORMS (Measured data sampled at 50 kHz) 49775 packets of 144 samples from 2015-04-07T17:00:03.678.000. Part 141/144

Processed Tue Apr 7 19:07:02 2015 by ELM ver.2012-10-06 from 001__elm20150407_170002__dat00.bin

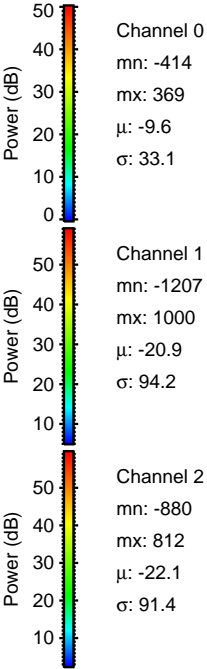
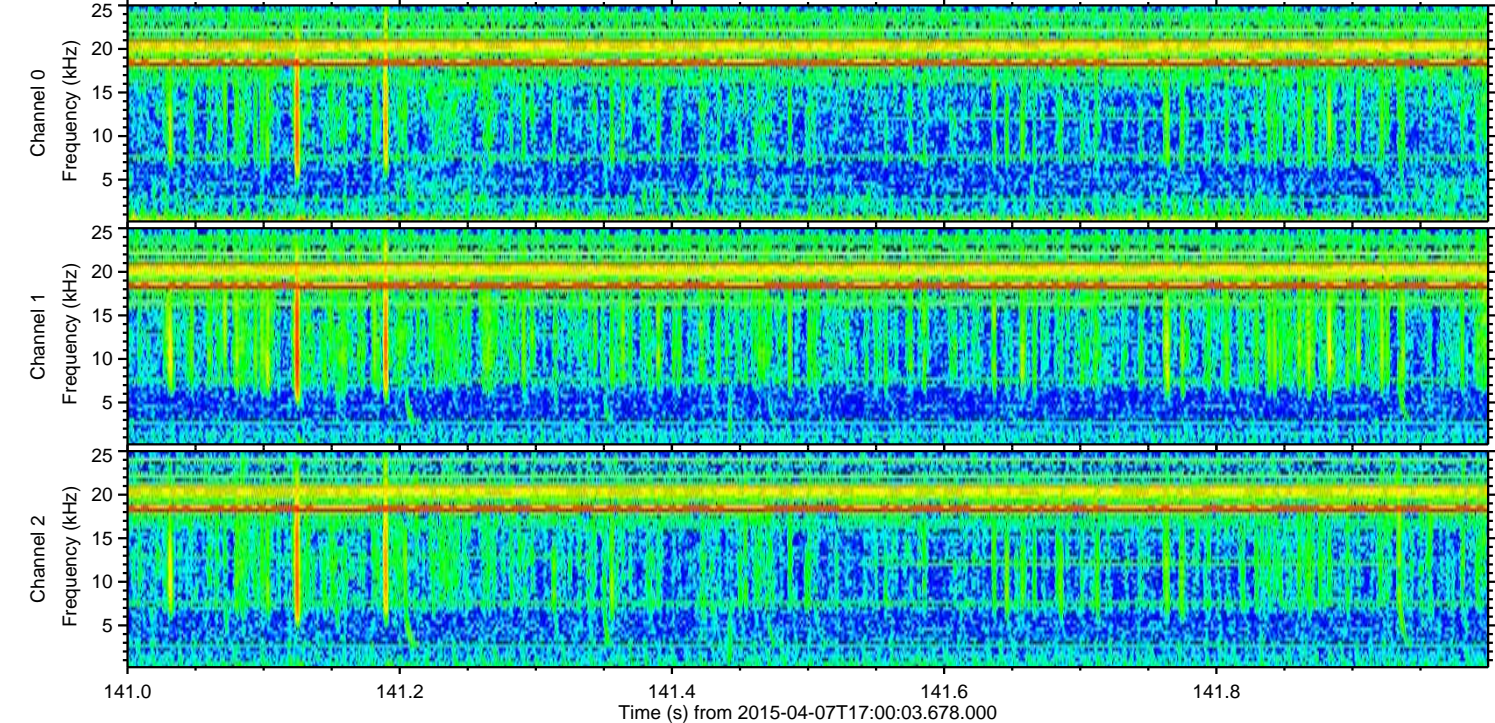
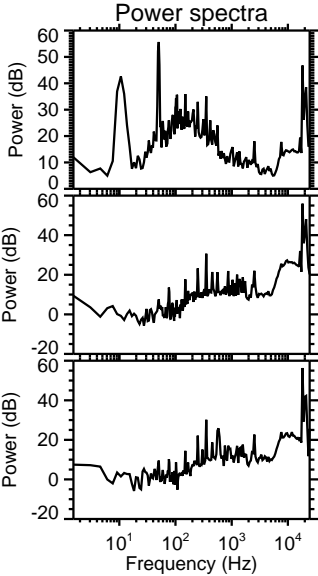
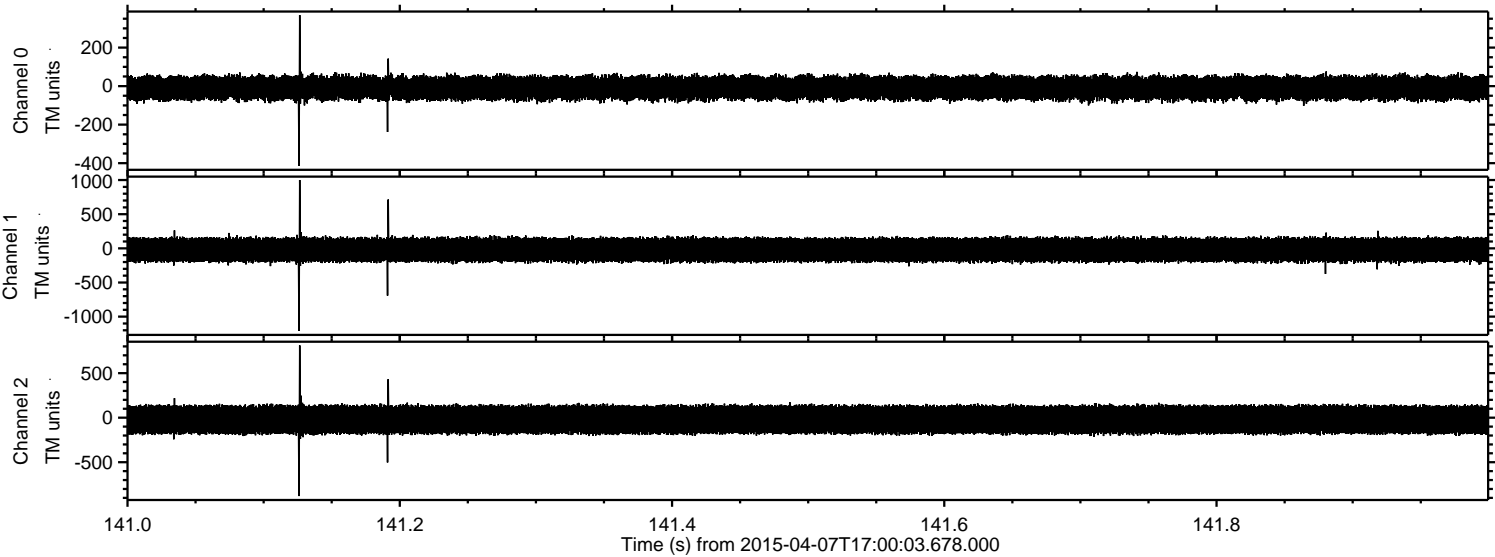


Processed Tue Apr 7 19:07:03 2015 by ELM ver.2012-10-06 from 001__elm20150407_170002__dat00.bin

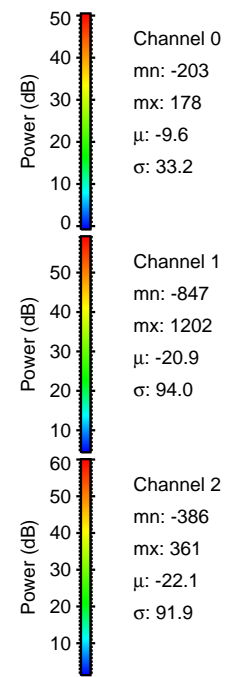
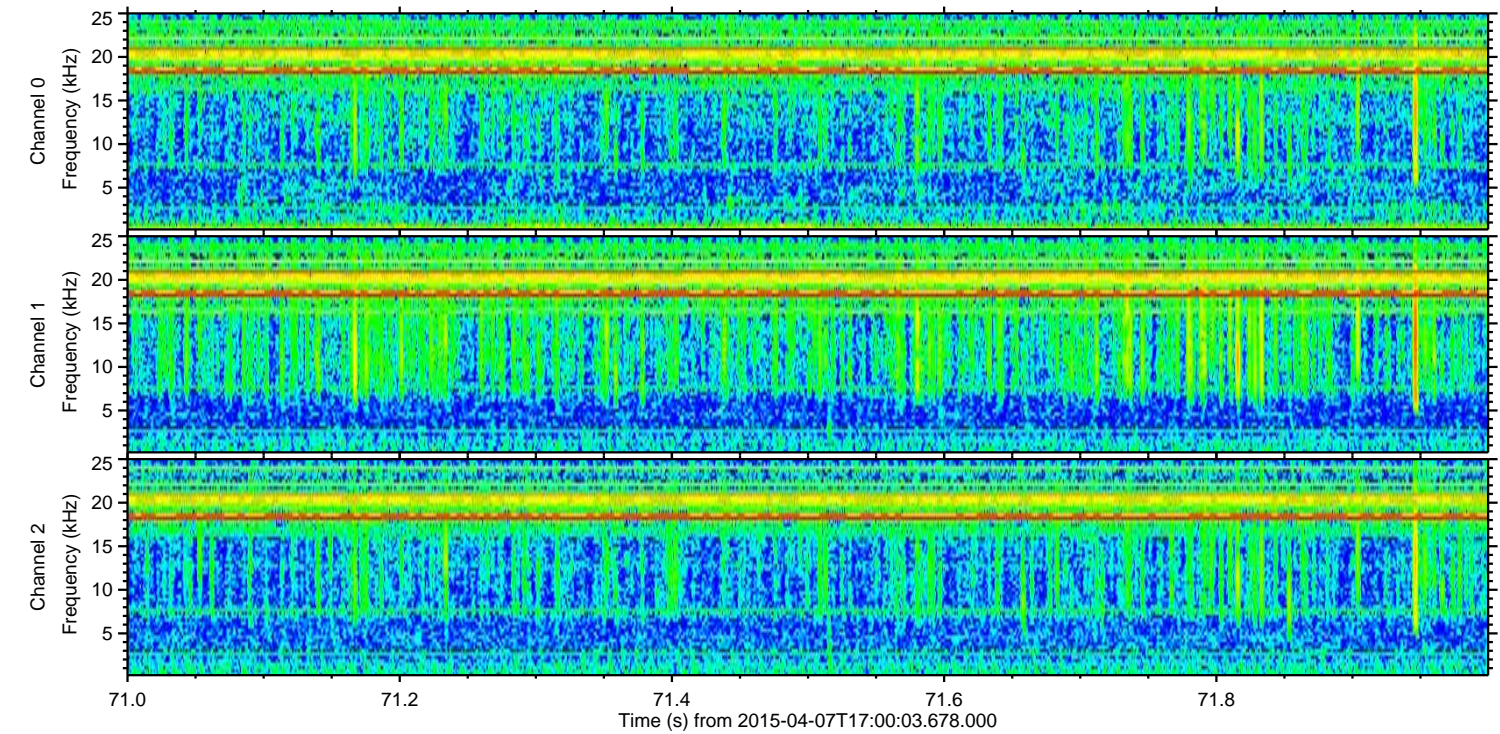
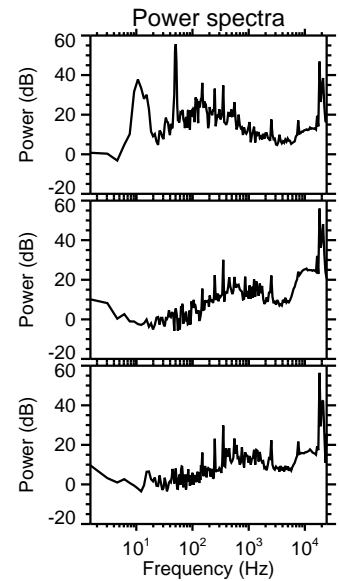
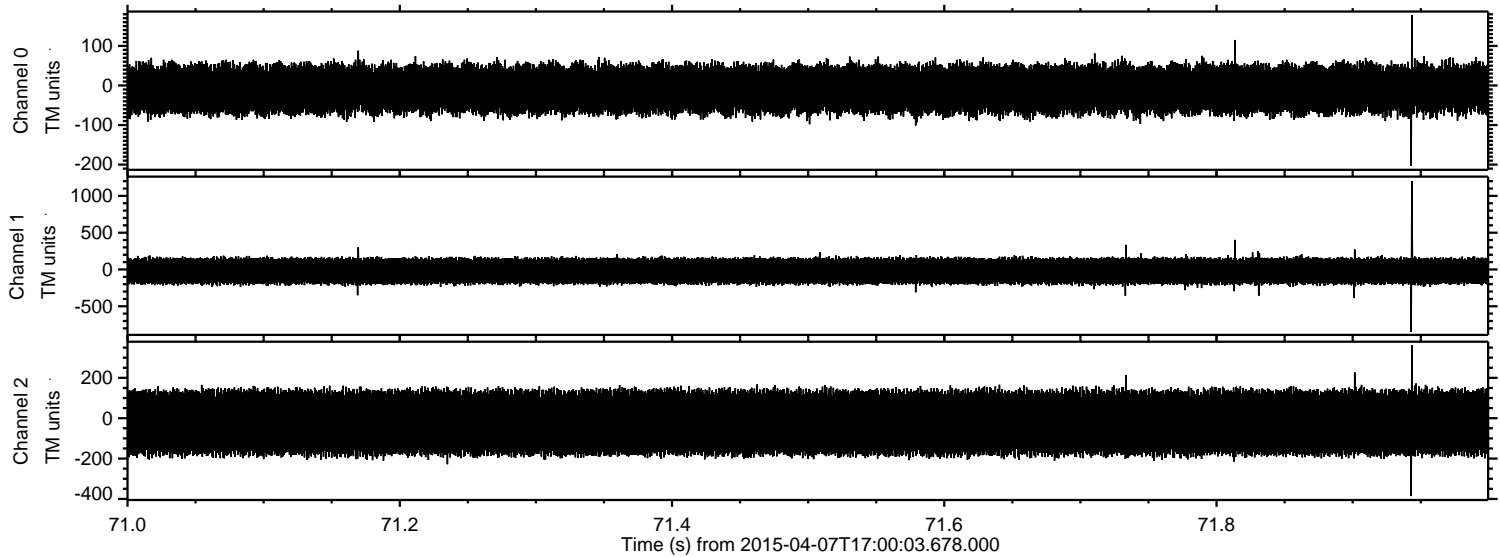


ELMAVAN 3D WAVEFORMS (Measured data sampled at 50 kHz) 49775 packets of 144 samples from 2015-04-07T17:00:03.678.000. Part 142/144

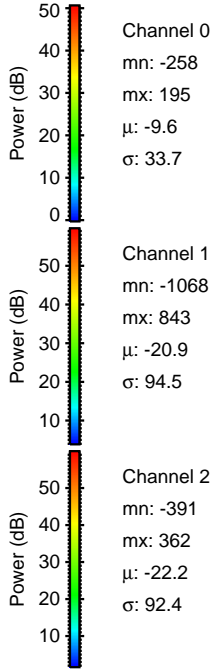
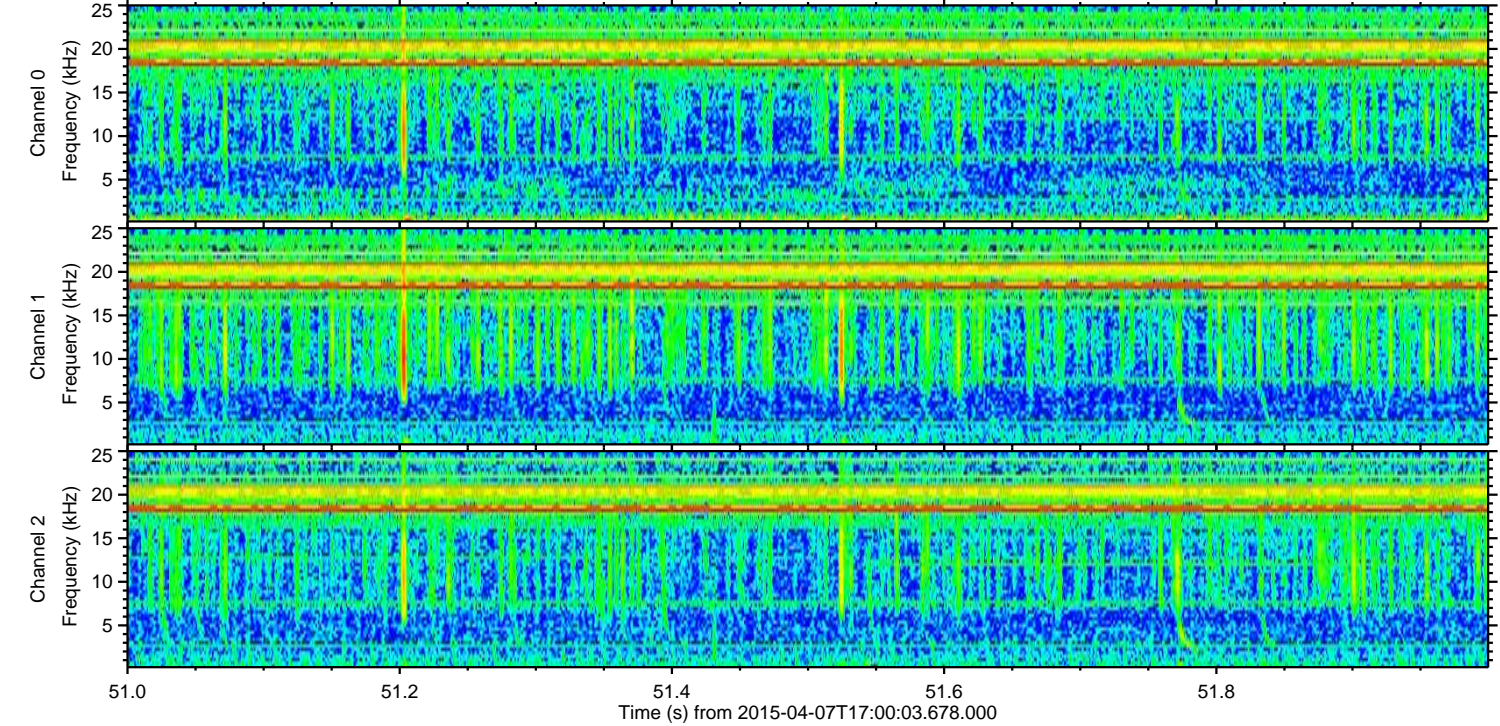
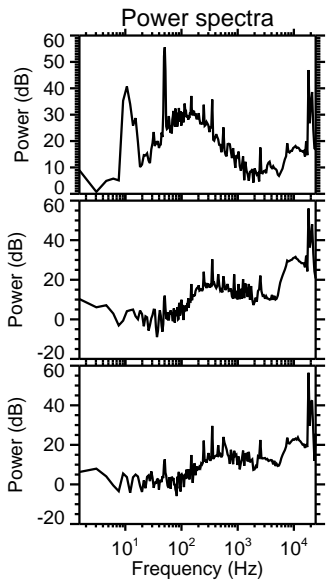
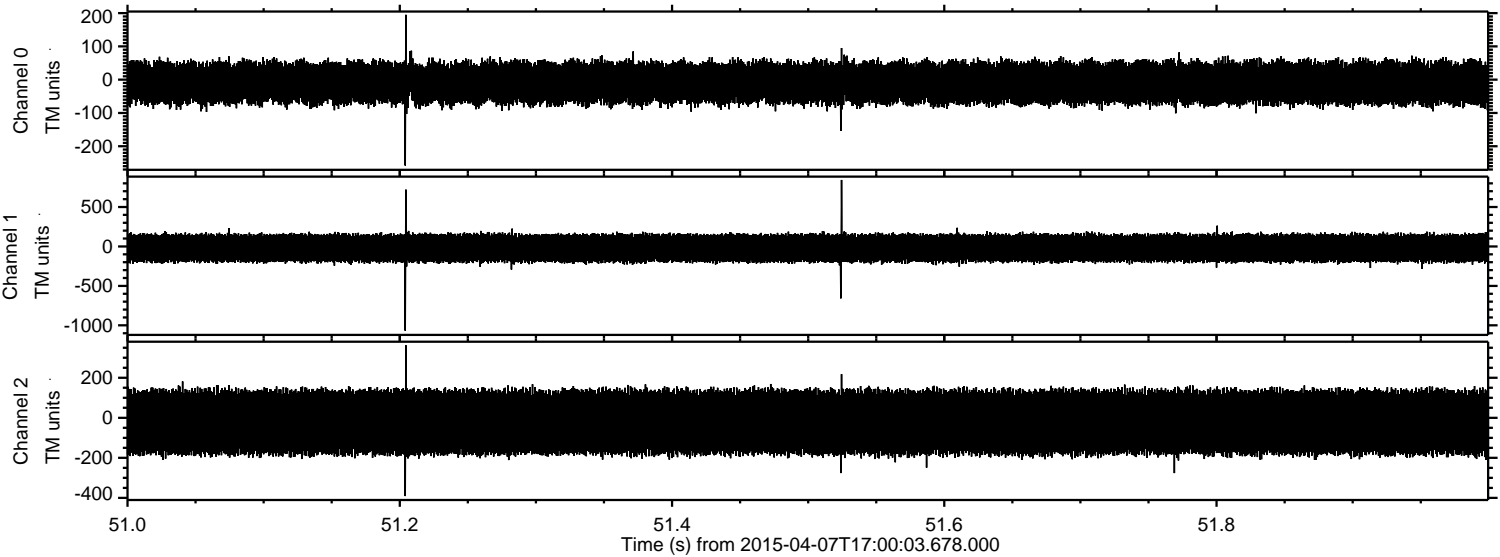
Processed Tue Apr 7 19:07:04 2015 by ELM ver.2012-10-06 from 001__elm20150407_170002__dat00.bin



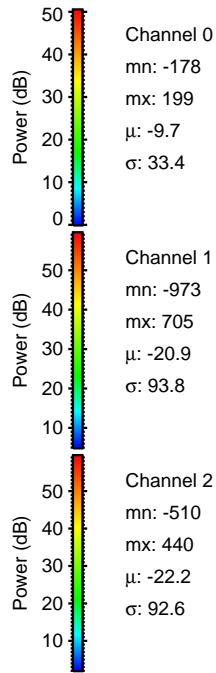
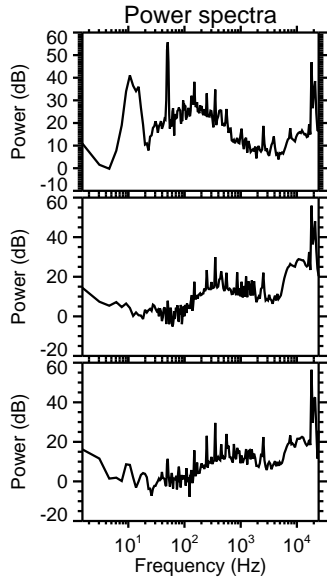
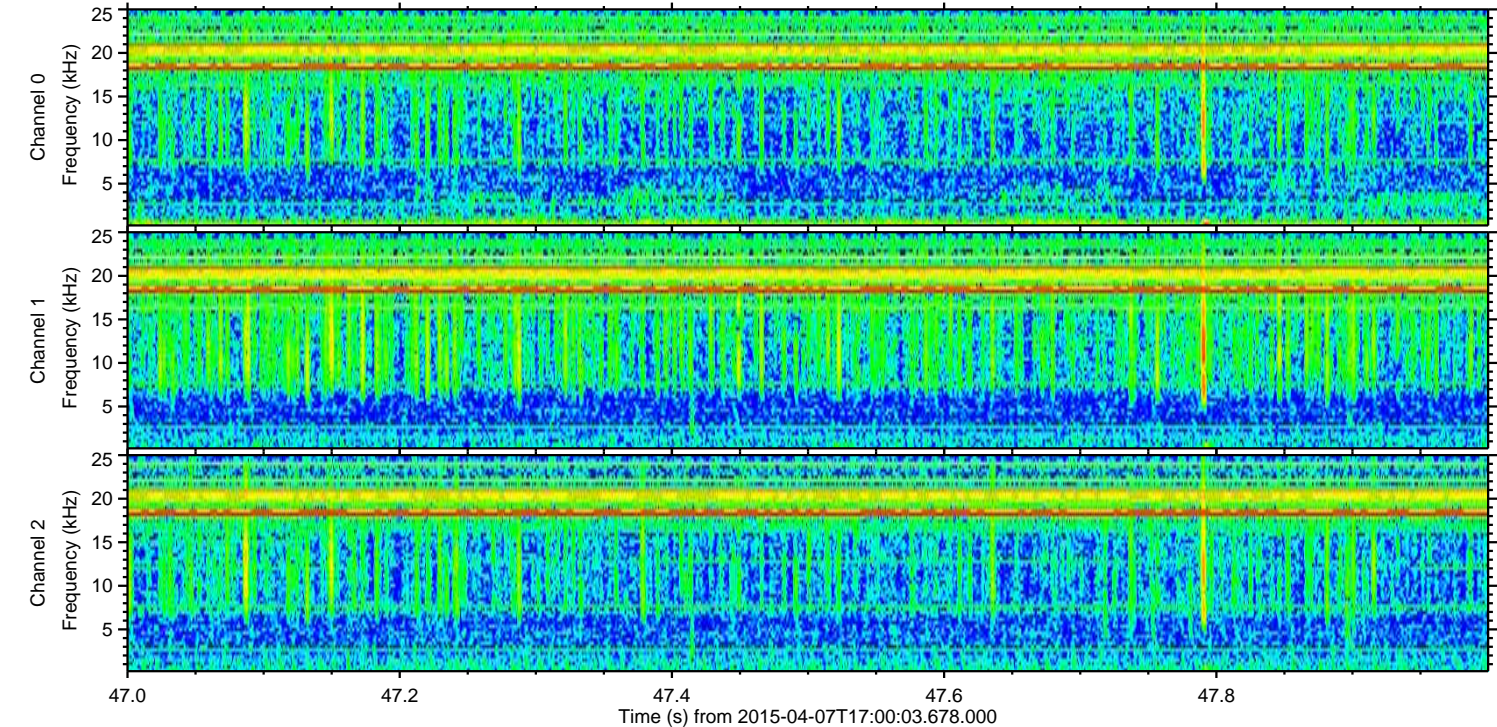
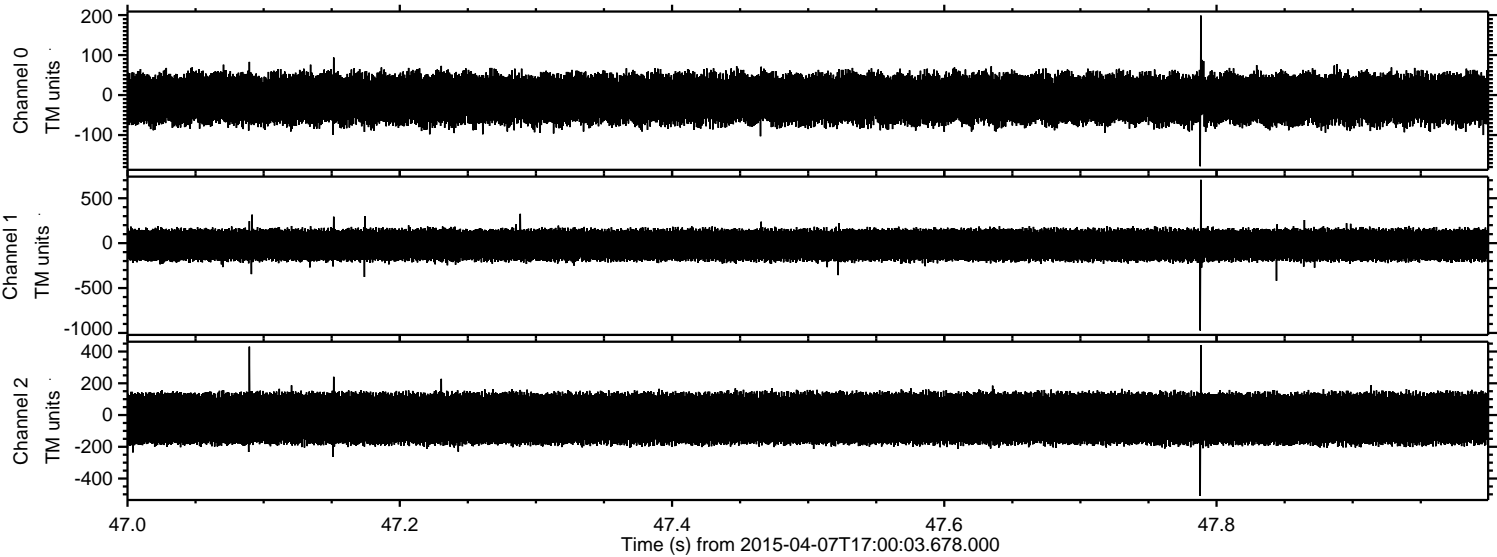
Processed Tue Apr 7 19:07:05 2015 by ELM ver.2012-10-06 from 001__elm20150407_170002__dat00.bin



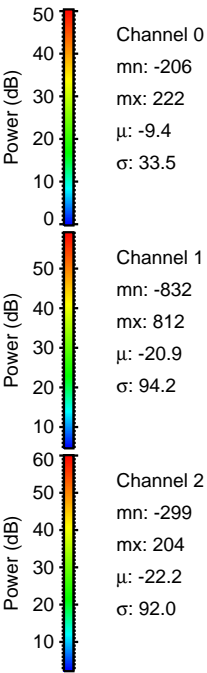
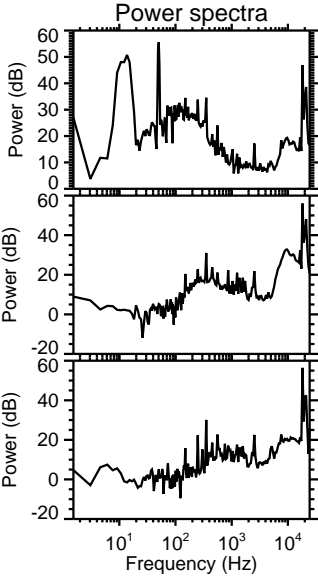
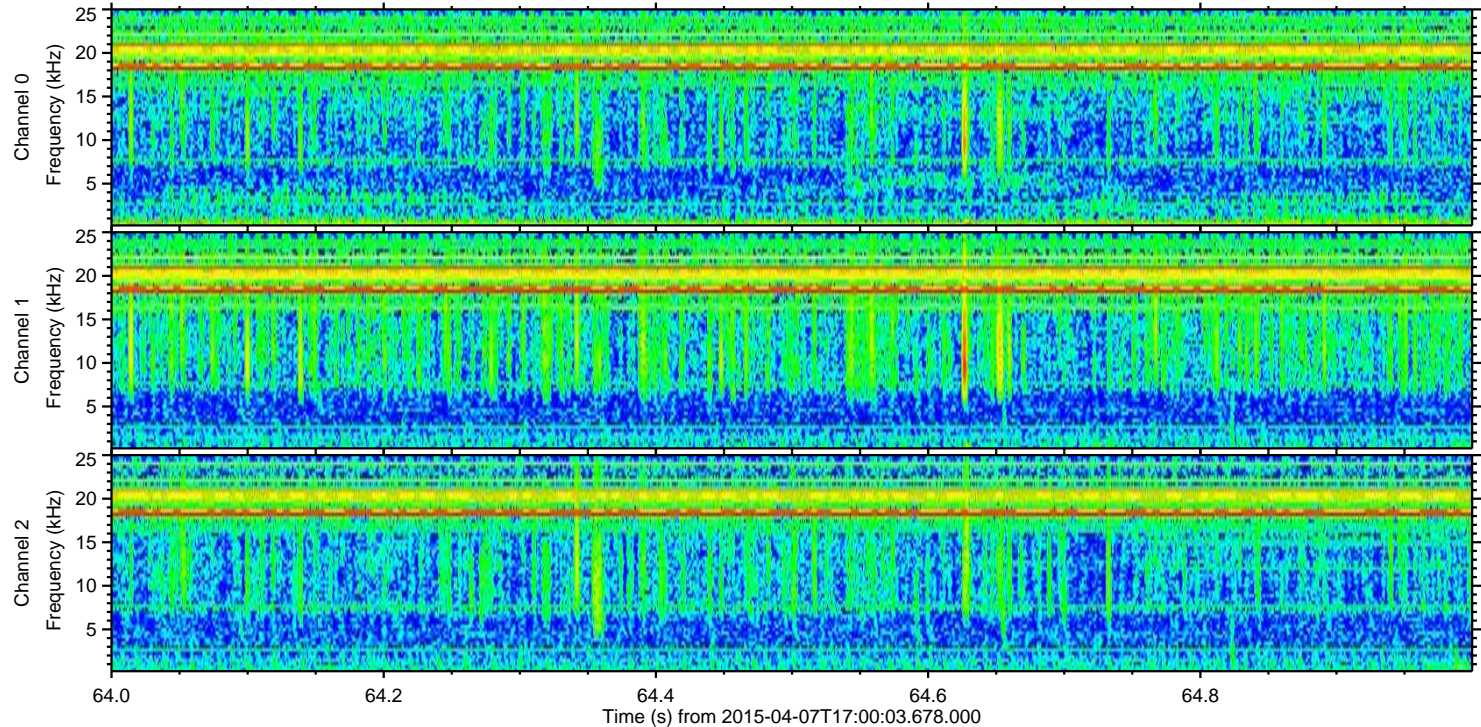
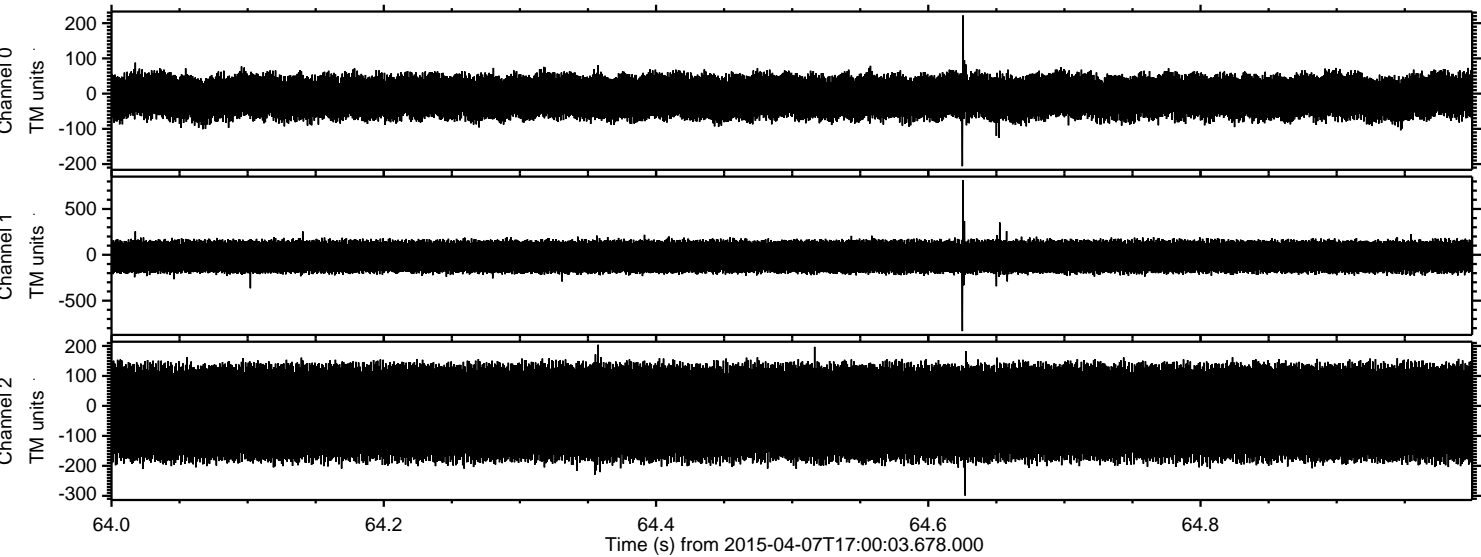
Processed Tue Apr 7 19:07:06 2015 by ELM ver.2012-10-06 from 001__elm20150407_170002__dat00.bin



Processed Tue Apr 7 19:07:07 2015 by ELM ver.2012-10-06 from 001__elm20150407_170002__dat00.bin

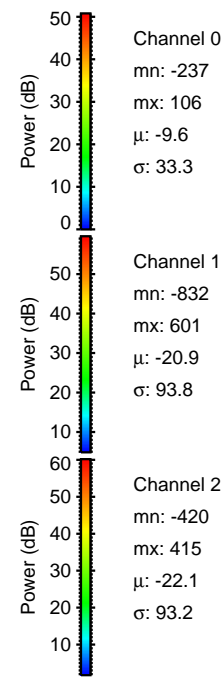
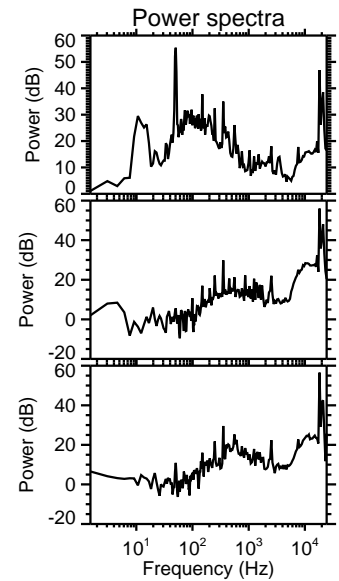
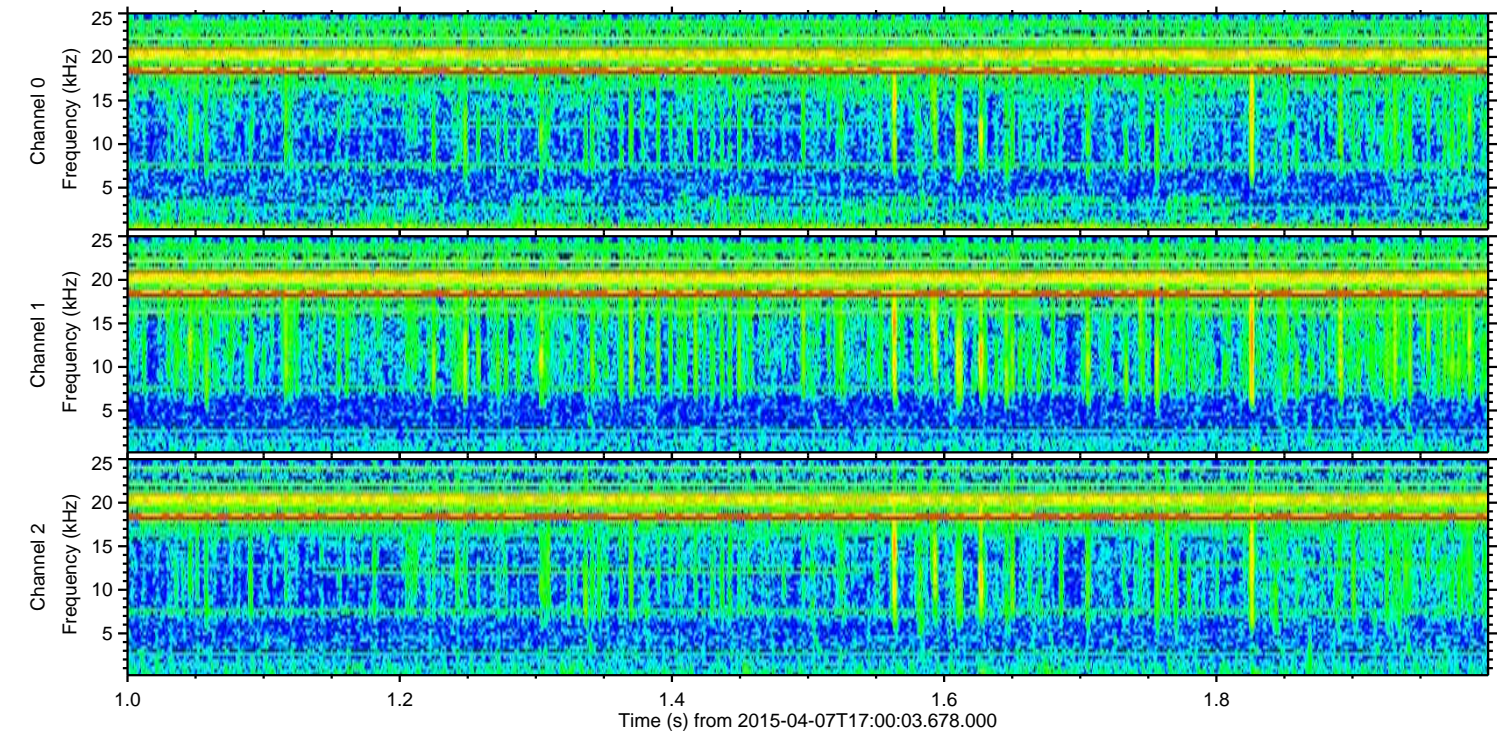
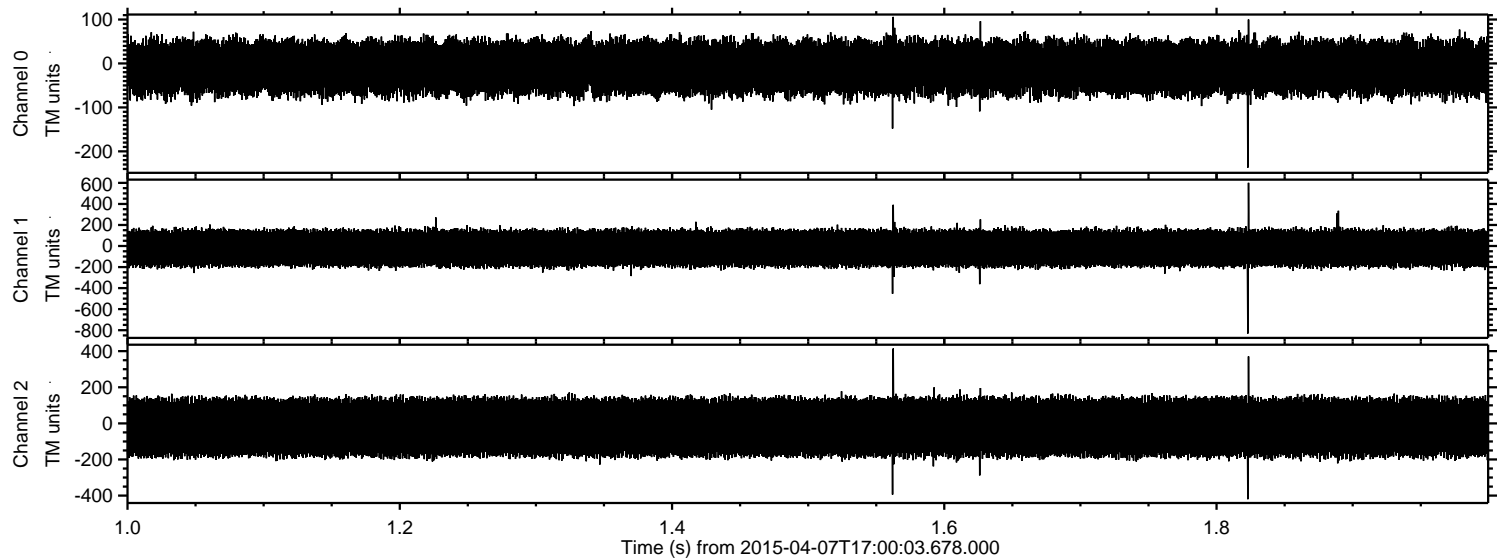


Processed Tue Apr 7 19:07:08 2015 by ELM ver.2012-10-06 from 001__elm20150407_170002__dat00.bin

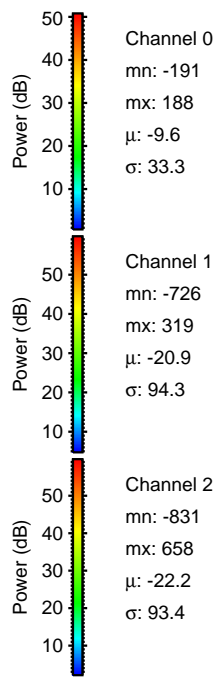
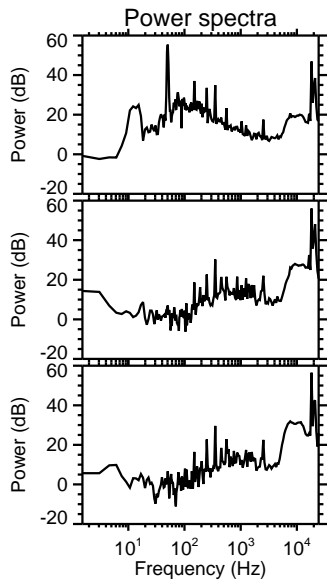
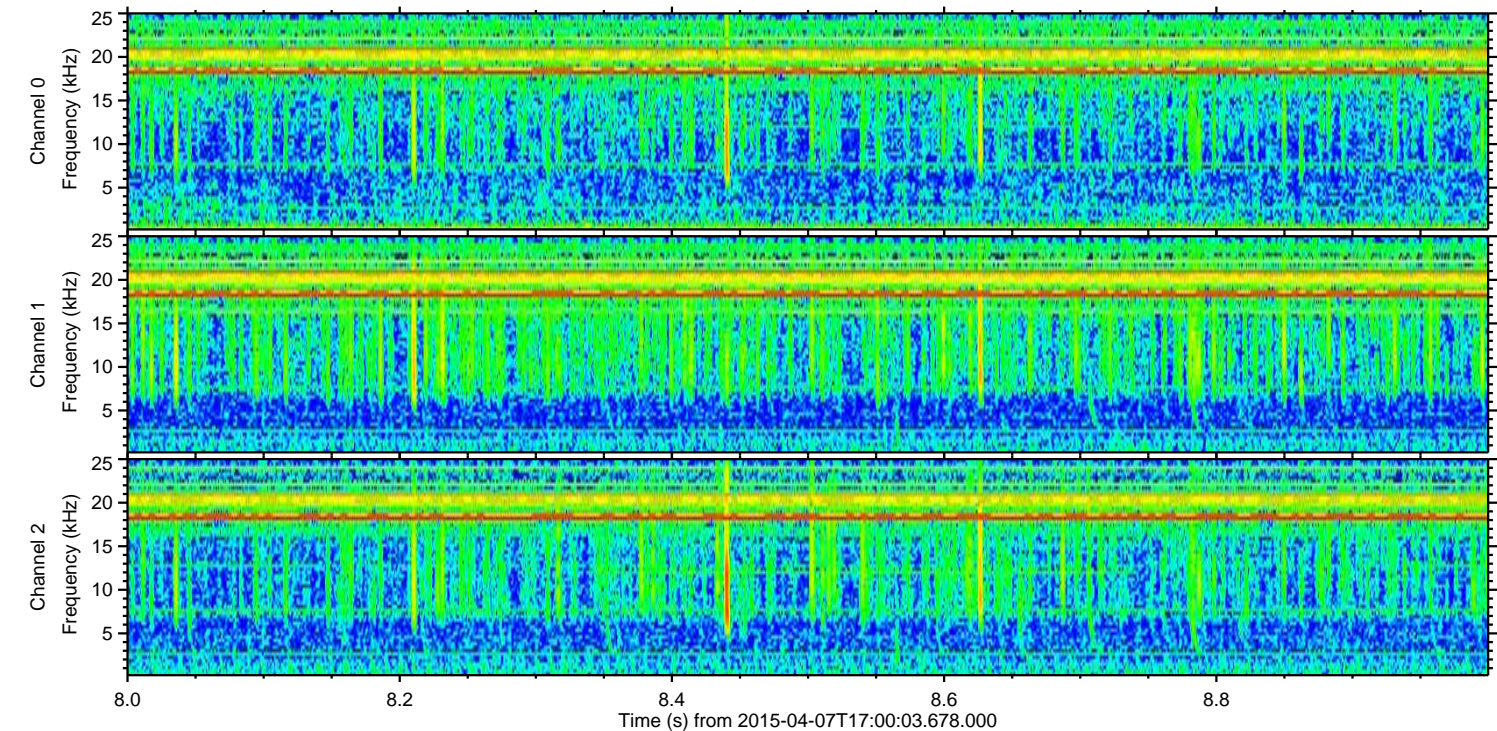
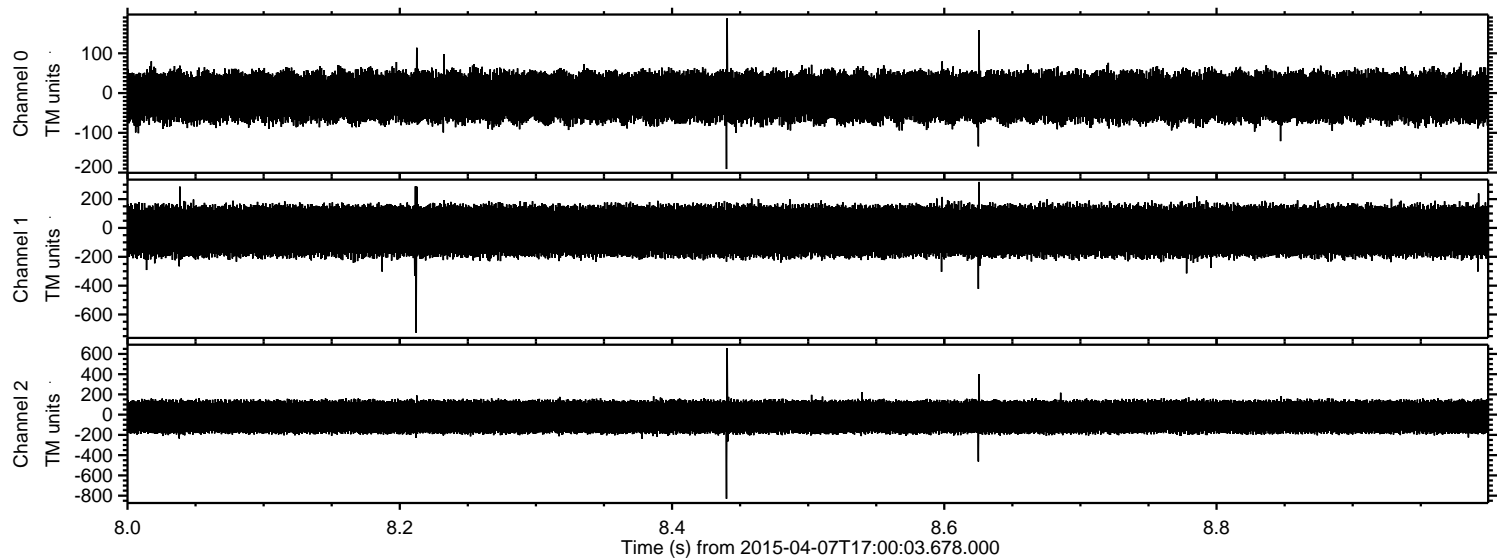


ELMAVAN 3D WAVEFORMS (Measured data sampled at 50 kHz) 49775 packets of 144 samples from 2015-04-07T17:00:03.678.000. Part 2/144

Processed Tue Apr 7 19:07:09 2015 by ELM ver.2012-10-06 from 001__elm20150407_170002__dat00.bin



Processed Tue Apr 7 19:07:10 2015 by ELM ver.2012-10-06 from 001__elm20150407_170002__dat00.bin



Channel 0
mn: -191
mx: 188
 μ : -9.6
 σ : 33.3

Channel 1
mn: -726
mx: 319
 μ : -20.9
 σ : 94.3

Channel 2
mn: -831
mx: 658
 μ : -22.2
 σ : 93.4

Processed Tue Apr 7 19:07:11 2015 by ELM ver.2012-10-06 from 001__elm20150407_170002__dat00.bin

