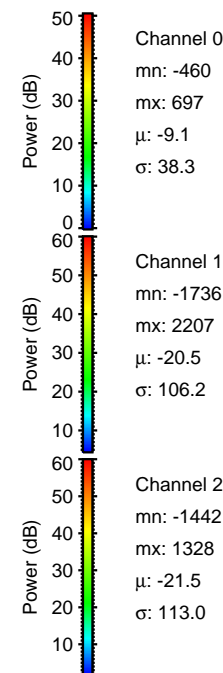
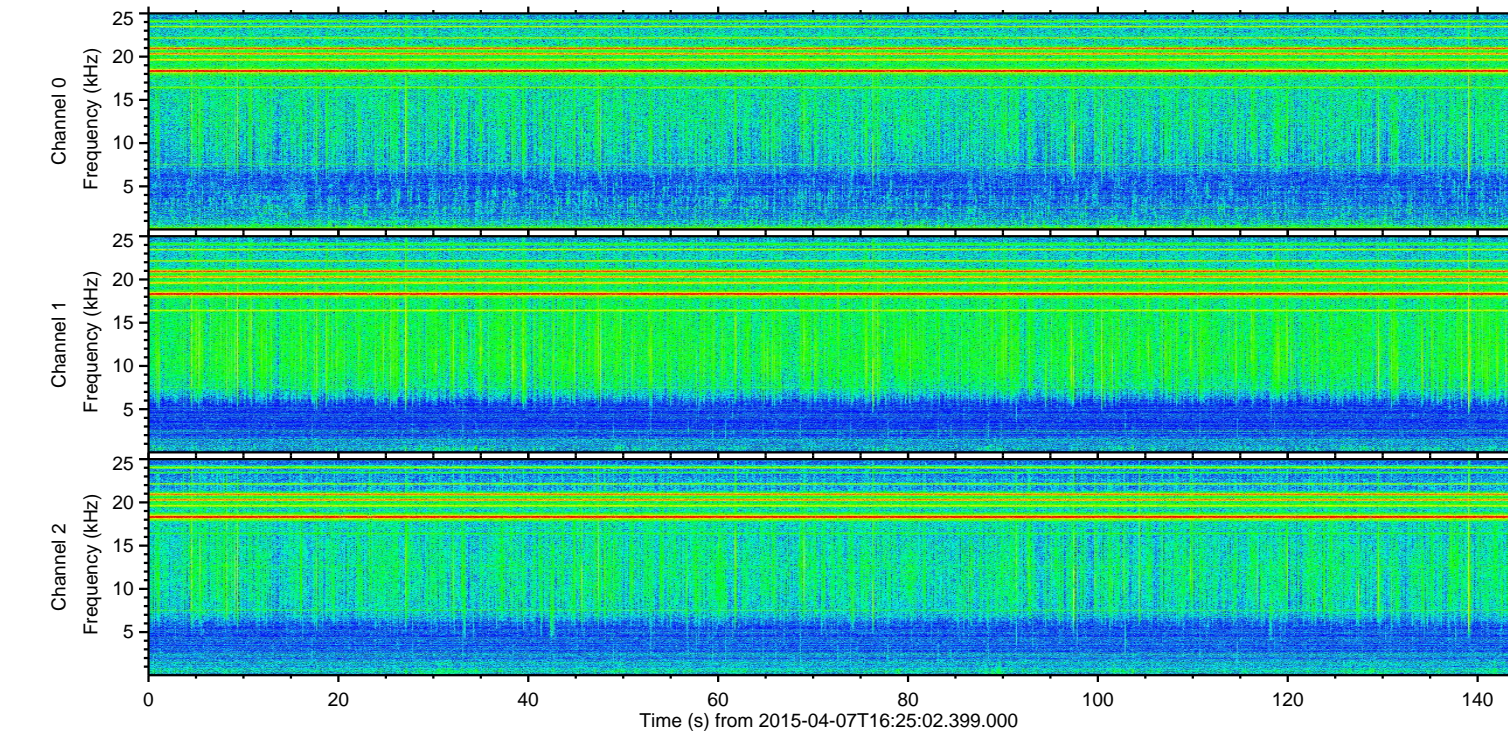
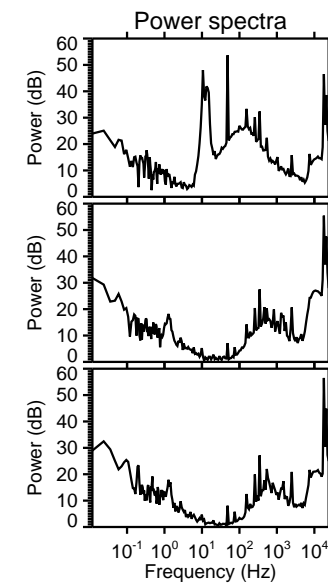
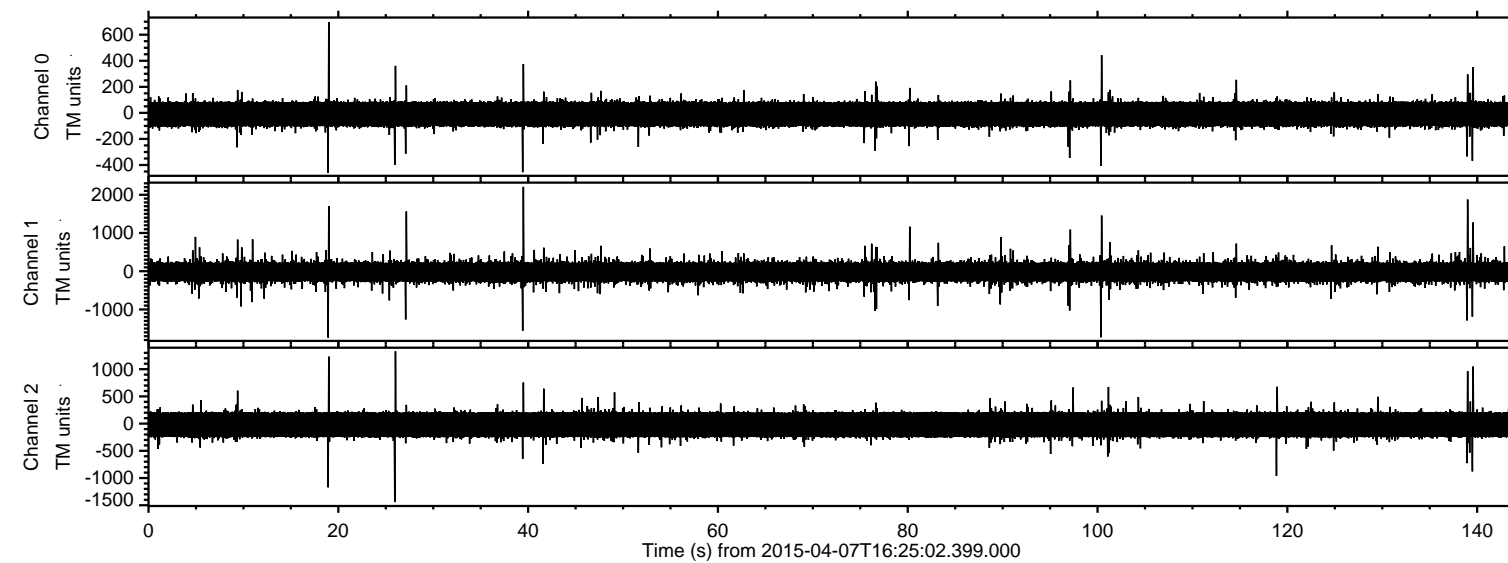
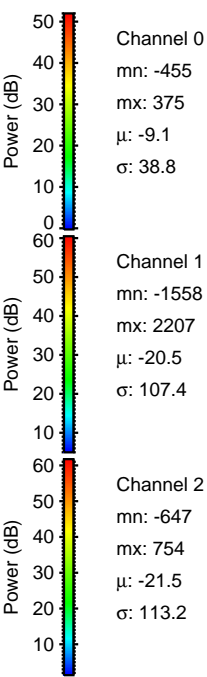
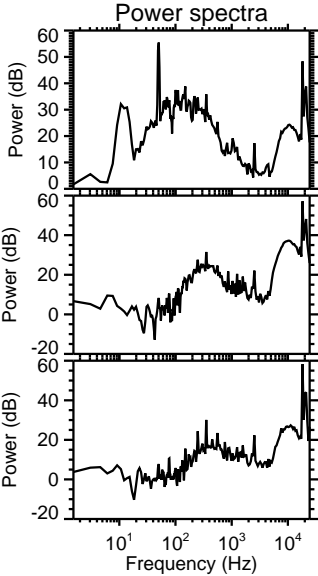
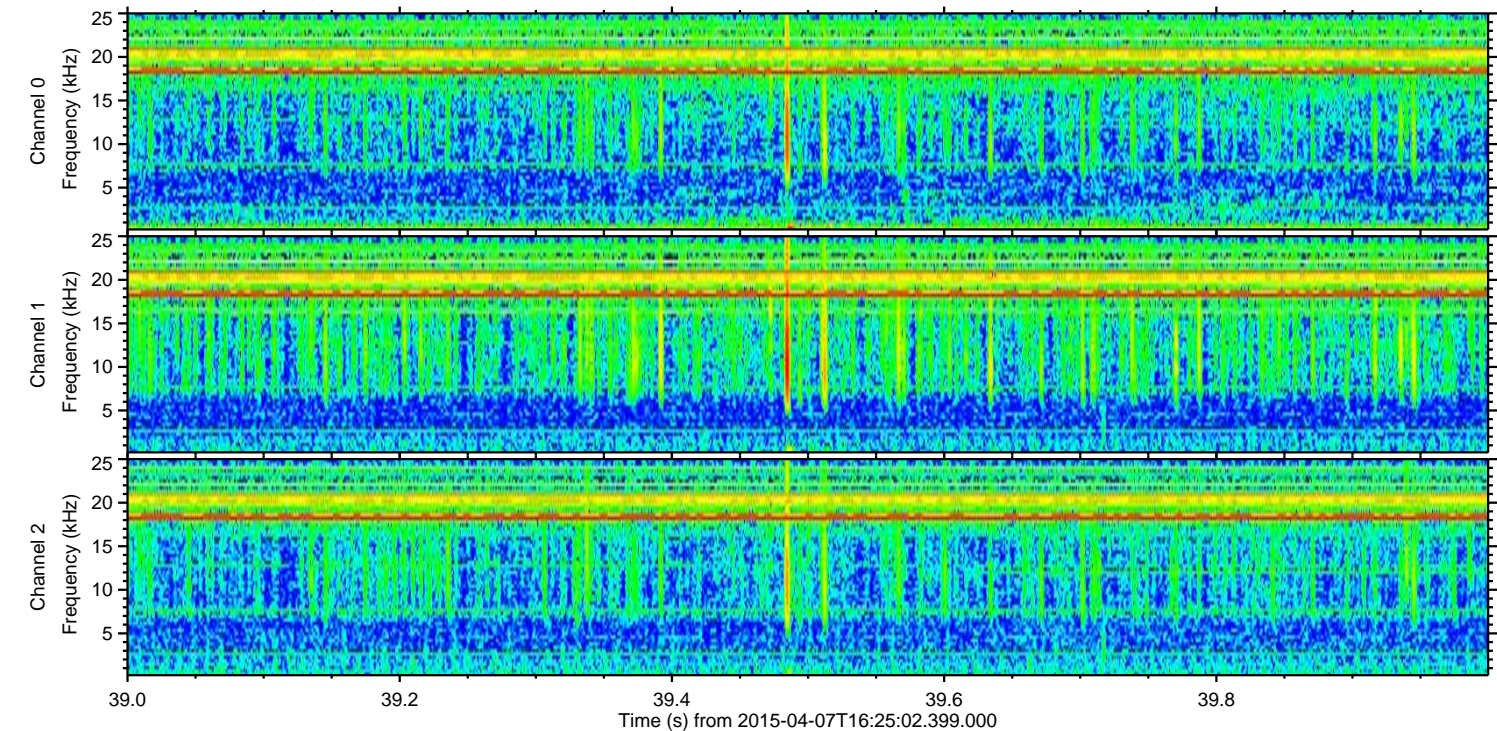
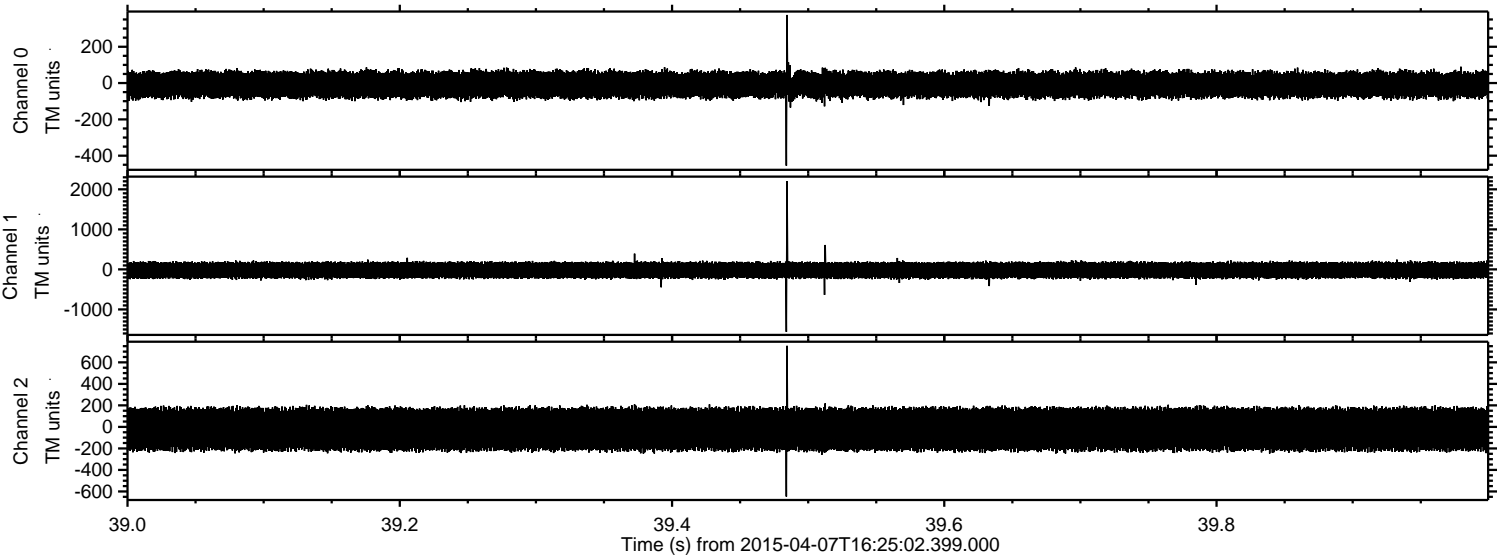


ELMAVAN 3D WAVEFORMS (Measured data sampled at 50 kHz) 49780 packets of 144 samples from 2015-04-07T16:25:02.399.000.

Processed Tue Apr 7 18:31:30 2015 by ELM ver.2012-10-06 from 001__elm20150407_162501__dat00.bin

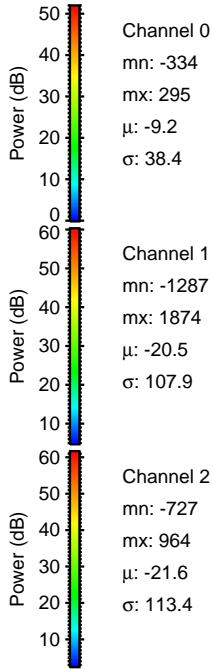
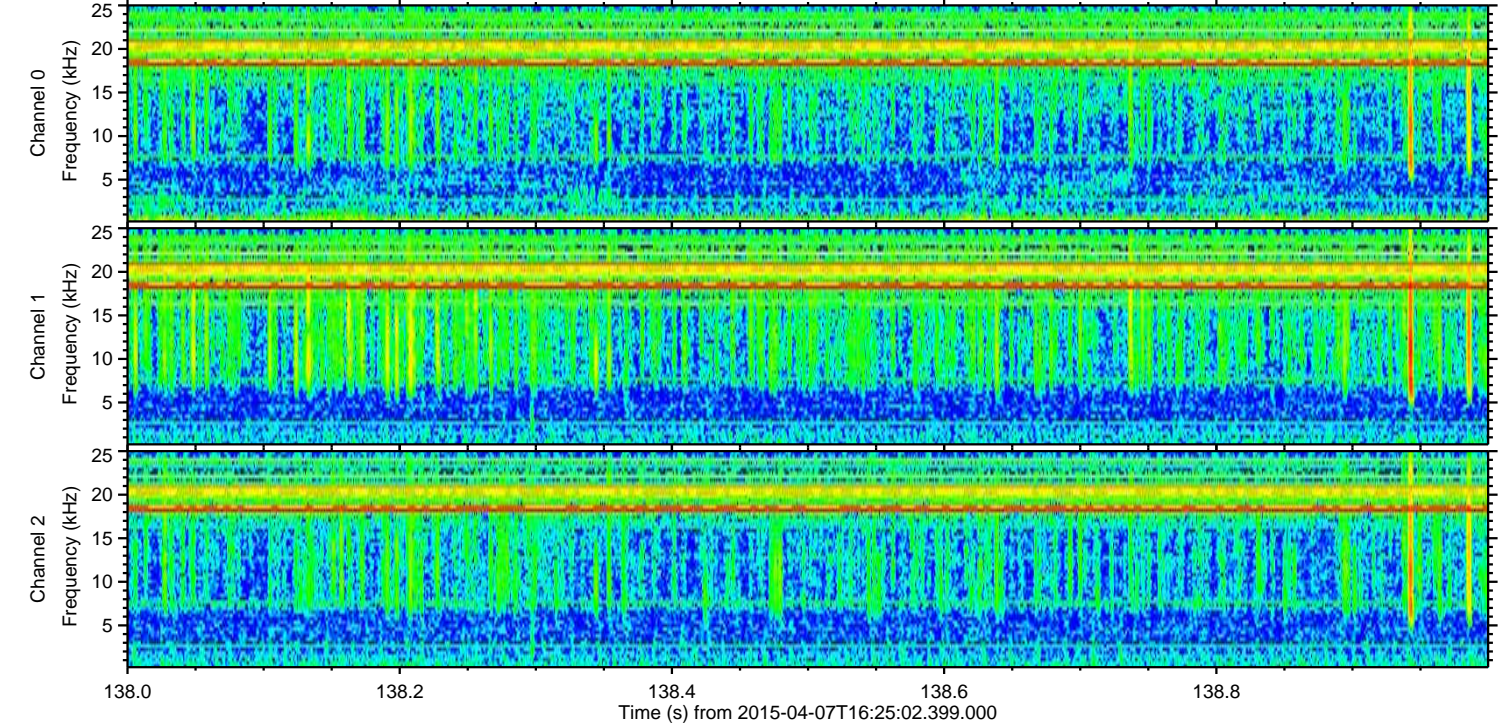
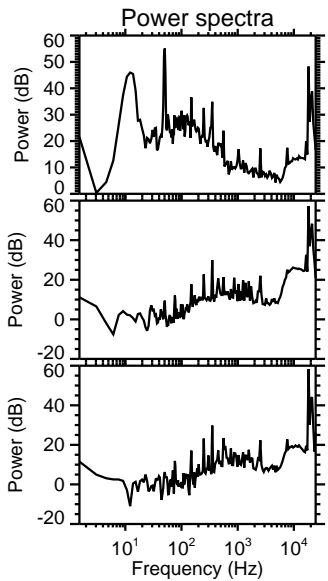
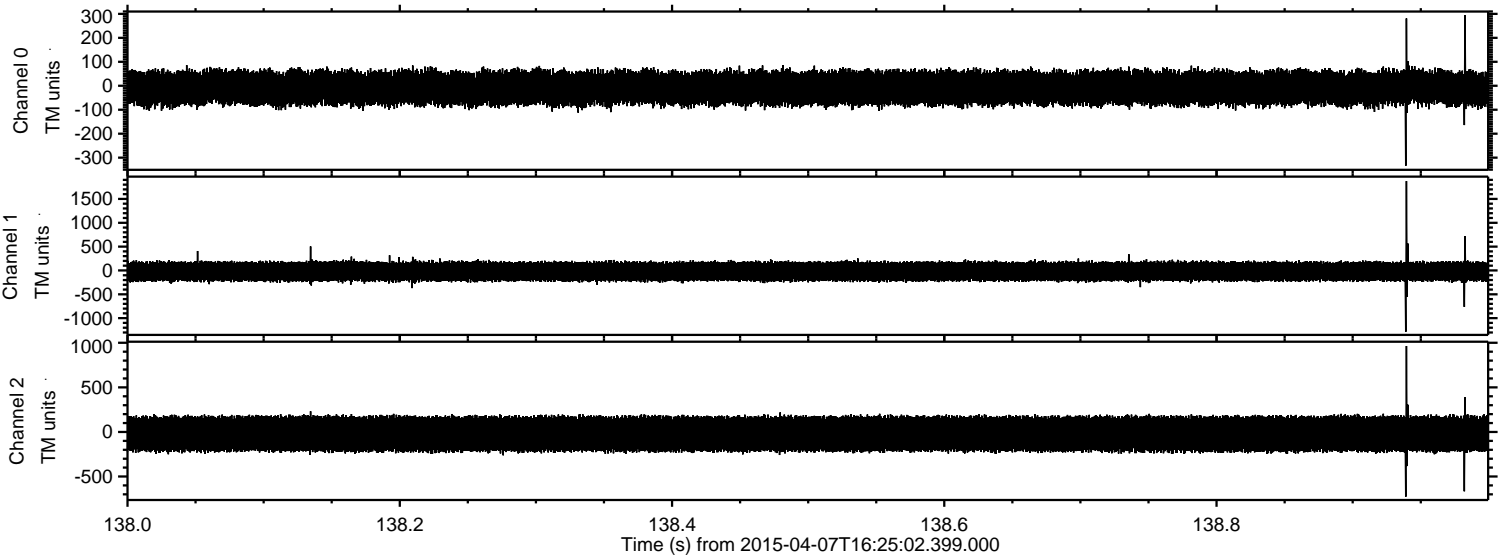


Processed Tue Apr 7 18:31:41 2015 by ELM ver.2012-10-06 from 001__elm20150407_162501__dat00.bin

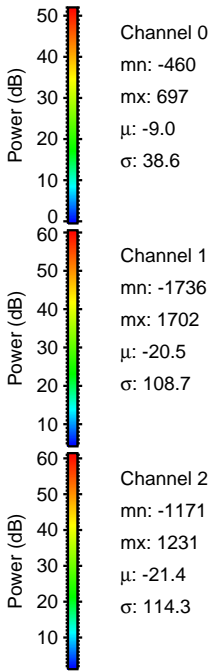
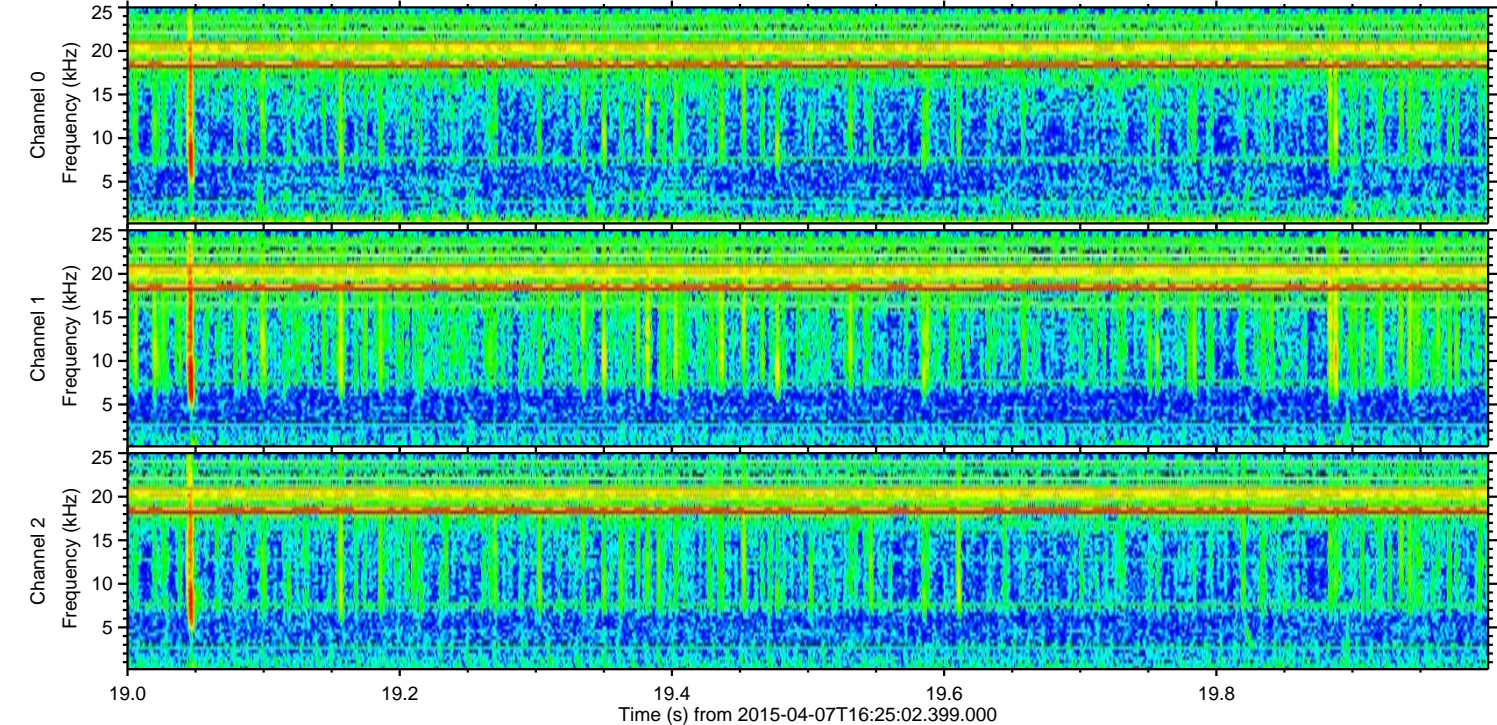
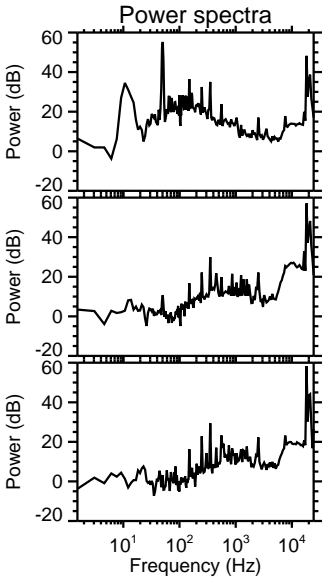
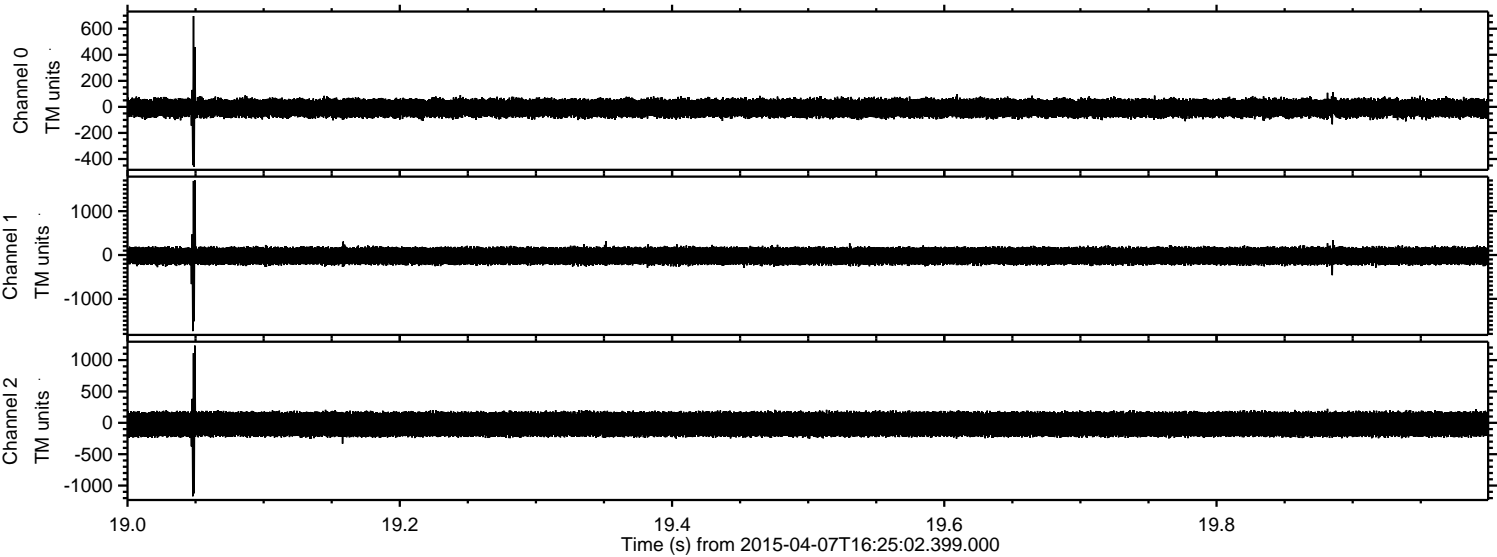


ELMAVAN 3D WAVEFORMS (Measured data sampled at 50 kHz) 49780 packets of 144 samples from 2015-04-07T16:25:02.399.000. Part 139/144

Processed Tue Apr 7 18:31:42 2015 by ELM ver.2012-10-06 from 001__elm20150407_162501__dat00.bin

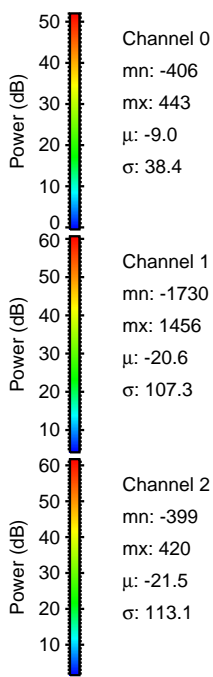
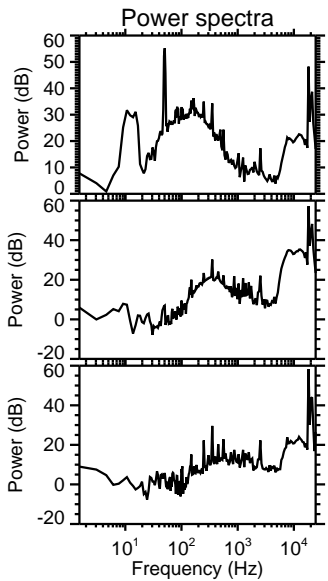
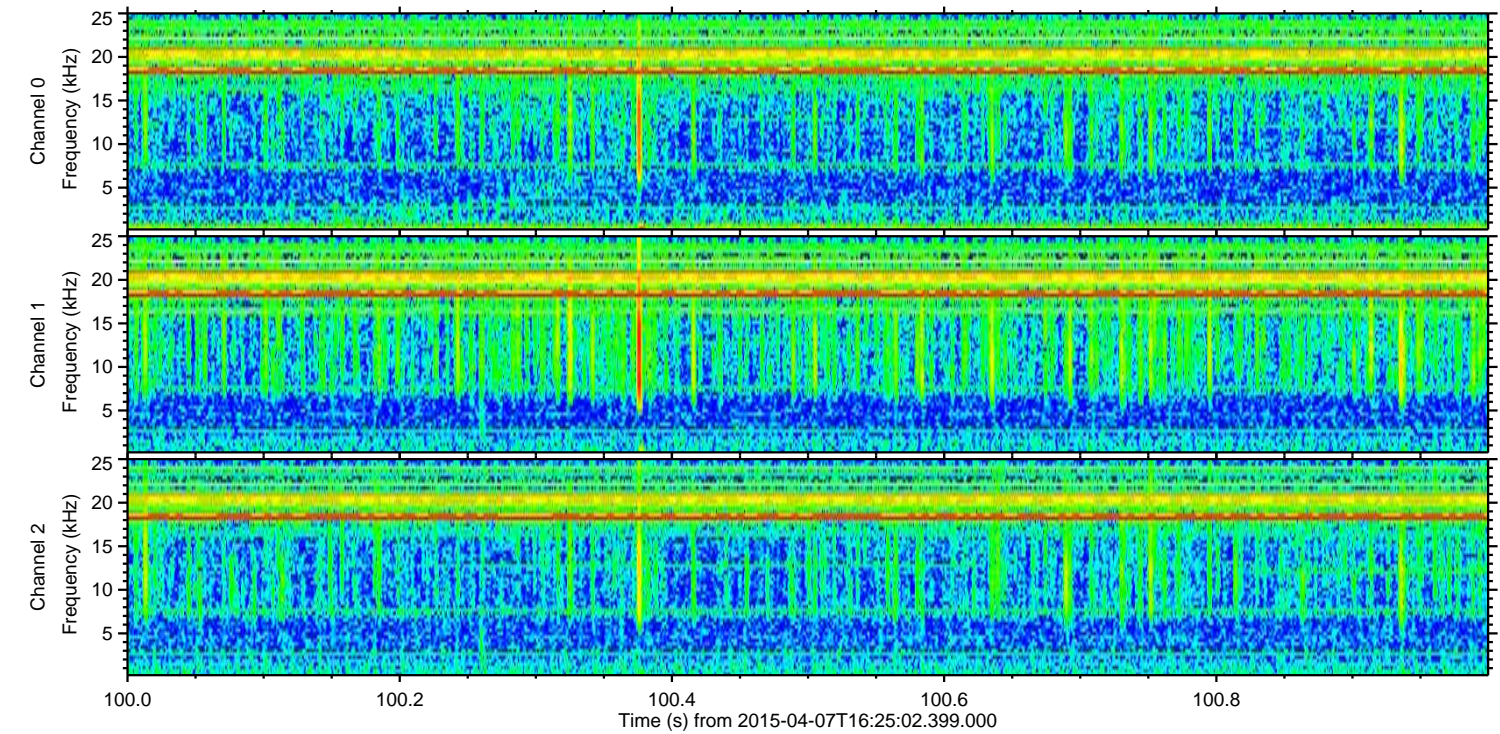
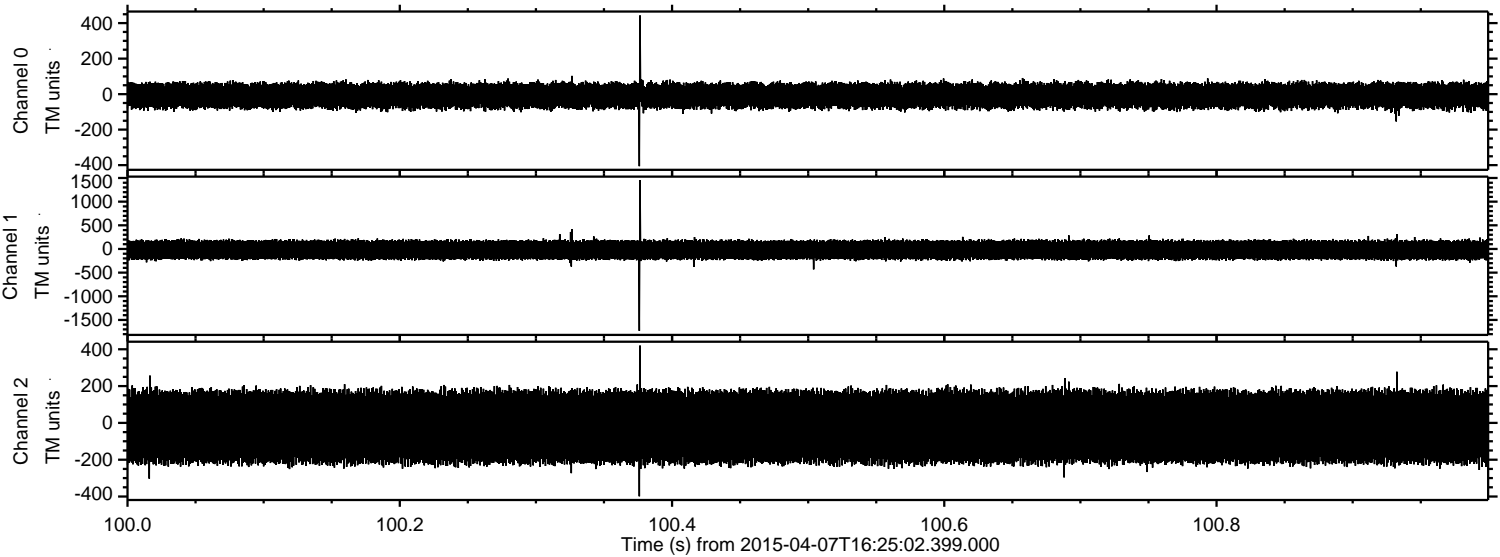


Processed Tue Apr 7 18:31:43 2015 by ELM ver.2012-10-06 from 001__elm20150407_162501__dat00.bin

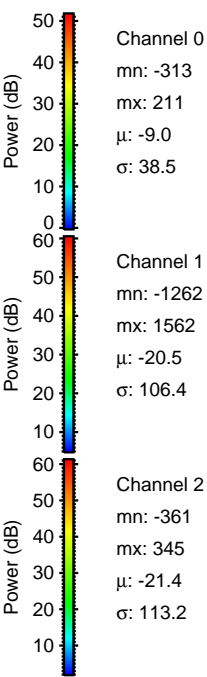
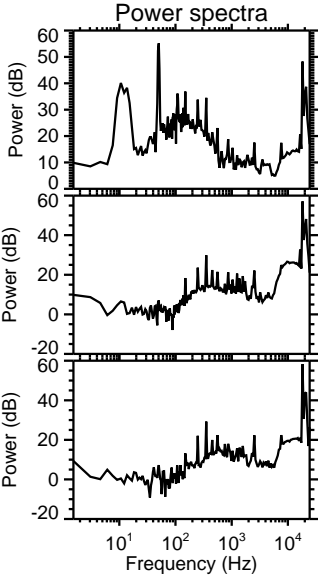
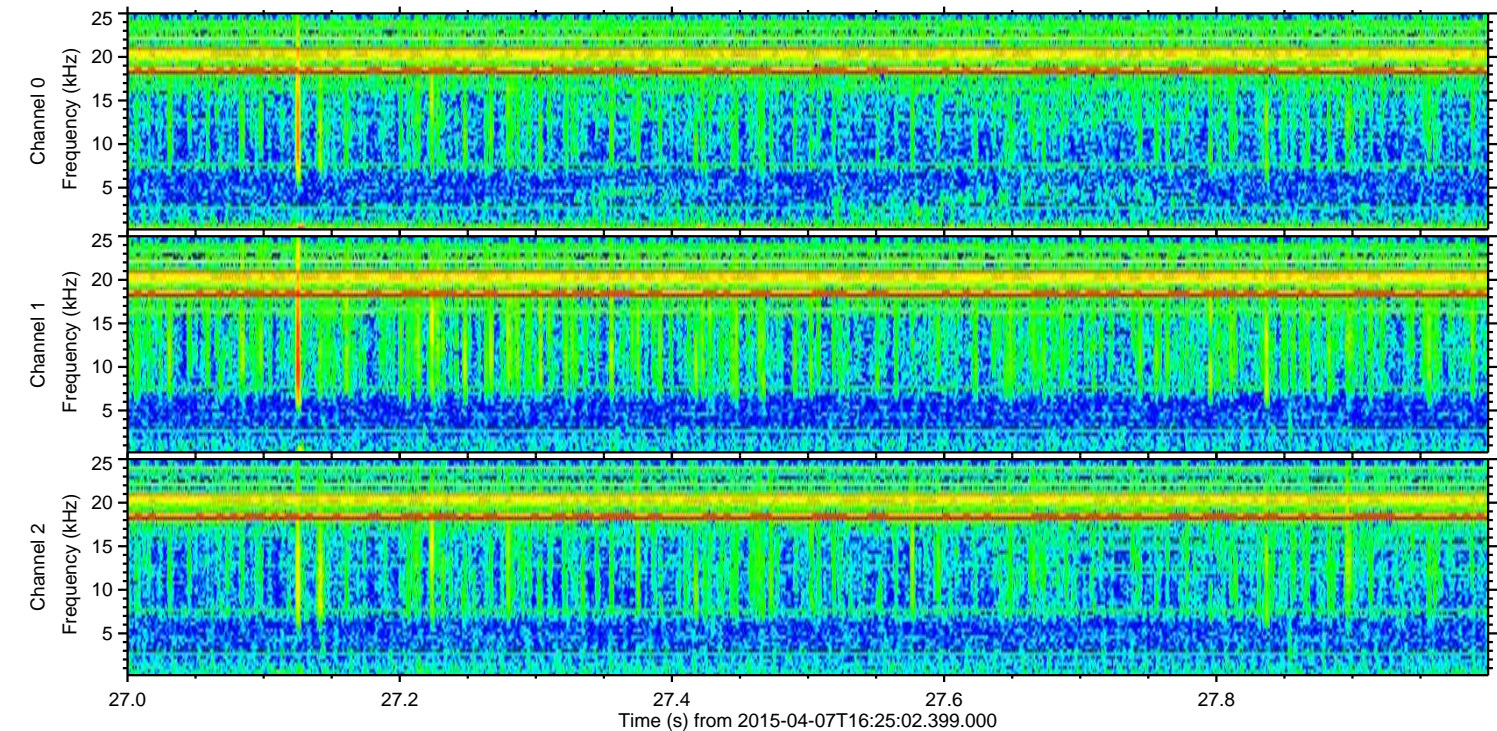
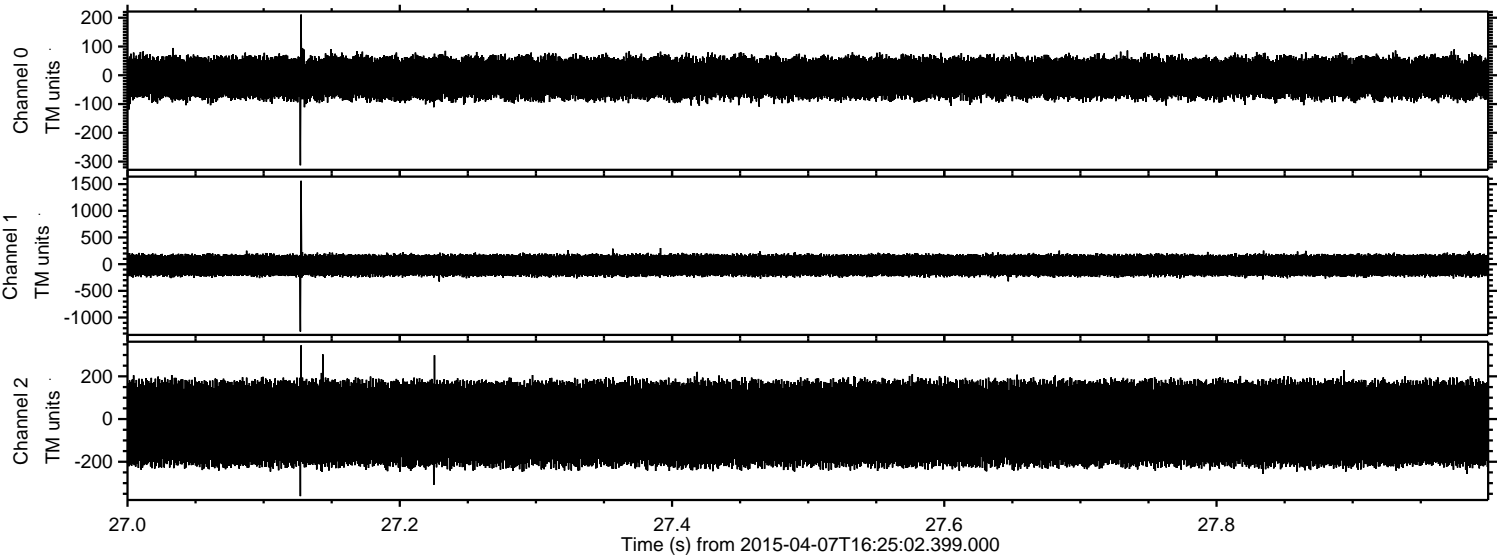


ELMAVAN 3D WAVEFORMS (Measured data sampled at 50 kHz) 49780 packets of 144 samples from 2015-04-07T16:25:02.399.000. Part 101/144

Processed Tue Apr 7 18:31:44 2015 by ELM ver.2012-10-06 from 001__elm20150407_162501__dat00.bin



Processed Tue Apr 7 18:31:45 2015 by ELM ver.2012-10-06 from 001__elm20150407_162501__dat00.bin



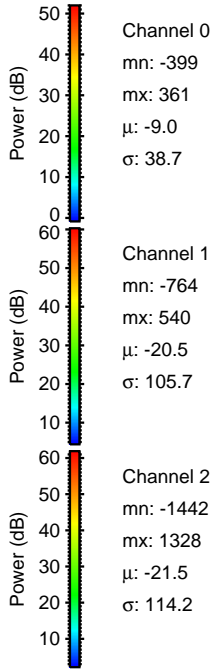
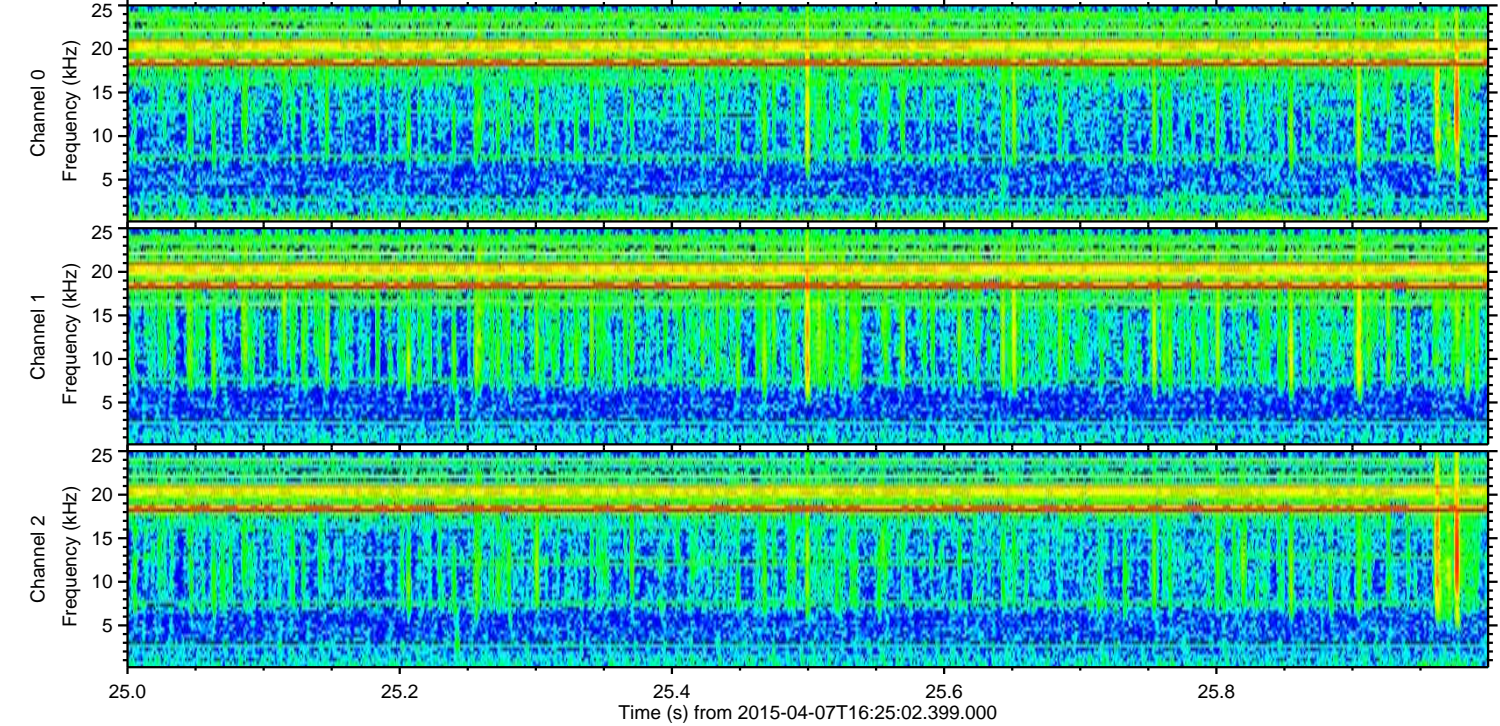
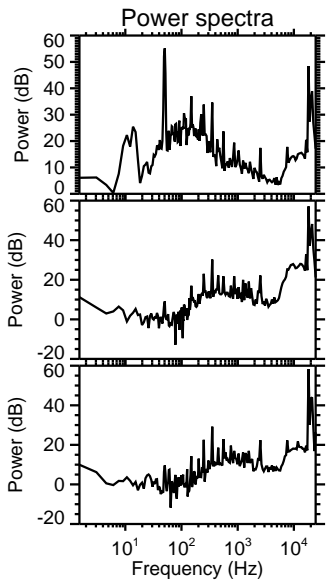
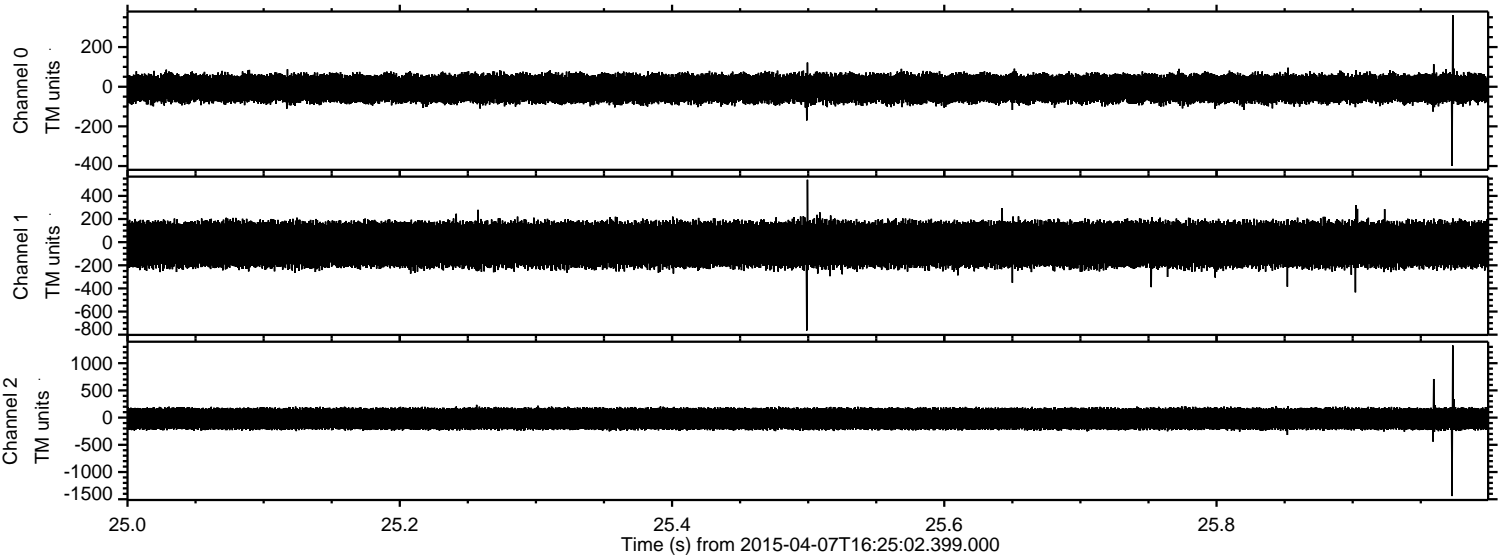
Channel 0
mn: -313
mx: 211
 μ : -9.0
 σ : 38.5

Channel 1
mn: -1262
mx: 1562
 μ : -20.5
 σ : 106.4

Channel 2
mn: -361
mx: 345
 μ : -21.4
 σ : 113.2

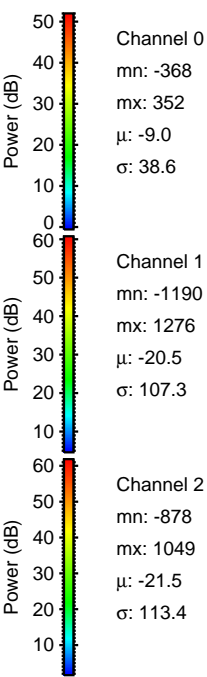
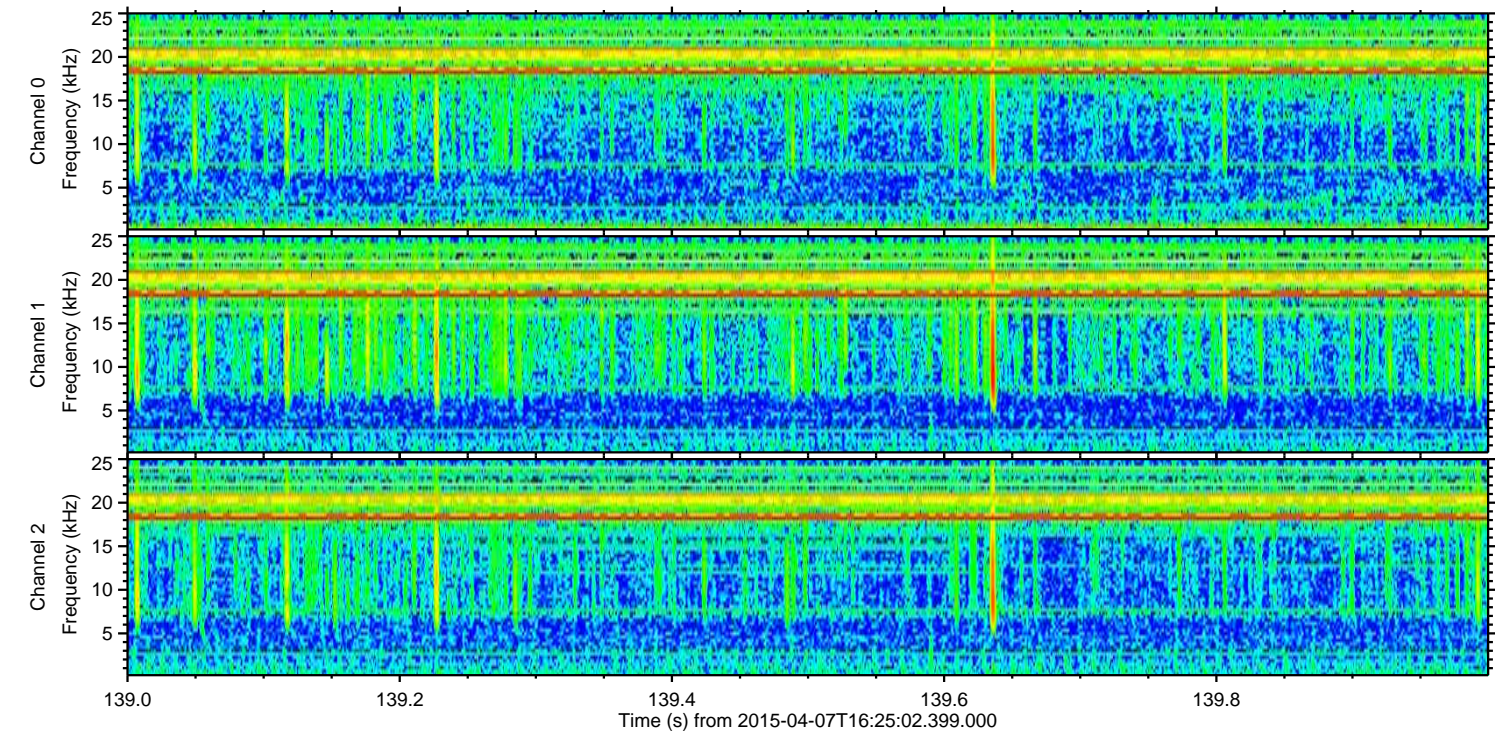
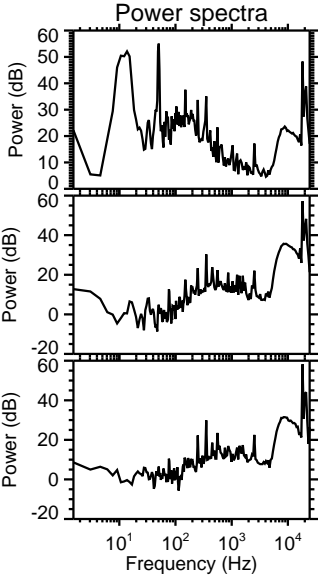
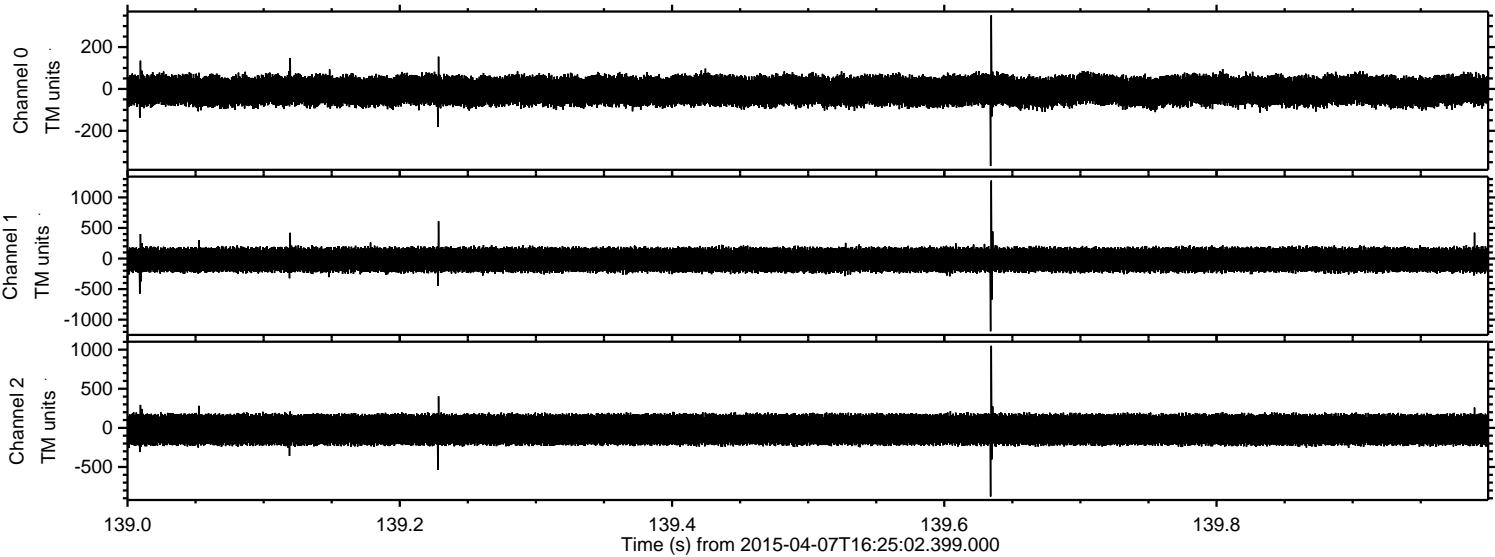
ELMAVAN 3D WAVEFORMS (Measured data sampled at 50 kHz) 49780 packets of 144 samples from 2015-04-07T16:25:02.399.000. Part 26/144

Processed Tue Apr 7 18:31:46 2015 by ELM ver.2012-10-06 from 001__elm20150407_162501__dat00.bin

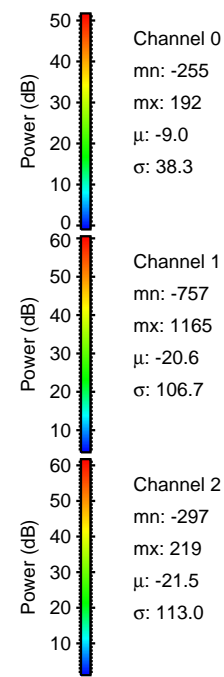
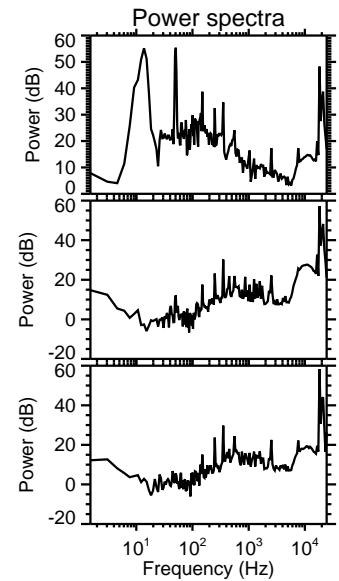
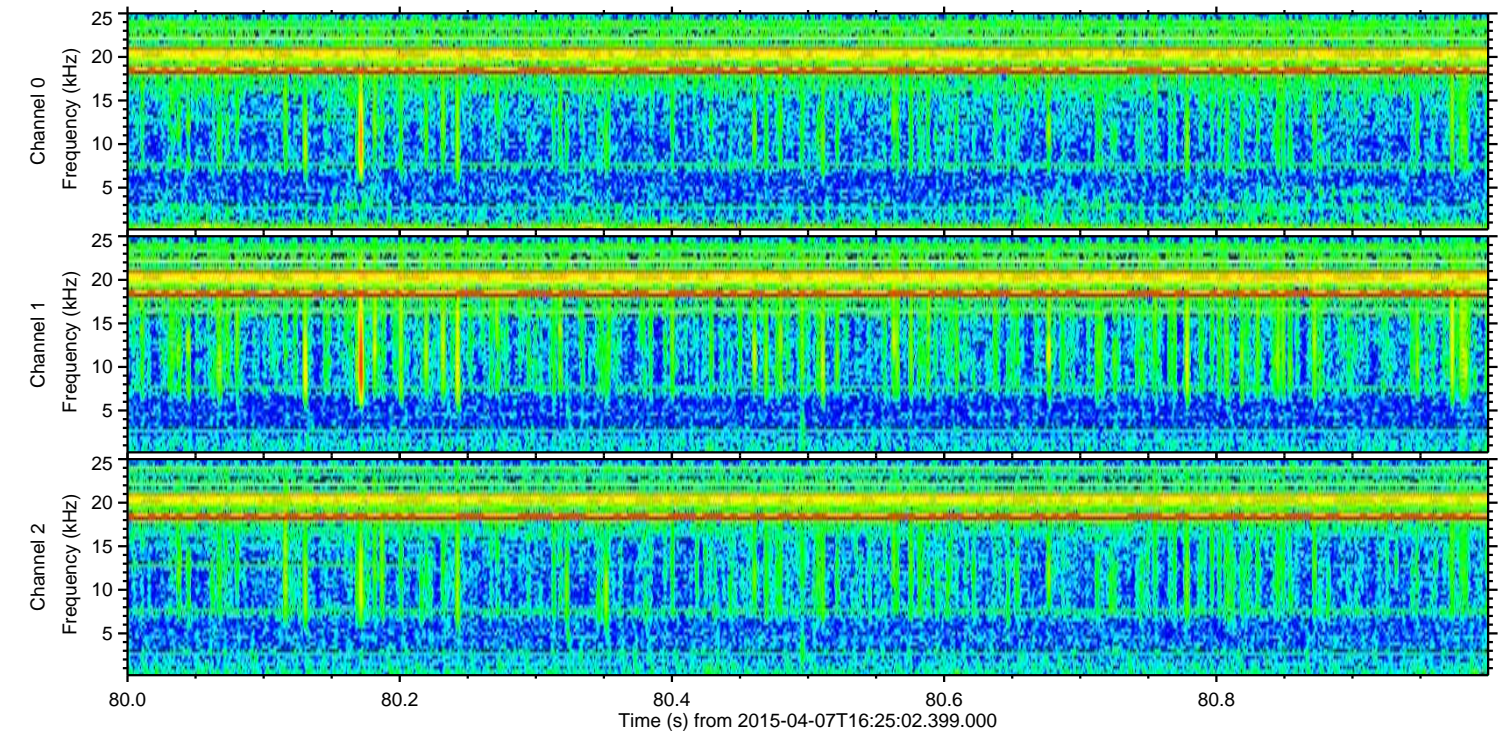
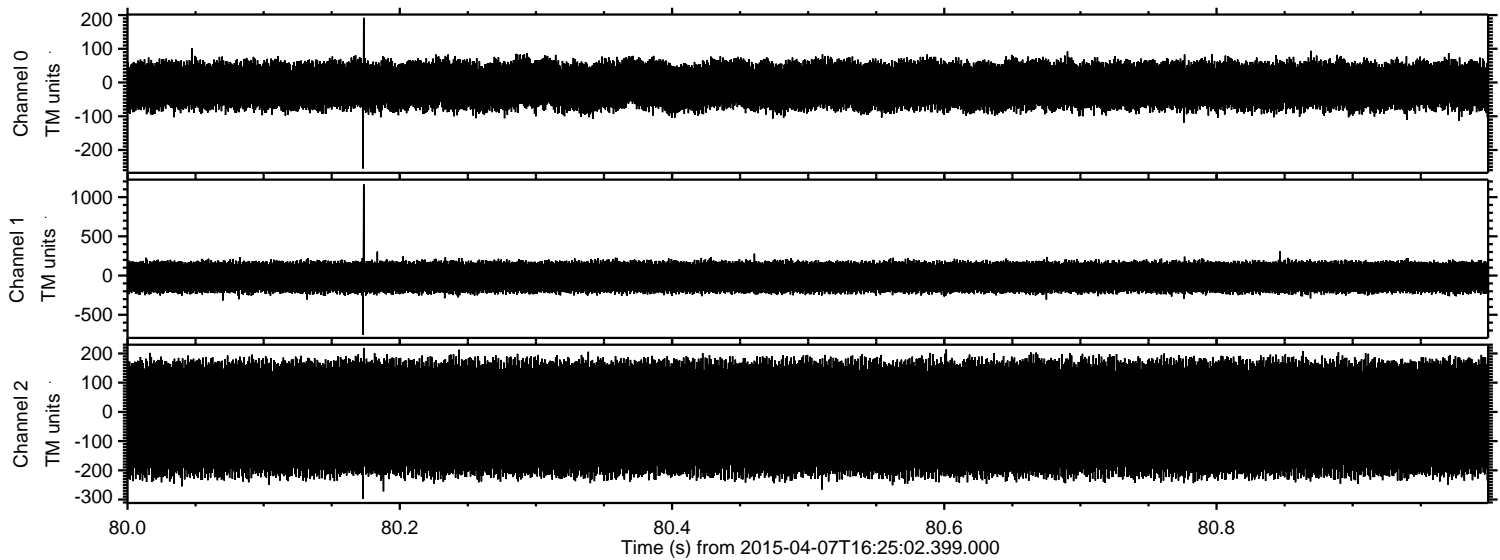


ELMAVAN 3D WAVEFORMS (Measured data sampled at 50 kHz) 49780 packets of 144 samples from 2015-04-07T16:25:02.399.000. Part 140/144

Processed Tue Apr 7 18:31:47 2015 by ELM ver.2012-10-06 from 001__elm20150407_162501__dat00.bin



Processed Tue Apr 7 18:31:48 2015 by ELM ver.2012-10-06 from 001__elm20150407_162501__dat00.bin

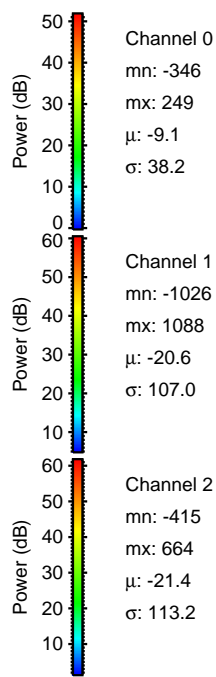
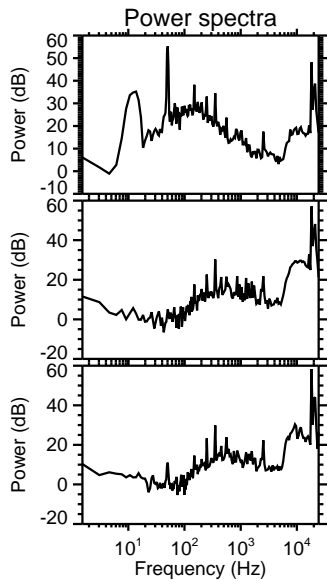
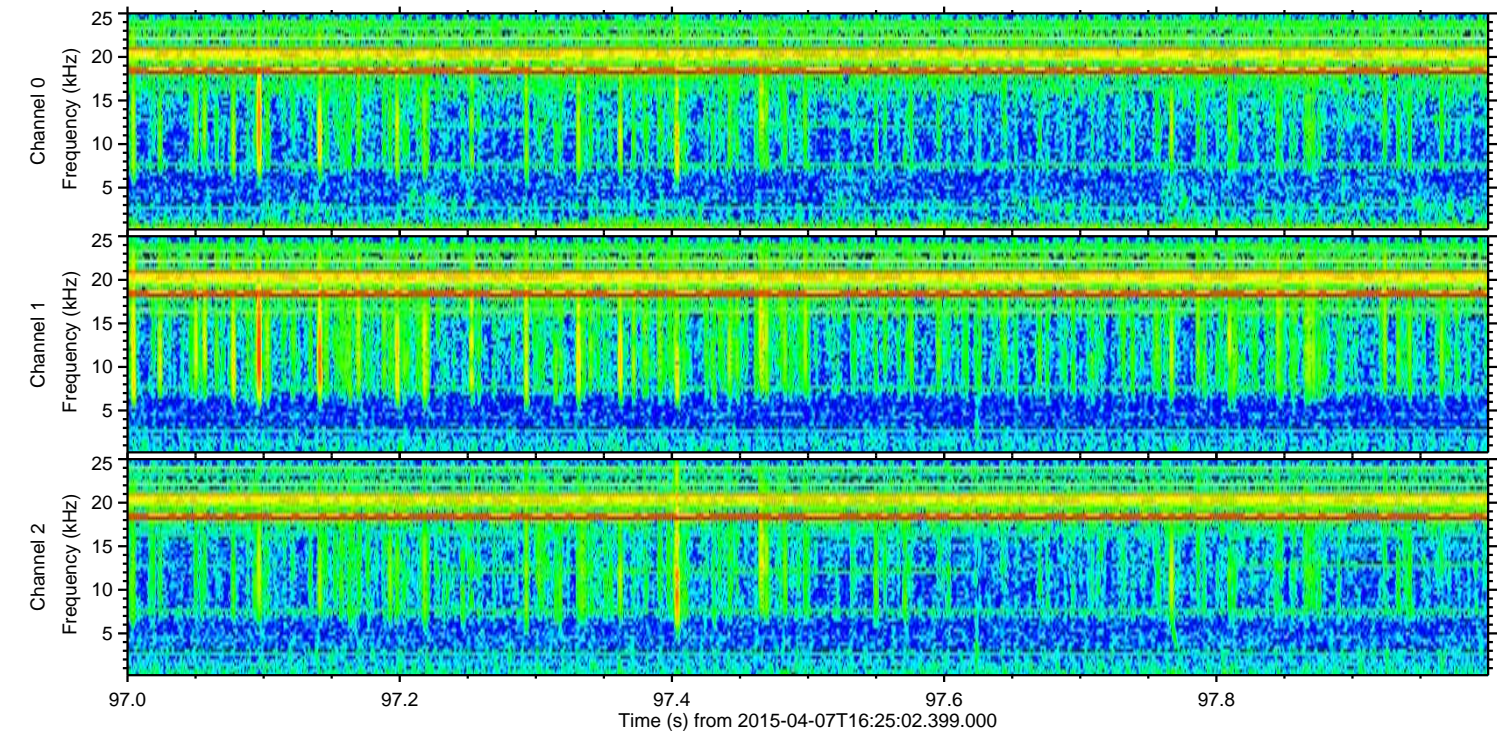
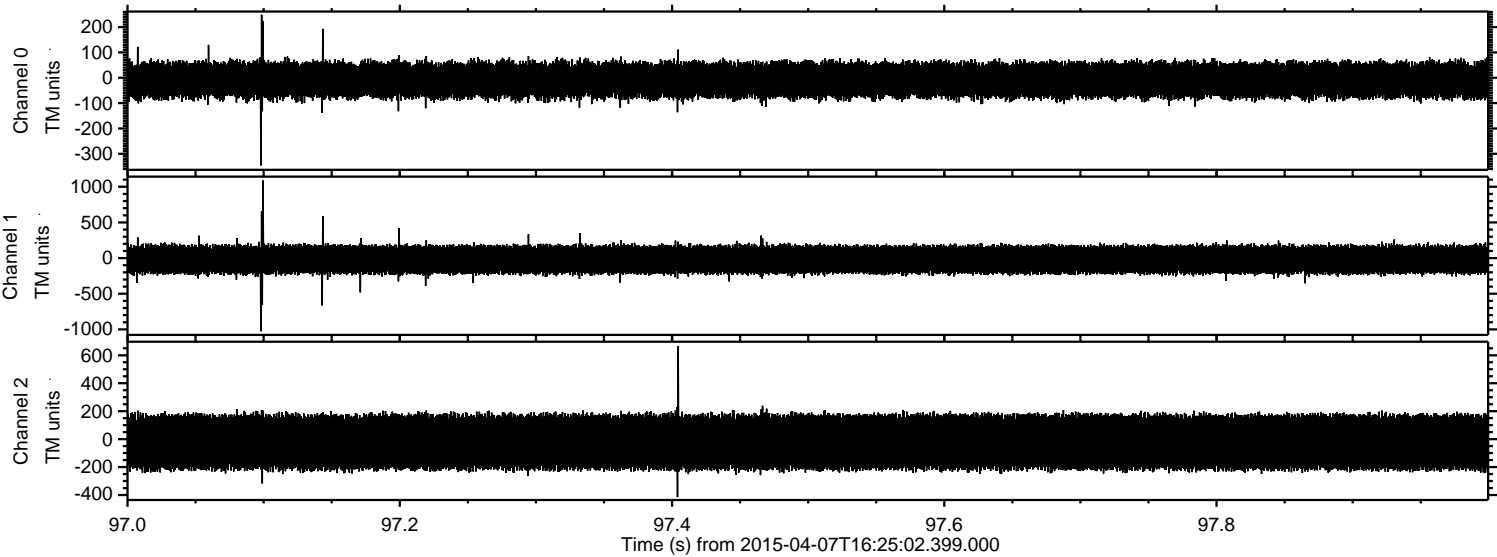


Channel 0
mn: -255
mx: 192
 μ : -9.0
 σ : 38.3

Channel 1
mn: -757
mx: 1165
 μ : -20.6
 σ : 106.7

Channel 2
mn: -297
mx: 219
 μ : -21.5
 σ : 113.0

Processed Tue Apr 7 18:31:49 2015 by ELM ver.2012-10-06 from 001__elm20150407_162501__dat00.bin



Processed Tue Apr 7 18:31:50 2015 by ELM ver.2012-10-06 from 001__elm20150407_162501__dat00.bin

