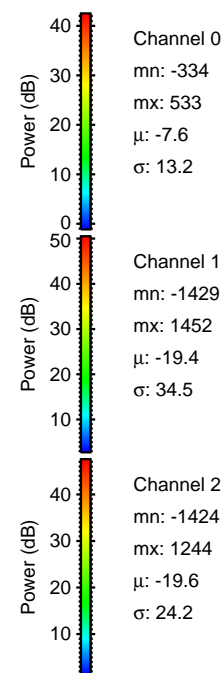
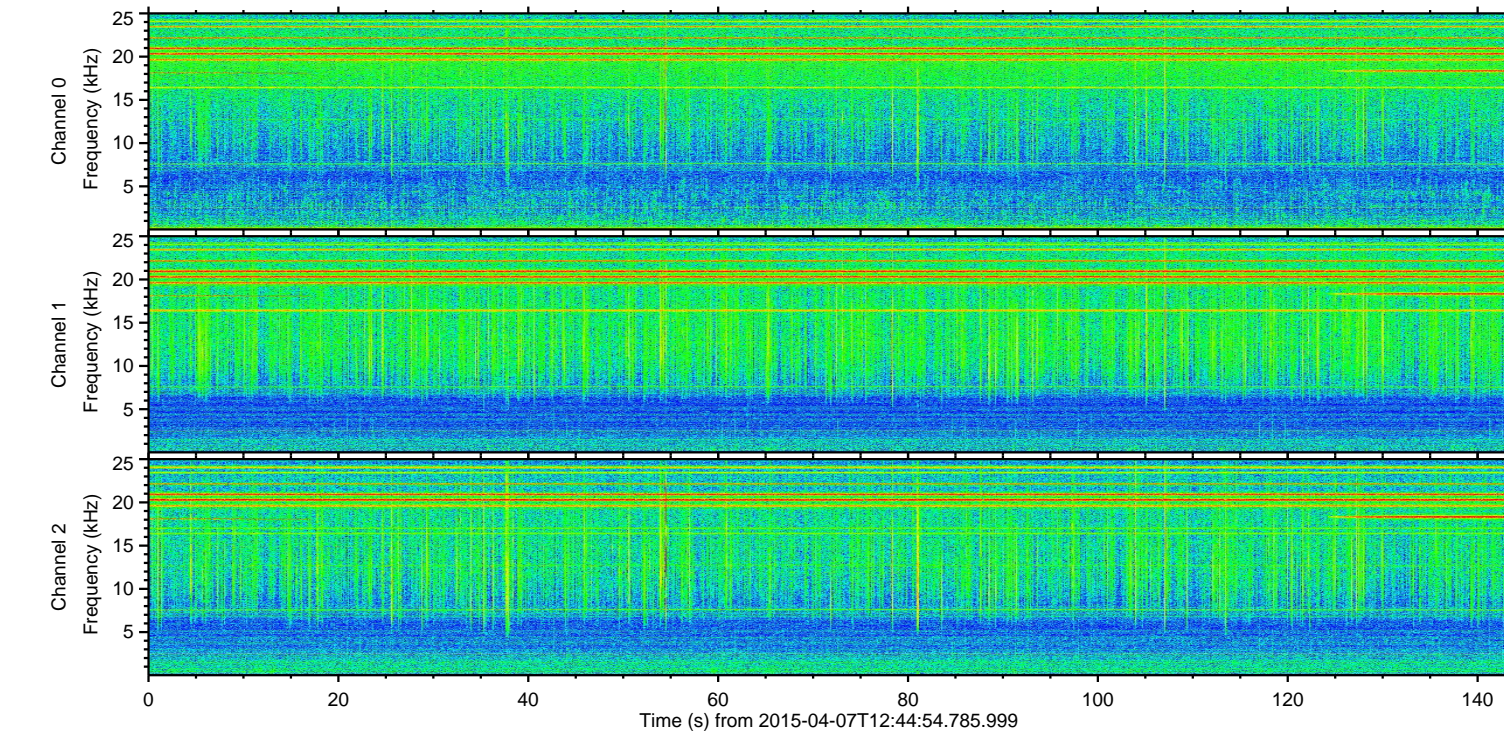
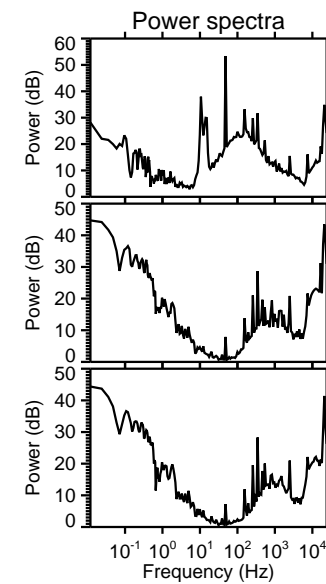
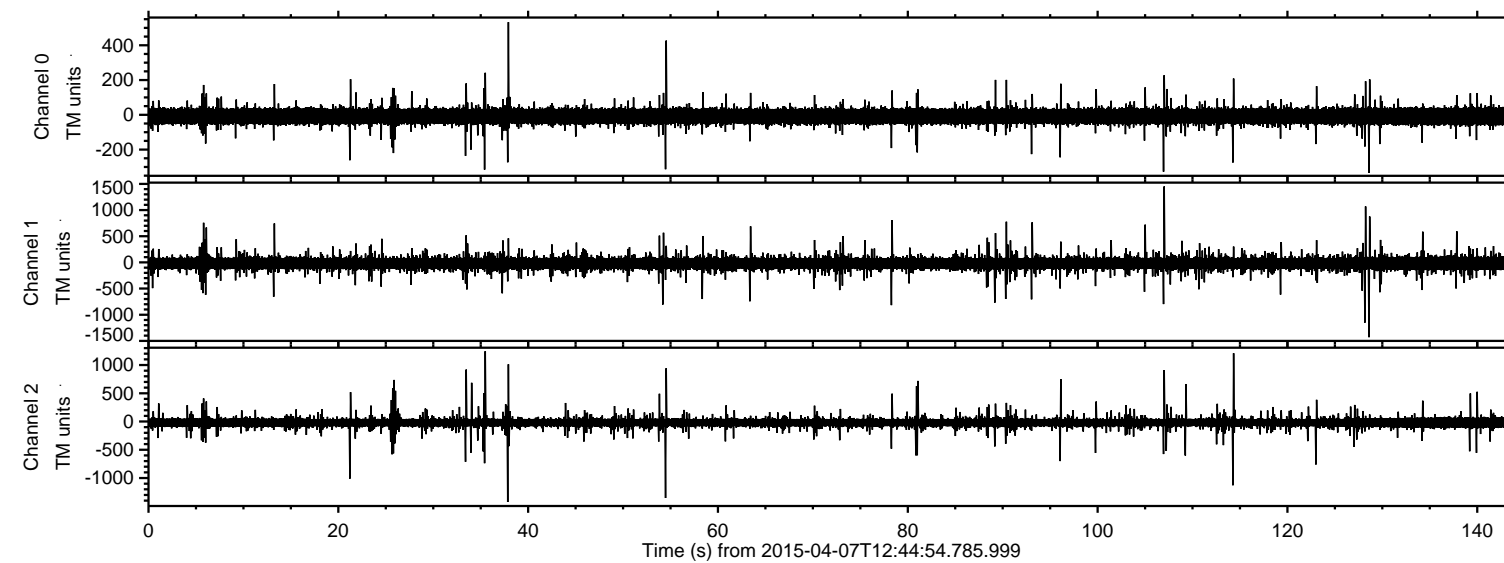


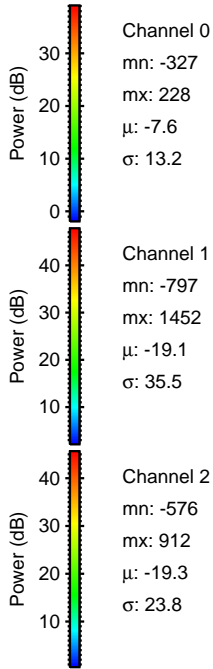
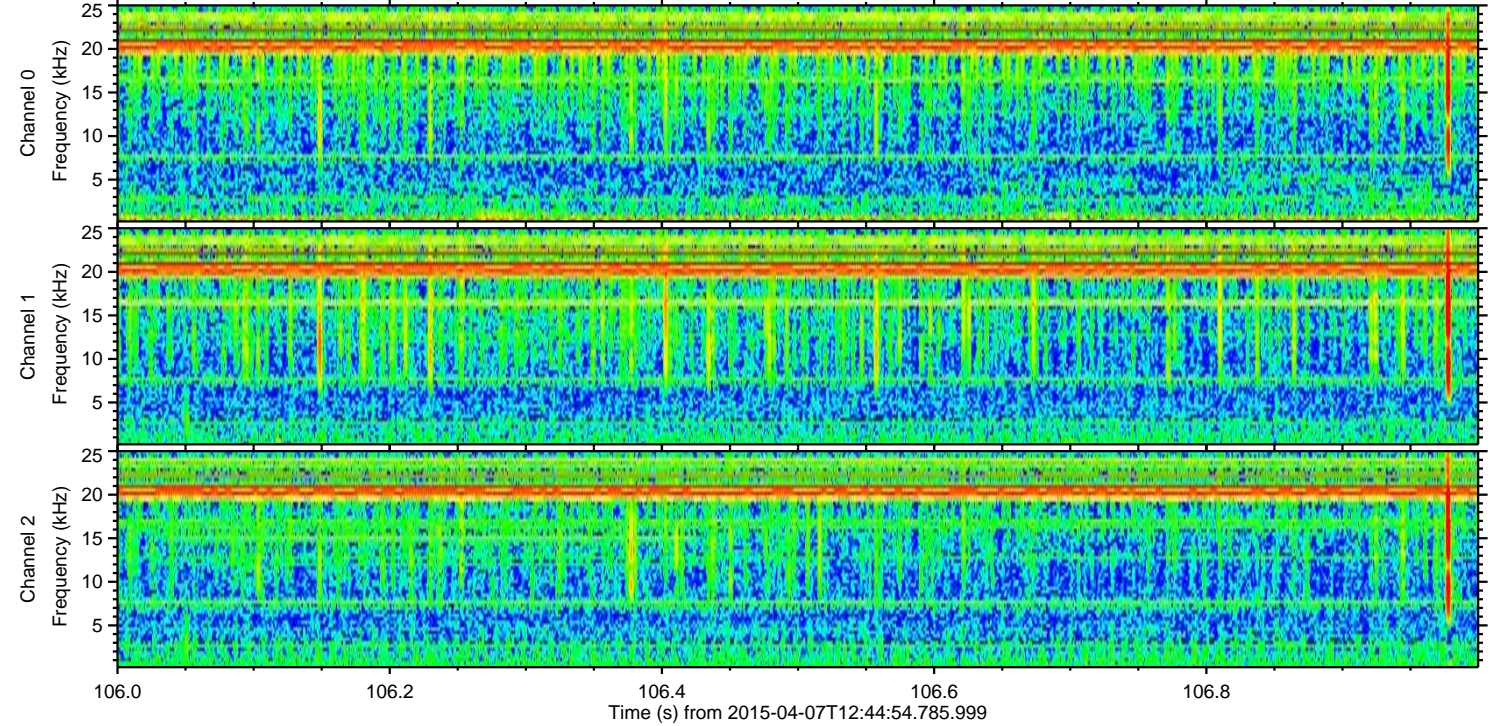
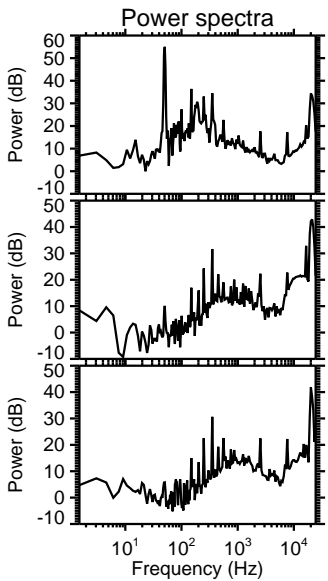
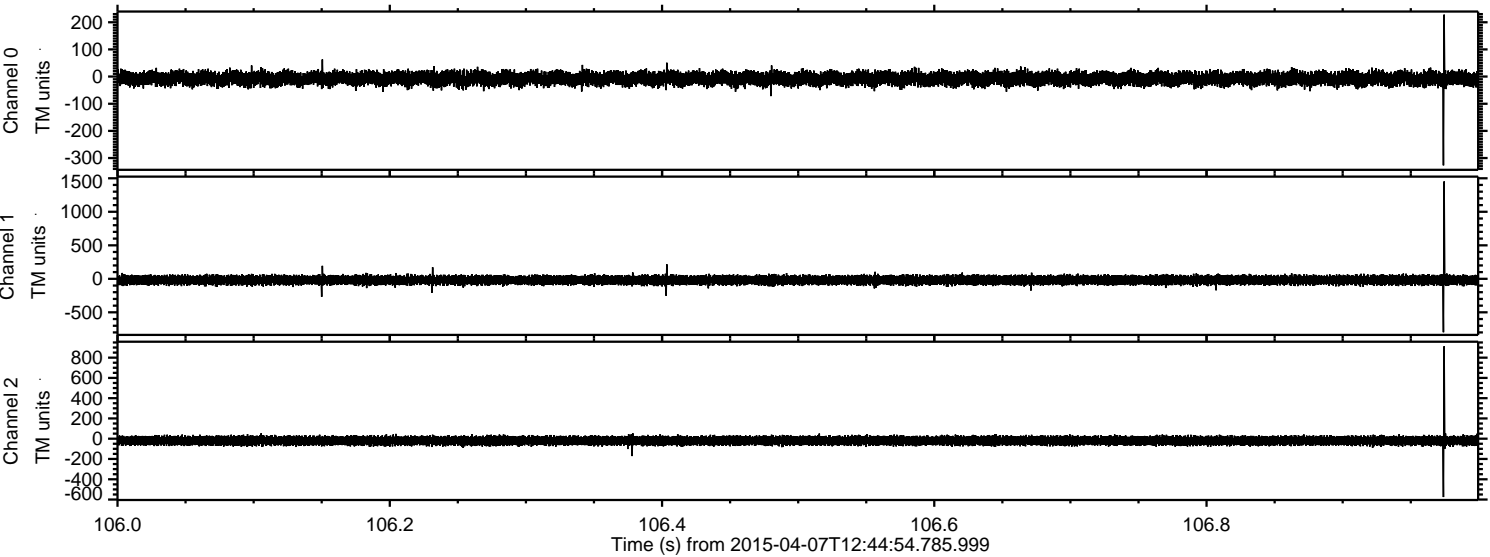
ELMAVAN 3D WAVEFORMS (Measured data sampled at 50 kHz) 49778 packets of 144 samples from 2015-04-07T12:44:54.785.999.

Processed Tue Apr 7 14:52:00 2015 by ELM ver.2012-10-06 from 001__elm20150407_124453__dat00.bin



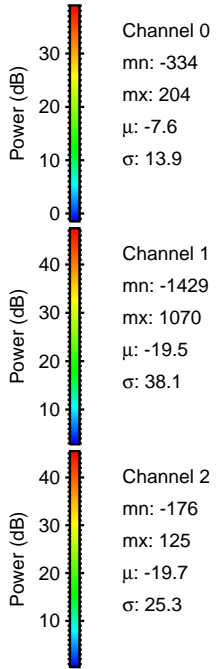
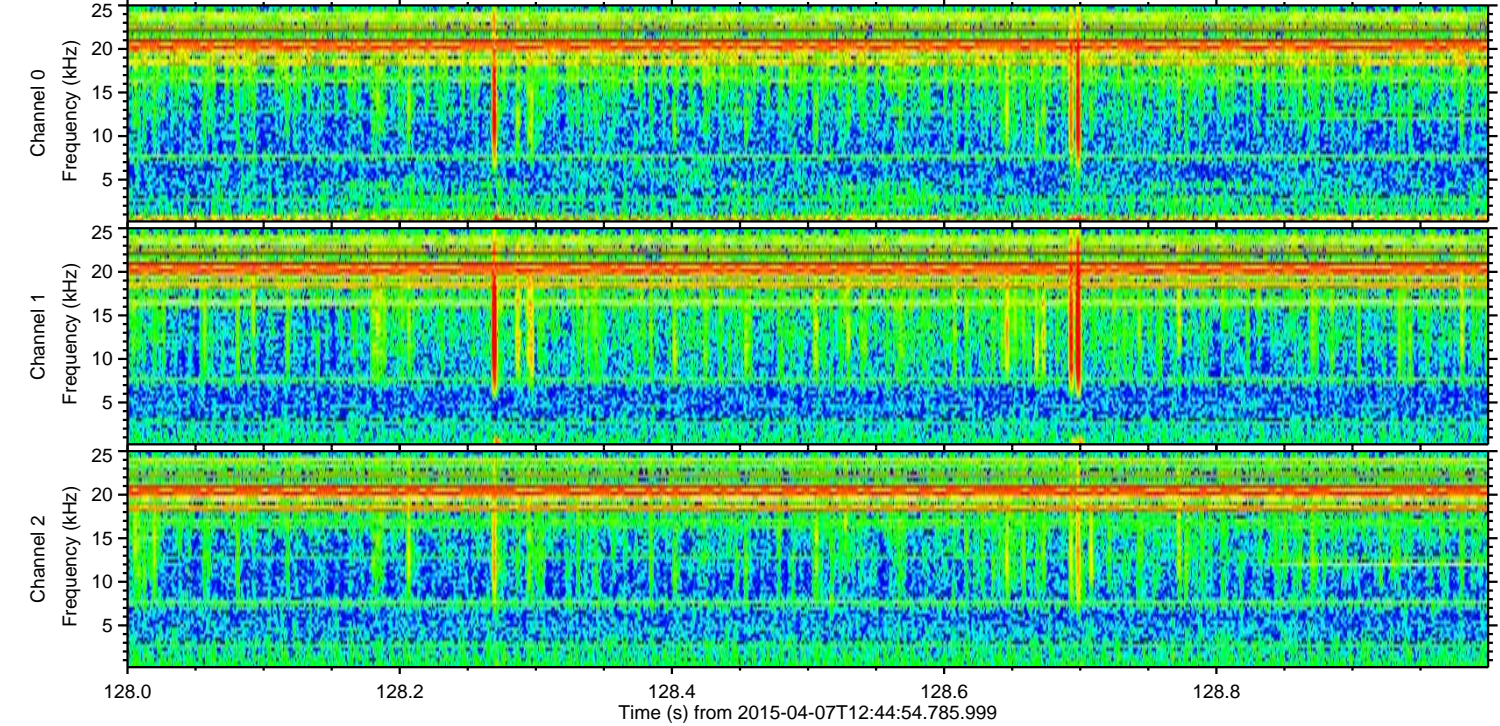
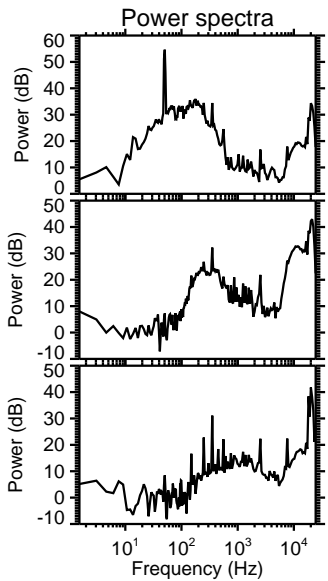
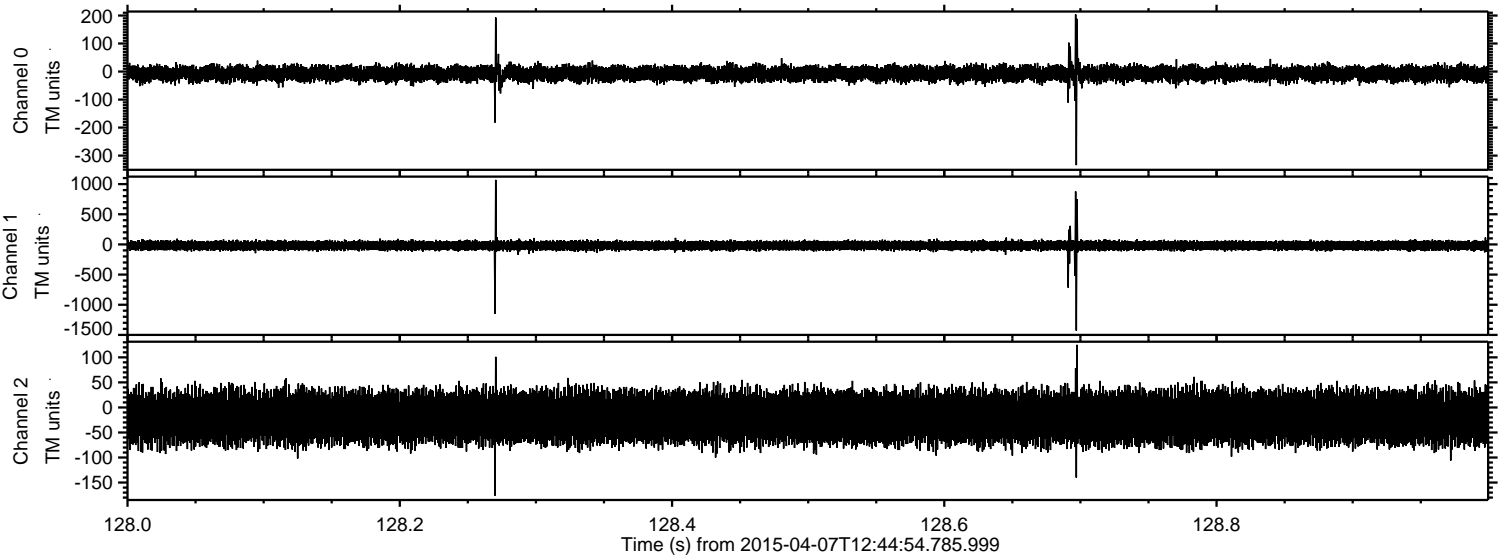
ELMAVAN 3D WAVEFORMS (Measured data sampled at 50 kHz) 49778 packets of 144 samples from 2015-04-07T12:44:54.785.999. Part 107/144

Processed Tue Apr 7 14:52:15 2015 by ELM ver.2012-10-06 from 001__elm20150407_124453__dat00.bin

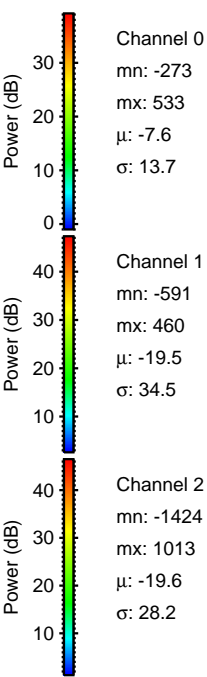
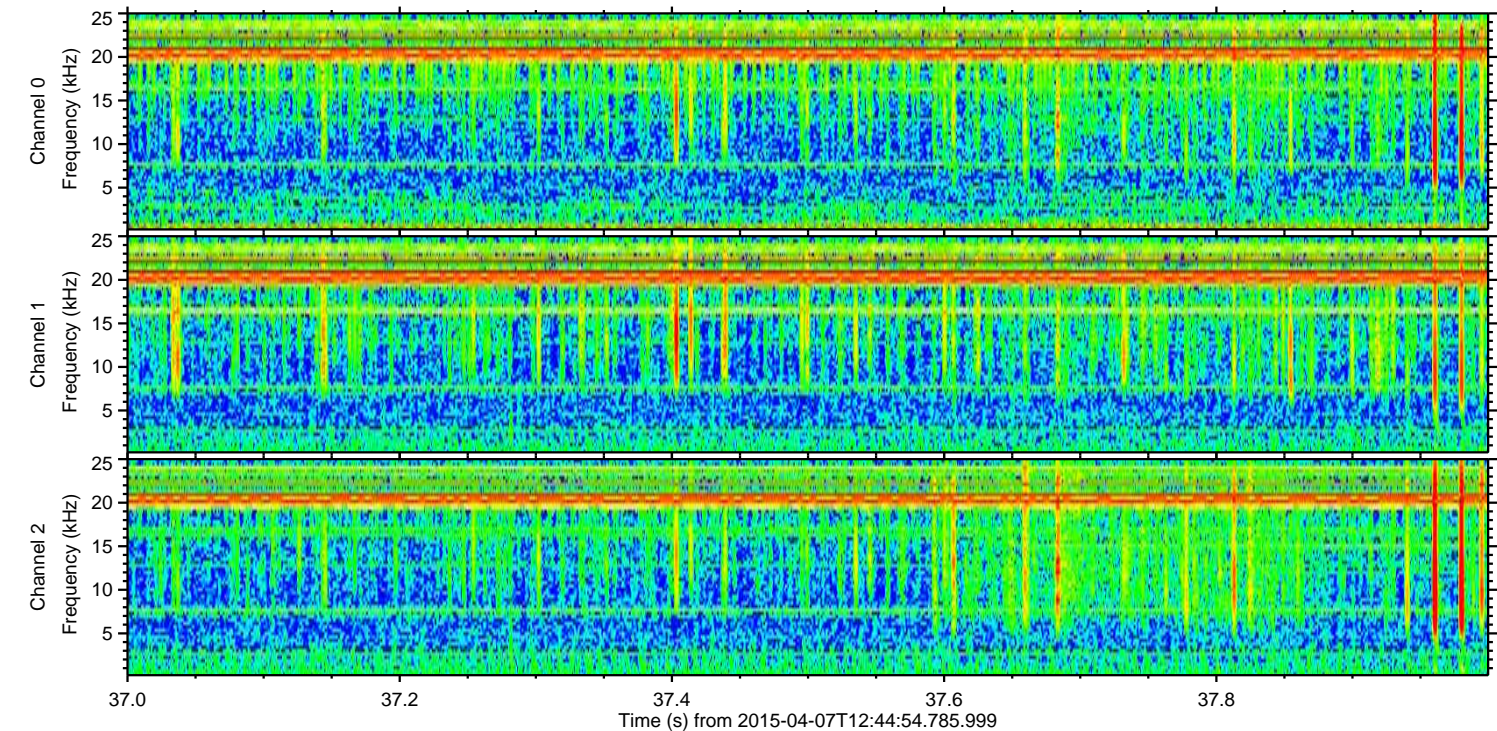
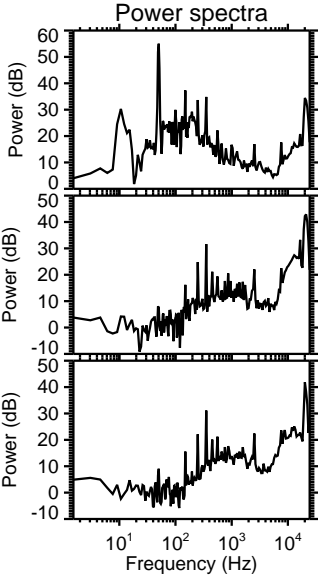
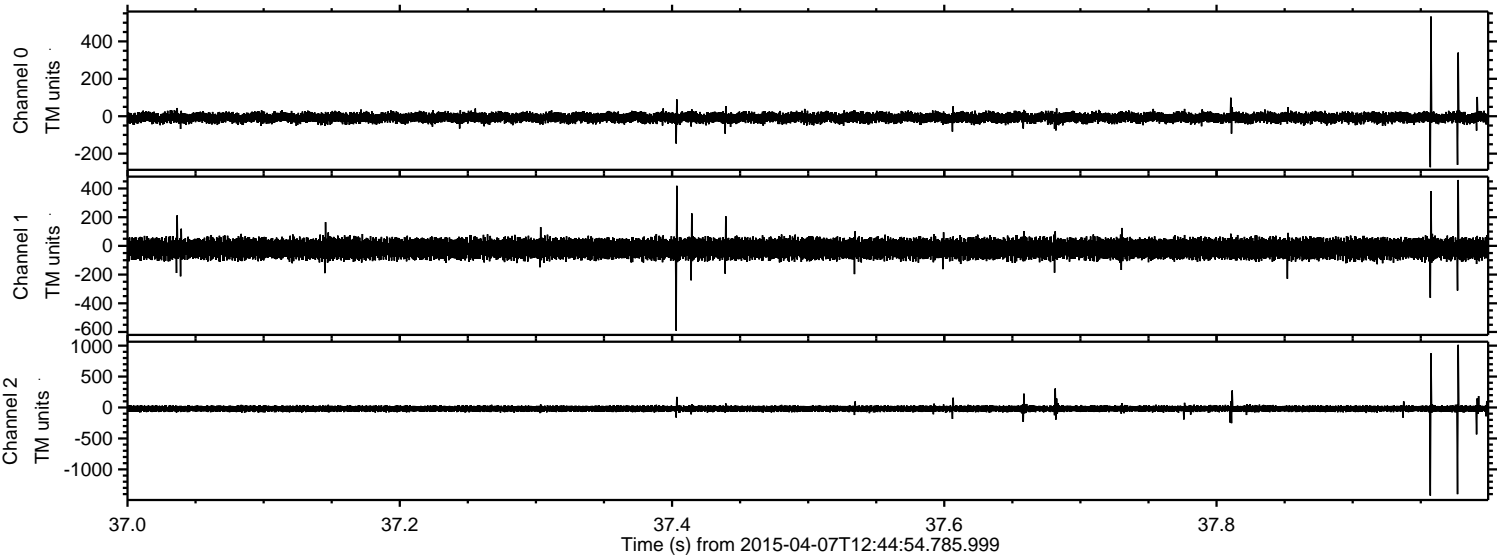


ELMAVAN 3D WAVEFORMS (Measured data sampled at 50 kHz) 49778 packets of 144 samples from 2015-04-07T12:44:54.785.999. Part 129/144

Processed Tue Apr 7 14:52:16 2015 by ELM ver.2012-10-06 from 001__elm20150407_124453__dat00.bin



Processed Tue Apr 7 14:52:17 2015 by ELM ver.2012-10-06 from 001__elm20150407_124453__dat00.bin

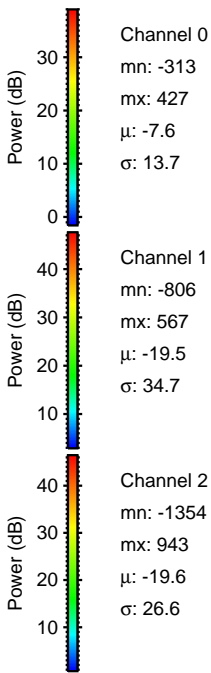
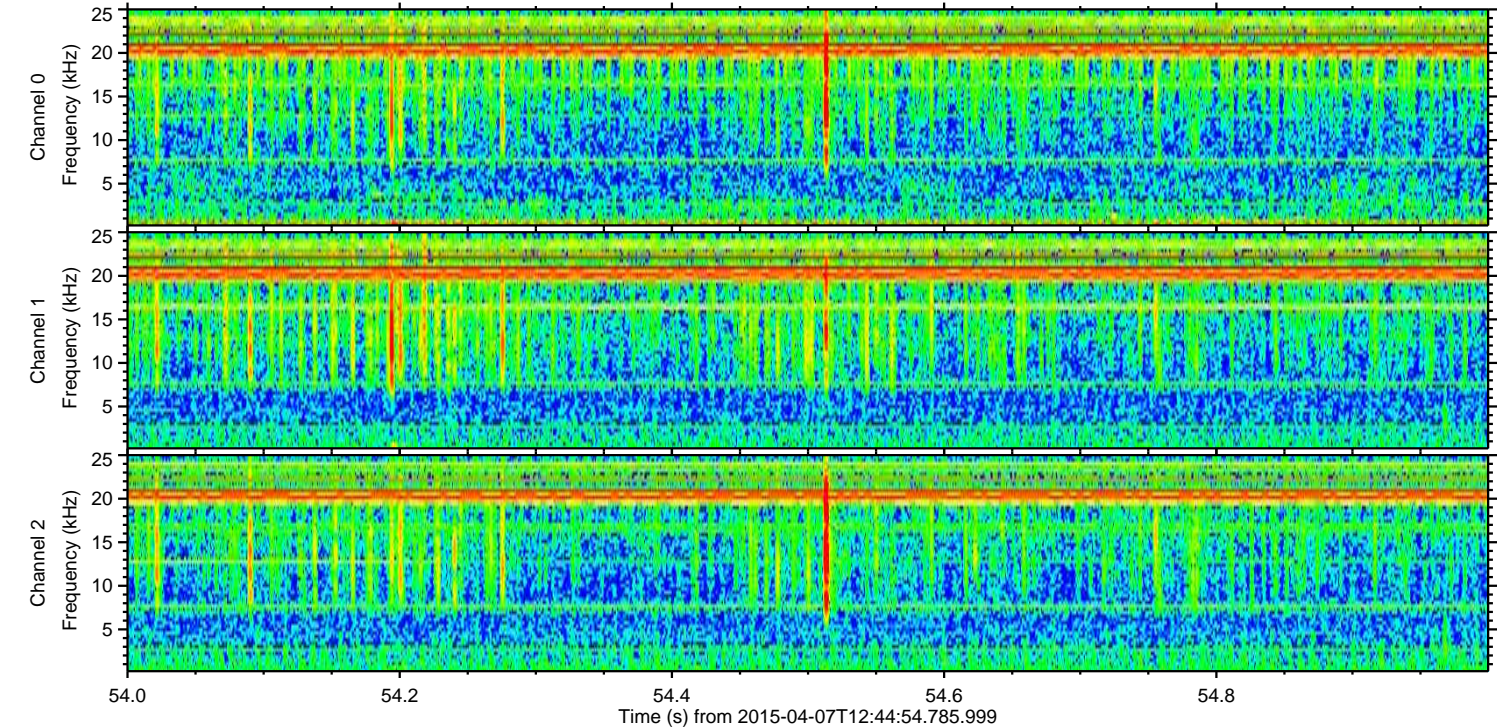
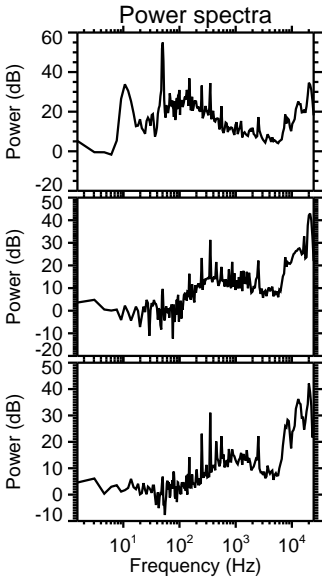
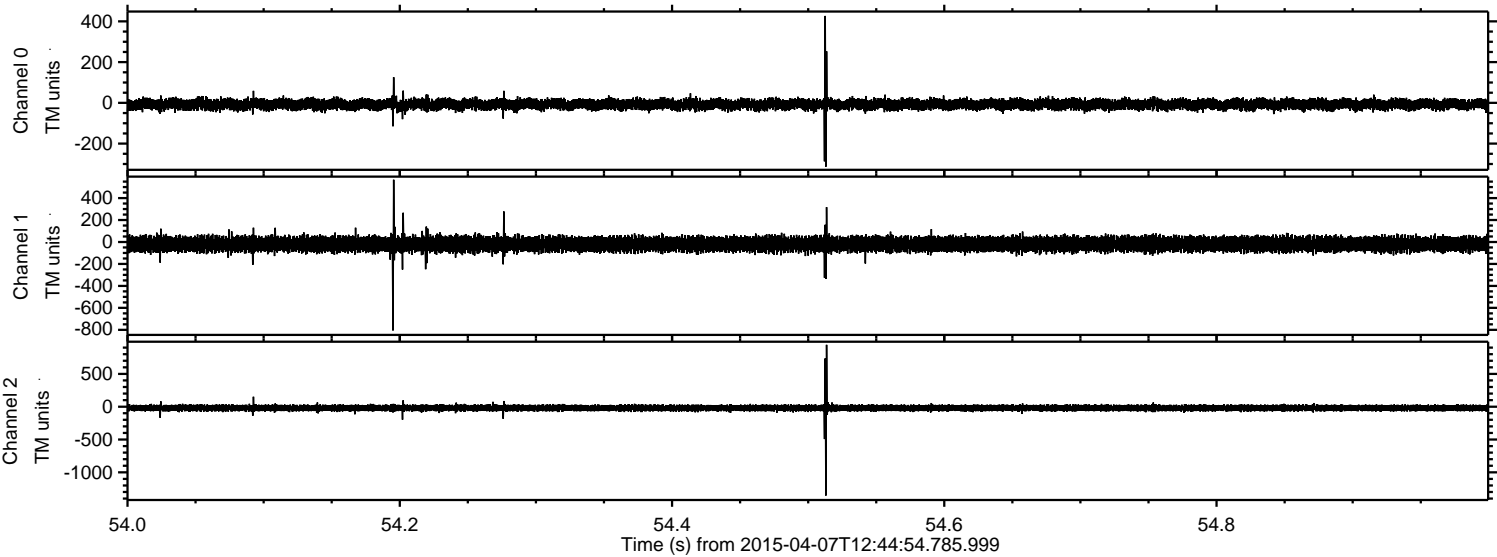


Channel 0
mn: -273
mx: 533
 μ : -7.6
 σ : 13.7

Channel 1
mn: -591
mx: 460
 μ : -19.5
 σ : 34.5

Channel 2
mn: -1424
mx: 1013
 μ : -19.6
 σ : 28.2

Processed Tue Apr 7 14:52:18 2015 by ELM ver.2012-10-06 from 001__elm20150407_124453__dat00.bin

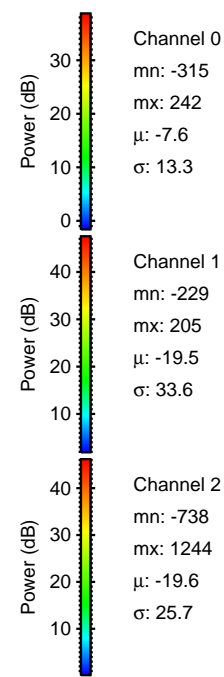
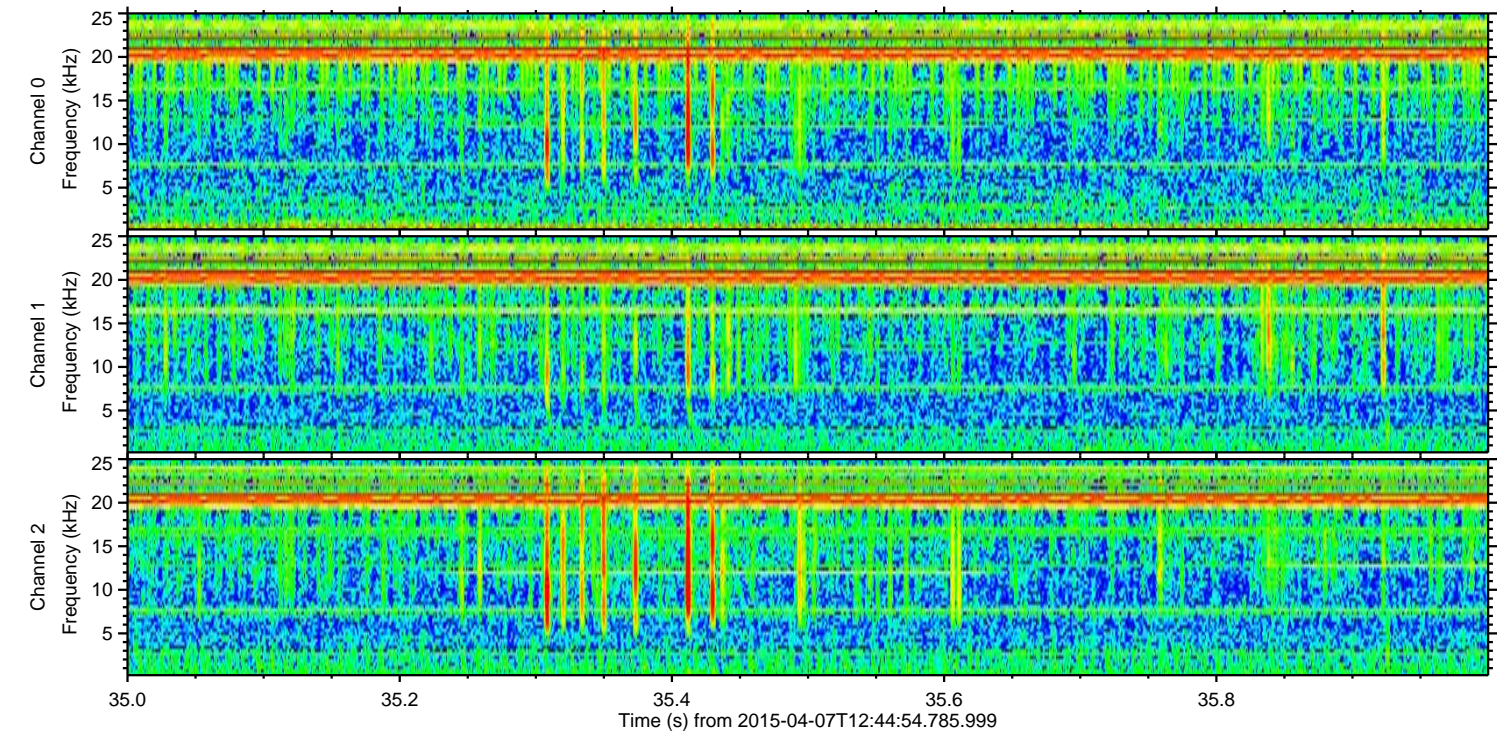
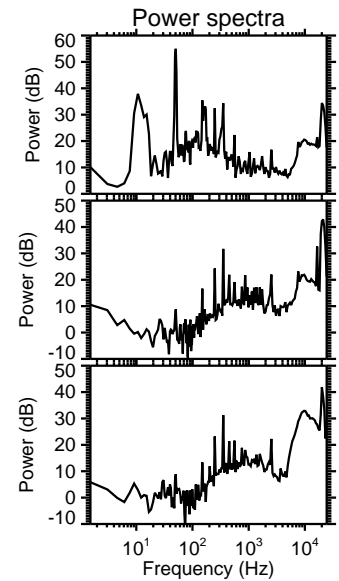
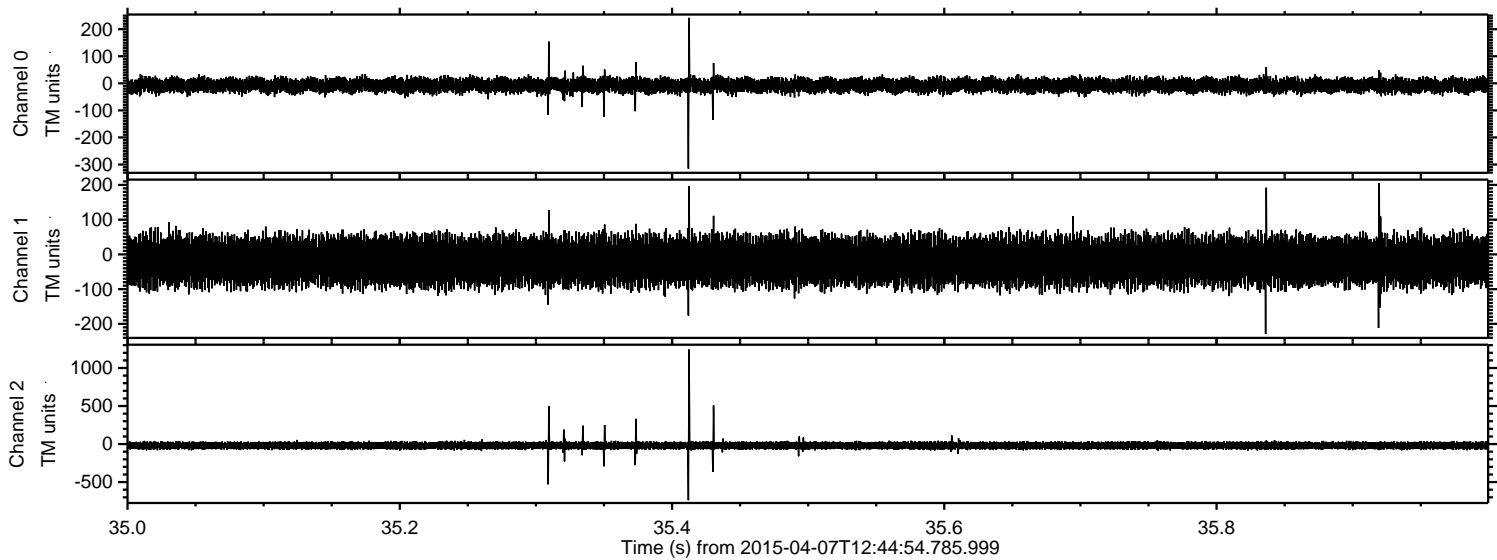


Channel 0
mn: -313
mx: 427
 μ : -7.6
 σ : 13.7

Channel 1
mn: -806
mx: 567
 μ : -19.5
 σ : 34.7

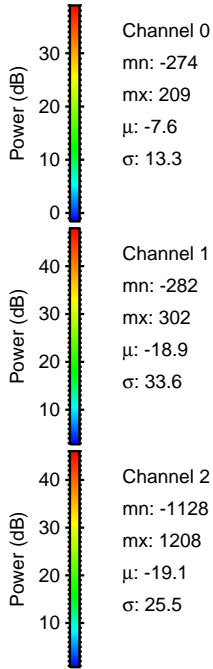
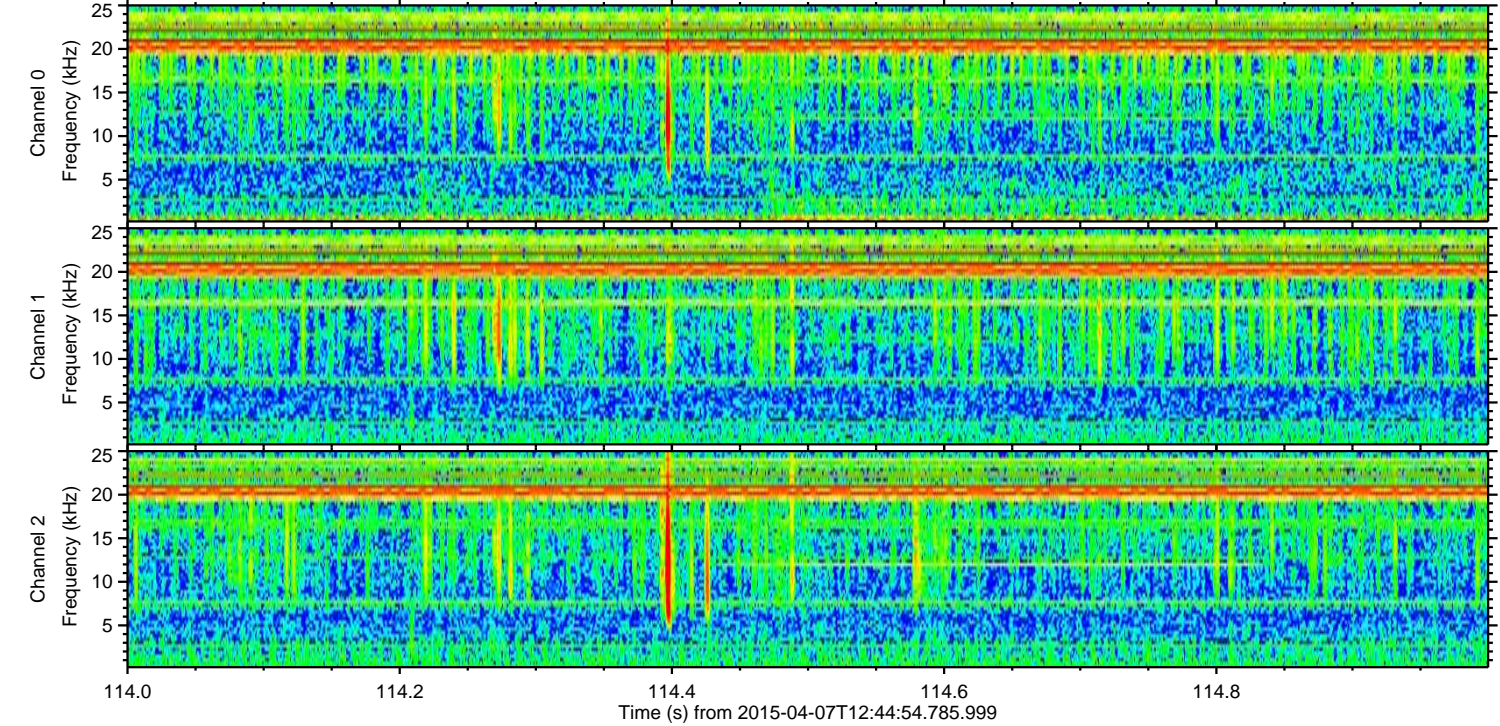
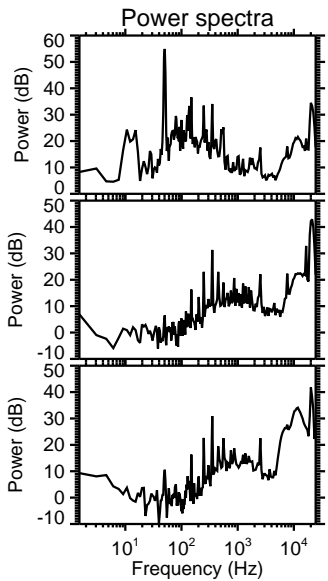
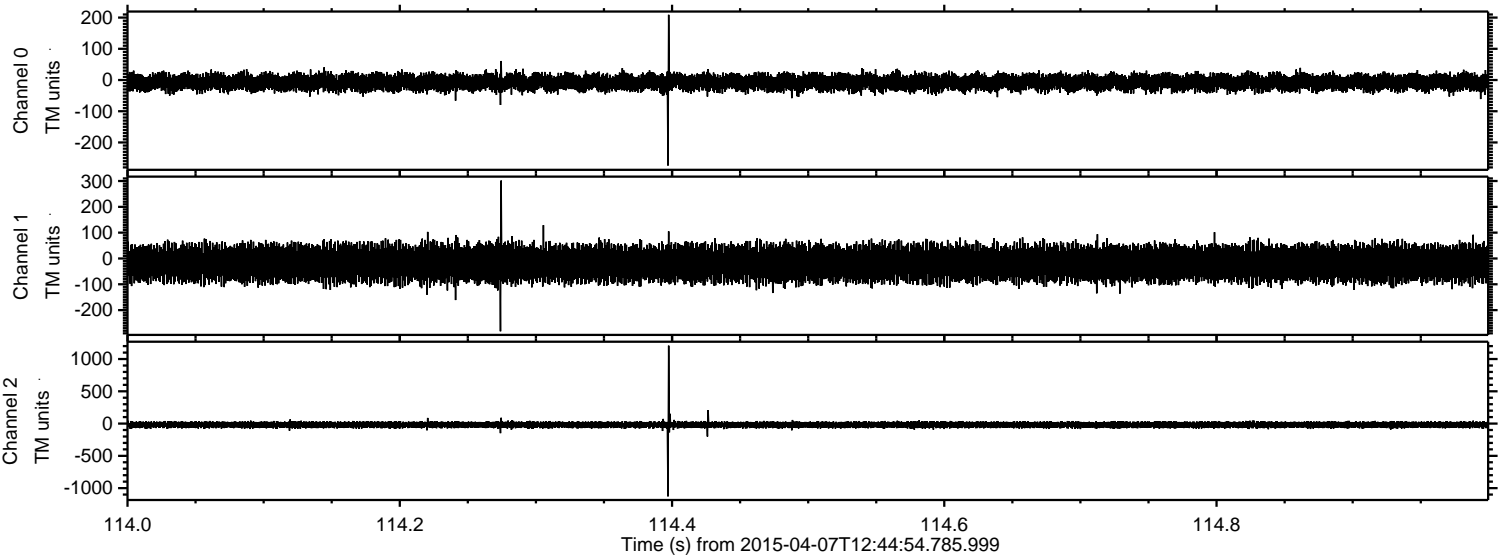
Channel 2
mn: -1354
mx: 943
 μ : -19.6
 σ : 26.6

Processed Tue Apr 7 14:52:20 2015 by ELM ver.2012-10-06 from 001__elm20150407_124453__dat00.bin

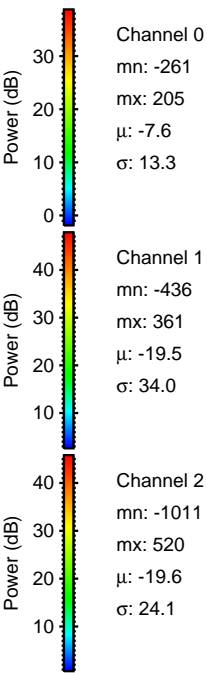
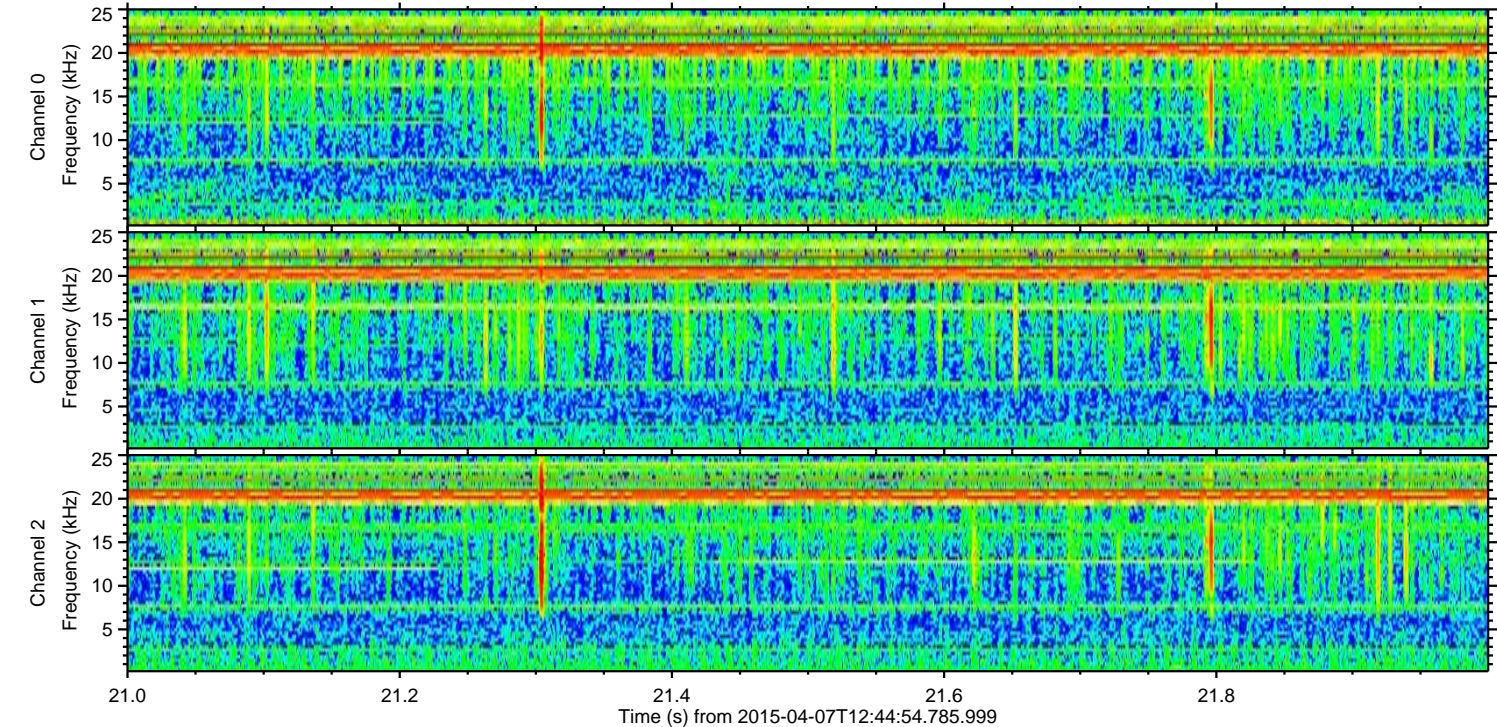
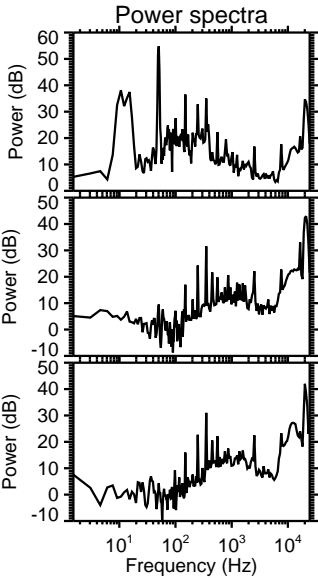
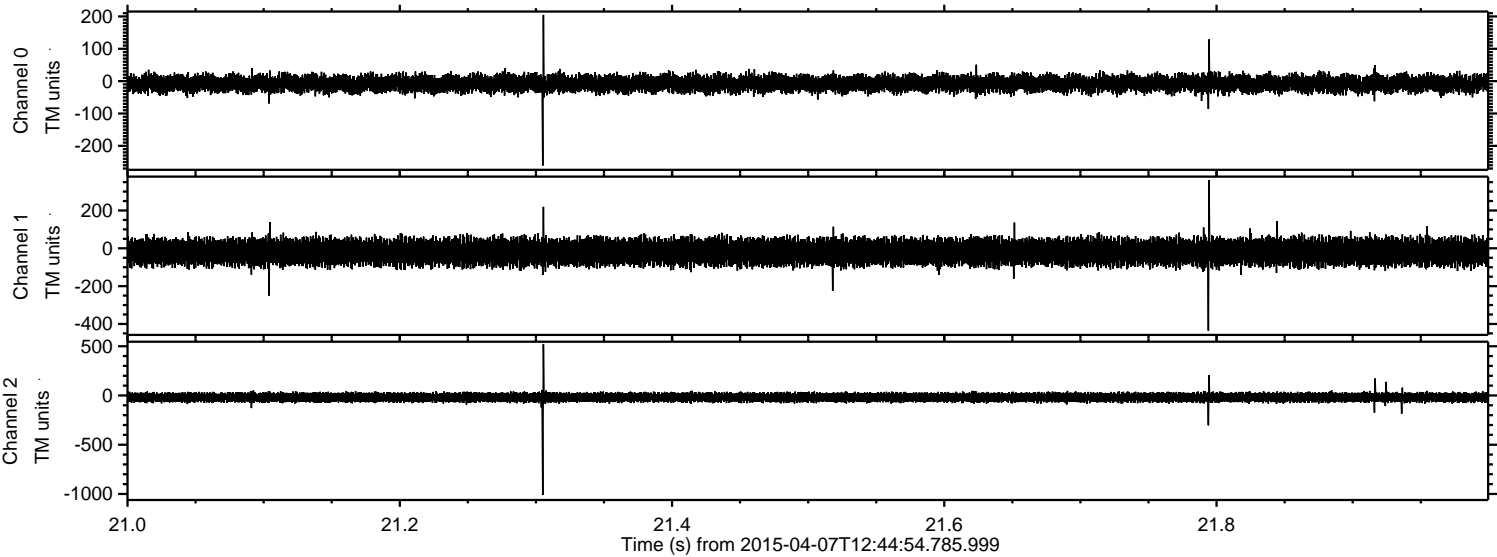


ELMAVAN 3D WAVEFORMS (Measured data sampled at 50 kHz) 49778 packets of 144 samples from 2015-04-07T12:44:54.785.999. Part 115/144

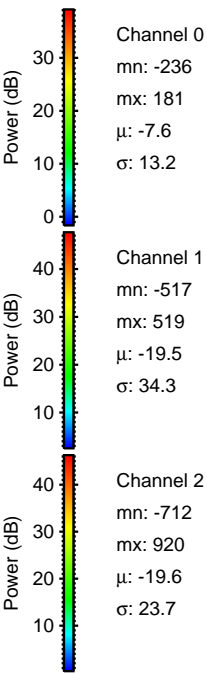
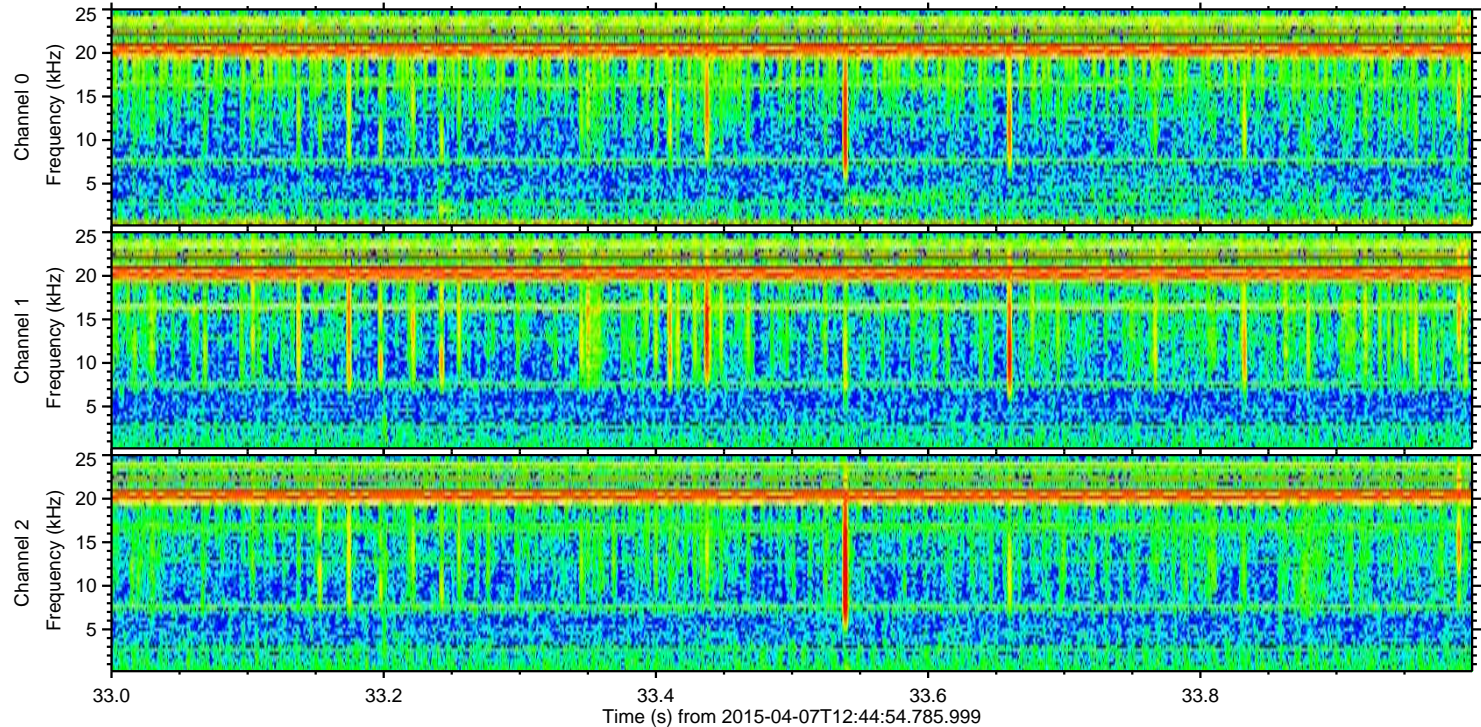
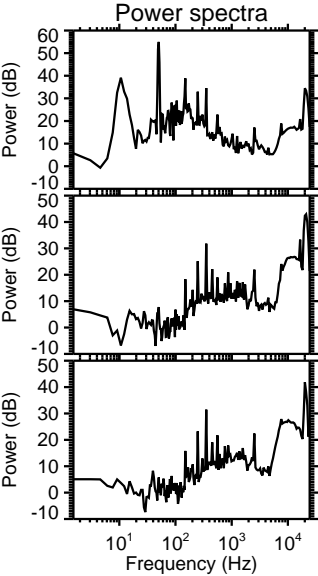
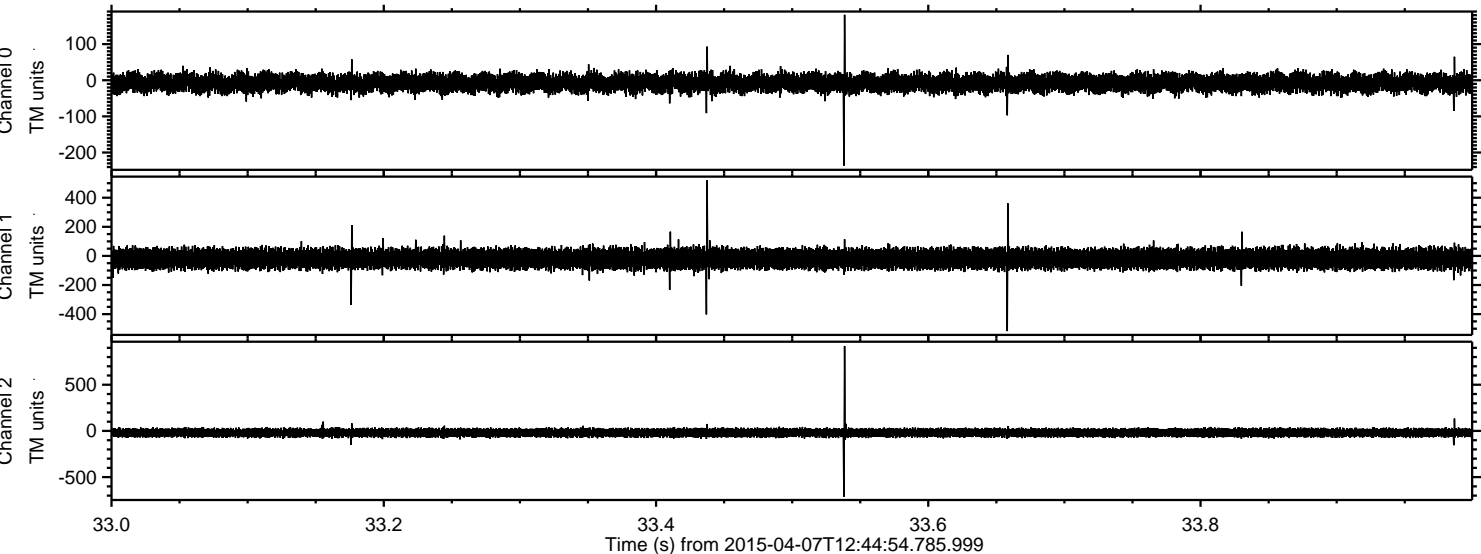
Processed Tue Apr 7 14:52:21 2015 by ELM ver.2012-10-06 from 001__elm20150407_124453__dat00.bin



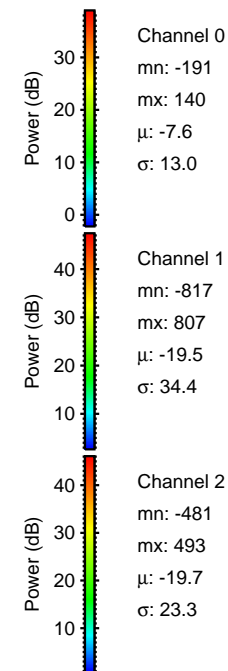
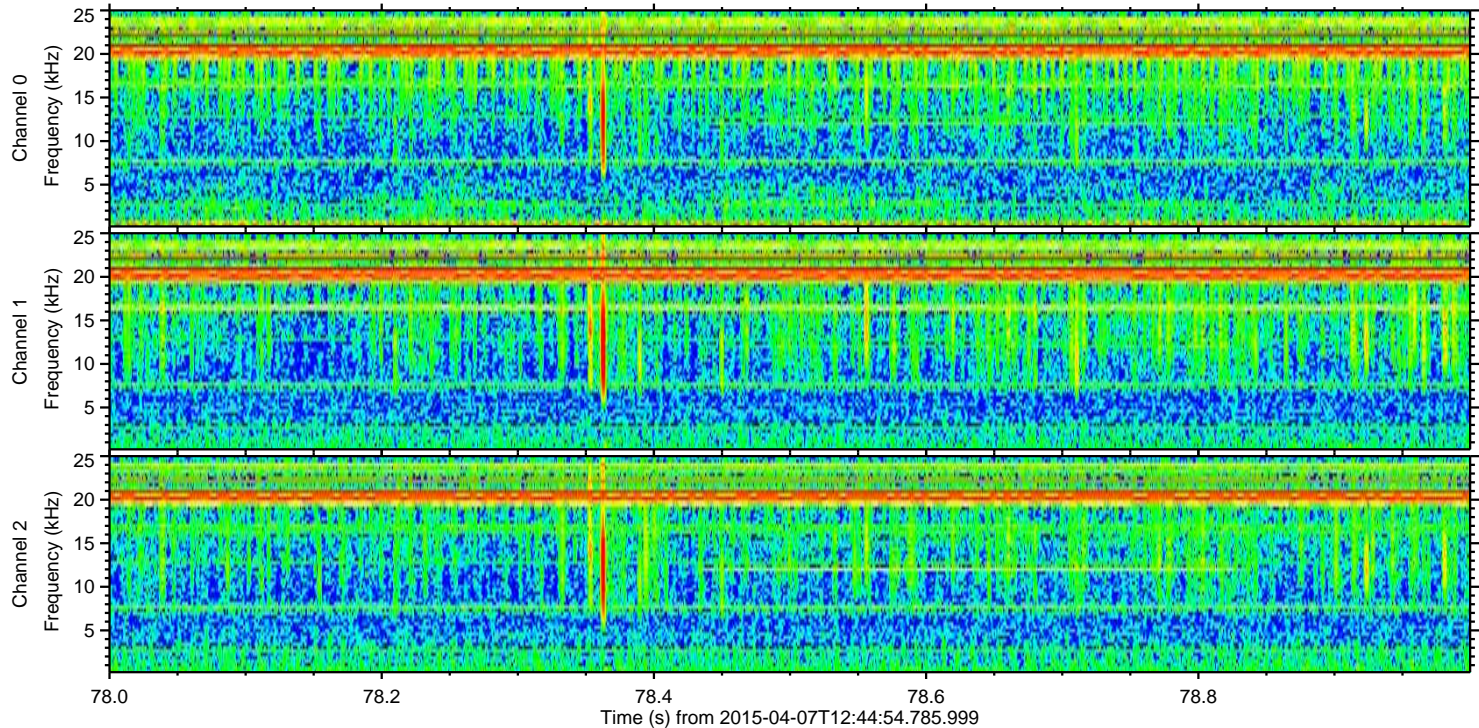
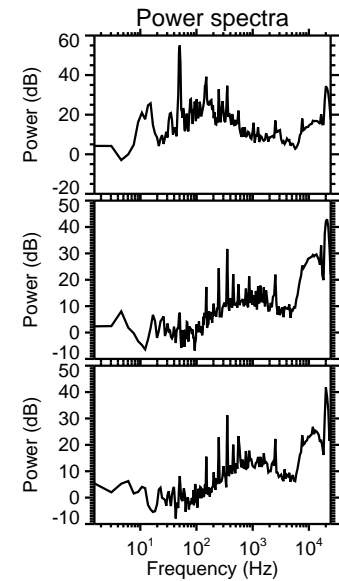
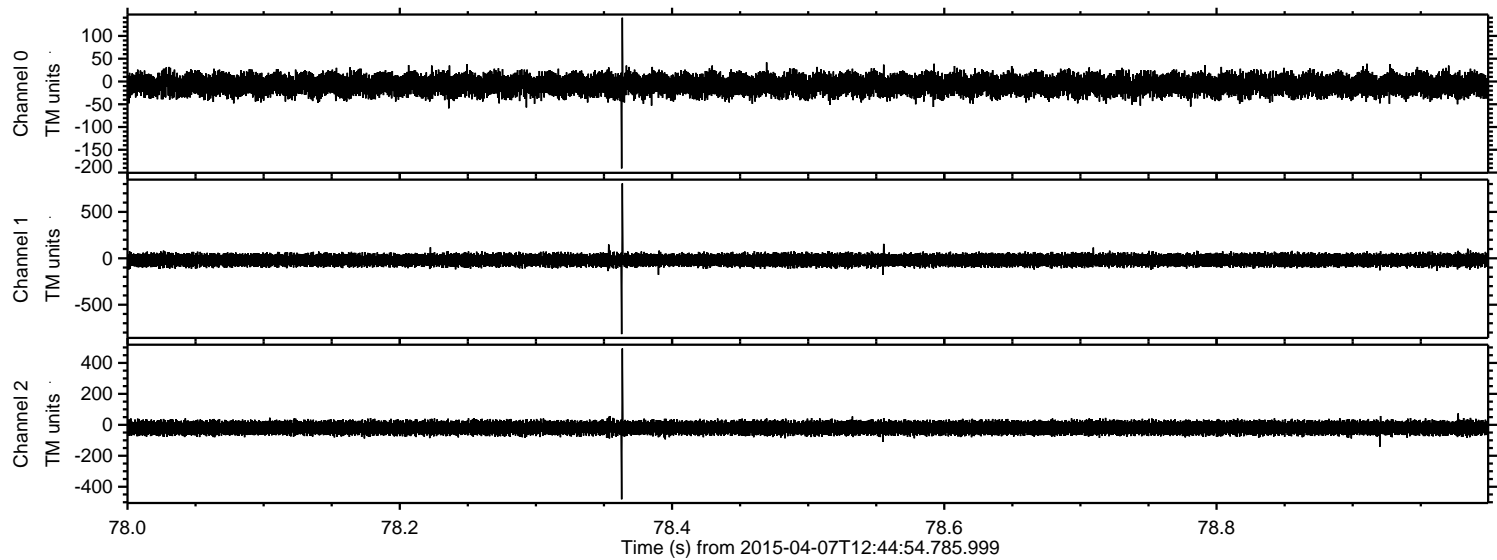
Processed Tue Apr 7 14:52:22 2015 by ELM ver.2012-10-06 from 001__elm20150407_124453__dat00.bin



Processed Tue Apr 7 14:52:23 2015 by ELM ver.2012-10-06 from 001__elm20150407_124453__dat00.bin



Processed Tue Apr 7 14:52:24 2015 by ELM ver.2012-10-06 from 001__elm20150407_124453__dat00.bin



Processed Tue Apr 7 14:52:25 2015 by ELM ver.2012-10-06 from 001__elm20150407_124453__dat00.bin

