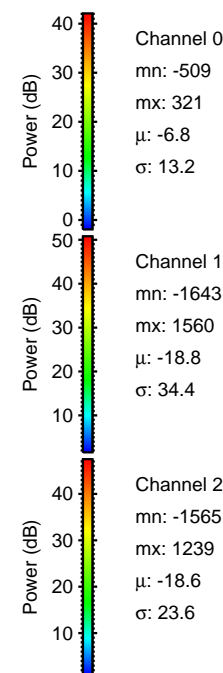
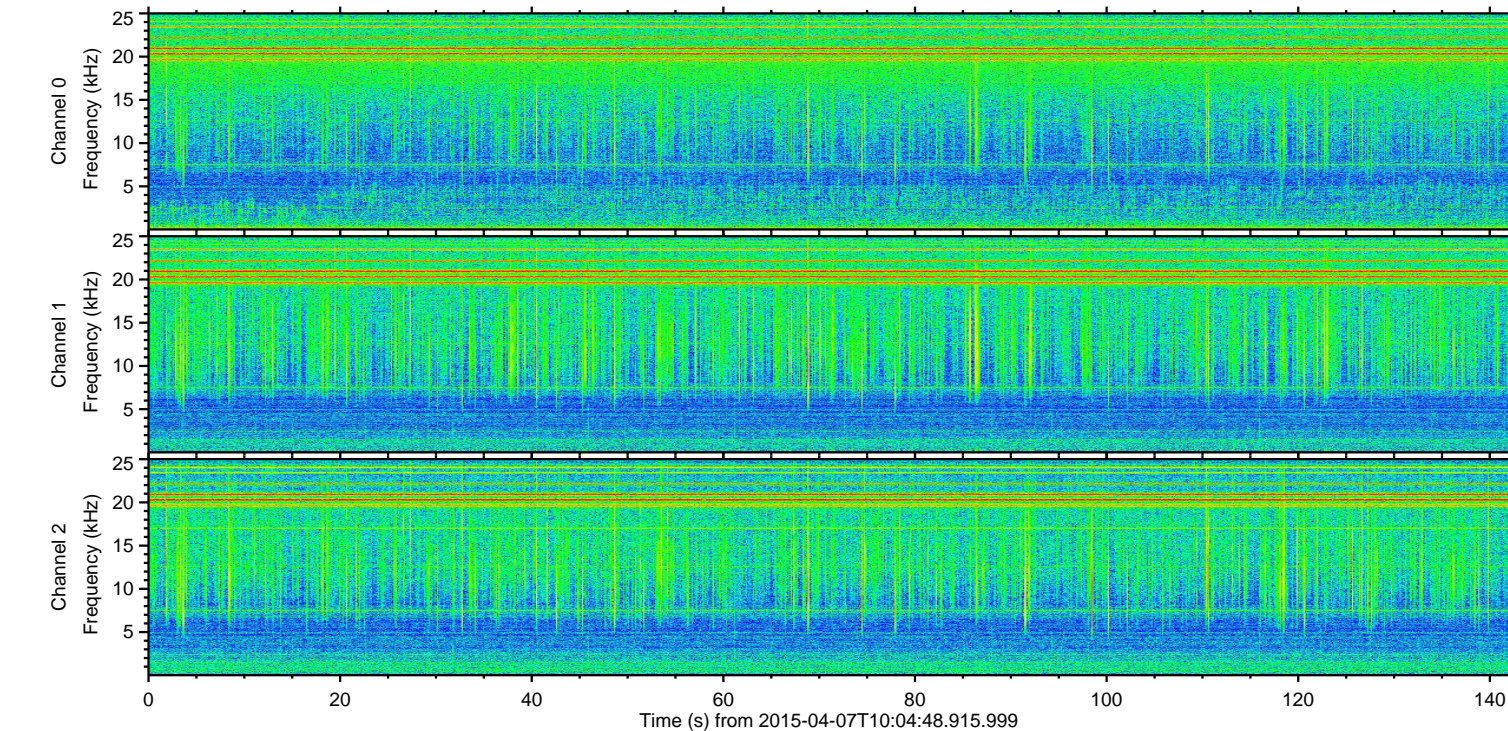
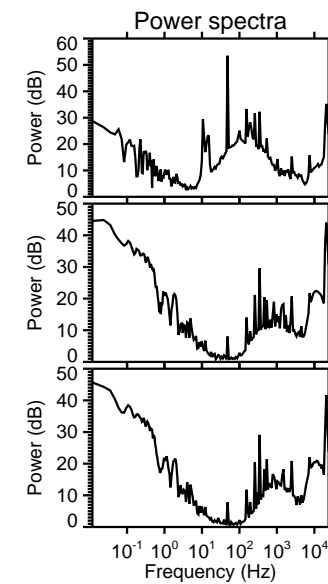
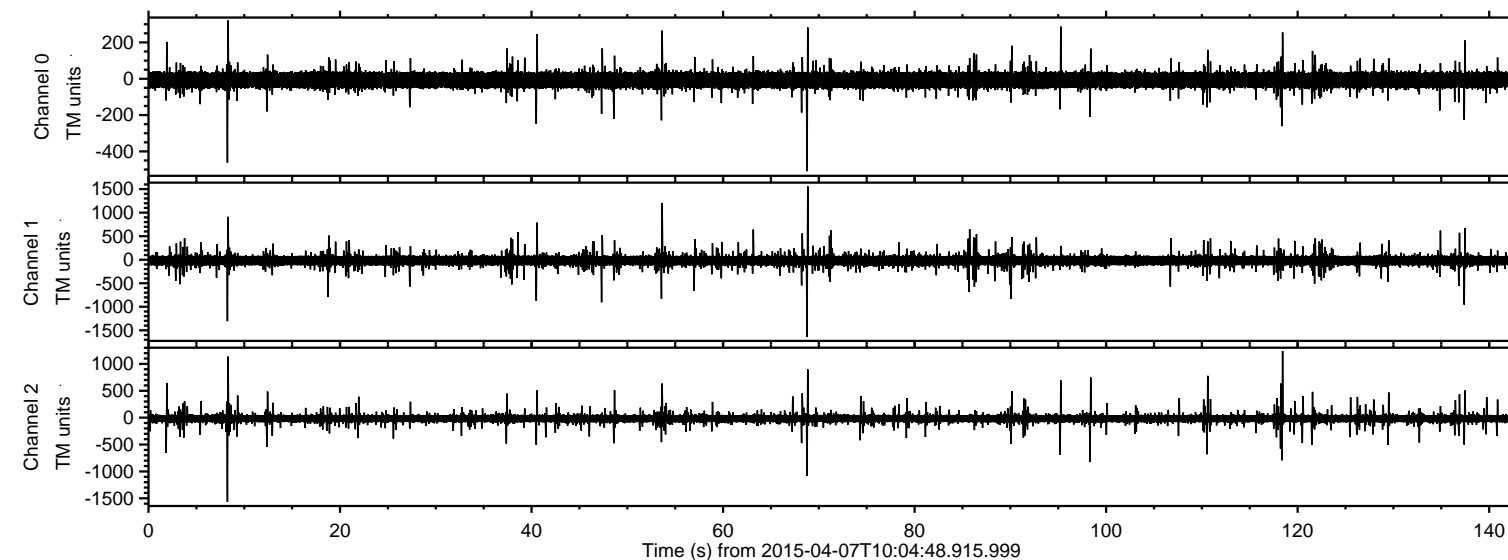


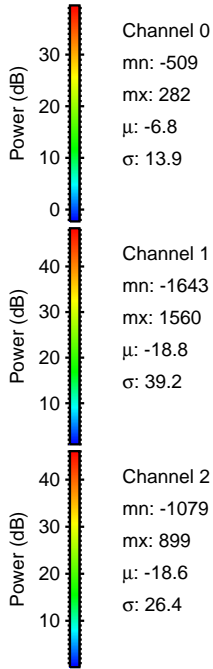
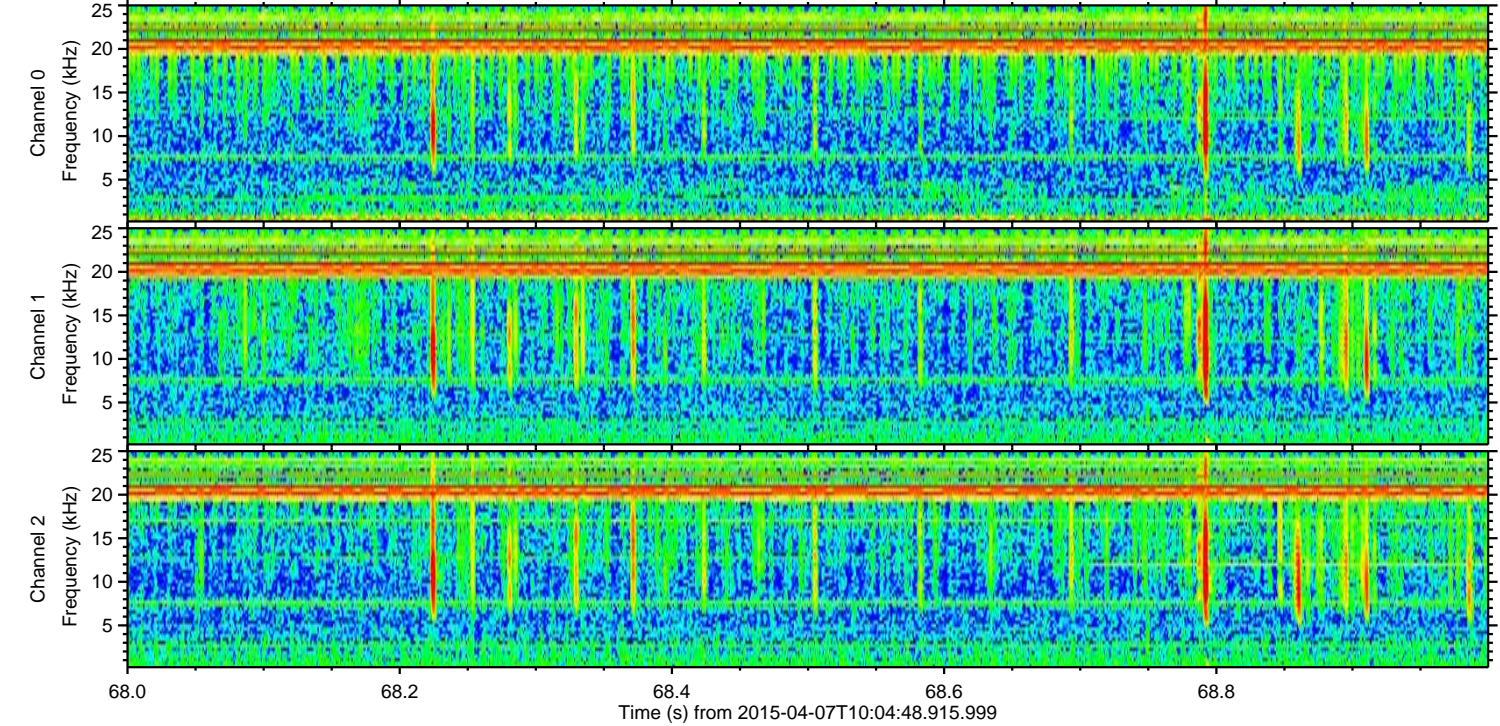
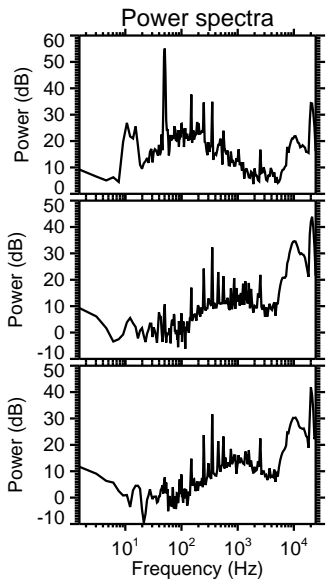
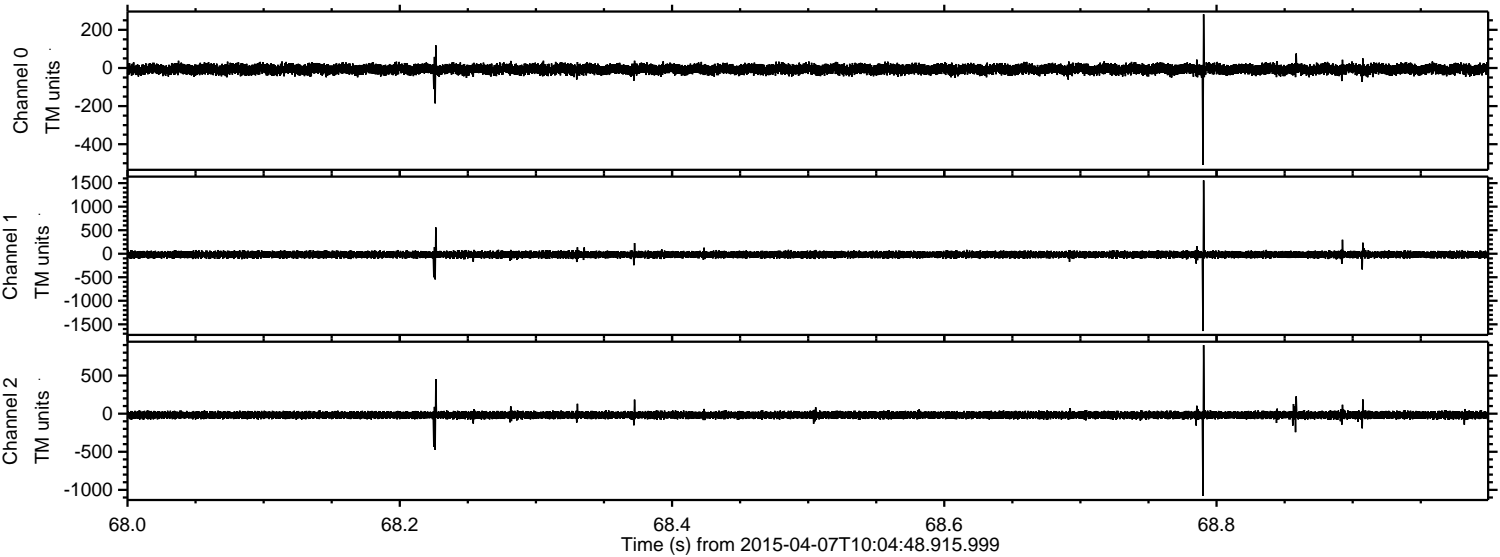
# ELMAVAN 3D WAVEFORMS (Measured data sampled at 50 kHz) 49336 packets of 144 samples from 2015-04-07T10:04:48.915.999.

Processed Tue Apr 7 13:43:15 2015 by ELM ver.2012-10-06 from 001\_\_elm20150407\_100447\_\_dat00.bin



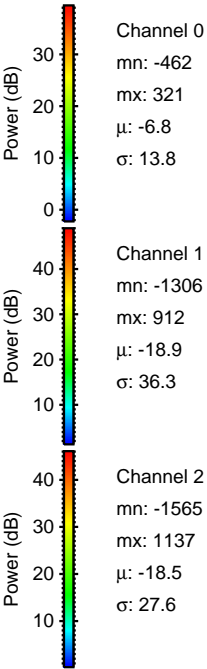
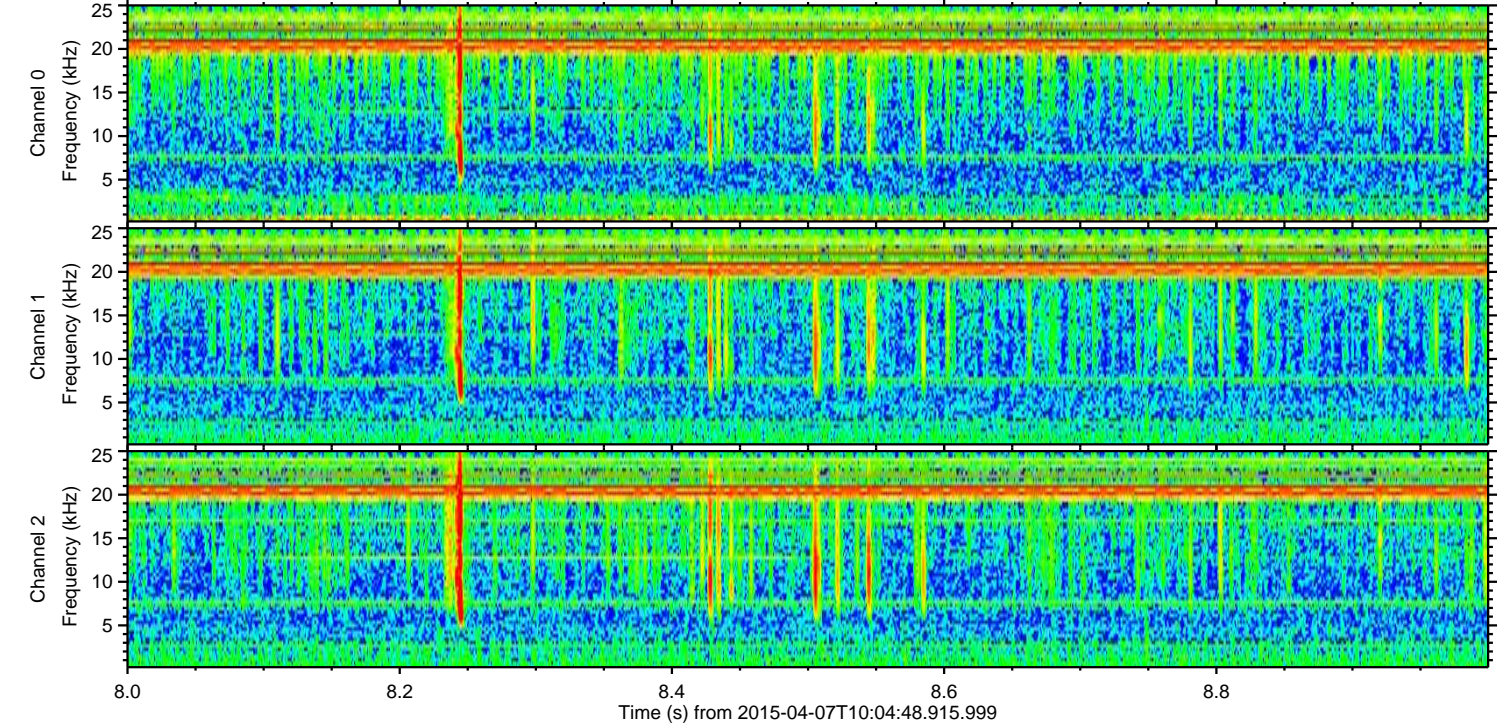
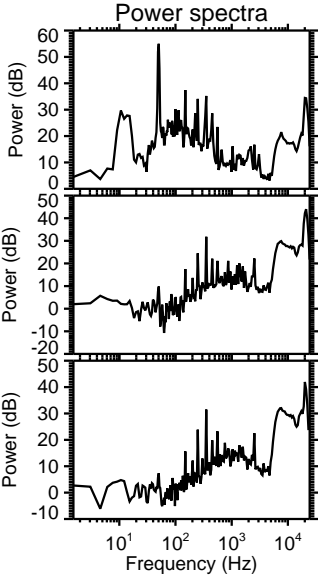
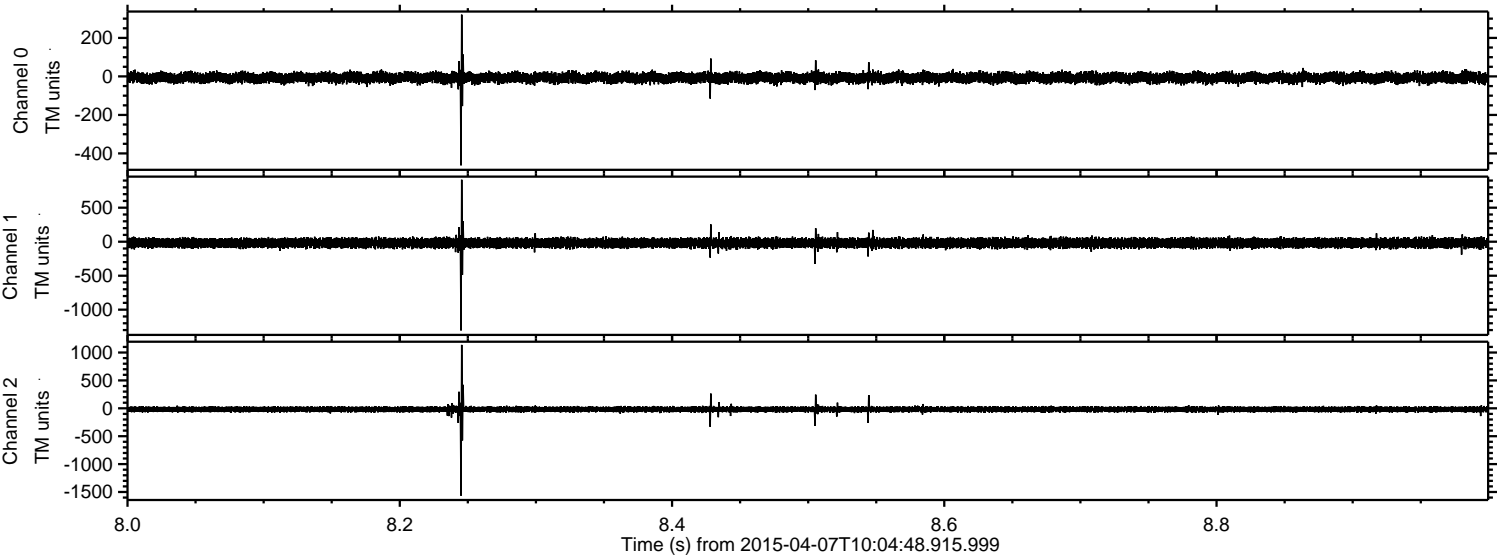


Processed Tue Apr 7 13:43:30 2015 by ELM ver.2012-10-06 from 001\_\_elm20150407\_100447\_\_dat00.bin



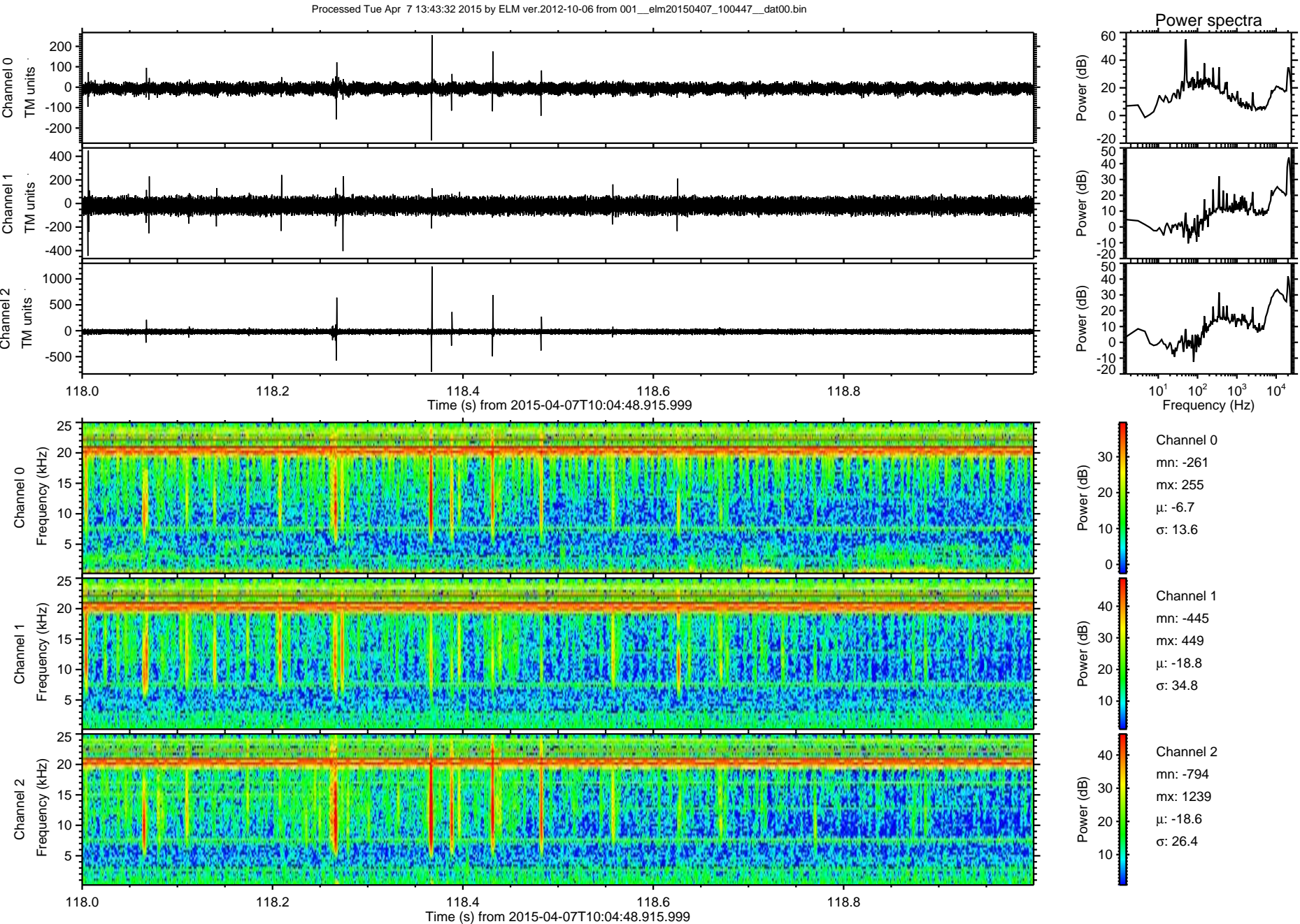


Processed Tue Apr 7 13:43:31 2015 by ELM ver.2012-10-06 from 001\_\_elm20150407\_100447\_\_dat00.bin



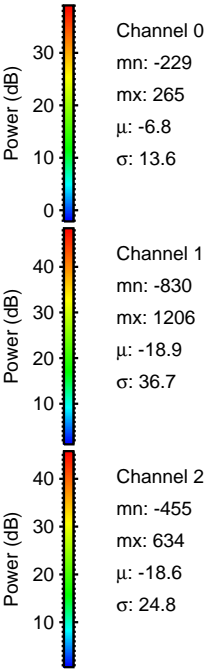
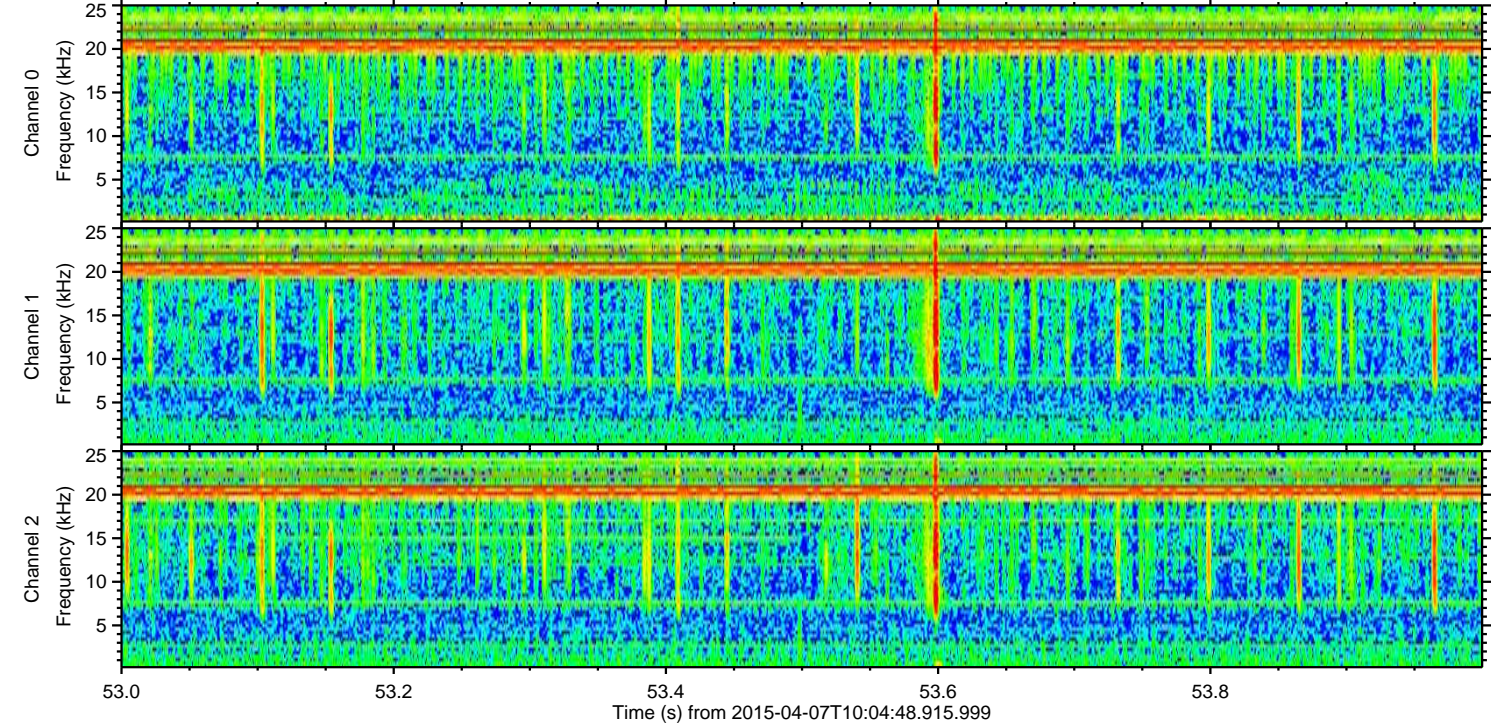
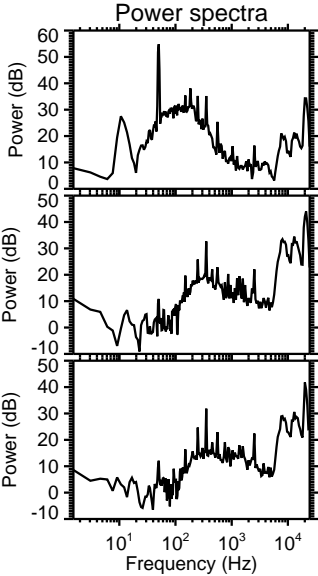
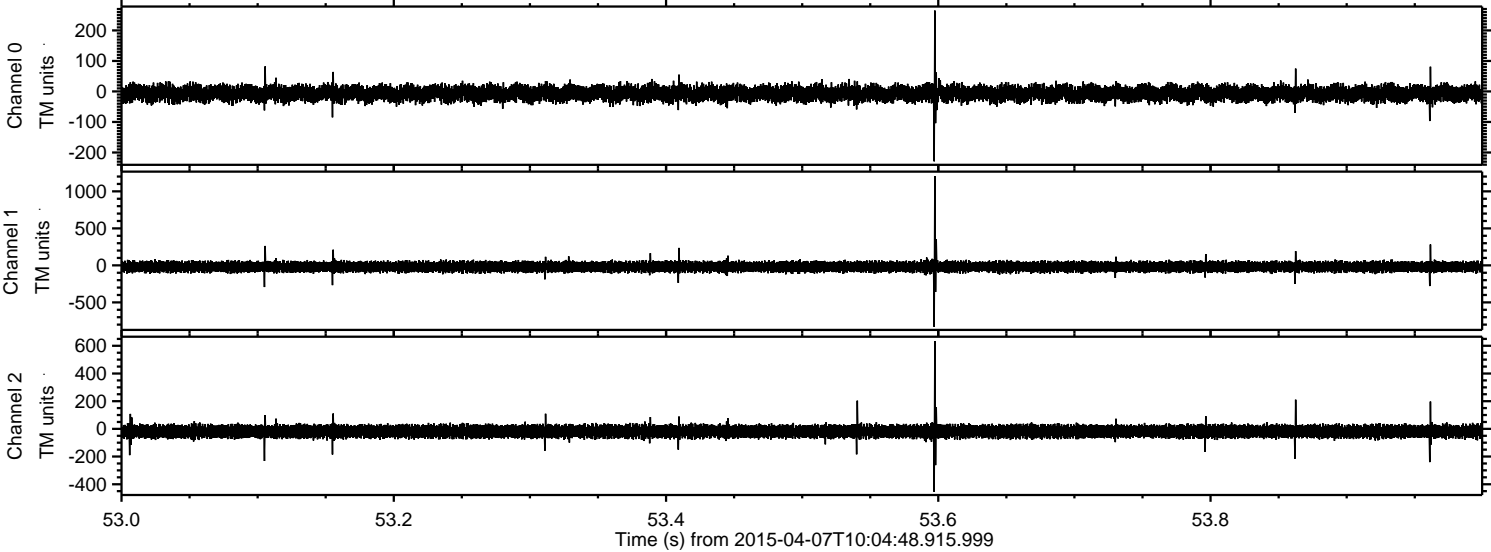


ELMAVAN 3D WAVEFORMS (Measured data sampled at 50 kHz) 49336 packets of 144 samples from 2015-04-07T10:04:48.915.999. Part 119/143





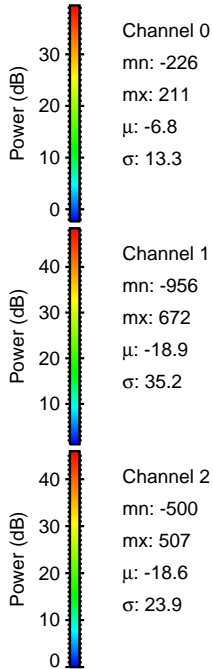
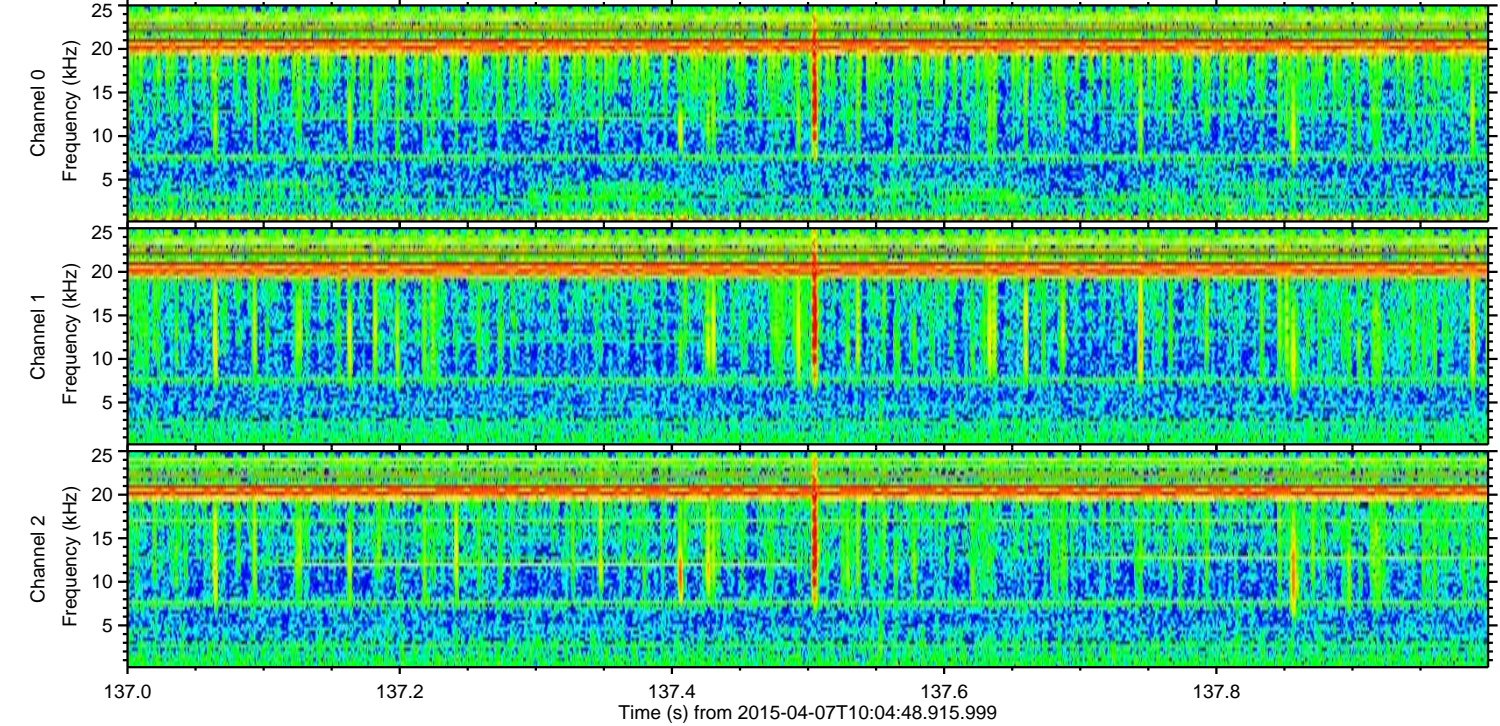
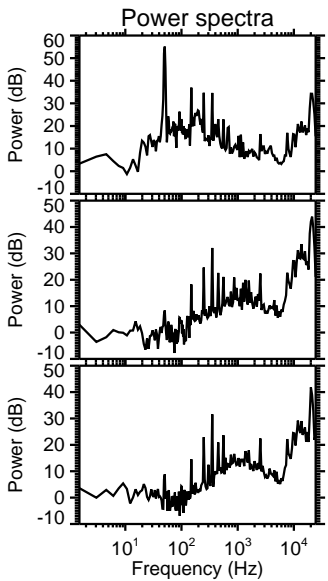
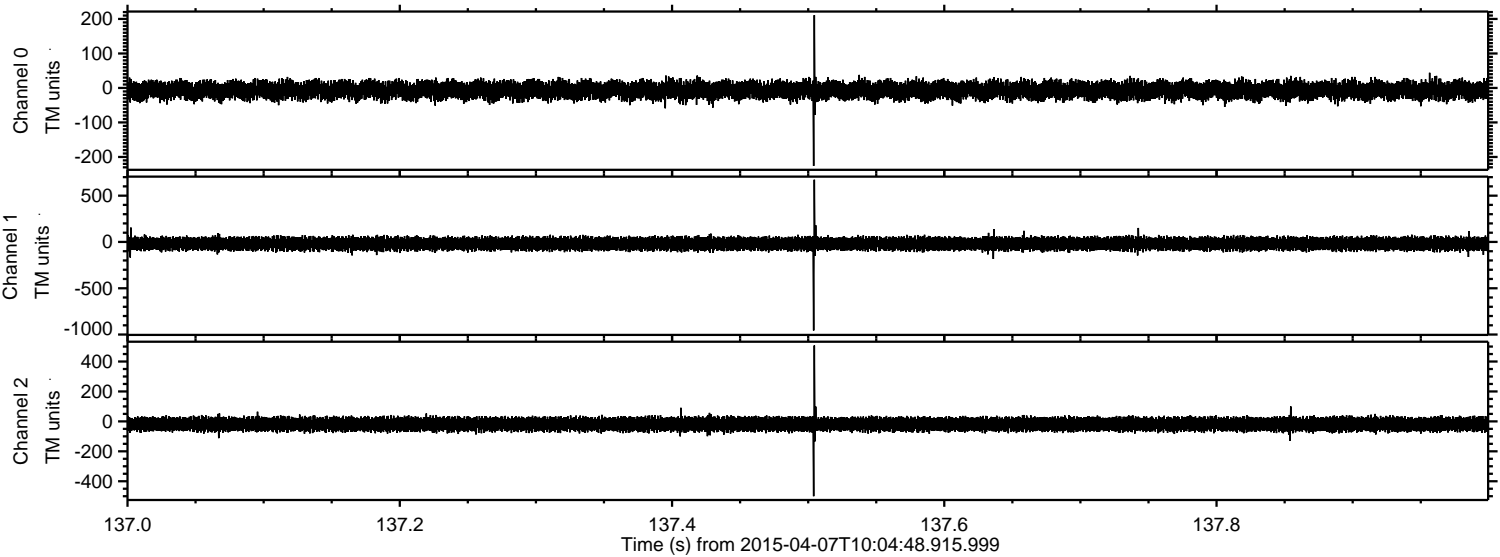
Processed Tue Apr 7 13:43:33 2015 by ELM ver.2012-10-06 from 001\_\_elm20150407\_100447\_\_dat00.bin





ELMAVAN 3D WAVEFORMS (Measured data sampled at 50 kHz) 49336 packets of 144 samples from 2015-04-07T10:04:48.915.999. Part 138/143

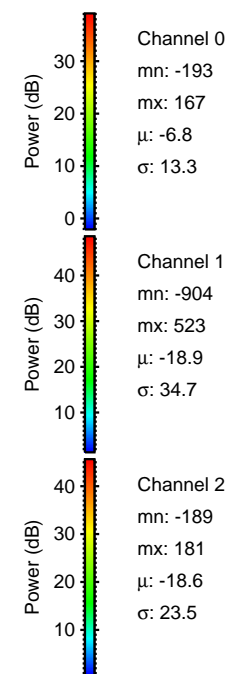
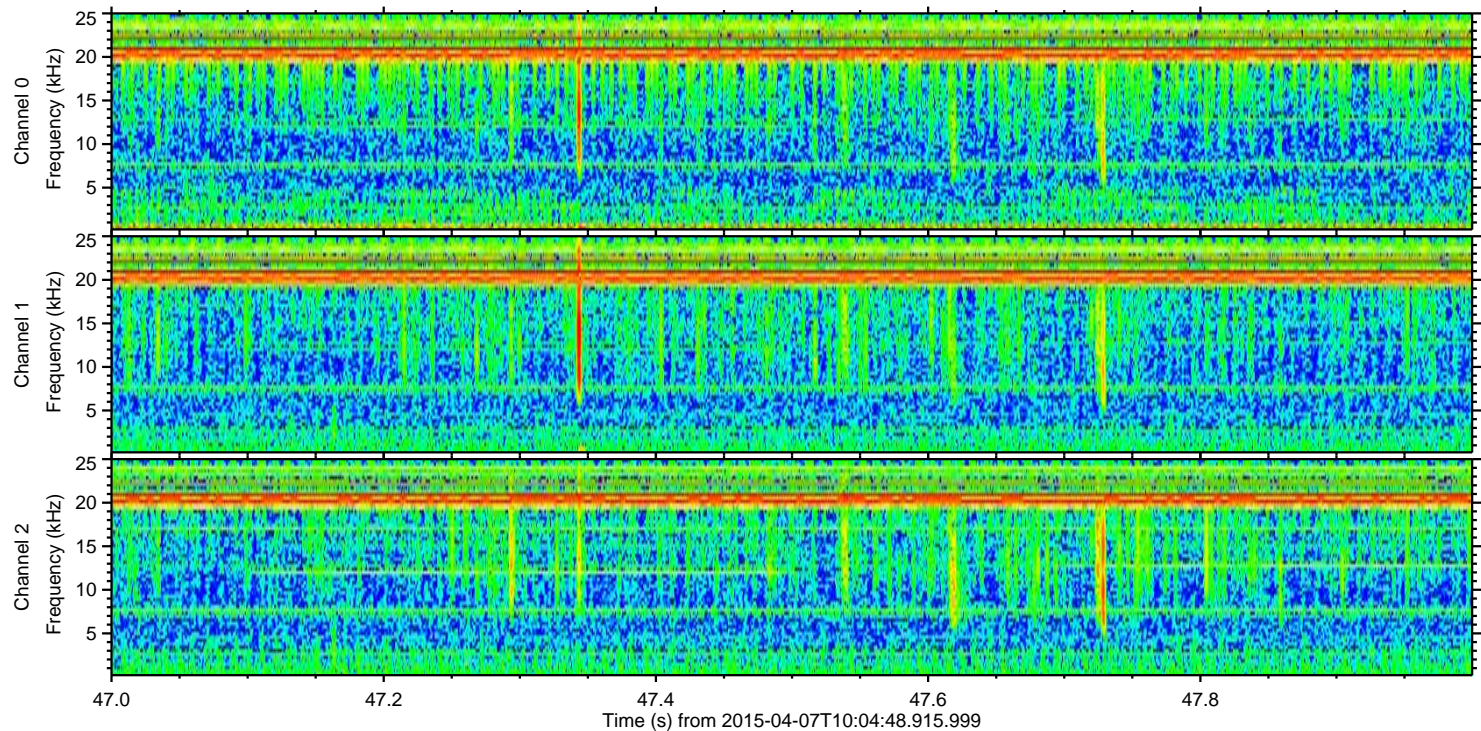
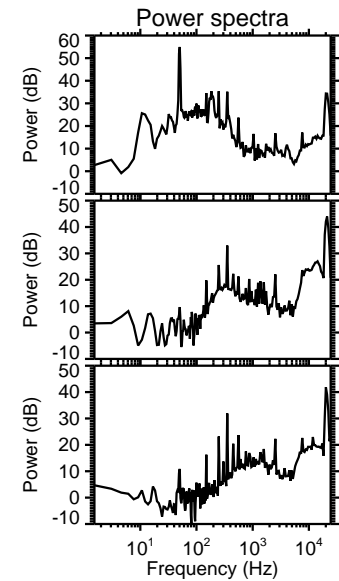
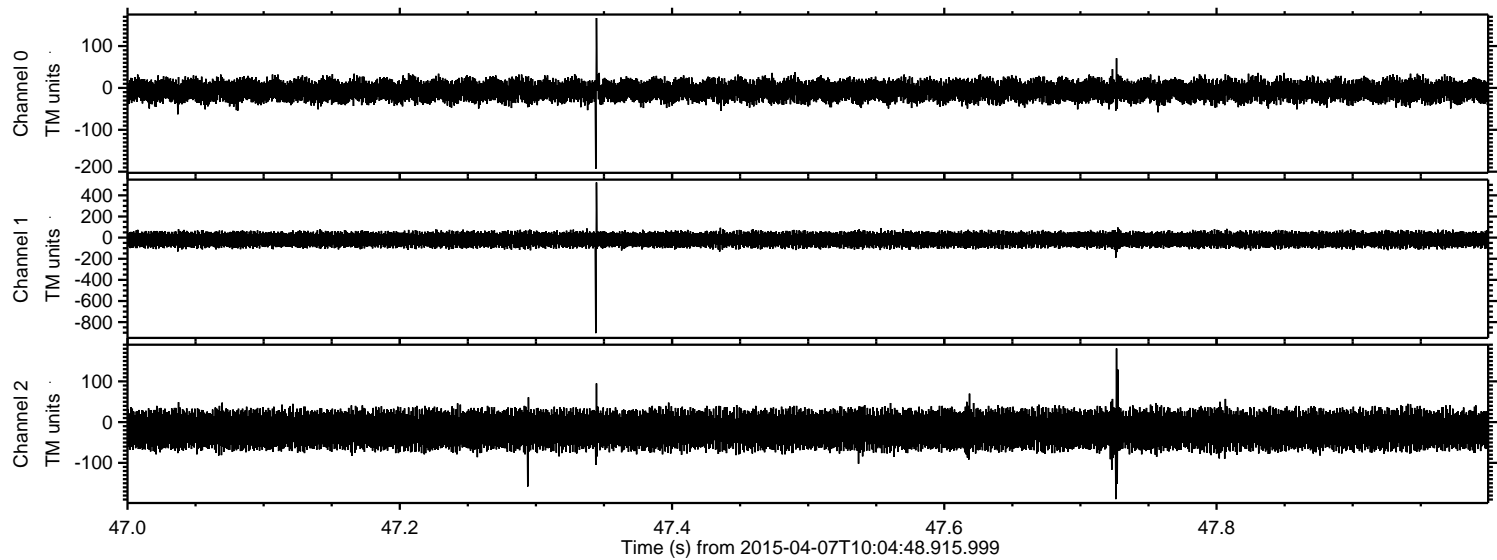
Processed Tue Apr 7 13:43:34 2015 by ELM ver.2012-10-06 from 001\_\_elm20150407\_100447\_\_dat00.bin





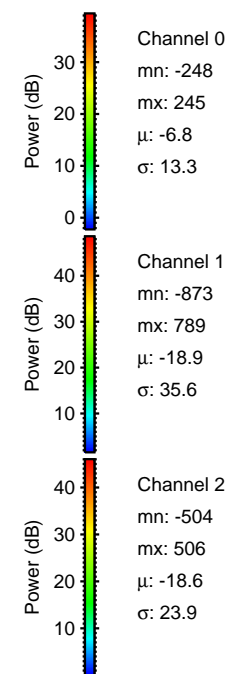
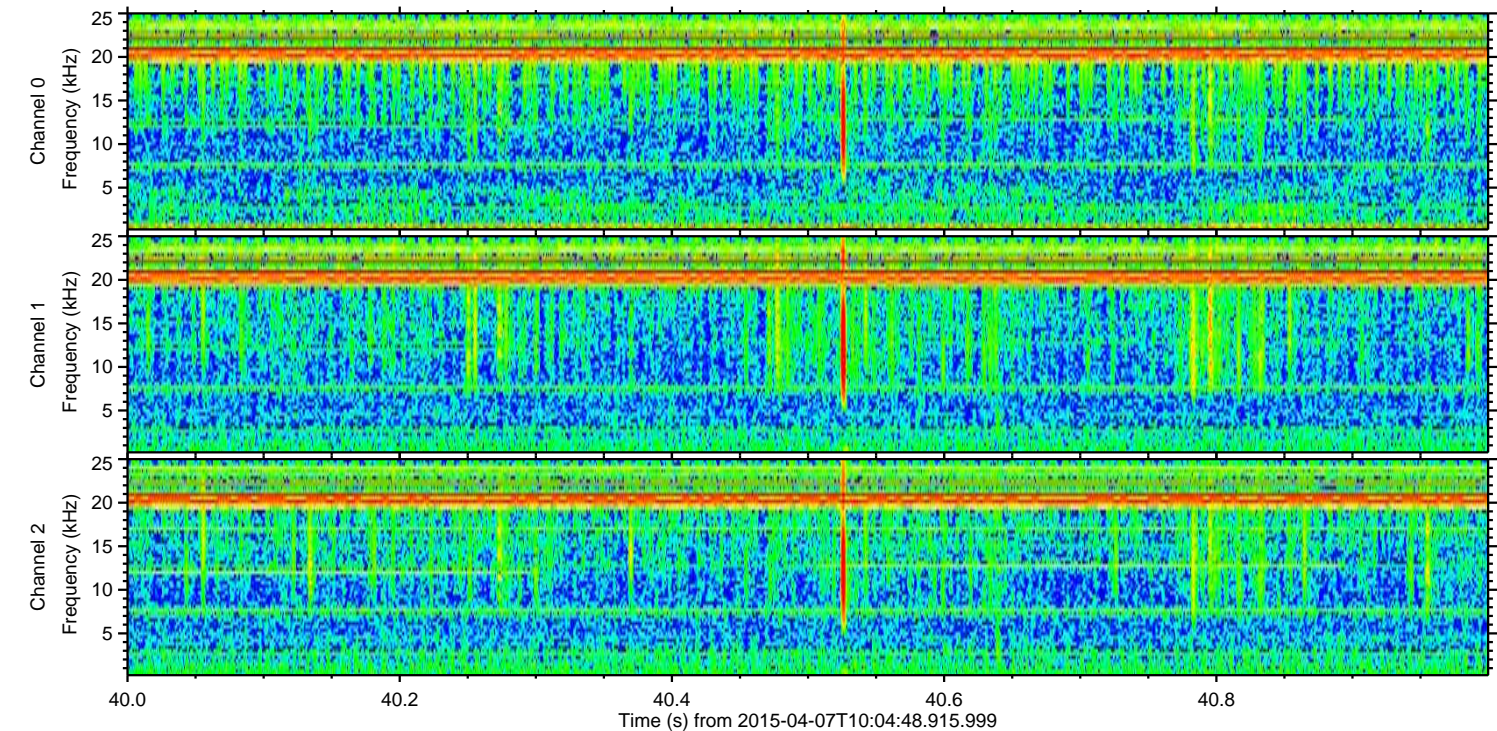
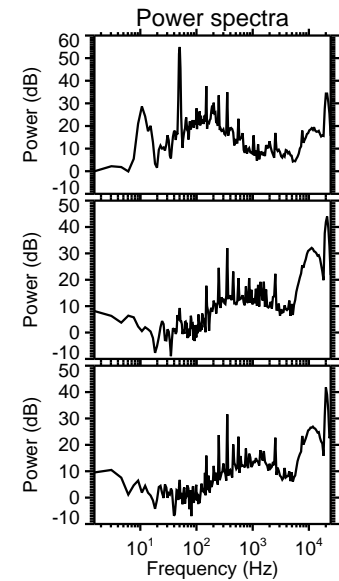
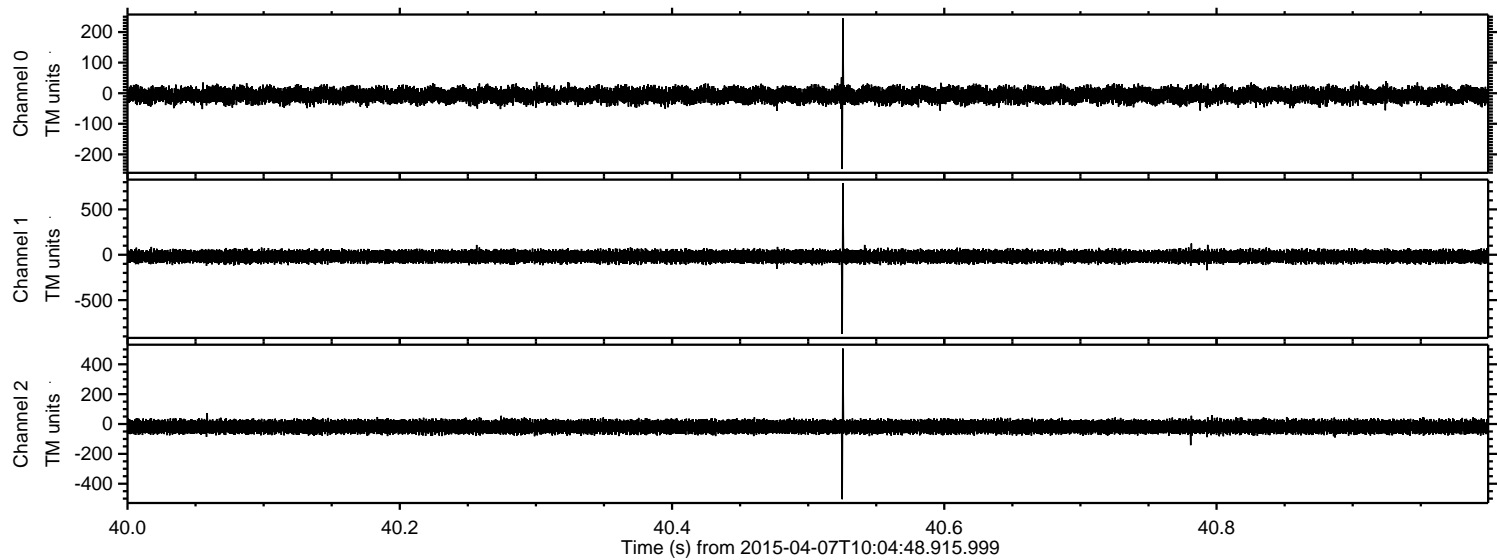
ELMAVAN 3D WAVEFORMS (Measured data sampled at 50 kHz) 49336 packets of 144 samples from 2015-04-07T10:04:48.915.999. Part 48/143

Processed Tue Apr 7 13:43:35 2015 by ELM ver.2012-10-06 from 001\_\_elm20150407\_100447\_\_dat00.bin



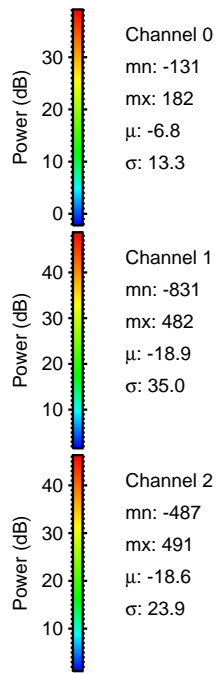
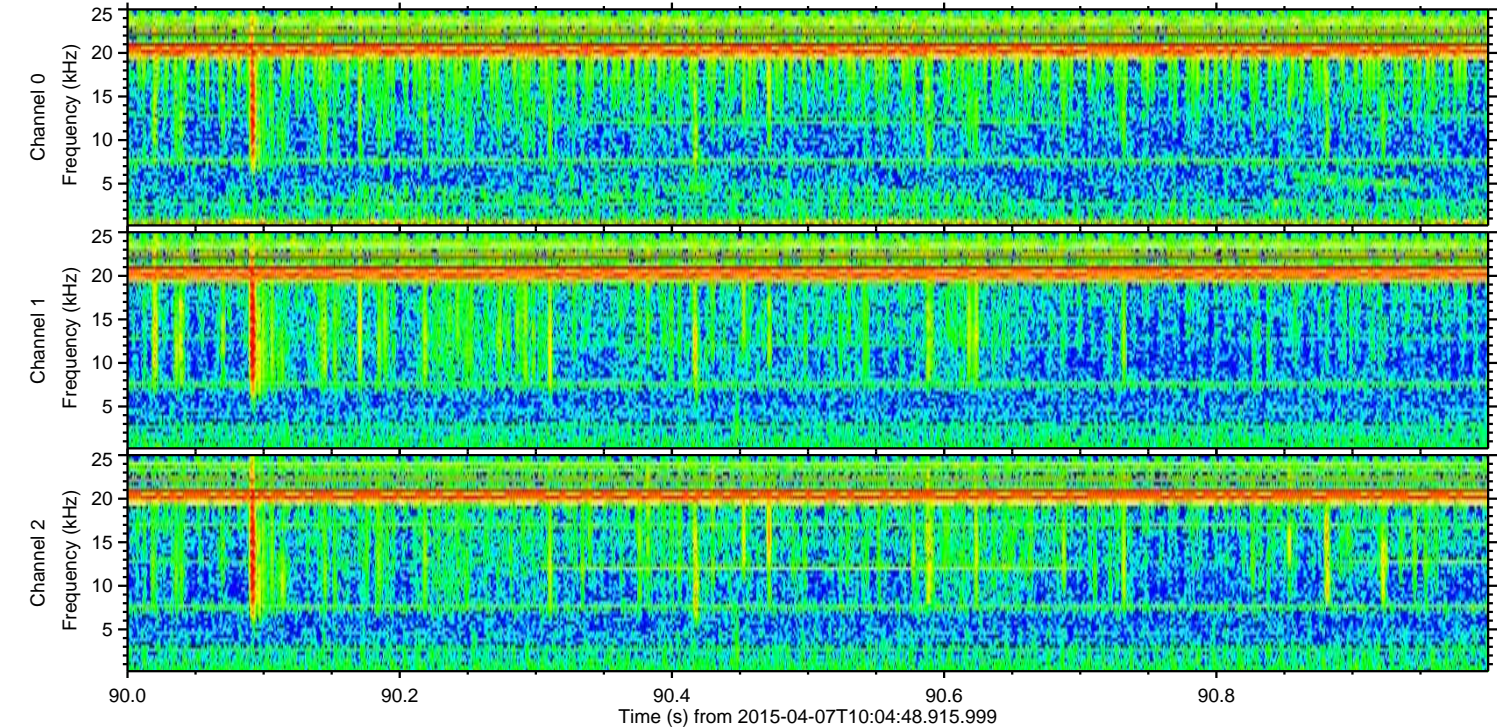
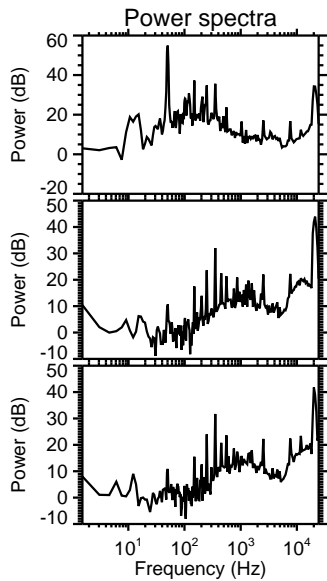
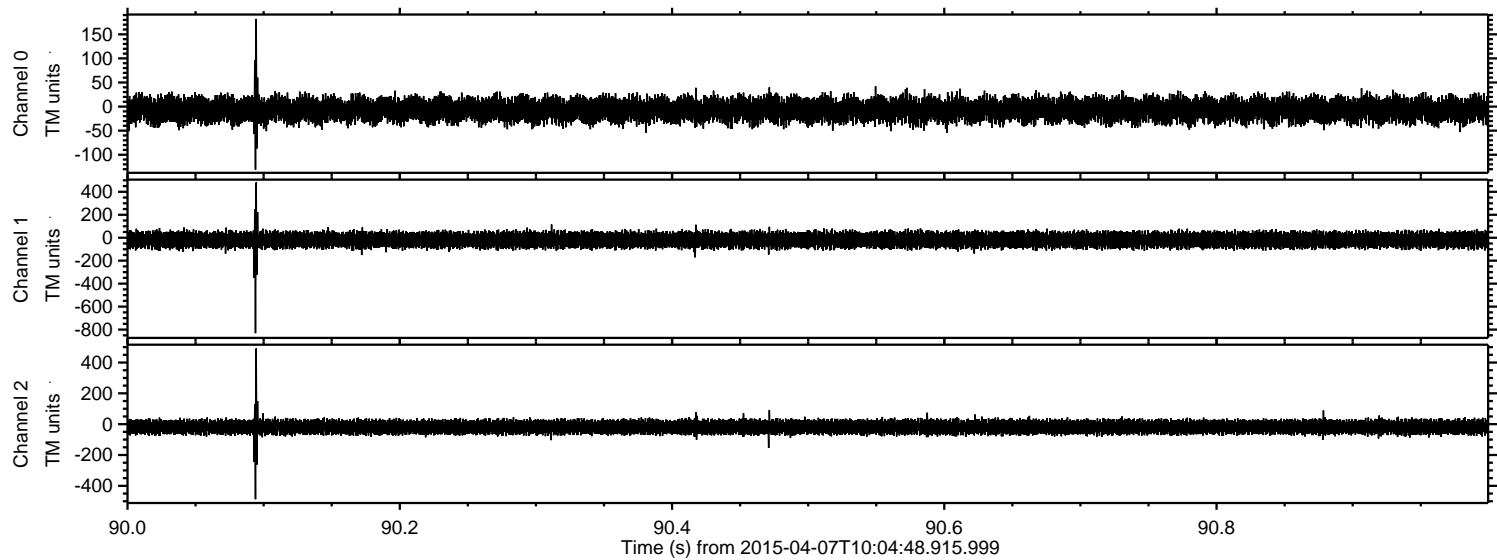


Processed Tue Apr 7 13:43:36 2015 by ELM ver.2012-10-06 from 001\_\_elm20150407\_100447\_\_dat00.bin





Processed Tue Apr 7 13:43:37 2015 by ELM ver.2012-10-06 from 001\_\_elm20150407\_100447\_\_dat00.bin





Processed Tue Apr 7 13:43:38 2015 by ELM ver.2012-10-06 from 001\_\_elm20150407\_100447\_\_dat00.bin

