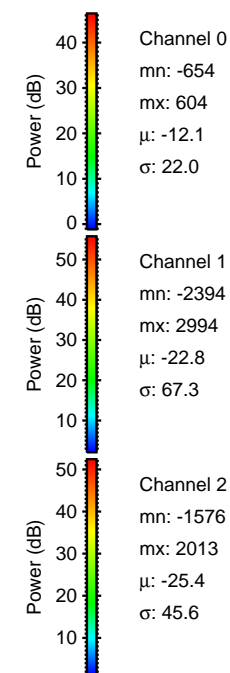
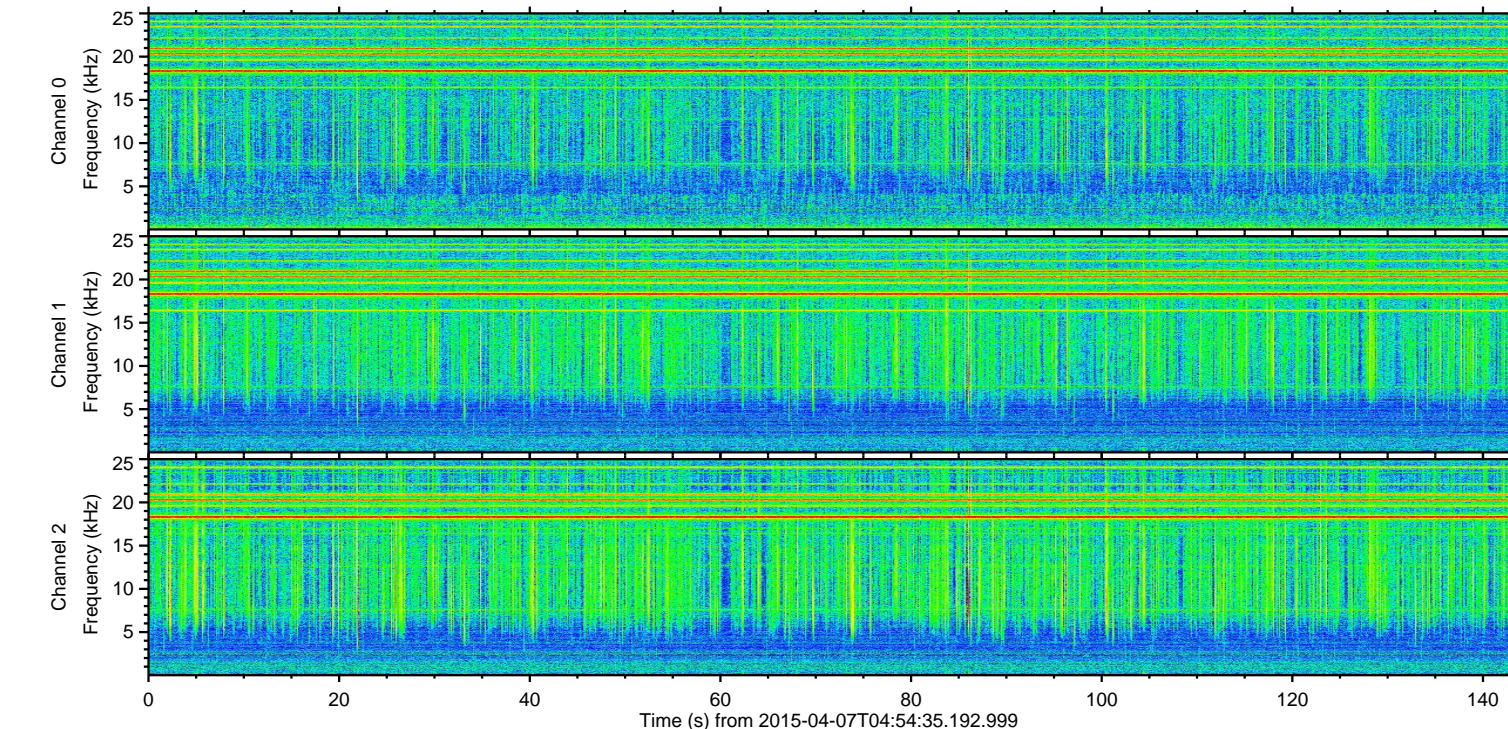
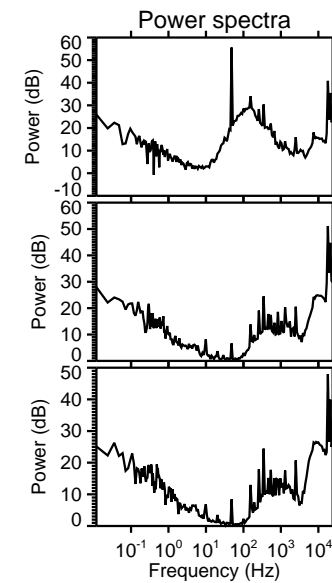
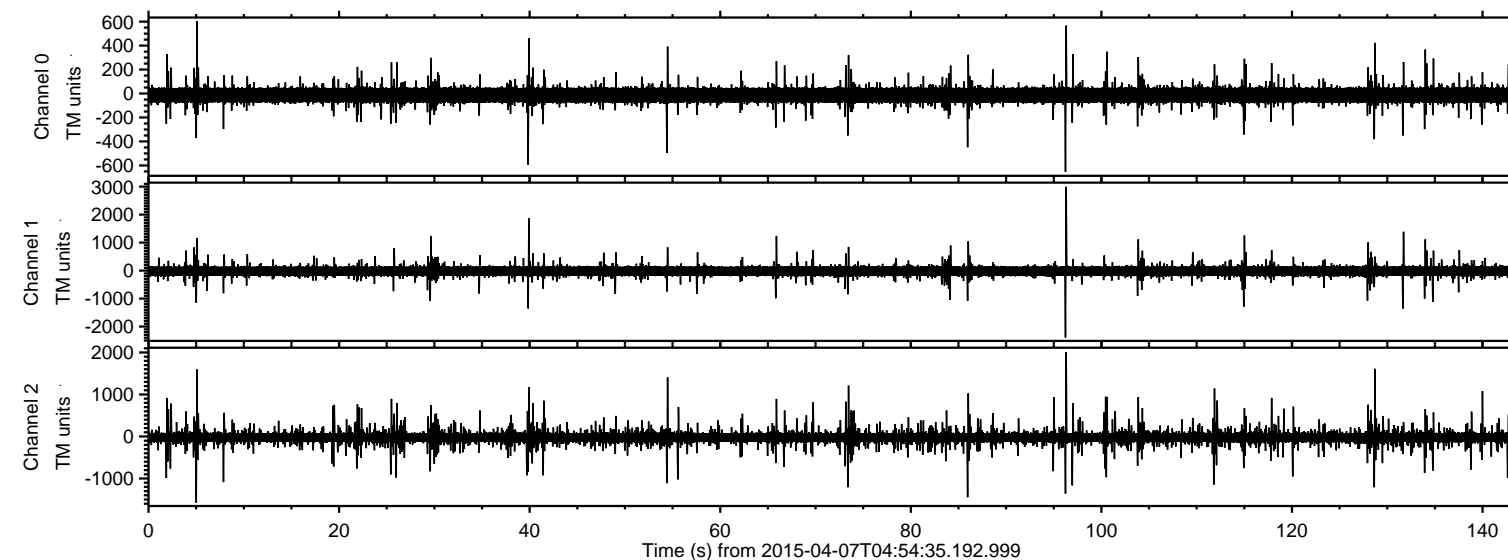


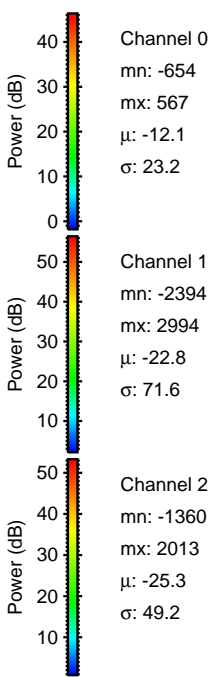
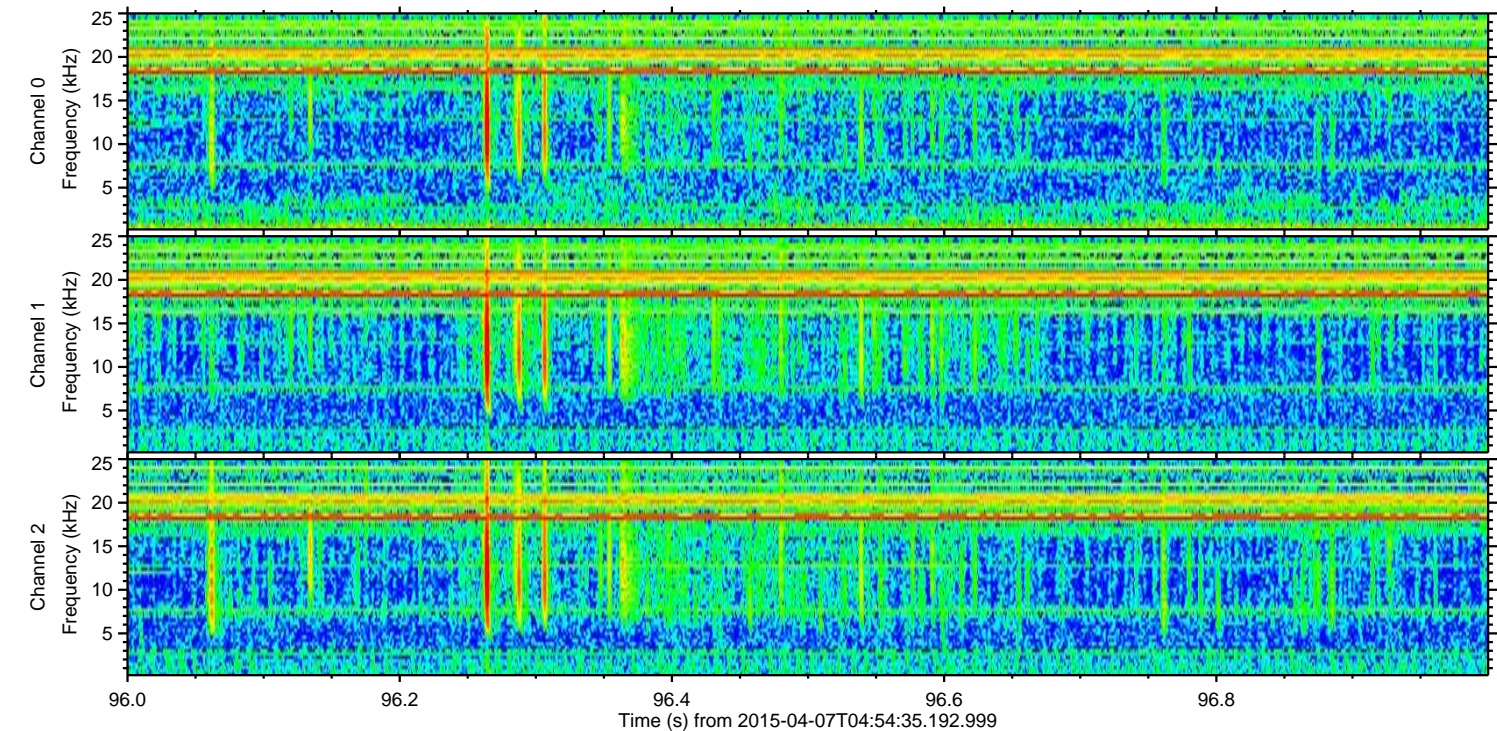
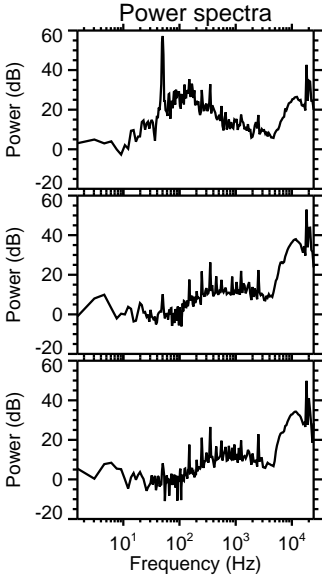
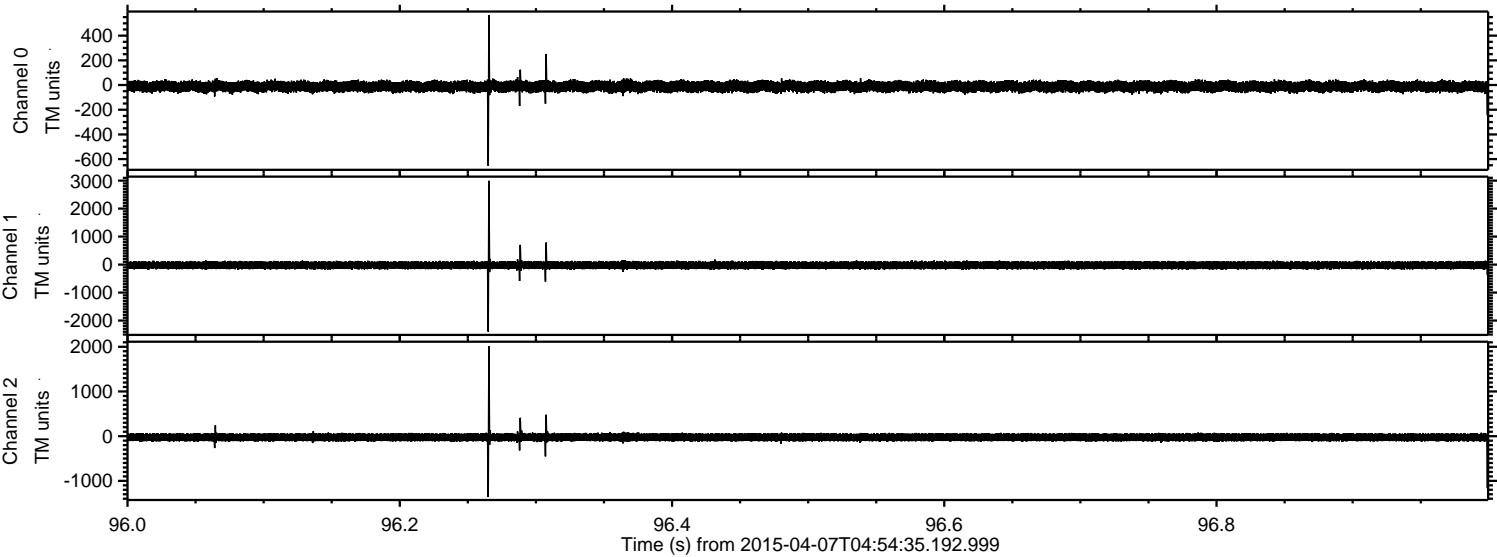
ELMAVAN 3D WAVEFORMS (Measured data sampled at 50 kHz) 49580 packets of 144 samples from 2015-04-07T04:54:35.192.999.

Processed Tue Apr 7 07:50:18 2015 by ELM ver.2012-10-06 from 001__elm20150407_045434__dat00.bin

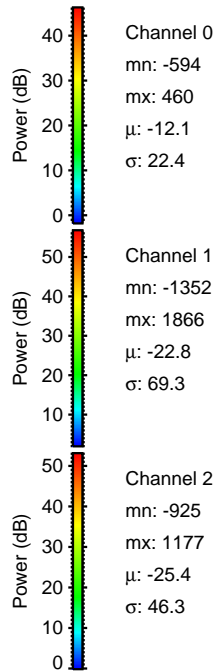
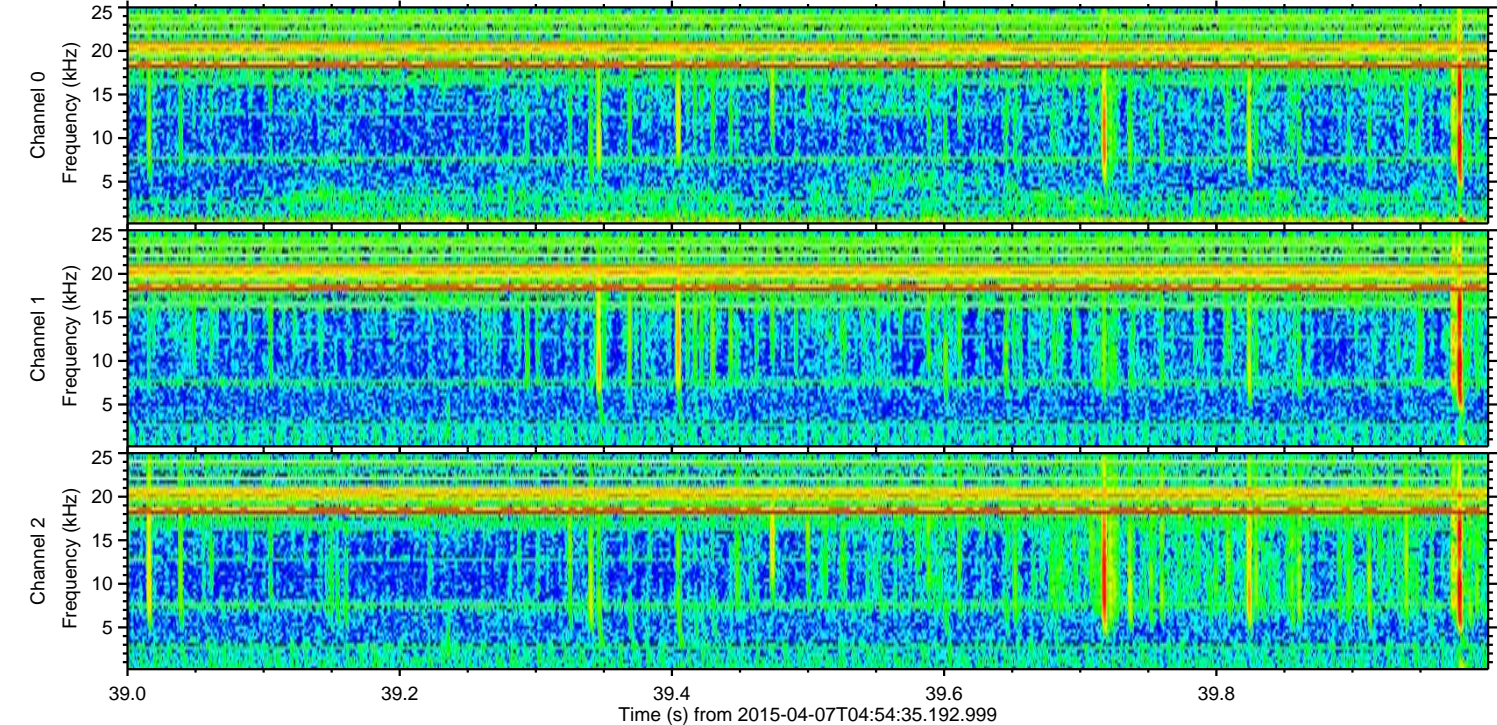
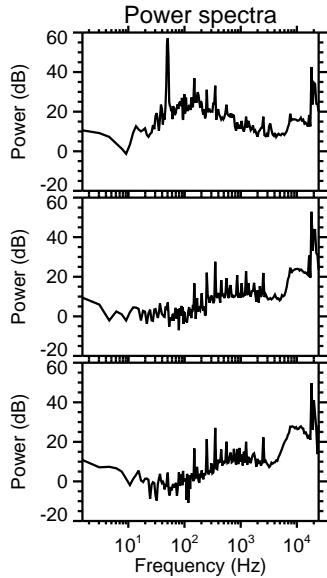
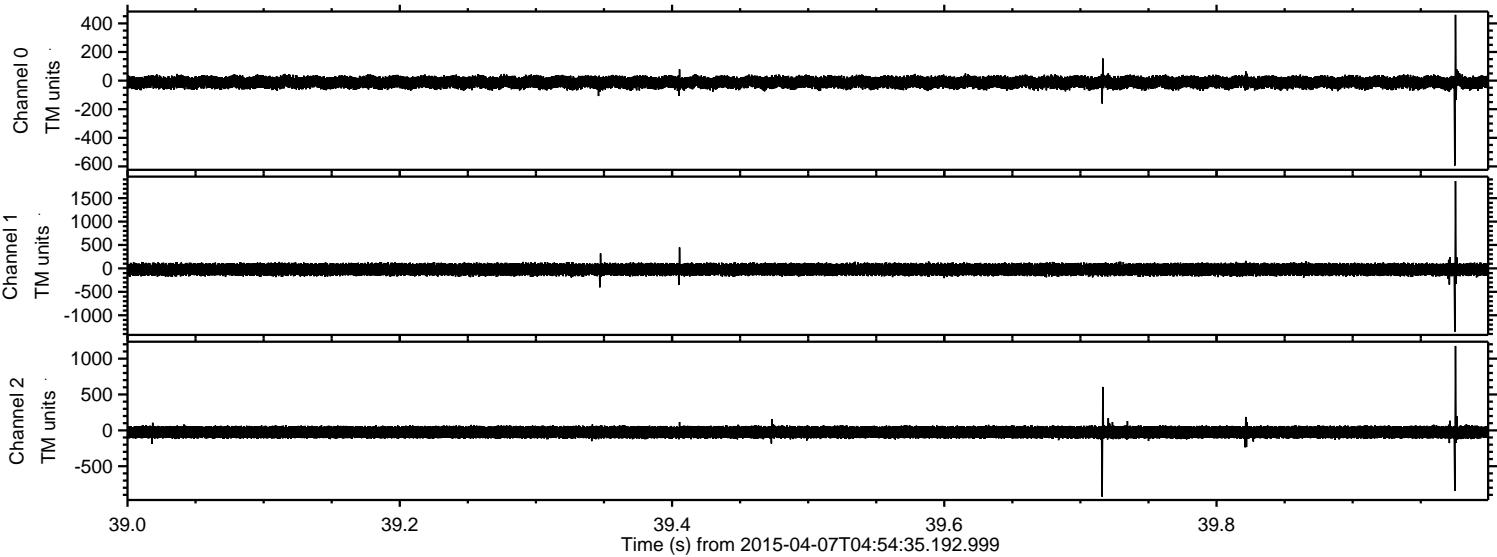


ELMAVAN 3D WAVEFORMS (Measured data sampled at 50 kHz) 49580 packets of 144 samples from 2015-04-07T04:54:35.192.999. Part 97/143

Processed Tue Apr 7 07:50:32 2015 by ELM ver.2012-10-06 from 001__elm20150407_045434__dat00.bin

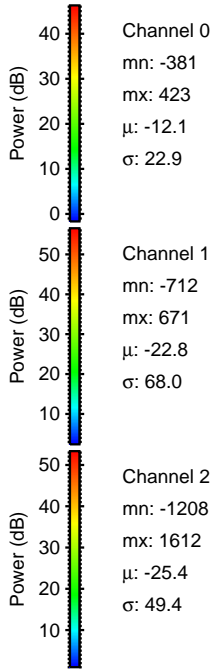
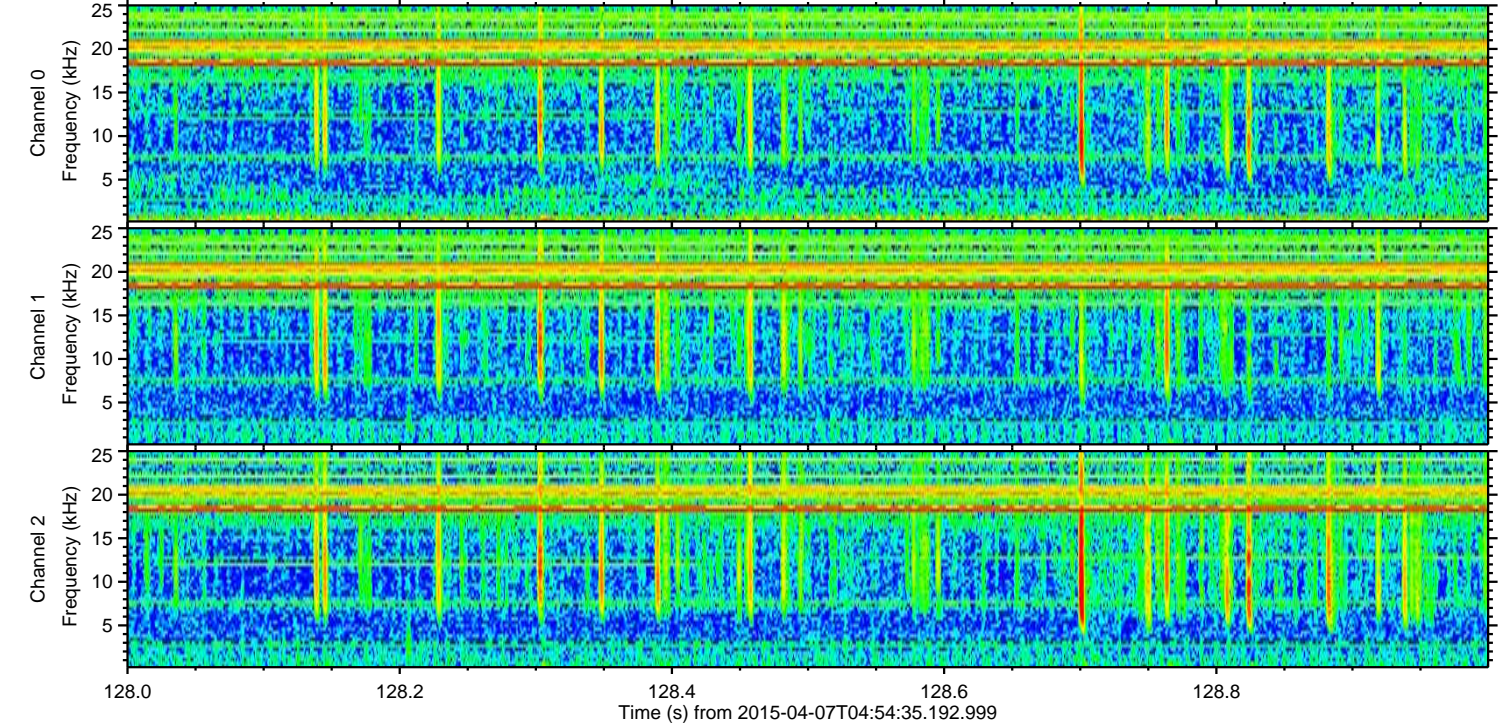
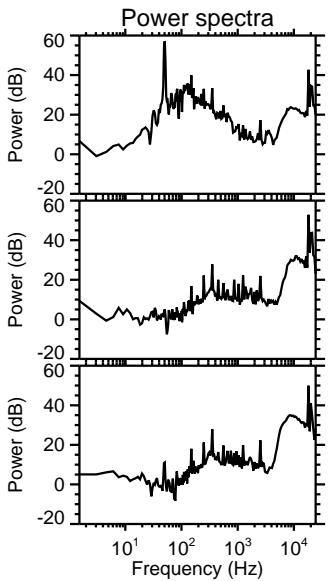
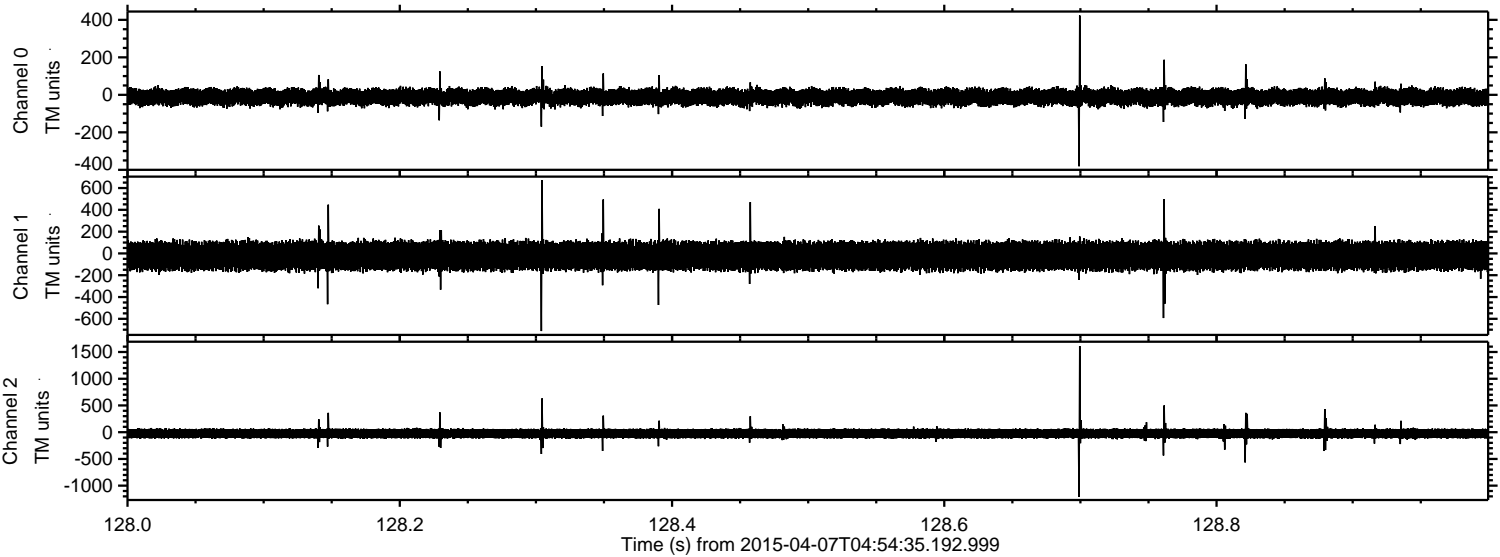


Processed Tue Apr 7 07:50:33 2015 by ELM ver.2012-10-06 from 001__elm20150407_045434__dat00.bin



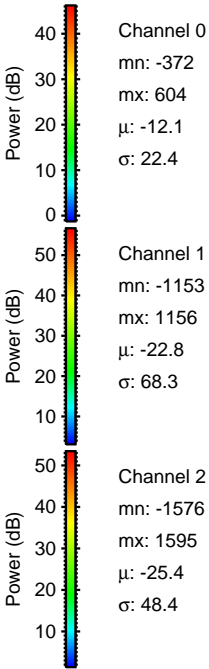
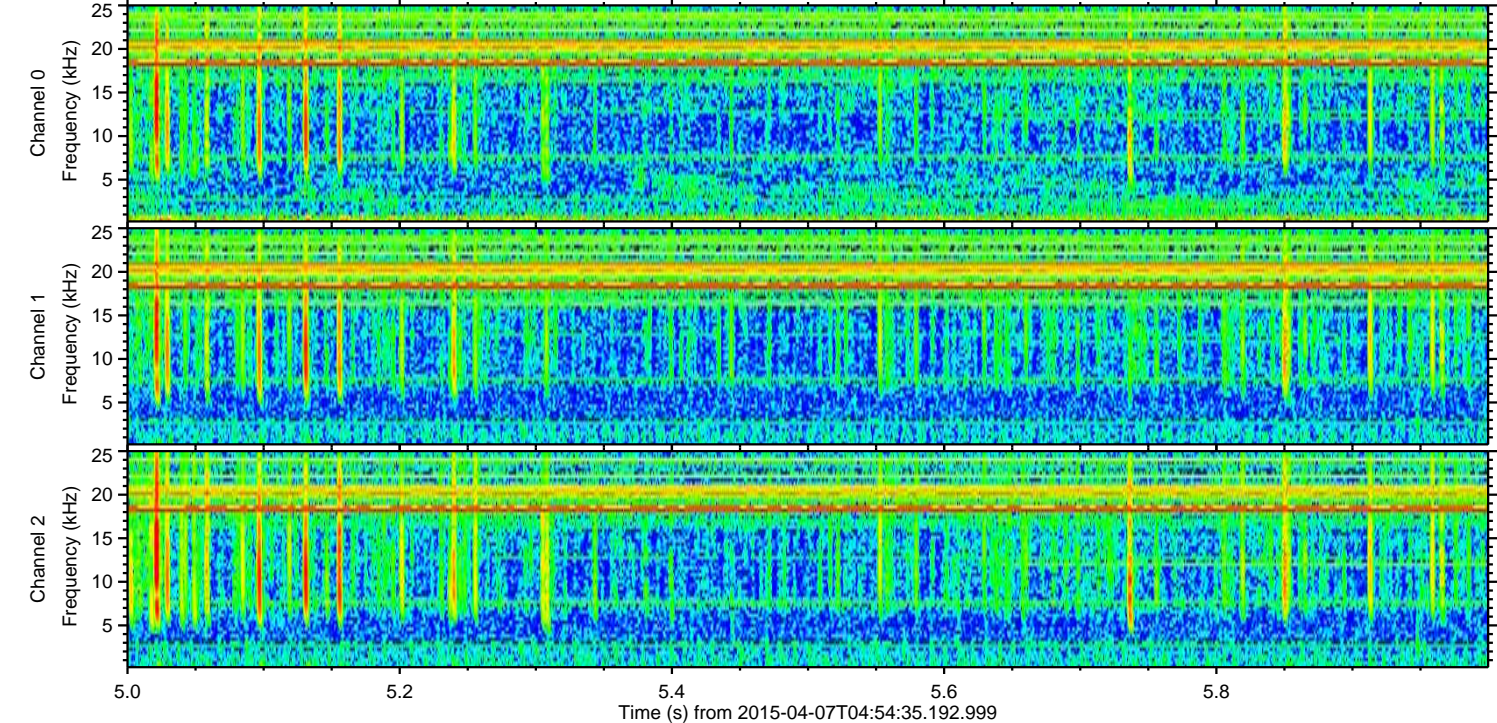
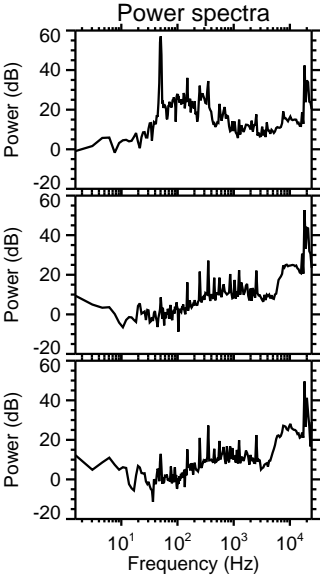
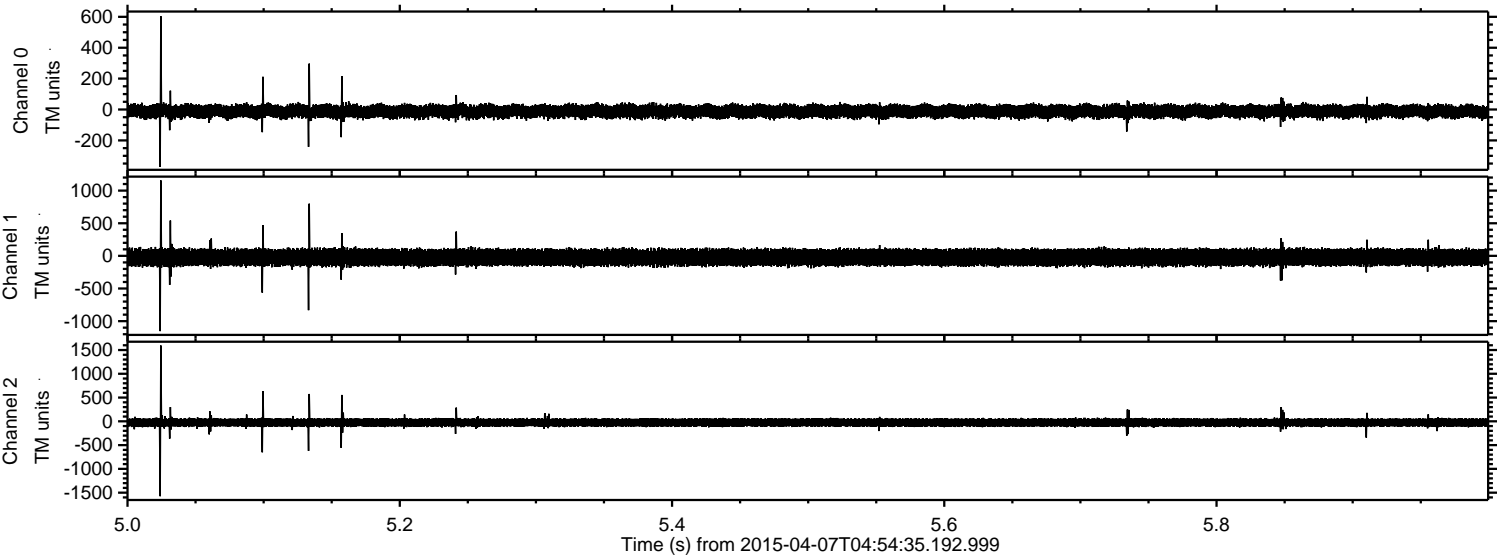
ELMAVAN 3D WAVEFORMS (Measured data sampled at 50 kHz) 49580 packets of 144 samples from 2015-04-07T04:54:35.192.999. Part 129/143

Processed Tue Apr 7 07:50:34 2015 by ELM ver.2012-10-06 from 001__elm20150407_045434__dat00.bin

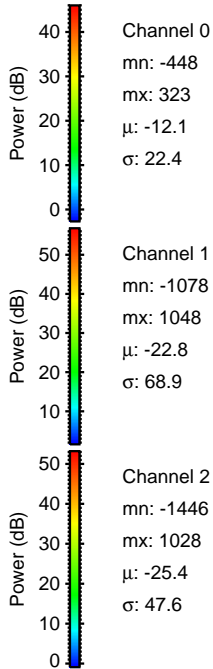
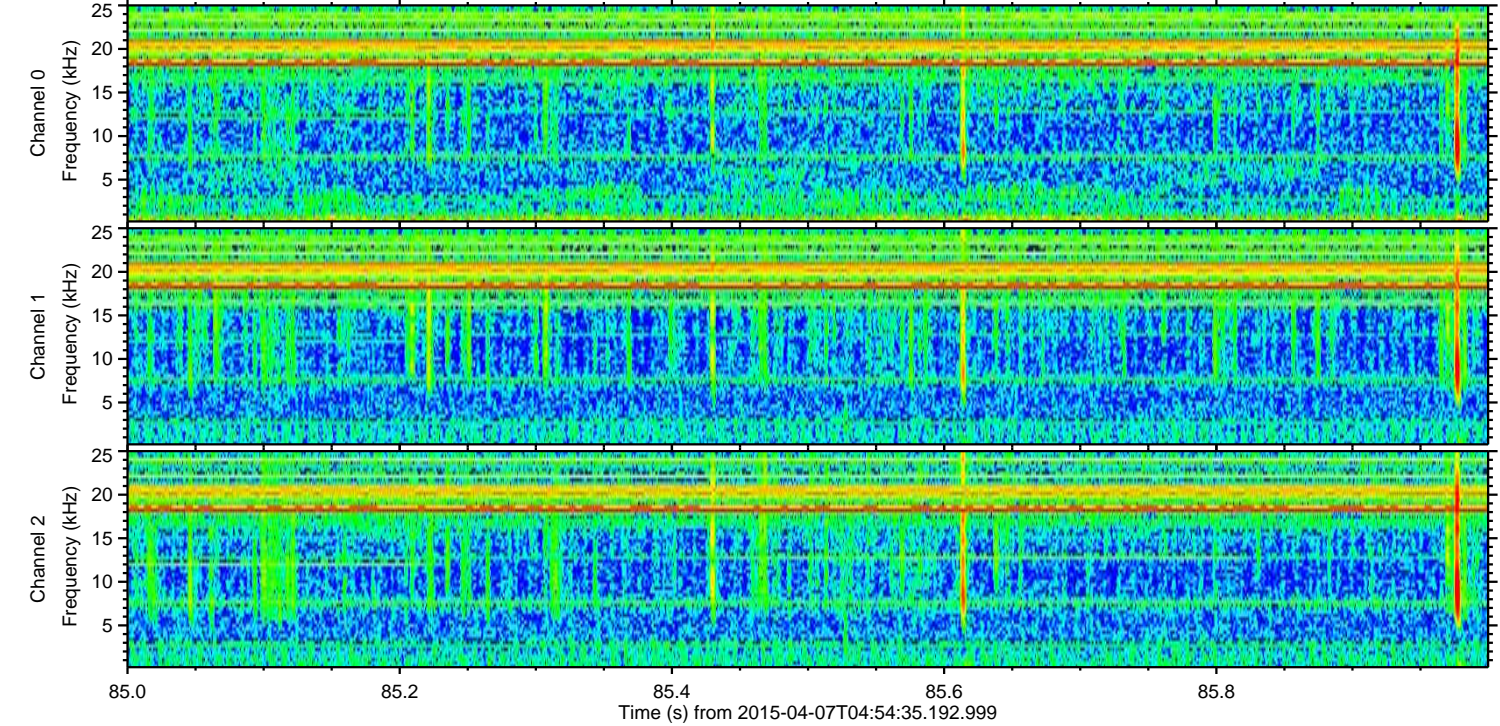
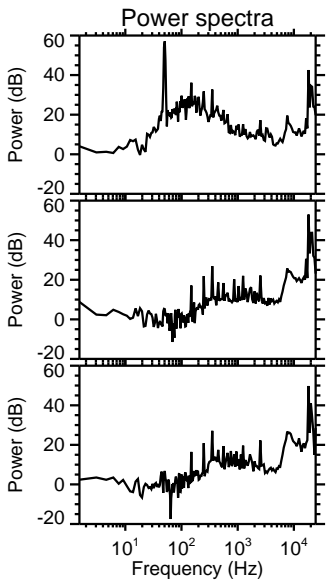
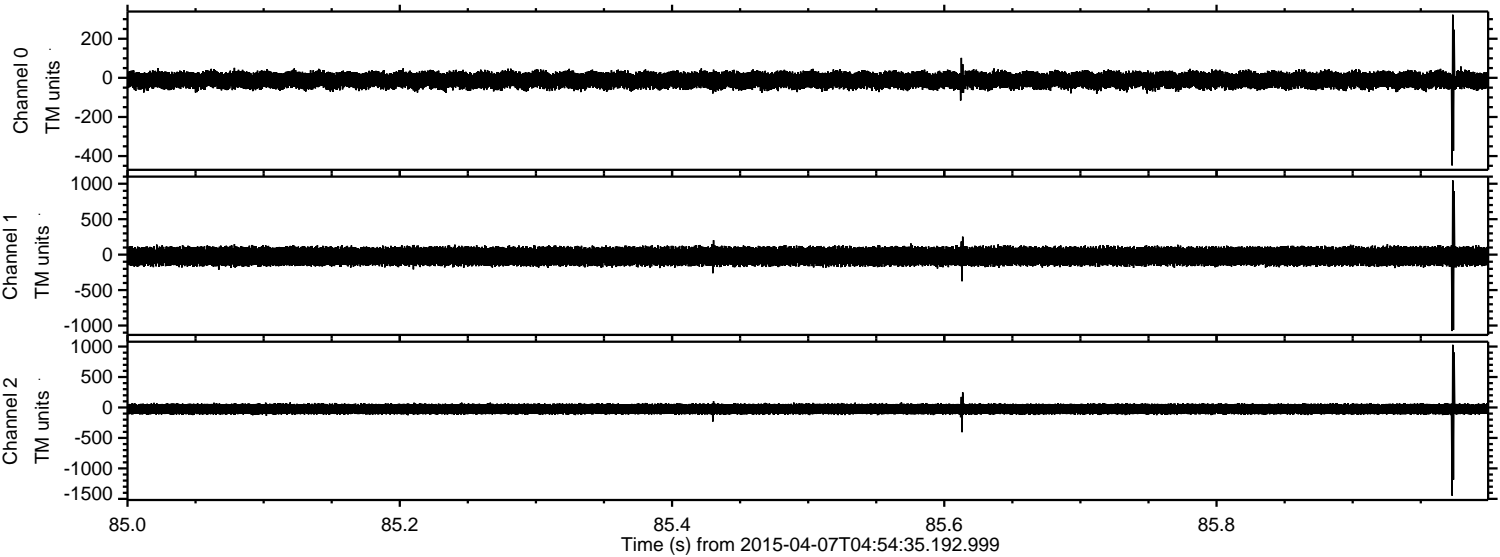


ELMAVAN 3D WAVEFORMS (Measured data sampled at 50 kHz) 49580 packets of 144 samples from 2015-04-07T04:54:35.192.999. Part 6/143

Processed Tue Apr 7 07:50:35 2015 by ELM ver.2012-10-06 from 001__elm20150407_045434__dat00.bin



Processed Tue Apr 7 07:50:36 2015 by ELM ver.2012-10-06 from 001__elm20150407_045434__dat00.bin

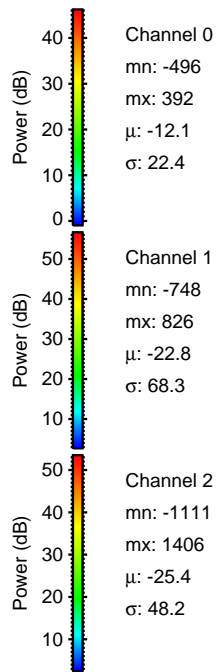
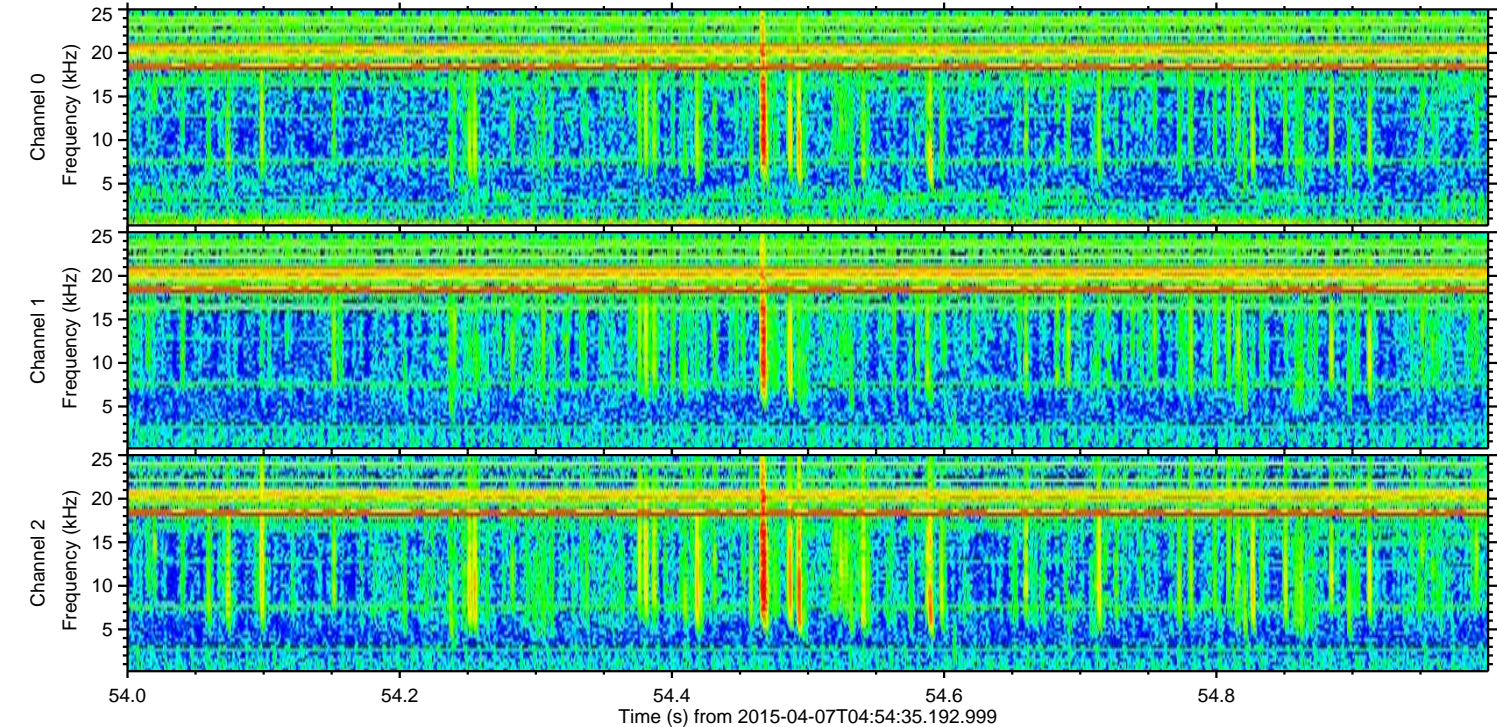
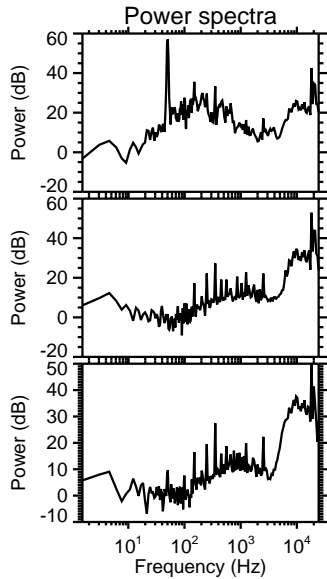
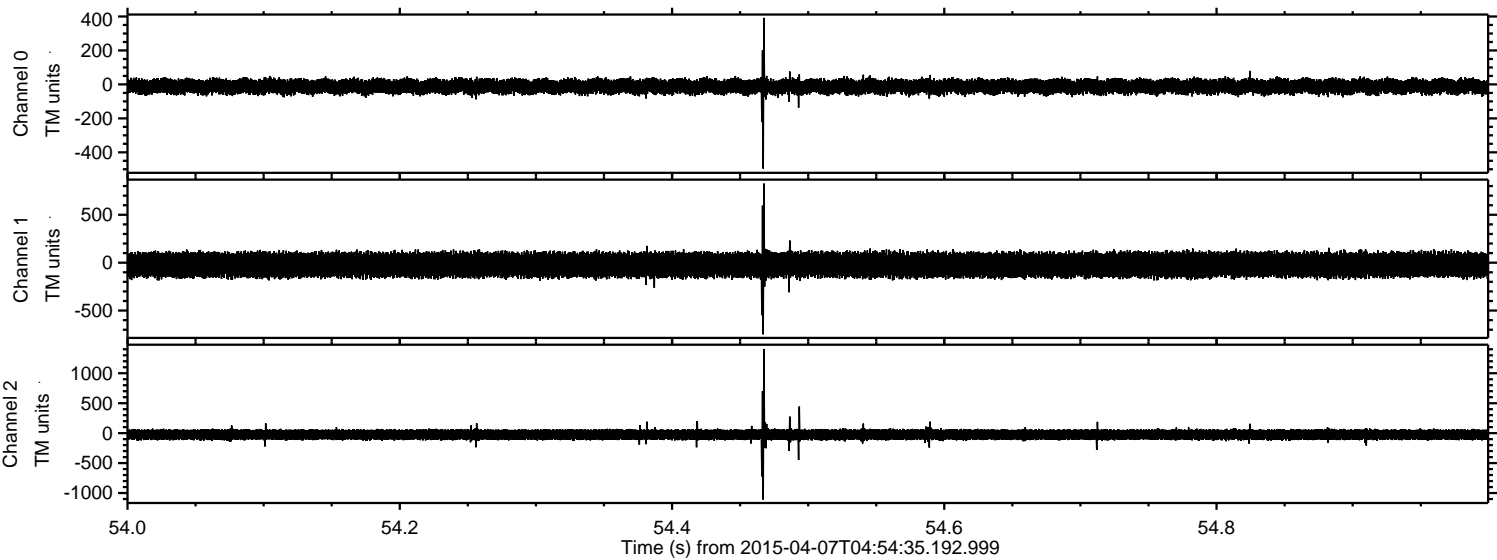


Channel 0
mn: -448
mx: 323
 μ : -12.1
 σ : 22.4

Channel 1
mn: -1078
mx: 1048
 μ : -22.8
 σ : 68.9

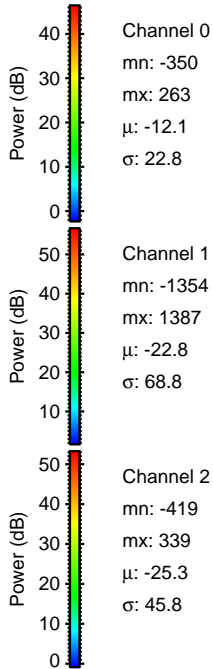
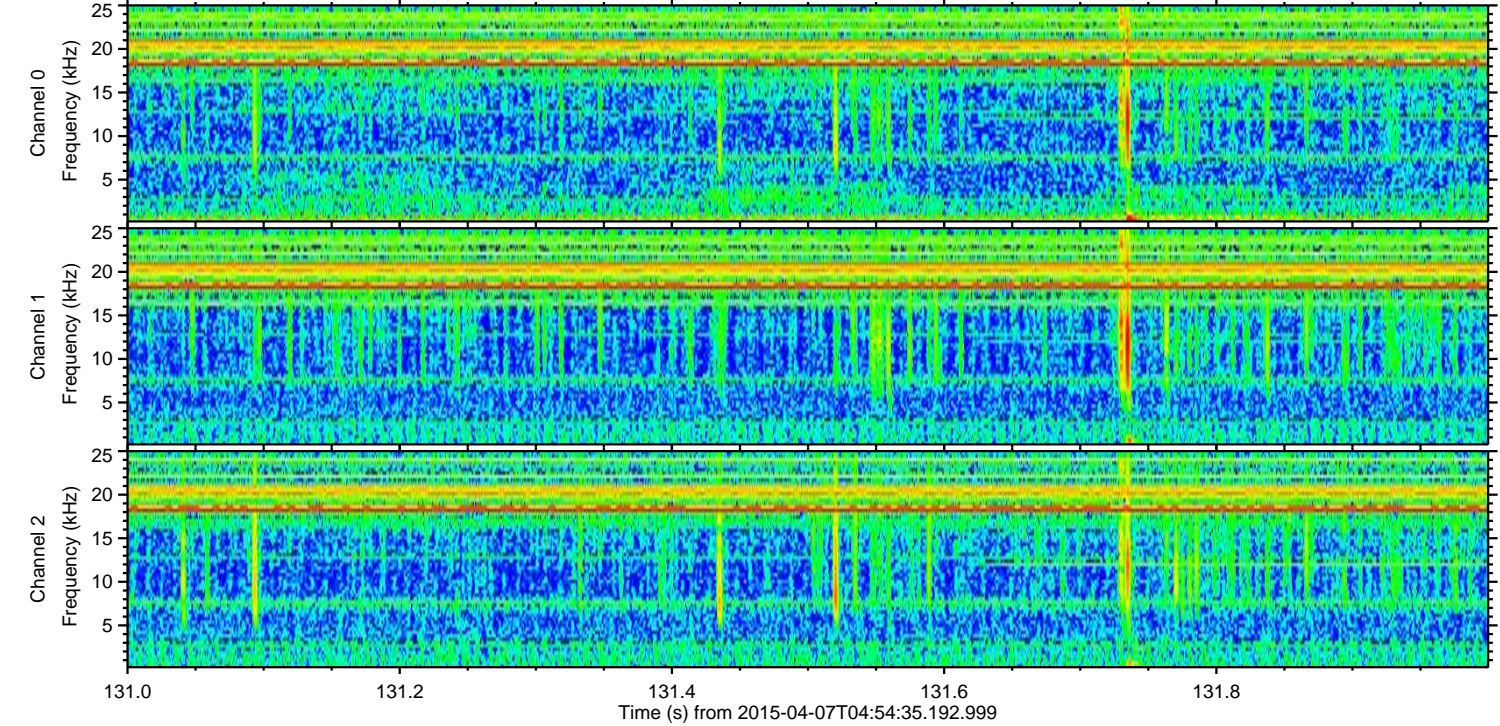
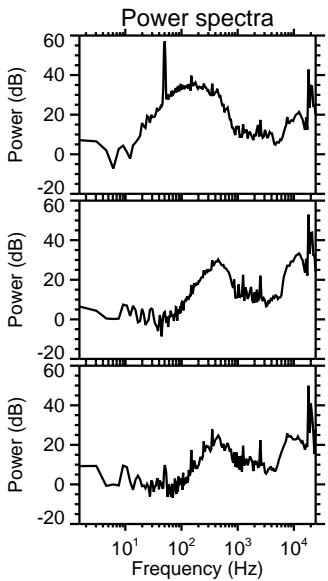
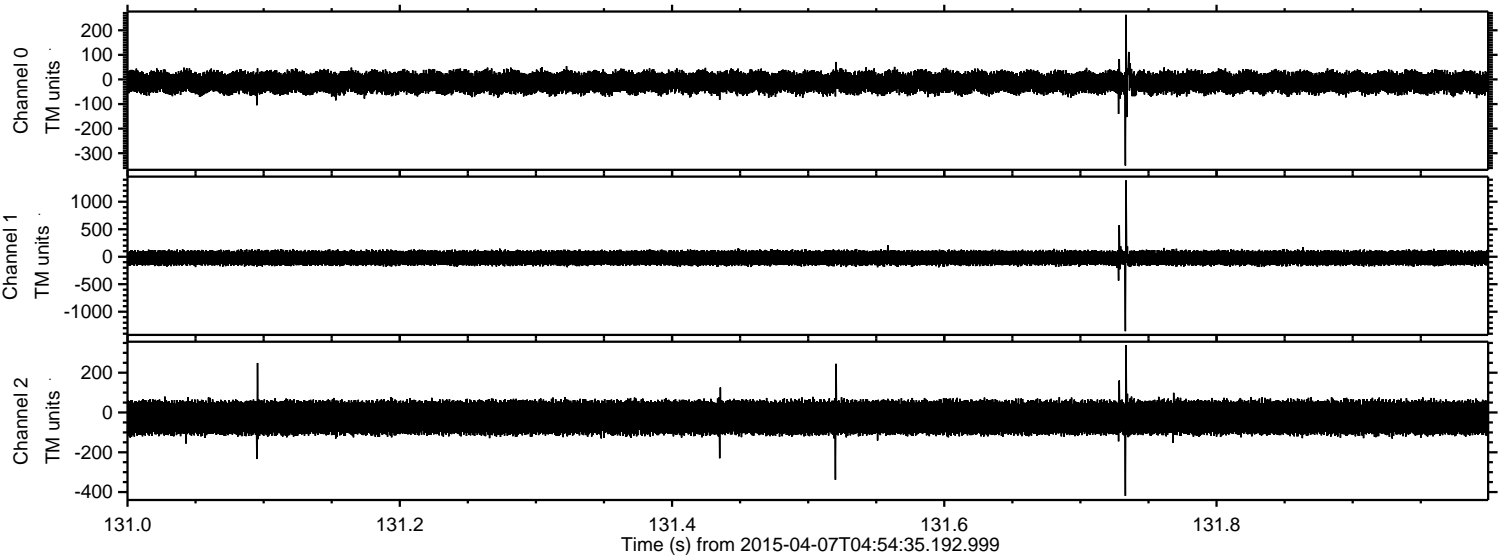
Channel 2
mn: -1446
mx: 1028
 μ : -25.4
 σ : 47.6

Processed Tue Apr 7 07:50:37 2015 by ELM ver.2012-10-06 from 001__elm20150407_045434__dat00.bin



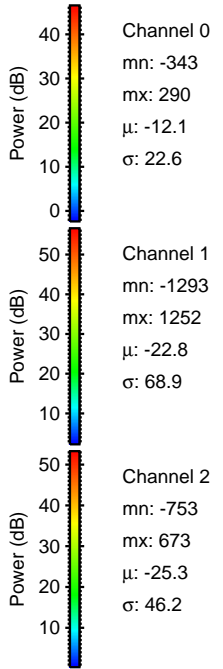
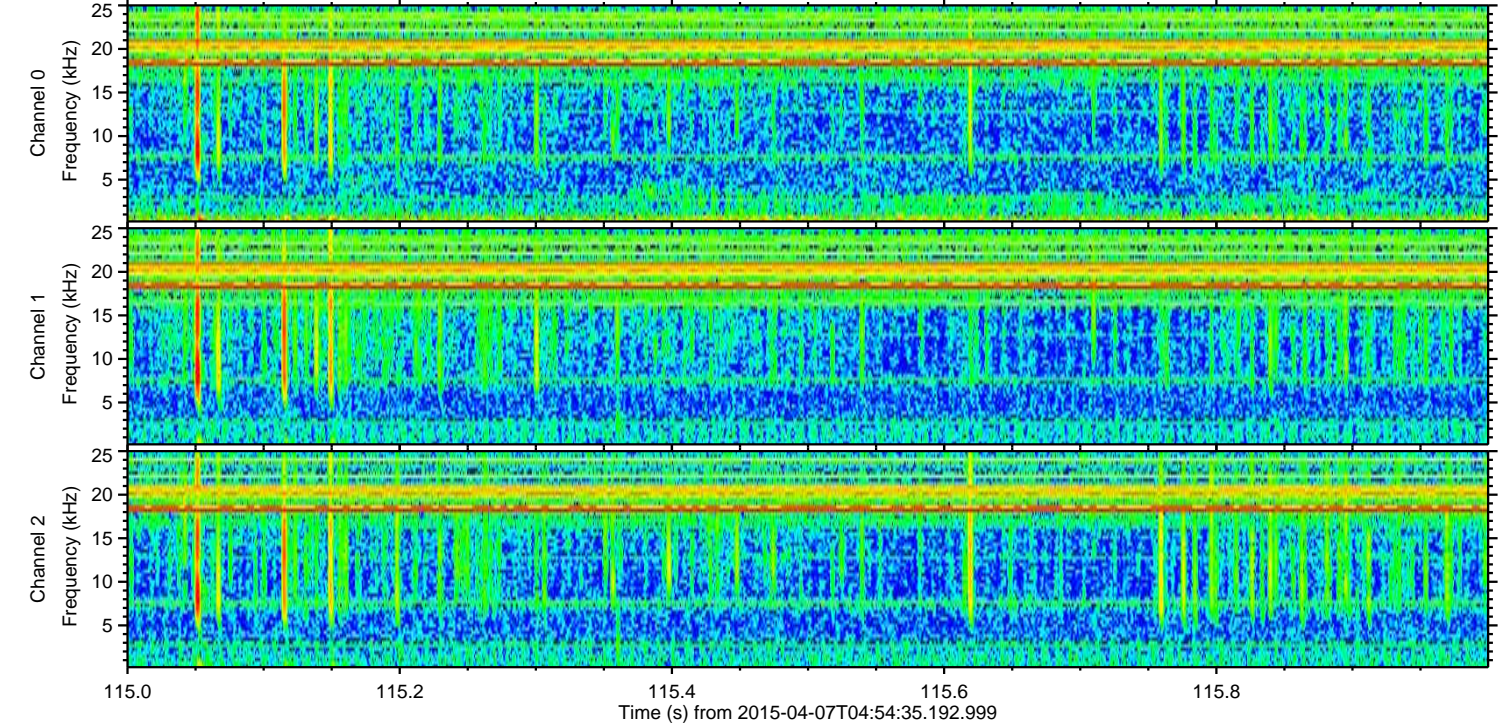
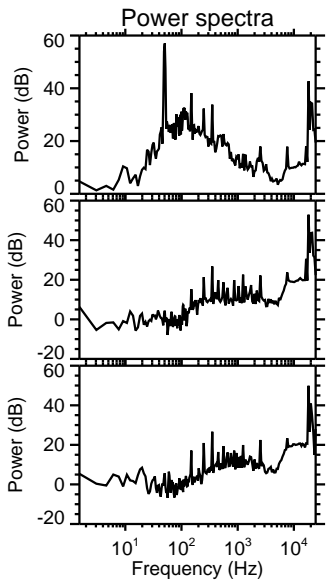
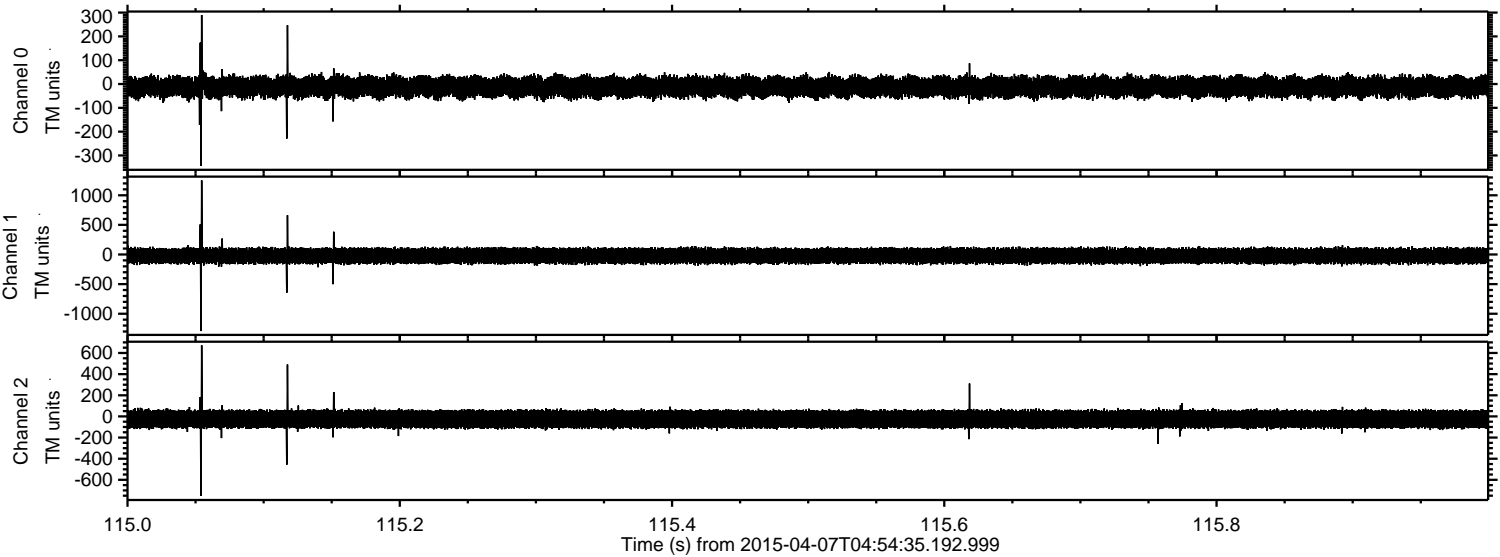
ELMAVAN 3D WAVEFORMS (Measured data sampled at 50 kHz) 49580 packets of 144 samples from 2015-04-07T04:54:35.192.999. Part 132/143

Processed Tue Apr 7 07:50:38 2015 by ELM ver.2012-10-06 from 001__elm20150407_045434__dat00.bin

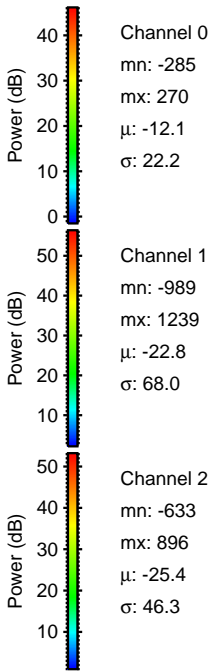
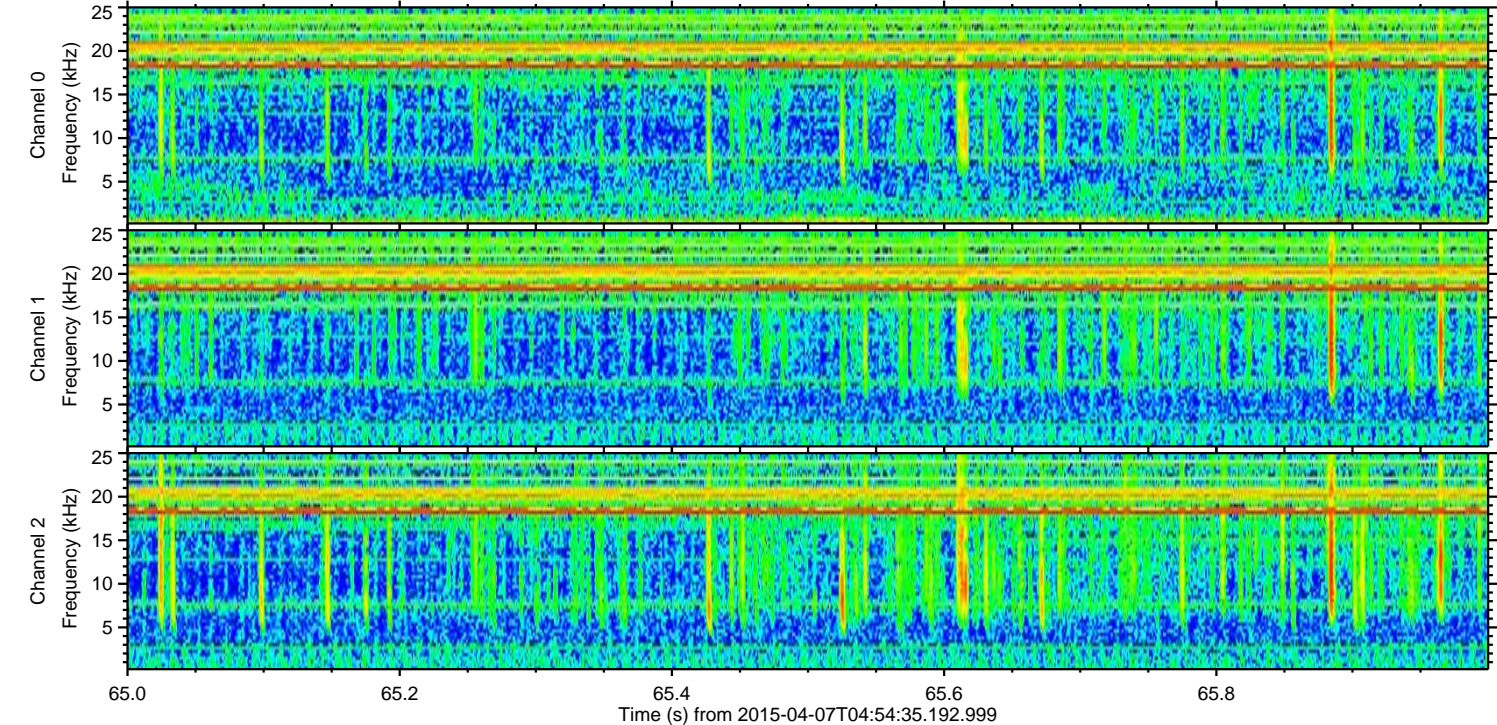
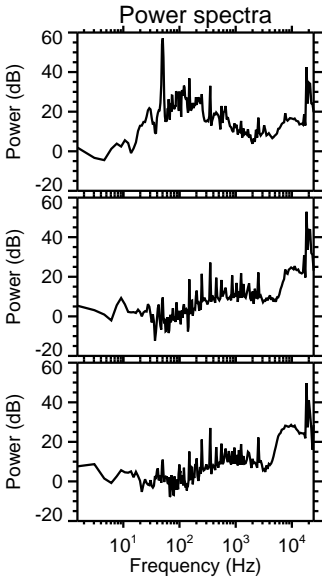
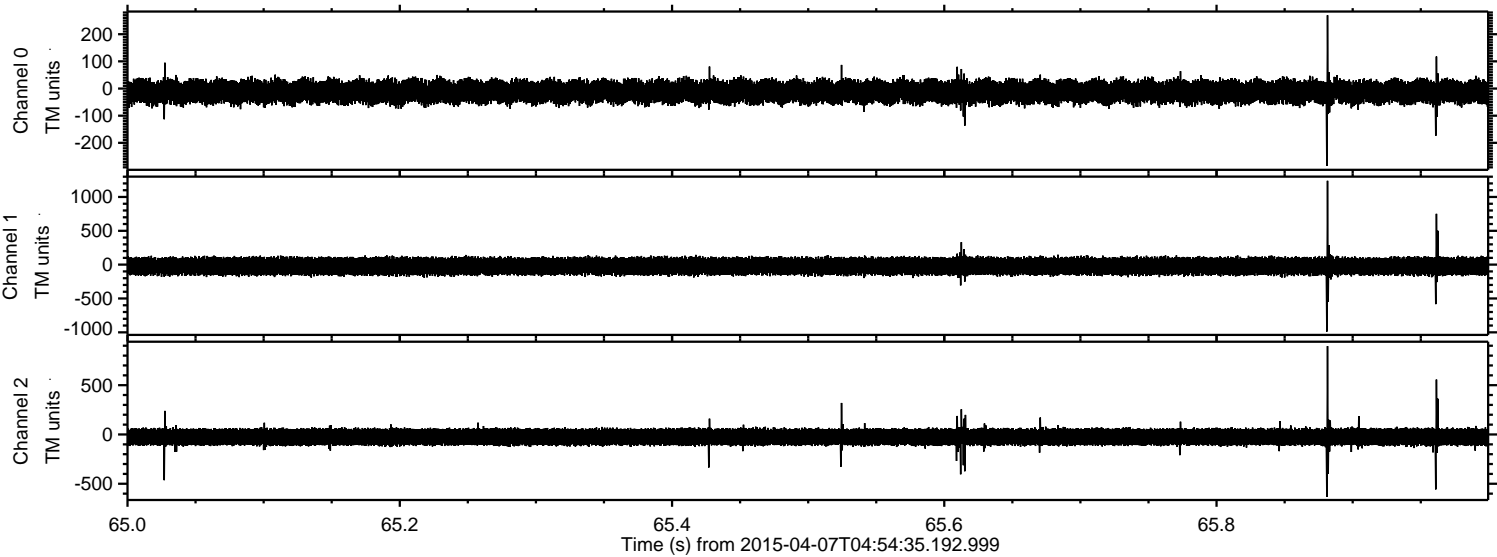


ELMAVAN 3D WAVEFORMS (Measured data sampled at 50 kHz) 49580 packets of 144 samples from 2015-04-07T04:54:35.192.999. Part 116/143

Processed Tue Apr 7 07:50:39 2015 by ELM ver.2012-10-06 from 001__elm20150407_045434__dat00.bin

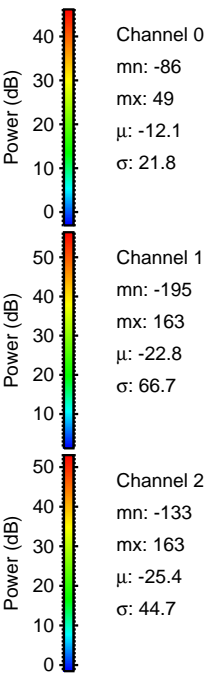
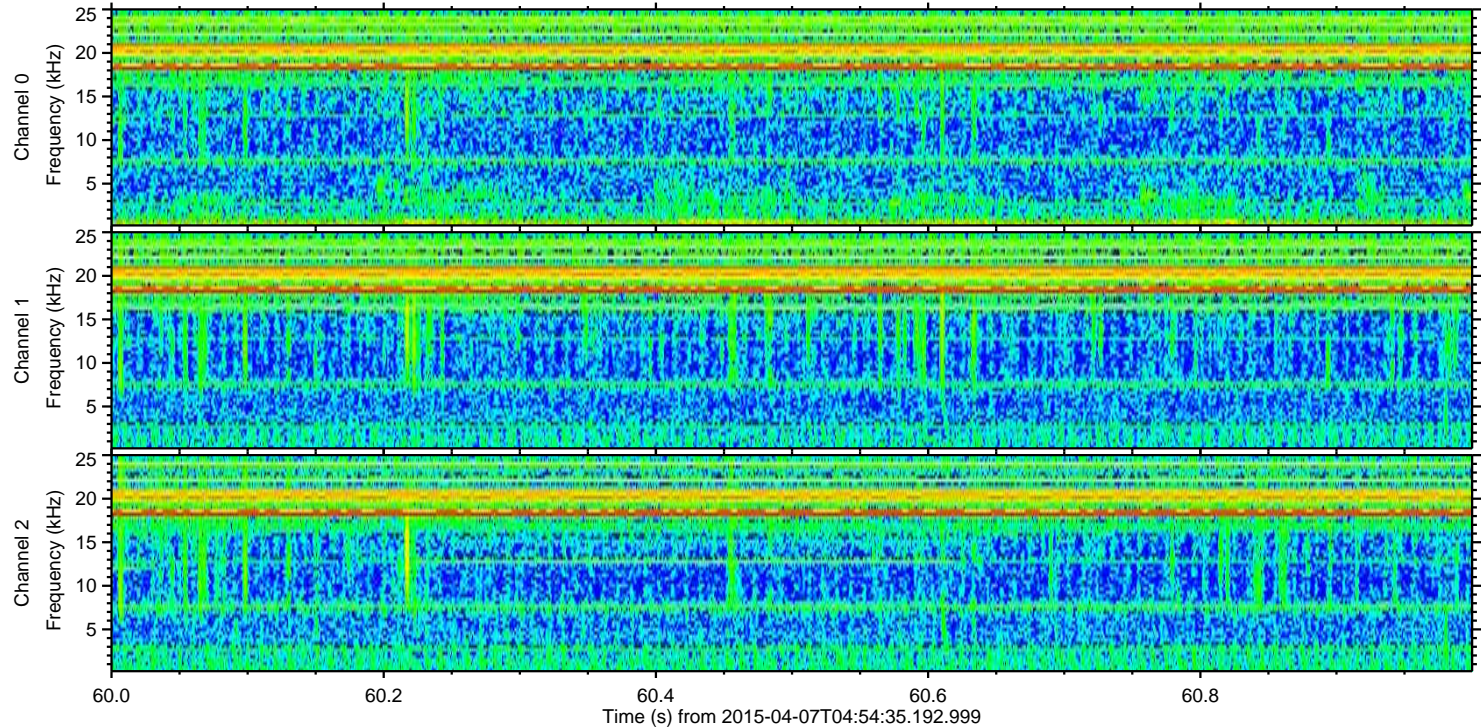
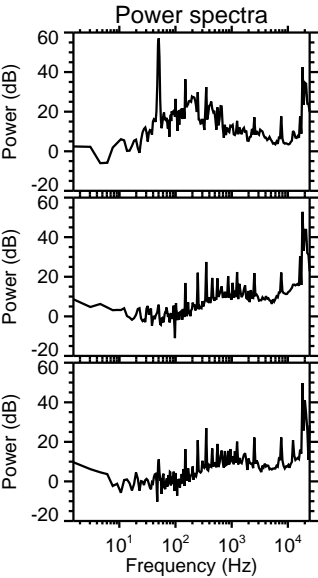
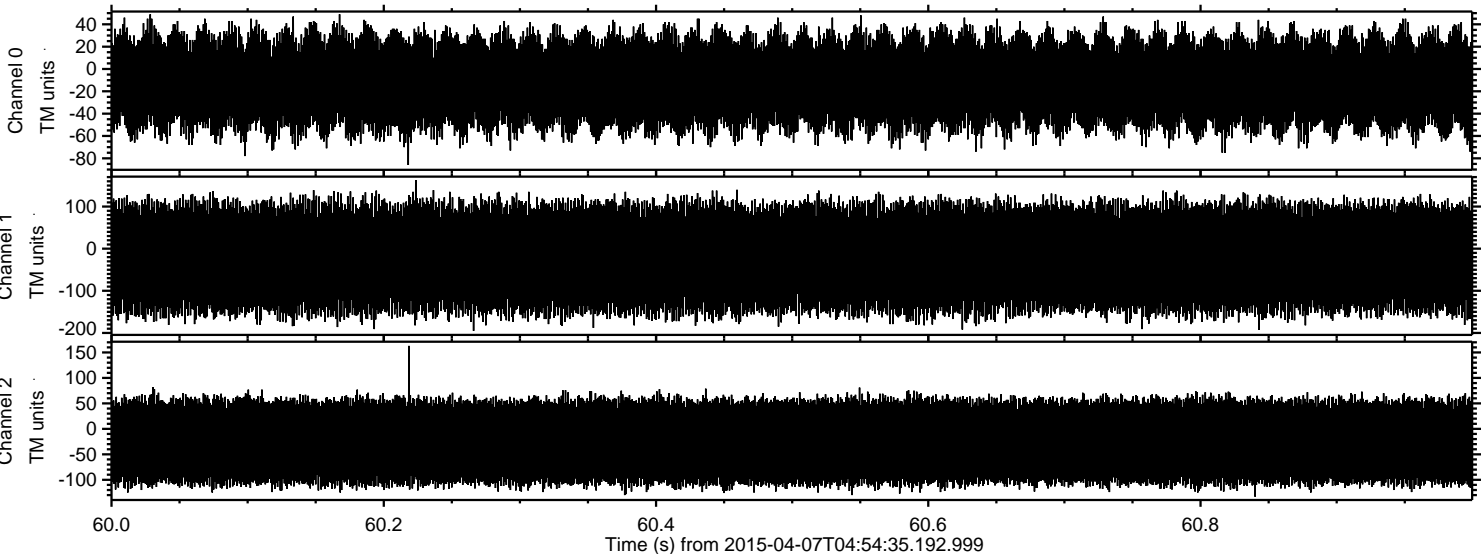


Processed Tue Apr 7 07:50:40 2015 by ELM ver.2012-10-06 from 001__elm20150407_045434__dat00.bin



ELMAVAN 3D WAVEFORMS (Measured data sampled at 50 kHz) 49580 packets of 144 samples from 2015-04-07T04:54:35.192.999. Part 61/143

Processed Tue Apr 7 07:50:42 2015 by ELM ver.2012-10-06 from 001__elm20150407_045434__dat00.bin



Channel 0
mn: -86
mx: 49
 μ : -12.1
 σ : 21.8

Channel 1
mn: -195
mx: 163
 μ : -22.8
 σ : 66.7

Channel 2
mn: -133
mx: 163
 μ : -25.4
 σ : 44.7