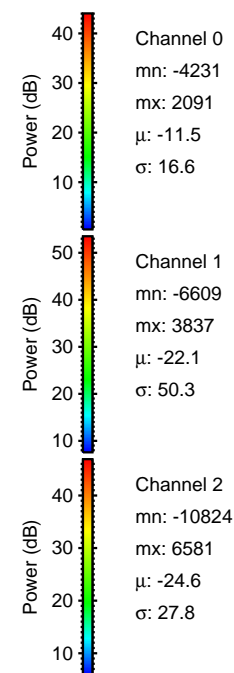
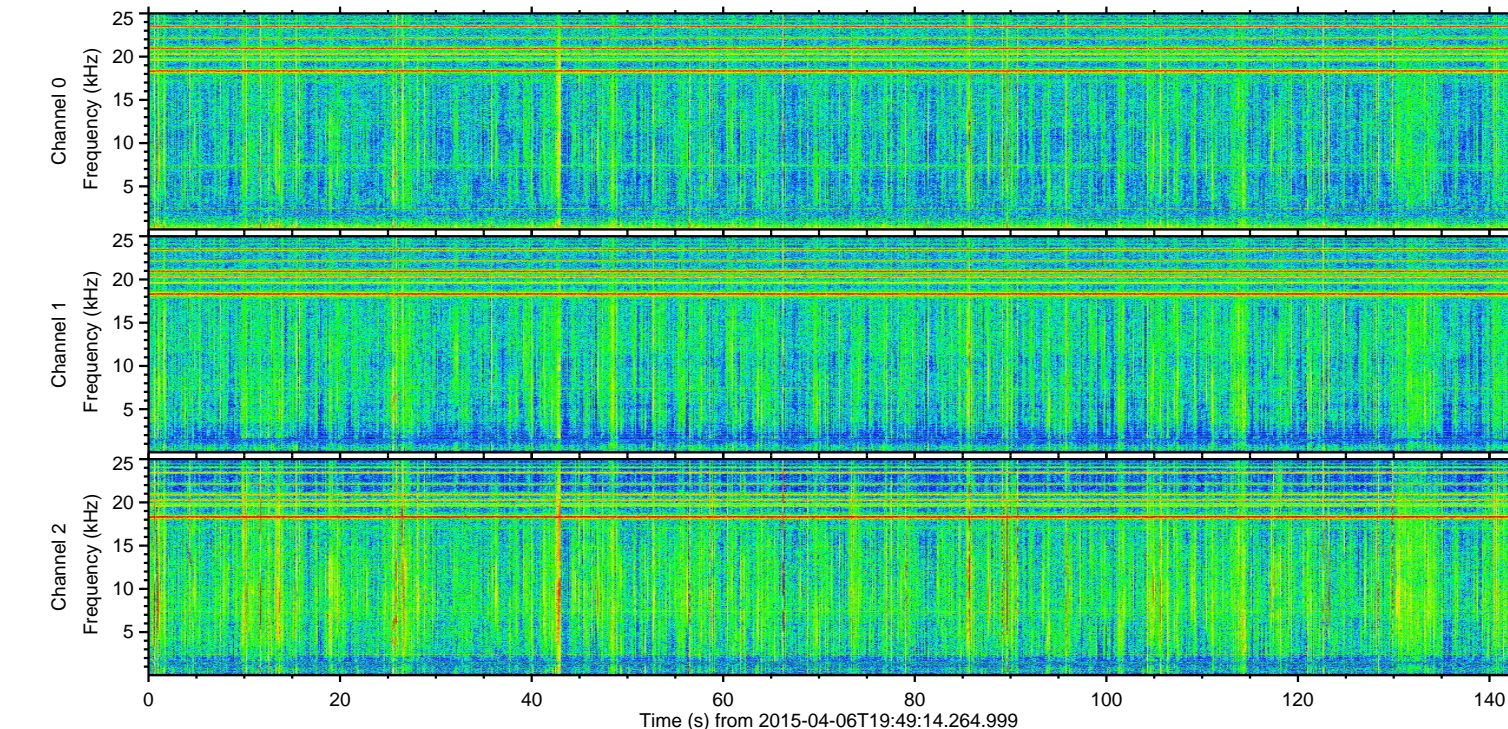
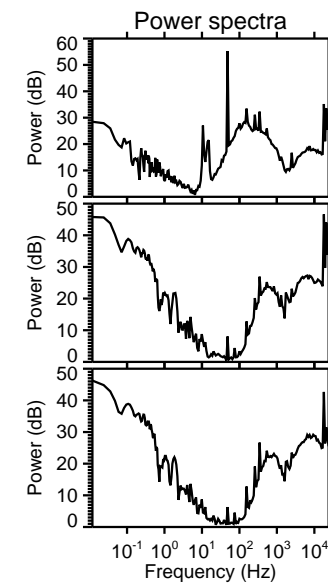
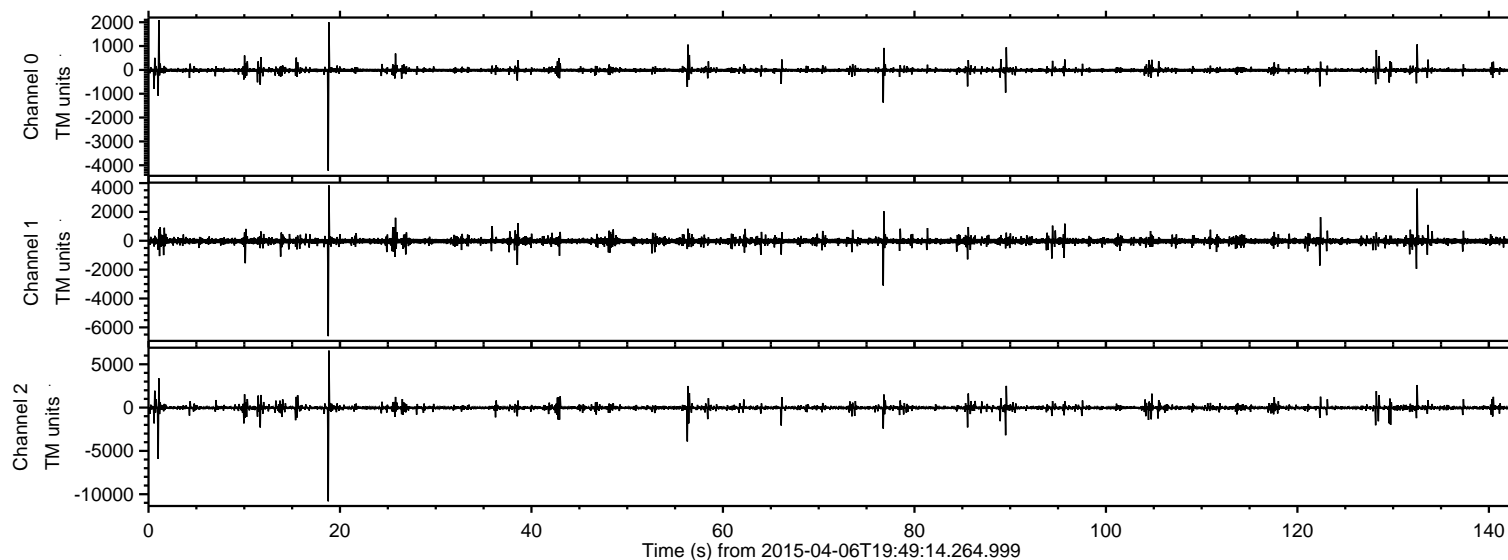


# ELMAVAN 3D WAVEFORMS (Measured data sampled at 50 kHz) 49346 packets of 144 samples from 2015-04-06T19:49:14.264.999.

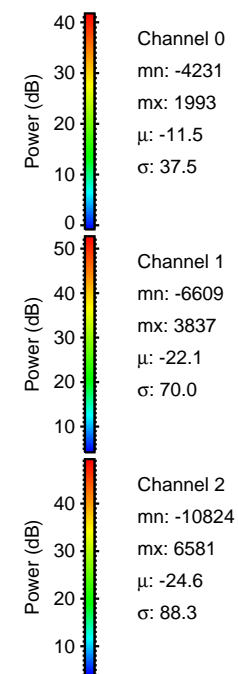
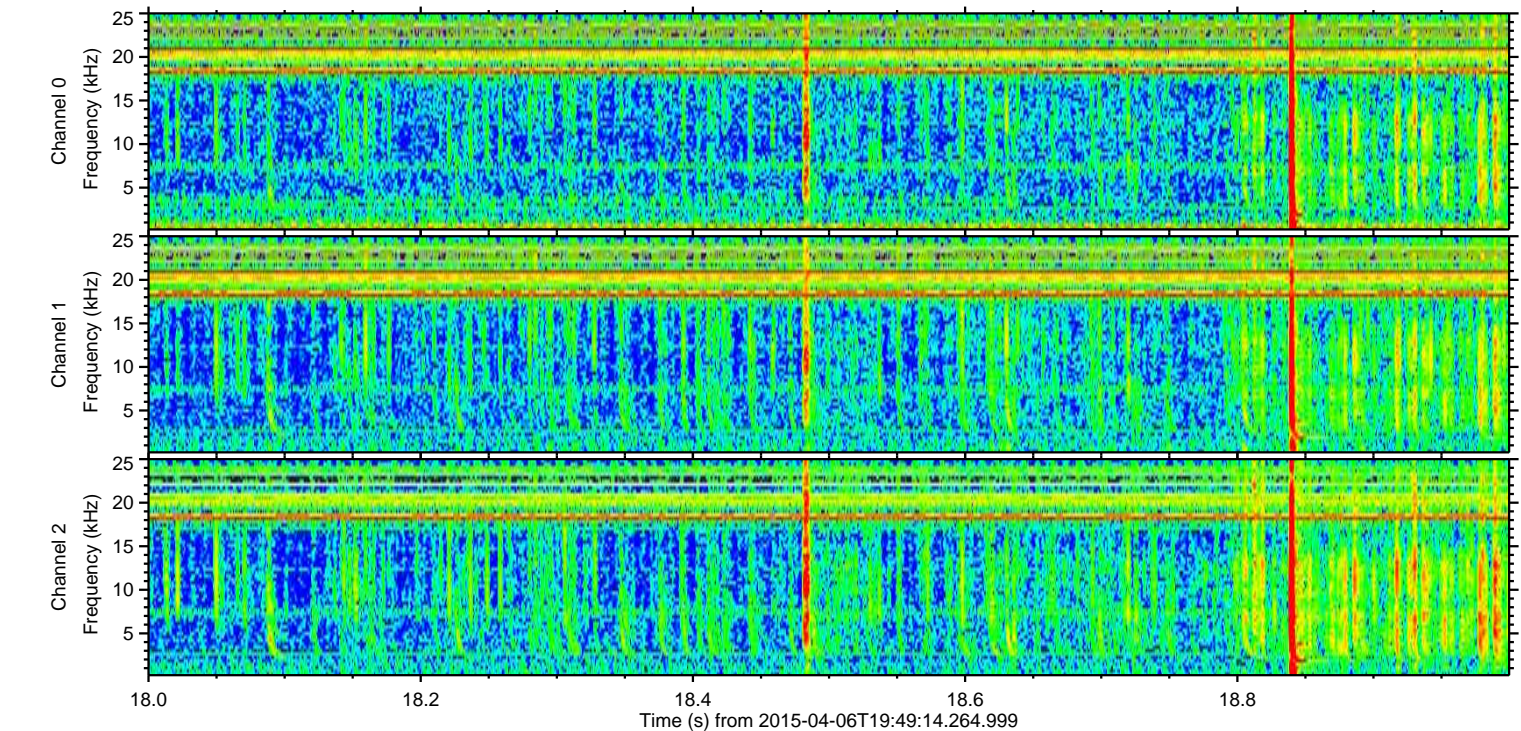
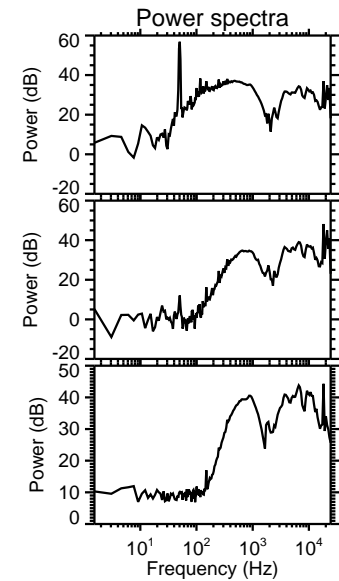
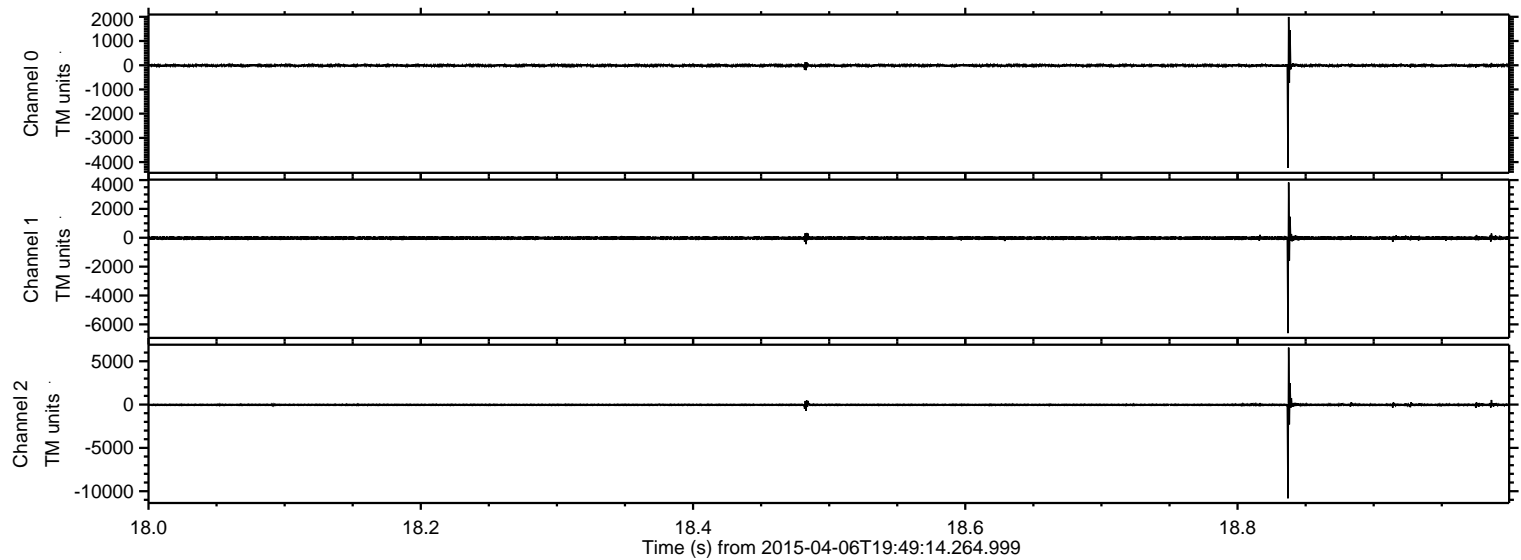
Processed Mon Apr 6 21:57:42 2015 by ELM ver.2012-10-06 from 001\_\_elm20150406\_194913\_\_dat00.bin





ELMAVAN 3D WAVEFORMS (Measured data sampled at 50 kHz) 49346 packets of 144 samples from 2015-04-06T19:49:14.264.999. Part 19/143

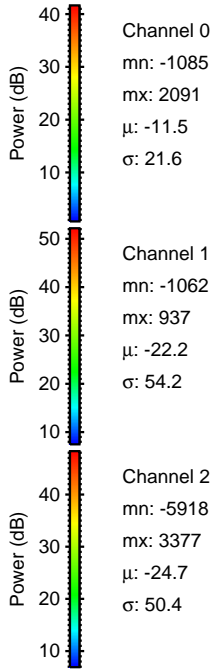
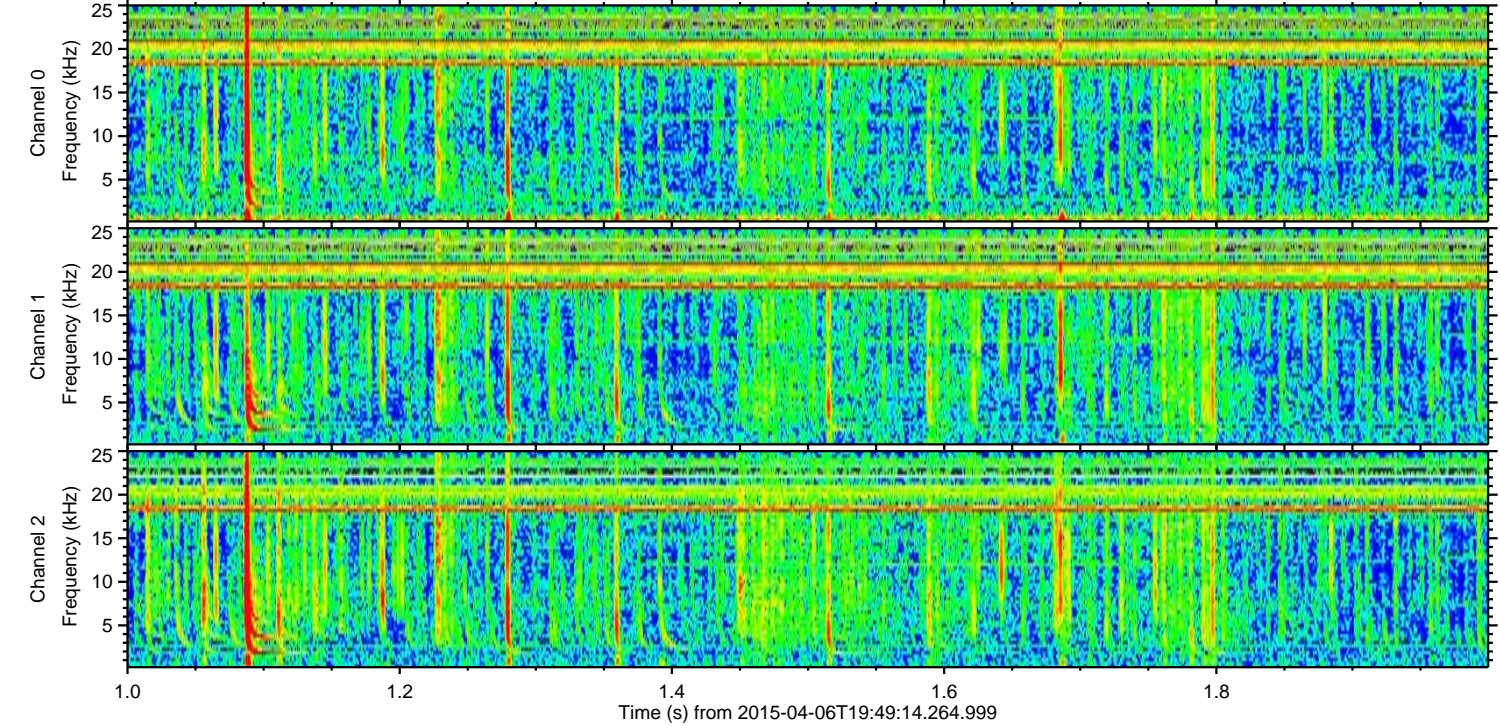
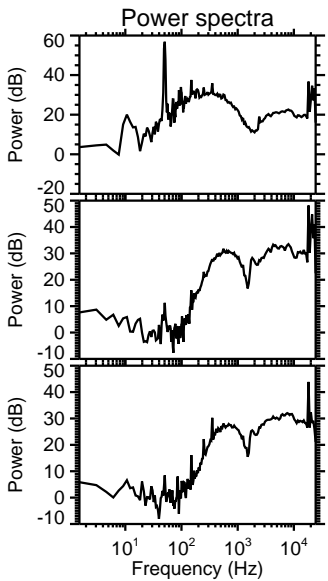
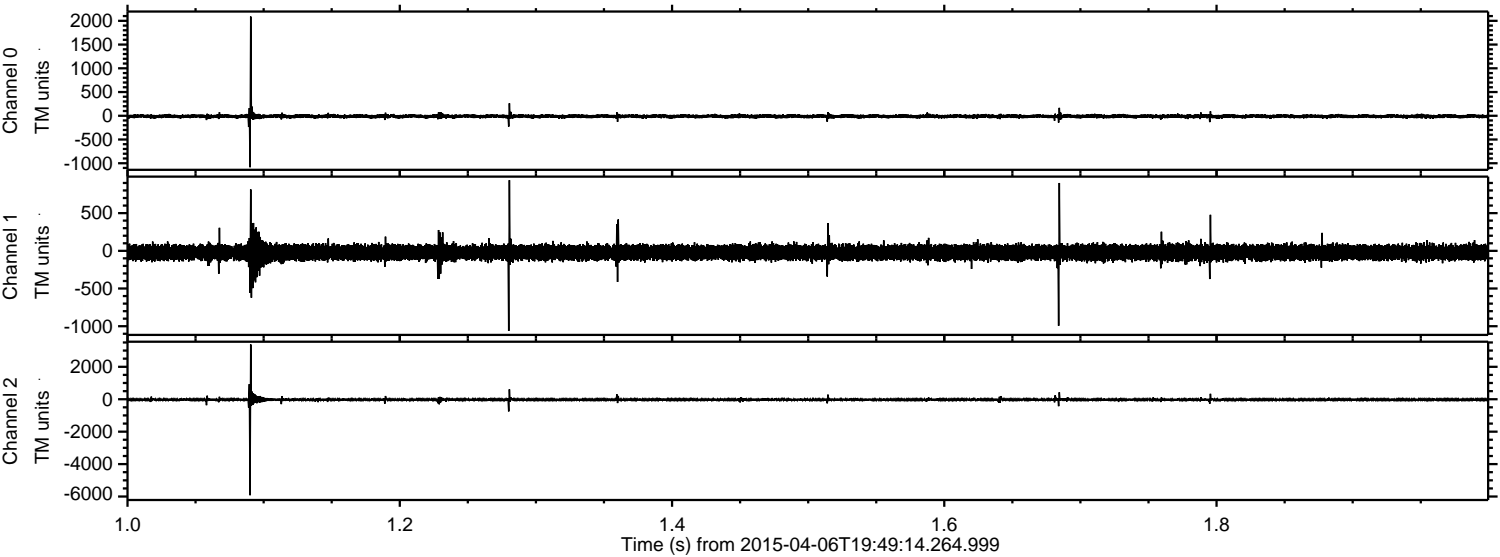
Processed Mon Apr 6 21:57:57 2015 by ELM ver.2012-10-06 from 001\_\_elm20150406\_194913\_\_dat00.bin





ELMAVAN 3D WAVEFORMS (Measured data sampled at 50 kHz) 49346 packets of 144 samples from 2015-04-06T19:49:14.264.999. Part 2/143

Processed Mon Apr 6 21:57:58 2015 by ELM ver.2012-10-06 from 001\_\_elm20150406\_194913\_\_dat00.bin



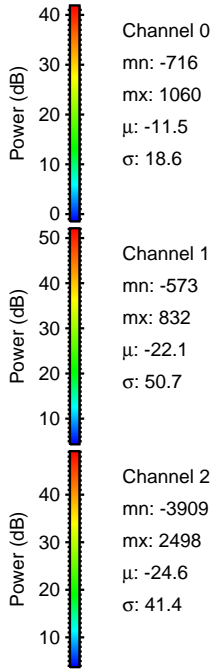
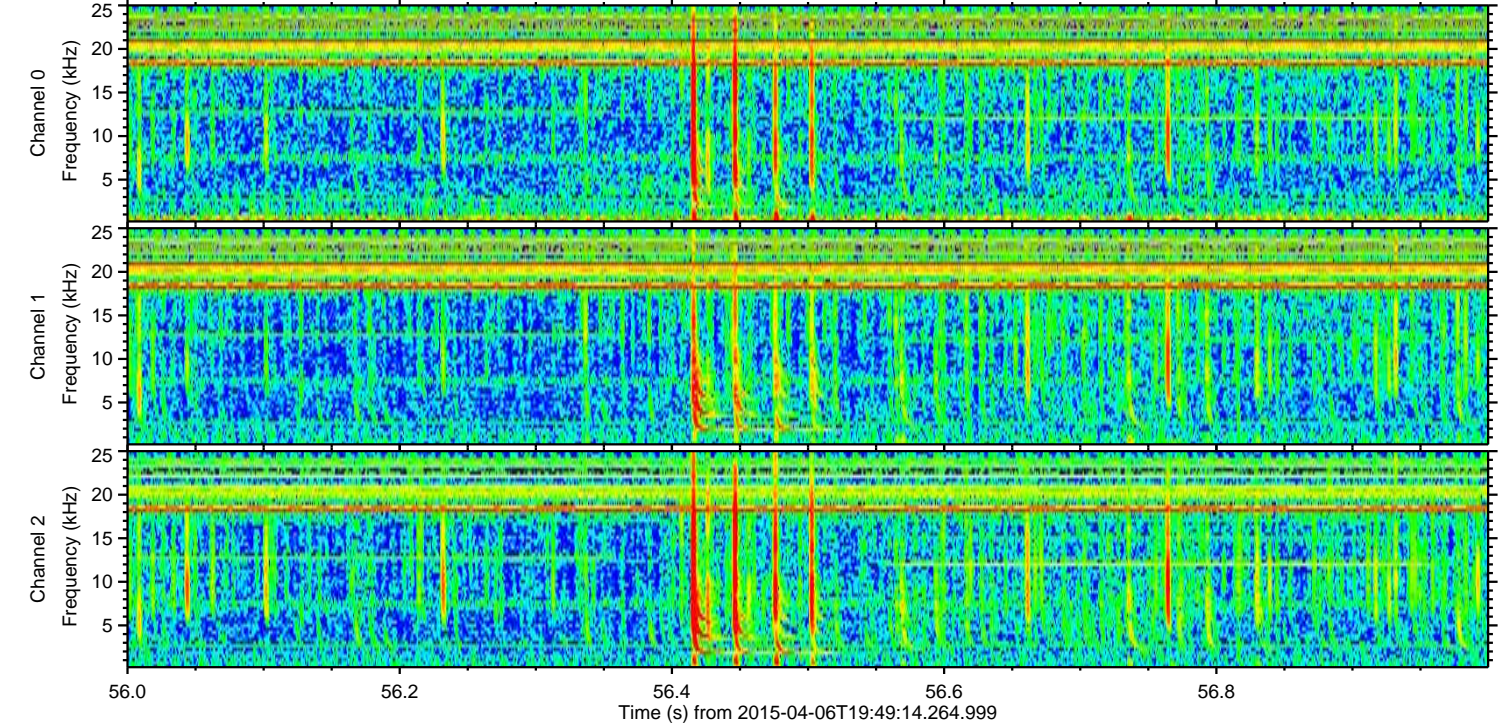
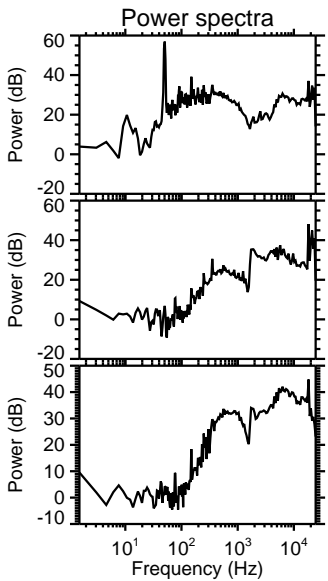
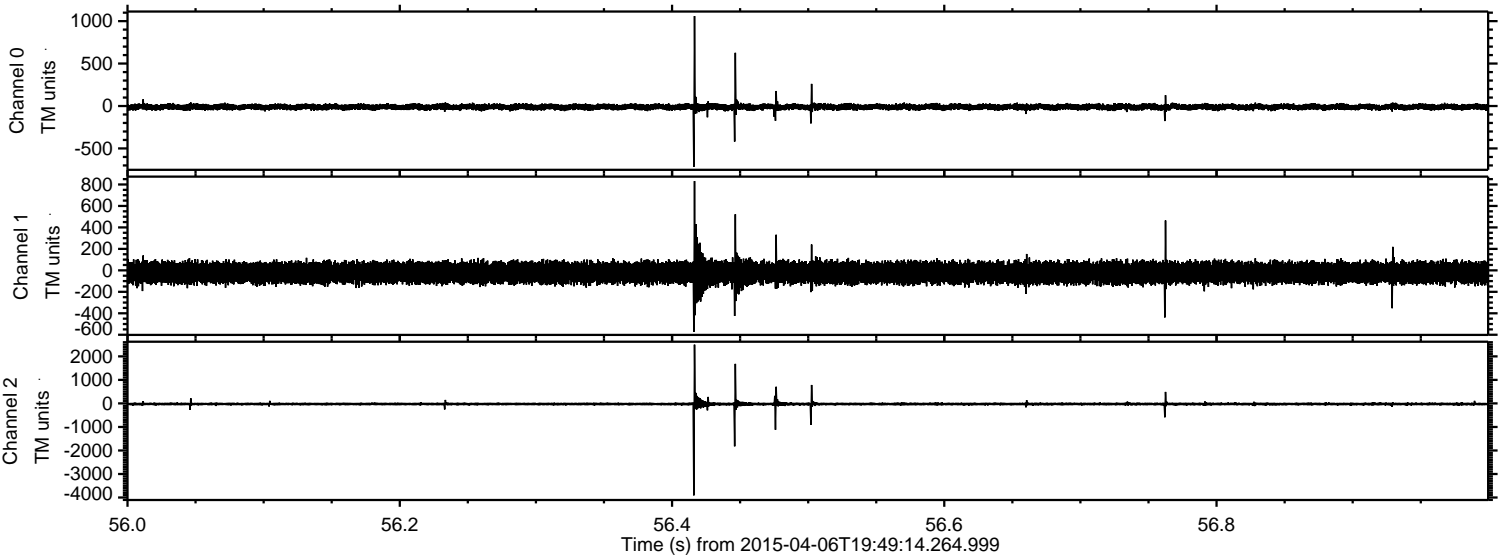
Channel 0  
mn: -1085  
mx: 2091  
 $\mu$ : -11.5  
 $\sigma$ : 21.6

Channel 1  
mn: -1062  
mx: 937  
 $\mu$ : -22.2  
 $\sigma$ : 54.2

Channel 2  
mn: -5918  
mx: 3377  
 $\mu$ : -24.7  
 $\sigma$ : 50.4



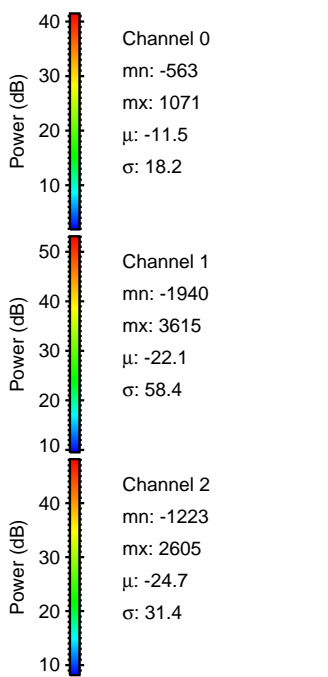
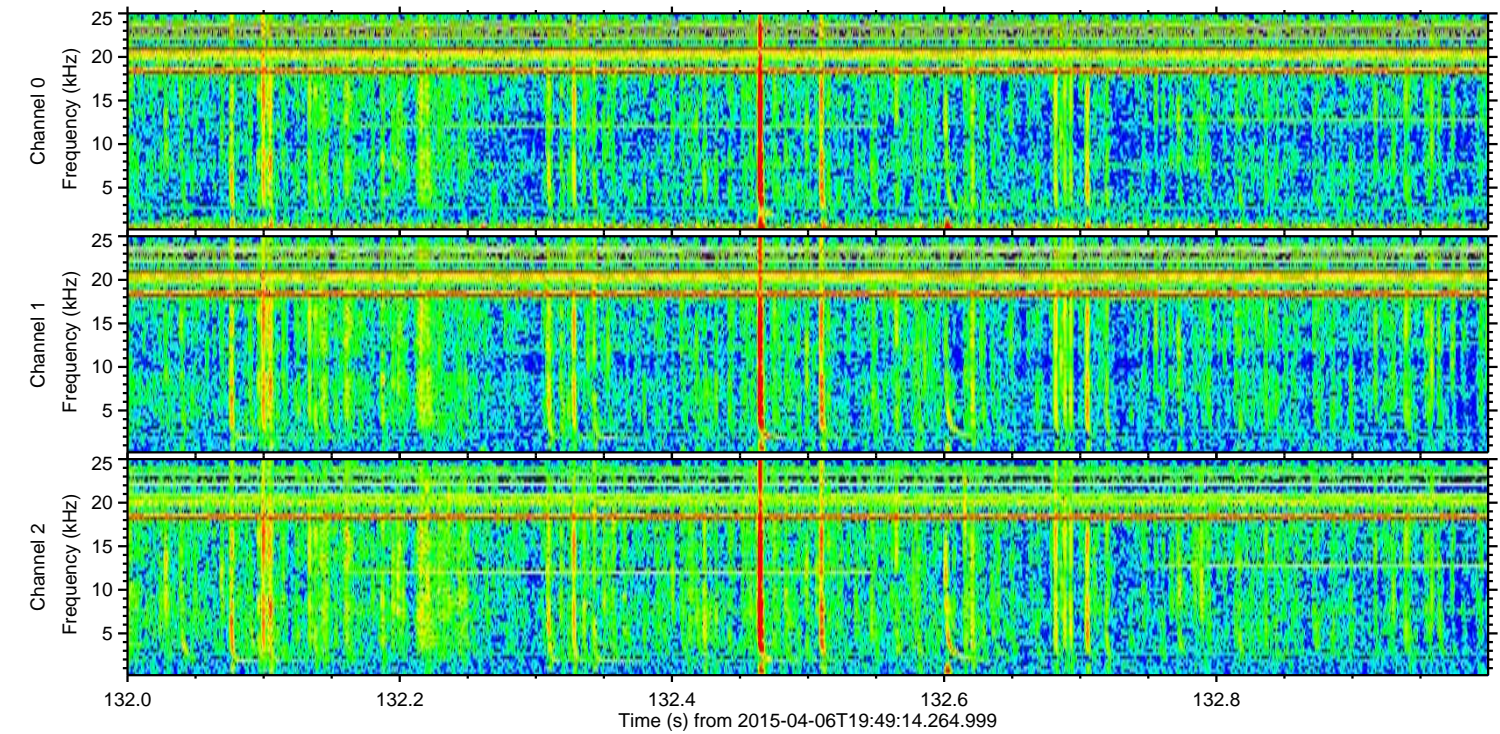
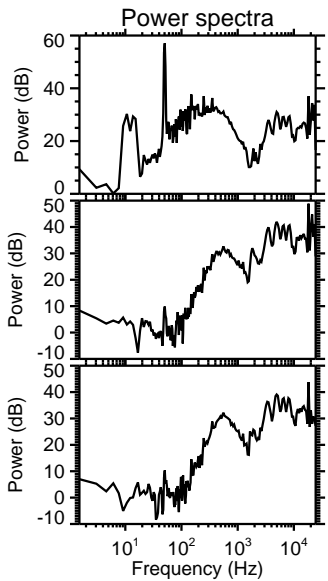
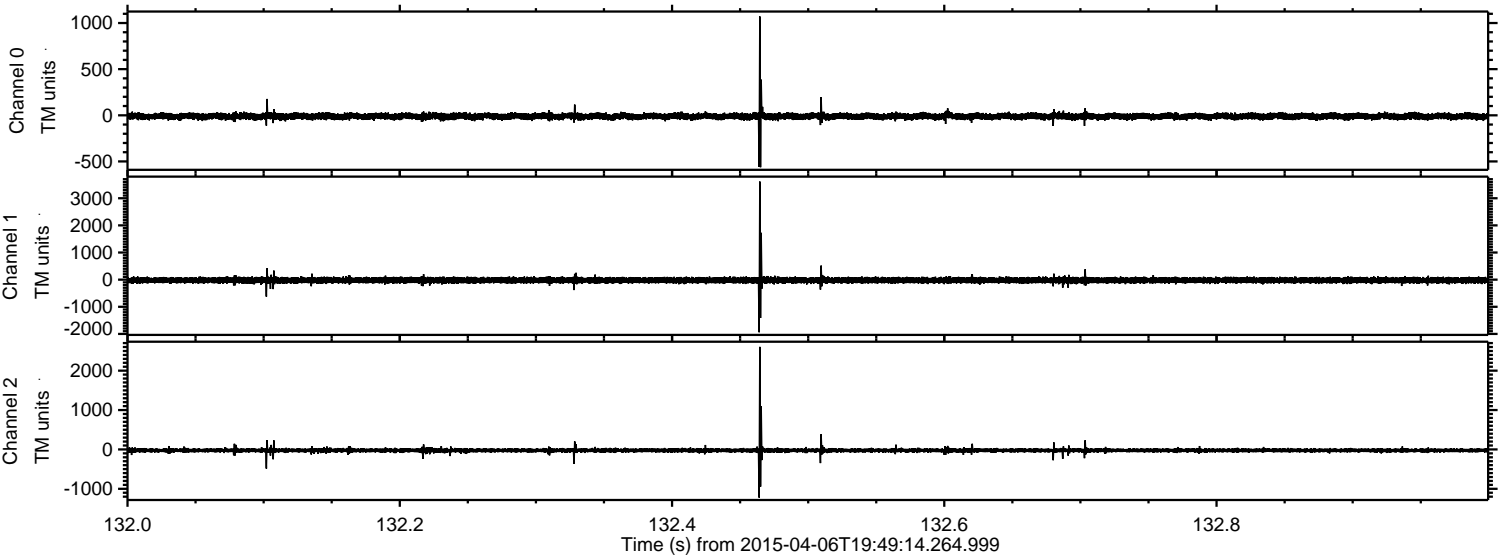
Processed Mon Apr 6 21:57:59 2015 by ELM ver.2012-10-06 from 001\_\_elm20150406\_194913\_\_dat00.bin





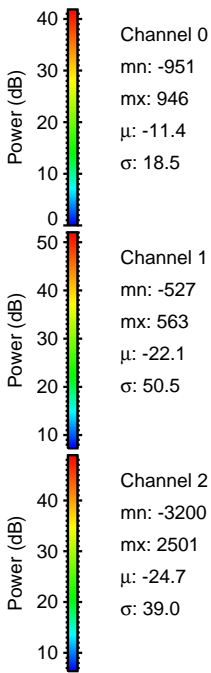
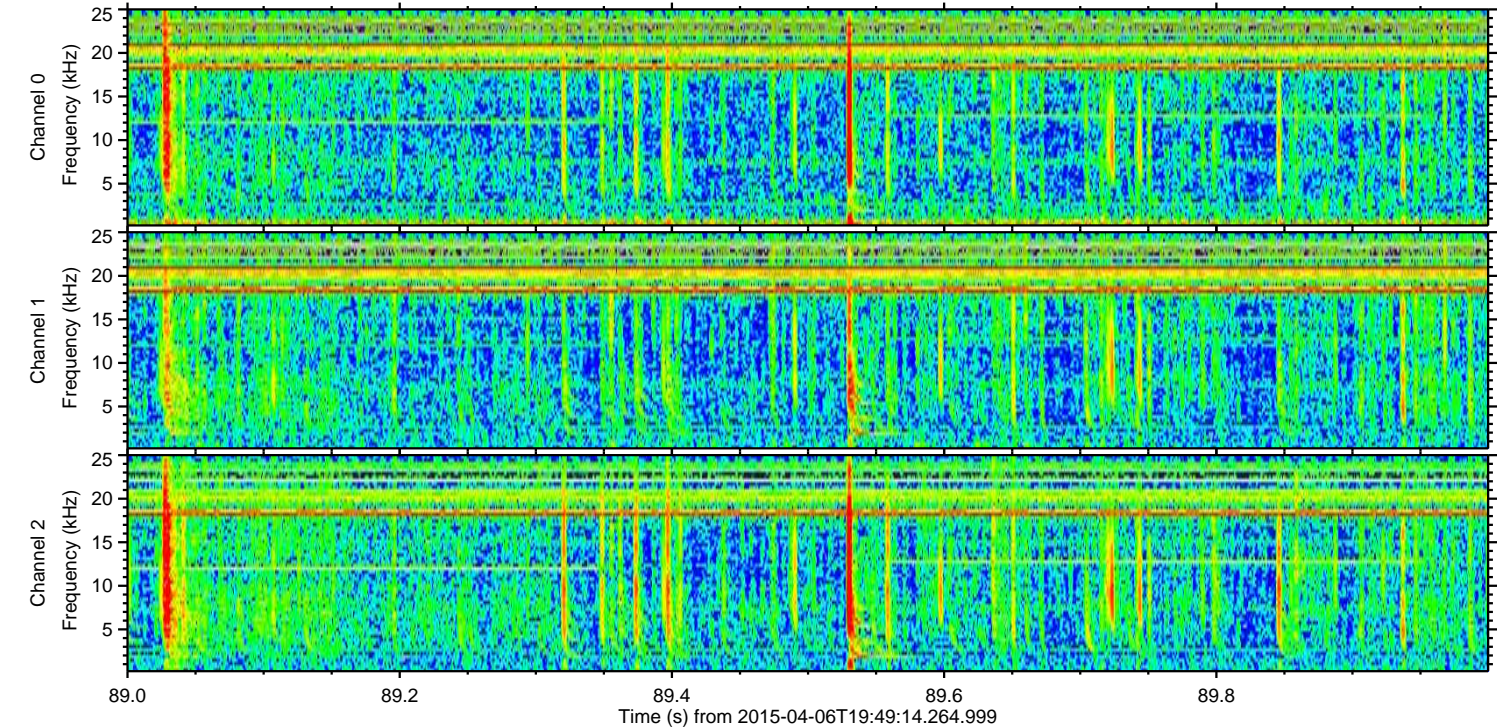
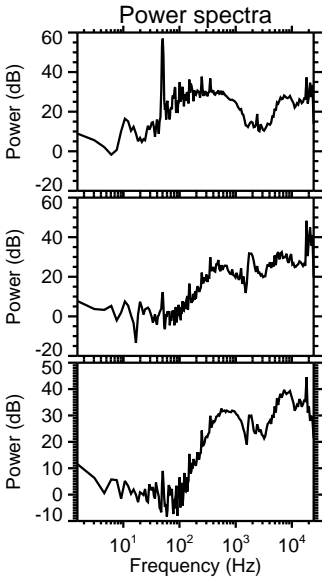
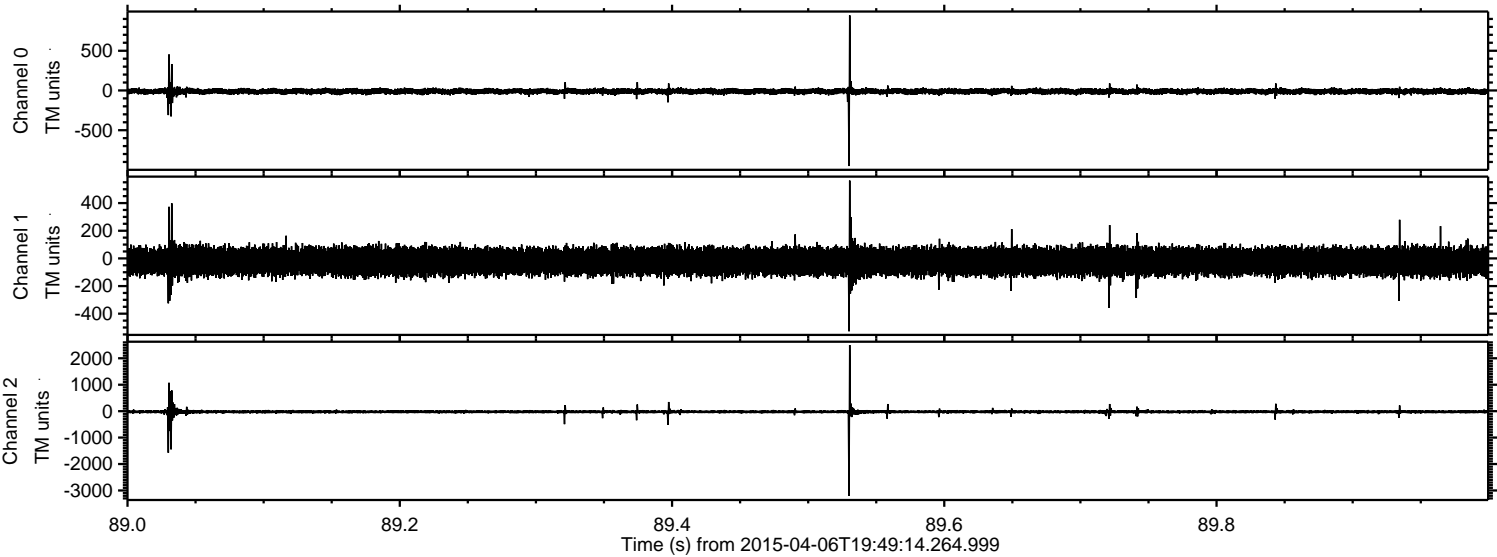
ELMAVAN 3D WAVEFORMS (Measured data sampled at 50 kHz) 49346 packets of 144 samples from 2015-04-06T19:49:14.264.999. Part 133/143

Processed Mon Apr 6 21:58:00 2015 by ELM ver.2012-10-06 from 001\_\_elm20150406\_194913\_\_dat00.bin





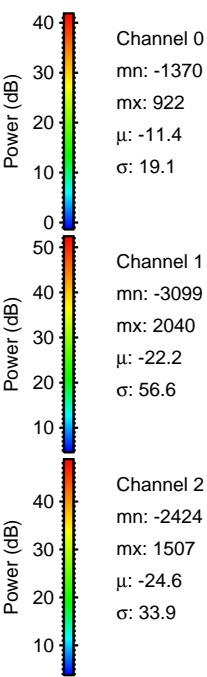
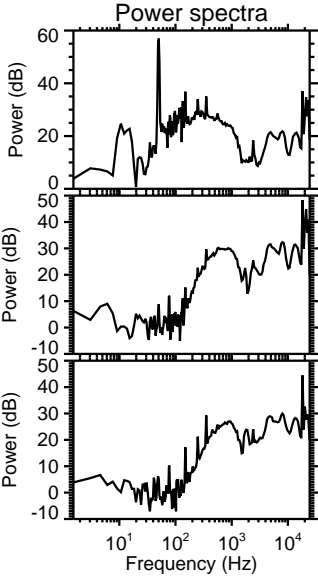
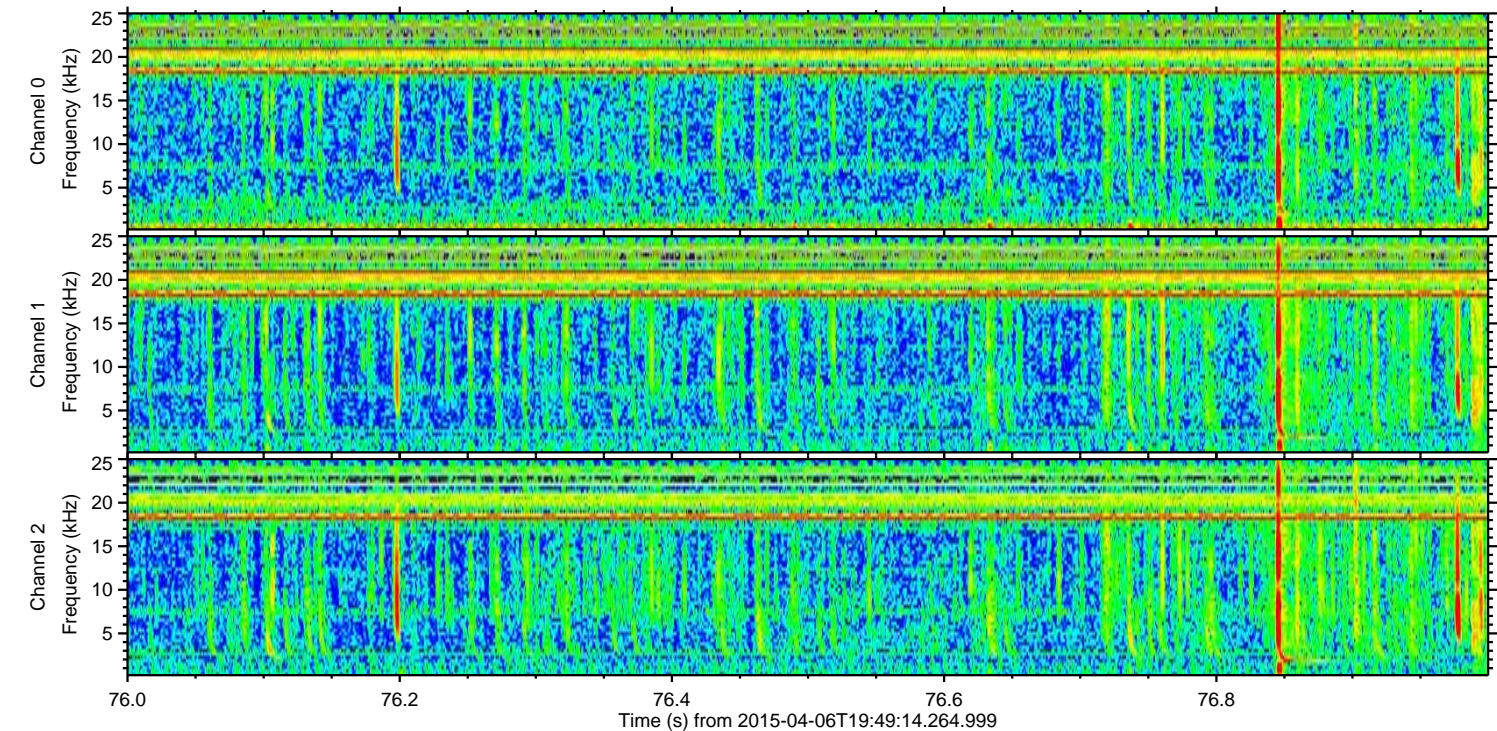
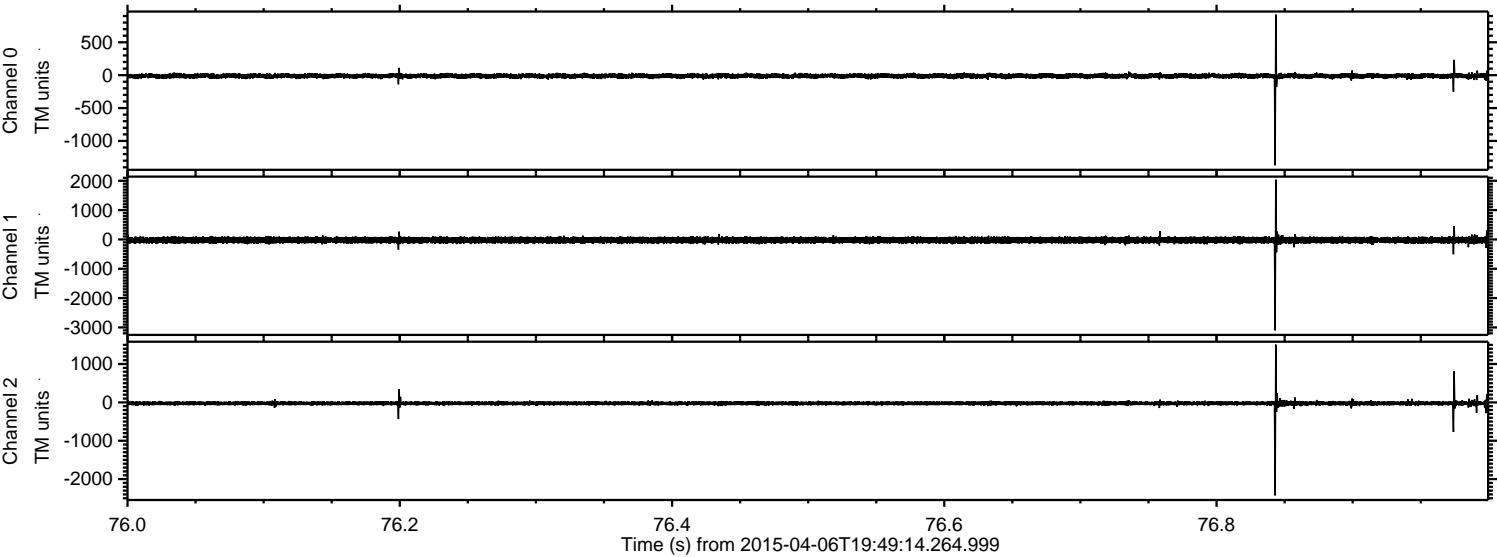
Processed Mon Apr 6 21:58:01 2015 by ELM ver.2012-10-06 from 001\_\_elm20150406\_194913\_\_dat00.bin





ELMAVAN 3D WAVEFORMS (Measured data sampled at 50 kHz) 49346 packets of 144 samples from 2015-04-06T19:49:14.264.999. Part 77/143

Processed Mon Apr 6 21:58:02 2015 by ELM ver.2012-10-06 from 001\_\_elm20150406\_194913\_\_dat00.bin



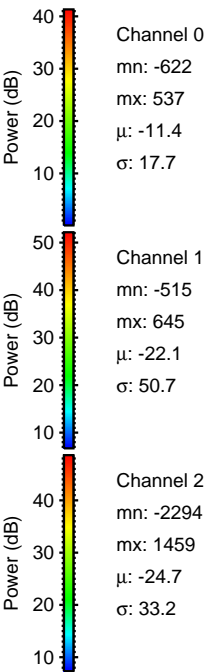
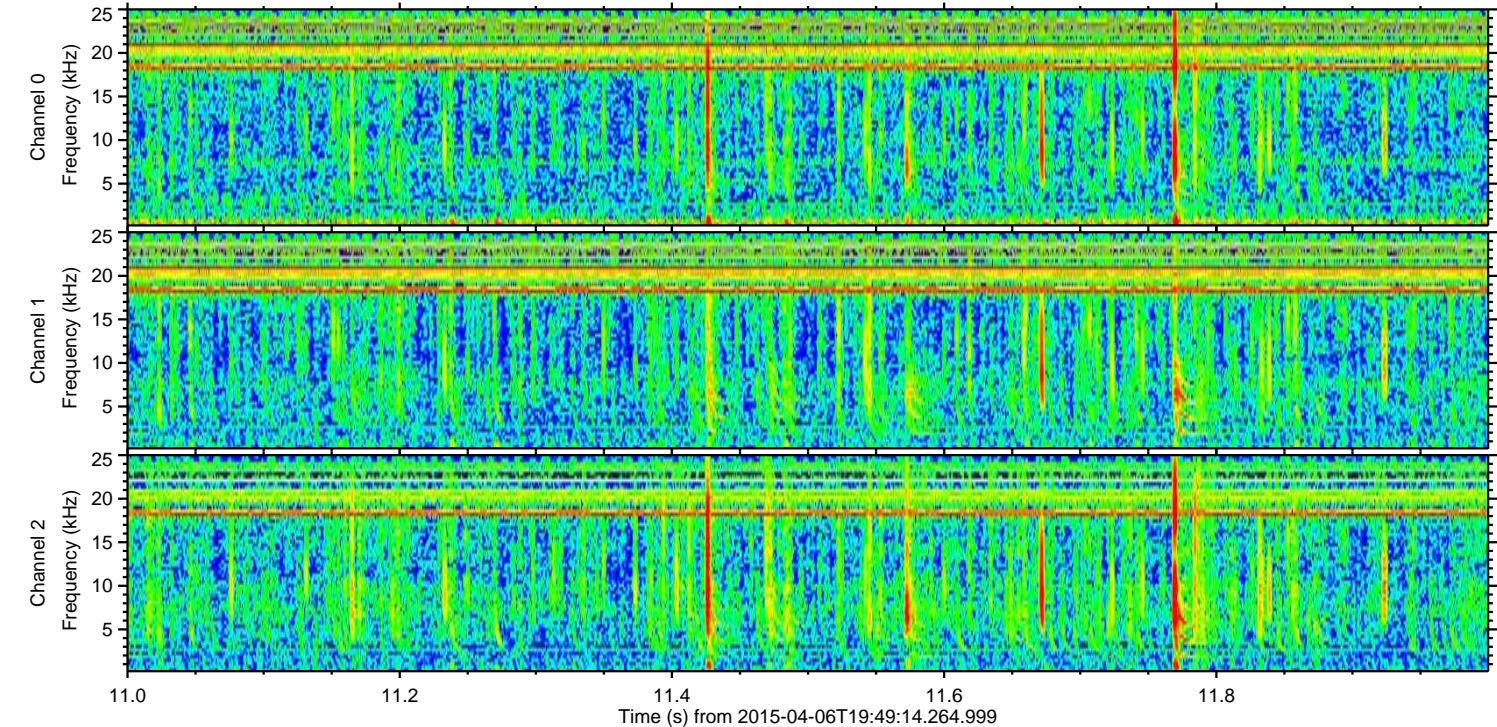
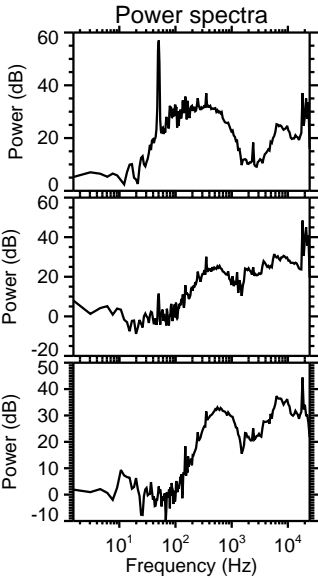
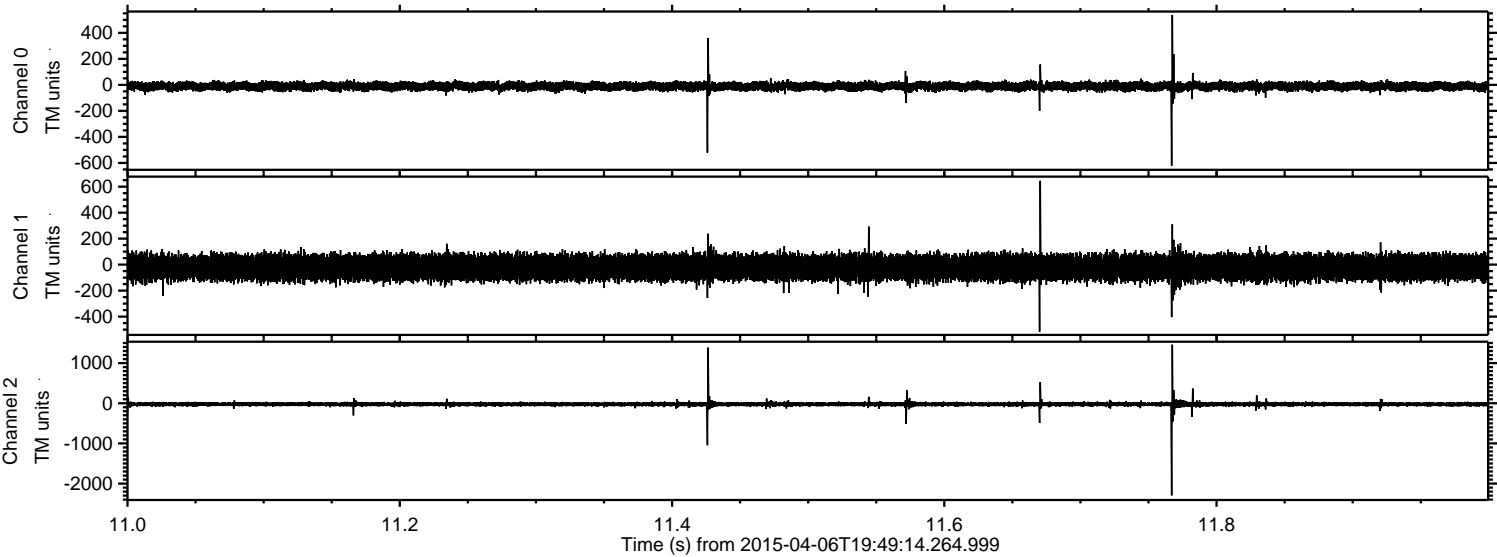
Channel 0  
mn: -1370  
mx: 922  
 $\mu$ : -11.4  
 $\sigma$ : 19.1

Channel 1  
mn: -3099  
mx: 2040  
 $\mu$ : -22.2  
 $\sigma$ : 56.6

Channel 2  
mn: -2424  
mx: 1507  
 $\mu$ : -24.6  
 $\sigma$ : 33.9

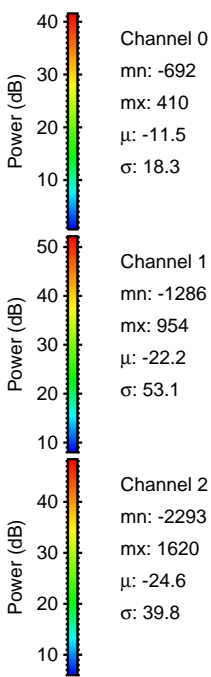
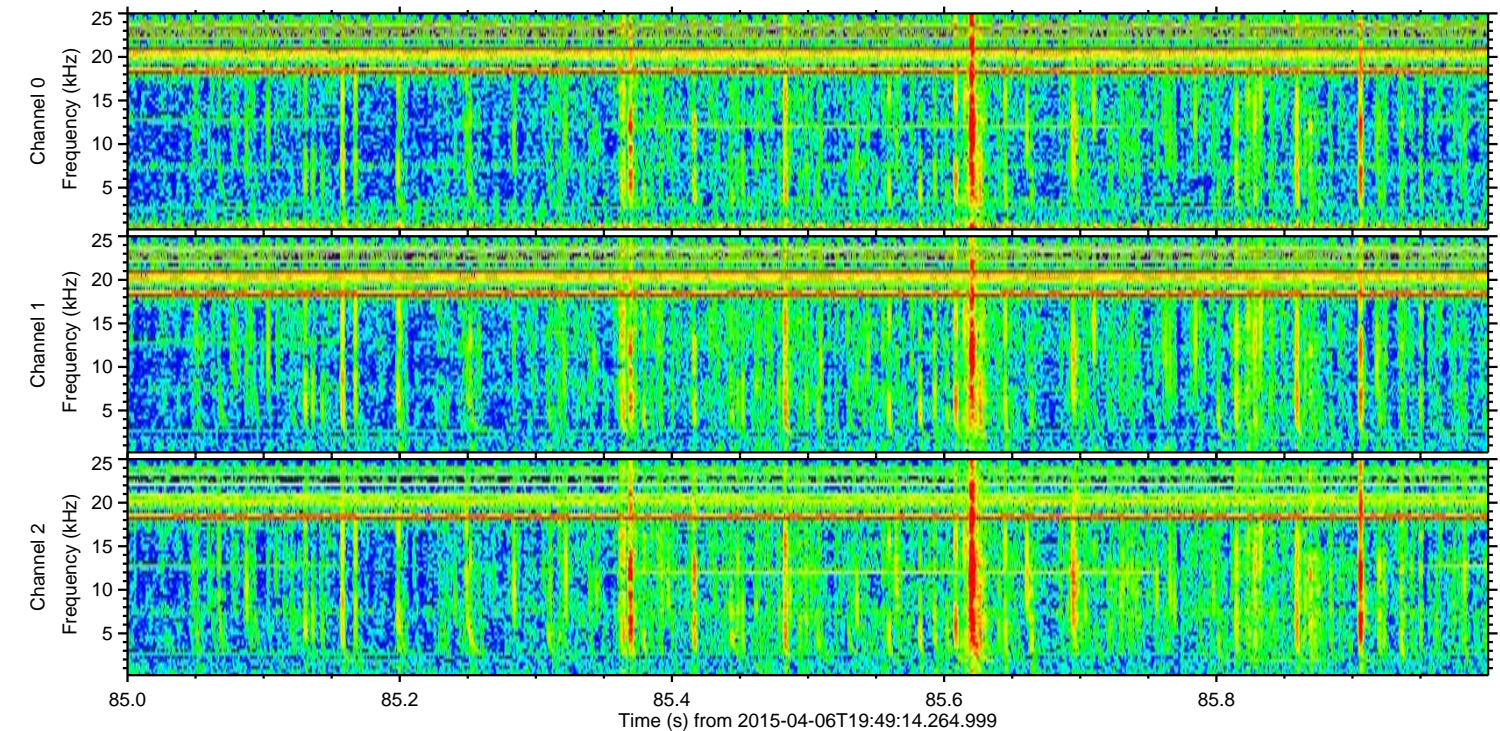
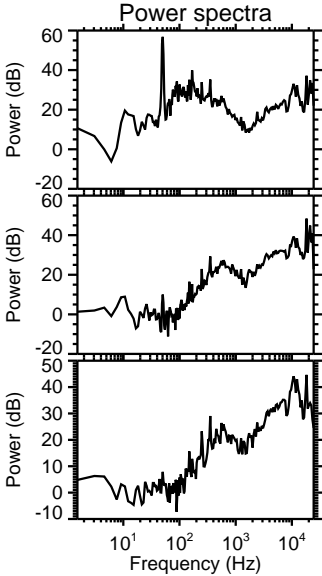
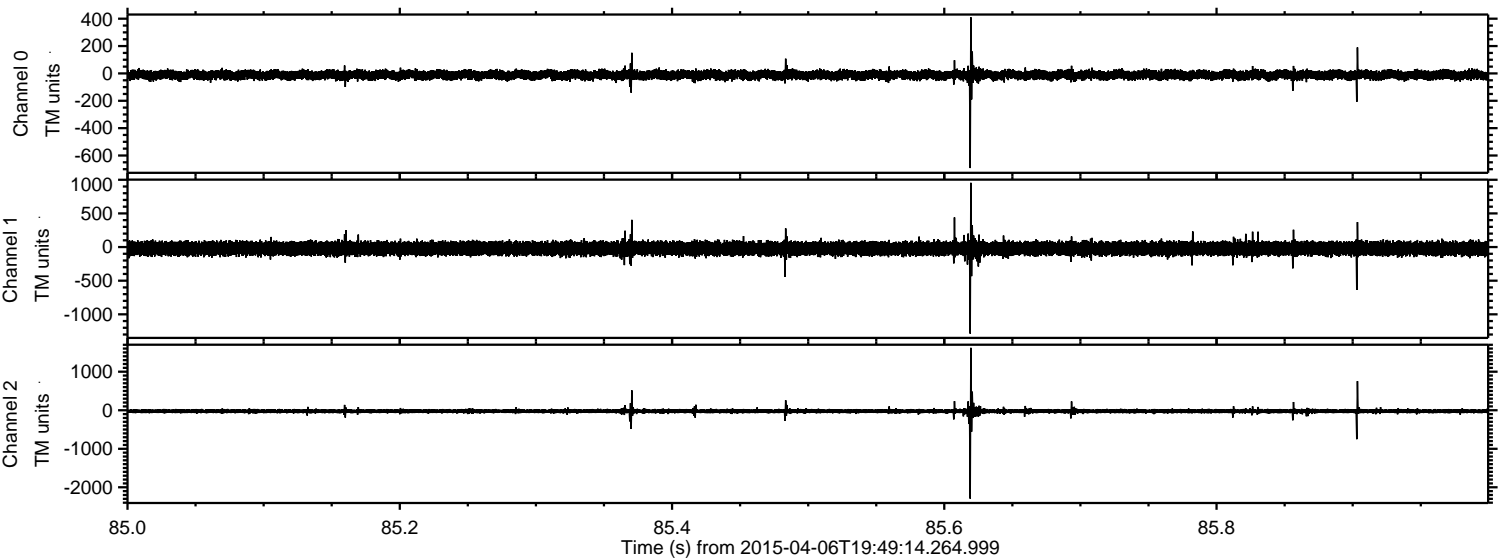


Processed Mon Apr 6 21:58:03 2015 by ELM ver.2012-10-06 from 001\_\_elm20150406\_194913\_\_dat00.bin



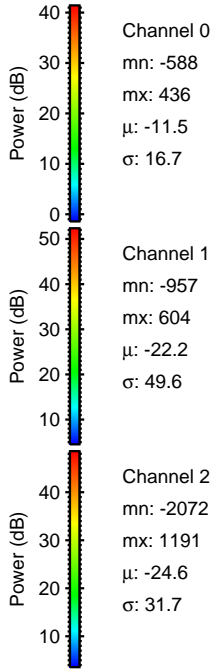
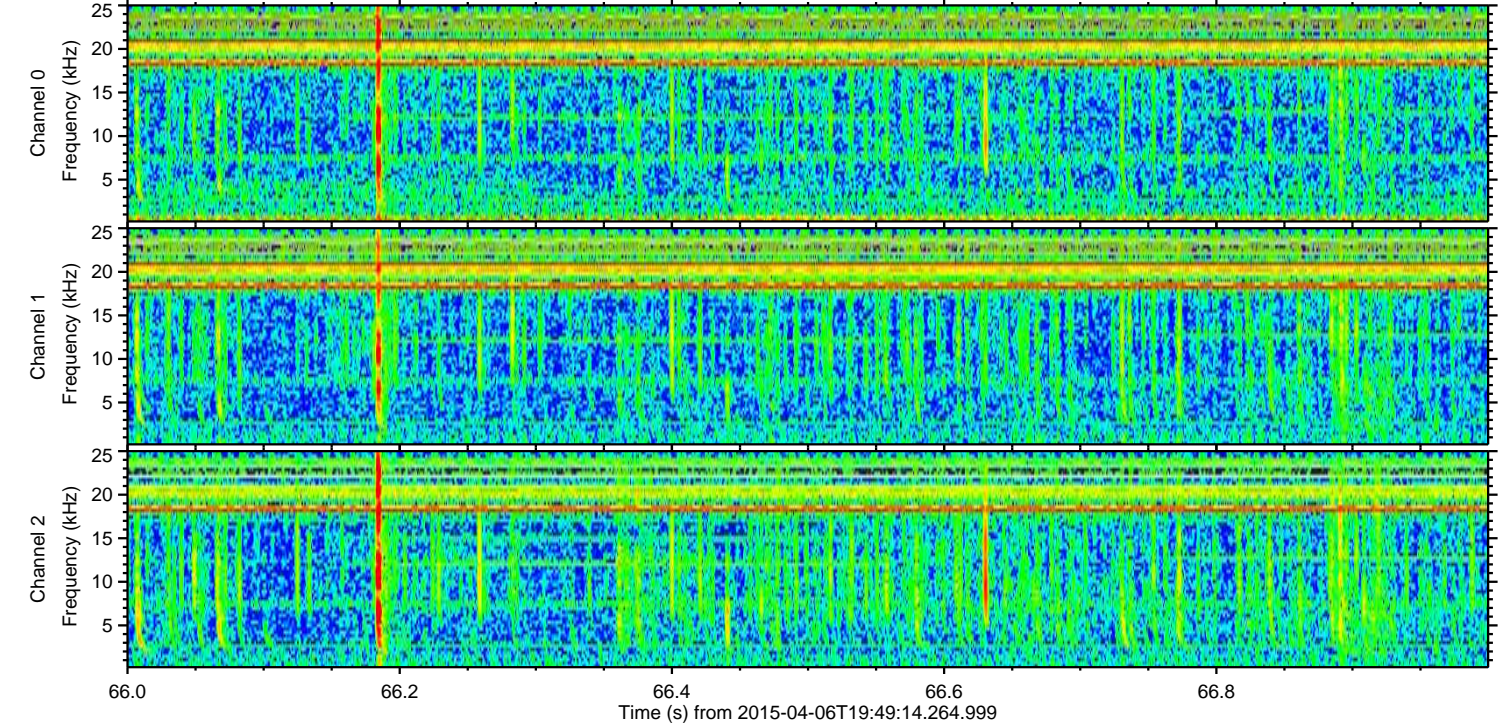
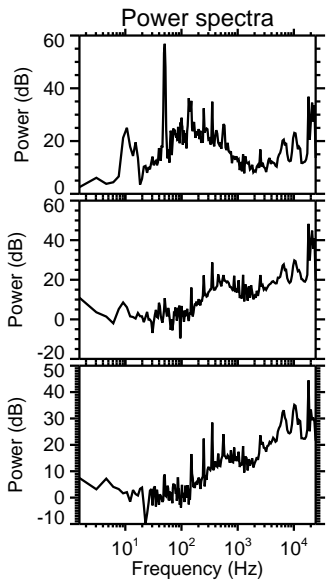
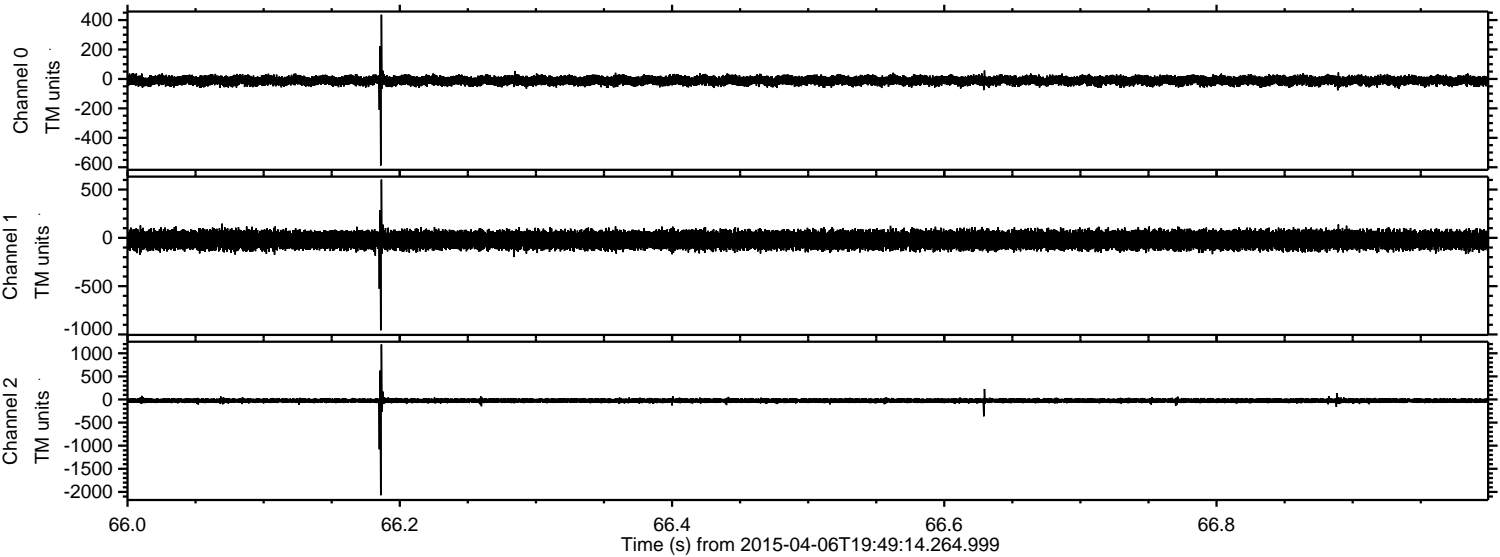


Processed Mon Apr 6 21:58:04 2015 by ELM ver.2012-10-06 from 001\_\_elm20150406\_194913\_\_dat00.bin





Processed Mon Apr 6 21:58:05 2015 by ELM ver.2012-10-06 from 001\_\_elm20150406\_194913\_\_dat00.bin



Channel 0  
mn: -588  
mx: 436  
 $\mu$ : -11.5  
 $\sigma$ : 16.7

Channel 1  
mn: -957  
mx: 604  
 $\mu$ : -22.2  
 $\sigma$ : 49.6

Channel 2  
mn: -2072  
mx: 1191  
 $\mu$ : -24.6  
 $\sigma$ : 31.7



ELMAVAN 3D WAVEFORMS (Measured data sampled at 50 kHz) 49346 packets of 144 samples from 2015-04-06T19:49:14.264.999. Part 31/143

Processed Mon Apr 6 21:58:06 2015 by ELM ver.2012-10-06 from 001\_\_elm20150406\_194913\_\_dat00.bin

