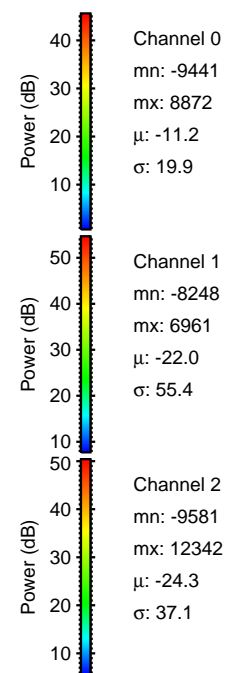
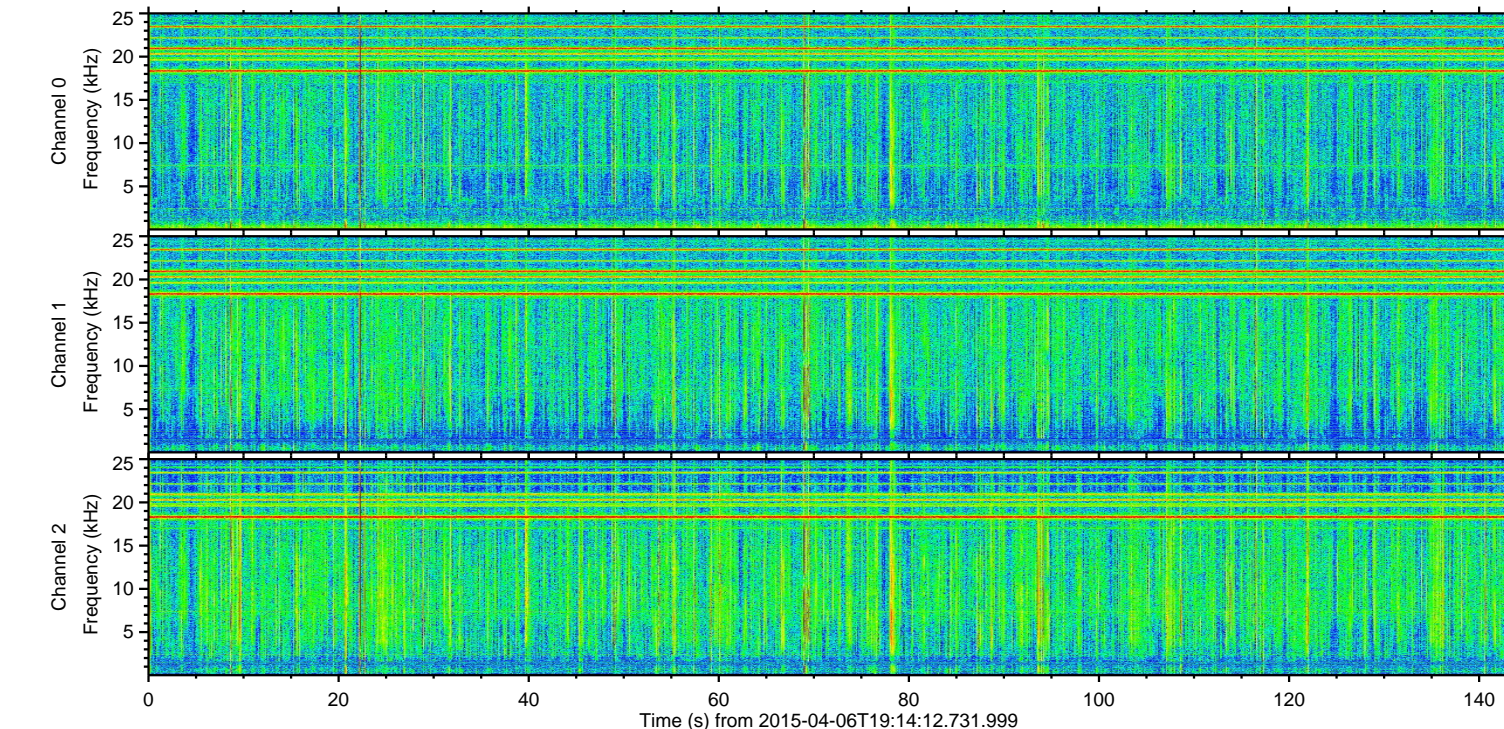
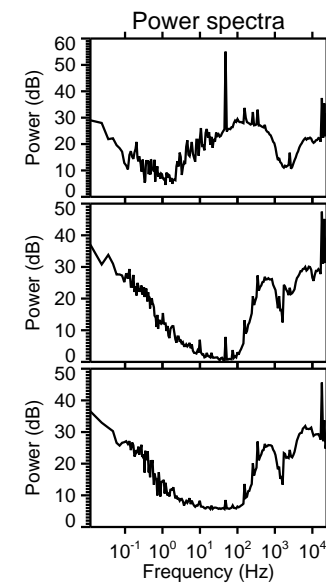
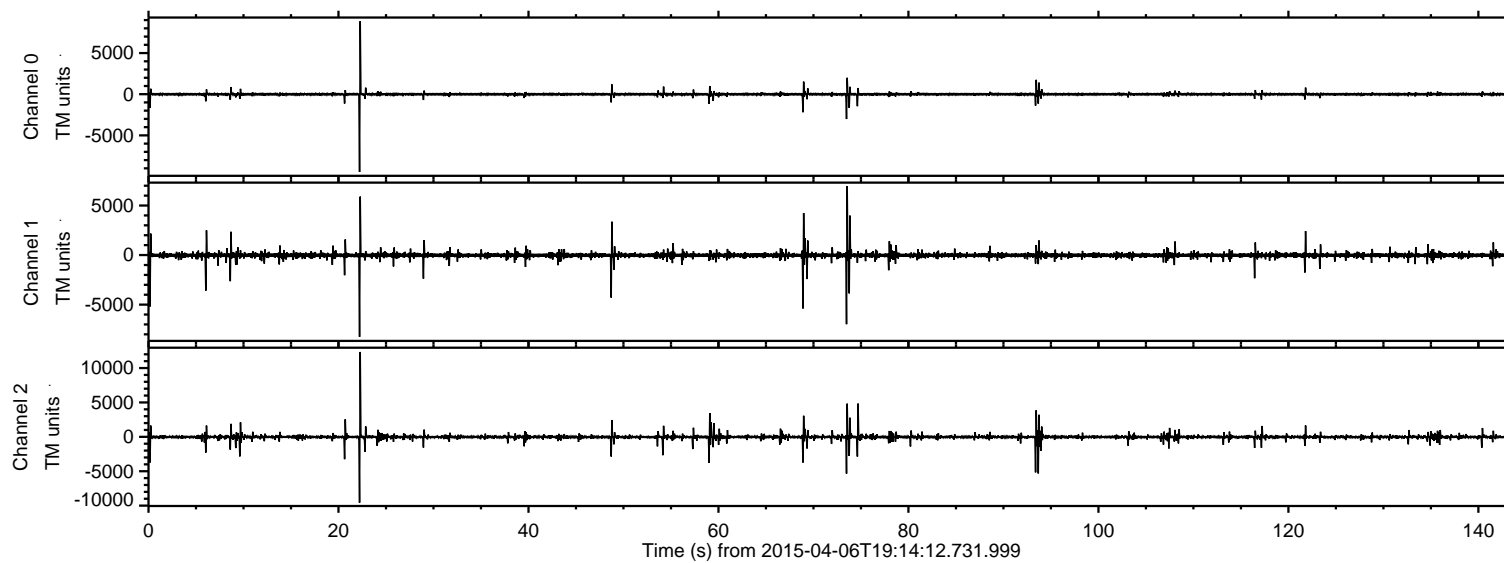


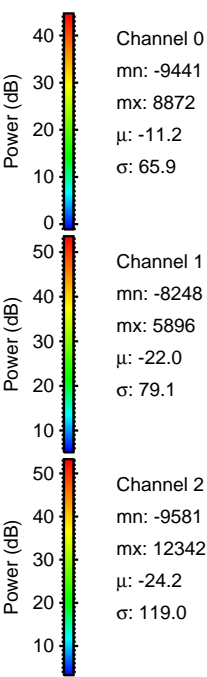
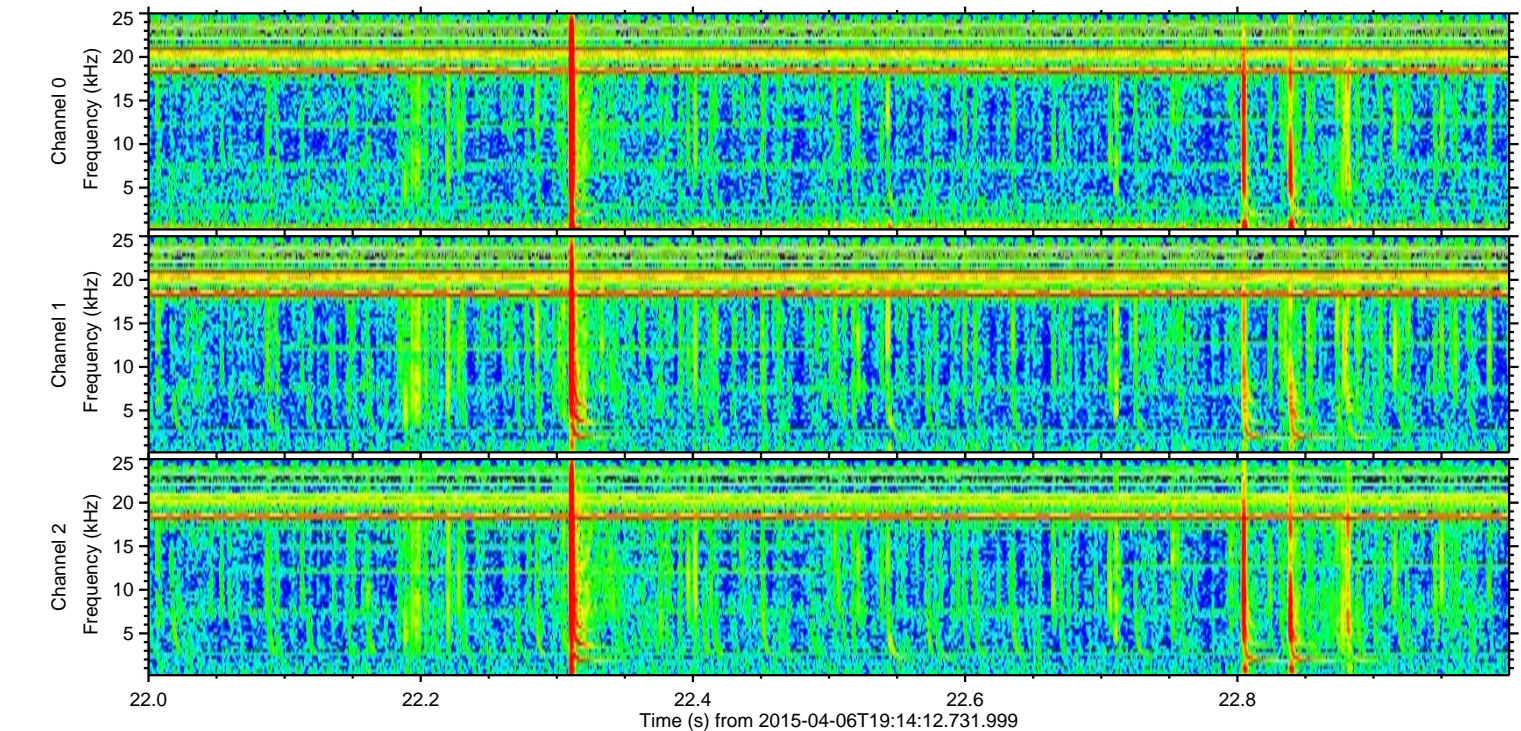
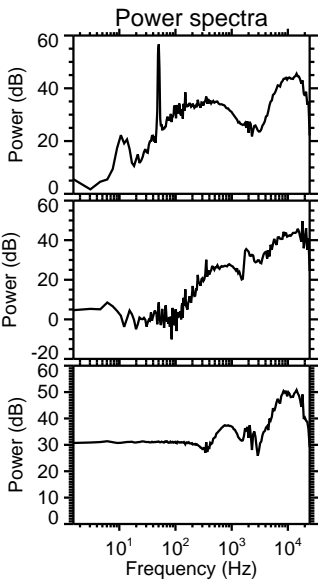
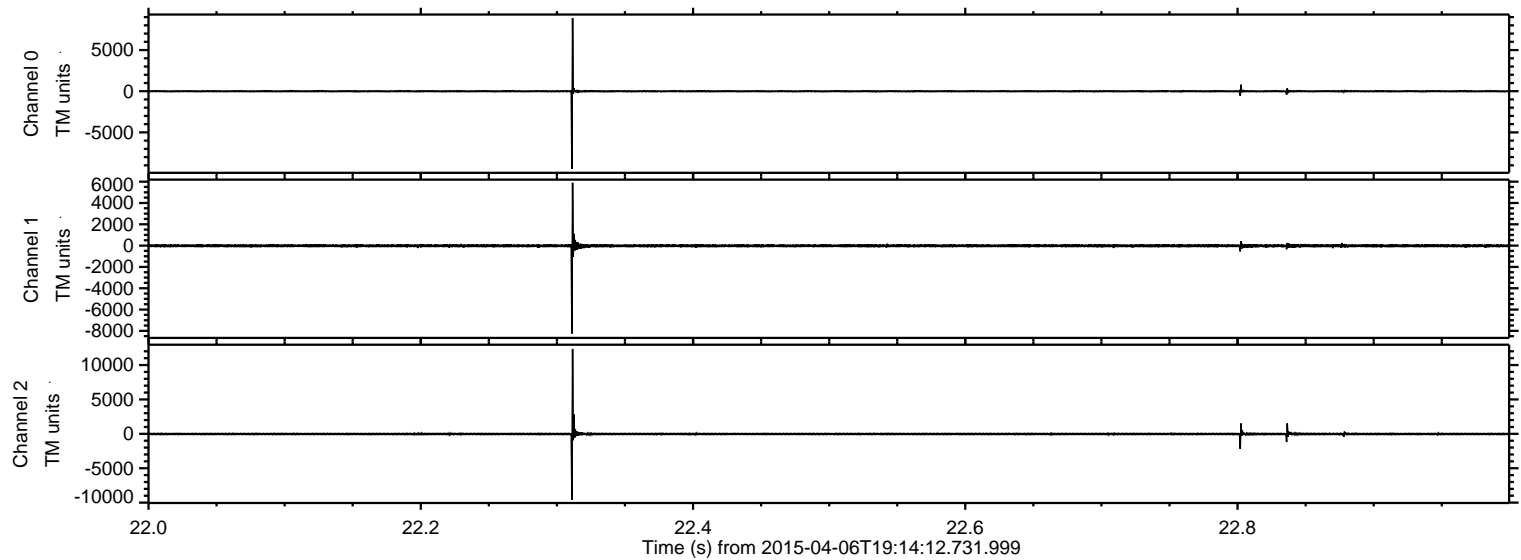
ELMAVAN 3D WAVEFORMS (Measured data sampled at 50 kHz) 49735 packets of 144 samples from 2015-04-06T19:14:12.731.999.

Processed Mon Apr 6 21:21:22 2015 by ELM ver.2012-10-06 from 001__elm20150406_191411__dat00.bin



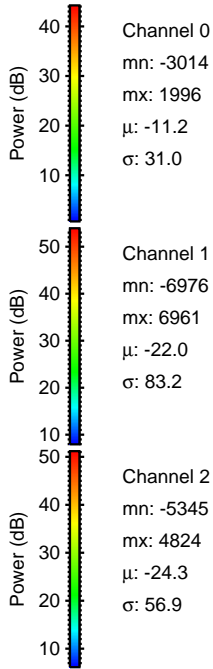
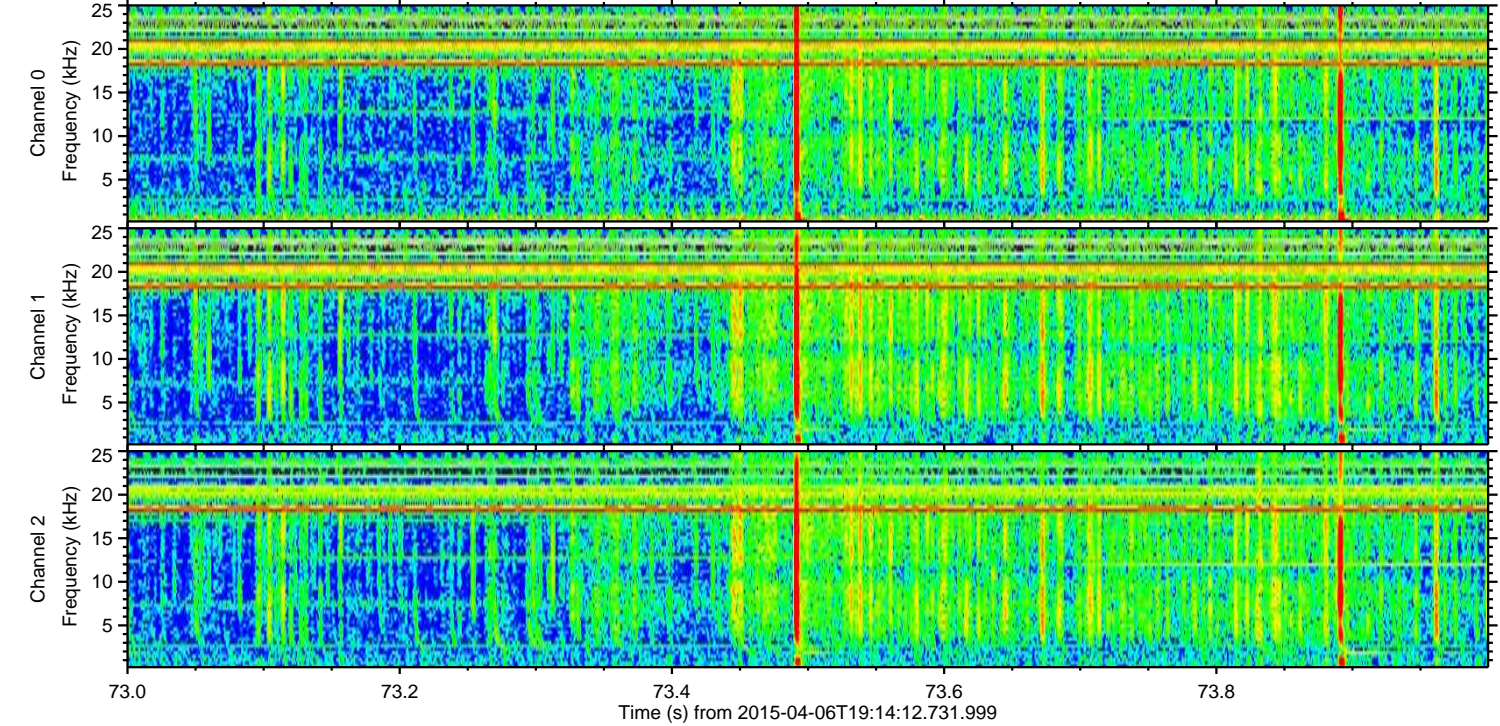
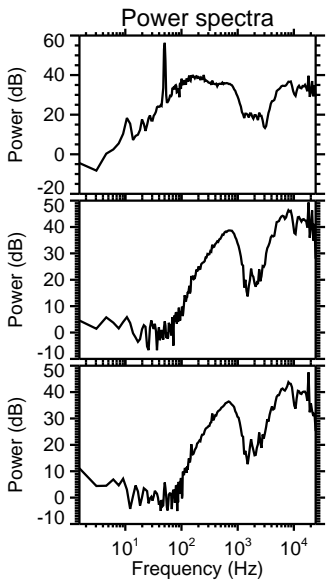
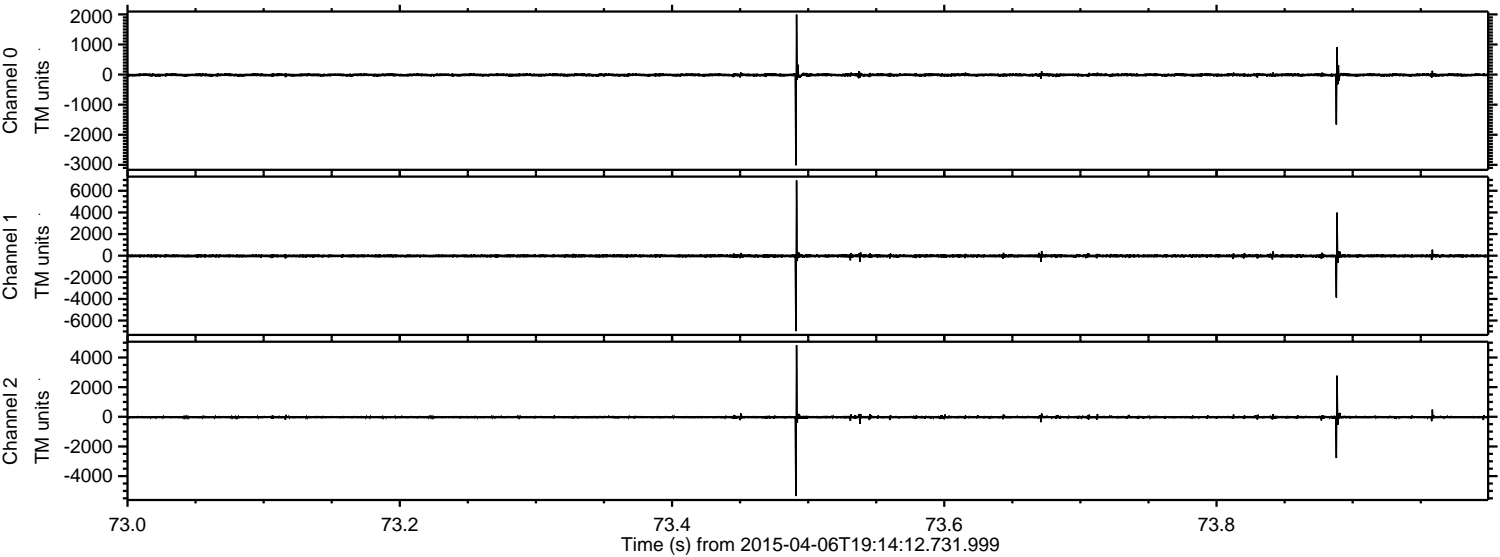
ELMAVAN 3D WAVEFORMS (Measured data sampled at 50 kHz) 49735 packets of 144 samples from 2015-04-06T19:14:12.731.999. Part 23/144

Processed Mon Apr 6 21:21:33 2015 by ELM ver.2012-10-06 from 001__elm20150406_191411__dat00.bin

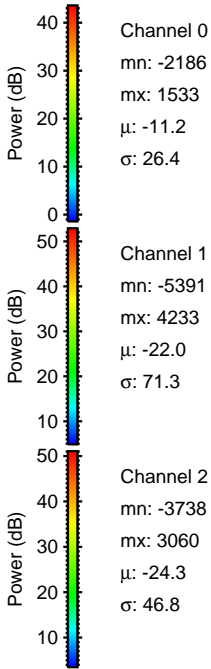
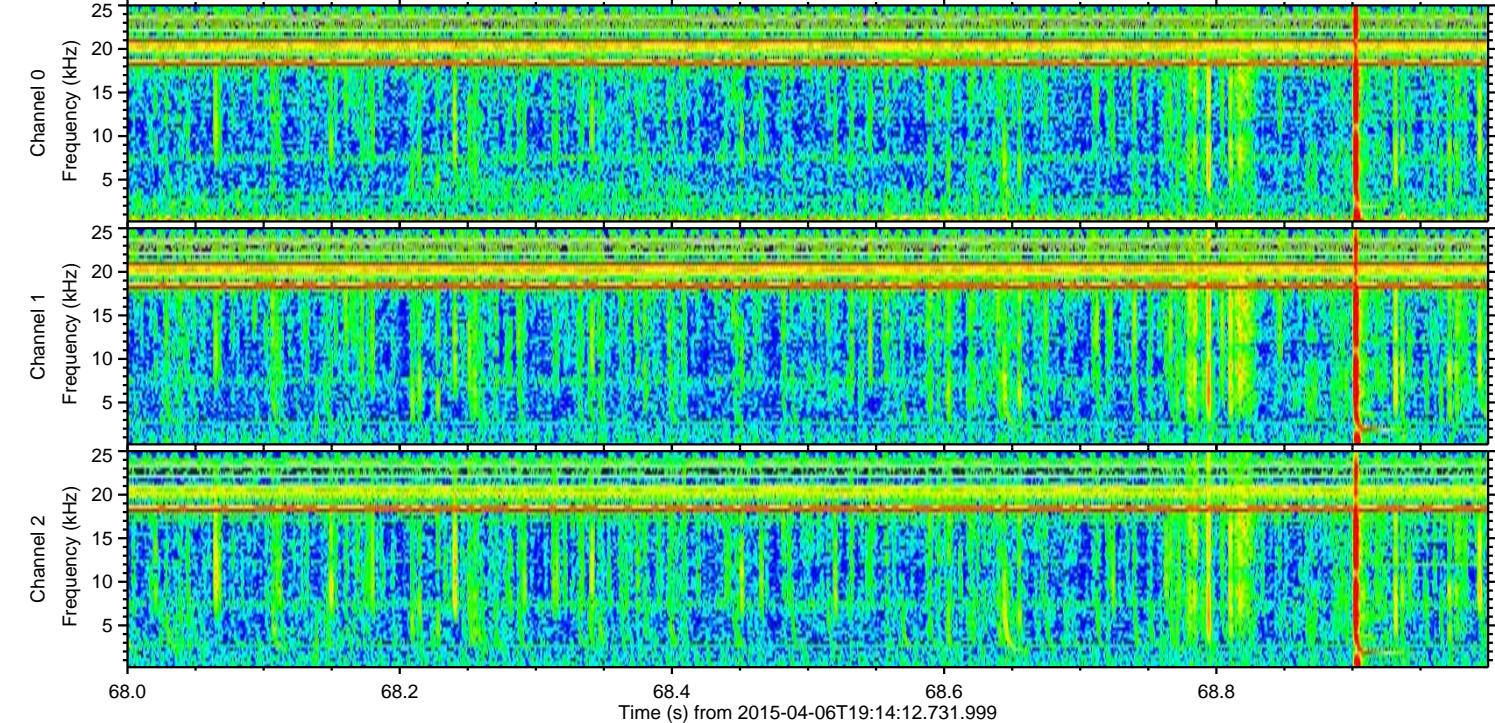
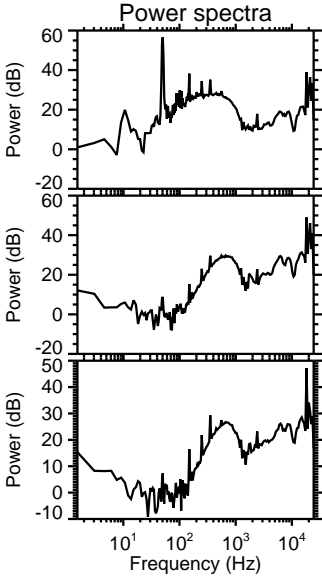
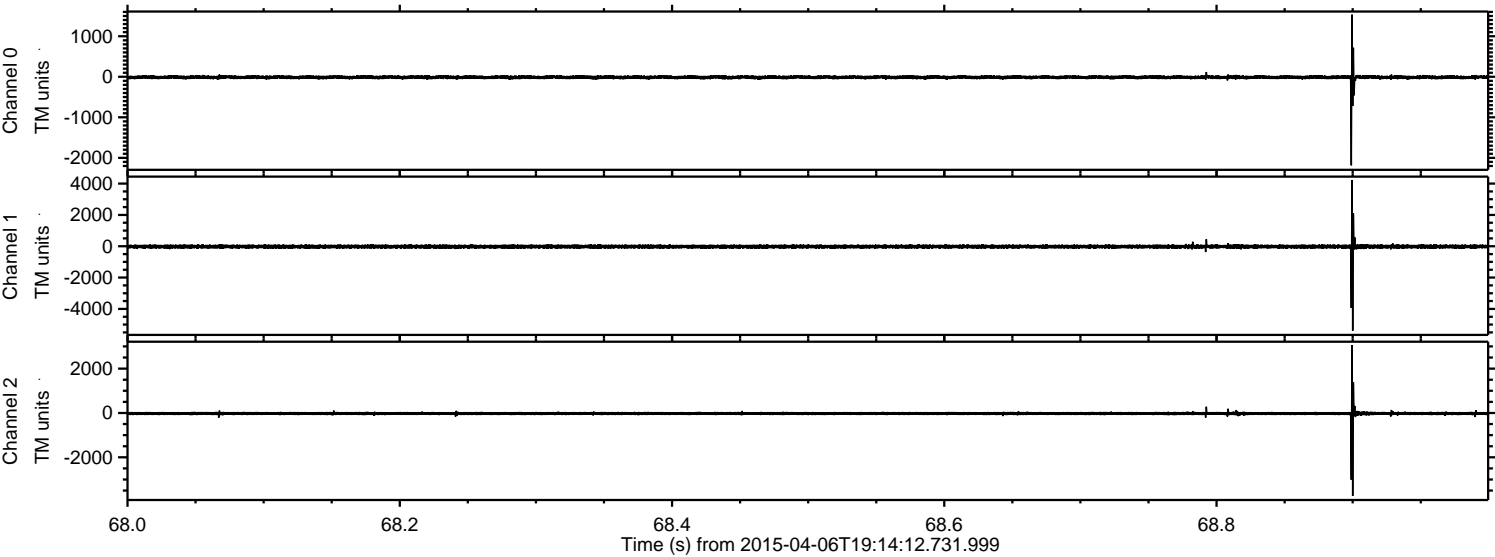


ELMAVAN 3D WAVEFORMS (Measured data sampled at 50 kHz) 49735 packets of 144 samples from 2015-04-06T19:14:12.731.999. Part 74/144

Processed Mon Apr 6 21:21:34 2015 by ELM ver.2012-10-06 from 001__elm20150406_191411__dat00.bin

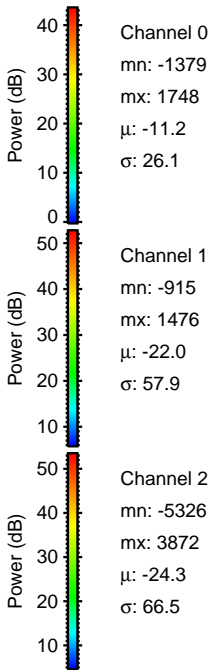
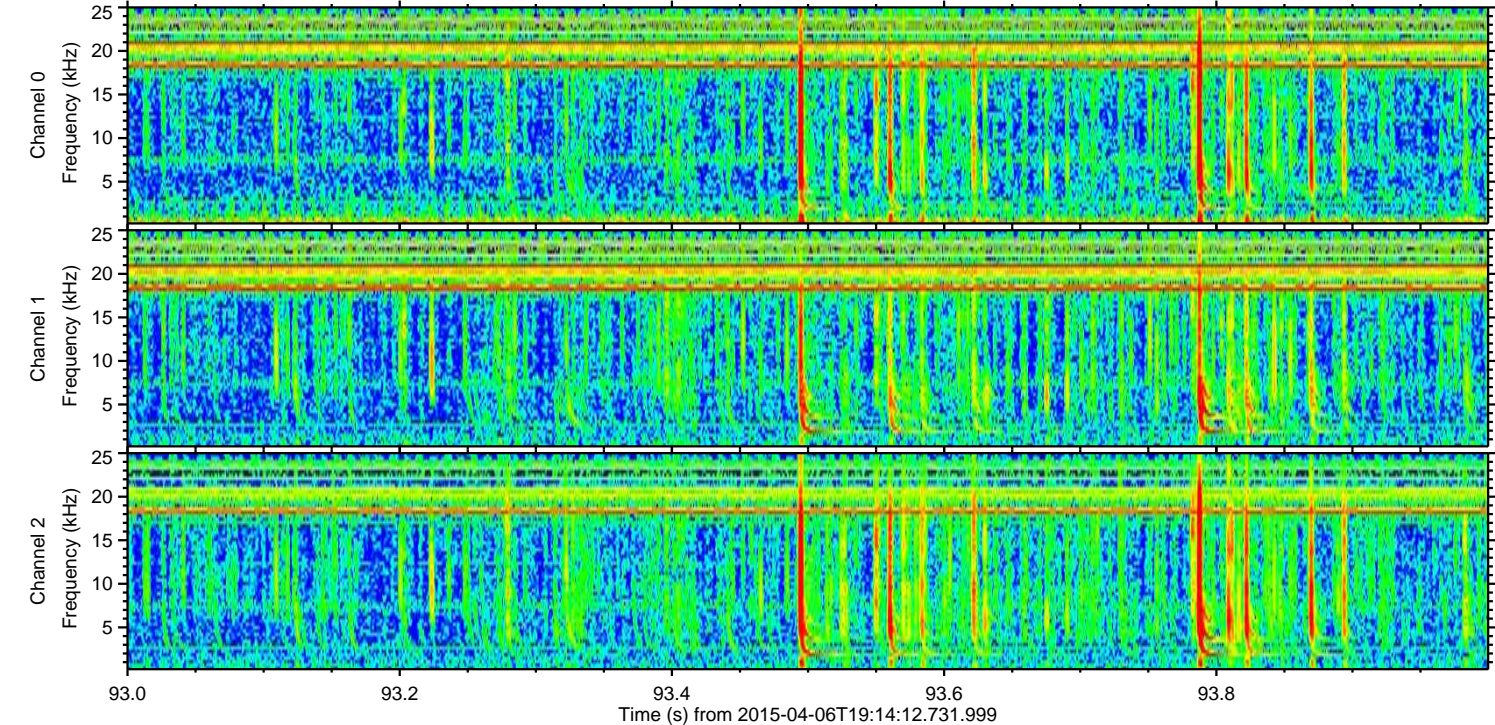
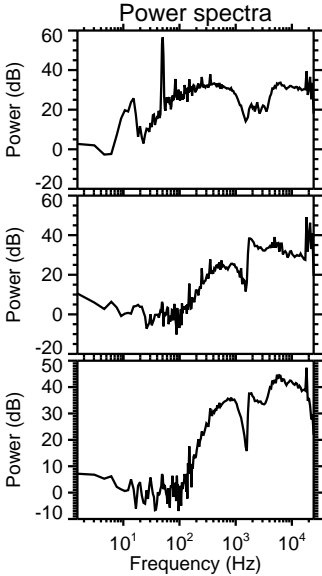
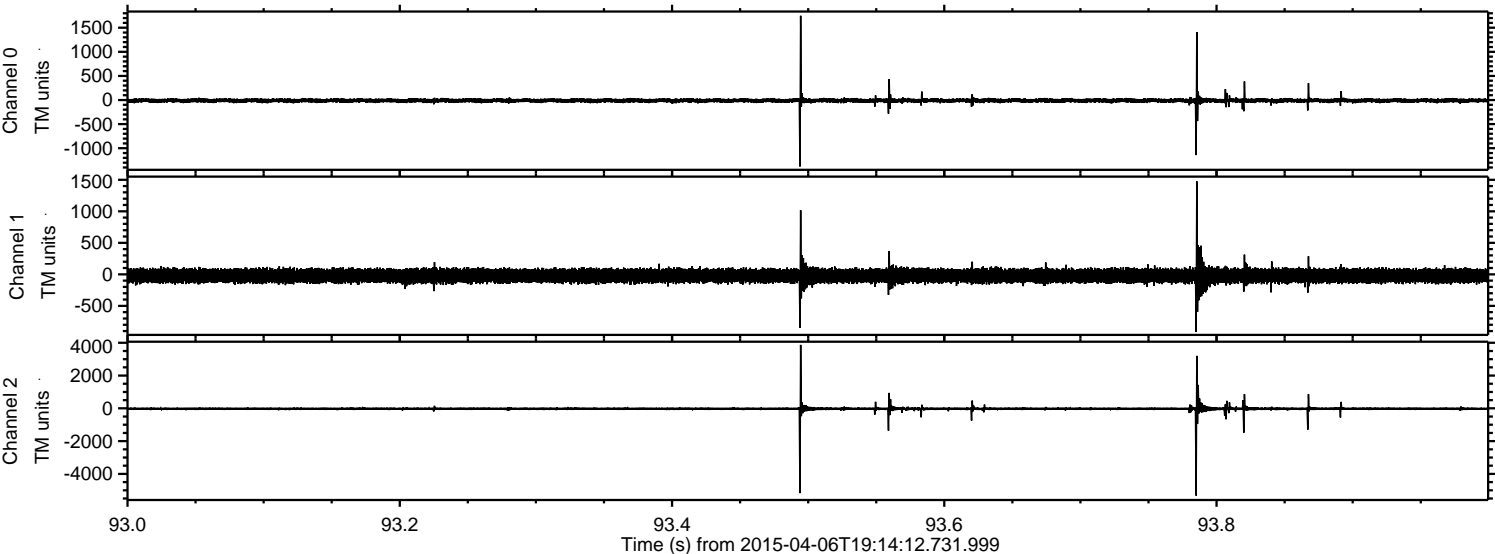


Processed Mon Apr 6 21:21:35 2015 by ELM ver.2012-10-06 from 001__elm20150406_191411__dat00.bin



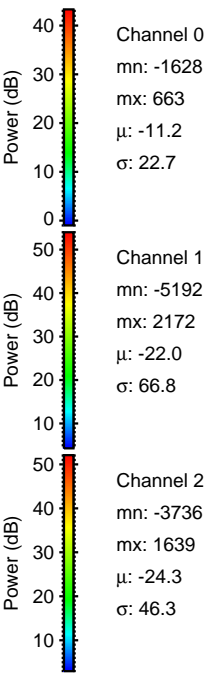
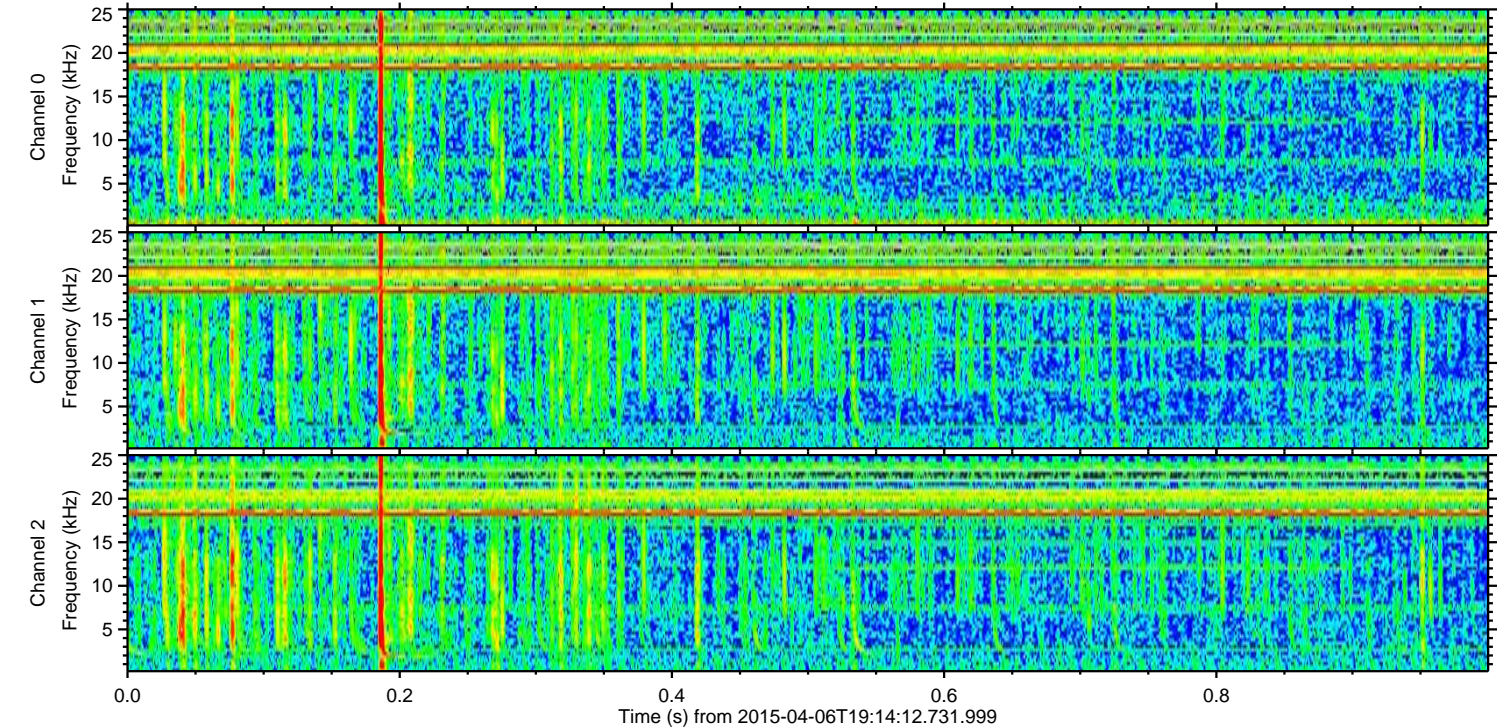
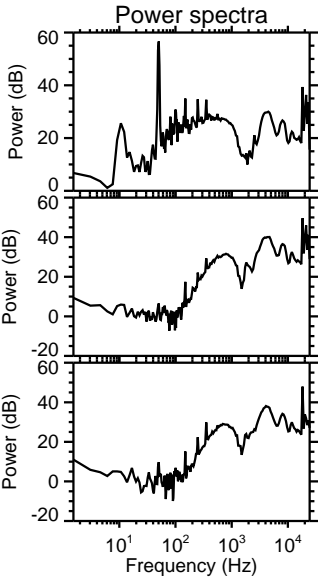
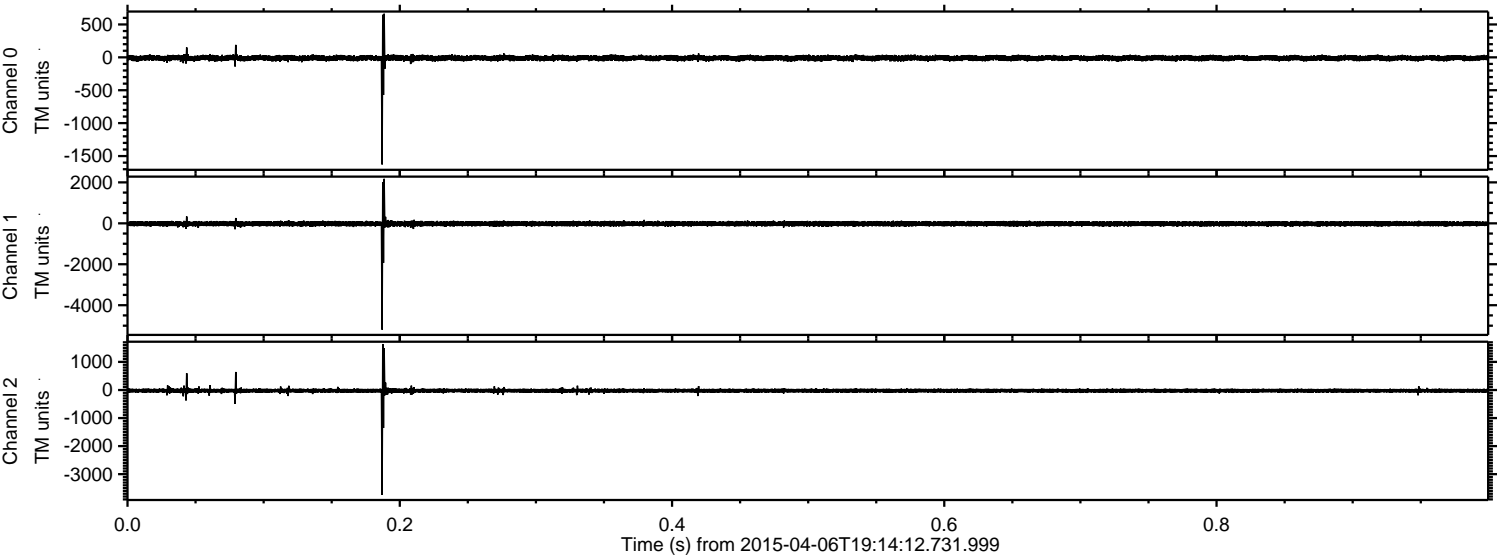
ELMAVAN 3D WAVEFORMS (Measured data sampled at 50 kHz) 49735 packets of 144 samples from 2015-04-06T19:14:12.731.999. Part 94/144

Processed Mon Apr 6 21:21:36 2015 by ELM ver.2012-10-06 from 001__elm20150406_191411__dat00.bin



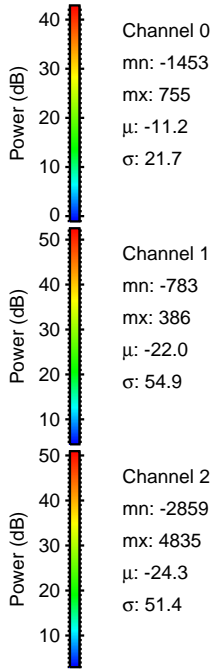
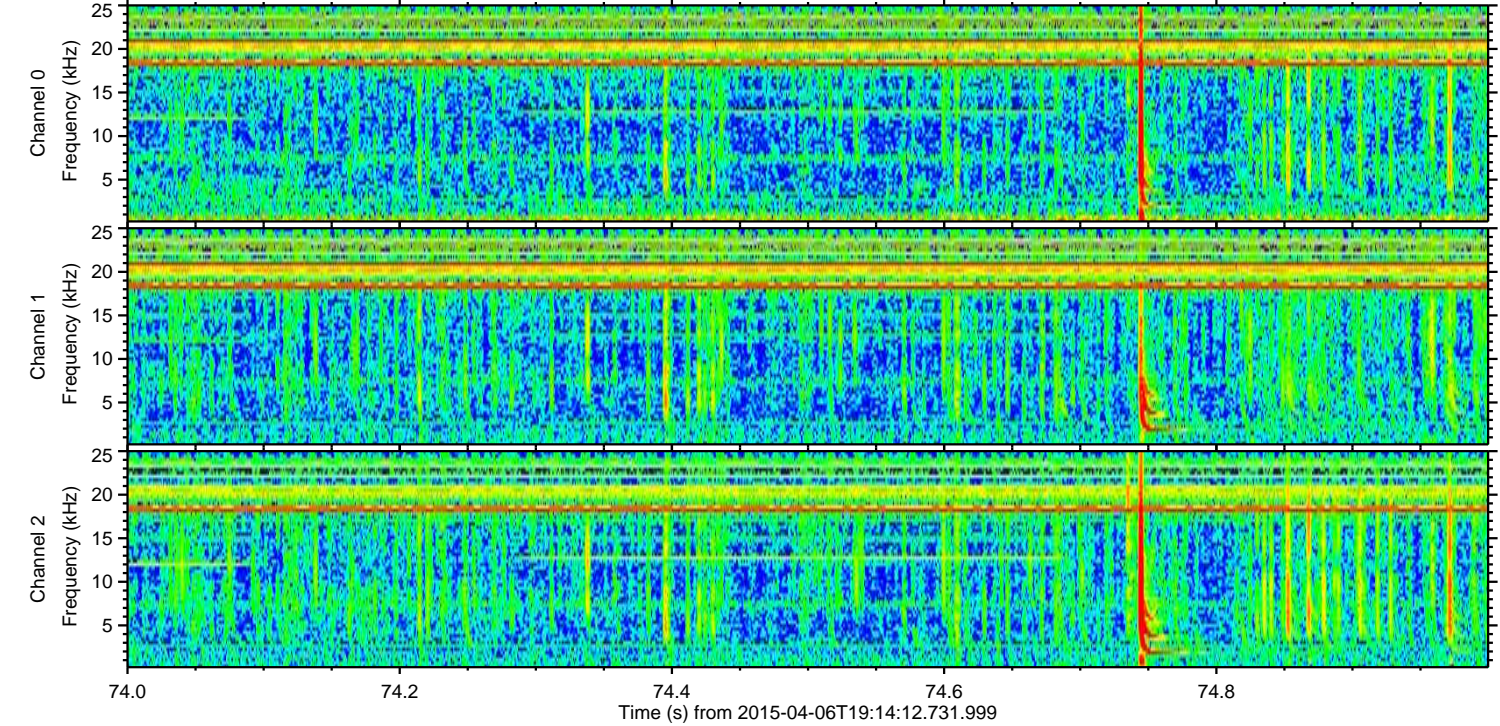
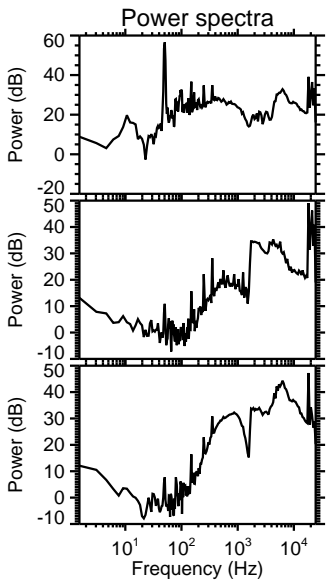
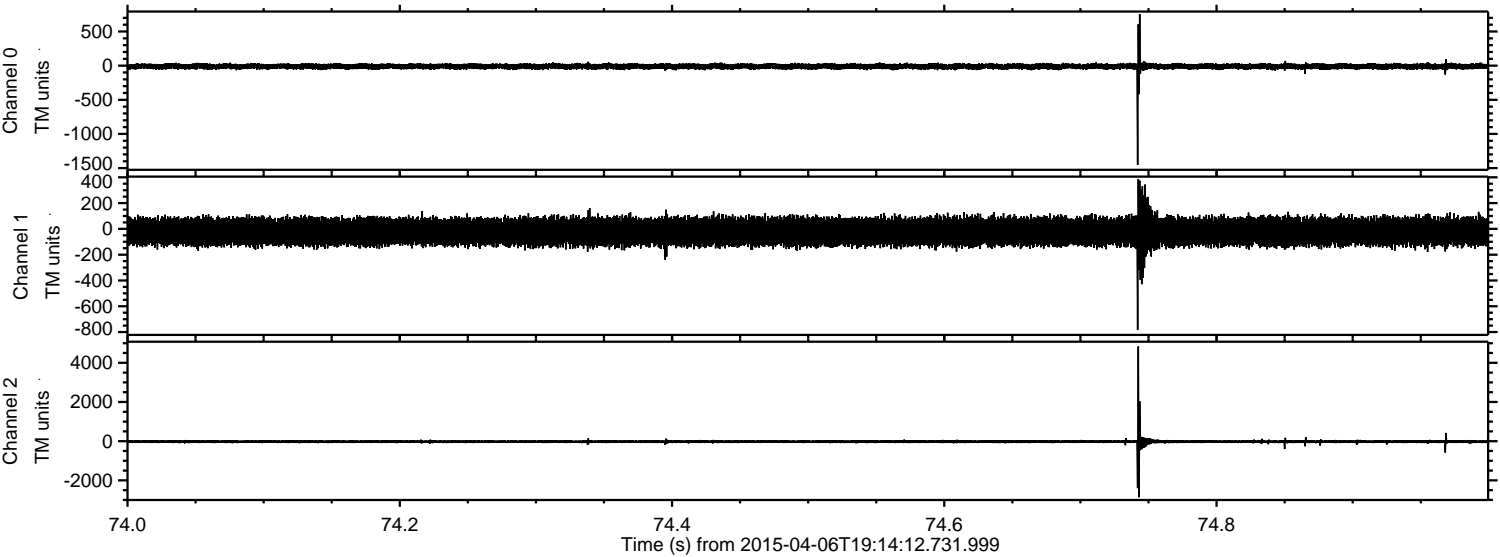
ELMAVAN 3D WAVEFORMS (Measured data sampled at 50 kHz) 49735 packets of 144 samples from 2015-04-06T19:14:12.731.999. Part 1/144

Processed Mon Apr 6 21:21:37 2015 by ELM ver.2012-10-06 from 001__elm20150406_191411__dat00.bin



ELMAVAN 3D WAVEFORMS (Measured data sampled at 50 kHz) 49735 packets of 144 samples from 2015-04-06T19:14:12.731.999. Part 75/144

Processed Mon Apr 6 21:21:38 2015 by ELM ver.2012-10-06 from 001__elm20150406_191411__dat00.bin



Power spectra

Channel 0

mn: -1453
mx: 755
 μ : -11.2
 σ : 21.7

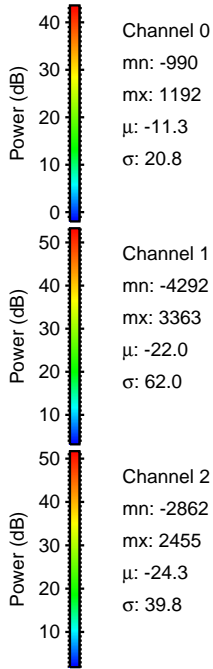
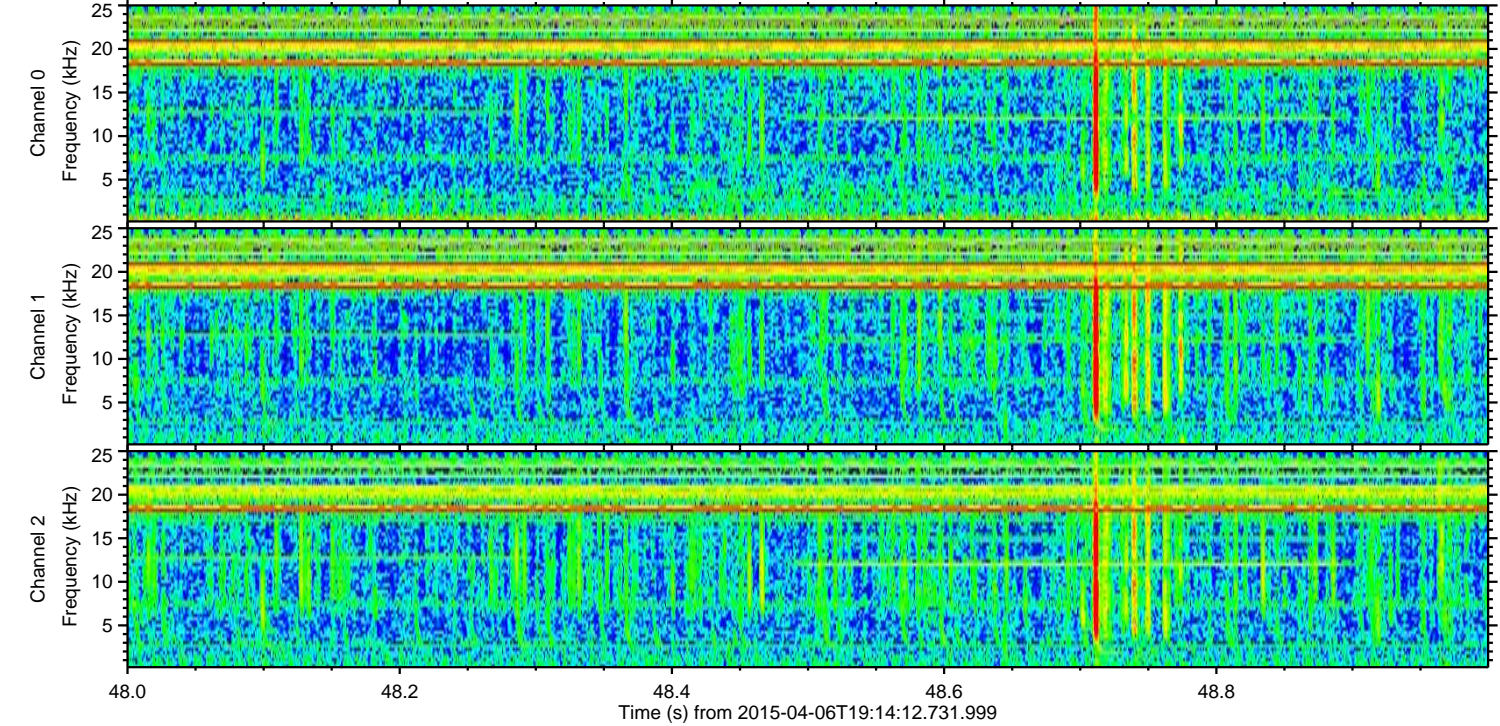
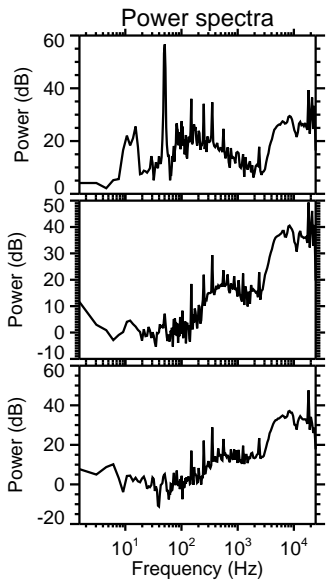
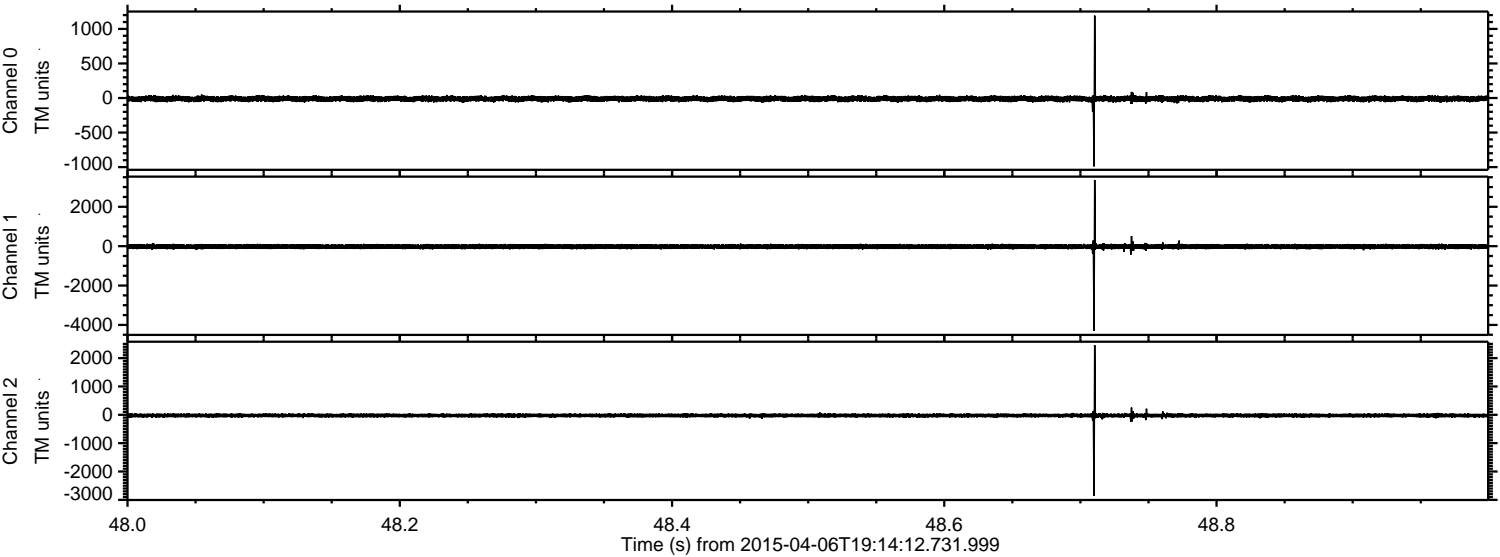
Channel 1

mn: -783
mx: 386
 μ : -22.0
 σ : 54.9

Channel 2

mn: -2859
mx: 4835
 μ : -24.3
 σ : 51.4

Processed Mon Apr 6 21:21:39 2015 by ELM ver.2012-10-06 from 001__elm20150406_191411__dat00.bin

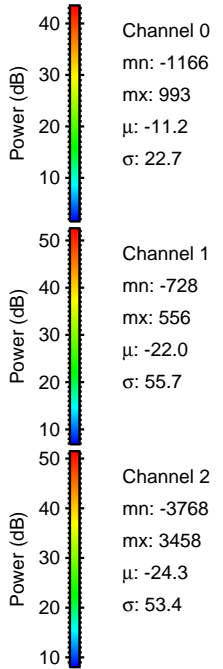
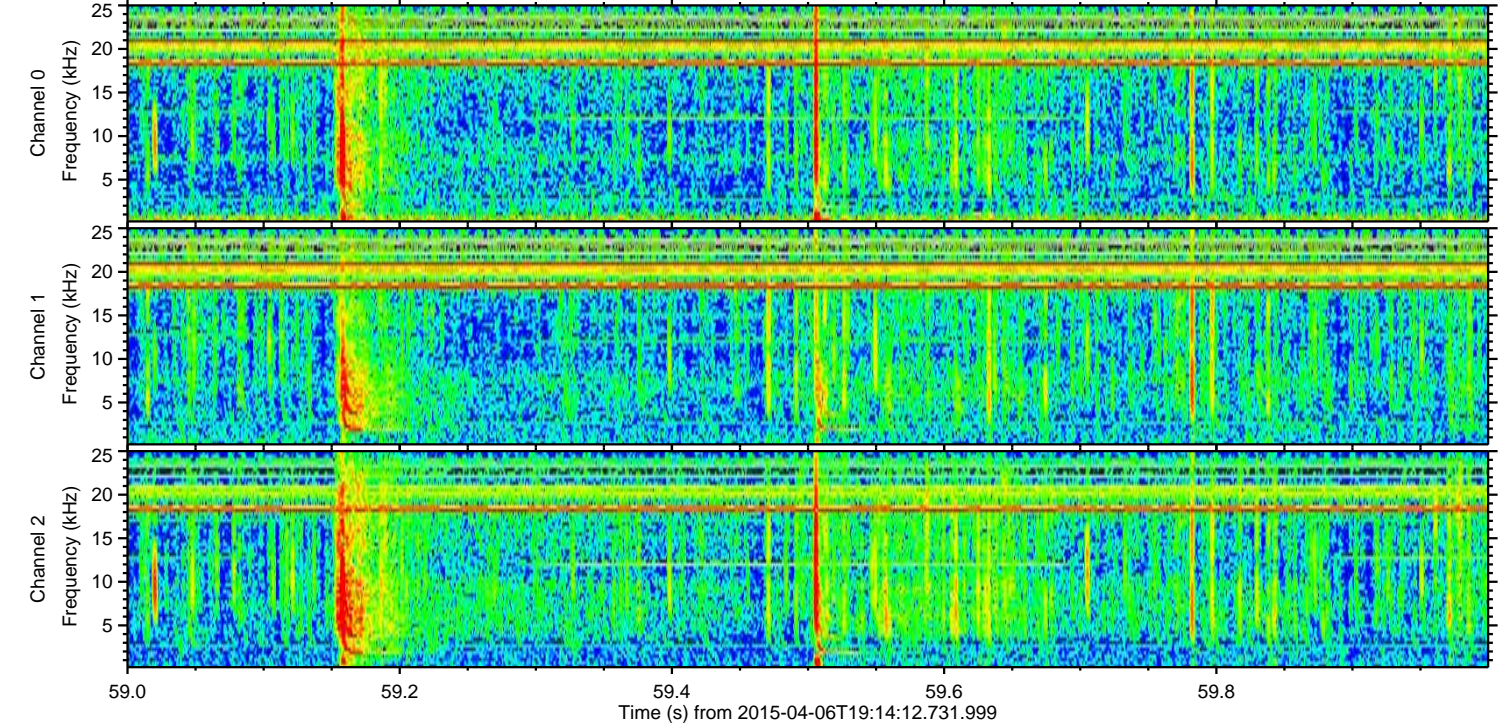
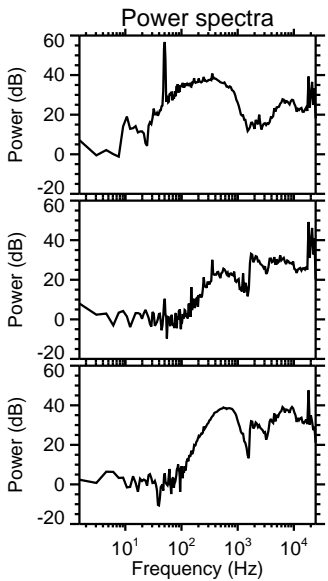
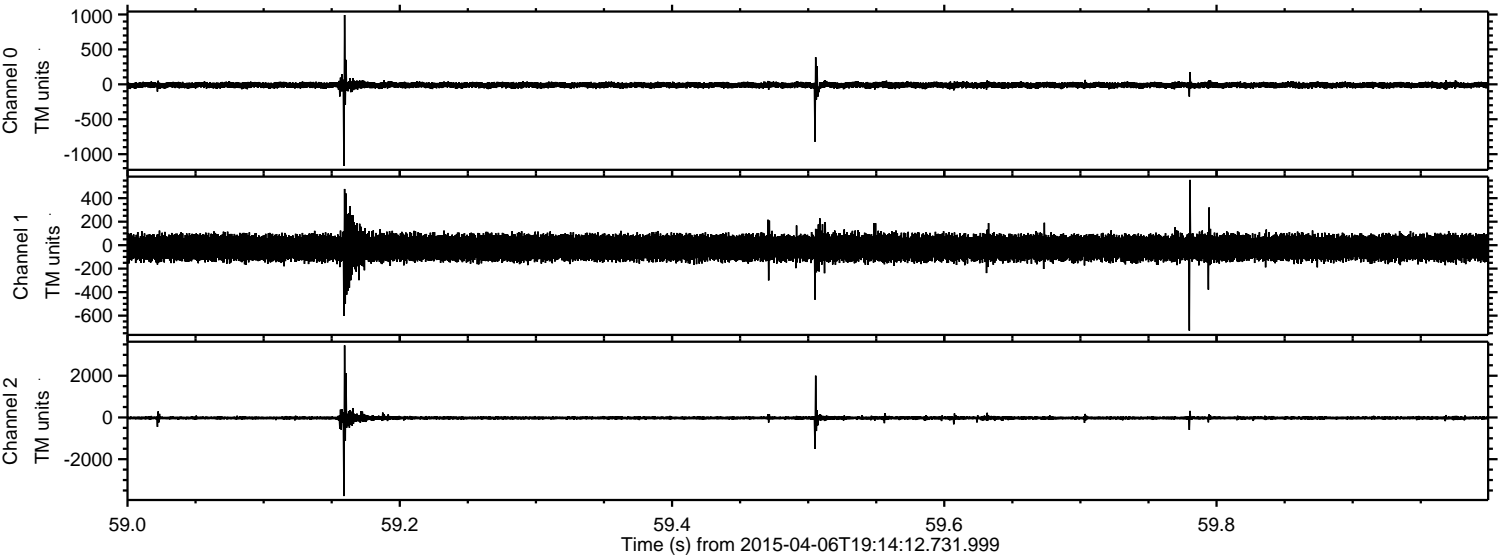


Channel 0
mn: -990
mx: 1192
 μ : -11.3
 σ : 20.8

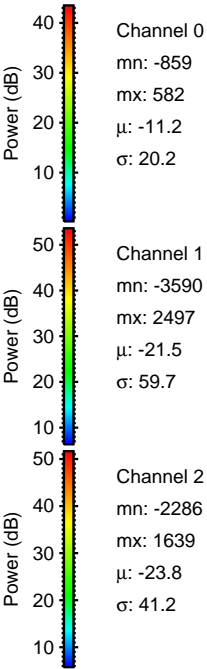
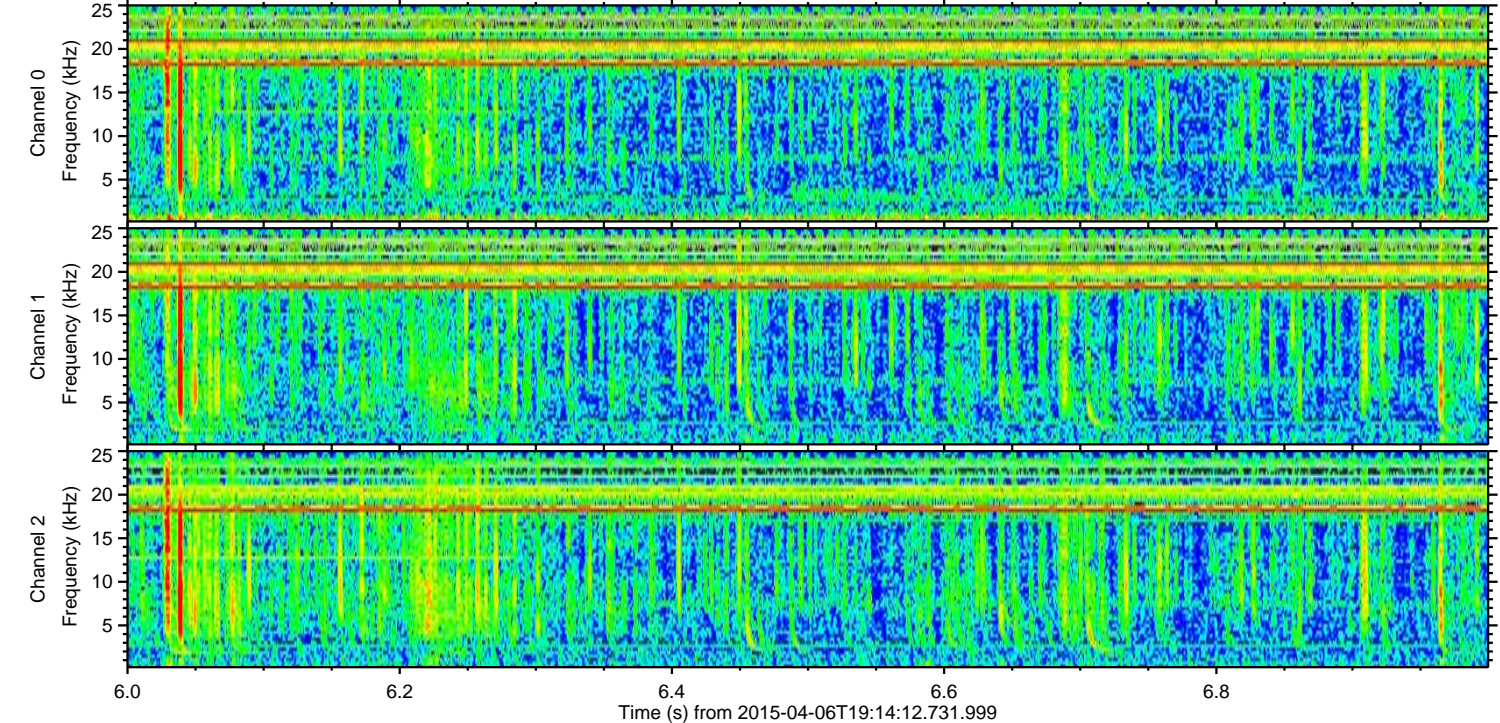
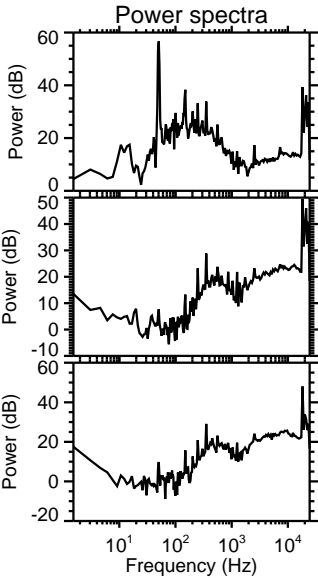
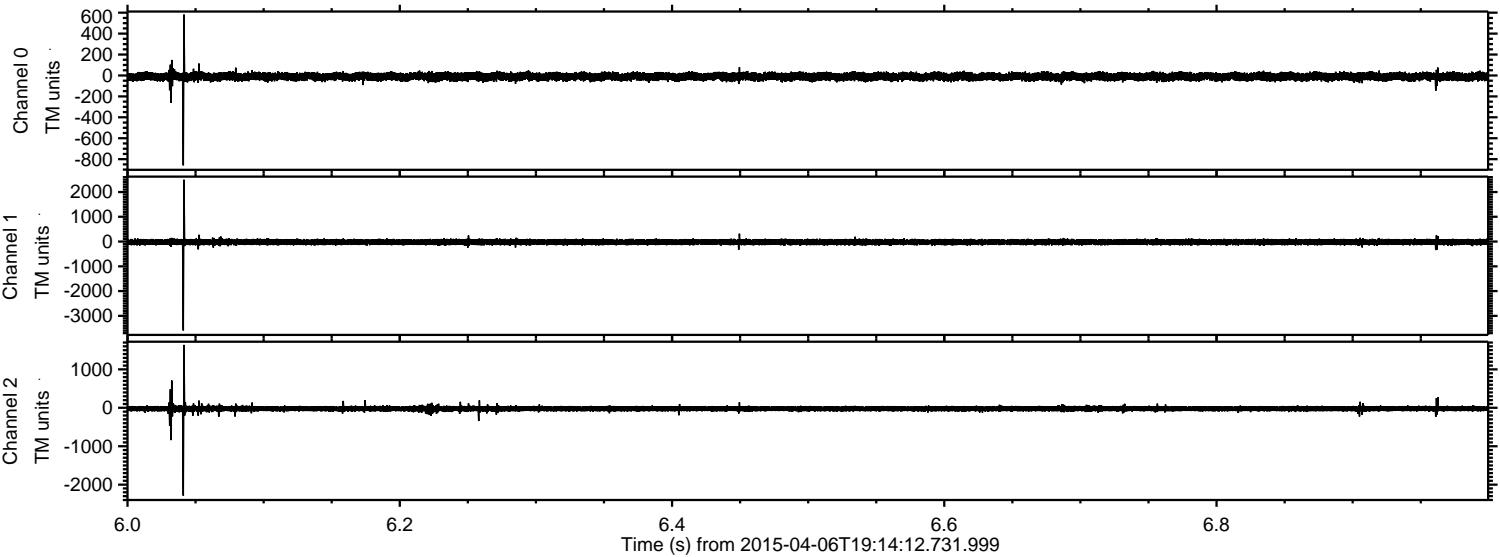
Channel 1
mn: -4292
mx: 3363
 μ : -22.0
 σ : 62.0

Channel 2
mn: -2862
mx: 2455
 μ : -24.3
 σ : 39.8

Processed Mon Apr 6 21:21:40 2015 by ELM ver.2012-10-06 from 001__elm20150406_191411__dat00.bin



Processed Mon Apr 6 21:21:41 2015 by ELM ver.2012-10-06 from 001__elm20150406_191411__dat00.bin



Processed Mon Apr 6 21:21:42 2015 by ELM ver.2012-10-06 from 001__elm20150406_191411__dat00.bin

