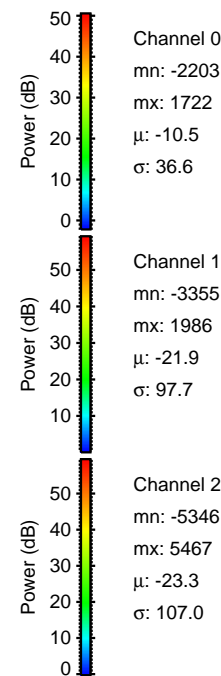
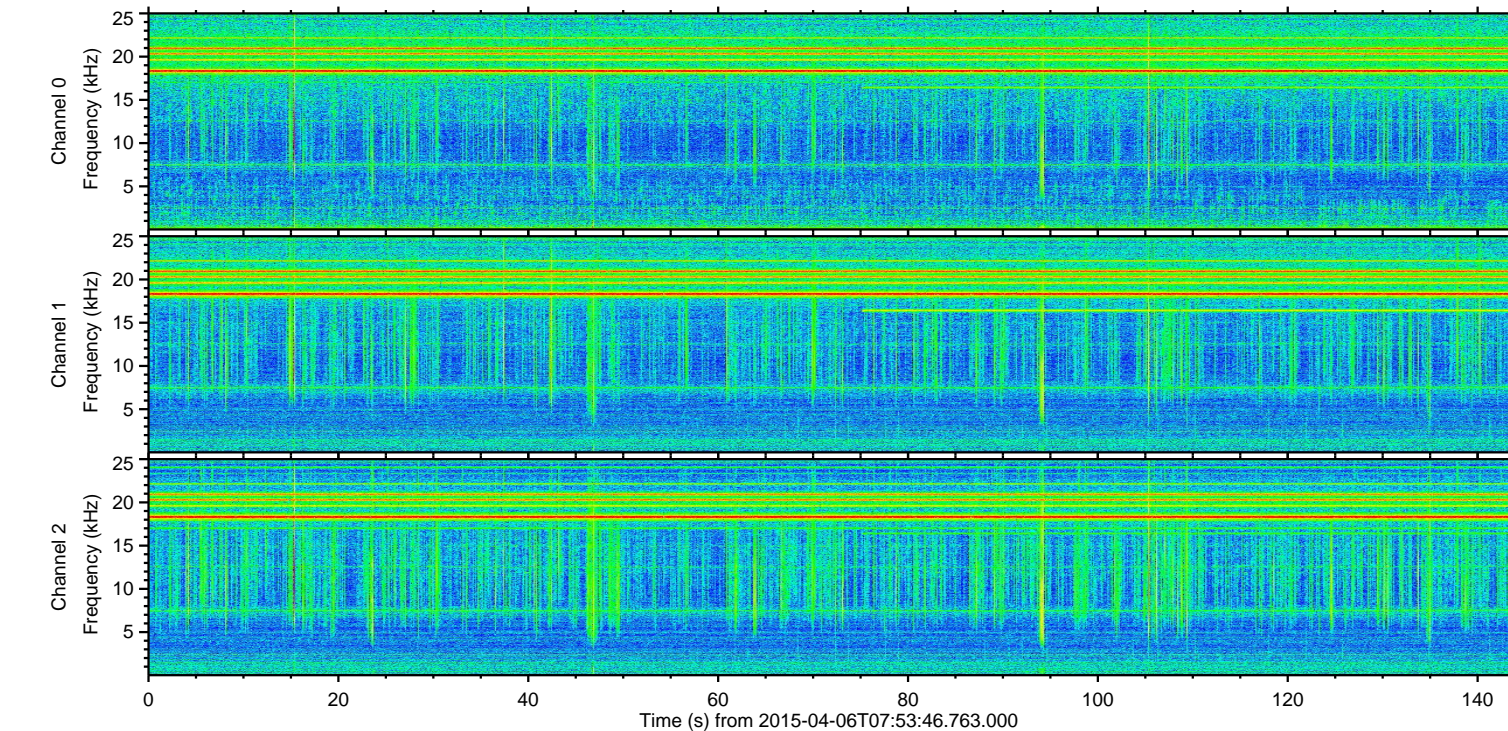
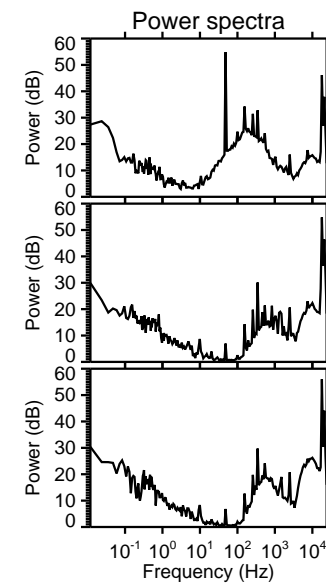
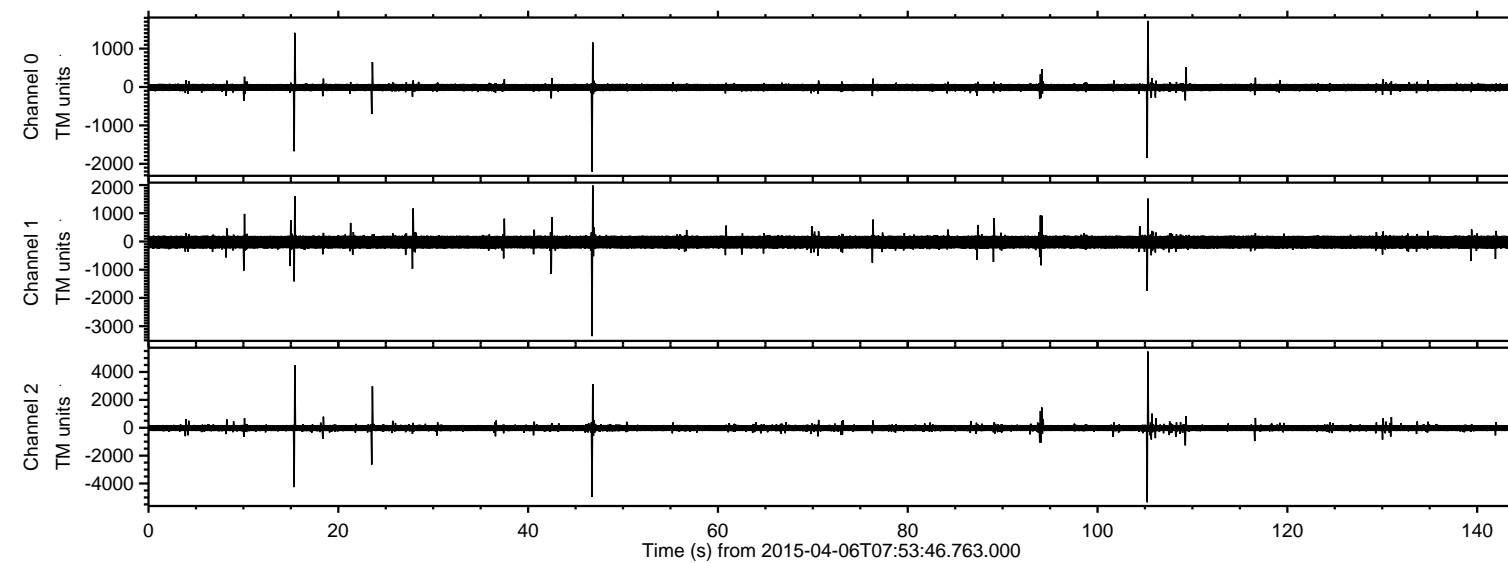


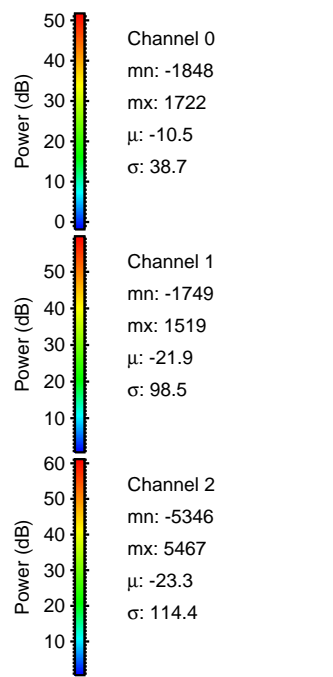
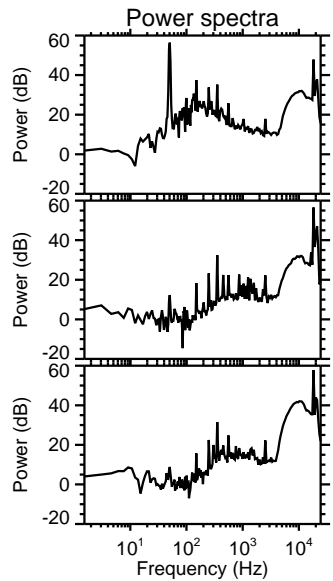
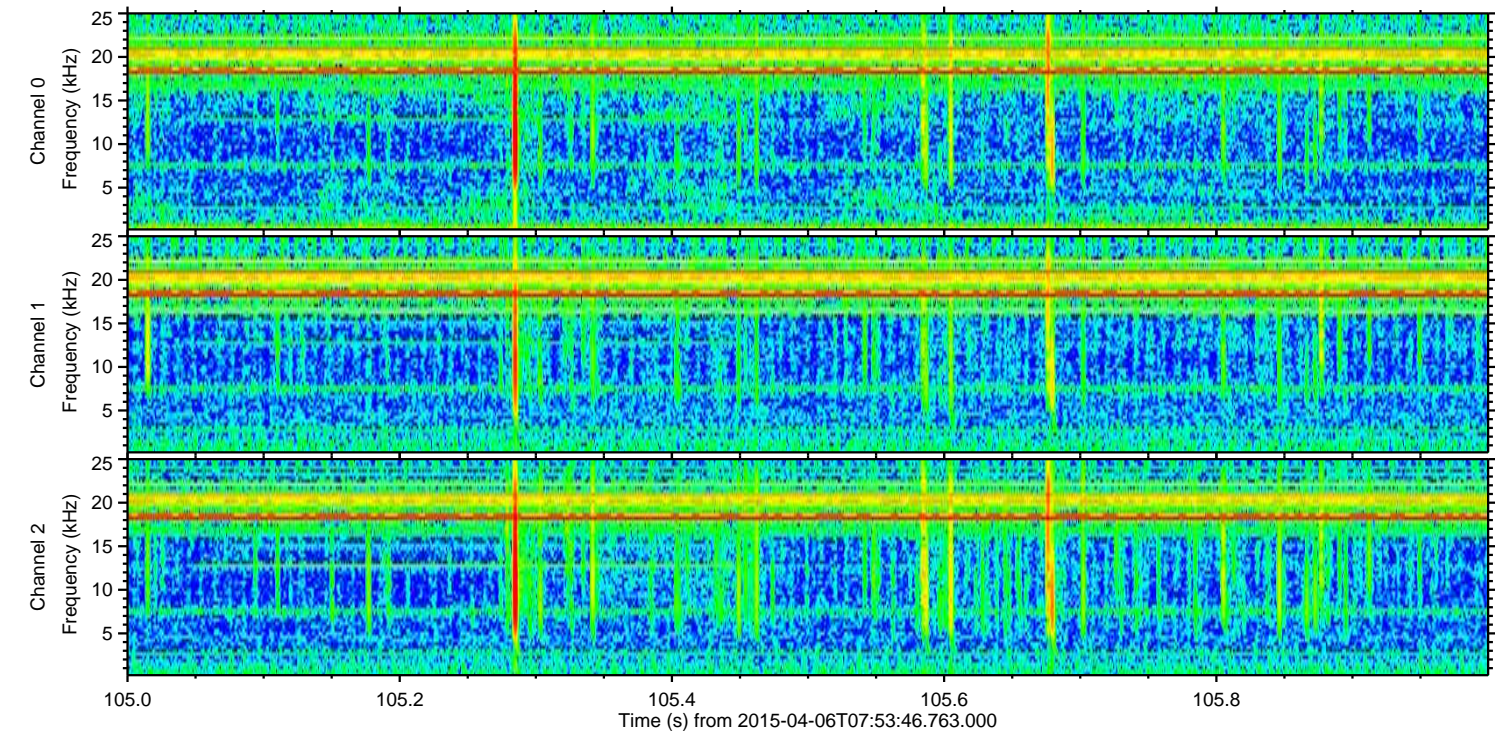
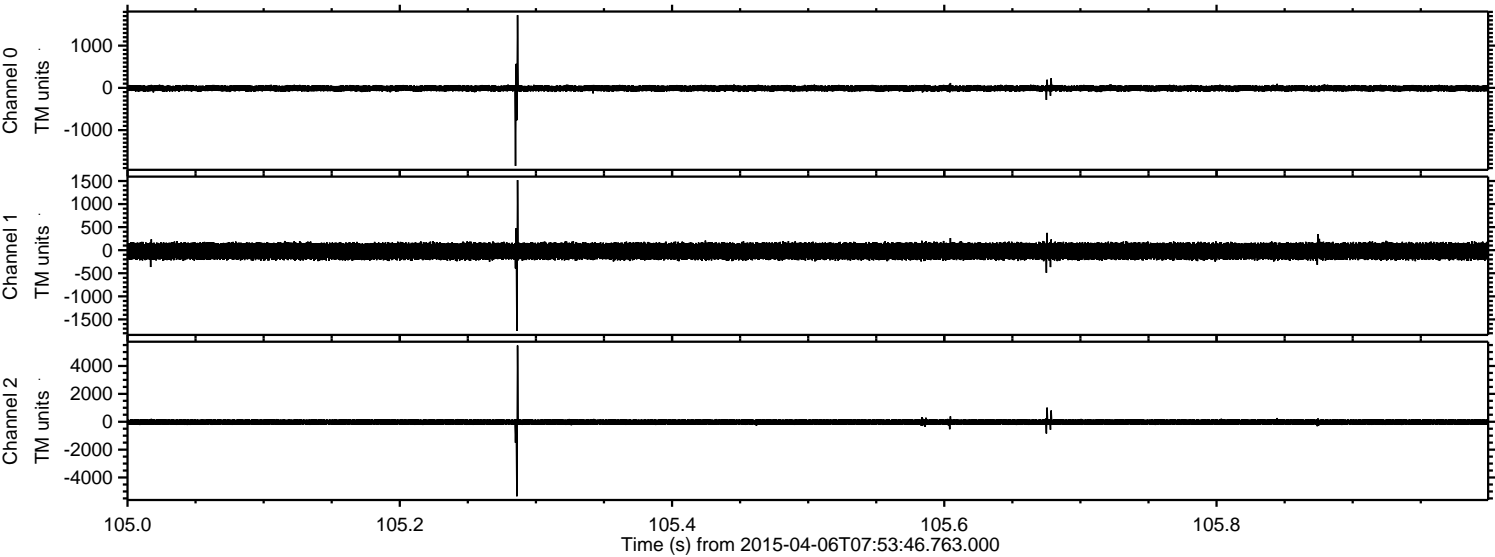
ELMAVAN 3D WAVEFORMS (Measured data sampled at 50 kHz) 49782 packets of 144 samples from 2015-04-06T07:53:46.763.000.

Processed Mon Apr 6 10:01:46 2015 by ELM ver.2012-10-06 from 001__elm20150406_075345__dat00.bin



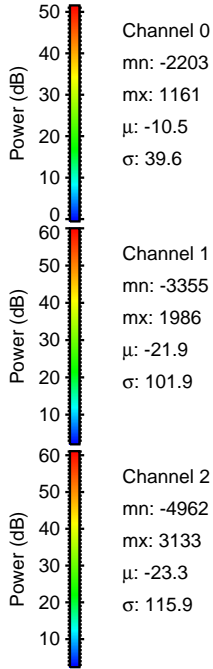
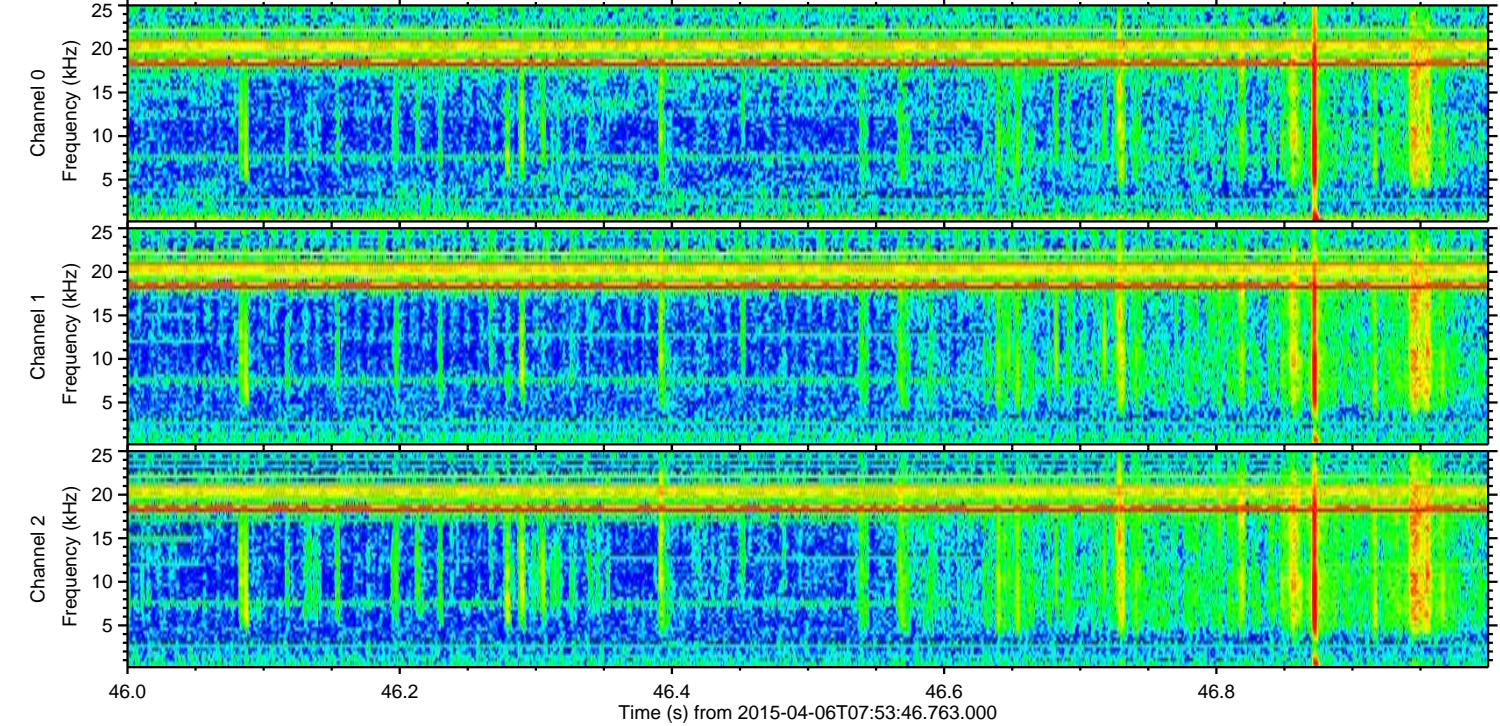
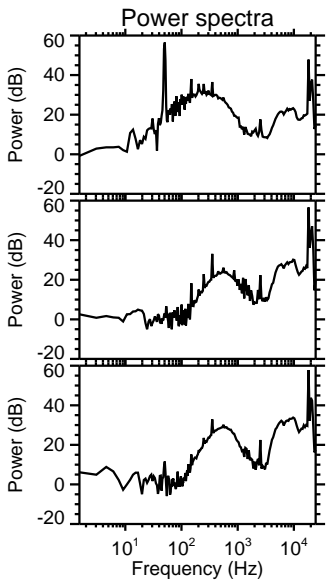
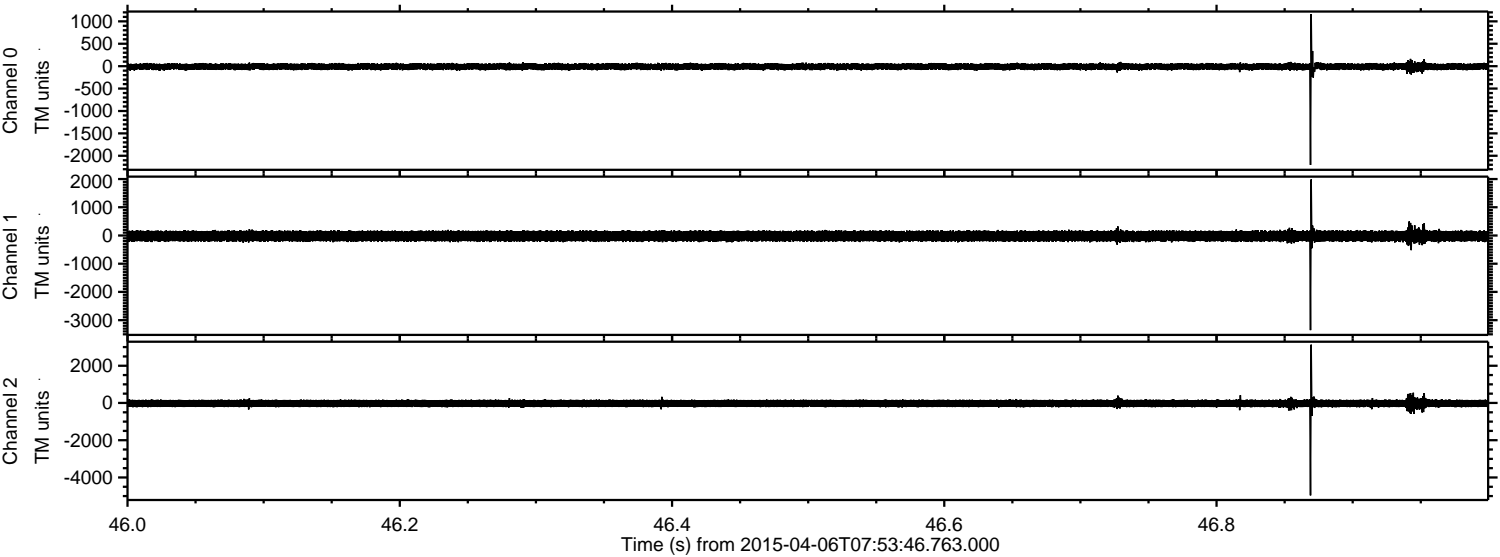
ELMAVAN 3D WAVEFORMS (Measured data sampled at 50 kHz) 49782 packets of 144 samples from 2015-04-06T07:53:46.763.000. Part 106/144

Processed Mon Apr 6 10:01:58 2015 by ELM ver.2012-10-06 from 001__elm20150406_075345__dat00.bin

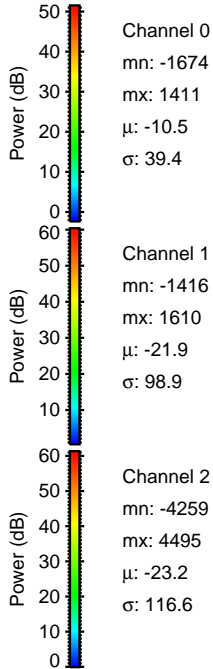
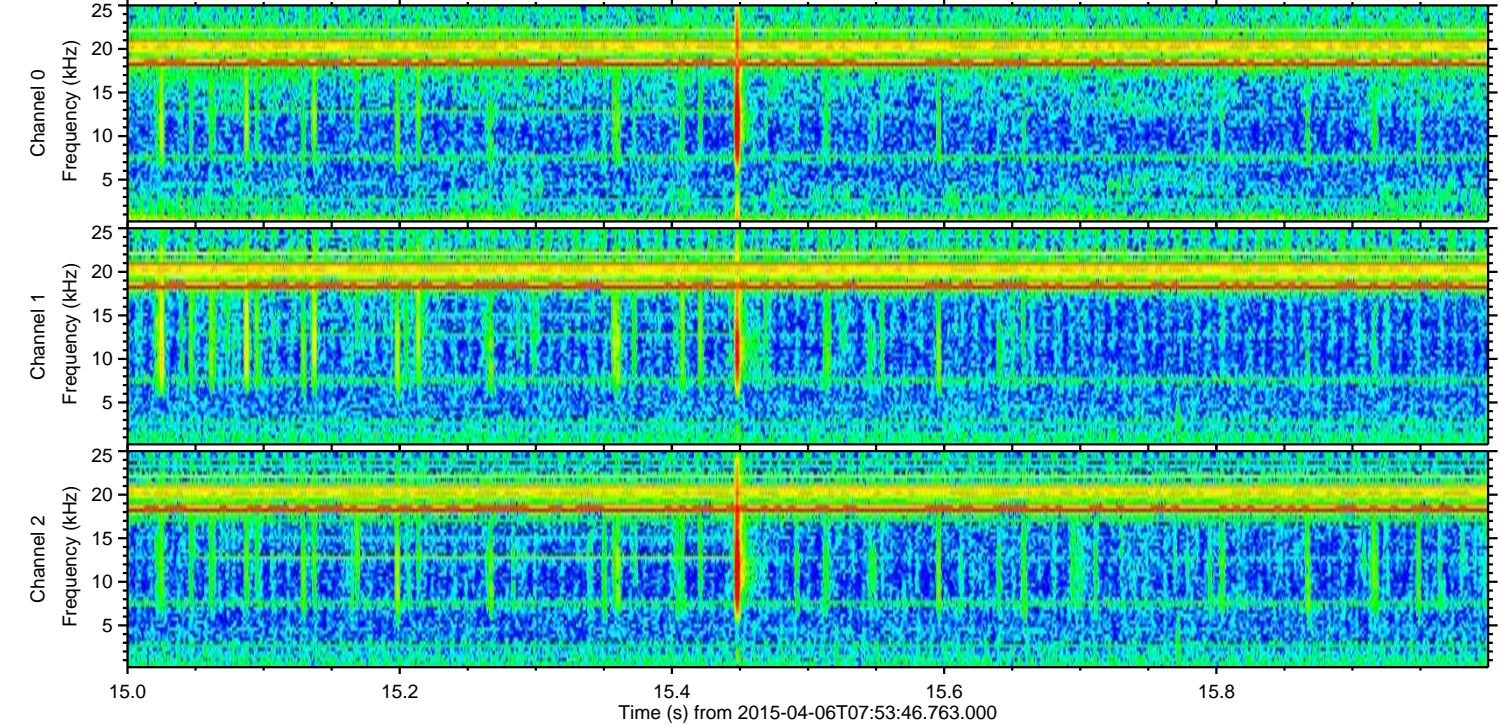
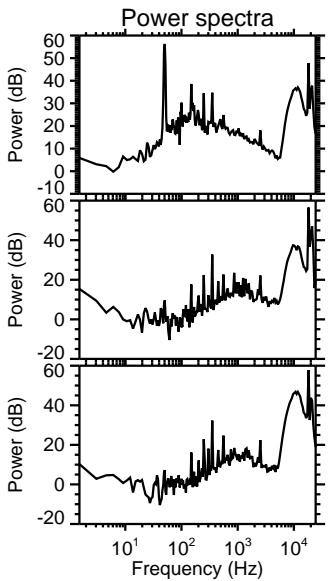
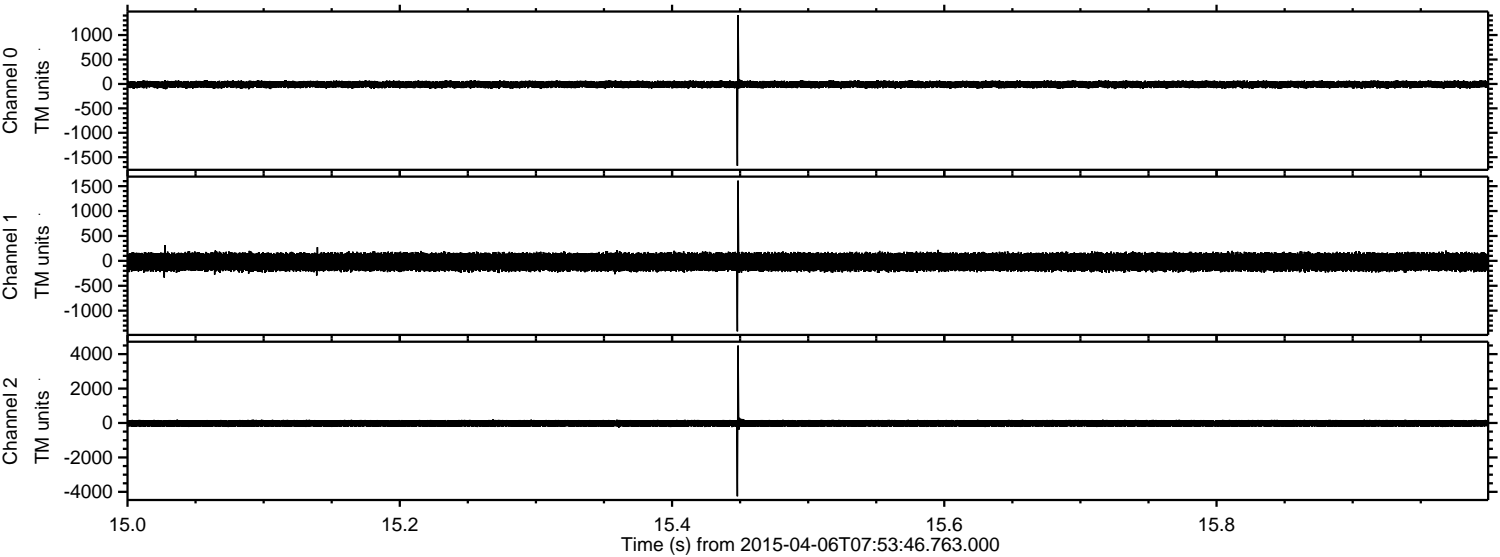


ELMAVAN 3D WAVEFORMS (Measured data sampled at 50 kHz) 49782 packets of 144 samples from 2015-04-06T07:53:46.763.000. Part 47/144

Processed Mon Apr 6 10:01:59 2015 by ELM ver.2012-10-06 from 001__elm20150406_075345__dat00.bin

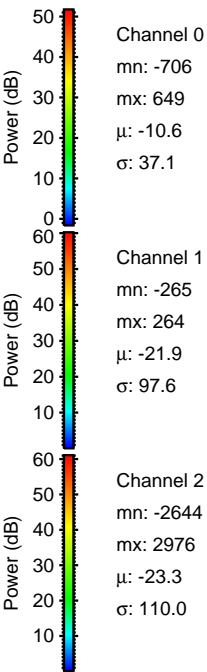
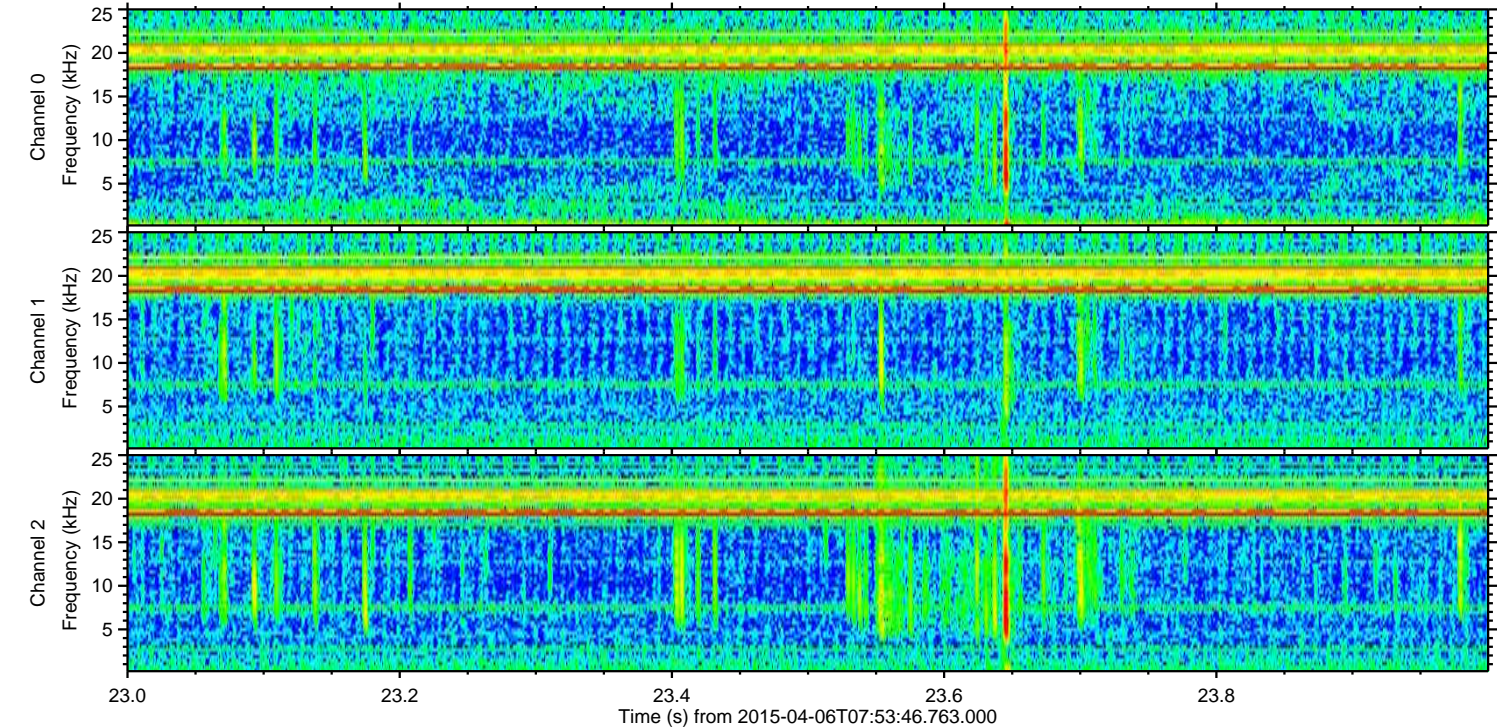
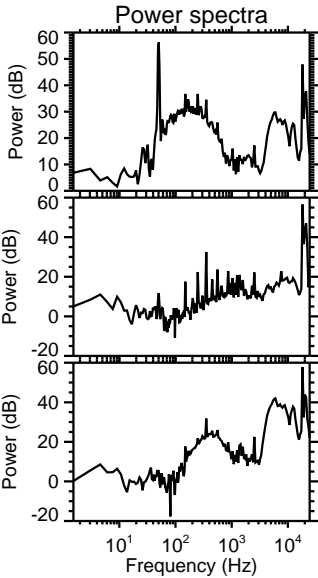
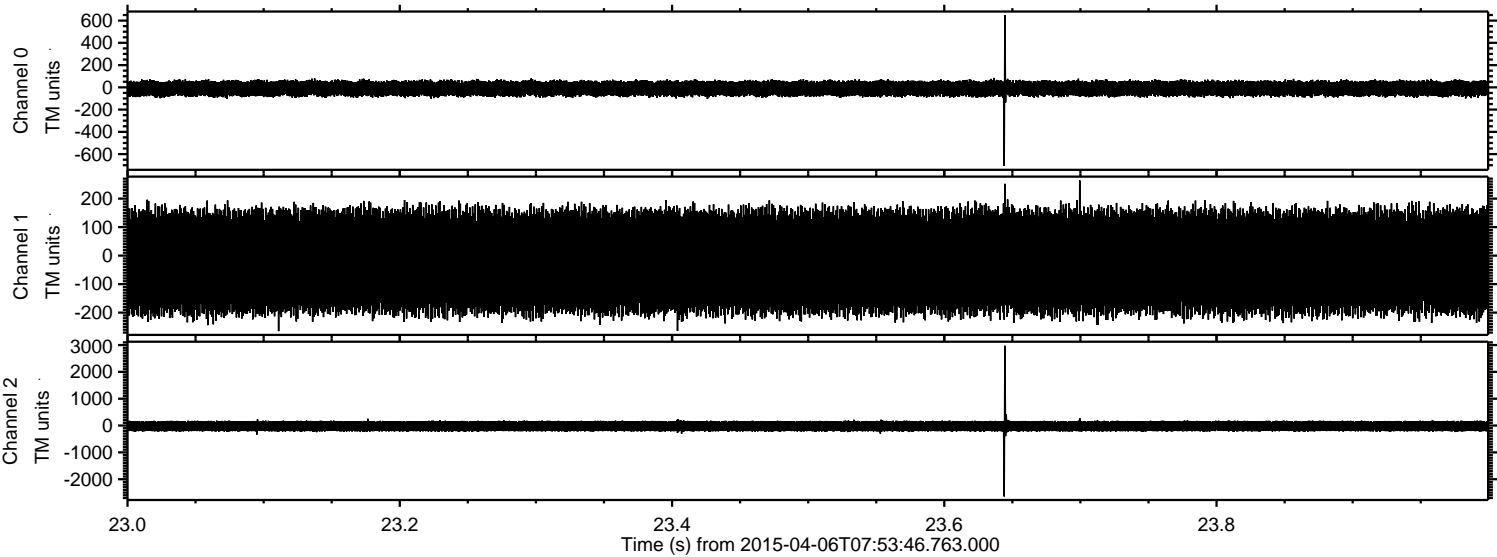


Processed Mon Apr 6 10:02:00 2015 by ELM ver.2012-10-06 from 001__elm20150406_075345__dat00.bin

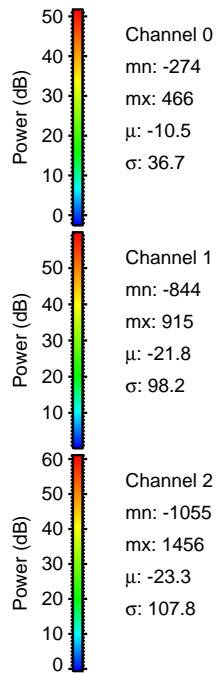
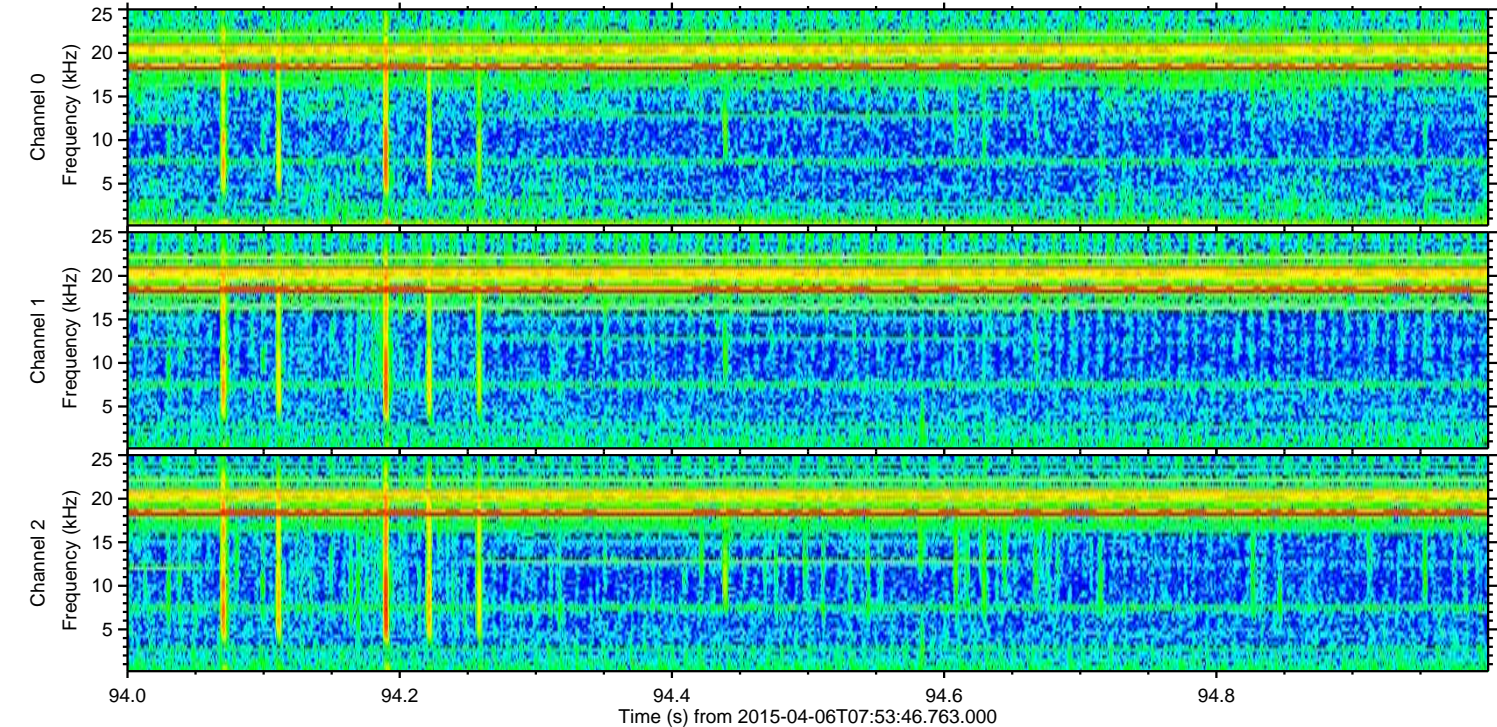
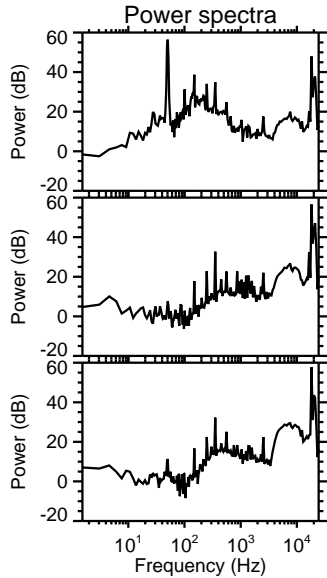
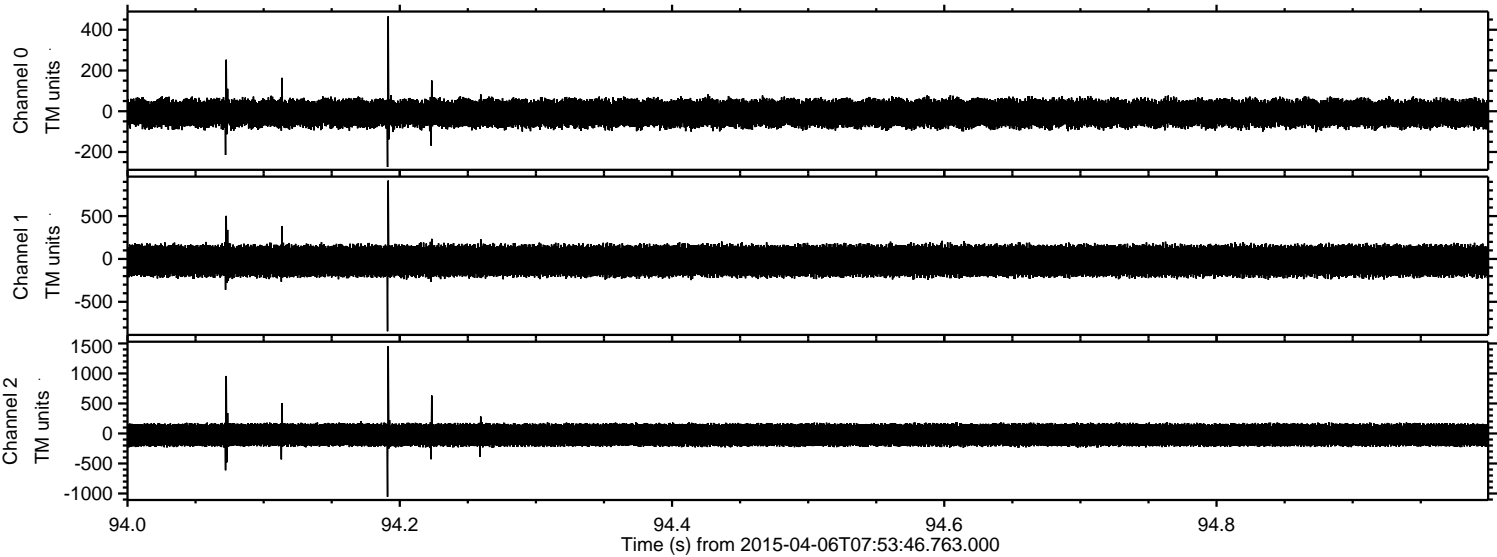


ELMAVAN 3D WAVEFORMS (Measured data sampled at 50 kHz) 49782 packets of 144 samples from 2015-04-06T07:53:46.763.000. Part 24/144

Processed Mon Apr 6 10:02:01 2015 by ELM ver.2012-10-06 from 001__elm20150406_075345__dat00.bin

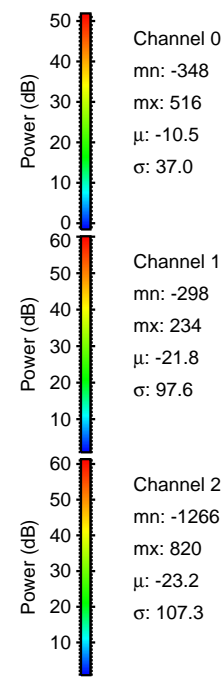
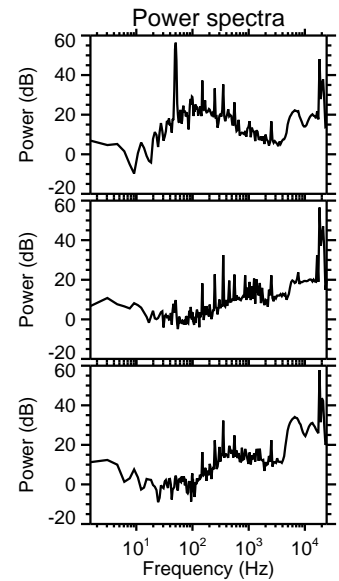
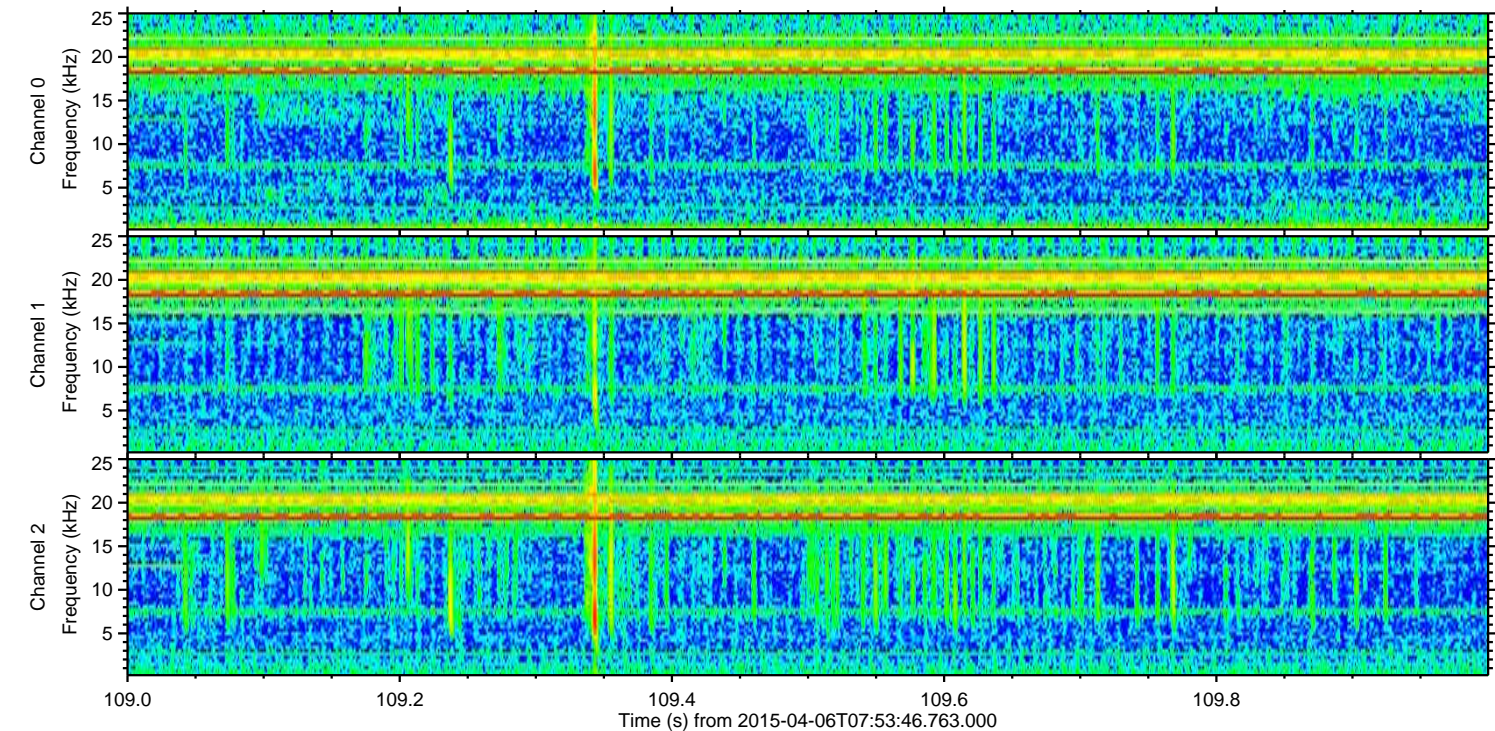
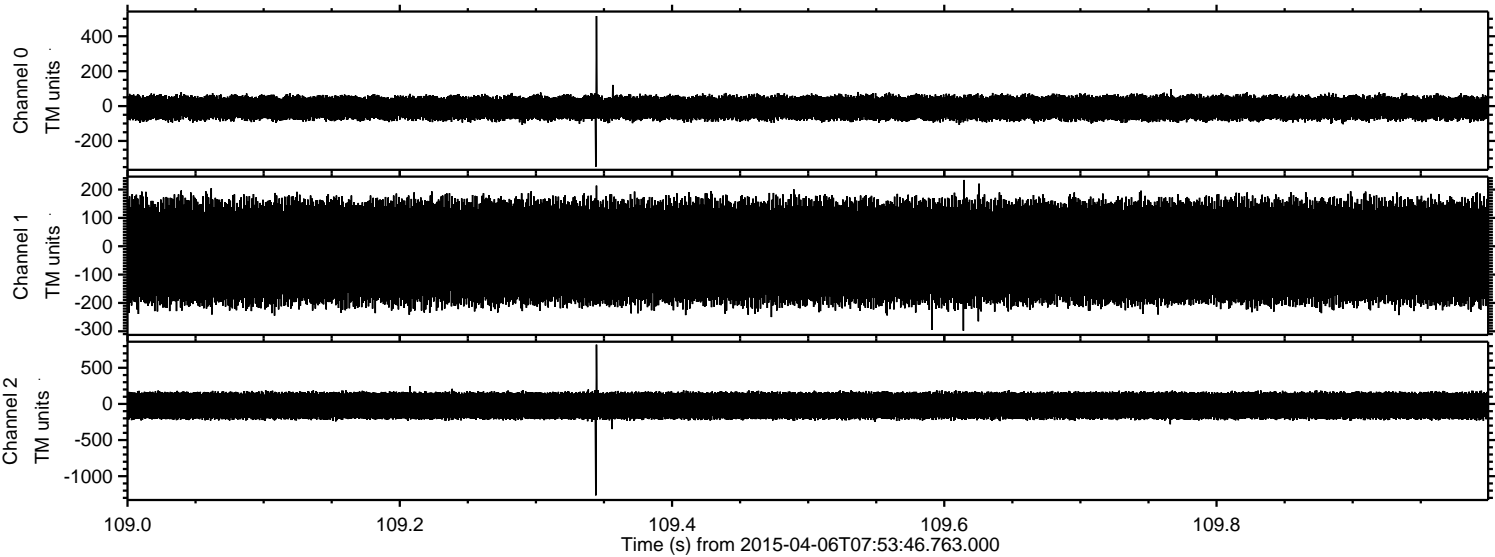


Processed Mon Apr 6 10:02:02 2015 by ELM ver.2012-10-06 from 001__elm20150406_075345__dat00.bin

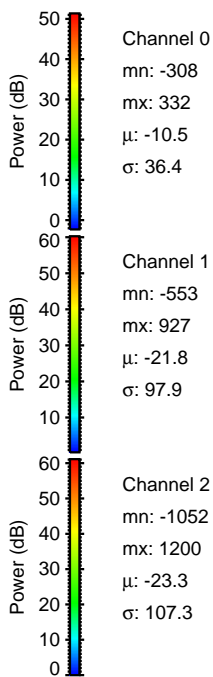
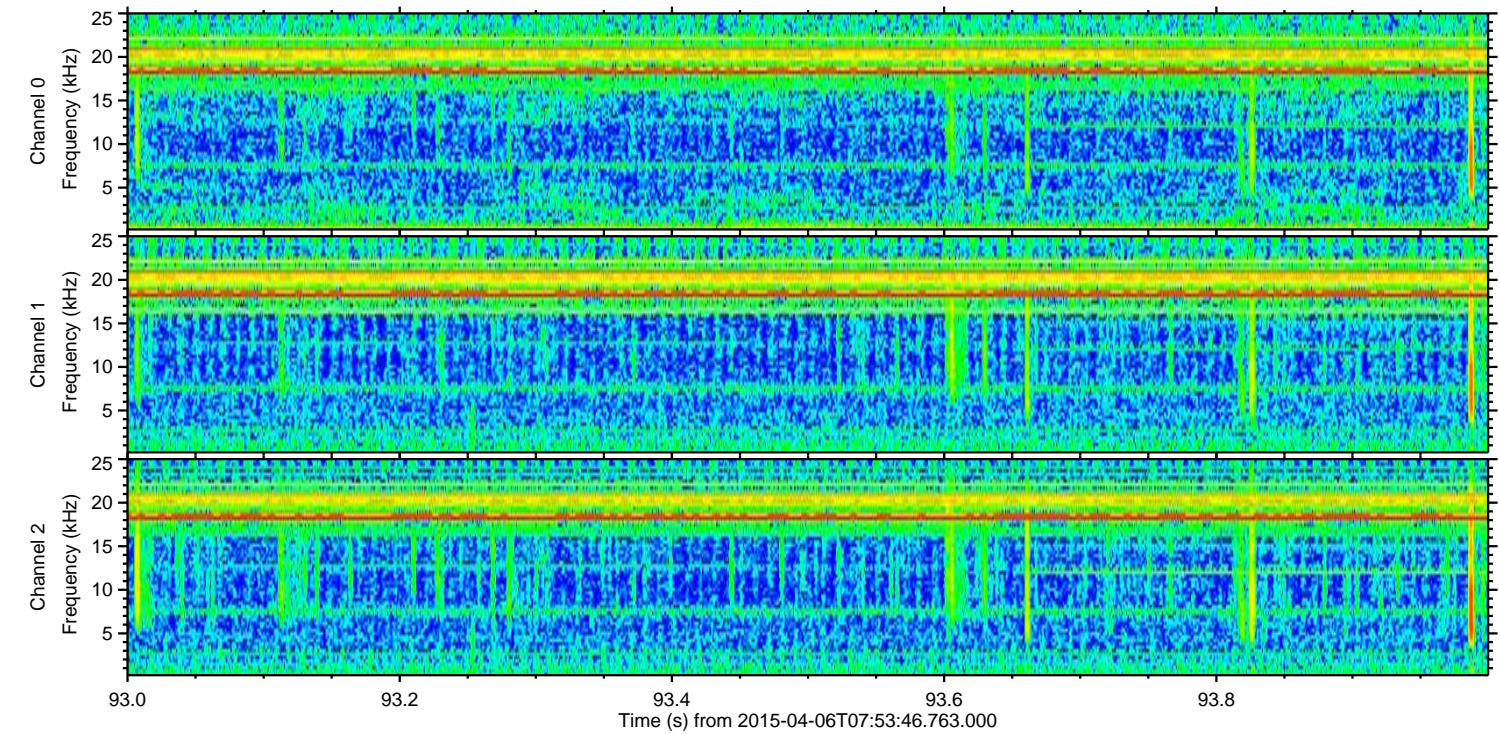
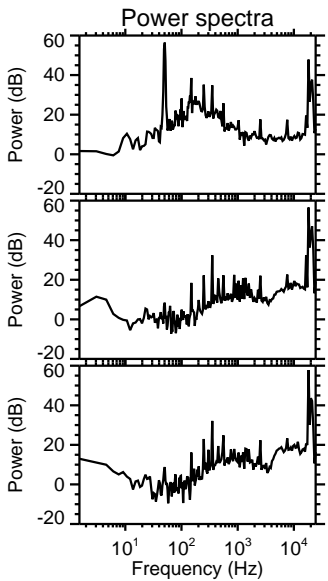
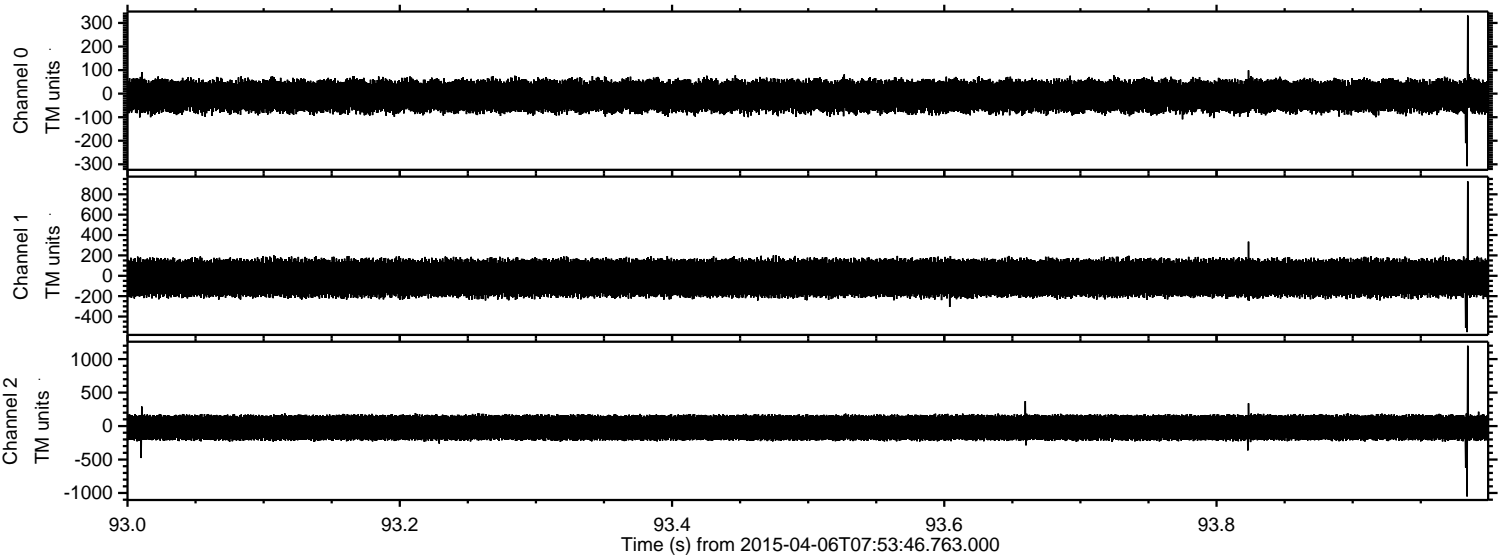


ELMAVAN 3D WAVEFORMS (Measured data sampled at 50 kHz) 49782 packets of 144 samples from 2015-04-06T07:53:46.763.000. Part 110/144

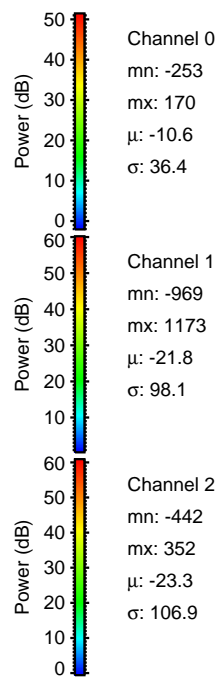
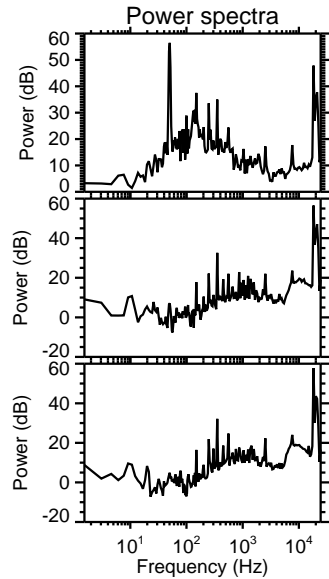
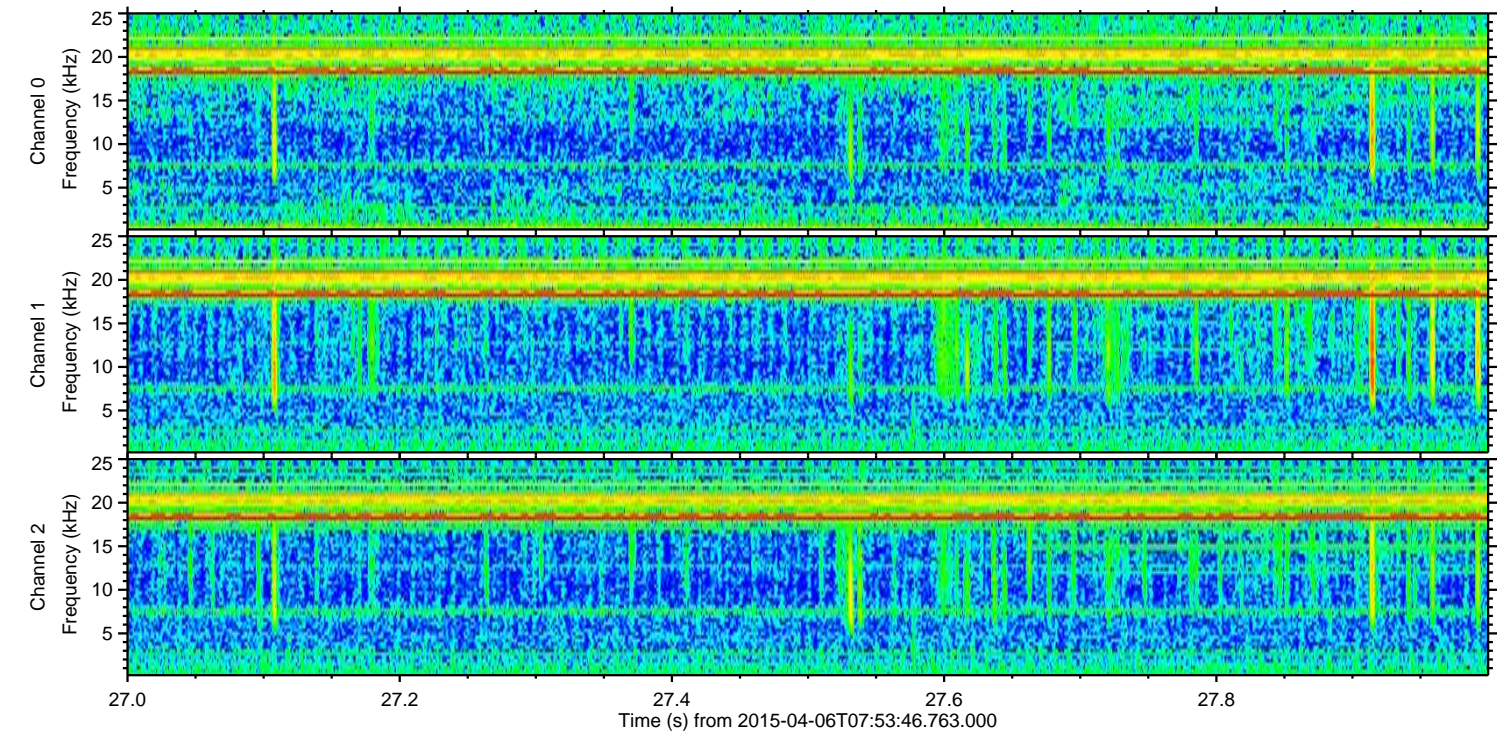
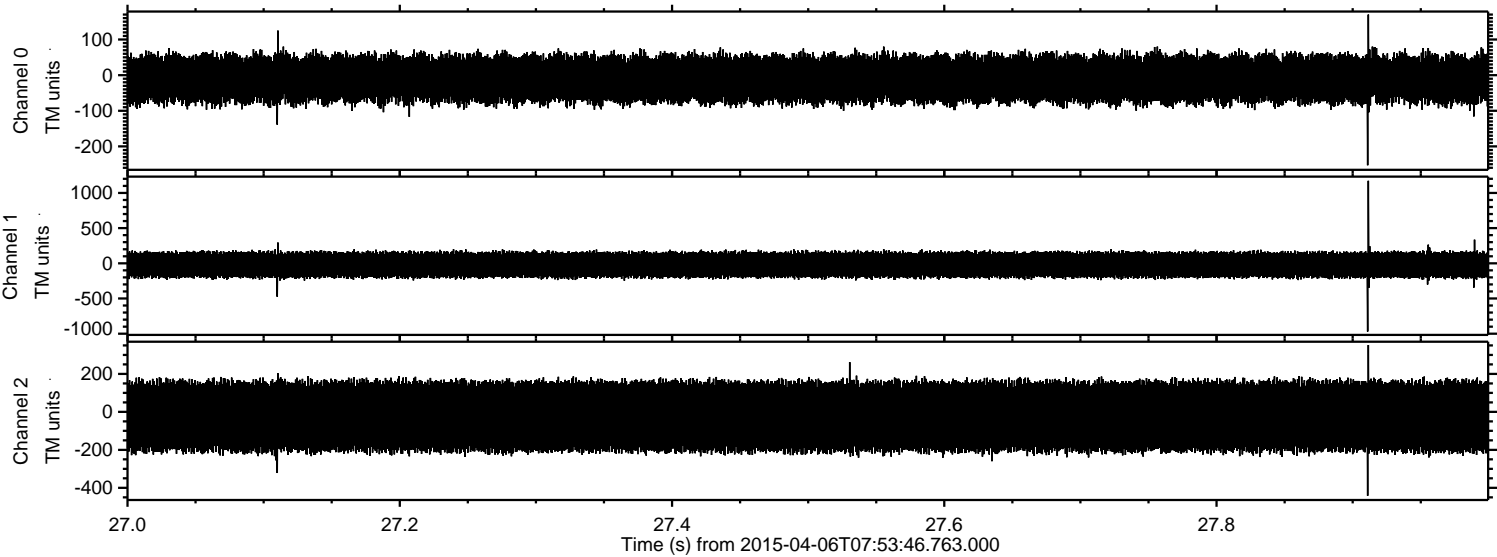
Processed Mon Apr 6 10:02:03 2015 by ELM ver.2012-10-06 from 001__elm20150406_075345__dat00.bin



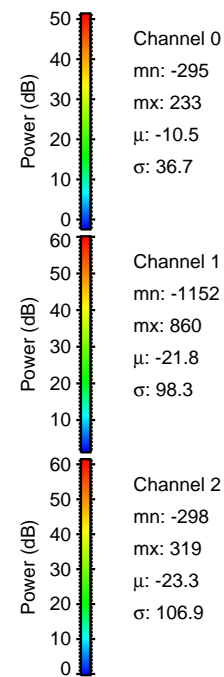
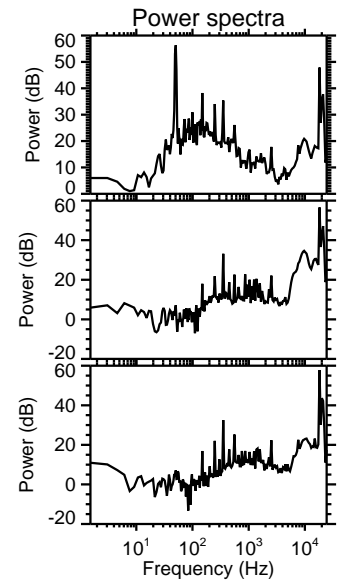
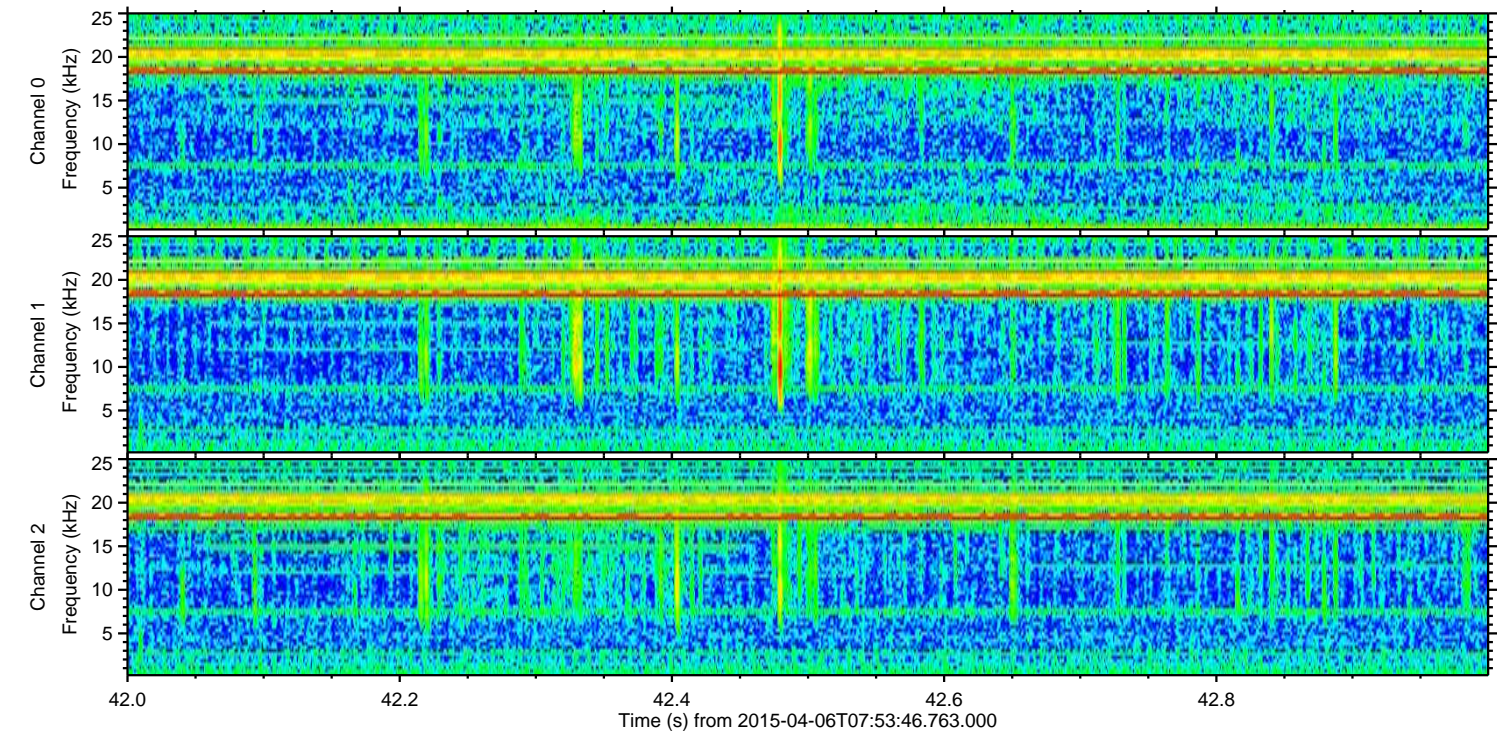
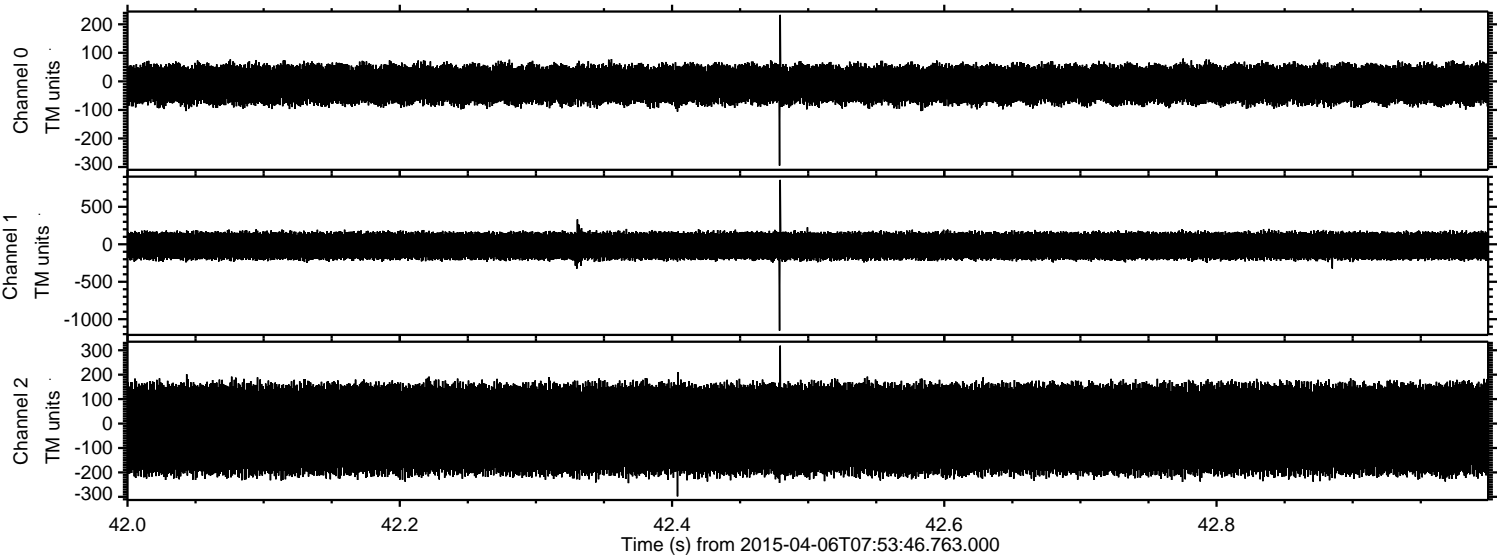
Processed Mon Apr 6 10:02:04 2015 by ELM ver.2012-10-06 from 001__elm20150406_075345__dat00.bin



Processed Mon Apr 6 10:02:05 2015 by ELM ver.2012-10-06 from 001__elm20150406_075345__dat00.bin



Processed Mon Apr 6 10:02:06 2015 by ELM ver.2012-10-06 from 001__elm20150406_075345__dat00.bin



Channel 0
mn: -295
mx: 233
 μ : -10.5
 σ : 36.7

Channel 1
mn: -1152
mx: 860
 μ : -21.8
 σ : 98.3

Channel 2
mn: -298
mx: 319
 μ : -23.3
 σ : 106.9

Processed Mon Apr 6 10:02:07 2015 by ELM ver.2012-10-06 from 001__elm20150406_075345__dat00.bin

