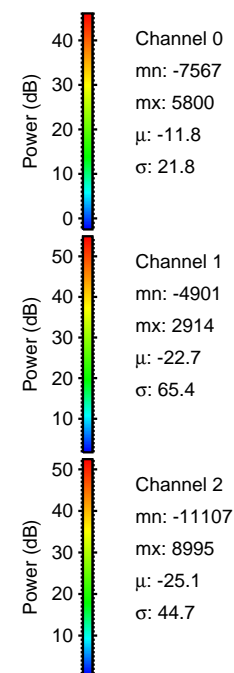
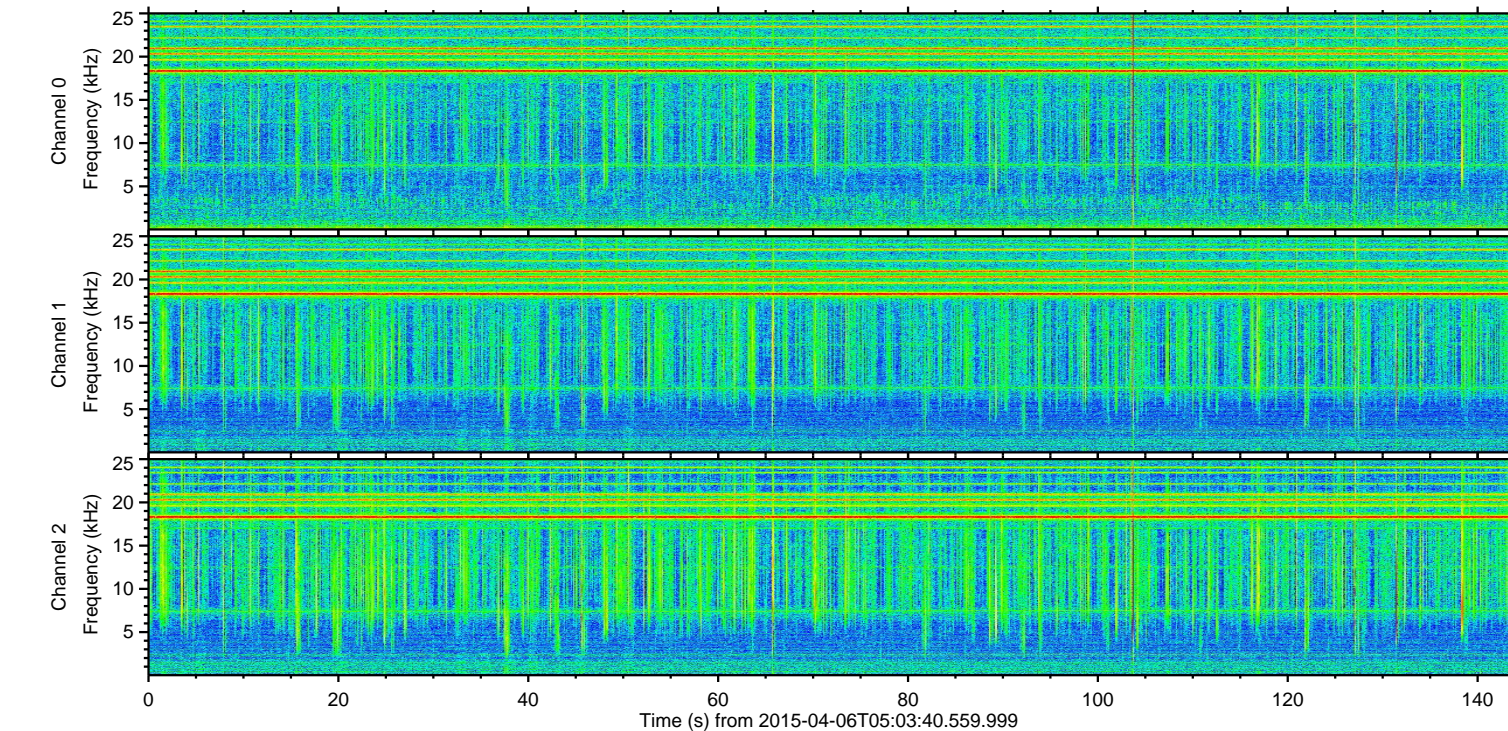
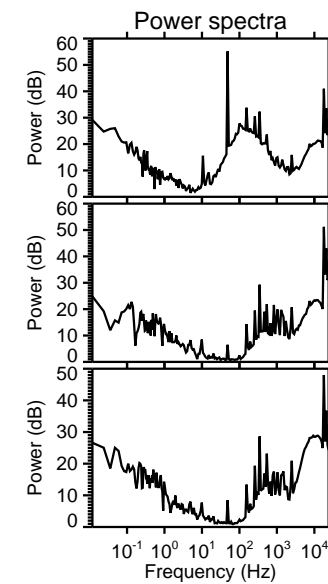
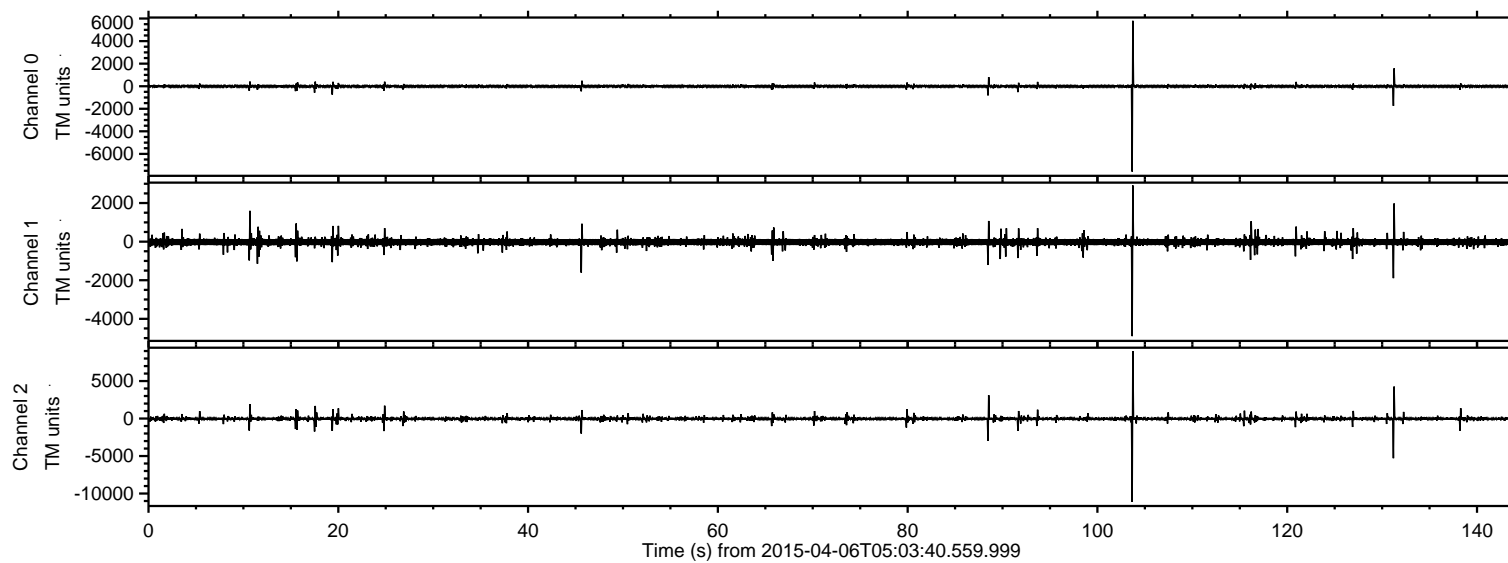


ELMAVAN 3D WAVEFORMS (Measured data sampled at 50 kHz) 49787 packets of 144 samples from 2015-04-06T05:03:40.559.999.

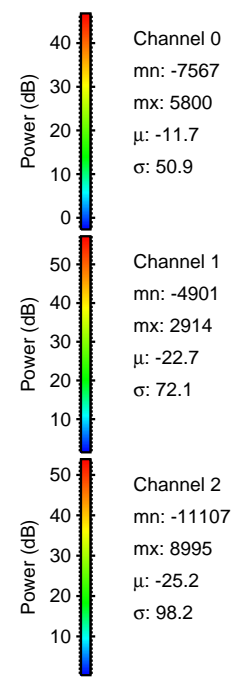
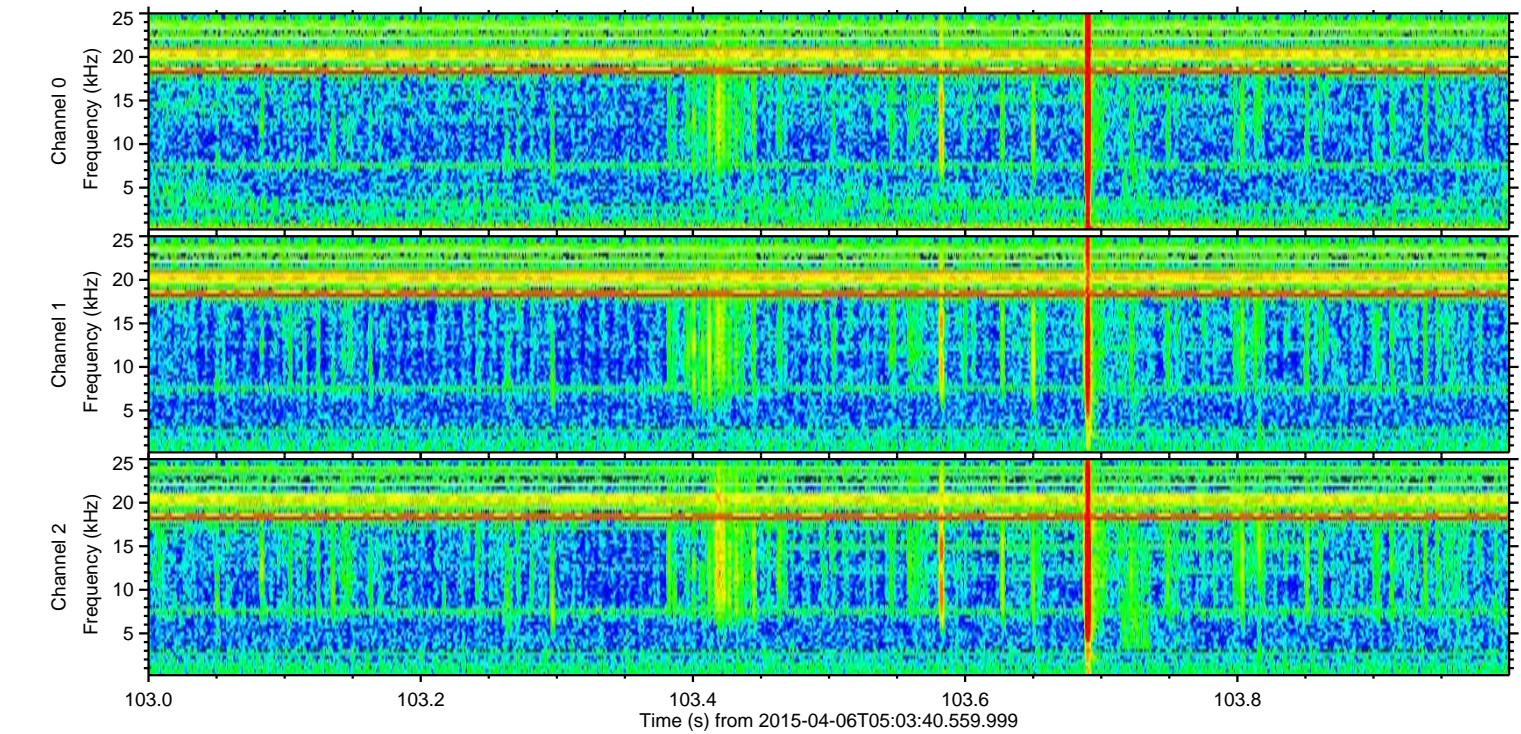
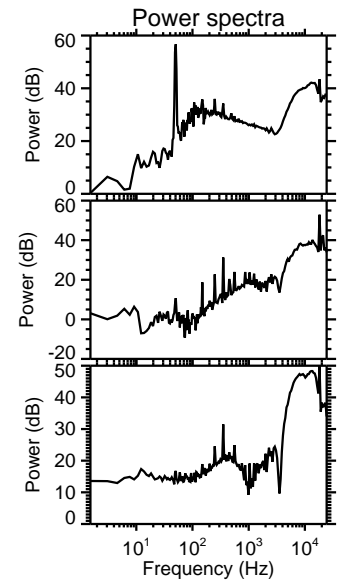
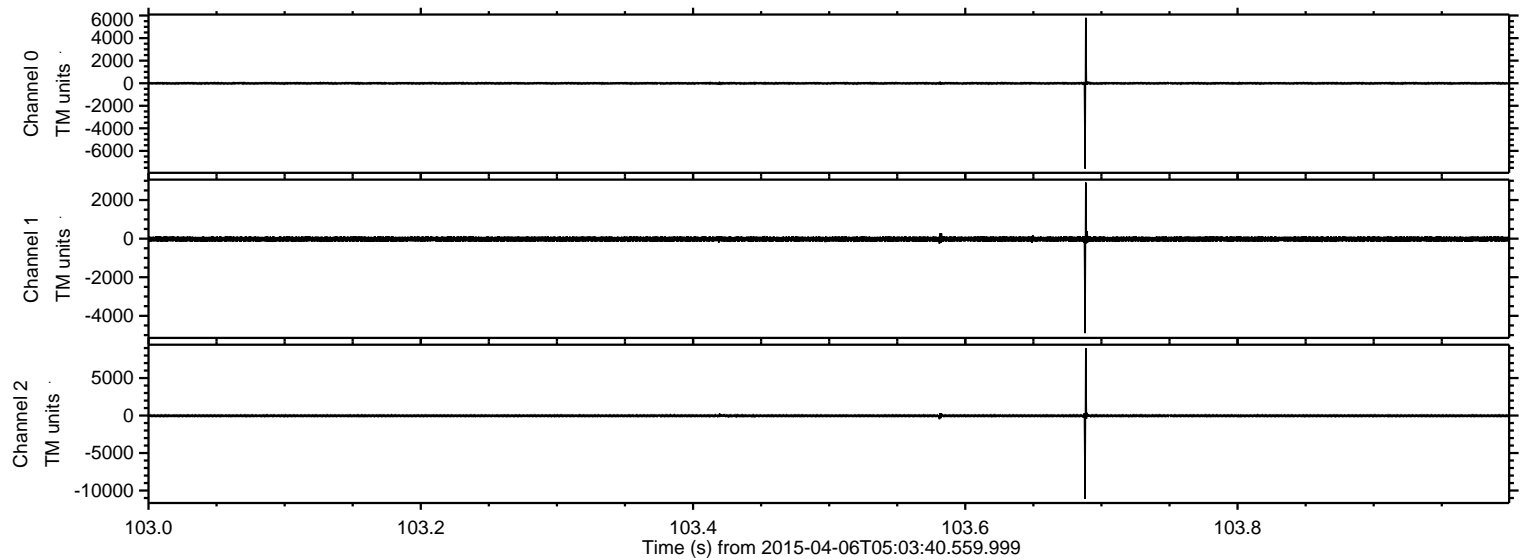
Processed Mon Apr 6 07:11:04 2015 by ELM ver.2012-10-06 from 001\_\_elm20150406\_050339\_\_dat00.bin





ELMAVAN 3D WAVEFORMS (Measured data sampled at 50 kHz) 49787 packets of 144 samples from 2015-04-06T05:03:40.559.999. Part 104/144

Processed Mon Apr 6 07:11:15 2015 by ELM ver.2012-10-06 from 001\_\_elm20150406\_050339\_\_dat00.bin



Channel 0  
mn: -7567  
mx: 5800  
 $\mu$ : -11.7  
 $\sigma$ : 50.9

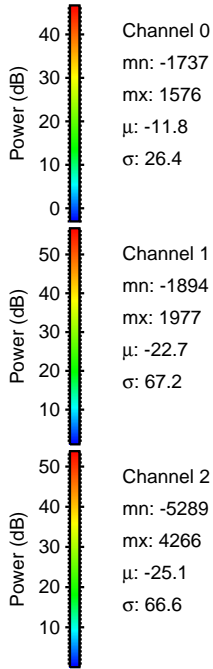
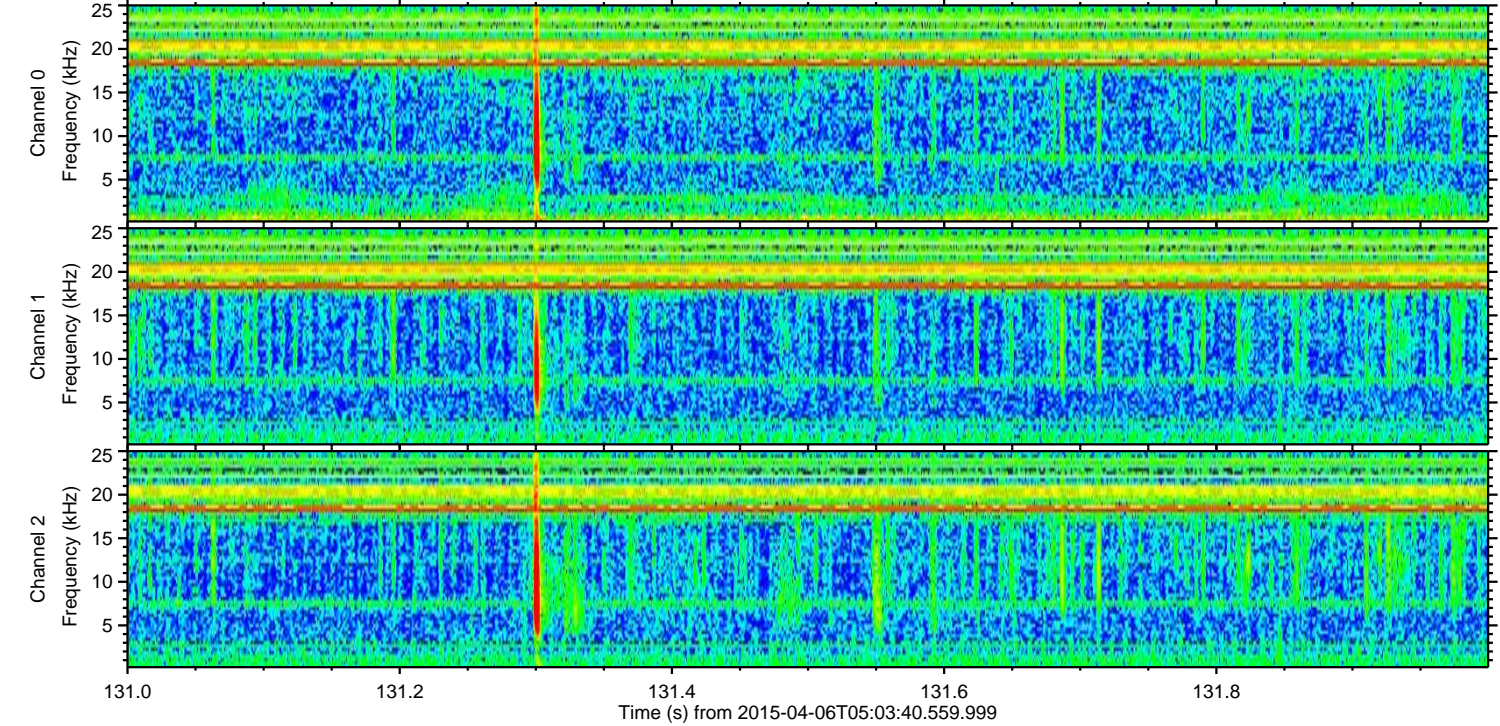
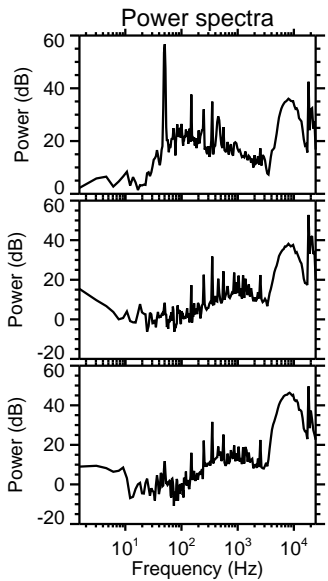
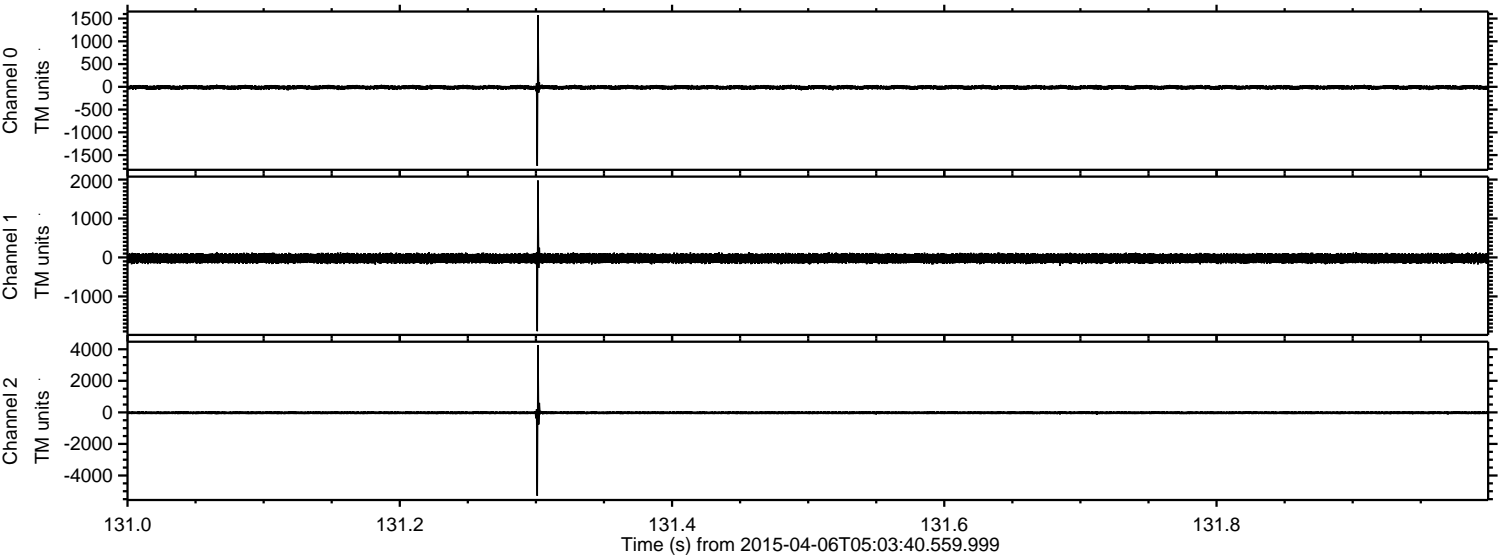
Channel 1  
mn: -4901  
mx: 2914  
 $\mu$ : -22.7  
 $\sigma$ : 72.1

Channel 2  
mn: -11107  
mx: 8995  
 $\mu$ : -25.2  
 $\sigma$ : 98.2



ELMAVAN 3D WAVEFORMS (Measured data sampled at 50 kHz) 49787 packets of 144 samples from 2015-04-06T05:03:40.559.999. Part 132/144

Processed Mon Apr 6 07:11:16 2015 by ELM ver.2012-10-06 from 001\_\_elm20150406\_050339\_\_dat00.bin



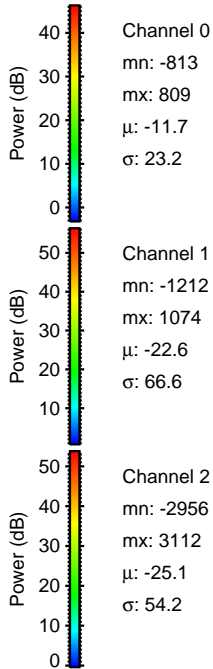
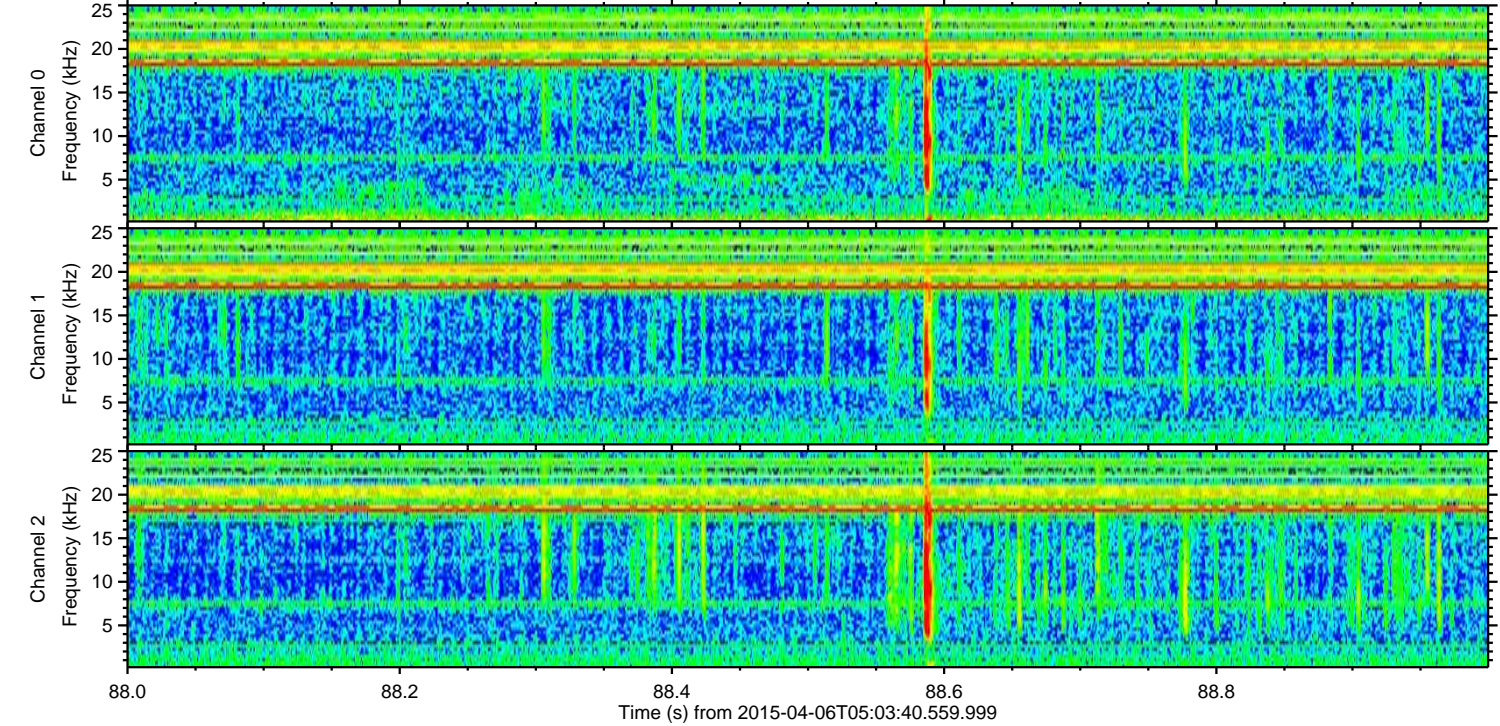
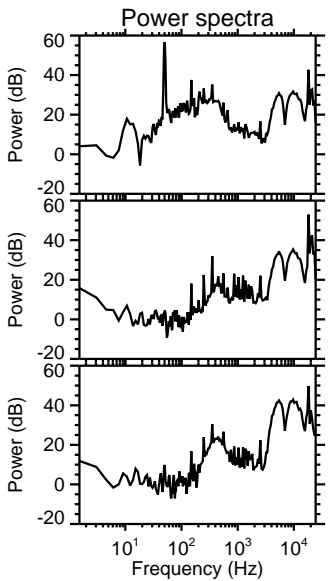
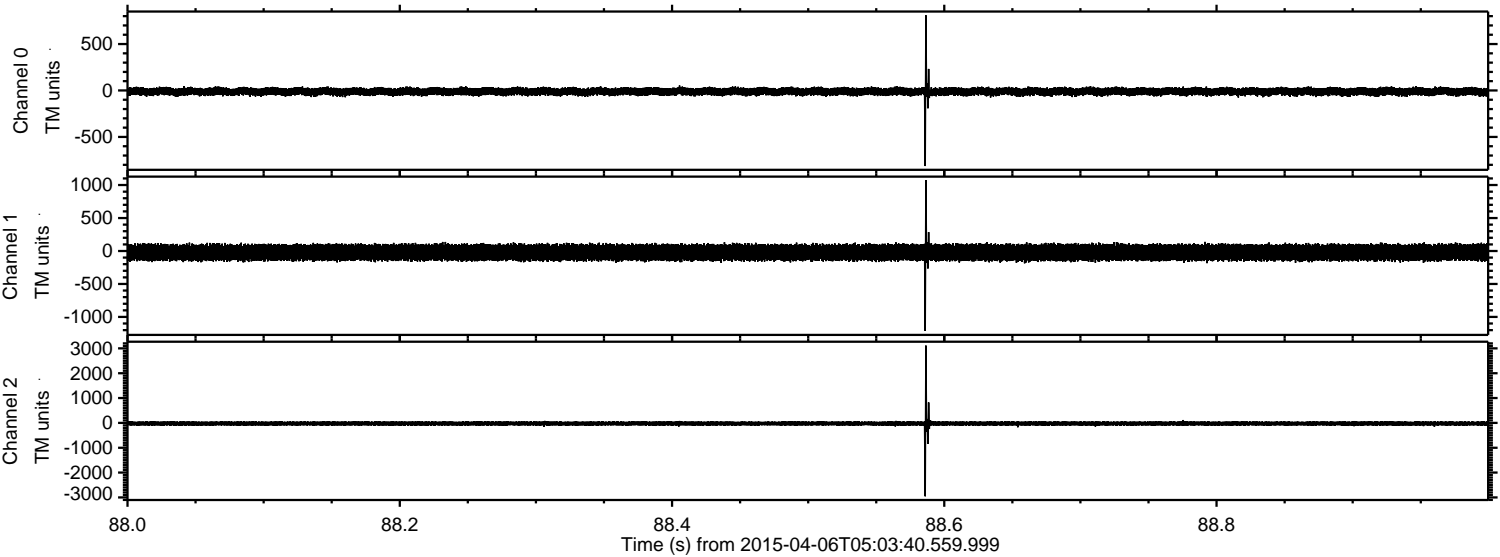
Channel 0  
mn: -1737  
mx: 1576  
 $\mu$ : -11.8  
 $\sigma$ : 26.4

Channel 1  
mn: -1894  
mx: 1977  
 $\mu$ : -22.7  
 $\sigma$ : 67.2

Channel 2  
mn: -5289  
mx: 4266  
 $\mu$ : -25.1  
 $\sigma$ : 66.6

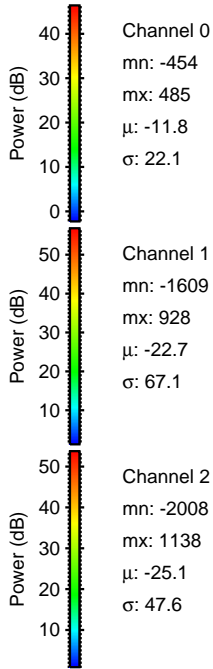
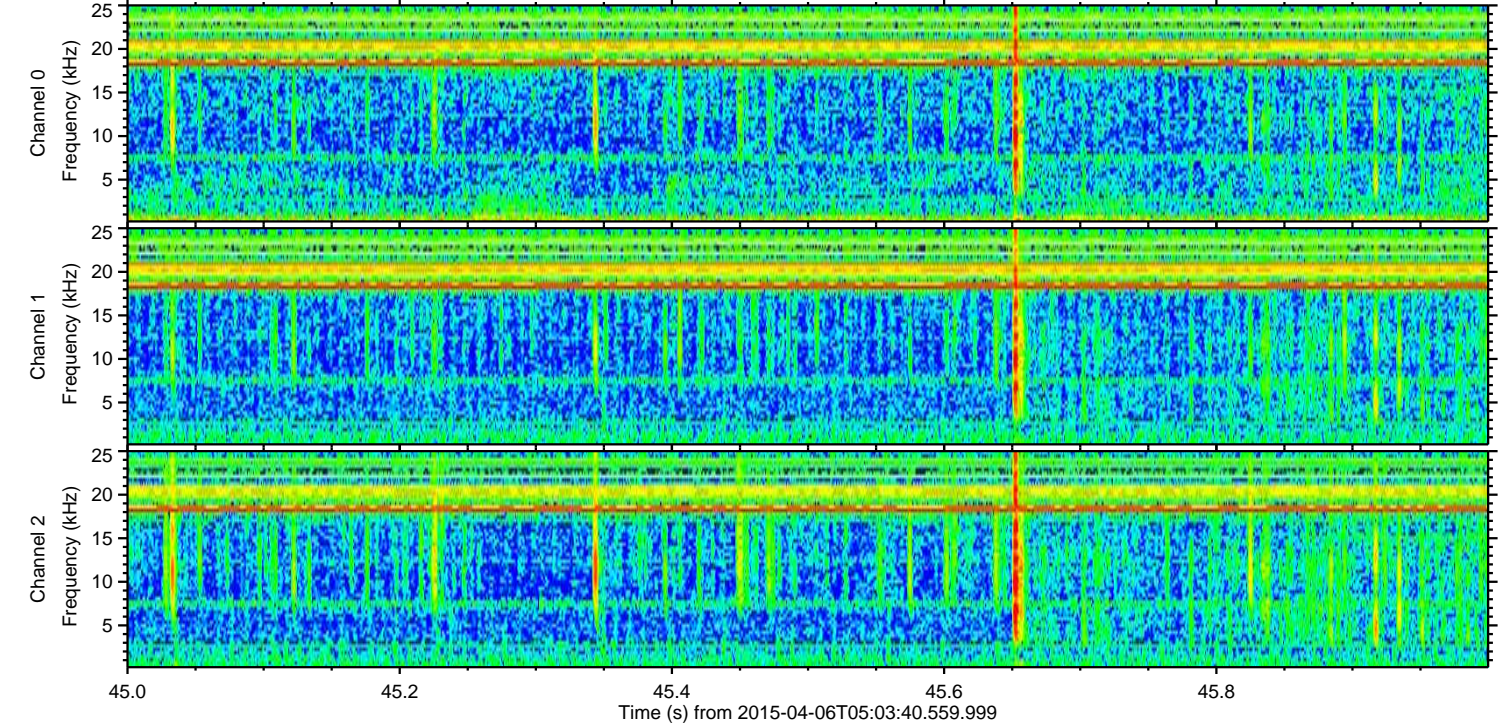
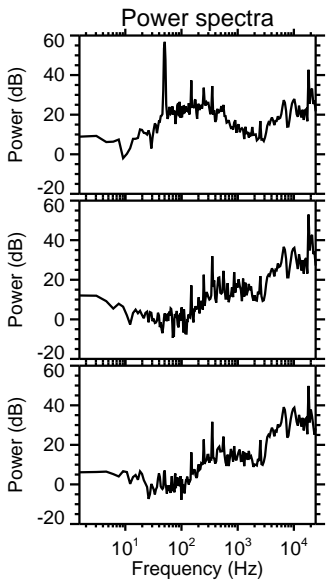
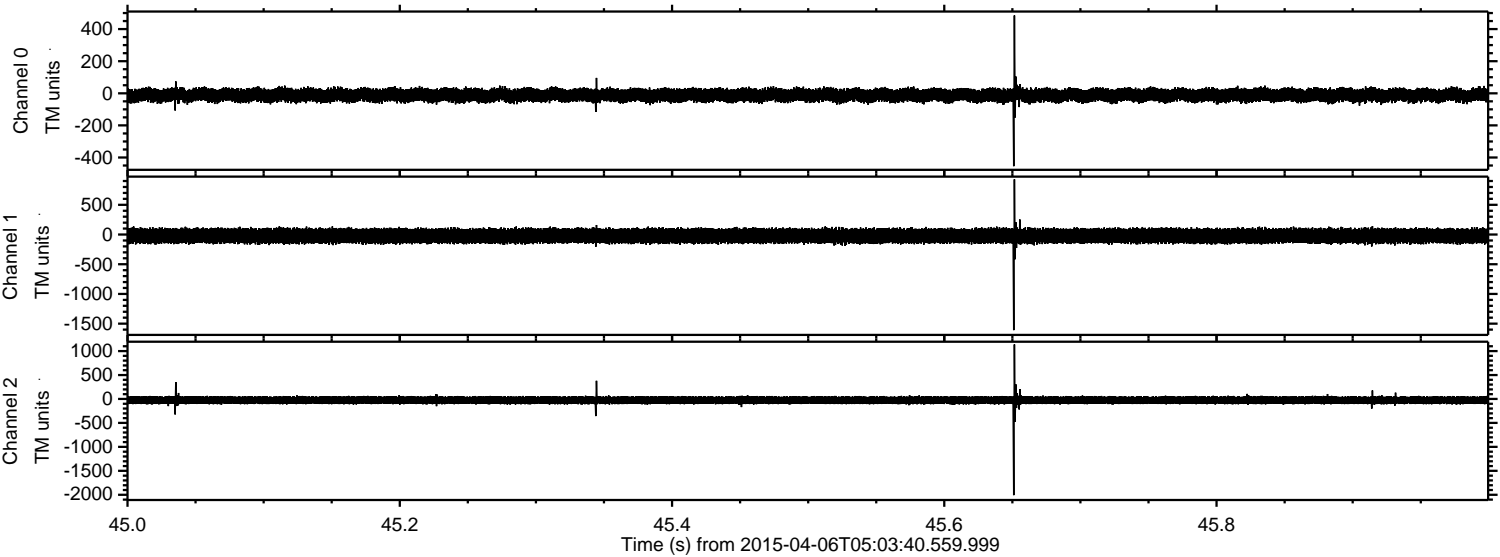


Processed Mon Apr 6 07:11:17 2015 by ELM ver.2012-10-06 from 001\_\_elm20150406\_050339\_\_dat00.bin



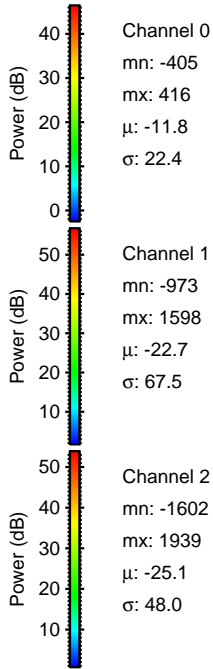
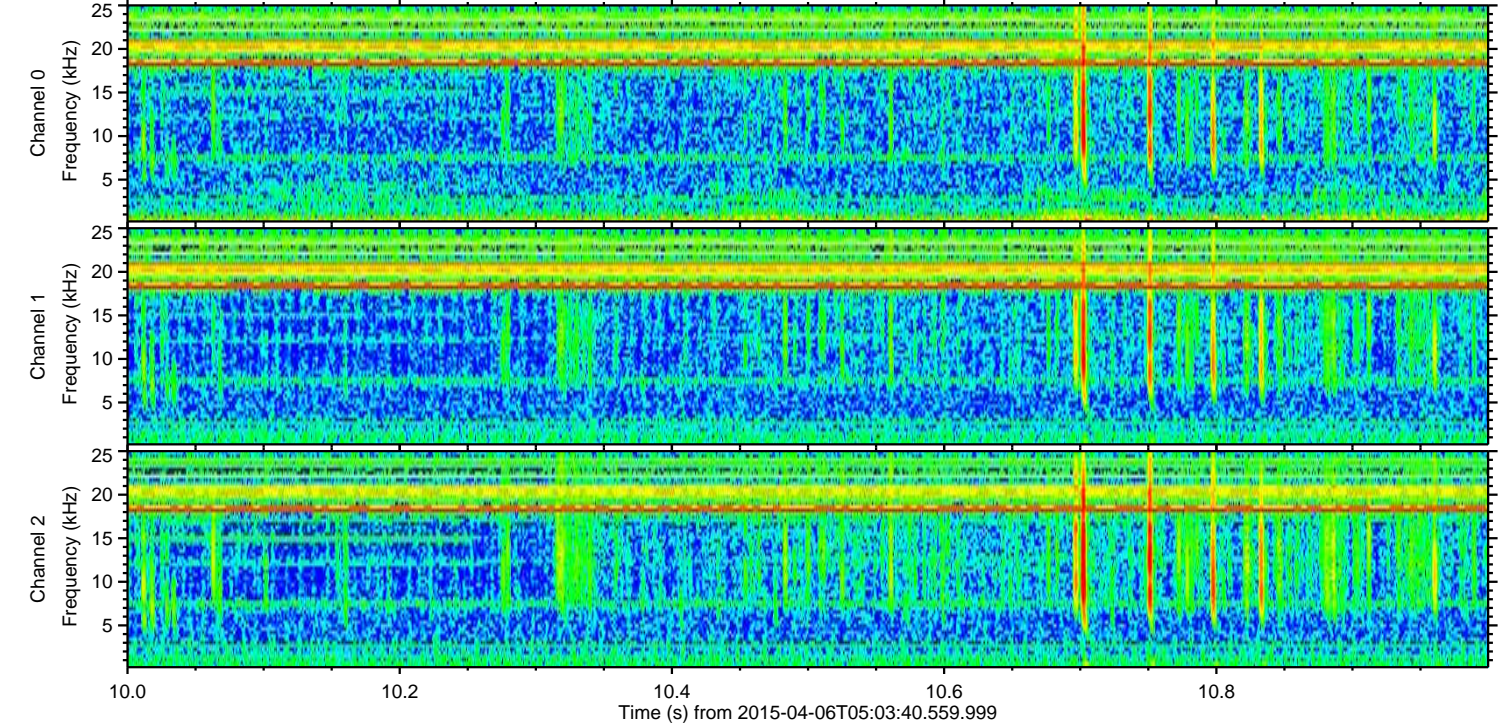
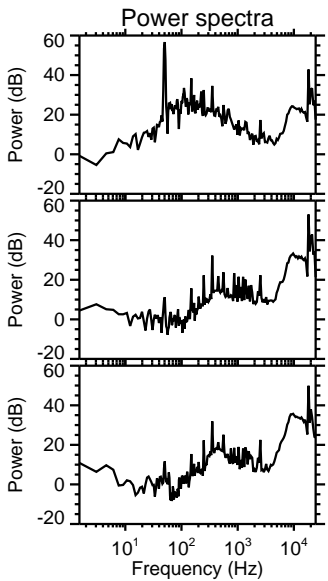
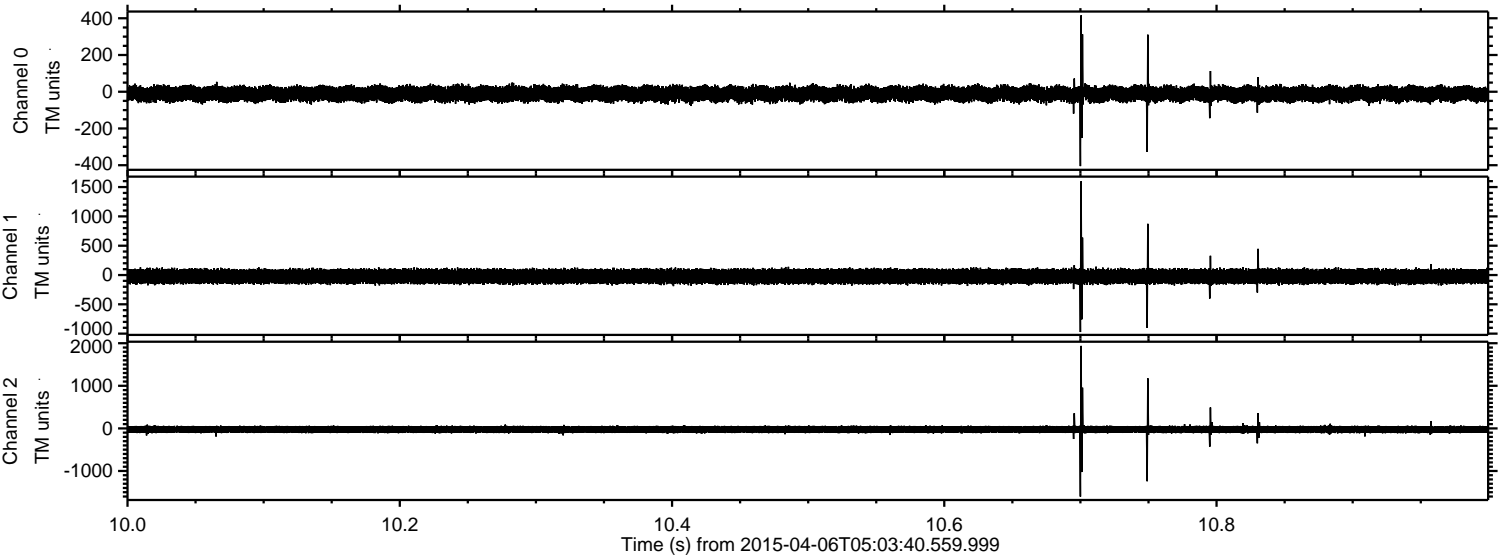


Processed Mon Apr 6 07:11:18 2015 by ELM ver.2012-10-06 from 001\_\_elm20150406\_050339\_\_dat00.bin





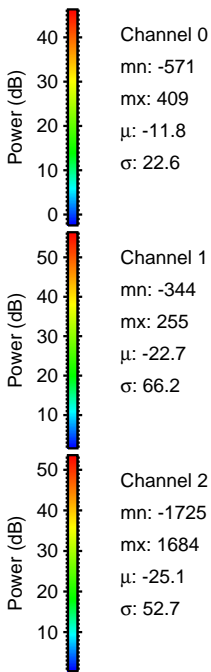
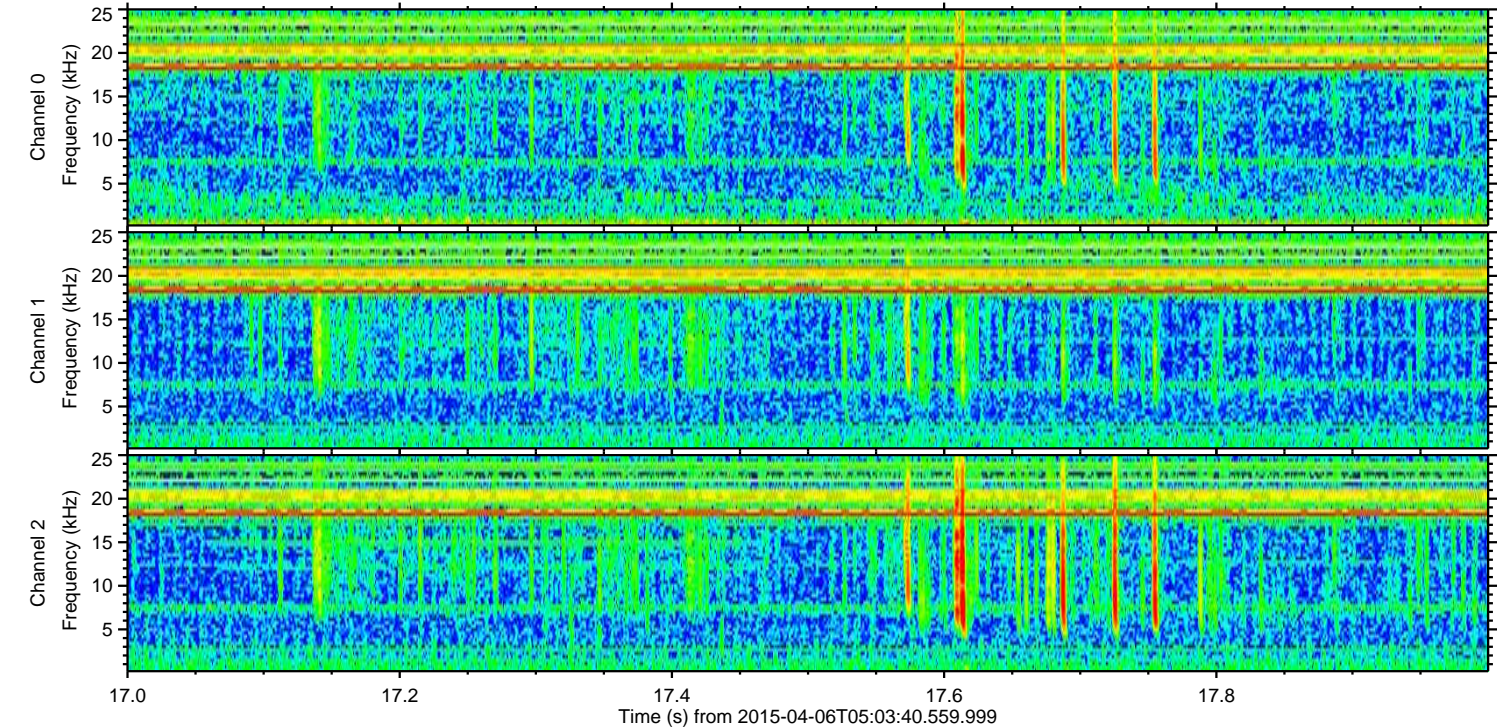
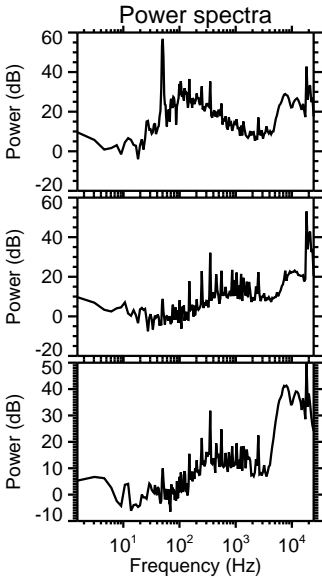
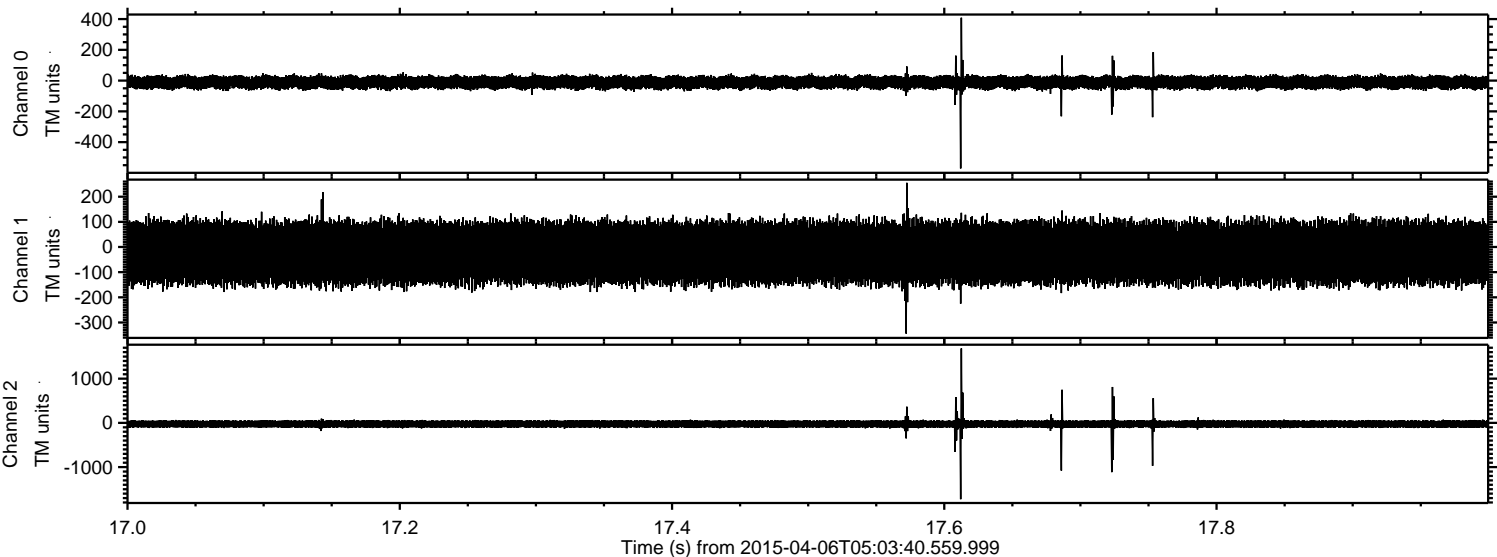
Processed Mon Apr 6 07:11:19 2015 by ELM ver.2012-10-06 from 001\_\_elm20150406\_050339\_\_dat00.bin





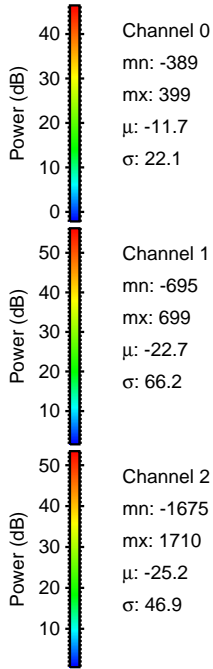
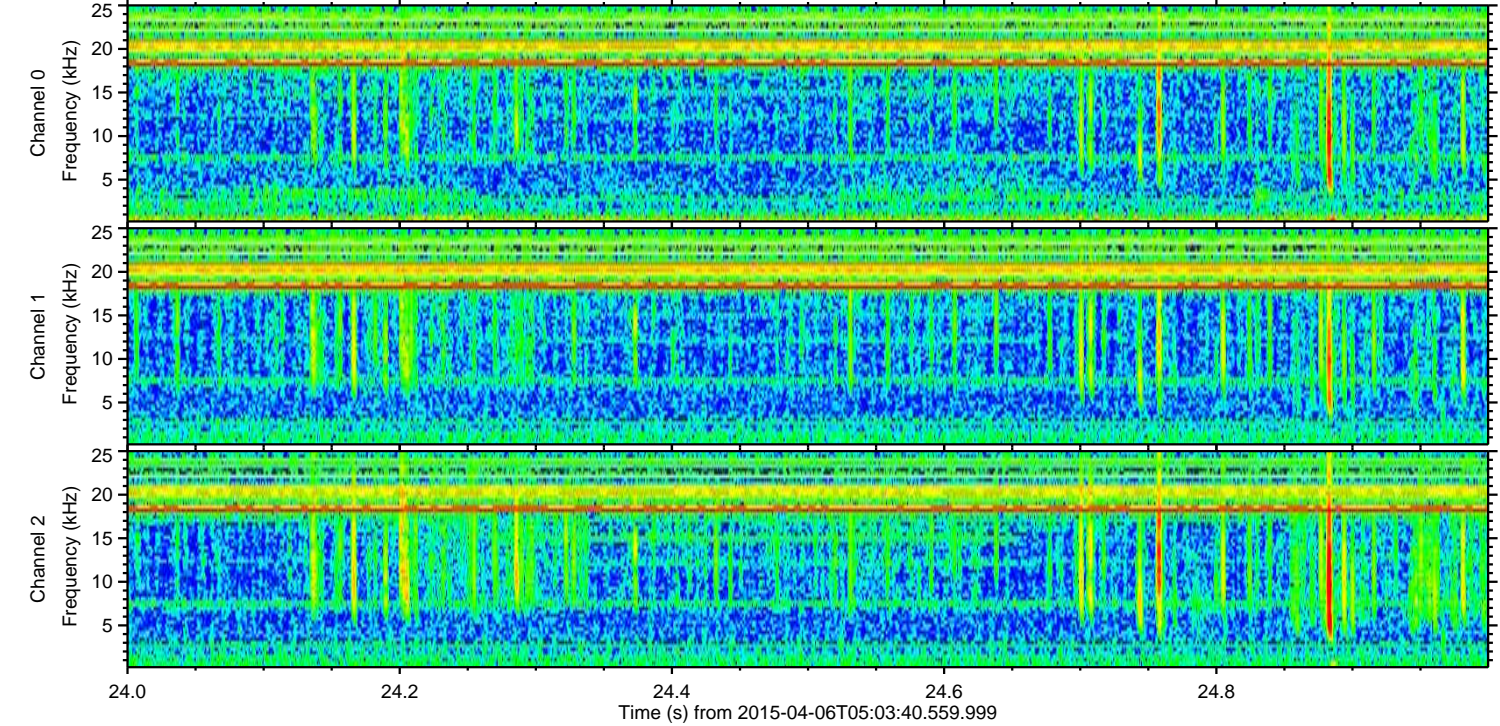
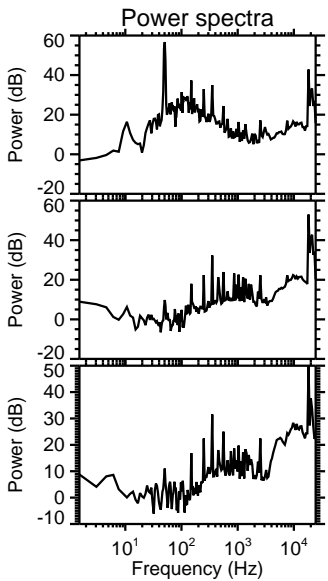
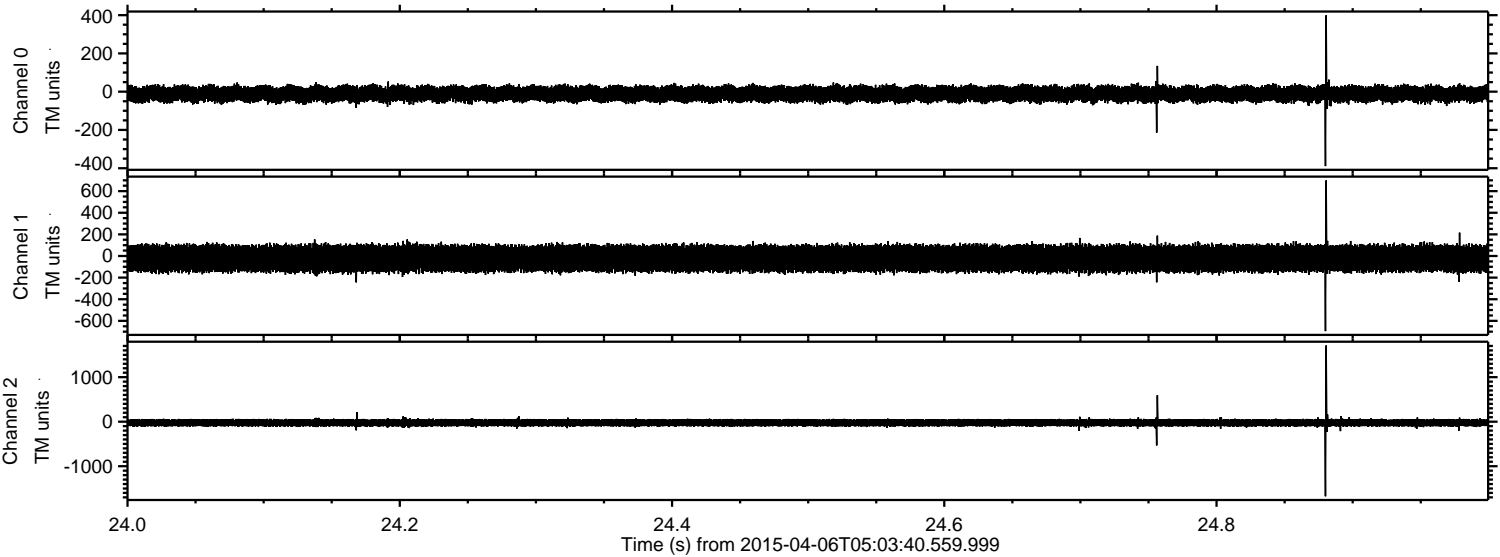
ELMAVAN 3D WAVEFORMS (Measured data sampled at 50 kHz) 49787 packets of 144 samples from 2015-04-06T05:03:40.559.999. Part 18/144

Processed Mon Apr 6 07:11:20 2015 by ELM ver.2012-10-06 from 001\_\_elm20150406\_050339\_\_dat00.bin





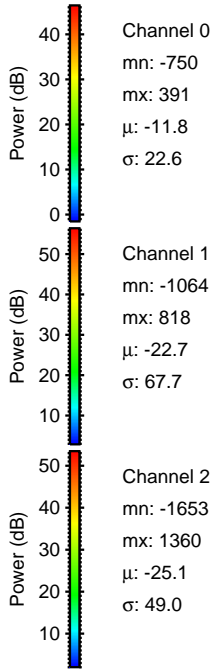
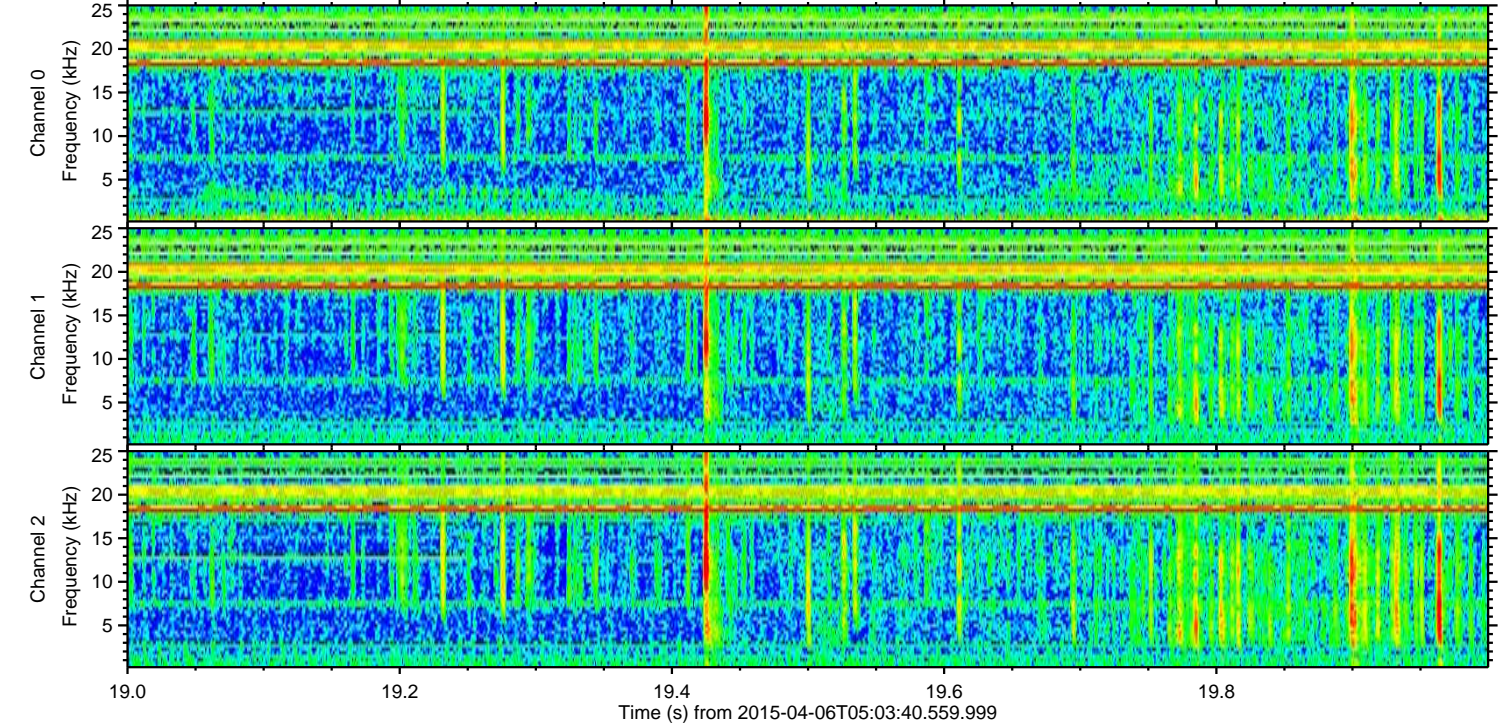
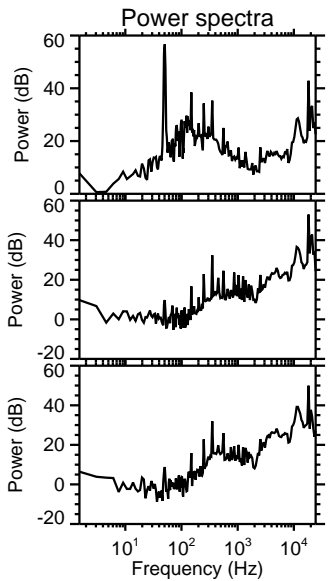
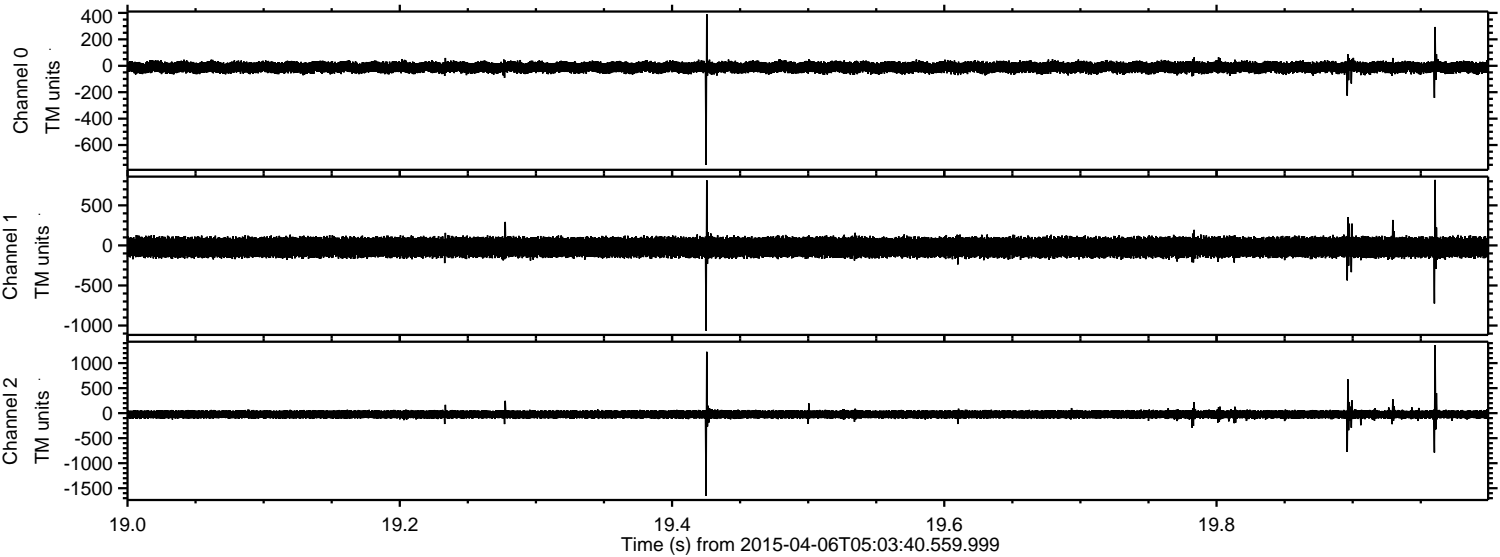
Processed Mon Apr 6 07:11:21 2015 by ELM ver.2012-10-06 from 001\_\_elm20150406\_050339\_\_dat00.bin





ELMAVAN 3D WAVEFORMS (Measured data sampled at 50 kHz) 49787 packets of 144 samples from 2015-04-06T05:03:40.559.999. Part 20/144

Processed Mon Apr 6 07:11:22 2015 by ELM ver.2012-10-06 from 001\_\_elm20150406\_050339\_\_dat00.bin



Channel 0  
mn: -750  
mx: 391  
 $\mu$ : -11.8  
 $\sigma$ : 22.6

Channel 1  
mn: -1064  
mx: 818  
 $\mu$ : -22.7  
 $\sigma$ : 67.7

Channel 2  
mn: -1653  
mx: 1360  
 $\mu$ : -25.1  
 $\sigma$ : 49.0



Processed Mon Apr 6 07:11:23 2015 by ELM ver.2012-10-06 from 001\_\_elm20150406\_050339\_\_dat00.bin

