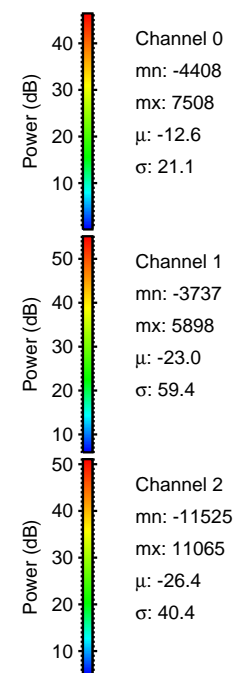
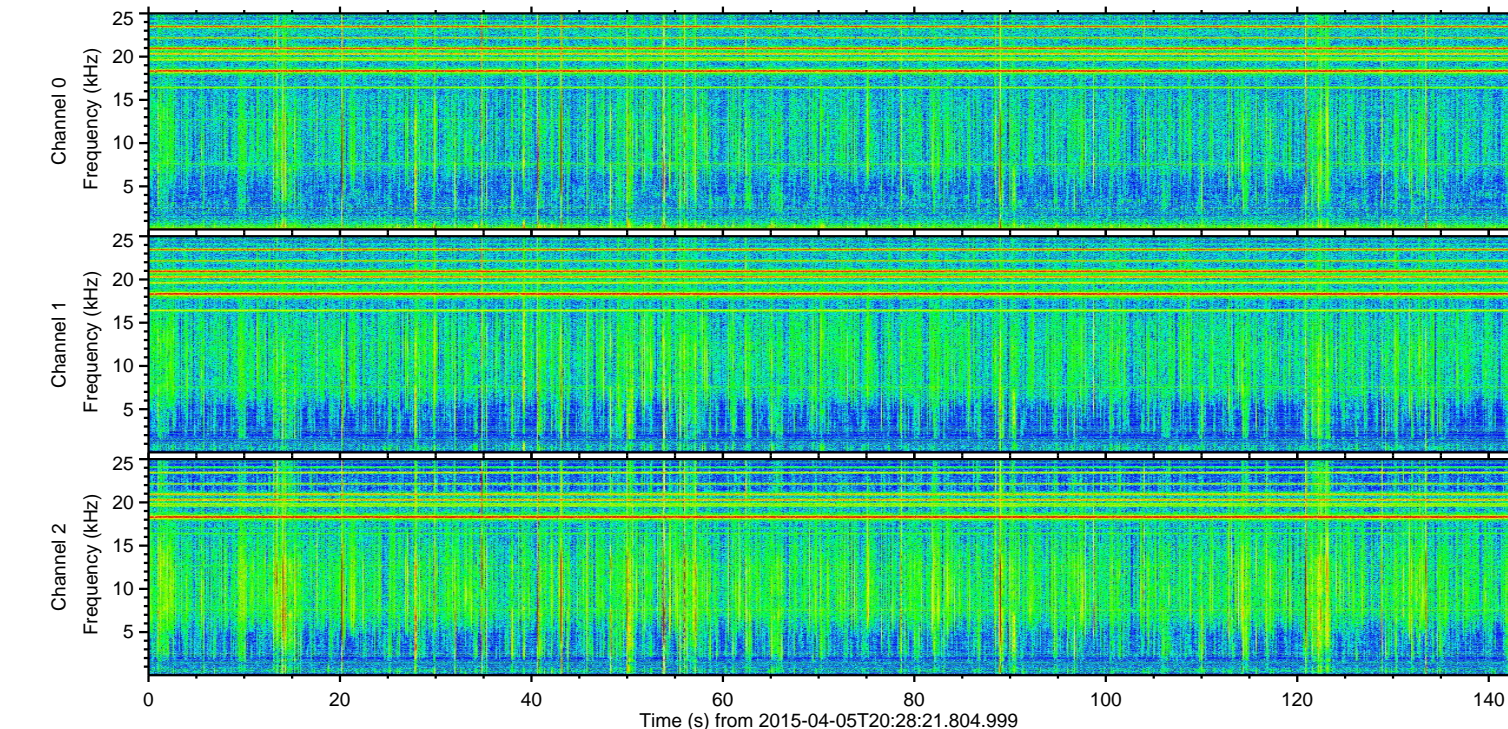
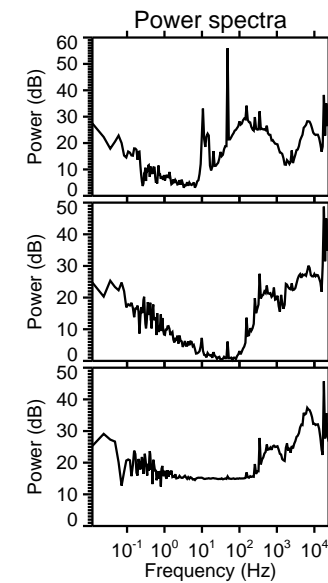
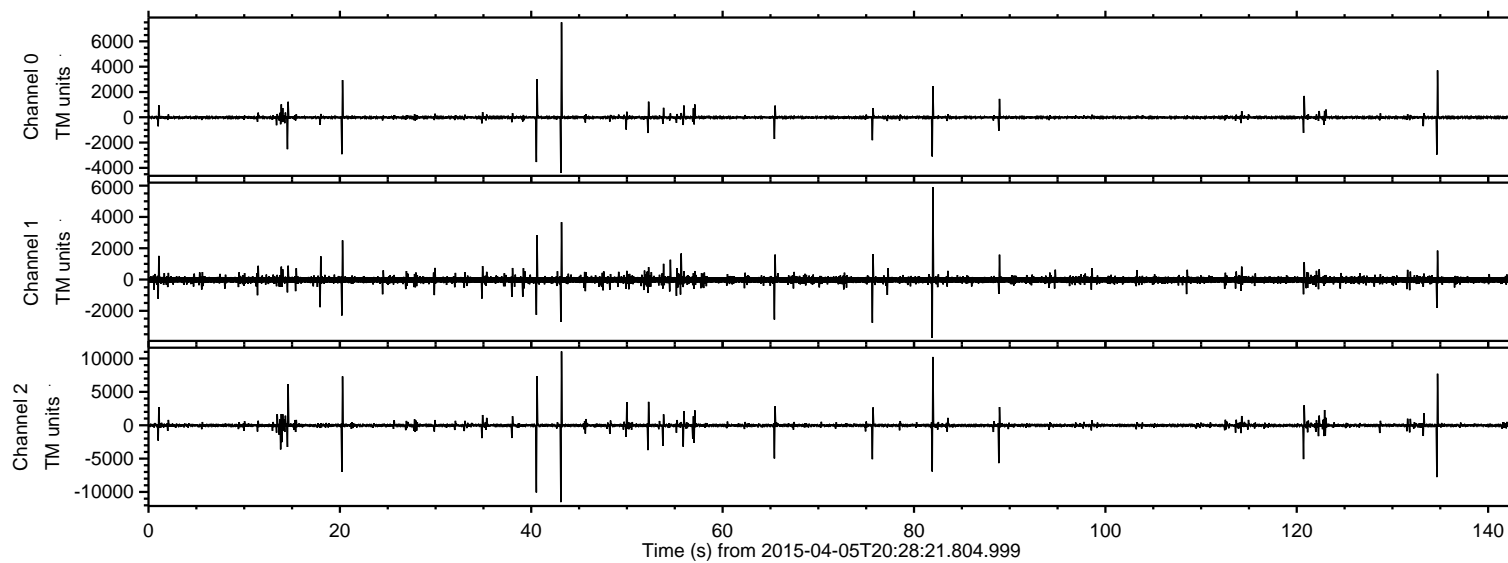


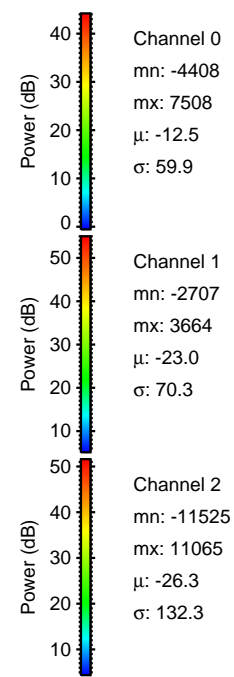
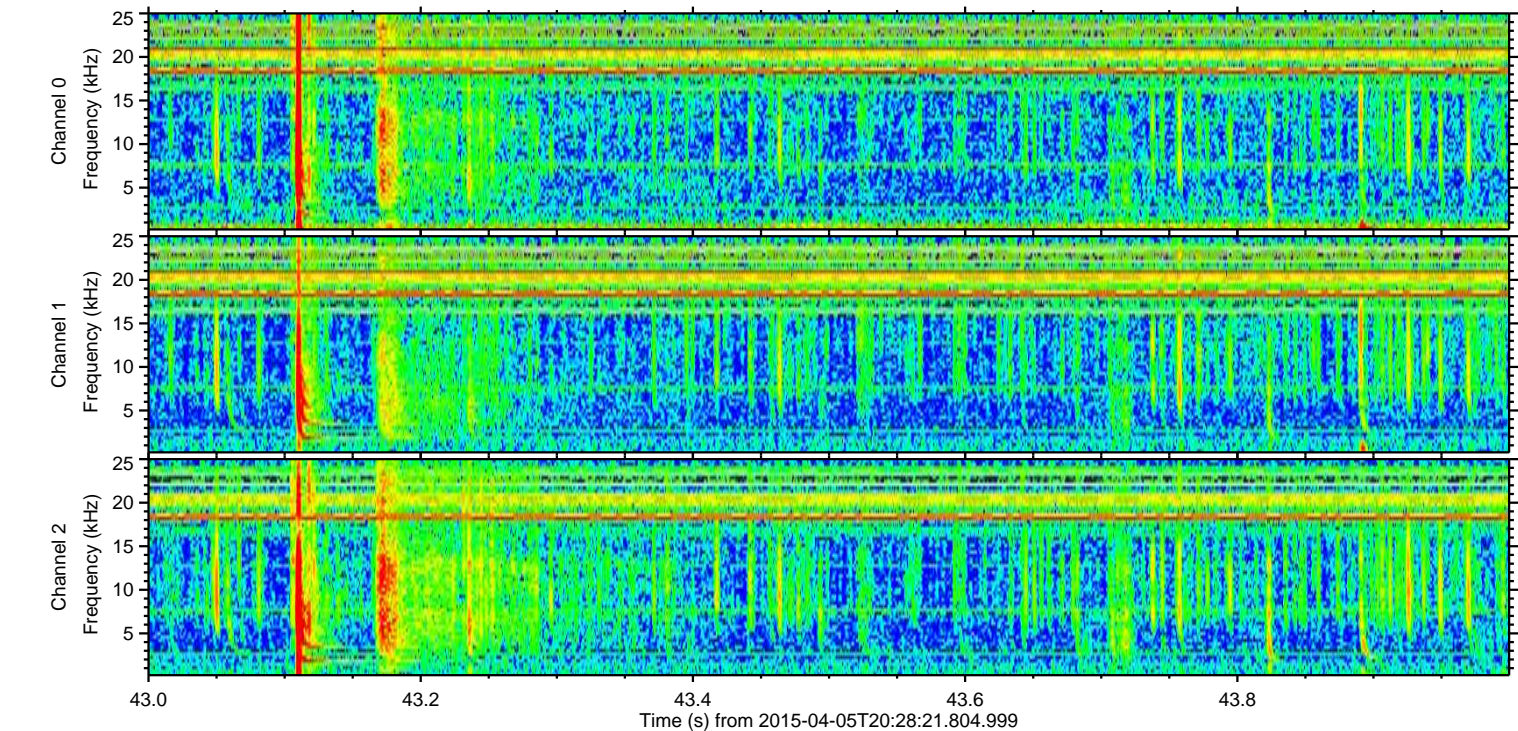
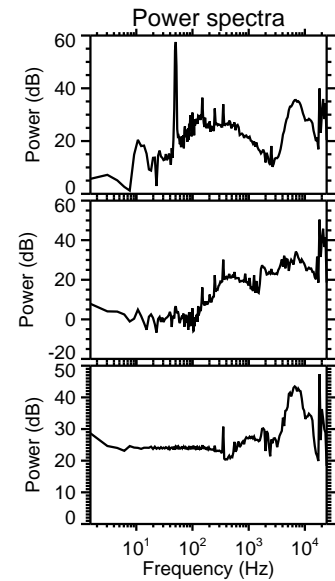
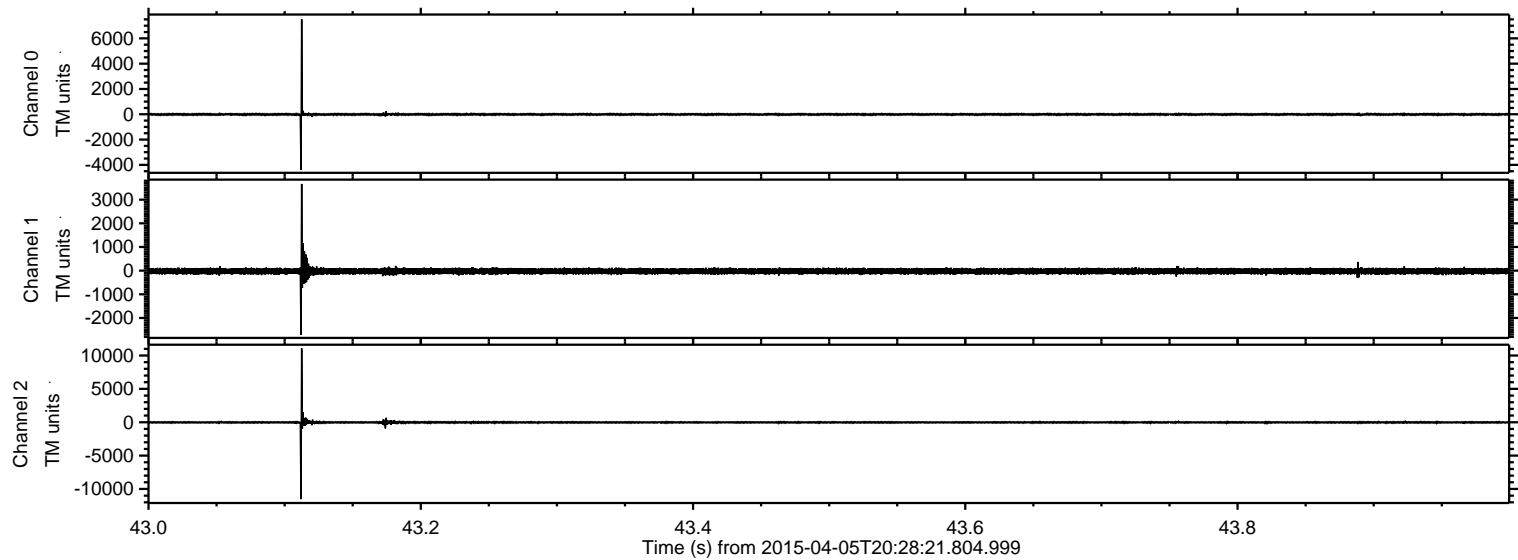
ELMAVAN 3D WAVEFORMS (Measured data sampled at 50 kHz) 49373 packets of 144 samples from 2015-04-05T20:28:21.804.999.

Processed Sun Apr 5 22:36:05 2015 by ELM ver.2012-10-06 from 001__elm20150405_202820__dat00.bin



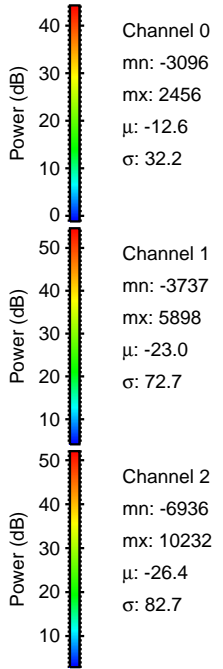
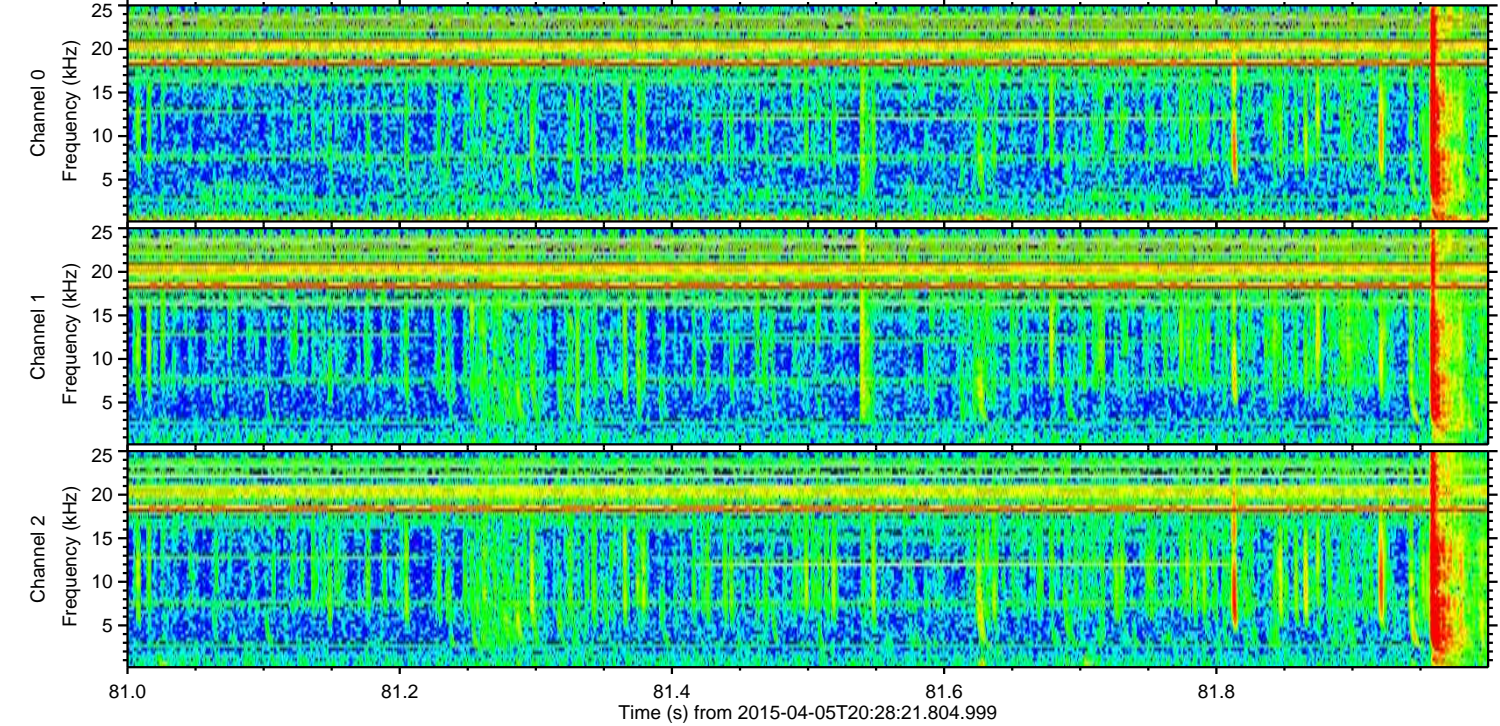
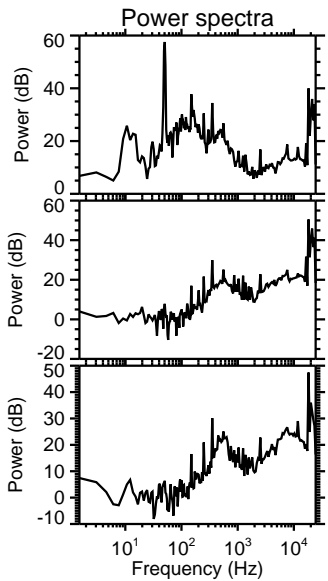
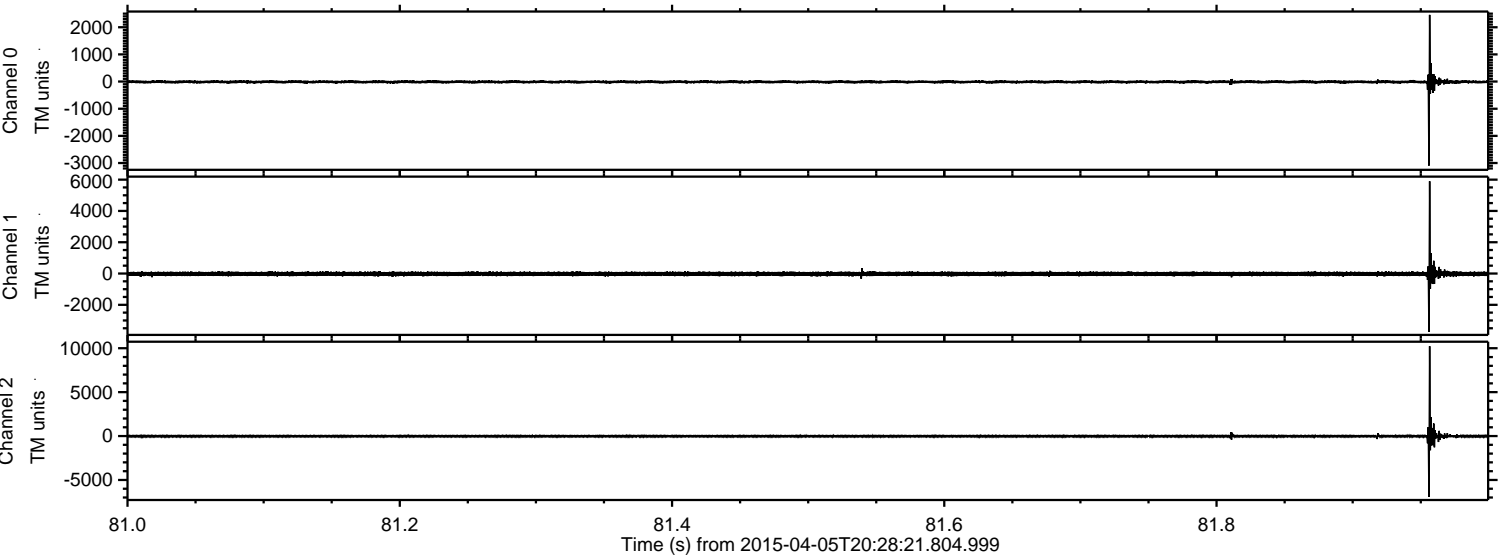
ELMAVAN 3D WAVEFORMS (Measured data sampled at 50 kHz) 49373 packets of 144 samples from 2015-04-05T20:28:21.804.999. Part 44/143

Processed Sun Apr 5 22:36:20 2015 by ELM ver.2012-10-06 from 001__elm20150405_202820__dat00.bin



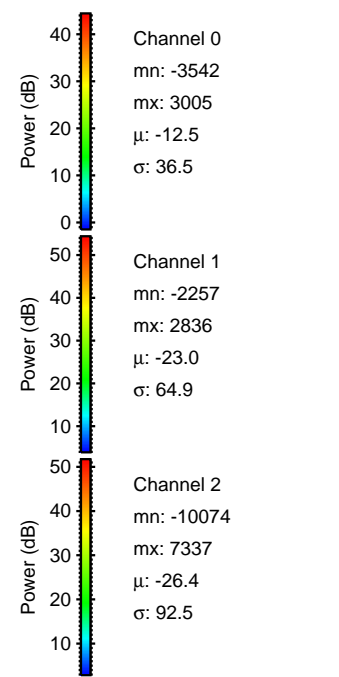
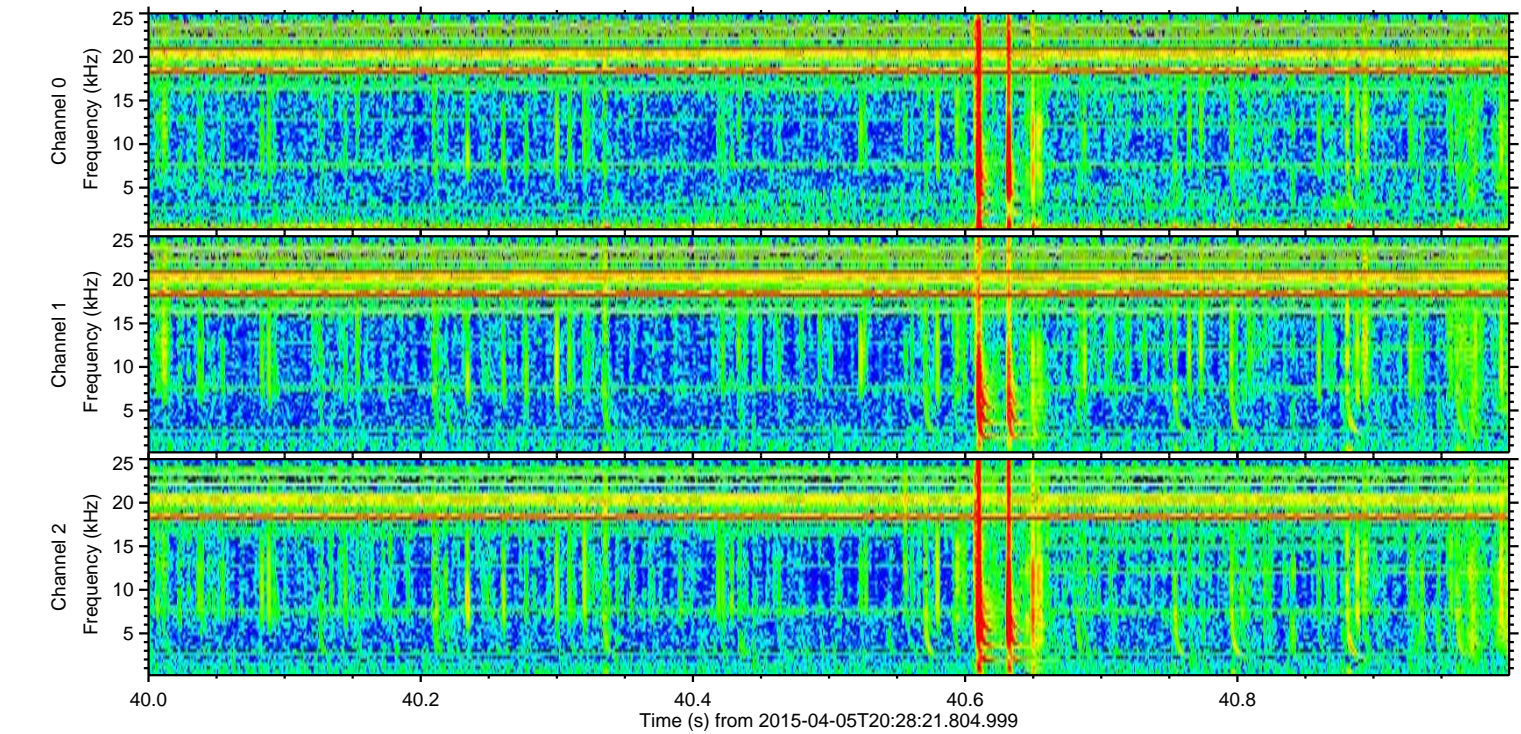
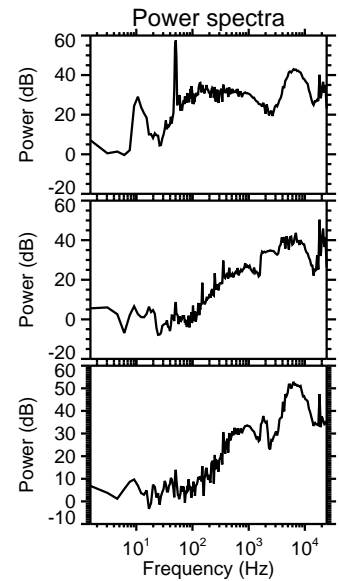
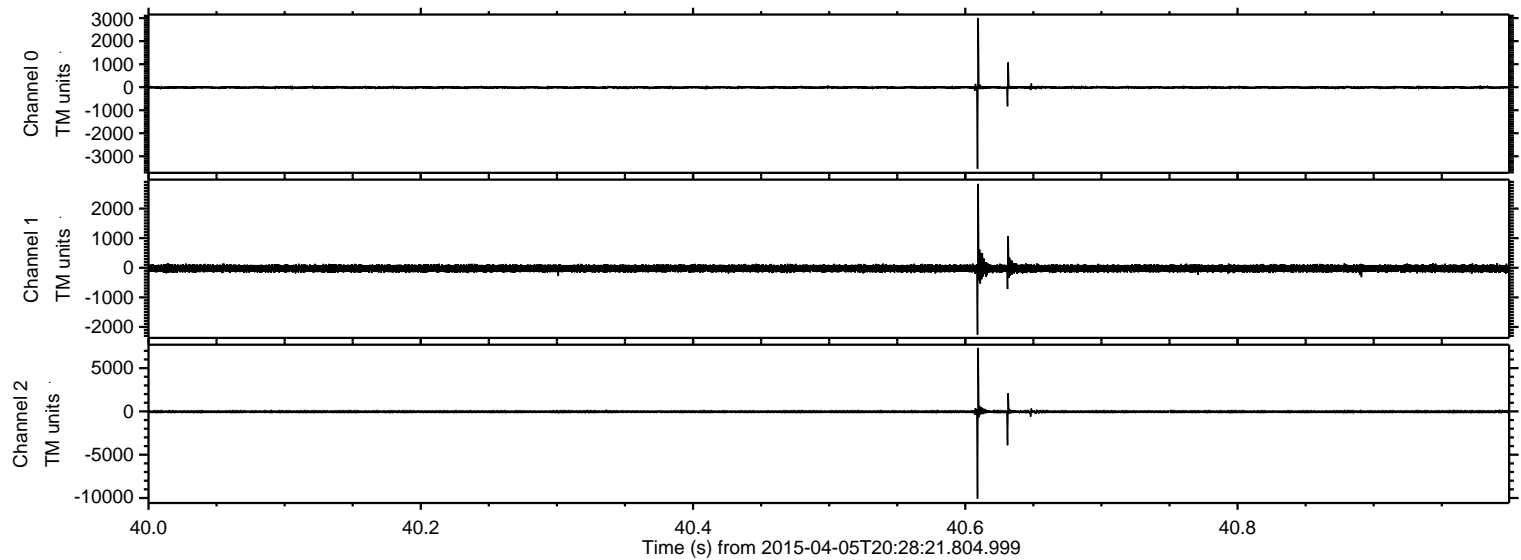
ELMAVAN 3D WAVEFORMS (Measured data sampled at 50 kHz) 49373 packets of 144 samples from 2015-04-05T20:28:21.804.999. Part 82/143

Processed Sun Apr 5 22:36:21 2015 by ELM ver.2012-10-06 from 001__elm20150405_202820__dat00.bin



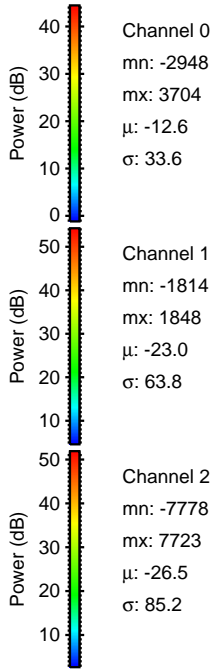
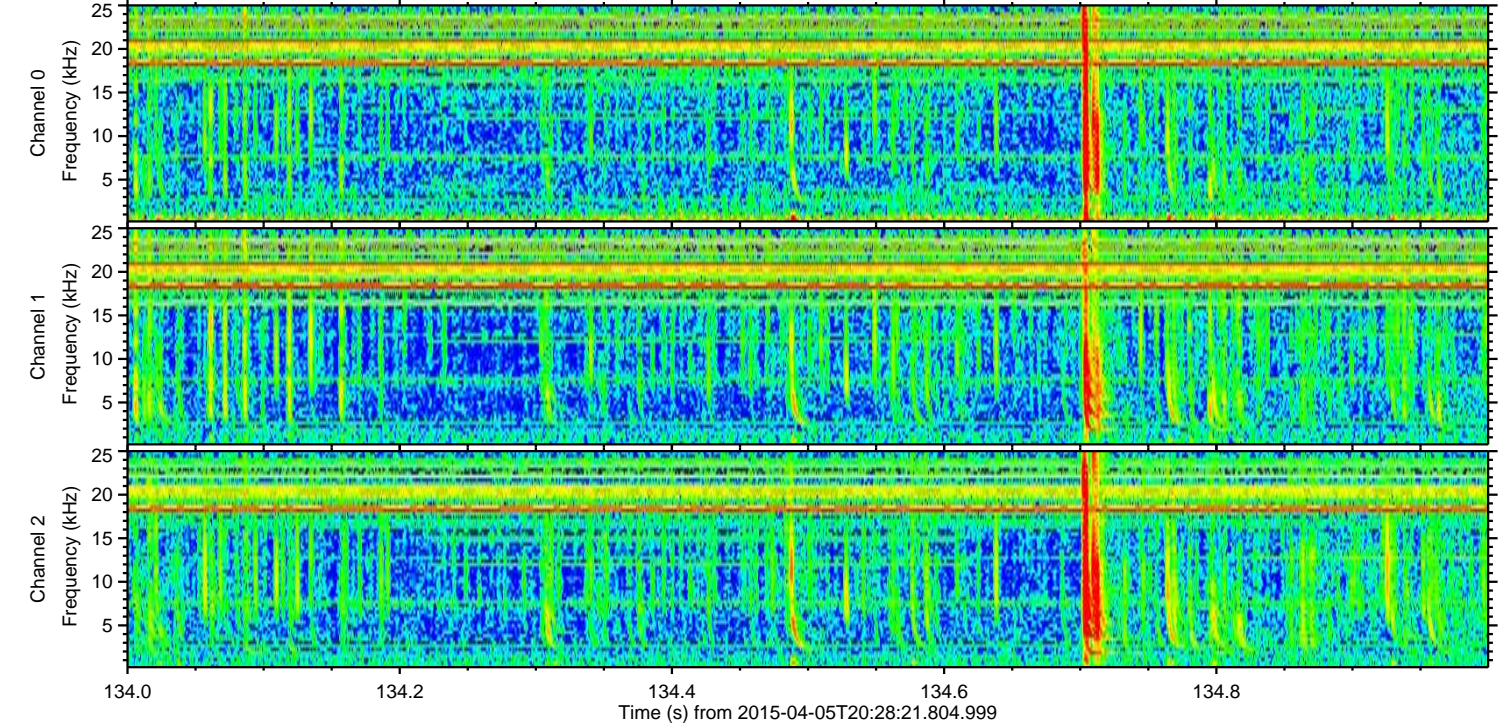
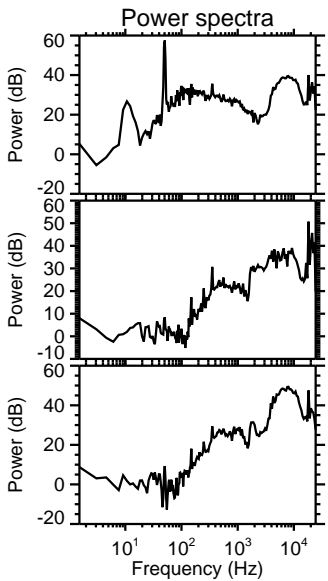
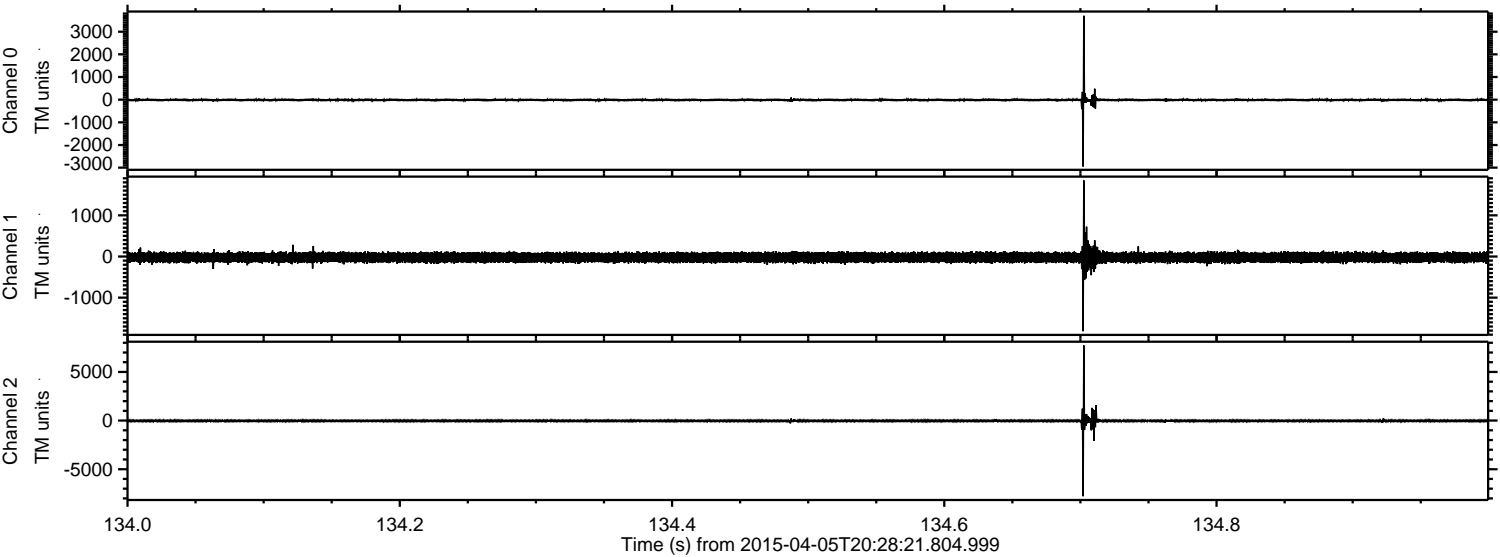
ELMAVAN 3D WAVEFORMS (Measured data sampled at 50 kHz) 49373 packets of 144 samples from 2015-04-05T20:28:21.804.999. Part 41/143

Processed Sun Apr 5 22:36:22 2015 by ELM ver.2012-10-06 from 001__elm20150405_202820__dat00.bin



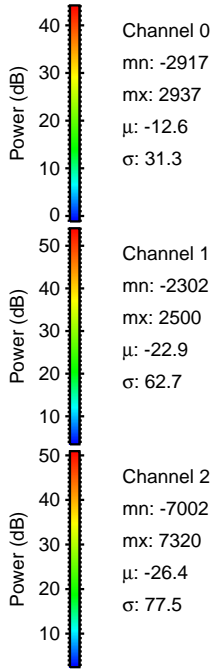
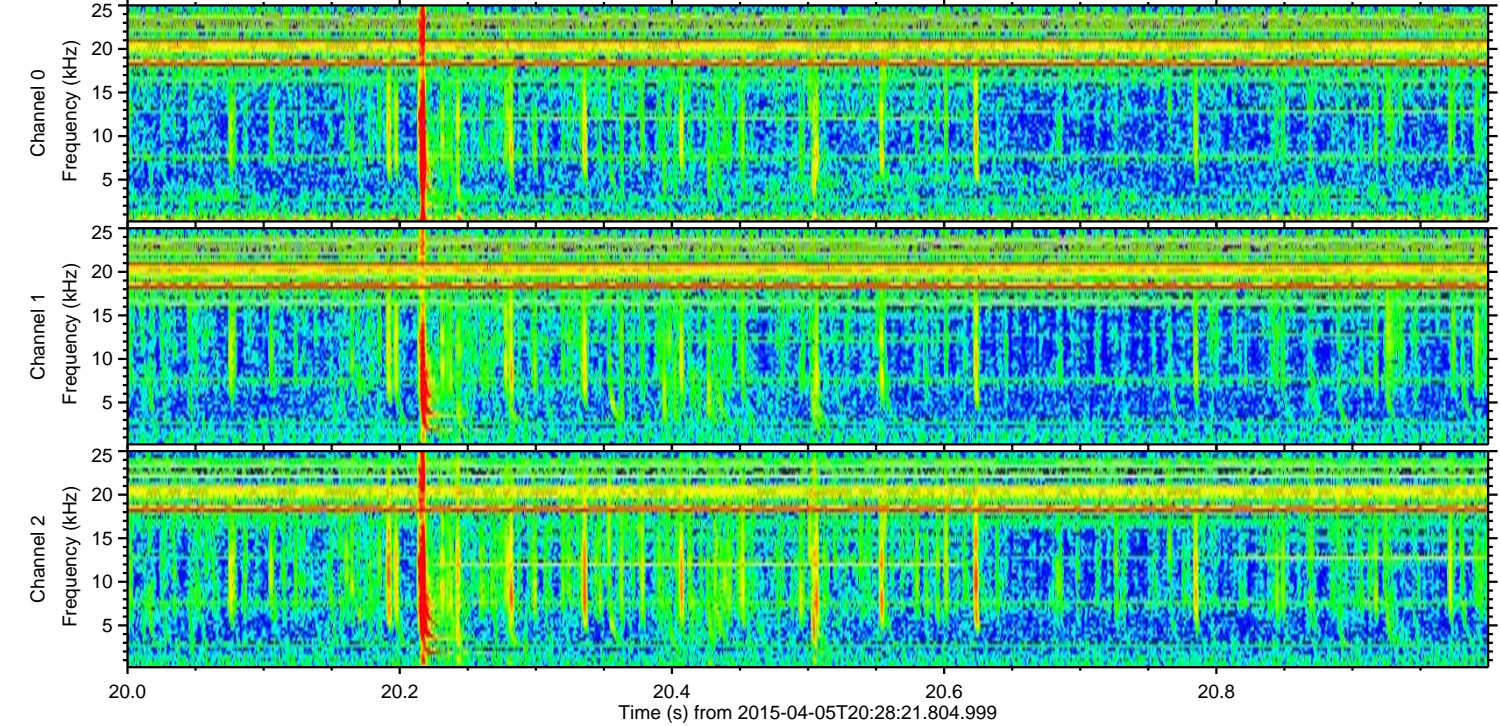
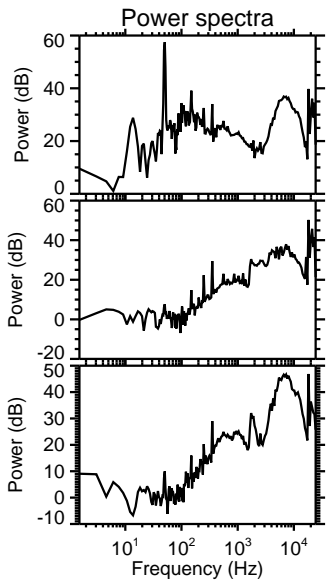
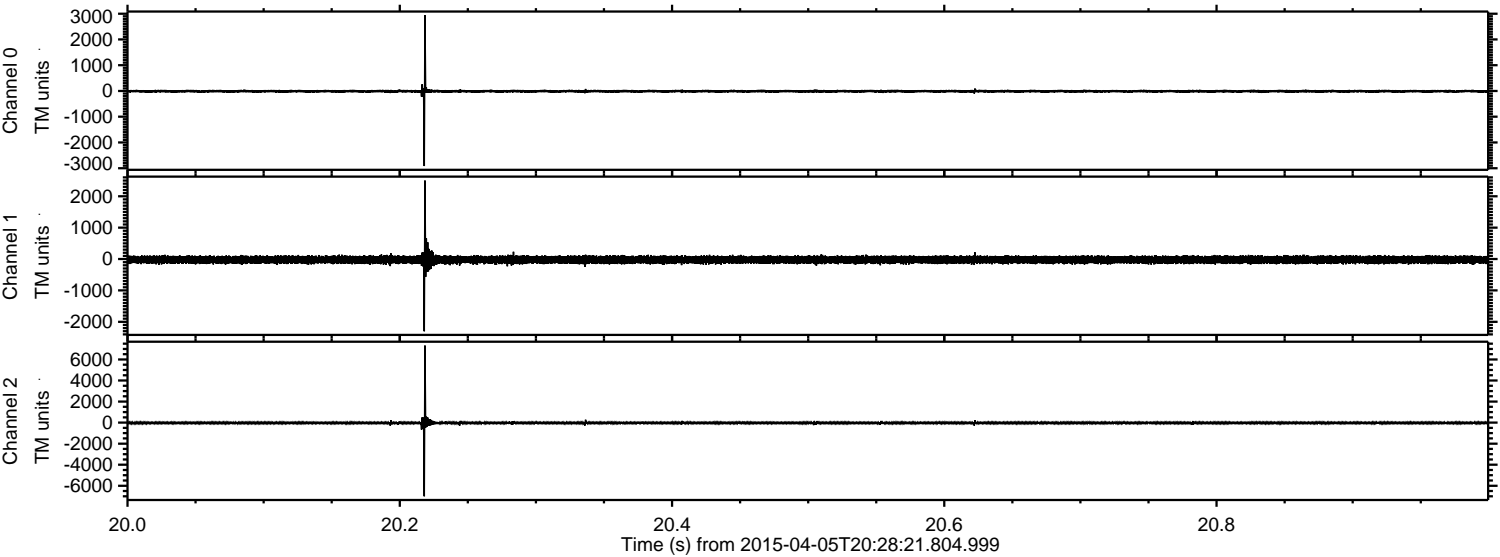
ELMAVAN 3D WAVEFORMS (Measured data sampled at 50 kHz) 49373 packets of 144 samples from 2015-04-05T20:28:21.804.999. Part 135/143

Processed Sun Apr 5 22:36:23 2015 by ELM ver.2012-10-06 from 001__elm20150405_202820__dat00.bin



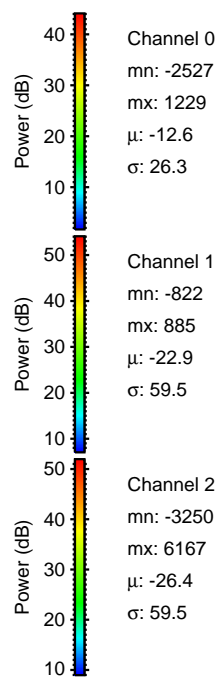
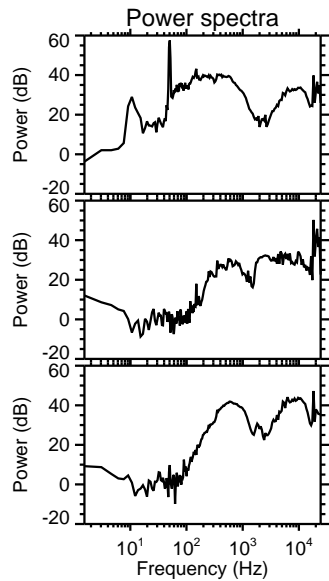
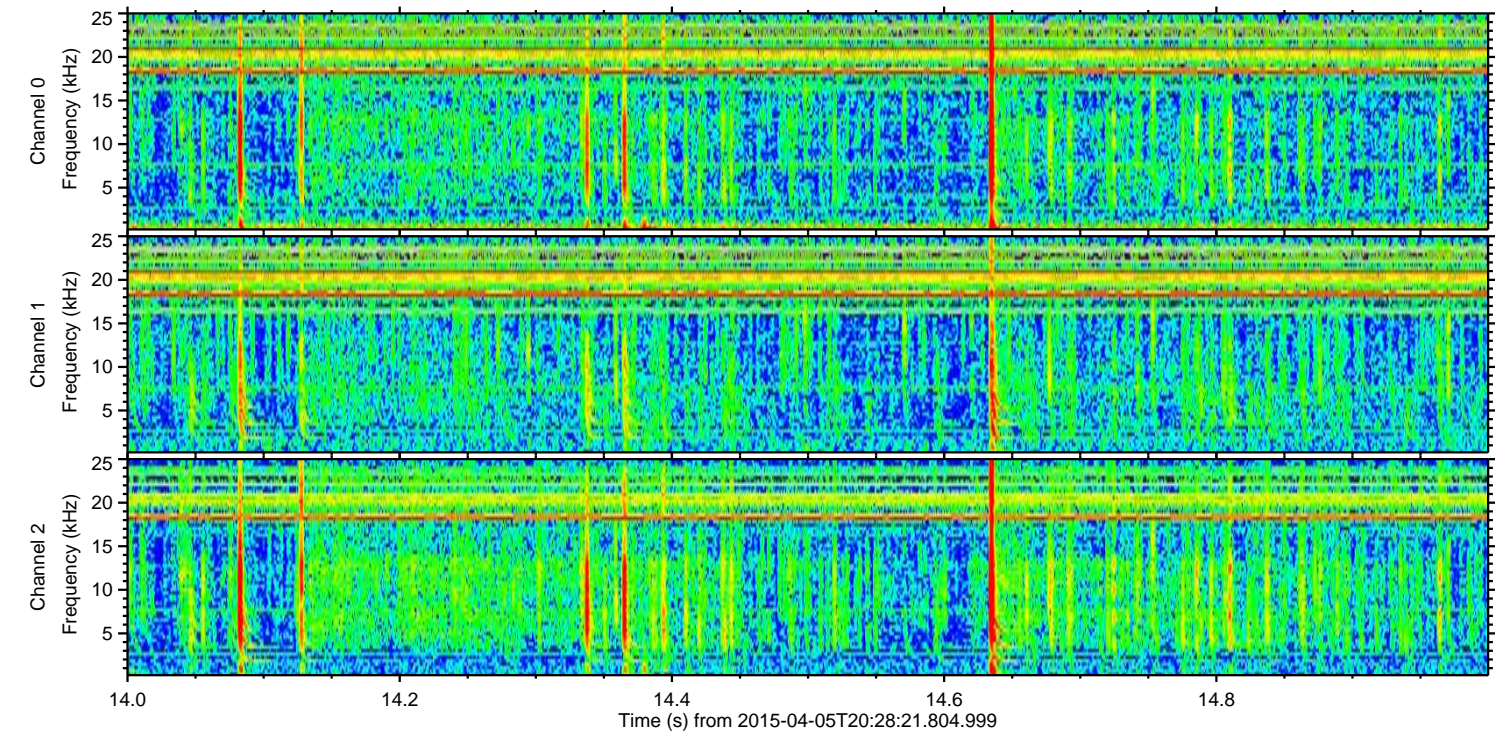
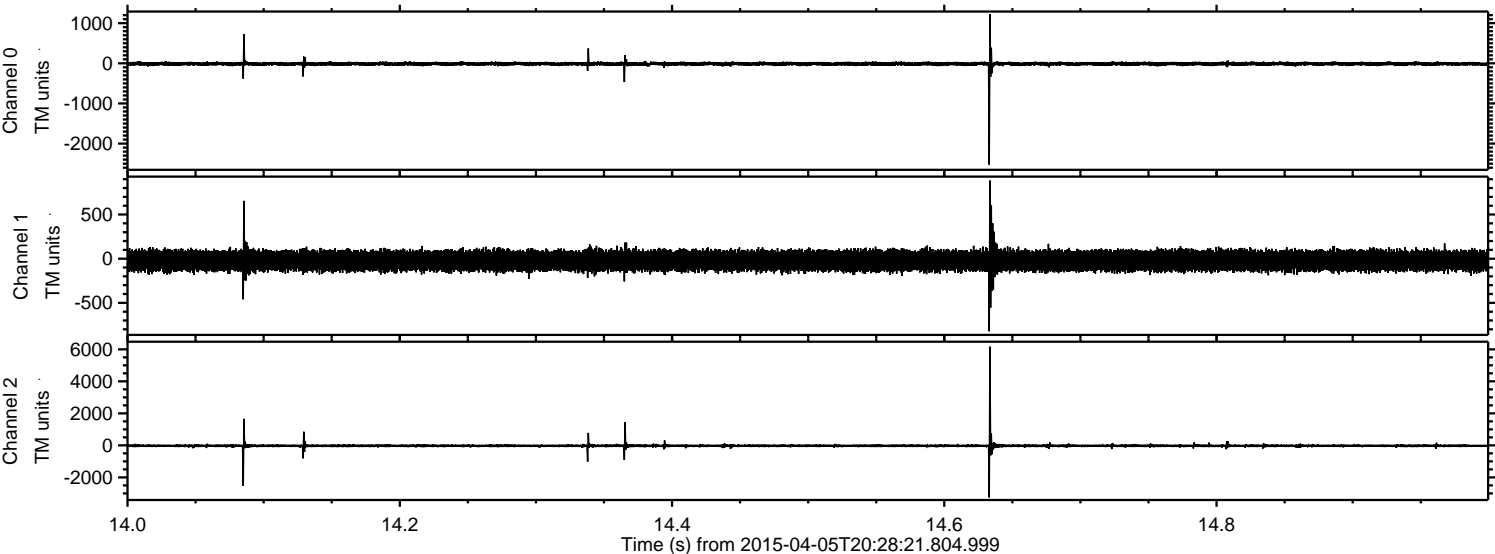
ELMAVAN 3D WAVEFORMS (Measured data sampled at 50 kHz) 49373 packets of 144 samples from 2015-04-05T20:28:21.804.999. Part 21/143

Processed Sun Apr 5 22:36:24 2015 by ELM ver.2012-10-06 from 001__elm20150405_202820__dat00.bin



ELMAVAN 3D WAVEFORMS (Measured data sampled at 50 kHz) 49373 packets of 144 samples from 2015-04-05T20:28:21.804.999. Part 15/143

Processed Sun Apr 5 22:36:25 2015 by ELM ver.2012-10-06 from 001__elm20150405_202820__dat00.bin



Power spectra

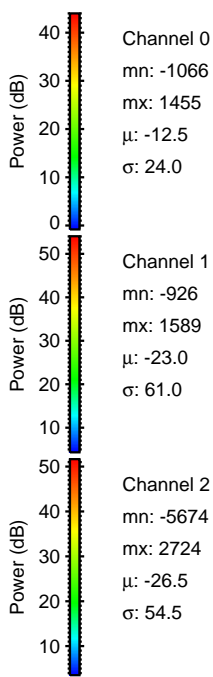
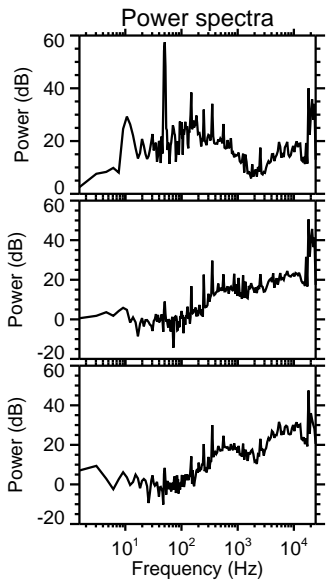
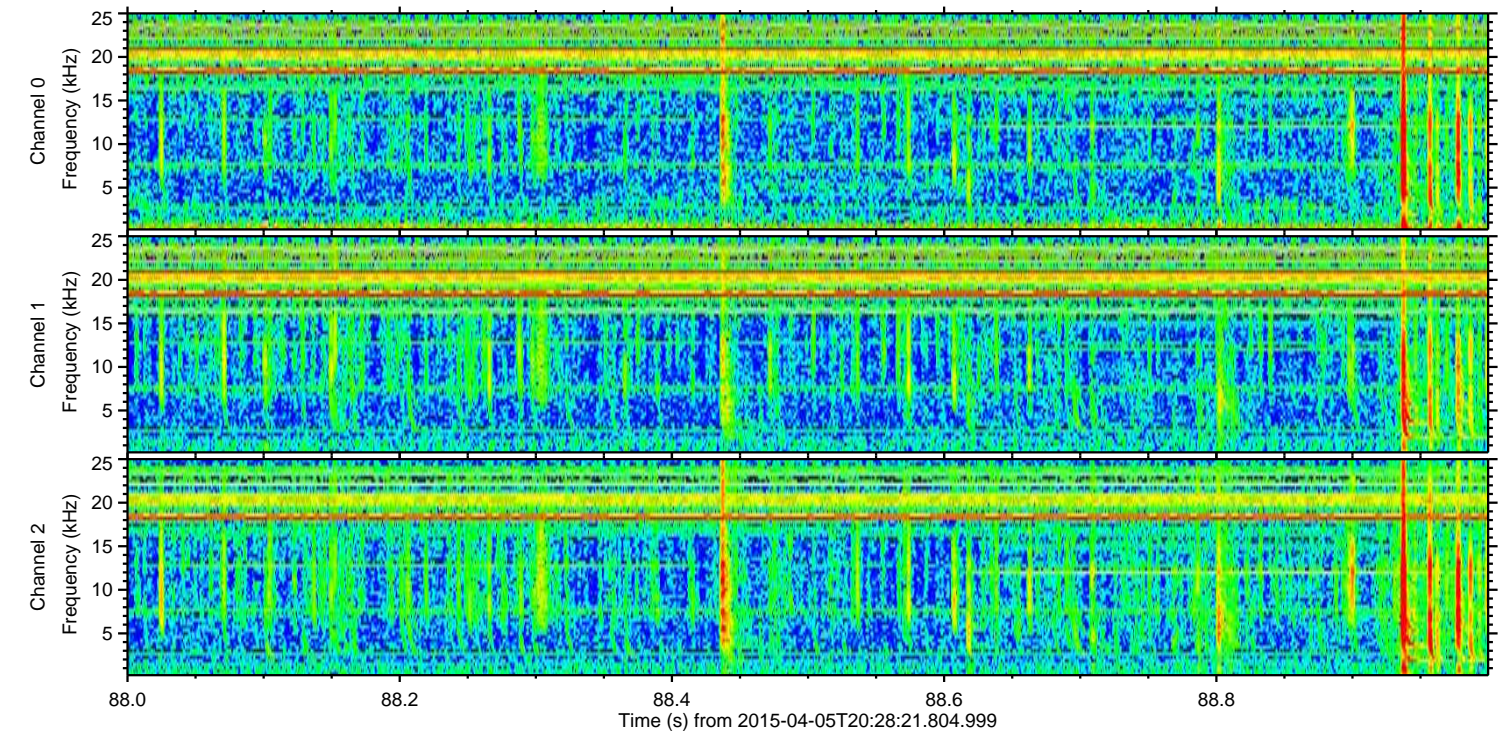
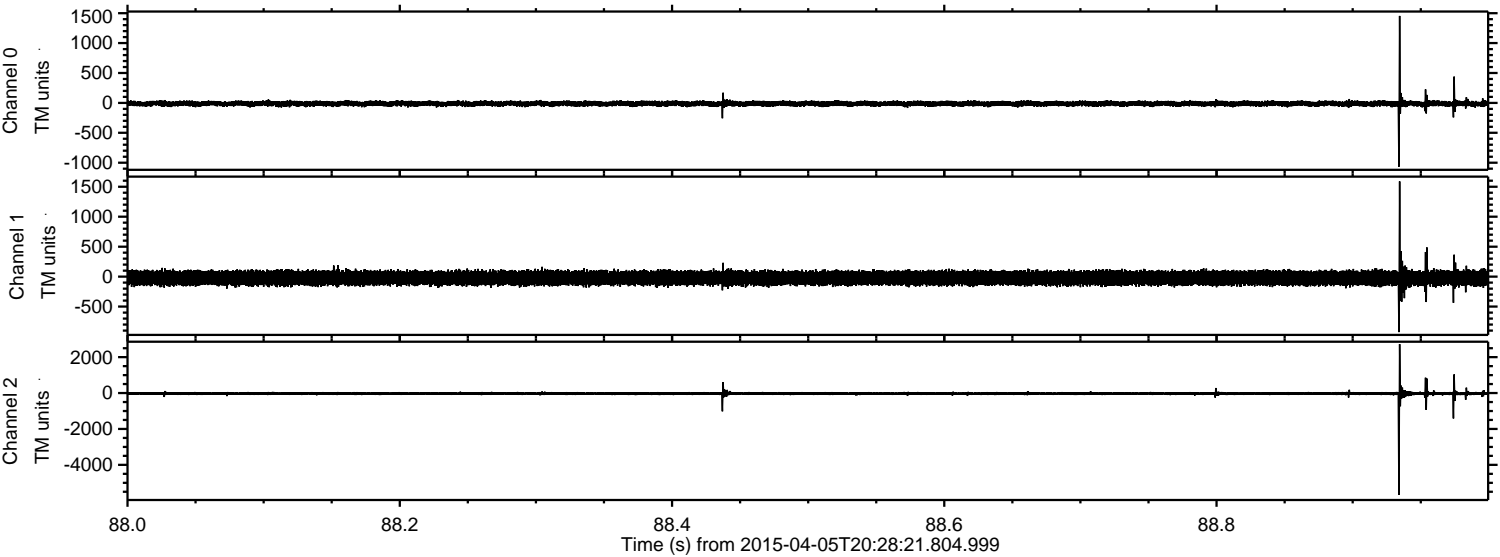
Channel 0
mn: -2527
mx: 1229
 μ : -12.6
 σ : 26.3

Channel 1
mn: -822
mx: 885
 μ : -22.9
 σ : 59.5

Channel 2
mn: -3250
mx: 6167
 μ : -26.4
 σ : 59.5

ELMAVAN 3D WAVEFORMS (Measured data sampled at 50 kHz) 49373 packets of 144 samples from 2015-04-05T20:28:21.804.999. Part 89/143

Processed Sun Apr 5 22:36:26 2015 by ELM ver.2012-10-06 from 001__elm20150405_202820__dat00.bin

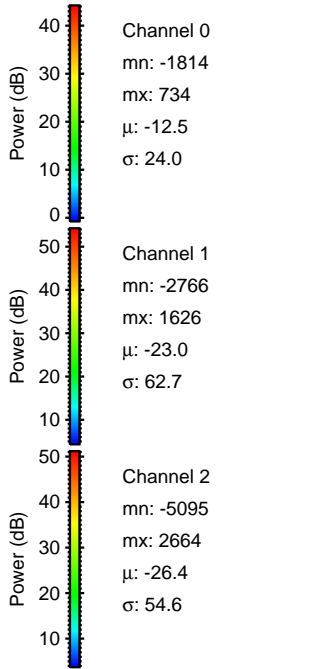
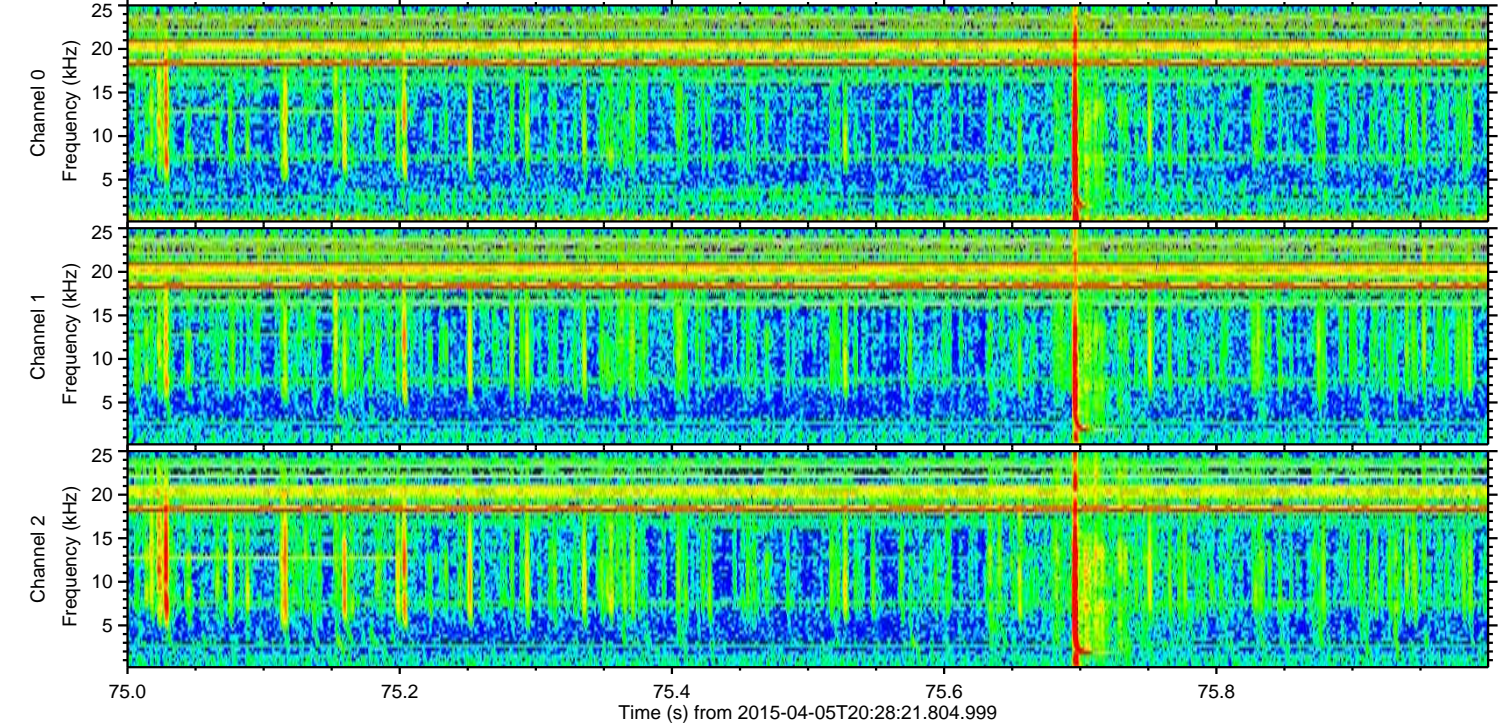
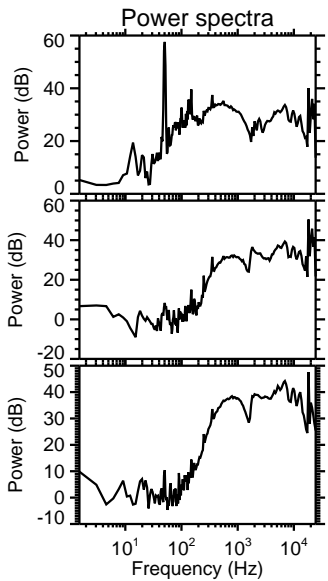
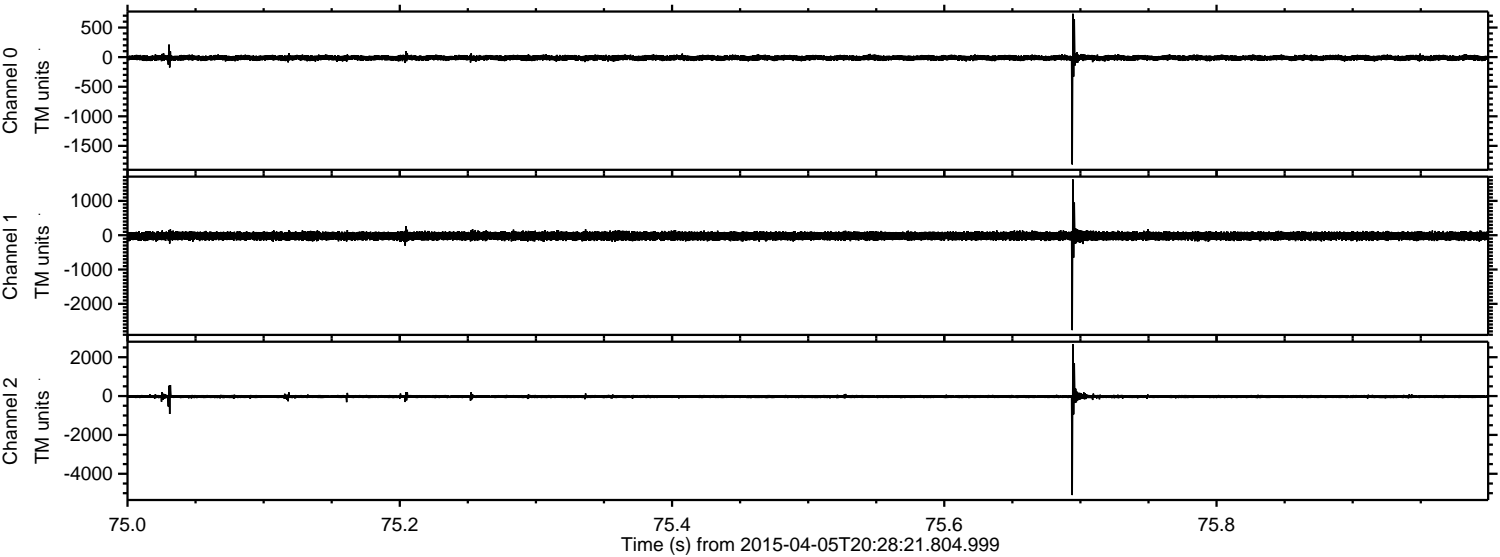


Channel 0
mn: -1066
mx: 1455
 μ : -12.5
 σ : 24.0

Channel 1
mn: -926
mx: 1589
 μ : -23.0
 σ : 61.0

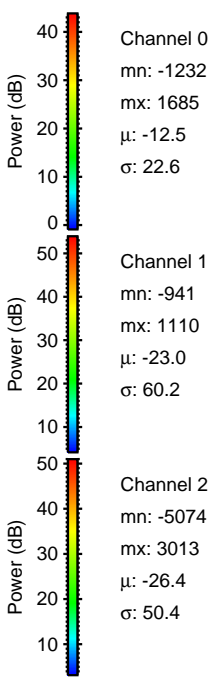
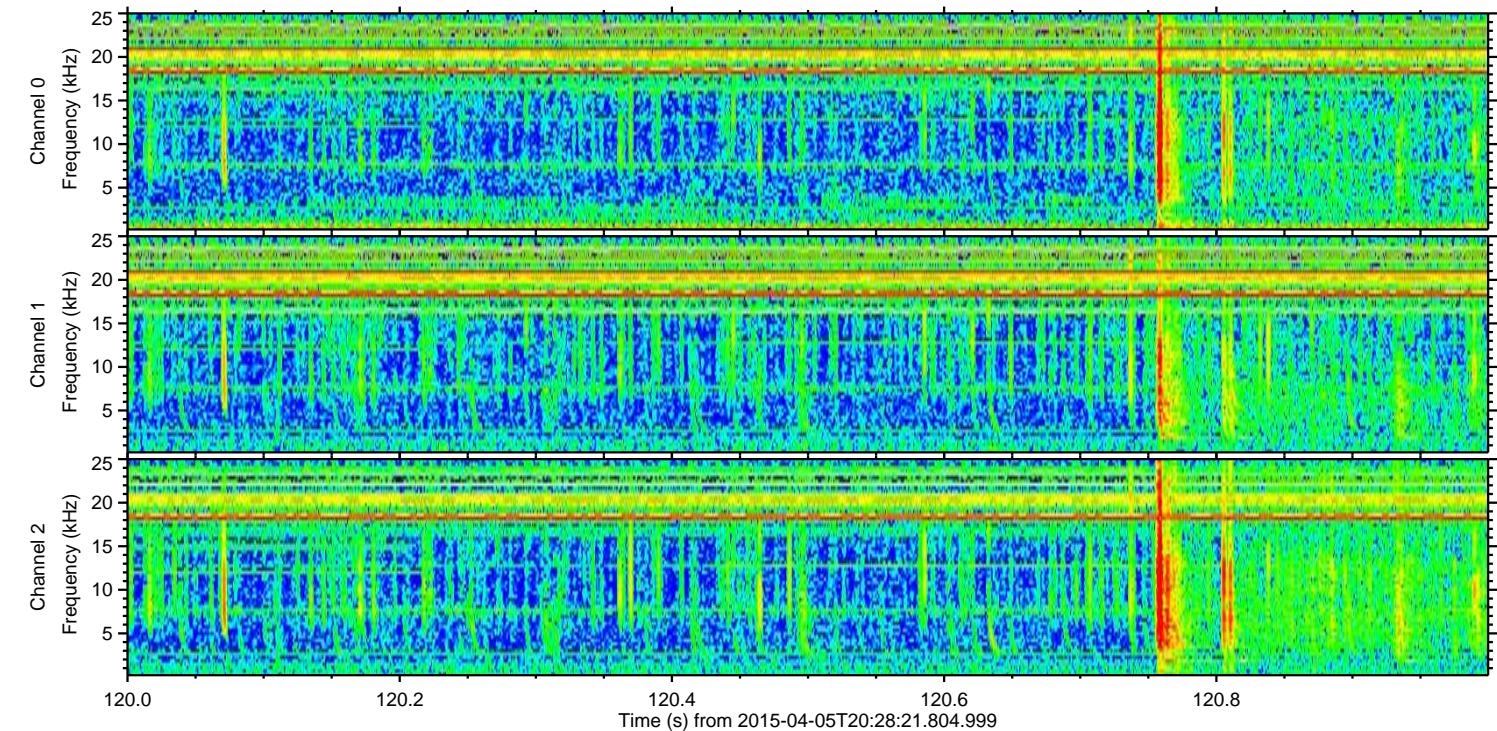
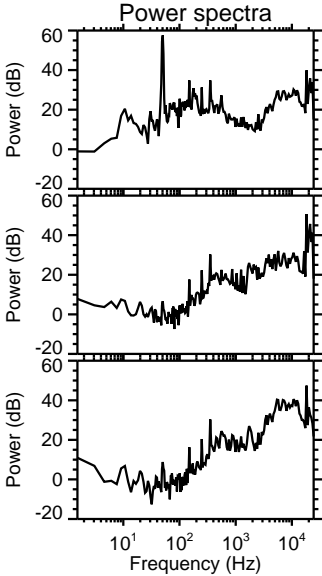
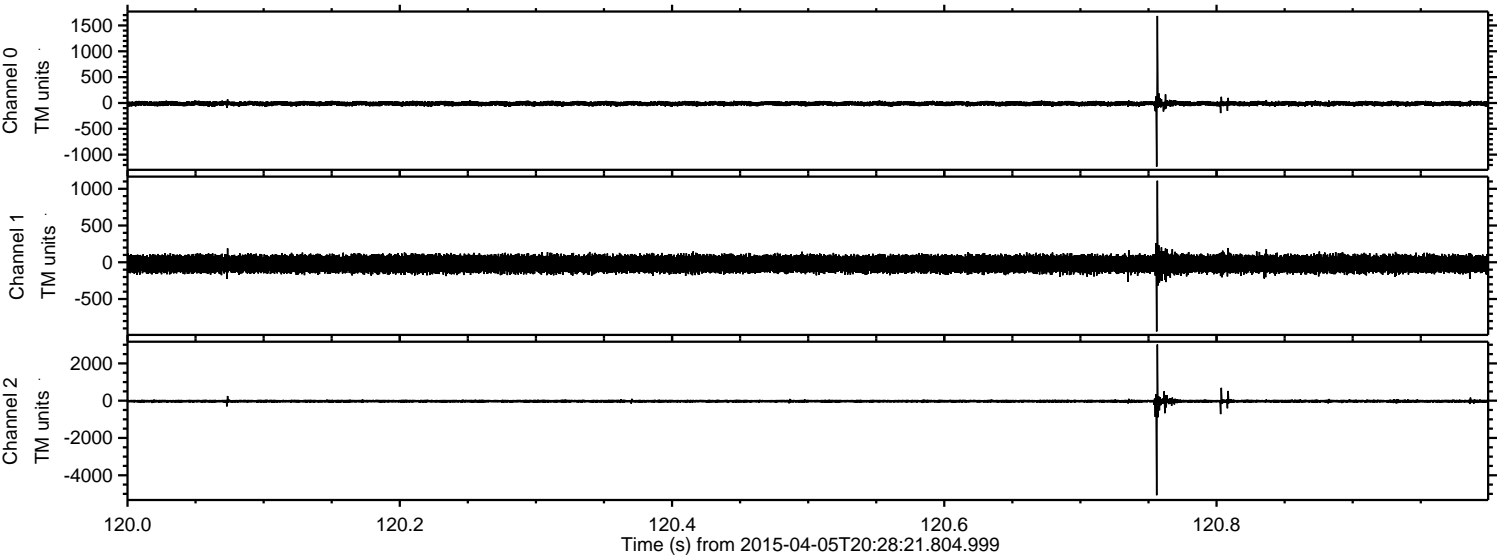
Channel 2
mn: -5674
mx: 2724
 μ : -26.5
 σ : 54.5

Processed Sun Apr 5 22:36:28 2015 by ELM ver.2012-10-06 from 001__elm20150405_202820__dat00.bin



ELMAVAN 3D WAVEFORMS (Measured data sampled at 50 kHz) 49373 packets of 144 samples from 2015-04-05T20:28:21.804.999. Part 121/143

Processed Sun Apr 5 22:36:29 2015 by ELM ver.2012-10-06 from 001__elm20150405_202820__dat00.bin



ELMAVAN 3D WAVEFORMS (Measured data sampled at 50 kHz) 49373 packets of 144 samples from 2015-04-05T20:28:21.804.999. Part 75/143

Processed Sun Apr 5 22:36:30 2015 by ELM ver.2012-10-06 from 001__elm20150405_202820__dat00.bin

