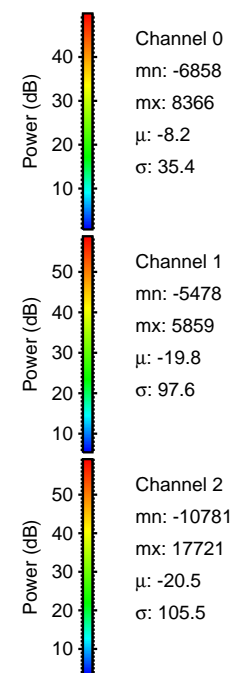
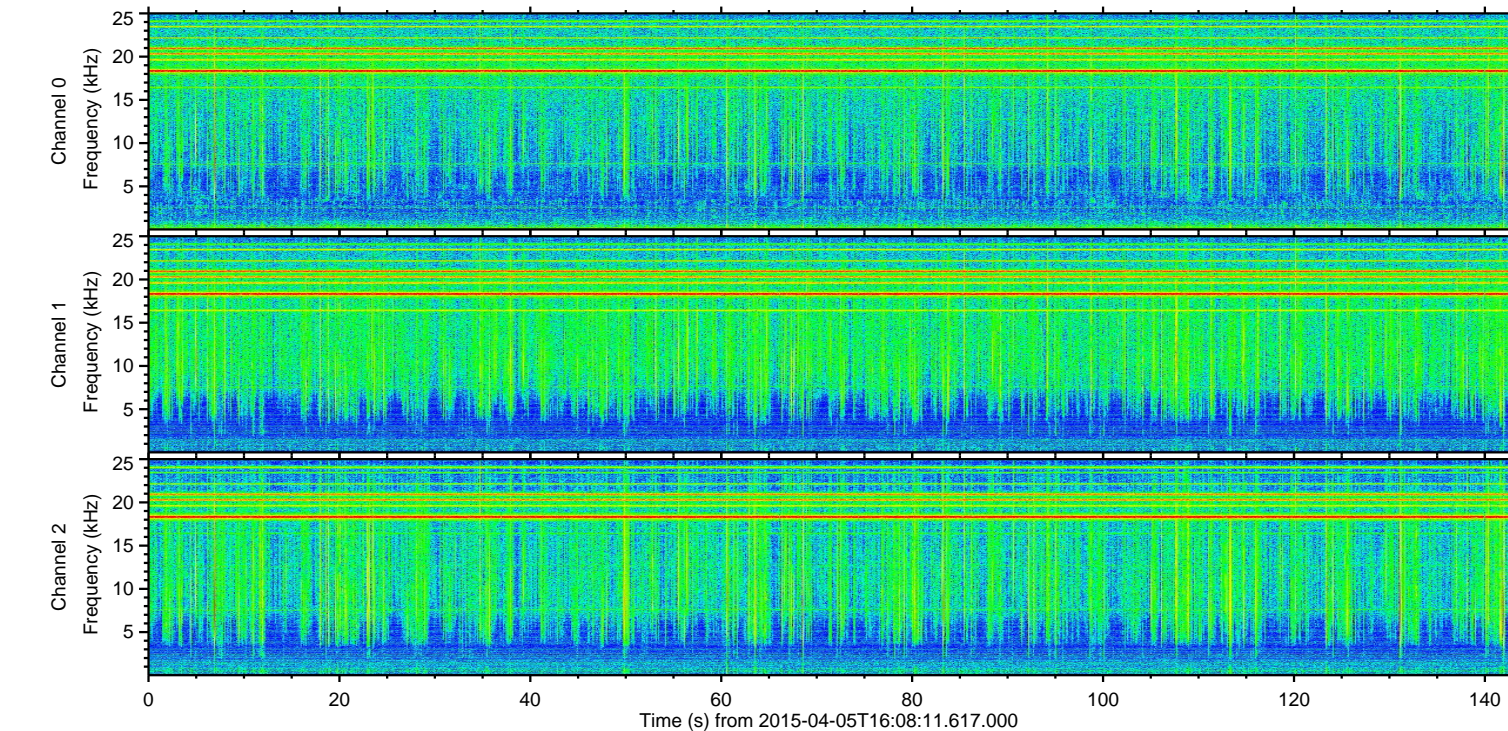
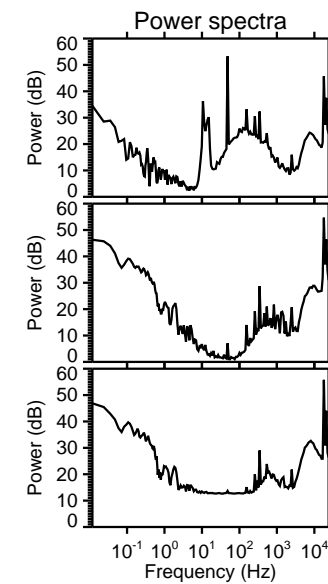
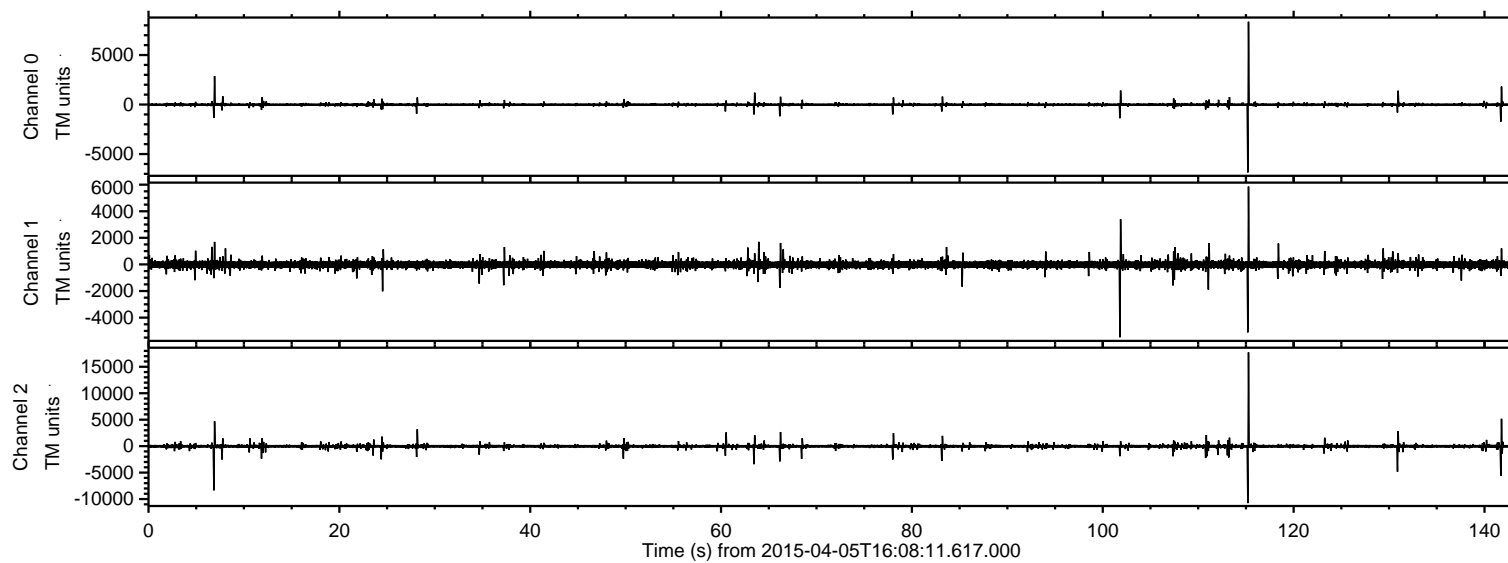


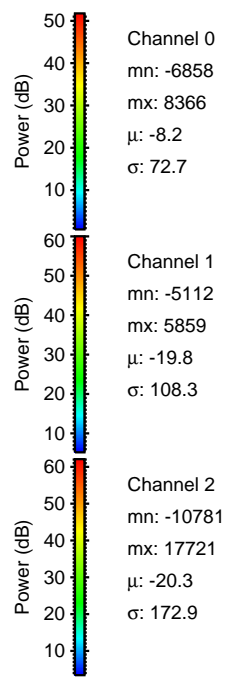
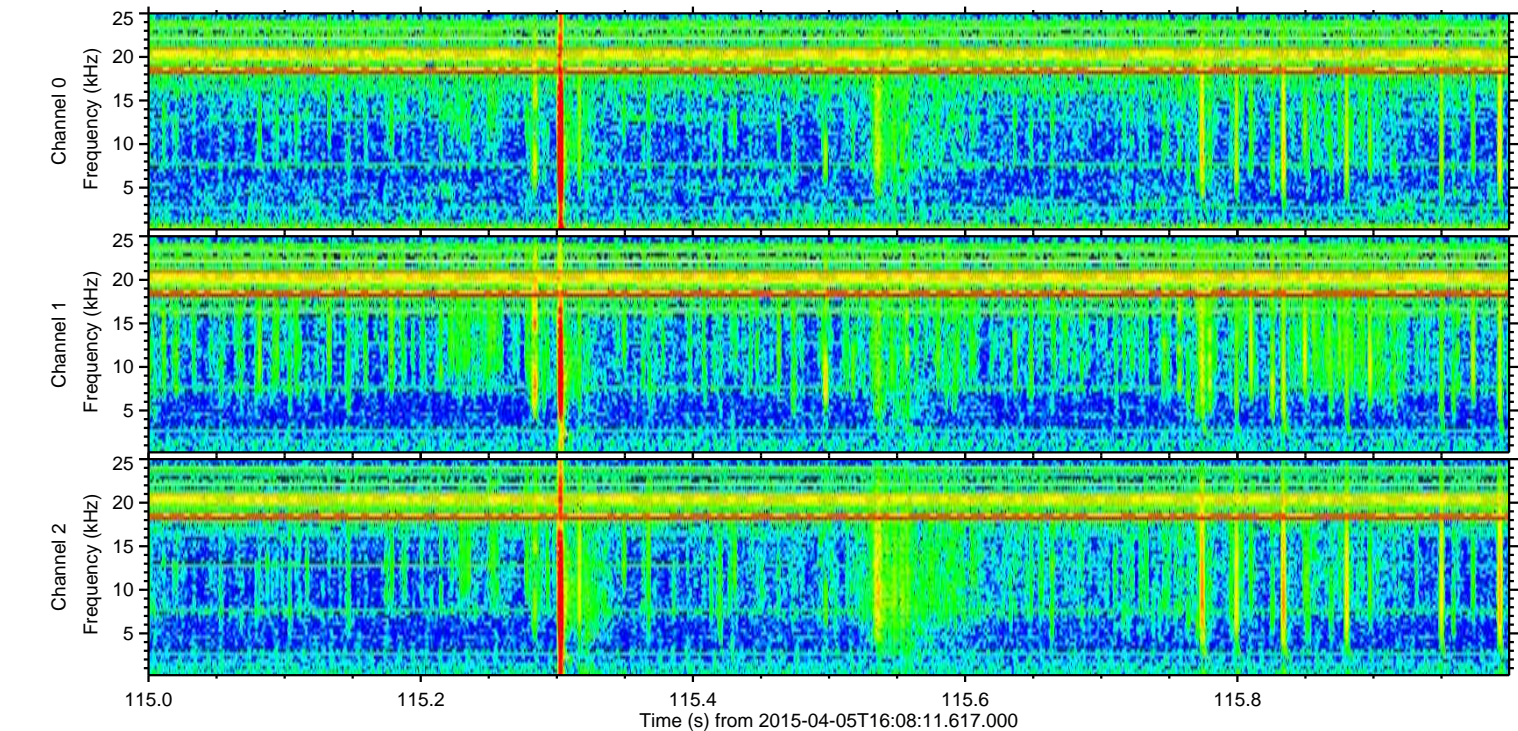
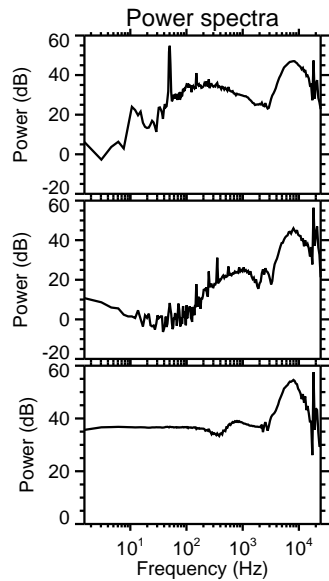
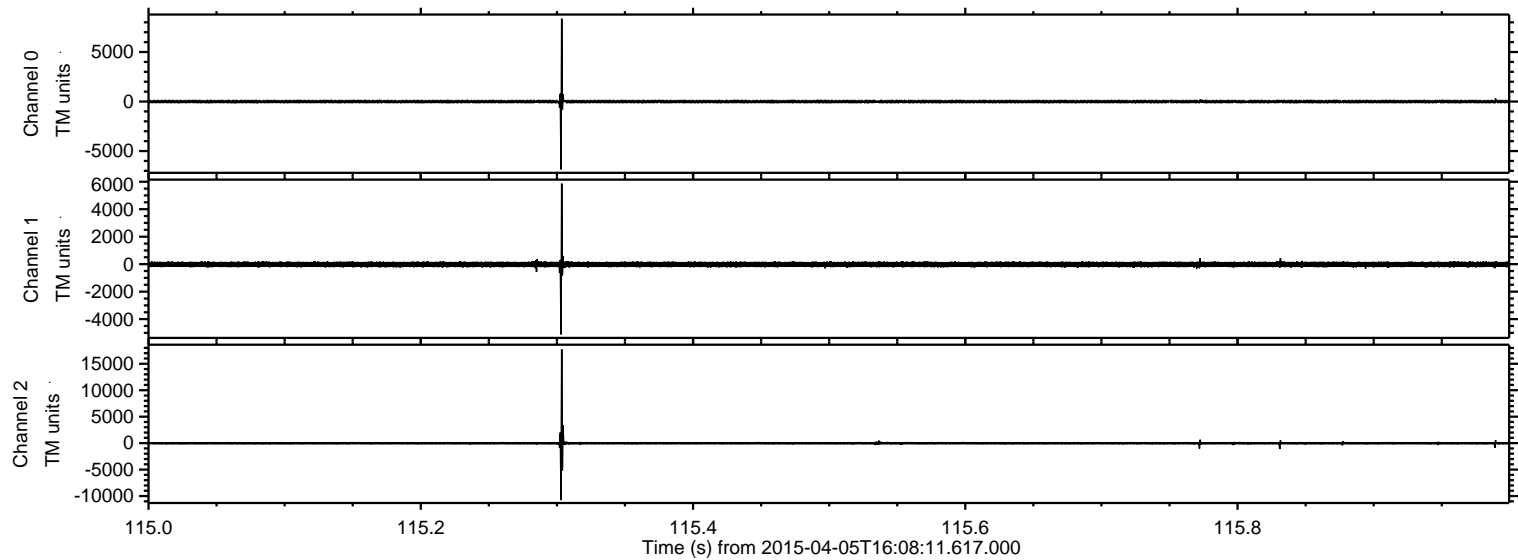
ELMAVAN 3D WAVEFORMS (Measured data sampled at 50 kHz) 49509 packets of 144 samples from 2015-04-05T16:08:11.617.000.

Processed Sun Apr 5 18:41:03 2015 by ELM ver.2012-10-06 from 001__elm20150405_160810__dat00.bin

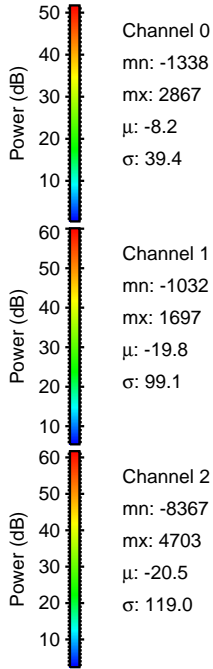
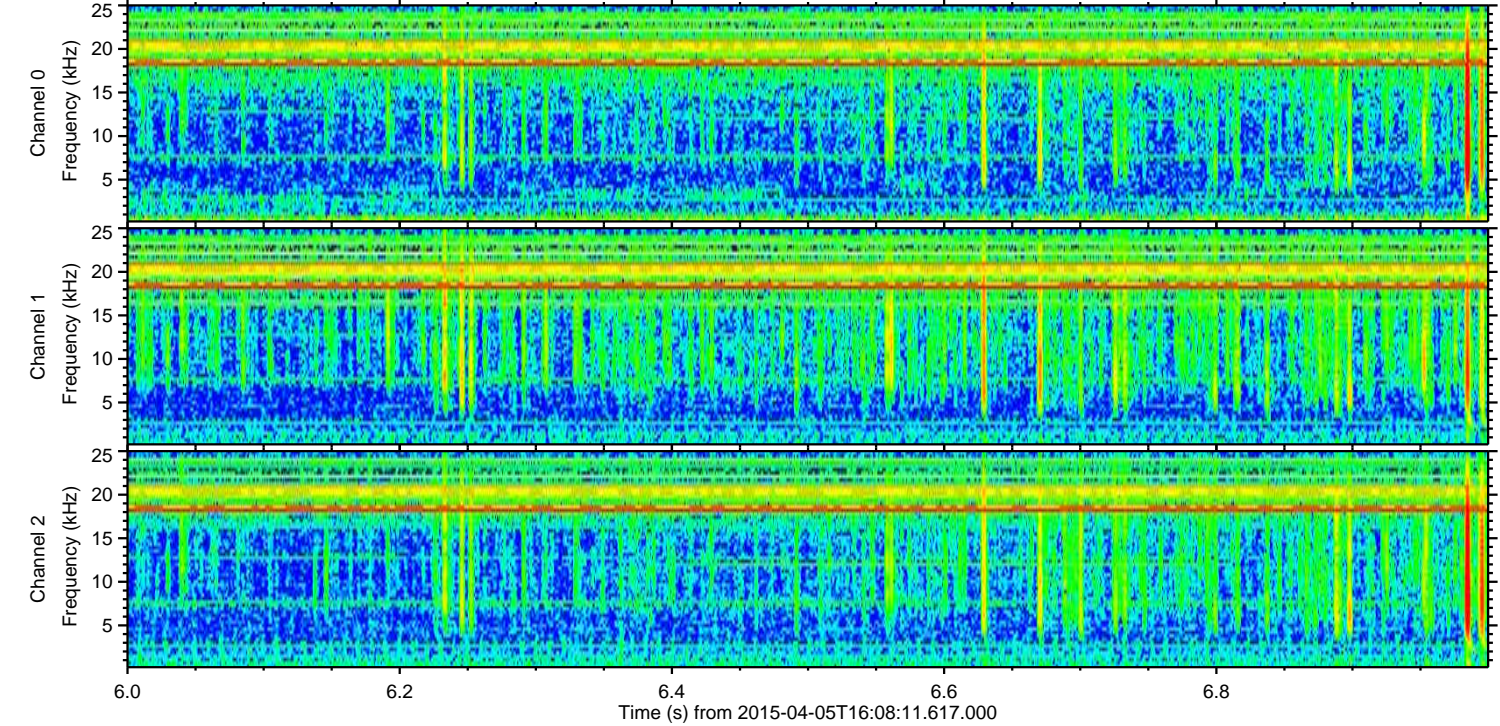
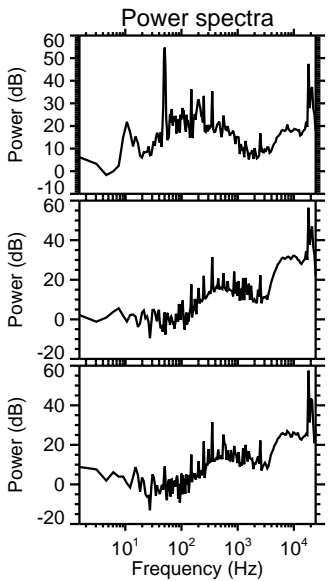
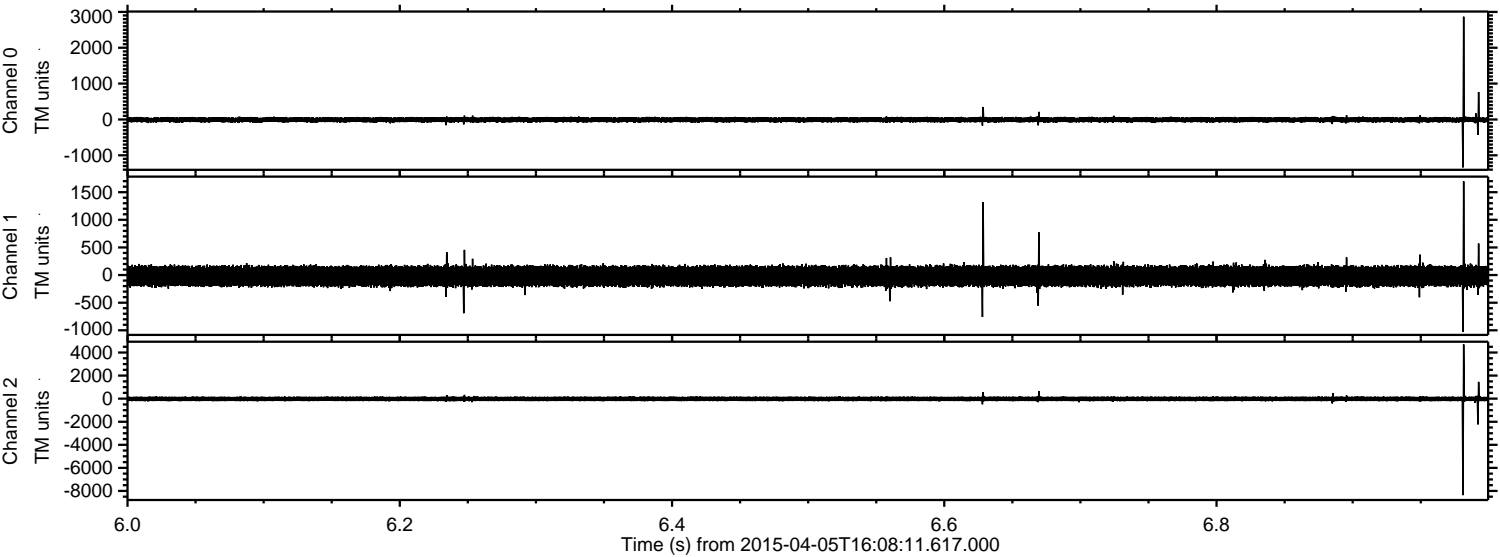


ELMAVAN 3D WAVEFORMS (Measured data sampled at 50 kHz) 49509 packets of 144 samples from 2015-04-05T16:08:11.617.000. Part 116/143

Processed Sun Apr 5 18:41:17 2015 by ELM ver.2012-10-06 from 001__elm20150405_160810__dat00.bin

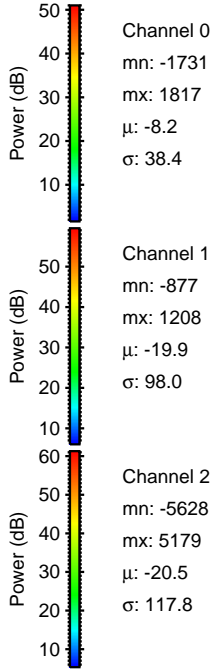
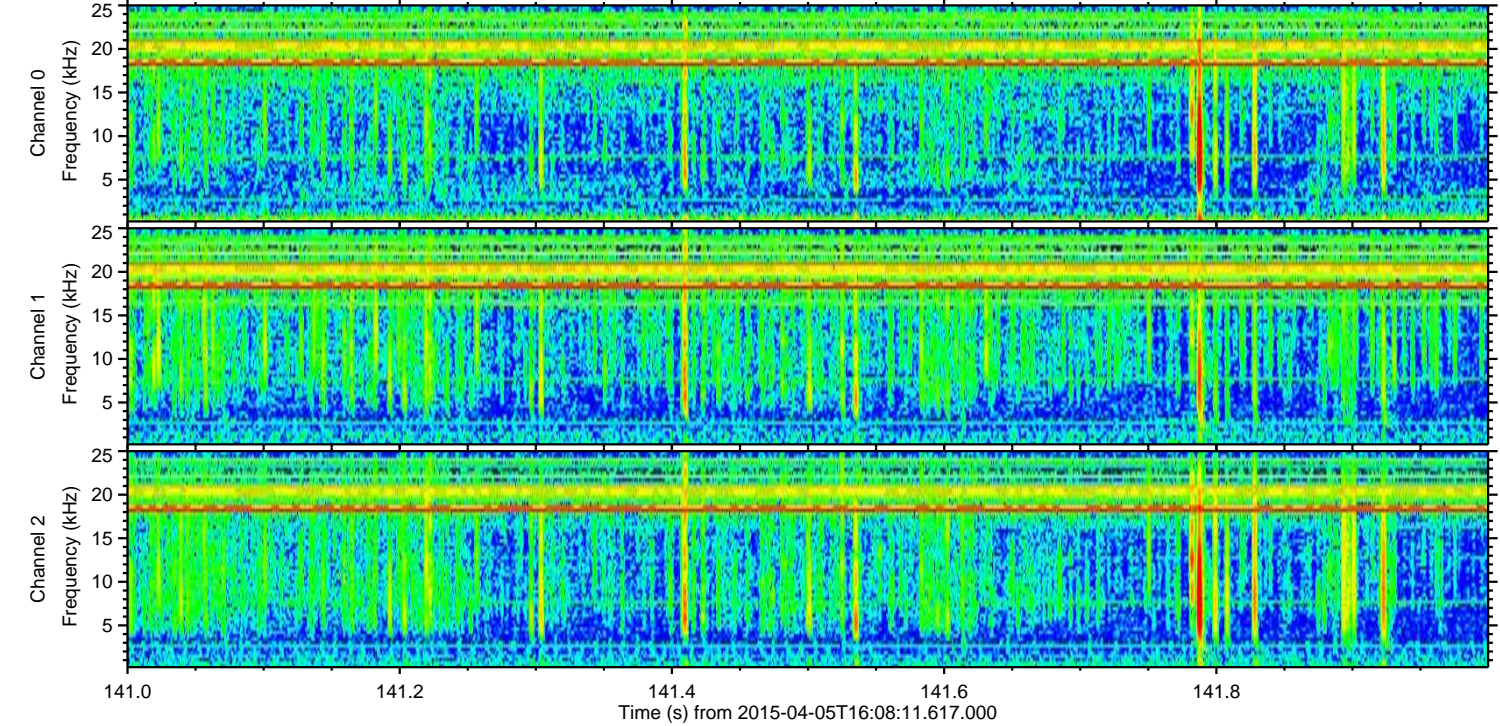
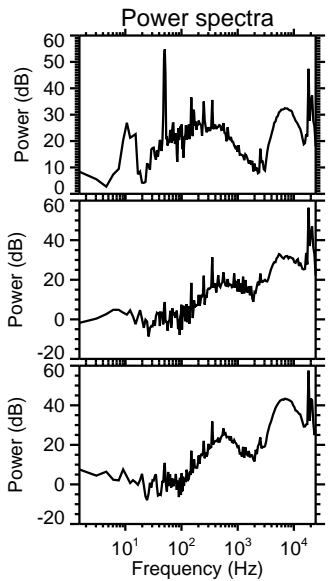
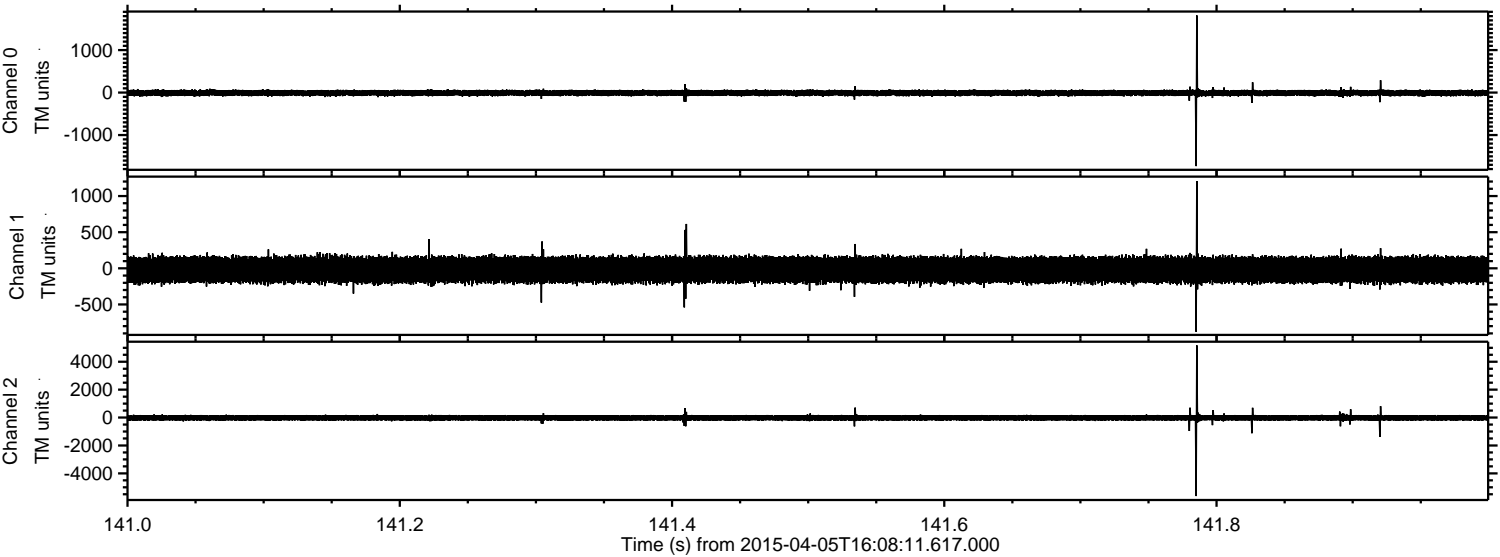


Processed Sun Apr 5 18:41:18 2015 by ELM ver.2012-10-06 from 001__elm20150405_160810__dat00.bin



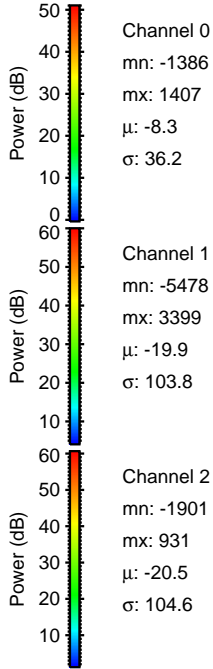
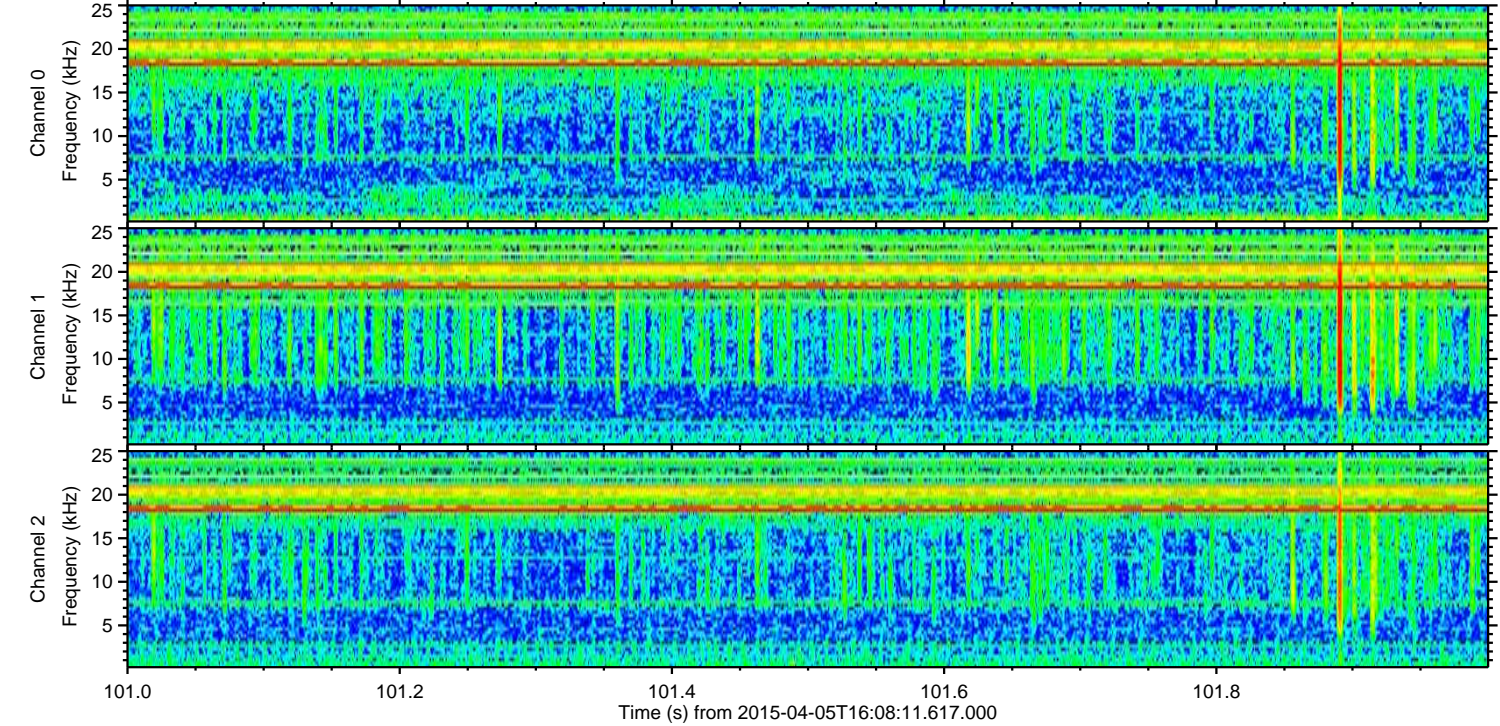
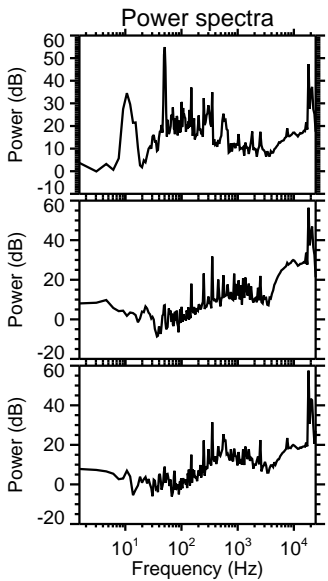
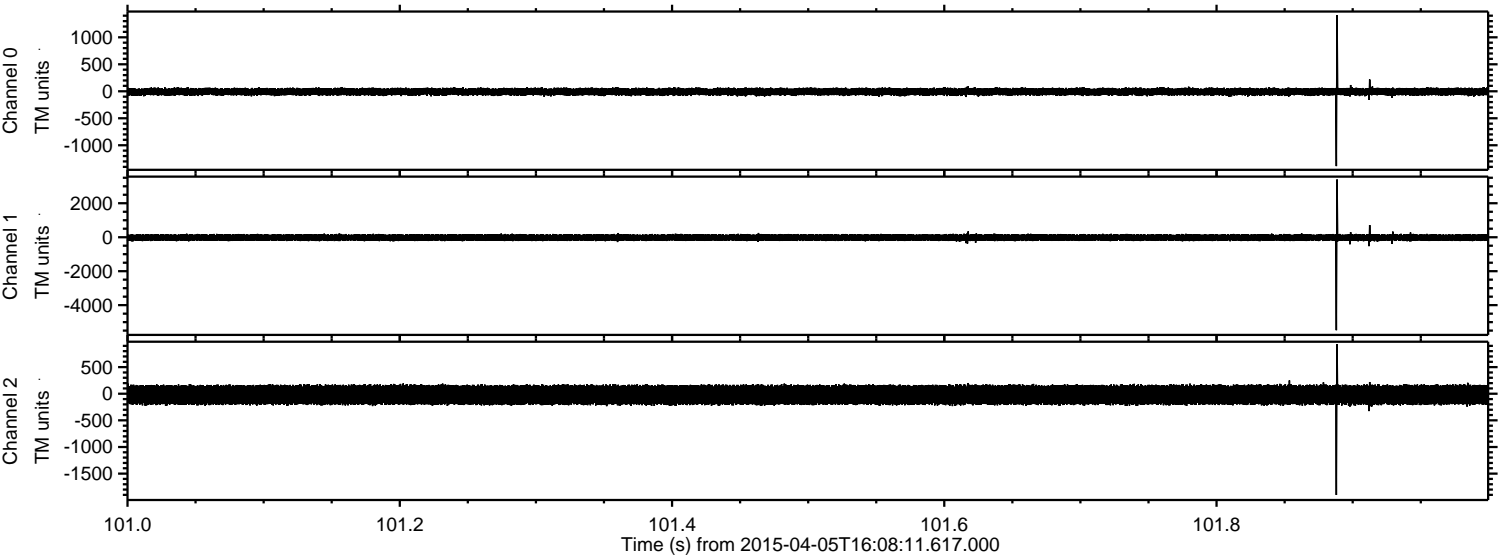
ELMAVAN 3D WAVEFORMS (Measured data sampled at 50 kHz) 49509 packets of 144 samples from 2015-04-05T16:08:11.617.000. Part 142/143

Processed Sun Apr 5 18:41:19 2015 by ELM ver.2012-10-06 from 001__elm20150405_160810__dat00.bin



ELMAVAN 3D WAVEFORMS (Measured data sampled at 50 kHz) 49509 packets of 144 samples from 2015-04-05T16:08:11.617.000. Part 102/143

Processed Sun Apr 5 18:41:20 2015 by ELM ver.2012-10-06 from 001__elm20150405_160810__dat00.bin



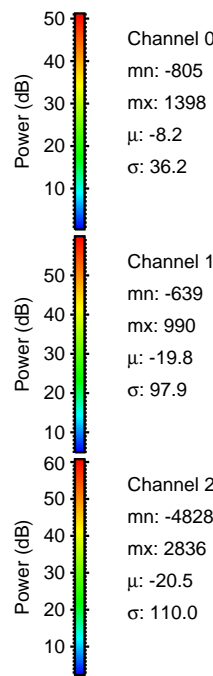
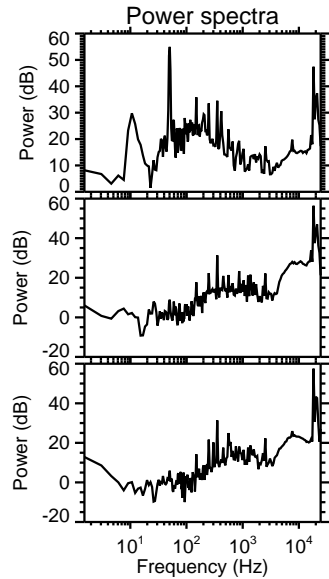
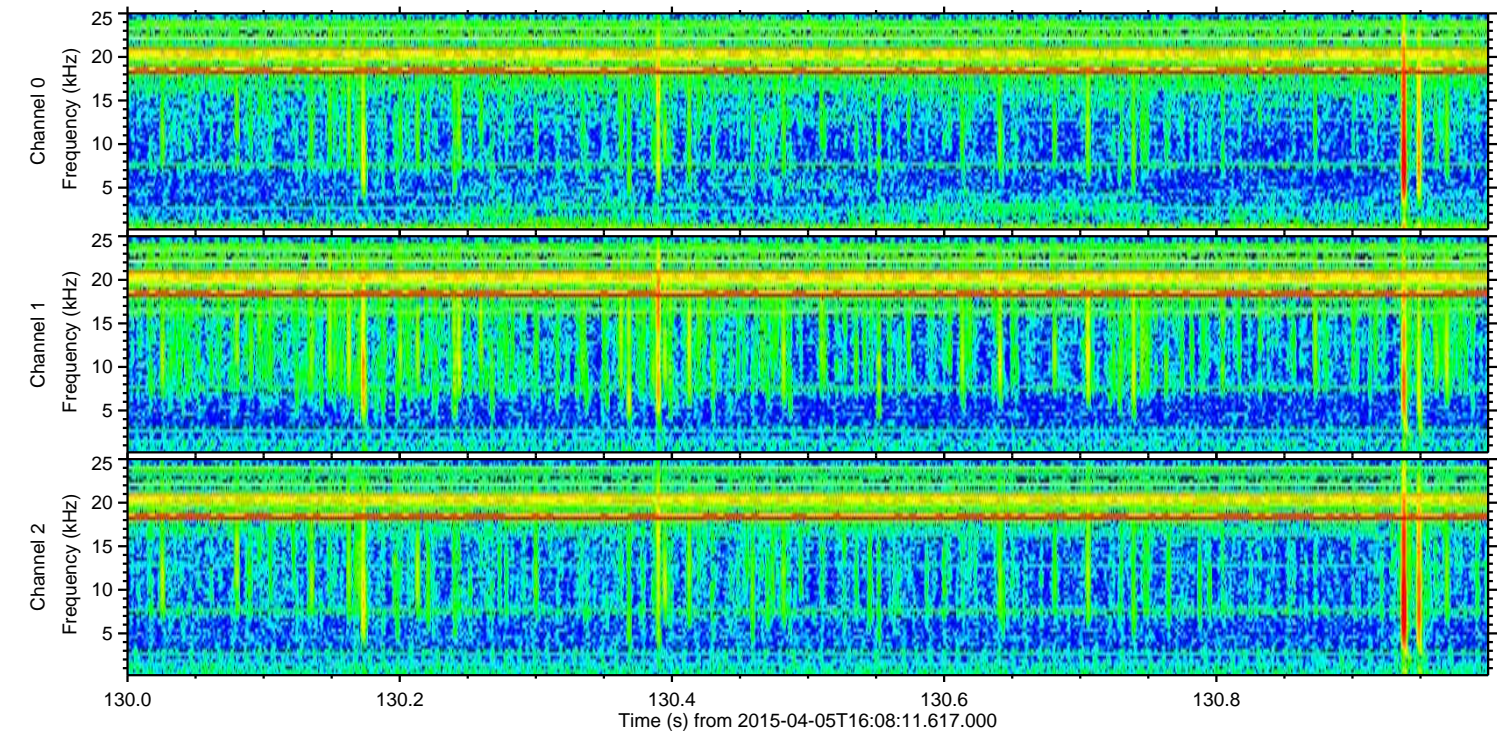
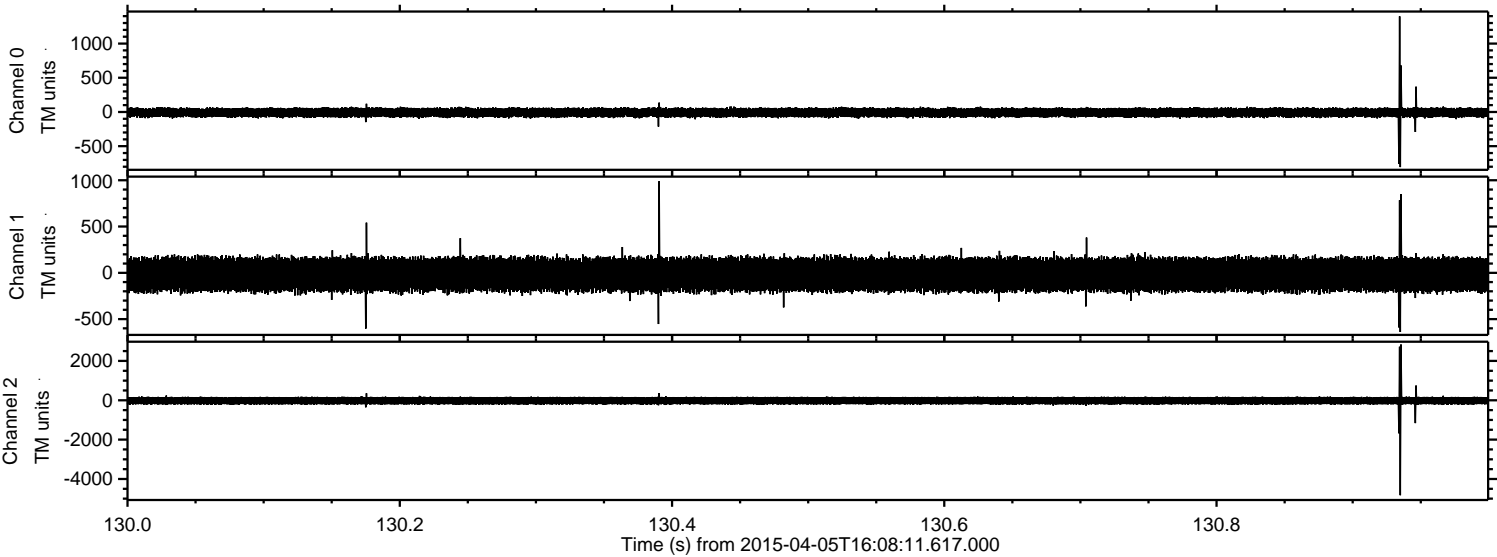
Channel 0
mn: -1386
mx: 1407
 μ : -8.3
 σ : 36.2

Channel 1
mn: -5478
mx: 3399
 μ : -19.9
 σ : 103.8

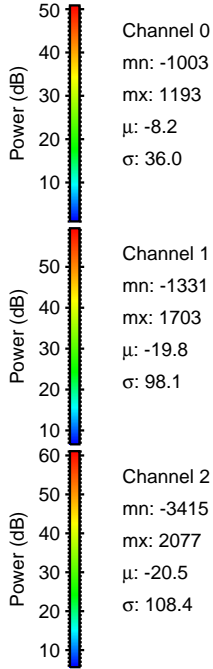
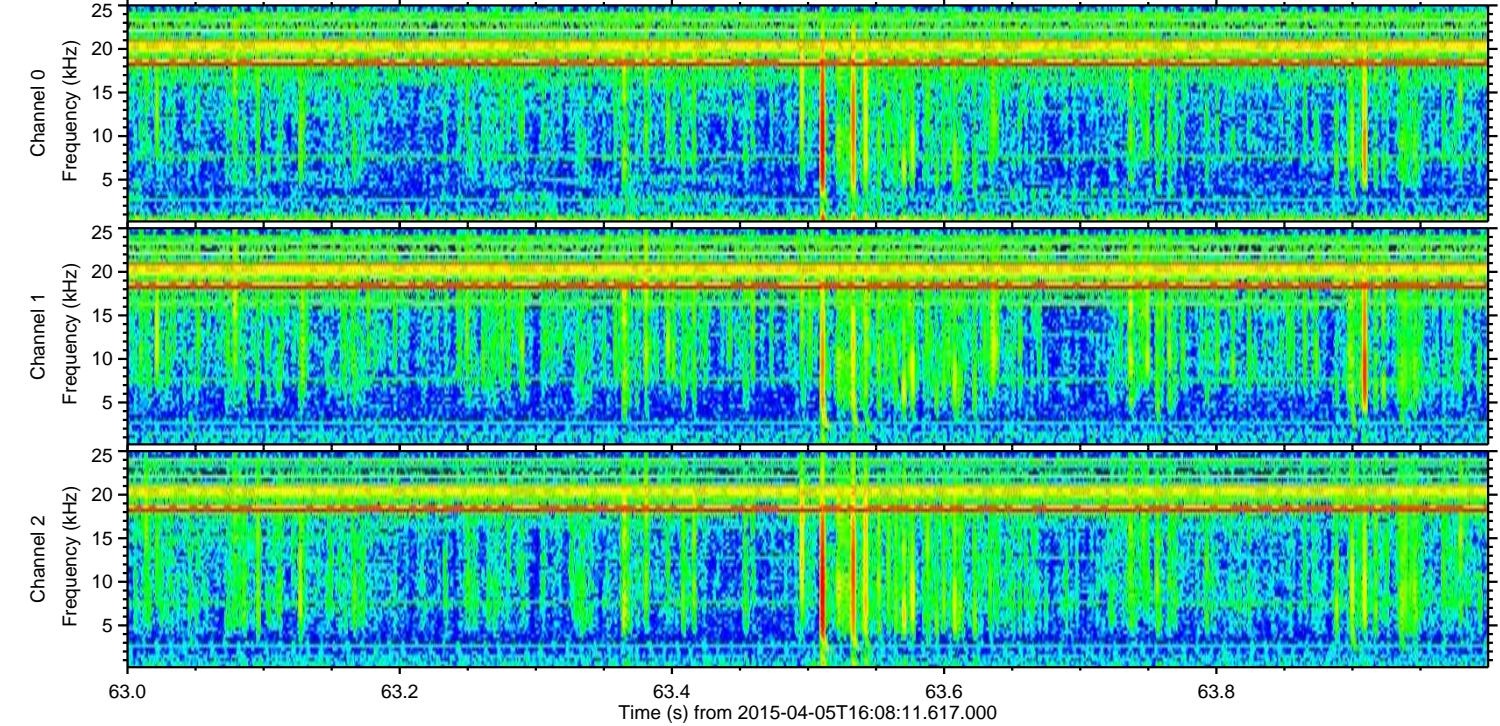
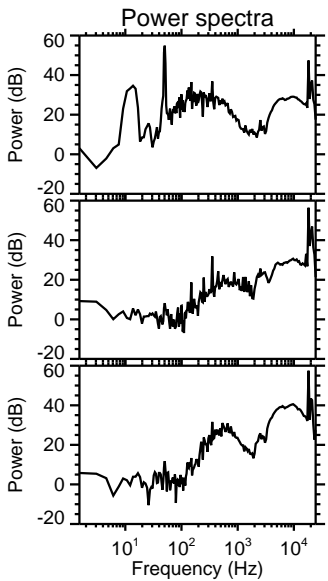
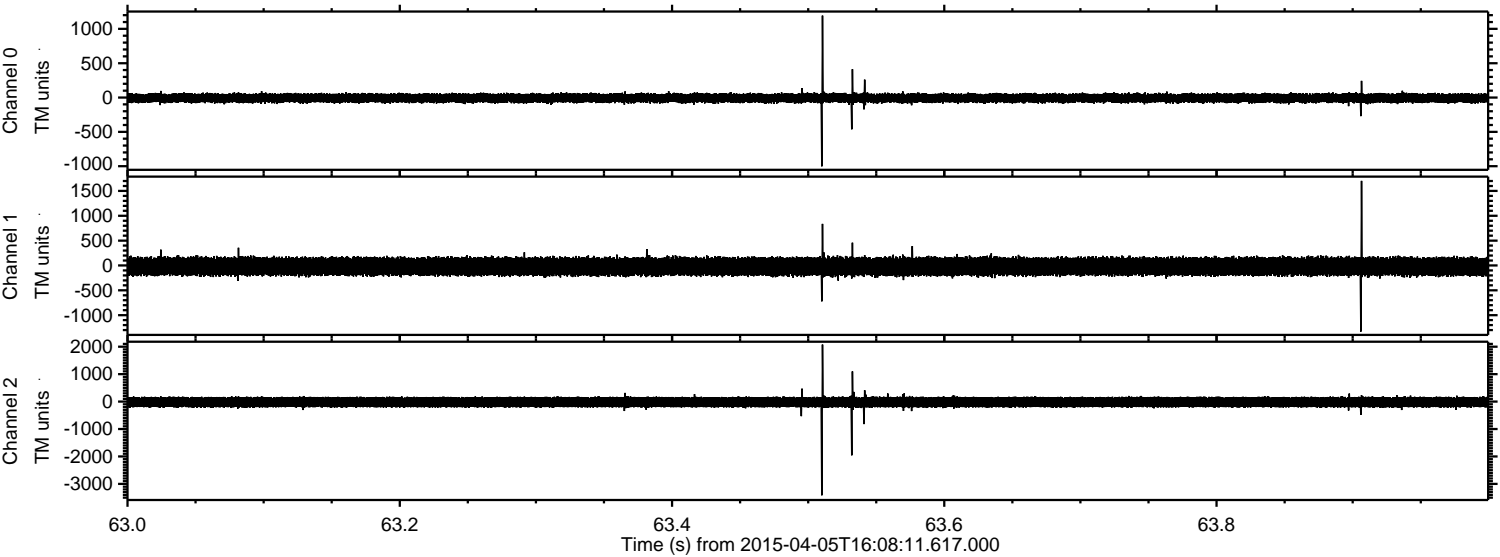
Channel 2
mn: -1901
mx: 931
 μ : -20.5
 σ : 104.6

ELMAVAN 3D WAVEFORMS (Measured data sampled at 50 kHz) 49509 packets of 144 samples from 2015-04-05T16:08:11.617.000. Part 131/143

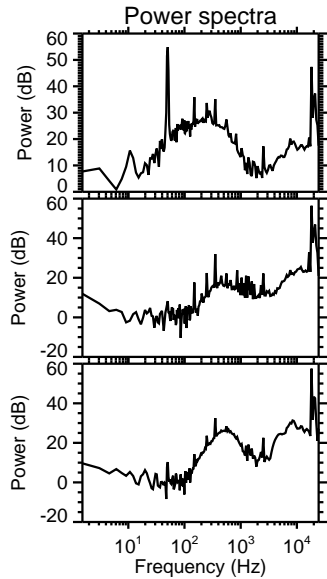
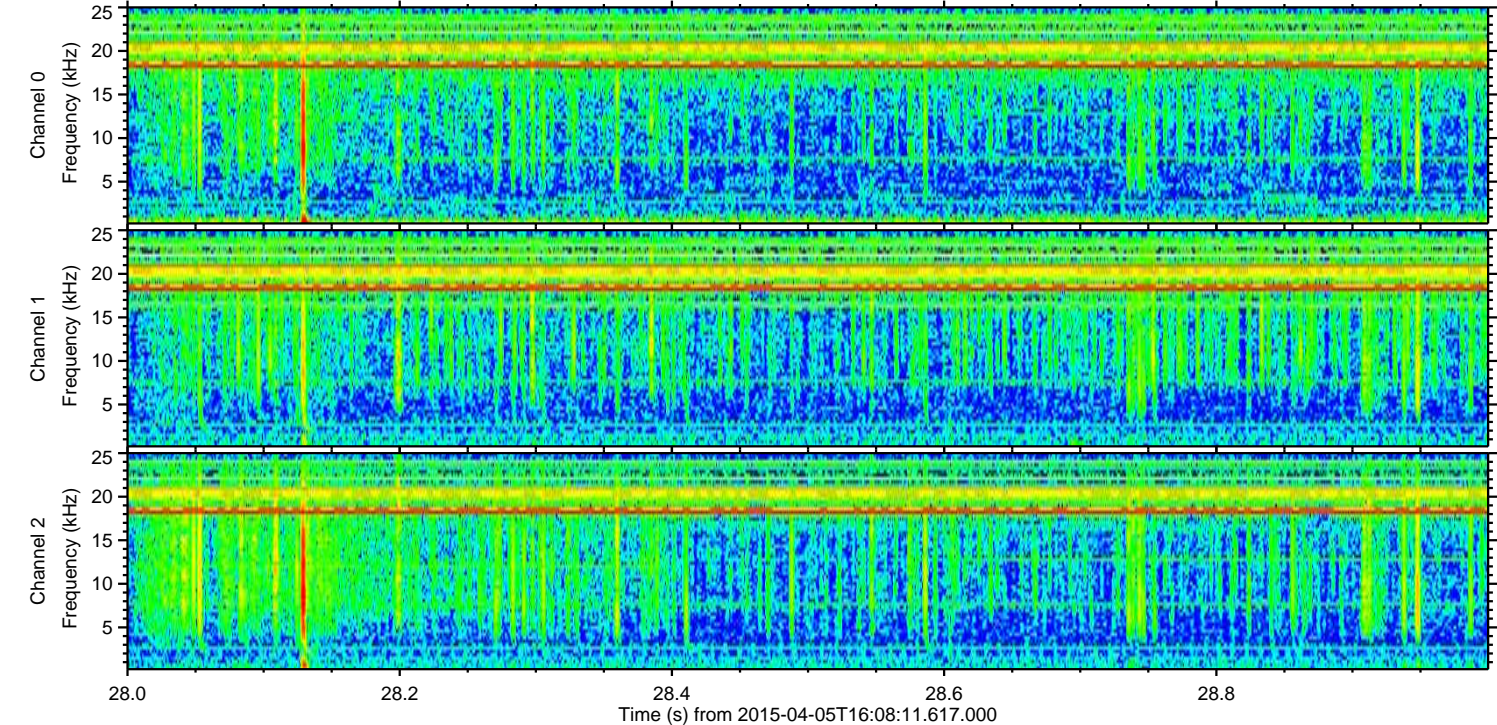
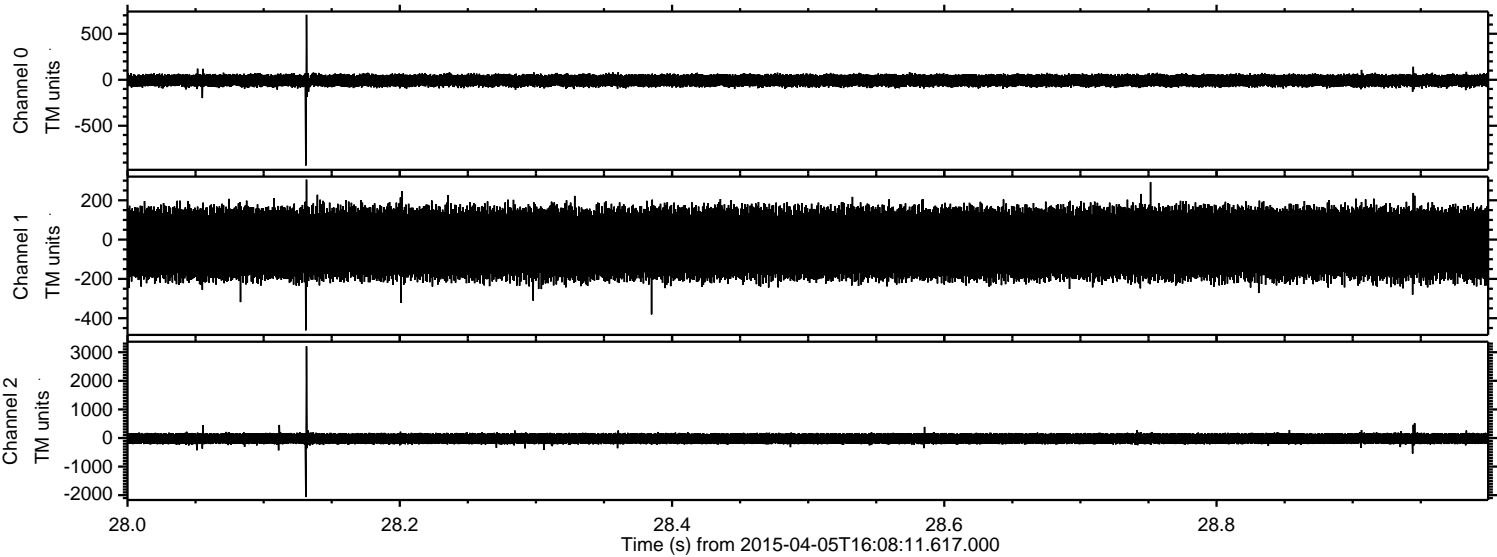
Processed Sun Apr 5 18:41:21 2015 by ELM ver.2012-10-06 from 001__elm20150405_160810__dat00.bin



Processed Sun Apr 5 18:41:22 2015 by ELM ver.2012-10-06 from 001__elm20150405_160810__dat00.bin



Processed Sun Apr 5 18:41:23 2015 by ELM ver.2012-10-06 from 001__elm20150405_160810__dat00.bin

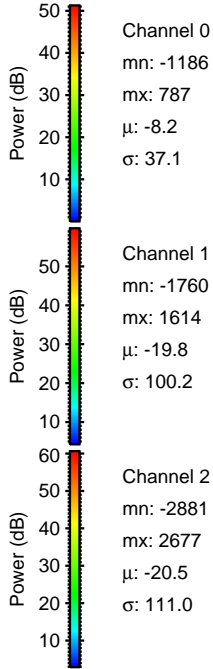
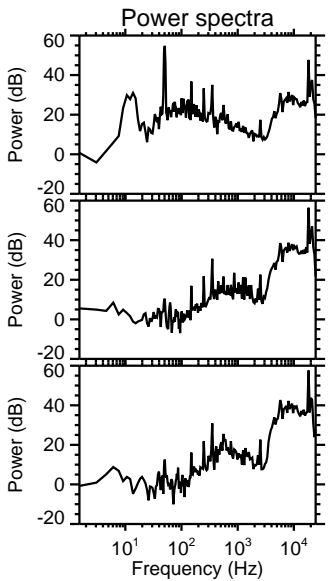
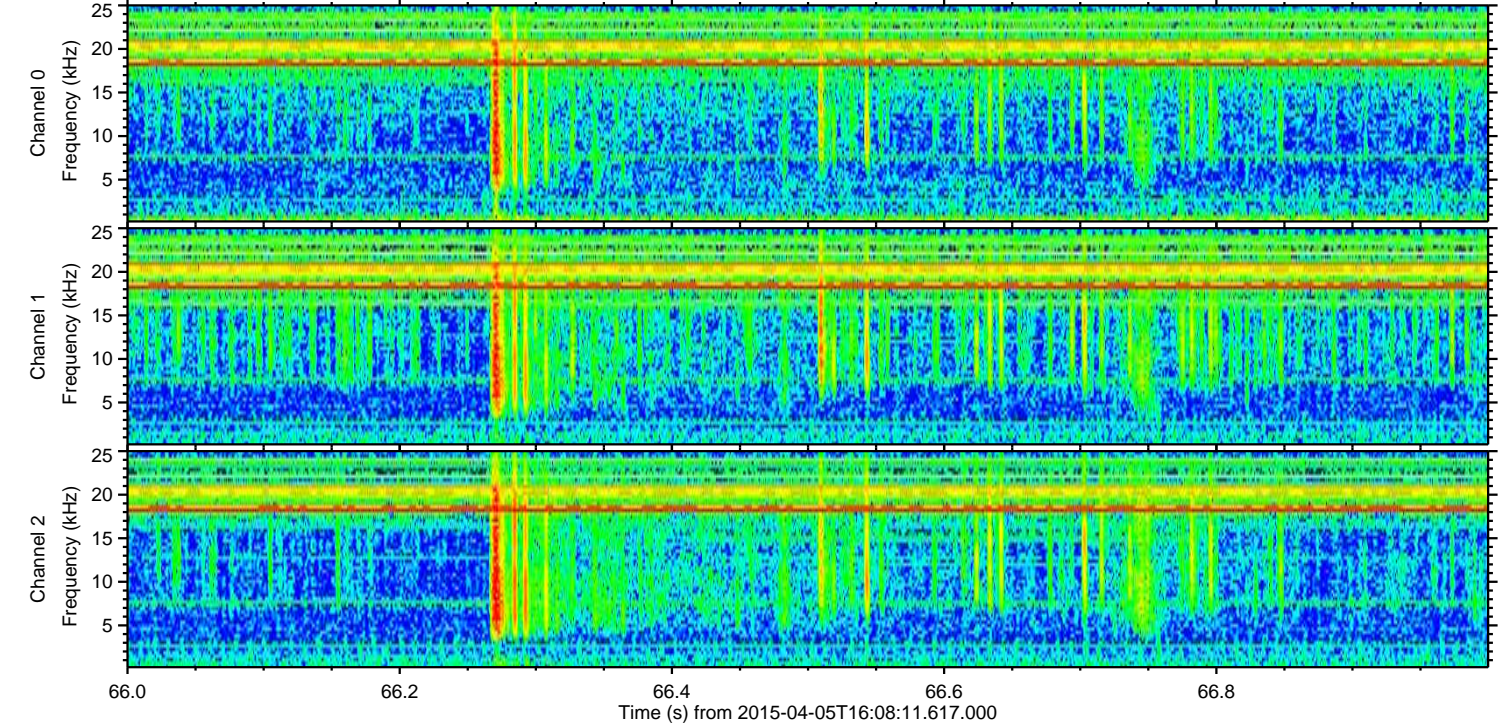
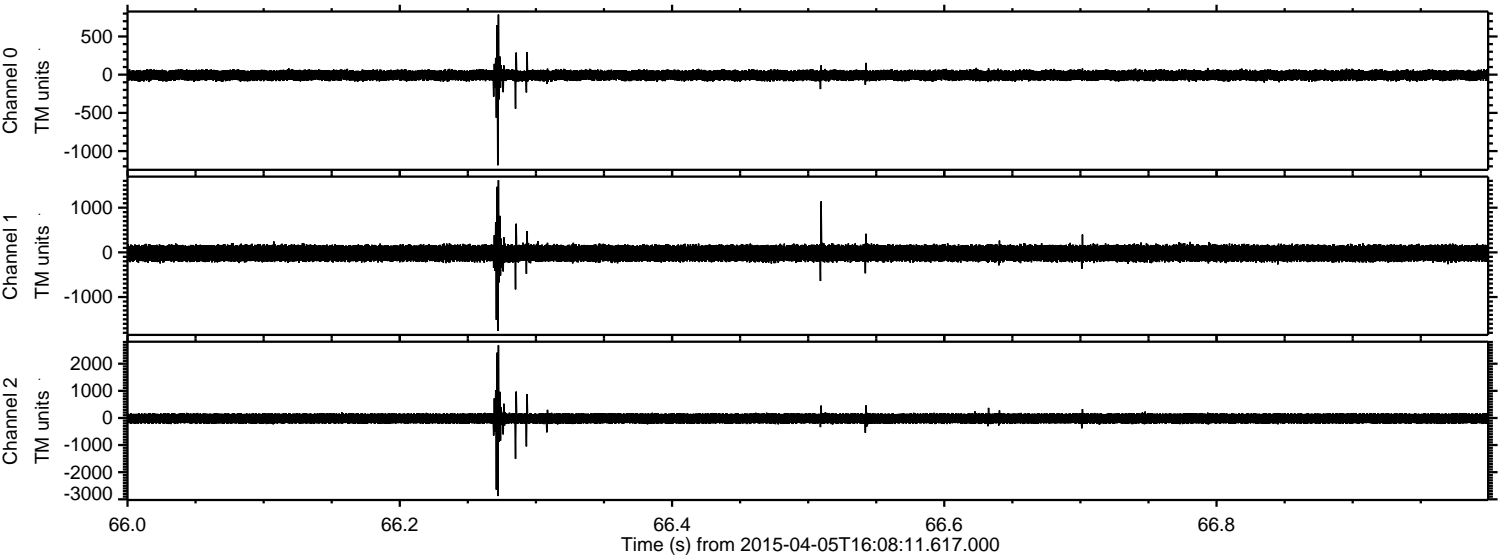


Channel 0
mn: -932
mx: 706
 μ : -8.2
 σ : 35.5

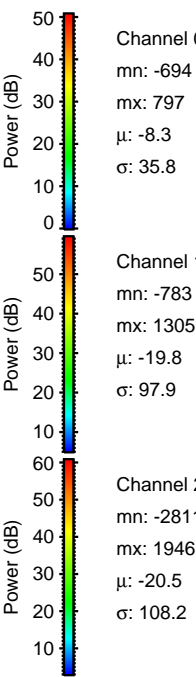
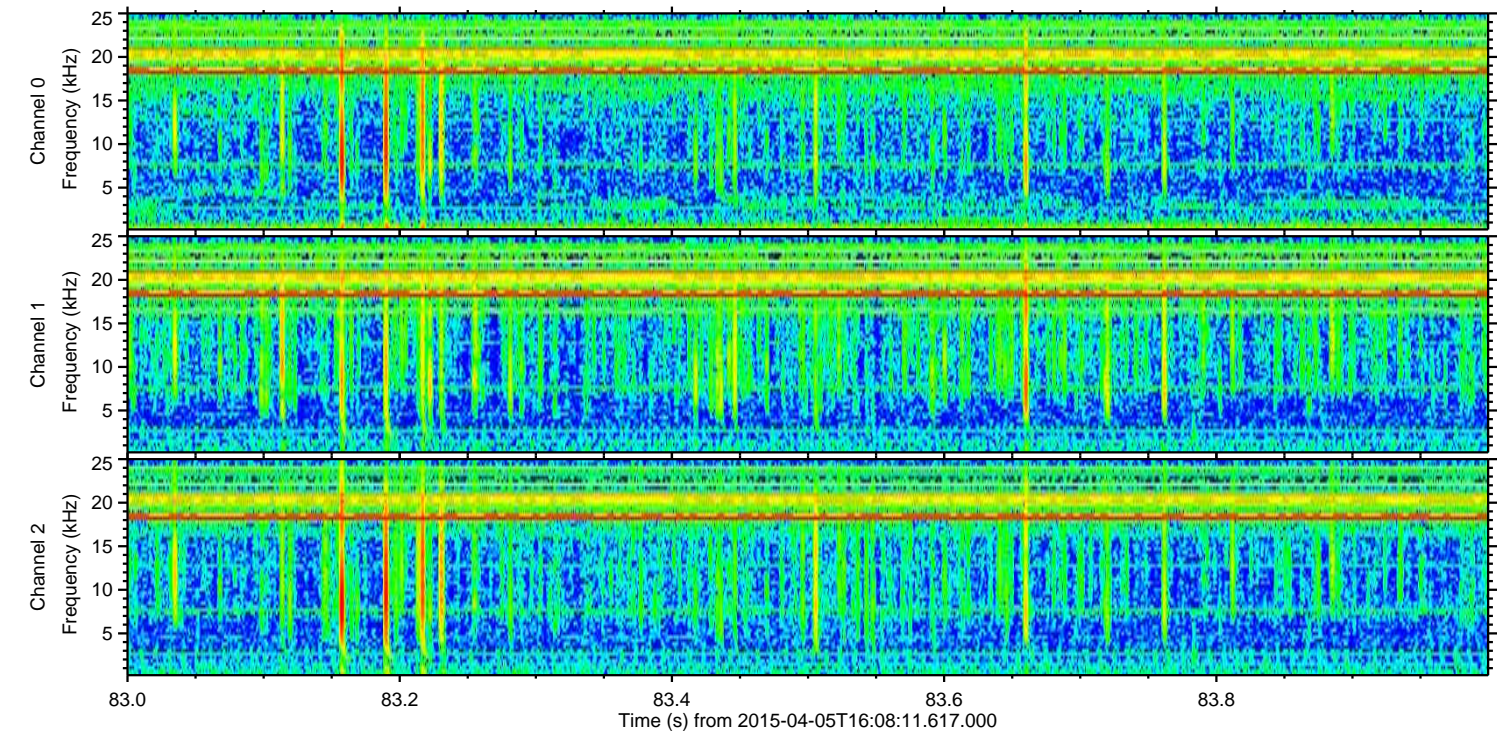
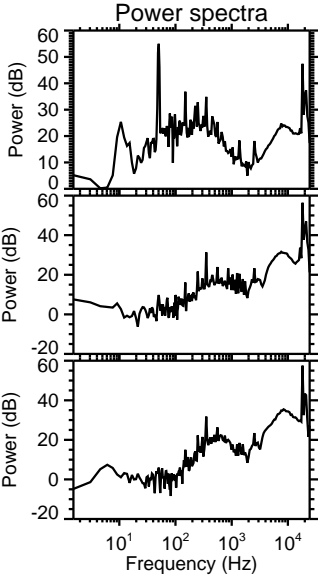
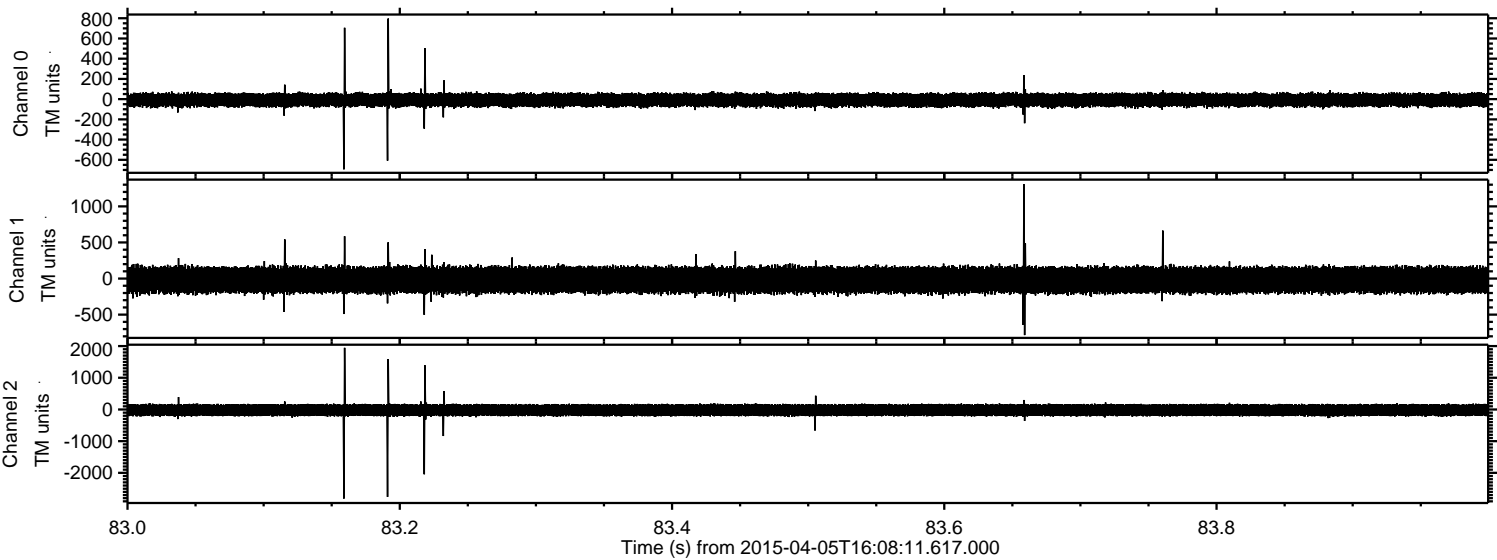
Channel 1
mn: -462
mx: 305
 μ : -19.8
 σ : 97.4

Channel 2
mn: -2065
mx: 3207
 μ : -20.5
 σ : 107.2

Processed Sun Apr 5 18:41:24 2015 by ELM ver.2012-10-06 from 001__elm20150405_160810__dat00.bin



Processed Sun Apr 5 18:41:25 2015 by ELM ver.2012-10-06 from 001__elm20150405_160810__dat00.bin



Processed Sun Apr 5 18:41:26 2015 by ELM ver.2012-10-06 from 001__elm20150405_160810__dat00.bin

