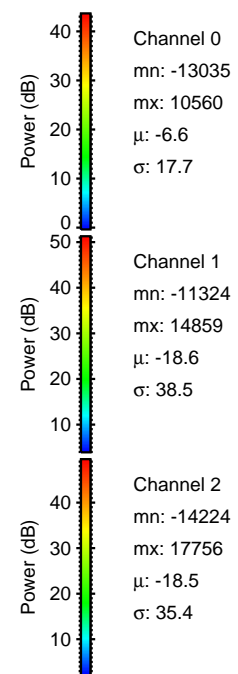
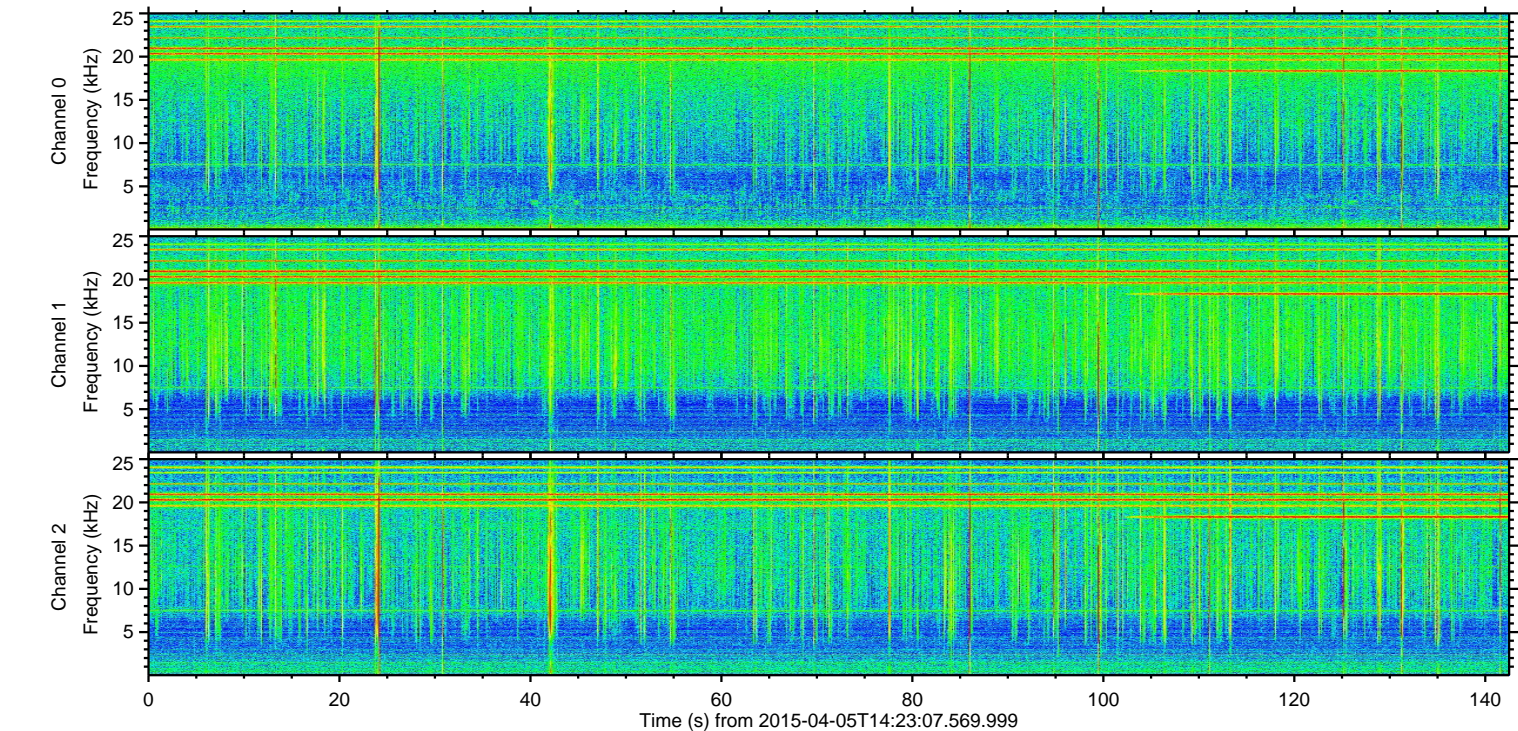
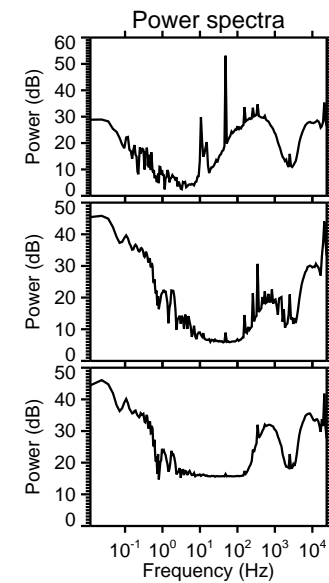
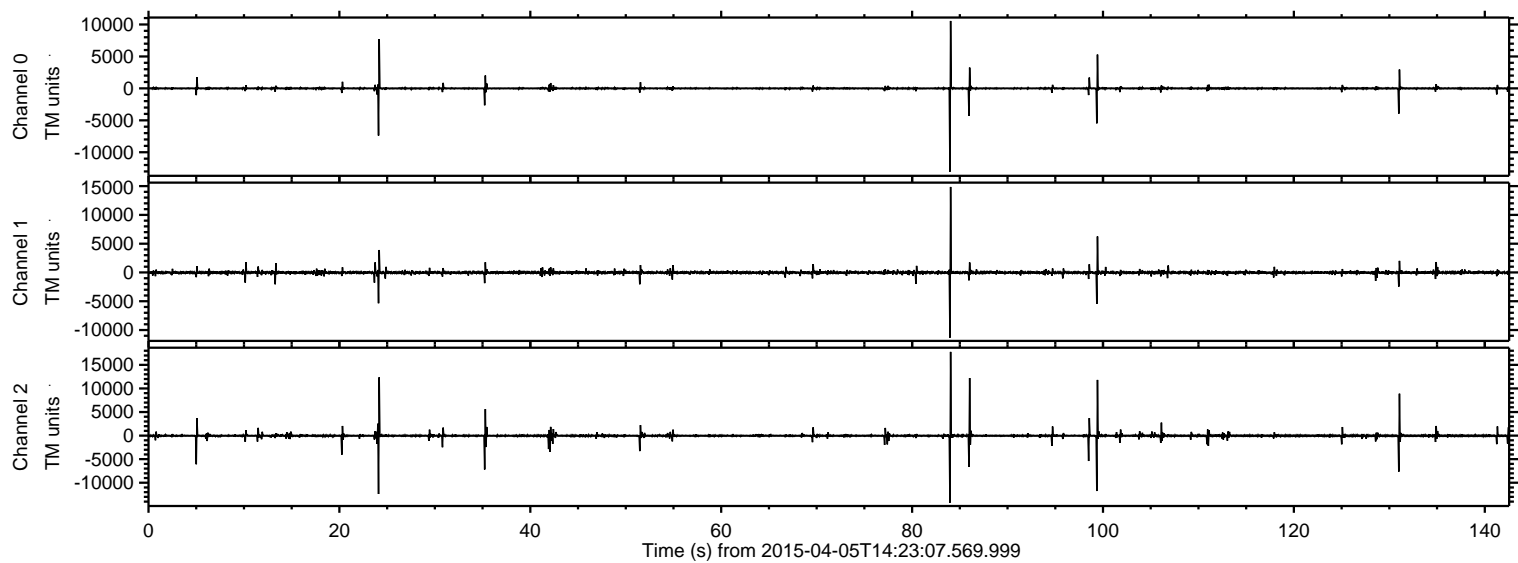


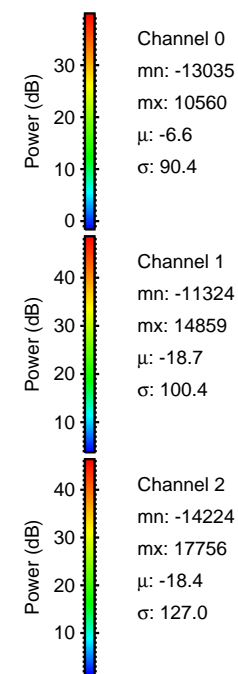
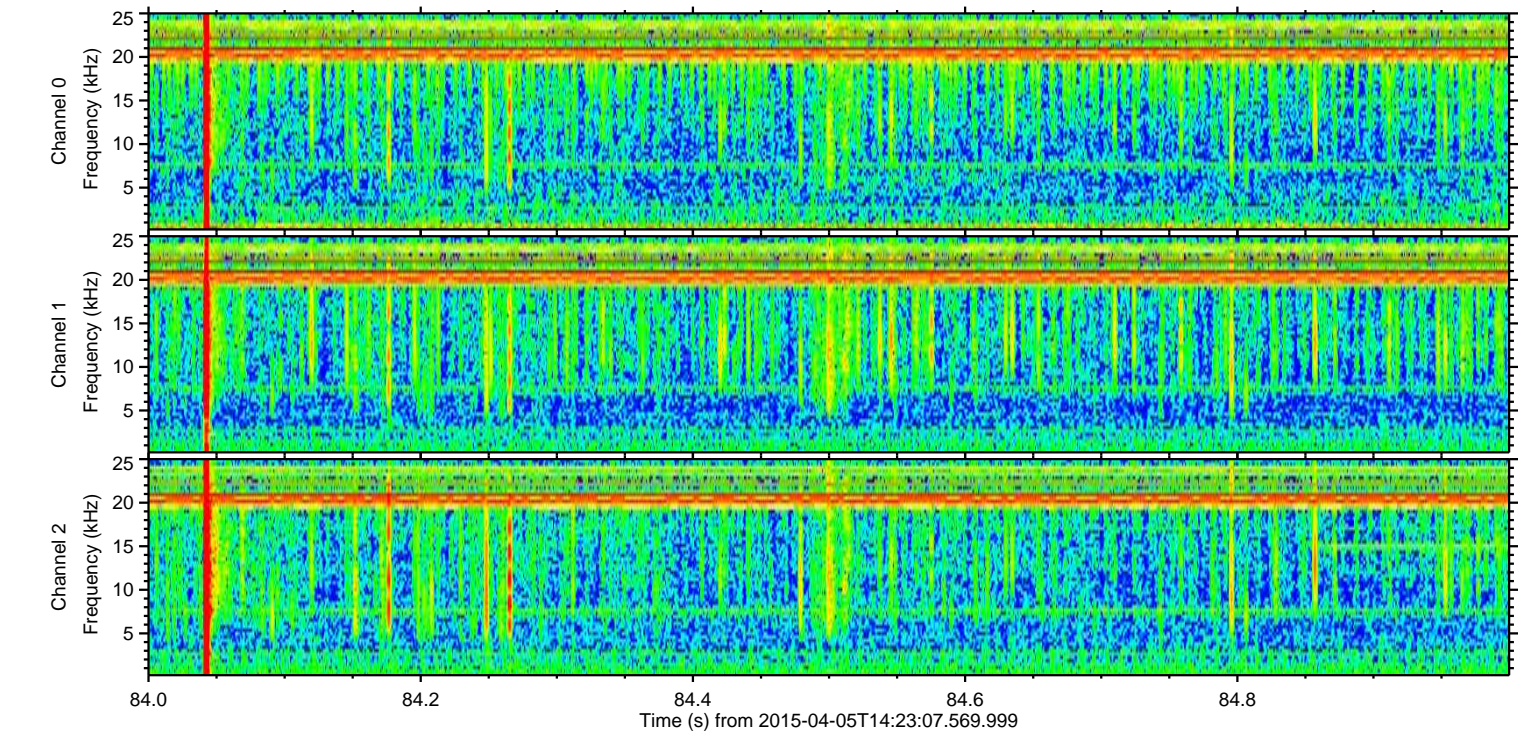
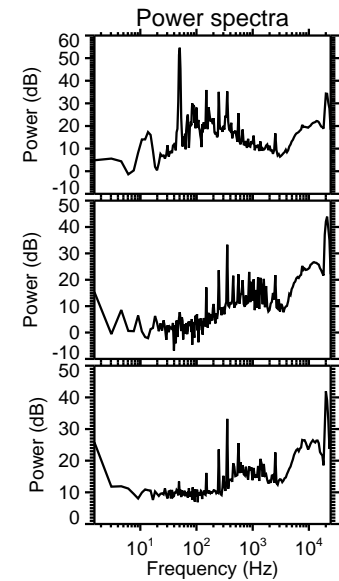
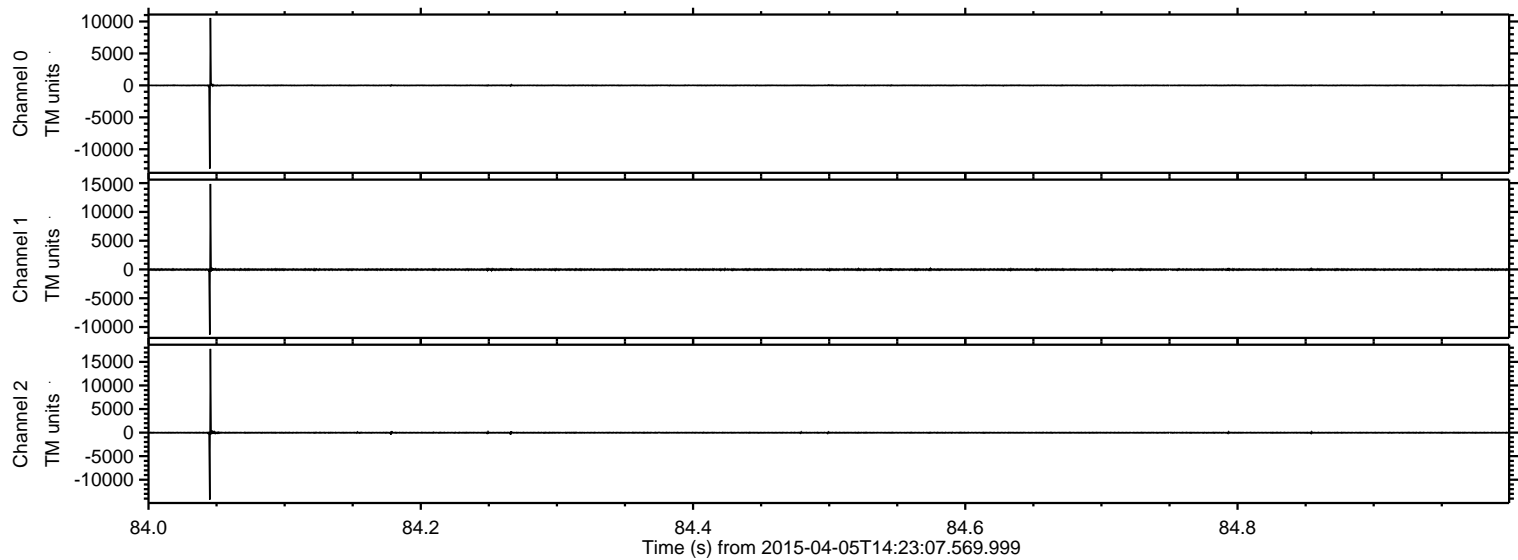
# ELMAVAN 3D WAVEFORMS (Measured data sampled at 50 kHz) 49497 packets of 144 samples from 2015-04-05T14:23:07.569.999.

Processed Sun Apr 5 17:44:10 2015 by ELM ver.2012-10-06 from 001\_\_elm20150405\_142306\_\_dat00.bin



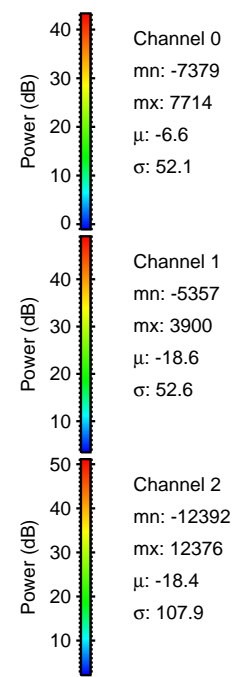
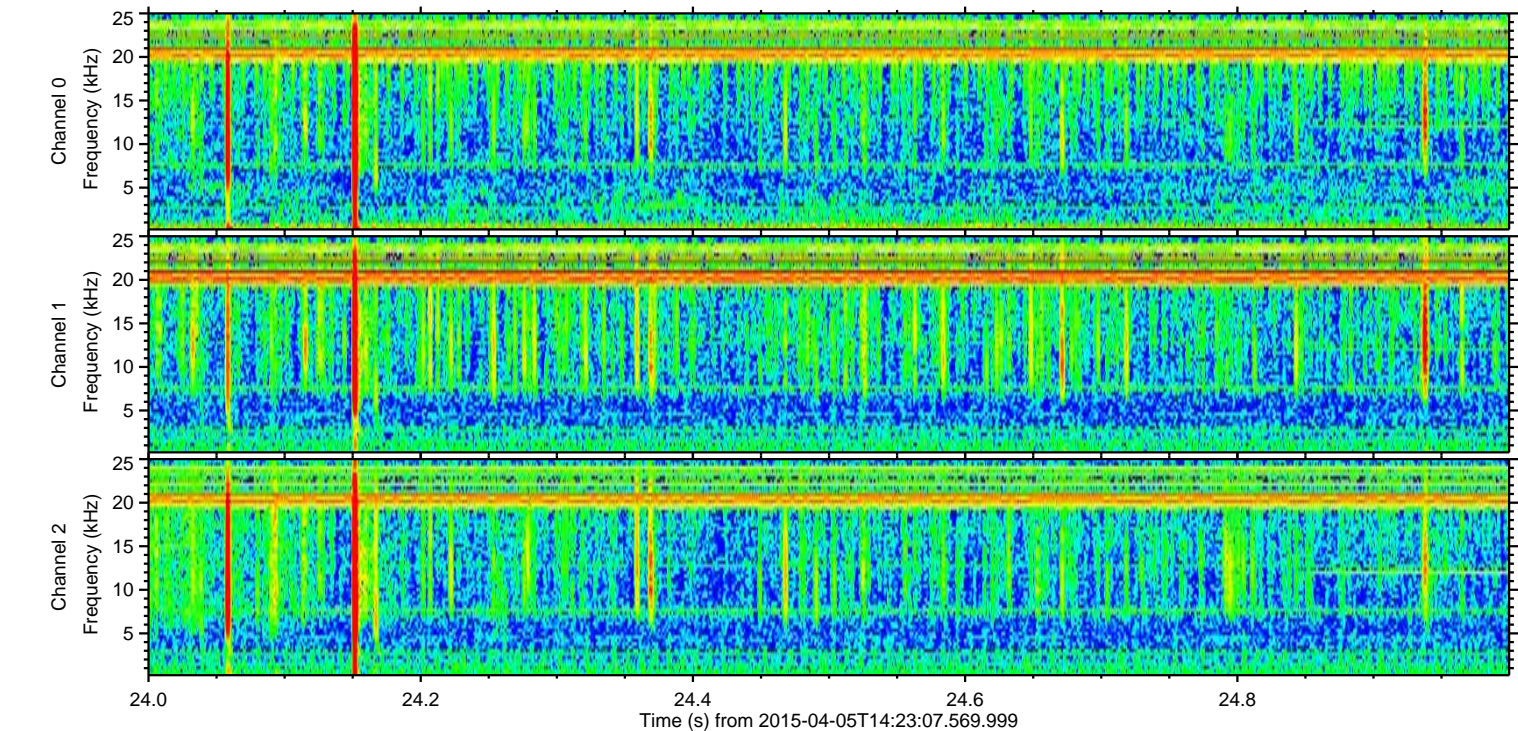
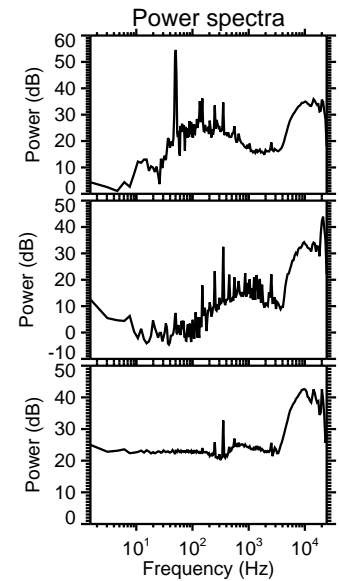
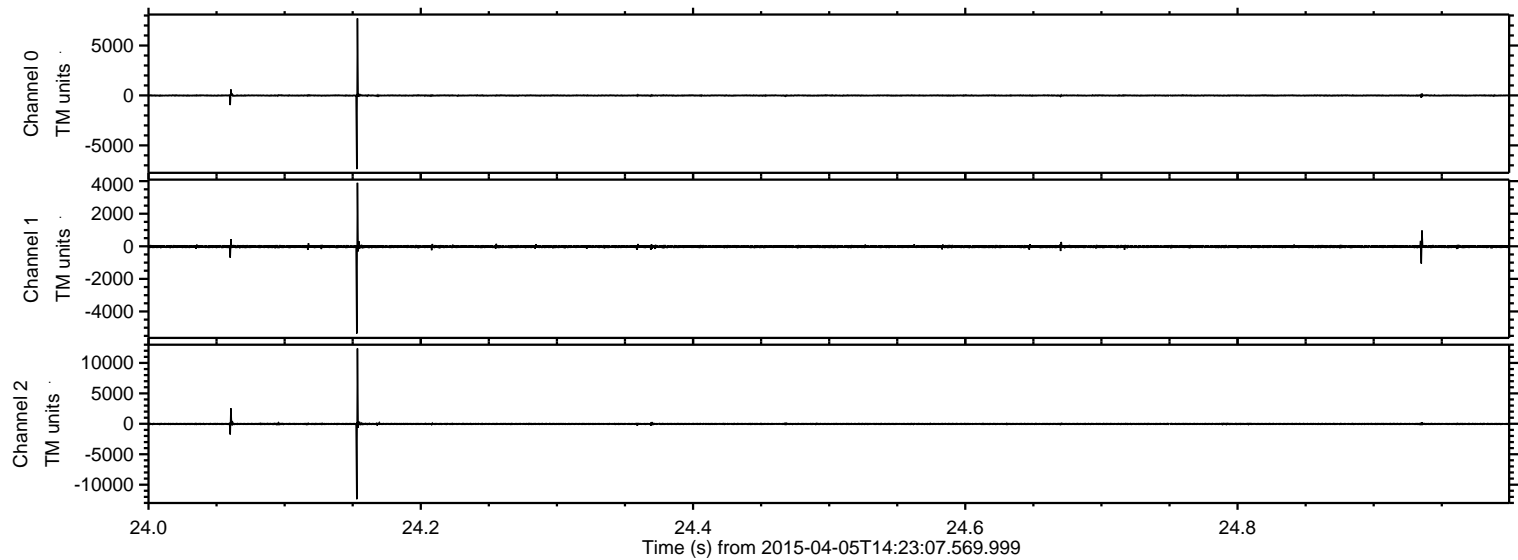


Processed Sun Apr 5 17:44:24 2015 by ELM ver.2012-10-06 from 001\_\_elm20150405\_142306\_\_dat00.bin





Processed Sun Apr 5 17:44:25 2015 by ELM ver.2012-10-06 from 001\_\_elm20150405\_142306\_\_dat00.bin



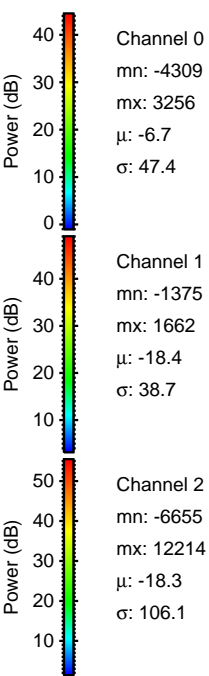
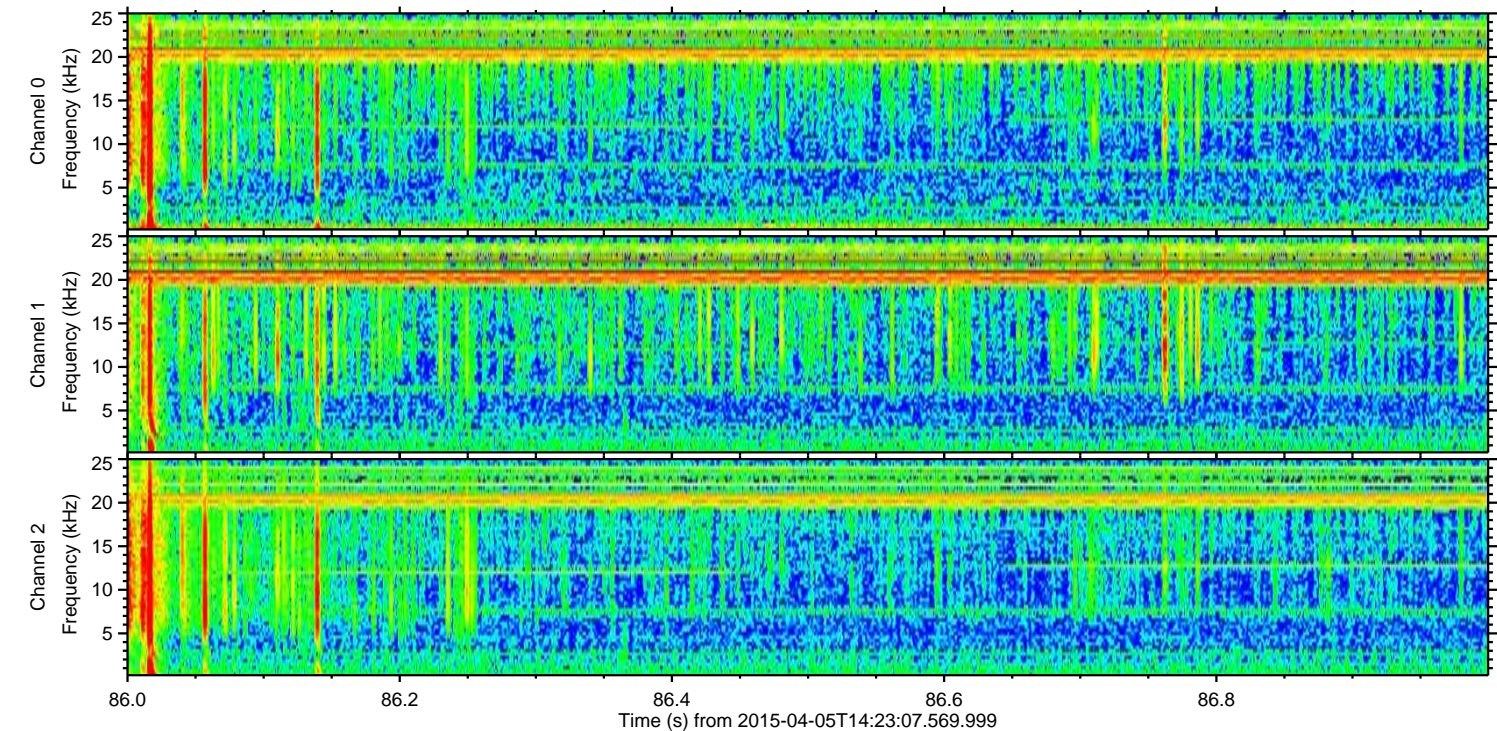
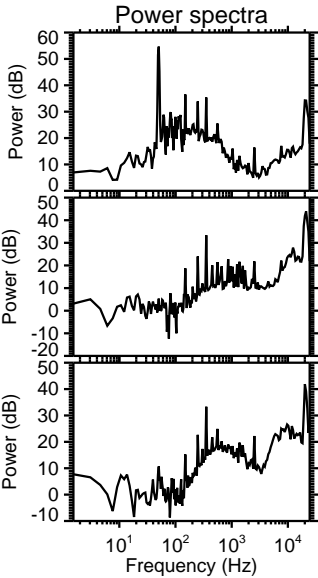
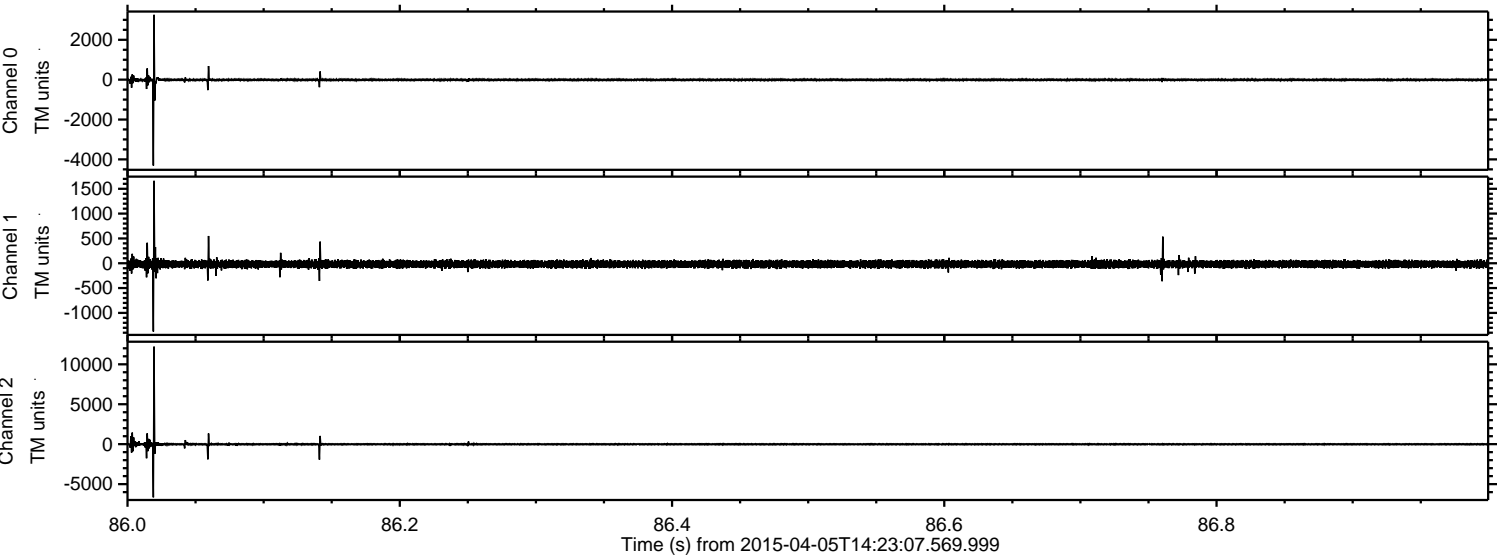
Channel 0  
mn: -7379  
mx: 7714  
 $\mu$ : -6.6  
 $\sigma$ : 52.1

Channel 1  
mn: -5357  
mx: 3900  
 $\mu$ : -18.6  
 $\sigma$ : 52.6

Channel 2  
mn: -12392  
mx: 12376  
 $\mu$ : -18.4  
 $\sigma$ : 107.9



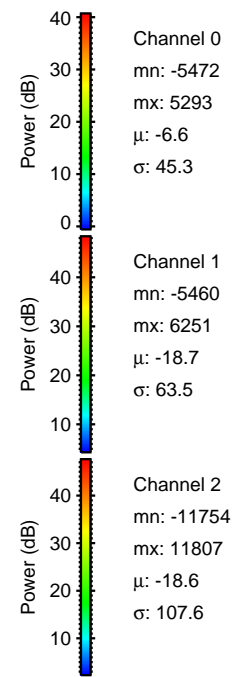
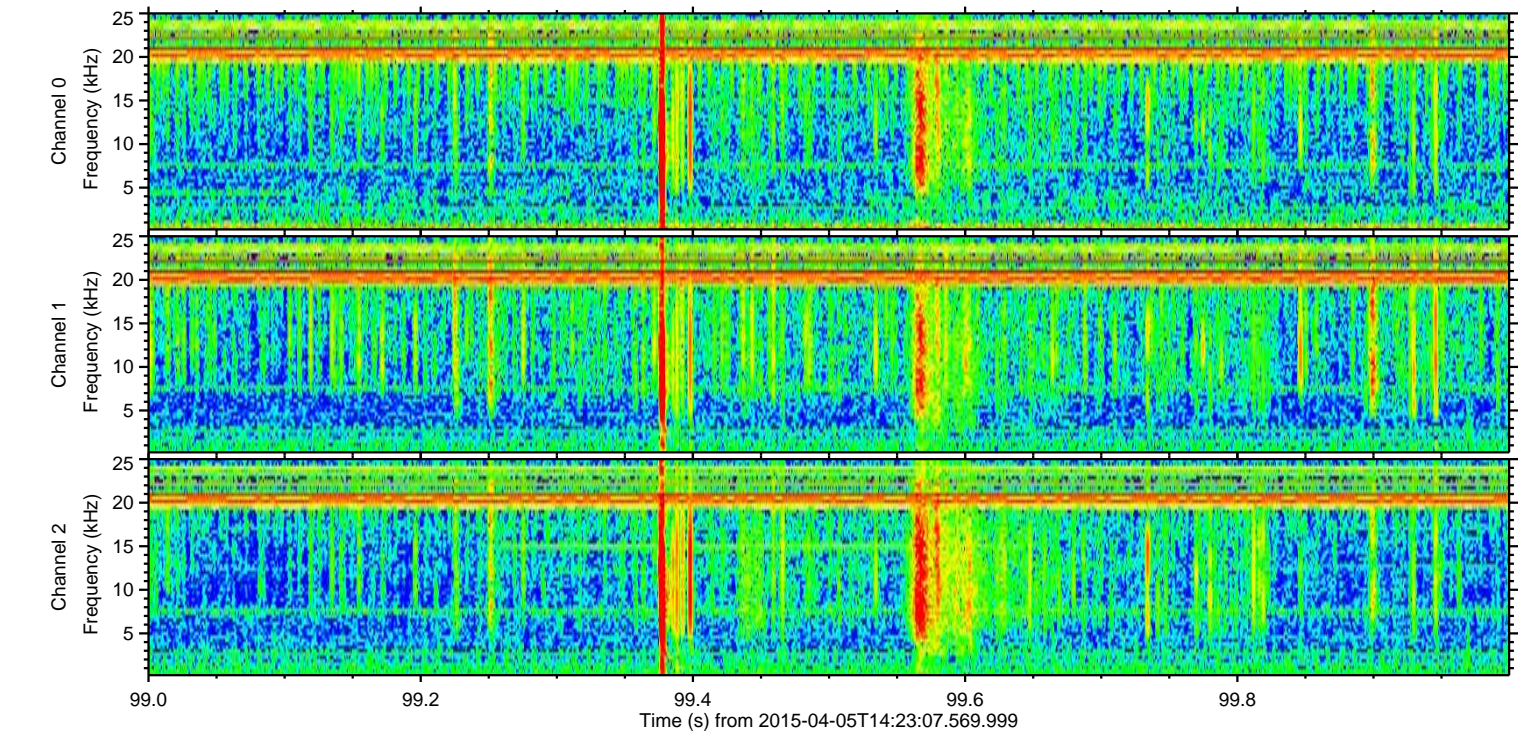
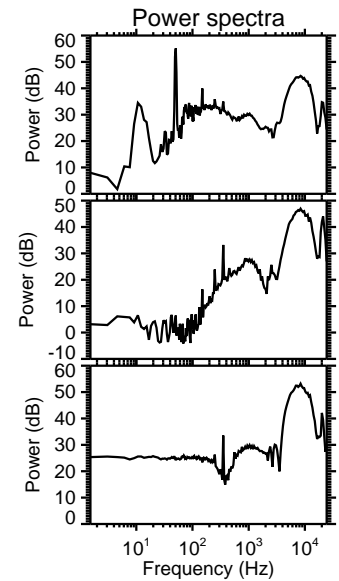
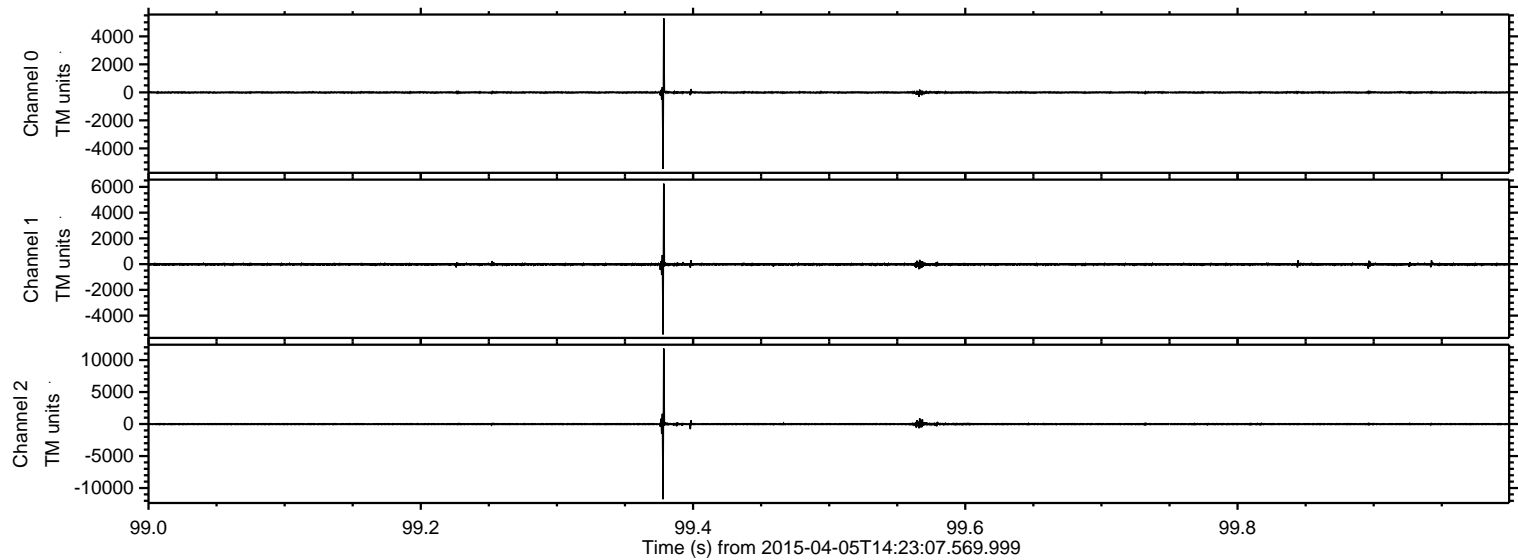
Processed Sun Apr 5 17:44:26 2015 by ELM ver.2012-10-06 from 001\_\_elm20150405\_142306\_\_dat00.bin





ELMAVAN 3D WAVEFORMS (Measured data sampled at 50 kHz) 49497 packets of 144 samples from 2015-04-05T14:23:07.569.999. Part 100/143

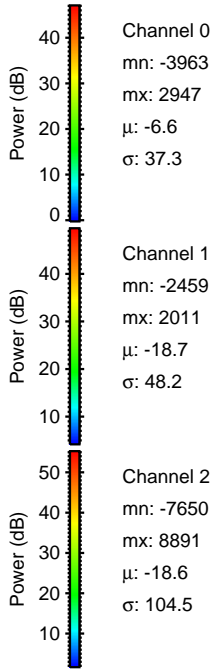
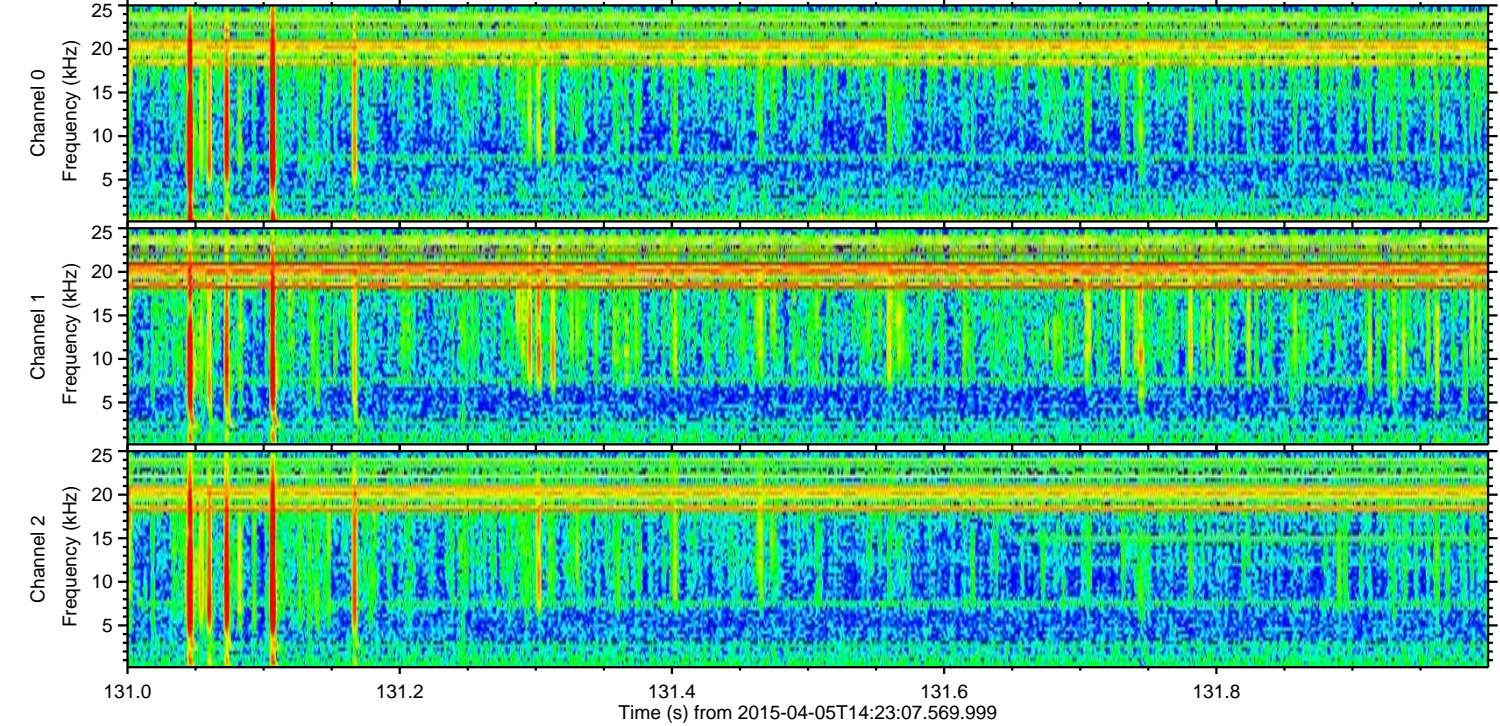
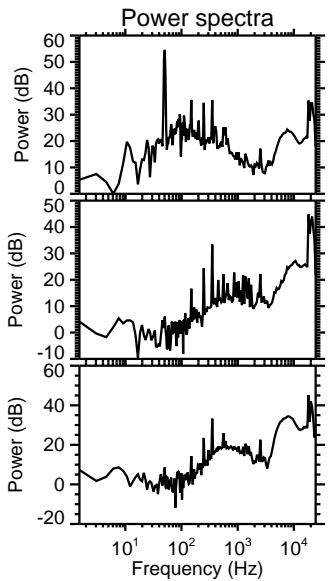
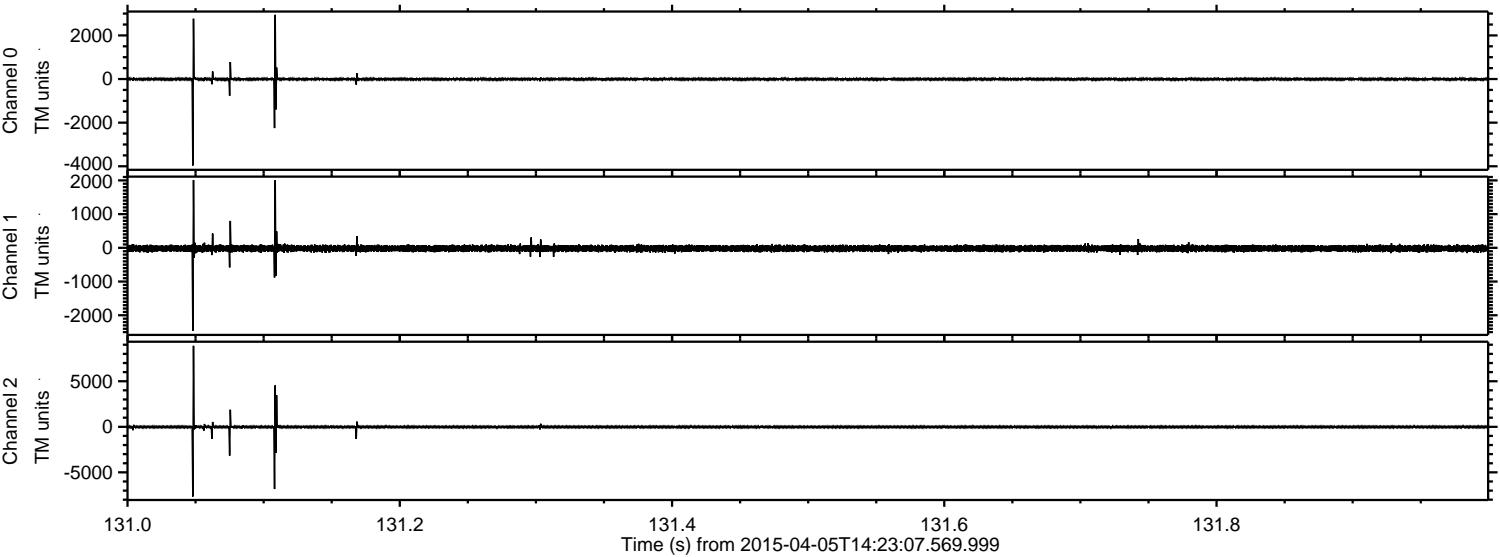
Processed Sun Apr 5 17:44:27 2015 by ELM ver.2012-10-06 from 001\_\_elm20150405\_142306\_\_dat00.bin





ELMAVAN 3D WAVEFORMS (Measured data sampled at 50 kHz) 49497 packets of 144 samples from 2015-04-05T14:23:07.569.999. Part 132/143

Processed Sun Apr 5 17:44:28 2015 by ELM ver.2012-10-06 from 001\_\_elm20150405\_142306\_\_dat00.bin



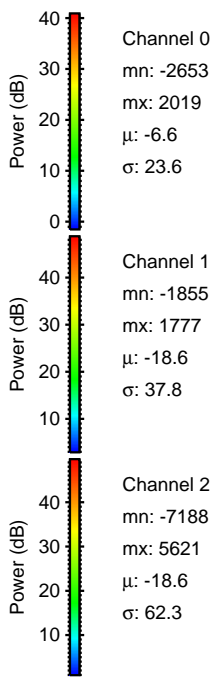
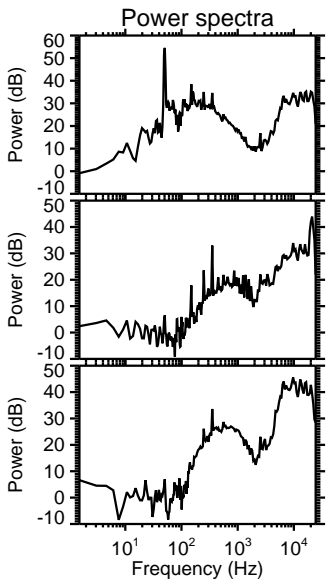
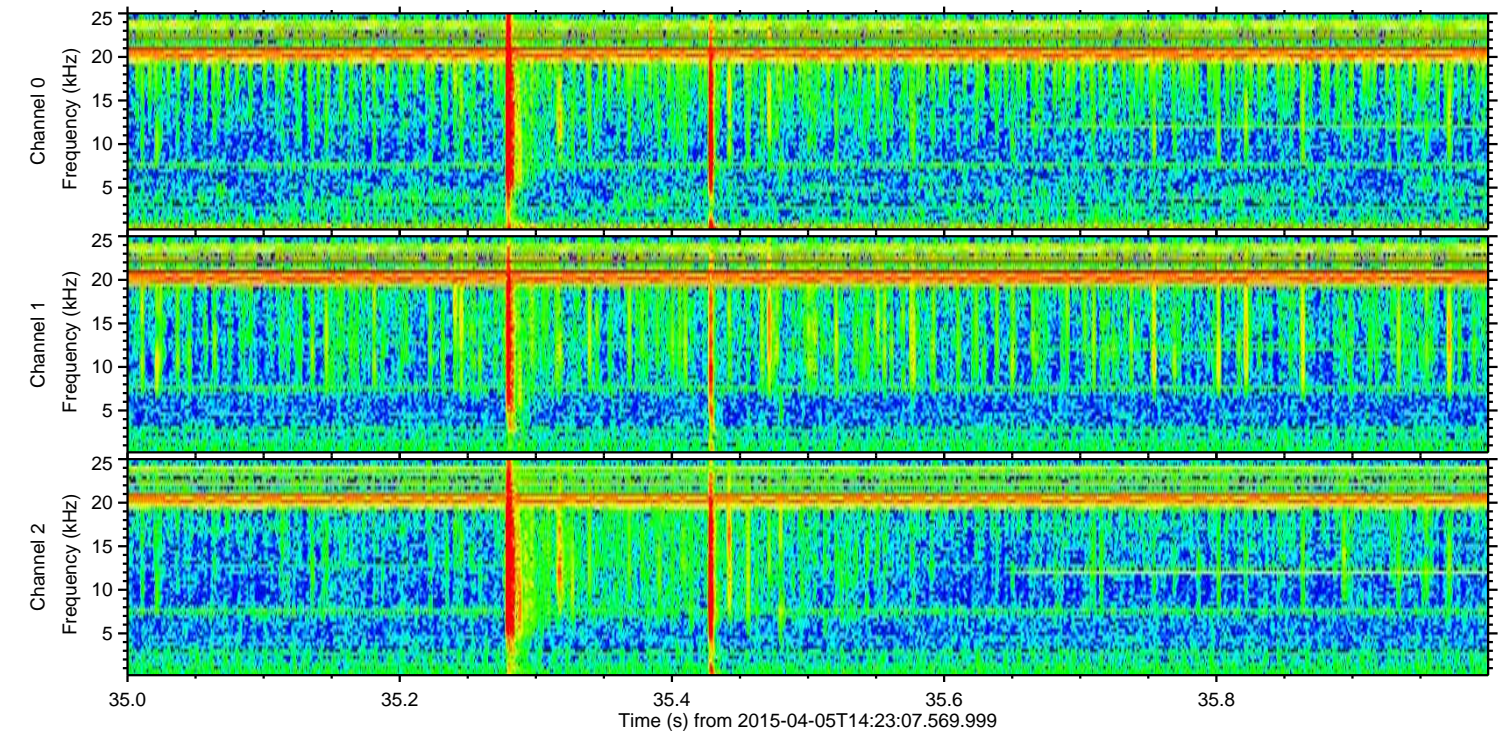
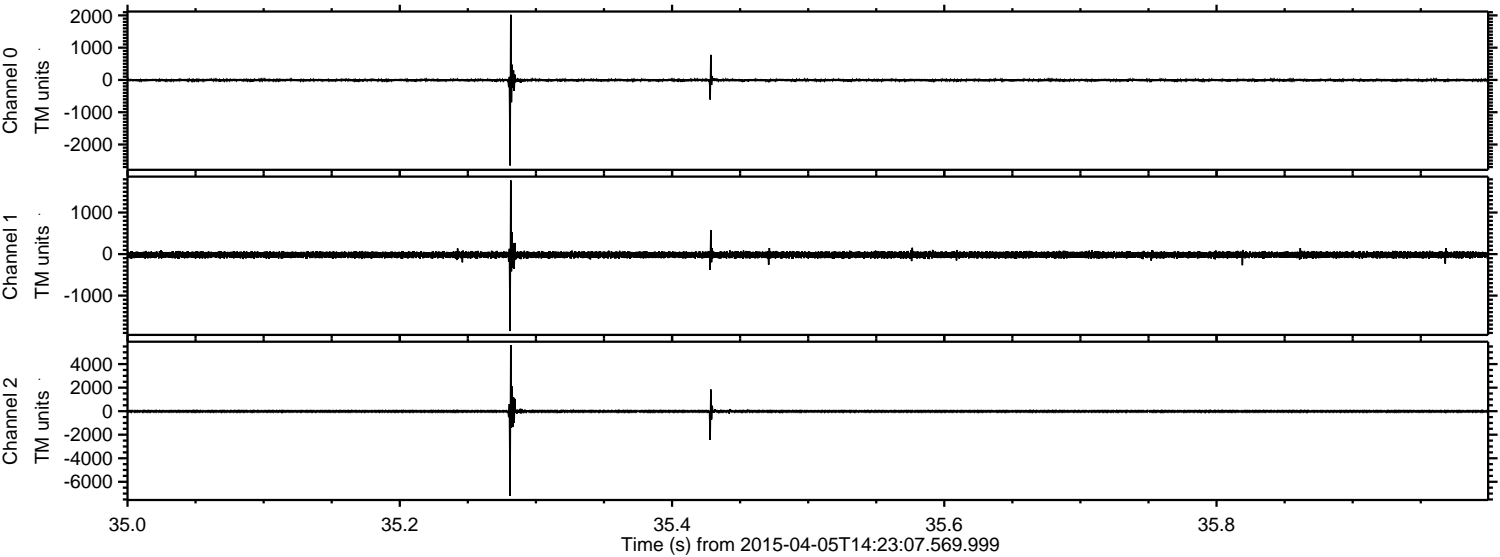
Channel 0  
mn: -3963  
mx: 2947  
 $\mu$ : -6.6  
 $\sigma$ : 37.3

Channel 1  
mn: -2459  
mx: 2011  
 $\mu$ : -18.7  
 $\sigma$ : 48.2

Channel 2  
mn: -7650  
mx: 8891  
 $\mu$ : -18.6  
 $\sigma$ : 104.5

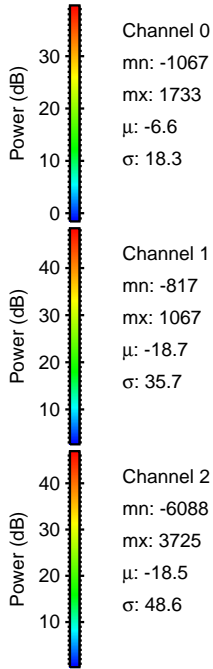
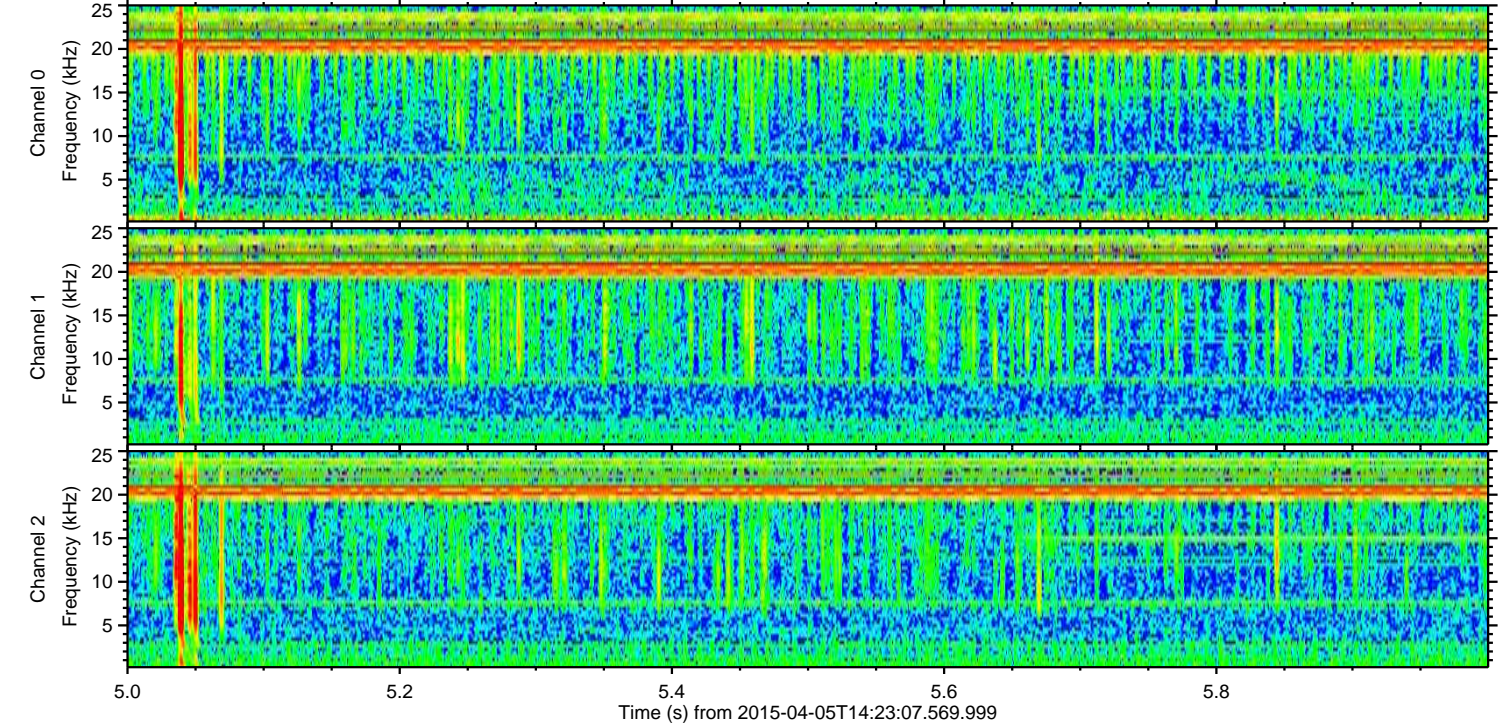
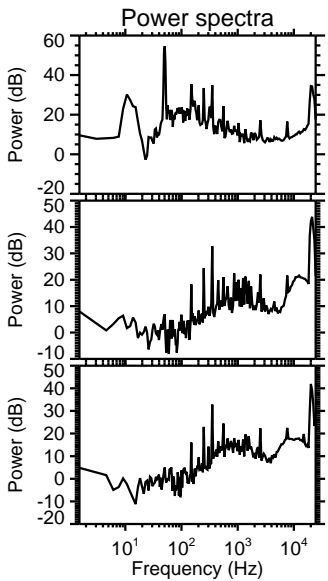
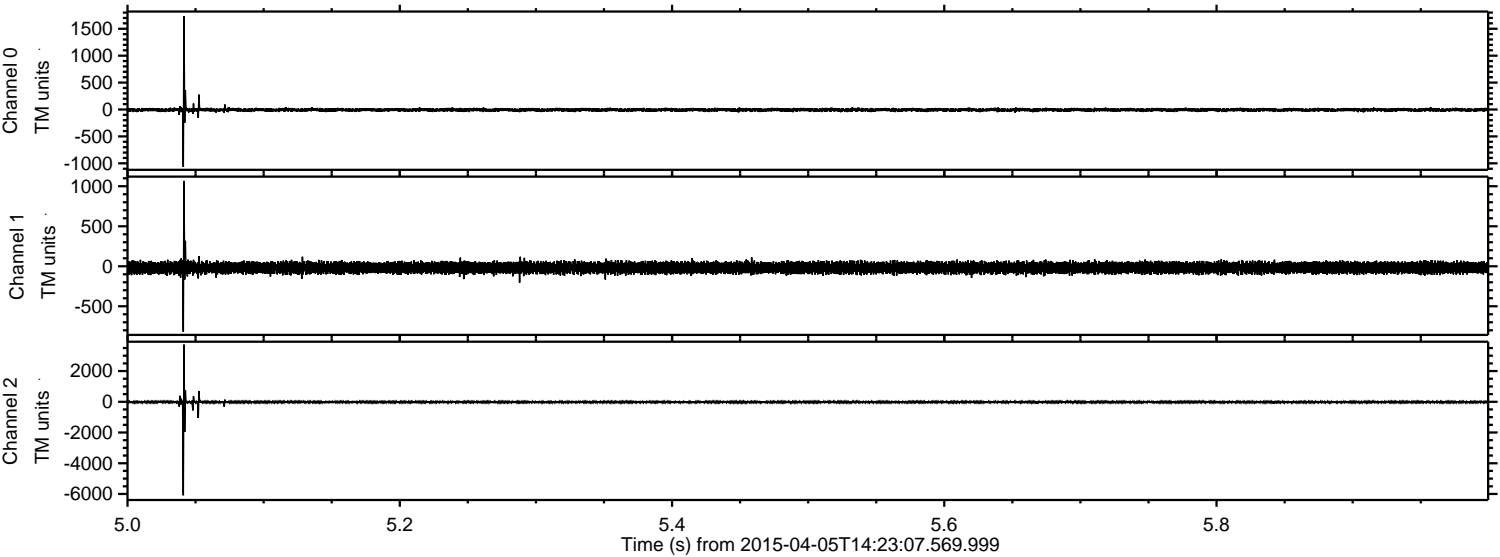


Processed Sun Apr 5 17:44:29 2015 by ELM ver.2012-10-06 from 001\_\_elm20150405\_142306\_\_dat00.bin





Processed Sun Apr 5 17:44:30 2015 by ELM ver.2012-10-06 from 001\_\_elm20150405\_142306\_\_dat00.bin



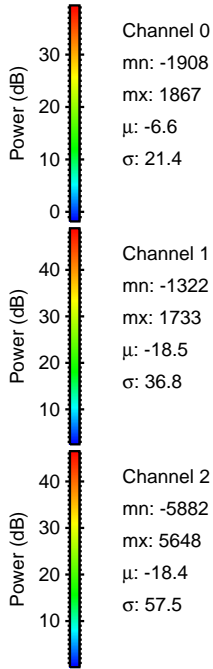
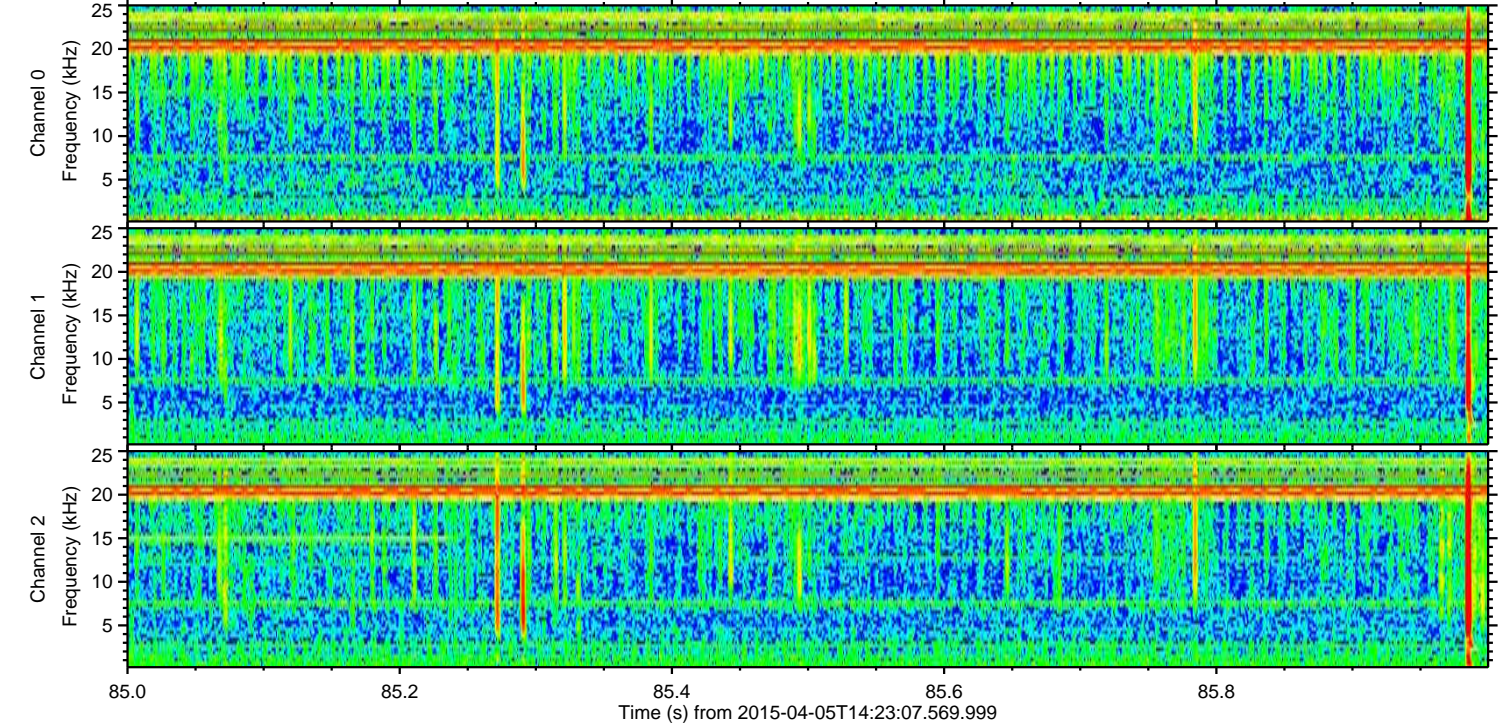
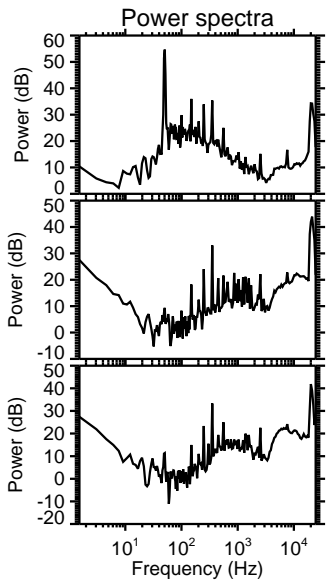
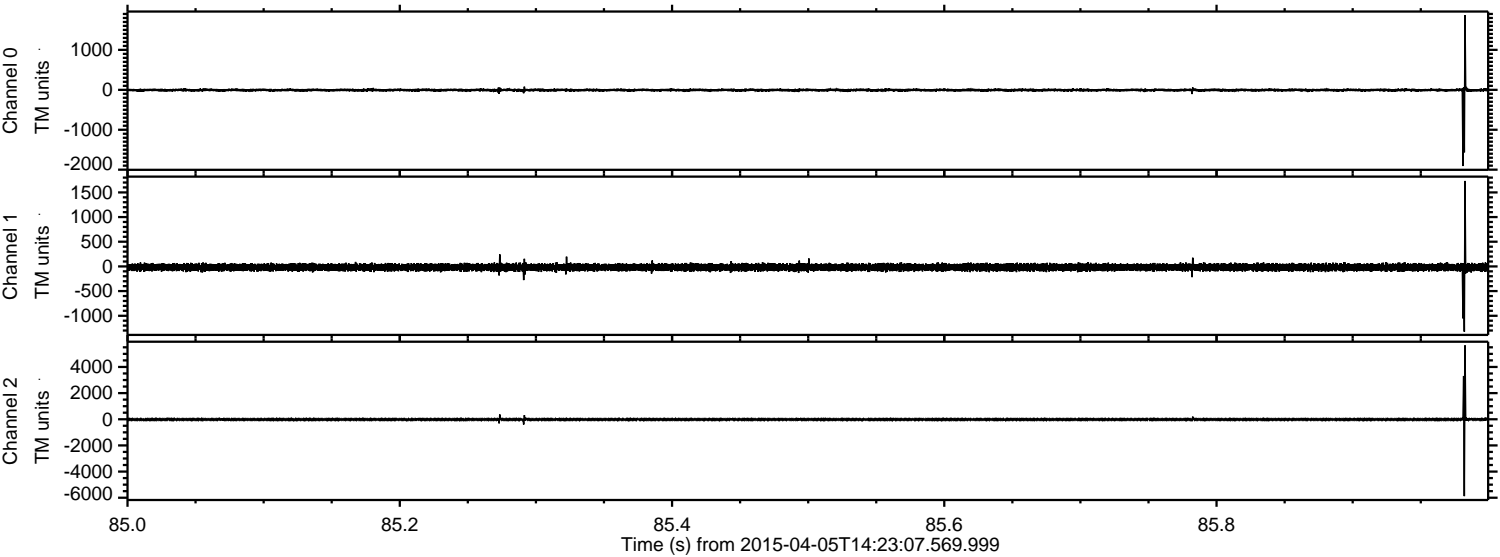
Channel 0  
mn: -1067  
mx: 1733  
 $\mu$ : -6.6  
 $\sigma$ : 18.3

Channel 1  
mn: -817  
mx: 1067  
 $\mu$ : -18.7  
 $\sigma$ : 35.7

Channel 2  
mn: -6088  
mx: 3725  
 $\mu$ : -18.5  
 $\sigma$ : 48.6



Processed Sun Apr 5 17:44:31 2015 by ELM ver.2012-10-06 from 001\_\_elm20150405\_142306\_\_dat00.bin



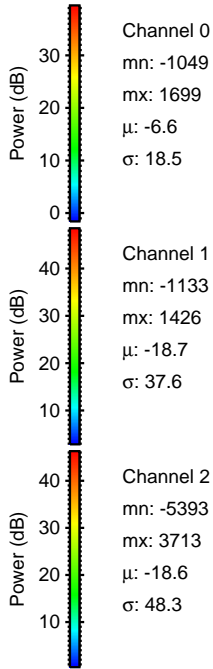
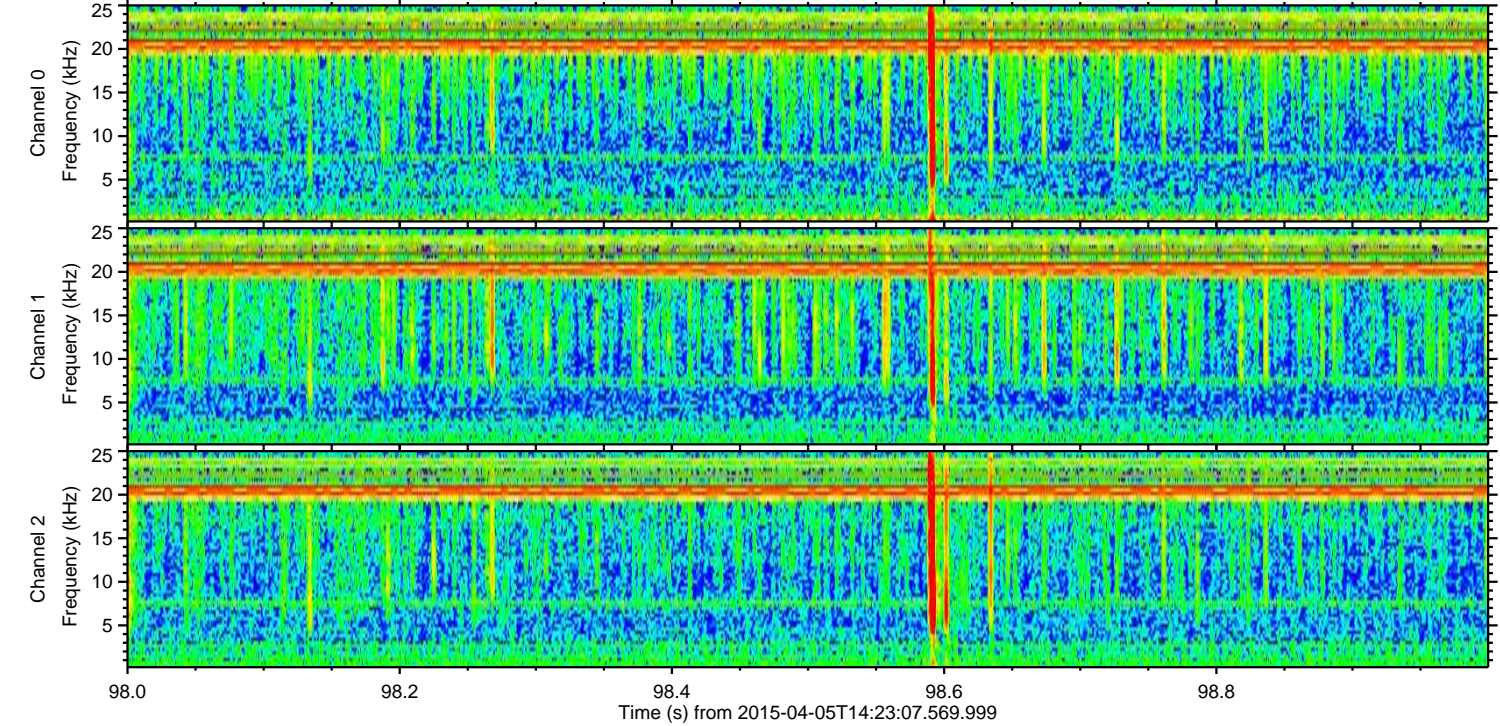
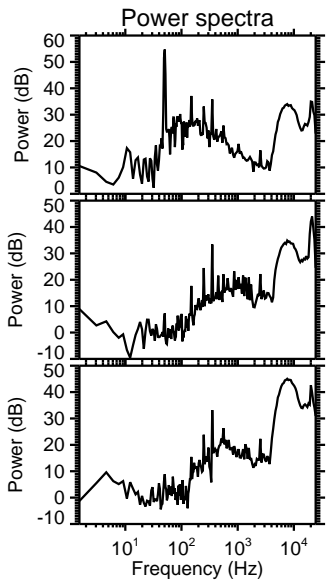
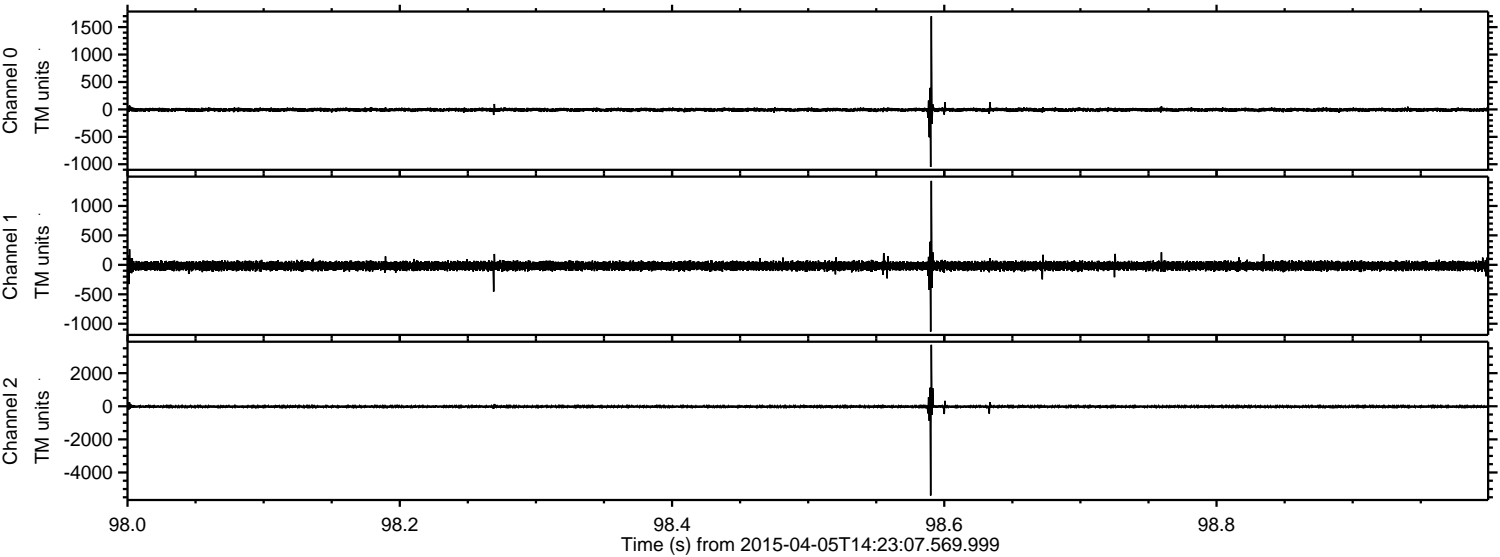
Channel 0  
mn: -1908  
mx: 1867  
 $\mu$ : -6.6  
 $\sigma$ : 21.4

Channel 1  
mn: -1322  
mx: 1733  
 $\mu$ : -18.5  
 $\sigma$ : 36.8

Channel 2  
mn: -5882  
mx: 5648  
 $\mu$ : -18.4  
 $\sigma$ : 57.5



Processed Sun Apr 5 17:44:32 2015 by ELM ver.2012-10-06 from 001\_\_elm20150405\_142306\_\_dat00.bin





Processed Sun Apr 5 17:44:33 2015 by ELM ver.2012-10-06 from 001\_\_elm20150405\_142306\_\_dat00.bin

