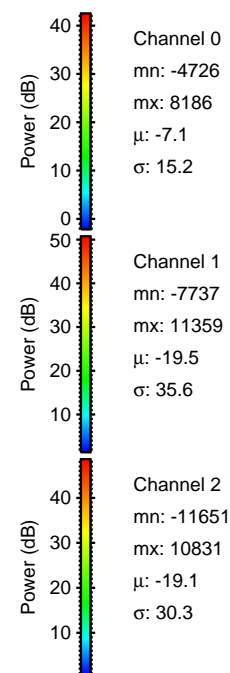
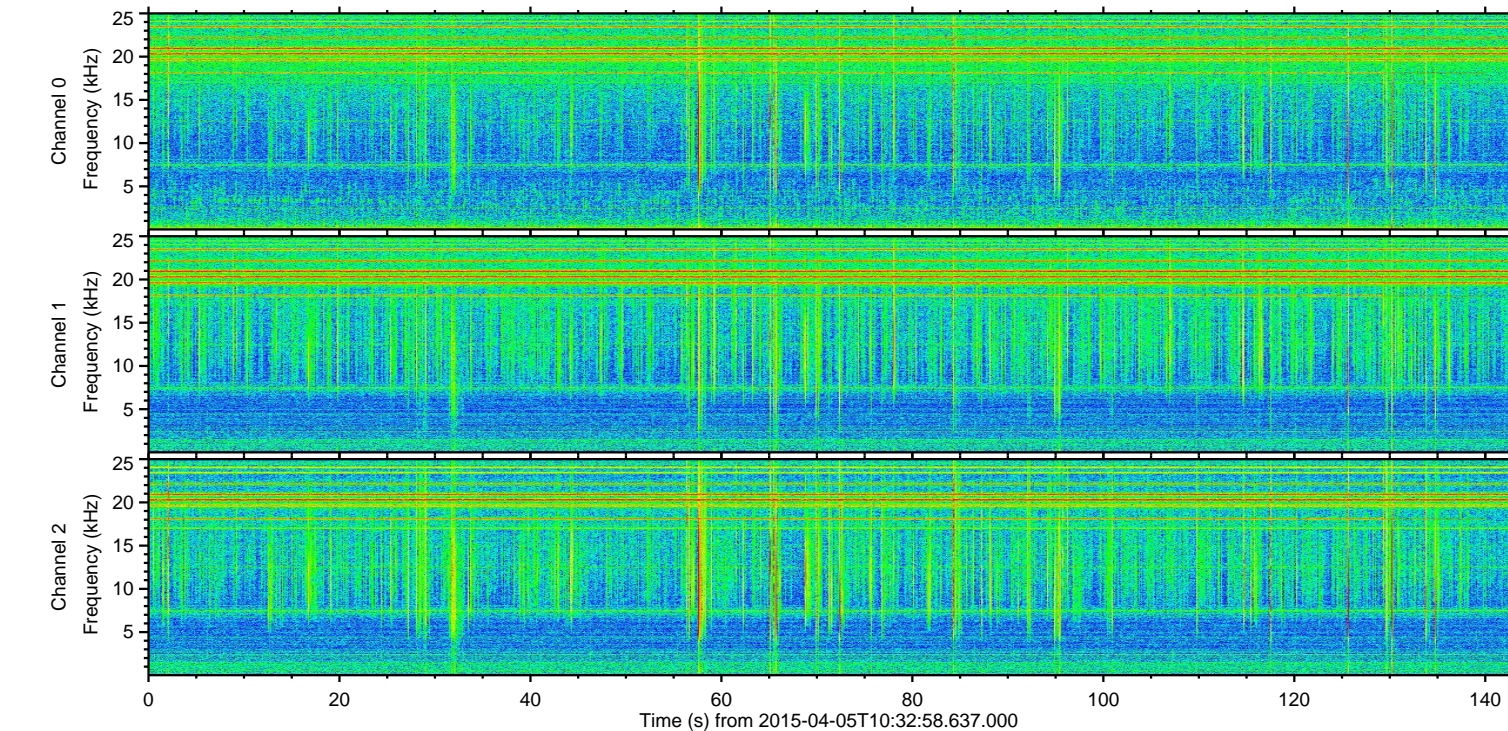
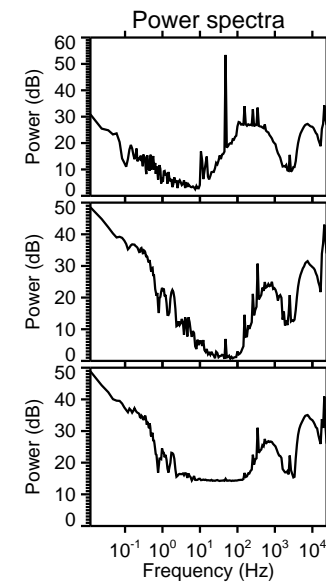
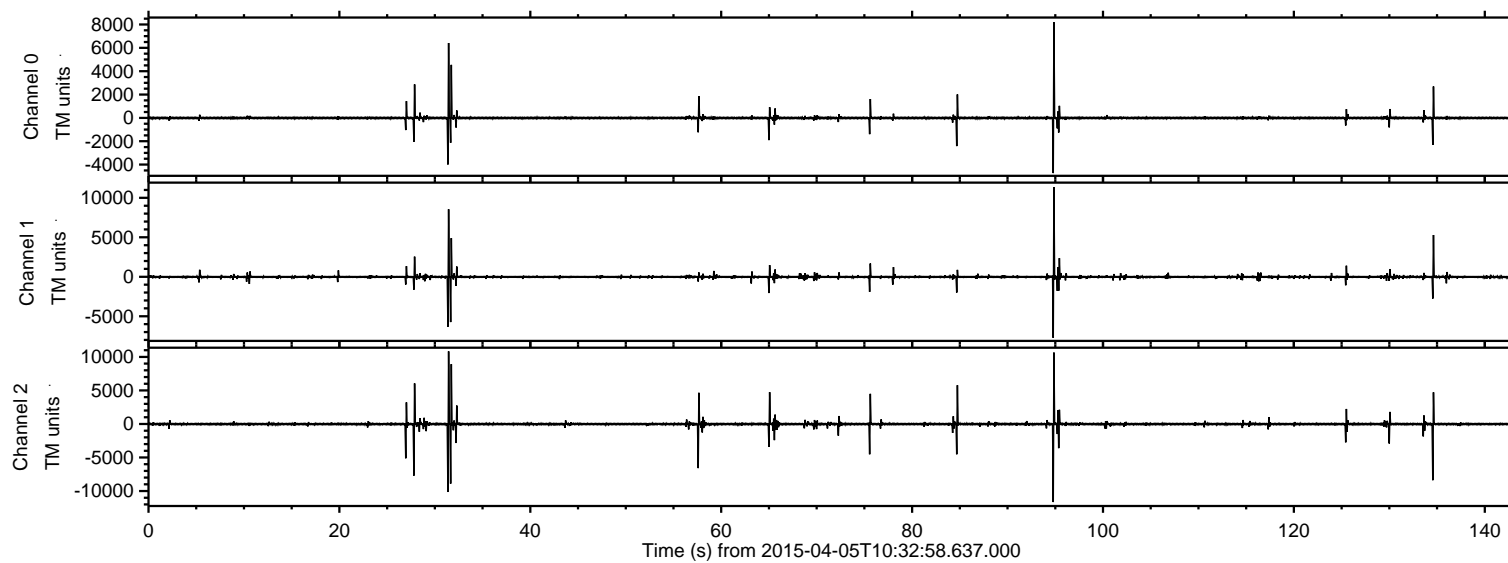
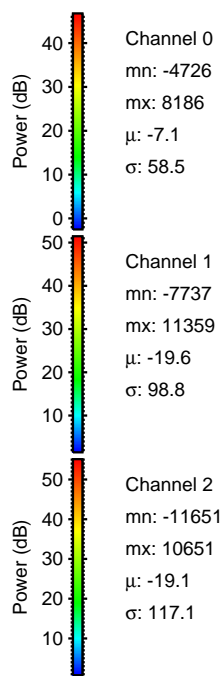
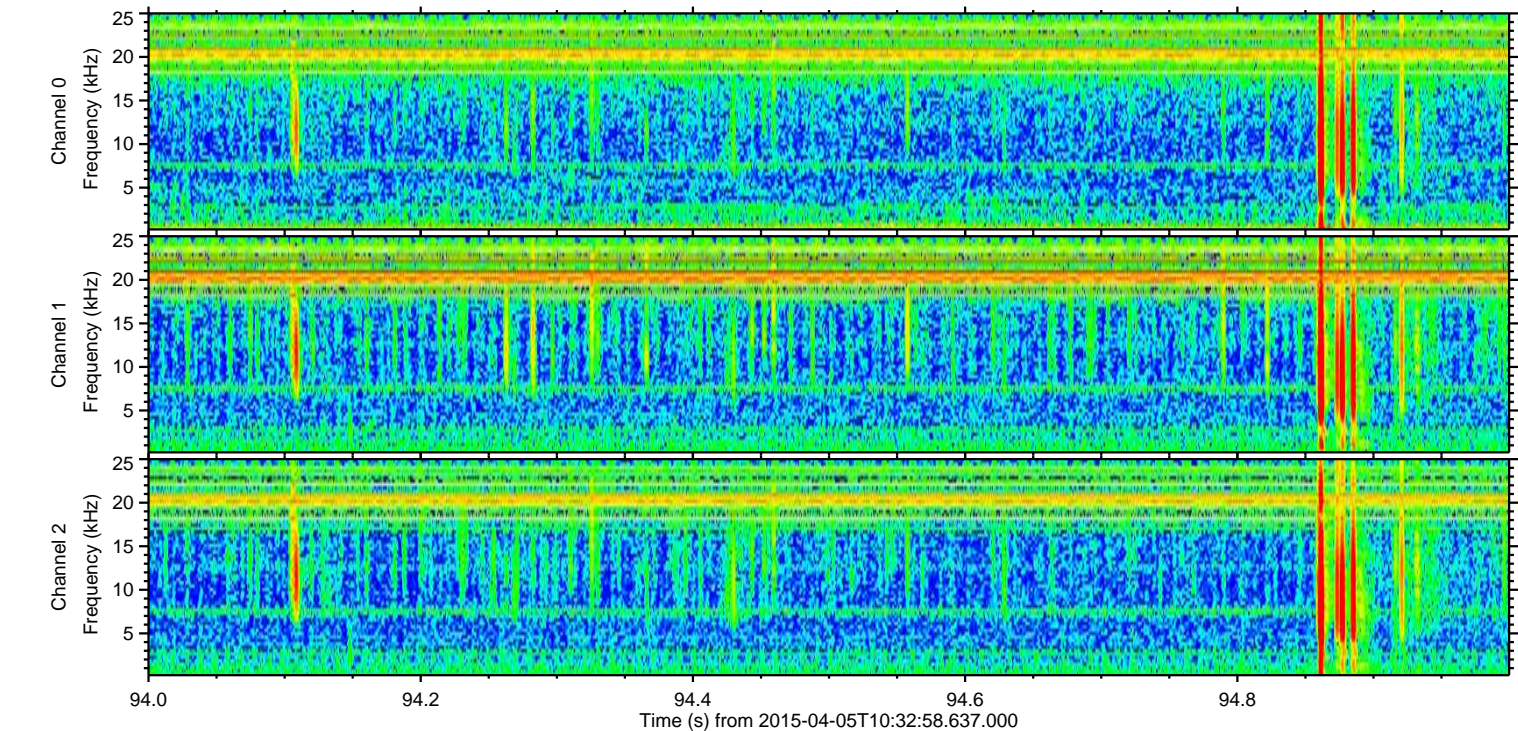
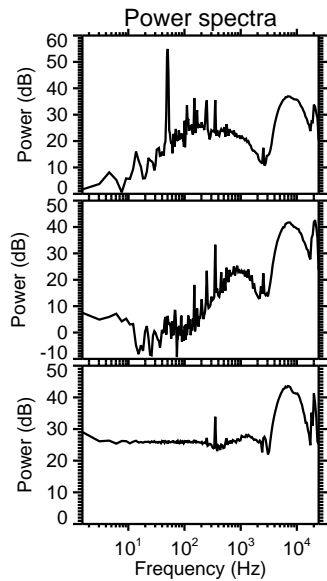
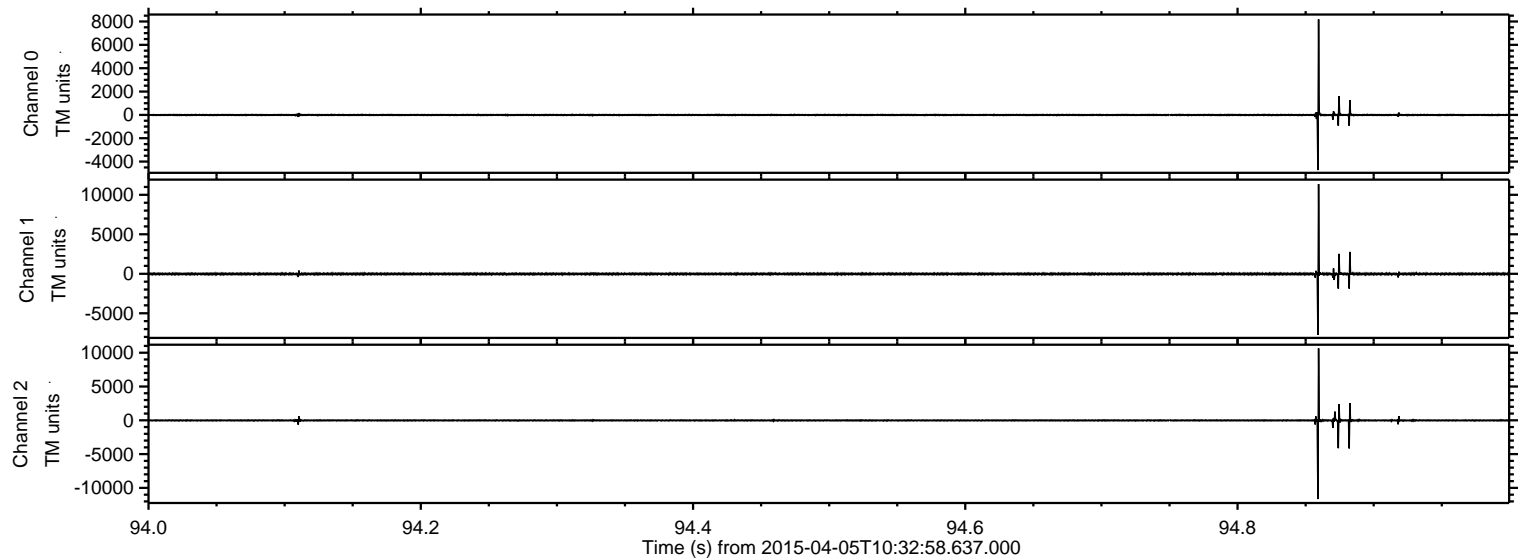


ELMAVAN 3D WAVEFORMS (Measured data sampled at 50 kHz) 49497 packets of 144 samples from 2015-04-05T10:32:58.637.000.

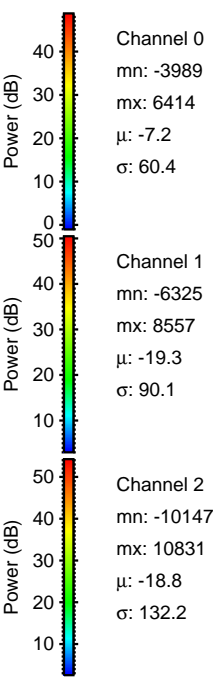
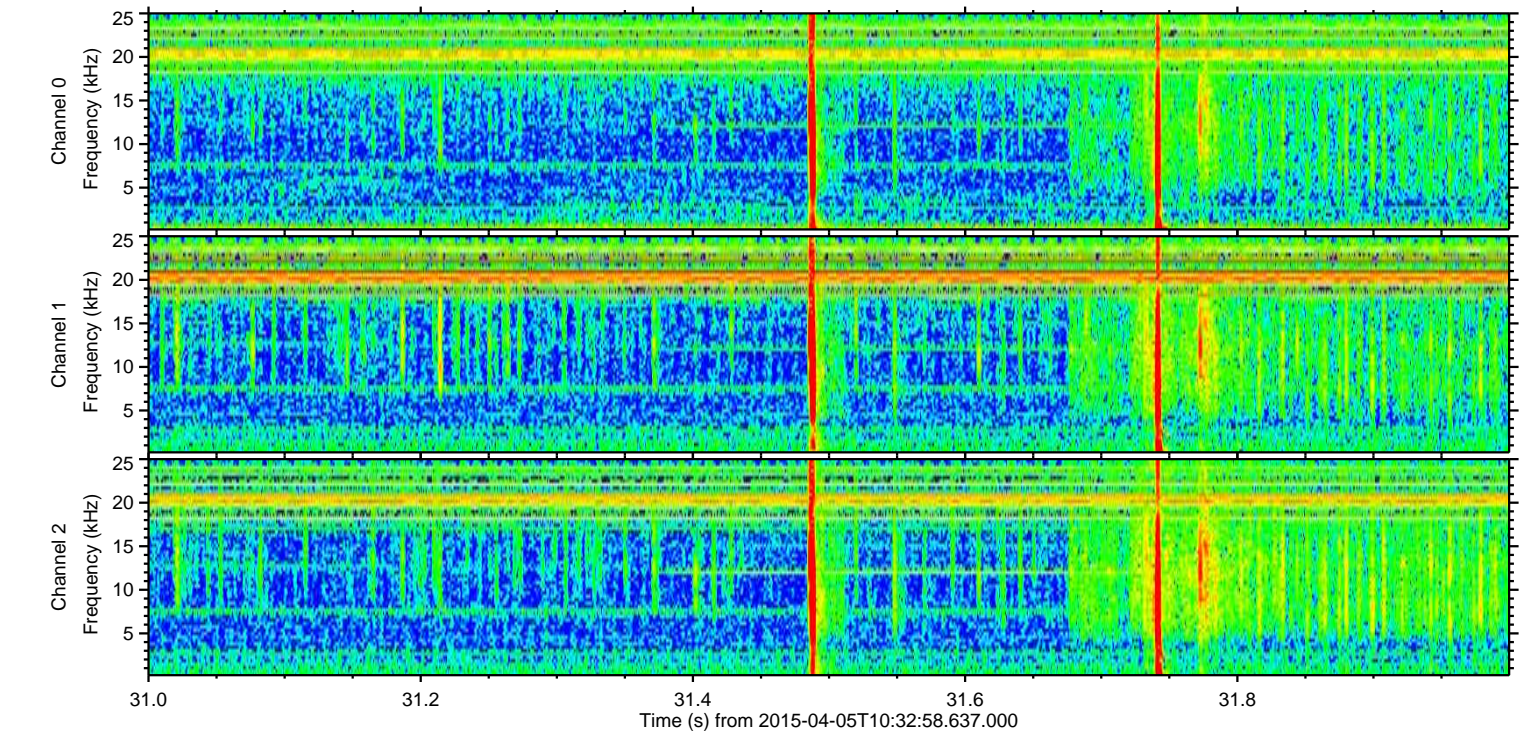
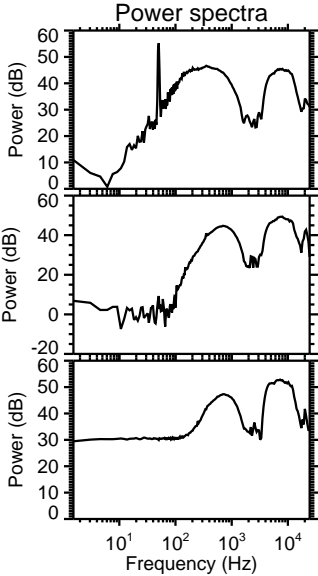
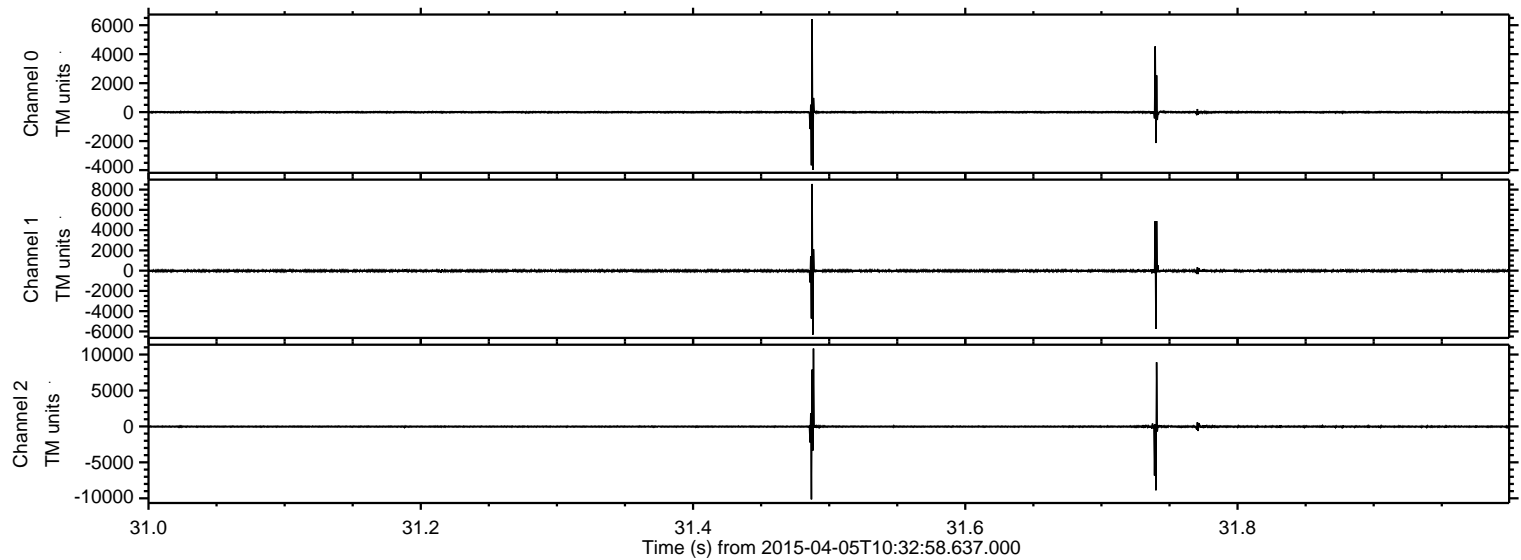
Processed Sun Apr 5 15:34:29 2015 by ELM ver.2012-10-06 from 001__elm20150405_103257__dat00.bin



Processed Sun Apr 5 15:34:44 2015 by ELM ver.2012-10-06 from 001__elm20150405_103257__dat00.bin

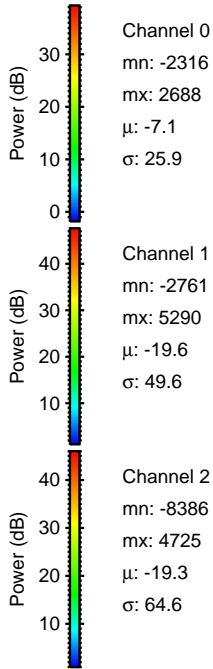
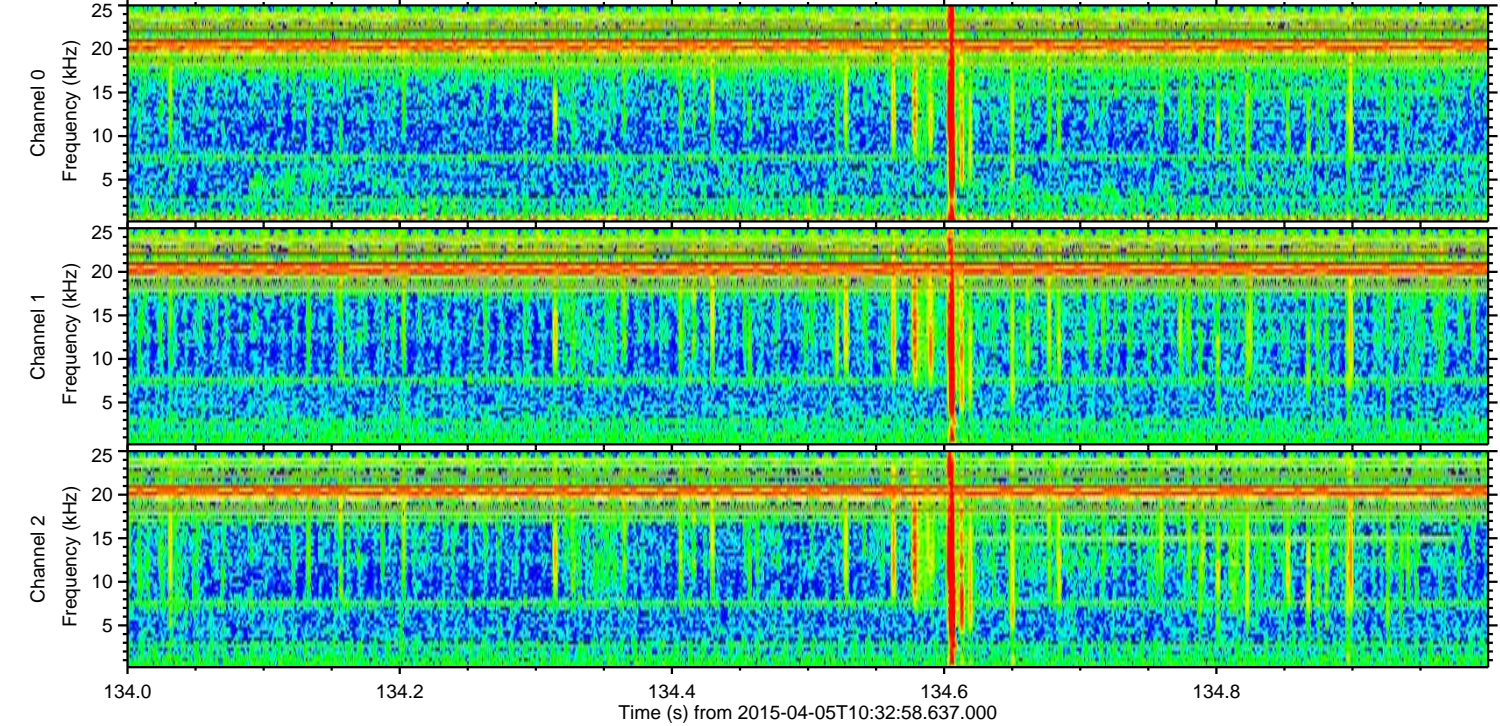
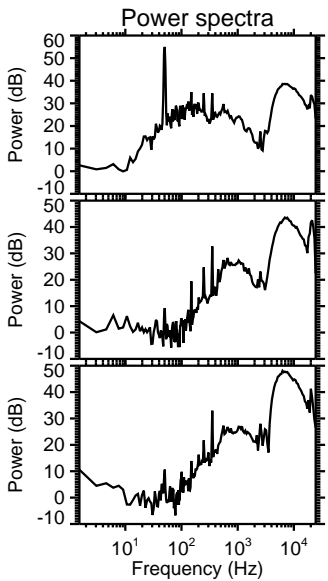
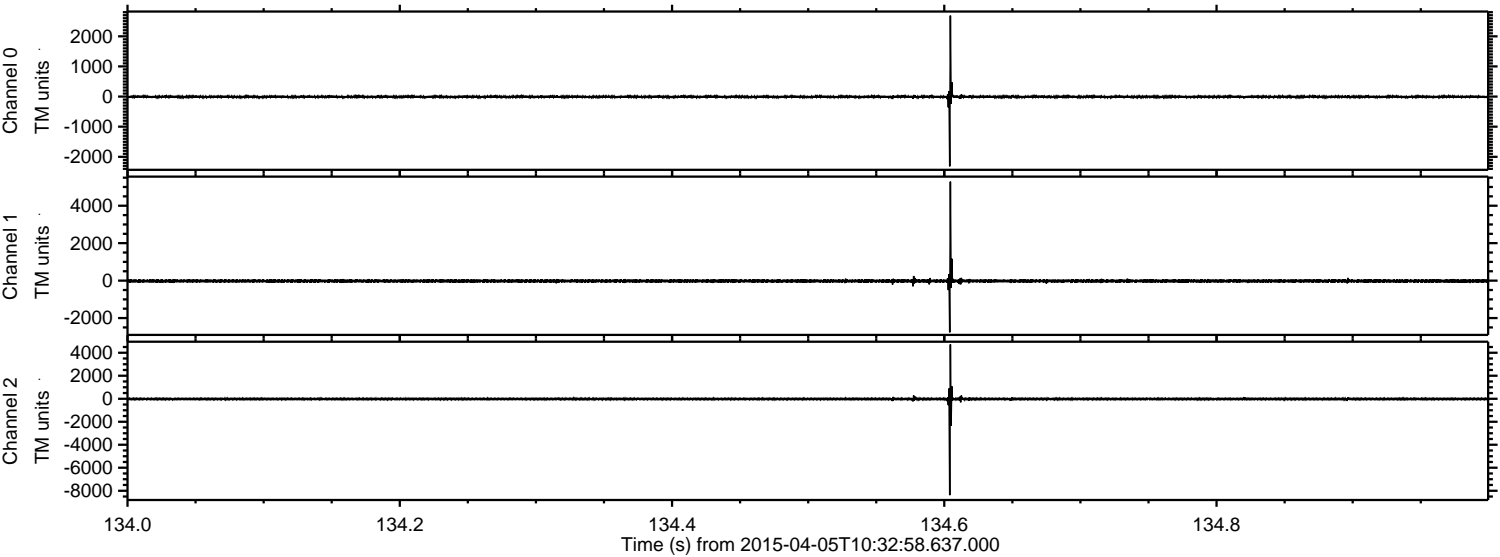


Processed Sun Apr 5 15:34:45 2015 by ELM ver.2012-10-06 from 001__elm20150405_103257__dat00.bin



ELMAVAN 3D WAVEFORMS (Measured data sampled at 50 kHz) 49497 packets of 144 samples from 2015-04-05T10:32:58.637.000. Part 135/143

Processed Sun Apr 5 15:34:46 2015 by ELM ver.2012-10-06 from 001__elm20150405_103257__dat00.bin



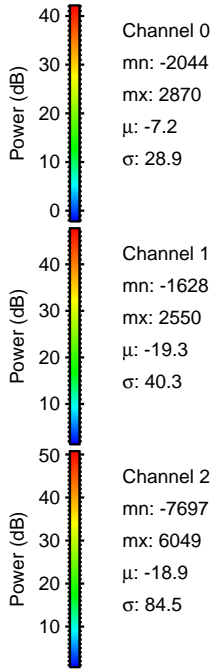
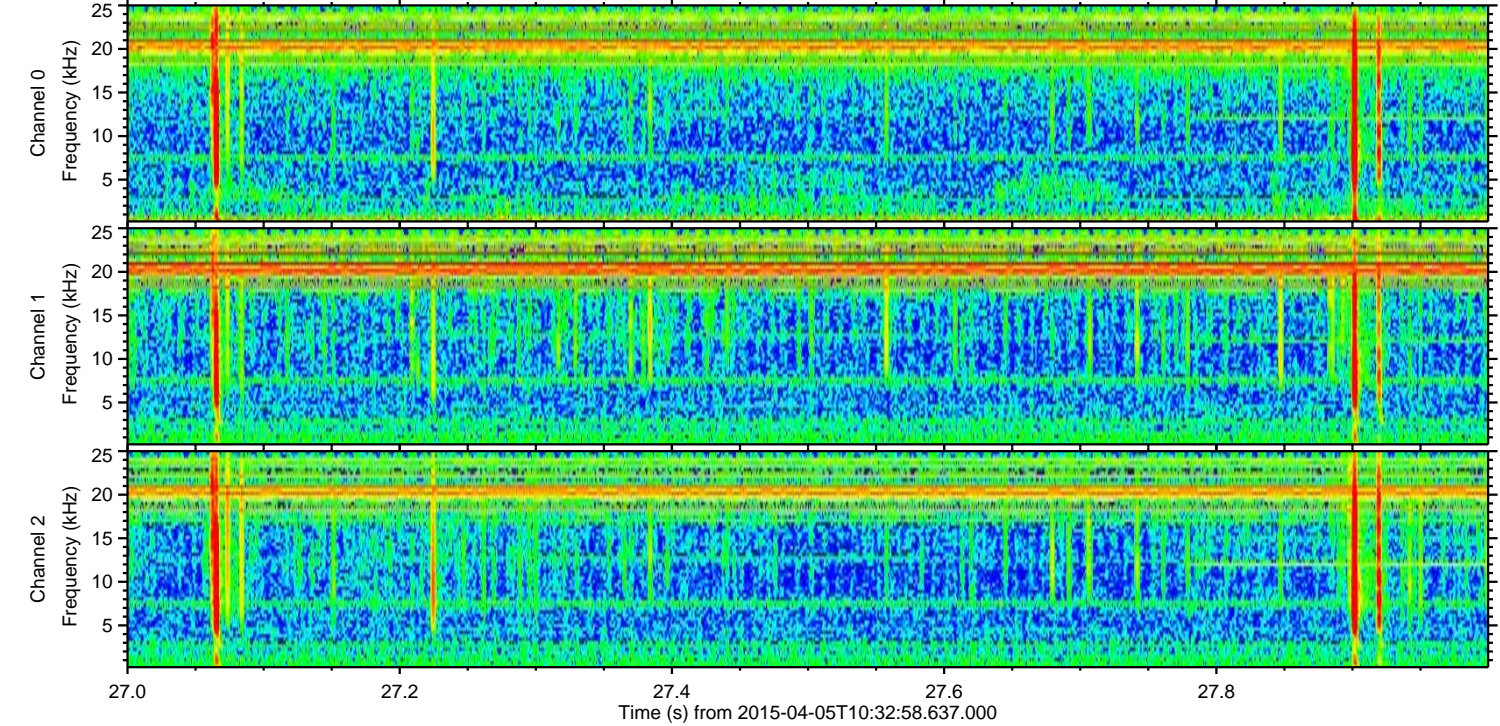
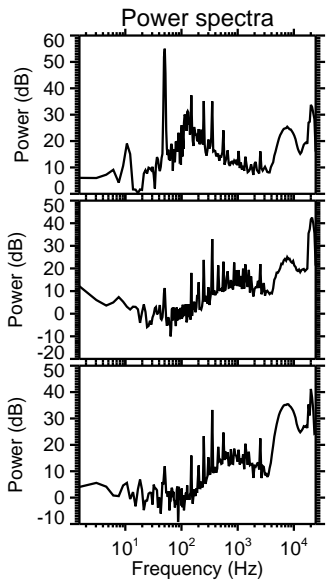
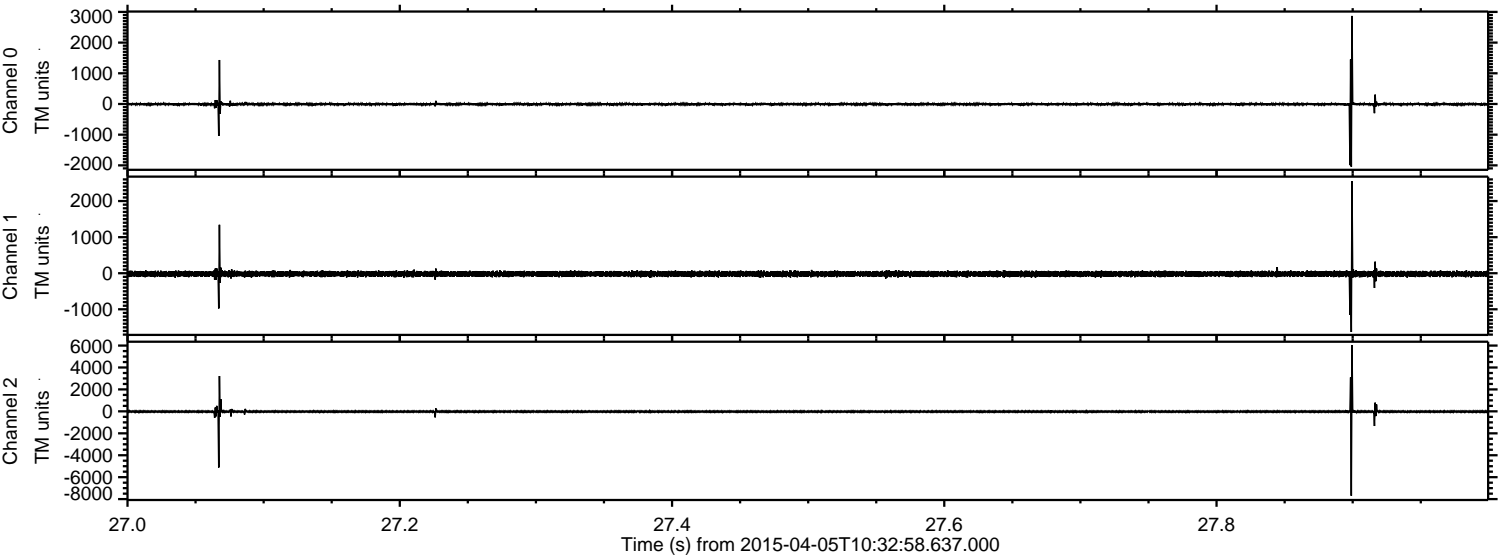
Channel 0
mn: -2316
mx: 2688
 μ : -7.1
 σ : 25.9

Channel 1
mn: -2761
mx: 5290
 μ : -19.6
 σ : 49.6

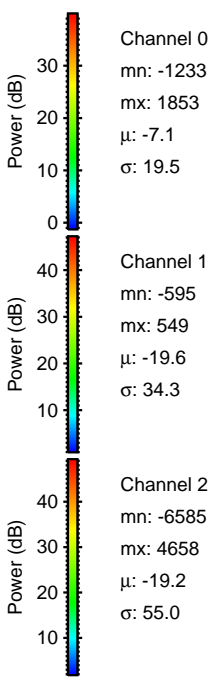
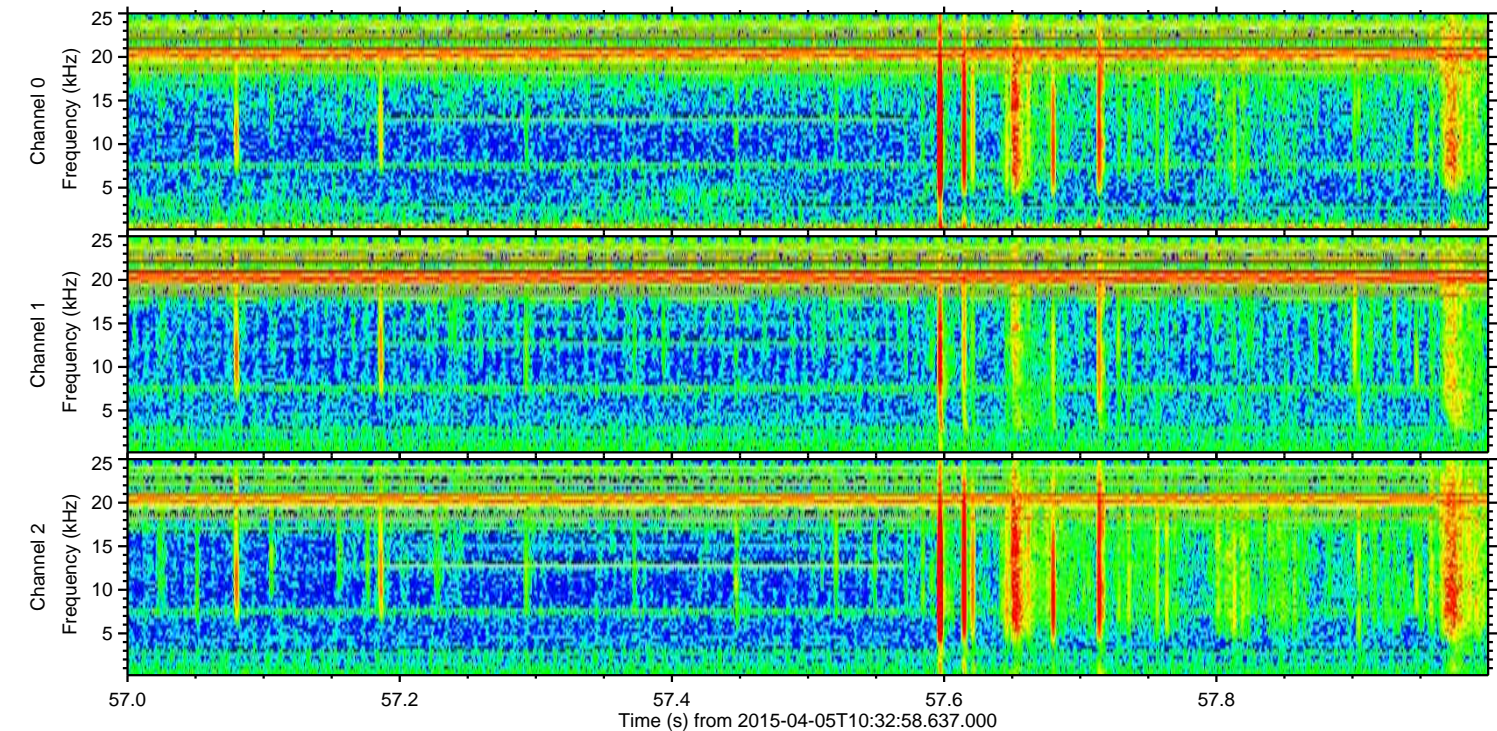
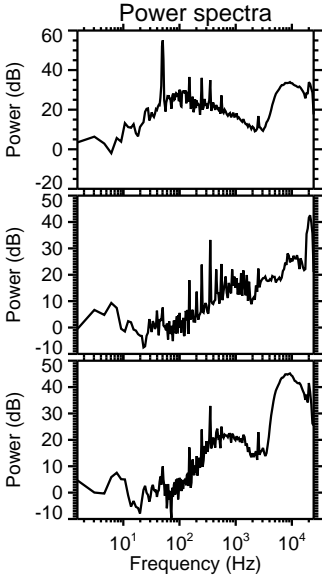
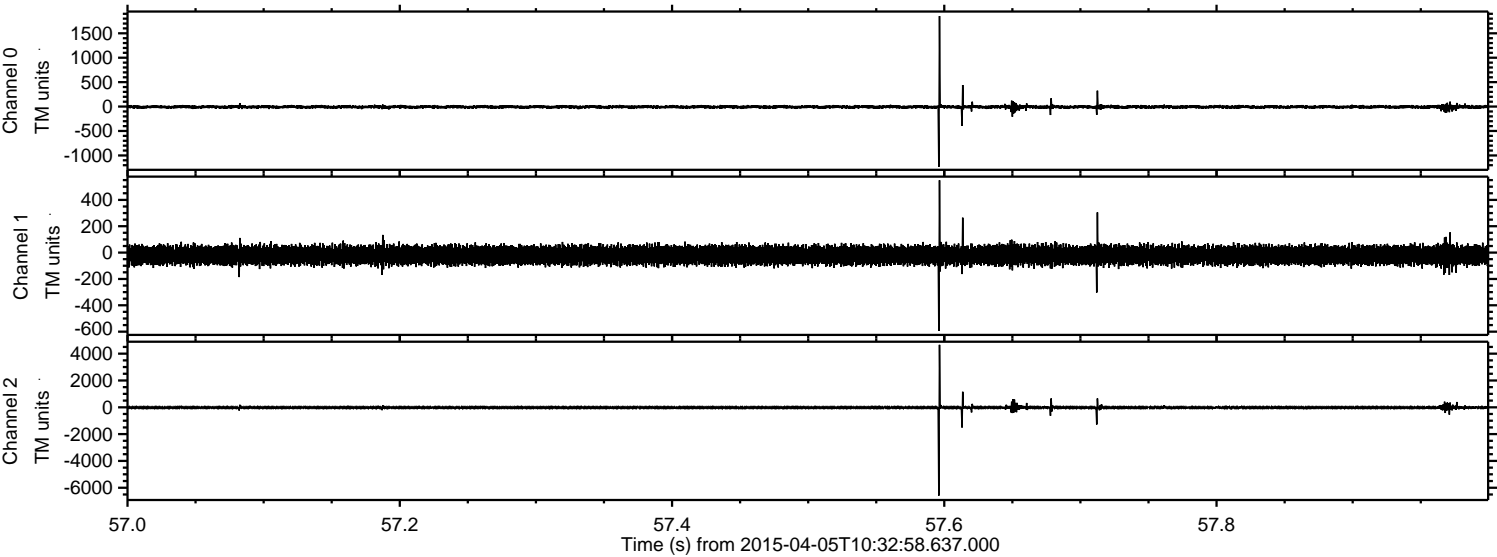
Channel 2
mn: -8386
mx: 4725
 μ : -19.3
 σ : 64.6

ELMAVAN 3D WAVEFORMS (Measured data sampled at 50 kHz) 49497 packets of 144 samples from 2015-04-05T10:32:58.637.000. Part 28/143

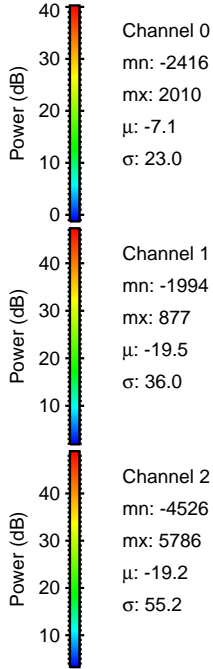
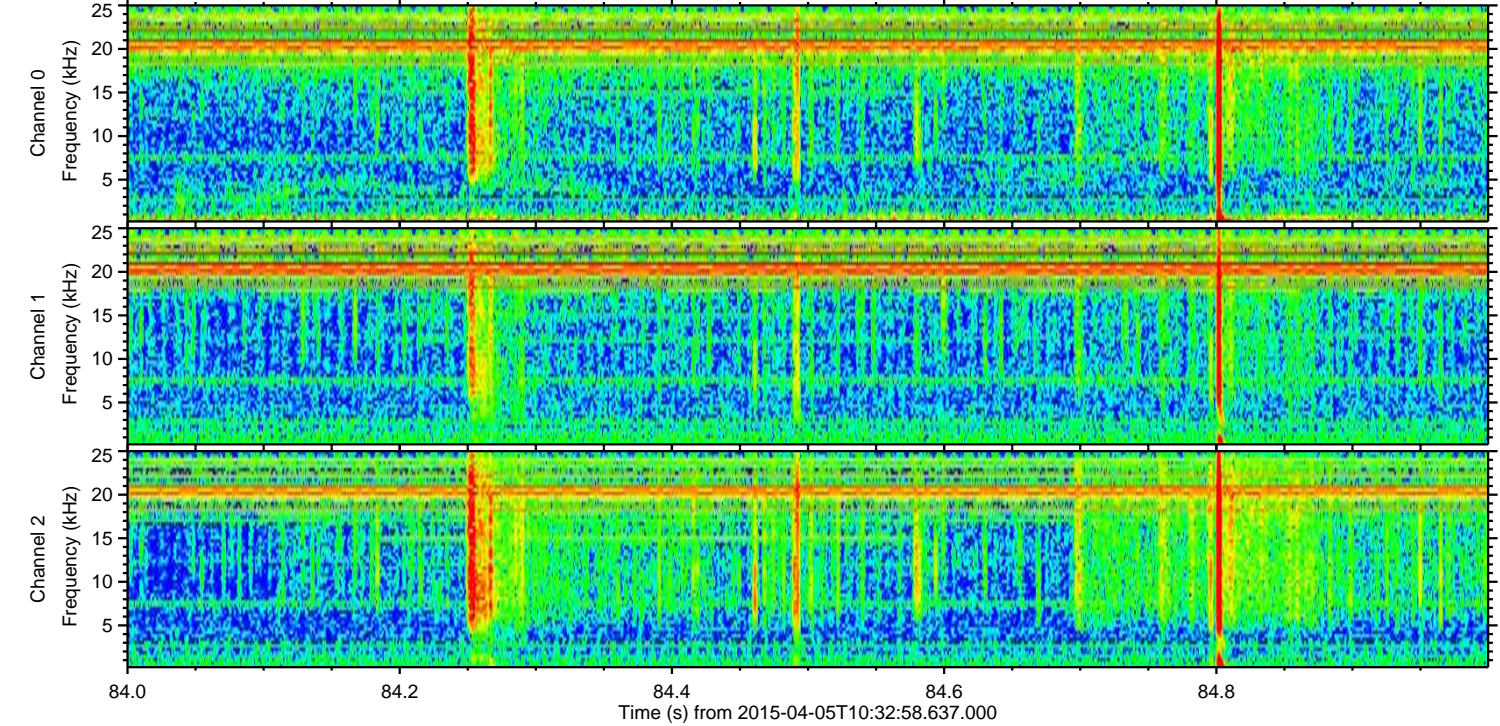
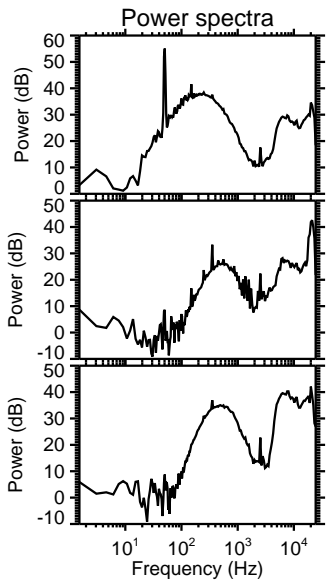
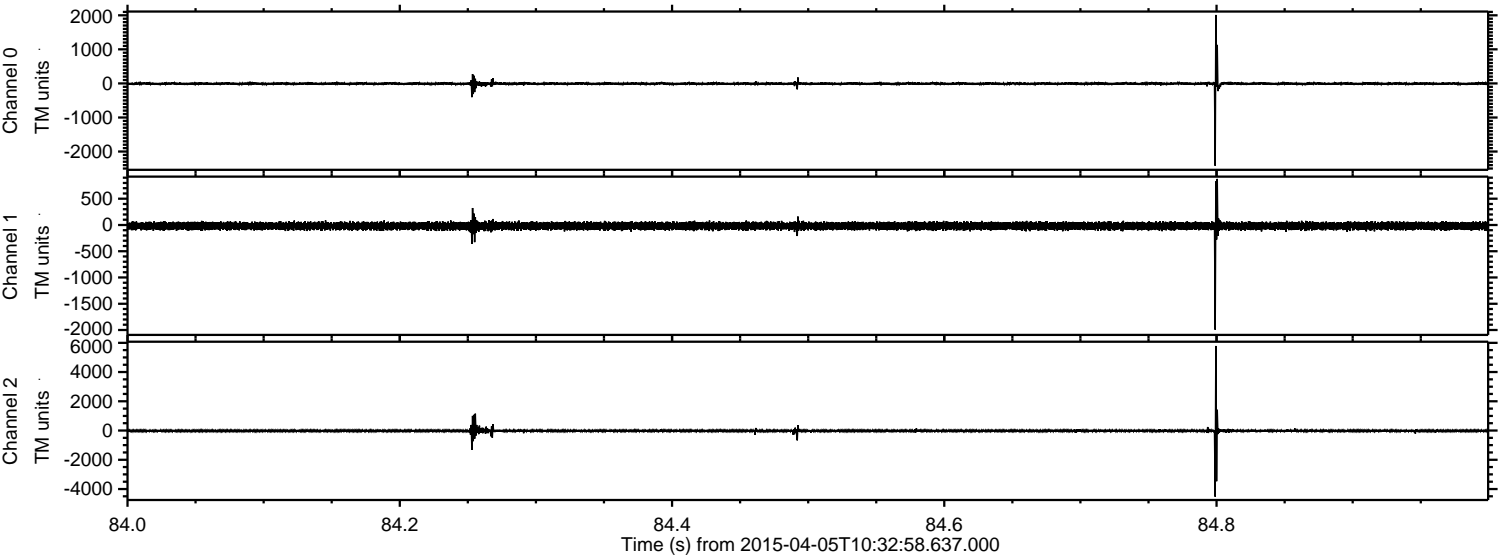
Processed Sun Apr 5 15:34:47 2015 by ELM ver.2012-10-06 from 001__elm20150405_103257__dat00.bin



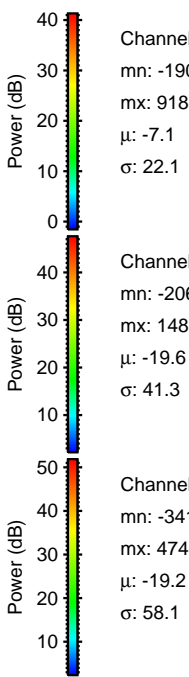
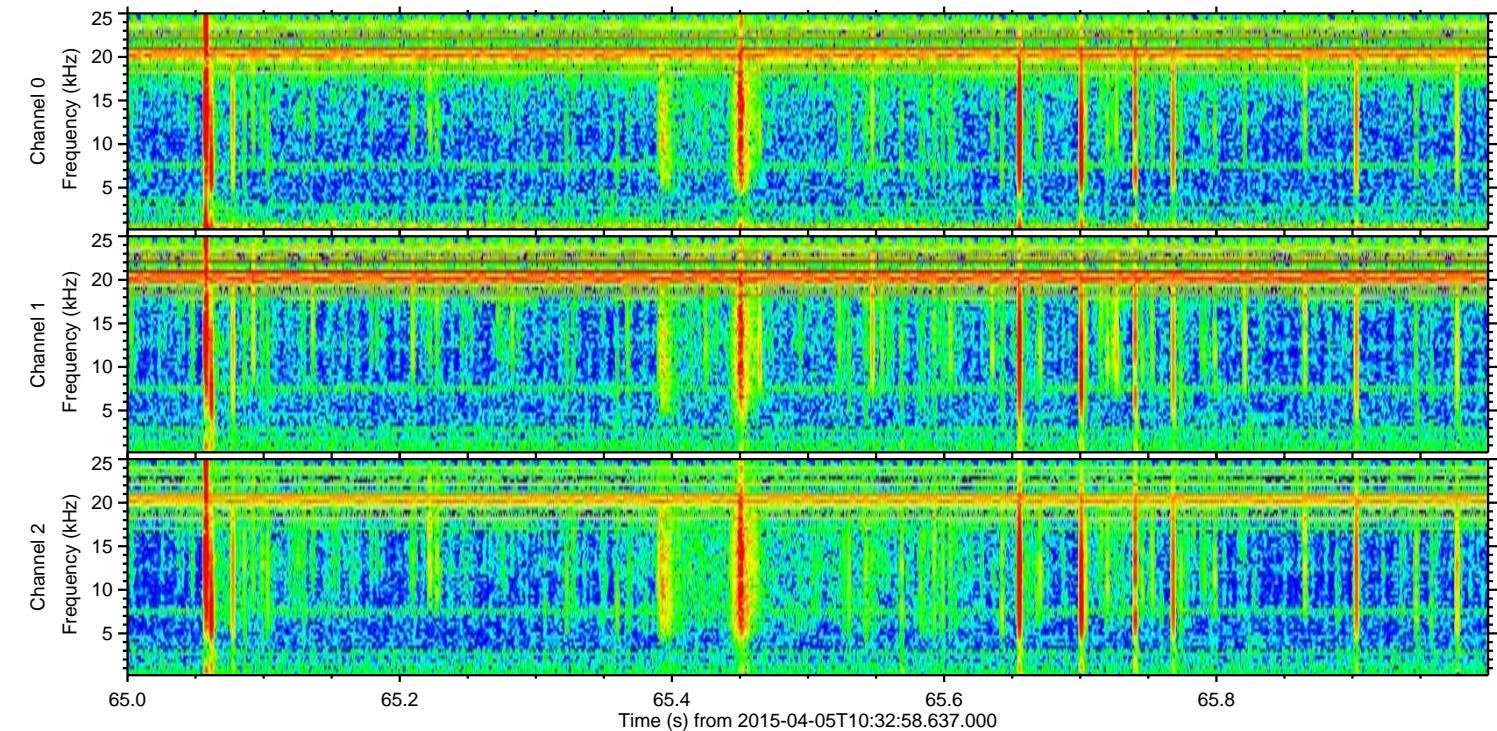
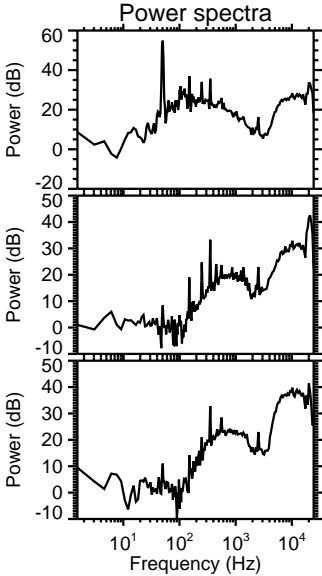
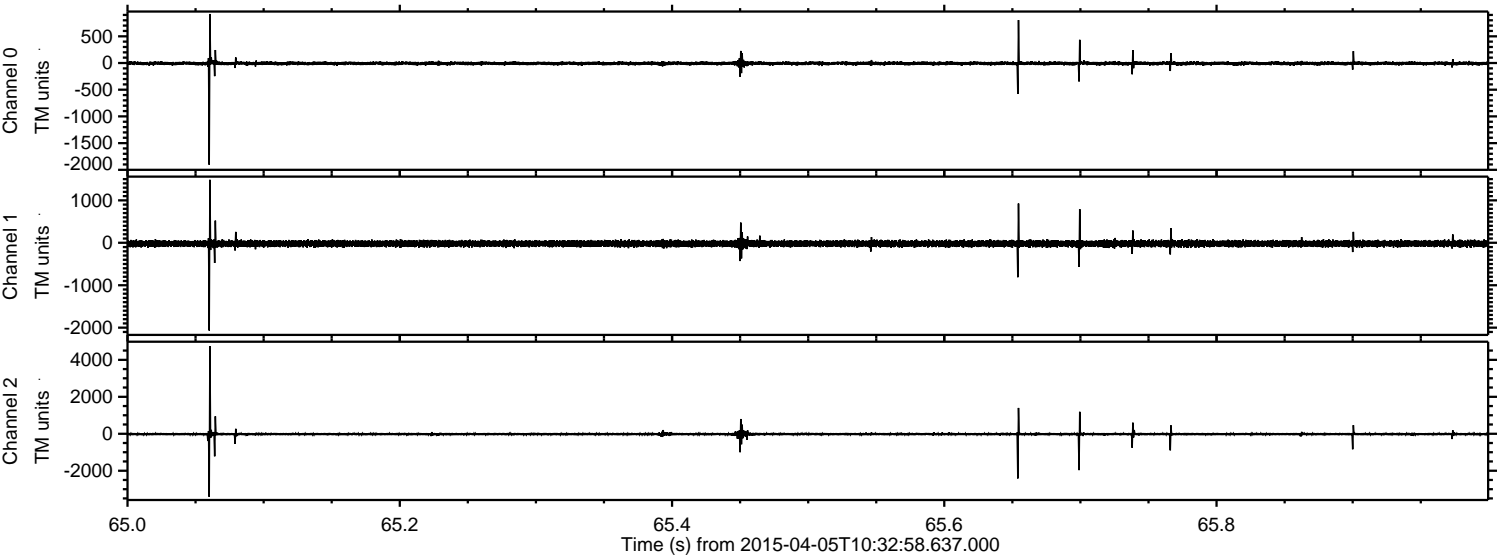
Processed Sun Apr 5 15:34:48 2015 by ELM ver.2012-10-06 from 001__elm20150405_103257__dat00.bin



Processed Sun Apr 5 15:34:49 2015 by ELM ver.2012-10-06 from 001__elm20150405_103257__dat00.bin



Processed Sun Apr 5 15:34:50 2015 by ELM ver.2012-10-06 from 001__elm20150405_103257__dat00.bin

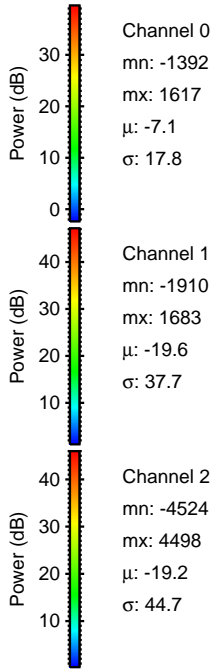
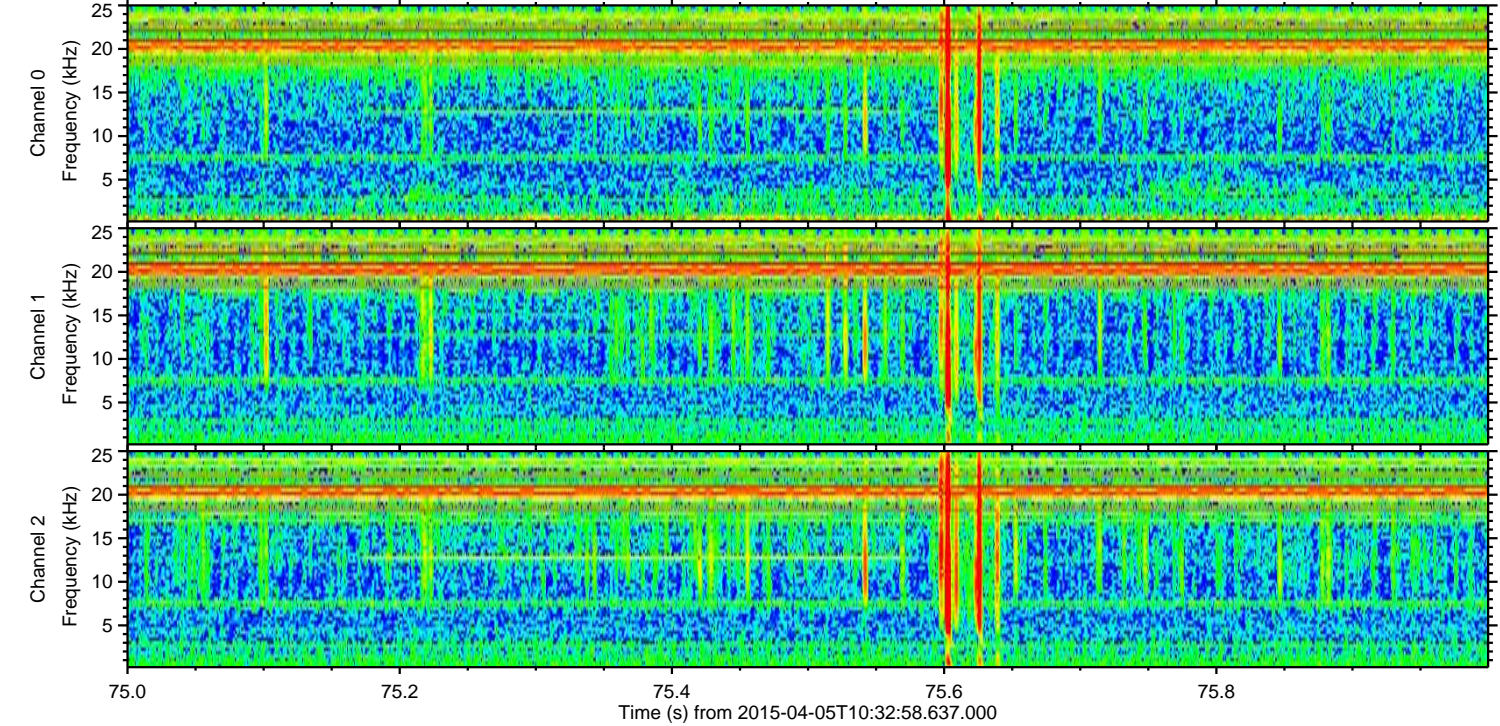
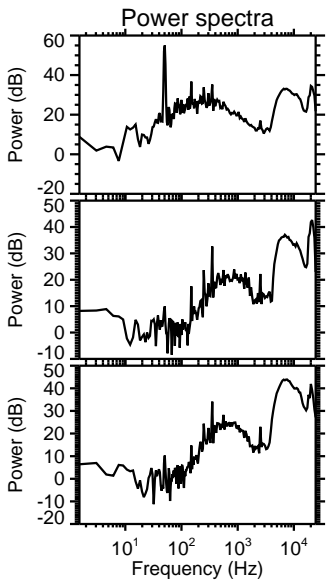
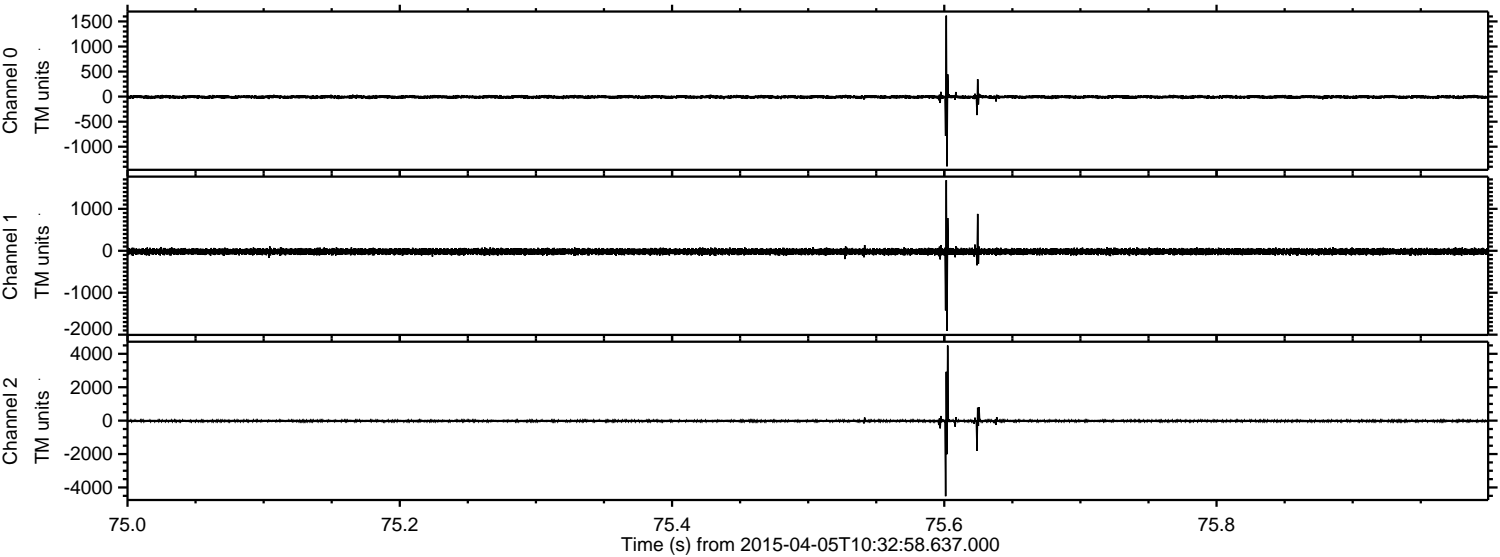


Channel 0
mn: -1905
mx: 918
 μ : -7.1
 σ : 22.1

Channel 1
mn: -2067
mx: 1485
 μ : -19.6
 σ : 41.3

Channel 2
mn: -3414
mx: 4743
 μ : -19.2
 σ : 58.1

Processed Sun Apr 5 15:34:51 2015 by ELM ver.2012-10-06 from 001__elm20150405_103257__dat00.bin

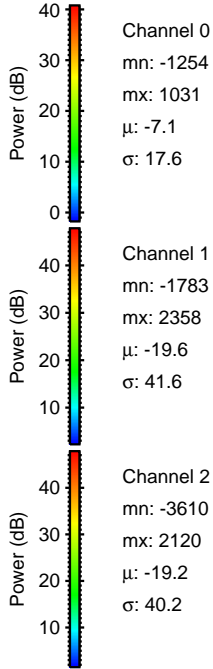
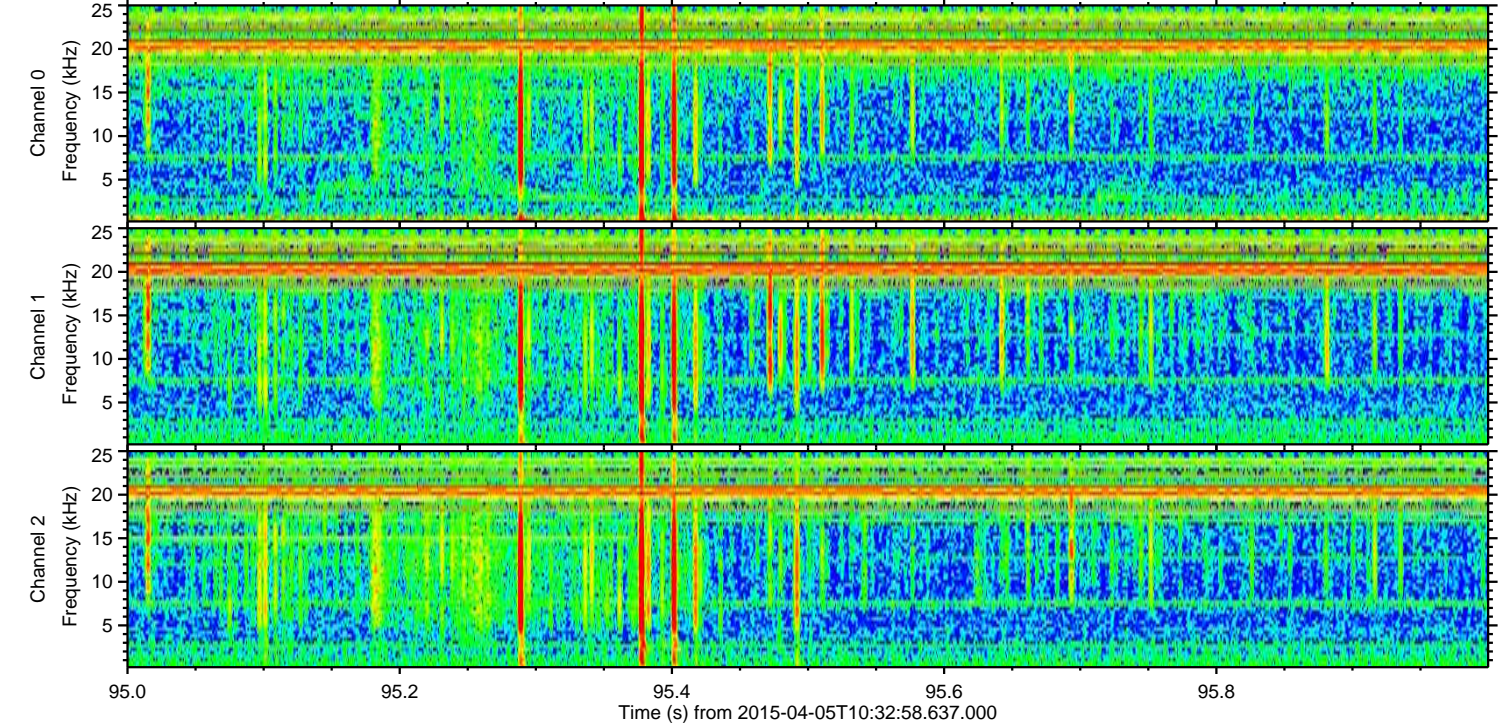
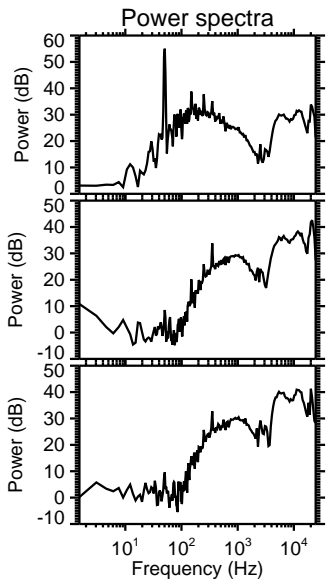
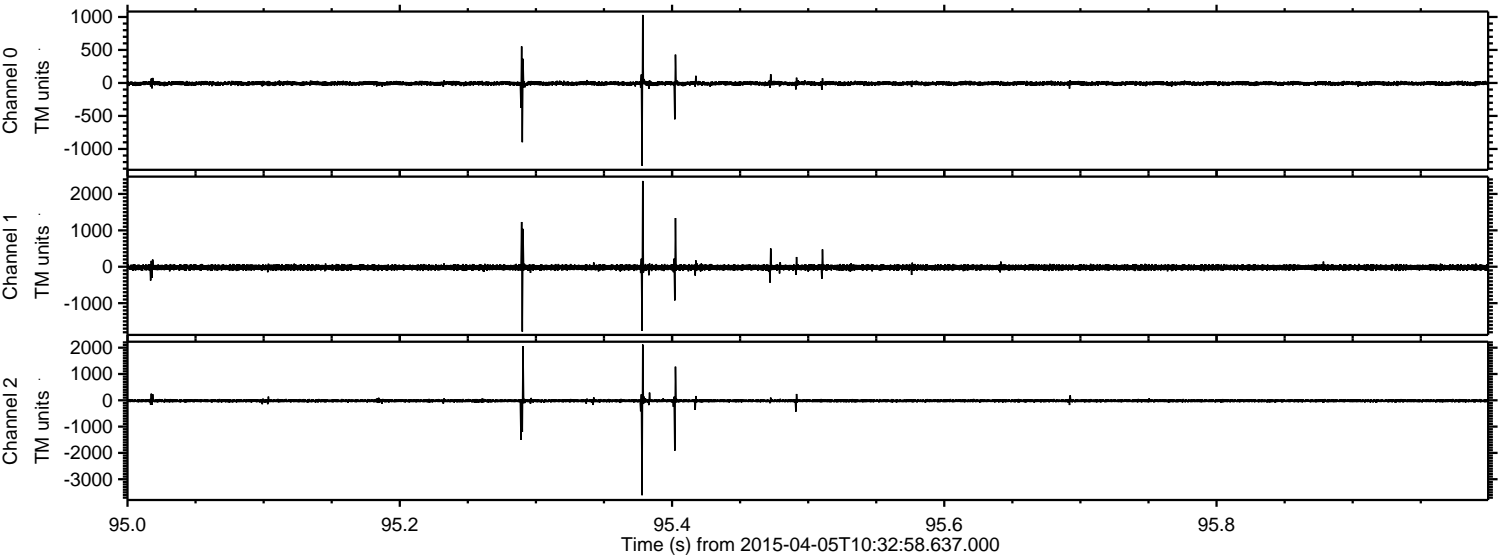


Channel 0
mn: -1392
mx: 1617
 μ : -7.1
 σ : 17.8

Channel 1
mn: -1910
mx: 1683
 μ : -19.6
 σ : 37.7

Channel 2
mn: -4524
mx: 4498
 μ : -19.2
 σ : 44.7

Processed Sun Apr 5 15:34:52 2015 by ELM ver.2012-10-06 from 001__elm20150405_103257__dat00.bin



Processed Sun Apr 5 15:34:53 2015 by ELM ver.2012-10-06 from 001__elm20150405_103257__dat00.bin

