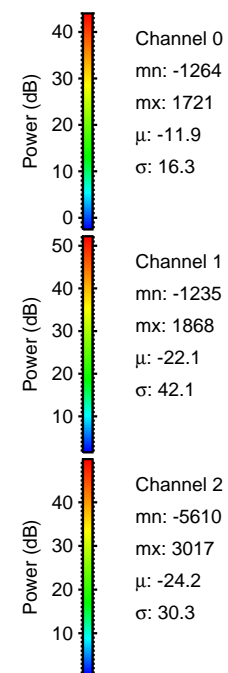
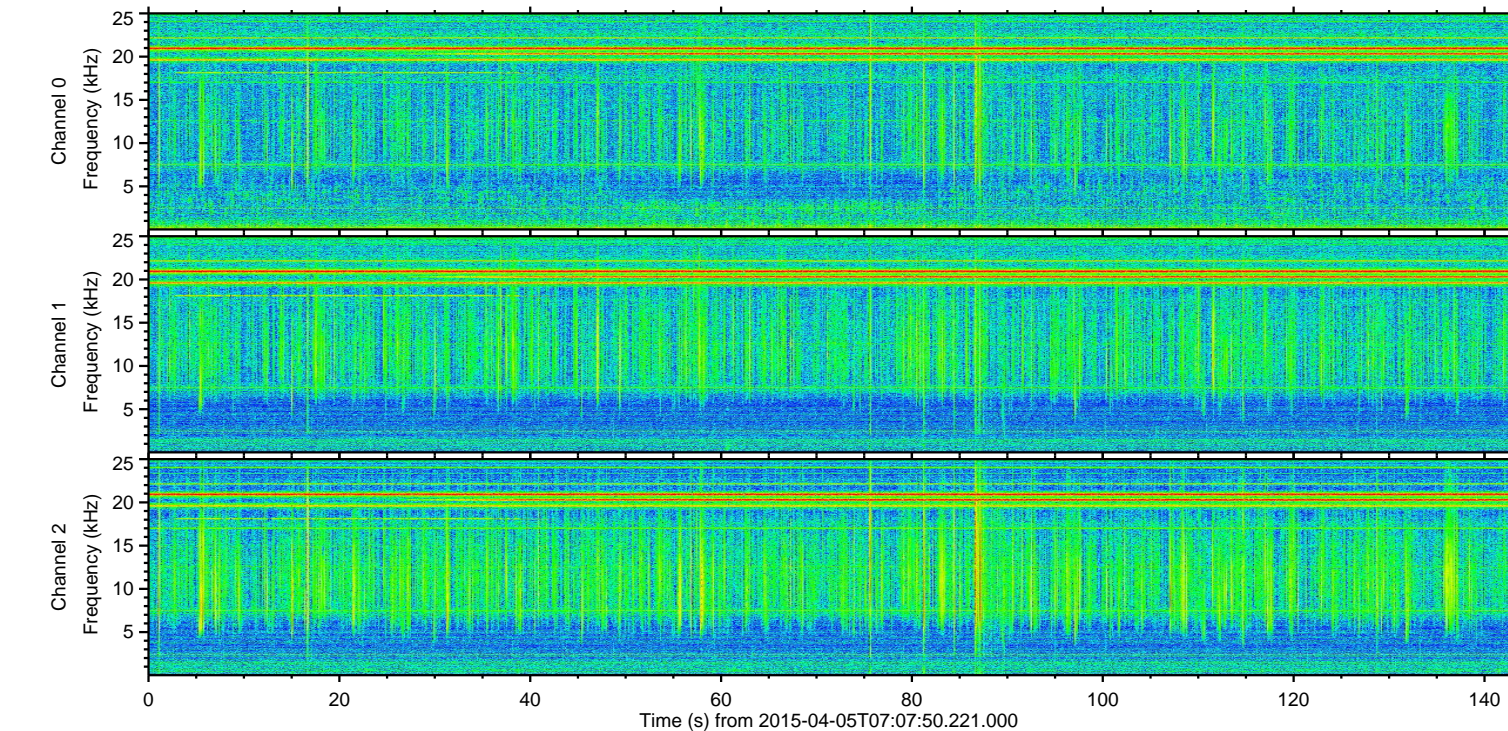
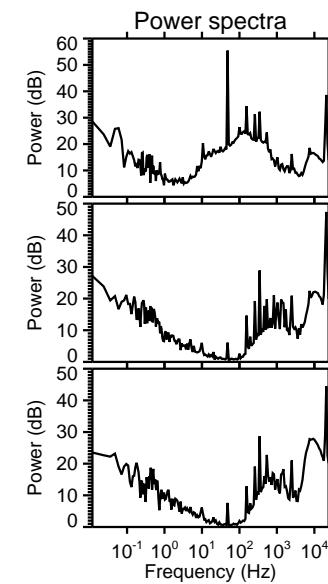
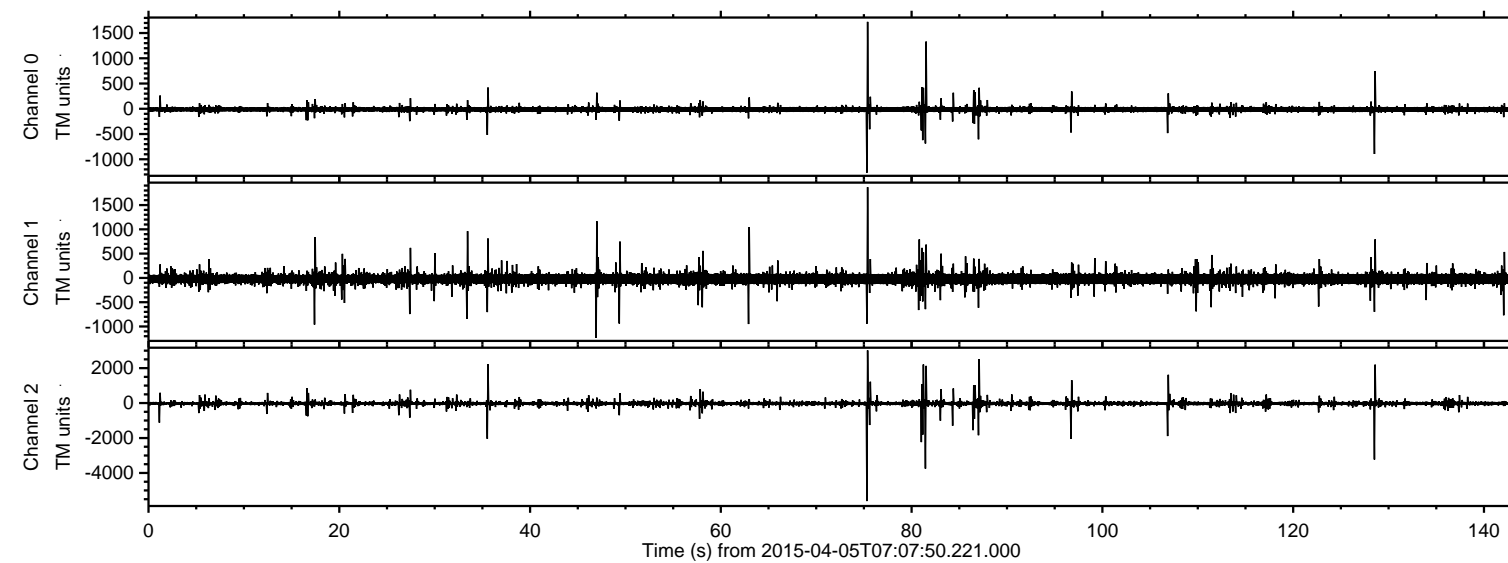


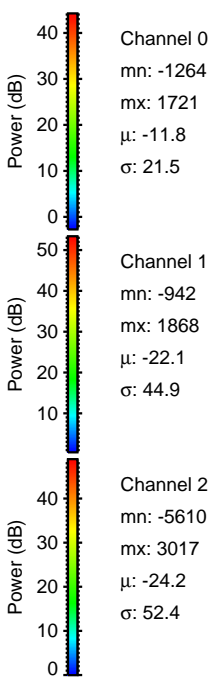
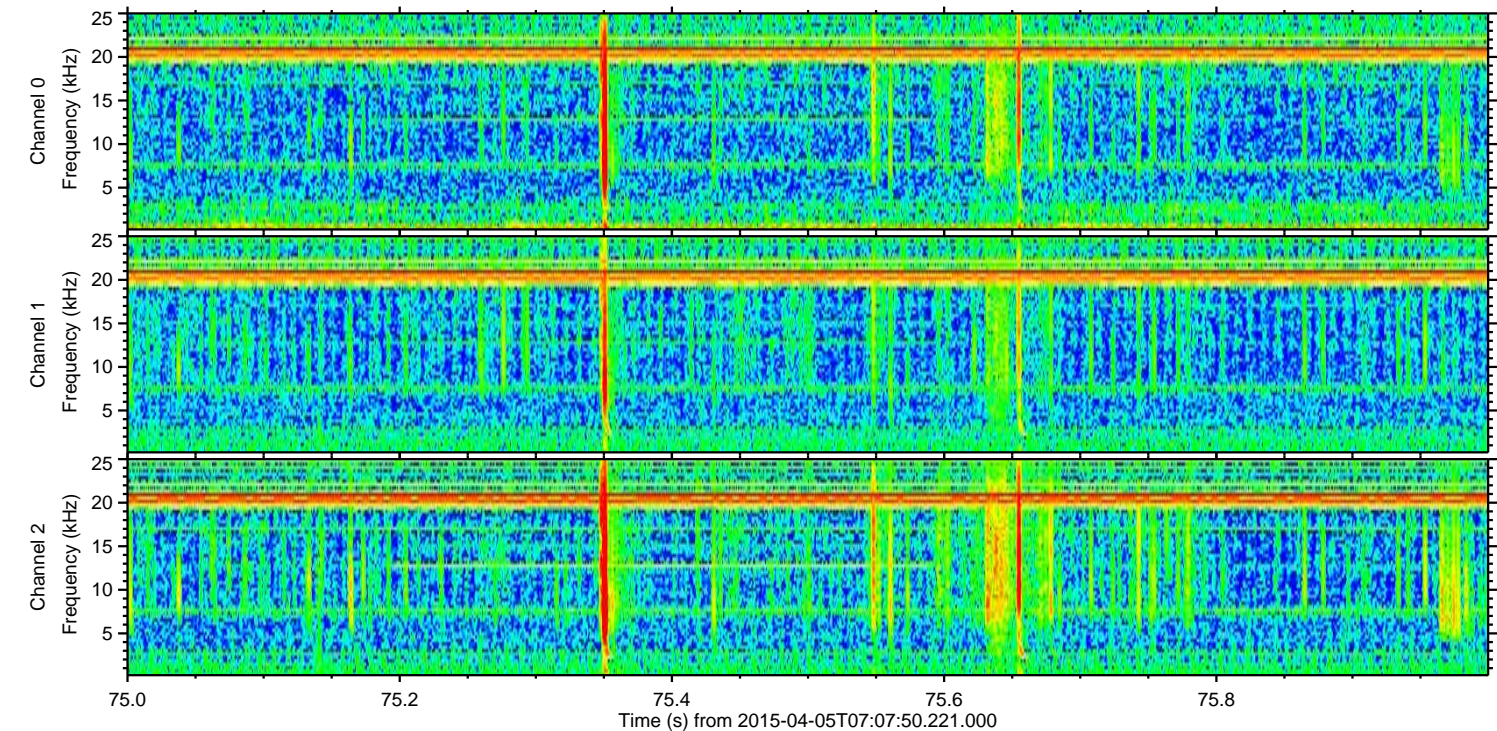
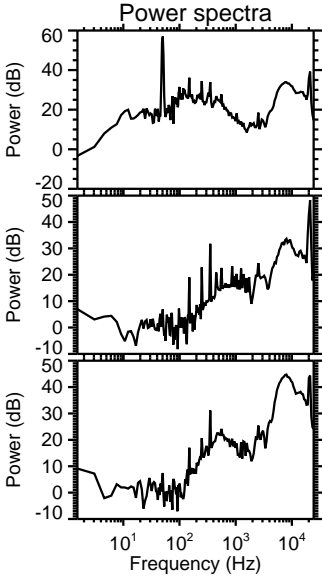
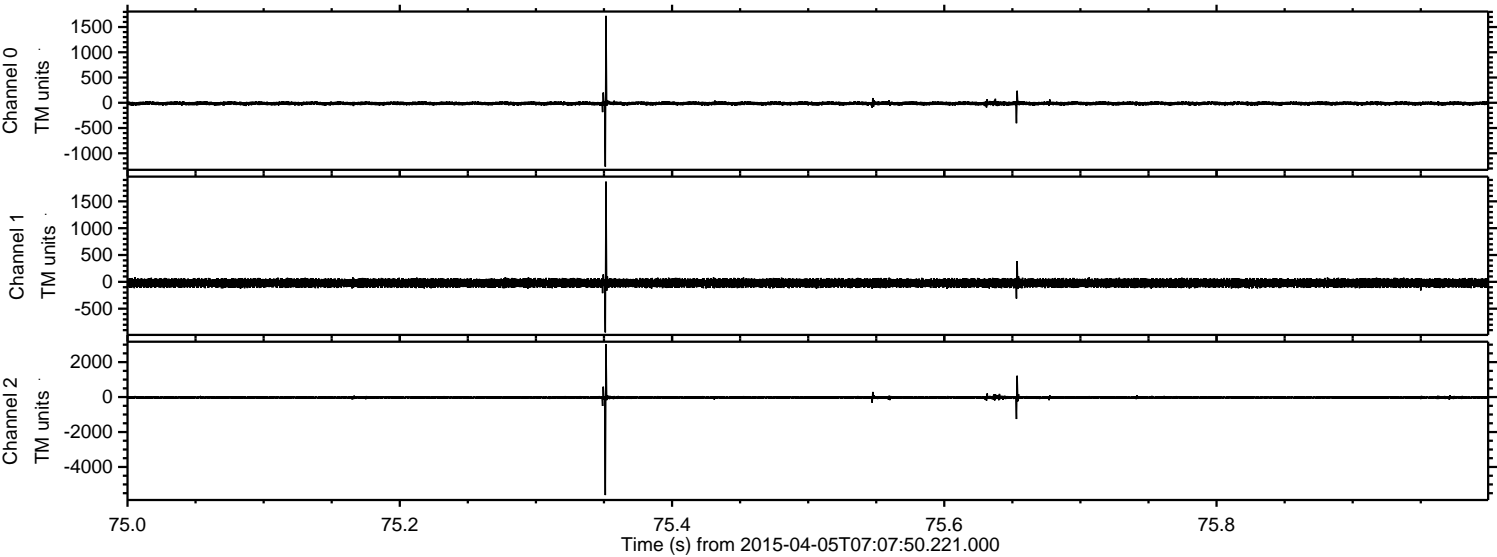
# ELMAVAN 3D WAVEFORMS (Measured data sampled at 50 kHz) 49528 packets of 144 samples from 2015-04-05T07:07:50.221.000.

Processed Sun Apr 5 12:48:06 2015 by ELM ver.2012-10-06 from 001\_\_elm20150405\_070749\_\_dat00.bin



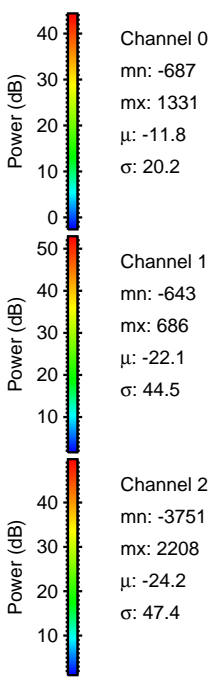
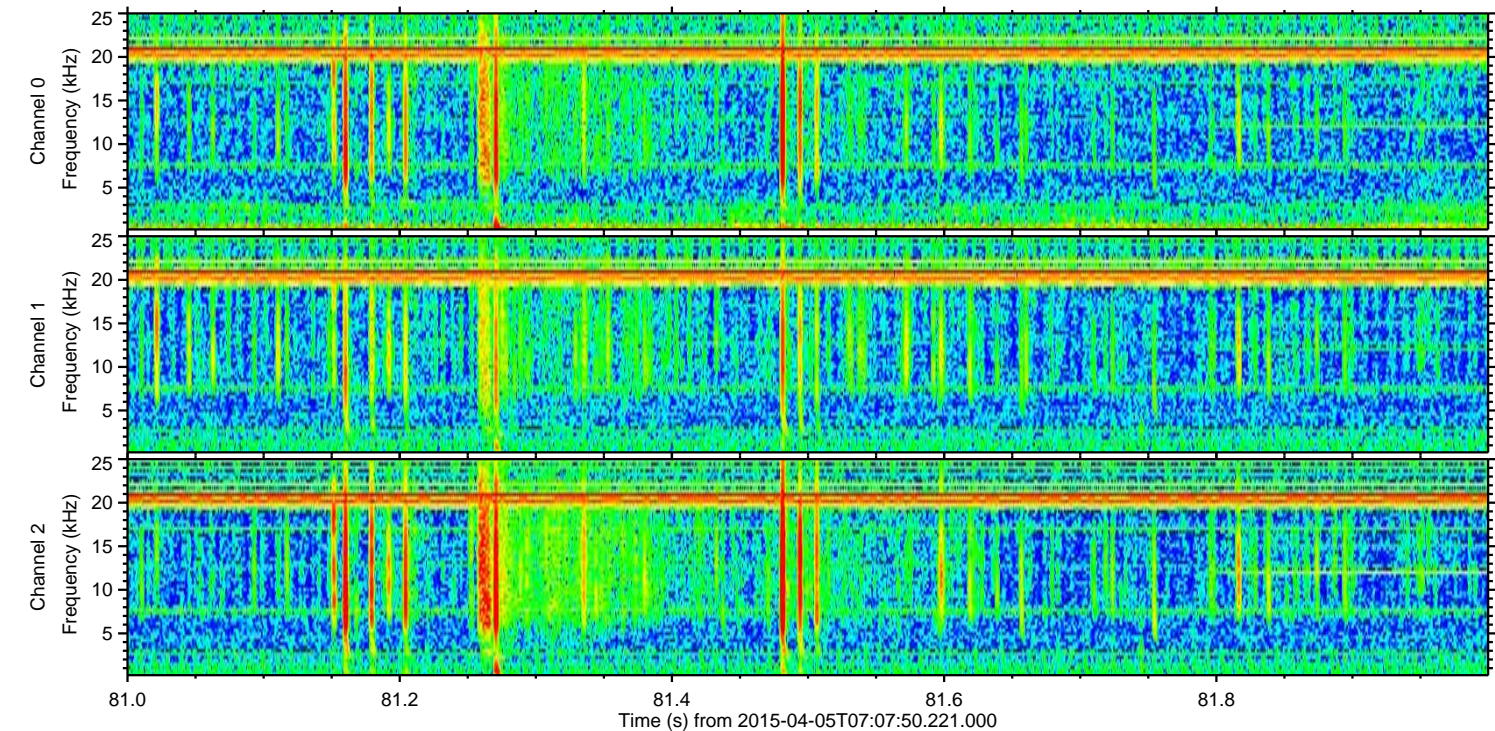
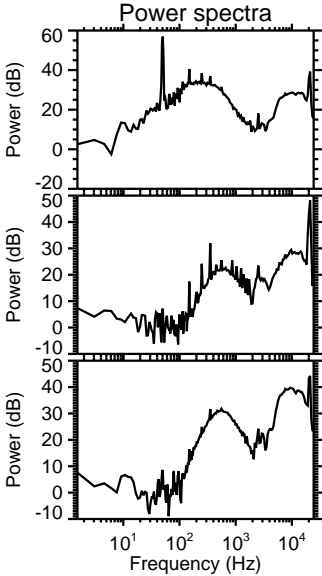
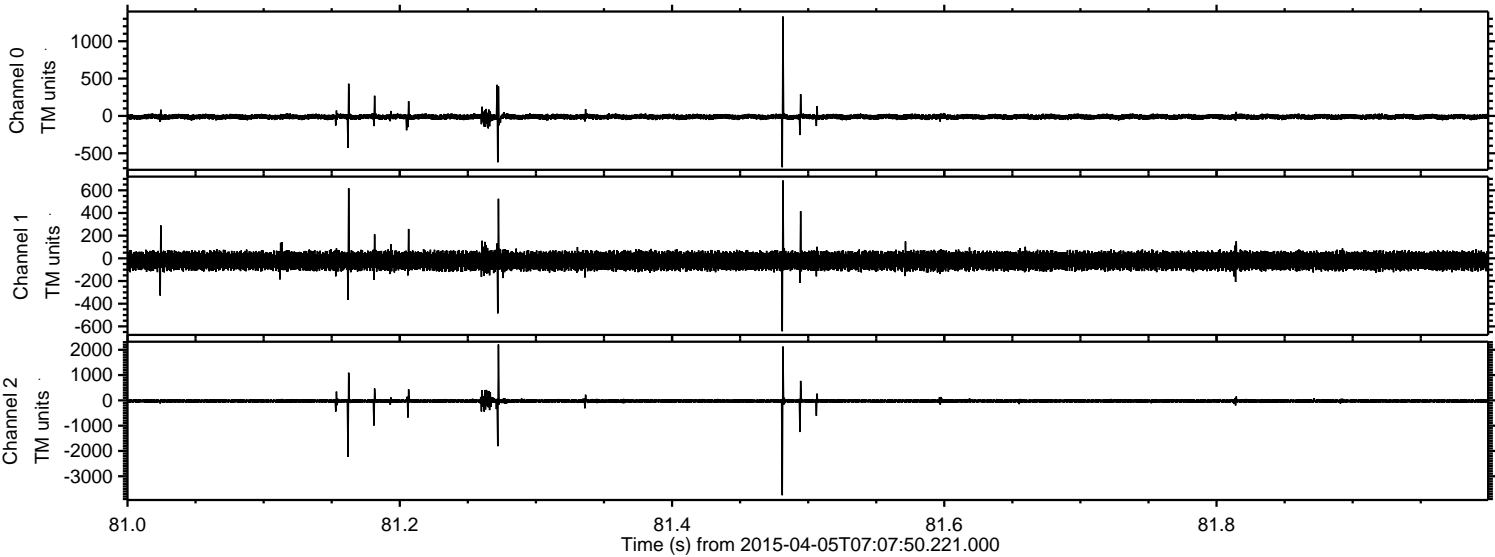


Processed Sun Apr 5 12:48:21 2015 by ELM ver.2012-10-06 from 001\_\_elm20150405\_070749\_\_dat00.bin





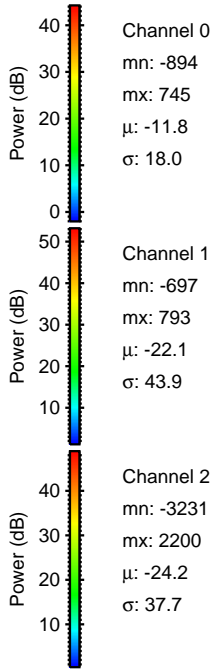
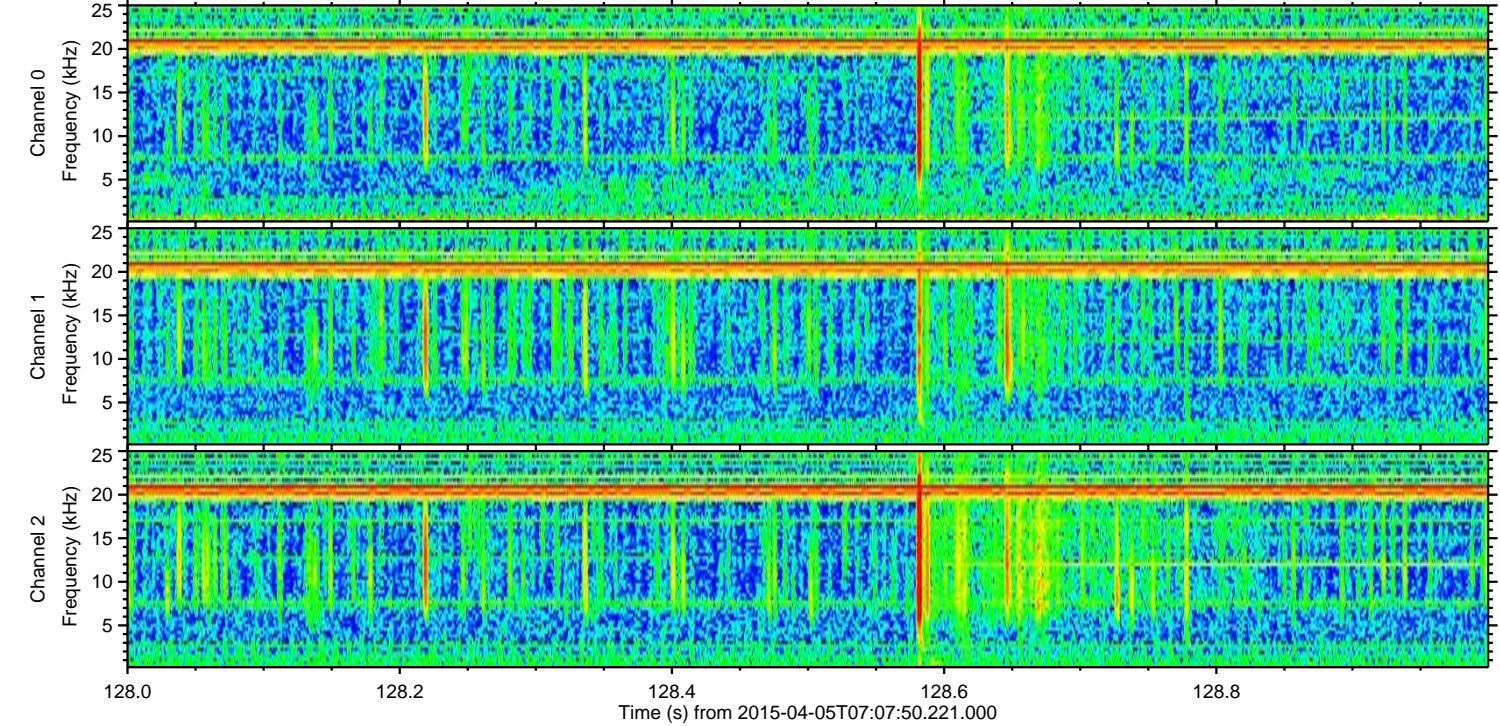
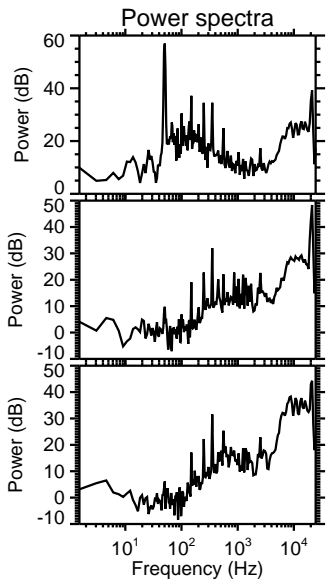
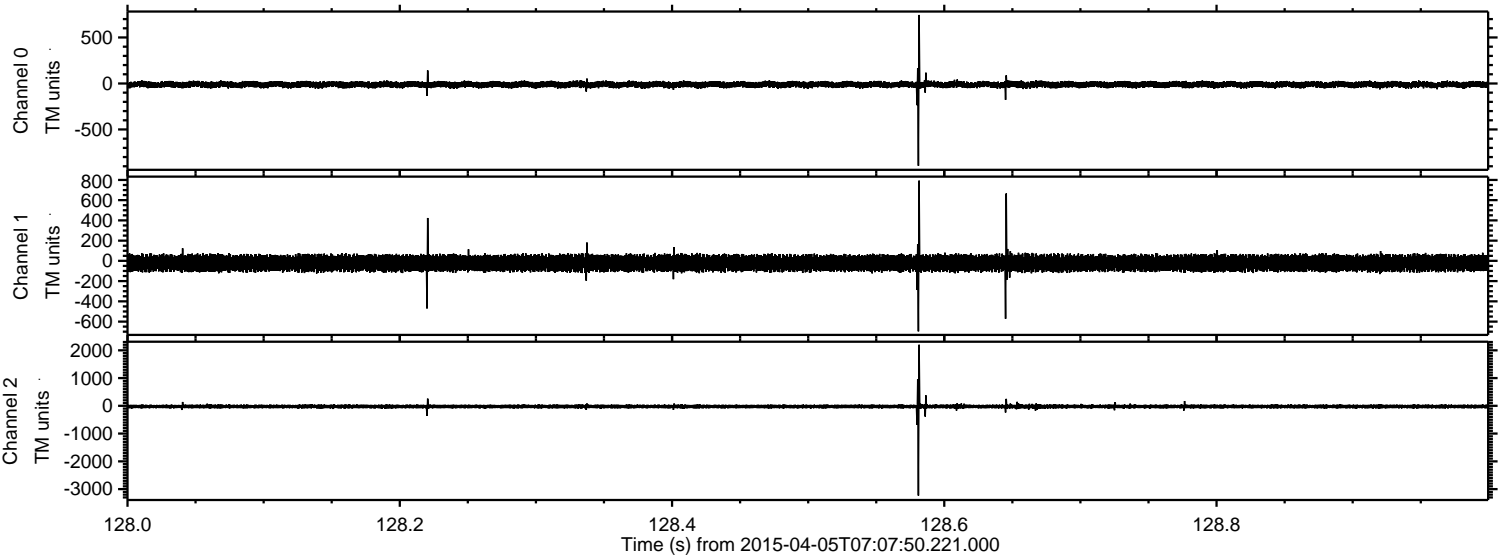
Processed Sun Apr 5 12:48:22 2015 by ELM ver.2012-10-06 from 001\_\_elm20150405\_070749\_\_dat00.bin





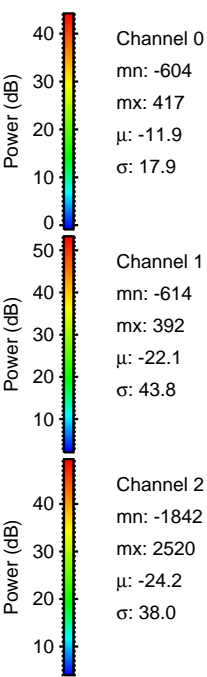
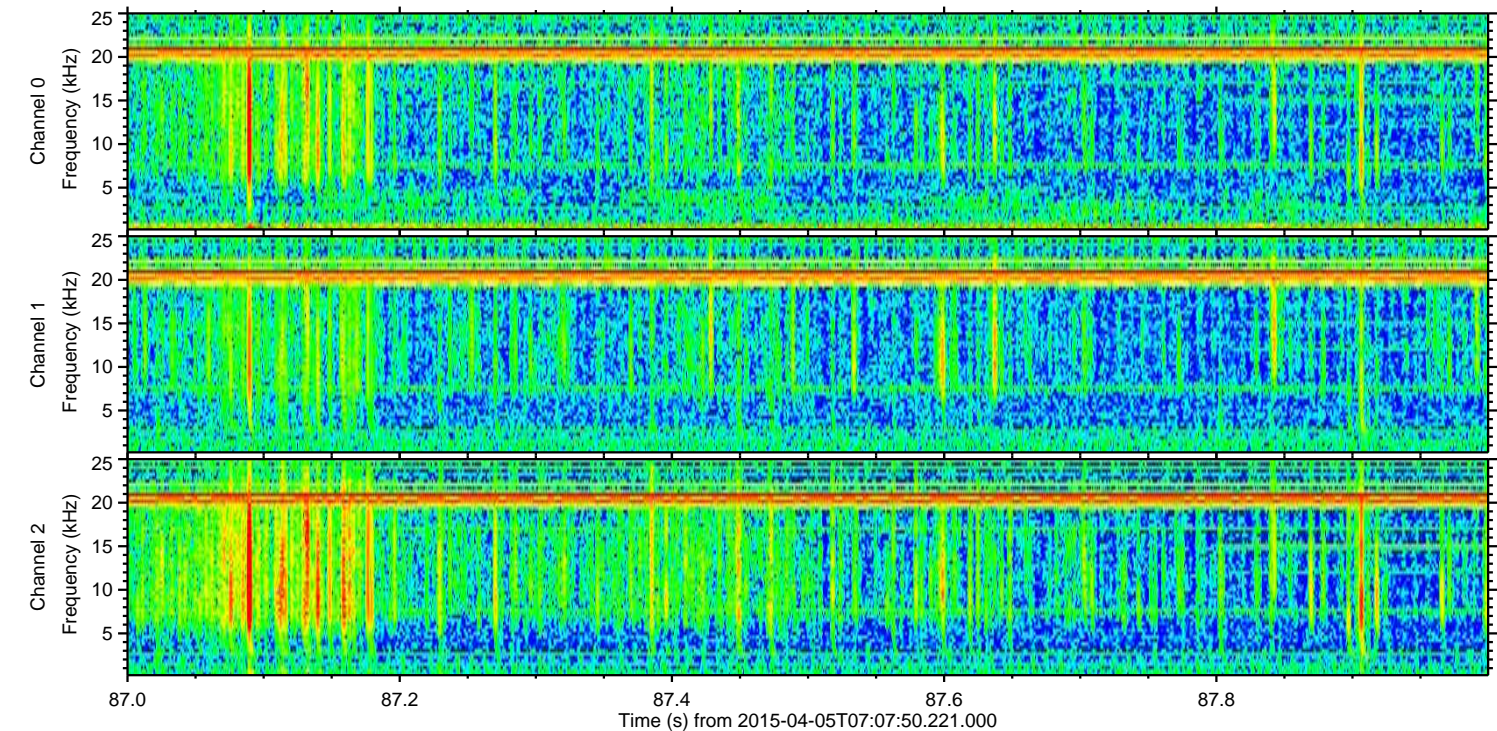
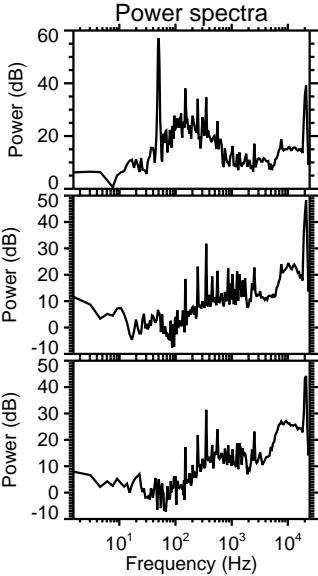
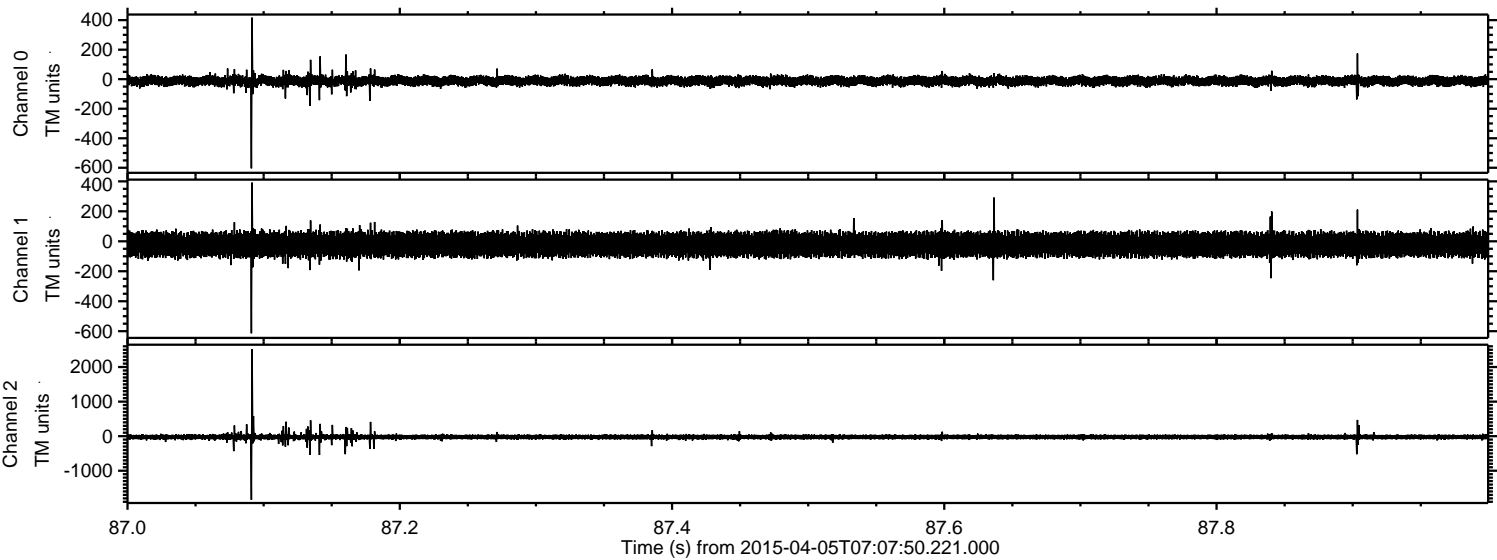
ELMAVAN 3D WAVEFORMS (Measured data sampled at 50 kHz) 49528 packets of 144 samples from 2015-04-05T07:07:50.221.000. Part 129/143

Processed Sun Apr 5 12:48:23 2015 by ELM ver.2012-10-06 from 001\_\_elm20150405\_070749\_\_dat00.bin



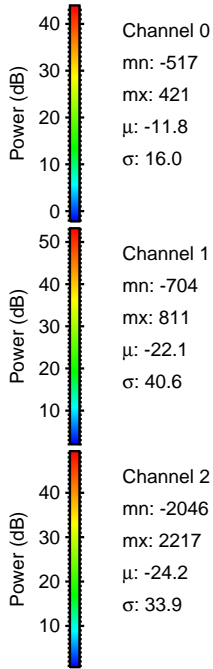
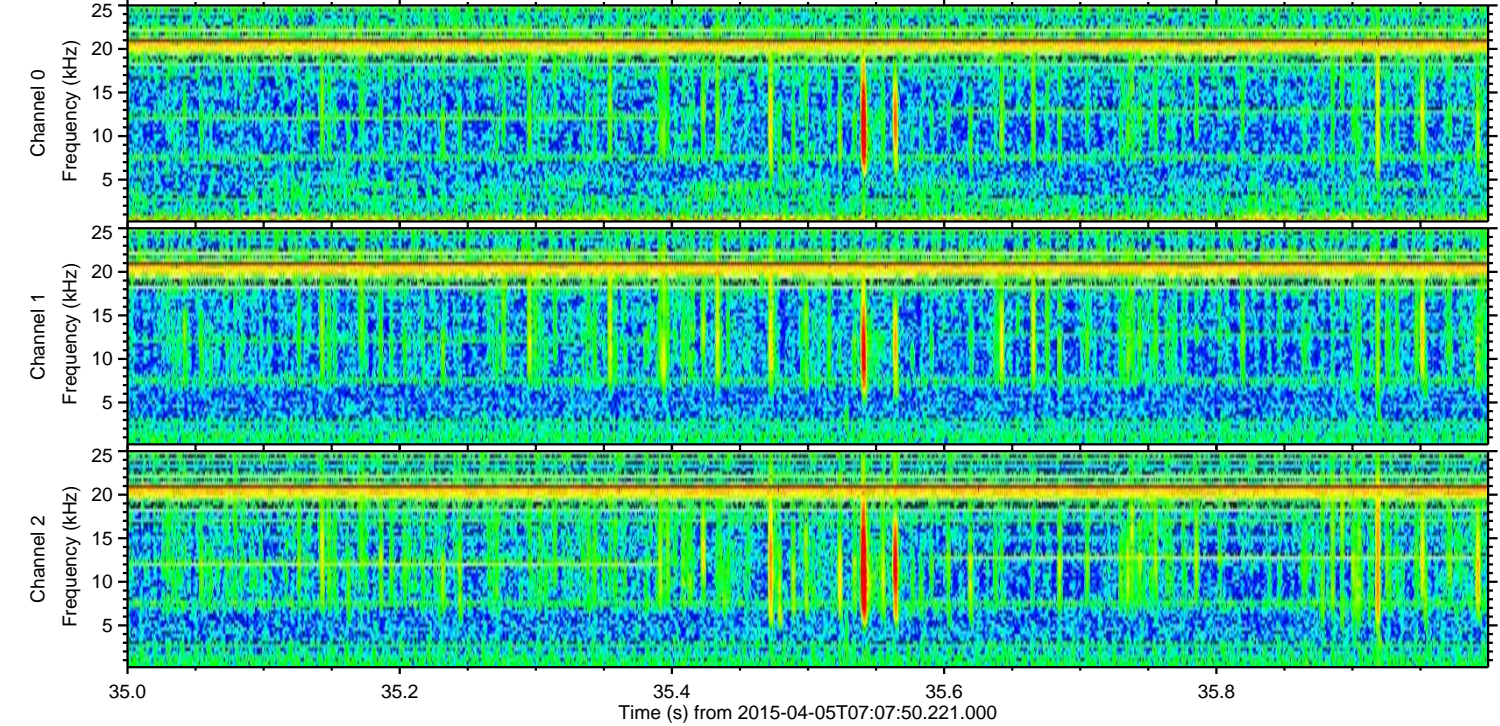
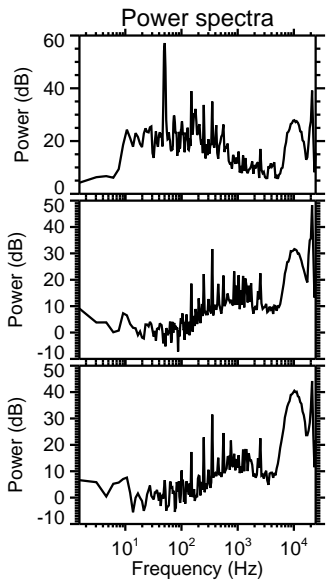
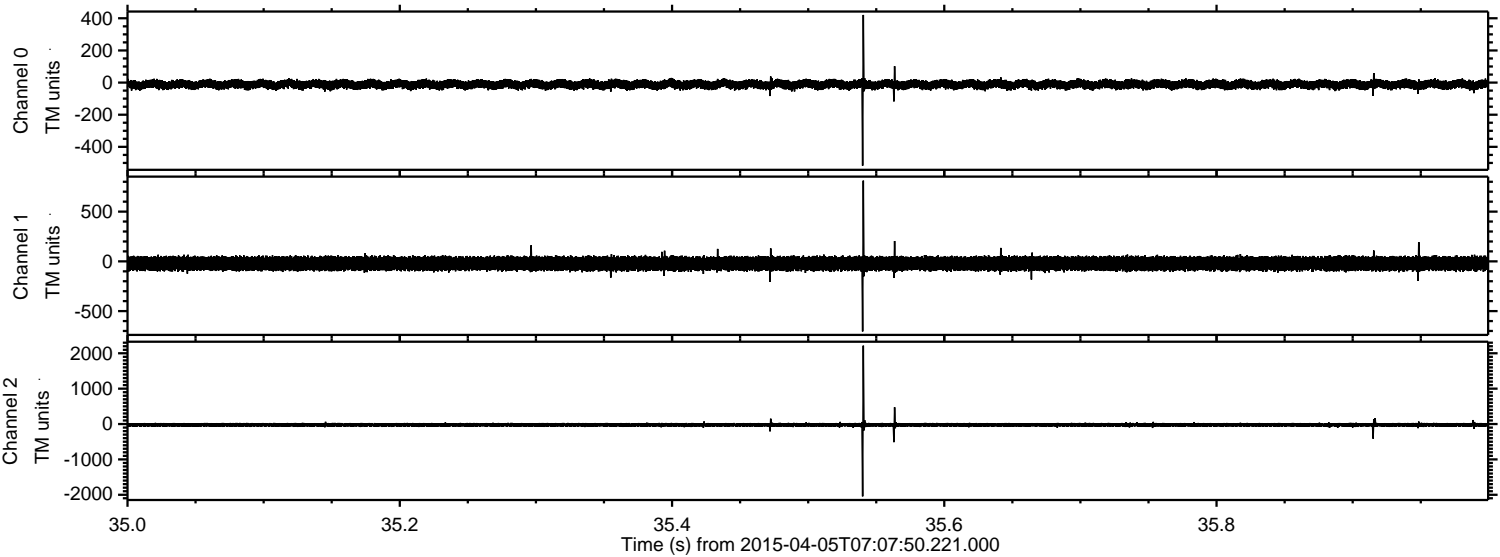


Processed Sun Apr 5 12:48:24 2015 by ELM ver.2012-10-06 from 001\_\_elm20150405\_070749\_\_dat00.bin



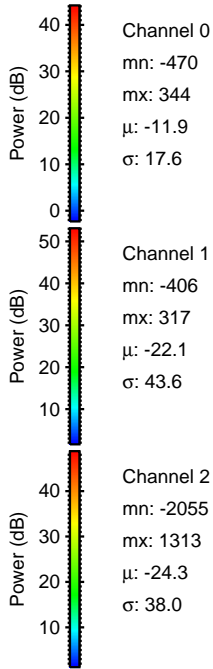
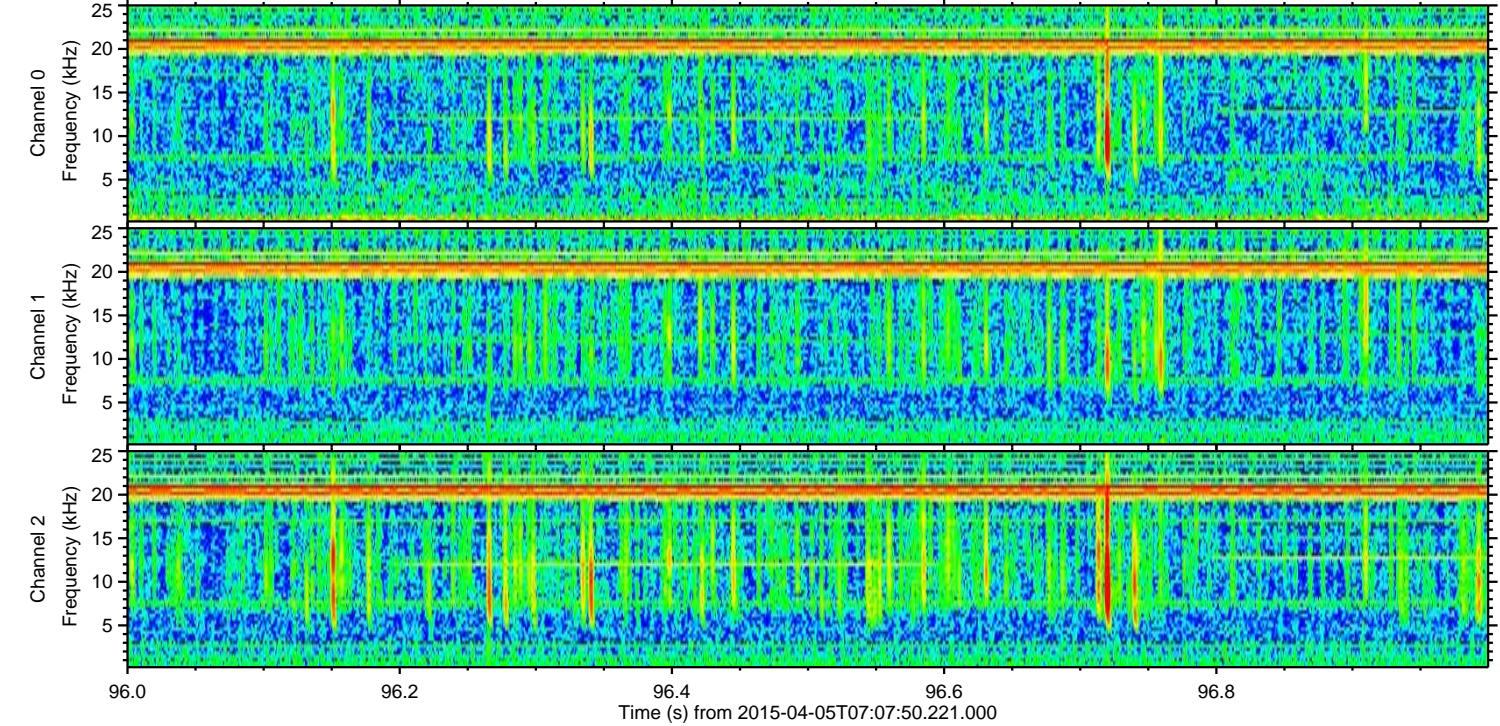
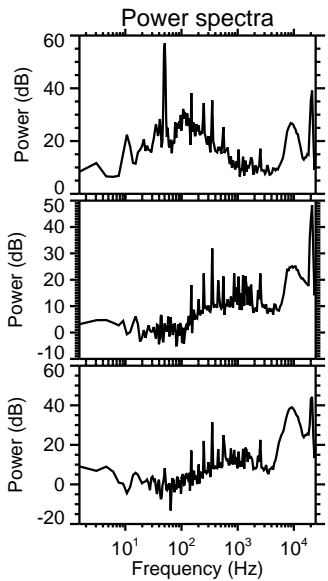
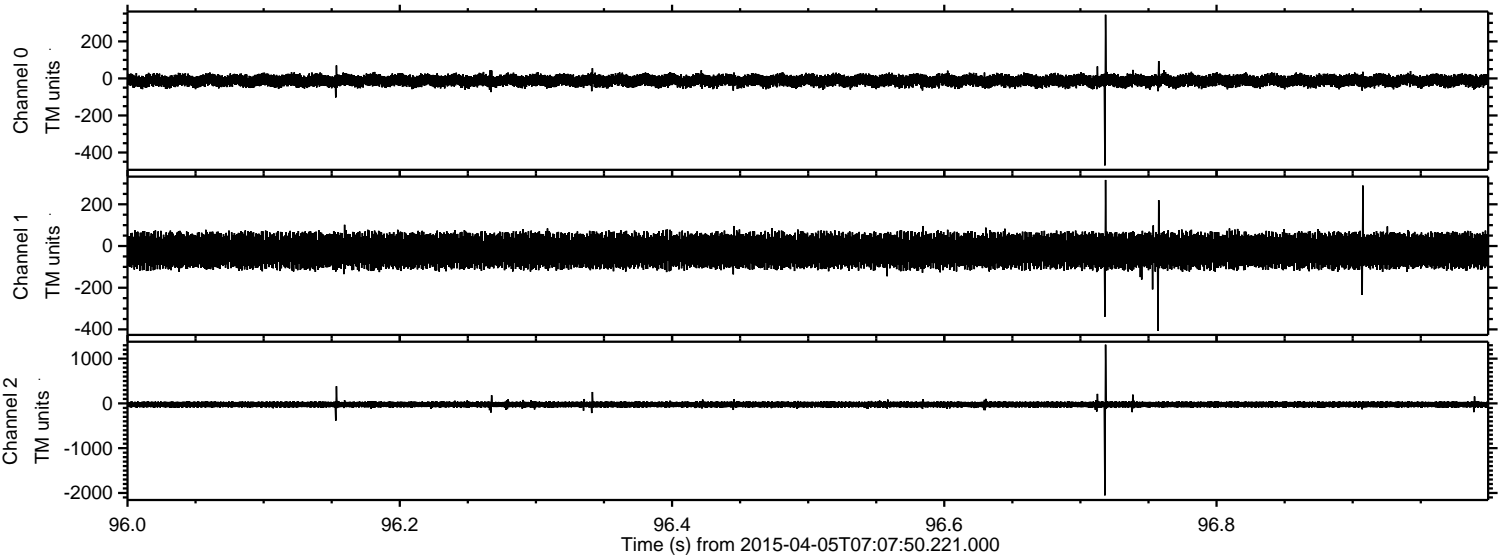


Processed Sun Apr 5 12:48:25 2015 by ELM ver.2012-10-06 from 001\_\_elm20150405\_070749\_\_dat00.bin





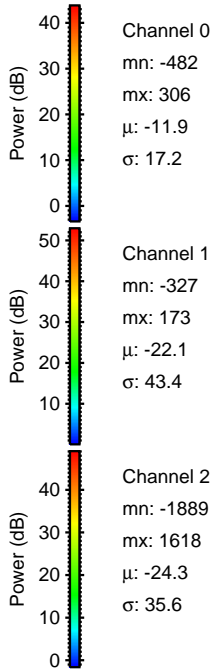
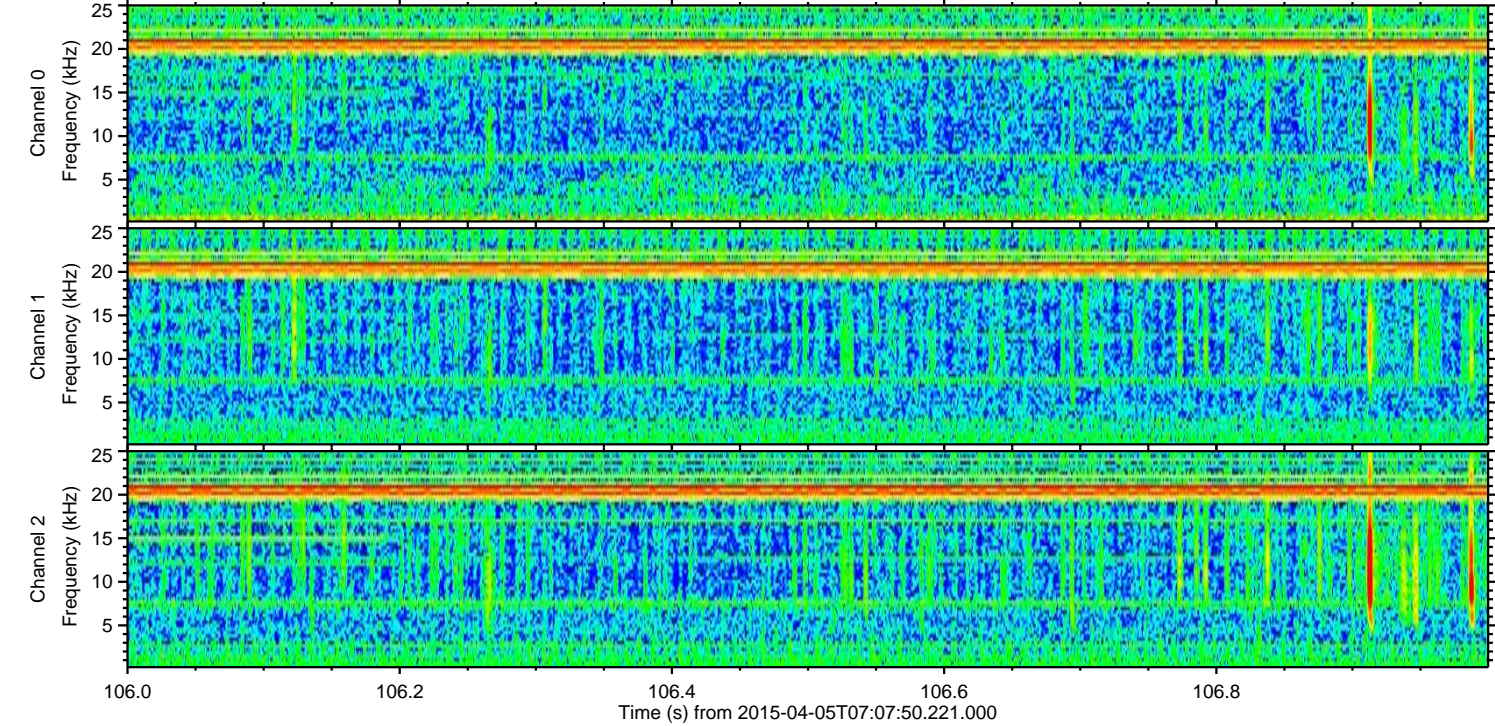
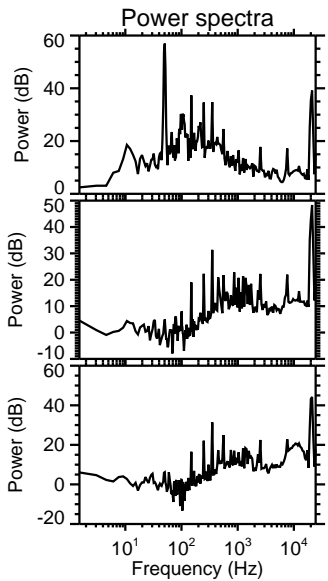
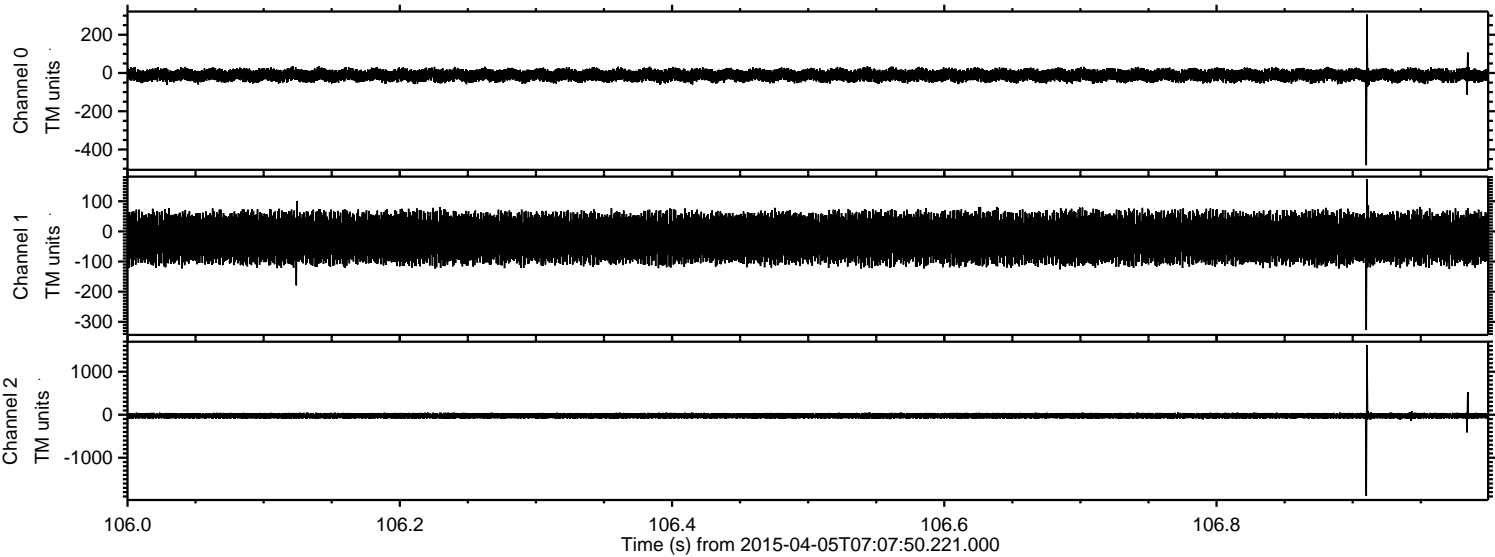
Processed Sun Apr 5 12:48:26 2015 by ELM ver.2012-10-06 from 001\_\_elm20150405\_070749\_\_dat00.bin





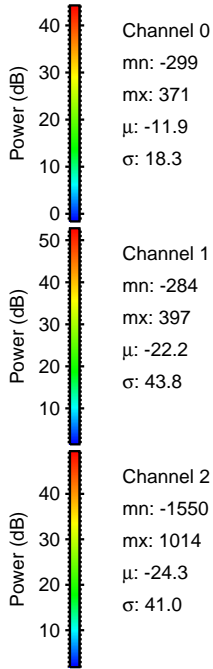
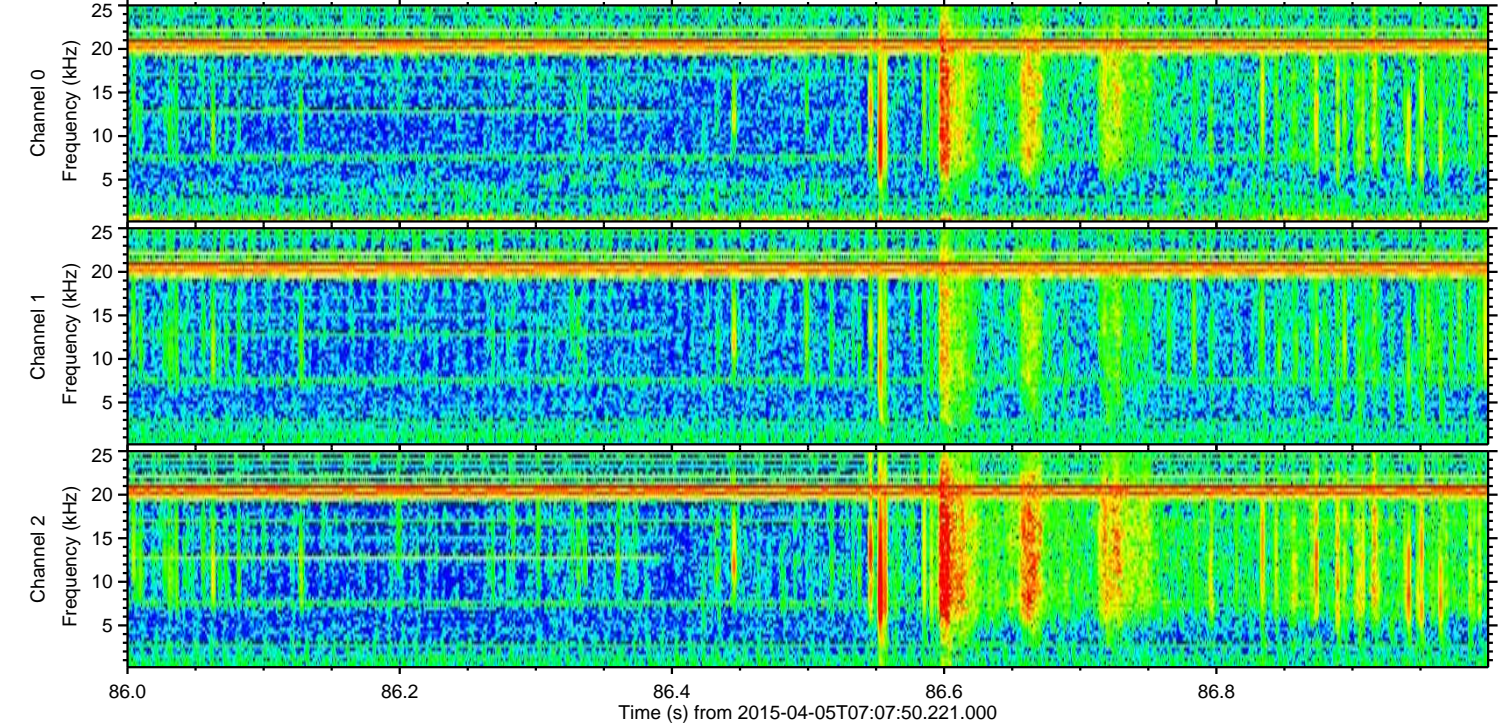
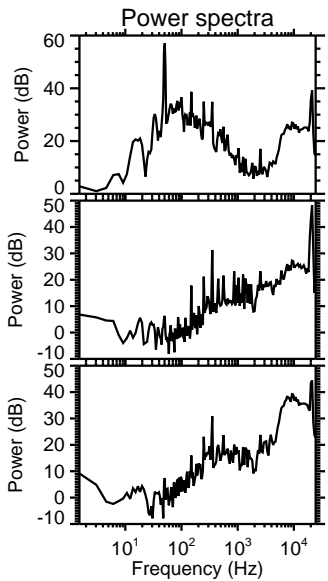
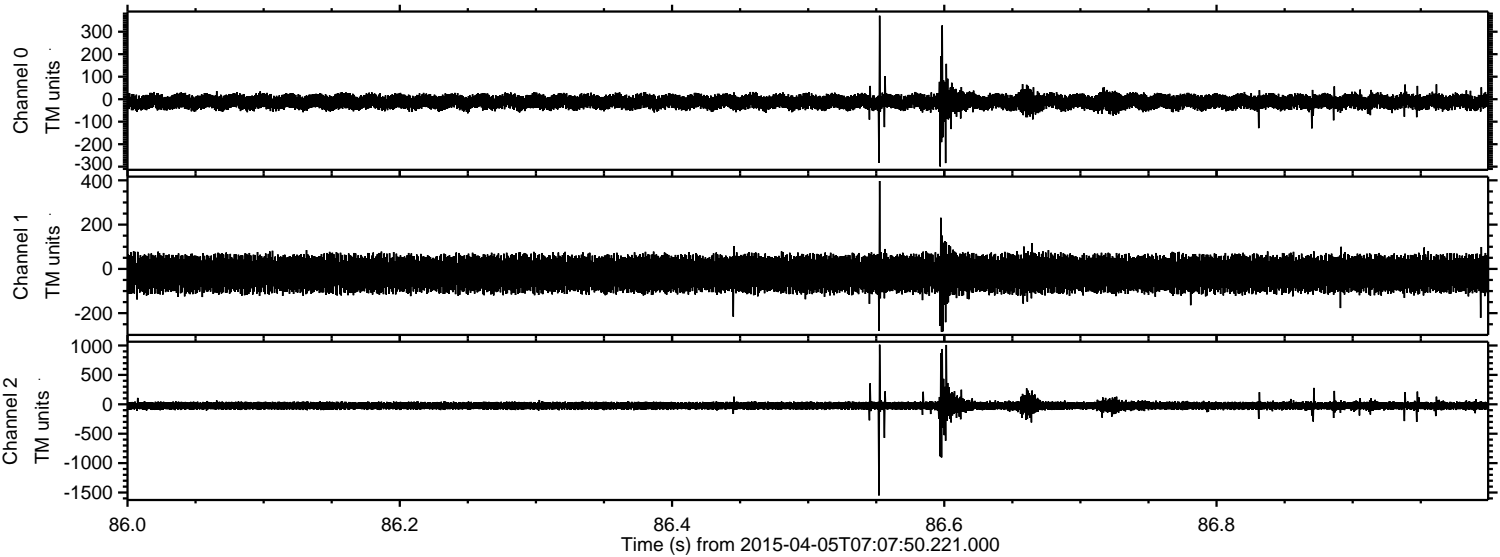
ELMAVAN 3D WAVEFORMS (Measured data sampled at 50 kHz) 49528 packets of 144 samples from 2015-04-05T07:07:50.221.000. Part 107/143

Processed Sun Apr 5 12:48:28 2015 by ELM ver.2012-10-06 from 001\_\_elm20150405\_070749\_\_dat00.bin





Processed Sun Apr 5 12:48:29 2015 by ELM ver.2012-10-06 from 001\_\_elm20150405\_070749\_\_dat00.bin



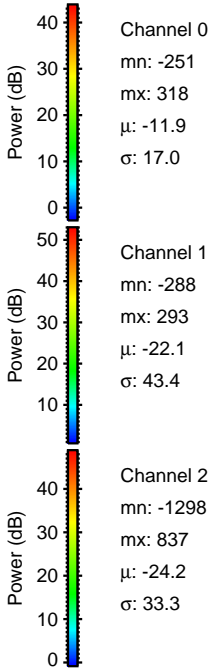
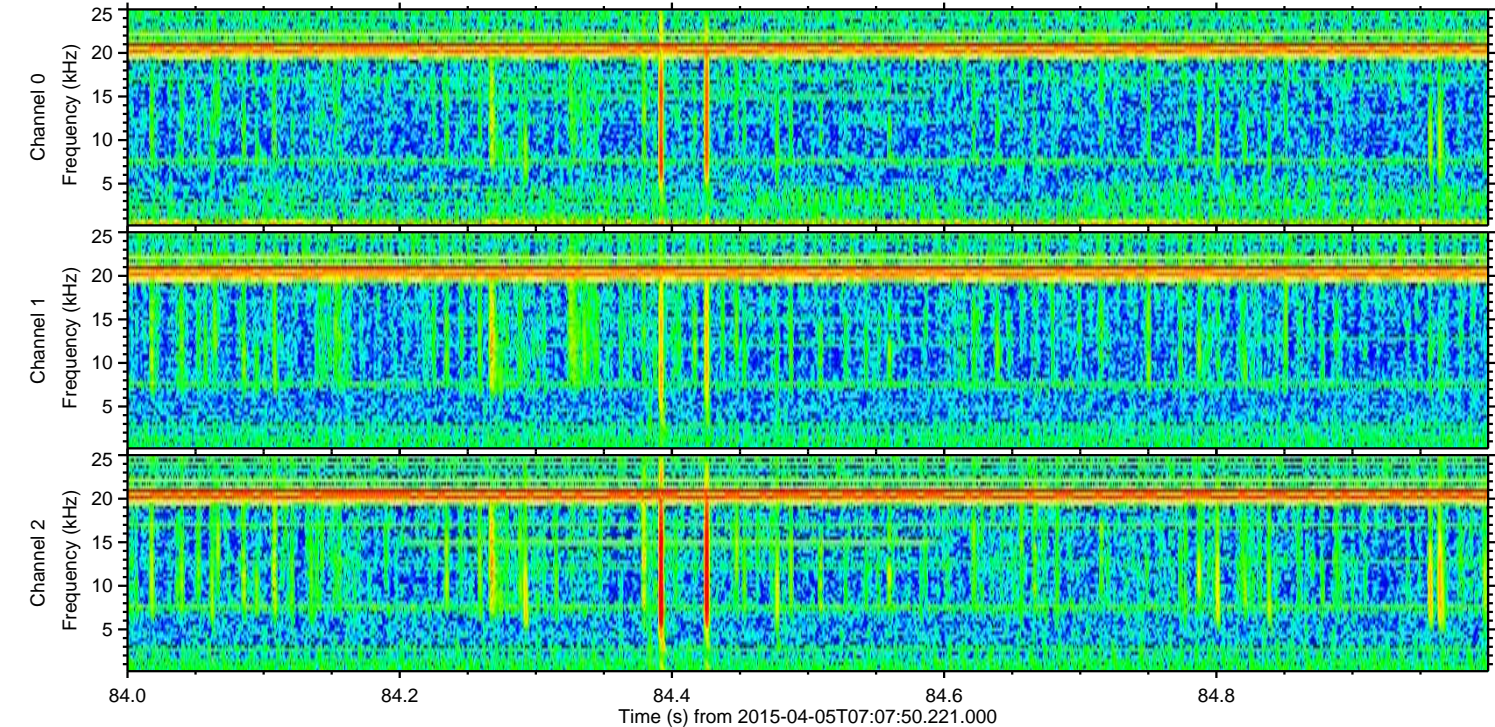
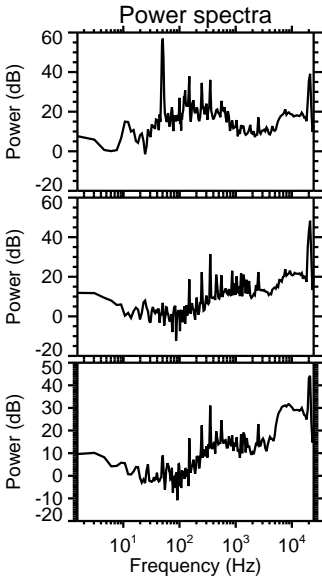
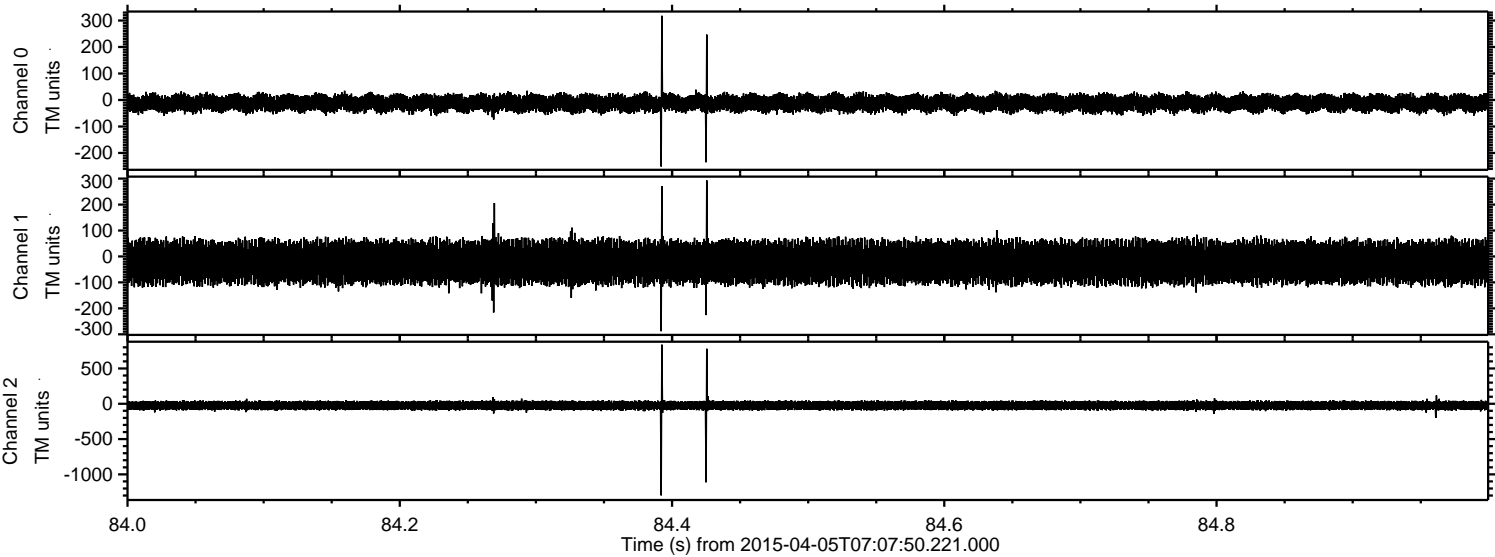
Channel 0  
mn: -299  
mx: 371  
 $\mu$ : -11.9  
 $\sigma$ : 18.3

Channel 1  
mn: -284  
mx: 397  
 $\mu$ : -22.2  
 $\sigma$ : 43.8

Channel 2  
mn: -1550  
mx: 1014  
 $\mu$ : -24.3  
 $\sigma$ : 41.0



Processed Sun Apr 5 12:48:30 2015 by ELM ver.2012-10-06 from 001\_\_elm20150405\_070749\_\_dat00.bin





Processed Sun Apr 5 12:48:31 2015 by ELM ver.2012-10-06 from 001\_\_elm20150405\_070749\_\_dat00.bin

