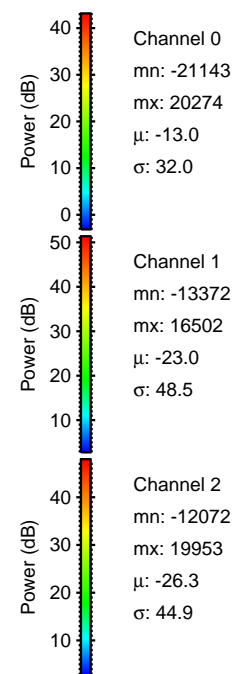
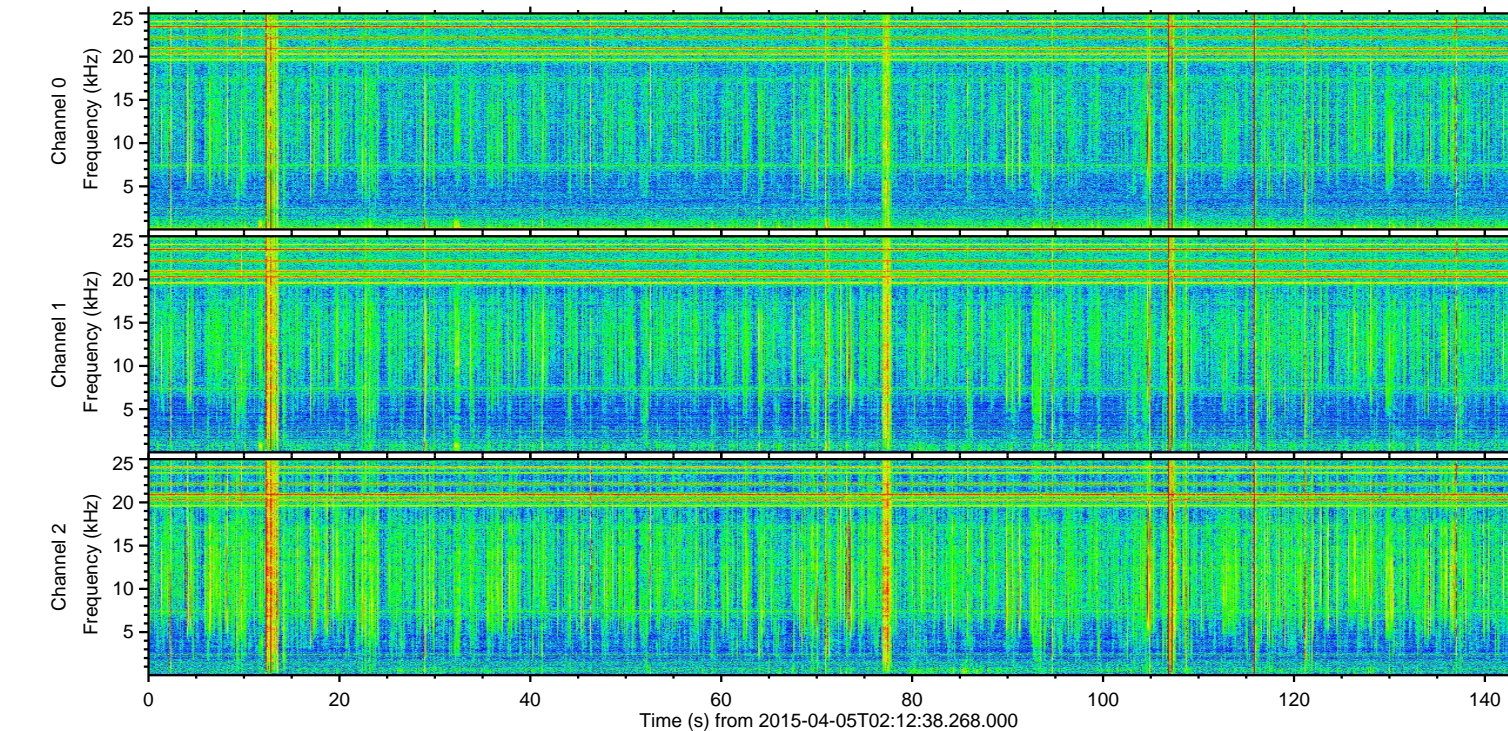
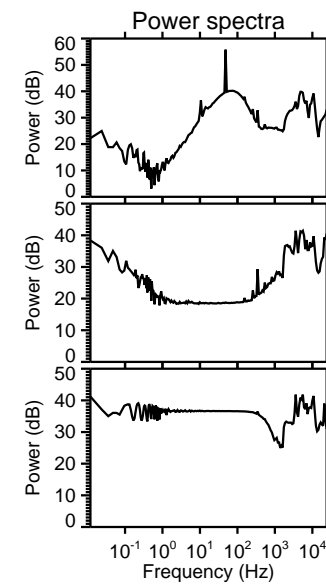
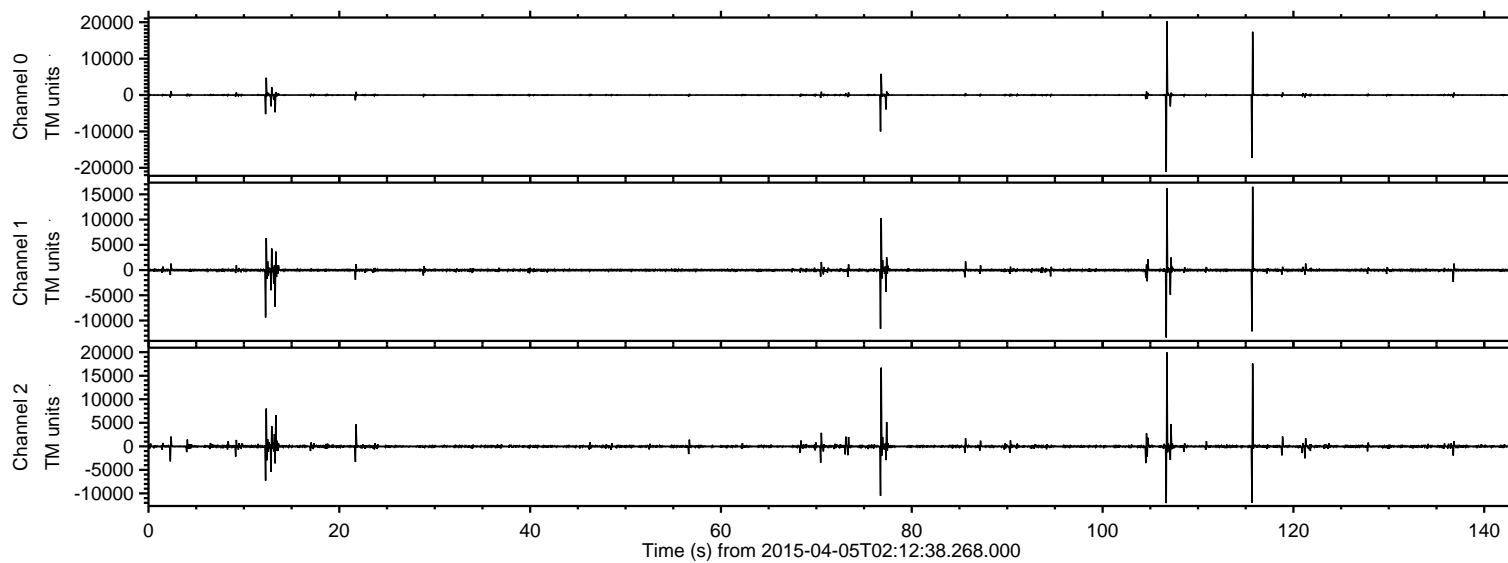


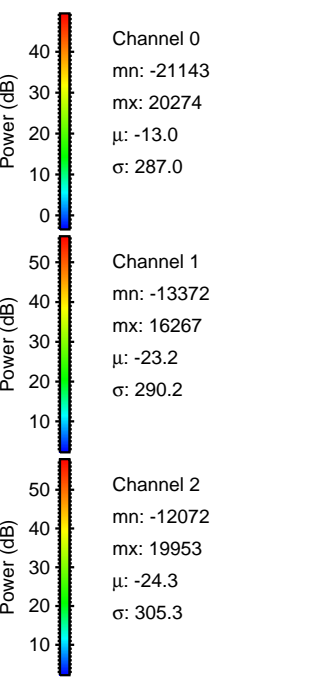
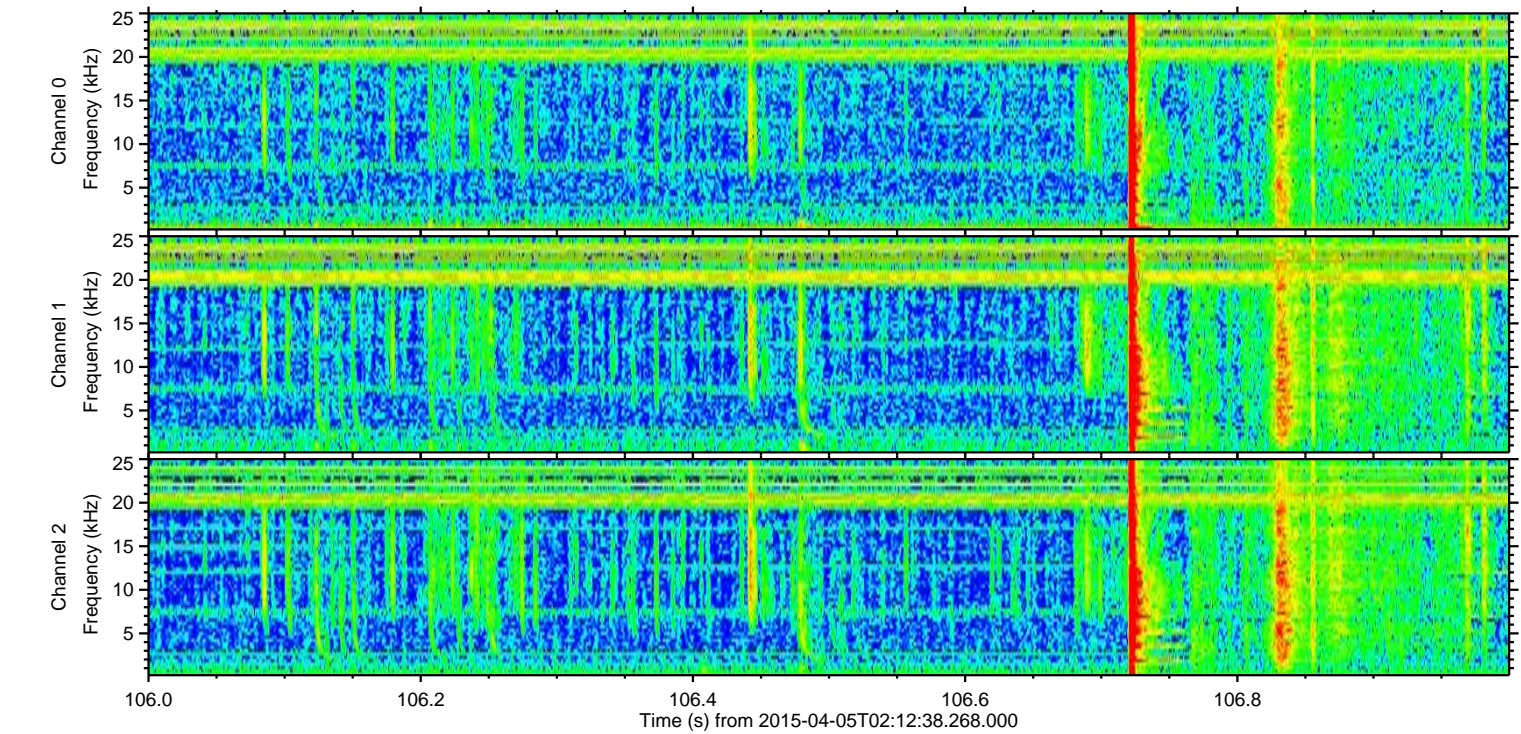
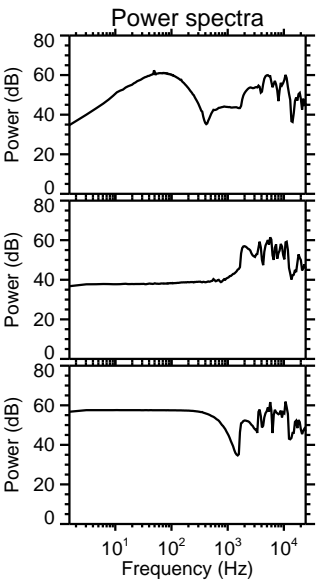
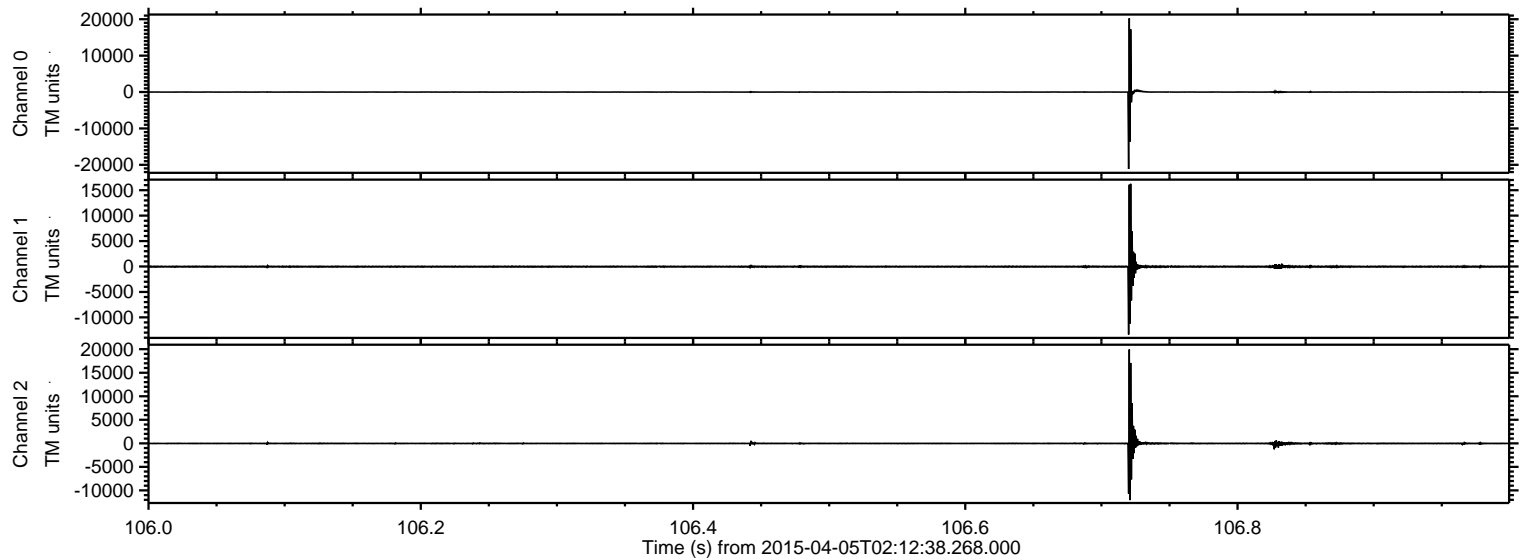
ELMAVAN 3D WAVEFORMS (Measured data sampled at 50 kHz) 49518 packets of 144 samples from 2015-04-05T02:12:38.268.000.

Processed Sun Apr 5 04:30:59 2015 by ELM ver.2012-10-06 from 001__elm20150405_021237__dat00.bin



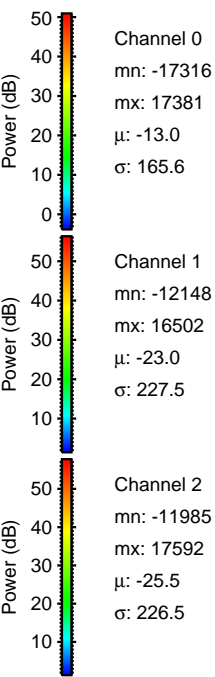
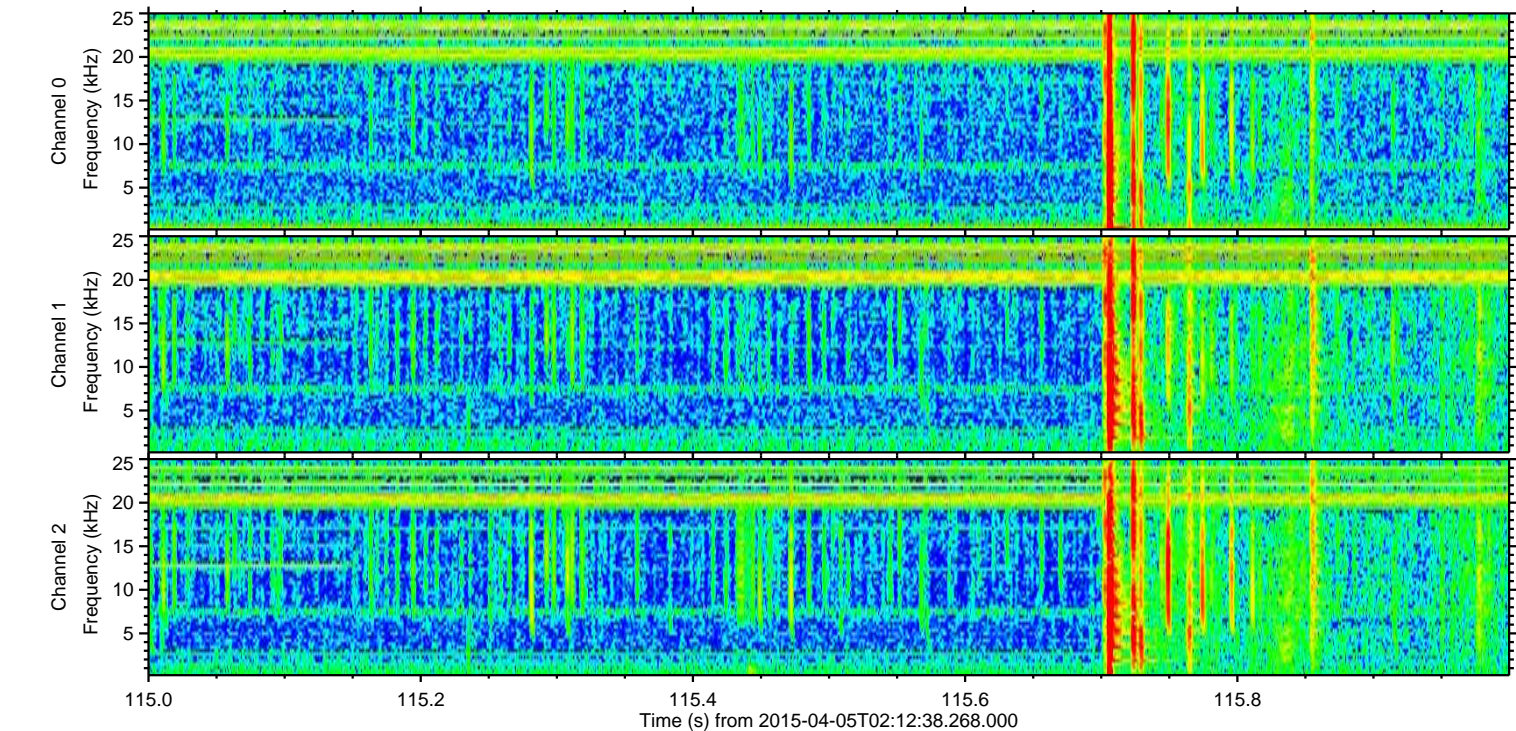
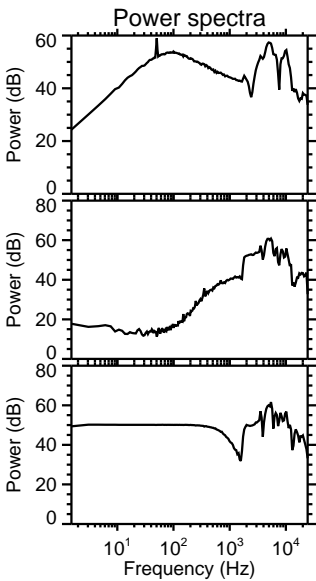
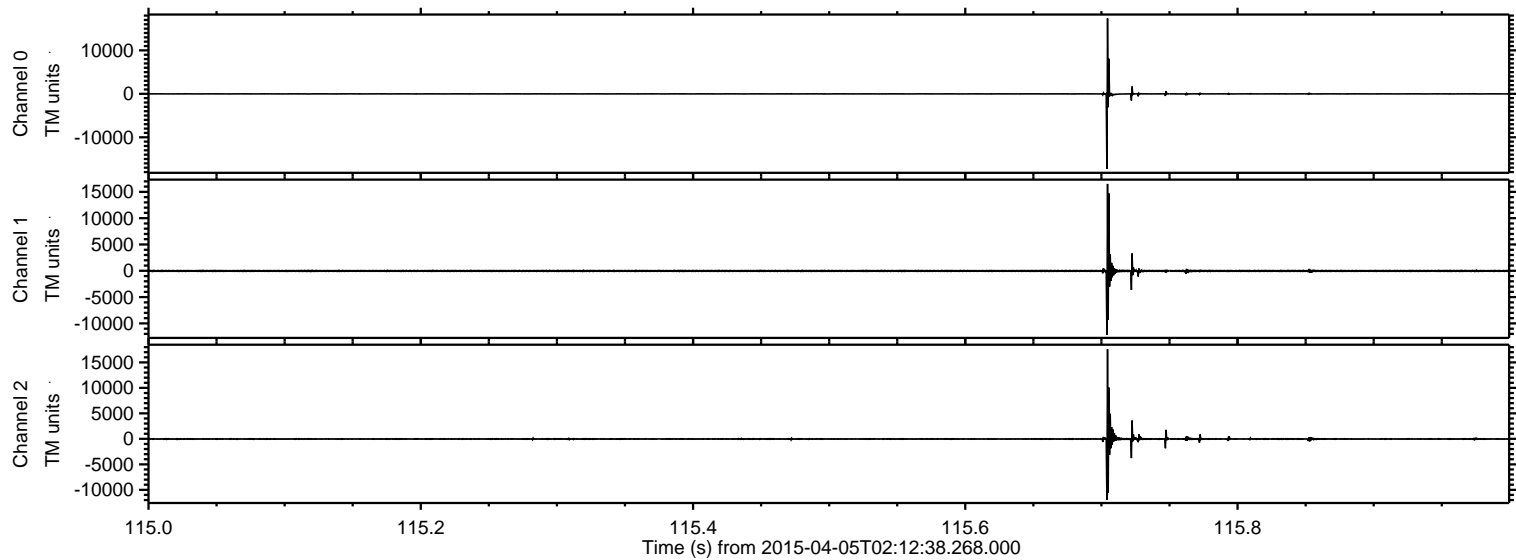
ELMAVAN 3D WAVEFORMS (Measured data sampled at 50 kHz) 49518 packets of 144 samples from 2015-04-05T02:12:38.268.000. Part 107/143

Processed Sun Apr 5 04:31:14 2015 by ELM ver.2012-10-06 from 001__elm20150405_021237__dat00.bin



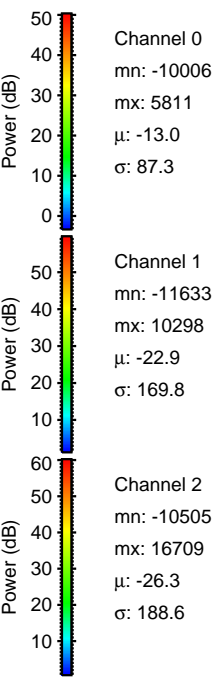
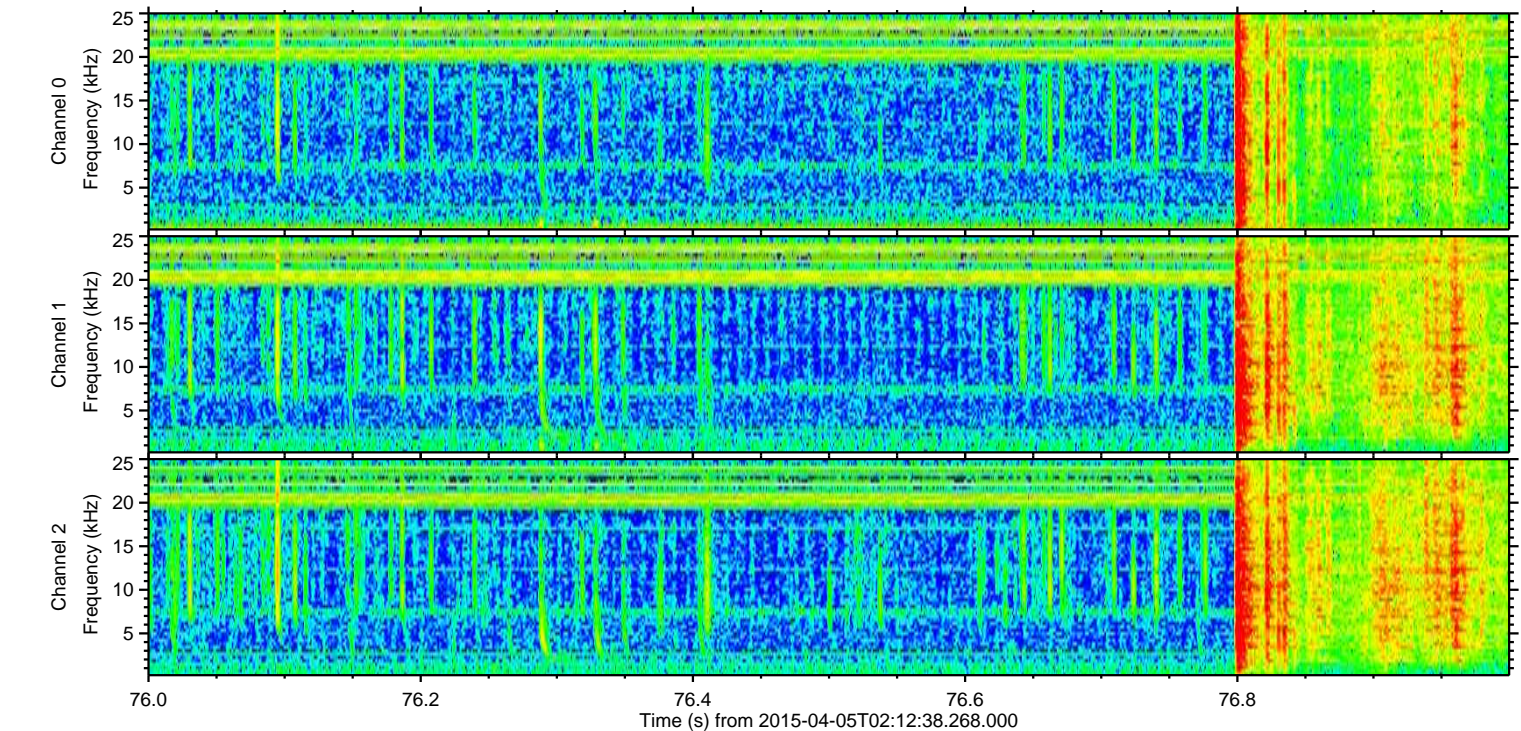
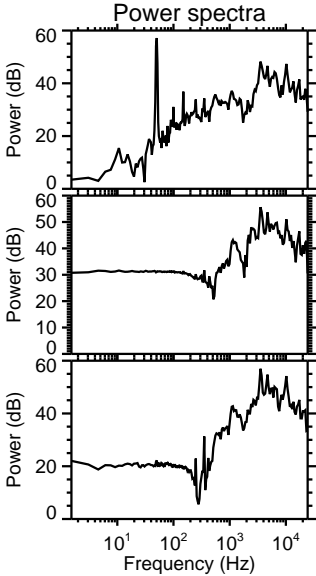
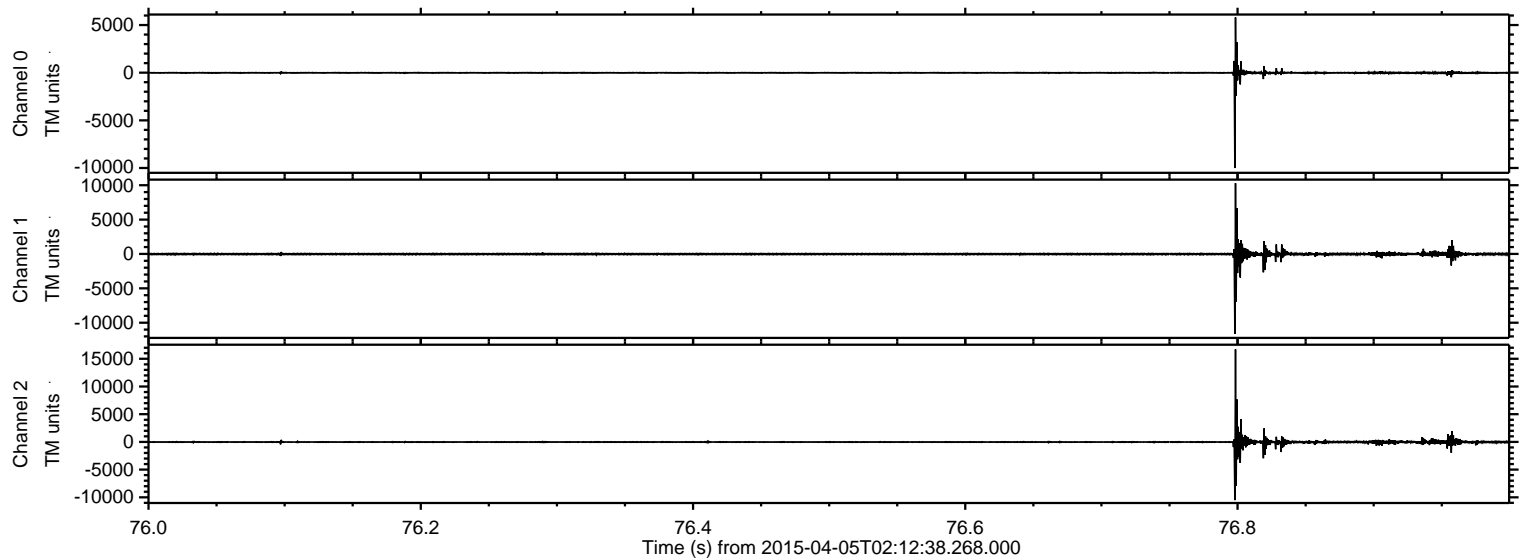
ELMAVAN 3D WAVEFORMS (Measured data sampled at 50 kHz) 49518 packets of 144 samples from 2015-04-05T02:12:38.268.000. Part 116/143

Processed Sun Apr 5 04:31:16 2015 by ELM ver.2012-10-06 from 001__elm20150405_021237__dat00.bin



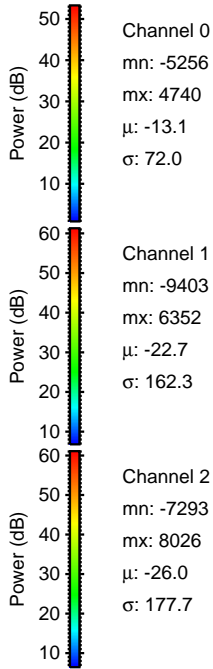
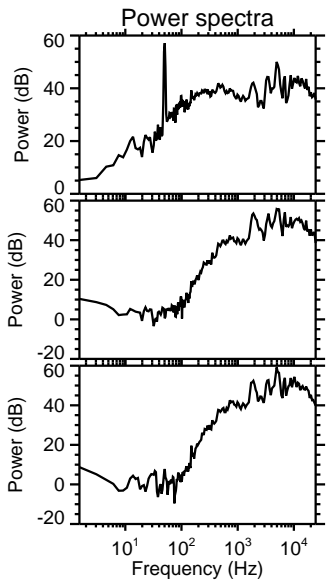
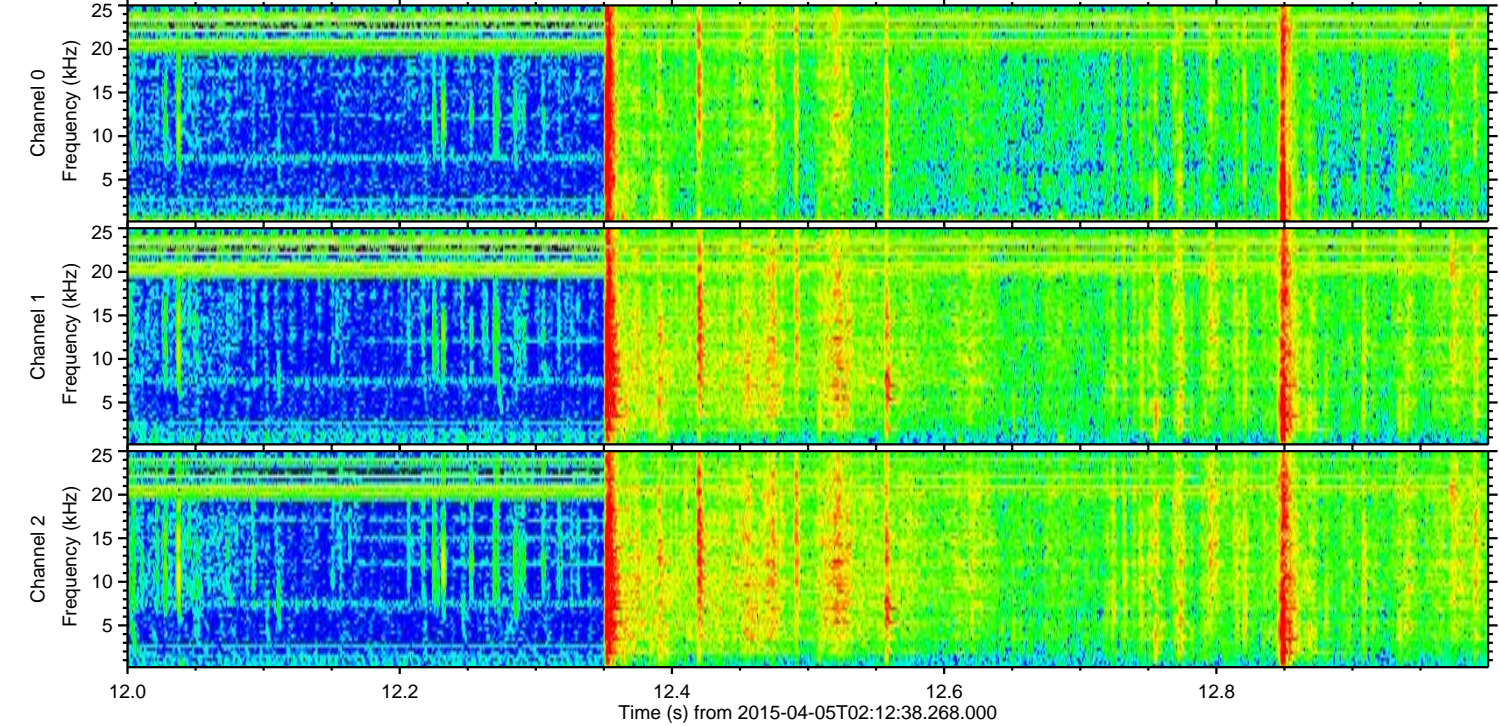
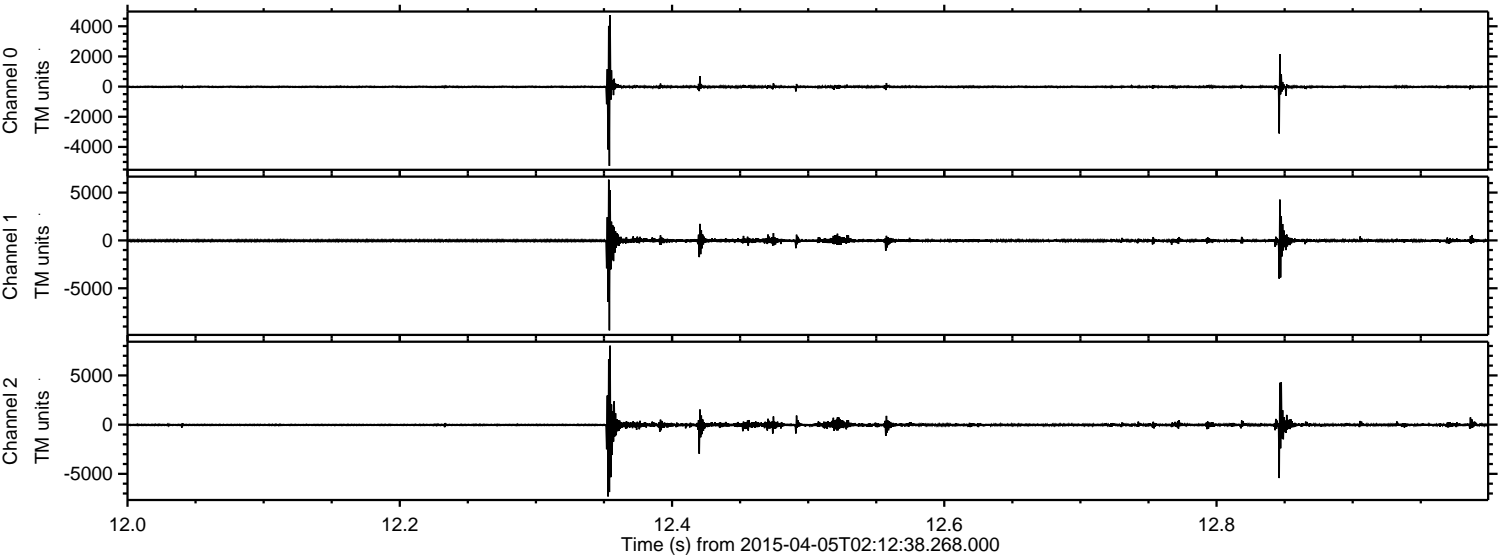
ELMAVAN 3D WAVEFORMS (Measured data sampled at 50 kHz) 49518 packets of 144 samples from 2015-04-05T02:12:38.268.000. Part 77/143

Processed Sun Apr 5 04:31:17 2015 by ELM ver.2012-10-06 from 001__elm20150405_021237__dat00.bin



ELMAVAN 3D WAVEFORMS (Measured data sampled at 50 kHz) 49518 packets of 144 samples from 2015-04-05T02:12:38.268.000. Part 13/143

Processed Sun Apr 5 04:31:18 2015 by ELM ver.2012-10-06 from 001__elm20150405_021237__dat00.bin

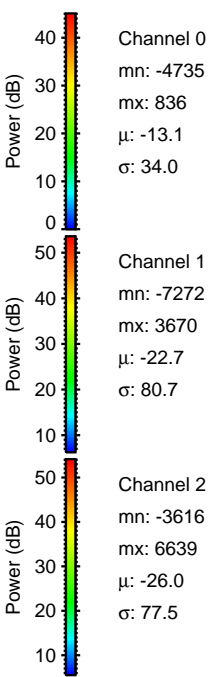
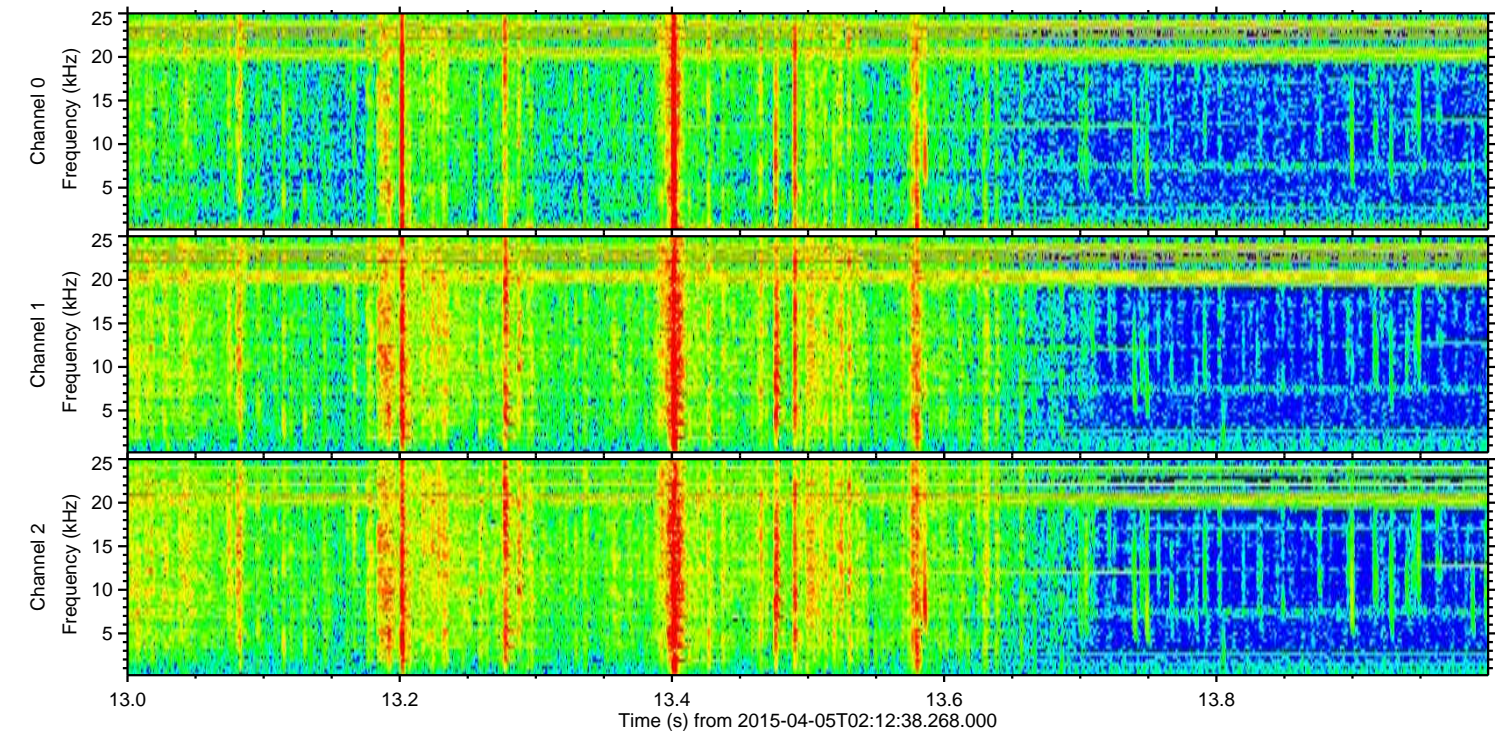
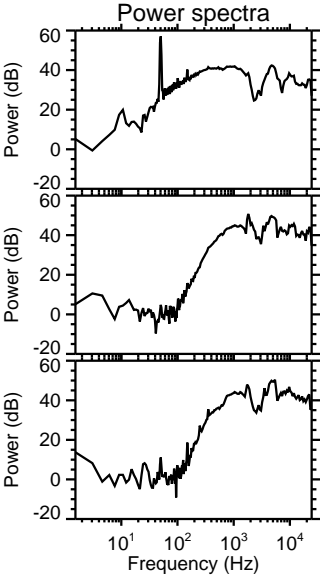
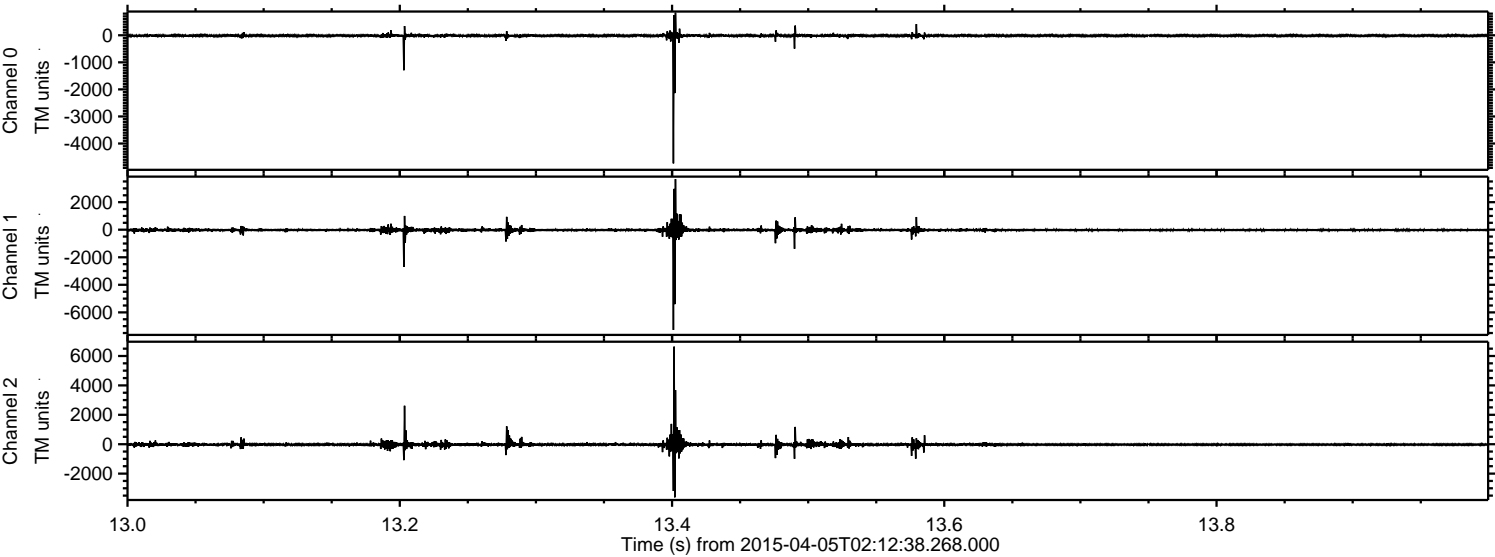


Channel 0
mn: -5256
mx: 4740
 μ : -13.1
 σ : 72.0

Channel 1
mn: -9403
mx: 6352
 μ : -22.7
 σ : 162.3

Channel 2
mn: -7293
mx: 8026
 μ : -26.0
 σ : 177.7

Processed Sun Apr 5 04:31:19 2015 by ELM ver.2012-10-06 from 001__elm20150405_021237__dat00.bin

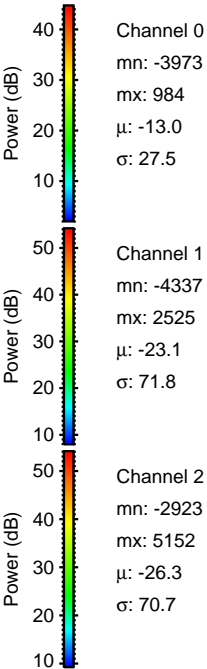
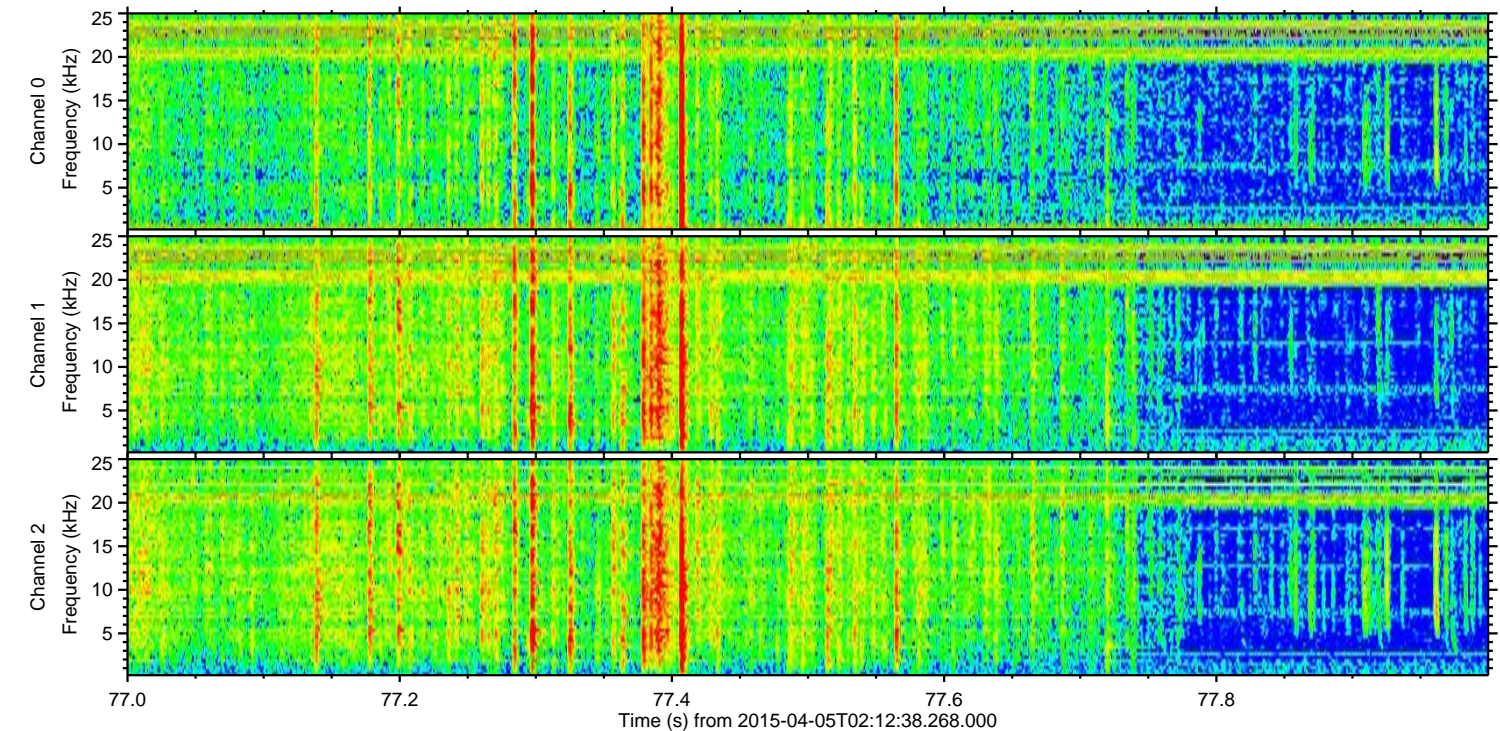
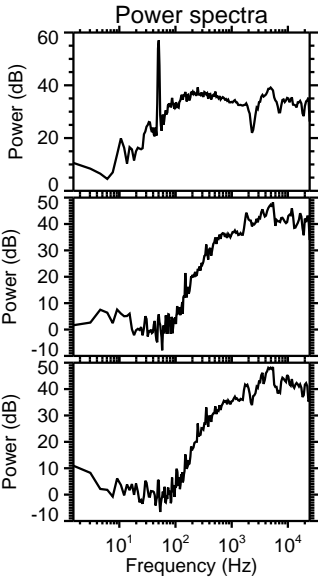
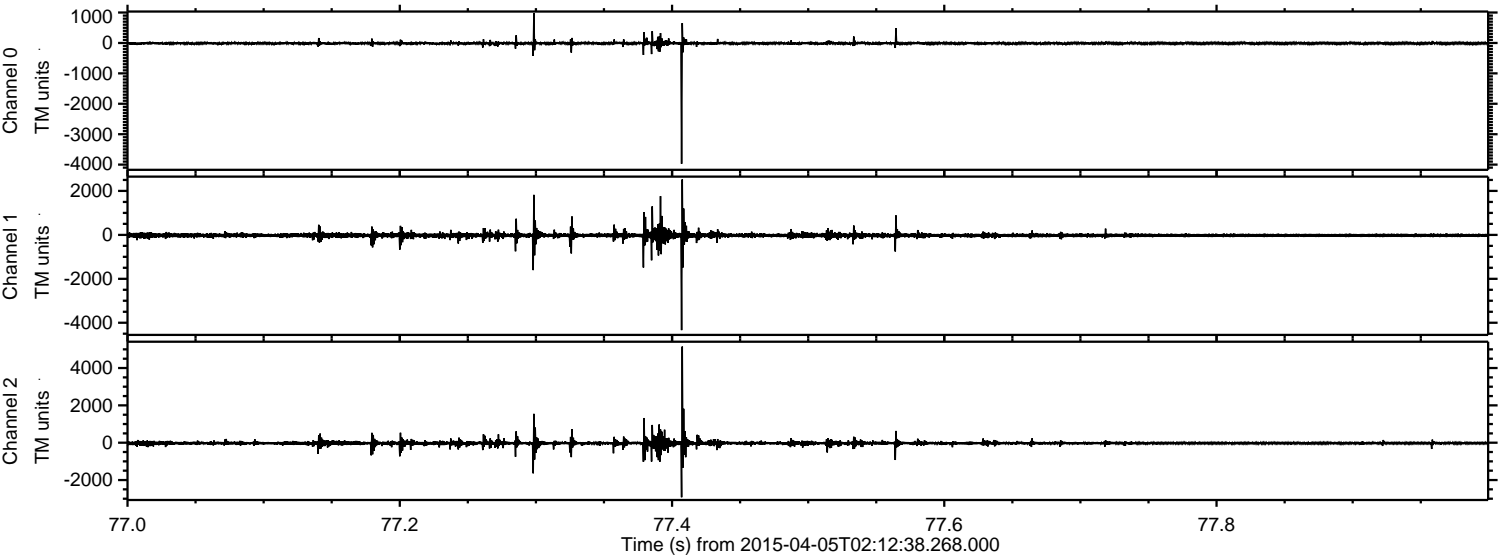


Channel 0
mn: -4735
mx: 836
 μ : -13.1
 σ : 34.0

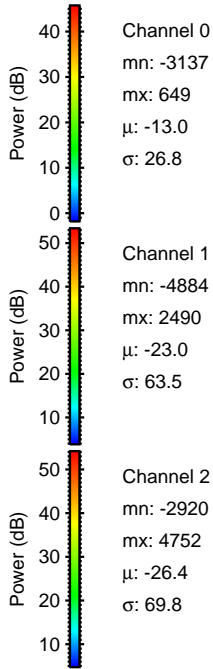
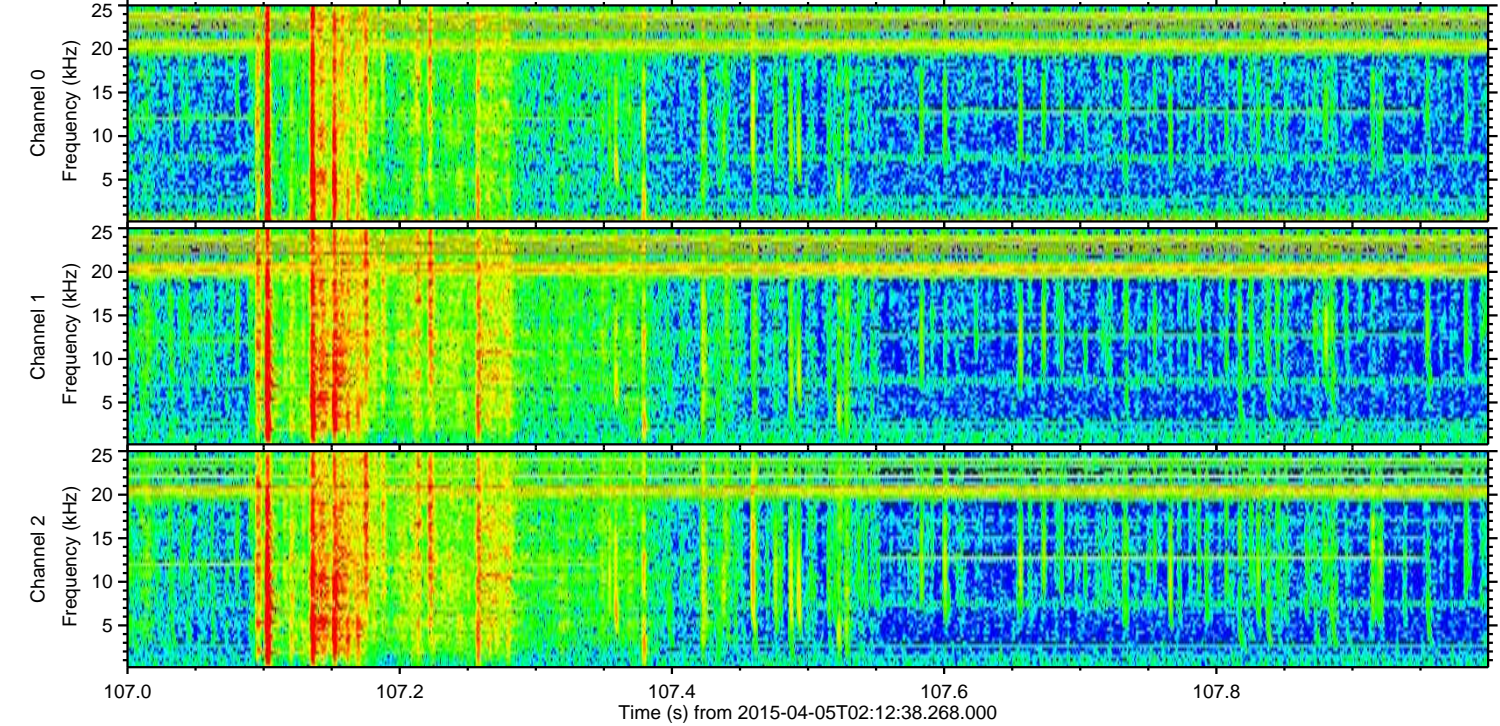
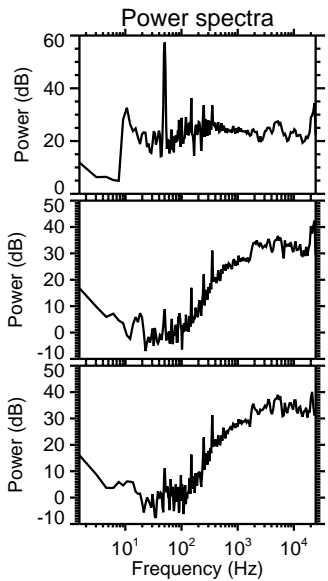
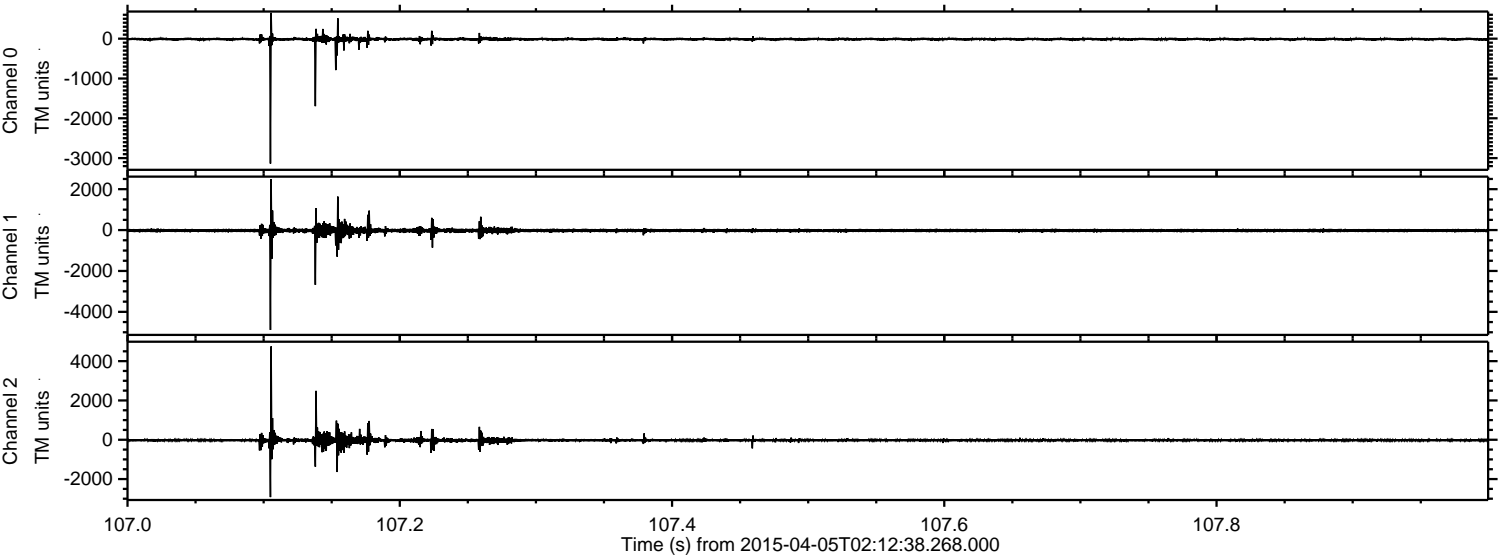
Channel 1
mn: -7272
mx: 3670
 μ : -22.7
 σ : 80.7

Channel 2
mn: -3616
mx: 6639
 μ : -26.0
 σ : 77.5

Processed Sun Apr 5 04:31:21 2015 by ELM ver.2012-10-06 from 001__elm20150405_021237__dat00.bin



Processed Sun Apr 5 04:31:22 2015 by ELM ver.2012-10-06 from 001__elm20150405_021237__dat00.bin

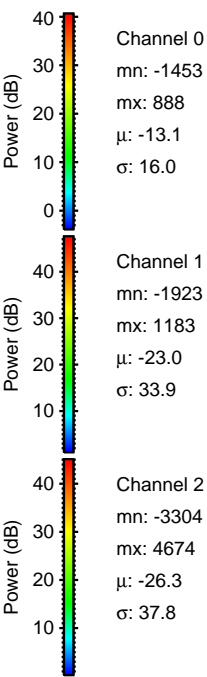
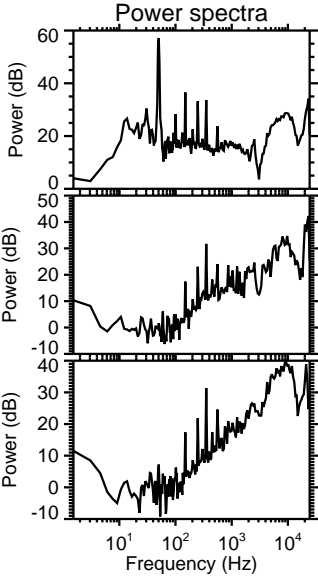
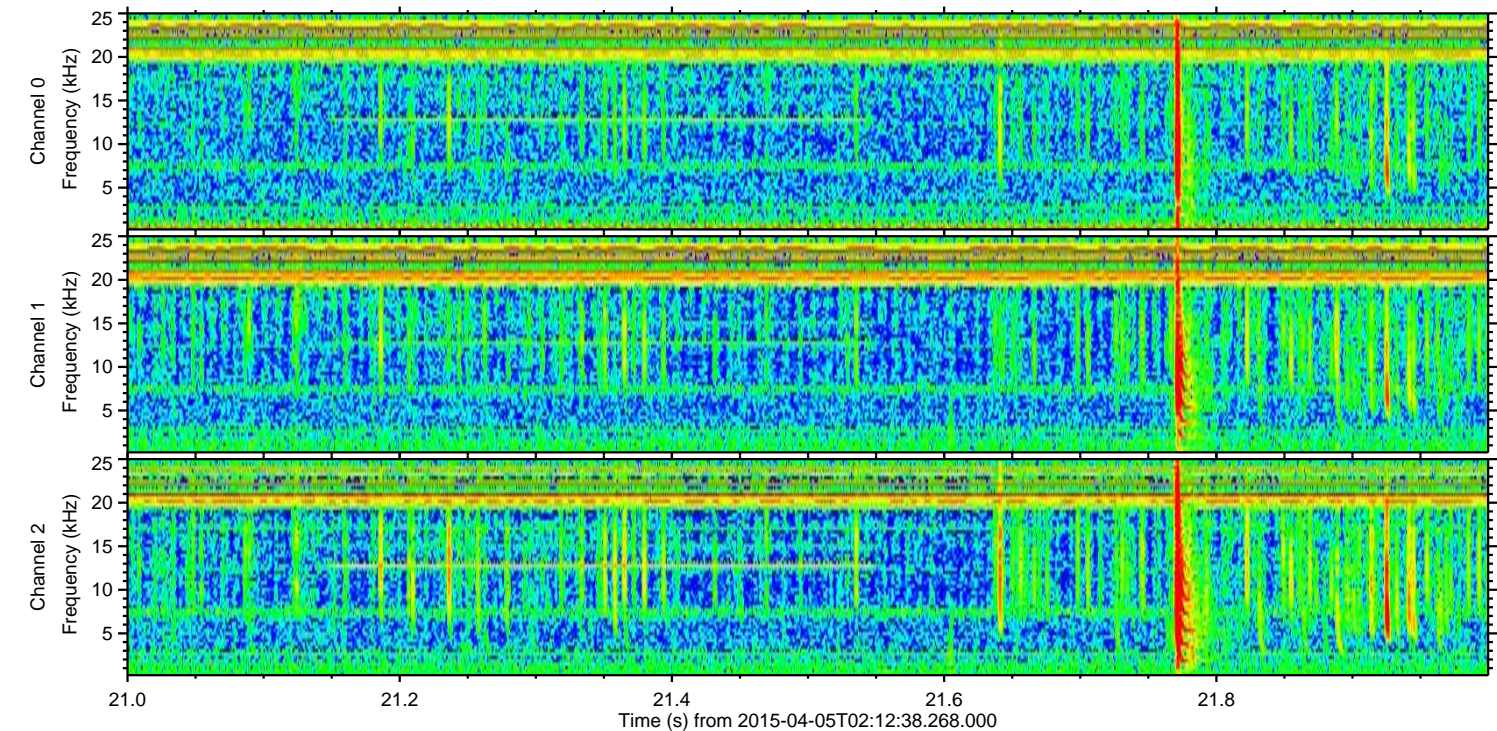
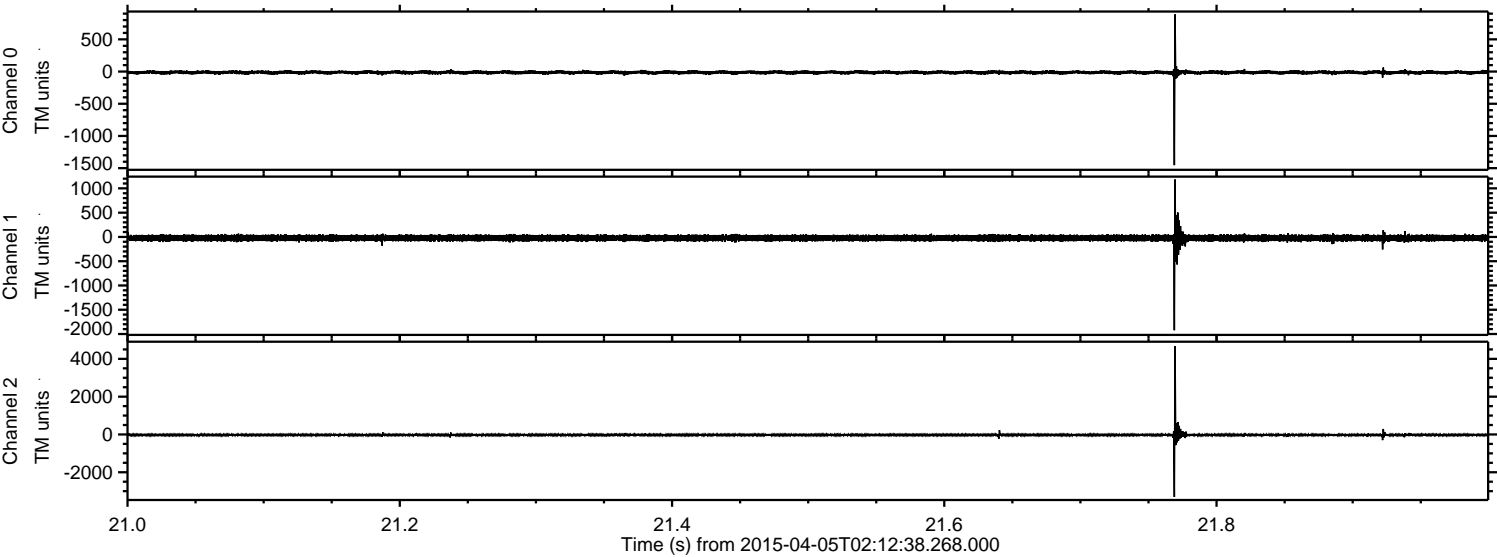


Channel 0
mn: -3137
mx: 649
 μ : -13.0
 σ : 26.8

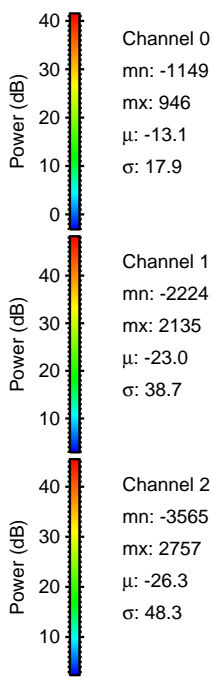
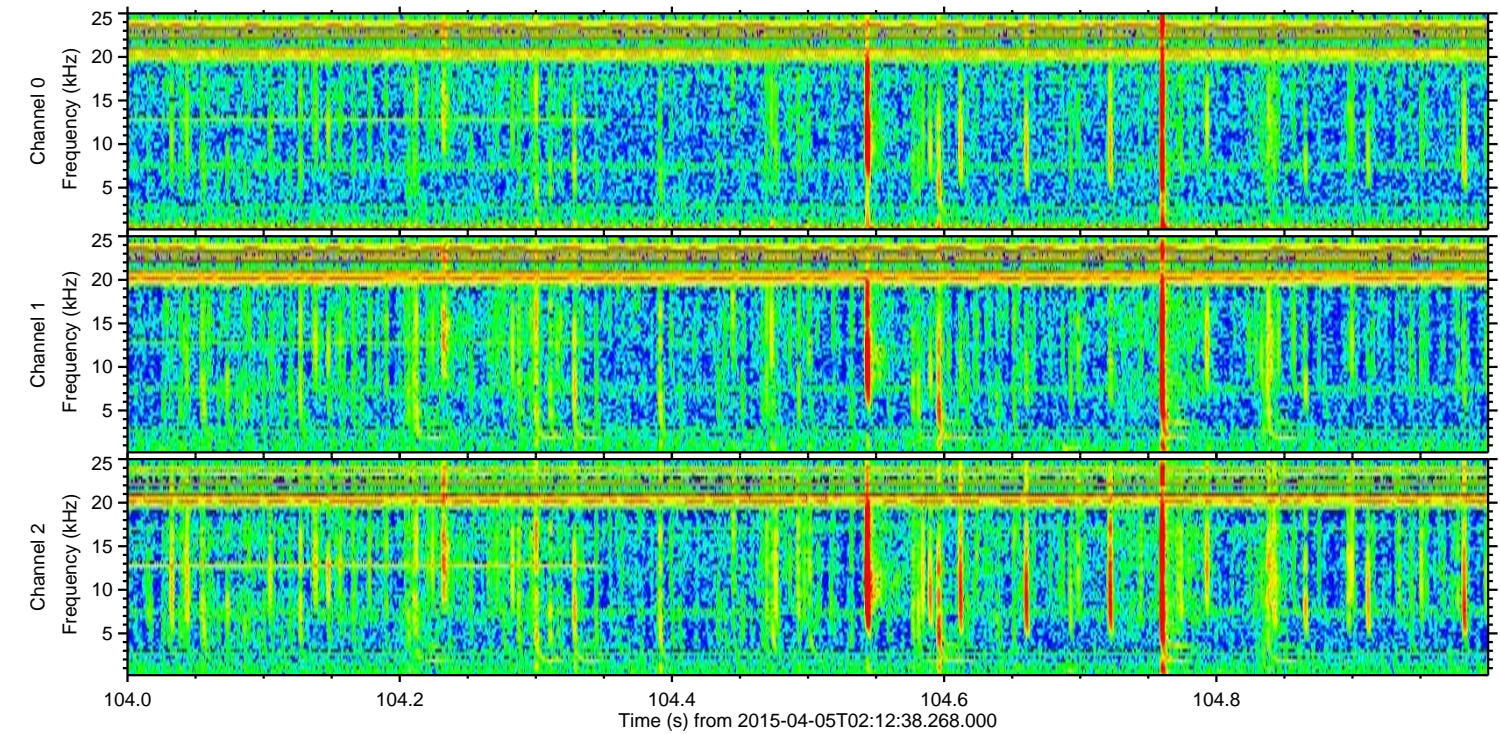
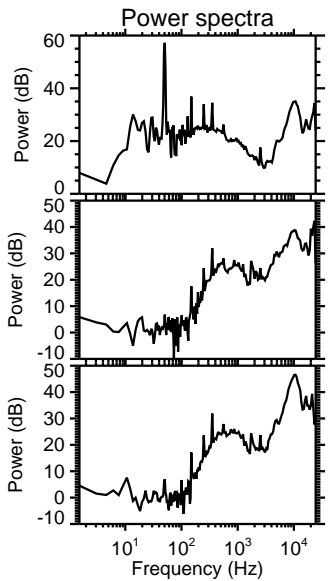
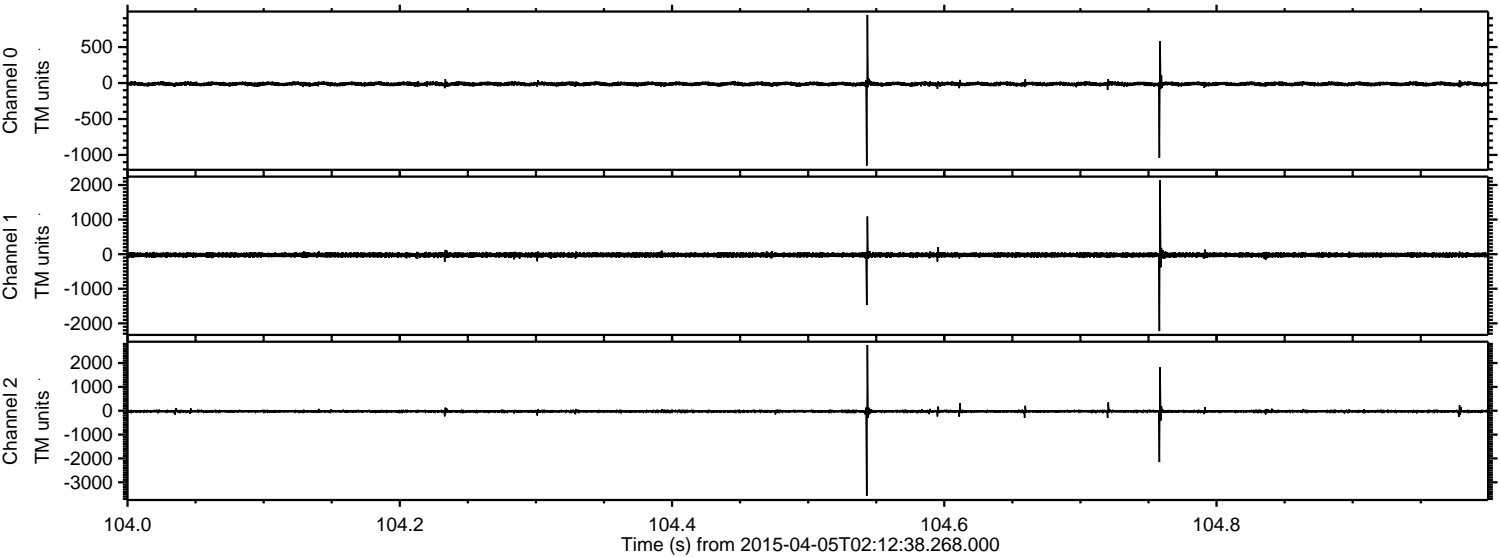
Channel 1
mn: -4884
mx: 2490
 μ : -23.0
 σ : 63.5

Channel 2
mn: -2920
mx: 4752
 μ : -26.4
 σ : 69.8

Processed Sun Apr 5 04:31:23 2015 by ELM ver.2012-10-06 from 001__elm20150405_021237__dat00.bin



Processed Sun Apr 5 04:31:24 2015 by ELM ver.2012-10-06 from 001__elm20150405_021237__dat00.bin



Processed Sun Apr 5 04:31:25 2015 by ELM ver.2012-10-06 from 001__elm20150405_021237__dat00.bin

