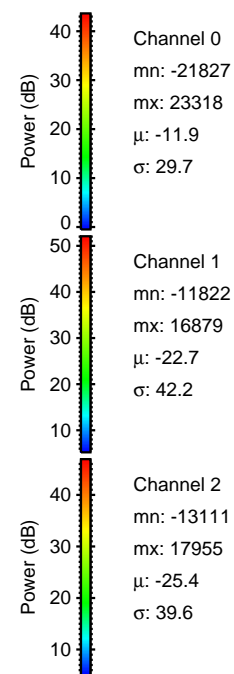
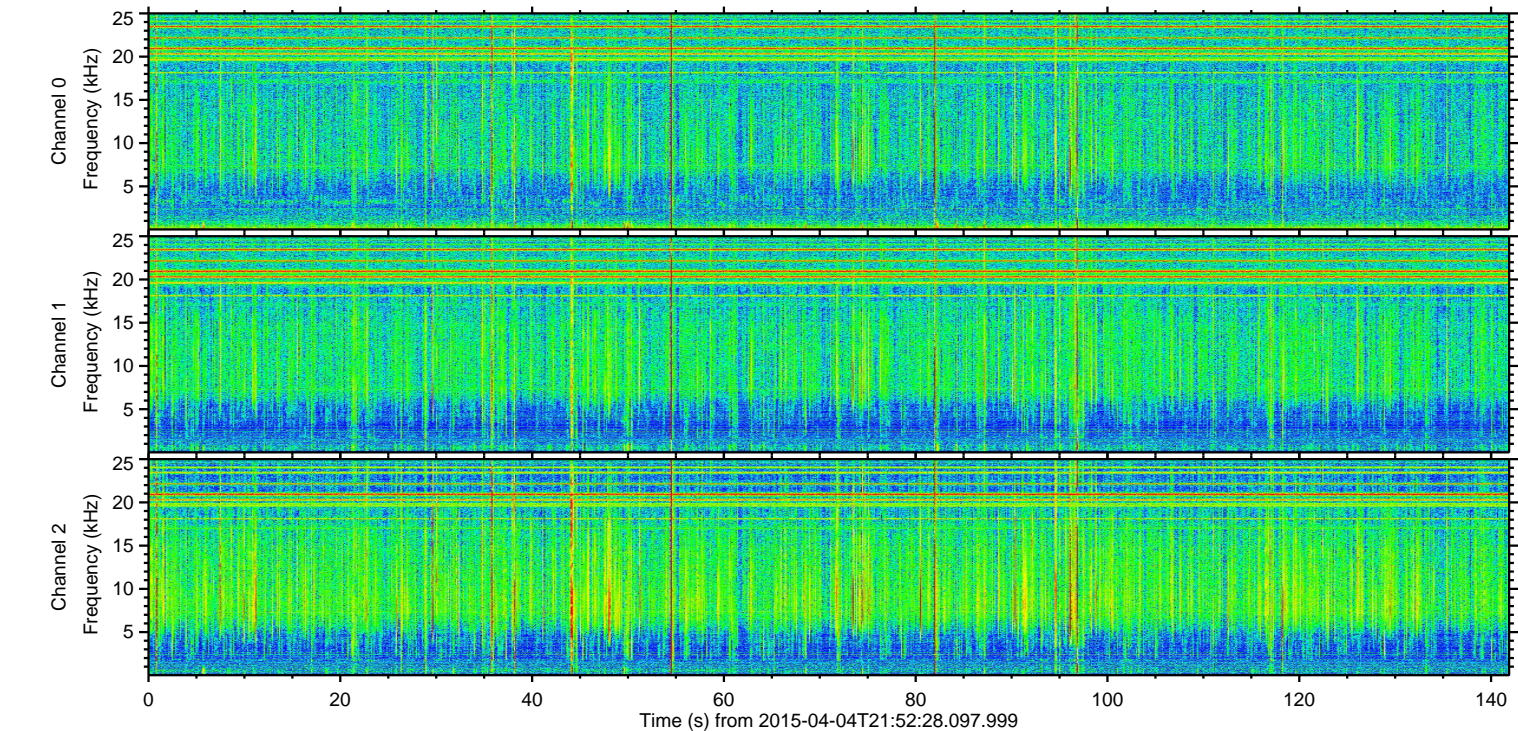
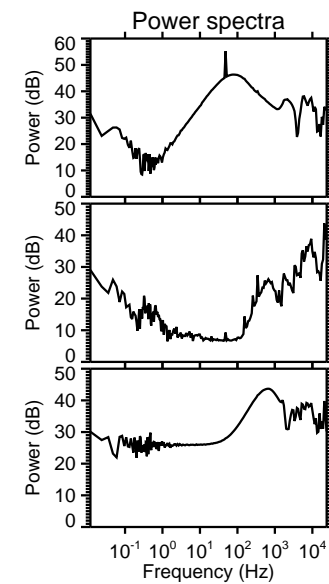
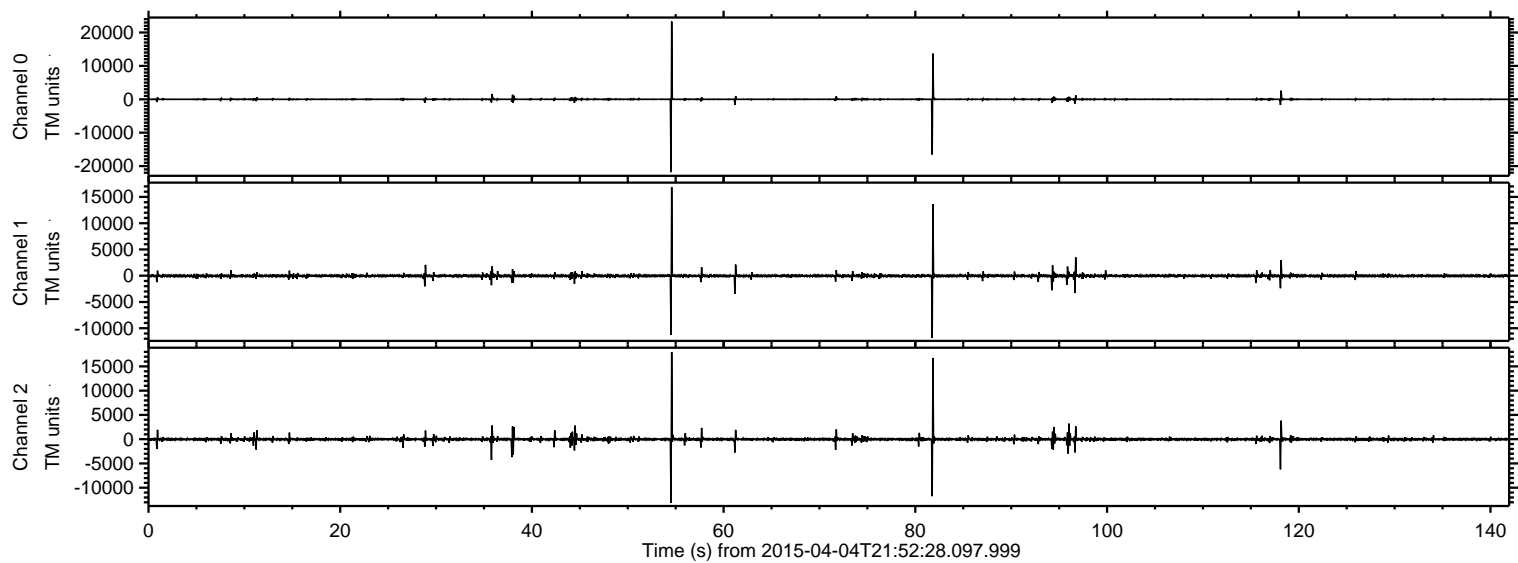
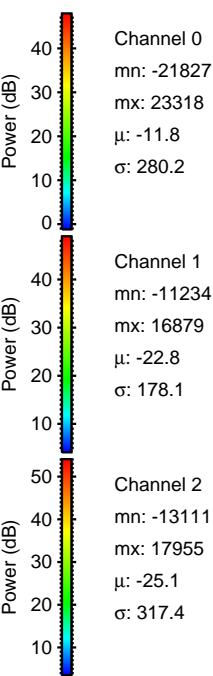
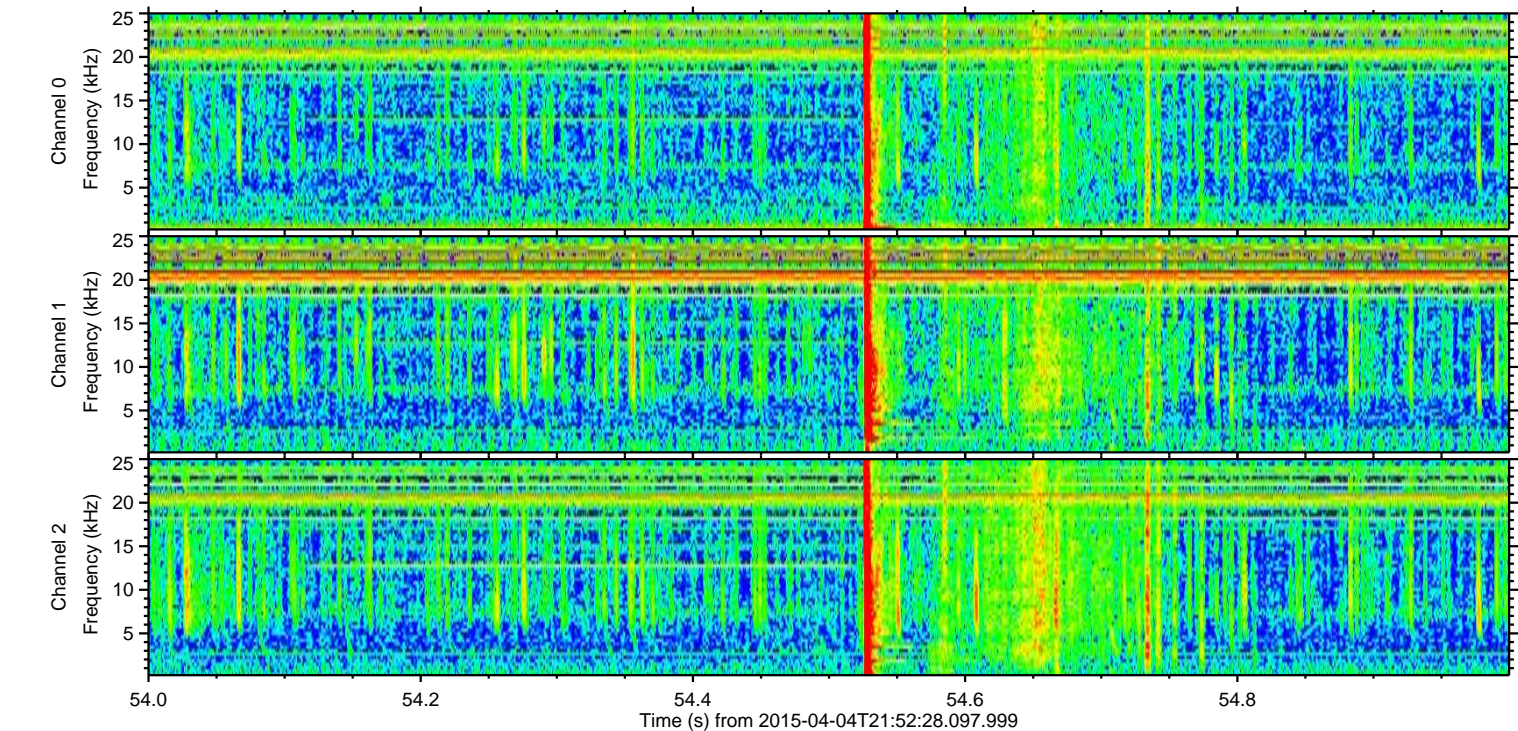
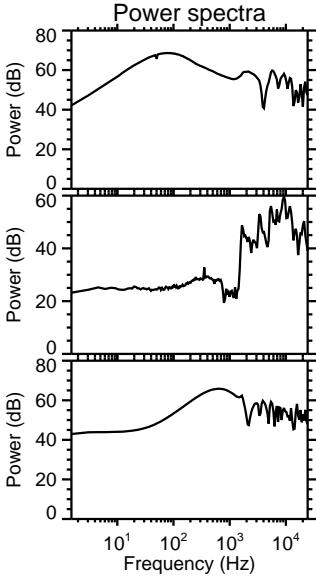
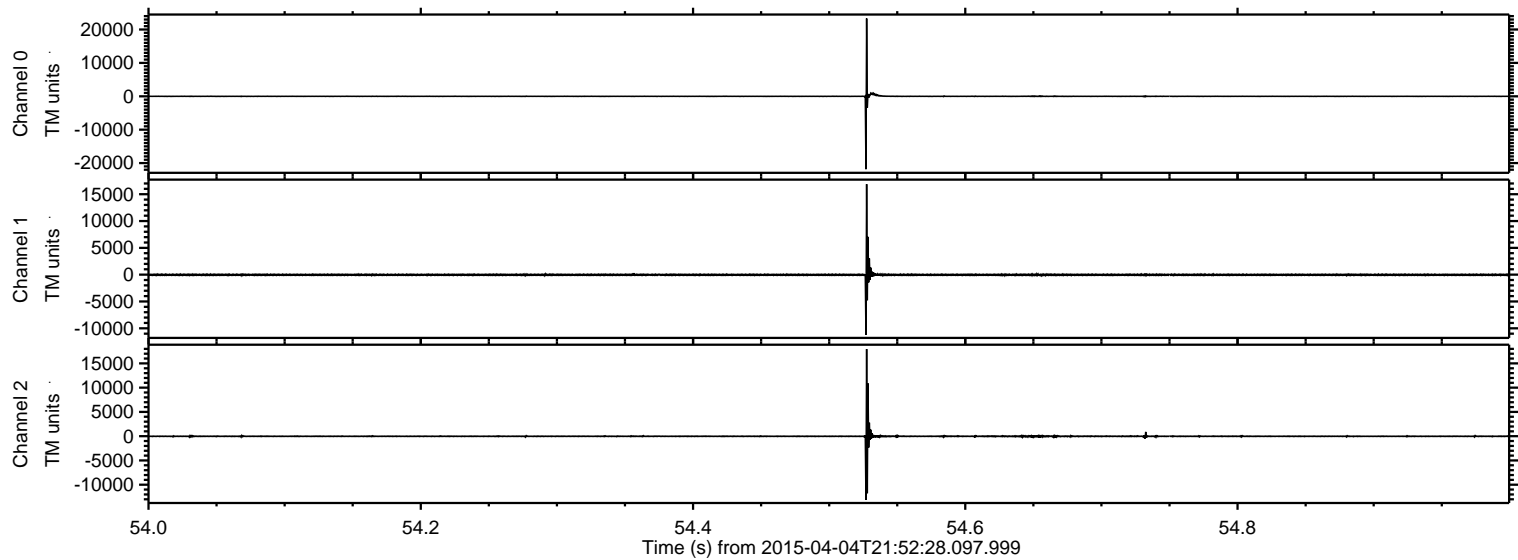


ELMAVAN 3D WAVEFORMS (Measured data sampled at 50 kHz) 49288 packets of 144 samples from 2015-04-04T21:52:28.097.999.

Processed Sat Apr 4 23:59:13 2015 by ELM ver.2012-10-06 from 001__elm20150404_215227__dat00.bin

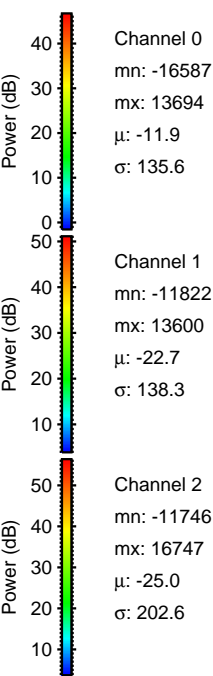
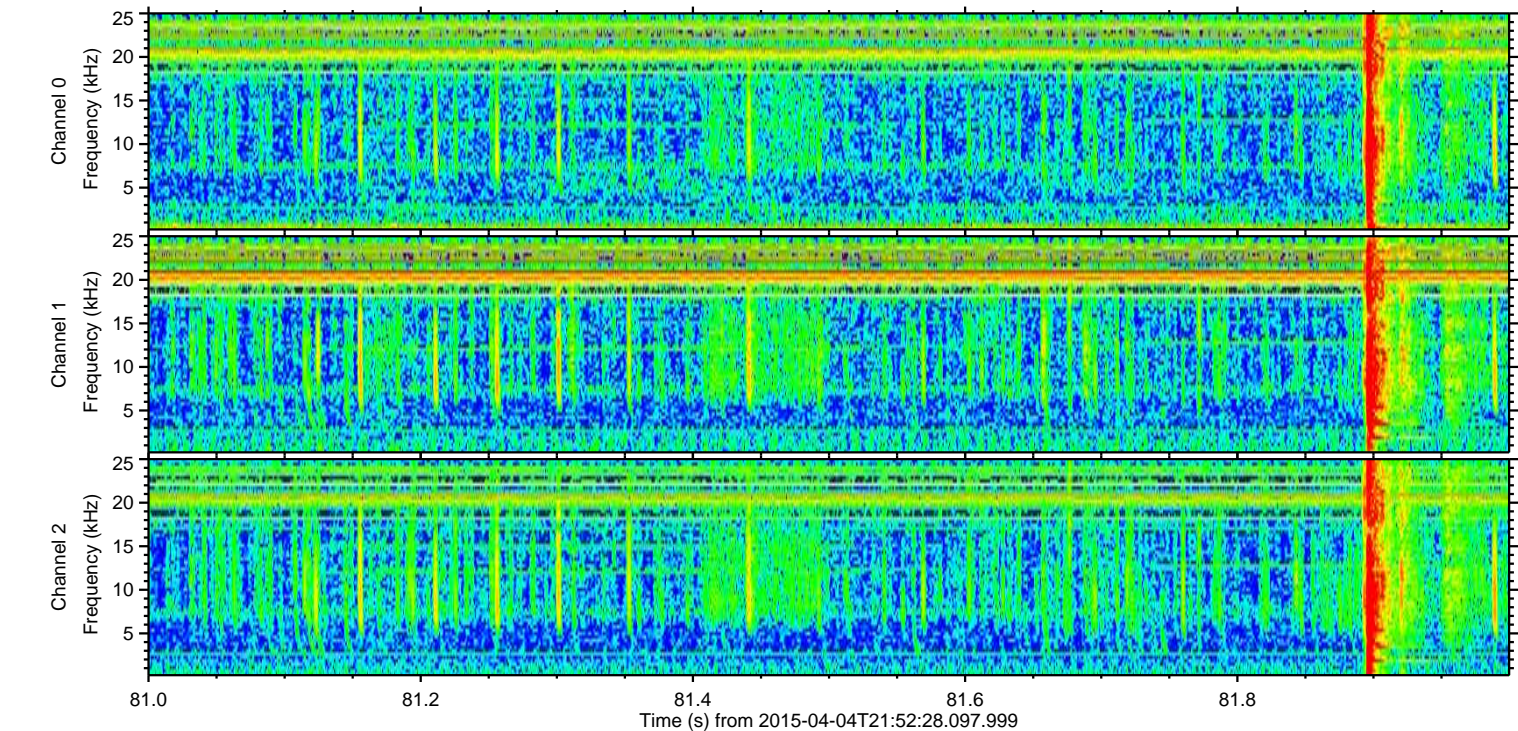
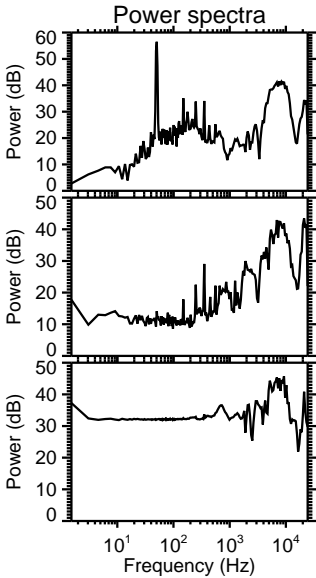
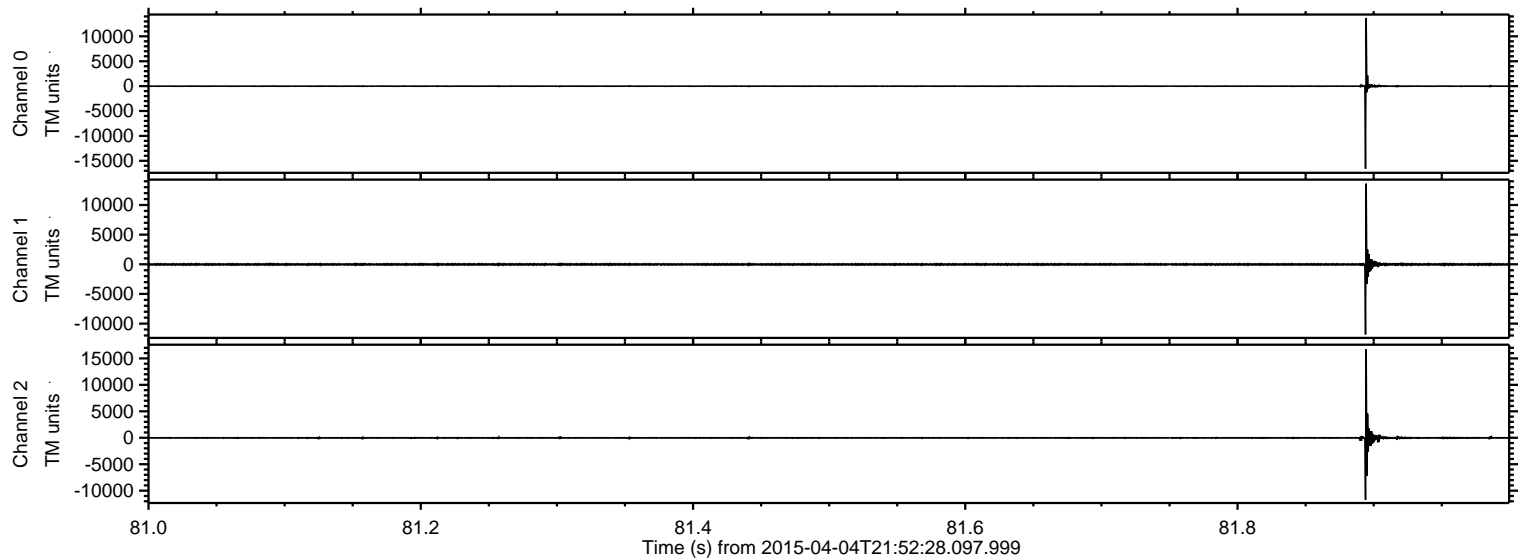


Processed Sat Apr 4 23:59:28 2015 by ELM ver.2012-10-06 from 001__elm20150404_215227__dat00.bin



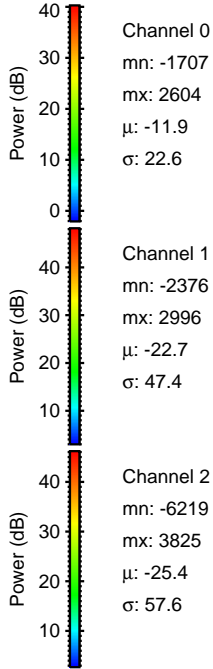
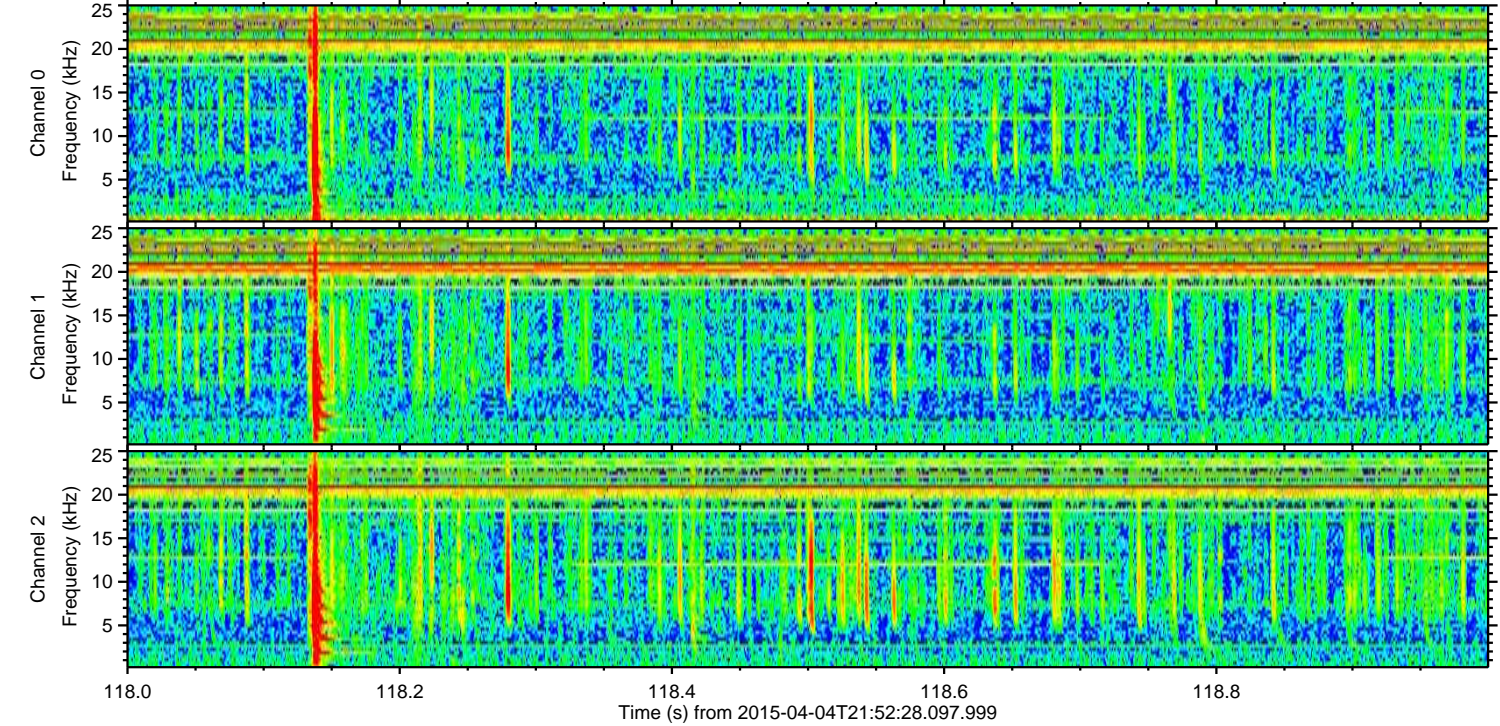
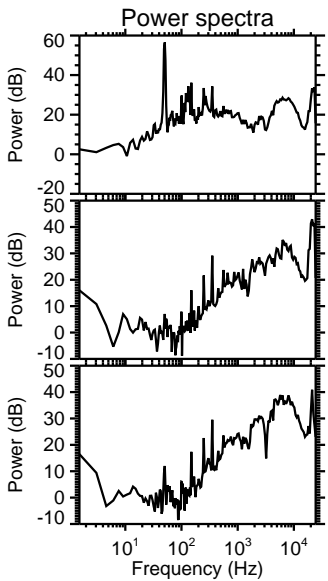
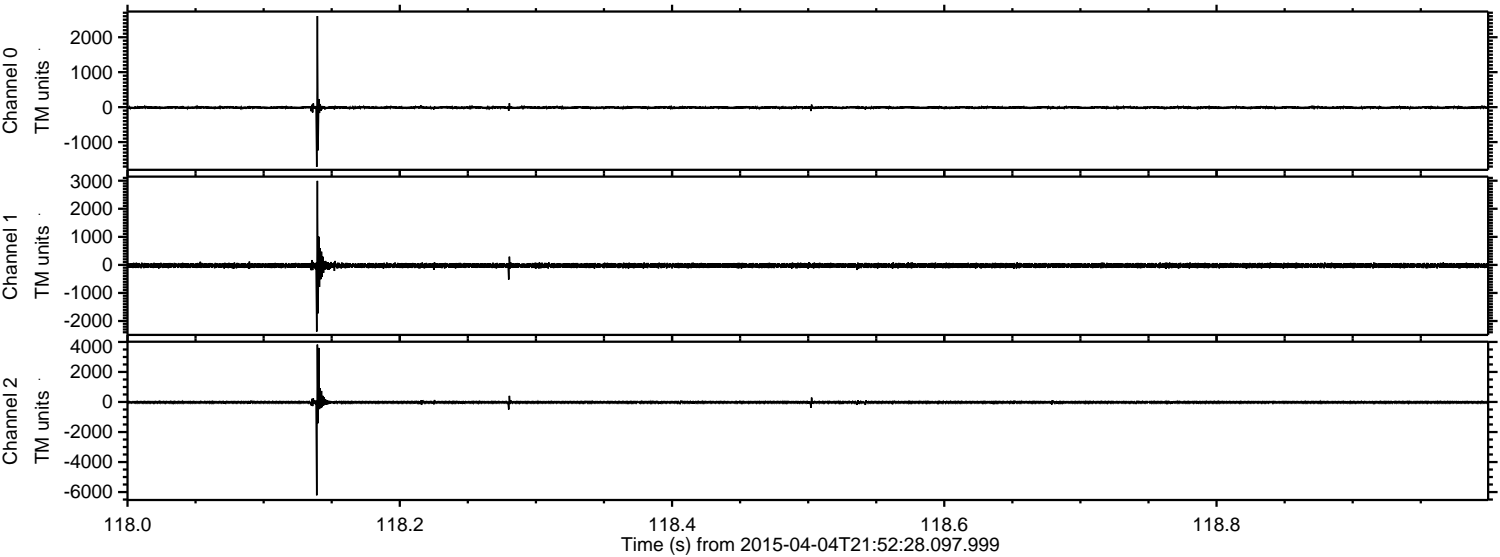
ELMAVAN 3D WAVEFORMS (Measured data sampled at 50 kHz) 49288 packets of 144 samples from 2015-04-04T21:52:28.097.999. Part 82/142

Processed Sat Apr 4 23:59:29 2015 by ELM ver.2012-10-06 from 001__elm20150404_215227__dat00.bin



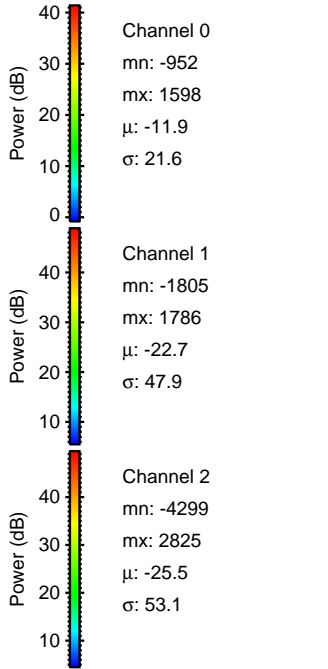
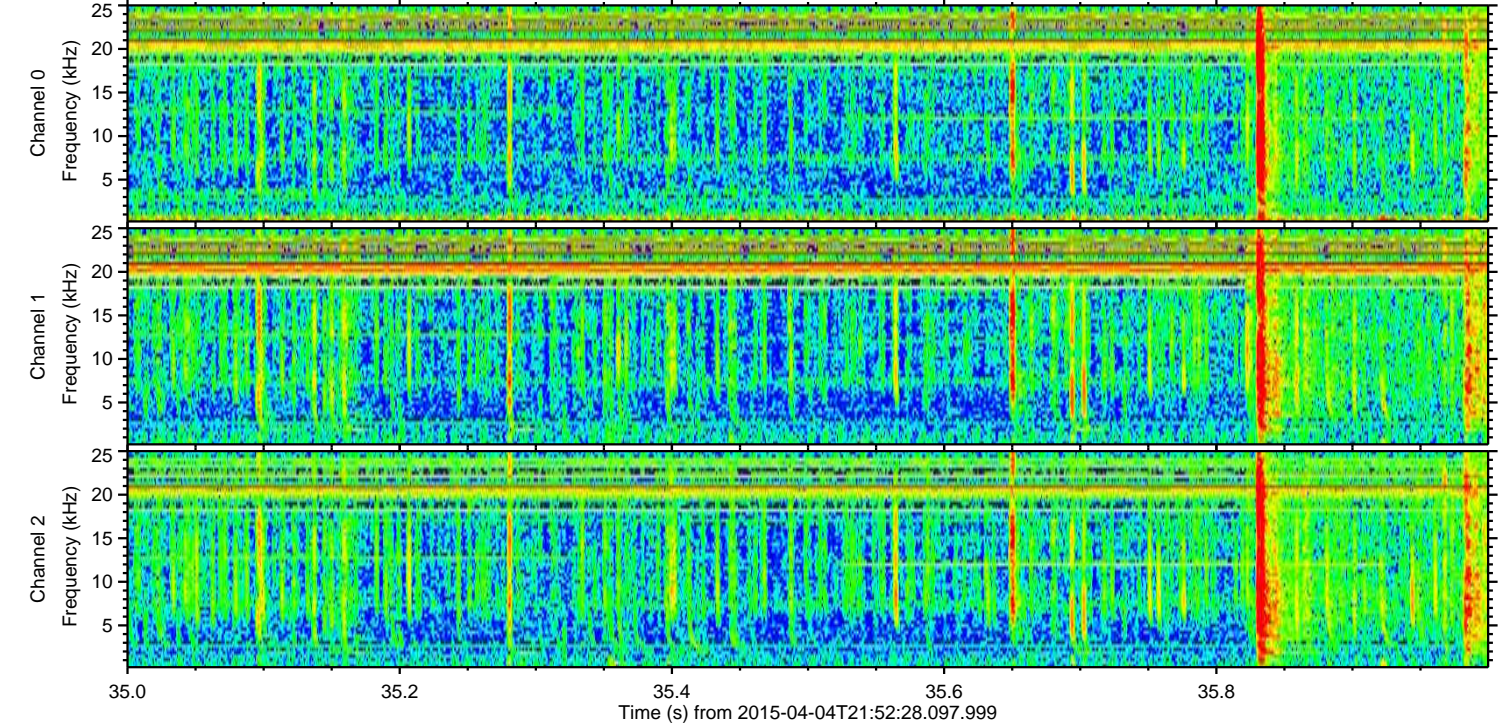
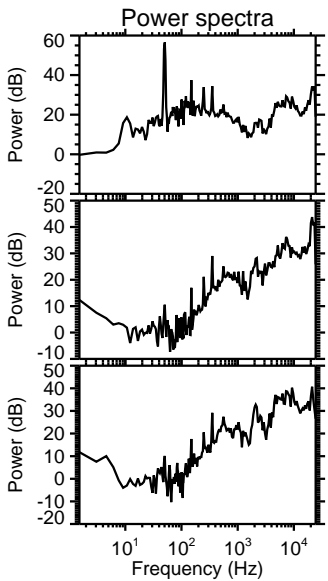
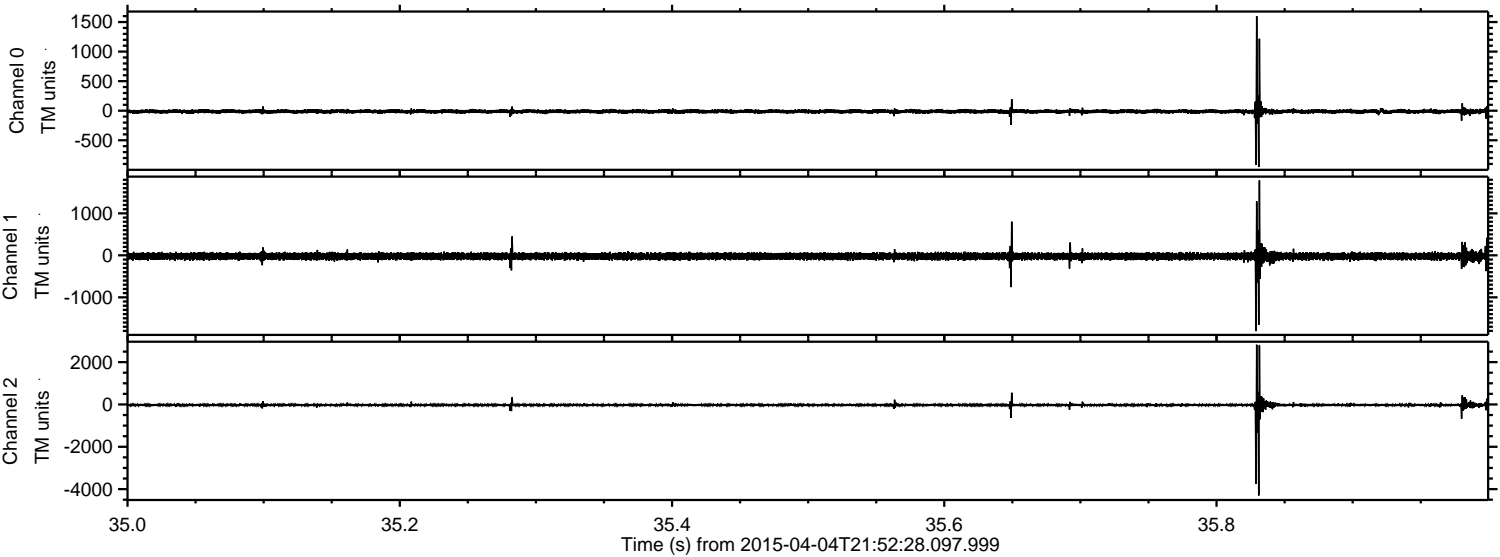
ELMAVAN 3D WAVEFORMS (Measured data sampled at 50 kHz) 49288 packets of 144 samples from 2015-04-04T21:52:28.097.999. Part 119/142

Processed Sat Apr 4 23:59:30 2015 by ELM ver.2012-10-06 from 001__elm20150404_215227__dat00.bin

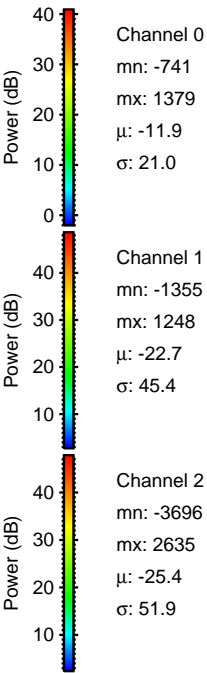
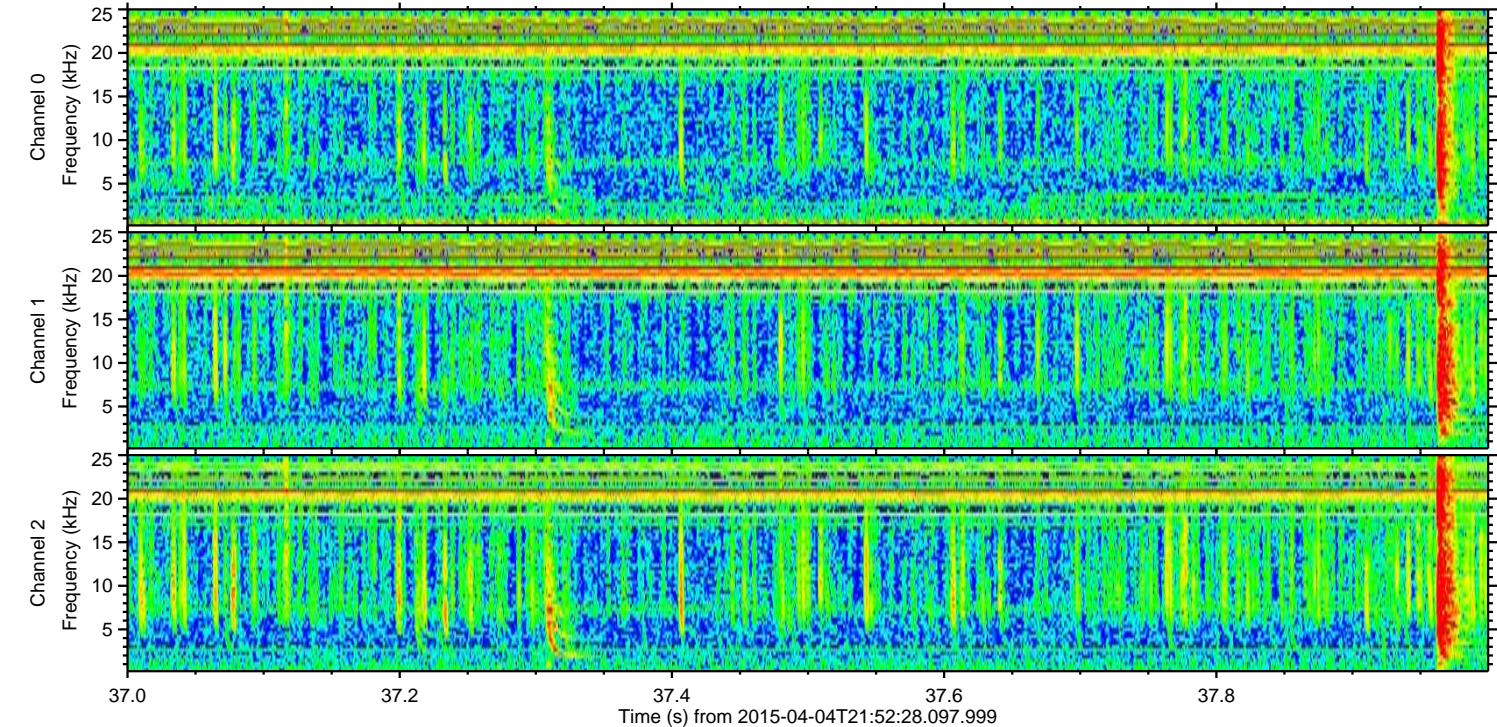
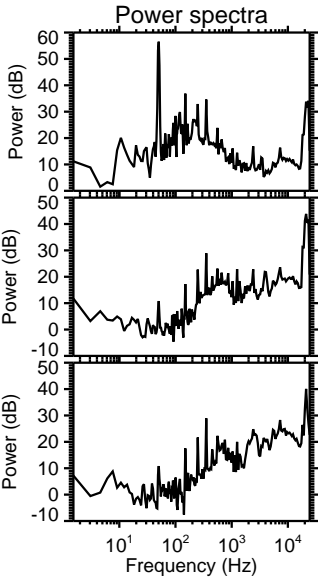
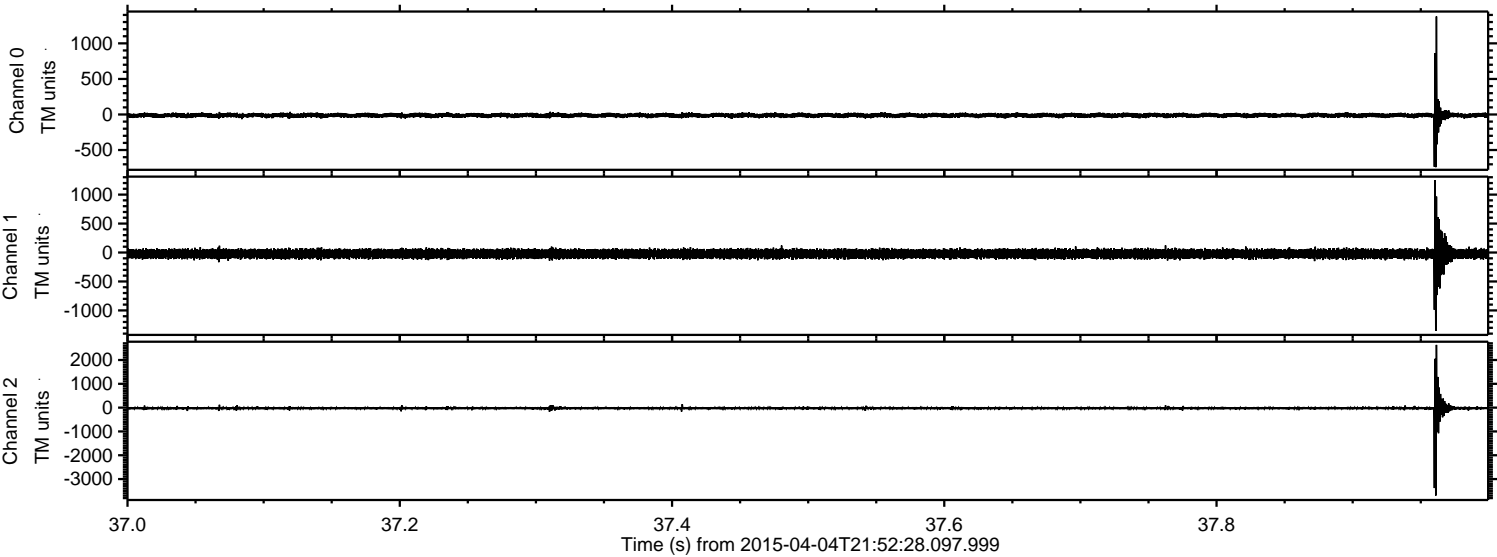


ELMAVAN 3D WAVEFORMS (Measured data sampled at 50 kHz) 49288 packets of 144 samples from 2015-04-04T21:52:28.097.999. Part 36/142

Processed Sat Apr 4 23:59:31 2015 by ELM ver.2012-10-06 from 001__elm20150404_215227__dat00.bin



Processed Sat Apr 4 23:59:32 2015 by ELM ver.2012-10-06 from 001__elm20150404_215227__dat00.bin



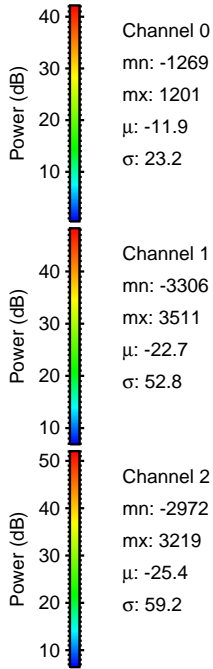
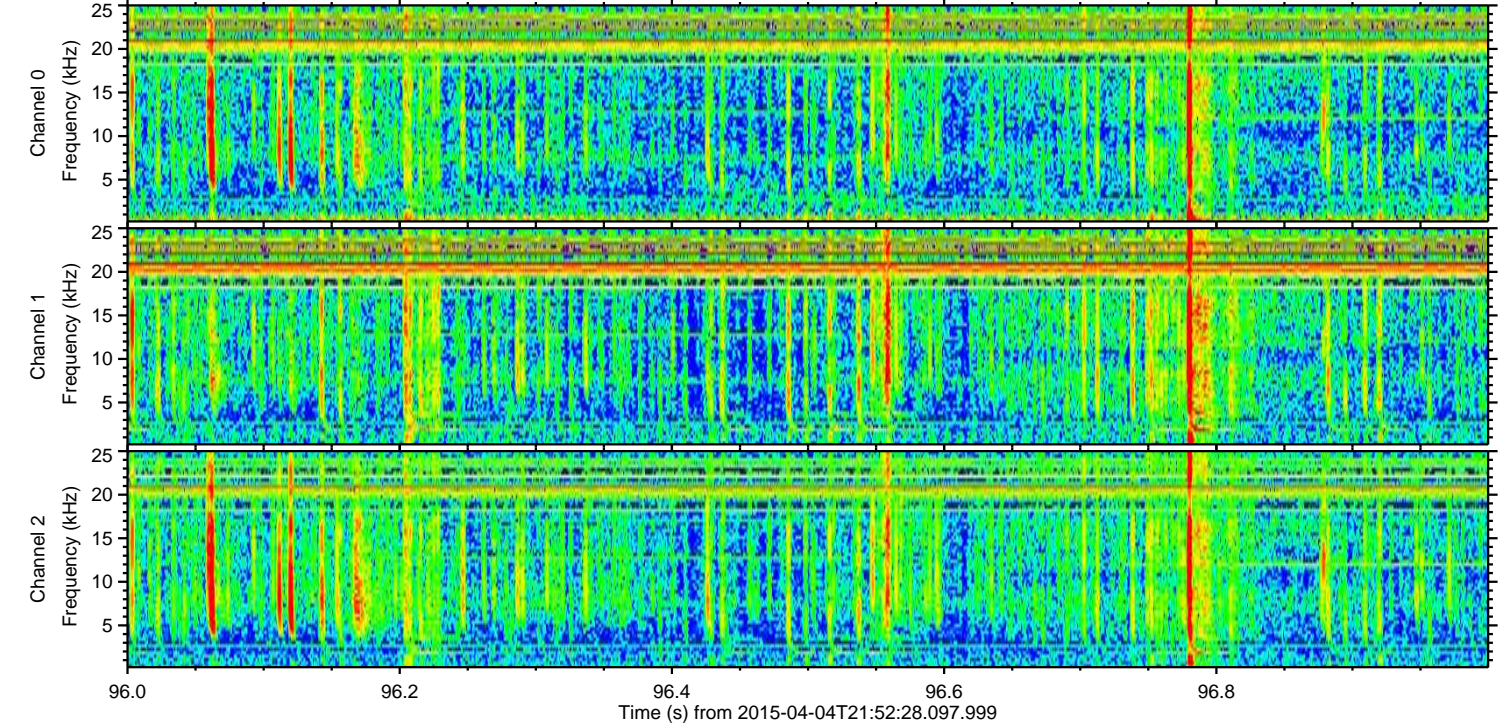
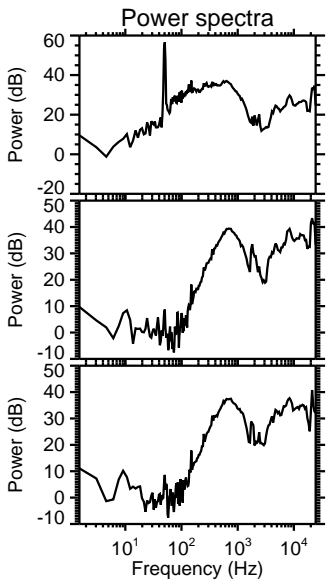
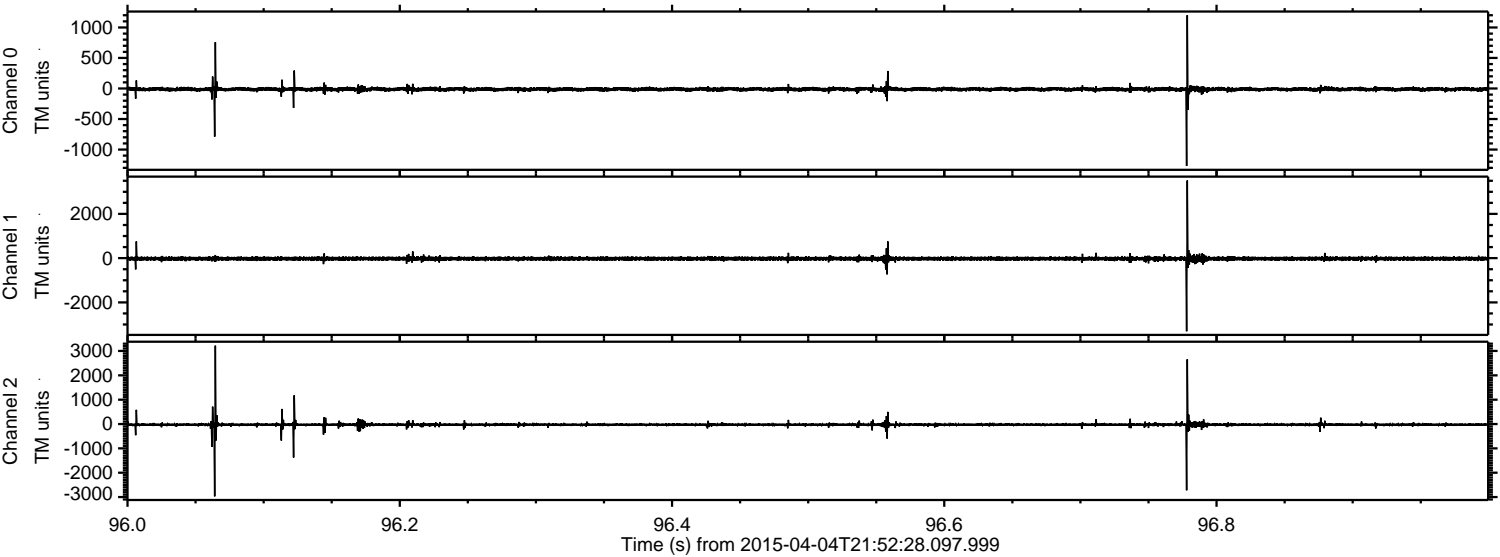
Channel 0
mn: -741
mx: 1379
 μ : -11.9
 σ : 21.0

Channel 1
mn: -1355
mx: 1248
 μ : -22.7
 σ : 45.4

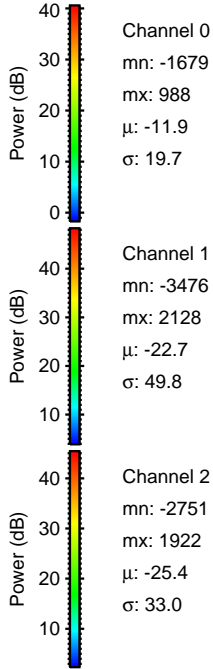
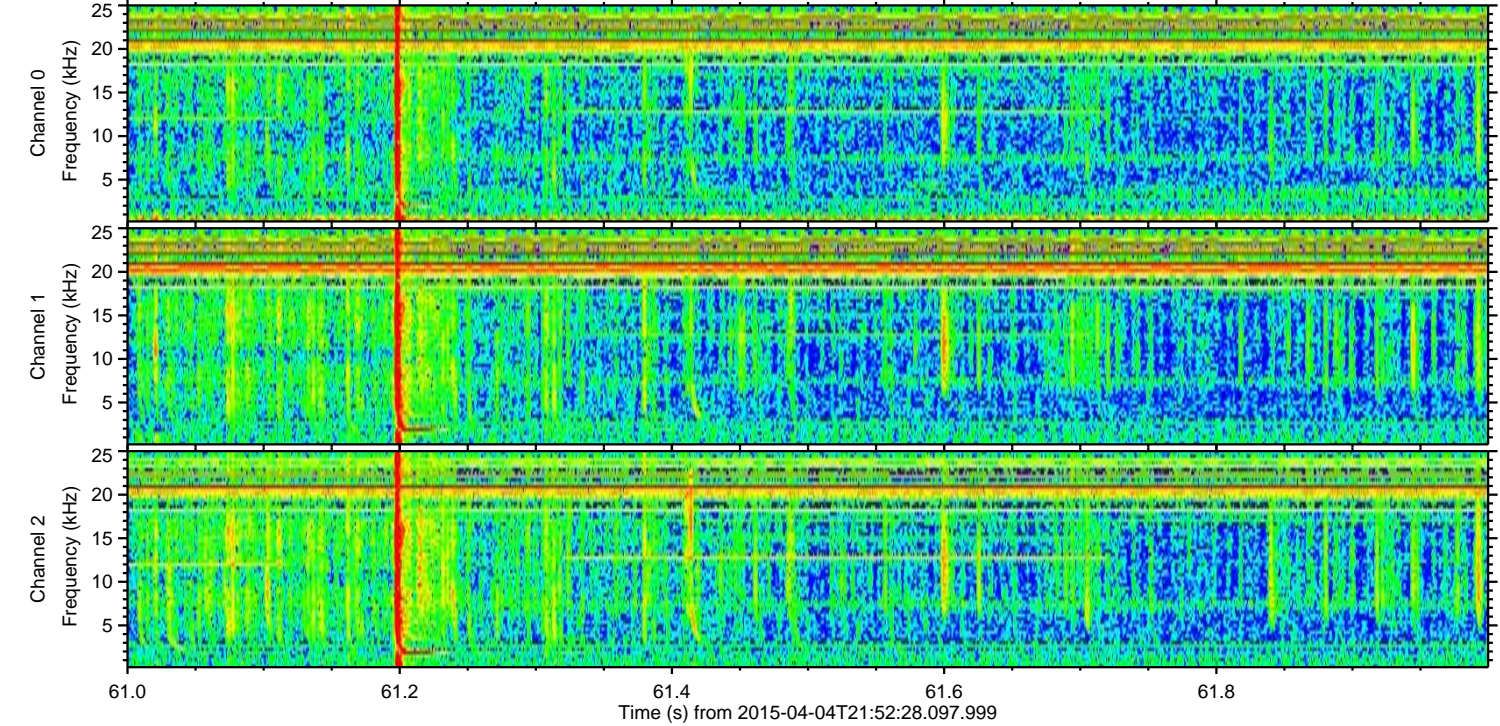
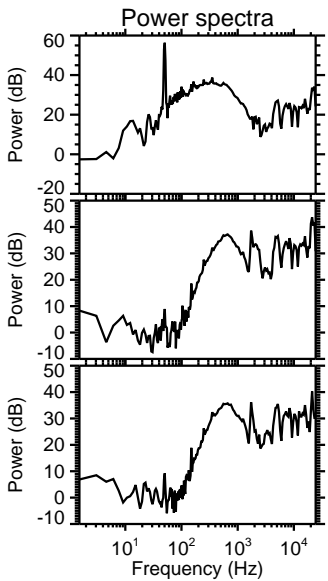
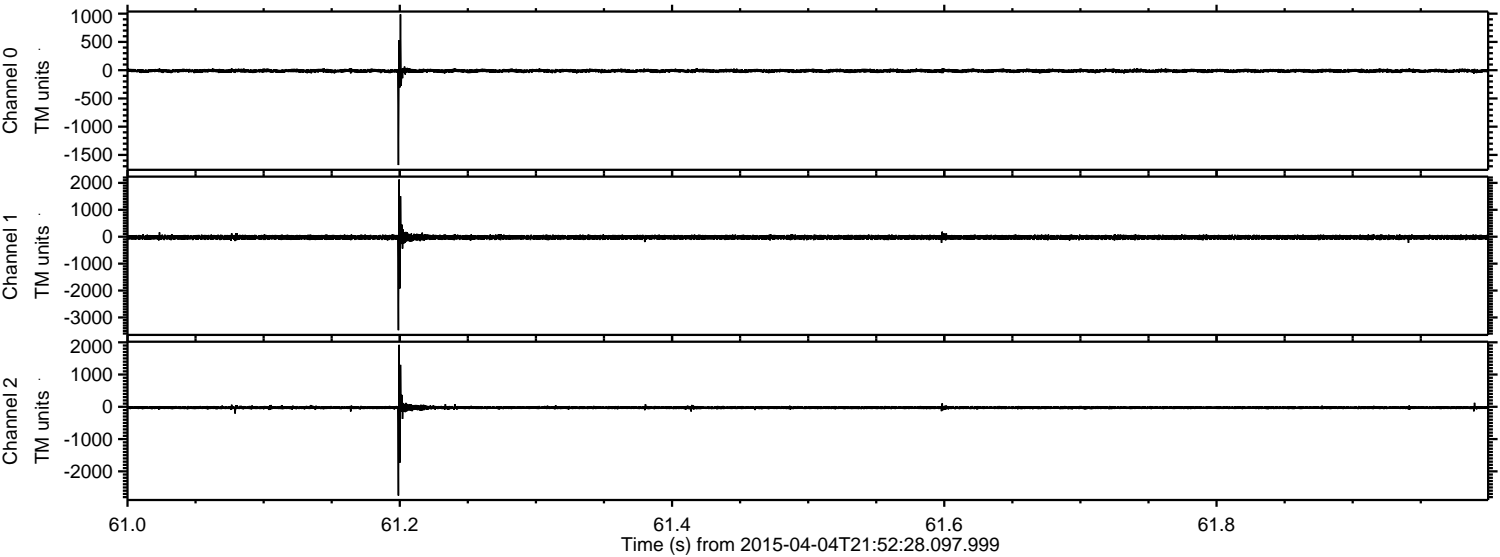
Channel 2
mn: -3696
mx: 2635
 μ : -25.4
 σ : 51.9

ELMAVAN 3D WAVEFORMS (Measured data sampled at 50 kHz) 49288 packets of 144 samples from 2015-04-04T21:52:28.097.999. Part 97/142

Processed Sat Apr 4 23:59:33 2015 by ELM ver.2012-10-06 from 001__elm20150404_215227__dat00.bin



Processed Sat Apr 4 23:59:35 2015 by ELM ver.2012-10-06 from 001__elm20150404_215227__dat00.bin

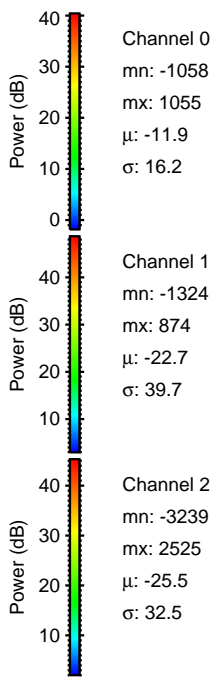
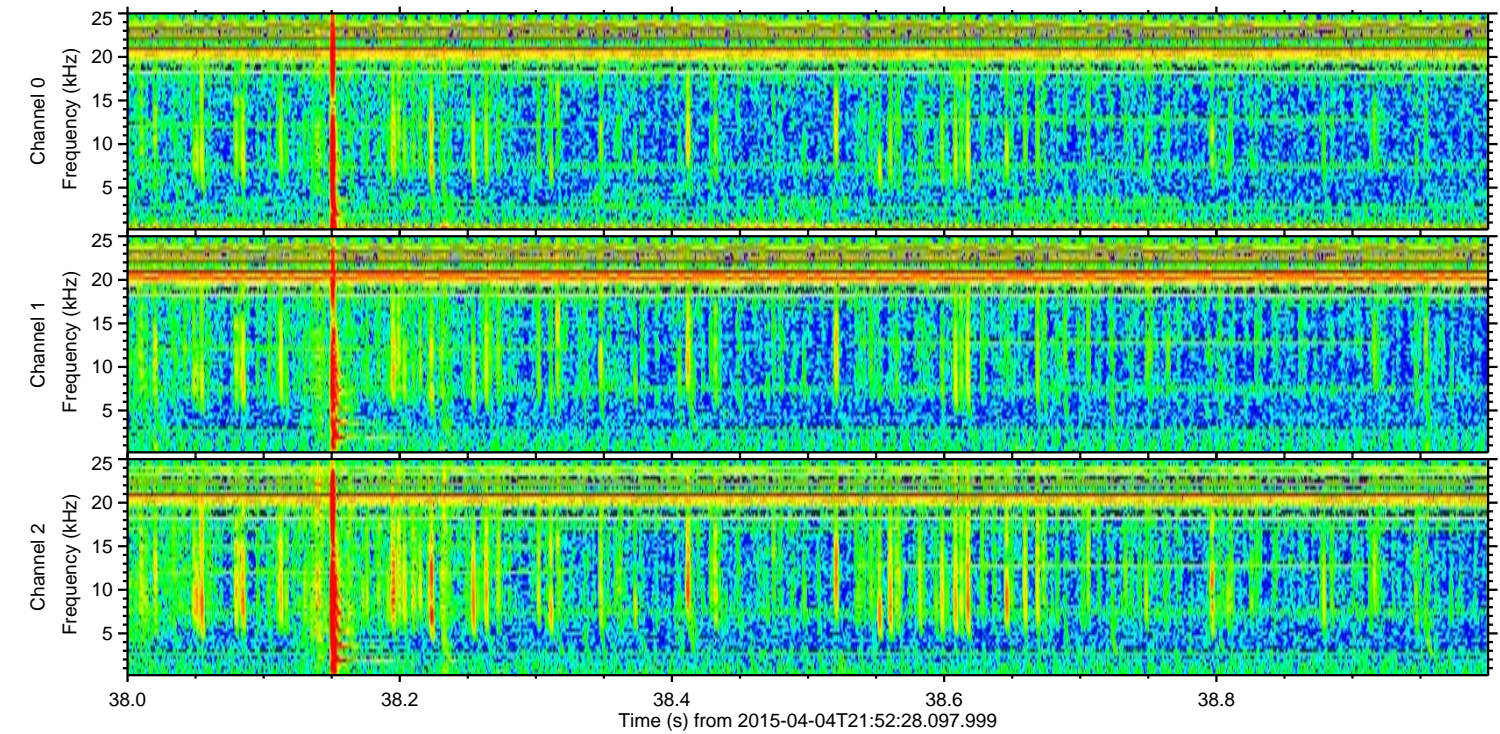
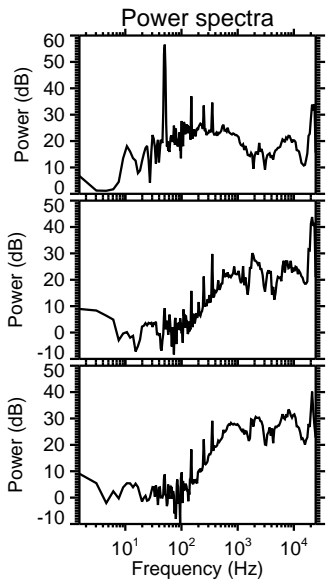
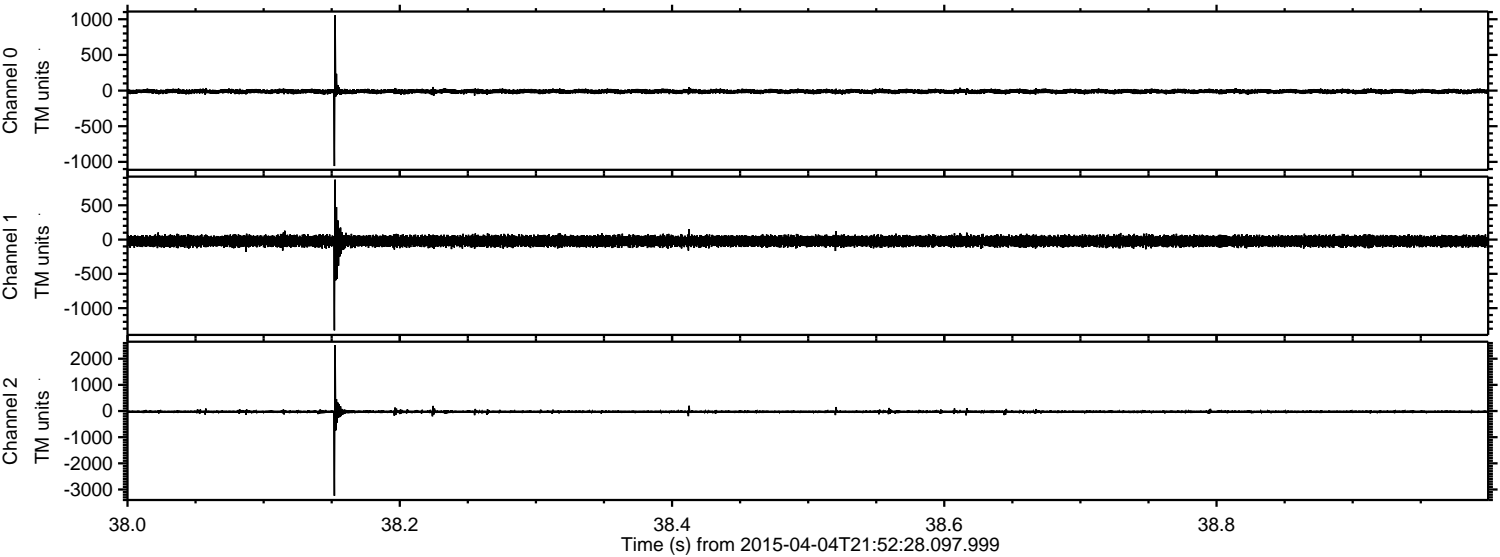


Channel 0
mn: -1679
mx: 988
 μ : -11.9
 σ : 19.7

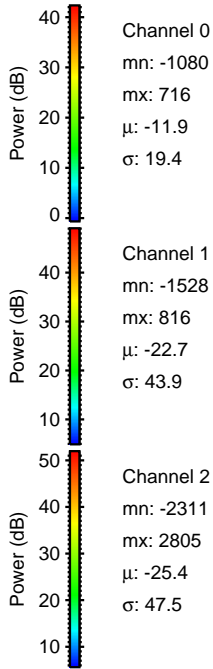
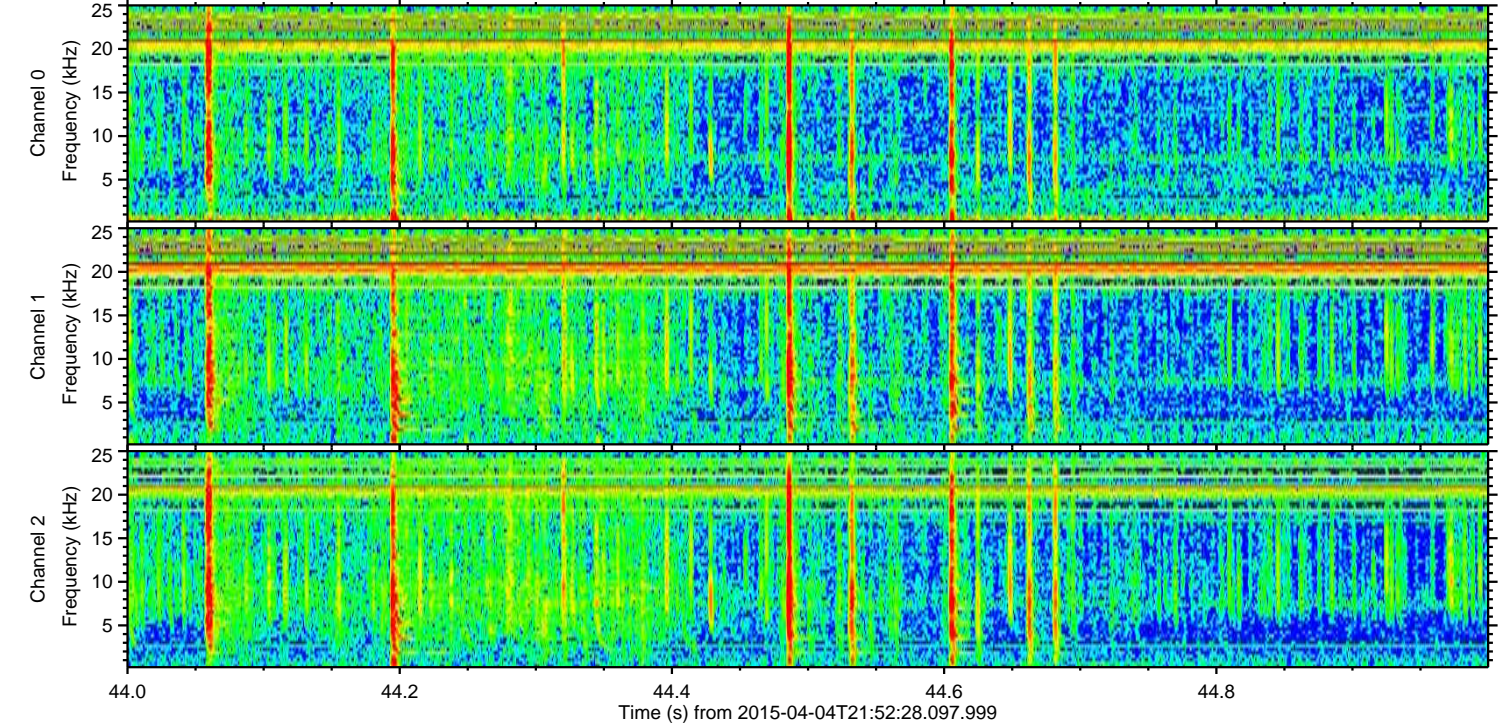
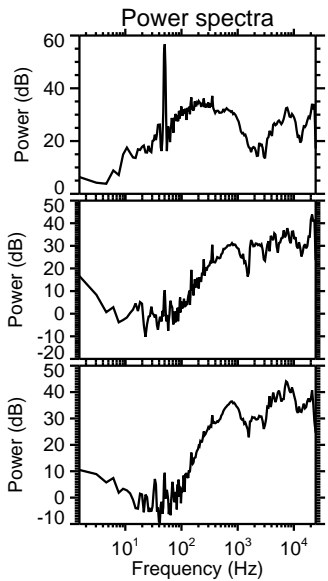
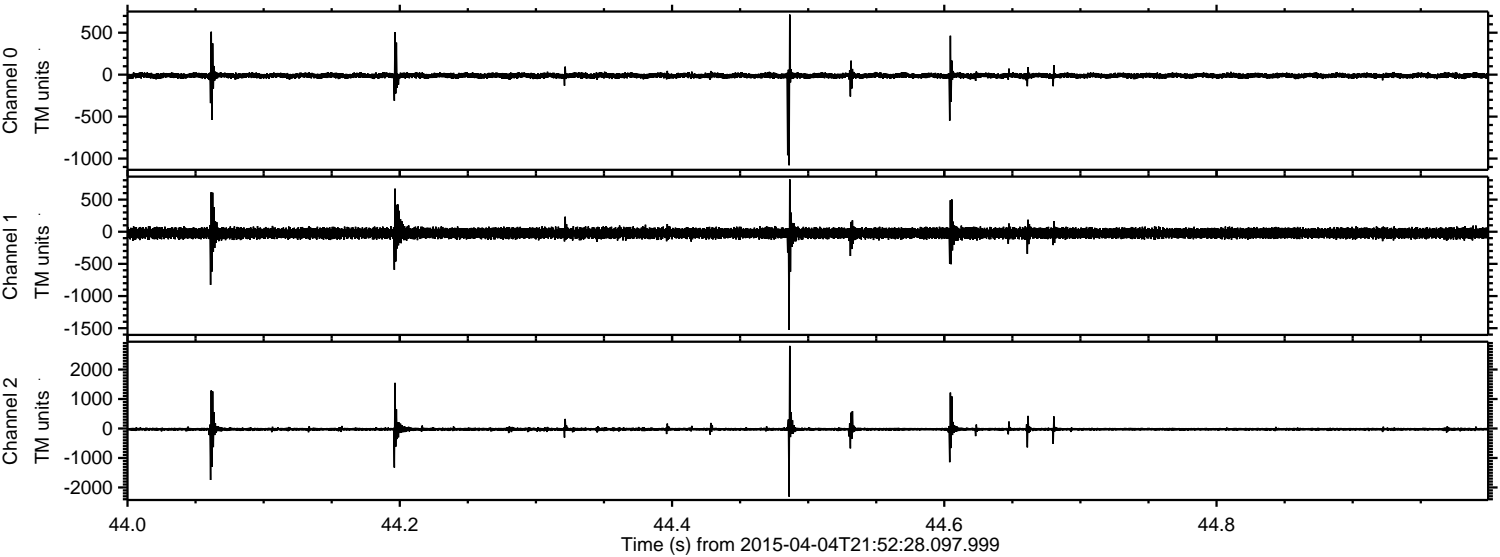
Channel 1
mn: -3476
mx: 2128
 μ : -22.7
 σ : 49.8

Channel 2
mn: -2751
mx: 1922
 μ : -25.4
 σ : 33.0

Processed Sat Apr 4 23:59:36 2015 by ELM ver.2012-10-06 from 001__elm20150404_215227__dat00.bin



Processed Sat Apr 4 23:59:37 2015 by ELM ver.2012-10-06 from 001__elm20150404_215227__dat00.bin



Channel 0
mn: -1080
mx: 716
 μ : -11.9
 σ : 19.4

Channel 1
mn: -1528
mx: 816
 μ : -22.7
 σ : 43.9

Channel 2
mn: -2311
mx: 2805
 μ : -25.4
 σ : 47.5

Processed Sat Apr 4 23:59:38 2015 by ELM ver.2012-10-06 from 001__elm20150404_215227__dat00.bin

