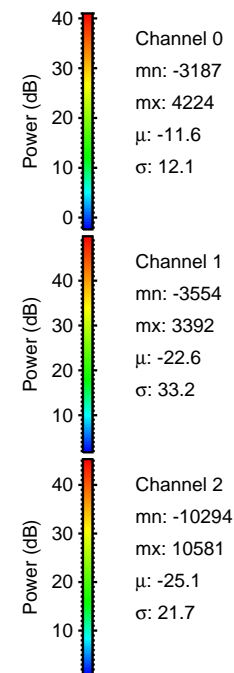
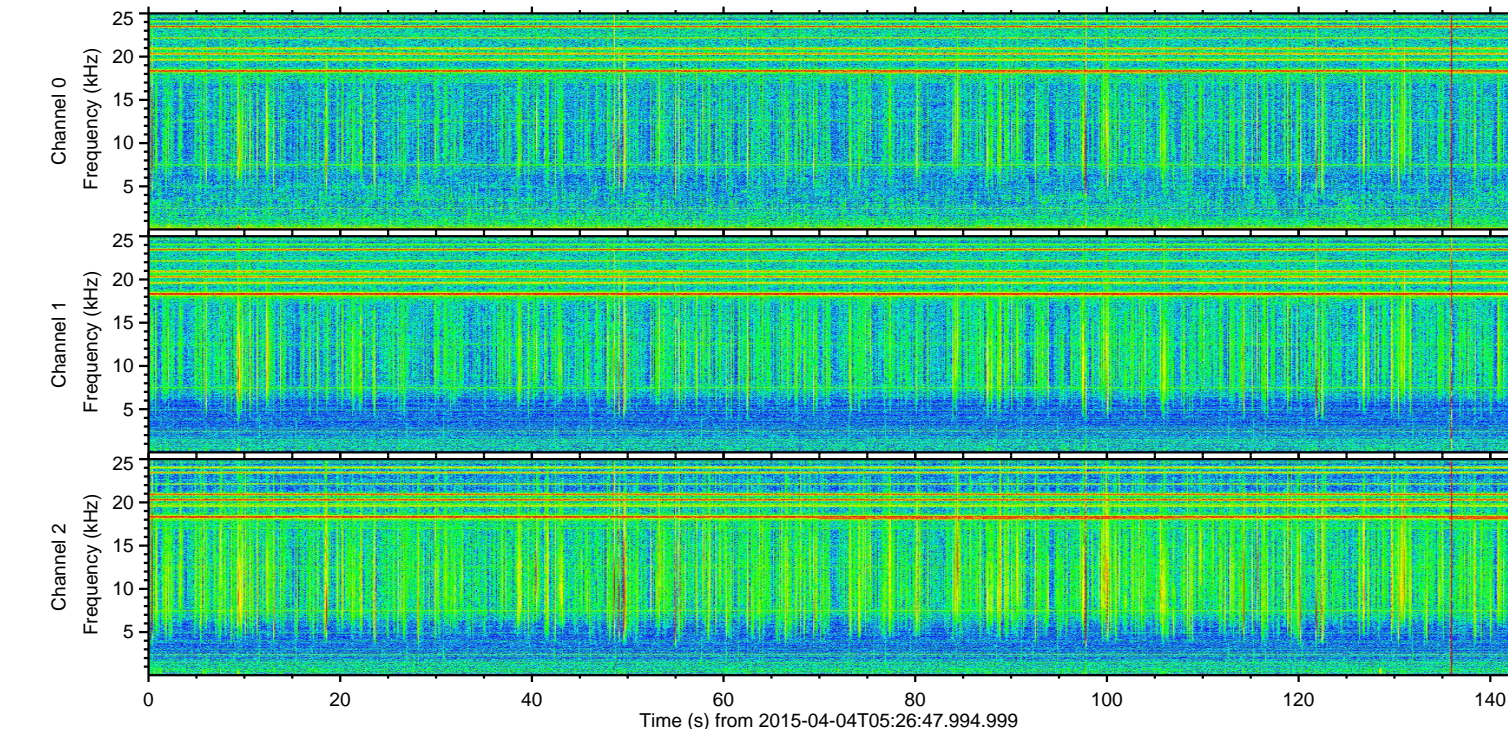
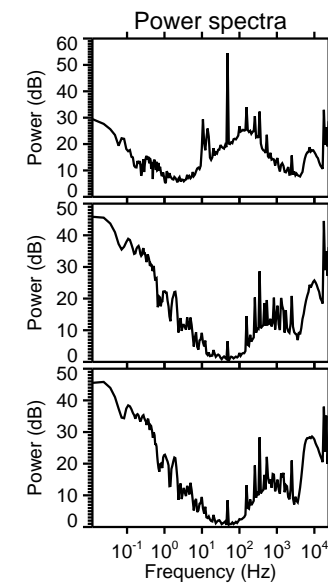
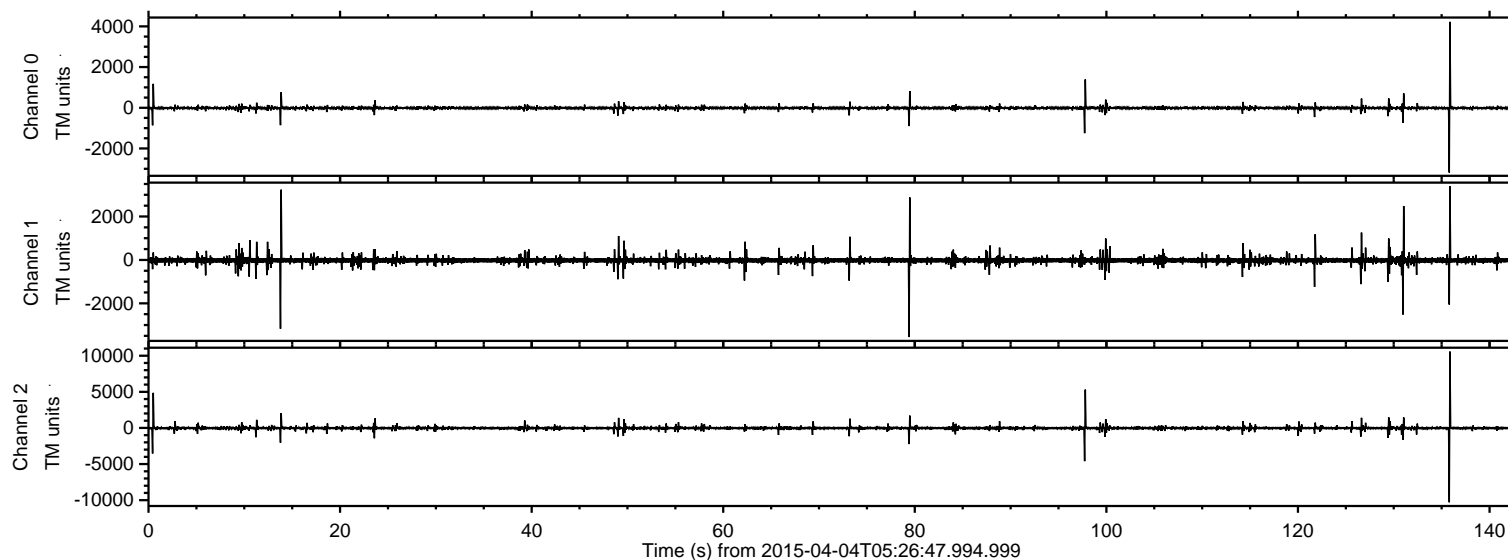


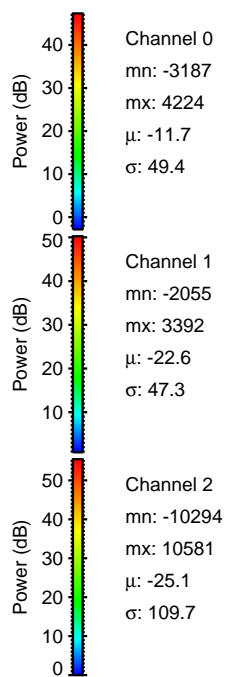
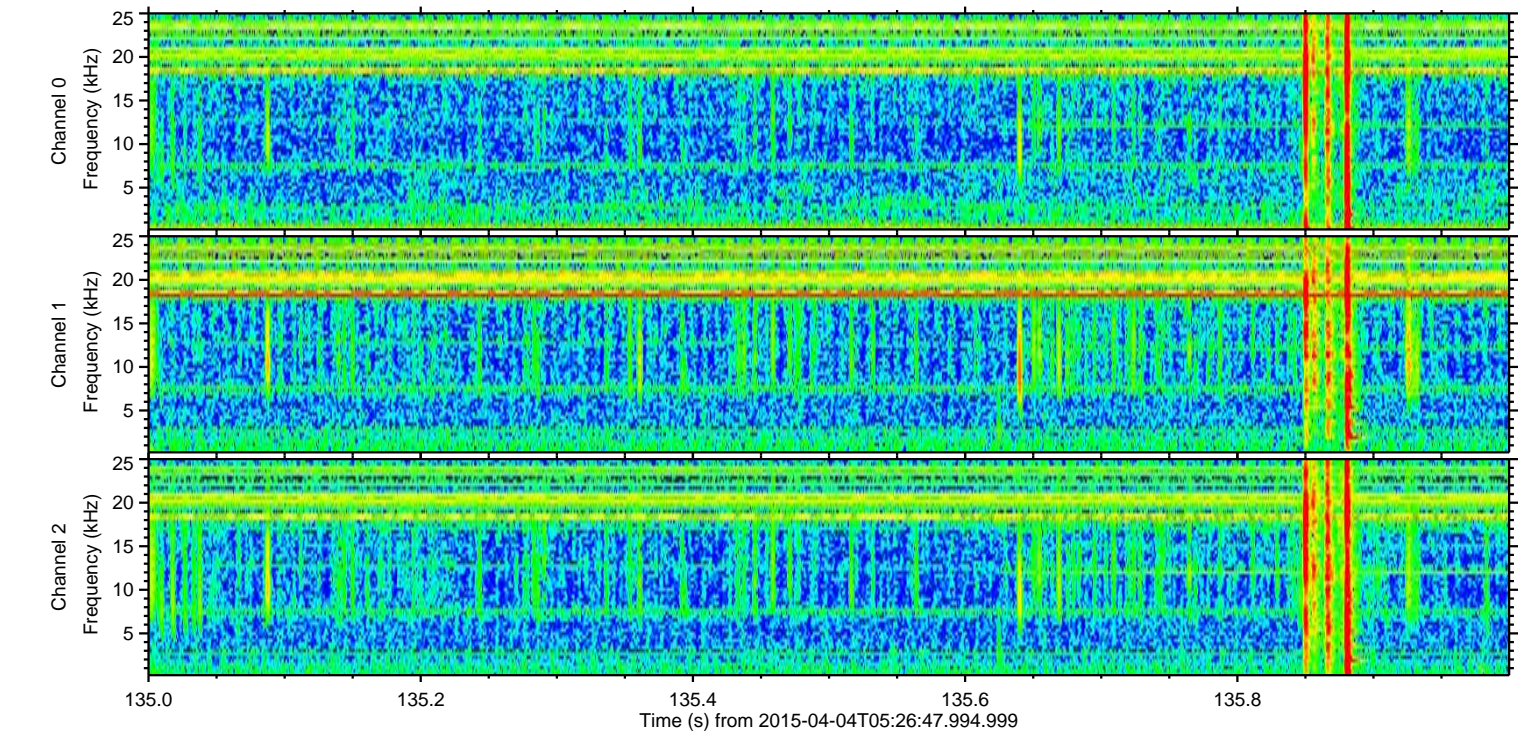
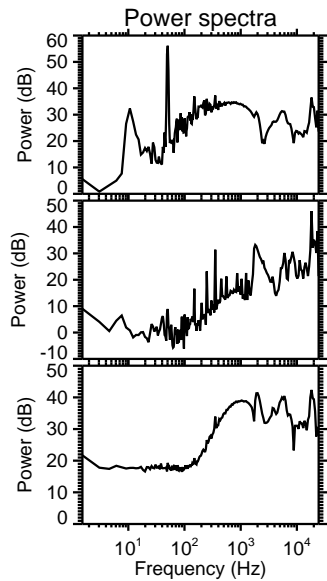
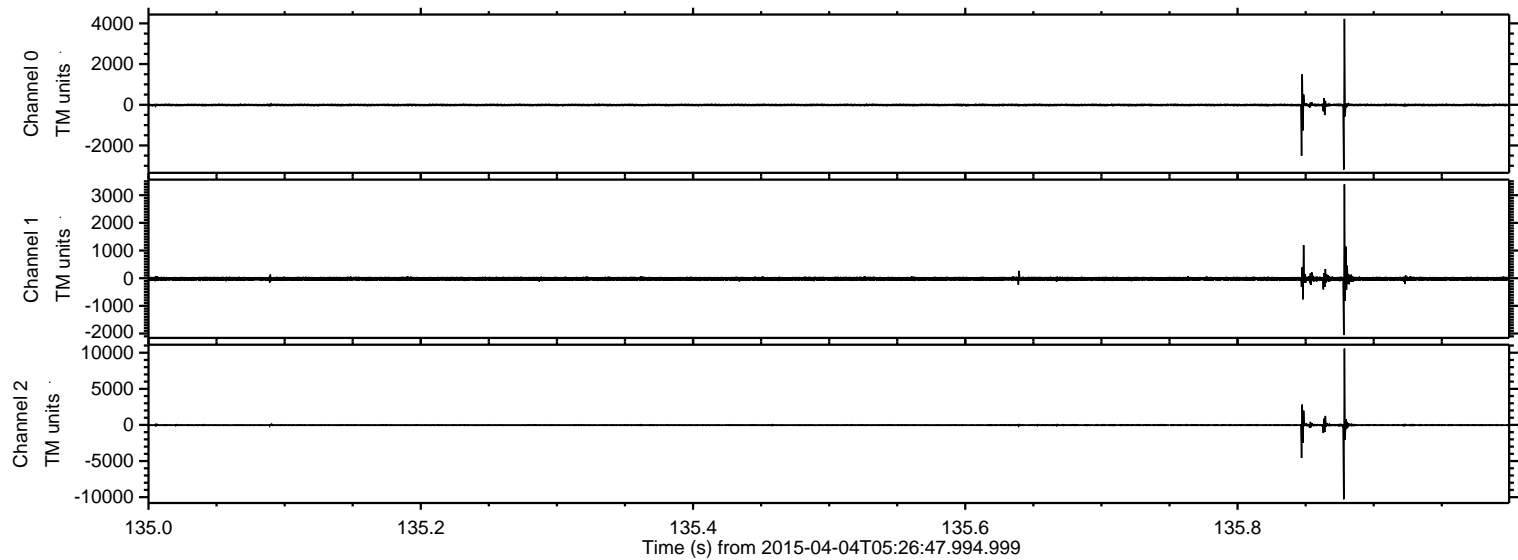
ELMAVAN 3D WAVEFORMS (Measured data sampled at 50 kHz) 49322 packets of 144 samples from 2015-04-04T05:26:47.994.999.

Processed Sat Apr 4 07:36:07 2015 by ELM ver.2012-10-06 from 001__elm20150404_052646__dat00.bin



ELMAVAN 3D WAVEFORMS (Measured data sampled at 50 kHz) 49322 packets of 144 samples from 2015-04-04T05:26:47.994.999. Part 136/143

Processed Sat Apr 4 07:36:22 2015 by ELM ver.2012-10-06 from 001__elm20150404_052646__dat00.bin

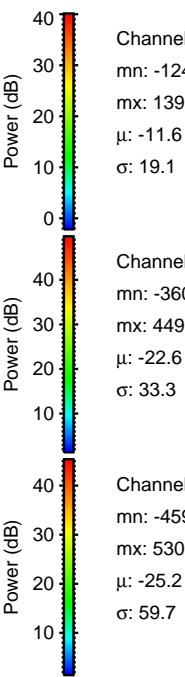
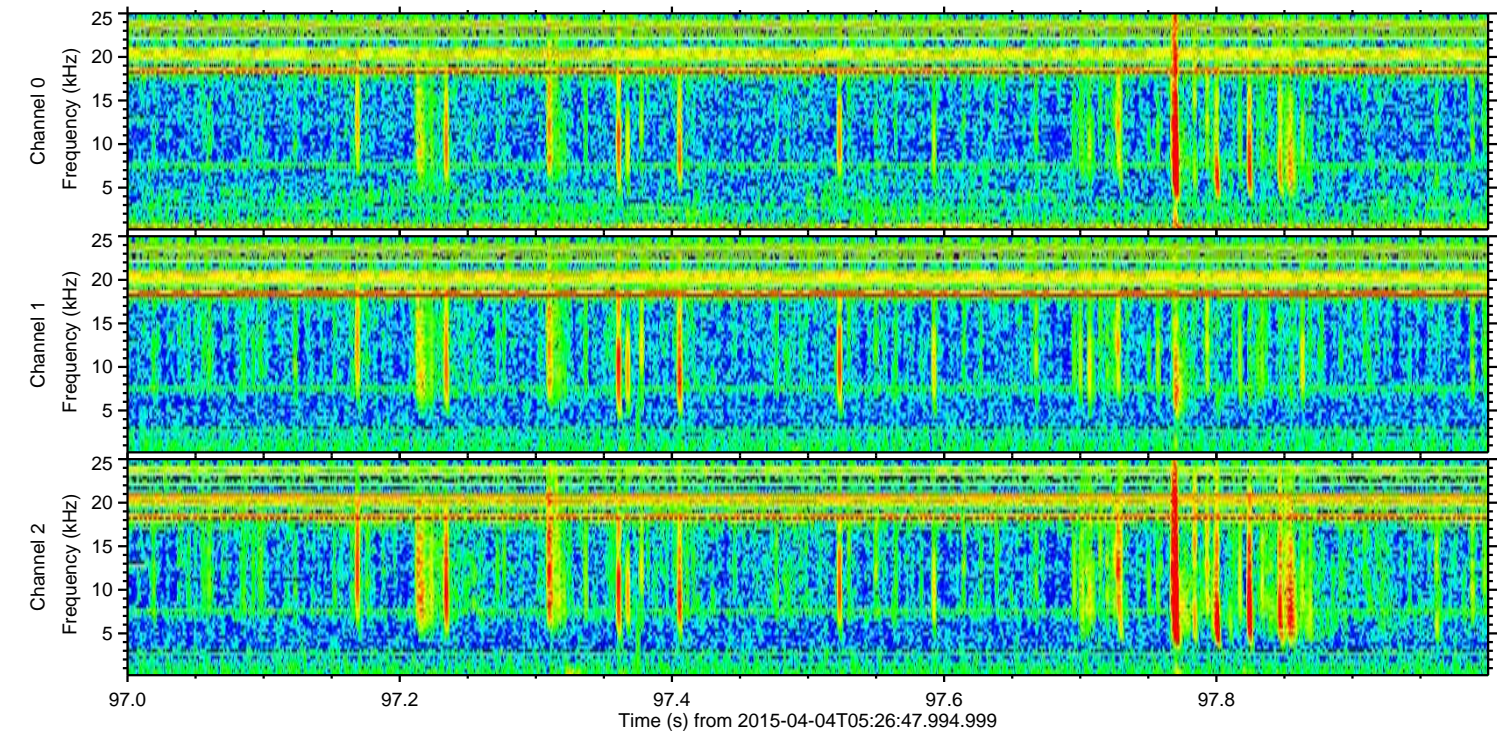
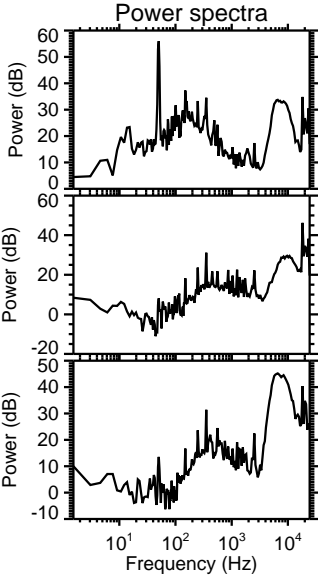
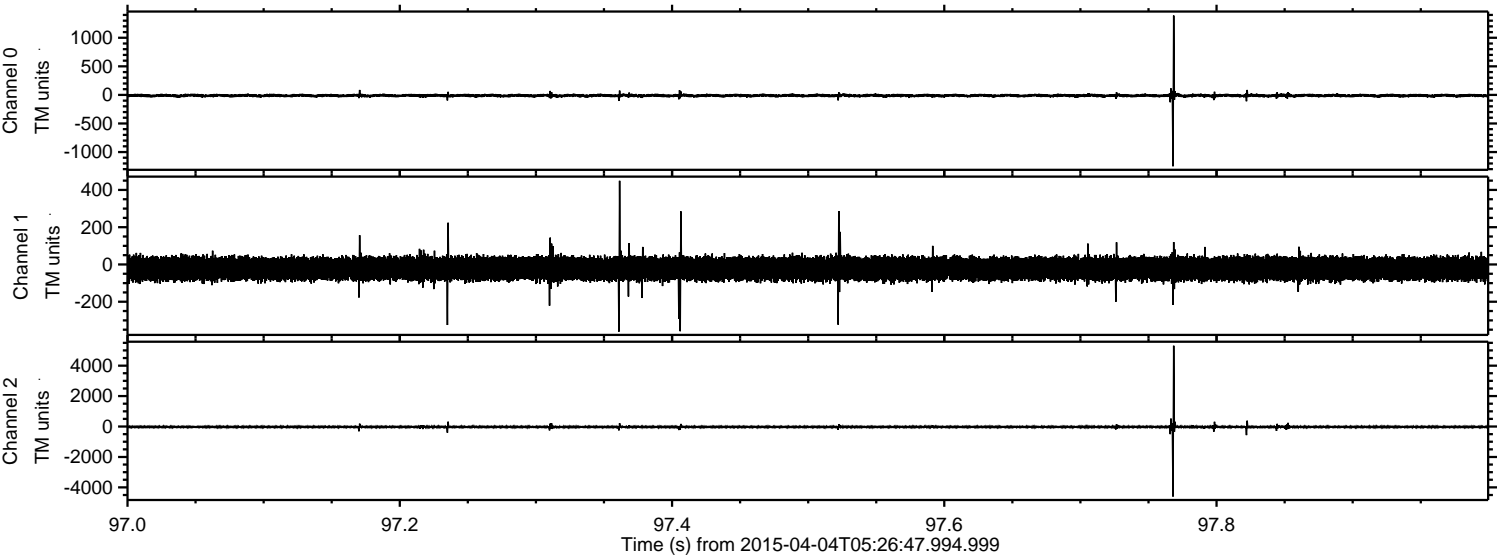


Channel 0
mn: -3187
mx: 4224
 μ : -11.7
 σ : 49.4

Channel 1
mn: -2055
mx: 3392
 μ : -22.6
 σ : 47.3

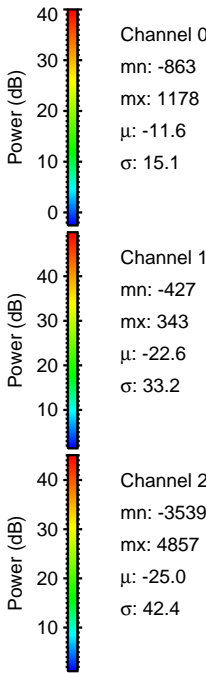
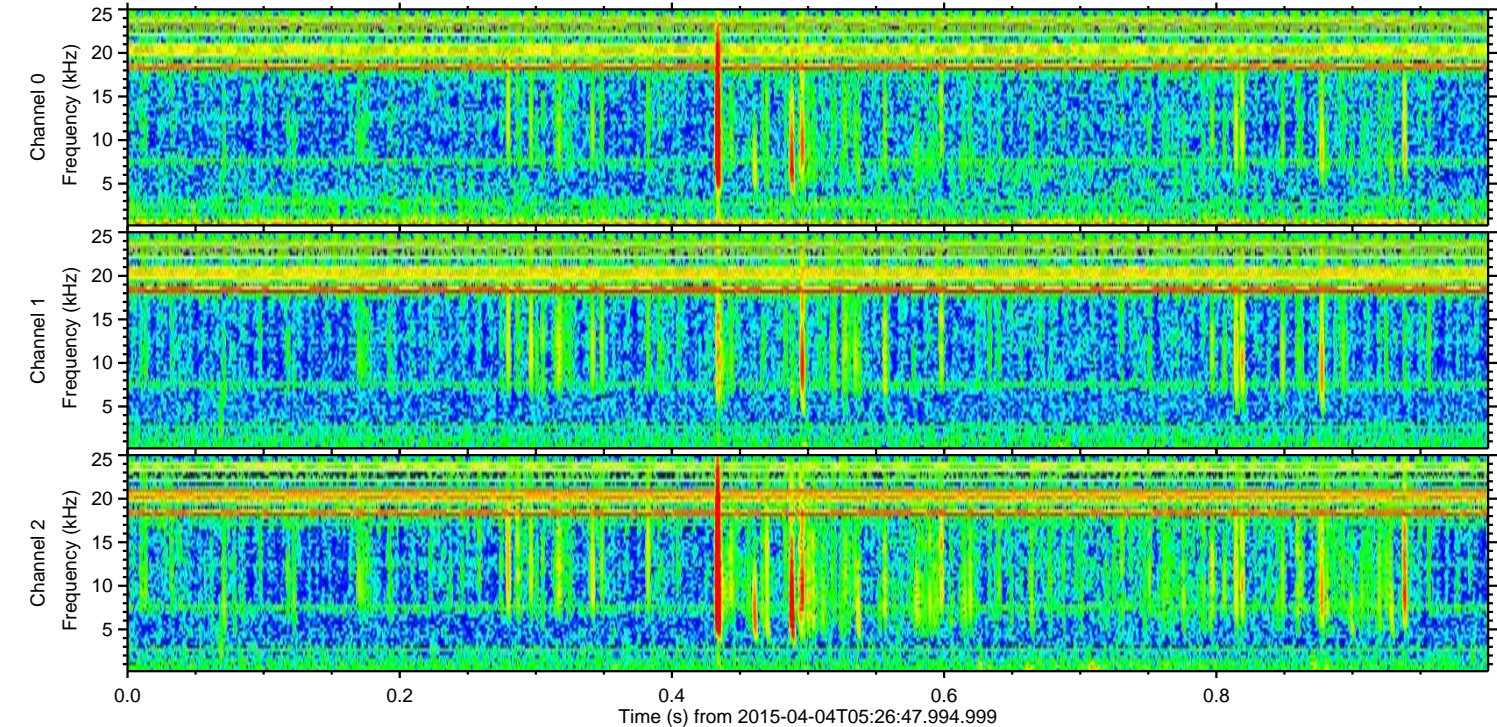
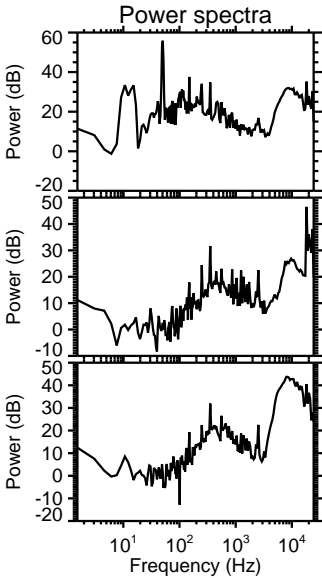
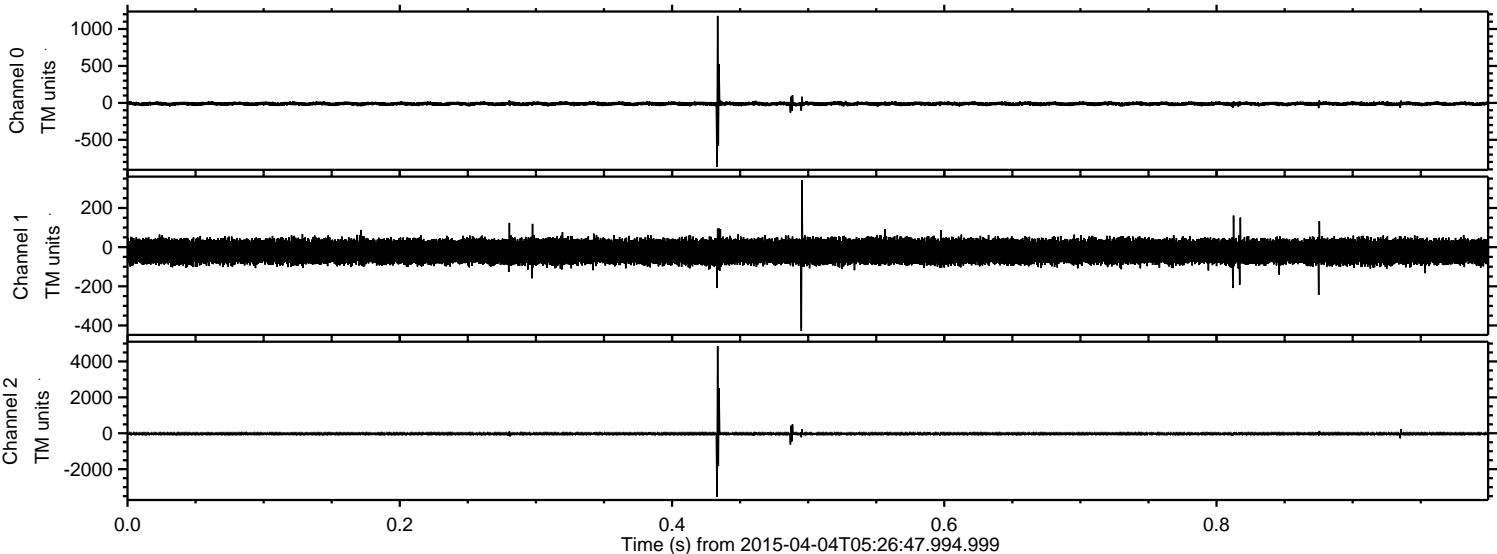
Channel 2
mn: -10294
mx: 10581
 μ : -25.1
 σ : 109.7

Processed Sat Apr 4 07:36:23 2015 by ELM ver.2012-10-06 from 001__elm20150404_052646__dat00.bin

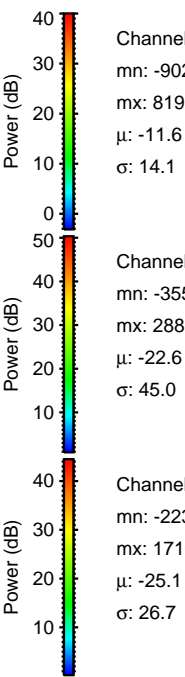
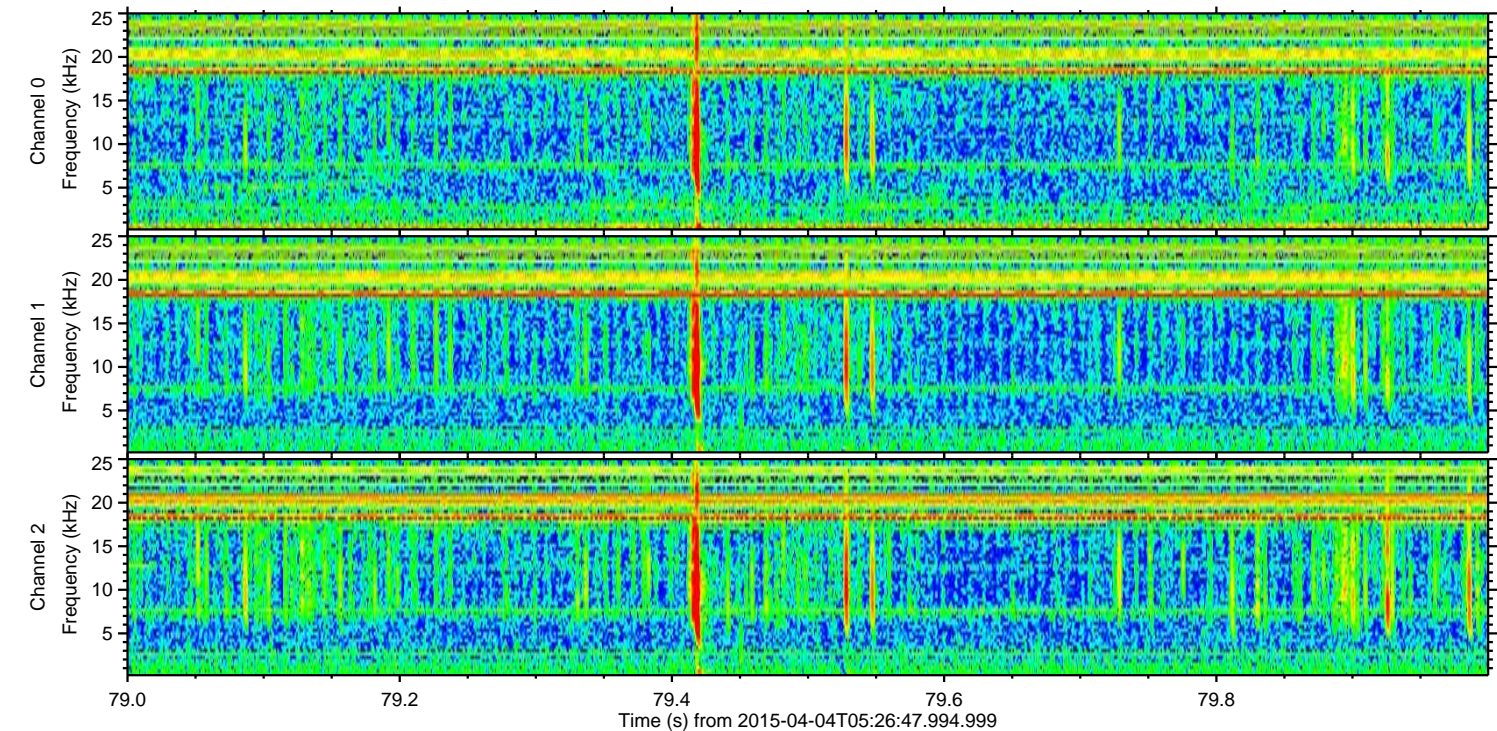
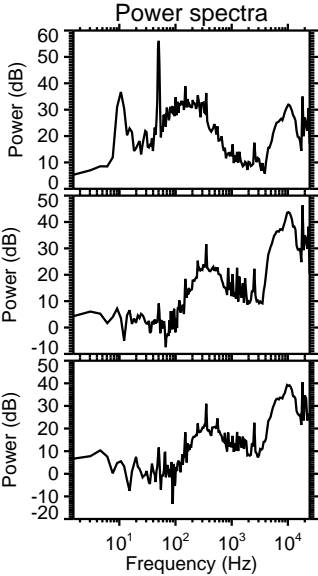
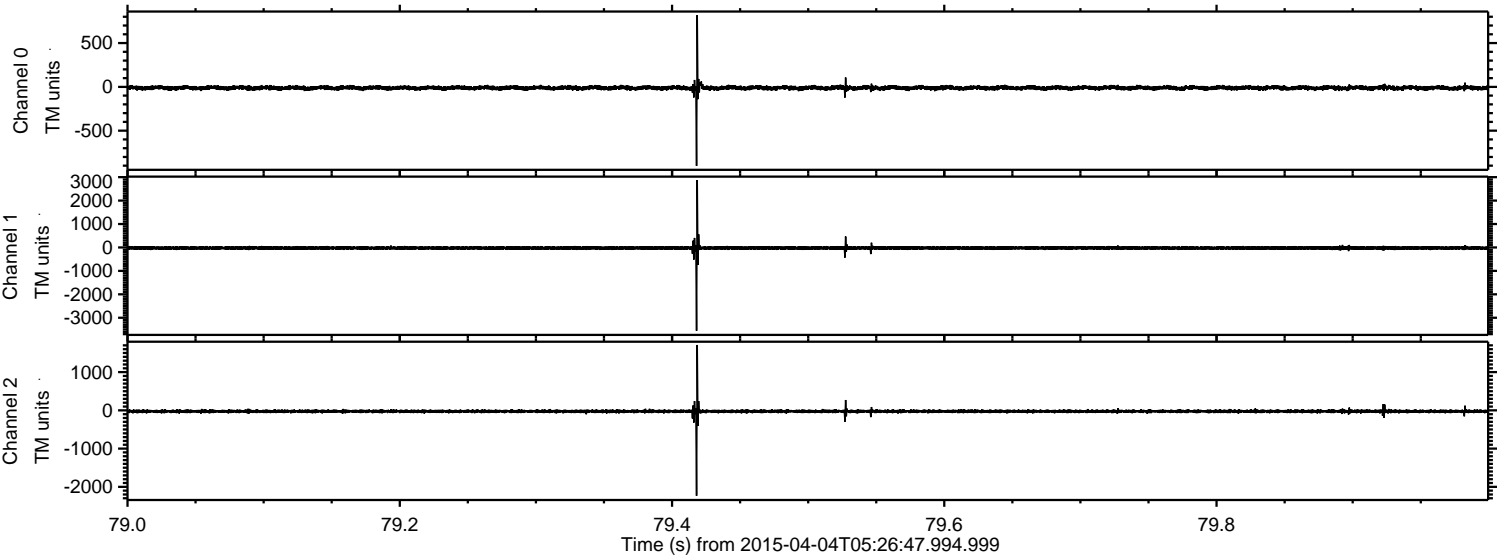


ELMAVAN 3D WAVEFORMS (Measured data sampled at 50 kHz) 49322 packets of 144 samples from 2015-04-04T05:26:47.994.999. Part 1/143

Processed Sat Apr 4 07:36:25 2015 by ELM ver.2012-10-06 from 001__elm20150404_052646__dat00.bin



Processed Sat Apr 4 07:36:26 2015 by ELM ver.2012-10-06 from 001__elm20150404_052646__dat00.bin



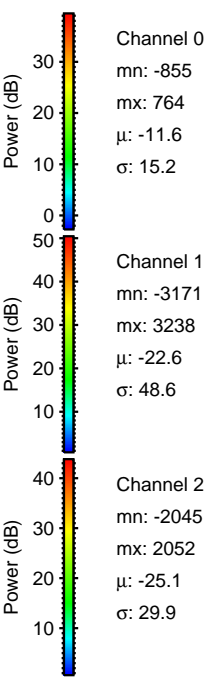
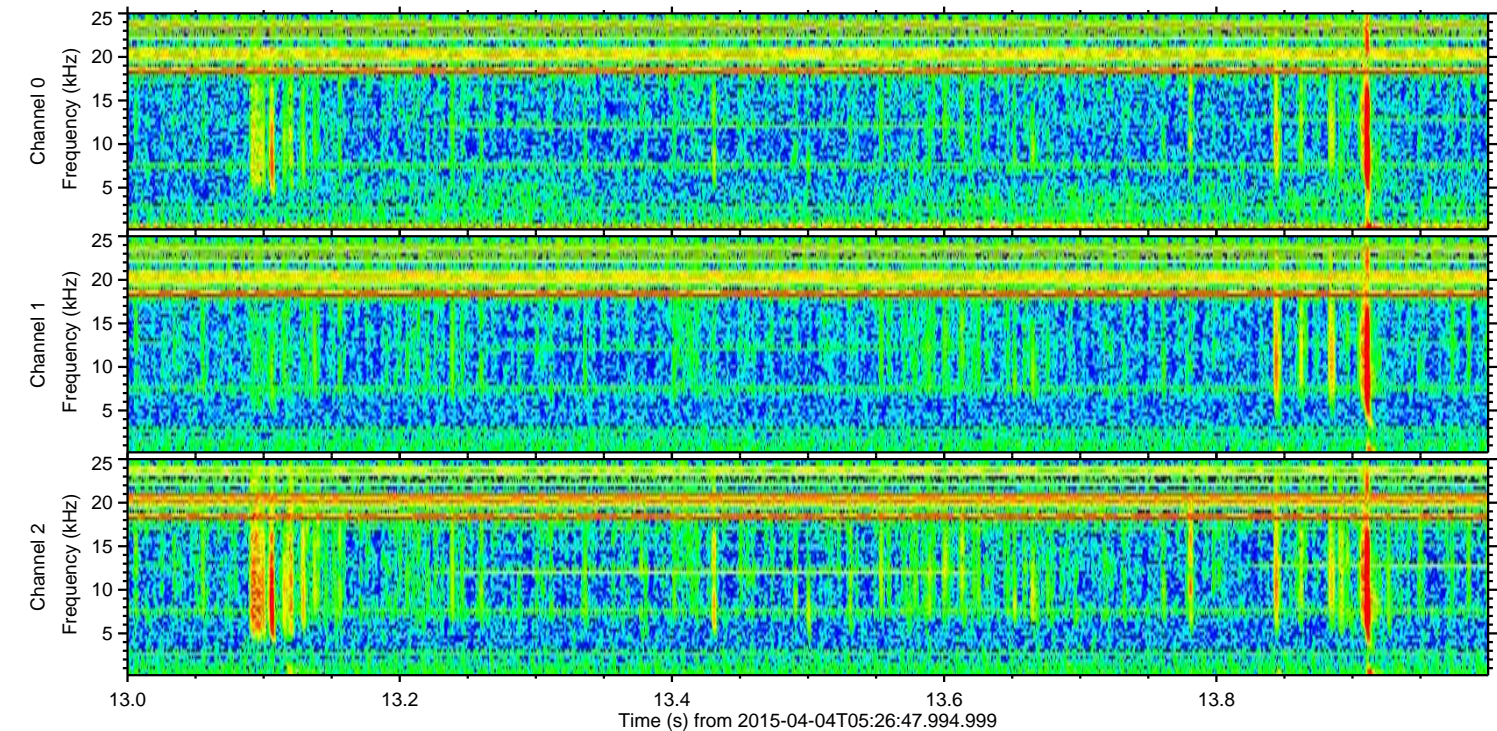
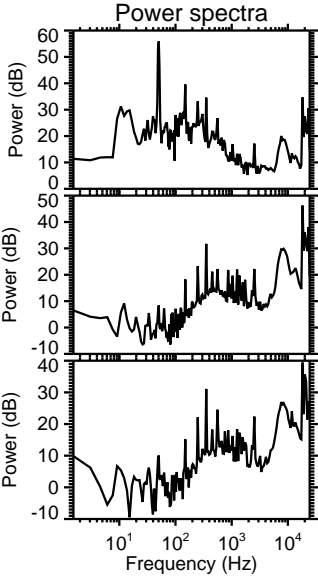
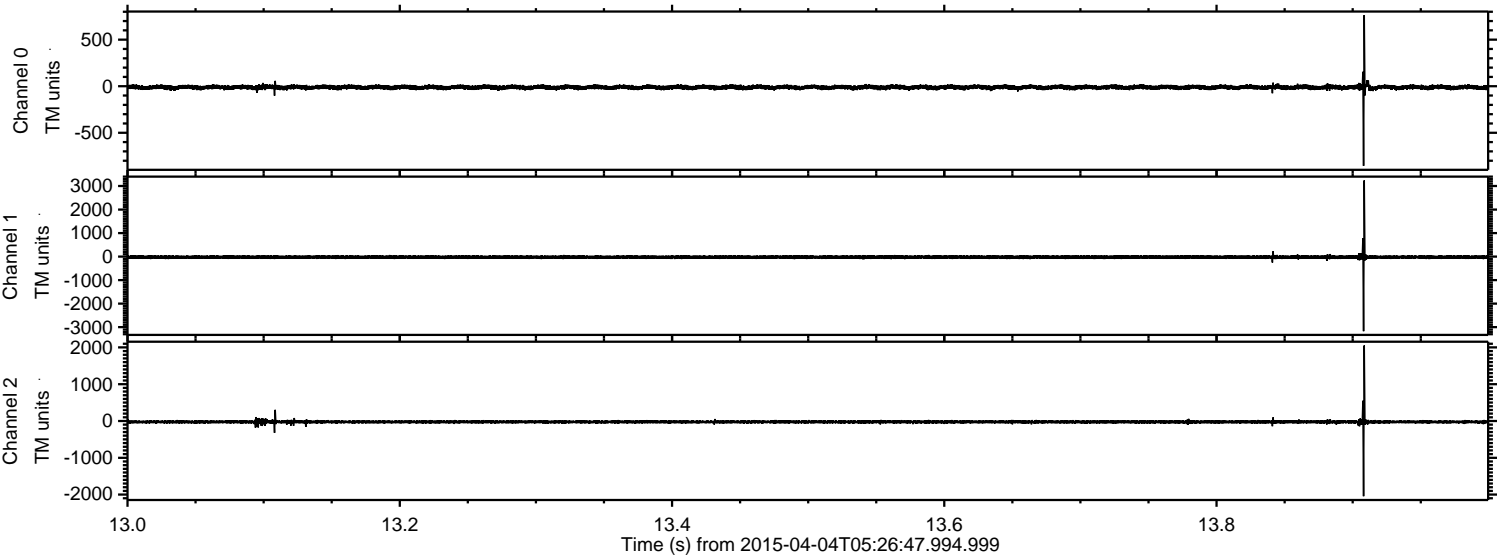
Channel 0
mn: -902
mx: 819
 μ : -11.6
 σ : 14.1

Channel 1
mn: -3554
mx: 2880
 μ : -22.6
 σ : 45.0

Channel 2
mn: -2233
mx: 1710
 μ : -25.1
 σ : 26.7

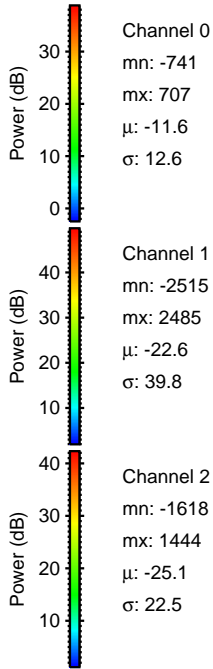
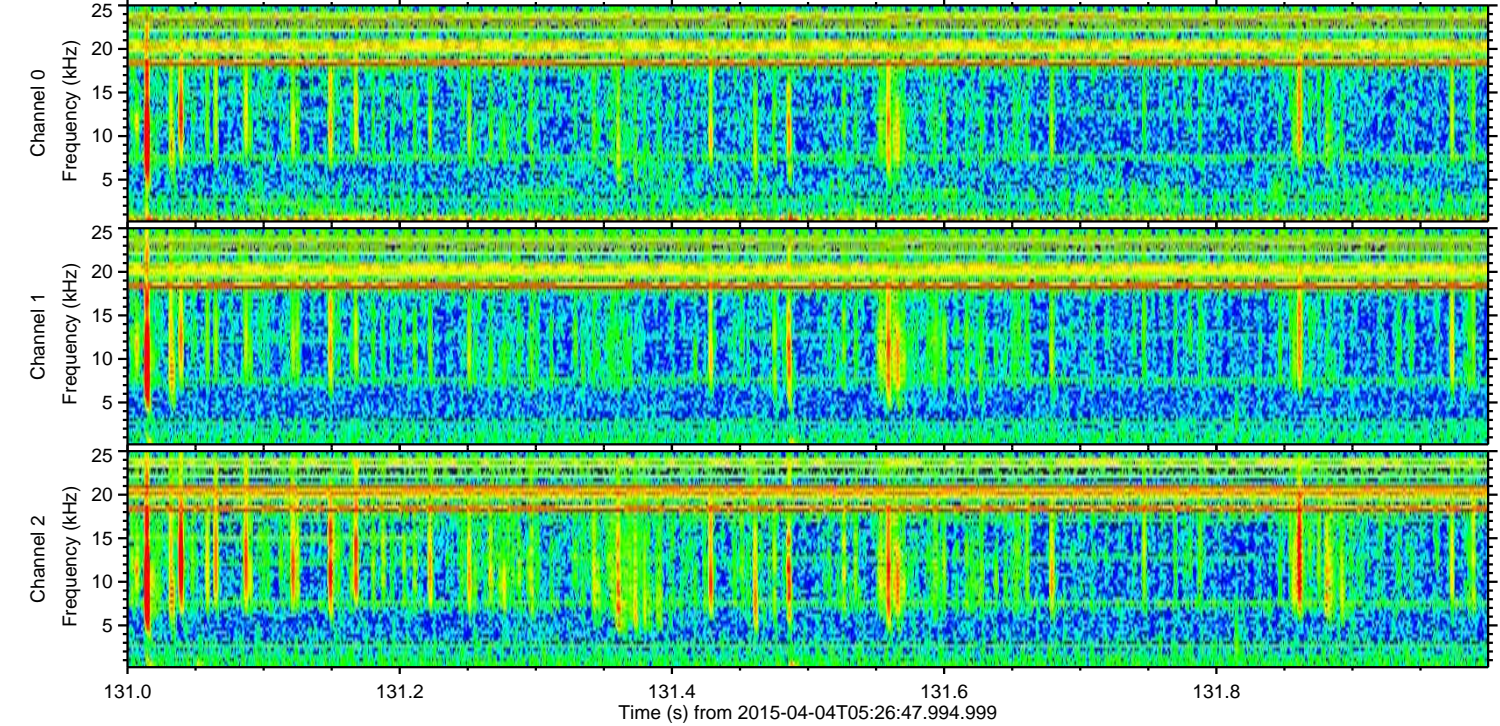
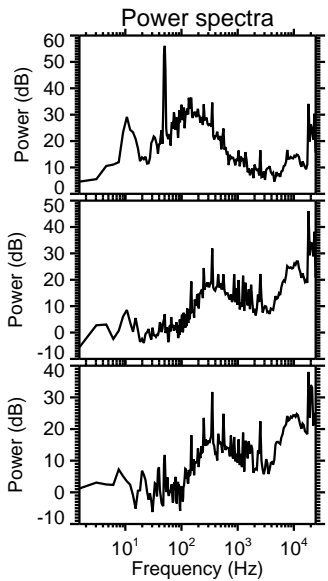
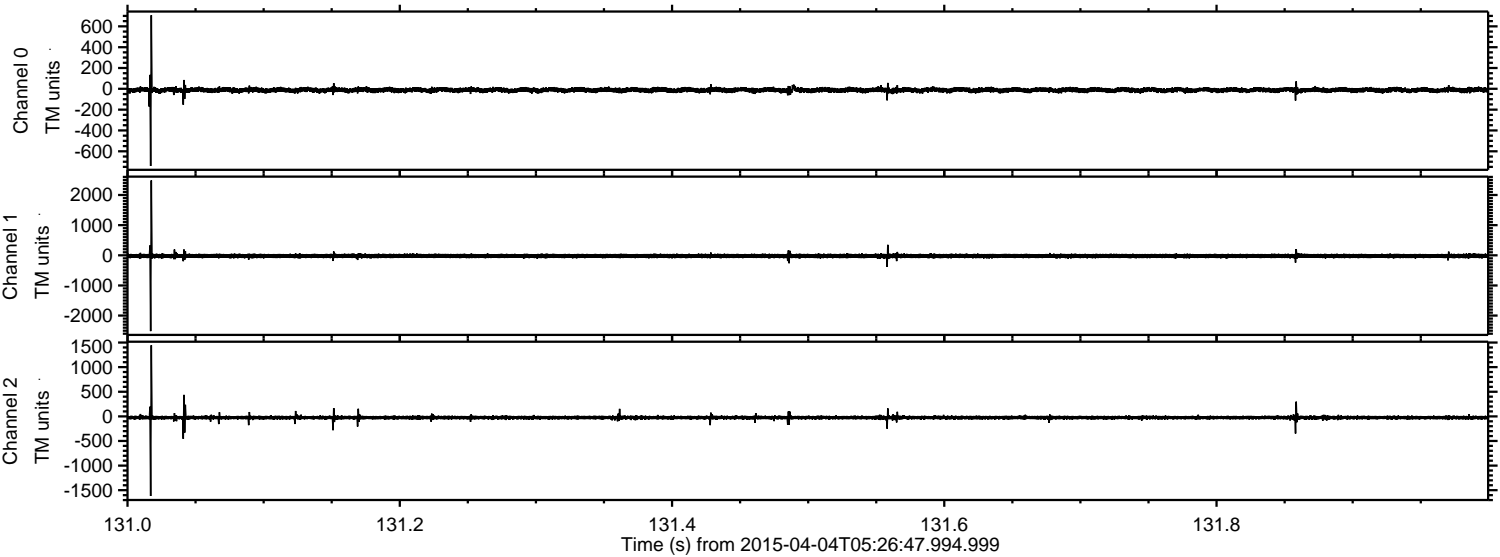
ELMAVAN 3D WAVEFORMS (Measured data sampled at 50 kHz) 49322 packets of 144 samples from 2015-04-04T05:26:47.994.999. Part 14/143

Processed Sat Apr 4 07:36:27 2015 by ELM ver.2012-10-06 from 001__elm20150404_052646__dat00.bin



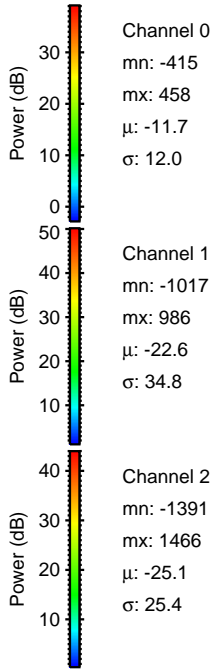
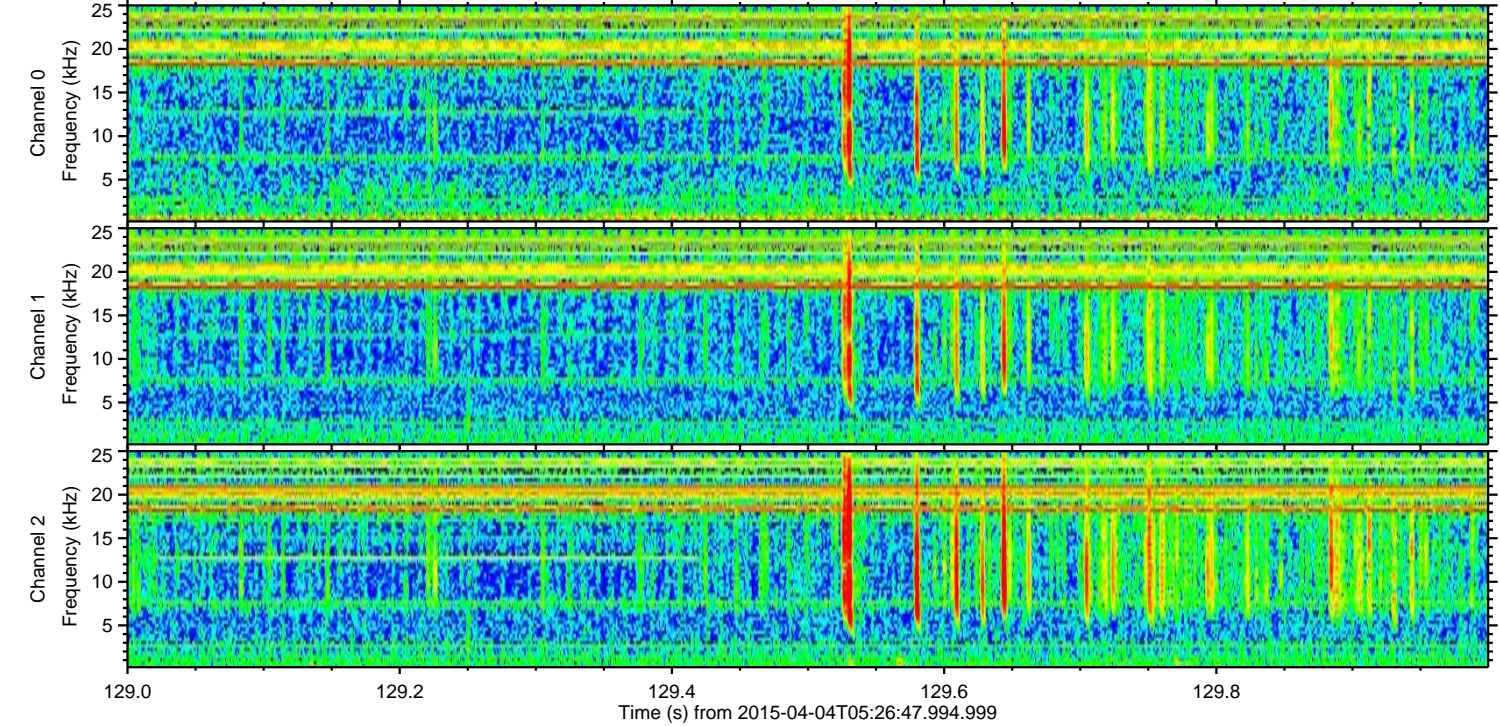
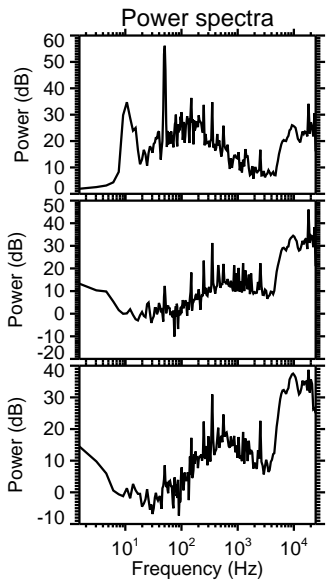
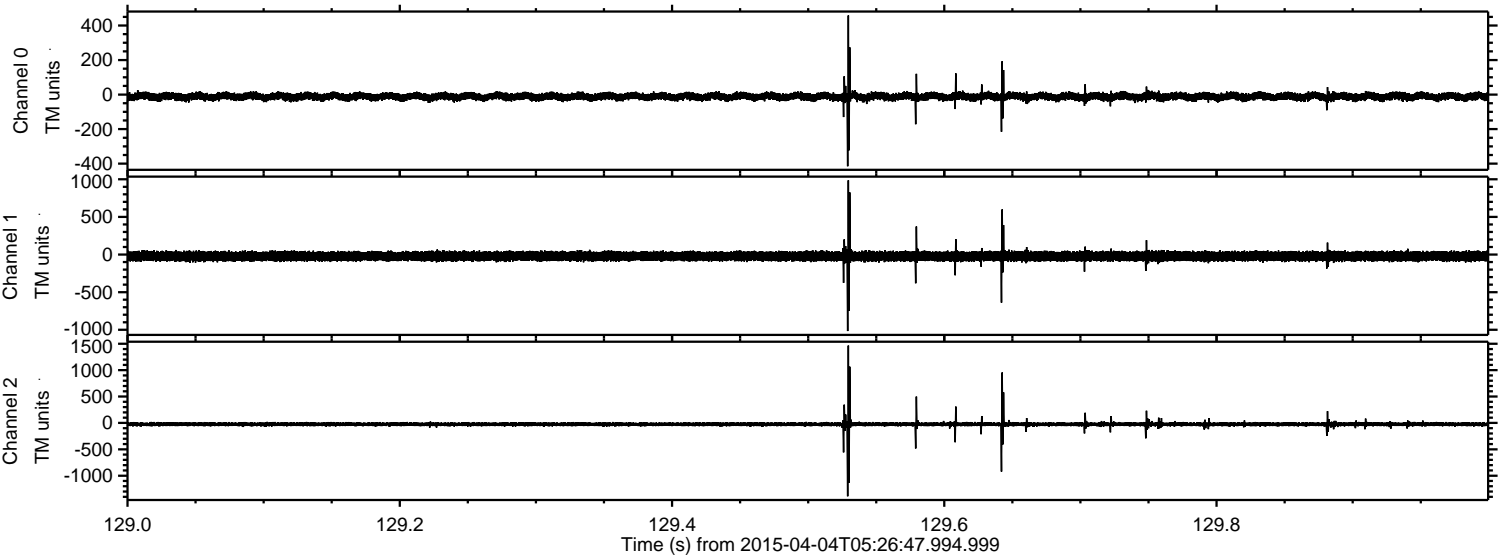
ELMAVAN 3D WAVEFORMS (Measured data sampled at 50 kHz) 49322 packets of 144 samples from 2015-04-04T05:26:47.994.999. Part 132/143

Processed Sat Apr 4 07:36:28 2015 by ELM ver.2012-10-06 from 001__elm20150404_052646__dat00.bin



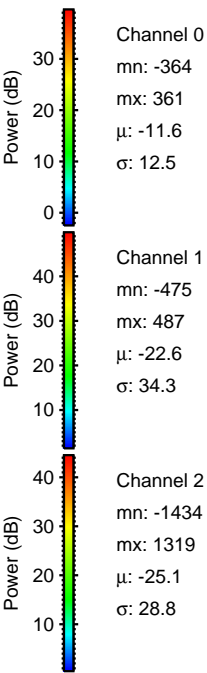
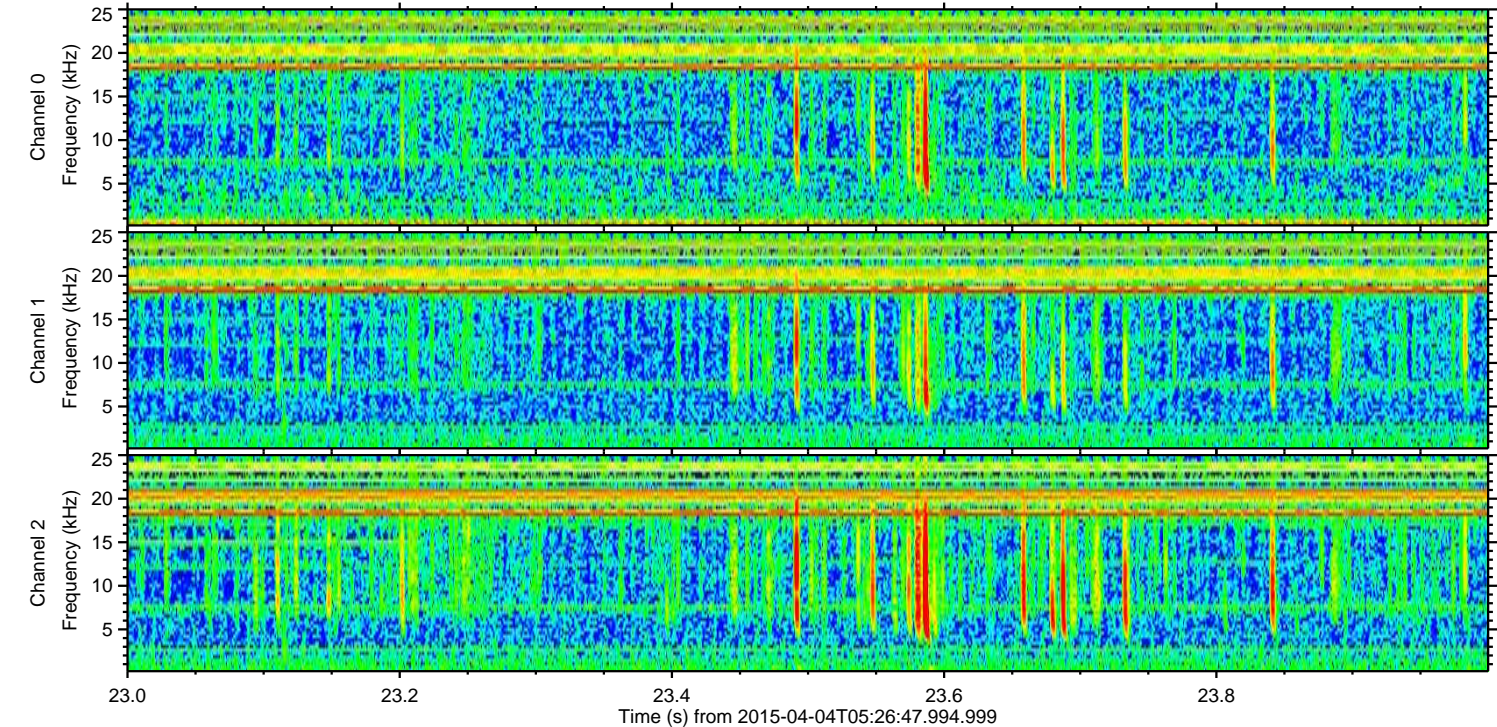
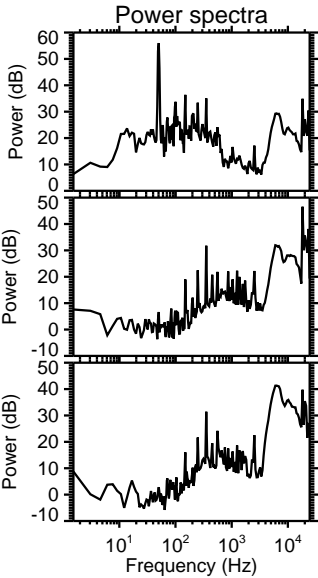
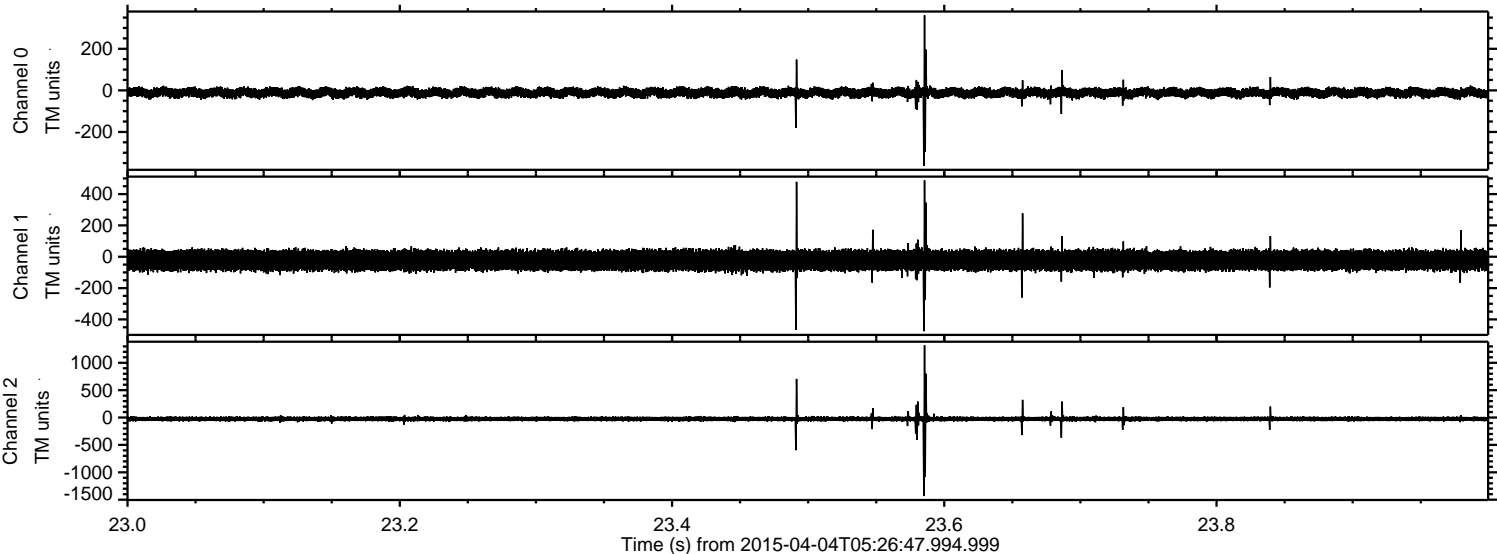
ELMAVAN 3D WAVEFORMS (Measured data sampled at 50 kHz) 49322 packets of 144 samples from 2015-04-04T05:26:47.994.999. Part 130/143

Processed Sat Apr 4 07:36:29 2015 by ELM ver.2012-10-06 from 001__elm20150404_052646__dat00.bin



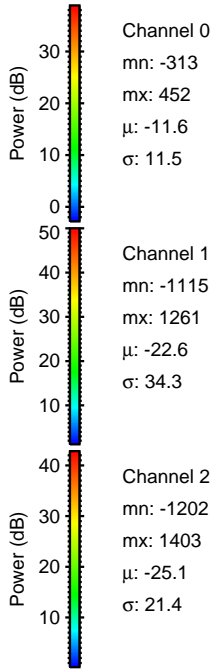
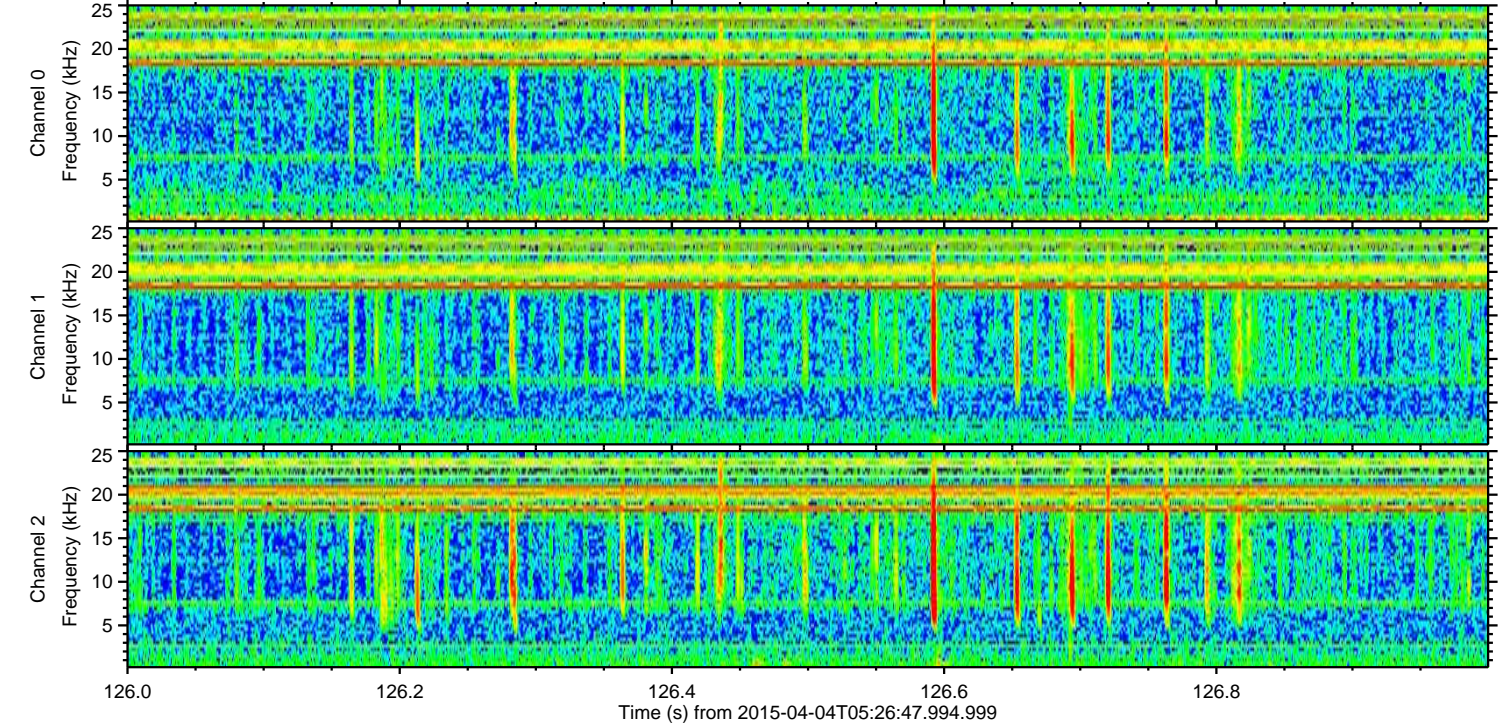
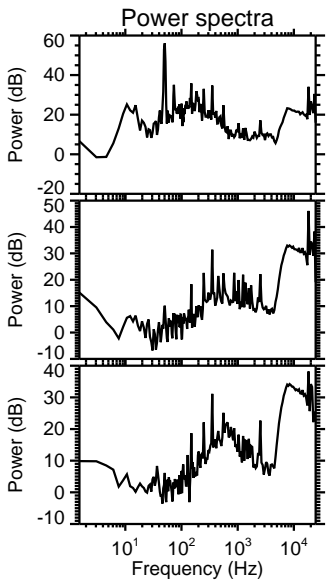
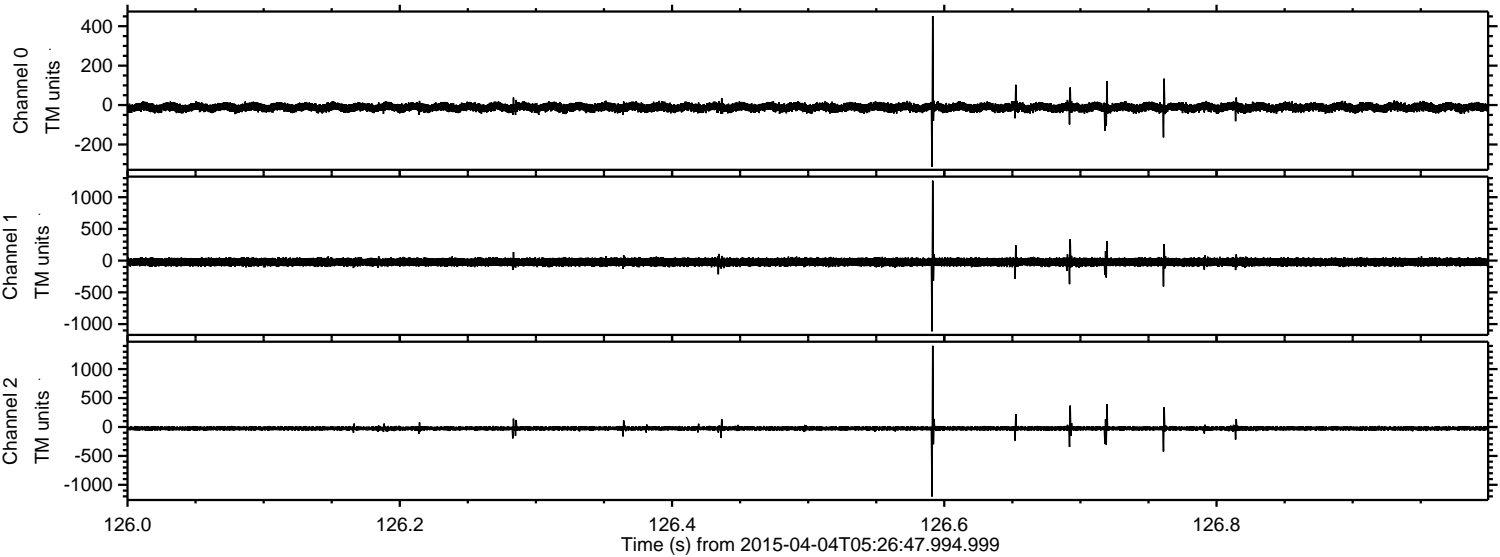
ELMAVAN 3D WAVEFORMS (Measured data sampled at 50 kHz) 49322 packets of 144 samples from 2015-04-04T05:26:47.994.999. Part 24/143

Processed Sat Apr 4 07:36:30 2015 by ELM ver.2012-10-06 from 001__elm20150404_052646__dat00.bin



ELMAVAN 3D WAVEFORMS (Measured data sampled at 50 kHz) 49322 packets of 144 samples from 2015-04-04T05:26:47.994.999. Part 127/143

Processed Sat Apr 4 07:36:31 2015 by ELM ver.2012-10-06 from 001__elm20150404_052646__dat00.bin



Channel 0
mn: -313
mx: 452
 μ : -11.6
 σ : 11.5

Channel 1
mn: -1115
mx: 1261
 μ : -22.6
 σ : 34.3

Channel 2
mn: -1202
mx: 1403
 μ : -25.1
 σ : 21.4

Processed Sat Apr 4 07:36:32 2015 by ELM ver.2012-10-06 from 001__elm20150404_052646__dat00.bin

