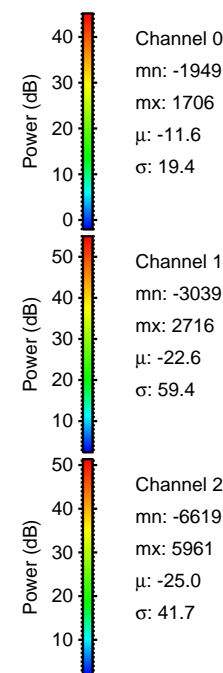
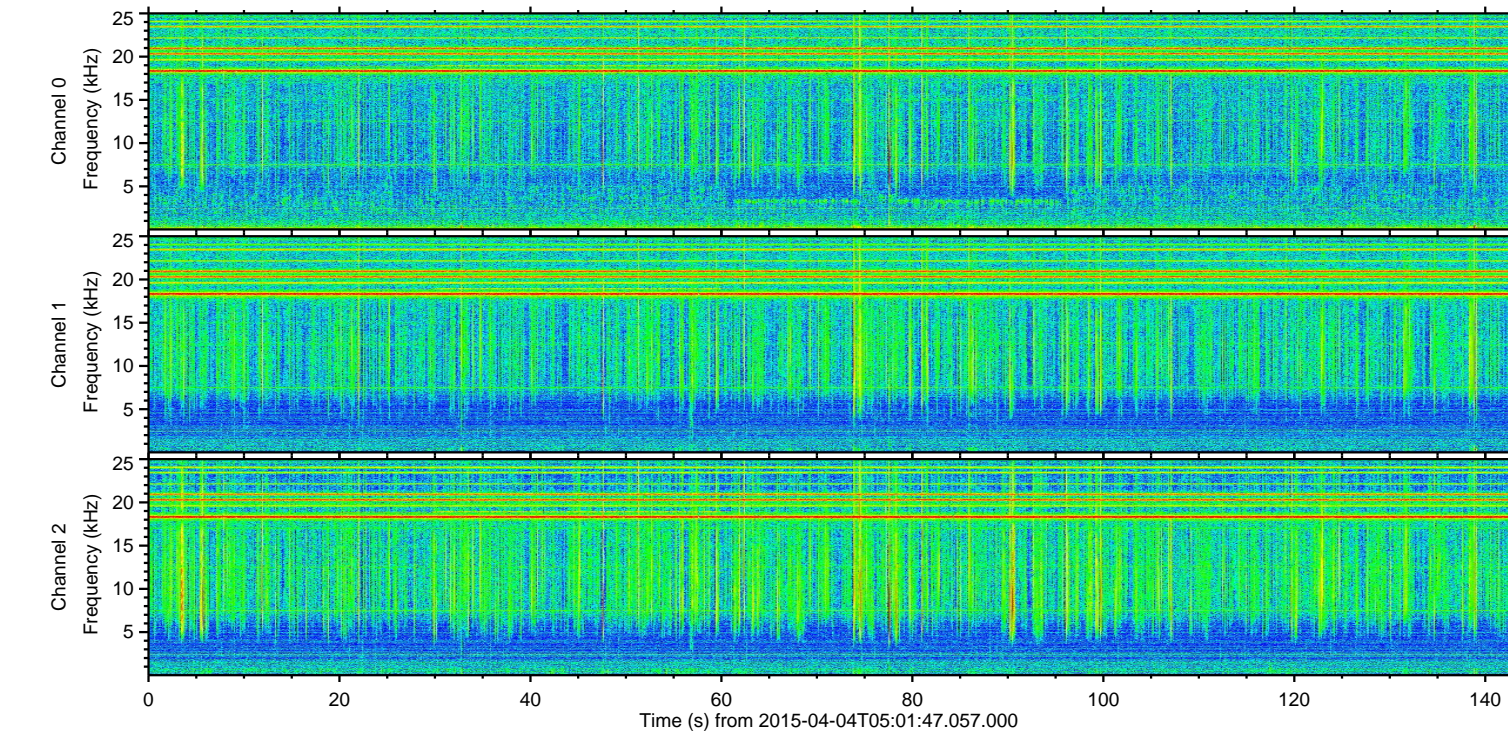
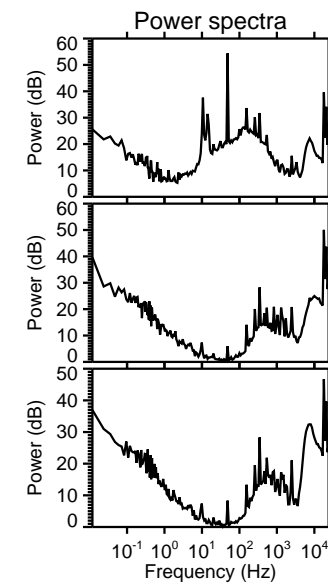
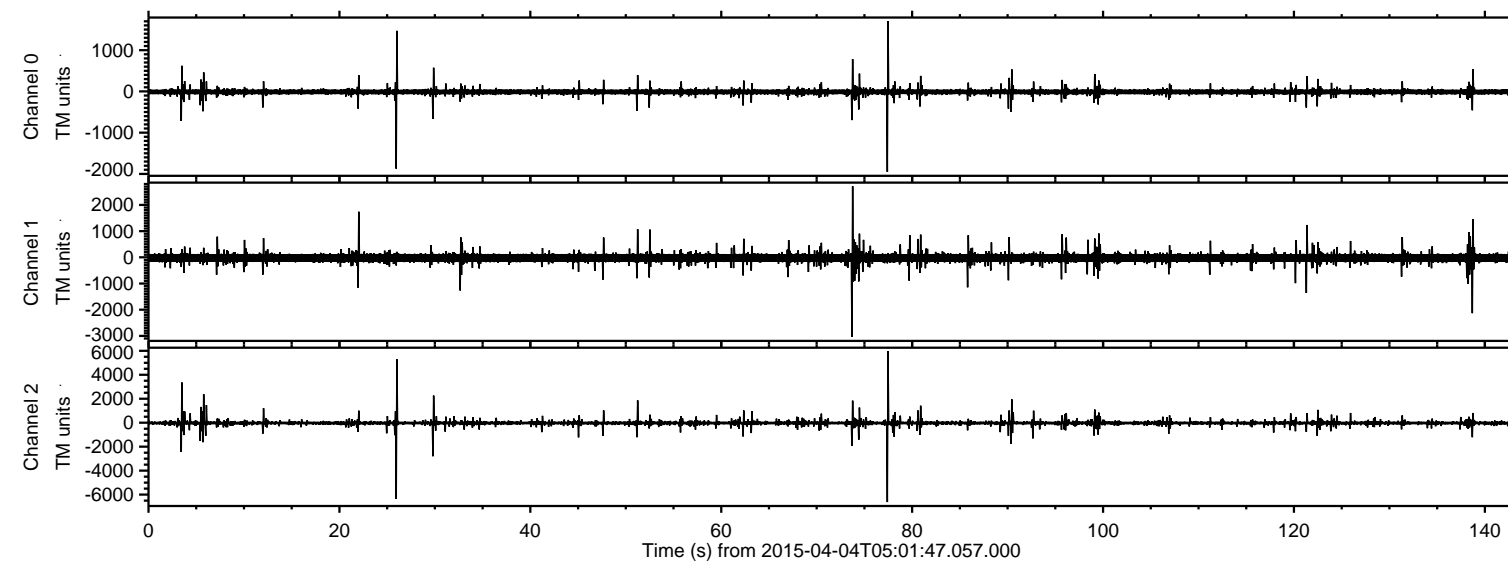
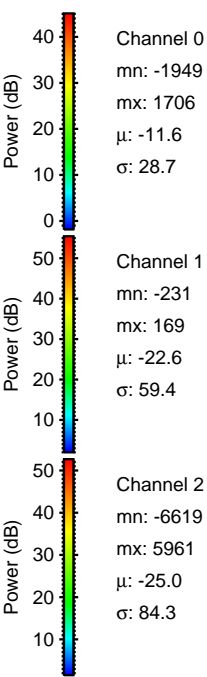
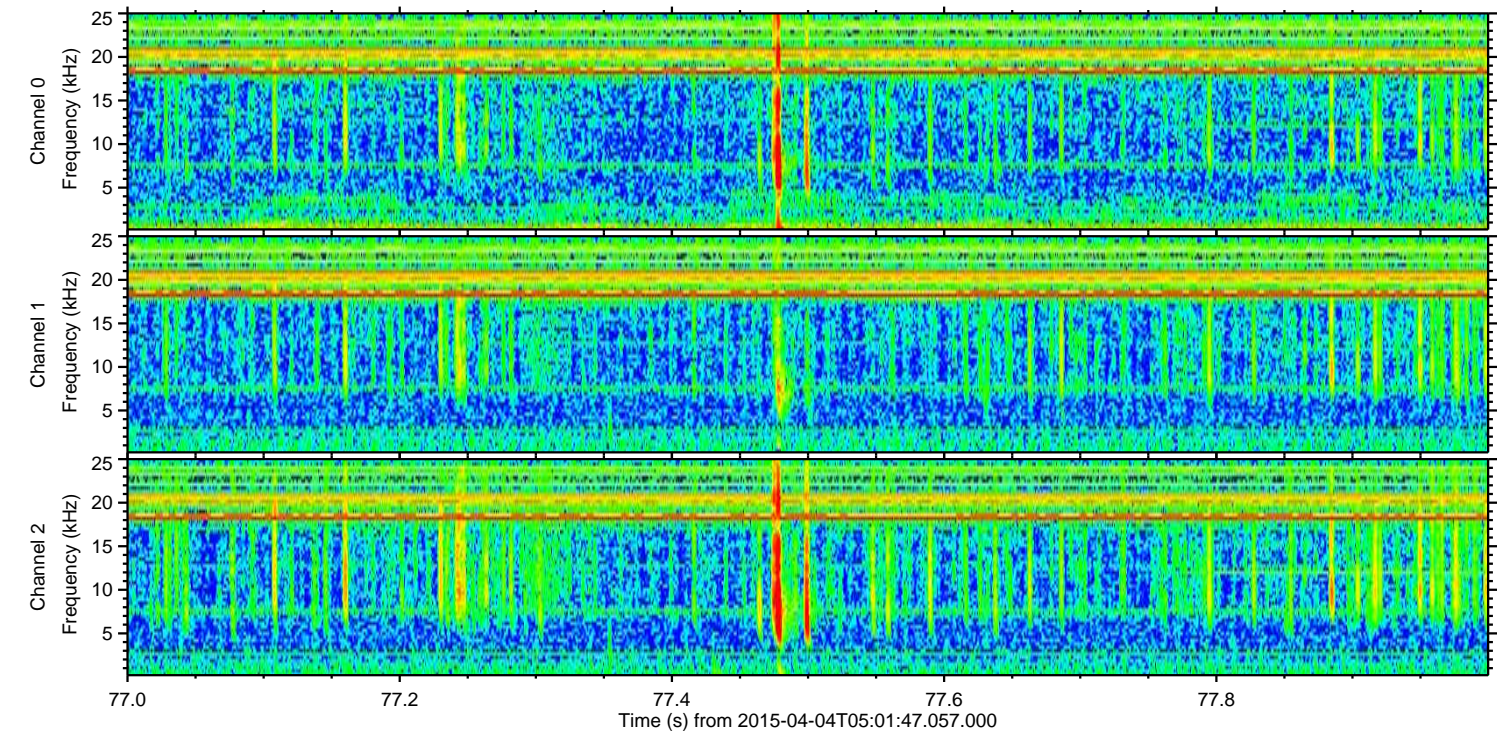
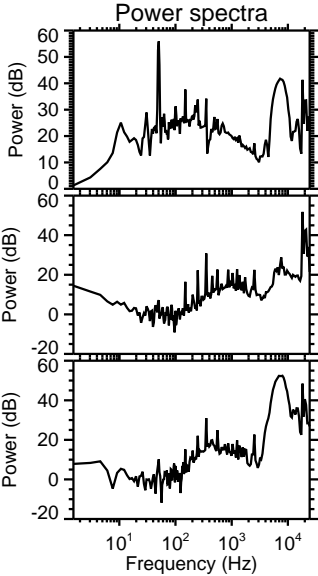
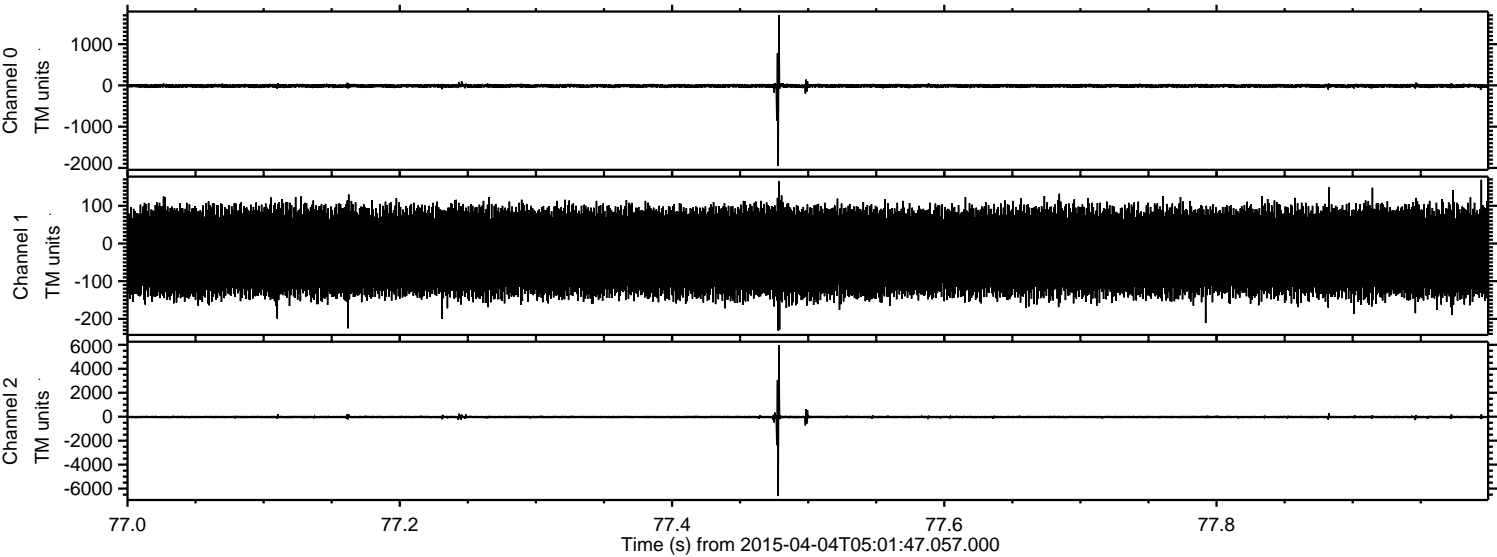


ELMAVAN 3D WAVEFORMS (Measured data sampled at 50 kHz) 49494 packets of 144 samples from 2015-04-04T05:01:47.057.000.

Processed Sat Apr 4 07:10:18 2015 by ELM ver.2012-10-06 from 001__elm20150404_050146__dat00.bin

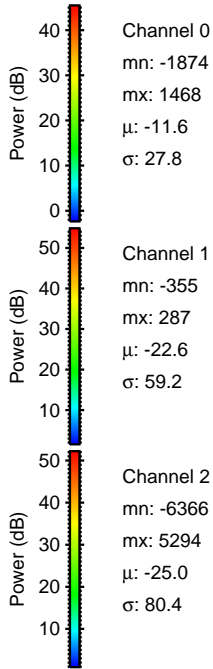
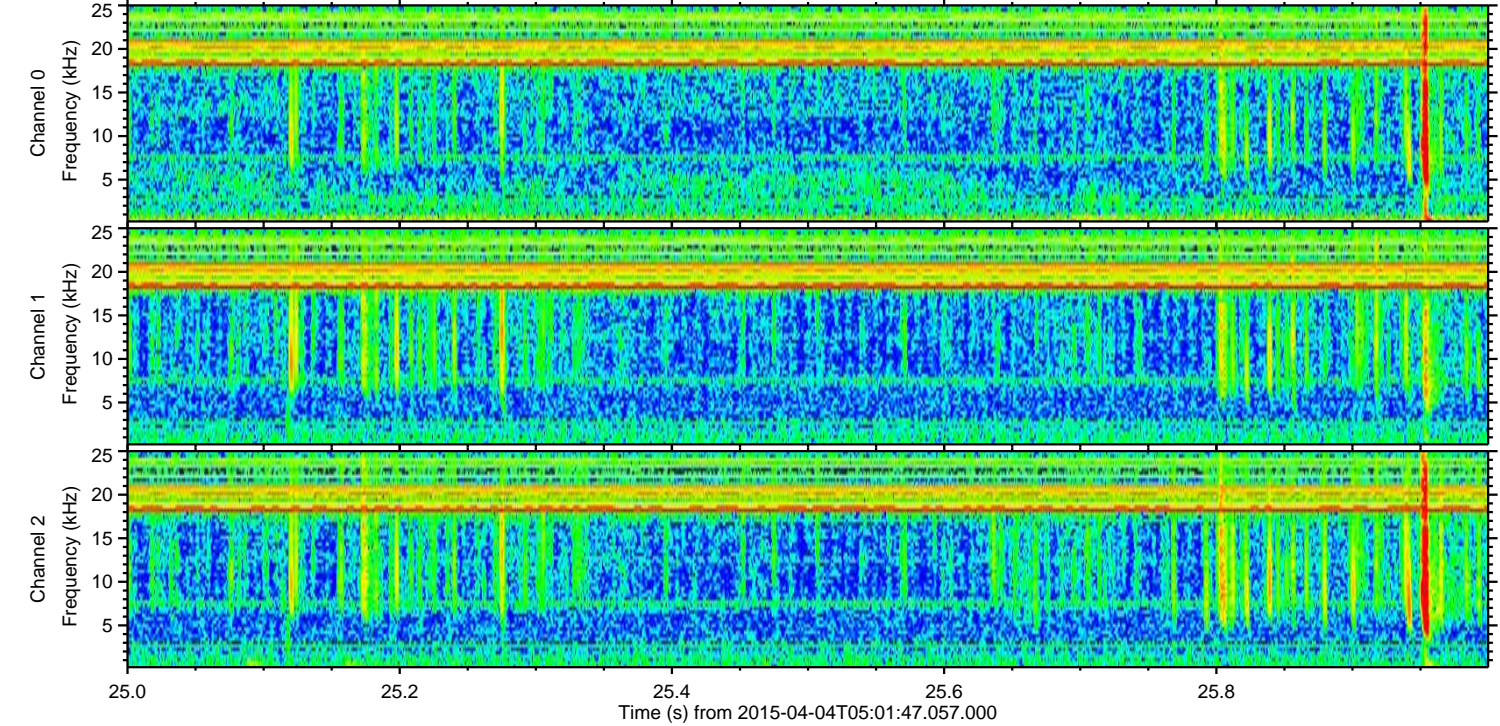
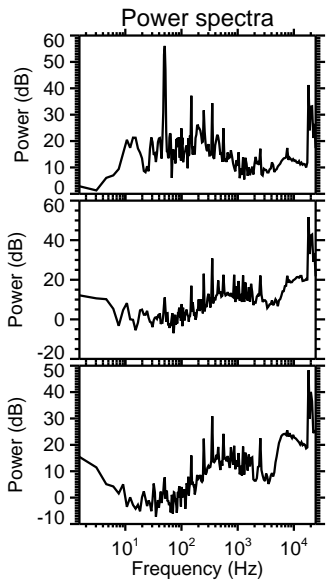
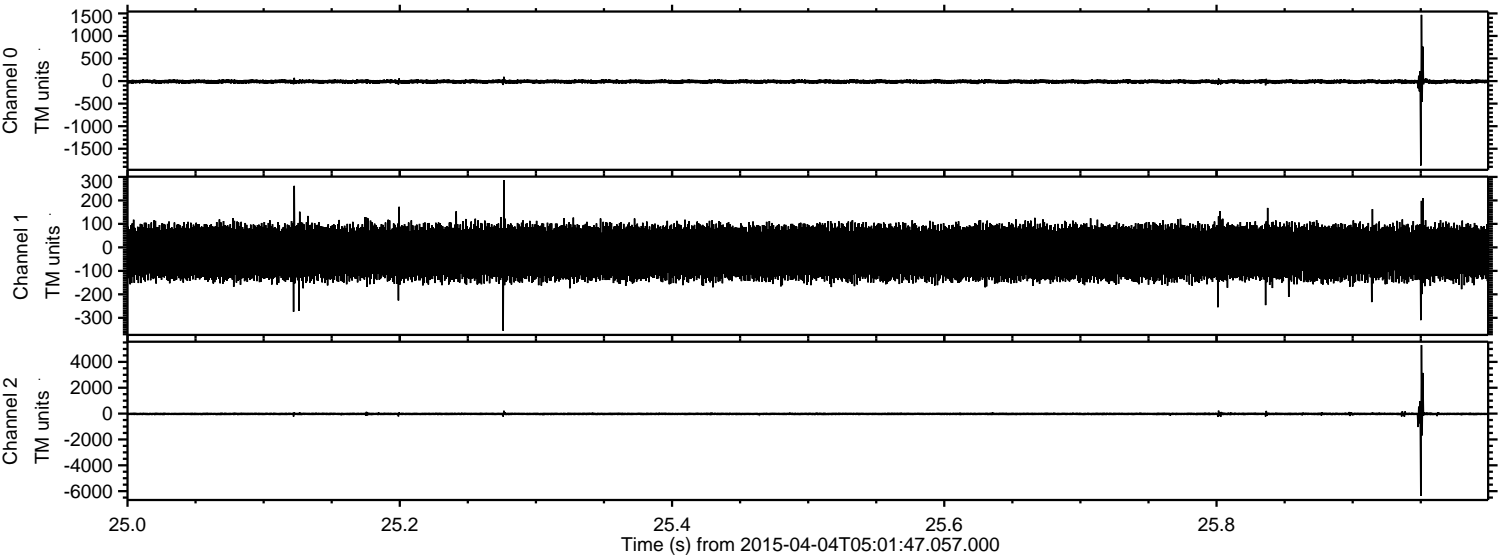


Processed Sat Apr 4 07:10:33 2015 by ELM ver.2012-10-06 from 001__elm20150404_050146__dat00.bin

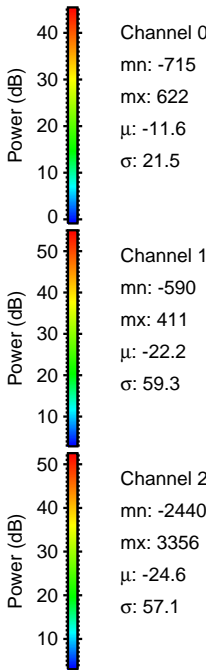
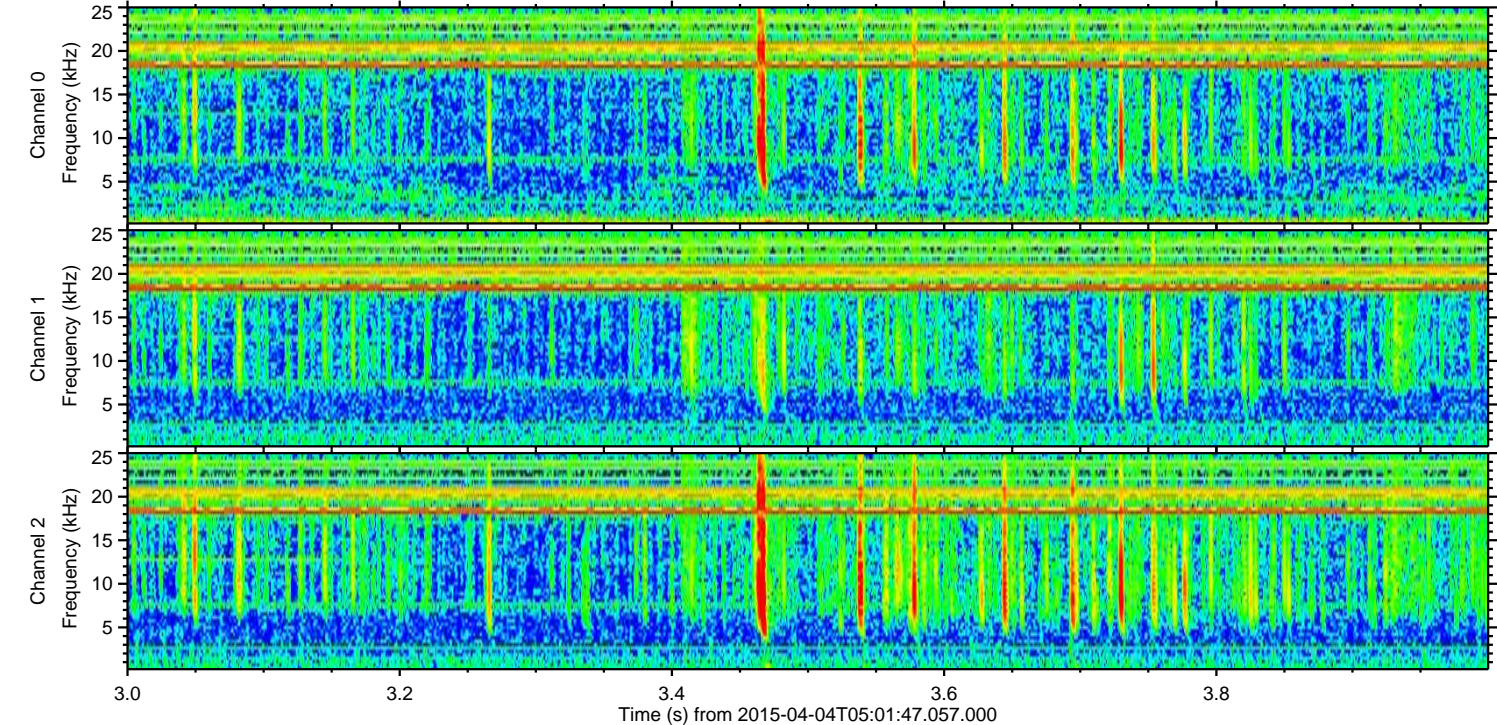
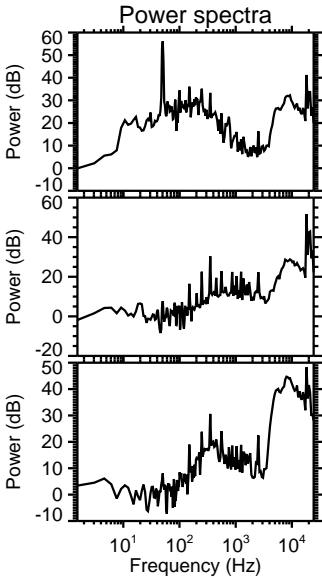
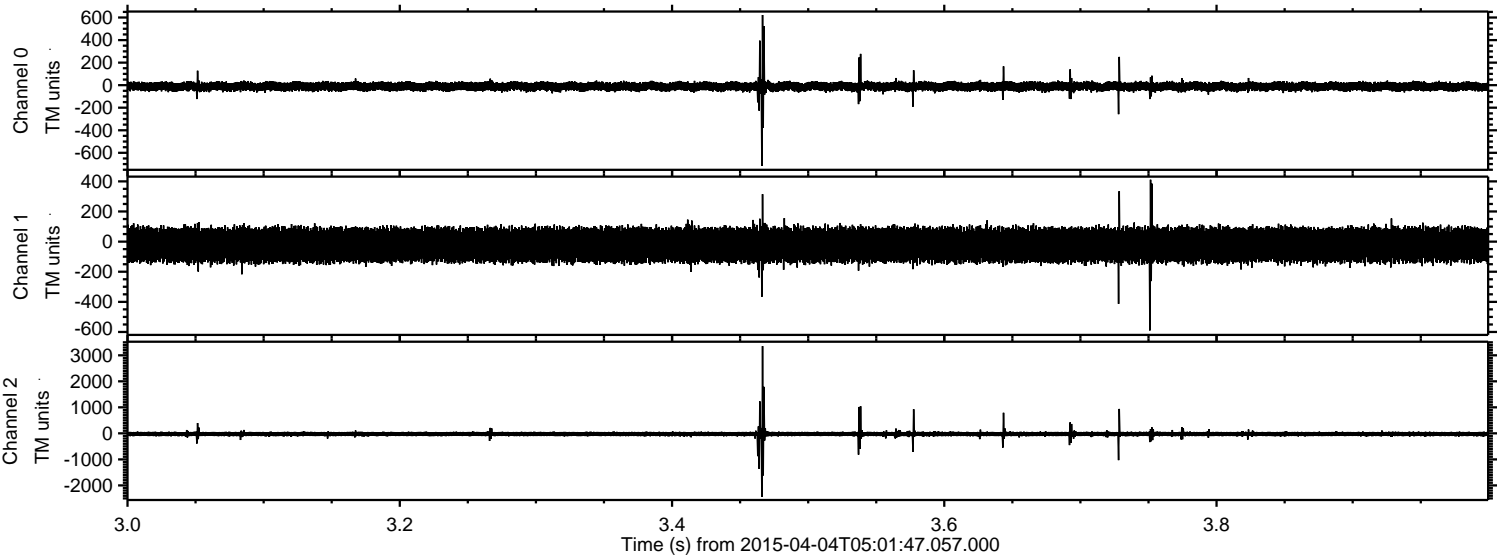


ELMAVAN 3D WAVEFORMS (Measured data sampled at 50 kHz) 49494 packets of 144 samples from 2015-04-04T05:01:47.057.000. Part 26/143

Processed Sat Apr 4 07:10:34 2015 by ELM ver.2012-10-06 from 001__elm20150404_050146__dat00.bin

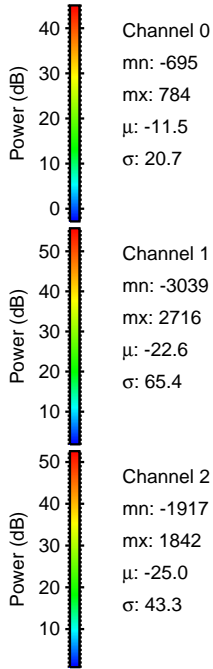
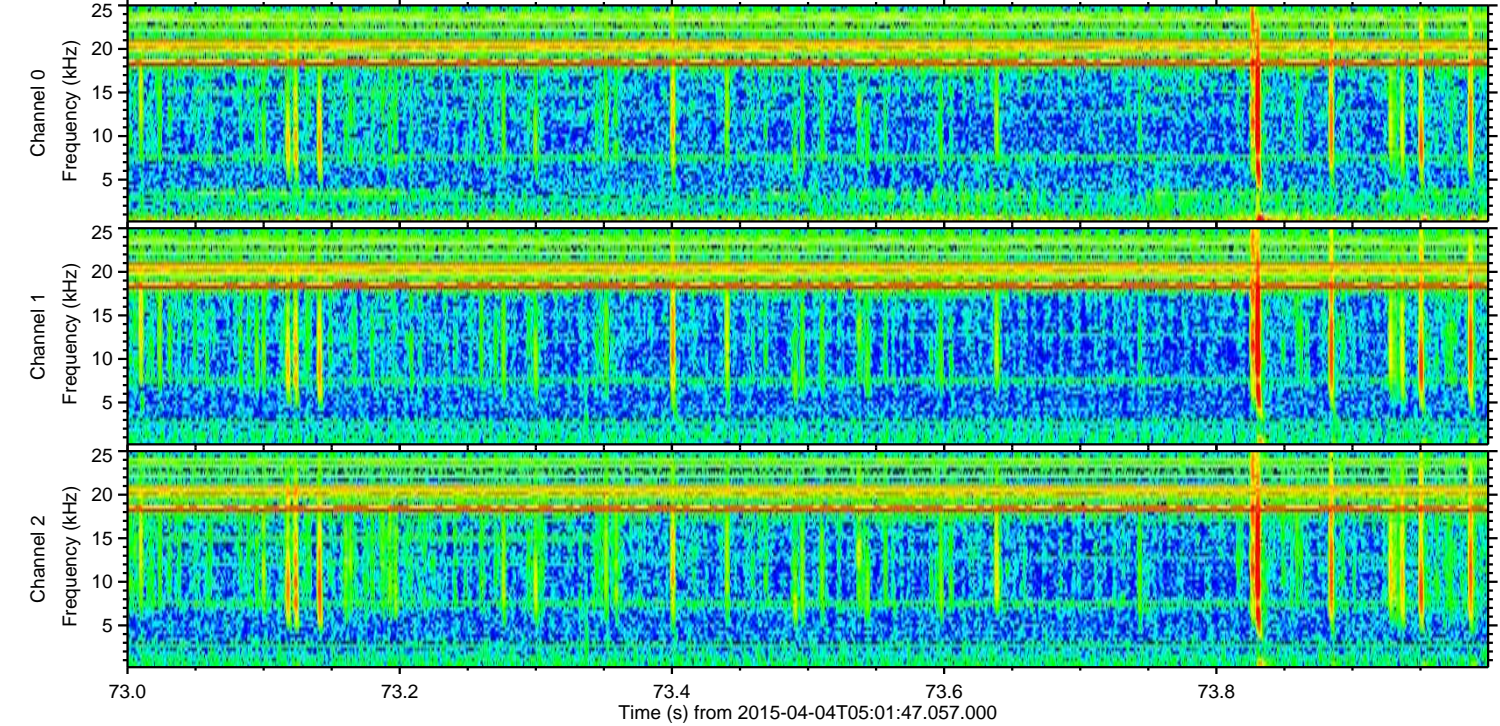
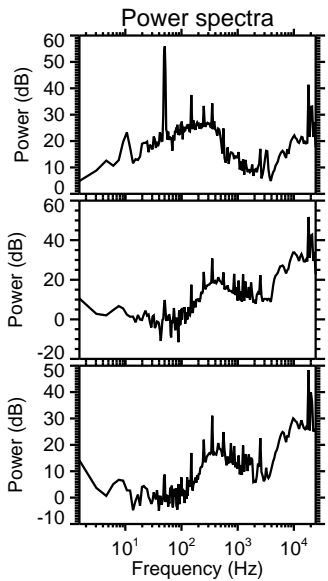
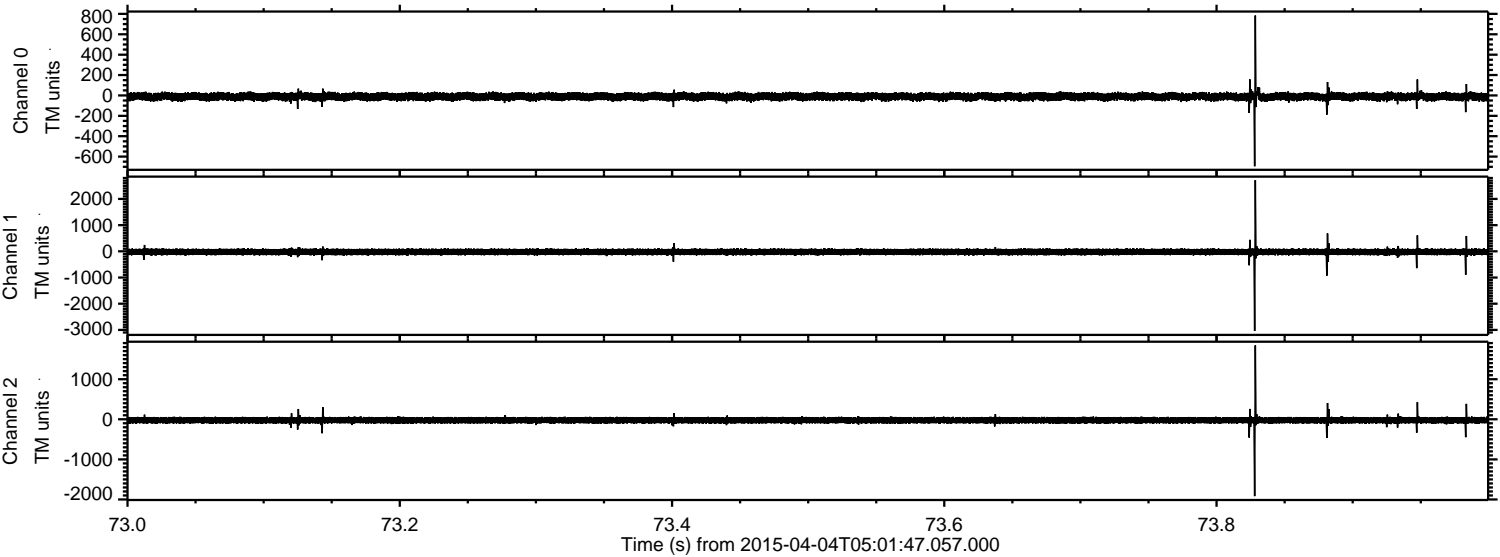


Processed Sat Apr 4 07:10:35 2015 by ELM ver.2012-10-06 from 001__elm20150404_050146__dat00.bin



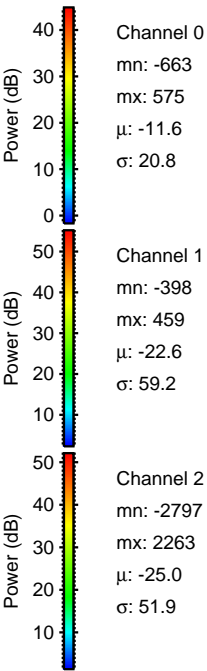
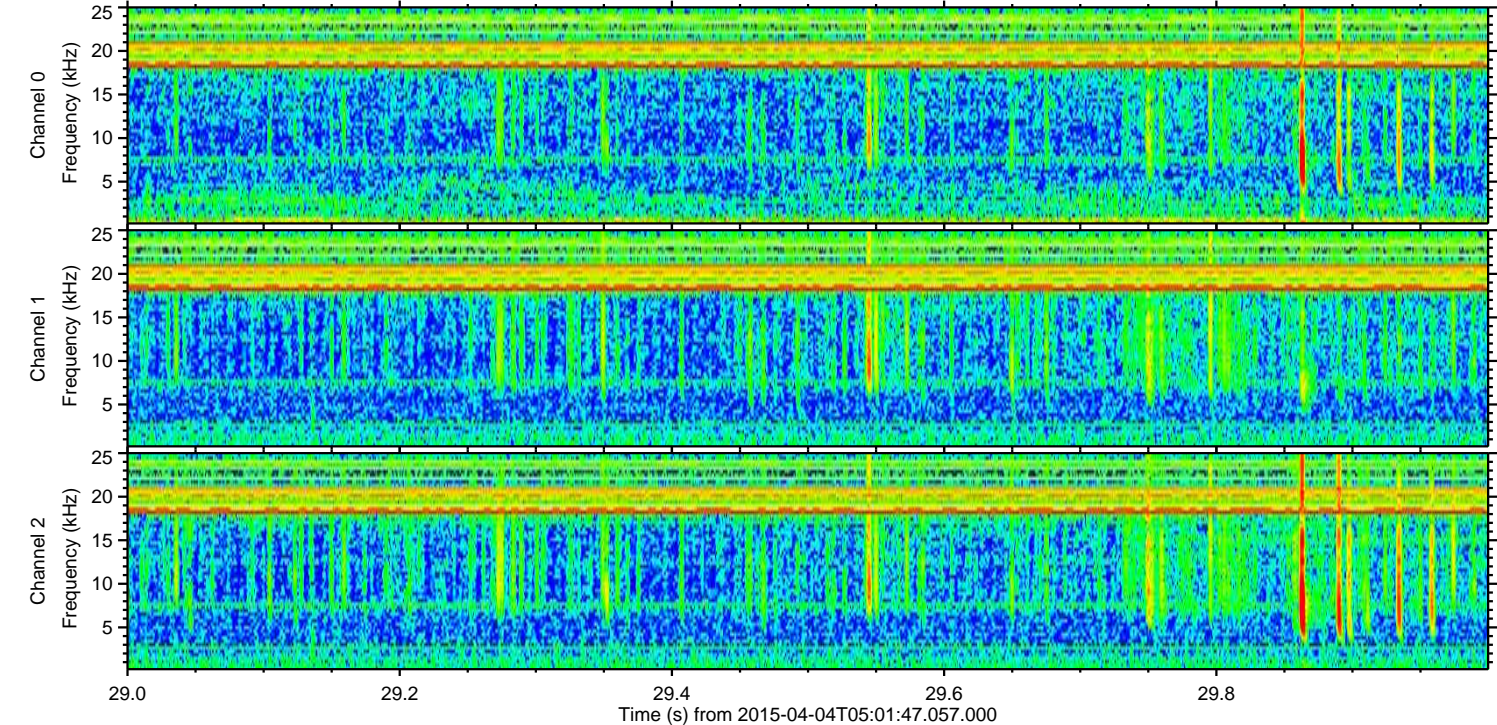
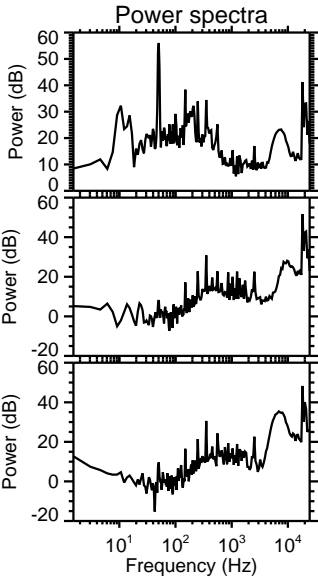
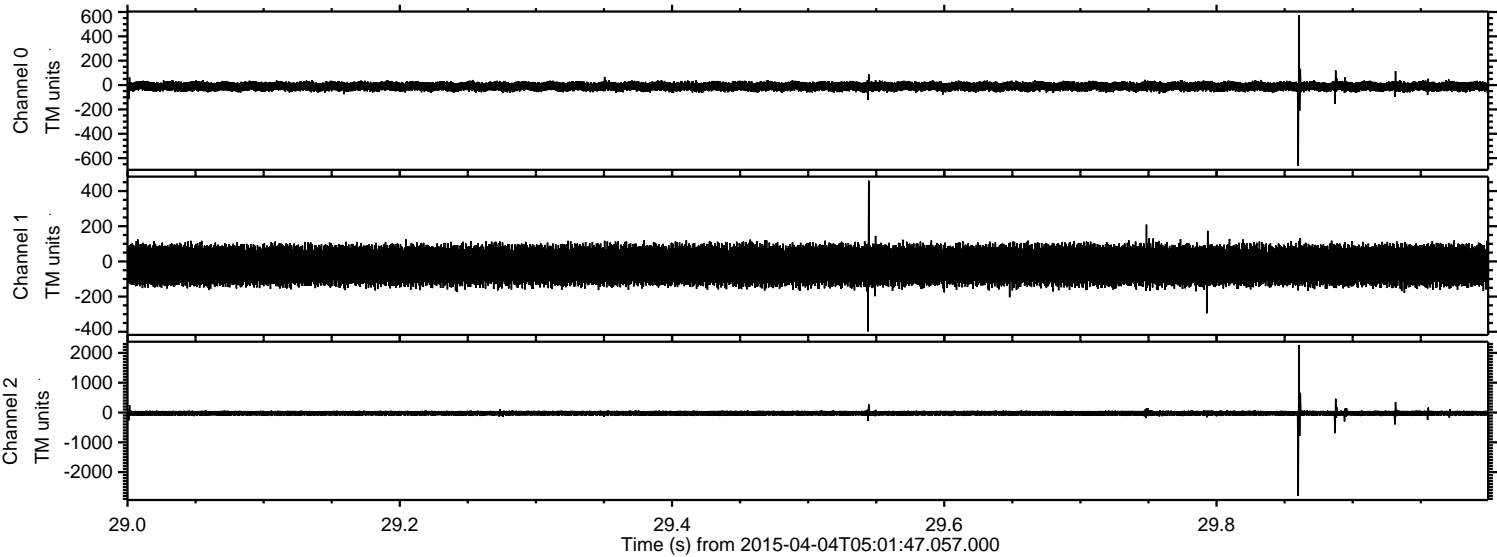
ELMAVAN 3D WAVEFORMS (Measured data sampled at 50 kHz) 49494 packets of 144 samples from 2015-04-04T05:01:47.057.000. Part 74/143

Processed Sat Apr 4 07:10:36 2015 by ELM ver.2012-10-06 from 001__elm20150404_050146__dat00.bin



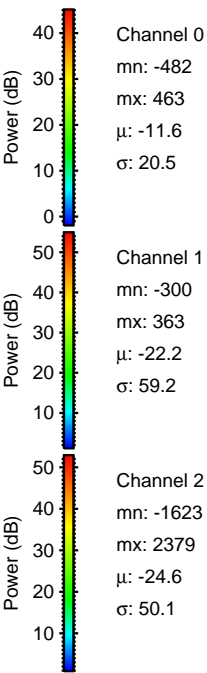
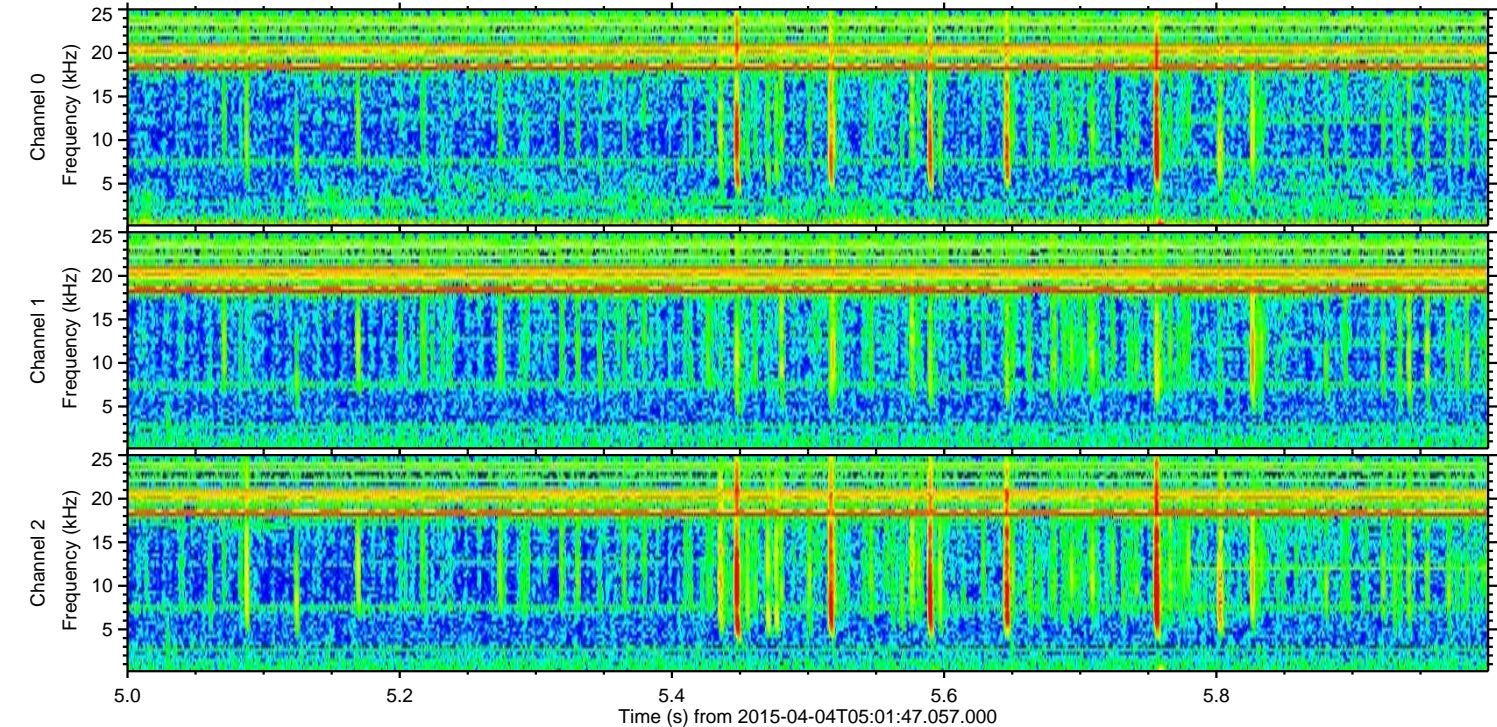
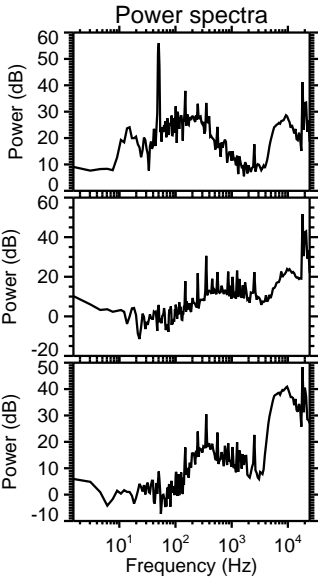
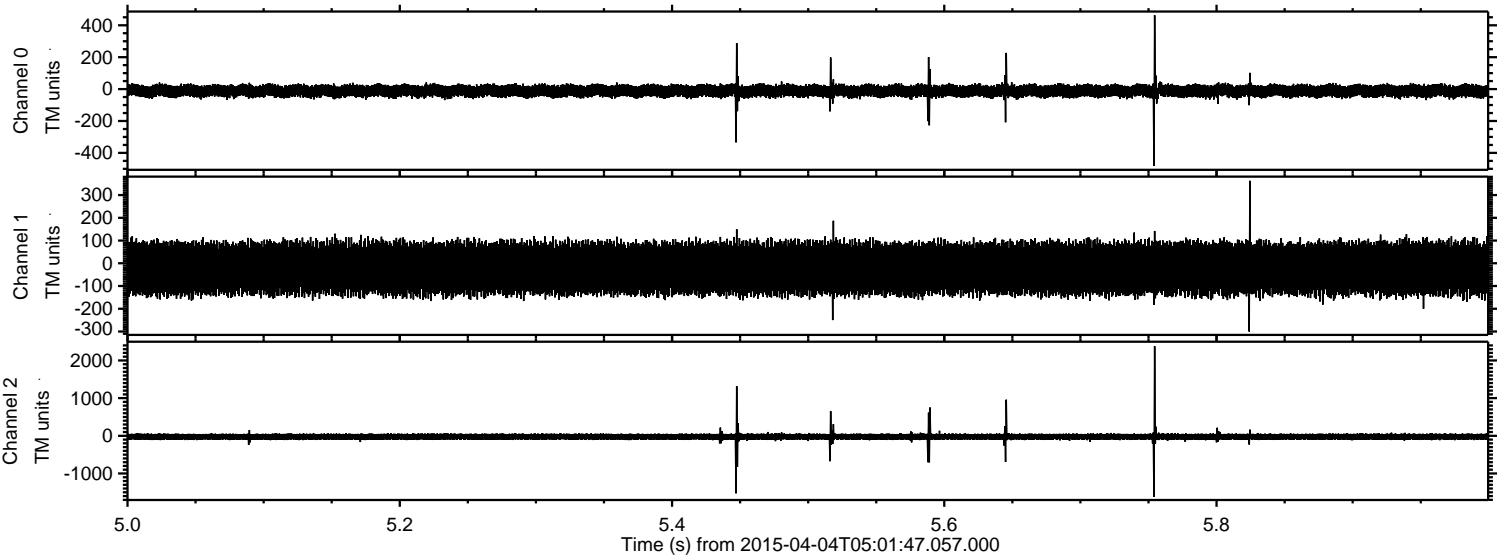
ELMAVAN 3D WAVEFORMS (Measured data sampled at 50 kHz) 49494 packets of 144 samples from 2015-04-04T05:01:47.057.000. Part 30/143

Processed Sat Apr 4 07:10:37 2015 by ELM ver.2012-10-06 from 001__elm20150404_050146__dat00.bin



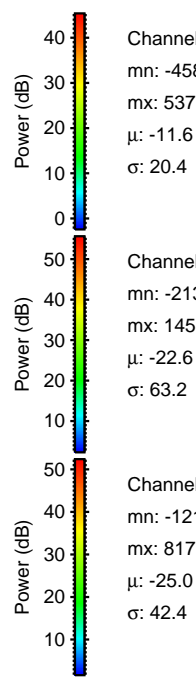
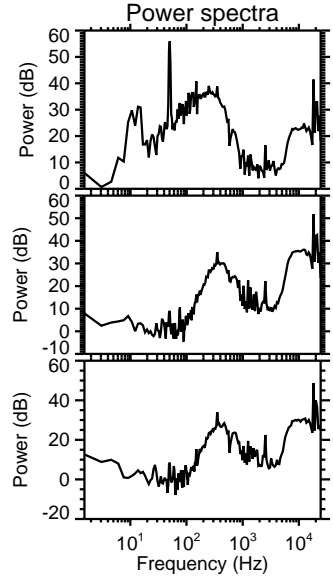
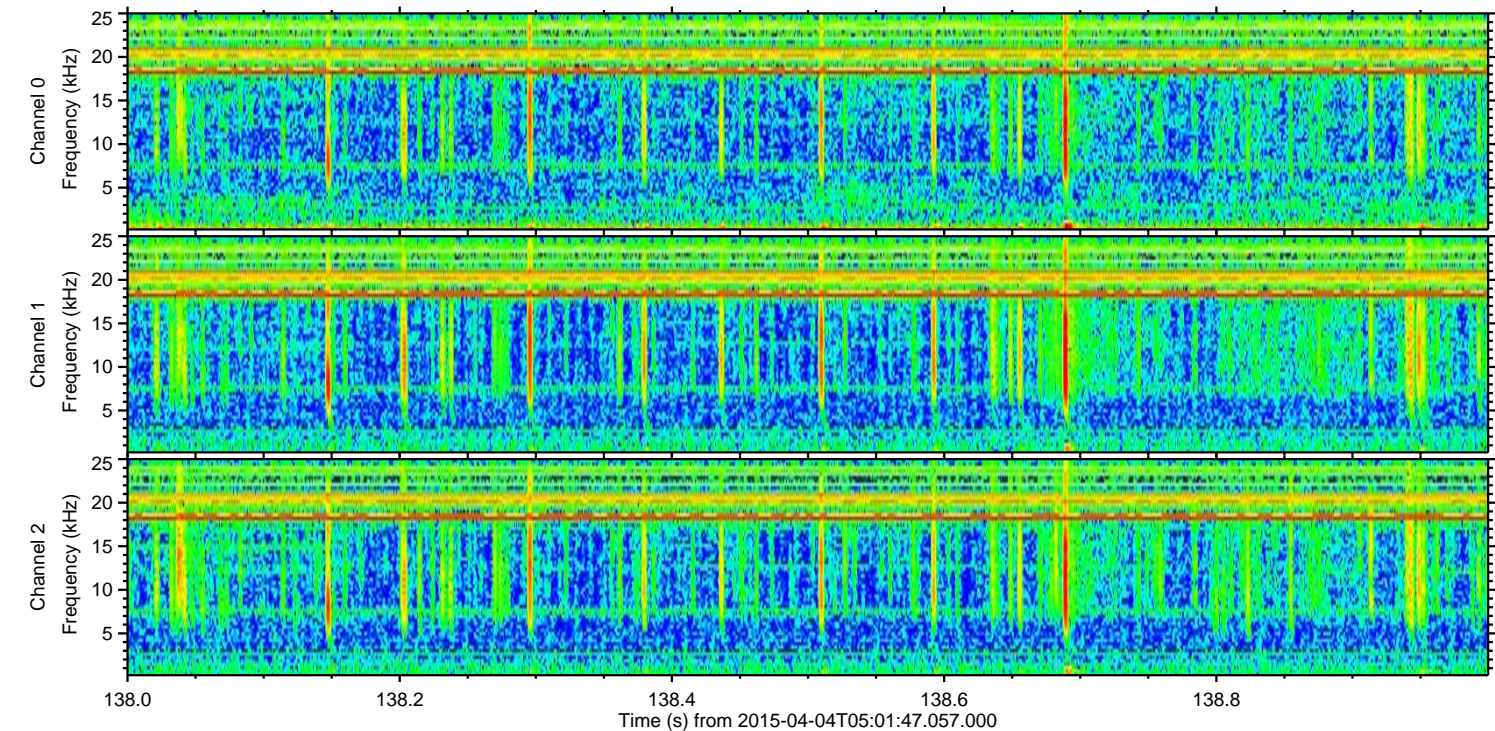
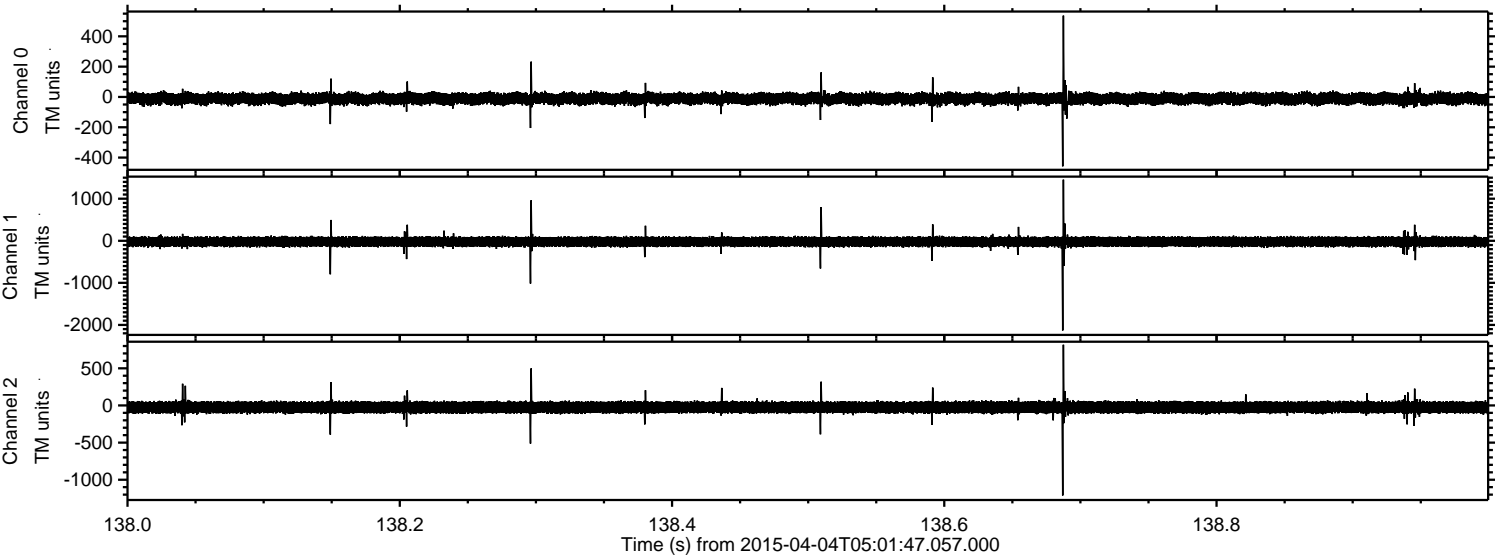
ELMAVAN 3D WAVEFORMS (Measured data sampled at 50 kHz) 49494 packets of 144 samples from 2015-04-04T05:01:47.057.000. Part 6/143

Processed Sat Apr 4 07:10:38 2015 by ELM ver.2012-10-06 from 001__elm20150404_050146__dat00.bin



ELMAVAN 3D WAVEFORMS (Measured data sampled at 50 kHz) 49494 packets of 144 samples from 2015-04-04T05:01:47.057.000. Part 139/143

Processed Sat Apr 4 07:10:40 2015 by ELM ver.2012-10-06 from 001__elm20150404_050146__dat00.bin

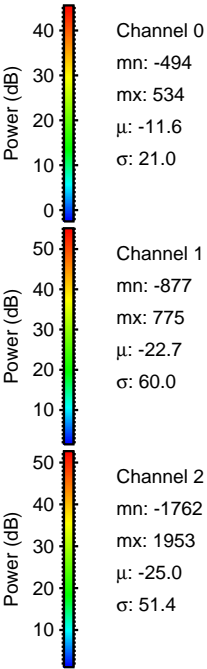
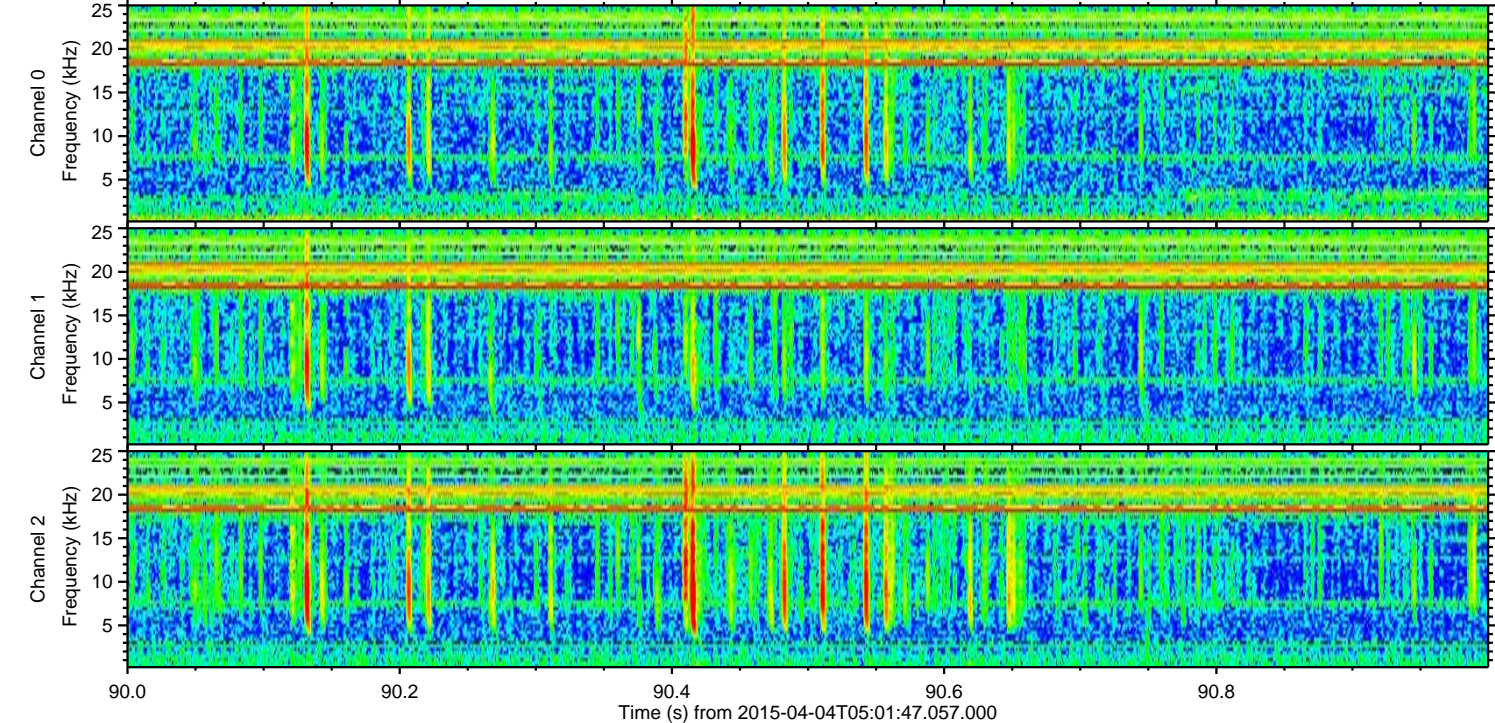
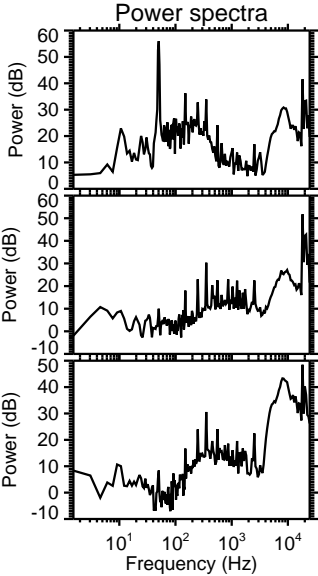
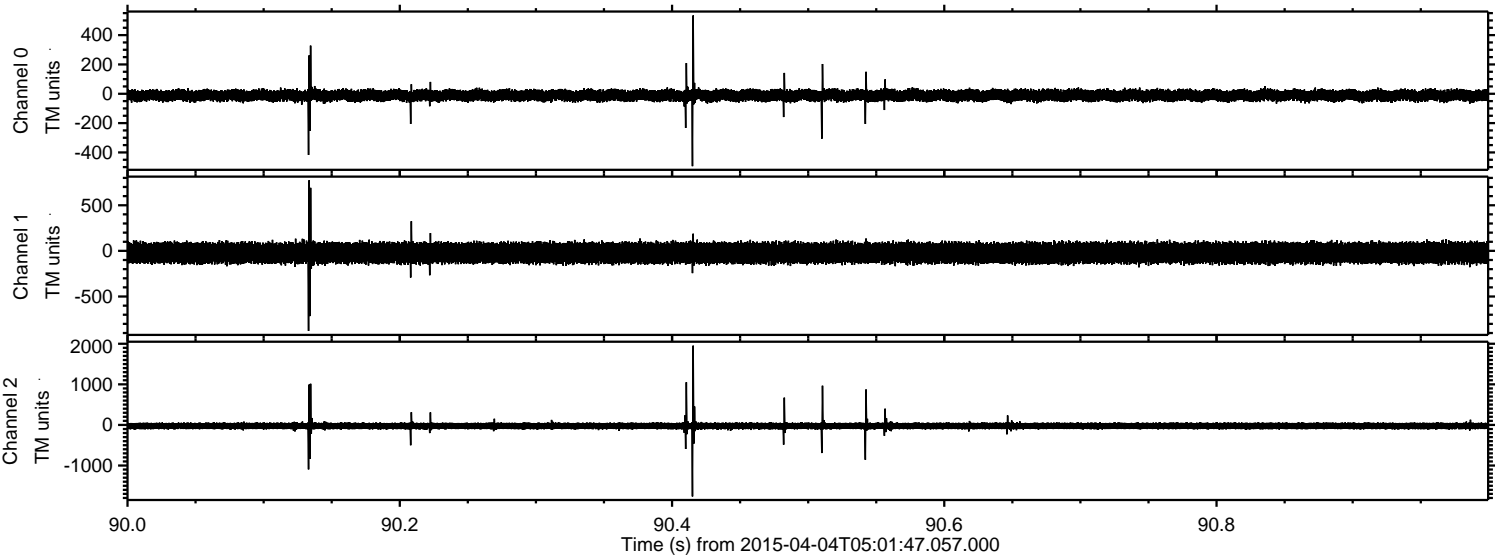


Channel 0
mn: -458
mx: 537
 μ : -11.6
 σ : 20.4

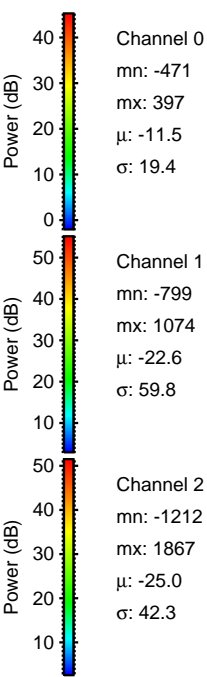
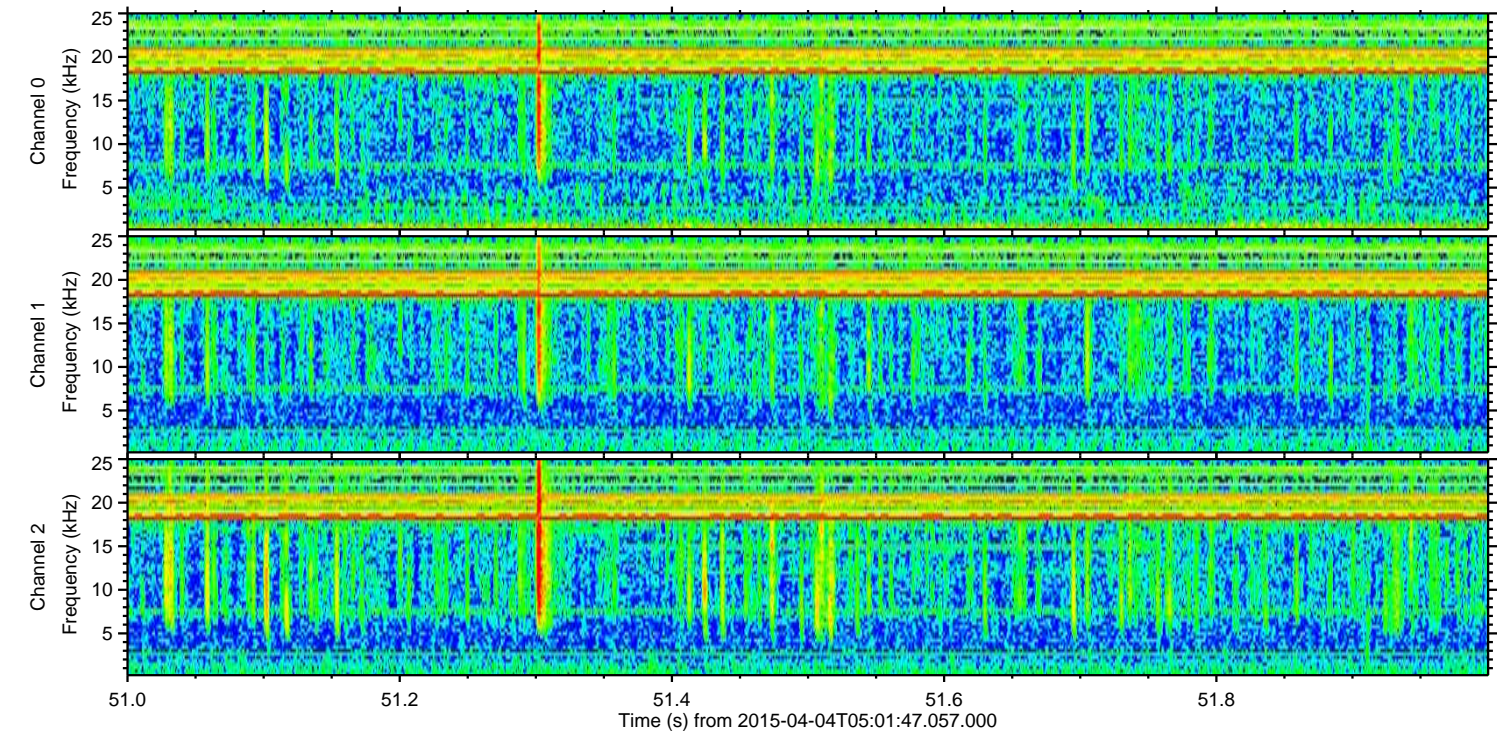
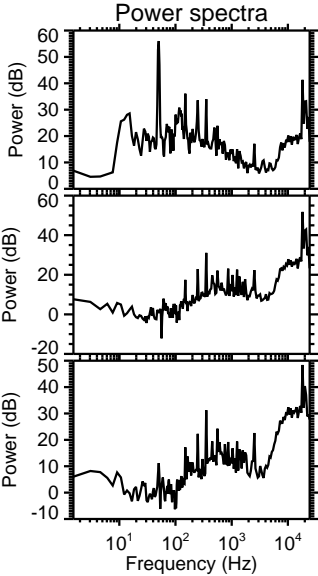
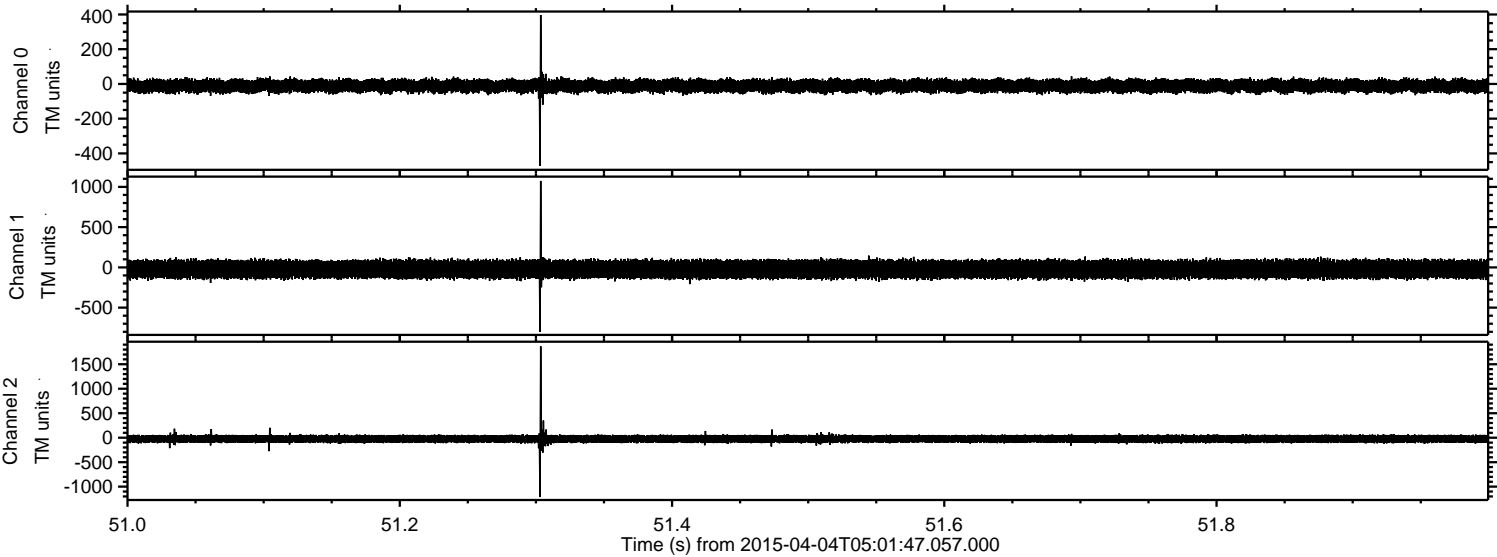
Channel 1
mn: -2131
mx: 1453
 μ : -22.6
 σ : 63.2

Channel 2
mn: -1212
mx: 817
 μ : -25.0
 σ : 42.4

Processed Sat Apr 4 07:10:41 2015 by ELM ver.2012-10-06 from 001__elm20150404_050146__dat00.bin



Processed Sat Apr 4 07:10:42 2015 by ELM ver.2012-10-06 from 001__elm20150404_050146__dat00.bin



Channel 0
mn: -471
mx: 397
 μ : -11.5
 σ : 19.4

Channel 1
mn: -799
mx: 1074
 μ : -22.6
 σ : 59.8

Channel 2
mn: -1212
mx: 1867
 μ : -25.0
 σ : 42.3

