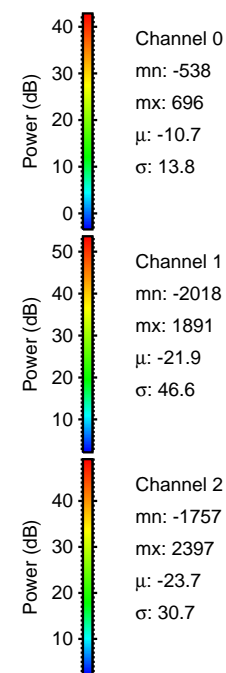
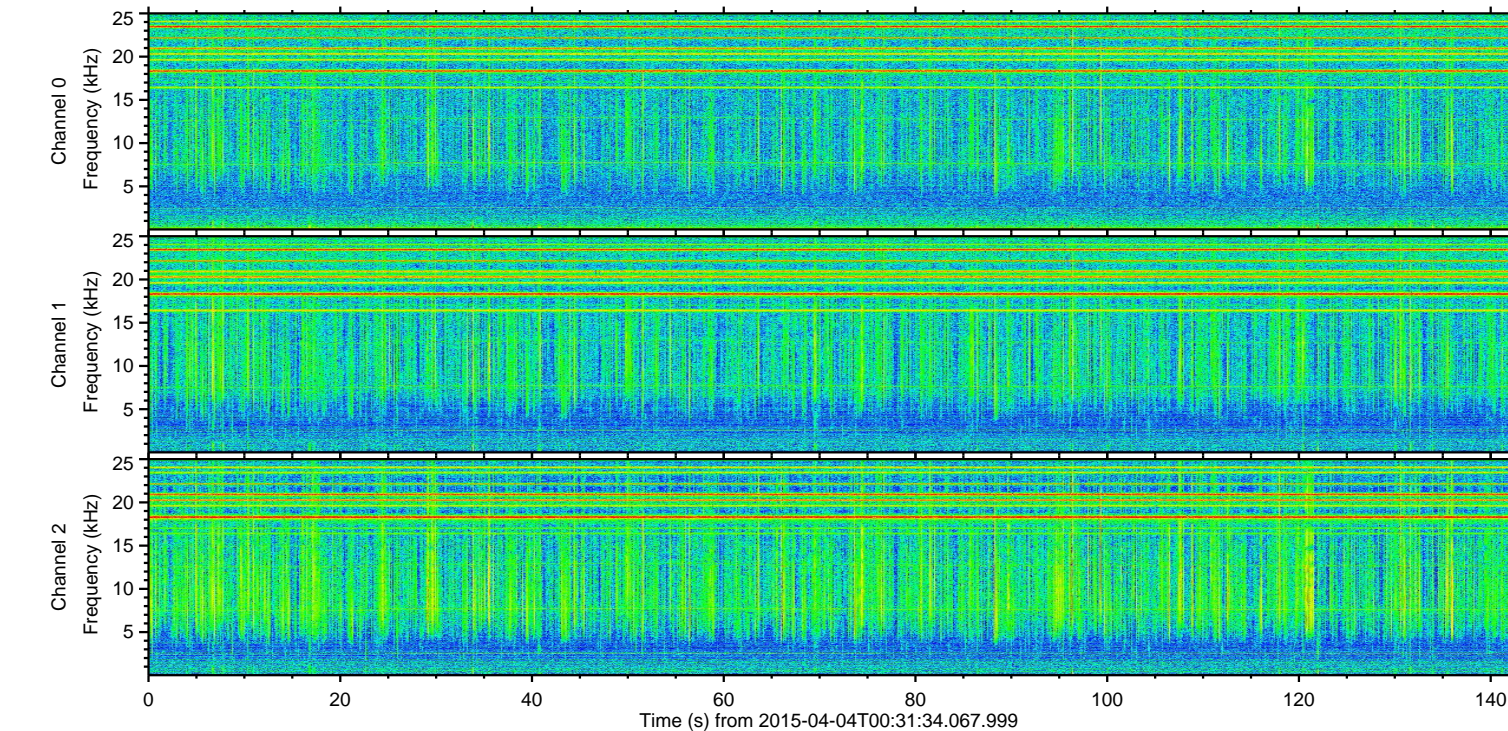
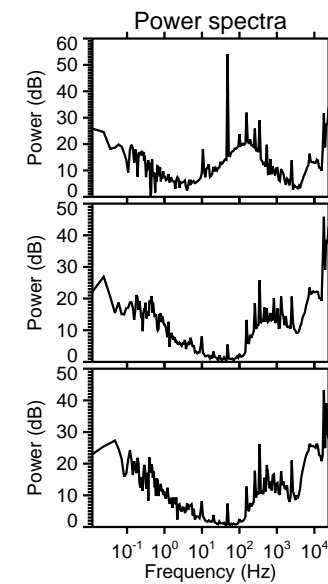
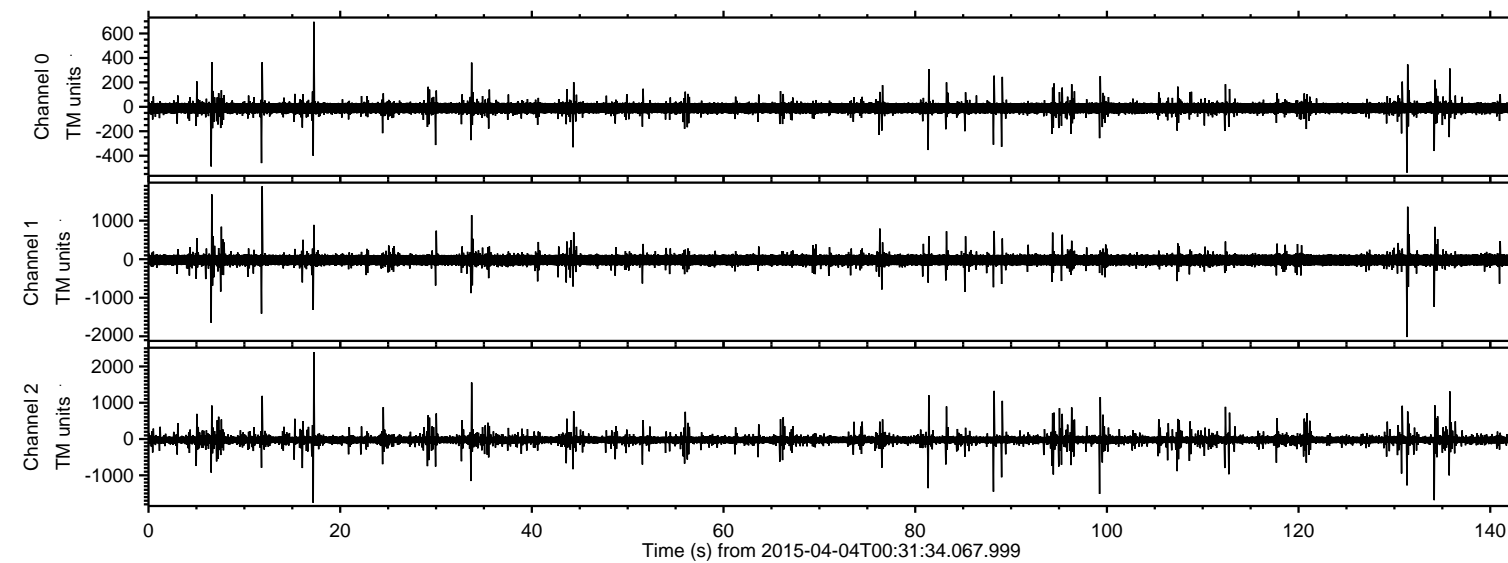
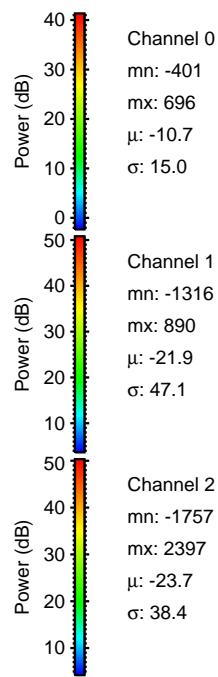
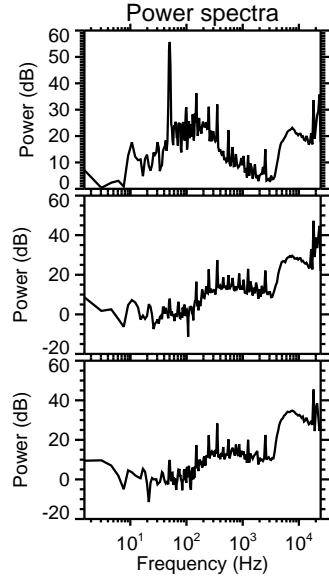
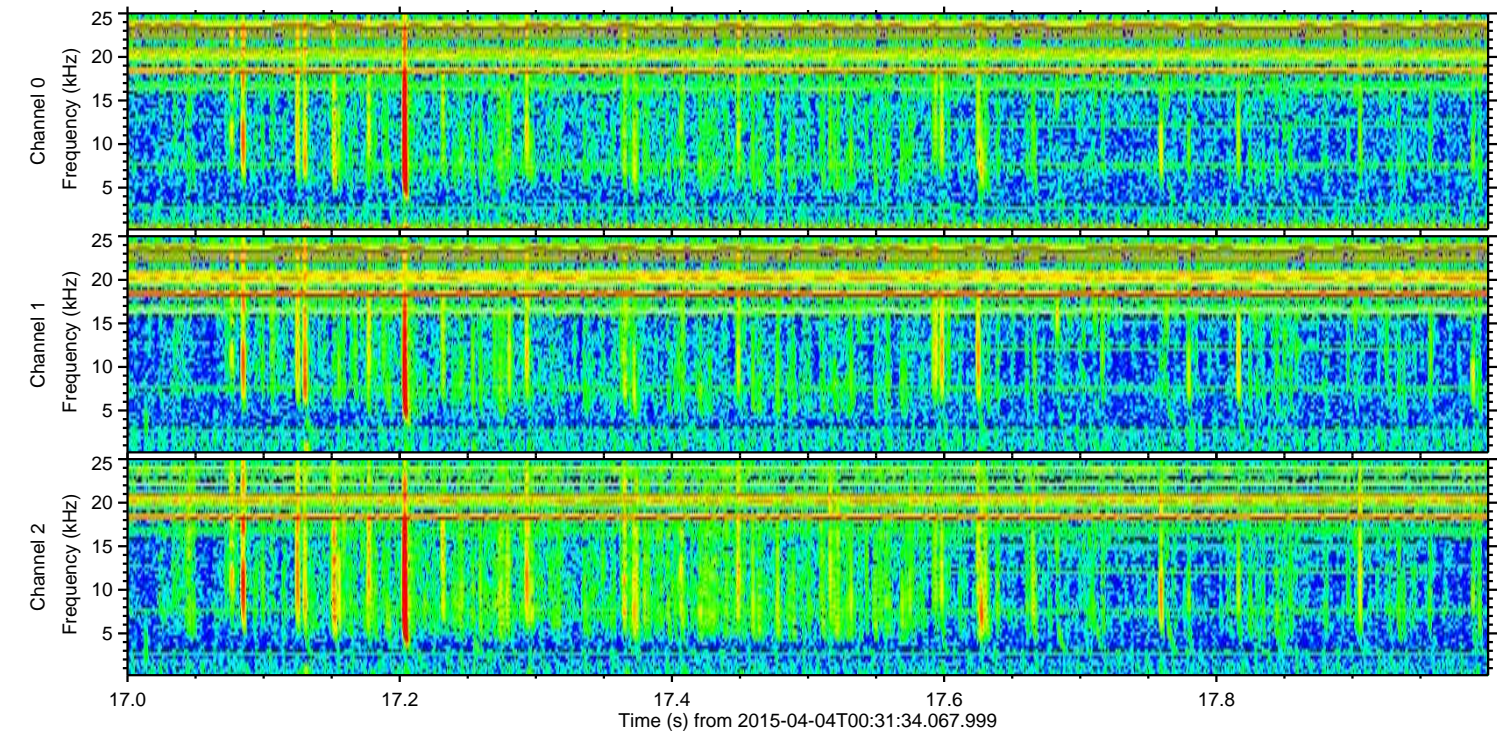
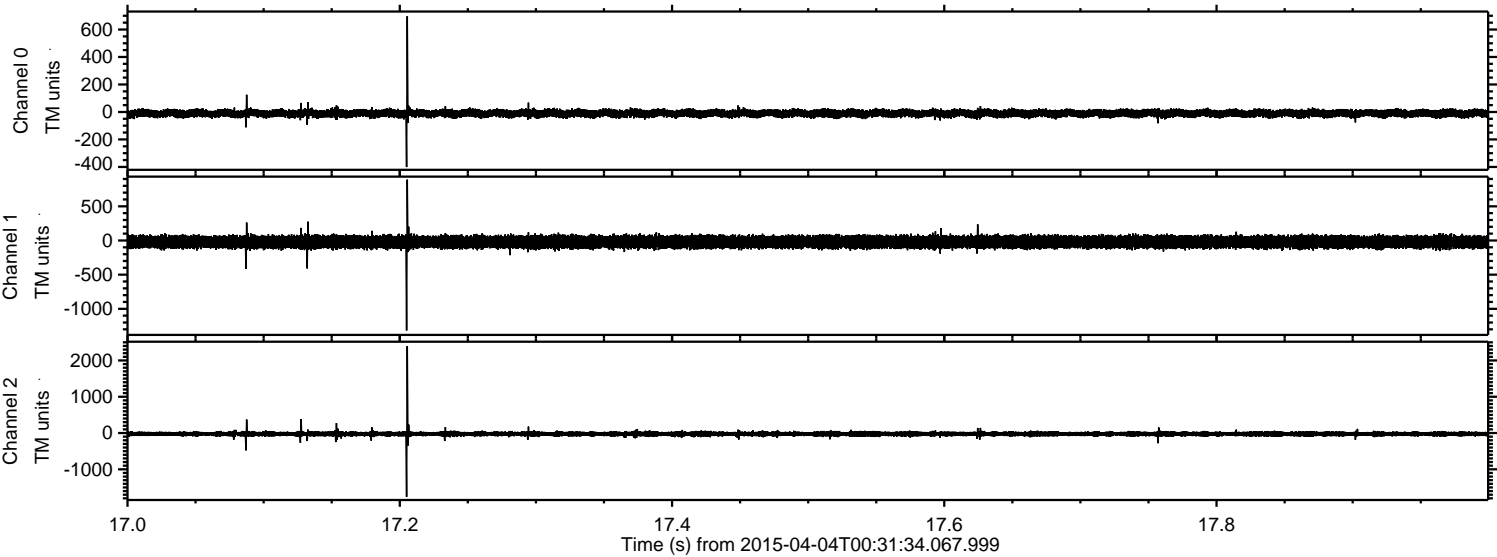


ELMAVAN 3D WAVEFORMS (Measured data sampled at 50 kHz) 49296 packets of 144 samples from 2015-04-04T00:31:34.067.999.

Processed Sat Apr 4 02:39:36 2015 by ELM ver.2012-10-06 from 001__elm20150404_003133__dat00.bin



Processed Sat Apr 4 02:39:51 2015 by ELM ver.2012-10-06 from 001__elm20150404_003133__dat00.bin



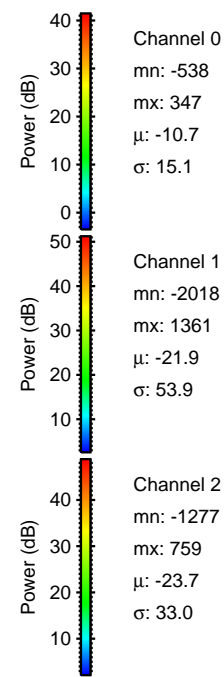
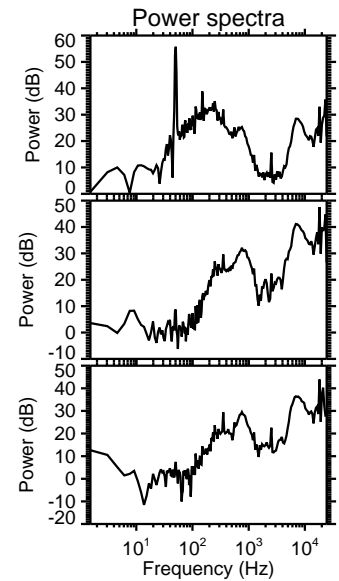
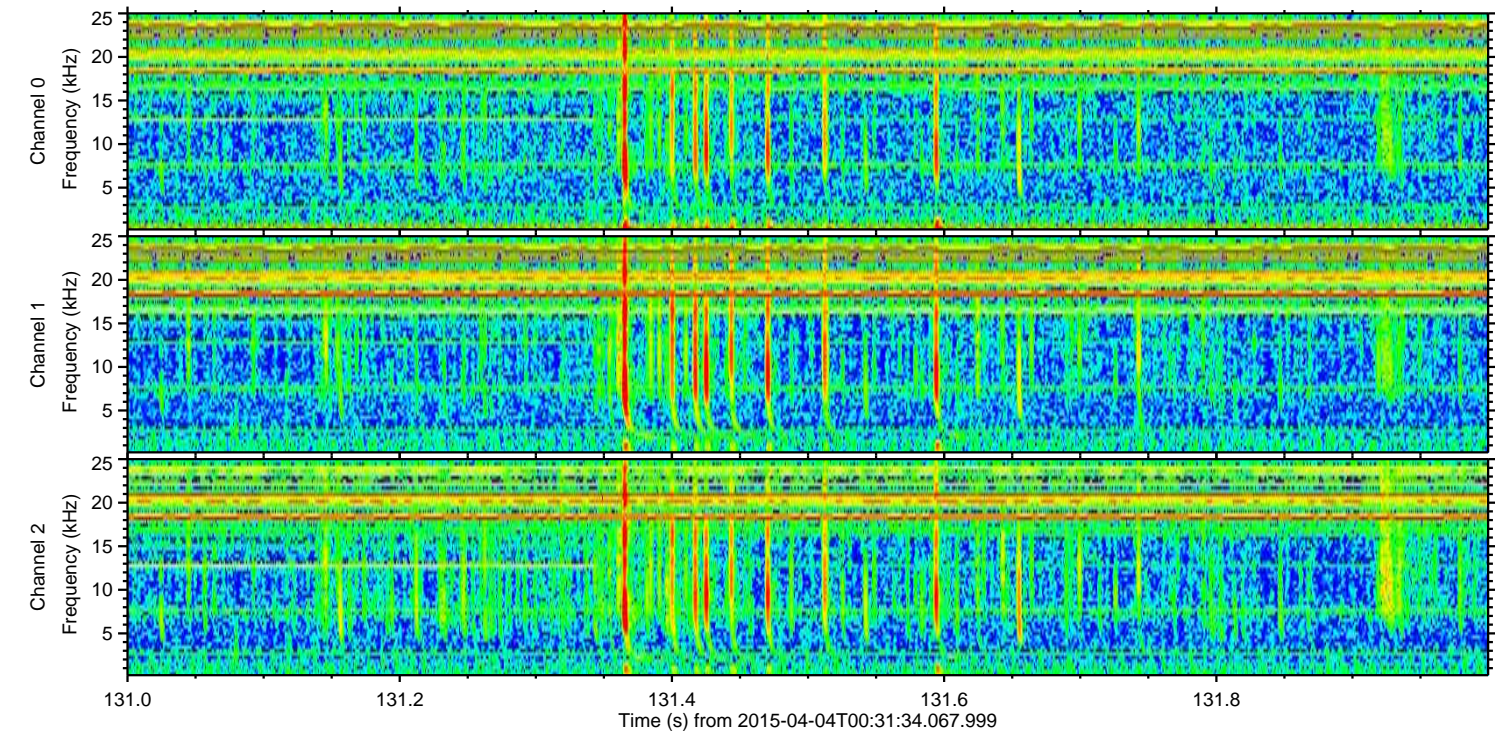
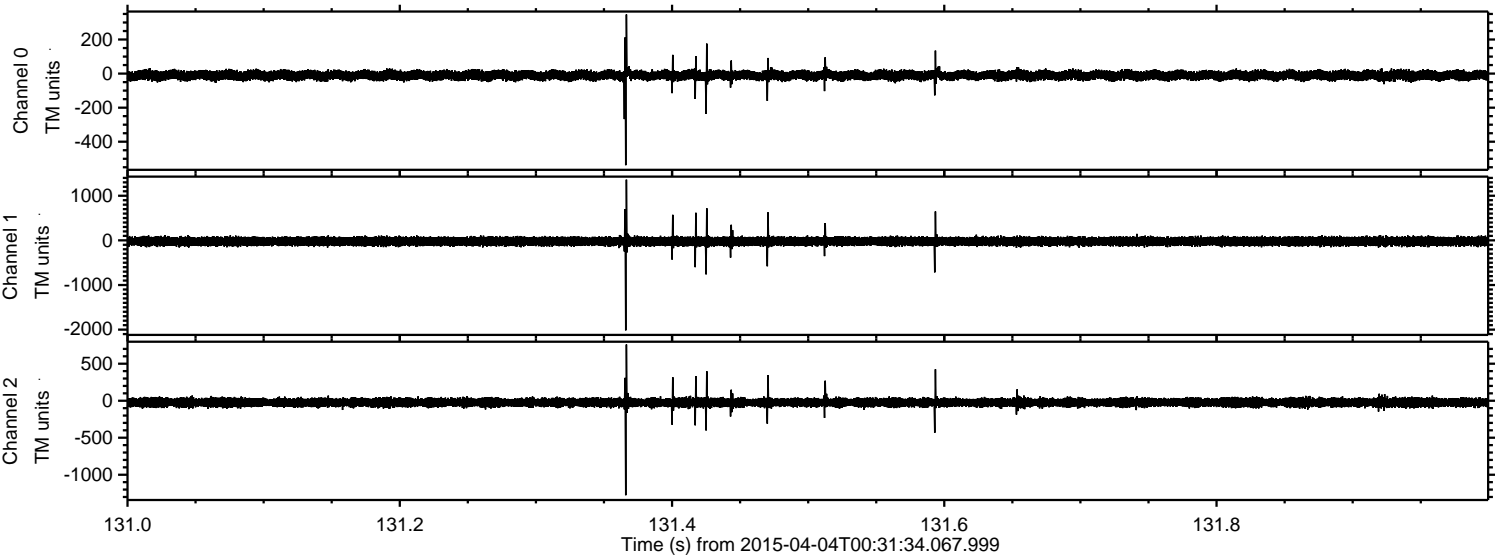
Channel 0
mn: -401
mx: 696
 μ : -10.7
 σ : 15.0

Channel 1
mn: -1316
mx: 890
 μ : -21.9
 σ : 47.1

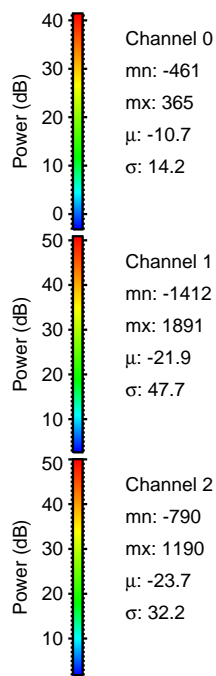
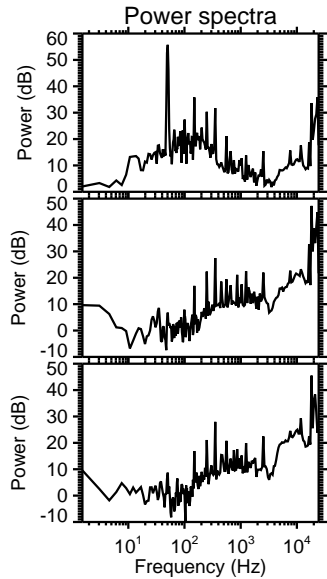
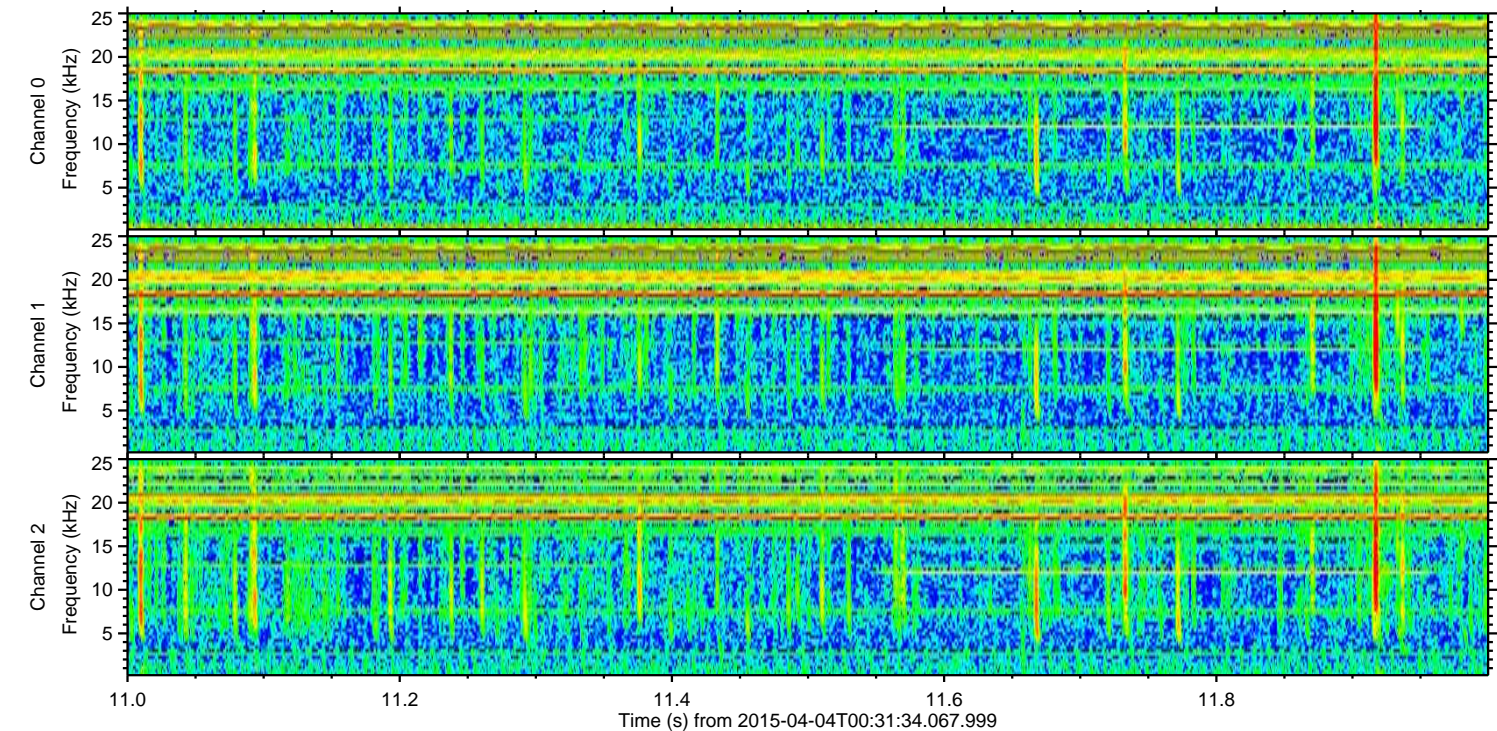
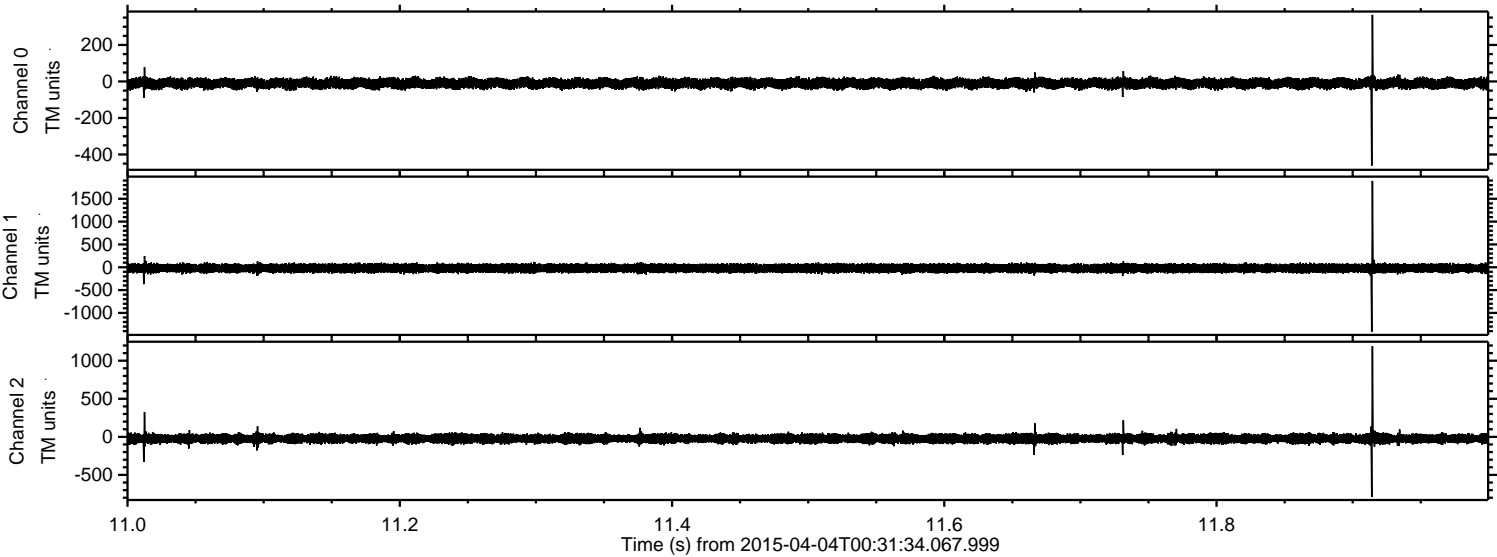
Channel 2
mn: -1757
mx: 2397
 μ : -23.7
 σ : 38.4

ELMAVAN 3D WAVEFORMS (Measured data sampled at 50 kHz) 49296 packets of 144 samples from 2015-04-04T00:31:34.067.999. Part 132/142

Processed Sat Apr 4 02:39:52 2015 by ELM ver.2012-10-06 from 001__elm20150404_003133__dat00.bin

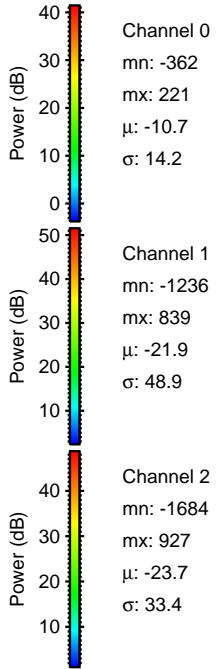
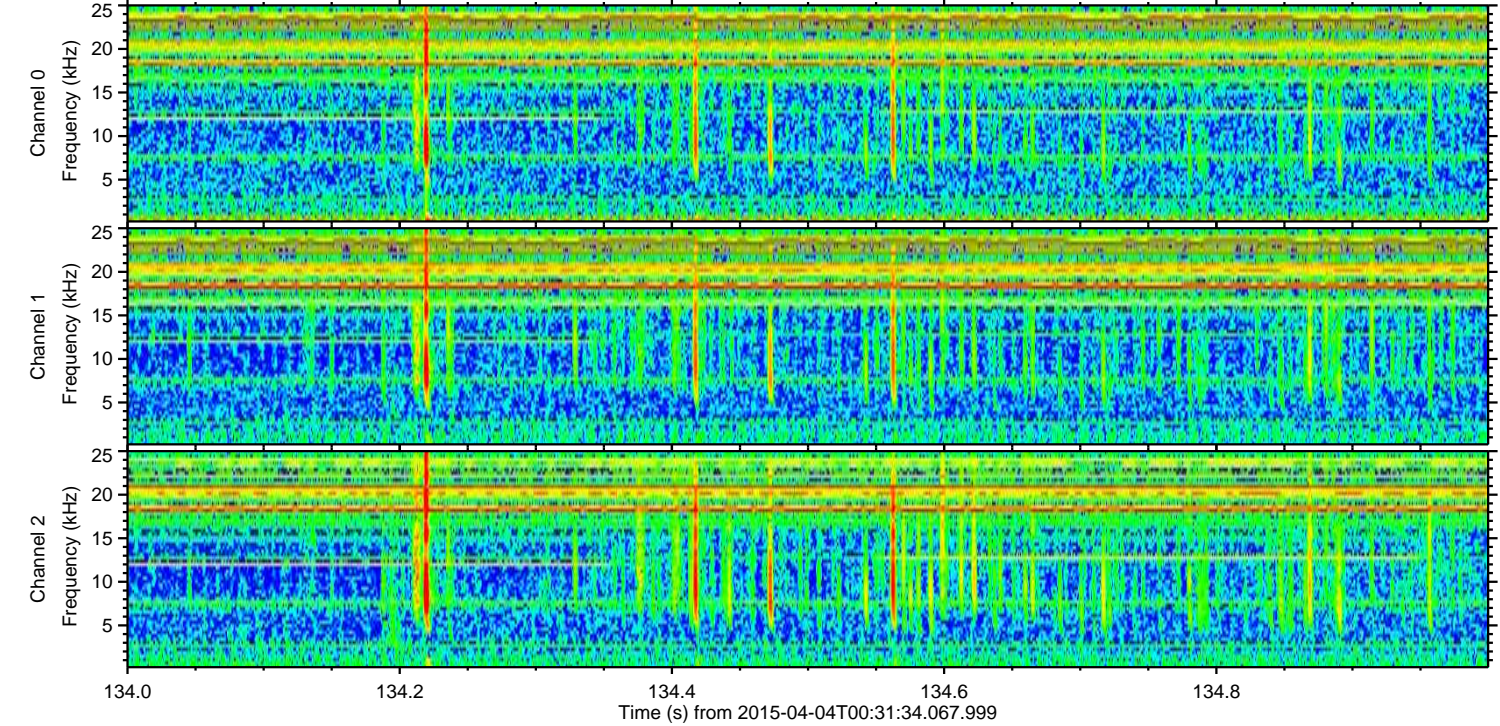
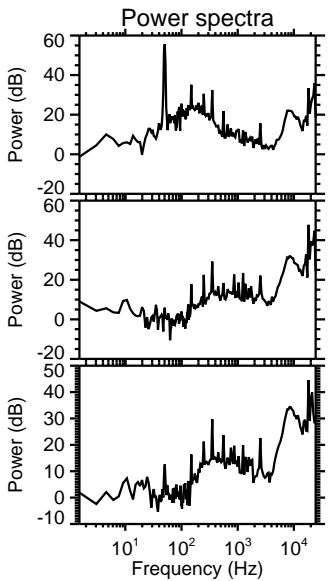
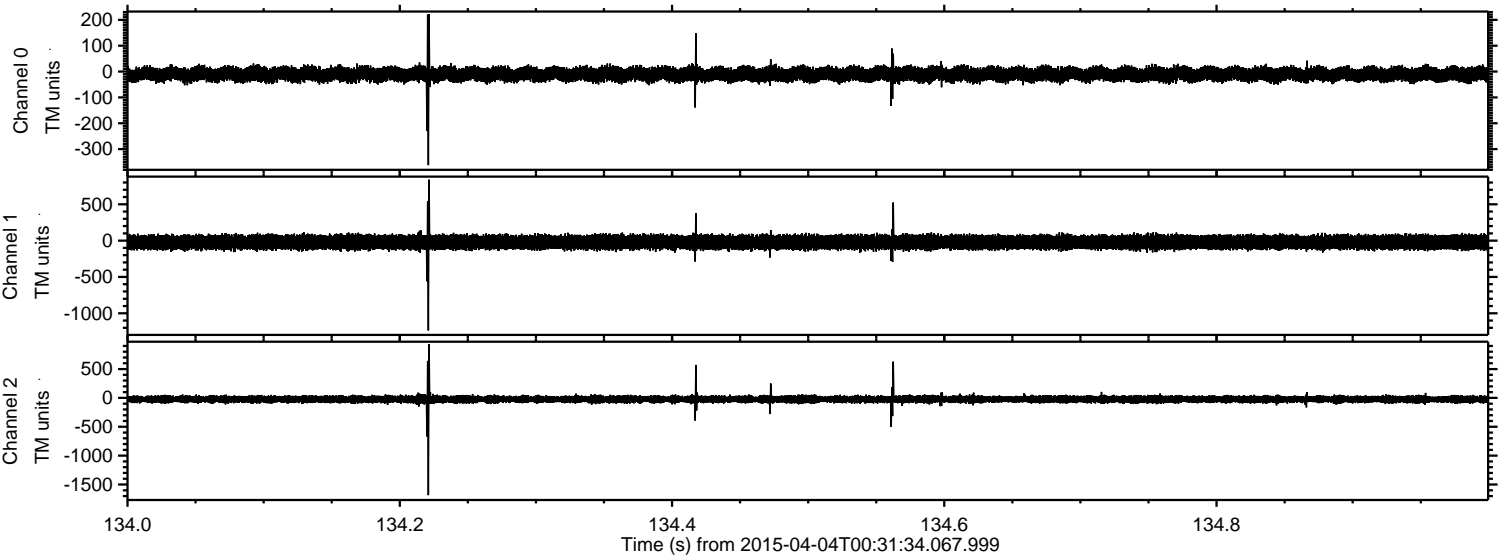


Processed Sat Apr 4 02:39:54 2015 by ELM ver.2012-10-06 from 001__elm20150404_003133__dat00.bin

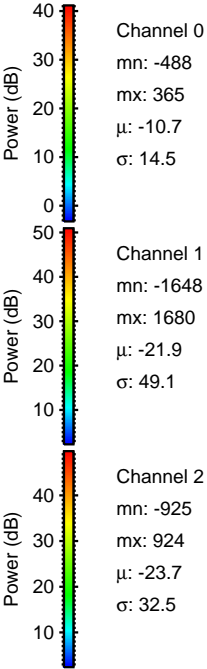
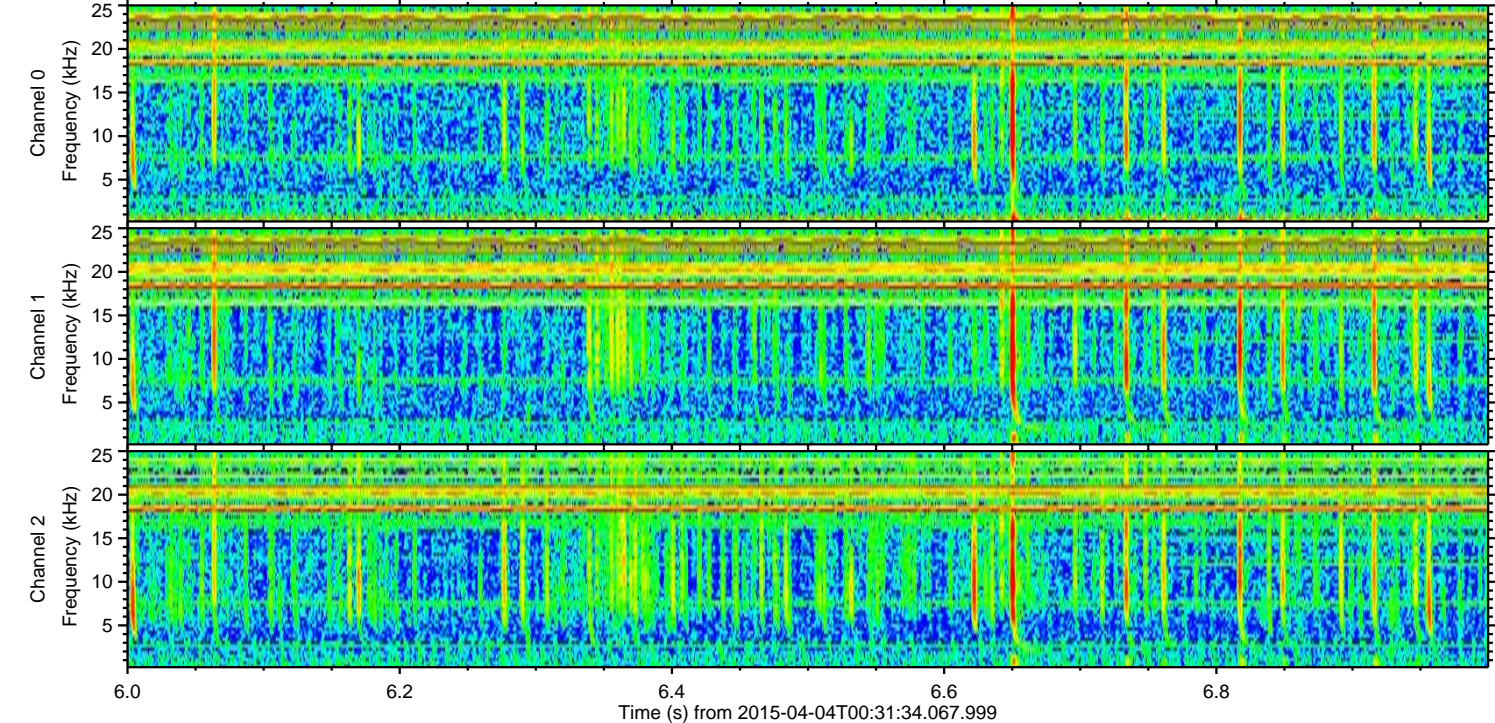
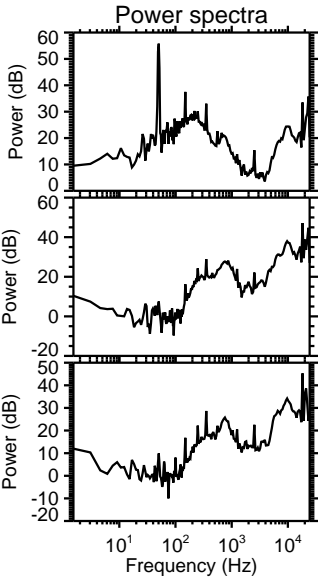
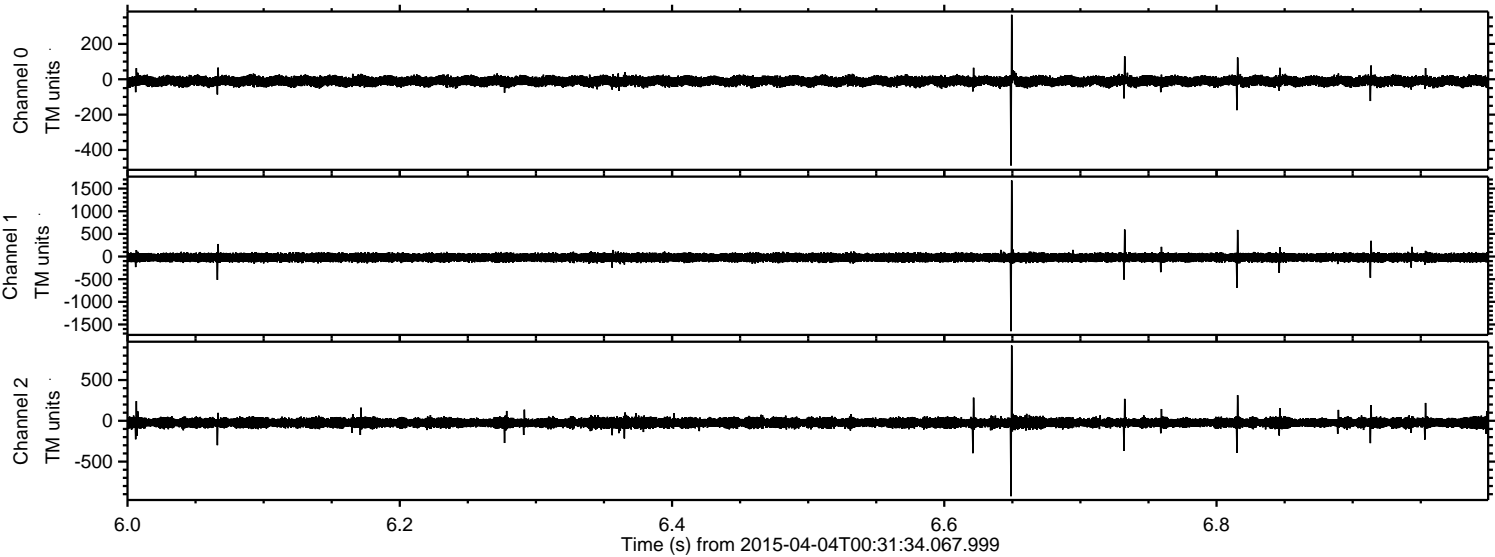


ELMAVAN 3D WAVEFORMS (Measured data sampled at 50 kHz) 49296 packets of 144 samples from 2015-04-04T00:31:34.067.999. Part 135/142

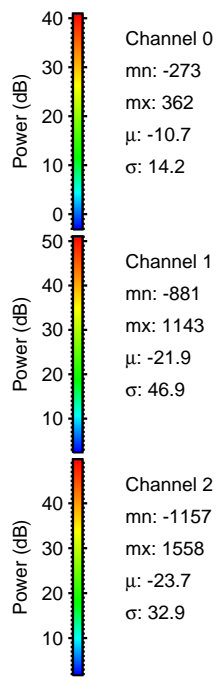
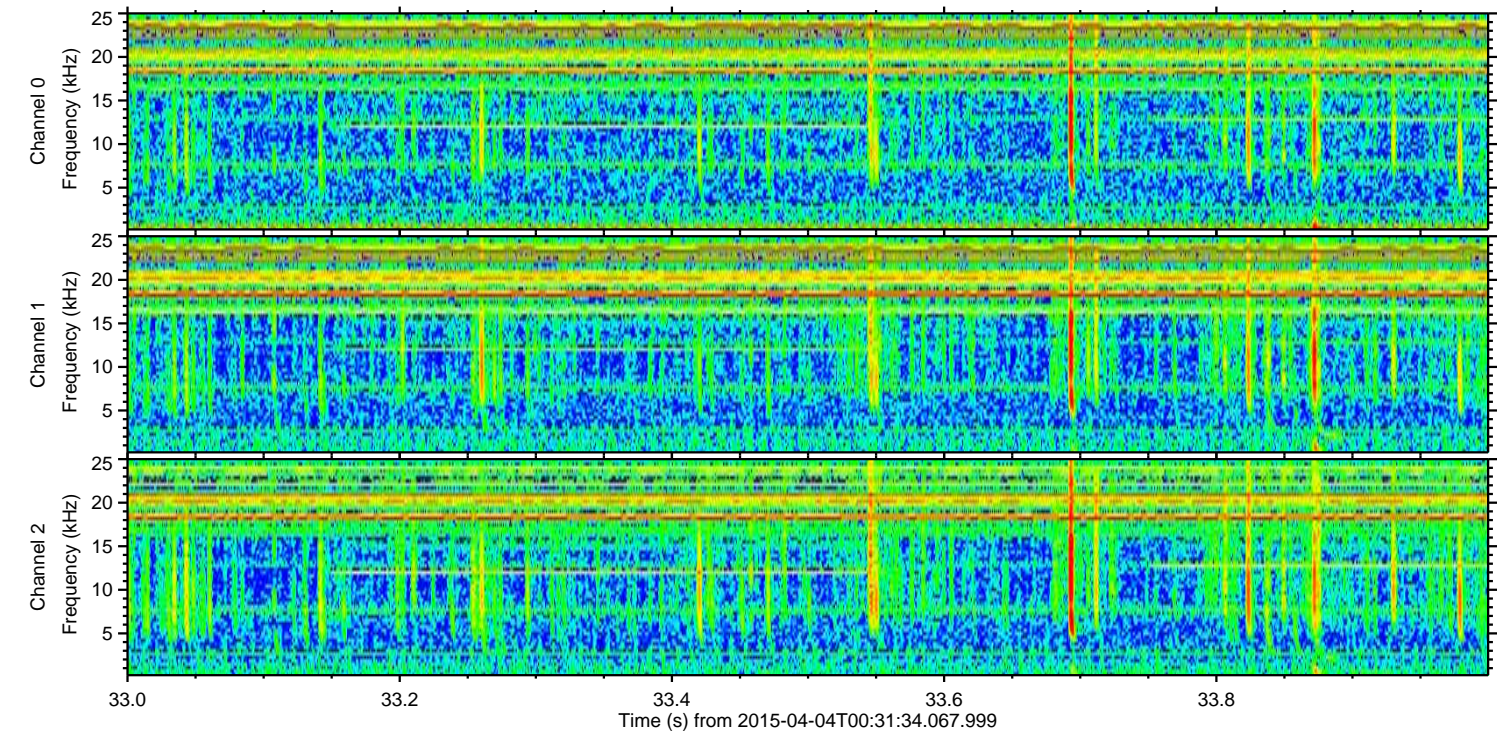
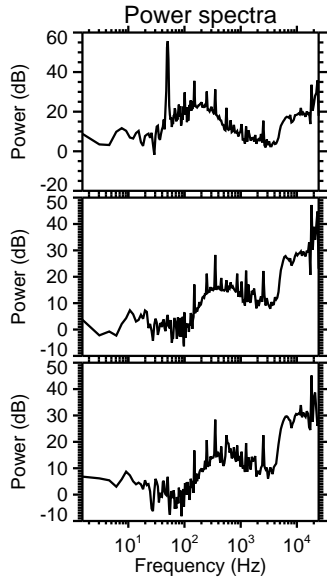
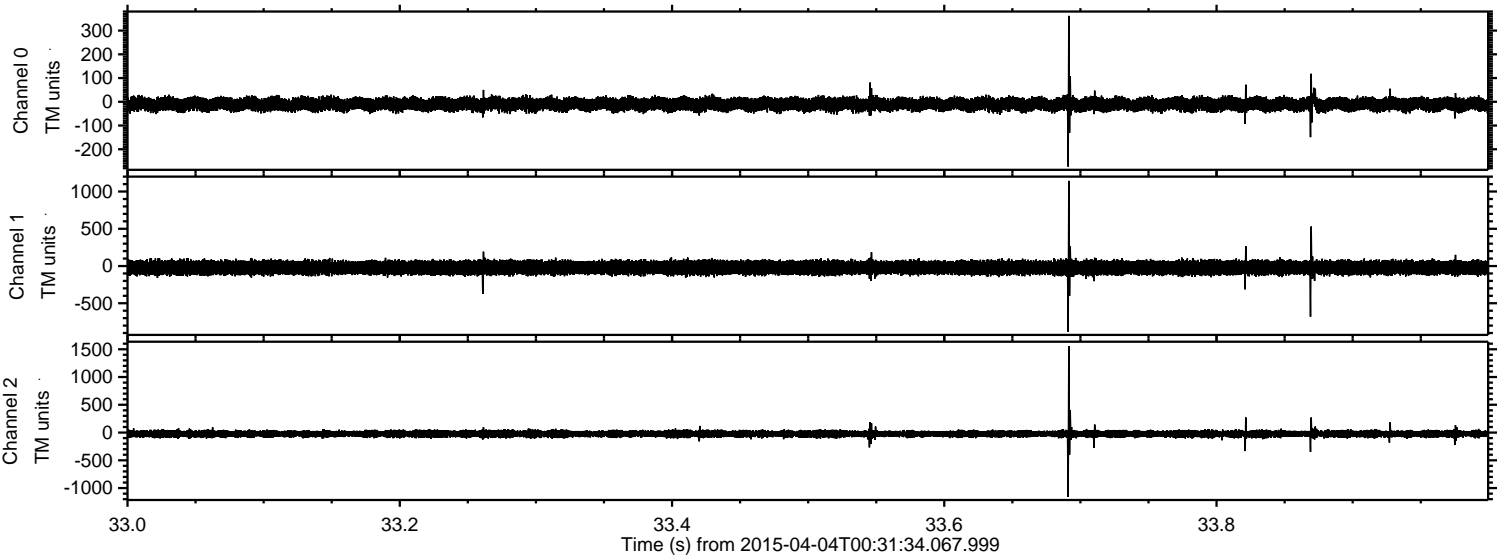
Processed Sat Apr 4 02:39:55 2015 by ELM ver.2012-10-06 from 001__elm20150404_003133__dat00.bin



Processed Sat Apr 4 02:39:56 2015 by ELM ver.2012-10-06 from 001__elm20150404_003133__dat00.bin

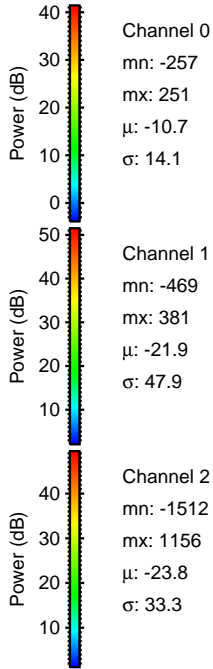
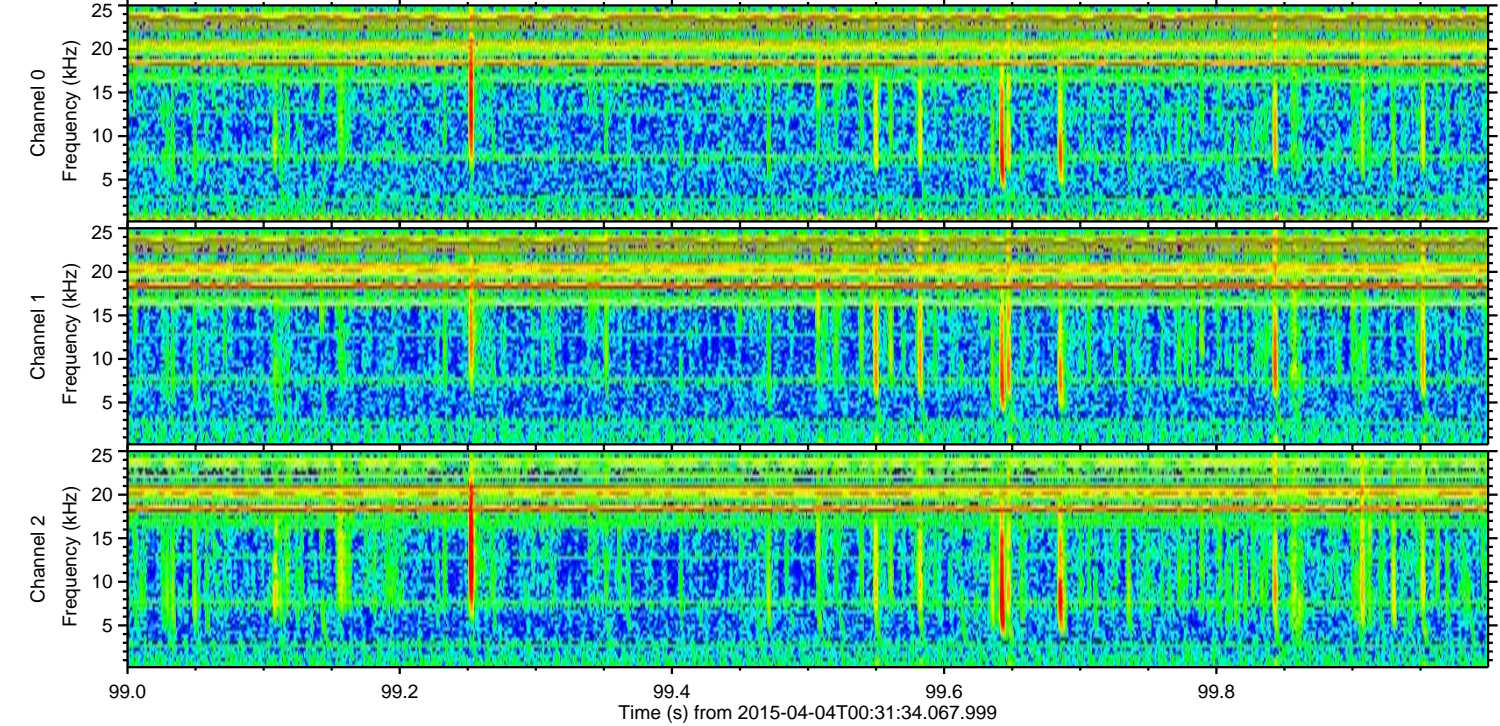
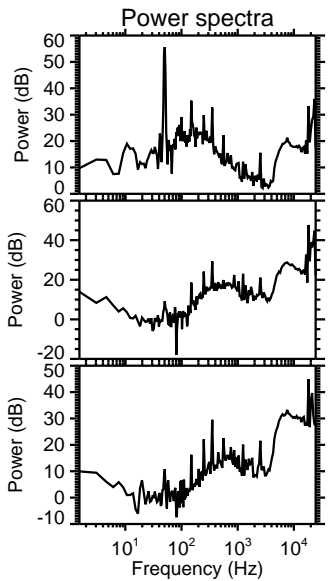
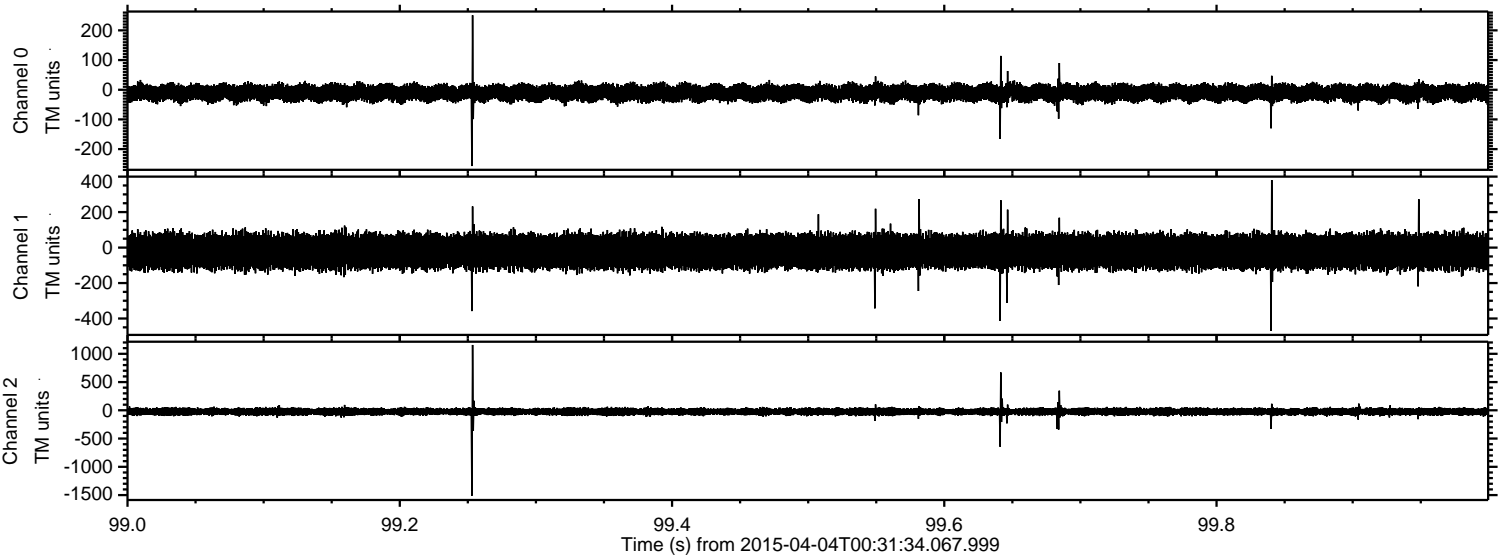


Processed Sat Apr 4 02:39:57 2015 by ELM ver.2012-10-06 from 001__elm20150404_003133__dat00.bin

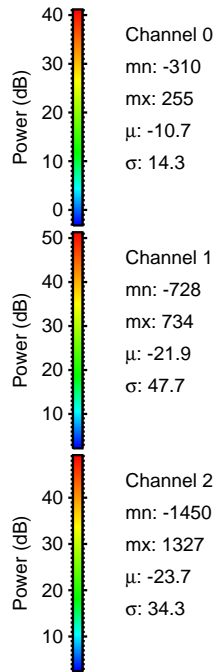
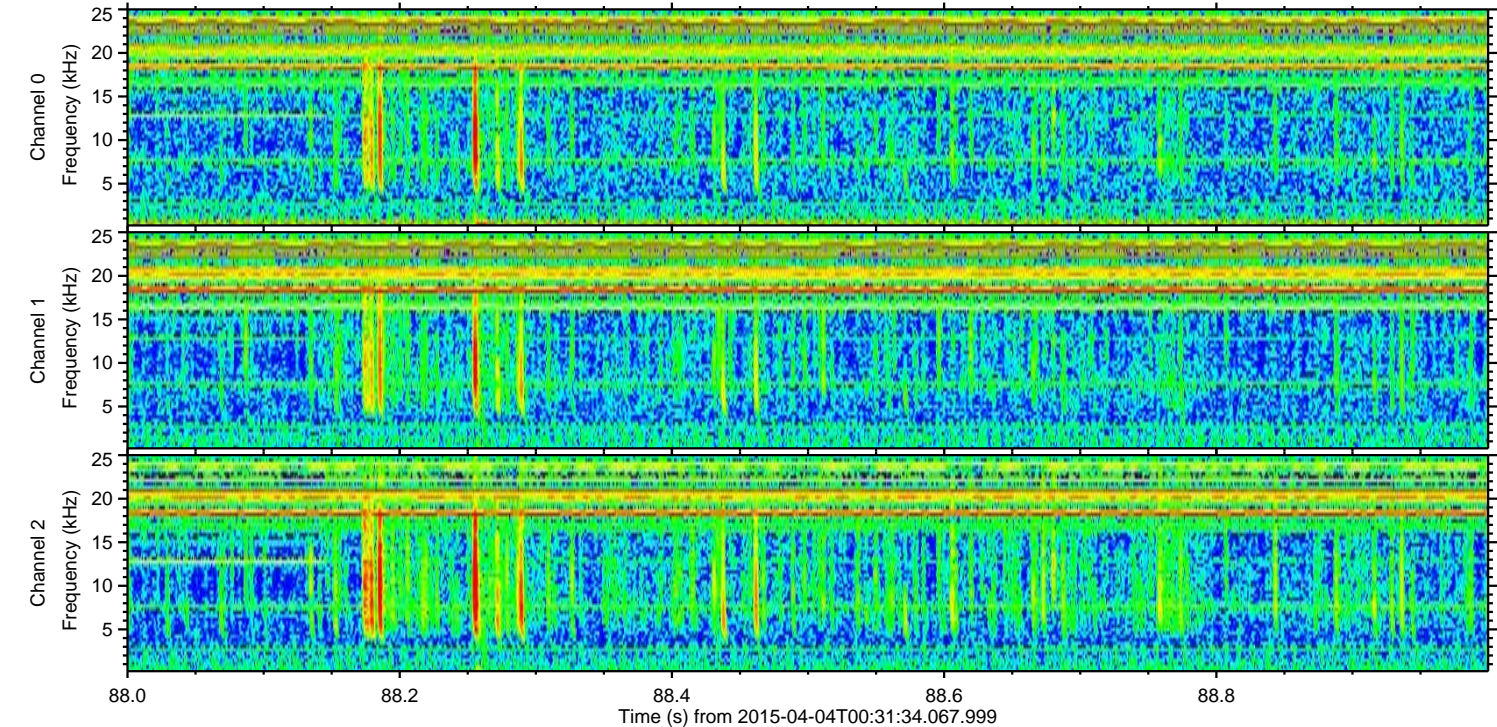
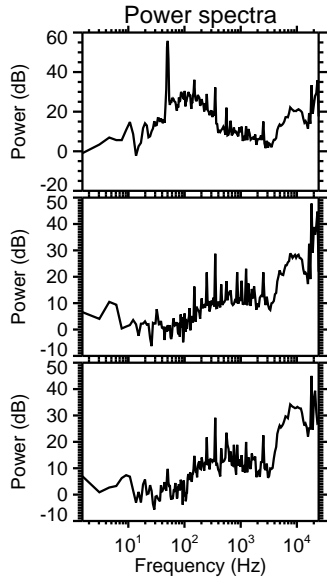
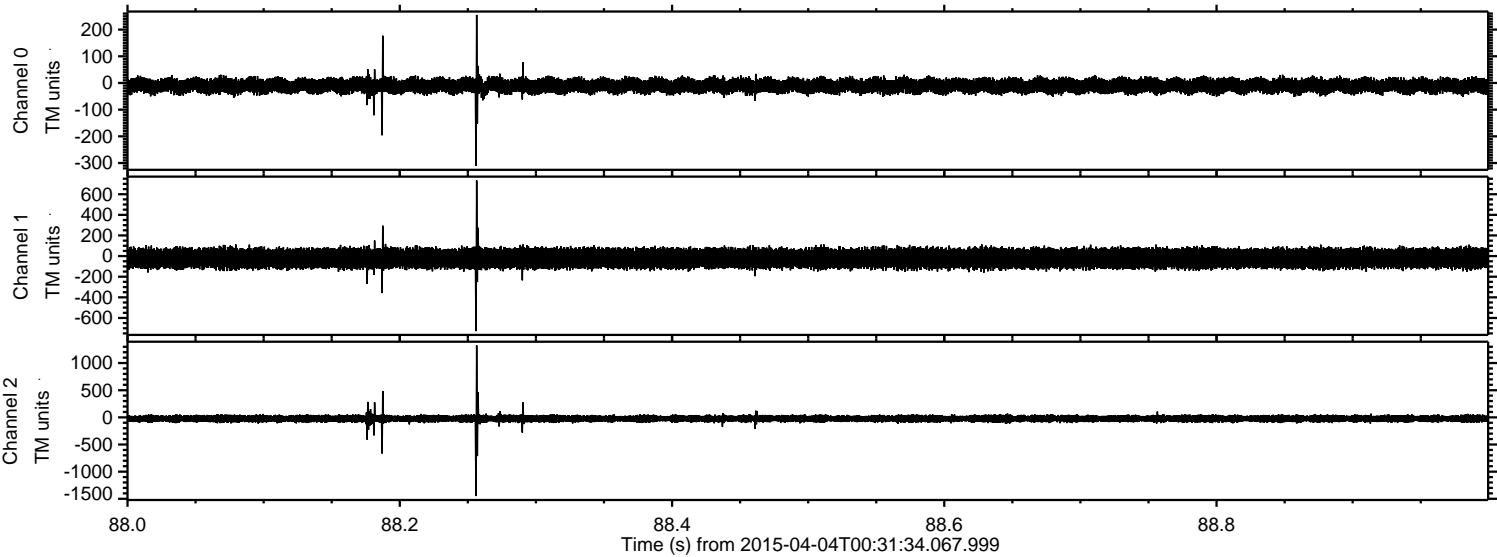


ELMAVAN 3D WAVEFORMS (Measured data sampled at 50 kHz) 49296 packets of 144 samples from 2015-04-04T00:31:34.067.999. Part 100/142

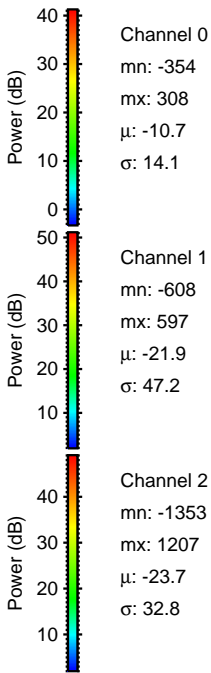
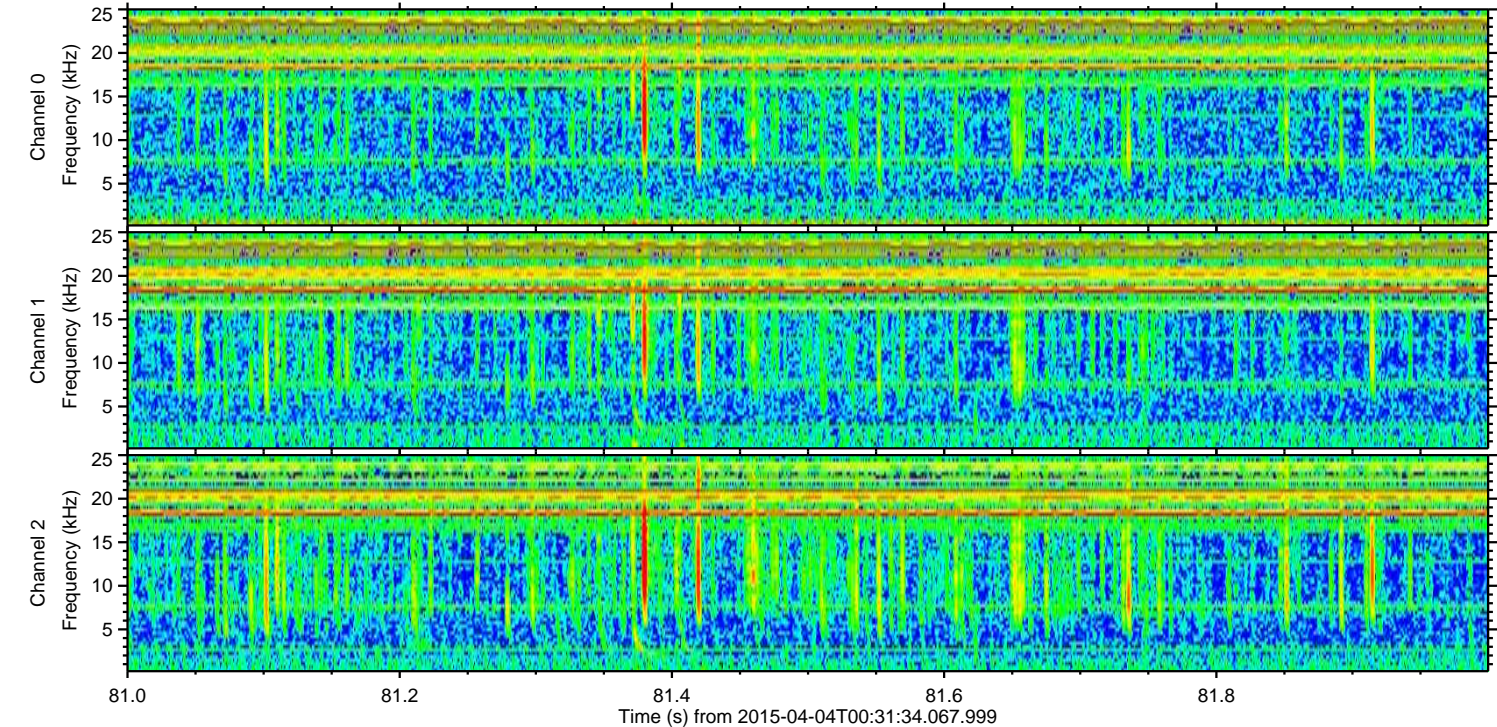
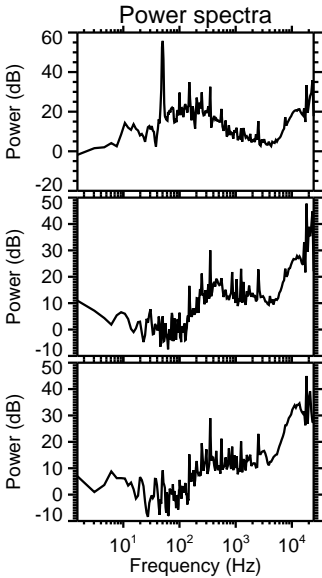
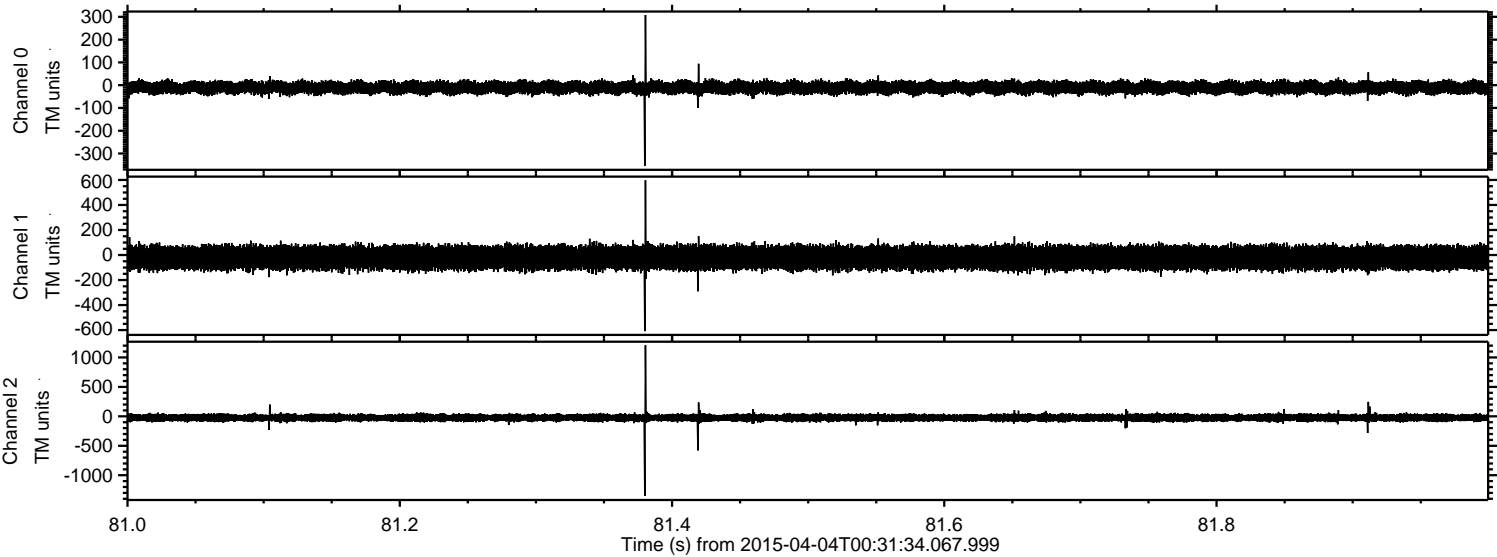
Processed Sat Apr 4 02:39:58 2015 by ELM ver.2012-10-06 from 001__elm20150404_003133__dat00.bin



Processed Sat Apr 4 02:39:59 2015 by ELM ver.2012-10-06 from 001__elm20150404_003133__dat00.bin



Processed Sat Apr 4 02:40:00 2015 by ELM ver.2012-10-06 from 001__elm20150404_003133__dat00.bin



Processed Sat Apr 4 02:40:01 2015 by ELM ver.2012-10-06 from 001__elm20150404_003133__dat00.bin

