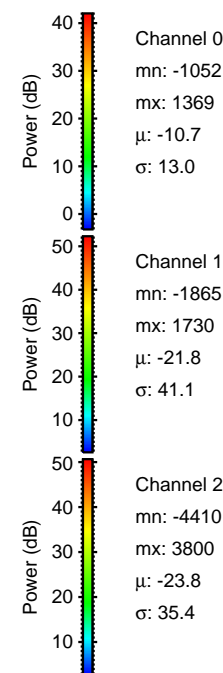
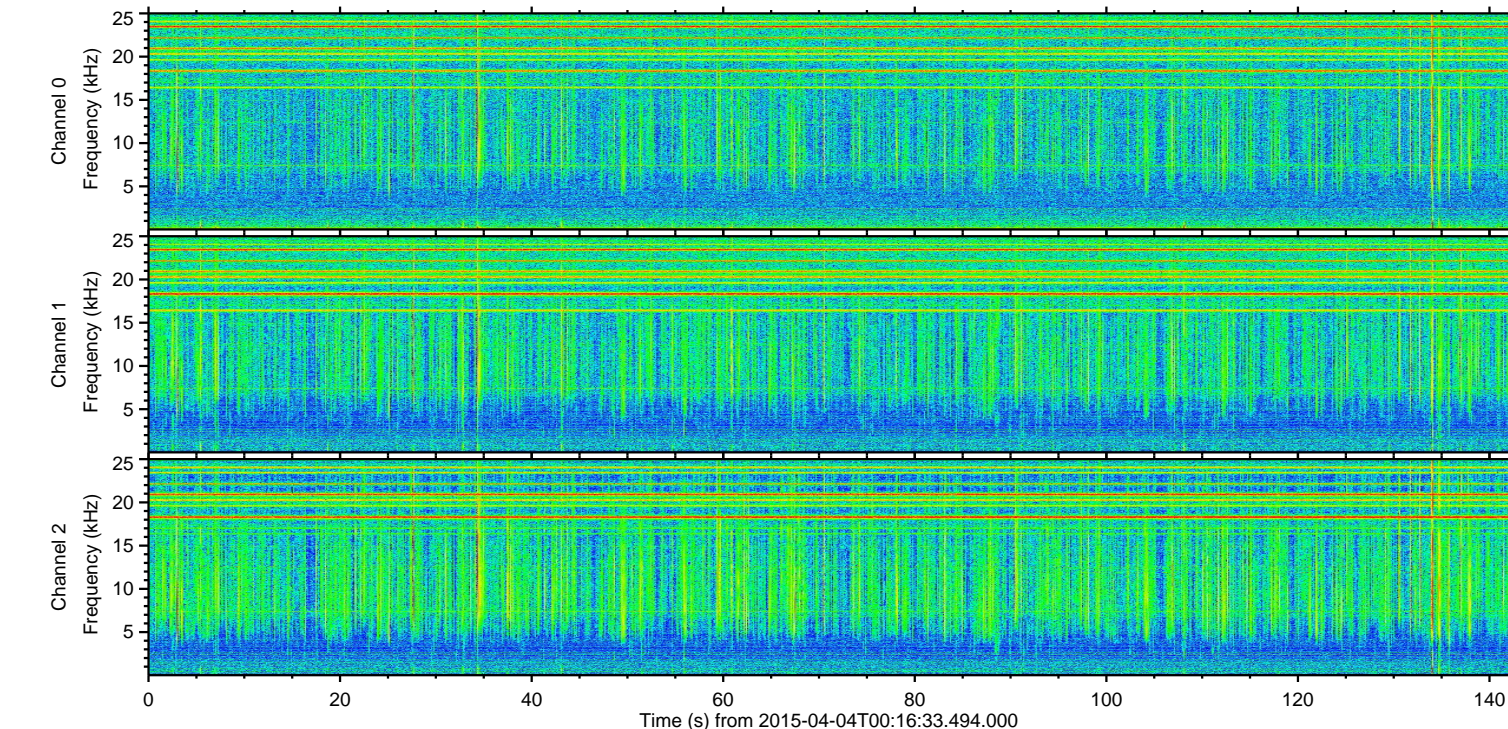
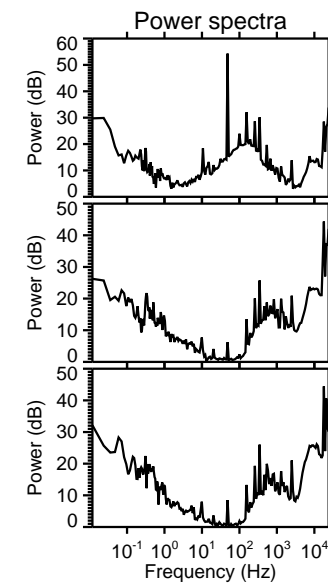
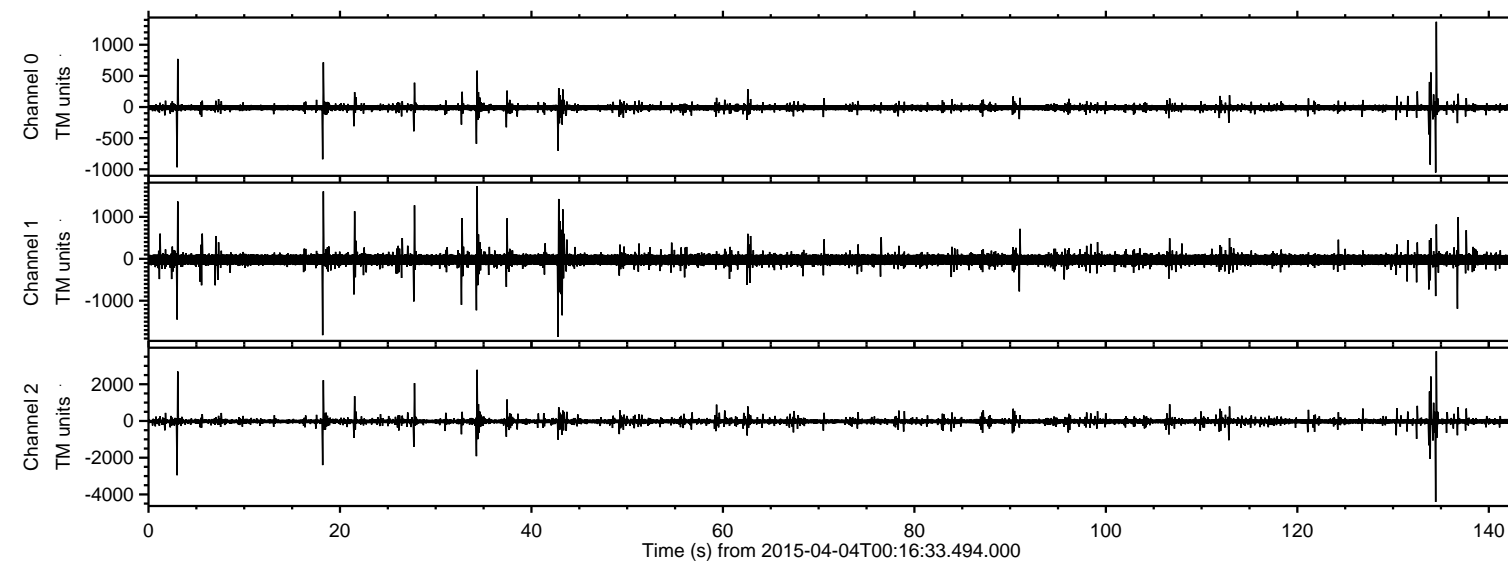


# ELMAVAN 3D WAVEFORMS (Measured data sampled at 50 kHz) 49349 packets of 144 samples from 2015-04-04T00:16:33.494.000.

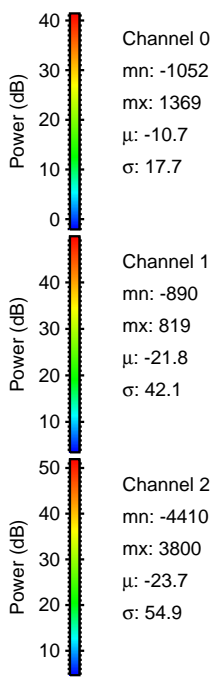
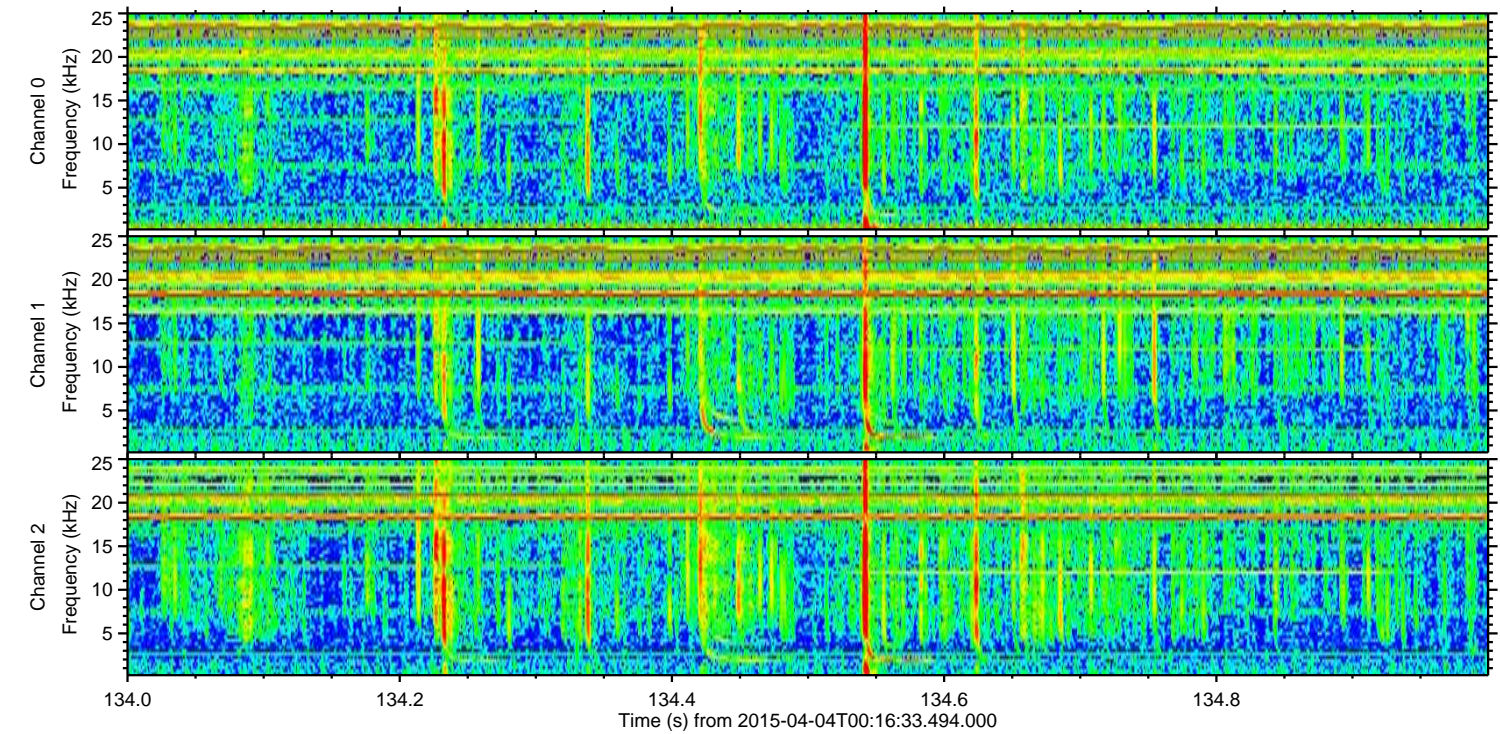
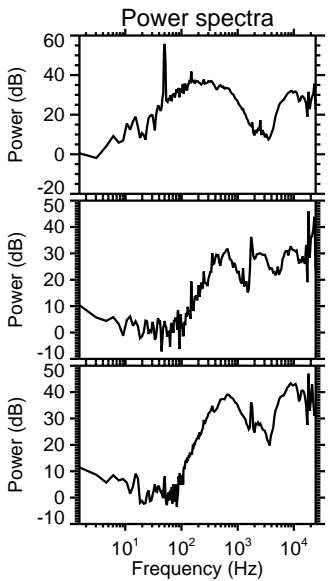
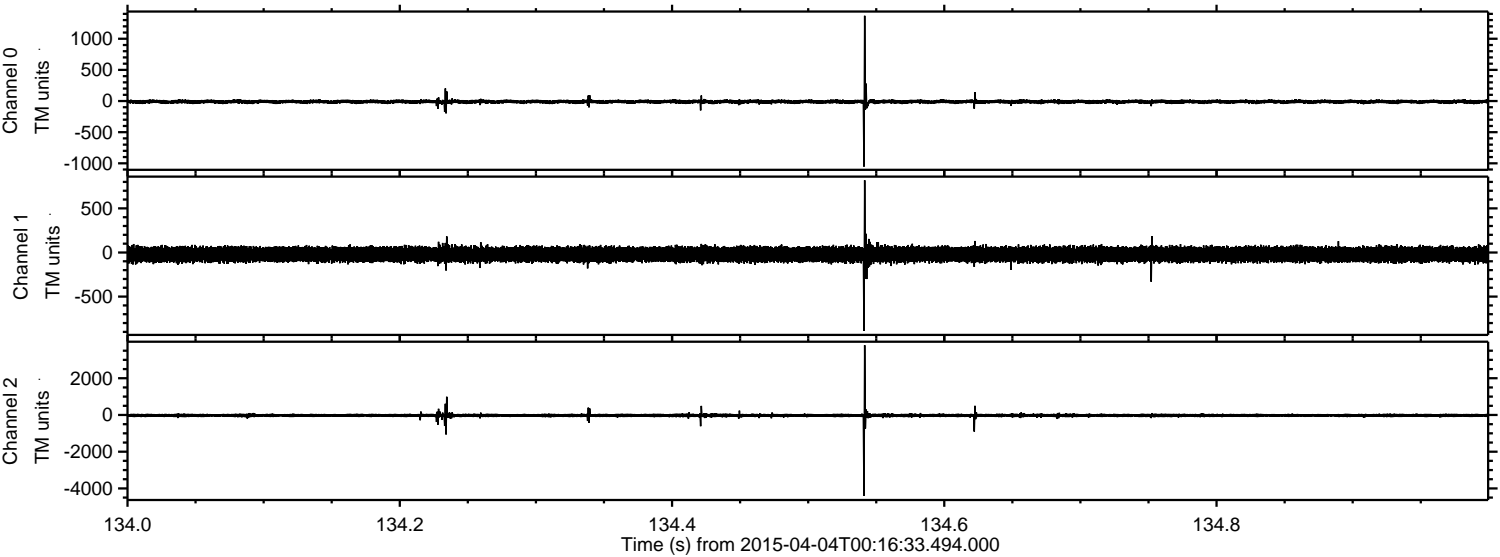
Processed Sat Apr 4 02:23:39 2015 by ELM ver.2012-10-06 from 001\_\_elm20150404\_001632\_\_dat00.bin





ELMAVAN 3D WAVEFORMS (Measured data sampled at 50 kHz) 49349 packets of 144 samples from 2015-04-04T00:16:33.494.000. Part 135/143

Processed Sat Apr 4 02:23:51 2015 by ELM ver.2012-10-06 from 001\_\_elm20150404\_001632\_\_dat00.bin



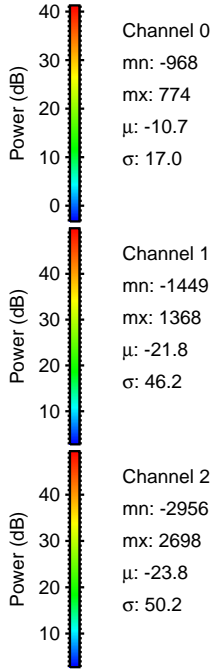
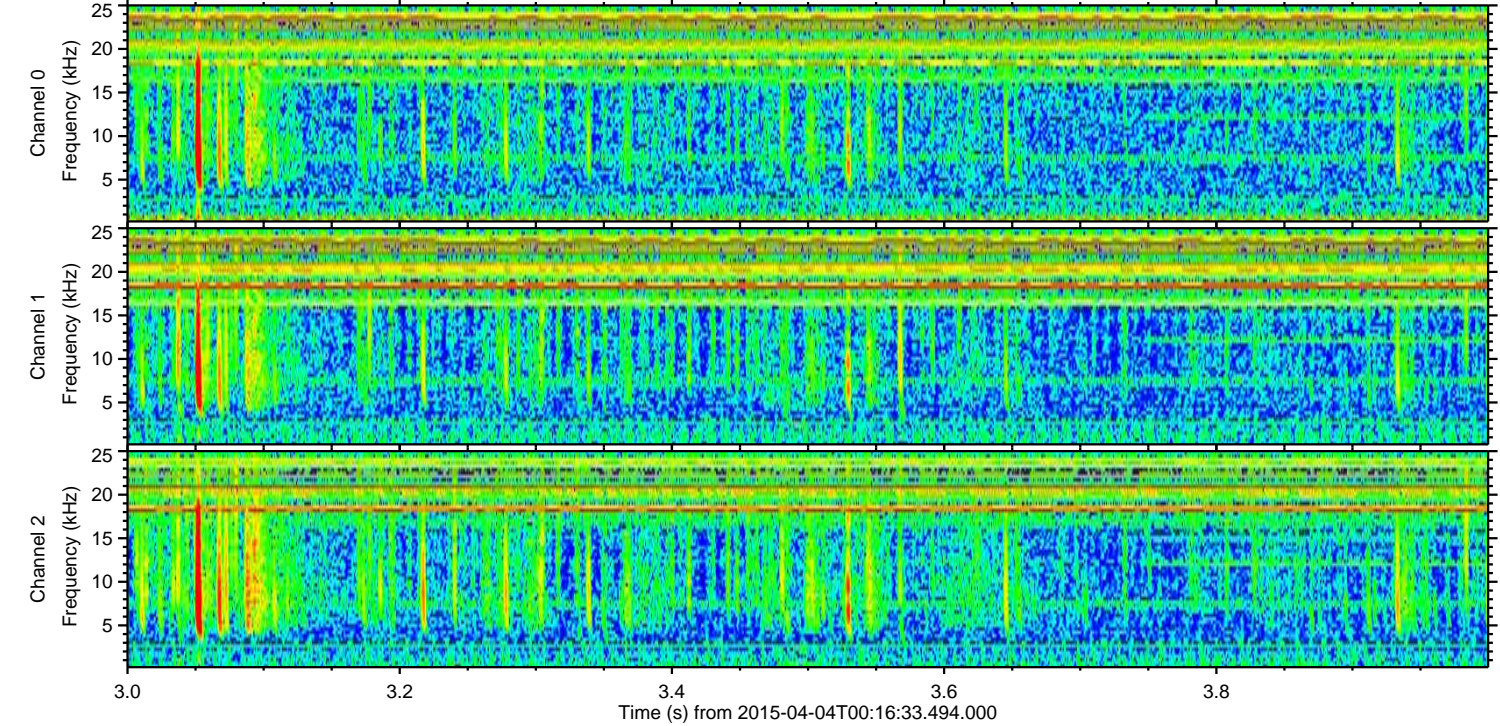
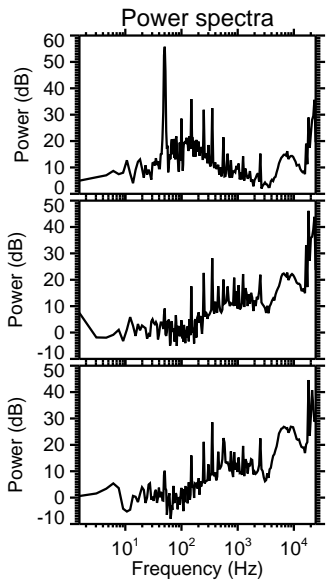
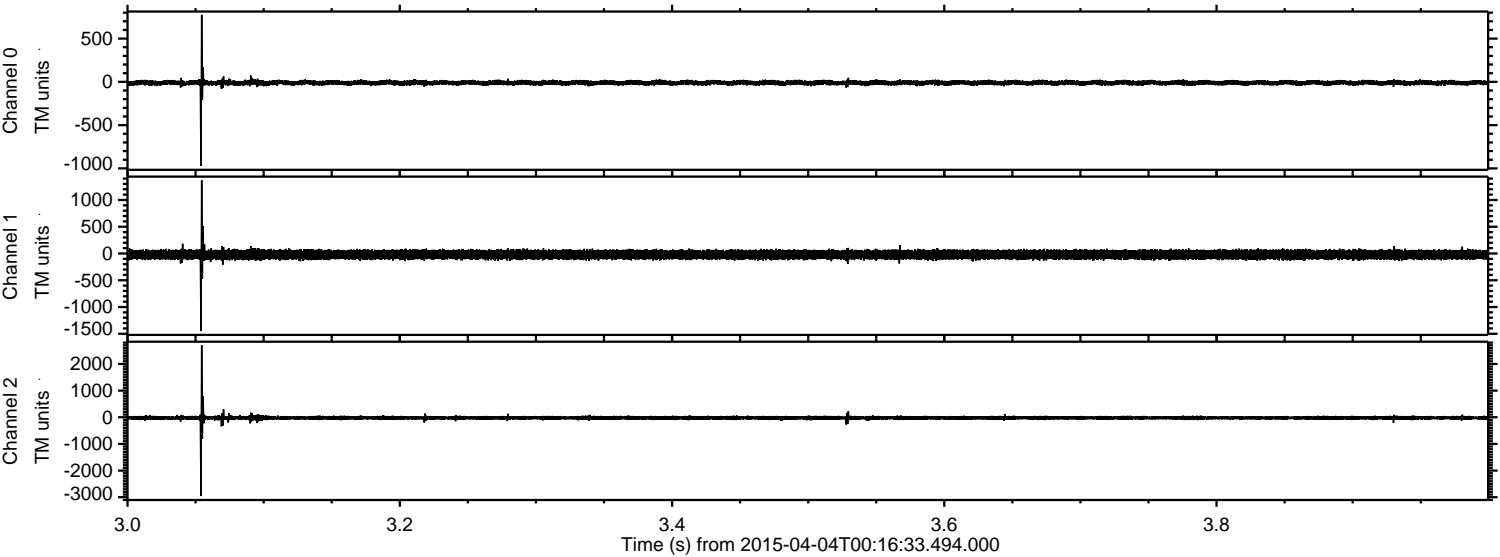
Channel 0  
mn: -1052  
mx: 1369  
 $\mu$ : -10.7  
 $\sigma$ : 17.7

Channel 1  
mn: -890  
mx: 819  
 $\mu$ : -21.8  
 $\sigma$ : 42.1

Channel 2  
mn: -4410  
mx: 3800  
 $\mu$ : -23.7  
 $\sigma$ : 54.9



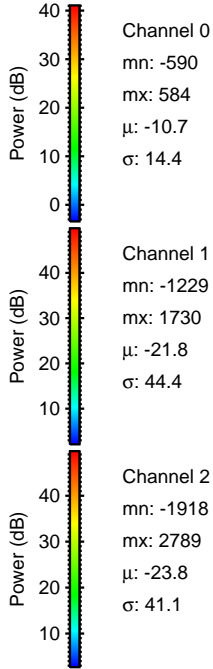
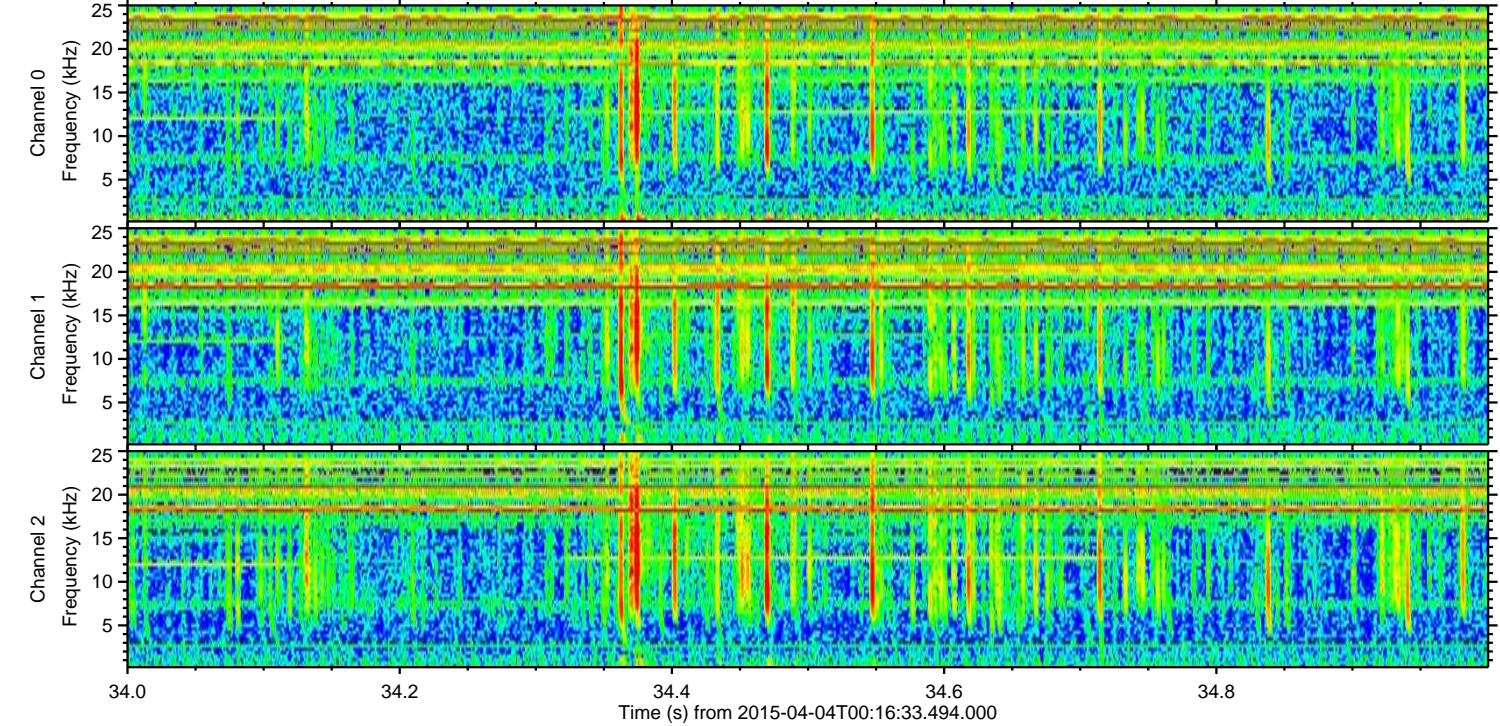
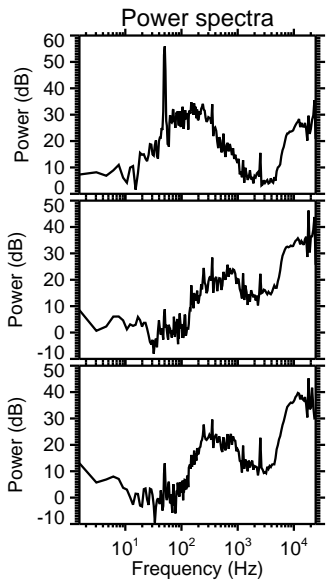
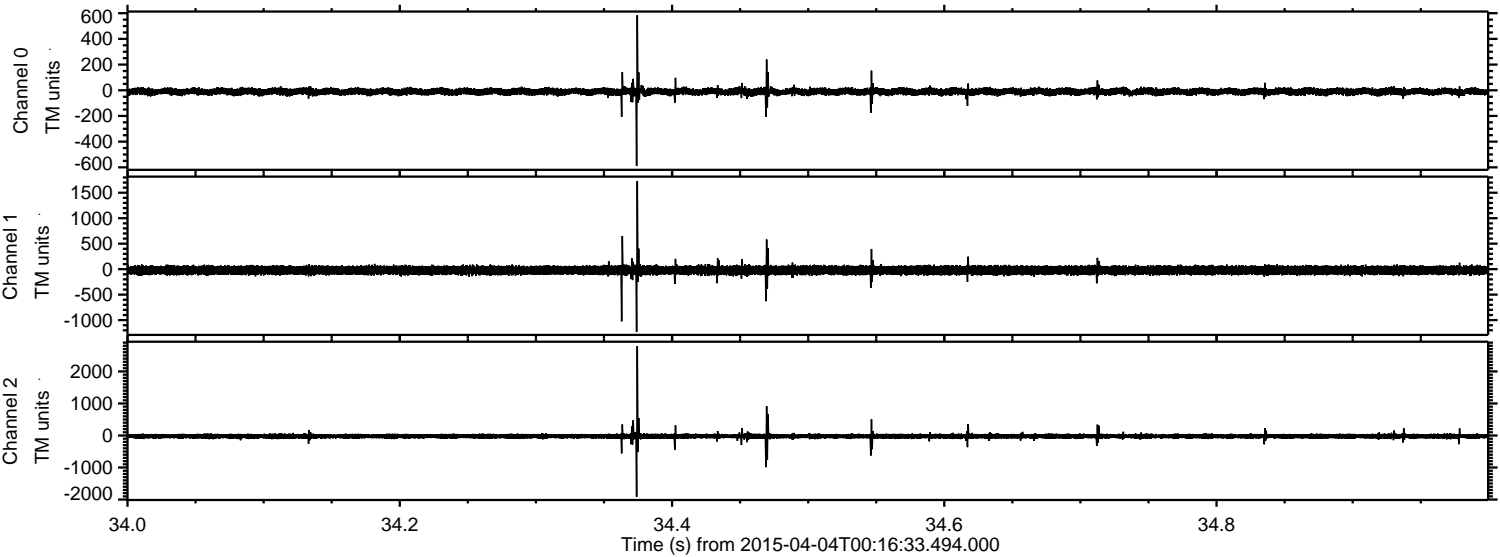
Processed Sat Apr 4 02:23:51 2015 by ELM ver.2012-10-06 from 001\_\_elm20150404\_001632\_\_dat00.bin





ELMAVAN 3D WAVEFORMS (Measured data sampled at 50 kHz) 49349 packets of 144 samples from 2015-04-04T00:16:33.494.000. Part 35/143

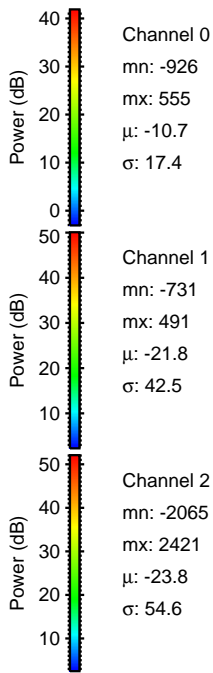
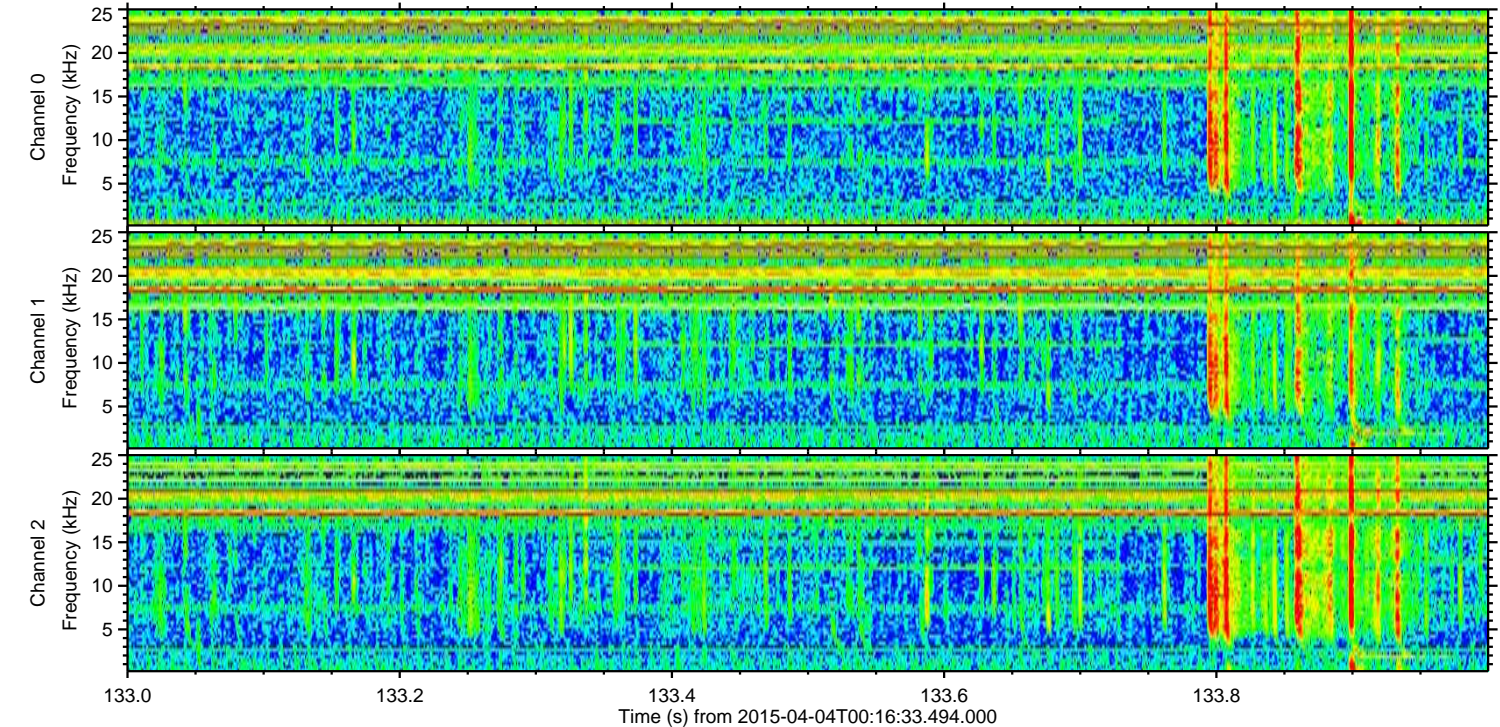
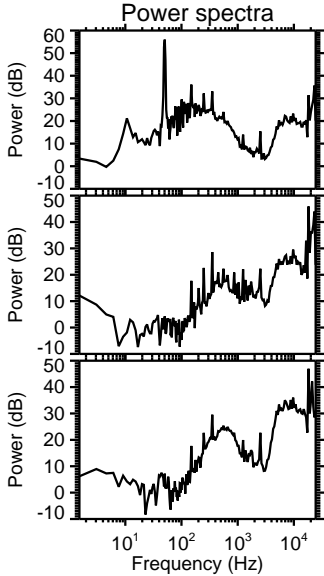
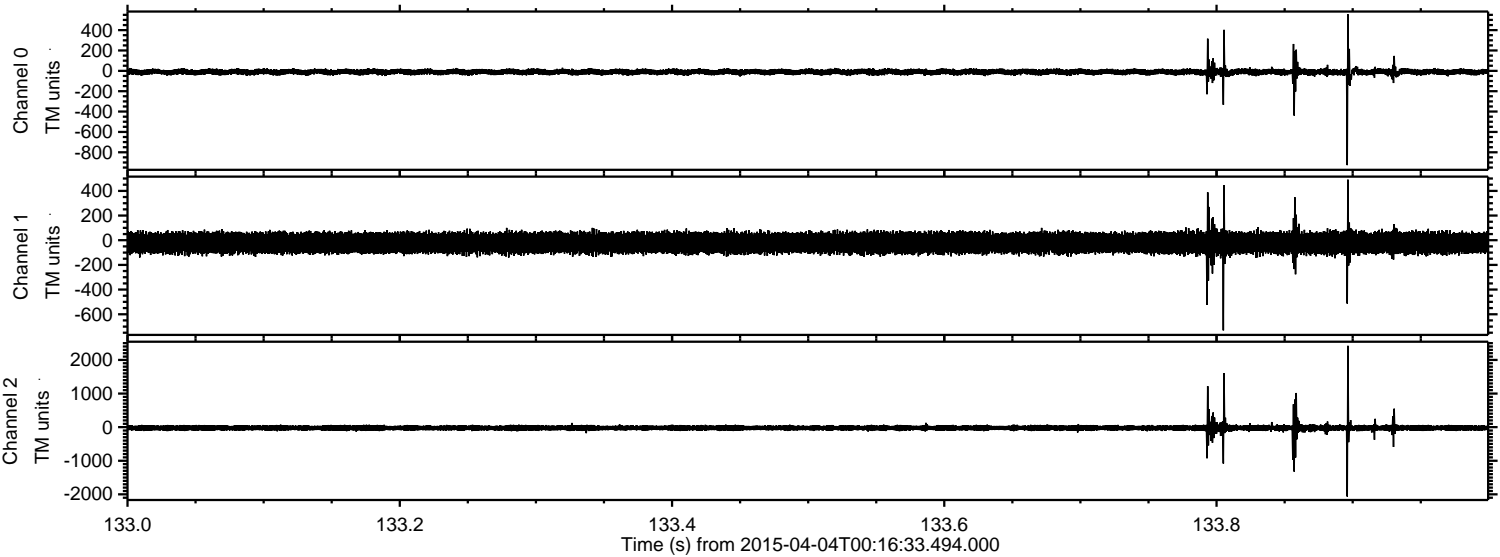
Processed Sat Apr 4 02:23:52 2015 by ELM ver.2012-10-06 from 001\_\_elm20150404\_001632\_\_dat00.bin





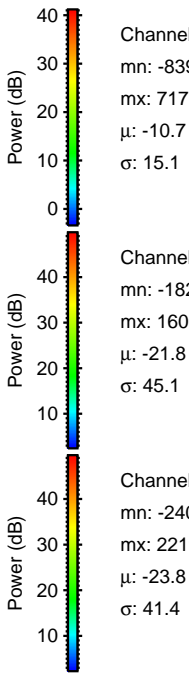
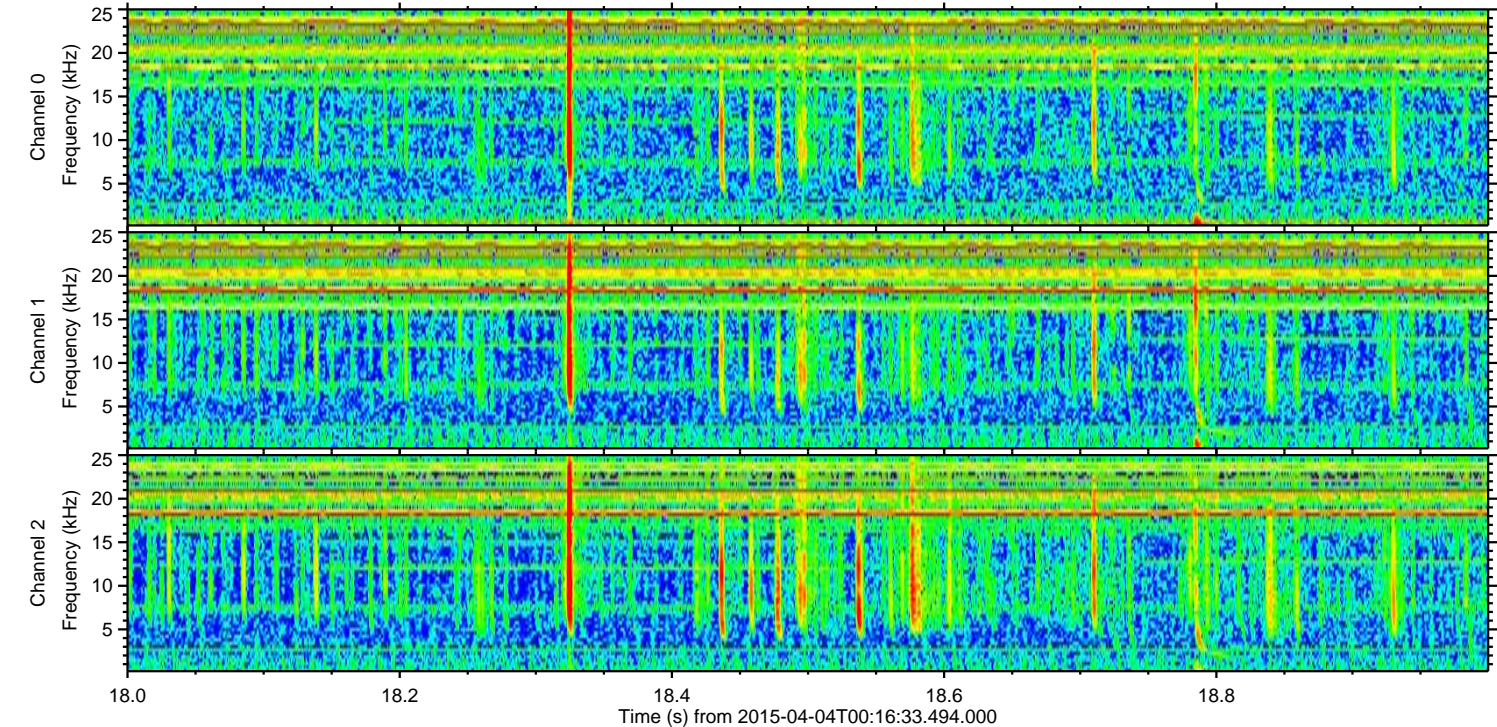
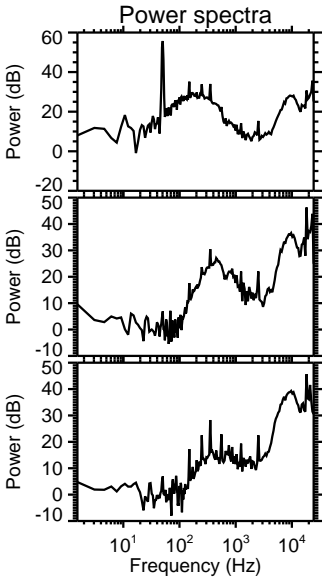
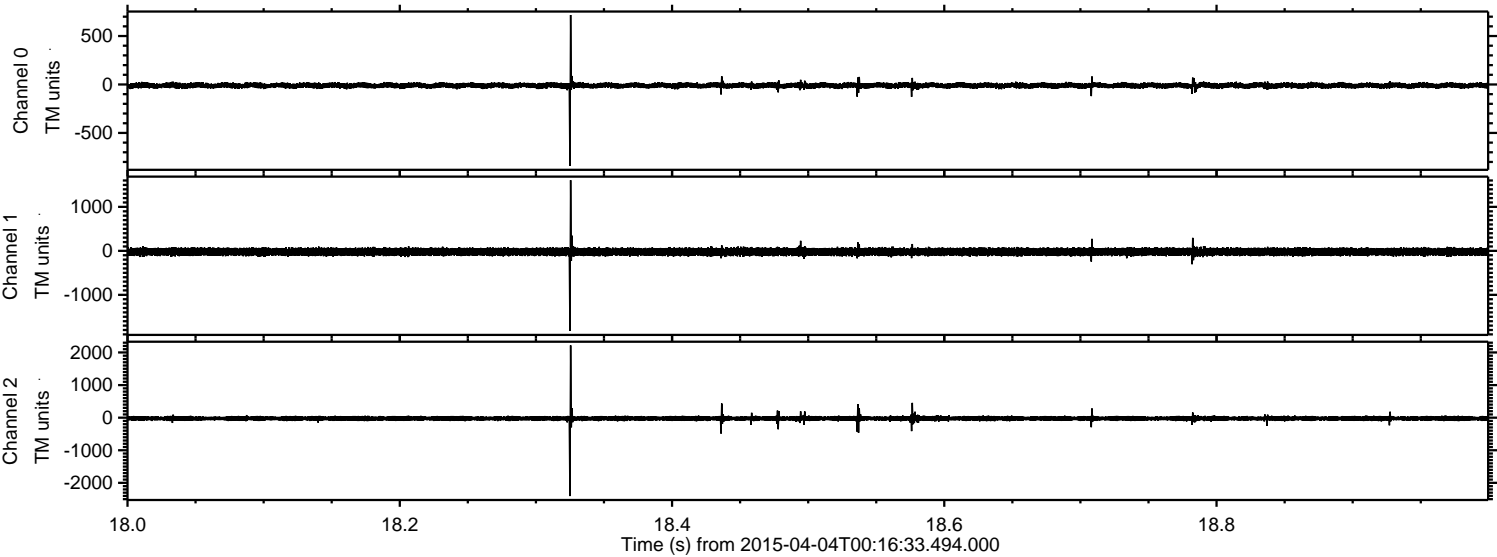
ELMAVAN 3D WAVEFORMS (Measured data sampled at 50 kHz) 49349 packets of 144 samples from 2015-04-04T00:16:33.494.000. Part 134/143

Processed Sat Apr 4 02:23:53 2015 by ELM ver.2012-10-06 from 001\_\_elm20150404\_001632\_\_dat00.bin



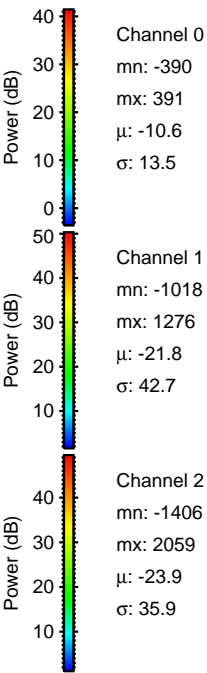
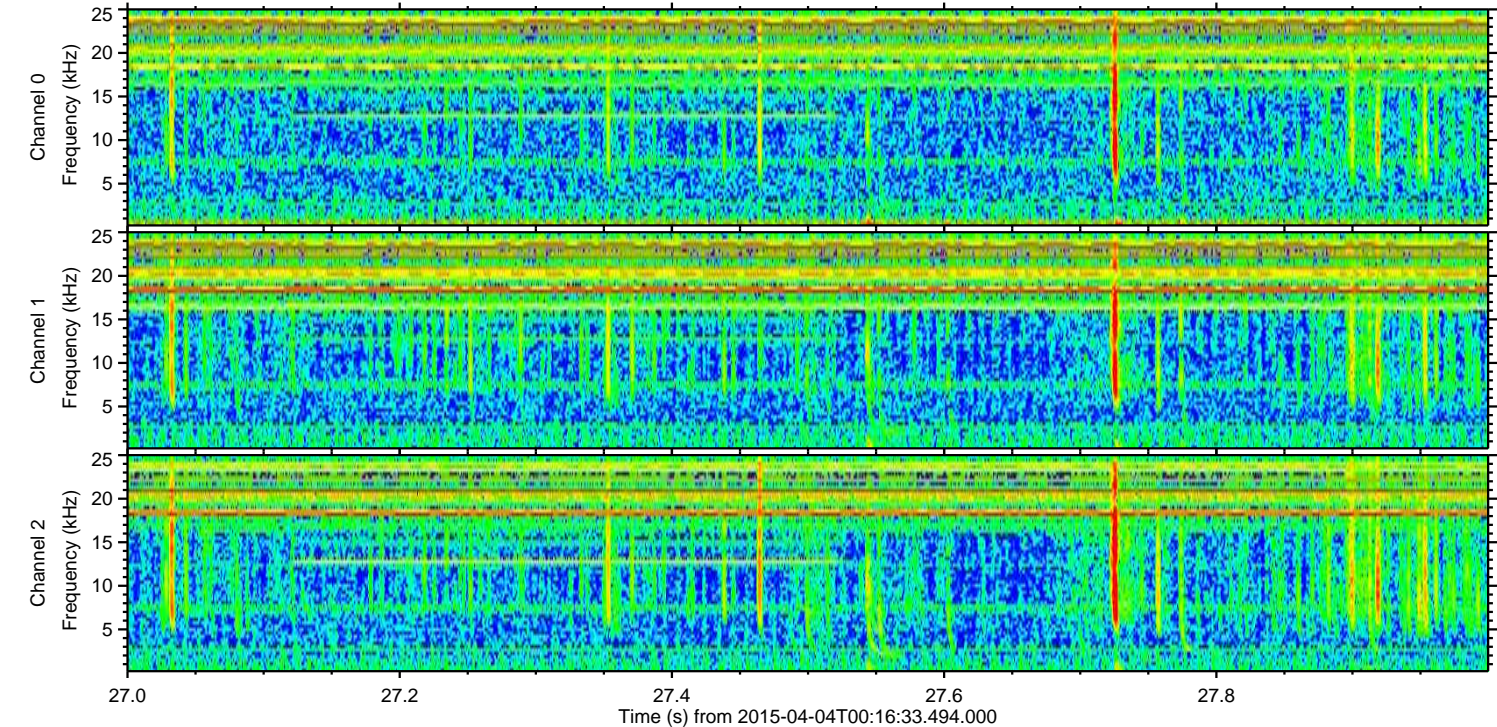
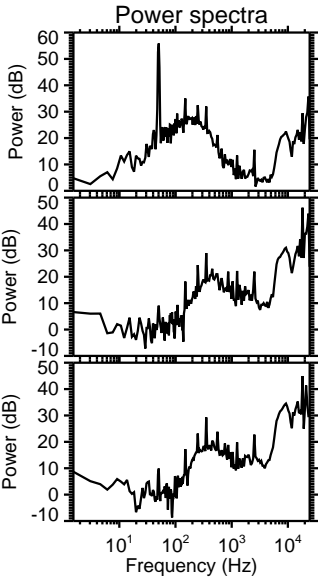
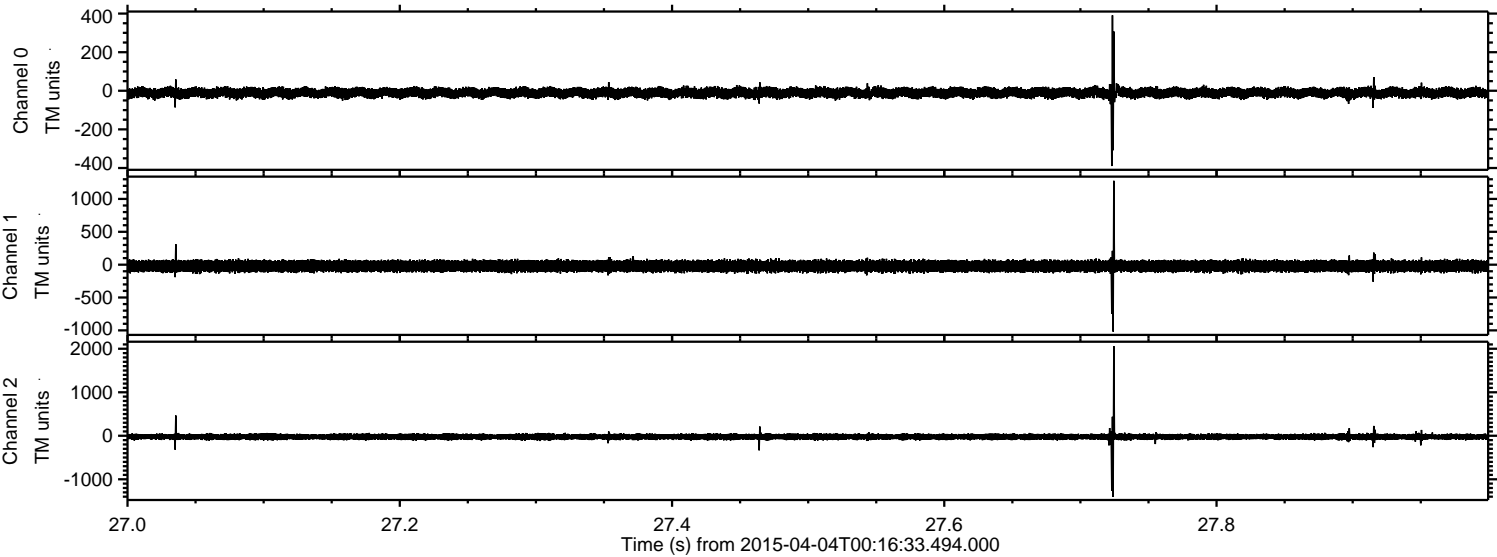


Processed Sat Apr 4 02:23:54 2015 by ELM ver.2012-10-06 from 001\_\_elm20150404\_001632\_\_dat00.bin





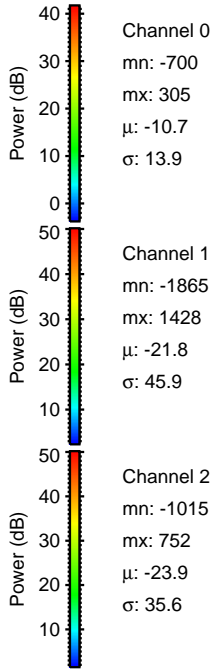
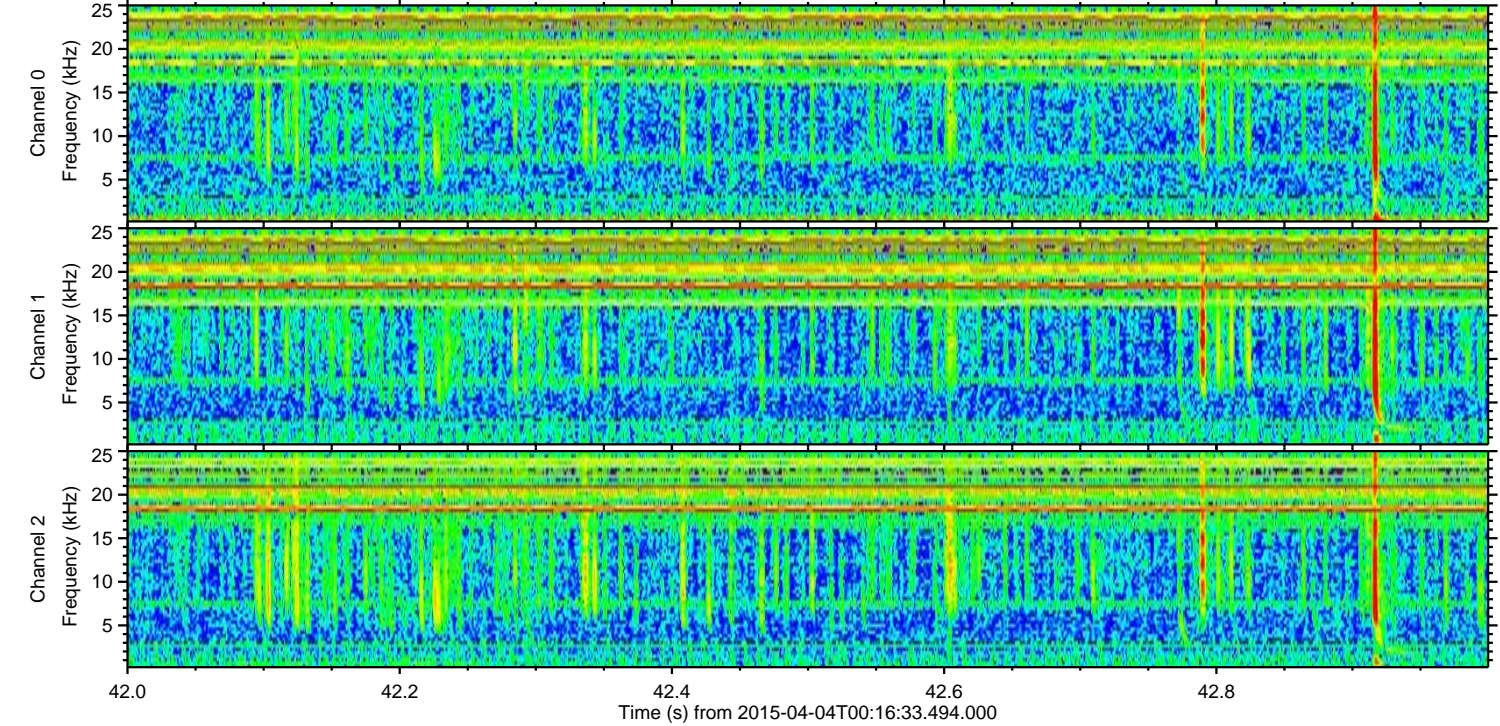
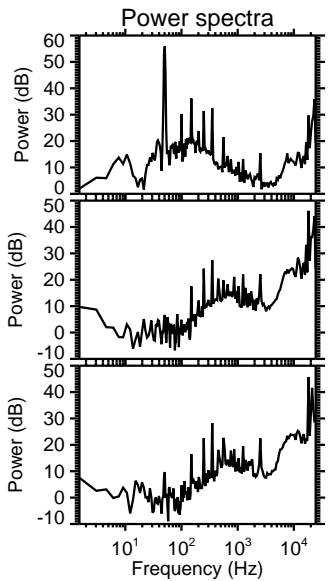
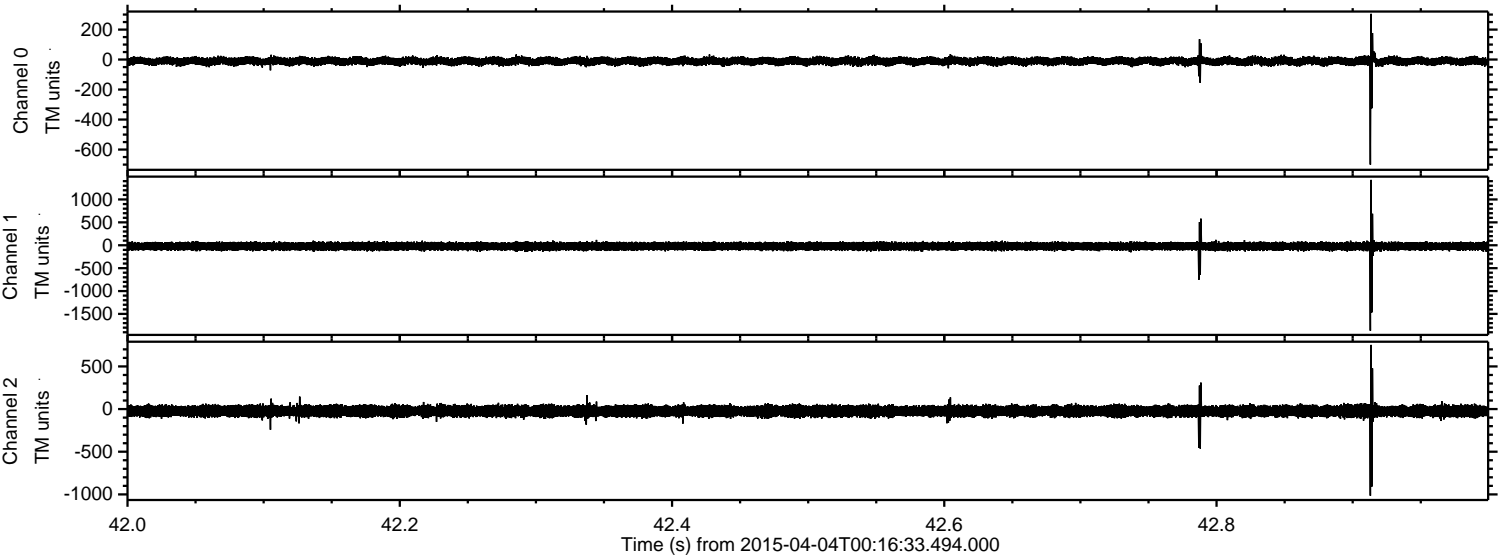
Processed Sat Apr 4 02:23:55 2015 by ELM ver.2012-10-06 from 001\_\_elm20150404\_001632\_\_dat00.bin





ELMAVAN 3D WAVEFORMS (Measured data sampled at 50 kHz) 49349 packets of 144 samples from 2015-04-04T00:16:33.494.000. Part 43/143

Processed Sat Apr 4 02:23:56 2015 by ELM ver.2012-10-06 from 001\_\_elm20150404\_001632\_\_dat00.bin



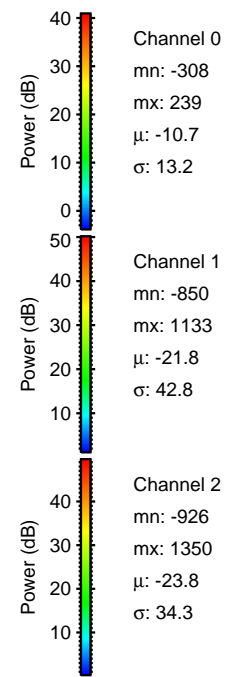
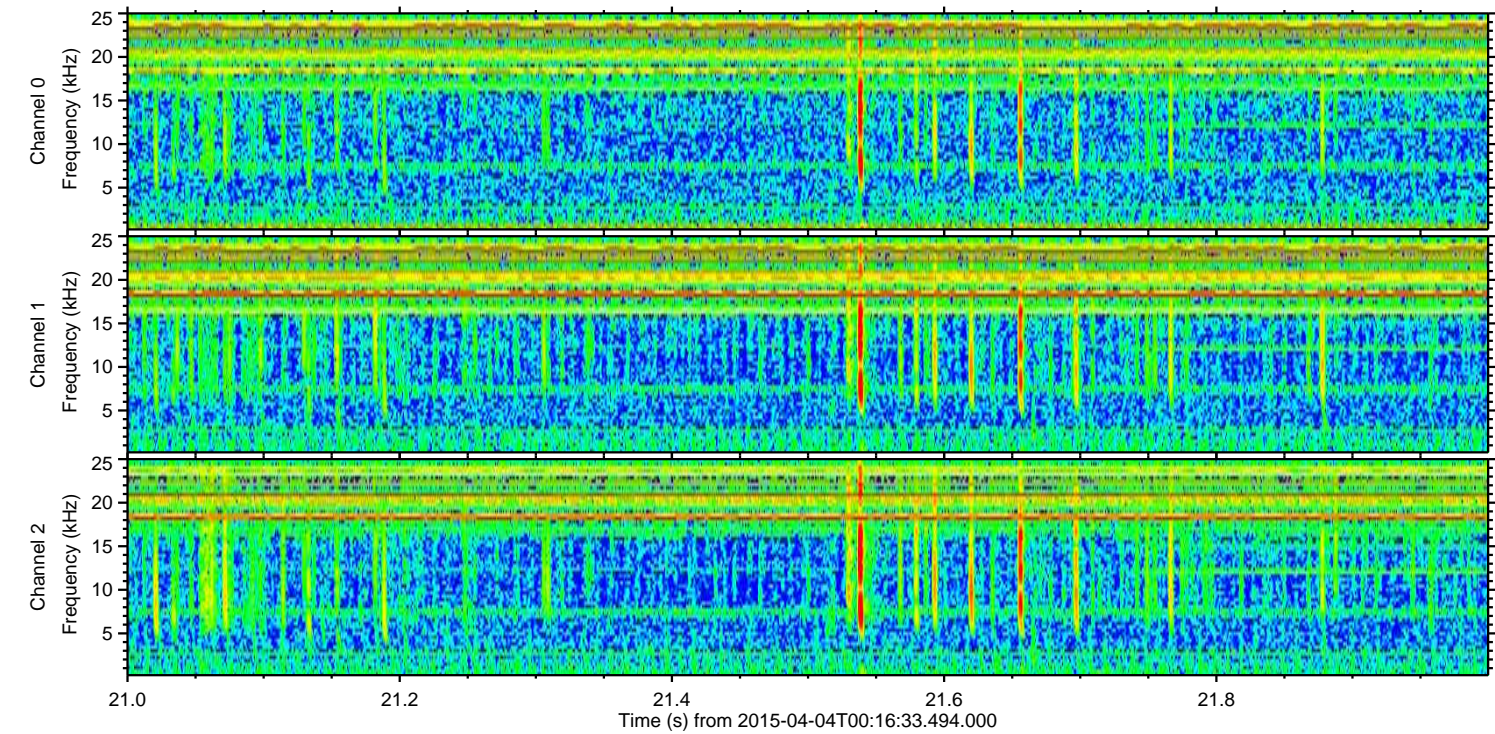
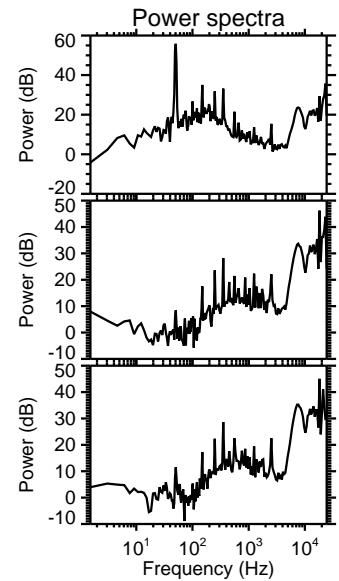
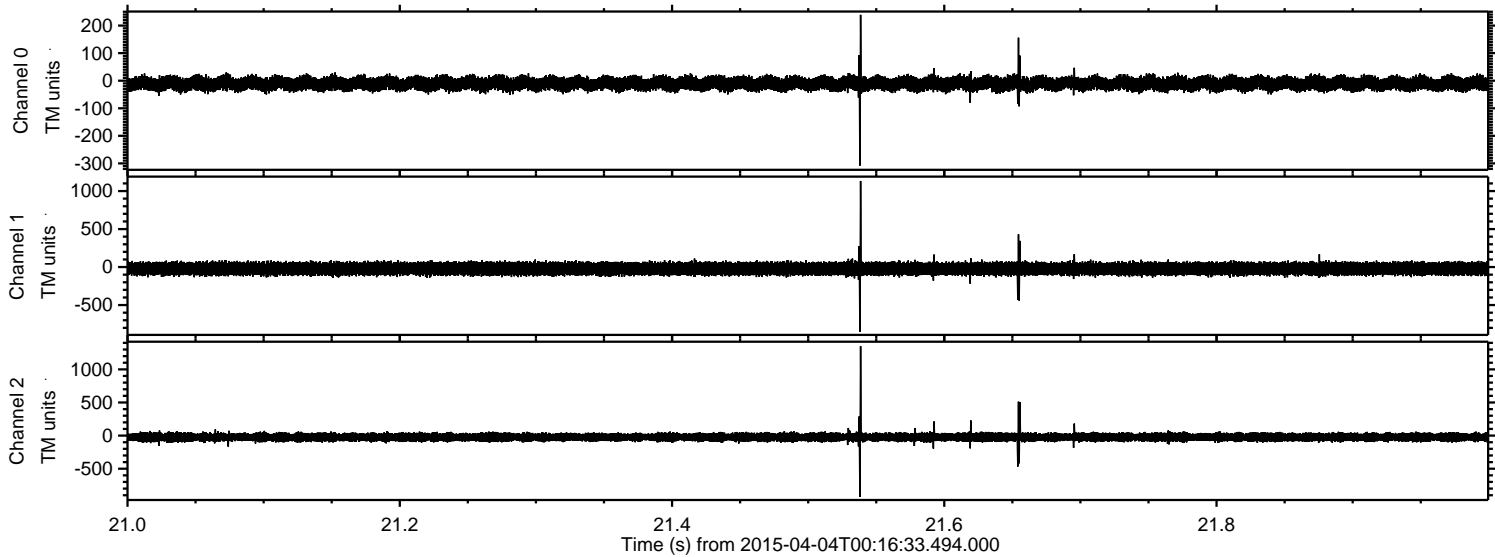
Channel 0  
mn: -700  
mx: 305  
 $\mu$ : -10.7  
 $\sigma$ : 13.9

Channel 1  
mn: -1865  
mx: 1428  
 $\mu$ : -21.8  
 $\sigma$ : 45.9

Channel 2  
mn: -1015  
mx: 752  
 $\mu$ : -23.9  
 $\sigma$ : 35.6

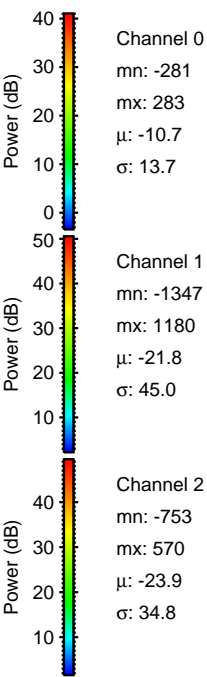
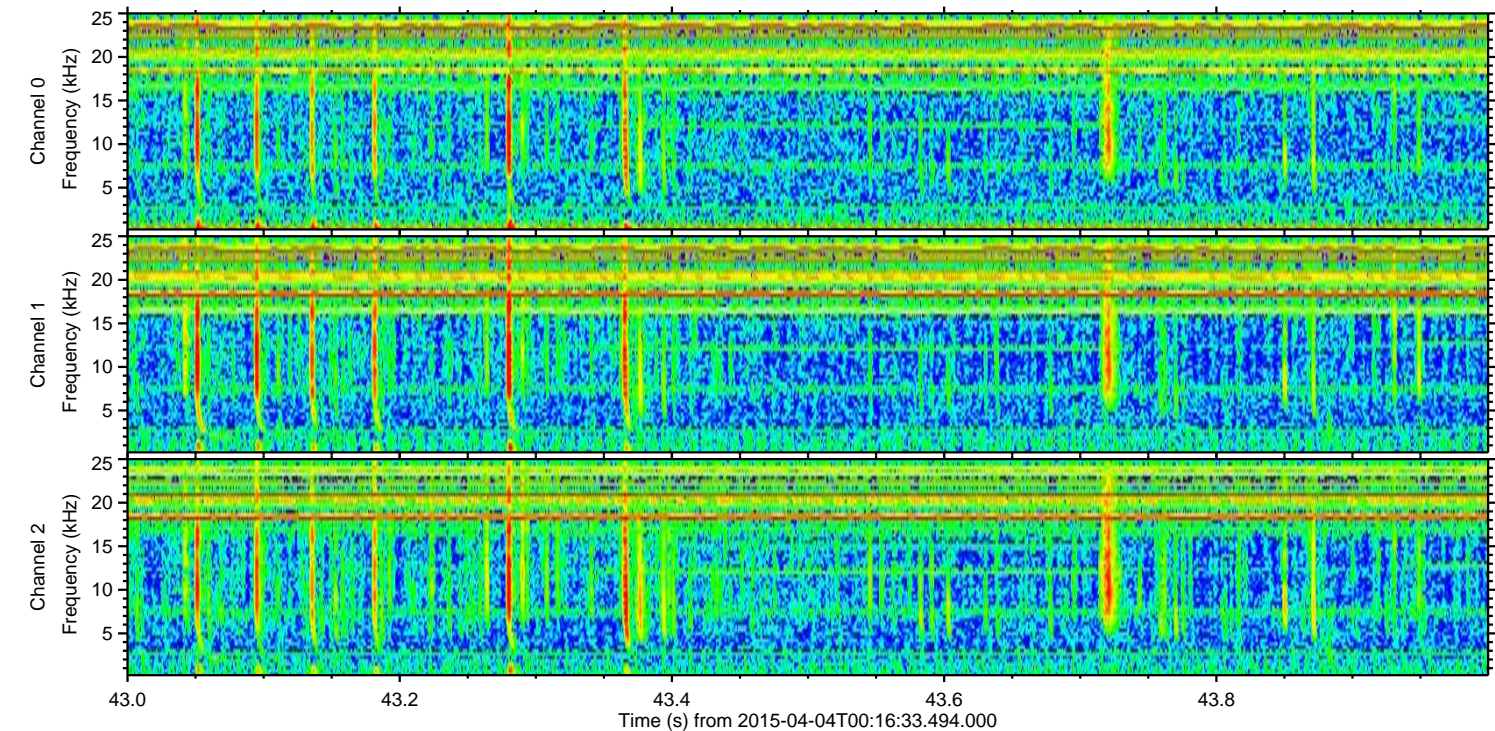
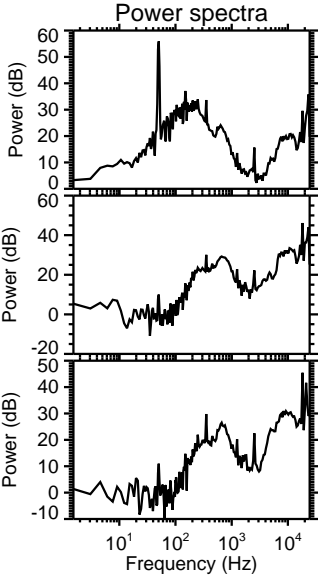
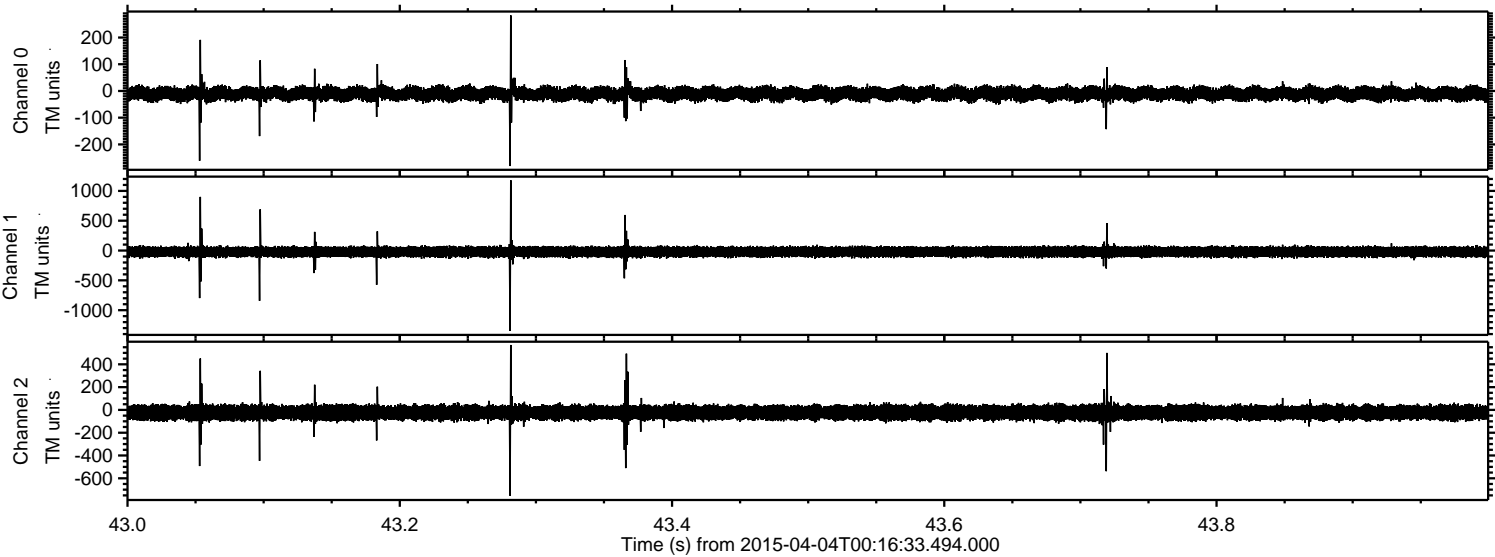


Processed Sat Apr 4 02:23:57 2015 by ELM ver.2012-10-06 from 001\_\_elm20150404\_001632\_\_dat00.bin





Processed Sat Apr 4 02:23:58 2015 by ELM ver.2012-10-06 from 001\_\_elm20150404\_001632\_\_dat00.bin





Processed Sat Apr 4 02:23:59 2015 by ELM ver.2012-10-06 from 001\_\_elm20150404\_001632\_\_dat00.bin

