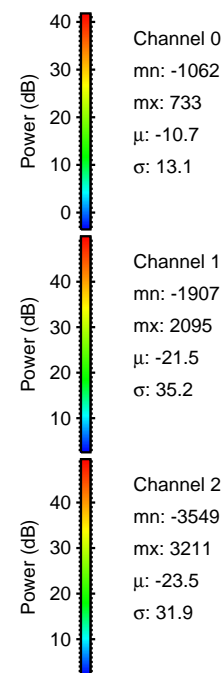
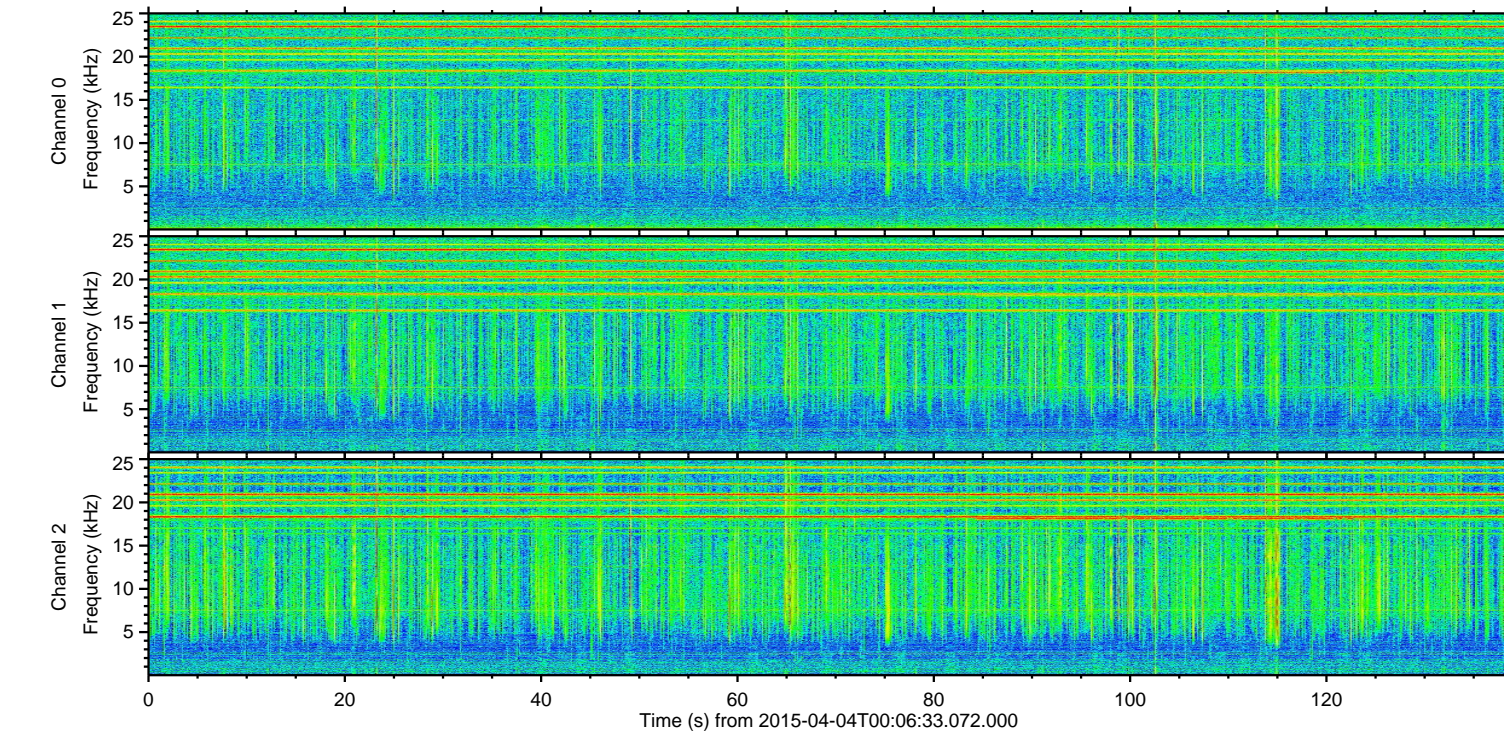
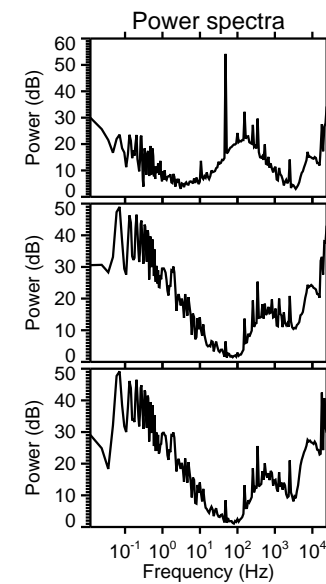
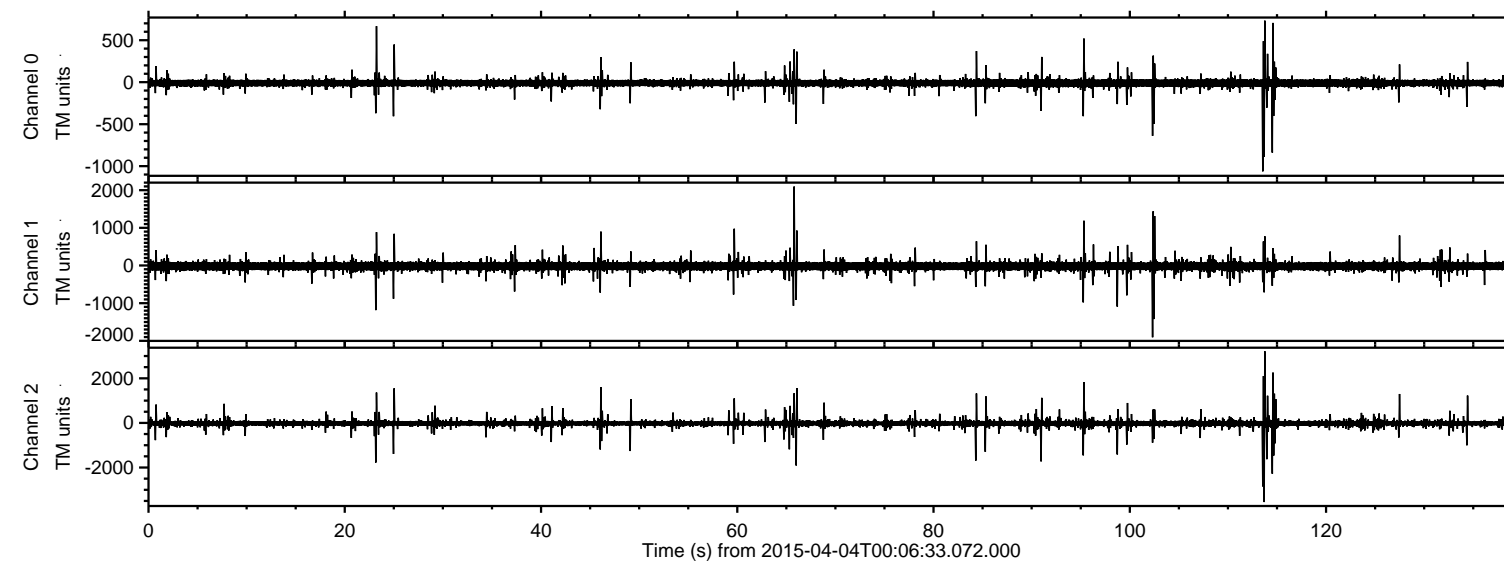


ELMAVAN 3D WAVEFORMS (Measured data sampled at 50 kHz) 48145 packets of 144 samples from 2015-04-04T00:06:33.072.000.

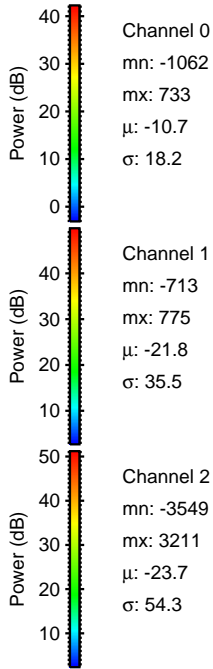
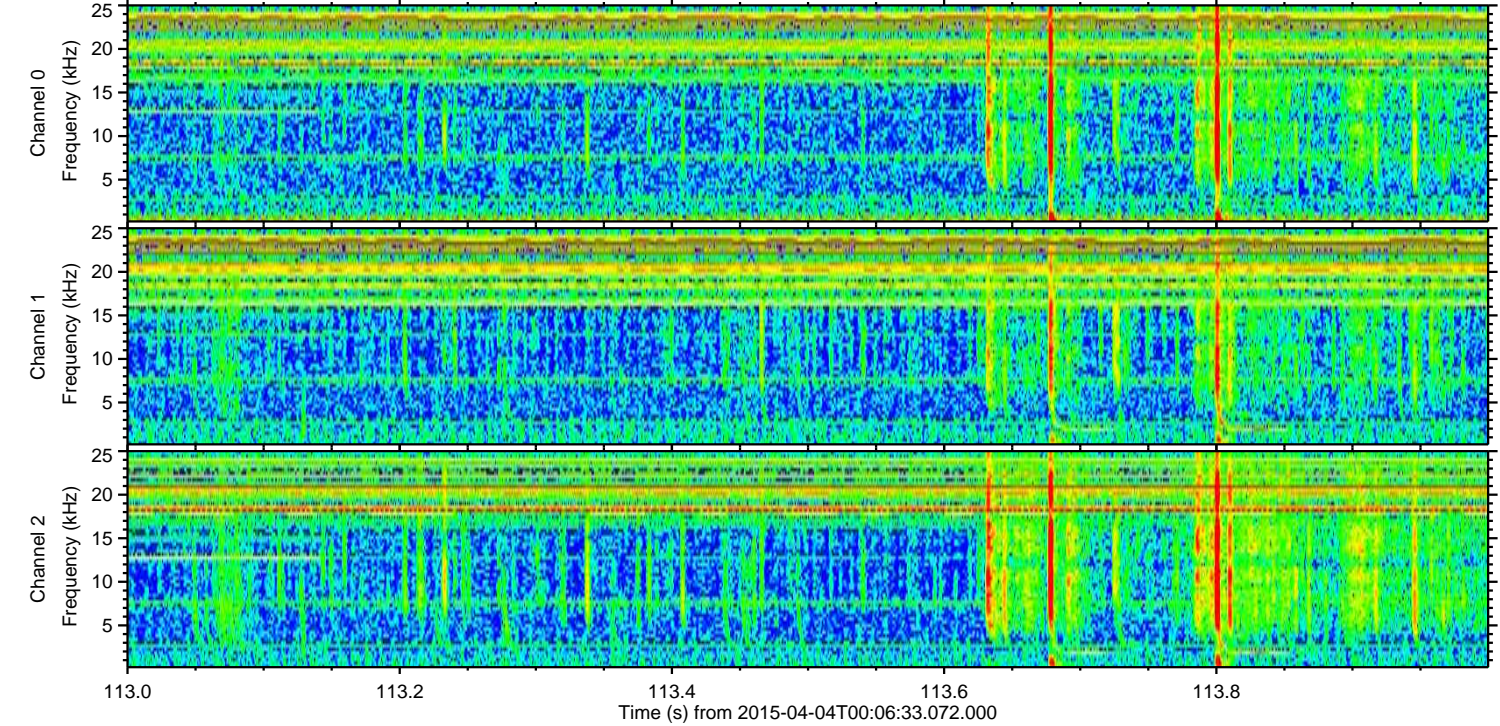
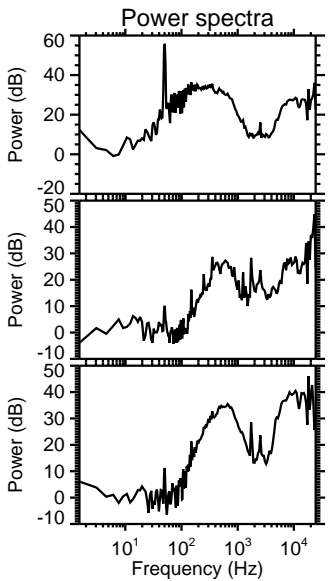
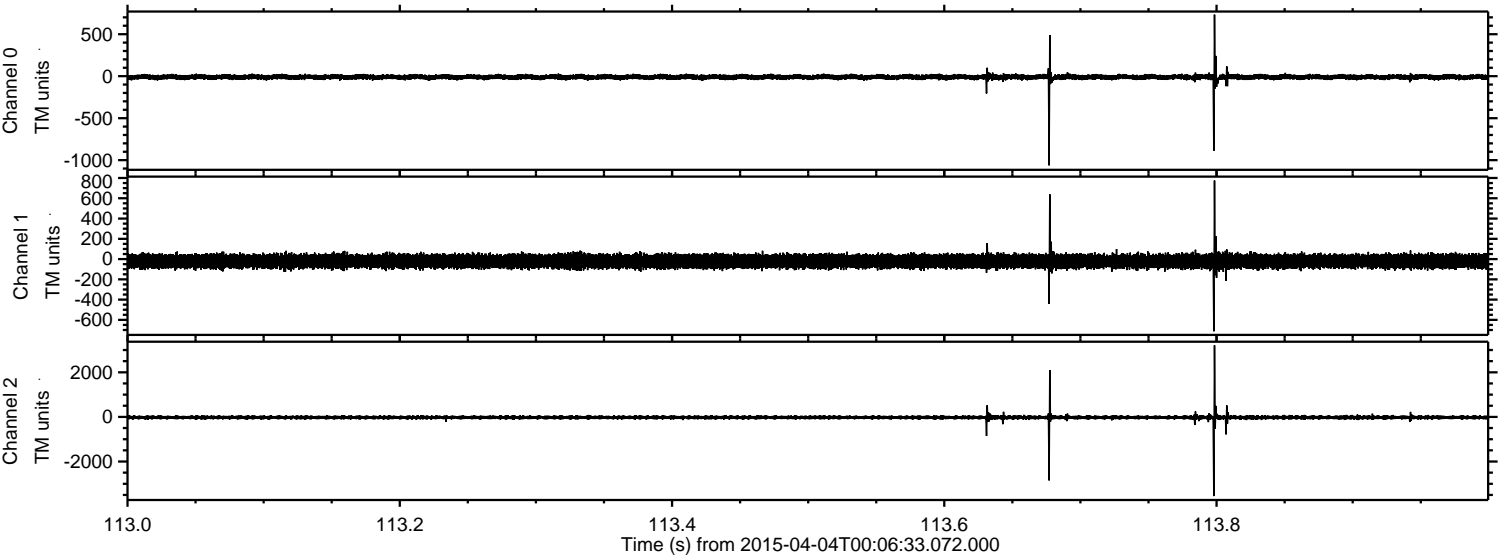
Processed Sat Apr 4 02:13:51 2015 by ELM ver.2012-10-06 from 001\_\_elm20150404\_000632\_\_dat00.bin





ELMAVAN 3D WAVEFORMS (Measured data sampled at 50 kHz) 48145 packets of 144 samples from 2015-04-04T00:06:33.072.000. Part 114/139

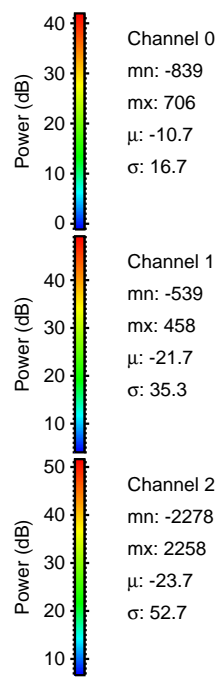
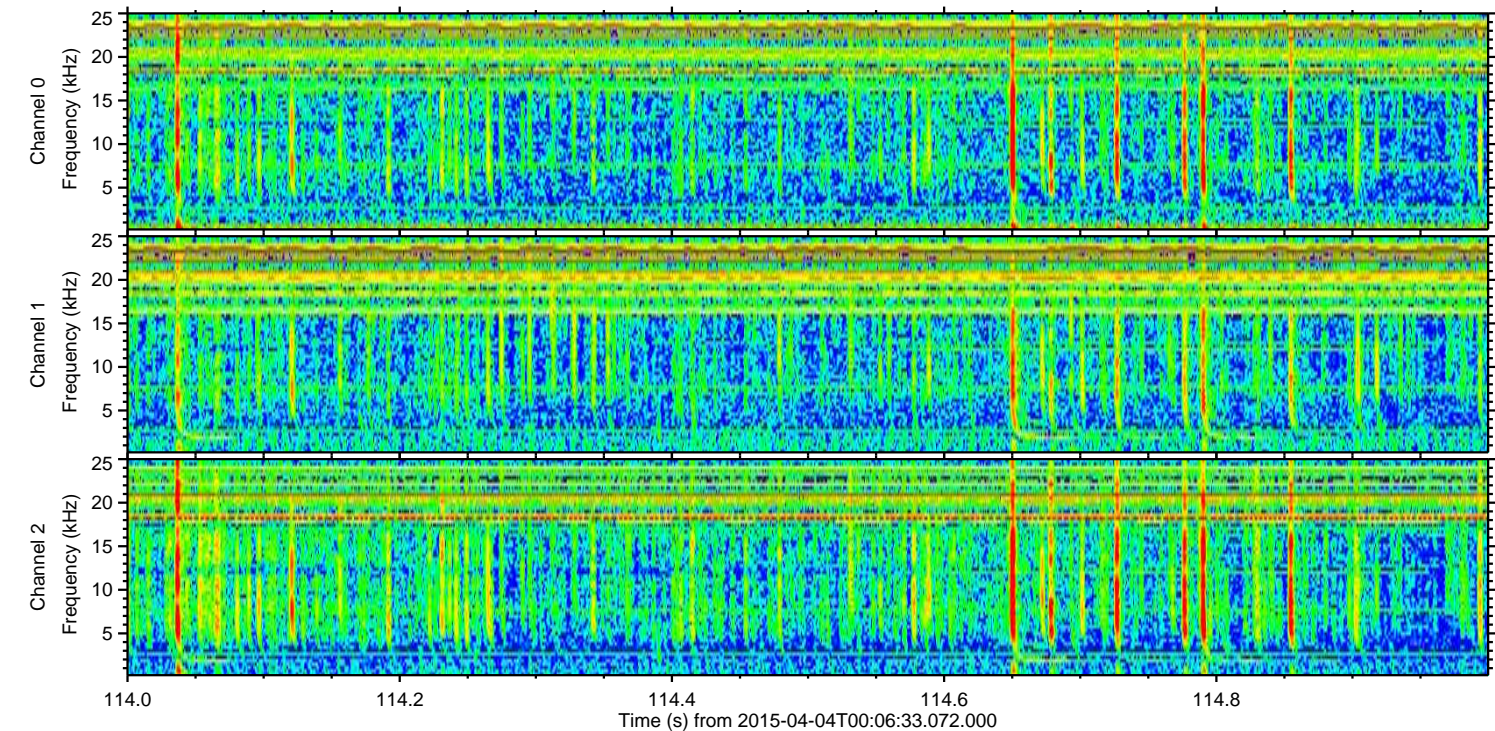
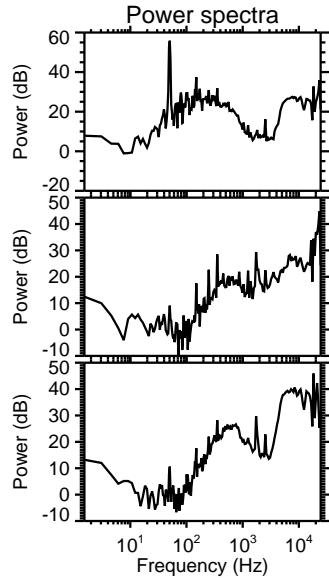
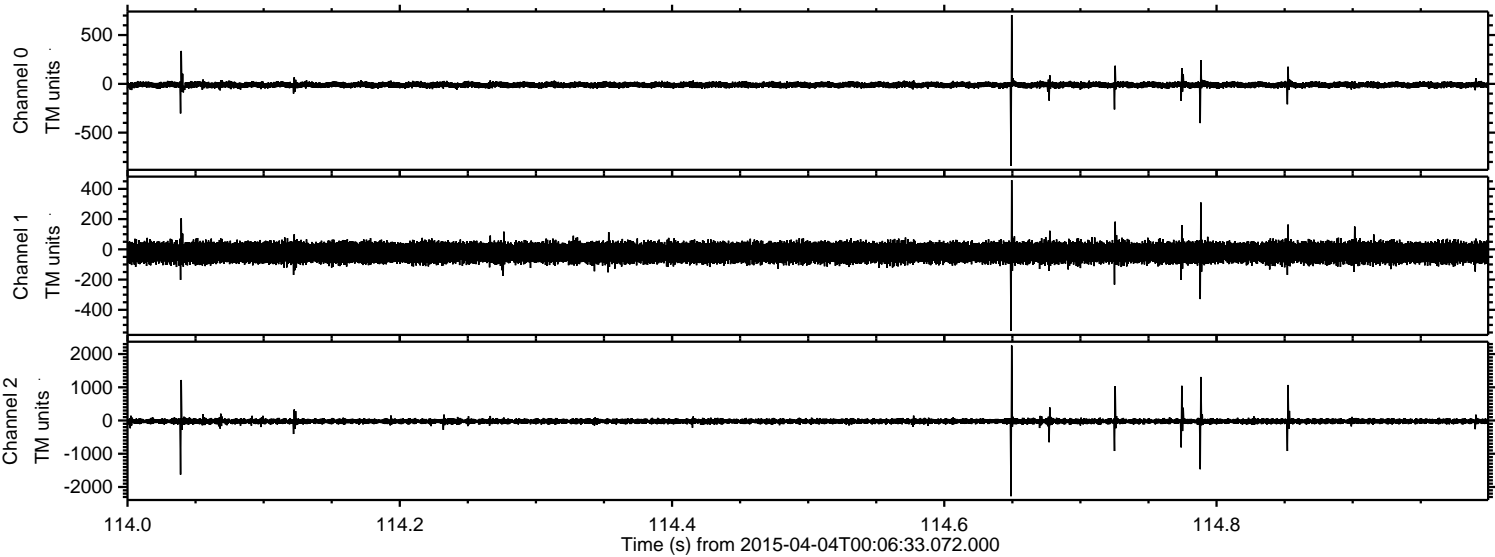
Processed Sat Apr 4 02:14:06 2015 by ELM ver.2012-10-06 from 001\_\_elm20150404\_000632\_\_dat00.bin





ELMAVAN 3D WAVEFORMS (Measured data sampled at 50 kHz) 48145 packets of 144 samples from 2015-04-04T00:06:33.072.000. Part 115/139

Processed Sat Apr 4 02:14:07 2015 by ELM ver.2012-10-06 from 001\_\_elm20150404\_000632\_\_dat00.bin



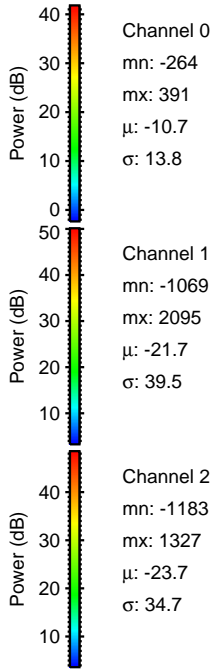
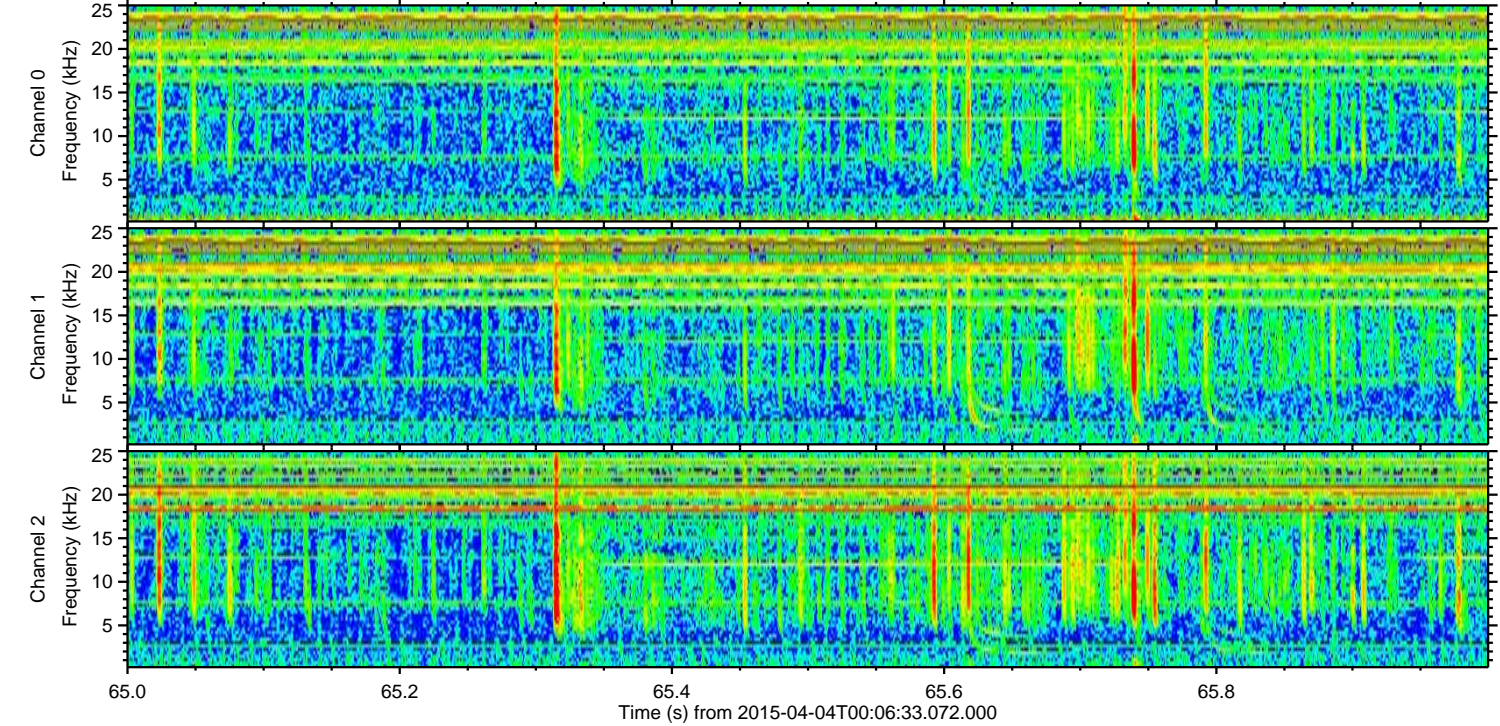
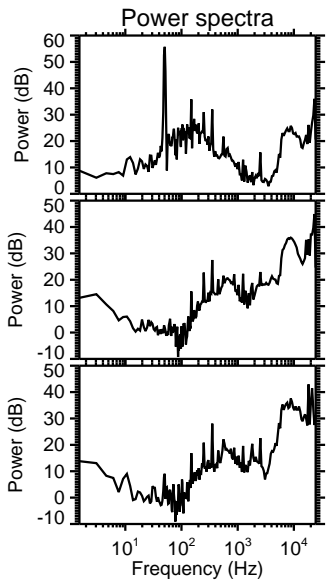
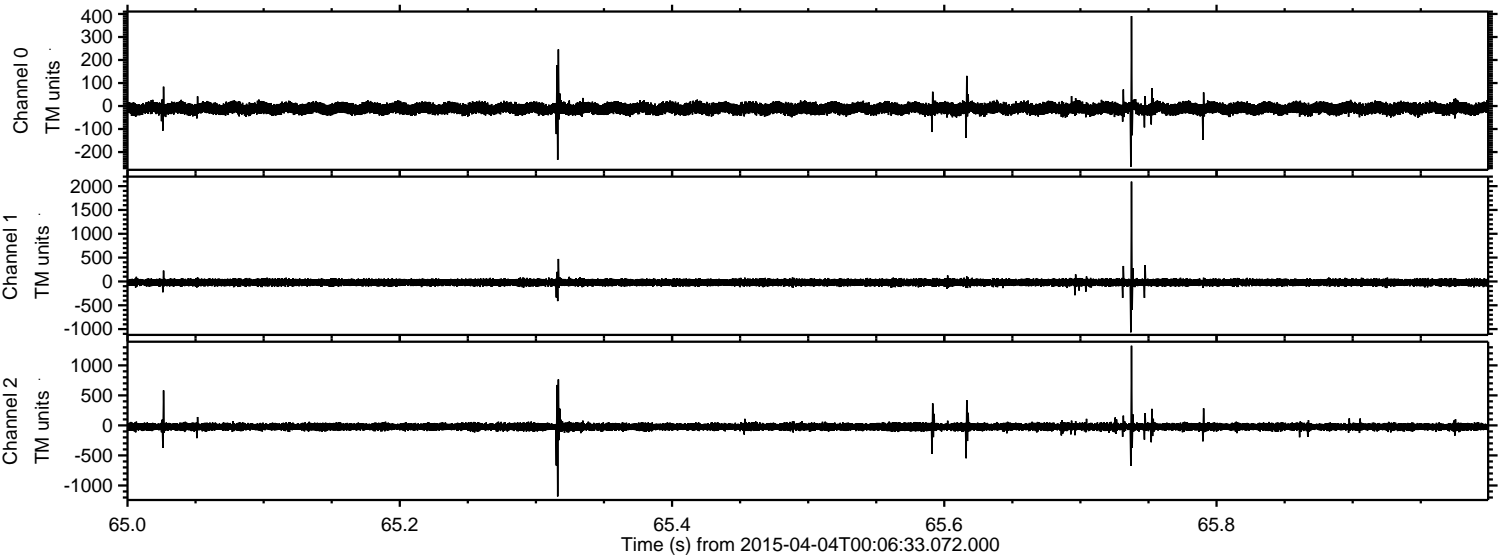
Channel 0  
mn: -839  
mx: 706  
 $\mu$ : -10.7  
 $\sigma$ : 16.7

Channel 1  
mn: -539  
mx: 458  
 $\mu$ : -21.7  
 $\sigma$ : 35.3

Channel 2  
mn: -2278  
mx: 2258  
 $\mu$ : -23.7  
 $\sigma$ : 52.7

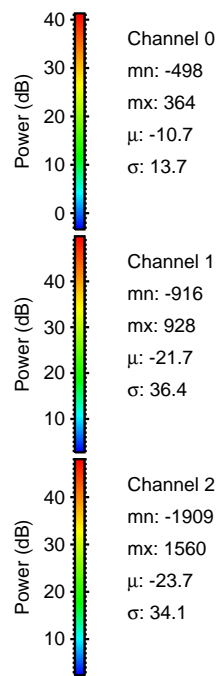
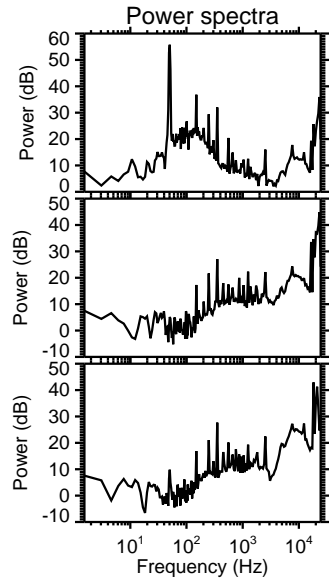
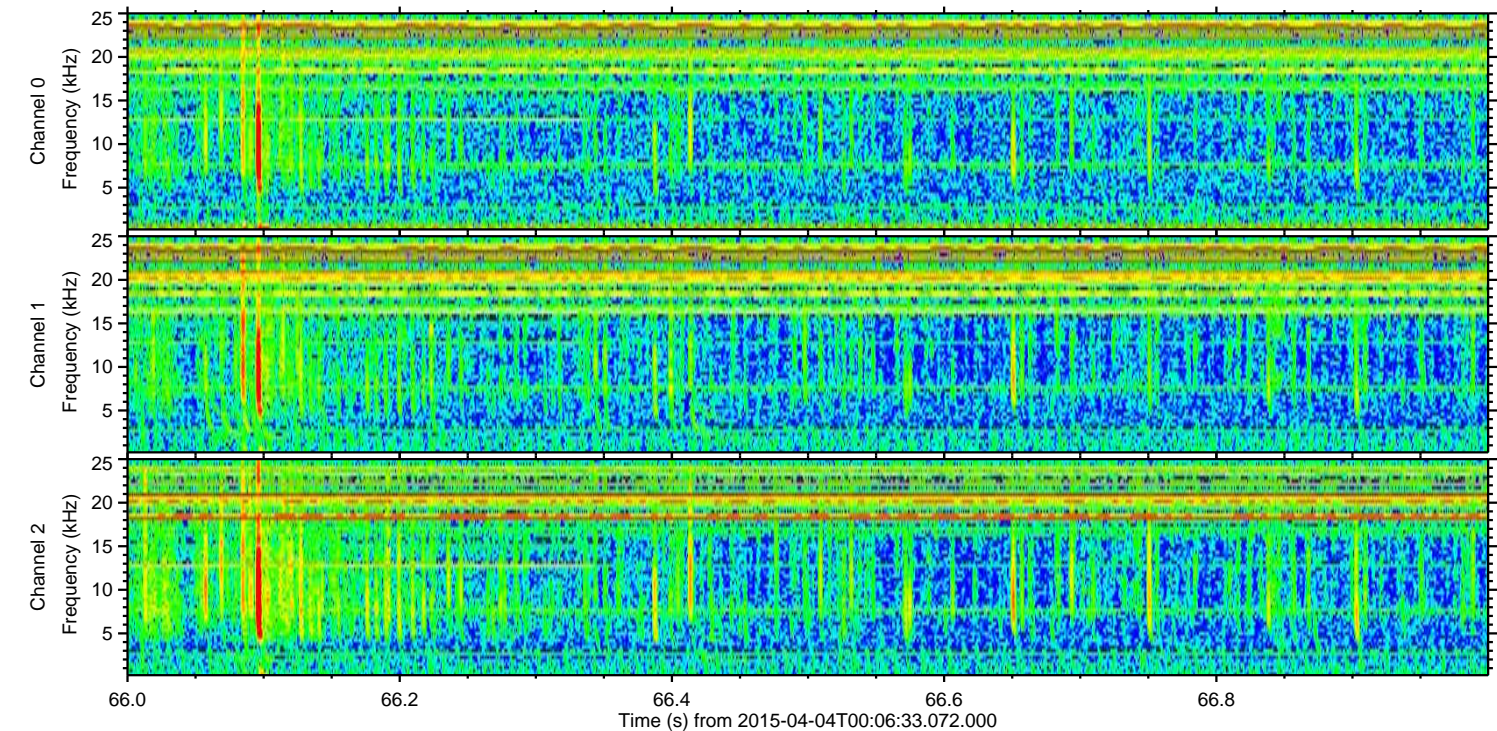
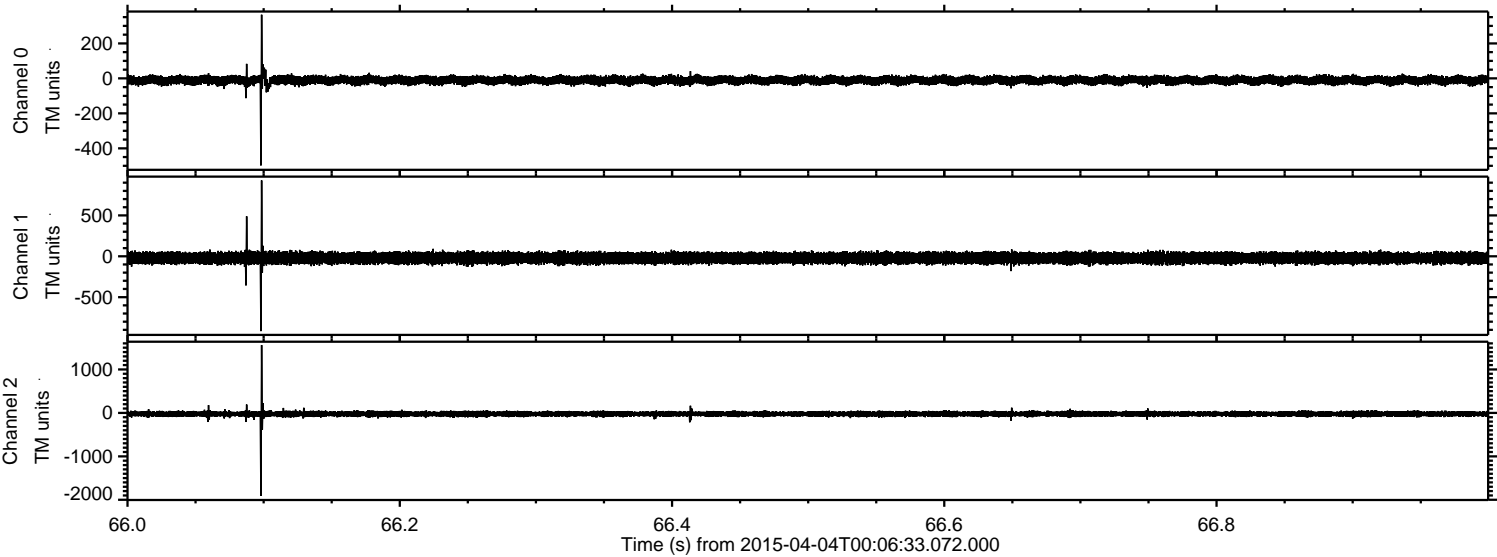


Processed Sat Apr 4 02:14:08 2015 by ELM ver.2012-10-06 from 001\_\_elm20150404\_000632\_\_dat00.bin





Processed Sat Apr 4 02:14:09 2015 by ELM ver.2012-10-06 from 001\_\_elm20150404\_000632\_\_dat00.bin



Power spectra

Channel 0  
mn: -498  
mx: 364  
 $\mu$ : -10.7  
 $\sigma$ : 13.7

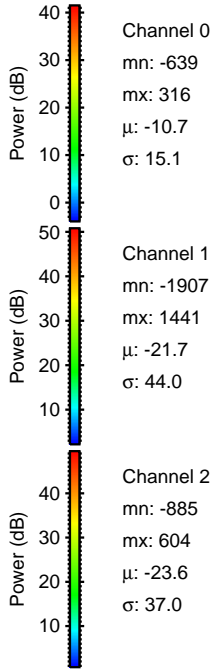
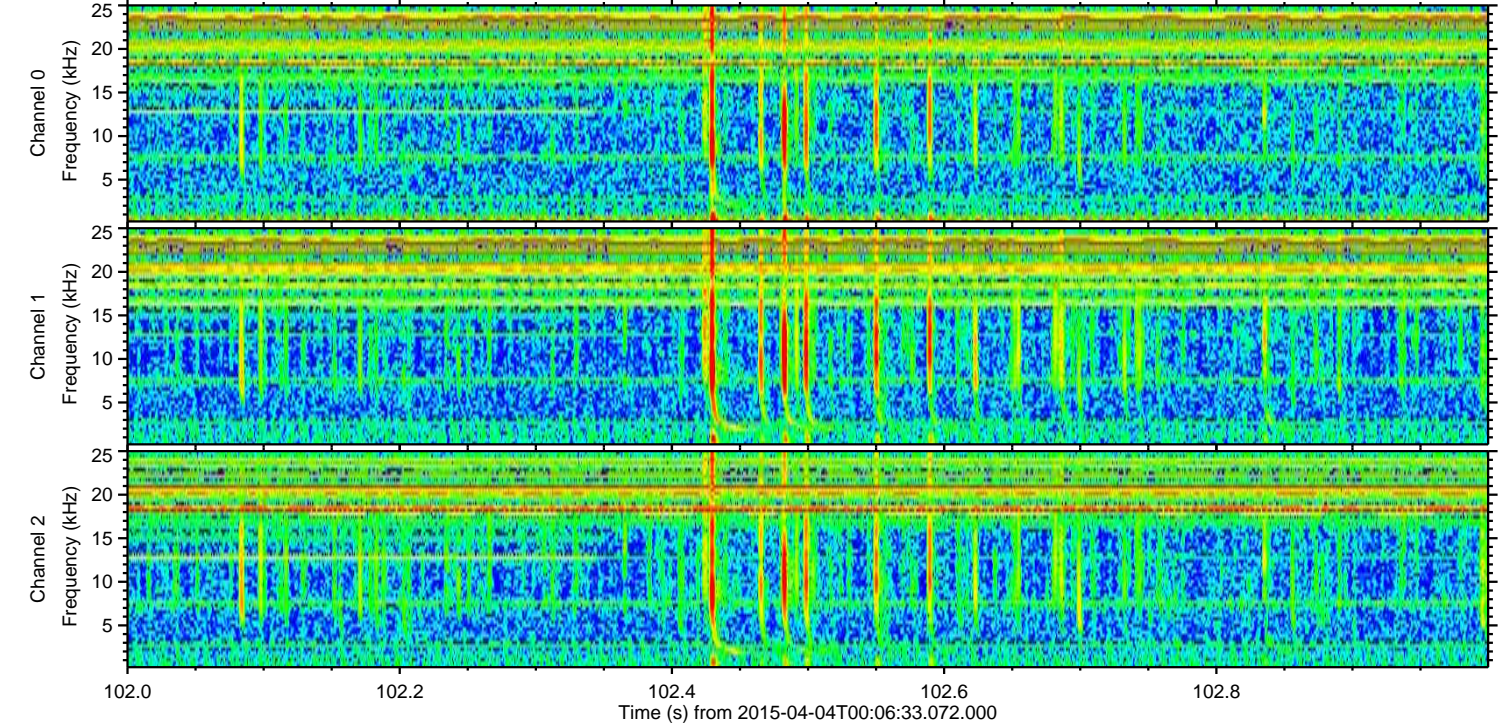
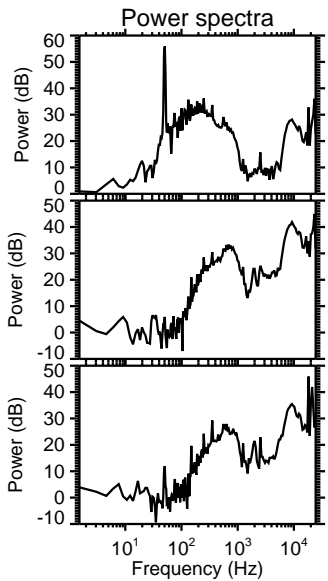
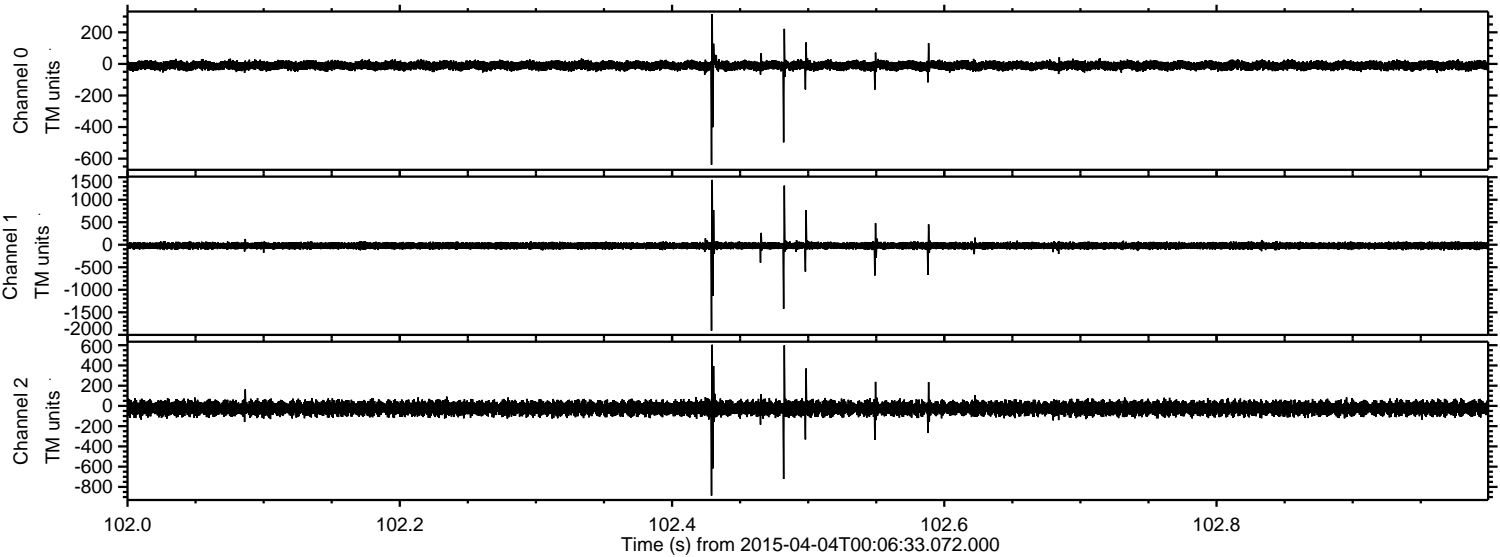
Channel 1  
mn: -916  
mx: 928  
 $\mu$ : -21.7  
 $\sigma$ : 36.4

Channel 2  
mn: -1909  
mx: 1560  
 $\mu$ : -23.7  
 $\sigma$ : 34.1



ELMAVAN 3D WAVEFORMS (Measured data sampled at 50 kHz) 48145 packets of 144 samples from 2015-04-04T00:06:33.072.000. Part 103/139

Processed Sat Apr 4 02:14:10 2015 by ELM ver.2012-10-06 from 001\_\_elm20150404\_000632\_\_dat00.bin



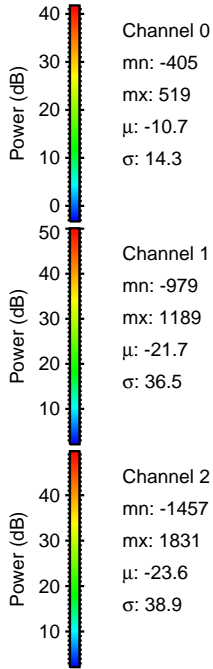
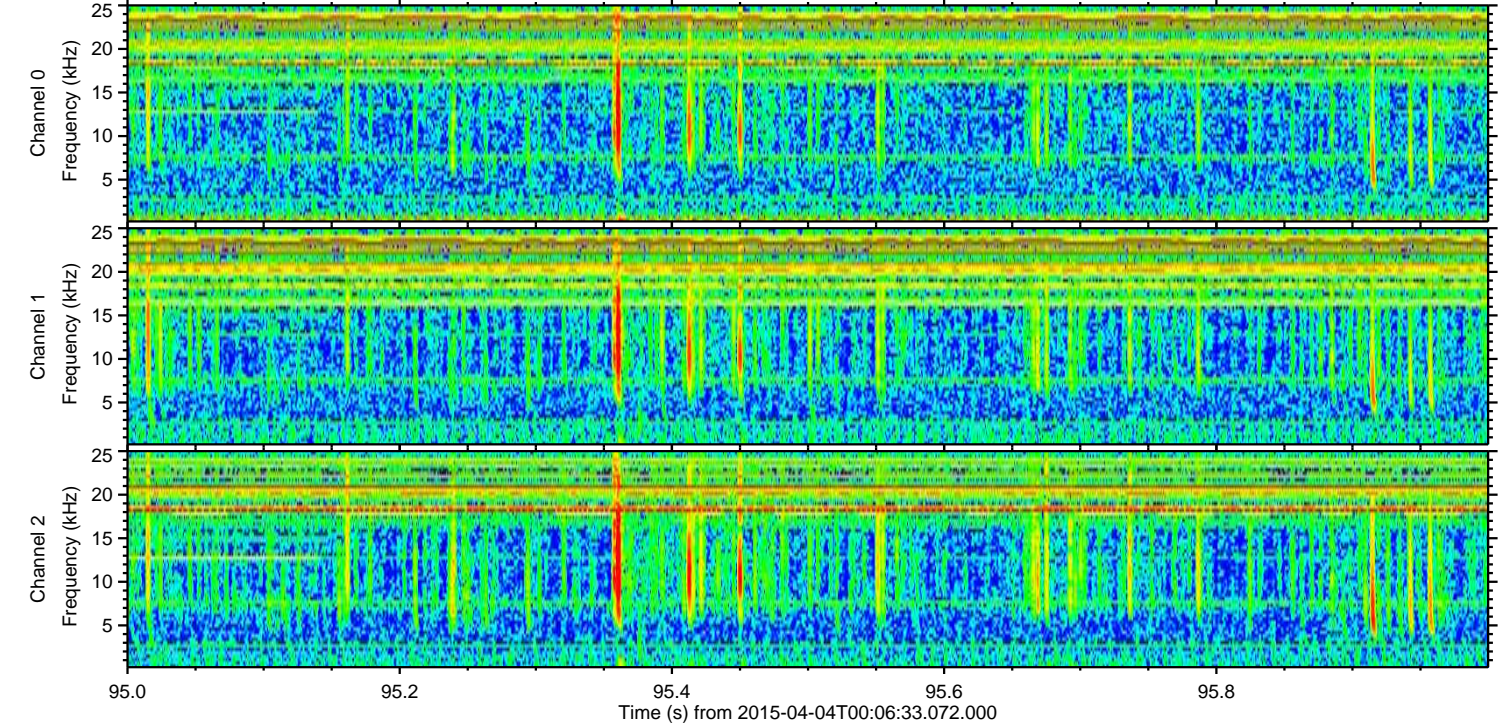
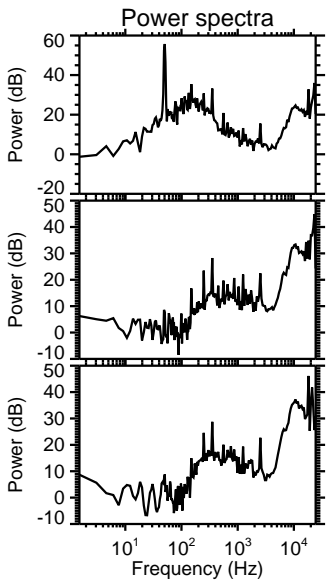
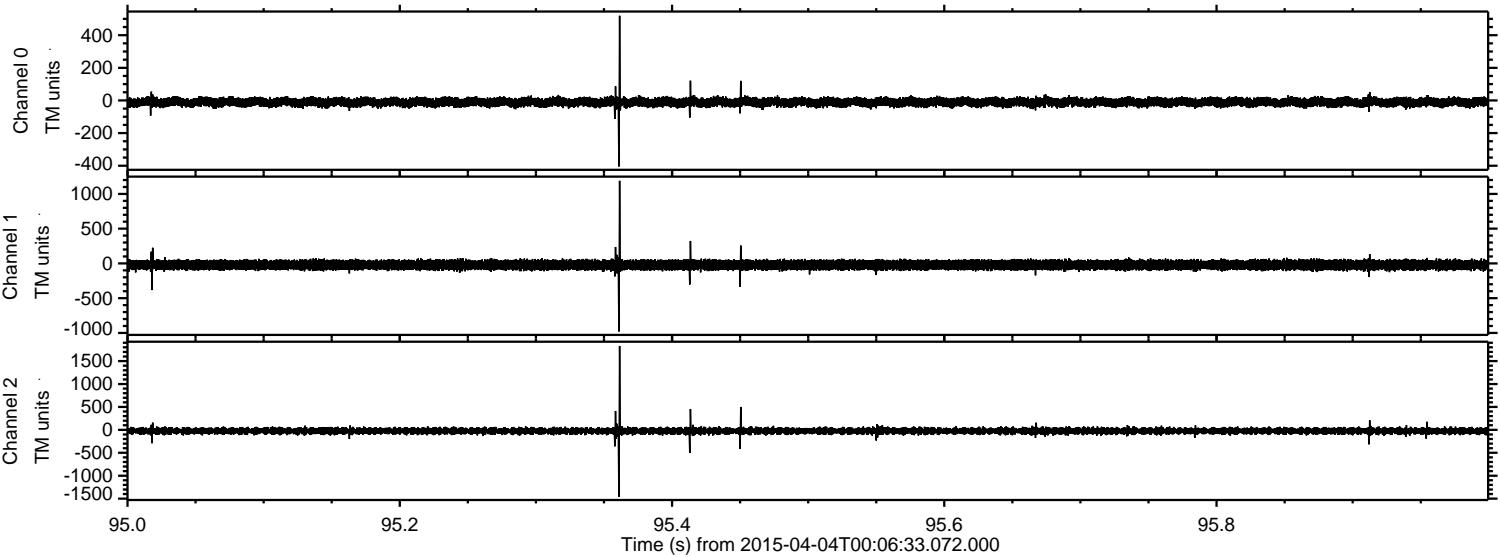
Channel 0  
mn: -639  
mx: 316  
 $\mu$ : -10.7  
 $\sigma$ : 15.1

Channel 1  
mn: -1907  
mx: 1441  
 $\mu$ : -21.7  
 $\sigma$ : 44.0

Channel 2  
mn: -885  
mx: 604  
 $\mu$ : -23.6  
 $\sigma$ : 37.0

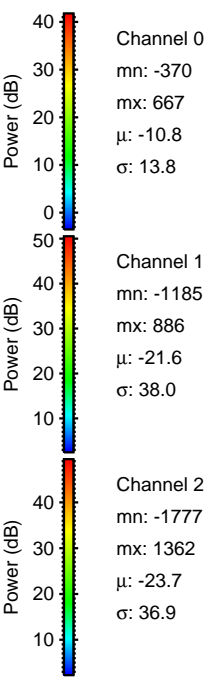
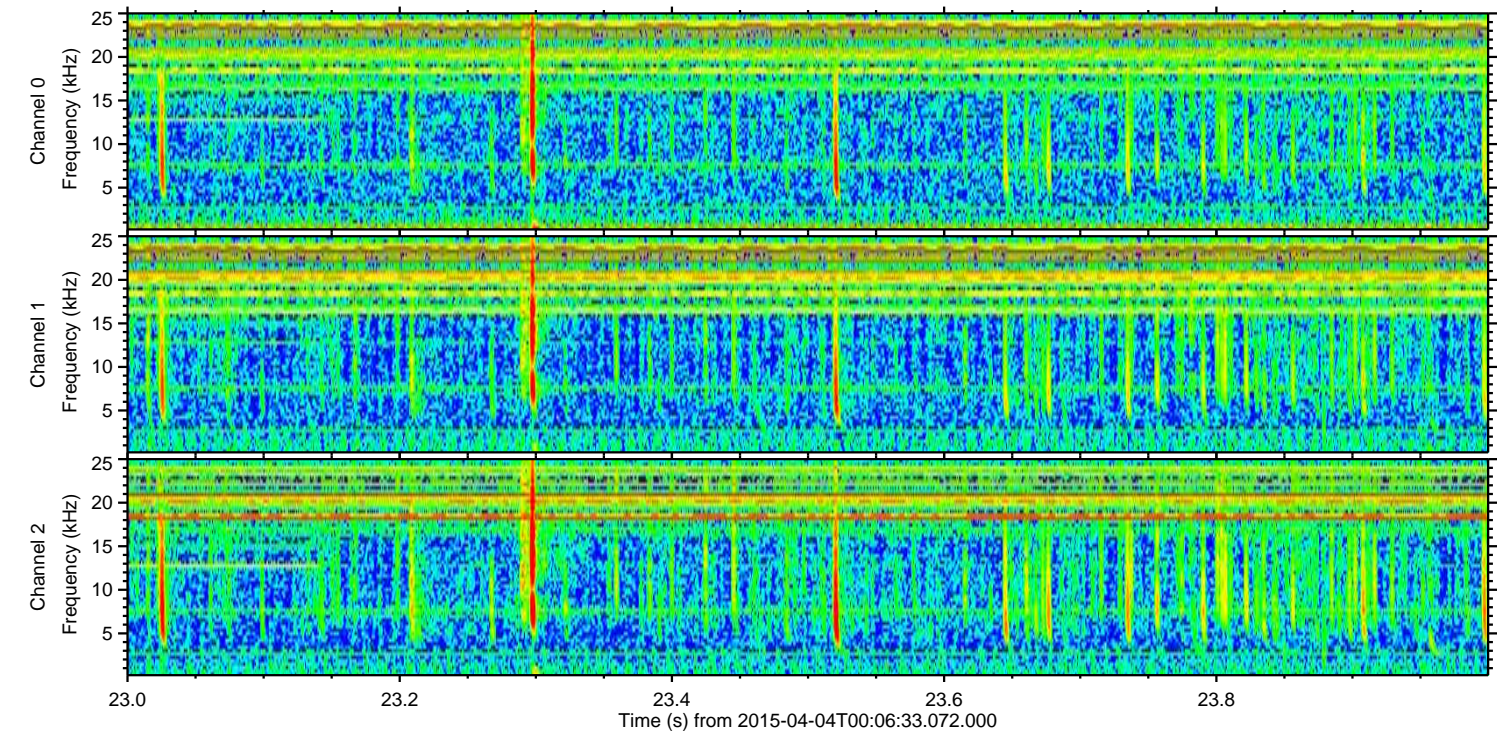
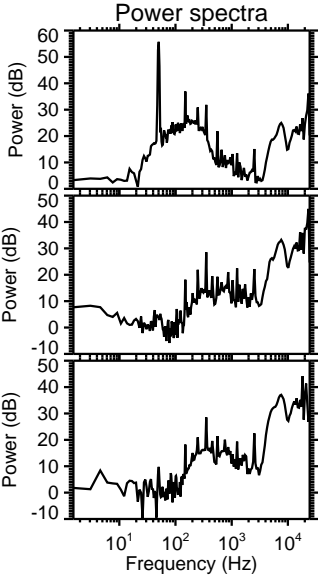
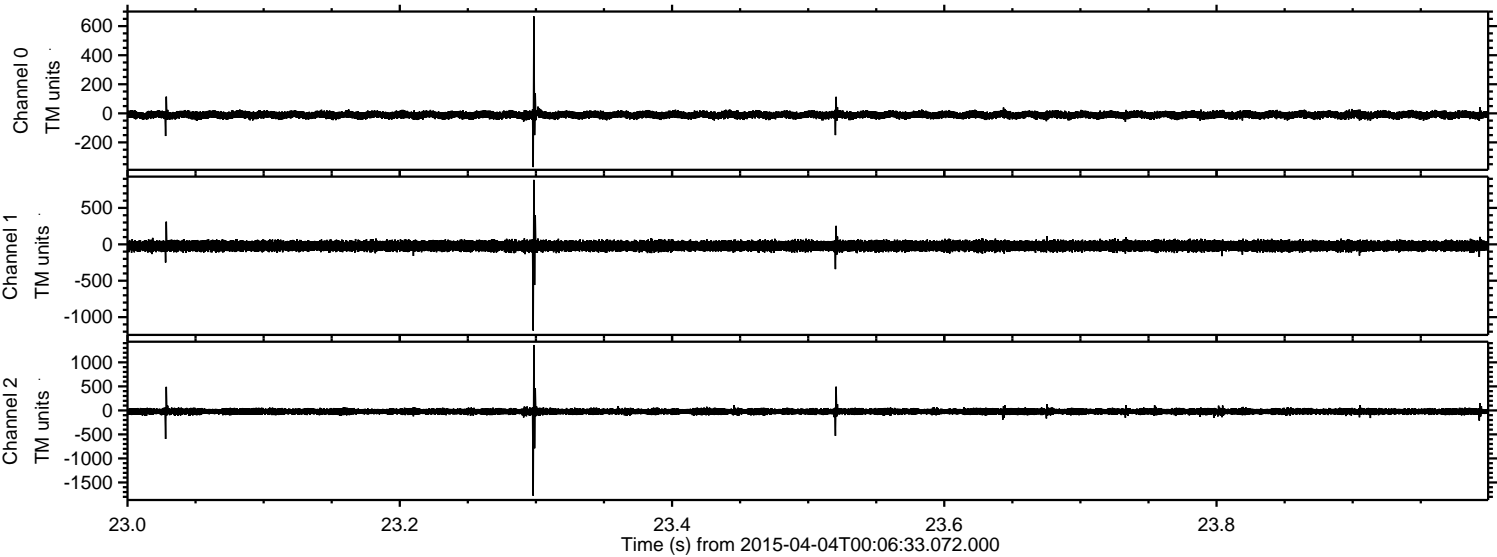


Processed Sat Apr 4 02:14:11 2015 by ELM ver.2012-10-06 from 001\_\_elm20150404\_000632\_\_dat00.bin



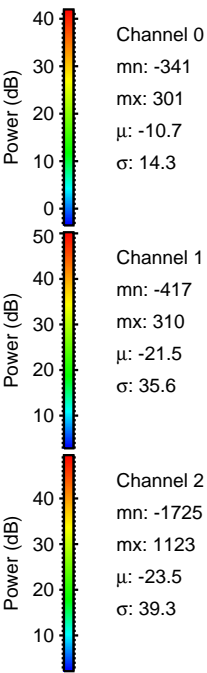
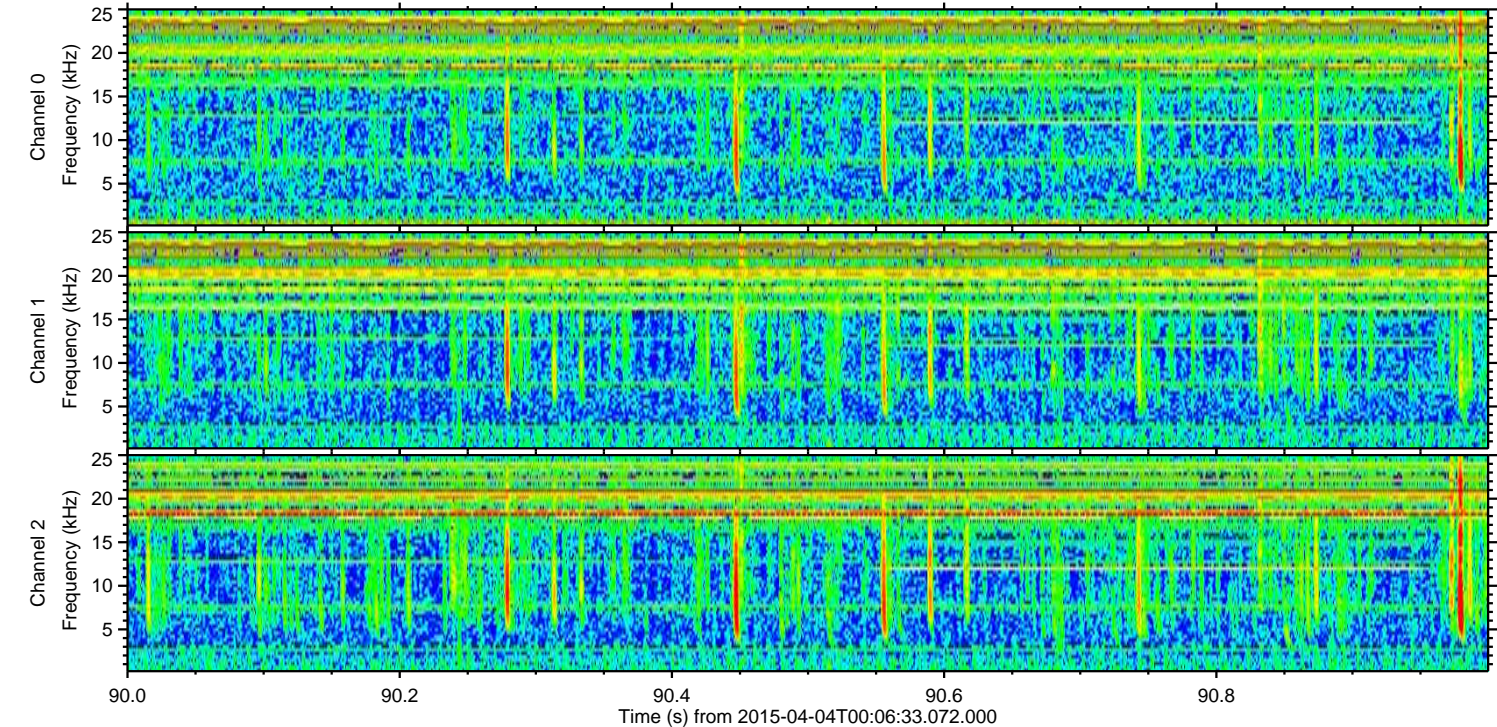
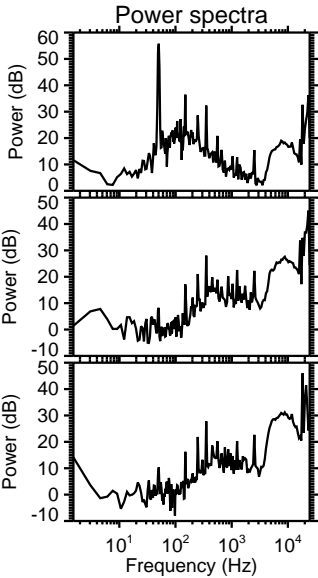
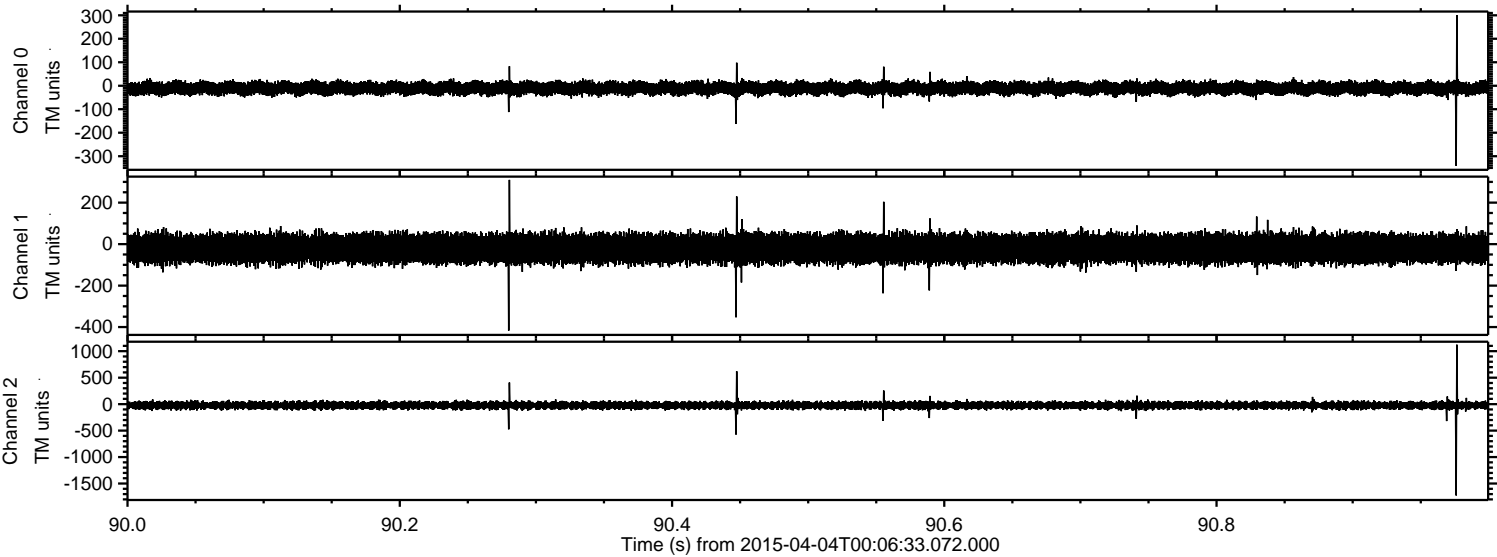


Processed Sat Apr 4 02:14:12 2015 by ELM ver.2012-10-06 from 001\_\_elm20150404\_000632\_\_dat00.bin



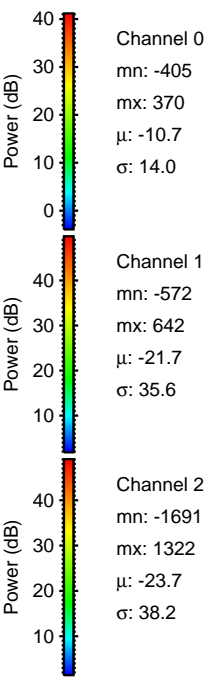
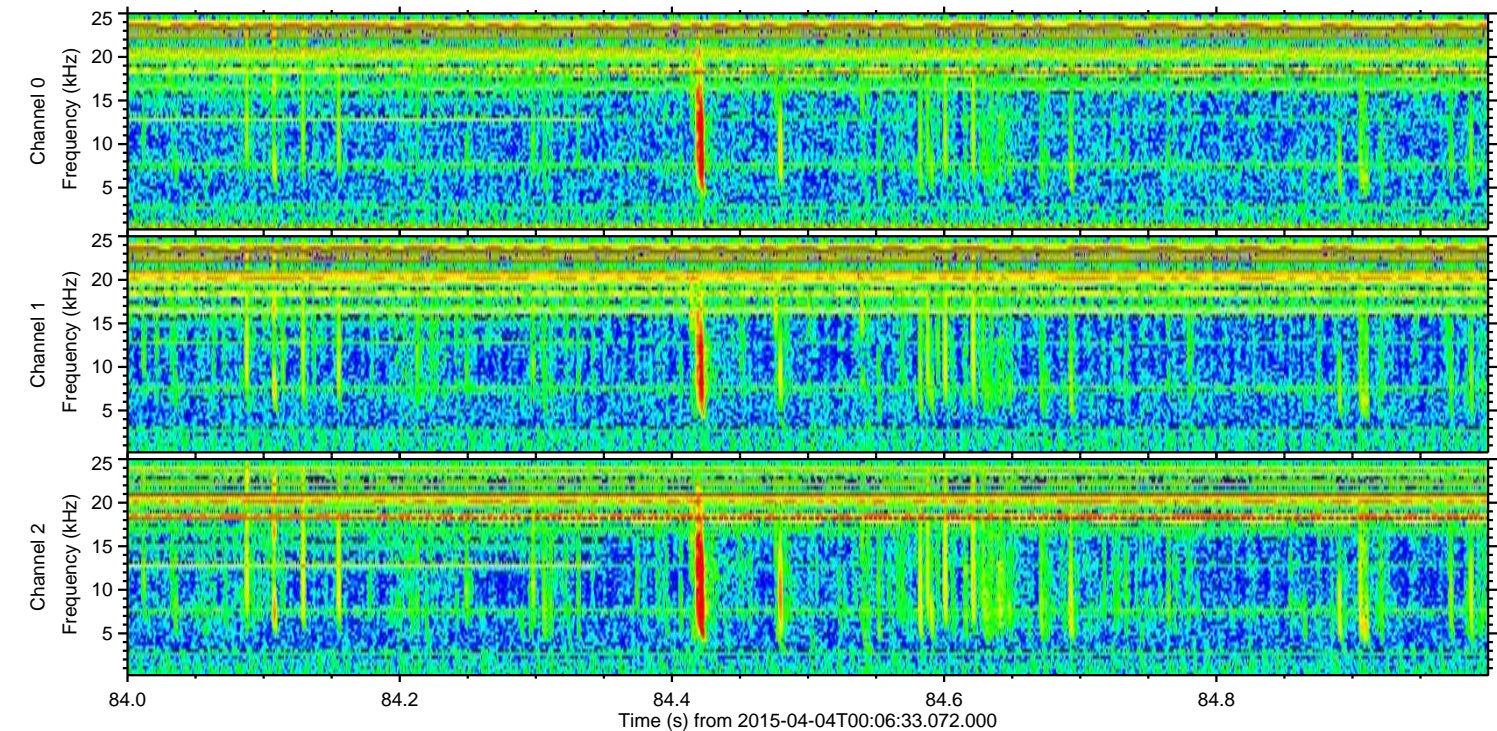
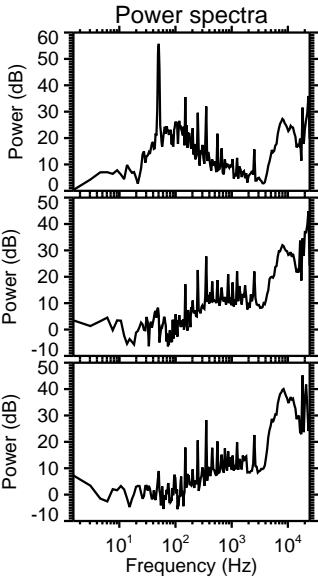
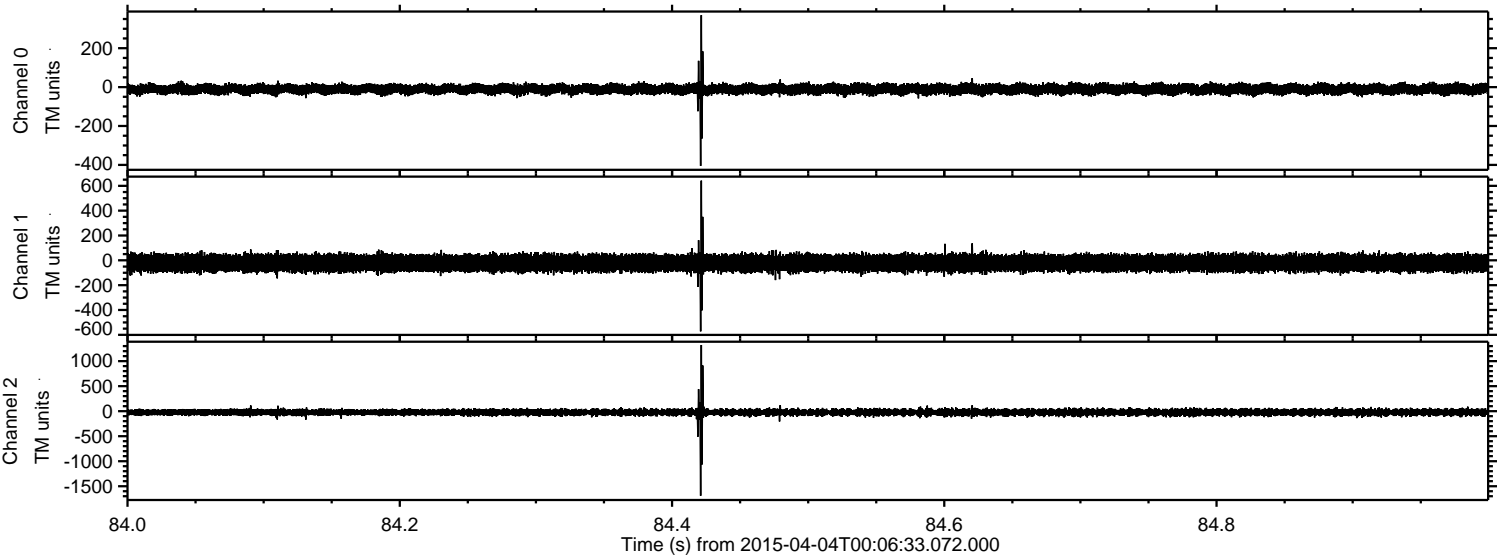


Processed Sat Apr 4 02:14:13 2015 by ELM ver.2012-10-06 from 001\_\_elm20150404\_000632\_\_dat00.bin





Processed Sat Apr 4 02:14:14 2015 by ELM ver.2012-10-06 from 001\_\_elm20150404\_000632\_\_dat00.bin





Processed Sat Apr 4 02:14:15 2015 by ELM ver.2012-10-06 from 001\_\_elm20150404\_000632\_\_dat00.bin

