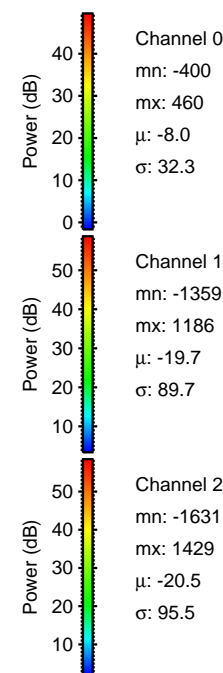
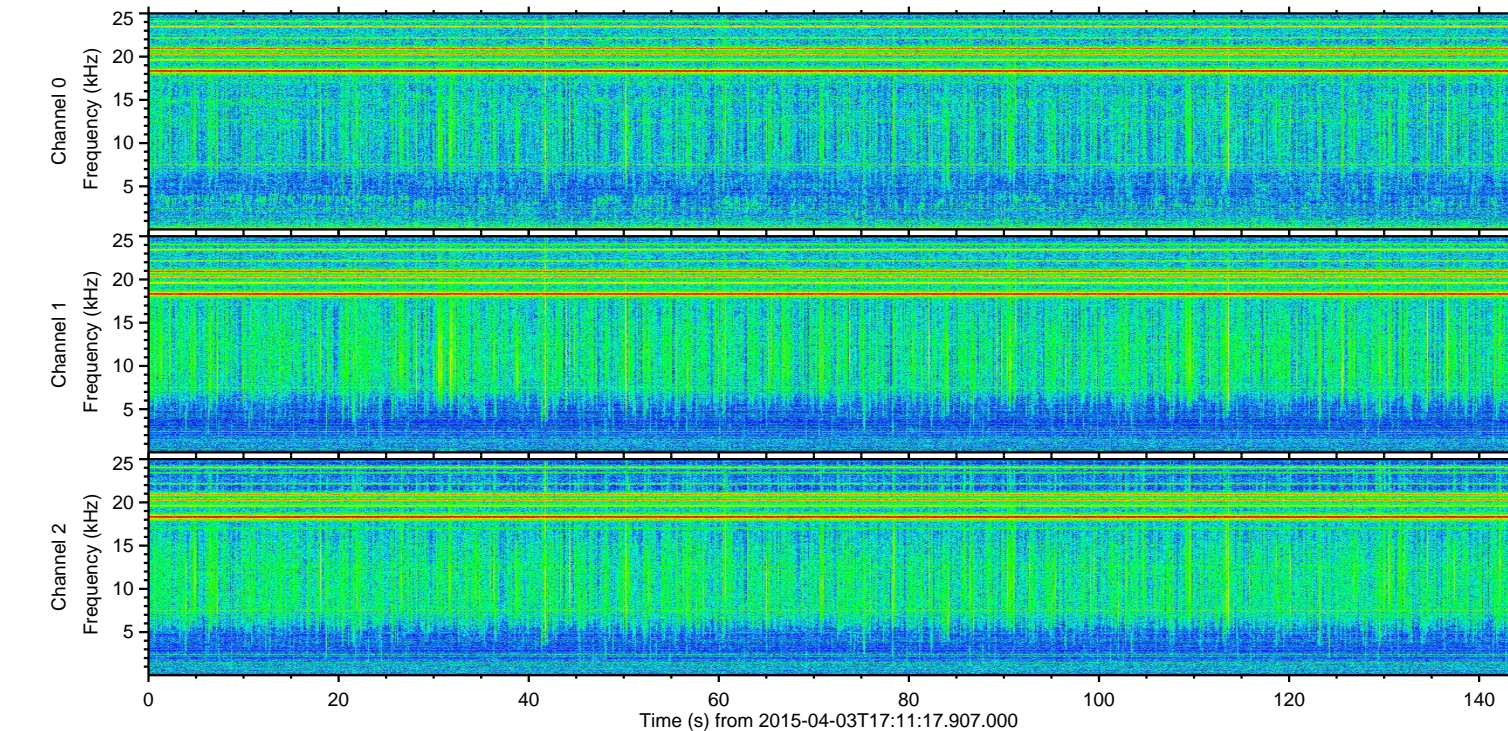
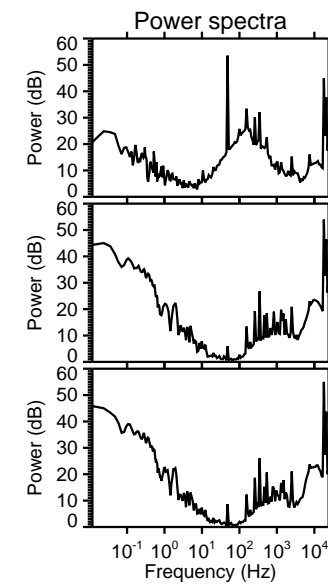
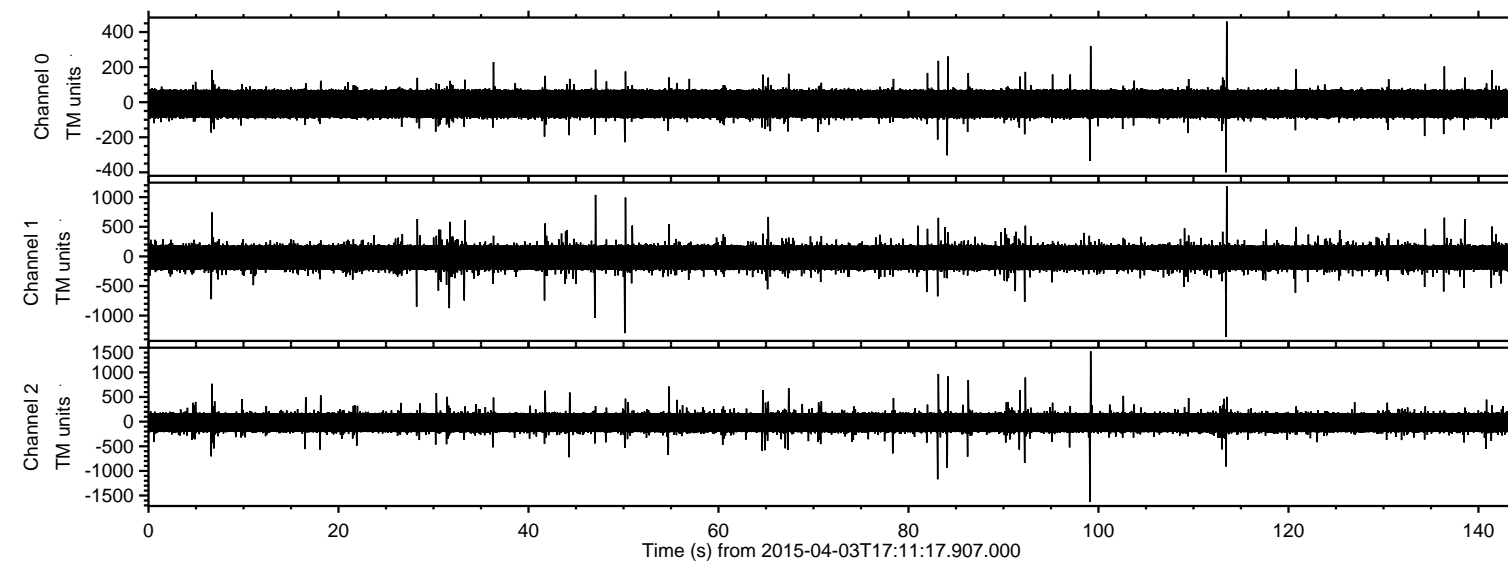


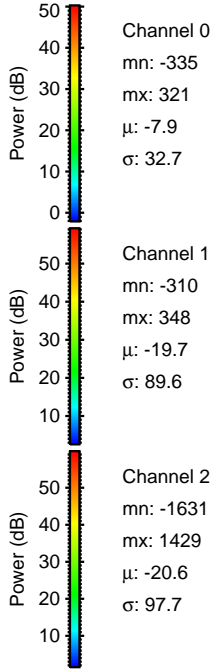
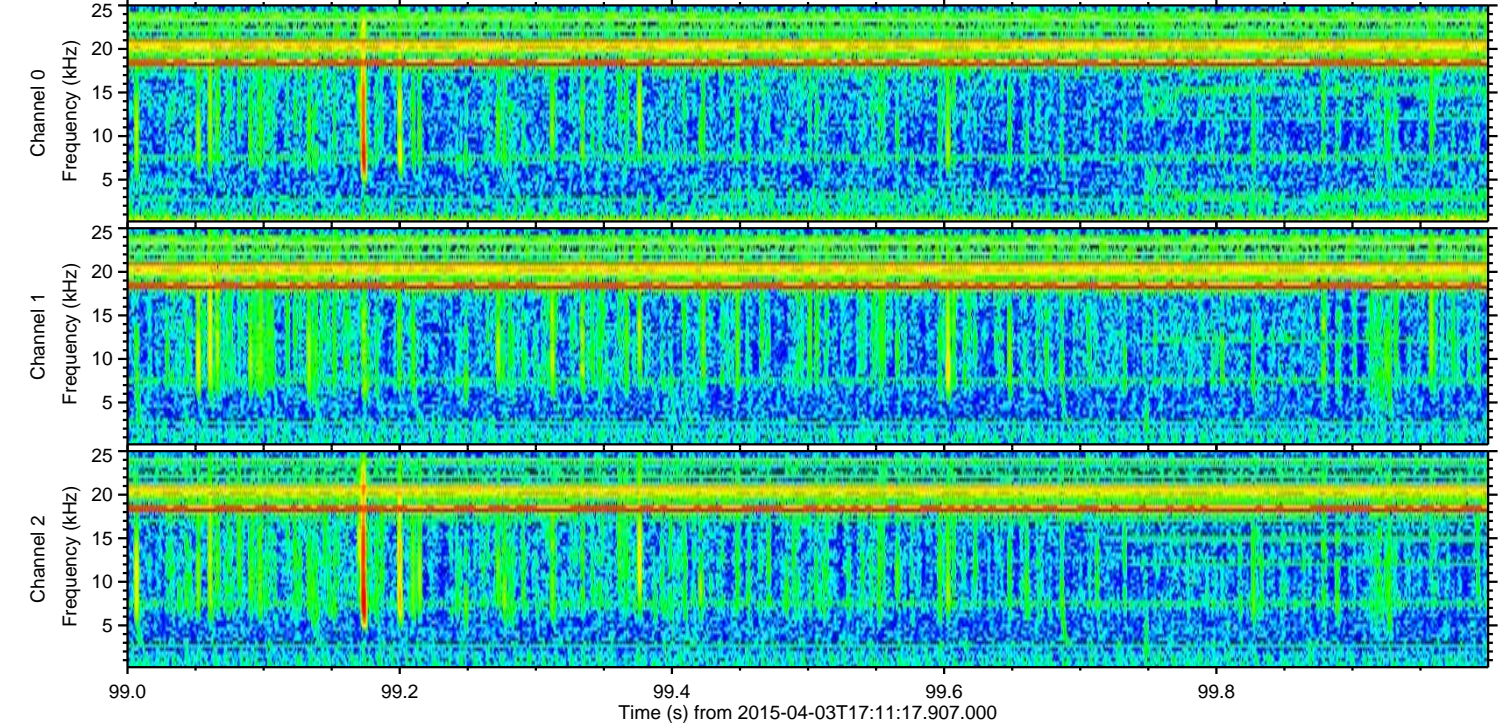
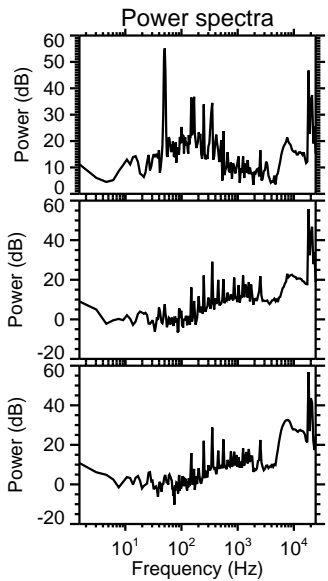
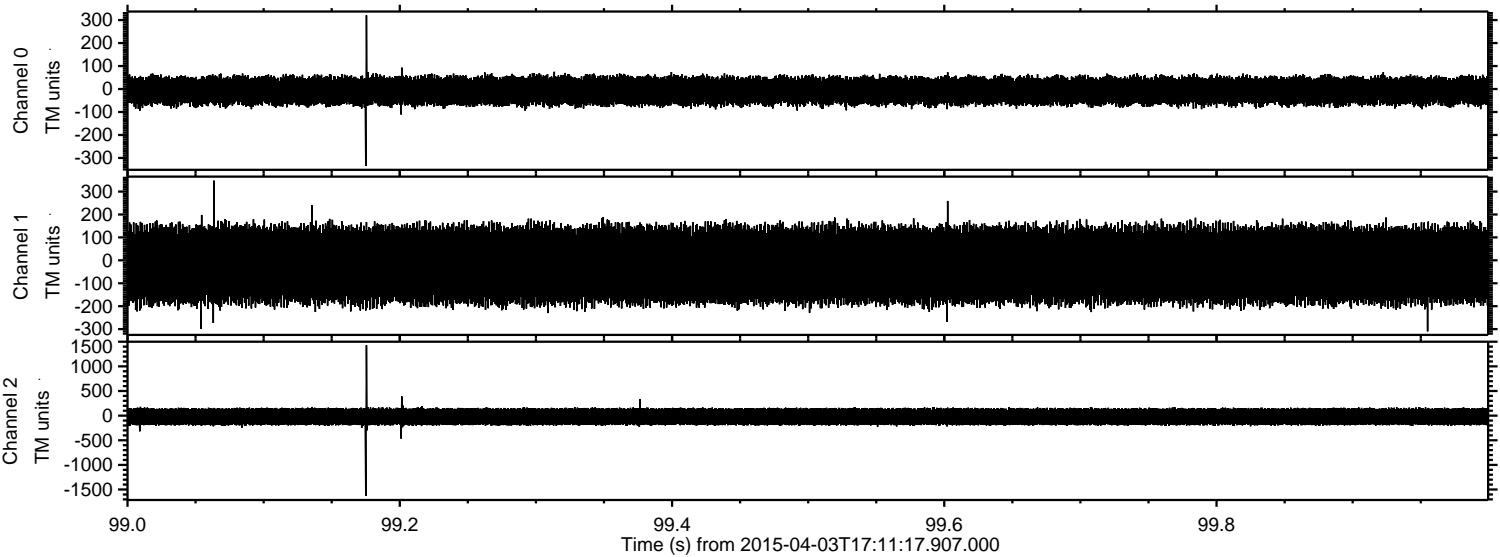
ELMAVAN 3D WAVEFORMS (Measured data sampled at 50 kHz) 49732 packets of 144 samples from 2015-04-03T17:11:17.907.000.

Processed Fri Apr 3 19:17:53 2015 by ELM ver.2012-10-06 from 001__elm20150403_171116__dat00.bin

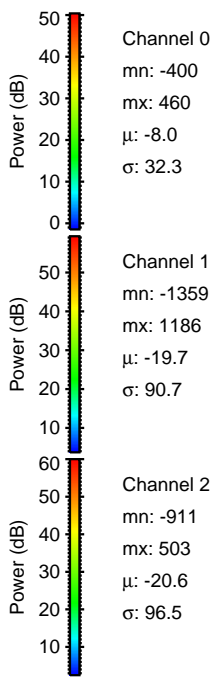
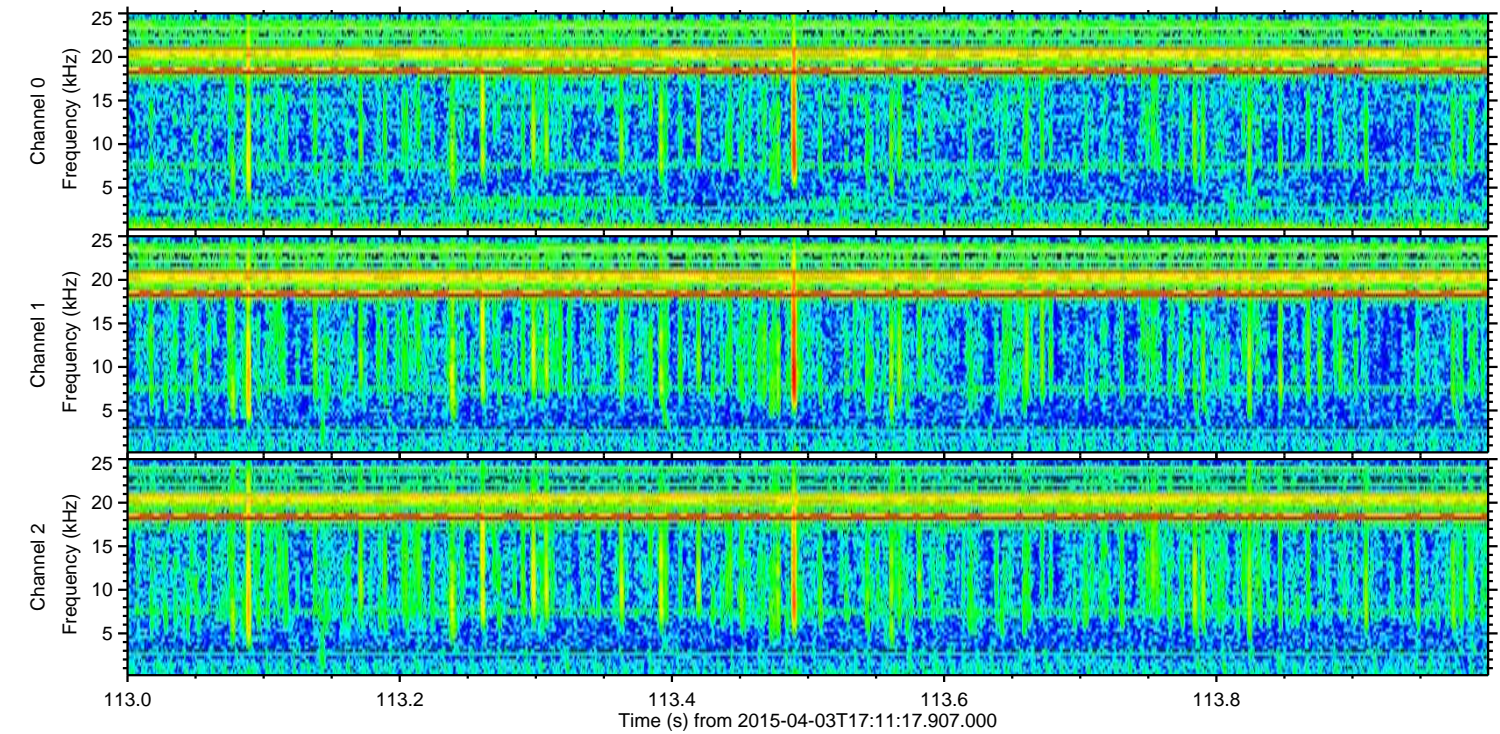
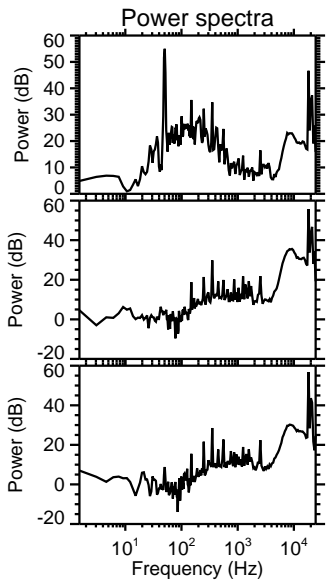
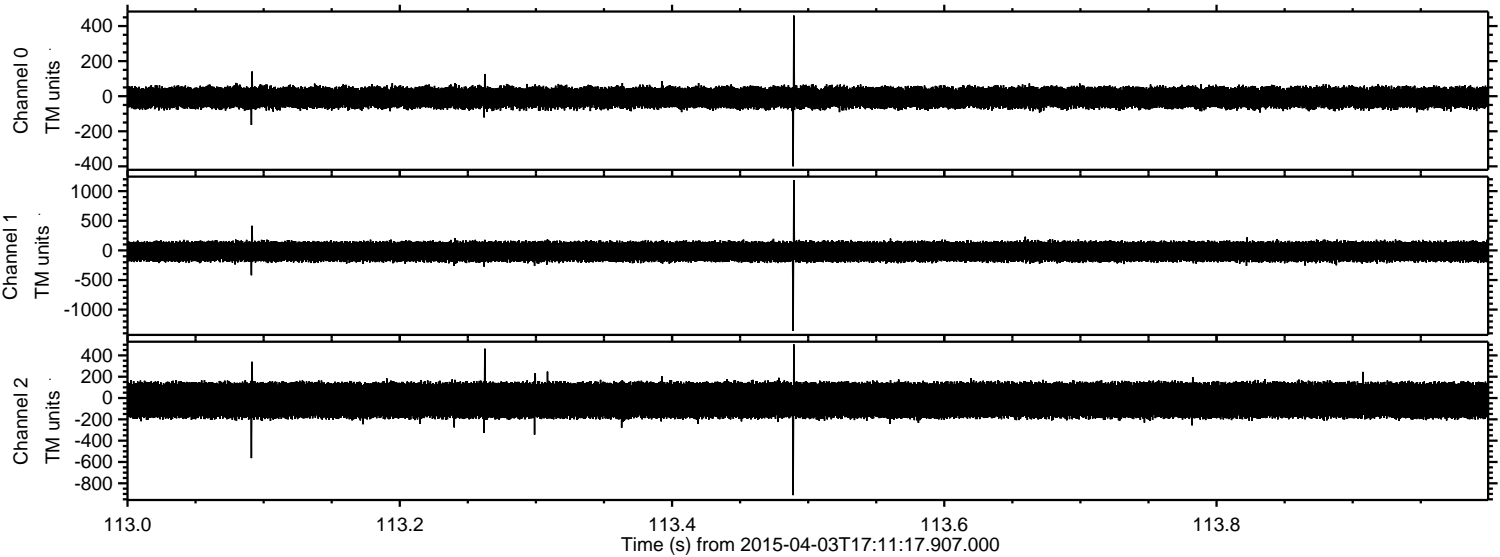


ELMAVAN 3D WAVEFORMS (Measured data sampled at 50 kHz) 49732 packets of 144 samples from 2015-04-03T17:11:17.907.000. Part 100/144

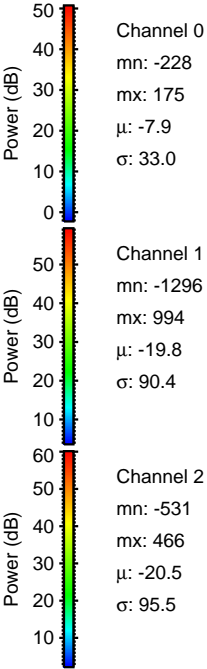
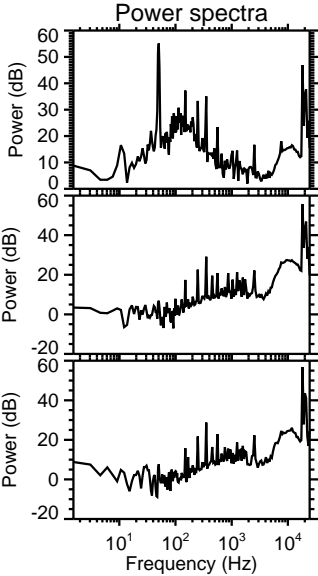
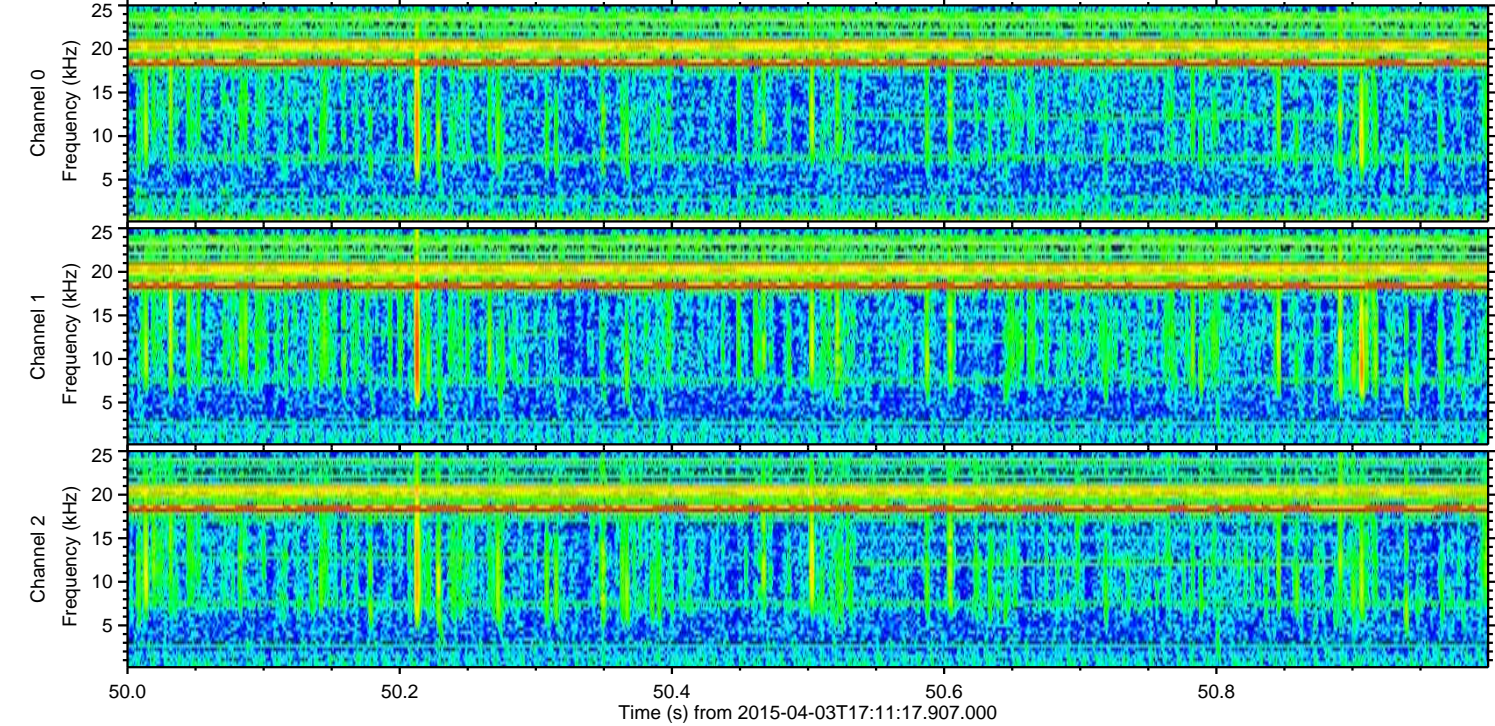
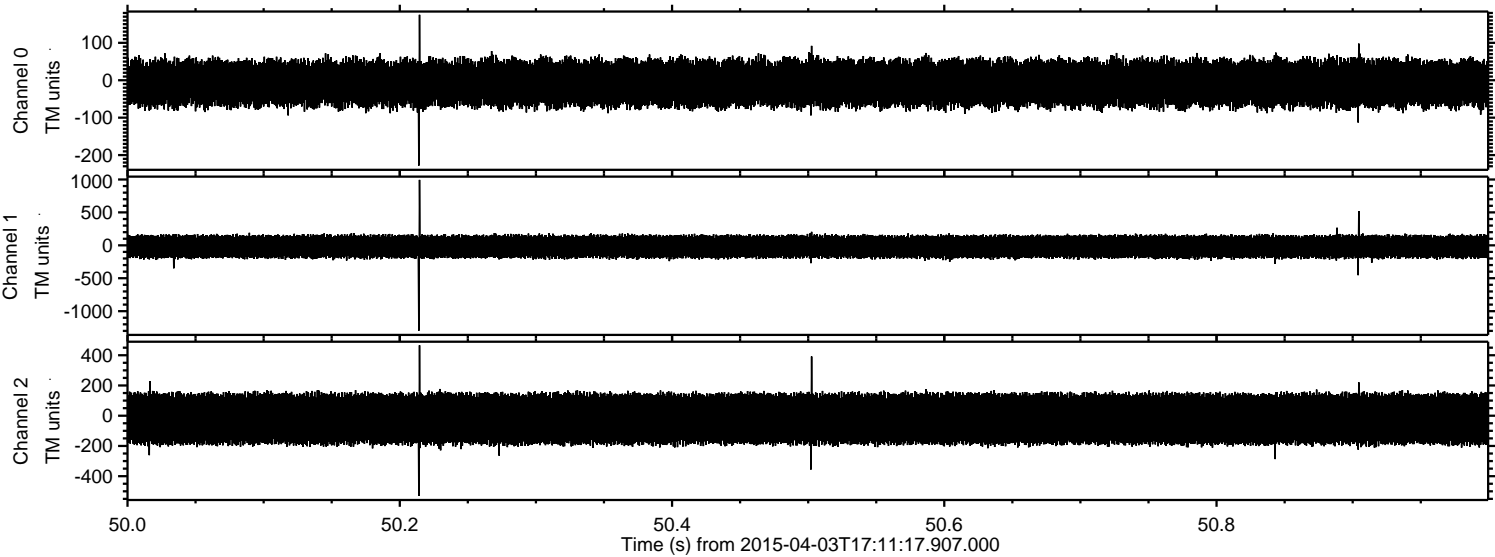
Processed Fri Apr 3 19:18:04 2015 by ELM ver.2012-10-06 from 001__elm20150403_171116__dat00.bin



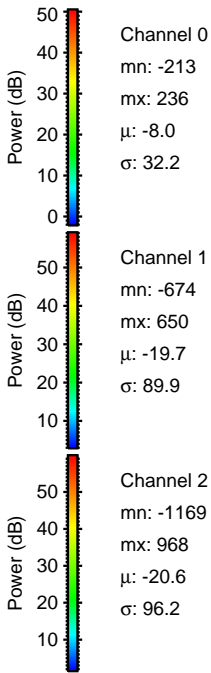
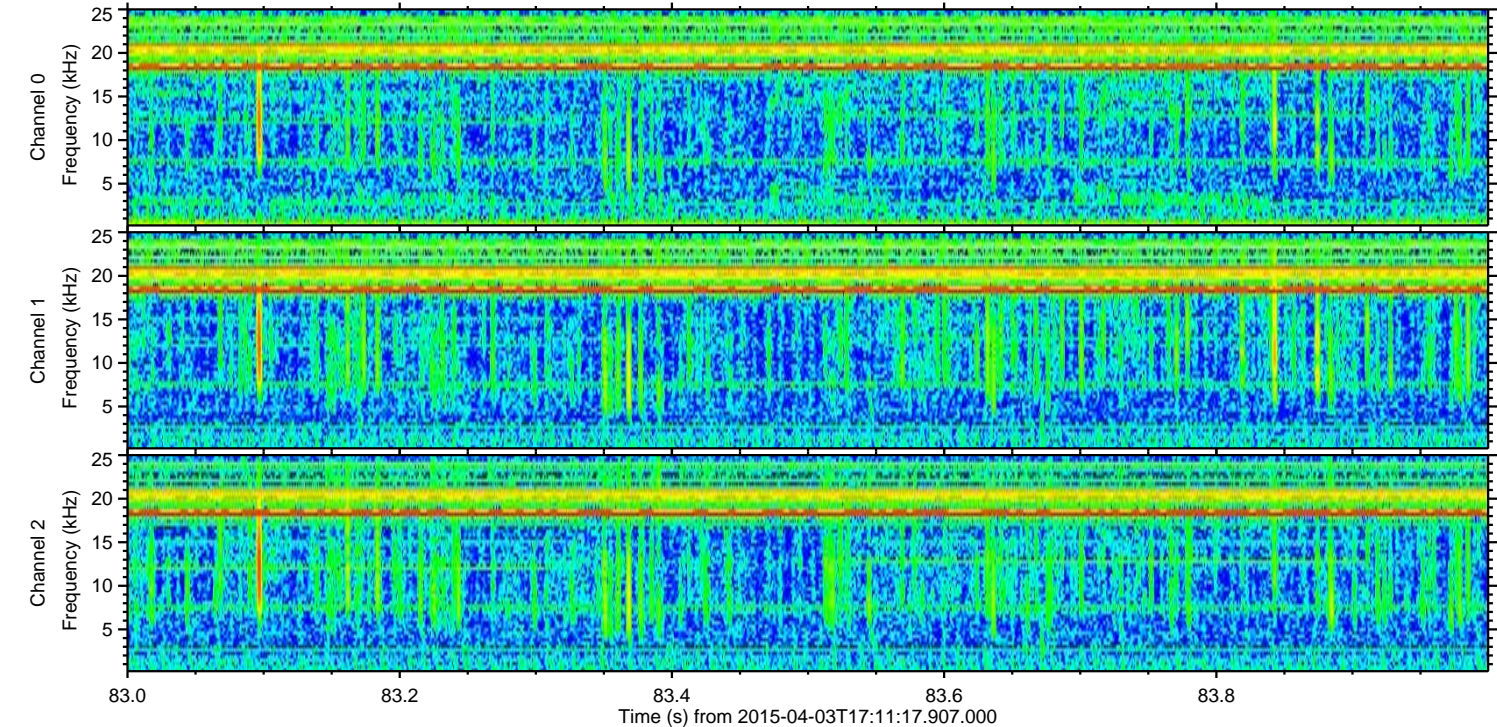
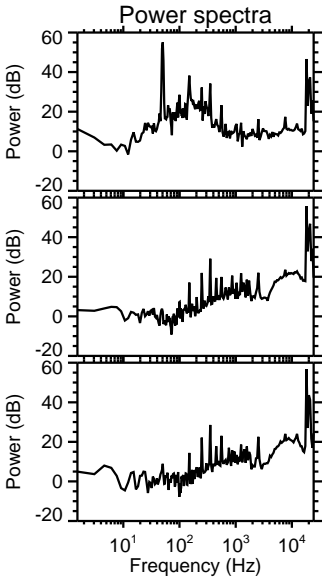
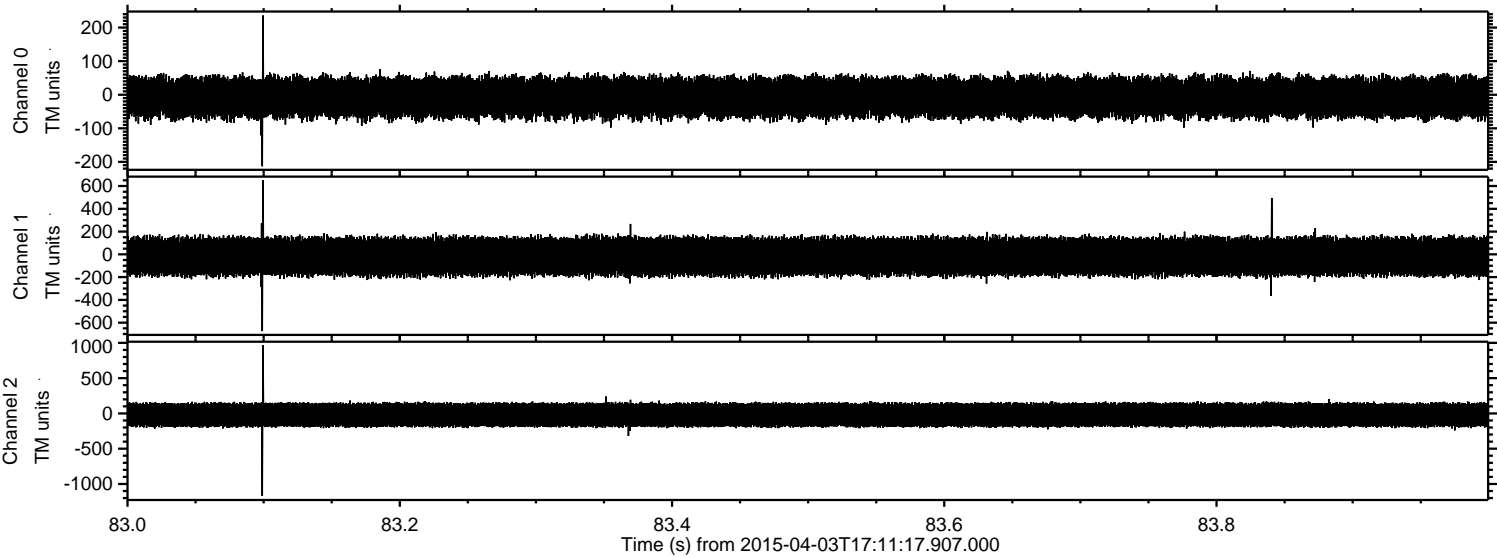
Processed Fri Apr 3 19:18:05 2015 by ELM ver.2012-10-06 from 001__elm20150403_171116__dat00.bin



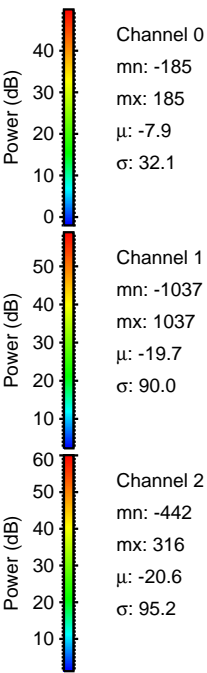
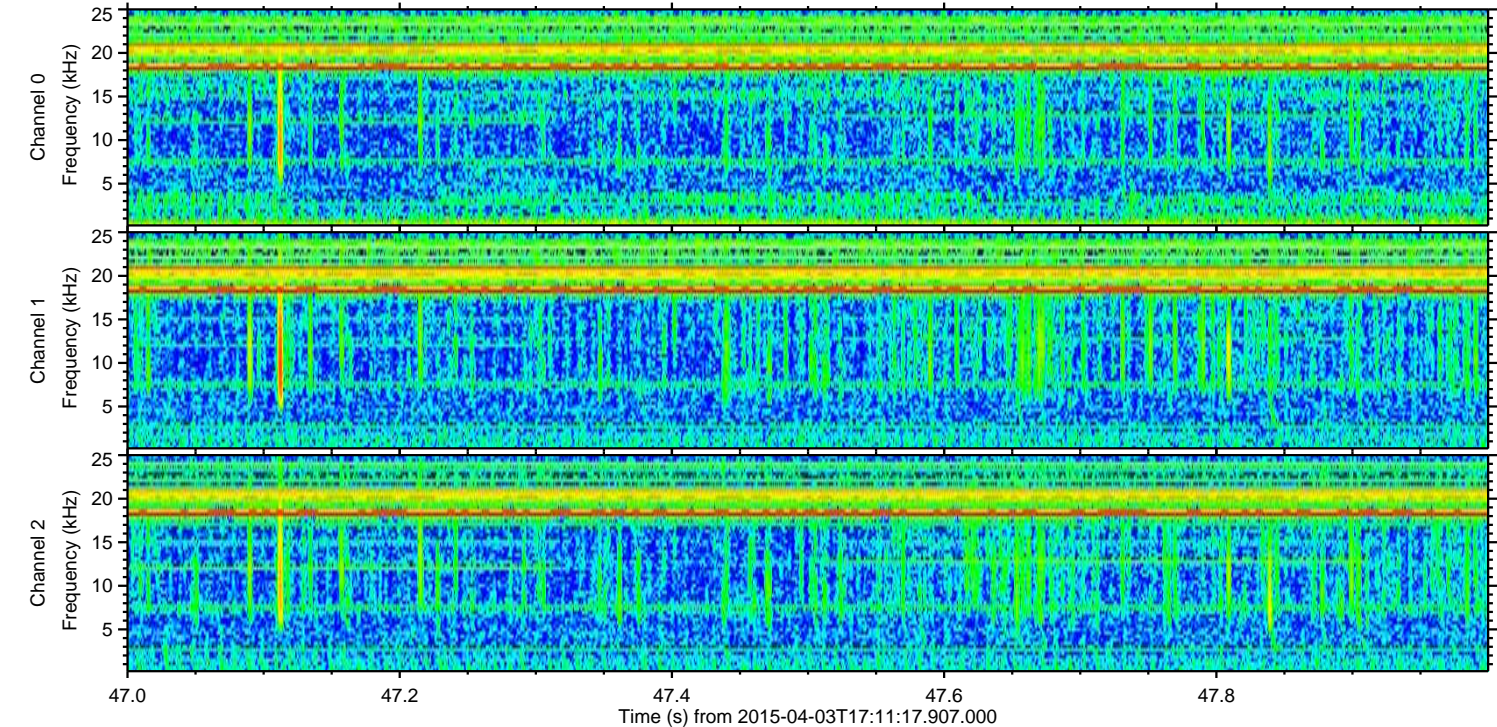
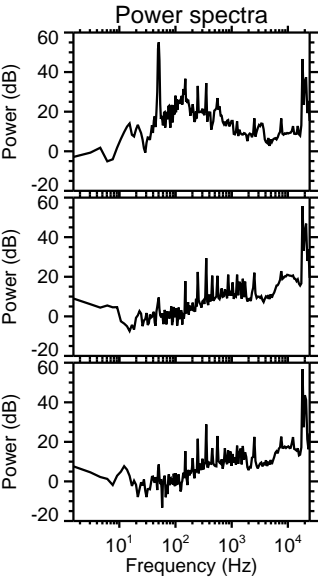
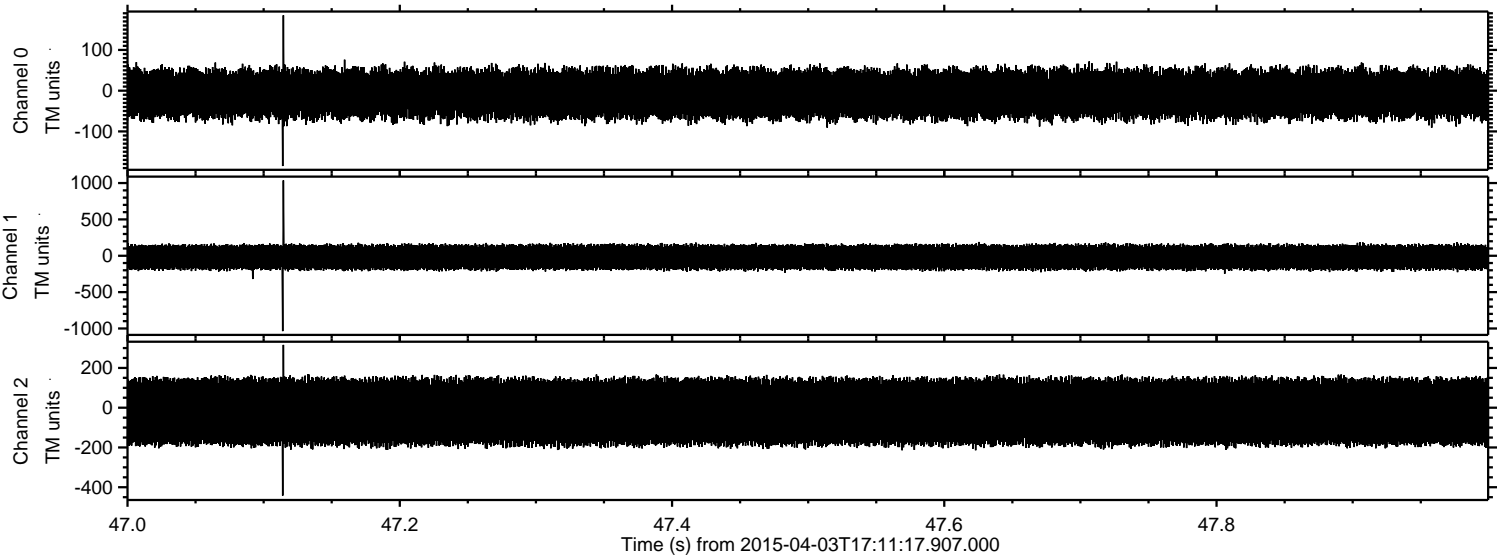
Processed Fri Apr 3 19:18:06 2015 by ELM ver.2012-10-06 from 001__elm20150403_171116__dat00.bin



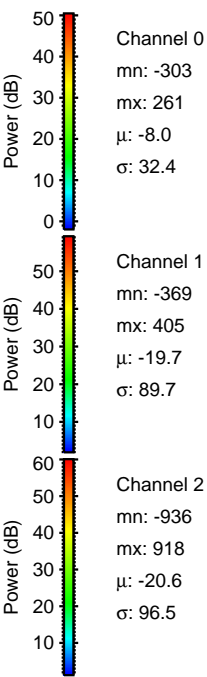
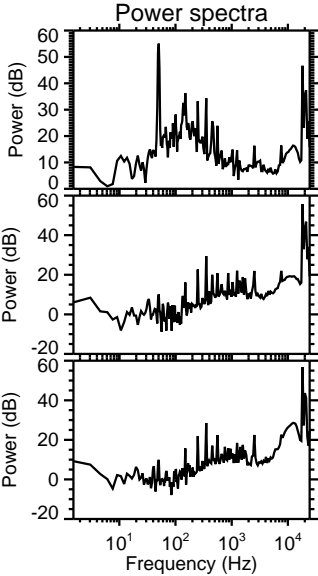
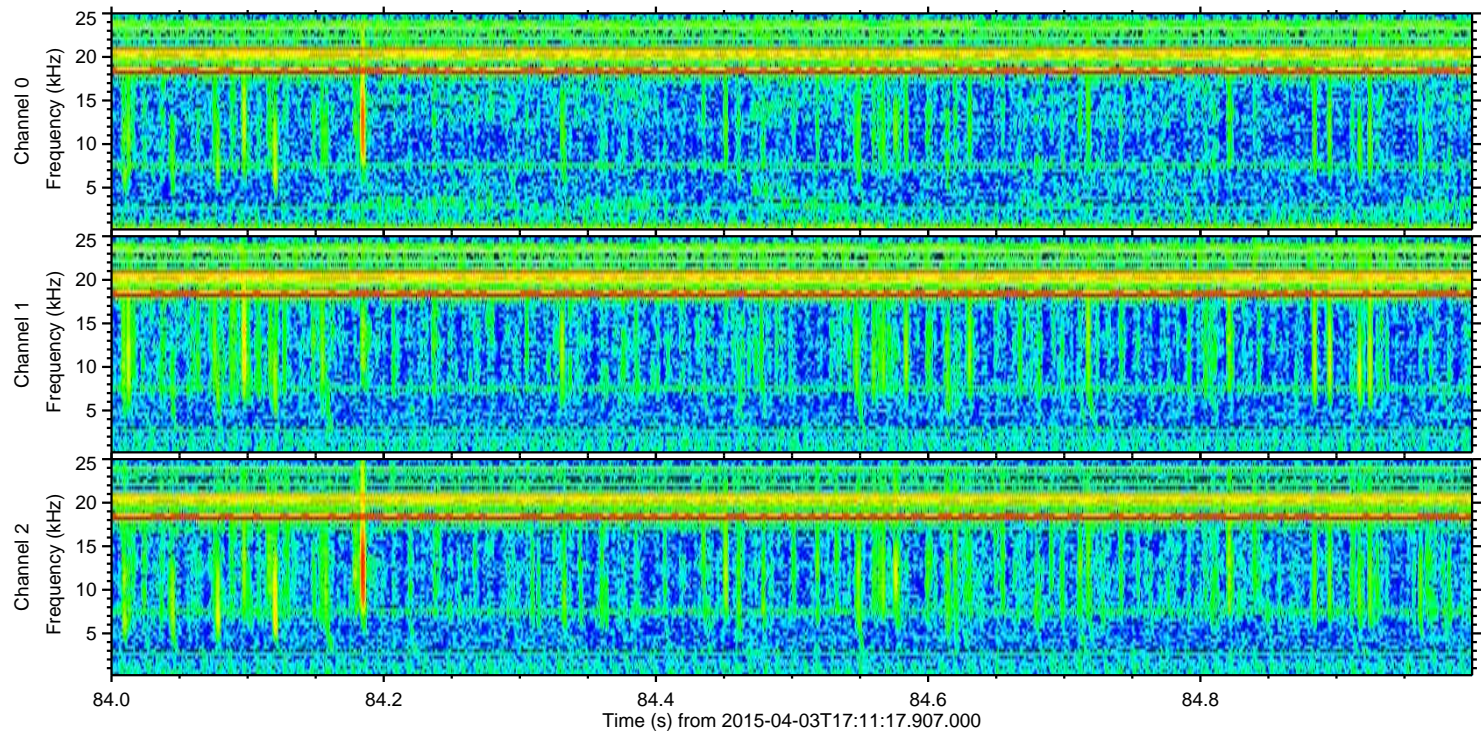
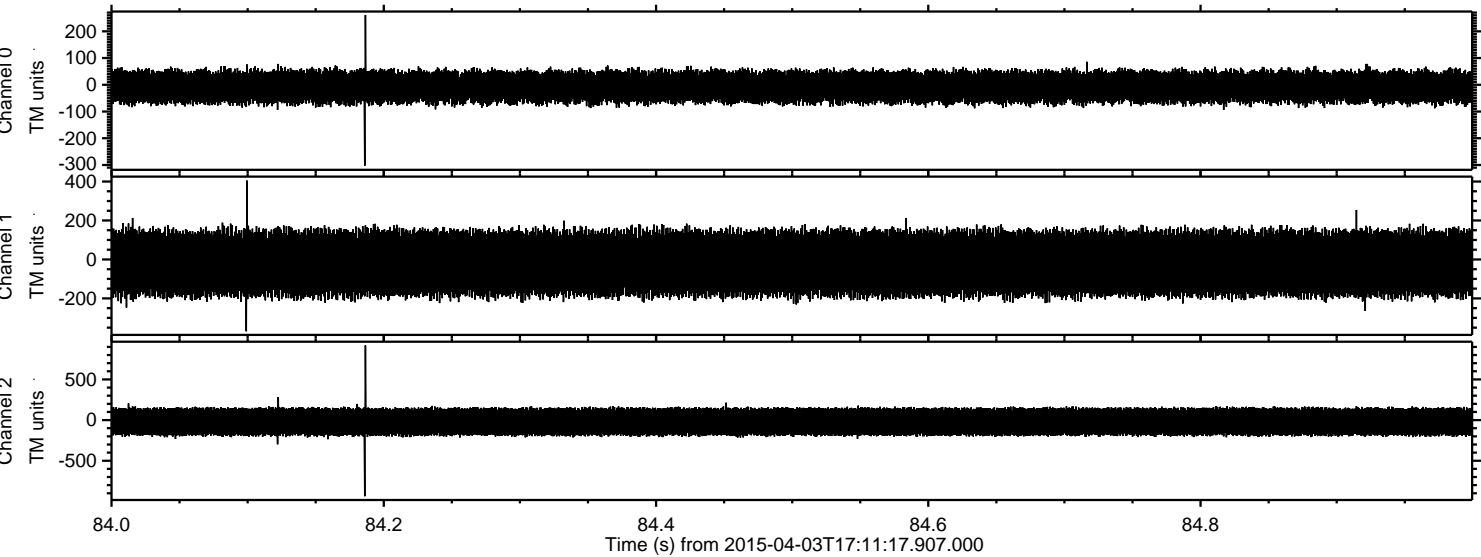
Processed Fri Apr 3 19:18:07 2015 by ELM ver.2012-10-06 from 001__elm20150403_171116__dat00.bin



Processed Fri Apr 3 19:18:08 2015 by ELM ver.2012-10-06 from 001__elm20150403_171116__dat00.bin



Processed Fri Apr 3 19:18:09 2015 by ELM ver.2012-10-06 from 001__elm20150403_171116__dat00.bin

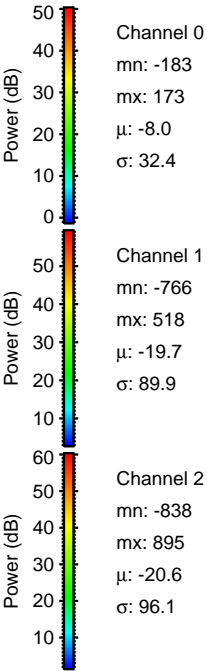
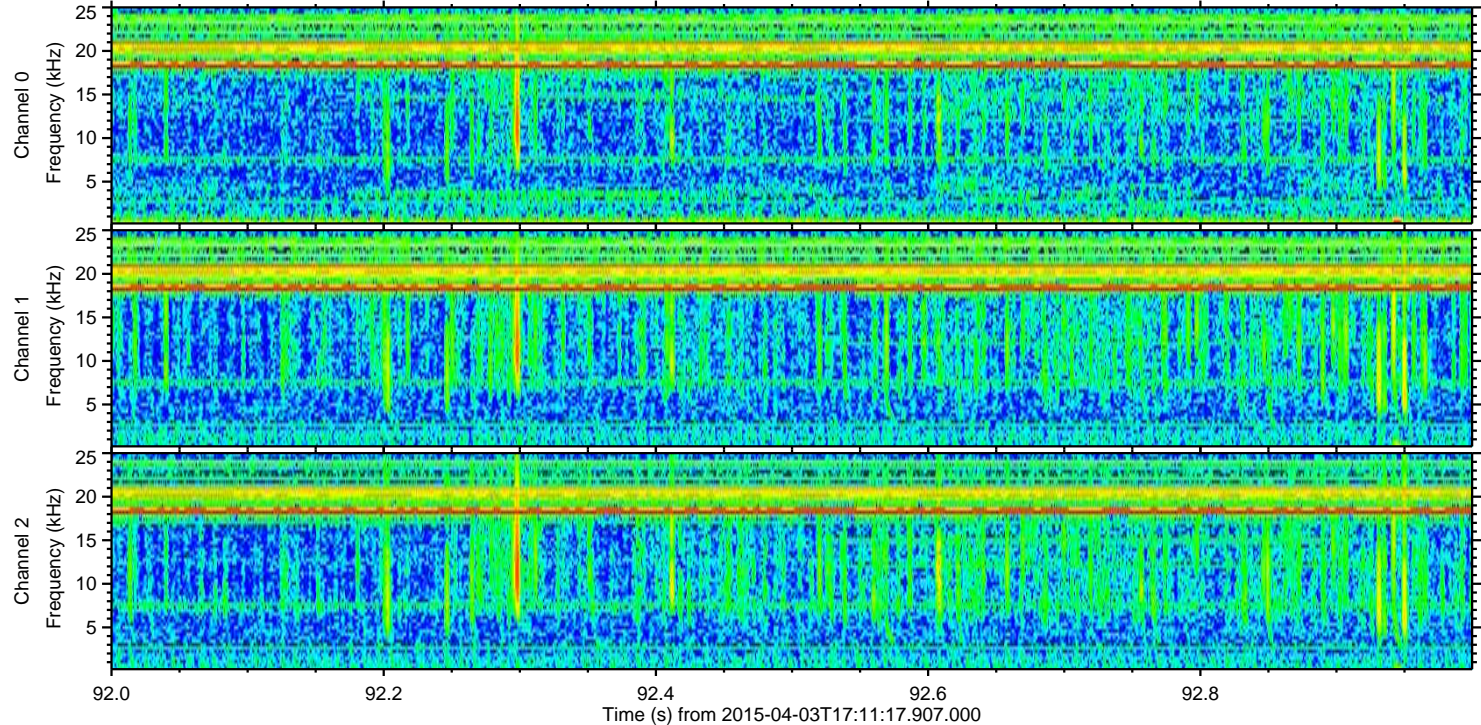
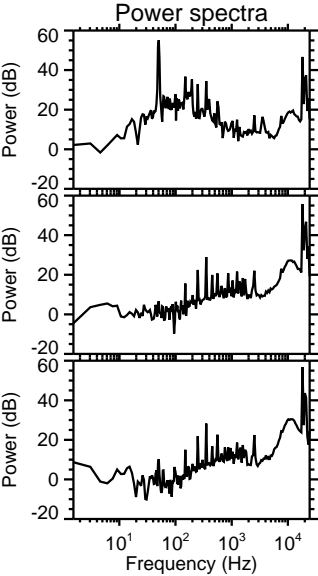
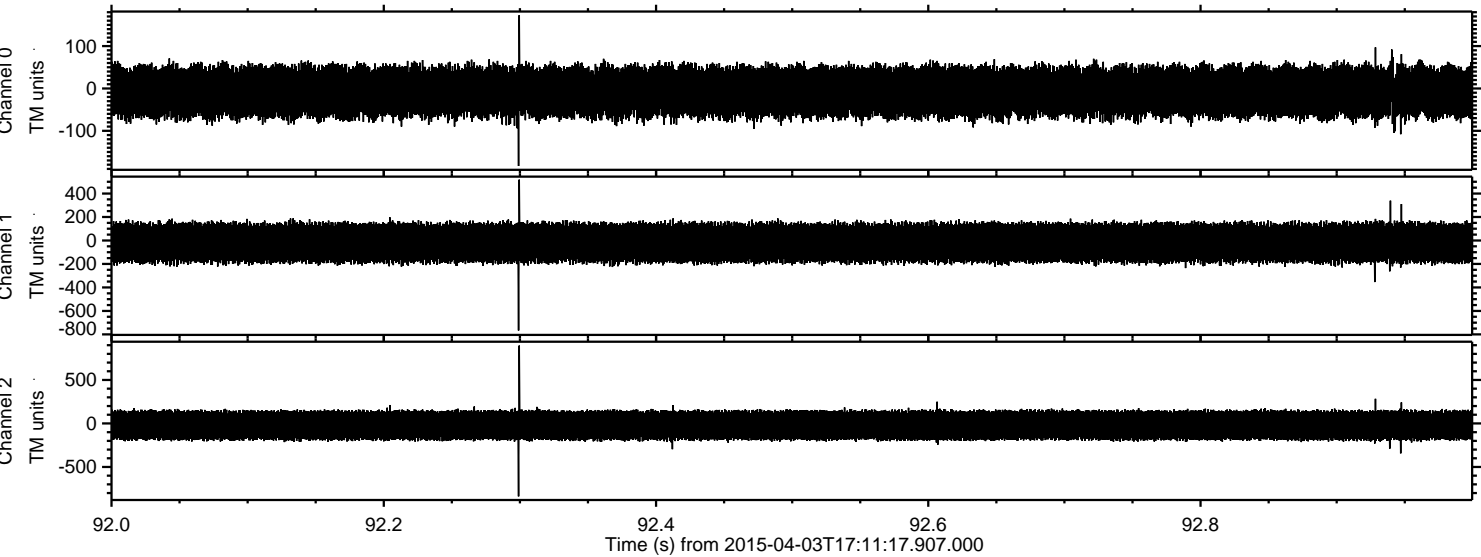


Channel 0
mn: -303
mx: 261
 μ : -8.0
 σ : 32.4

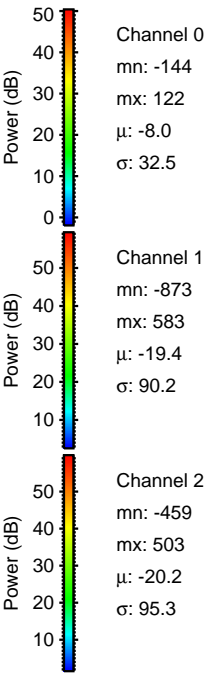
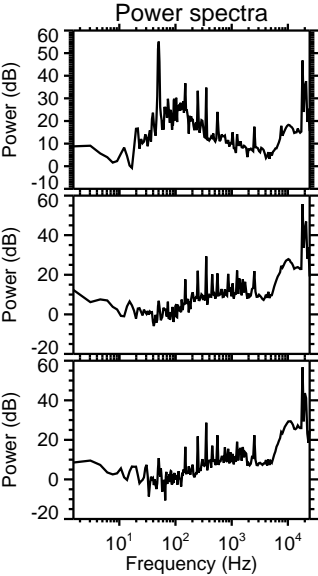
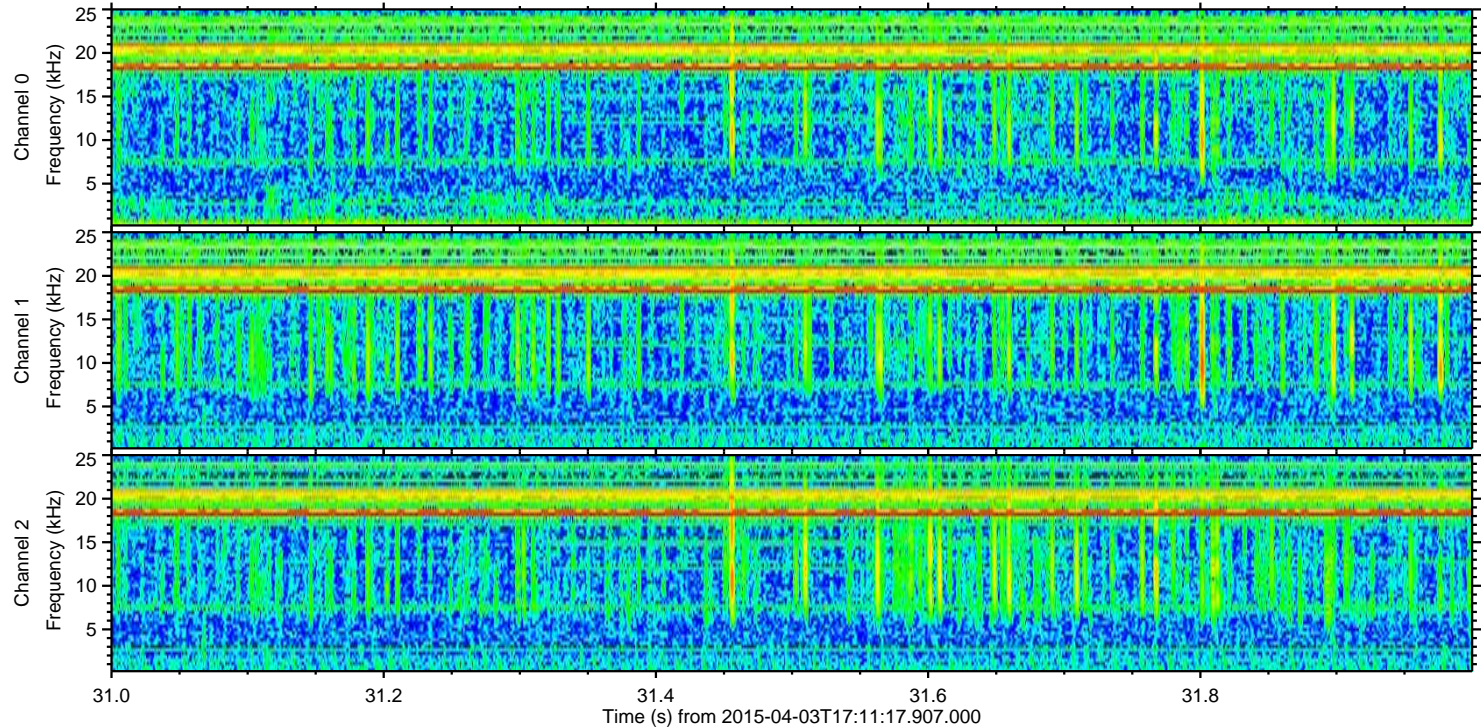
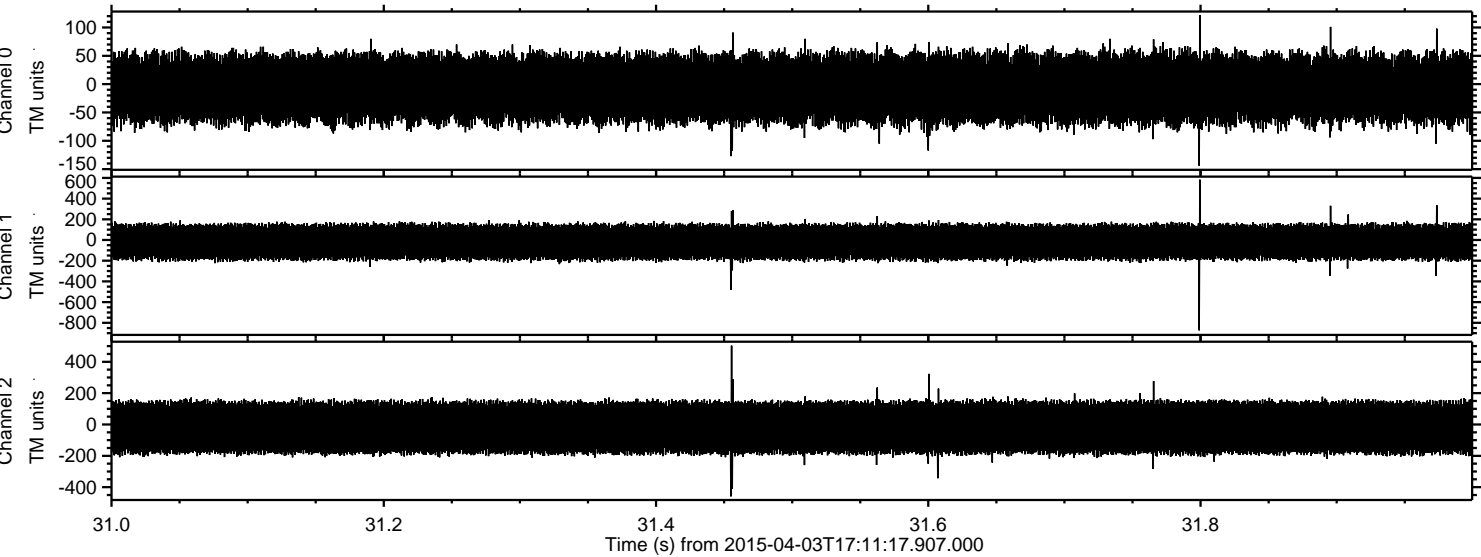
Channel 1
mn: -369
mx: 405
 μ : -19.7
 σ : 89.7

Channel 2
mn: -936
mx: 918
 μ : -20.6
 σ : 96.5

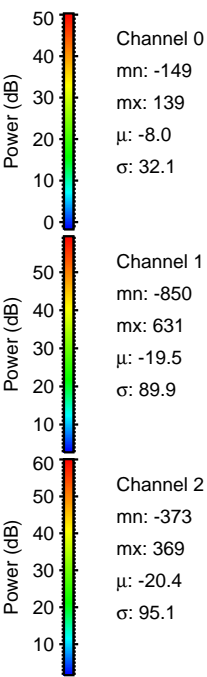
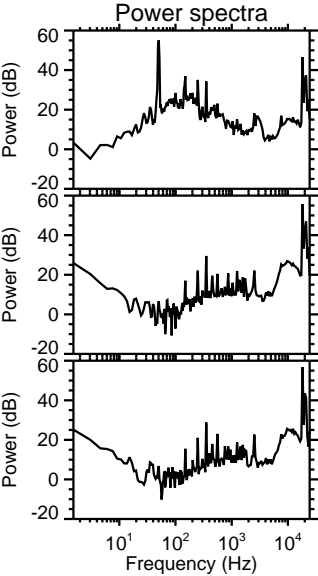
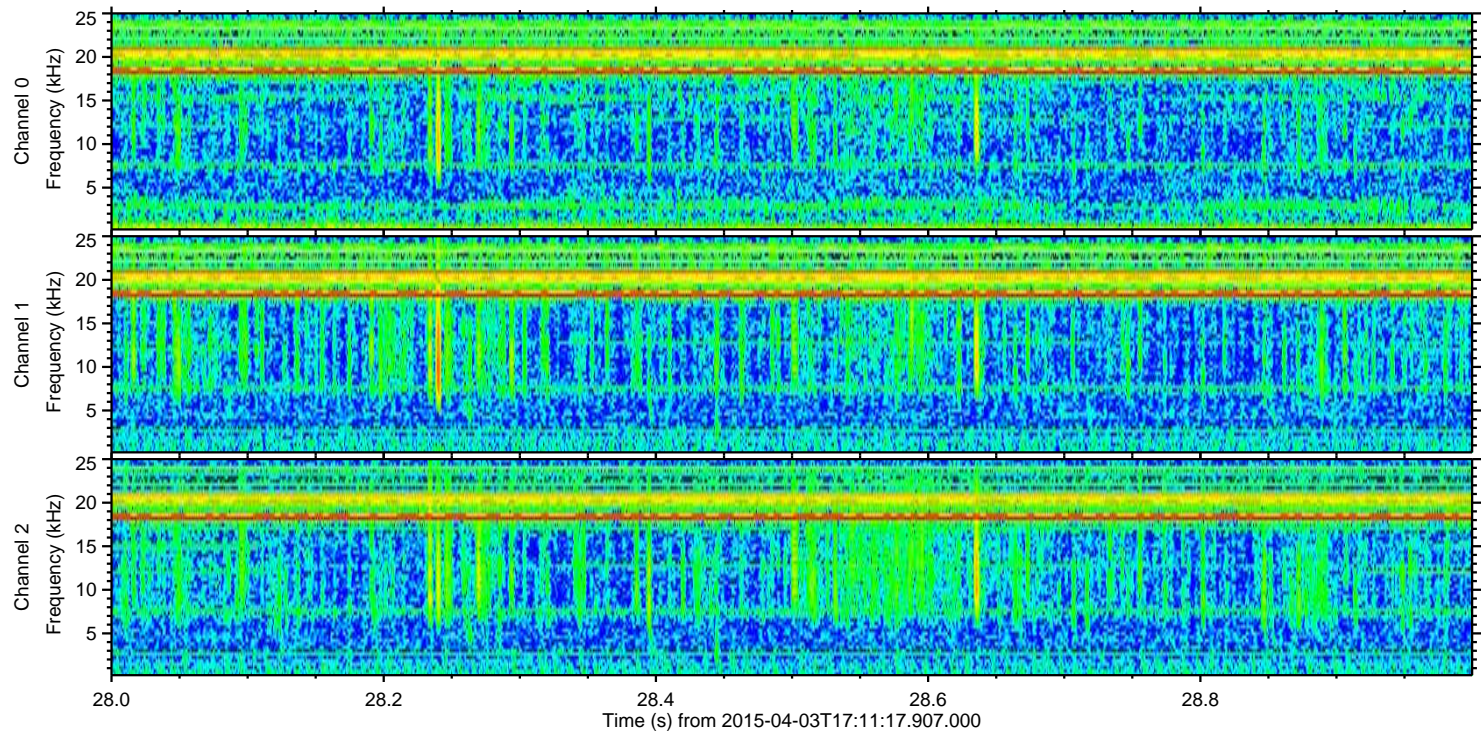
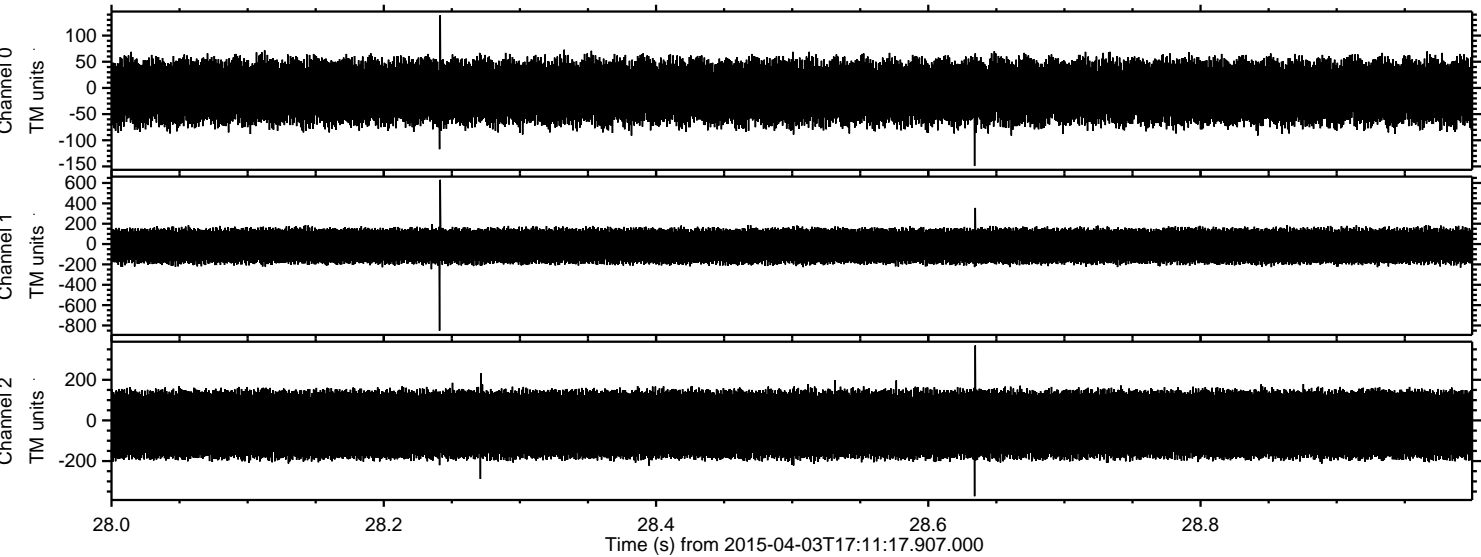
Processed Fri Apr 3 19:18:10 2015 by ELM ver.2012-10-06 from 001__elm20150403_171116__dat00.bin



Processed Fri Apr 3 19:18:11 2015 by ELM ver.2012-10-06 from 001__elm20150403_171116__dat00.bin



Processed Fri Apr 3 19:18:12 2015 by ELM ver.2012-10-06 from 001__elm20150403_171116__dat00.bin



Channel 0
mn: -149
mx: 139
 μ : -8.0
 σ : 32.1

Channel 1
mn: -850
mx: 631
 μ : -19.5
 σ : 89.9

Channel 2
mn: -373
mx: 369
 μ : -20.4
 σ : 95.1

Processed Fri Apr 3 19:18:13 2015 by ELM ver.2012-10-06 from 001__elm20150403_171116__dat00.bin

