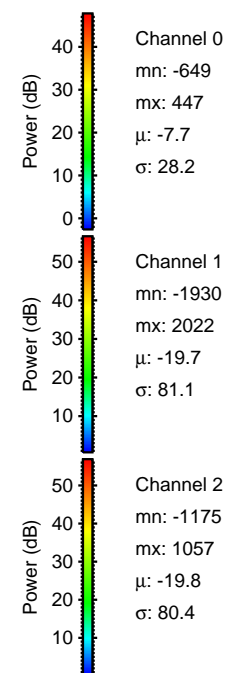
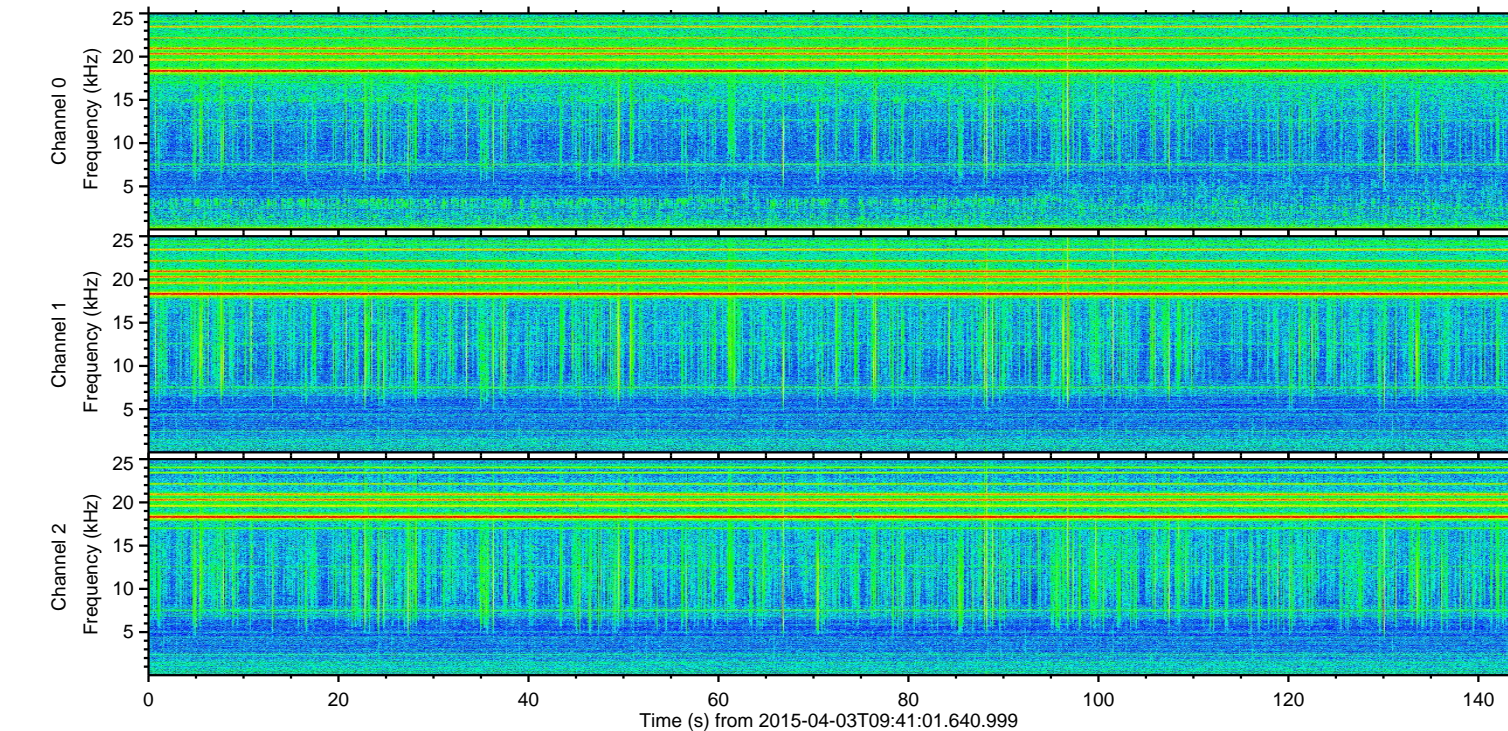
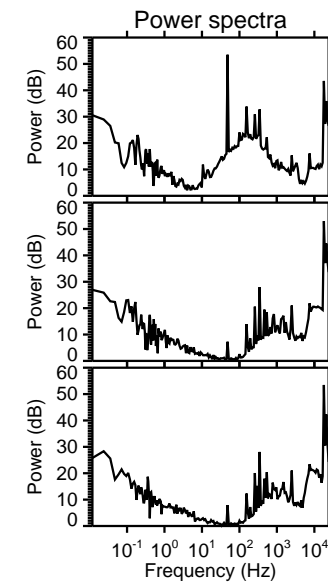
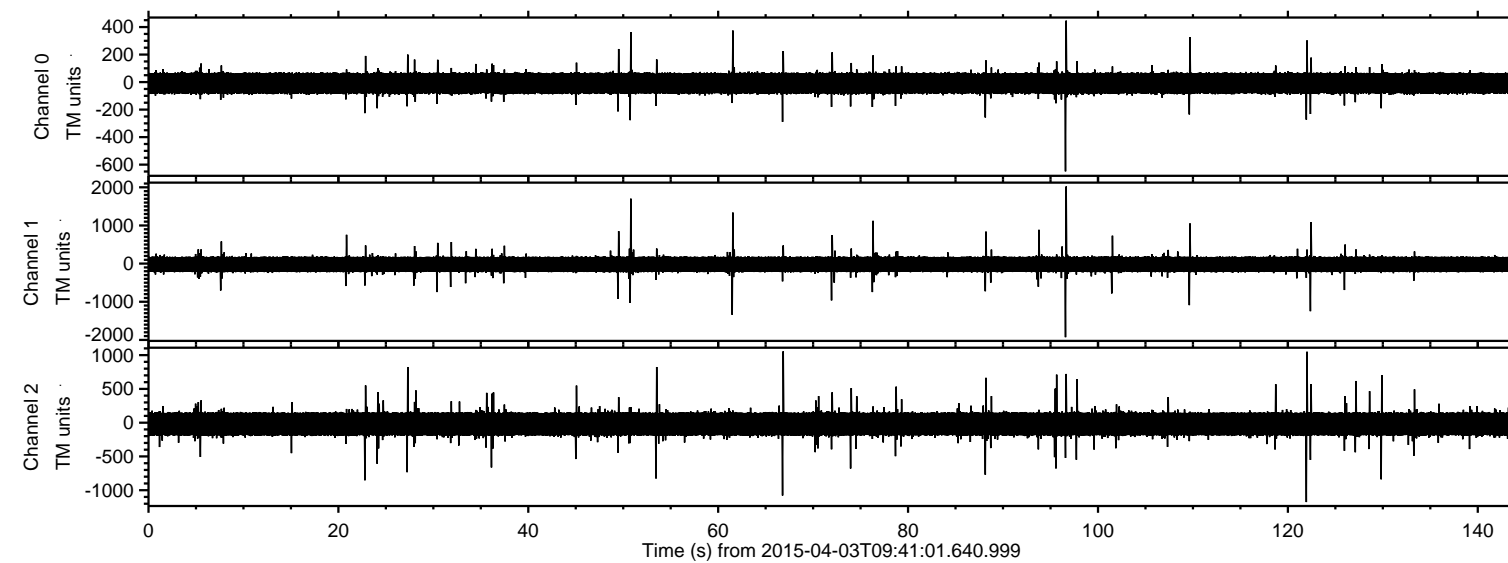


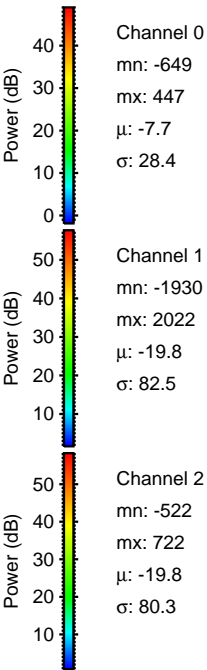
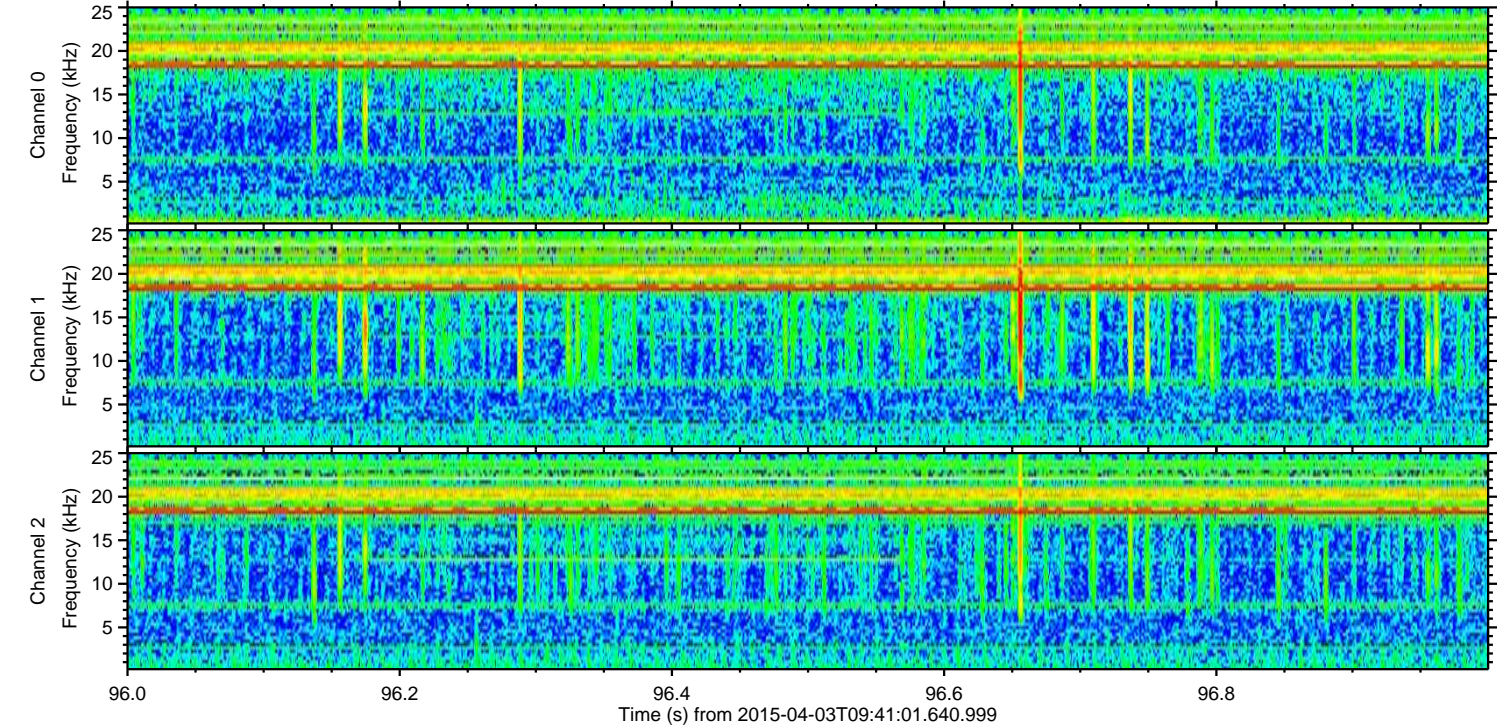
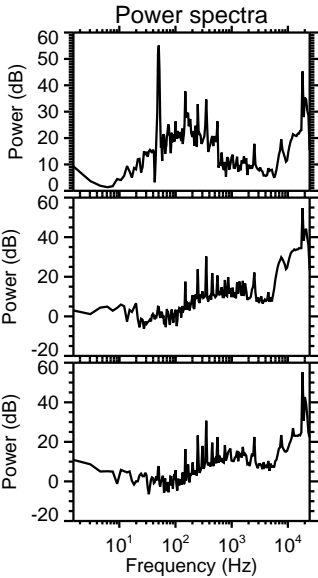
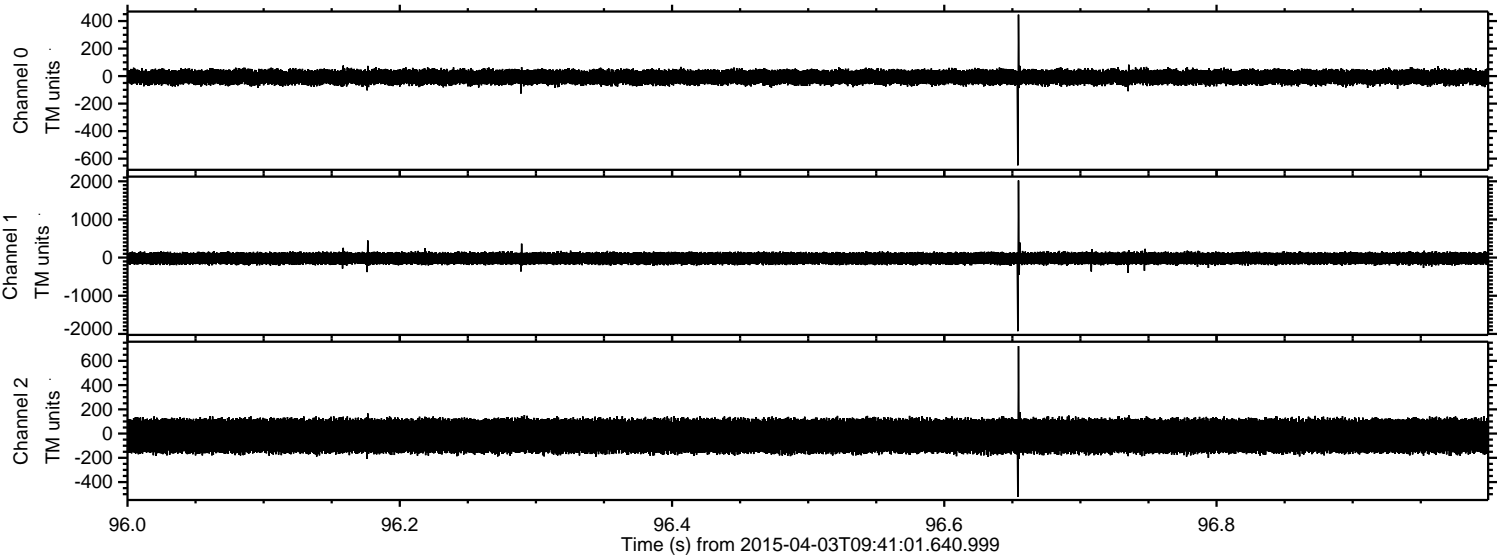
ELMAVAN 3D WAVEFORMS (Measured data sampled at 50 kHz) 49759 packets of 144 samples from 2015-04-03T09:41:01.640.999.

Processed Fri Apr 3 11:48:32 2015 by ELM ver.2012-10-06 from 001\_\_elm20150403\_094100\_\_dat00.bin



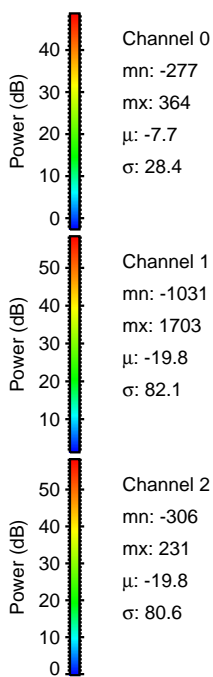
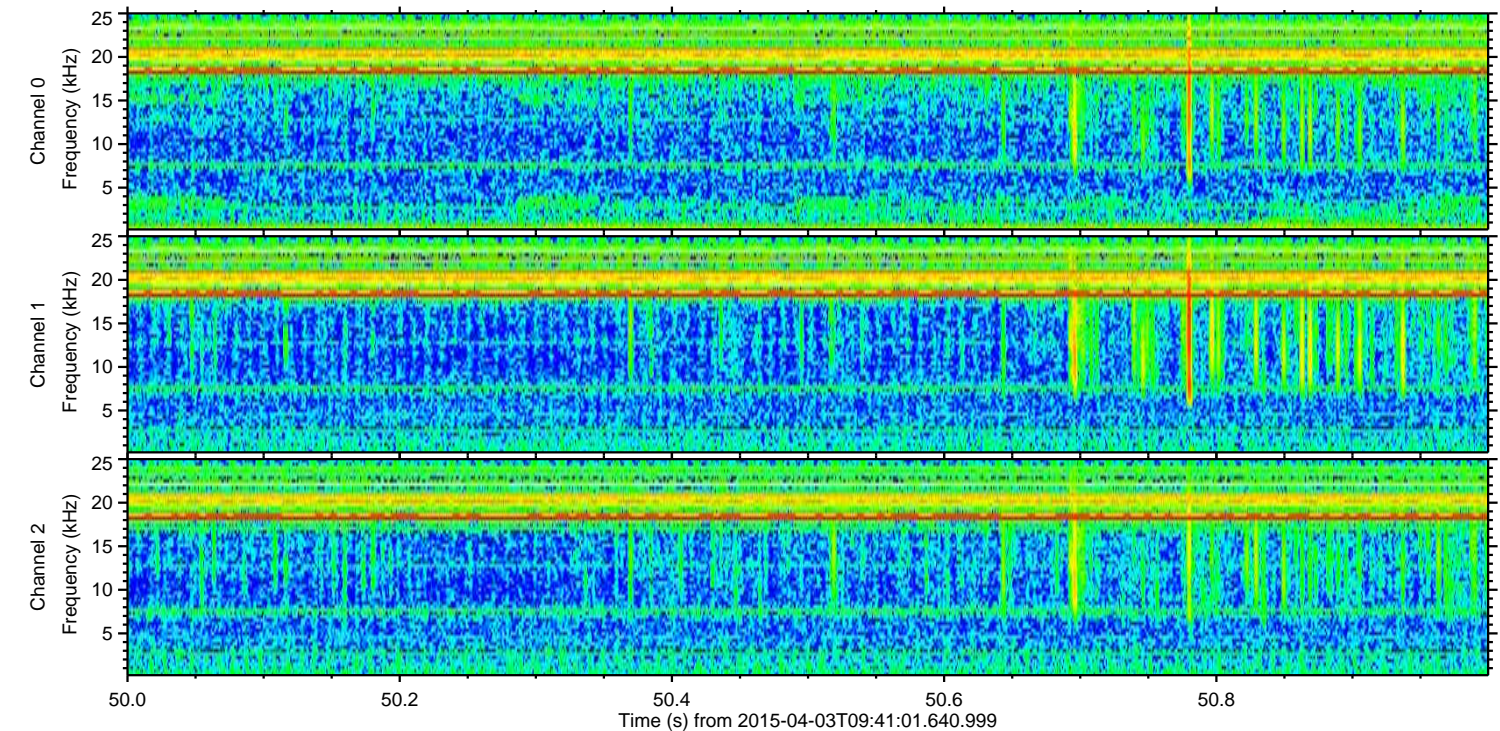
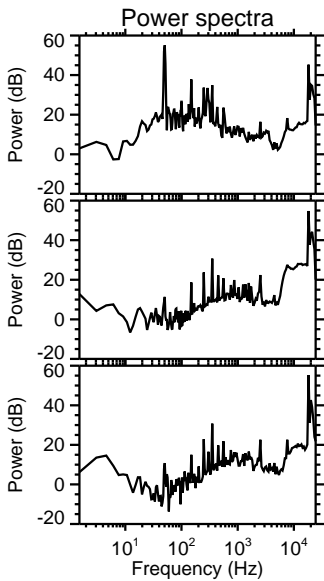
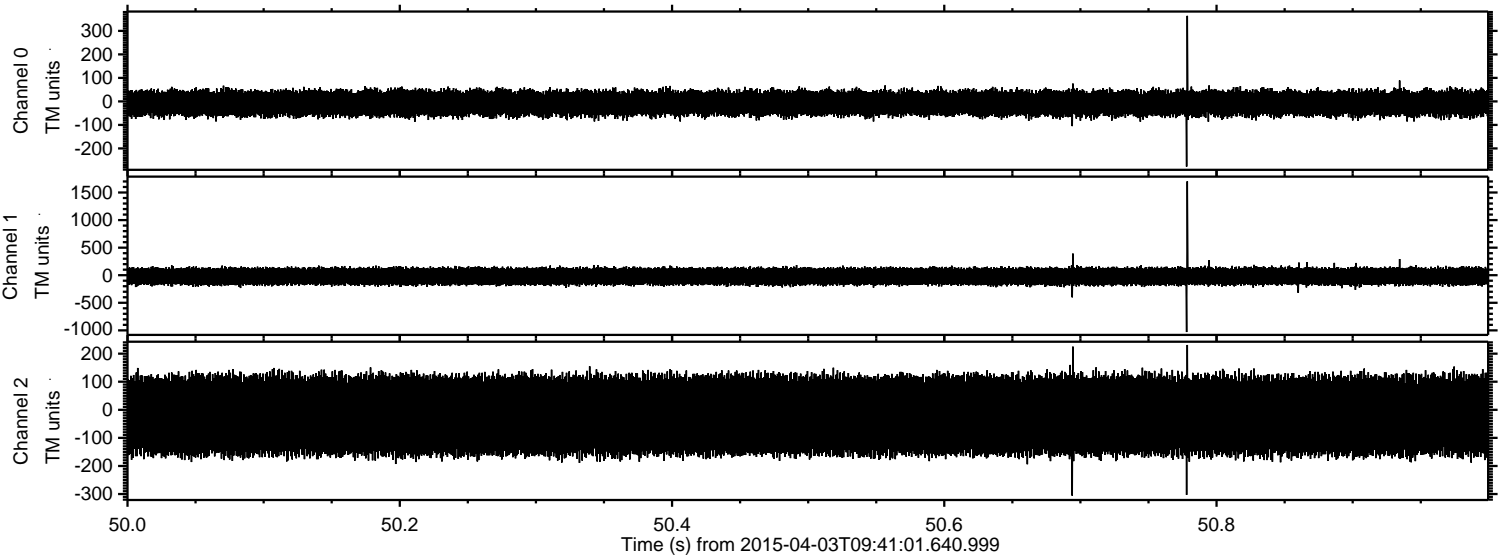


Processed Fri Apr 3 11:48:43 2015 by ELM ver.2012-10-06 from 001\_\_elm20150403\_094100\_\_dat00.bin





Processed Fri Apr 3 11:48:44 2015 by ELM ver.2012-10-06 from 001\_\_elm20150403\_094100\_\_dat00.bin



Channel 0  
mn: -277  
mx: 364  
 $\mu$ : -7.7  
 $\sigma$ : 28.4

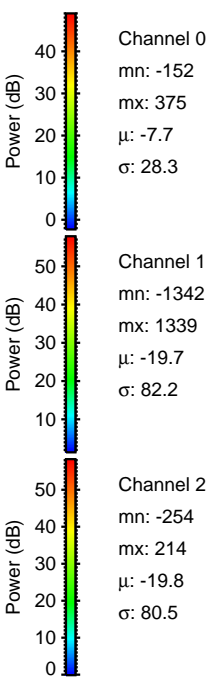
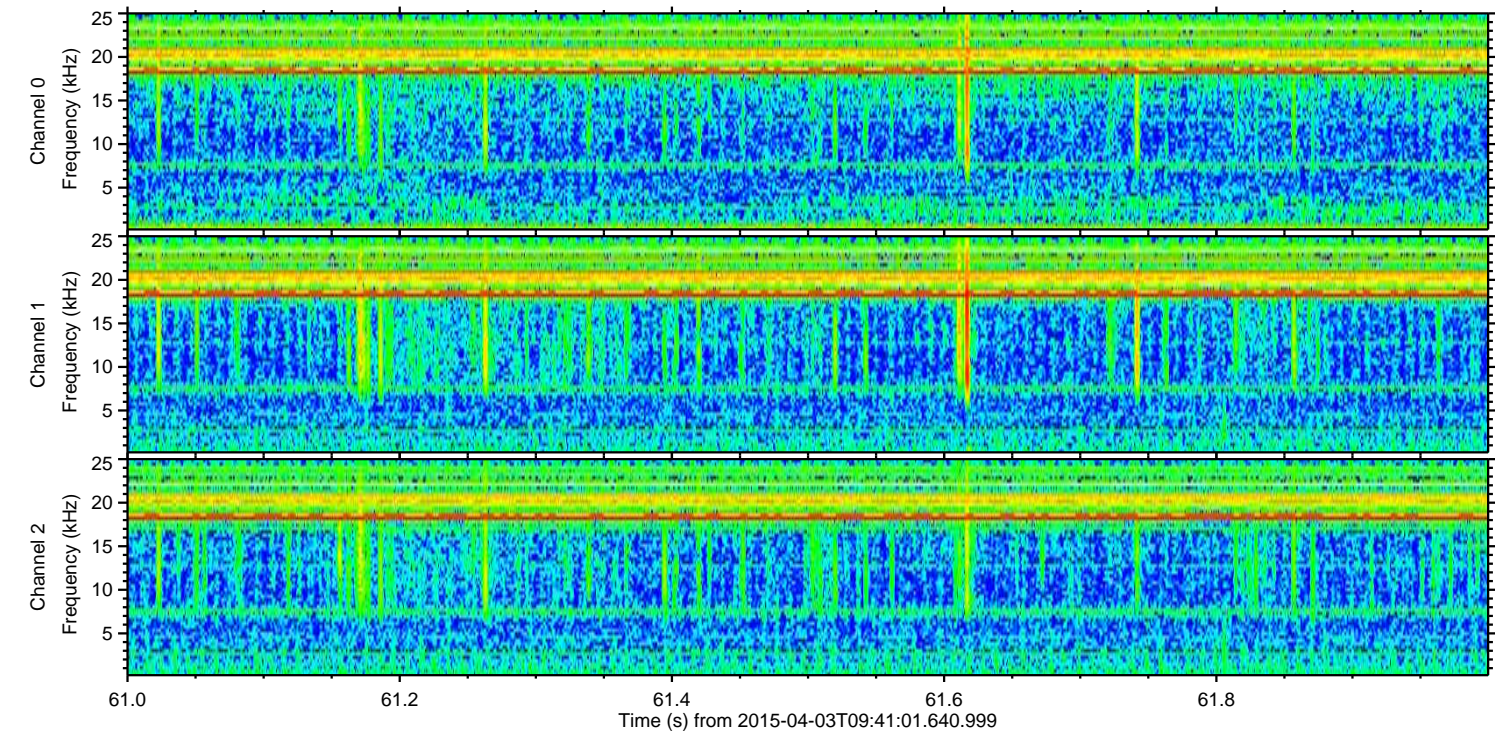
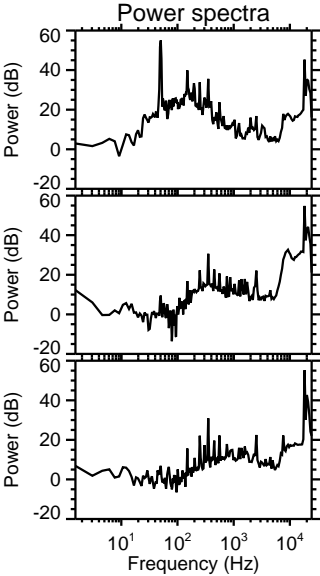
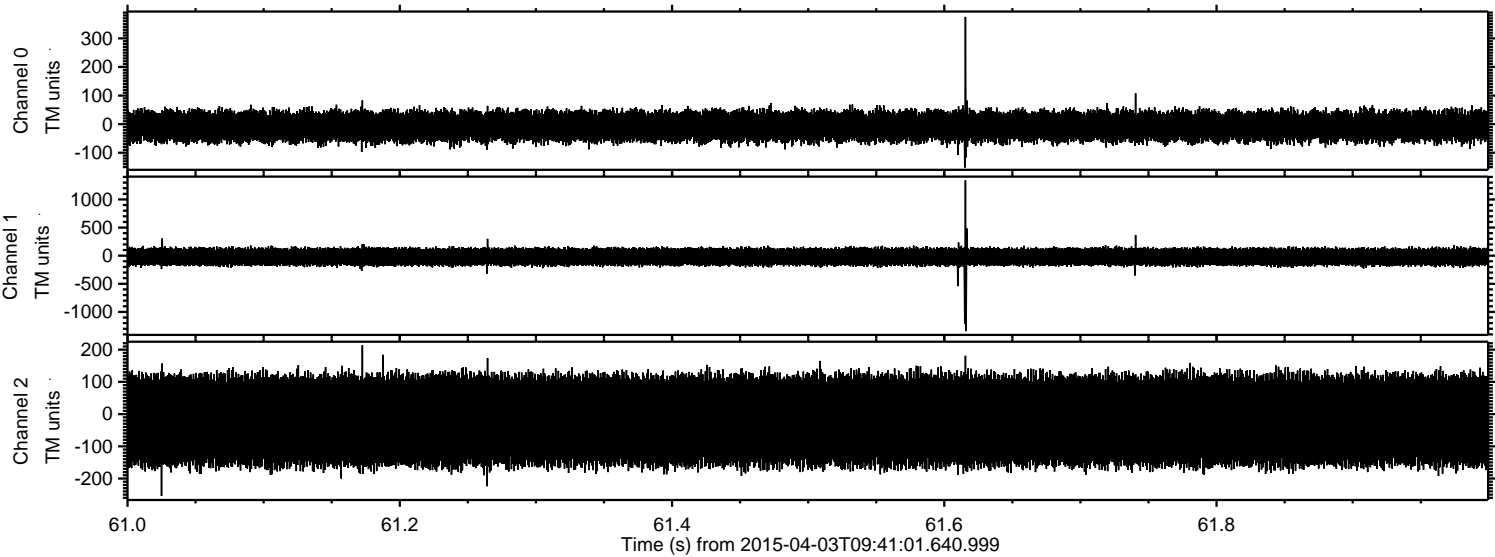
Channel 1  
mn: -1031  
mx: 1703  
 $\mu$ : -19.8  
 $\sigma$ : 82.1

Channel 2  
mn: -306  
mx: 231  
 $\mu$ : -19.8  
 $\sigma$ : 80.6



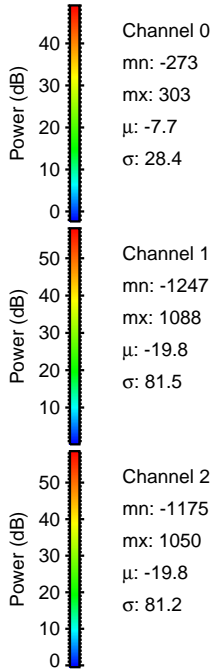
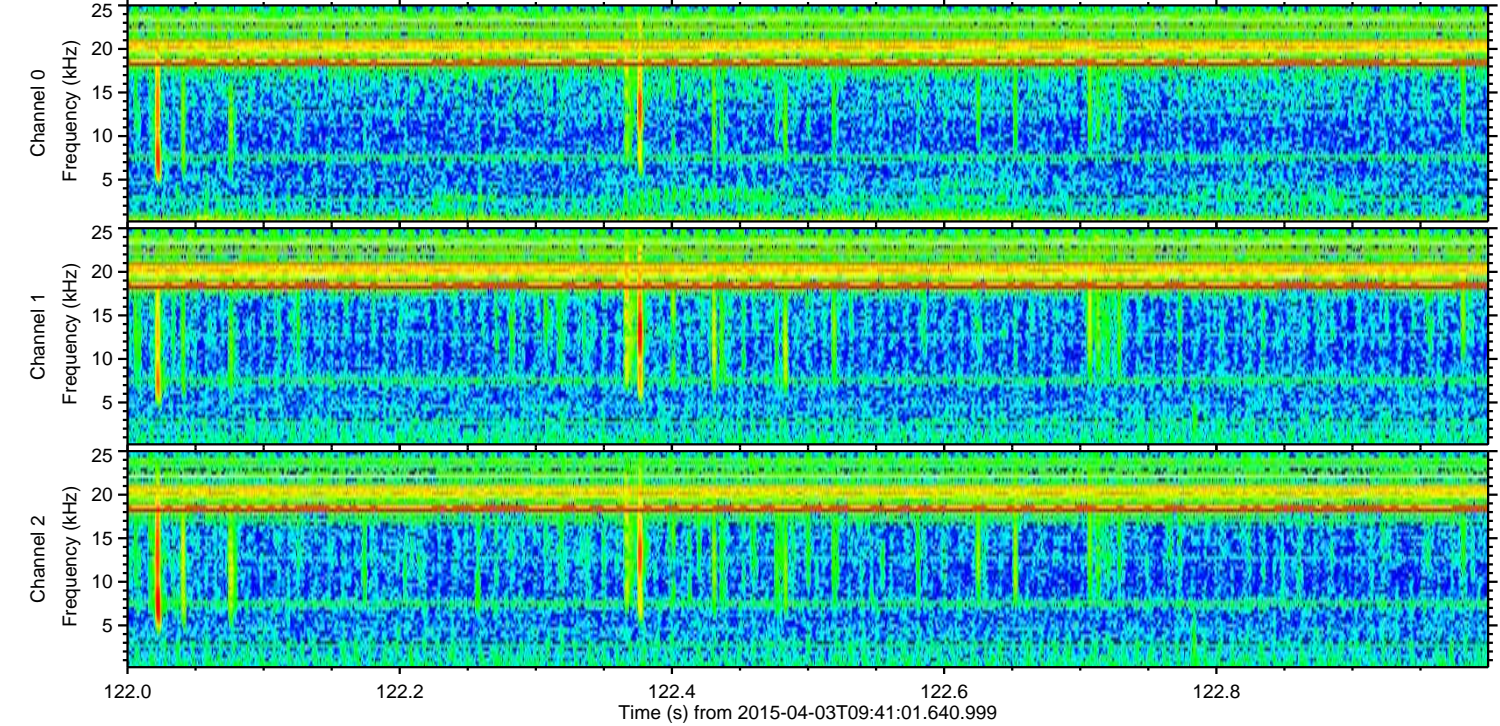
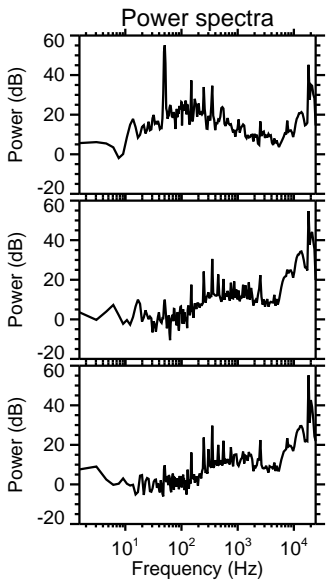
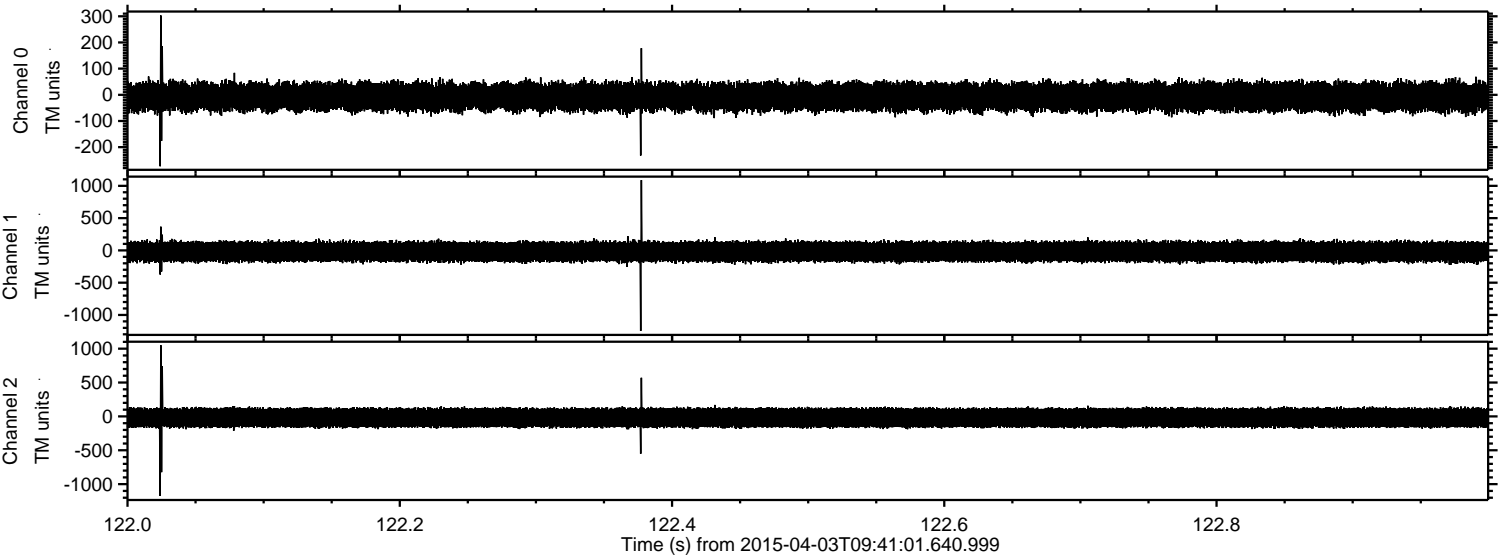
ELMAVAN 3D WAVEFORMS (Measured data sampled at 50 kHz) 49759 packets of 144 samples from 2015-04-03T09:41:01.640.999. Part 62/144

Processed Fri Apr 3 11:48:45 2015 by ELM ver.2012-10-06 from 001\_\_elm20150403\_094100\_\_dat00.bin

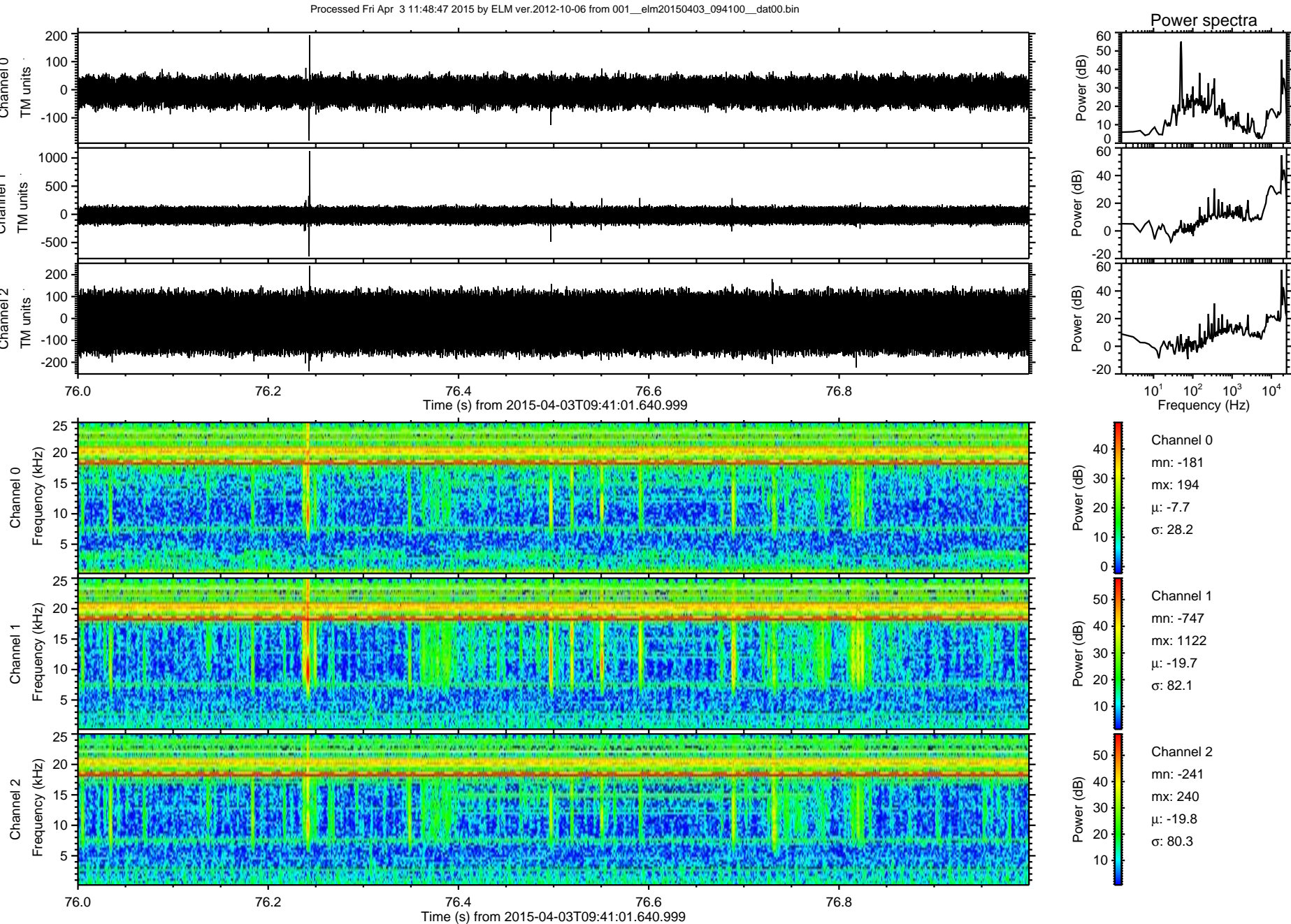




Processed Fri Apr 3 11:48:46 2015 by ELM ver.2012-10-06 from 001\_\_elm20150403\_094100\_\_dat00.bin



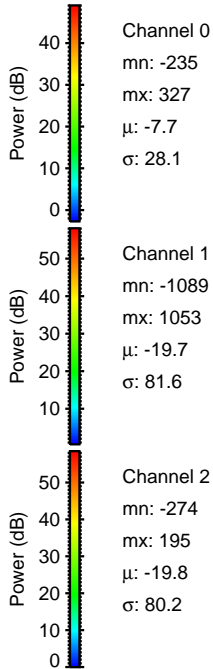
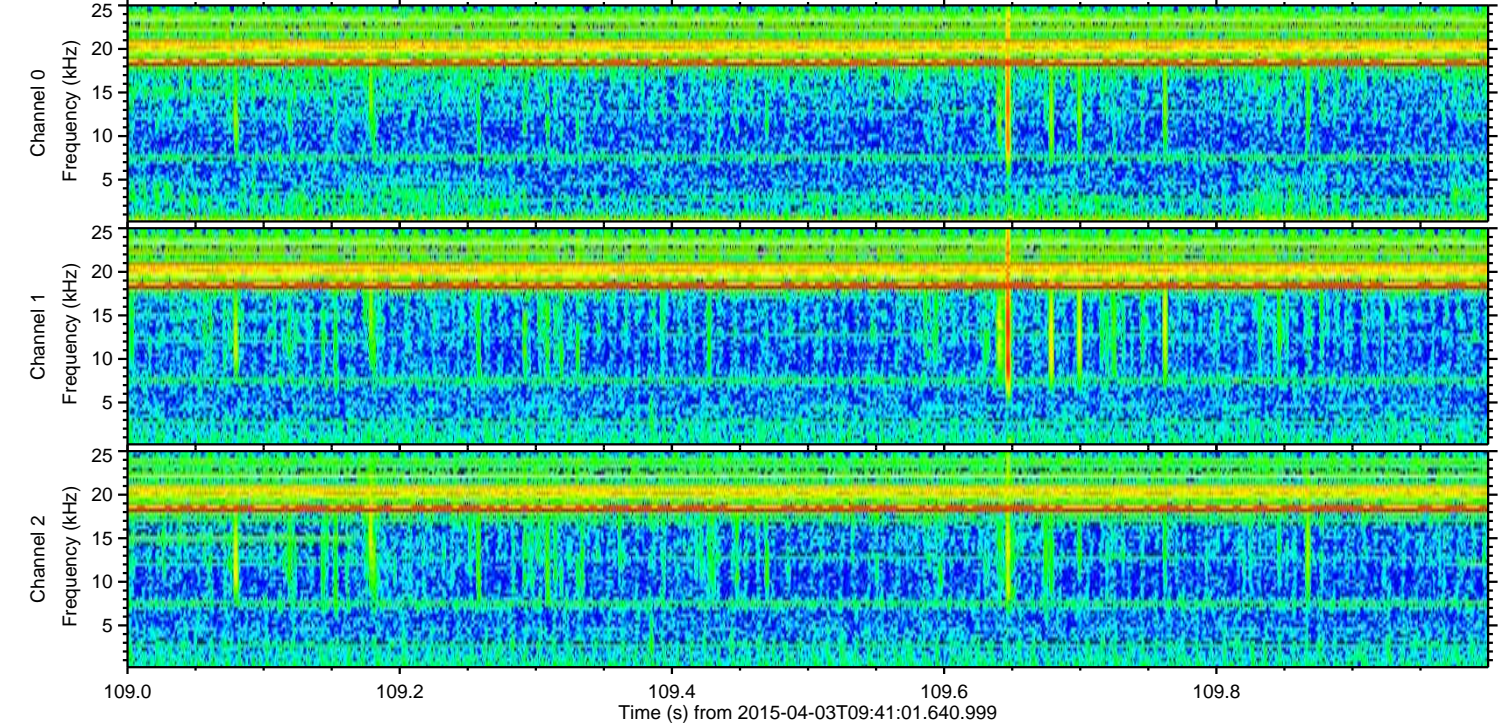
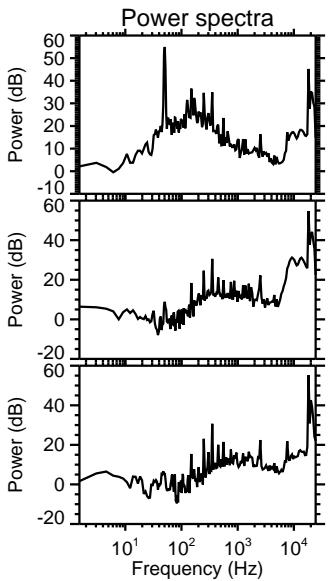
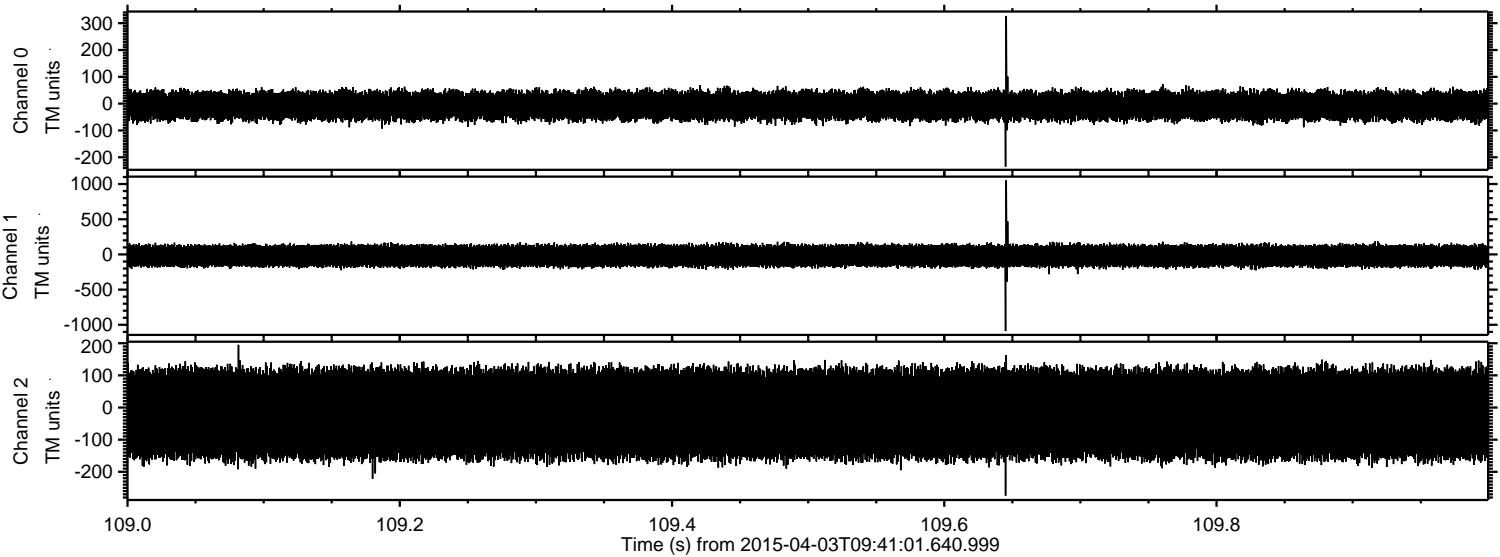






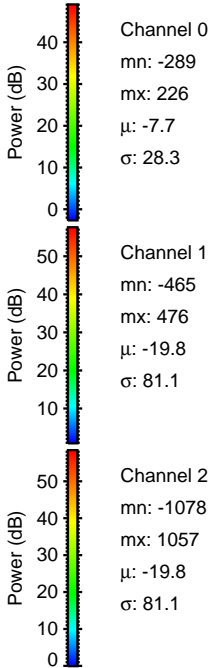
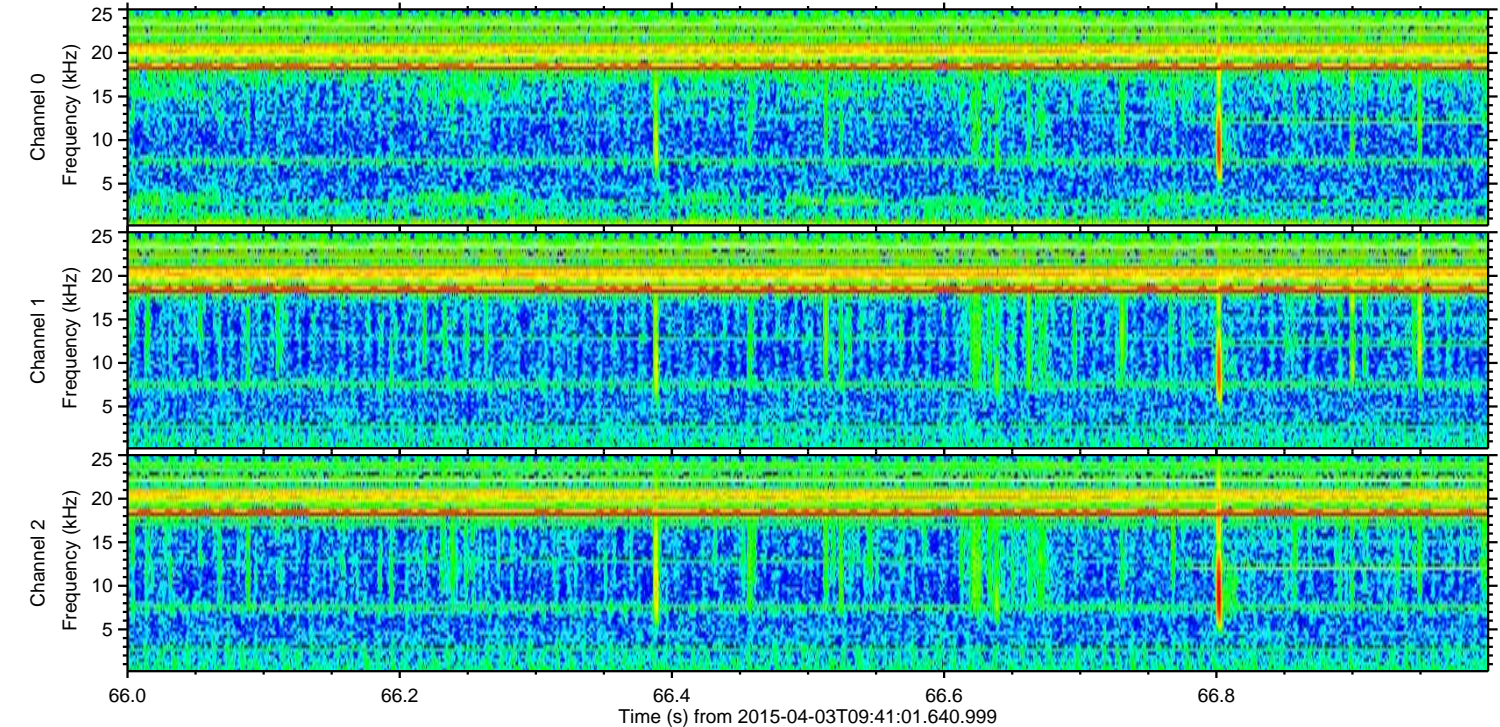
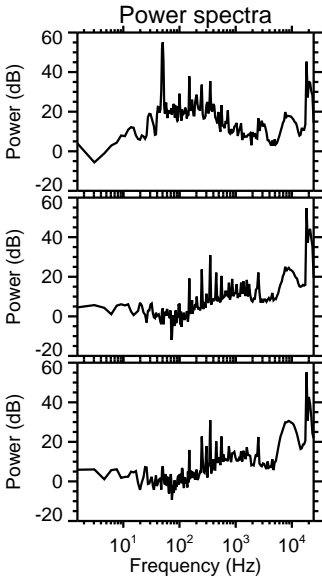
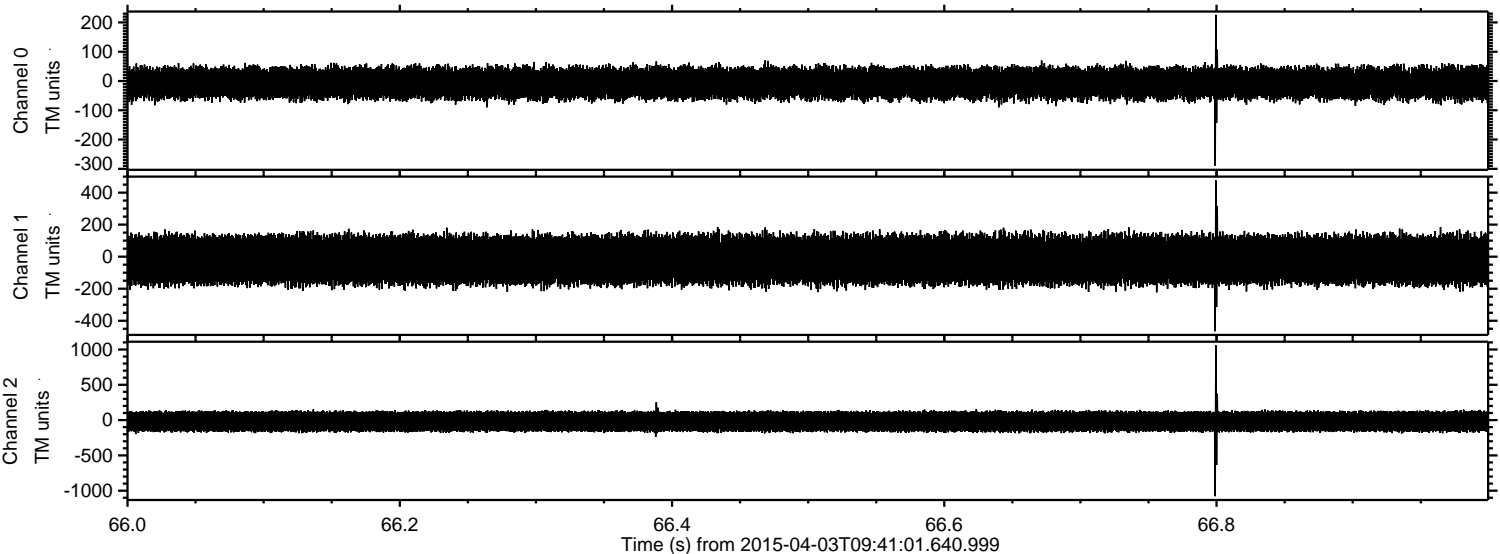
ELMAVAN 3D WAVEFORMS (Measured data sampled at 50 kHz) 49759 packets of 144 samples from 2015-04-03T09:41:01.640.999. Part 110/144

Processed Fri Apr 3 11:48:48 2015 by ELM ver.2012-10-06 from 001\_\_elm20150403\_094100\_\_dat00.bin



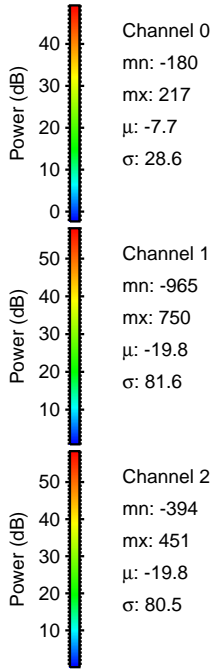
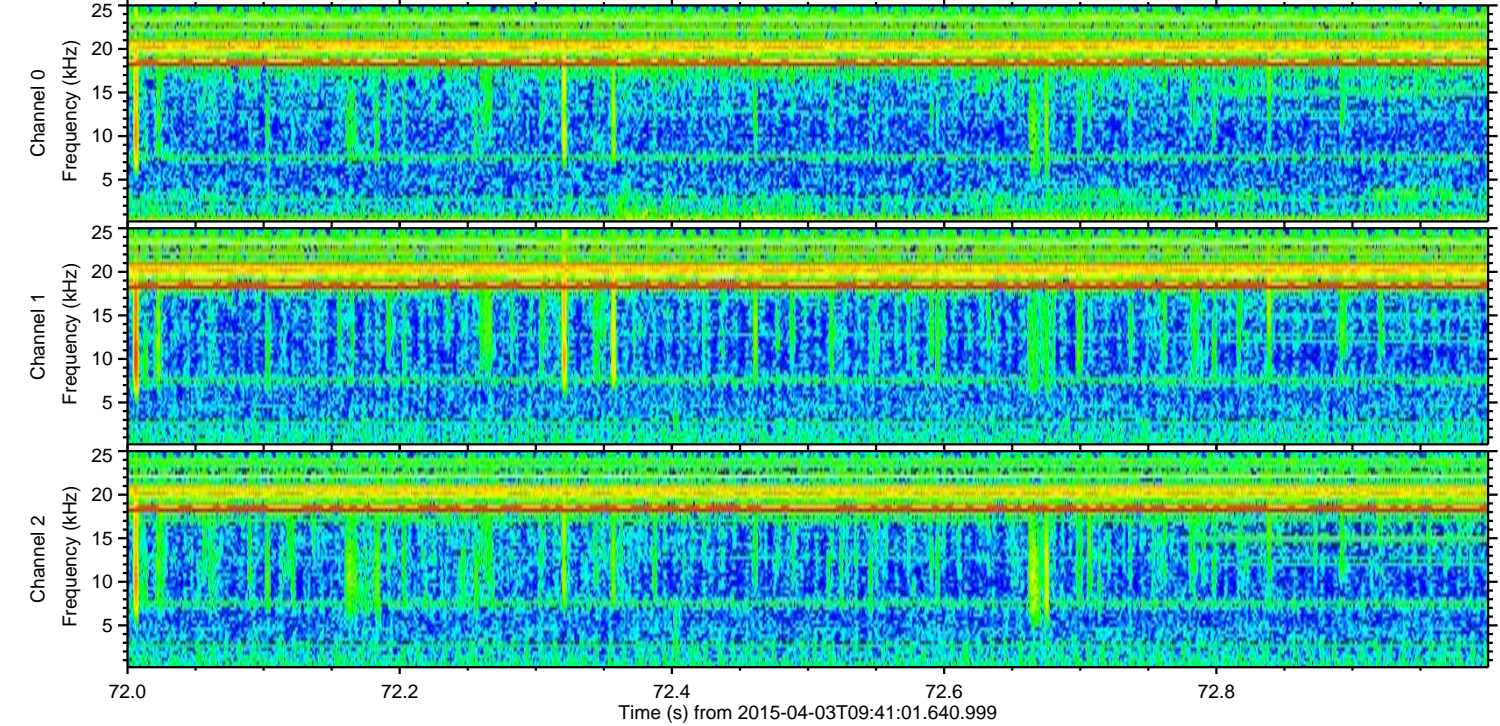
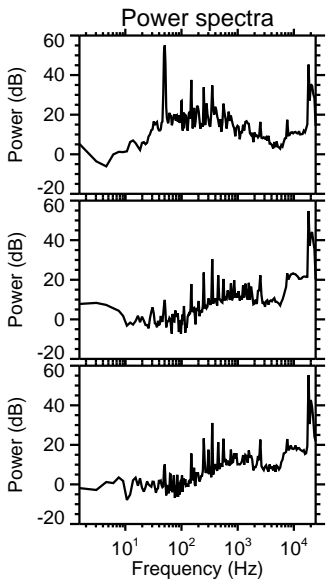
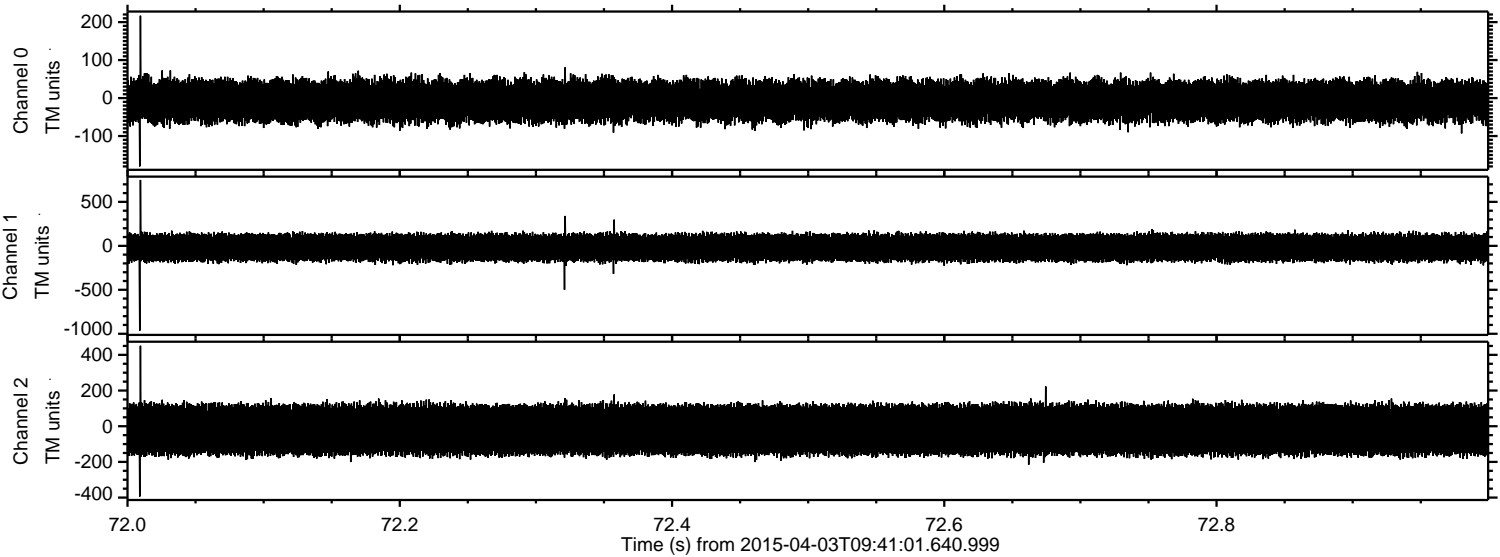


Processed Fri Apr 3 11:48:49 2015 by ELM ver.2012-10-06 from 001\_\_elm20150403\_094100\_\_dat00.bin





Processed Fri Apr 3 11:48:50 2015 by ELM ver.2012-10-06 from 001\_\_elm20150403\_094100\_\_dat00.bin



Channel 0  
mn: -180  
mx: 217  
 $\mu$ : -7.7  
 $\sigma$ : 28.6

Channel 1  
mn: -965  
mx: 750  
 $\mu$ : -19.8  
 $\sigma$ : 81.6

Channel 2  
mn: -394  
mx: 451  
 $\mu$ : -19.8  
 $\sigma$ : 80.5



Processed Fri Apr 3 11:48:51 2015 by ELM ver.2012-10-06 from 001\_\_elm20150403\_094100\_\_dat00.bin

