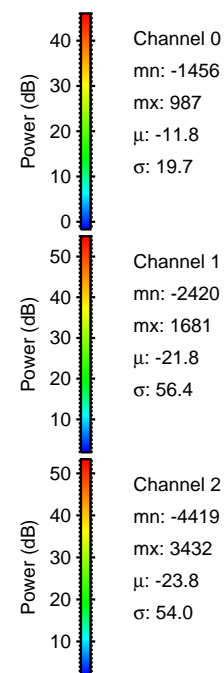
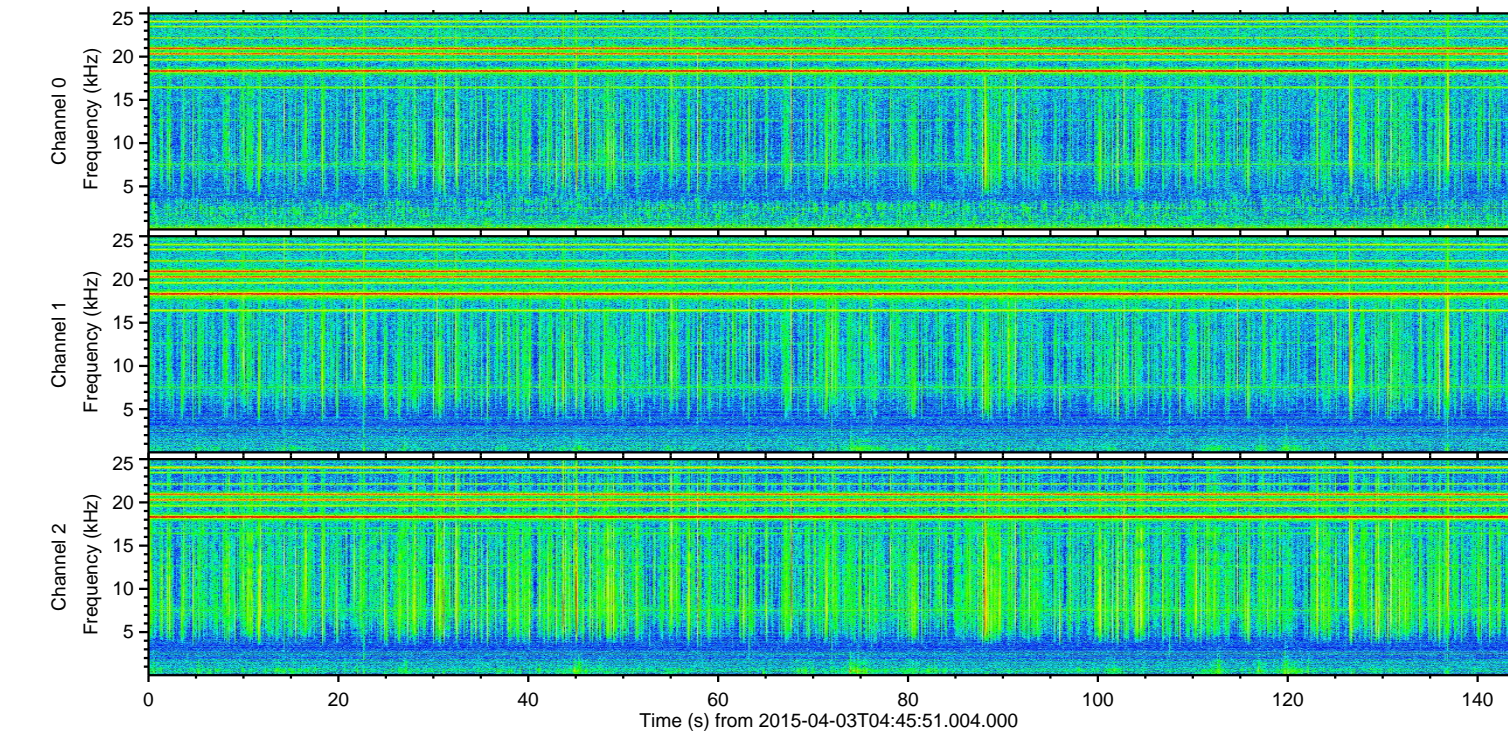
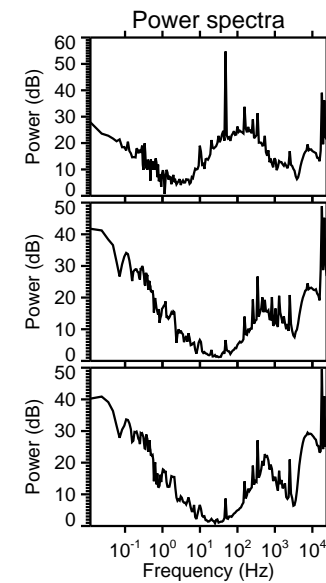
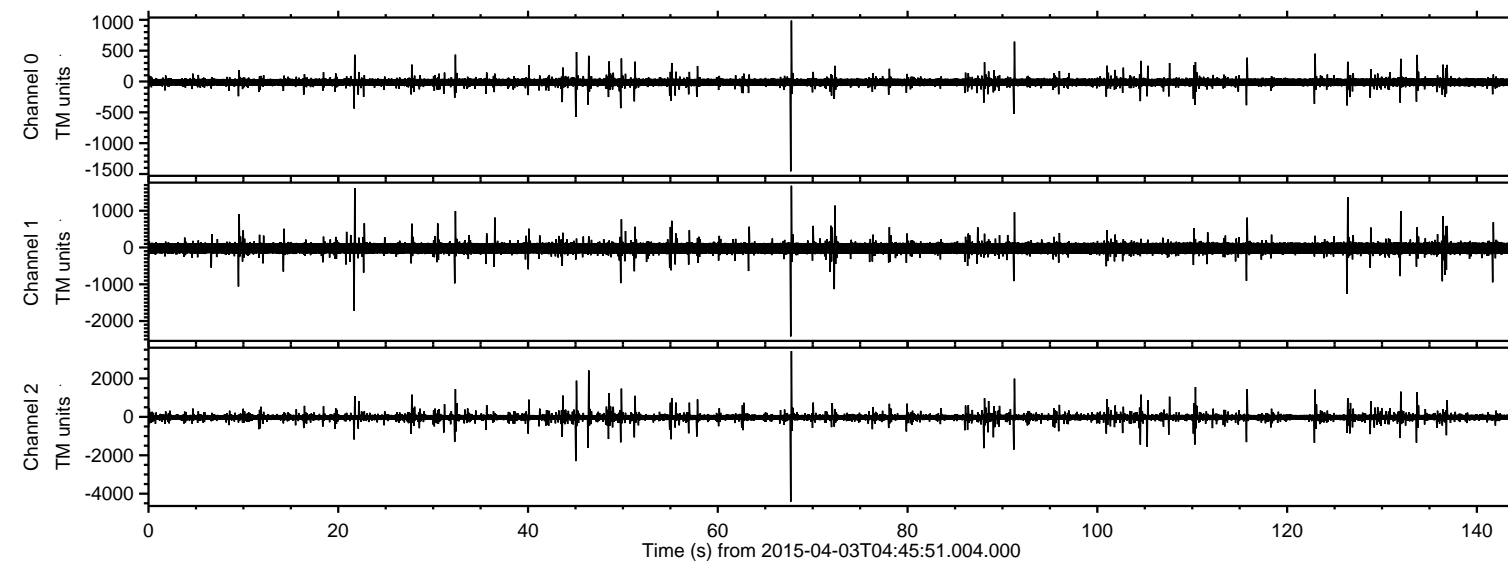
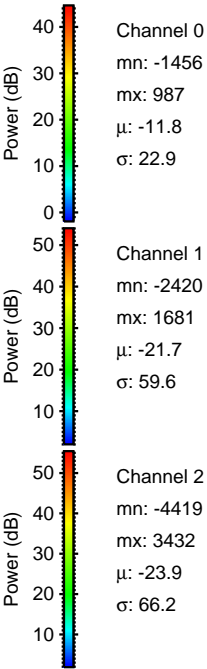
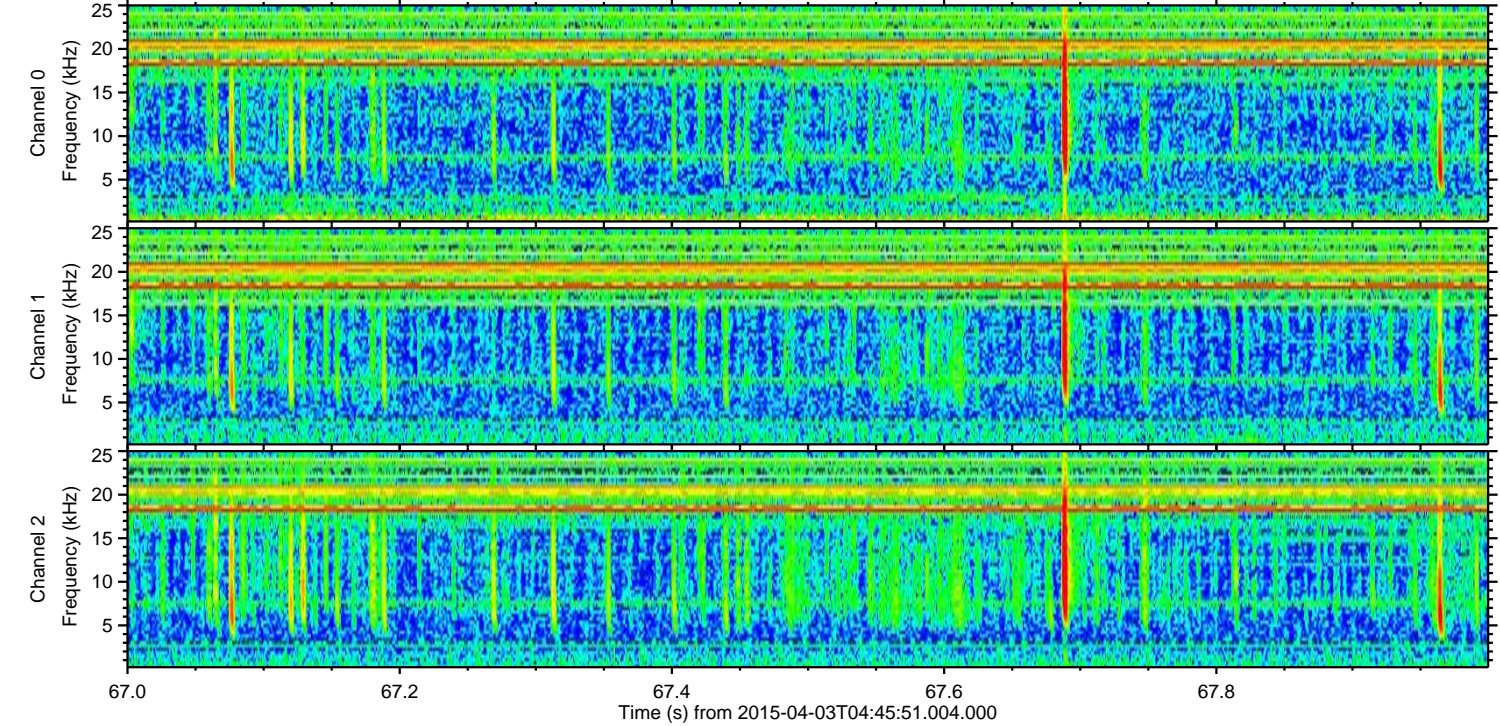
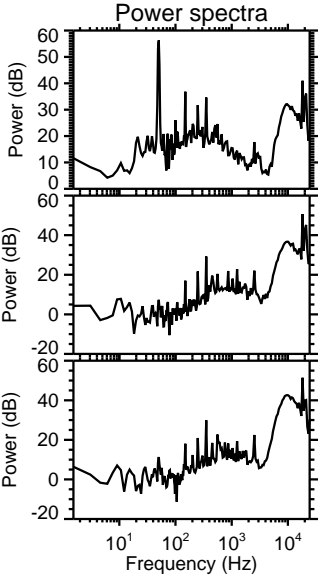
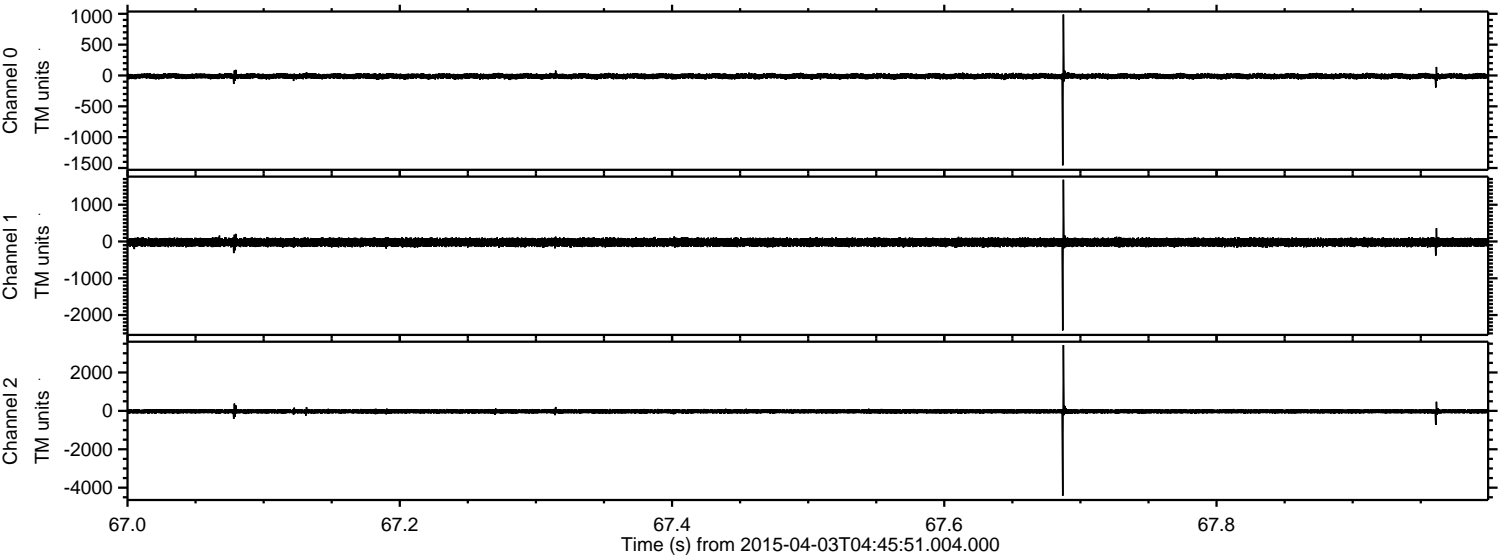


ELMAVAN 3D WAVEFORMS (Measured data sampled at 50 kHz) 49791 packets of 144 samples from 2015-04-03T04:45:51.004.000.

Processed Fri Apr 3 07:05:04 2015 by ELM ver.2012-10-06 from 001__elm20150403_044549__dat00.bin

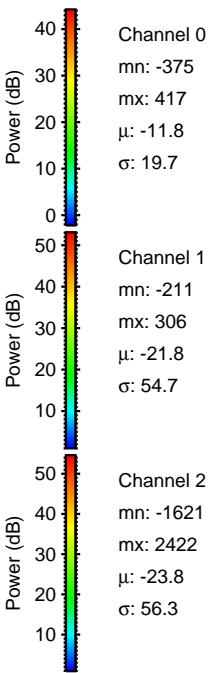
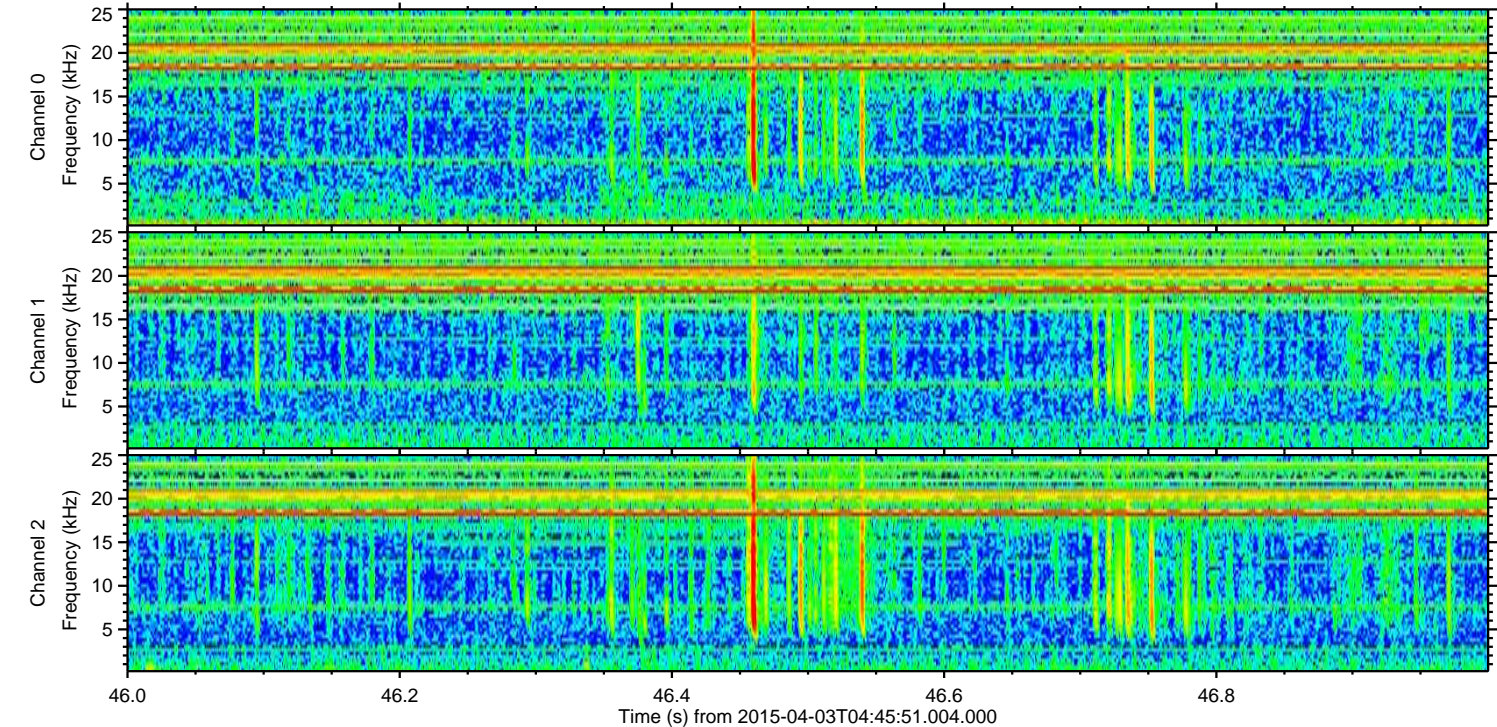
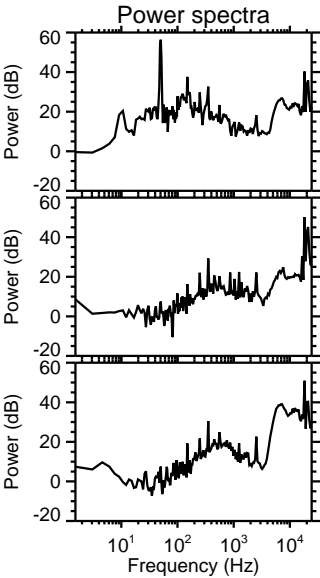
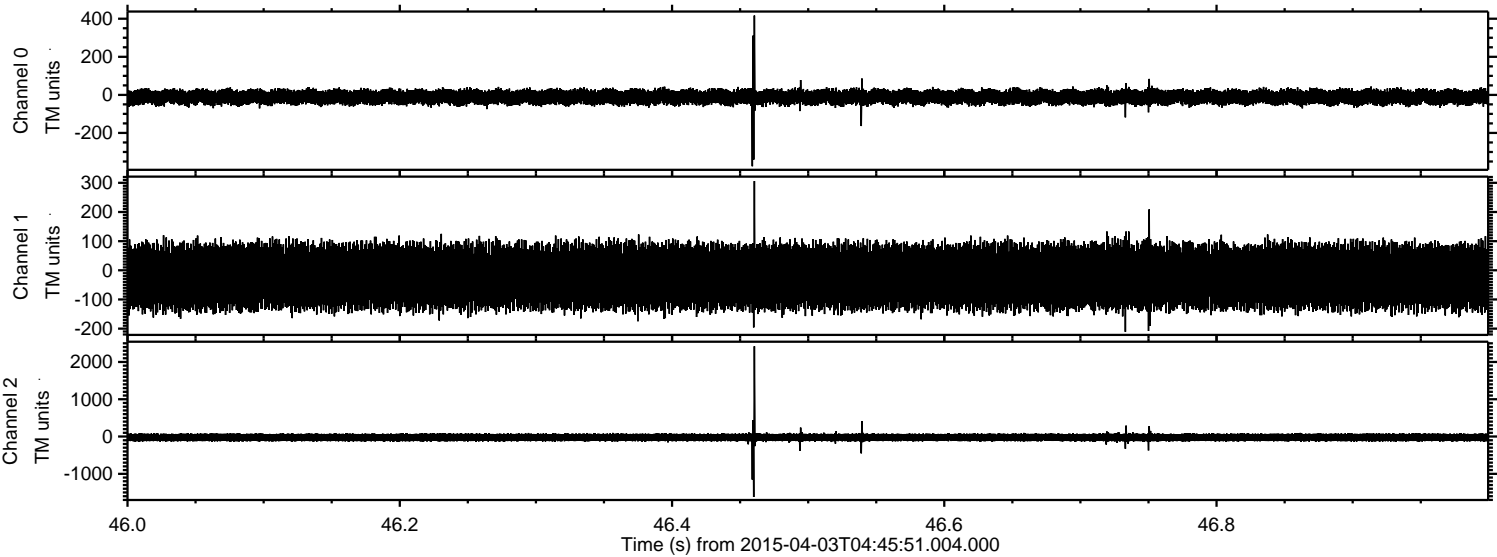


Processed Fri Apr 3 07:05:15 2015 by ELM ver.2012-10-06 from 001__elm20150403_044549__dat00.bin

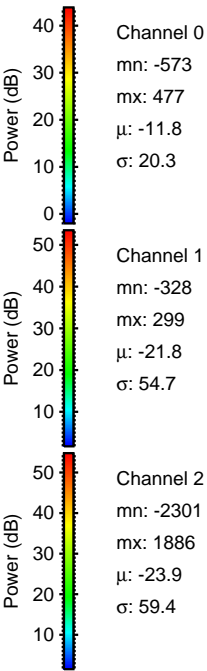
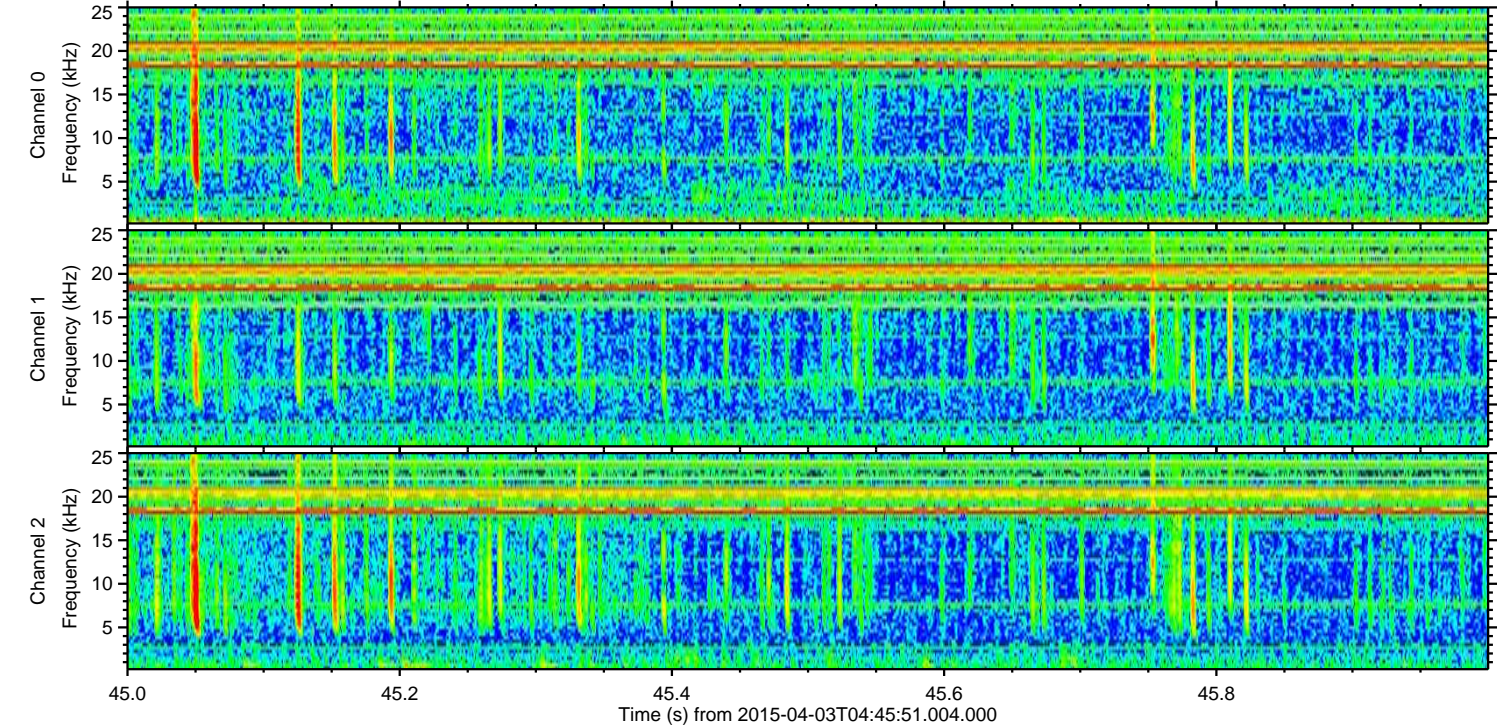
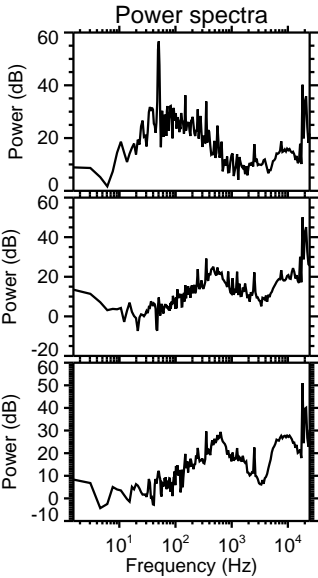
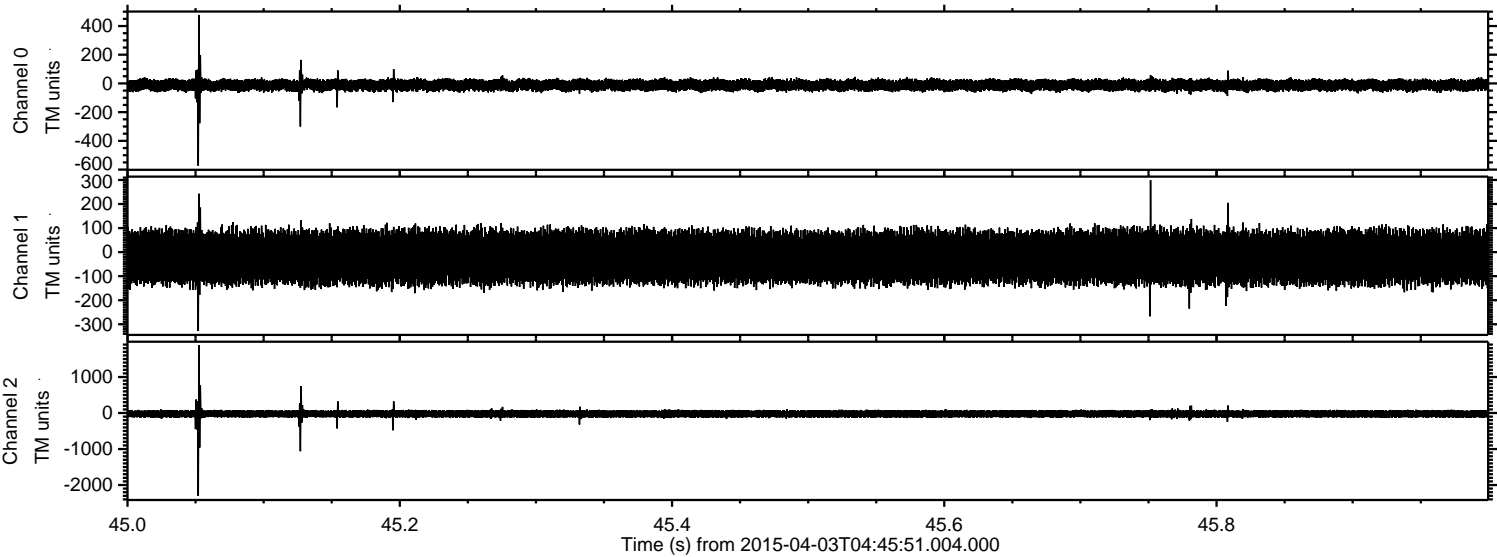


ELMAVAN 3D WAVEFORMS (Measured data sampled at 50 kHz) 49791 packets of 144 samples from 2015-04-03T04:45:51.004.000. Part 47/144

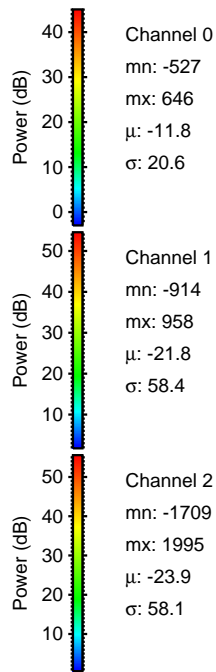
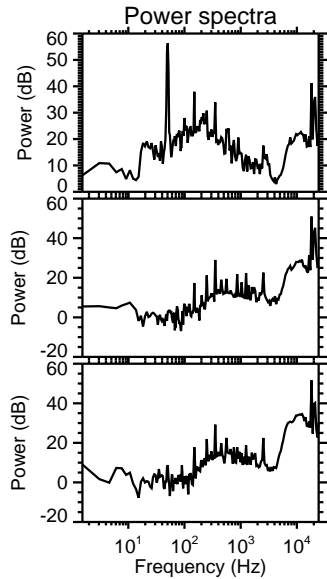
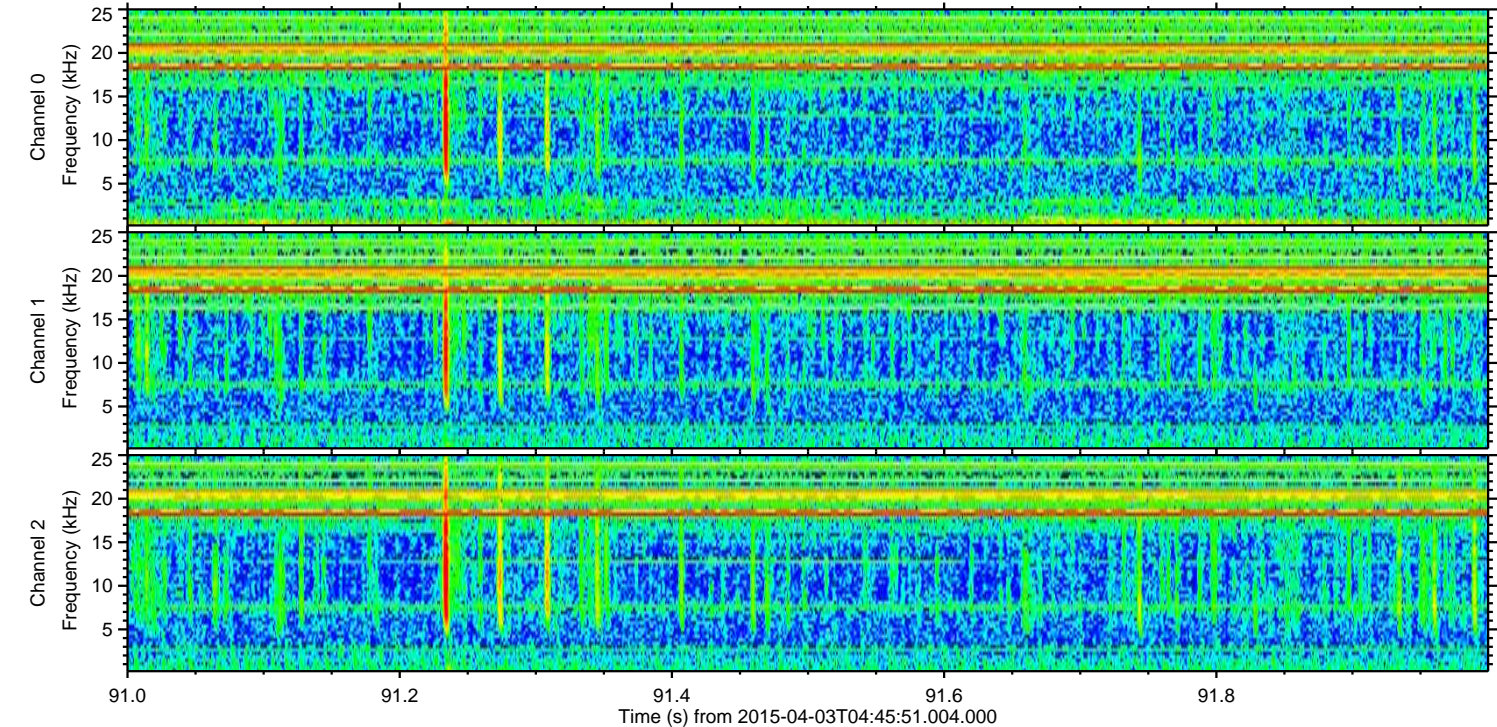
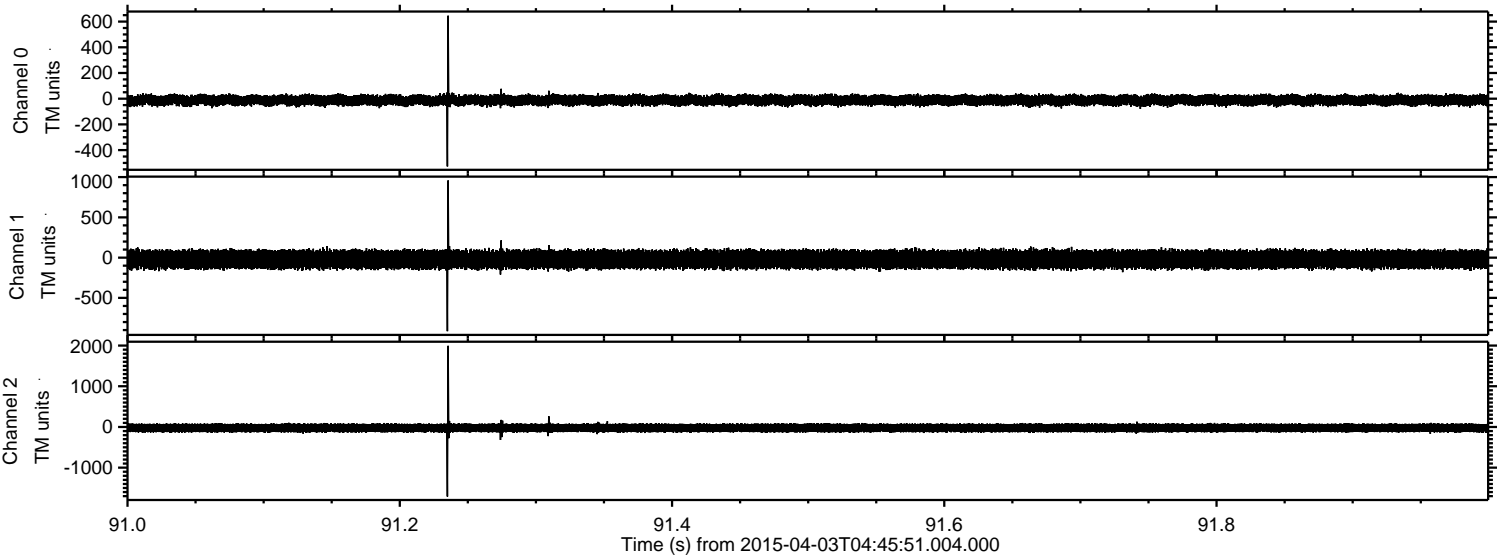
Processed Fri Apr 3 07:05:16 2015 by ELM ver.2012-10-06 from 001__elm20150403_044549__dat00.bin



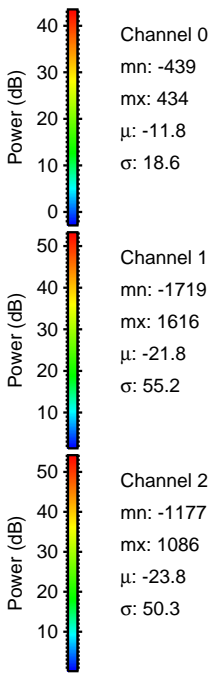
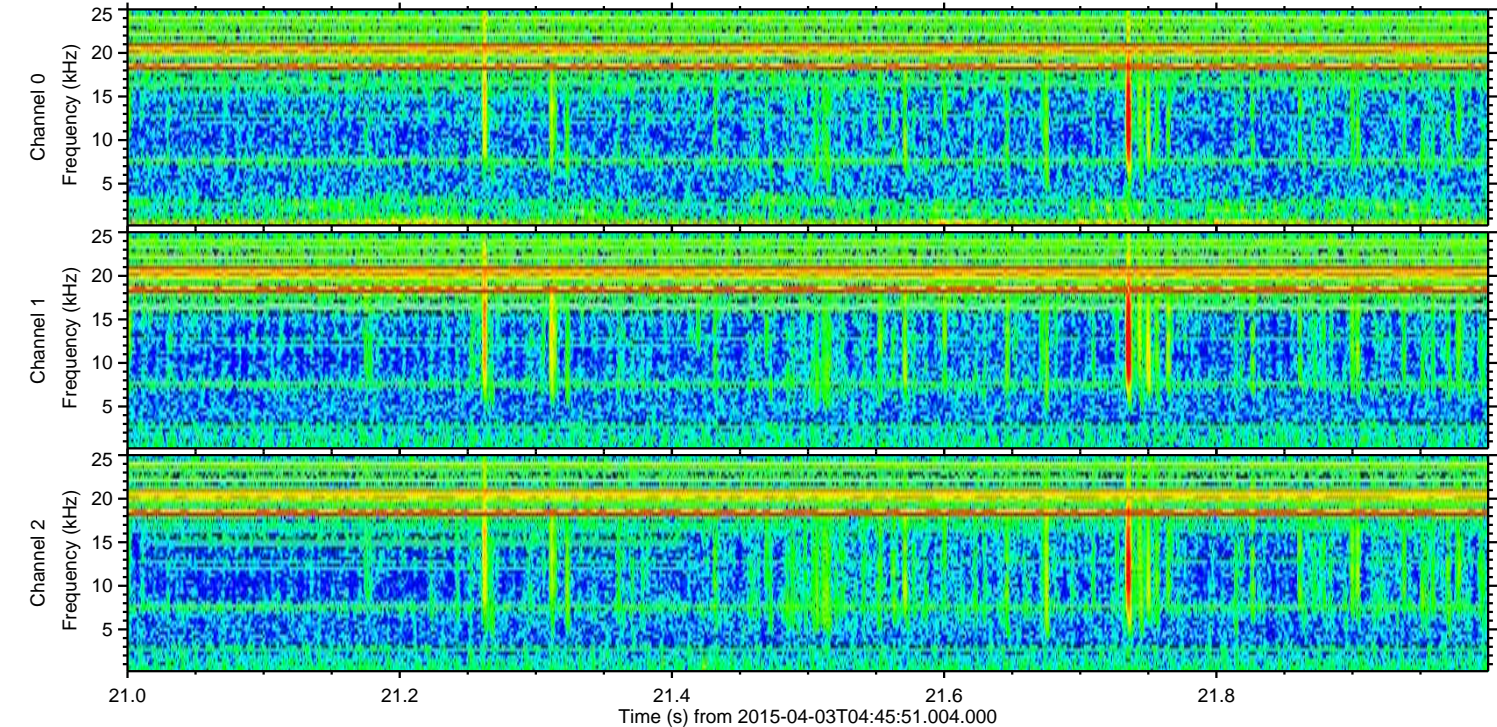
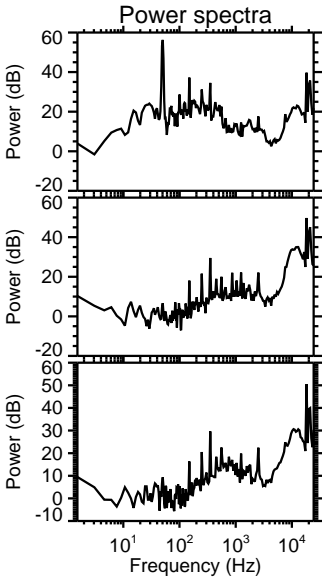
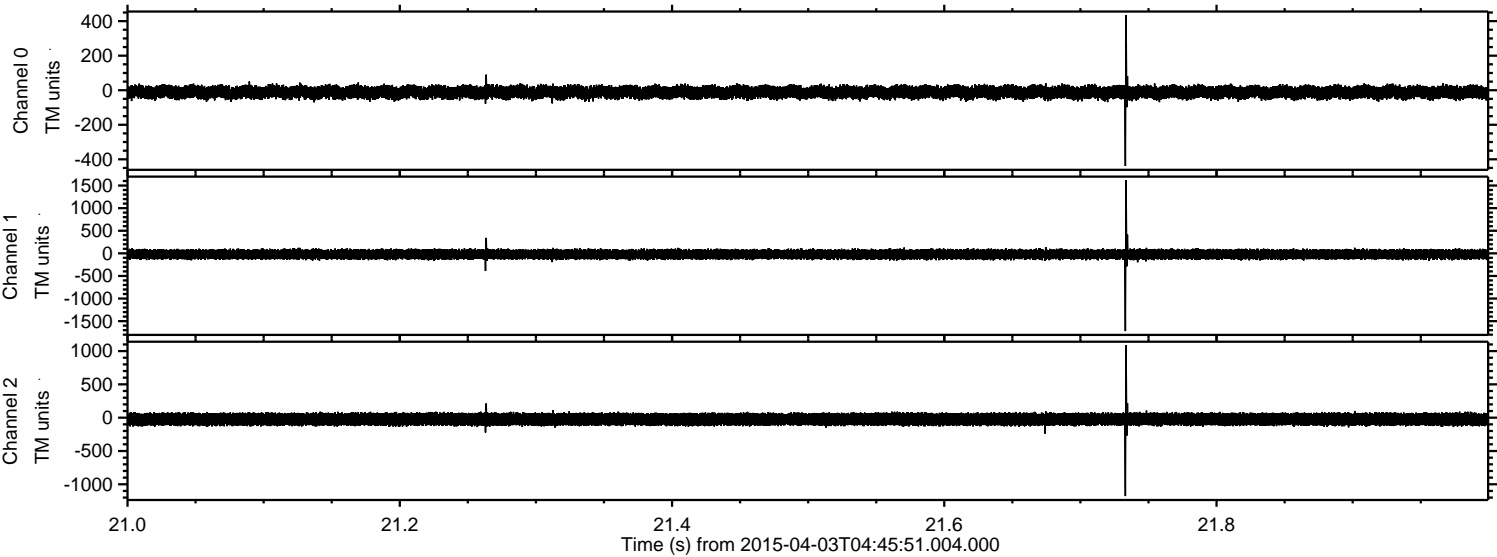
Processed Fri Apr 3 07:05:17 2015 by ELM ver.2012-10-06 from 001__elm20150403_044549__dat00.bin



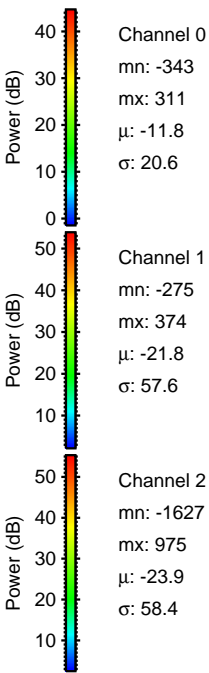
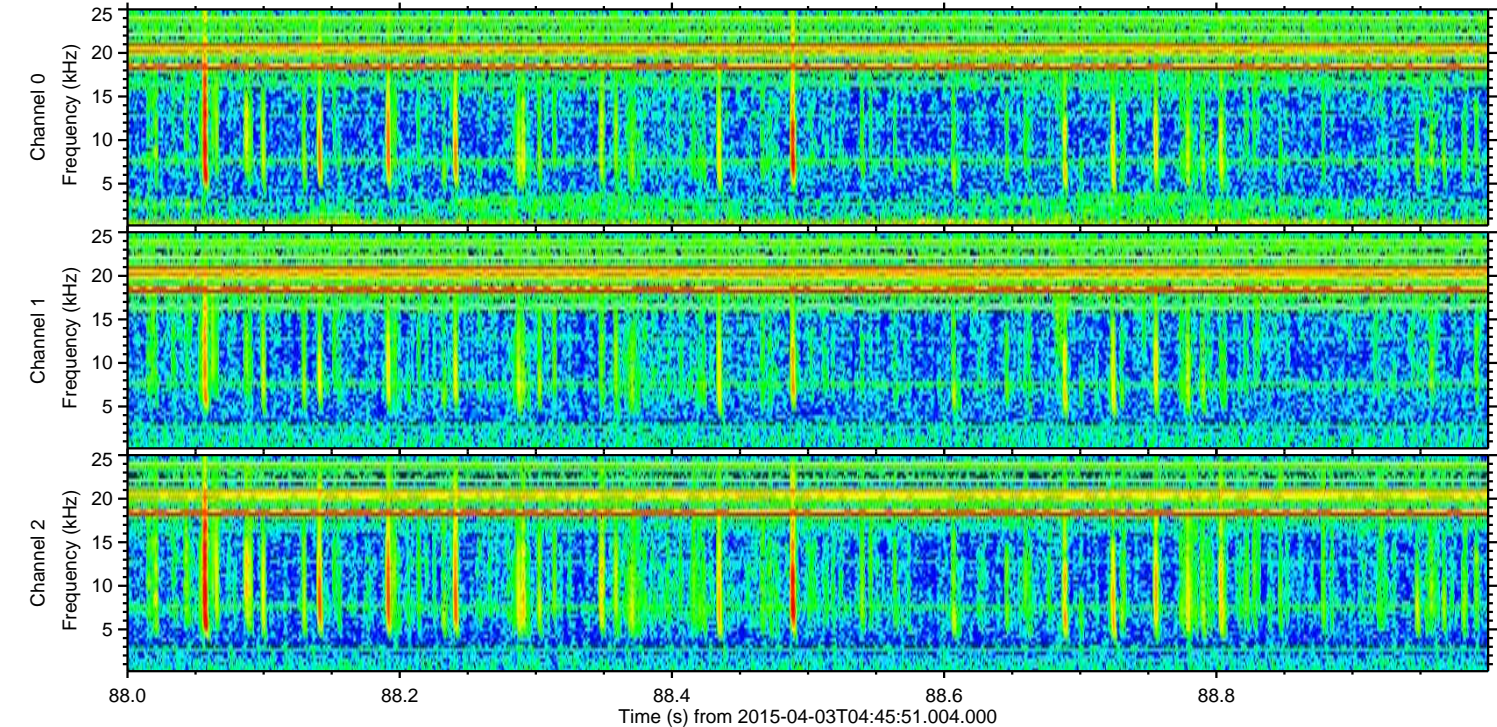
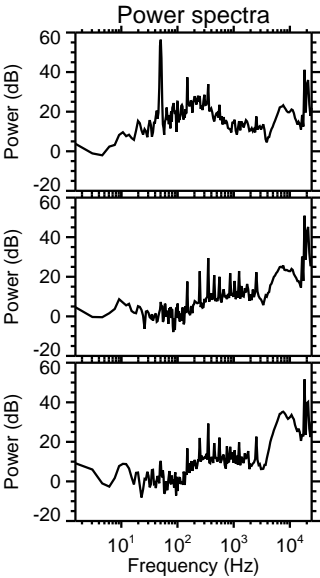
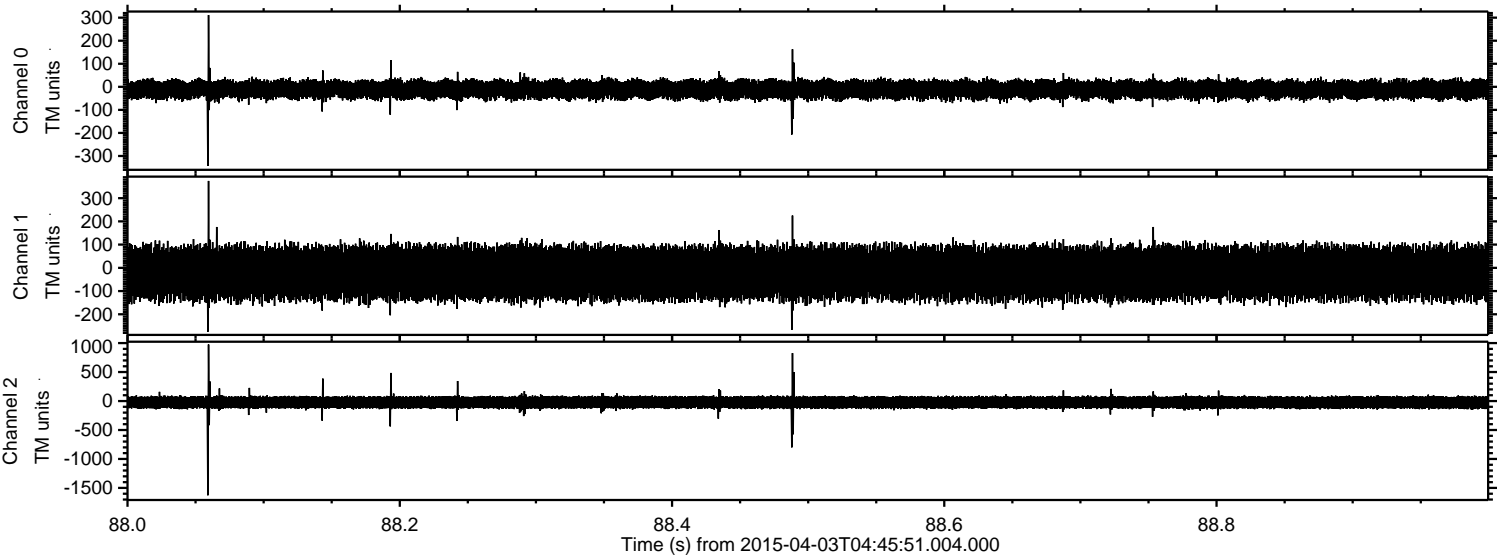
Processed Fri Apr 3 07:05:18 2015 by ELM ver.2012-10-06 from 001__elm20150403_044549__dat00.bin



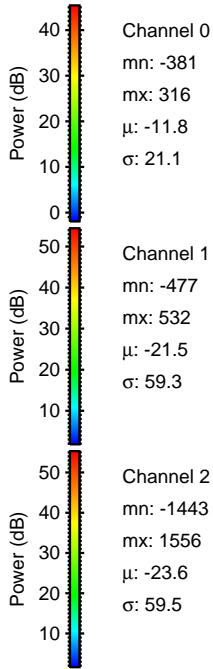
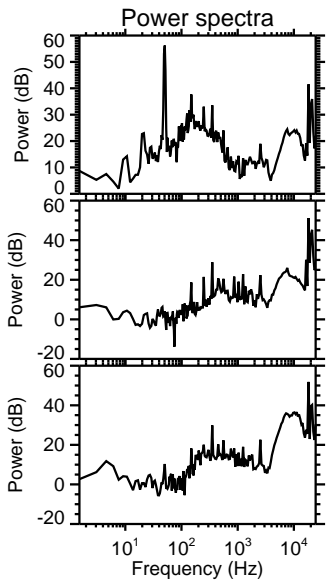
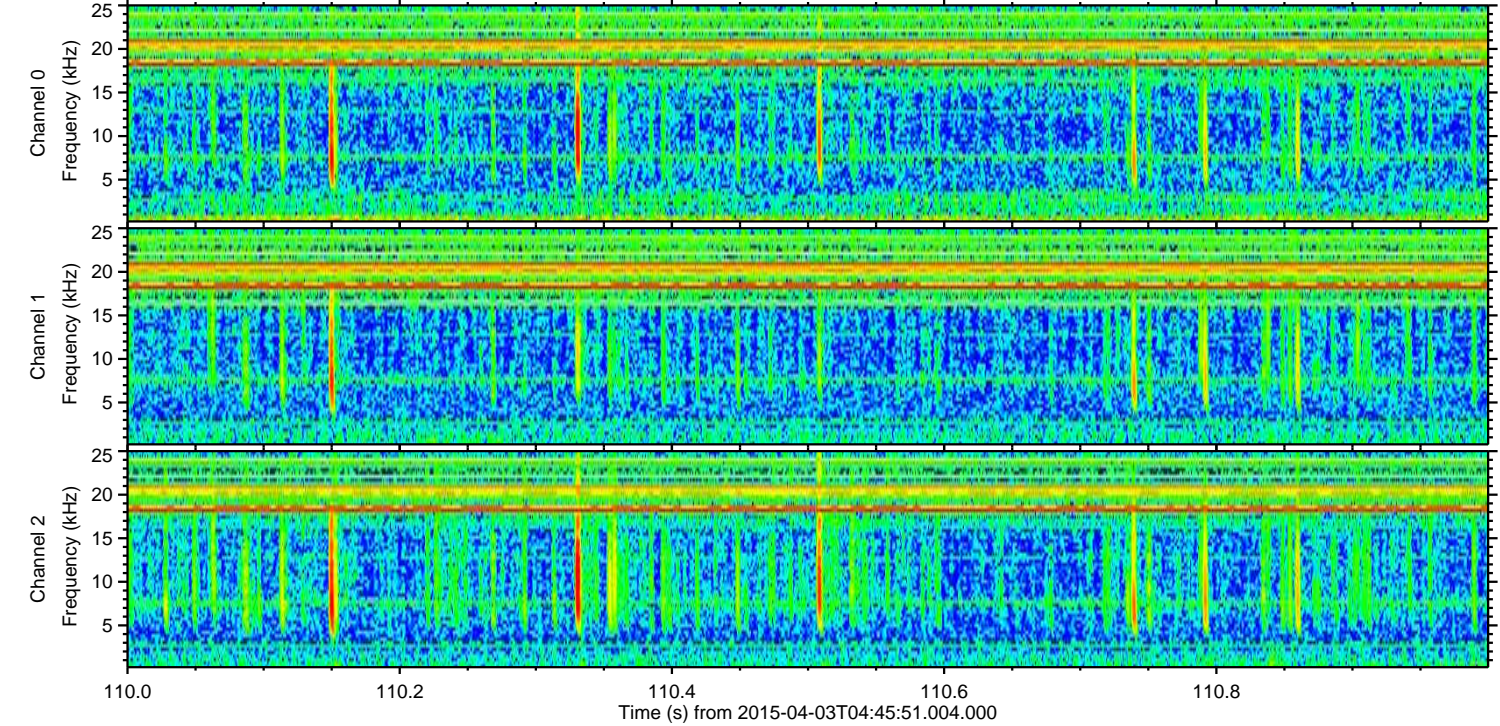
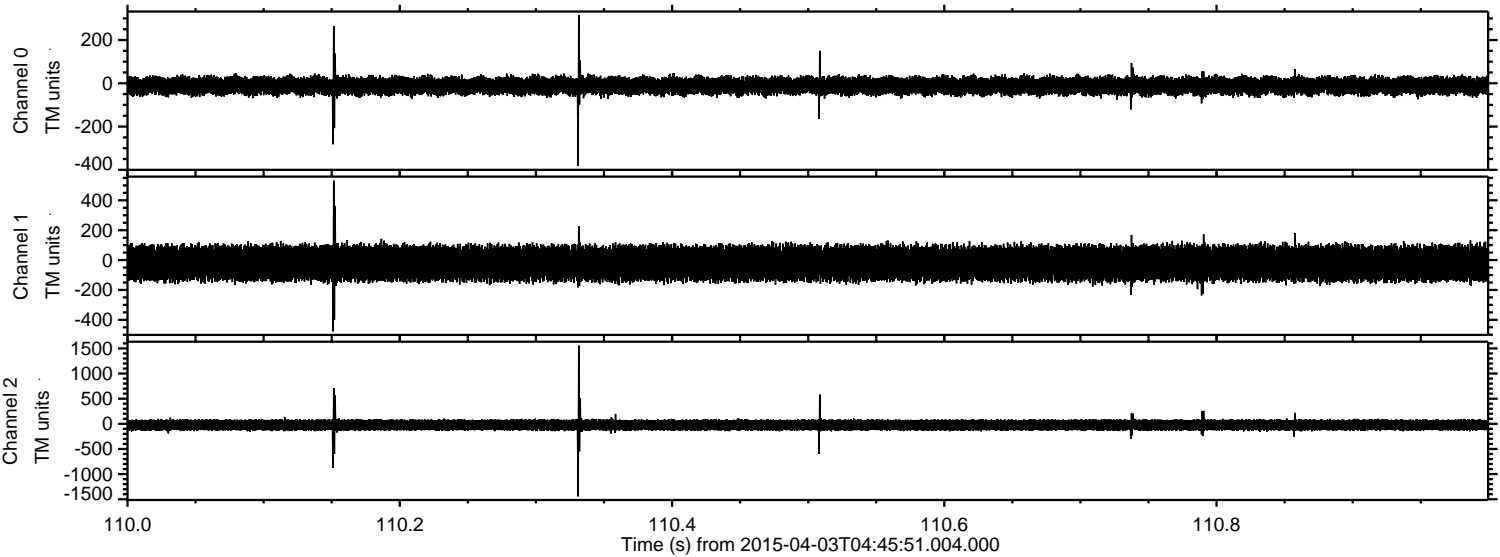
Processed Fri Apr 3 07:05:19 2015 by ELM ver.2012-10-06 from 001__elm20150403_044549__dat00.bin



Processed Fri Apr 3 07:05:20 2015 by ELM ver.2012-10-06 from 001__elm20150403_044549__dat00.bin

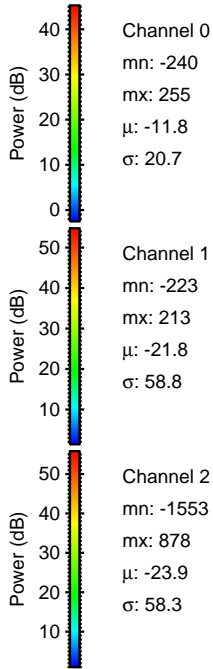
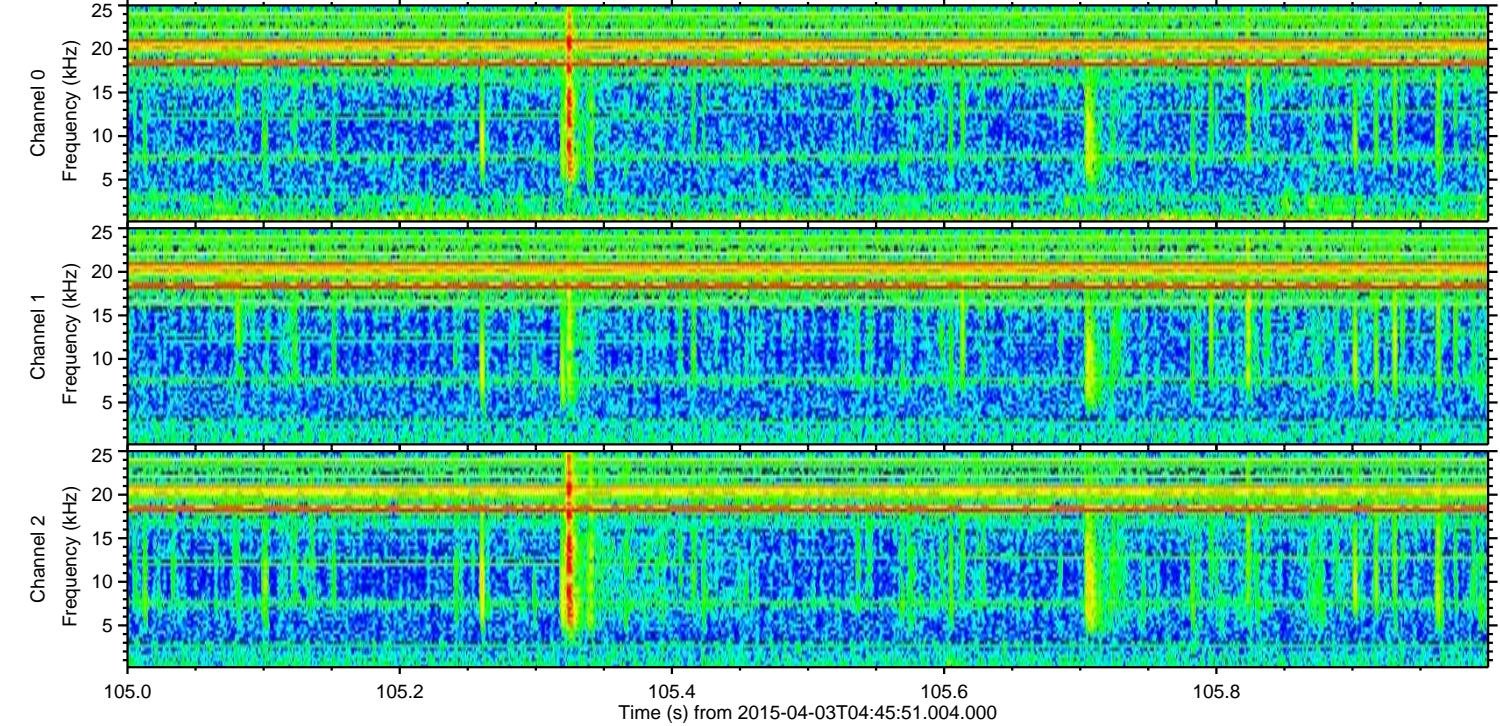
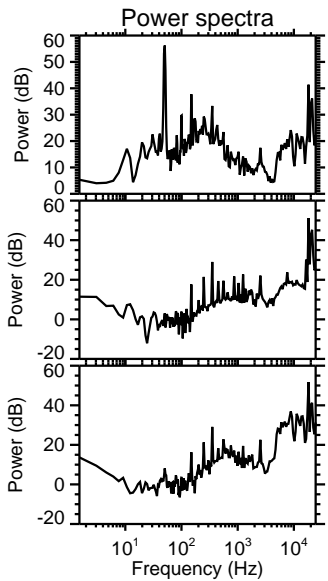
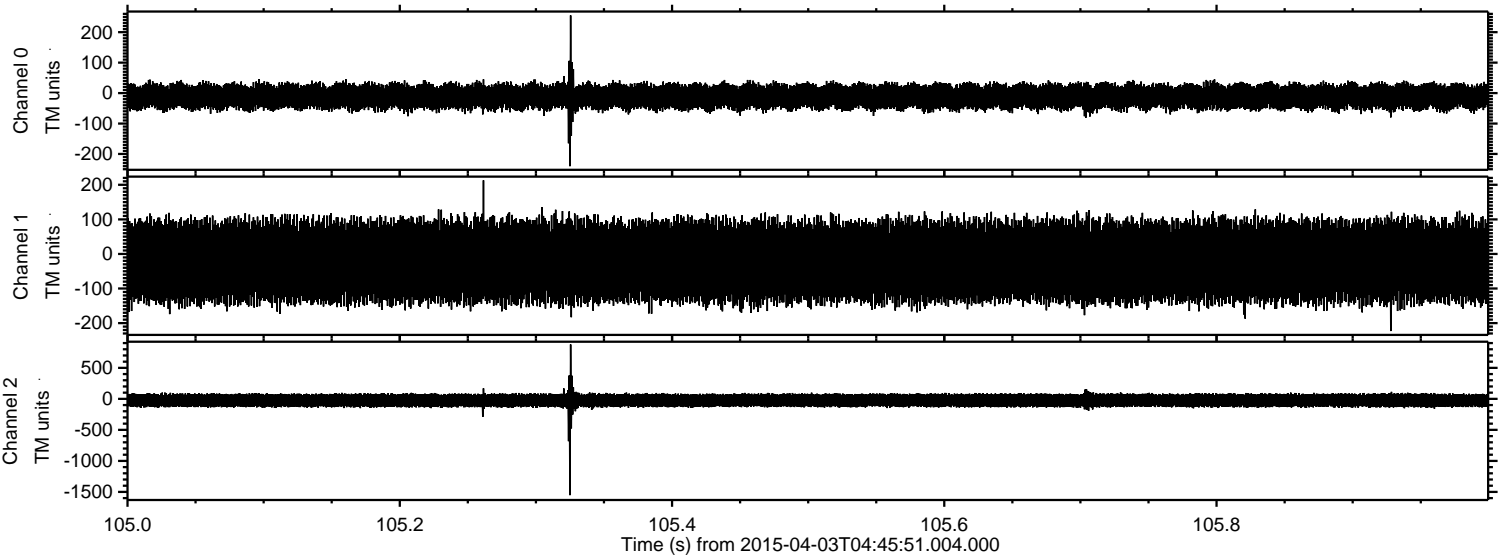


Processed Fri Apr 3 07:05:21 2015 by ELM ver.2012-10-06 from 001__elm20150403_044549__dat00.bin

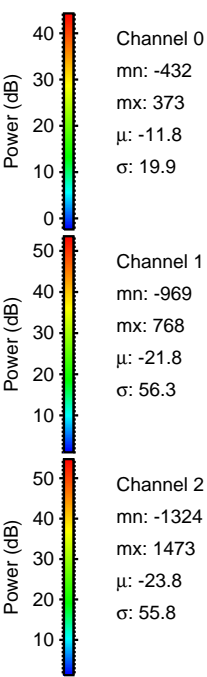
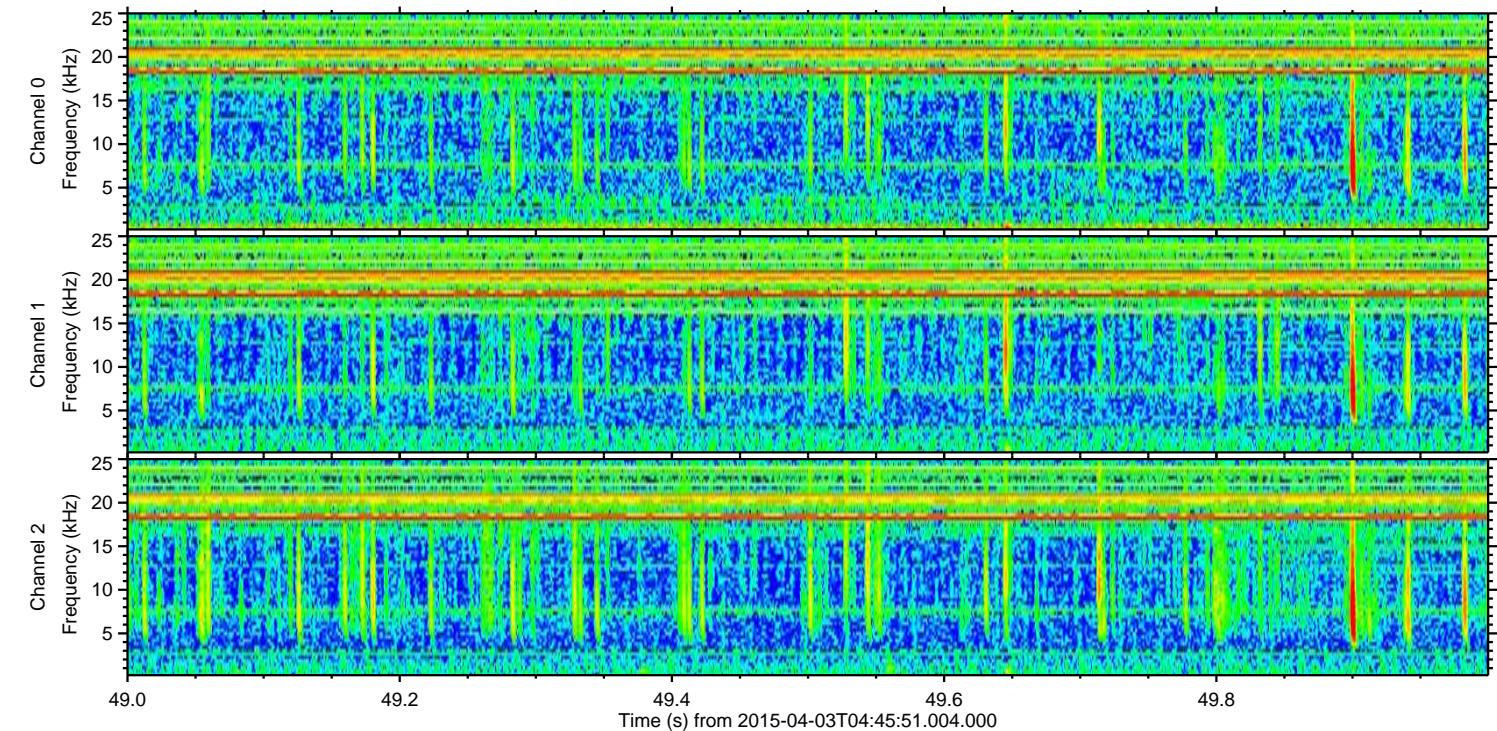
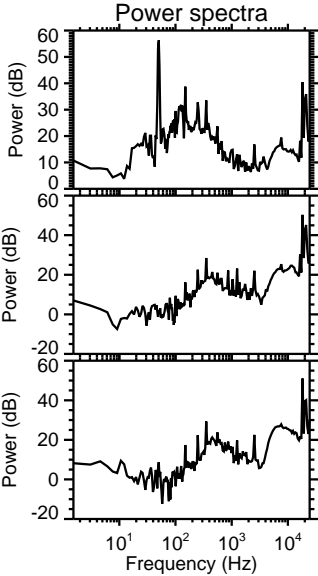
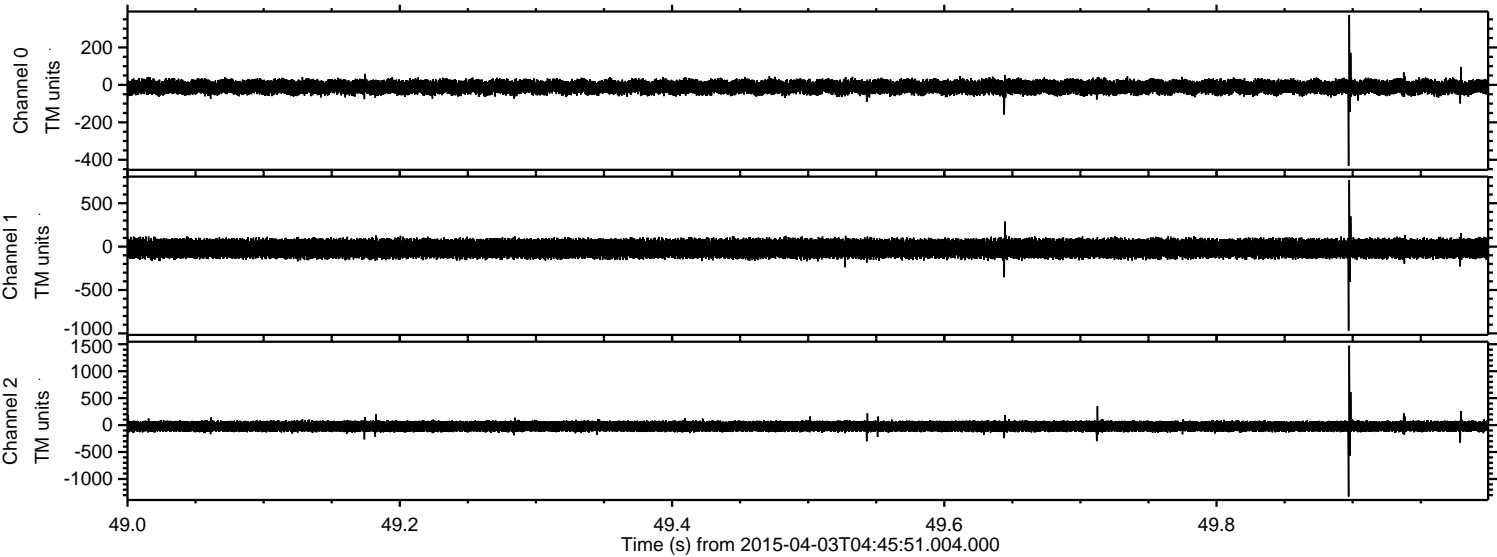


ELMAVAN 3D WAVEFORMS (Measured data sampled at 50 kHz) 49791 packets of 144 samples from 2015-04-03T04:45:51.004.000. Part 106/144

Processed Fri Apr 3 07:05:22 2015 by ELM ver.2012-10-06 from 001__elm20150403_044549__dat00.bin



Processed Fri Apr 3 07:05:23 2015 by ELM ver.2012-10-06 from 001__elm20150403_044549__dat00.bin



Channel 0
mn: -432
mx: 373
 μ : -11.8
 σ : 19.9

Channel 1
mn: -969
mx: 768
 μ : -21.8
 σ : 56.3

Channel 2
mn: -1324
mx: 1473
 μ : -23.8
 σ : 55.8

