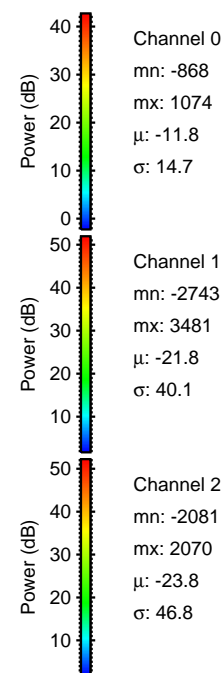
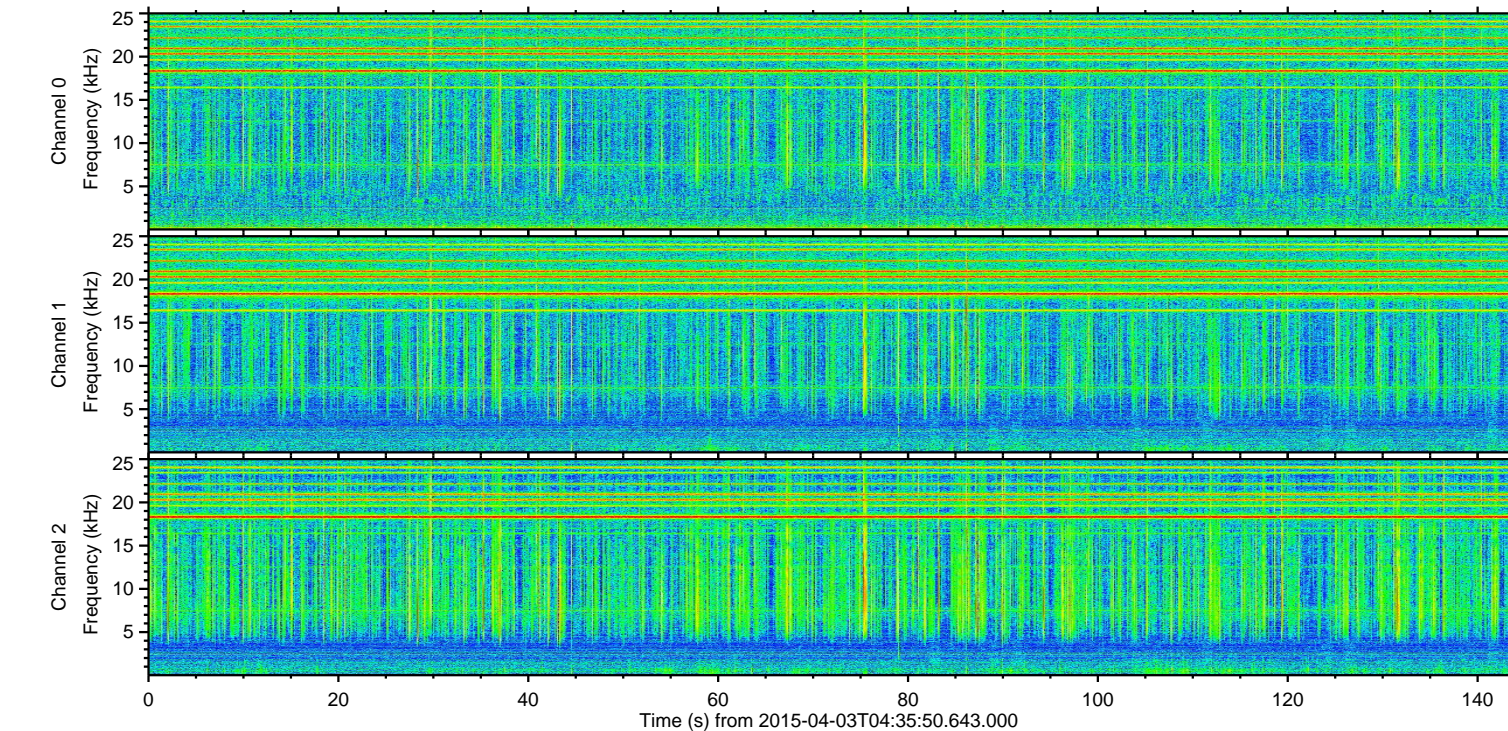
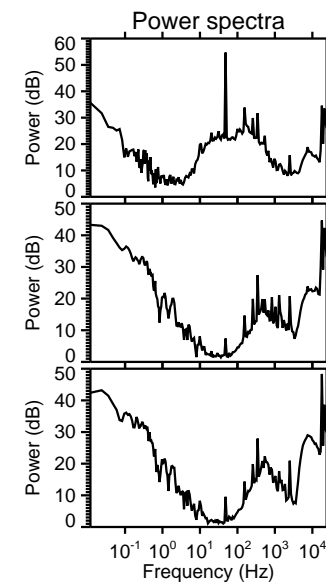
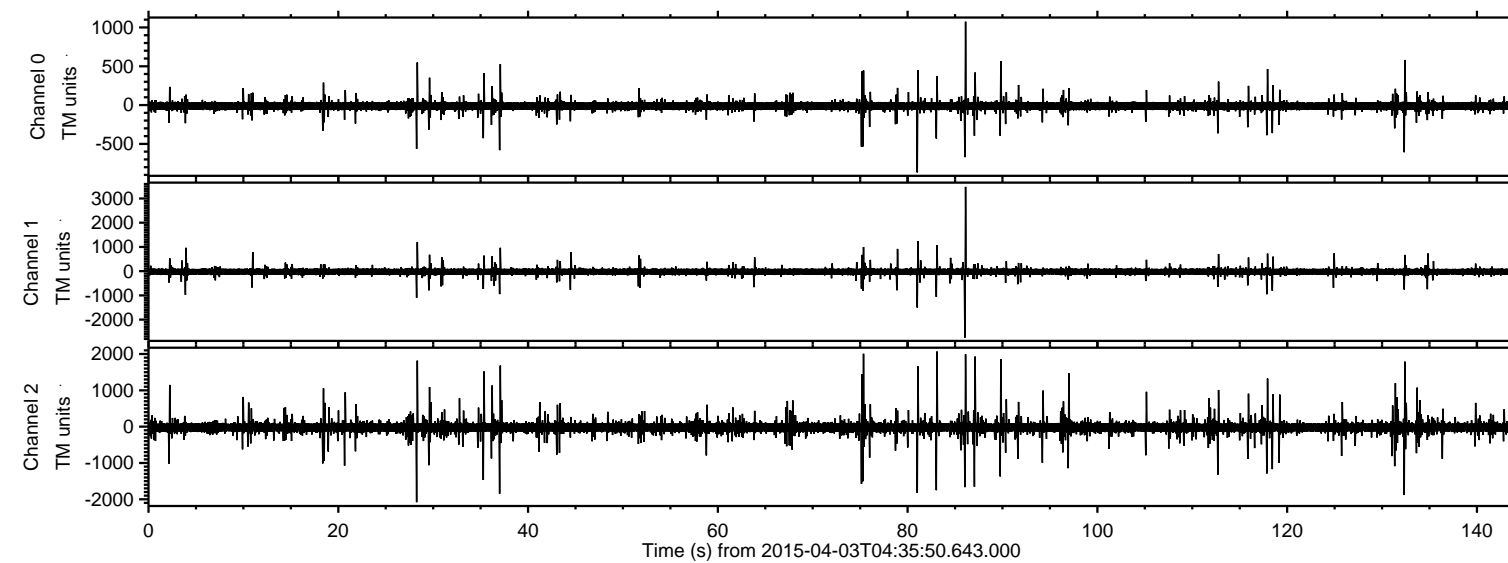
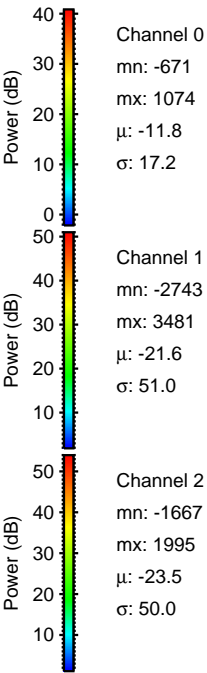
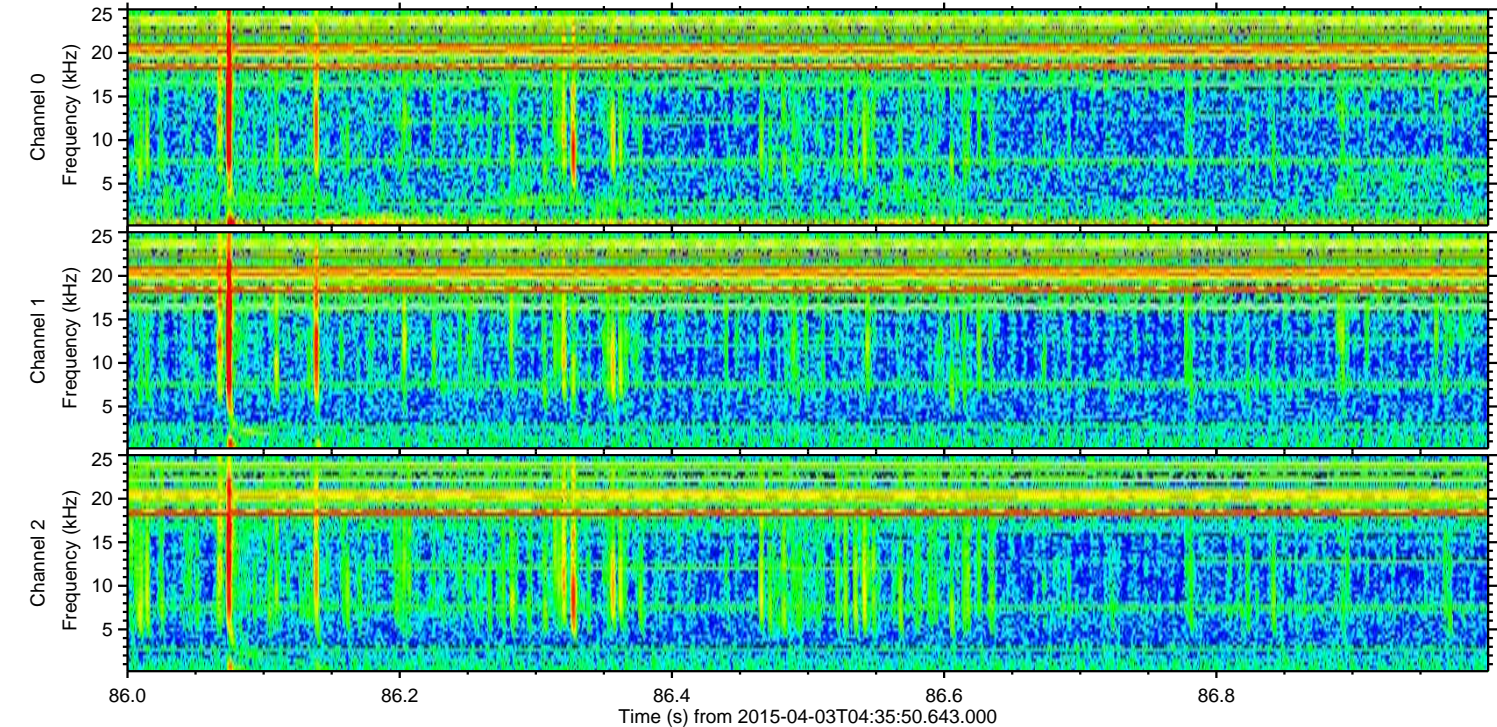
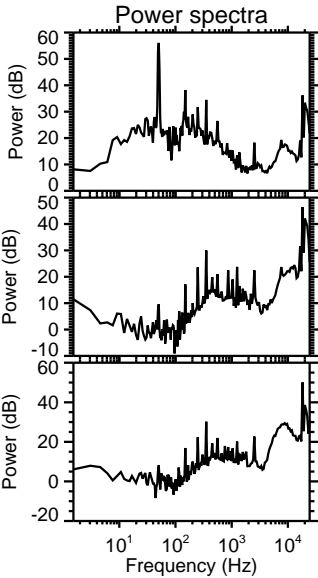
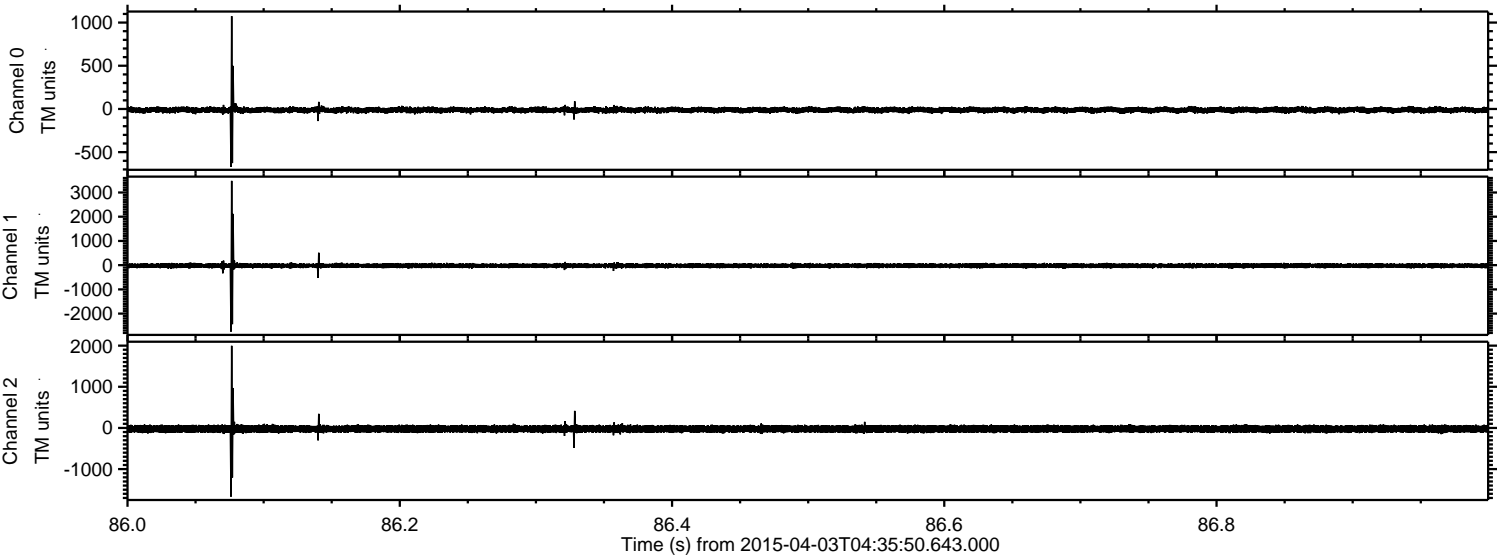


ELMAVAN 3D WAVEFORMS (Measured data sampled at 50 kHz) 49790 packets of 144 samples from 2015-04-03T04:35:50.643.000.

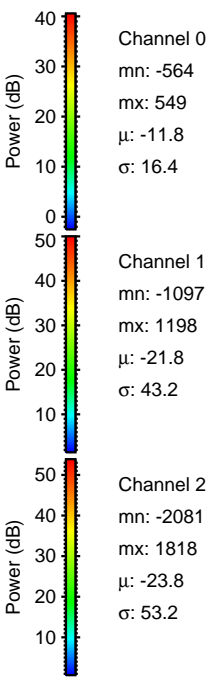
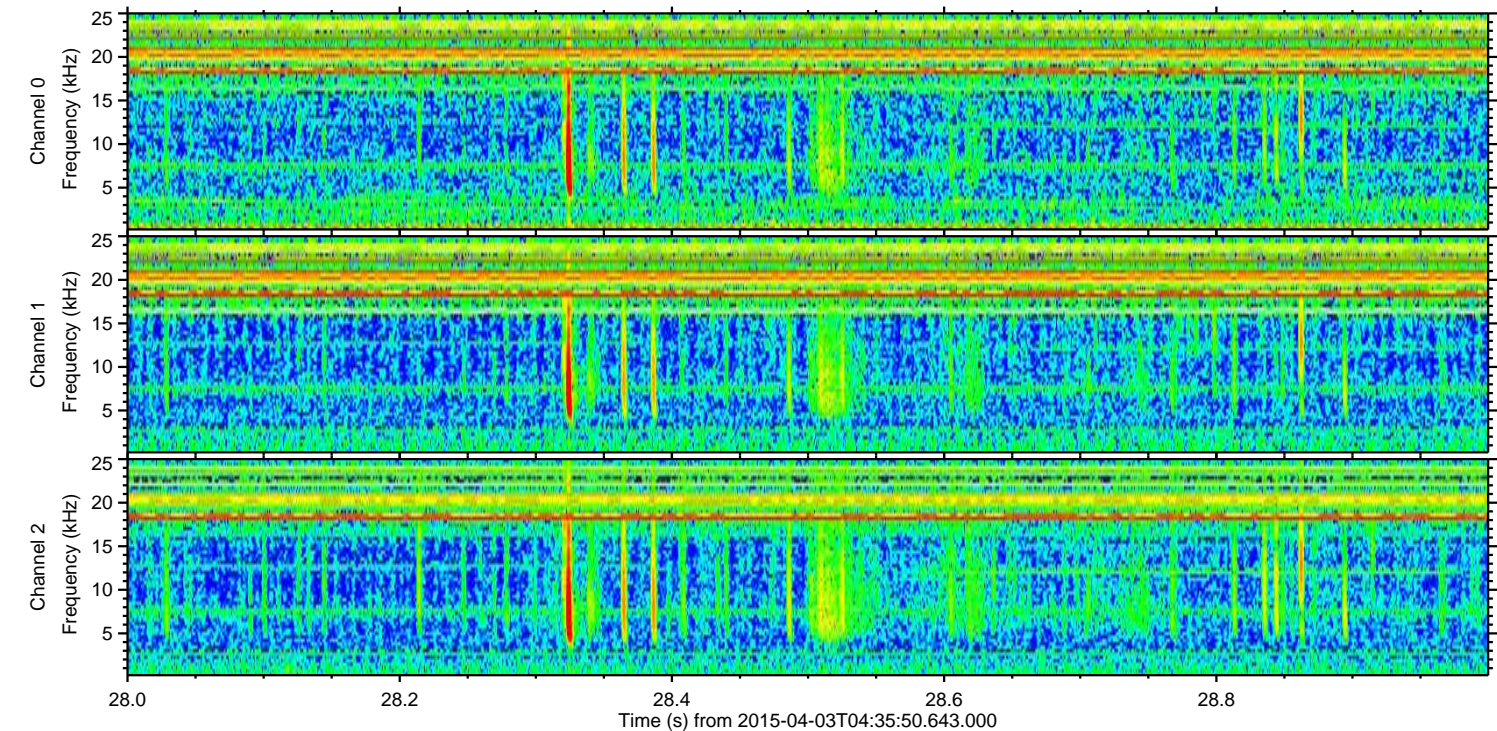
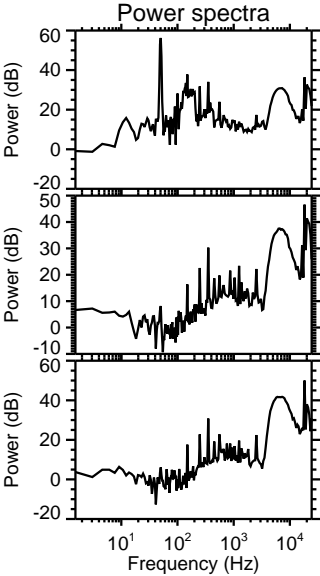
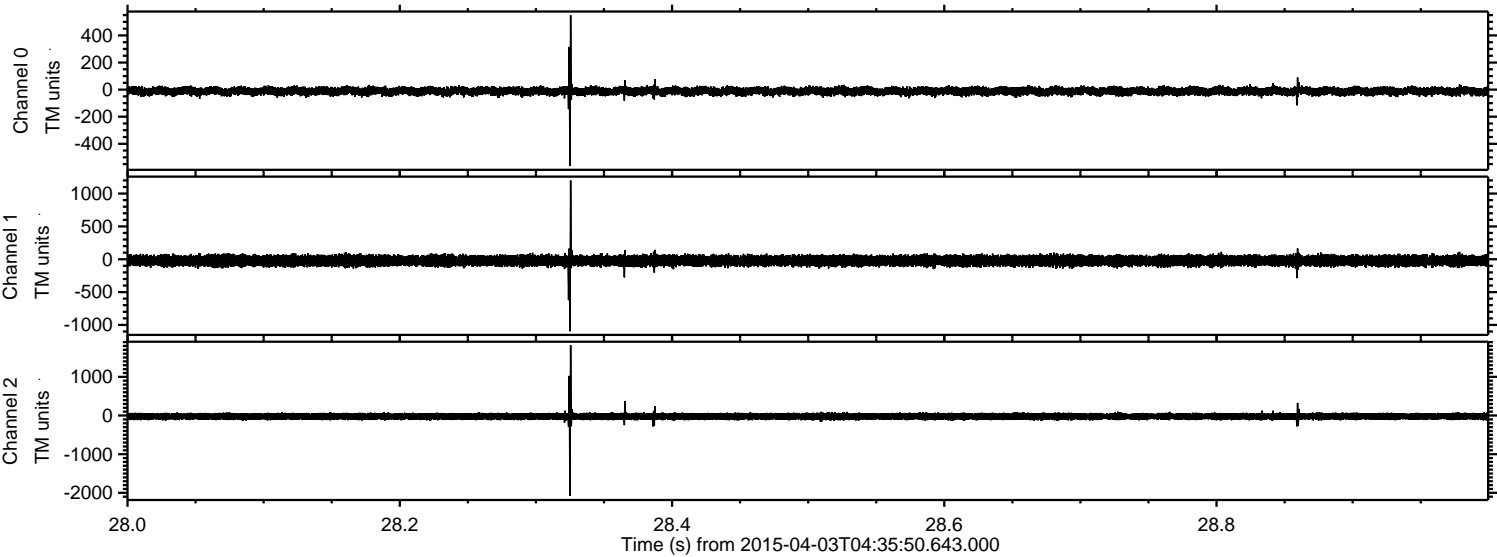
Processed Fri Apr 3 07:02:49 2015 by ELM ver.2012-10-06 from 001__elm20150403_043549__dat00.bin



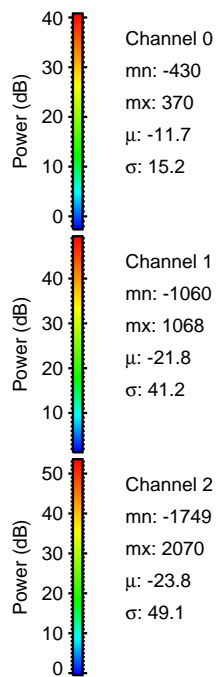
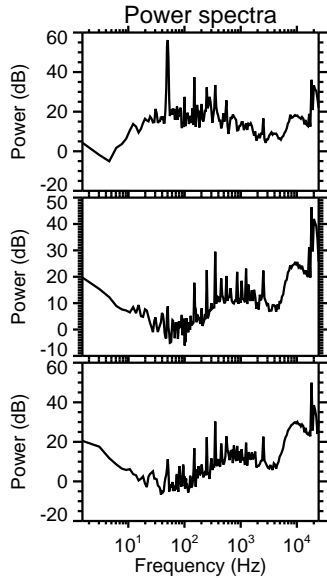
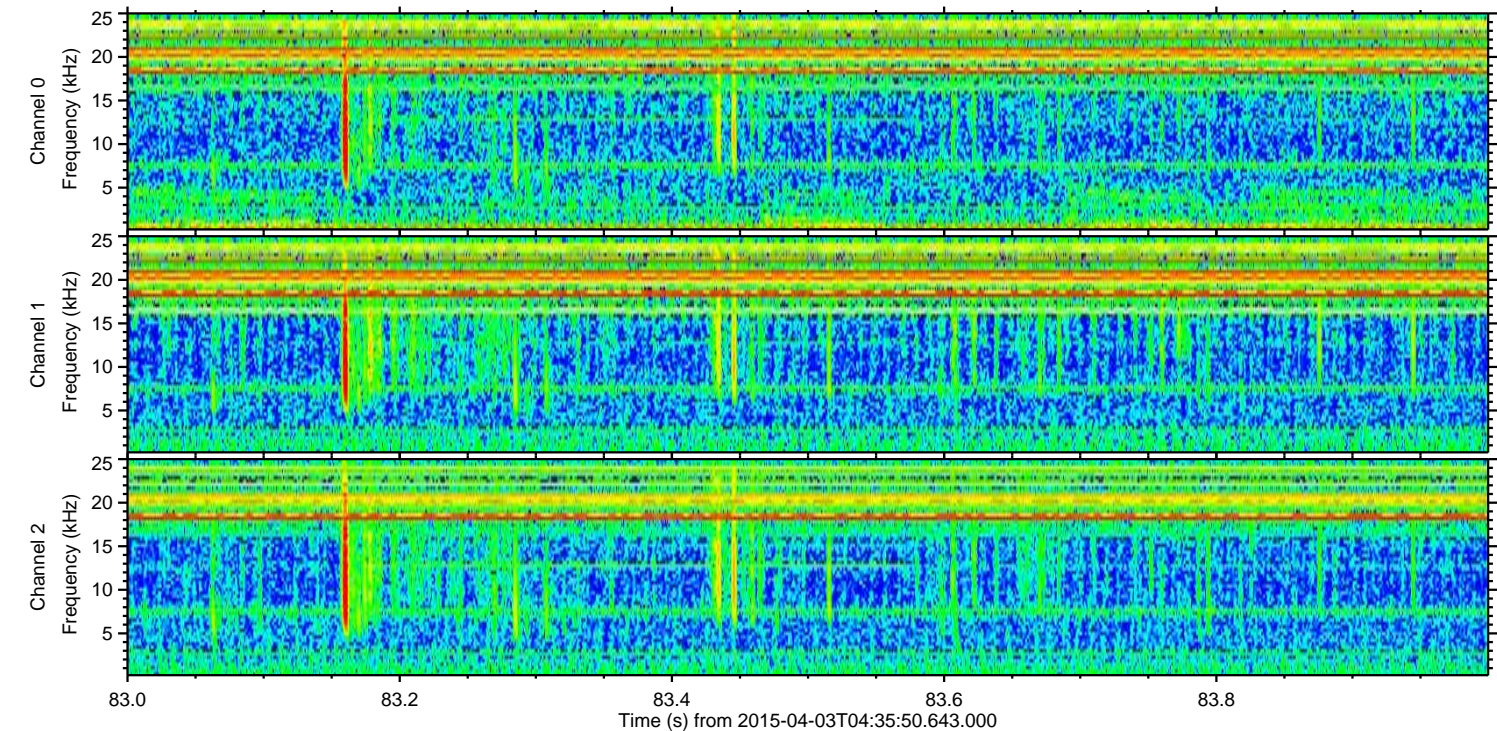
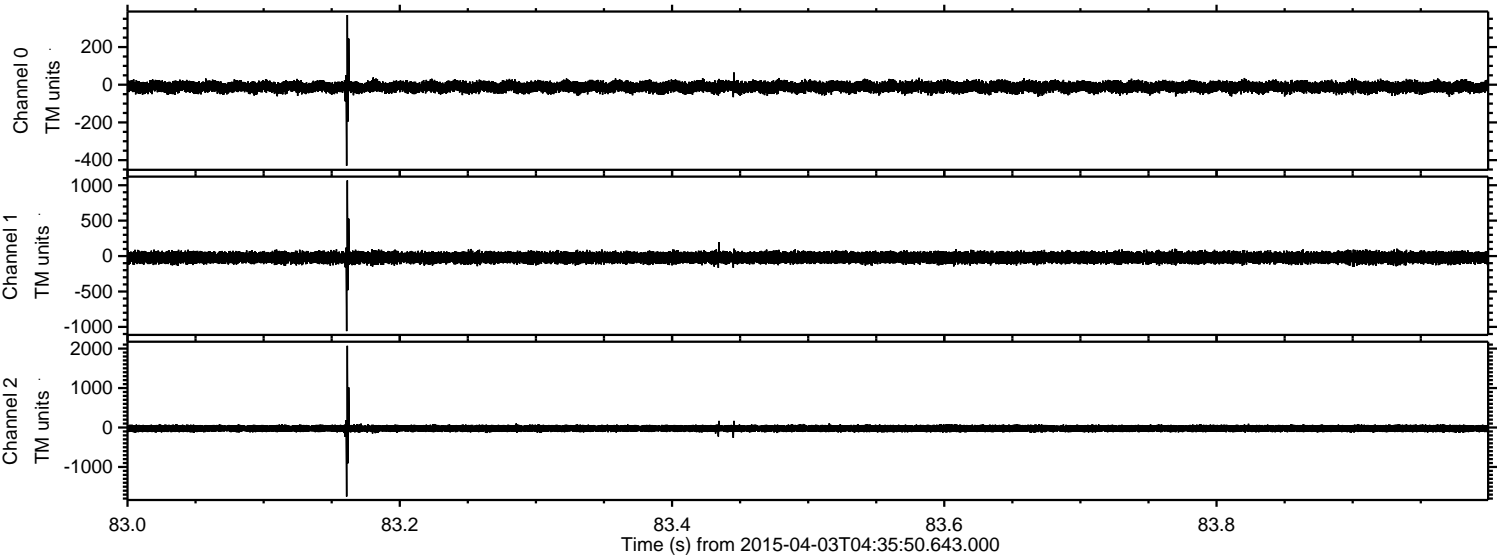
Processed Fri Apr 3 07:03:00 2015 by ELM ver.2012-10-06 from 001__elm20150403_043549__dat00.bin



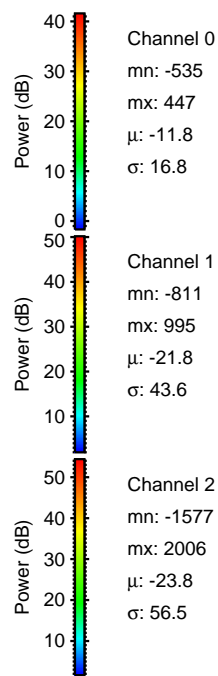
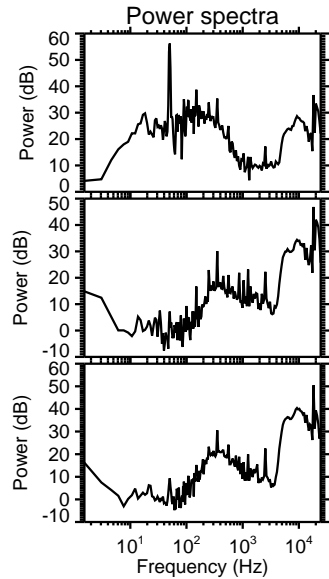
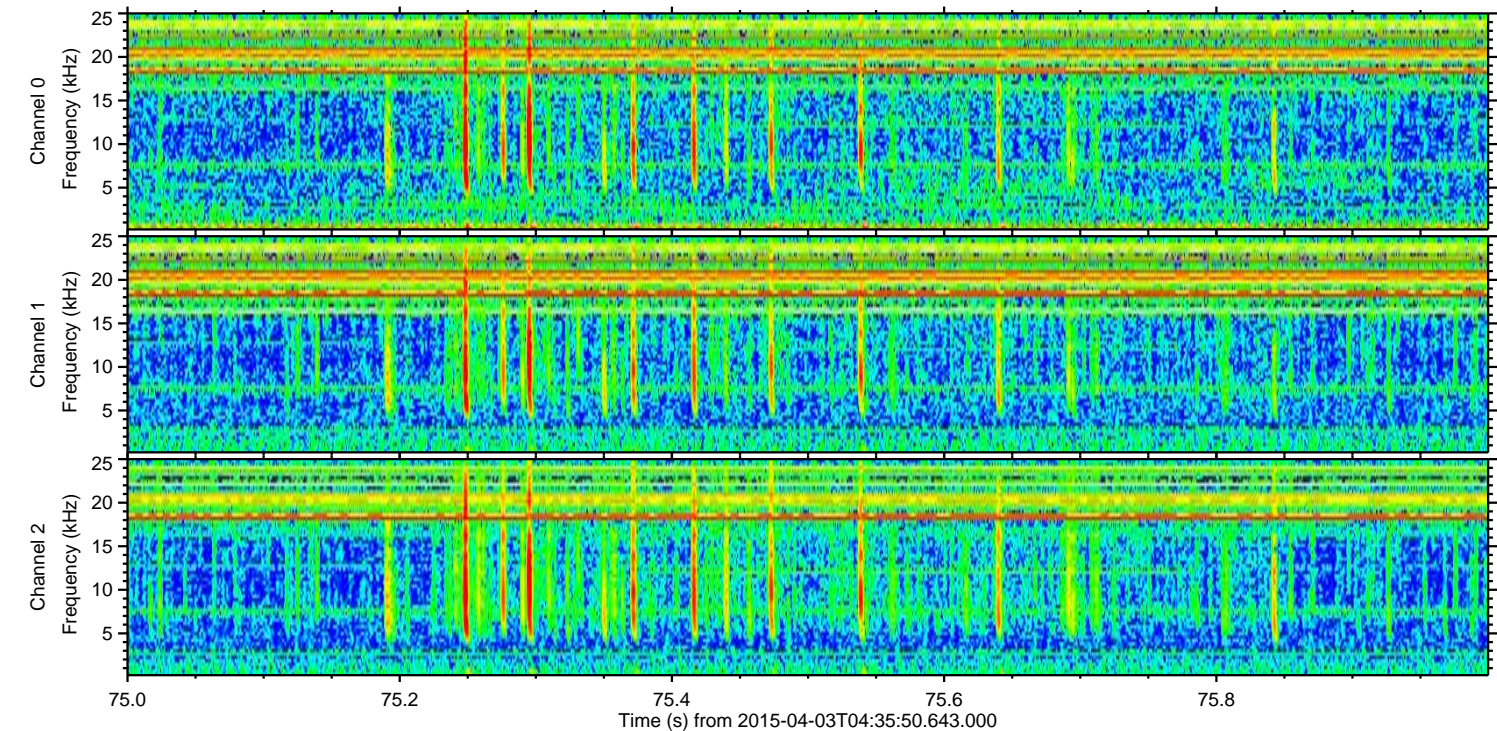
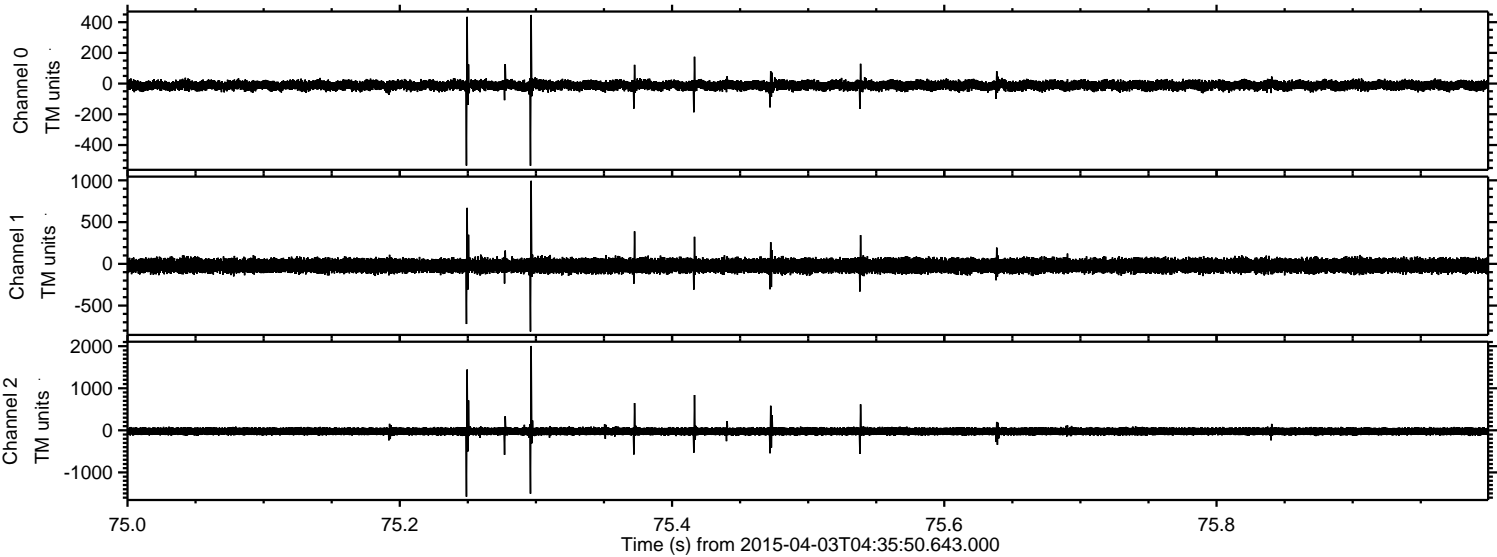
Processed Fri Apr 3 07:03:01 2015 by ELM ver.2012-10-06 from 001__elm20150403_043549__dat00.bin



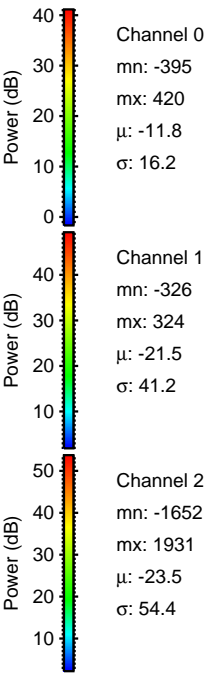
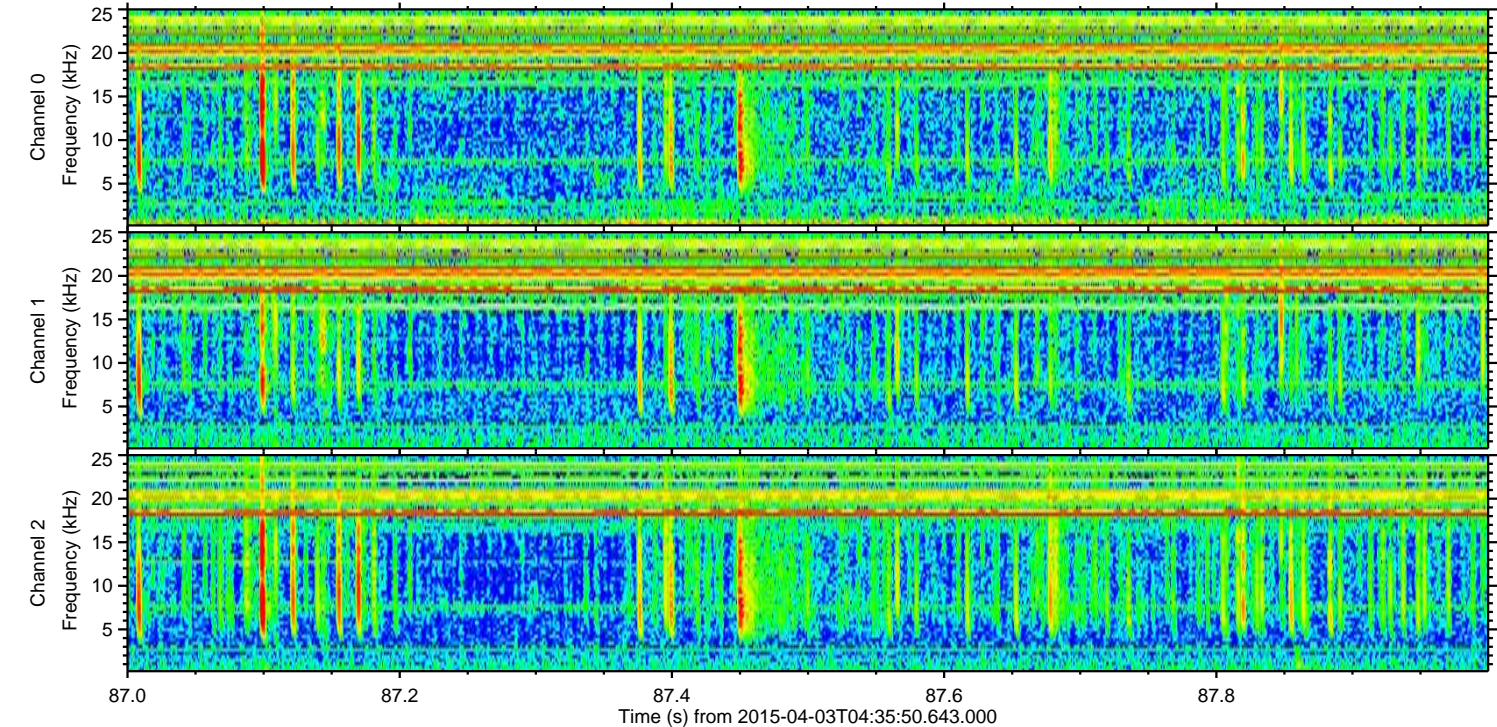
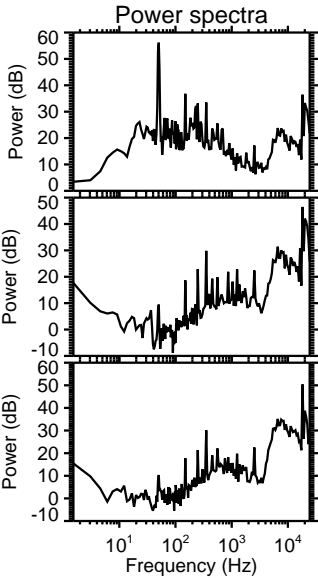
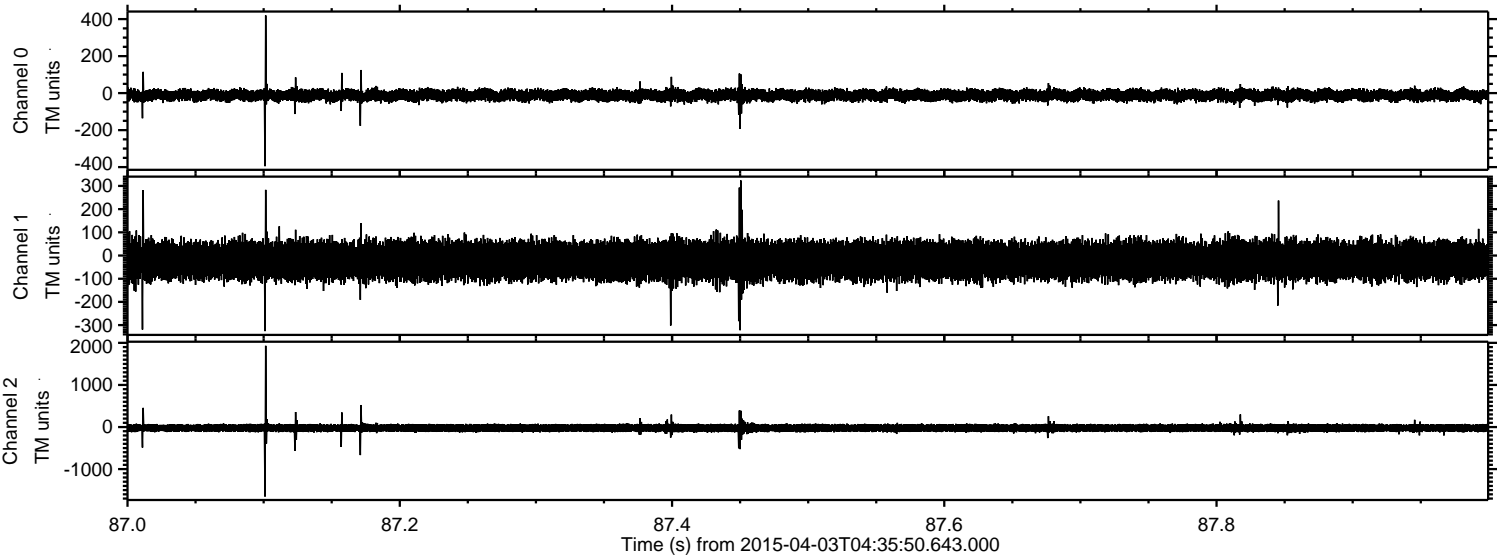
Processed Fri Apr 3 07:03:02 2015 by ELM ver.2012-10-06 from 001__elm20150403_043549__dat00.bin



Processed Fri Apr 3 07:03:03 2015 by ELM ver.2012-10-06 from 001__elm20150403_043549__dat00.bin

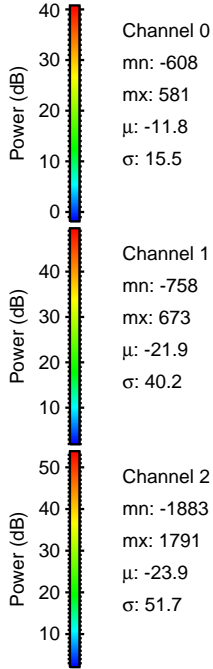
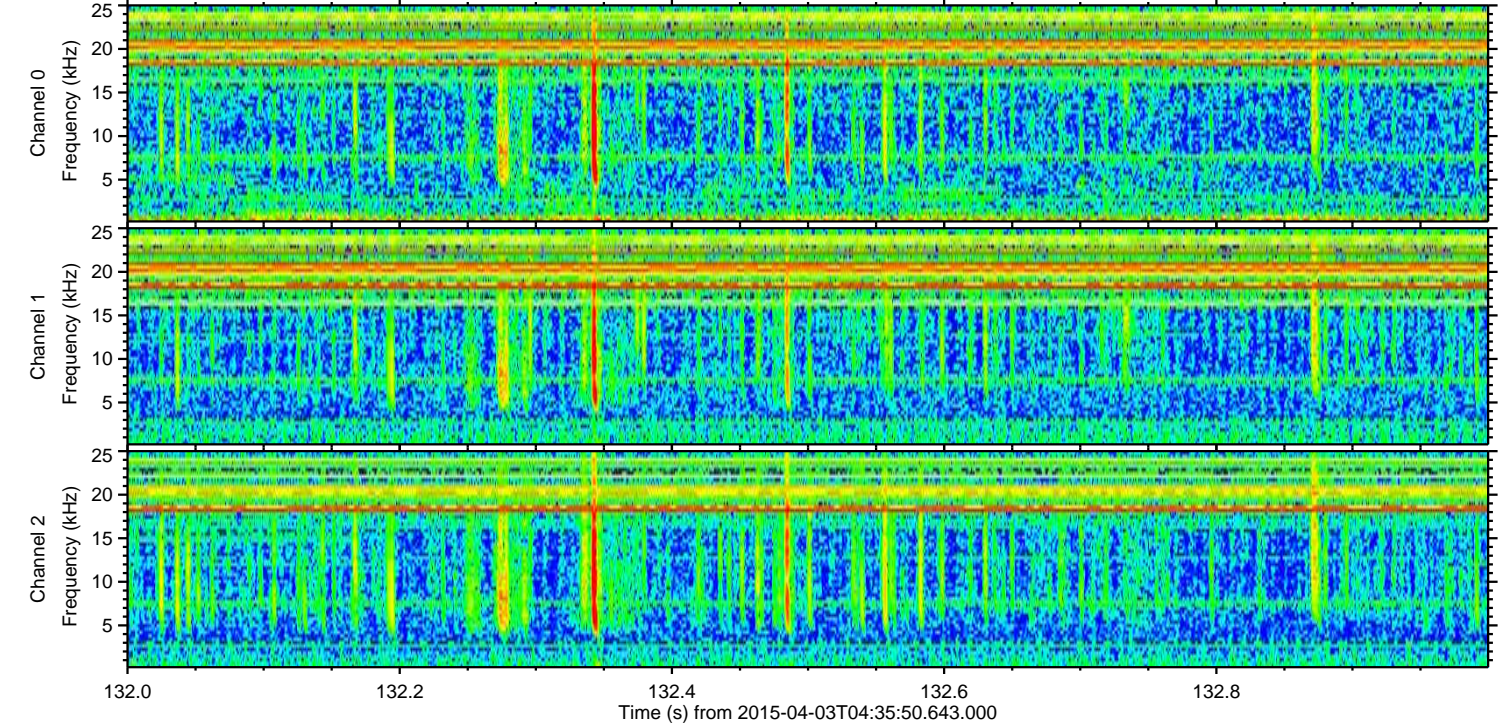
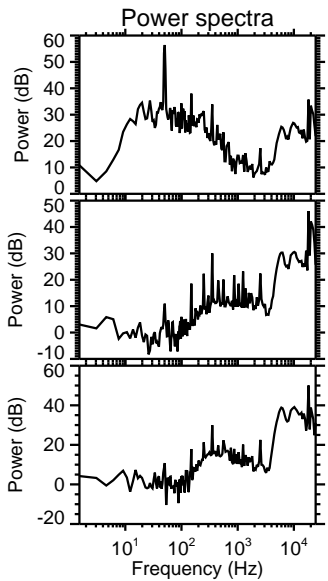
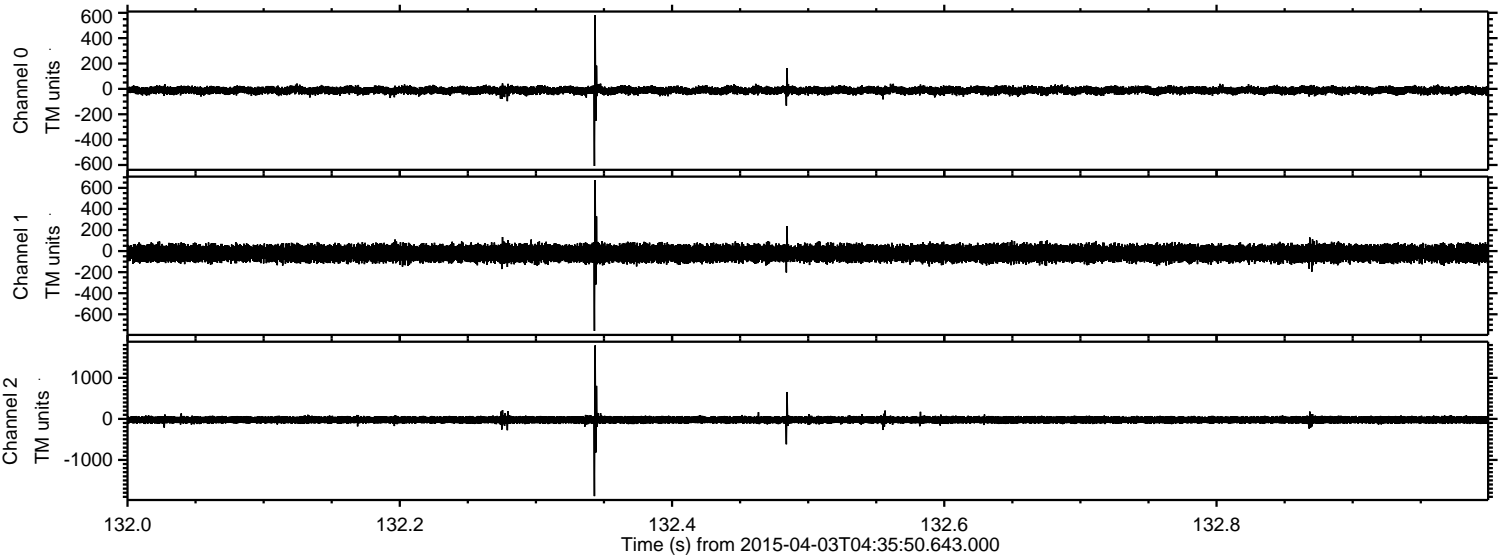


Processed Fri Apr 3 07:03:04 2015 by ELM ver.2012-10-06 from 001__elm20150403_043549__dat00.bin

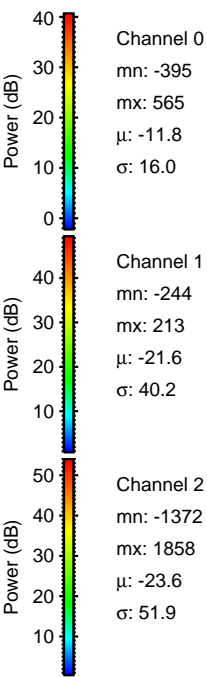
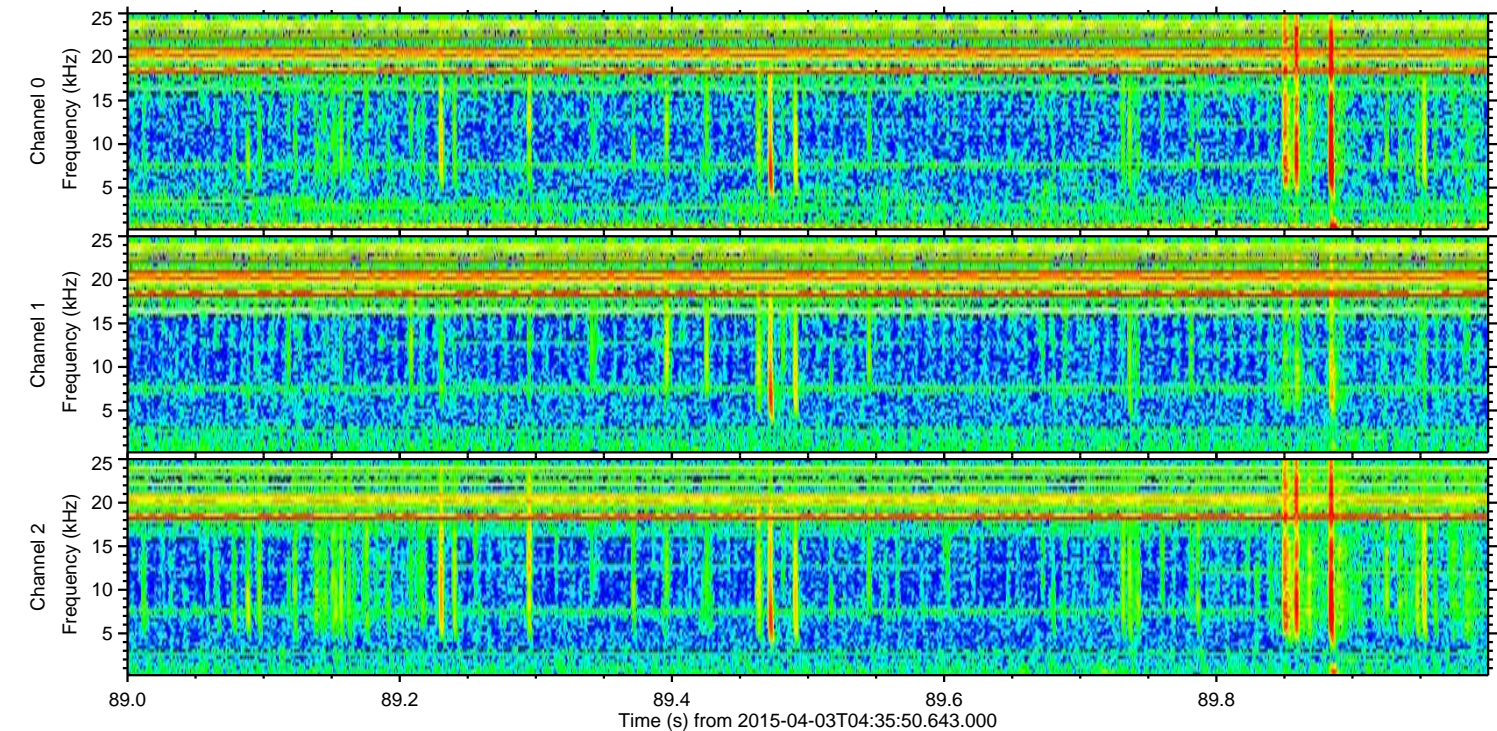
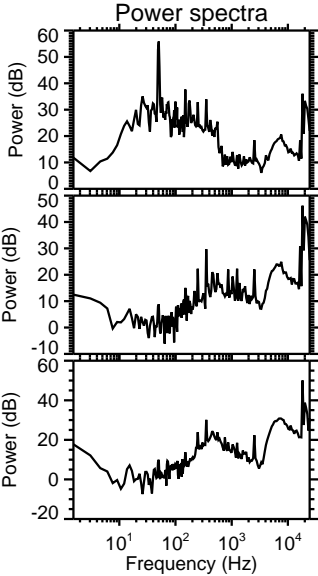
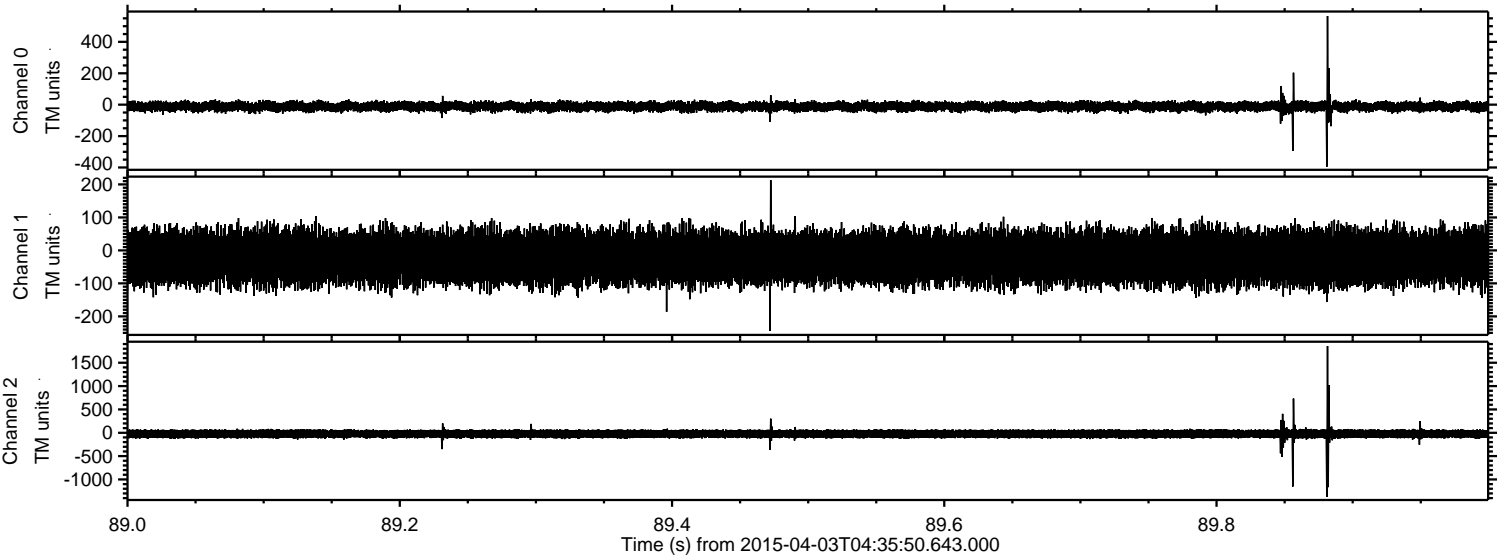


ELMAVAN 3D WAVEFORMS (Measured data sampled at 50 kHz) 49790 packets of 144 samples from 2015-04-03T04:35:50.643.000. Part 133/144

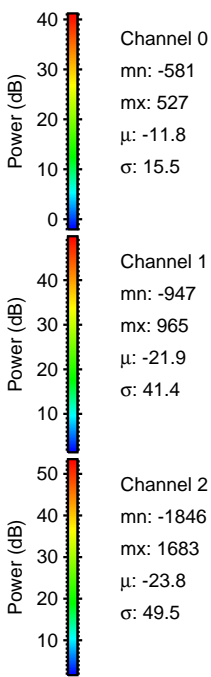
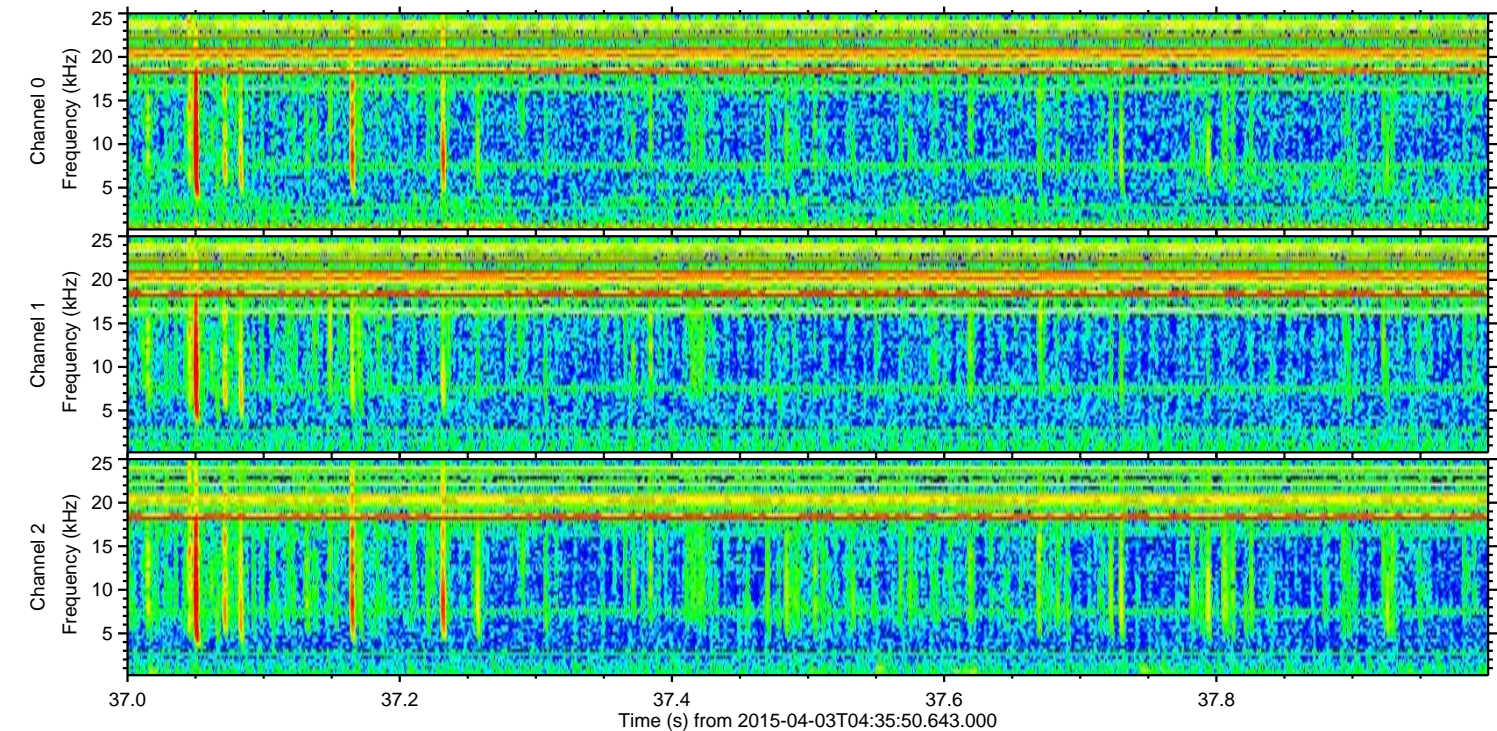
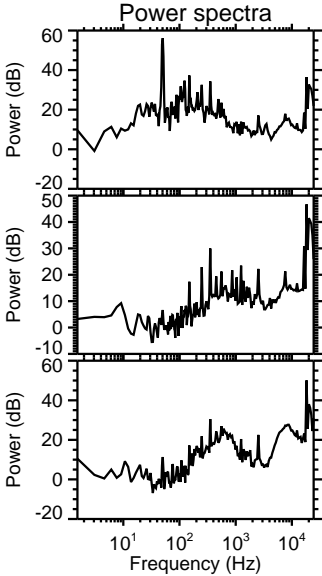
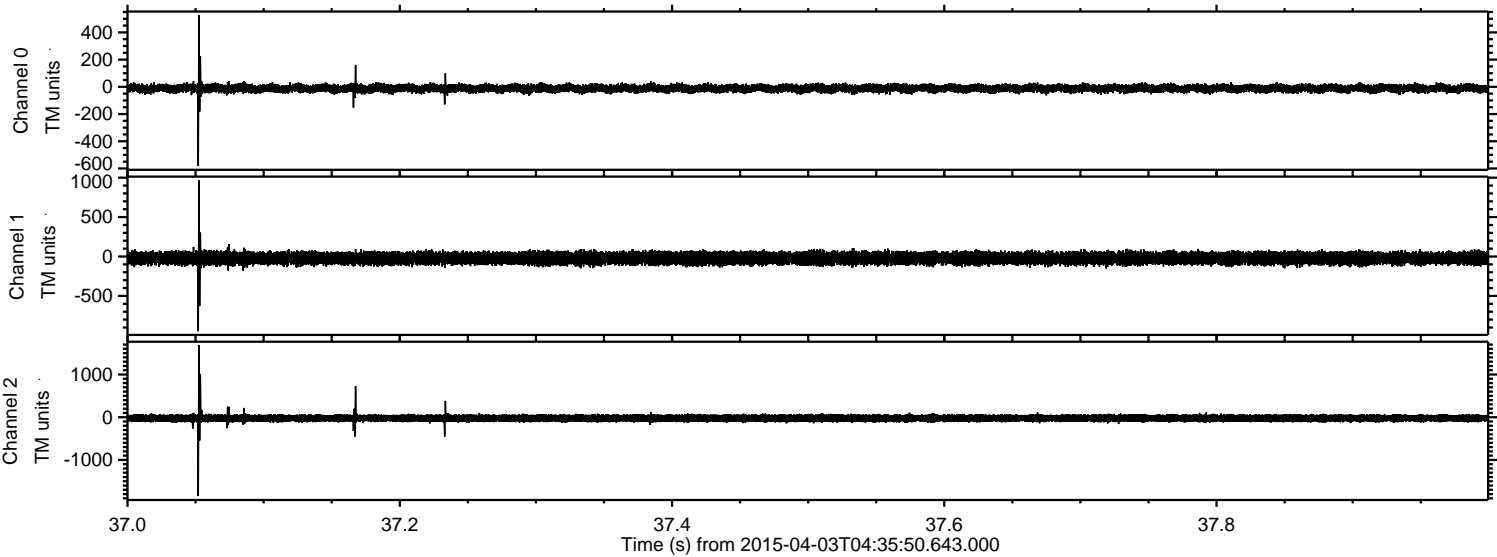
Processed Fri Apr 3 07:03:05 2015 by ELM ver.2012-10-06 from 001__elm20150403_043549__dat00.bin



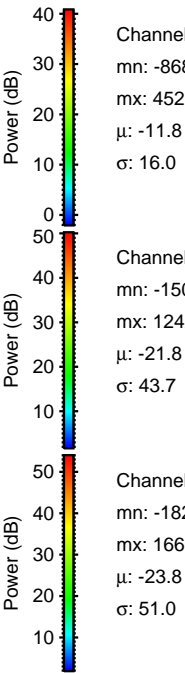
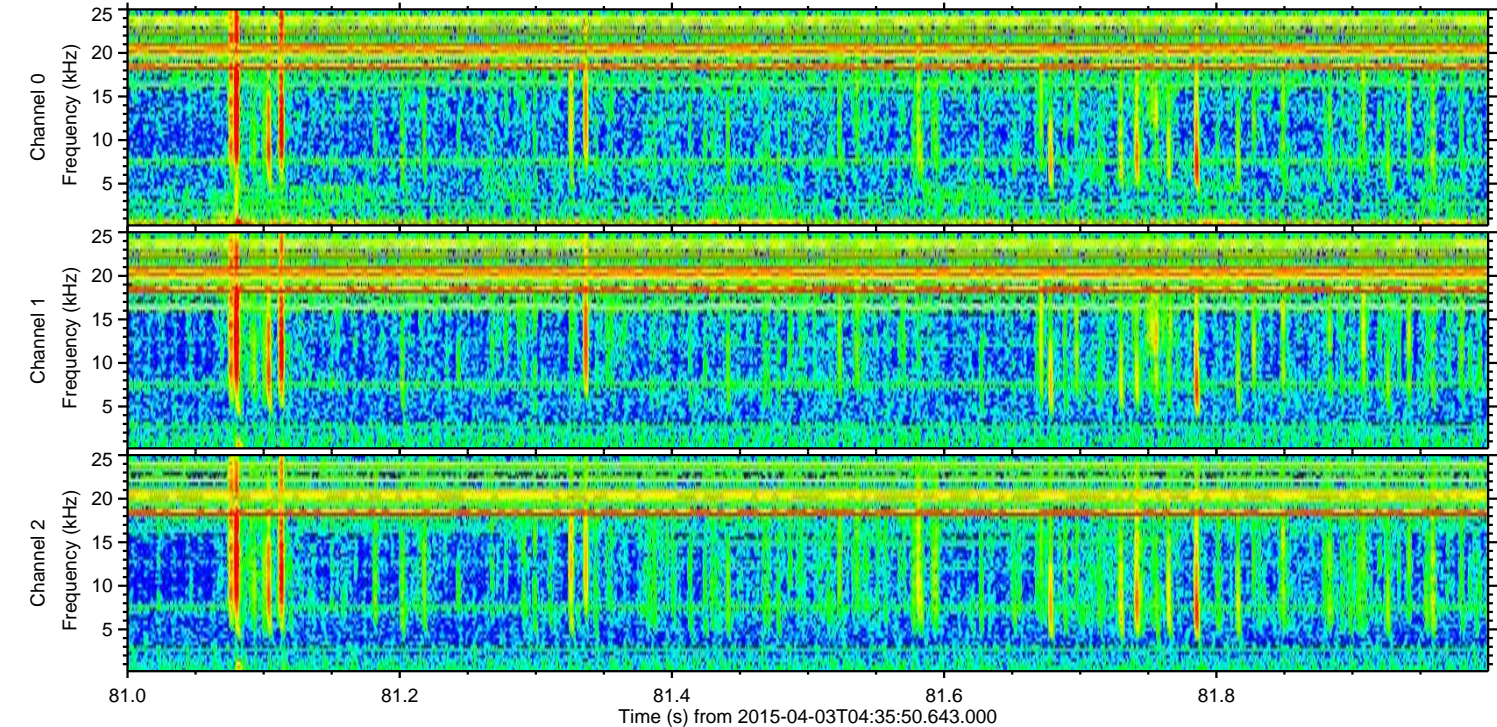
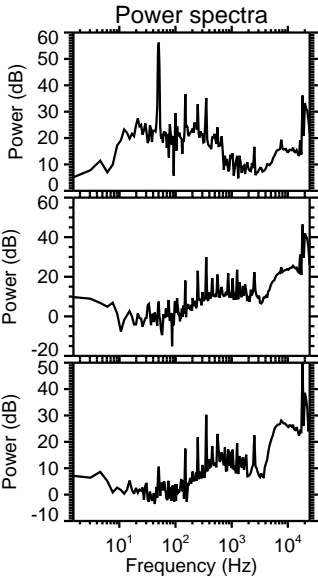
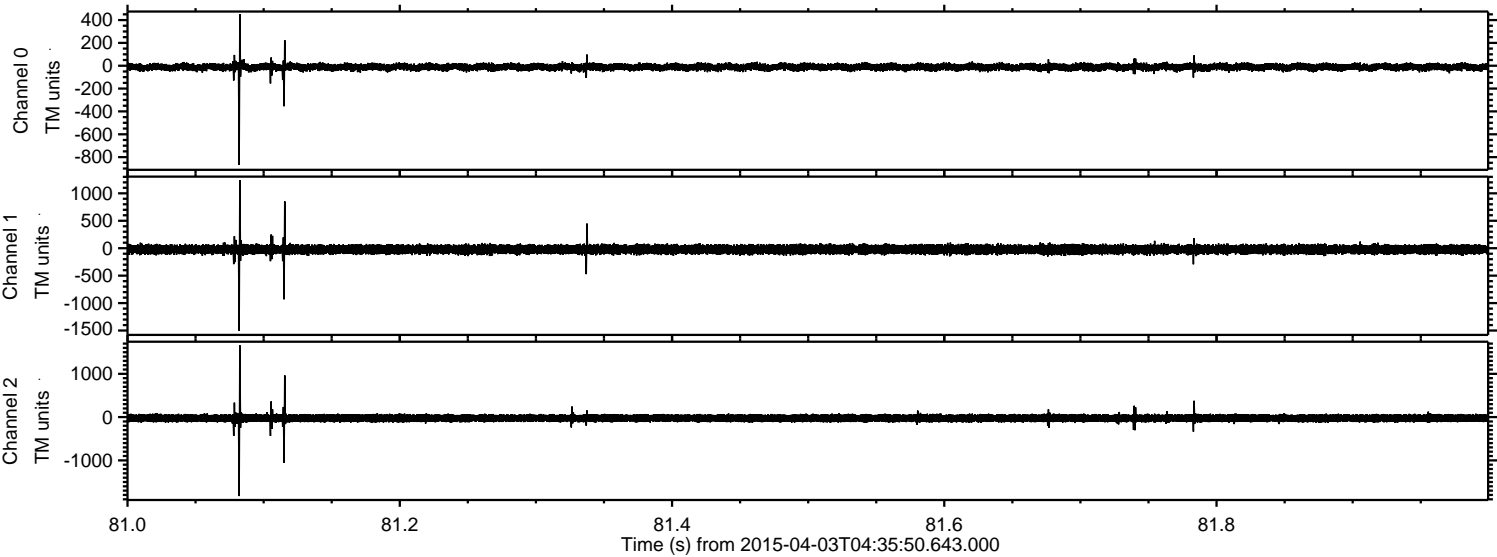
Processed Fri Apr 3 07:03:06 2015 by ELM ver.2012-10-06 from 001__elm20150403_043549__dat00.bin



Processed Fri Apr 3 07:03:07 2015 by ELM ver.2012-10-06 from 001__elm20150403_043549__dat00.bin



Processed Fri Apr 3 07:03:08 2015 by ELM ver.2012-10-06 from 001__elm20150403_043549__dat00.bin



Channel 0
mn: -868
mx: 452
 μ : -11.8
 σ : 16.0

Channel 1
mn: -1504
mx: 1242
 μ : -21.8
 σ : 43.7

Channel 2
mn: -1825
mx: 1660
 μ : -23.8
 σ : 51.0

