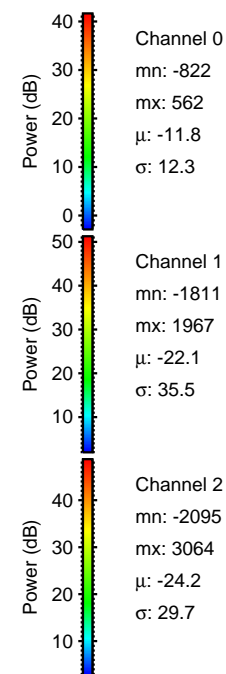
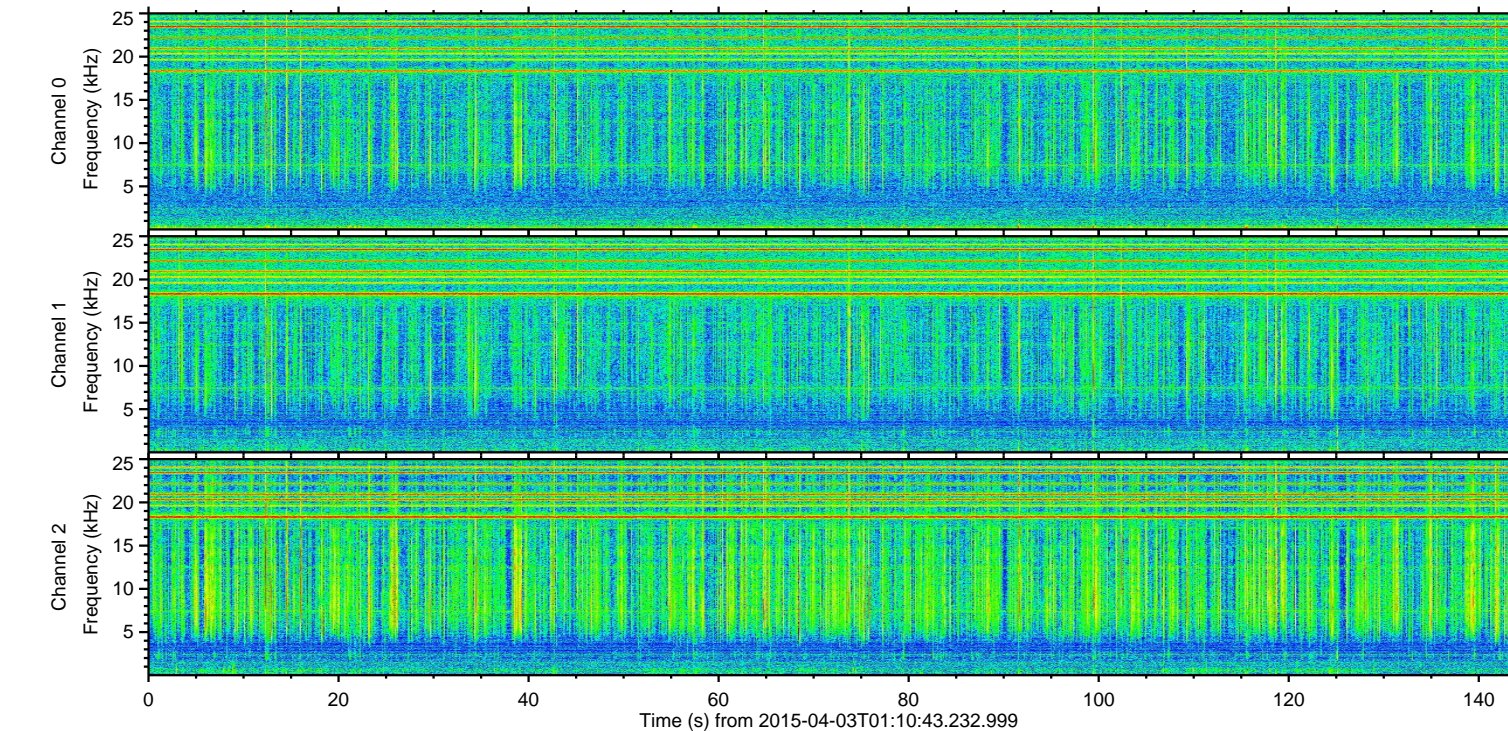
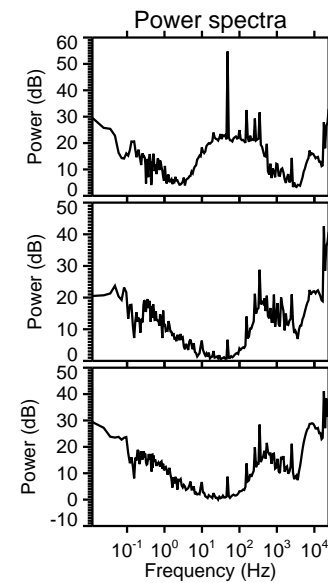
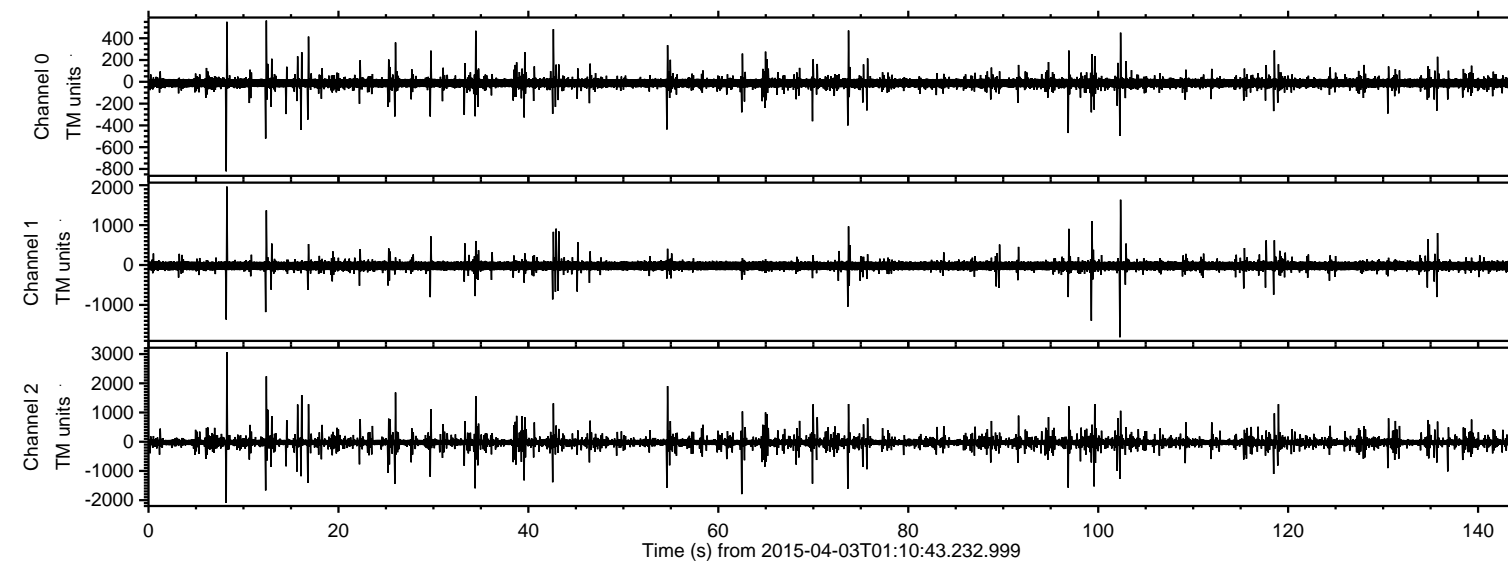
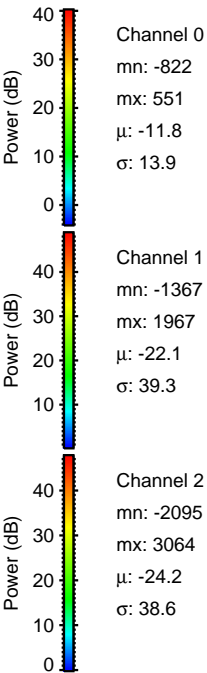
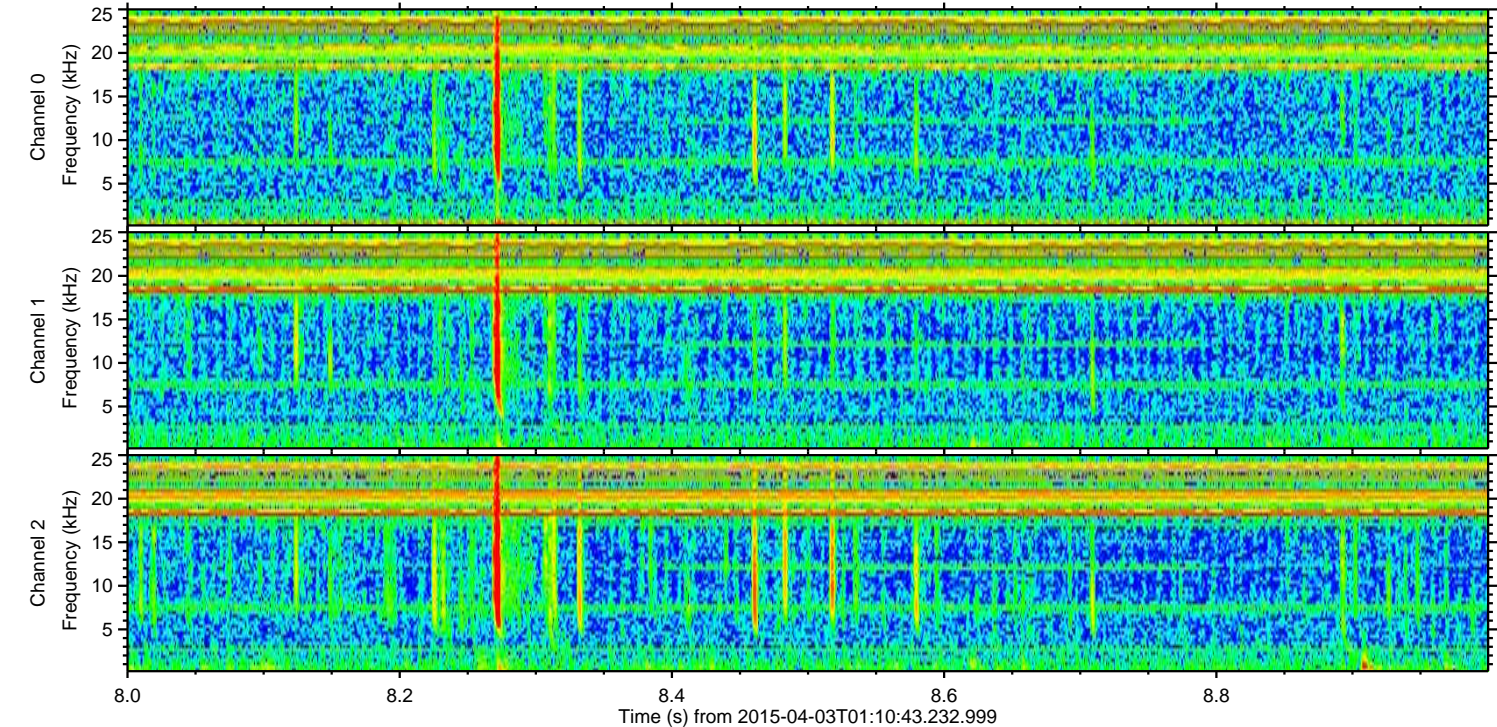
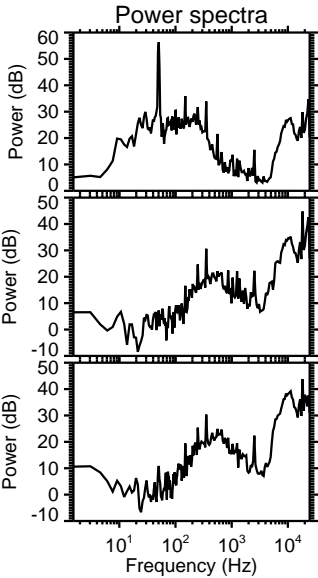
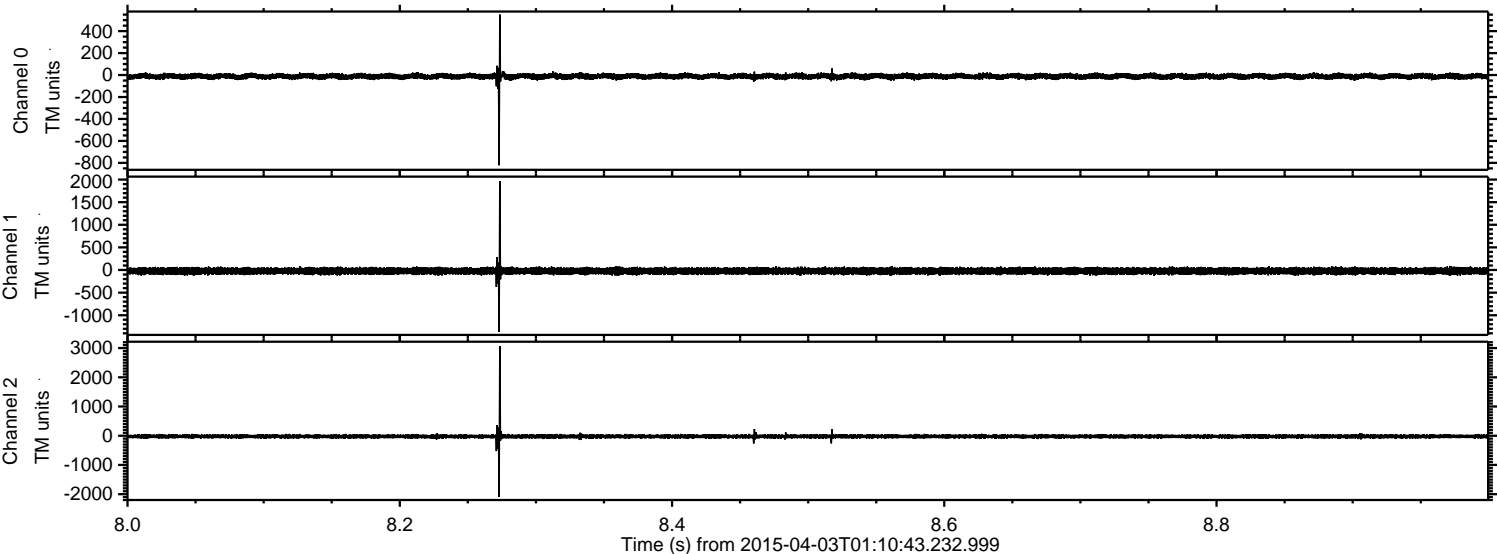


ELMAVAN 3D WAVEFORMS (Measured data sampled at 50 kHz) 49747 packets of 144 samples from 2015-04-03T01:10:43.232.999.

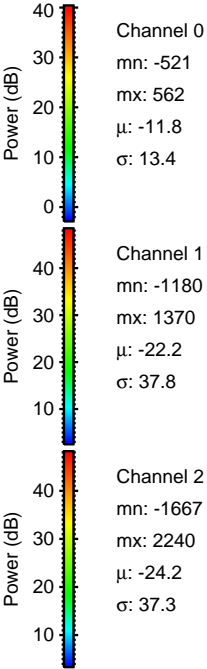
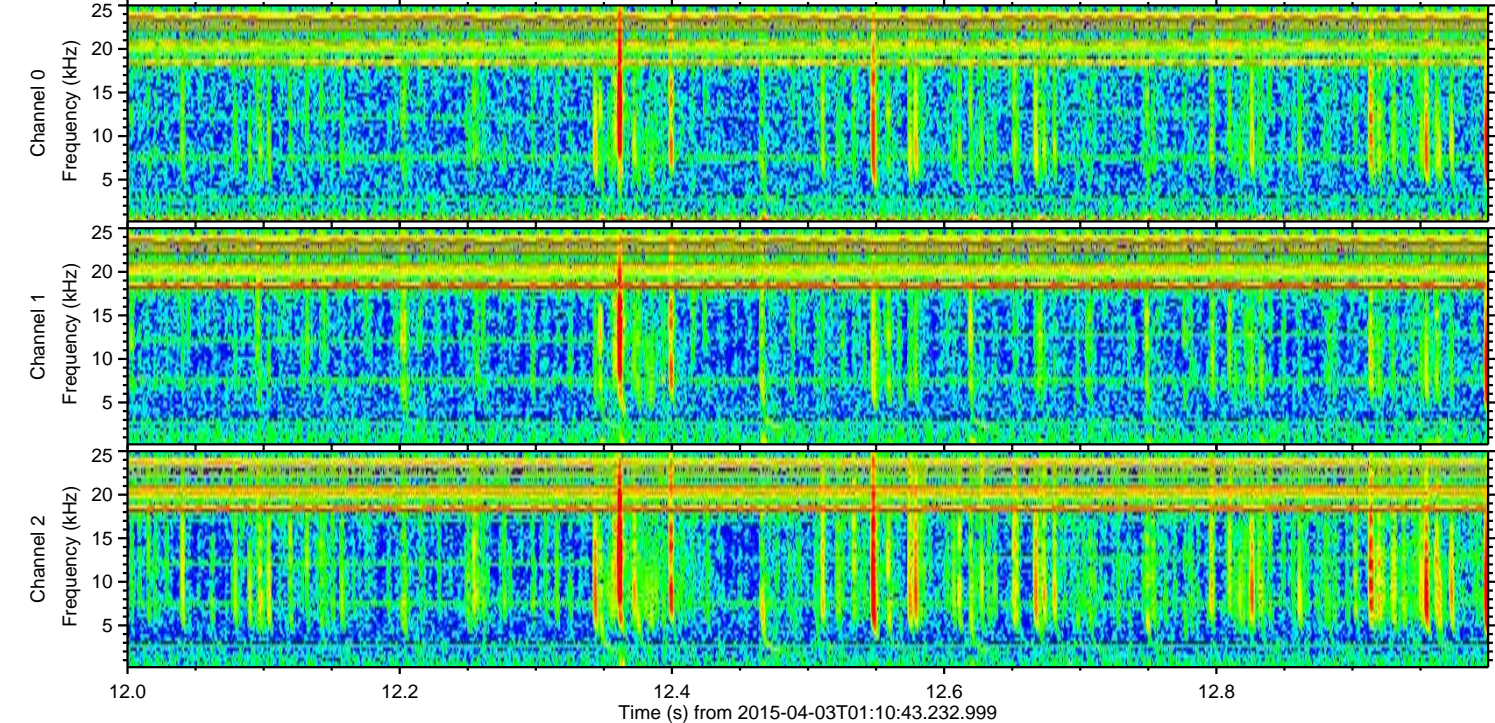
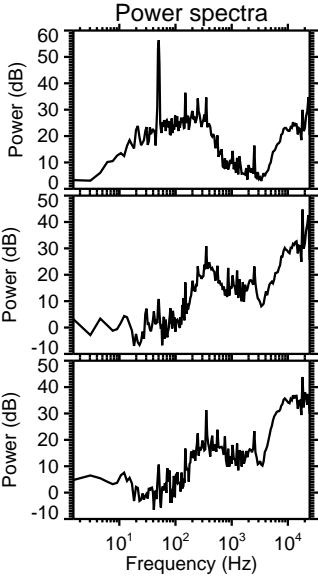
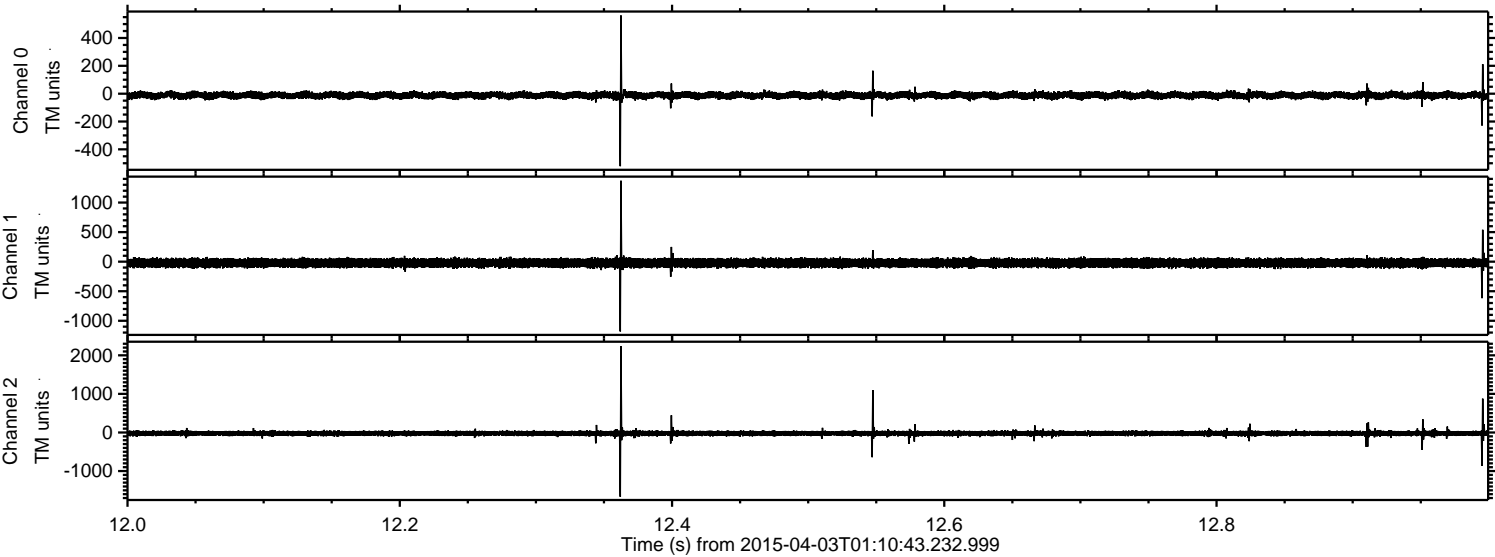
Processed Fri Apr 3 03:18:28 2015 by ELM ver.2012-10-06 from 001__elm20150403_011042__dat00.bin



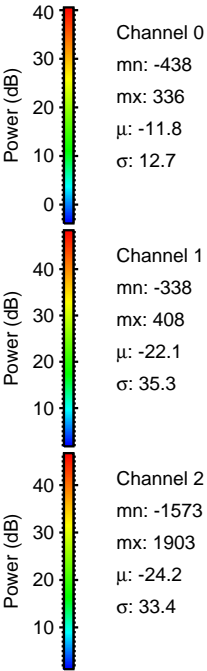
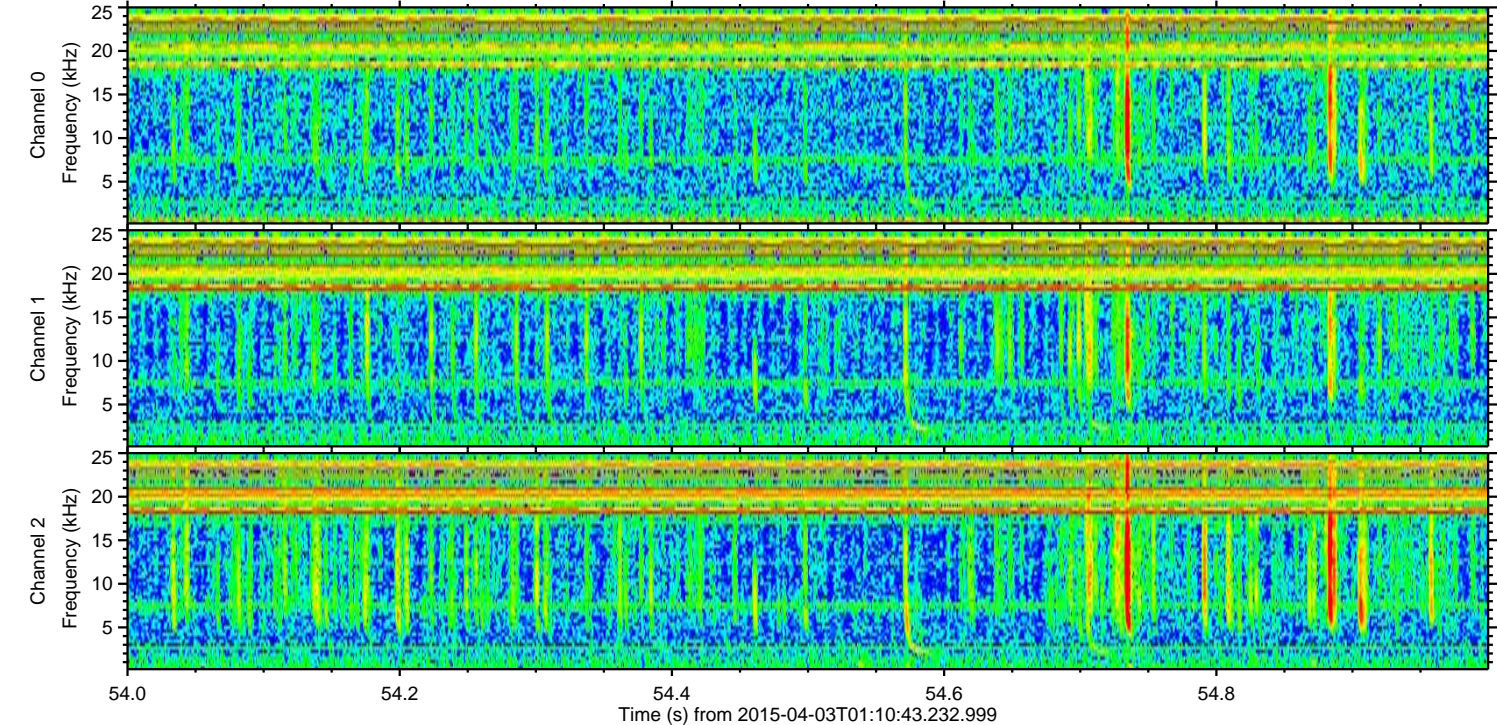
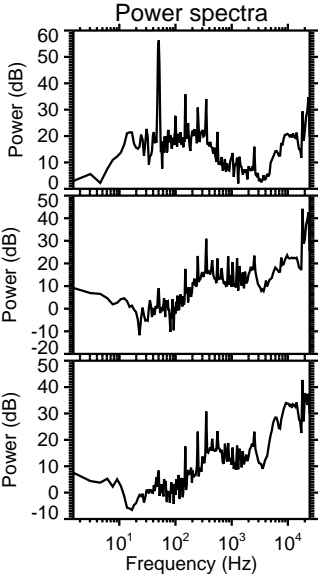
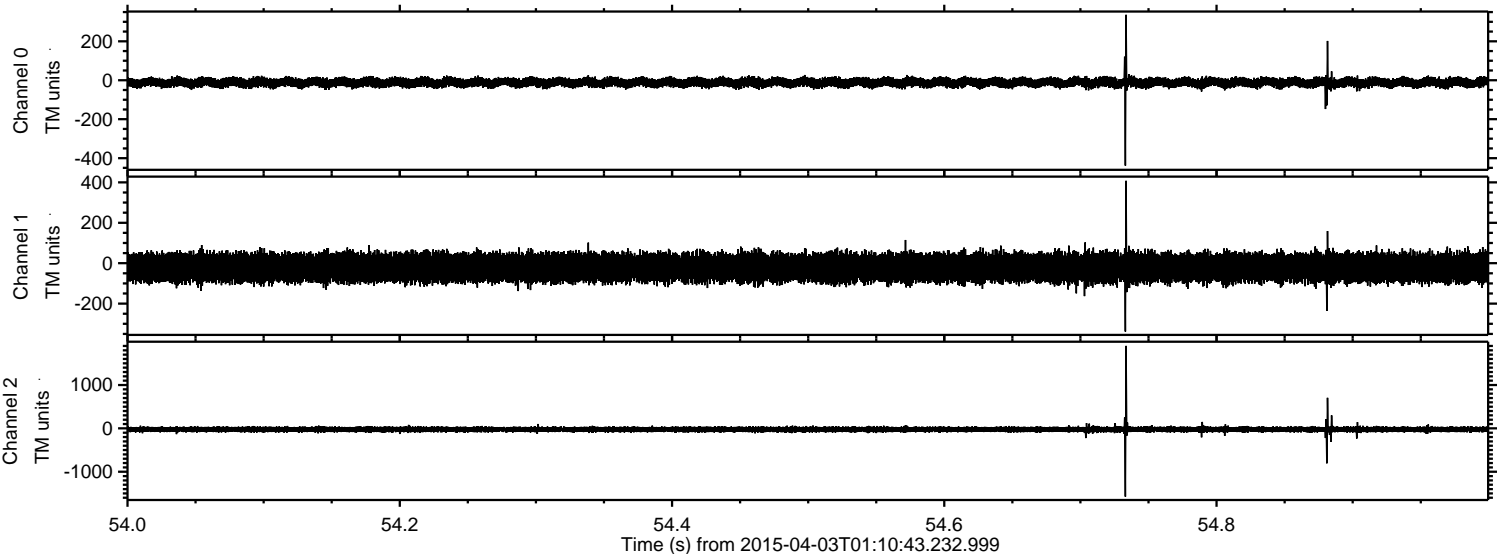
Processed Fri Apr 3 03:18:40 2015 by ELM ver.2012-10-06 from 001__elm20150403_011042__dat00.bin



Processed Fri Apr 3 03:18:41 2015 by ELM ver.2012-10-06 from 001__elm20150403_011042__dat00.bin



Processed Fri Apr 3 03:18:42 2015 by ELM ver.2012-10-06 from 001__elm20150403_011042__dat00.bin

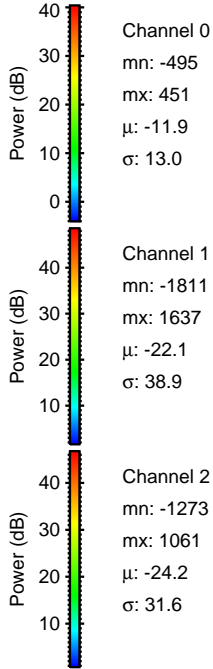
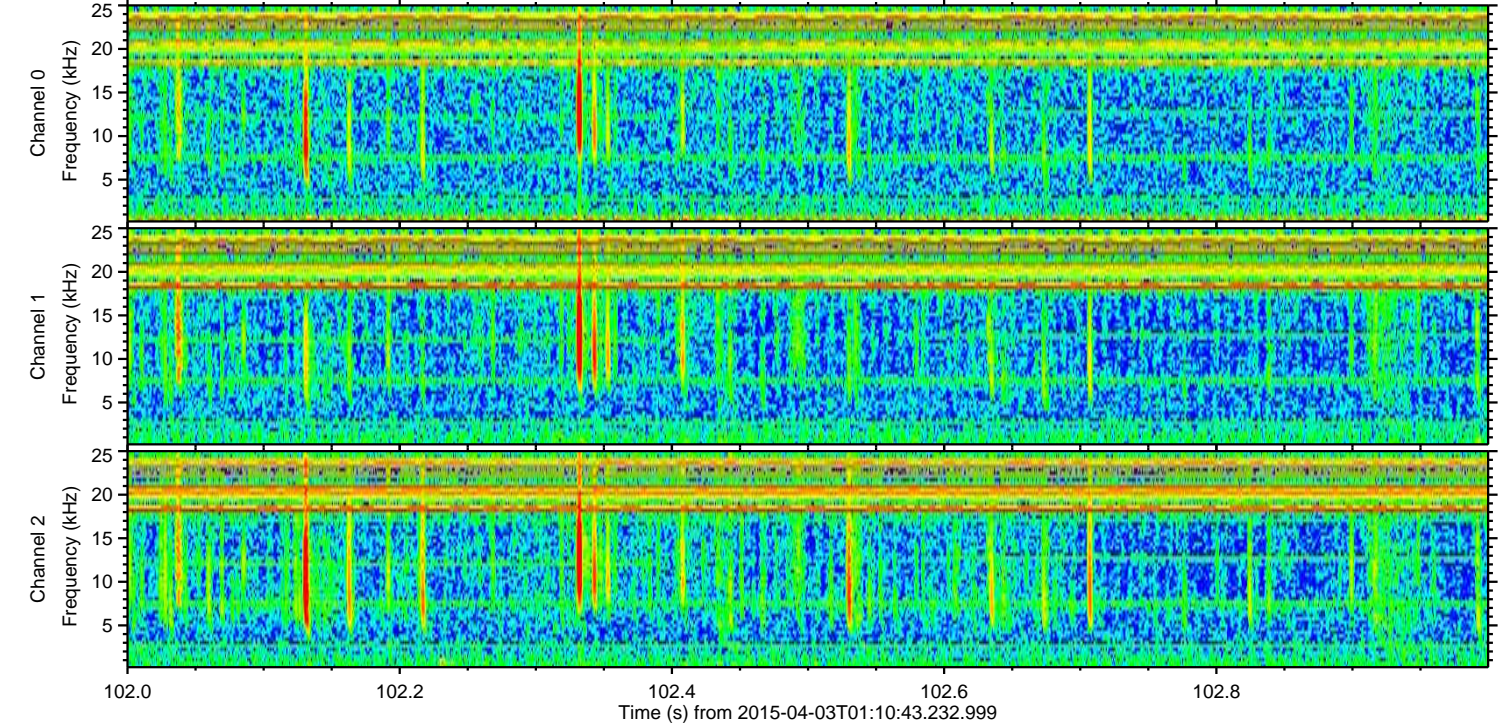
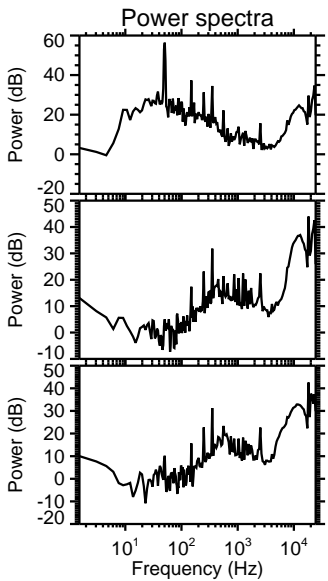
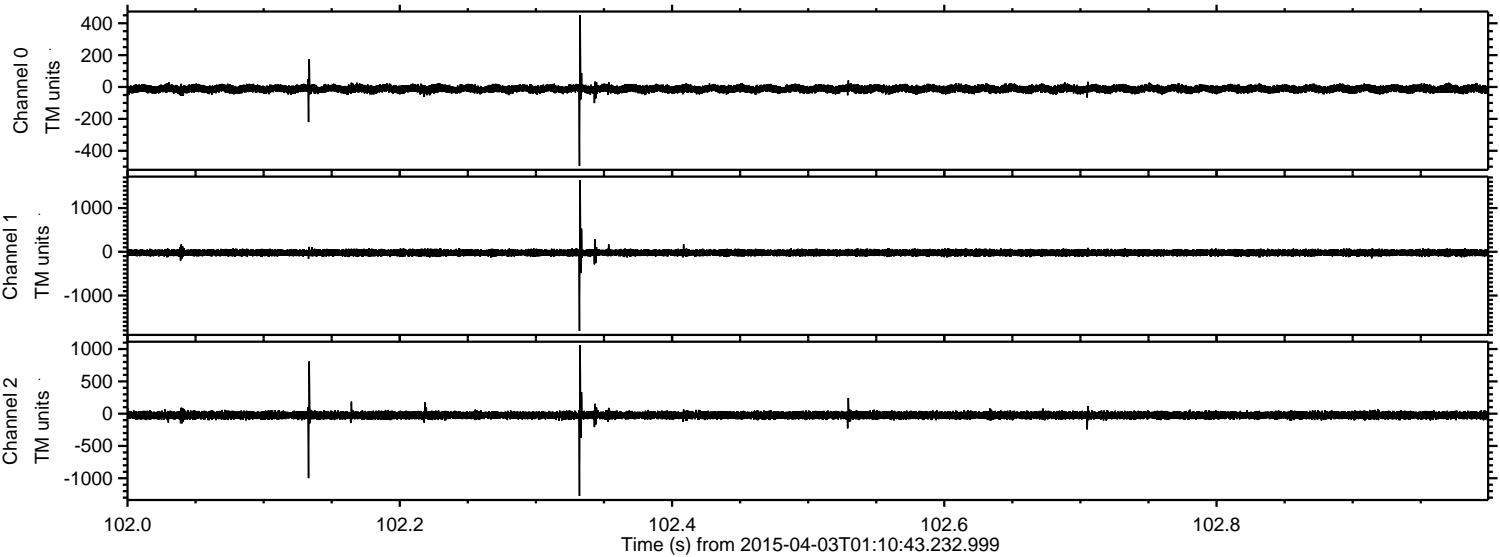


Channel 0
mn: -438
mx: 336
 μ : -11.8
 σ : 12.7

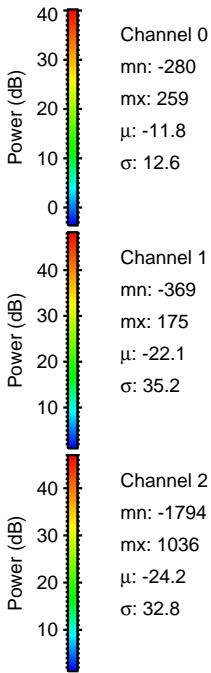
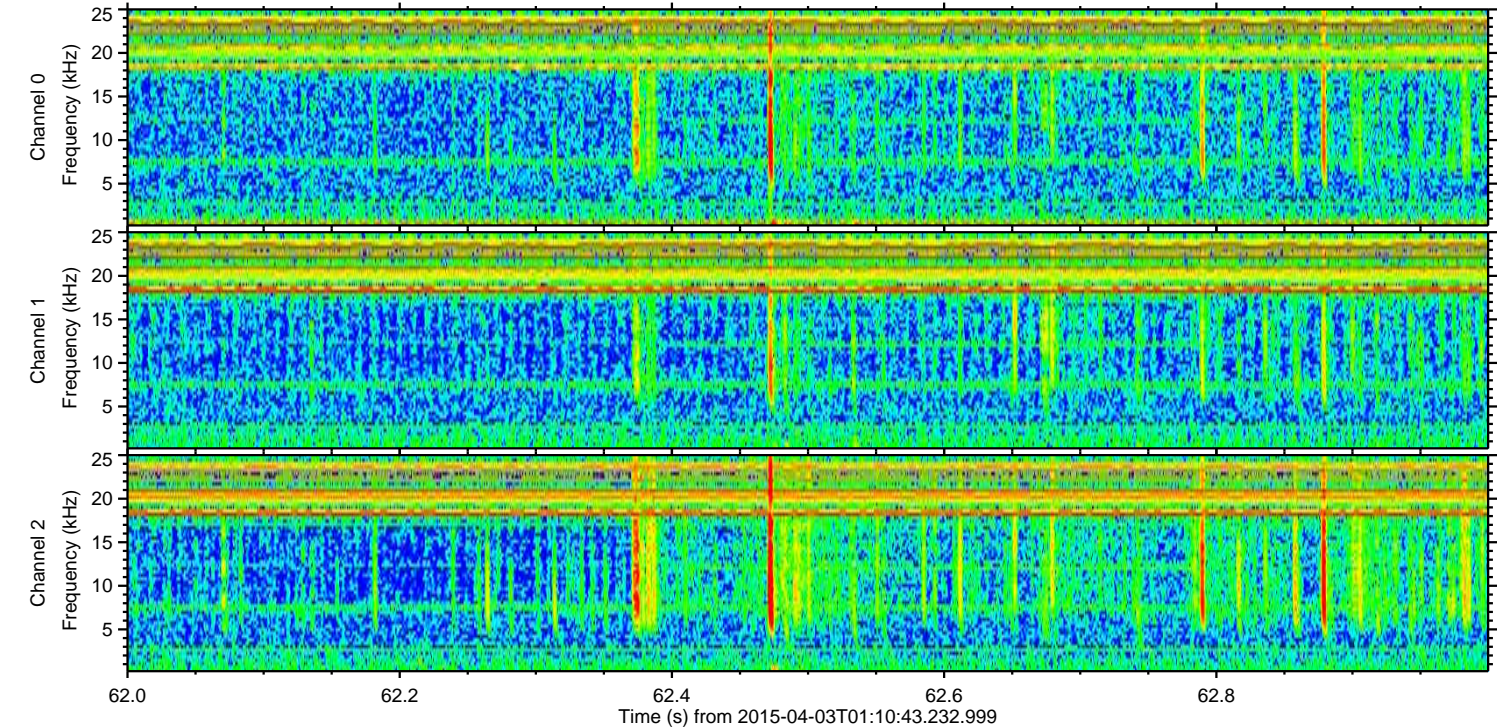
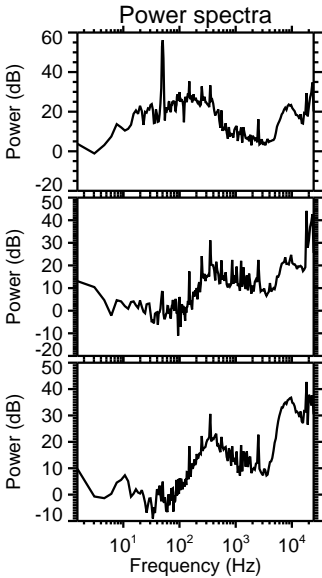
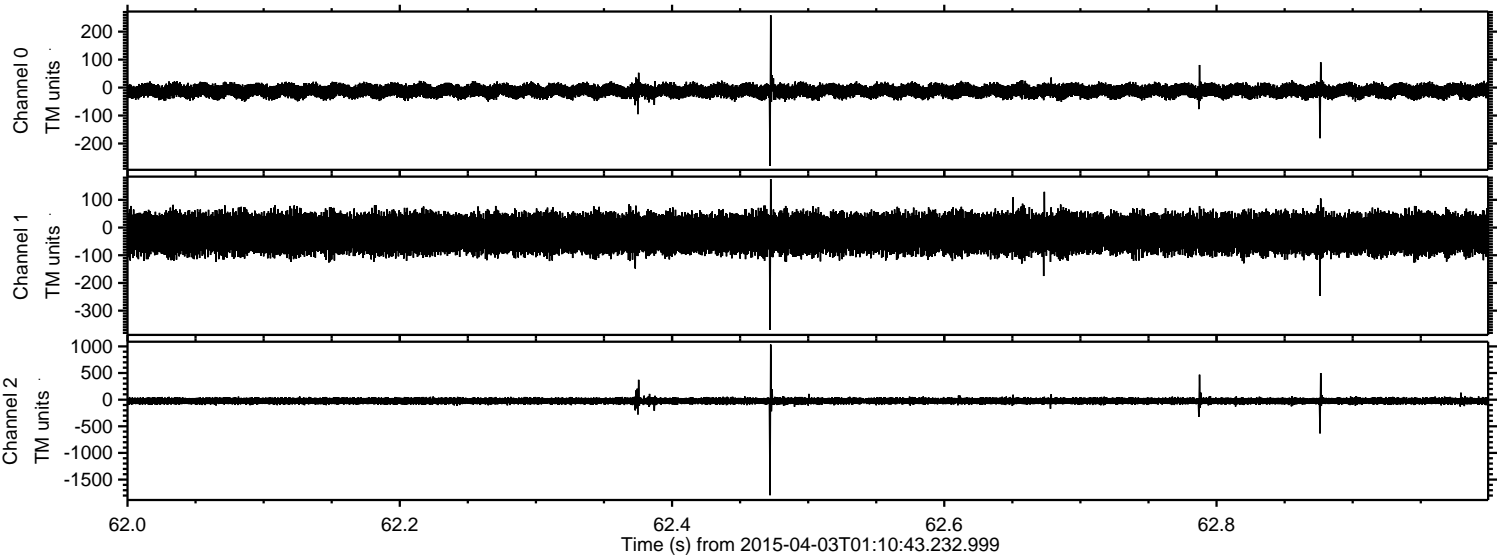
Channel 1
mn: -338
mx: 408
 μ : -22.1
 σ : 35.3

Channel 2
mn: -1573
mx: 1903
 μ : -24.2
 σ : 33.4

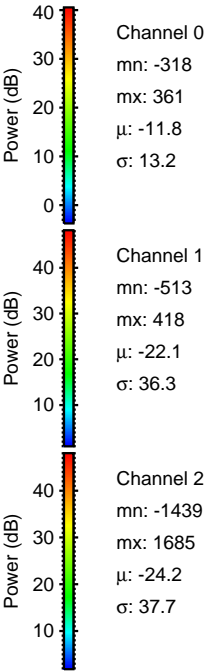
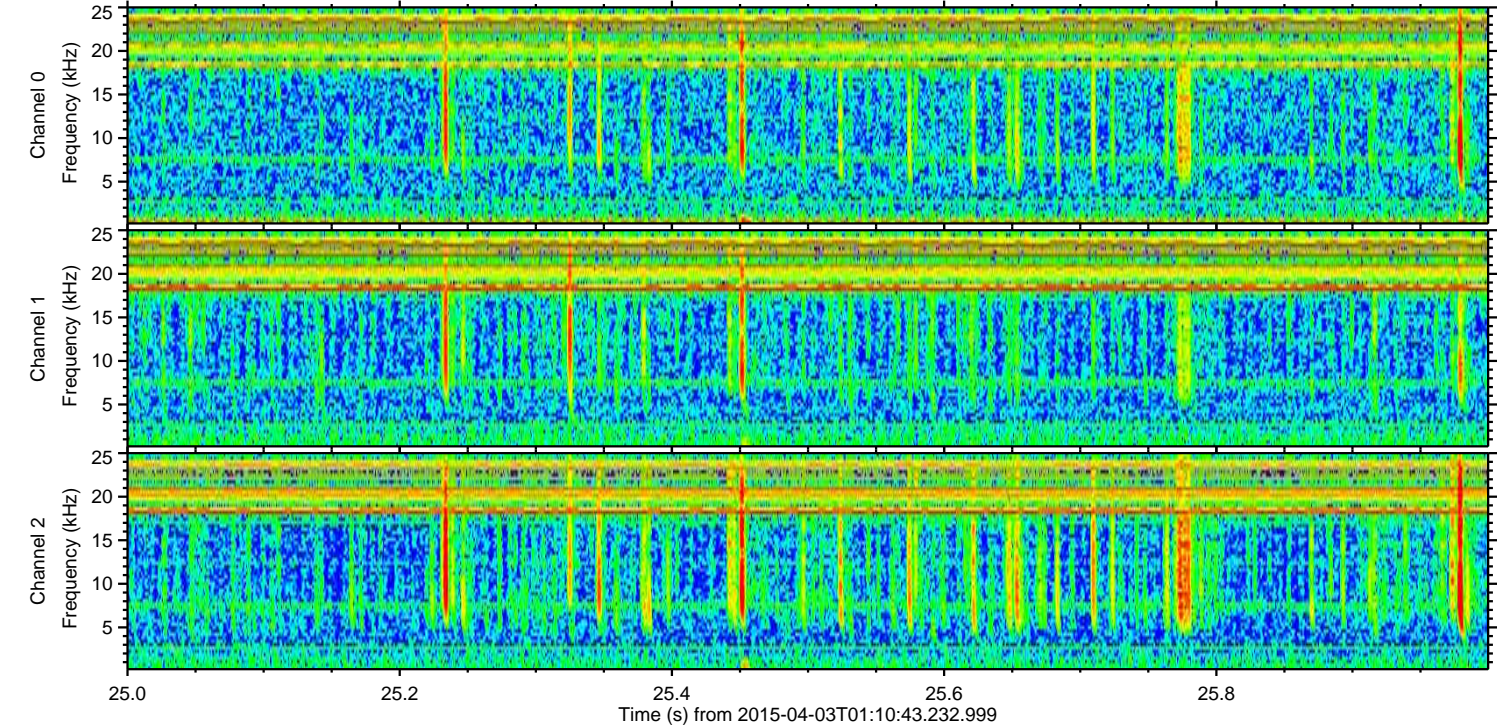
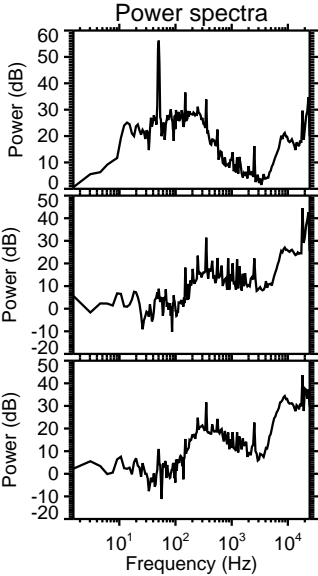
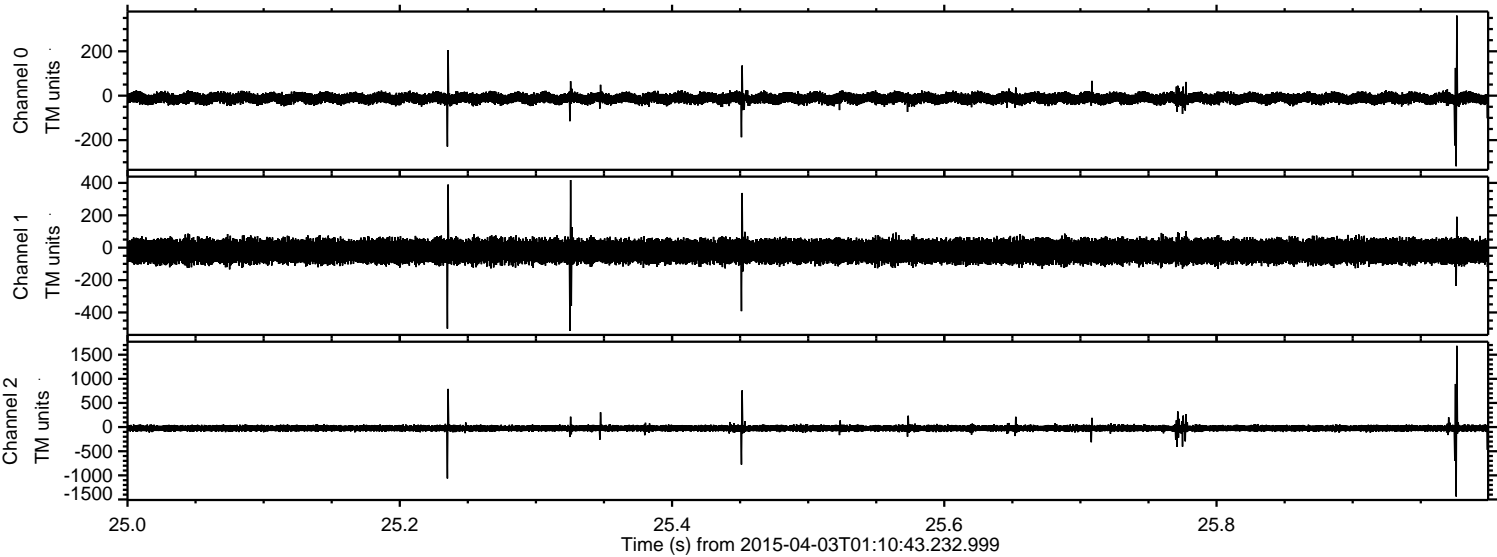
Processed Fri Apr 3 03:18:43 2015 by ELM ver.2012-10-06 from 001__elm20150403_011042__dat00.bin



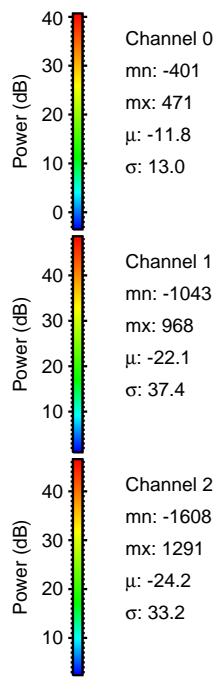
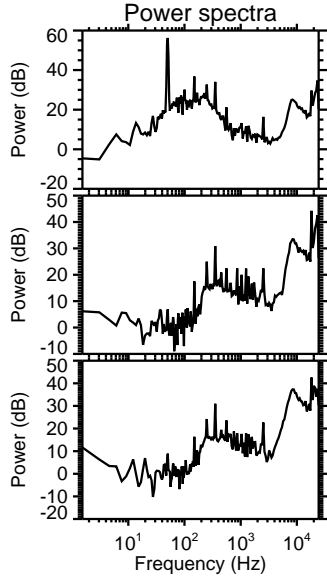
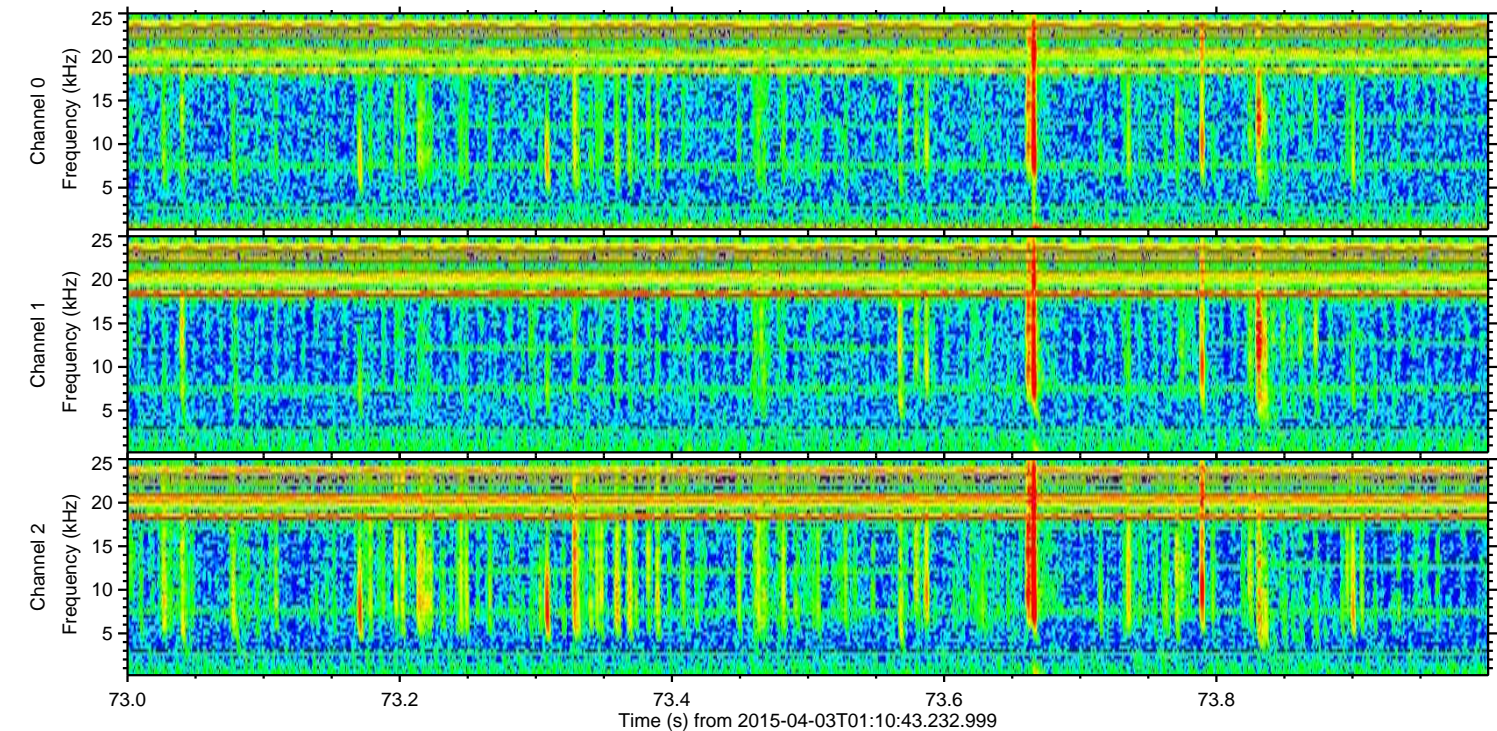
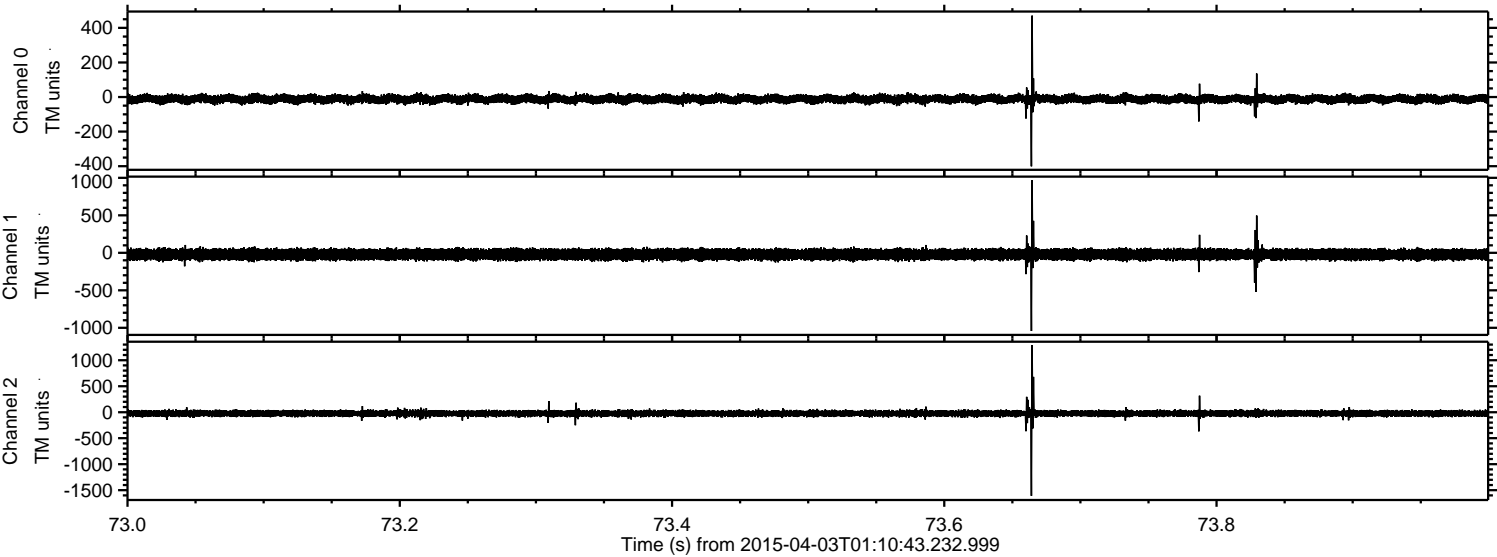
Processed Fri Apr 3 03:18:44 2015 by ELM ver.2012-10-06 from 001__elm20150403_011042__dat00.bin



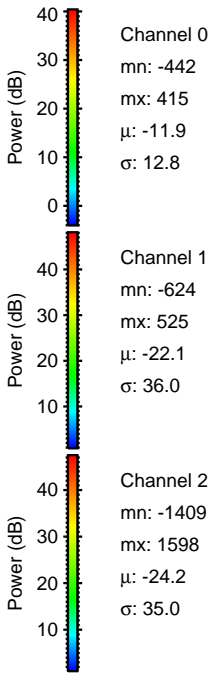
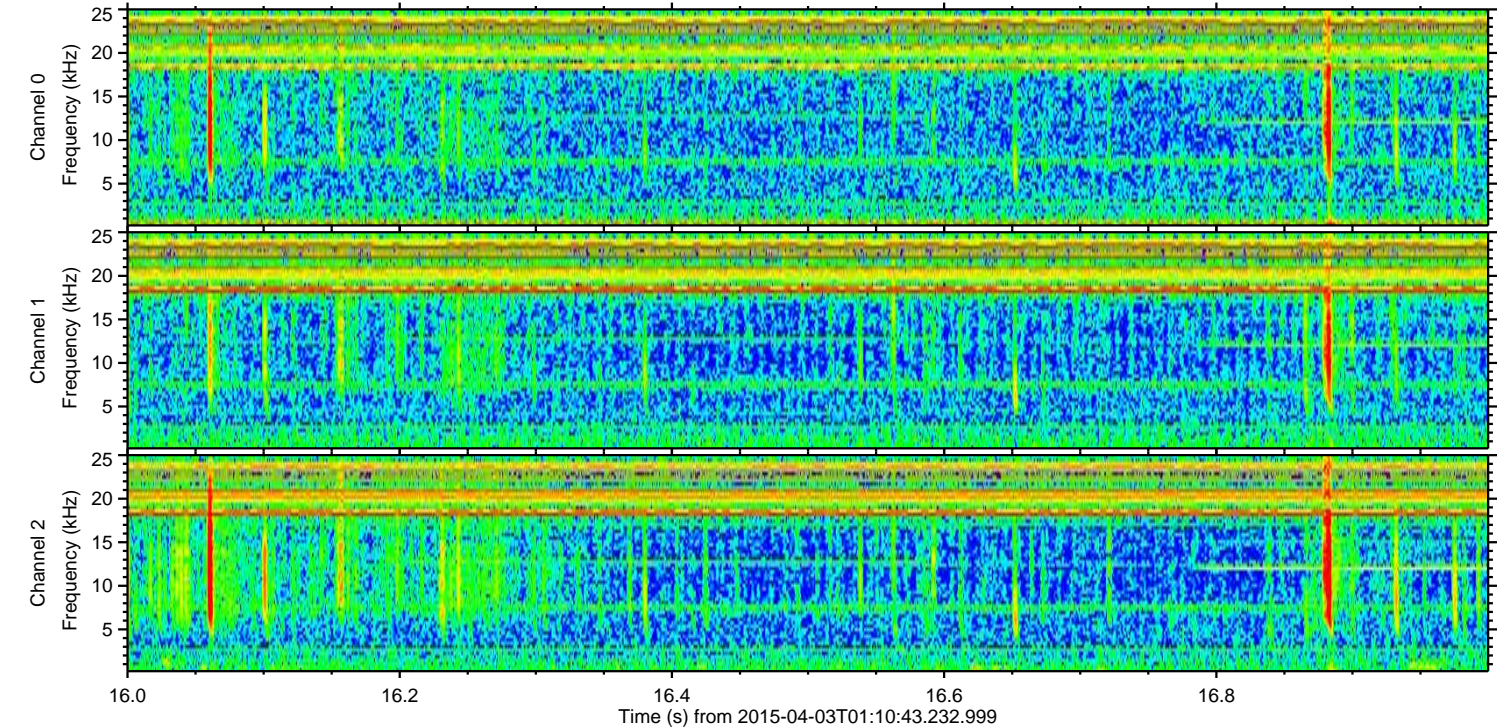
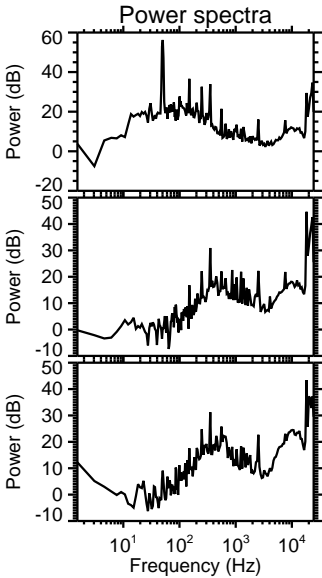
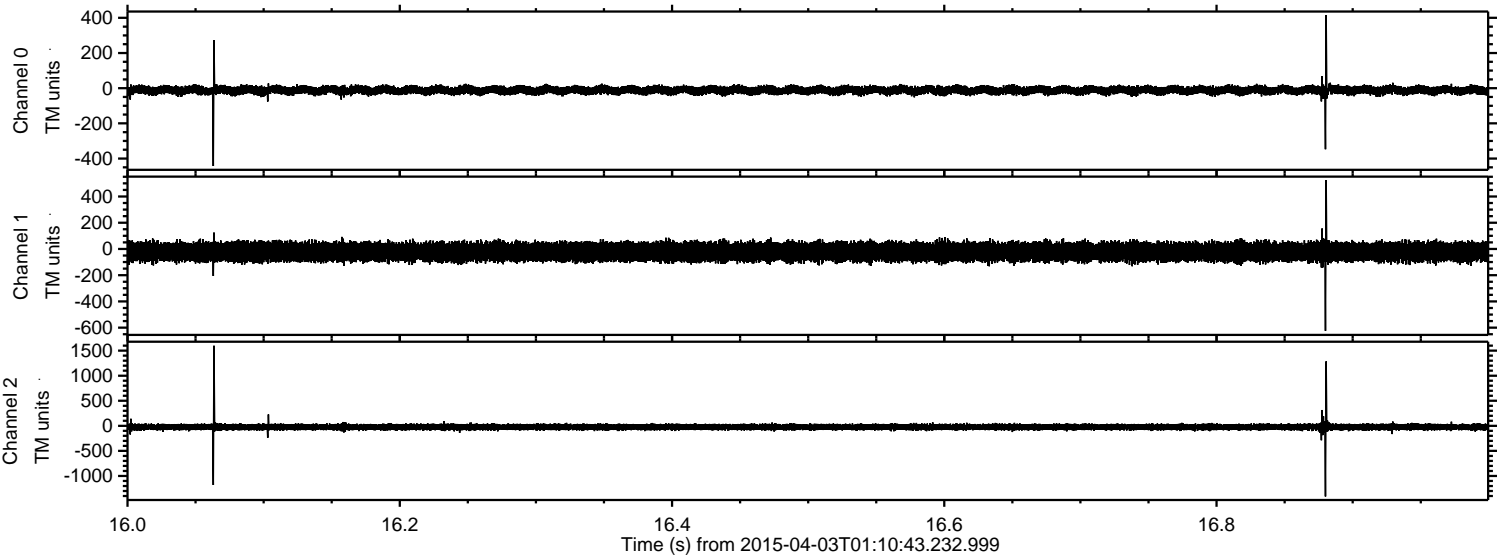
Processed Fri Apr 3 03:18:44 2015 by ELM ver.2012-10-06 from 001__elm20150403_011042__dat00.bin



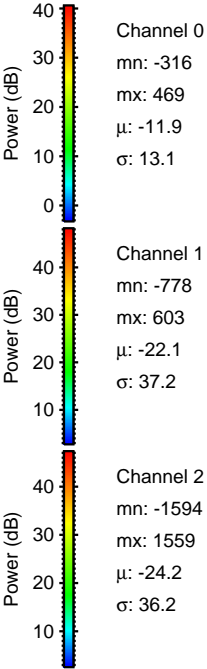
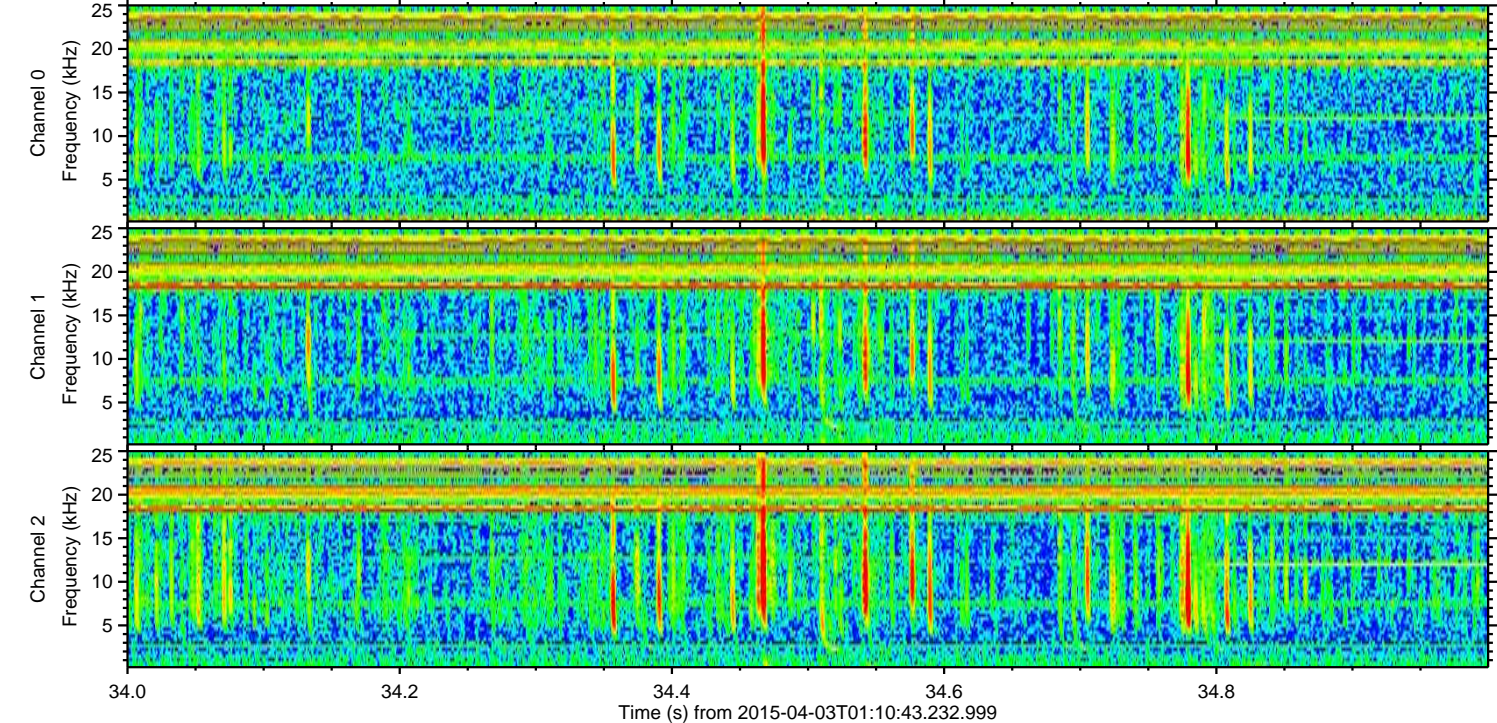
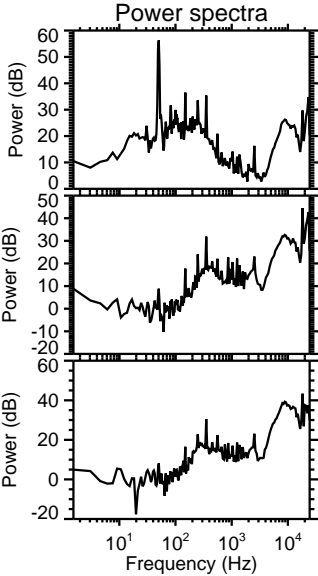
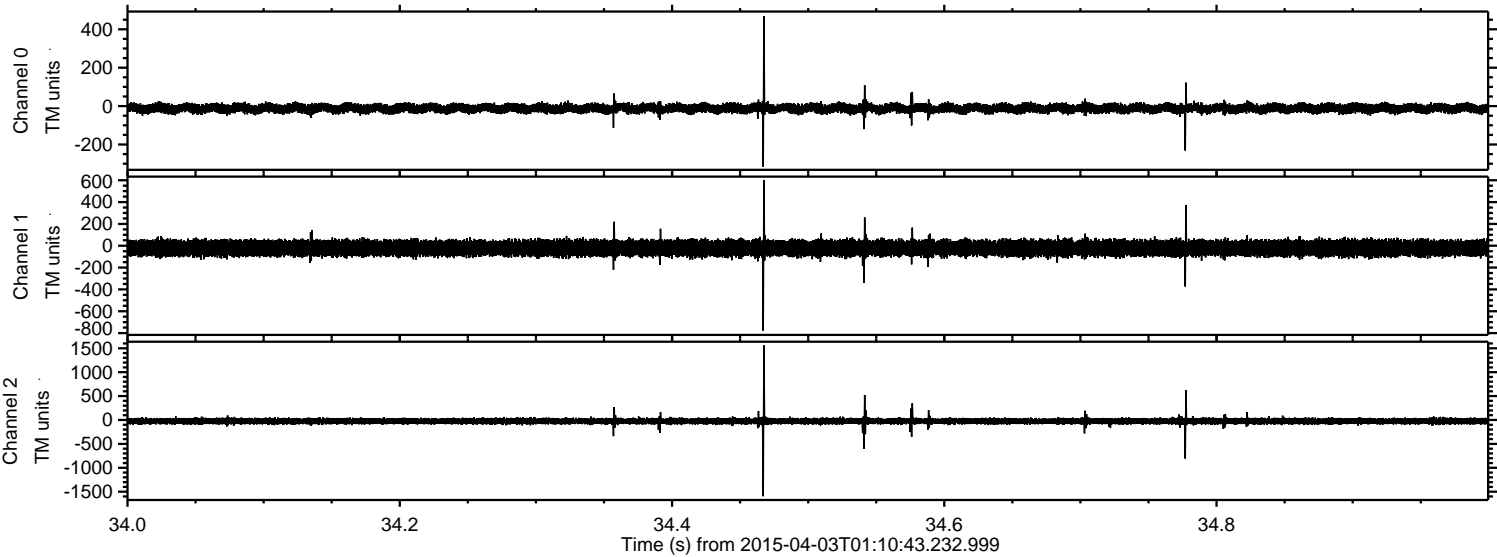
Processed Fri Apr 3 03:18:45 2015 by ELM ver.2012-10-06 from 001__elm20150403_011042__dat00.bin



Processed Fri Apr 3 03:18:46 2015 by ELM ver.2012-10-06 from 001__elm20150403_011042__dat00.bin



Processed Fri Apr 3 03:18:47 2015 by ELM ver.2012-10-06 from 001__elm20150403_011042__dat00.bin



ELMAVAN 3D WAVEFORMS (Measured data sampled at 50 kHz) 49747 packets of 144 samples from 2015-04-03T01:10:43.232.999. Part 114/144

