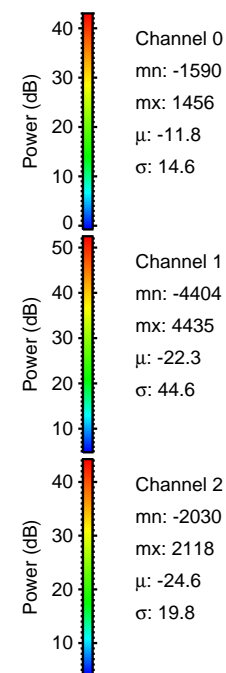
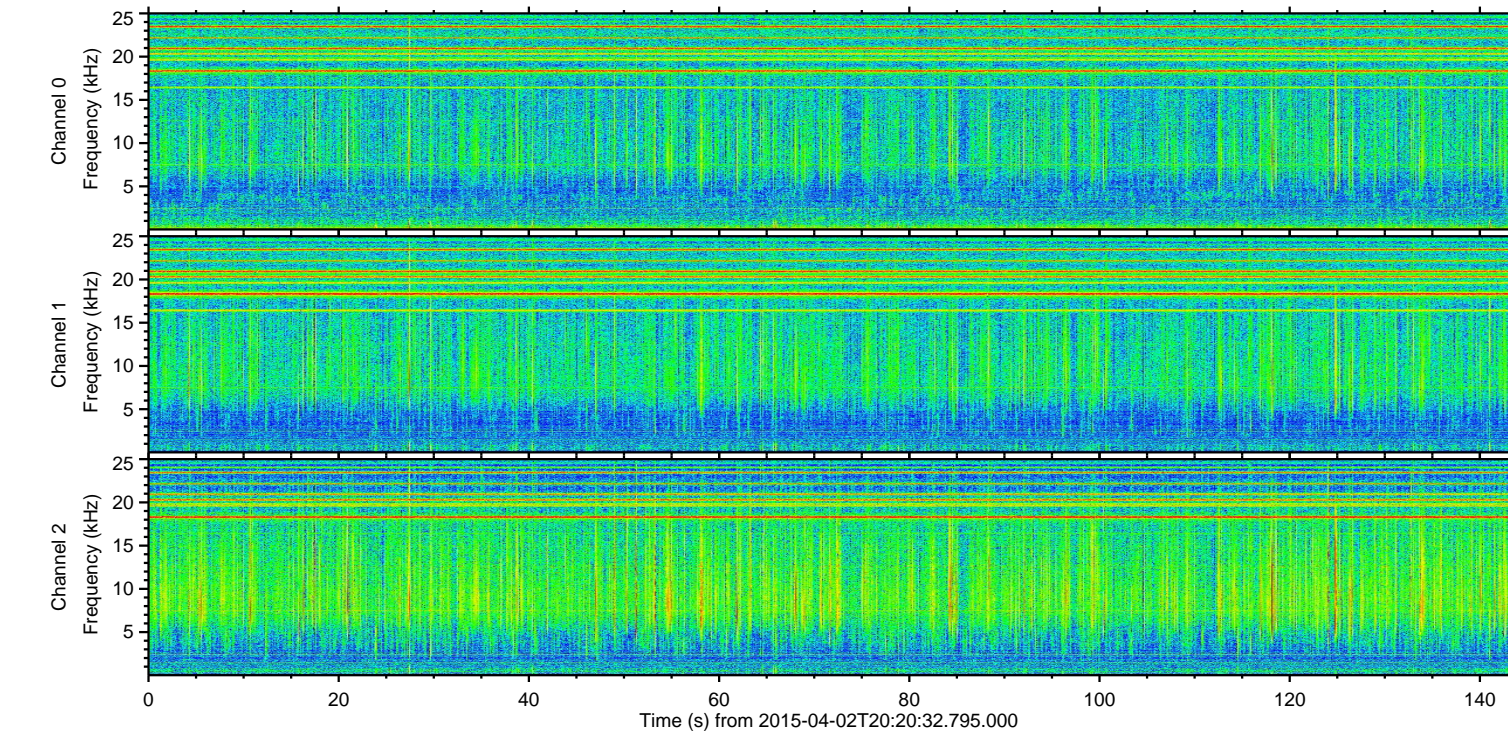
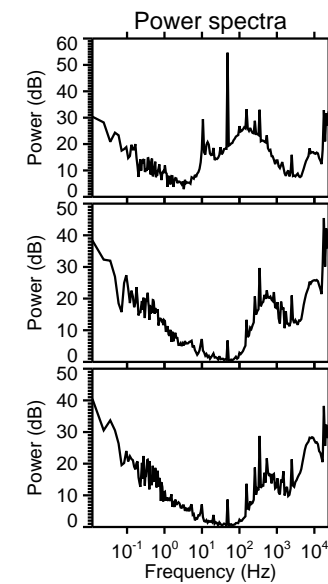
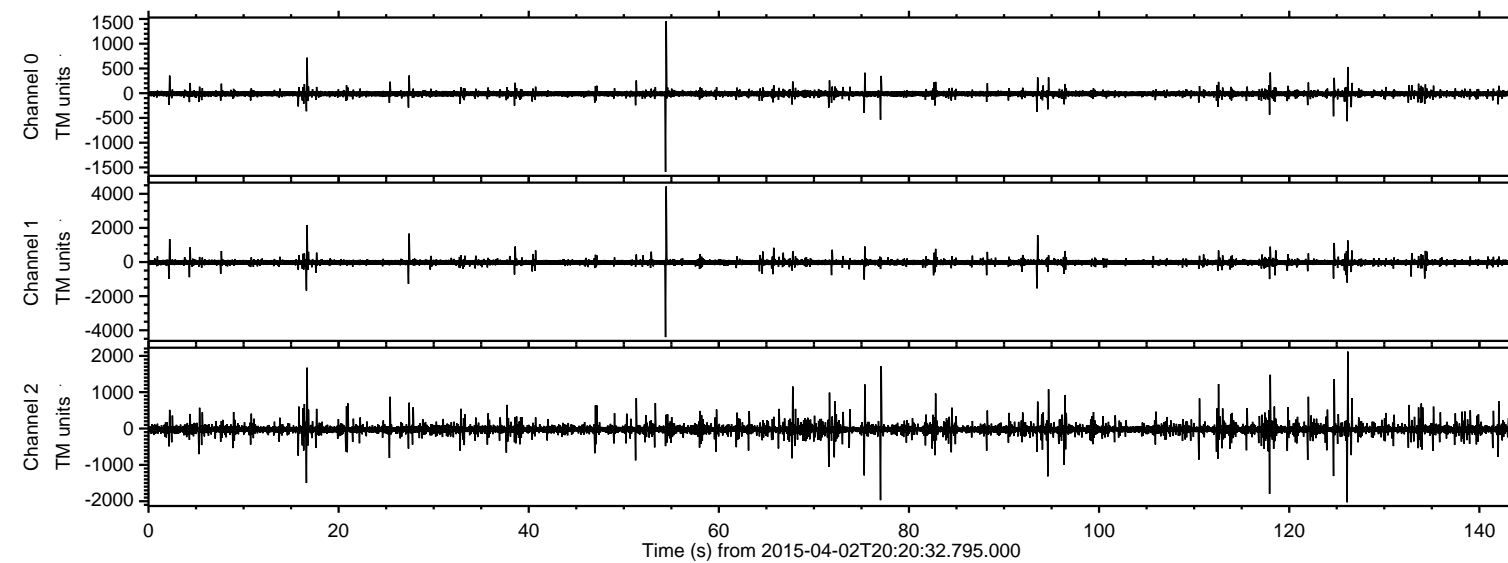
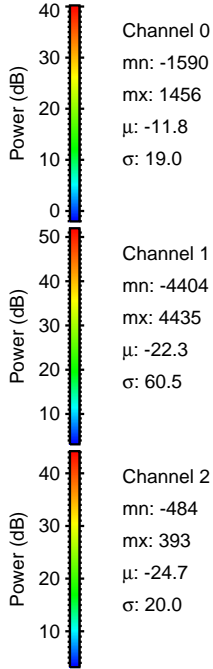
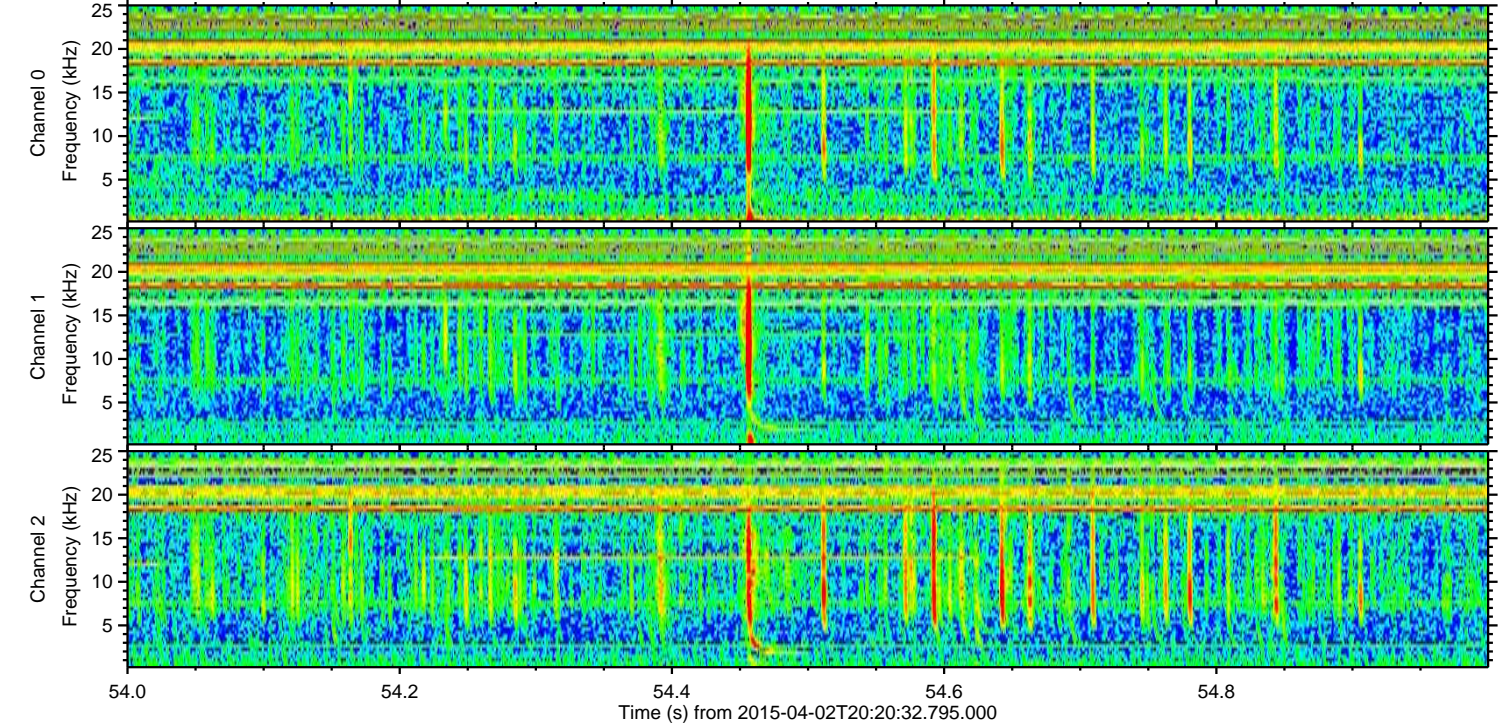
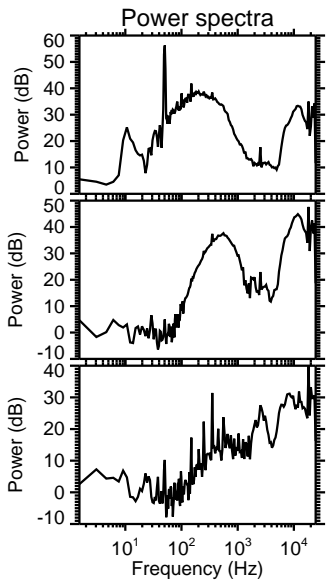
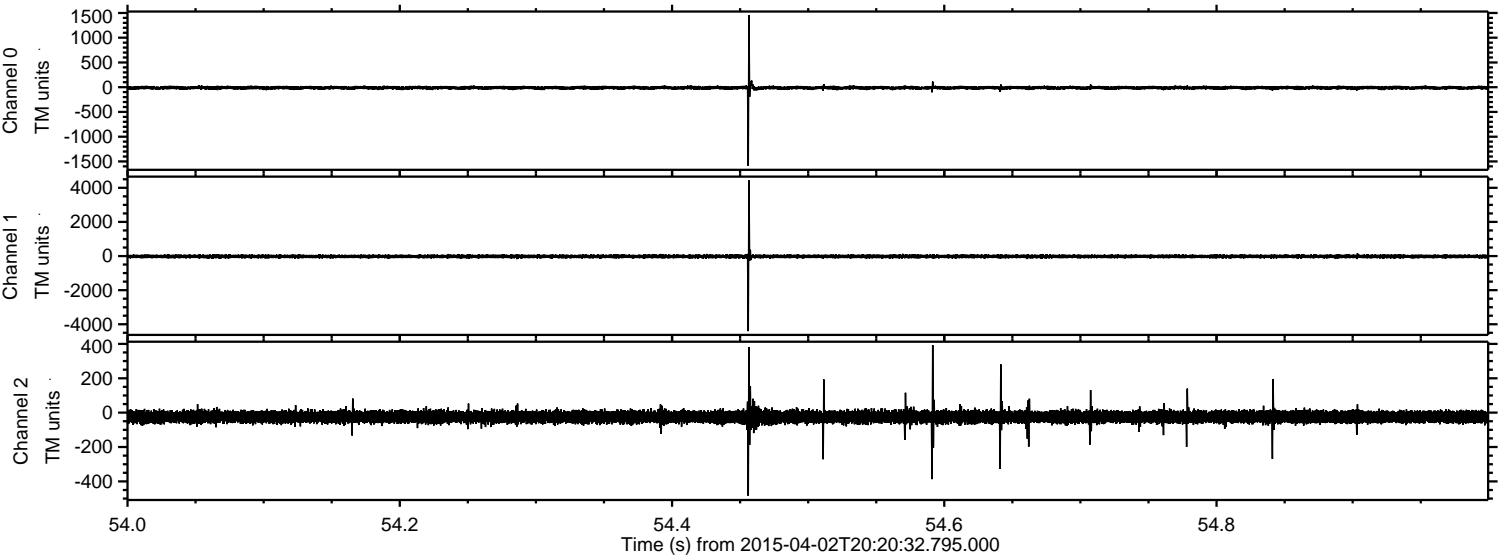


ELMAVAN 3D WAVEFORMS (Measured data sampled at 50 kHz) 49700 packets of 144 samples from 2015-04-02T20:20:32.795.000.

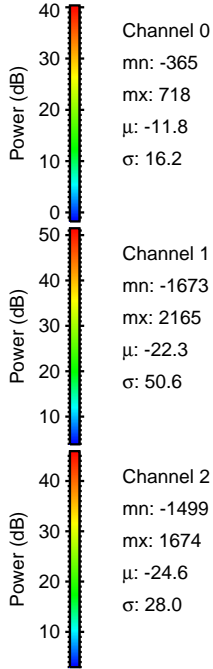
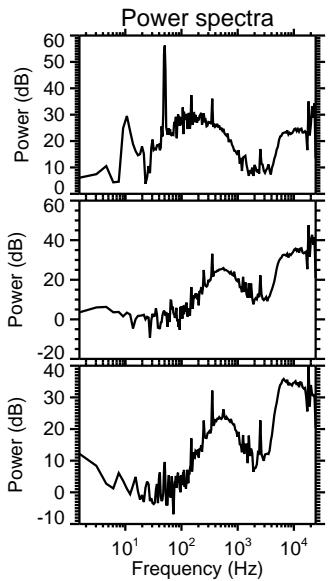
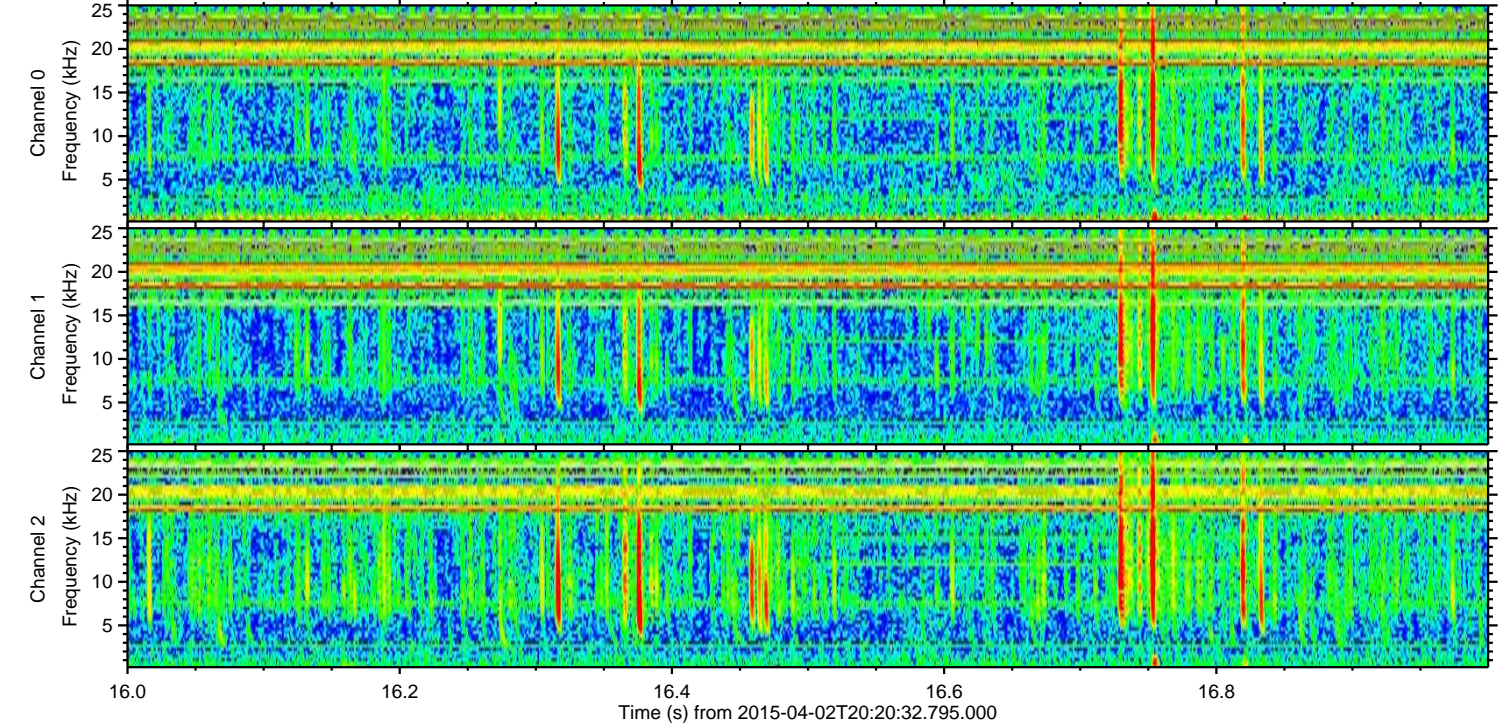
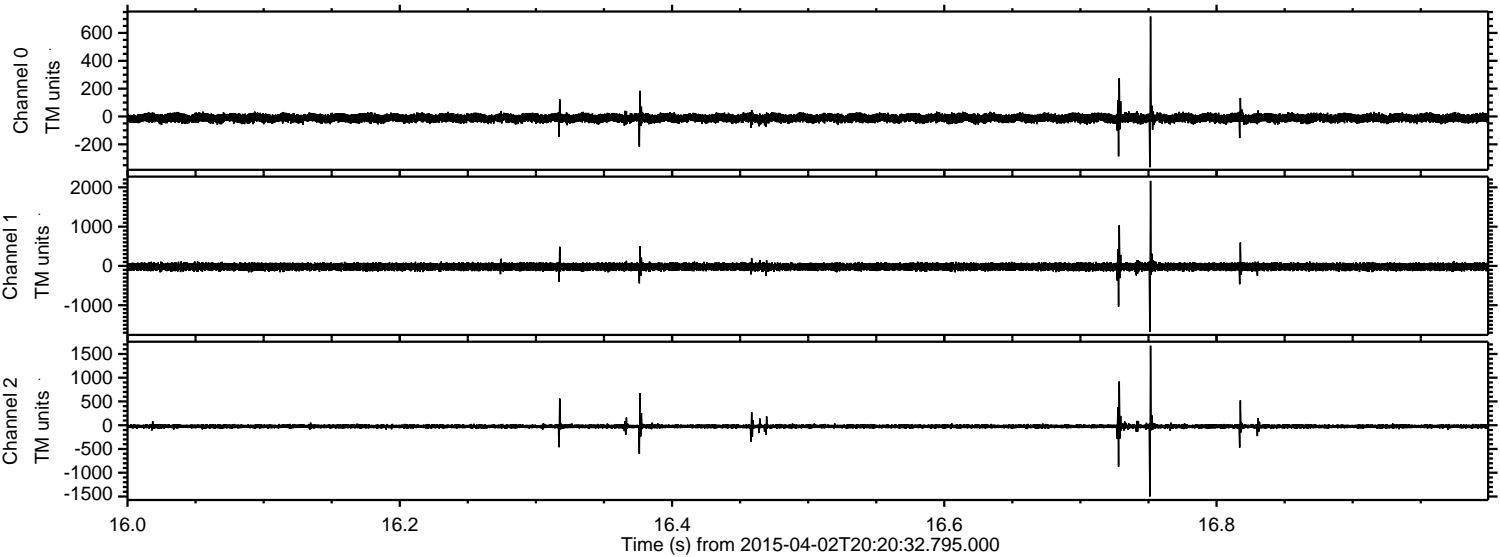
Processed Thu Apr 2 22:29:27 2015 by ELM ver.2012-10-06 from 001__elm20150402_202031__dat00.bin



Processed Thu Apr 2 22:29:42 2015 by ELM ver.2012-10-06 from 001__elm20150402_202031__dat00.bin

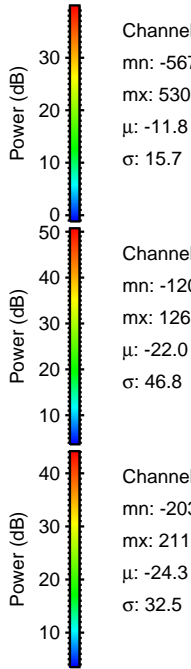
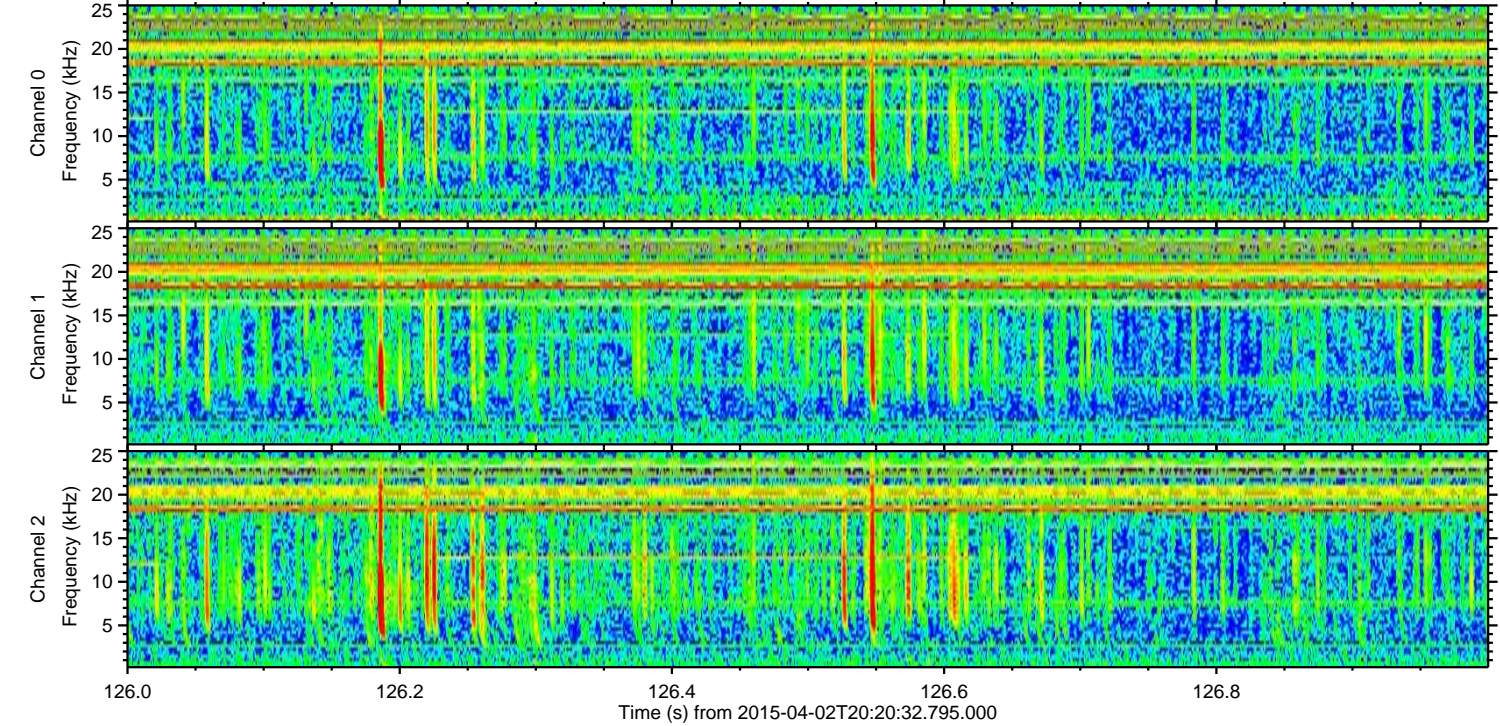
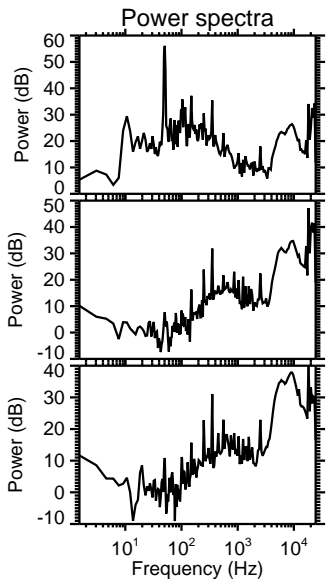
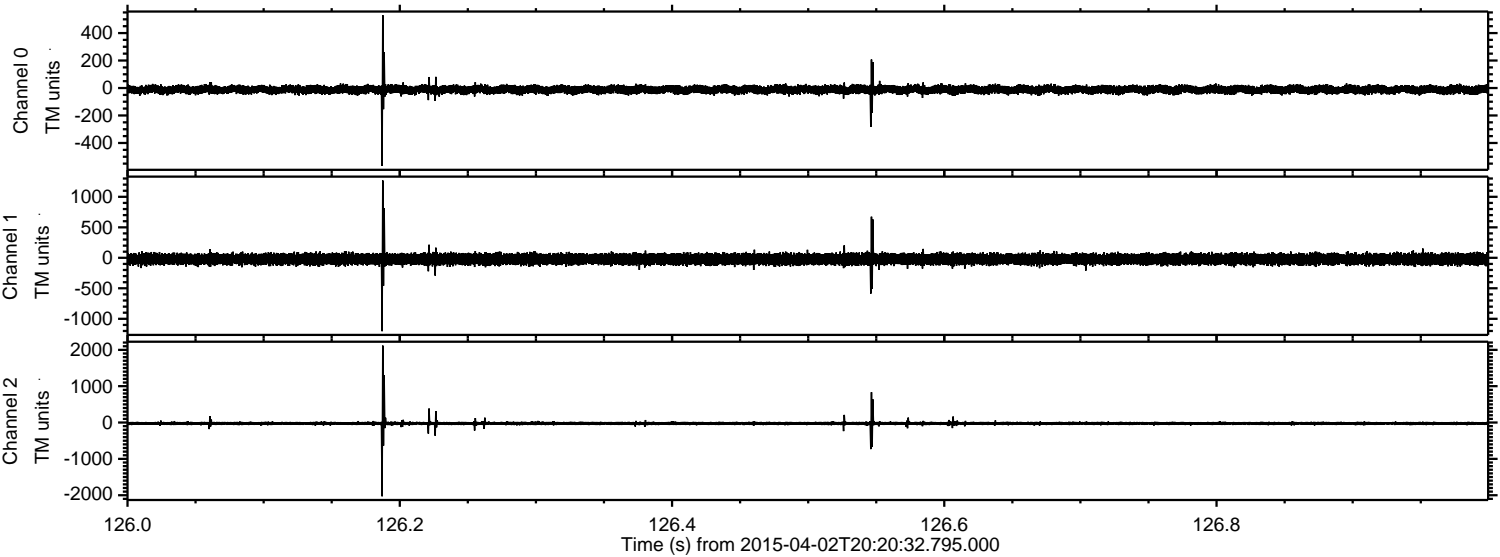


Processed Thu Apr 2 22:29:43 2015 by ELM ver.2012-10-06 from 001__elm20150402_202031__dat00.bin



ELMAVAN 3D WAVEFORMS (Measured data sampled at 50 kHz) 49700 packets of 144 samples from 2015-04-02T20:20:32.795.000. Part 127/144

Processed Thu Apr 2 22:29:44 2015 by ELM ver.2012-10-06 from 001__elm20150402_202031__dat00.bin

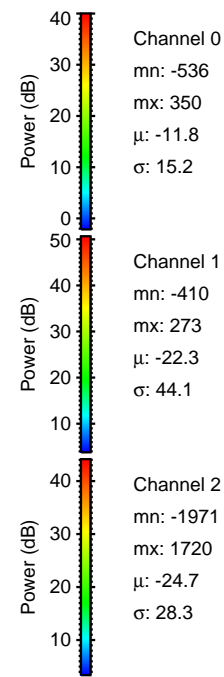
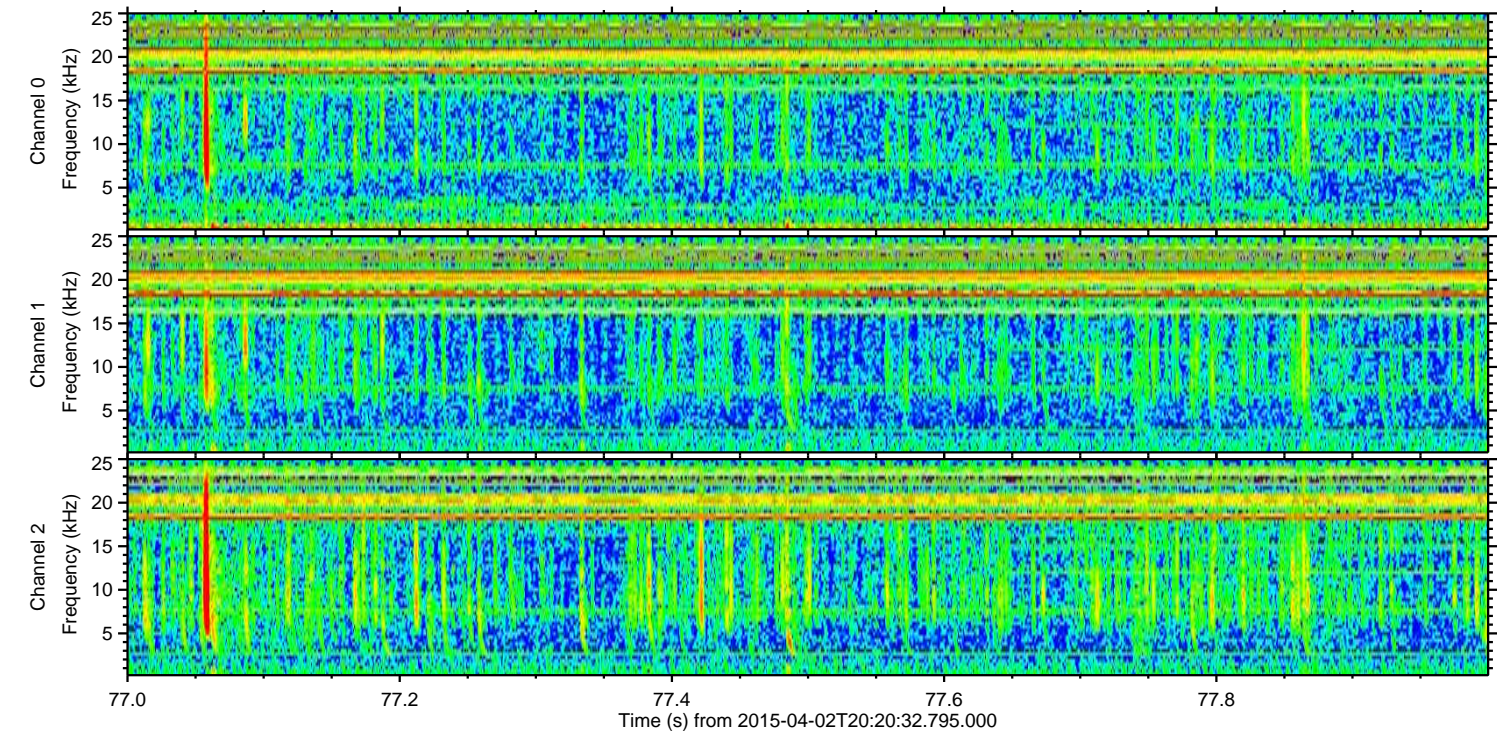
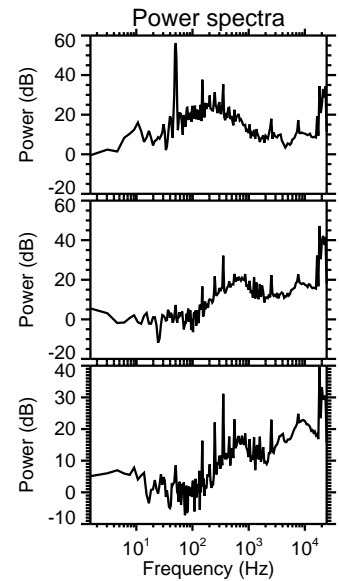
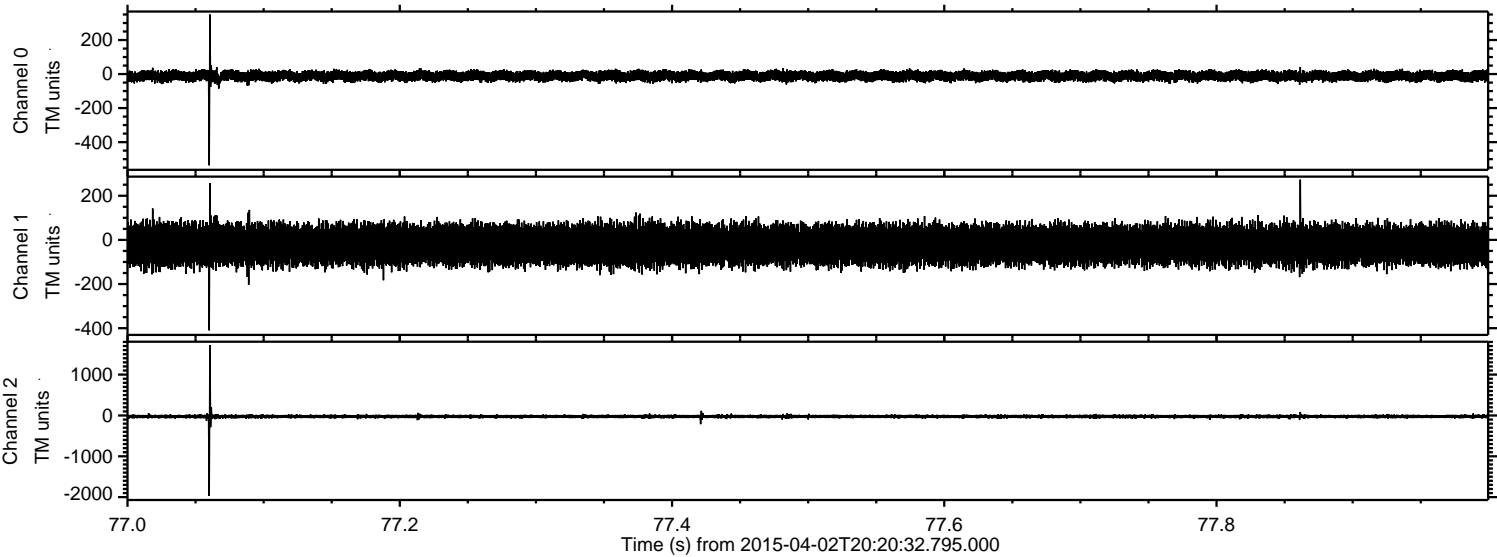


Channel 0
mn: -567
mx: 530
 μ : -11.8
 σ : 15.7

Channel 1
mn: -1204
mx: 1268
 μ : -22.0
 σ : 46.8

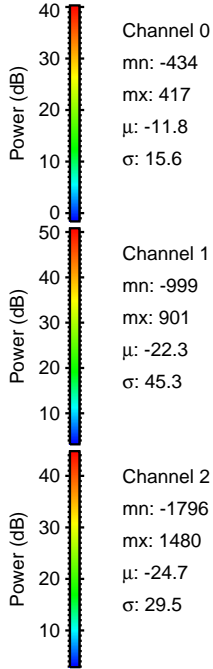
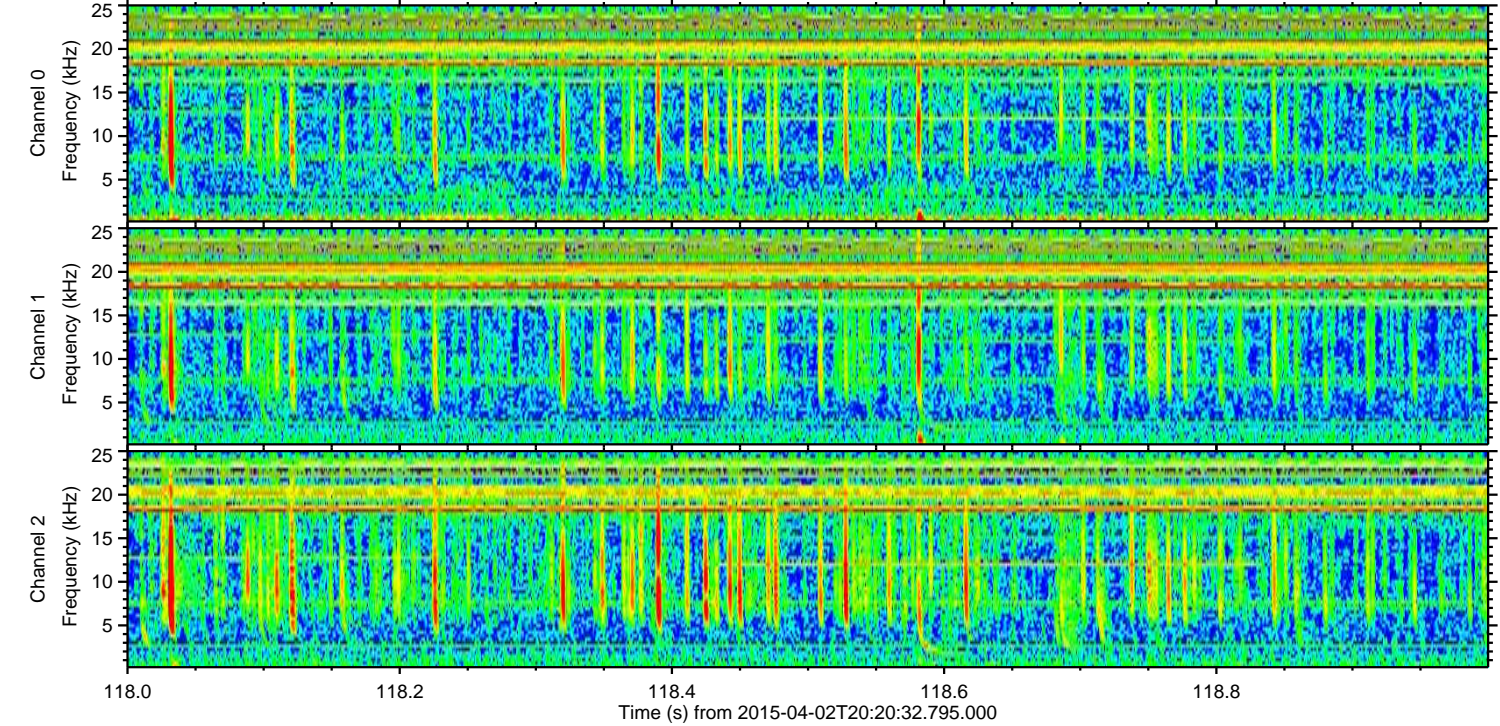
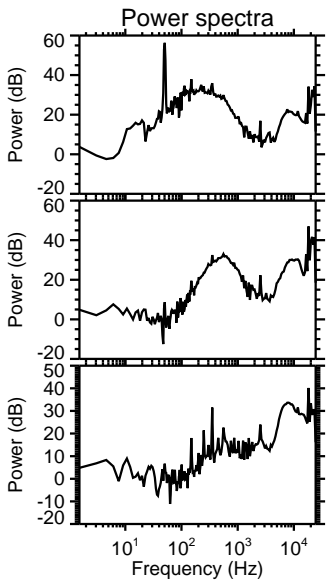
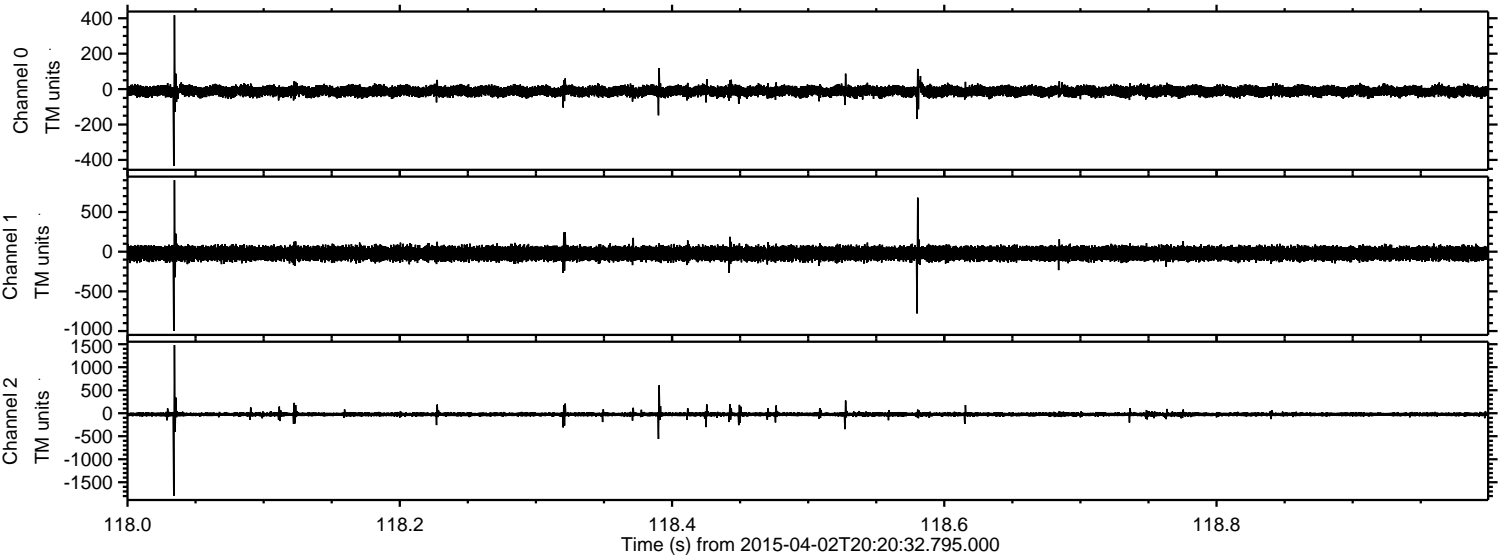
Channel 2
mn: -2030
mx: 2118
 μ : -24.3
 σ : 32.5

Processed Thu Apr 2 22:29:45 2015 by ELM ver.2012-10-06 from 001__elm20150402_202031__dat00.bin

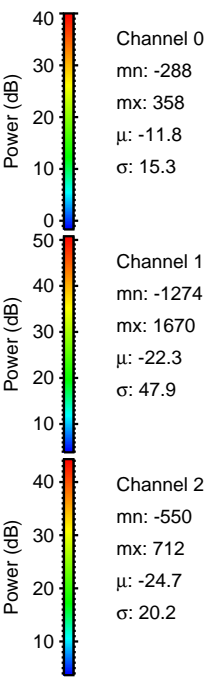
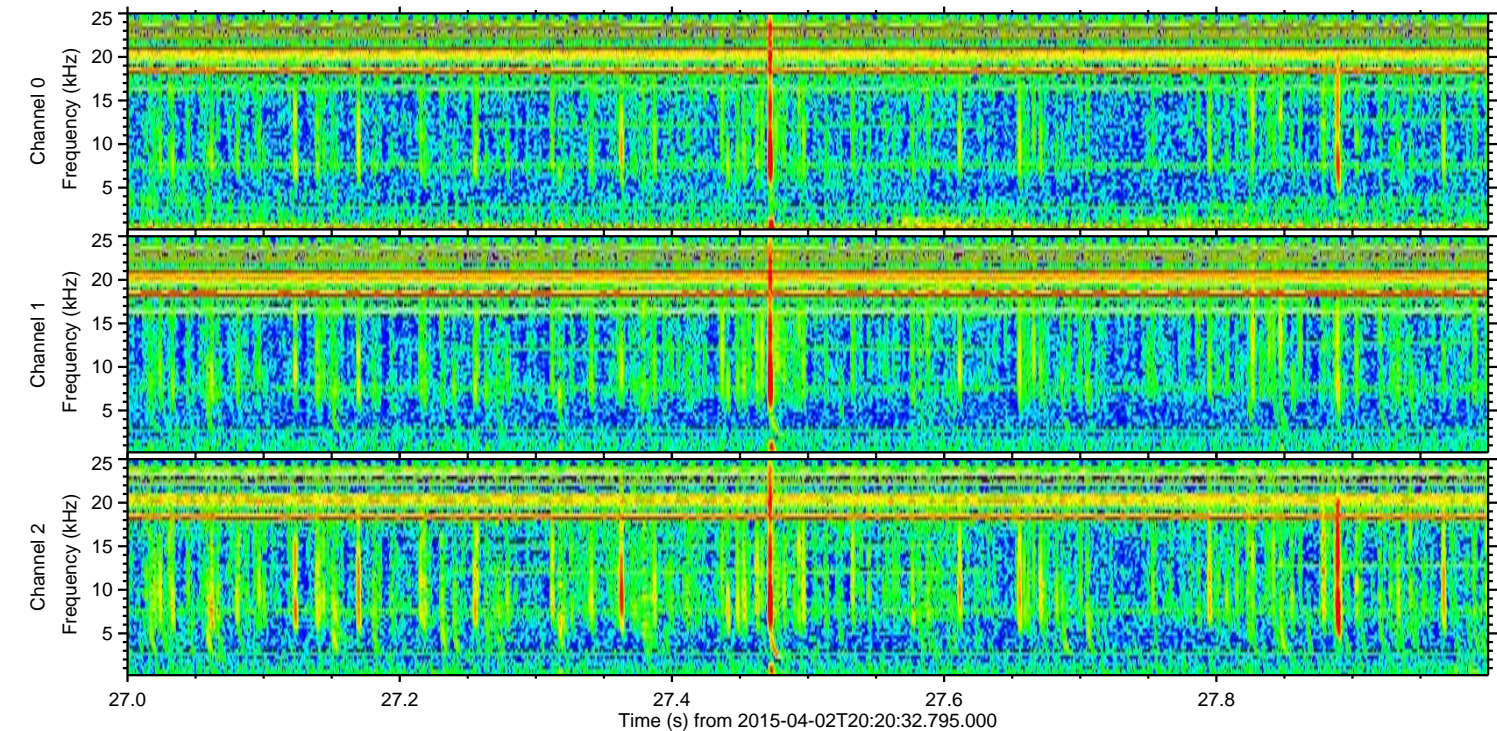
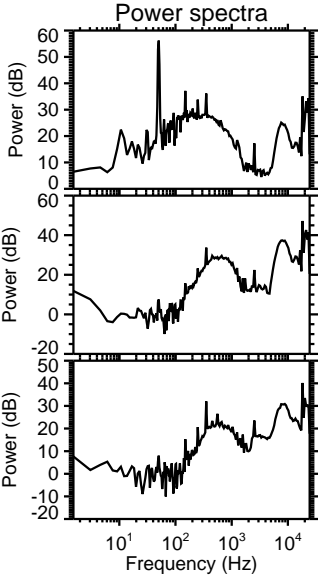
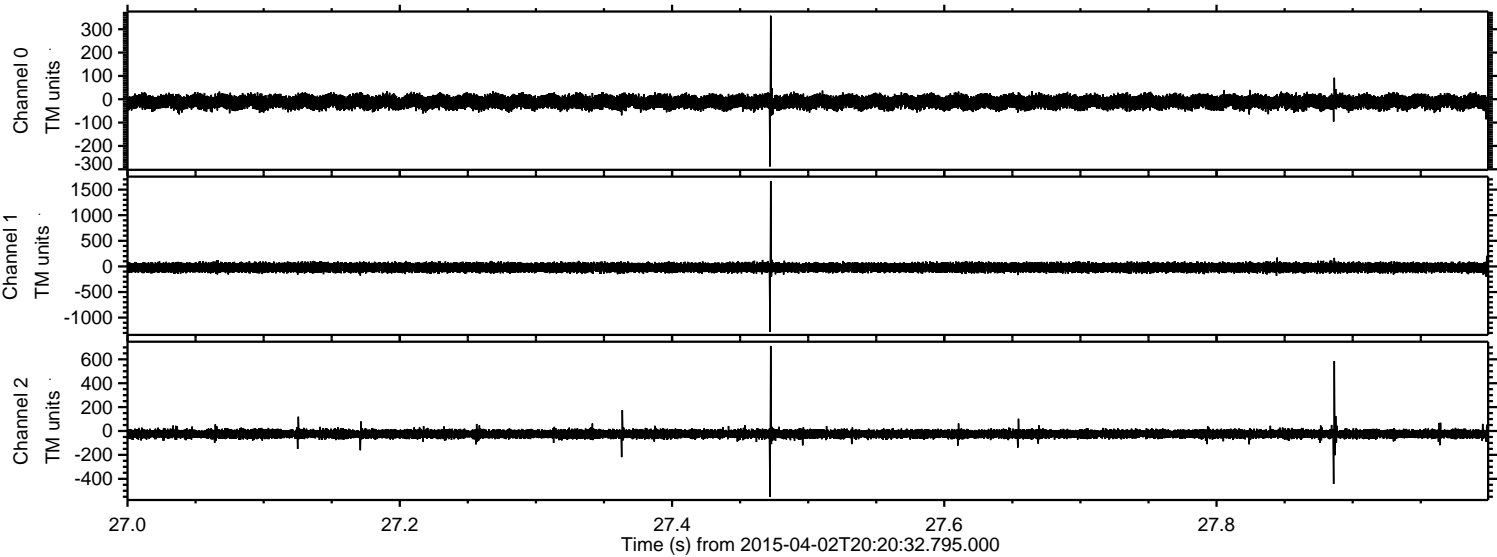


ELMAVAN 3D WAVEFORMS (Measured data sampled at 50 kHz) 49700 packets of 144 samples from 2015-04-02T20:20:32.795.000. Part 119/144

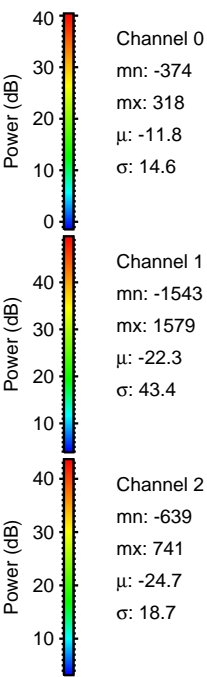
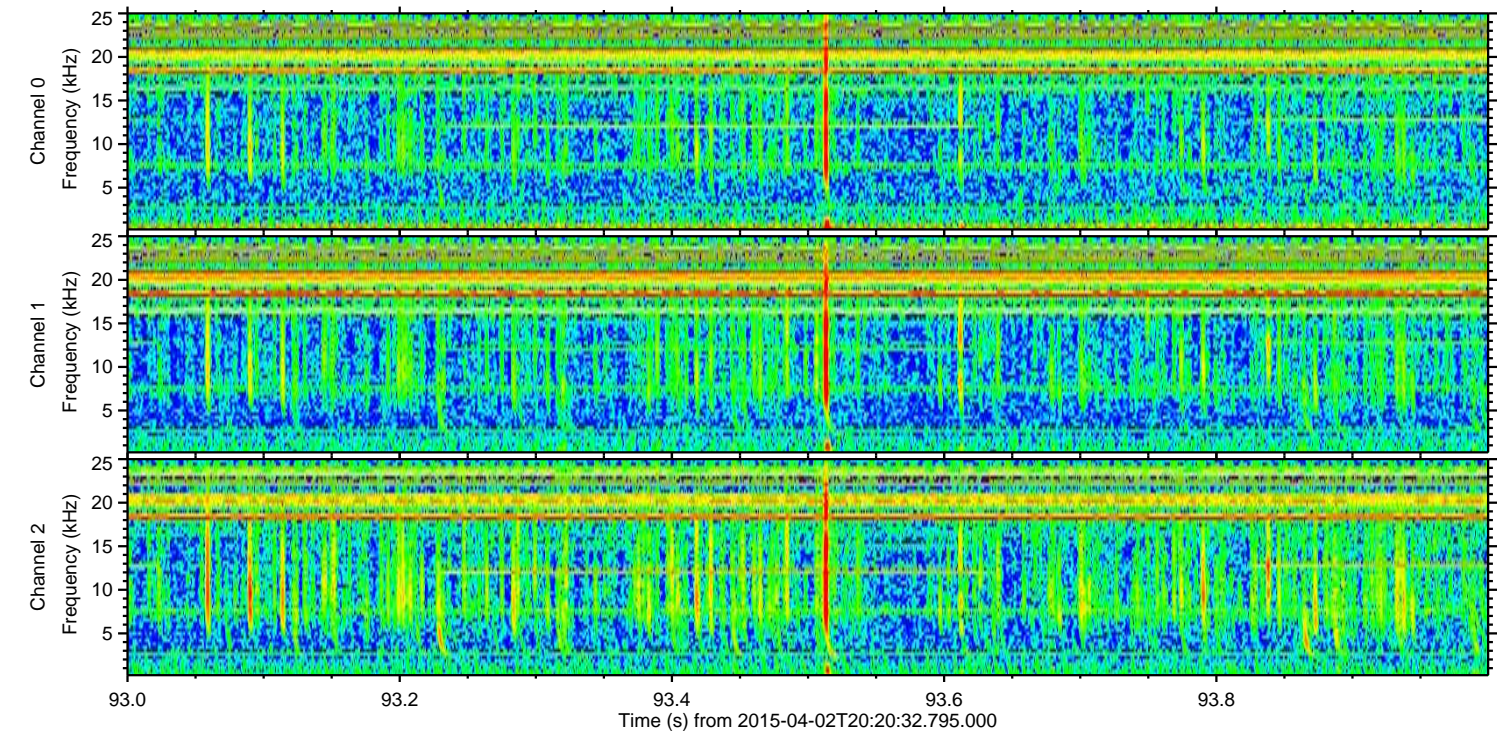
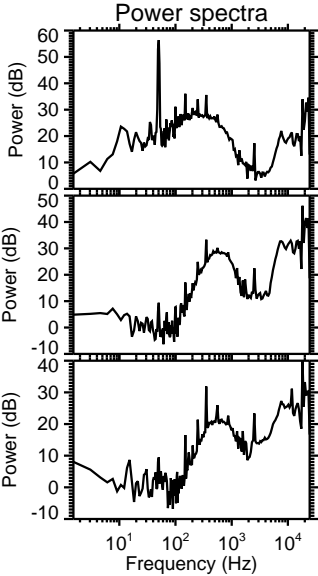
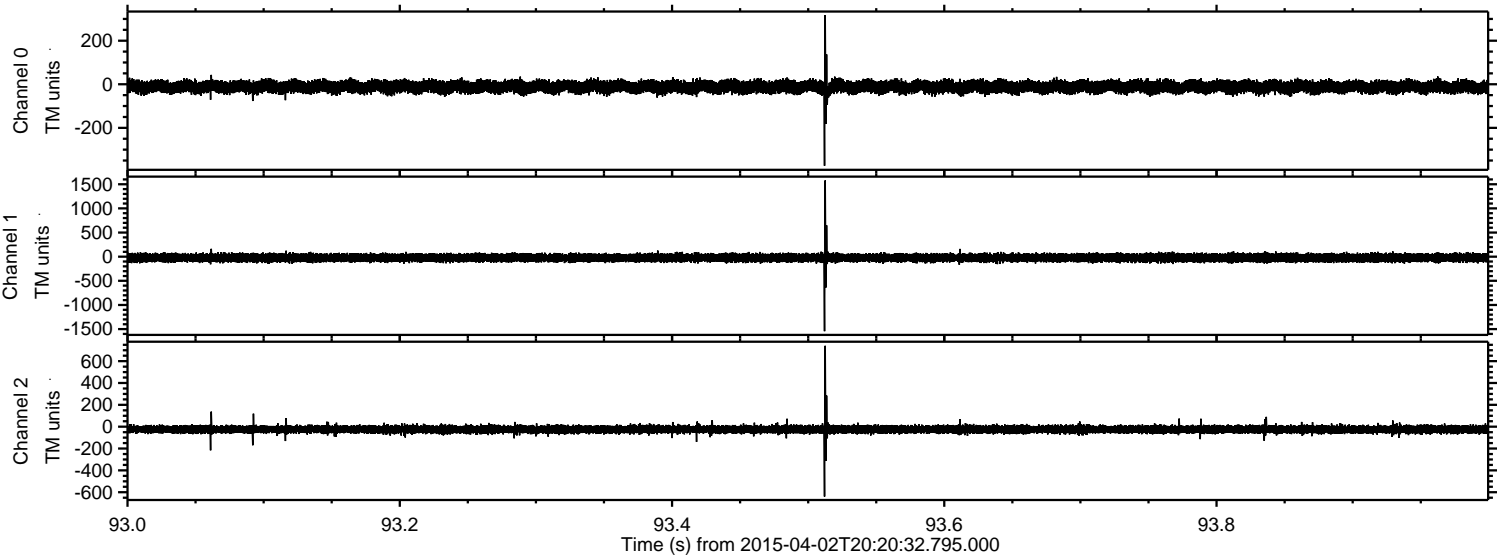
Processed Thu Apr 2 22:29:46 2015 by ELM ver.2012-10-06 from 001__elm20150402_202031__dat00.bin



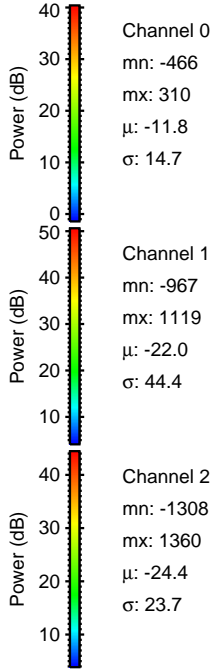
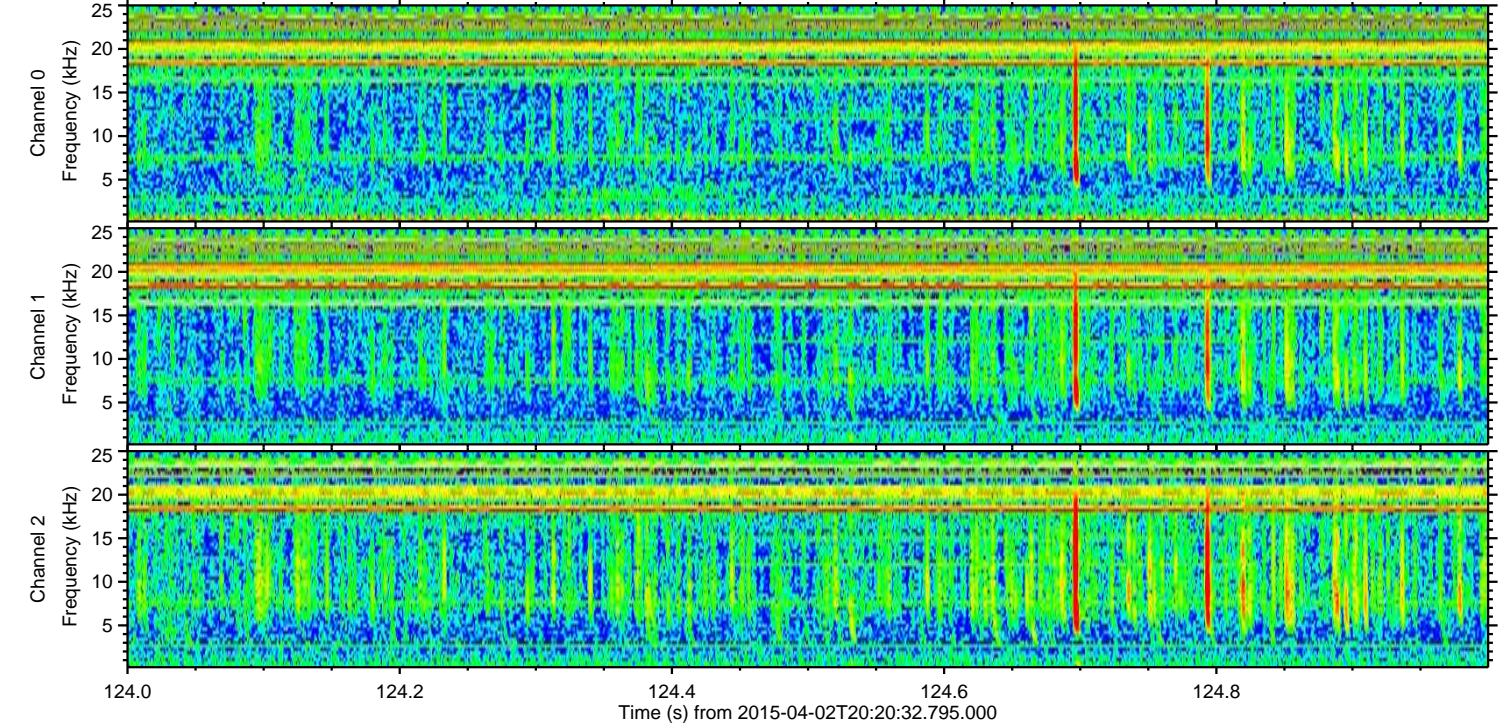
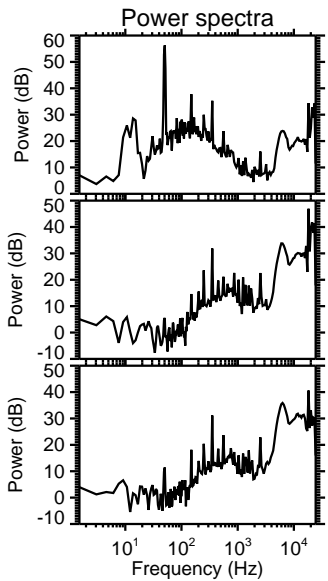
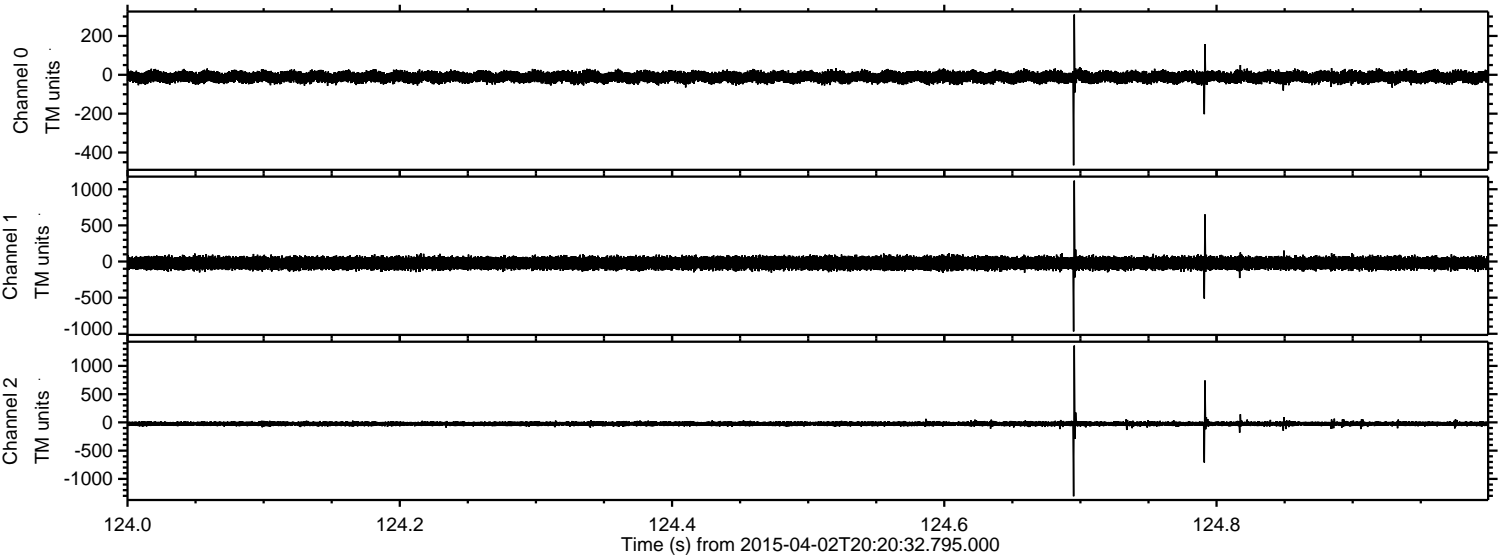
Processed Thu Apr 2 22:29:47 2015 by ELM ver.2012-10-06 from 001__elm20150402_202031__dat00.bin



Processed Thu Apr 2 22:29:49 2015 by ELM ver.2012-10-06 from 001__elm20150402_202031__dat00.bin



Processed Thu Apr 2 22:29:50 2015 by ELM ver.2012-10-06 from 001__elm20150402_202031__dat00.bin



Channel 0
mn: -466
mx: 310
 μ : -11.8
 σ : 14.7

Channel 1
mn: -967
mx: 1119
 μ : -22.0
 σ : 44.4

Channel 2
mn: -1308
mx: 1360
 μ : -24.4
 σ : 23.7

Processed Thu Apr 2 22:29:51 2015 by ELM ver.2012-10-06 from 001__elm20150402_202031__dat00.bin

