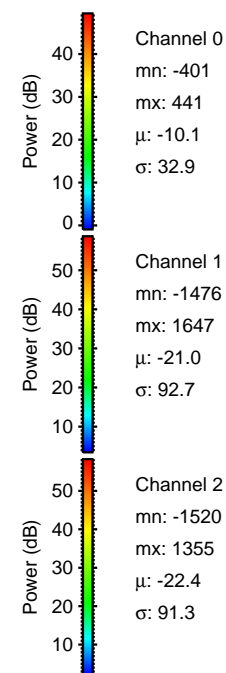
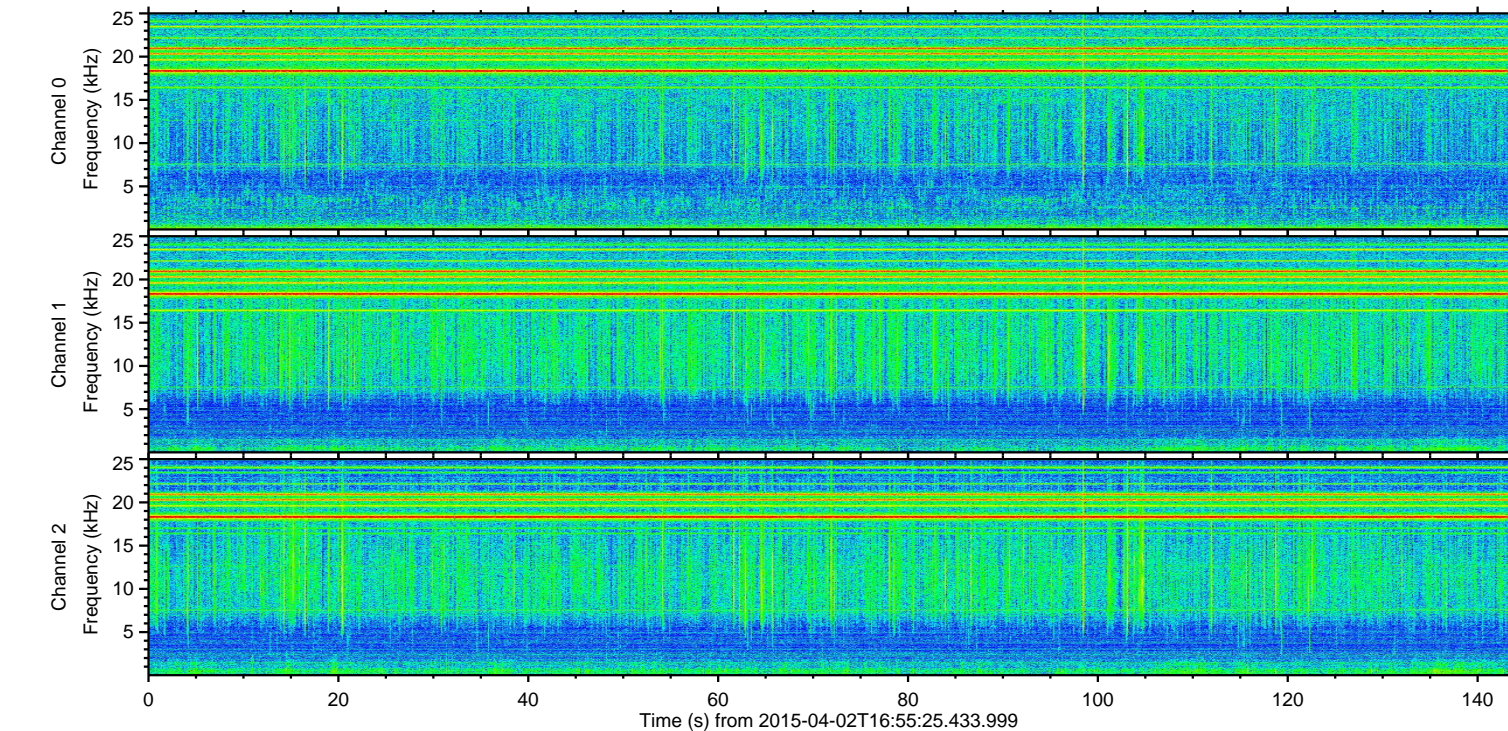
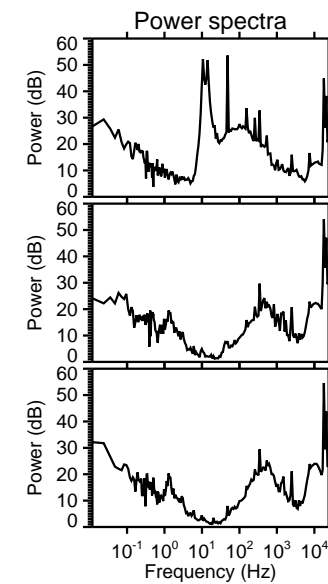
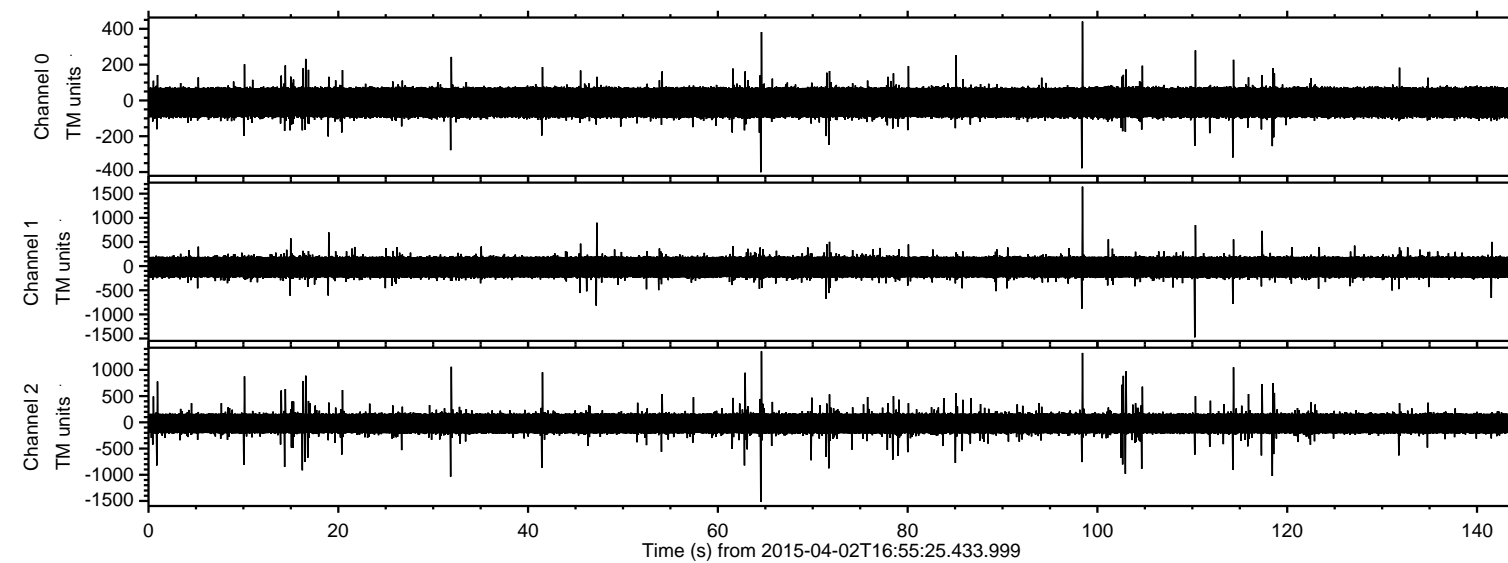
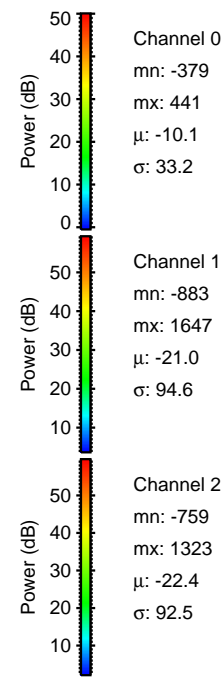
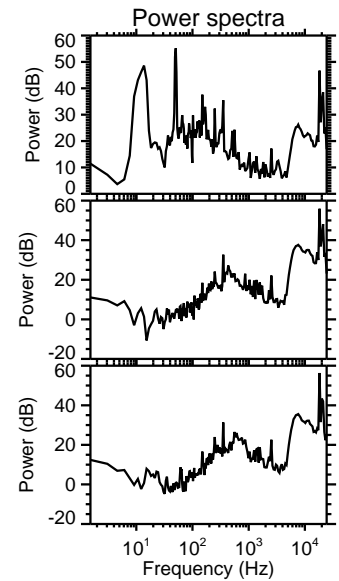
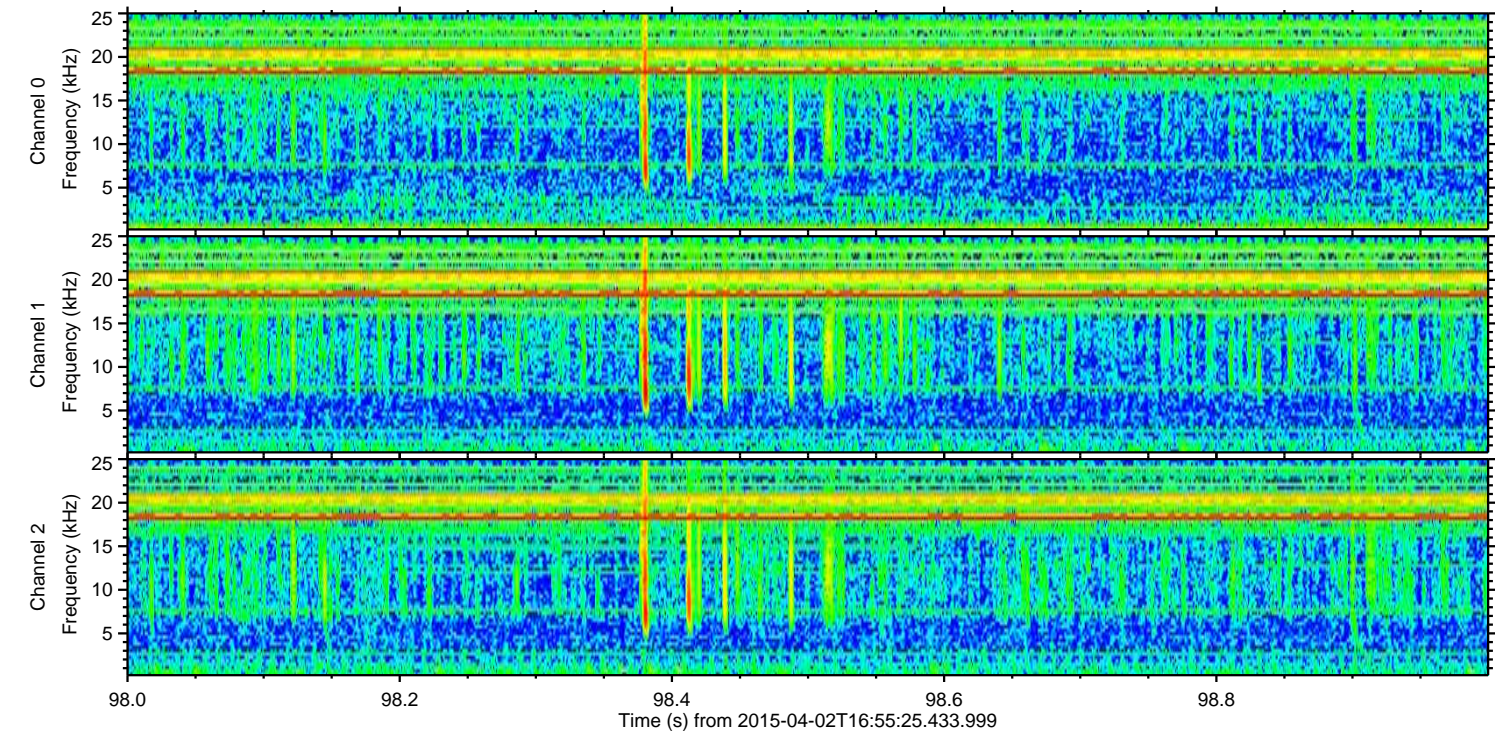
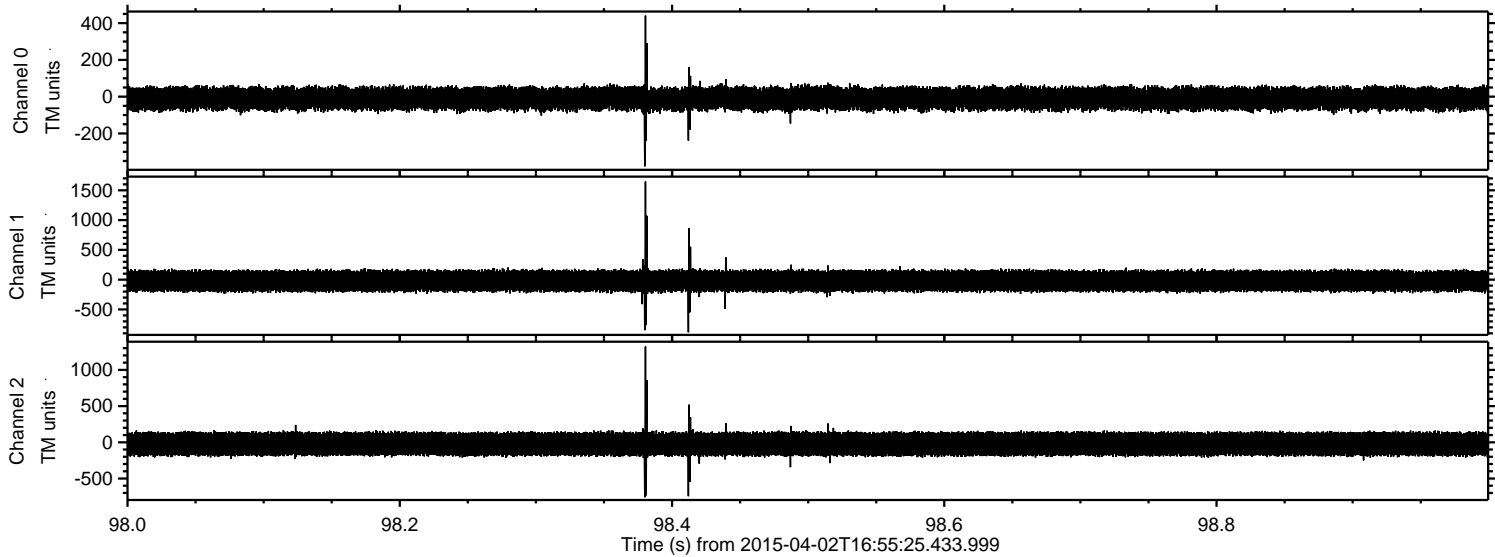


ELMAVAN 3D WAVEFORMS (Measured data sampled at 50 kHz) 49787 packets of 144 samples from 2015-04-02T16:55:25.433.999.

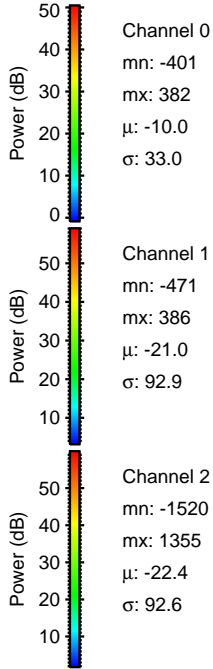
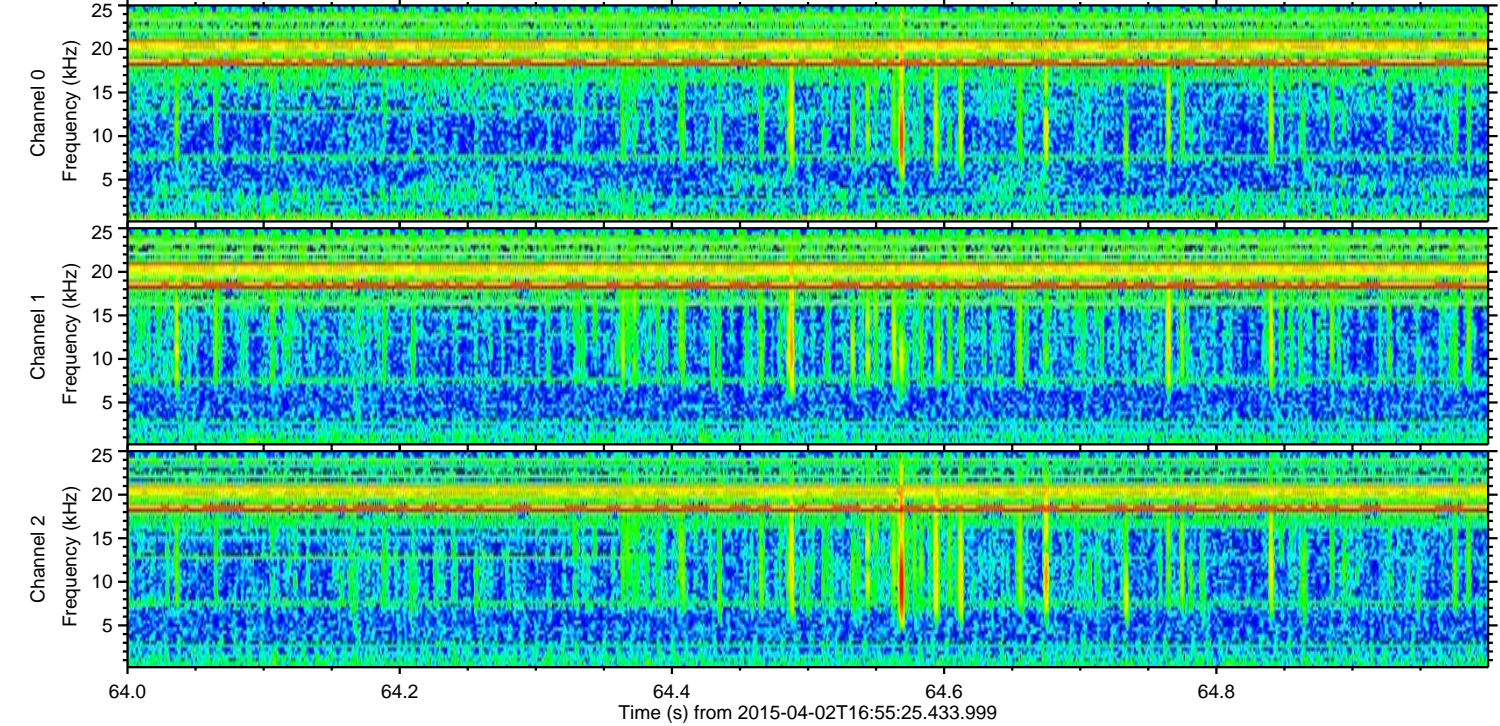
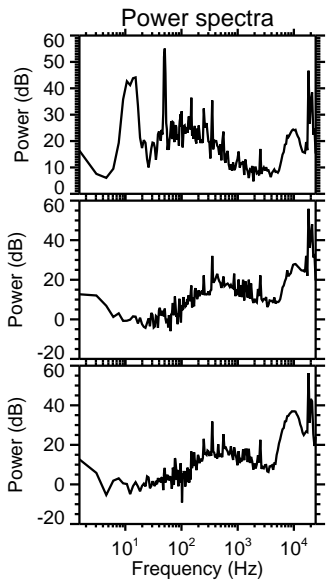
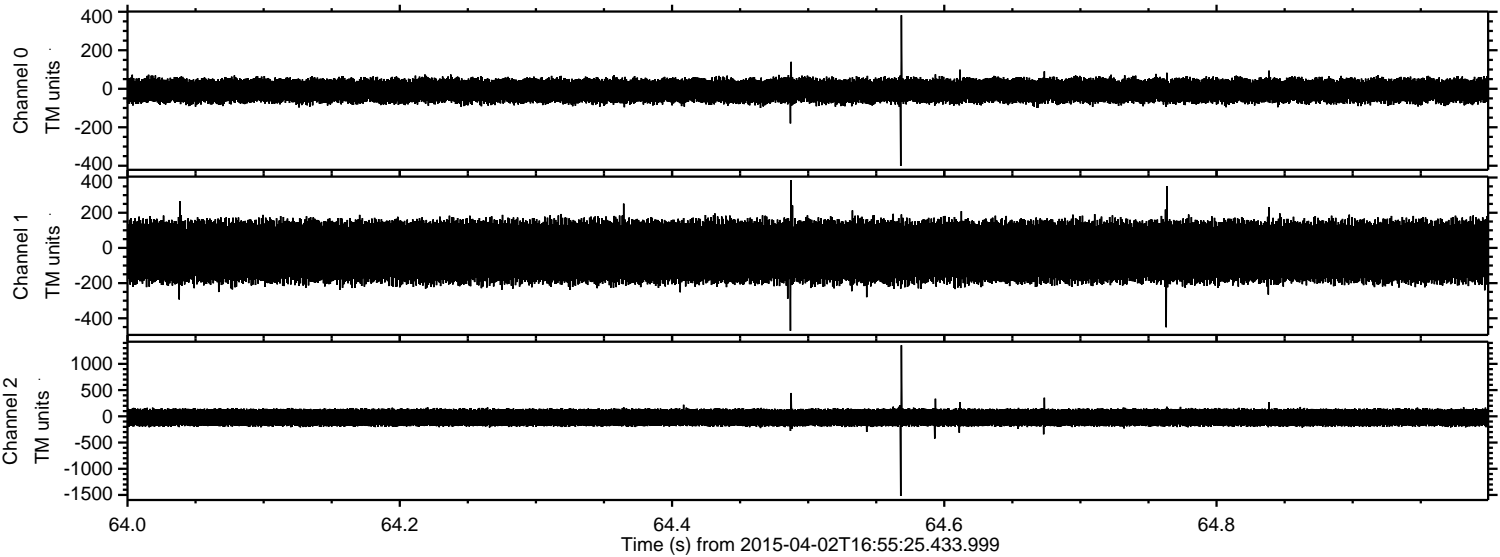
Processed Thu Apr 2 19:02:12 2015 by ELM ver.2012-10-06 from 001__elm20150402_165524__dat00.bin



Processed Thu Apr 2 19:02:23 2015 by ELM ver.2012-10-06 from 001__elm20150402_165524__dat00.bin

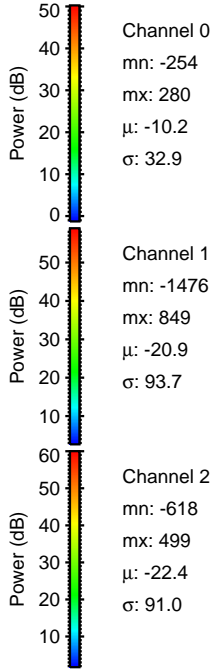
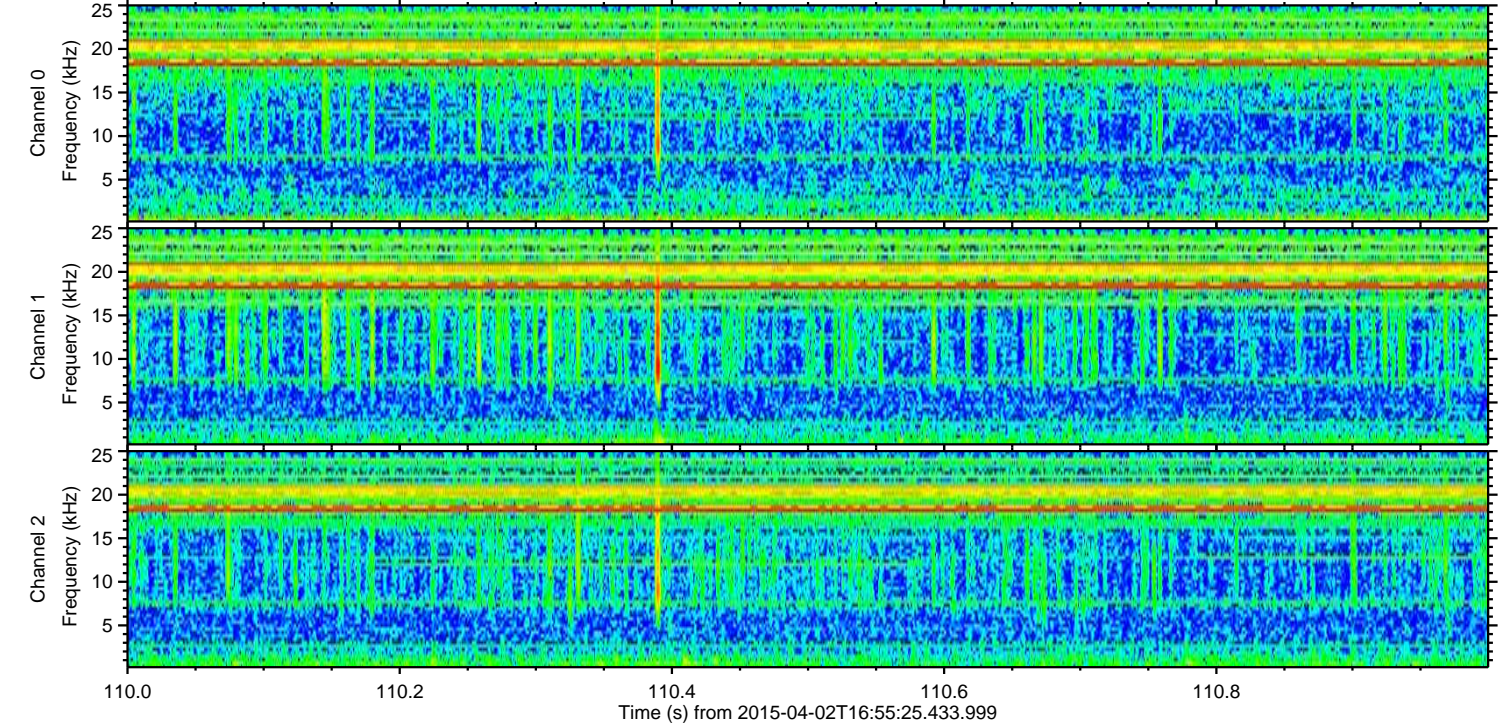
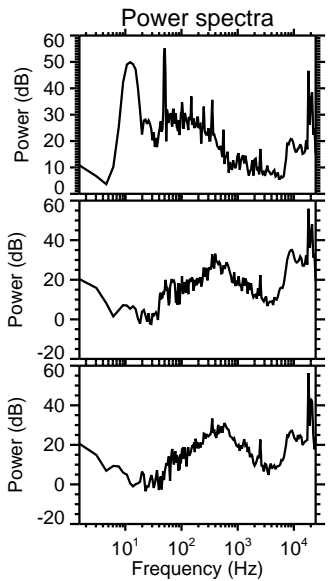
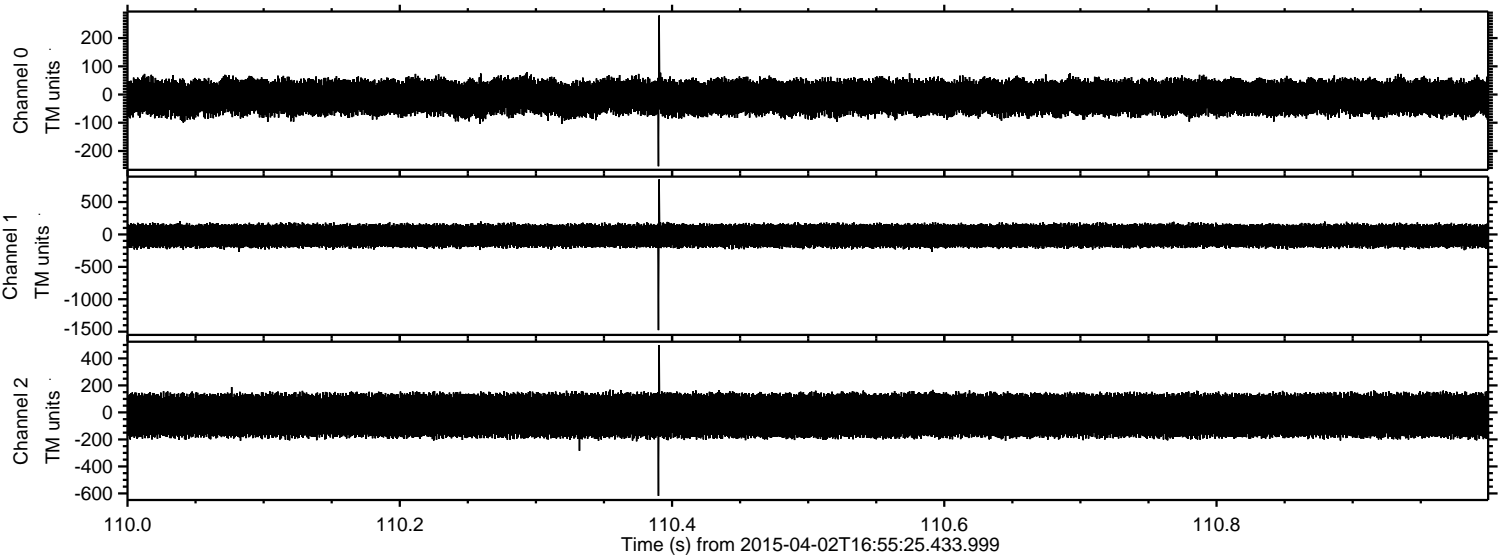


Processed Thu Apr 2 19:02:24 2015 by ELM ver.2012-10-06 from 001__elm20150402_165524__dat00.bin

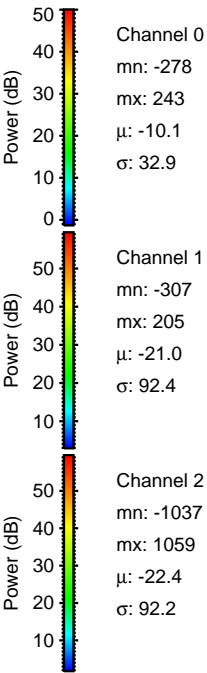
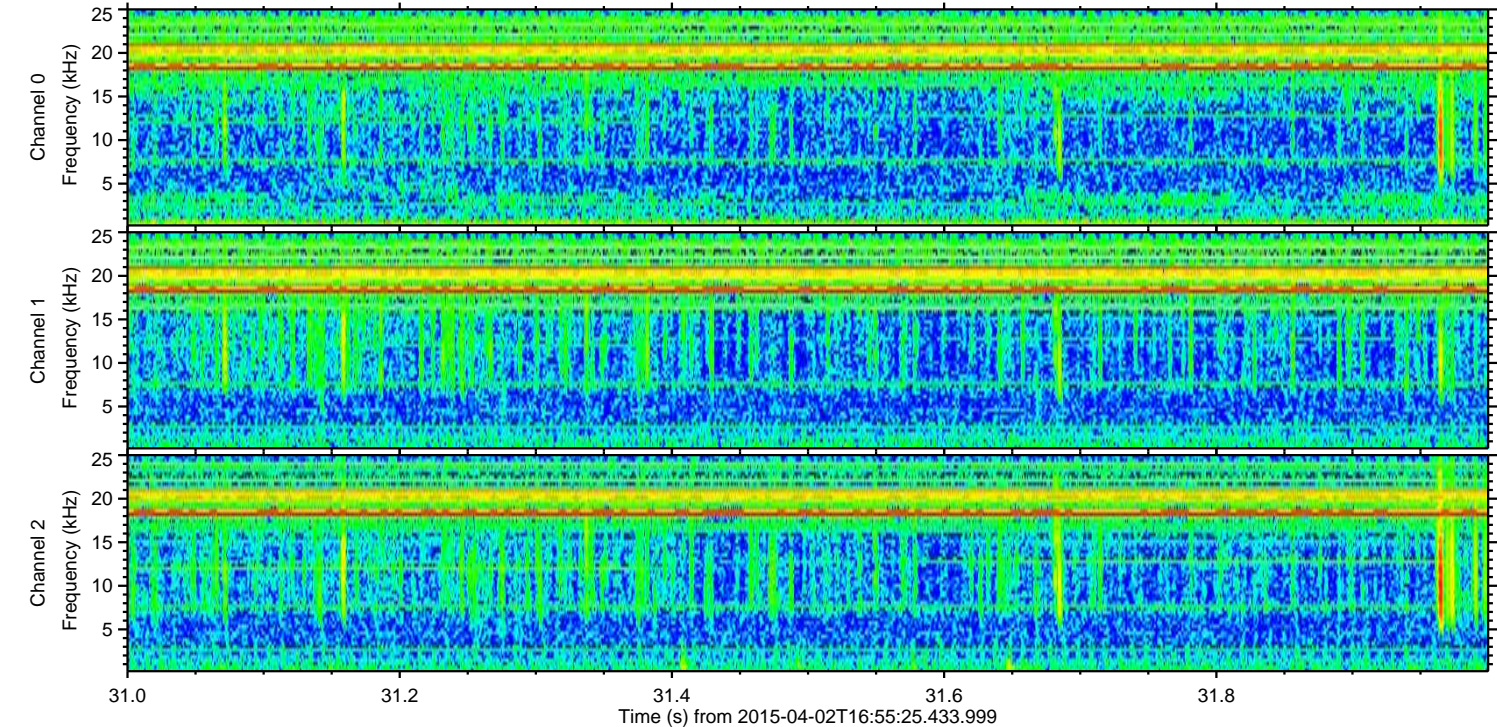
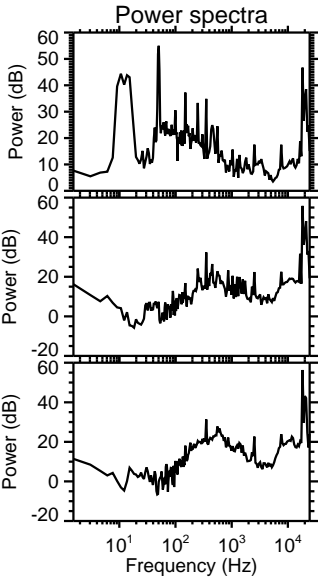
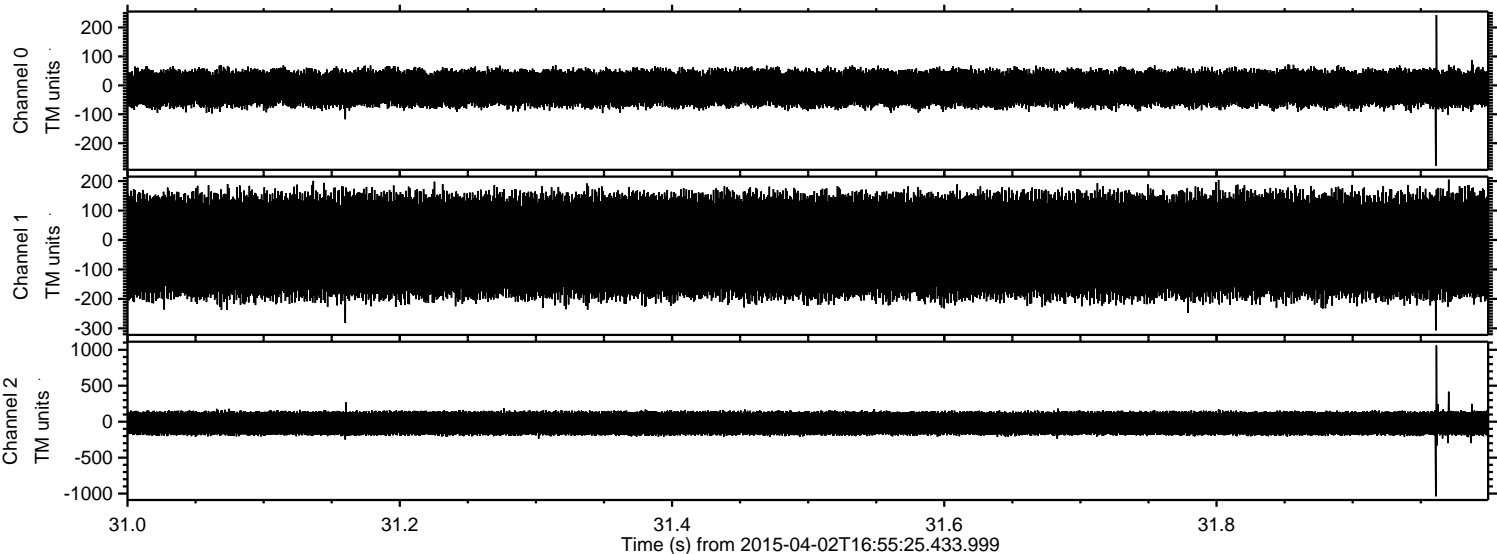


ELMAVAN 3D WAVEFORMS (Measured data sampled at 50 kHz) 49787 packets of 144 samples from 2015-04-02T16:55:25.433.999. Part 111/144

Processed Thu Apr 2 19:02:25 2015 by ELM ver.2012-10-06 from 001__elm20150402_165524__dat00.bin

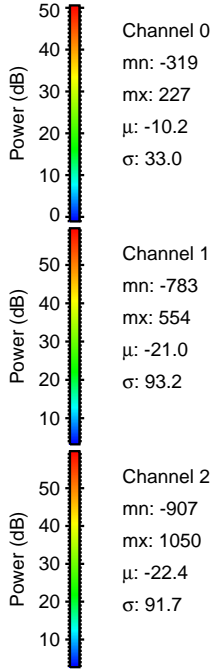
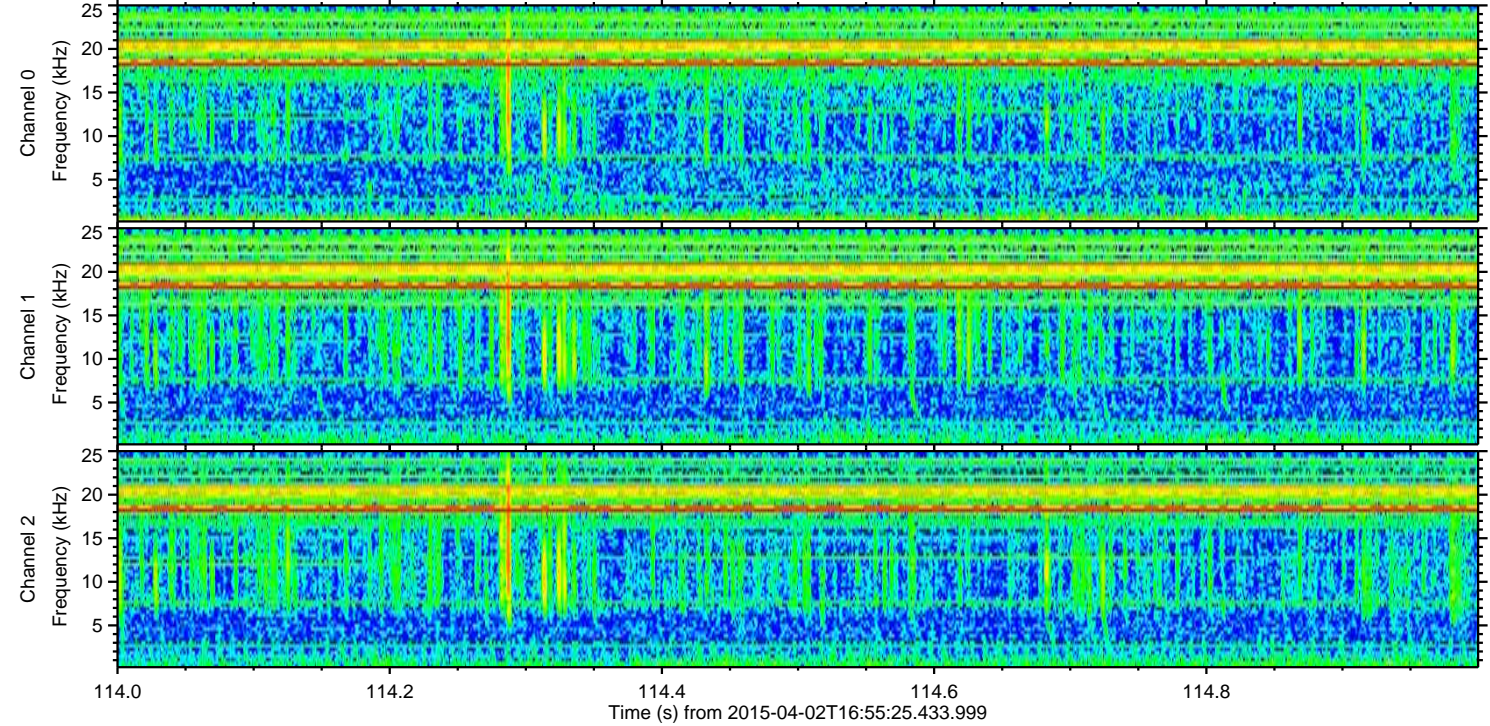
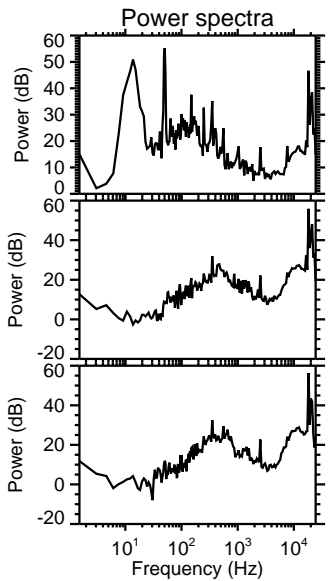
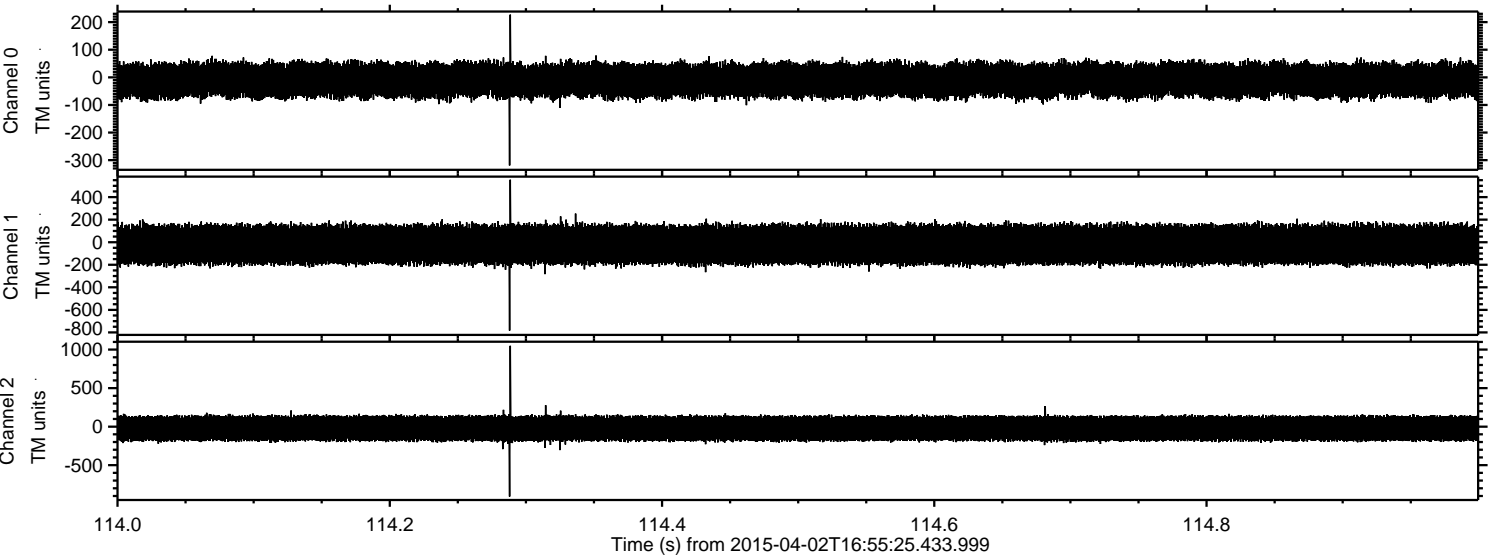


Processed Thu Apr 2 19:02:26 2015 by ELM ver.2012-10-06 from 001__elm20150402_165524__dat00.bin



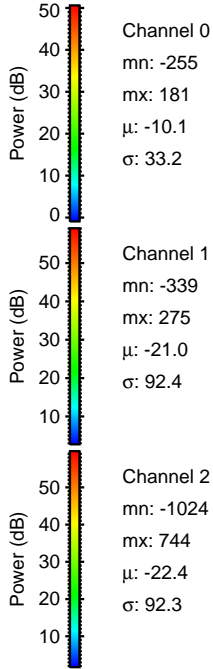
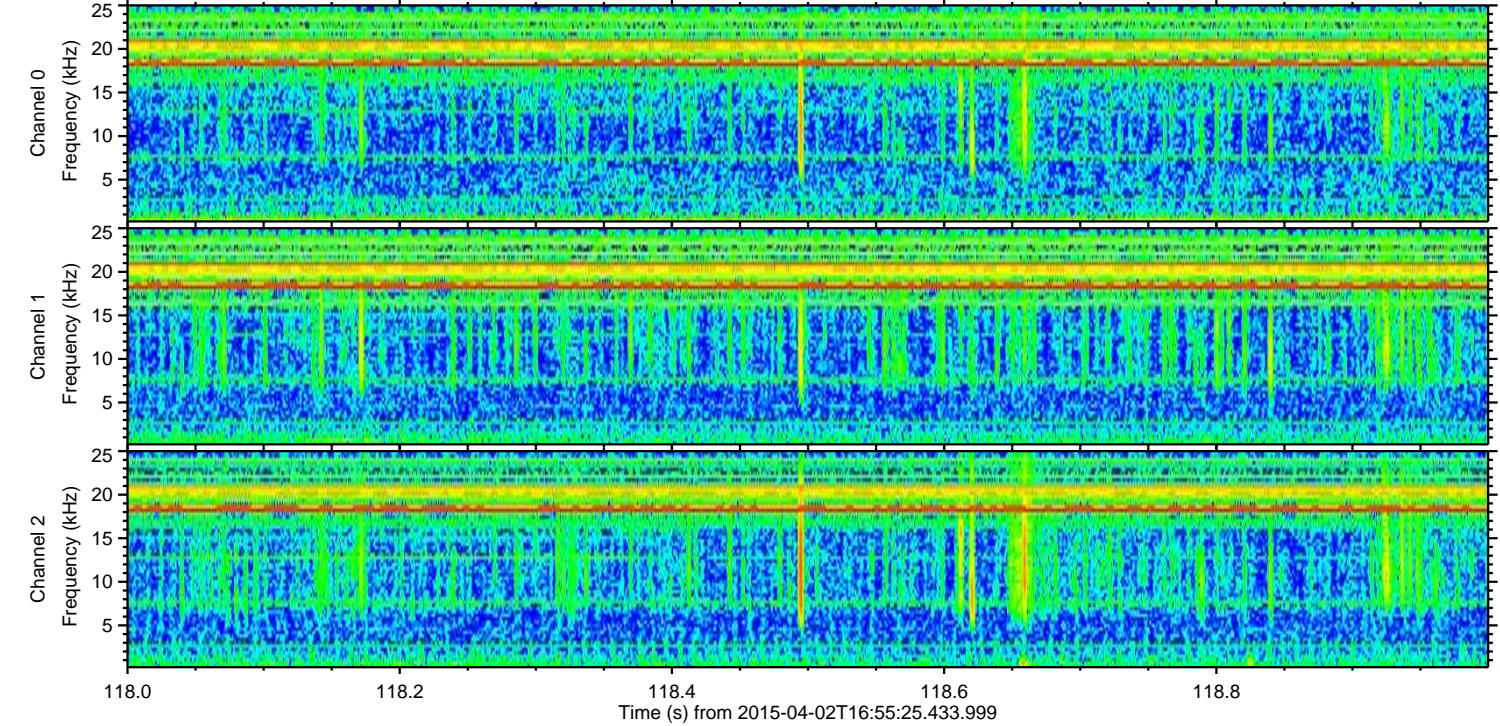
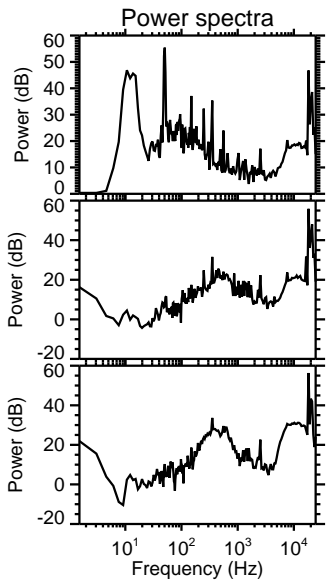
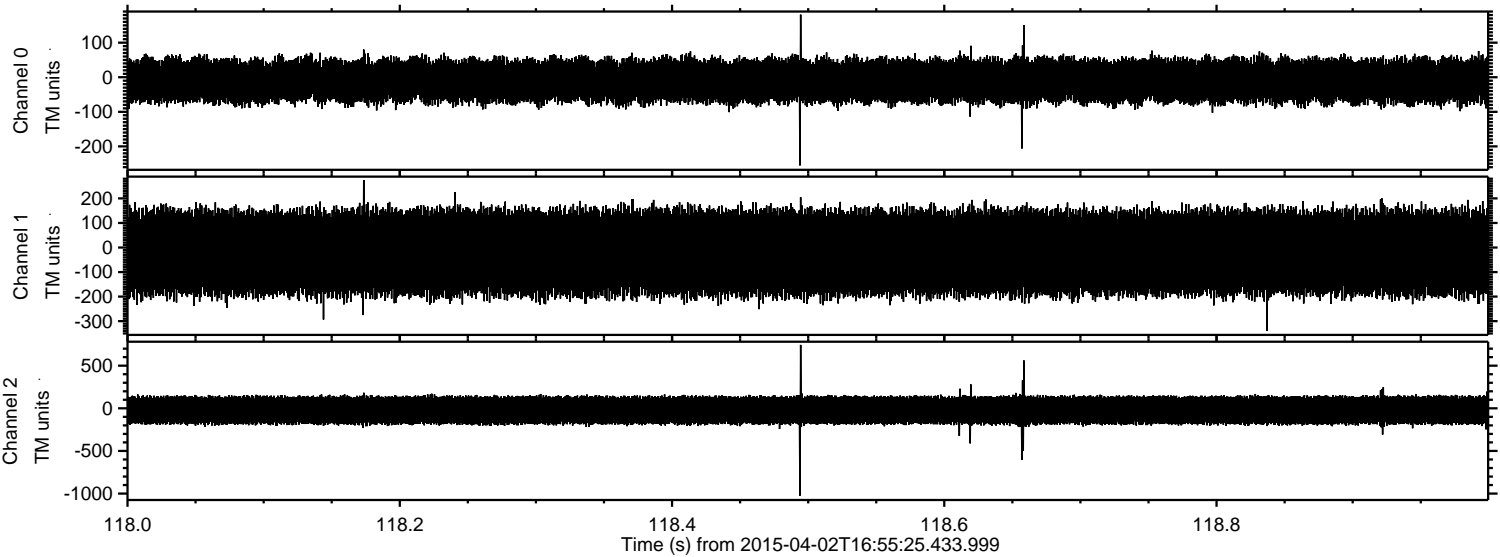
ELMAVAN 3D WAVEFORMS (Measured data sampled at 50 kHz) 49787 packets of 144 samples from 2015-04-02T16:55:25.433.999. Part 115/144

Processed Thu Apr 2 19:02:27 2015 by ELM ver.2012-10-06 from 001__elm20150402_165524__dat00.bin



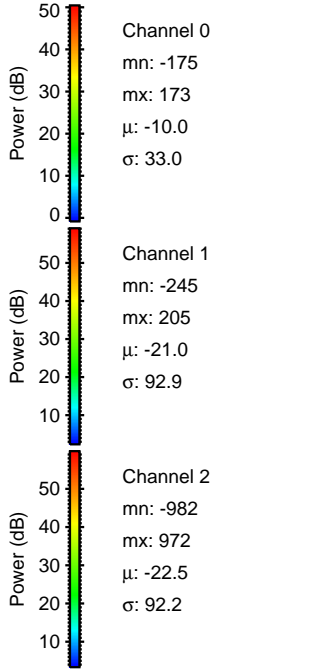
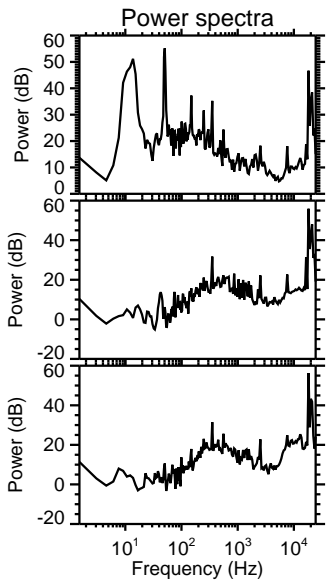
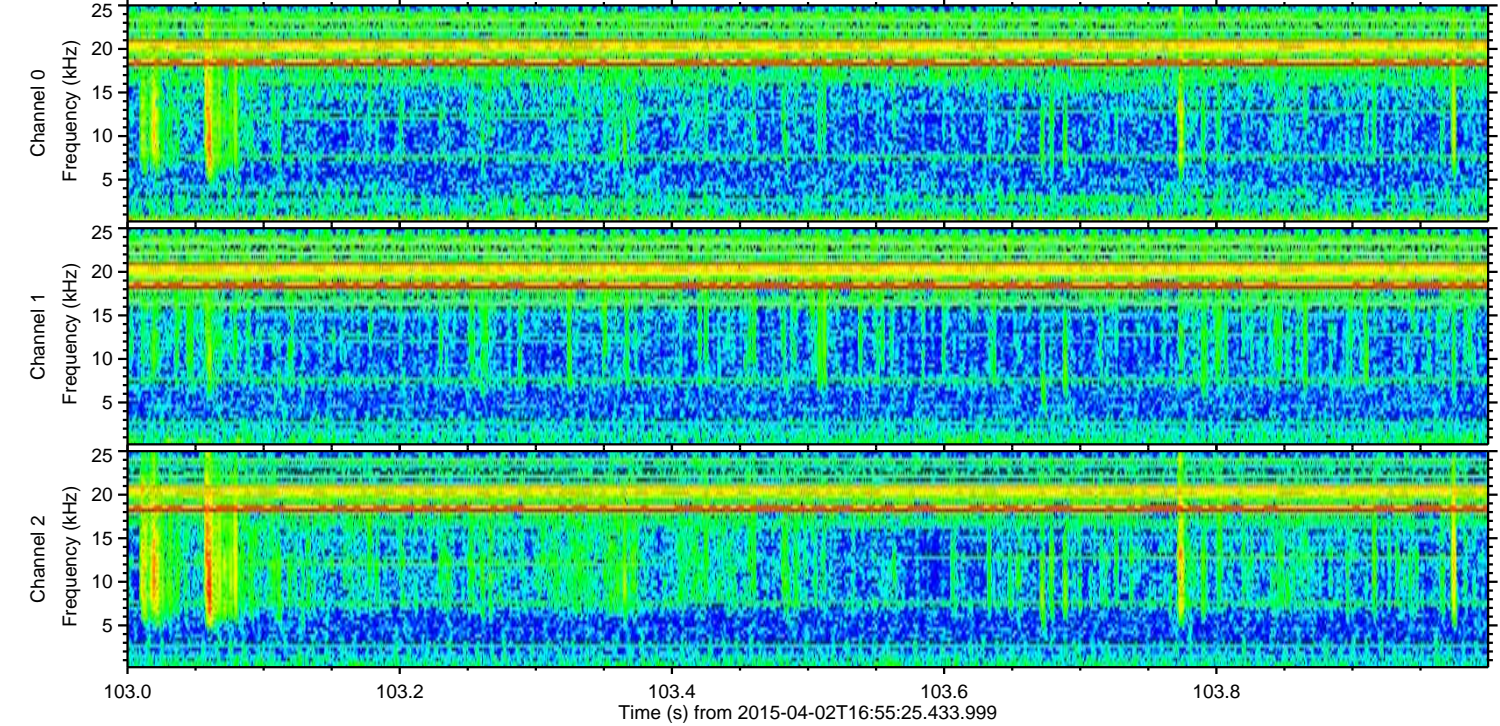
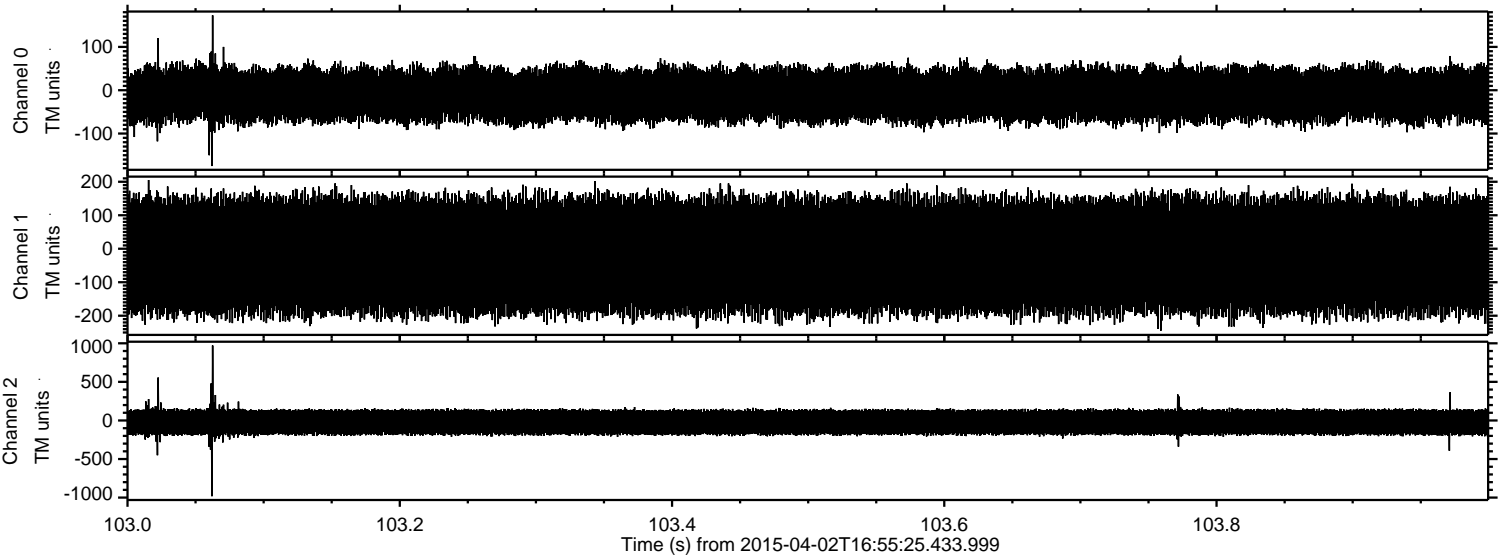
ELMAVAN 3D WAVEFORMS (Measured data sampled at 50 kHz) 49787 packets of 144 samples from 2015-04-02T16:55:25.433.999. Part 119/144

Processed Thu Apr 2 19:02:28 2015 by ELM ver.2012-10-06 from 001__elm20150402_165524__dat00.bin

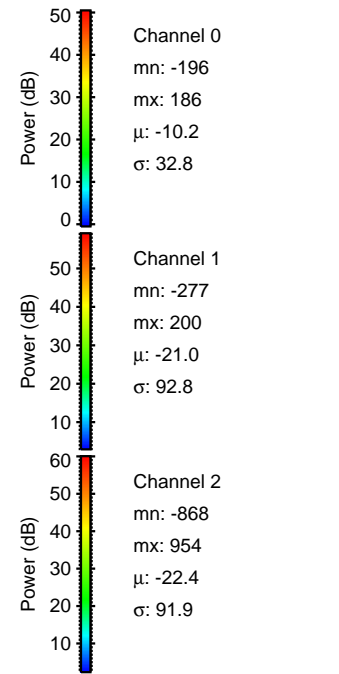
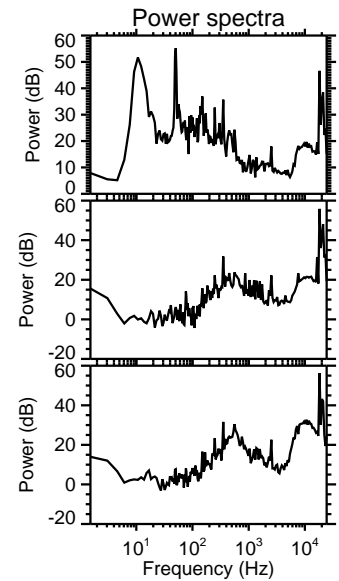
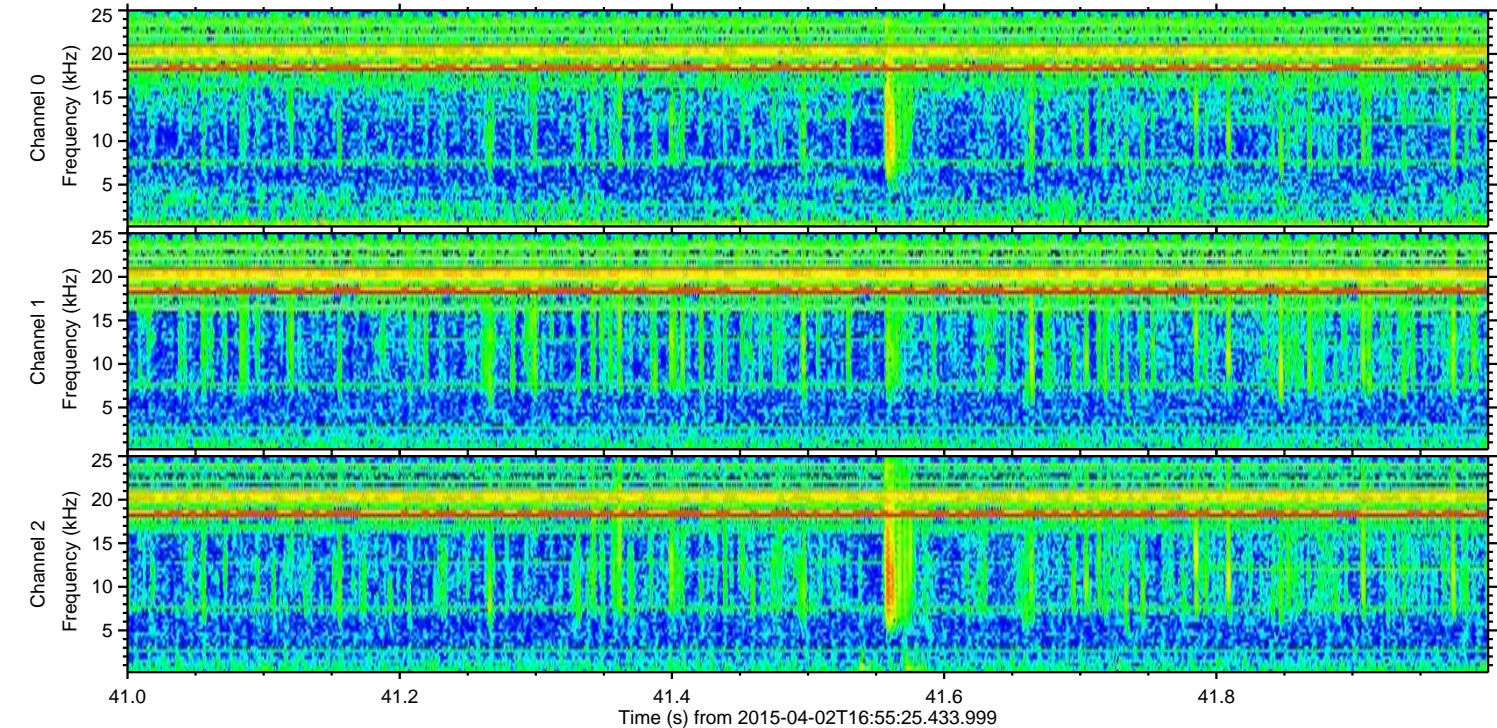
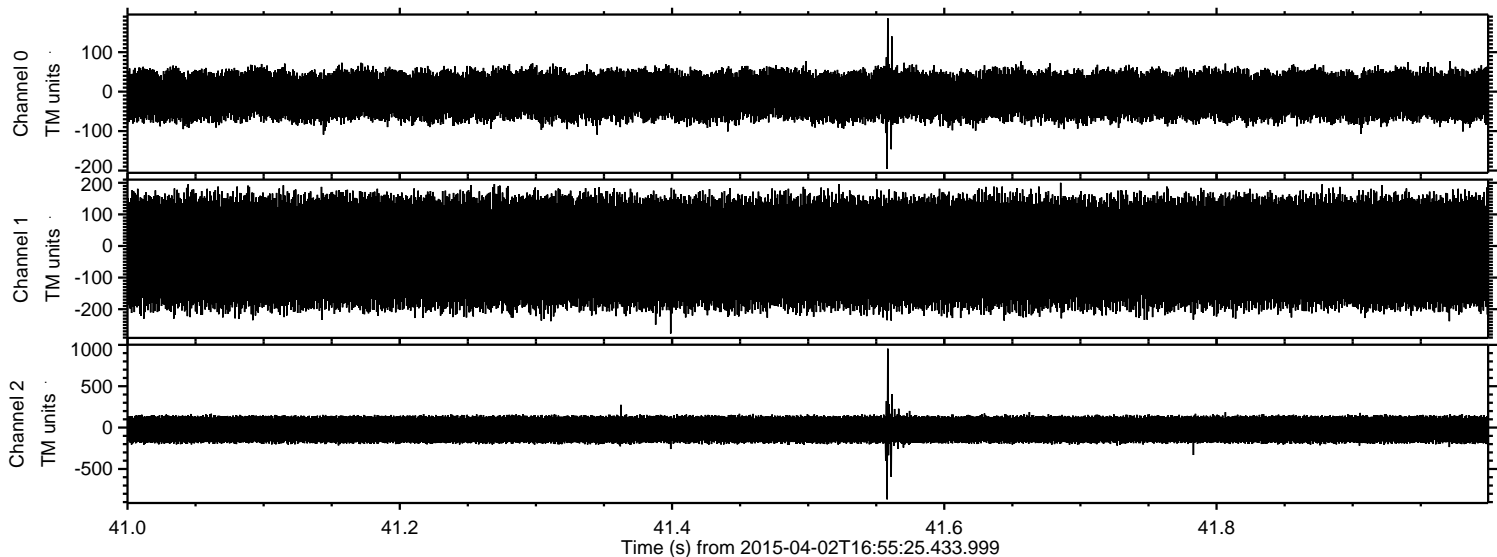


ELMAVAN 3D WAVEFORMS (Measured data sampled at 50 kHz) 49787 packets of 144 samples from 2015-04-02T16:55:25.433.999. Part 104/144

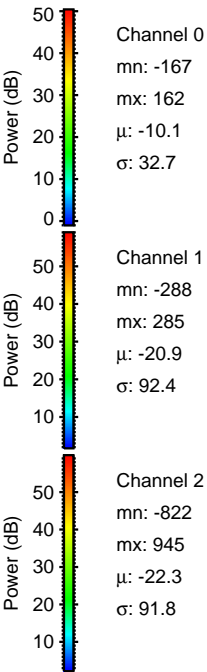
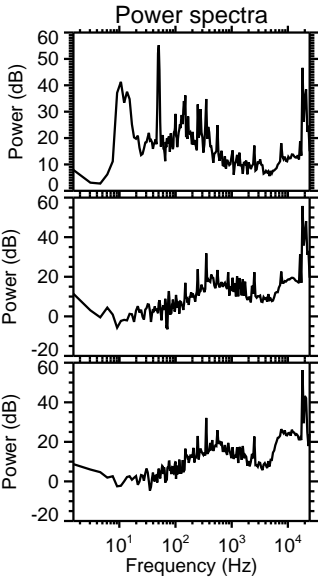
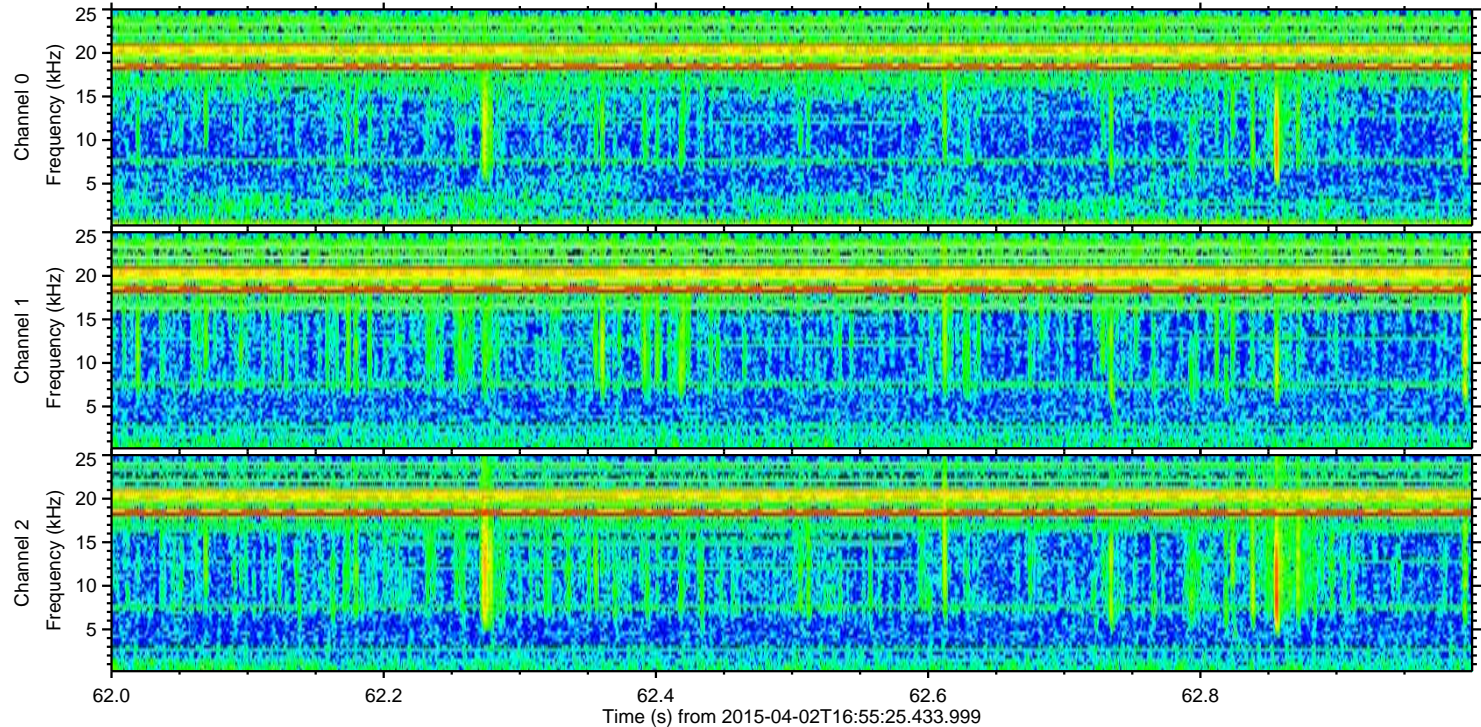
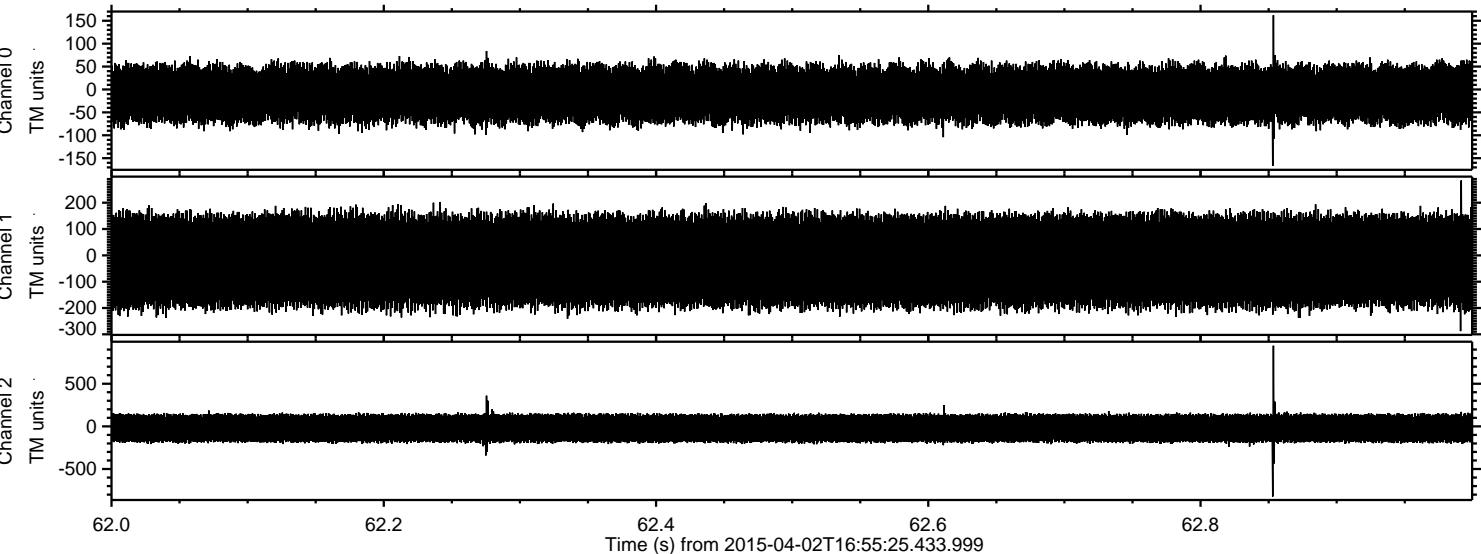
Processed Thu Apr 2 19:02:29 2015 by ELM ver.2012-10-06 from 001__elm20150402_165524__dat00.bin



Processed Thu Apr 2 19:02:30 2015 by ELM ver.2012-10-06 from 001__elm20150402_165524__dat00.bin



Processed Thu Apr 2 19:02:31 2015 by ELM ver.2012-10-06 from 001__elm20150402_165524__dat00.bin



Processed Thu Apr 2 19:02:32 2015 by ELM ver.2012-10-06 from 001__elm20150402_165524__dat00.bin

