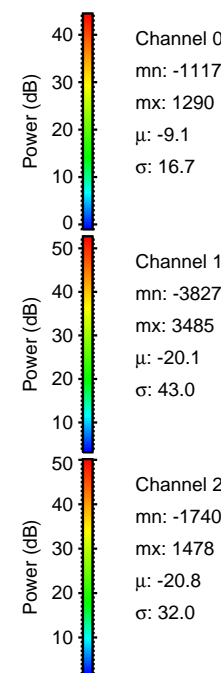
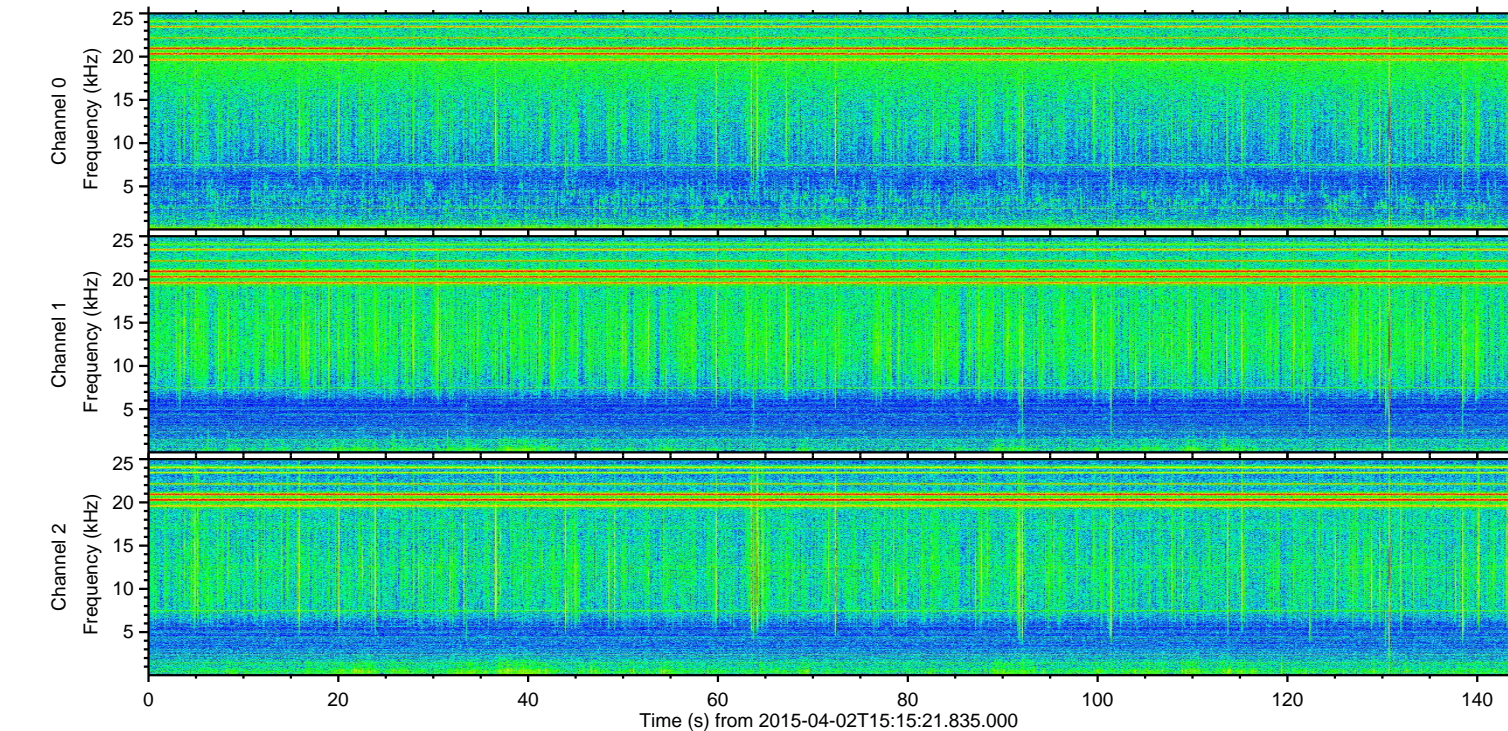
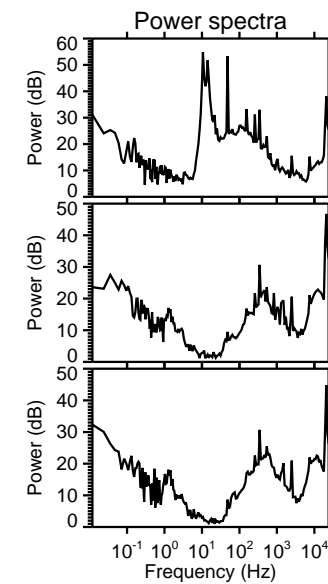
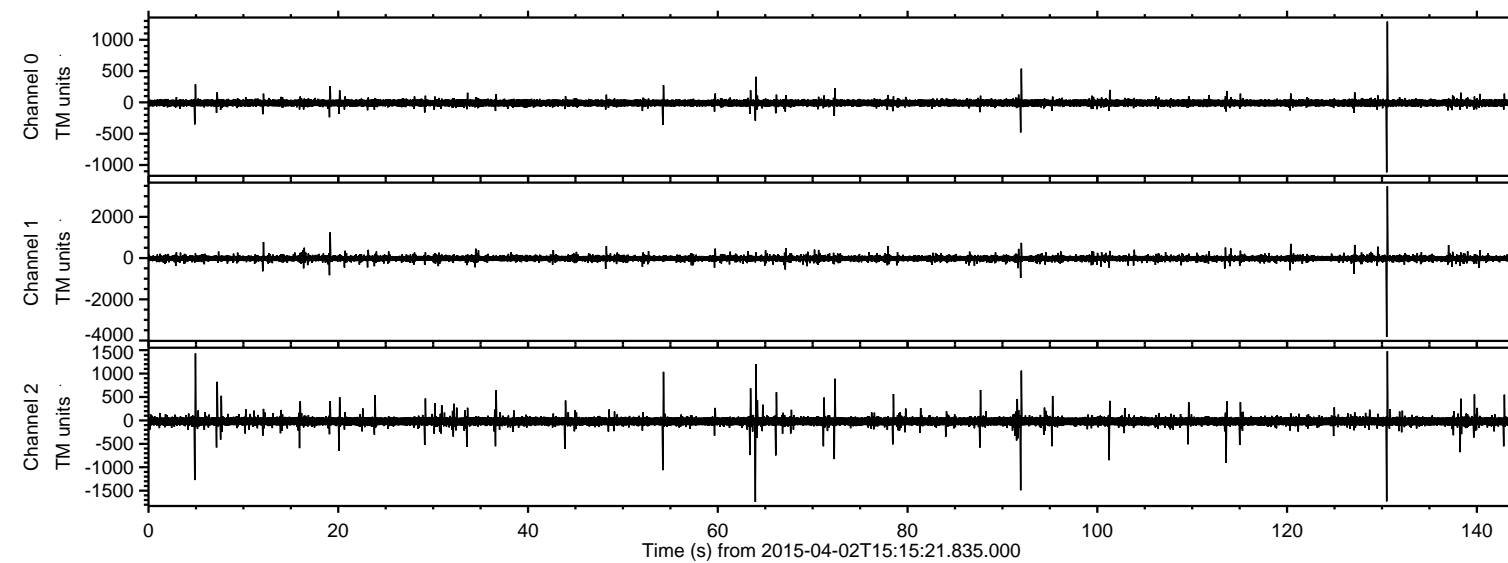


ELMAVAN 3D WAVEFORMS (Measured data sampled at 50 kHz) 49793 packets of 144 samples from 2015-04-02T15:15:21.835.000.

Processed Thu Apr 2 17:21:34 2015 by ELM ver.2012-10-06 from 001__elm20150402_151520__dat00.bin



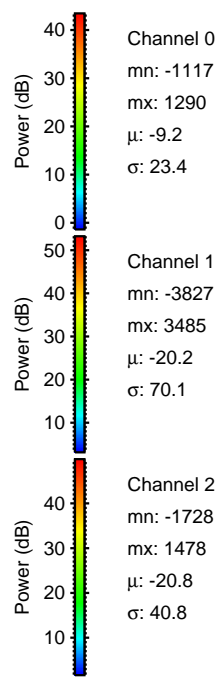
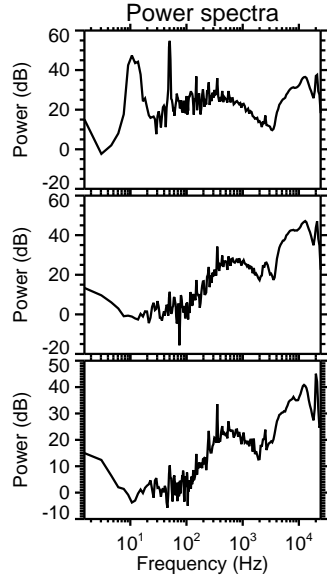
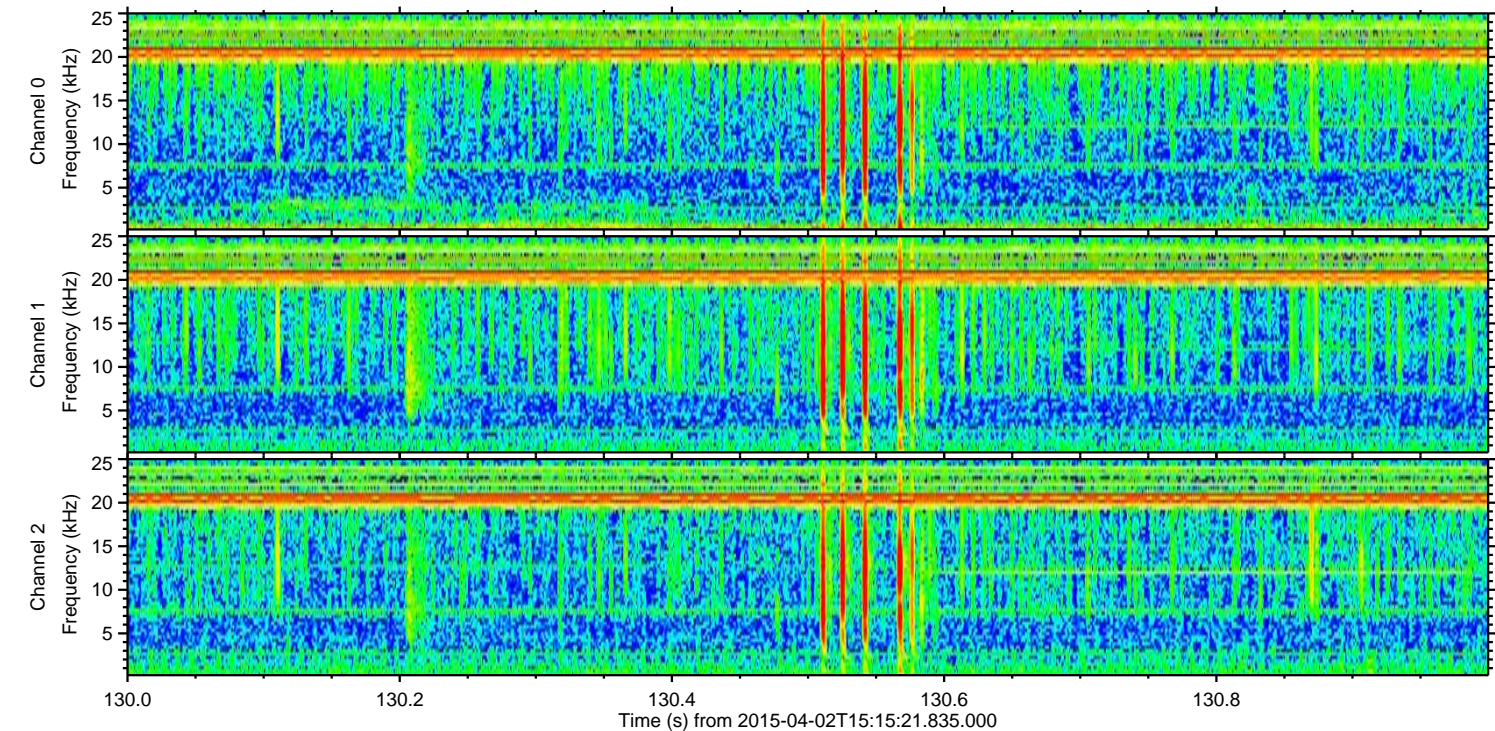
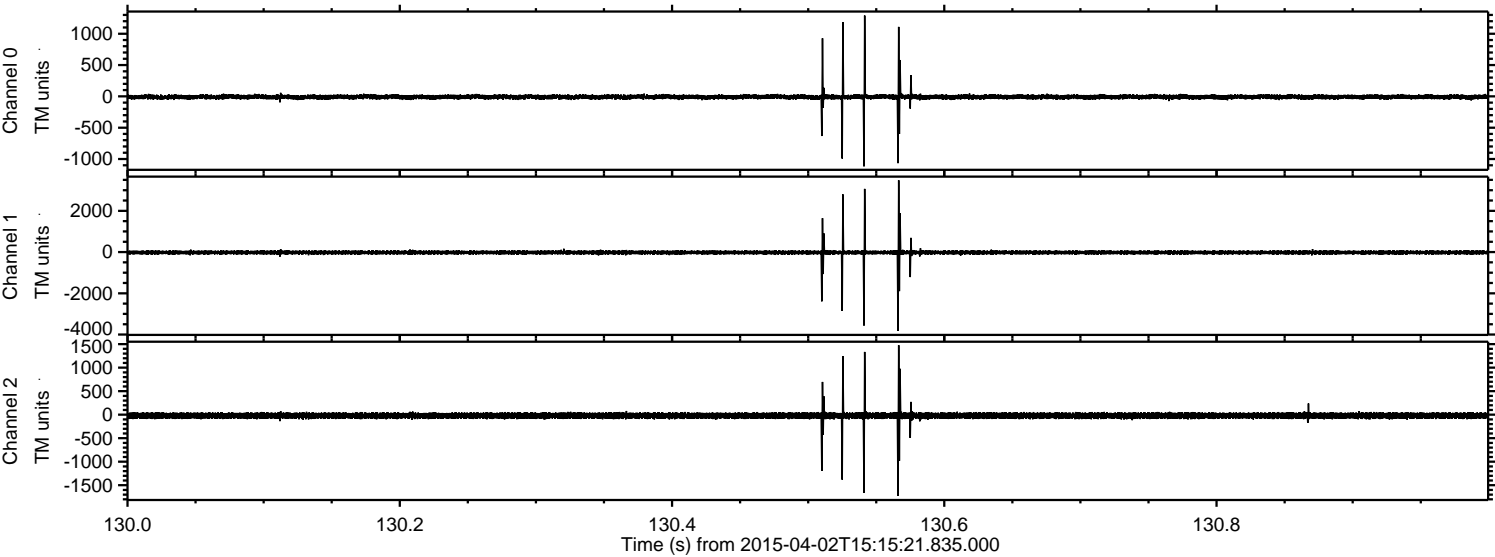
Channel 0
mn: -1117
mx: 1290
 μ : -9.1
 σ : 16.7

Channel 1
mn: -3827
mx: 3485
 μ : -20.1
 σ : 43.0

Channel 2
mn: -1740
mx: 1478
 μ : -20.8
 σ : 32.0

ELMAVAN 3D WAVEFORMS (Measured data sampled at 50 kHz) 49793 packets of 144 samples from 2015-04-02T15:15:21.835.000. Part 131/144

Processed Thu Apr 2 17:21:45 2015 by ELM ver.2012-10-06 from 001__elm20150402_151520__dat00.bin

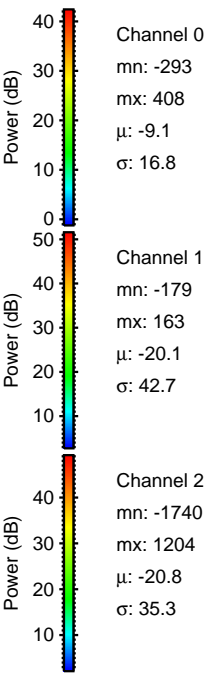
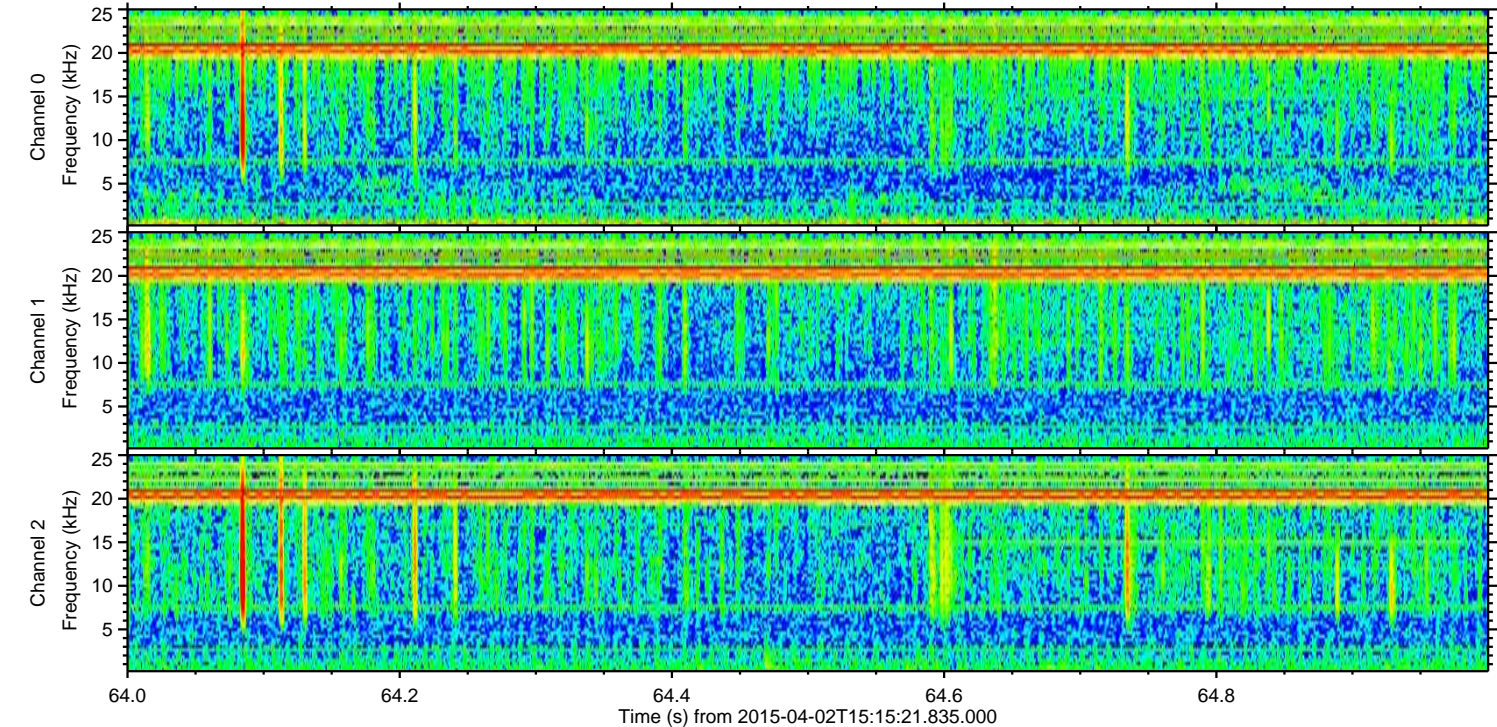
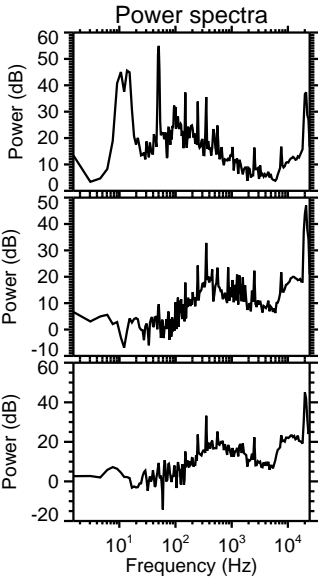
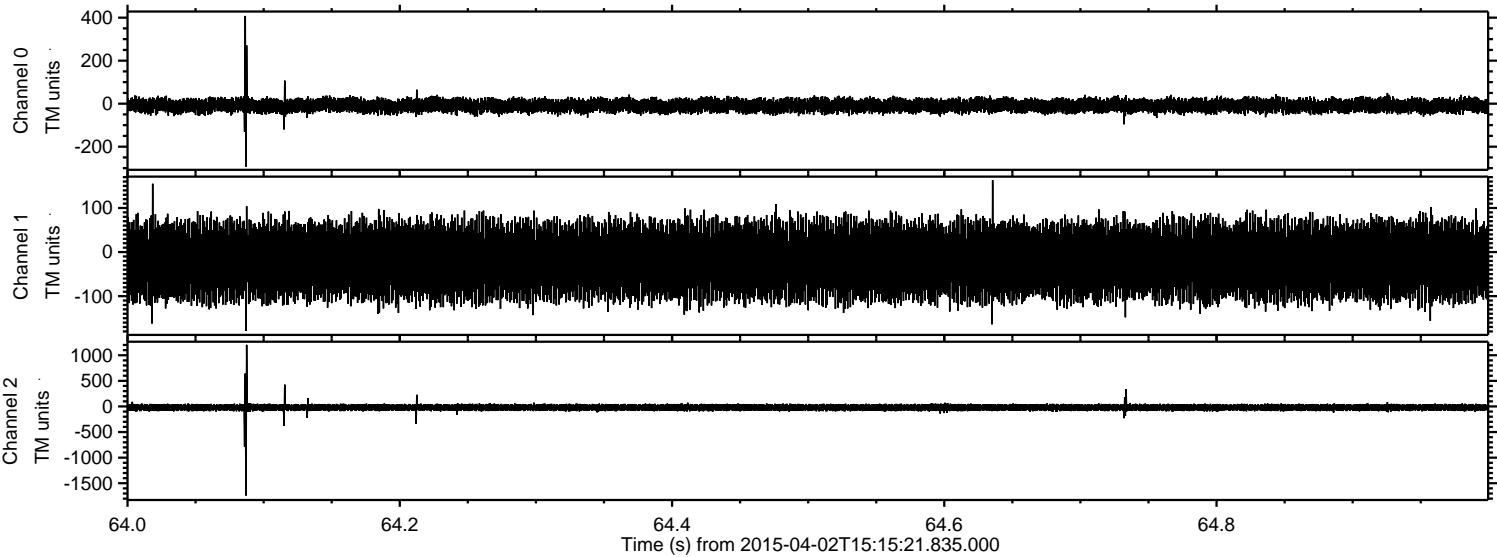


Channel 0
mn: -1117
mx: 1290
 μ : -9.2
 σ : 23.4

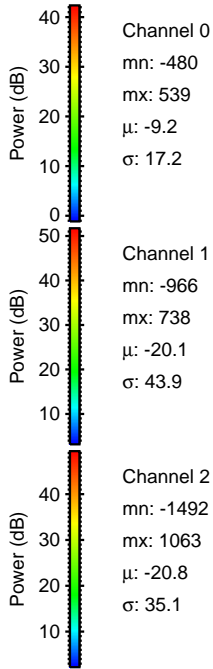
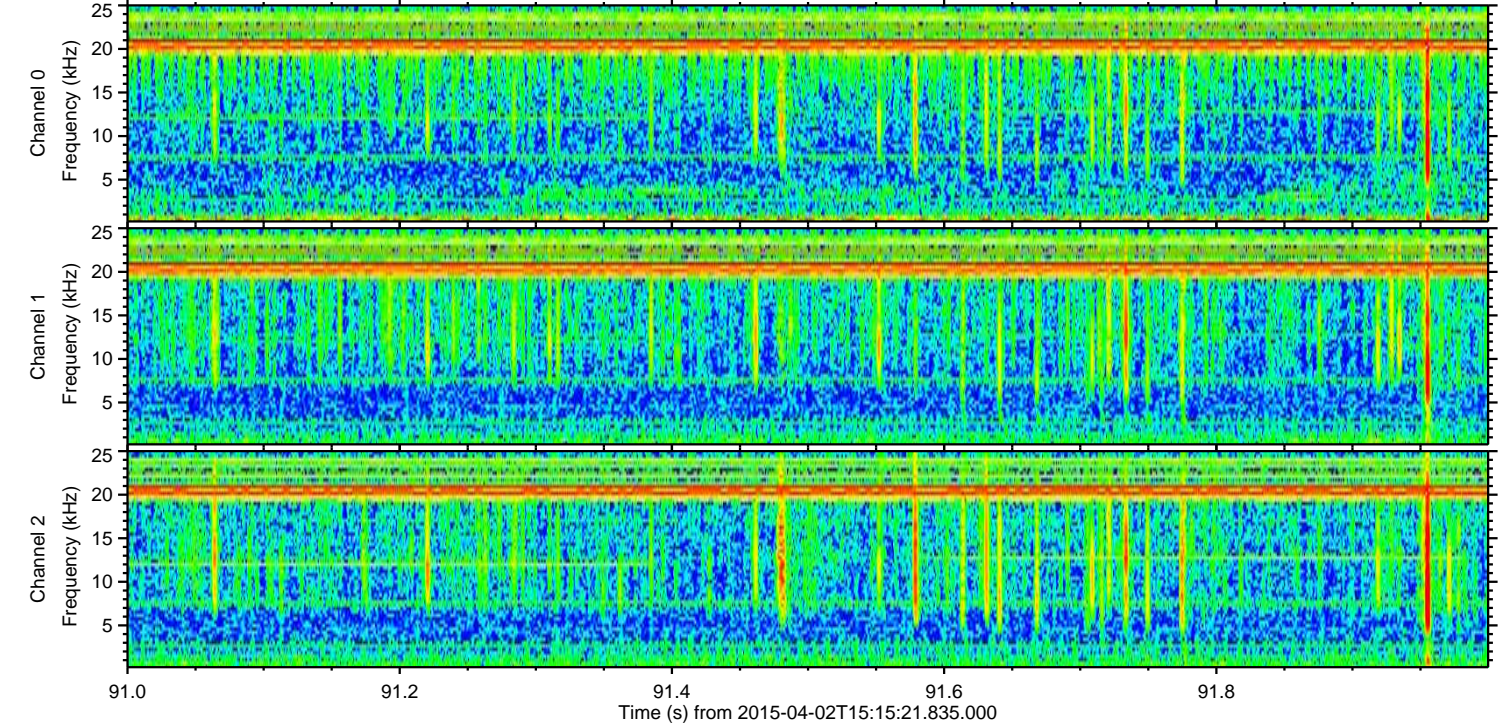
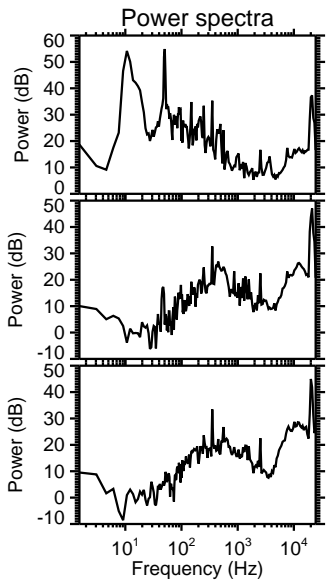
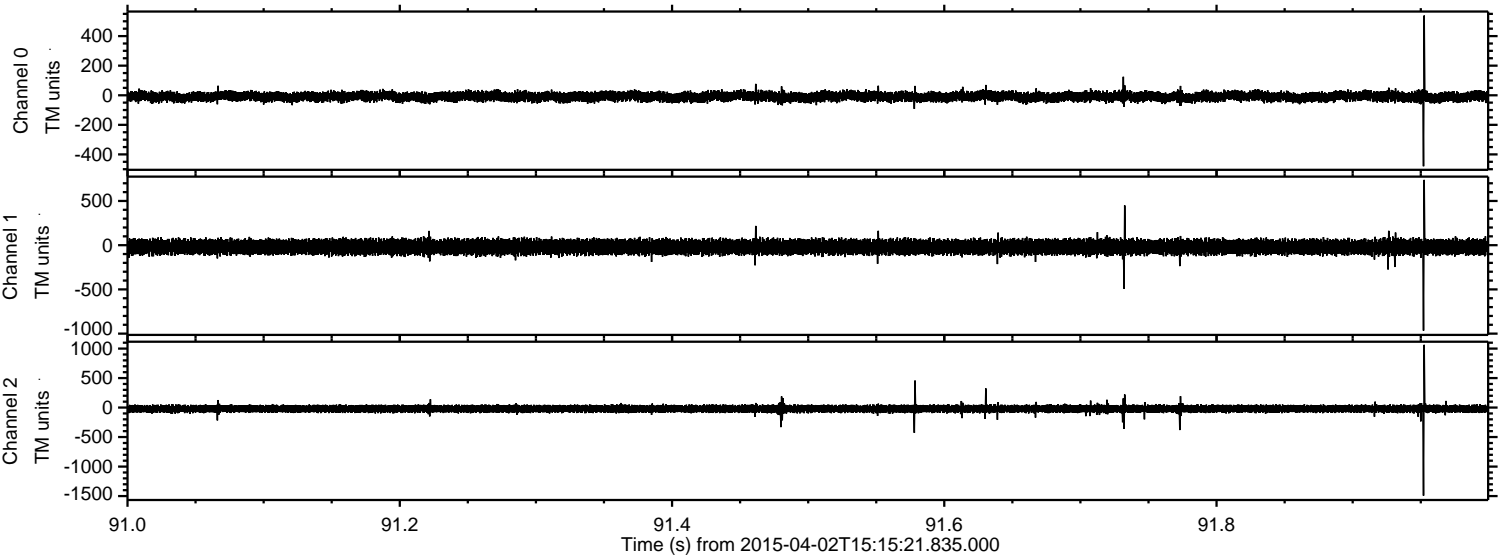
Channel 1
mn: -3827
mx: 3485
 μ : -20.2
 σ : 70.1

Channel 2
mn: -1728
mx: 1478
 μ : -20.8
 σ : 40.8

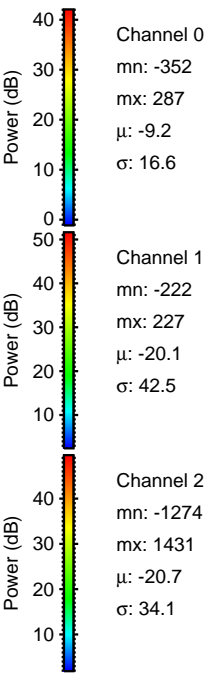
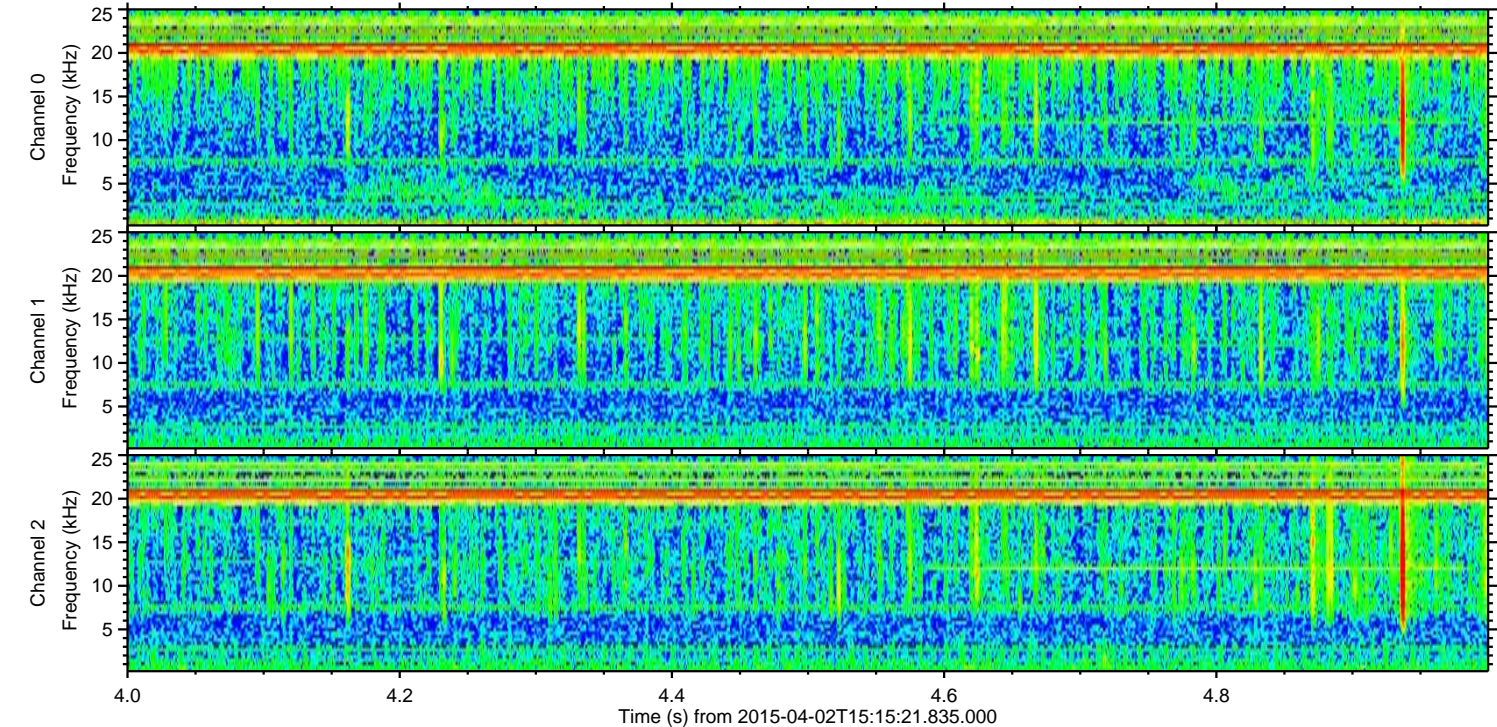
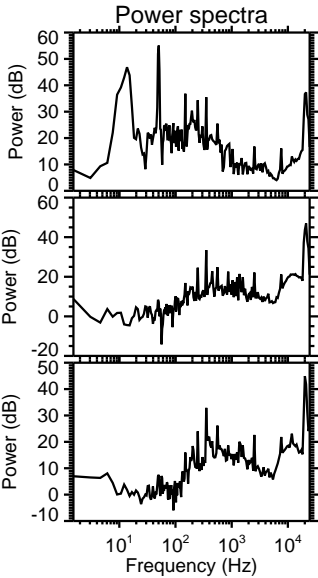
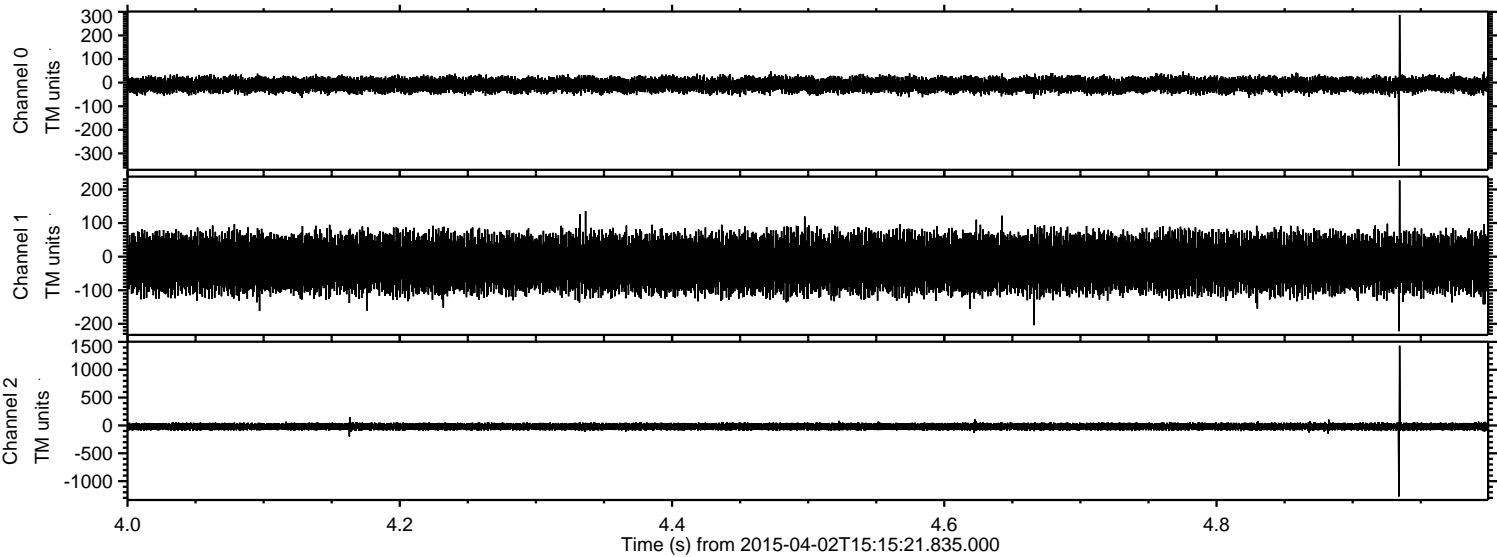
Processed Thu Apr 2 17:21:46 2015 by ELM ver.2012-10-06 from 001__elm20150402_151520__dat00.bin



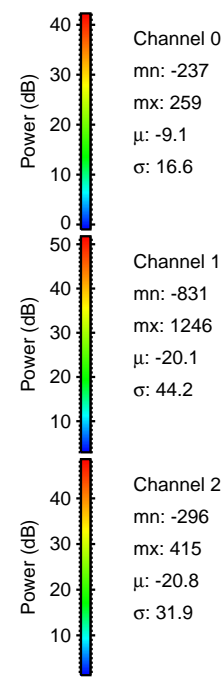
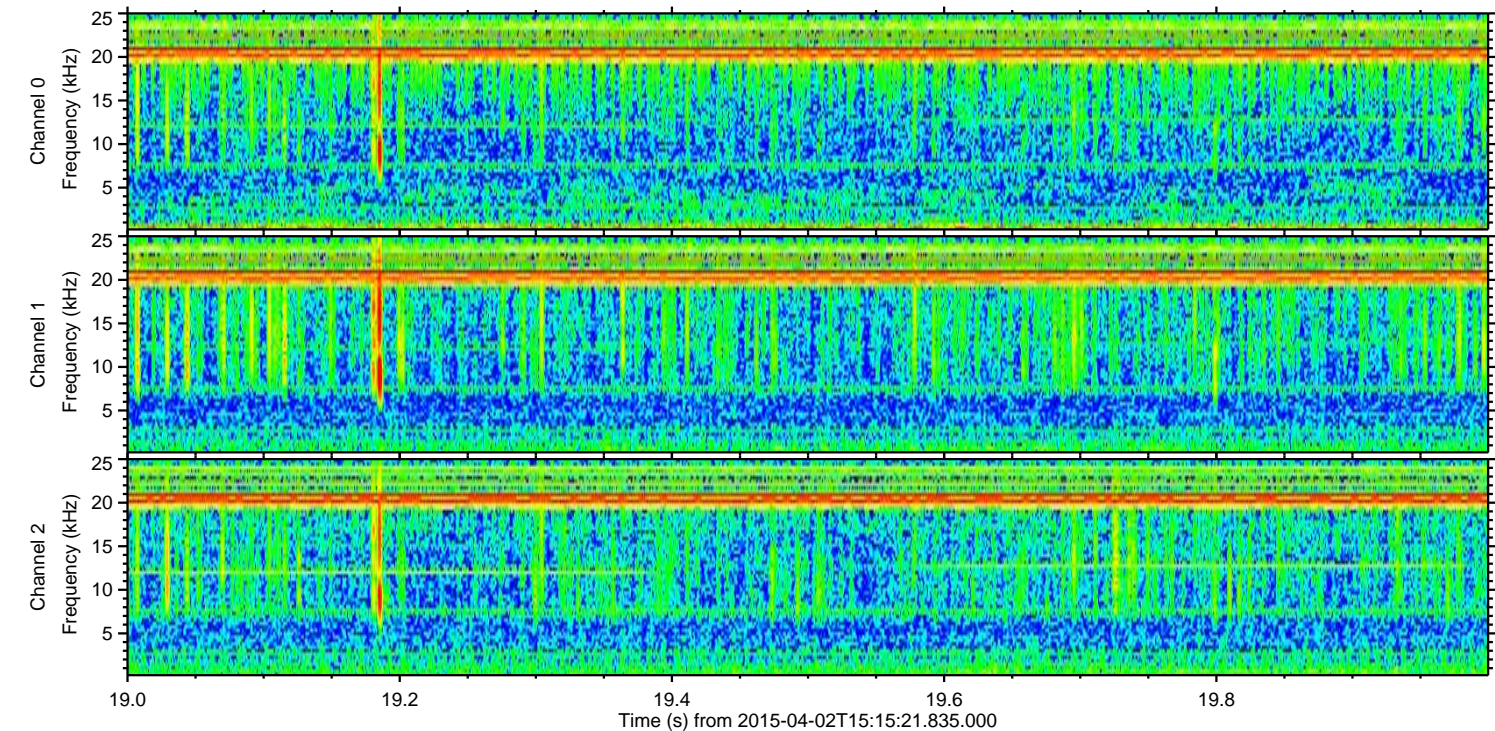
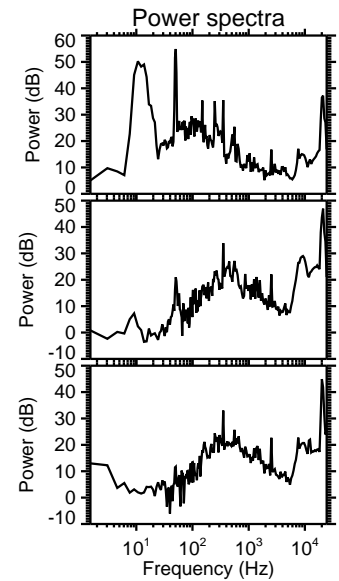
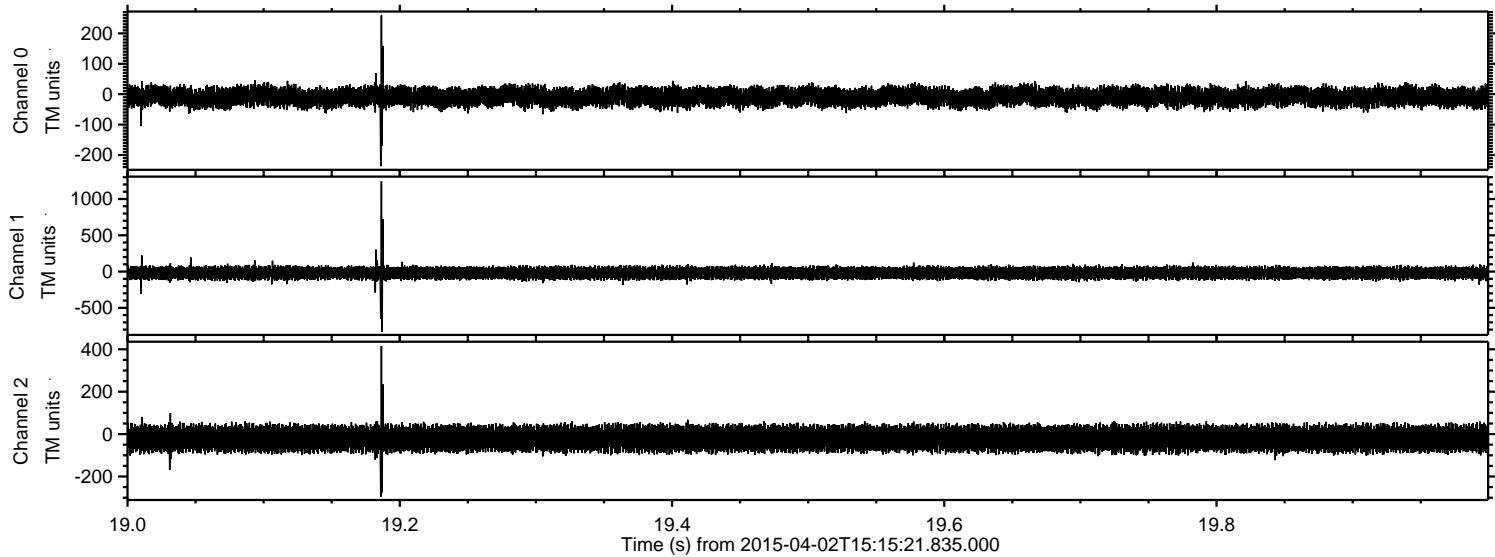
Processed Thu Apr 2 17:21:47 2015 by ELM ver.2012-10-06 from 001__elm20150402_151520__dat00.bin



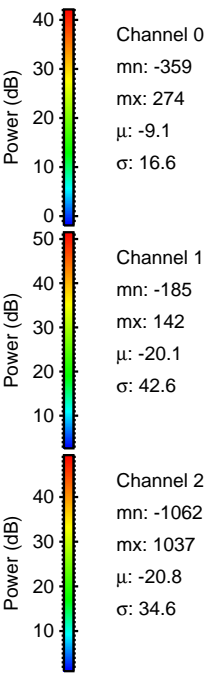
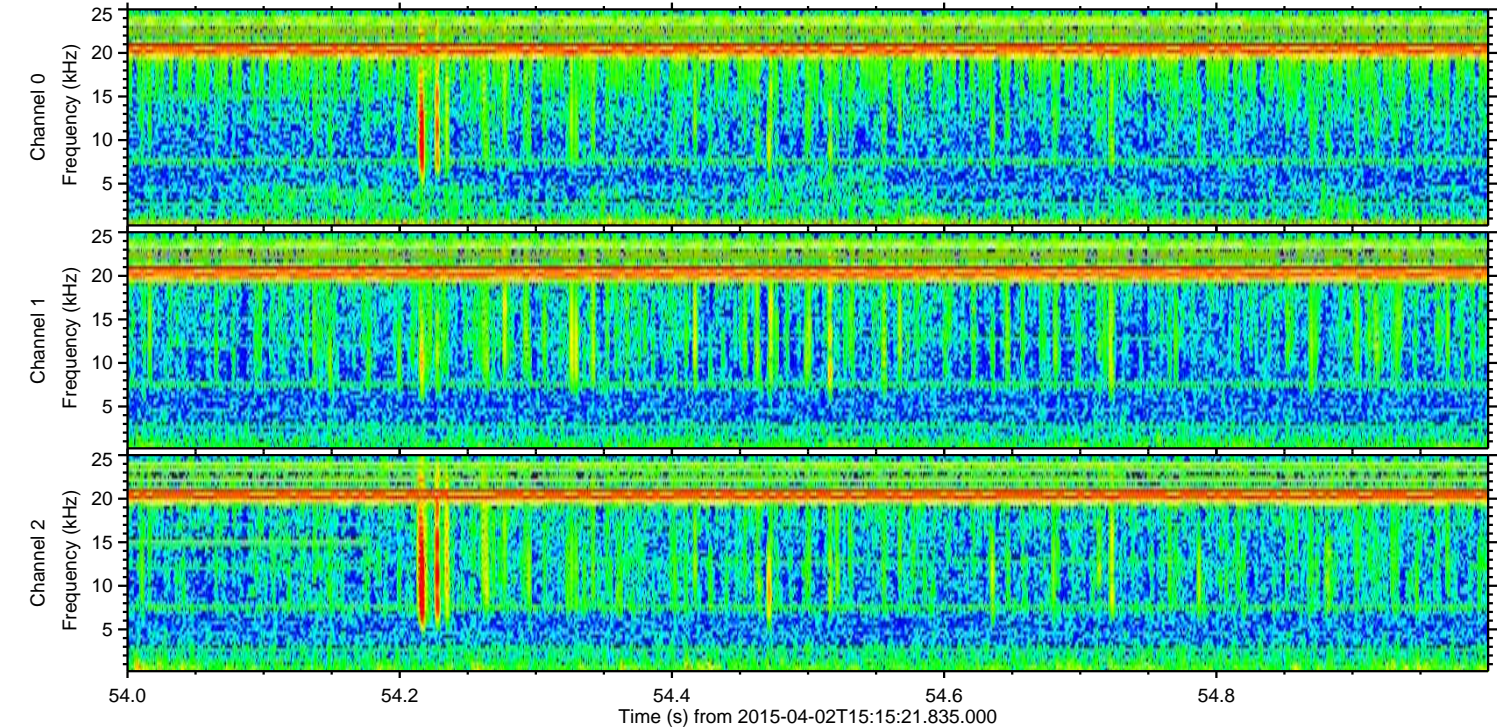
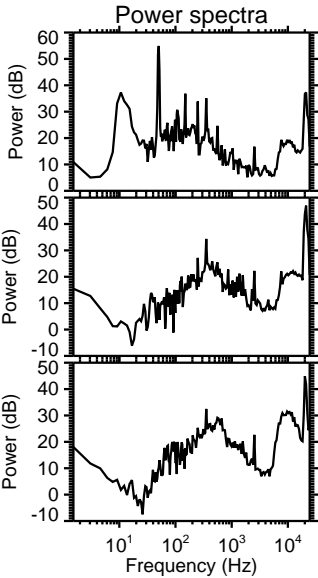
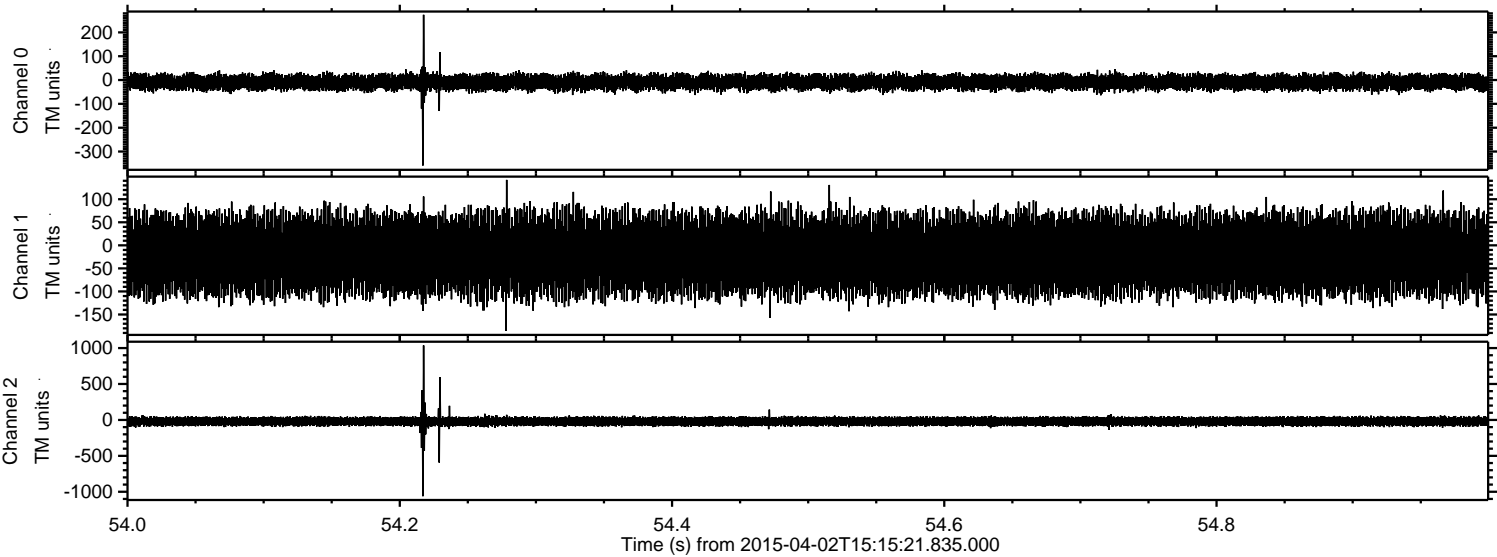
Processed Thu Apr 2 17:21:48 2015 by ELM ver.2012-10-06 from 001__elm20150402_151520__dat00.bin



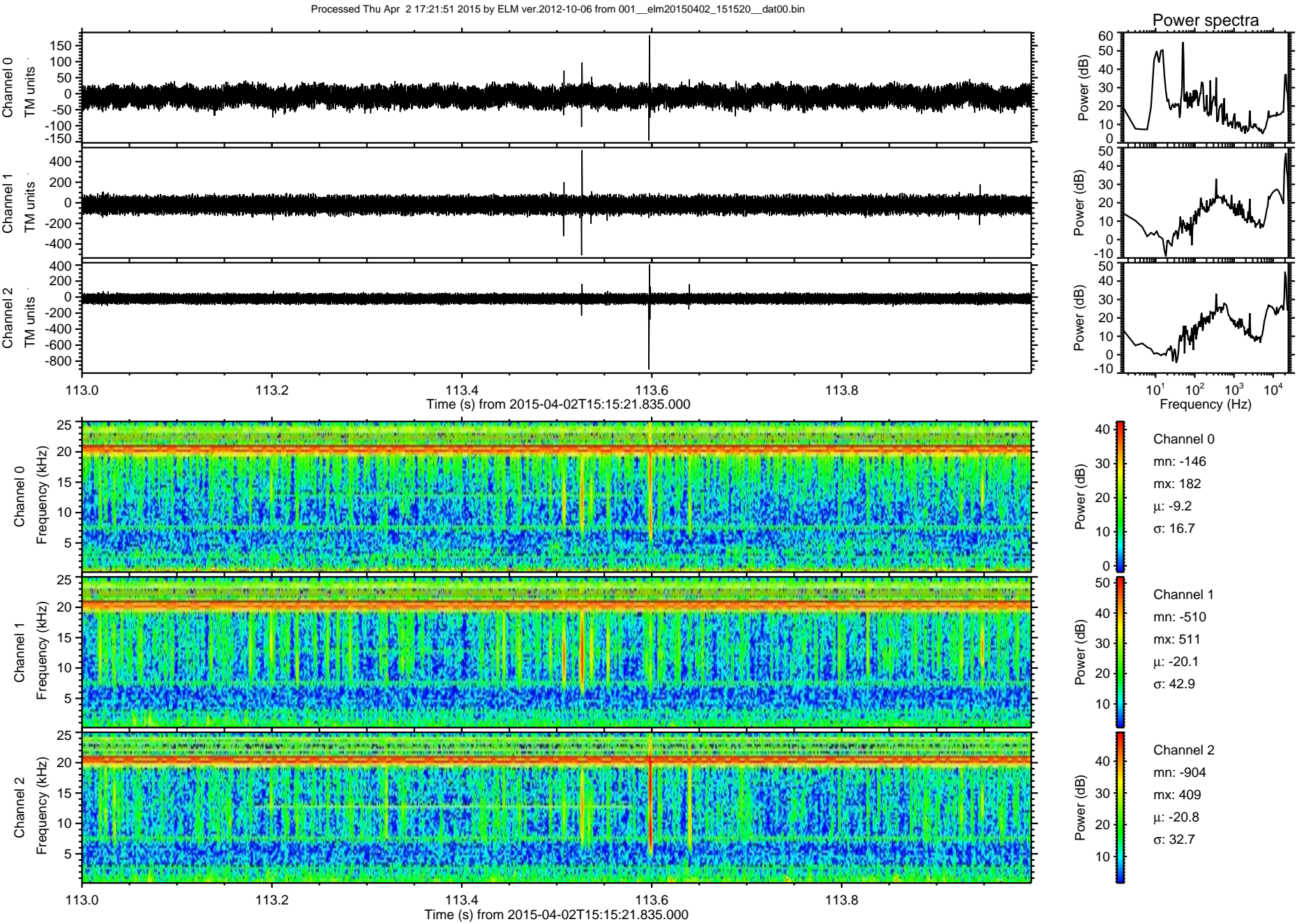
Processed Thu Apr 2 17:21:49 2015 by ELM ver.2012-10-06 from 001__elm20150402_151520__dat00.bin



Processed Thu Apr 2 17:21:50 2015 by ELM ver.2012-10-06 from 001__elm20150402_151520__dat00.bin



ELMAVAN 3D WAVEFORMS (Measured data sampled at 50 kHz) 49793 packets of 144 samples from 2015-04-02T15:15:21.835.000. Part 114/144



Processed Thu Apr 2 17:21:52 2015 by ELM ver.2012-10-06 from 001__elm20150402_151520__dat00.bin

