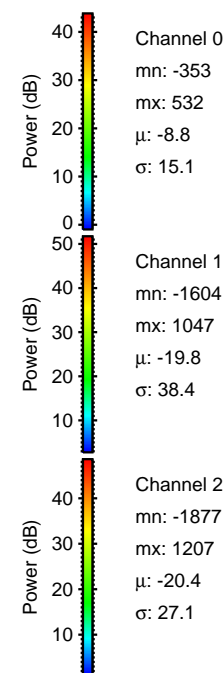
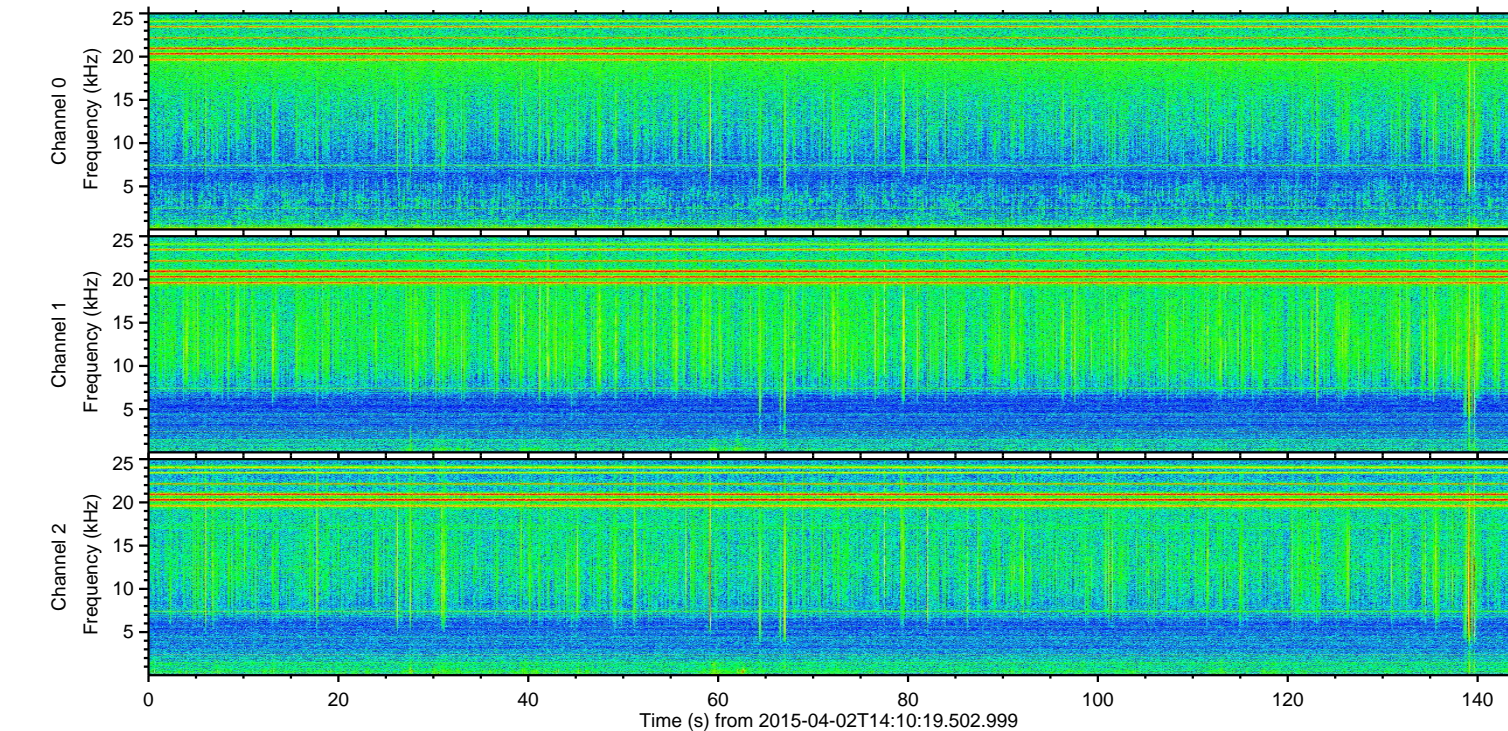
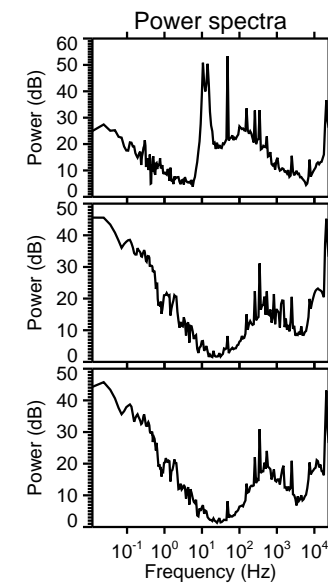
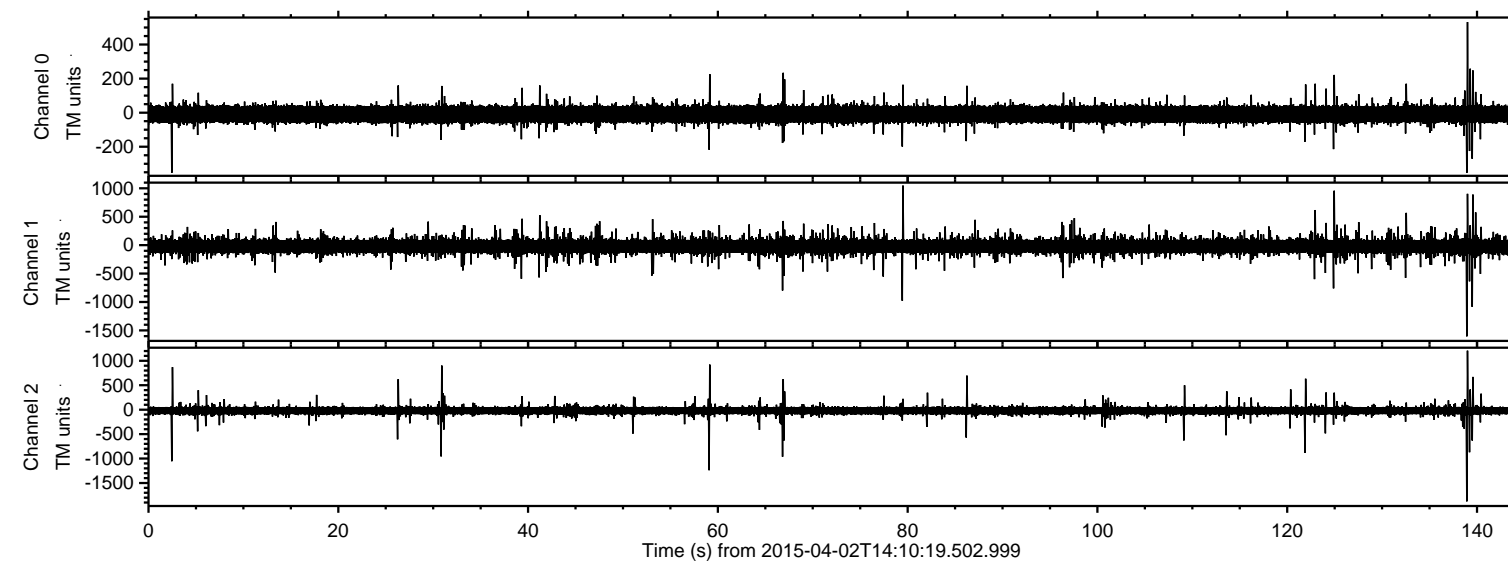


# ELMAVAN 3D WAVEFORMS (Measured data sampled at 50 kHz) 49788 packets of 144 samples from 2015-04-02T14:10:19.502.999.

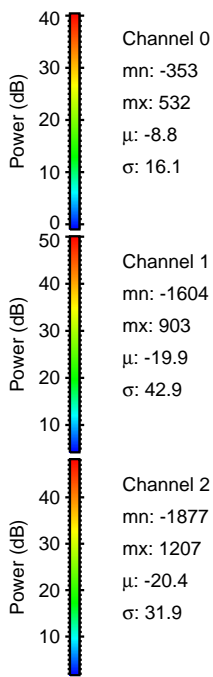
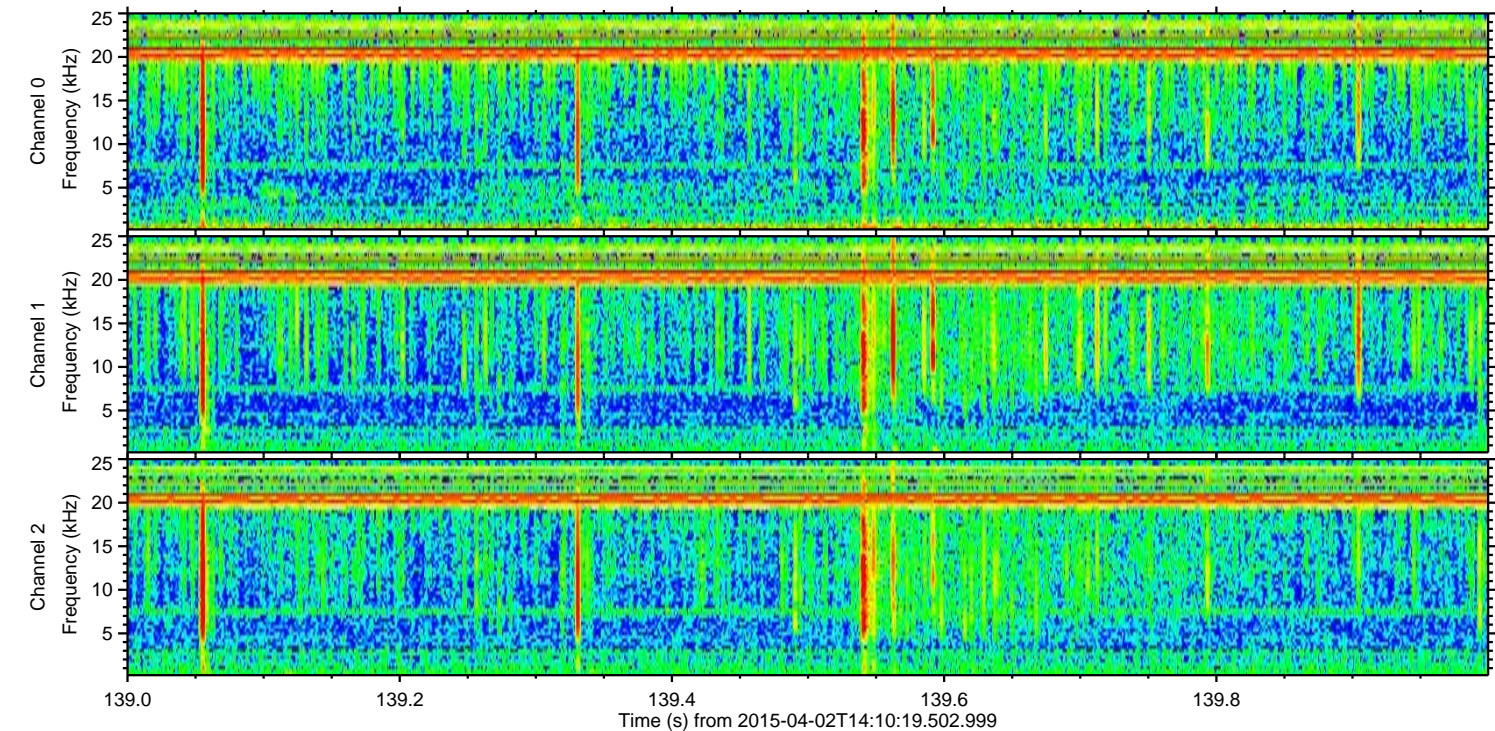
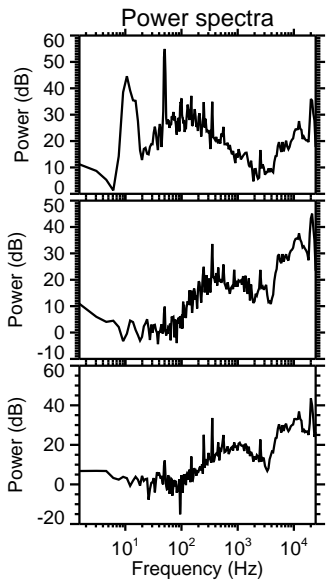
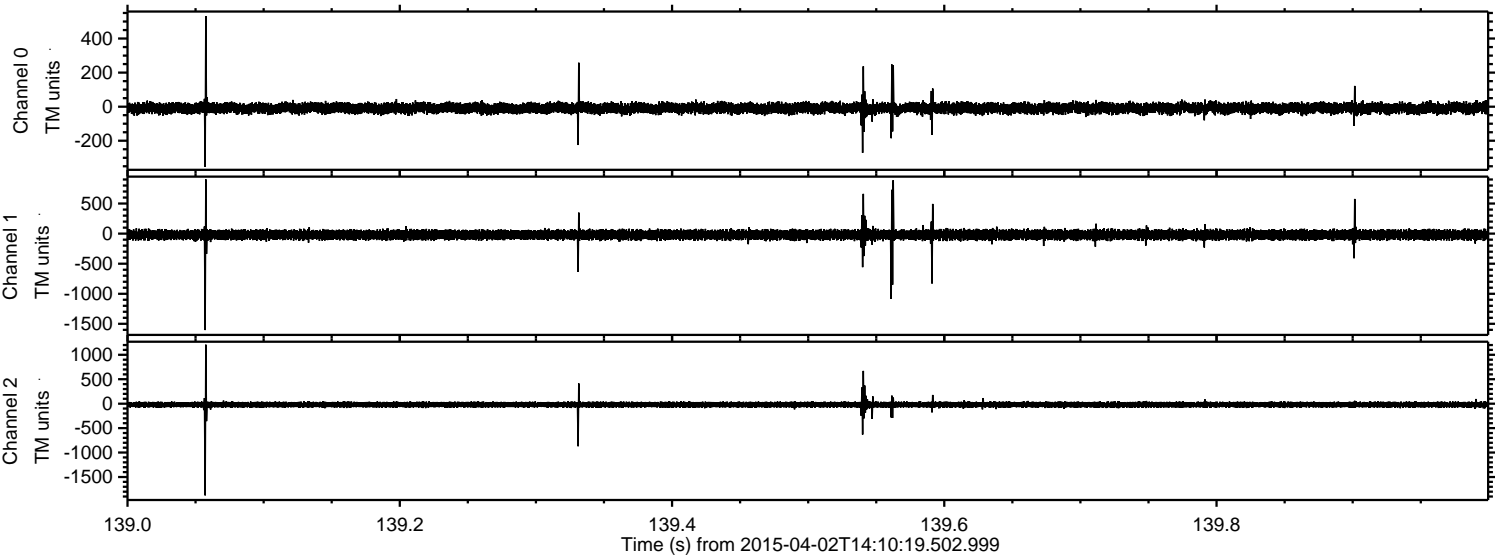
Processed Thu Apr 2 16:17:18 2015 by ELM ver.2012-10-06 from 001\_\_elm20150402\_141018\_\_dat00.bin





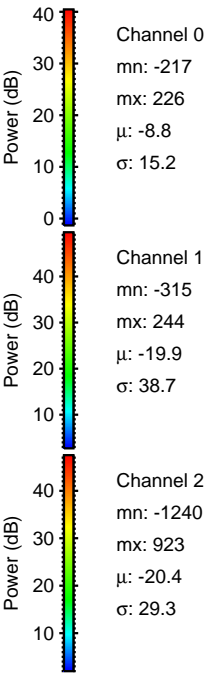
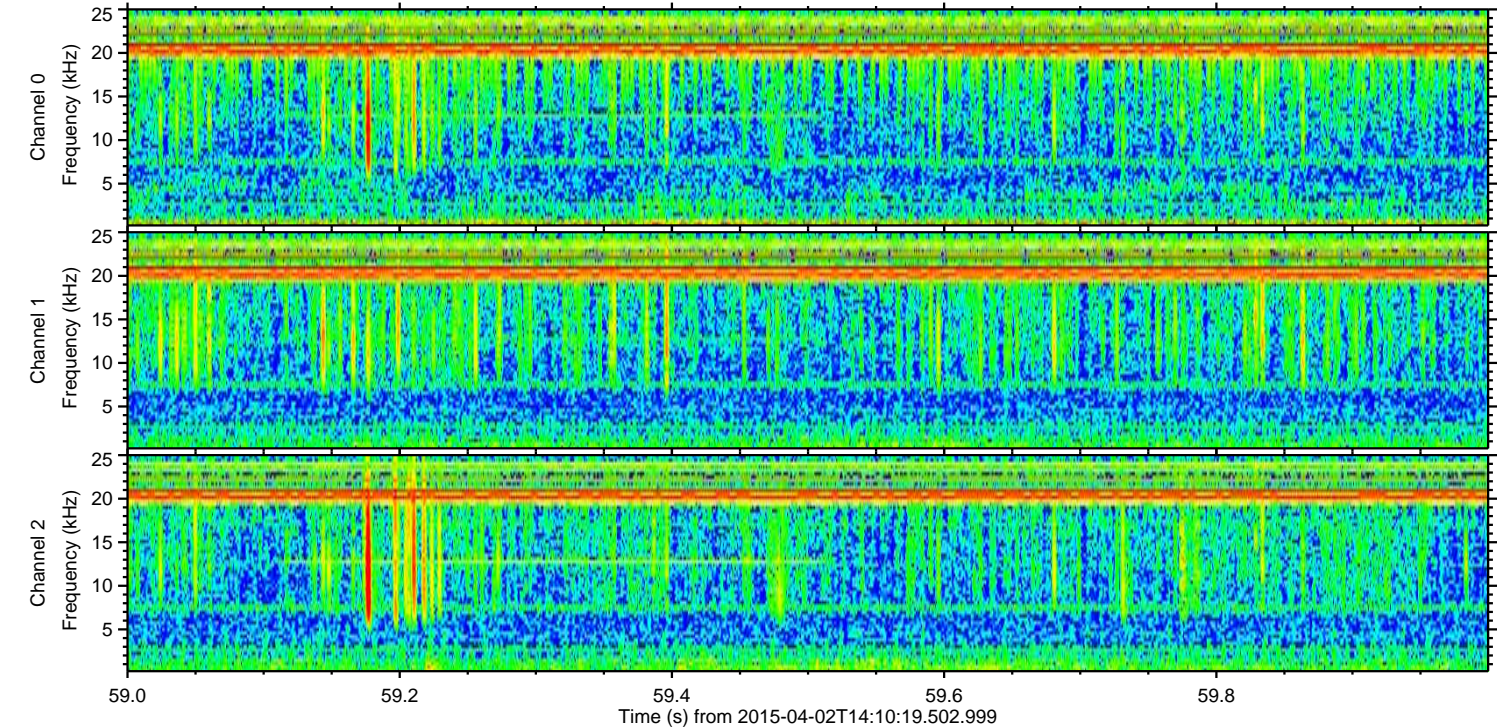
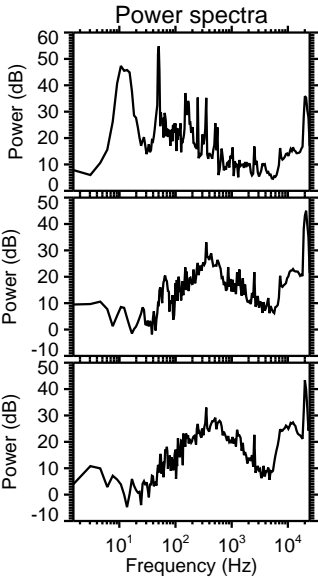
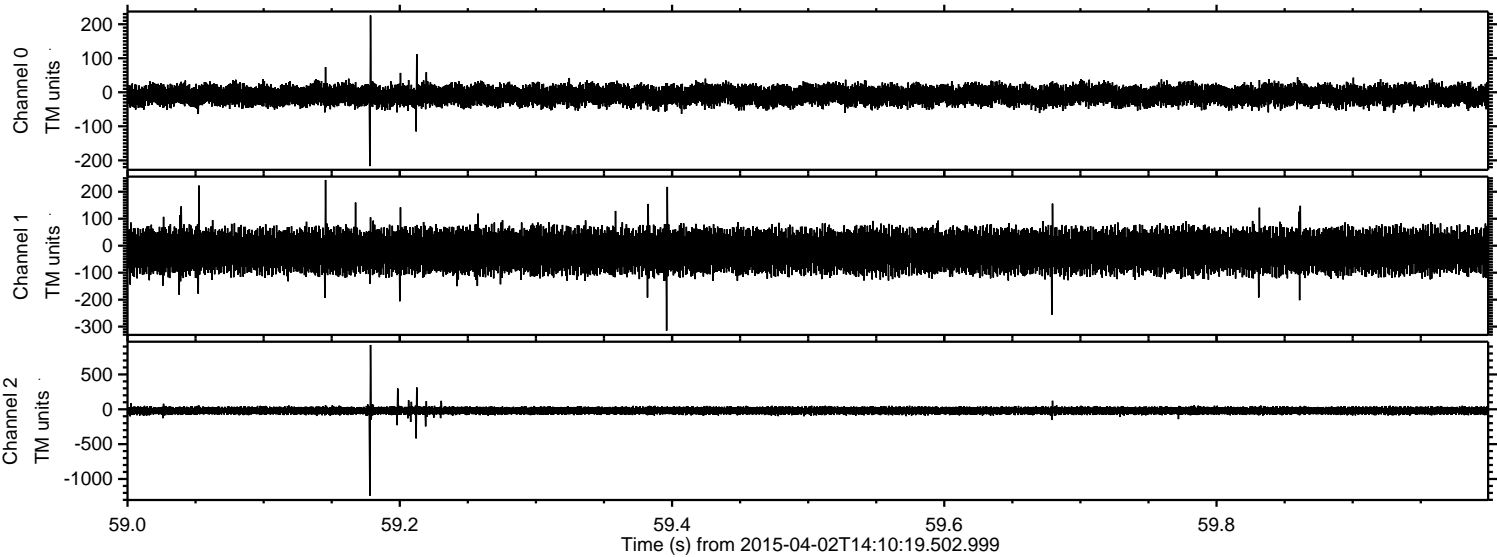
ELMAVAN 3D WAVEFORMS (Measured data sampled at 50 kHz) 49788 packets of 144 samples from 2015-04-02T14:10:19.502.999. Part 140/144

Processed Thu Apr 2 16:17:30 2015 by ELM ver.2012-10-06 from 001\_\_elm20150402\_141018\_\_dat00.bin





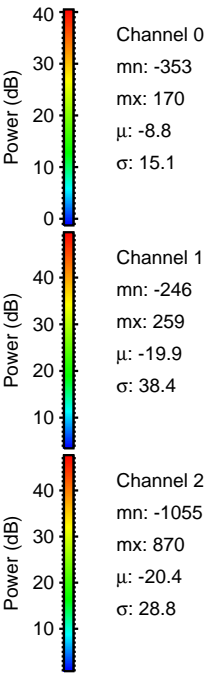
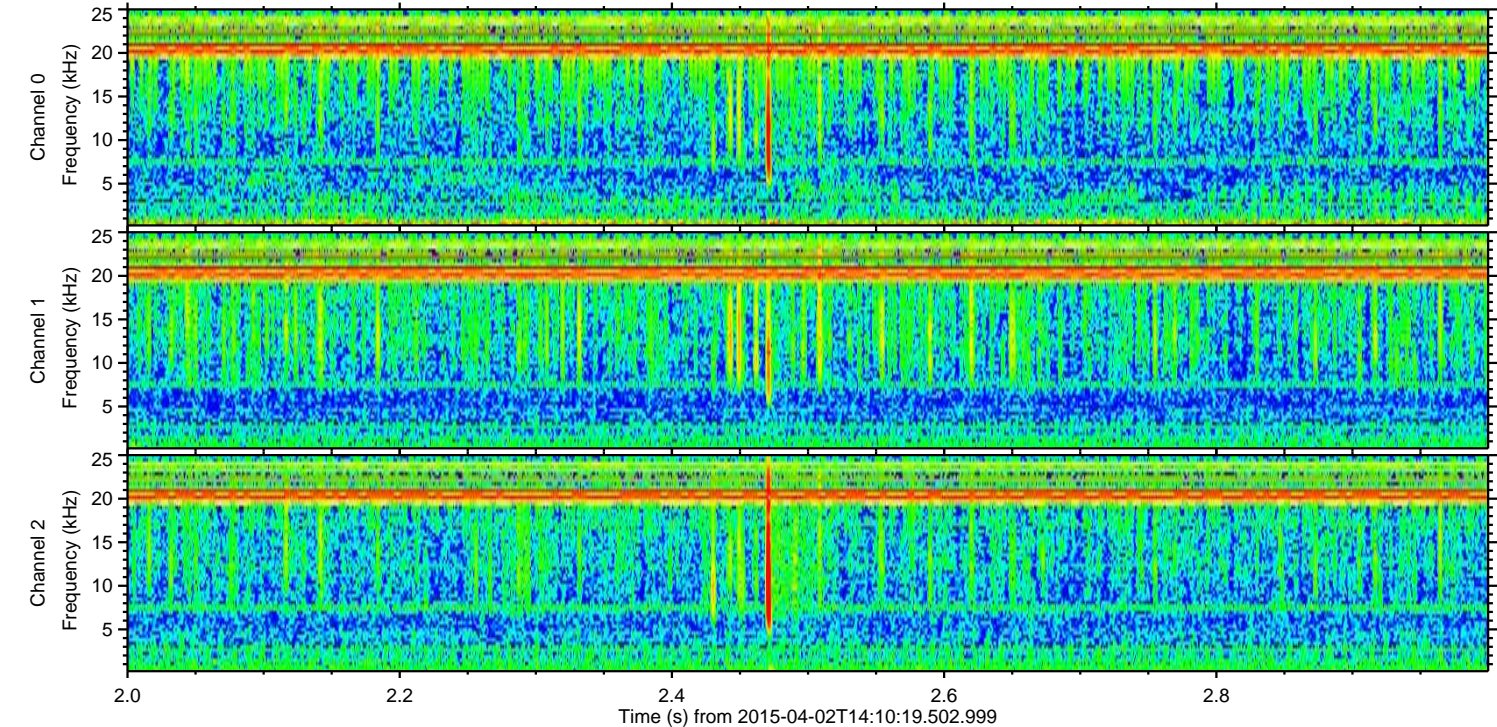
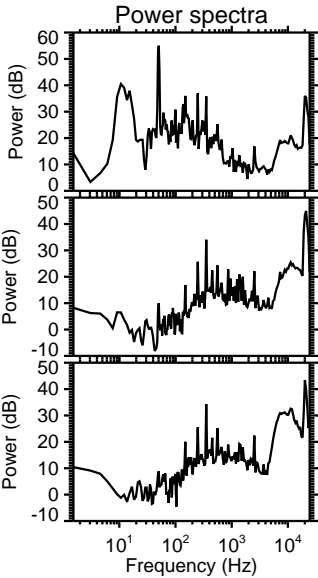
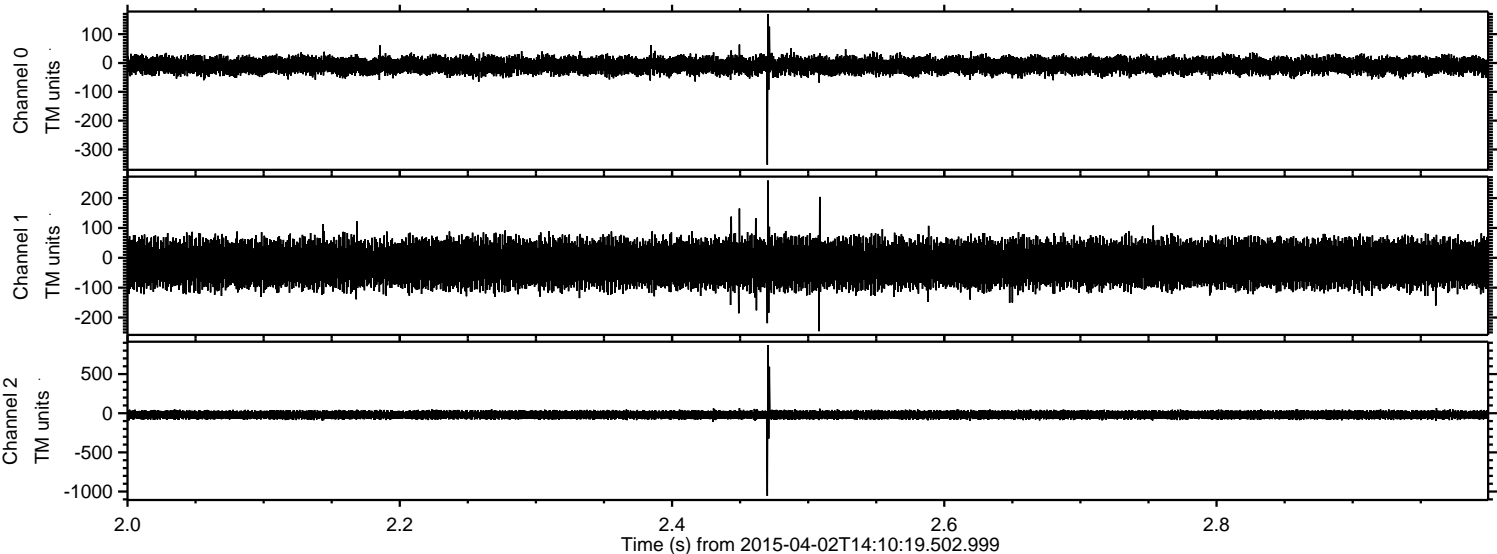
Processed Thu Apr 2 16:17:30 2015 by ELM ver.2012-10-06 from 001\_\_elm20150402\_141018\_\_dat00.bin





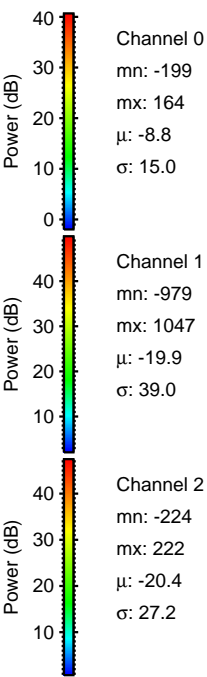
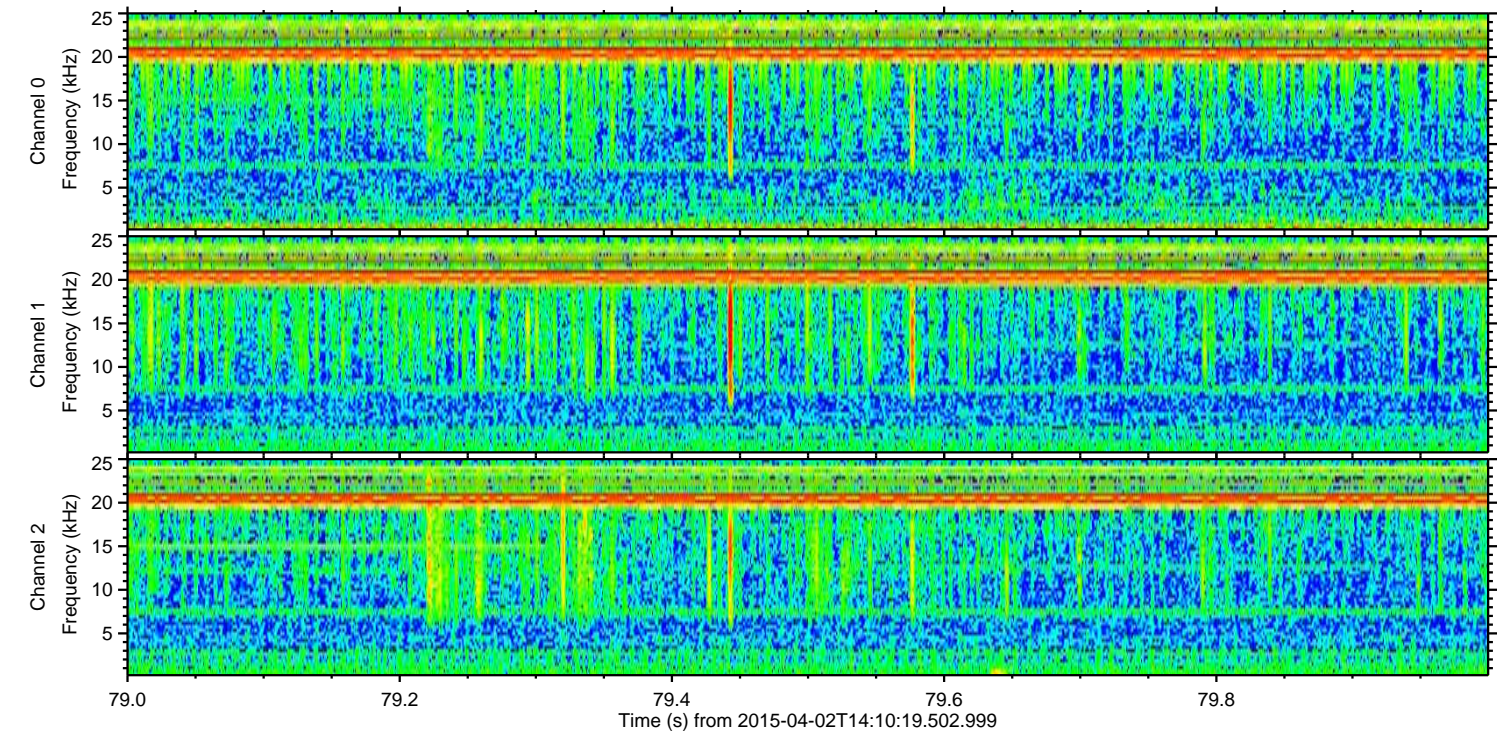
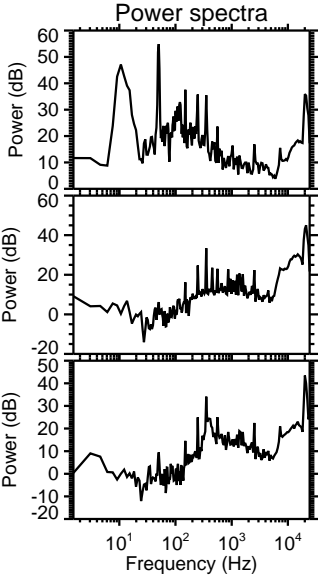
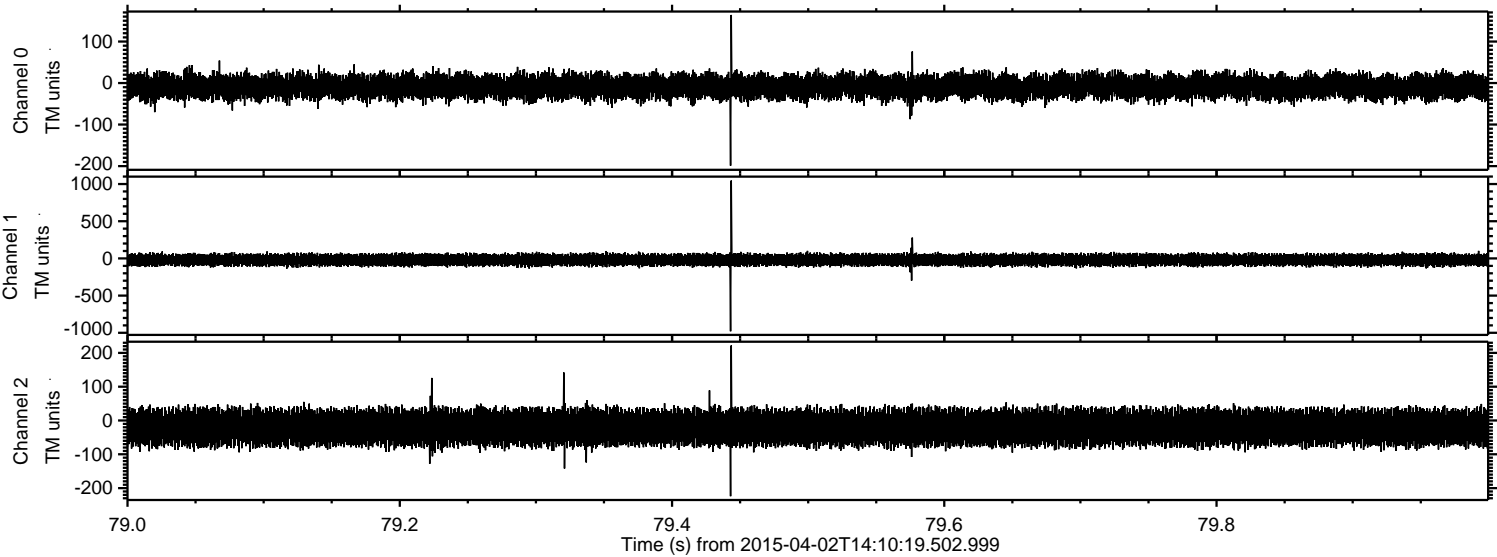
ELMAVAN 3D WAVEFORMS (Measured data sampled at 50 kHz) 49788 packets of 144 samples from 2015-04-02T14:10:19.502.999. Part 3/144

Processed Thu Apr 2 16:17:31 2015 by ELM ver.2012-10-06 from 001\_\_elm20150402\_141018\_\_dat00.bin



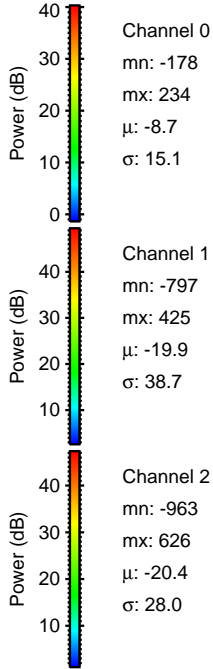
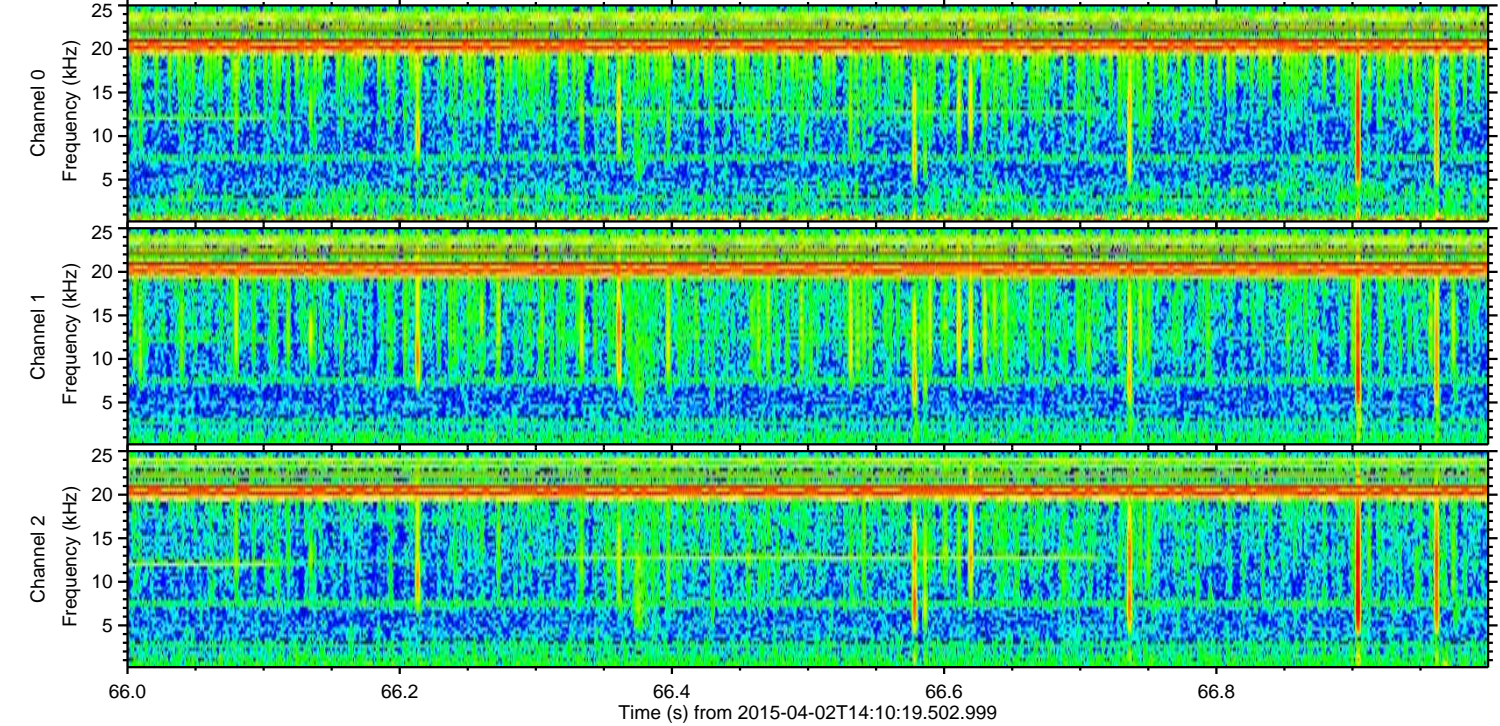
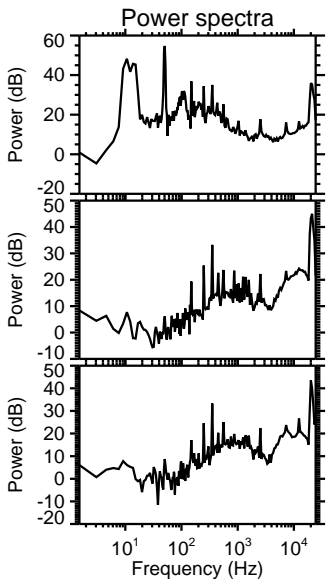
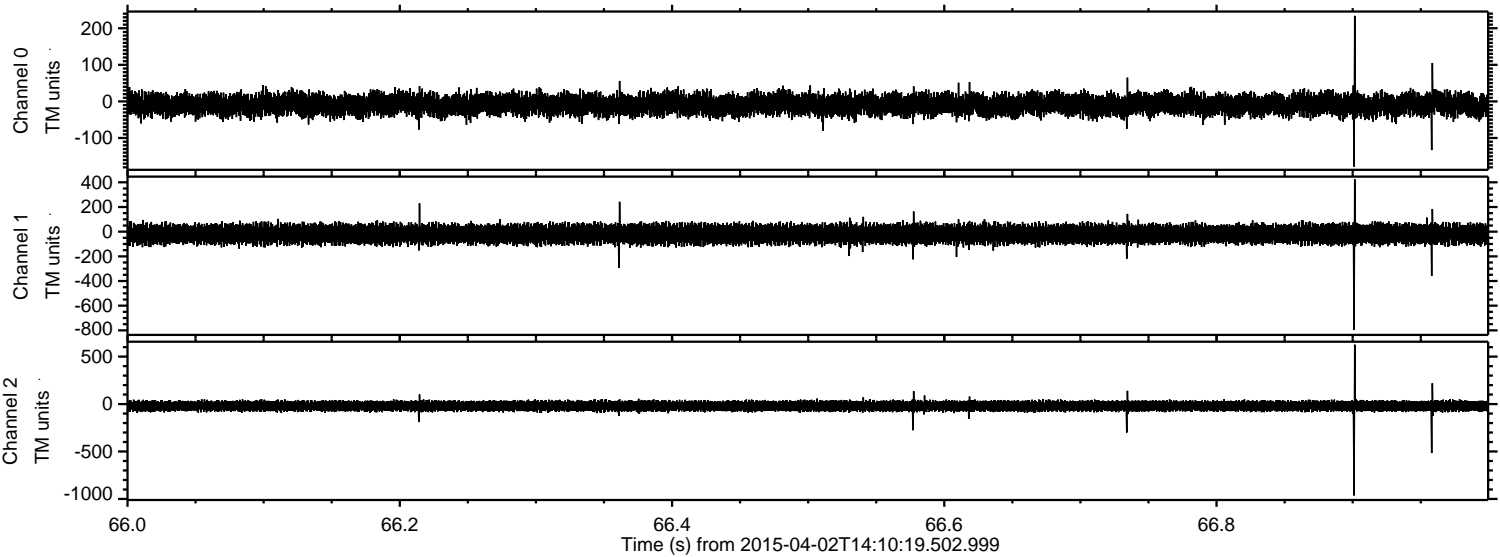


Processed Thu Apr 2 16:17:32 2015 by ELM ver.2012-10-06 from 001\_\_elm20150402\_141018\_\_dat00.bin



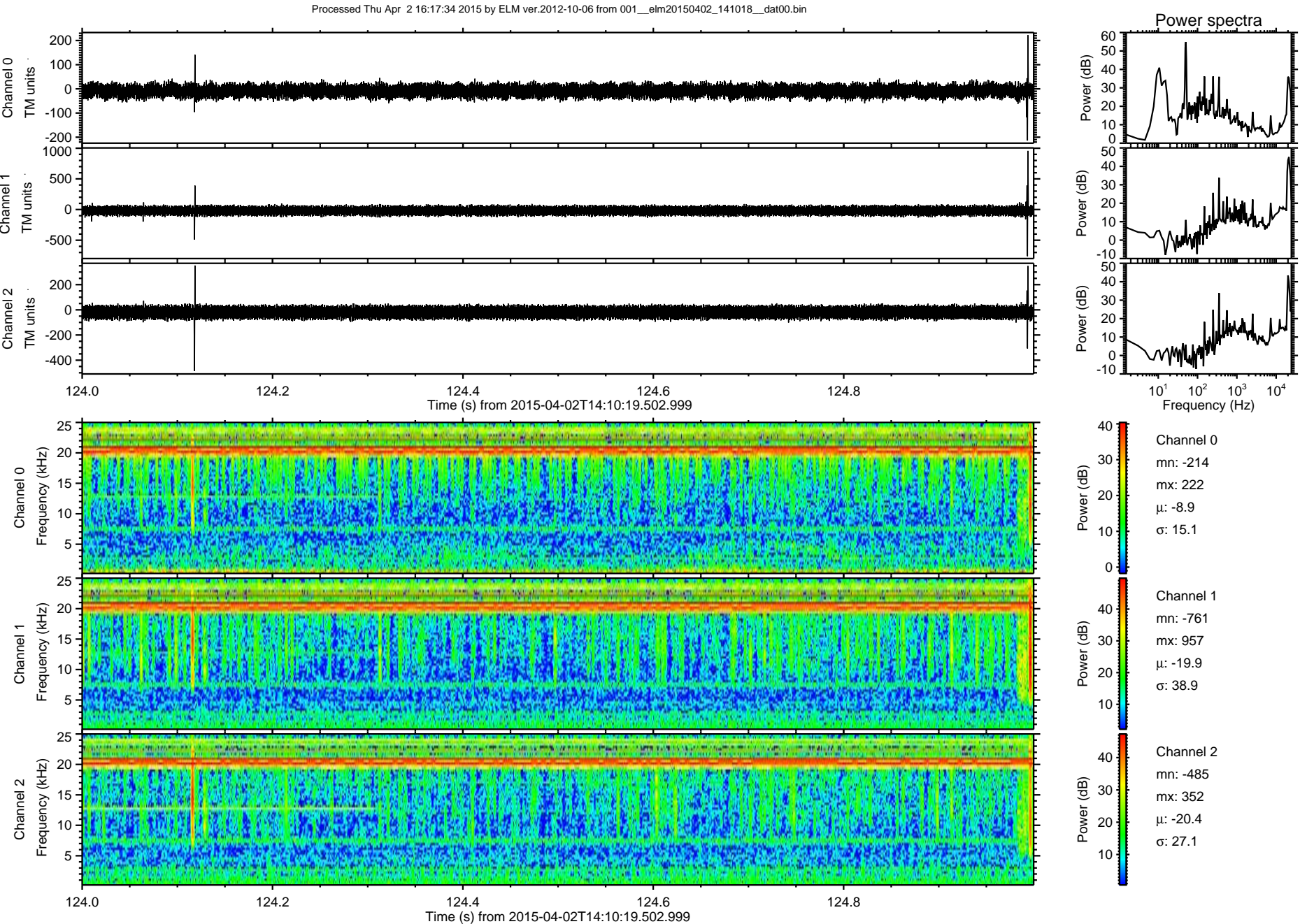


Processed Thu Apr 2 16:17:33 2015 by ELM ver.2012-10-06 from 001\_\_elm20150402\_141018\_\_dat00.bin



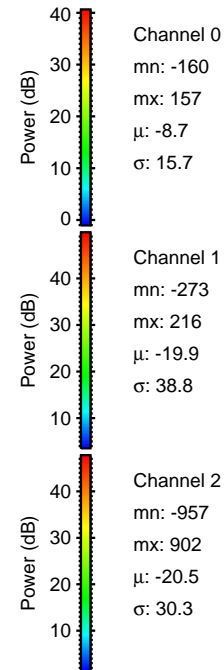
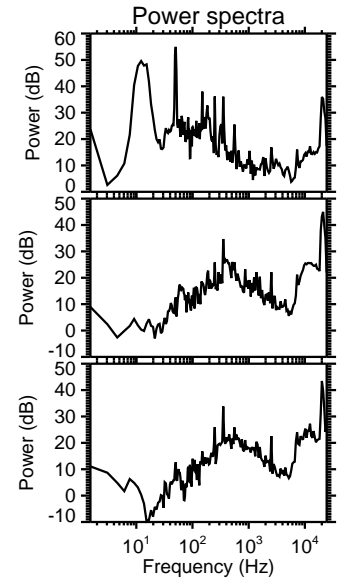
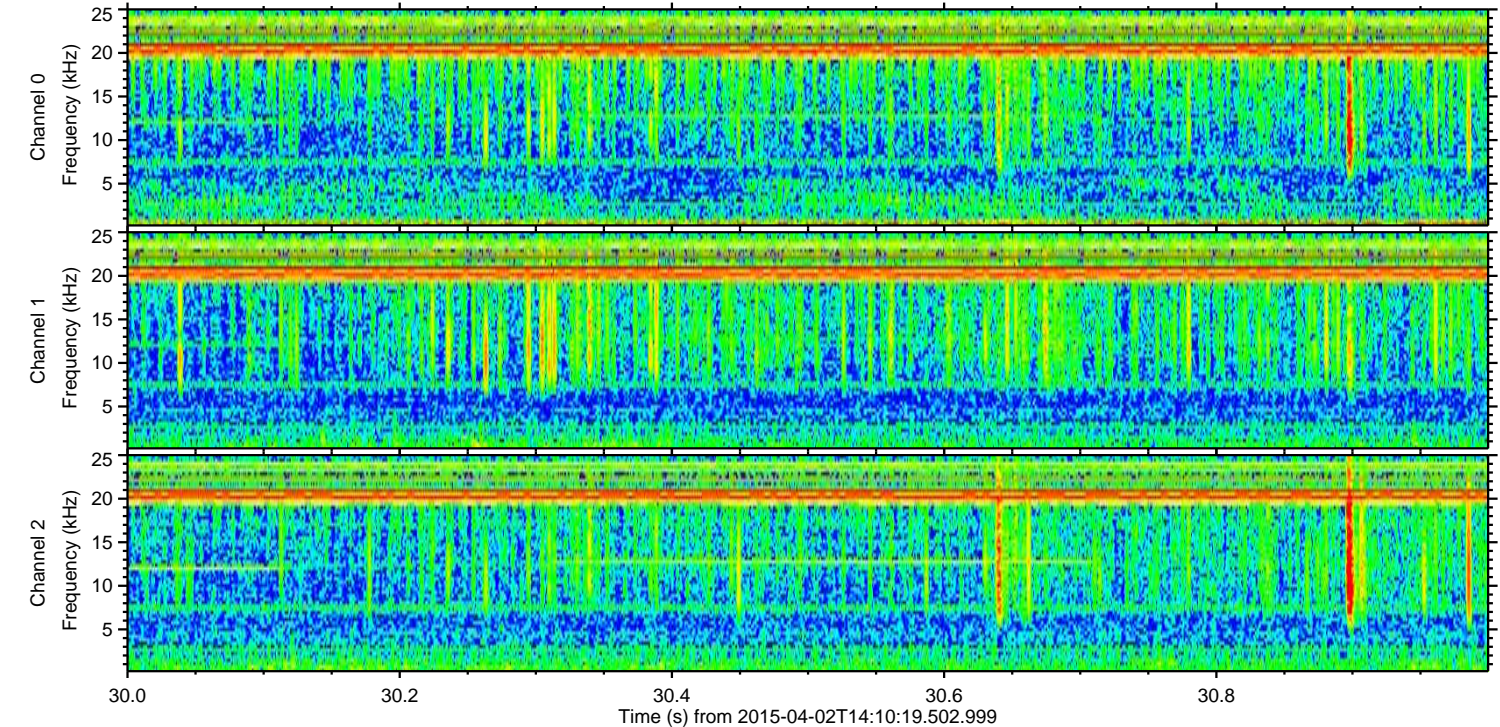
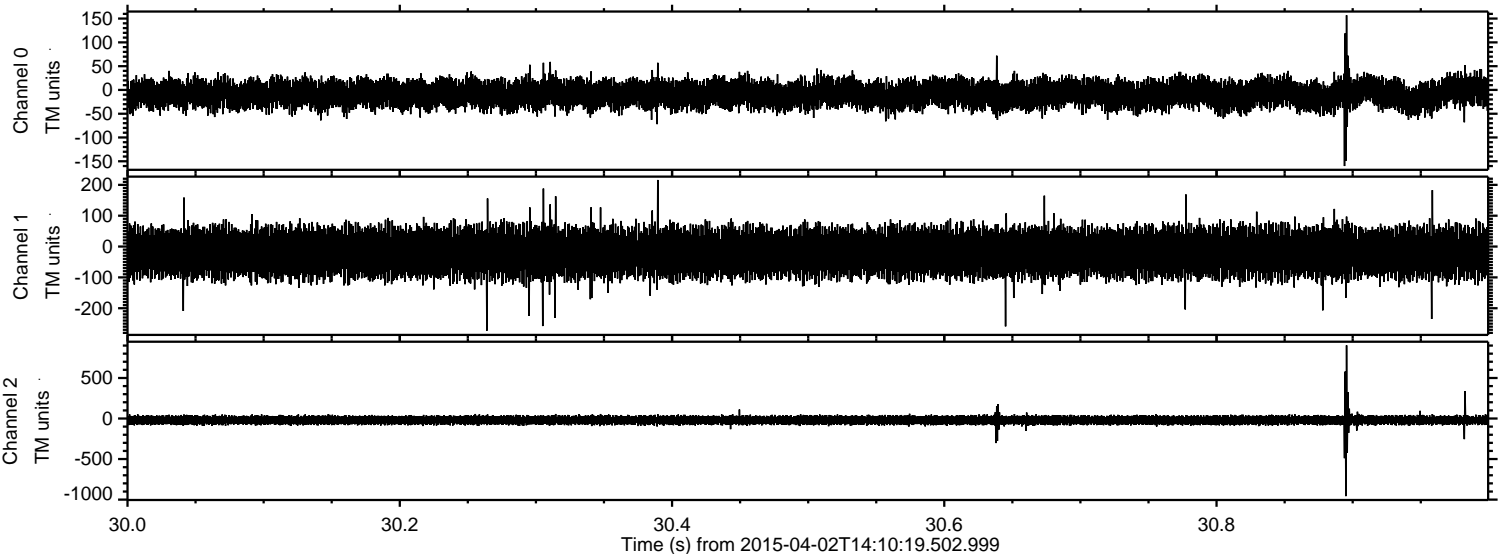


ELMAVAN 3D WAVEFORMS (Measured data sampled at 50 kHz) 49788 packets of 144 samples from 2015-04-02T14:10:19.502.999. Part 125/144



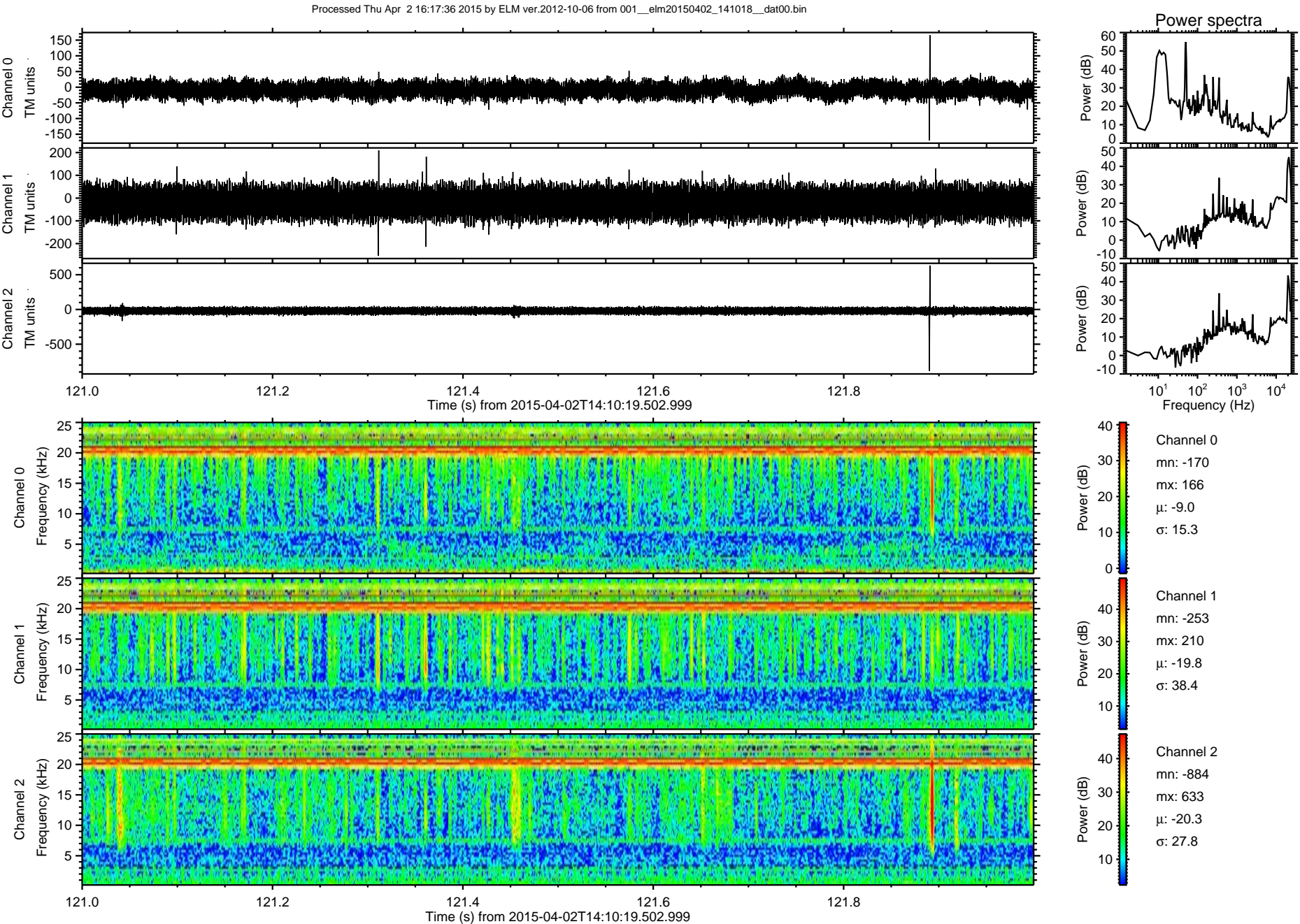


Processed Thu Apr 2 16:17:35 2015 by ELM ver.2012-10-06 from 001\_\_elm20150402\_141018\_\_dat00.bin

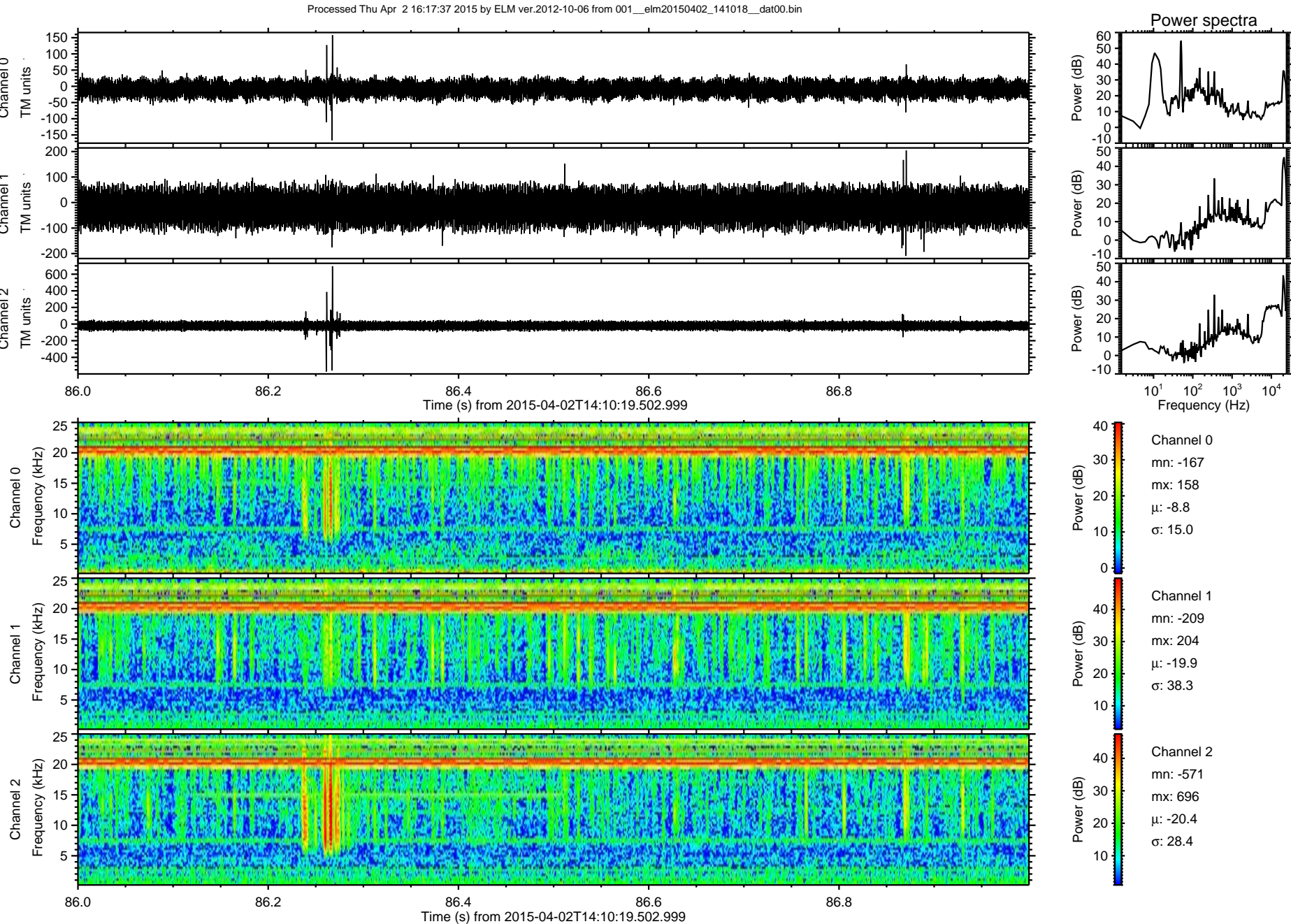




ELMAVAN 3D WAVEFORMS (Measured data sampled at 50 kHz) 49788 packets of 144 samples from 2015-04-02T14:10:19.502.999. Part 122/144









Processed Thu Apr 2 16:17:38 2015 by ELM ver.2012-10-06 from 001\_\_elm20150402\_141018\_\_dat00.bin

