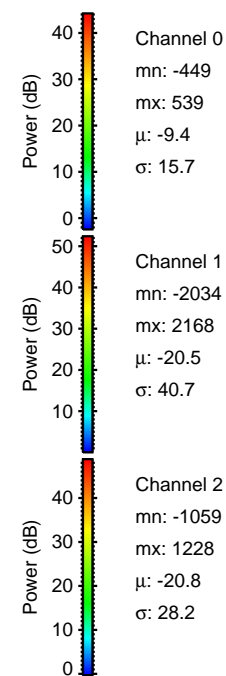
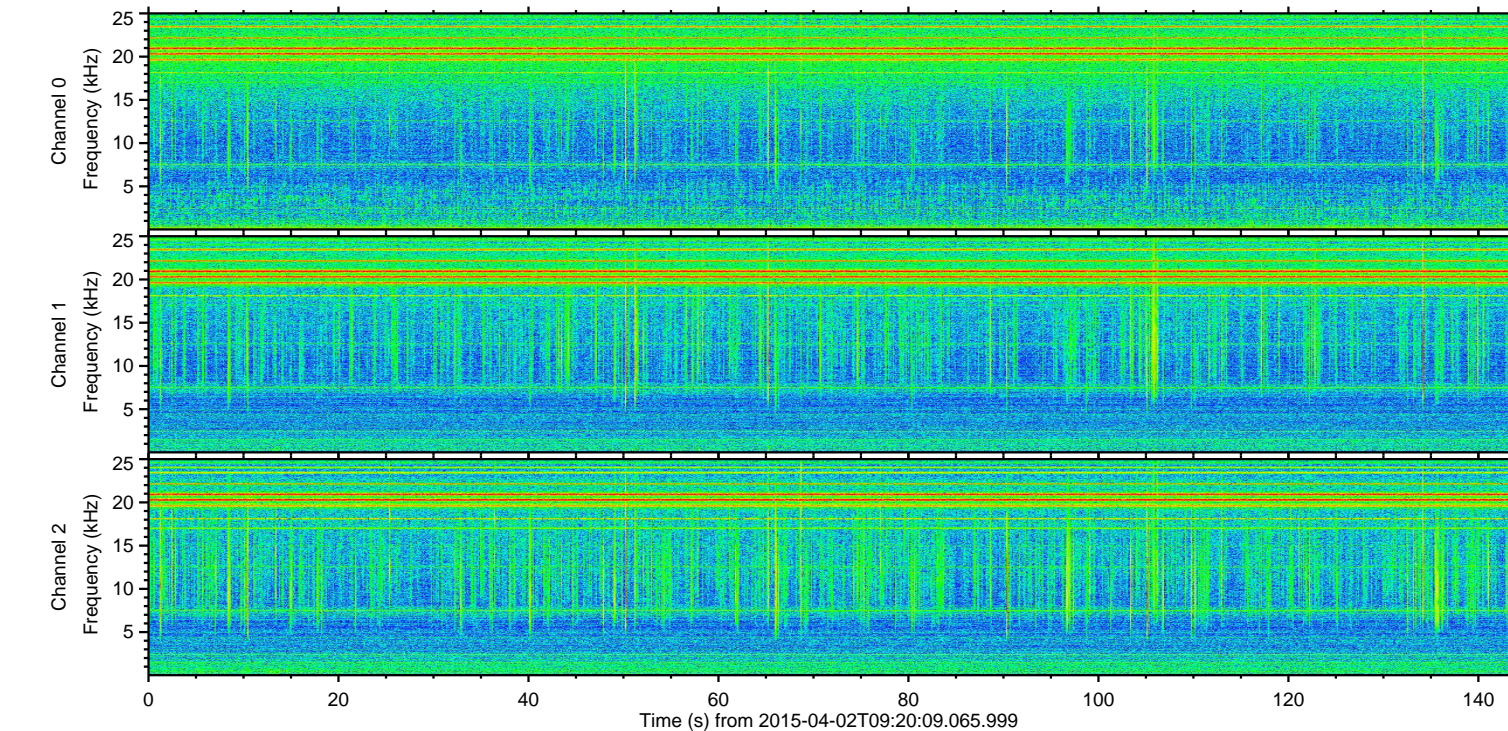
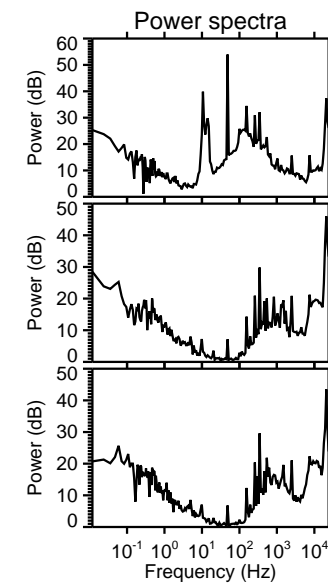
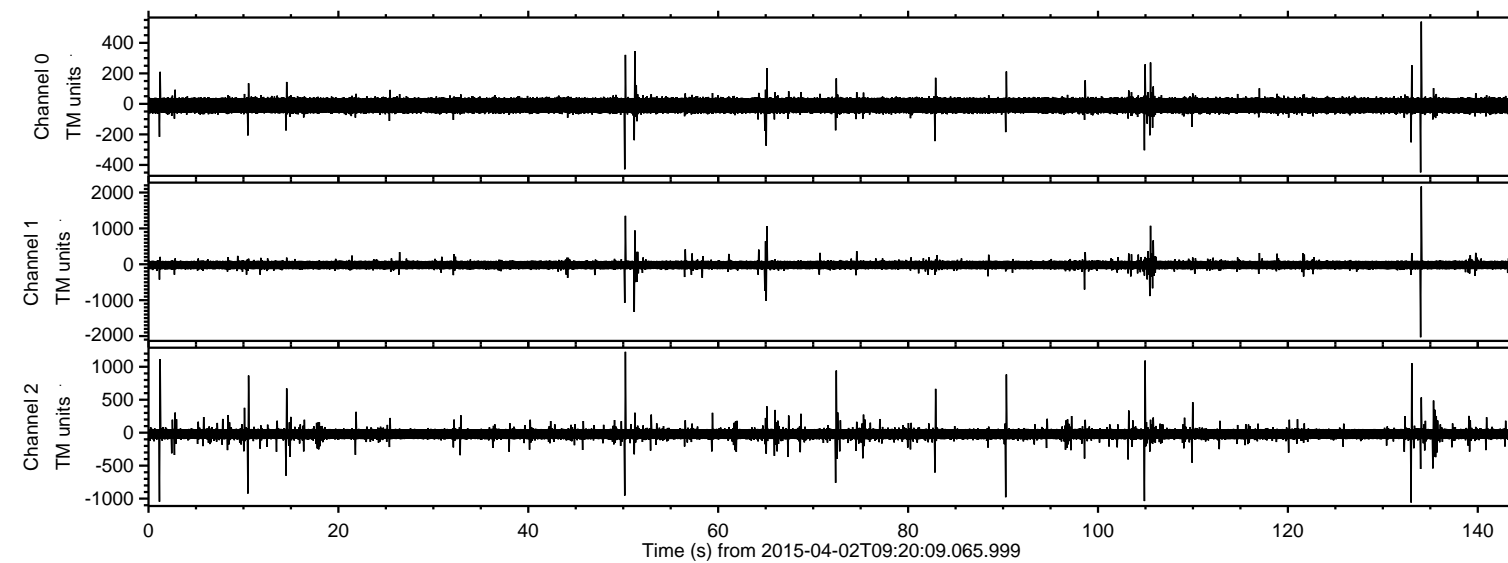


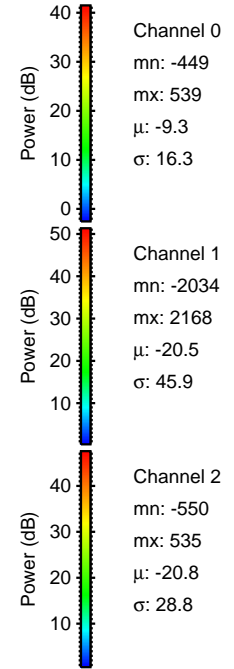
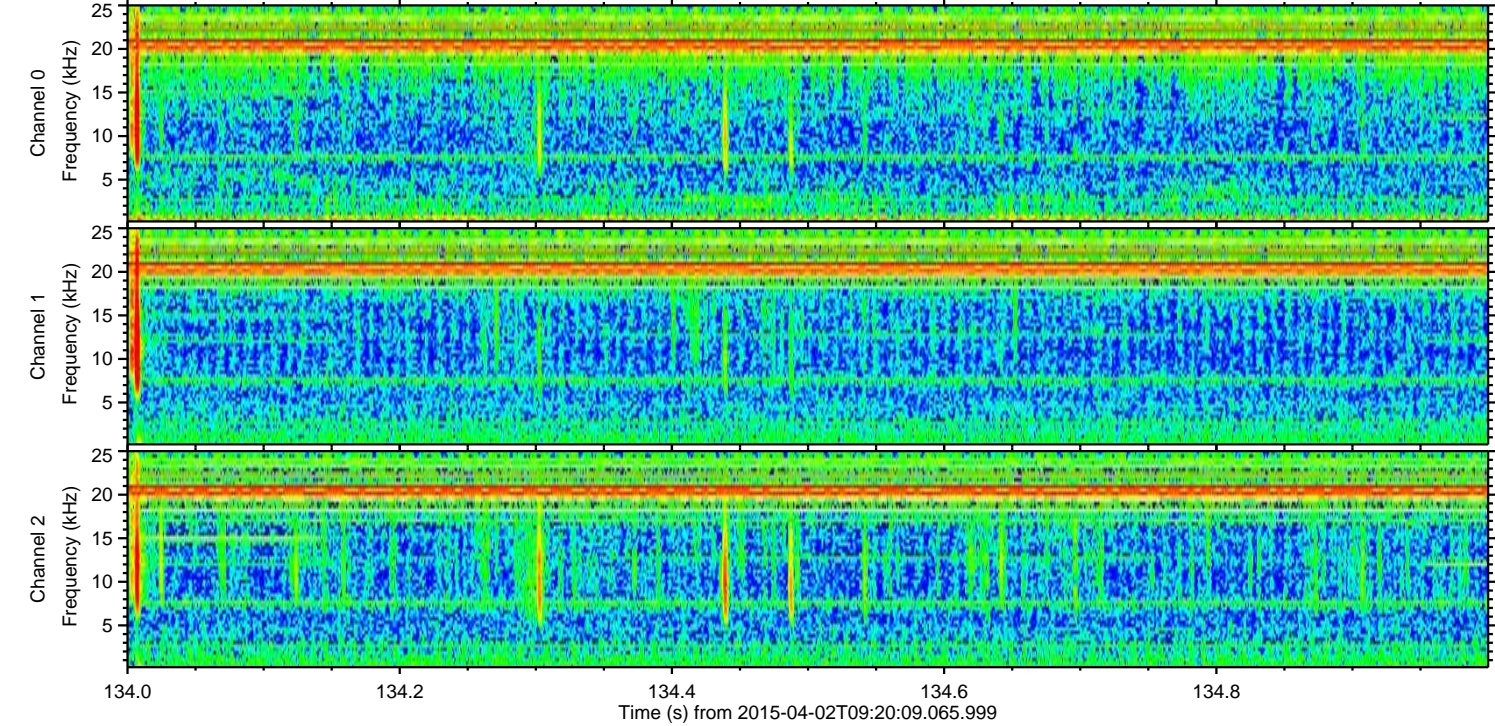
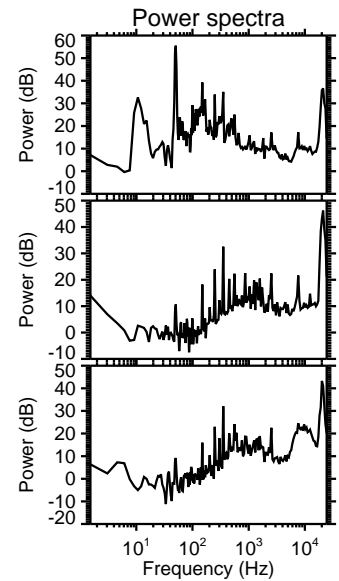
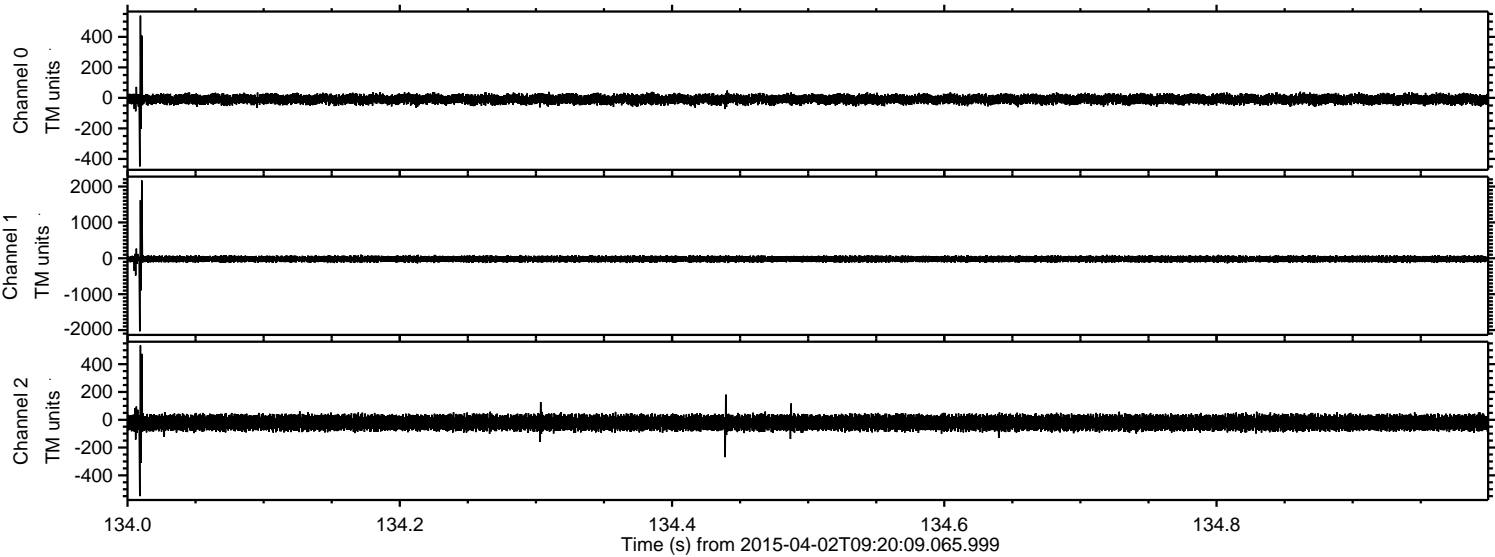
ELMAVAN 3D WAVEFORMS (Measured data sampled at 50 kHz) 49758 packets of 144 samples from 2015-04-02T09:20:09.065.999.

Processed Thu Apr 2 11:27:37 2015 by ELM ver.2012-10-06 from 001__elm20150402_092008__dat00.bin

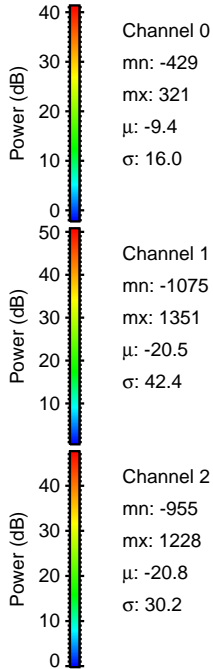
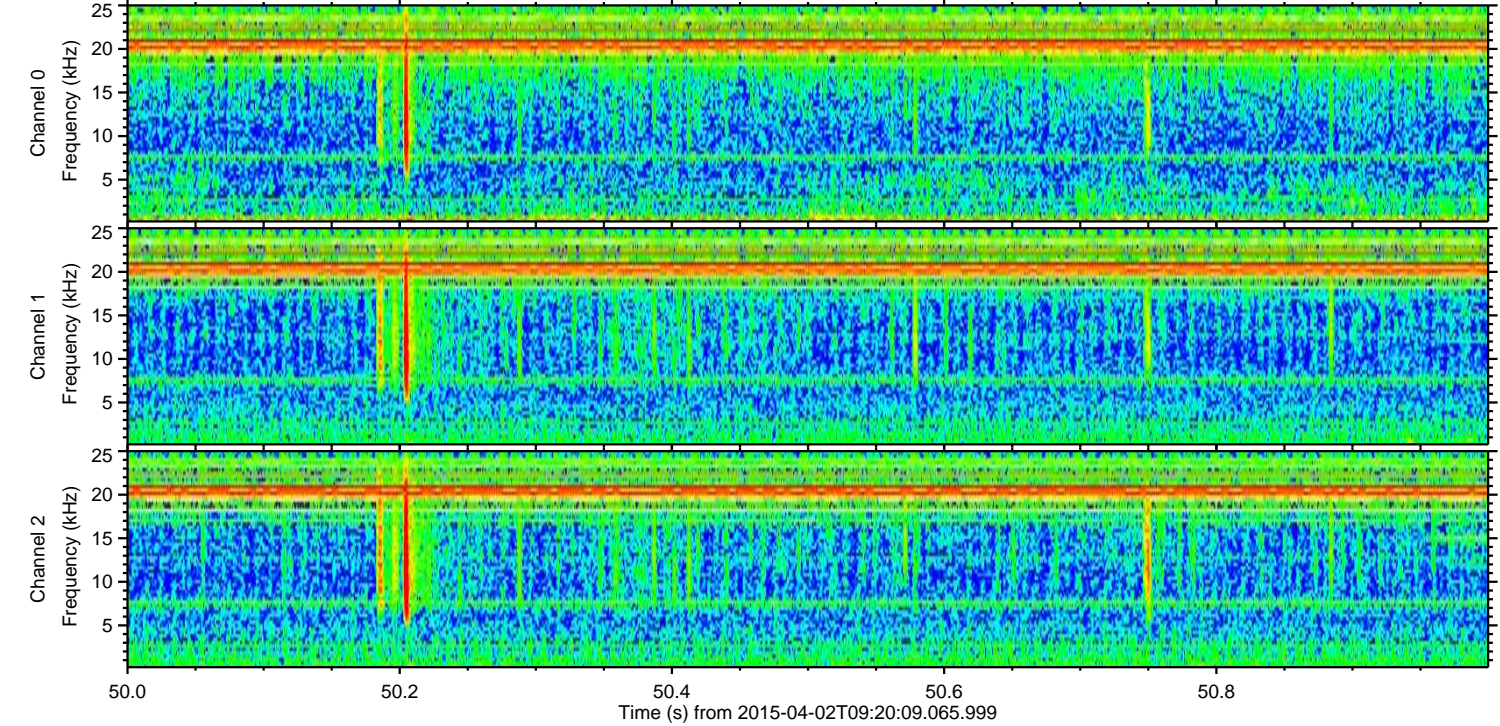
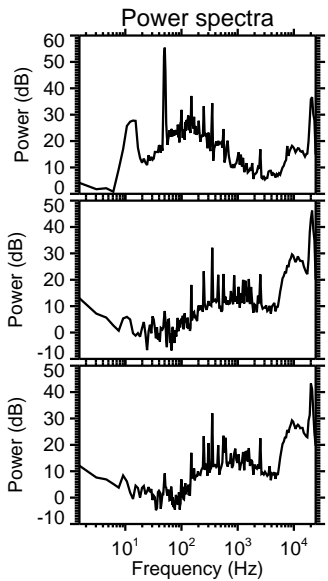
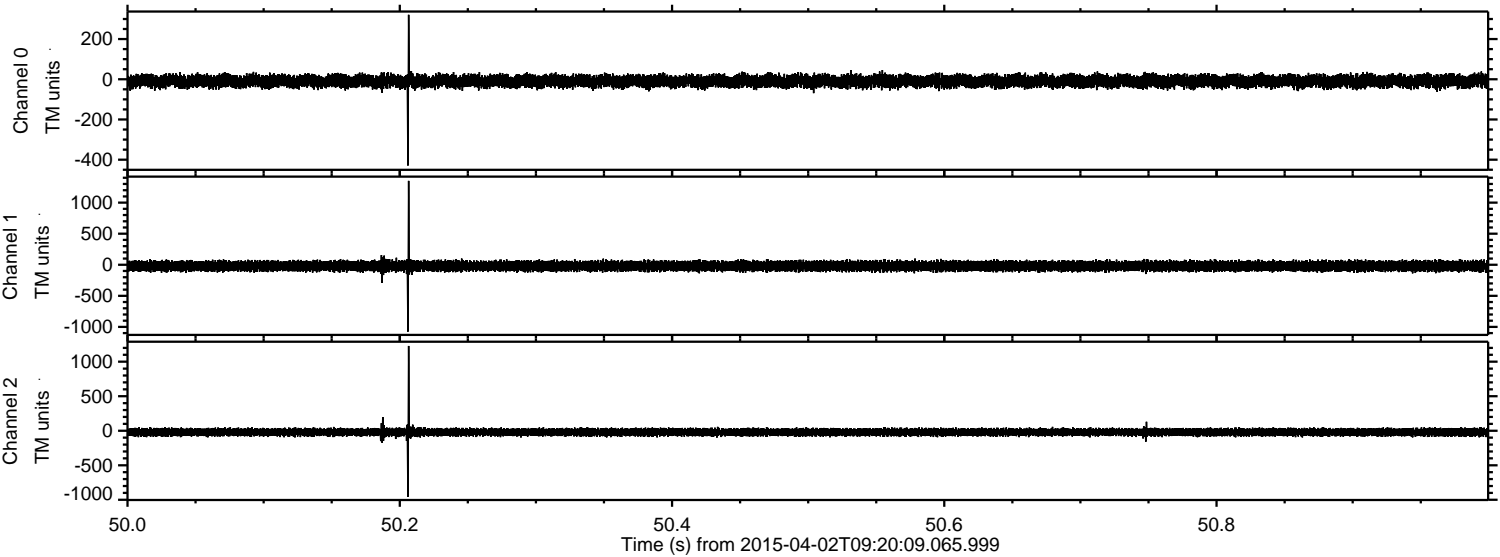


ELMAVAN 3D WAVEFORMS (Measured data sampled at 50 kHz) 49758 packets of 144 samples from 2015-04-02T09:20:09.065.999. Part 135/144

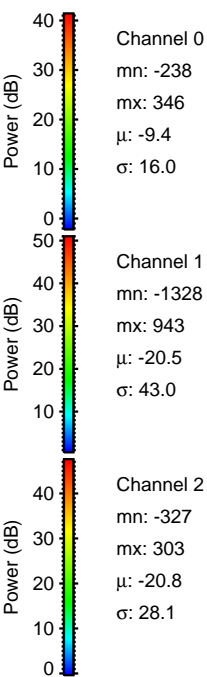
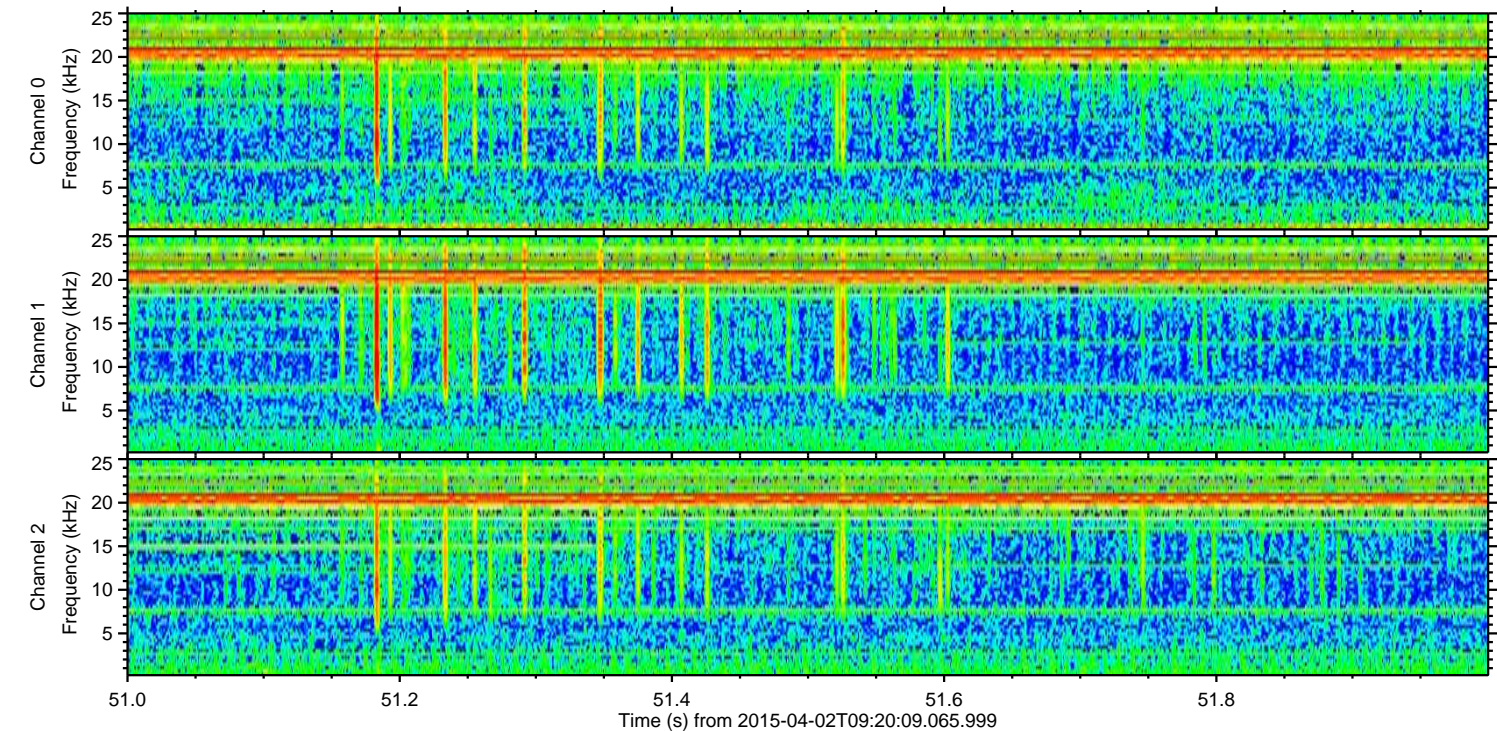
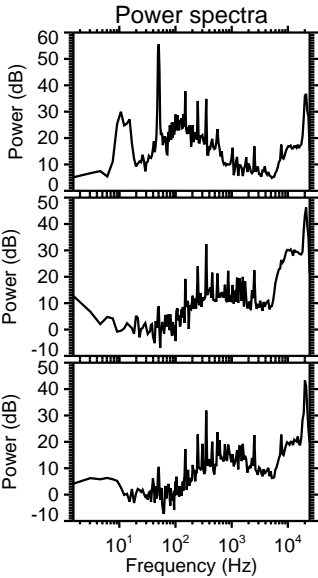
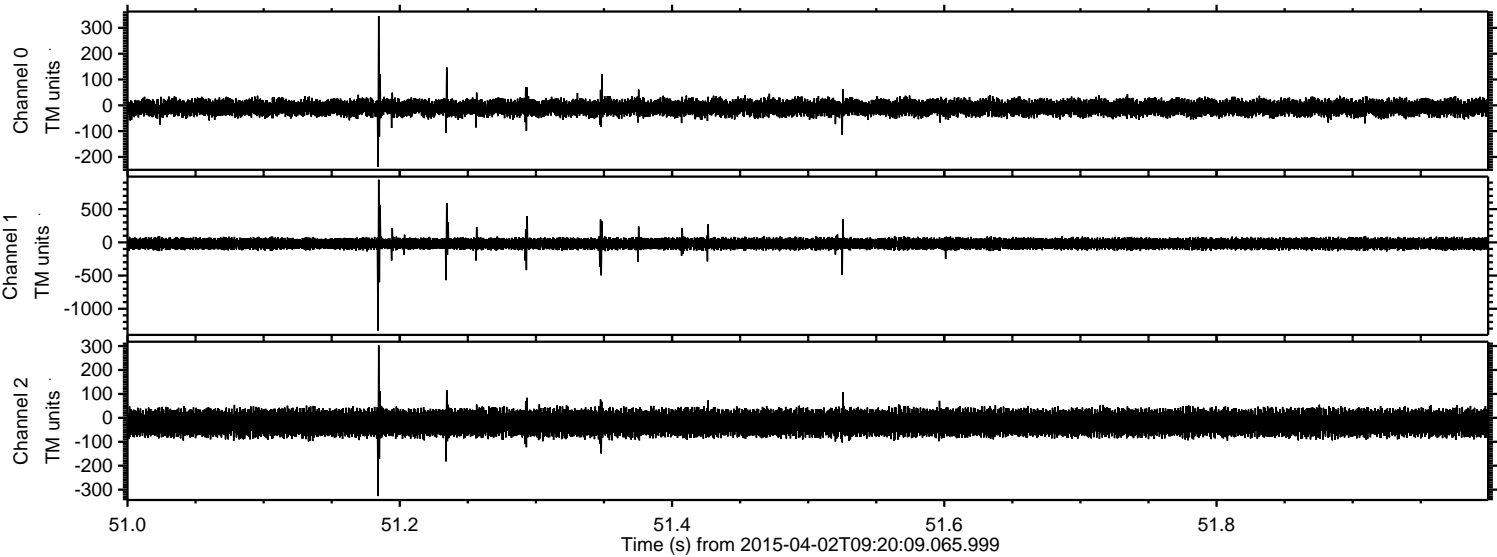
Processed Thu Apr 2 11:27:49 2015 by ELM ver.2012-10-06 from 001__elm20150402_092008__dat00.bin



Processed Thu Apr 2 11:27:50 2015 by ELM ver.2012-10-06 from 001__elm20150402_092008__dat00.bin

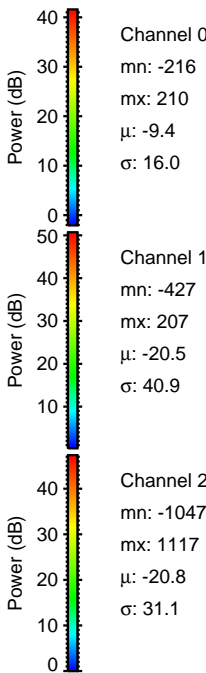
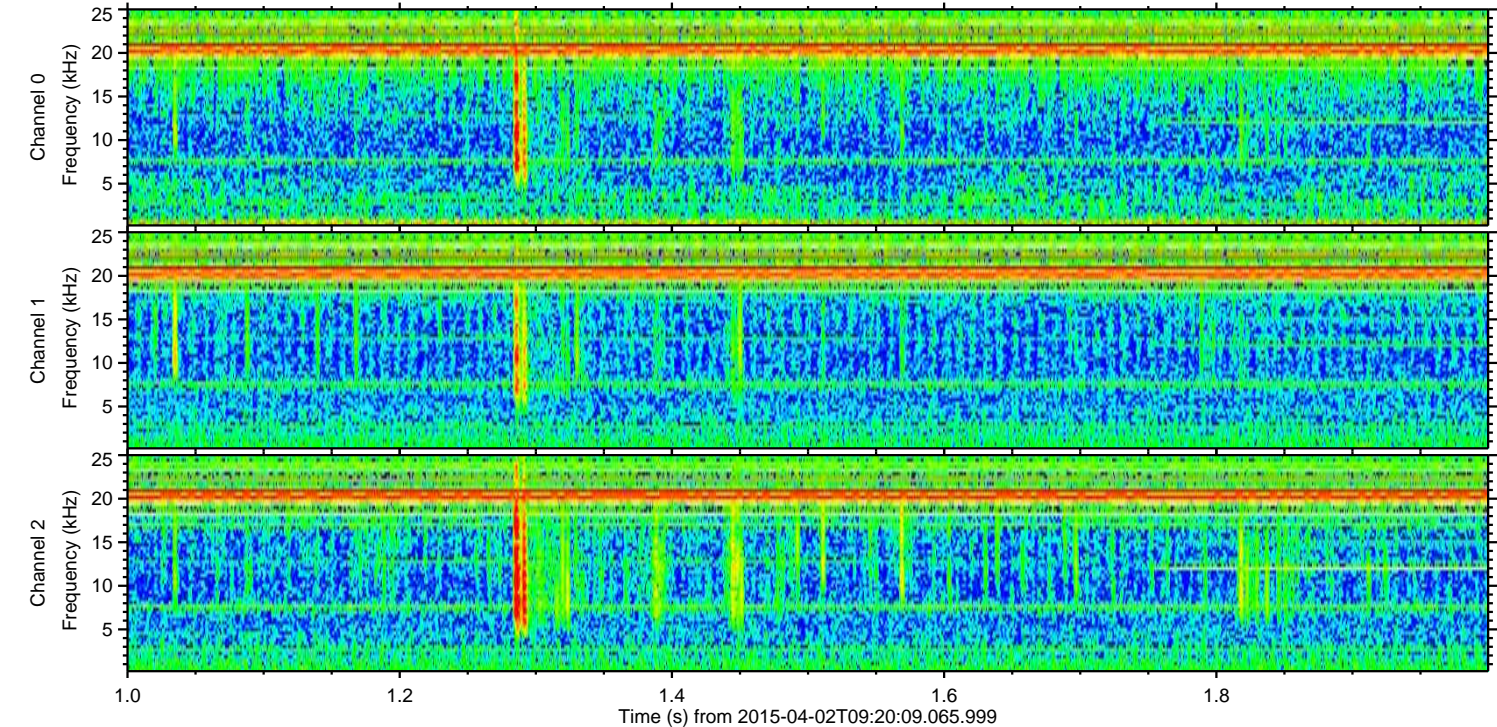
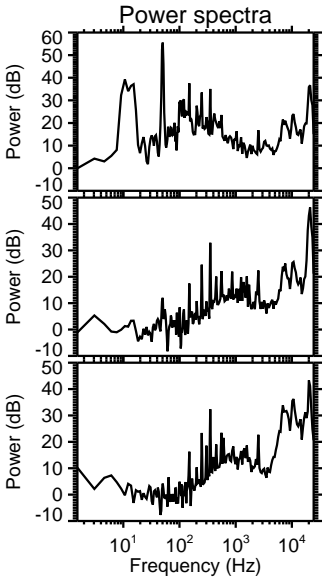
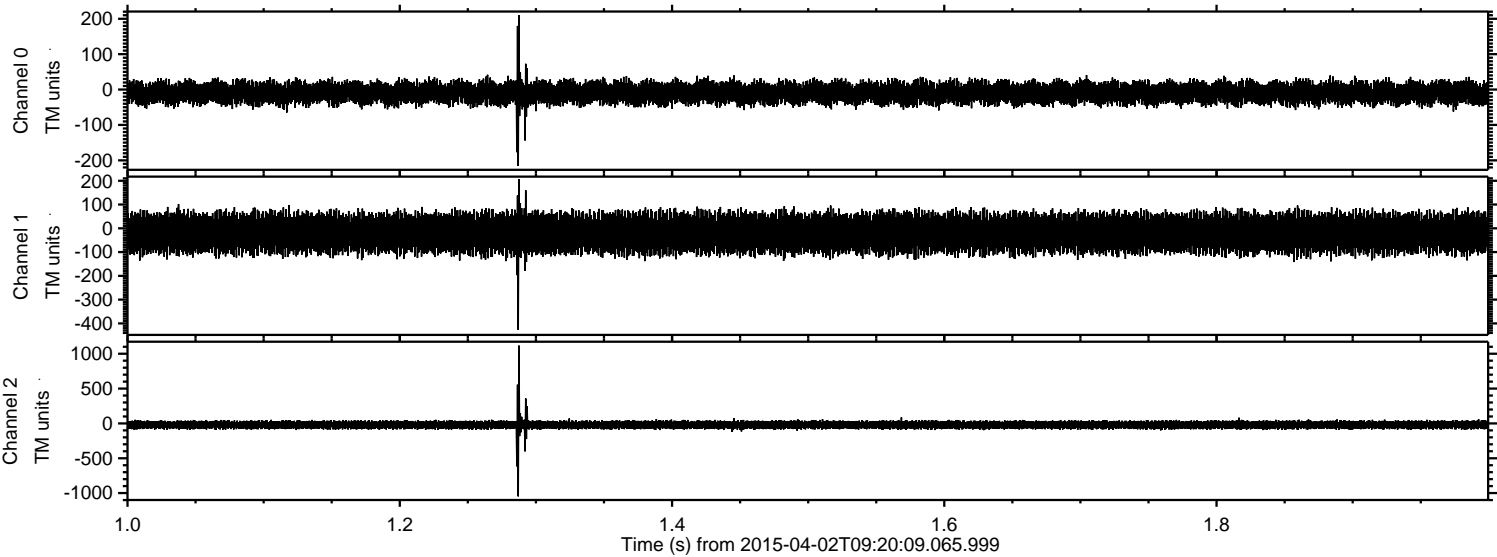


Processed Thu Apr 2 11:27:51 2015 by ELM ver.2012-10-06 from 001__elm20150402_092008__dat00.bin



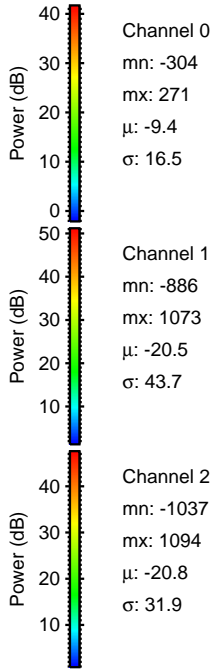
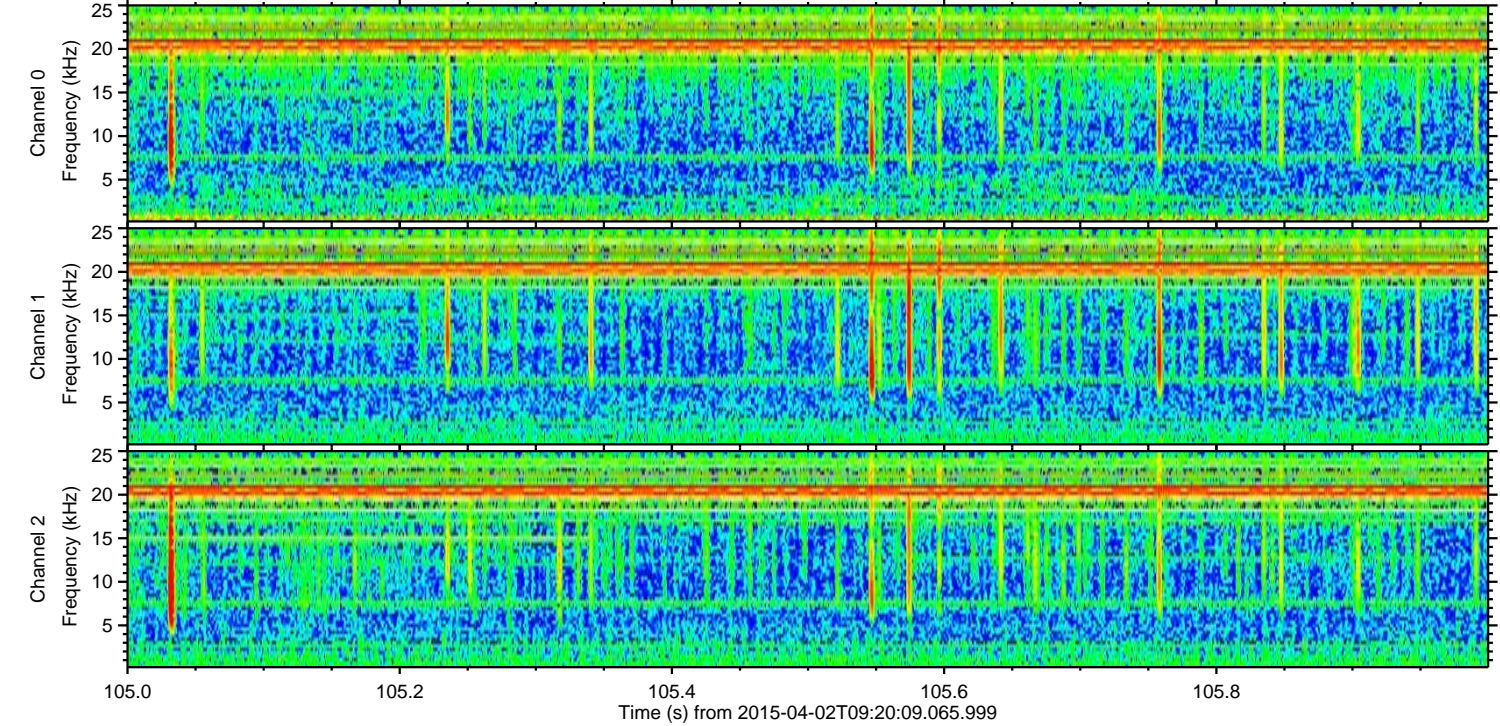
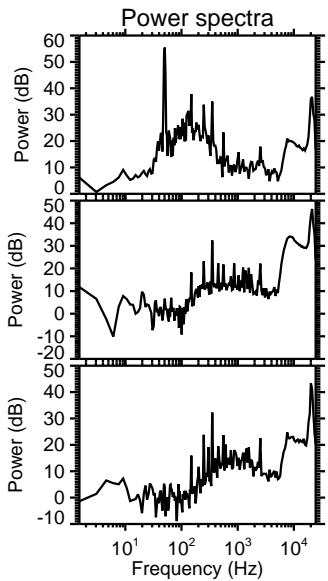
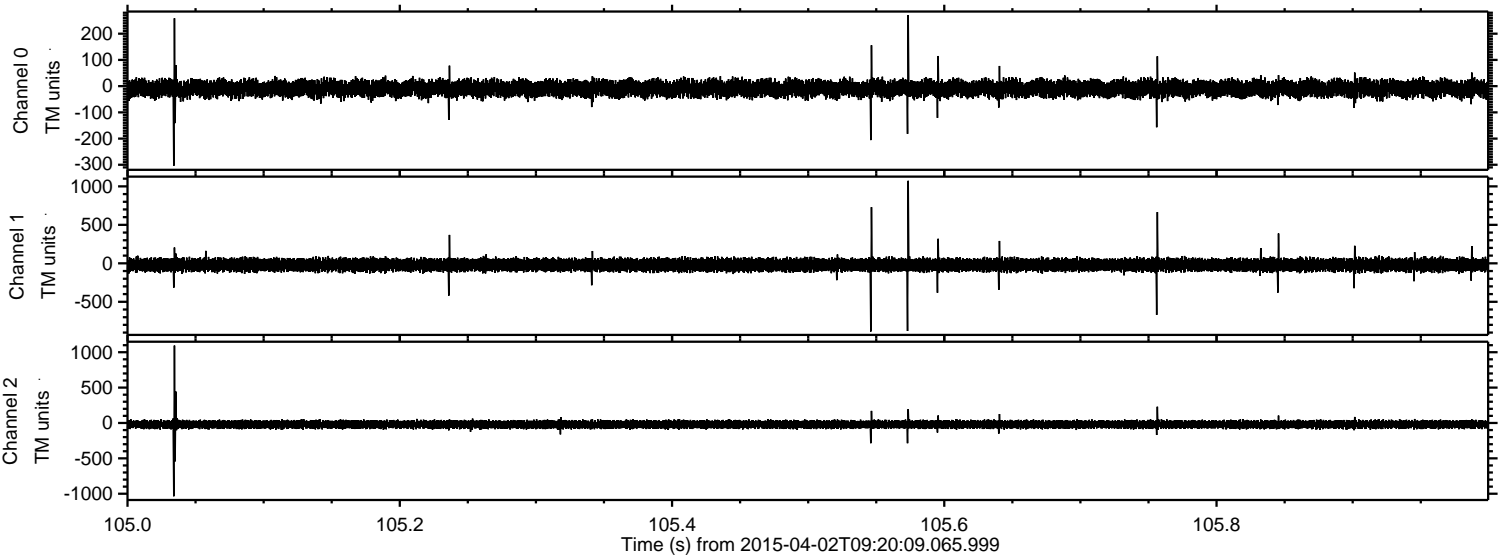
ELMAVAN 3D WAVEFORMS (Measured data sampled at 50 kHz) 49758 packets of 144 samples from 2015-04-02T09:20:09.065.999. Part 2/144

Processed Thu Apr 2 11:27:52 2015 by ELM ver.2012-10-06 from 001__elm20150402_092008__dat00.bin



ELMAVAN 3D WAVEFORMS (Measured data sampled at 50 kHz) 49758 packets of 144 samples from 2015-04-02T09:20:09.065.999. Part 106/144

Processed Thu Apr 2 11:27:53 2015 by ELM ver.2012-10-06 from 001__elm20150402_092008__dat00.bin

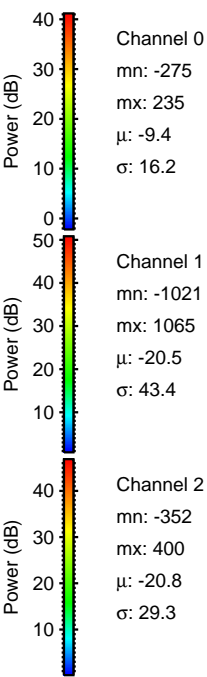
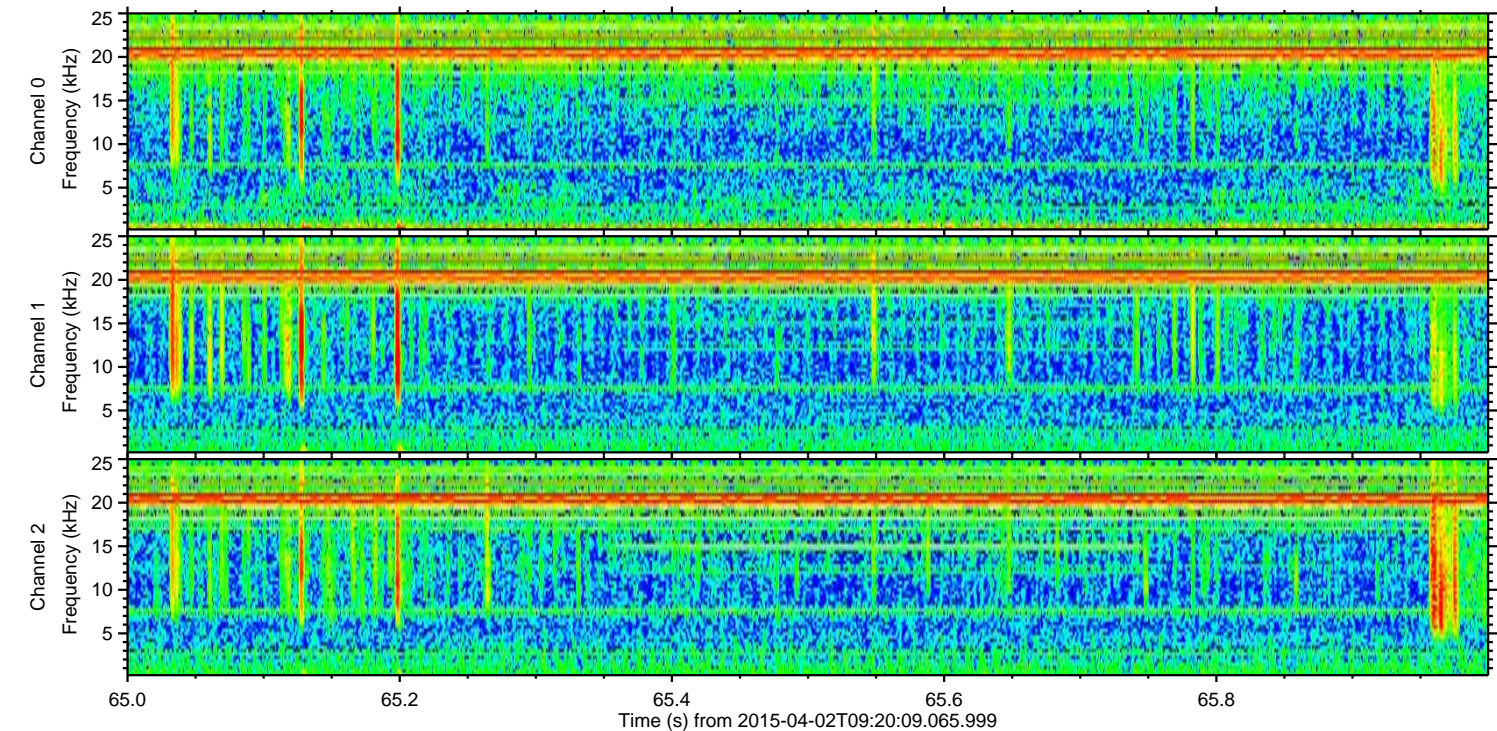
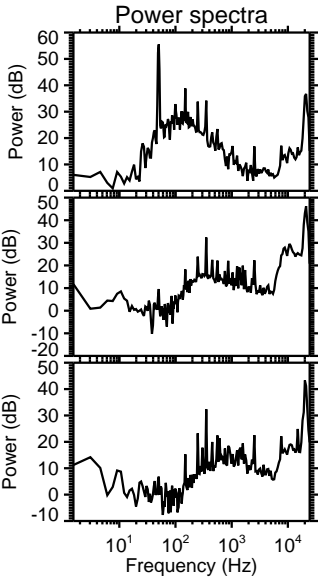
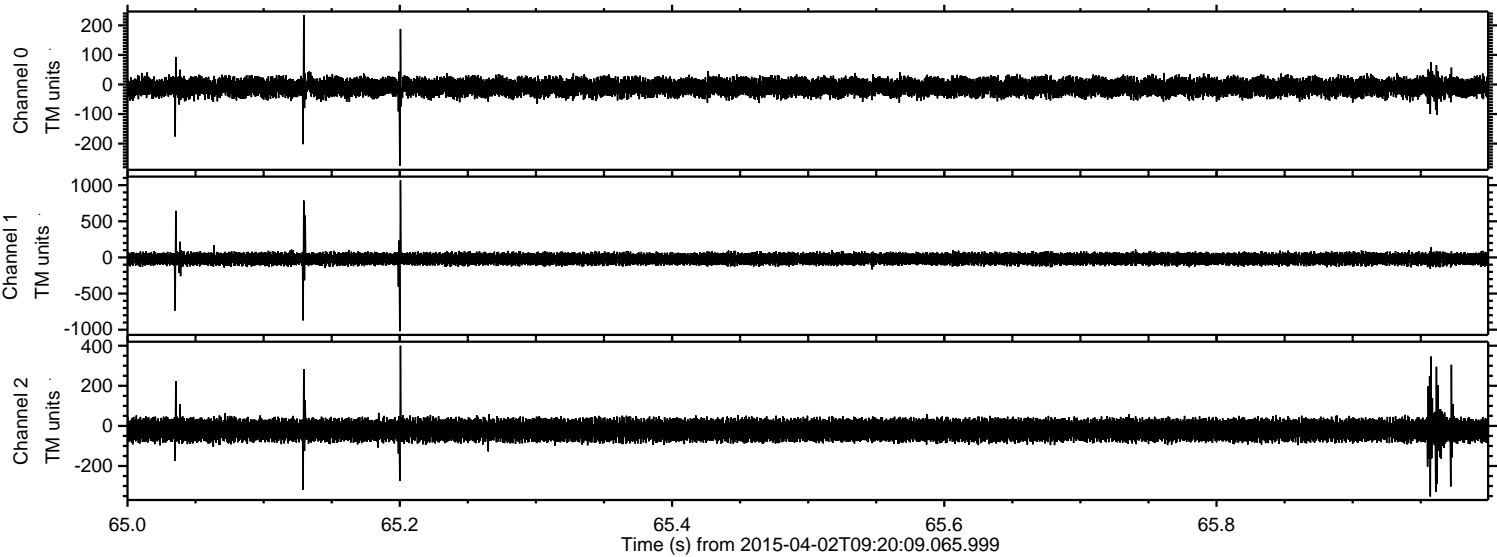


Channel 0
mn: -304
mx: 271
 μ : -9.4
 σ : 16.5

Channel 1
mn: -886
mx: 1073
 μ : -20.5
 σ : 43.7

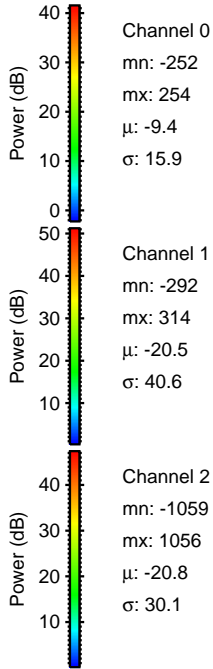
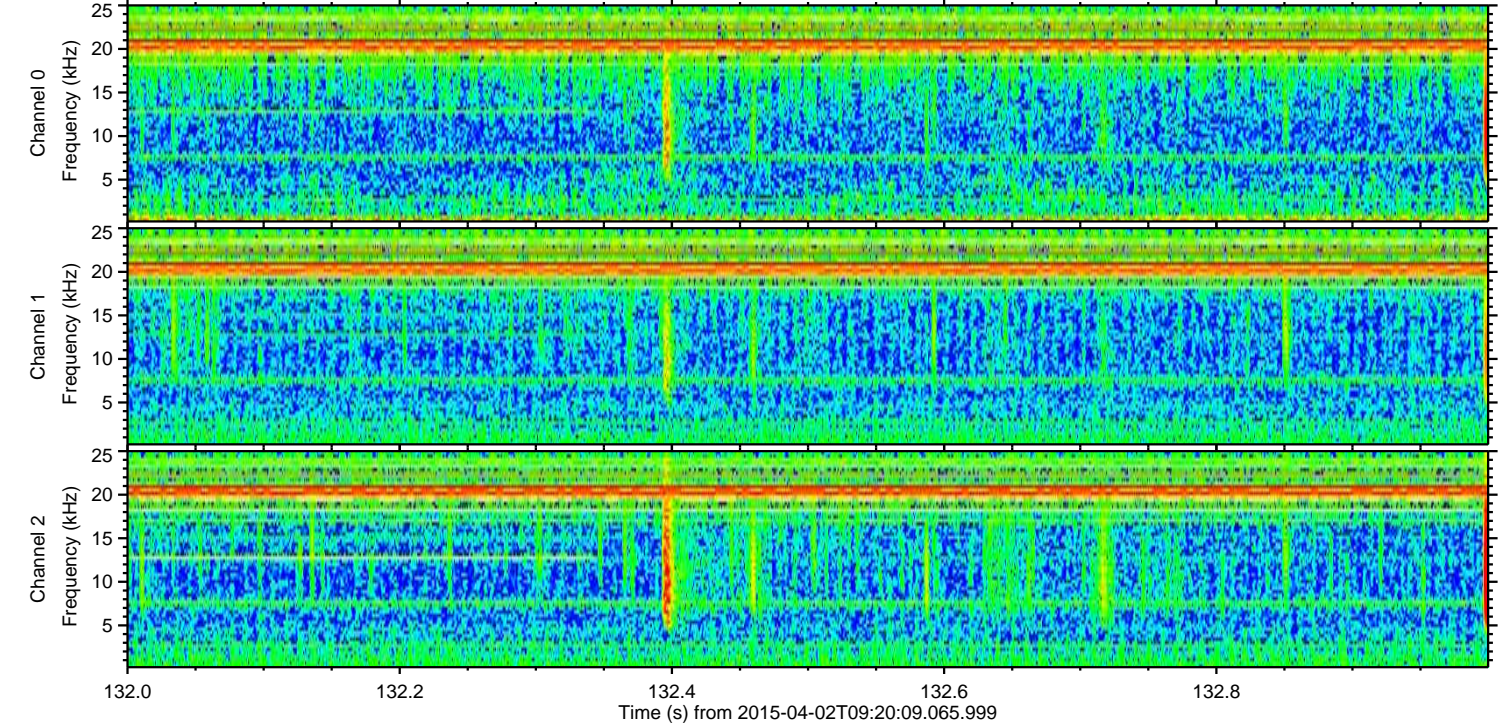
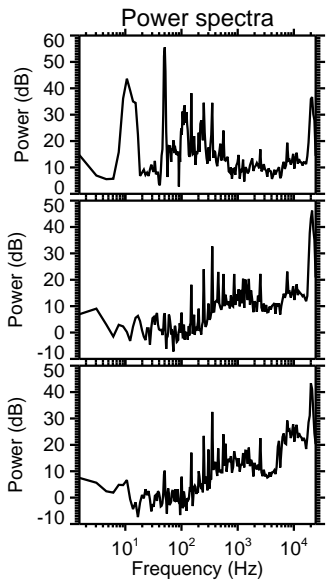
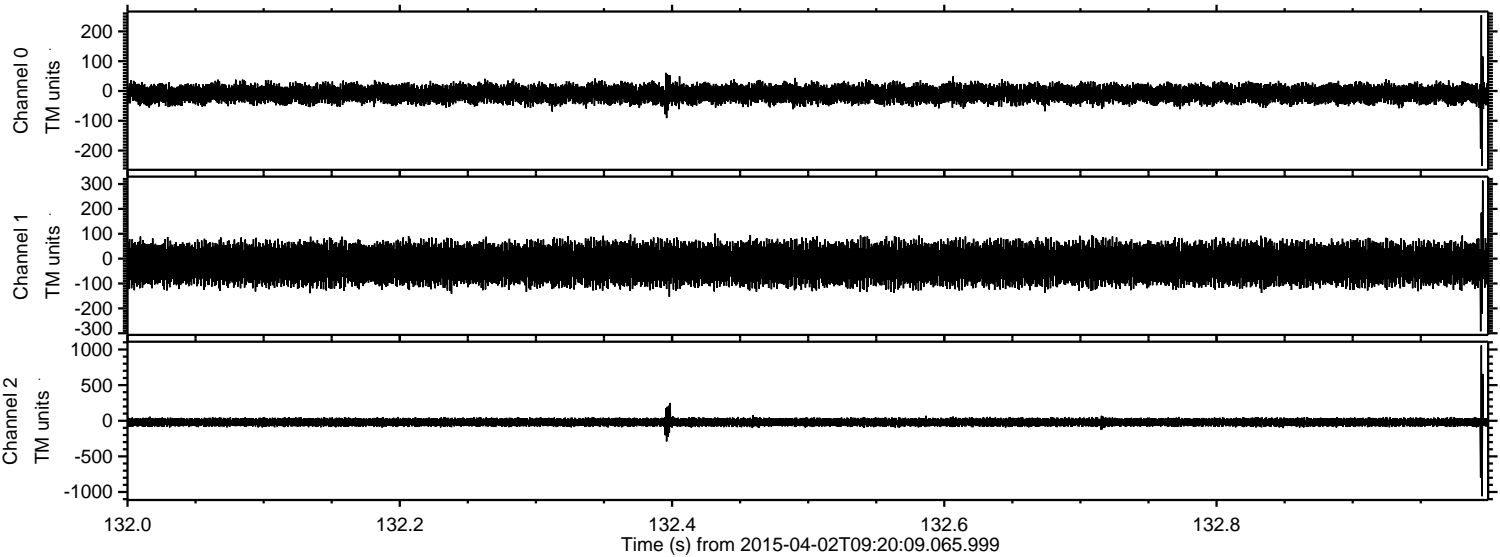
Channel 2
mn: -1037
mx: 1094
 μ : -20.8
 σ : 31.9

Processed Thu Apr 2 11:27:53 2015 by ELM ver.2012-10-06 from 001__elm20150402_092008__dat00.bin

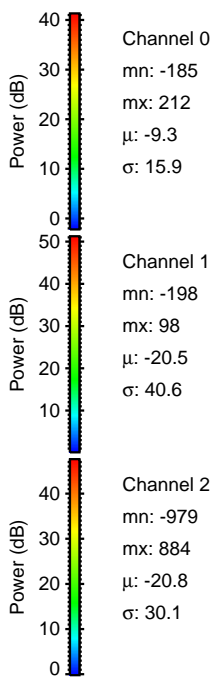
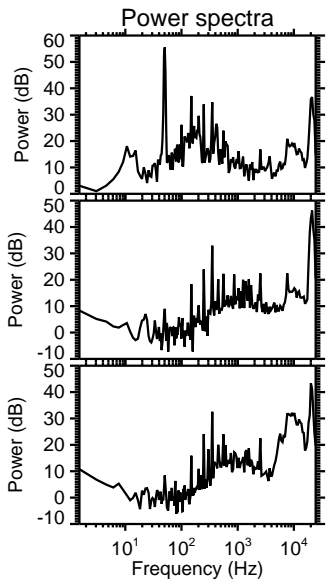
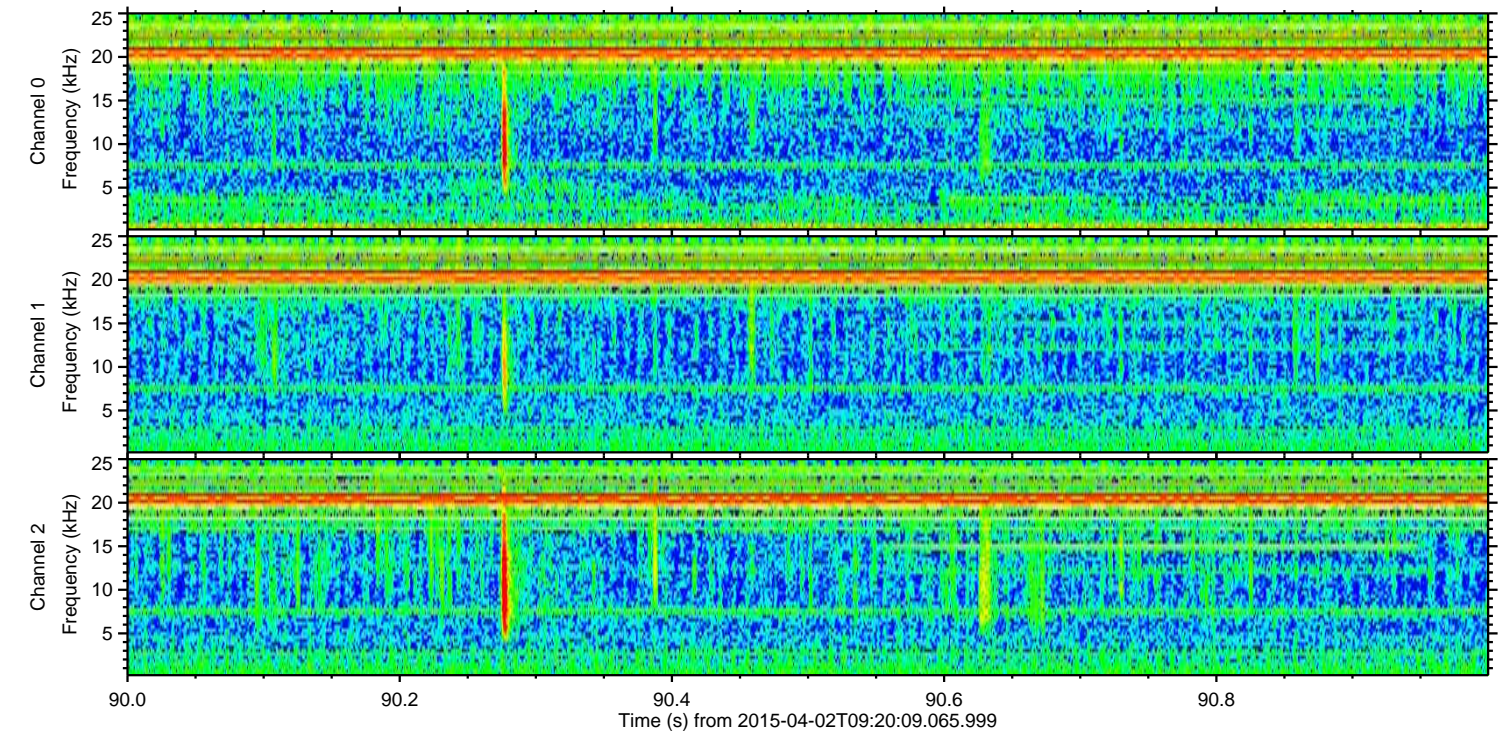
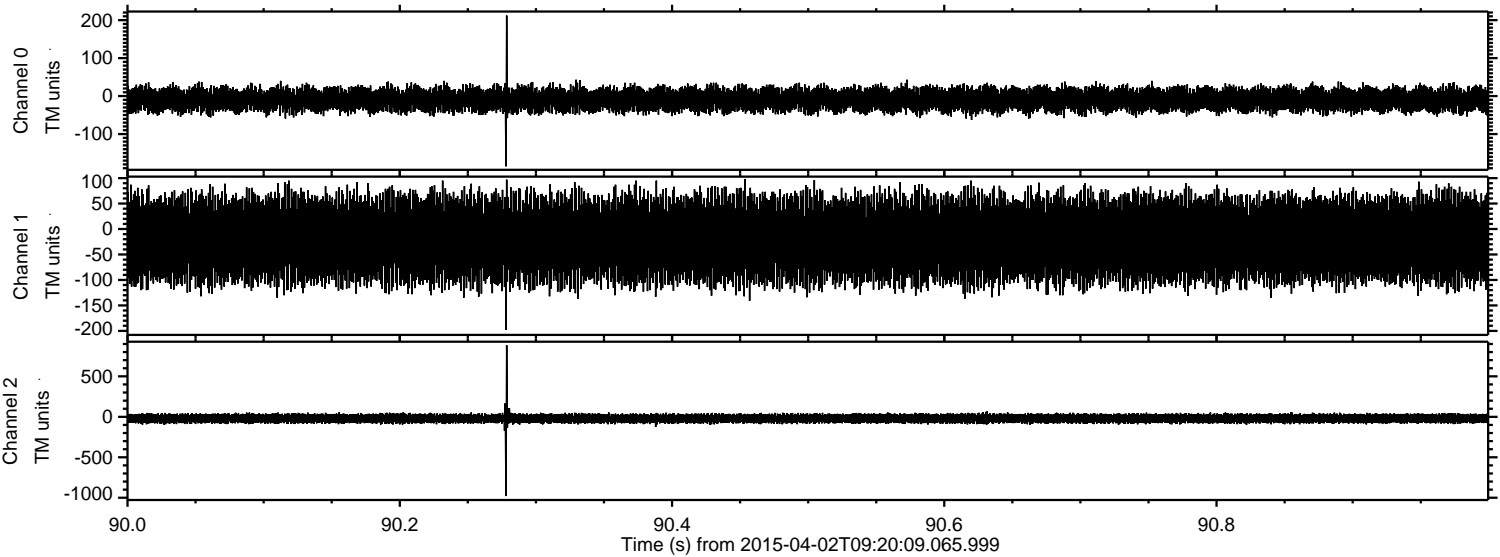


ELMAVAN 3D WAVEFORMS (Measured data sampled at 50 kHz) 49758 packets of 144 samples from 2015-04-02T09:20:09.065.999. Part 133/144

Processed Thu Apr 2 11:27:54 2015 by ELM ver.2012-10-06 from 001__elm20150402_092008__dat00.bin



Processed Thu Apr 2 11:27:55 2015 by ELM ver.2012-10-06 from 001__elm20150402_092008__dat00.bin



Channel 0
mn: -185
mx: 212
 μ : -9.3
 σ : 15.9

Channel 1
mn: -198
mx: 98
 μ : -20.5
 σ : 40.6

Channel 2
mn: -979
mx: 884
 μ : -20.8
 σ : 30.1

Processed Thu Apr 2 11:27:56 2015 by ELM ver.2012-10-06 from 001__elm20150402_092008__dat00.bin

