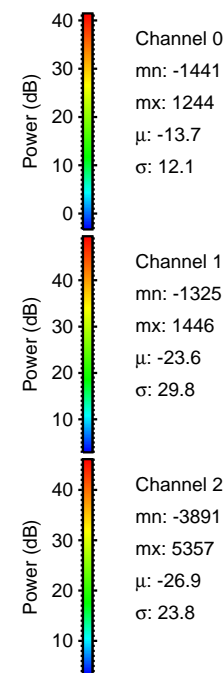
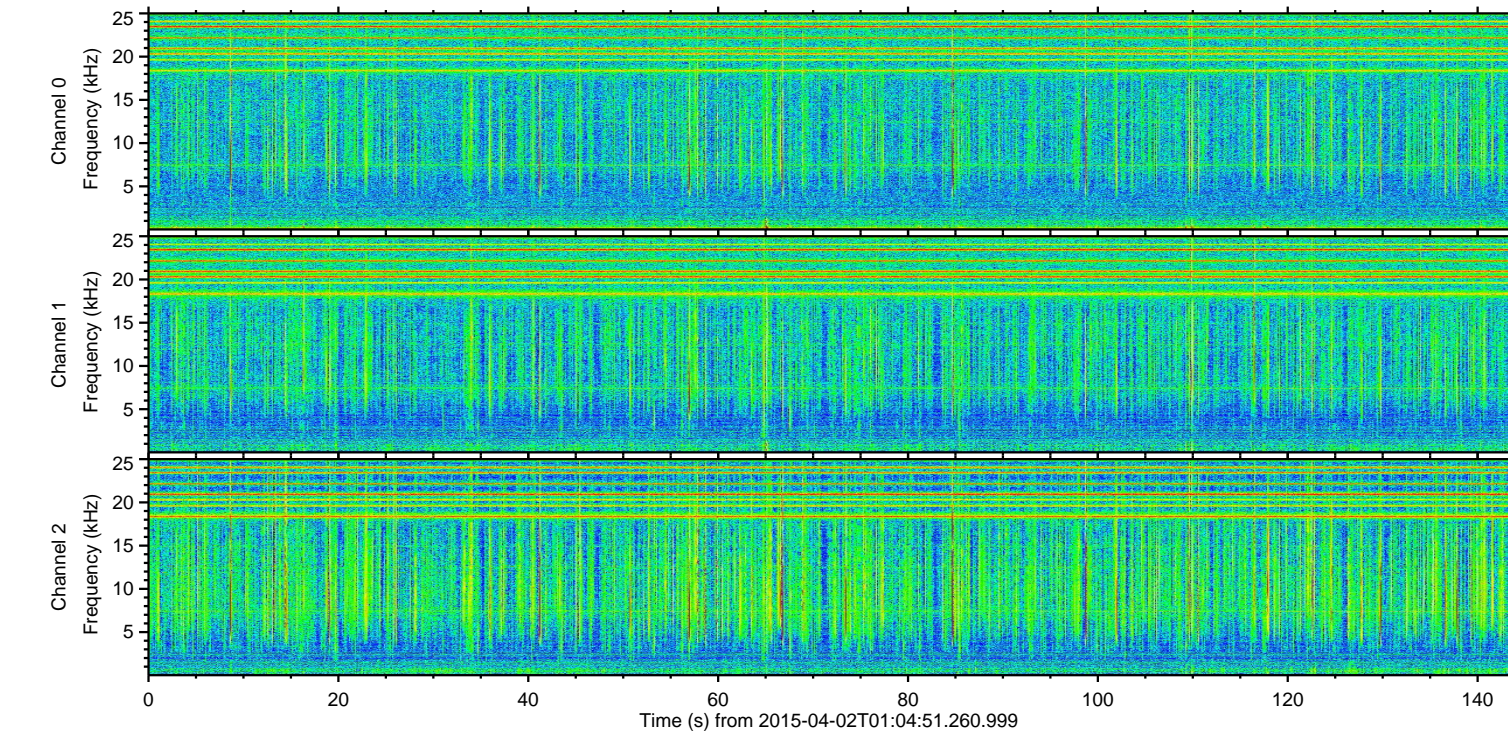
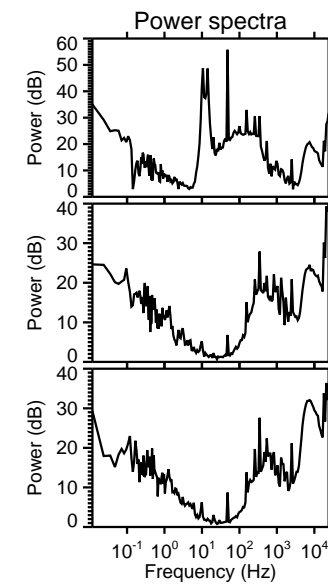
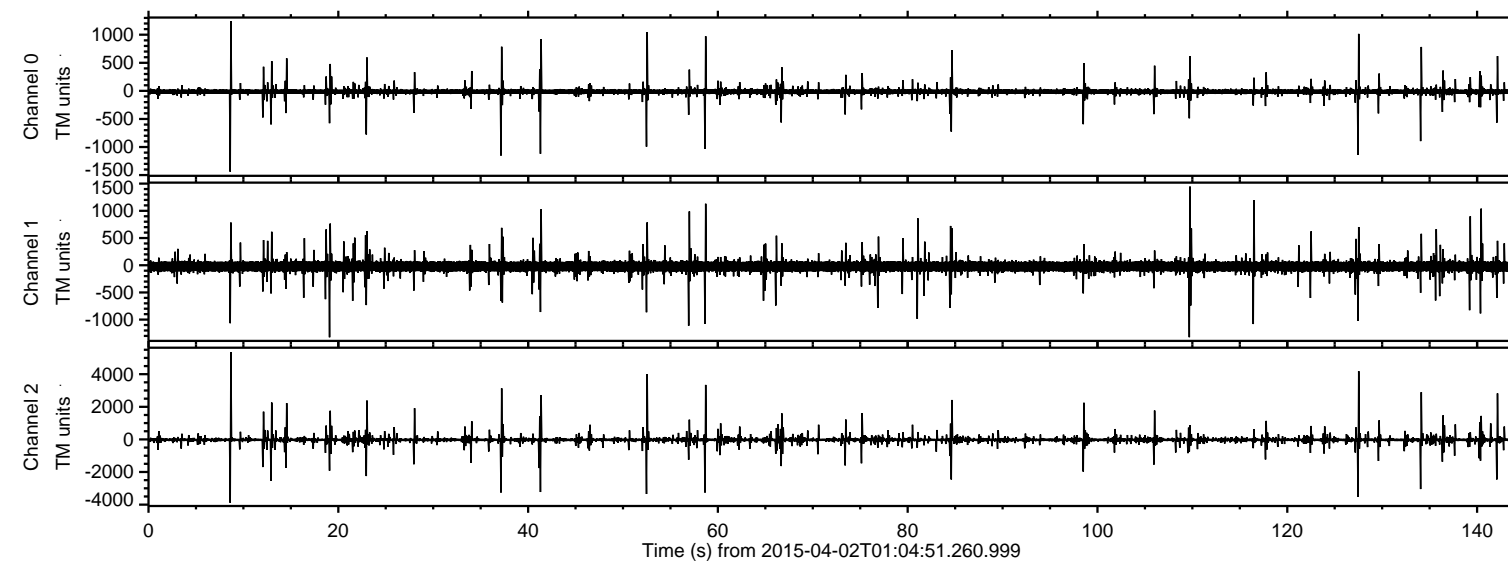
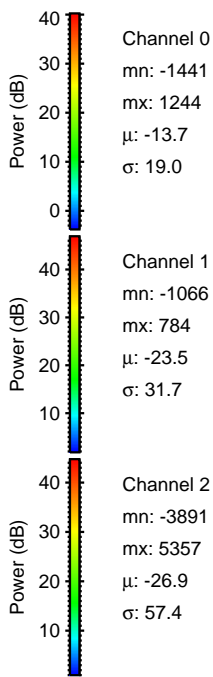
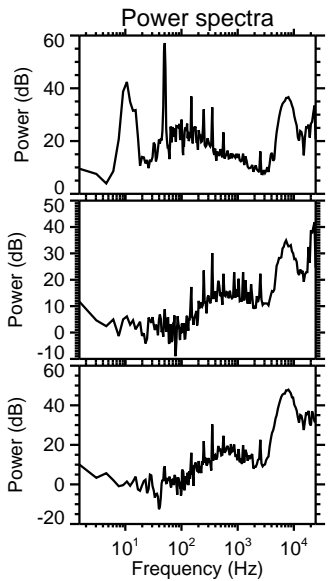
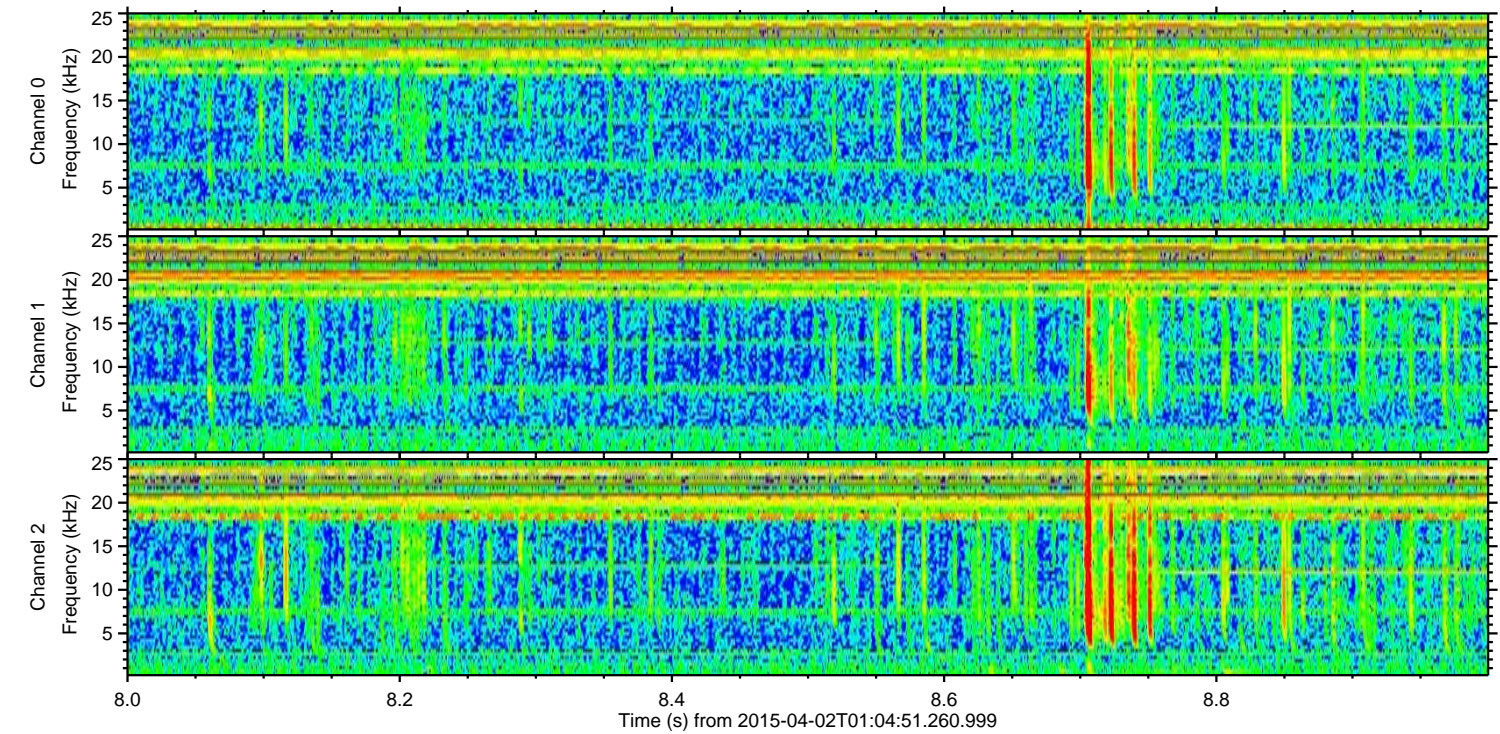
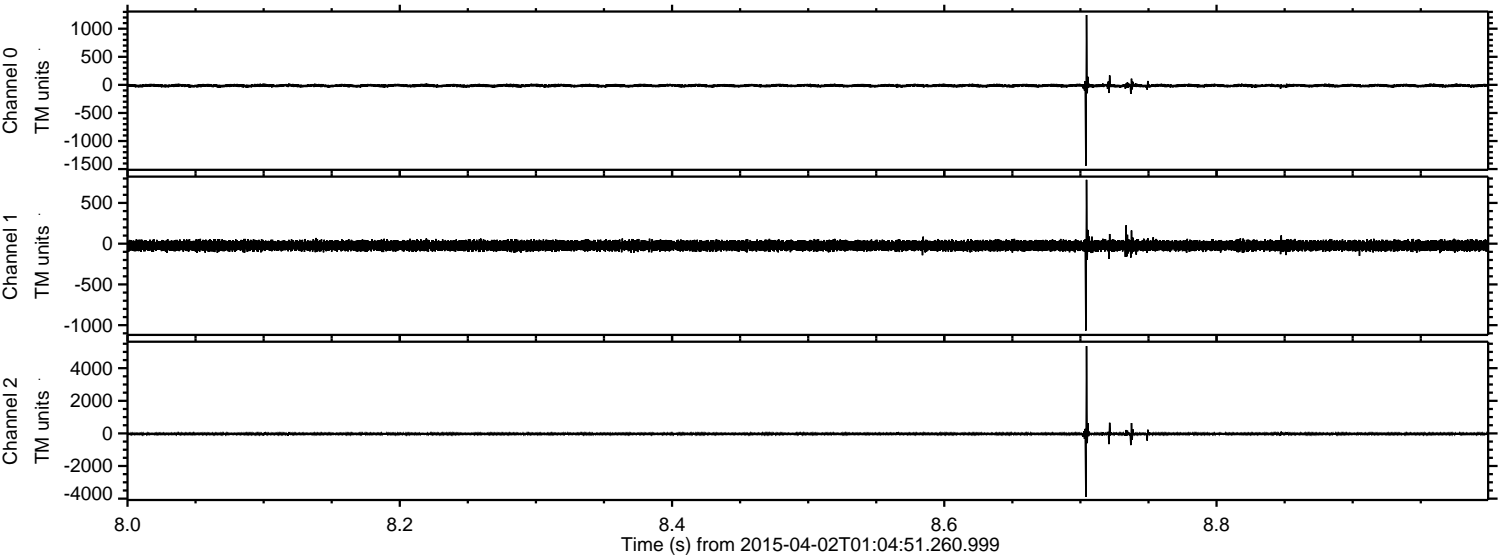


ELMAVAN 3D WAVEFORMS (Measured data sampled at 50 kHz) 49785 packets of 144 samples from 2015-04-02T01:04:51.260.999.

Processed Thu Apr 2 03:11:55 2015 by ELM ver.2012-10-06 from 001__elm20150402_010450__dat00.bin

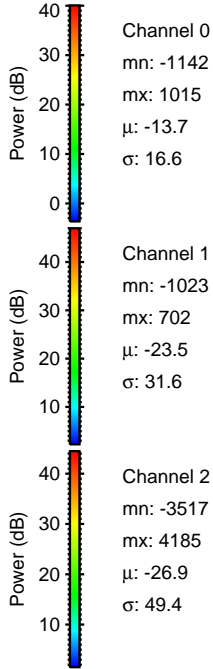
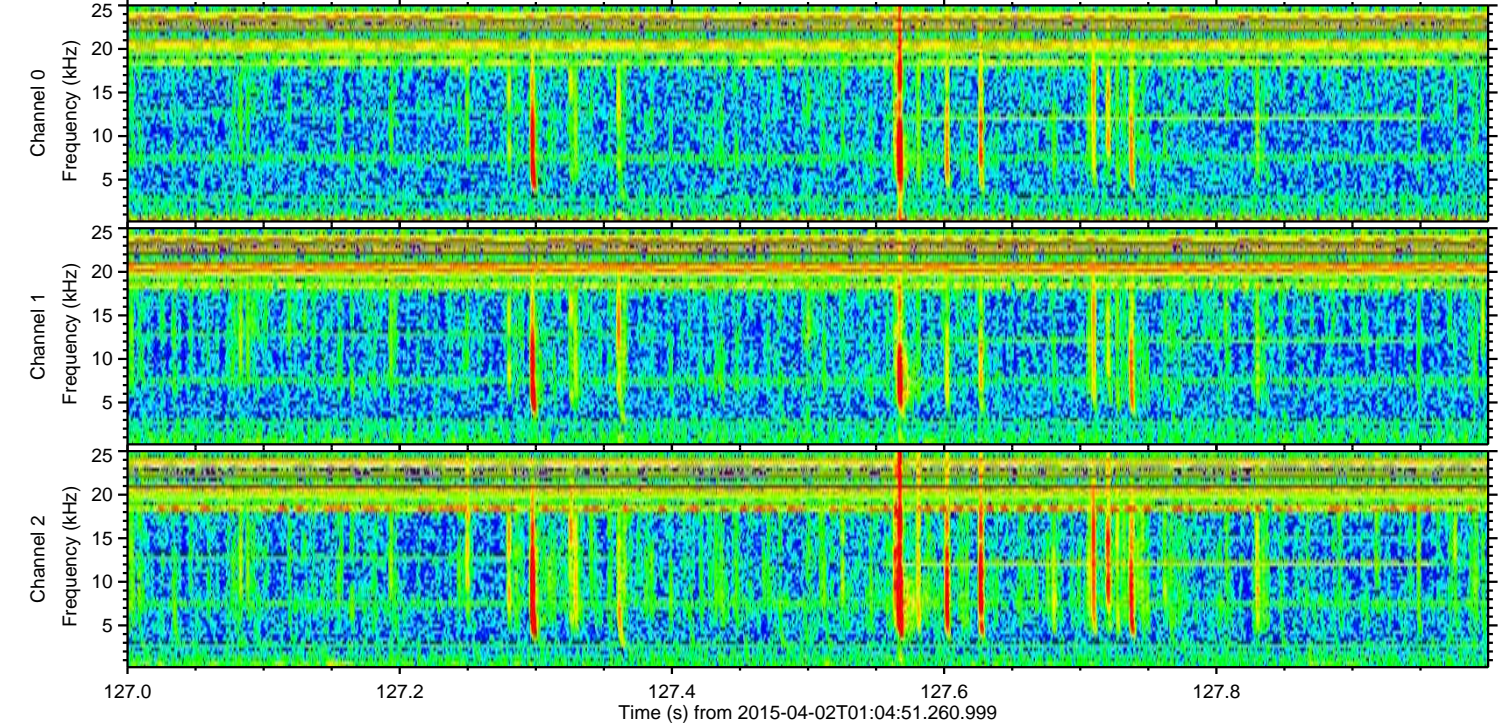
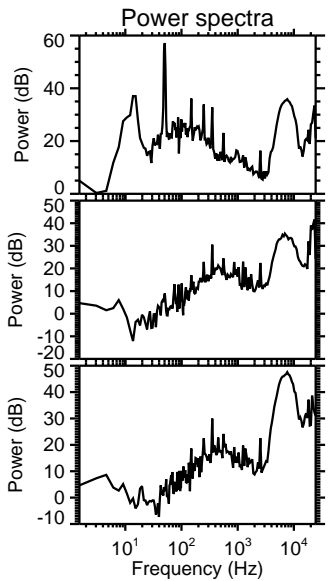
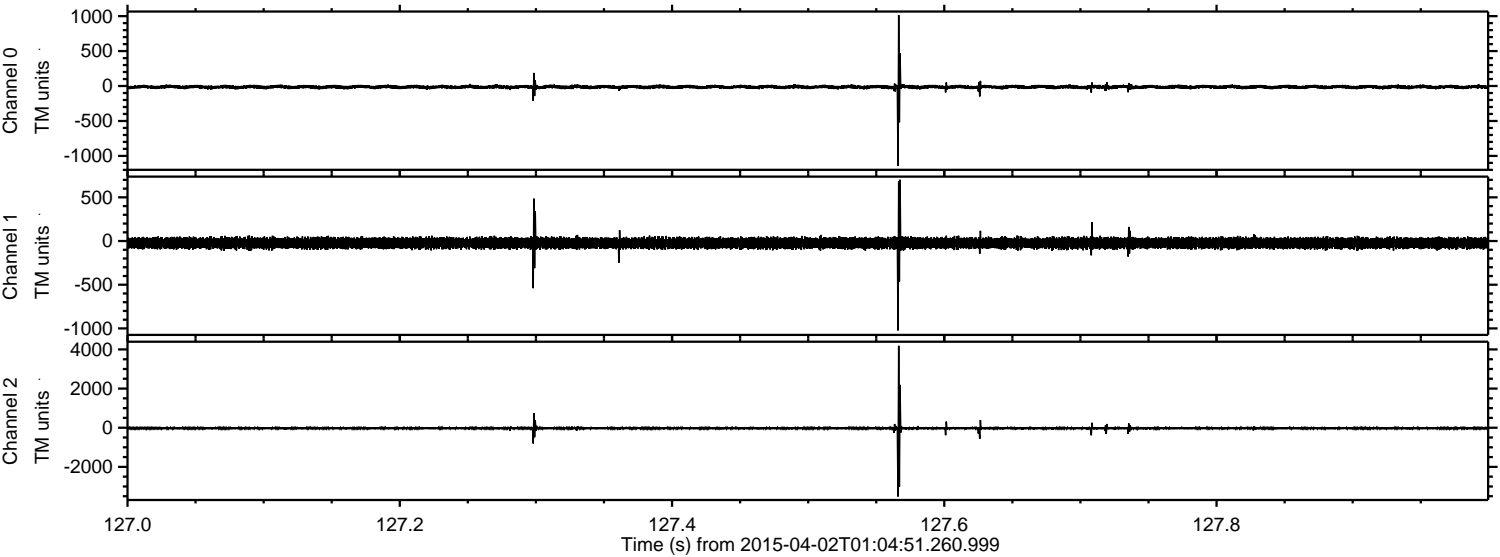


Processed Thu Apr 2 03:12:06 2015 by ELM ver.2012-10-06 from 001__elm20150402_010450__dat00.bin

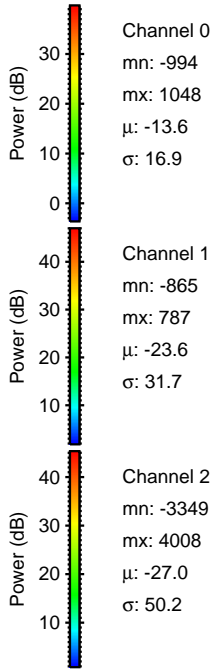
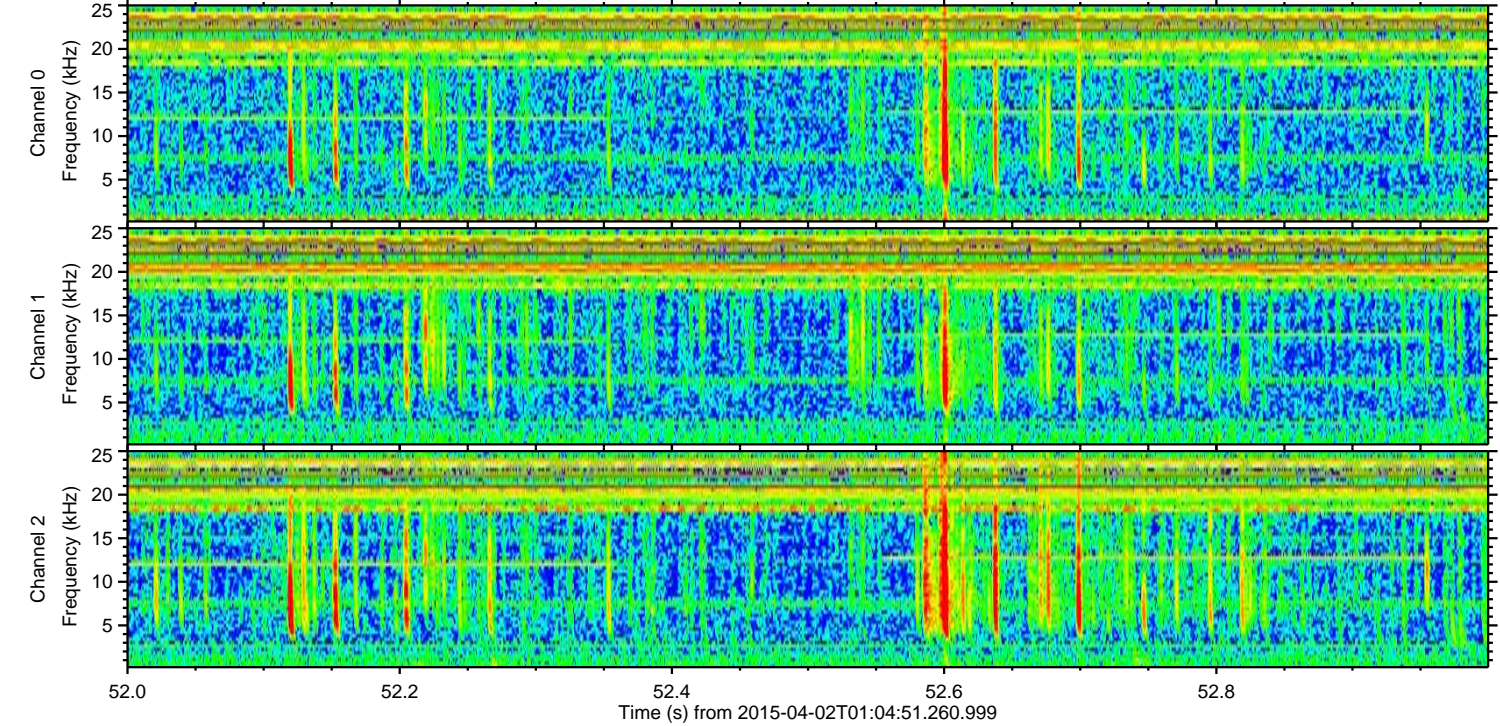
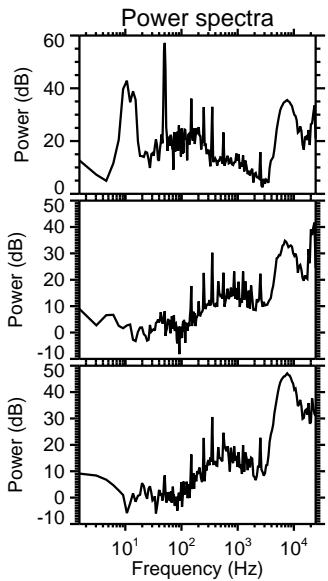
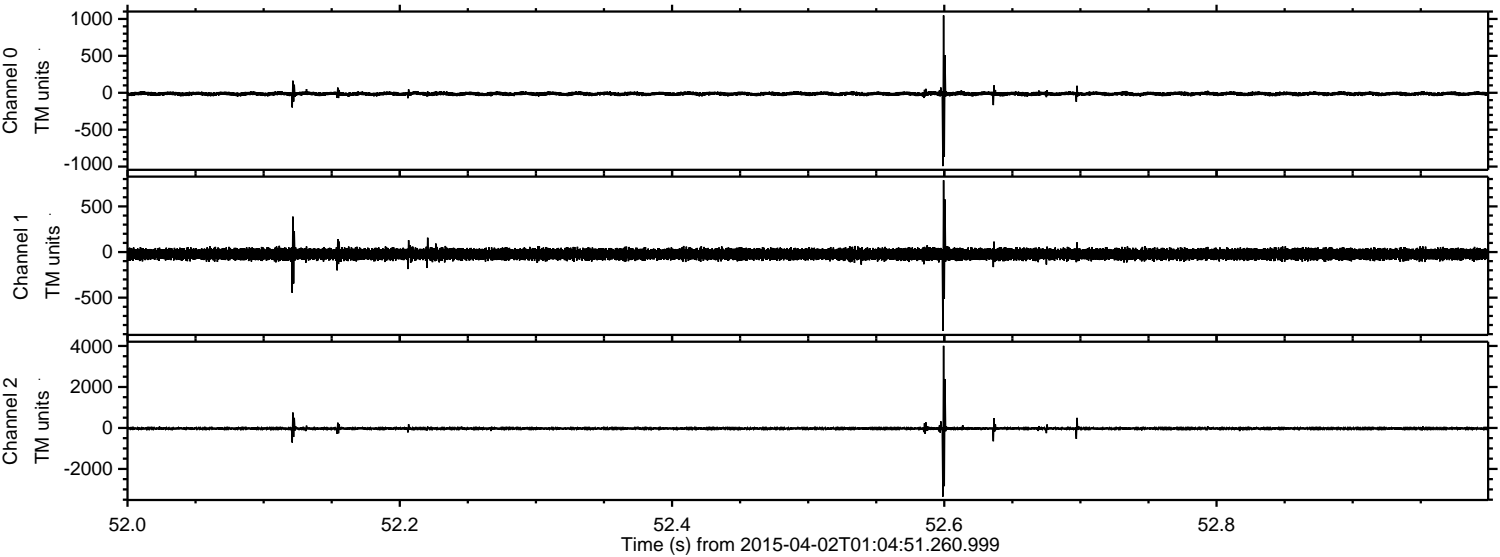


ELMAVAN 3D WAVEFORMS (Measured data sampled at 50 kHz) 49785 packets of 144 samples from 2015-04-02T01:04:51.260.999. Part 128/144

Processed Thu Apr 2 03:12:07 2015 by ELM ver.2012-10-06 from 001__elm20150402_010450__dat00.bin



Processed Thu Apr 2 03:12:08 2015 by ELM ver.2012-10-06 from 001__elm20150402_010450__dat00.bin

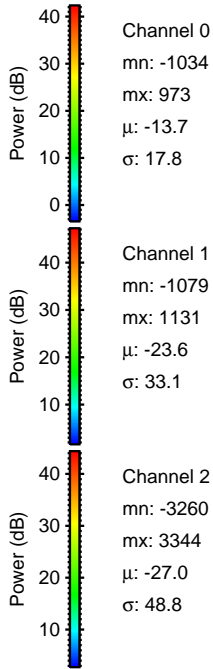
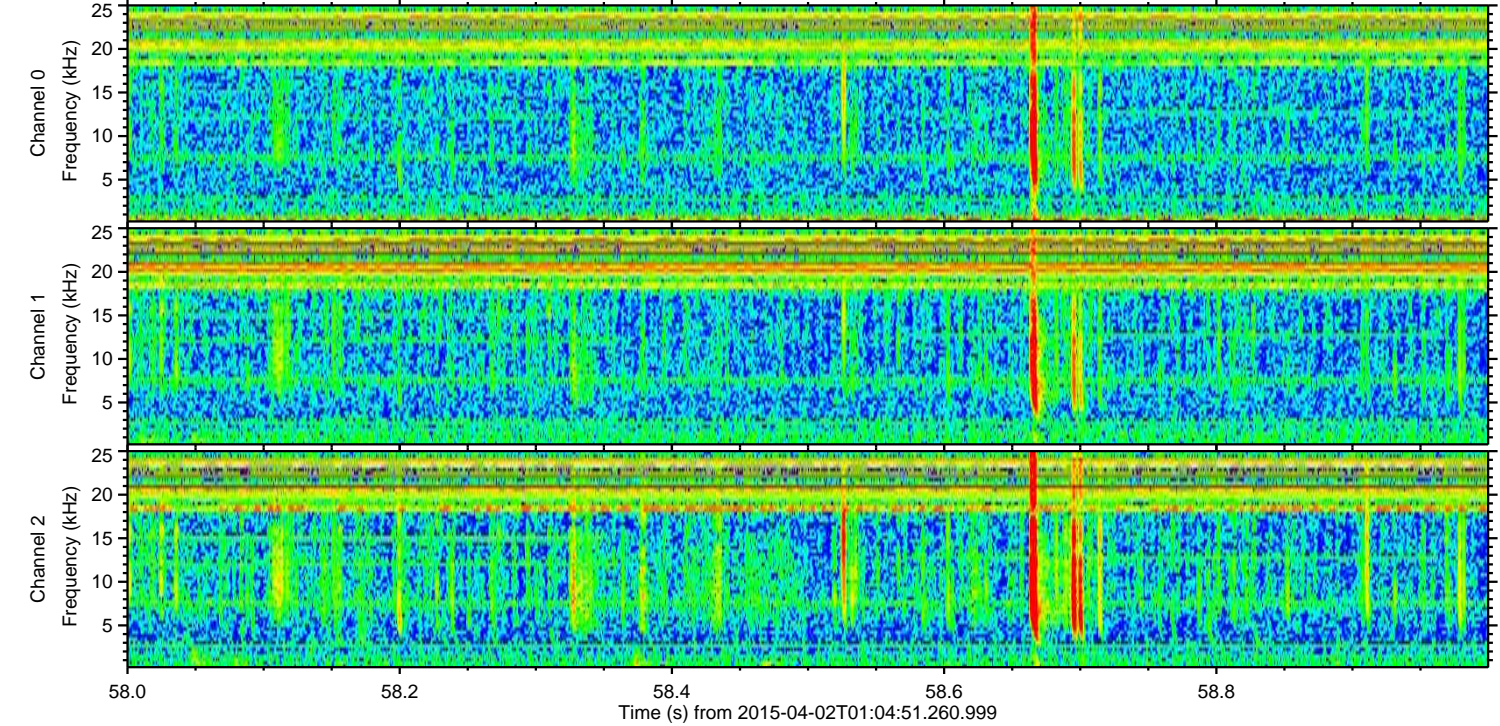
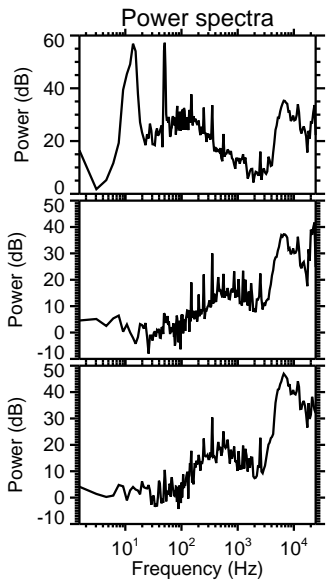
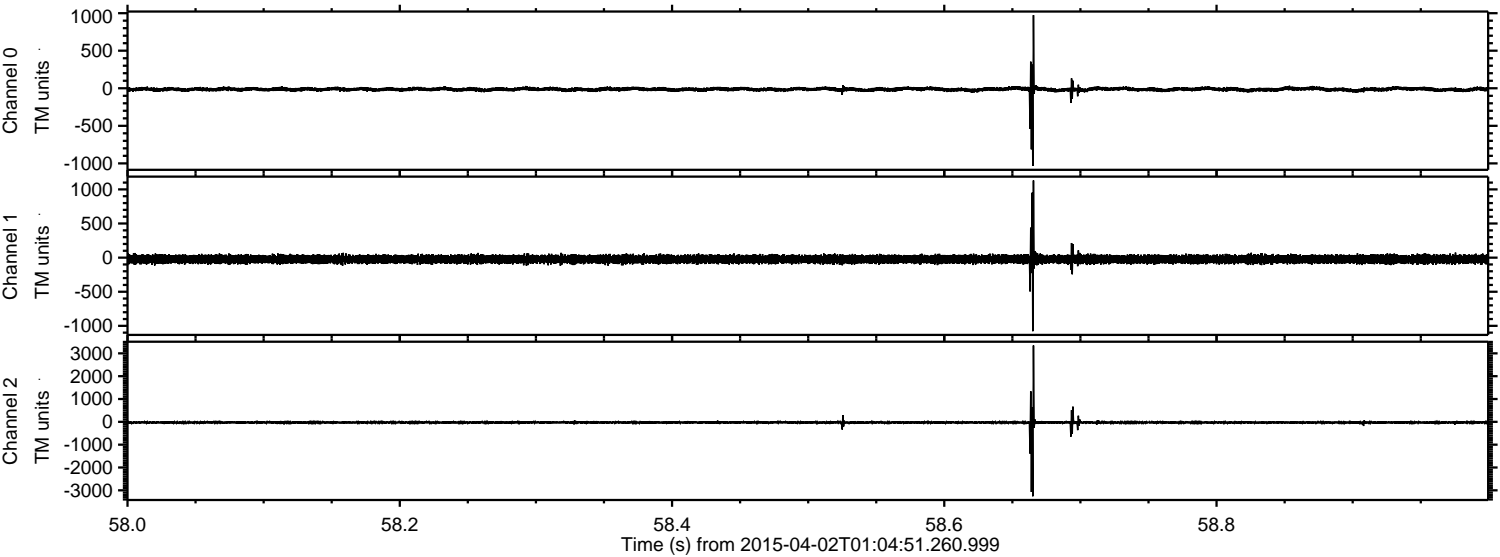


Channel 0
mn: -994
mx: 1048
 μ : -13.6
 σ : 16.9

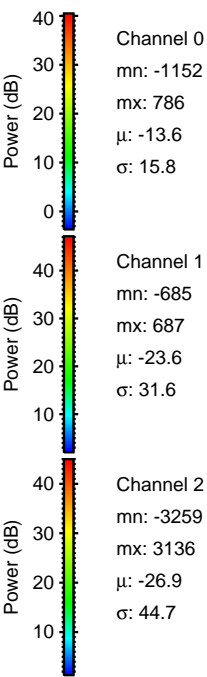
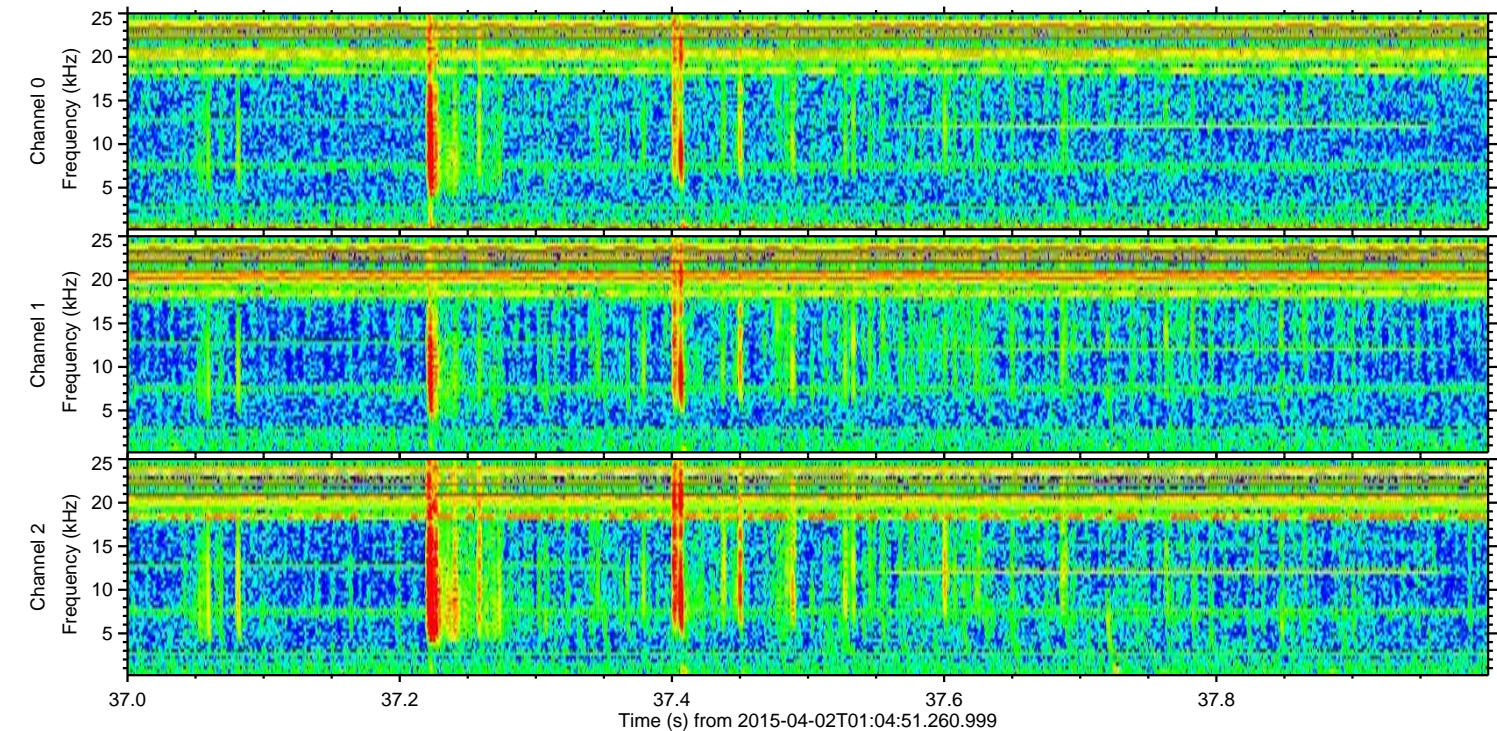
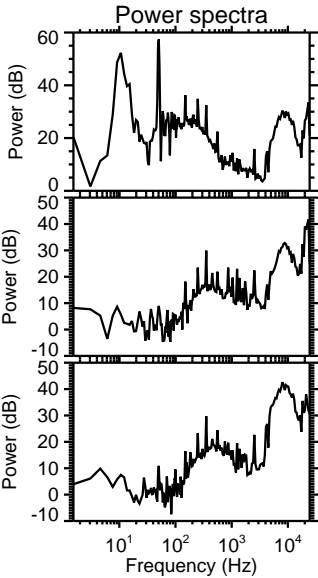
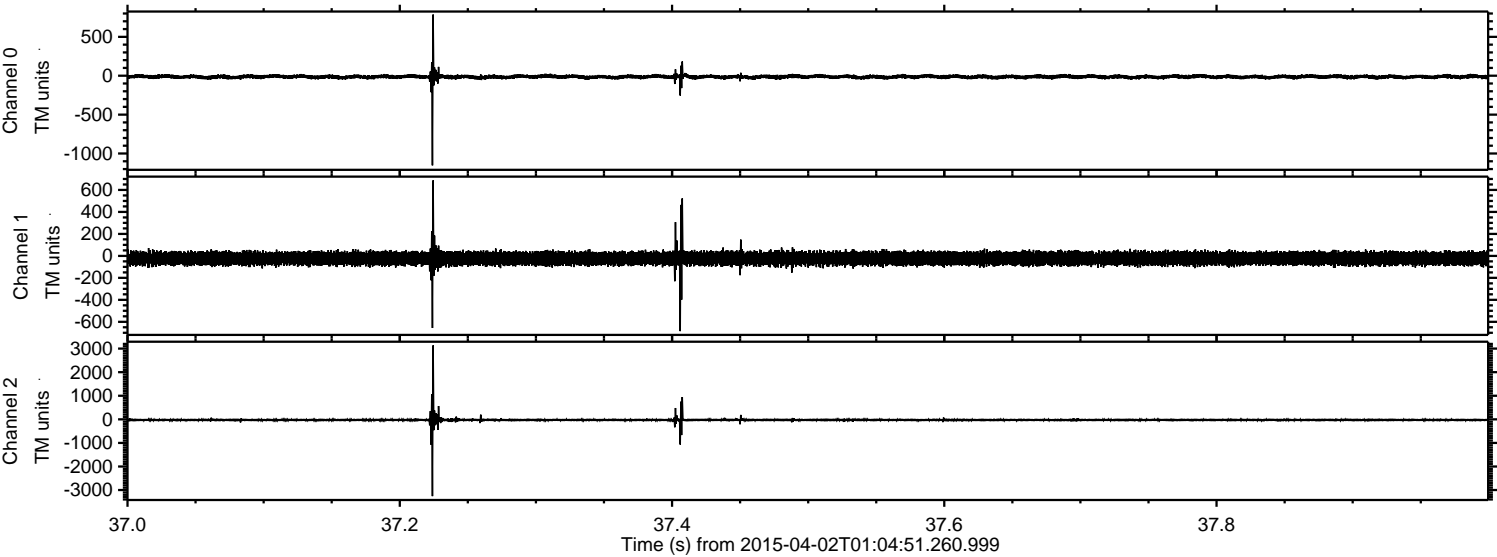
Channel 1
mn: -865
mx: 787
 μ : -23.6
 σ : 31.7

Channel 2
mn: -3349
mx: 4008
 μ : -27.0
 σ : 50.2

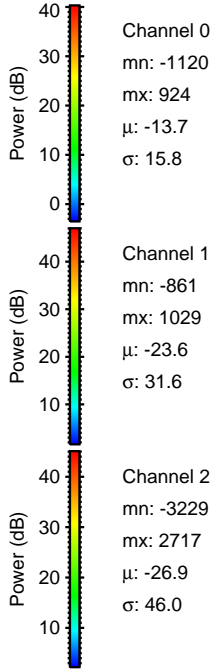
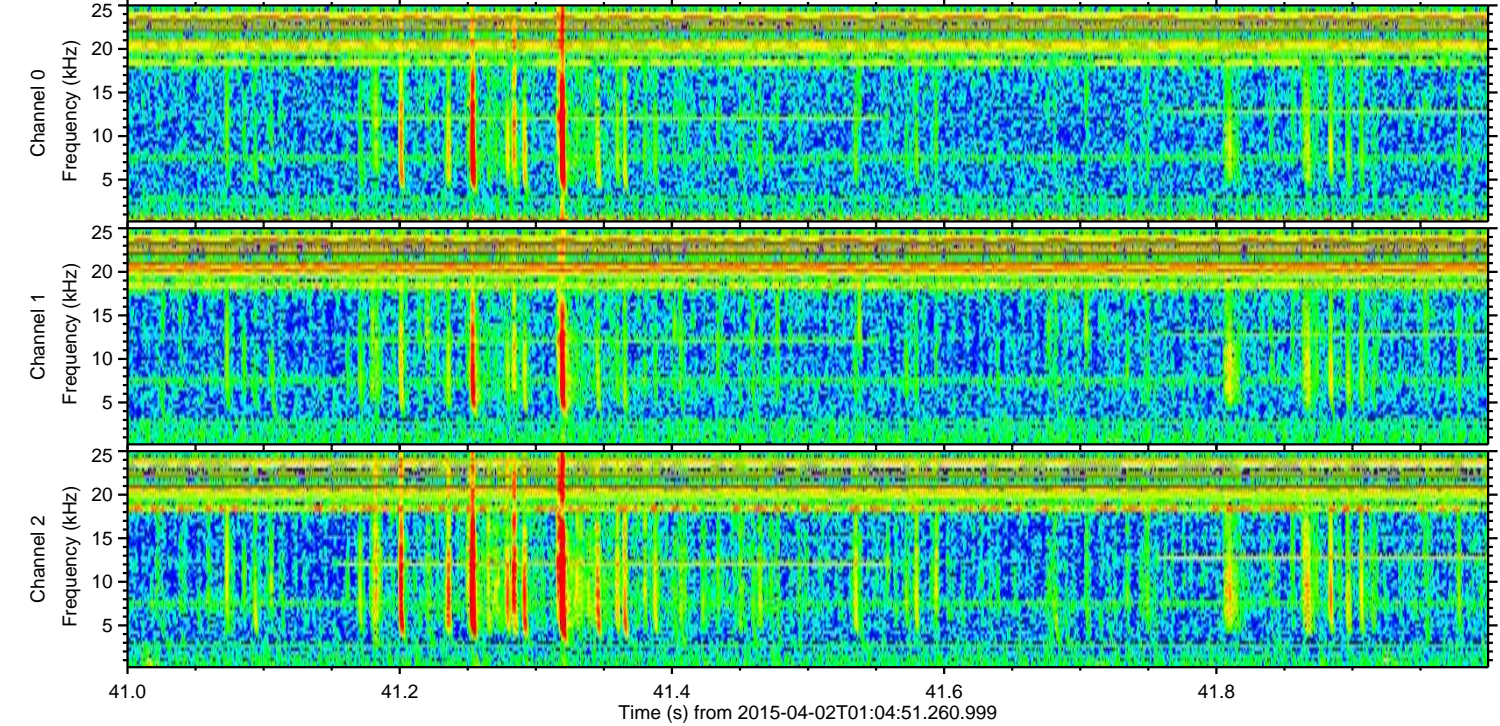
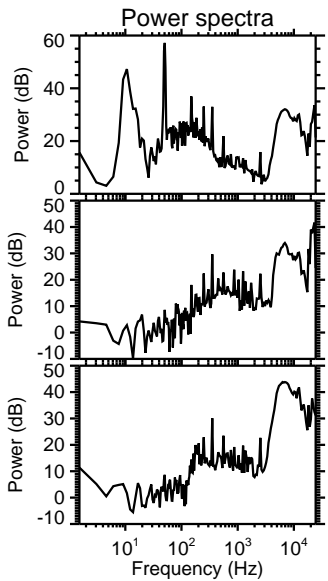
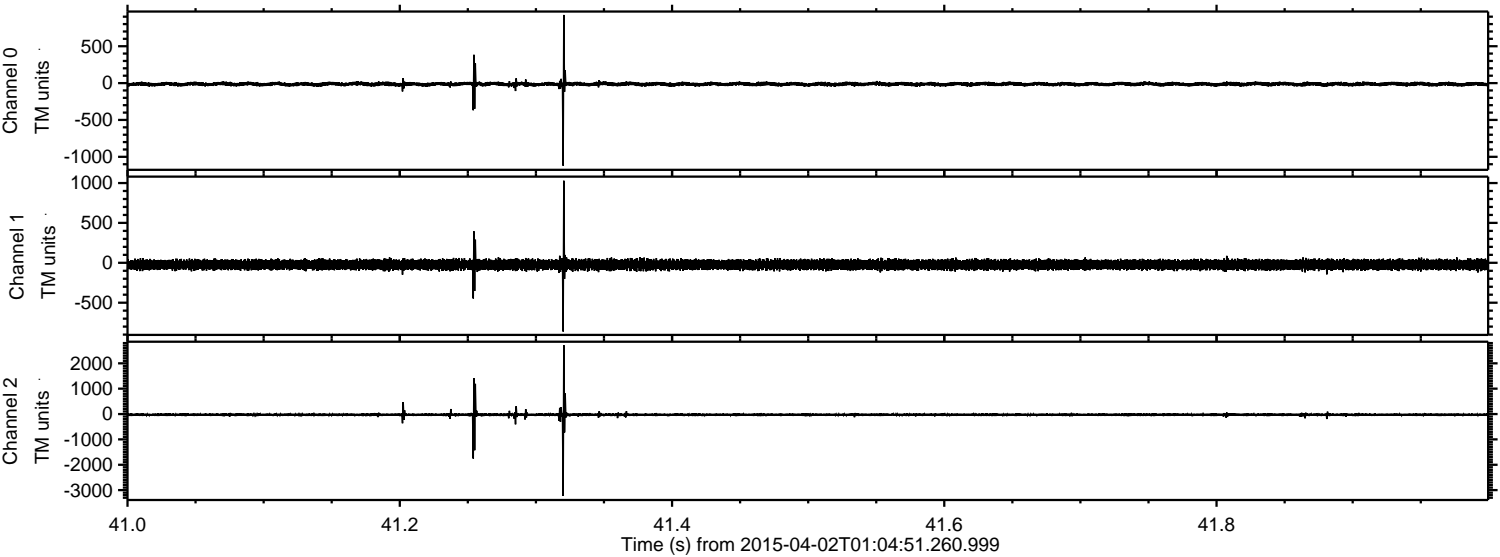
Processed Thu Apr 2 03:12:09 2015 by ELM ver.2012-10-06 from 001__elm20150402_010450__dat00.bin



Processed Thu Apr 2 03:12:10 2015 by ELM ver.2012-10-06 from 001__elm20150402_010450__dat00.bin

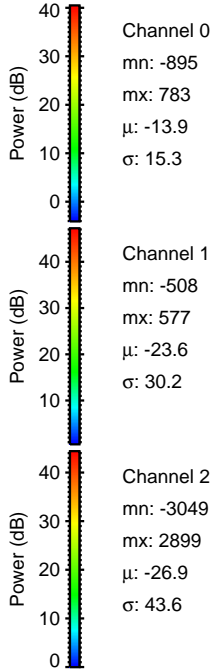
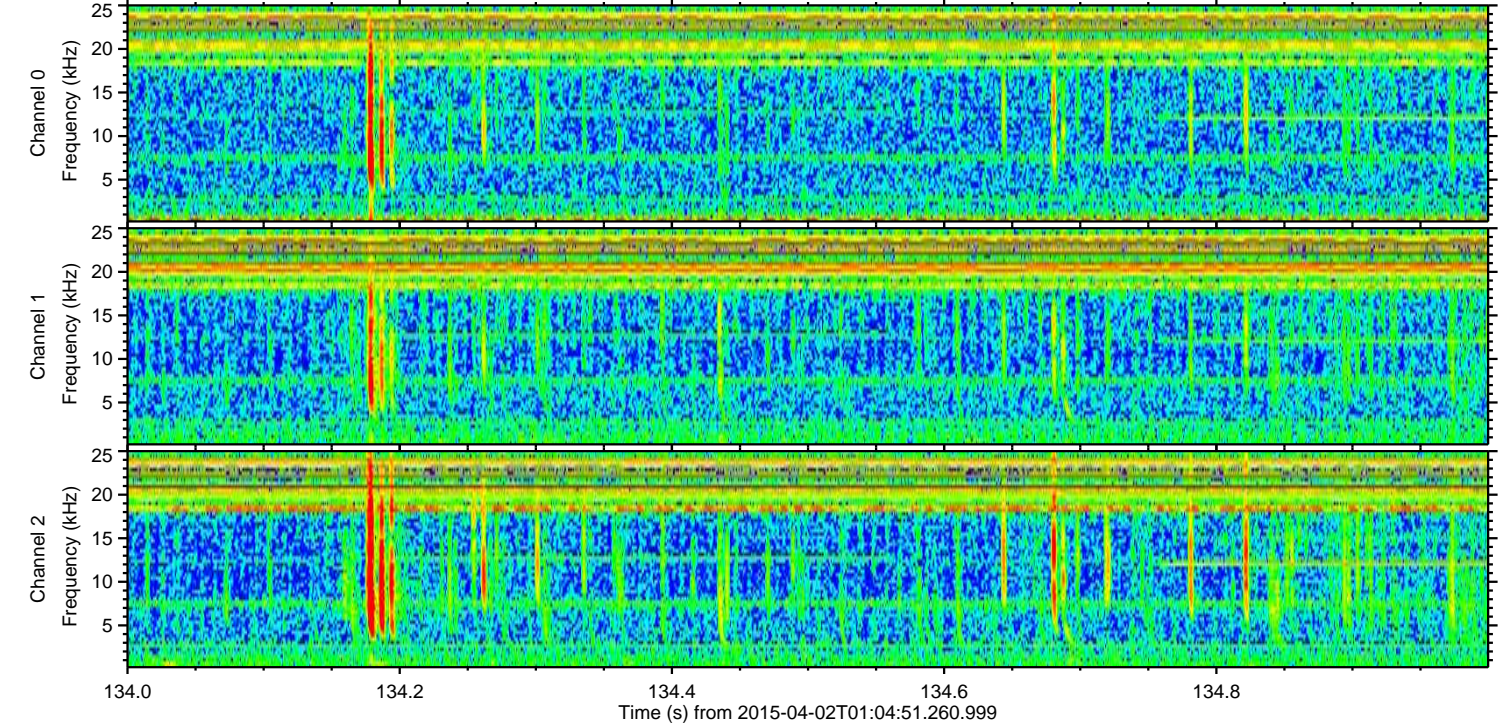
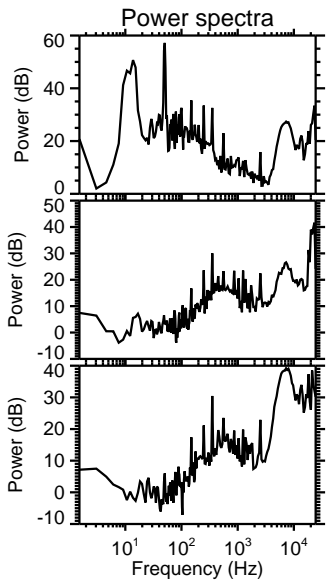
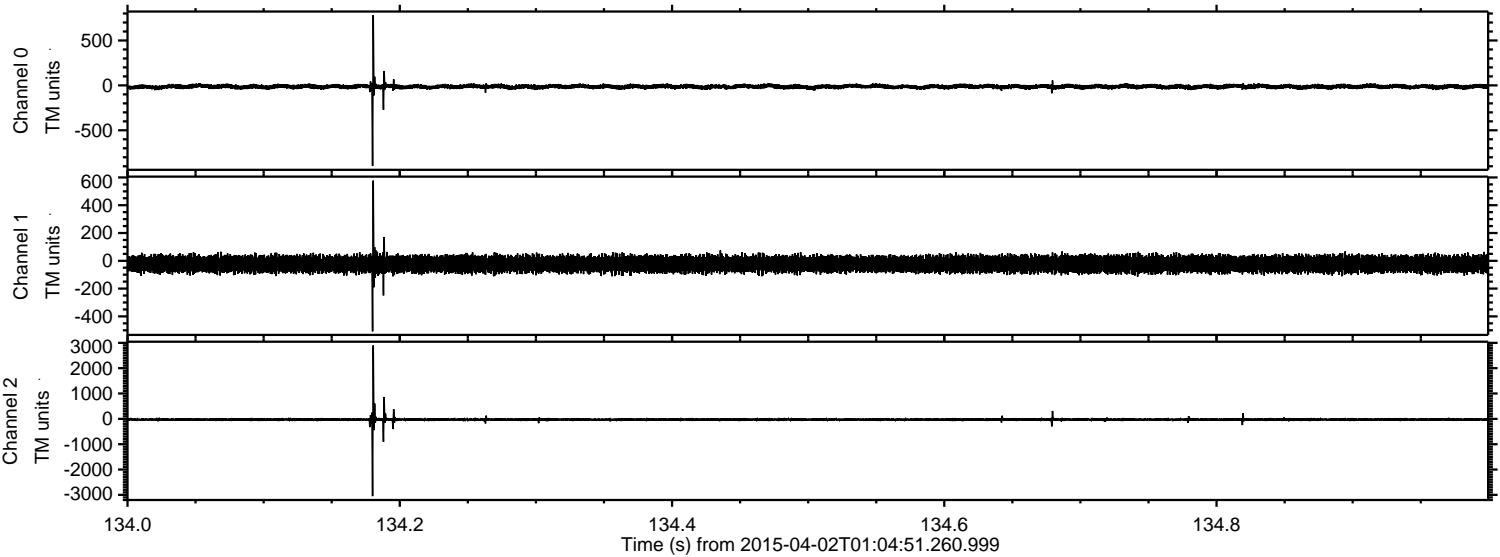


Processed Thu Apr 2 03:12:11 2015 by ELM ver.2012-10-06 from 001__elm20150402_010450__dat00.bin



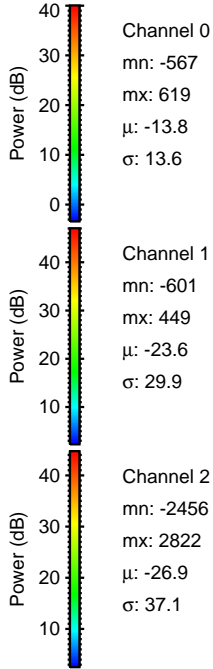
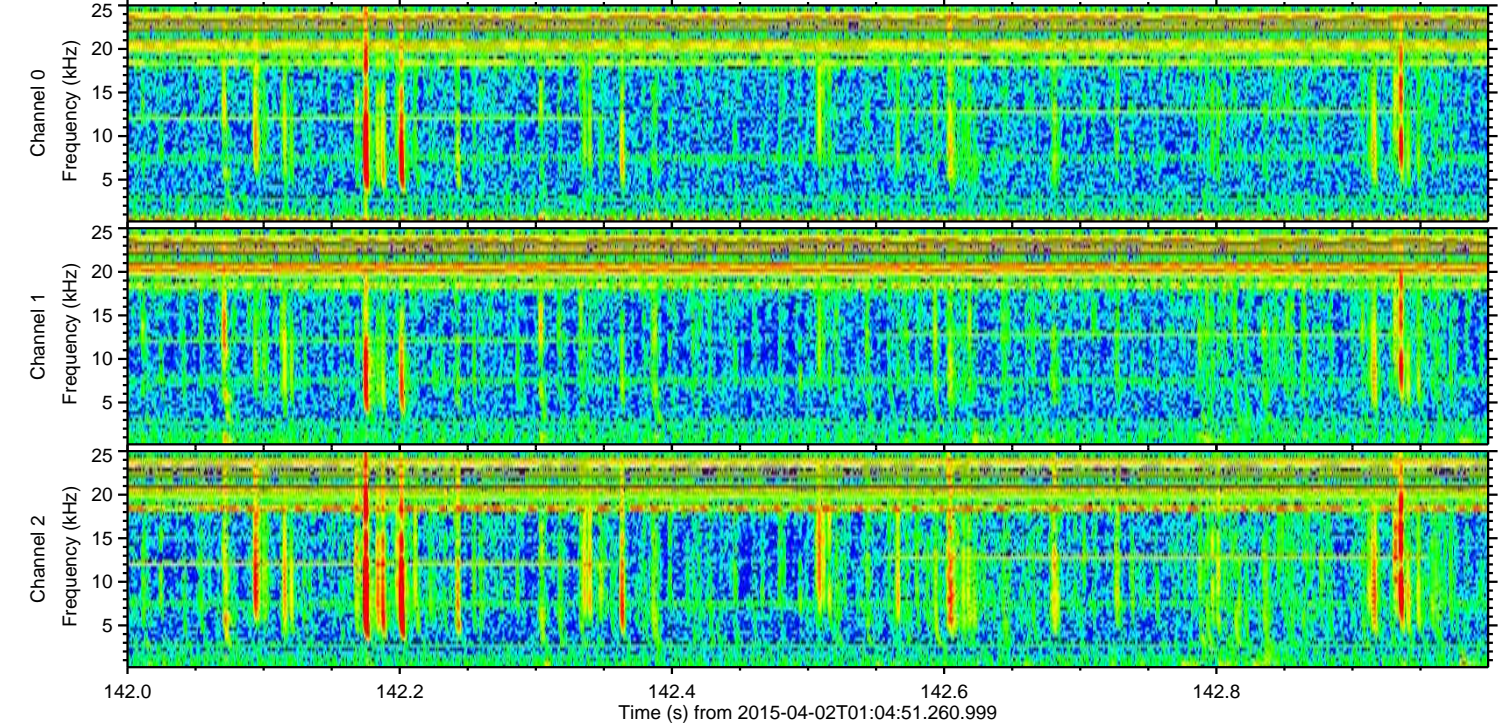
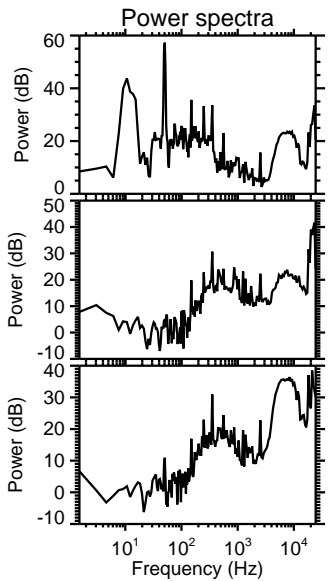
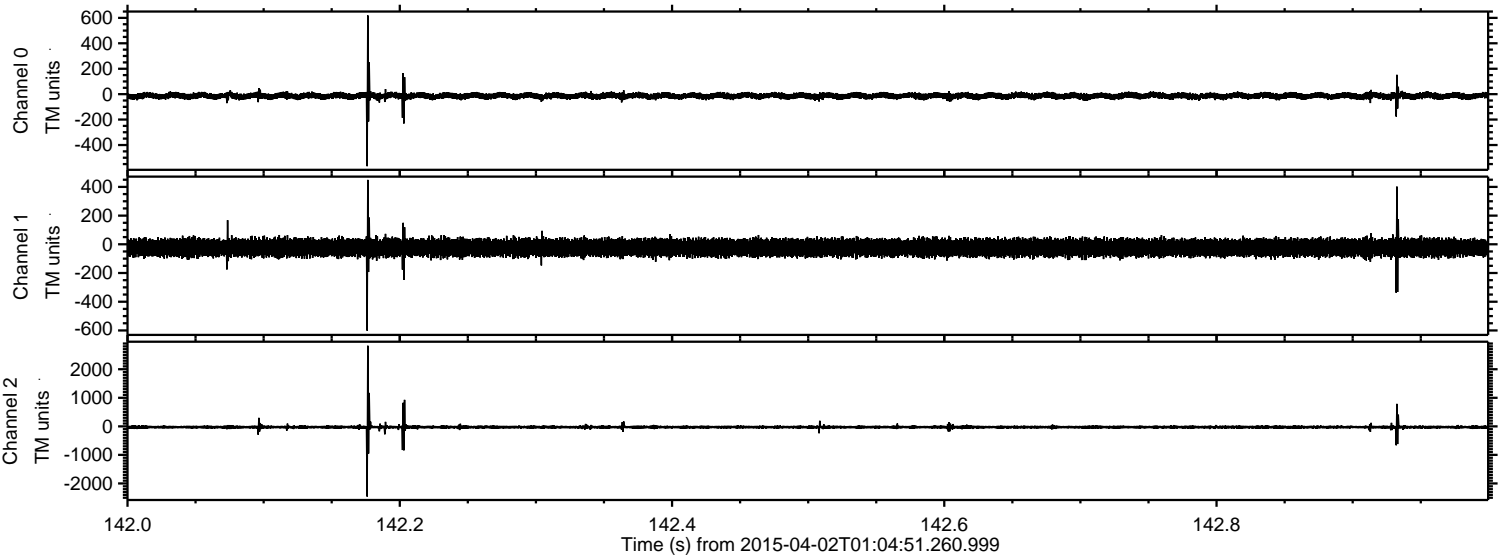
ELMAVAN 3D WAVEFORMS (Measured data sampled at 50 kHz) 49785 packets of 144 samples from 2015-04-02T01:04:51.260.999. Part 135/144

Processed Thu Apr 2 03:12:12 2015 by ELM ver.2012-10-06 from 001__elm20150402_010450__dat00.bin



ELMAVAN 3D WAVEFORMS (Measured data sampled at 50 kHz) 49785 packets of 144 samples from 2015-04-02T01:04:51.260.999. Part 143/144

Processed Thu Apr 2 03:12:13 2015 by ELM ver.2012-10-06 from 001__elm20150402_010450__dat00.bin

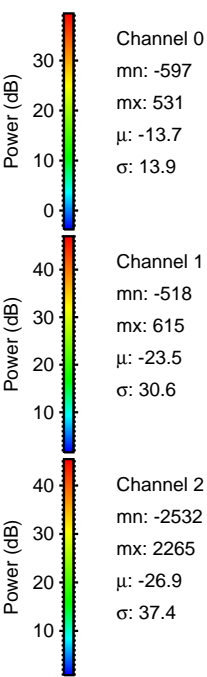
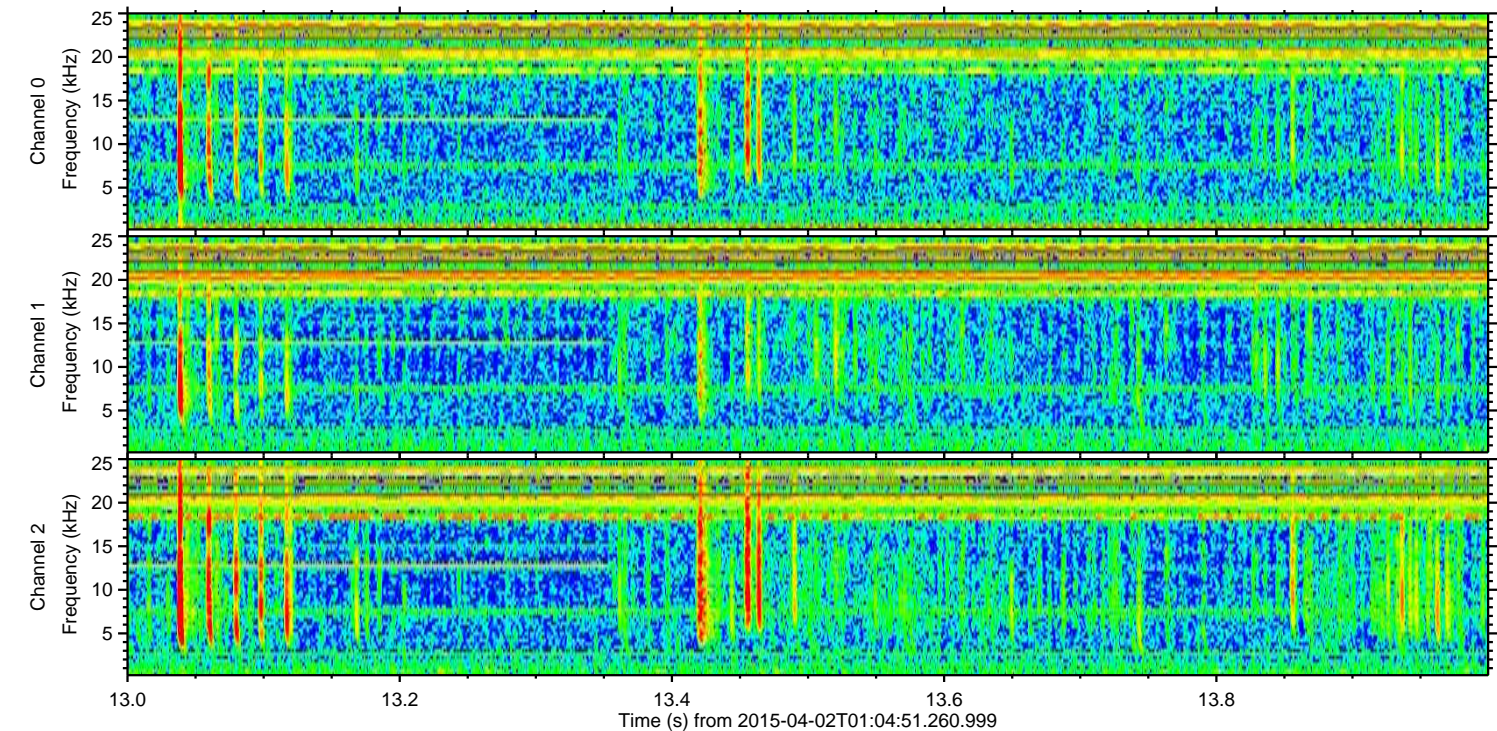
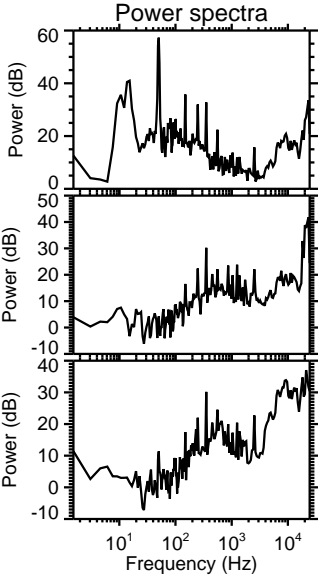
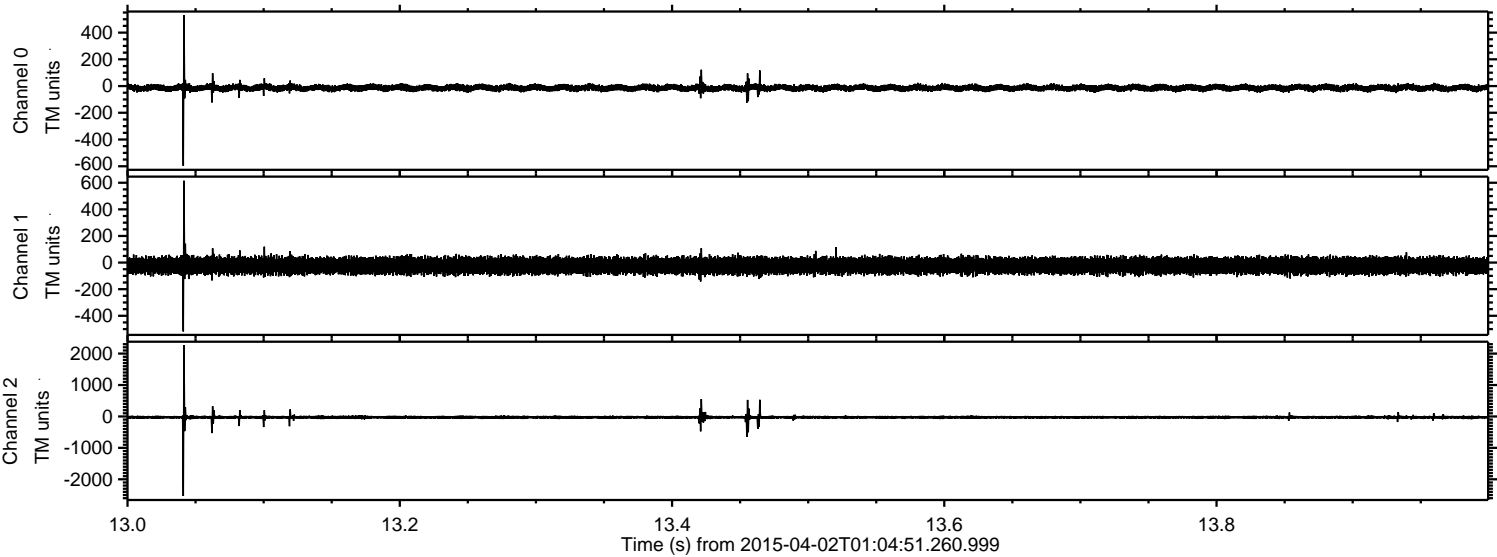


Channel 0
mn: -567
mx: 619
 μ : -13.8
 σ : 13.6

Channel 1
mn: -601
mx: 449
 μ : -23.6
 σ : 29.9

Channel 2
mn: -2456
mx: 2822
 μ : -26.9
 σ : 37.1

Processed Thu Apr 2 03:12:14 2015 by ELM ver.2012-10-06 from 001__elm20150402_010450__dat00.bin



Processed Thu Apr 2 03:12:15 2015 by ELM ver.2012-10-06 from 001__elm20150402_010450__dat00.bin

