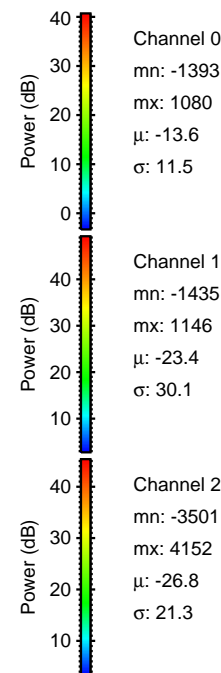
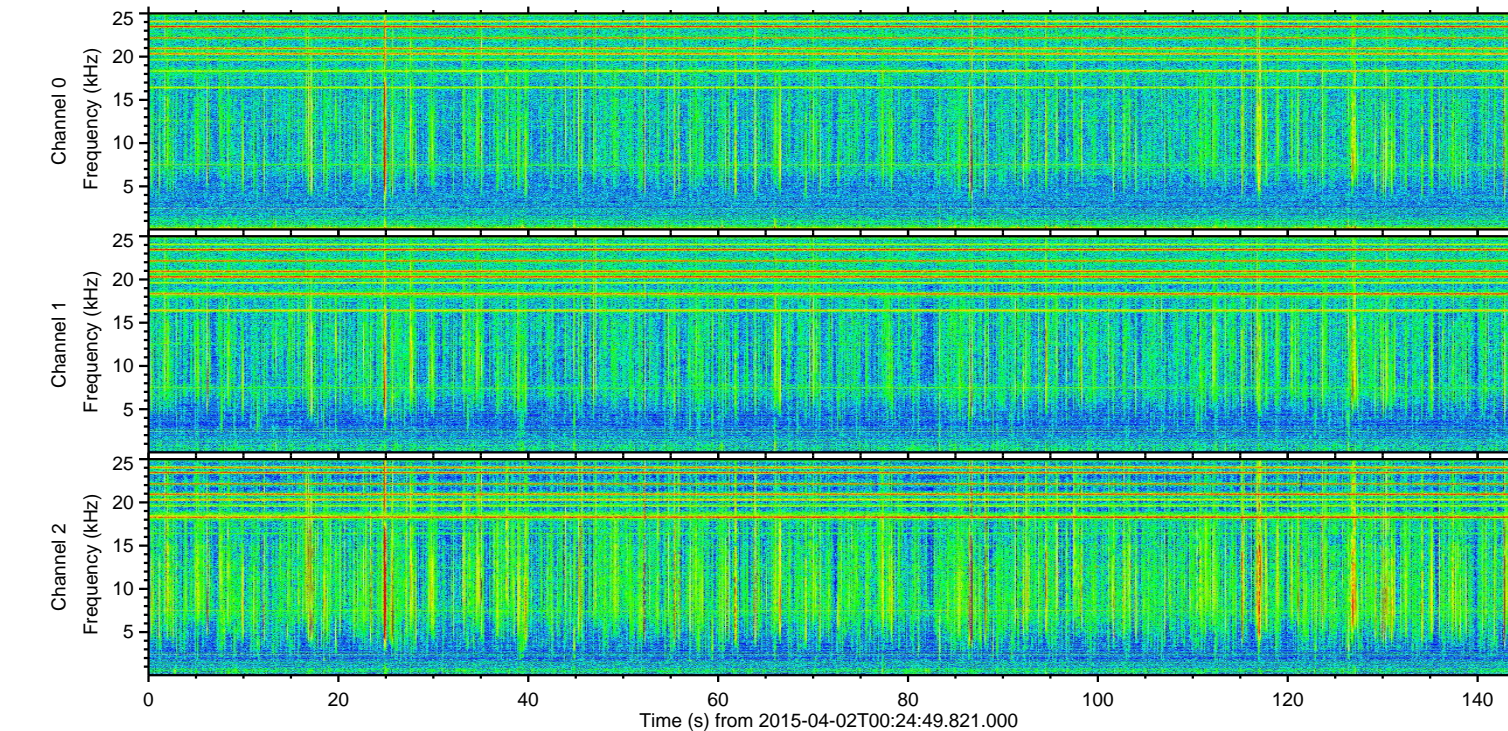
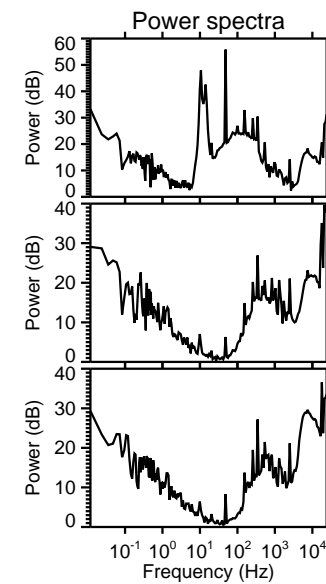
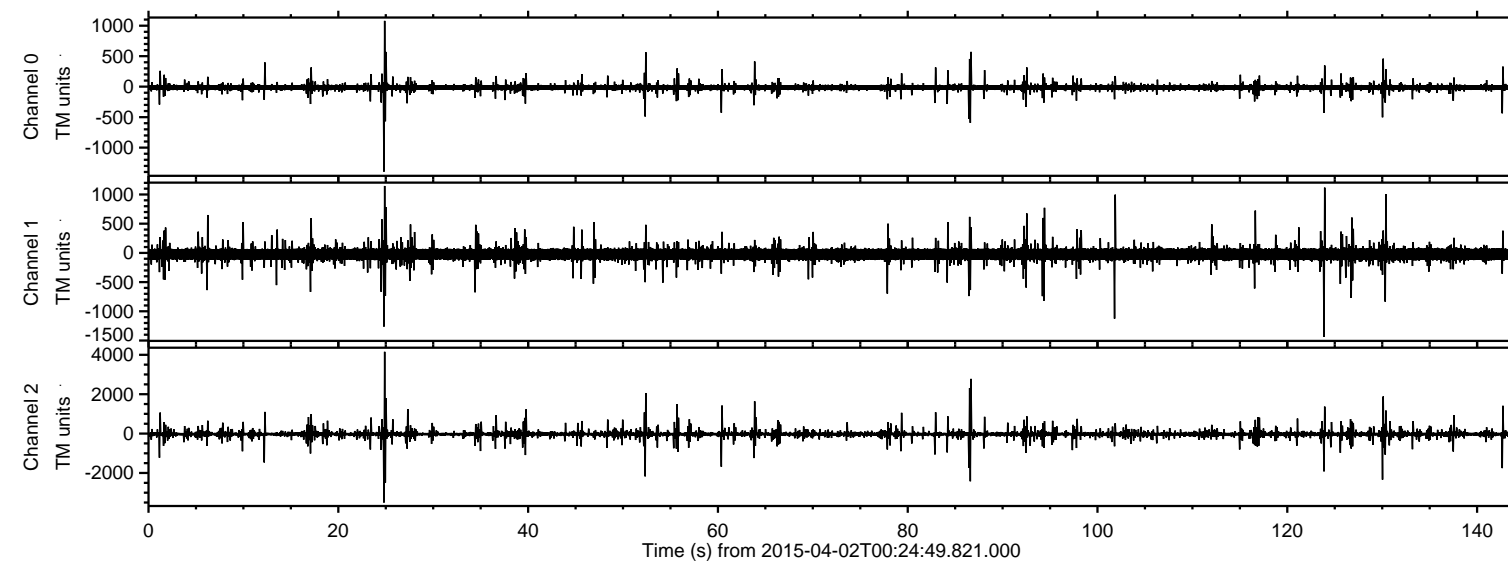
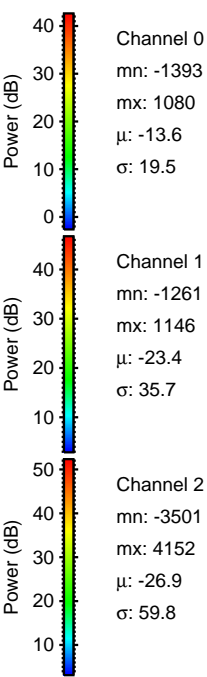
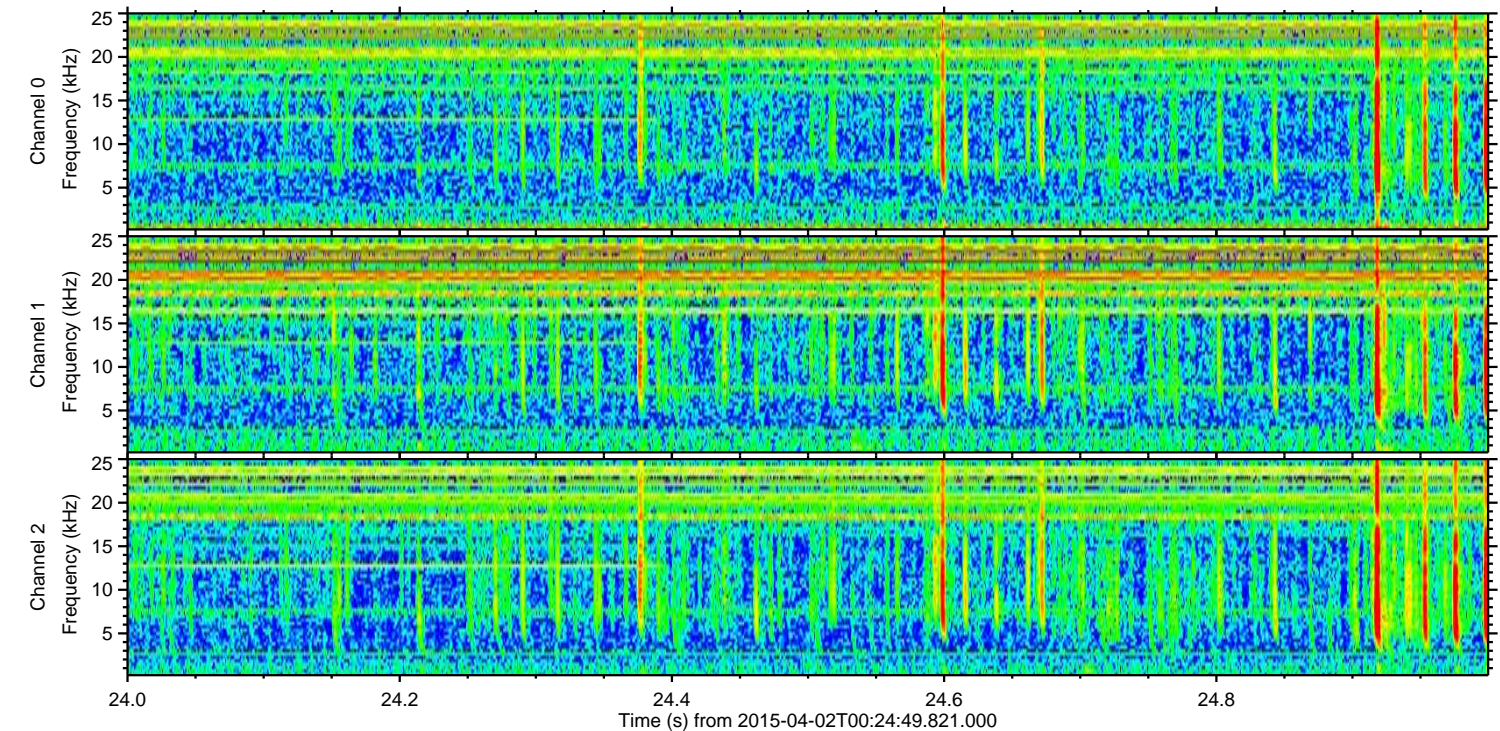
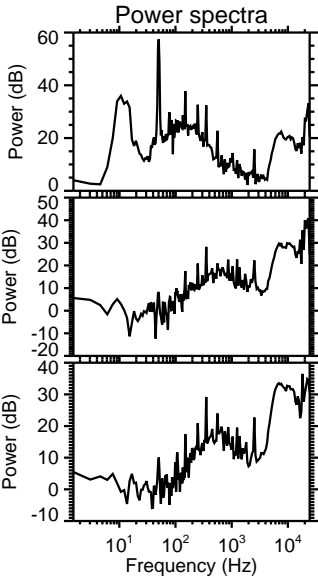
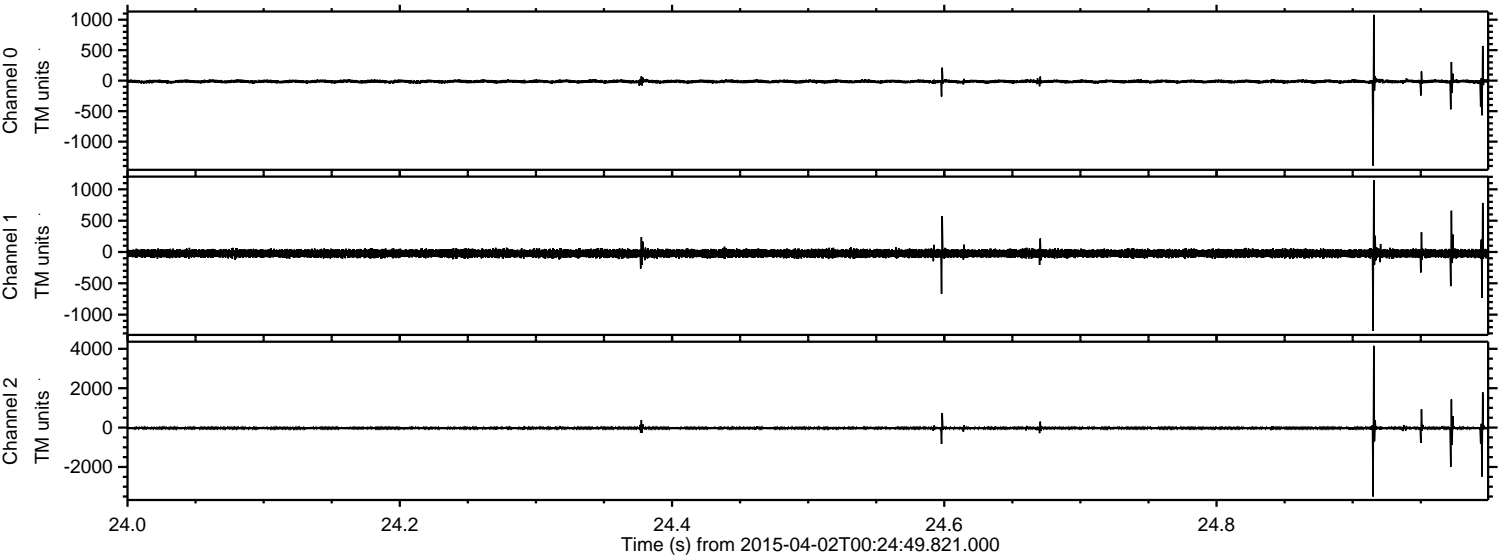


ELMAVAN 3D WAVEFORMS (Measured data sampled at 50 kHz) 49783 packets of 144 samples from 2015-04-02T00:24:49.821.000.

Processed Thu Apr 2 02:31:29 2015 by ELM ver.2012-10-06 from 001__elm20150402_002448__dat00.bin



Processed Thu Apr 2 02:31:40 2015 by ELM ver.2012-10-06 from 001__elm20150402_002448__dat00.bin

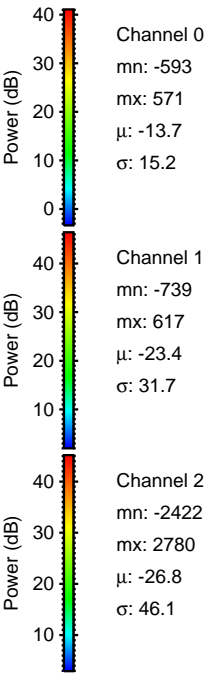
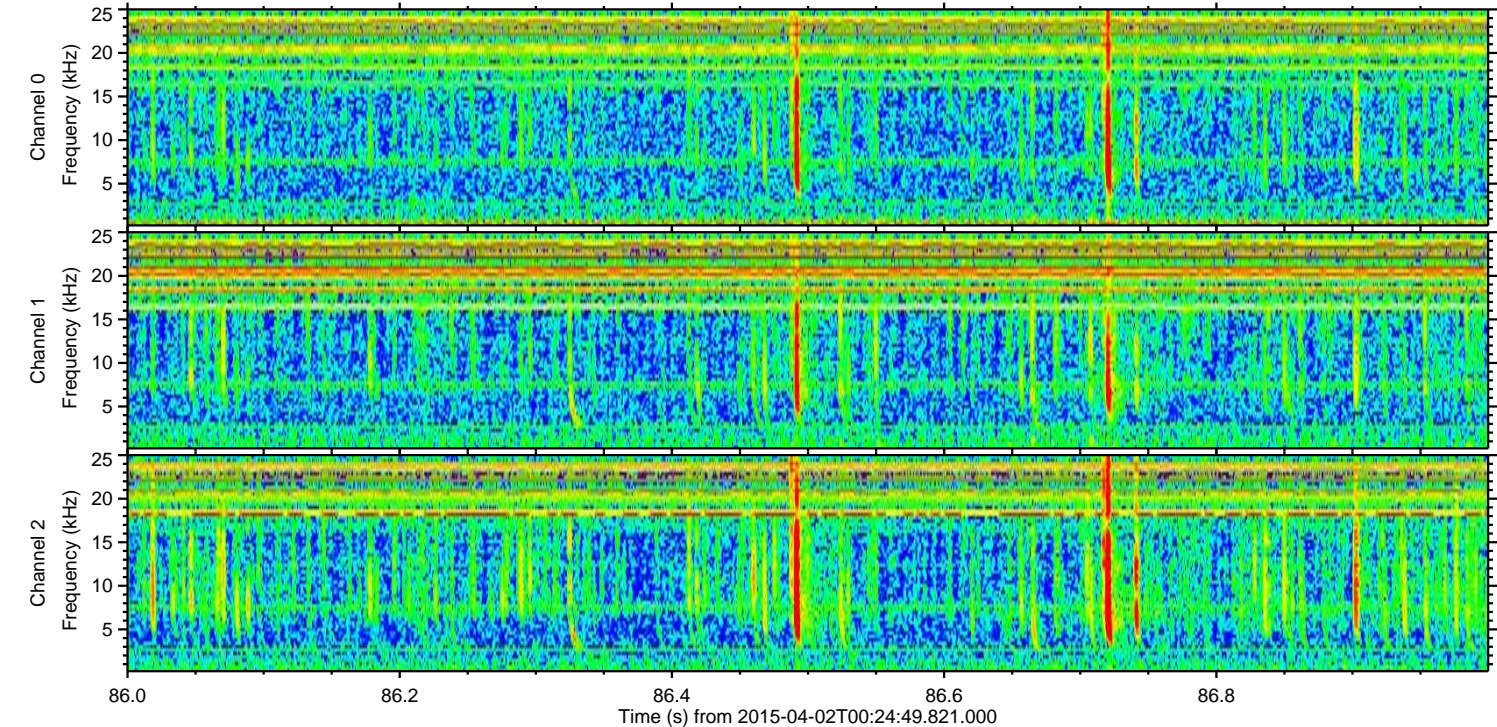
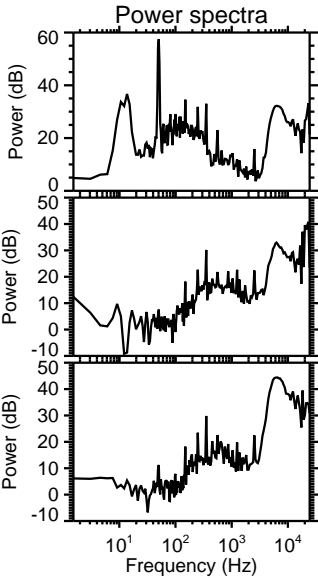
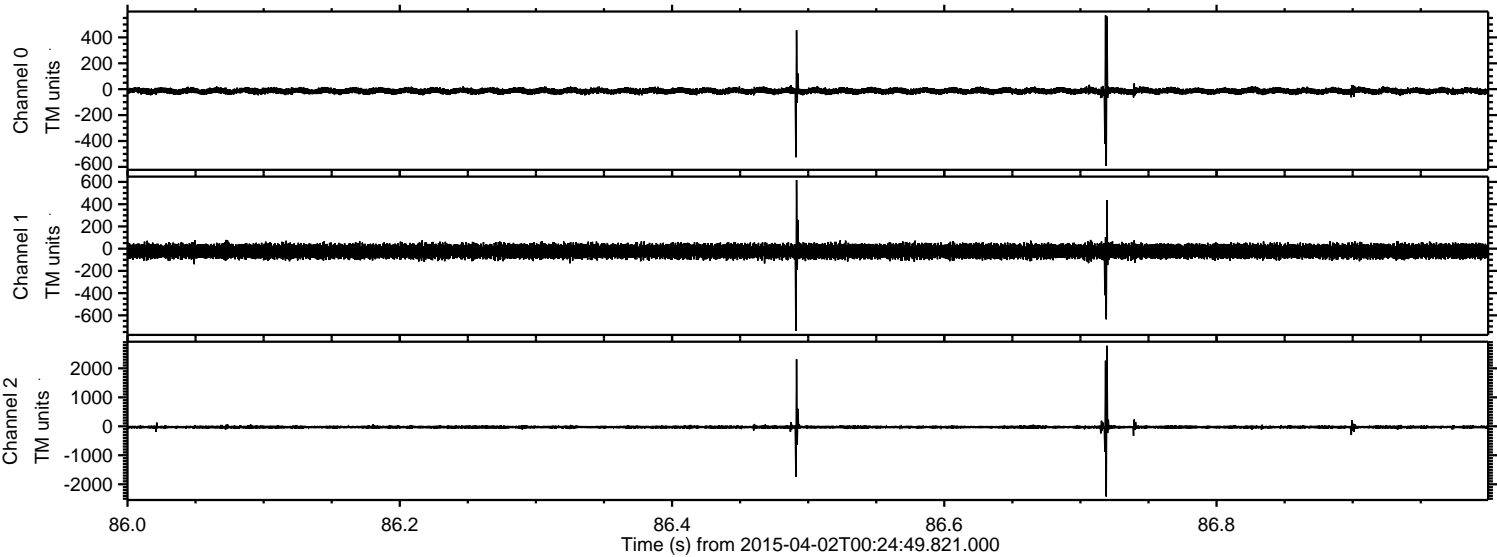


Channel 0
mn: -1393
mx: 1080
 μ : -13.6
 σ : 19.5

Channel 1
mn: -1261
mx: 1146
 μ : -23.4
 σ : 35.7

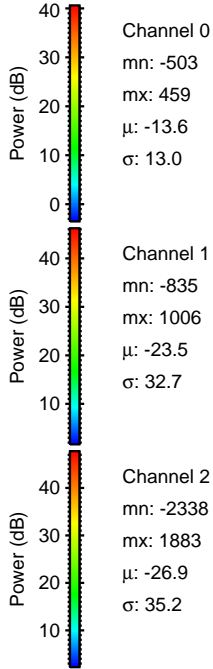
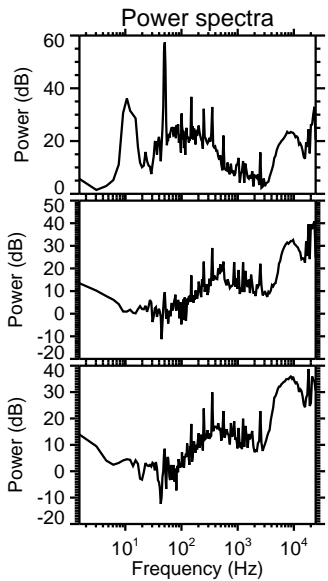
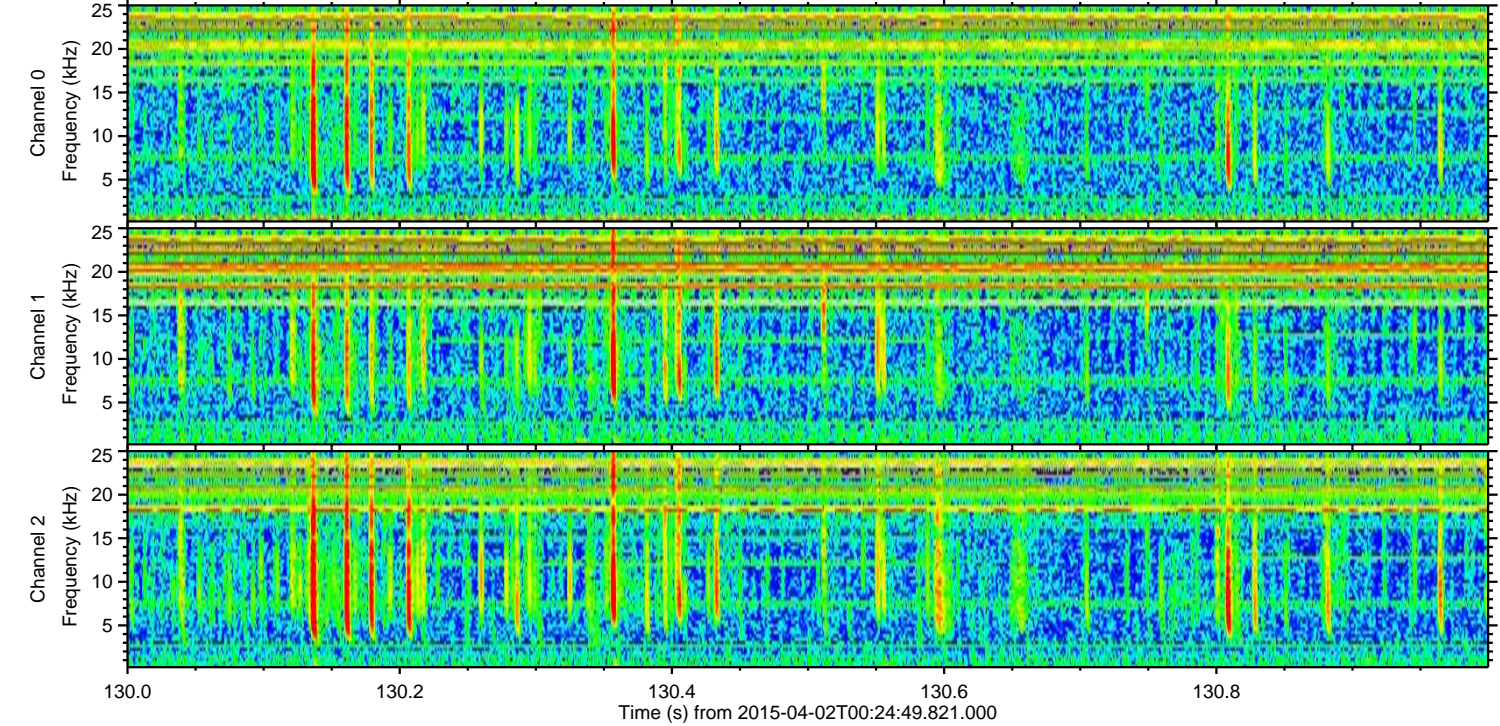
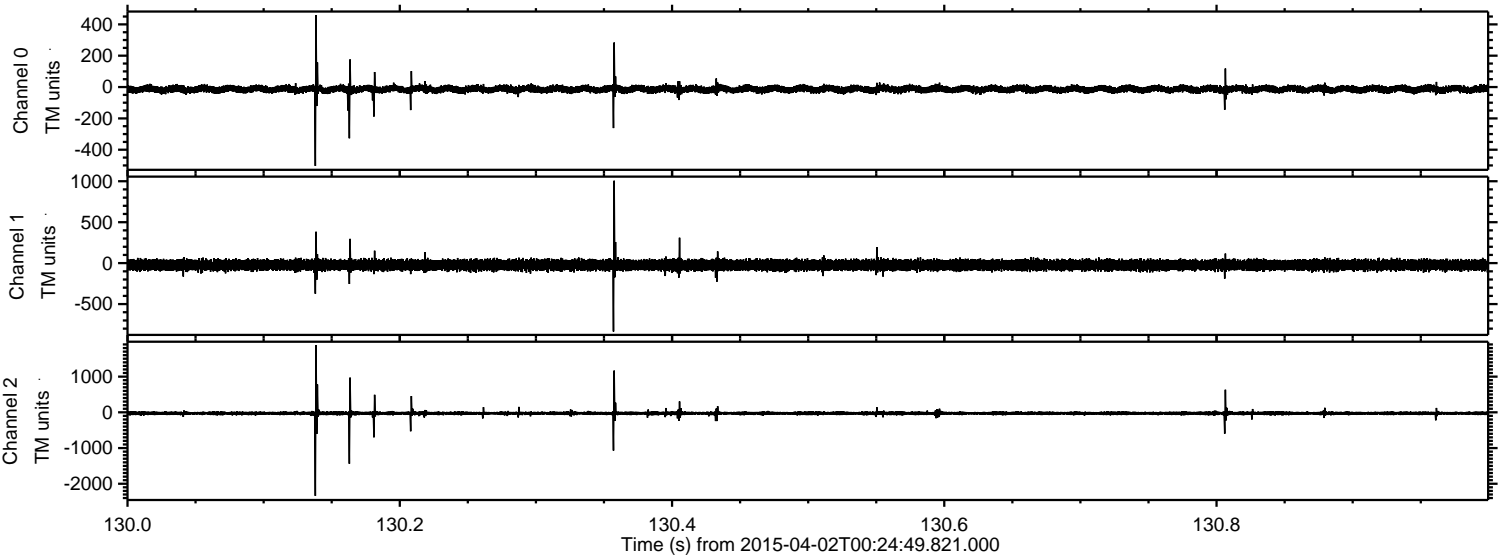
Channel 2
mn: -3501
mx: 4152
 μ : -26.9
 σ : 59.8

Processed Thu Apr 2 02:31:41 2015 by ELM ver.2012-10-06 from 001__elm20150402_002448__dat00.bin

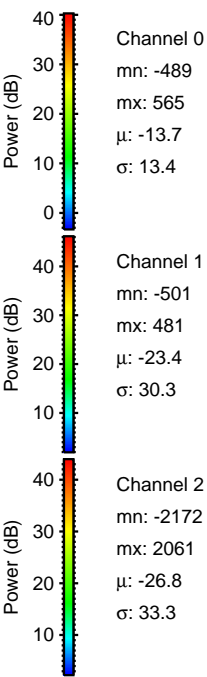
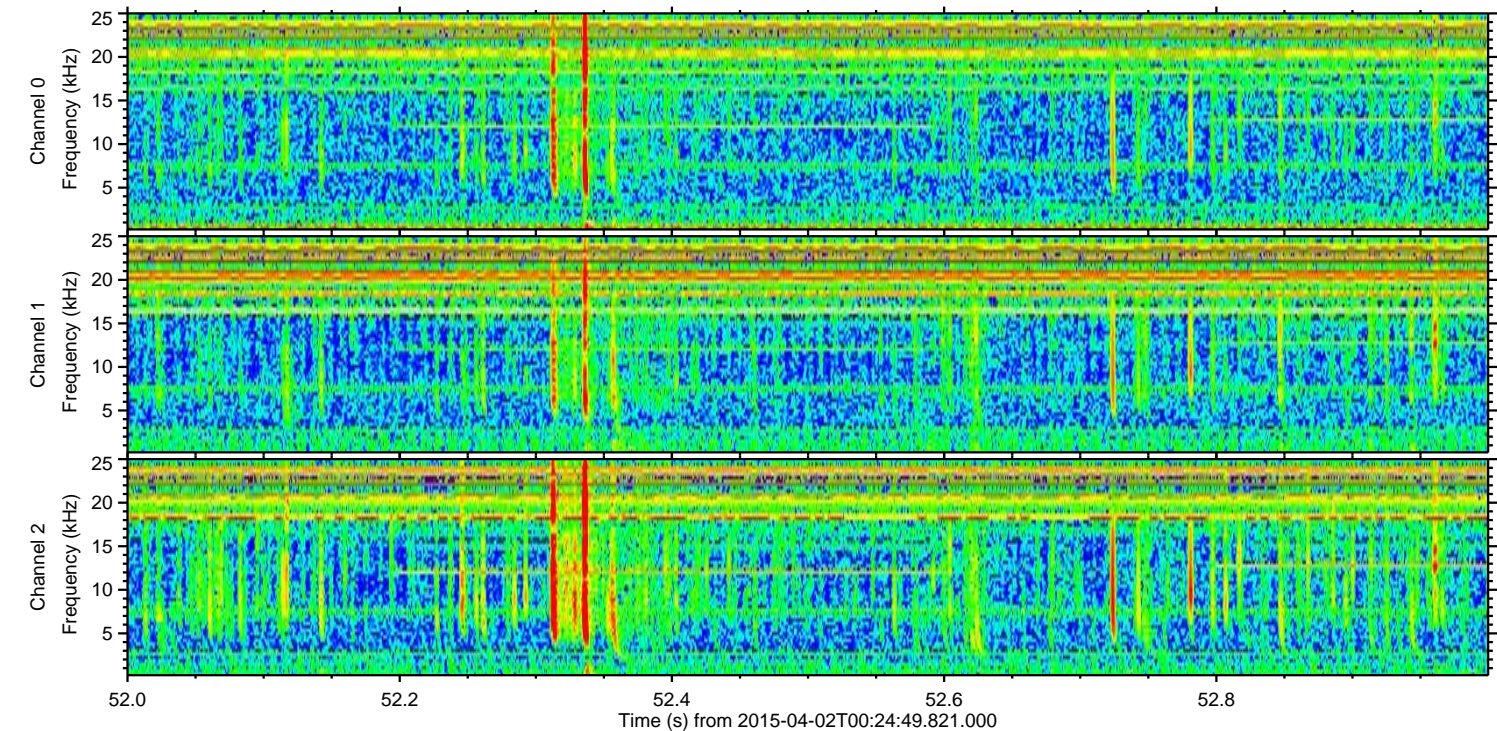
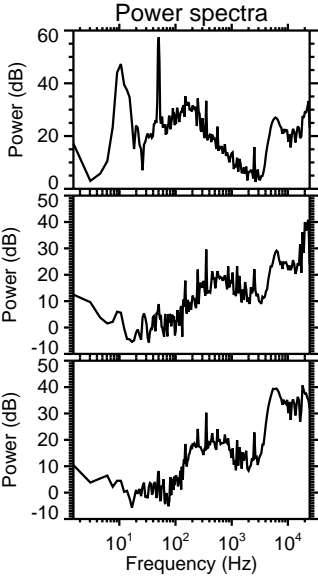
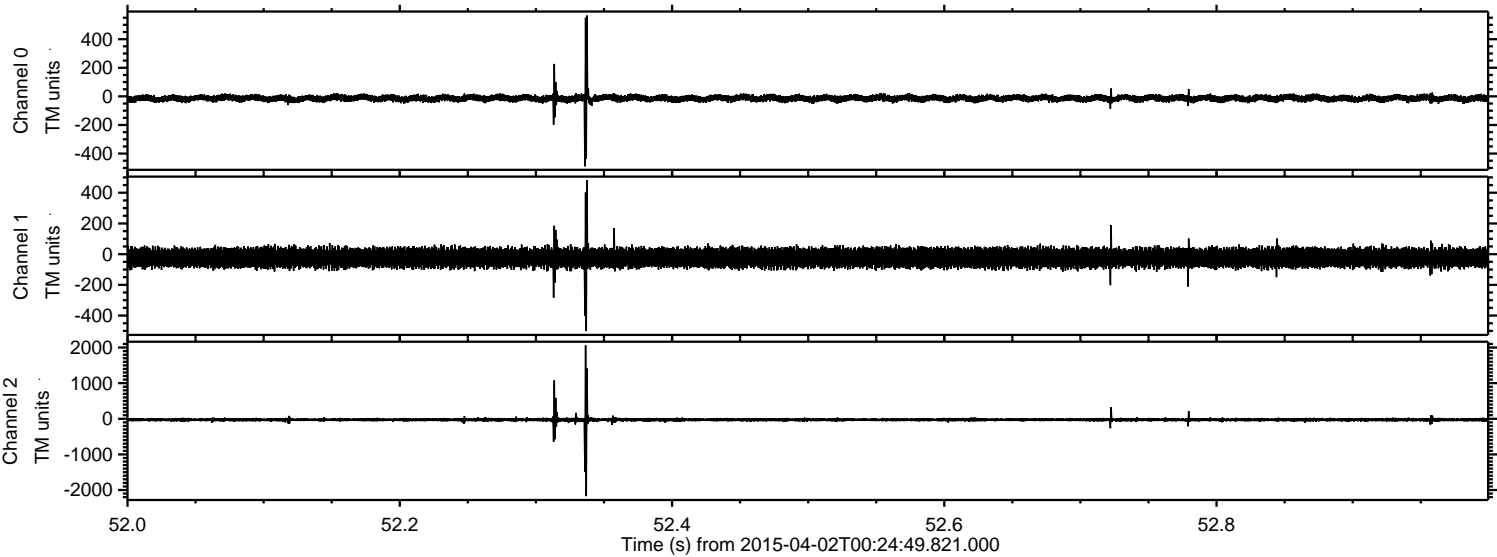


ELMAVAN 3D WAVEFORMS (Measured data sampled at 50 kHz) 49783 packets of 144 samples from 2015-04-02T00:24:49.821.000. Part 131/144

Processed Thu Apr 2 02:31:42 2015 by ELM ver.2012-10-06 from 001__elm20150402_002448__dat00.bin

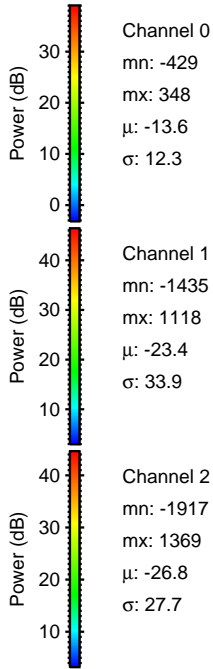
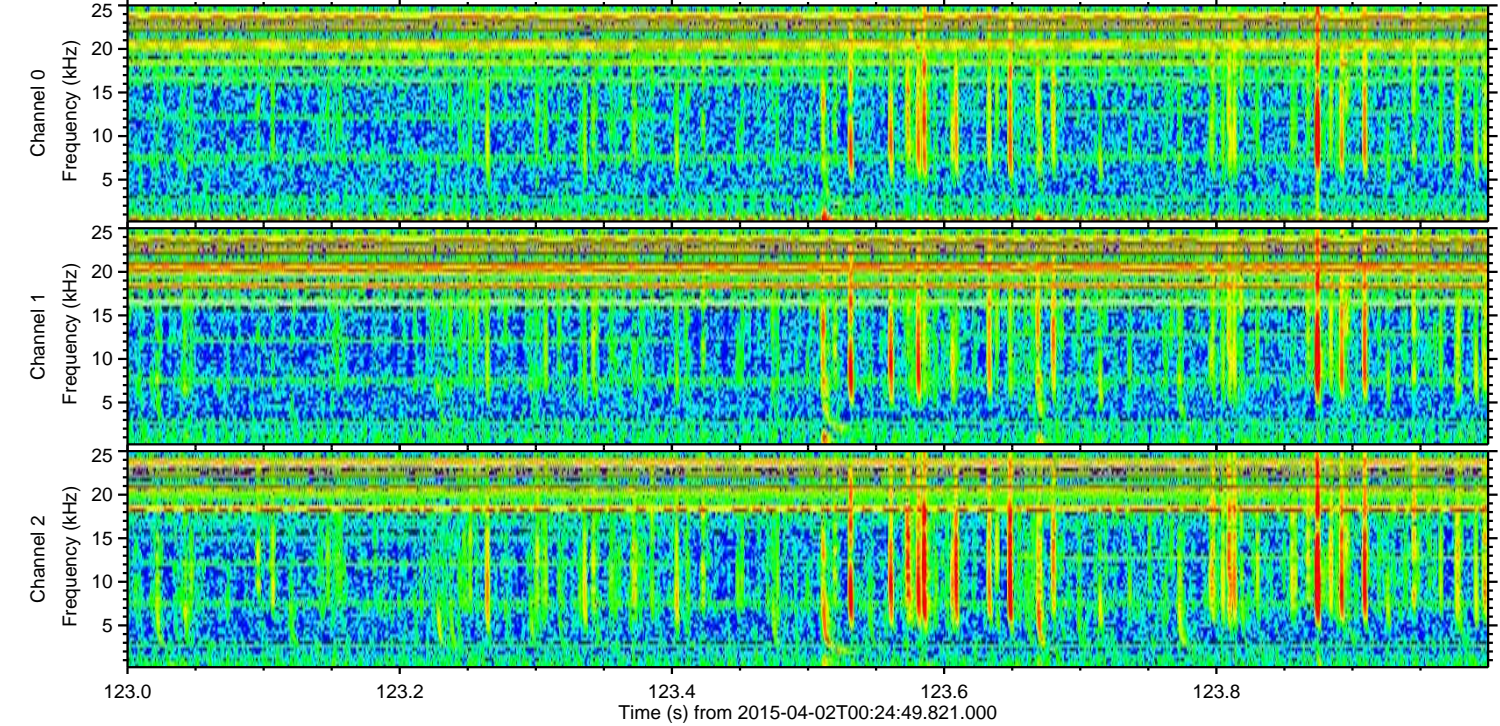
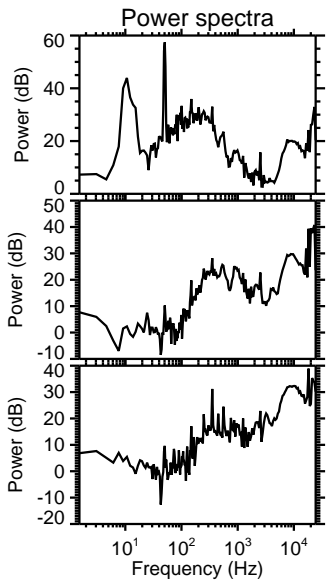
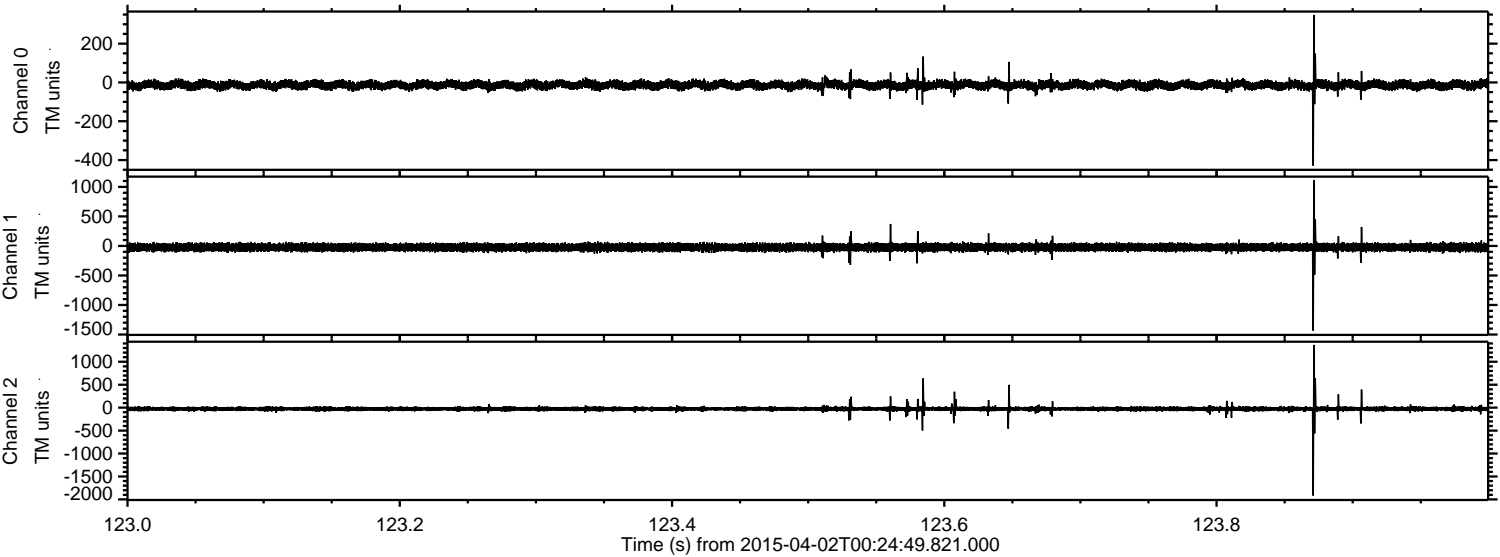


Processed Thu Apr 2 02:31:43 2015 by ELM ver.2012-10-06 from 001__elm20150402_002448__dat00.bin



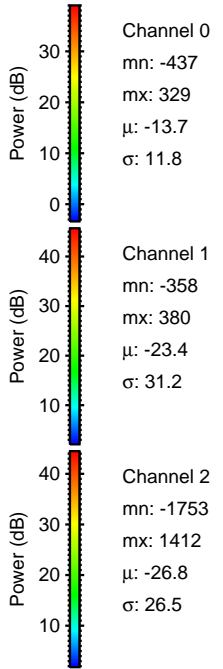
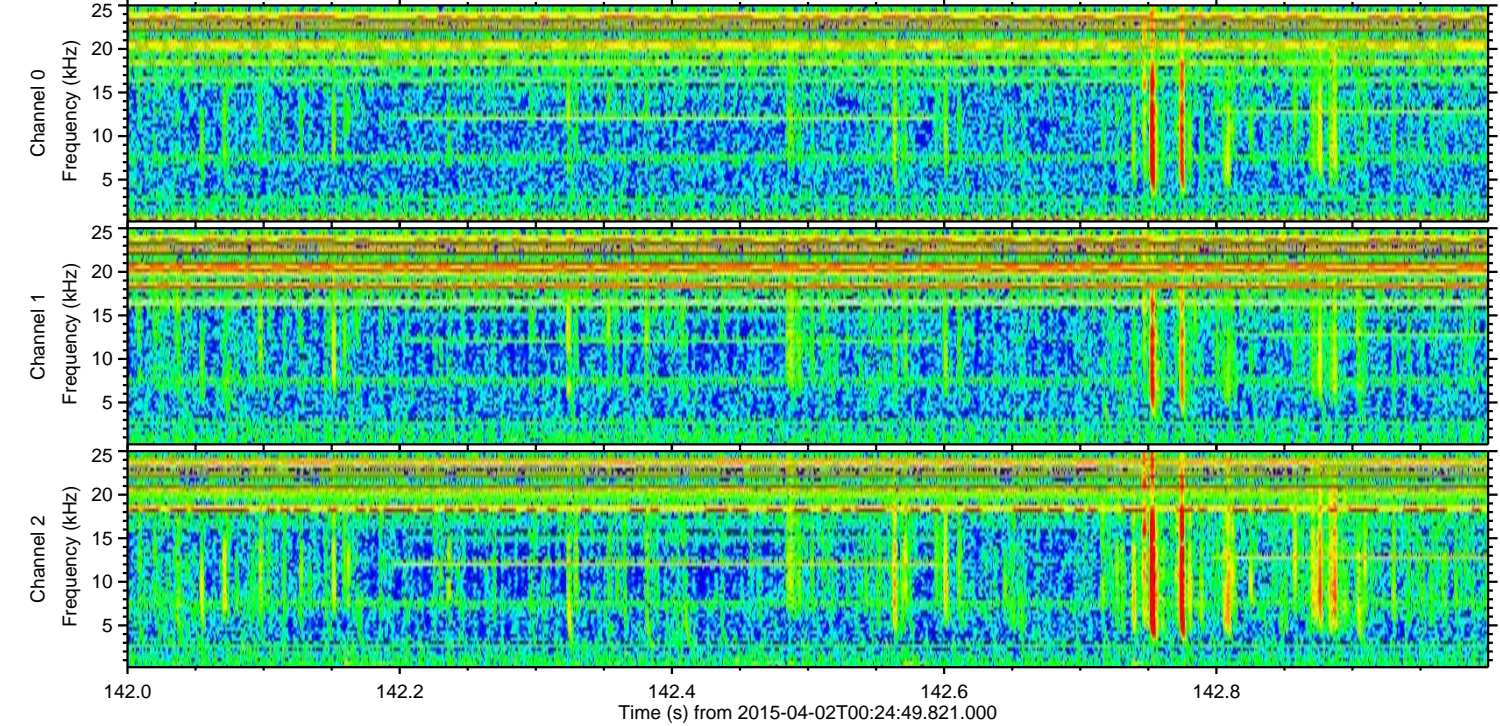
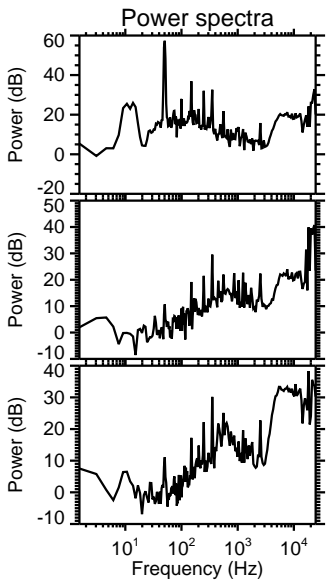
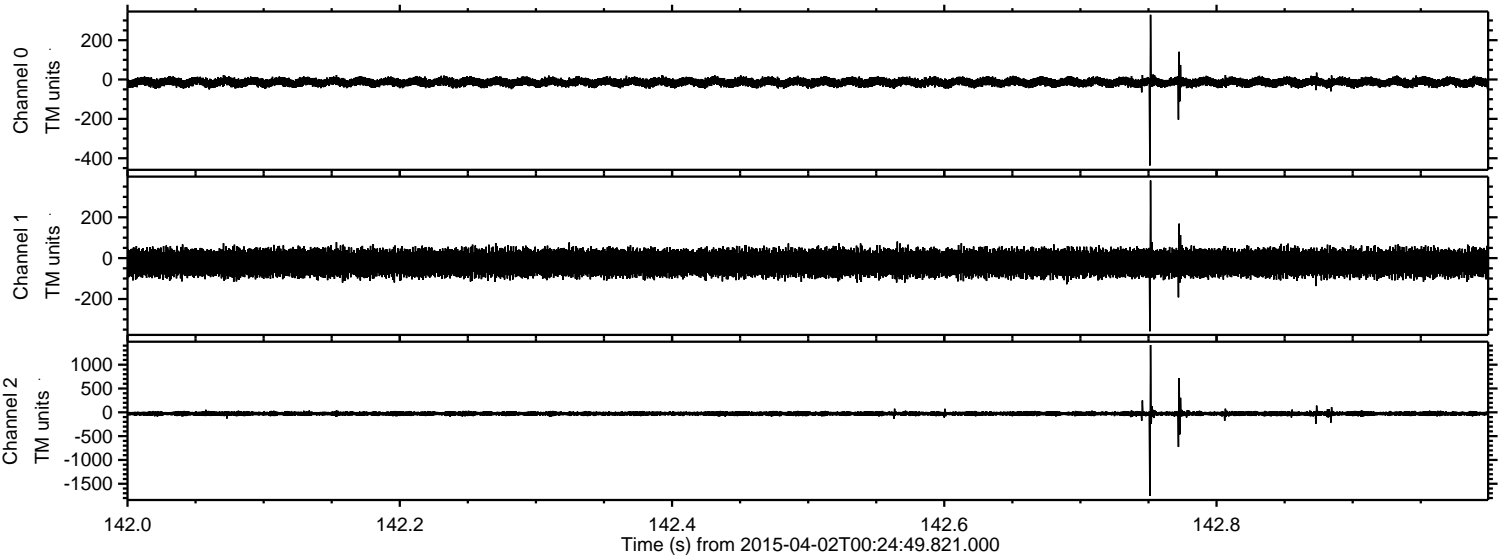
ELMAVAN 3D WAVEFORMS (Measured data sampled at 50 kHz) 49783 packets of 144 samples from 2015-04-02T00:24:49.821.000. Part 124/144

Processed Thu Apr 2 02:31:44 2015 by ELM ver.2012-10-06 from 001__elm20150402_002448__dat00.bin

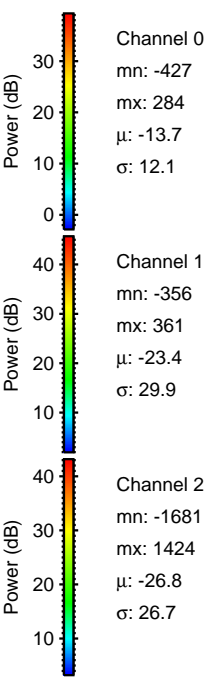
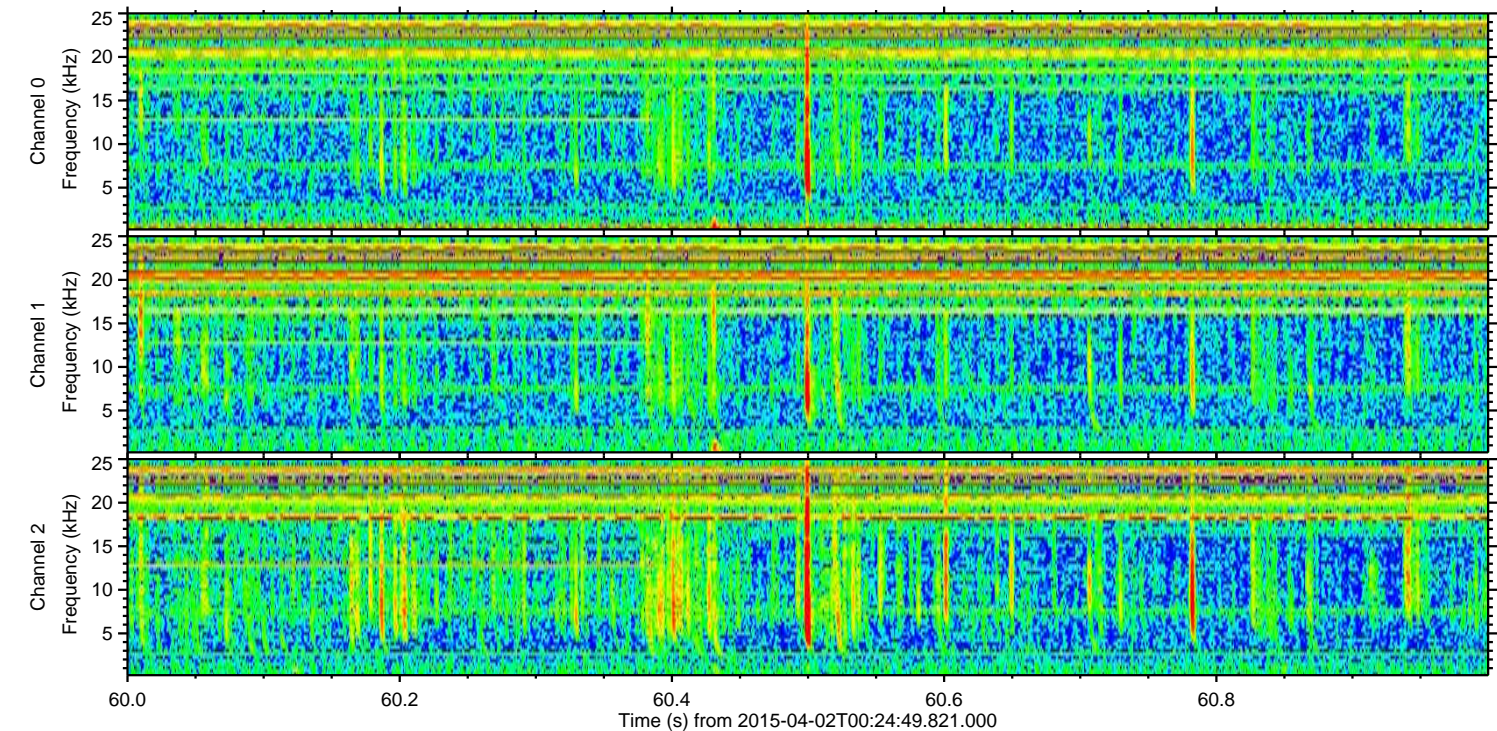
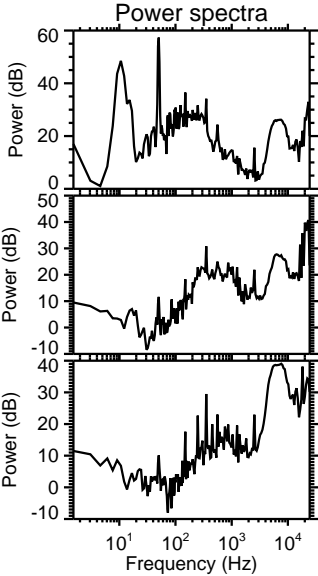
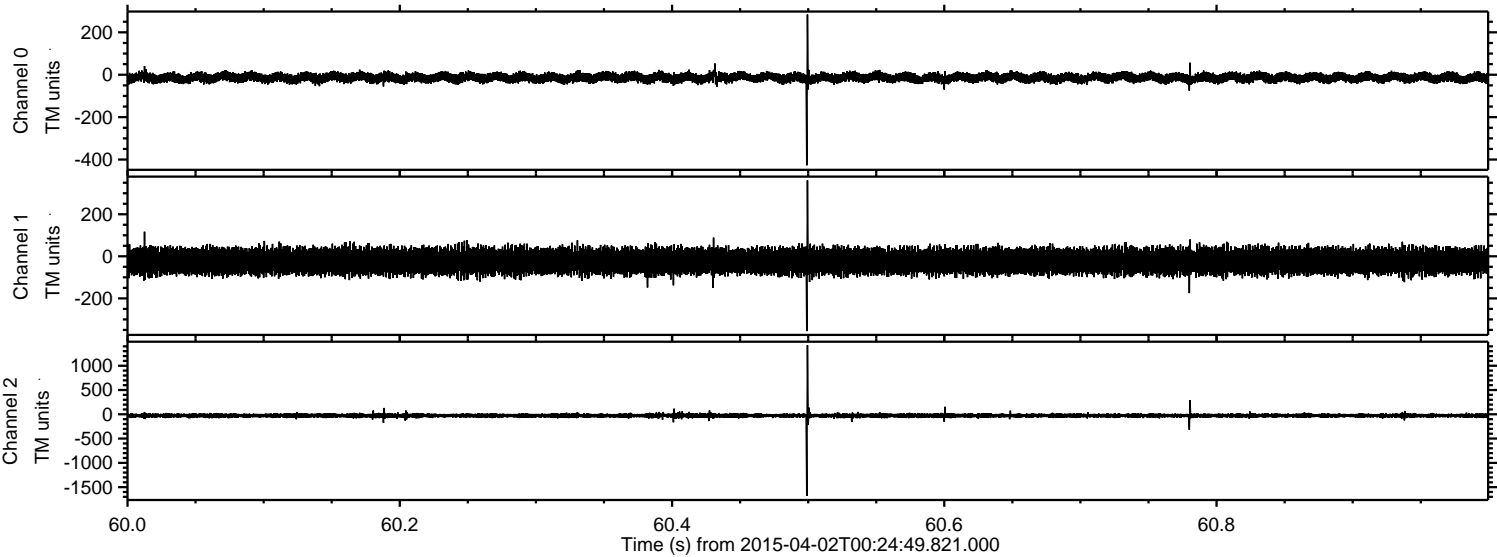


ELMAVAN 3D WAVEFORMS (Measured data sampled at 50 kHz) 49783 packets of 144 samples from 2015-04-02T00:24:49.821.000. Part 143/144

Processed Thu Apr 2 02:31:45 2015 by ELM ver.2012-10-06 from 001__elm20150402_002448__dat00.bin



Processed Thu Apr 2 02:31:46 2015 by ELM ver.2012-10-06 from 001__elm20150402_002448__dat00.bin

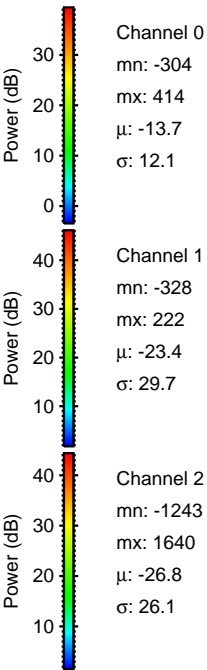
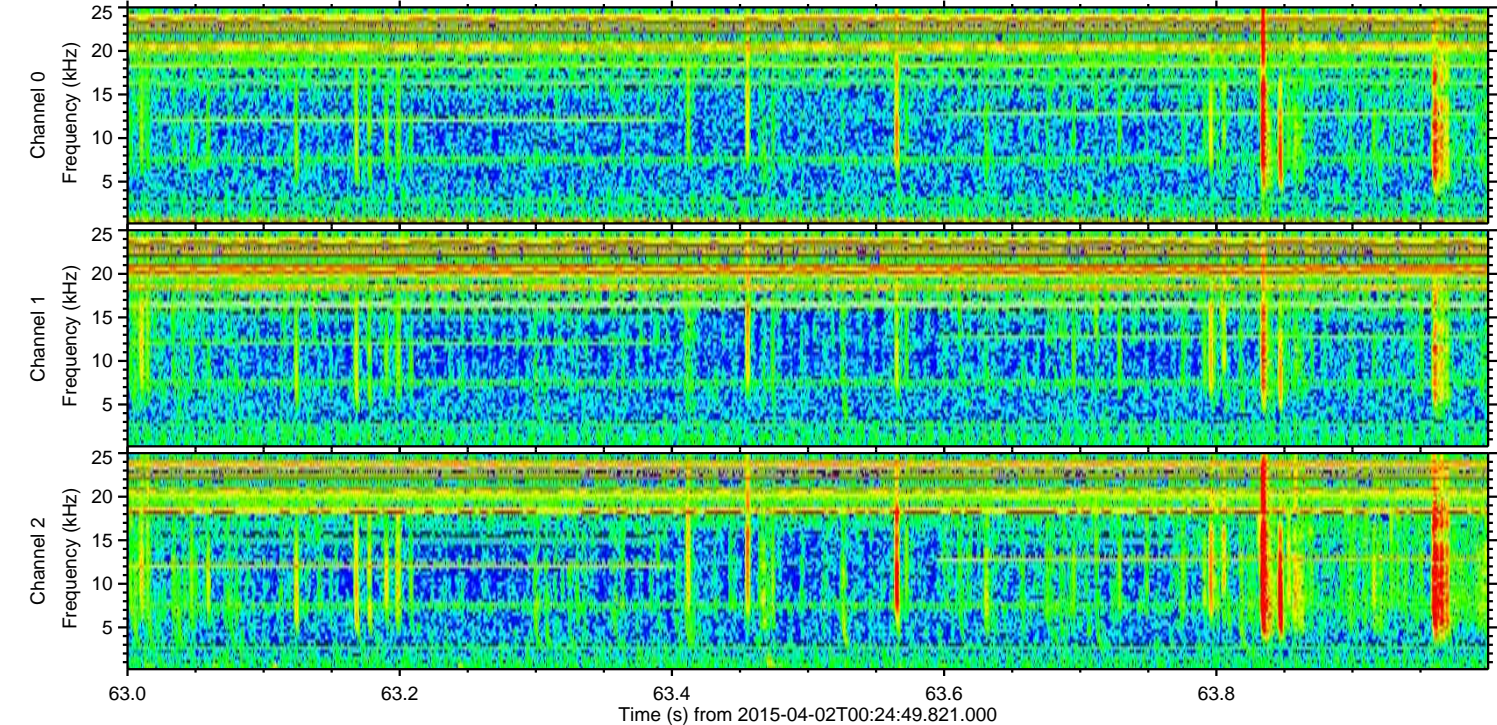
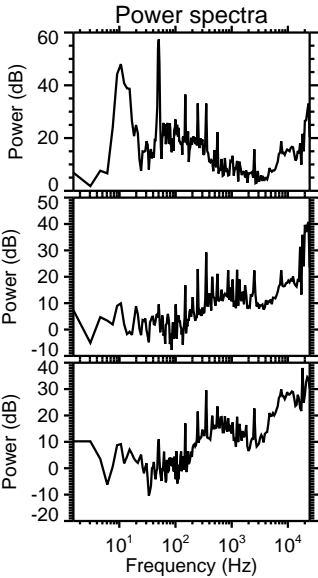
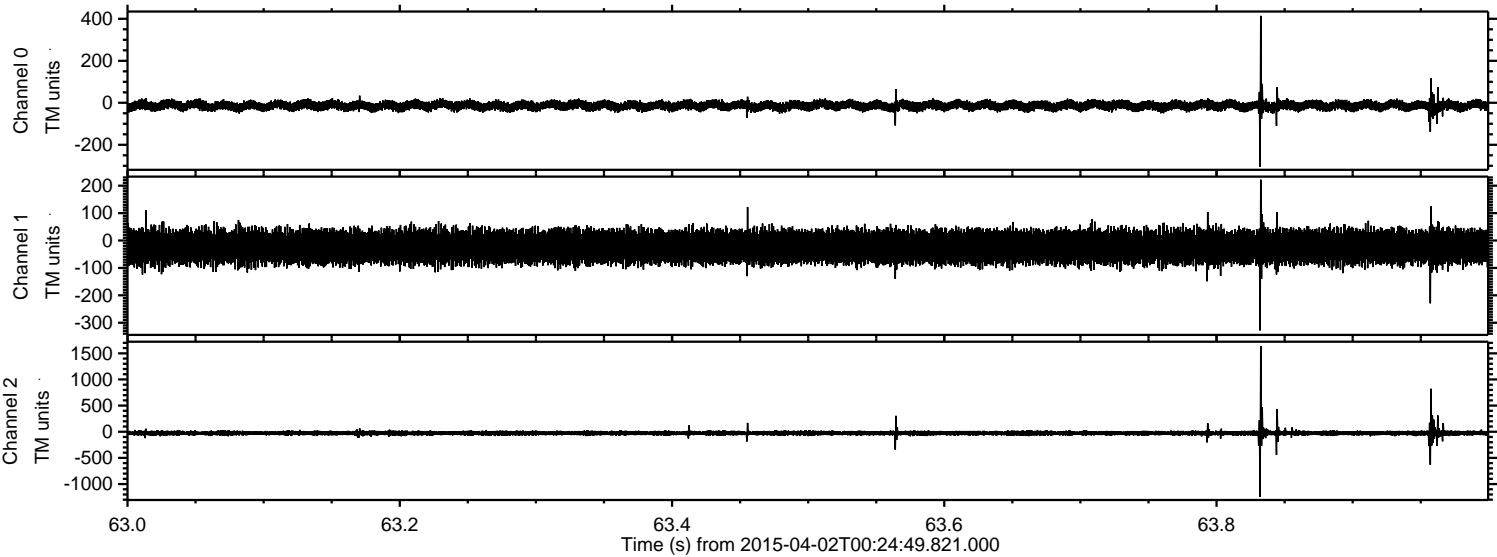


Channel 0
mn: -427
mx: 284
 μ : -13.7
 σ : 12.1

Channel 1
mn: -356
mx: 361
 μ : -23.4
 σ : 29.9

Channel 2
mn: -1681
mx: 1424
 μ : -26.8
 σ : 26.7

Processed Thu Apr 2 02:31:47 2015 by ELM ver.2012-10-06 from 001__elm20150402_002448__dat00.bin



Processed Thu Apr 2 02:31:48 2015 by ELM ver.2012-10-06 from 001__elm20150402_002448__dat00.bin

