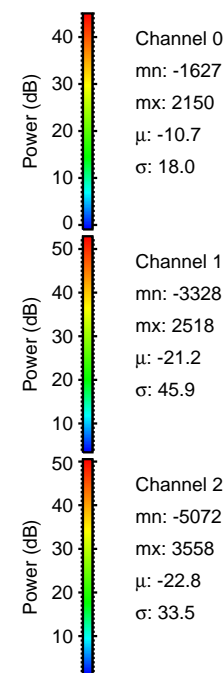
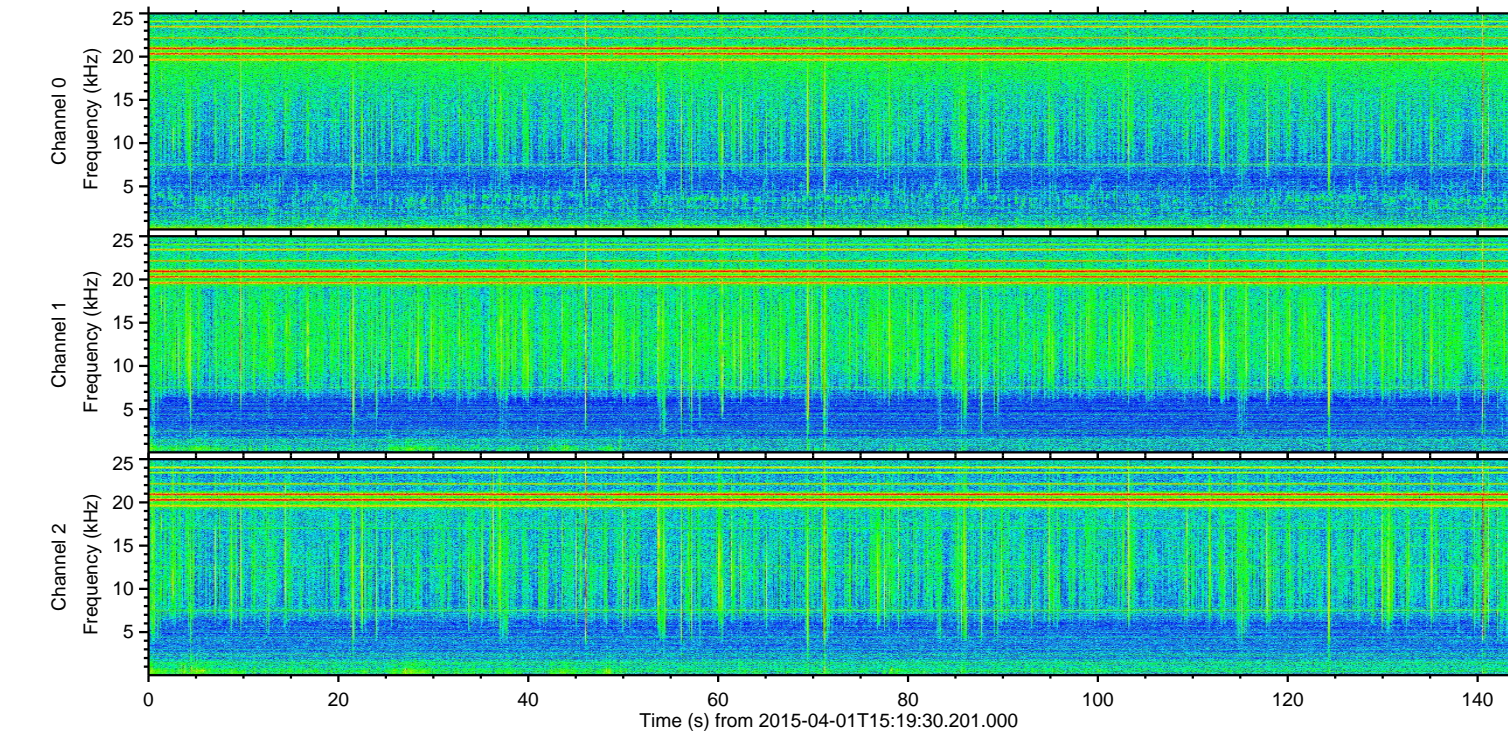
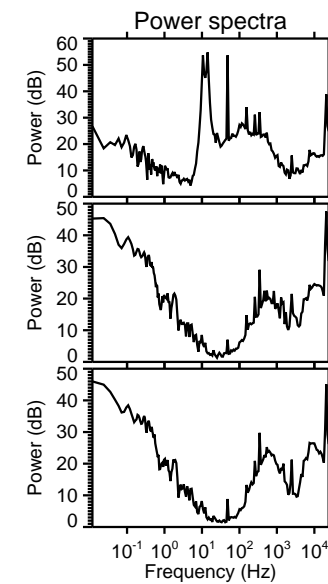
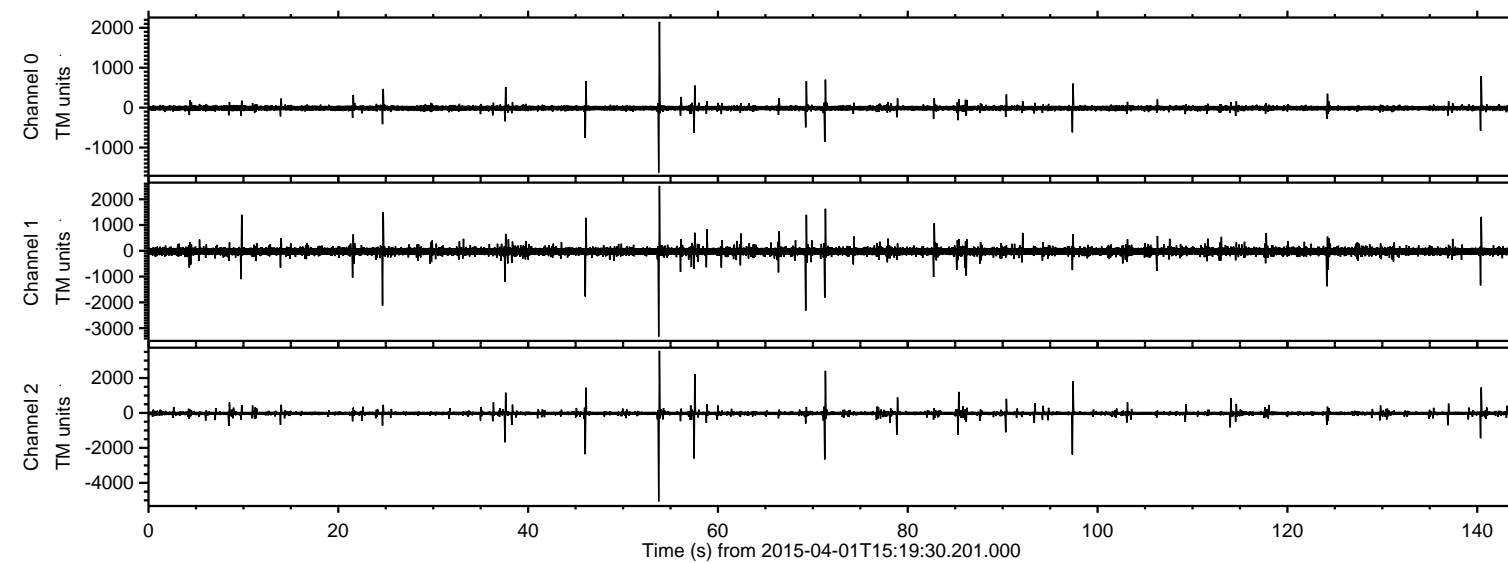
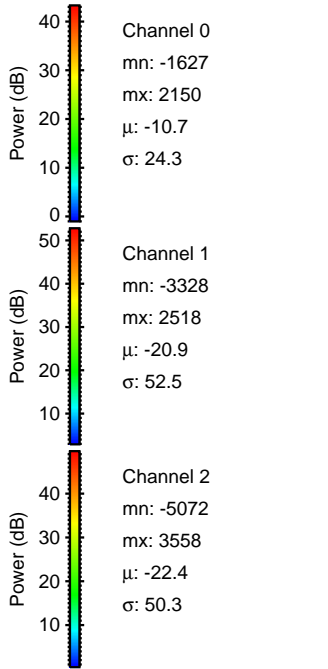
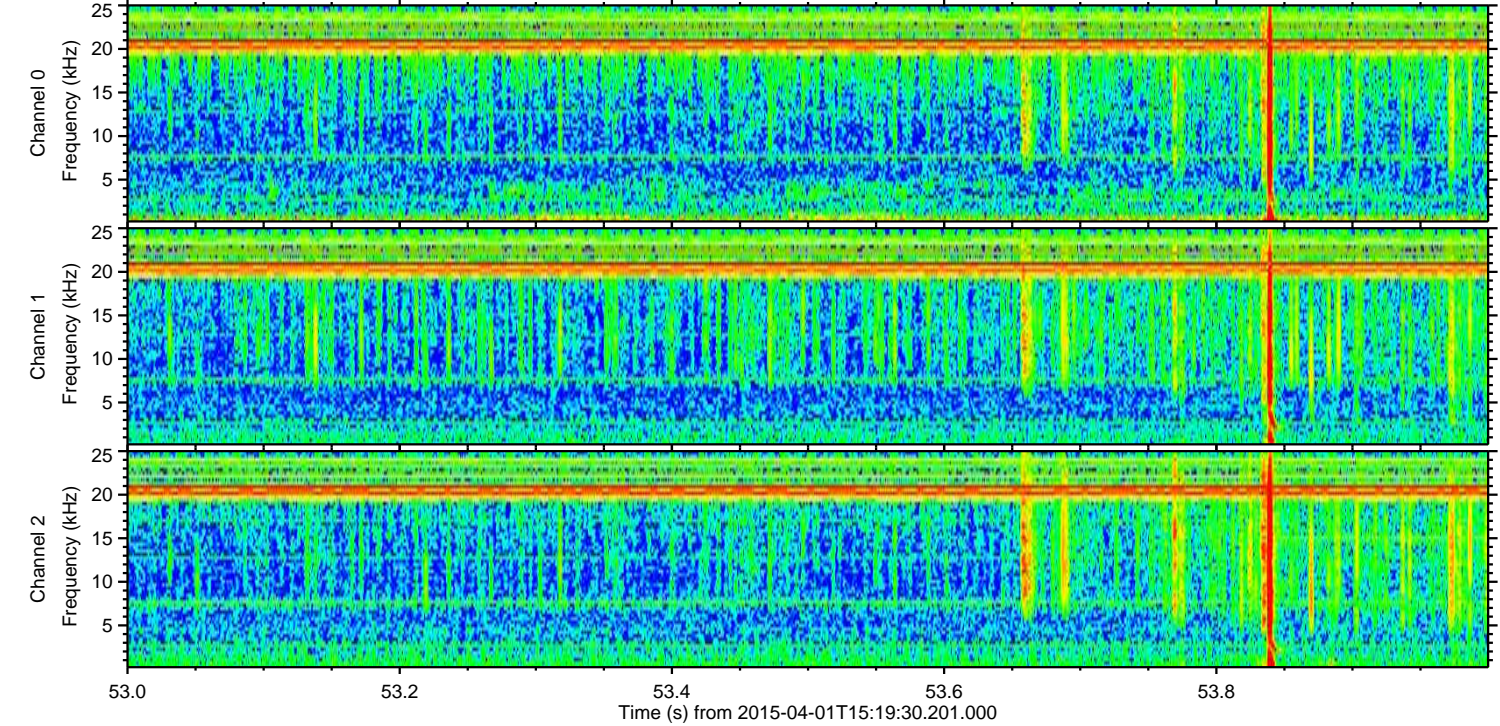
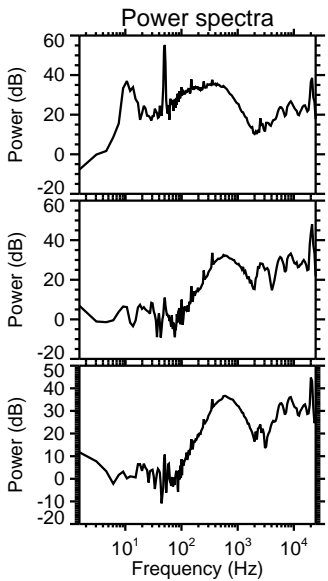
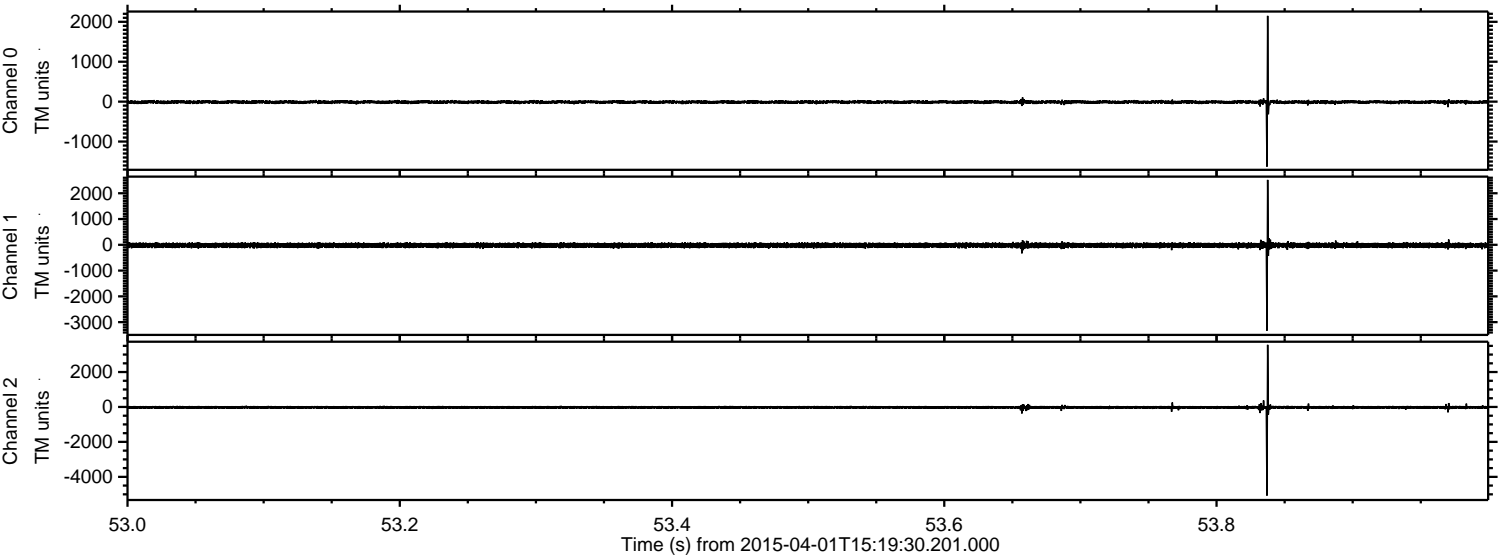


ELMAVAN 3D WAVEFORMS (Measured data sampled at 50 kHz) 49779 packets of 144 samples from 2015-04-01T15:19:30.201.000.

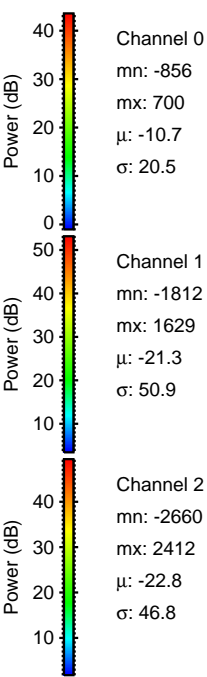
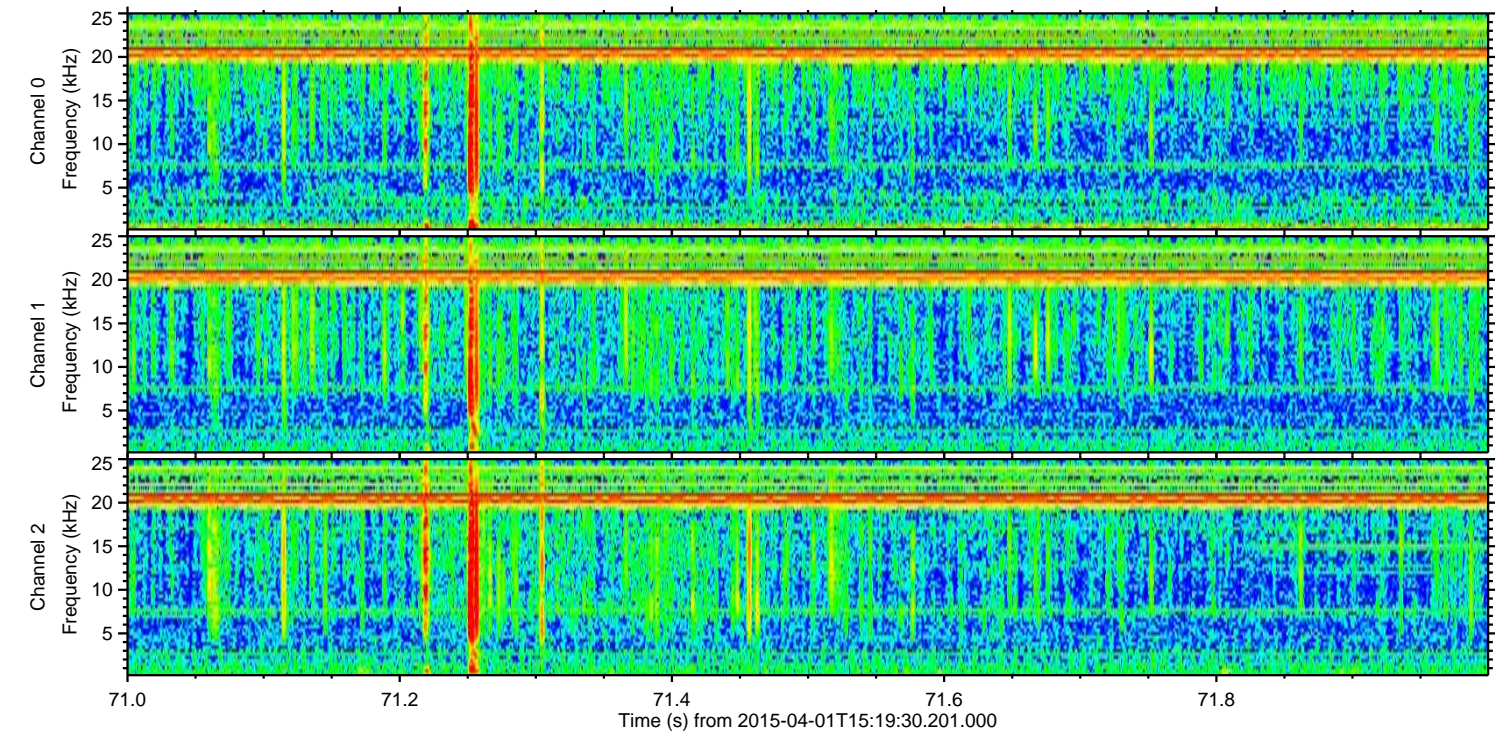
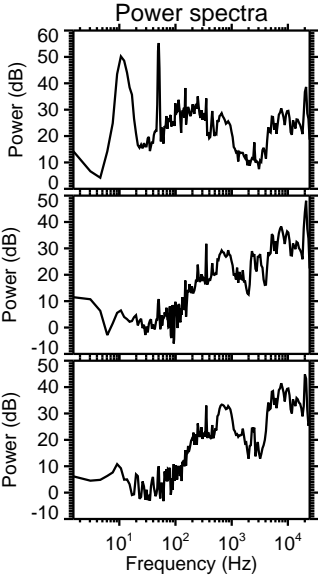
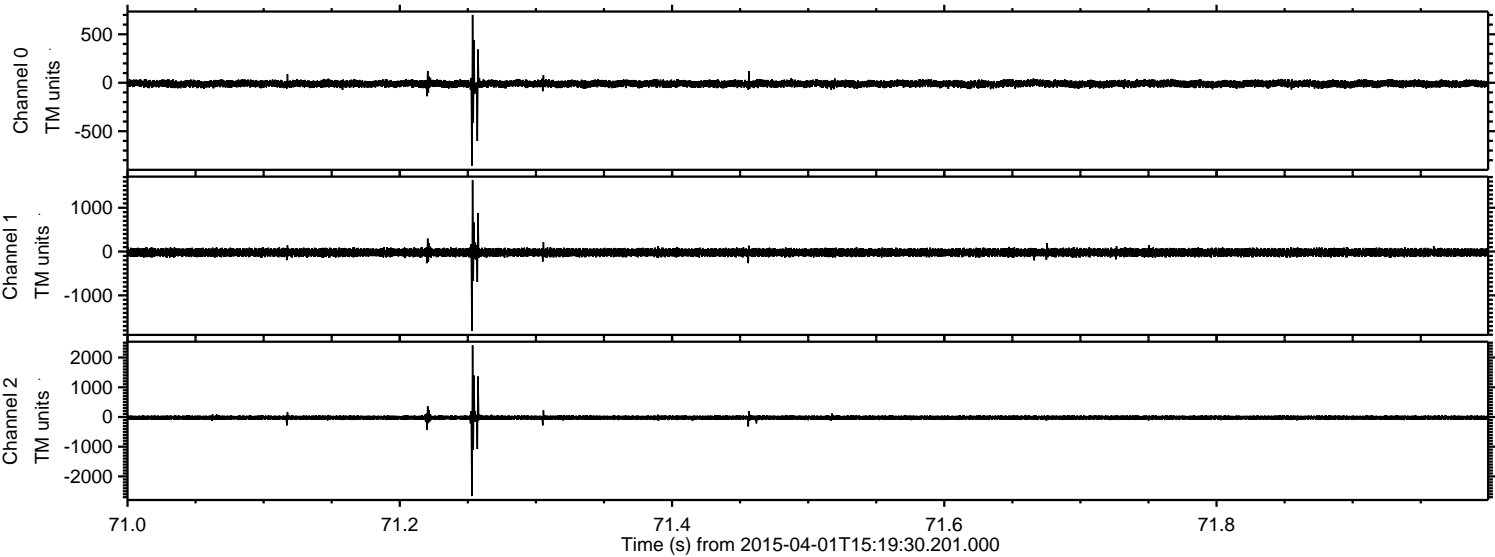
Processed Wed Apr 1 17:26:05 2015 by ELM ver.2012-10-06 from 001__elm20150401_151929__dat00.bin



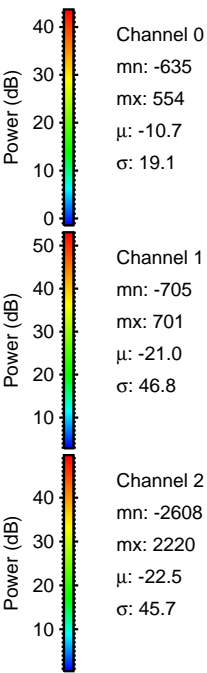
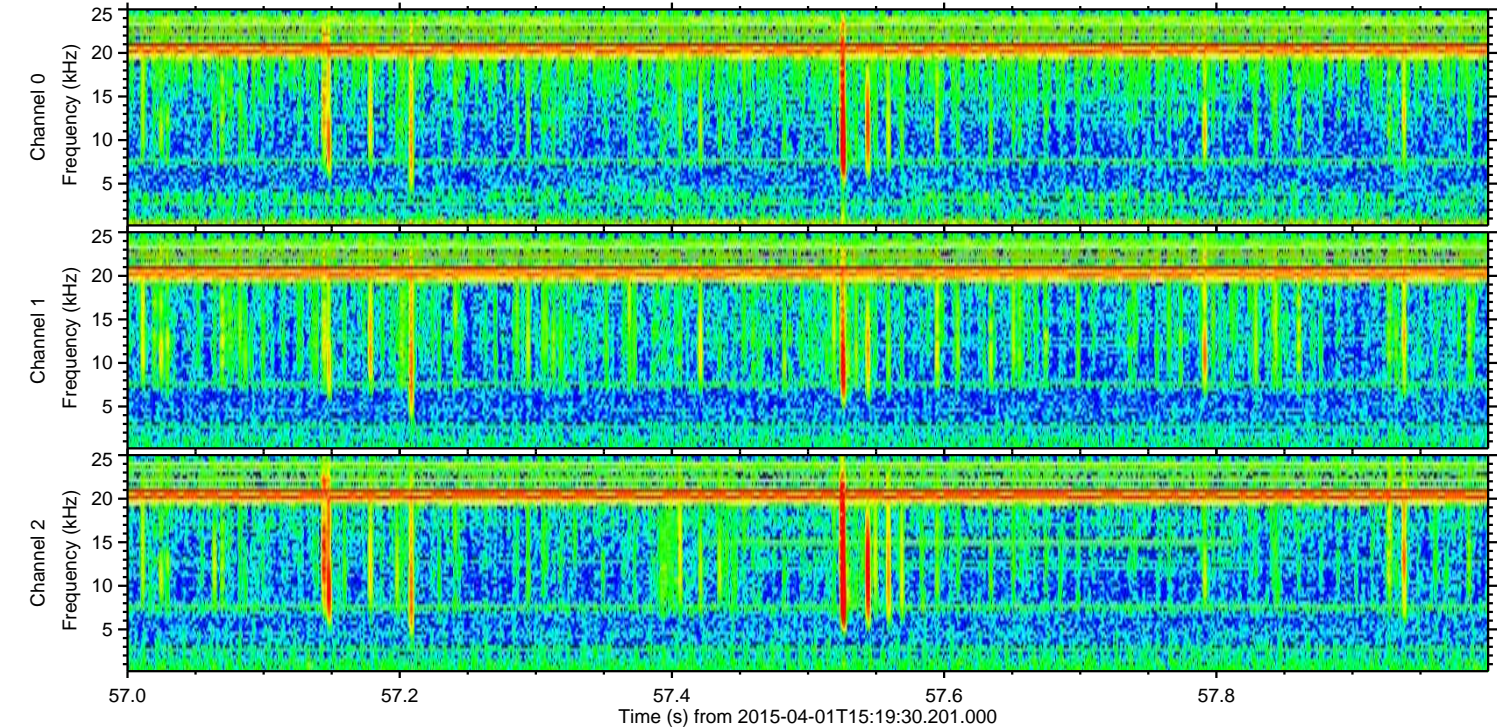
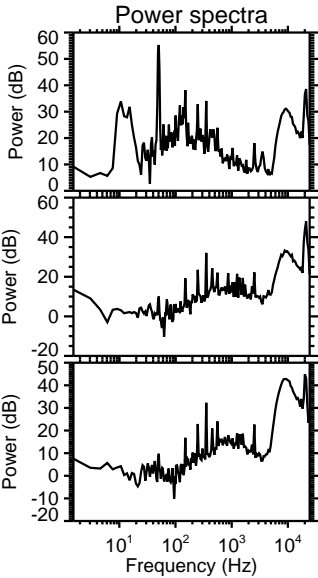
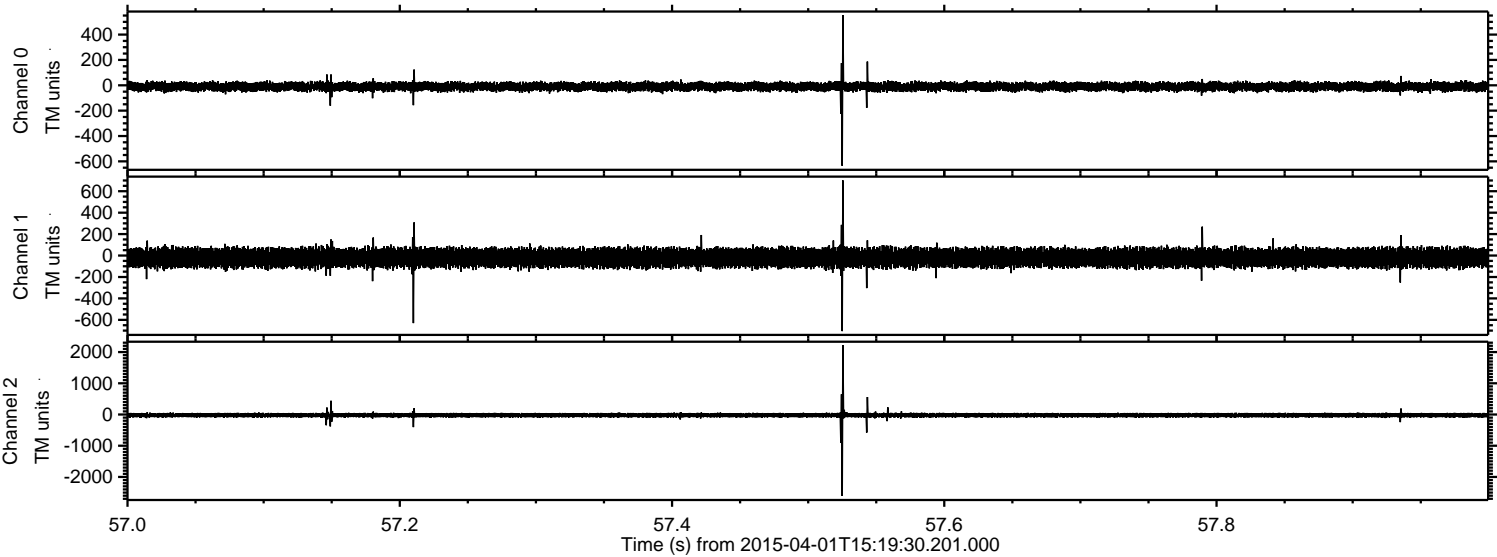
Processed Wed Apr 1 17:26:17 2015 by ELM ver.2012-10-06 from 001__elm20150401_151929__dat00.bin



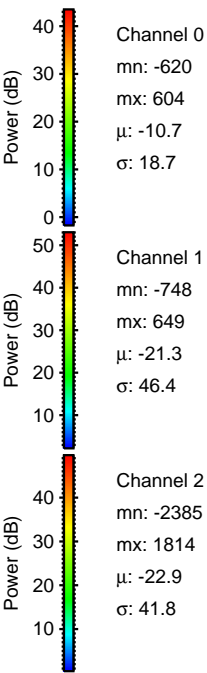
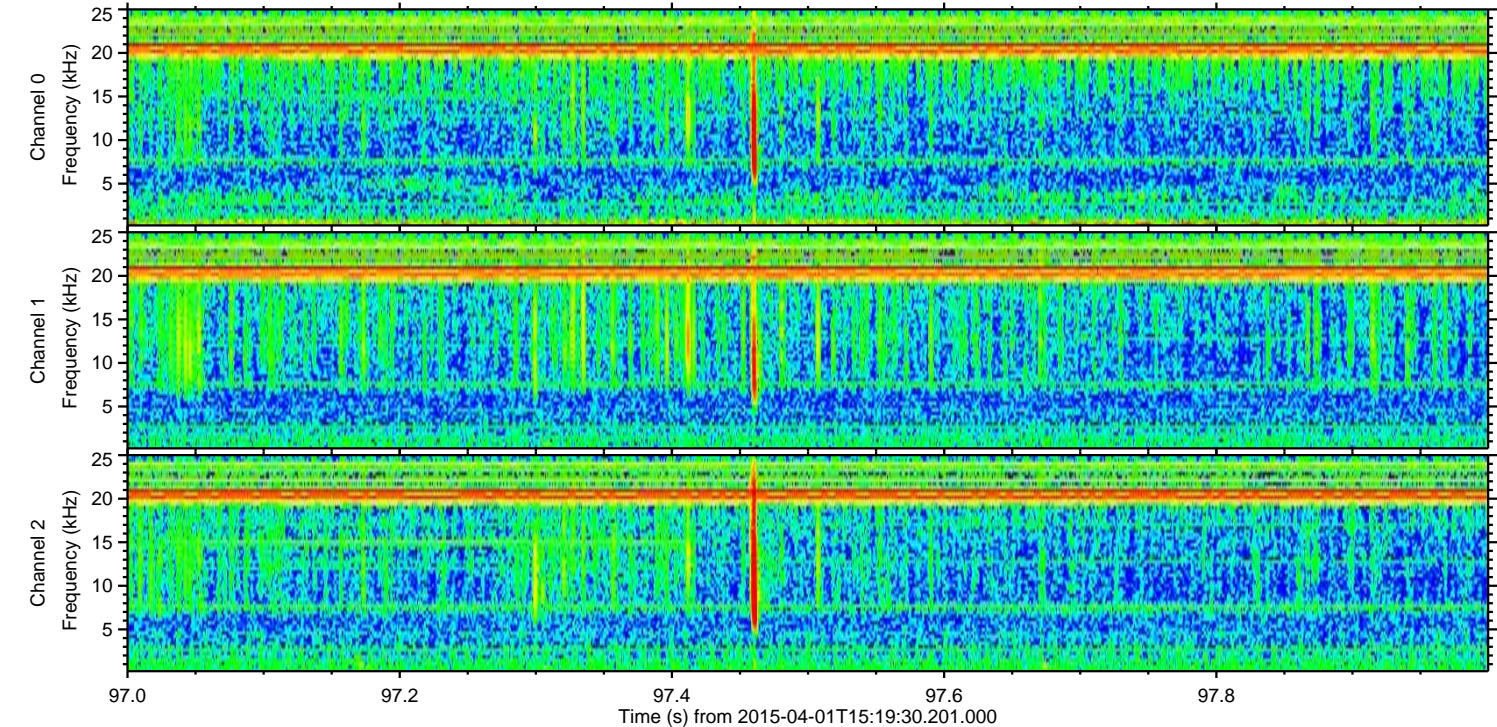
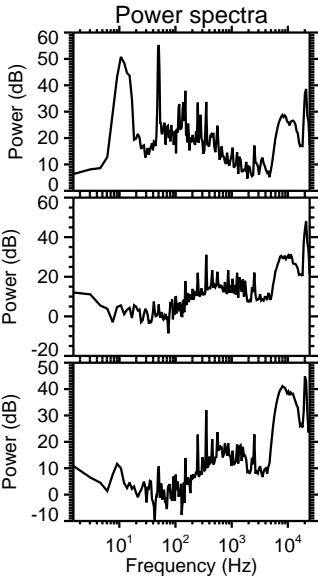
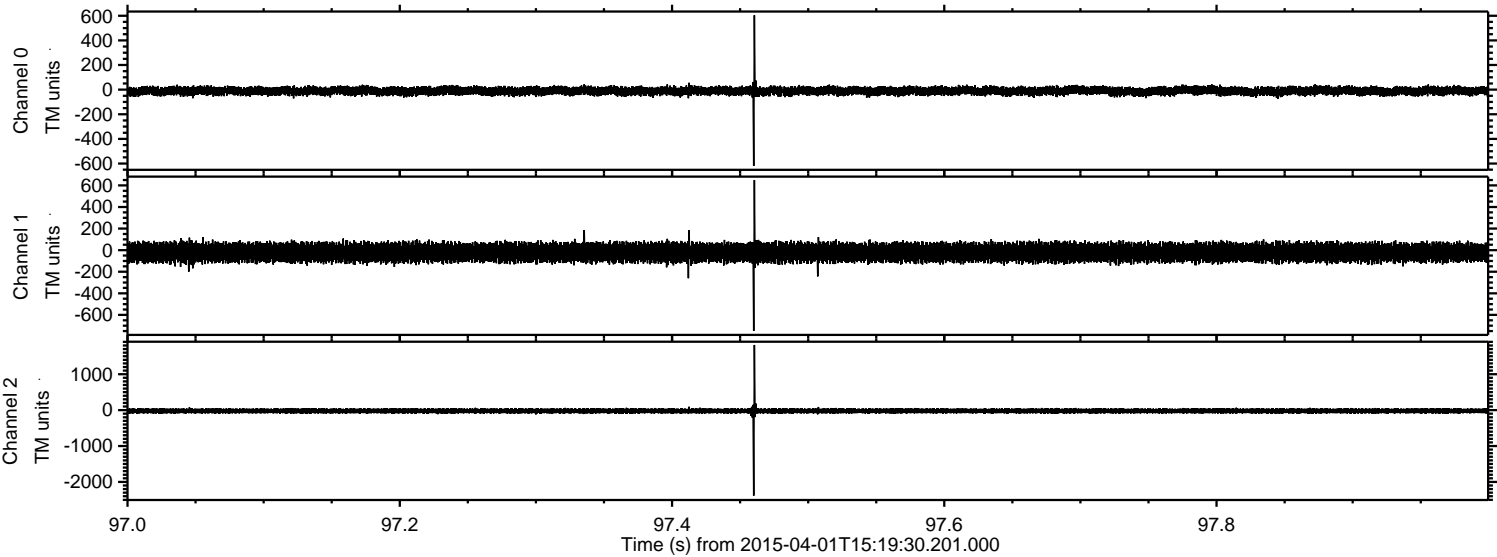
Processed Wed Apr 1 17:26:17 2015 by ELM ver.2012-10-06 from 001__elm20150401_151929__dat00.bin



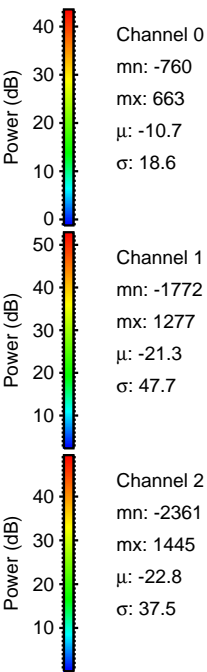
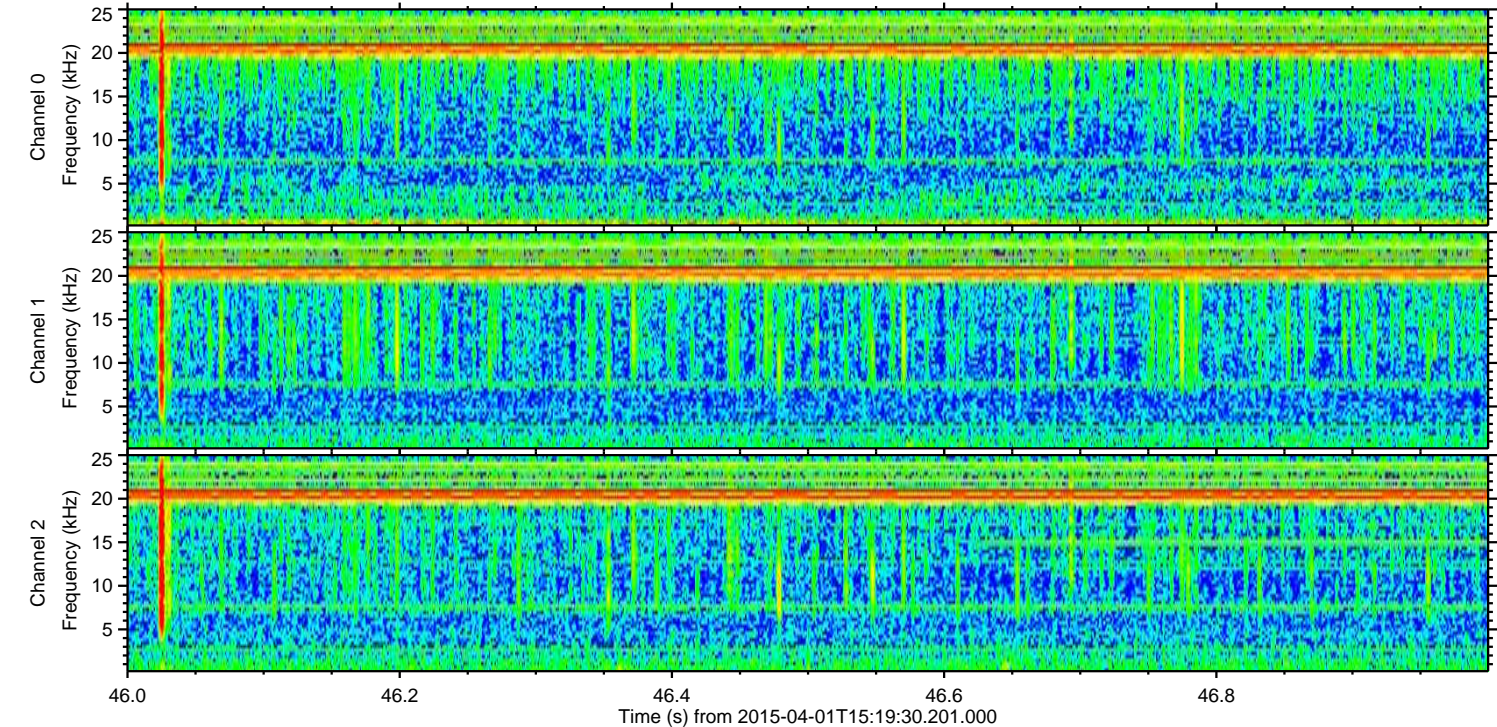
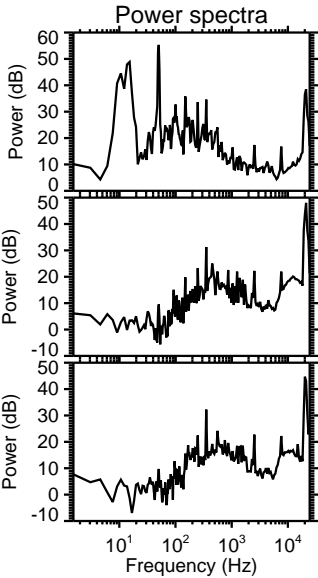
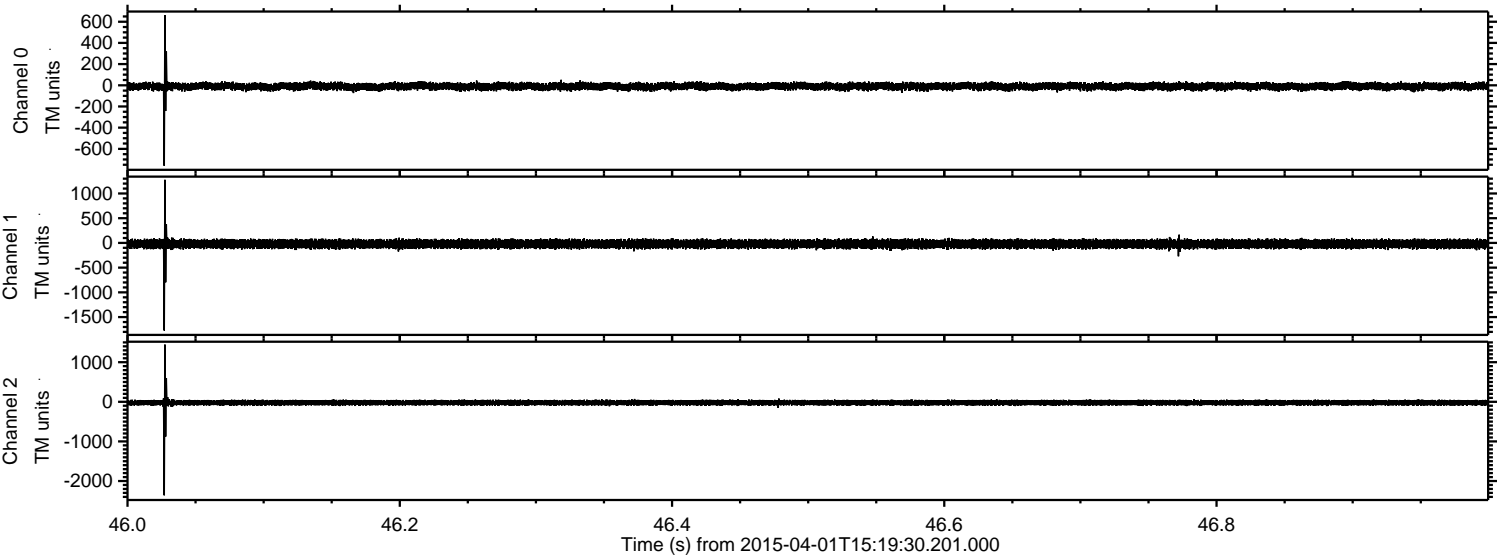
Processed Wed Apr 1 17:26:18 2015 by ELM ver.2012-10-06 from 001__elm20150401_151929__dat00.bin



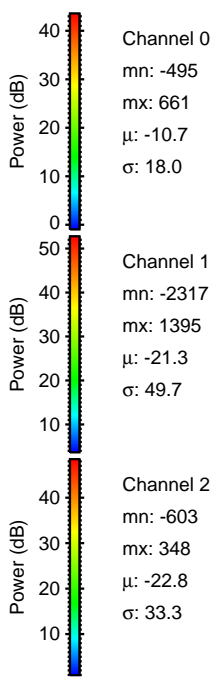
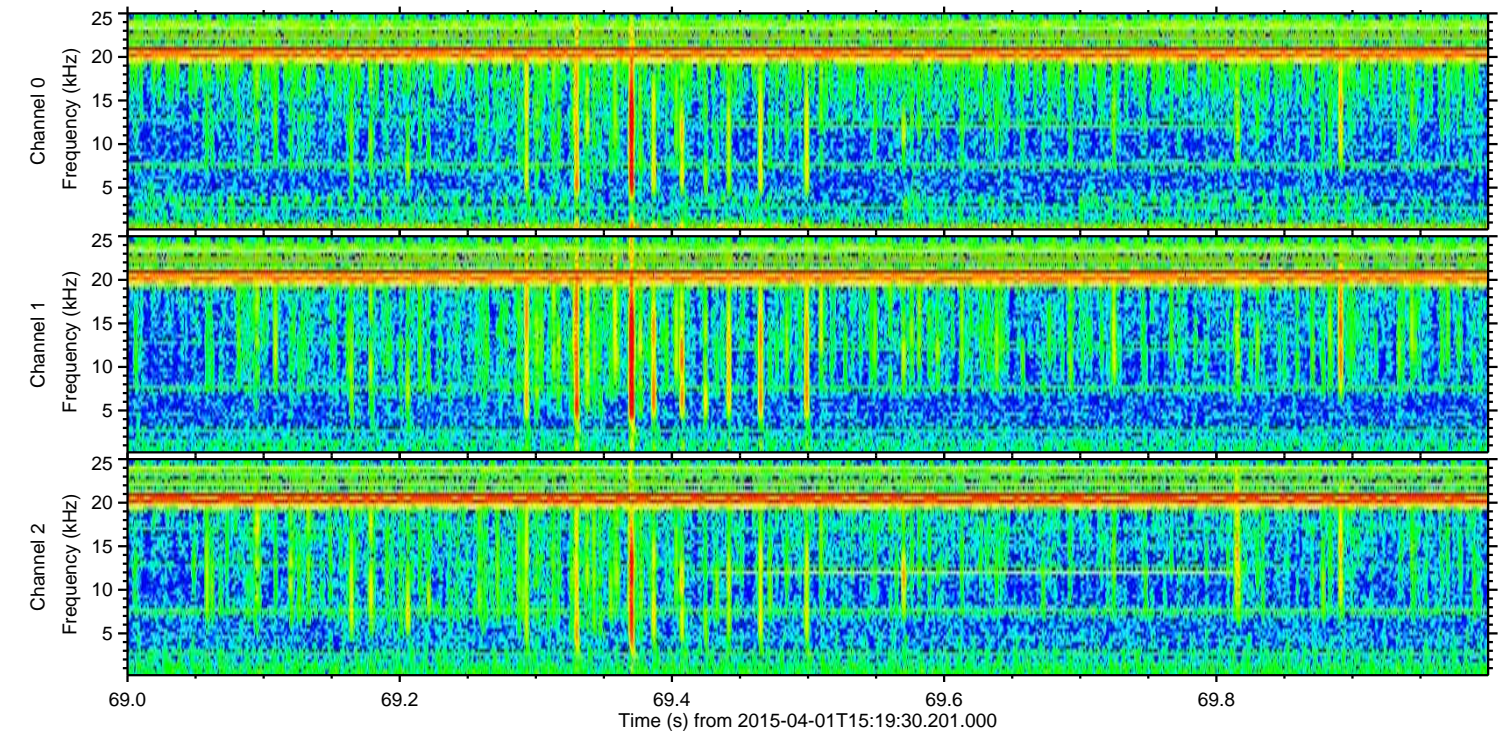
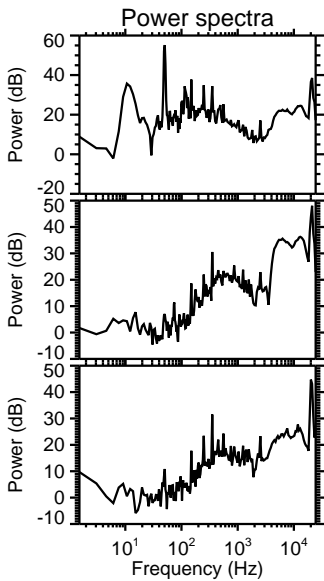
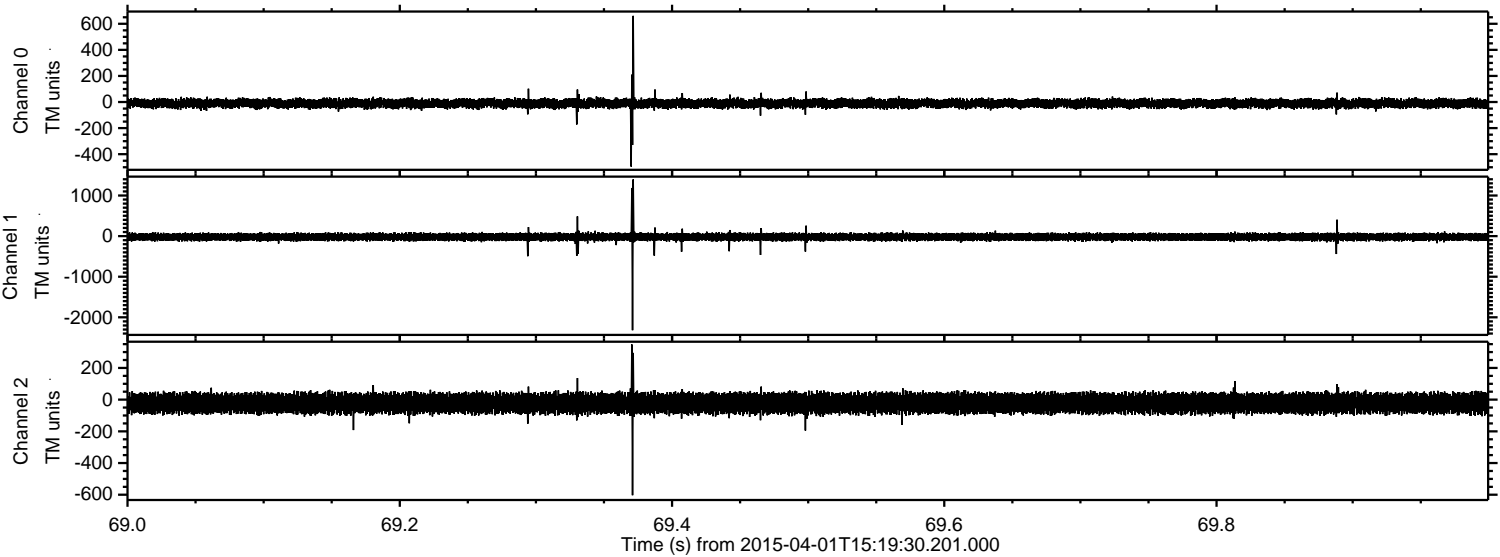
Processed Wed Apr 1 17:26:19 2015 by ELM ver.2012-10-06 from 001__elm20150401_151929__dat00.bin



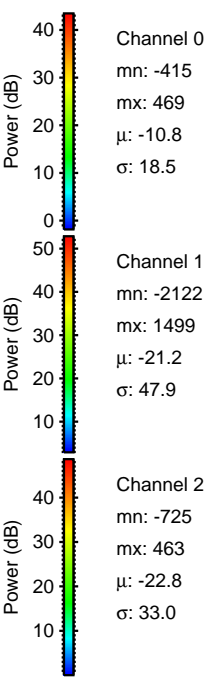
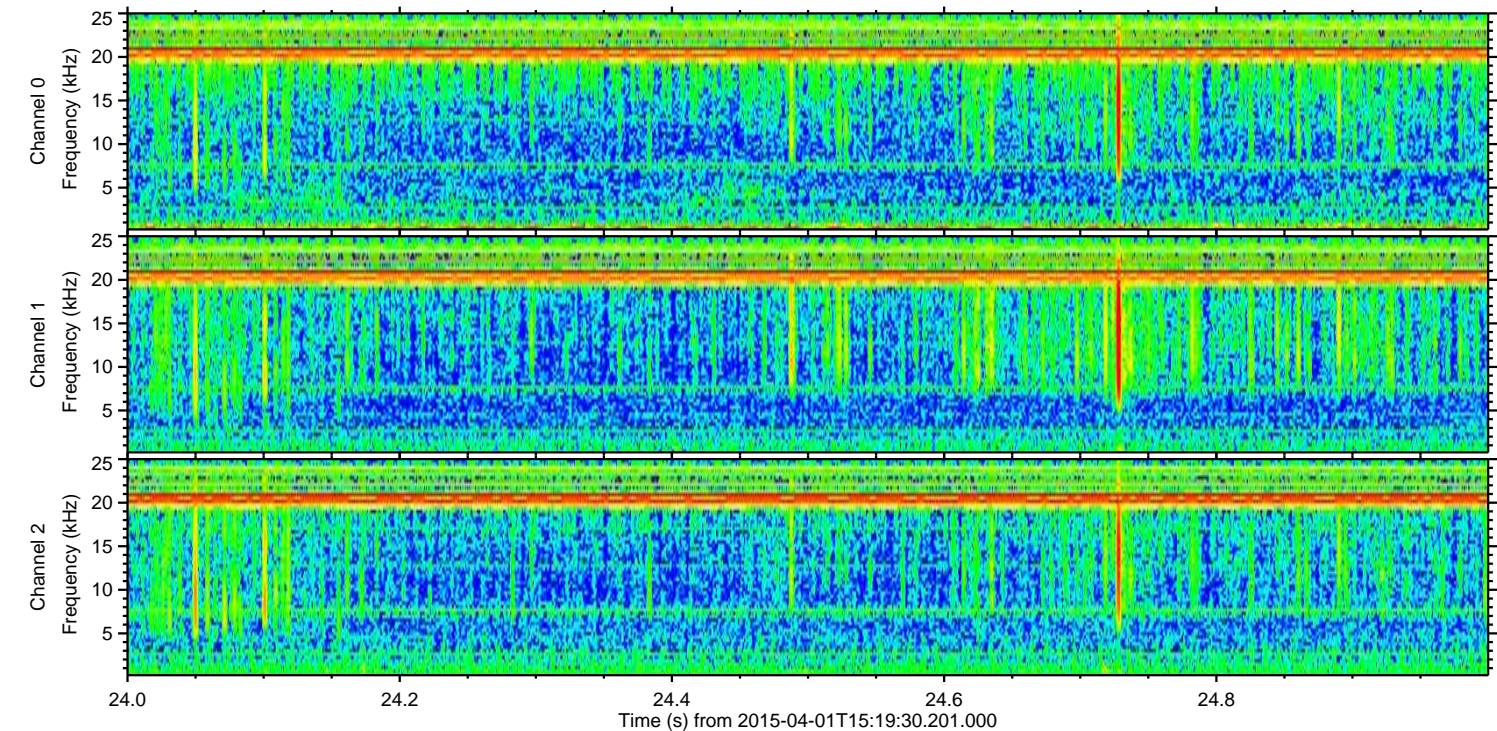
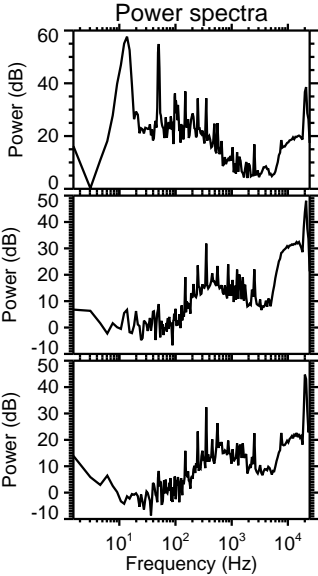
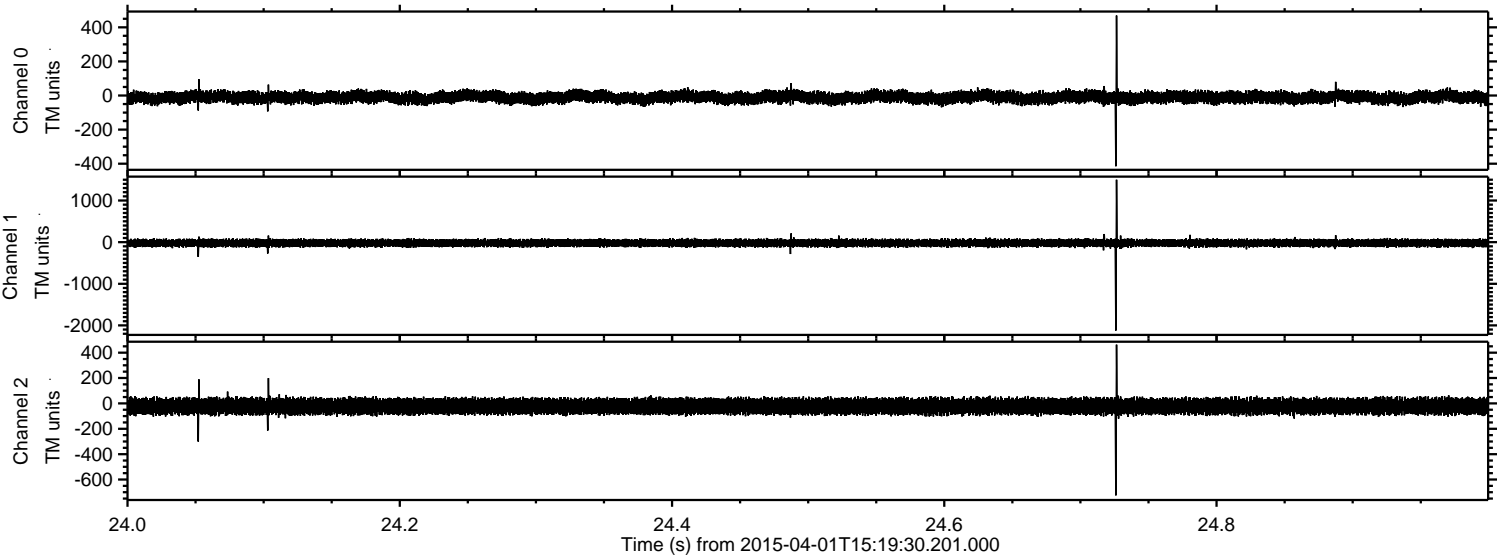
Processed Wed Apr 1 17:26:20 2015 by ELM ver.2012-10-06 from 001__elm20150401_151929__dat00.bin



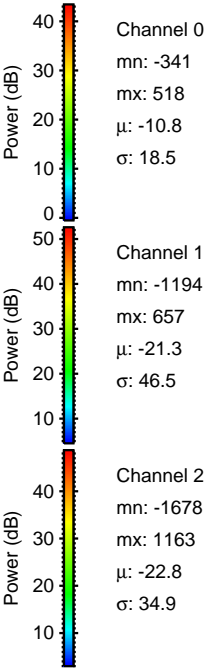
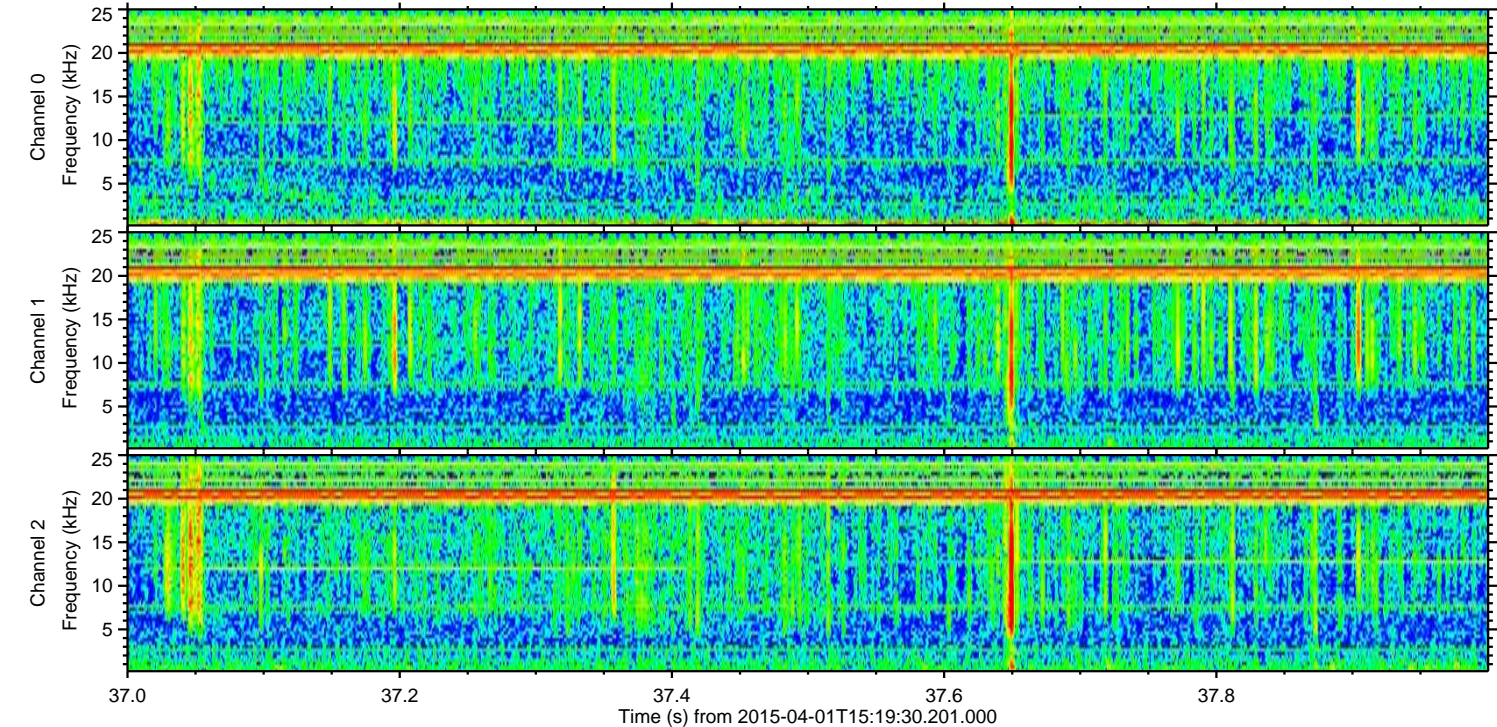
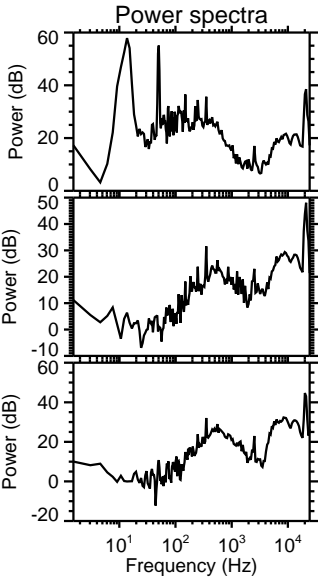
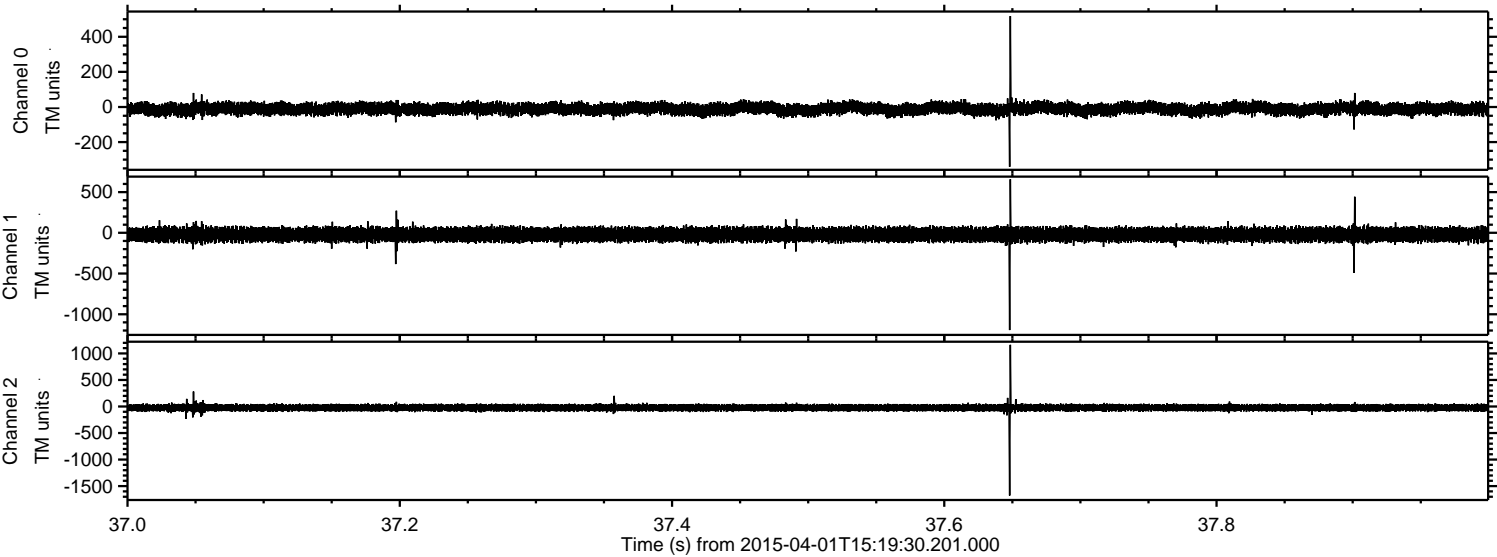
Processed Wed Apr 1 17:26:21 2015 by ELM ver.2012-10-06 from 001__elm20150401_151929__dat00.bin



Processed Wed Apr 1 17:26:22 2015 by ELM ver.2012-10-06 from 001__elm20150401_151929__dat00.bin

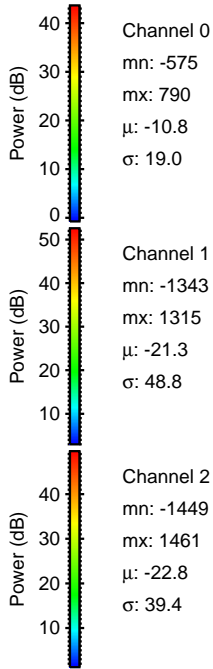
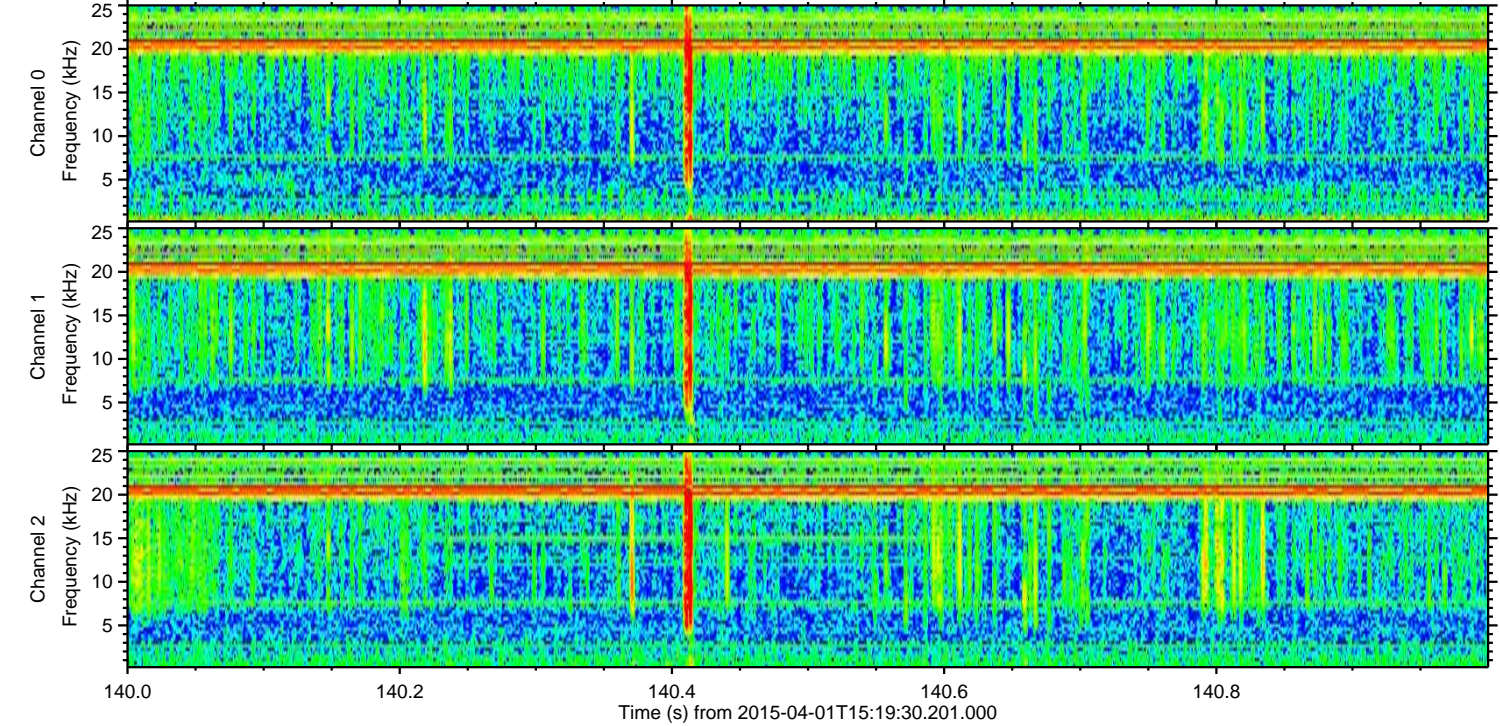
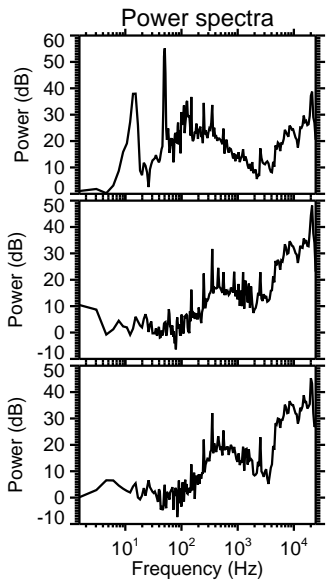
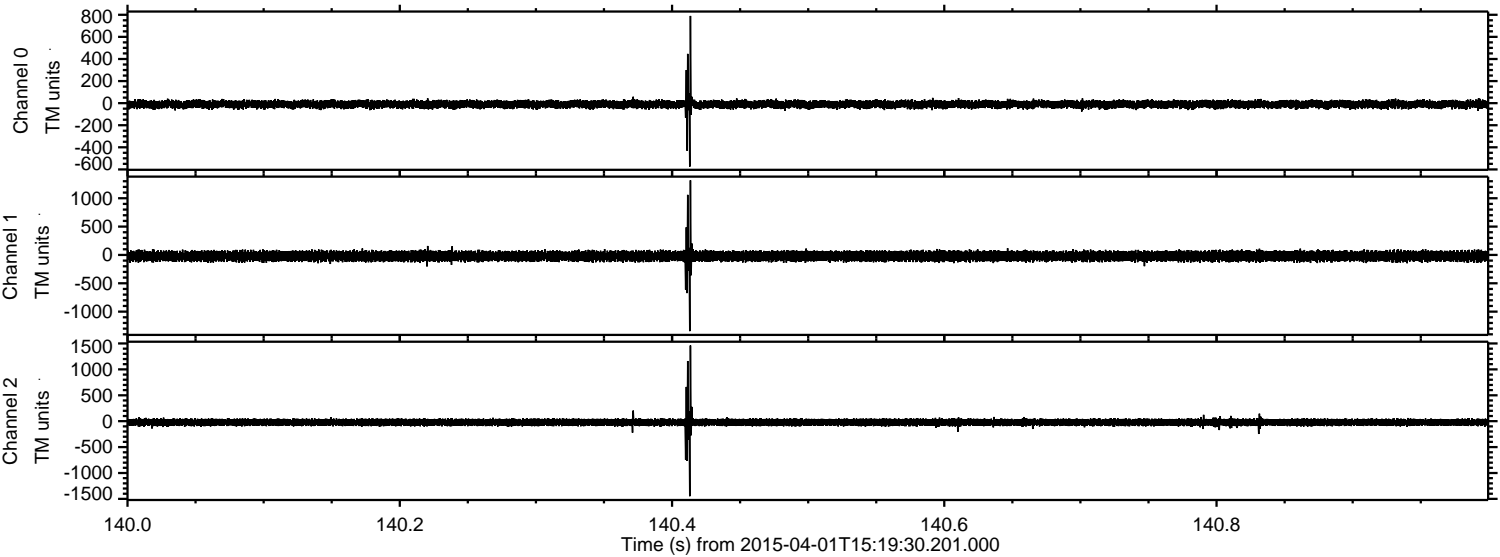


Processed Wed Apr 1 17:26:23 2015 by ELM ver.2012-10-06 from 001__elm20150401_151929__dat00.bin



ELMAVAN 3D WAVEFORMS (Measured data sampled at 50 kHz) 49779 packets of 144 samples from 2015-04-01T15:19:30.201.000. Part 141/144

Processed Wed Apr 1 17:26:24 2015 by ELM ver.2012-10-06 from 001__elm20150401_151929__dat00.bin



ELMAVAN 3D WAVEFORMS (Measured data sampled at 50 kHz) 49779 packets of 144 samples from 2015-04-01T15:19:30.201.000. Part 101/144

